

OFFICE OF POLICY ANALYSIS, RESEARCH & STATISTICAL SERVICES

NEW YORK STATE DIVISION of
CRIMINAL JUSTICE SERVICES

NEW YORK STATE
CRIMINAL JUSTICE EXPENDITURES
1979 through 1983

June 1985

105293



105293

NEW YORK STATE
DIVISION OF CRIMINAL JUSTICE SERVICES
Richard J. Condon
Commissioner

OFFICE OF POLICY ANALYSIS, RESEARCH AND STATISTICAL SERVICES
Sherwood E. Zimmerman
Deputy Commissioner

NEW YORK STATE
CRIMINAL JUSTICE EXPENDITURES
1979 through 1983

June 1985

Bureau of Program and Policy Analysis

Prepared By:

Edward T. Guider

NCJRS

MAR 30 1987

ACQUISITIONS

U.S. Department of Justice
National Institute of Justice

105293

This document has been reproduced exactly as received from the person or organization originating it. Points of view or opinions stated in this document are those of the authors and do not necessarily represent the official position or policies of the National Institute of Justice.

Permission to reproduce this copyrighted material in microfiche only has been granted by

New York State Division of
Criminal Justice Services

to the National Criminal Justice Reference Service (NCJRS).

Further reproduction outside of the NCJRS system requires permission of the copyright owner.

ACKNOWLEDGEMENT

We would like to extend our appreciation to Mr. Joseph Hilton, Director of Municipal Research and Statistics and Mr. Kenneth Preisser, Director of State Accounts in the Office of the State Comptroller. Through their generous cooperation, a large volume of information concerning local and state criminal justice expenditures was made available for this report. Special thanks are due to Mr. Joseph Green of the Bureau of Municipal Research and Statistics for his frequent assistance and patience in meeting our numerous requests for information and explanations.

An additional note of appreciation is extended to Debbie Govel for her diligent work in producing and distributing this report.

TABLE OF CONTENTS

	Page No.
PART I - THE REPORT.....	1
Introduction.....	1
Data Sources.....	1
Data Limitations.....	2
PART II - THE COST OF JUSTICE . . . 1983 OVERVIEW.....	3
Total Statewide Expenditures.....	3
Local Justice Spending.....	4
State Government Spending.....	5
PART III - FUNCTIONAL EXPENDITURES.....	7
A. Law Enforcement Services.....	7
B. Sheriff Services.....	11
C. Defense Services.....	13
D. Prosecution Services.....	17
E. Court Services.....	21
F. Probation Services.....	25
G. Correction Services.....	29
H. Parole Services.....	35
I. Crime Victims Services.....	37
J. Division For Youth Services.....	39
K. Division of Criminal Justice Services.....	41

APPENDICIES

Page No.

A. SUMMARY OF STATE CRIMINAL JUSTICE EXPENDITURES DATA

Table 1 NYS Criminal Justice Expenditures, 1979-83.....	45
---	----

B. SUMMARY OF UPSTATE MUNICIPAL GOVERNMENT CRIMINAL JUSTICE EXPENDITURES

Table 2 Law Enforcement Expenditures, 1979-83.....	49
Table 3 Upstate Sheriff Expenditures, 1979-83.....	65
Table 4 Upstate Defense Expenditures, 1979-83.....	67
Table 5 Upstate Prosecution Expenditures, 1979-83.....	69
Table 6 Upstate Court Expenditures, 1979-83.....	71
Table 7 Upstate Probation Expenditures, 1979-83.....	87
Table 8 Upstate Correction Expenditures, 1979-83.....	89

C. SUMMARY OF NEW YORK CITY CRIMINAL JUSTICE EXPENDITURES

Table 9 New York City Criminal Justice Expenditures, 1979-83.....	107
---	-----

D. CRIMINAL JUSTICE EMPLOYMENT DATA

Table 10 State Criminal Justice Agency Staffing Levels, 1979-83...	111
Table 11 Sheriff Department Employees, 1979-83.....	112
Table 12 Municipal Police Employees, 1979-83.....	113
Table 13 Local Probation Employees, 1979-83.....	114

E. ACCOUNT CODES FOR LOCAL EXPENDITURE DATA

F. LOCAL PER CAPITA EXPENDITURES BY FUNCTION..... 122

THE REPORT...

INTRODUCTION

To present a "snap-shot" of criminal justice spending for fiscal years 1979-1983, the Office of Policy Analysis, Research and Statistical Services (OPARSS) collected data identifying criminal justice expenditures throughout New York State for all county, city, town and village governments. Expenditures by State agencies dealing with criminal justice matters have also been identified for the same time period. Information concerning the number of personnel employed by the State and by localities for selected criminal justice activities is reported where available.

The report brings together a variety of data from the State Comptroller's Office, the New York City Comptroller's Office, and the State Budget Office to report the cost of the criminal justice system in New York State.

This publication reports criminal justice expenditure information in several functional areas. These include: police, sheriff, corrections, probation, the courts, prosecution, and defense for both State and local governments. Additional categories for State spending include Division of Parole, Crime Victims, Division for Youth and the Division of Criminal Justice Services.

A general description is provided for each function followed by a discussion of the service provided and its cost to the public.

A comprehensive breakdown of functional expenditures by each level of government is provided in tabular form in the Appendices.

In addition, descriptions of the account codes used by localities to report expenditures to the Office of the Comptroller are provided by functional category in Appendix E.

DATA SOURCES

State Expenditures

Expenditures by State agencies were obtained from the Office of the State Comptroller. These represent actual amounts spent by these agencies.

Amounts reported as aid to localities are appropriation levels identified in the State of New York, Classification of Appropriations by the Legislature, 1979 through 1983. Appropriation figures were used, as aid payments often lag behind actual fiscal year expenditure figures due to late fourth quarter claims.

State expenditures are reported for the following agencies: the Commission on Corrections; the Department of Correctional Services; the Division of Parole; the Division of Probation, the State Police, the Division for Youth; the Division of Criminal Justice Services; the Crime Victim's Board; and the Office of Court Administration.

Local Expenditures

The Local criminal justice expenditure data were obtained from the Office of the State Comptroller, Division of Municipal Affairs, Bureau of Municipal Research and Statistics, for the years 1979 through 1983.

The data compiled by the State Comptroller are gathered annually from financial reports submitted by all county, village, town and city governments throughout New York State pursuant to Article 3, Section 30 of the Municipal Law.

The data elements reported by local agencies were selected and combined into the following seven criminal justice expenditure categories: court, prosecution, defense, probation, police, sheriff, and corrections.

Specific account codes used to compile functional categories are identified in Appendix E.

At the local level, municipalities did not always report similar objects of expenditure (e.g., personal services, equipment, capital outlay, employee benefits, contractual services, and all other expenditures) to the comptroller; therefore, annual expenditures for a given jurisdiction and function may not be strictly comparable to those reported by other jurisdictions.

THE REPORT...

New York City - Expenditure data were obtained from the City of New York Comprehensive Annual Report of the Comptroller for the fiscal year 1979-1983.

DATA LIMITATIONS

Employee Benefits

It was not possible to determine employee benefit levels for all jurisdictions for each of the years reported. In some cases, localities reported employee benefits within functional categories. In most cases, employee benefits were reported as a general charge and not differentiated by functional category or agency of expenditure.

State agencies also record employee benefits as a general lump-sum governmental charge. These amounts approximate an additional 30-33% of personal service expenditures. Since most criminal justice agencies spend roughly 75% of their total budgets on personnel, an additional 1/3 of this amount can be used to generate an employee benefit level. This spending would increase reported spending levels by roughly 22%.

Other Criminal Justice Expenditures

Some costs of the criminal justice system are contained in cost centers such as "public safety administration" which includes expenditures for purposes other than those related solely to criminal justice activities. As these costs were not readily separable from the larger cost category, they were not included in this report. This report reflects only direct expenditures on criminal justice activities. Specifically excluded were retirement benefits for individuals formerly employed by criminal justice agencies. Current expenditures by indirect service agencies were also excluded. These indirect expenditures include activities such as mental health services, drug and alcohol counseling, social services support, and law enforcement activities by non criminal justice agencies (e.g., The Department of Environmental Conservation). Finally, Federal criminal expenditures and expenditures on private security are excluded.

Despite these limitations, it seems reasonable to assume that total dollar figures collected indicate at least a minimum level of direct criminal justice spending, and that these expenditures are not inflated. In fact, by excluding employee benefits costs at the State level, and in most instances from the local level expenditures, this report underestimates the actual direct costs of the criminal justice system to the citizens of the State.

Per Capita Expenditures

Per capita expenditures are based on 1980 census counts. Actual population figures are listed by county in Appendix F.

TOTAL STATEWIDE EXPENDITURES

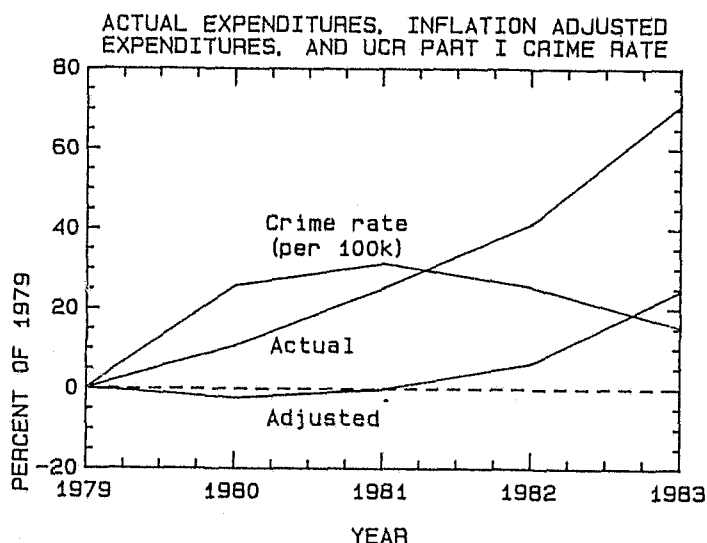
Total spending statewide for criminal justice activities by the State and local governments increased from \$3,481,641,000 in 1982 to \$4,217,067,000 in 1983. This represents an increase of 21.1%. The average annual increase in spending was 17.8% since 1979. Adjusted for estimated fringe benefits, the 1983 spending level would exceed \$5.3 billion.

Based on 1979 dollars, 1983 expenditures would approach \$3.073 billion. While real spending increased 71.2% between 1979 and 1983, when adjusted for inflation, criminal justice spending increased only 24.7%.

**Criminal Justice Spending
1979-83**

	<u>Amount</u>	<u>Inflation Adjusted*</u>
1979	\$ 2,463,642,000	\$ 2,463,642,000
1980	2,726,545,000	2,401,813,000
1981	3,084,982,000	2,462,124,000
1982	3,481,641,000	2,618,194,000
1983	4,217,067,000	3,072,555,000

*Based on 1979 dollars.



During 1983-84, the rate of growth of inflation adjusted criminal justice spending exceeded the rate of growth in the reported crime rate using 1979 as the base periods.

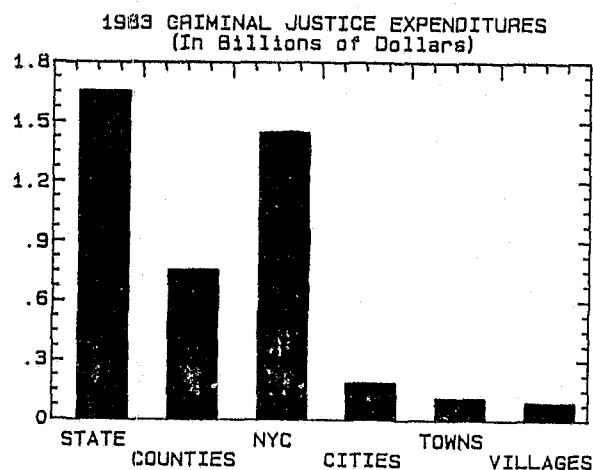
Patterns of Justice Spending

Municipal governments dominated justice spending by allocating \$2,594,990,000 during 1983 to criminal justice activities. Of this amount, \$34,655,000 was reimbursed by state-aid programs.

State funding accounted for \$1,656,732,000 in justice spending during fiscal year 1983-84. This represented 39.3% of total statewide criminal justice spending.

New York City spending accounted for 55.7% of total local spending. Other municipalities spending accounted for 44.3% of total local spending; counties, 29.2%; cities other than New York City, 7.3%; towns, 4.4%; and villages, 3.5%.

Governments have varying levels of responsibility in the delivery of justice services. These responsibilities have evolved due to constitutional, statutory and historical constraints which have limited the areas of involvement by different jurisdictions.



**Functional Areas
of Responsibility**

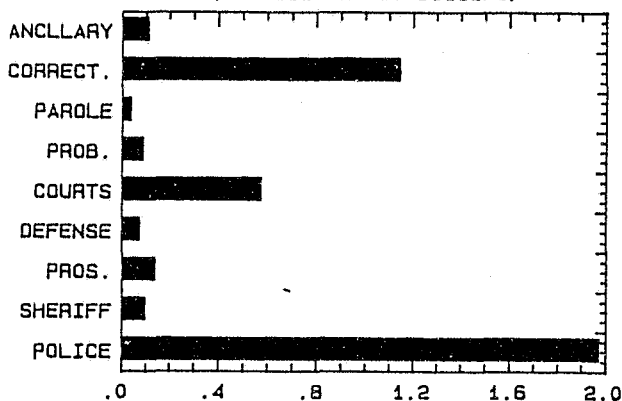
	State	County	City	Town	Village
Police	•	•	•	•	•
Sheriff		•			
Prosecution	o	•			
Defense	o	•			
Courts	•		•	•	•
Probation	o	•*			
Parole	•				
Corrections	•	•	o	o	o
Ancillary Services	•				

- Major Responsibility
- o Supplementary Responsibility
- * NYC is responsible for this function in Kings, Queens, New York, Bronx and Richmond Counties.

Functional Spending

Police expenditures dominate statewide criminal justice spending. Approximately \$1.969 billion was spent on police services in 1983 or 46.7% of statewide spending. This was followed by corrections spending of \$1.141 billion and court spending of \$572 million.

1983 EXPENDITURES BY FUNCTION
(In Billions of Dollars)



LOCAL JUSTICE SPENDING

Local governments spent \$2.6 billion in 1983. Less state local aid to probation departments and for salaries of district attorneys, this accounted for 60.7% of statewide criminal justice spending.

New York City was responsible for approximately 55.7% of this spending. Other municipal governments accounted for the remaining 44.3%.

**Local Spending
1983**

	Amount	Percent
New York City	\$ 1,445,398,000	55.7%
Other Cities	188,909,000	7.3%
Counties	756,706,000	29.2%
Towns	113,505,000	4.4%
Villages	90,472,000	3.5%
TOTAL	2,594,990,000	100.1%

Localities spent 70.4% of all criminal justice monies on police services. This accounted for 92.8% of the statewide spending on police services. The next largest category of local expenditure was for corrections. Localities spent \$388,646,000 or 15.0% of their justice spending on this functional area. Prosecution activities, largely a local function, accounted for 4.5% of local spending. This was followed by sheriff spending of 3.7%, defense spending of 2.3%, probation spending of 1.9%, and court spending of 1.1%

**Local Functional Spending
1983**

	Amount	% of Local Spending	% of State- wide Spending
Police	\$ 1,828,027,000	71.4%	43.4%
Sheriff	94,986,000	3.7%	2.3%
Prosecution*	115,767,000	4.5%	2.8%
Defense	57,602,000	2.3%	1.4%
Courts	27,521,000	1.1%	0.7%
Probation*	47,356,000	1.9%	1.1%
Corrections	388,646,000	15.2%	9.2%
TOTAL	\$ 2,560,335,000	100.1%	60.9%

*Less State Aid.

STATE GOVERNMENT SPENDING

New York State governmental agencies spent \$1,656,732,000 in 1983-84. This was an increase of \$208,244,000 or 14.4% over 1982-83 spending.

The largest increase occurred in spending by the Department of Correctional Services. DOCS spending grew \$143 million or 26.3%. Almost half this increase was due to accelerated capital construction expenditures.

New York State
Agency Spending
(thousands)

	Amount	% Change
Commission of Correction \$	1,848	+10.6%
Correctional Services	644,557	+26.3%
Crime Victims Board	12,547	+24.4%
Criminal Justice Services	83,659	- 4.5%
Division for Youth	172,483	+ 2.2%
Judiciary	544,246	+10.9%
Parole	34,175	+16.5%
Probation	37,138	+ 7.3%
State Police	126,915	+ 9.9%
TOTAL	1,657,568	+14.4%

Direct State expenditures grew 11.7%, aid to localities grew 6.5%, and capital construction costs rose 76.4% during 1983-84.

Although localities outspend the State in aggregate terms, the State shoulders major responsibility for such functions as the Courts, Corrections and Parole. The State accounts for 95.2% of Court spending, 65.9% of Corrections spending, and 100% of Parole spending.

State Share of
Functional Spending

Function	Percent
Police	7.2%
Sheriff	0.9%
Prosecution	15.3%
Defense	21.6%
Courts	95.2%
Probation	39.6%
Parole	100.0%
Corrections	65.9%
Ancillary Services	99.6%

Functional State Spending

State spending for functional purposes may cut across several agencies. Other functions are supported by a single agency such as sheriff or parole spending.

1983 State Functional Spending

Function	Agency	Amount
Police	State Police	\$216,915,000
	DCJS	14,162,000
Sheriff	DCJS	896,000
Prosecution	DCJS	20,577,000
	Audit & Control	380,000
Defense	DCJS	15,875,000
Probation	Probation	37,138,000
	DCJS	2,115,000
Parole	Parole	34,175,000
Corrections	Correctional Services	644,557,000
	Commission Corr.	1,848,000
	DFY	105,668,000
	Crime Victims	12,547,000
Ancillary Services	DFY	66,815,000
	DCJS	1,216,000

Criminal Justice
Functional Spending, 1983
(thousands)

	STATE			LOCAL						
	Total	Direct	Local Aid	Total	Counties	New York City	Other Cities	Towns	Villages	Total
Police	141,077	141,077	-----	1,828,027	373,488	1,082,476	187,272	99,267	85,524	1,969,104
Sheriff	896	896	-----	94,986	92,986	2,000	-----	-----	-----	95,882
Prosecution	20,957	20,577	380*	116,147	49,114	67,033	-----	-----	-----	136,724*
Defense	15,875	15,875	-----	57,602	22,618	34,984	-----	-----	-----	73,477
Courts	544,246	544,246	-----	27,521	7,888	375	343	14,015	4,900	571,767
Probation	39,253	4,978	34,275*	81,631	57,708	23,923	-----	-----	-----	86,609*
Parole	34,175	34,175	-----	-----	-----	-----	-----	-----	-----	34,175
Corrections	752,073	752,073	-----	388,646	152,904	234,177	1,294	223	48	1,140,719
Ancillary Services	108,180	41,365	66,815	430	-----	430	-----	-----	-----	108,610
TOTAL	1,656,732	1,555,762	101,470	2,594,990	756,706	1,445,398	188,909	113,505	90,472	4,143,590*

*Does not include reimburseable state aid of \$380,000 in Prosecution Function and \$34,275,000 in Probation Function.

A. LAW ENFORCEMENT SERVICES

POLICE SERVICES

Law enforcement activities, although performed by entities such as sheriff's departments and conservation officers, are largely identified with the patrol and investigative functions performed by local municipal police agencies. These agencies conduct a range of services that constitute the popular perception of police work. These include activities such as:

- traffic control and safety inspections;
- routine geographic patrolling;
- "door" and business checks;
- criminal investigations and arrests;
- court appearances;
- settling of domestic disputes;
- finding missing children;
- keeping order and riot control;
- assuring proper licensing of dogs, peddlers and businesses;
- promoting neighborhood crime prevention techniques;
- running educational programs;
- dealing with the mentally ill; and
- handling and diverting juvenile problems.

Although these activities give some indication as to the scope of policing services, they are by no means exhaustive.

In New York State, these services are largely provided by over 500 municipal town, village, city and county police agencies, three quarters of which are full-time departments. Additionally, these efforts are augmented by the law enforcement activities of sheriff's departments and by the activities of multijurisdictional police agencies

such as the Capitol Police, State University Police or railroad and park police.

MULTIJURISDICTIONAL POLICE

New York State Police
Capitol Police
NYC Reservoir Police
Rensselaer Poly Tech Police
Cornell University Police
Ithaca College PD
State University Campus Police
Saratoga/Capital District Park
Allegany Region Park
Central Region Park
Finger Lakes Region Park
Thousand Island Region Park
Taconic Region Park
Niagara Frontier Region Park
Genesee Region Park
Long Island Region Park
Onondaga County Park Rangers
Palisades Region Park
Suffolk County Park Rangers
Conrail - Atlantic
Conrail - Northeastern
Delaware and Hudson Railroad
Broome County (RR-RC)
Norfolk and Western Railroad
Dutchess County (RR-MN)
Long Island Railroad

Local Governments Provide 93.5% of Police Funding

Total statewide spending for police law enforcement services was \$1,954,942,000 during 1983. This was an increase of 7.7% over 1982. On average, statewide spending for police services rose 10% per year since 1979.

Police Expenditures, 1979-83 (thousands)

	Upstate	N Y C	State	Total
1979	\$ 497,994	\$ 794,255	\$ 104,111	\$ 1,396,360
1980	562,711	877,735	110,037	1,550,483
1981	609,980	899,410	119,308	1,628,698
1982	689,171	1,010,745	115,442	1,815,358
1983	745,551	1,082,476	126,915	1,954,942

A. LAW ENFORCEMENT SERVICES

Cities Accounted for 65% of All 1983 Police Spending

The State's 62 cities accounted for 65% of police expenditures during 1983. New York City spent 55.4% of this amount while other cities accounted for 9.6% of this spending.

Pattern of Police Spending 1983 (thousands)

	Amount	Percent
Counties	\$ 373,488	19.1%
Towns	99,267	5.1%
Villages	85,524	4.4%
Upstate Cities	187,272	9.6%
NYC	1,082,476	55.4%
State	126,915	6.5%
TOTAL	\$1,954,942	100.1%

STATE SPENDING

The New York State Police provide services throughout the State. In counties with little or no local police coverage, the State Police act as a primary law enforcement agency. In counties or jurisdictions with a greater amount of locally provided police coverage, the State Police act as a supplemental force. In all cases, the State Police offer technical assistance to localities through its laboratories for crime analysis and through the services of the Bureau of Criminal Investigation. Finally, the State Police provide the primary patrolling force on the State's major thoroughfares such as the New York State Thruway and the Taconic Parkway. During 1983-84, the State Police spent \$127 million on law enforcement activities.

In addition, the State provided localities with an additional \$14,161,500 during 1983 through the Major Offense Police Program administered by the Division of Criminal Justice Services. This program provides additional resources to selected police agencies to target the violent felon, the illicit drug trafficker and the illegal gun dealer. The program also provided \$3.5 million to the

New York City Transit Police Strike Force to increase the arrest and conviction rate of the most serious repeat subway offenders.

State Funding 1979-83 (thousands)

	State Police	MOPP	Total
1979	\$ 104,111	\$ 5,599*	\$ 109,710
1980	110,037	3,015*	113,052
1981	119,308	8,908*	128,216
1982	115,442	11,012*	126,454
1983	126,915	14,162	141,077

Although State funding of law enforcement services grew 11.6% since 1982, it rose only 7.2% per year since 1979. State Police funding grew 9.9% between 1982 and 1983, and an average of 5.5% a year since 1979.

PERSONNEL

There were 63,370 individuals reported employed in police services during 1983. Approximately 83% or 52,651 of these were uniformed personnel. New York City accounted for 55.8% of these personnel, Upstate departments for 34.7%, the New York State Police for 6.5%, and multijurisdictional agencies for 3.0% of total police personnel.

Police Personnel, 1983

	Total	Uniformed
Upstate Departments	21,988	18,776
Multijurisdictional	1,890	1,285
NYC	35,373	29,046
-NYC Marine and Aviation	(15)	(15)
-NYC Housing	(1,861)	(1,724)
-NYC Police Department	(29,289)	(23,339)
-NYC Port Authority	(689)	(649)
-NYC Transit	(3,512)	(3,312)
-Staten Island		
Rapid Transit	(7)	(7)
New York State Police	4,119	3,544
TOTAL	63,370	52,651

*Includes funding to New York City for Violent Felony Warrant Enforcement Program.

A. LAW ENFORCEMENT SERVICES

1983 PER CAPITA POLICE EXPENDITURES

<u>County</u>	<u>Total Expenditure</u>	<u>Per Capita Police Expenditure</u>	<u>County</u>	<u>Total Expenditure</u>	<u>Per Capita Police Expenditure</u>
Albany	\$ 18,628,000	\$ 65.15	Ontario	\$ 2,121,000	\$ 23.86
Allegany	730,000	14.11	Orange	10,120,000	38.98
Broome	7,297,000	34.15	Orleans	557,000	14.47
Cattaraugus	1,733,000	20.22	Oswego	2,389,000	20.97
Cayuga	1,861,000	23.29	Otsego	758,000	12.83
Chautauqua	4,227,000	28.77	Putnam	2,854,000	36.97
Chemung	2,935,000	30.05	Rensselaer	6,379,000	41.98
Chenango	639,000	12.95	Rockland	16,815,000	64.79
Clinton	1,197,000	14.82	St. Lawrence	2,931,000	25.65
Columbia	721,000	12.12	Saratoga	2,668,000	17.35
Cortland	1,054,000	21.59	Schenectady	9,034,000	60.25
Delaware	474,000	10.10	Schoharie	186,000	6.26
Dutchess	12,296,000	50.18	Schuyler	199,000	11.25
Erie	52,268,000	51.47	Seneca	716,000	21.23
Essex	444,000	12.27	Steuben	1,995,000	20.12
Franklin	766,000	17.05	Suffolk	141,664,000	110.31
Fulton	1,404,000	25.46	Sullivan	1,686,000	25.88
Genesee	1,331,000	22.41	Tioga	567,000	11.38
Greene	643,000	15.74	Tompkins	1,963,000	22.54
Hamilton	66,000	13.11	Ulster	4,871,000	30.80
Herkimer	1,494,000	22.39	Warren	1,326,000	24.17
Jefferson	2,086,000	23.66	Washington	798,000	14.56
Lewis	104,000	4.15	Wayne	1,089,000	12.78
Livingston	1,105,000	19.38	Westchester	85,802,000	99.01
Madison	1,100,000	16.88	Wyoming	498,000	12.48
Monroe	33,639,000	47.90	Yates	297,000	13.84
Montgomery	1,120,000	20.96			
Nassau	260,228,000	196.91			
Niagara	7,397,000	32.57	Upstate	\$ 745,551,000	\$ 71.10
Oneida	6,997,000	27.61	New York City	\$1,082,476,000	\$153.09
Onondaga	19,284,000	41.62	Statewide	\$1,828,027,000	\$104.12

B. SHERIFF SERVICES

Historically, the sheriff is the chief elected law enforcement official in each county of New York who performs a number of civil, policing and correctional duties.

The sheriff acts as the civil enforcement officer of the court. Among his civil duties are serving summonses and subpoenas and the collection of monetary judgements. Property judgements authorize a sheriff to seize and sell property belonging to a judgement debtor; income judgements allow a sheriff to collect a percentage of a debtor's wages from his employer.

Most sheriffs also provide policing services that supplement the enforcement efforts of municipal police departments. In most rural counties, the sheriff's office and the State Police provide the bulk of policing services. Patrol activities run the gamut of checking buildings, retail stores, factories and residences to emergency rescues, auto accidents, missing person checks and criminal arrests. The degree to which policing services are provided by sheriff departments is often contingent on the level of services provided by other governmental jurisdictions and the State Police within the county. For example, Nassau, Suffolk and Westchester Counties each maintain some form of county-based police force, thereby limiting the enforcement responsibilities of their respective sheriff's departments.

In addition, the sheriff is responsible for operating the county jails except in New York City and Westchester County. Sheriffs also transport inmates to and from court appearances and operate inmate work release programs.

Spending for Enforcement Activities by Sheriff's Grew 14.3% in 1983

Throughout New York State, \$94,986,000 was spent on the enforcement function by sheriff's departments in 1983. This was 14.3% above the 1982 level. Annual expenditures for Sheriff services rose 22.4% since 1979.

Expenditures for Sheriffs 1979-1983 (thousands)

	<u>Upstate</u>	<u>N Y C</u>	<u>Total</u>
1979	\$ 48,625	\$ 1,460	\$ 50,085
1980	63,415	1,587	65,002
1981	72,516	1,602	74,118
1982	81,311	1,787	83,098
1983	92,986	2,000	94,986

In addition, the State of New York provided \$896,000 to local sheriff's departments through the Target Crime Initiative Program administered by the State Division of Criminal Justice Services for correctional purposes.

PERSONNEL

Sheriff's departments reported 3,731 employees to the Uniform Crime Reporting Personnel System in 1983. This represents an increase of 1.7% over 1982 staffing levels.

Sheriff Department Employees 1979-1983

	<u>Upstate</u>	<u>N Y C</u>	<u>Total</u>
1979	4,414	83	4,497
1980	4,628	86	4,714
1981	4,359	80	4,439
1982	3,589	81	3,650
1983	3,650	81	3,731

Although reported sheriff's department staffing levels declined 17% since 1979, the reasons for the decline are unclear. One explanation involves the reporting of correctional personnel along with the enforcement staffing levels. As agencies change reporting practices, total numbers may shift dramatically. Other explanations could include budgetary cutbacks and creation of countywide police or public safety departments. Therefore, these data should be used with great caution.

B. SHERIFF SERVICES

1983 PER CAPITA SHERIFF EXPENDITURES

<u>County</u>	<u>Total Expenditures</u>	<u>Per Capita Sheriff Expenditures</u>	<u>County</u>	<u>Total Expenditures</u>	<u>Per Capita Sheriff Expenditures</u>
Albany	\$ 1,808,000	\$ 6.32	Ontario	\$ 1,808,000	\$ 20.34
Allegany	180,000	3.48	Orange	3,632,000	13.99
Broome	1,777,000	8.32	Orleans	696,000	18.08
Cattaraugus	934,000	10.90	Oswego	2,245,000	19.71
Cayuga	735,000	9.20	Otsego	186,000	3.15
Chautauqua	2,169,000	14.76	Putnam	1,564,000	20.26
Chemung	948,000	9.71	Rensselaer	1,059,000	6.97
Chenango	597,000	12.10	Rockland	2,638,000	10.16
Clinton	183,000	2.27	St. Lawrence	958,000	8.38
Columbia	644,000	10.83	Saratoga	1,526,000	9.92
Cortland	649,000	13.29	Schenectady	181,000	1.21
Delaware	358,000	7.63	Schoharie	149,000	5.02
Dutchess	2,487,000	10.15	Schuyler	262,000	14.81
Erie	10,009,000	9.86	Seneca	533,000	15.80
Essex	91,000	2.52	Steuben	660,000	6.66
Franklin	78,000	1.74	Suffolk	6,325,000	4.93
Fulton	516,000	9.36	Sullivan	1,276,000	19.58
Genesee	962,000	16.20	Tioga	783,000	15.72
Greene	220,000	5.38	Tompkins	797,000	9.15
Hamilton	74,000	14.70	Ulster	937,000	5.92
Herkimer	107,000	1.60	Warren	1,354,000	24.68
Jefferson	528,000	5.99	Washington	432,000	7.88
Lewis	223,000	8.91	Wayne	1,188,000	13.94
Livingston	1,018,000	17.86	Westchester	2,994,000	3.45
Madison	369,000	5.66	Wyoming	560,000	14.04
Monroe	14,129,000	20.12	Yates	437,000	20.36
Montgomery	419,000	7.84			
Nassau	2,733,000	2.07	Upstate	\$ 92,986,000	\$ 8.87
Niagara	3,665,000	16.14			
Oneida	1,303,000	5.14	New York City	\$ 2,000,000	\$.28
Onondaga	7,893,000	17.04			
			Statewide	\$ 94,986,000	\$ 5.41

C. DEFENSE SERVICES

Local governments provide legal counsel to indigent defendants in both criminal and certain civil proceedings through Legal Aid offices, local bar associations, public defender programs and individual court appointed attorneys. Approximately 38 counties and the City of New York have assigned counsel programs. In 19 of these jurisdictions, the assigned counsel program serves indigent offenders in conjunction with a public defender office or a legal aid organization. Twenty-nine counties have public defenders offices and 9 jurisdictions contract with Legal Aid organizations.

Defense Spending Up 29.9% Over 1982

Local governments spent \$57.6 million on defense and defense-related services including the costs of psychiatric and other expert services. This represents an increase of 29.9% over the 1982 level. Defense spending by localities grew an average of 7.5% per year since 1979.

Defense Expenditures for Upstate and New York City 1979-83 (thousands)

	Upstate	N Y C	Total
1979	\$13,689	\$18,465	\$32,154
1980	17,025	20,298	37,323
1981	18,215	21,057	39,272
1982	19,466	24,865	44,331
1983	22,618	34,984	57,602

The increase in 1983 expenditures was most pronounced in New York City. Although statewide spending grew 29.9%, New York City defense expenditures rose 41%. Spending by upstate counties grew by 16.2% between 1982 and 1983.

New York City Accounts for 61% of All Defense Spending

Although New York City constitutes 40% of the State's total population, it accounted for 61% of the statewide local expenditures for defense services in 1983. This was up from 56% in 1982. The share of upstate county spending on defense and defense related services declined to 39% from the 1982 level of 44%.

Structure of Defense Services

County	AC	PD	LA
Albany	•	•	
Allegany	•	•	
Broome		•	
Cattaraugus	•		
Cayuga	•		
Chautauqua		•	
Chemung		•	
Chenango	•		
Clinton	•		
Columbia		•	
Cortland		•	
Delaware	•		
Dutchess		•	
Erie	•		•
Essex	•		
Franklin		•	
Fulton	•		
Genesee	•	•	
Greene		•	
Hamilton	•		
Herkimer	•		
Jefferson	•		
Lewis		•	
Livingston	•		
Madison	•		
Monroe		•	
Montgomery	•		
Nassau	•		•
Niagara		•	
Oneida	•	•	
Onondaga	•		•
Ontario	•		•
Orange	•		•
Orleans		•	
Oswego	•		
Otsego		•	
Putnam			•
Rensselaer	•	•	
Rockland	•	•	
St. Lawrence	•		
Saratoga	•	•	
Schenectady	•		
Schoharie	•		
Schuyler		•	
Seneca		•	
Steuben	•	•	
Suffolk	•		•
Sullivan			•
Tioga	•	•	
Tompkins	•		
Ulster	•	•	
Warren	•		
Washington		•	
Wayne		•	
Westchester	•		•
Wyoming	•	•	
Yates	•	•	
NYC	•		•
TOTAL	39	29	9

AC - Assigned Counsel
PD - Public Defender
LA - Legal Aid

C. DEFENSE SERVICES

LOCAL SHARE OF DEFENSE SPENDING

Area	Amount	%
NYC	34,984,000	60.7
Upstate	22,618,000	39.3
TOTAL	57,602,000	100.0

Growth in Defense Expenditures Outpaces Growth in Prosecution

Defense spending grew 29.9% in 1983, while prosecution spending rose 13.3% statewide. However, spending for prosecution functions continue to outpace defense spending by a 2:1 margin.

State Support for Defense Services

Although responsibility to support defense programs is a county mandate, the State supplements these efforts by funding several defense related programs: Target Crime Initiative Program (Defense); Indigent Parolee Program; Prisoner's Legal Services; and the Defenders Association. Approximately, \$15.9 million was made available for these programs in 1983.

STATE SUPPORT OF DEFENSE SERVICES, 1983

Target Crime Initiative	\$ 12,712,000
Indigent Parolees	1,359,000
Prisoners' Legal Services	1,362,000
Defender's Association	442,000
TOTAL	\$ 15,875,000

The Target Crime Initiative Program's Defense Component (administered by the Division of Criminal Justice Services) provides funding to local Legal Aid, public defender and assigned counsel programs to enhance staffing levels for those counties which

are participating in special prosecution programs for serious and repeat offenders.¹ In addition, the State supports the education and organizational activities of the defense sector through a grant to the Defender's Association.

The Indigent Parolees Program reimburses counties and the City of New York which provide legal assistance and representation to indigent parolees and inmates in correctional facilities at parole revocation hearings.

Finally, through a contract with the NYS Division of Criminal Justice Services, the Prisoners' Legal Services of New York provides legal representation to indigent inmates of correctional facilities.

¹Participating counties in 1983 included: Albany; Broome; Chemung; Dutchess; Erie; Monroe; Nassau; Niagara; Oneida; Onondaga; Orange; Rockland; Steuben; Suffolk; Ulster; Westchester; and New York City.

C. DEFENSE SERVICES

1983 PER CAPITA DEFENSE EXPENDITURES

<u>County</u>	<u>Total Expenditure</u>	<u>Per Capita Defense Expenditure</u>	<u>County</u>	<u>Total Expenditure</u>	<u>Per Capita Defense Expenditure</u>
Albany	\$ 523,000	\$ 1.83	Ontario	\$ 138,000	\$ 1.55
Allegany	69,000	1.33	Orange	321,000	1.24
Broome	468,000	2.19	Orleans	82,000	2.13
Cattaraugus	120,000	1.40	Oswego	94,000	.83
Cayuga	79,000	.99	Otsego	74,000	1.25
Chautauqua	276,000	1.88	Putnam	146,000	1.89
Chemung	151,000	1.55	Rensselaer	185,000	1.22
Chenango	41,000	.83	Rockland	573,000	2.21
Clinton	114,000	1.41	St. Lawrence	197,000	1.72
Columbia	84,000	1.41	Saratoga	116,000	.75
Cortland	74,000	1.52	Schenectady	174,000	1.16
Delaware	30,000	.64	Schoharie	24,000	.81
Dutchess	502,000	2.05	Schuyler	42,000	2.37
Erie	1,793,000	1.77	Seneca	31,000	.92
Essex	38,000	1.05	Steuben	239,000	2.41
Franklin	68,000	1.51	Suffolk	3,266,000	2.54
Fulton	64,000	1.16	Sullivan	356,000	5.46
Genesee	81,000	1.36	Tioga	72,000	1.45
Greene	82,000	2.01	Tompkins	108,000	1.24
Hamilton	11,000	2.19	Ulster	256,000	1.62
Herkimer	40,000	.60	Warren	79,000	1.44
Jefferson	176,000	2.00	Washington	61,000	1.11
Lewis	20,000	.80	Wayne	229,000	2.69
Livingston	79,000	1.39	Westchester	3,297,000	3.80
Madison	66,000	1.01	Wyoming	259,000	6.49
Monroe	1,826,000	2.60	Yates	32,000	1.49
Montgomery	60,000	1.12			
Nassau	2,887,000	2.18			
Niagara	394,000	1.73	Upstate	\$22,618,000	\$ 2.16
Oneida	360,000	1.42			
Onondaga	1,591,000	3.43	New York City	\$34,984,000	\$ 4.95
			Statewide	\$57,602,000	\$ 3.28

D. PROSECUTION SERVICES

District Attorneys are elected local officials constitutionally charged to prosecute crimes or offenses committed within their jurisdictions. There are 62 elected district attorneys in New York State.

The role of the prosecution is multifaceted. The district attorney is trial advocate, administers a public agency, coordinates various agencies involved in the criminal justice process, and is "watchdog" to the community's sense of justice and proper law enforcement.

After formal accusation, the prosecutor must decide whether there is sufficient evidence to proceed to prosecution. Additionally, prosecutors must decide what formal charges will be lodged, whether to "bargain" downward, whether to present a case to a grand jury, whether to go to trial or whether it is in the public interest to pursue a retrial.

Generally, the district attorney must oversee case processing on behalf of the people from the investigative stage forward. This includes responsibility for charging, case preparation, trial, and appeals.

To this end, the state has actively encouraged localities to establish full time district attorney positions through special subsidies. Currently, all counties with populations of 100,000 or more must have full time prosecutors. These counties (25) receive the \$10,000 annual state subsidy. In addition, any county whose population is between 40,000 and 100,000 is eligible for the \$10,000 subsidy provided they employ a full time district attorney. Thirteen counties fall into the optional category and receive the state subsidy.

Localities Spent 13.3% More on Prosecution Services in 1983 than 1982.

Although in 1983 prosecution spending rose across the board, New York City spending rose 14.8%, while upstate localities committed 11.2% more to prosecution services. Since 1979, local resources for prosecution activities have risen an average of 17.5% per year.

COUNTIES WITH FULL TIME DA's		
Albany	-	Mandatory
Allegany	-	Optional
Broome	-	Mandatory
Cattaraugus	-	Optional
Chautauqua	-	Mandatory
Chemung	-	Optional
Clinton	-	Optional
Dutchess	-	Mandatory
Erie	-	Mandatory
Essex	-	Optional
Franklin	-	Optional
Fulton	-	Optional
Livingston	-	Optional
Madison	-	Optional
Monroe	-	Mandatory
Nassau	-	Mandatory
Niagara	-	Mandatory
Oneida	-	Mandatory
Onondaga	-	Mandatory
Ontario	-	Optional
Orange	-	Mandatory
Oswego	-	Mandatory
Rensselaer	-	Mandatory
Rockland	-	Mandatory
St. Lawrence	-	Mandatory
Saratoga	-	Mandatory
Schenectady	-	Mandatory
Steuben	-	Optional
Suffolk	-	Mandatory
Sullivan	-	Optional
Tompkins	-	Optional
Ulster	-	Mandatory
Westchester	-	Mandatory
New York City		
Bronx	-	Mandatory
Kings	-	Mandatory
New York	-	Mandatory
Queens	-	Mandatory
Richmond	-	Mandatory
TOTAL	-	38 Counties

D. PROSECUTION SERVICES

Local Prosecution Spending 1979-1983 (thousands)

	<u>N Y C</u>	<u>Upstate</u>	<u>Total</u>
1979	\$ 39,111	\$ 29,197	\$ 68,308
1980	44,724	32,431	77,155
1981	48,151	39,023	87,174
1982	58,378	44,159	102,537
1983	67,033	49,114	116,147

Local Governments Fund 84.7% of Prosecution Services

Although the state contributes approximately \$21 million to support prosecutorial services, localities provide the largest share of prosecution spending: New York City, 49%; Upstate counties, 35.7%; and New York State, 15.3%

STATE PROSECUTION SPENDING

Although local governments hold primary responsibility to support the prosecution function, the state supplements this activity through various programs.

The Target Crime Initiative Program provides localities with resources to enhance their ability to investigate and prosecute serious violent and repeat offenders. This program, administered by the Division of Criminal Justice Services, provided funds to 16 counties¹ and the five boroughs of the City of New York during 1983.

In addition, certain activities of the State Attorney General and special prosecutors supplement and support the activities of local prosecutors in areas such as organized crime and medicaid fraud.

1983 STATE AID TO PROSECUTION

Target Crime Initiative	\$ 20,576,838
Aid to DA's	380,000
TOTAL	\$ 20,956,838

¹Participating counties included: Albany; Broome; Chemung; Dutchess; Erie; Monroe; Nassau; Niagara; Oneida; Onondaga; Orange; Rockland; Steuben; Suffolk; Ulster and Westchester.

D. PROSECUTION SERVICES

1983 PER CAPITA PROSECUTION EXPENDITURES

<u>County</u>	<u>Total Expenditure</u>	<u>Per Capita Prosecution Expenditure</u>	<u>County</u>	<u>Total Expenditure</u>	<u>Per Capita Prosecution Expenditure</u>
Albany	\$ 1,074,000	\$ 3.76	Ontario	\$ 337,000	\$ 3.79
Allegany	128,000	2.47	Orange	1,326,000	5.11
Broome	538,000	2.52	Orleans	97,000	2.52
Cattaraugus	204,000	2.38	Oswego	374,000	3.28
Cayuga	186,000	2.33	Otsego	74,000	1.25
Chautauqua	473,000	3.22	Putnam	354,000	4.59
Chemung	276,000	2.83	Rensselaer	391,000	2.57
Chenango	70,000	1.42	Rockland	1,212,000	4.67
Clinton	142,000	1.76	St. Lawrence	186,000	1.63
Columbia	114,000	1.92	Saratoga	261,000	1.70
Cortland	90,000	1.84	Schenectady	323,000	2.15
Delaware	58,000	1.24	Schoharie	37,000	1.25
Dutchess	786,000	3.21	Schuyler	37,000	2.09
Erie	4,904,000	4.83	Seneca	39,000	1.16
Essex	121,000	3.34	Steuben	349,000	3.52
Franklin	155,000	3.45	Suffolk	8,514,000	6.63
Fulton	112,000	2.03	Sullivan	413,000	6.34
Genesee	140,000	2.36	Tioga	97,000	1.95
Greene	119,000	2.91	Tompkins	227,000	2.61
Hamilton	33,000	6.56	Ulster	482,000	3.05
Herkimer	78,000	1.17	Warren	120,000	2.19
Jefferson	174,000	1.97	Washington	149,000	2.72
Lewis	39,000	1.56	Wayne	250,000	2.93
Livingston	183,000	3.21	Westchester	5,851,000	6.75
Madison	154,000	2.36	Wyoming	48,000	1.20
Monroe	3,453,000	4.92	Yates	35,000	1.63
Montgomery	72,000	1.35			
Nassau	9,695,000	7.34	Upstate	\$ 49,114,000	\$ 4.68
Niagara	662,000	2.92			
Oneida	693,000	2.73	New York City	\$ 67,033,000 ¹	\$ 9.48 ¹
Onondaga	2,605,000	5.62	Statewide	\$116,147,000	\$ 6.62

¹Includes \$3,779,000 for Special Narcotics Prosecutor

E. COURT SERVICES

"The Judiciary is one of the three branches of New York State government. Article VI of the State Constitution establishes a unified court system, defines the organization and jurisdiction of the courts, governs the manner of selecting and removing judges, and provides for the administrative supervision of the courts by a Chief Administrator of the Courts, on behalf of the Chief Judge of the State of New York.

"The objectives of the Judiciary are to: (1) provide a forum for the peaceful, fair and prompt resolution of (a) civil claims and family disputes, (b) criminal charges and charges of juvenile delinquency and (c) disputes between citizens and their government and challenges to government actions; (2) determine the legality of wills, adoptions, uncontested divorces and other undisputed matters submitted to the courts for review and approval; (3) provide legal protection for children, mentally ill persons and others entitled by law to the special protection of the court; (4) regulate the admission of lawyers to the Bar and their conduct and discipline; and (5) review administrative determinations in judicial disciplinary proceedings to admonish, censure or remove judges and justices.¹

The courts provide a forum for the administration and application of the State's laws and system of justice. They operate at the "cutting" edge of society, providing the cement for social cohesion. The courts must not only resolve disputes justly by allowing both sides a fair hearing, but they must give the appearance of justice being done.

The courts in New York are broken into two functional units. The state system administered by the Office of Court Administration consists of various courts of original jurisdiction, or trial courts, which have the power to hear cases in the first instance, and appellate courts which hear appeals from decisions made by other courts. The State bears the full cost (except facility

STRUCTURE AND JURISDICTION OF THE COURTS

Appellate Courts

Court of Appeals
Appellate Division of the Supreme
Court
Appellate Terms of the Supreme
Court
County Courts (acting as appellate
courts)

Trial Courts of Superior Jurisdiction

State-wide:
Supreme Court
Court of Claims
Family Court
Surrogate's Court
Outside New York City:
County Court

Trial Courts of Lesser Jurisdiction

New York City:
Criminal Court of the City of
New York
Civil Court of the City of
New York
Outside New York City:
City Courts
District Courts
Town Courts*
Village Courts*

*Not state funded

maintenance, construction, and security costs) of these courts.

- o the Court of Appeals, the State's highest court. This court decides appeals arising from lower courts;
- o the Appellate Divisions of the Supreme Court. These four courts decide appeals from lower courts within their judicial department;

¹New York State Executive Budget.

E. COURT SERVICES

o the Supreme Court, the court of unlimited original jurisdiction. This court generally hears cases outside the jurisdiction of other specialized courts;

o the Court of Claims, the court which decides claims against the State;

o the County Court, authorized to decide criminal and limited civil cases;

o the Family Court, the court with jurisdiction over matters involving children and families;

o the Surrogate's Court, the court which settles the affairs of decedents;

o the New York City Civil Court, including small claims and housing parts; and

o the New York City Criminal Court which has jurisdiction over minor criminal offenses and violations.

The second layer of courts called "Justice Courts" includes town and village courts and is supervised by the Office of Court Administration. These courts hear civil cases up to \$3,000 and cases involving minor traffic violations or misdemeanors. Justices are usually elected for four-year terms except where District Courts have been established. Justices are not required to be attorneys.

Judges of the State court system are largely elected officials with fewer than 200 appointed. Appointed judges include members of the Court of Appeals and the Court of Claims. In addition, the mayor of New York City appoints judges to the Family Court and the City's Criminal Courts.

Elected judges include Supreme Court judges, County and Family Court judges outside New York City, New York City Civil Court judges and Town and Village justices. Upstate city court judges are elected in some cases, appointed in others.

There are approximately 1,000 State court judges and 2,000 town and village justices.

New York State Judicial System

<u>Court</u>	<u>Number of Judges</u>
Court of Appeals	7
Supreme Court, Appellate Divisions	24
Supreme Court, Trial Parts	263
Supreme Court-Certificated Retired Justices	50
Court of Claims	17
Court of Claims-Emergency Dangerous Drug Control Program	14
Surrogates Courts-Including 6 Surrogates in the City of New York	34
County Courts-County Judges outside the City of New York, in counties that have separate Surrogates and Family Court Judges	59
County Courts-County Judges who are also Surrogates	9
County Courts-County Judges who are also Family Court Judges	8
County Courts-County Judges who are also Surrogates and Family Court Judges	30
Family Courts-including 42 Family Court Judges in the City of New York	110
Criminal Court of the City of New York	107
Civil Court of the City of New York	120
District Courts-in Nassau and Suffolk Counties	49
City courts in the 61 Cities outside the City of New York - including Acting and Part-Time Judges	167
Town and Village Justice Courts	2,327

Source: Office of Court Administration Annual Report, 1983.

E. COURT SERVICES

Court Spending Rose 10.4% in 1983

Spending by all levels of government for court services was \$571,667,000 or an increase of 10.4% in 1983. The State contributed the lion's share of court spending*, totaling 95.3%. This compares to 83.7% in 1979.

Court Spending 1979-1983 (thousands)

	<u>Local</u>	<u>N Y C</u>	<u>State</u>	<u>Total</u>
1979	\$38,598	\$33,661	\$370,702	\$442,961
1980	26,325	17,378	404,031	447,734
1981	20,352	246	469,456	490,027
1982	27,128	363	490,567	518,058
1983	27,146	375	544,246	571,667

In 1983, non-state spending on court services was dominated by town and village courts. Towns and villages spend \$18,915,000 or 69.7% of all local spending for court services.

1983 Local Spending

<u>Jurisdiction</u>	<u>Amount</u>	<u>Percent</u>
County	\$ 7,888,000	28.7%
Town	14,015,000	50.9%
Village	4,900,000	17.8%
City	718,000	2.6%
TOTAL	\$27,591,000	100.0%

PERSONNEL

There were 11,381 personnel reported employed in the State's court system in 1983. This was up 3.5% over 1982. In addition, there were approximately 2,327 sitting town and village justices, 65% of whom had at least part-time clerks. Large

jurisdictions employ more staff. More detailed information on local court staffing is not currently available.

Court Personnel 1983

Court of Appeals.....	54--Judges 1,231--Non-Judicial
Other State Courts.....	993--Judges 9,103--Non-Judicial
Justice Courts.....	2,327--Justices Unknown--Non-Judicial

*The State began a four year, phased in assumption of the costs to local government for state, county-level, district and city courts beginning in 1977.

E. COURT SERVICES

1983 PER CAPITA COURT EXPENDITURES

<u>County</u>	<u>Total Expenditures</u>	<u>Per Capita Court Expenditures</u>	<u>County</u>	<u>Total Expenditures</u>	<u>Per Capita Court Expenditures</u>
Albany	\$ 741,000	\$ 2.59	Orleans	\$ 117,000	\$ 3.04
Allegany	107,000	2.07	Oswego	181,000	1.59
Broome	567,000	2.65	Otsego	143,000	2.42
Cattaraugus	274,000	3.20	Putnam	323,000	4.18
Cayuga	154,000	1.93	Rensselaer	227,000	1.49
Chautauqua	366,000	2.49	Rockland	943,000	3.63
Chemung	309,000	3.16	St. Lawrence	334,000	2.92
Chenango	79,000	1.60	Saratoga	323,000	2.10
Clinton	167,000	2.07	Schenectady	224,000	1.49
Columbia	187,000	3.14	Schoharie	72,000	2.42
Cortland	105,000	2.15	Schuyler	48,000	2.71
Delaware	128,000	2.73	Seneca	117,000	3.47
Dutchess	557,000	2.27	Steuben	275,000	2.77
Erie	2,325,000	2.29	Suffolk	2,025,000	1.58
Essex	186,000	5.14	Sullivan	317,000	4.87
Franklin	160,000	3.56	Tioga	94,000	1.89
Fulton	69,000	1.25	Tompkins	205,000	2.35
Genesee	161,000	2.71	Ulster	431,000	2.73
Greene	161,000	3.94	Warren	164,000	2.99
Hamilton	60,000	11.92	Washington	130,000	2.37
Herkimer	143,000	2.14	Wayne	307,000	3.60
Jefferson	226,000	2.56	Westchester	2,951,000	3.41
Lewis	66,000	2.64	Wyoming	77,000	1.93
Livingston	204,000	3.58	Yates	45,000	2.10
Madison	136,000	2.09			
Monroe	4,312,000	6.14	Upstate	\$27,146,000	\$ 2.58
Montgomery	102,000	1.91			
Nassau	2,677,000	2.03	New York City	\$ 375,000	\$ 0.05
Niagara	343,000	1.51			
Oneida	248,000	0.98	Statewide	\$27,521,000	\$ 1.56
Orondaga	646,000	1.39			
Ontario	204,000	2.29			
Orange	803,000	3.09			

FI. PROBATION SERVICES

County and New York City probation departments provide a variety of services in New York State under regulations and guidelines promulgated by the State Division of Probation. Major services include supervision of sentenced adults and juveniles; investigation and reporting of case information to Family and Criminal Courts prior to disposition; and Family Court Intake and Diversion, a case review process to determine whether formal court action or diversion outside the Family Court process is appropriate.

CRIMINAL COURTS

Supervision - Probation supervision continues to offer the courts an intermediate form of punishment that is significantly less costly than imprisonment. Offenders are released to the community provided they adhere to certain conditions for release, such as: continued employment, avoidance of certain individuals or places, and completion of restitution, fine or reparation orders. Approximately 37,480 adults entered probation supervision during 1983, up 12% over 1982. Thirty-nine percent of these cases resulted from felony convictions and 58% from misdemeanor convictions. Twenty-five local departments and 3 boroughs of the City of New York participated in the Division's Intensive Supervision program. This program supports reduced caseloads for particular officers who handle high-risk probationers. Tighter supervision aims to increase the chance that these offenders will successfully complete their terms of probation.

Investigations - Pre-sentence investigations are required in New York State prior to sentencing in felony cases and in misdemeanor cases which can result in imprisonment in excess of 90 days, or probation. During 1983, probation departments completed 53,258 felony investigations and 64,876 misdemeanor investigations.

Pre-trial Services - The courts may release individuals facing criminal charges pending final disposition of their cases. In 1983, the courts requested 31,082 pre-trial investigations from local departments to determine an individual's suitability for this option.

Restitution - The courts in New York State may order a defendant to repay a victim for loss or damages suffered as a result of the defendant's actions. These orders are largely issued as a condition of probation. During 1983, \$3,671,620 was collected by probation departments as a result of these court orders.

1983 STATE AID TO LOCAL DEPARTMENTS¹

County	Regular State Aid	Intensive Supervision	Total Payments
Albany	507,690	86,479	594,169
Allegany	65,728	-----	65,728
Broome	330,960	47,438	378,398
Cattaraugus	85,292	-----	85,292
Cayuga	68,693	-----	68,693
Chautauqua	216,409	48,460	264,869
Chemung	273,328	56,418	329,746
Chenango	45,611	-----	45,611
Clinton	148,028	24,766	172,794
Columbia	76,677	-----	76,677
Cortland	128,903	-----	128,903
Delaware	50,337	-----	50,337
Dutchess	370,509	58,522	429,031
Erie	1,238,099	246,900	1,484,999
Essex	43,250	-----	43,250
Franklin	99,365	-----	99,365
Fulton	77,589	-----	77,589
Genesee	121,425	24,839	146,264
Greene	67,540	-----	67,540
Hamilton	7,775	-----	7,775
Herkimer	63,398	-----	63,398
Jefferson	164,954	25,519	190,473
Lewis	44,712	-----	44,712
Livingston	87,067	-----	87,067
Madison	118,388	-----	118,388
Monroe	1,266,772	219,067	1,485,839
Nassau	5,249,609	517,396	5,767,005
Niagara	288,295	-----	288,295
Oneida	402,262	55,539	457,801
Onondaga	1,018,245	170,131	1,188,376
Ontario	166,103	22,427	188,530
Orange	361,568	41,473	403,041
Orleans	105,202	-----	105,202
Oswego	232,806	19,067	251,873
Otsego	45,401	-----	45,401
Putnam	128,337	-----	128,337
Rensselaer	248,504	21,277	269,781
Rockland	408,771	70,881	479,652
St. Lawrence	244,893	20,587	265,480
Saratoga	119,441	-----	119,441
Schenectady	253,461	27,853	281,314
Schoharie	39,829	-----	39,829
Schuyler	39,541	-----	39,541
Seneca	39,582	-----	39,582
Steuben	165,392	25,951	191,343
Suffolk	3,521,132	332,184	3,853,316
Sullivan	142,344	19,011	161,355
Tioga	89,405	-----	89,405
Tompkins	151,597	-----	151,597
Ulster	160,765	23,282	184,047
Warren	78,296	-----	78,296
Washington	46,174	-----	46,174
Wayne	141,066	-----	141,066
Westchester	1,729,165	282,491	2,011,656
Wyoming	39,739	-----	39,739
Yates	31,325	-----	31,325
Upstate Total	21,456,749	2,487,958	23,944,707
New York City	10,086,381	1,064,285	11,150,666
New York State	31,543,130	3,552,243	35,095,373

¹Figures provided by the State Division of Probation, Annual Report, 1983-84.

F. PROBATION SERVICES

FAMILY COURTS

Intake - Local probation departments function as "gatekeepers" to the Family Courts. They provide information to potential petitioners, screen complaints for appropriate jurisdiction and attempt to divert or adjust matters without going through the formal court procedures.

Investigations - Probation departments provide Family Courts with investigations regarding juvenile delinquent and persons-in-need-of-supervision petitions, adoption, custody and guardianship cases. Approximately 24,850 of these investigations were conducted during 1983.

Supervision - Approximately 6,238 cases were referred from Family Courts for probation supervision: 2,971 were for juvenile delinquent cases and 2,657 for PINS cases.

Local Probation Spending Rises 11.5% Since 1982

Local governments spent \$81,631,000 on probation services during 1983. This represented an increase of 11.5% over 1982 levels. Upstate counties increased probation spending 11.1% since 1982 and an average of 14.9% since 1979. Although New York City surpassed the statewide increase with a 12.6% rise over 1982 outlays, it significantly trailed the rest of the state by increasing probation expenditures by an average of only 7.8% per year since 1979.

Probation Expenditures 1979-83 (thousands)

LOCAL	1979	1980	1981	1982	1983
Upstate	36,125	40,008	47,559	51,964	57,708
NYC	18,222	20,453	19,582	21,240	23,923
TOTAL	54,347	60,461	67,141	73,204	81,631
STATE					
Operations	1,908	2,217	2,482	2,470	2,863
Local Aid	21,381	22,314	29,085	32,151	34,275
TOTAL	23,289	24,531	31,567	34,621	37,138
GRAND TOTAL (Less Local Aid*)	56,255	62,678	69,623	75,674	84,494

*Grand total excludes state local aid which reimburses localities for expenses incurred but does not represent additional spending.

STATE SUPPORT

The state's commitment to probation funding grew 7.3% since 1982 and an average of 14.9% per year since 1979. However, the state share of total probation spending declined from 45.8% in 1982 to 44% in 1983.

State/Local Shares of Probation Funding

Year	State	Local
1979	41.4	59.6
1980	39.1	60.9
1981	45.3	54.7
1982	45.8	54.2
1983	44.0	56.0

However, the State directed an additional \$2,114,640 to local probation departments in 1983 through the Target Crime Initiative Program.

PERSONNEL

During 1983, probation departments employed 3,526 professional and non-professional staff. Of these, 528 were in supervision, administrative and management positions, 1,061 were in clerical and support positions and 1,937 were line probation staff.

The following table approximates¹ the functional responsibilities of local line probation staff during 1983.

Function	Positions	Percent
Family Court Intake	241	12.4%
Family Court Investigations	150	7.7%
Family Court Supervision	192	9.9%
Criminal Court Investigations	498	25.7%
Criminal Court Supervision	856	44.2%
	1,937	99.9%

In addition, the State Division of Probation employed 89 individuals during 1983.

¹Estimate provided by the State Division of Probation.

F. PROBATION SERVICES

1983 PER CAPITA PROBATION EXPENDITURES

<u>County</u>	<u>Total Expenditure</u>	<u>Per Capita Probation Expenditures</u>	<u>County</u>	<u>Total Expenditure</u>	<u>Per Capita Probation Expenditures</u>
Albany	\$ 1,226,000	\$ 4.29	Ontario	\$ 465,000	\$ 5.23
Allegany	143,000	2.76	Orange	1,138,000	4.38
Broome	956,000	4.47	Orleans	231,000	6.00
Cattaraugus	253,000	2.95	Oswego	536,000	4.71
Cayuga	186,000	2.33	Otsego	93,000	1.57
Chautauqua	736,000	5.01	Putnam	342,000	4.43
Chemung	627,000	6.42	Rensselaer	739,000	4.86
Chenango	97,000	1.97	Rockland	981,000	3.78
Clinton	342,000	4.24	St. Lawrence	560,000	4.90
Columbia	165,000	2.77	Saratoga	343,000	2.23
Cortland	283,000	5.80	Schenectady	530,000	3.53
Delaware	143,000	3.05	Schoharie	86,000	2.89
Dutchess	847,000	3.46	Schuyler	85,000	4.81
Erie	3,803,000	3.75	Seneca	82,000	2.43
Essex	116,000	3.21	Steuben	481,000	4.85
Franklin	290,000	6.45	Suffolk	8,533,000	6.64
Fulton	167,000	3.03	Sullivan	417,000	6.40
Genesee	348,000	5.86	Tioga	209,000	4.20
Greene	145,000	3.55	Tompkins	328,000	3.77
Hamilton	17,000	3.38	Ulster	381,000	2.41
Herkimer	139,000	2.08	Warren	171,000	3.12
Jefferson	389,000	4.41	Washington	120,000	2.19
Lewis	129,000	5.15	Wayne	393,000	4.61
Livingston	196,000	3.44	Westchester	4,258,000	4.91
Madison	271,000	4.16	Wyoming	85,000	2.13
Monroe	4,193,000	5.97	Yates	67,000	3.12
Montgomery*	-----	----			
Nassau	14,598,000	11.05	Upstate	\$57,708,000	\$ 5.50
Niagara	800,000	3.52	New York City	\$23,923,000	\$ 3.38
Oneida	1,146,000	4.52	Statewide	\$81,631,000	\$ 4.65
Onondaga	3,303,000	7.13			

*Montgomery County is a direct state operation.

G. CORRECTION SERVICES

The adult correctional system in New York State is comprised largely of two broad categories of facilities: state facilities operated by the Department of Correctional Services and local facilities operated by the sheriff or a Department of Corrections in upstate counties and by the City Department of Corrections in New York City. All such facilities operate under the general oversight of the State Commission on Corrections.

THE STATE COMMISSION ON CORRECTIONS

The State Commission of Correction is composed of three Commissioners appointed by the Governor. The commission is charged with the responsibility to inspect correctional facilities, review and approve plans for new construction, and make recommendation to the Governor and to correctional administrators to improve administration and programs. The Commission also investigates deaths within penal institutions and establishes inmate grievance procedures.

State Funding of Commission Activities Rises 10.6% in 1983

State funding of the Commission on Corrections rose 10.6% in 1983 and an average of 10.9% per year since 1979.

Commission Spending 1979-83

	Amount	% Change
1979	\$ 1,289,000	-----
1980	1,259,000	- 2.3%
1981	1,431,000	+13.7%
1982	1,671,000	+16.8%
1983	1,848,000	+10.6%

THE STATE PRISON SYSTEM

Facilities operated by the Department of Correctional Services (DOCS) comprise what is commonly known as the state prison system. It is the responsibility of DOCS to maintain those facilities for the custody and control of persons convicted of a felony and sentenced to a term of incarceration in excess of 1 year. The Department maintains inmates in facilities ranging from minimum to maximum security settings.

Annual State Prison Per Inmate Costs 1983-84

	Average No. of Inmates	Per* Capita
MAXIMUM SECURITY		
Attica	1,965	\$16,568
Auburn	1,670	14,268
Clinton	2,675	16,903
Coxsackie	929	18,218
Downstate	1,099	25,452
Eastern	1,125	18,702
Elmira	1,730	14,736
Great Meadow	1,735	15,828
Green Haven	2,040	14,651
Ossining	2,160	17,309
TOTAL MAXIMUM	17,128	16,801
MEDIUM SECURITY		
Adirondack	500	23,431
Albion	450	22,629
Arthurskill	810	19,967
Bedford Hills	491	32,051
Collins	494	33,313
Fishkill	1,650	21,903
Groveland	250	30,081
Long Island	600	22,487
Marcy	225	26,848
Mid-Orange	700	22,721
Mt. McGregor	648	19,603
Ogdensburg	250	27,705
Otisville	580	22,451
Queensboro	310	28,865
Taconic	384	17,158
Wallkill	500	21,455
Watertown	200	35,945
Woodbourne	760	21,987
TOTAL MEDIUM	9,802	23,687
MINIMUM SECURITY		
Albany	40	12,590
Bayview	170	24,709
Buffalo	40	12,685
Camp Beacon	125	16,119
Camp Gabriels	150	20,263
Camp Georgetown	179	12,368
Camp Monterey	168	13,234
Camp Pharsalia	152	14,433
Camp Summit	165	13,254
Edgecombe	190	14,922
Fulton	221	13,862
Hudson	440	21,033
Lincoln	190	17,384
Rochester	40	12,450
TOTAL MINIMUM	2,270	\$16,757
ALL FACILITIES	29,200	\$19,109

*Includes adjustment for fringe benefits.
Source: 1983-84 Proposed Executive Budget.

G. CORRECTION SERVICES

The 1983-84 proposed Executive Budget projected that DOCS would operate a total of 42 facilities with 29,200 inmates by the end of the fiscal year.

Maximum security facilities were expected to house 17,128 inmates or 58.7% of the population under custody (see Table above). Average cost per prisoner during 1983-84 for these facilities range from a low of \$14,268 to a high of \$25,452. These costs were based upon the 10 maximum facilities identified in 1983-84 Executive Budget.

Medium secure facilities were projected to maintain an average daily population of 9,802 inmates, or 33.6% of the under custody population. These facilities range in cost from \$17,158 to \$35,945 per inmate. There were 18 medium secure facilities identified in 1983-84 Executive Budget.

Minimum secure facilities were expected to account for 7.8% of the DOCS' inmate population or average daily population of 2,270 inmates. Costs for this category of correctional facilities range from a low of \$12,368 per year to a high of \$24,709. There were 14 minimum facilities identified in 1983-84 Executive Budget.

1983-84
Facility Profile
Range of Per Inmate Costs

	Per Inmate Cost		Population	
	high	low	high	low
Maximum	\$25,452	\$14,268	2,675	929
Medium	\$35,945	\$17,158	1,650	200
Minimum	\$24,709	\$12,368	440	40

Source: 1983-84 Proposed Executive Budget.

PERSONNEL

The Department of Correctional Services is one of the largest employers among state agencies. During 1983-84, 18,605¹ individuals were employed by the Department in positions ranging from correctional officers to teachers, medical personnel, vocational trainers and other support personnel. This represented a personnel increase of 13.1% over 1982-83.

¹Employment numbers reported by DOCS as of March, 1984.

DOCS Personnel 1979-83

	Regular	Corcraft	Total
1979	11,504	239	11,743
1980	11,945	271	12,216
1981	14,117	285	14,402
1982	16,160	287	16,445
1983	18,430	275	18,605

Operating Cost of State Penal Institutions Rises 17.1% during 1983-84

Though the overall funds available to DOCS rose 26.3% in 1983, operating expenditures (the cost of housing prisoners) rose 17.1% during the same period. Since 1979, overall corrections spending rose an average of 24.8% per year while operating expenditures rose 17%.

State Department of Correctional Services Spending, 1979-83 (thousands)

	Operating Costs	Capital Expenditures	Total
1979	\$ 310,051	\$ 14,049	\$324,100
1980	305,273	11,083	316,356
1981	387,979	48,682	436,661
1982	445,213	65,153	510,366
1983	521,285	123,272	644,557

LOCAL CORRECTIONS

Local governments operate three types of facilities. These include: lock-ups, jails and penitentiaries.

After arrest, individuals are generally confined to one of over 200 local lock-ups operated by various towns, villages or cities. Currently, there is no centralized information available on the cost of these facilities. Upon arraignment, defendants may be placed in a local jail. These facilities hold both sentenced and unsentenced individuals. Four localities (Monroe, Erie, Westchester and Onondaga) operate penitentiaries for sentenced inmates.

G. CORRECTION SERVICES

Profile of Local Corrections Population

There were 6,835 persons under custody in local facilities (excluding New York City) as of December 31, 1983. Detainees accounted for 67.4% of this population, and sentenced inmates 29.6% (3% other).

Of 1983 local admissions, Whites accounted for 61.2%, Blacks 32.7%, and Puerto Ricans 4.1%. Of these, 27.6% were under the age of twenty-one.

Costs of Local Correctional Facilities

Per capita costs for local facilities are not centrally available. However, estimates were developed based upon jail expenditures reported to the Office of the State Comptroller and average daily census counts reported to the Commission on Correction. These estimates provide relative reference points, and cannot be interpreted as precise accountings.

County Wide Corrections Costs

Expenditures reported by all municipalities within a county, for correction purposes, include a wide range of spending areas. Not only are jail expenditures included, but cost categories such as jail counseling services, jail industries, rehabilitation services, prisoner's release counseling, penitentiary, penitentiary industries, juvenile detention houses, juvenile detention homes, juvenile counseling services, juvenile training schools and other correctional agencies were also included.

¹Population count as of 12/13/84 for NYC: Males 9,326; Females 526.

Source: NYS Commission on Correction, Compilation of Data from 1983 Sheriff's Annual Reports.

County Jails and Penitentiaries 1983 Average Daily Population¹

Facility	Average Male	Average Female
Albany Jail	59.5	17.2
Pen	67.9	21.6
Allegany Jail	25	1
Broome Jail	121	10
Cattaraugus	49	3
Cayuga	37.8	2.6
Chautauqua	81.04	2.3
Chemung	77	5.5
Chenango	23.5	1
Clinton	37	2
Columbia	43	4
Cortland	26	1
Delaware	13	0.94
Dutchess	126	11
Erie H.C.	405.6	38.5
Erie Pen	242	33
Essex	12.5	0.5
Franklin	29	1
Fulton	27.5	0.81
Genesee	37.17	0.57
Greene	20	1
Hamilton	-----	-----
Herkimer	32.76	0.09
Jefferson	52	5.1
Lewis	11.22	0.59
Livingston	44.29	2.44
Madison	50.64	1.48
Monroe	341	31
Montgomery	49	3
Nassau Jail	986	91
Niagara	133	11
Oneida	155	12
Orondaga Jail	197	16
Orondaga Pen	136.5	18.9
Ontario	60.4	3.37
Orange	195	19
Orleans	34.4	5.2
Oswego	67.73	2.19
Otsego	21	3
Putnam	28	0.1
Rensselaer	65	3
Rockland	83.4	7.8
St. Lawrence	53.96	1.94
Saratoga	87	4
Schenectady	61.3	6.75
Schoharie	14.86	0.45
Schulyer	17	0.5
Seneca	17.94	0.68
Steuben	53.12	7.19
Suffolk Jail	675.2	41
Sullivan	108	4
Tioga	42	1
Tompkins	29	1
Ulster	107	7
Warren	39	4
Washington	42.79	1.32
Wayne	43.5	3
Westchester Jail	523	0
Westchester Pen	273	0
Westchester W.U.	0	81
Wyoming	8.61	0.18
Yates	33.6	0.04
TOTAL	33.73	559.83

G. CORRECTION SERVICES

Estimated Local Jail Per Capita Costs, 1983

Counties	Local Jail Spending	Annual Cost	Per Diem Cost
Albany	\$ 4,244,000	\$ 25,566	\$ 70
Allegany	450,000	17,708	47
Broome	1,438,000	10,977	30
Cattaraugus	514,000	9,885	27
Cayuga	467,000	11,675	32
Chautauqua	1,026,000	12,361	34
Chemung	863,000	10,398	28
Chenango	56,000	2,240	6
Clinton	564,000	14,462	40
Columbia	448,000	9,532	26
Cortland	386,000	14,296	39
Delaware	NA	NA	NA
Dutchess	3,525,000	25,730	70
Erie	11,773,000	15,718	43
Essex	352,000	27,077	74
Franklin	504,000	16,800	46
Fulton	162,000	5,786	16
Genesee	460,000	12,105	33
Greene	429,000	20,429	56
Hamilton	10,000	---	---
Herkimer	507,000	15,364	42
Jefferson	744,000	13,053	36
Lewis	252,000	21,000	58
Livingston	664,000	14,128	39
Madison	523,000	10,058	28
Monroe	8,637,000	23,218	64
Montgomery	564,000	10,846	30
Nassau	27,017,000	25,085	69
Niagara	1,871,000	12,993	36
Oneida	1,405,000	8,413	23
Orondaga	8,456,000	22,978	63
Ontario	946,000	14,781	40
Orange	3,419,000	15,977	44
Orleans	488,000	12,200	33
Oswego	711,000	10,157	28
Otsego	331,000	13,792	38
Putnam	1,103,000	39,393	108
Rensselaer	1,129,000	16,603	45
Rockland	1,848,000	20,308	56
St. Lawrence	650,000	11,607	32
Saratoga	1,194,000	13,121	36
Schenectady	1,085,000	15,956	44
Schoharie	284,000	18,933	52
Schuyler	275,000	15,278	42
Seneca	198,000	10,421	29
Steuben	1,027,000	17,117	47
Suffolk	13,462,000	18,802	52
Sullivan	1,178,000	10,518	29
Tioga	298,000	6,930	19
Tompkins	346,000	11,533	32
Ulster	1,418,000	12,439	34
Warren	464,000	10,791	30
Washington	463,000	10,523	29
Wayne	1,024,000	21,787	60
Westchester	19,096,000	21,774	60
Wyoming	291,000	32,333	89
Yates	321,000	9,441	26
TOTAL	\$120,170,000		

*Data on NYC costs were not available; it is estimated that per diem costs approximated \$100 during 1983.

G. CORRECTION SERVICES

1983 PER CAPITA COUNTY CORRECTIONAL EXPENDITURES

<u>County</u>	<u>Total Expenditures</u>	<u>Per Capita Corrections Expenditures</u>	<u>County</u>	<u>Total Expenditures</u>	<u>Per Capita Corrections Expenditures</u>
Albany	\$ 5,186,000	\$ 18.14	Ontario	\$ 1,130,000	\$ 12.71
Allegany	525,000	10.15	Orange	3,935,000	15.16
Broome	2,116,000	9.90	Orleans	628,000	16.31
Cattaraugus	597,000	6.97	Oswego	980,000	8.60
Cayuga	814,000	10.19	Otsego	362,000	6.13
Chautauqua	1,334,000	9.08	Putnam	1,199,000	15.53
Chemung	1,372,000	14.05	Rensselaer	2,108,000	13.87
Chenango	90,000	1.82	Rockland	2,274,000	8.76
Clinton	734,000	9.09	St. Lawrence	766,000	6.70
Columbia	665,000	11.18	Saratoga	1,721,000	11.19
Cortland	679,000	13.91	Schenectady	1,434,000	9.56
Delaware	-----	-----	Schoharie	368,000	12.39
Dutchess	4,164,000	16.99	Schuyler	313,000	17.70
Erie	13,453,000	13.25	Seneca	277,000	8.21
Essex	392,000	10.84	Steuben	1,073,000	10.82
Franklin	591,000	13.15	Suffolk	14,760,000	11.49
Fulton	593,000	10.75	Sullivan	1,408,000	21.61
Genesee	819,000	13.79	Tioga	429,000	8.61
Greene	549,000	13.44	Tompkins	503,000	5.78
Hamilton	16,000	3.18	Ulster	1,619,000	10.24
Herkimer	559,000	8.38	Warren	570,000	10.39
Jefferson	1,023,000	11.61	Washington	507,000	9.25
Lewis	252,000	10.07	Wayne	1,108,000	13.00
Livingston	817,000	14.33	Westchester	20,983,000	24.21
Madison	524,000	8.04	Wyoming	405,000	10.15
Monroe	11,458,000	16.32	Yates	326,000	15.19
Montgomery	564,000	10.55			
Nassau	28,397,000	21.49	Upstate	\$154,469,000	\$ 14.73
Niagara	2,286,000	10.07			
Oneida	1,945,000	7.67	New York City	\$234,177,000	\$ 33.12
Onondaga	10,769,000	23.24	Statewide	\$388,646,000	\$ 22.14

H. PAROLE SERVICES

The State Division of Parole is charged with developing and maintaining an effective, efficient and equitable parole system in New York State. Three units - Administration, Field Parole Services and Institution Parole Services - comprise the basic organizational structure of the Division. These functions are solely a State responsibility; local governments do not provide parole services.

THE PAROLE BOARD

The Parole Board is the body within the Division appointed by the Governor to oversee the release of eligible inmates prior to serving their maximum term of incarceration. The Board reviews all applicants for early release - both parole release and conditional release. The Board decides on the appropriateness of an individual for parole release and sets the conditions for parole and conditional releases. In addition, the Board can authorize warrants for release violators, revoke the release of violators, certify jail and parole time, and advise the Governor on pardon and commutation decisions. In 1983-84, the Parole Board conducted 8% more hearings than in 1982-83.

Parole Board Number and
Type of Hearings
1983-84

Type Interview/Hearing	1983-84	% Change
Minimum Period of Incarceration Hearing	45	-64%
Initial Release Consideration Hearing	9,983	+ 7%
Reappearance Consideration	5,220	+13%
Re-release of Parolees Returned to Prison	1,061	- 3%
Parole/Conditional Release Revocation Hearing	396	+137%
Administrative Hearings	129	-30%
GRAND TOTAL	16,834	+ 8%

Source: New York State Division of Parole.

RE-ENTRY SERVICES

Institutional parole officers help inmates develop positive attitudes and behaviors to prepare for successful pre-release hearings. Officers encourage and facilitate inmate involvement in various correctional programs such as vocational training, alcohol and drug counseling, education programs and work or employment activities.

In addition, institutional parole officers provide pre-release counseling and community preparation classes all aimed at helping orient the prospective release to successfully re-enter life in the community and complete the prescribed period of supervision. During 1983-84, the Division conducted 98,365 re-entry type activities including: 1,156 parole orientation classes for inmate groups; 50,680 inmate interviews in preparation for Parole Board interviews; 32,648 service interviews; and 302 inmate group counseling sessions. Total workload for 1983 was up 15,207 or 18.3% over 1982.

COMMUNITY SERVICE

Field parole staff supervise offenders released from either state prisons or local correctional facilities to community living. They ensure that releasees comply with the terms of their release agreement and help locate support services to facilitate an offender's reintegration into the community.

Field parole officers of the Absconder Search Unit are responsible for locating delinquent parolees who flee from parole supervision and law enforcement agencies.

It should be noted that while the 1983 year-end parole supervision caseload grew 7.8% over 1982 to 23,100, the number of delinquent parolees grew by only 4.4% to 4,046 during the same period. There were 19,054 parolees under active supervision as of March 31, 1984.

H. PAROLE SERVICES

Parole Census 1983-84

Active Parolees (April 1, 1983)	17,555
State Inmates Released by Board	8,967
State Inmates Released by CR	2,388
Local Inmates Released by Board	676
Cooperative Parolee Agreement from Other States	430
Juvenile Offenders Released	293
Total Inmates Released to Parole Supervision	12,754
Total Caseload Discharges and Returns	9,087
Total End of Year Caseload	23,100
Delinquent Parolees	4,046
Active Parolees (March 31, 1984)	19,054

Source: NYS Division of Parole.

State Support of Parole Grew 16.5% in 1983

Expenditures by the State on Parole activities grew 16.5% during 1983-84. Since 1979, expenditures rose an average of 12.4% per year.

Parole Expenditures 1979-83

	Amount	% Change
1979	\$ 22,864,000	----
1980	24,309,000	+ 6.3%
1981	27,018,000	+ 11.1%
1982	29,333,000	+ 8.6%
1983	34,175,000	+ 16.5%

While State funding to Parole increased by 16.5% since 1982, Parole spending remained fairly constant as a portion of the total state criminal justice dollar.

Parole Expenditures as a Percent of State Criminal Justice Spending

1979	2.3%
1980	2.3%
1981	2.0%
1982	2.0%
1983	2.1%

THE PERSONNEL

In 1983, the Division of Parole employed approximately 1,300 professional and support staff including over 550 parole officers who provided community supervision services and 140 institutional officers who conducted investigations on prospective parolees.

Parole Staffing Levels* 1979-83

Year	Employees
1979	1,066
1980	1,136
1981	1,156
1982	1,176
1983	1,324

*Year end staffing levels.

I. CRIME VICTIMS BOARD

The Crime Victims Board provides financial compensation to innocent victims of violent crime. They or their dependents are eligible for awards in the event of financial hardship due to the loss of life, injury or disability resulting from the crime incident.

The Board assists victims of crime through two major programs: the Payments to Victims Program and the Victim/Witness Assistance Program. The first provides awards to individual victims of violent crime. These awards may provide funeral benefits to family members, reimbursement for the loss of essential property, or replacement of lost earnings. The second program provides funding to local agencies which service crime victims including rape crises centers, family shelters, and abused women services.

Since 1983, elderly victims of crime are eligible for compensation of up to \$250 for lost, stolen or destroyed personal property. Victims of child abuse or domestic violence who are physically injured are eligible for medical expenses, counseling, or loss of earnings. In addition, the Board makes awards to injured "Good Samaritans" and to victims of sex-related crimes.

The Board uses several methods for referrals and contacts with the public. These include postings in police departments, hospital emergency rooms, subways and buses. The Board has also used radio, television and newspaper public service announcements. The Board also relies on police agencies to provide victims of violent crimes with information on the availability of services for the victim and the possibility of financial awards.

Claims Rise to 9,000 in 1983

The Board received 9,001 claims for compensation during 1983. Awards were made in 3,262 cases. A total of \$8,800,000 was paid to claimants in 1983, which represented 70% of the agency budget.

Board Activity, 1983-84

9,001	---Claims for Compensation
1,514	---Claims by Elderly
532	---Claims Sex Related
3,262	---Awards Made
\$8.8m	---Paid to Victims

State Funding of Crime Victims Climbs 24.4% in 1983

State support for crime victim services grew to \$12,547,000 in 1983, or up 24.4% since 1982. This continues a trend of expanded State commitment to help lessen the impact of violent crime on victims. Since 1979, State funding to the Crime Victims Board grew an average of 22.6% per year.

Crime Victim Expenditures 1979-83

	Amount	% Change
1979	\$ 6,592,000	----
1980	6,832,000	+ 4.6%
1981	8,281,000	+21.2%
1982	10,084,000	+21.8%
1983	12,547,000	+24.4%

It should be noted that the State and localities support and provide victim assistance programs through many social service, medical, and mental health agencies. No dollar figure on this assistance is currently available.

J. DIVISION FOR YOUTH SERVICES

The New York State Division for Youth is charged with the care, treatment and rehabilitation of certain trouble-prone youth including those classified as juvenile offenders, juvenile delinquents and persons-in-need-of-supervision. The Division also administers financial assistance to community agencies which provide a variety of educational and supportive services to youth as a means of preventing or reducing the incidence of delinquent behavior in a community.

The Division operates a system of residential programs that range from controlled, secure settings to community-based or family settings.

Secure Program - This program includes Juvenile Offenders, Restrictive Juvenile Delinquents, and Title III Juvenile Delinquents. These facilities provide intensive programming for youth requiring a highly-controlled and restrictive environment.

Limited Secure Facility - This program provides less secure facilities than above; however, these facilities are generally located in rural areas and are restrictive in nature. Intensive supervision is provided. Youths admitted to these facilities must be Title III Juvenile Delinquents requiring removal from the community.

Non-Community Based Program - This group of facilities admit youths who must be removed from the community, but who pose a less serious threat to public safety. The population includes Juvenile Delinquents, PINS, or youths adjudicated in adult courts with DFY placement as a condition of probation. These youths may engage in limited community activities.

Community Based Services - This program provides residential placements for adjudicated youths who do not pose a threat to themselves or others. Settings include youth development centers, group homes and fostercare. The Division may also place certain youths in authorized voluntary child care agencies.

The Division admitted 2,395 youths during 1983, a 2.8% decline from 1982 admissions.

1983 DFY Residential Admissions Characteristics

ADMISSION CHARACTERISTIC	1983		Change 1982-83
	#	%	%
TOTAL ADMISSIONS	2,395	100.0	- 2.8
<u>Type of Admission</u>			
First Admission	1,938	80.9	- 3.0
Re-Admission from Aftercare	243	10.1	-14.1
New Placement with Prior Service	214	8.9	+15.7
<u>Age</u>			
10-12 Years	78	3.3	-16.1
13 Years	196	8.2	+14.0
14 Years	463	19.3	+ 5.2
15 Years	885	37.0	- 7.8
16 Years	587	24.5	- 1.2
17 Years	146	6.1	-15.1
18 Years + Over	40	1.7	+17.6
<u>Gender</u>			
Male	1,973	82.4	- 3.2
Female	422	17.6	- 0.1
<u>Ethnicity</u>			
White	907	37.9	- 6.5
Black	1,123	46.9	- 1.9
Hispanic	343	14.3	+ 3.0
Other	22	0.9	+29.4
<u>Adjudication</u>			
Juvenile Offender	306	12.8	-17.7
Juvenile Delinquent	1,553	64.8	- 3.7
PINS	360	15.0	+ 5.3
Youthful Offender	72	3.0	+35.8
Other	104	4.4	+20.9
<u>Region</u>			
Region I	516	21.5	- 5.1
Region II	266	11.1	-21.8
Region III	281	11.7	- 7.3
Region IV	1,323	55.2	+ 3.5
Interstate	9	0.4	0

SOURCE: New York State, Division for Youth,
Masterplan 84.

J. DIVISION FOR YOUTH SERVICES

Youth Funding Grew 62.3% Since 1979

State funding for Division programs grew 2.2% in 1983, up 62.3% since 1979. The largest increase occurred during 1981 when funding climbed 50% in a single year. Division funding grew an average of 15.6% per year since 1979.

Division for Youth Funding 1979-83 (thousands)

	<u>Amount</u>	<u>% Change</u>
1979	\$ 106,307	-----
1980	118,359	+11.3%
1981	177,496	+50.0%
1982	168,796	- 5.2%
1983	172,483	+ 2.2%

Though overall youth spending grew significantly since 1979, local aid grew even more. Funding for such DFY local service programs as Youth Development and Delinquency Prevention, Special Delinquency Prevention, Runaway and Homeless Youth and Special Projects rose an average of 20.4% per year since 1979. The largest increase in aid to localities occurred during 1981 when expenditures rose 71.7%.

DFY Local Aid Spending (thousands)

	<u>Amount</u>	<u>% Change</u>
1979	\$ 36,771	-----
1980	41,520	+12.9%
1981	71,275	+71.7%
1982	64,633	- 9.3%
1983	66,815	+ 3.4%

K. DIVISION OF CRIMINAL JUSTICE SERVICES

The Division of Criminal Justice Services maintains the State's computerized criminal history system, provides training to municipal police and peace officers, conducts criminal justice research and monitors and evaluates selected justice programs. In addition, the Division provides financial aid to selected localities to enhance police and prosecutorial activities which target certain serious offenders for specialized processing.

TARGET CRIME INITIATIVE PROGRAM

The primary goal of the Target Crime Initiative Program is the speedy and effective apprehension and prosecution of repeat and serious violent offenders. The program achieves this goal by supporting additional local prosecution and defense staff, increasing the number of indictments against repeat offenders, eliminating plea bargaining in most circumstances, reducing prosecution caseloads, and pursuing an increased number and length of prison terms for this group of offenders.

During 1983, the Target Crime Initiative Program provided \$40,678,000 to 16 counties¹ and the five boroughs of the City of New York.

TCI 1983-84 Funding

Corrections	\$ 1,918,359
Defense	12,712,333
Labs	1,241,556
Probation	2,114,640
Prosecution	20,576,838
Sheriff	896,003
Statewide	1,218,971
TOTAL	\$40,678,700

Approximately 82% of all TCI monies went to support prosecution (50.6%) and defense (33.1%) services in 1983-84. The remainder, 18.1%, went

¹Counties include Albany, Broome, Chemung, Dutchess, Erie, Monroe, Nassau, Oneida, Onondaga, Orange, Rockland, Steuben, Suffolk, Ulster and Westchester.

to support corrections, laboratory, probation, sheriff and other services.

MAJOR OFFENSE POLICE PROGRAM

The Major Offense Police Program provides funding to selected localities to establish police units that target the violent felon, the illicit drug trafficker and the illegal handgun dealer. Approximately \$14,000,000 was provided to localities during 1983-84 to hire additional police personnel and purchase equipment in 10 localities, including: New York City, Buffalo, Rochester, Syracuse, Westchester, Suffolk, Nassau, Rockland, Orange, and Albany. In addition, \$3.5 million was provided to New York City for the Transit Police Strike Force to apprehend the most dangerous and predatory subway criminals.

ALTERNATIVES TO INCARCERATION PROGRAM

The Division also administered a \$4.5 million Alternatives to Incarceration Program which funded 84 programs that reduced the incidence of incarceration of non-violent offenders in both local and state facilities.

State Funding of DCJS Climbs 63% Since 1979

Although funding of DCJS fell 4.5% between 1982 and 1983, it grew an average of 15.8% per year since 1979.

DCJS Funding 1979-1983

	Amount	% Change
1979	\$51,323,000	-----
1980	50,075,000	- 2.4%
1981	69,928,000	+39.7%
1982	87,608,000	+25.3%
1983	83,659,000	- 4.5%

Approximately \$65.5 million or 78.3% of all DCJS funds during 1983-84 were in the form of local aid or grant programs.

Appendix A

STATE CRIMINAL JUSTICE EXPENDITURE DATA

TABLE 1
NEW YORK STATE
Criminal Justice Expenditures, 1979-1983
(thousands)

FUNCTION	1979 - 1980				1980 - 1981				1981 - 1982				1982 - 1983				1983 - 1984			
	State Purposes	Local Assist- ance	Capital Budget	Total	State Purposes	Local Assist- ance	Capital Budget	Total	State Purposes	Local Assist- ance	Capital Budget	Total	State Purposes	Local Assist- ance	Capital Budget	Total	State Purposes	Local Assist- ance	Capital Budget	Total
Commission on Corrections	1,289	0	0	1,289	1,259	0	0	1,259	1,431	0	0	1,431	1,671	0	0	1,671	1,848	0	0	1,848
Correctional Services	310,051	0	14,049	324,100	305,273	0	11,083	316,356	387,979	0	48,682	436,661	445,213	0	65,153	510,366	521,285	0	123,272	644,557
Crime Victims Board	6,592	0	0	6,592	6,832	0	0	6,832	8,281	0	0	8,281	10,084	0	0	10,084	12,547	0	0	12,547
Criminal Justice Serve.	11,761	39,562	0	51,323	12,827	37,248	0	50,075	14,846	55,082	0	69,928	27,905	59,703	0	87,608	18,117	65,542	0	83,659
Division for Youth	67,404	36,771	2,132	106,307	71,541	41,520	5,298	118,359	93,971	71,275	12,250	177,496	96,552	64,633	7,611	168,796	100,679	66,815	4,989	172,483
Judiciary/Courts	370,702	0	0	370,702	404,031	0	0	404,031	469,456	0	0	469,456	490,567	0	0	490,567	544,246	0	0	544,246
Parole	22,864	0	0	22,864	24,309	0	0	24,309	27,018	0	0	27,018	29,333	0	0	29,333	34,175	0	0	34,175
Probation	1,908	21,381	0	23,289	2,217	22,314	0	24,531	2,482	29,085	0	31,567	2,470	32,151	0	34,621	2,863	34,275	0	37,138
State Police	103,205	0	906	104,111	109,752	0	285	110,037	118,990	0	318	119,308	115,259	0	183	115,442	126,465	0	450	126,915
Grand Total	895,776	97,714	17,087	1,010,577	938,041	101,082	16,666	1,055,789	1,124,454	155,442	61,250	1,341,146	1,219,054	156,487	72,947	1,448,488	1,362,225	166,632	128,711	1,657,568

Appendix B

LOCAL GOVERNMENT CRIMINAL
JUSTICE EXPENDITURES

TABLE 2

Local Government
Court Expenditures, 1979-83.

County	Level of Government	Fiscal Year				
		1979	1980	1981	1982	1983
Albany	County	\$ 601,000	\$ 646,000	\$ 446,000	\$ 441,000	\$ 311,000
	City	118,000	36,000	-----	-----	-----
	Town	280,000	320,000	342,000	368,000	394,000
	Village	22,000	26,000	29,000	34,000	36,000
	TOTAL	1,021,000	1,028,000	817,000	843,000	741,000
Allegany	County	73,000	22,000	2,000	*	1,000
	City	-----	-----	-----	-----	-----
	Town	66,000	67,000	71,000	84,000	86,000
	Village	18,000	19,000	22,000	26,000	20,000
	TOTAL	157,000	108,000	95,000	110,000	107,000
Broome	County	141,000	28,000	29,000	35,000	48,000
	City	62,000	13,000	-----	-----	-----
	Town	245,000	299,000	312,000	327,000	355,000
	Village	97,000	115,000	131,000	138,000	164,000
	TOTAL	545,000	455,000	472,000	500,000	567,000
Cattaraugus	County	204,000	118,000	101,000	98,000	117,000
	City	23,000	12,000	-----	-----	-----
	Town	116,000	122,000	121,000	133,000	133,000
	Village	18,000	19,000	21,000	22,000	24,000
	TOTAL	361,000	271,000	243,000	253,000	274,000

*less than \$500

Courts

County	Level of Government	Fiscal Year				
		1979	1980	1981	1982	1983
Cayuga	County	\$ 129,000	\$ 47,000	\$ 8,000	\$ 17,000	\$ 16,000
	City	24,000	12,000	-----	-----	-----
	Town	79,000	98,000	101,000	119,000	122,000
	Village	11,000	13,000	14,000	16,000	16,000
	TOTAL	243,000	170,000	123,000	152,000	154,000
Chautauqua	County	150,000	32,000	-----	95,000	104,000
	City	39,000	6,000	-----	-----	-----
	Town	194,000	209,000	208,000	232,000	238,000
	Village	20,000	21,000	19,000	20,000	24,000
	TOTAL	403,000	268,000	227,000	347,000	366,000
Chemung	County	662,000	142,000	109,000	114,000	114,000
	City	35,000	13,000	14,000	-----	15,000
	Town	106,000	108,000	126,000	136,000	141,000
	Village	25,000	32,000	34,000	37,000	39,000
	TOTAL	828,000	295,000	283,000	287,000	309,000
Chenango	County	82,000	25,000	*	*	*
	City	7,000	2,000	*	-----	-----
	Town	54,000	57,000	58,000	62,000	64,000
	Village	13,000	14,000	15,000	14,000	15,000
	TOTAL	156,000	98,000	73,000	76,000	79,000

*less than \$500

Courts

County	Level of Government	Fiscal Year				
		1979	1980	1981	1982	1983
Clinton	County	\$ 234,000	\$ 41,000	\$ 16,000	\$ 19,000	\$ 24,000
	City	12,000	2,000	*	-----	-----
	Town	96,000	103,000	113,000	130,000	131,000
	Village	7,000	9,000	9,000	9,000	12,000
	TOTAL	349,000	155,000	138,000	158,000	167,000
Columbia	County	63,000	11,000	1,000	1,000	17,000
	City	6,000	4,000	-----	-----	-----
	Town	124,000	135,000	138,000	146,000	163,000
	Village	6,000	6,000	6,000	7,000	7,000
	TOTAL	199,000	156,000	145,000	154,000	187,000
Cortland	County	40,000	31,000	6,000	8,000	5,000
	City	11,000	3,000	2,000	2,000	1,000
	Town	66,000	73,000	81,000	84,000	89,000
	Village	7,000	7,000	8,000	9,000	10,000
	TOTAL	124,000	114,000	97,000	103,000	105,000
Delaware	County	102,000	41,000	*	3,000	1,000
	City	-----	-----	-----	4,000	-----
	Town	82,000	83,000	85,000	91,000	92,000
	Village	15,000	22,000	29,000	32,000	35,000
	TOTAL	199,000	146,000	114,000	130,000	128,000

*less than \$500

Courts

County	Level of Government	Fiscal Year				
		1979	1980	1981	1982	1983
Dutchess	County	\$ 583,000	\$ 231,000	\$ 91,000	\$ 53,000	\$ 62,000
	City	26,000	11,000	2,000	-----	2,000
	Town	274,000	316,000	344,000	427,000	431,000
	Village	36,000	35,000	40,000	57,000	62,000
	TOTAL	919,000	593,000	477,000	537,000	557,000
Erie	County	1,600,000	573,000	75,000	351,000	431,000
	City	521,000	252,000	-----	-----	-----
	Town	1,049,000	1,217,000	1,399,000	1,548,000	1,659,000
	Village	159,000	177,000	189,000	208,000	235,000
	TOTAL	3,329,000	2,219,000	1,663,000	2,107,000	2,325,000
Essex	County	139,000	12,000	1,000	13,000	12,000
	City	-----	-----	-----	-----	-----
	Town	139,000	149,000	143,000	164,000	166,000
	Village	4,000	5,000	6,000	7,000	8,000
	TOTAL	282,000	166,000	150,000	184,000	186,000
Franklin	County	104,000	62,000	*	51,000	23,000
	City	-----	-----	-----	-----	-----
	Town	81,000	84,000	80,000	87,000	84,000
	Village	44,000	48,000	45,000	52,000	53,000
	TOTAL	229,000	194,000	125,000	190,000	160,000

*less than \$500

Courts

County	Level of Government	Fiscal Year				
		1979	1980	1981	1982	1983
Fulton	County	\$ 105,000	\$ 22,000	\$ *	\$ *	\$ 11,000
	City	18,000	2,000	1,000	*	*
	Town	50,000	51,000	51,000	53,000	55,000
	Village	3,000	3,000	3,000	3,000	3,000
	TOTAL	176,000	78,000	55,000	56,000	69,000
Genesee	County	76,000	19,000	*	*	16,000
	City	13,000	4,000	-----	-----	-----
	Town	101,000	112,000	113,000	126,000	126,000
	Village	15,000	16,000	17,000	17,000	19,000
	TOTAL	205,000	151,000	130,000	143,000	161,000
Greene	County	150,000	17,000	2,000	3,000	2,000
	City	-----	-----	-----	-----	-----
	Town	92,000	98,000	119,000	128,000	129,000
	Village	22,000	24,000	23,000	25,000	30,000
	TOTAL	264,000	139,000	144,000	156,000	161,000
Hamilton	County	46,000	21,000	4,000	5,000	5,000
	City	-----	-----	-----	-----	-----
	Town	46,000	47,000	41,000	53,000	55,000
	Village	2,000	2,000	2,000	-----	-----
	TOTAL	94,000	70,000	47,000	58,000	60,000

*less than \$500

Courts

County	Level of Government	Fiscal Year				
		1979	1980	1981	1982	1983
Herkimer	County	\$ 69,000	\$ 56,000	\$ 17,000	\$ 18,000	\$ 19,000
	City	5,000	1,000	-----	-----	-----
	Town	82,000	84,000	76,000	89,000	93,000
	Village	25,000	27,000	25,000	25,000	31,000
	TOTAL	181,000	168,000	118,000	132,000	143,000
Jefferson	County	172,000	67,000	23,000	27,000	32,000
	City	46,000	23,000	1,000	6,000	8,000
	Town	132,000	136,000	129,000	159,000	164,000
	Village	20,000	24,000	19,000	21,000	22,000
	TOTAL	370,000	250,000	172,000	213,000	226,000
Lewis	County	48,000	21,000	7,000	8,000	6,000
	City	-----	-----	-----	-----	-----
	Town	44,000	46,000	46,000	46,000	46,000
	Village	11,000	12,000	12,000	13,000	14,000
	TOTAL	103,000	79,000	65,000	67,000	66,000
Livingston	County	110,000	53,000	27,000	27,000	28,000
	City	-----	-----	-----	-----	-----
	Town	88,000	90,000	85,000	108,000	117,000
	Village	40,000	47,000	51,000	55,000	59,000
	TOTAL	238,000	190,000	163,000	190,000	204,000

*less than \$500

Courts

County	Level of Government	Fiscal Year				
		1979	1980	1981	1982	1983
Madison	County	\$ 112,000	\$ 36,000	\$ *	\$ *	\$ 1,000
	City	9,000	2,000	-----	-----	-----
	Town	71,000	78,000	62,000	91,000	95,000
	Village	26,000	32,000	37,000	40,000	40,000
	TOTAL	218,000	148,000	99,000	131,000	136,000
Monroe	County	2,276,000	3,162,000	3,144,000	3,232,000	3,237,000
	City	336,000	169,000	-----	-----	-----
	Town	669,000	750,000	793,000	928,000	1,016,000
	Village	39,000	40,000	45,000	52,000	59,000
	TOTAL	3,320,000	4,121,000	3,982,000	4,212,000	4,312,000
Montgomery	County	137,000	35,000	*	32,000	8,000
	City	12,000	2,000	-----	1,000	1,000
	Town	68,000	67,000	72,000	84,000	88,000
	Village	1,000	1,000	2,000	1,000	5,000
	TOTAL	218,000	105,000	74,000	118,000	102,000
Nassau	County	5,229,000	1,124,000	282,000	1,101,000	1,179,000
	City	107,000	49,000	-----	-----	-----
	Town	-----	-----	-----	-----	-----
	Village	1,021,000	1,158,000	1,225,000	1,315,000	1,498,000
	TOTAL	6,357,000	2,331,000	1,507,000	2,416,000	2,677,000

*less than \$500

Courts

County	Level of Government	Fiscal Year				
		1979	1980	1981	1982	1983
Niagara	County	\$ 491,000	\$ 158,000	\$ 31,000	\$ 71,000	\$ 36,000
	City	99,000	21,000	*	3,000	9,000
	Town	212,000	237,000	253,000	285,000	297,000
	Village	1,000	1,000	1,000	1,000	1,000
	TOTAL	803,000	417,000	285,000	360,000	343,000
Oneida	County	323,000	224,000	NA	2,000	23,000
	City	123,000	102,000	-----	-----	-----
	Town	156,000	161,000	162,000	168,000	187,000
	Village	28,000	31,000	37,000	37,000	38,000
	TOTAL	630,000	518,000	199,000	207,000	248,000
Onondaga	County	569,000	295,000	2,000	3,000	-----
	City	204,000	30,000	-----	-----	-----
	Town	392,000	425,000	471,000	513,000	564,000
	Village	71,000	67,000	62,000	86,000	82,000
	TOTAL	1,236,000	817,000	535,000	602,000	646,000
Ontario	County	108,000	15,000	44,000	44,000	35,000
	City	25,000	5,000	-----	-----	-----
	Town	126,000	135,000	156,000	156,000	165,000
	Village	4,000	4,000	4,000	4,000	4,000
	TOTAL	263,000	159,000	183,000	204,000	204,000

*less than \$500

Courts

County	Level of Government	Fiscal Year				
		1979	1980	1981	1982	1983
Orange	County	\$ 454,000	\$ 186,000	\$ 6,000	\$ 18,000	\$ 7,000
	City	61,000	35,000	17,000	-----	-----
	Town	467,000	519,000	539,000	679,000	694,000
	Village	70,000	78,000	78,000	90,000	102,000
	TOTAL	1,052,000	818,000	640,000	787,000	803,000
Orleans	County	63,000	9,000	2,000	1,000	9,000
	City	-----	-----	-----	-----	-----
	Town	63,000	64,000	68,000	83,000	86,000
	Village	11,000	15,000	20,000	21,000	22,000
	TOTAL	137,000	88,000	90,000	105,000	117,000
Oswego	County	250,000	81,000	-----	-----	-----
	City	27,000	4,000	-----	-----	-----
	Town	133,000	149,000	145,000	175,000	172,000
	Village	10,000	10,000	11,000	9,000	9,000
	TOTAL	420,000	244,000	156,000	184,000	181,000
Otsego	County	84,000	10,000	*	21,000	22,000
	City	28,000	17,000	16,000	-----	17,000
	Town	84,000	83,000	71,000	88,000	94,000
	Village	8,000	7,000	10,000	9,000	10,000
	TOTAL	204,000	117,000	97,000	118,000	143,000

*less than \$500

Courts

County	Level of Government	Fiscal Year				
		1979	1980	1981	1982	1983
Putnam	County	\$ 85,000	\$ 1,000	\$ 7,000	\$ 7,000	\$ 8,000
	City	-----	-----	-----	-----	-----
	Town	179,000	190,000	168,000	263,000	290,000
	Village	16,000	16,000	20,000	26,000	25,000
	TOTAL	280,000	207,000	195,000	296,000	323,000
Rensselaer	County	282,000	92,000	1,000	1,000	1,000
	City	57,000	14,000	-----	-----	-----
	Town	150,000	158,000	173,000	199,000	214,000
	Village	8,000	11,000	12,000	11,000	12,000
	TOTAL	497,000	275,000	186,000	211,000	227,000
Rockland	County	408,000	98,000	6,000	6,000	6,000
	City	-----	-----	-----	-----	-----
	Town	432,000	479,000	426,000	662,000	723,000
	Village	153,000	150,000	172,000	194,000	214,000
	TOTAL	993,000	727,000	604,000	862,000	943,000
St. Lawrence	County	252,000	92,000	21,000	21,000	22,000
	City	16,000	3,000	-----	-----	-----
	Town	201,000	213,000	227,000	239,000	239,000
	Village	45,000	46,000	54,000	64,000	73,000
	TOTAL	514,000	354,000	302,000	324,000	334,000

*less than \$500

Courts

County	Level of Government	Fiscal Year				
		1979	1980	1981	1982	1983
Saratoga	County	\$ 273,000	\$ 109,000	\$ 19,000	\$ 17,000	\$ 11,000
	City	27,000	4,000	*	-----	-----
	Town	211,000	232,000	249,000	271,000	290,000
	Village	15,000	16,000	18,000	18,000	22,000
	TOTAL	526,000	361,000	286,000	306,000	323,000
Schenectady	County	233,000	81,000	*	44,000	46,000
	City	-----	8,000	2,000	1,000	-----
	Town	119,000	124,000	133,000	150,000	163,000
	Village	10,000	10,000	11,000	12,000	15,000
	TOTAL	362,000	223,000	146,000	207,000	224,000
Schoharie	County	36,000	8,000	*	*	24,000
	City	-----	-----	-----	-----	-----
	Town	41,000	44,000	35,000	40,000	39,000
	Village	11,000	11,000	11,000	9,000	9,000
	TOTAL	88,000	63,000	46,000	49,000	72,000
Schulyer	County	34,000	5,000	1,000	*	1,000
	City	-----	-----	-----	-----	-----
	Town	29,000	31,000	34,000	31,000	31,000
	Village	7,000	10,000	9,000	15,000	16,000
	TOTAL	70,000	46,000	44,000	46,000	48,000

*less than \$500

Courts

County	Level of Government	Fiscal Year				
		1979	1980	1981	1982	1983
Seneca	County	\$ 44,000	\$ 9,000	\$ *	\$ 7,000	\$ 17,000
	City	-----	-----	-----	-----	-----
	Town	52,000	63,000	56,000	69,000	72,000
	Village	28,000	26,000	28,000	26,000	28,000
	TOTAL	124,000	98,000	84,000	102,000	117,000
Steuben	County	150,000	78,000	*	*	79,000
	City	13,000	12,000	-----	-----	-----
	Town	130,000	137,000	143,000	154,000	159,000
	Village	29,000	30,000	35,000	34,000	37,000
	TOTAL	322,000	257,000	178,000	188,000	275,000
Suffolk	County	2,144,000	835,000	10,000	2,957,000	1,370,000
	City	-----	-----	-----	-----	-----
	Town	328,000	350,000	472,000	398,000	481,000
	Village	163,000	190,000	202,000	241,000	274,000
	TOTAL	2,635,000	1,375,000	684,000	3,596,000	2,025,000
Sullivan	County	111,000	35,000	10,000	2,000	2,000
	City	-----	-----	-----	-----	-----
	Town	191,000	201,000	225,000	248,000	262,000
	Village	32,000	40,000	43,000	50,000	53,000
	TOTAL	334,000	276,000	278,000	300,000	317,000

*less than \$500

Courts

County	Level of Government	Fiscal Year				
		1979	1980	1981	1982	1983
Tioga	County	\$ 74,000	\$ 25,000	\$ *	\$ *	\$ *
	City	-----	-----	-----	-----	-----
	Town	49,000	55,000	58,000	61,000	65,000
	Village	24,000	24,000	25,000	27,000	29,000
	TOTAL	147,000	104,000	83,000	88,000	94,000
Tompkins	County	151,000	69,000	17,000	23,000	33,000
	City	44,000	20,000	1,000	-----	-----
	Town	81,000	86,000	94,000	109,000	131,000
	Village	25,000	29,000	35,000	37,000	41,000
	TOTAL	301,000	204,000	147,000	169,000	205,000
Ulster	County	374,000	128,000	2,000	1,000	2,000
	City	14,000	4,000	-----	-----	-----
	Town	288,000	311,000	332,000	373,000	408,000
	Village	14,000	16,000	17,000	20,000	21,000
	TOTAL	690,000	459,000	351,000	394,000	431,000
Warren	County	171,000	59,000	*	1,000	1,000
	City	-----	2,000	-----	-----	-----
	Town	119,000	107,000	139,000	137,000	150,000
	Village	8,000	10,000	11,000	15,000	13,000
	TOTAL	298,000	178,000	150,000	153,000	164,000

*less than \$500

Courts

County	Level of Government	Fiscal Year				
		1979	1980	1981	1982	1983
Washington	County	\$ 122,000	\$ 40,000	\$ 3,000	\$ 1,000	\$ 1,000
	City	-----	-----	-----	-----	-----
	Town	65,000	76,000	70,000	77,000	78,000
	Village	36,000	39,000	38,000	46,000	51,000
	TOTAL	223,000	155,000	111,000	124,000	130,000
Wayne	County	150,000	18,000	1,000	1,000	59,000
	City	-----	-----	-----	-----	-----
	Town	131,000	148,000	128,000	172,000	184,000
	Village	42,000	45,000	52,000	58,000	64,000
	TOTAL	323,000	211,000	181,000	231,000	307,000
Westchester	County	1,418,000	820,000	31,000	38,000	243,000
	City	719,000	448,000	347,000	461,000	290,000
	Town	1,010,000	1,113,000	808,000	1,305,000	1,356,000
	Village	686,000	784,000	842,000	966,000	1,062,000
	TOTAL	3,833,000	3,165,000	2,028,000	2,770,000	2,951,000
Wyoming	County	51,000	16,000	*	*	*
	City	-----	-----	-----	-----	-----
	Town	51,000	51,000	52,000	55,000	54,000
	Village	20,000	19,000	21,000	23,000	23,000
	TOTAL	122,000	86,000	73,000	78,000	77,000

*less than \$500

Courts

County	Level of Government	Fiscal Year				
		1979	1980	1981	1982	1983
Yates	County	\$ 48,000	\$ 15,000	\$ *	\$ *	\$ *
	City	-----	-----	-----	-----	-----
	Town	27,000	33,000	33,000	34,000	35,000
	Village	8,000	9,000	10,000	10,000	10,000
	TOTAL	83,000	57,000	43,000	44,000	45,000
TOTALS	County	22,390,000	10,306,000	4,605,000	9,039,000	7,888,000
	City	2,887,000	1,347,000	403,000	478,000	343,000
	Town	10,011,000	10,974,000	11,229,000	13,197,000	14,015,000
	Village	3,310,000	3,698,000	3,967,000	4,414,000	4,900,000
	TOTAL	38,598,000	26,325,000	20,183,000	27,128,000	27,046,000

*less than \$500

TABLE 3
Local Government
Prosecution Expenditures, 1979-83.

County	1979	1980	1981	1982	1983
Albany	\$ 750,000	\$ 862,000	\$ 888,000	\$1,049,000	\$1,074,000
Allegany	70,000	74,000	83,000	99,000	128,000
Broome	315,000	428,000	447,000	468,000	538,000
Cattaraugus	131,000	149,000	152,000	173,000	204,000
Cayuga	113,000	126,000	146,000	158,000	186,000
Chautauqua	312,000	361,000	366,000	422,000	473,000
Chemung	246,000	258,000	327,000	359,000	276,000
Chenango	42,000	60,000	60,000	64,000	70,000
Clinton	114,000	115,000	118,000	156,000	142,000
Columbia	71,000	89,000	97,000	107,000	114,000
Cortland	75,000	79,000	87,000	85,000	90,000
Delaware	44,000	53,000	55,000	55,000	58,000
Dutchess	520,000	585,000	637,000	659,000	786,000
Erie	3,076,000	3,377,000	3,891,000	3,779,000	4,904,000
Essex	65,000	82,000	83,000	107,000	121,000
Franklin	59,000	85,000	111,000	127,000	155,000
Fulton	57,000	105,000	177,000	118,000	112,000
Genesee	76,000	97,000	108,000	117,000	140,000
Greene	59,000	65,000	68,000	87,000	119,000
Hamilton	24,000	28,000	35,000	31,000	33,000
Herkimer	53,000	62,000	64,000	68,000	78,000
Jefferson	124,000	132,000	149,000	159,000	174,000
Lewis	26,000	29,000	32,000	34,000	39,000
Livingston	101,000	114,000	122,000	133,000	183,000
Madison	83,000	92,000	101,000	147,000	154,000
Monroe	2,523,000	2,719,000	2,885,000	3,221,000	3,453,000
Montgomery	56,000	62,000	58,000	69,000	72,000
Nassau	5,146,000	5,756,000	8,195,000	8,731,000	9,695,000

County	1979	1980	1981	1982	1983
Niagara	\$ 335,000	\$ 381,000	\$ 444,000	\$ 537,000	\$ 662,000
Oneida	358,000	419,000	451,000	559,000	693,000
Onondaga	1,062,000	1,098,000	1,932,000	2,365,000	2,605,000
Ontario	184,000	217,000	250,000	297,000	337,000
Orange	734,000	761,000	829,000	1,038,000	1,326,000
Orleans	62,000	66,000	91,000	99,000	97,000
Oswego	169,000	210,000	231,000	254,000	374,000
Otsego	46,000	60,000	68,000	68,000	74,000
Putnam	131,000	148,000	188,000	289,000	354,000
Rensselaer	261,000	272,000	350,000	380,000	391,000
Rockland	815,000	815,000	1,022,000	1,188,000	1,212,000
St. Lawrence	140,000	152,000	160,000	198,000	186,000
Saratoga	156,000	175,000	184,000	224,000	261,000
Schenectady	235,000	263,000	297,000	311,000	323,000
Schoharie	28,000	30,000	30,000	35,000	37,000
Schuyler	27,000	26,000	32,000	31,000	37,000
Seneca	30,000	32,000	33,000	37,000	39,000
Steuben	158,000	190,000	223,000	305,000	349,000
Suffolk	5,158,000	6,032,000	6,818,000	8,072,000	8,514,000
Sullivan	235,000	251,000	360,000	414,000	413,000
Tioga	63,000	72,000	81,000	87,000	97,000
Tompkins	129,000	148,000	166,000	184,000	227,000
Ulster	363,000	397,000	395,000	481,000	482,000
Warren	80,000	85,000	91,000	103,000	120,000
Washington	91,000	103,000	102,000	159,000	149,000
Wayne	156,000	144,000	168,000	237,000	250,000
Westchester	3,597,000	3,772,000	4,411,000	5,339,000	5,851,000
Wyoming	40,000	44,000	47,000	51,000	48,000
Yates	23,000	24,000	27,000	30,000	35,000
TOTAL	29,197,000	32,431,000	39,023,000	44,159,000	49,114,000

TABLE 4
Local Government
Defense Expenditures, 1979-83.

County	1979	1980	1981	1982	1983
Albany	\$ 361,000	\$ 441,000	\$ 470,000	\$ 515,000	\$ 523,000
Allegany	43,000	45,000	52,000	65,000	69,000
Broome	154,000	218,000	255,000	379,000	468,000
Cattaraugus	80,000	71,000	91,000	107,000	120,000
Cayuga	47,000	69,000	73,000	69,000	79,000
Chautauqua	176,000	215,000	224,000	259,000	276,000
Chemung	97,000	108,000	110,000	136,000	151,000
Chenango	23,000	25,000	31,000	36,000	41,000
Clinton	97,000	125,000	125,000	124,000	114,000
Columbia	39,000	45,000	55,000	78,000	84,000
Cortland	73,000	82,000	74,000	83,000	74,000
Delaware	17,000	30,000	30,000	29,000	30,000
Dutchess	376,000	398,000	420,000	465,000	502,000
Erie	1,205,000	1,460,000	1,421,000	1,403,000	1,793,000
Essex	10,000	26,000	32,000	36,000	38,000
Franklin	41,000	45,000	59,000	65,000	68,000
Fulton	27,000	53,000	75,000	51,000	64,000
Genesee	47,000	83,000	71,000	78,000	81,000
Greene	51,000	53,000	67,000	69,000	82,000
Hamilton	4,000	7,000	6,000	9,000	11,000
Herkimer	19,000	26,000	29,000	44,000	40,000
Jefferson	101,000	92,000	111,000	119,000	176,000
Lewis	16,000	16,000	18,000	20,000	20,000
Livingston	39,000	46,000	70,000	68,000	79,000
Madison	51,000	72,000	68,000	66,000	66,000
Monroe	1,385,000	1,503,000	1,535,000	1,687,000	1,826,000
Montgomery	30,000	33,000	33,000	48,000	60,000
Nassau	1,448,000	2,125,000	2,135,000	2,284,000	2,887,000

County	1979	1980	1981	1982	1983
Niagara	\$ 202,000	\$ 218,000	\$ 264,000	\$ 319,000	\$ 394,000
Oneida	174,000	205,000	266,000	293,000	360,000
Onondaga	822,000	894,000	1,510,000	1,351,000	1,591,000
Ontario	80,000	100,000	120,000	108,000	138,000
Orange	253,000	386,000	395,000	357,000	321,000
Orleans	33,000	47,000	71,000	82,000	82,000
Oswego	56,000	61,000	105,000	87,000	94,000
Otsego	37,000	52,000	48,000	59,000	74,000
Putnam	89,000	109,000	119,000	138,000	146,000
Rensselaer	125,000	144,000	184,000	177,000	185,000
Rockland	411,000	311,000	339,000	373,000	573,000
St. Lawrence	125,000	153,000	178,000	163,000	197,000
Saratoga	77,000	86,000	82,000	103,000	116,000
Schenectady	127,000	154,000	167,000	155,000	174,000
Schoharie	8,000	9,000	12,000	16,000	24,000
Schuyler	16,000	24,000	25,000	34,000	42,000
Seneca	25,000	27,000	30,000	31,000	31,000
Steuben	130,000	181,000	197,000	203,000	239,000
Suffolk	2,355,000	2,707,000	3,011,000	2,943,000	3,266,000
Sullivan	190,000	226,000	251,000	328,000	356,000
Tioga	43,000	52,000	66,000	67,000	72,000
Tompkins	46,000	75,000	103,000	124,000	108,000
Ulster	180,000	201,000	191,000	249,000	256,000
Warren	53,000	86,000	101,000	77,000	79,000
Washington	46,000	38,000	36,000	40,000	61,000
Wayne	111,000	127,000	187,000	192,000	229,000
Westchester	1,777,000	2,540,000	2,244,000	2,717,000	3,297,000
Wyoming	24,000	278,000	148,000	264,000	259,000
Yates	17,000	22,000	25,000	24,000	32,000
TOTAL	13,689,000	17,025,000	18,215,000	19,466,000	22,618,000

TABLE 5
Local Government
Sheriff Expenditures, 1979-83.

County	1979	1980	1981	1982	1983
Albany	\$1,471,000	\$1,557,000	\$1,777,000	\$1,817,000	\$1,808,000
Allegany	115,000	122,000	142,000	168,000	180,000
Broome	1,007,000	1,543,000	1,566,000	1,749,000	1,777,000
Cattaraugus	558,000	742,000	827,000	819,000	934,000
Cayuga	549,000	621,000	679,000	673,000	735,000
Chautauqua	1,457,000	1,603,000	1,792,000	1,968,000	2,169,000
Chemung	534,000	777,000	819,000	903,000	948,000
Chenango	354,000	404,000	438,000	492,000	597,000
Clinton	219,000	166,000	189,000	190,000	183,000
Columbia	102,000	149,000	486,000	600,000	644,000
Cortland	469,000	507,000	573,000	570,000	649,000
Delaware	243,000	284,000	333,000	310,000	358,000
Dutchess	1,908,000	1,856,000	1,991,000	2,223,000	2,487,000
Erie	6,832,000	7,262,000	8,891,000	8,846,000	10,009,000
Essex	82,000	100,000	101,000	78,000	91,000
Franklin	52,000	62,000	66,000	72,000	78,000
Fulton	327,000	379,000	411,000	417,000	516,000
Genesee	601,000	639,000	702,000	765,000	962,000
Greene	133,000	154,000	159,000	181,000	220,000
Hamilton	63,000	80,000	76,000	84,000	74,000
Herkimer	90,000	104,000	102,000	110,000	107,000
Jefferson	417,000	453,000	489,000	488,000	528,000
Lewis	165,000	186,000	187,000	216,000	223,000
Livingston	680,000	830,000	975,000	1,071,000	1,018,000
Madison	264,000	306,000	316,000	378,000	369,000
Monroe	1,655,000	9,623,000	10,302,000	11,751,000	14,129,000
Montgomery	375,000	385,000	392,000	385,000	419,000
Nassau	1,449,000	1,586,000	2,280,000	2,543,000	2,733,000

County	1979	1980	1981	1982	1983
Niagara	\$1,247,000	\$2,500,000	\$2,791,000	\$3,636,000	\$3,665,000
Oneida	875,000	1,006,000	1,106,000	1,286,000	1,303,000
Onondaga	4,315,000	4,646,000	5,925,000	6,592,000	7,893,000
Ontario	843,000	1,121,000	1,361,000	1,640,000	1,808,000
Orange	794,000	903,000	1,005,000	1,243,000	3,632,000
Orleans	435,000	496,000	575,000	583,000	696,000
Oswego	998,000	1,751,000	1,908,000	2,072,000	2,245,000
Otsego	125,000	159,000	150,000	163,000	186,000
Putnam	558,000	719,000	1,056,000	1,442,000	1,564,000
Rensselaer	648,000	617,000	912,000	1,027,000	1,059,000
Rockland	1,345,000	1,479,000	1,818,000	2,823,000	2,638,000
St. Lawrence	637,000	875,000	855,000	891,000	958,000
Saratoga	914,000	993,000	1,107,000	1,327,000	1,526,000
Schenectady	90,000	113,000	150,000	165,000	181,000
Schoharie	251,000	209,000	116,000	137,000	149,000
Schuyler	193,000	221,000	239,000	274,000	262,000
Seneca	408,000	353,000	418,000	452,000	533,000
Steuben	406,000	489,000	556,000	647,000	660,000
Suffolk	4,574,000	5,276,000	5,559,000	5,647,000	6,325,000
Sullivan	290,000	791,000	1,058,000	1,188,000	1,276,000
Tioga	159,000	264,000	493,000	714,000	783,000
Tompkins	612,000	710,000	684,000	735,000	797,000
Ulster	543,000	802,000	781,000	821,000	937,000
Warren	724,000	816,000	819,000	1,002,000	1,354,000
Washington	296,000	465,000	399,000	357,000	432,000
Wayne	422,000	700,000	771,000	860,000	1,188,000
Westchester	3,199,000	1,894,000	2,051,000	2,823,000	2,994,000
Wyoming	228,000	204,000	415,000	453,000	560,000
Yates	325,000	363,000	377,000	444,000	437,000
TOTAL	48,625,000	63,415,000	72,516,000	81,311,000	92,986,000

TABLE 6
Local Government
Police Expenditures, 1979-83.

County	Level of Government	Fiscal Year				
		1979	1980	1981	1982	1983
Albany	County	\$ -----	\$ -----	\$ -----	\$ -----	\$ -----
	City	8,069,000	9,274,000	10,078,000	10,370,000	13,648,000
	Town	2,103,000	2,418,000	2,872,000	4,128,000	4,462,000
	Village	341,000	358,000	415,000	456,000	518,000
	TOTAL	10,513,000	12,050,000	13,365,000	14,954,000	18,628,000
Allegany	County	-----	-----	-----	-----	-----
	City	-----	-----	-----	-----	-----
	Town	110,000	118,000	133,000	146,000	159,000
	Village	293,000	346,000	423,000	480,000	571,000
	TOTAL	403,000	464,000	556,000	626,000	730,000
Broome	County	-----	-----	-----	-----	236,000 ¹
	City	2,553,000	2,810,000	3,043,000	3,218,000	3,647,000
	Town	499,000	556,000	636,000	761,000	854,000
	Village	1,174,000	1,292,000	1,787,000	2,302,000	2,560,000
	TOTAL	4,226,000	4,658,000	5,466,000	6,281,000	7,297,000
Cattaraugus	County	-----	-----	-----	-----	-----
	City	778,000	905,000	953,000	1,085,000	1,159,000
	Town	74,000	49,000	68,000	110,000	119,000
	Village	7,000	4,000	5,000	418,000	455,000
	TOTAL	859,000	958,000	1,026,000	1,613,000	1,733,000

¹Law Enforcement Capital Expenditures

Police

County	Level of Government	Fiscal Year				
		1979	1980	1981	1982	1983
Cayuga	County	\$ -----	\$ -----	\$ -----	\$ -----	\$ 32,000 ¹
	City	1,280,000	1,361,000	1,505,000	1,782,000	1,752,000
	Town	2,000	4,000	3,000	5,000	6,000
	Village	42,000	42,000	48,000	65,000	71,000
	TOTAL	1,324,000	1,407,000	1,556,000	1,852,000	1,861,000
Chautauqua	County	-----	-----	-----	-----	-----
	City	1,956,000	2,067,000	2,222,000	2,555,000	2,737,000
	Town	75,000	78,000	109,000	603,000	613,000
	Village	720,000	874,000	807,000	924,000	877,000
	TOTAL	2,751,000	3,019,000	3,138,000	4,082,000	4,227,000
Chemung	County	-----	-----	-----	-----	-----
	City	1,559,000	1,776,000	1,852,000	2,162,000	2,326,000
	Town	8,000	50,000	45,000	63,000	58,000
	Village	411,000	415,000	466,000	498,000	551,000
	TOTAL	1,978,000	2,241,000	2,363,000	2,723,000	2,935,000
Chenango	County	-----	-----	-----	-----	1,000 ¹
	City	279,000	312,000	378,000	439,000	434,000
	Town	6,000	4,000	5,000	3,000	3,000
	Village	110,000	173,000	177,000	181,000	201,000
	TOTAL	395,000	489,000	560,000	623,000	639,000

¹Law Enforcement Capital Expenditures

Police

County	Level of Government	Fiscal Year				
		1979	1980	1981	1982	1983
Clinton	County	\$ -----	\$ -----	\$ -----	\$ -----	\$ -----
	City	839,000	876,000	910,000	1,047,000	1,137,000
	Town	5,000	7,000	11,000	10,000	7,000
	Village	30,000	5,000	44,000	60,000	53,000
	TOTAL	874,000	888,000	965,000	1,117,000	1,197,000
Columbia	County	-----	-----	-----	-----	-----
	City	243,000	269,000	305,000	413,000	553,000
	Town	70,000	56,000	56,000	95,000	72,000
	Village	91,000	89,000	94,000	95,000	96,000
	TOTAL	404,000	414,000	455,000	603,000	721,000
Cortland	County	-----	-----	-----	-----	8,000 ¹
	City	693,000	798,000	843,000	921,000	981,000
	Town	*	*	*	*	*
	Village	25,000	71,000	56,000	62,000	65,000
	TOTAL	718,000	869,000	899,000	983,000	1,054,000
Delaware	County	2,000	-----	-----	-----	-----
	City	-----	-----	-----	-----	-----
	Town	34,000	62,000	68,000	55,000	52,000
	Village	220,000	267,000	334,000	369,000	422,000
	TOTAL	256,000	329,000	402,000	424,000	474,000

*less than \$500

¹Law Enforcement Capital Expenditures

Police

County	Level of Government	Fiscal Year				
		1979	1980	1981	1982	1983
Dutchess	County	\$ -----	\$ -----	\$ -----	\$ -----	\$6,699,000 ¹
	City	1,874,000	2,186,000	2,062,000	2,655,000	2,577,000
	Town	2,262,000	259,000	243,000	2,341,000	2,517,000
	Village	358,000	367,000	389,000	529,000	503,000
	TOTAL	4,494,000	2,812,000	2,694,000	5,525,000	12,296,000
Erie	County	3,306,000	3,185,000	3,149,000	3,837,000	3,552,000 ²
	City	22,283,000	23,326,000	24,372,000	25,168,000	25,310,000
	Town	8,364,000	9,444,000	10,303,000	18,419,000	19,308,000
	Village	2,662,000	2,961,000	3,246,000	3,684,000	4,098,000
	TOTAL	36,615,000	38,916,000	41,070,000	51,108,000	52,268,000
Essex	County	-----	-----	-----	-----	-----
	City	-----	-----	-----	-----	-----
	Town	26,000	85,000	103,000	135,000	154,000
	Village	195,000	241,000	246,000	282,000	290,000
	TOTAL	221,000	326,000	349,000	417,000	444,000
Franklin	County	-----	-----	-----	-----	-----
	City	-----	-----	-----	-----	-----
	Town	3,000	2,000	2,000	2,000	2,000
	Village	409,000	378,000	528,000	752,000	764,000
	TOTAL	412,000	380,000	530,000	754,000	766,000

¹Law Enforcement Capital Expenditures

²\$39,000 reported as Law Enforcement Capital Expenditures

Police

County	Level of Government	Fiscal Year				
		1979	1980	1981	1982	1983
Fulton	County	\$ -----	\$ -----	\$ -----	\$ -----	\$ -----
	City	1,080,000	1,123,000	1,265,000	1,363,000	1,356,000
	Town	4,000	4,000	5,000	3,000	5,000
	Village	30,000	29,000	36,000	37,000	43,000
	TOTAL	1,114,000	1,156,000	1,306,000	1,403,000	1,404,000
Genesee	County	-----	-----	-----	-----	-----
	City	891,000	983,000	996,000	1,049,000	1,078,000
	Town	3,000	3,000	2,000	5,000	5,000
	Village	197,000	211,000	214,000	235,000	248,000
	TOTAL	1,091,000	1,197,000	1,212,000	1,289,000	1,331,000
Greene	County	-----	-----	-----	-----	-----
	City	-----	-----	-----	-----	-----
	Town	123,000	132,000	147,000	200,000	199,000
	Village	287,000	298,000	358,000	393,000	444,000
	TOTAL	410,000	430,000	505,000	593,000	643,000
Hamilton	County	-----	-----	-----	-----	-----
	City	-----	-----	-----	-----	-----
	Town	35,000	41,000	48,000	59,000	66,000
	Village	-----	-----	-----	-----	-----
	TOTAL	35,000	41,000	48,000	59,000	66,000

Police

County	Level of Government	Fiscal Year				
		1979	1980	1981	1982	1983
Herkimer	County	\$ -----	\$ -----	\$ -----	\$ -----	\$ 4,000
	City	201,000	208,000	213,000	217,000	240,000
	Town	54,000	53,000	62,000	89,000	129,000
	Village	737,000	918,000	879,000	1,097,000	1,121,000
	TOTAL	992,000	1,179,000	1,154,000	1,403,000	1,494,000
Jefferson	County	-----	-----	-----	-----	-----
	City	1,347,000	1,434,000	1,545,000	1,638,000	1,788,000
	Town	12,000	7,000	2,000	4,000	4,000
	Village	278,000	235,000	243,000	279,000	294,000
	TOTAL	1,637,000	1,676,000	1,790,000	1,921,000	2,086,000
Lewis	County	-----	-----	-----	-----	-----
	City	-----	-----	-----	-----	-----
	Town	*	*	*	2,000	2,000
	Village	89,000	95,000	99,000	106,000	102,000
	TOTAL	89,000	95,000	99,000	108,000	104,000
Livingston	County	-----	-----	-----	-----	478,000 ¹
	City	-----	-----	-----	-----	-----
	Town	30,000	30,000	*	33,000	50,000
	Village	343,000	381,000	529,000	556,000	577,000
	TOTAL	373,000	411,000	529,000	589,000	1,105,000

*less than \$500

¹Law Enforcement Capital Expenditures

Police

County	Level of Government	Fiscal Year				
		1979	1980	1981	1982	1983
Madison	County	\$ *	\$ 5,000	\$ *	\$ *	\$ -----
	City	382,000	426,000	455,000	500,000	540,000
	Town	9,000	9,000	5,000	28,000	19,000
	Village	380,000	425,000	467,000	358,000	541,000
	TOTAL	771,000	865,000	927,000	886,000	1,100,000
Monroe	County	7,939,000	50,000	-----	-----	-----
	City	16,582,000	18,049,000	20,337,000	21,194,000	22,867,000
	Town	6,473,000	7,268,000	7,780,000	5,662,000	9,558,000
	Village	734,000	822,000	861,000	999,000	1,214,000
	TOTAL	31,728,000	26,189,000	28,978,000	27,855,000	33,639,000
Montgomery	County	-----	-----	-----	-----	-----
	City	752,000	381,000	756,000	751,000	886,000
	Town	2,000	2,000	3,000	3,000	2,000
	Village	143,000	168,000	202,000	230,000	232,000
	TOTAL	897,000	551,000	961,000	984,000	1,120,000
Nassau	County **	145,920,000	185,277,000	194,307,000	204,871,000	223,610,000 ¹
	City	4,096,000	4,210,000	4,795,000	5,601,000	5,790,000
	Town	2,172,000	2,522,000	2,778,000	5,123,000	5,891,000
	Village	17,458,000	18,323,000	18,724,000	22,989,000	24,937,000
	TOTAL	169,646,000	210,332,000	220,604,000	238,584,000	260,228,000

*less than \$500

¹\$2,597,000 reported as Law Enforcement Capital Expenditures

Police

County	Level of Government	Fiscal Year				
		1979	1980	1981	1982	1983
Niagara	County	\$ -----	\$ -----	\$ -----	\$ -----	\$ -----
	City	5,643,000	5,971,000	6,193,000	6,652,000	7,037,000
	Town	31,000	38,000	41,000	97,000	212,000
	Village	99,000	57,000	125,000	125,000	148,000
	TOTAL	5,773,000	6,066,000	6,359,000	6,874,000	7,397,000
Oneida	County	-----	-----	-----	-----	10,000 ¹
	City	4,496,000	4,546,000	4,443,000	5,576,000	5,998,000
	Town	23,000	20,000	14,000	242,000	297,000
	Village	381,000	451,000	504,000	592,000	692,000
	TOTAL	4,900,000	5,017,000	4,961,000	6,410,000	6,997,000
Onondaga	County	17,000	-----	200,000	-----	1,000 ¹
	City	10,387,000	11,234,000	12,505,000	13,415,000	14,583,000
	Town	409,000	294,000	337,000	2,454,000	2,730,000
	Village	1,622,000	1,431,000	1,492,000	2,145,000	1,970,000
	TOTAL	12,435,000	12,959,000	14,534,000	18,014,000	19,284,000
Ontario	County	-----	-----	-----	-----	375,000 ¹
	City	1,000,000	1,109,000	741,000	1,430,000	1,644,000
	Town	2,000	2,000	2,000	7,000	7,000
	Village	52,000	66,000	65,000	69,000	95,000
	TOTAL	1,054,000	1,177,000	808,000	1,506,000	2,121,000

*less than \$500

¹Law Enforcement Capital Expenditures

Police

County	Level of Government	Fiscal Year				
		1979	1980	1981	1982	1983
Orange	County	\$ -----	\$ -----	\$ -----	\$ -----	\$ -----
	City	2,325,000	3,038,000	2,607,000	3,872,000	4,356,000
	Town	1,298,000	1,495,000	1,554,000	3,158,000	3,510,000
	Village	1,473,000	1,595,000	1,590,000	2,158,000	2,254,000
	TOTAL	5,096,000	6,128,000	5,751,000	9,188,000	10,120,000
Orleans	County	-----	-----	-----	-----	-----
	City	-----	-----	-----	-----	-----
	Town	2,000	3,000	3,000	7,000	8,000
	Village	163,000	177,000	188,000	509,000	549,000
	TOTAL	165,000	180,000	191,000	516,000	557,000
Oswego	County	-----	-----	-----	-----	-----
	City	1,620,000	1,866,000	1,843,000	2,012,000	2,216,000
	Town	24,000	12,000	18,000	21,000	20,000
	Village	93,000	113,000	123,000	129,000	153,000
	TOTAL	1,737,000	1,991,000	1,984,000	2,162,000	2,389,000
Otsego	County	-----	-----	-----	-----	-----
	City	295,000	304,000	377,000	615,000	614,000
	Town	5,000	5,000	75,000	6,000	6,000
	Village	95,000	103,000	104,000	126,000	138,000
	TOTAL	395,000	412,000	556,000	747,000	758,000

*less than \$500

Police

County	Level of Government	Fiscal Year				
		1979	1980	1981	1982	1983
Putnam	County	\$ -----	\$ -----	\$ -----	\$ -----	\$ 41,000 ¹
	City	-----	-----	-----	-----	-----
	Town	1,315,000	1,607,000	1,817,000	2,373,000	2,616,000
	Village	153,000	161,000	174,000	190,000	197,000
	TOTAL	1,468,000	1,768,000	1,991,000	2,563,000	2,854,000
Rensselaer	County	-----	-----	-----	-----	7,000 ¹
	City	4,094,000	4,500,000	4,926,000	5,088,000	5,439,000
	Town	349,000	440,000	368,000	625,000	784,000
	Village	84,000	119,000	118,000	139,000	149,000
	TOTAL	4,527,000	5,059,000	5,412,000	5,852,000	6,379,000
Rockland	County	-----	-----	-----	-----	-----
	City	-----	-----	-----	-----	-----
	Town	7,943,000	9,067,000	13,995,000	11,844,000	12,900,000
	Village	2,713,000	2,854,000	3,131,000	3,600,000	3,915,000
	TOTAL	10,656,000	11,921,000	17,126,000	15,444,000	16,815,000
St. Lawrence	County	-----	-----	-----	-----	653,000 ¹
	City	391,000	409,000	654,000	741,000	804,000
	Town	10,000	10,000	10,000	25,000	25,000
	Village	1,028,000	1,115,000	1,289,000	1,425,000	1,449,000
	TOTAL	1,429,000	1,534,000	1,953,000	2,191,000	2,931,000

¹Law Enforcement Capital Expenditures

Police

County	Level of Government	Fiscal Year				
		1979	1980	1981	1982	1983
Saratoga	County	\$ -----	\$ -----	\$ -----	\$ -----	\$ 241,000 ¹
	City	1,369,000	1,370,000	1,455,000	1,610,000	1,731,000
	Town	127,000	127,000	168,000	252,000	265,000
	Village	335,000	369,000	401,000	438,000	431,000
	TOTAL	1,831,000	1,866,000	2,024,000	2,300,000	2,668,000
Schenectady	County	-----	-----	-----	-----	1,166,000 ¹
	City	3,305,000	3,778,000	4,121,000	4,445,000	5,074,000
	Town	1,459,000	1,754,000	1,693,000	2,244,000	2,478,000
	Village	220,000	229,000	270,000	272,000	316,000
	TOTAL	4,984,000	5,761,000	6,084,000	6,961,000	9,034,000
Schoharie	County	-----	-----	-----	-----	-----
	City	-----	-----	-----	-----	-----
	Town	*	1,000	*	6,000	7,000
	Village	145,000	146,000	169,000	174,000	179,000
	TOTAL	145,000	147,000	169,000	180,000	186,000
Schulyer	County	-----	-----	-----	-----	-----
	City	-----	-----	-----	-----	-----
	Town	1,000	*	*	*	-----
	Village	131,000	146,000	166,000	184,000	199,000
	TOTAL	132,000	146,000	166,000	184,000	199,000

*less than \$500

¹Law Enforcement Capital Expenditures

Police

County	Level of Government	Fiscal Year				
		1979	1980	1981	1982	1983
Seneca	County	\$ -----	\$ -----	\$ -----	\$ -----	\$ 165,000
	City	-----	-----	-----	-----	-----
	Town	2,000	6,000	5,000	9,000	10,000
	Village	368,000	421,000	388,000	502,000	541,000
	TOTAL	370,000	427,000	393,000	511,000	716,000
Steuben	County	-----	-----	-----	-----	168,000 ¹
	City	820,000	861,000	1,306,000	1,065,000	1,156,000
	Town	38,000	50,000	46,000	99,000	111,000
	Village	416,000	446,000	514,000	550,000	560,000
	TOTAL	1,274,000	1,357,000	1,866,000	1,714,000	1,995,000
Suffolk	County***	99,896,000	109,755,000	121,302,000	129,979,000	126,067,000 ²
	City	-----	-----	-----	-----	-----
	Town	1,368,000	2,048,000	2,289,000	8,879,000	9,799,000
	Village	3,937,000	4,179,000	4,632,000	5,389,000	5,798,000
	TOTAL	105,201,000	115,982,000	128,223,000	144,247,000	141,664,000
Sullivan	County	-----	*	-----	-----	26,000 ¹
	City	-----	-----	-----	-----	-----
	Town	33,000	64,000	111,000	612,000	742,000
	Village	578,000	643,000	698,000	850,000	918,000
	TOTAL	611,000	707,000	809,000	1,462,000	1,686,000

*less than \$500

¹Law Enforcement Capital Expenditures

²includes \$4,202,000 Law Enforcement Capital Expenditures

Police

County	Level of Government	Fiscal Year				
		1979	1980	1981	1982	1983
Tioga	County	\$ -----	\$ -----	\$ -----	\$ -----	\$ -----
	City	-----	-----	-----	-----	-----
	Town	7,000	9,000	9,000	10,000	11,000
	Village	372,000	382,000	410,000	264,000	556,000
	TOTAL	379,000	391,000	419,000	274,000	567,000
Tompkins	County	-----	-----	-----	-----	-----
	City	1,143,000	1,235,000	1,364,000	1,494,000	1,591,000
	Town	5,000	5,000	6,000	6,000	7,000
	Village	219,000	283,000	302,000	341,000	365,000
	TOTAL	1,367,000	1,523,000	1,672,000	1,841,000	1,963,000
Ulster	County	-----	-----	-----	-----	68,000 ¹
	City	1,505,000	1,743,000	1,874,000	2,163,000	2,446,000
	Town	674,000	744,000	817,000	1,708,000	1,607,000
	Village	587,000	365,000	653,000	639,000	750,000
	TOTAL	2,766,000	2,852,000	3,344,000	4,510,000	4,871,000
Warren	County	-----	-----	-----	-----	-----
	City	605,000	689,000	775,000	805,000	855,000
	Town	315,000	357,000	448,000	448,000	348,000
	Village	96,000	106,000	117,000	113,000	123,000
	TOTAL	1,016,000	1,152,000	1,340,000	1,366,000	1,326,000

¹Law Enforcement Capital Expenditures

Police

County	Level of Government	Fiscal Year				
		1979	1980	1981	1982	1983
Washington	County	\$ -----	\$ -----	\$ -----	\$ -----	\$ -----
	City	-----	-----	-----	-----	-----
	Town	9,000	9,000	7,000	25,000	29,000
	Village	542,000	550,000	634,000	724,000	769,000
	TOTAL	551,000	559,000	641,000	749,000	798,000
Wayne	County	-----	14,000	15,000	-----	-----
	City	-----	-----	-----	-----	-----
	Town	3,000	10,000	2,000	104,000	99,000
	Village	467,000	577,000	807,000	867,000	990,000
	TOTAL	470,000	601,000	824,000	971,000	1,089,000
Westchester	County	4,044,000	6,583,000	5,882,000	7,052,000	9,880,000 ¹
	City	28,726,000	32,936,000	34,821,000	39,369,000	40,922,000
	Town	6,109,000	6,808,000	10,932,000	16,730,000	16,318,000
	Village	12,860,000	14,047,000	14,887,000	17,148,000	18,682,000
	TOTAL	51,739,000	60,374,000	66,522,000	80,299,000	85,802,000
Wyoming	County	-----	-----	-----	-----	-----
	City	-----	-----	-----	-----	-----
	Town	1,000	1,000	*	1,000	1,000
	Village	80,000	87,000	117,000	507,000	497,000
	TOTAL	81,000	88,000	117,000	508,000	498,000

*less than \$500

¹includes \$1,316,000 Law Enforcement Capital Expenditures

Police

County	Level of Government	Fiscal Year				
		1979	1980	1981	1982	1983
Yates	County	\$ -----	\$ -----	\$ -----	\$ -----	\$ -----
	City	-----	-----	-----	-----	-----
	Town	3,000	1,000	1,000	1,000	4,000
	Village	213,000	223,000	233,000	267,000	293,000
	TOTAL	216,000	224,000	234,000	268,000	297,000
TOTALS	County	261,124,000	304,869,000	324,855,000	345,739,000	373,488,000 ¹
	City	135,461,000	148,363,000	158,890,000	174,480,000	187,272,000
	Town	44,123,000	48,250,000	60,257,000	90,080,000	99,267,000
	Village	57,286,000	61,229,000	65,978,000	78,872,000	85,524,000
	TOTAL	497,994,000	562,711,000	609,980,000	689,171,000	745,551,000

**Nassau County Comptrollers Office

***Suffolk County Comptrollers Office

¹includes \$18,367,000 Law Enforcement Capital Expenditures

TABLE 7
Local Government
Probation Expenditures, 1979-83.

County	1979	1980	1981	1982	1983
Albany	\$ 783,000	\$ 903,000	\$ 1,024,000	\$ 1,152,000	\$ 1,226,000
Allegany	87,000	101,000	111,000	128,000	143,000
Broome	559,000	717,000	786,000	838,000	956,000
Cattaraugus	185,000	205,000	211,000	239,000	253,000
Cayuga	156,000	154,000	164,000	172,000	186,000
Chautauqua	477,000	536,000	561,000	595,000	736,000
Chemung	456,000	511,000	547,000	598,000	627,000
Chenango	71,000	75,000	84,000	96,000	97,000
Clinton	197,000	232,000	263,000	314,000	342,000
Columbia	82,000	105,000	132,000	149,000	165,000
Cortland	193,000	209,000	227,000	260,000	283,000
Delaware	96,000	125,000	99,000	115,000	143,000
Dutchess	559,000	627,000	646,000	767,000	847,000
Erie	2,685,000	3,020,000	3,547,000	3,485,000	3,803,000 ¹
Essex	72,000	95,000	127,000	109,000	116,000
Franklin	149,000	178,000	232,000	269,000	290,000
Fulton	-----	-----	141,000	149,000	167,000
Genesee	171,000	193,000	228,000	266,000	348,000
Greene	95,000	107,000	124,000	135,000	145,000
Hamilton	14,000	15,000	16,000	16,000	17,000
Herkimer	65,000	86,000	104,000	121,000	139,000 ²
Jefferson	317,000	295,000	349,000	368,000	389,000
Lewis	87,000	104,000	114,000	122,000	129,000
Livingston	119,000	142,000	164,000	180,000	196,000
Madison	159,000	179,000	223,000	259,000	271,000
Monroe	3,312,000	3,326,000	3,668,000	3,913,000	4,193,000
Montgomery	-----	-----	25,000	2,000	-----
Nassau	7,166,000	7,855,000	11,718,000	12,841,000	14,598,000 ³

¹Includes \$28,000 from city of Tonawanda

²Includes \$2,800 from village of Middleville

³Includes \$139,000 from city of Long Beach

County	1979	1980	1981	1982	1983
Niagara	\$ 525,000	\$ 564,000	\$ 570,000	\$ 785,000	\$ 800,000
Oneida	688,000	632,000	631,000	799,000	1,146,000
Onondaga	2,103,000	2,226,000	2,608,000	2,965,000	3,303,000
Ontario	220,000	264,000	319,000	421,000	465,000
Orange	827,000	807,000	878,000	957,000	1,138,000
Orleans	140,000	173,000	162,000	216,000	231,000
Oswego	413,000	448,000	454,000	501,000	536,000
Otsego	60,000	72,000	76,000	83,000	93,000
Putnam	151,000	149,000	199,000	269,000	342,000
Rensselaer	549,000	640,000	712,000	715,000	739,000
Rockland	639,000	709,000	754,000	869,000	981,000
St. Lawrence	377,000	422,000	479,000	525,000	560,000
Saratoga	144,000	161,000	203,000	292,000	343,000
Schenectady	365,000	417,000	470,000	484,000	530,000
Schoharie	43,000	53,000	63,000	67,000	86,000
Schuyler	60,000	66,000	75,000	77,000	85,000
Seneca	64,000	69,000	73,000	79,000	82,000
Steuben	269,000	339,000	353,000	467,000	481,000
Suffolk	5,759,000	7,232,000	7,635,000	8,046,000	8,533,000
Sullivan	141,000	181,000	279,000	365,000	417,000
Tioga	122,000	137,000	184,000	185,000	209,000
Tompkins	243,000	257,000	268,000	292,000	328,000
Ulster	273,000	314,000	320,000	348,000	381,000
Warren	-----	-----	147,000	172,000	171,000
Washington	84,000	86,000	107,000	97,000	120,000
Wayne	270,000	248,000	292,000	305,000	393,000
Westchester	3,188,000	3,142,000	3,472,000	3,790,000	4,258,000
Wyoming	45,000	55,000	63,000	77,000	85,000
Yates	51,000	50,000	55,000	58,000	67,000
TOTAL	36,125,000	40,008,000	47,559,000	51,964,000	57,708,000

TABLE 8
Local Government
Corrections Expenditures, 1979-83.

County	Level of Government	Fiscal Year				
		1979	1980	1981	1982	1983
Albany	County	\$3,738,000	\$3,923,000	\$3,931,000	\$4,934,000	\$5,186,000
	City	-----	-----	-----	-----	-----
	Town	-----	-----	-----	-----	-----
	Village	-----	-----	-----	-----	-----
	TOTAL	3,738,000	3,923,000	3,931,000	4,934,000	5,186,000
Allegany	County	307,000	350,000	458,000	465,000	513,000
	City	-----	-----	-----	-----	-----
	Town	-----	-----	-----	-----	-----
	Village	8,000	10,000	9,000	7,000	12,000
	TOTAL	315,000	360,000	467,000	472,000	525,000
Broome	County	1,043,000	1,448,000	1,857,000	1,824,000	2,115,000
	City	-----	-----	-----	-----	-----
	Town	3,000	1,000	-----	4,000	-----
	Village	1,000	1,000	1,000	1,000	1,000
	TOTAL	1,047,000	1,450,000	1,858,000	1,829,000	2,116,000
Cattaraugus	County	130,000	325,000	433,000	697,000	597,000
	City	-----	-----	-----	-----	-----
	Town	-----	-----	-----	-----	-----
	Village	-----	-----	-----	-----	-----
	TOTAL	130,000	325,000	433,000	697,000	597,000

Corrections

County	Level of Government	Fiscal Year				
		1979	1980	1981	1982	1983
Cayuga	County	\$ 391,000	\$ 601,000	\$ 724,000	\$ 488,000	\$ 808,000
	City	2,000	1,000	2,000	9,000	6,000
	Town	-----	-----	-----	-----	-----
	Village	-----	-----	-----	-----	-----
	TOTAL	393,000	602,000	726,000	497,000	814,000
Chautauqua	County	518,000	734,000	897,000	1,170,000	1,334,000
	City	-----	-----	-----	-----	-----
	Town	*	*	*	-----	*
	Village	*	*	-----	-----	-----
	TOTAL	518,000	734,000	897,000	1,170,000	1,334,000
Chemung	County	726,000	566,000	717,000	913,000	1,372,000
	City	-----	-----	-----	16,000	-----
	Town	-----	-----	-----	-----	-----
	Village	*	*	*	*	*
	TOTAL	726,000	566,000	717,000	929,000	1,372,000
Chenango	County	26,000	64,000	69,000	72,000	90,000
	City	-----	-----	-----	*	-----
	Town	-----	-----	-----	-----	-----
	Village	-----	-----	-----	-----	-----
	TOTAL	26,000	64,000	69,000	72,000	90,000

*less than \$500

Corrections

County	Level of Government	Fiscal Year				
		1979	1980	1981	1982	1983
Clinton	County	\$ 295,000	\$ 504,000	\$ 641,000	\$ 596,000	\$ 734,000
	City	-----	-----	-----	-----	-----
	Town	-----	-----	-----	-----	-----
	Village	-----	-----	-----	-----	-----
	TOTAL	295,000	504,000	641,000	596,000	734,000
Columbia	County	168,000	271,000	549,000	633,000	665,000
	City	-----	-----	-----	-----	-----
	Town	-----	-----	-----	-----	-----
	Village	-----	-----	-----	-----	-----
	TOTAL	168,000	271,000	549,000	633,000	665,000
Cortland	County	296,000	415,000	415,000	455,000	679,000
	City	-----	-----	-----	-----	-----
	Town	-----	-----	-----	-----	-----
	Village	-----	-----	-----	-----	-----
	TOTAL	296,000	415,000	415,000	455,000	679,000
Delaware	County	12,000	28,000	34,000	28,000	*
	City	-----	-----	-----	-----	-----
	Town	-----	-----	3,000	-----	-----
	Village	*	*	*	*	*
	TOTAL	12,000	28,000	37,000	28,000	*

*less than \$500

Corrections

County	Level of Government	Fiscal Year				
		1979	1980	1981	1982	1983
Dutchess	County	\$2,110,000	\$2,566,000	\$3,102,000	\$3,453,000	\$4,083,000
	City	-----	95,000	*	91,000	81,000
	Town	-----	-----	-----	-----	-----
	Village	-----	-----	-----	-----	-----
	TOTAL	2,110,000	2,661,000	3,102,000	3,544,000	4,164,000
Erie	County	9,637,000	10,590,000	10,295,000	11,902,000	13,451,000
	City	-----	-----	-----	-----	1,000
	Town	*	*	*	-----	-----
	Village	1,000	1,000	1,000	-----	1,000
	TOTAL	9,638,000	10,591,000	10,296,000	11,902,000	13,453,000
Essex	County	165,000	272,000	363,000	354,000	392,000
	City	-----	-----	-----	-----	-----
	Town	-----	-----	1,000	-----	-----
	Village	*	*	*	*	*
	TOTAL	165,000	272,000	364,000	354,000	392,000
Franklin	County	253,000	336,000	455,000	569,000	591,000
	City	-----	-----	-----	-----	-----
	Town	-----	-----	-----	-----	-----
	Village	3,000	3,000	3,000	3,000	-----
	TOTAL	256,000	339,000	458,000	572,000	591,000

*less than \$500

Corrections

County	Level of Government	Fiscal Year				
		1979	1980	1981	1982	1983
Fulton	County	\$ 383,000	\$ 426,000	\$ 445,000	\$ 395,000	\$ 592,000
	City	1,000	1,000	1,000	1,000	1,000
	Town	-----	-----	-----	-----	-----
	Village	-----	-----	-----	-----	-----
	TOTAL	384,000	427,000	446,000	396,000	593,000
Genesee	County	315,000	409,000	389,000	494,000	819,000
	City	-----	-----	-----	-----	-----
	Town	-----	-----	-----	-----	-----
	Village	-----	-----	-----	*	-----
	TOTAL	315,000	409,000	389,000	494,000	819,000
Greene	County	208,000	316,000	424,000	534,000	549,000
	City	-----	-----	-----	-----	-----
	Town	-----	-----	-----	-----	-----
	Village	-----	-----	-----	-----	-----
	TOTAL	208,000	316,000	424,000	534,000	549,000
Hamilton	County	10,000	11,000	12,000	13,000	16,000
	City	-----	-----	-----	-----	-----
	Town	-----	-----	-----	-----	-----
	Village	-----	-----	-----	-----	-----
	TOTAL	10,000	11,000	12,000	13,000	16,000

*less than \$500

Corrections

County	Level of Government	Fiscal Year				
		1979	1980	1981	1982	1983
Herkimer	County	\$ 328,000	\$ 407,000	\$ 458,000	\$ 488,000	\$ 559,000
	City	-----	-----	-----	-----	-----
	Town	*	-----	-----	-----	*
	Village	*	-----	2,000	-----	*
	TOTAL	328,000	407,000	460,000	488,000	559,000
Jefferson	County	364,000	458,000	551,000	794,000	1,018,000
	City	4,000	4,000	4,000	4,000	5,000
	Town	7,000	10,000	-----	-----	-----
	Village	1,000	-----	-----	-----	-----
	TOTAL	376,000	472,000	555,000	798,000	1,023,000
Lewis	County	130,000	173,000	198,000	240,000	252,000
	City	-----	-----	-----	-----	-----
	Town	-----	-----	-----	-----	-----
	Village	-----	-----	-----	-----	-----
	TOTAL	130,000	173,000	198,000	240,000	252,000
Livingston	County	229,000	372,000	398,000	523,000	817,000
	City	-----	-----	-----	-----	-----
	Town	-----	-----	-----	-----	-----
	Village	*	*	*	-----	*
	TOTAL	229,000	372,000	398,000	523,000	817,000

*less than \$500

Corrections

County	Level of Government	Fiscal Year				
		1979	1980	1981	1982	1983
Madison	County	\$ 325,000	\$ 436,000	\$ 466,000	\$ 523,000	\$ 523,000
	City	-----	-----	-----	-----	-----
	Town	-----	-----	-----	-----	-----
	Village	*	*	*	*	1,000
	TOTAL	325,000	436,000	466,000	523,000	524,000
Monroe	County	6,230,000	6,072,000	6,321,000	7,707,000	11,458,000
	City	-----	-----	-----	-----	-----
	Town	-----	-----	-----	-----	-----
	Village	-----	-----	-----	-----	-----
	TOTAL	6,230,000	6,072,000	6,321,000	7,707,000	11,458,000
Montgomery	County	286,000	469,000	392,000	477,000	564,000
	City	-----	-----	-----	-----	-----
	Town	-----	-----	1,000	-----	-----
	Village	-----	-----	-----	-----	-----
	TOTAL	286,000	469,000	393,000	477,000	564,000
Nassau	County	12,881,000	15,012,000	23,320,000	25,599,000	28,394,000
	City	-----	-----	-----	-----	-----
	Town	-----	-----	-----	-----	-----
	Village	1,000	1,000	*	-----	3,000
	TOTAL	12,882,000	15,013,000	23,320,000	25,599,000	28,397,000

*less than \$500

Corrections

County	Level of Government	Fiscal Year				
		1979	1980	1981	1982	1983
Niagara	County	\$1,301,000	\$1,649,000	\$1,604,000	\$2,142,000	\$2,284,000
	City	1,000	2,000	1,000	1,000	2,000
	Town	-----	-----	-----	-----	-----
	Village	-----	-----	-----	-----	-----
	TOTAL	1,302,000	1,651,000	1,605,000	2,143,000	2,286,000
Oneida	County	1,058,000	1,519,000	1,139,000	1,647,000	1,945,000
	City	-----	-----	-----	-----	-----
	Town	-----	-----	-----	*	-----
	Village	-----	-----	-----	-----	-----
	TOTAL	1,058,000	1,519,000	1,139,000	1,647,000	1,945,000
Onondaga	County	5,430,000	6,160,000	6,618,000	8,959,000	10,769,000
	City	-----	-----	-----	-----	-----
	Town	25,000	26,000	-----	33,000	-----
	Village	-----	-----	-----	-----	-----
	TOTAL	5,455,000	6,160,000	6,618,000	8,992,000	10,769,000
Ontario	County	513,000	527,000	684,000	850,000	1,130,000
	City	-----	-----	*	-----	-----
	Town	-----	-----	3,000	-----	-----
	Village	-----	-----	-----	-----	-----
	TOTAL	513,000	527,000	687,000	850,000	1,130,000

*less than \$500

Corrections

County	Level of Government	Fiscal Year				
		1979	1980	1981	1982	1983
Orange	County	\$ 766,000	\$1,536,000	\$3,083,000	\$2,845,000	\$3,902,000
	City	-----	-----	25,000	29,000	33,000
	Town	-----	*	*	-----	-----
	Village	-----	*	*	-----	*
	TOTAL	766,000	1,536,000	3,108,000	2,874,000	3,935,000
Orleans	County	355,000	384,000	518,000	547,000	624,000
	City	-----	-----	-----	-----	-----
	Town	-----	-----	1,000	-----	-----
	Village	3,000	3,000	3,000	4,000	4,000
	TOTAL	358,000	387,000	522,000	551,000	628,000
Oswego	County	510,000	136,000	131,000	212,000	980,000
	City	-----	-----	-----	-----	-----
	Town	-----	-----	-----	-----	-----
	Village	-----	-----	-----	-----	-----
	TOTAL	510,000	136,000	131,000	212,000	980,000
Otsego	County	166,000	261,000	298,000	362,000	362,000
	City	-----	-----	-----	-----	-----
	Town	-----	-----	-----	-----	-----
	Village	-----	-----	-----	-----	-----
	TOTAL	166,000	261,000	298,000	362,000	362,000

*less than \$500

Corrections

County	Level of Government	Fiscal Year				
		1979	1980	1981	1982	1983
Putnam	County	\$ -----	\$ 689,000	\$ 754,000	\$1,066,000	\$1,199,000
	City	-----	-----	-----	-----	-----
	Town	-----	*	*	-----	*
	Village	-----	-----	-----	-----	-----
	TOTAL	0,000	689,000	754,000	1,066,000	1,199,000
Rensselaer	County	450,000	1,010,000	1,501,000	1,308,000	2,108,000
	City	-----	-----	-----	-----	-----
	Town	-----	-----	-----	-----	-----
	Village	-----	-----	-----	-----	-----
	TOTAL	450,000	1,010,000	1,501,000	1,308,000	2,108,000
Rockland	County	1,241,000	1,275,000	1,688,000	2,426,000	2,225,000
	City	-----	-----	-----	-----	-----
	Town	-----	-----	-----	21,000	48,000
	Village	1,000	*	1,000	-----	1,000
	TOTAL	1,242,000	1,275,000	1,689,000	2,447,000	2,274,000
St. Lawrence	County	443,000	498,000	577,000	962,000	766,000
	City	-----	-----	-----	-----	-----
	Town	-----	-----	-----	-----	-----
	Village	*	*	*	1,000	-----
	TOTAL	443,000	498,000	577,000	963,000	766,000

*less than \$500

Corrections

County	Level of Government	Fiscal Year				
		1979	1980	1981	1982	1983
Saratoga	County	\$ 563,000	\$ 750,000	\$ 961,000	\$ 934,000	\$1,622,000
	City	-----	79,000	85,000	90,000	99,000
	Town	*	*	*	4,000	-----
	Village	-----	-----	-----	-----	-----
	TOTAL	563,000	829,000	1,046,000	1,028,000	1,721,000
Schenectady	County	654,000	1,009,000	1,087,000	1,185,000	1,434,000
	City	-----	-----	-----	-----	-----
	Town	-----	-----	-----	-----	-----
	Village	-----	-----	-----	-----	-----
	TOTAL	654,000	1,009,000	1,087,000	1,185,000	1,434,000
Schoharie	County	66,000	121,000	359,000	385,000	368,000
	City	-----	-----	-----	-----	-----
	Town	-----	-----	-----	-----	-----
	Village	-----	-----	-----	-----	-----
	TOTAL	66,000	121,000	359,000	385,000	368,000
Schulyer	County	176,000	177,000	196,000	274,000	313,000
	City	-----	-----	-----	-----	-----
	Town	-----	-----	-----	-----	-----
	Village	*	*	*	-----	*
	TOTAL	176,000	177,000	196,000	274,000	313,000

*less than \$500

Corrections

County	Level of Government	Fiscal Year				
		1979	1980	1981	1982	1983
Seneca	County	\$ 74,000	\$ 121,000	\$ 134,000	\$ 170,000	\$ 277,000
	City	-----	-----	-----	-----	-----
	Town	-----	-----	-----	-----	-----
	Village	-----	-----	-----	-----	-----
	TOTAL	74,000	121,000	134,000	170,000	277,000
Steuben	County	673,000	760,000	937,000	1,066,000	1,072,000
	City	-----	-----	-----	-----	-----
	Town	-----	-----	-----	-----	-----
	Village	1,000	1,000	1,000	-----	1,000
	TOTAL	674,000	761,000	938,000	1,066,000	1,073,000
Suffolk	County	6,400,000	7,739,000	9,056,000	13,781,000	14,591,000
	City	-----	-----	-----	-----	-----
	Town	12,000	25,000	17,000	116,000	165,000
	Village	2,000	2,000	4,000	6,000	4,000
	TOTAL	6,414,000	7,766,000	9,077,000	13,903,000	14,760,000
Sullivan	County	322,000	838,000	1,112,000	1,304,000	1,408,000
	City	-----	-----	-----	-----	-----
	Town	-----	-----	-----	-----	-----
	Village	-----	-----	-----	-----	*
	TOTAL	322,000	838,000	1,112,000	1,304,000	1,408,000

*less than \$500

Corrections

County	Level of Government	Fiscal Year				
		1979	1980	1981	1982	1983
Tioga	County	\$ 200,000	\$ 258,000	\$ 352,000	\$ 421,000	\$ 429,000
	City	-----	-----	-----	-----	-----
	Town	-----	-----	-----	-----	-----
	Village	-----	-----	-----	-----	-----
	TOTAL	200,000	258,000	352,000	421,000	429,000
Tompkins	County	219,000	311,000	387,000	468,000	503,000
	City	-----	-----	-----	-----	-----
	Town	-----	-----	-----	-----	-----
	Village	-----	-----	-----	-----	-----
	TOTAL	219,000	311,000	387,000	468,000	503,000
Ulster	County	1,111,000	1,211,000	1,460,000	1,650,000	1,619,000
	City	-----	-----	-----	-----	-----
	Town	-----	-----	-----	-----	-----
	Village	-----	*	-----	-----	-----
	TOTAL	1,111,000	1,211,000	1,460,000	1,650,000	1,619,000
Warren	County	301,000	327,000	436,000	458,000	570,000
	City	-----	-----	-----	-----	-----
	Town	*	*	*	*	-----
	Village	-----	-----	-----	-----	-----
	TOTAL	301,000	327,000	436,000	458,000	570,000

*less than \$500

Corrections

County	Level of Government	Fiscal Year				
		1979	1980	1981	1982	1983
Washington	County	\$ 426,000	\$ 358,000	\$ 383,000	\$ 525,000	\$ 498,000
	City	-----	-----	-----	-----	-----
	Town	-----	-----	-----	-----	9,000
	Village	*	*	*	*	*
	TOTAL	426,000	358,000	383,000	525,000	507,000
Wayne	County	536,000	758,000	800,000	905,000	1,108,000
	City	-----	-----	-----	-----	-----
	Town	-----	-----	-----	-----	-----
	Village	*	-----	*	-----	-----
	TOTAL	536,000	758,000	800,000	905,000	1,108,000
Westchester	County	8,831,000	10,124,000	14,822,000	16,880,000	19,901,000
	City	583,000	707,000	808,000	969,000	1,066,000
	Town	2,000	3,000	2,000	12,000	-----
	Village	7,000	9,000	10,000	26,000	16,000
	TOTAL	9,423,000	10,843,000	15,642,000	17,887,000	20,983,000
Wyoming	County	56,000	161,000	249,000	273,000	405,000
	City	-----	-----	-----	-----	-----
	Town	-----	-----	-----	-----	-----
	Village	-----	-----	-----	-----	-----
	TOTAL	56,000	161,000	249,000	273,000	405,000

*less than \$500

Corrections

County	Level of Government	Fiscal Year				
		1979	1980	1981	1982	1983
Yates	County	\$ 33,000	\$ 126,000	\$ 151,000	\$ 151,000	\$ 321,000
	City	-----	-----	-----	-----	-----
	Town	-----	*	*	*	1,000
	Village	1,000	1,000	2,000	3,000	4,000
	TOTAL	34,000	127,000	153,000	154,000	326,000
TOTALS	County	74,378,000	88,347,000	109,791,000	130,496,000	152,904,000
	City	591,000	889,000	926,000	1,210,000	1,294,000
	Town	49,000	65,000	28,000	190,000	223,000
	Village	30,000	32,000	37,000	51,000	48,000
	TOTAL	75,048,000	89,333,000	110,782,000	131,947,000	154,469,000

*less than \$500

Appendix C

NEW YORK CITY CRIMINAL
JUSTICE EXPENDITURES

TABLE 9
New York City
Criminal Justice Expenditures, 1979-83.
(Thousands)

	1979	1980	1981	1982	1983
Corrections*	\$ 117,914	\$ 155,351	\$ 170,576	\$ 203,527	\$ 234,177
Courts	33,661	17,378	246	363	375
Prosecution					
Bronx	7,116	8,076	8,816	10,401	11,981
Kings	11,582	12,777	13,660	16,269	18,377
New York	12,973	15,122	16,150	19,154	22,120
Queens	4,847	5,883	6,455	8,193	9,414
Richmond	780	953	967	1,209	1,362
Special Narcotics	1,813	1,913	2,103	3,152	3,779
Defense	18,465	20,298	21,057	24,865	34,984
Police					
NYPD	646,307	712,883	721,193	815,802	864,300
Transit	100,214	112,347	118,275	129,750	144,047
Housing	47,734	52,505	59,942	65,193	74,129
Probation	18,222	20,453	19,582	21,240	23,923
Sheriff	1,460	1,587	1,602	1,787	2,000
Other					
Firearms Control Board	402	402	351	476	430
Criminal Justice Coordinating Council	<u>11,747</u>	<u>13,210</u>	<u>16,364</u>	<u>20,989</u>	<u>-----</u>
TOTAL	\$1,035,237	\$1,151,138	\$1,177,339	\$1,342,370	\$1,445,398

*Includes Department of Juvenile Justice

Appendix D

CRIMINAL JUSTICE
PERSONNEL DATA

EMPLOYMENT

TABLE 10
State Criminal Justice Agency Staffing Levels,
1979-83.

	1979-80	1980-81	1981-82	1982-83	1983-84
Department of Correctional Services	11,743	11,694	12,314	14,785	16,537
Commission on Corrections	70	65	63	62	59
Crime Victims Board	50	62	56	71	66
Division of Criminal Justice	882	812	764	741	735
Judiciary (Courts)	12,207*	11,564*	11,661*	11,000	11,381
Parole	1,064	1,134	1,160	1,161	1,173
Probation	96*	97*	88*	81*	89
State Police	3,406	3,681	4,095	4,072	4,119
Division for Youth	1,834*	1,872*	2,383*	2,288*	2,481*
TOTAL	31,352	30,981	32,584	34,261	36,640

Sources: Agency fiscal or personnel office; payroll period #1 for each fiscal year.

*Staffing estimates obtained from the Executive Budget for the appropriate fiscal year.

TABLE 11
Sheriff Department Employees, 1979-83.

County	1979	1980	1981	1982	1983
Albany	153	136	125	93	93
Allegany	20	25	30	30	69
Broome	101	123	90	63	65
Cattaraugus	39	35	41	42	44
Cayuga	31	31	34	39	39
Chautauqua	88	91	83	76	77
Chemung	43	42	39	42	52
Chenango	42	30	50	32	41
Clinton	35	41	31	38	38
Columbia	34	47	50	70	68
Cortland	31	31	40	45	43
Delaware	19	21	24	18	16
Dutchess	162	168	170	159	162
Erie	603	645	620	431	360
Essex	15	17	19	21	7
Franklin	27	28	28	3	7
Fulton	59	60	33	38	40
Genesee	68	67	68	45	47
Greene	17	9	14	15	18
Hamilton	16	15	9	9	9
Herkimer	39	45	46	5	12
Jefferson	51	58	48	28	54
Lewis	28	30	25	25	30
Livingston	45	64	60	88	54
Madison	20	25	24	24	26
Monroe	510	345	345	310	315
Montgomery	38	33	32	30	30
Nassau	----	----	----	----	----
Niagara	159	156	160	113	123
Oneida	50	75	76	68	68
Onondaga	425	454	488	330	323
Ontario	60	61	61	71	79
Orange	130	151	72	72	66
Orleans	55	37	36	53	58
Oswego	101	56	55	53	53
Otsego	8	10	8	9	13
Putnam	64	59	54	56	59
Rensselaer	61	65	53	35	35
Rockland	53	62	72	86	94
St. Lawrence	33	42	44	49	54
Saratoga	55	58	60	55	62
Schenectady	61	3	21	11	11
Schoharie	22	23	18	23	21
Schuyler	22	22	22	22	22
Seneca	51	29	47	37	37
Steuben	55	60	22	23	25
Suffolk	209	491	531	231	241
Sullivan	39	41	37	38	39
Tioga	35	37	44	51	44
Tompkins	56	63	64	44	41
Ulster	41	55	46	39	39
Warren	41	61	71	66	55
Washington	43	49	58	37	54
Wayne	58	71	71	42	45
Westchester	---	---	---	---	---
Wyoming	68	56	68	33	50
Yates	25	20	21	23	23
NYS TOTAL	4,414	4,628	4,359	3,589	3,650

TABLE 12

MUNICIPAL POLICE EMPLOYEES, UNIFORMED AND CIVILIAN,
1979-83

County	1979			1980			1981			1982			1983		
	T	U	C	T	U	C	T	U	C	T	U	C	T	U	C
Albany	703	583	120	725	588	137	734	586	148	731	579	152	728	575	153
Allegany	59	51	8	55	47	8	54	41	13	63	48	15	63	49	14
Broome	312	277	35	325	286	39	311	270	41	301	264	37	302	262	40
Cattaraugus	102	96	6	97	93	4	100	97	3	99	96	3	100	94	6
Cayuga	84	75	9	91	81	10	86	76	10	86	76	10	91	81	10
Chautauqua	221	200	21	216	190	26	213	191	22	217	190	27	214	183	31
Chemung	127	119	8	122	113	9	123	113	10	122	113	9	127	115	12
Chenango	45	41	4	41	36	5	44	40	4	42	38	4	49	43	6
Clinton	53	51	2	56	54	2	55	53	2	58	54	4	57	53	4
Columbia	73	71	2	76	73	3	77	75	2	79	77	2	68	63	5
Cortland	47	44	3	48	45	3	46	43	3	47	43	4	54	50	4
Delaware	45	40	5	45	41	4	51	44	7	50	43	7	52	44	8
Dutchess	340	295	45	354	306	48	354	297	57	356	298	58	340	296	44
Erie	2,255	1,977	278	2,232	1,966	266	2,147	1,908	239	2,125	1,895	230	2,098	1,860	238
Essex	50	47	3	56	41	15	55	53	2	46	44	2	50	48	2
Franklin	59	51	8	67	56	11	61	53	8	43	37	6	45	39	6
Fulton	77	67	10	71	62	9	66	61	5	65	60	5	71	66	5
Genesee	48	45	3	46	42	4	45	41	4	52	40	12	51	39	12
Greene	72	62	10	87	78	9	71	69	2	72	66	6	73	67	6
Hamilton	5	5	0	8	6	2	7	5	2	7	5	2	8	4	4
Herkimer	138	129	9	135	128	7	118	113	5	125	119	6	117	109	8
Jefferson	117	105	12	129	118	11	112	105	7	104	99	5	107	102	5
Lewis	11	11	0	11	11	0	8	8	0	7	7	0	7	7	0
Livingston	59	43	16	56	42	14	60	48	12	53	46	7	62	48	14
Madison	64	53	11	64	53	11	69	59	10	73	63	10	78	67	11
Monroe	1,149	905	244	1,206	910	296	1,088	870	218	1,055	868	187	1,075	862	213
Montgomery	81	81	0	72	70	2	78	71	7	74	71	3	82	71	11
Nassau	4,758	4,242	516	4,724	4,139	585	4,692	4,070	622	4,711	4,040	671	4,652	3,986	666
Niagara	317	295	22	299	285	14	290	275	15	301	287	14	300	276	24
Oneida	344	319	25	355	328	27	343	315	28	350	323	27	364	339	25
Onondaga	794	662	132	813	650	163	847	675	172	843	669	174	820	646	174
Ontario	83	78	5	85	78	7	86	79	7	86	78	8	88	79	9
Orange	512	413	99	573	450	123	541	436	105	585	480	105	607	495	112
Orleans	38	36	2	38	36	2	33	31	2	34	32	2	35	33	2
Oswego	117	108	9	109	103	6	119	113	6	116	109	7	121	112	9
Otsego	42	40	2	41	39	2	35	33	2	36	33	3	45	41	4
Putnam	82	72	10	87	78	9	88	78	10	88	78	8	90	78	12
Rensselaer	244	223	21	251	223	28	237	213	24	237	212	25	237	204	33
Rockland	488	442	46	485	442	43	500	458	42	501	456	45	521	468	53
St. Lawrence	104	91	13	108	96	12	108	92	16	101	85	16	109	88	21
Saratoga	153	140	13	150	137	13	150	136	14	149	135	14	154	139	15
Schenectady	265	232	33	277	238	39	269	237	32	292	239	53	286	242	44
Schoharie	31	28	3	27	20	7	21	21	0	17	14	3	21	21	0
Schuyler	21	18	3	19	15	4	19	15	4	19	14	5	18	13	5
Seneca	35	31	4	35	31	4	36	33	3	35	32	3	33	29	4
Steuben	103	89	14	88	74	14	110	100	10	108	100	8	114	102	12
Suffolk	3,343	2,970	373	3,320	2,895	425	3,472	2,994	478	3,554	3,034	520	3,686	3,060	626
Sullivan	82	71	11	85	72	13	76	66	10	76	69	7	85	72	13
Tioga	34	33	1	33	29	4	29	26	3	37	32	5	37	32	5
Tompkins	97	87	10	104	92	12	102	90	12	101	89	12	110	97	13
Ulster	305	265	40	303	260	43	293	248	45	314	258	56	331	274	57
Warren	72	64	8	76	66	10	78	73	5	64	54	10	64	58	6
Washington	73	67	6	61	55	6	73	66	7	71	66	5	76	69	7
Wayne	58	54	4	66	62	4	61	57	4	60	56	4	63	55	8
Westchester	2,741	2,455	286	2,727	2,408	319	2,622	2,307	315	2,638	2,303	335	2,691	2,317	374
Wyoming	37	32	5	41	38	3	37	36	1	42	38	4	43	38	5
Yates	17	14	3	17	14	3	18	15	3	18	16	2	18	16	2
Upstate Total	21,786	19,195	2,591	21,888	18,989	2,899	21,618	18,778	2,840	21,736	18,770	2,966	21,988	18,776	3,212
New York City Total	33,352	28,378	4,974	32,227	27,394	4,833	33,704	27,783	5,921	34,750	28,487	6,263	35,373	29,046	6,327
New York State Total	55,138	47,573	7,565	54,115	46,383	7,732	55,322	46,561	8,761	56,486	47,257	9,229	57,361	47,822	9,539

T = Total Personnel U = Uniformed Personnel C = Civilian Personnel

TABLE 13
Local Probation Staff, 1979-1983.

County	1979	1980	1981	1982	1983
Albany	62	65	65	71	73
Allegany	7	7	7	7.5	9.5
Broome	46	41	43	44	41
Cattaraugus	9	9	9	9	9
Cayuga	8	8	8	8	8
Chautauqua	29	28	27	26	26
Chemung	34	28	33	33	33
Chenango	7	7	6	6	6
Clinton	20	19	20	20	19
Columbia	11	11	10	10	10
Cortland	17	13	13	10.5	15
Delaware	8	7	7	7	8
Dutchess	37	37	38	41	40
Erie	132	132	135	134	134
Essex	6	6	6	6	6
Franklin	13	14	14	14	14
Fulton	**	**	12	9	10
Genesee	14	14	16	15.5	15
Greene	11	10	10	10	10
Hamilton	1	1.5	1.5	1.5	1.5
Herkimer	11	8	9	9	9
Jefferson	27	24	22	22	23
Lewis	6	7	7	7	7
Livingston	9	9	9	9	9
Madison	14	14	14	15	15
Monroe	141	141	137	142	132
Montgomery	**	**	3	**	**
Nassau	433	459	453	440	470
Niagara	31	31	31	30	31
Oneida	42	42	40	45	48
Onondaga	111	125	121	129	128
Ontario	16	18	19	19	20
Orange	42	41	50	46	48
Orleans	13	15	14	14	14
Oswego	33	31	33	32	33
Otsego	5	5	5	5	6
Putnam	9	9	9	10	12
Rensselaer	36	39	40	38	34
Rockland	38.5 [†]	37.5	38	40	44
St. Lawrence	28	28	28	29	28
Saratoga	11	13	17	16	17
Schenectady	26	32	32	32	33
Schoharie	3.5	4	5	4	4
Schuyler	7	6.5	6	6	6
Seneca	5	5	5	5	5
Steuben	19	24	20	20	20
Suffolk	363	378	398	348	364
Sullivan	17	16	16	20	23
Tioga	9	11	12.5	11.5	12
Tompkins	20	20	20	20	20
Ulster	28	23	21	21.5	21.5
Warren	**	**	11	11	11
Washington	6.5	6.5	7	7	6.5
Wayne	16	16	17	16	16
Westchester	152	155	161	164.5	171
Wyoming	6	6	6	5	5
Yates	4	4	4	4	4
UPSTATE TOTAL	2,210.5	2,261	2,321	2,275.5	2,338
NYC TOTAL	1,294	1,152	993	1,136	1,189
NYS TOTAL	3,505	3,413	3,314.0	3,412	3,527

Appendix E

Account Codes for
Local Expenditure Data

APPENDIX E

The Comptroller's Uniform System of Accounts for Counties is the source of account codes used to identify expenditures for criminal justice purposes by local governments. Functional categories contained the following account codes:

LAW ENFORCEMENT SERVICES

A3120.0 Police

Record here the expenditures of a county or part county police department.

3197.0 Law Enforcement Project

SHERIFF SERVICES

A3110.0 Sheriff

Record here the compensation and expenditures of the sheriff and his staff.

PROBATION SERVICES

A3140.0 Probation

Record here compensation and expenditures of probation officers.

PROSECUTION SERVICES

A1165.0 District Attorney

Record here the salary and expenditures of the district attorney and his staff. Include stenographers employed by a district attorney in justice courts.

DEFENSE SERVICES

A1170.0 Public Defender

Record here the salary and expenditures of the Public Defender and payments to counsel assigned in accordance with a plan of a bar association. Include payments to a private legal aid bureau or society.

COURTS SERVICES

A1180.0 Justices and Constables

Record here county charges for fees of local justices and constables.

1162.0 Unified Court Budget Costs

1110.0 Municipal Courts

CORRECTIONAL SERVICES

A3150.0 Jail

Record here the expenditures of operating and maintaining a county jail.

A3151.0 Jail Counseling Services

Record here the expenditures for providing jail counseling services.

A3152.0 Jail Industries

Record here the expenditures of maintaining an activity for the employment of prisoners in the jail.

A3155.0 Rehabilitation Service

Record here expenditures for providing rehabilitation services for prisoners.

A3157.0 Prisoners Release Counseling

Record here expenditures for providing counseling for prisoners prior to release.

A3160.0 Penitentiary

Record here the expenditures of operating and maintaining a county penitentiary.

A3162.0 Penitentiary Industries

Record here the expenditures of maintaining an activity for the employment of prison labor.

A3170.0 Other Correction Agencies

This functional unit shall be used to record payments made to other municipalities, the State of New York or private correctional institutions for the detention and custody of prisoners.

A3145.0 Juvenile Detention Home

This functional unit shall be used to record the expenditure of operation of a juvenile detention home. Do not include payments to the state or other municipalities for the care and custody of juvenile delinquents which shall be recorded in functional units A3170.0, A6123.0 or A6129.0.

A3147.0 Juvenile Counseling Services

Record here the expenditures for providing jail counseling services.

A6129.0 Juvenile Training School

Appendix F

Local Per Capita Expenditures
By Function

PER CAPITA EXPENDITURES FOR ALL LOCAL GOVERNMENTS, BY COUNTY

PER CAPITA EXPENDITURES, BY FUNCTION

<u>County</u>	<u>1980 Population</u>	<u>Total Spending</u>	<u>Total Per Capita</u>	<u>Percent of Local Spending</u>	<u>Police</u>	<u>Sheriff</u>	<u>Defense</u>	<u>Prosecution</u>	<u>Court</u>	<u>Probation</u>	<u>Corrections</u>
Albany	285,909	29,186,000	102.08	0.0112	\$ 65.15	\$ 6.32	\$ 1.83	\$ 3.76	\$ 2.59	\$ 4.29	\$ 18.14
Allegany	51,742	1,882,000	36.37	0.0007	14.11	3.48	1.33	2.47	2.07	2.76	10.15
Broome	213,648	13,719,000	64.21	0.0053	34.15	8.32	2.19	2.52	2.65	4.47	9.90
Cattaraugus	85,697	4,115,000	48.02	0.0016	20.22	10.90	1.40	2.38	3.20	2.95	6.97
Cayuga	79,894	4,015,000	50.25	0.0015	23.29	9.20	.99	2.33	1.93	2.33	10.19
Chautauqua	146,925	9,581,000	65.21	0.0037	28.77	14.76	1.88	3.22	2.49	5.01	9.08
Chemung	97,656	6,618,000	67.77	0.0026	30.05	9.71	1.55	2.83	3.16	6.42	14.05
Chenango	49,344	1,613,000	32.69	0.0006	12.95	12.10	.83	1.42	1.60	1.97	1.82
Clinton	80,750	2,879,000	35.65	0.0011	14.82	2.27	1.41	1.76	2.07	4.24	9.09
Columbia	59,487	2,580,000	43.37	0.0010	12.12	10.83	1.41	1.92	3.14	2.77	11.18
Cortland	48,820	2,934,000	60.10	0.0011	21.59	13.29	1.52	1.84	2.15	5.80	13.91
Delaware	46,931	1,191,000	25.38	0.0005	10.10	7.63	.64	1.24	2.73	3.05	-----
Dutchess	245,055	21,639,000	88.30	0.0083	50.18	10.15	2.05	3.21	2.27	3.46	16.99
Erie	1,015,472	88,555,000	87.21	0.0341	51.47	9.86	1.77	4.83	2.29	3.75	13.25
Essex	36,176	1,388,000	38.37	0.0005	12.27	2.52	1.05	3.34	5.14	3.21	10.84
Franklin	44,929	2,108,000	46.92	0.0008	17.05	1.74	1.51	3.45	3.56	6.45	13.15
Fulton	55,153	2,925,000	53.03	0.0011	25.46	9.36	1.16	2.03	1.25	3.03	10.75
Genesee	59,400	3,842,000	64.68	0.0015	22.41	16.20	1.36	2.36	2.71	5.86	13.79
Greene	40,861	1,919,000	46.96	0.0007	15.74	5.38	2.01	2.91	3.94	3.55	13.44
Hamilton	5,034	277,000	55.03	0.0001	13.11	14.70	2.19	6.56	11.92	3.38	3.18
Herkimer	66,714	2,560,000	38.37	0.0010	22.39	1.60	.60	1.17	2.14	2.08	8.38
Jefferson	88,151	4,602,000	52.21	0.0018	23.66	5.99	2.00	1.97	2.56	4.41	11.61
Lewis	25,035	833,000	33.27	0.0003	4.15	8.91	.80	1.56	2.64	5.15	10.07
Livingston	57,006	3,602,000	63.19	0.0014	19.38	17.86	1.39	3.21	3.58	3.44	14.33
Madison	65,150	2,620,000	40.21	0.0010	16.88	5.66	1.01	2.36	2.09	4.16	8.04
Monroe	702,238	73,010,000	103.97	0.0281	47.90	20.12	2.60	4.92	6.14	5.97	16.32
Montgomery	53,439	2,337,000	43.73	0.0009	20.96	7.84	1.12	1.35	1.91	-----	10.55
Nassau	1,321,582	321,215,000	243.05	0.1238	196.91	2.07	2.18	7.34	2.03	11.05	21.49
Niagara	227,101	15,547,000	68.46	0.0060	32.57	16.14	1.73	2.92	1.51	3.52	10.07
Oneida	253,466	12,692,000	50.07	0.0049	27.61	5.14	1.42	2.73	0.98	4.52	7.67
Onondaga	463,324	46,091,000	99.48	0.0178	41.62	17.04	3.43	5.62	1.39	7.13	23.24

<u>County</u>	<u>1980 Population</u>	<u>Total Spending</u>	<u>Total Per Capita</u>	<u>Percent of Local Spending</u>	<u>Police</u>	<u>Sheriff</u>	<u>Defense</u>	<u>Prosecution</u>	<u>Court</u>	<u>Probation</u>	<u>Corrections</u>
Ontario	88,909	6,203,000	69.77	0.0024	\$ 23.86	\$ 20.34	\$ 1.55	\$ 3.79	\$ 2.29	\$ 5.23	\$ 12.71
Orange	259,603	21,275,000	81.95	0.0082	38.98	13.99	1.24	5.11	3.09	4.38	15.16
Orleans	38,496	2,408,000	62.55	0.0009	14.47	18.08	2.13	2.52	3.04	6.00	16.31
Oswego	113,901	6,799,000	59.69	0.0026	20.97	19.71	.83	3.28	1.59	4.71	8.60
Otsego	59,075	1,690,000	28.61	0.0007	12.83	3.15	1.25	1.25	2.42	1.57	6.13
Putnam	77,193	6,782,000	87.86	0.0026	36.97	20.26	1.89	4.59	4.18	4.43	15.53
Rensselaer	151,966	11,088,000	72.96	0.0043	41.98	6.97	1.22	2.57	1.49	4.86	13.87
Rockland	259,530	25,436,000	98.01	0.0098	64.79	10.16	2.21	4.67	3.63	3.78	8.76
St. Lawrence	114,254	5,932,000	51.92	0.0023	25.65	8.38	1.72	1.63	2.92	4.90	6.70
Saratoga	153,759	6,958,000	45.25	0.0027	17.35	9.92	.75	1.70	2.10	2.23	11.19
Schenectady	149,946	11,900,000	79.36	0.0046	60.25	1.21	1.16	2.15	1.49	3.53	9.56
Schoharie	29,710	922,000	31.03	0.0004	6.26	5.02	.81	1.25	2.42	2.89	12.39
Schuyler	17,686	986,000	55.75	0.0004	11.25	14.81	2.37	2.09	2.71	4.81	17.70
Seneca	33,733	1,795,000	53.21	0.0007	21.23	15.80	.92	1.16	3.47	2.43	8.21
Steuben	99,135	5,072,000	51.16	0.0020	20.12	6.66	2.41	3.52	2.77	4.85	10.82
Suffolk	1,284,231	185,087,000	144.12	0.0713	110.31	4.93	2.54	6.63	1.58	6.64	11.49
Sullivan	65,155	5,873,000	90.14	0.0023	25.88	19.58	5.46	6.34	4.87	6.40	21.61
Tioga	49,812	2,251,000	45.19	0.0009	11.38	15.72	1.45	1.95	1.89	4.20	8.61
Tompkins	87,085	4,131,000	47.44	0.0016	22.54	9.15	1.24	2.61	2.35	3.77	5.78
Ulster	158,158	8,977,000	56.76	0.0035	30.80	5.92	1.62	3.05	2.73	2.41	10.24
Warren	54,854	3,784,000	68.98	0.0015	24.17	24.68	1.44	2.19	2.99	3.12	10.39
Washington	54,795	2,197,000	40.09	0.0008	14.56	7.88	1.11	2.72	2.37	2.19	9.25
Wayne	85,230	4,564,000	53.55	0.0018	12.78	13.94	2.69	2.93	3.60	4.61	13.00
Westchester	866,599	126,136,000	145.55	0.0486	99.01	3.45	3.80	6.75	3.41	4.91	24.21
Wyoming	39,895	1,932,000	48.43	0.0007	12.48	14.04	6.49	1.20	1.93	2.13	10.15
Yates	21,459	1,239,000	57.74	0.0005	13.84	20.36	1.49	1.63	2.10	3.12	15.19
UPSTATE	10,486,258	1,149,492,000	109.62	0.4431	71.10	8.87	2.16	4.68	2.58	5.50	14.73
NEW YORK CITY	7,071,030	1,444,968,000	204.35	0.5569	153.09	.28	4.95	9.48	0.05	3.38	33.12
STATEWIDE	17,557,288	2,594,460,000	147.77	1.0000	104.12	5.41	3.28	6.62	1.56	4.65	22.14