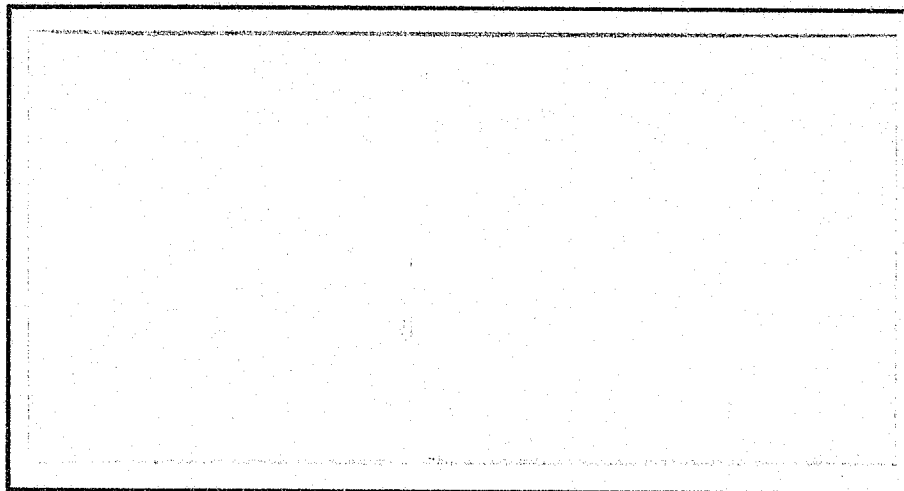


CR 501

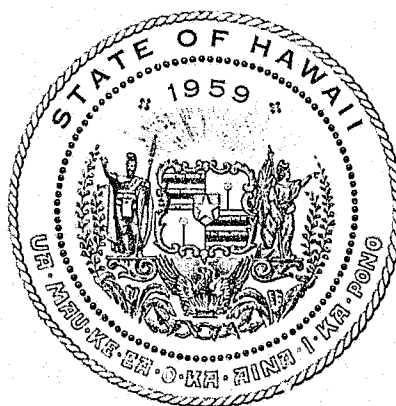
ME-1

11-10-87

DEPARTMENT OF THE ATTORNEY GENERAL
HAWAII CRIMINAL JUSTICE
DATA CENTER



105854





STATE OF HAWAII
DEPARTMENT OF THE ATTORNEY GENERAL
HAWAII CRIMINAL JUSTICE DATA CENTER

STEVEN E. VIDINHA
DIRECTOR

KEKUANAO'A BUILDING, ROOM 101
465 SOUTH KING STREET
HONOLULU, HAWAII 96813

CRIME TRENDS IN HAWAII

NINE MONTH REVIEW

1986

105854

U.S. Department of Justice
National Institute of Justice

This document has been reproduced exactly as received from the person or organization originating it. Points of view or opinions stated in this document are those of the authors and do not necessarily represent the official position or policies of the National Institute of Justice.

Permission to reproduce this copyrighted material has been granted by
Hawaii Criminal Justice
Data Center

to the National Criminal Justice Reference Service (NCJRS).

Further reproduction outside of the NCJRS system requires permission of the copyright owner.

NCJRS
FEB 28 1987
ACQUISITIONS

FOREWORD

"Crime Trends in Hawaii" is published three (3) times a year. Each publication focuses on Uniform Crime Reporting (UCR) data trends. However, other articles include short reports on topics of current interest and summaries or excerpts from research reports.

The Data Center wishes to express its appreciation to the chiefs and staffs of the four county police departments. Their assistance is gratefully acknowledged.

Please address all comments, mailing list changes, and mailing list additions to:

Research and Statistics
Hawaii Criminal Justice Data Center
Department of the Attorney General
Kekuanao'a Building, Room 101
465 South King Street
Honolulu, Hawaii 96813

CRIME TRENDS IN HAWAII

TABLE OF CONTENTS

	Page
Foreword	i
Crime Trends in Hawaii, First Nine Months 1986	1
Special Report Section	13
Part II Crime Trends 1976-1985	S-1

CRIME TRENDS IN HAWAII, FIRST NINE MONTHS 1986

SUMMARY

Crime Index Offenses for First Nine Months of 1986 Increased 9.2 Percent

The number of reported statewide Crime Index offenses for the first nine months of 1986 increased by 9.2 percent as compared to the first nine months of 1985. (All counties showed an overall increase in Crime Index offenses.)

A comparison between 1985 and 1986 data showed that the number of violent crimes decreased only in Maui County. Property crimes increased in all counties.

Violent crimes increased 10.6 percent. All categories of violent crime, with the exception of rapes, increased. There were 11 more murders in the first nine months of 1986 than in the first nine months of 1985, a 42.3 percent increase. Aggravated assaults rose by 19.2 percent. Robbery, the most frequently reported violent crime, increased 5.7 percent. Rapes decreased 0.8 percent.

Property crimes increased by 9.2 percent. The number of reported burglaries increased 18.3 percent. Motor vehicle theft increased 10.5 percent. Larceny-theft, the most frequently reported in crime index offense, increased 6.2 percent.

The data in this report are provisional and subject to change.

INTRODUCTION

The Hawaii Criminal Justice Data Center (HCJDC) maintains a policy of keeping criminal justice agencies and the public informed on reported crimes in the State of Hawaii. Every year, the HCJDC publishes three "Crime Trends in Hawaii" reports, containing Uniform Crime Reporting (UCR) program data for the first three months, first six months and first nine months of the year.

This report presents information on Crime Index offenses. The Crime Index is comprised of the violent crimes of murder (criminal homicide and non-negligent manslaughter), forcible rape, robbery and aggravated assault; and the property crimes of burglary, larceny-theft and motor vehicle theft. In 1979, the property crime of arson was added. The Crime Index is limited to these offenses because they are the crimes most likely to be reported and which occur often enough to provide an adequate basis for comparison. They are serious crimes by nature and/or volume.

The data presented in this report can be used in law enforcement administration, operation and management as a reliable set of uniformly defined crime statistics for inter-agency or national comparison. These statistics are also intended for the use and information of other criminal justice professionals, legislators and planners as well as an important reference source for the public as an indicator of the level of criminality in our society.

Method of Reporting

The Federal Bureau of Investigation (FBI) serves as the national clearinghouse for statistical information on crime. Prior to 1975, each of the four county police departments in the State, independently provided the FBI with reported offense and arrest statistics. Through the cooperation of the four police departments, the UCR data are now collected monthly by the HCJDC where the reports are edited, then submitted to the FBI.

The HCJDC also compiles, analyzes and publishes UCR data, in order to inform the State on crime trends in Hawaii. It should be noted, however, that UCR data pertain only to offenses that come to the attention of the police. Unreported crimes have not been taken into consideration; therefore, the actual number of crimes committed is unknown.

In this report, current year UCR data for a given time period are compared with data from the past two years for the same time period. Trend data are compiled for all Crime Index offenses with the exception of arson.

Nine Month Report

Data for the first nine months of the years 1984, 1985 and 1986 are presented for all counties.

The actual number of Crime Index offenses reported to the police is shown in Table 1, reported by county for the first nine months of 1986. Subsequent tables report changes in Crime Index offenses over a three-year period for the same time interval.

Table 2 shows the percentage change in reported Crime Index offenses for the State.

Tables 3-6 show the actual number difference in reported Crime Index offenses for each county. Tables 1 and 2 have been derived from those tables.

Table 7 shows the percentage change from 1985 to 1986 for all crimes and for violent and property crimes, by county.

Please note that for tables 2 through 7, negative numbers or decreases are enclosed in parentheses so that they may be easily distinguished from increases.

The displays on pages 11 and 12 indicate the frequency of crime occurring in the State for each of the seven Crime Index offenses for the first nine months of 1985 and 1986.

The Hawaii Criminal Justice Data Center will continue in its effort to inform all criminal justice agencies and the public on matters of general crime trends in Hawaii.

TABLE 1
 ACTUAL CRIME INDEX OFFENSES REPORTED TO THE POLICE
 FIRST NINE MONTHS 1986 BY COUNTY

	<u>State</u>	<u>City & County Honolulu</u>	<u>Hawaii County</u>	<u>Maui County</u>	<u>Kauai County</u>
Total Resident Population ¹	1,054,000	817,083	107,957	84,316	44,644
Percent Distribution	100.00	77.52	10.24	8.00	4.24
Total Index Offenses	44,683	34,473	4,041	4,404	1,765
Percent Distribution	100.00	77.15	9.04	9.86	3.95
Violent Crimes	1,958	1,570	137	179	72
Murder	37	33	2	1	1
Forcible Rape	242	184	28	18	12
Robbery	866	808	30	20	8
Aggravated Assault	813	545	77	140	51
Property Crimes	42,725	32,903	3,904	4,225	1,693
Burglary	10,487	7,883	1,069	1,102	433
Larceny-theft	29,727	22,944	2,678	2,925	1,180
Motor Vehicle Theft	2,511	2,076	157	198	80

¹Provisional 1985 population figures based on the Bureau of the Census' state provisional estimates as of July 1, 1985.

TABLE 2
STATE OF HAWAII CRIME TRENDS
JANUARY - SEPTEMBER, 1984-1986

<u>INDEX OFFENSES</u>	<u>Jan-Sep</u>	<u>Number of Offenses</u>	<u>Percent Change</u>
<u>Violent Crimes</u>	1984	1,831	(-7.3)
	1985	1,771	(-3.3)
	1986	1,958	10.6
Murder	1984	28	(-37.8)
	1985	26	(-7.1)
	1986	37	42.3
Forcible Rape	1984	239	7.2
	1985	244	2.1
	1986	242	(-0.8)
Robbery	1984	907	(-10.2)
	1985	819	(-9.7)
	1986	866	5.7
Aggravated Assault	1984	657	(-5.9)
	1985	682	3.8
	1986	813	19.2
<u>Property Crimes</u>	1984	41,481	(-5.0)
	1985	39,134	(-5.7)
	1986	42,725	9.2
Burglary	1984	9,596	(-8.6)
	1985	8,862	(-7.6)
	1986	10,487	18.3
Larceny-Theft	1984	29,020	(-2.6)
	1985	28,000	(-3.5)
	1986	29,727	6.2
Motor Vehicle Theft	1984	2,865	(-15.3)
	1985	2,272	(-20.7)
	1986	2,511	10.5
TOTAL FOR STATE	1984	43,312	(-5.1)
	1985	40,905	(-5.6)
	1986	44,683	9.2

TABLE 3
CITY AND COUNTY OF HONOLULU CRIME TRENDS
JANUARY - SEPTEMBER, 1984-1986

<u>INDEX OFFENSES</u>	<u>Jan-Sep</u>	<u>Number of Offenses</u>	<u>Change in Number of Offenses</u>
<u>Violent Crimes</u>	1984	1,506	(-139)
	1985	1,394	(-112)
	1986	1,570	176
Murder	1984	21	(-12)
	1985	24	3
	1986	33	9
Forcible Rape	1984	202	16
	1985	195	(-7)
	1986	184	(-11)
Robbery	1984	844	(-97)
	1985	763	(-81)
	1986	808	45
Aggravated Assault	1984	439	(-46)
	1985	412	(-27)
	1986	545	133
<u>Property Crimes</u>	1984	32,746	(-1,232)
	1985	29,910	(-2,836)
	1986	32,903	2,993
Burglary	1984	7,170	(-560)
	1985	6,561	(-609)
	1986	7,883	1,322
Larceny-Theft	1984	23,093	(-104)
	1985	21,503	(-1,590)
	1986	22,944	1,441
Motor Vehicle Theft	1984	2,483	(-568)
	1985	1,846	(-637)
	1986	2,076	230
TOTAL FOR COUNTY	1984	34,252	(-1,371)
	1985	31,304	(-2,948)
	1986	34,473	3,169

TABLE 4

HAWAII COUNTY CRIME TRENDS
 JANUARY - SEPTEMBER, 1984-1986

<u>INDEX OFFENSES</u>	<u>Jan-Sep</u>	<u>Number of Offenses</u>	<u>Change in Number of Offenses</u>
<u>Violent Crimes</u>	1984	113	13
	1985	120	7
	1986	137	17
Murder	1984	2	(-3)
	1985	2	0
	1986	2	0
Forcible Rape	1984	13	(-6)
	1985	19	6
	1986	28	9
Robbery	1984	22	(-3)
	1985	23	1
	1986	30	7
Aggravated Assault	1984	76	25
	1985	76	0
	1986	77	1
<u>Property Crimes</u>	1984	3,435	(-145)
	1985	3,626	191
	1986	3,904	278
Burglary	1984	923	7
	1985	849	(-74)
	1986	1,069	220
Larceny-Theft	1984	2,338	(-199)
	1985	2,630	292
	1986	2,678	48
Motor Vehicle Theft	1984	174	47
	1985	147	(-27)
	1986	157	10
TOTAL FOR COUNTY	1984	3,548	(-132)
	1985	3,746	198
	1986	4,041	295

TABLE 5
 MAUI COUNTY CRIME TRENDS
 JANUARY - SEPTEMBER, 1984-1986

<u>INDEX OFFENSES</u>	<u>Jan-Sep</u>	<u>Number of Offenses</u>	<u>Change in Number of Offenses</u>
<u>Violent Crimes</u>	1984	129	(-16)
	1985	198	69
	1986	179	(-19)
Murder	1984	4	0
	1985	0	(-4)
	1986	1	1
Forcible Rape	1984	14	(-1)
	1985	23	9
	1986	18	(-5)
Robbery	1984	34	(-2)
	1985	28	(-6)
	1986	20	(-8)
Aggravated Assault	1984	77	(-13)
	1985	147	70
	1986	140	(-7)
<u>Property Crimes</u>	1984	3,726	(-707)
	1985	4,015	289
	1986	4,225	210
Burglary	1984	1,084	(-332)
	1985	1,012	(-72)
	1986	1,102	90
Larceny-Theft	1984	2,493	(-376)
	1985	2,782	289
	1986	2,925	143
Motor Vehicle Theft	1984	149	1
	1985	221	72
	1986	198	(-23)
TOTAL FOR COUNTY	1984	3,855	(-723)
	1985	4,213	358
	1986	4,404	191

TABLE 6
 KAUAI COUNTY CRIME TRENDS
 JANUARY - SEPTEMBER, 1984-1986

<u>INDEX OFFENSES</u>	<u>Jan-Sep</u>	<u>Number of Offenses</u>	<u>Change in Number of Offenses</u>
<u>Violent Crimes</u>	1984	83	(-3)
	1985	59	(-24)
	1986	72	13
Murder	1984	1	(-2)
	1985	0	(-1)
	1986	1	1
Forcible Rape	1984	10	7
	1985	7	(-3)
	1986	12	5
Robbery	1984	7	(-1)
	1985	5	(-2)
	1986	8	3
Aggravated Assault	1984	65	(-7)
	1985	47	(-18)
	1986	51	4
<u>Property Crimes</u>	1984	1,574	(-118)
	1985	1,583	9
	1986	1,693	110
Burglary	1984	419	(-17)
	1985	440	21
	1986	433	(-7)
Larceny-Theft	1984	1,096	(-105)
	1985	1,085	(-11)
	1986	1,180	95
Motor Vehicle Theft	1984	59	4
	1985	58	(-1)
	1986	80	22
<u>TOTAL FOR COUNTY</u>	1984	1,657	(-121)
	1985	1,642	(-15)
	1986	1,765	123

TABLE 7

PERCENT CHANGE IN CRIME BY COUNTY

JANUARY - SEPTEMBER, 1985 - 1986

	<u>Honolulu</u>	<u>Hawaii</u>	<u>Maui</u>	<u>Kauai</u>
Violent Crimes	12.6	14.2	-9.6	22.0
Property Crimes	10.0	7.7	5.2	6.9
All Index Offenses	10.1	7.9	4.5	7.5

State of Hawaii

CRIME INDEX OFFENSES REPORTED

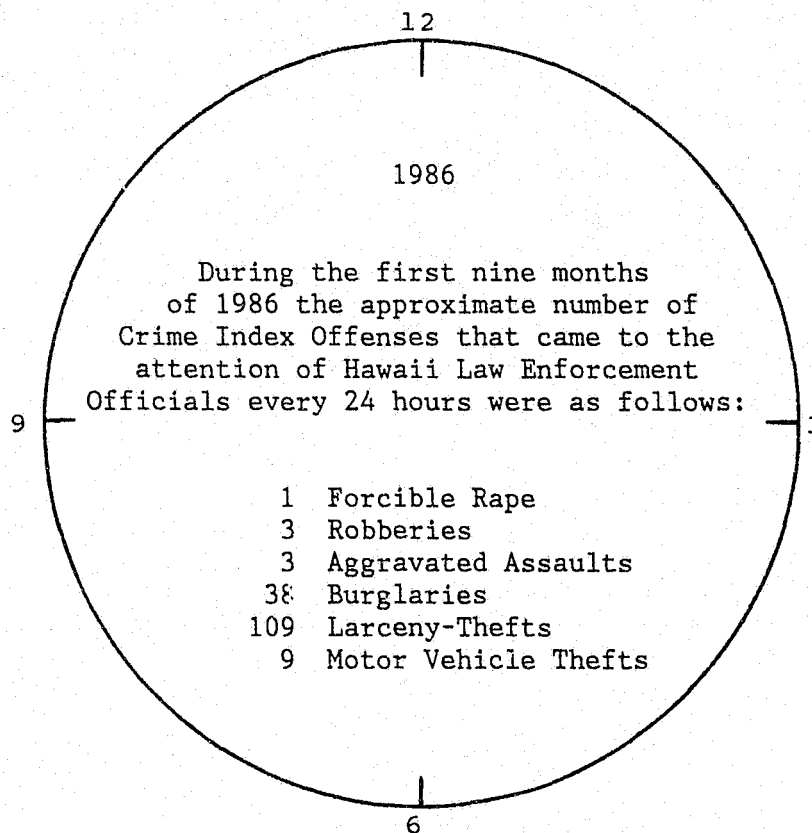
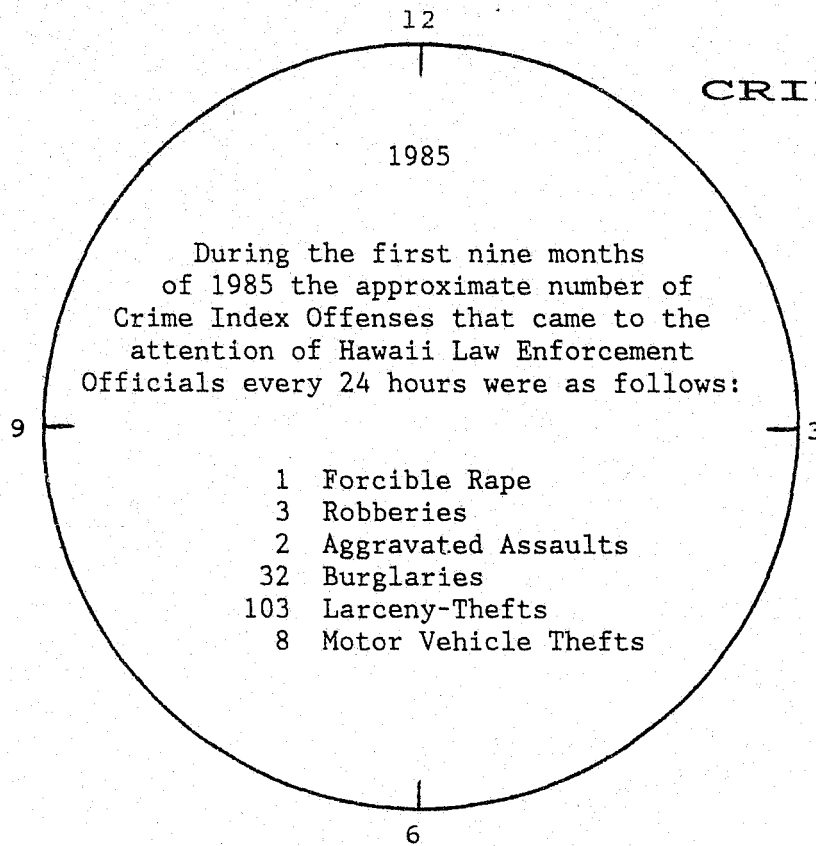
1985
First Nine Months

1986
First Nine Months

<p><u>ONE</u> <u>CRIME INDEX</u> <u>OFFENSE</u> Every 9 minutes 37 seconds</p>	<p><u>ONE</u> <u>VIOLENT CRIME</u> Every 3 hours 42 minutes</p>	<p><u>ONE MURDER</u> Every 10 days 12 hours</p> <p>Every 7 days 9 hours</p>	<p><u>ONE</u> <u>VIOLENT CRIME</u> Every 3 hours 21 minutes</p>
	<p><u>ONE</u> <u>PROPERTY</u> <u>CRIME</u> Every 10 minutes 3 seconds</p>	<p><u>ONE FORCIBLE RAPE</u> Every 1 day 3 hours</p> <p><u>ONE ROBBERY</u> Every 8 hours 0 minutes</p> <p>Every 1 day 3 hours</p> <p>Every 7 hours 34 minutes</p>	
		<p><u>ONE AGGRAVATED ASSAULT</u> Every 9 hours 36 minutes</p> <p>Every 8 hours 4 minutes</p>	
		<p><u>ONE BURGLARY</u> Every 44 minutes 22 seconds</p> <p>Every 37 minutes 29 seconds</p>	
		<p><u>ONE LARCENY-THEFT</u> Every 14 minutes 2 seconds</p> <p>Every 13 minutes 13 seconds</p>	
		<p><u>ONE MOTOR VEHICLE THEFT</u> Every 2 hours 53 minutes</p> <p>Every 2 hours 37 minutes</p>	<p><u>ONE</u> <u>CRIME INDEX</u> <u>OFFENSE</u> Every 8 minutes 48 seconds</p> <p><u>ONE</u> <u>PROPERTY</u> <u>CRIME</u> Every 9 minutes 12 seconds</p>

The crime clock should be viewed with care. It is designed to convey the reported crime experience by showing the relative frequency of occurrence of the Crime Index offenses. This mode of display should not be taken to imply a regularity in the commission of the Crime Index offenses; rather, it represents the ratio of crime to fixed time intervals.

CRIME CLOCKS



NOTE: During the first nine months of 1985 one murder occurred approximately every 10 days. During the first nine months of 1986 one murder occurred approximately every 7 days.

SPECIAL REPORT SECTION

One special report is included in this section. The report "Part II Crime Trends" examines trends in Part II offenses for the state for the ten year period 1976 through 1985. Trends are also presented by county. Reported offenses, clearances and arrests are covered.

PART II CRIME TRENDS, 1976-1985

This special report reviews the number of Part II offenses that were actually reported and cleared over the ten year period 1976 and 1985. It also examines arrests for Part II offenses. The trends are presented by State and counties.

The Hawaii Criminal Justice Data Center usually reports crime trends using the Crime Index. The Crime Index consists of eight Part I offenses:

- Homicide (which includes negligent manslaughter)
- Forcible rape
- Robbery
- Aggravated assault
- Burglary
- Larceny-theft
- Auto theft
- Arson

These offenses are considered serious in nature or are frequently reported. The Crime Index differs from Part I offenses, in that it excludes negligent manslaughter.

Part II offenses are defined as those offenses not classified as Part I and includes the following offenses:

- Other assaults
- Forgery and counterfeiting
- Fraud
- Embezzlement
- Stolen property
- Vandalism
- Weapons
- Prostitution and commercialized vice
- Sex offenses
- Drug abuse
- Gambling
- Offenses against family and children
- DUI (driving under the influence)
- Liquor laws
- Drunkenness
- Disorderly conduct
- Vagrancy
- All other offenses (includes curfew and runaway)
- Suspicion

Part II offenses exclude traffic violations. In 1979, the FBI reclassified arson as a Part I offense. For this reason the HCJDC prepared this report with arson excluded for the entire ten-year period.

ACTUAL REPORTED OFFENSES

Actual reported offenses, clearance and arrest data were compiled from county police statistical reports. Population figures which were used to compute crime rates were obtained from the Department of Planning and Economic Development Annual Data Books (see References).

State Trends

Actual Part II offenses increased 55.7 percent from 62,198 reported in 1976 to 96,851 reported in 1985 (see Table 1). Except for the years 1982 and 1983, the number of reported offenses has been increasing each year (see Figure 1).

Largest Offense Category

The largest category, all other offenses, is inclusive of any offense not listed as a Part II offense and accounts for approximately one-half of all reported offenses. All other offenses increased 36.5 percent from 1976 to 1985.

Other large categories are simple assaults, fraud, vandalism, drug abuse, DUI and disorderly conduct. Annually, each of these offenses numbered at least 1,000. DUI rose 267.9 percent, although most of the increase, 71 percent, was recorded between 1983 and 1984. Drug abuse was up 116.1 percent and the white collar crimes, fraud and forgery-counterfeiting, were up 113.0 percent and 172.3 percent, respectively.

County Trends

Table 3 shows that Maui reported the largest increase, 130.3 percent, over the ten year period. According to Tables 2, 4 and 5, the other counties also registered increases: Honolulu, 43.8 percent; Hawaii, 73.7 percent; and Kauai, 60.1 percent. Maui and Honolulu were the only counties that usually reported more Part II offenses than Part I offenses.

CRIME RATES

State Trends

The crime rate per 100,000 resident population in 1985 was 9,188.9 which is a 31.0 percent increase over the 7,015.3 crime rate in 1976 (see Table 1). Part II crime rates are much higher than Part I crime rates because more Part II offenses are reported than Part I offenses. The crime rate climbed steadily until it peaked in 1979 at 9,707.2, and then it declined until 1984 (see Figure 2).

County Trends

Kauai's crime rate increased only 20.9 percent over the ten year period and this represented the smallest change of all the counties (see Table 4). Maui, which ranked third in population among the counties and reported more offenses than both Kauai and Hawaii counties combined, had unusually high crime rates (see Tables 3-5). Maui's 1985 crime rate was 18,130.6 which is a 52.6 percent increase over the 11,882.3 crime rate in 1976. All other offenses accounted for over one-half of all reported offenses. A small population and high levels of reported offenses contributed to Maui's high crime rate.

CLEARANCE RATE

Offenses are cleared when someone is arrested, charged with the commission of the crime, and summoned to appear in court (or in the case of a juvenile, had been cited and referred to juvenile authorities). Clearance rates are calculated by dividing the number of clearances by the number of reported offenses.

Each year Part II offenses are cleared at an average rate of about 63 percent (see Table 1). The clearance rate did not change significantly over the ten year period.

Kauai never cleared more than 50 percent of it's offenses (see Table 4). The average annual clearance rate for the other counties ranged between 57 and 64 percent (see Tables 2,3 and 5).

ARRESTS

Part II arrests nearly doubled over the ten year period. There was a larger proportional increase in adult arrests, 94.5 percent, than juvenile arrests, 90.7 percent (see Table 6).

All counties experienced increases in the number of arrests made between 1976 and 1985 (see Figure 3). Kauai, by almost tripling its arrest output, had the greatest proportional change over the other counties. Maui and Hawaii Counties had greater percentage increases in juvenile arrests than adult arrests, but the opposite adult and juvenile arrest trends were observed for Honolulu and Kauai Counties.

REFERENCES:

1. Department of Planning and Economic Development, State of Hawaii Data Book, (Annual), Years 1975 to 1984, State of Hawaii.
2. Hawaii State Census Statistical Areas Committee, Report CTC-51.

Table 1
Part II Actual Reported Offenses, Crime Rate and Clearances
State Total

	<u>1976</u>	<u>1977</u>	<u>1978</u>	<u>1979</u>	<u>1980</u>	<u>1981</u>	<u>1982</u>	<u>1983</u>	<u>1984</u>	<u>1985</u>
Other Assaults	6,942	7,816	8,760	9,557	11,469	10,671	11,456	11,262	11,252	11,318
Forgery/Counterfeit	570	941	1,170	883	818	869	1,232	918	1,238	1,552
Fraud	1,529	2,090	2,394	2,674	2,716	2,954	3,177	3,031	3,303	3,257
Embezzlement	75	41	65	120	142	135	158	180	219	313
Stolen Property	94	115	143	141	205	140	207	245	240	267
Vandalism	9,546	9,931	11,228	12,641	12,486	11,279	11,155	10,472	11,380	11,923
Weapons	659	677	678	729	787	662	626	637	671	820
Prostitution	380	580	448	455	428	354	478	606	565	453
Sex Offenses	491	534	636	651	667	680	764	737	994	902
Drug Laws	2,956	4,059	4,391	4,663	4,992	7,011	5,486	6,999	6,420	6,389
Gambling	482	440	497	773	538	523	748	636	471	579
Offenses Against Family	157	196	258	387	478	497	892	1,434	1,918	2,054
DUI	2,234	2,630	3,078	2,703	2,838	3,273	3,436	4,238	7,247	8,219
Liquor Laws	308	454	396	350	628	888	902	1,965	1,907	2,284
Disorderly Conduct	3,246	4,293	6,376	6,712	6,858	6,512	3,041	2,860	2,337	2,116
All Other Offenses	32,529	37,744	43,960	45,362	47,100	47,253	48,824	41,708	43,687	44,405
TOTAL	62,198	72,541	84,478	88,801	93,150	93,701	92,582	87,928	93,869	96,851
Population	886,600	894,800	896,700	914,800	964,624	989,000	994,000	1,023,200	1,039,000	1,054,000
Crime Rate	7,015.3	8,107.0	9,421.0	9,707.2	9,656.6	9,474.3	9,314.1	8,593.4	9,032.6	9,188.9
Clearances	41,787	46,072	56,220	56,922	55,159	56,115	53,283	52,960	59,227	61,653
Clearance Rate	67.2	63.5	66.6	64.1	59.2	59.9	57.6	60.2	63.1	63.7

55

Table 2
Part II Actual Reported Offenses, Crime Rate and Clearances
City and County of Honolulu

	<u>1976</u>	<u>1977</u>	<u>1978</u>	<u>1979</u>	<u>1980</u>	<u>1981</u>	<u>1982</u>	<u>1983</u>	<u>1984</u>	<u>1985</u>
Other Assaults	5,182	5,988	6,891	7,655	9,218	8,251	8,717	8,879	8,769	8,735
Forgery/Counterfeit	347	579	748	453	419	452	680	490	534	541
Fraud	959	1,149	1,443	1,637	1,666	1,789	2,025	1,944	2,063	1,841
Embezzlement	17	27	34	42	23	54	44	60	97	112
Stolen Property	53	54	71	69	116	89	145	191	199	157
Vandalism	7,361	7,467	8,516	9,657	9,607	8,644	8,520	8,041	8,736	8,752
Weapons	516	493	452	520	600	486	432	487	494	603
Prostitution	377	574	438	450	400	334	473	598	561	453
Sex Offenses	401	437	508	525	509	558	624	611	748	668
Drug Laws	1,432	2,302	2,355	3,018	2,959	4,750	3,555	4,847	4,367	4,478
Gambling	455	334	453	657	395	393	512	505	373	433
Offenses Against Family	123	157	183	275	326	358	760	1,278	1,738	1,757
DUI	1,680	2,206	2,584	2,204	2,243	2,569	2,639	3,317	5,197	6,229
Liquor Laws	183	266	230	228	484	594	633	1,597	1,462	1,758
Disorderly Conduct	2,750	3,688	5,643	5,945	5,745	5,090	1,921	1,757	1,132	944
All Other Offenses	27,113	30,740	35,872	37,391	38,980	38,149	40,246	32,104	33,316	32,922
TOTAL	48,949	56,461	66,421	70,726	73,690	72,560	71,926	66,706	69,786	70,383
Population	719,919	721,800	722,400	734,300	761,964	779,100	785,181	798,200	810,772	817,083
Crime Rate	6,799.2	7,822.3	9,194.5	9,631.8	9,671.1	9,313.3	9,160.4	8,357.1	8,607.4	8,613.9
Clearances	33,926	37,521	46,672	47,227	45,011	44,041	41,392	40,476	44,936	46,613
Clearance Rate	69.3	66.5	70.3	66.8	61.1	60.7	57.5	60.7	64.4	66.2

Table 3
Part II Actual Reported Offenses, Crime Rate and Clearances
Maui County

	<u>1976</u>	<u>1977</u>	<u>1978</u>	<u>1979</u>	<u>1980</u>	<u>1981</u>	<u>1982</u>	<u>1983</u>	<u>1984</u>	<u>1985</u>
Other Assaults	616	733	844	906	1,014	1,009	1,078	1,066	1,140	1,125
Forgery/Counterfeit	59	133	186	164	151	154	305	237	394	443
Fraud	224	356	497	541	549	620	669	589	731	725
Embezzlement	54	7	27	68	110	67	95	107	105	176
Stolen Property	23	37	48	54	68	37	43	28	31	101
Vandalism	887	1,118	1,395	1,352	1,315	1,268	1,270	1,163	1,249	1,222
Weapons	34	61	82	94	91	88	91	69	81	80
Prostitution	0	4	1	0	8	7	0	0	0	0
Sex Offenses	24	47	67	55	87	68	50	62	105	85
Drug Laws	479	558	581	553	770	849	717	818	754	642
Gambling	7	16	22	72	101	63	74	52	57	65
Offenses Against Family	11	30	53	105	139	113	112	128	125	140
DUI	223	189	258	195	232	234	260	390	1,220	1,004
Liquor Laws	77	163	137	88	107	113	181	295	263	203
Disorderly Conduct	207	383	516	598	952	1,255	952	966	975	972
All Other Offenses	3,712	5,124	6,015	6,042	6,493	7,040	6,380	7,313	7,566	8,304
TOTAL	6,637	8,959	10,729	10,887	12,187	12,985	12,277	13,283	14,796	15,287
Population	55,856	60,000	61,400	62,600	71,337	74,100	73,505	82,100	80,171	84,316
Crime Rate	11,882.3	14,931.7	17,473.9	17,391.4	17,083.7	17,523.6	16,702.3	16,179.1	18,455.6	18,130.6
Clearances	4,417	4,740	5,751	5,693	6,508	7,594	6,998	8,052	9,140	8,630
Clearance Rate	66.6	52.9	53.6	52.3	53.4	58.5	57.0	60.6	61.8	56.5

57

Table 4
Part II Actual Reported Offenses, Crime Rate and Clearances
Kauai County

	<u>1976</u>	<u>1977</u>	<u>1978</u>	<u>1979</u>	<u>1980</u>	<u>1981</u>	<u>1982</u>	<u>1983</u>	<u>1984</u>	<u>1985</u>
Other Assaults	593	537	493	423	600	797	973	674	592	504
Forgery/Counterfeit	20	41	62	40	43	17	38	27	17	34
Fraud	114	250	225	217	199	206	139	121	113	166
Embezzlement	0	2	1	3	3	1	0	0	1	4
Stolen Property	0	1	0	1	1	0	0	0	1	0
Vandalism	506	502	536	642	515	458	505	443	458	675
Weapons	17	19	36	26	27	22	17	18	22	31
Prostitution	0	0	1	0	0	2	1	1	2	1
Sex Offenses	29	11	25	19	26	17	38	24	36	45
Drug Laws	286	358	461	392	470	510	322	368	328	324
Gambling	13	27	15	33	30	33	43	65	33	27
Offenses Against Family	4	1	0	3	5	17	0	8	16	102
DUI	69	68	66	120	106	254	327	238	284	335
Liquor Laws	2	0	3	5	6	22	26	24	47	73
Disorderly Conduct	45	21	24	13	25	23	15	4	11	14
All Other Offenses	530	621	811	689	314	427	386	748	985	1,233
TOTAL	2,228	2,459	2,759	2,626	2,370	2,806	2,830	2,763	2,946	3,568
Population	33,691	34,800	34,000	35,400	39,117	40,200	40,306	42,000	43,730	44,644
Crime Rate	6,613.0	7,066.1	8,114.7	7,418.1	6,058.8	6,980.1	7,021.3	6,578.6	6,736.8	7,992.1
Clearances	871	1,026	1,087	1,221	633	1,204	1,345	1,356	1,391	1,646
Clearance Rate	39.1	41.7	39.4	46.5	26.7	42.9	47.5	49.1	47.2	46.1

Table 5
Part II Actual Reported Offenses, Crime Rate and Clearances
Hawaii County

	<u>1976</u>	<u>1977</u>	<u>1978</u>	<u>1979</u>	<u>1980</u>	<u>1981</u>	<u>1982</u>	<u>1983</u>	<u>1984</u>	<u>1985</u>
Other Assaults	551	558	532	573	637	614	688	643	751	954
Forgery/Counterfeit	144	188	174	226	205	246	209	164	293	534
Fraud	232	335	229	279	302	339	344	377	396	525
Embezzlement	4	5	3	7	6	13	19	13	16	21
Stolen Property	18	23	24	17	20	14	19	26	9	9
Vandalism	792	844	781	990	1,049	909	860	825	937	1,274
Weapons	92	104	108	89	69	66	86	63	74	106
Prostitution	3	2	8	5	20	11	4	7	2	-1
Sex Offenses	37	39	36	52	45	37	52	40	105	104
Drug Laws	759	841	994	700	793	902	892	966	971	945
Gambling	7	63	7	11	12	34	119	14	8	54
Offenses Against Family	19	8	22	4	8	9	20	20	39	55
DUI	262	167	170	184	257	216	210	293	546	651
Liquor Laws	46	25	26	29	31	159	62	49	135	250
Disorderly Conduct	244	201	193	156	136	144	153	133	219	186
All Other Offenses	1,174	1,259	1,262	1,240	1,313	1,637	1,812	1,543	1,820	1,946
TOTAL	4,384	4,662	4,569	4,562	4,903	5,350	5,549	5,176	6,321	7,613
Population	77,134	78,200	78,900	82,500	92,206	95,600	95,008	100,900	104,327	107,957
Crime Rate	5,683.6	5,961.6	5,790.9	5,529.7	5,317.4	5,596.2	5,840.6	5,129.8	6,058.8	7,051.9
Clearances	2,573	2,785	2,710	2,781	3,007	3,276	3,548	3,076	3,760	4,764
Clearance Rate	58.7	59.7	59.3	61.0	61.3	61.2	63.9	59.4	59.5	62.6

Table 6
Part II Arrests
By County and Age, 1976-1985

	Honolulu	Maui	Kauai	Hawaii	State
1976 Adult	12,359	1,566	322	1,565	15,812
Juv	3,714	239	395	405	4,753
Total	16,073	1,805	717	1,970	20,565
1977 Adult	13,630	1,786	420	1,359	17,195
Juv	3,680	288	282	385	4,635
Total	17,310	2,074	702	1,744	21,830
1978 Adult	13,738	1,830	370	1,381	17,319
Juv	3,539	340	303	459	4,641
Total	17,277	2,170	673	1,840	21,960
1979 Adult	14,408	1,350	443	1,343	17,544
Juv	3,307	352	280	421	4,360
Total	17,715	1,702	723	1,764	21,904
1980 Adult	14,561	1,467	486	1,513	18,027
Juv	3,555	509	253	454	4,771
Total	18,116	1,976	739	1,967	22,798
1981 Adult	16,653	1,538	940	1,853	20,984
Juv	3,794	501	369	602	5,266
Total	20,447	2,039	1,309	2,455	26,250
1982 Adult	16,263	1,745	1,088	1,818	20,914
Juv	4,673	642	448	741	6,504
Total	20,936	2,387	1,536	2,559	27,418
1983 Adult	17,893	2,181	1,072	1,725	22,871
Juv	4,593	598	548	553	6,292
Total	22,486	2,779	1,620	2,278	29,163
1984 Adult	19,602	2,702	1,196	2,115	25,615
Juv	5,297	732	712	705	7,446
Total	24,899	3,434	1,908	2,820	33,061
1985 Adult	24,208	2,508	1,282	2,759	30,757
Juv	6,513	866	803	883	9,065
Total	30,721	3,374	2,085	3,642	39,822

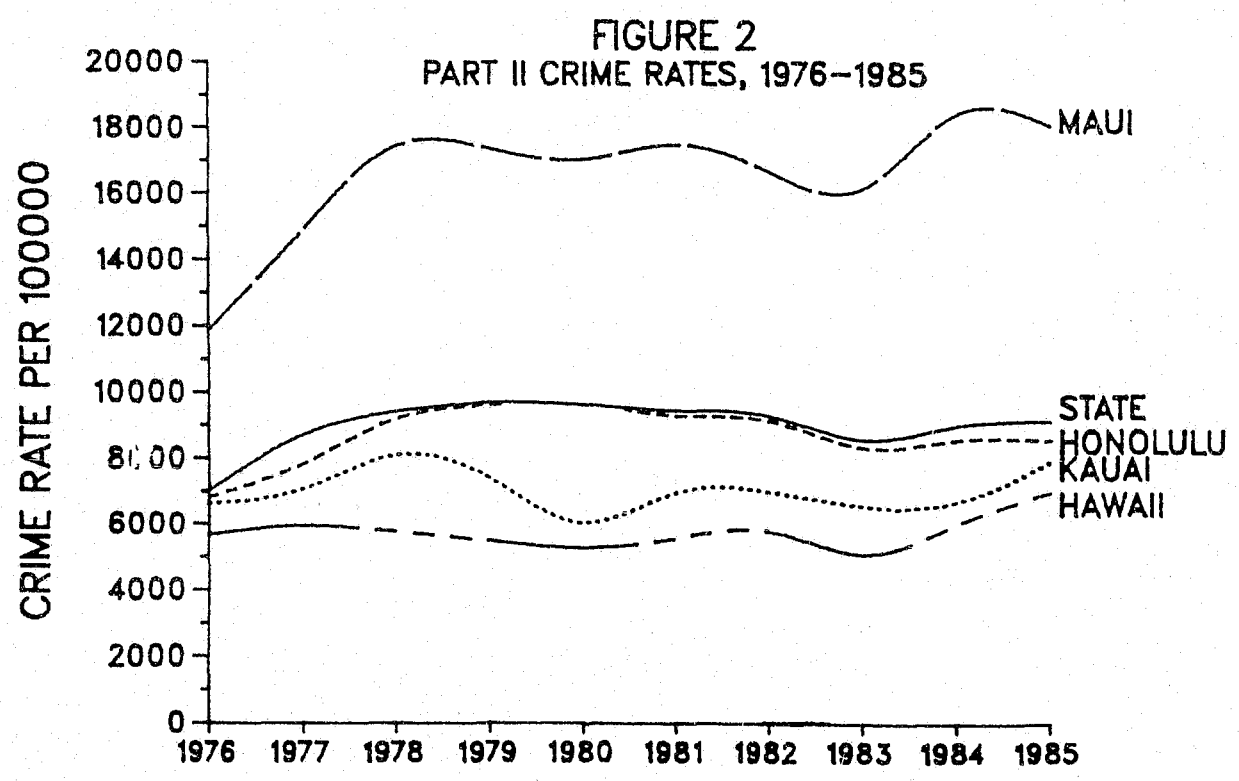
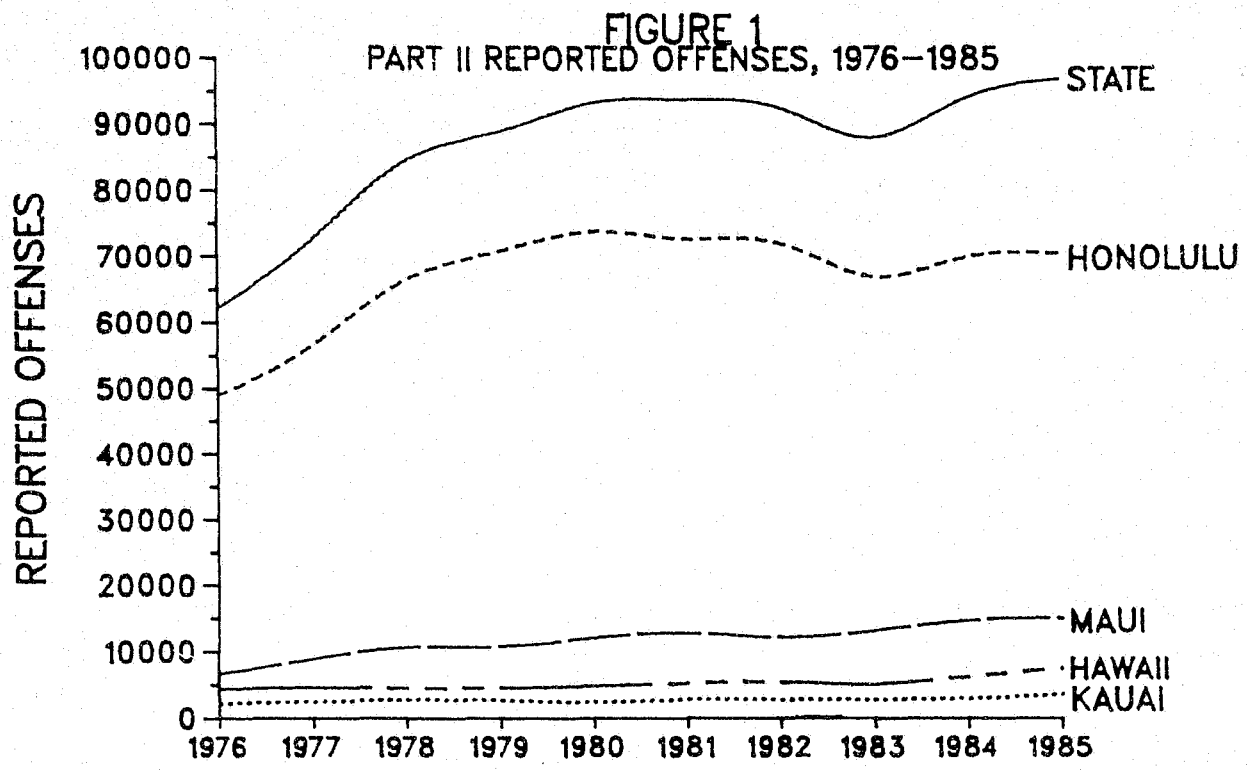


FIGURE 3
PART II ARRESTS, 1976-1985

