

*cf sent
June 28, 88*



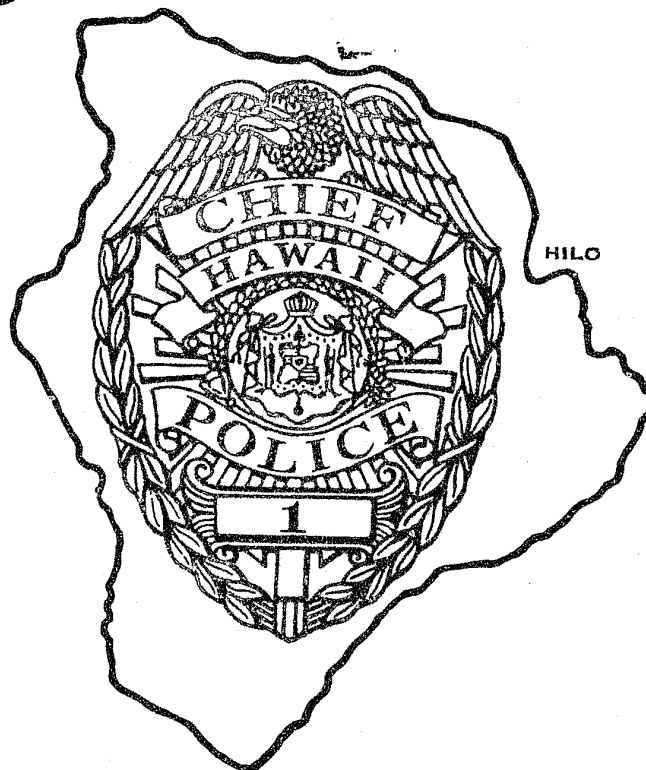
THE CHIEF OF POLICE • COUNTY OF HAWAII

NCJRS

MAR 25 1988

ACQUISITIONS

110212



1985-1986 Annual Report

110212

**U.S. Department of Justice
National Institute of Justice**

This document has been reproduced exactly as received from the person or organization originating it. Points of view or opinions stated in this document are those of the authors and do not necessarily represent the official position or policies of the National Institute of Justice.

Permission to reproduce this copyrighted material has been
granted by

Hawaii County Police Department

to the National Criminal Justice Reference Service (NCJRS).

Further reproduction outside of the NCJRS system requires permission of the copyright owner.

110212



**THE
HAWAII
COUNTY
POLICE
DEPARTMENT**

ANNUAL REPORT

1985-86



WILLIAM BERGIN
Chairman

The Honorable Dante K. Carpenter
Mayor, County of Hawaii
25 Aupuni St.
Hilo, Hawaii 96720

Dear Mayor Carpenter:

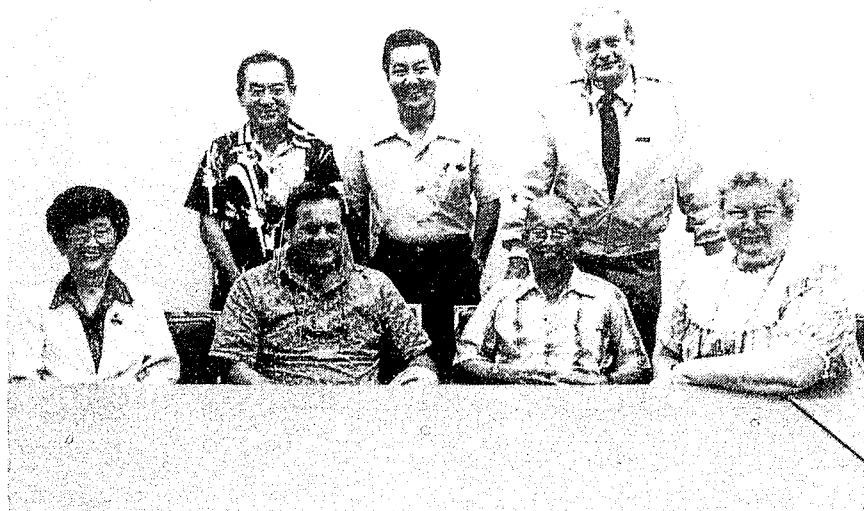
We transmit herewith the 1985-86 report of the Hawaii Police Commission.

We are pleased with the outstanding accomplishments of the Hawaii Police Department, as outlined in the report, and we are pleased to be allowed to serve as commissioners.

We appreciate the support we, and the department, have received from you and from the members of your administration.

Sincerely,

William Bergin
Chairman



Hawaii Police Commission
County of Hawaii
Hilo, Hawaii 96720

Dear Commissioners:

As required by Section 53-66 of the Hawaii Revised Statutes, we submit herewith the annual report of the Hawaii Police Department.

We are proud of the accomplishments of the past year.

We appreciate very much the time and the effort you have given, as voluntary representatives of the community charged with setting the policy of the Hawaii Police Department.

Sincerely,

Guy A. Paul
Chief of Police



GUY A. PAUL
Chief of Police



WAYNE CARVALHO
Deputy Chief



FRANCIS DEMORALES
Hilo Operations

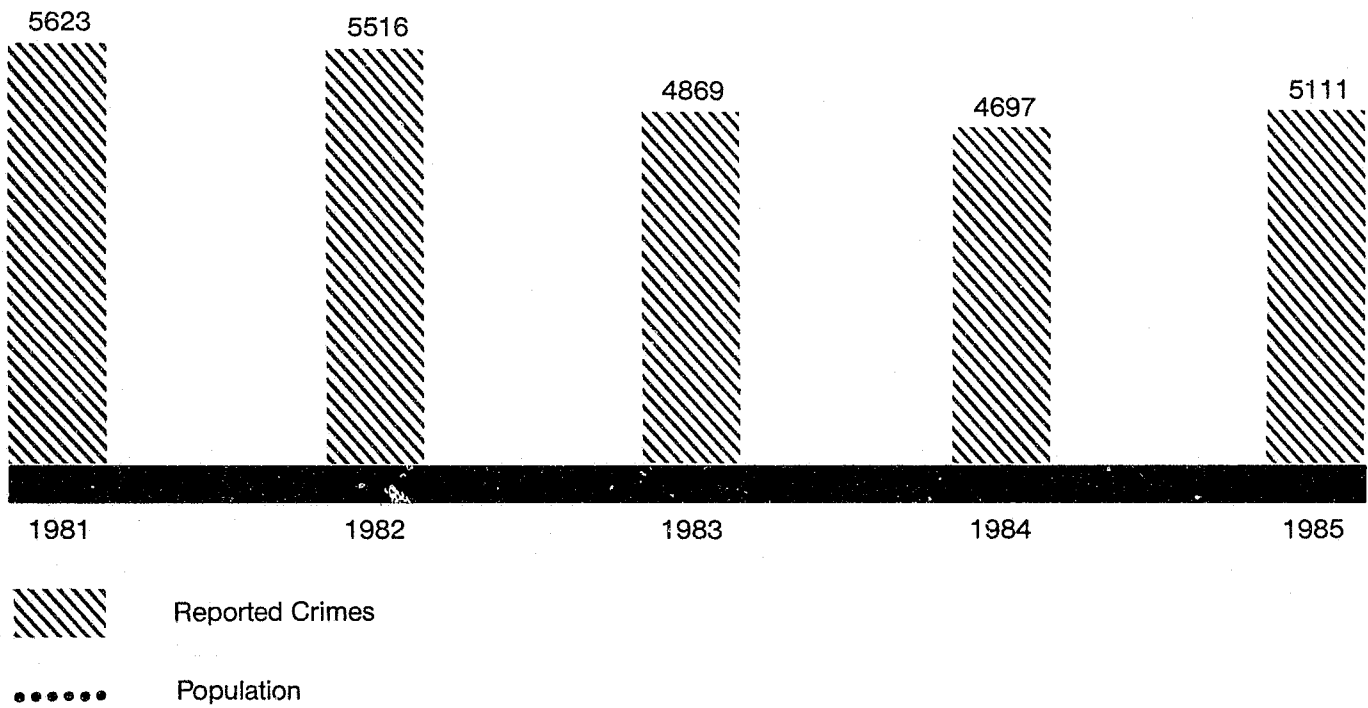
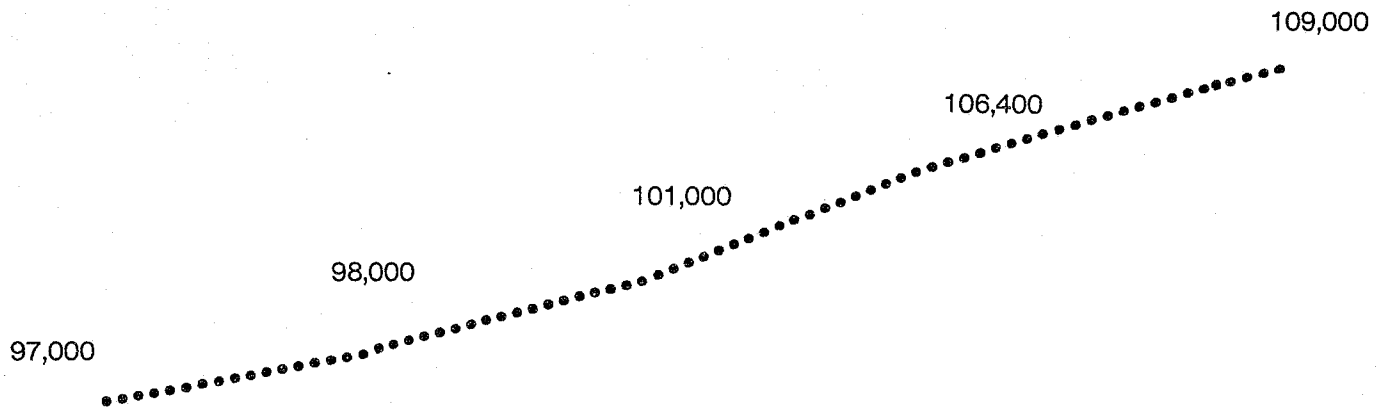


RAYMOND GLORY
Country Operations



GLENN TODD
Administration

CRIME INDEX



THE REDUCTION OF CRIME, AND THE CLEARANCE OF CRIMES COMMITTED

One of the things that we in the Hawaii Police Department are most proud of is our high record of clearances in criminal cases. Throughout the nation, according to FBI statistics, police clear about 20 percent of the major crimes reported.

During 1985, on the Big Island, our clearance rate of major crimes was 37.9 percent. We've been in that area of clearance rate for several years, and strive to maintain that level.

Crime on the Big Island has remained fairly level in recent years. We hit an all-time high, in 1981, of 5,623 major crimes. (By standard criminal statistics, these include murder, rape, robbery, aggravated assault, burglary, larceny and motor vehicle theft.)

That figure dropped to 5,516 in 1982, to 4,869 in 1983, to 4,697 in 1984, and rose to 5,111 for 1985. The 1985 figure was still well below the 1981 high of 5,623, although our population during that same period has increased by more than 10 percent.

Our population is up, our crime statistics are holding their own and our clearance rate is about double the national average. It is a record we believe we can be proud of.

One of our specific areas of emphasis has been crimes against visitors. The visitor is a comparatively easy victim for the criminal. People on vacation tend to let down their guard, to carry large sums of money and to be careless about their possessions.

Visitors also are frequently unable to identify people of various local races, and often do not wish to make the effort or take the time to insure that the culprit is prosecuted.

We've initiated two specific programs to deal with crimes against visitors. One is the deployment of special enforcement units, normally officers in plain clothes, working on irregular schedules, in areas such as Banyan Drive and Kailua-Kona.

Their focus has been to reduce public drinking, drug use or sales, harassment and other violations in these areas.

We have also initiated patrols on Cushman scooters in Kailua, to heighten police visibility and to increase law enforcement.

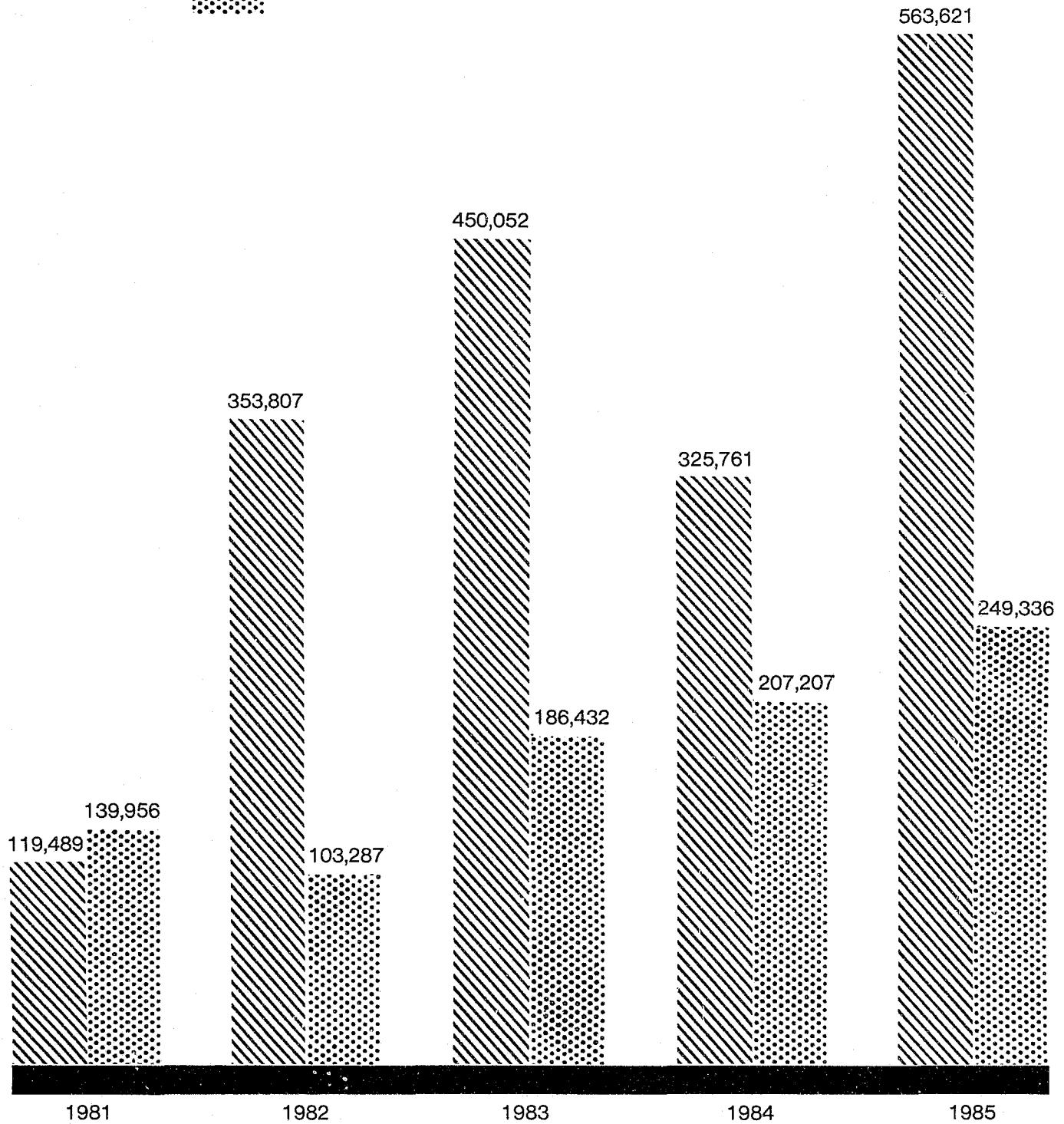
MARIJUANA ERADICATION



County of Hawaii



Rest of State



INHIBITING THE GROWTH AND DISTRIBUTION OF DRUGS ON OUR ISLAND

During 1985, the officers of the Hawaii Police Department pulled up five marijuana plants for every man, woman and child on the Big Island.

That is a lot of marijuana, a total of 563,621 plants. It was a substantial increase over 1984, when we destroyed 325,761 marijuana plants. Additional utilization of helicopters resulted in the large number of plants destroyed, in part because of increased funding from the U.S. Drug Enforcement Administration.

We also seized and destroyed 2,783 pounds of dry marijuana in 1985, and we arrested 461 people on marijuana related charges. Another 142 people were arrested on charges relating to the sale, use, distribution or possession of drugs other than marijuana.

The marijuana destroyed on the Big Island, by DEA estimates, had a street value of more than a half-billion dollars. We believe we were able to get only 15 to 20 percent of it.

In one major incident in late 1985, police officers raided a 'marijuana factory' at Glenwood where we seized three large green houses, a residence, 1,084 plants, 300 pounds of dried marijuana and \$52,000 in cash.

We are noticing a greater importation of cocaine into Hawaii, a trend that concerns all of us in law enforcement. In one major breakthrough, we were able to arrest 14 people in Hilo and Honolulu as the result of an investigation into a large-scale ring of cocaine importers.

During August, 1985, in the U.S. Attorney General's Operation Delta Nine, a nation-wide marijuana eradication project, officers of the Hawaii Police Department pulled up 82,779 marijuana plants, more than any state in the nation and about one-fifth of the national total.

In March, 1986, the department, and three individual officers, were honored by the Drug Enforcement Administration for helping in the fight against drugs.



Certificates of appreciation were presented by Joseph Brzostowski, resident agent in charge of the Honolulu office of the DEA, to:

*---Chief Guy A. Paul, who received the award on behalf of the entire department.

*---Captain Charles Wakita, now commander of the Hamakua District but formerly head of the vice squad in Hilo.

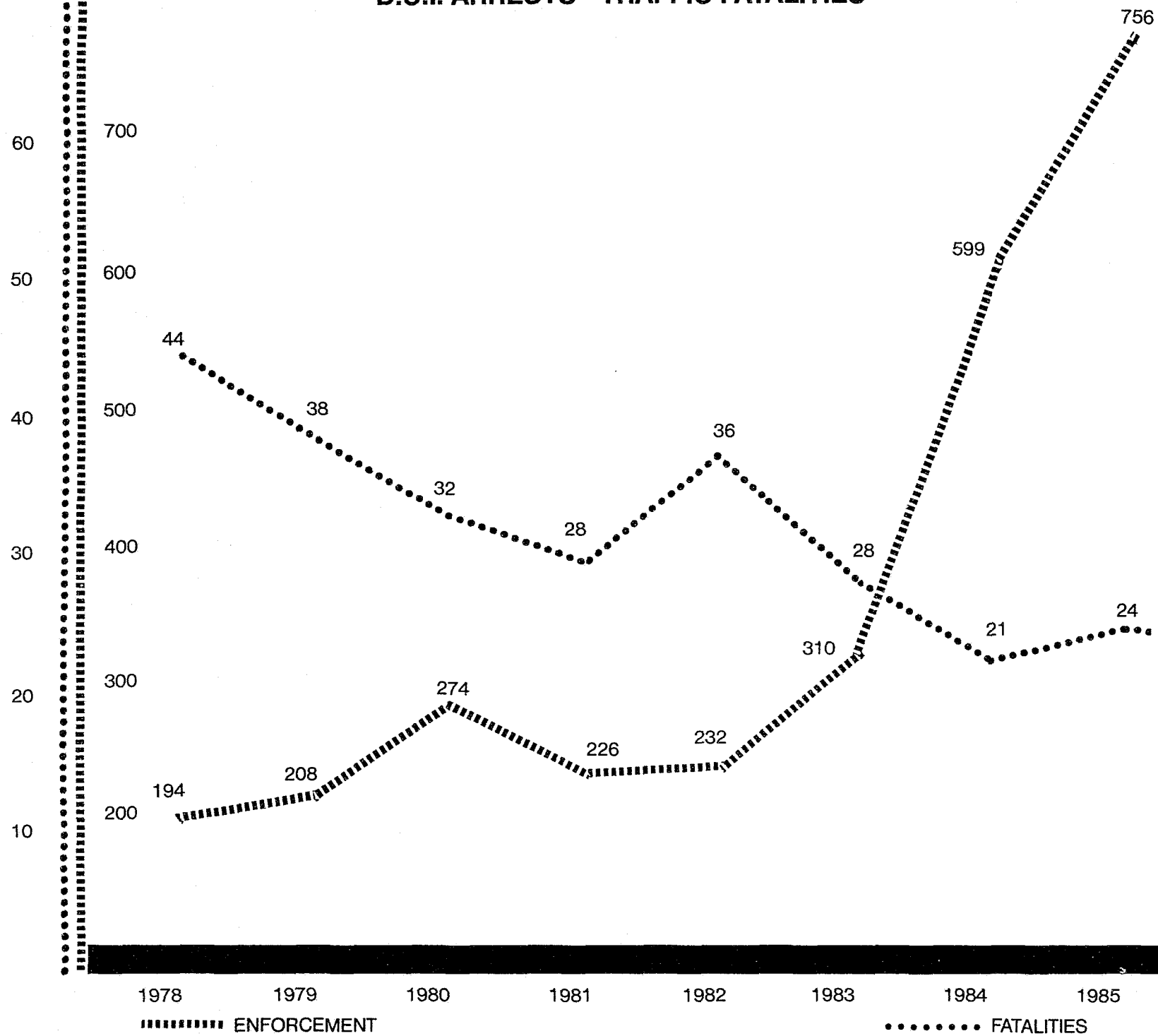
*---Lt. Dennis Correa, who heads the vice unit in Kona.

*---Detective James Ferry, now in the criminal investigation section in Kona, but formerly a vice officer in Hilo.

The department, Correa and Wakita were cited for their ongoing assistance in the eradication of marijuana.

Ferry's award came as a result of his investigative work into the cocaine distribution ring as well as the initiation of an investigation in Hawaii that led to a number of California arrests by the DEA.

D.U.I. ARRESTS - TRAFFIC FATALITIES



REDUCING TRAFFIC FATALITIES

The drinking driver, we believe, is a primary cause of traffic death on the Big Island's highways and roads. Because of that belief, the Hawaii Police Department has increased our effort at apprehending the drinking driver, hopefully before he kills himself or someone else.

Our total number of DUI arrests has been increasing annually. In the past two years, we have arrested more people for DUI than in the prior five years. And yet we continue to arrest them, by the day.

Traffic fatalities on the Big Island hit an all time high in 1978 of 44. With the increased emphasis on traffic enforcement since that time, the totals have decreased to 38 in 1979, to 32 in 1980, 28 in 1981, then increased to 36 in 1982, dropped to 28 in 1983, to 21 in 1984, and then showed a slight increase in 1985 to 24.

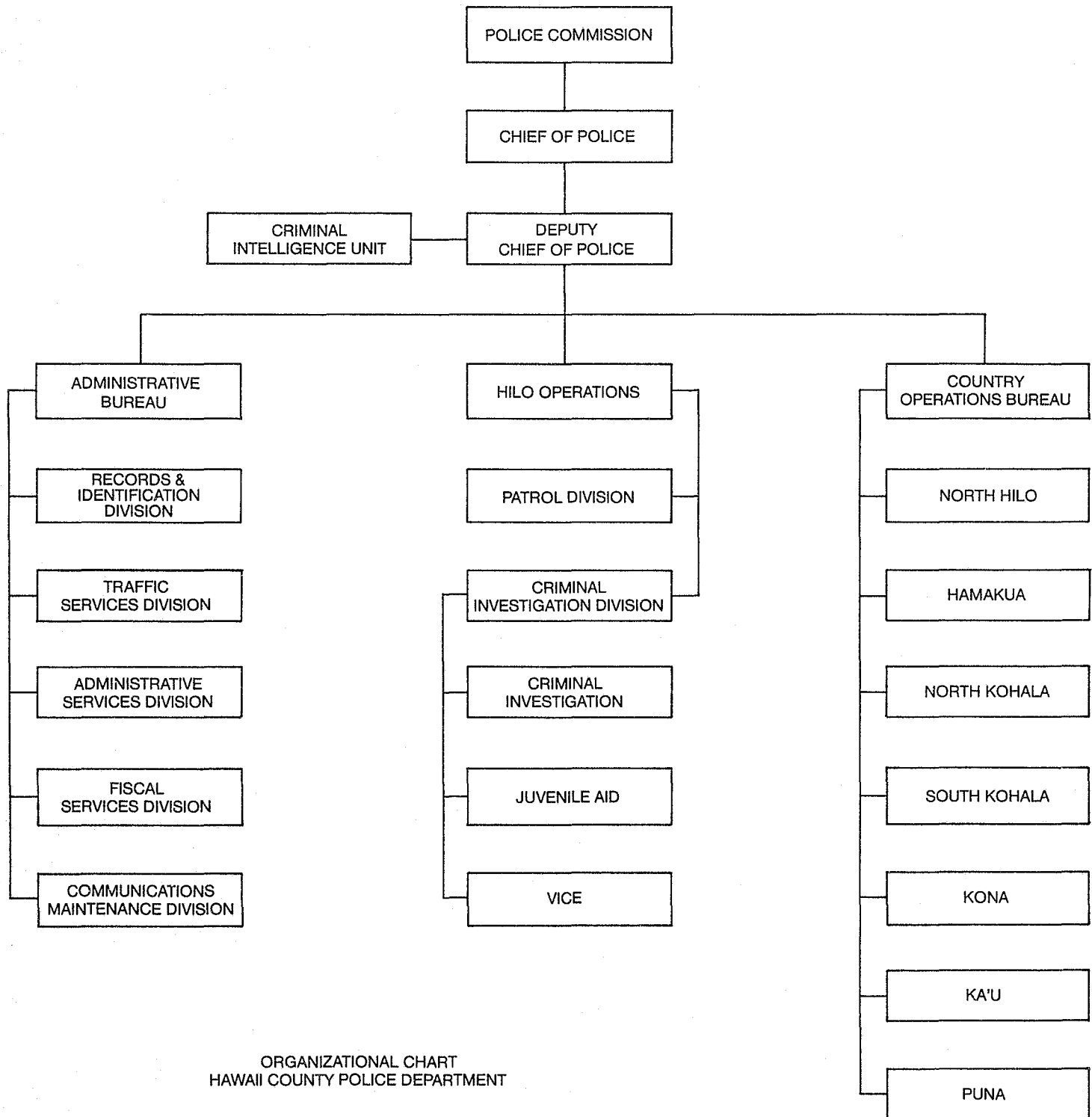
DUI arrests, meanwhile, have been increasing. We arrested 194 in 1978, 208 in 1979, 274 in 1980, 226 in 1981, 232 in 1982, 310 in 1983, 599 in 1984 and an all time record of 756 in 1985.

During the first half of 1986, we arrested 357 persons for DUI, and the emphasis continues.

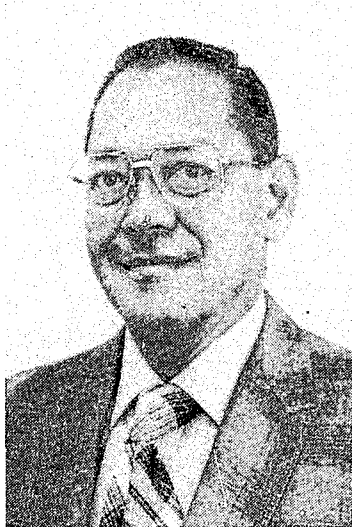
One trend that has caused some concern is the tendency of some drivers to get their second, third or even fourth DUI conviction. The two-year-old law strengthening Hawaii's DUI penalties requires mandatory license suspensions for first, and second offenses, and a license revocation for the third conviction, but some drivers have been arrested for driving under the influence during that suspension period.

Among the other factors influencing traffic enforcement have been new regulatory laws, especially the ordinance prohibiting overtaking of a school bus displaying alternating red lights, and the new seat belt law. While these new laws help to reduce traffic accidents and injuries, they also require a substantial amount of time to enforce.

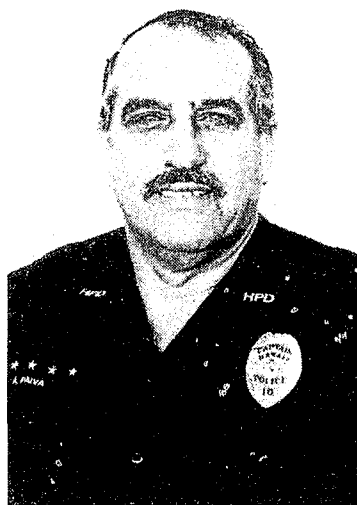
PERSONNEL CHART



ORGANIZATIONAL CHART
HAWAII COUNTY POLICE DEPARTMENT



Inspector Robert Pung



Capt. Albert Paiva



Sgt. Joseph Keliipaakaua

YEAR ENDS WITH DEPARTMENT'S RANKS FULL

The Hawaii Police Department ended the 1985-86 fiscal year at full strength, with a recruit class beginning on July 1, 1986.

The recruits, after four months of training, will go into the field to fill existing vacancies.

During the fiscal year, three veteran members of the department announced their retirement.

They were Inspector Robert Pung, head of the Administrative Bureau, Captain Albert Paiva, commander of the Honokaa District and Sgt. Joseph Keliipaakaua, a Kona patrol sergeant.

Pung, a member of the department for more than 30 years, was the senior of the department's three inspectors when he retired. He served most of his career in administration.

Paiva, a member of the department for more than 27 years, had served in Hamakua and Hilo, in traffic and patrol assignments, before being named Hamakua commander in 1984.

Keliipaakaua, also a member of the department for more than 30 years, served nearly his entire career in Kona.

Glenn Todd, who was commanding the Kona District, was promoted to inspector and named to head the Administrative Bureau. In other major promotions, lieutenants Charles Wakita and Raymond Simao were named captains and placed in command of the Honokaa and Kohala districts, respectively.



RECRUIT TRAINING THE BEAT GOES ON

One of the highlights of 1985 for the Hawaii Police Department was the graduation of a class of 20 police recruits, on Oct. 18, 1985.

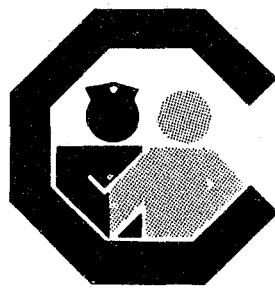
The officers were then assigned to duty stations around the Island of Hawaii.

County Council vice chairman Kalani Schutte, a former Honolulu Police officer, was the keynote speaker at the graduation ceremonies, where Police Chief Guy A. Paul, Mayor Dante Carpenter and Police Commission Chairman Jacqueline Blackshear handed out diplomas to the graduates.

Richard A. Miyamoto was honored for the highest academic standing in the class, and Robert Hironaka received the top award for firearms proficiency.

Paul H. Kealoha, Jr., was the class president, Martin Ellazar, Jr., was the vice president, and Keith Tom served as secretary-treasurer.

Joining the 20 police officers for the four-month class was James F. Weller, Jr., a conservation officer for the State Division of Conservation and Resources Enforcement.



**crime
stoppers**
Hawaii Inc.

COMMUNITY COOPERATION CRITICAL TO SUCCESS

The cooperation of the public in solving crime has been a major factor in the efforts of the Hawaii Police Department.

The CrimeStopper program, in 1985, solved an all-time high of 96 cases through information received from the public. During the first half of 1986, another 44 cases were solved through public cooperation.

Rewards are paid out by two community groups, in East Hawaii and in West Hawaii, who handle the chore of raising funds, deciding on the amount of the reward and paying the money.

Through the program, we recovered \$111,224 in stolen property and confiscated \$1.0 million worth of drugs in 1985, and, in the first six months of 1986, recovered \$18,185 worth of property and seized more than \$3 million worth of drugs.

A total of \$2,800 was paid out in 1985, and \$2,250 in the first half of 1986, in rewards.

FIVE HONORED FOR ACTION IN KONA SHOOTING CASE

Five members of the department were honored for outstanding service during a shooting incident in Kona in December, 1985.

Honored in ceremonies during a meeting of the Police Commission at the King Kamehameha Hotel in Kailua-Kona were:

*---Officer Julio Resureccion, who was cited for valor.

*---Officers Bradley Ballesteros and Keith Tom, who were cited for meritorious action.

*---Officer Leroy Victorino and dispatcher Linda Hirai, who received commendations.

All five were on duty in the Kona District during a shooting incident in the parking lot of a restaurant at the Honokohau Harbor.

Resureccion, a 15-year member of the police department, was the first officer on the scene at the restaurant parking lot.

He was cited for calmly assessing the situation, positioning the other officers as they arrived, exposing himself to possible danger while attempting to talk with the suspect after he locked himself in the car, and, after the suspect wounded himself, taking charge of the situation, getting medical help, recovering evidence and interviewing witnesses.

Ballesteros and Tom, who arrived at the scene after Resureccion, were cited for their efforts at maintaining control of the scene while the attempts to capture the suspect were in progress.

Ballesteros has been a police officer since July, 1982. Tom joined the department in 1985. Both have spent their entire careers, after recruit training, in Kona.

In letters to all three officers, Police Chief Guy A. Paul said "You were in a position where you could have used deadly force against the suspect with ample justification, but you avoided doing so.

"Your actions reflected an unusually high degree of professionalism and courage."

Victorino and Hirai were on duty at the police station when the calls came in.

Both were commended for their coolness during the frantic calls as they obtained information that was helpful to the officers arriving on the scene.

Victorino has been a police officer since 1979. Hirai has worked as a dispatcher in Kona since 1983.

1985 STATISTICS: AN OVERVIEW

The Hawaii Police Department's 1985 statistics showed an increase in major crime during the year, with the clearance rate remaining very high when compared to national average.

A total of 6,065 actual Part One (major) offenses were reported to police, compared to 5,448 for 1984. A total of 7,014 actual Part Two (lesser) offenses were reported to police in 1985, compared to 5,610 in 1984.

The grand total of actual cases reported was 13,079 for 1985, compared to 11,058 for 1984.

A total of 23,608 people, or nearly one out of every five living on the Big Island, received citations or were arrested for traffic violations during the year.

Of the department's \$12.5 million budget, 65 percent was spent on salaries, 4 percent on equipment and 30 percent on other expenses, including contractual services, materials and supplies.

It cost each resident of the Island of Hawaii \$114.76 for police service during 1985. There were 409 people on the island for every police officer.

Officers patrolled nearly three and a half million miles on the Island of Hawaii during 1985, ranging from the South Point area to Upolo Point in North Kohala and from Cape Kumukahi in Puna to the Kailua-Kona area of North Kona.

OFFENSES KNOWN TO POLICE & CLEARANCES 1985

CLASSIFICATION OF OFFENSES	Reported or Known	Unfounded	Actual	Cleared by Arrest or Otherwise*	Per Cent Cleared	Cleared	Cleared
						Cases Committed by Adults	Cases Committed by Juv.
PART I CLASSES							
1a. Murder/Nonnegligent							
Manslaughter	4	-	4	4	100.0	3	1
2. Rape	37	11	26	22	84.6	22	
3. Robbery	38	7	31	23	74.2	21	2
4. Aggravated Assault	106	3	103	87	84.5	78	9
5. Burglary	1,248	25	1,223	339	27.7	193	146
6. Larceny	3,624	106	3,518	979	27.8	597	382
7. Auto Theft	239	33	206	68	33.0	38	30
Crime Index Total	5,296	185	5,111	1,522	29.8	952	570
Crime Index Last Year	4,831	134	4,697	1,310	27.9	899	411
Per Cent Change			+8.8	+16.2		+5.9	+38.7
1b. Manslaughter by Negl.	-	-	-	-	-	-	-
8. Other Assaults	955	1	954	776	81.3	679	97
PART I TOTALS	6,251	186	6,065	2,298	37.9	1,631	667
PART I LAST YEAR	5,585	137	5,448	1,950	35.8	1,461	489
PER CENT CHANGE			+11.3	+17.8		+11.6	+36.4
PART II CLASSES							
9. Arson	36	-	36	13	36.1	10	3
10. Forgery/Counterfeit	536	2	534	309	57.9	296	13
11. Fraud	538	13	525	288	54.9	285	3
12. Embezzlement	21	-	21	7	33.3	7	-
13. Rec. Stolen Property	9	-	9	7	77.8	3	4
14. Vandalism	1,283	9	1,274	179	14.1	113	66
15. Weapons	107	1	106	77	72.6	68	9
16. Prostitution	-	1	(1)	-	-	-	-
17. Sex Offenses	118	14	104	65	62.5	52	13
18. Narcotic Drug Laws	953	8	945	556	58.8	385	171
19. Gambling	54	-	54	57	105.6	48	9
20. Offenses vs. Family	62	7	55	46	83.6	46	-
21. Driv. Under Influence	755	104	651	651	100.0	645	6
22. Liquor Laws	250	-	250	246	98.4	210	36
23.** Drunkenness	-	-	-	-	-	-	-
24. Disorderly Conduct	188	2	186	88	47.3	83	5
25. Vagrancy	-	-	-	-	-	-	-
26. All Other Offenses	1,986	40	1,946	1,412	72.6	1,263	149
27.** Truancy	-	-	-	-	-	-	-
28. Curfew	32	-	32	32	100.0	-	32
29. Runaways	296	9	287	279	97.2	-	279
PART II TOTALS	7,224	210	7,014	4,312	61.5	3,514	798
PART II LAST YEAR	5,726	116	5,610	3,131	55.8	2,490	641
PER CENT CHANGE			+25.0	+37.7		+41.1	+24.5
GRAND TOTAL This Year	13,475	396	13,079	6,610	50.5	5,145	1,465
GRAND TOTAL Last Year	11,311	253	11,058	5,081	46.0	3,951	1,130
PER CENT CHANGE			+18.3	+30.1		+30.2	+29.6

*Includes clearances of cases from previous years.

**Not a criminal offense as of 1969.

PERSONS CHARGED AND DISPOSITION

1985

DISPOSITIONS*

CLASSIFICATION OF OFFENSES	Total Arrested	Adults Arrested	Juveniles Arrested	Released	Total Charged	Adults Guilty of Offense Charged	Adults Guilty of Lesser Offense	Bail Forfeited	Acquitted or Otherwise Dismissed	Referred to Juvenile Court	Pending
PART I CLASSES											
1a. Murder	2	1	1	(1)	3	2	3	-	-	1	1
b. Manslaughter by Negli.	10	8	2	1	9	7	-	-	-	2	-
2. Rape	11	10	1	3	8	3	1	-	4	-	1
3. Robbery	28	18	10	7	21	10	2	-	7	6	4
4. Aggravated Assault	45	39	6	10	35	10	6	-	5	5	13
5. Burglary	237	90	147	34	203	41	8	-	17	139	10
6a. Larceny-\$200 & over	67	36	31	19	48	10	-	-	7	30	3
b. Larceny-\$50 to \$200	99	32	67	8	91	17	1	-	11	62	7
c. Larceny-Under \$50	514	327	187	33	481	172	-	7	107	172	61
7. Auto Theft	62	27	35	19	43	8	-	-	7	31	1
8. Other Assaults	166	111	55	13	153	48	3	-	47	55	15
PART I TOTAL	1,241	699	542	146	1,095	328	24	7	212	503	116
PART II CLASSES											
9. Arson	3	1	2	-	3	-	-	-	1	2	1
10. Forgery/Counterfeiting ...	16	15	1	4	12	10	-	-	1	1	1
11. Fraud	67	64	3	10	57	20	1	-	33	3	7
12. Embezzlement	3	3	-	-	3	3	-	-	1	-	-
13. Receiving Stolen Prop.	4	-	4	-	4	-	-	-	-	4	-
14. Vandalism	128	47	81	7	121	24	2	-	11	82	22
15. Weapons	67	60	7	6	61	33	-	-	26	7	7
16. Prostitution	-	-	-	-	-	-	-	-	-	-	-
17. Sex Offenses	20	11	9	(3)	23	7	-	-	6	9	2
18. Narcotic Drug Laws	631	420	211	122	509	213	5	2	106	193	64
19. Gambling	48	33	15	14	34	20	-	-	16	11	3
20. Offenses vs. Family	2	2	-	-	2	2	-	-	-	-	-
21. Driv. Under Influence	759	747	12	184	575	383	40	2	77	7	168
22. Liquor Laws	396	335	61	23	373	248	-	19	44	48	54
23.** Drunkenness	-	-	-	-	-	-	-	-	-	-	-
24. Disorderly Conduct	81	75	6	5	76	42	-	-	14	2	26
25. Vagrancy	-	-	-	-	-	-	-	-	-	-	-
26. All Other Offenses	982	836	146	54	928	267	5	32	375	142	249
27.** Truancy	-	-	-	-	-	-	-	-	-	-	-
28. Curfew	46	-	46	4	42	-	-	-	-	42	-
29. Runaways	226	-	226	9	217	-	-	-	-	217	-
PART II TOTAL	3,479	2,649	830	439	3,040	1,272	53	55	711	769	593
GRAND TOTAL	4,720	3,348	1,372	585	4,135	1,600	77	62	923	1,272	709
TRAFFIC ARRESTS											
Hazardous Violations	5,477	5,246	231	115	5,362	NOT	RECORDED		18	-	-
Other Violations	12,027	11,567	460	10	12,017	NOT	RECORDED		5	-	-
Parking Violations	6,229	6,229	-	-	6,229	NOT	RECORDED		-	-	-
Traffic Arrests Total	23,733	23,042	691	125	23,608	NOT	RECORDED		23	-	-

*Includes dispositions of cases from previous years.

**Not a criminal offense as of 1969.

**Includes Traffic Task Force Unit Totals.

OFFENSES AND COMPLAINTS KNOWN TO POLICE BY DISTRICT-COUNTY OF HAWAII 1985

CLASSIFICATION OF OFFENSES

PART I CLASSES		Total	South Hilo	North Hilo	Hamakua	North Kohala	South Kohala	Kona	Ka'u	Puna
1a.	Murder/Non-negligent.....									
	Manslaughter.....	4	1	-	-	-	-	2	-	1
1b.	Manslaughter by Negli.....	-	-	-	-	-	-	-	-	-
2.	Rape.....	37	18	-	1	3	1	10	-	4
3.	Robbery.....	38	16	-	1	-	-	19	1	1
4.	Aggravated Assault.....	106	38	2	3	-	4	36	5	18
5.	Burglary.....	1,248	475	11	34	28	52	393	36	219
6.	Larceny.....	3,624	1,711	35	76	68	196	1,132	82	324
7.	Auto Theft.....	239	98	4	5	4	7	86	3	32
8.	Other Assaults.....	955	398	25	14	17	49	318	27	107
PART I TOTALS.....		6,251	2,755	77	134	120	309	1,996	154	706
PART II CLASSES										
9.	Arson.....	36	15	-	4	-	2	8	1	6
10.	Forgery/Counterfeiting.....	536	260	-	-	8	13	245	-	10
11.	Fraud.....	538	330	-	-	3	16	177	4	8
12.	Embezzlement.....	21	3	-	-	1	-	17	-	-
13.	Receiving Stolen Prop.....	9	4	-	2	-	1	-	1	1
14.	Vandalism.....	1,283	594	18	43	36	62	343	39	148
15.	Weapons.....	107	31	2	2	4	4	35	12	17
16.	Prostitution.....	-	-	-	-	-	-	-	-	-
17.	Sex Offenses.....	118	52	6	-	2	3	29	5	21
18.	Narcotic Drug Laws.....	953	301	14	42	37	35	240	74	210
19.	Gambling.....	54	49	1	1	-	-	-	1	2
20.	Offenses vs. Family.....	62	25	2	2	3	2	10	2	16
21.	Driv. Under Influence.....	755	264	2	15	10	30	347	7	80
22.	Liquor Laws.....	250	106	1	4	2	7	113	2	15
23.*	Drunkenness.....	-	-	-	-	-	-	-	-	-
24.	Disorderly Conduct.....	188	63	2	2	1	6	95	3	16
25.	Vagrancy.....	-	-	-	-	-	-	-	-	-
26.	All Other Offenses.....	1,986	624	38	38	53	107	737	67	322
27.*	Truancy.....	-	-	-	-	-	-	-	-	-
28.	Curfew.....	32	9	1	-	-	1	21	-	-
29.	Runaways.....	296	141	1	10	7	16	50	6	65
PART II TOTALS.....		7,224	2,871	88	165	167	305	2,467	224	937
PART I & II TOTALS.....		13,475	5,626	165	299	287	614	4,463	378	1,643
TRAFFIC ENFORCEMENT										
Hazardous Violations.....		5,477	1,293	94	117	85	425	2,660	297	506
Other Violations.....		12,027	3,181	275	319	271	973	4,558	345	2,105
Parking Violations.....		6,229	1,110	1	48	36	268	4,509	6	251
**Traffic Enforce. Totals.....		23,733	5,584	370	484	392	1,666	11,727	648	2,862
Traffic Accidents Totals.....		2,426	1,118	58	87	66	173	589	65	270
Numbered Misc. Public.....										
Reports Totals.....		32,068	10,994	923	1,341	1,280	2,232	10,292	1,334	3,672
GRAND TOTALS.....		71,702	23,322	1,516	2,211	2,025	4,685	27,071	2,425	8,447

*Not a criminal offense as of 1969.

**Includes Traffic Task Force Unit Totals.

DISTRIBUTION OF ALL COMPLAINTS AND NUMBERED REPORTS BY DISTRICT AND WATCH 1985

	TOTAL	S. HILO	N. HILO	HAMAKUA	N. KOH.	S. KOH.	KONA	KA'U	PUNA
FIRST WATCH (11PM-7AM)									
Part I Offenses	1,036	505	5	15	15	34	345	32	85
Part II Offenses	1,204	535	7	22	19	44	445	18	114
Traffic Violations	3,251	1,011	10	40	25	205	1,579	43	338
MV Accidents	448	178	10	20	13	41	118	7	61
Misc. Public Reports	6,731	2,641	101	176	133	411	2,490	173	606
TOTAL	12,670	4,870	133	273	205	735	4,977	273	1,204
SECOND WATCH (7AM-3PM)									
Part I Offenses	3,089	1,321	49	78	62	168	946	76	389
Part II Offenses	3,581	1,411	56	91	90	152	1,132	133	516
Traffic Violations	10,706	2,245	215	268	221	868	5,171	297	1,421
MV Accidents	932	470	21	28	26	54	201	33	99
Misc. Public Reports	11,937	3,763	431	631	672	844	3,510	569	1,517
TOTAL	30,245	9,210	772	1,096	1,071	2,086	10,960	1,108	3,942
THIRD WATCH (3PM-11PM)									
Part I Offenses	2,126	929	23	41	43	107	705	46	232
Part II Offenses	2,439	925	25	52	58	109	890	73	307
Traffic Violations	9,776	2,328	145	176	146	593	4,977	308	1,103
MV Accidents	1,046	470	27	39	27	78	270	25	110
Misc. Public Reports	13,400	4,590	391	534	475	977	4,292	592	1,549
TOTAL	28,787	9,242	611	842	749	1,864	11,134	1,044	3,301
TOTAL ALL WATCHES									
Part I Offenses	6,251	2,755	77	134	120	309	1,996	154	706
Part II Offenses	7,224	2,871	88	165	167	305	2,467	224	937
Traffic Violations	23,733	5,584	370	484	392	1,666	11,727	648	2,862
MV Accidents	2,426	1,118	58	87	66	173	589	65	270
Misc. Public Reports	32,068	10,994	923	1,341	1,280	2,232	10,292	1,334	3,672
GRAND TOTAL	71,702	23,322	1,516	2,211	2,025	4,685	27,071	2,425	8,447

OFFENSES CLEARED BY JUVENILE ARRESTS OR OTHERWISE* BY DISTRICT 1985

<u>DISTRICT</u>	<u>PART I</u>	<u>PART II</u>	<u>TRAFFIC VIOLATIONS</u>	<u>TOTAL OFFENSES</u>
South Hilo.....	287	345	250	882
North Hilo.....	21	17	12	50
Hamakua.....	21	26	29	66
North Kohala.....	25	38	36	99
South Kohala.....	52	44	62	158
Kona.....	162	179	228	569
Ka'u.....	25	27	25	77
Puna.....	74	122	59	255
 TOTAL	 667	 798	 691	 2,156

*Warned or Reprimanded
Lack of Prosecution

JUVENILE ARRESTS BY DISTRICT 1985

<u>DISTRICT</u>	<u>PART I</u>	<u>PART II</u>	<u>TRAFFIC ARRESTS</u>	<u>TOTAL</u>
South Hilo.....	213	350	250	813
North Hilo.....	8	9	12	29
Hamakua.....	12	32	19	63
North Kohala.....	37	30	36	103
South Kohala.....	40	49	62	151
Kona.....	143	201	228	572
Ka'u.....	19	23	25	67
Puna.....	70	136	59	265
TOTAL	542	830	691	2,063

JUVENILE ARRESTS BY AGE & SEX 1985

CLASSIFICATION OF OFFENSE

PART I CLASSES			Both		Total		10 and Under		11-12		13-14		15		16		17	
			Sexes		M	F	M	F	M	F	M	F	M	F	M	F	M	F
1a.	Murder/Nonnegli.																	
	Manslaughter.....		1		1	-	-	-	-	-	-	-	-	-	-	-	1	-
1b.	Manslaughter by Negli.....		2		1	1	-	-	-	-	-	-	-	-	-	-	1	1
2.	Rape.....		1		1	-	-	-	-	-	-	-	-	1	-	-	-	-
3.	Robbery.....		10		10	-	-	-	1	-	-	-	5	-	4	-	-	-
4.	Aggravated Assault.....		6		6	-	-	-	1	-	1	-	4	-	-	-	-	-
5.	Burglary.....		147		131	16	3	4	20	3	41	4	29	1	21	3	17	1
6a.	Larceny-\$200 & Over.....		31		24	7	1	-	3	-	6	4	-	1	9	-	5	2
6b.	Larceny-\$50 to \$200.....		67		49	18	2	-	3	-	14	8	15	5	8	2	7	3
6c.	Larceny-Under \$50.....		187		133	54	12	-	13	8	49	15	25	13	20	9	14	9
7.	Auto Theft.....		35		30	5	-	-	1	-	8	1	5	2	10	1	6	1
8.	Other Assaults.....		55		35	20	-	-	-	-	3	5	4	6	15	4	13	5
PART I TOTALS.....			542		421	121	18	4	42	11	122	37	87	28	88	19	64	22
PART II CLASSES																		
9.	Arson.....		2		2	-	-	-	-	-	2	-	-	-	-	-	-	-
10.	Forgery/Counterfeiting.....		1		-	1	-	-	-	-	-	-	-	-	-	-	-	1
11.	Fraud.....		3		1	2	-	-	-	-	1	1	-	-	-	-	-	1
12.	Embezzlement.....		-		-	-	-	-	-	-	-	-	-	-	-	-	-	-
13.	Receiving Stolen Prop.....		4		4	-	-	-	-	-	1	-	1	-	-	-	2	-
14.	Vandalism.....		81		63	18	4	-	7	-	23	4	14	1	4	3	11	10
15.	Weapons.....		7		7	-	-	-	1	-	3	-	2	-	-	-	1	-
16.	Prostitution.....		-		-	-	-	-	-	-	-	-	-	-	-	-	-	-
17.	Sex Offenses.....		9		9	-	5	-	-	-	-	-	2	-	2	-	-	-
18.	Narcotic Drug Laws.....		211		163	48	1	-	5	1	55	19	36	15	40	6	26	7
19.	Gambling.....		15		15	-	-	-	-	-	5	-	3	-	5	-	2	-
20.	Offenses vs. Family.....		-		-	-	-	-	-	-	-	-	-	-	-	-	-	-
21.	Driv. Under Influence.....		12		9	3	-	-	-	-	-	-	3	-	2	1	4	2
22.	Liquor Laws.....		61		41	20	-	-	-	-	4	6	8	4	10	6	19	4
23.*	Drunkenness.....		-		-	-	-	-	-	-	-	-	-	-	-	-	-	-
24.	Disorderly Conduct.....		6		4	2	-	-	-	-	1	-	1	-	1	1	1	1
25.	Vagrancy.....		-		-	-	-	-	-	-	-	-	-	-	-	-	-	-
26.	All Other Offenses.....		146		94	52	1	-	7	-	15	18	23	11	24	14	24	9
27.*	Truancy.....		-		-	-	-	-	-	-	-	-	-	-	-	-	-	-
28.	Curfew.....		46		40	6	-	-	1	-	9	1	14	3	7	1	9	1
29.	Runaways.....		226		88	138	1	-	4	4	34	45	25	42	17	28	7	19
PART II TOTALS.....			830		540	290	12	-	25	5	152	94	133	76	112	60	106	55
GRAND TOTALS.....			1,372		961	411	30	4	67	16	274	131	220	104	200	79	170	77

TRAFFIC ENFORCEMENT

Hazardous Violations.....	232	192	40	2	-	-	-	-	1	25	4	71	16	94	19
Other Violations.....	459	357	102	-	-	2	2	17	10	62	13	105	38	171	39
Parking Violations.....	-	-	-	-	-	-	-	-	-	-	-	-	-	-	-
TRAFFIC ENFORCEMENT TOTAL.....	691	549	142	2	-	2	2	17	11	87	17	176	54	265	58

*Not a criminal offense as of 1969.

SIX YEAR COMPARISON OF JUVENILE ARRESTS

COUNTY OF HAWAII

1980-1985

CLASSIFICATION OF OFFENSES

		1980	1981	1982	1983	1984	1985
PART I CLASSES							
1a.	Murder/Nonnegli. Manslaughter	3	-	-	-	-	1
b.	Manslaughter by Negligence.....	-	-	-	-	-	2
2.	Rape.....	1	-	2	4	2	1
3.	Robbery.....	11	6	9	2	5	10
4.	Aggravated Assault.....	6	2	3	-	2	6
5.	Burglary.....	137	116	131	98	99	147
6a.	Larceny-\$50 & over.....	63	65	93	63	55	98
b.	Larceny-Under \$50.....	119	102	195	131	147	187
7.	Auto Theft.....	36	18	37	43	37	35
8.	Other Assaults	38	37	50	50	53	55
Part I Totals		414	346	520	391	400	542
PART II CLASSES							
9.	Arson.....	2	4	3	10	3	2
10.	Forgery/Counterfeiting.....	6	2	-	1	2	1
11.	Fraud.....	2	2	5	5	6	3
12.	Embezzlement.....	-	-	-	-	-	-
13.	Receiving Stolen Property.....	2	4	6	5	1	4
14.	Vandalism.....	40	24	31	35	42	81
15.	Weapons.....	4	6	1	3	1	7
16.	Prostitution	-	-	-	-	-	-
17.	Sex Offenses.....	3	1	3	3	7	9
18.	Narcotic Drug Laws.....	76	130	68	83	131	211
19.	Gambling.....	11	-	47	-	16	15
20.	Offenses vs.Family	-	-	-	-	-	-
21.	Driving Under Influence.....	7	5	1	5	8	12
22.	Liquor Laws.....	4	41	8	17	27	61
23.*	Drunkenness.....	-	-	-	-	-	-
24.	Disorderly Conduct.....	9	8	6	8	3	6
25.	Vagrancy.....	-	-	-	-	-	-
26.	All Other Offenses.....	52	85	242	162	116	146
27.*	Truancy.....	-	-	-	-	-	-
28.	Curfew.....	44	92	43	24	77	46
29.	Runaways.....	156	165	230	152	215	226
Part II Totals		418	569	694	513	655	830
GRAND TOTAL.....		832	915	1,214	904	1,055	1,372

*Not a criminal offense as of 1969.

MOTOR VEHICLE TRAFFIC ACCIDENTS BY DISTRICTS 1979-1985

DISTRICT	1979	1980	1981	1982	1983	1984	1985	No. Fatal & Injury Acc.	No. Persons Killed	No. Persons Injured	Property Damage Only
S. Hilo.....	1,005	1,032	985	977	943	1,145	1,118	552	7	839	566
N. Hilo.....	62	62	49	63	44	54	58	27	1	40	31
Hamakua.....	69	74	55	70	76	74	87	42	-	51	45
N. Kohala.....	33	44	28	35	56	46	66	47	2	66	19
S. Kohala.....	137	133	149	175	145	147	173	97	3	134	76
Kona.....	602	539	517	516	478	567	589	318	9	463	271
Ka'u.....	47	59	57	47	53	54	65	32	-	57	33
Puna.....	189	177	211	246	232	254	270	142	2	317	128
TOTAL	2,144	2,120	2,051	2,129	2,027	2,341	2,426	1,257	24	1,967	1,169

TRAFFIC ENFORCEMENT BY DISTRICTS

OFFENSE	Total												
	Total	Adult	Juv.	Reisd.	Arrested & Cited	S. Hilo	N. Hilo	Hamakua	North Kohala	South Kohala	Kona	Ka'u	Puna
Hazardous Viol. Total.....	5,477	5,246	231	115	5,362	1,293	94	117	85	425	2,660	297	506
Driv. Under Influence.....	756	744	12	115	641	262	2	13	10	30	352	7	80
Speeding.....	3,575	3,445	130	-	3,575	519	71	94	59	346	1,914	273	299
Due Care.....	32	31	1	-	32	18	-	1	-	3	5	-	5
Reckless Driving.....	38	32	6	-	38	17	-	1	4	6	6	2	2
Traffic Signals.....	119	111	8	-	119	94	-	-	-	-	25	-	-
Stop Sign.....	333	305	28	-	333	212	1	1	3	6	92	1	17
Other Regulatory Sign.....	82	73	9	-	82	53	-	2	-	1	22	-	4
Improper Passing.....	252	241	11	-	252	13	18	3	4	24	108	7	75
Improper Turning.....	55	50	5	-	55	29	-	-	1	1	22	-	2
Right of Way - Vehicle.....	54	50	4	-	54	23	-	1	-	1	26	1	2
Right of Way - Pedestrian.....	2	2	-	-	2	1	-	-	-	-	-	-	1
Following Too Closely.....	6	5	1	-	6	1	-	1	-	-	2	1	1
No or Improper Signal.....	5	5	-	-	5	2	-	-	-	-	2	1	-
Improper Starting.....	-	-	-	-	-	-	-	-	-	-	-	-	-
Improper Backing.....	2	1	1	-	2	1	-	-	-	-	-	-	1
Failure to Drive - Right.....	70	66	4	-	70	26	1	-	1	3	34	-	5
Other Hazardous Viol.	48	47	1	-	48	14	-	-	-	1	28	2	3
Other Violation.....	48	38	10	-	48	8	1	-	3	3	22	2	9
Other Violation.....	12,027	11,567	460	10	12,017	3,181	275	319	271	973	4,559	345	2,105
Parking Violation.....	6,229	6,229	-	-	6,229	1,110	1	48	36	268	4,509	6	251
TOTAL.....	23,733	23,042	691	125	23,608	5,584	370	484	392	1,666	11,727	648	2,862
Violator Contacts.....	37,392					10,022	1,228	2,749	1,115	3,988	12,185	1,641	4,464
Hazardous.....	25,959					7,051	902	2,147	715	2,803	8,497	1,095	2,749
Parking.....	3					1	-	-	-	2	-	-	-
Others.....	11,430					2,970	326	602	400	1,183	3,688	546	1,715
GRAND TOTAL.....	61,125					15,606	1,598	3,233	1,507	5,654	23,912	2,289	7,326

ANALYSIS OF TRAFFIC ACCIDENTS BY POPULATION, LICENSED DRIVERS MOTOR VEHICLES, AND GASOLINE CONSUMPTION 1981-1985

	<u>1981</u>	<u>1982</u>	<u>1983</u>	<u>1984</u>	<u>1985</u>
Accidents.....	2,051	2,129	2,027	2,341	2,426
Injuries.....	1,785	1,795	1,684	1,859	1,967
Killed.....	28	36	28	21	24
Population (Approximate).....	97,000	98,000	101,000	106,000	109,700
Number of Licensed Drivers.....	60,171	63,610	64,560	65,578	68,177
Registered Motor Vehicles.....	77,584	76,118	78,976	82,346	87,615
Fuel Consumption (Gallons).....	41,164,107	40,683,109	42,042,754	44,585,388	44,742,935
Gasoline.....	(38,890,738)	(38,212,319)	(39,296,794)	(41,388,164)	(41,872,370)
Diesel Oil & Liq. Pet. Gas (Highway use).....	(2,273,369)	(2,470,790)	(2,745,960)	(3,197,224)	(2,870,565)
Rate Per 10,000 Population					
Accidents.....	211.4	217.2	200.7	220.0	221.1
Injuries.....	184.0	183.2	166.7	174.7	179.3
Deaths.....	2.9	3.7	2.8	2.0	2.1
Rate Per 1,000 Licensed Drivers					
Accidents.....	34.1	33.5	31.4	35.7	35.9
Injuries.....	29.7	28.2	26.1	28.4	28.9
Deaths.....	.47	.57	.43	.32	.35
Rate Per 1,000 Motor Vehicles					
Accidents.....	26.4	28.0	25.7	28.4	27.7
Injuries.....	23.0	23.6	21.3	22.6	22.5
Deaths.....	.36	.47	.35	.26	.27
Rate Per 1,000,000 Gallons Fuel Consumed					
Accidents.....	49.8	52.3	48.2	52.5	54.2
Injuries.....	43.4	44.1	40.1	41.7	44.0
Deaths.....	.68	.88	.67	.47	.53

MISCELLANEOUS SERVICES AND REPORTS 1981-1985

	1981	1982	1983	1984	1985
Motor Vehicle Non-Traffic Accidents.....	225	202	247	311	369
Minor MV Non-Traffic Accidents.....	553	566	596	608	806
Minor MV Traffic Accidents	1,098	1,126	938	915	930
Lost, Found Property	1,494	1,441	1,392	1,367	1,547
Building Checks (Numbered).....	3,093	2,911	3,554	3,554	3,665
Doors, Windows Open	725	631	563	578	869
Persons Missing.....	57	39	39	56	50
Fires Reported	471	264	495	391	355
Safety	973	1,315	1,453	1,629	2,185
Arrests for Other Jurisdictions	72	93	89	113	140
Domestic Trouble.....	893	830	866	999	1,295
Transportation	81	101	93	98	132
Outside Assistance	182	168	249	398	232
A.W.O.L.	11	7	11	1	2
Unattended Deaths	131	134	128	135	170
Coroner's Inquest	90	57	67	113	114
Attempted Suicides.....	76	81	88	103	128
Suicidal Deaths.....	8	16	12	12	12
Strayed Animals	1,048	1,013	1,126	1,274	1,264
Minor Nuisances	4,125	4,539	4,795	5,445	6,058
Notifications.....	58	65	46	78	58
Civil Matter	173	172	124	139	144
Insanity Cases.....	31	50	36	64	69
Drunkenness Assistance	60	43	15	24	22
Other Personal Services.....	6,505	7,066	8,014	9,117	10,864
Public Accident Reports.....	233	229	260	343	325
Industrial Accident Reports	113	101	98	111	104
Home Accident Reports	75	86	131	184	159
Beat Condition Reports.....	1,368	1,694	1,957	1,516	1,468
Other Un-numbered Misc. Services.....	11,705	8,098	10,508	10,764	12,629
Violator Contacts.....	25,943	28,070	35,858	33,731	37,392
TOTAL.....	61,670	61,208	73,848	74,171	83,557

HOW THE MONEY WAS SPENT 1985

<u>SALARIES</u>	<u>AMOUNT</u>	<u>PERCENT</u>
Administration and personnel.....	\$8,275,476.00	65.7%
 EQUIPMENT		
Policing Equipment.....	\$515,887.00	4.1%
 EXPENSE		
Contractual Services.....	\$2,103,408.00	
Materials & Supplies	684,030.00	
Other Charges	443,935.00	
1984-1985 Encumbrance	566,757.00	
Total	<u>\$3,798,130.00</u>	30.2%
 GRAND TOTAL.....	 <u><u>\$12,589,493.00</u></u>	 100.0%

PER CAPITA COST OF POLICE SERVICE 1983-1985

	1983	1984	1985
Total Expenditures.....	\$10,667,042.00	\$11,886,141.00	\$12,589,493.00
Population (Approximate).....	101,000*	106,400*	109,700*
Per Capita Cost	105.61	111.71	114.76

*State Department of Planning & Economic Development Estimate.

RATIO OF POPULATION TO POLICE OFFICERS 1980-1985 (As of December 31)

	1980	1981	1982	1983	1984	1985
SWORN						
Authorized Strength.....	266	274	270	270	273	288
Vacancies	25	26	5	19	11	20
Actual Strength.....	241	248	265	251	262	268
CIVILIAN*						
Authorized Strength.....	57	59	64	70	82	83
Vacancies	9	8	3	1	11	2
Actual Strength.....	48	51	61	69	71	81
Population*.....	92,053	97,000	98,000	101,000	106,400	109,700
Number of Persons						
Per Police Officer.....	382	391	370	402	406	409

*Does not include temporary, part-time, or short-term employees.

**State Department of Planning & Economic Development estimate.

COMPARATIVE SUMMARY OF THE ANNUAL REPORT 1982-1985

ADMINISTRATION:	1982	1983	1984	1985
Total Numerical Strength, Dec. 31	326	320	333	349
Appointments.....	50	13	39	38
Separations	25	19	26	22
Average Age of Police Officers	34.5	35.4	36.7	36.2
Average Length of Service, Years	9.2	10.1	11.0	10.4
Total General Orders Issued	1	15	14	10
Total Special Orders Issued	0	0	0	0
Total Administrative Notices Issued.....	3	9	10	11
Total Reserve Orders Issued.....	0	0	1	0
Total Memorandums Issued.....	59	51	95	122
Total Personnel Orders Issued	67	68	90	80
Total Disciplinary Orders Issued.....	8	11	24	16
EXPENDITURES:				
Actual Policing Expenses	\$9,603,373.00	\$10,667,042.00	\$11,886,141.00	\$12,589,493.00
Per Capita Cost	97.99	105.61	111.71	114.76
Total Patrol Mileage	3,240,576	3,530,283	3,134,402	3,476,150
Auto Patrol, Cost Per Mile	0.296	0.302	0.379	0.362
OFFENSES AND ARRESTS:				
PART I OFFENSES:				
Actual Offenses.....	6,204	5,512	5,448	6,065
Cleared by Arrest or Otherwise.....	2,207	1,959	1,950	2,298
Per Cent Cleared	35.6	35.5	35.8	37.9
Persons Charged	1,171	1,082	1,009	1,095
PART II OFFENSES (Excl. Traffic):				
Actual Offenses.....	4,091	4,582	5,610	7,014
Cleared by Arrest or Otherwise.....	2,981	2,565	3,131	4,312
Per Cent Cleared	60.8	56.0	55.8	61.5
Persons Charged	2,057	1,768	2,279	3,040
REPORTS AND COMPLAINTS RECEIVED:				
Part I Offenses	6,375	5,652	5,585	6,251
Part II Offenses (Excl. Traf. Viol.).....	4,974	4,652	5,726	7,224
Traffic Violations	29,282	28,683	26,910	23,733
MV Traffic Accidents.....	2,129	2,027	2,341	2,426
Misc. Reports (Numbered)	23,346	25,525	28,160	32,068
All Other Misc. Services	8,098	10,508	10,764	12,629
TOTAL COMPLAINTS AND REPORTS	74,204	77,047	79,486	84,331
JUVENILES:				
PART I OFFENSES:				
Offenses Committed by Juveniles	752	505	489	667
Juveniles Warned & Reprimanded.....	176	170	138	193
Juveniles Referred to Other Depts.....	1	0	1	2
Juveniles Arrested.....	520	391	400	542
Total Juveniles Handled	97	561	539	737
PART II OFFENSES (Excl. Traffic):				
Offenses Committed by Juveniles	695	504	641	798
Juveniles Warned & Reprimanded.....	168	104	141	163
Juveniles Referred to Other Depts.....	1	0	0	0
Juveniles Arrested.....	694	513	655	830
Total Juveniles Handled	863	617	796	993
Juveniles Traffic Citations & Arrests.....	498	252	326	691

Comparative Summary of the Annual Report (continued)

1982-1985

MOTOR VEHICLE TRAFFIC ACCIDENTS:	1982	1983	1984	1985
Fatal Accidents	34	25	19	23
Injury Accidents.....	1,122	1,122	1,206	1,234
Property Damage Only Accidents	973	880	1,116	1,169
TOTAL MOTOR VEHICLE TRAF. ACC.	2,129	2,027	2,341	2,426
Number of Persons Killed	36	28	21	24
Number of Persons Injured	1,795	1,684	1,859	1,967
Minor Traffic Accidents	1,126	938	915	930
TRAFFIC ENFORCEMENT:				
Citations & Arrests, Hazardous Traffic Violations.....	4,708	4,997	7,063	5,477
Citations & Arrests, Other Traffic Violations.....	8,281	8,043	8,768	12,027
Citations & Arrests, Parking Traffic Violations.....	16,293	15,643	11,079	6,229
TOTAL TRAFFIC ENFORCEMENT.....	29,282	28,683	26,910	23,733
LICENSES & PERMITS:				
Operators' Licenses Issued	4,656	4,768	4,985	5,542
Operators' Licenses Renewed.....	13,667	19,402	20,234	16,081
Instruction Permits Issued	8,787	8,460	8,761	8,398
Duplicate License	2,593	2,626	2,684	2,920
Firearms Registered	2,014	2,785	3,088	3,146
Firearms Permits Issued.....	1,442	1,520	1,296	1,288
Fireworks Permits Issued.....	28	15	12	19
Permits to Drink at Public Parks Issued	217	193	130	538
Parade & Motorcade Permits Issued.....	234	229	281	294
Reconstructed Motor Vehicle Permits Issued	47	31	165	265
Revenues, Exam. of Drivers	\$193,225.00	\$317,969.00	\$334,499.00	\$289,494.00
Revenues, Other Police	\$41,191.45	\$42,550.55	\$43,838.00	\$48,556.59
MISCELLANEOUS:				
Number of Persons Killed				
Public Acc. (Excl. Drowning).....	4	1	6	2
Drowning.....	6	8	7	4
Industrial Accidents.....	1	2	3	3
Home Accidents	2	1	3	1
Identification Fingerprints on File.....	43,724	45,058	46,357	47,809
Identification Photographs on File.....	24,725	26,029	27,328	30,281
Value of Property Stolen	\$2,058,813.00	\$2,011,657.00	\$2,530,842.00	\$2,710,361.00
Value of Property Recovered	\$513,637.00	\$478,285.00	\$817,569.00	\$547,071.00
Per Cent of Property Recovered.....	25.0	23.8	32.3	20.2
Vice Checks.....	11,202	9,957	8,835	10,461
Reports to Philippine & British Consulates.....	1	0	0	0
Population, County of Hawaii (Approx.)	98,000*	101,000*	106,400*	109,700*
Area in Square Miles	4,015	4,015	4,015	4,015

*State Dept. of Planning & Economic Development estimate.

Law Enforcement Code of Ethics

As a Law Enforcement Officer, my fundamental duty is to serve mankind; to safeguard lives and property; to protect the innocent against deception, the weak against oppression or intimidation, and the peaceful against violence or disorder; and to respect the Constitutional rights of all men to liberty, equality and justice.

I will keep my private life unsullied as an example to all; maintain courageous calm in the face of danger, scorn, or ridicule; develop self-restraint; and be constantly mindful of the welfare of others. Honest in thought and deed in both my personal and official life, I will be exemplary in obeying the laws of the land and the regulations of my department. Whatever I see or hear of a confidential nature or that is confided to me in my official capacity will be kept ever secret unless revelation is necessary in the performance of my duty.

I will never act officiously or permit personal feelings, prejudices, animosities or friendships to influence my decisions. With no compromise for crime and with relentless prosecution of criminals, I will enforce the law courteously and appropriately without fear or favor, malice or ill will, never employing unnecessary force or violence and never accepting gratuities.

I recognize the badge of my office as a symbol of public faith, and I accept it as a public trust to be held so long as I am true to the ethics of the police service. I will constantly strive to achieve these objectives and ideals, dedicating myself before God to my chosen profession. . . law enforcement.

International Association of Chiefs of Police, Inc.

Hawaii County Police Department
340 Kapiolani Street
Hilo, Hawaii 96720

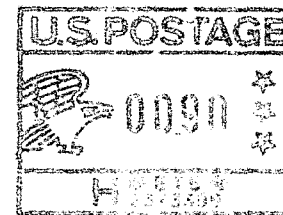
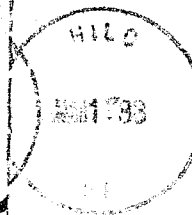
MAR 14 1988



Annual Report

THE CHIEF OF POLICE • COUNTY OF HAWAII

National Criminal Justice
Reference Service 3H
Law Enforcement Assist. Adm.
U.S. Department of Justice
Washington, D. C. 20530



PRIORITY

