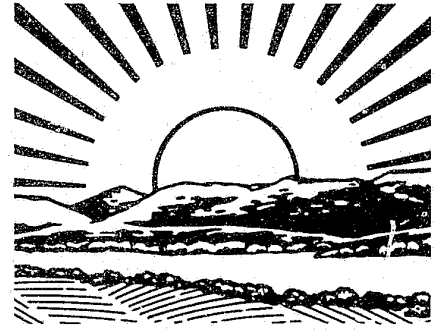


Ohio Department of Rehabilitation and Correction



1985 Annual Report

*CR sent
June 16, 88*

110279

OHIO
the heart of it all! © 1985

U.S. Department of Justice
National Institute of Justice

110279

This document has been reproduced exactly as received from the person or organization originating it. Points of view or opinions stated in this document are those of the authors and do not necessarily represent the official position or policies of the National Institute of Justice.

Permission to reproduce this copyrighted material has been granted by

Ohio Department of Rehabilitation
and Correction

to the National Criminal Justice Reference Service (NCJRS).

Further reproduction outside of the NCJRS system requires permission of the copyright owner.

Ohio Department of Rehabilitation and Correction

Richard F. Celeste, Governor
Richard P. Seiter, Director

Ohio Adult Correctional Institutions

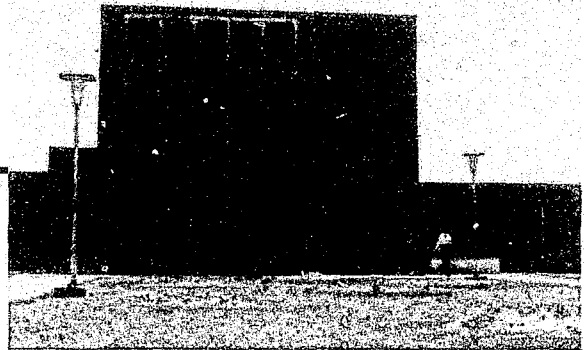
- CHILICOTHE CORRECTIONAL INSTITUTION - CCI (614) 773-2616
P.O. Box 5500
Chillicothe, Ohio 45601
Arthur Tate, Superintendent
- HOCKING CORRECTIONAL FACILITY - HCF (614) 753-1917
16759 Snake Hollow Road
Nelsonville, Ohio 45764
Carl Humphreys, Superintendent
- LEBANON CORRECTIONAL INSTITUTION - LECI (513) 932-1211
P.O. Box 56
Lebanon, Ohio 45036
William Dallman, Superintendent
- LIMA CORRECTIONAL FACILITY - LCF (419) 222-0770
P.O. Box 4571
Lima, Ohio 45802
Harry Russell, Superintendent
- LONDON CORRECTIONAL INSTITUTION - LOCI (614) 852-2454
P.O. Box 69
London, Ohio 43140
Arnold Jago, Superintendent
224-1664
224-0097
- MARION CORRECTIONAL INSTITUTION - MCI (614) 382-5781
P.O. Box 57
Marion, Ohio 43302
Norris McMackin, Superintendent
- OHIO REFORMATORY FOR WOMEN - ORW (513) 642-1065
1479 Collins Avenue
Marysville, Ohio 43040
Dorothy Arn, Superintendent
466-1480
- OHIO STATE REFORMATORY - OSR (419) 526-2000
P.O. Box 788
Mansfield, Ohio 44901
Eric Dahlberg, Superintendent
- ORIENT CORRECTIONAL INSTITUTION - OCI (614) 877-4361
P.O. Box 511
Columbus, Ohio 43216
Thomas J. Stickrath, Superintendent
- PICKAWAY CORRECTIONAL INSTITUTION - PCI (614) 877-4361
P.O. Box 209
Orient, Ohio 43146
Norm Hills, Superintendent
- SOUTHEASTERN CORRECTIONAL INSTITUTION - SCI (614) 653-4324
Lancaster, Ohio 43130
Anthony Brigano, Superintendent
466-4339
- SOUTHERN OHIO CORRECTIONAL FACILITY - SOCF (614) 259-5544
P.O. Box 45699
Lucasville, Ohio 45699
Terry Morris, Superintendent

NCJRS

MAR 31 1988

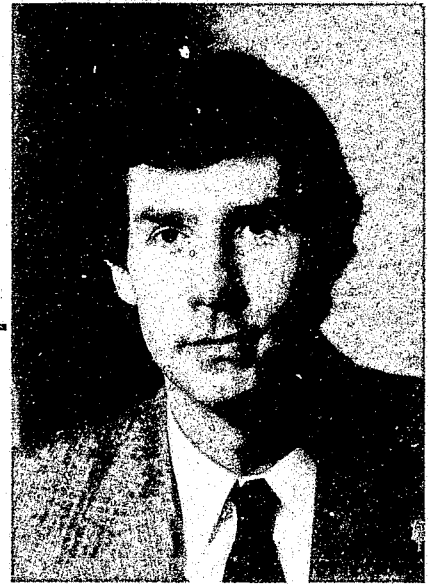
ACQUISITIONS

Table of Contents



Director's Message	2
The Department	3
Organizational Chart	4
The Institutions	5
Prison Overcrowding	6
Prison Construction	7
Institution Programs	8
Parole and Community Services	9
Statistics - Table of Contents	10
Commitments by Age and System	11
Commitments by Race and System	12
Commitments by County and System	13-14
Commitments by Offense and System	15-17
Commitments by Sentence and System	18-20
Operating Expenditures by Institution	21
Summary Data	22
OPI Profit and Loss	23

Director's Message



Dear Ohioan,

The mission of the Ohio Department of Rehabilitation and Correction is to manage institutional and community activities related to convicted adult felons. We do this through two avenues - management of offenders inside the correctional institutions and community supervision such as parole, probation and residential programs.

Community protection and security are the department's primary responsibilities, both inside the institutions and out in the community. Security is maintained by trained and diligent staff and by the use of state-of-the-art security technology. These factors combine to maintain our reputation for having one of the lowest escape records in the country - well below the national average.

Our inmate programs are centered on providing safe and humane living conditions for the people com-

mitted to our custody, offering all inmates an equal opportunity to improve their chances of a successful return to society through educational and work related programs. Inmates are also provided with complete medical care, nutritious meals and recreational opportunities. We are proud that we can operate a quality prison at one of the lowest per-inmate costs in the country, saving taxpayer dollars while protecting our communities by operating secure institutions.

It is the department's hope that we can meet the concerns of public safety, carry out the sentences of the courts and encourage and train inmates to become productive and law-abiding citizens upon release. All of the department's staff are committed to these goals and we pledge to do our part to make Ohio a safe and just place to live.

Richard P. Seiter was appointed director of the Ohio Department of Rehabilitation and Correction in January 1983 by Gov. Richard F. Celeste.

A native of Marion Co., Seiter earned bachelor of science, master of public administration and doctorate of public administration and criminal justice degrees from the Ohio State University.

Between 1976 and 1983 he held several positions with the Federal Bureau of Prisons including superintendent of the National Academy for Corrections in Boulder, Colorado.

A handwritten signature in cursive script that reads "Richard P. Seiter".

Richard P. Seiter, Director

The Department



The Ohio Department of Rehabilitation and Correction was established July 12, 1972 by the 109th General Assembly's passage of Amended House Bill 494. For over one hundred years the correctional system in Ohio was administrated by a branch of the state's mental institutions. The separate cabinet-level department became necessary by the early 1970s because of a dramatic increase in the number of felons being sentenced to serve time in Ohio's prisons.

Rehabilitation and Correction currently employs about 5,500 persons throughout the state and is responsible for administration and operation of both the institutional and community related phases of Ohio's adult correctional system.

The mission of the department is to provide community protection and public safety through the operation of safe, secure and humane facilities that offer inmates rehabilitative opportunities.

The department is headed by a director who is appointed by the governor.

Major functions and responsibilities are shared by three administrators who report to the director:

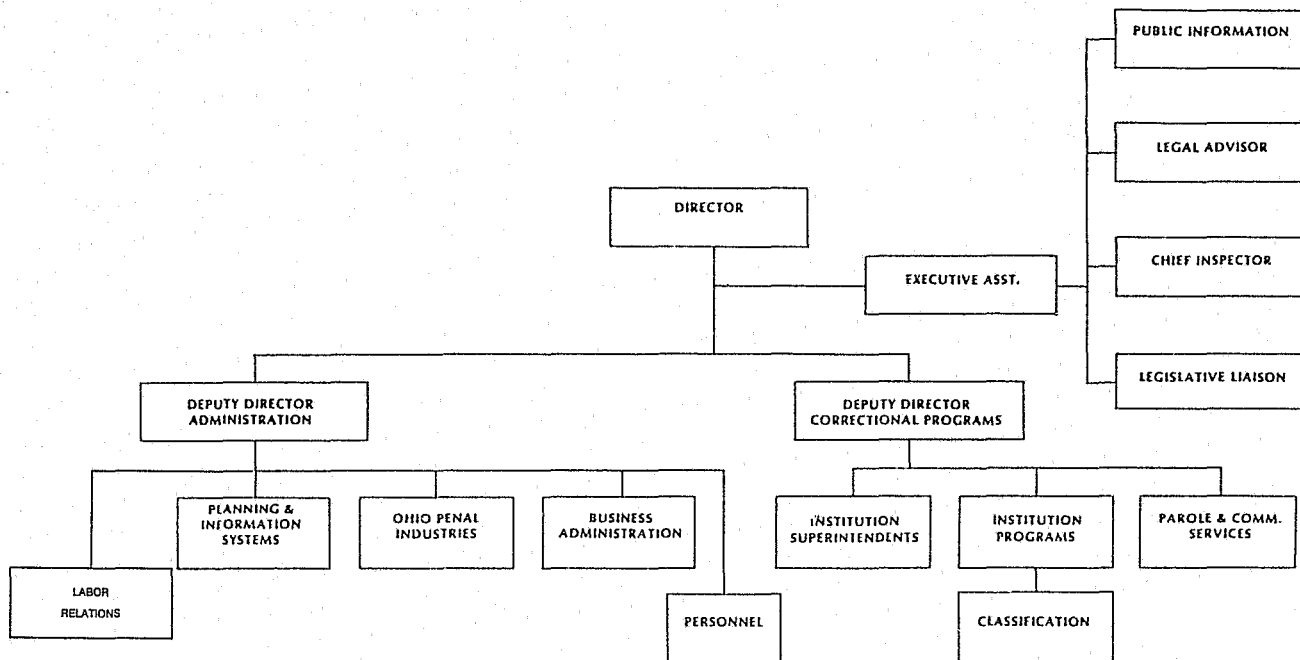
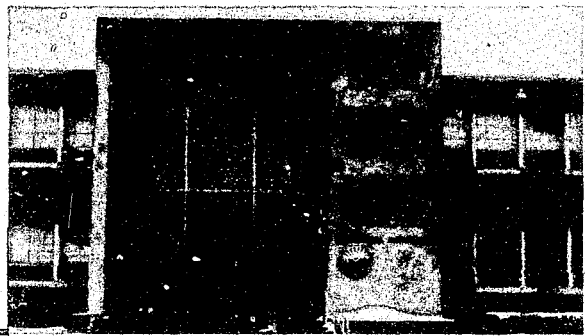
The Executive Assistant to the Director Responsible for the executive branch. Program areas include

public information, legal services, the Office of Chief Inspector, legislative matters and prison construction.

The Deputy Director for Administration Fiscal, personnel and record keeping matters are handled by five divisions and bureaus; Planning and Information System, Business Administration, the Bureau of Personnel, Ohio Penal Industries and Labor Relations. Program areas include food service, affirmative action, employee training and research. Each division is headed by a chief. The Bureau of Personnel is headed by an administrator. They report to the deputy director.

The Deputy Director for Correctional Programs Responsible for the overall operation of correctional facilities and community supervision programs through three divisions; Institutions, Institution Programs and Parole and Community Services. Institution programs is in charge of inmate classification, security, education, recreation, medical, social, psychological and religious services. The Division of Parole and Community Services supervises the Adult Parole Authority, the Parole Board, probation, community corrections, halfway houses and local jail inspections. Division chiefs report to the deputy director. Each correctional institution has a separate administrative staff headed by a superintendent. Superintendents report to the deputy director.

Organizational Chart



Richard P. Seiter, Director

Paul Goggin, Executive Assistant/Legislative Liaison

Ted Engle, Deputy Director Correctional Programs

W. C. Mullan, Deputy Director Business Administration

Robert W. Prosser, Public Information Officer

McCullough Williams, Chief of Legal Services

John Kinkela, Chief Inspector

Don Elder, Chief of Labor Relations

Clarence Glover, Chief of Planning and Information

T.D. Taylor, Chief of Ohio Penal Industries

Don Britton, Chief of Business Administration

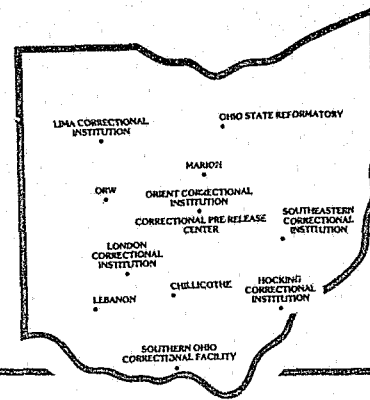
Dorothy DeFranco, Personnel Administrator

Harrison L. Morris, Chief of Institutional Programs

Geno Natalucci-Persichetti, Chief of Parole and Community Services.

Roger Overberg, Chief of Classification and Reception

The Institutions



The Chillicothe Correctional Institution is a medium-security prison housing older and repeat offenders. Located just north of Chillicothe in Ross County, the institution consists of over 50 buildings on a 72 acre compound and a 1,500 acre farm. The facility first opened as an Ohio prison in 1966.

The Pickaway Correctional Institution was formerly named the Correctional Pre-Release Center. It was created in 1984 to provide training and job-hunting skills to male and female inmates anticipating release from Ohio's correctional system. Inmates are provided with six weeks of training to aide them in their transition from the institution to society.

The Hocking Correctional Facility is a medium-security institution housing older male inmates. Located in Hocking County near Nelsonville, the prison operates a 412 acre farm.

The Lebanon Correctional Institution a medium security reformatory, is located on 40 acres in Warren County. It houses male reformatory offenders. Outside the fence, a 1,700 acre farm is operated by the inmates. LECI opened in 1960.

The Lima Correctional Institution is a medium-security prison housing young male offenders in Lima in Allen County. Formerly an institution for the mentally ill the facility opened as a prison in 1982.

The London Correctional Institution is a medium-security prison housing male offenders. Located on 3,000 acres of land near London in Madison County, LOCI operates the largest prison farm in the state, over 2,500 acres.

The Marion Correctional Institution is a close-security prison for male offenders. Opened in 1956, the institution is located near Marion in Marion County. The

facility contains 12 housing units, all under one roof, on 60 acres. Outside the fence there is a 925 acre farm, and an honor dormitory.

The Ohio Reformatory for Women is Ohio's only correctional institution for adult female offenders. Located on 260 acres of land outside of Marysville in Union County, the prison ranges from minimum to maximum security and houses both young and repeat offenders.

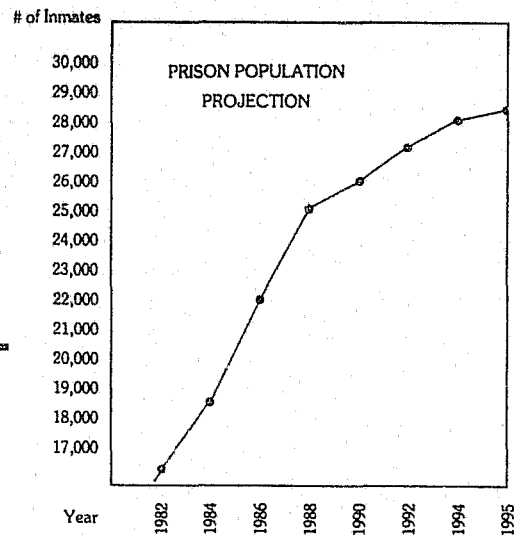
The Ohio State Reformatory is the state's largest reformatory, housing male offenders under the age of 30 serving their first prison term. The institution is located on 600 acres of land near Mansfield in Richland County. An honor farm is located outside the walls, and the 2,000 acre Grafton Farm located in Lorain County is also operated by the facility. Originally opened in 1896, OSR is an 18-acre facility that also serves as the reception center for reformatory offenders.

The Orient Correctional Institution is a medium-security prison housing male offenders. Located in Pickaway County south of Columbus, the institution was transferred to the department from the Department of Mental Retardation and Developmental Disabilities and received its first inmate in June 1984.

The Southeastern Correctional Institution is Ohio's newest reformatory, opened in 1981. It houses male reformatory offenders. It is located near Lancaster in Fairfield County on 1,687 acres of land.

The Southern Ohio Correctional Facility Ohio's fully programmed maximum-security prison houses repeat male offenders and young male offenders accused of more serious and violent crimes. The institution is located on a 1,000 acre site in Scioto County near Lucasville and consists of a 22 acre complex of structures, all under one roof. The facility opened in 1972.

Prison Overcrowding



Ohio's prisons are grossly overcrowded. As of January 1, 1986, 20,500 inmates were housed in institutions designed to hold only 13,000. In many cases, area once used for program space (recreation, counseling, education, etc.) is now used for housing.

The state's prison population has been rising steadily for several years. Public outcry for tougher laws has resulted in longer sentences for felony convictions increasing the average stay in prison by 60 percent.

Projections indicate longer sentences will cause Ohio's prison population to increase by 1,000 inmates a year and by 1995 it is expected to have doubled from its 1980 level to almost 30,000.

Recognizing the need for more prison space, the Ohio General Assembly approved House Bill 530 in 1982. The bill authorizes the Ohio Building Authority to issue \$638 million in bonds to finance the construction of 14 new state prisons and the expansion of two existing facilities. Along with the state projects, the bill contains authorization to spend \$50 million to upgrade or build local jails.

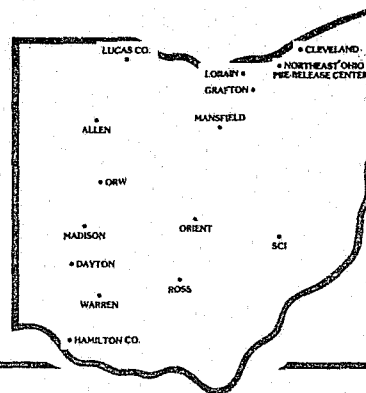
The prison construction bill is one of the biggest building programs ever undertaken by Ohio. All the projects are underway (see next page) and several are scheduled to open in the next two years.

Despite the massive scope of the building program, Ohio's prisons will remain short of space even when all the new prisons open. Construction will add about 9,000 beds to the system, giving the department a design capacity of 21,500 - far short of the projected inmate population.

A 21-member task force appointed by Gov. Richard F. Celeste has made several recommendations to deal with the problems caused by overcrowded prison conditions. The recommendations include changes in the sentencing structure, the elimination of most mandatory minimum sentences, increased incentives for good behavior, and housing of non-violent offenders in local facilities and more use of intensive probation. The committee also recommends building up to four additional 500-bed prisons if necessary.

Members of the Ohio General Assembly are studying the committee's report.

Prison Construction



Ross Correctional Institution The 250-bed minimum-security dormitory opened in June 1985. The 1000-bed medium-security penitentiary is scheduled to open in early 1987. Ross Correctional is located on state Rt. 104 north of Chillicothe directly across the highway from CCI. Cost of the project is \$75 million.

Dayton Correctional Institution Located on the west side of Dayton adjacent to the city workhouse. A ground-breaking ceremony was held March 18, 1985. The 500-bed medium-security reformatory is expected to open in early 1987 at a cost of \$25 million.

Madison Correctional Institution Located in Madison Co. across state Rt. 56 from LOCI. Ground was broken May 21, 1985 for the 1000-bed medium-security penitentiary. It's scheduled to open in mid 1987 and cost \$35 million.

Allen Correctional Institution A ground-breaking ceremony was held June 21, 1985 adjacent LCI in Allen Co. beginning construction on this 500-bed medium-security penitentiary. Cost of the project is \$28 million. It's scheduled to open in the summer of 1987.

Orient Reception Center Construction on this 900-bed penitentiary/reception center/psychological facility complex on the grounds of Orient Correctional Complex south of Columbus began with the ground-breaking ceremony October 4, 1985. Completion is expected in the summer of 1987 at a cost of \$40 million.

Grafton Correctional Institution Located in Lorain Co. at the site of the Grafton Prison Farm. Construction on the 500-bed institution will begin in 1986. The institution will be completed in late 1987 at a cost of \$30 million.

Warren Correctional Institution Construction will begin in 1986 on this 750-bed close-security reformatory located adjacent to LECI in Warren Co. Cost of the project is \$44 million and it's expected to open in late 1987.

Cleveland Correctional Institution The 500-bed medium-security reformatory will be built in Cleveland at Coit Rd. and 140th St.. It's scheduled to open in mid to late 1988 at a cost of \$39 million.

Lorain Correctional Institution The 750-bed reformatory/reception center will be built adjacent to the Grafton Correctional Institution in Lorain Co. Construction will begin in 1986 with completion estimated in mid 1988. Cost of the project is \$44 million.

Mansfield Correctional Institution Construction of the 1,200-bed penitentiary will begin in 1986 near OSR. The \$54 million project will be completed in 1988.

Northeast Ohio Pre-Release Center Located near downtown Cleveland at Orange and 30th St. Construction on the 350-bed \$14.3 million center will begin in 1986 and is scheduled to be completed in 1987.

Hamilton County Pre-Release Center Site selection for 350-bed \$14.3 million center is underway.

Franklin County Pre-Release Center Construction on 250-bed center at Frank Rd. and Harmon Ave. just south of downtown Columbus will begin in late 1986. The \$7 million project is scheduled to open in 1987.

Lucas County Pre-Release Center Will be built on land owned by the city of Toledo in Waterville Twp. Construction on the 200-bed center will begin in 1986. Completion of the \$8.5 million project is estimated to be in late 1987.

In addition to these new construction projects, the department is building new 300-bed housing units at ORW and SOTC and a dormitory, vocational training building and OPI factory at LCI. Total cost for these projects is about \$16 million.

Institution Programs



Religious Services An inmate is able to choose from a number of religious faiths in the institution. Each prison has a chapel and clergy are on staff. Outside clergy are also invited to hold services and to counsel inmates.

The department recognizes the importance of religion. Participation in religious services helps inmates prepare for the time when they will be released. Services in institution chapels are well attended.

Inmate Medical Services The Frazier Health Center at the Orient Correctional Complex provides inmate care for non-emergency and chronic medical cases. Doctors on duty at institution infirmaries are able to handle minor problems and make diagnosis for further treatment. Surgical and emergency care is provided by contracted hospitals.

Social Services Social workers counsel inmates in a variety of areas including family problems, visiting, drug and alcohol abuse and employment possibilities on release. The social services staff provide invaluable counseling for inmates on an as-needed basis. Many problems are often remedied during counseling sessions. Social workers also provide the Parole Board with inmate institutional reports. The information includes reports of an inmate's institutional adjustment and parole plans.

Inmate Education The department's accredited Ohio Central School System gives inmates the opportunity to improve academic skills. Many inmates enter the correctional system unable to read and write or do even the simplest math. Illiteracy is a prime factor in criminal behavior and the department strives to offer learning opportunities to all inmates. The opportunities include required basic education courses to college degrees offered in conjunction with local colleges and universities.

Vocational education opportunities are also offered. Several certified programs such as auto mechanics, electronic equipment repair, computer programming and cosmetology are available providing inmates with the necessary training and skill to compete in the job market on release.

Ohio Penal Industries Along with vocational training, Ohio Penal Industries (OPI) offers inmates an opportunity to learn work habits and skills that are useful in the job market.

OPI manufactures and markets products for inside and outside sales. Inmates provide the necessary labor and are paid (an average of \$20 per month) for their work. Sales are made primarily to local and state government. OPI generates its own capital from sales (See OPI statement last page).

Items manufactured by OPI include license plates and validation stickers for the Ohio Bureau of Motor Vehicles, signs for the Department of Transportation, high-quality office furniture, inmate garments, custodial supplies and flags.

Inmate Grievance Procedure The grievance procedure gives inmates in Ohio correctional institutions a standardized method of presenting complaints concerning the conditions of their incarceration.

A grievance may relate to almost any aspect of institutional life. It may concern departmental or local policies, procedures, rules and regulations. It may also pertain to any actions on the part of any staff member or inmate affecting the person filing the grievance. It is to be filed with the inspector of institutional services and it must be specific in its description of the complaint or problem.

Parole and Community Services



Adult Parole Authority Under Ohio's current sentencing laws, judges have the option of sending felons to prison for either a fixed time (determinate sentence) or a period of time that includes minimum and maximum lengths of time to serve (indeterminate sentence).

All indeterminate sentenced offenders are eligible for release after meeting specific time requirements determined by the state Legislature.

The Ohio Parole Board reviews the cases of all eligible inmates. The seven board members are appointed from the civil service ranks by the chief of the Adult Parole Authority. The board, with the help of hearing officers, decided almost 12,000 cases in fiscal year 1985.

After release on parole, the department continues to supervise offenders before a final release is granted. The adjustment of parolees back into society is closely monitored by caseworkers in regional Adult Parole Authority offices. Violation of strict guidelines could result in a revocation of parole and a return to prison for the offender.

Probation Development Services Judges have the option of sentencing first-time and non-violent offenders to serve their sentences on probation instead of in an institution. Probation Development works with local courts in supervising offenders given probation.

Halfway House Program The department contracts with private halfway houses throughout the state providing housing and counseling to parolees and some probationers.

The Bureau Of Adult Detention Facilities And Services The bureau has the responsibility for developing and implementing minimum standards for local jails in Ohio. Four jail inspectors work out of regional offices. They routinely inspect all village, municipal and county jails and, if necessary, make recommendations on what must be done to bring the facility into compliance with state standards. The bureau works closely with local governments to ensure Ohio's jails are safe, secure and humane.

Statistics - Table of Contents



Commitments by Age and System	11
Commitments by Race and System	12
Commitments by County and System	13-14
Commitments by Offense and System	15-17
Commitments by Sentence and System	18-20
Operating Expenditures by Institution	21
Summary Data	22
OPI Profit and Loss	23

Commitments To The Department By Age And System
Fiscal Year 1985
7-1-84 to 6-30-85

AGE	CCI-MALE	OSR-MALE	ORW-FEMALE		TOTAL
	PENITENTIARY	REFORMATORY	REF	PEN	
15 YEARS	0	0	0	0	0
16 YEARS	3	4	0	0	7
17 YEARS	4	25	1	0	30
18 YEARS	21	302	8	0	331
19 YEARS	73	505	25	1	604
20 YEARS	194	458	30	4	686
21 YEARS	219	397	35	4	655
22 YEARS	292	336	35	5	668
23 YEARS	321	257	37	10	625
24 YEARS	312	270	40	13	635
25 YEARS	271	199	34	8	512
26 YEARS	253	183	30	14	485
27 YEARS	295	162	28	16	501
28 YEARS	289	158	29	18	494
29 YEARS	290	108	29	12	439
30 YEARS	269	43	0	37	349
31 YEARS	278	10	0	34	322
32 YEARS	260	3	0	32	295
33 YEARS	247	0	0	21	268
34 YEARS	200	1	0	36	237
35 YEARS	170	4	0	25	199
36 YEARS	165	1	0	13	179
37 YEARS	163	0	0	15	178
38 YEARS	100	0	0	22	122
39 YEARS	96	0	0	15	111
40 YEARS	72	0	0	9	81
41 YEARS	79	0	0	8	87
42 YEARS	61	0	0	5	66
43 YEARS	54	0	0	3	57
44 YEARS	42	0	0	7	49
45 YEARS	37	0	0	1	38
46 YEARS	32	0	0	4	36
47 YEARS	34	0	0	2	36
48 YEARS	32	0	0	4	36
49 YEARS	30	0	0	2	32
50 YEARS	16	0	0	3	19
51 YEARS	22	0	0	5	27
52 YEARS	23	0	0	2	25
53 YEARS	13	0	0	1	14
54 YEARS	14	0	0	2	16
55 YEARS	13	0	0	0	13
56 YEARS	14	0	0	1	15
57 YEARS	6	0	0	2	8
58 YEARS	14	0	0	2	16
59 YEARS	4	0	0	0	4
60 YEARS	11	0	0	0	11
61 YEARS	12	0	0	0	12
62 YEARS	6	0	0	1	7
63 YEARS	5	0	0	1	6
64 YEARS	10	0	0	0	10
65 YEARS	2	0	0	0	2
OVER 65 YEARS	22	0	0	2	24
TOTAL	5465	3431	361	422	9679

**Commitments To The Department By Race And System
Fiscal Year 1985
7-1-84 to 6-30-85**

<u>Race</u>	<u>Population</u>	<u>Percentage</u>
	CCI	
Black	2489	45.5
White	<u>2976</u>	54.5
	5465	
	OSR	
Black	1240	36.1
White	<u>2191</u>	63.9
	3431	
	ORW	
Black	423	54.0
White	<u>360</u>	46.0
	783	
	Department	
Black	4152	42.9
White	<u>5527</u>	57.1
	9679	

Commitments To The Department By County And System
Fiscal Year 1985
7-1-84 to 6-30-85

County	CCI-Male	% of	OSR-Male	% of	ORW-Female		% of	Dept. Total	% of
	Penitentiary	Intake	Reformatory	Intake	REF	PEN	Intake		Intake
ADAMS	9	.2	10	.3	1	1	.3	21	.2
ALLEN	95	1.7	4	.1	3	8	1.4	110	1.1
ASHLAND	6	.1	26	.8	2	0	.3	34	.4
ASHTABULA	22	.4	30	.9	3	2	.6	57	.6
ATHENS	12	.2	14	.4	1	1	.3	28	.3
AUGLAIZE	33	.6	1	*	1	1	.3	36	.4
BELMONT	19	.3	9	.3	1	1	.3	30	.3
BROWN	6	.1	2	.1	0	0		8	.1
BUTLER	57	1.0	57	1.7	3	11	1.8	128	1.3
CARROLL	4	.1	7	.2	0	0		11	.1
CHAMPAIGN	24	.4	15	.4	0	1	.1	40	.4
CLARK	113	2.1	46	1.3	2	4	.8	165	1.7
CLERMONT	74	1.4	64	1.9	7	9	2.0	154	1.6
CLINTON	9	.2	19	.6	1	0	.1	29	.3
COLUMBIANA	38	.7	50	1.5	1	3	.5	92	1.0
COSHOCTON	13	.2	10	.3	0	0		23	.2
CRAWFORD	17	.3	16	.5	1	0	.1	34	.4
CUYAHOGA	1080	19.8	574	16.7	49	59	13.8	1762	18.2
DARKE	1	*	4	.1	0	0		5	.1
DEFIANCE	6	.1	4	.1	0	1	.1	11	.1
DELAWARE	17	.3	17	.5	0	2	.3	36	.4
ERIE	40	.7	22	.6	4	3	.9	69	.7
FAIRFIELD	27	.5	52	1.5	4	3	.9	86	.9
FAYETTE	9	.2	15	.4	0	3	.4	27	.3
FRANKLIN	644	11.8	353	10.3	45	65	14.0	1107	11.4
FULTON	9	.2	4	.1	1	0	.1	14	.1
GALIA	3	.1	8	.2	0	0		11	.1
GEAUGA	10	.2	9	.3	1	1	.3	21	.2
GREENE	45	.8	59	1.7	8	4	1.5	116	1.2
GUERNSEY	9	.2	19	.6	2	1	.4	31	.3
HAMILTON	773	14.1	372	10.8	39	55	12.0	1239	12.8
HANCOCK	14	.3	20	.6	4	1	.6	39	.4
HARDIN	7	.1	12	.4	1	2	.4	22	.2
HARRISON	6	.1	4	.1	0	0		10	.1
HENRY	3	.1	6	.2	0	1	.1	10	.1
HIGHLAND	15	.3	10	.3	4	0	.5	29	.3
HOCKING	4	.1	5	.2	0	0		9	.1
HOLMES	5	.1	2	.1	0	1	.1	8	.1
HURON	5	.1	9	.3	0	0		14	.1
JACKSON	16	.3	0		1	0	.1	17	.2
JEFFERSON	13	.2	1	*	0	0		14	.1
KNOX	15	.3	16	.5	2	4	.8	37	.4
LAKE	60	1.1	73	2.1	2	2	.5	137	1.4
LAWRENCE	34	.6	6	.2	0	1	.1	41	.4
LICKING	39	.7	52	1.5	5	6	1.4	102	1.1
LOGAN	25	.5	22	.6	0	2	.3	49	.5
LORAIN	66	1.2	115	3.4	11	10	2.7	202	2.1
LUCAS	444	8.1	160	4.7	39	34	9.3	677	7.0
MADISON	10	.2	13	.4	4	1	.6	28	.3
MAHONING	58	1.1	26	.8	3	5	1.0	92	1.0
MARION	70	1.3	10	.3	0	3	.4	83	.9
MEDINA	17	.3	13	.4	2	2	.5	34	.4
MEIGS	11	.2	1	*	0	1	.1	13	.1
MERCER	5	.1	1	*	0	1	.1	7	.1
MIAMI	10	.2	15	.4	0	4	.5	29	.3
MONROE	2	*	1	*	0	0		3	*
MONTGOMERY	299	5.5	200	5.8	20	17	4.7	536	5.5
MORGAN	5	.1	0		0	0		5	.1
MORROW	1	*	4	.1	0	0		5	.1
MUSKINGUM	33	.6	45	1.3	1	1	.3	80	.8

**Commitments To The Department By County And System
Fiscal Year 1985
7-1-84 to 6-30-85**

County	CCI-Male		OSR-Male		ORW-Female		Dept. Total	% of Intake
	Penitentiary	% of Intake	Reformatory	% of Intake	REF	PEN		
NOBLE	3	.1	0	*	0	0	3	*
OTTAWA	14	.3	2	*	2	1	18	.2
PAULDING	3	.1	5	.2	0	1	9	.1
PERRY	5	.1	5	.2	0	0	10	.1
PICKAWAY	33	.6	27	.8	3	5	68	.7
PIKE	10	.2	11	.3	0	0	21	.2
PORTAGE	22	.4	16	.5	3	0	41	.4
PREBLE	4	.1	7	.2	0	1	12	.1
PUTNAM	5	.1	4	.1	1	0	10	.1
RICHLAND	32	.6	48	1.4	5	5	90	.9
ROSS	38	.7	27	.8	3	4	72	.7
SANDUSKY	15	.3	23	.7	1	1	40	.4
SCIOTO	22	.4	21	.6	2	1	46	.5
SENECA	20	.4	22	.6	2	3	47	.5
SHELBY	22	.4	15	.4	0	0	37	.4
STARK	95	1.7	58	1.7	7	5	165	1.7
SUMMIT	384	7.0	218	6.4	30	36	688	6.9
TRUMBULL	41	.8	34	1.0	4	7	86	.9
TUSCARAWAS	20	.4	23	.7	1	1	45	.5
UNION	9	.2	7	.2	0	1	17	.2
VAN WERT	4	.1	12	.4	0	0	16	.2
VINTON	4	.1	0		0	0	4	*
WARREN	38	.7	15	.4	0	1	54	.6
WASHINGTON	18	.3	16	.5	1	1	36	.4
WAYNE	22	.4	22	.6	1	1	46	.5
WILLIAMS	13	.2	15	.4	6	3	37	.4
WOOD	42	.8	42	1.2	9	5	98	1.0
WYANDOT	11	.2	3	.1	1	1	16	.2
TOTAL	5465		3431		361	422	9679	

* Indicates that percent value was less than .1

**Commitments To The Department By Offense And System
Fiscal Year 1985
7-1-84 to 6-30-85**

CHARGE	CCI-Male	OSR-Male	ORW—Female		Dept Total
	Penitentiary	Reformatory	REF	PEN	
ABDUCTION	14	4	0	0	18
AGGRAVATED ARSON	12	9	3	3	27
AGGRAVATED ASSAULT	170	107	5	7	289
AGGRAVATED BURGLARY	293	205	6	2	506
AGGRAVATED MENACING (MISDEMEANOR)	0	0	0	0	0
AGGRAVATED MURDER	41	1	0	1	63
AGGRAVATED MURDER (DEATH ROW)	14	0	0	0	14
AGGRAVATED RIOT	0	2	0	0	2
AGGRAVATED ROBBERY	286	172	10	11	479
AGGRAVATED TRAFFICKING IN DRUGS	188	120	25	15	348
AGGRAVATED VEHICULAR HOMICIDE	15	33	2	0	50
AIDING & ABETTING ATTEMPTED GRAND THEFT	1	0	0	0	1
AIDING & ABETTING AGGRAVATED ROBBERY	1	0	0	0	1
AIDING ESCAPE	0	0	1	0	1
ARSON	29	26	3	4	62
ASSAULT (MISDEMEANOR)	0	2	0	0	2
ASSAULT WITH INTENT TO KILL	1	0	0	0	1
ATTEMPTED ABDUCTION	3	1	0	0	4
ATTEMPTED AGGRAVATED ARSON	5	3	0	0	8
ATTEMPTED AGGRAVATED BURGLARY	11	5	0	0	16
ATTEMPTED AGGRAVATED MURDER	3	3	1	0	7
ATTEMPTED AGGRAVATED RIOT	0	0	0	0	0
ATTEMPTED AGGRAVATED ROBBERY	3	1	0	0	4
ATTEMPTED AGGRAVATED TRAFFICKING IN DRUGS	8	4	2	2	16
ATTEMPTED ARSON	15	0	1	1	17
ATTEMPTED BREAKING & ENTERING	0	0	0	0	0
ATTEMPTED BREAKING & ENTERING (MISDEMEANOR)	0	0	0	0	0
ATTEMPTED BRIBERY	0	0	0	0	0
ATTEMPTED BURGLARY	58	35	0	0	93
ATTEMPTED CARRYING CONCEALED WEAPON	8	3	1	0	12
ATTEMPTED COMPELLING PROSTITUTION	0	0	0	0	0
ATTEMPTED CORRUPTION OF A MINOR	1	3	0	0	4
ATTEMPTED DECEPTION TO OBTAIN DANGEROUS DRUGS	0	0	0	0	0
ATTEMPTED DRUG ABUSE	1	0	0	0	1
ATTEMPTED FELONIOUS ASSAULT	12	15	1	0	28
ATTEMPTED GRAND THEFT	23	14	1	2	40
ATTEMPTED GRAND THEFT (MOTOR VEHICLE)	7	23	0	0	30
ATTEMPTED GROSS SEXUAL IMPOSITION	5	4	0	0	9
ATTEMPTED ILLEGAL PROCESSION-DRUG DOCUMENTS	2	0	0	0	2
ATTEMPTED INTIMIDATION	0	1	0	0	1
ATTEMPTED INVOLUNTARY MANSLAUGHTER	7	0	0	0	7
ATTEMPTED KIDNAPPING	1	0	0	0	1
ATTEMPTED MURDER	28	4	0	0	32
ATTEMPTED RAPE	22	28	1	0	51
ATTEMPTED RECEIVING STOLEN PROPERTY	6	4	0	0	10
ATTEMPTED RECEIVING STOLEN PROPERTY (MOTOR VEHICLE)	3	8	0	0	1
ATTEMPTED ROBBERY	33	40	2	2	77
ATTEMPTED SEXUAL BATTERY	5	1	0	0	6
ATTEMPTED THEFT	6	4	0	0	10
ATTEMPTED THEFT OF MOTOR VEHICLE	0	3	0	0	3
ATTEMPTED THEFT OF DRUGS	1	0	0	0	1
ATTEMPTED TRAFFICKING IN DRUGS	4	6	0	0	10
ATTEMPTED VOLUNTARY MANSLAUGHTER	0	0	0	1	1
BREAKING & ENTERING	452	451	9	3	915
BRIBERY	3	1	0	0	4
BRIBERY (ELECTION FRAUD)	0	0	0	0	0
BURGLARY	211	231	5	5	452
CARRYING CONCEALED WEAPON	148	40	1	6	195
CARRYING CONCEALED WEAPON (MISDEMEANOR)	0	0	0	0	0
CHILD STEALING	0	0	0	0	0
COMPELLING PROSTITUTION	1	0	0	0	1

**Commitments To The Department By Offense And System
Fiscal Year 1985
7-1-84 to 6-30-85**

CHARGE	CCI-Male	OSR-Male	ORW—Female		Dept Total
	Penitentiary	Reformatory	REF	PEN	
COMPLICITY TO AGGRAVATED ARSON	0	0	1	0	1
COMPLICITY TO AGGRAVATED ASSAULT	0	0	0	0	0
COMPLICITY TO AGGRAVATED BURGLARY	2	1	1	0	4
COMPLICITY TO AGGRAVATED MURDER	1	0	0	0	1
COMPLICITY TO AGGRAVATED ROBBERY	0	7	1	4	12
COMPLICITY TO AGGRAVATED TRAFFICKING	0	1	0	0	1
COMPLICITY TO ARSON	0	1	0	0	1
COMPLICITY TO ATTEMPTED AGGRAVATED ROBBERY	0	1	0	0	1
COMPLICITY TO ATTEMPTED AGGRAVATED BURGLARY	0	1	0	0	1
COMPLICITY TO BREAKING & ENTERING	12	3	0	0	15
COMPLICITY TO BURGLARY	15	3	2	0	20
COMPLICITY TO DRUG ABUSE	0	0	0	0	0
COMPLICITY TO ESCAPE	0	0	0	0	0
COMPLICITY TO FELONIOUS ASSAULT	1	0	0	0	1
COMPLICITY TO FORGERY	1	2	0	0	3
COMPLICITY TO GRAND THEFT	0	2	1	1	4
COMPLICITY TO GROSS SEXUAL IMPOSITION	0	0	0	1	1
COMPLICITY TO INVOLUNTARY MANSLAUGHTER	1	0	0	0	1
COMPLICITY TO MURDER	1	0	0	0	1
COMPLICITY TO PASSING BAD CHECKS	1	1	0	0	2
COMPLICITY TO RAPE	0	0	1	0	1
COMPLICITY TO RECEIVING STOLEN PROPERTY	1	1	0	1	3
COMPLICITY TO ROBBERY	2	4	2	0	8
COMPLICITY TO TAMPERING WITH EVIDENCE	1	0	0	0	1
COMPLICITY TO THEFT	0	3	0	0	3
COMPLICITY TO TRAFFICKING IN DRUGS	1	2	0	0	3
COMPLICITY TO VANDALISM	0	0	0	0	0
CONSPIRACY TO AGGRAVATED MURDER	0	0	0	1	1
CONSPIRACY TO AGGRAVATED ROBBERY	2	0	1	0	3
CONSPIRACY TO AGGRAVATED TRAFFICKING IN DRUGS	0	1	0	0	1
CONSPIRACY TO BURGLARY	1	0	1	0	2
CONSPIRACY TO DRUG ABUSE	0	0	0	0	0
CONSPIRACY TO MURDER	0	1	0	0	1
CONSPIRACY TO ROBBERY	1	0	0	0	1
CONSPIRACY TO TRAFFICKING IN DRUGS	0	0	0	0	0
CORRUPTION OF A MINOR	28	8	0	0	36
CORRUPTION OF ANOTHER WITH DRUGS	1	0	0	0	1
CRIMINAL SIMULATION	1	0	0	0	1
CULTIVATION MARIJUANA	0	1	0	0	1
DECEPTION TO OBTAIN DANGEROUS DRUGS	7	1	0	3	11
DETECTING A GAME PROTECTOR (MISDEMEANOR)	0	0	0	0	0
DISPENSING OF STOLEN PROPERTY	0	0	0	0	1
DISRUPTING PUBLIC SERVICE	1	0	0	0	1
DISSEMINATING MATTER HARMFUL TO JUVENILES	1	0	0	0	1
DOMESTIC VIOLENCE	9	4	0	0	13
DRIVING UNDER SUSPENSION (MISDEMEANOR)	1	0	0	0	1
DRIVING WHILE INTOXICATED	1	1	0	0	2
DRUG ABUSE	63	36	12	13	124
DRUG LAW	79	48	0	0	127
EMBEZZLEMENT (OLD CODE)	0	0	0	0	0
ENDANGERING CHILDREN	7	9	10	3	29
ESCAPE	85	39	1	1	126
EXTORTION	1	0	0	0	1
FAILURE TO APPEAR ON OWN RECOGNIZANCE	5	5	0	0	10
FAILURE TO DELIVER TITLE	2	0	0	0	2
FAILURE TO PAY MAINTENANCE COST	2	0	0	0	2
FELONIOUS ASSAULT	166	111	8	8	293
FELONIOUS SEXUAL PENETRATION	3	1	0	0	4
FICTITIOUS OPERATOR'S LICENSE (MISDEMEANOR)	0	0	0	0	0
FORGERY	191	88	44	51	374

Commitments To The Department By Offense And System
Fiscal Year 1985
7-1-84 to 6-30-85

CHARGE	CCI-Male	OSR-Male	ORW—Female		Dept Total
	Penitentiary	Reformatory	REF	PEN	
FRAUDULENT USE OF TELEPHONE SERVICE	1	0	0	0	1
GAMBLING	1	0	0	0	1
GRAND THEFT	429	140	44	108	721
GRAND THEFT (MOTOR VEHICLE)	5	27	0	0	32
GROSS SEXUAL IMPOSITION	152	77	0	0	229
HAVING A WEAPON UNDER DISABILITY	57	8	0	0	65
ILLEGAL PROCESSING OF DRUG DOCUMENTS	39	3	8	15	65
INCITING TO VIOLENCE	1	0	0	0	1
INTIMIDATION	4	0	0	0	4
INVOLUNTARY MANSLAUGHTER	4	40	12	6	102
KIDNAPPING	28	19	0	0	47
LIMITATION EXEMPTIONS	0	0	0	0	0
MANSLAUGHTER (OLD CODE)	0	0	1	0	1
MENACING (MISDEMEANOR)	0	1	0	0	1
MISUSE OF CREDIT CARD	3	2	1	1	7
MURDER	69	1	0	6	76
NEGLIGENT HOMICIDE (MISDEMEANOR)	0	0	0	0	0
NONSUPPORT (MISDEMEANOR)	0	0	0	0	0
OBSTRUCTION OF JUSTICE	3	2	0	1	6
OPERATING A GAMBLING HOUSE	0	0	0	0	0
OVERPURCHASE OF EXEMPT NARCOTIC	1	0	0	0	1
PASSING BAD CHECKS	50	16	12	13	91
PASSING BAD CHECKS (MISDEMEANOR)	0	0	0	0	0
PERJURY	0	1	0	0	1
PETTY THEFT (MISDEMEANOR)	0	1	0	0	1
POOR RELIEF FRAUD	0	0	0	0	0
POSSESSION OF CRIMINAL TOOLS	31	20	4	4	59
POSSESSION OF DANGEROUS ORDNANCE	2	5	0	0	7
POSSESSION OF FORGED PRESCRIPTION	2	2	0	0	4
POSSESSION OF DRUGS	7	1	0	1	9
PROMOTING PROSTITUTION	0	2	0	0	2
RAPE	217	81	3	1	302
RECEIVING STOLEN PROPERTY	413	232	23	17	685
RECEIVING STOLEN PROPERTY (MISDEMEANOR)	1	1	0	0	2
RECEIVING STOLEN PROPERTY (MOTOR VEHICLE)	6	42	0	0	48
ROBBERY	219	196	13	14	415
SAFECRACKING	10	8	0	0	18
SALE OF DANGEROUS DRUGS	0	1	0	0	1
SECURING WRITINGS BY DECEPTION	1	0	0	0	1
SELLING OF UNREGISTERED DRUGS	1	0	0	0	1
SEXUAL BATTERY	119	31	2	1	153
TAMPERING WITH A COIN MACHINE	2	4	0	0	6
TAMPERING WITH EVIDENCE	2	0	0	0	2
TAMPERING WITH UTILITY EQUIPMENT	0	0	0	0	0
TELEPHONE HARASSMENT (MISDEMEANOR)	1	1	0	0	2
THEFT	401	171	35	48	655
THEFT BY DECEPTION	5	0	0	0	5
THEFT OF FIREARMS	0	2	0	0	2
THEFT IN OFFICE	1	2	0	4	7
THEFT OF DRUGS	2	1	0	0	3
THEFT OF MOTOR VEHICLE	4	8	0	0	12
THEFT OF UTILITY SERVICES	1	0	0	0	1
TRAFFICKING IN DRUGS	183	236	29	20	468
TRAFFICKING IN FOOD STAMPS	2	0	2	1	5
UNAUTHORIZED USE OF A MOTOR VEHICLE	17	16	0	0	33
UNLAWFUL RESTRAINT	0	0	0	0	0
UNLAWFUL TRANSPORT OF WEAPON	0	1	0	0	1
UTTERING	12	6	0	0	18
VANDALISM	12	20	0	0	32
VOLUNTARY MANSLAUGHTER	45	25	6	9	85
TOTAL	5465	3431	361	422	9679

**Commitments To The Department By Sentence And System
Fiscal Year 1985
7-1-84 to 6-30-85**

SENTENCE	CCI-Male Penitentiary	OSR-Male Reformatory	ORW—Female		Dept Total
			REF	PEN	
½ — 5	24	25	5	3	57
1 — 5	74	74	9	13	170
1½ — 5	41	47	5	8	101
2 — 5	152	64	9	7	232
2½ — 5	6	9	0	0	15
3 — 5	59	14	2	1	76
1 — 10	13	11	1	2	27
1½ — 10	1	6	0	0	7
2 — 10	64	96	6	6	172
2½ — 10	30	4	0	2	36
3 — 10	71	30	2	4	107
4 — 10	33	11	0	2	46
5 — 10	12	4	3	1	20
7 — 10	1	0	0	0	1
8 — 10	1	0	0	0	1
1 — 15	1	0	0	0	1
1½ — 15	0	1	0	0	1
2 — 15	60	47	5	8	120
2½ — 15	1	0	0	0	1
3 — 15	302	356	20	16	694
4 — 15	106	77	7	3	193
5 — 15	120	75	2	7	204
6 — 15	35	19	4	0	58
7 — 15	12	7	0	1	20
8 — 15	65	14	0	1	80
9 — 15	2	1	0	0	3
10 — 15	3	0	0	0	3
12 — 15	8	0	0	0	8
3 — 18	1	0	0	0	1
1 — 20	1	0	0	0	1
2 — 20	1	0	0	0	1
3½ — 20	0	1	0	0	1
4 — 20	2	2	0	0	4
4½ — 20	1	0	0	0	1
5 — 20	1	1	0	0	2
5½ — 20	1	1	0	0	2
7 — 20	0	2	0	0	2
8 — 20	1	0	0	0	1
9 — 20	0	1	0	0	1
10 — 20	1	1	0	0	2
2 — 25	2	0	0	0	2
3 — 25	2	0	0	0	2
4 — 25	34	22	1	5	62
5 — 25	277	302	27	15	621
6 — 25	66	58	4	7	135
6½ — 25	1	0	0	0	1
7 — 25	101	61	4	2	168
8 — 25	26	32	0	1	59
8½ — 25	33	0	0	0	33
9 — 25	10	7	0	3	20
10 — 25	199	44	2	2	247
11 — 25	8	0	0	0	8
12 — 25	12	1	0	0	13
13 — 25	3	0	0	0	3
14 — 25	2	0	0	0	2
15 — 25	24	1	0	0	25
4 — 30	1	0	0	0	1
5 — 30	1	3	0	0	4
5½ — 30	0	1	0	0	1
6 — 30	1	3	0	1	5

Commitments To The Department By Sentence And System
Fiscal Year 1985
7-1-84 to 6-30-85

SENTENCE	CCI-Male Penitentiary	OSR-Male Reformatory	ORW—Female		Dept Total
			REF	PEN	
6½ — 30	1	0	0	0	1
7 — 30	0	1	0	0	1
8 — 30	1	0	0	0	1
10 — 30	1	3	0	0	4
1 — 30	1	0	0	0	1
12 — 30	2	2	0	0	4
15 — 30	2	0	0	0	2
18 — 30	1	0	0	0	1
24 — 30	1	0	0	0	1
6½ — 35	0	1	0	0	1
7 — 35	0	3	0	0	3
8 — 35	0	1	0	0	1
21 — 35	3	0	0	0	3
7 — 40	0	1	0	0	1
8 — 40	1	2	0	0	3
9 — 40	2	1	0	0	3
10 — 40	1	3	0	0	4
12 — 40	0	2	0	0	2
15 — 40	2	0	0	0	2
17 — 40	1	0	0	0	1
18 — 40	1	1	0	0	2
23 — 40	1	0	0	0	1
15 — 45	1	0	0	0	1
24 — 45	0	1	0	0	1
5 — 50	0	0	0	1	1
10 — 50	1	4	0	0	5
11 — 50	1	2	0	0	3
12 — 50	1	1	0	0	2
13 — 50	1	3	0	0	4
14 — 50	2	2	0	0	4
15 — 50	3	6	0	0	9
16 — 50	1	0	0	0	1
17 — 50	0	2	0	0	2
20 — 50	6	4	0	0	10
30 — 50	2	0	0	0	2
14 — 55	1	0	0	0	1
15 — 55	0	1	0	0	1
16 — 55	0	1	0	0	1
23 — 55	1	0	0	0	1
33 — 55	1	0	0	0	1
28 — 60	1	0	0	0	1
32 — 60	1	0	0	0	2
15 — 65	0	2	0	0	2
25 — 65	1	0	0	0	1
15 — 70	1	0	0	0	1
25 — 75	1	0	0	0	1
30 — 75	2	2	0	0	4
51 — 85	1	0	0	0	1
41 — 90	1	0	0	0	1
28 — 100	0	0	0	0	1
80 — 200	0	1	0	0	1
15 - LIFE	61	2	0	6	69
17 - LIFE	1	0	0	0	1
20 - LIFE	1	0	0	0	1
22 - LIFE	1	0	0	0	1
23 - LIFE	1	0	0	0	1
25 - LIFE	1	0	0	0	1
30 - LIFE	1	0	0	0	1
LIFE - LIFE	75	4	0	1	1
LIFE (Rape)	0	0	1	0	1
DEATH -	26	0	0	0	26

**Commitments To The Department By Sentence And System
Fiscal Year 1985
7-1-84 to 6-30-85**

<u>SENTENCE</u>	<u>CCI-Male Penitentiary</u>	<u>OSR-Male Reformatory</u>	<u>ORW—Female</u>		<u>Dept Total</u>
			<u>REF</u>	<u>PEN</u>	
<u>DEFINITE SENTENCE</u>					
6 Months	603	371	61	59	1094
1 Year	1133	787	109	128	2157
427 Days	1	0	0	0	1
14 Months 23 Days	0	1	0	0	1
15 Months	0	2	0	0	2
1½ Years	827	450	52	61	1390
2 Years	461	138	12	27	638
2½ Years	19	10	1	1	31
3 Years	40	40	4	10	94
3½ Years	17	12	0	1	30
4 Years	12	10	0	2	24
4½ Years	1	8	1	2	12
5 Years	9	2	0	1	12
6 Years	9	2	1	1	13
7 Years	1	0	0	0	1
7½ Years	0	2	0	0	2
8½ Years	0	0	1	0	1
10½ Years	0	1	0	0	1
TOTAL	5465	3431	361	422	9679

**Operating Expenditures by Institution For Major Areas
Fiscal Year 1985**

	<u>Personel Services</u>	<u>Maintenance</u>	<u>Equipment</u>	<u>Special Funds & Subsidies</u>	<u>Capitol Improvements</u>	<u>Total Operating</u>
Central Office	\$ 4,303,318	\$ 1,116,072	\$ 325,973	\$ 3,493,023	\$ 1,991,342	\$ 11,229,728
Parole & Community Services	13,423,771	1,666,123	63,554	8,219,126	0	23,372,574
CCI	12,016,248	5,316,543	83,882	0	267,963	17,684,366
OCI	10,844,960	6,090,218	66,706	0	129,781	17,131,665
LECI	9,788,813	3,975,916	76,970	0	601,106	14,442,805
LOCI	8,489,633	4,488,925	112,783	0	418,206	13,509,547
MCI	9,001,647	4,965,225	79,124	0	486,262	14,532,258
ORW	6,840,959	2,631,680	41,104	0	595,314	10,109,057
OSR	12,712,403	5,887,793	87,383	0	596,733	19,284,312
SOCF	14,392,495	5,425,975	89,201	0	71,997	19,979,668
SOTC	5,951,760	2,064,612	42,995	0	206,526	8,265,893
HCF	2,488,752	1,057,880	25,411	0	53,862	3,625,905
LCF	8,793,211	3,653,991	64,885	0	67,499	12,579,586
CPC	<u>7,524,330</u>	<u>3,328,933</u>	<u>52,785</u>	<u>0</u>	<u>1,494,849</u>	<u>12,400,897</u>
TOTAL	<u>\$126,572,300</u>	<u>\$51,669,886</u>	<u>\$1,212,756</u>	<u>\$11,712,149</u>	<u>\$6,981,170</u>	<u>\$ 198,148,261</u>

SUMMARY DATA REPORT
Fiscal Year 1985

	<u>Average Number of State Funded Employees</u>	<u>Average Daily Inmate Population</u>	<u>Inmates Per Employees</u>	<u>Annual Cost Per Inmate</u>	<u>Daily Cost Per Inmate</u>
Central Office	177	0	0	0	0
Parole & Community Services	521	0	0	0	0
CCI	476	2,383	5.0	7,421	20.34
OCI	420	1,176	2.8	14,568	39.92
LECI	412	2,045	5.0	7,063	19.35
LOCI	351	2,141	6.1	6,310	17.29
MCI	391	1,959	5.1	7,419	20.33
ORW	268	777	2.9	13,011	35.65
OSR	514	2,337	4.6	8,252	22.61
SOCF	583	2,303	4.0	8,676	23.77
SOTC	251	870	3.5	9,501	26.03
HCF	104	320	3.1	11,331	31.05
LCF	388	1,548	4.0	8,127	22.27
CPC	319	1,027	3.3	12,075	33.09
TOTAL	<u>5,175</u>	<u>18,886</u>	<u>3.7</u>	<u>8,660</u>	<u>23.73</u>

**OPI Correctional Industries
Consolidated
Profit & Loss Statement
Fiscal Year 1985**

GROSS SALES			\$	15,377,620.87	
Less: Freight on Sales	\$	6,021.86			
Returns and Allowances		54,781.60			
NET SALES:				15,316,817.41	100%
Less: Beginning Inventory Balance	\$	4,465,226.52			
Purchases		8,342,744.25			
Ending Inventory Balance		5,905,249.99			
Cost of Raw Materials			\$	6,902,720.78	45.1%
GROSS PROFIT:			\$	8,414,096.63	54.9%
Operating Expenses:					
Salaries	\$	2,568,896.43			
Inmate Compensation		446,000.00			
Heat, Light, Power, and Water		114,234.88			
Plant, Oils and Lubricants		2,754.46			
Machinery & Equipment Repairs		148,775.13			
Rents and Royalties		30,599.00			
Shop Tool Expense		40,807.03			
Factory Supplies Expense		420,794.04			
Miscellaneous		6,482.63			
Packing and Shipping		75,820.60			
Depreciation		314,666.72			
Purchases Services		—0—			
Total Operating Expenses:			\$	4,169,830.92	27.2%
Profit or Loss on Operations:			\$	4,244,265.71	27.7%
Other Expenses & Inst. Adm. Expense:	\$	269,084.09			01.8%
Central Office Allocation:		1,230,684.13			08.0%
Less: Total Other Expenses:			\$	1,499,768.22	09.8%
Plus: Other Income				33,451.89	00.2%
Net Profit or Loss:			\$	2,777,949.38	18.1%



STATE OF OHIO
DEPARTMENT OF REHABILITATION AND CORRECTION
1050 FREEWAY DRIVE, NORTH, SUITE 403
COLUMBUS OHIO 43229

AN EQUAL OPPORTUNITY EMPLOYER

Printed by Ohio Penal Industries

Total copies printed: 750
Unit cost: \$2.46
Publication date: 9/86
(includes paper costs)
