

DEPARTMENT OF  
JUSTICE  
BUREAU OF  
PRISONS

125077

125077

**U.S. Department of Justice  
National Institute of Justice**

This document has been reproduced exactly as received from the person or organization originating it. Points of view or opinions stated in this document are those of the authors and do not necessarily represent the official position or policies of the National Institute of Justice.

Permission to reproduce this copyrighted material has been  
granted by  
Kentucky State Police

---

to the National Criminal Justice Reference Service (NCJRS).

Further reproduction outside of the NCJRS system requires permission of the copyright owner.

# Dedication



The 1988-1989 Kentucky State Police Biennial Report is dedicated to the memory of Trooper Johnny M. Edrington, Post 11, London, who was shot and killed in the line of duty on December 21, 1988 in Laurel County.



Acting Commissioner W. Michael Troop  
Kentucky State Police  
and  
Secretary of Justice



COMMONWEALTH OF KENTUCKY  
KENTUCKY STATE POLICE

919 VERSAILLES ROAD  
FRANKFORT 40601

WALLACE G. WILKINSON  
GOVERNOR

W. MICHAEL TROOP  
ACTING COMMISSIONER  
KENTUCKY STATE POLICE  
AND  
SECRETARY OF JUSTICE

The Honorable Wallace G. Wilkinson  
Governor of Kentucky  
The Capitol  
Frankfort, Kentucky 40601

Dear Governor Wilkinson:

Significant accomplishments were made by the Kentucky State Police during 1988-1989. Because of our strides, it is with great pride that I submit to you and the citizens of this Commonwealth the 1988-89 Kentucky State Police Biennial Report on behalf of the dedicated employees and officers who, by working together, have made this department one of the most highly respected law enforcement agencies in the nation.

Even during difficult fiscal times, our records reflect positive results in all areas of statutory responsibility. The delivery of total police service to all citizens of the Commonwealth has also been maintained.

I trust you will find this report to be informative. It reflects the dedicated efforts of the employees of the Kentucky State Police.

Sincerely,

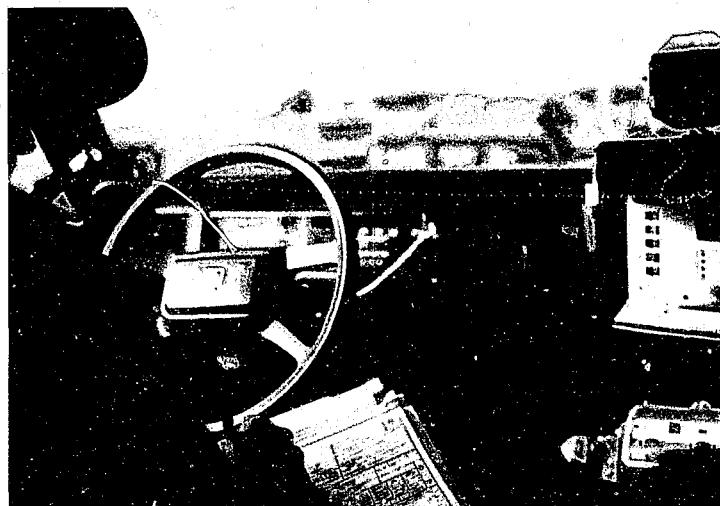
W. Michael Troop  
Acting Commissioner  
Kentucky State Police



"AN EQUAL OPPORTUNITY EMPLOYER M/F/H"



Lt. Col. Dorris Kirkman  
Director  
Operations Division

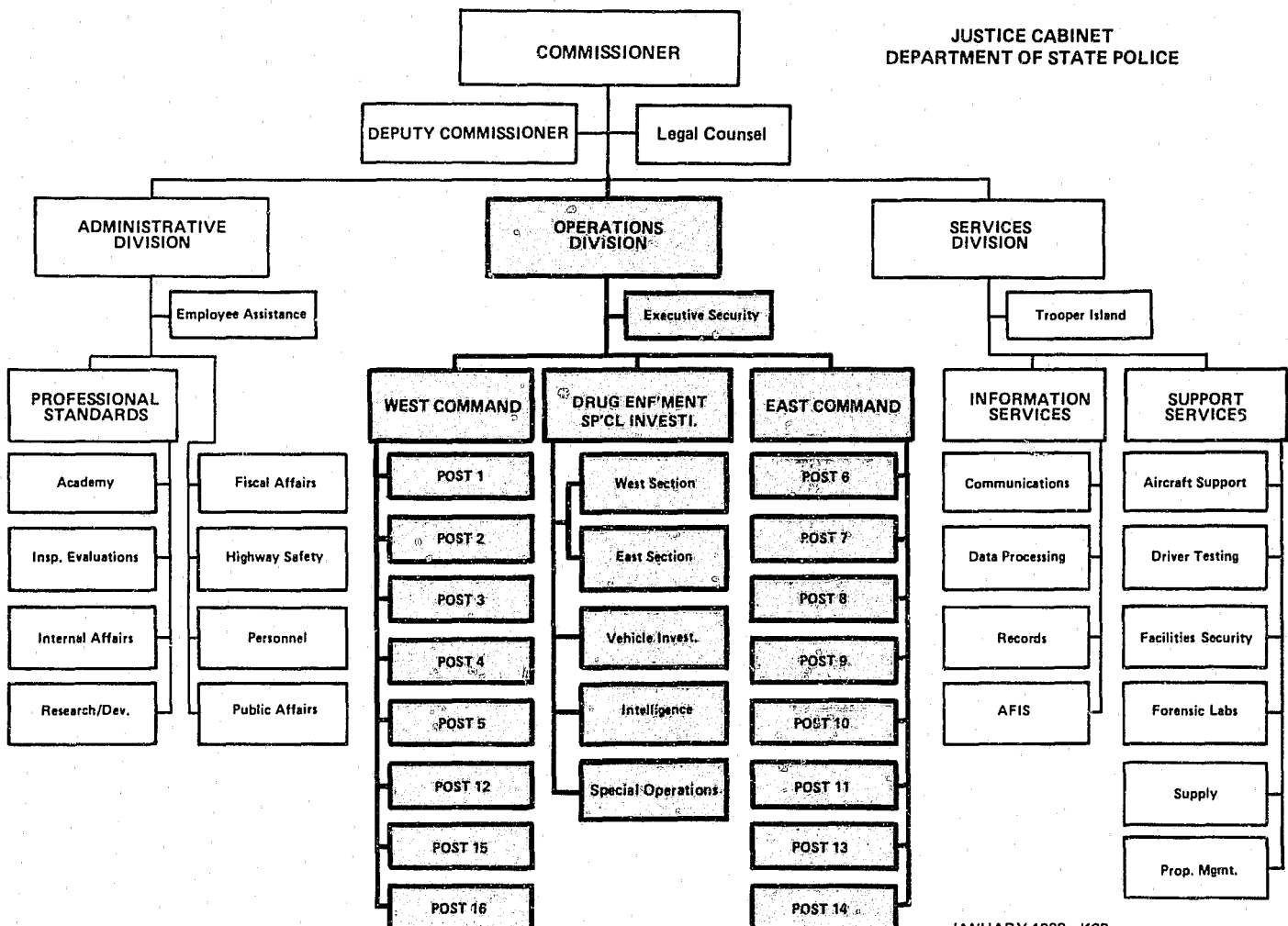


# OPERATIONS DIVISION

The Operations Division provides complete police services to the citizens of Kentucky, those traveling through the Commonwealth and officials of other law enforcement agencies. The focus of the division is to prevent traffic accidents and to protect our citizens through the detection, apprehension and conviction of criminal law violators. Additionally, the division investigates organized criminal activity, stolen motor vehicles, unlawful drug use, corruption and provides security for the governor, lieutenant governor and their families.

Made up of three branches, the West Command, East Command and Drug Enforcement/Special Investigation Branches, the Operations Division is the central element of the Kentucky State Police. The West Command includes KSP Posts 1, 2, 3, 4, 5, 12, 15 and 16. The East Command includes KSP Posts 6, 7, 8, 9, 10, 11, 13 and 14. The Drug Enforcement/Special Investigations Branch is comprised of an East and West Command and the Intelligence, Vehicle Investigation Sections, Hazardous Materials and the Canine Units.

The Hazardous Devices Unit and the Executive Security Section fall directly under the Operations Division.



JANUARY 1989 - KSP



**POST 16**  
Henderson  
Capt. Randy Hill



**POST 4**  
Elizabethtown  
Capt. David Fulks



**POST 5**  
LaGrange  
Capt. Lonnie Moert



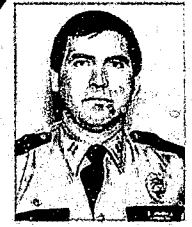
**POST 6**  
Dry Ridge  
Capt. Tommy Fields



**POST 8**  
Morehead  
Capt. Rob Elliott



**POST 2**  
Madisonville  
Capt. Bob Forsythe



**POST 14**  
Ashland  
Capt. Bill Lewis



**POST 1**  
Mayfield  
Capt. John Witt



**POST 9**  
Pikeville  
Capt. Gary Rose



**POST 3**  
Bowling Green  
Capt. Riley Wyatt



**POST 13**  
Hazard  
Capt. Stan Farler



**POST 12**  
Frankfort  
Capt. Mike Duncan



**POST 15**  
Columbia  
Capt. David Rowland



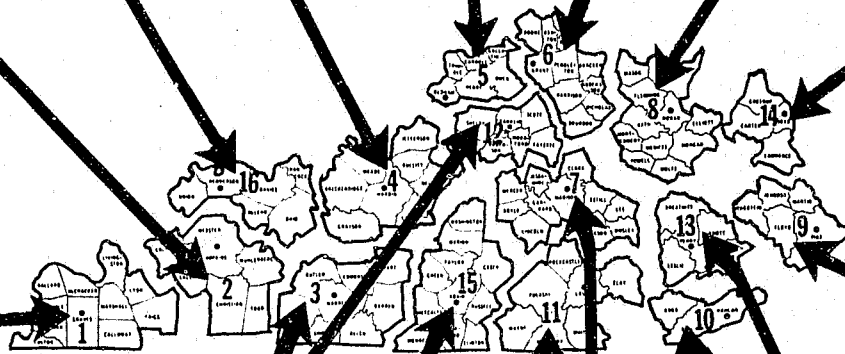
**POST 11**  
London  
Capt. Doug Asher



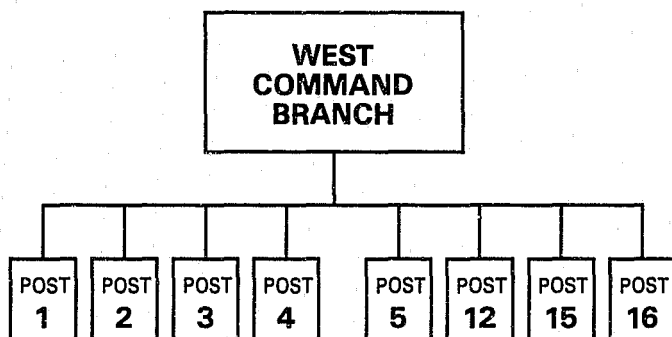
**POST 7**  
Richmond  
Capt. Don Pendleton



**POST 10**  
Harlan  
Capt. Larry Lewis







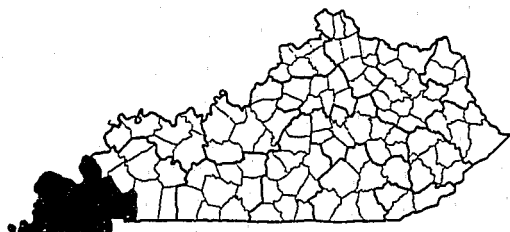
In 1988, the West Command Branch was staffed with 320 sworn personnel. During 1989, the Branch was staffed with 342 sworn personnel and they were responsible for the following activities:

<b>WEST COMMAND BRANCH</b>	<b>1988</b>	<b>1989</b>
Citations	99,900	98,150
DUI Arrests	5,867	5,619
Criminal Cases	10,616	13,411
Criminal Arrests	6,557	9,039

#### ● **POST 1 MAYFIELD**

*Ballard, Calloway, Carlisle, Fulton, Graves, Hickman, Lyon, Livingston, McCracken, Trigg, and Marshall Counties.*

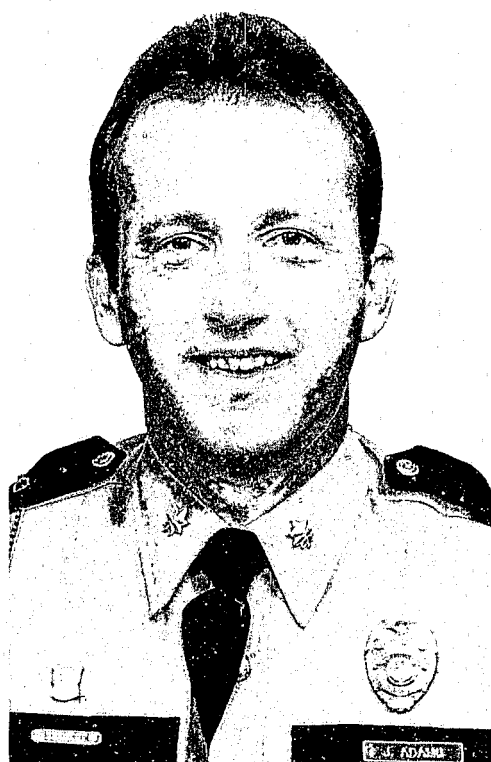
<b>Post 1</b>	<b>1988</b>	<b>1989</b>
Square Miles	3,341	
Population	203,429	
Sworn Personnel	37	38
Total Personnel	50	49



Post 1 - 1988 - A major escape from the Eddyville State Penitentiary in Lyon County involved eight inmates, three of whom were captured within the post area. The other five were caught the week after their June jailbreak, two in the Columbia Post area, one in Texas, and two in Mexico.

Post 1 - 1988 - A former Marshall County deputy sheriff was indicted by the Marshall County Grand Jury after a lengthy investigation involving the theft of several thousands of dollars from tax monies collected over an extended period of time.

Post 1 - November 1989 - A 16 year-old male, lured an elderly man from his home and shot him



MAJOR JACK ADAMS

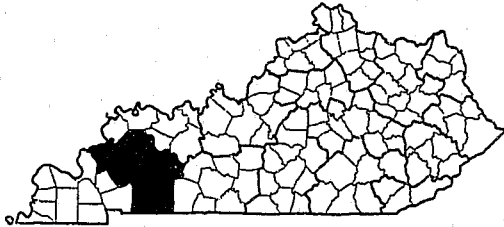
in an attempt to kill him. Investigation revealed that the young male was unstable and deeply involved in satanic and cult related activities. He had originally planned to murder a young teen-age girl he knew only casually, however for some unknown reason he changed his mind and selected the elderly man for his target to see what it is like to kill someone. The investigation revealed that the young male had apparently made a list of intended victims and the method he intended to use to kill them. Also, arrested in this incident were two other persons who were charged with Criminal Facilitation to Commit Murder.



## ● POST 2 MADISONVILLE

*Caldwell, Christian, Crittenden, Hopkins, Muhlenberg, Todd, and Webster Counties.*

Post 2	1988	1989
Square Miles	3,172	
Population	191,002	
Sworn Personnel	36	40
Total Personnel	49	53

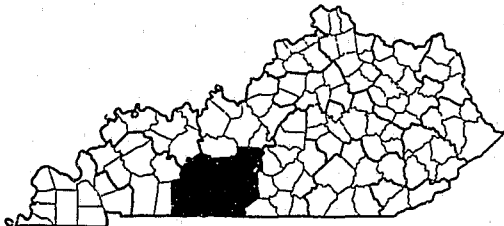


Post 2 - 1988 - Officers investigated the trading of a two-week old baby for an automobile. A woman traded her baby to a man in Muhlenberg County, who in turn took the baby to the London Post area, where he was arrested. Both the mother and man were charged.

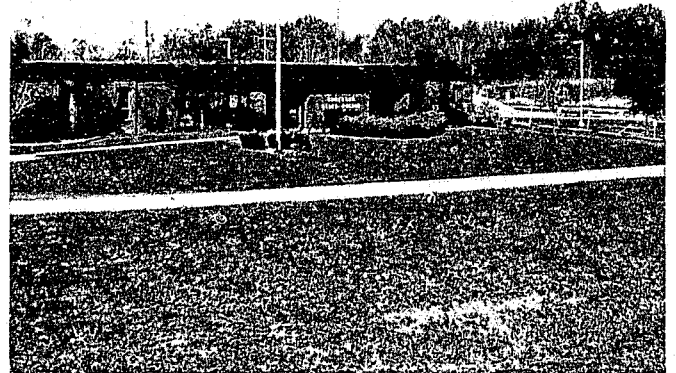
## ● POST 3 BOWLING GREEN

*Allen, Barren, Butler, Edmonson, Hart, Logan, Simpson, and Warren Counties.*

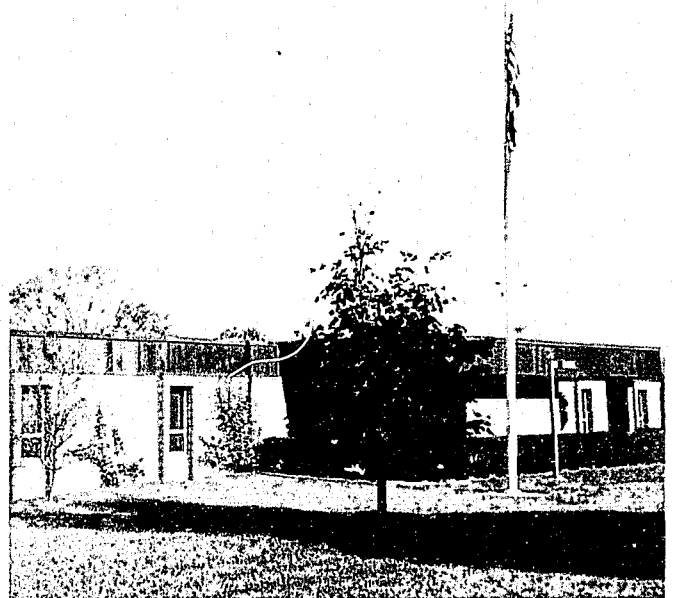
Post 3	1988	1989
Square Miles	3,304	
Population	209,879	
Sworn Personnel	44	48
Total Personnel	56	61



Post 3 - June 1988 - A man surrendered to Bowling Green detectives after he had reportedly raped an Allen County woman, traveled to Richmond, Va., attempted to burglarize a house, fled the home and then shot and killed a man a block from the scene. He stole the victim's truck and came back to Kentucky. On June 7, Post 3 officers went to the suspect's residence where he was arrested.



Post 2 - August 1989 - Three men were arrested and charged with burglarizing a sporting goods store in Greenville and one in Madisonville. Hunting equipment and sporting equipment were stolen at both stores and, in addition, 165 guns were stolen in the Greenville burglary. Forty-five minutes after that burglary, the three were charged with robbing two gas station attendants making a night deposit of \$2,400. Most of the property stolen, valued at \$100,000, has been recovered.

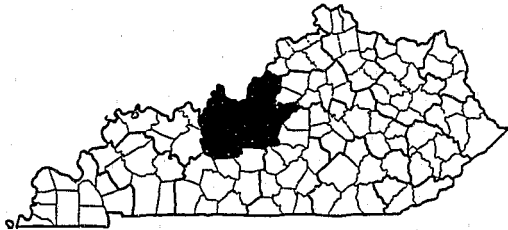


Post 3 - September 1989 - A Detroit couple was charged with trafficking in Marijuana over eight ounces, after they were stopped near Bowling Green on I-65 for a traffic violation. After they were stopped, two and one-half pounds of marijuana was found in their vehicle. The seizure was made by the Drug Interdiction Team.

## ● POST 4 ELIZABETHTOWN

*Breckinridge, Bullitt, Grayson, Hardin, Jefferson, Larue, Meade, and Nelson Counties.*

Post 4	1988	1989
Square Miles	3,367	
Population	920,086	
Sworn Personnel	52	52
Total Personnel	65	65



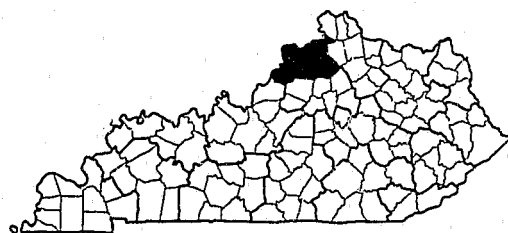
Post 4 - 1988 - Four people were arrested for the January murder and robbery of an elderly Hardin County man. Officers had found the man lying in the living room of his home with a single gunshot wound to his neck and money and a handgun missing from his residence.

Post 4 - September 1989 - Two suspects that had reportedly robbed an Elizabethtown bank at gunpoint were being followed by a Post 4 detective on I-65, after the Elizabethtown P.D. had alerted Post 4 of the incident. The detective radioed that he was behind a vehicle on I-65 that fit the getaway

## ● POST 5 LA GRANGE

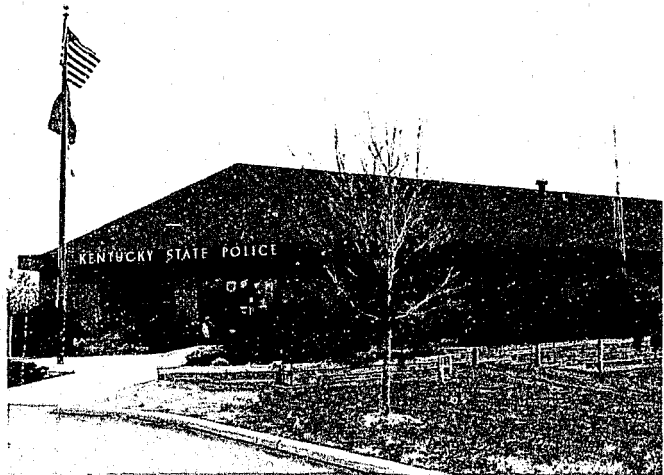
*Carroll, Gallatin, Henry, Oldham, Owen, and Trimble Counties.*

Post 5	1988	1989
Square Miles	1,212	
Population	73,462	
Sworn Personnel	28	30
Total Personnel	41	43



Post 5 - 1988 - An anonymous call led officers to a murder victim in Owen County in April. A man had been shot once in the chest and several days later a Cincinnati man turned himself into the LaGrange Post where he was charged with the Murder.

Post 5 - 1988 - A 34 year-old man was arrested and charged with 27 counts of Murder after he



car's description. The officer followed the car through Lebanon Junction where he was fired upon four times. He returned fire once during the chase. The suspects pulled in behind a house and fled on foot trying to elude their pursuer. About 15 minutes later, the detective was joined by two Post 4 uniformed units, who apprehended the subjects. They were charged with Attempted Murder and Robbery. The suspects vehicle, a firearm and money were recovered.



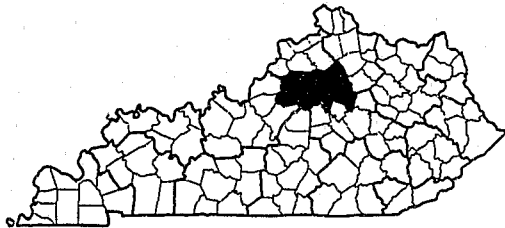
drove his truck into a busload of children on May 14 in Carroll County.

Post 5 - February 1989 - A man employed in Oldham County as a middle school teacher and as a high school wrestling coach, was arrested and charged with Theft by Unlawful Taking over \$100 from a coke machine. The Oldham County Board of Education and the Kentucky State Police set up a video surveillance and taped the coach taking the money which, over a period of time, accumulated to quite a large sum.

## ● POST 12 FRANKFORT

*Anderson, Fayette, Franklin, Scott, Shelby, Spencer, and Woodford Counties.*

Post 12	1988	1989
Square Miles	1,756	
Population	337,963	
Sworn Personnel	50	55
Total Personnel	65	71



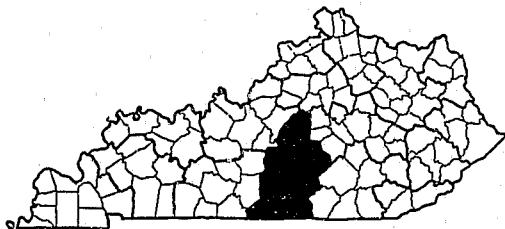
Post 12 - 1988 - Detectives charged three men with Rape, Sodomy and Sexual Abuse. Charges stemmed from incidents that occurred from the late 1970's to 1988. Five Franklin County juveniles were the victims.

After a 15-month investigation, the accused in a murder case in Spencer County was given a sentence for the murder of a 19 year-old female in 1986.

## ● POST 15 COLUMBIA

*Adair, Casey, Clinton, Cumberland, Green, Marion, Metcalfe, Monroe, Russell, Taylor, and Washington Counties.*

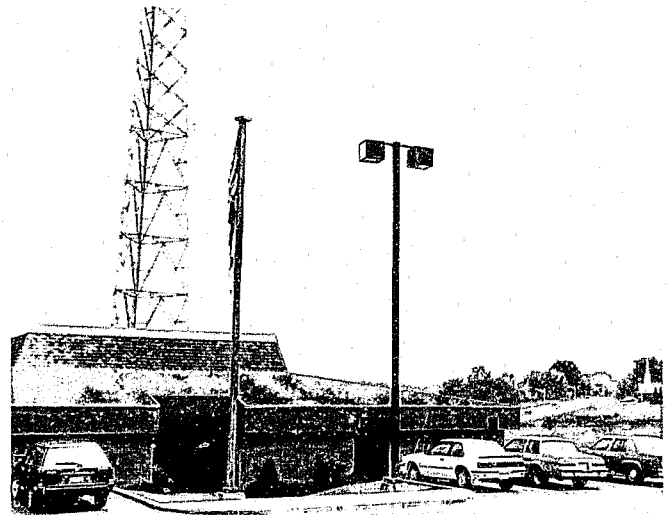
Post 15	1988	1989
Square Miles	3,431	
Population	146,814	
Sworn Personnel	39	41
Total Personnel	51	54



Post 15 - 1988 - Two armed escapees from the Eddyville Penitentiary were apprehended in Taylor County on June 22. Shots were fired by at least one escapee, but no one was injured. Officers had received information that the two were in the area and, after an extensive search, the area was narrowed down to a specific location where the two were finally arrested.



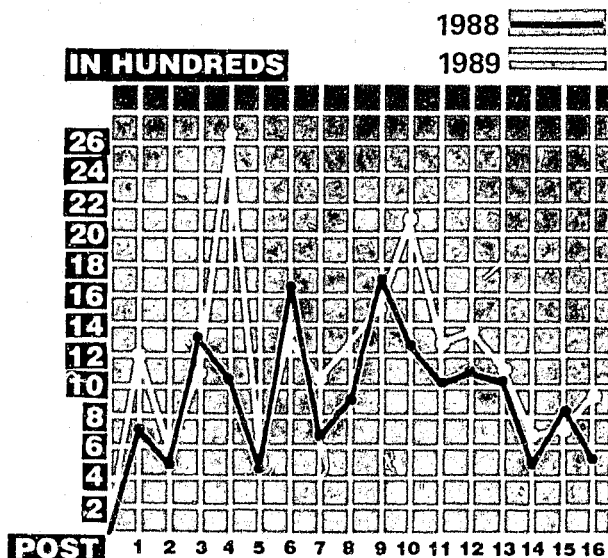
Post 12 - 1989 - In July, a post detective arrested a Midway man on three counts of sexual offenses and four counts of Sodomy 1st. He was accused of sexually molesting 11 different male and female victims since 1972, both in Ohio and Kentucky. He apparently befriended some of the juveniles while he was a little league coach and while operating restaurants in Versailles, Lexington and Cincinnati.



Columbia units arrested an Arizona man after they found 300 pounds of processed marijuana in the trunk of his car.

Post 15 - 1989 - In February, an Albany woman surrendered to police after five hours of negotiations. Officers had responded to a situation in downtown Albany where a 67 year-old woman was in her apartment firing shots with a .22 caliber pistol. Eight Post 15 units contained the scene and, after long negotiations, the woman surrendered and was arrested.

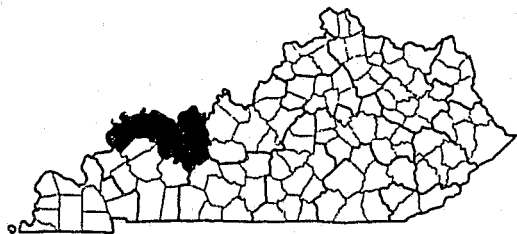
## KENTUCKY STATE POLICE CRIMINAL ARRESTS



### ● POST 16 HENDERSON

*Davis, Hancock, Henderson, McLean, Ohio, and Union Counties.*

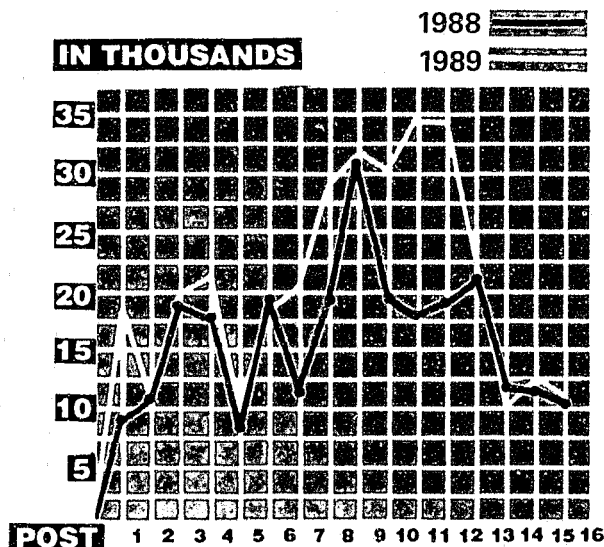
Post 16	1988	1989
Square Miles	2,283	
Population	188,228	
Sworn Personnel	35	38
Total Personnel	47	51



Post 16 - 1988 - Officers arrested two suspects after a July robbery at the Whitesville Branch of the Owensboro National Bank. KSP Canine Units and the KSP Aircraft responded to the search. The assailants were charged with Robbery 1st and Assault 3rd.

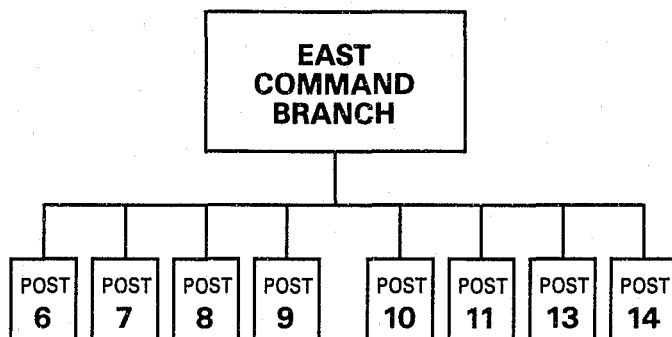
Post 16 - 1988 - Ten men were indicted after state police officers investigated the illegal excavation of artifacts from an Indian burial ground in

## KENTUCKY STATE POLICE CRIMINAL CASES



Union County. The case received national exposure and resulted in new legislation which elevated the crime from a misdemeanor to a felony.

Post 16 - 1989 - Two Owensboro men and one Lewisport man were arrested and charged with Theft by Unlawful Taking over \$100 and Burglary 3rd. On April 21, a call received at post reported a break-in in progress at an oil and gas company in Ohio County. Troopers responded and caught three men in the building. They had already loaded several thousand dollars worth of tools and equipment into trucks.



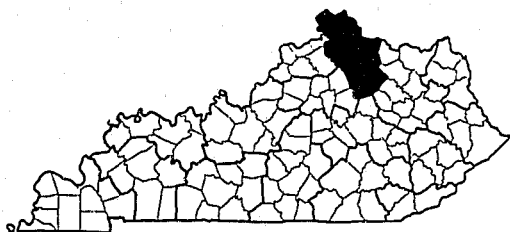
In 1988, the East Command Branch was staffed with 341 sworn personnel. In 1989, the Branch was staffed with 362 sworn personnel and they were responsible for the following activities:

EAST COMMAND BRANCH	1988	1989
Citations	119,761	123,697
DUI Arrests	7,857	7,517
Criminal Cases	15,745	18,264
Criminal Arrests	10,073	10,738

#### ● POST 6 DRY RIDGE

*Boone, Bourbon, Bracken, Campbell, Grant, Harrison, Kenton, Nicholas, Pendleton, and Robertson Counties.*

Post 6	1988	1989
Square Miles	2,203	
Population	345,444	
Sworn Personnel	43	46
Total Personnel	55	59

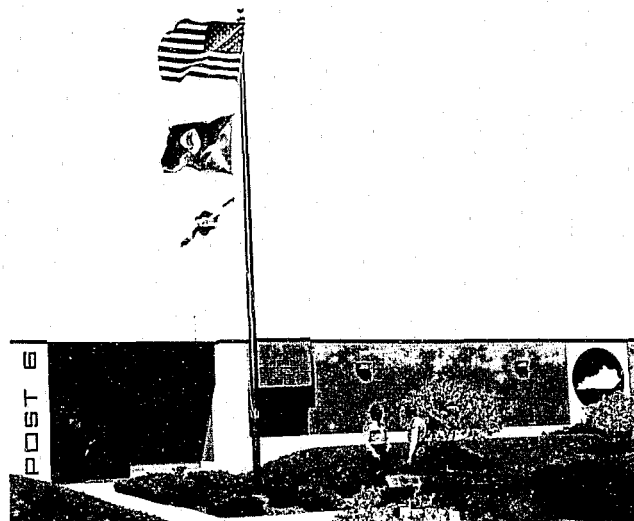


Post 6 - 1988 - A routine traffic stop resulted in the drug-related seizure of a vehicle and \$221,200 in cash. The driver was arrested after a license check revealed there were traffic charges against him and there was no VIN number on the truck.

Post detectives and arson investigators investigated an apartment house fire in Dayton, Ky., where five people were killed, including three children. One adult and a juvenile were charged with five counts of Murder, Burglary and Arson.



MAJOR JERRY LOVITT

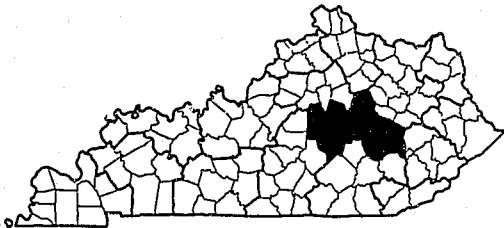


Post 6 - May 1989 - A 16 year-old boy was arrested and charged with Rape 1st, Kidnapping and Wanton Endangerment. The boy is accused of forcing a 24 year-old woman out of her house at gun-point and raping her in a barn behind the house. At one point she attempted to get the rifle away from the juvenile but she fell to the ground. He fired one shot into the ground next to her. The boy, wearing a bandana over his face, fled on foot. Based on information from his neighbors, he was later arrested at his house a mile from the victim's home.

## ● POST 7 RICHMOND

*Boyle, Clark, Estill, Garrard, Jackson, Jessamine, Lee, Lincoln, Madison, Mercer and Owsley Counties.*

Post 7	1988	1989
Square Miles	2,885	
Population	227,422	
Sworn Personnel	50	48
Total Personnel	61	60



Post 7 - 1988 - Two brothers were charged with the September murder of a store clerk in Crab Orchard. They were also charged with robbing the store.

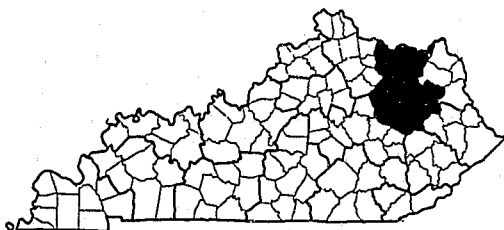
Post detectives arrested a Winchester man who had allegedly strangled his wife in October and dumped her body beside I-64 in Franklin County. He was also charged with several counts of Armed Robbery.

Post 7 - September 1989 - A Jackson County High School student took 13 classmates hostage after he entered a classroom in the morning and

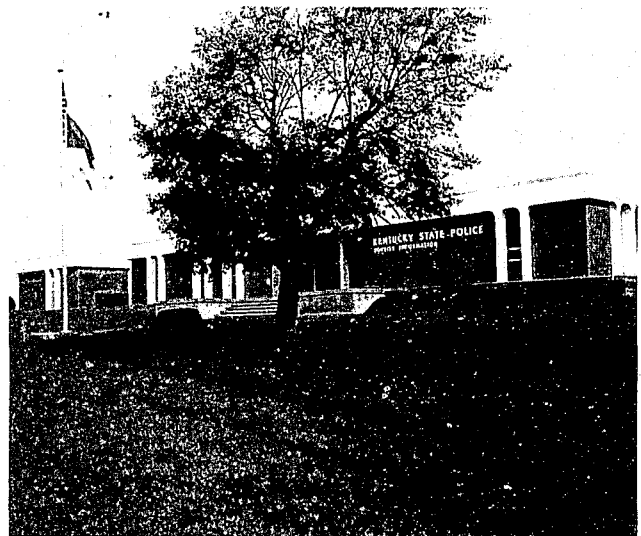
## ● POST 8 MOREHEAD

*Bath, Elliott, Fleming, Lewis, Mason, Menifee, Montgomery, Morgan, Powell, Rowan, and Wolfe Counties.*

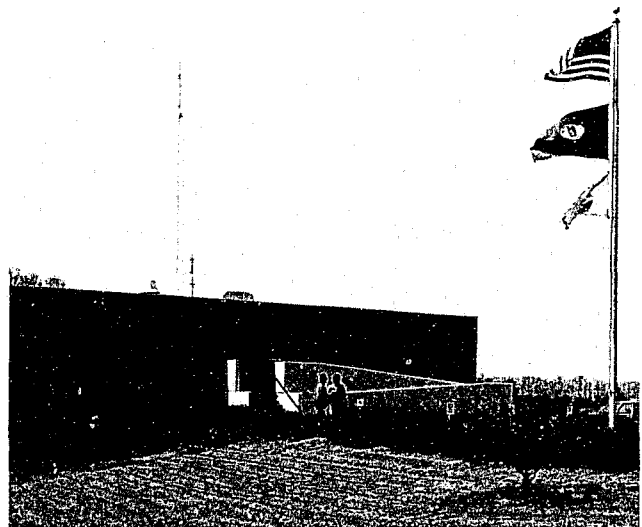
Post 8	1988	1989
Square Miles	3,057	
Population	136,980	
Sworn Personnel	35	45
Total Personnel	48	57



Post 8 - 1988 - The arrest of a man who led police on a vehicle pursuit through Rowan County in October, is believed to have broken a major drug store burglary/auto theft operation that was being run throughout the southeastern United States. One officer attempted to stop the suspect for speeding, the suspect eluded and wrecked, fled on foot and stole another vehicle which he later aban-



fired a shot into the ceiling. Later, he demanded the teacher and several students leave. During the course of the hostage situation, he released all other students intermittently and by 6:30 p.m. he surrendered himself. No one was injured during the incident. The boy was arrested and charged with Kidnapping, Wanton Endangerment and Unlawful Imprisonment.



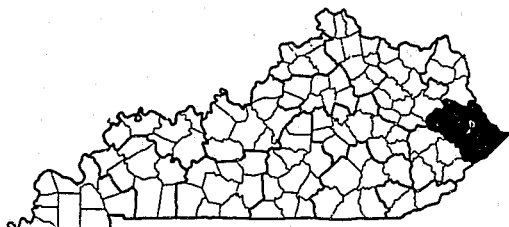
doned. After a lengthy manhunt, he was arrested and charged on various counts including Wanton Endangerment and Burglary.

Post 8 - July 1989 - Four men who were identifying themselves as FBI agents at homes, and then robbing the inhabitants, were caught and charged. Their arrests broke cases in Fleming, Fayette, Jessamine, Bourbon, Montgomery and Powell Counties, where the four had run scams. They reportedly had taken money, jewelry and drugs from homes over a six to eight-month period.

# ● **POST 9 PIKEVILLE**

*Floyd, Johnson, Magoffin, Martin, and Pike Counties.*

Post 9	1988	1989
Square Miles	1,983	
Population	188,388	
Sworn Personnel	52	58
Total Personnel	65	71



Post 9 - 1988 - With the assistance of a K-9 unit, an armed robbery suspect was tracked down in a wooded area after the July robbery of a bank in Phelps. After the suspect was caught, he confessed and identified two other suspects involved. They were arrested by the FBI and the West Virginia State Police.

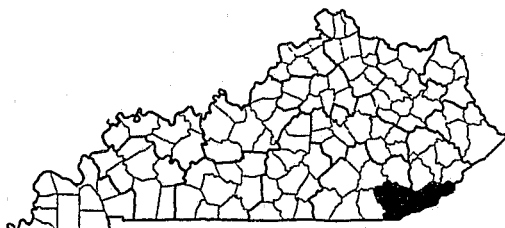


Post 9 - 1989 - Two juveniles and one adult were arrested for the February 10 armed robbery of a Johnson County woman. Two of the accused, armed with handguns, entered her residence and demanded money. The two fled the residence with \$800 and left the scene with the third suspect, who was waiting in a getaway car.

# ● **POST 10 HARLAN**

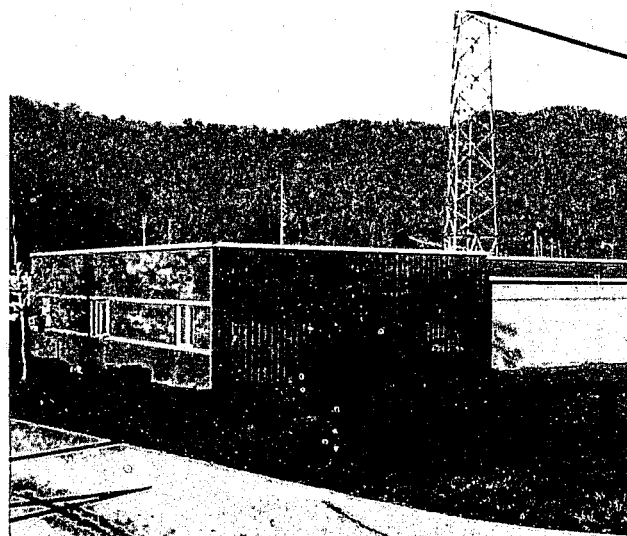
*Bell, Harlan, and Knox Counties.*

Post 10	1988	1989
Square Miles	1,217	
Population	106,556	
Sworn Personnel	43	45
Total Personnel	57	58



Post 10 - 1988 - A man and woman were arrested for the double murders of another man and woman in August in Knox County. The victims were found on Kay Jay Mountain in a partially burned vehicle. Both had been shot in the head.

Two suspects were apprehended the day after they robbed a Bell County grocery store in February. The two had been armed with a knife and tire tool, then fled the scene on foot.



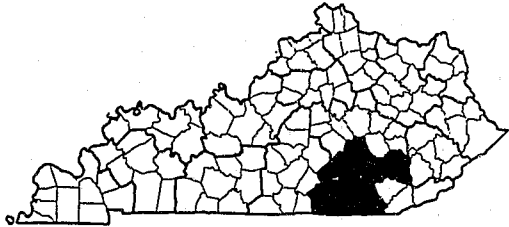
Post 10 - 1989 - Four Harlan County men were arrested on July 20th and charged with the Capital Murder of a CSX Railroad investigator who was a former KSP trooper. The victim was reported missing on July 19th while conducting an investigation in Harlan County. In addition to the Murder charge, the four were charged with Robbery 1st and Theft by Unlawful Taking over \$100.



## ● POST 11 LONDON

*Clay, Laurel, McCreary, Pulaski, Rockcastle, Wayne, and Whitley Counties.*

Post 11	1988	1989
Square Miles	3,199	
Population	197,243	
Sworn Personnel	47	53
Total Personnel	60	66

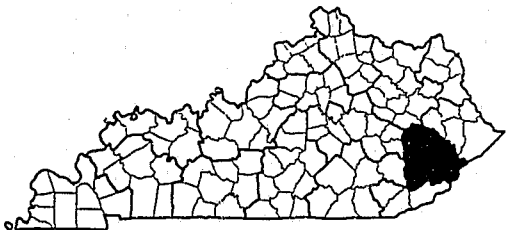


Post 11 - 1988 - A kidnapping led officers to the recovery of drugs, weapons and over \$100,000 in cash in Clay County. A man who had been abducted at gunpoint was later released and police arrested three men in connection with the incident. A search of one of the men's homes turned up the drug-related property and cash.

## ● POST 13 HAZARD

*Breathitt, Knott, Leslie, Letcher, and Perry Counties.*

Post 13	1988	1989
Square Miles	1,929	
Population	116,205	
Sworn Personnel	43	45
Total Personnel	55	58



Post 13 - 1988 - During July, Hazard units and the Perry County Sheriff's Office executed a search warrant at a Perry County residence in reference to an Assault 1st case. During the search, drugs, more than four pounds of marijuana and over \$54,200 in cash were confiscated.

The Hazard Post discovered the most marijuana plots, 482, and reported the most arrests, 25, during 1988.



Post 11 - 1989 - A Clay County man was charged with the murder and robbery of two service station attendants in the London area. He was arrested February 25th, after he allegedly went to a service station near Mount Vernon and fired five shots at the owner. He fled after the owner shot back four times slightly wounding him. The victim reported the incident to post and after a 26 mile high speed chase, the suspect was arrested at his home after he exited his car and tried to flee on foot.

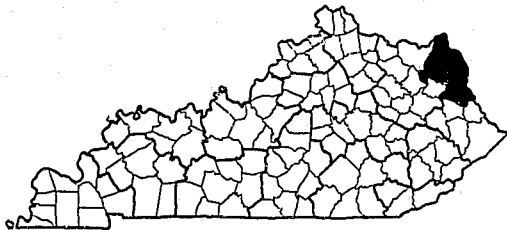


Post 13 - 1989 - In January, two KSP troopers were injured while trying to arrest a woman brandishing a kitchen knife. After several unsuccessful attempts to influence her surrender, they decided to subdue her. During the ensuing altercation, one trooper was stabbed in the left forearm and the other trooper was stabbed in the left shoulder. The troopers were treated at a nearby hospital and the suspect was charged with two counts of Assault 1st.

## ● POST 14 ASHLAND

Boyd, Carter, Greenup, and Lawrence Counties.

Post 14	1988	1989
Square Miles	1,335	
Population	133,923	
Sworn Personnel	28	31
Total Personnel	41	45

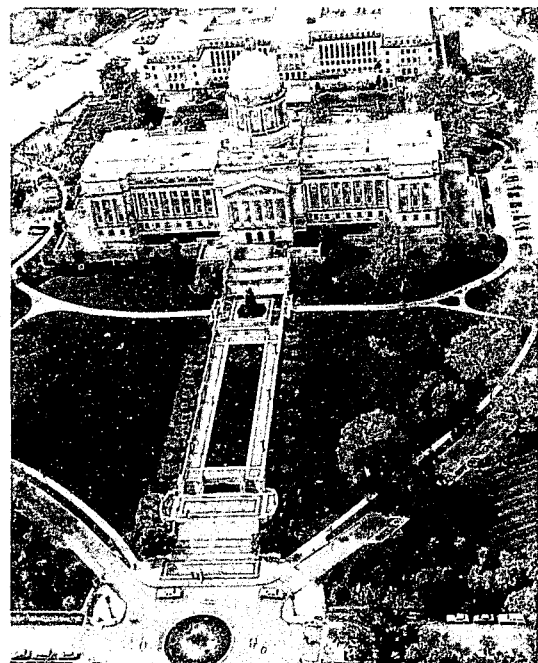
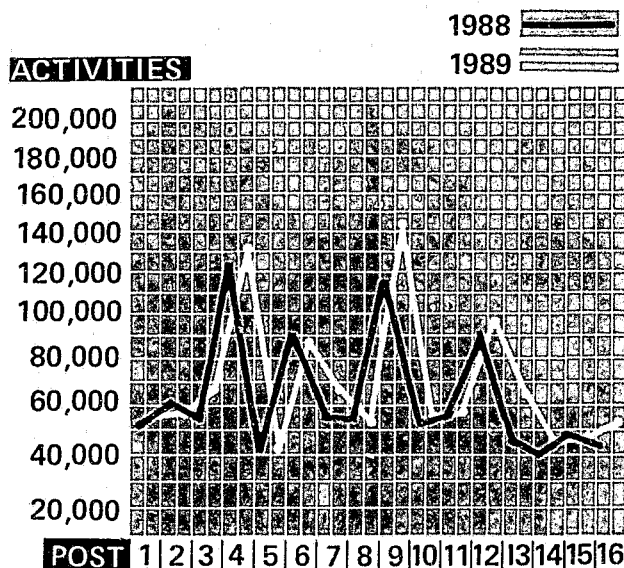


Post 14 - 1988 - The Ashland Post received information that a South Shore grocery was going to be robbed. Several plain clothes units were at the scene and apprehended two armed subjects as they entered the market. Both subjects were charged with Criminal Attempt to Commit Robbery and Carrying Concealed Deadly Weapons. One of the suspects was also wanted by Ohio authorities on Rape and Fugitive charges.



Post 14 - 1989 - The Kentucky State Police arrested five people on January 20th, in connection with the January 14th murder of a Carter County woman. After a week long investigation, two adults and three juveniles were charged with Murder in the death of the 83 year-old woman. She had been shot seven times at her residence.

## KENTUCKY STATE POLICE ACTIVITIES BY POSTS



## Executive Security

The Executive Security officers have primary responsibility for the safety of the governor, lieutenant governor, their families and residences.



## Canine

The Canine Unit is designed to effectively combat violent crime and reduce manpower hours used by police agencies in apprehending subjects. In 1988, there were 13 dog handlers and 14 dogs in use. They were comprised of five bloodhounds for tracking; eight german shepherds, three of them cross-trained to detect drugs, one trained as a cadaver dog and the other four trained for tracking, area and evidence searches; and one labrador retriever trained to detect drugs.

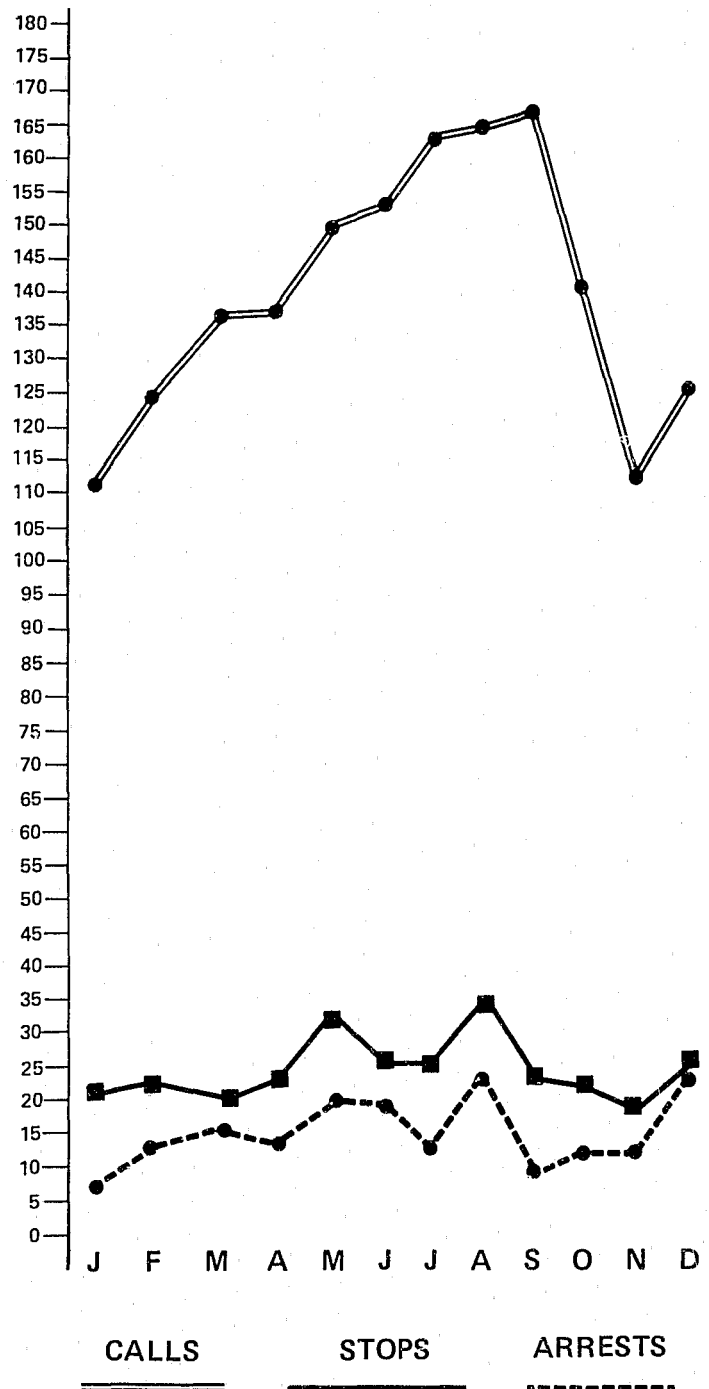
### CANINE

	1988	1989
Programs conducted	144	177
Tracking calls	255	217
People located	37	33
Building searches	38	9
Felons located		
inside buildings	4	1
Assistance on		
warrants served	29	19
SRT activations	5	6
Surveillance details	65	18
Evidence searches	12	4
Drug searches	139	169
Cadaver searches	16	28
Cadaver located	1	4

## Kentucky State Police

1-800-222-5555

Hot Line to report  
an Intoxicated Driver  
Jan. 1 to Dec. 31, 1988



# 1988

## KENTUCKY STATE POLICE 40TH ANNIVERSARY

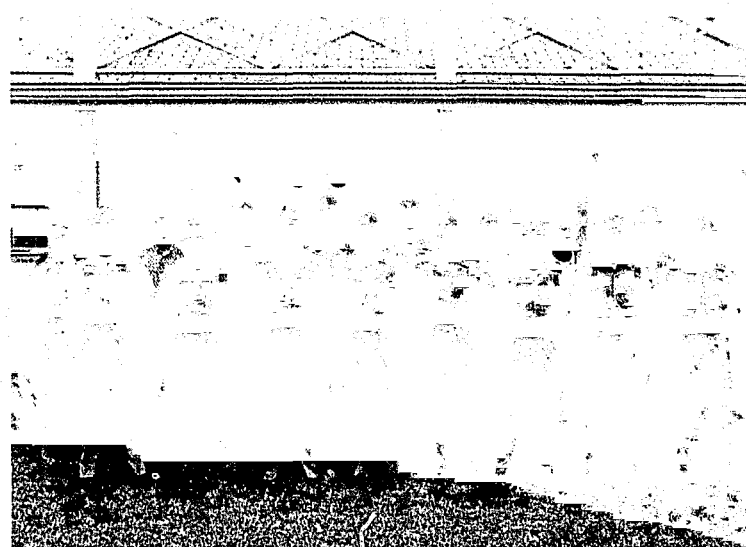
The Kentucky State Police marked their 40th Anniversary in 1988 after the highway patrol was organized into a full-service state police department in 1948. In the years since, many people have "worked" for the agency, but for so many it became and has become a chosen way of life.

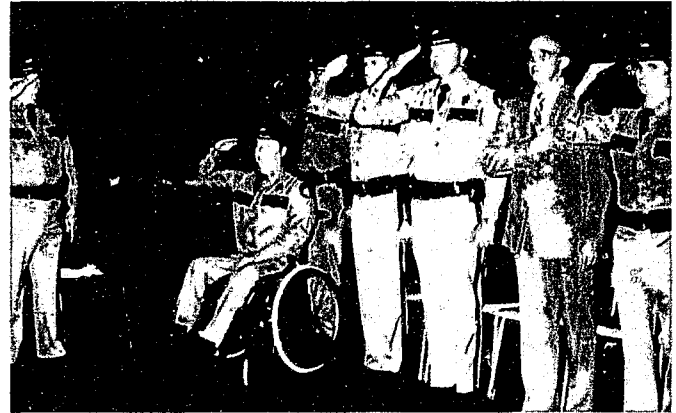
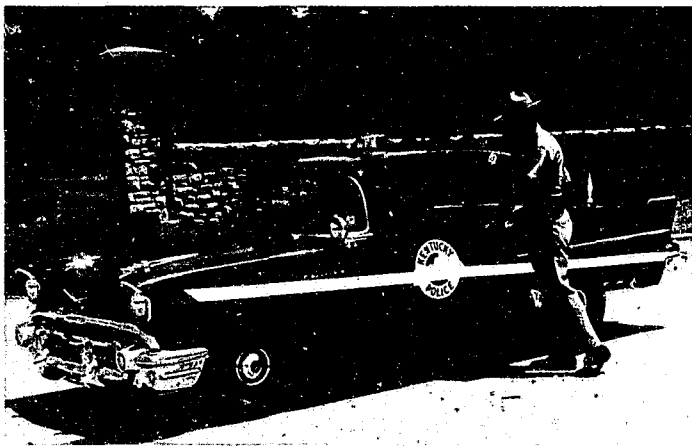
In the early years of the state police, the duties of a trooper were far different than today. The trooper worked a 10-hour day, six days a week, and was lucky if he wasn't called back after a shift. The state police was small enough that the officers were well known to each other.

The trooper today has a 40-hour work week with paid overtime to cover the extra hours worked. He or she has the finest equipment and superior training to help fight the sophisticated level of crime in our society today.

The men and women who fill the ranks of the state police today are really not so different from the first troopers. They are all dedicated, hard working individuals who perform their duties, not for tremendous monetary gain, but because they are caring people who want to help those in need and make a positive difference.

The history of the Kentucky State Police could not be justly written without recognizing the civilians who contribute greatly to this organization or to the families of officers who must share their loved one with a demanding way of life. It is the contributions and sacrifices of these individuals and families that have made the Kentucky State Police one of the finest law enforcement agencies in the nation.





## DRUG ENFORCEMENT/ SPECIAL INVESTIGATIONS BRANCH

The Special Investigations Branch was restructured in 1988 and retitled Drug Enforcement/Special Investigations Branch (DE/SI). Personnel assigned to the former Narcotics Section were combined with personnel from the Special Investigations East and West. The combination of personnel resulted in less duplication and greater coordination of investigative effort.

In addition to narcotics investigations, the branch is responsible for conducting investigations of white collar, organized crime, fraud and corruption in both business and governments. It is also responsible for maintaining liaisons with other law enforcement agencies at local, state and federal levels.

The DE/SI Branch was staffed with 68 sworn personnel in 1988 and 84 sworn officers in 1989.

During 1988, the Intelligence Section was assigned under the Drug Enforcement Special Investigations Branch because the functions of the section are closely aligned with criminal investigations. The Vehicle Investigation Section remained assigned to the branch but underwent a complete restaffing of sworn personnel.

A new section was created during 1989. This section was titled the Special Operations Section. It consists of the Hazardous Materials/Devices Unit and Centralized Special Response Team. The Hazardous Materials/Devices Unit is vested with the responsibility of investigating the report of improperly transported, stored or deposited hazardous materials. These include dangerous chemicals, as well as, infectious waste. The increasing concern about the proper means with which to handle these types of materials necessitated the formation of this unit.

The S.R.T. is utilized during dangerous situations including barricaded individuals and hostage incidents. The SRT now has a canine that will be certified in bomb/explosive detection as well as protection, building search and tracking.

The Asset Forfeiture Program was initiated during 1989. It serves as a central repository for information and assistance on all K.S.P. forfeiture actions.

### DE/SI West and East

- During 1989, personnel assigned to the DE/SI East and West sections prevented the distribution of \$2,837,000 in cocaine and \$6,850,000 in marijuana through conspiracy to distribute charges.



MAJOR TOM RAKESTRAW

- Investigations into the corruption of public officials during 1989 led to the indictment of 36 public officials on a total of 225 charges.
- DE/SI personnel participated in 7 task force operations during 1989. These operations consisted of personnel from local and federal agencies, as well as DE/SI detectives.
- In 1988, 60 organized or semi-organized groups of people participating in various forms of criminal activity were identified. The groups ranged from local political corruption to multi-state drug distribution and money laundering schemes. There were 5,661 people arrested on drug charges during the year in Kentucky. Thirty-four individuals, identified as major violators, were arrested.
- Project T.E.A.M.S. (Team Effort to Apprehend Marijuana Sources) was initiated in 1988 and 16 regional task forces comprised of KSP and local police officers were established. Fifty-one local police agencies participated in the program.
- While 1988 proved successful in marijuana eradication, 1989 showed significant increases. The number of plants destroyed in 1988 was 381,649. This increased to 439,113 in 1989. Plots found in 1988 totaled 2,337 while in 1989 2,978 were located. The number of arrests in 1988 was 148 and increased by almost 100 in 1989, when the total jumped to 246. These figures are KSP totals which also include figures from the Green/Gray sweep, an annual effort by the

KSP and the Kentucky National Guard to eradicate marijuana in the state.

Notable investigations during 1988 had the following results:

- Five greenhouse operations were seized in Owsley County, along with 4,393 marijuana plants, \$5,000 in growing equipment, eight pounds of "shake marijuana" and a two-ton truck. Several arrests were also made.
- A multi-state investigation involving DE/SI personnel centered in Marion County, Ky. is continuing. At least 245,000 pounds of marijuana has been seized and the drug operation is believed to involve at least nine states. Several arrests have been made and more are expected.
- An investigation of the Fayette County Sheriff's Office resulted in the arrest and subsequent conviction of the sheriff on drug charges and misappropriation of funds.

- Long-term investigations concluded with the arrests of 34 people in 11 counties in the Elizabethtown and Bowling Green Post area on charges of Trafficking in Marijuana and Cocaine; 31 people in the Franklin County area and 17 people in Harlan and Bell Counties. These arrests also led to the seizures of property and cash.
- A methamphetamine lab was discovered in Bowling Green and three persons were arrested while four others were implicated as co-conspirators.
- Sixty pounds of marijuana, several thousand dollars worth of certificates of deposits, a vehicle, \$54,000 in cash and two pieces of property were seized in Perry and Powell Counties by the Hazard Post and DE/SI personnel.
- Two men were arrested and their 128 acre Woodford County farm seized after detectives found marijuana growing on the farm.
- A major violator in Lincoln County was arrested and a half kilo of cocaine seized, whereupon, a search of his residence turned up numerous drugs, 50 weapons, a truck and \$3,899 in cash. Another arrest was made in connection with the investigation.

## STATISTICAL INFORMATION

1989\*

	DE/SI — EAST	DE/SI — WEST
Cases		
Opened	843	989
Criminal		
Arrests	396	846
Complaints	2,251	96
Assistance to Posts	267	664
Undercover		
Cocaine		
Purchased	\$62,715	\$88,010
Street Value of Cocaine		
Purchased	\$159,600	\$223,545
Cocaine		
Seized	\$23,250	\$33,000
Street Value of Cocaine		
Seized	\$54,669	\$77,550
Marijuana		
Purchased	\$40,591	\$67,455
Marijuana		
Seized	\$25,908,983	\$20,900,653
LSD		
Purchased	\$3,205	\$425
LSD Seized	\$20,000	\$0
Other Drugs		
Bought & Seized	\$21,290	\$124,207
Assets		
Seized	\$860,365	\$1,118,070

\*1988 figures not available due to reorganization.



A Kentucky State Police officer destroys marijuana by burning.



- Also in 1988, while assisting the Lexington Metro Police and U.S. Drug Enforcement Administration officers, a DE/SI detective, utilizing a drug dog, seized two kilos of cocaine at the Lexington Bluegrass Airport. Three people were arrested.

Significant investigations during 1989 include the following:

- A joint Kentucky State Police/Louisville Police Department investigation designated "Operation Barfly" that started in January of 1988 and concluded June 1989 proved successful. During the investigation a DE/SI West detective made 115 drug buys from 82 different persons in the Louisville area. Buys were made from bartenders, bar help, managers, waitresses, customers and band members at 11 different popular establishments. Six hundred sixty-two grams of cocaine, 10 and one-half grams of "crank", LSD, and marijuana valued at \$67,400 were purchased. Five vehicles and \$10,000 were also seized.
- A six month undercover investigation concentrating on cocaine trafficking on the Kentucky-Tennessee border resulted in the arrest of 33 persons. The confiscation of five vehicles valued at \$25,000, a grocery store



Another seized crop of marijuana awaits destruction.

valued at \$45,000, and one farm valued at \$30,000 is pending. The case led to a significant violator in Bell County. The detective was able to make two large purchases of pharmaceutical Dilaudid. The subject was later arrested, and his house and business valued at \$125,000 was seized for forfeiture.

- A major cocaine and marijuana distributor pleaded guilty to drug and income tax evasion charges in U.S. District Court in Louisville. He received an eight year sentence. He and associated family members were arrested in connection with organized marijuana cultivation in Kentucky, Maine, Kansas and Florida. Another associate was apprehended in Canada, in April 1989. He was a federal fugitive and had been actively involved in producing marijuana in Kansas. These subjects are believed to be ring leaders in the "Corn Bread Mafia" based in Marion County. The identification of this regional marijuana growing group has attracted national attention and inquiry by a federal senate sub-committee. In December 1989, seven other members of the "Corn Bread Mafia" entered guilty pleas for conspiracy and possession with the intent to distribute 25,000 marijuana plants



A pipe bomb booby trap, near a marijuana field, mounted on a tree.



in northern Missouri. All seven were given stiff mandatory jail sentences in U.S. District court in Louisville.

- DE/SI detectives assisted the Union Township, Ohio Police Department in obtaining a search warrant and arresting the national president of the Iron Horseman Motorcycle Gang. The arrest was for two motorcycle gang-related murders in Ohio. The arrest occurred in Livingston County.
- A federal fugitive who was a member of Hell's Angels Motorcycle Gang was arrested by the Kentucky State Police and the FBI near Wickliffe in Ballard County. The arrestee was a fugitive of national interest, and was a subject of the television program "America's Most Wanted."
- A complex major drug trafficking operation was dismantled after an 18-month investigation in the Mercer County area. Three individuals were identified as main "dealers." Their distribution network dated back to 1979. Thirty-seven people were directly

Twelve of these people have been convicted and an additional 25 are expected to be indicted. Property valued at \$500,000 has been forfeited along with \$28,000 in cash.

## Intelligence

The Intelligence Section, which was absorbed by the Drug Enforcement/Special Investigations Branch in 1988, provides support to the department and other criminal justice agencies via the collection, analysis and dissemination of intelligence information.

The section's staff and the Missing Child Information Center, located in the section, published a Crime Information Bulletin which is sent to all sworn KSP personnel. It covers services, officer safety, fugitive and criminal activity. Comments from a questionnaire concerning the bulletin were positive.

The section and INTERPOL-U.S. National Central Bureau established an agreement which designated the KSP to become the liaison for all requests for the assistance of INTERPOL which occur in the KSP jurisdiction.

A new service, investigative assistance, was offered by the section. A criminal analyst, aided by a computer, is now available to assist investigators on-site with the gathering of pertinent information.

## Significant Investigations

- During 1989, the Intelligence Section assisted DE/SI East in the identification and location of approximately 100 air compressors valued at \$210,000. The compressors were taken from and/or located in 10 different states. A theft ring in Powell County was running the operation. The Intelligence Section developed a computer program to assist detectives in the coordination of suspect associations and coordination of the purchasers and sellers.
- The section assisted DE/SI East by providing research information on a subject under investigation for drug trafficking. This information enabled the officers to effect the arrest during a buy-bust. Officers at the scene said that without the information, personal injury likely would have happened since the suspect had a fully loaded MAC-10 and was hesitant to comply with officers' commands.
- The Office of the Governor requested assistance be given to a woman who advised her daughter was abducted by her ex-husband in December 1986. They had joint

### INTELLIGENCE

	1988	1989
Intelligence		
Reports Received	2,374	2,918
Information Documents		
Dispersed	2,114	1,329
Request for Information	3,177	3,469
Investigative Leads		
Developed	7,674	9,597

### MISSING CHILD INFORMATION CENTER

	1988	1989
Missing Person		
Reports Received	2,979	3,436
Missing Person		
Reports Cancelled	2,026	1,000
Investigative Leads		
Developed	263	237
Requests for		
Informational Assistance	16,010	11,434
Individuals Located by		
Information provided		
by section	14	12
Missing Person Flyers		
Distributed	30,453	26,726

related to this organization and they were responsible for the distribution of over 72 pounds of cocaine in Central Kentucky.

custody of the child so local authorities would not assist her. The Missing Child Information Center, located within the Intelligence Section, learned the child was in a private Cincinnati school and a call to Ohio resulted in the father's arrest for a Failure to Appear warrant which the Columbia Post had obtained.

- During 1989, information provided to DE/SI West and the Houston, Texas Police Department resulted in the arrest of two suspected drug couriers and the seizure of \$12,000. The LaGrange Post was given information concerning the location of a hit-and-run suspect and the Richmond Post was provided with the location of a suspect wanted since 1984. The suspect was arrested.
- The Hazard Post received an address and vehicle information which resulted in the apprehension of a suspect wanted by Pennsylvania authorities for Theft by Deception and Fraud. A subject wanted by Virginia authorities on theft charges was located in Lexington. This subject was arrested by DE/SI East.
- The Madisonville Post received knowledge of a subject wanted for counterfeiting in New York. Several arrests on bank robbery charges were made by the Pikeville Post with information developed by this section. A subject wanted by the Bowling Green Post for two counts of Theft by Deception was apprehended after a current address and vehicle information was obtained.
- The section provided assistance to the Owen County Sheriff's Office which resulted in the arrest of a subject for bad checks and a larceny charge in Texas. Information given to the LaGrange Post resulted in the arrest of a subject wanted for custodial interference. A subject wanted by the Frankfort Post was located in Massachusetts. Two subjects wanted for Theft by Deception were located and subsequently apprehended by the Hardin County Sheriff.
- Information provided to the Nashville, Tennessee and Glasgow Police Departments resulted in the arrest and conviction of a subject charged with safe burglaries. The identity of a burglary suspect was revealed to the Elizabethtown Post. An NCIC check revealed the suspect was wanted in Florida. The suspect was arrested in Radcliff within two weeks after the identity was provided. A subject wanted on burglary charges for two years was located and arrested by Elizabethtown Post officers.

## Special Operations

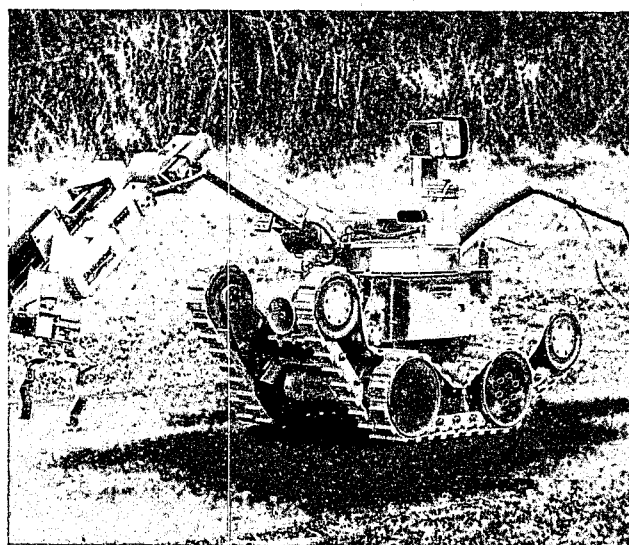
The Special Operations Section was officially designated on December 16, 1989. The Hazardous Materials Unit and Hazardous Devices Unit were combined to form the Hazardous Devices-Materials Unit. Members of this unit responded to 176 incidents and recovered 43 explosive devices. They destroyed 2,262 sticks of dynamite, 8,109 blasting caps and 28 military ordinances. The personnel of this unit conducted three environmental investigations.

The Hazardous Devices Unit conducted 14 classes for 954 people on safety concerning explosives. The coordinator of the unit assisted Murray State University in the development of a training program for Kentucky State Police officers titled "First Responders". This training was mandated by OSHA and given to 492 troopers, 63 sergeants and over 100 vehicle enforcement officers.

The Special Response Team was centralized on July 1, 1989. Members of this team were activated 21 times from July 1, 1989, through December 31, 1989.

## Hazardous Devices

The Hazardous Devices Unit is comprised of four Hazardous Devices investigators who have been certified in the handling and disposal of explosives and explosive devices.



During 1988, a hazardous devices and tactical robot was acquired. The multi-faceted piece of equipment has two main functions: (1) to remove explosive devices in tactical situations such as hostage negotiations; and, (2) to act as a go-between for police and barricaded subjects. This robot is one of only three of its kind in the United States.

The Hazardous Devices Unit reports the following activity for 1988:

- 102 incidents/investigations involving the disposal of 2,160 sticks of dynamite, 7,124 blasting caps, 21 pieces of military ordinance and approximately 1,500 pounds of fireworks.
- 23 incidents involving explosive devices (bombs) that were rendered safe and investigations conducted.
- The most significant incidents involved the search for and the recovery of explosive booby traps within the marijuana fields. There was a total of 19 explosive booby traps recovered in 1988. This number was the highest of any state and is an increase of seven over 1987 and 16 over 1986.
- Investigators conducted 21 classes on explosive safety involving booby traps, bomb threats and explosive recognition.
- Investigators also assisted several local police departments including Lexington Metro Police with the search of vehicles and buildings for possible explosive devices.

## Hazardous Materials

The development of the Hazardous Materials Unit occurred in November 1988. The section provides for enforcement of environmental laws and is closely aligned with the Department for Environmental Protection in that it must monitor transportation, storage and disposal of hazardous materials and waste that are in or being shipped to Kentucky.

### Significant Investigations

- An illegal dump site was located in Shelby County which contained 275 55-gallon containers which held mostly petroleum waste by-products. A joint clean-up effort was conducted by the Hazardous Materials Section and the Department of Natural Resources.
- The Hazardous Materials Unit reported two environmental investigations in 1988.

## Vehicle Investigations

The Vehicle Investigation Section is responsible for tabulating recoveries of stolen motor vehicles and arrests by field officers from all divisions; maintaining custody of motor vehicle

registration files; and furnishing registration data and technical assistance to all law enforcement agencies upon request. Additionally, personnel of this section assist in the identification, arrest and prosecution of those responsible for the thefts.

During 1988, the Vehicle Investigation Section expanded and was completely re-staffed. In-service was held for Vehicle Investigations specialists from 16 posts and DE/SI East and West. In addition, approximately 100 certified vehicle inspectors were re-certified during the year.

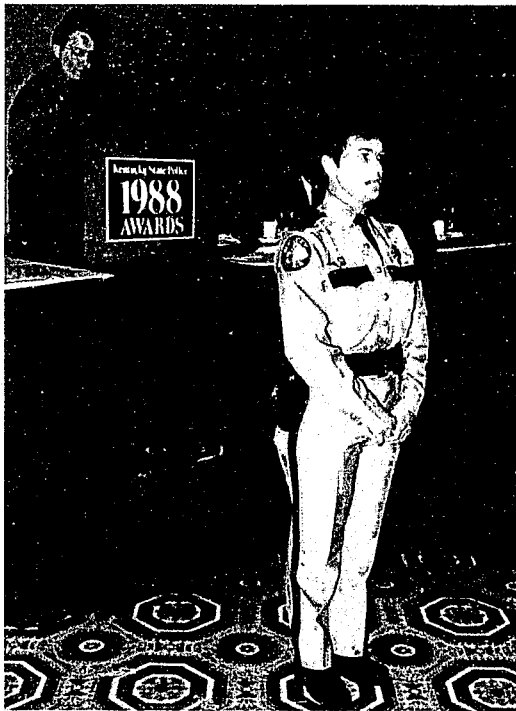
This Section was involved in several significant investigations during 1989. Sworn personnel from this Section opened 91 criminal investigations and made 833 special identification assists. There were 10 theft rings detected. The motor vehicle document examiners examined 60,400 motor vehicle documents, and gave 6,759 assists to law enforcement agencies.

VEHICLE INVESTIGATIONS			
	1988		1989
Vehicles recovered	784		609
Arrests	184		232
Agency inquiry			
assists	12,548		6,759
Motor vehicle			
documents			
examined	175,221		60,400
Value of property			
recovered	\$5,339,624		\$4,037,948

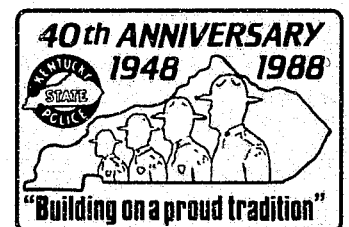
## Asset Forfeiture Program

The Asset Forfeiture Program was started in 1989. Currently there are \$2,688,663 in property/currency pending forfeitures to the Kentucky State Police. (This figure represents the value of property subject to forfeiture and not the value to be received by the Kentucky State Police.) The program is still in its infancy stages. Files and information are currently being gathered to more efficiently track pending forfeitures through the various stages of the forfeiture process.

The program is staffed by a program manager, a financial analyst and two investigative coordinators.



Deputy Commissioner Gene Peter  
Acting/Director  
Administrative Division



# ADMINISTRATIVE DIVISION

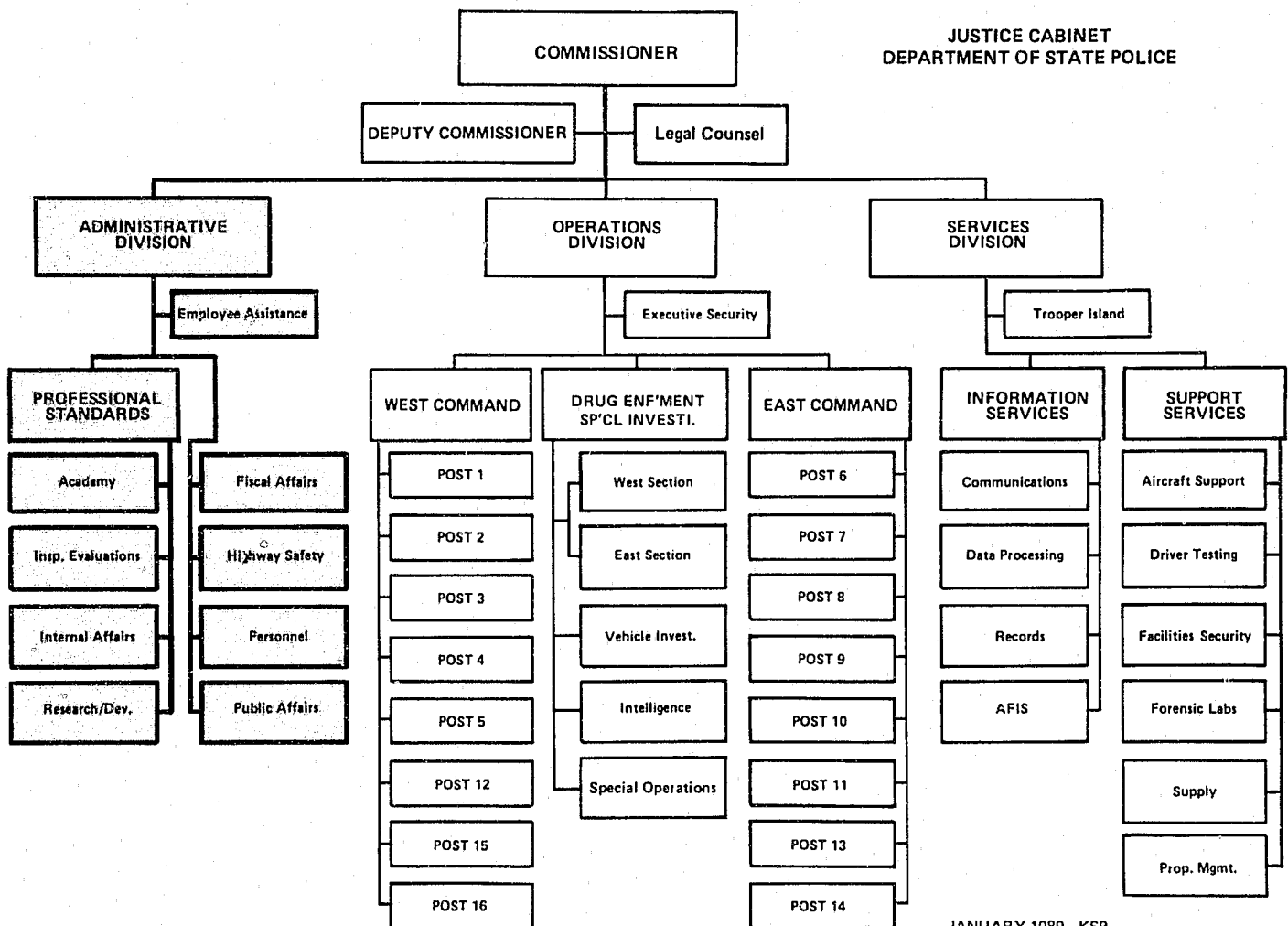
While the Operations Division is responsible for providing the front-line protection and services for the citizens of Kentucky, this can only be accomplished through effective assistance by the Administrative Division.

Personnel must be provided with the highly specialized and professional training needed to accomplish the enormous obligations which must be met daily in the field. A vast array of statistical analyses and information must be made available to the field staff as well as analyzing new equipment and programs for possible use and implementation. A means of inspection and evaluation monitors the effectiveness of all personnel and programs.

The Kentucky State Police must have a prepared budget each year, and a way to monitor checks and balances, so that monies are available to provide necessary equipment, training and personnel to provide protection and services to the citizens of Kentucky.

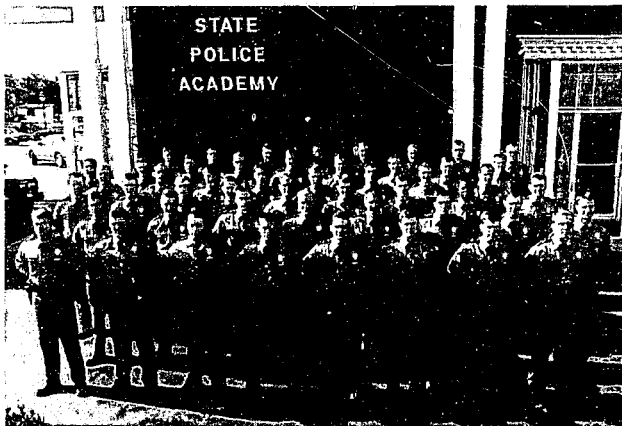
Manpower allocation is continuously studied and distributed to maximize the efficiency of the state police. A healthy relationship between the state police and the news media must be maintained and traffic safety/crime prevention issues kept before the public.

These functions, as well as in-house assistance programs for employees, are all managed by the Administrative Division.



## PROFESSIONAL STANDARDS BRANCH

The Professional Standards Branch is responsible for the coordination, supervision, and management of the Academy, Inspections/Evaluations, Internal Affairs and the Research and Development Sections.



## Academy

The Kentucky State Police Academy is responsible for administering cadet, in-service and specialized training programs within the department and for the development, administration, monitoring and periodic re-evaluation of programs for other law enforcement agencies which are developed and conducted on a request basis.

During 1988-89, the Academy conducted a wide range of training programs for the benefit of the state police as well as local departments and other state agencies. A total of 3,003 state police officers and 757 individuals representing other agencies attended these training programs.

Cadet training was provided for the 58 members of Cadet Class #66 during 1988 and for the 38 members of Cadet Class #67 in 1989. This represented 13 weeks training and 600 hours instruction during 1988, and 27 weeks training and 1,242 hours instruction during 1989.

Specialized programs were offered in 20 areas in 1988 and in 25 areas in 1989 that included vehicle theft investigations, media relations, first-line supervisor training and hostage negotiations. The Academy also provided a four-week training course for the Fish & Wildlife Department.

The health awareness and fitness testing for sworn personnel continued in 1988-89. The program assesses aerobic fitness, flexibility, strength and body fat composition, followed by an individual prescriptive package.

## Inspections/Evaluations

The Inspections/Evaluations Section is responsible for inspecting posts and sections, reviewing recordkeeping, conducting inventories of supplies and evidence at each location and submitting written reports of these activities. The section is also responsible for evaluating all components of the state police and to determine the level of management and recognize potential problems. Recommendations are made to offset potential problems and improve professional management.

During 1988-89, the Inspections/Evaluations Section conducted inspections at the following:

1988	1989
Post 2 Madisonville	Post 4 Elizabethtown
Post 5 LaGrange	Post 7 Richmond
Post 8 Morehead	Post 13 Hazard
Post 10 Harlan	Post 14 Ashland
Post 11 London	Post 15 Columbia
Post 12 Frankfort	Post 16 Henderson
Special Investigations West	Special Investigations East

Operationally and administratively, in 1988-89 the posts/sections were assessed to be in good condition. There have been concerns expressed about the manpower shortage by commanders, troopers and local officials. This concern has diminished as evidenced by the responses received during the most recent inspections. This concern should be alleviated somewhat when the next class graduates. Also 50 additional troopers have been authorized in the next biennium budget.

## Internal Affairs

The Internal Affairs Section provides the commissioner with the assistance necessary to discharge his implicit duties relating to the maintenance of good order and discipline within the agency. The section also ensures that the police mission of the agency is executed within the constitutional limits imposed by the United States and the Commonwealth of Kentucky. In addition, it is the repository for all matters relating to the discipline of agency personnel.

In 1988, the Internal Affairs Section investigated 107 cases. Of those, 47 cases originated internally and 60 externally. Of the internal cases, 77 percent were sustained and 17 percent of the external cases were sustained.

During 1989, the section investigated 75 cases. Of those, 29 originated internally and 46 externally. Of the internal cases, 84.8 percent were sustained and 33.3 percent of the external cases were sustained.

## Research and Development

The Research and Development Section serves as the department's research staff for various studies including policy review and revision, manpower research and grant activities. The section is also responsible for planning, programming and statistical research for the state police.

In 1988, the section provided planning and instruction in new sergeants' training; updated the Coal Strike Master Plan; conducted retirement seminars across the state; administered a space utilization and allocation study for headquarters; and completed the recruitment process for Cadet Class #66. In addition, the staff completed a single audit of 98 grants totalling \$8.5 million dollars; revised and updated 31 KSP policies and procedures; and responded to 43 questionnaires from various agencies.

During 1989, the section completely revised and distributed the new KSP Policy and Procedure Manual which include LINK/NCIC guidelines and completed a comparison study and made recommendations on flextime.

During that same year, the section completed and submitted 20 grant applications that include the following: crime laboratory upgrade, highway drug interdiction, DUI overtime, D.A.R.E., asset forfeiture, uniform public safety education and desk top publishing.

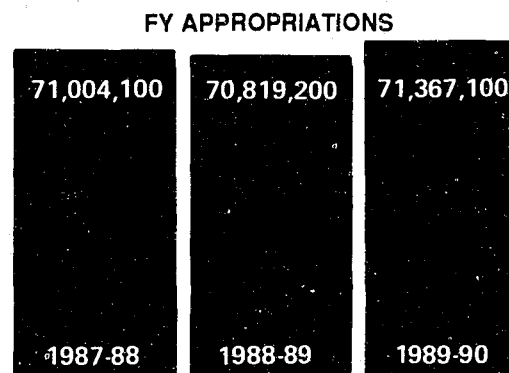
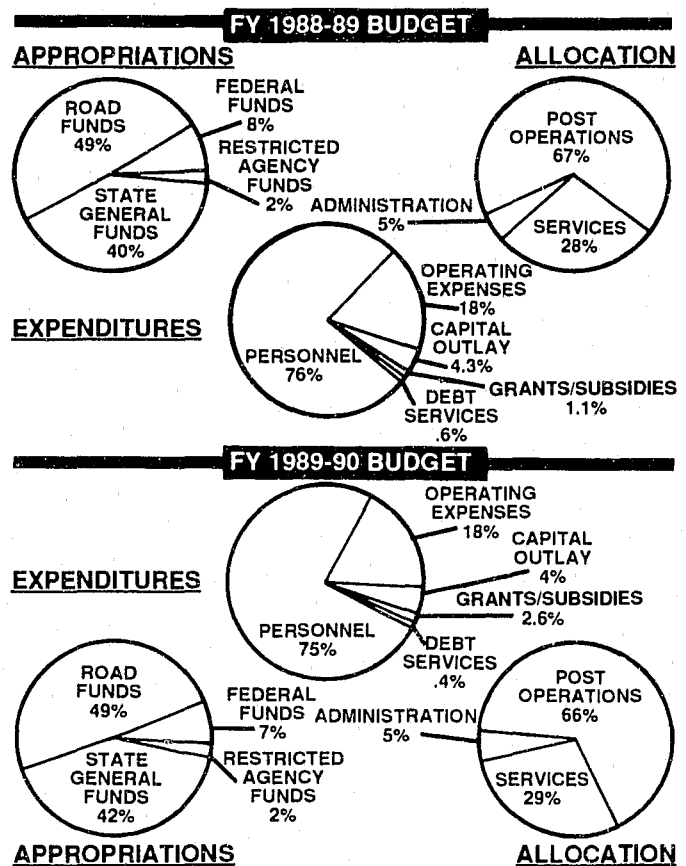
## FISCAL AFFAIRS

The Fiscal Affairs Branch has total responsibility for all state police budgetary, purchasing and accounting functions. During 1988-89, the branch insured that all expenditures incurred during these years complied with applicable purchase regulations and policies and were in conformity with the budget bill adopted by the 1988 General Assembly.

The branch prepared monthly financial reports indicating expenditures for the month and cumulative expenditures for the year. The staff also provided management with up-to-date reports on the financial condition of the department. During 1989, the department's 1990-92 Biennium Budget was prepared and submitted to the governor and Legislative Research Commission in both hard copy and in computer disc form.

## HIGHWAY SAFETY STANDARDS

The mission of the Highway Safety Branch is to administer the United States Department of Transportation's National Highway Traffic Safety Administration and Federal Highway Administration



402 Safety Program monies. These funds are granted to state and local governments to provide for problem identification and countermeasure activities that will reduce traffic accidents on Kentucky's roads.

During 1988-1989, the primary focus of the Highway Safety Branch continued to be in the alcohol countermeasure area. These activities were supplemented with programs concerning occupant protection countermeasures and other traffic crash contributing factors such as excessive speed. Expanded alcohol enforcement projects responded to the overwhelming public concern for removing the drinking driver from our roadways.

Project Graduation continued to be emphasized by conducting state wide conferences during 1988-89, where students heard about alternatives

to drinking or taking drugs during graduation activities, proms, senior trips, class outings, etc.

As a part of Kentucky's Highway Safety Plan,



activities addressing both safety belts and child passenger safety were continued. Public information and education materials necessary for the safety belt and child passenger programs were purchased and/or developed.

The branch provided funding for increased speed enforcement in counties as part of an integrated traffic enforcement project. With Kentucky adopting the 65 M.P.H. speed limit in June of 1987, there is concern of traffic crash activity not only on 65 M.P.H. posted rural interstates, but secondary highways as well. Increased enforcement was applied in rural areas where the Kentucky State Police is the primary enforcement agency.

The "Signs for Locals" project was continued. Expanded efforts were carried out in FY 1989 to bring in as many cities as possible from the "qualified cities" list. These cities inventoried existing signs and needed new regulatory and warning signs. They will maintain the upgraded signs for at least five years.

## PERSONNEL

The Personnel Branch is responsible for the administrative process related to agency personnel activities; retention of all personnel and payroll files; issuance and distribution of payroll checks; personnel orders related to promotions, transfers, resignations, travel and disciplinary actions; and the administration of the promotional procedure for Chapter 16 personnel.

To reduce the number of "new hires" when filling vacant positions, 53 civilians employees were promoted and/or transferred into existing vacant positions during 1988. To further promotional op-

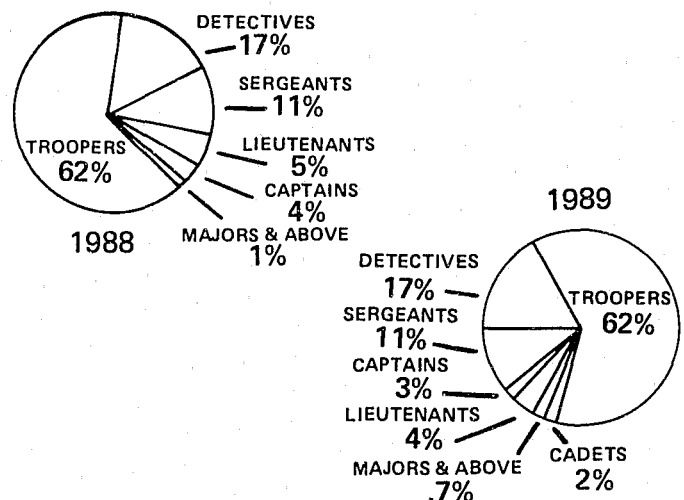
portunities, a total of 354 KSP employees were promoted and/or transferred into existing positions within the department during 1989.

There was a decrease of personnel during 1988 but by the end of 1989 the total was increased by 67.

During 1988, a cadet class of 50 individuals was selected, processed and appointed. During the following year, a cadet class of 38 was selected, processed and appointed.

The year 1988 reflects retirement personnel actions and payroll documents that were processed for 94 Chapter 16 employees and 31 Chapter 18 employees through the "Early Retirement Window" provision.

### PERCENT OF KSP COMMISSIONED PERSONNEL BY RANK



### RETIREMENTS

	1988	1989
COMMISSIONED	94	4
NONCOMMISSIONED	31	6
<b>TOTALS</b>	<b>125</b>	<b>10</b>

KSP COMMISSIONED PERSONNEL	
AGE DISTRIBUTION 1988-1989	
<b>25-29 YRS</b>	
1988	141
1989	158
<b>30-34 YRS</b>	
1988	160
1989	152
<b>35-39 YRS</b>	
1988	281
1989	240
<b>40 OVER</b>	
1988	252
1989	361



## PUBLIC AFFAIRS

The Public Affairs Branch has the primary mission of educating the public concerning traffic safety issues. A secondary responsibility is to serve as a liaison between headquarters and the media.

In meeting this responsibility, the branch has worked in the following areas: Project Graduation - an annual alcohol accident prevention program designed to teach high school seniors and juniors how to hold chemical-free proms and graduation parties. This event is co-sponsored by the KSP Highway Safety Branch and the Kentucky Dept. of Education.

"Tie One On - Against Drunk Driving" - a statewide Red Ribbon Campaign, was aimed at encouraging motorists not to drink and drive during the December 1989 holiday season. Public Affairs organized a press conference/rally, held at the state capitol, with Governor Wilkinson as the featured speaker. Also in attendance at this rally were hundreds of high school students attending Project Graduation who were bussed to Frankfort to give support to this event.

"D" Day on Traffic Ways - originated by KSP Public Affairs in 1984 was adopted by Operation C.A.R.E. as a nationwide drunk driving countermeasure program. A cooperative program of the KSP, sheriff's offices and local police departments. The 13-hour enforcement period in 1988 resulted in 274 arrests and no DUI related accidents.

In 1988, at a special demonstration for the media, reporters were invited to participate in the "Two Doesn't Equal .10" demonstration to show the effects of alcohol consumption on the human body.



In 1989, the "Trooper Teddy" program was designed to provide comfort to children who may be terminally ill, a victim of crime or an accident. The program began with the support of the "Red Mile" Racing Track of Lexington and later received additional financial support from Frank Schoop Chevrolet, of Georgetown. Initially over \$10,000 dollars was donated to purchase "Teddys".

Public Affairs, in 1988, provided assistance to the KSP 40th Anniversary Committee, by designing a logo for the event to use on promotional materials, produced a 10 minute slide program on the history of the KSP and produced a souvenir program book for this event.

Public Affairs officers made presentations state-wide to schools, churches and civic groups on topics such as: drunk driving, occupant restraint, traffic safety, drug talks, victim support and many other subjects in the area of public safety and concern.

Other continuing projects by the branch during 1988-89 include the production of a fund raising video on Trooper Island, the monthly newsletter "The Thin Gray Hot Line," manning of displays at fairs and at trade shows statewide and participation in Operation C.A.R.E. safety efforts during the major holidays.

Again on the national scene in 1989, the Public Affairs Branch hosted the Uniformed Safety Education Officers Workshop in Louisville. The four-day conference was attended by 150 officers from 22 states. The branch designed a logo for this event that was adopted as the official logo for the U.S.E.O.W.

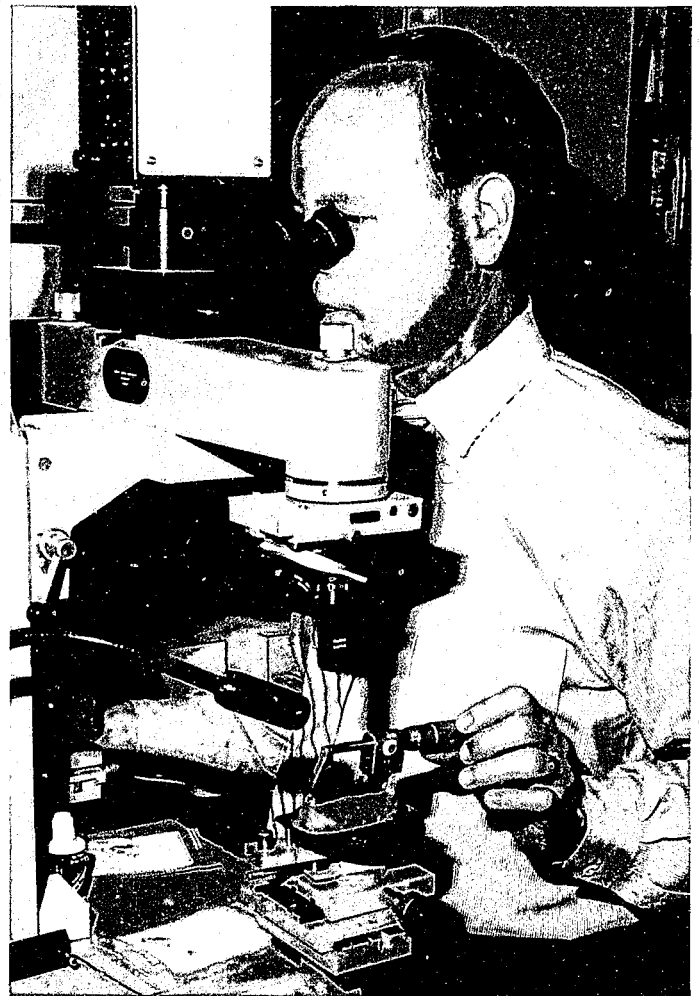
Also in 1989, the staff provided personnel and technical support to the Region IV American Association of Motor Vehicle Administrators. Members of the branch served in the following ways: Vice-Chairman of the Public Affairs and Consumer Education Committee; provided for audio-visual equipment and for group transportation; and organized youth activities.

## EMPLOYEE ASSISTANCE

The Employee Assistance Program provides counseling, referral and guidance to all Kentucky State Police employees and their families.

A great effort has been made to keep all employees aware of the available services and programs and the office strives to remain cognizant of employees' needs.

During 1988-89 the following services were offered: alcohol/drug, psychological, job related, marital/divorce, family/child, and financial/legal.



Lt. Col. Charles Johnson  
Director  
Service Division

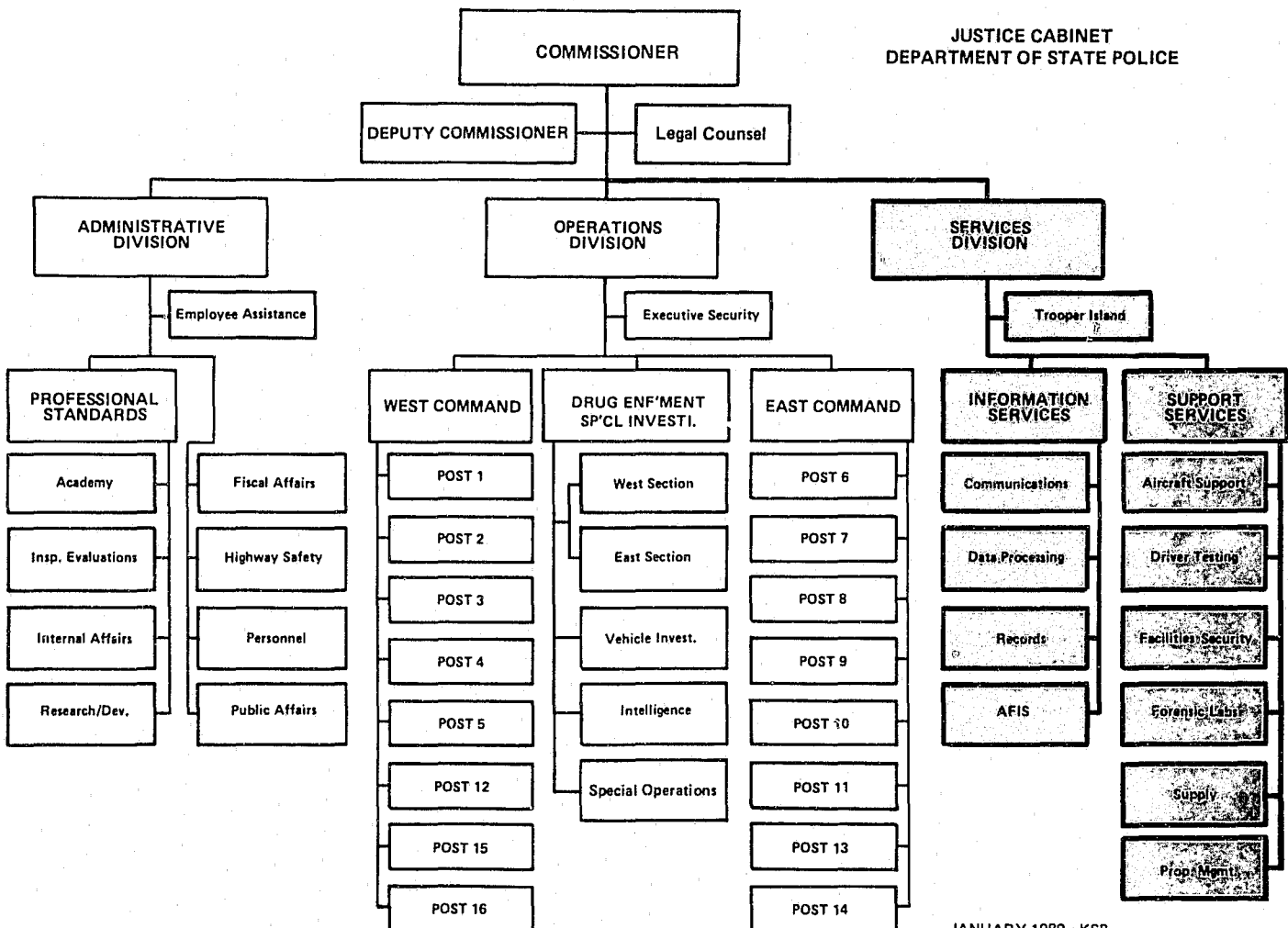


# SERVICES DIVISION

The Services Division is responsible to the commissioner and coordinates and manages the activities of the Information Services Branch and the Trooper Island program.

Successful enforcement by the Kentucky State Police is dependent upon a strong Services Division. The information provided by the division keeps the officer abreast of data necessary to his/her function. The division also provides all equipment utilized by the state police along with record-keeping and communications systems that are mandatory for the effective and safe patrol of all troopers.

The assistance and maintenance provided by the sections of the Support Services Branch accentuate the effectiveness of the patrol and criminal investigation of the Operations Division.



JANUARY 1989 - KSP

## INFORMATION SERVICES BRANCH

The Information Services Branch is charged with providing technical assistance through its Communications, Data Processing, AFIS and Records Section.



MAJOR NEAL BRITTAIN

During 1988, the Information Services Branch underwent tremendous change. The branch was reorganized with one section abolished and a new section, Automated Fingerprint Identification System (AFIS), created. With these changes, a whole new direction of thinking was also created.

The branch was reorganized in November in order to place similar functions together. Every section under the branch must work closely together and almost always has an impact on each other, and will have a direct or indirect impact in various areas of the state police and other criminal justice agencies, which make up 78 percent of the Information Services Branch work.



## AFIS

The AFIS Section was created in November 1988. Its mission is to provide fingerprint identification by computer analysis. The AFIS data base by the end of 1988 had a store of 265,000 fingerprint cards.

During 1989, 1,219 cases were received and 1,114 cases were completed.



## Communications

During 1988, the Communications Section had the difficult task of keeping an outmoded system operational. This was further complicated because many of the parts needed for repair are obsolete.

The purchase of high-tech analysis and diagnostic equipment in 1989 has upgraded and enhanced the section's ability to increase maintenance capabilities and provide a broader scope of services to KSP and other state agencies.

Another major objective of the section during 1989 was the replacement of all base stations, on an as-needed basis, which had deteriorated due to age.

## Data Processing

By the closing of 1989, the Data Processing Section resolved backlog problems that existed in 1988 and in previous years and reduced them to manageable levels that do not extend beyond 7 to 10 days in any area. During 1989, the error rate for NCIC was less than one tenth of one percent which was the best in the nation.

A Disaster Recovery Plan developed and implemented in 1989 provides back-up of all data for off-site storage preserves.

## Records

The Records Section receives, maintains and analyzes records of traffic accidents and traffic law activities, criminal cases and statistics, criminal history and identification documents.

During 1988, the section was reorganized and this enhanced the ability of the section to gather reports. The section had success in 1989 conducting ICAP and LINK user meetings. These meetings involved actual hands-on training for the users.

The Kentucky Drug Information Network made significant strides in 1989. Information provided by the network assists leaders to establish ap-



propriate drug strategies for their respective jurisdictions.

## SUPPORT SERVICES BRANCH

The Aircraft Support Section is responsible for the operation, maintenance, coordination and management of all KSP aircraft. Services provided by the section in 1988-89 included marijuana eradication, drug smuggling, air interdiction, crime scene response, transport of prisoners, aerial photography and vehicle trackings. More than one half of all flight hours during 1988-89 were for marijuana eradication and prisoner transport.

An outstanding accomplishment of the Aircraft Section was a perfect safety record in their 2,305 flight hours during the period covered by this report.

## Driver Testing

Personnel in this section, working with the Transportation Cabinet, Administrative Office of the Courts and Kentucky Circuit Clerks, were able to administer all the vehicle drivers test for Kentucky. During 1988, 319,635 individual license examinations were administered statewide and during 1989, 311,313 tests were administered.

## Facilities Security

The Facilities Security Section has the responsibility for maintaining security at designated state-owned or leased facilities and property.

A new commander was named to this section in 1988, a secretary position was created and filled and four supervisory positions were filled. During 1989, the section's operations office was moved from the Capitol Annex to the Bush Building and a 50 watt base station was purchased giving this section its own radio frequency.



MAJOR L. E. BURGIN

## Forensic Laboratories

The Kentucky State Police provides valuable assistance to the criminal justice system through the Forensic Laboratories. The assistance includes training of law enforcement officers, crime scene searches, evidence analysis, laboratory and police personnel interaction during the course of an investigation and courtroom evidence and testimony.

During 1989, a total of 20,696 cases were submitted containing 60,451 exhibits to be examined. This was 10.95% above 1988, which showed 18,653 cases with 49,334 exhibits.

The Photo Laboratory printed 516,343 photographs during 1989. This represents an increase of 87,662 (or 20% over 1988). A breakdown of the photographs printed indicated 8,425 color enlargements and 15,062 black and white prints.

The Polygraph Unit conducted 700 polygraph examinations in 1989 compared to 562 in 1988. There were 101 confessions obtained during the course of these examinations, up from 87 obtained in 1988.

Laboratory personnel spent a total of 2,762 hours providing training to law enforcement and



court personnel. This time includes classroom instruction or lecturing at conferences, symposiums and seminars.

## Properties Management

This section, newly created in 1988, has the responsibility for the construction and maintenance of all state police facilities. In 1988, planning was completed for the new post construction at Mayfield. A safety awareness program for the work place was developed for department employees.

During 1989, an asbestos survey for those sites having potentially dangerous levels was conducted statewide. A project was started to upgrade KSP building sites, at all facilities, for handicap access. Also, in 1989, a project was initiated for the removal, repair and or replacement of KSP underground gasoline storage tanks.

## Supply

The Supply Section is responsible for the acquisition, storage, distribution, maintenance and disposal of equipment and supplies necessary for the efficient operation of the agency and for maintaining records necessary to accomplish this objective.

	1988	1989
New Vehicles Issued	175	208
Used Vehicles Issued	466	372
Vehicles Sold at Auction	190	194
Sold to Other Agencies	27	10
Vehicle General Repairs	1049	955
New Cars Prepped	167	187
Vehicles Stripped	134	117

Improvements were made to the computer system to track overdue routine maintenance and to project when replacement was needed on all state police vehicles.

## Trooper Island

Trooper Island Boy's Camp was developed by the Kentucky State Police as part of a long range program designed to instill a positive image of law enforcement in Kentucky's youth and to ultimately impact criminal behavior, obedience to traffic laws and to improve citizenship.

Established in 1968, the camp provides free camping and educational opportunities for approximately 700 10 to 12 year-old boys each year. During 1988, camps for girls were set up the last few weeks of the summer program. More camps for girls are expected in future seminars.

Each boy or girl is selected by a trooper and given the opportunity to attend camp. The camping aspect is dedicated to developing the whole person, building the physical body through nutritious food and exercise, boosting mental capabilities with classroom study and providing spiritual growth through non-denominational chapel services. All of the growth experiences are shared with troopers, and civilian women for the girls, bonding the youngsters to their new found friends.

**This publication was produced by the  
Public Affairs Branch**

**Captain John B. Lile, Commander  
Edward Moriarty, Information Officer Supervisor  
Mary Ann Jenkins, Information Officer  
Laura Naylor, Graphic Artist**

**All photographs produced by KSP Photolab  
Det. Joe Haydon, Commander**

**Type set by Finance Cabinet, Division of Printing**

**Paid for with State Funds**