



Statistical Report

Intake Data

Fiscal Years

1987 - 1989

William Donald Schaefer
Governor, State of Maryland

Linda D'Amario Rossi
Secretary, Department of Juvenile Services

12-5-91 MF1
131495

131495

**U.S. Department of Justice
National Institute of Justice**

This document has been reproduced exactly as received from the person or organization originating it. Points of view or opinions stated in this document are those of the authors and do not necessarily represent the official position or policies of the National Institute of Justice.

Permission to reproduce this copyrighted material has been granted by

Maryland Department of Juvenile
Services

to the National Criminal Justice Reference Service (NCJRS).

Further reproduction outside of the NCJRS system requires permission of the copyright owner.

TABLE OF CONTENTS

	Title	Page
1	List of Tables	i
2	List of Figures	ii
3	Introduction	1
4	Highlights of Intake Statistics FY 1987 - FY 1989	5
5	Tables and Figures	8

List of Tables

Number	Title	Page
1	Number and Percent of Intake Cases by County of Jurisdiction and by Area: FY 1987 - FY 1989	11
2	Number and Percent of Formal Cases by County of Jurisdiction and by Area: FY 1987 - FY 1989	12
3	Number and Percent of Informal Cases by County of Jurisdiction and by Area: FY 1987 - FY 1989	13
4	Number and Percent of Cases Closed at Intake by County of Jurisdiction and by Area: FY 1987 - FY 1989	14
5	Number and Percent of Disapproved Cases by County of Jurisdiction and by Area: FY 1987 - FY 1989	15
6	Intake Decisions by County of Jurisdiction: FY 1989	16
7	Rank Order of Formal Cases by County of Jurisdiction: FY 1989	17
8	Intake Decisions by Race: FY 1987 - FY 1989	19
9	Intake Decisions by Sex: FY 1987 - FY 1989	20
10	Number and Percent of Total Cases by Age: FY 1987 - FY 1989	21
11	Referral Sources: FY 1987 - FY 1989	23
12	Offenses by Offense Type: FY 1987 - FY 1989	24
13	Offense Rates per 1,000 Population by County of Residence: FY 1989	26
14	Rates of Total Referrals per 1,000 Population Ages 11-17 Years by County of Jurisdiction: FY 1987 - FY 1989	27
15	Rates of Total and Delinquent Referrals per 1,000 Population Ages 11-17 Years by County of Residence: FY 1989	28
16	Disposition of Formal Cases: FY 1987 - FY 1989	30

List of Figures

Number	Title	Page
1	Department of Juvenile Services Organization Structure	8
2	Flow Chart of Case Referrals: FY 1989	9
3	Manner of Handling Intake Cases: FY 1989	10
4	Intake Decisions by Area: FY 1989	18
5	Intake Decisions by Race: FY 1989	19
6	Intake Decisions by Sex: FY 1989	20
7	Age Distribution of Intake Cases: FY 1989	22
8	Source of Referral: FY 1989	23
9	Total Cases by Offense Type: FY 1989	25
10	State Rates of Total and Delinquent referrals: FY 1987 - FY 1989	29

INTRODUCTION

The period covered by this report, Fiscal Years (FY) 1987 through 1989, was characterized by changes in organization and in methods of data management for Maryland Juvenile Services.

In a period of three years, Juvenile Services moved from an Administration to an Agency to a Department. The first change occurred in 1987 when the Juvenile Services Administration, which was situated in the Department of Health and Mental Hygiene, became a separate agency. In 1989, the Juvenile Services Agency became a department. Figure 1 shows the current organizational structure of the Department of Juvenile Services (DJS) under the leadership of its first secretary, Linda D'Amario Rossi.

These years also saw the development and implementation of the Information System for Youth Services (ISYS), an on-line, real-time relational database for case tracking and management. Data previously processed by the Maryland Automated Juvenile Information System (MAJIS) have been converted to ISYS, which is the source of all data in this report. Methodology and data definition standards remain the same.

This report provides statistics on youths from the time of their initial referral to Juvenile Services through Court disposi-

tion. Figure 2 gives an overview of the basic categories of data covered in this report. Information about services provided to these youths will be reported separately.

The department's intake officers, working out of offices throughout the state, screen and evaluate all complaints against youths. Police refer most cases to Juvenile Services. An Intake Officer can pursue four courses of action depending on the circumstances of the case. The officer may decide to (1) disapprove the filing of a petition if the matter is not within the jurisdiction of the juvenile court, or otherwise lacks legal sufficiency, (2) close the case at intake, (3) deal with the matter informally by pursuing a period of informal supervision, or (4) assuming that the complaint is legally sufficient, authorize the filing of a petition.

The Intake Officer denies authorization to file a petition and closes the case at intake whenever the facts and circumstances indicate that further intervention by DJS or the court is not necessary to protect the public or help the youth. When a case is closed at intake, the youth may receive immediate counseling, a warning, referral to another agency for services, or a combination of these or other short-term interventions.

The Intake Officer pursues a period of informal supervision whenever it appears that a youth or the youth's family needs

assistance in preventing further violations of the law by the youth but does not require, and may not benefit from, judicial intervention or long-term formal supervision. By law, consent must be received from the victim, the youth, and the youth's parents or guardian to pursue this route. Voluntary informal supervision cannot exceed 90 days unless otherwise extended by the court and may include referrals to other agencies, completion of community service work, and other types of non-judicial intervention.

The Intake Officer authorizes the filing of a petition whenever the officer determines that formal court action is necessary either to protect the public or to effect a positive adjustment on the part of the youth. Cases that are formalized are submitted to the States Attorney's office. The State's Attorney can file or deny the petition.

If the case goes to court it can be dismissed, denied, waived to adult jurisdiction, continued or statted. If the charges are sustained and if a youth is found delinquent, the major court dispositions are: probation, commitment for community placement, or institutional placement.

Probation entails providing community services and case management oversight for adjudicated delinquents who continue to live in their own homes. Physical and legal custody of the youth

remains with the parents or guardians. More than half of all youth who are adjudicated delinquent are placed on probation.

Youths are committed to DJS by an act of a judicial officer ordering that they be placed in an institutional or residential facility, for a specific reason authorized by law. In this case, there is a transfer of custody to the Department.

Highlights of Intake Statistics FY 1987 to FY 1989

- o Total intake cases referred to the Department decreased by 4.7% from FY 1987 to FY 1989 (from 38826 to 37019), mirroring but not equalling the 6.2% decline in the Statewide population of youth between the ages of eleven and seventeen years.

Table 1

page 11

- o About 37.7% of the 37,019 cases that were referred to the Department in FY 1989 were closed at intake, 3.6% were disapproved, 22.4% were handled informally at intake, and 36.3% received formal court action.

Table 2-5

Figure 3

pages 10, 12-15

- o Comparison of intake decisions by area showed that Area I (Baltimore City) ranked the highest (51%) in the proportion of cases that were formalized, and lowest in the proportion of closed or disapproved cases (22%). Area III (Allegany, Frederick, Garrett, Montgomery, and Washington Counties) had the lowest proportion of cases that were referred for formal court action (23%) and the highest proportion of cases that were closed or disapproved (56%) at the intake level. Examination of intake decisions by county, however, indicate that Area III counties rank both highest and lowest in the proportion of cases referred for formal court action: Allegany County leads the state with 52.4% of cases and Montgomery County ranks lowest with only 15.9%.

Table 6-7

Figure 4

pages 16-18

- o In FY 1989 about 52% of the total intake cases were white, 46% were black, and 2% were other races. The proportion of cases of black youth has grown from 41% of all cases in FY 1987 to 46% in FY 1989. About 58% of the youth that were referred for formal court action were black and 41% were white. In contrast, 53% of the cases that were handled informally were white and 45% were black.

Table 8

Figure 5

page 19

- o Males accounted for about 81% of the total cases referred to intake and 86% of formal cases.

Table 9

Figure 6

page 20

- o Over the three-year period, about 77% of the youth who were referred to intake were between the ages 14 and 17. The number of youth referred increased with age. The average and median age at referral was 15.0 years.

Table 10

Figure 7

pages 21-22

- o Police accounted for 91% of the 37,019 referrals to the Department in FY 1989.

Table 11

Figure 8

page 23

- o In FY 1989 property offenses accounted for the largest proportion of cases with 48%, followed by person-to-person offenses with 16%, alcohol and drug-related offenses with 15%, uncategorized offenses with 14% and CINS/CINA offenses with 6%. Over the three-year period, person-to person offenses and alcohol and drug-related offenses rose while CINS/CINA cases declined both in absolute number and as a share of total cases.

Table 12

Figure 9

pages 24-25

- o Offense rates for offense type by youth county of residence are reported for the first time by the Department of Juvenile Services. Rural counties such as St. Mary's, Garrett, Allegany, Queen Anne's, and Calvert showed higher rates for CINS/CINA referrals per 1,000 population, while Baltimore City, Baltimore County, and Prince Georges' showed higher rates for person to person, and property offenders per 1,000 for population.

Table 13

page 26

- o In FY 1989, the juvenile referral rate for Maryland was 86.5 cases per 1,000 population 11 through 17 years of age. The delinquency referral rate was 75.7 per 1,000 population for ages 11 through 17. The rate rose over the three year period.

Tables 14-15

Figure 10

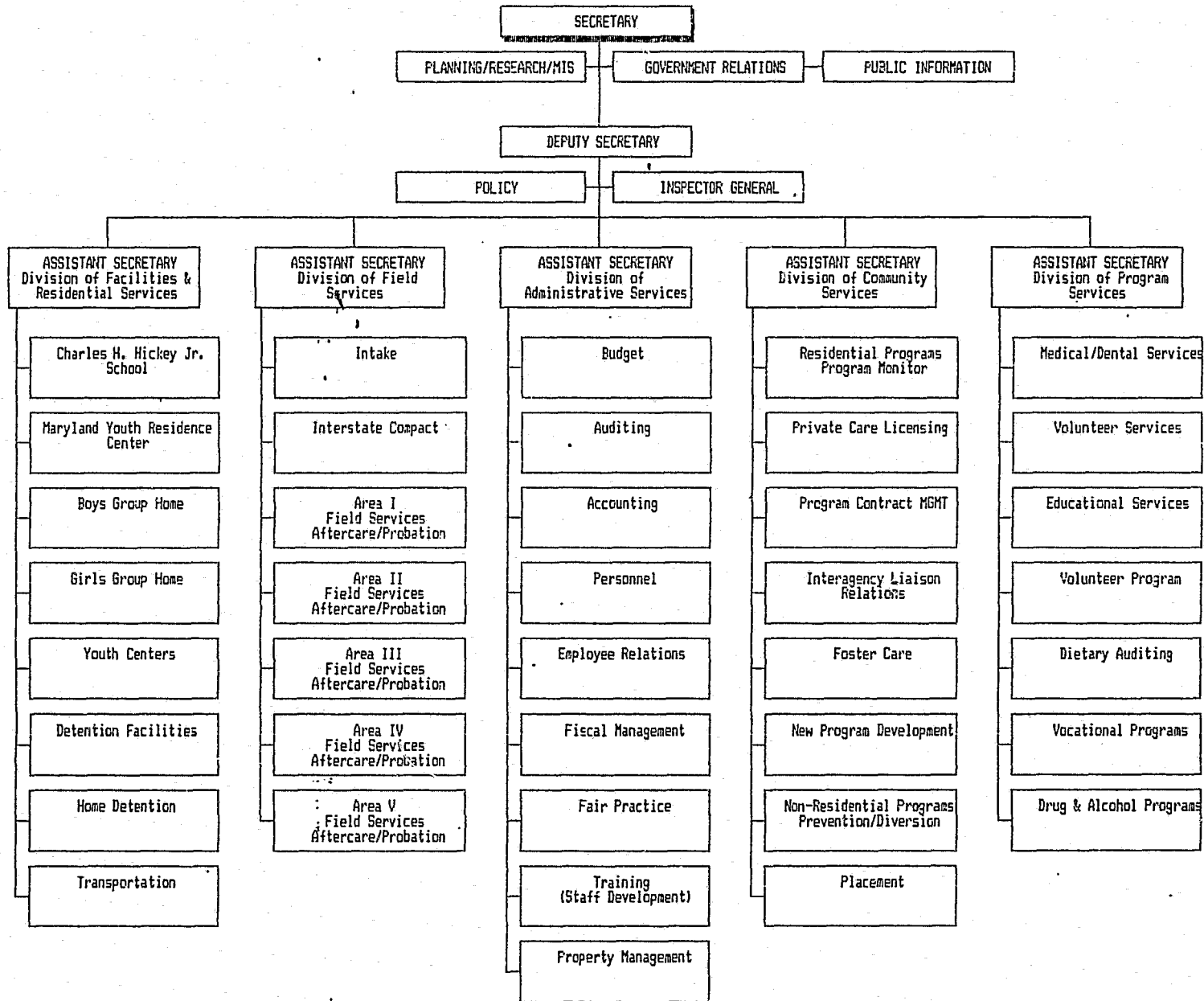
pages 27-29

- o Of the 13,437 cases handled formally by the court in FY 1989, about 33% were placed on probation or protective supervision, 20% were dismissed or closed, 11% were committed to DJS for placement, 10% were continued or statted, 9% had the petition withdrawn or denied, about 5% had jurisdiction waived, and the remaining 12% were other dispositions.

Table 16

page 30

FIGURE 1
Department of Juvenile Services



Flow Chart of Case Referrals

For FY 1989

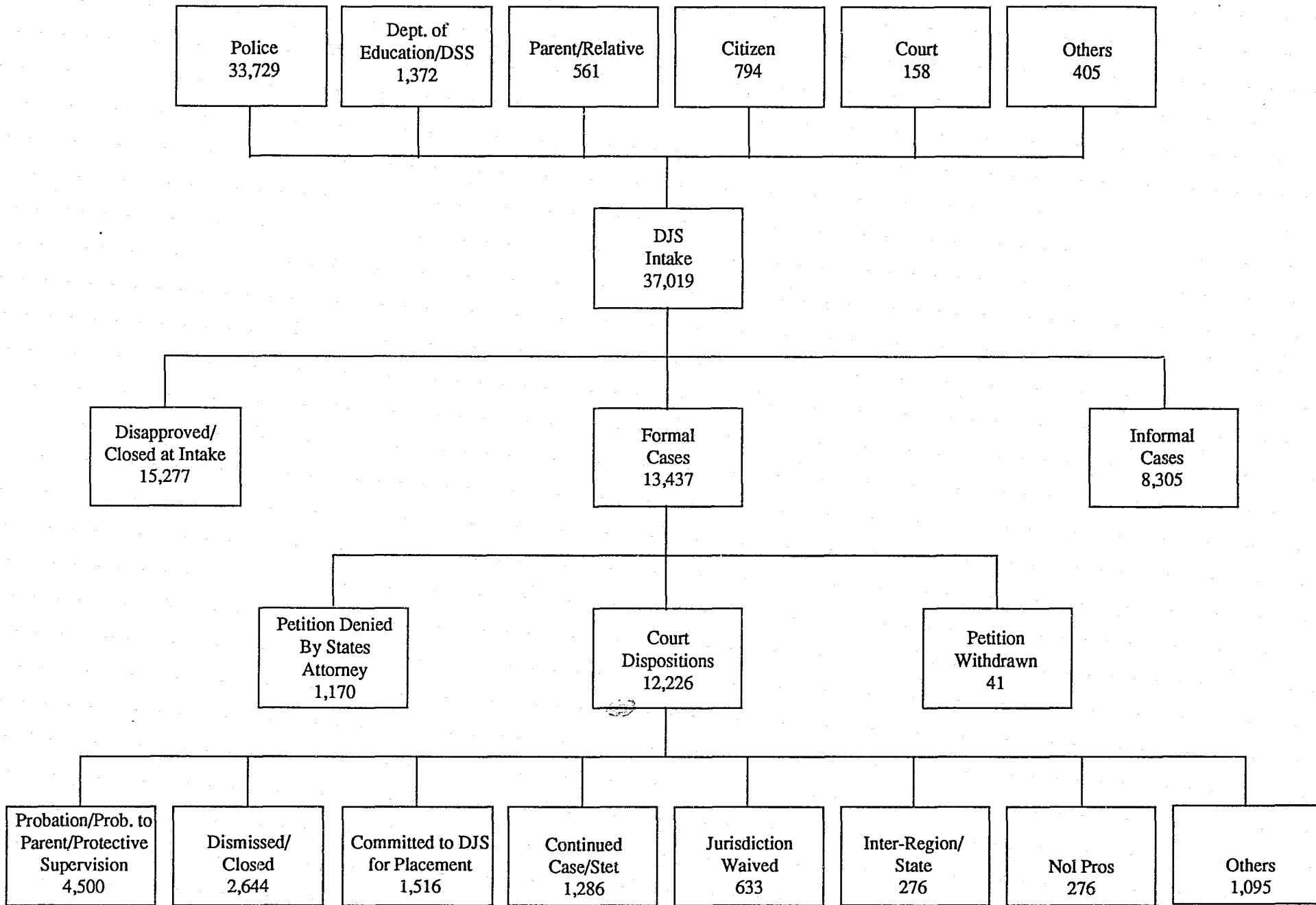


Figure 3
Manner of Handling Intake Cases: FY 1989

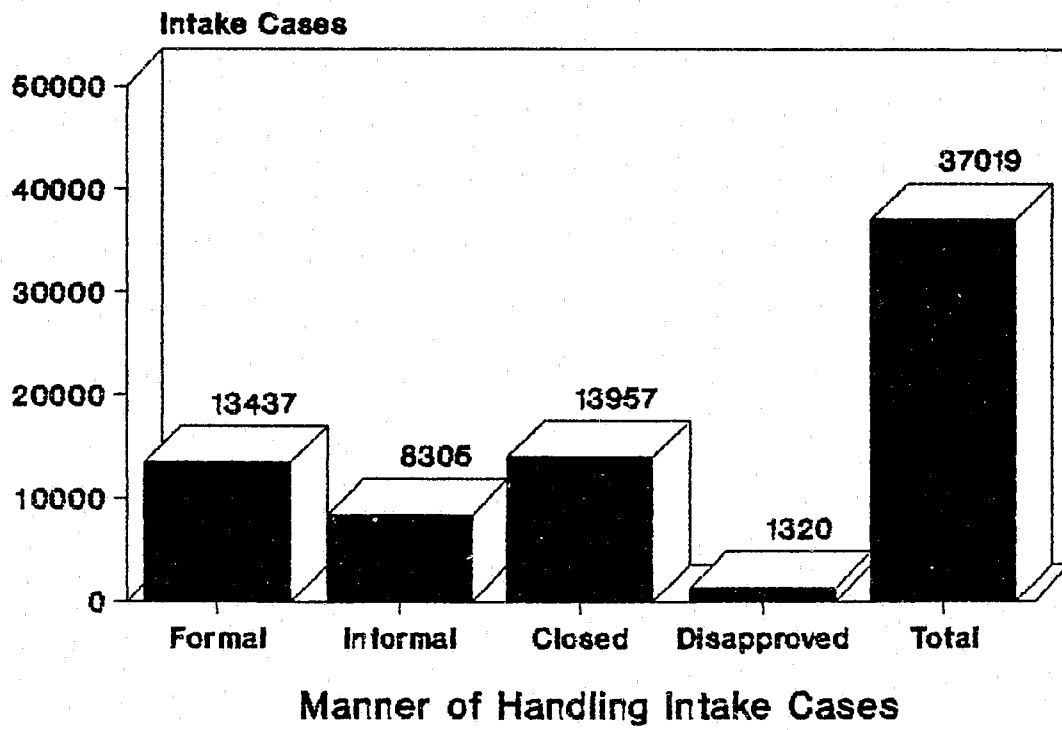


Table 1
 Number and Percentage of Intake Cases by County of
 Jurisdiction and by Area: FY 1987 - FY 1989

Area	1987	percent of cases	1988	percent of cases	1989	percent of cases
1. Baltimore City	8791	22.6	8725	23.4	8029	21.7
2. Baltimore	5810	15.0	4823	13.0	4784	12.9
Carroll	909	2.3	935	2.5	966	2.6
Howard	873	2.2	795	2.1	969	2.6
Harford	1400	3.6	1196	3.2	1221	3.3
Area 2 Total	8992	23.2	7749	20.8	7940	21.4
3. Allegany	470	1.2	555	1.5	567	1.5
Frederick	1099	2.8	1241	3.3	1223	3.3
Garrett	179	0.5	242	0.6	187	0.5
Montgomery	4029	10.4	4082	11.0	4030	10.9
Washington	890	2.3	897	2.4	1001	2.7
Area 3 Total	6667	17.2	7017	18.8	7008	18.9
4. Anne Arundel	3369	8.7	2961	8.0	2793	7.5
Caroline	228	0.6	281	0.8	231	0.6
Cecil	825	2.1	728	2.0	662	1.8
Dorchester	358	0.9	314	0.8	307	0.8
Kent	132	0.3	117	0.3	111	0.3
Queen Anne's	229	0.6	214	0.6	259	0.7
Somerset	169	0.4	116	0.3	80	0.2
Talbot	281	0.7	304	0.8	318	0.9
Wicomico	474	1.2	450	1.2	602	1.6
Worcester	730	1.9	636	1.7	753	2.0
Area 4 Total	6795	17.5	6121	16.4	6116	16.5
5. Calvert	421	1.1	438	1.2	489	1.3
Charles	946	2.4	1004	2.7	1075	2.9
St. Mary's	467	1.2	434	1.2	544	1.5
Prince Georges	5737	14.8	5733	15.4	5818	15.7
Area 5 Total	7571	19.5	7609	20.4	7926	21.4
Unknown	10	0.0	7	0.0	0	0.0
State total	38826	100.0	37228	100.0	37019	100.0

Table 2
 Number and Percentage of Formal Cases by County of
 Jurisdiction and by Area: FY 1987 - FY 1989

Area	1987	percent of cases	1988	percent of cases	1989	percent of cases
1. Baltimore City	4505	31.1	4791	34.1	4104	30.5
2. Baltimore	1779	12.3	1638	11.6	1637	12.2
Carroll	290	2.0	262	1.9	287	2.1
Howard	264	1.8	255	1.8	310	2.3
Harford	411	2.8	448	3.2	416	3.1
Area 2 Total	2744	19.0	2603	18.5	2650	19.7
3. Allegany	269	1.9	294	2.1	297	2.2
Frederick	310	2.1	368	2.6	317	2.4
Garrett	40	0.3	85	0.6	62	0.5
Montgomery	623	4.3	682	4.8	642	4.8
Washington	248	1.7	213	1.5	262	1.9
Area 3 Total	1490	10.3	1642	11.7	1580	11.8
4. Anne Arundel	1445	10.0	1069	7.6	1100	8.2
Caroline	58	0.4	75	0.5	72	0.5
Cecil	331	2.3	257	1.8	213	1.6
Dorchester	79	0.5	74	0.5	77	0.6
Kent	53	0.4	42	0.3	42	0.3
Queen Anne's	73	0.5	75	0.5	92	0.7
Somerset	76	0.5	61	0.4	35	0.3
Talbot	124	0.9	124	0.9	108	0.8
Wicomico	133	0.9	81	0.6	168	1.3
Worcester	180	1.2	153	1.1	137	1.0
Area 4 Total	2552	17.6	2011	14.3	2044	15.2
5. Calvert	153	1.1	171	1.2	117	0.9
Charles	365	2.5	342	2.4	318	2.4
St. Mary's	187	1.3	175	1.2	200	1.5
Prince Georges	2472	17.1	2328	16.5	2424	18.0
Area 5 Total	3177	21.9	3016	21.4	3059	22.8
Unknown	7	0.0	7	0.0	0	0.0
State total	14475	100.0	14070	100.0	13437	100.0

Table 3
 Number and Percentage of Informal Cases by County of
 Jurisdiction and by Area: FY 1987 - FY 1989

Area	1987	percent	1988	percent	1989	percent
		of cases		of cases		of cases
1. Baltimore City	2093	26.1	2200	26.2	2195	26.4
2. Baltimore	1179	14.7	1357	16.1	1057	12.7
Carroll	87	1.1	101	1.2	121	1.5
Howard	241	3.0	199	2.4	278	3.3
Harford	105	1.3	156	1.9	211	2.5
Area 2 Total	1612	20.1	1813	21.6	1667	20.1
3. Allegany	1	0.0	0	0.0	1	0.0
Frederick	39	0.5	42	0.5	72	0.9
Garrett	126	1.6	134	1.6	103	1.2
Montgomery	1020	12.7	952	11.3	931	11.2
Washington	361	4.5	371	4.4	366	4.4
Area 3 Total	1547	19.3	1499	17.8	1473	17.7
4. Anne Arundel	959	12.0	1018	12.1	954	11.5
Caroline	70	0.9	87	1.0	51	0.6
Cecil	5	0.1	8	0.1	6	0.1
Dorchester	21	0.3	2	0.0	1	0.0
Kent	32	0.4	20	0.2	10	0.1
Queen Anne's	42	0.5	30	0.4	46	0.6
Somerset	3	0.0	1	0.0	0	0.0
Talbot	46	0.6	78	0.9	83	1.0
Wicomico	9	0.1	11	0.1	20	0.2
Worcester	0	0.0	0	0.0	0	0.0
Area 4 Total	1187	14.8	1255	14.9	1171	14.1
5. Calvert	2	0.0	0	0.0	144	1.7
Charles	53	0.7	95	1.1	122	1.5
St. Mary's	157	2.0	129	1.5	122	1.5
Prince Georges	1365	17.0	1418	16.9	1411	17.0
Area 5 Total	1577	19.7	1642	19.5	1799	21.7
State total	8016	100.0	8409	100.0	8305	100.0

Table 4
 Number and Percentage of Cases Closed at Intake
 by County of Jurisdiction and by Area
 FY 1987 - FY 1989

Area	1987	percent	1988	percent	1989	percent
		of cases		of cases		of cases
1. Baltimore City	1929	12.9	1506	11.2	1528	10.9
2. Baltimore	2446	16.3	1455	10.8	1637	11.7
Carroll	512	3.4	542	4.0	545	3.9
Howard	363	2.4	325	2.4	374	2.7
Harford	803	5.4	541	4.0	524	3.8
Area 2 Total	4124	27.5	2863	21.2	3080	22.1
3. Allegany	200	1.3	260	1.9	267	1.9
Frederick	720	4.8	792	5.9	784	5.6
Garrett	13	0.1	23	0.2	22	0.2
Montgomery	2370	15.8	2438	18.1	2451	17.6
Washington	265	1.8	294	2.2	355	2.5
Area 3 Total	3568	23.8	3807	28.2	3879	27.8
4. Anne Arundel	695	4.6	578	4.3	473	3.4
Caroline	87	0.6	110	0.8	94	0.7
Cecil	440	2.9	447	3.3	427	3.1
Dorchester	252	1.7	224	1.7	223	1.6
Kent	41	0.3	52	0.4	42	0.3
Queen Anne's	111	0.7	99	0.7	103	0.7
Somerset	77	0.5	38	0.3	43	0.3
Talbot	96	0.6	90	0.7	113	0.8
Wicomico	329	2.2	347	2.6	386	2.8
Worcester	497	3.3	427	3.2	522	3.7
Area 4 Total	2625	17.5	2412	17.9	2426	17.4
5. Calvert	248	1.7	258	1.9	227	1.6
Charles	521	3.5	561	4.2	627	4.5
St. Mary's	116	0.8	128	0.9	220	1.6
Prince Georges	1869	12.5	1965	14.6	1970	14.1
Area 5 Total	2754	18.4	2912	21.6	3044	21.8
Unknown	3	0.0	0	0.0	0	0.0
State total	15003	100.0	13500	100.0	13957	100.0

Table 5
 Number and Percentage of Disapproved Cases by County of
 Jurisdiction and by Area: FY 1987 - FY 1989

Area	1987	percent	1988	percent	1989	percent
		of cases		of cases		of cases
1. Baltimore City	264	19.8	228	18.3	202	15.3
2. Baltimore	406	30.5	373	29.9	453	34.3
Carroll	20	1.5	30	2.4	13	1.0
Howard	5	0.4	16	1.3	7	0.5
Harford	81	6.1	51	4.1	70	5.3
Area 2 Total	512	38.4	470	37.6	543	41.1
3. Allegany	0	0.0	1	0.1	2	0.2
Frederick	30	2.3	39	3.1	50	3.8
Garrett	0	0.0	0	0.0	0	0.0
Montgomery	16	1.2	10	0.8	6	0.5
Washington	16	1.2	19	1.5	18	1.4
Area 3 Total	62	4.7	69	5.5	76	5.8
4. Anne Arundel	270	20.3	296	23.7	266	20.2
Caroline	13	1.0	9	0.7	14	1.1
Cecil	49	3.7	16	1.3	16	1.2
Dorchester	6	0.5	14	1.1	6	0.5
Kent	6	0.5	3	0.2	17	1.3
Queen Anne's	3	0.2	10	0.8	18	1.4
Somerset	13	1.0	16	1.3	2	0.2
Talbot	15	1.1	12	1.0	14	1.1
Wicomico	3	0.2	11	0.9	28	2.1
Worcester	53	4.0	56	4.5	94	7.1
Area 4 Total	431	32.4	443	35.5	475	36.0
5. Calvert	18	1.4	9	0.7	1	0.1
Charles	7	0.5	6	0.5	8	0.6
St. Mary's	7	0.5	2	0.2	2	0.2
Prince Georges	31	2.3	22	1.8	13	1.0
Area 5 Total	63	4.7	39	3.1	24	1.8
State total	1332	100.0	1249	100.0	1320	100.0

Table 6
Intake Decisions by County of
Jurisdiction - FY 1989

Area	Formal	percent Informal	percent Closed/ Disappro.	percent	Total		
1. Baltimore City	4104	51.1	2195	27.3	1730	21.5	8029
2. Baltimore	1637	34.2	1057	22.1	2090	43.7	4784
Carroll	287	29.7	121	12.5	558	57.8	966
Howard	310	32.0	278	28.7	381	39.3	969
Harford	416	34.1	211	17.3	594	48.6	1221
Area 2 Total	2650	33.4	1667	21.0	3623	45.6	7940
3. Allegany	297	52.4	1	0.2	269	47.4	567
Frederick	317	25.9	72	5.9	834	68.2	1223
Garrett	62	33.2	103	55.1	22	11.8	187
Montgomery	642	15.9	931	23.1	2457	61.0	4030
Washington	262	26.2	366	36.6	373	37.3	1001
Area 3 Total	1580	22.5	1473	21.0	3955	56.4	7008
4. Anne Arundel	1100	39.4	954	34.2	739	26.5	2793
Caroline	72	31.2	51	22.1	108	46.8	231
Cecil	213	32.2	6	0.9	443	66.9	662
Dorchester	77	25.1	1	0.3	229	74.6	307
Kent	42	37.8	10	9.0	59	53.2	111
Queen Anne's	92	35.5	46	17.8	121	46.7	259
Somerset	35	43.8	0	0.0	45	56.3	80
Talbot	108	34.0	83	26.1	127	39.9	318
Wicomico	168	27.9	20	3.3	414	68.8	602
Worcester	137	18.2	0	0.0	616	81.8	753
Area 4 Total	2044	33.4	1171	19.1	2901	47.4	6116
5. Calvert	117	23.9	144	29.4	228	46.6	489
Charles	318	29.6	122	11.3	635	59.1	1075
St. Mary's	200	36.8	122	22.4	222	40.8	544
Prince Georges	2424	41.7	1411	24.3	1983	34.1	5818
Area 5 Total	3059	38.6	1799	22.7	3068	38.7	7926
State total	13437	36.3	8305	22.4	15277	41.3	37019

Table 7
 Rank Order of Formal Cases
 by County of Jurisdiction
 FY 1989

County	Formal	percent
Allegany	297	52.4
Baltimore City	4104	51.1
Somerset	35	43.8
Prince Georges	2424	41.7
Anne Arundel	1100	39.4
Kent	42	37.8
St. Mary's	200	36.8
Queen Anne's	92	35.5
Baltimore	1637	34.2
Harford	416	34.1
Talbot	108	34.0
Garrett	62	33.2
Cecil	213	32.2
Howard	310	32.0
Caroline	72	31.2
Carroll	287	29.7
Charles	318	29.6
Wicomico	168	27.9
Washington	262	26.2
Frederick	317	25.9
Dorchester	77	25.1
Calvert	117	23.9
Worcester	137	18.2
Montgomery	642	15.9

Figure 4
Intake Decisions by Area: FY 1989

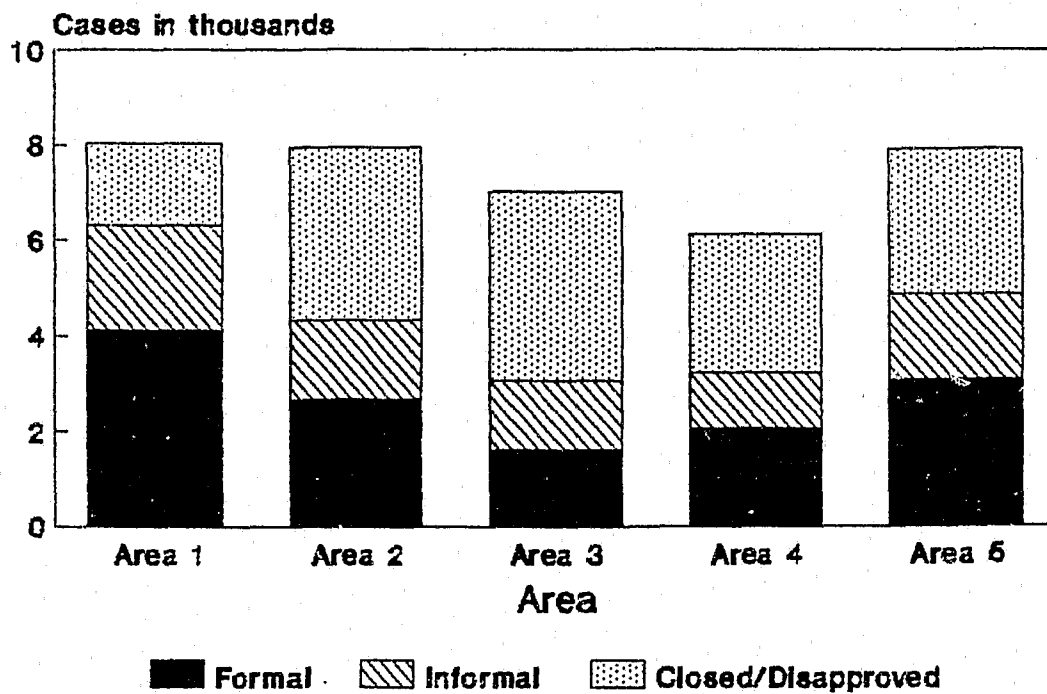


Table 8
Intake Decisions by Race: FY 1987 - FY 1989

Manner of Handling Cases	1987				1988				1989			
	White	Black	Other	Total	White	Black	Other	Total	White	Black	Other	Total
Formal	6610	7665	200	14475	6006	7881	183	14070	5510	7741	186	1343
Percent of Formal	45.66	52.95	1.38	100.00	42.69	56.01	1.30	100.00	41.01	57.61	1.38	100.0
Informal	4591	3267	158	8016	4576	3675	158	8409	4376	3766	163	830
Percent of Informal	57.27	40.76	1.97	100.00	54.42	43.70	1.88	100.00	52.69	45.35	1.96	100.0
Disapproved/Closed	10788	5129	418	16335	9233	5193	323	14749	9322	5602	353	1527
Percent of Disapproved/Closed	66.04	31.40	2.56	100.00	62.60	35.21	2.19	100.00	61.02	36.67	2.31	100.0
State total	21989	16061	776	38826	19815	16749	664	37228	19208	17109	702	3701
Percent of State Total	56.63	41.37	2.00	100.00	53.23	44.99	1.78	100.00	51.89	46.22	1.90	100.0

Figure 5
Intake Decisions by Race: FY 1989

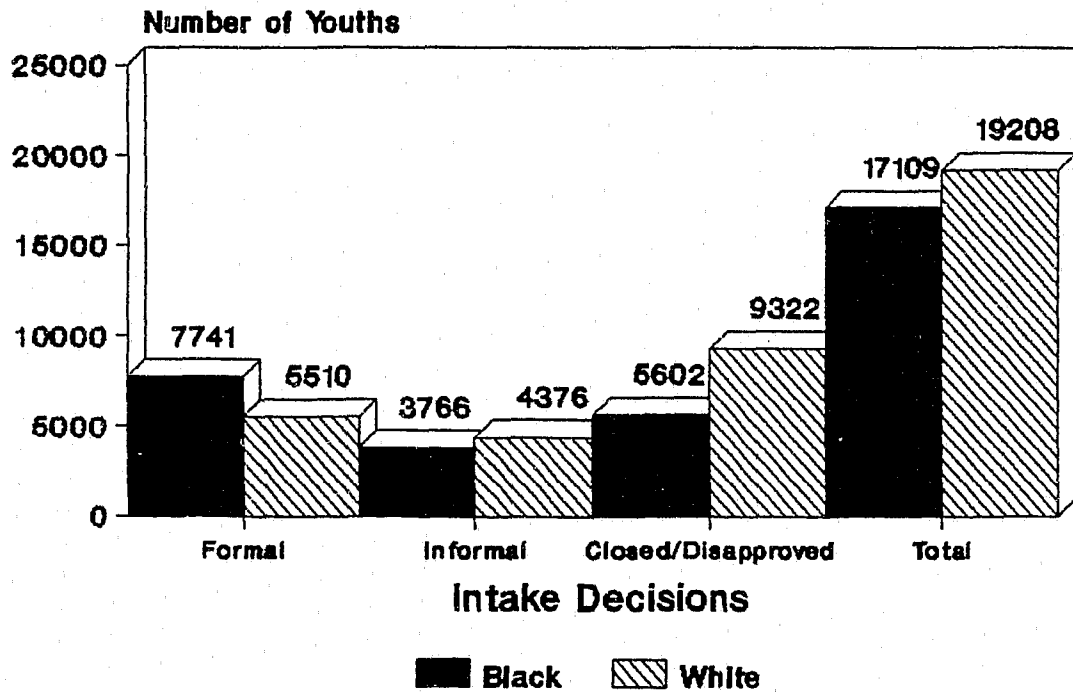


Table 9
Intake Decisions by Sex: FY 1987 - FY 1989

Intake Decisions	1987			1988			1989		
	Male	Female	Total	Male	Female	Total	Male	Female	Total
Formal	12764	1711	14475	12370	1700	14070	11905	1532	13437
Percent of Formal	88.18	11.82	100.00	87.92	12.08	100.00	88.60	11.40	100.00
Informal	6294	1722	8016	6460	1949	8409	6629	1676	8305
Percent of Informal	78.52	21.48	100.00	76.82	23.18	100.00	79.82	20.18	100.00
Disapproved/Closed	12019	4316	16335	10931	3818	14749	11446	3831	15277
Percent of Disapproved/clos	73.58	26.42	100.00	74.11	25.89	100.00	74.92	25.08	100.00
State total	31077	7749	38826	29761	7467	37228	29980	7039	37019
Percent of State Total	80.04	19.96	100.00	79.94	20.06	100.00	80.99	19.01	100.00

Figure 6
Intake Decisions by Sex: FY 1989

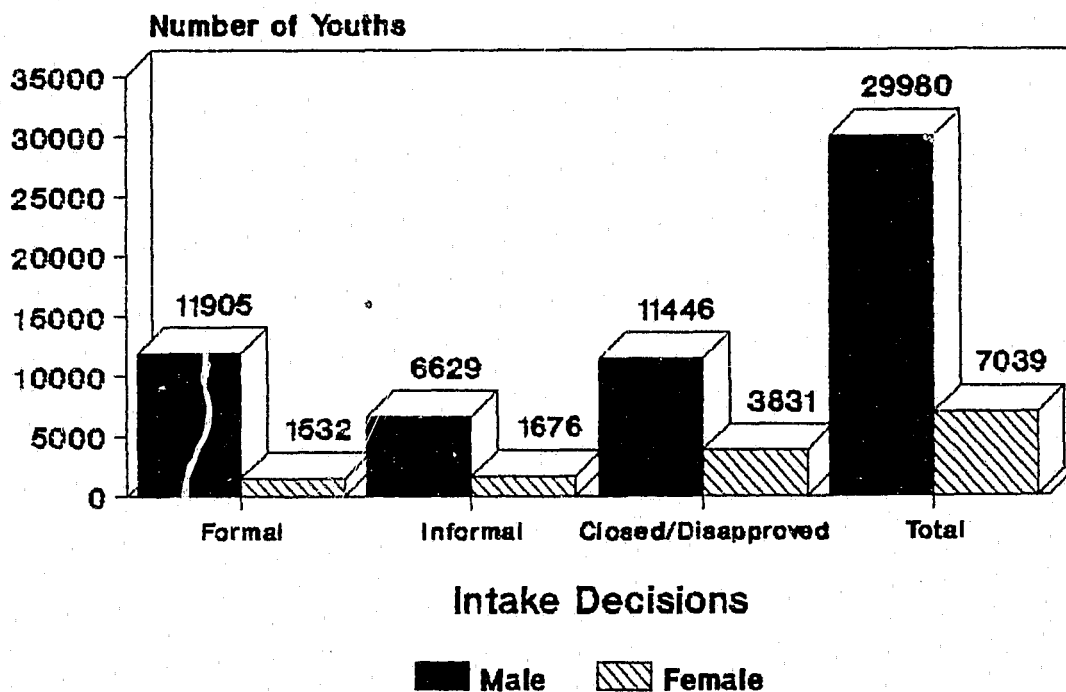


Table 10
 Number and Percent of Total Cases
 by Age: FY 1987 - FY 1989

Age of youths	1987	percent of cases	1988	percent of cases	1989	percent of cases
Under 10	743	1.9	656	1.8	729	2.0
ten	531	1.4	524	1.4	534	1.4
eleven	905	2.3	789	2.1	896	2.4
twelve	1610	4.1	1543	4.1	1703	4.6
thirteen	3031	7.8	2667	7.2	3144	8.5
fourteen	5127	13.2	4554	12.2	4965	13.4
fifteen	7546	19.4	6756	18.1	6512	17.6
sixteen	8971	23.1	7985	21.4	7881	21.3
seventeen	9288	23.9	9249	24.8	9240	25.0
eighteen	827	2.1	2167	5.8	1318	3.6
other/unknown	247	0.6	338	0.9	97	0.3
State Total	38826	100.0	37228	100.0	37019	100.0

Figure 7
Age Distribution of Intake Cases: FY 1989

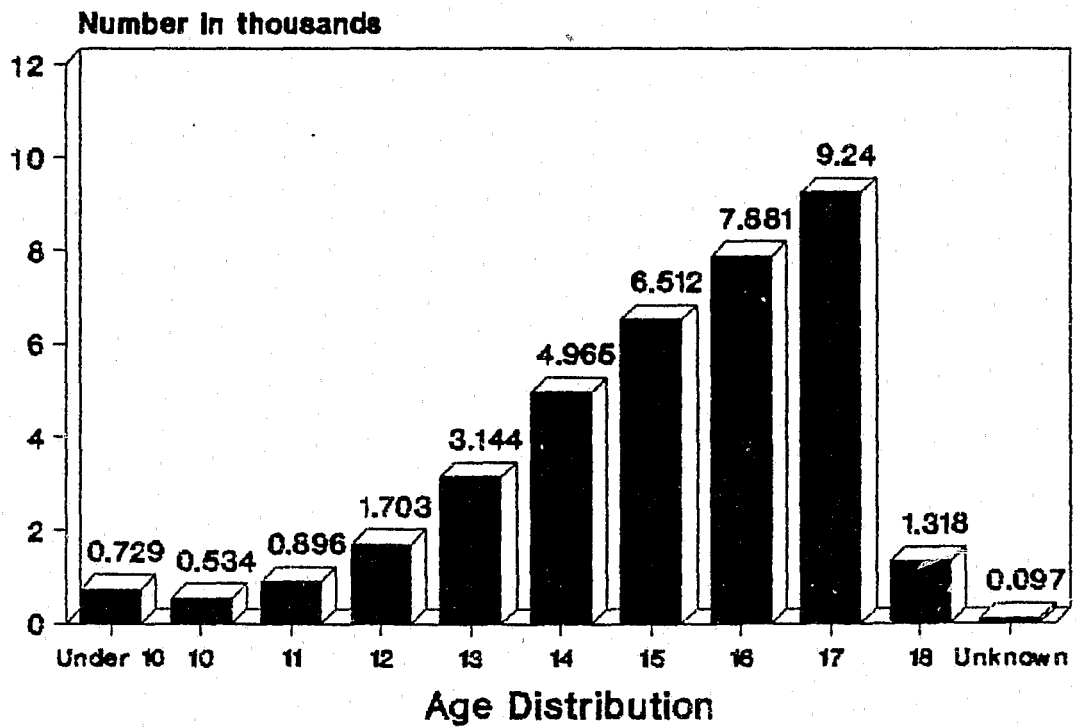


Table 11
Referral Sources
FY 1987 - FY 1989

Referral Sources	1987	Percent	1988	Percent	1989	Percent
Police	34533	88.9	33215	89.2	33729	91.1
State Departments	1400	3.6	1494	4.0	1372	3.7
Citizen	919	2.4	955	2.6	794	2.1
Paren/Relative	887	2.3	824	2.2	561	1.5
Court	271	0.7	203	0.5	158	0.4
Other	816	2.1	537	1.4	405	1.1
Total	38826	100.0	37228	100.0	37019	100.0

Figure 8
Source of Referral: FY 1989

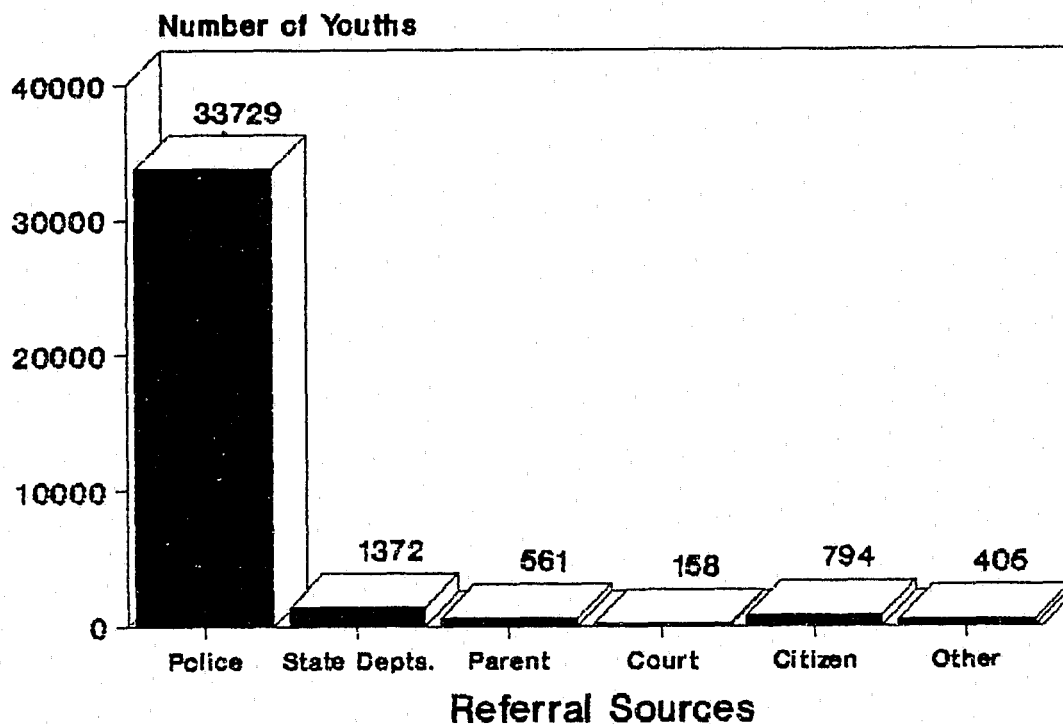


Table 12
Intake Cases - Offenses by Offense Type
FY 1987 - 1989

Offenses - Person-to-Person						
Offense	FY 1987	Per Cent	FY 1988	Per Cent	FY 1989	Per Cent
assault	5023	12.9	4975	13.4	5092	13.8
robbery	671	1.7	497	1.3	339	0.9
sex offense	536	1.4	534	1.4	570	1.5
murder	0	0.0	1	0.0	8	0.0
manslaughter	3	0.0	6	0.0	6	0.0
kidnapping	4	0.0	6	0.0	3	0.0
purse snatching	8	0.0	14	0.0	8	0.0
Total Person-to-Person	6245	16.1	6033	16.2	6026	16.3
Offenses - Property						
arson	170	0.4	178	0.5	196	0.5
auto theft/authorized use	2298	5.9	2782	7.5	3114	8.4
burglary/breaking & entering	3134	8.1	3005	8.1	2747	7.4
malicious destruction	2947	7.6	2525	6.8	2538	6.9
shoplifting	1993	5.1	2255	6.1	2049	5.5
theft	6086	15.7	5896	15.8	5787	15.6
tampering	248	0.6	225	0.6	254	0.7
trespassing	1412	3.6	1272	3.4	1133	3.1
Total Property	18288	47.1	18138	48.7	17818	48.1
Offenses - Alcohol & Drug Related						
alcohol violations	2855	7.4	2407	6.5	2394	6.5
narcotics violations	2397	6.2	2765	7.4	3137	8.5
glue sniffing & other inhalants	60	0.2	69	0.2	69	0.2
Total - alcohol & drug related	5312	13.7	5241	14.1	5600	15.1
Offenses - CINS/CINA						
child abuse/beatng	77	0.2	43	0.1	38	0.1
dependency & neglect	131	0.3	94	0.3	112	0.3
mentally handicapped	1	0.0	2	0.0	0	0.0
runaway	1422	3.7	949	2.5	915	2.5
trauncy	286	0.7	344	0.9	436	1.2
ungovernable	1199	3.1	922	2.5	698	1.9
Total - CINS/CINA	3116	8.0	2354	6.3	2199	5.9
Offenses - Uncategorized						
carry or conceal a deadly weapon	652	1.7	641	1.7	626	1.7
disorderly conduct	935	2.4	820	2.2	845	2.3
traffic/motor vehicle violations	1607	4.1	1472	4.0	1550	4.2
other	2671	6.9	2529	6.8	2355	6.4
Total - Uncategorized	5865	15.1	5462	14.7	5376	14.0
Total Offenses	38826	100.0	37228	100.0	37019	100.0

Figure 9
Total Cases by Offense Type: FY 1989

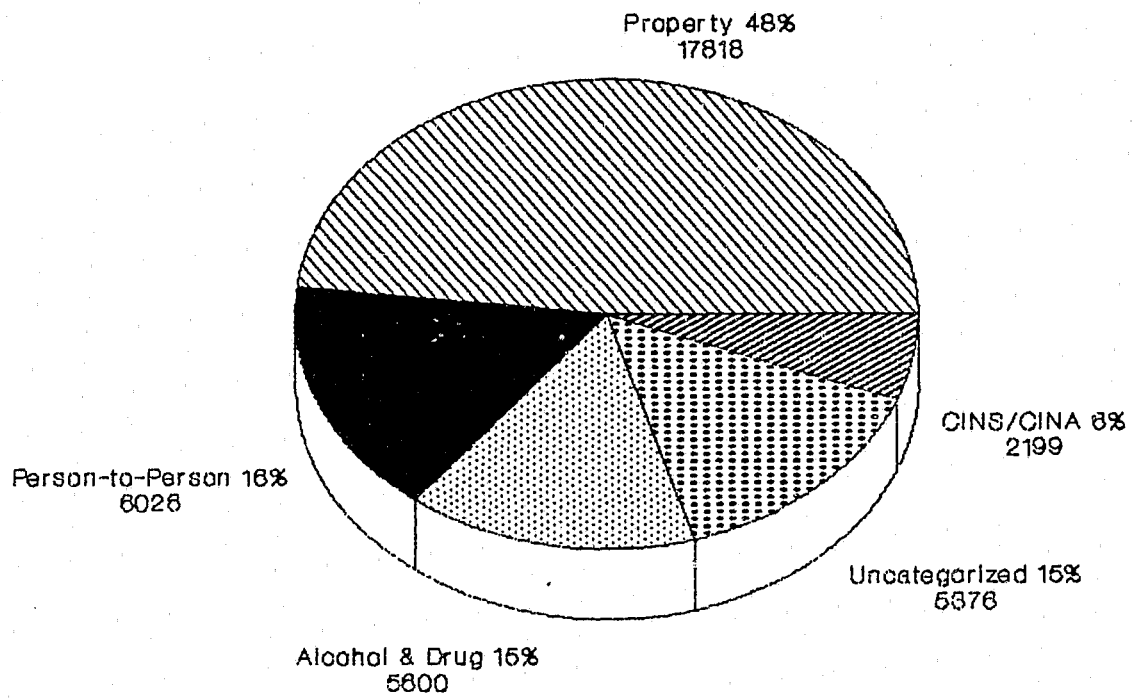


Table 13
Offense Rates Per 1,000 Population by County of
Residence: FY 1989

Area	1989 Projected 11-17 Pop.	Person-to Person	per 1,000 pop.	Property per 1,000 pop	per 1,000 pop	Alcohol & Drug	per 1,000 pop	CINS/CINA	per 1,000 pop	Other	per 1,000 pop
1. Baltimore City	66885	1842	27.5	3415	51.1	1218	18.2	313	4.7	1206	18.0
2. Baltimore	54259	951	17.5	2913	53.7	492	9.1	69	1.3	553	10.2
Carroll	11532	115	10.0	493	42.8	170	14.7	65	5.6	108	9.4
Howard	15660	118	7.5	380	24.3	257	16.4	25	1.6	97	6.2
Harford	16381	239	14.6	505	30.8	163	10.0	22	1.3	228	13.9
Area 2 Total	97832	1423	14.5	4291	43.9	1082	11.1	181	1.9	986	10.1
3. Allegany	6464	48	7.4	202	31.3	103	15.9	97	15.0	70	10.8
Frederick	14135	120	8.5	521	36.9	281	19.9	105	7.4	181	12.8
Garrett	3087	14	4.5	41	13.3	32	10.4	54	17.5	20	6.5
Montgomery	58295	496	8.5	1732	29.7	608	10.4	136	2.3	666	11.4
Washington	10315	116	11.2	385	37.3	277	26.9	63	6.1	136	13.2
Area 3 Total	92296	794	8.6	2881	31.2	1301	14.1	455	4.9	1073	11.6
4. Anne Arundel	38071	497	13.1	1478	38.8	314	8.2	166	4.4	397	10.4
Caroline	2391	36	15.1	131	54.8	37	15.5	18	7.5	46	19.2
Cecil	7341	86	11.7	250	34.1	77	10.5	82	11.2	147	20.0
Dorchester	2900	51	17.6	137	47.2	42	14.5	20	6.9	40	13.8
Kent	1295	16	12.4	37	28.6	16	12.4	11	8.5	17	13.1
Queen Anne's	2919	30	10.3	95	32.5	60	20.6	45	15.4	46	15.8
Somerset	1887	11	5.8	59	31.3	2	1.1	2	1.1	10	5.3
Talbot	2071	50	24.1	104	50.2	75	36.2	13	6.3	53	25.6
Wicomico	6439	98	15.2	299	46.4	75	11.6	36	5.6	71	11.0
Worcester	2945	16	5.4	154	52.3	60	20.4	26	8.8	56	19.0
Area 4 Total	68259	891	13.1	2744	40.2	758	11.1	419	6.1	883	12.9
5. Calvert	5208	64	12.3	212	40.7	54	10.4	74	14.2	75	14.4
Charles	10615	135	12.7	486	45.8	194	18.3	83	7.8	143	13.5
St. Mary's	6992	81	11.6	231	33.0	33	4.7	124	17.7	43	6.1
Prince Georges	64633	698	10.8	2801	43.3	737	11.4	480	7.4	788	12.2
Area 5 Total	87448	978	11.2	3730	42.7	1018	11.6	761	8.7	1049	12.0
State total	412720	5928	14.4	17061	41.3	5377	13.0	2129	5.2	5197	12.6

* Projections prepared by Maryland Department of State Planning,
Office of Planning Data, Revisions, September 1987

Note: Total did not add up to 37,019, because 1327 were out-of-state youths

Table 14
Rates of Total Referrals per 1,000 Population
Ages 11--17 Years by County of Jurisdiction
FY 1987 - FY 1989

Areas	1987	Total Referrals	Cases per 1,000 pop	1988	Total Referrals	Cases per 1,000 pop	1989	Total referrals	Cases per 1,000 pop
1. Baltimore City	72440	8791	121.4	70194	8725	124.3	66885	8029	120.0
2. Baltimore	56832	5810	102.2	55433	4823	87.0	54259	4784	88.2
Carroll	11969	909	75.9	11742	935	79.6	11532	966	83.8
Howard	16160	873	54.0	15939	795	49.9	15660	969	61.9
Harford	17315	1400	80.9	16786	1196	71.2	16381	1221	74.5
Area 2 Total	102276	8992	87.9	99900	7749	77.6	97832	7940	81.2
3. Allegany	7009	470	67.1	6716	555	82.6	6464	567	87.7
Frederick	14699	1099	74.8	14355	1241	86.5	14135	1223	86.5
Garrett	3341	179	53.6	3226	242	75.0	3087	187	60.6
Montgomery	62167	4029	64.8	59772	4082	68.3	58295	4030	69.1
Washington	11343	890	78.5	10748	897	83.5	10315	1001	97.0
Area 3 Total	98559	6667	67.6	94817	7017	74.0	92296	7008	75.9
4. Anne Arundel	40624	3369	82.9	38990	2961	75.9	38071	2793	73.4
Caroline	2551	228	89.4	2479	281	113.4	2391	231	96.6
Cecil	7845	825	105.2	7478	728	97.4	7341	662	90.2
Dorchester	3080	358	116.2	2980	314	105.4	2900	307	105.9
Kent	1397	132	94.5	1334	117	87.7	1295	111	85.7
Queen Anne's	2883	229	79.4	2899	214	73.8	2919	259	88.7
Somerset	1897	169	89.1	1944	116	59.7	1887	80	42.4
Talbot	2172	281	129.4	2107	304	144.3	2071	318	153.5
Wicomico	6630	474	71.5	6465	450	69.6	6439	602	93.5
Worcester	3043	730	239.9	2984	636	213.1	2945	753	255.7
Area 4 Total	72122	6795	94.2	69660	6121	87.9	68259	6116	89.6
5. Calvert	5157	421	81.6	5209	438	84.1	5208	489	93.9
Charles	11137	946	84.9	10893	1004	92.2	10615	1075	101.3
St. Mary's	7365	467	63.4	7155	434	60.7	6992	544	77.8
Prince Georges	70794	5737	81.0	67622	5733	84.8	64633	5818	90.0
Area 5 Total	94453	7571	80.2	90879	7609	83.7	87448	7926	90.6
Unknown	0	10	0.0	0	7	0.0	0	0	0.0
State total	439850	38826	88.3	425450	37228	87.5	412720	37019	89.7

* Projections prepared by Maryland Department of State Planning
Office of Planning Data, Revisions, September 1987

Table 15
 Rates of Total and Delinquent Referrals per 1,000
 Population Ages 11-17 Years by County of
 Residence: FY 1989

Area	1989 Projected 11-17 Pop.	Total Referrals	per 1,000 pop.	Delinquent Referrals	per 1,000 pop
1. Baltimore City	66885	7994	119.5	7618	113.9
2. Baltimore	54259	4978	91.7	4656	85.8
Carroll	11532	951	82.5	761	66.0
Howard	15660	877	56.0	652	41.6
Harford	16381	1157	70.6	1040	63.5
Area 2 Total	97832	7963	81.4	7109	72.7
3. Allegany	6464	520	80.4	324	50.1
Frederick	14135	1208	85.5	911	64.4
Garrett	3087	161	52.2	77	24.9
Montgomery	58295	3638	62.4	3146	54.0
Washington	10315	977	94.7	665	64.5
Area 3 Total	92296	6504	70.5	5123	55.5
4. Anne Arundel	38071	2852	74.9	2536	66.6
Caroline	2391	268	112.1	221	92.4
Cecil	7341	642	87.5	502	68.4
Dorchester	2900	290	100.0	256	88.3
Kent	1295	97	74.9	77	59.5
Queen Anne's	2919	276	94.6	189	64.7
Somerset	1887	84	44.5	81	42.9
Talbot	2071	295	142.4	224	108.2
Wicomico	6439	579	89.9	509	79.0
Worcester	2945	312	105.9	242	82.2
Area 4 Total	68259	5695	83.4	4837	70.9
5. Calvert	5208	479	92.0	384	73.7
Charles	10615	1041	98.1	852	80.3
St. Mary's	6992	512	73.2	371	53.1
Prince Georges	64633	5504	85.2	4940	76.4
Area 5 Total	87448	7536	86.2	6547	74.9
State total	412720	35692	86.5	31234	75.7

* Projections prepared by Maryland Department of State Planning,
 Office of Planning Data, Revisions, September 1987

Note: Totals exclude out-of-state youths

Figure 10 : State Rates of Total and Delinquent Referrals: FY 1987 - FY 1989

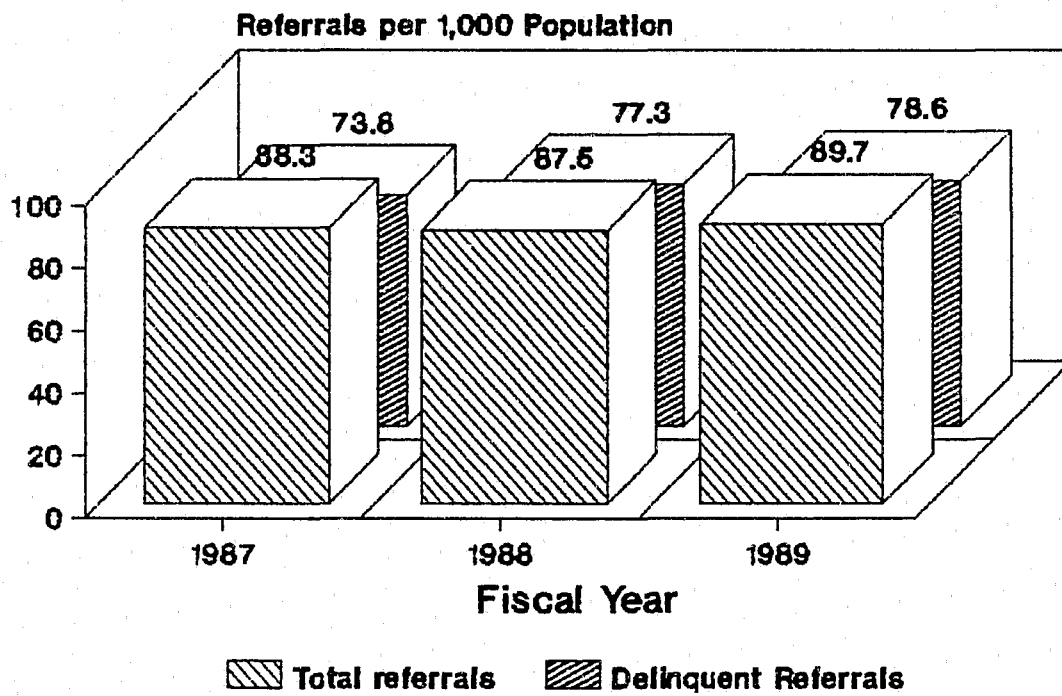


Table 16
Disposition of Formal Cases
FY 1987 - FY 1989

Total	1987	Percent	1988	Percent	1989	Percent
Probation/prob to parent/ protective supervision	4768	32.9	4970	35.3	4500	33.5
Dismissed/Closed	3205	22.1	3194	22.7	2644	19.7
Committed to DJS for placement	1733	12.0	1624	11.5	1516	11.3
Continued case/STET	1217	8.4	1251	8.9	1286	9.6
Petition denied by State Attorney	656	4.5	735	5.2	1170	8.7
Petition Withdrawn	65	0.4	75	0.5	41	0.3
Jurisdiction Waived	688	4.8	482	3.4	633	4.7
Inter-Region/State	342	2.4	324	2.3	276	2.1
Nol Pros	341	2.4	298	2.1	276	2.1
Others	1460	10.1	1117	7.9	1095	8.1
Total	14475	100.0	14070	100.0	13437	100.0