

137364

U.S. Department of Justice
National Institute of Justice

This document has been reproduced exactly as received from the person or organization originating it. Points of view or opinions stated in this document are those of the authors and do not necessarily represent the official position or policies of the National Institute of Justice.

Permission to reproduce this copyrighted material has been granted by

Wisconsin Office of Justice
Assistance

to the National Criminal Justice Reference Service (NCJRS).

Further reproduction outside of the NCJRS system requires permission of the copyright owner.

Index Crime Rates For Wisconsin - 1990

An Inter-State Comparison

**Wisconsin
Office of Justice
Assistance**

**Statistical Analysis
Center**

Introduction

This publication compares Wisconsin crime rates with those of other states. The crime rate is the number of reported crimes for every 100,000 residents. The crime categories examined are seven of the eight crimes which make up the Crime Index, as defined by the national Uniform Crime Reporting (UCR) program. This report shows state rankings of Index Crime rates. The rankings also show the rates for the United States and the Midwest.

Most of the state data for this publication were obtained from **Crime in the United States**, published by the Federal Bureau of Investigation. State data were available for only seven of the eight index crimes. Data on arson, the eighth index crime, were not uniformly available for all states. Note that the offense rates for Wisconsin were obtained from the State UCR report. While these figures are slightly different from the rates reported in the national UCR report, they are more accurate.

The Crime Index

The Crime Index is made up of eight crime categories which are intended to reflect general crime trends. The Crime Index includes two sub-indices, the Violent Crime Index, consisting of the crimes of murder, forcible rape, robbery, and aggravated assault, and the Property Crime Index, consisting of the crimes of burglary, theft, motor vehicle theft, and arson. Sufficient data were not available to estimate state totals for arson, so it is not included in the Property Crime Index in this publication.

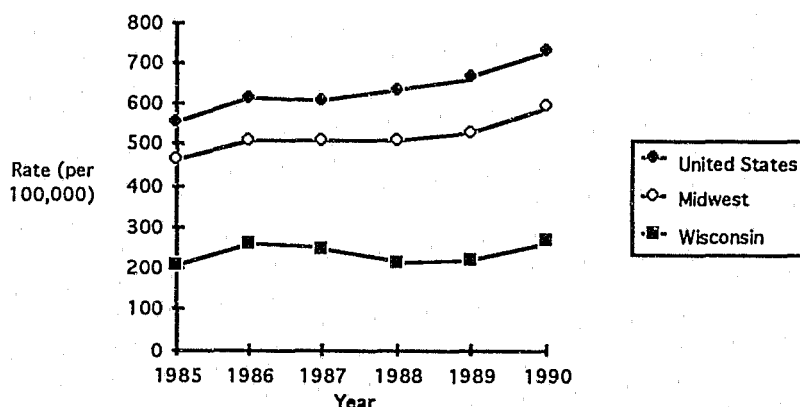
Rankings for the total Crime Index are not provided in this publication because the total Index is heavily dominated by property crime. While property crime made up over 87 percent of the Index in the United States in 1990, it accounted for 94 percent of the Wisconsin total. Wisconsin ranked thirty-seventh in total index crimes in 1990, identical to its thirty-seventh rank for reported property crimes.

Crime Trend Comparisons

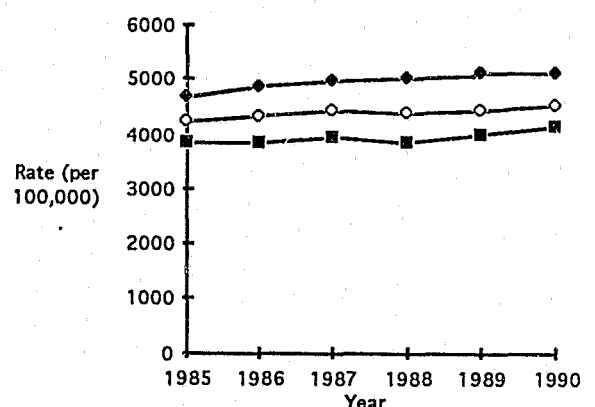
Regional crime rate trends for the United States, the Midwest, and the State of Wisconsin for the past six years for both the Violent and the Property Crime Index are shown in the charts below. The Midwest includes the states of Illinois, Indiana, Iowa, Kansas, Michigan, Minnesota, Missouri, Nebraska, North Dakota, Ohio, South Dakota and Wisconsin.. Violent crime rates for Wisconsin were substantially lower than the rates for both the Midwest and the Nation. Over the past six years the rates for the United States and the Midwest have increased more than the rate for Wisconsin. Property Index Crime rates increased for Wisconsin, the Midwest, and the United States. However, Wisconsin property crime rates remained at least ten percent less than those of the Midwest and twenty percent less than those of the Nation.

INDEX CRIME RATES BY YEAR AND REGION

VIOLENT



PROPERTY



Tommy G. Thompson
Governor

Office of Justice Assistance
Jerome D. Lacke, Executive Director

VIOLENT CRIMES: MURDER, FORCIBLE RAPE, ROBBERY, AGGRAVATED ASSAULT

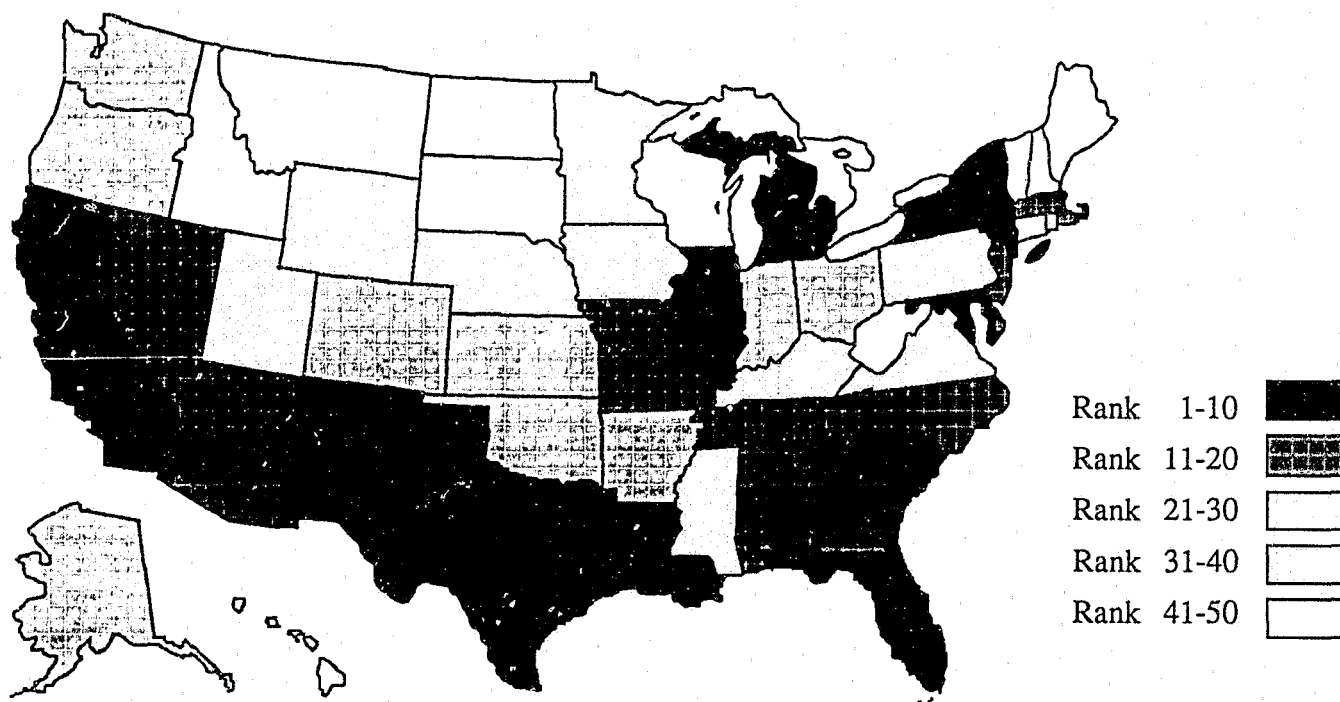
In 1990 Wisconsin ranked forty-third in reported violent crimes with a crime rate of 264.8 offenses per 100,000 residents. This ranking is identical to Wisconsin's position in 1988. The state rankings for violent crimes are shown in the table at right.

Wisconsin's rate is considerably lower than both the United States rate of 731.8 and the Midwest rate of 593.9. Its rate is less than one-fourth that of Florida, the highest ranked state.

The map below shows the distribution of state rankings. States are divided into five categories, according to their violent crime rate ranking.

Rank	State	Rate (per 100,000)	Rank	State	Rate (per 100,000)
1.	Florida	1,244.3	25.	Alaska	524.5
2.	New York	1,180.9	26.	Oregon	506.8
3.	California	1,045.2	27.	Ohio	506.2
4.	South Carolina	976.6	28.	Washington	501.6
5.	Illinois	967.4	29.	Indiana	473.9
6.	Maryland	919.0	30.	Kansas	447.7
7.	Louisiana	898.4	31.	Rhode Island	431.9
8.	Michigan	790.4	32.	Pennsylvania	431.0
9.	New Mexico	780.2	33.	Kentucky	390.4
10.	Texas	761.4	34.	Virginia	350.6
11.	Georgia	756.3	35.	Mississippi	340.4
12.	Massachusetts	736.3	36.	Nebraska	330.0
	<i>United States</i>	731.8	37.	Minnesota	306.1
13.	Missouri	715.3	38.	Wyoming	301.4
14.	Alabama	708.6	39.	Iowa	299.7
15.	Tennessee	670.4	40.	Utah	283.9
16.	Delaware	655.2	41.	Hawaii	280.9
17.	Arizona	652.4	42.	Idaho	275.7
18.	New Jersey	647.6	43.	Wisconsin	264.8
19.	North Carolina	623.5	44.	West Virginia	169.3
20.	Nevada	600.9	45.	South Dakota	162.8
	<i>Midwest</i>	593.9	46.	Montana	159.3
21.	Connecticut	553.7	47.	Maine	143.2
22.	Oklahoma	547.5	48.	New Hampshire	131.5
23.	Arkansas	532.2	49.	Vermont	127.2
24.	Colorado	526.0	50.	North Dakota	73.9

Violent Crime Rate Rankings of States - 1990



PROPERTY CRIMES: BURGLARY, LARCENY-THEFT, MOTOR VEHICLE THEFT, ARSON

The State of Wisconsin ranked thirty-seventh in reported property crimes with a rate of 4,133 offenses per 100,000 residents. This ranking is slightly higher than the thirty-ninth position of Wisconsin in 1988. The state rankings are shown in the table at the right.

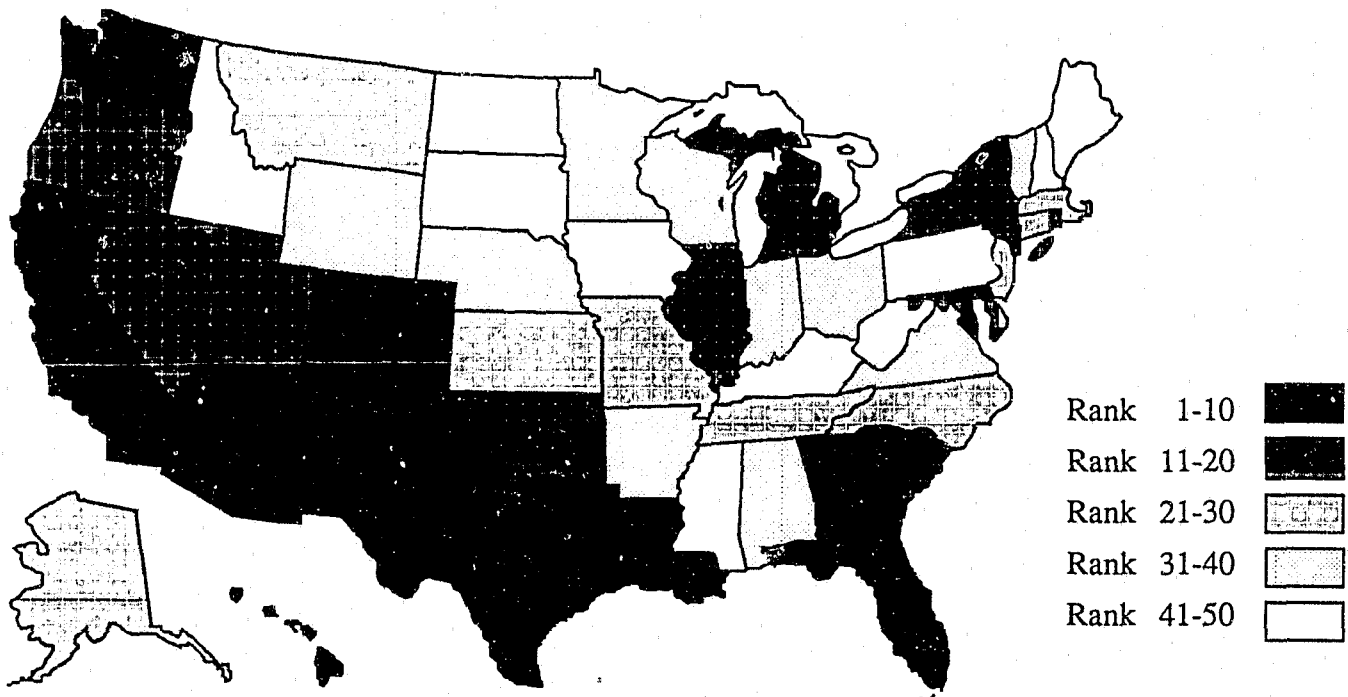
Wisconsin's rate is somewhat less than the Midwest rate of 4,508 and substantially less than the United States' rate of 5,088.

The map below shows the distribution of state rankings. The states are divided into five categories, according to their property crime rate ranking.

Since 1979, a fourth crime, arson, has been part of the Property Crime Index. However, sufficient data are not available to estimate state totals for arson. Therefore, arson is not included in the Property Crime Index shown here.

Rank	State	Rate (per 100,000)	Rank	State	Rate (per 100,000)
1.	Florida	7,566	26.	Alaska	4,628
2.	Arizona	7,236	27.	Massachusetts	4,562
3.	Texas	7,065		Midwest	4,508
4.	Georgia	6,007	28.	Missouri	4,405
5.	New Mexico	5,904	29.	Tennessee	4,381
6.	Hawaii	5,826	30.	Montana	4,343
7.	Washington	5,721	31.	Ohio	4,337
8.	Louisiana	5,588	32.	Arkansas	4,335
9.	California	5,558	33.	Minnesota	4,233
10.	Colorado	5,528	34.	Vermont	4,214
11.	Nevada	5,463	35.	Indiana	4,209
12.	Utah	5,376	36.	Alabama	4,207
13.	Michigan	5,204	37.	Wisconsin	4,133
14.	New York	5,183	38.	Virginia	4,090
15.	Oregon	5,139	39.	Wyoming	3,909
	United States	5,088	40.	Nebraska	3,883
16.	South Carolina	5,069	41.	Iowa	3,801
17.	Oklahoma	5,051	42.	Idaho	3,781
18.	Illinois	4,968	43.	Maine	3,554
19.	Rhode Island	4,921	44.	Mississippi	3,529
20.	Maryland	4,912	45.	New Hampshire	3,514
21.	North Carolina	4,862	46.	Pennsylvania	3,045
22.	Connecticut	4,833	47.	Kentucky	2,909
23.	New Jersey	4,800	48.	North Dakota	2,848
24.	Kansas	4,745	49.	South Dakota	2,746
25.	Delaware	4,705	50.	West Virginia	2,334

Property Crime Rate Rankings of States - 1990



Individual Violent Crimes

Murder

During 1990 Wisconsin ranked thirty-fifth in murder and non-negligent manslaughter with a rate of 4.6 murders per 100,000 residents. This ranking is higher than the forty-second position of Wisconsin in 1988. The table on the right shows the state rankings for the crime of murder and non-negligent manslaughter. The UCR definition of murder is the willful killing of one human being by another.

Wisconsin's rate is considerably lower than both the United States rate of 8.4 and the Midwest rate of 6.4. It is less than one-third the rate of Louisiana, the highest ranked state.

Forcible Rape

During 1990 Wisconsin ranked forty-seventh in forcible rape with a rate of 20.7 per 100,000 residents. This ranking is somewhat lower than the forty-fourth position of Wisconsin in 1988. The table on the far right shows the state rankings for the crime of forcible rape. The UCR definition of rape is the carnal knowledge of a female forcibly and against her will.

Wisconsin's rate is about one-half of both the United States rate of 41.2 and the Midwest rate of 42.6. Also, it is less than one-fourth the rate of Delaware, the highest ranked state.

Murder

Rank	State	Rate (per 100,000)
1.	Louisiana	17.2
2.	New York	14.5
3.	Texas	14.1
4.	Mississippi	12.2
5.	California	11.9
6.	Georgia	11.8
7.	Alabama	11.6
8.	Maryland	11.5
9.	South Carolina	11.2
10.	Florida	10.7
11.	North Carolina	10.7
12.	Tennessee	10.5
13.	Michigan	10.4
14.	Arkansas	10.3
15.	Illinois	10.3
16.	Nevada	9.7
	<i>United States</i>	9.4
17.	New Mexico	9.2
18.	Missouri	8.8
19.	Virginia	8.8
20.	Oklahoma	8.0
21.	Arizona	7.7
22.	Alaska	7.5
23.	Kentucky	7.2
	<i>Midwest</i>	7.0
24.	Pennsylvania	6.7
25.	Indiana	6.2
26.	Ohio	6.1
27.	West Virginia	5.7
28.	New Jersey	5.6
29.	Connecticut	5.1
30.	Delaware	5.0
31.	Montana	4.9
32.	Washington	4.9
33.	Wyoming	4.9
34.	Rhode Island	4.8
35.	Wisconsin	4.6
36.	Colorado	4.2
37.	Hawaii	4.0
38.	Kansas	4.0
39.	Massachusetts	4.0
40.	Oregon	3.8
41.	Utah	3.0
42.	Idaho	2.7
43.	Minnesota	2.7
44.	Nebraska	2.7
45.	Maine	2.4
46.	Vermont	2.3
47.	South Dakota	2.0
48.	Iowa	1.9
49.	New Hampshire	1.9
50.	North Dakota	0.8

Forcible Rape

Rank	State	Rate (per 100,000)
1.	Delaware	88.1
2.	Michigan	77.6
3.	Alaska	72.9
4.	Washington	64.0
5.	Nevada	62.2
6.	South Carolina	53.7
7.	Georgia	53.6
8.	Florida	52.4
9.	Texas	51.5
10.	New Mexico	49.7
11.	Tennessee	49.5
12.	Oklahoma	47.0
13.	Oregon	46.9
14.	Ohio	46.8
15.	Colorado	46.2
16.	Maryland	45.7
17.	Mississippi	44.1
18.	Arkansas	43.3
19.	California	42.6
	<i>Midwest</i>	42.6
20.	Louisiana	42.2
	<i>United States</i>	41.2
21.	Arizona	40.9
22.	Kansas	40.4
23.	Illinois	39.4
24.	Indiana	37.9
25.	Utah	37.8
26.	New Hampshire	34.8
27.	North Carolina	34.3
28.	South Dakota	34.3
29.	Minnesota	34.0
30.	Massachusetts	33.7
31.	Alabama	32.6
32.	Hawaii	32.5
33.	Missouri	32.5
34.	Virginia	31.0
35.	Nebraska	30.0
36.	New Jersey	29.8
37.	New York	29.8
38.	Wyoming	29.5
39.	Kentucky	29.0
40.	Connecticut	27.9
41.	Idaho	27.3
42.	Vermont	25.9
43.	Pennsylvania	25.8
44.	Rhode Island	24.7
45.	Montana	24.4
46.	West Virginia	23.6
47.	Wisconsin	20.7
48.	Maine	19.7
49.	Iowa	18.4
50.	North Dakota	17.8

Individual Property Crimes

Burglary

In 1990 Wisconsin ranked forty-first in reported burglaries, with a rate of 752 per 100,000 residents. This ranking is slightly higher than the forty-third position of Wisconsin in 1988. The state rankings are shown in the table at the right. The UCR program defines burglary as the unlawful entry of a structure to commit a felony or a theft.

Wisconsin's rate is considerably below both the Midwest rate of 983 and the United States rate of 1,236. In addition, Wisconsin's rate is about one-third that of Florida, the highest ranking state.

Theft

Wisconsin ranked twenty-eighth in theft offenses in 1990, with a rate of 2,965 per 100,000 residents. This ranking is slightly higher than the thirtieth position of Wisconsin in 1988. The state rankings for theft are shown in the table on the far right. The UCR program defines theft as the unlawful taking, carrying, leading, or riding away of property from the possession or constructive possession of another.

Wisconsin's rate is somewhat less than both the United States rate of 3,195, and the Midwest rate of 3,024. Also, Wisconsin's rate is over 37 percent less than the rate of Arizona, the highest ranking state.

Because the volume of reported thefts is high, relative to the other index offenses, theft dominates the Property Crime Index and, in turn, the total index. Wisconsin's high rate of reported thefts accounts for its relatively high ranking in the rate of reported property crimes.

Burglary

Rank	State	Rate (per 100,000)
1.	Florida	2,171
2.	Texas	1,852
3.	New Mexico	1,739
4.	Arizona	1,670
5.	Georgia	1,619
6.	North Carolina	1,530
7.	Oklahoma	1,448
8.	Louisiana	1,438
9.	South Carolina	1,380
10.	Nevada	1,367
11.	California	1,345
12.	Rhode Island	1,271
13.	Tennessee	1,264
14.	Washington	1,263
15.	Mississippi	1,251
	<i>United States</i>	1,236
16.	Connecticut	1,228
17.	Hawaii	1,228
18.	Arkansas	1,211
19.	Colorado	1,209
20.	Kansas	1,166
21.	New York	1,161
22.	Michigan	1,143
23.	Oregon	1,135
24.	Maryland	1,120
25.	Massachusetts	1,113
26.	Alabama	1,103
27.	Vermont	1,087
28.	Missouri	1,066
29.	Illinois	1,063
30.	New Jersey	1,017
	<i>Midwest</i>	983
31.	Ohio	982
32.	Delaware	970
33.	Indiana	943
34.	Minnesota	907
35.	Alaska	894
36.	Utah	881
37.	Maine	823
38.	Idaho	813
39.	Iowa	808
40.	Kentucky	767
41.	Wisconsin	752
42.	New Hampshire	736
43.	Virginia	731
44.	Pennsylvania	729
45.	Nebraska	724
46.	Montana	709
47.	West Virginia	657
48.	Wyoming	631
49.	South Dakota	527
50.	North Dakota	427

Theft

Rank	State	Rate (per 100,000)
1.	Arizona	4,703
2.	Florida	4,570
3.	Texas	4,305
4.	Utah	4,258
5.	Hawaii	4,217
6.	Washington	4,011
7.	Colorado	3,891
8.	New Mexico	3,828
9.	Georgia	3,714
10.	Louisiana	3,528
11.	Oregon	3,545
12.	Nevada	3,503
13.	Montana	3,391
14.	Michigan	3,347
15.	South Carolina	3,302
16.	Delaware	3,291
17.	Illinois	3,262
18.	Kansas	3,244
19.	California	3,198
	<i>United States</i>	3,195
20.	Alaska	3,168
21.	Wyoming	3,129
22.	Maryland	3,083
23.	North Carolina	3,048
24.	Virginia	3,031
	<i>Midwest</i>	3,024
25.	Oklahoma	3,002
26.	Nebraska	2,981
27.	New York	2,979
28.	Wisconsin	2,965
29.	Minnesota	2,960
30.	Vermont	2,918
31.	Connecticut	2,874
32.	Ohio	2,864
33.	New Jersey	2,843
34.	Arkansas	2,834
35.	Indiana	2,827
36.	Iowa	2,823
37.	Idaho	2,803
38.	Missouri	2,800
39.	Alabama	2,755
40.	Rhode Island	2,695
41.	Maine	2,555
42.	Tennessee	2,545
43.	New Hampshire	2,534
44.	Massachusetts	2,525
45.	North Dakota	2,289
46.	South Dakota	2,109
47.	Mississippi	2,070
48.	Kentucky	1,943
49.	Pennsylvania	1,810
50.	West Virginia	1,523

Robbery

Wisconsin ranked thirty-first in reported robbery offenses in 1990 with a rate of 112.7 per 100,000 residents. This ranking is higher than the thirty-eighth position of Wisconsin in 1988. The table at right shows the state rankings for robbery. The UCR program defines robbery as taking or attempting to take anything of value from the care, custody, or control of a person or persons by force or threat of force or violence.

Wisconsin's rate is well below both the United States rate of 257.0 and the Midwest rate of 198.5. It is less than one-fifth the rate of New York, the highest ranked state.

Aggravated Assault

In 1990 Wisconsin ranked forty-third in reported aggravated assaults with a rate of 126.7 per 100,000 residents. The ranking is identical to the forty-third position of Wisconsin in 1988. The table on the far right shows the state rankings for aggravated assault. According to the UCR program definition, aggravated assault is the unlawful attack by one person upon another for the purpose of inflicting severe or aggravated bodily injury.

Wisconsin's rate is much less than both the United States rate of 424.1 and the Midwest rate of 345.9. It is less than one-sixth the rate of Florida, the highest ranked state.

Robbery

Rank	State	Rate (per 100,000)
1.	New York	624.7
2.	Florida	416.8
3.	Illinois	394.0
4.	California	377.0
5.	Maryland	363.8
6.	New Jersey	301.0
7.	Louisiana	269.8
8.	Georgia	263.5
9.	Texas	260.8
	<i>United States</i>	257.0
10.	Nevada	238.3
11.	Connecticut	234.8
12.	Michigan	234.0
13.	Massachusetts	217.1
14.	Missouri	216.4
	<i>Midwest</i>	198.5
15.	Tennessee	191.2
16.	Ohio	188.5
17.	Pennsylvania	176.2
18.	Delaware	164.8
19.	Arizona	160.9
20.	South Carolina	152.4
21.	North Carolina	152.1
22.	Oregon	144.3
23.	Alabama	143.7
24.	Washington	130.0
25.	Virginia	123.3
26.	Rhode Island	122.0
27.	Oklahoma	121.9
28.	Kansas	117.6
29.	New Mexico	115.1
30.	Arkansas	113.2
31.	Wisconsin	112.7
32.	Indiana	101.3
33.	Minnesota	92.7
34.	Hawaii	91.4
35.	Colorado	90.6
36.	Mississippi	86.2
37.	Alaska	76.7
38.	Kentucky	69.1
39.	Utah	56.9
40.	Nebraska	51.1
41.	Iowa	39.2
42.	West Virginia	37.9
43.	New Hampshire	27.2
44.	Maine	25.1
45.	Montana	21.7
46.	Wyoming	15.9
47.	Idaho	15.0
48.	South Dakota	12.4
49.	Vermont	11.7
50.	North Dakota	7.8

Aggravated Assault

Rank	State	Rate (per 100,000)
1.	Florida	764.4
2.	South Carolina	759.3
3.	California	613.6
4.	New Mexico	606.2
5.	Louisiana	569.2
6.	Illinois	523.6
7.	Alabama	520.7
8.	New York	512.0
9.	Maryland	497.9
10.	Massachusetts	481.4
11.	Michigan	468.4
12.	Missouri	457.6
13.	Arizona	442.8
14.	Texas	435.1
15.	Georgia	427.4
16.	North Carolina	426.4
	<i>United States</i>	424.1
17.	Tennessee	419.2
18.	Delaware	397.3
19.	Colorado	385.0
20.	Oklahoma	370.5
21.	Alaska	367.4
22.	Arkansas	365.4
	<i>Midwest</i>	345.9
23.	Indiana	328.4
24.	Oregon	311.8
25.	New Jersey	311.1
26.	Washington	302.7
27.	Nevada	290.7
28.	Connecticut	286.0
29.	Kansas	285.7
30.	Kentucky	285.2
31.	Rhode Island	280.4
32.	Ohio	264.7
33.	Wyoming	251.1
34.	Nebraska	246.2
35.	Iowa	240.1
36.	Idaho	230.7
37.	Pennsylvania	222.3
38.	Mississippi	198.0
39.	Virginia	187.6
40.	Utah	186.3
41.	Minnesota	176.7
42.	Hawaii	153.0
43.	Wisconsin	126.7
44.	South Dakota	114.1
45.	Montana	108.4
46.	West Virginia	102.1
47.	Maine	96.0
48.	Vermont	87.2
49.	New Hampshire	67.6
50.	North Dakota	47.4

Motor Vehicle Theft

Motor Vehicle Theft

Wisconsin ranked twenty-seventh in reported motor vehicle theft in 1990 with a rate of 417 per 100,000 residents. This ranking is higher than the thirty-second position of Wisconsin in 1988. The state rankings for motor vehicle theft are shown in the table at the right. Motor vehicle theft is defined as the theft or attempted theft of a motor vehicle.

While Wisconsin's rate is somewhat less than the Midwest rate of 501, it is about one-third less than the United States rate of 658. Also, the Wisconsin rate is less than one-half the rate of New York, the highest ranked state in the rate of motor vehicle thefts.

Arson

Data on arson, the fourth property crime in the Crime Index, are not sufficient to estimate state totals. Therefore, it is not possible to rank states on reported arson offenses.

<u>Rank</u>	<u>State</u>	<u>Rate (per 100,000)</u>	<u>Rank</u>	<u>State</u>	<u>Rate (per 100,000)</u>
1.	New York	1,043	25.	Indiana	439
2.	California	1,016	26.	Colorado	428
3.	Rhode Island	954	27.	Wisconsin	417
4.	New Jersey	940	28.	South Carolina	386
5.	Massachusetts	924	29.	Hawaii	380
6.	Texas	909	30.	Minnesota	366
7.	Arizona	864	31.	Alabama	348
8.	Florida	826	32.	New Mexico	337
9.	Connecticut	731	33.	Kansas	335
10.	Michigan	714	34.	Virginia	328
11.	Maryland	709	35.	Arkansas	289
12.	Georgia	674	36.	North Carolina	284
	<i>United States</i>	658	37.	New Hampshire	244
13.	Illinois	643	38.	Montana	242
14.	Louisiana	602	39.	Utah	238
15.	Oklahoma	602	40.	Mississippi	208
16.	Nevada	592	41.	Vermont	208
17.	Tennessee	572	42.	Kentucky	199
18.	Alaska	565	43.	Nebraska	178
19.	Missouri	539	44.	Maine	177
20.	Pennsylvania	506	45.	Iowa	170
	<i>Midwest</i>	501	46.	Idaho	166
21.	Ohio	491	47.	West Virginia	154
22.	Oregon	459	48.	Wyoming	149
23.	Washington	447	49.	North Dakota	133
24.	Delaware	444	50.	South Dakota	110

Trends in State Rankings

This document has been published every other year since 1987, and it is intended that it will continue to be published every two years. Comparing the figures in this publication with the 1988 figures reveals that Wisconsin's position in the state ranking of violent crime rates remained at forty-third. However, Wisconsin's position in the state ranking of property crimes increased from thirty-ninth in 1988 to thirty-seventh in 1990. The greatest changes in Wisconsin's ranking for individual crimes included murder (forty-second in 1988 and thirty-fifth in 1990), robbery (thirty-eighth in 1988 and thirty-first in 1990), and motor vehicle theft (thirty-second in 1988 and twenty-seventh in 1990). Nonetheless, an overall conclusion to be drawn from the data is that Wisconsin continues to be a relatively safe place to live, work, and do business, compared to many other states.

Office of Justice Assistance
Wisconsin Statistical Analysis Center
222 State Street, Second Floor
Madison, Wisconsin 53703

NATIONAL INSTITUTE OF JUSTICE/NCJRS
ACQUISITIONS DEPARTMENT - 2L
1600 RESEARCH BLVD
ROCKVILLE, MD 20850