



STATISTICAL PROFILE

OF THE

FY 1990 OFFENDER POPULATION



Kansas Department of Corrections

November 1990

138694

**Statistical Profile
of the
FY 1990 Offender Population**

**Kansas Department of Corrections
Steven J. Davies, Ph.D.
Secretary of Corrections**

138694

**U.S. Department of Justice
National Institute of Justice**

This document has been reproduced exactly as received from the person or organization originating it. Points of view or opinions stated in this document are those of the authors and do not necessarily represent the official position or policies of the National Institute of Justice.

Permission to reproduce this copyrighted material has been granted by

Kansas Department of
Corrections

to the National Criminal Justice Reference Service (NCJRS).

Further reproduction outside of the NCJRS system requires permission of the copyright owner.

Prepared by:

**Division of Management Services
Planning and Information
Analysis Unit**

November 1990

Table of Contents

Title Pagei
Table of Contentsii
Prefacevi
Introduction1

Section I. Offender Population Levels and Institutional Capacity for Fiscal Year 19902

 Components of the System-wide Offender Population2
 Inmate Population Trends2
 Current Inmate Population3
 Capacity of Correctional Facilities4
 Table 1 Status and Physical Location of All Felony Offenders
 in the Correctional System: Comparison of the
 June 30, 1989 and June 30, 1990 Populations5
 Figure 1 Kansas Inmate Population: Fiscal Years 1980 - 19906
 Figure 2 End-of-month Inmate Population: Fiscal Years 1989 -
 19907
 Table 2 Number of Inmates Confined (Census) and Average Daily
 Population: FY 1989 and FY 19908
 Table 3 Operating Capacity of Correctional Facilities9

Section II. Admissions and Releases During Fiscal Year 199010

 Summary of Admission and Release Activities10
 Admissions by Court Actions11
 Rate of Parole12
 Offender Recidivism12

Table of Contents (cont.)

Table 4	Admissions and Releases During FY 1990	14
Table 5	Yearly Admissions and Releases: FY 1980 - 1990	16
Table 6	Admissions by Court Actions, by Felony Class of the Most Serious Current Offense Relating to the Latest Admission of the Period: FY 1981 - 1990	18
Figure 3	Number of Admissions by Court Actions: FY 1990 and Level of Change from FY 1989, by County	19
Table 7	Number of Admissions of Offenders Under Age Eighteen at the Time of Offense, by Felony Class and Type of Offense: FY 1980 - FY 1990	20
Table 8	Kansas Parole Board Decisions by Type of Decision (FY 1985 - FY 1990)	21
Table 9	Return Rate of Offenders Released via Parole or Conditional Release from KDOC Facilities During FY 1983 - FY 1989: By Type of Readmission and Length of Follow-up Period	22

<u>Section III.</u>	<u>Profile of the Inmate Population: June 30</u>	
1990		24
Characteristics of the Inmate Population		24
Inmate Employment Status and Program Assignments		26
Comparison of Female and Male Inmate Populations		26
Characteristics of the New Admissions Population		27
Criminal Offenses and Sentence Structures		28
Average Length of Stay and Projected Time to Serve		29
Figure 4	Inmate Population, by Location: June 30, 1990	31
Table 10	Summary of Inmate Characteristics: June 30, 1990 Population	32
Table 11	Inmate Characteristics: Comparison of the June 30, 1989 and June 30, 1990 Populations	34

Table of Contents (cont.)

Table 12	Number of Previous Felony Convictions and Incarcerations by Felony Class of the Most Serious Current Offense: June 30, 1990 Population	36
Table 13	General Employment and Program Status of Offenders in the Inmate Population as of June 30, 1990	37
Figure 5	Changes in Average Daily Population: Male and Female Inmates, FY 1980 - FY 1990	40
Table 14	Comparison of the Characteristics of Male and Female Inmates: June 30, 1990 Population	41
Table 15	Characteristics of New Admissions Population: Comparison of FY 1983 - 1990	43
Table 16	Distribution of the Inmate Population by Felony Class and Criminal Offense: Comparison of Fiscal Years 1983 - 1990	45
Table 17	Structure of Controlling Sentences: June 30, 1990 Inmate Population, Comparison of FY 1990 with Previous Years	51
Table 18	Average Length of Stay in Correctional Facilities, by Felony Class of Offense and Sentence Minimum: Offenders Paroled During Fiscal Years 1983 - 1990	53
Table 19	Projected Average Length of Time to Serve to Earliest Possible Release Date: FY 1990 Admissions Population	55
<u>Section IV. Kansas Parolee Population, June 30, 1990</u>		57
Composition of Parole Caseload		57
Characteristics of Kansas Parolees		58
Table 20	Composition of Offender Caseload Managed by Kansas Parole Officers: End-of-year Status, FY 1987 - FY 1990	60
Table 21	Characteristics of Kansas Parolees: Comparison of June 30, 1989 and June 30, 1990 Populations	61
Figure 6	Inmate vs. Parole Population, by Felony Class of Most Serious Offense	63

Table of Contents (cont.)

Table 22	Kansas Offenders Paroled and Conditionally Released During Fiscal Year 1990, by County or State to Which Released	64
Table 23	Number of Compact Cases Serving Parole or Probation in Kansas on June 30, 1990, by Sending State	66
Table 24	Number of Kansas Cases Serving Out-of-state Parole or Conditional Release: As of June 30, 1990, by Location	68

Preface

This report has been compiled to provide a detailed statistical profile of the adult offenders within the Kansas correctional system and to describe offender commitment and release trends for the state.

Each year since Fiscal Year 1980, the data for this report have been obtained through an on-line computerized offender information system in which information is gathered systematically during the entire period that offenders are in the custody or control of the Department of Corrections. The number of offenders for which information could be obtained varies among the items of information being reported. For this reason, each percentage reported is based on the number of individuals for whom the data were available, and not necessarily on the total number in the population being described.

Per Kansas Senate Bill 748, effective May 24, 1990, several correctional facilities were consolidated and/or renamed. Subsequent administrative actions taken by the Department of Corrections in August, 1990 resulted in further consolidation of facilities at Topeka and at Hutchinson.

Current Facility Designations

- | | |
|---|---|
| Lansing Correctional Facility (LCF) - | consolidation of Kansas State Penitentiary and Kansas Correctional Institution at Lansing. |
| Hutchinson Correctional Facility (HCF)- | consolidation of Kansas State Industrial Reformatory and Hutchinson Correctional Work Facility. |
| Norton Correctional Facility (NCF) - | consolidation of facilities at Norton and Stockton. |
| Ellsworth Correctional Facility (ECF) | |
| Topeka Correctional Facility (TCF) - | consolidation of State Reception and Diagnostic Center, Kansas Correctional-Vocational Training Center, Forbes Correctional Facility, and Topeka Correctional Facility. |
| Winfield Correctional Facility (WCF) | |
| Osawatomie Correctional Facility (OCF) | |

Osawatomie Correctional Facility (OCF)

Toronto Correctional Work Facility (TCWF) - formerly Toronto Honor Camp.

El Dorado Correctional Work Facility (EDCWF) - formerly El Dorado Honor Camp.

Wichita Work Release Facility (WWRF) - formerly Wichita Work Release Center.

Inmates were also housed in FY 1990 at one contract work release facility (Fort Scott Work Release Center), at Larned State Hospital (LSH), and in contract jail placement (CJP). The two community residential centers (Topeka CRC and Wichita CRC) were closed in July of 1989.

Introduction

The purpose of this statistical profile report is to summarize information regarding offender population levels, commitment trends, and characteristics of the offender population. The four major sections of the report include: a description of the pattern of growth in the offender population; a summary of admission and release activities occurring during Fiscal Year 1990; a detailed description of the characteristics of the inmate population confined on June 30, 1990; and a description of the June 30, 1990 population of offenders on supervised release. In the past several years there have been several modifications in Kansas criminal statutes which have produced significant changes in various attributes of the offender population. For this reason emphasis has been placed on comparisons of current information with that of prior years (particularly for data pertaining to type of criminal offense, sentencing patterns, and length of time served).

The detailed statistical tables and graphs of each section of the report are preceded by a summary of the highlights which identify significant trends and developments that occurred during FY 1990.

• • • • • SECTION I • • • • •

Offender Population Levels and Institutional Capacity for
Fiscal Year 1990

Components of the System-wide Offender Population

- Primary components of June 30, 1990 system population of 13,286 are as follows:
 - Inmates confined in Kansas correctional facilities numbered 5,677 or 43% of the system population.
 - Offenders on supervised release -- Kansas offenders on parole/conditional release and compact parole/probation -- numbered 7,122 or 54% of the system population.
 - Offenders in other locations, such as those in out-of-state correctional facilities and those returned for court appearance, numbered 487 (4%).
- System population increased by 10% from FY 1989.

[SEE Table 1: Status and Physical Location of All Felony Offenders in the Correctional System: Comparison of June 30, 1989 and June 30, 1990 Populations -- page 5]

Inmate Population Trends

- Year-end inmate population decreased for the first time in 10 years and reflects primarily the effects of the liberalized good time provision of Senate Bill 49 and an increase in the rate of decisions to parole by the Kansas Parole Board.
- The month-end inmate population decreased steadily during FY 1990, with population increases in only two months, decreases in nine months, and no change in one month.
- The average monthly change in inmate population has fluctuated markedly over the past several years.

<u>Fiscal Year</u>	<u>Average Monthly Increase</u>
1980	-6.9
1981	27.8
1982	28.5
1983	31.8
1984	53.6
1985	42.1
1986	37.8
1987	55.3
1988	29.9
1989	13.3
1990	-41.3

[SEE Figure 1: Kansas Inmate Population: Fiscal Years 1980-1990 -- page 6; and

Figure 2: End-of-month Inmate Population: Fiscal Years 1989-1990 -- page 7]

Current Inmate Population

- On June 30, 1990 the total inmate population was 5,677, a decrease of 495 (-8.0%) from June 30, 1989.
 - The number of inmates in facilities operated by the Department of Corrections was 5,511, a decrease of 157 (2.8%) from FY 1989. With the closing of the two community residential centers at Topeka and Wichita in July, 1989, the population in contracted facilities was only 166, down 338 from 504 in FY 1989.
 - Much of the decrease is due to the implementation of the Senate Bill 49 provision that increased the amount of good time earned by most inmates. This provision was effective August 1, 1989, and was retroactive, thus applicable to all eligible inmates in the existing population as well as to new entries to the system. As a result, 165 inmates received "early" conditional releases on August 1, 1989. Also, the parole eligibility dates for most of the remaining inmates were moved forward - hence a large increase in the number of paroles in August, 1989 and subsequent months.
- The FY 1989 average daily population was 5,703, a decrease of 345 (5.7%) from FY 1988.
- Update on inmate population levels since June 30, 1990:

	<u>Number of Inmates</u>		
	<u>KDOC Facilities</u>	<u>Contract Placements</u>	<u>Total</u>
July 31, 1990	5,521	166	5,687
August 31, 1990	5,576	161	5,737
September 30, 1990	5,608	155	5,763
October 31, 1990	5,638	157	5,795

- Total inmate population has increased by 118 in the period June 30, 1990 through October 31, 1990, an average monthly increase of about 29.5.

[SEE Table 2: Number of Inmates Confined (Census) and Average Daily Population, FY 1989 and FY 1990 -- page 8]

Capacity of Correctional Facilities

- The operating capacity for all currently existing KDOC facilities is 5,405.
 - The operating capacity total excludes 515 beds categorized as temporary or special use (such as segregation and infirmary beds).
 - Facilities under construction (El Dorado Correctional Facility, a 640-bed facility scheduled to begin receiving inmates by June 1, 1991, and Larned Correctional Mental Health Facility, a 150-bed facility that is scheduled to receive its first inmates in January, 1992) will raise the operating capacity from 5,405 to 6,195.
- The capacity for placement of inmates at non-DOC facilities is 172. This total includes placements at Larned State Hospital and contract jail facilities.

[SEE Table 3: Operating Capacity of Correctional Facilities -- page 9]

Table 1

Status and Physical Location of All Felony Offenders in the Correctional System:
Comparison of the June 30, 1989 and June 30, 1990 Populations

Status/Physical Location	Number of Offenders		Change	
	6-30-89	6-30-90	No.	%
Kansas Correctional Facilities:				
Intake Evaluation Complete	5344	5233	-111	-2%
Awaiting Intake Evaluation (or in progress)	222	191	-31	-14%
Presentence Evaluation	4	3	-1	-25%
Interstate Compact Received	73	74	1	1%
Other Facilities & Placements:				
State hospital	112	116	4	4%
Contract jail placement	39	45	6	15%
Contract work release	4	5	1	25%
Community residential centers	328	0	-328	-100%
Extended furlough	21	0	-21	-100%
Medical	10	5	-5	-50%
Local Detention/Security Housing	7	0	-7	-100%
Regular Furlough	8	5	-3	-38%
Subtotals	6172	5677	-495	-8%
Out-of-State Correctional Facilities:				
Interstate compact sent	73	66	-7	-10%
In absentia	90	85	-5	-6%
Subtotals	163	151	-12	-7%
Other Locations:				
Out for court appearance	240	298	58	24%
Local detention	9	8	-1	-11%
Escape (at large)	47	30	-17	-36%
Subtotals	296	336	40	14%
Parole/Conditional Release/Probation:				
In-state parole/CR	2658	3707	1049	39%
Out-of-state parole/CR	1229	1424	195	16%
Compact parole	245	312	67	27%
Compact probationer	690	818	128	19%
Active DOC warrant (abscond, etc.)	659	861	202	31%
Subtotals	5481	7122	1641	30%
Grand Totals (All Offenders)	12112	13286	1174	10%

Figure 1

Kansas Inmate Population Fiscal Years 1980-1990

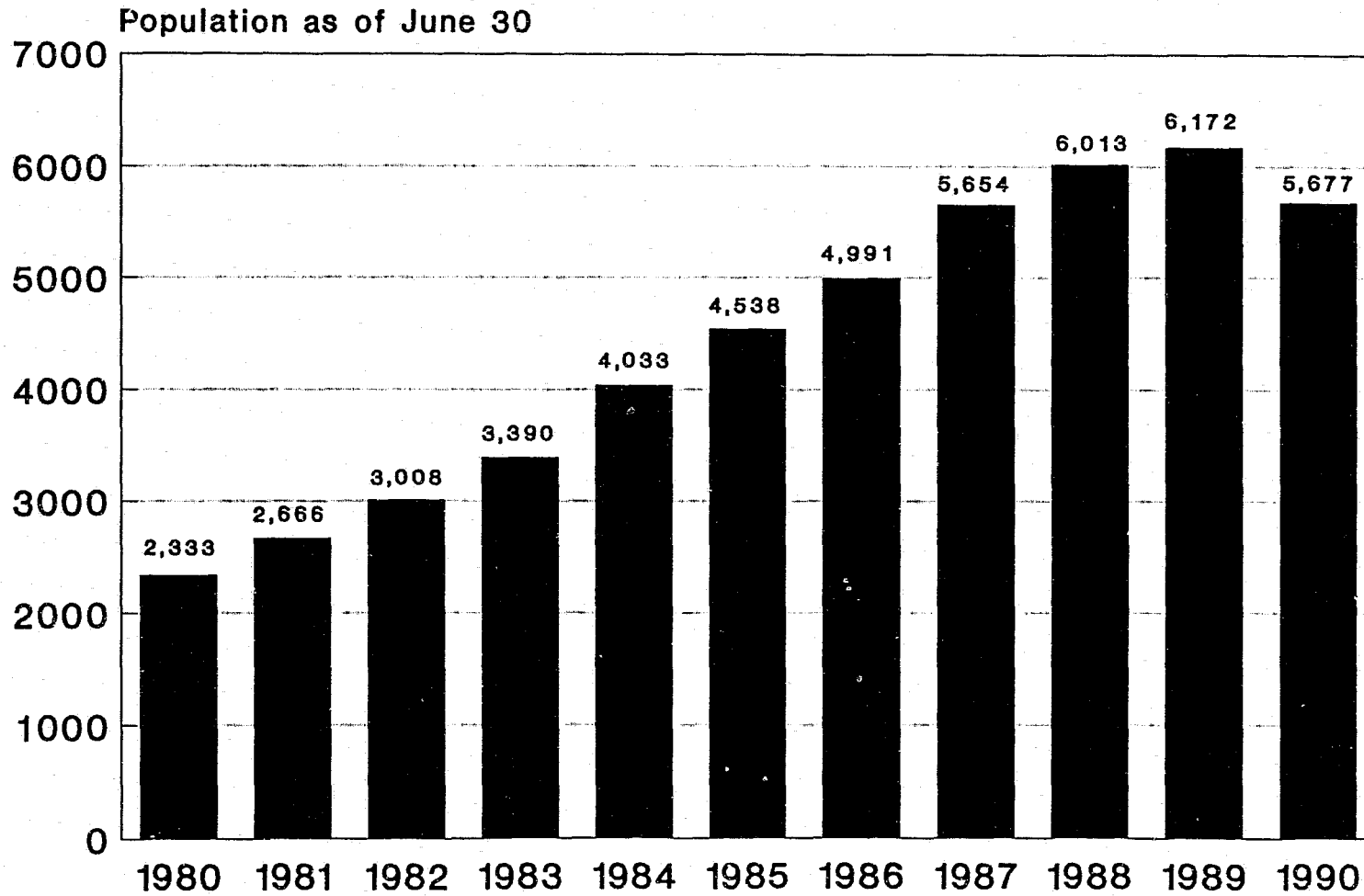


Figure 2

End-of-Month Inmate Population Fiscal Years 1989-1990

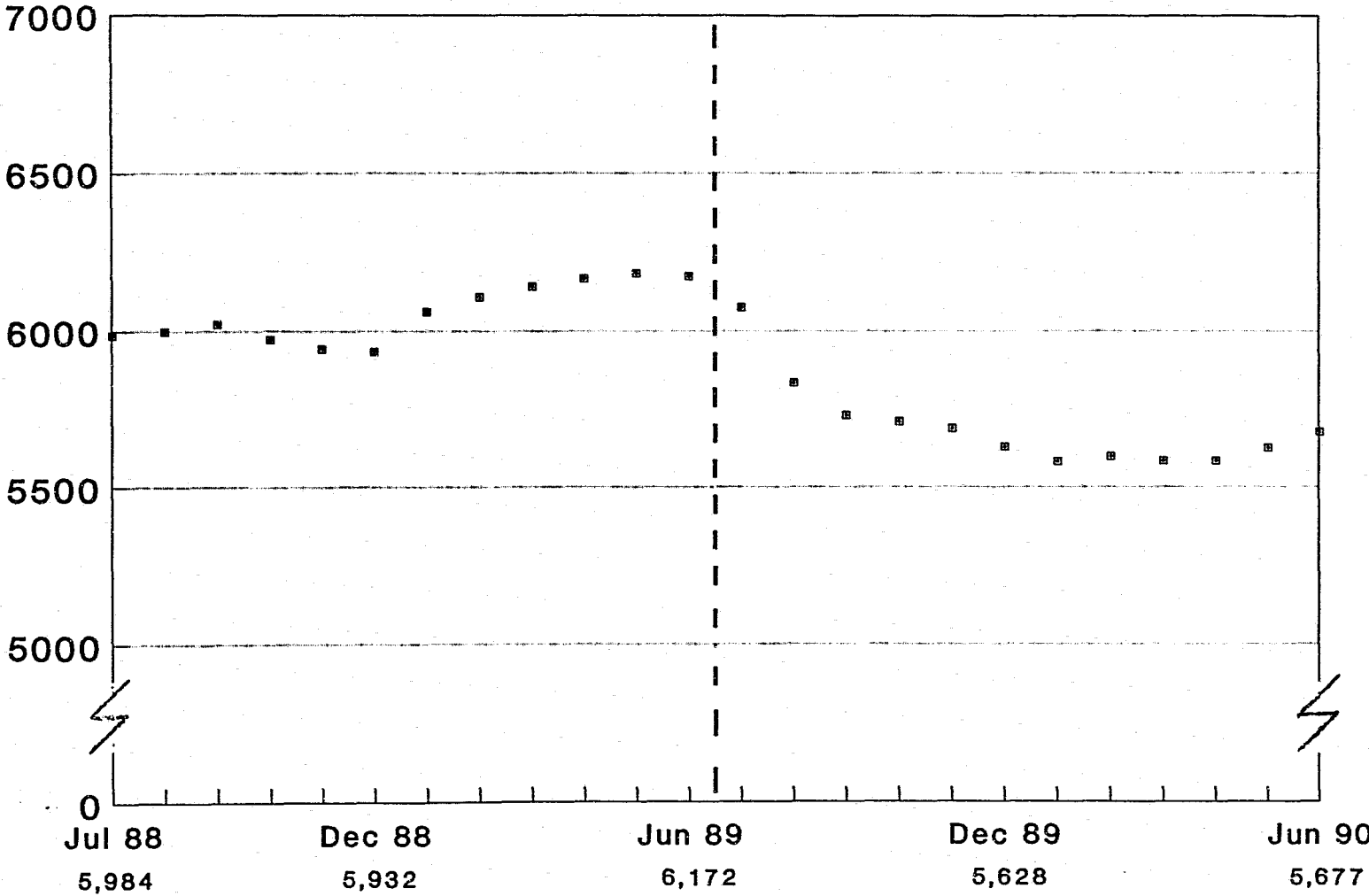


Table 2
Number of Inmates Confined (Census) and Average Daily Population, FY 1989 and FY 1990*

Name of Correctional Facility	Average Daily Population			Number Confined (Census)		
	FY 89	FY 90	Change	6-30-89	6-30-90	Change
D.O.C. Facilities						
Lansing Correctional Facility	2098 (80)	1826 (88)	-272	2012 (90)	1840 (91)	-172
Hutchinson Correctional Facility	1745	1532	-213	1707	1492	-215
Norton Correctional Facility	300	477	177	393	539	146
Ellsworth Correctional Facility	244	436	192	288	467	179
Topeka Correctional Facility	651 (188)	603 (180)	-48	629 (191)	610 (195)	-19
Winfield Correctional Facility	282	261	-21	288	243	-45
Osawatomie Correctional Facility	79	69	-10	78	66	-12
Toronto Correctional Work Facility	70	64	-6	68	70	2
El Dorado Correctional Work Facility	104	93	-11	104	99	-5
Wichita Work Release Facility	100 (8)	153 (7)	53	101 (9)	85 (5)	-16
Subtotal: D.O.C. Facility Population	5673 (276)	5514 (275)	-159	5668 (290)	5511 (291)	-157
Non-D.O.C. Facilities/Programs						
Larned State Hospital	105 (3)	112 (1)	7	112 (1)	116 (2)	4
Contract Work Release Placement	6 (0)	5 (0)	-1	4 (0)	5 (0)	1
Contract Jail Placement	41 (1)	43 (0)	2	39 (0)	45 (0)	6
Community Residential Centers	209 (7)	25 (1)	-184	328 (8)	0 (0)	-328
Inmates Furloughed to Parole Plan	12 (1)	2 (0)	-10	17 (1)	0 (0)	-17
Community Reintegration Program	2 (0)	2 (0)	0	4 (0)	0 (0)	-4
Subtotal: Non-D.O.C. Facility Population	375 (12)	189 (2)	-186	504 (10)	166 (2)	-338
Grand Total: All Facilities	6048 (288)	5703 (277)	-345	6172 (300)	5677 (293)	-495

*The institutional designations reflect the consolidation and/or renaming of correctional facilities as explained in the preface of this report.

Note: Parentheses denote the number of females included in the population.

Table 3

Operating Capacity of Correctional Facilities*

Name of Correctional Facility	Operating Capacity	Beds Not Counted in Operating Capacity	
		Special Use Beds	Temporary Beds
D.O.C. Facilities:			
Lansing Correctional Facility	1527	90	269
Hutchinson Correctional Facility	1415	56	50
Norton Correctional Facility	594	11	--
Ellsworth Correctional Facility	516	17	--
Topeka Correctional Facility	611	10	10
Winfield Correctional Facility	290	2	--
Osawatomie Correctional Facility	80	--	--
Toronto Correctional Work Facility	70	--	--
El Dorado Correctional Work Facility	102	--	--
Wichita Work Release Facility	200	--	--
D.O.C. Facility Capacity	5405	186	329
**D.O.C. Facilities Under Construction:			
El Dorado Correctional Facility	640	27	--
Larned Correctional Mental Health Facility	150	--	--
Subtotal	790	27	0
Non-D.O.C. Facilities (Placement Capacity)			
Type of Placement			
Contract Jail Placement	56		
Larned State Hospital	116		
Total Non-D.O.C. Placements	172		
Grand Total Capacity and Placements	6367		

*Capacity figures represent those established by Federal District Court, effective July 1, 1991. An interim inmate population cap was also set by the Court, temporarily allowing the Department of Corrections to exceed the established capacity until July 1, 1991. As of November 1, 1990, the population cap was 5,994 (versus capacity of 5,405).

**El Dorado Correctional Facility is scheduled to begin receiving inmates by June 1, 1991; Larned Correctional Mental Health Facility by January, 1992.

• • • • • SECTION II • • • • •

Admissions and Releases During Fiscal Year 1989

Information pertaining to admissions and releases of offenders during FY 1990 is summarized in this section. The basic data are presented in Table 4, the format of which is explained in the footnotes accompanying the table. Detailed information on court-related admissions to the system is presented by felony class of offense and county of commitment. Also included as part of this section is information on two topics which are central to the discussion of admissions and releases -- rate of parole and offender recidivism.

Summary of Admission and Release Activities

- In FY 1989, both admissions and releases were the highest observed in the previous decade. These figures were surpassed in FY 1990.
- Total number of admissions during FY 1990 was 3,929, up 406 (11.5%) from FY 1989.
 - As in previous years, court commitments accounted for most of the FY 1990 admissions (72%).
- Total number of releases during FY 1990 was 4,439, up sharply (1,031 or 30.3%) from FY 1989. This was due primarily to an increase of 1,020 in the number of paroles and conditional releases, which in turn reflects the following law and policy changes.
 - Accelerated parole eligibility and advancement of parole hearing dates resulting from the liberalized good time provisions of Kansas Senate Bill 49, effective August 1, 1989.
 - Increase in the rate of decisions to parole by the Kansas Parole Board.
- FY 1990 is the first year since FY 1980 that releases have outnumbered admissions, producing a decrease in inmate population.
- In recent years, return admissions for violations of parole and conditional release (no new sentence) have increased substantially and have accounted for larger proportions of total admissions. In FY 1990 returns with no new sentences accounted for nearly one-fourth (24.3%) of all admissions. Return admissions via violations for new sentences have accounted for smaller proportions of total admissions over the past several years.

Return Admissions for Violation of Parole or Conditional Release

<u>Fiscal Year</u>	<u>No New Sentence</u>		<u>New Sentence</u>	
	<u>No.</u>	<u>% of Total Admissions</u>	<u>No.</u>	<u>% of Total Admissions</u>
1980	160	9	148	9
1981	215	10	228	11
1982	185	8	218	10
1983	202	8	240	10
1984	242	10	249	10
1985	254	11	158	7
1986	334	14	162	7
1987	393	15	197	7
1988	564	19	204	7
1989	715	20	238	7
1990	954	24	254	6

[SEE Table 4: Admissions and Releases During FY 1990 -- page 14; and

Table 5: Yearly Admissions and Releases: FY 1980 - FY 1990 -- page 16]

Admissions by Court Actions

- The distribution of the 2,677 FY 1990 court admissions by felony class is as follows:

<u>Felony Class</u>	<u>%</u>
A	1.1
B	5.7
C	26.9
D	28.3
E	38.0
Total	100.0

- The distribution of the FY 1990 court admissions by county of commitment indicates that as in prior years, the four most populous counties (Johnson, Sedgwick, Shawnee, and Wyandotte) collectively account for well over half the total (57%).
- In FY 1990 there were 71 admissions of offenders under age eighteen at the time of offense, down 15 (17%) from FY 1989.

[SEE Table 6: Admissions by Court Actions, by Felony Class of the Most Serious Offense: FY 1981 - FY 1990 -- page 18; and

Figure 3: Number of Admissions by Court Actions: FY 1990 and Level of Change from FY 1989, by County -- page 19; and

Table 7: Number of Admissions of Offenders Under Age Eighteen at the Time of Offense, by Felony Class of Offense and Type of Offense: FY 1980 - FY 1990 -- page 20]

Rate of Parole

The information presented on rate of parole reflects Kansas Parole Board decisions only and not actual parole exits from correctional facilities. The length of the period of time between the decision to parole and the actual release varies among cases.

- The rate of parole for FY 1990 was 56% -- the highest in recent years (FY 89, 53%; FY 88, 45%; FY 87, 43%; FY 86, 51%).
- The rates of parole experienced in recent years are substantially lower than the estimated 80% parole rate for the early 1980's.

[SEE Table 8: Kansas Parole Board Decisions by Type of Decision (FY 1985 - FY 1990 -- page 21)]

Offender Recidivism

The rate of offender recidivism has been operationally defined by the Department as the rate of return to Kansas prisons by offenders released via parole or conditional release. In deriving the data on this measure each offender is tracked individually for the specified length of the follow-up period. Separate rates are calculated for those returning with new sentences and those returning with no new sentences. Table 9 contains a summary of the return rates for each yearly cohort of releases (Fiscal Years 1983 - 1989).

- "Combined failure rate" (combined returns via new sentence, no new sentence, and new commitment after discharge) for the release cohorts was as follows:

<u>Follow-up Period (years after release)</u>	<u>Range of Return Rates</u>
One	16% - 23%
Two	31% - 39%
Three	37% - 46%
Four	41% - 47%
Five	43% - 47%

- In general there appears to be the same trend in these data as noted in the admissions and releases section of this report:
 - Considerably higher rate of returns with no new sentences for the later years (FY 1986 - FY 1989) as compared to the earlier years (FY 1983 - 84).

- Somewhat lower rate of new sentence returns for the later years.

[SEE Table 9: Return Rate of Offenders Released Via Parole or Conditional Release During FY 1983 - FY 1989: By Type of Readmission and Length of Follow-up Period -- page 22]

Table 4
Admissions and Releases During FY 1990

***** Admissions *****

Types of Admission -----	Number of Admissions, FY 90*			Change from FY 1989 (Total)	
	Initial	Subsequent**	Total	Number	%
Admissions by Court Action:					
Court Commitments					
New Court Commitment	2291	4	2295	182	8.6
Aggravated Juvenile Delinquency	3	0	3	3	-
Probation Violator, No New Sentence	177	30	207	-57	-21.6
Probation Violator, New Sentence	71	10	81	16	24.6
Parole Violator, New Sentence	167	49	216	4	1.9
Conditional Release Violator, New Sentence	25	13	38	12	46.2
	---	---	---	---	---
Subtotals: Court Commitments	2734	106	2840	160	6.0
Presentence Evaluation	17	0	17	-14	-45.2
Return from Court Appearance	55	2	57	7	14.0
	---	---	---	---	---
Subtotals: Admissions by Court Action	2806	108	2914	153	5.5
Returns by Department of Corrections Action:					
Parole Violator, No New Sentence	614	258	872	232	36.3
Conditional Release Violator, No New Sentence	38	44	82	7	9.3
Escapee Returned	26	0	26	12	85.7
	---	---	---	---	---
Subtotals: Returns by D.O.C. Action	678	302	980	251	34.4
Inter-jurisdictional Transfers:					
Interstate/Federal Compact Received	16	1	17	0	0.0
Ks. Inmate Returned from Another Jurisdiction	15	3	18	2	12.5
	---	---	---	---	---
Subtotals: Inter-jurisdictional Transfers	31	4	35	2	6.1
	====	====	====	====	====
Totals: All Types of Admission	3515	414	3929	406	11.5

Table 4 (cont.)

***** Releases *****

Types of Release -----	Number of Releases, FY 90*			Change from FY 1989 (Total)	
	Initial	Subsequent**	Total	Number	%
Parole:					
Parole In-state	2102	256	2358	661	39.0
Parole Out-of-state (Compact)	358	17	375	18	5.0
Parole to Detainer	221	17	238	116	95.1
Reparole	3	0	3	-2	-40.0
	---	---	---	---	
Subtotals: Parole	2684	290	2974	793	36.4
Conditional Release	425	75	500	227	83.2
Expiration of Sentence	98	1	99	22	28.6
Commutation or Pardon	0	0	0	0	0.0
Inter-jurisdictional Transfers					
Kansas Inmate Released for Housing	14	3	17	1	6.3
Interstate/Fed. Inmate Rel. to Sending Juris.	13	1	14	0	0.0
	---	---	---	---	
Subtotals: Inter-jurisdictional Transfers	27	4	31	1	3.3
Court-ordered Releases:					
Probation	482	43	525	-8	-1.5
Returned Parolee Placed on Probation	0	0	0	-1	-100.0
Released on Appeal Bond	11	1	12	1	9.1
Presentence Returned to Court	14	0	14	-11	-44.0
Released for Court Appearance	257	0	257	33	14.7
Other Final Release by Court Order	9	0	9	2	28.6
	---	---	---	---	
Subtotals: Court-ordered Releases	773	44	817	16	2.0
Escape	7	0	7	-25	-78.1
Death (All Causes)	11	0	11	-3	-21.4
	====	====	====	====	
Totals: All Types of Release	4025	414	4439	1031	30.3
Difference: Admissions Over Releases	-510	--	-510	--	--

* An "Initial" entry/exit represents the first entry by an offender during the period and/or his latest exit, with each individual counted only once as an entry and/or once as an exit. The "Subsequent" column includes the counting of offenders who were in confinement at the beginning of the period, but who were subsequently released and readmitted, thus remaining in confinement at the end of the period. This column also includes the counting of the additional release-admission transactions for offenders already counted in the "Initial" column. The "Total" column contains the sum of the "Initial" and "Subsequent" entries/exits.

**Within the "Subsequent" column, certain types of transactions involving temporary exit from a correctional facility have been excluded: Release to court/return from court (629 transactions) and escape/return from escape (30 transactions).

Table 5

Yearly Admissions and Releases: FY 1980 - FY 1990*

***** Admissions *****

Types of Admission

Types of Admission	FY 80	FY 81	FY 82	FY 83	FY 84	FY 85	FY 86	FY 87	FY 88	FY 89	FY 90
Admissions by Court Action											
Court Commitments:											
New Court Commitment	1107	1296	1451	1588	1535	1383	1503	1537	1723	2113	2295
Aggravated Juvenile Delinquency	6	4	12	13	11	11	8	7	9	0	3
Probation Violator, No New Sentence	82	143	180	178	221	217	240	256	237	264	207
Probation Violator, New Sentence	56	73	97	107	103	114	93	153	121	65	81
Parole Violator, New Sentence	144	221	212	236	246	148	155	186	191	212	216
Conditional Release Vio., New Sent.	4	7	6	4	3	10	7	11	13	26	38
Subtotals: Court Commitments	1399	1744	1958	2126	2119	1883	2006	2150	2294	2680	2840
Presentence Evaluation	63	70	56	48	22	31	25	34	32	31	17
Return from Court Appearance	30	28	30	29	27	37	37	42	57	50	57
Subtotals: Admissions by Court Action	1492	1842	2044	2203	2168	1951	2068	2226	2383	2761	2914
Returns by Dept. of Corrections Action											
Parole Violator, No New Sentence	160	215	183	202	241	249	319	379	514	640	872
Conditional Rel. Violator, No New Sent.	0	0	2	0	1	5	15	14	50	75	82
Escapee Returned	12	11	14	8	15	8	9	15	13	14	26
Subtotals: Returns by D.O.C. Action	172	226	199	210	257	262	343	408	577	729	980
Inter-jurisdictional Transfers											
Interstate/Federal Compact Received	14	12	17	21	21	17	21	29	25	17	17
Kansas Inmate Ret. from Another Juris.	8	12	6	14	11	13	11	12	15	16	18
Subtotals: Inter-juris. Transfers	22	24	23	35	32	30	32	41	40	33	35
Totals: All Types of Admission	1686	2092	2266	2448	2457	2243	2443	2675	3000	3523	3929

Table 5 (cont.)

***** Releases *****

Types of Release	FY 80	FY 81	FY 82	FY 83	FY 84	FY 85	FY 86	FY 87	FY 88	FY 89	FY 90
Parole											
Parole In-state	1019	955	1103	1072	747	774	913	933	1153	1697	2358
Parole Out-of-state (Compact)	206	184	189	251	181	220	247	196	257	357	375
Parole to Detainer	3	8	32	69	49	57	91	64	96	122	238
Reparole	6	21	20	7	20	12	5	0	14	5	3
Subtotals: Parole	1234	1168	1344	1399	997	1063	1256	1193	1520	2181	2974
Conditional Release											
Expiration of Sentence	51	58	43	46	90	86	101	146	287	273	500
Commutation or Pardon	0	1	1	1	5	0	7	21	50	77	99
	0	0	0	0	2	1	1	0	0	0	0
Inter-jurisdictional Transfers											
Kansas Inmate Released for Housing	17	11	22	21	18	27	16	13	18	16	17
Interstate/Fed. Inmate Returned	7	10	2	16	16	14	23	14	24	14	14
Subtotals: Inter-juris. Transfers	24	21	24	37	34	41	39	27	42	30	31
Court-ordered Releases											
Probation	323	290	324	405	455	340	380	332	321	533	525
Returned Parolee Placed on Probation	12	6	7	3	0	0	0	0	0	1	0
Released on Appeal Bond	10	4	4	4	5	6	5	12	27	11	12
Presentence Returned to Court	53	63	46	41	22	28	22	31	29	25	14
Released for Court Appearance	35	107	129	112	216	149	187	229	339	224	257
Other First Release by Court Order	7	6	4	8	7	4	4	11	14	7	9
**Subtotal: Court-ordered Releases	440	476	514	573	705	527	598	615	730	801	817
Escape	17	18	10	15	5	13	15	15	17	32	7
Death (All Causes)	4	11	5	5	7	6	10	9	18	14	11
Totals: All Types of Release	1770	1753	1941	2076	1845	1737	2027	2026	2664	3408	4439
Difference: Admissions Over Releases	(84)	339	325	372	612	506	416	649	336	115	(510)

Note: A number in parentheses is a negative value.

*The data represent "total admissions" and "total releases" as defined in Table 4 footnotes.

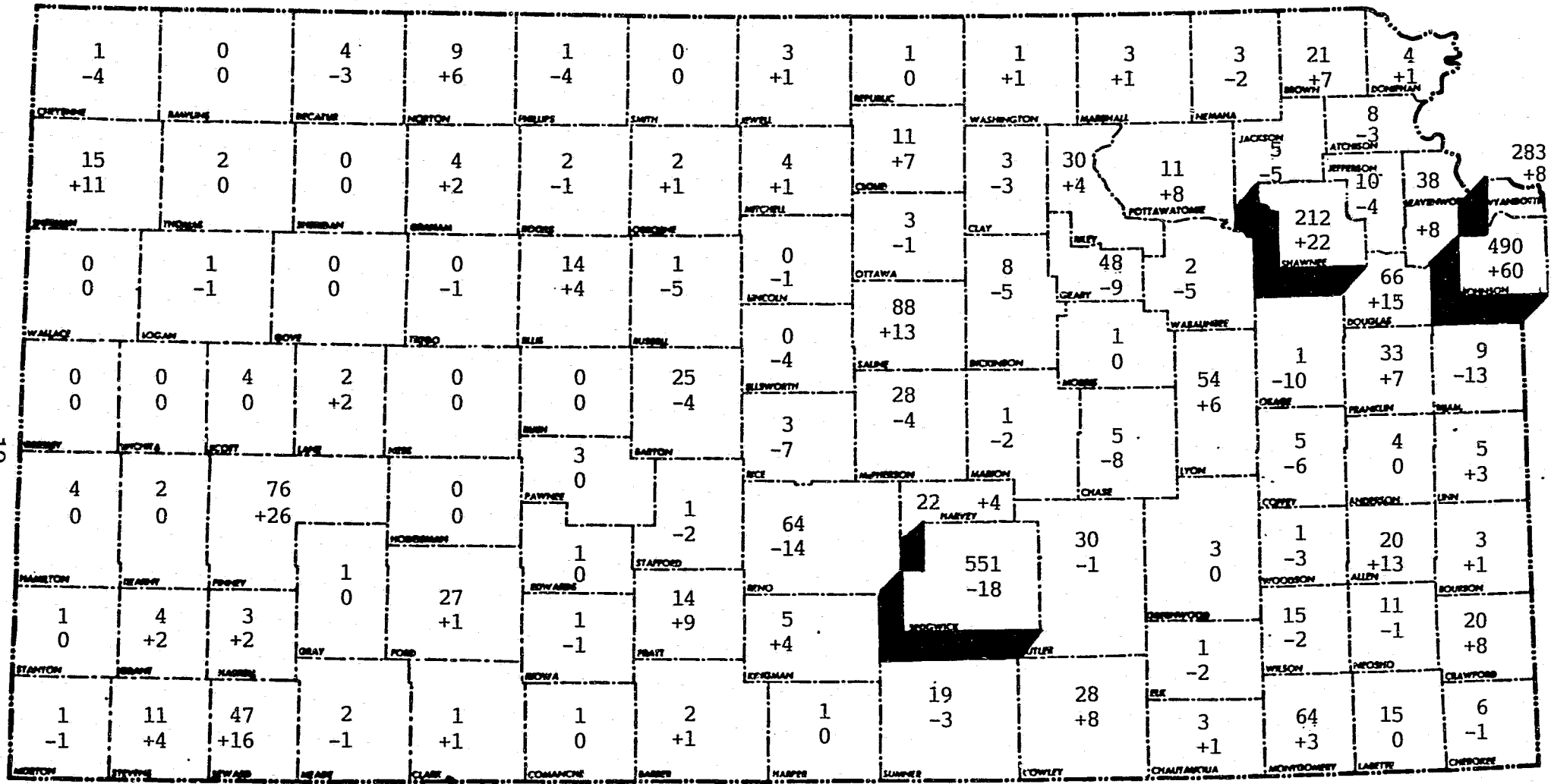
Table 6

Admissions by Court Actions,
by Felony Class of the Most Serious Current Offense
Relating to the Latest Admission of the Period:
FY 1981 - FY 1990*

Fiscal Year	Felony Class of Offense					Totals
	A	B	C	D	E	
1981	28	170	287	881	299	1665
1982	35	215	395	950	307	1902
1983	32	193	416	1060	347	2048
1984	36	178	410	1000	391	2015
1985	33	175	391	687	480	1766
1986	26	164	411	613	658	1872
1987	30	151	439	608	793	2021
1988	30	161	520	688	815	2214
1989	20	171	618	753	977	2539
1990 by County:						
Sedgwick	7	65	216	139	124	551
Johnson	3	13	75	160	239	490
Wyandotte	5	24	53	77	124	283
Shawnee	1	10	42	74	85	212
Geary	1	2	12	9	24	48
Montgomery	0	0	12	22	30	64
Saline	0	3	30	25	30	88
Lyon	1	3	10	16	24	54
Reno	1	3	26	10	24	64
Finney	1	0	34	12	29	76
Douglas	1	1	22	12	30	66
Seward	0	3	14	12	18	47
Remaining 94 Counties	9	25	173	191	236	634
FY 90 Totals	30	152	719	759	1017	2677

*Entries represent "Initial" admissions as defined in Table 4; see "Subtotals: Court Commitments" (FY 90 = 2734; FY 89 = 2579; FY 88 = 2249; FY 87 = 2112; FY 86 = 1953; FY 85 = 1852; FY 84 = 2049; FY 83 = 2062; FY 82 = 1939; FY 81 = 1695) less the number of admissions for which the county and/or felony class was unknown at that time.

Figure 3
 Number of Admissions by Court Actions:
 FY 1990 and Level Change from FY 1989 by County*
KANSAS



*The top figure for each county is the number of "Initial" admissions as defined in Table 4 (all types of "Initial" admissions under the heading "Court Commitments"). The bottom figure represents the change in the number from FY 1989. For FY 1990 statewide, there were 2,734 such admissions (including 57 for which the county of admission was not available). Four counties (those projected on the map) collectively accounted for over half (57%) of the total.

Table 7

Number of Admissions of Offenders Under Age Eighteen
at the Time of Offense, by Felony Class and Type
of Offense: FY 1980 - FY 1990

Fiscal Year	Felony Class of Offense for Which Admitted					Totals
	A	B	C	D	E*	
1980	1	12	6	21	9 (5)	49
1981	1	10	8	31	8 (6)	58
1982	3	6	14	40	23 (19)	86
1983	0	6	12	35	21 (16)	74
1984	0	8	13	37	13 (8)	71
1985	0	10	6	16	24 (12)	56
1986	1	6	14	24	21 (8)	66
1987	1	7	11	20	32 (6)	71
1988	0	6	5	29	34 (11)	74
1989	0	15	13	29	29 (6)	86
1990	0	16	11	24	20 (5)	71

Fiscal Year	Type of Offense				Totals
	Person	Property	Drug	Other	
1980	20	23	0	6	49
1981	18	32	2	6	58
1982	23	42	1	20	86
1983	17	39	2	16	74
1984	23	39	1	8	71
1985	17	25	2	12	56
1986	21	35	0	10	66
1987	20	44	1	6	71
1988	20	41	2	11	74
1989	32	46	2	6	86
1990	29	35	2	5	71

*A figure in parentheses represents the number of aggravated juvenile delinquency commitments within the total Class E felony admissions.

Table 8

Kansas Parole Board Decisions by Type
of Decision (FY 1985 - FY 1990)*

Fiscal Year	Type of KPB Decision**							
	Parole		Pass		Continue		Total	
	No.	%	No.	%	No.	%	No.	%
1985	1137	49	985	42	203	9	2325	100
1986	1382	51	1056	39	280	10	2718	100
1987	1327	43	1449	47	296	10	3072	100
1988	1765	45	1541	39	639	16	3945	100
1989	2381	53	1593	36	483	11	4457	100
1990	2961	56	1931	37	349	7	5241	100

*Source of information: Kansas Department of Corrections computer program "KPBTBL" (KPB decisions that occurred during the period specified). The number of paroles and passes reflect all such KPB decisions during the period (from version 1 of "KPBTBL" - "All KPB Decisions"). The number of continuances is the number of offenders whose latest KPB decision of the period was "continued" (from version 2 of "KPBTBL" - "Most Recent KPB Decision").

The tabled information reflects KPB decisions only and not actual parole exits from correctional facilities. The data include all decisions (whether by regular hearing, special minute, etc.) that were entered into the KDOC computer by KPB staff.

**Explanation of the types of KPB decisions rendered: "Parole" - parole granted; "Pass" - paroled denied, a date is set for offender to be heard again; "Continue" - decision pending, a final decision will be made after further deliberation.

Table 9

Return Rate of Offenders Released via Parole or Conditional Release
from KDOC Facilities During FY 1983 - 1989:
By Type of Readmission and Length of Follow-up Period*

	FY 1983		FY 1984		FY 1985		FY 1986		FY 1987		FY 1988		FY 1989	
	No.	%	No.	%	No.	%	No.	%	No.	%	No.	%	No.	%
One-year Follow-up	---	---	---	---	---	---	---	---	---	---	---	---	---	---
Successes	1047	74.1%	777	72.3%	821	72.6%	889	68.3%	929	69.8%	1167	66.7%	1535	68.1%
Violation, New Sentence	117	8.3%	69	6.4%	45	4.0%	75	5.8%	60	4.5%	77	4.4%	116	5.1%
Violation, No New Sentence	133	9.4%	120	11.2%	137	12.1%	176	13.5%	205	15.4%	329	18.8%	402	17.8%
New Commitment (After Discharge)	0	0.0%	1	0.1%	1	0.1%	3	0.2%	1	0.1%	2	0.1%	4	0.2%
Abscond Status (End of Period)	116	8.2%	107	10.0%	127	11.2%	158	12.1%	135	10.2%	174	9.9%	197	8.7%
Total (All Cases)	1413	100.0%	1074	100.0%	1131	100.0%	1301	100.0%	1330	100.0%	1749	100.0%	2254	100.0%
Two-year Follow-up														
Successes	839	59.4%	639	59.5%	651	57.6%	690	53.0%	748	56.2%	921	52.7%	**	**
Violation, New Sentence	220	15.6%	125	11.6%	111	9.8%	154	11.8%	123	9.2%	155	8.9%	**	**
Violation, No New Sentence	222	15.7%	201	18.7%	234	20.7%	314	24.1%	348	26.2%	532	30.4%	**	**
New Commitment (After Discharge)	7	0.5%	4	0.4%	9	0.8%	12	0.9%	5	0.4%	17	1.0%	**	**
Abscond Status (End of Period)	125	8.8%	105	9.8%	126	11.1%	131	10.1%	106	8.0%	124	7.1%	**	**
Total (All Cases)	1413	100.0%	1074	100.0%	1131	100.0%	1301	100.0%	1330	100.0%	1749	100.0%	**	**
Three-year Follow-up														
Successes	761	53.9%	558	52.0%	556	49.2%	613	47.1%	664	49.9%	**	**	**	**
Violation, New Sentence	253	17.9%	148	13.8%	137	12.1%	194	14.9%	144	10.8%	**	**	**	**
Violation, No New Sentence	269	19.0%	246	22.9%	307	27.1%	388	29.8%	423	31.8%	**	**	**	**
New Commitment (After Discharge)	23	1.6%	11	1.0%	19	1.7%	21	1.6%	16	1.2%	**	**	**	**
Abscond Status (End of Period)	107	7.6%	111	10.3%	112	9.9%	85	6.5%	83	6.2%	**	**	**	**
Total (All Cases)	1413	100.0%	1074	100.0%	1131	100.0%	1301	100.0%	1330	100.0%	**	**	**	**
Four-year Follow-up														
Successes	722	51.1%	522	48.6%	533	47.1%	573	44.0%	**	**	**	**	**	**
Violation, New Sentence	265	18.8%	164	15.3%	151	13.4%	203	15.6%	**	**	**	**	**	**
Violation, No New Sentence	298	21.1%	280	26.1%	343	30.3%	414	31.8%	**	**	**	**	**	**
New Commitment (After Discharge)	41	2.9%	30	2.8%	30	2.7%	37	2.8%	**	**	**	**	**	**
Abscond Status (End of Period)	87	6.2%	78	7.3%	74	6.5%	74	5.7%	**	**	**	**	**	**
Total (All Cases)	1413	100.0%	1074	100.0%	1131	100.0%	1301	100.0%	**	**	**	**	**	**
Five-year Follow-up														
Successes	710	50.2%	524	48.8%	521	46.1%	**	**	**	**	**	**	**	**
Violation, New Sentence	274	19.4%	170	15.8%	155	13.7%	**	**	**	**	**	**	**	**
Violation, No New Sentence	316	22.4%	298	27.7%	364	32.2%	**	**	**	**	**	**	**	**
New Commitment (After Discharge)	58	4.1%	40	3.7%	43	3.8%	**	**	**	**	**	**	**	**
Abscond Status (End of Period)	55	3.9%	42	3.9%	48	4.2%	**	**	**	**	**	**	**	**
Total (All Cases)	1413	100.0%	1074	100.0%	1131	100.0%	**	**	**	**	**	**	**	**

*See footnotes next page.

Table 9 (cont.)

Footnotes

*The release population includes all offenders released via parole or conditional release during the fiscal year specified (excluding releases to detainees). The follow-up period is applied individually for each inmate (release date plus the specified number of years in the follow-up period).

Explanation of row headings:

Successes = no readmission to KDOC facilities during follow-up;

Violation, New Sentence = readmission to KDOC for a new felony offense;

Violation, No New Sentence = readmission to KDOC for violation of parole/CR that did not involve a new felony sentence.

New Commitment (After Discharge) = new admission to KDOC (after discharge from sentence obligation, but before the end of the follow-up period).

Abscond Status (End of Period) = offender was on abscond status as of the end of the follow-up period.

**Information not yet available (end date of follow-up period has not yet passed).

***In some instances it is possible for the number of "successes" during the year to be greater than that of a preceding year. Such instances arise in cases where offenders are on abscond status for a long period of time (counted in "Abscond Status" group), but later are reinstated on parole in good standing and then discharged. When such reinstatements occur, the affected offenders move from the absconder group to the success group for the latest year.

NOTE: Each percentage total is given as 100 even though the sum may vary slightly due to rounding.

• • • • SECTION III • • • • •

Profile of the Inmate Population: June 30, 1990

This section provides a description of selected characteristics of the inmate population confined within Kansas correctional facilities on June 30, 1990, the last day of FY 1990. The focus of this profile information is on the demographic attributes and social backgrounds of the offenders, the nature of the offenses for which incarcerated, the sentences imposed, and the criminal histories of the offenders. The inmate population was composed of 5,384 males and 293 females, for a total of 5,677.

Characteristics of the Inmate Population

- The list below summarizes some of the basic characteristics of the inmate population on June 30, 1990. Each of the following characteristics was observed in a majority of the inmates upon admission to the correctional system (or, as in the case of "length of current confinement," the status as of June 30, 1990):
 - Sex - Male
 - Racial/ethnic Group - White (40% non-white)
 - Age - 34 or under (average age - 29.6)
 - Religion - Protestant
 - Formal Education - Less than high school or G.E.D. (52%)
 - Formal Vocational Training - None
 - Employment Status - Not employed full-time
 - Longest Period of Employment - One year or less
 - Type of Admission - New court commitment
 - Type of Offense (most serious) - Person crime
 - Length of Sentence (minimum) - Four years or less
 - Duration of Current Confinement (through 6-30-90) - Two years or less

- Prior Felony Convictions - None
- Prior Felony Incarcerations - None
- The Lansing Correctional Facility and the Hutchinson Correctional Facility together house over half (58.7%) of the total population.
- There is considerable difference among the correctional facilities with regard to the demographic and criminal history characteristics of the inmate population housed. To a great extent this reflects the assignment of housing according to the security needs of the inmates, as well as their needs for particular correctional programs and services.
 - The more secure facilities such as LCF and HCF house proportionately more inmates with serious offenses and longer terms to be served.
- Among offenders by felony class, the group of inmates with Class D felonies have the highest proportion with at least one prior felony conviction (49% vs. 39% to 48% in the other felony class groups). The proportion with at least one prior felony incarceration ranges from 22% for Class E to 35% for Classes A and B.
- The distribution of the population by inmate security classification was as follows on June 30, 1990:

Maximum	17%	
Medium	31%	
Minimum	40%	
-Regular Minimum		27%
-Community Custody		13%
*Special Management	7%	
Unclassified	5%	
	100%	

* Special management includes those inmates assigned to segregation and protective custody. They are housed in the most secure parts of the institutions.

- [SEE Figure 4: Inmate Population, by Location: June 30, 1990 -- page 31; and
 Table 10: Summary of Inmate Characteristics: June 30, 1990 Population -
 - page 32; and
 Table 11: Inmate Characteristics: Comparison of the June 30, 1989 and
 June 30, 1990 Populations -- page 34; and
 Table 12: Number of Previous Felony Convictions and Incarcerations by
 Felony Class of the Most Serious Offense: June 30, 1990
 Population -- page 36]

Inmate Employment Status and Program Assignments

- On June 30, 1990, 4,326 or 76% of all inmates had full-time work, academic or vocational assignments.
 - Of the 1,351 inmates without full-time assignments:
 - 838 were not available for employment because they were in some type of segregation, treatment, orientation, or evaluation.
 - 513 were not employed either because no assignments were available (224), or because they were unwilling or temporarily unable to work (289).
- The most common institutional assignments were of the following types: institutional support, maintenance, utility work detail, Kansas Correctional Industries, vocational or academic education, and evaluation status. Additionally, a large number of inmates housed at the smaller facilities were assigned to non-institutional work programs.

[SEE Table 13: General Employment and Program Status of Offenders in the Inmate Population as of June 30, 1990 -- page 37]

Comparison of Female and Male Inmate Populations

- As of June 30, 1990, the inmate population was 95% male and 5% female.
 - The women in the inmate population numbered 293, down 7 (2%) from 300 the previous year.
- The growth in average daily population (ADP) has been different for male and female inmates. Compared to FY 80, the FY 90 ADP is 201% greater for women compared to 144% greater for men.
- As in the past several years, differences have been noted between the female and male inmates on almost all the characteristics compared. Proportionately speaking, in comparison to the male population the female population:
 - contained more blacks
 - had a higher level of formal education upon admission
 - had been committed for less severe offenses
 - had shorter average duration of current confinement
 - had less extensive criminal histories
 - fewer had prior felony convictions

- fewer had prior felony incarcerations

- had greater prevalence of serious problems with drugs
- had less serious problems with alcohol

[SEE Figure 5: Changes in Average Daily Population: Male and Female Inmates, FY 1980 - FY 1990 -- page 40; and

Table 14: Comparison of the Characteristics of Male and Female Inmates: June 30, 1990 Population -- page 41]

Characteristics of the New Admissions Population

Although the yearly turnover rate is relatively high among the offenders in the inmate population, at any point in time there is a large proportion of the group that has been counted in the yearly population for a number of years. For the past several years the characteristics of newly admitted offenders have been examined in order to better assess any trends toward change in the composition of the inmate population. Included as new admissions are new court commitments, aggravated juvenile delinquency commitments, and probation violators. Many offenders in this group are also members of the end-of-year inmate population since they were still on hand as of June 30, 1990. Note that the new admissions were not necessarily first-time offenders -- some had been incarcerated previously in other states or had served Kansas sentences from which they had been discharged.

- Compared to the June 30, 1989 inmate population, the FY 1990 new admissions population contained proportionately:
 - more offenders in the younger age groups
 - more whites
 - more women
 - more offenders with less serious offenses
 - fewer offenders with prior felony convictions
 - fewer offenders with prior felony incarcerations

- To some extent the differences noted are due to the type of offense and sentence length. The offenders with more serious offenses, extensive criminal histories, and longer sentences tend to accumulate in the inmate population. Thus, the population on hand contains proportionately more offenders with these and related characteristics than does the population of new incoming offenders.

[SEE Table 15: Characteristics of the New Admissions Population: Comparison of FY 1983 - FY 1990 -- page 43]

Criminal Offenses and Sentence Structures

- Collectively, eight specific crimes were identified as the most serious offenses of just over half (51.6%) the inmate population:

<u>Offense</u>	<u>Class</u>	<u>No.</u>	<u>%</u>
Burglary	D/E	678	12.4
Aggravated Robbery	B	532	9.7
Theft	D/E	367	6.7
Murder I	A	340	6.2
Indecent Liberties/Child	C	266	4.8
Rape	B/C	239	4.4
Robbery	C	210	3.8
Aggravated Battery	C	196	3.6
Subtotal		2,828	51.6

- Offenders whose most serious offense was a drug crime numbered 743. This represents 13.6% of the population and reflects an increase of 95 or 14.7% from the corresponding figure for FY 1989 (648) and an increase of 266 or 55.8% from FY 1988 (477).
- Distribution of the inmate population by the minimum term of the controlling offense shows that there is a nearly even split between those with minimums of under five years (51%) and those with minimums of five or more years (49%).

<u>Minimum (Years)</u>	<u>% of Population</u>
1	13.6
2	10.9
3	19.5
4	7.4
5	12.1
6-14	17.9
15 or more	18.6
	100.0

- Nearly half (44%) of the population was serving minimum terms of three years or less.

[SEE Table 16: Distribution of the Inmate Population by Felony Class and Criminal Offense: Comparison of Fiscal Years 1983 - 1990 -- page 45; and

Table 17: Structure of Controlling Sentences: June 30, 1990 Inmate Population (Comparison with Previous Years) -- page 51]

Average Length of Stay

- Average length of stay for FY 1990 parolees (all cases):

<u>Felony Class</u>	<u>Average Stay in Months</u>
A	193.3
B -	63.8
C	28.1
D	15.7
E	8.7
All Classes	25.1

- Again, due in part to the effects of Senate Bill 49, the average length of stay of parolees was shorter by 3.2 months or 11% from last year.

<u>Fiscal Year</u>	<u>Average Stay in Months (All Felony Classes Combined)</u>
1983	16.2
1984	18.2
1985	19.3
1986	21.0
1987	22.9
1988	24.9
1989	28.3
1990	25.1

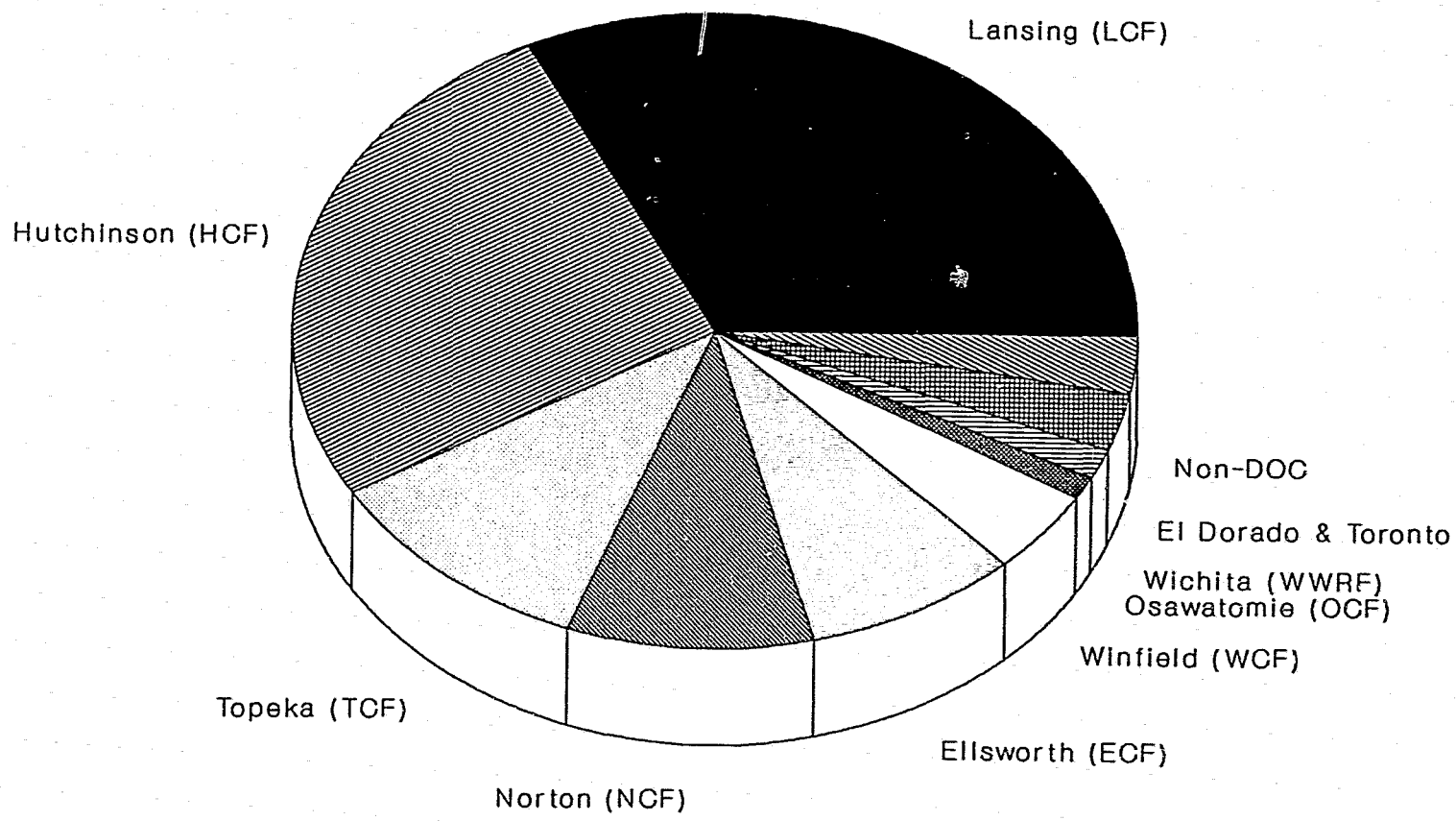
- For the FY 1990 admissions population, the overall projected average time to serve to earliest possible release, all felony classes combined, is 18.2 months. This represents a slight increase (0.8 months or 5%) from the average of 17.4 months previously projected for FY 1989 admissions.

[SEE Table 18: Average Length of Stay in Correctional Facilities, by Felony Class of Offense and Sentence Minimum: Offenders Paroled During Fiscal Years 1983 - 1990 -- page 53; and

Table 19: Projected Average Length of Time to Serve to Earliest Possible Release Date: FY 1990 Admissions Population -- page 55]

Figure 4

Inmate Population, By Location June 30, 1990



Note: Non-DOC locations include Larned State Hospital, and contract jail and contract work release placements.

Table 10
Summary of Inmate Characteristics: June 30, 1990 Population

**Characteristic	Facility of Confinement													
	Totals	LCF	HCF	NCF	ECF	TCF	WCF	OCF	TCWF	EDCWF	WWRF	LSH	FSWRC	CJP
Age Group (Years)														
15 - 19	203	25	80	32	24	27	7	1	2	3	0	2	0	0
20 - 24	1129	248	357	142	125	113	52	18	13	18	16	20	1	6
25 - 29	1354	398	371	124	122	142	69	17	15	30	13	34	3	16
30 - 34	1205	418	311	100	81	127	53	12	17	18	25	32	0	11
35 - 39	791	317	169	61	46	91	38	5	13	16	14	14	1	6
40+	989	432	202	80	69	108	24	13	10	14	17	14	0	6
Unknown	6	2	2	0	0	2	0	0	0	0	0	0	0	0
Totals	5677	1840	1492	539	467	610	243	66	70	99	85	116	5	45
Racial/Ethnic Group														
White	3403	1059	896	329	288	371	151	44	50	71	53	58	5	28
Black	1879	657	500	162	135	201	78	19	17	24	24	46	0	16
Hispanic	285	84	70	35	40	24	9	3	2	3	6	8	0	1
American Indian	86	31	19	9	3	13	4	0	1	1	2	3	0	0
Asian/Pac. Islander	24	9	7	4	1	1	1	0	0	0	0	1	0	0
Totals	5677	1840	1492	539	467	610	243	66	70	99	85	116	5	45
Sex														
Male	5384	1749	1492	539	467	415	243	66	70	99	80	114	5	45
Female	293	91	0	0	0	195	0	0	0	0	5	2	0	0
Totals	5677	1840	1492	539	467	610	243	66	70	99	85	116	5	45
Education Level														
Grades 0-11	2690	819	763	292	239	205	130	32	32	52	42	63	1	20
High School Grad.	986	298	237	99	94	109	48	16	19	23	17	15	1	10
G.E.D.	1139	372	329	98	97	99	53	12	11	16	18	23	2	9
Greater than H.S.	317	116	78	25	17	50	7	4	7	4	4	2	0	3
Unknown	545	235	85	25	20	147	5	2	1	4	4	13	1	3
Totals	5677	1840	1492	539	467	610	243	66	70	99	85	116	5	45
Inmate Security Classification														
Special Management	420	263	78	3	7	3	0	0	0	0	0	66	0	0
Maximum	932	479	419	0	24	5	0	0	0	0	0	5	0	0
Medium	1777	543	606	238	354	34	0	0	0	0	0	2	0	0
Minimum	1503	335	226	240	46	253	183	41	40	64	18	21	1	35
Min.-Commun. Cust.	750	137	116	58	36	150	60	25	30	35	67	22	4	10
Unclassified	295	83	47	0	0	165	0	0	0	0	0	0	0	0
Totals	5677	1840	1492	539	467	610	243	66	70	99	85	116	5	45

Table 10 (cont.)

**Characteristic	Facility of Confinement													
	Totals	LCF	HCF	NCF	ECF	TCF	WCF	OCF	TCWF	EDCHF	WRF	LSH	FSWRC	CJP
Number of Previous Felony Convictions														
None	2945	811	755	326	268	399	120	35	39	60	47	63	1	21
1	1186	355	351	104	95	103	61	21	16	23	14	30	3	10
2	664	224	171	64	55	56	38	3	9	8	14	11	1	10
3	313	139	77	17	24	22	15	5	1	4	4	3	0	2
4 or more	267	129	73	13	16	15	5	1	3	3	5	4	0	0
Unknown	302	182	65	15	9	15	4	1	2	1	1	5	0	2
Totals	5677	1840	1492	539	467	610	243	66	70	99	85	116	5	45
Number of Previous Incarcerations														
None	3692	1016	958	403	338	475	161	51	49	78	57	79	3	24
1	866	307	238	64	65	71	45	8	13	9	11	23	0	12
2	421	171	118	36	27	25	21	2	3	4	6	4	0	4
3	152	70	35	9	11	9	7	4	1	0	5	0	0	1
4 or more	103	49	31	5	7	5	0	0	1	2	1	2	0	0
Unknown	443	227	112	22	19	25	9	1	3	6	5	8	2	4
Totals	5677	1840	1492	539	467	610	243	66	70	99	85	116	5	45
Felony Class of Most Serious Current Offense														
A	445	235	131	24	27	14	1	0	2	2	3	4	0	2
B	1271	499	400	83	101	59	33	3	8	25	16	30	0	14
C	1579	424	424	162	121	190	72	26	33	43	32	32	0	20
D	1359	383	350	134	125	159	74	22	19	24	25	35	4	5
E	813	210	145	119	74	159	55	15	8	4	8	13	0	3
Unavail. or Unknown	210	89	42	17	19	29	8	0	0	1	1	2	1	1
Totals	5677	1840	1492	539	467	610	243	66	70	99	85	116	5	45

*The population includes, in addition to inmates actually housed in correctional facilities on June 30, 1989, all offenders in the following physical locations: state hospital, contract jail placement, contract work release, out for medical care, and out on furlough. Excluded from the population are offenders out for court appearances, inmates serving Kansas sentences while housed in out-of-state facilities under compact agreement, inmates serving in absentia (inmates housed in other jurisdictions while serving Kansas sentences concurrently with sentences of other jurisdictions), escapees, offenders confined in local detention facilities, and all offenders on parole or probation status.

**All characteristics reflect status on June 30, 1990 (or time calculated from that date) except "Education Level" which is as reported upon admission. The total number of inmates for which information was available varies with the type of characteristic assessed.

Note. See Preface, pages vi and vii, for list of facility abbreviations.

Table 11

Inmate Characteristics:
Comparison of the June 30, 1989 and June 30, 1990 Populations

*Characteristic	Total Inmate Population		Total Inmate Population	
	FY 1989		FY 1990	
	Number	%	Number	%
Age Group (Years)				
15-19	214	3%	203	4%
20-24	1267	21%	1129	20%
25-29	1542	25%	1354	24%
30-34	1313	21%	1205	21%
35-39	805	13%	791	14%
40+	1029	17%	989	17%
Totals	6170	100%	5671	100%
Unknown	2	--	6	--
Racial/Ethnic Group				
American Indian	84	1%	86	2%
Asian	24	0%	24	0%
Black	2103	34%	1879	33%
Hispanic	273	4%	285	5%
White	3688	60%	3403	60%
Totals	6172	100%	5677	100%
Unknown	0	--		--
Sex				
Male	5872	95%	5384	95%
Female	300	5%	293	5%
Totals	6172	100%	5677	100%
Education Level				
Grades 0-11	2970	53%	2690	52%
High School Graduate	989	18%	986	19%
G.E.D.	1298	23%	1139	22%
Greater Than High School	363	6%	317	6%
Totals	5620	100%	5132	100%
Unknown	552	--	545	--
Number of Previous Felony Convictions				
None	2886	50%	2945	55%
1	1349	23%	1186	22%
2	820	14%	664	12%
3 or more	735	13%	580	11%
Totals	5790	100%	5375	100%
Unknown	382	--	302	--
Number of Previous Incarcerations				
None	3754	67%	3692	71%
1	1034	18%	866	17%
2	490	9%	421	8%
3 or more	318	6%	255	5%
Totals	5596	100%	5234	100%
Unknown	576	--	443	--

Table 11 (cont.)

Characteristic*	Total Inmate Population			
	FY 1989		FY 1990	
	Number	%	Number	%
Felony Class of Most Serious Current Offense				
A	419	7%	445	8%
B	1386	23%	1271	23%
C	1582	26%	1579	29%
D	1684	28%	1359	25%
E	933	16%	813	15%
	-----	-----	-----	-----
Totals	6004	100%	5467	100%
Unknown	168	--	210	--
Duration of Present Confinement**				
6 months or less	1559	26%	1750	31%
Over 6 mos. - to 1 year	945	16%	881	16%
Over 1 year - to 2 yrs.	1141	19%	964	17%
Over 2 yrs. - to 3 yrs.	643	11%	473	8%
Over 3 yrs. - to 4 yrs.	402	7%	345	6%
Over 4 yrs. - to 5 yrs.	298	5%	228	4%
Over 5 years	1079	18%	961	17%
	-----	-----	-----	-----
Totals	6067	100%	5602	100%
Unavailable	105	--	75	--
Types of Admission***				
Commitments for Violation				
Probation Violation/No New Sent.	308	5%	189	3%
Probation Violation/New Sentence	258	4%	196	3%
	-----	-----	-----	-----
Subtotal (All Probation Violation)	566	9%	385	7%
Parole Violation/No New Sent.				
Parole Violation/New Sentence	539	9%	635	11%
	-----	-----	-----	-----
Subtotal (All Parole Violation)	1264	20%	1258	22%
Conditional Release Violation				
	124	2%	143	3%
	-----	-----	-----	-----
Subtotal (All Types of Violation)	1954	32%	1786	31%
Other Commitments				
New Commitments	4218	68%	3891	69%
	=====	=====	=====	=====
Totals	6172	100%	5677	100%

*All characteristics reflect status on June 30 of the specified year (or time calculated from that date) except "Education Level" which is as reported upon admission. The total number of inmates for which information was available varies with the type of characteristic assessed.

**Period from most recent admission to June 30 of the specified year.

***Figures represent the number of inmates in the population on the date specified whose most recent entry into the Department of Corrections was of the specified type.

NOTE: Each percentage total is given as 100 even though the sum may vary slightly due to rounding.

Table 12

Number of Previous Felony Convictions and Incarcerations
by Felony Class of the Most Serious Current Offense:
June 30, 1990 Population

Number of Previous Convictions	No. of Offenders in Each Felony Class of Most Serious Current Offense					Totals (All Classes)
	A	B	C	D	E	
0	218	611	868	686	483	2866
1	93	273	337	300	158	1161
2	47	149	179	187	87	649
3	20	66	86	96	35	303
4 or more	17	79	52	71	35	254
Totals	395	1178	1522	1340	798	5233

Number of Previous Incarcerations						
	A	B	C	D	E	
0	254	746	1083	910	610	3603
1	76	207	247	227	92	849
2	41	122	106	82	51	402
3	9	44	35	41	16	145
4 or more	9	27	21	26	15	98
Totals	389	1146	1492	1286	784	5097

Information unavailable or unknown: Felony class of most serious current offense = 212; number of previous convictions = 302; number of previous incarcerations = 443.

Table 13

General Employment and Program Status of Offenders
in the Inmate Population as of June 30, 1990*

Part 1: Employment Status (Full-Time Assignments)

Employment Status	Facility of Confinement								Other KDOC Facilities**
	Totals	LCF	HCF	NCF	ECF	TCF	WCF	OCF	
Employed Full-Time:									
Student (Vocational training and academic education)	647	222	228	68	39	59	31	0	0
Unskilled Worker	654	302	226	0	56	70	0	0	0
Semi-Skilled Worker	881	286	277	120	57	8	91	42	0
Skilled Worker	1316	464	380	191	172	40	45	24	0
Private Industries	51	51	0	0	0	0	0	0	0
Other Employment/Program	777	6	17	74	0	234	26	0	420
Subtotal Employed	4326	1331	1128	453	324	411	193	66	420
Not Employed:									
Lay-in (Able to work, no assignment available)	224	80	56	7	81	0	0	0	0
Lay-in (Failure to work, unwilling and/or unable)	289	124	74	35	56	0	0	0	0
Lay-in (Medical)	133	86	27	19	1	0	0	0	0
Orientation	118	73	29	0	0	14	2	0	0
Medical Seg./Clinical Serv.	9	1	7	0	0	1	0	0	0
Drug Treatment Unit	183	45	70	21	0	0	47	0	0
Other Not Employed/Not Assign.	214	100	101	4	5	3	1	0	0
Subtotal Not Employed	1170	509	364	86	143	18	50	0	0
Undergoing Evaluation	181	0	0	0	0	181	0	0	0
Grand Totals (All Offenders)	5677	1840	1492	539	467	610	243	66	420
Breakdown of Segregation Status (Included above and distributed among the employment status categories)									
Administration Segregation	253	151	34	2	4	0	0	0	62
Disciplinary Segregation	64	22	37	0	2	1	0	0	2
Protective Custody	103	90	7	1	1	2	0	0	2
Subtotal	420	263	78	3	7	3	0	0	66

Table 13 (cont.)

Part 2: Program or Work Assignments (Full-Time)***

NOTE: All full-time assignments in drafting, computer technology, and word processing are included under vocational education.

Facilities with Computerized
Inmate Payroll Records:

Type of Assignment	LCF	HCF	NCF	ECF	TCF	WCF	OCF
Institutional Support Detail	624	262	204	179	51	116	15
Maintenance Detail	163	342	36	50	1	15	0
Utility Work Detail	132	79	60	42	64	0	51
Kansas Correctional Industries	212	179	11	14	11	0	0
Private Industries	51	0	0	0	0	0	0
Academic Education:							
Clerk, Orderly, Tutor	6	10	0	5	0	4	0
Student	67	79	26	34	0	32	0
Vocational Education:							
Clerk, Orderly	0	12	0	0	0	0	0
Detail Workers	4	0	0	0	0	0	0
Trainee	72	148	42	0	50	0	0
Subtotal	1331	1111	379	324	177	167	66
Remaining Population	509	381	160	143	433	76	0
Total Population	1840	1492	539	467	610	243	66

Additional Detail on Selected Facilities

- LCF: Includes the 187 inmates assigned to the East Unit (W and X unit).
- HCF: Includes 372 inmates assigned to the East Unit.
- NCF: Includes the 74 inmates assigned to the East Unit (Stockton).
- TCF: Central Unit (195 at vocational unit and 70 at work center), Reception and Diagnostic Unit (181), West Unit (85), South Unit (79).
- WCF: Work program (116 inmates), pre-release program (127 inmates).

Table 13 (cont.)

Facilities Without Computerized
Inmate Payroll Records:

	Number of Inmates
Toronto and El Dorado Correctional Work Facilities	
State Park and Community Projects	132
Facility Maintenance/Services	37
Total	169
Work Release	
Wichita Work Release Facility	85
Contract Work Release	5
Total	90
Larned State Hospital	
Psychiatric Unit	73
Substance Abuse Treatment Unit	43
Total	116
Contract Jail Placement	45
Grand Total (All Facilities)	5677

*Source of information: 6-30-90 runs of "PGM-WRKASM" (computerized record of work assignments); segregation breakdown from "PGM-POPRP3". Detailed work/program assignment information is not yet available for some of the facilities or units within certain facilities.

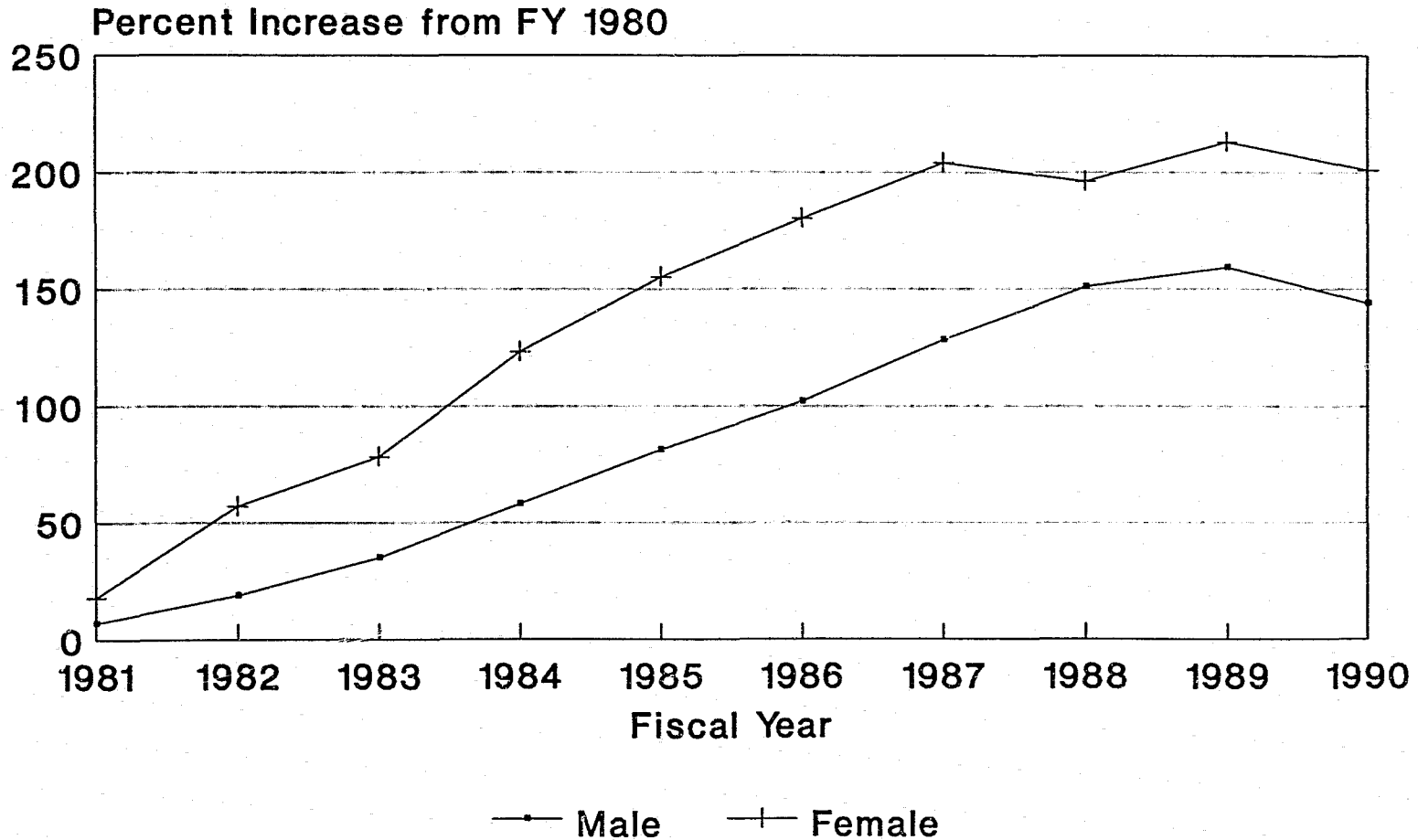
**More detailed information regarding program assignments at these facilities is presented in Part 2 of this table.

***In addition to the full-time assignments tabled, many inmates participate in other programs on a part-time basis. Such part-time programs include certain courses in academic and vocational education as well as services available in the alcohol, drug, and adjustment counseling areas.

Note. See Preface, pages vi and vii, for list of facility abbreviations.

Figure 5

Change in Average Daily Population Male and Female Inmates: FY80-FY90



FY 1980 Levels: Male--2,224 Female--92

Table 14

Comparison of the Characteristics of Male and Female Inmates:
June 30, 1990 Population

Characteristic*	Male		Female	
	Number	%	Number	%
Age Group (Years)				
15-19	196	4%	7	2%
20-24	1094	20%	35	12%
25-29	1282	24%	72	25%
30-34	1125	21%	80	28%
35-39	751	14%	40	14%
40+	933	17%	56	19%
Totals	5381	100%	290	100%
Unknown	3	--	3	--
Racial/Ethnic Group				
White	3231	60%	172	59%
Black	1766	33%	113	39%
Hispanic	281	5%	4	1%
American Indian	83	2%	3	1%
Asian or Pacific Islander	23	0%	1	0%
Totals	5384	100%	293	100%
Unknown	0	--	0	0%
Education Level				
Grades 0-11	2598	53%	92	37%
High School Graduate	917	19%	69	27%
G.E.D.	1078	22%	61	24%
Greater Than High School	287	6%	30	12%
Totals	4880	100%	252	100%
Unknown	504	--	41	--
Level of Alcohol Usage (Prior to Admission)				
No Known Usage	1828	38%	154	62%
Addiction	1119	23%	24	10%
Habitual Excessive	783	16%	36	14%
Episodic Excessive	914	19%	30	12%
Use at Time of Offense	171	4%	5	2%
Totals	4815	100%	249	100%
Unknown	569	--	44	--
Level of Drug Usage (Prior to Admission)				
No Known Usage	1801	37%	69	28%
Addiction	1505	31%	84	34%
Episodic Excessive	763	16%	68	27%
Non-dependent Short-term	621	13%	27	11%
Use at Time of Offense	113	2%	1	0%
Totals	4803	100%	249	100%
Unknown	581	--	44	--

Table 14 (cont.)

Characteristic*	Male		Female	
	Number	%	Number	%
Felony Class of Most Serious Current Offense				
A	427	8%	18	6%
B	1245	24%	26	9%
C	1482	29%	97	34%
D	1306	25%	53	18%
E	719	14%	94	33%
	-----	---	-----	---
Totals	5179	100%	288	100%
Unknown	205	--	5	--
Number of Previous Felony Convictions				
None	2765	54%	180	66%
1	1137	22%	49	18%
2	635	12%	29	11%
3 or more	564	11%	16	6%
	-----	---	-----	---
Totals	5101	100%	274	100%
Unknown	283	--	19	--
Number of Previous Incarcerations				
None	3461	70%	231	85%
1	837	17%	29	11%
2	412	8%	9	3%
3 or more	251	5%	4	1%
	-----	---	-----	---
Totals	4961	100%	273	100%
Unknown	423	--	20	--
Duration of Present Confinement**				
6 months or less	1609	30%	141	49%
Over 6 mos. - to 1 year	824	16%	57	20%
Over 1 year - to 2 yrs.	920	17%	44	15%
Over 2 yrs. - to 3 yrs.	456	9%	17	6%
Over 3 yrs. - to 4 yrs.	338	6%	7	2%
Over 4 yrs. - to 5 yrs.	221	4%	7	2%
Over 5 years	945	18%	16	6%
	-----	---	-----	---
Totals	5313	100%	289	100%
Unavailable	71	--	4	--

*All characteristics reflect status on June 30 of the specified year (or time calculated from that date) except "Education Level," "Level of Alcohol Usage," and "Level of Drug Usage" which are as reported upon admission. The total number of inmates for which information was available varies with the type of characteristic assessed.

**Period from most recent admission to June 30 of the specified year.

NOTE: Each percentage total is given as 100 even though the sum may vary slightly due to rounding.

Table 15

Characteristics of New Admissions Population:
Comparison of FY 1983 - FY 1990*

Number in Population	New Admissions Population							FY 90	
	FY 83 1983	FY 84 1984	FY 85 1985	FY 86 1986	FY 87 1987	FY 88 1988	FY 89 1989	No.	%
Characteristic**	%	%	%	%	%	%	%	No.	%
Age Group (Years)									
15-19	13	11	10	10	9	10	9	207	8%
20-24	38	38	34	34	33	31	29	746	29%
25-29	21	21	23	22	21	22	24	638	25%
30-34	12	13	13	15	17	17	17	434	17%
35-39	8	8	9	9	9	9	10	267	10%
40+	8	9	11	10	11	11	11	284	11%
Totals	100	100	100	100	100	100	100	2576	100%
No. Unknown	38	35	8	3	4	9	5	2	--
Racial/Ethnic Group									
White	67	68	67	71	70	67	65	1618	63%
Black	28	27	28	23	24	26	29	730	28%
Hispanic	3	4	4	5	5	5	5	177	7%
American Indian	2	1	1	1	--	1	1	41	2%
Asian or Pacific Islander	--	--	--	--	1	1	0	11	0%
Totals	100	100	100	100	100	100	100	2577	100%
No. Unknown	37	28	0	1	5	1	0	1	--
Sex									
Male	91	89	91	91	92	91	90	2288	89%
Female	9	11	9	9	8	9	10	290	11%
Totals	100	100	100	100	100	100	100	2578	100%
Education Level									
Grades 0-11	52	51	47	46	59	57	48	1167	50%
High School Graduate	17	21	17	19	22	22	25	587	25%
G.E.D.	23	20	27	26	10	14	22	423	18%
Greater Than High School	8	8	9	9	9	7	5	155	7%
Totals	100	100	100	100	100	100	100	2332	100%
No. Unknown	368	408	456	359	395	189	220	246	--
Level of Alcohol Usage (Prior to Admission)									
No Known Usage	36	45	44	40	41	39	41	934	40%
Addiction	14	12	13	17	17	21	26	549	24%
Habitual Excessive	21	17	17	18	15	17	13	329	14%
Episodic Excessive	24	22	22	21	24	20	17	443	19%
Use at Time of Offense	5	4	4	4	3	3	3	74	3%
Totals	100	100	100	100	100	100	100	2329	100%
No. Unknown	557	493	481	385	408	205	219	249	--

Table 15 (cont.)

Characteristic**	New Admissions Population							FY 90	
	FY 83	FY 84	FY 85	FY 86	FY 87	FY 88	FY 89	No.	%
	%	%	%	%	%	%	%		
Level of Drug Usage (Prior to Admission)									
No Known Usage	40	46	44	44	40	38	34	745	32%
Addiction	21	17	18	20	22	29	35	820	35%
Episodic Excessive	20	20	22	21	21	18	15	393	17%
Non-dependent Short-term	17	15	14	13	14	13	14	333	14%
Use at Time of Offense	2	2	2	2	3	2	2	40	2%
Totals	100	100	100	100	100	100	100	2331	100%
No. Unknown	603	509	486	382	405	203	221	247	--
Number of Previous Felony Convictions									
None	52	60	58	57	61	61	63	1776	70%
1	26	21	22	23	20	20	21	485	19%
2	12	12	14	12	11	11	10	195	8%
3 or more	10	7	6	8	8	8	6	98	4%
Totals	100	100	100	100	100	100	100	2554	100%
No. Unknown	486	435	339	269	267	150	64	24	--
Number of Previous Incarcerations									
None	68	80	78	74	80	81	81	2185	86%
1	20	14	14	17	13	11	13	247	10%
2	7	4	6	6	4	5	4	75	3%
3 or more	5	2	2	3	3	3	2	37	1%
Totals	100	100	100	100	100	100	100	2544	100%
No. Unknown	747	625	544	720	381	183	77	34	--
Felony Class of Most Serious Current Offense									
A	2	2	2	1	1	1	1	27	1%
B	10	8	10	9	8	8	7	144	6%
C	21	21	23	22	23	24	25	698	28%
D	51	50	40	34	32	32	31	708	28%
E	16	19	25	34	36	35	36	926	37%
Totals	100	100	100	100	100	100	100	2503	100%
No. Unknown	8	16	39	42	43	24	35	75	--

*New admissions include new court commitments, aggravated juvenile delinquency commitments, and probation violators (both new sentence and no new sentence) entering the system during the specified fiscal year. The total number of inmates for which information was available varies with the type of characteristic assessed.

**All characteristics reflect status on June 30 of the specified year except "Education Level," "Level of Alcohol Usage," and "Level of Drug Usage" which are as reported upon admission.

NOTE: Each percentage total is given as 100 even though the sum may vary slightly due to rounding.

Table 16

Distribution of the Inmate Population
by Felony Class and Criminal Offense:
Comparison of Fiscal Years 1983 - 1990*

Kansas Statute	Offense Description	Number of Inmates (June 30)							
		1983	1984	1985	1986	1987	1988	1989	1990
Class A Felonies									
21-3401	**Murder, First Degree	204	232	247	260	280	301	304	325
21-3421	Aggravated Kidnapping	70	79	91	100	107	110	114	117
65-4127A3	Drug Offense	0	0	0	0	1	1	1	3
Total Class A Felonies		274	311	338	360	388	412	419	445
Class B Felonies									
21-3401	Murder, First Degree (A/C/S)	2	3	5	8	12	11	17	17
21-3402	**Murder, Second Degree	121	144	141	158	171	178	183	170
21-3415	Aggravated Battery on a Law Enforcement Officer	6	9	8	12	11	13	14	14
21-3420	Kidnapping	123	136	149	155	174	189	181	157
21-3421	Aggravated Kidnapping (A/C/S)	0	1	1	1	0	1	2	2
21-3427	**Aggravated Robbery	486	530	574	617	662	687	603	528
21-3502	***Rape	105	128	145	166	188	205	207	197
21-3504	Agg. Indecent Liberties with a Child (and Indecent Liberties with a Ward)	1	3	11	13	14	13	11	10
21-3506	Aggravated Sodomy	58	72	89	105	114	126	135	129
21-3719	Aggravated Arson	8	9	10	12	15	17	20	23
65-4127A	Drug Offense	4	3	4	5	2	6	13	24
Total Class B Felonies		914	1038	1137	1252	1363	1446	1386	1271
Class C Felonies									
21-3401	Murder, First Degree (A/C/S)	4	4	4	3	7	7	5	6
21-3402	Murder, Second Degree (A/C/S)	2	7	7	6	6	5	4	5
21-3403	Voluntary Manslaughter	68	67	67	71	74	75	72	68

Table 16 (cont.)

Kansas Statute	Offense Description	Number of Inmates (June 30)							
		1983	1984	1985	1986	1987	1988	1989	1990

Class C Felonies (cont.)									

21-3411	Aggravated Assault on a Law Enforcement Officer	28	23	23	31	34	38	33	29
21-3414	Aggravated Battery	125	155	183	202	224	228	207	196
21-3415	Aggravated Battery on a Law Enforcement Officer (A/C/S)	0	0	0	0	0	0	1	1
21-3420	Kidnapping (A/C/S)	2	3	2	4	7	7	10	5
21-3421	Aggravated Kidnapping (A/C/S)	2	2	4	5	3	3	2	1
21-3426	Robbery	184	222	226	244	234	242	249	210
21-3427	Aggravated Robbery (A/C/S)	12	22	26	30	28	37	37	32
21-3502	***Rape	22	30	32	36	38	48	50	42
21-3503	Indecent Liberties with a Child	58	86	130	186	238	265	269	266
21-3504	Agg. Indecent Liberties with a Child (and Ind. Lib. with a Ward) (A/C/S)	0	0	2	2	2	1	0	0
21-3506	Aggravated Sodomy (A/C/S)	2	4	6	11	14	14	17	12
21-3716	Aggravated Burglary	41	48	76	83	95	113	100	93
21-3718	Arson	33	38	47	61	62	60	60	59
21-3719	Aggravated Arson (A/C/S)	0	1	1	2	4	2	3	3
21-3753	Grain Embezzlement	0	0	0	0	0	0	1	0
21-38051	Perjury (Made in Felony Trial)	3	2	1	2	1	0	0	0
65-41261	Drug Offense	1	0	0	0	0	0	0	0
65-4127A	Drug Offense	0	0	0	0	0	0	0	0
65-4127A1	Drug Offense	36	50	74	75	94	161	250	337
65-4127BB	Drug Offense	66	84	133	142	193	204	212	214
Total Class C Felonies		689	848	1044	1196	1358	1510	1582	1579

Class D Felonies									

21-3401	Murder, First Degree (A/C/S)	1	1	1	2	1	2	2	0
21-3420	Murder, Second Degree (A/C/S)	0	0	0	0	0	0	0	1
21-3403	Voluntary Manslaughter (A/C/S)	0	0	0	1	1	2	2	1
21-3404	Involuntary Manslaughter	4	15	23	30	31	37	35	28
21-3405A	Aggravated Vehicular Homicide	0	0	0	0	0	0	0	1
21-3410	Aggravated Assault	71	91	110	121	130	127	116	126
21-3411	Aggravated Assault on a Law Enforcement Officer (A/C/S)	0	0	0	2	2	5	7	5

Table 16 (cont.)

Kansas Statute	Offense Description	Number of Inmates (June 30)							
		1983	1984	1985	1986	1987	1988	1989	1990
----- Class D Felonies (cont.) -----									
21-3414	Aggravated Battery (A/C/S)	8	14	18	21	24	25	26	25
21-3422	Aggravated Interference with Parental Custody	0	0	0	0	0	0	2	1
21-3426	Robbery (A/C/S)	12	13	17	23	34	29	39	37
21-3503	Indecent Liberties with a Child	2	3	10	24	28	30	36	36
21-3506	Aggravated Sodomy (A/C/S)	0	0	0	0	1	1	1	1
21-3509	Enticement of a Child	3	7	8	8	10	11	6	8
21-3516	Sexual Exploitation of a Child	0	0	0	0	0	1	1	0
21-3518	Aggravated Sexual Battery	0	2	18	33	46	68	86	78
21-3603	Aggravated Incest	6	6	8	15	25	46	66	58
21-3609	Abuse of a Child	0	0	1	7	8	13	13	14
21-3701	****Theft	375	417	400	287	245	191	139	83
21-3704	****Theft of Services	0	2	2	0	0	0	1	1
21-3708	****Habitual Giving of Worthless Checks	7	10	7	5	3	1	1	2
21-3710	****Forgery	104	126	111	66	62	52	61	21
21-3711	Marking a False Writing	3	5	3	4	2	9	13	12
21-3715	****Burglary	550	673	720	738	850	899	854	663
21-3716	Aggravated Burglary (A/C/S)	2	6	10	14	18	19	18	14
21-3718	Arson (A/C/S)	1	1	1	1	8	11	12	5
21-3805	Perjury (Made in Felony Trial)(A/C/S)	0	0	0	0	2	2	0	1
21-3901	Bribery	0	0	1	2	1	1	1	0
21-4105	Inciting a Riot	0	0	0	1	1	1	0	0
21-42041	Unlawful Possession of Firearms	13	14	16	18	27	23	20	18
21-4209A	Possession of Explosives	0	0	0	1	1	2	0	0
65-4127A1	Drug Offense	1	1	3	3	10	23	50	57
65-4127B	Drug Offense	9	7	6	3	3	5	11	11
65-4127BA	Drug Offense	14	10	18	20	34	33	22	14
65-4127BB	Drug Offense	2	7	8	14	20	26	43	37
Total Class D Felonies		1188	1431	1520	1464	1628	1695	1684	1359

Table 16 (cont.)

Kansas Statute	Offense Description	Number of Inmates (June 30)							
		1983	1984	1985	1986	1987	1988	1989	1990
----- Class E Felonies -----									
08-116	Vehicle Identification Violation	0	0	0	0	1	2	1	0
08-262A	Driver's License Violation	1	1	1	8	9	7	18	21
08-287	Habitual Violation; Unlawful Operation of Vehicle When Prohibited	1	3	5	12	14	17	25	27
21-3404	Involuntary Manslaughter	14	6	4	4	2	2	3	2
21-3405A	Aggravated Vehicular Homicide	0	0	1	9	21	18	20	14
21-3410	Aggravated Assault (A/C/S)	5	12	11	16	14	13	15	27
21-3414	Aggravated Battery (A/C/S)	2	0	0	0	1	2	2	1
21-3419	Terroristic Threat	8	9	16	24	27	38	27	41
21-3420	Kidnapping (A/C/S)	1	1	0	0	0	0	1	0
21-3422A	Aggravated Interference with Parental Custody	0	0	0	1	1	1	1	1
21-3426	Robbery	0	1	1	1	2	2	2	1
21-3427	Aggravated Robbery (A/C/S)	0	0	2	1	0	0	0	0
21-3428	Blackmail	0	0	0	1	0	0	2	1
21-3503	Indecent Lib. with a Child (A/C/S)	1	0	0	0	0	0	0	0
21-3509	Enticement of a Child	1	2	1	3	2	0	1	0
21-3511	Aggravated Indecent Solicitation of a Child	3	8	10	9	7	9	11	5
21-3514	Habitual Promoting Prostitutions	0	1	0	0	0	0	0	0
21-3516	Sexual Exploitation of a Child	1	1	1	1	2	2	2	0
21-3518	Aggravated Sexual Battery	0	0	0	4	9	13	14	14
21-3519	Promoting Sexual Performance/Minor	0	0	0	0	0	2	1	0
21-3602	Incest	1	0	0	0	3	2	1	1
21-3603	Aggravated Incest (A/C/S)	3	0	0	3	6	11	11	4
21-3605	Nonsupport of a Child	6	8	6	1	4	2	4	6
21-3609	Abuse of a Child	7	8	8	7	6	7	5	3
21-3611	Aggravated Juvenile Delinquency	11	13	15	16	12	9	10	9
21-3612	Contributing to Misconduct or Deprivation of a Child	0	0	0	1	1	2	0	0
21-3701	****Theft and/or Attempted Theft	36	58	128	233	344	367	367	284
21-3704	****Theft of Services	0	0	0	2	1	2	0	0

Table 16 (cont.)

Kansas Statute	Offense Description	Number of Inmates (June 30)							
		1983	1984	1985	1986	1987	1988	1989	1990
----- Class E Felonies (cont.) -----									
21-3707	****Giving of a Worthless Check	27	36	26	33	26	26	16	20
21-3708	Habitual Giving of Worthless Checks	0	0	0	7	3	5	13	10
21-3710	****Forgery (and/or Attempted Forgery)	3	9	31	56	87	93	115	113
21-3711	Making a False Writing (A/C/S)	0	0	0	0	0	1	1	1
21-3714	Possession of Forgery Devices	0	1	1	0	0	2	0	1
21-3715	****Burglary (and Burglary A/C/S)	21	29	40	39	54	56	83	73
21-3716	Aggravated Burglary (A/C/S)	0	0	1	1	0	0	0	0
21-3717	Possession of Burglary Tools	1	1	4	4	3	2	4	0
21-3718	Arson (A/C/S)	0	1	0	0	0	2	2	1
21-3720	Criminal Damage to Property	22	27	32	36	44	46	57	44
21-3726	Agg. Tampering with Traffic Signal	0	0	0	0	1	1	0	0
21-3729	Unlawful Use of Financial Cards	5	5	4	5	8	5	7	5
21-3731	Criminal Use of Explosives	0	0	0	0	0	0	1	0
21-3734	Impairment of Security Interest	0	1	2	2	1	1	1	0
21-3805	Perjury, Non-felony Trial	0	0	0	0	0	1	0	0
21-3806	Corruptly Influencing a Witness	1	0	0	0	0	0	0	0
21-3808	Obstruction of Legal Process (Felony Case)	1	3	2	2	2	1	6	4
21-3810	Aggravated Escape from Custody	5	4	8	8	7	12	11	6
21-3812	Aiding a Felon	5	6	5	4	6	4	1	5
21-3814	Aggravated Failure to Appear	4	2	2	4	3	6	2	4
21-3825	Aggravated False Impersonation	1	1	2	1	0	1	3	4
21-3826	Traffic in Contraband in a Penal Institution	2	3	2	2	3	3	10	4
21-3833	Aggravated Intimidation of Witness	0	0	2	2	4	1	1	1
21-3904	Presenting False Claim (\$50 or more)	0	0	0	0	1	0	0	0
21-42011	Unlawful Firearm, Possession, etc.	1	3	2	3	1	1	2	4
21-4202	Aggravated Weapons Violation	0	2	3	1	2	1	3	3
21-42041	Unlawful Possess. of Firearms (A/C/S)	0	0	0	0	1	1	2	1
21-4214	Obtaining Prescription Drug Fraudulently	0	0	2	1	0	2	2	0
21-4306	Dealing in Gambling Devices	0	0	1	0	0	0	0	0
36-206	Fraud in Obtaining Accommodations	1	1	1	0	2	1	0	1
65-4127A1	Drug Offense (A/C/S)	2	4	5	2	5	9	24	23
65-4127A2	Drug Offense (A/C/S)	0	0	0	0	0	0	1	0

Table 16 (cont.)

Kansas Statute	Offense Description	Number of Inmates (June 30)							
		1983	1984	1985	1986	1987	1988	1989	1990
Class E Felonies (cont.)									
65-4127B	Drug Offense (A/C/S)	1	1	1	1	0	0	5	8
65-4127BA	Drug Offense (A/C/S)	3	4	4	5	6	3	10	6
65-4127BB	Drug Offense (A/C/S)	3	7	3	2	8	6	6	9
Total Class E Felonies		211	283	396	578	767	823	933	813
Total (All Felony Classes)		3276	3911	4435	4850	5504	5886	6004	5467
Felony Class Unavailable or Unknown		77	57	55	84	82	133	168	210
Grand Total		3353	3968	4490	4934	5586	6019	6172	5677

Breakdown of Unknown Category

Kansas Statute	Offense Description	Number of Inmates (June 30)							
		1983	1984	1985	1986	1987	1988	1989	1990
21-3401	Murder, First Degree	29	26	22	24	22	22	21	15
21-3402	Murder, Second Degree	5	3	2	2	2	2	0	0
21-3427	Aggravated Robbery	11	10	9	11	11	9	6	5
	Other Unclassified Felonies	13	8	9	8	10	36	76	77
	Felony Class Undetermined	19	10	13	39	37	64	65	113
Total Unavailable or Unknown		77	57	55	84	82	133	168	210

*The offense described is the overall most serious offense of all active sentences for the inmate. The designation "A/C/S" (Attempt/Conspire/Solicitation) in the offense description denotes attempted crimes or in some cases to conspire to commit, or to aid, abet, advise, counsel, procure, or hire others to commit the crime.

**For the total number of inmates serving for this offense, add the corresponding unclassified offenses listed in the "Breakdown of Unknown Category."

***The offense of rape was changed from Class C to Class B on 7-1-1978; hence, there are inmates serving under each of the two classifications.

****On May 17, 1984, the felony class of several offenses (including theft, theft of services, habitual giving of worthless checks, and forgery) was changed from D to E. Effective July 1, 1990, these same offenses, except for forgery, were reclassified according to a dollar value threshold (\$500 up to \$50,000 = Class E; \$50,000 or more = Class D). Also, the offense of burglary was reclassified (burglary of residences, business, etc. = Class D; of vehicles, etc. = Class E).

Table 17

Structure of Controlling Sentences: June 30, 1990 Inmate Population
Comparison of FY 1990 with Previous Years

*Controlling Sentence Minimum Maximum	FY 1989		FY 1989	
	No.	%	No.	%
1 2	236	3.9%	198	3.5%
1 3	78	1.3%	79	1.4%
1 5	479	7.9%	402	7.2%
1 10	57	0.9%	43	0.8%
Other 1-year minimum	46	0.8%	37	0.7%
2 5	241	4.0%	181	3.2%
2 7	119	2.0%	107	1.9%
2 10	271	4.5%	183	3.3%
Other 2-year minimum	145	2.4%	137	2.5%
3 10	824	13.7%	787	14.1%
3 15	90	1.5%	68	1.2%
3 20	38	0.6%	30	0.5%
Other 3-year minimum	184	3.1%	201	3.6%
4 10	80	1.3%	75	1.3%
4 12	70	1.2%	77	1.4%
4 15	151	2.5%	140	2.5%
4 20	71	1.2%	48	0.9%
Other 4-year minimum	73	1.2%	70	1.3%
5 20	515	8.5%	442	7.9%
Other 5-year minimum	246	4.1%	234	4.2%
6 to 9-year minimum	563	9.3%	584	10.5%
10 Life	109	1.8%	82	1.5%
Other 10-year minimum	178	3.0%	180	3.2%
11 to 14-year minimum	147	2.4%	156	2.8%
15 Life	175	2.9%	163	2.9%
Other 15-year minimum	60	1.0%	63	1.1%
20-year minimum	56	0.9%	55	1.0%
30 Life	57	0.9%	53	1.0%
Other 30-year minimum	5	0.1%	5	0.1%
Life Life	442	7.3%	463	8.3%
Other minimum more than 15	220	3.7%	235	4.2%
Totals (All minimums)	6026	100%	5578	100%
Unknown Minimum	41	--	24	--
Info. Unavail. (compacts, etc.)	105	--	75	--
Grand Totals	6172	--	5677	--

Table 17 (cont.)

Summary by Minimum Term of Controlling Sentence

Minimum (Years)	% of Population at Each Minimum								
	FY 82	FY 83	FY 84	FY 85	FY 86	FY 87	FY 88	FY 89	FY 90
1	27.2	13.6	11.4	13.6	14.5	15.1	13.9	14.9	13.6
2	13.9	19.1	17.7	14.0	12.5	12.6	12.6	12.9	10.9
3	12.1	15.9	18.4	19.6	18.8	18.9	19.1	18.9	19.5
4	1.4	3.3	5.0	5.1	5.9	6.4	7.3	7.4	7.4
5	16.1	16.0	15.6	15.4	15.6	14.7	14.1	12.6	12.1
6	2.2	2.4	3.1	3.7	4.0	3.8	4.1	4.2	4.6
7	1.1	1.6	1.8	2.3	2.3	2.3	2.4	2.2	2.5
8	1.1	1.6	1.7	1.6	1.7	1.8	1.9	2.0	2.2
9	0.5	0.8	0.8	0.8	0.9	0.9	0.9	0.9	1.1
10	5.1	5.4	5.1	5.1	5.1	5.0	5.1	4.8	4.7
11	0.2	0.3	0.3	0.5	0.5	0.6	0.7	0.8	0.9
12	0.3	0.6	0.7	0.8	0.8	0.9	0.9	0.9	1.0
13	0.3	0.2	0.2	0.2	0.3	0.4	0.4	0.5	0.7
14	0.1	0.2	0.2	0.1	0.2	0.2	0.1	0.2	0.2
15	4.1	4.4	4.3	4.0	3.9	3.9	3.8	3.9	4.1
20	0.9	1.0	0.8	0.8	0.9	0.9	1.0	0.9	1.0
30	1.6	1.7	1.5	1.4	1.3	1.1	1.1	1.0	1.0
Life	9.2	9.1	8.5	8.2	7.9	7.4	7.4	7.3	8.3
Other (> 15)	2.6	2.8	2.9	2.8	2.9	3.1	3.2	3.7	4.2
Totals (All minimums)	100.0	100.0	100.0	100.0	100.0	100.0	100.0	100.0	100.0
Number of Inmates (on which % is based)	2950	3347	3957	4454	4884	5552	5921	6026	5578

*The controlling sentence is the range, in years, determined by the longest minimum and the longest maximum term to be served. The controlling minimum is the indicator for the parole eligibility date. The controlling maximum is used to project the conditional release date (the date of the maximum term less the statutorily earned good time) which indicates completion of the sentence obligation.

NOTE: Each percentage total is given as 100 even though the sum may vary slightly due to rounding.

Table 18

Average Length of Stay in Correctional Facilities, by Felony Class of Offense
and Sentence Minimum: Offenders Paroled During Fiscal Years 1983 - 1990*

Cases in Which Neither the Habitual Criminal Nor Mandatory Sentence Statute Was Imposed

Felony Class and Minimum	FY 1983		FY 1984		FY 1985		FY 1986		FY 1987		FY 1988		FY 1989		FY 1990	
	No.	Avg. Stay (Months)	No.	Avg. Stay (Months)	No.	Avg. Stay (Months)	No.	Avg. Stay (Months)	No.	Avg. Stay (Months)	No.	Avg. Stay (Months)	No.	Avg. Stay (Months)	No.	Avg. Stay (Months)
Class A Life	1	180.00 **	2	180.00 **	2	180.00 **	1	180.00 **	1	180.00 **	1	180.00 **	8	206.86	6	195.50
Class B																
10 Year	6	58.24	7	34.82	1	52.30	1	108.40	4	12.34	1	63.70	16	80.28	24	74.36
4-5 Year	40	31.39	29	41.03	29	34.84	23	40.16	22	46.68	52	55.05	80	53.42	101	47.51
Other Minimums	6	69.03	5	53.88	3	45.92	4	38.82	1	89.00	13	73.41	17	79.55	35	78.99
All Class B	52	38.83	41	41.54	33	36.37	28	42.41	27	43.16	66	58.79	113	61.16	160	58.43
Class C																
5 Year	18	30.57	14	32.20	11	34.07	24	43.47	25	43.22	44	49.19	50	48.23	56	43.57
4 Year	2	36.82	3	24.03	4	35.18	4	41.19	13	42.23	19	37.02	25	39.34	41	34.62
3 Year	27	25.17	27	21.13	47	24.67	78	29.33	117	30.96	108	31.33	170	28.19	285	23.45
2 Year	42	16.08	56	17.69	10	17.21	10	12.37	3	22.21	8	23.98	7	13.20	3	7.79
1 Year	89	9.19	23	11.09	20	21.83	11	12.58	10	15.15	11	25.92	9	13.42	14	8.20
All Class C	178	15.71	123	19.02	92	24.82	127	29.59	168	32.56	190	35.41	261	32.18	399	26.76
Class D																
3 Year	76	21.48	61	20.67	79	24.13	116	25.84	72	29.62	76	23.35	100	26.30	123	20.71
2 Year	151	17.19	188	15.62	216	17.91	207	19.49	141	19.17	151	18.61	149	17.96	236	14.22
1 Year	421	10.14	146	11.61	161	11.28	144	12.60	123	12.98	140	12.60	144	11.99	157	10.16
All Class D	648	13.11	395	14.91	456	16.64	467	18.94	336	19.14	367	17.30	393	17.89	516	14.53
Class E																
2 Year	0	--	10	14.90	28	17.08	18	22.52	10	29.08	3	18.44	3	13.94	1	9.63
1 Year	189	9.90	132	9.07	133	10.04	191	10.65	212	11.90	267	12.84	328	11.68	381	8.70
All Class E	189	9.90	142	9.48	161	11.27	209	11.67	222	12.67	270	12.90	331	11.70	382	8.70
Total (All Classes)	1068	14.38	703	16.55	744	17.80	832	19.72	754	21.30	894	23.07	1106	25.20	1463	21.89

Table 18 (cont.)

Cases in Which Habitual Criminal or Mandatory Sentence Statute or Both Imposed***

Felony Class and Minimum	FY 1983		FY 1984		FY 1985		FY 1986		FY 1987		FY 1988		FY 1989		FY 1990	
	No.	Avg. Stay (Months)	No.	Avg. Stay (Months)	No.	Avg. Stay (Months)	No.	Avg. Stay (Months)	No.	Avg. Stay (Months)	No.	Avg. Stay (Months)	No.	Avg. Stay (Months)	No.	Avg. Stay (Months)
Class A (All Min.)	0	--	0	--	0	--	1	180.00 **	0	--	1	180.00 **	0	--	1	180.00 **
Class B (All Min.)	30	57.70	29	54.41	29	52.64	12	52.54	15	59.47	27	69.26	74	67.55	74	75.43
Class C (All Min.)	46	28.28	21	22.64	13	28.65	22	40.41	25	48.54	19	41.63	40	34.75	30	45.77
Class D (All Min.)	16	23.09	16	19.31	16	22.47	19	25.66	7	27.97	16	21.19	26	40.44	31	34.65
Class E (All Min.)	3	11.83	6	14.25	3	15.83	3	15.17	0	--	8	25.50	10	19.85	10	9.25
Total (All Classes)	95	36.17	72	34.00	61	37.80	57	39.18	47	48.98	71	47.66	150	50.92	146	56.86

All Cases (With and Without Imposition of the Habitual Criminal or Mandatory Sentence Statutes)

Class A (All Min.)	1	180.00 **	2	180.00 **	2	180.00 **	2	180.00 **	1	180.00 **	2	180.00 **	8	206.86	7	193.29
Class B (All Min.)	82	45.73	70	46.87	62	43.98	40	45.44	42	48.98	93	61.83	187	63.69	234	63.81
Class C (All Min.)	224	18.29	144	19.54	105	25.29	149	31.19	193	34.63	209	35.98	301	32.52	429	28.09
Class D (All Min.)	664	13.35	411	15.08	472	16.84	486	19.20	343	19.32	383	17.46	419	19.29	547	15.67
Class E (All Min.)	192	9.93	148	9.68	164	11.35	212	11.72	222	12.67	278	13.26	341	11.94	392	8.71
Grand Total (All Classes, All Min.)	1163	16.16	775	18.17	805	19.32	889	20.97	801	22.92	965	24.88	1256	28.27	1609	25.06

*Excluded from the parolee population are those with sentence structures which involved consecutive sentencing and those paroled from in absentia status. The length of stay is the period of time from the date of admission to the date of release (thus excluding any jail credit or other credits applied to the sentence). The felony class of offense is the most serious offense associated with the offender's most recent admission and the minimum sentence is the minimum term associated with this same offense. Source of information: PGM-AVSTAS run 6-30-90.

**The number of parolees in the group is too small for the average stay to be representative. For purposes of calculating the overall average (all classes combined) an average length of stay of 15 years (180 months) was used for Class A cases in these instances.

***In these cases the average length of stay for each felony class was estimated from a frequency distribution consisting of the number of offenders falling within each category of range of months served.

Table 19

Projected Average Length of Time to Serve to Earliest Possible
Release Date: FY 1990 Admissions Population*

Felony Class by Minimum Sentence (Years)	Number of Offenders (Adjusted)**	Projected Average Time to Serve		Total Number of Years to Serve
		In Years	In Months	

Class A				
Life	29	15.00	180.0	435.00
Probation	0	--	--	--
	-----			-----
Total Class A	29	15.00	180.0	435.00
Class B				
5	89	2.50	30.0	222.50
7.5	24	3.75	45.0	90.00
12	20	6.00	72.0	120.00
15	17	7.50	90.0	127.50
***10	77	5.00	60.0	385.00
Probation	9	0.25	3.0	2.25
	-----			-----
Total Class B	236	4.01	48.2	947.25
Class C				
1	12	0.67	8.0	8.04
2	8	1.00	12.0	8.00
3	379	1.50	18.0	568.50
4	48	2.00	24.0	96.00
5	75	2.50	30.0	187.50
8	8	4.00	48.0	32.00
***6	217	3.00	36.0	651.00
Probation	155	0.25	3.0	38.75
	-----			-----
Total Class C	902	1.76	21.2	1589.79
Class D				
1	185	0.67	8.0	123.95
2	269	1.00	12.0	269.00
3	147	1.50	18.0	220.50
5	7	2.50	30.0	17.50
***4	384	2.00	24.0	768.00
Probation	155	0.25	3.0	38.75
	-----			-----
Total Class D	1147	1.25	15.0	1437.70
Class E				
1	539	0.67	8.0	361.13
2	4	1.00	12.0	4.00
3.5	2	1.75	21.0	3.50
***2	319	1.00	12.0	319.00
Probation	206	0.25	3.0	51.50
	-----			-----
Total Class E	1070	0.69	8.3	739.13
Total (All Classes)	3384	1.52	18.3	5148.87

Table 19 (cont.)

*Figures based on 3,384 admissions during FY 1990 (first admissions during the period per computer program PGM-ELLNAS run 6-3-90. For purposes of this table, time to be served was calculated according to the new good time provisions which were effective August 1, 1989 per Kansas Senate Bill 49. The maximum allowable earned good time has been applied in all cases. Thus, projected time to serve is the period from the sentence begins date to earliest possible release date.

**Represents the number of offenders remaining in the specified group after the estimated number of probationers is removed from the group. For each felony class, the probationers (total of 525 for all classes) are identified separately and assigned an average time to serve of three months (.25 years).

***Represents cases involving the application of consecutive sentencing. In such cases the sentence minimum used is twice the current lowest possible minimum for the felony class.

• • • • • SECTION IV • • • • •

Kansas Parolee Population, June 30, 1990

This section provides a brief description of the population of offenders in the correctional system who were on parole or supervised conditional release as of June 30, 1990. Also included is a summary of various parole-related activities occurring during FY 1990.

In years prior to FY 1987 the parole services caseload information that was described in this report was limited to clients in good standing. For the past four years there has been more detailed information available regarding the various categories of clients comprising the caseload. The parole officer caseload consists of Kansas offenders paroled to Kansas locations, as well as out-of-state parolees and probationers received by Kansas for supervision under interstate compact. There are no Kansas probationers included in the caseload since the supervision of this group has been a function of the district courts since June 1, 1979.

Composition of Parole Caseload

- As of June 30, 1990 there was a total Kansas caseload of 4,923 offenders under supervision of 78 Kansas parole officers.
 - The total Kansas caseload has increased by 1,243 (34%) from FY 1989 and by 1,819 (59%) from FY 1988.
 - By the end of FY 1990, 8 new parole officer positions had been added to the 70 existing positions. However, with the large increase in the parole population, the average caseload per parole officer increased to 63 from 53 at the end of FY 1989.
 - The group of 1,644 Kansas offenders under supervision out-of-state (including those with KDOC warrants), plus another group of 539 absconders, brings the total number of offenders managed by Kansas Parole Services to 7,106 -- up 1,607 (29%) from FY 1989 and up 2,517 (55%) from FY 1988.

[SEE Table 20: Composition of Offender Caseload Managed by Kansas Parole Officers: End-of-year Status, FY 1987 - FY 1990 -- page 60]

Characteristics of Kansas Parolees

- The basic profile information on the characteristics of the population of offenders on parole and conditional release in Kansas suggests relatively little change in the past several years.
 - One exception noted in FY 1989 and 1990 is a shift in the composition of the population with regard to felony class of offense.

Noteworthy is the substantial increase in the number and proportion of offenders in felony classes A, B and C (the more serious offenses). At the end of FY 1988, only 28% of the population was from A, B, and C collectively. The proportion has increased to 33% in FY 1989 and to 36% in FY 1990.

- There are substantial differences between the composition of the parole population and that of the inmate population:
 - Collectively, Class A and B offenders account for about 31% of the inmate population, but only about 11% of the parole population.
 - Class D and E offenders account for about 54% of the inmate population, compared to 66% of the parole population.

[SEE Table 21: Characteristics of Kansas Parolees: Comparison of June 30, 1989 and June 30, 1990 Populations -- page 61; and

Figure 6: Inmate vs. Parole Population, by Felony Class of Most Serious Offense -- page 63]

- As in previous years, the paroles and conditional releases occurring in FY 1990 were concentrated in a few counties/states:
 - Three counties (Sedgwick, Shawnee, and Wyandotte) collectively account for 67% of the total number of in-state paroles and conditional releases. Sedgwick County alone received 1,045 or 36% of the statewide total.
 - Three states (Missouri, Oklahoma, and Texas) collectively account for 52% of the total number of out-of-state paroles and conditional releases.
- Within the June 30, 1990 parole population there was a total of 1,128 out-of-state offenders being supervised in Kansas (311 parole cases and 817 probation cases). The number of such cases increased by 195 or 21% from FY 1989.
- As of June 30, 1990, there was a total of 1,424 Kansas cases being supervised out-of-state (excluding 225 with KDOC warrants), up 195 (16%) from June 30, 1989.
- As in previous years, the amount of compact case activity (compacts received and sent) was especially great in three states: Missouri, Oklahoma, and

Texas.

- [SEE Table 22: Kansas Offenders Paroled and Conditionally Released During FY 1990, by County or State to Which Released -- page 64; and
- Table 23: Number of Compact Cases Serving Parole or Probation in Kansas on June 30, 1990, by Sending State -- page 66; and
- Table 24: Number of Kansas Cases Serving Out-of-state Parole or Conditional Release: As of June 30, 1990, by Location -- page 68]

Table 20

Composition of Offender Caseload Managed by
Kansas Parole Officers: End-of-year Status, FY 1987 - FY 1990*

* * * * * Kansas Caseload * * * * *

Clients in Good Standing:	Number of Offenders			
	FY 87	FY 88	FY 89	FY 90
-----	-----	-----	-----	-----
Parole	1,605	1,760	2,275	3,099
Conditional Release	101	179	208	312
Compact Parole	225	249	236	298
Compact Probation	630	682	682	805
-----	-----	-----	-----	-----
Subtotal (In Good Standing)	2,561	2,870	3,401	4,514
Clients Held in County Jail:				
Felony Charge	35	24	34	54
Misdemeanor Charge	6	8	5	23
Serving Misdemeanor Sentence	4	4	7	20
Awaiting Return to KDOC Institution	9	12	10	11
Other	4	9	24	12
-----	-----	-----	-----	-----
Subtotal (Held in County Jail)	58	57	80	120
Other Clients:				
KDOC Warrant Case Monitored by P.O.	41	54	45	57
Cases Not Yet Assigned to Parole Officer	71	123	154	232
-----	-----	-----	-----	-----
Subtotal (Other Clients)	112	177	199	289
Total Kansas Caseload	2,731	3,104	3,680	4,923
Number of Field Parole Officers	37	59	70	78
Average Caseload Per Parole Officer	74	53	53	63

* * * Kansas Offenders on Supervised Release Out-of-state * * *

Kansas Offenders Out-of-state:	Number of Offenders			
	FY 87	FY 88	FY 89	FY 90
-----	-----	-----	-----	-----
Parole	596	701	942	1,033
Conditional Release	45	69	99	150
Parole to Detainer	108	137	187	236
KDOC Warrant Out-of-state (Case Monitored)	183	169	195	225
-----	-----	-----	-----	-----
Total (Out-of-state)	932	1,076	1,423	1,644

* * * * * Other Offenders * * * * *

Absconders	363	409	396	539
-----	-----	-----	-----	-----
Grand Total (All Categories of Offender)	4,026	4,589	5,499	7,106

*Source of information: Parole activities report (computer program "PARREP") run dates 7-7-87, 7-8-88, 7-5-89, and 6-30-90.

Table 21

Characteristics of Kansas Parolees:
Comparison of June 30, 1989 and June 30, 1990 Populations*

**Characteristic	Kansas Parolee Population			
	FY 1989		FY 1990	
	Number	%	Number	%
Age Group (Years)				
15-19	22	1%	20	1%
20-24	453	17%	611	16%
25-29	859	32%	1125	30%
30-34	586	22%	878	24%
35-39	325	12%	480	13%
40+	406	15%	590	16%
Totals	2,651	100%	3,704	100%
No. Unknown	7	--	3	--
Grand Totals	2,658		3,707	
Racial/Ethnic Group				
White	1,700	64%	2293	62%
Black	822	31%	1216	33%
Hispanic	96	4%	140	4%
American Indian	29	1%	47	1%
Asian or Pacific Islander	6	***	7	***
Totals	2,653	100%	3,703	100%
No. Unknown	5	--	4	--
Sex				
Male	2,422	91%	3408	92%
Female	236	9%	299	8%
Totals	2,658	100%	3,707	100%
Felony Class of Most Serious Offense				
A	8	***	11	***
B	251	9%	399	11%
C	614	23%	918	25%
D	1,169	44%	1479	40%
E	603	23%	848	23%
Totals	2,645	100%	3,655	100%
No. Unknown	13	--	52	--
Number of Previous Felony Convictions				
None	1,211	48%	1744	49%
1	606	24%	870	24%
2	452	18%	591	17%
3 or more	252	10%	366	10%
Totals	2,521	100%	3,571	100%
No. Unknown	137	--	136	--

Table 21 (cont.)

**Characteristic	Kansas Parolee Population			
	FY 1989		FY 1990	
	Number	%	Number	%
Number of Previous Incarcerations				
None	1,621	71%	2395	71%
1	429	19%	613	18%
2	152	7%	226	7%
3 or more	91	4%	129	4%
Totals	2,293	100%	3,363	100%
No. Unknown	365	--	344	--

*Includes conditional releases.

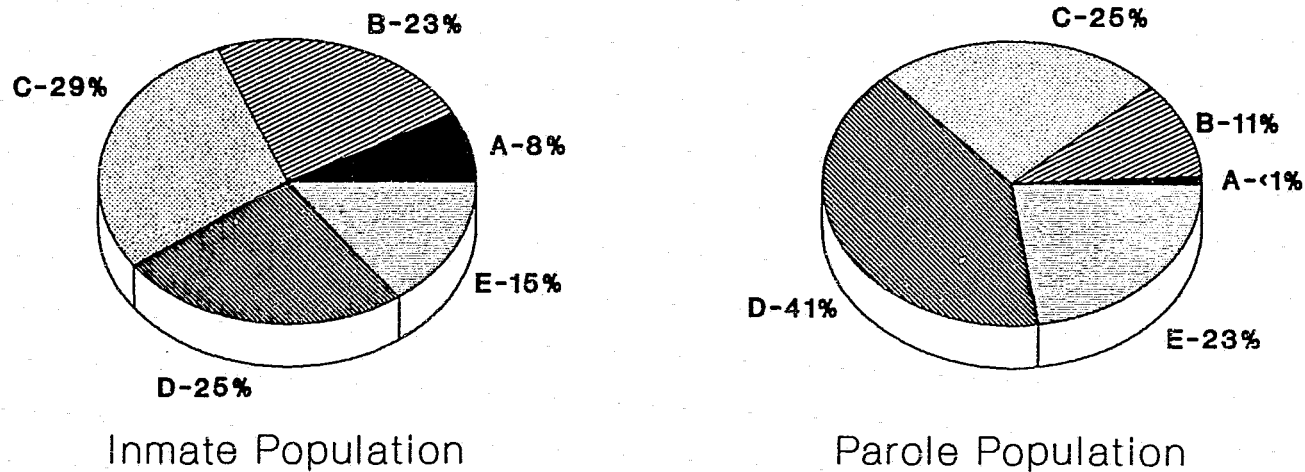
**All characteristics reflect status on June 30 of the specified year. The total number of inmates for which information was available varies with the type of characteristic assessed.

***Less than .5 of one percent.

NOTE: Each percentage total is given as 100 even though the sum may vary slightly due to rounding.

Figure 6

Inmate vs. Parole Population by Felony Class of Most Serious Offense



Based on June 30, 1990 Population

Table 22

Kansas Offenders Paroled and Conditionally Released
During Fiscal Year 1990,
by County or State to Which Released*

* * * * * Parole and Conditional Release (CR) to Kansas * * * * *

County -----	Number		County -----	Number		County -----	Number	
	Par.	CR		Par.	CR		Par.	CR
Allen	8	1	Greeley	0	0	Osborne	0	0
Anderson	6	1	Greenwood	5	2	Ottawa	2	0
Atchison	7	1	Hamilton	3	0	Pawnee	2	2
Barber	0	0	Harper	3	1	Phillips	2	0
Barton	16	5	Harvey	20	4	Pottawatomie	3	1
Bourbon	9	1	Haskell	1	0	Pratt	4	1
Brown	5	0	Hodgeman	0	0	Rawlins	0	0
Butler	31	8	Jackson	3	1	Reno	50	18
Chase	2	1	Jefferson	5	1	Republic	0	0
Chautauqua	2	0	Jewell	0	0	Rice	4	0
Cherokee	1	3	Johnson	131	26	Riley	16	3
Cheyenne	0	0	Kearny	0	1	Rooks	1	0
Clark	0	1	Kingman	0	0	Rush	0	0
Clay	0	0	Kiowa	1	0	Russell	1	1
Cloud	0	0	Labette	12	1	Saline	30	8
Coffey	2	0	Lane	1	0	Scott	1	0
Comanche	0	0	Leavenworth	47	2	Sedgwick	953	92
Cowley	16	1	Lincoln	0	0	Seward	20	2
Crawford	22	8	Linn	4	2	Shawnee	382	65
Decatur	2	0	Logan	0	0	Sheridan	0	0
Dickinson	6	1	Lyon	25	6	Sherman	1	1
Doniphan	0	0	Marion	3	0	Smith	0	0
Douglas	42	3	Marshall	2	0	Stafford	0	0
Edwards	0	0	McPherson	12	0	Stanton	0	1
Elk	0	0	Meade	0	0	Stevens	2	1
Ellis	4	0	Miami	11	7	Sumner	10	4
Ellsworth	2	2	Mitchell	2	0	Thomas	0	1
Finney	54	5	Montgomery	37	3	Trego	0	0
Ford	13	5	Morris	2	1	Wabaunsee	0	0
Franklin	11	5	Morton	1	0	Wallace	0	0
Geary	30	3	Nemaha	4	0	Washington	0	1
Gove	0	0	Neosho	9	1	Wichita	0	0
Graham	0	0	Ness	0	0	Wilson	4	2
Grant	0	0	Norton	4	2	Woodson	2	0
Gray	0	0	Osage	5	2	Wyandotte	351	83
							====	====
						Statewide Totals	2485	405

Table 22 (cont.)

* * * * * Parole and Conditional Release (CR) Out-of-state * * * * *

State -----	Number		State -----	Number	
	Par.	CR		Par.	CR
Alabama	4	2	Nebraska	12	2
Alaska	1	0	Nevada	2	2
Arizona	5	1	New Hampshire	0	0
Arkansas	11	3	New Jersey	0	0
California	31	6	New Mexico	3	1
Colorado	23	3	New York	3	0
Connecticut	1	0	North Carolina	3	1
Delaware	0	0	North Dakota	1	0
Florida	9	4	Ohio	11	0
Georgia	7	1	Oklahoma	42	9
Hawaii	0	0	Oregon	0	0
Idaho	1	0	Pennsylvania	0	1
Illinois	10	2	Rhode Island	2	0
Indiana	6	3	South Carolina	3	1
Iowa	6	0	South Dakota	2	0
Kentucky	0	0	Tennessee	10	0
Louisiana	6	0	Texas	28	15
Maine	1	0	Utah	1	0
Maryland	2	1	Vermont	0	0
Massachusetts	1	0	Virginia	3	0
Michigan	6	0	Washington	13	1
Minnesota	4	2	West Virginia	1	0
Mississippi	3	2	Wisconsin	4	0
Missouri	183	32	Wyoming	2	0
Montana	1	0	Other (including Federal)	28	1
			Total (All States)	496	96

* * * * * Summary of Parole and CR (FY 1990 Compared to FY 1989) * * * * *

Type of Release -----	FY 1989	FY 1990	% Change
Parole (All Types)	2200	2981	35.5%
Conditional Release (All Types)	275	501	82.2%
Total (All Parole and CR)	2475	3482	40.7%

*The number includes any multiple parole/CR of an individual offender during the period. The types of parole/CR include: Parole, reparole, parole to detainer, parole of returned probationer, CR supervised, and CR unsupervised. In some cases the totals differ slightly from corresponding figures in Tables 4 and 5 (due to differences in the way the computer programs categorize certain types of data).

Table 23

Number of Compact Cases Serving Parole or Probation
in Kansas on June 30, 1990, by Sending State*

Sending State	Felony Cases		Totals
	Parole	Probation	
Alabama	1	1	2
Alaska	1	6	7
Arizona	2	11	13
Arkansas	4	11	15
California	15	29	44
Colorado	14	46	60
Connecticut	0	1	1
Delaware	0	0	0
District of Columbia	0	0	0
Florida	0	21	21
Georgia	5	11	16
Hawaii	1	1	2
Idaho	0	0	0
Illinois	5	13	18
Indiana	0	1	1
Iowa	7	8	15
Kentucky	0	1	1
Louisiana	4	8	12
Maine	1	0	1
Maryland	0	1	1
Massachusetts	0	1	1
Michigan	3	10	13
Minnesota	2	6	8
Mississippi	1	0	1
Missouri	136	317	453
Montana	2	4	6

Table 23 (cont.)

Sending State	Felonv Cases		Totals
	Parole	Probation	
Nebraska	4	12	16
Nevada	2	10	12
New Hampshire	0	1	1
New Jersey	1	2	3
New Mexico	6	12	18
New York	2	2	4
North Carolina	0	2	2
North Dakota	0	3	3
Ohio	0	7	7
Oklahoma	14	83	97
Oregon	2	3	5
Pennsylvania	6	4	10
Rhode Island	0	0	0
South Carolina	1	2	3
South Dakota	3	2	5
Tennessee	5	8	13
Texas	55	137	192
Utah	2	1	3
Vermont	0	0	0
Virginia	1	5	6
Washington	0	1	1
West Virginia	1	2	3
Wisconsin	1	3	4
Wyoming	1	7	8
**Dual Supervision	0	0	0
Totals	311	817	1128

*Effective November 1, 1983 Kansas supervision of out-of-state misdemeanor probation cases was discontinued.

**Under dual supervision of two states.

Table 24
 Number of Kansas Cases Serving Out-of-State
 Parole or Conditional Release:
 As of June 30, 1990, by Location

Location -----	Number -----	Location -----	Number -----
Alabama	12	Nebraska	30
Alaska	4	Nevada	4
Arizona	13	New Hampshire	1
Arkansas	35	New Jersey	7
California	66	New Mexico	11
Colorado	56	New York	15
Connecticut	4	North Carolina	8
Delaware	0	North Dakota	3
District of Columbia	0	Ohio	19
Florida	31	Oklahoma	158
Georgia	11	Oregon	5
Hawaii	2	Pennsylvania	7
Idaho	2	Rhode Island	2
Illinois	35	South Carolina	5
Indiana	15	South Dakota	4
Iowa	23	Tennessee	16
Kentucky	6	Texas	129
Louisiana	14	Utah	2
Maine	2	Vermont	0
Maryland	10	Virginia	24
Massachusetts	5	Washington	24
Michigan	21	West Virginia	1
Minnesota	15	Wisconsin	14
Mississippi	5	Wyoming	4
Missouri	461	United States	76*
Montana	6	Other Countries	1
		Total	===== 1424

*United States - indicates parole to federal detainer.