

Jail Backlog Projection for Fiscal Years 1993 - 2000

February 2, 1993

143238

U.S. Department of Justice
National Institute of Justice

This document has been reproduced exactly as received from the person or organization originating it. Points of view or opinions stated in this document are those of the authors and do not necessarily represent the official position or policies of the National Institute of Justice.

Permission to reproduce this copyrighted material has been granted by

Texas Criminal Justice Policy

Council

to the National Criminal Justice Reference Service (NCJRS).

Further reproduction outside of the NCJRS system requires permission of the copyright owner.

Criminal Justice Policy Council
P.O. Box 13332
Austin, Texas 78711
(512) 463-1810

143238

Copies of this publication have been deposited with the Texas State Library in compliance with the State Depository Law.

Note From the Director

The projection presented in this report is an update of projections published by the Criminal Justice Policy Council (CJPC) on October 30, 1992. The main assumptions of this projection are stated in the body of the report. The CJPC worked closely with the Criminal Justice Policy Analysis Unit of the Legislative Budget Office in developing these assumptions. The projection was conducted using the JUSTICE computerized projection and simulation model developed by the Criminal Justice Policy Council (CJPC).

The projection assumes the continuation of the prison release policy of the last five months of 75 releases per day. It takes into account the increase in prison capacity due to the settlement of the Ruiz case and new state jail capacity.

The total jail backlog of state offenders in county jails as of January 1, 1993 was 19,815 inmates. The projected jail backlog of state offenders in county jails by 1995 will be 21,408 and the population of state jails will be 12,549. If status quo prison release and sentencing policies continue the state would not be able to meet its commitment under House Bill 93 to accept by September 1, 1995 all offenders sentenced to prison.

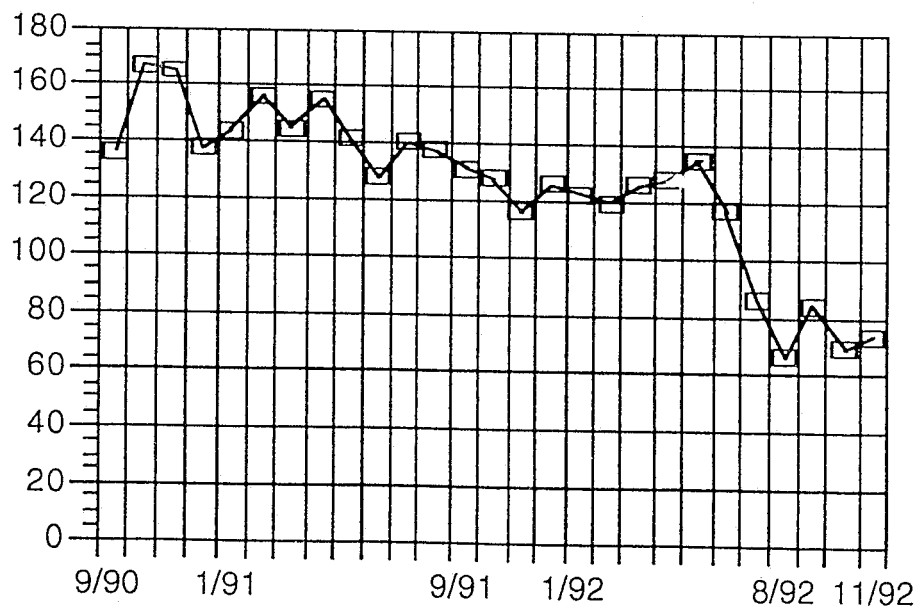
If the present release policy continues, the state will commit a substantial portion of the new prison capacity to increase time served for those offenders admitted to prison as opposed to reducing the jail backlog. Time served in prison is projected to increase from an average of 20 months or 18% of sentence in 1991 to 40 months or 38% of sentence by the year 2000. Due to the present legal provision that requires offenders to be released from prison when their good time and calendar time equals their sentence (mandatory release law), time served in prison would not increase beyond 42% of sentence unless present good time credit awards are restricted to make offenders serve longer.

Tony Fabelo, Ph.D.
Executive Director

Main Assumptions of the Projection

- **Prison release/admission rate of 75 a day**
 - √ This is the average number of releases per day for the period of July 1992 to November 1992
- **Exceptions to a prison release/admission rate of 75 per day**
 - √ Admissions to prison will be higher than 75 per day in those periods when new prison capacity becomes operational
 - √ Releases from prison will be higher than 75 per day when enough offenders are eligible for mandatory release to surpass this number
 - Offenders have to be released on mandatory supervision when their good time credits and time served equals their sentence
 - Unless good time credit policies are changed it is projected that after 1995 enough offenders will be eligible for release on mandatory supervision to force an increase in prison releases to over 75 per day
- **Releases from county or state jails on Parole-in-Absentia (PIA) will be an average of 5 % of the population in county jails awaiting transfer to prison and the population of state jails**
 - √ PIA releases for the period of July 1992 to November 1992 represented an average of 5% of the total backlog

**Chart 1: Average Daily Release Per Day From Prison
Each Month, September 1990 - November 1992**



Main Assumptions of the Projection (cont.)

- **Prison capacity, the capacity of the Substance Abuse Felony Punishment Facilities and the capacity of state jails will become operational according to the schedule in Table 1 below**
 - √ This schedule is based on projections made in January 1993 by the Texas Department of Criminal Justice - Institutional Division
 - Schedule includes additional capacity gained by the settlement of the Ruiz litigation (approximately 3,300 beds)
 - √ State jail capacity is included in the schedule
 - State jail capacity will be used to reduce the jail backlog of state prisoners in county jails as soon as it becomes operational
 - √ The total number of beds becoming operational by 1995 will be 51,537
 - √ The operational capacity phase-in schedule used for the projections is that developed by the Legislative Budget Office (See Appendix 2)

**Table 2: Correctional Bed Expansion Schedule,
FY 93 - 95**

	Prison	Drug Treatment	State Jails	Total
93	13,692	1,566	3,795	19,053
94	3,550	1,000	6,000	10,550
95	12,500	9,434	0	21,934
				51,537

Main Assumptions of the Projection (cont.)

- **The community corrections drug treatment beds will operate as follows:**
 - ✓ Offenders will serve an average of nine months in these facilities
 - ✓ Offenders placed in these facilities will come from direct court, parole and probation modifications
 - By the year 2000 it is estimated that 35% of the offenders placed in these facilities will be placed directly from courts, 30% will be parole modifications and 35% probation modifications
 - ✓ Approximately 95% of the offenders placed in the facilities will complete the drug treatment program successfully
 - ✓ All those completing the program successfully will be ordered by the court to complete their sentences on probation
 - These offenders will have a recidivism rate that is 10% lower than the regular probation recidivism rate
 - ✓ All those not completing the program successfully will be ordered by the court to complete their sentences in prison
- **Incapacitation effects are reflected in a reduction in the size of the population under parole supervision and in a reduction of parole revocations within the time frame of the projection**
 - ✓ Relatively fewer offenders on parole supervision means less "street time" for offenders to commit crimes in the community
- **The starting backlog for the projection is that reported for the end of November 1992 by the Texas Commission on Jail Standards: 20,377 (December 1, 1992 report)**
- **Sentencing patterns are assumed not to change from present practices during the period of the projection**

Projected Prison, Drug Treatment and State Jail Bed Capacity

Table 2

End FY	Prison Capacity	Operational Capacity	Drug Treatment Capacity	State Jail Capacity	Total Capacity
92	55,011	51,242	0	2,820	57,831
93	68,681	63,030	1,566	6,615	76,862
94	72,231	67,705	2,566	12,615	87,412
95	84,731	80,491	12,000	12,615	109,346
96	84,731	80,940	12,000	12,615	109,346
97	84,731	80,940	12,000	12,615	109,346
98	84,731	80,940	12,000	12,615	109,346
99	84,731	80,940	12,000	12,615	109,346
2000	84,731	80,940	12,000	12,615	109,346

Jail Backlog Projection: FY 1993-2000

- The projected jail backlog of state prisoners in county jails by the end of fiscal year 1995 will be 21,408

- √ An additional 12,549 state prisoners are projected to be in state jails
- √ Under this scenario the state would not be able to meet its commitment under House Bill 93 to accept by September 1, 1995 all offenders sentenced to prison within 45 days
- √ The monthly jail backlog projection is presented in Appendix 1

Table 3
Projected State Felons in County Jails and in State Jails, FY 1993-2000

End of FY	Jail Backlog Population	State Jails Population	Total Backlog and State Jails Population
93	21,941	6,549	28,490
94	22,775	12,549	35,324
95	21,408	12,549	33,957
96	26,546	12,549	39,095
97	30,067	12,549	42,616
98	35,427	12,549	47,976
99	40,662	12,549	53,211
2000	46,228	12,549	58,777

Projected Flow Dynamics, FY 1993-2000

Table 4
Projected Prison Admission Pressure, Actual Prison
Admissions, Releases from Prison and Releases from
County and State Jails Per Day, FY 1992-2000

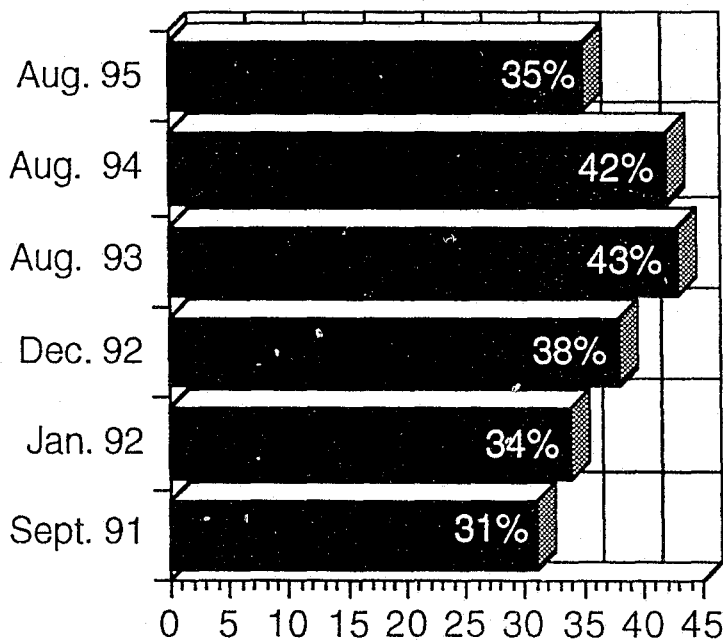
Fiscal Year	Prison Admission Pressure Per Day	Prison Admissions Per Day	Releases from Prison Per Day	Releases from County and State Jails Per Day
93	185	125	75	60
94	199	94	75	78
95	208	127	75	88
96	202	93	93	88
97	217	105	105	99
98	236	106	106	109
99	254	109	109	124
2000	264	104	104	137

Jail Space Occupied by State Backlog

- **The jail backlog will continue to occupy between 35% and 40% of all jail capacity in the state during the period of the projection**

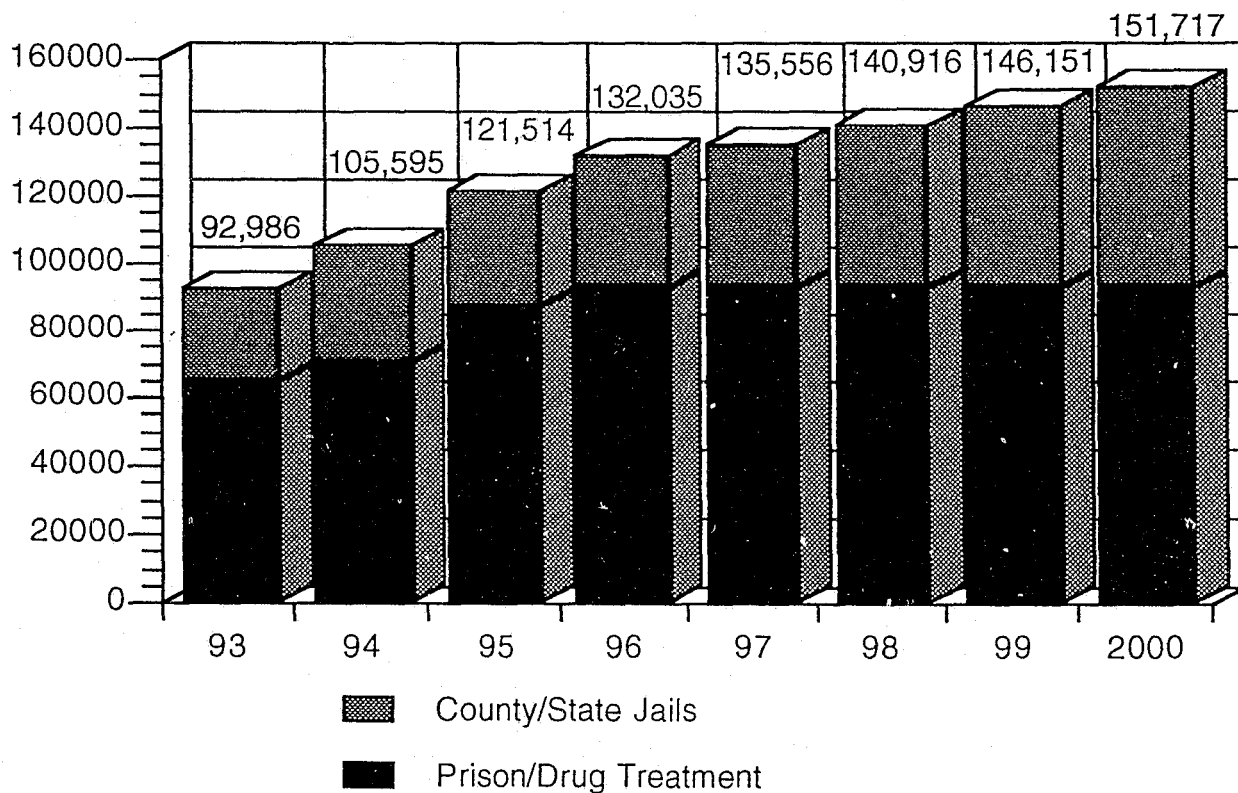
- ✓ Texas jails house local inmates and state inmates awaiting transfer to prison
- ✓ Texas jails as of December 1992 were operating at an average overcapacity of 110%
 - County jail capacities presently total 47,264 but hold 52,023 local and state inmates
- ✓ The jail backlog consumes an increasingly large proportion of the jail capacity in the state
 - In December 1992 the offenders in the jail backlog were occupying the equivalent of 38% of the jail capacity compared to 30% in 1991
 - Approximately 40% of the inmates in the jail backlog are from Harris County

Chart 2: Actual and Projected Jail Backlog as a Proportion of Total Jail Capacity



Felons Incarcerated in Prison, Drug Treatment Punishment Facilities, County Backlog and State Jails, FY 1993-2000

Chart 3

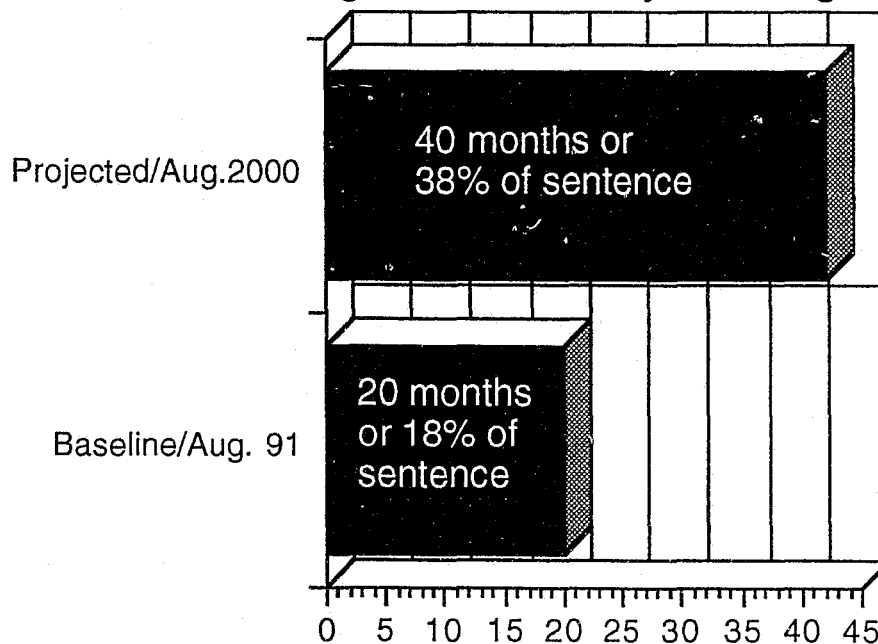


Time Served in Prison to Increase

- **Average time served for offenders in prison will increase**

- ✓ A larger prison population means that more offenders in the prison population will be eligible for parole
- ✓ A release policy of 75 releases per day will result in a decrease in the parole rate compared to the present parole rate for the same number of releases per day
- ✓ A decrease in parole rate will increase time served in prison
 - Average time served in prison in 1991: 20 months or 18% of sentence
 - Average by end of fiscal year 2000: 40 months or 38% of sentence
- ✓ Due to the present legal provision that requires offenders to be released from prison when their good time and calendar time equals their sentence (mandatory release law), time served in prison would not increase beyond 42% of sentence unless present good time credits provisions are restricted

Chart 4
Average Time Served in Months in Prison
Baseline August 1991 vs. Projected August 2000



Appendix 1: Monthly Projection

SUMMARY OF SYSTEM DYNAMICS - MONTHLY

Mon-Yr (1)	S.R. Facilities Capacity (2)	Prison Capacity Change (3)	Prison Capacity 100% (4)	Prison Operational Capacity (5)	Admissions Target (6)	Admissions Pressure (7)	Jail To Prison (8)	Jail Diversions (9)	Local Diversions (10)	Admissions Shortfall (11)	Jail Backlog (12)	State Jails (13)
Baseline			60,870	56,508							20,377	
Dec-92	466	0	60,870	57,601	1,350	4,030	2,439	1,126	0	465	20,842	3,012
Jan-93	666	3,392	64,262	58,374	1,650	4,272	2,419	1,182	0	671	21,513	3,012
Feb-93	866	0	64,262	60,915	1,425	4,138	3,962	1,216	0	(1,040)	20,473	3,012
Mar-93	1,066	(141)	64,121	60,715	1,575	4,218	1,371	1,164	0	1,683	22,156	3,012
Apr-93	1,066	0	64,121	60,755	1,650	4,262	1,686	1,248	0	1,348	23,504	3,012
May-93	1,566	2,310	66,431	60,830	1,650	4,192	1,721	1,315	0	1,156	24,660	2,549
Jun-93	1,566	0	66,431	61,270	1,425	3,968	1,861	1,373	0	734	25,394	2,549
Jul-93	1,566	0	66,431	63,030	1,650	4,202	3,406	1,410	0	(614)	22,780	4,549
Aug-93	1,566	2,250	68,681	63,030	1,575	4,111	1,571	1,379	0	1,161	21,941	6,549
FY 1993	1,566	13,692	68,681	63,030	18,600	45,885	24,412	14,831	0	6642	21,941	6,549
Sep-93	1,566	550	69,231	63,470	1,500	4,066	1,936	1,437	0	693	20,634	8,549
Oct-93	1,566	0	69,231	65,250	1,725	4,336	3,501	1,472	0	(637)	19,997	8,549
Nov-93	1,566	0	69,231	65,336	1,350	4,067	1,432	1,440	0	1,195	21,192	8,549
Dec-93	1,566	0	69,231	65,425	1,425	4,087	1,510	1,500	0	1,077	18,269	12,549
Jan-94	1,566	0	69,231	65,513	1,650	4,316	1,734	1,553	0	1,029	19,298	12,549
Feb-94	1,566	0	69,231	65,593	1,425	4,005	1,501	1,605	0	899	20,197	12,549
Mar-94	1,566	0	69,231	65,682	1,575	4,123	1,660	1,650	0	813	21,010	12,549
Apr-94	1,566	1,000	70,231	65,908	1,575	4,154	1,797	1,691	0	666	21,676	12,549
May-94	1,566	1,000	71,231	66,725	1,500	4,072	2,313	1,724	0	35	21,711	12,549
Jun-94	1,566	0	71,231	67,444	1,575	4,140	2,290	1,726	0	124	21,835	12,549
Jul-94	2,066	0	71,231	67,705	1,725	4,034	1,982	1,732	0	320	22,155	12,549
Aug-94	2,566	1,000	72,231	67,705	1,500	3,864	1,496	1,748	0	620	22,775	12,549
FY 1994	2,566	3,550	72,231	67,705	18,525	49,264	23,152	19,278	0	6,834	22,775	12,549

Footnotes: Admissions shortfall in this report includes local diversions.

(11) = (7) - [(8)+(9)+(10)]

(12)+(13) = previous jail backlog and state jail population - admissions shortfall

Jail diversions (9) include PIR, PIR/PPT, and Jail to Boot Camp

Jail to Prison (8) does not include those going from Boot Camp to Prison

The first fiscal year totals are based on projected data which are shown and data existing prior to the model which are not shown.

SUMMARY OF SYSTEM DYNAMICS - MONTHLY

Mon-Yr (1)	S.R. Facilities Capacity (2)	Prison Capacity Change (3)	Prison Capacity 100% (4)	Prison Operational Capacity (5)	Admissions Target (6)	Admissions Pressure (7)	Jail To Prison (8)	Jail Diversions (9)	Local Diversions (10)	Admissions Shortfall (11)	Jail Backlog (12)	State Jails (13)
Sep-94	3,066	0	72,231	68,424	1,575	4,266	2,290	1,779	0	197	22,972	12,549
Oct-94	3,066	0	72,231	68,685	1,650	4,661	1,907	1,789	0	965	23,937	12,549
Nov-94	3,066	1,000	73,231	68,685	1,350	4,319	1,346	1,837	0	1,136	25,073	12,549
Dec-94	3,066	1,000	74,231	69,404	1,575	4,531	2,290	1,894	0	347	25,420	12,549
Jan-95	3,566	2,000	76,231	70,416	1,425	4,165	2,433	1,911	0	(179)	25,241	12,549
Feb-95	4,066	3,250	79,481	70,978	1,425	4,154	1,983	1,902	0	269	25,510	12,549
Mar-95	5,566	0	79,481	73,615	1,650	4,368	4,283	1,916	0	(1,831)	23,679	12,549
Apr-95	7,066	2,250	81,731	75,542	1,575	4,116	3,498	1,824	0	(1,206)	22,473	12,549
May-95	8,566	0	81,731	77,892	1,500	4,092	3,846	1,764	0	(1,518)	20,955	12,549
Jun-95	10,066	3,000	84,731	78,045	1,650	4,222	1,799	1,688	0	735	21,690	12,549
Jul-95	10,566	0	84,731	79,781	1,650	4,455	3,382	1,725	0	(652)	21,038	12,549
Aug-95	12,000	0	84,731	80,491	1,575	4,343	2,281	1,692	0	370	21,408	12,549
FY 1995	12,000	12,500	84,731	80,491	18,600	51,692	31,338	21,721	0	(1,367)	21,408	12,549
Sep-95	12,000	0	84,731	80,940	1,575	4,357	2,427	1,710	0	220	21,628	12,549
Oct-95	12,000	0	84,731	80,940	1,575	4,160	1,857	1,721	0	582	22,210	12,549
Nov-95	12,000	0	84,731	80,940	1,425	4,027	1,833	1,751	0	443	22,653	12,549
Dec-95	12,000	0	84,731	80,940	1,650	4,248	2,080	1,773	0	395	23,048	12,549
Jan-96	12,000	0	84,731	80,940	1,500	3,964	1,763	1,792	0	409	23,457	12,549
Feb-96	12,000	0	84,731	80,940	1,425	3,344	1,709	1,813	0	422	23,879	12,549
Mar-96	12,000	0	84,731	80,940	1,650	4,154	1,951	1,834	0	369	24,248	12,549
Apr-96	12,000	0	84,731	80,940	1,500	4,244	1,950	1,852	0	442	24,690	12,549
May-96	12,000	0	84,731	80,940	1,575	4,288	2,041	1,875	0	372	25,062	12,549
Jun-96	12,000	0	84,731	80,940	1,650	4,398	2,026	1,893	0	475	25,541	12,549
Jul-96	12,000	0	84,731	80,940	1,500	4,267	1,821	1,917	0	529	26,070	12,549
Aug-96	12,000	0	84,731	80,940	1,725	4,501	2,081	1,944	0	476	26,546	12,549
FY 1996	12,000	0	84,731	80,940	18,750	50,552	23,539	21,875	0	5,138	26,546	12,549

Footnotes: Admissions shortfall in this report includes local diversions.

(11) = (7) - [(8)+(9)+(10)]

(12) + (13) = previous jail backlog and state jail population - admissions shortfall

Jail diversions (9) include PIR, PIR/PPT, and Jail to Boot Camp

Jail to Prison (8) does not include those going from Boot Camp to Prison

The first fiscal year totals are based on projected data which are shown and data existing prior to the model which are not shown.

SUMMARY OF SYSTEM DYNAMICS - MONTHLY

Mon-Yr (1)	S.R. Facilities Capacity (2)	Prison Capacity Change (3)	Prison Capacity 100% (4)	Prison Operational Capacity (5)	Admissions Target (6)	Admissions Pressure (7)	Jail To Prison (8)	Jail Diversions (9)	Local Diversions (10)	Admissions Shortfall (11)	Jail Backlog (12)	State Jails (13)
Sep-96	12,000	0	84,731	80,940	1,575	4,405	2,004	1,967	0	434	26,980	12,549
Oct-96	12,000	0	84,731	80,940	1,575	4,250	2,137	1,989	0	124	27,104	12,549
Nov-96	12,000	0	84,731	80,940	1,425	4,175	1,965	1,995	0	215	27,319	12,549
Dec-96	12,000	0	84,731	80,940	1,575	4,333	2,097	2,006	0	230	27,549	12,549
Jan-97	12,000	0	84,731	80,940	1,575	4,603	2,104	2,017	0	482	28,031	12,549
Feb-97	12,000	0	84,731	80,940	1,425	4,441	2,147	2,042	0	252	28,283	12,549
Mar-97	12,000	0	84,731	80,940	1,650	4,698	2,520	2,054	0	124	28,407	12,549
Apr-97	12,000	0	84,731	80,940	1,425	4,503	2,121	2,060	0	322	28,729	12,549
May-97	12,000	0	84,731	80,940	1,650	4,744	2,350	2,076	0	318	29,047	12,549
Jun-97	12,000	0	84,731	80,940	1,575	4,700	2,127	2,092	0	481	29,528	12,549
Jul-97	12,000	0	84,731	80,940	1,500	4,480	2,060	2,116	0	304	29,832	12,549
Aug-97	12,000	0	84,731	80,940	1,725	4,763	2,396	2,132	0	235	30,067	12,549
FY 1997	12,000	0	84,731	80,940	18,675	54,095	26,028	24,546	0	3,521	30,067	12,549
Sep-97	12,000	0	84,731	80,940	1,500	4,573	2,280	2,143	0	150	30,217	12,549
Oct-97	12,000	0	84,731	80,940	1,650	4,950	2,330	2,151	0	469	30,686	12,549
Nov-97	12,000	0	84,731	80,940	1,500	4,787	2,085	2,174	0	528	31,214	12,549
Dec-97	12,000	0	84,731	80,940	1,425	4,764	2,057	2,201	0	506	31,720	12,549
Jan-98	12,000	0	84,731	80,940	1,575	4,945	2,315	2,226	0	404	32,124	12,549
Feb-98	12,000	0	84,731	80,940	1,500	4,889	2,190	2,246	0	453	32,577	12,549
Mar-98	12,000	0	84,731	80,940	1,575	4,977	2,106	2,269	0	602	33,179	12,549
Apr-98	12,000	0	84,731	80,940	1,650	4,905	2,160	2,299	0	446	33,625	12,549
May-98	12,000	0	84,731	80,940	1,650	4,964	2,164	2,321	0	479	34,104	12,549
Jun-98	12,000	0	84,731	80,940	1,425	4,751	2,128	2,345	0	278	34,382	12,549
Jul-98	12,000	0	84,731	80,940	1,650	5,181	2,233	2,359	0	589	34,971	12,549
Aug-98	12,000	0	84,731	80,940	1,575	5,086	2,241	2,389	0	456	35,427	12,549
FY 1998	12,000	0	84,731	80,940	18,675	58,772	26,289	27,123	0	5,360	35,427	12,549

Footnotes: Admissions shortfall in this report includes local diversions.

(11) = (7) - [(8)+(9)+(10)]

(12)+(13) = previous jail backlog and state jail population - admissions shortfall

Jail diversions (9) include PIA, PIA/PPT, and Jail to Boot Camp

Jail to Prison (8) does not include those going from Boot Camp to Prison

The first fiscal year totals are based on projected data which are shown and data existing prior to the model which are not shown.

SUMMARY OF SYSTEM DYNAMICS - MONTHLY

Mon-Yr (1)	S.R. Facilities Capacity (2)	Prison Capacity Change (3)	Prison Capacity 100% (4)	Prison Operational Capacity (5)	Admissions Target (6)	Admissions Pressure (7)	Jail To Prison (8)	Jail Diversions (9)	Local Diversions (10)	Admissions Shortfall (11)	Jail Backlog (12)	State Jails (13)
Sep-98	12,000	0	84,731	80,940	1,500	5,095	2,111	2,411	0	573	36,000	12,549
Oct-98	12,000	0	84,731	80,940	1,725	5,321	2,313	2,440	0	568	36,568	12,549
Nov-98	12,000	0	84,731	80,940	1,350	4,972	2,113	2,468	0	391	36,959	12,549
Dec-98	12,000	0	84,731	80,940	1,425	5,063	2,123	2,488	0	452	37,411	12,549
Jan-99	12,000	0	84,731	80,940	1,650	5,165	2,348	2,511	0	306	37,717	12,549
Feb-99	12,000	0	84,731	80,940	1,425	4,989	2,090	2,526	0	373	38,090	12,549
Mar-99	12,000	0	84,731	80,940	1,575	5,140	2,270	2,545	0	325	38,415	12,549
Apr-99	12,000	0	84,731	80,940	1,575	5,347	2,367	2,561	0	419	38,834	12,549
May-99	12,000	0	84,731	80,940	1,575	5,315	2,354	2,582	0	379	39,213	12,549
Jun-99	12,000	0	84,731	80,940	1,500	5,281	2,217	2,601	0	463	39,676	12,549
Jul-99	12,000	0	84,731	80,940	1,650	5,442	2,353	2,624	0	465	40,141	12,549
Aug-99	12,000	0	84,731	80,940	1,500	5,299	2,131	2,647	0	521	40,662	12,549
FY 1999	12,000	0	84,731	80,940	18,450	62,429	26,790	30,404	0	5,235	40,662	12,549
Sep-99	12,000	0	84,731	80,940	1,575	5,397	2,278	2,673	0	446	41,108	12,549
Oct-99	12,000	0	84,731	80,940	1,725	5,404	2,331	2,695	0	378	41,486	12,549
Nov-99	12,000	0	84,731	80,940	1,275	5,009	1,862	2,714	0	433	41,919	12,549
Dec-99	12,000	0	84,731	80,940	1,500	5,236	2,103	2,736	0	397	42,316	12,549
Jan-00	12,000	0	84,731	80,940	1,500	5,444	2,086	2,756	0	602	42,918	12,549
Feb-00	12,000	0	84,731	80,940	1,425	5,344	2,072	2,786	0	486	43,404	12,549
Mar-00	12,000	0	84,731	80,940	1,575	5,534	2,210	2,810	0	514	43,918	12,549
Apr-00	12,000	0	84,731	80,940	1,575	5,531	2,114	2,836	0	581	44,499	12,549
May-00	12,000	0	84,731	80,940	1,500	5,462	2,016	2,865	0	581	45,080	12,549
Jun-00	12,000	0	84,731	80,940	1,575	5,544	2,113	2,894	0	537	45,617	12,549
Jul-00	12,000	0	84,731	80,940	1,725	5,553	2,344	2,921	0	288	45,905	12,549
Aug-00	12,000	0	84,731	80,940	1,500	5,367	2,107	2,935	0	323	46,228	12,549
FY 2000	12,000	0	84,731	80,940	18,450	64,025	25,638	33,621	0	5,566	46,228	12,549

Footnotes: Admissions shortfall in this report includes local diversions.

(11) = (7) - [(8)+(9)+(10)]

(12)+(13) = previous jail backlog and state jail population - admissions shortfall

Jail diversions (9) include PIR, PIR/PPT, and Jail to Boot Camp

Jail to Prison (8) does not include those going from Boot Camp to Prison

The first fiscal year totals are based on projected data which are shown and data existing prior to the model which are not shown.

Appendix 2: Prison Construction Schedule

Completion Date	Unit	Capacity	City	County
10/31/90	Gib Lewis	1,000	Woodville	Tyler
08/28/91	T. L. Roach	1,000	Childress	Childress
01/24/92	Dolph Briscoe	1,000	Dilley	Frio
04/30/92	Psychiatric Center - Clements	114	Amarillo	Potter
05/15/92	Former N-Group Facility #1	500	Marlin	
06/01/92	Former N-Group Facility #2	500	San Saba	
06/15/92	Former N-Group Facility #3	500	Tulia	
07/01/92	Former N-Group Facility #4	500	Cotulla	
07/15/92	Former N-Group Facility #5	500	Ft. Stockton	
08/15/92	Former N-Group Facility #6	500	Diboll	
08/20/92	William R. Boyd Jr.	1,000	Teague	Freestone
09/28/92	William G. McConnell	2,250	Beeville	Bee
09/30/92	French M. Robertson	2,250	Hawley (Abilene)	Jones
10/02/92	Preston E. Smith	1,000	Lamesa	Dawson
10/23/92	Rufe Jordan	1,000	Pampa	Gray
01/01/93	Ruben Torres	1,000	Hondo	Medina
03/15/93	Geriatric Center - Ellis II	59	Huntsville	Walker
05/31/93	Mark W. Stiles	2,250	Beaumont	Jefferson
08/31/93	Charles Terrell	2,250	Livingston	Polk
09/30/93	Psychiatric Center - Jester	550	Richmond	Fort Bend
04/01/94	Regional #1	1	1,000	Cuero
05/15/94	Regional #2	2	1,000	Colorado City
07/01/94	Substance Abuse #1	9	500	Brownwood
08/01/94	Substance Abuse #2	11	500	Breckenridge
08/15/94	Regional #3	4	1,000	Ft. Stockton
09/01/94	Substance Abuse #3	12	500	San Diego
11/15/94	Regional #4	8	1,000	Amarillo
12/15/94	Regional #5	10	1,000	Dalhart
01/15/95	Substance Abuse #4	15	500	Hondo
02/15/95	Maximum #1	3	2,250	Karnes
02/15/95	Regional #6	13	1,000	Rusk
02/15/95	Substance Abuse #5	17	500	Winnsboro
03/01/95	Substance Abuse #11	14	1,000	Bonham
03/15/95	Substance Abuse #6	19	500	Plainview
04/01/95	Maximum #2	5	2,250	New Boston
04/01/95	Substance Abuse #12	16	1,000	Edinberg
04/01/95	Substance Abuse #7	20	500	Brownfield
05/01/95	Substance Abuse #13	18	1,000	Beaumont
05/01/95	Substance Abuse #8	22	500	Dayton
06/01/95	Psychiatric Facility	7	750	Lubbock
06/01/95	Substance Abuse #9	23	500	Jasper
06/15/95	Maximum #3	6	2,250	Wichita Falls
06/15/95	Substance Abuse #14	21	1,000	Bryan
07/01/95	Substance Abuse #10	24	500	Burnet

CAPACITY

Month	Prison Units	Prison Adjust	Total Prison Units	Special Units	Total Prison & Special	SAT Facilities	Total Capacity
Aug-91	52,261	0	52,261	0	52,261	0	52,261
Sep-91	53,261	0	53,261	0	53,261	0	53,261
Oct-91	53,261	0	53,261	0	53,261	0	53,261
Nov-91	53,261	0	53,261	0	53,261	0	53,261
Dec-91	53,261	0	53,261	0	53,261	0	53,261
Jan-92	54,261	0	54,261	0	54,261	0	54,261
Feb-92	54,261	0	54,261	0	54,261	0	54,261
Mar-92	54,261	0	54,261	0	54,261	0	54,261
Apr-92	54,411	0	54,411	0	54,411	0	54,411
May-92	54,411	0	54,411	470	54,881	0	54,881
Jun-92	54,411	0	54,411	1,410	55,821	0	55,821
Jul-92	54,411	0	54,411	2,350	56,761	0	56,761
Aug-92	55,411	0	55,411	2,820	58,231	0	58,231
Sep-92	59,911	0	59,911	2,820	62,731	0	62,731
Oct-92	61,911	(219)	61,692	3,085	64,777	466	65,243
Nov-92	61,911	(619)	61,292	3,085	64,377	466	64,843
Dec-92	61,911	(619)	61,292	3,085	64,377	466	64,843
Jan-93	62,911	1,773	64,684	3,085	67,769	666	68,435
Feb-93	62,911	1,773	64,684	3,085	67,769	866	68,635
Mar-93	62,970	1,573	64,543	3,085	67,628	1,066	68,694
Apr-93	62,970	1,573	64,543	3,085	67,628	1,066	68,694
May-93	65,220	1,633	66,853	2,615	69,468	1,566	71,034
Jun-93	65,220	1,633	66,853	2,615	69,468	1,566	71,034
Jul-93	65,220	1,633	66,853	4,615	71,468	1,566	73,034
Aug-93	67,470	1,633	69,103	6,615	75,718	1,566	77,284
Sep-93	68,020	1,633	69,653	8,615	78,268	1,566	79,834
Oct-93	68,020	1,633	69,653	8,615	78,268	1,566	79,834
Nov-93	68,020	1,633	69,653	8,615	78,268	1,566	79,834
Dec-93	68,020	1,633	69,653	12,615	82,268	1,566	83,834
Jan-94	68,020	1,633	69,653	12,615	82,268	1,566	83,834
Feb-94	68,020	1,633	69,653	12,615	82,268	1,566	83,834
Mar-94	68,020	1,633	69,653	12,615	82,268	1,566	83,834
Apr-94	69,020	1,633	70,653	12,615	83,268	1,566	84,834
May-94	70,020	1,633	71,653	12,615	84,268	1,566	85,834
Jun-94	70,020	1,633	71,653	12,615	84,268	1,566	85,834
Jul-94	70,020	1,633	71,653	12,615	84,268	2,066	86,334
Aug-94	71,020	1,633	72,653	12,615	85,268	2,566	87,834
Sep-94	71,020	1,633	72,653	12,615	85,268	3,066	88,334
Oct-94	71,020	1,633	72,653	12,615	85,268	3,066	88,334
Nov-94	72,020	1,633	73,653	12,615	86,268	3,066	89,334
Dec-94	73,020	1,633	74,653	12,615	87,268	3,066	90,334
Jan-95	75,020	1,633	76,653	12,615	89,268	3,566	92,834
Feb-95	78,270	1,633	79,903	12,615	92,518	4,066	96,584
Mar-95	78,270	1,633	79,903	12,615	92,518	5,566	98,084
Apr-95	80,520	1,633	82,153	12,615	94,768	7,066	101,834
May-95	80,520	1,633	82,153	12,615	94,768	8,566	103,334
Jun-95	83,520	1,633	85,153	12,615	97,768	10,066	107,834
Jul-95	83,520	1,633	85,153	12,615	97,768	10,566	108,334
Aug-95	83,520	1,633	85,153	12,615	97,768	12,000	109,768

Prison Capacity

	Aug. 91	Aug. 92	Nov. 92
System Adj.	0	1,060	2,068
On-count	49,333	51,401	56,274
Private	2,000	2,000	2,000
Bootcamps	400	422	422
Skyview	528	528	528
Total	52,261	55,411	61,292

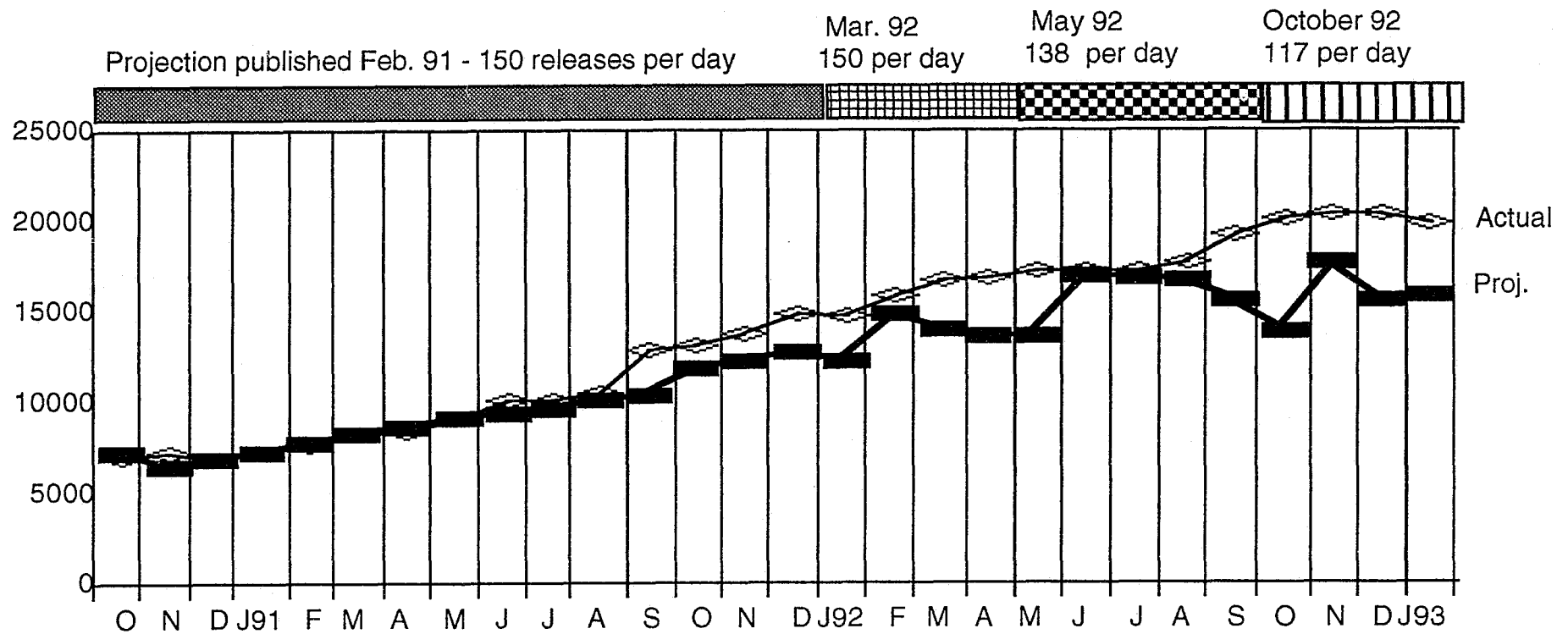
*NOTE: The Criminal Justice Policy Council does not count bootcamps as part of prison capacity; they are counted as a part of diversion capacity.

Appendix 3: Historical Information

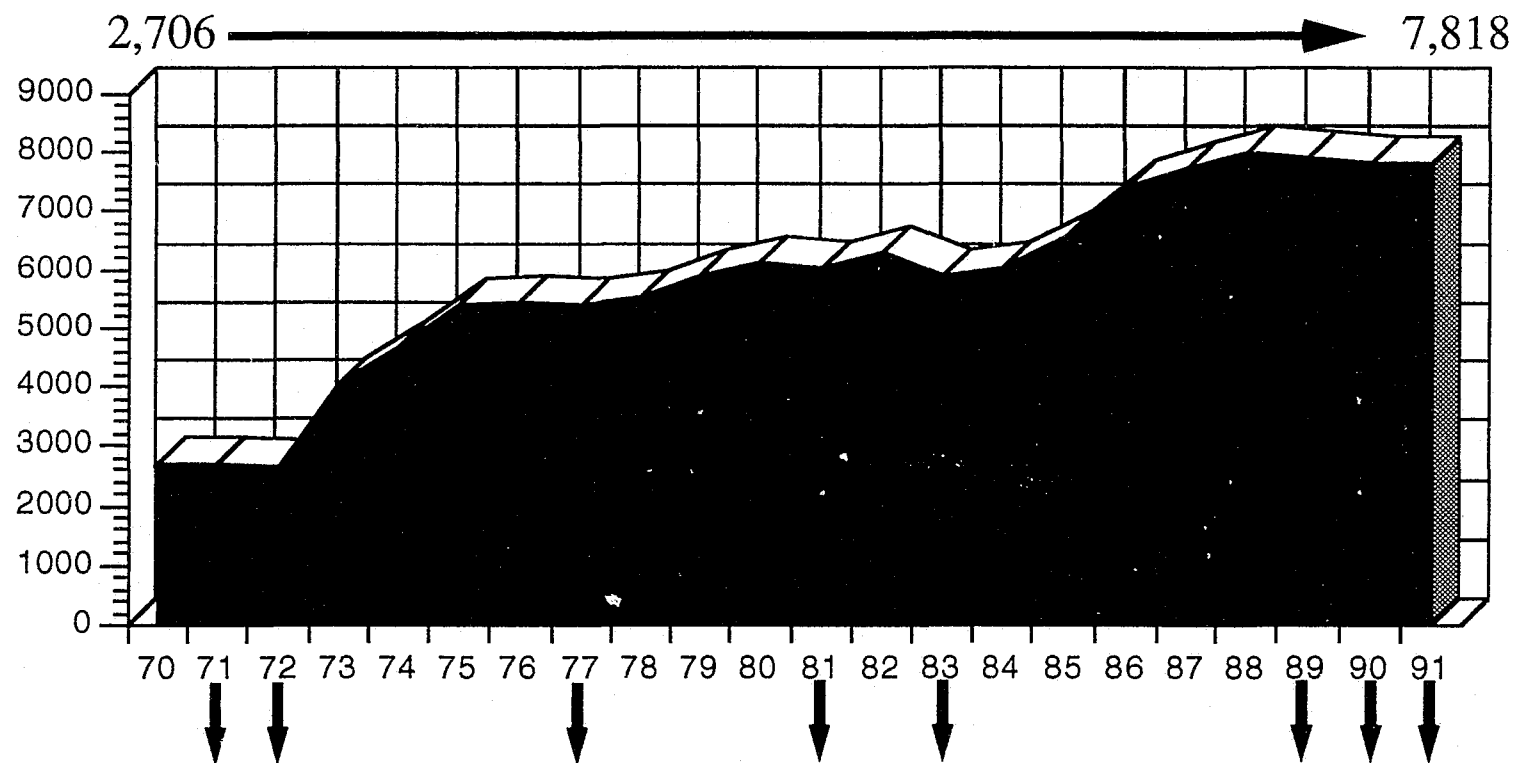
Historical Release Information, September 91 to November 92

Date	Parole Releases	Average Paroles Per Day	Total Releases	Average Total Per Day	Total PIAs Releases	Average PIAs Per Day	Jail BAcklog	Percent PIA's of Backlog
Sep-91	2,439	122	2,614	131	792	40	13,134	6
Oct-91	2,636	120	2,811	128	921	42	13,691	7
Nov-91	2,148	107	2,311	116	757	38	14,821	5
Dec-91	2,198	116	2,403	126	718	38	14,695	5
Jan-92	2,343	112	2,565	122	805	38	15,854	5
Feb-92	2,076	109	2,279	120	696	37	16,699	4
Mar-92	2,412	115	2,642	126	1,069	51	16,825	6
Apr-92	2,587	118	2,820	128	956	43	17,198	6
May-92	2,463	123	2,696	135	1,136	57	17,275	7
Jun-92	2,231	106	2,459	117	1,056	50	17,220	6
Jul-92	1,724	75	1,975	86	876	38	17,718	5
Aug-92	1,096	55	1,339	67	807	40	19,299	4
Average FY		106		117		43		5
Sep-92	1956	93	1795	85	1297	62	20161	6
Oct-92	1289	59	1521	69	980	45	20388	5
Nov-92	1121	62	1327	74	748	42	20377	4
Average Sept-Nov 92		72		76		50		5
Average July-Nov. 92		69		76		45		5

Comparison of Actual Jail Backlog with CJPC Projected Backlog, Sep. 1990 - January 1993



Crime Rate in Texas Per 100,000 Population, 1970-1991



8 Downs and 13 Ups in 22 Years