

NEW JERSEY STATE POLICE 71st ANNUAL REPORT

FOR THE YEAR ENDING JUNE 30, 1992

146564

U.S. Department of Justice
National Institute of Justice

This document has been reproduced exactly as received from the person or organization originating it. Points of view or opinions stated in this document are those of the authors and do not necessarily represent the official position or policies of the National Institute of Justice.

Permission to reproduce this copyrighted material has been
granted by
New Jersey State Police

to the National Criminal Justice Reference Service (NCJRS).

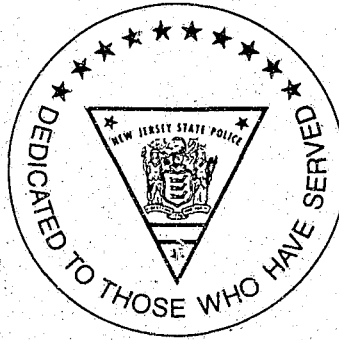
Further reproduction outside of the NCJRS system requires permission of the copyright owner.

New Jersey State Police
Museum & Learning Center

ROBERT J. D'AMICO
APPOINTMENT GENERAL

JUSTIN J. DINTINO
SUPERINTENDENT

146564



New Jersey State Police Museum & Learning Center

The New Jersey State Police Museum and Learning Center is the culmination of many years of hard work and dedication by many individuals, corporations and unions. Located at Division Headquarters, this facility is a new chapter in the history of the Division and is a fitting monument for those brave troopers who made the ultimate sacrifice for the citizens of this state. It symbolizes the beginning of a new era where both young and old, can come together to learn and understand the history of this great and diverse organization.

The new complex encompasses over 6,500 square feet of floor space which houses a library and learning center as well as open exhibit area. These exhibits and displays track the history of the New Jersey State Police from its inception in 1921 to the present day. It includes artifacts from the Lindbergh kidnapping case and many other famous events that highlight the Division's 71 years of proud service.

Pages 48-50 contain photographs of the Museum and Learning Center while photographs of various historical significance can be found throughout this report.

*For Hours of Operation Call: (609) 882-2000, Extension 6013.
Group Tours by Appointment.*

146564



State of New Jersey

DEPARTMENT OF LAW AND PUBLIC SAFETY DIVISION OF STATE POLICE

POST OFFICE BOX 7068
WEST TRENTON, NEW JERSEY 08628-0068
(609) 882-2000

ROBERT J. DEL TUFO
Attorney General

COLONEL JUSTIN J. DINTINO
Superintendent

The Honorable Robert J. Del Tufo
Attorney General of the
State of New Jersey

Sir:

I respectfully submit the Annual Report of the Division of State Police for the fiscal year July 1, 1991 through June 30, 1992, our seventy-first year of service to the citizens and the State of New Jersey.

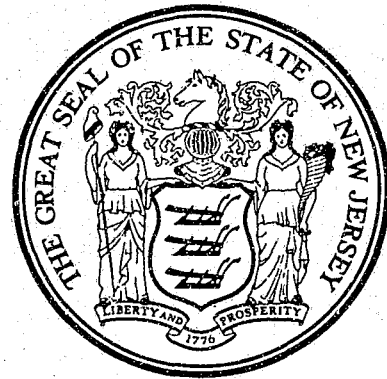
I am proud of our accomplishments during this fiscal year, and wish to take this opportunity to acknowledge the continuous efforts of our members, enlisted and civilian, who have provided the highest level of service to the citizens and the State of New Jersey.

I also wish to acknowledge your confident support and express our sincere appreciation to your staff for the cooperation rendered in areas of mutual concern.

Sincerely,

A handwritten signature in cursive script, reading "Justin J. Dintino".

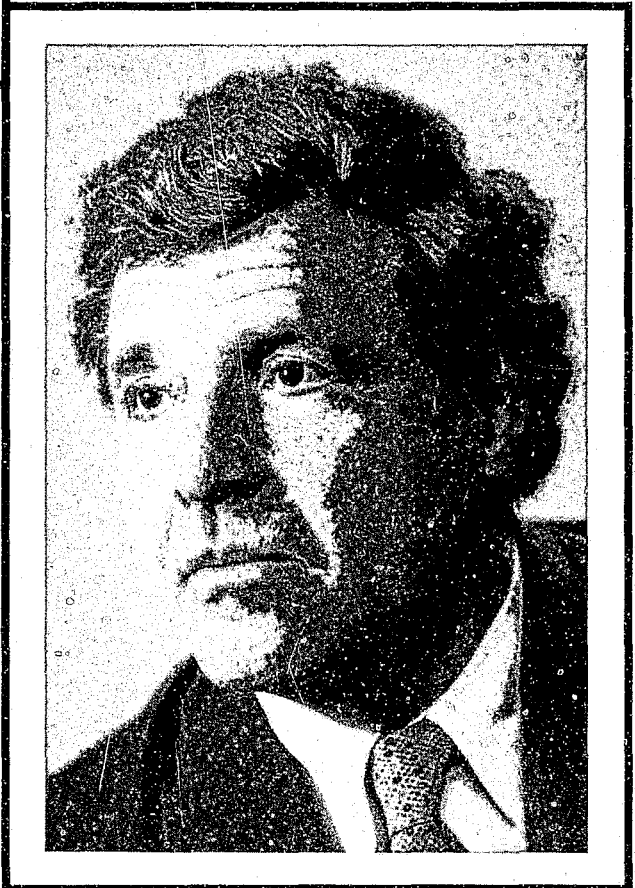
Justin J. Dintino
Colonel
Superintendent



Governor Jim Florio



Attorney General Robert J. Del Tufo





Colonel J.J. Dintino
Superintendent



Lt. Col. R. Jankowski
Deputy Superintendent



Lt. Col. F. Morrone
Executive Officer

1991 TROOPERS OF THE YEAR



DSG Edward Quirk - 2979 and DSG William Newsome - 3043 are presented with the Trooper of the Year Award by Colonel Justin Dintino.

In 1968, Colonel David Kelly decided that the State Police Awards Program was in need of a commendation that would exemplify the continuous work done by a Trooper on a day-to-day basis throughout the year. By doing so, he hoped it would inspire the Troopers to work to a level of ultimate recognition. His decision was to add a commendation that would, each year, honor the "New Jersey State Trooper of the Year." Its recognizable red ribbon, its annual ceremony and outstanding list of recipients, have allowed the award to remain an "honor above all honors." This year's recipients, DSG William Newsome - 3043 and DSG Edward Quirk - 2979, are no exception.

A three-year undercover investigation, code named "OPERATION BROADSWORD," culminated with the arrest of 38 members and associates of six organized crime families. Among those arrested were John Riggi, reputed boss of the DeCavalcante family; Joseph "Scoops" Licata; Anthony "Tony Buck" Piccolo and Nicholas Scarfo Jr., son of Nicodemo Scarfo Sr., boss of the Bruno/Scarfo family. DSGs Quirk and Newsome initiated this investigation by developing a highly placed confidential source, who in turn provided them with incriminating conversations into the illegal

activities being conducted by these criminal enterprises. The Detectives coordinated the street level activities during this operation, controlling and interacting with the source and bringing them into daily contact with known mob members. Their vast knowledge of the inner workings of these well-entrenched organizations was paramount to the success of "OPERATION BROADSWORD." All accused were indicted by a state grand jury in 18 separate but related indictments for racketeering, conspiracy, commercial bribery, criminal usury, leader of organized crime, theft by extortion, drug offenses, gambling, bookmaking, loansharking, and the manufacture and distribution of illegal video machines. Noteworthy was the recording of an actual "Making Ceremony" for membership in the Bruno/Scarfo Crime Family. This was only the second time, nationwide, that law enforcement authorities have actually recorded this secret ritual.

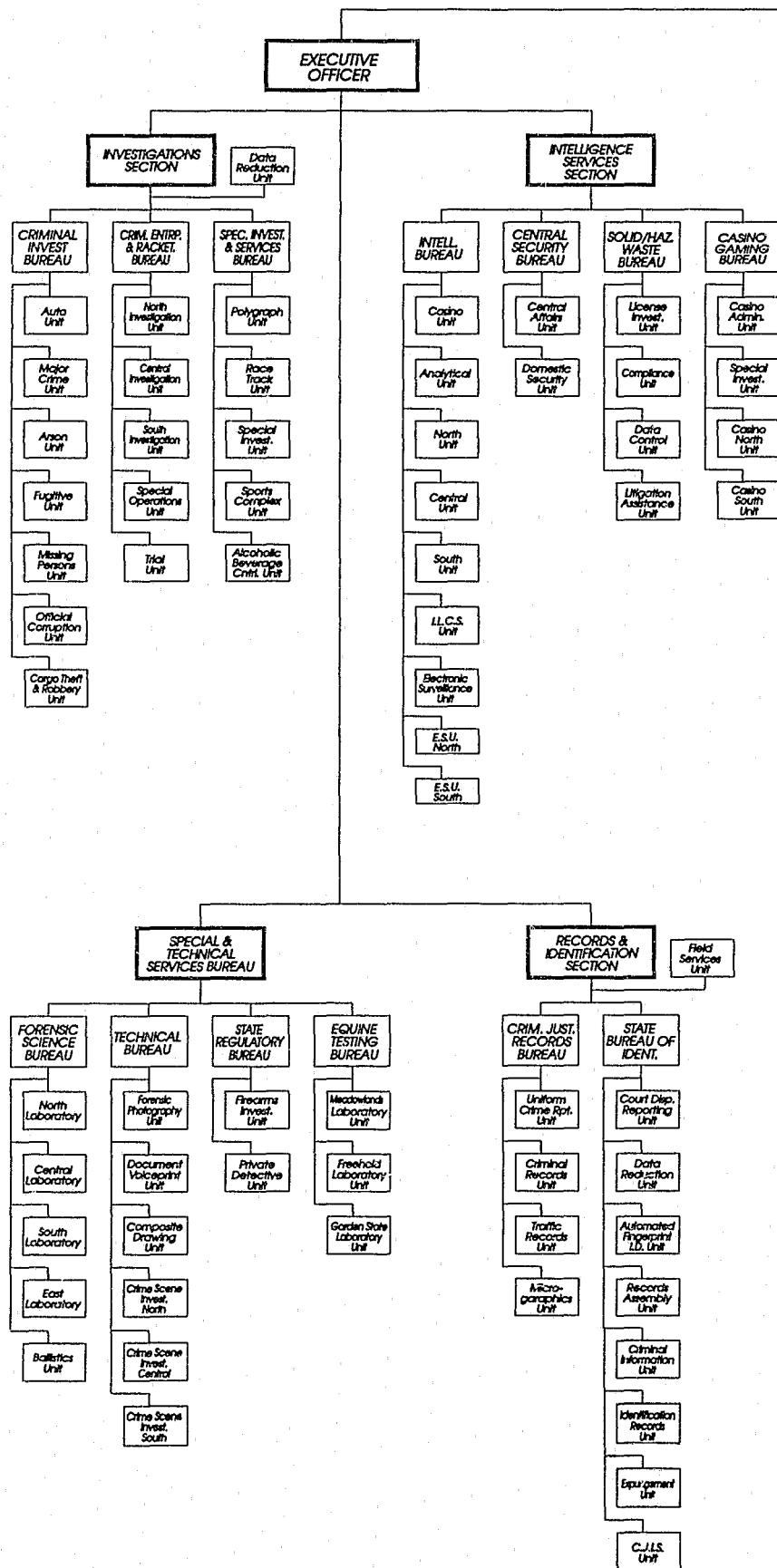
DSGs Quirk and Newsome are two outstanding, well respected veterans of 17 years and this year's recipients of the most prestigious award this organization has to offer to its members. The Division congratulates DSG Newsome and DSG Quirk on becoming the 1991 New Jersey State Troopers of the Year. ▽

TABLE OF CONTENTS

ORGANIZATIONAL CHART	i
TROOP AND FACILITY LOCATIONS	iii
POWERS AND DUTIES	iv
ORGANIZATION	iv
INVESTIGATIONS SECTION	
Criminal Investigation Bureau	1
Criminal Enterprise and Racketeering Bureau	4
Special Investigations and Services Bureau	5
DIVISION STAFF SECTION	
State Governmental Security Bureau	9
Internal Affairs Bureau	10
Training Bureau	10
Division Services Bureau	14
FIELD OPERATIONS SECTION	
Traffic Bureau	17
Troop A	18
Troop B	19
Troop C	19
Troop D	20
Troop E	21
INTELLIGENCE SERVICES SECTION	
Intelligence Bureau	23
Central Security Bureau	25
Solid/Hazardous Waste Background Investigation Bureau	25
Casino Gaming Bureau	25
EMERGENCY MANAGEMENT SECTION	
Regional Organization Bureau	27
Operational Planning Bureau	28
Training and Program Support Bureau	28
Marine Law Enforcement Bureau	28
Communications Bureau	29
ADMINISTRATION SECTION	
Office of Affirmative Action	31
Personnel Bureau	31
Fiscal Control Bureau	33
Logistics Bureau	33
Planning Bureau	36
SPECIAL AND TECHNICAL SERVICES SECTION	
Forensic Sciences Bureau	39
Technical Bureau	40
State Regulatory Bureau	41
Equine Testing Bureau	42
RECORDS AND IDENTIFICATION SECTION	
State Bureau of Identification	43
Criminal Justice Records Bureau	45

NEW JERSEY STATE POLICE Organizational Chart

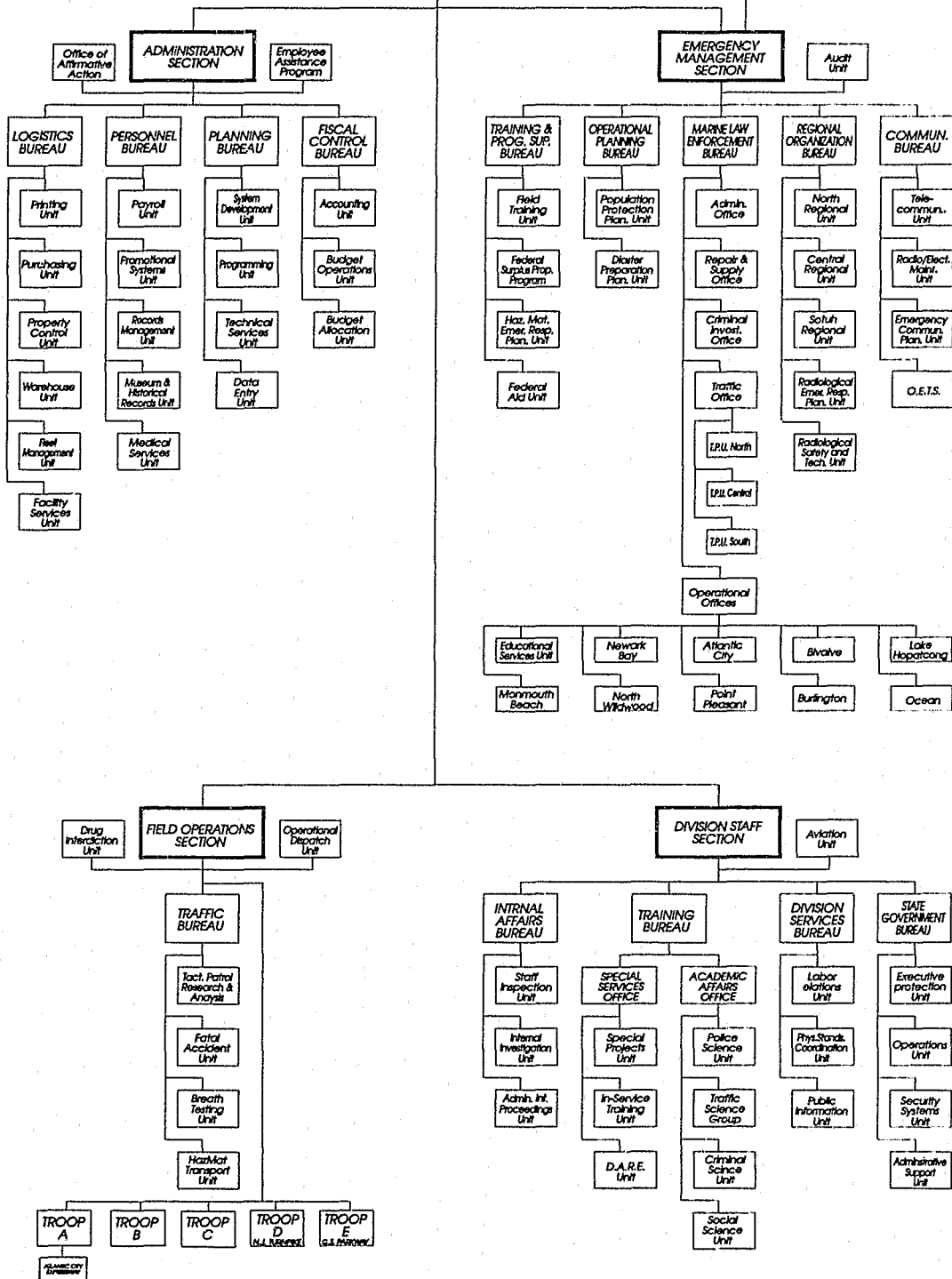
June 30, 1992



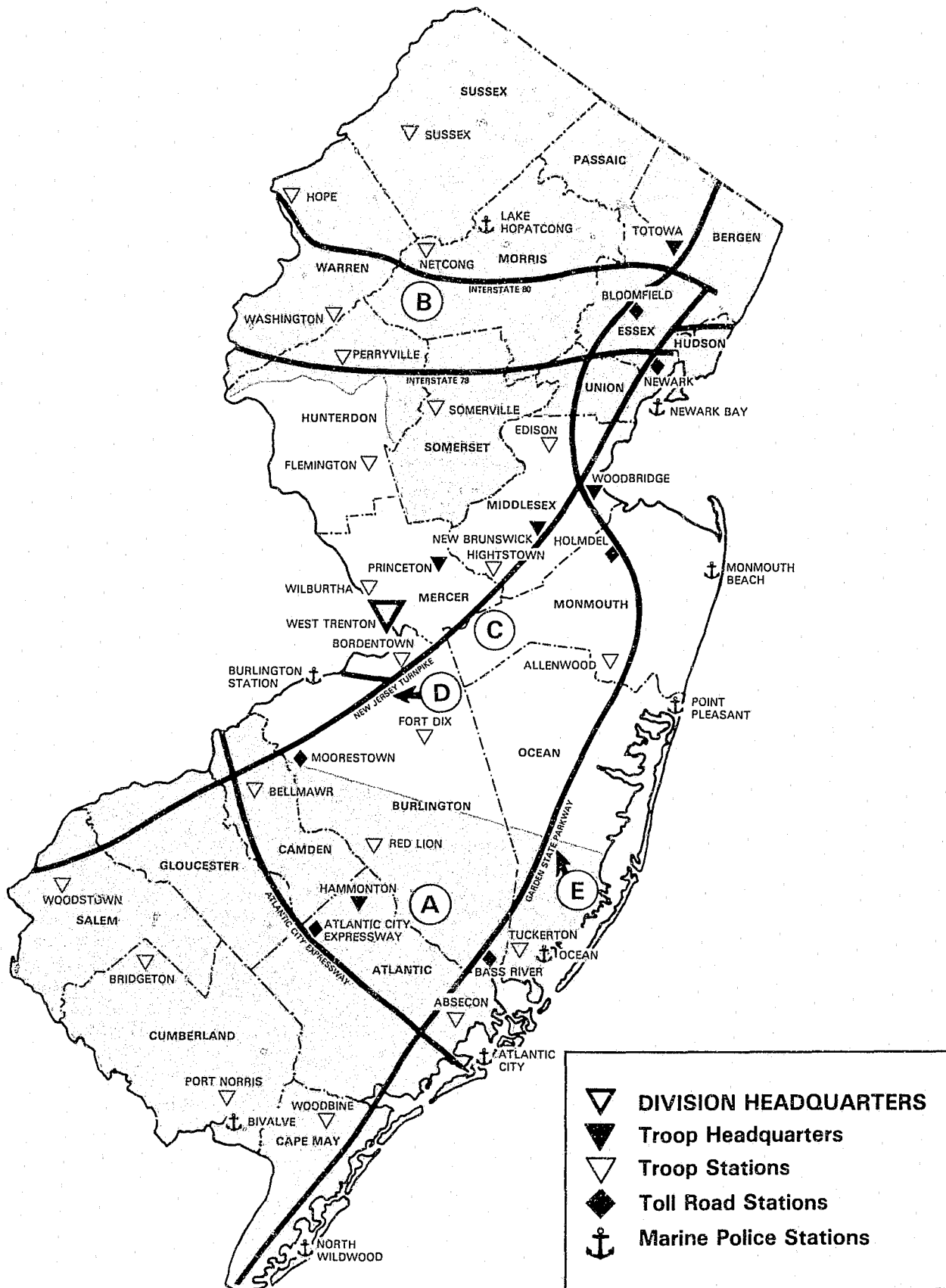
SUPERINTENDENT

DEPUTY SUPERINTENDENT

Management Review Unit



TROOP AND FACILITY LOCATIONS



POWERS & DUTIES

Under the executive leadership of the Superintendent, the Division has full police powers and is authorized to enforce any law or ordinance anywhere within the State. Members of the Division of State Police are subject to the call of the Governor. They are peace officers of the State and are empowered to furnish police protection; to render first aid to the injured and succor the helpless; and to exercise, in general, the same powers and authority as are conferred by law upon police officers and constables.

The Division of State Police has the power to prevent crime, to pursue and apprehend offenders, and to obtain legal evidence necessary to ensure the conviction of such offenders in the courts. Division members are authorized by law to execute any lawful warrant or order of arrest issued against any person and to make arrests without warrant for violations of the law in their presence, the same as are or may be authorized by law for other peace officers.

Members of the Division of State Police provide statewide enforcement of the criminal, motor vehicle, marine, and alcoholic beverage control laws. They are authorized to cooperate with any state department or any state or local authority in the preservation of law and order. The Division may not, however, be used as a posse in any municipality except by order of the Governor, upon request by the governing body of such municipality. This does not preclude the assignment of Division personnel to aid election superintendents on election day in the enforcement of the State's election laws. The Division directs and controls the State Emergency Management program and when directed by the Governor and the Attorney General, assists local police authorities in controlling civil riots and other unlawful civil disturbances of major proportions. Division members may also act as wardens in the protection of the forests and the fish and game of the state.

ORGANIZATION

The Division of State Police, one of nine Divisions of the Department of Law and Public Safety, was established in 1921. The Division is headed by a Superintendent and supported by a Deputy Superintendent and staff, whose areas of responsibilities are divided into eight categories: Investigations, Intelligence Services, Records and Identification, Special and Technical Services, Administration, Emergency Management, Division Staff, and Field Operations. Through his staff, the Superintendent directs the activities of the five general road duty commands: Troop A (Southern New Jersey), Troop B (Northern New Jersey), Troop C (Central New Jersey), Troop D (New Jersey Turnpike), and Troop E (Garden State Parkway).

The Deputy Superintendent is the Chief of Staff and serves as the Acting Superintendent in the absence of the Superintendent. His primary obligation is the execution of staff tasks through the coordinated efforts of its members. The Deputy Superintendent has the responsibility of directing and coordinating the policies of the Superintendent as they pertain to the Divisions Sections and the personnel within.

The organizational structure of the Division of State Police, as depicted in the Organizational Chart, is designed to provide maximum efficiency and effectiveness in the performance of its diversified functions.



Troopers interrogate a suspect during the course of an investigation, circa 1926.

INVESTIGATIONS SECTION



Major P. Vona
Section Supervisor

The **Investigations Section** is responsible for the direction, coordination, and control of the Criminal Investigation Bureau, Criminal Enterprise and Racketeering Bureau and Special Investigation and Services Bureau. Presently, the section has 292 sworn members, 36 alcoholic beverage control inspectors, two analysts and 41 civilian personnel.

The section has processed over 2,251 requests for criminal history checks and investigative history information over this past year. It organizes, controls and analyzes large amounts of investigative data by utilizing data processing and traditional analytic techniques.

The **Data Management Unit** is responsible for all the computer hardware and software assigned to the Investigation Section. The personnel assigned to this unit work closely with detectives within the section to design tailor-made computer programs to collect and correlate data facilitating their investigation.

The Automated Files for Investigative Records Management (AFFIRM) system is a mainframe database serving as the central repository for investigative information generated by the section. AFFIRM supports the diverse objectives of the Investigations Section by allowing its users to share captured information.

The On-Scene Investigation System (OSIS) consists of microcomputers and tailor-designed databases created to accommodate the needs of each specific investigation.

The **Criminal Investigation Bureau** is comprised of the Auto Unit, Major Crime Unit, Arson Unit, Fugitive Unit, Missing Persons Unit, Official Corruption Unit, and the Cargo Theft and Robbery Unit.

The primary function of the **Auto Unit** is the investigation of organized criminal groups responsible for the theft of trucks, heavy equipment, and private automobiles for profit. Detectives assigned to the Auto Unit are experts in the area of vehicle identification, and utilize methods such as heat or acid to obtain obliterated vehicle identification numbers. Members of the Auto Unit primarily target "chop shop" operations where stolen luxury automobiles are taken and disassembled for parts or are altered and disguised for resale. They also actively investigate counterfeit documentation rings, salvage title operations and insurance fraud schemes. Unit personnel are trained in all systems and procedures used by the Division of Motor Vehicles in recording and filing data.

The Auto Unit provides assistance to federal, state and local agencies in all vehicle theft investigations, and maintains a liaison with international, national, and state auto theft association members involved in complex investigations. Auto Unit members serve as officers and representatives in numerous professional organizations, such as the Vehicle Theft Investigators Association of New Jersey and the International Association of Auto Theft Investigators. Members of the Auto Unit lecture at the various police academies throughout the state to educate municipal police officers in the latest auto theft methods and current deterrent techniques.

During the past year, the Special Projects Unit of the Field Operations Section was reassigned to the Auto Unit. The Auto Unit has assumed a majority of the Special Projects Unit's investigative responsibilities. These

include odometer fraud and the investigation of Division of Motor Vehicle criminal complaints, such as driver's license, registration and title irregularities. This merger has allowed the unit to regionalize into three squads that can target specific auto theft problems in their area of responsibility.

The Auto Unit also handles numerous administrative and regulatory responsibilities. In 1992, the Auto Unit initiated a new Statewide Regulatory Inspection Program of licensed and unlicensed auto body and junk yards throughout the state. The Auto Unit has always inspected these facilities, but the impetus of the Governor's Auto Body Fraud Task Force, of which the Superintendent is a member, has led to a regular statewide program. Each month an Auto Unit coordinator selects a different county to conduct the regulatory inspections. Teams of state, local and county police then inspect body shops and junk yards in that county. Since the program's inception, 160 facilities have been inspected, 20 stolen vehicles recovered, and 62 regulatory violations noted, including 31 unlicensed facilities.

The Superintendent has designated the Auto Unit to coordinate the Combat Auto Theft Program (CAT). A voluntary decal program has been established by statute for the purpose of deterring auto theft and creating public awareness in the state's effort to curtail vehicle theft rates. Through this program, automobile owners are able to waive their constitutional rights in writing to permit a police officer to stop their vehicle if it is observed operating between the hours of the 1:00 am and 5:00 am, the hours in which most vehicle thefts occur.

The Auto Unit maintains an office within the Division of Motor Vehicles for the purpose of initiating investigations on all counterfeit/ altered titled documents illegally submitted to the D.M.V. agencies located in the state. It also services Auto Unit detectives in the field and other agencies requesting investigative information on registered motor vehicles.

The Auto Unit coordinates a statewide salvage inspection program at three inspection sites. This program deters stolen vehicles from being replaced with falsely obtained vehicle identification numbers (VIN) and operated as a legitimate vehicle.

During the 1992 Fiscal Year, the Auto Unit conducted 394 auto theft investigations, resulting in the arrests of 198 persons on 420 counts. This led to the recovery of 195 stolen vehicles valued at \$3,339,450. In addition,

\$1,053,562 in stolen property was also retrieved through verification of vehicle identification numbers in conjunction with the state's salvage title program. Additionally, the Auto Unit conducted 25 presentations and lectures on auto theft investigations and deterrence.

The **Major Crime Unit** investigates all homicides, kidnappings, and any other serious crimes which warrant the expertise of its highly trained personnel. Unit members also assist county and local authorities in cooperative investigations, resulting in the solution of homicides which might ordinarily go unsolved.

The Major Crime Unit provides training in the proper care and evaluation of the crime scene, evidence handling, guidance at autopsies, and assurance that all medico-legal aspects of an investigation are covered. The unit is solely responsible for the investigation of all shootings and incidents resulting in serious injury or death of or by sworn members of the Division of State Police. They also provide cooperative assistance to federal, state, and local law enforcement agencies in the tracking of serial and repetitive murderers.

Personnel continually update their knowledge by attending medico-legal and other homicide investigation schools and seminars, and are kept abreast of all modern scientific techniques available to homicide investigators. Detectives assigned to the Major Crime Unit are active members of the Harvard Associates of Police Science, and are also trained hostage negotiators.

The **Homicide Evaluation and Assessment Tracking (H.E.A.T.) Squad**, which operates within the Major Crime Unit, is a culmination of a formalized partnership between the New Jersey State Police and the Federal Bureau of Investigation in an effort to identify violent crimes exhibiting similar patterns. The H.E.A.T. Squad collects data through the use of a Crime Analysis Report on crimes such as: 1) solved or unsolved homicides or attempts, especially those that involve an abduction, are apparently random, motiveless, sexually oriented, or are known or suspected to be part of a series, 2) missing persons, where the circumstances indicate a strong possibility of foul play and the victim is still missing, and 3) unidentified bodies, where the manner of death is known or suspected to be homicide.

The H.E.A.T. Program is an investigative tool used to link similar pattern violent crimes through comparison of specifics such as date, location, modus operandi, vehicle, weapons,

victim/suspect description, and known suspect behavior. When crimes entered into the H.E.A.T Program exhibit serial or repetitive characteristics, each investigative agency is notified and urged to coordinate their information. Information entered into the H.E.A.T Program is also entered into the Federal Bureau of Investigation's V.I.C.A.P. (Violent Criminal Apprehension Program) for comparison to cases nationwide. It is the goal of H.E.A.T. and V.I.C.A.P. to provide all law enforcement agencies with the information necessary to initiate cooperation and a coordinated multi-agency investigation.

In conjunction with the H.E.A.T Program, the bureau has implemented a Criminal Investigative Analysis (CIA) Program, which includes an analyst who has been trained by the Federal Bureau of Investigation's National Center for the Analysis of Violent Crime. CIA is the process of identifying the personality characteristics of an individual based upon a detailed analysis of the crime they have committed. Although physical evidence can be collected and otherwise documented at crime scenes, certain behavioral clues do not lend themselves to collection. Factors such as rage, hate, love, fear or remorse may be present at any given crime scene, but may not even be considered by an untrained investigator. These programs are additional weapons that are available to law enforcement agencies to assist in the identification, arrest and prosecution of those who commit violent crimes.

During the past year, the Major Crime Unit received and investigated a total of 82 homicides or major crime complaints. Ten of these cases have been closed, while 30 are still pending court action and 42 remain under investigation. Forty-one individuals were arrested.

The **Arson Unit** continues to provide the state of New Jersey with statewide arson investigative capabilities. Unit personnel initiate and coordinate investigations, as well as assist other agencies in the detection and investigation of arson cases. They provide expertise in the determination of the cause and origin of fires, which are the most critical areas in arson investigation, and appear in court as expert witnesses. During this year, the unit received a total of 441 requests for assistance from state, county, and local police and fire departments. Unit members arrested 98 persons for a total of 158 arson and explosive-related crimes, and cleared 66 pending investigations. In addition to normal investigative operations, the unit also

participates in extensive training throughout the state in conjunction with the International Association of Arson Investigators, Division of Criminal Justice, Rutgers University, and numerous other agencies. Members often work closely with investigators of the New Jersey Department of Insurance Fraud Unit in efforts to deter insurance fraud in the state.

During Fiscal Year 1992, Smokey, an accelerant detection dog, was added to the Arson Unit. Trained to react to various accelerants utilized in the crimes of arson, Smokey has reacted positively at over thirty scenes. This added investigative tool has led to several arrests that may have otherwise gone without detection.

The **Bomb and Explosives Investigation Team** within the Arson Unit is responsible for the investigation and rendering safe of all explosive devices found by the New Jersey State Police or any other agency requesting assistance. The Bomb Squad has extensive knowledge of terrorist groups and their operational methodology, and maintains this proficiency through constant training and education. Bomb technicians responded to 126 requests to investigate explosive-related incidents throughout the state.

Organized in 1982, the Bomb Squad is renowned nationwide for professionalism and expertise in the field of explosives investigation.

The **Fugitive Unit** identifies the most violent and dangerous fugitives in the state and apprehends them, significantly reducing the number of Class I offenders wanted as fugitives from justice. The Fugitive Tracking System has been tested and proven effective in bringing this about.

The Fugitive Unit had 487 investigations in the system, of which 363 were new cases. Of these, a total of 317 resulted in arrests.

The Fugitive Unit publishes the *New Jersey 12 Most Wanted List*, which is formulated to generate both official and public awareness of the fact that these dangerous subjects are at large. This list is distributed nationally. The accused selected for placement on this list are chosen from candidates submitted by the various prosecutor's offices and prison systems.

Since the inception of this program in 1969, 66 of the 74 fugitives placed on this list have been apprehended. Three of New Jersey's 12 most wanted fugitives have been arrested within the last twelve months.

The **Missing Persons Unit**, established by

legislation in 1984, is one of the few law enforcement agencies in the United States which comprehensively addresses the many facets of the missing persons problem.

Among its many roles, the Missing Persons Unit was legislatively charged with the responsibility of coordinating and investigating cases involving missing persons, unidentified living and deceased individuals. The unit also collects and maintains a centralized database on all missing and unidentified persons who are reported in New Jersey.

The Missing Persons Unit provides investigative and technical service to law enforcement agencies throughout New Jersey on the various aspects of missing and unidentified person investigations. The unit is also responsible for providing specialized training to law enforcement personnel and medical examiners throughout the state.

By virtue of their investigative activities, the Missing Persons Unit began to observe a strong correlation between runaway children and the sexual exploitation of these children either before or during the runaway episode. In response to this tragic situation, a squad was created within the unit to investigate the sexual exploitation of children in the state. The Child Sexual Exploitation Squad has gained national recognition for their expertise in proactively addressing this problem.

During the past year, the unit initiated 92 investigations and has assisted in numerous other investigations with other New Jersey law enforcement agencies. The unit's air scent body recovery dog, "Buffy," responded to over 37 searches and recovered 2 bodies. The unit gave 23 lectures this past year to law enforcement, public and private groups. The unit also received over 700 calls from other agencies and the general public requesting assistance and information.

The **Cargo Theft and Robbery Unit** was established on June 1, 1992, and is responsible for the investigation of thefts and robberies from major cargo storage facilities and commercial freight carriers within the state of New Jersey. This includes all commercial and industrial centers, air, sea, and rail terminals, and the motor vehicles utilized for the transportation of such cargo.

The Cargo Theft and Robbery Unit also maintains a statistical record of cargo thefts and robberies which occur in the state, and provides specialized assistance to municipal, county, state and federal authorities to increase arrests,

prosecution and conviction of cargo thieves and fences.

The **Official Corruption Unit** is responsible for the investigation of allegations of corruption in governmental operations at municipal, county and state levels. These allegations are received through the Division of State Police and the Division of Criminal Justice, as well as through anonymous sources. All allegations received are thoroughly investigated by the unit's highly trained investigators. These investigations routinely involve the examination of voluminous financial, business and legal documents.

The Official Corruption Unit also works in conjunction with the Official Corruption Unit of the Division of Criminal Justice. Each case investigated is assigned a Deputy Attorney General who provides legal advice during the investigation, presents the case to a State Grand Jury when warranted, and will ultimately prosecute the case at trial.

In Fiscal Year 1992, the Official Corruption Unit investigated 127 complaints of corruption statewide. Of these investigations, 13 involved the use of court-authorized consensual recordings.

The formation of the **Criminal Enterprise and Racketeering Bureau** represents the Division's awareness to changes in criminal behavior and operation. Previously, the Division had maintained both a Narcotic Bureau and an Organized Crime Bureau. However, the reality of current criminal enterprises in New Jersey was that narcotics or narcotic-related offenses have become entwined with organized criminal behavior.

As a result, the New Jersey State Police has seen organized criminal groups which had traditionally operated in small, loosely knit elements, evolve into increasingly larger and more complex organizations. These organizations consisted of older established networks, as well as newly formed alliances. These larger enterprises afforded both the individual criminal and the organization more efficient and effective utilization of resources, manpower and criminal expertise. This type of organization provided greater security and stability for illicit operations, especially narcotics trafficking. These enterprises are sophisticated, complex, and unfortunately, commonplace. An innovative investigative initiative is required to deal with this growing problem.

The goal of the Criminal Enterprise and Racketeering Bureau is to provide a viable and

effective organized investigative program to combat systematic conspiratorial criminal activity by structured groups or organizations. The bureau is responsible for the identification, disruption and eradication of organized criminal groups and their illicit enterprises.

The combined narcotic and organized crime expertise of the Criminal Enterprise and Racketeering Bureau personnel has allowed the Division to enhance its efforts in combating the proliferation and expanding influence of criminal enterprises and their racketeering activities. The Criminal Enterprise and Racketeering Bureau now consists of 140 sworn and 14 civilian personnel.

This bureau is comprised of the North, Central and South Investigation Units, the Special Operations Unit and the Trial Unit.

The **North, Central and South Investigation Units** are field offices that are strategically located throughout the state and work in close cooperation with federal, county and municipal authorities. Bureau operatives often engage in undercover operations and utilize all types of physical and electronic surveillance equipment.

The **Special Operations Unit** consists of the Patrol Response Squad, and the Special Projects Squad.

The **Patrol Response Squad** assists all State Police road stations, including those of the Garden State Parkway and New Jersey Turnpike, regarding substantial seizures of drugs and currency. The investigative technique utilized by squad members facilitates the gathering and disseminating of vital intelligence information. This information is sought in an effort to pursue all conspiratorial aspects, such as source and destination of the drugs/currency involved. The detectives' expertise in this field has been recognized nationally through lectures concerning highway drug interdiction and follow-up investigations.

The **Special Projects Squad** conducts investigations in cooperation with other law enforcement organizations targeting criminal groups or organizations operating in multi-jurisdictional circumstances.

The **Trial Unit** prepares criminal cases originating from the Criminal Enterprise and Racketeering Bureau for grand jury and trial.

During this past fiscal year, members of the Criminal Enterprise and Racketeering Bureau arrested 1,028 persons and seized \$4,689,867 in cash, 176 weapons, 5,929 lbs. of cocaine, 1,735 lbs. of marijuana, 10 lbs. of crack cocaine, and 10 lbs. of heroin. The total value of seized

narcotics was \$64,931,198.

Hotel Interdiction — On July 12, 1991, bureau members conducting a hotel interdiction in Newark, New Jersey observed five subjects acting suspiciously. This investigation resulted in the seizure of \$113,000 and two vehicles. Five subjects were arrested, including two from Toronto, Canada. Upon contacting Toronto Police, it was learned that these subjects were targets of a wiretap investigation which had connections in Canada, New York, New Jersey, and Florida.

Operation Downtown — A multi-faceted undercover investigation targeting diverse street crimes and narcotic distribution in the city of Newark. Bureau members raided two illegal casinos, and seized illegal assault weapons and narcotics. Thirty-three individuals were arrested and \$34,185 was seized.

Operation Sea Coast — This was a five-month wiretap investigation targeting cocaine distribution in Monmouth County, New Jersey. On April 18, 1992, five subjects were arrested in New Jersey and eight subjects were arrested in California. Seized were 290 kilograms of cocaine, two ounces of marijuana, \$37,600, five vehicles, and two weapons.

Operation Big Apple — A nine-month investigation which targeted an international heroin smuggling network centered in Bergen County. Bureau members arrested fifty-three subjects and seized \$27,000 cash, nine ounces of cocaine, and over two kilos of heroin valued at \$360,000.

The **Special Investigations and Services Bureau** is comprised of five units: the Polygraph Unit, Race Track Unit, Special Investigations Unit, Sports Complex Unit, Alcohol Beverage Control Enforcement Unit.

The **Polygraph Unit** was created within the Division of State Police in 1952. It is the oldest existing polygraph unit within the state. The unit conducts both stipulated and non-stipulated polygraph examinations for all state, county, and municipal law enforcement agencies and provides service to other state and federal agencies, as well as out-of-state agencies with the proper authorization.

The polygraph is used as an investigative aid and provides technical assistance to detectives during ongoing criminal investigations. The use of the polygraph in criminal investigations dramatically reduces investigative time and costs. The detection of deception technique eliminates truthful persons from suspicion and quickly identifies the deceptive person.

The unit is presently staffed with five examiners; three were trained in the detection of deception techniques at the Keeler Polygraph Institute, Chicago, Illinois. Two were trained at the Royal Canadian Mounted Police College in Ottawa, Canada. All are court-accepted experts and are active members of the State of New Jersey Polygraph Association and the American Polygraph Association. Both organizations have established the ethical and professional standards by which examiners are guided.

During the past year, 378 persons were examined on the polygraph. Two hundred fifty-five persons were identified as being truthful and thereby eliminated as suspects in such crimes as homicide, arson, rape, extortion, and official misconduct. Ninety-nine persons were found to be deceptive. Eighty-two persons confessed their guilt. Twenty-four examinations resulted in being indefinite or inconclusive in nature.

In addition, Polygraph Unit personnel conduct lectures and demonstrations on the polygraph technique for educational institutions, civic groups, and law enforcement agencies. Due to the unit's expertise in interviewing and interrogation, lectures covering both disciplines are presented statewide at various police academies and special training schools.

The **Racetrack Unit** members are responsible for investigating all criminal activity that occurs on the grounds of the five licensed pari-mutuel wagering facilities in the state. Primarily, unit members investigate all findings of foreign substances in the post-race urine specimens of participating horses, any race which is questionable and all pari-mutuel ticket frauds, as well as all cases of hidden ownership.

Unit members assist the Racing Commission investigators and the Thoroughbred Racing Protective Bureau (TRPB) in maintaining integrity throughout the racing industry. The New Jersey Racing Commission requires that all horsemen and employees at the pari-mutuel wagering racetracks be fingerprinted, and unit members check all arrest records and forward their recommendations concerning the licensing of these individuals to the Commission.

The unit conducted a total of 5,988 criminal background and other investigations during the year. Included in these are 467 criminal investigations which resulted in 103 arrests, 33 drug "positive" investigations and 5,521 fingerprint record checks. Property totalling over \$5,842.00 was recovered as a result of the unit's

investigations.

Racetrack Unit detectives, along with investigators from the U.S. Department of Immigration and Naturalization investigated allegations that numerous illegal aliens were being employed as horse grooms at the Meadowlands Racetrack. A joint investigation resulted in the apprehension of 71 persons who had entered the United States illegally from Mexico and other South American countries and gained employment by using fictitious documents.

The **Special Investigations Unit** conducts confidential investigations for the Governor, Attorney General, Superintendent of State Police, Casino Control Commission, Division of Criminal Justice, and the State Commission of Investigation. Unit personnel conduct various types of security clearance investigations, in addition to processing requests for assistance or information from out-of-state agencies, federal authorities and local law enforcement agencies. They also investigate cases of suspicious circumstances or of an unusual nature that are not normally handled by other investigative units of the Division of State Police.

The unit conducts background investigations of campus police, railroad police, airport police, capitol police, motor vehicle agents and for the Racing Commission.

The unit conducted a total of 441 background and security clearance investigations, of which 310 were in-depth field investigations.

The **Sports Complex Unit's** primary responsibility is the investigation of criminal activity at the Sports Complex located in East Rutherford, New Jersey. The complex is operated by the New Jersey Sports and Exposition Authority, and is composed of four separate facilities: Meadowlands Racetrack, Giants Stadium, the Brendan Byrne Arena and the Arena Outdoor Amphitheater. During multiple events, the Sports Complex can accommodate 165,000 patrons on site at one time.

Personnel of the Sports Complex Unit, which is comprised of 13 sworn members, maintain a liaison with Troop B and Troop D in coordinating traffic flow and other police activities in the area during major or multiple scheduled events.

This year, unit personnel conducted 824 criminal investigations which resulted in 512 arrests. Unit members provided criminal patrol coverage at 590 racetrack events, 93 stadium events, and 232 arena events.

The **Alcoholic Beverage Control Enforcement Unit** has the responsibility of initiating

and investigating complaints which are violations of Title 33, Intoxicating Liquors, and Title 13, Administrative Code violations. There are 11,597 liquor licenses throughout the 21 counties of the state which are policed by this unit. Unit members also take enforcement action on any other criminal violations involving licensed premises which occur in their presence.

The Alcoholic Beverage Control Enforcement Unit is comprised of four operational squads strategically located in Camden, Passaic and Monmouth Counties.

The **Investigation Squads** conduct investigations which ascertain and document violations of the New Jersey intoxicating liquor laws. These inquiries are concerned primarily with the undisclosed interest and/or fronts, farm-outs, leasing licenses, and failures to maintain true books of account. They also conduct investigations of licensed wholesalers, distributors, breweries, importers, and solicitors. Records pertaining to the purchase and sales of alcoholic beverages are examined to ascertain if administrative violations are occurring. In addition, investigations are conducted relative to kickbacks, illegal transportation of stolen liquor, and criminally disqualified persons.

The **North, Central and South Squads** made 348 unannounced retail and liquor gauging

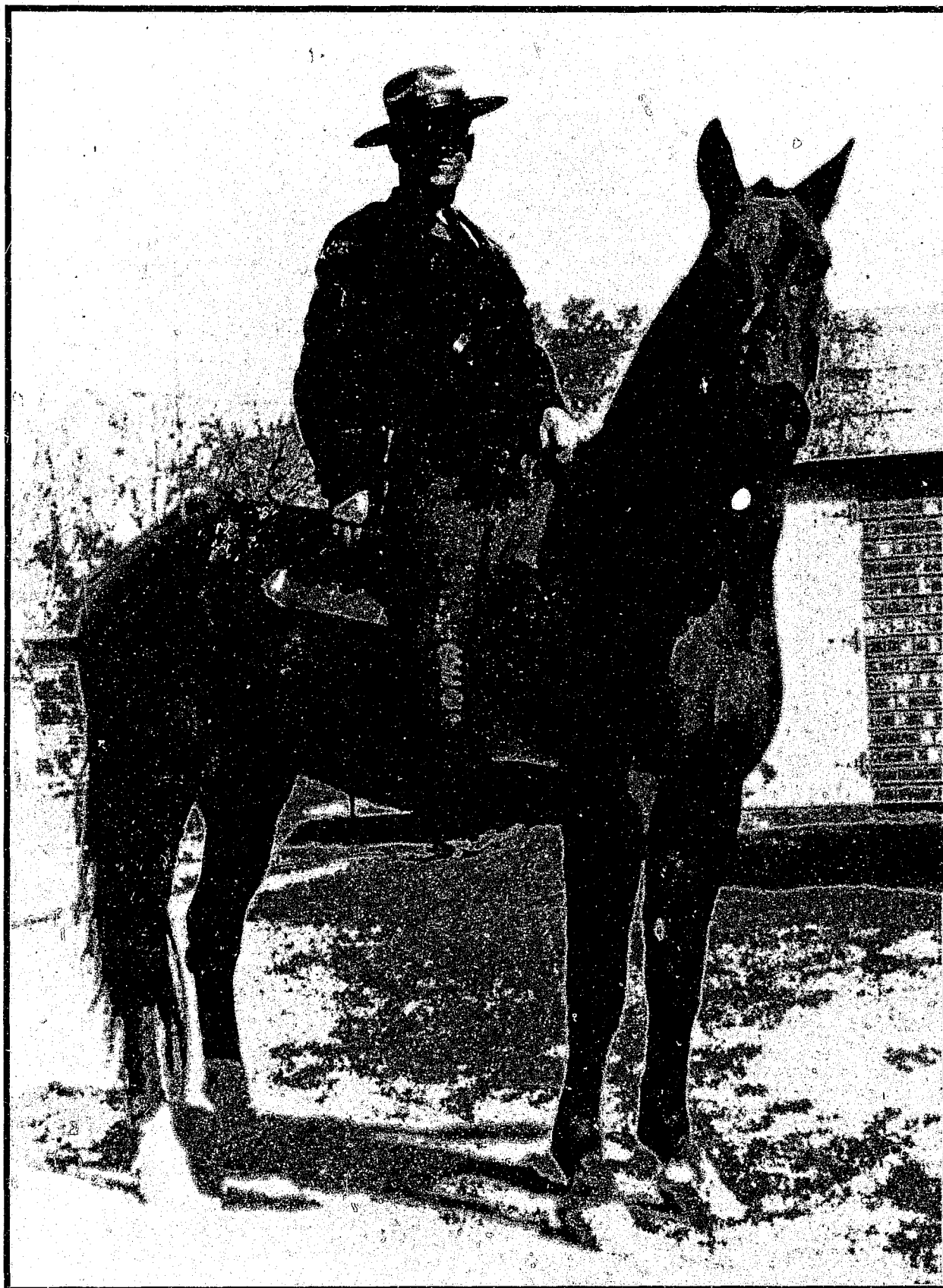
inspections and investigations in all plenary retail and club licensed premises. These inspections are to determine proper licensing, qualifications of employees, possession of narcotics, gambling paraphernalia, indecent and lewd material, and illegal storage and transportation of alcoholic beverages. Inspectors also gauge and test contents of open bottles for evidence of tampering.

The **Undercover Squads** conduct investigations which involve sales to minors, intoxicated patrons, and sales without a license. Also investigated by these squads is the presence of narcotics and gambling activities, lewd shows, prostitution, and any other violations of Title 33, Intoxicating Liquors, and Title 2C, New Jersey Criminal Statutes.

During this period, the unit conducted 972 investigations, which resulted in 121 persons being arrested for Title 33, Intoxicated Liquor Law, and Title 2C, Criminal Justice Code. As a result of these arrests, there were 200 charges brought against the people arrested. A total of 488 premises were cited, resulting in 918 violations which generated over \$1,281,356 in fines to the State Treasury. During 1992, the unit also seized \$11,652 in currency, and confiscated 14 electronic video games valued at \$33,000.



Absecon Troopers aid Egg Harbor City Police in the recovery of a missing child, circa 1928.



Trooper James O'Rourke - 228 astride his mount in 1925.

DIVISION STAFF SECTION



Major D.C. Trocchia
Section Supervisor

The **Division Staff Section** has the responsibility of directing, controlling and coordinating the Division's efforts in the areas of; governmental security, training, internal complaints, labor issues, media dissemination and aviation operations.

The fulfillment of these various responsibilities are accomplished through the State Governmental Security Bureau, the Training Bureau, the Internal Affairs Bureau, the Division Services Bureau and the Aviation Unit.

The **State Governmental Security Bureau** is responsible for the security of the state's Chief Executive, his family, various state officials, and visiting dignitaries. Equally important is the security of the State's 77 buildings, and grounds encompassing the Capitol Complex, which is spread throughout Mercer County. In January 1992, the Bureau expanded its security responsibilities and began providing security at the Thomas H. Kean Aquarium in Camden. The bureau consists of the Executive Protection Unit, Administrative Support Unit, Operations Unit, Security and Systems Unit, and the Division Headquarters Complex Security Unit.

The **Executive Protection Unit** specializes in providing security for the state's Chief Executive, his family, other state officials, and the Governor's official residence. Responsible for protective operations are the Governor's security team, the First Lady's security team, the Chief of Staff's security, the Secretary of State's security, the Attorney General's security, visiting dignitary security, and the mansion (Drumthwacket) security detail. Through contemporary training and constant evaluation of security procedures, troopers assigned to the

unit are able to maintain a high level of efficiency and expertise in executive protection. This efficiency and expertise was demonstrated in successful security operations for 12 visiting state governors and other dignitaries during 1992.

The **Administrative Support Unit** is responsible for overseeing all personnel actions and functions, payroll, budgetary and fiscal matters, logistical needs, and transportation for the bureau. In addition to the 68 enlisted personnel assigned therein, there are 14 State Capitol Police Officers, 170 security guards, 14 systems monitors, and 6 clerical personnel. Equally important is the function of the Investigations Squad of the unit. The squad coordinates and conducts criminal investigations with the other bureau units. During the year, the bureau initiated and conducted 418 criminal investigations which resulted in the criminal arrests of 202 individuals. Sixty-nine of these 202 persons were arrested as a result of patrol-related activities, 48 individuals were arrested as a result of criminal warrants and 117 were arrested as a result of continued investigations.

The **Operations Unit** coordinates all general road duty functions and activities, including patrol assignments, preliminary criminal/investigations, traffic/parking coordination, crowd control and special security/protection details. The unit investigated 43 motor vehicle accidents, issuing 1,386 traffic citations; investigated 1,597 other complaints; and monitored 75 demonstrations and rallies. The unit also provides security for the Governor's Office, Senate and Assembly Legislative Chambers, Supreme Court Chambers, Appellate Court hearings, and Casino Control Commission

DIVISION STAFF SECTION

hearings.

The **Security and Systems Unit** supervises, coordinates and trains security guard personnel assigned to the Capitol Complex. It monitors fire/life safety and intrusion systems for state owned/leased facilities within the complex. The unit provides physical security to 58 sites throughout Mercer County, and in conjunction with the Operations Unit, responds to a total of 77 buildings and facilities. The unit expanded its security responsibilities in January 1992, when requested to conduct a security survey for the Thomas H. Kean Aquarium in Camden. As a result of the survey and recommendations, the unit now provides security functions on a daily basis at the Aquarium. Security guard personnel responded to approximately 2,500 complaints or incidents during the year, which included emergency medical situations, hazardous conditions, unauthorized access to sites, or observations of criminal or malicious activities. Moreover, the unit conducted 16 security surveys in various sites throughout New Jersey. In addition, 12 crime prevention seminars were provided for 650 state employees throughout the complex.

The **Division of State Police Headquarters Security Unit** provides security for the buildings and grounds of Division Headquarters. The unit controls access to the complex and issues parking permits to employees and visitors. In addition, the unit coordinates and provides tours of the Division complex.

Several major accomplishments occurred during fiscal year 1992. In January 1992, the bureau was assigned the responsibility of conducting a security survey and making recommendations for providing security at the Thomas H. Kean Aquarium in Camden. As a result of that survey, the aquarium opened as scheduled in February 1992 with the necessary security required to run an effective and efficient operation. The bureau, in conjunction with the Planning Bureau, was also given the major responsibility for the coordination of security for the National Governor's Association's annual meeting scheduled during August 1992 in Princeton. Preparations and planning for this meeting required members of the bureau to attend meetings in Washington, D.C. and Seattle, Washington.

Finally, the bureau submitted a fiscal program to address security needs within the Capitol Complex. This preparation entailed debit and credit fundings for guard positions by the agency or department utilizing these

services. The bureau oversees a guard force of 170.

The **Internal Affairs Bureau** is charged with maintaining the disciplinary process for all members of the Division of State Police. The bureau consists of the Internal Investigation Unit, the Administrative Internal Proceedings Unit, and the Staff Inspection Unit.

The **Internal Investigation Unit** is responsible for recording, evaluating, and directing the investigation of all misconduct complaints received against sworn members of the Division. At the completion of all investigations, the complainant is apprised of the findings, and the investigation becomes a permanent record of the New Jersey State Police.

The **Administrative Internal Proceedings Unit** is responsible for the adjudication of all violations of the Rules and Regulations of the Division by members of the State Police, Alcoholic Beverage Control Inspectors, and Marine Police. The unit reviews and analyzes all internal investigations and prepares and presents disciplinary cases to an advisory board consisting of six captains. It also prepares and serves disciplinary charges and monitors all disciplinary hearings. The unit also establishes liaison with the Attorney General's Office in obtaining legal counsel in the preparation of criminal and civil cases.

The **Staff Inspection Unit** conducts unannounced periodic field inspections of all facilities and personnel. The unit's function is to assure compliance with Division policies, procedures, rules and regulations, and orders.

The **Training Bureau** is located at the State Police Academy in Sea Girt. The bureau is comprised of seven units which are separated into administrative and training functions. The Training Bureau is responsible for conducting State Police pre-service for its recruits, in-service training for its enlisted and civilian personnel, and advanced and specialized training courses for federal, state, county, and municipal police officers in order to meet the continuing training needs of New Jersey's law enforcement community.

The **Police Science Unit** is responsible for the coordination and instruction of pre-service training of State Police recruit classes. The 100-day program prepares each qualified recruit to become a trooper assigned to one of the Division's road stations. Each recruit receives instruction in basic police topics such as firearms, self-defense, military drill, physical conditioning, and basic police practices and

procedures.

The unit also offers the following advanced and specialized training courses:

A five-day Defensive Tactics Course is designed to develop a police officer's threat awareness and increase their self-defense capabilities to maximize officer safety and better protect citizens.

A seven-day Firearms Instructor Course which qualifies graduates to become firearms instructors. It teaches the legal use of deadly force, basic shooting fundamentals, bullet potential, shotgun and assault weapons, a combat course, and the responsibilities of the rangemaster and line instructor.

A five-day Police Survival Tactics Course provides law enforcement officers with techniques in preparing, planning, and reacting to life-threatening encounters. Also included are practical exercises on low and high risk stops, building searches, and night arrest problems.

A five-day PR-24 Instructor Course for State Police personnel consists of instruction and practical exercises that will enable the student to effectively and properly utilize the PR-24 in the various situations that may be encountered during the performance of their duties.

A three-day Incident Command System Training Course is designed to meet the needs of law enforcement officers and managers with responsibilities to use, deploy, implement, and/or function within a departmental ICS. This program addresses the need for an incident management system, an overview of the structure and expandability of ICS, and an understanding of the command skills needed by departmental officers to effectively use ICS guidelines.

A one-day Cardio-Pulmonary Resuscitation Course certifies each student in the proper techniques of CPR.

The **Criminal Science Unit** provides instruction to the State Police recruit classes in criminal-related subjects. They include New Jersey Criminal Law, Arrest, Search and Seizure, Criminal Investigation Procedures, Rules of Evidence, Drug Enforcement, Organized Crime, Civil Rights, U.S. Constitution, Crime Scene Investigation, Courtroom Testimony, Interview and Interrogation, Missing Persons Investigations, and First Responder at Crisis Situations.

The unit also offers the following advanced and specialized training:

A five-day Criminal Investigation School provides the student with investigative methods

and techniques to conduct a comprehensive criminal investigation.

A five-day Drug Enforcement School introduces police officers to all available areas of narcotics investigation, drug identification, narcotic laws, and current drug use trends.

The Advanced Narcotic School provides the student with an in-depth knowledge of investigations and drug symptomatology. The three-day course provides detailed information from undercover personnel and studies the physical/psychological effects of drugs.

A five-day Sex Crimes Investigation and Analysis Course is designed to better understand sex crimes and the sex offender. It enables the students to conduct sex crime investigations, handling of evidence, and proper preparation of cases for court.

The five-day Organized Criminal Groups Course provides law enforcement professionals with a comprehensive study of organized criminal groups. This course increases the student's knowledge of organized criminal activities and the latest methods and techniques of the investigation process.

The five-day Interview and Interrogation School familiarizes personnel with a variety of proven techniques for information gathering. The course also covers case law pertaining to interviewing and interrogation.

A three-day Sexual Assault/Crisis Intervention Workshop is structured for the development of crisis intervention skills. Two days of classroom instruction are followed by practical exercises which serve to reinforce skills and techniques utilized when dealing with victims of sexual assault.

A five-day Hostage Negotiation School is designed to acquaint the student with the principles of hostage/crisis intervention. Case studies and actual incidents are examined and discussed. Practical training exercises are conducted where students carry out command and control of simulated incidents.

The four-day Surveillance Course is designed to familiarize law enforcement officers with the most current practices and procedures for obtaining information that is to be utilized in a criminal investigation. Investigation parameter is stressed in order to maintain the delicate balance between the legitimate needs of law enforcement and individual privacy.

The two-day Auto Theft Investigation Course provides the uniformed police officer and detective with a practical working knowledge of auto theft and its investigation. Classroom

instruction includes introduction to basic terminology, an overview of car theft in New Jersey, the DMV computer, vehicle identification, title documents, gray market vehicles, and the investigation of the theft of trucks, trailers, airplanes, construction equipment, boats, and motorcycles. In addition to classroom lectures, "hands on" instruction is presented in the area of raising and identifying vehicle identification numbers.

These courses are offered to all levels of federal, state, county, and municipal police agencies through the country. The Criminal Science Unit was involved in the development and presentation of criminal-related subjects for in-service and specialized training programs.

The Training Bureau houses the **New Jersey State Police Crime Prevention Resource Center** which was created as a result of legislation in January 1985. The resource center serves as a clearinghouse for crime prevention information and materials. As a result of this facility, municipal police departments have access to over 120 videotapes, 20 slide presentations, "McGruff" costumes and puppets, books, handouts, and other research documents. Last year the resource center produced, printed, and distributed over 500,000 crime prevention sports cards featuring the Philadelphia Eagles and the New York Giants. The "Say No To Drugs" sports program, where a player from the Giants or Eagles appears at a school and presents a positive anti-drug message to students, continues; 32 schools were visited. In addition to the anti-drug programs, the resource center has presented over 18 date/acquaintance rape lectures to New Jersey high schools. The resource center was also instrumental, in conjunction with the Division of Criminal Justice, in presenting a "Senior vs. Crime" program to senior citizens in eight counties.

The **Traffic Science Unit** provides instruction to State Police recruit classes in traffic-related subjects. They include: Motor Vehicle Law, Traffic Accident Investigation, Defensive Driving, Evasive Driving, Case Presentations, Driving While Intoxicated Laws, and the Manual Direction of Traffic.

The unit also offers the following advanced and specialized training:

A ten-day Advanced Traffic Accident Investigation School addresses the in-depth investigative role of the police officer regarding traffic accidents. The student learns to develop

scale diagrams, establish minimum speeds from skid marks, examine lamps, compute/critical curve speeds, and testify in court.

The five-day Traffic Law Enforcement School familiarizes the student with current enforcement trends. This course also updates the student in motor vehicle law, case law, selective assignment programs, and vehicle inspection procedures.

The five-day Evasive Driving School consists of classroom and practical driving exercises designed to improve driving skills, especially in accident avoidance situations.

The **Social Science Unit** is responsible for teaching the topics of Police Psychology, Police Sociology, Crisis Intervention, Language and Communications, and Juvenile Justice to the State Police Recruit Classes.

The unit also offers the following advanced and specialized training:

A ten-day Basic Police Supervision Course is conducted for municipal and State Police supervisors. This course provides an in-depth and ongoing study of the principles of police supervision.

A five-day Mid-Level Management Course is presented for Division members holding the rank of Sergeant First Class and Lieutenant. Discussion of management theory is augmented with workshops for those holding middle management positions.

A five-day Civilian Supervision Course is offered for non-enlisted State Police personnel who are in supervisory or managerial positions. Problems relating to civilian employees are explored and discussed with an emphasis on management theory and application.

A ten-day Instructor Training Course is given to prepare individuals as instructors for municipal, county, and state level police agencies. This program offers both theory and practical instruction opportunities.

A five-day Juvenile Justice Course is designed to assist law enforcement personnel in dealing with delinquency problems. This comprehensive program is available to law enforcement officers throughout the state and is designed to enlighten and develop skills relating to the handling of juveniles in a uniform, unbiased, and preventive manner.

A five-day Child Abuse Seminar is offered for police officers and social workers. The course is presented as a joint effort by the State Police and the Division of Youth and Family Services. This program provides the opportunity for police and social workers to receive useful

information from experts in the field.

A Spousal Stress Course is conducted for the immediate family members of the State Police class. This course includes instruction on stress in a police marriage, firearms safety, the role of the trooper in society, State Police tradition, and Division benefits.

A one-day Media Relations Workshop is offered and is designed for participants to have practice in preparing and presenting information for public consumption through the media. The seminar promotes the media as the most effective vehicle for conveying information. Subject matter in the course examines skills essential to anyone who must speak or be interviewed under the scrutiny of their peers, the public, and especially the media.

A two-day course on Police Professionalism and Cultural Diversity is designed to enhance the professional image of police officers and to improve the relationship between the members of police department and the various groups within their community. This course provides an opportunity for law enforcement officers to gain further insight into the cultural differences which exist within their municipality. An environment is established to discuss issues related to racial and ethnic diversity, and how to better serve and protect citizens in their community.

A five-day Trooper Youth Week Program is a condensed version of the Basic State Police Recruit Training. Fifteen and sixteen-year-old high school students undergo classroom instruction, morning exercises, military drill, and "hands on" training required of a State Police applicant.

The **In-Service Training Unit** is responsible for the administration, coordination, and instruction of all State Police in-service training programs. This training includes annual eight-hour classroom sessions designed to update personnel on the latest enforcement trends, laws, equipment, and the bi-annual and supplemental firearms qualifications. The unit coordinates the Annual Physical Fitness Test and Retests, provides remedial physical fitness programs to State Police members, and presents the Physical Fitness Instructor School to all law enforcement agencies in the state. The unit provides supervision to the State Police Audio Visual Services. This office is responsible for the production of training videos for all Division personnel and public service messages for the state. The Visual Resource Information Center, comprised of a media

room, equipment room, and central video library is available to all law enforcement agencies in New Jersey.

The **Drug Abuse Resistance Education (D.A.R.E.) Unit** conducts D.A.R.E. Officer Training courses in the Project D.A.R.E. curriculum. The basic course is an intensive ten-day seminar which certifies municipal and State Police members as D.A.R.E. officers who will instruct elementary school students in a 17-week substance abuse prevention education program. This training course includes an overview of current drug use prevention activities, communication and public speaking skills, learning methodology and classroom management, school and police relations, police and parent/community relations, stages of adolescent chemical dependency, audio-visual techniques, and program administration. The basic course is the first track of the four-track Project D.A.R.E. curriculum. Middle school, high school, and parent education curricula are also being introduced into New Jersey communities. The D.A.R.E. Unit periodically monitors the standards and integrity of the instruction at D.A.R.E. schools as provided for in the national model, and establishes pilot programs in districts adopting or augmenting the D.A.R.E. programs.

The **Special Projects Unit** provides support services to the Director of Training and the training functions at the State Police Academy. The unit supervises the Automated Information Management Systems Office, which has developed computerized files for basic, in-service, and advanced training information, and has recorded the bureau's lesson plans, instructor resumes, time-keeping documents, personnel files, transportation statistics, and class records.

The **Budget and Logistics Office** prepares the annual budget and spending plans for the bureau by coordinating its activities with all other units. This office administers the bureau budget and acts as liaison to the Division Fiscal Control Bureau. The office also provides logistical support to the bureau on a daily basis, involving the purchase, storage, distribution, and maintenance of supplies and equipment.

The **Research and Development Office** acts as the administrative component of the Director of Training. The office coordinates special tasks and activities, promulgates orders and instructions, develops research reports, and maintains a liaison with the other training organizations, such as the Police Training Commission, the New Jersey Police Academy Direc-

tors' Association, and the Human Resource Development Institute within the Department of Personnel.

The **State Police Library** maintains its operation within the Training Bureau and is divided into a main library and a law library. The main library consists of textbooks, periodicals, and manuals related to law enforcement issues, as well as police administration, management, and education materials. The library also keeps updated Division orders, procedures, and a personnel roster. The law library contains over 1,229 volumes of state and federal law and case law, digests, reporters, citations, rules and reviews. Newspaper clippings, magazine articles, and research files are also maintained. A microfiche reader/printer is available. The State Police Library is a member agency of the New Jersey State Library network through a computer information retrieval system with Regional Library Cooperative Region V Central Jersey.

Summary of Activities

During Fiscal Year 1992, the Training Bureau conducted 159 advanced and specialized training sessions during 4,367 hours for 7,244 students. There were 26 in-service training sessions held over 365 hours for 3,672 students. The bureau conducted 96 school and adult assembly programs, spending 254 hours and reaching 38,685 New Jersey citizens. The D.A.R.E. Unit conducted six courses over 240 hours, preparing 205 officers to teach the D.A.R.E. curriculum. In addition, Training Bureau members conducted 891 other activities related to the training functions.

The **Division Services Bureau** has the responsibility of implementing the Superintendent's policies regarding labor issues and physical standards of enlisted personnel under his command. Additionally, the bureau is responsible for the dissemination of information to the public and maintaining media relations. The bureau facilitates these policies through the Labor Relations Unit, the Physical Standards Coordination Unit, and the Public Information Unit.

The **Labor Relations Unit** personnel are responsible for the administration and resolution of grievances, facilitating the administration of union contracts, and serving as part of the negotiations team. The unit also serves as a liaison between enlisted personnel, civilian employees, and the Superintendent to maintain informal and effective communications.

The **Physical Standards Coordination Unit**

assists management in the coordination and uniform application of the Division's physical fitness program. The unit reviews all physical testing results to insure that Division personnel are in compliance with the standards detailed in Standing Operating Procedure C20. A remedial physical fitness program was instituted in order to provide members with individualized assessment counselling and a fitness prescription designed to enable the member to meet the Division's physical standards. This unit also reviews the physical test records of members being considered for promotion and make recommendations to the Superintendent's office regarding promotional eligibility. Additionally, the Physical Standards Coordination Unit does research on the latest physical testing procedures and methods.

The **Public Information Unit** is responsible for the proper dissemination of information concerning the Division's operations, functions, and daily activities in an attempt to keep the public well informed. This is done by daily contact with the members of the media, preparing press releases, conducting press conferences, assisting with feature stories, and keeping an open line of communication with the general public.

During Fiscal Year 1992, the unit issued 60 press releases and answered a multitude of questions regarding 850 separate incidents. The unit released photographs for promotions, special news assignments and major news stories. Some of the major news stories included the seizure of 596 kilos of cocaine by "Operation R.O.A.D.S.I.D.E." personnel, Laurel Lake rescue by the medevac team, the HEAT/VICAP program by the Major Crime Unit, the arrest in the McDonalds slaying investigation by Bordentown troopers, assault weapons demonstrations, coastal storm damage, and the solving of the East Orange serial murders by the Major Crime Unit.

The unit had the responsibility of writing and coordinating the presentation of 50 Division awards by the Superintendent to Division members for acts of valor, meritorious service or to dignitaries, police officials and civilian employees.

The unit coordinates the distribution of press passes to all recognized news gathering agencies by the N.J. Press Association, N.J. Broadcasters Association, and the N.J. Cable Association.

The **Aviation Unit** is responsible for providing airborne support and assistance for investiga-

DIVISION STAFF SECTION

tions of a criminal, traffic or general police nature. The services of this unit are also available to other state agencies, as well as police departments on both county and municipal levels.

Unit pilots have logged 2,620 flight hours, and have covered 304,080 miles during the year. They were involved in 52 criminal investigations, 324 general police and special activity flights and 316 training and technical service related flights.

During Fiscal Year 1992, special emphasis has been placed on flights over New Jersey's parks and forests in order to take legal action against or deter polluters of these natural resources. The Aviation Unit, in a joint program with the Department of Environmental Protection and

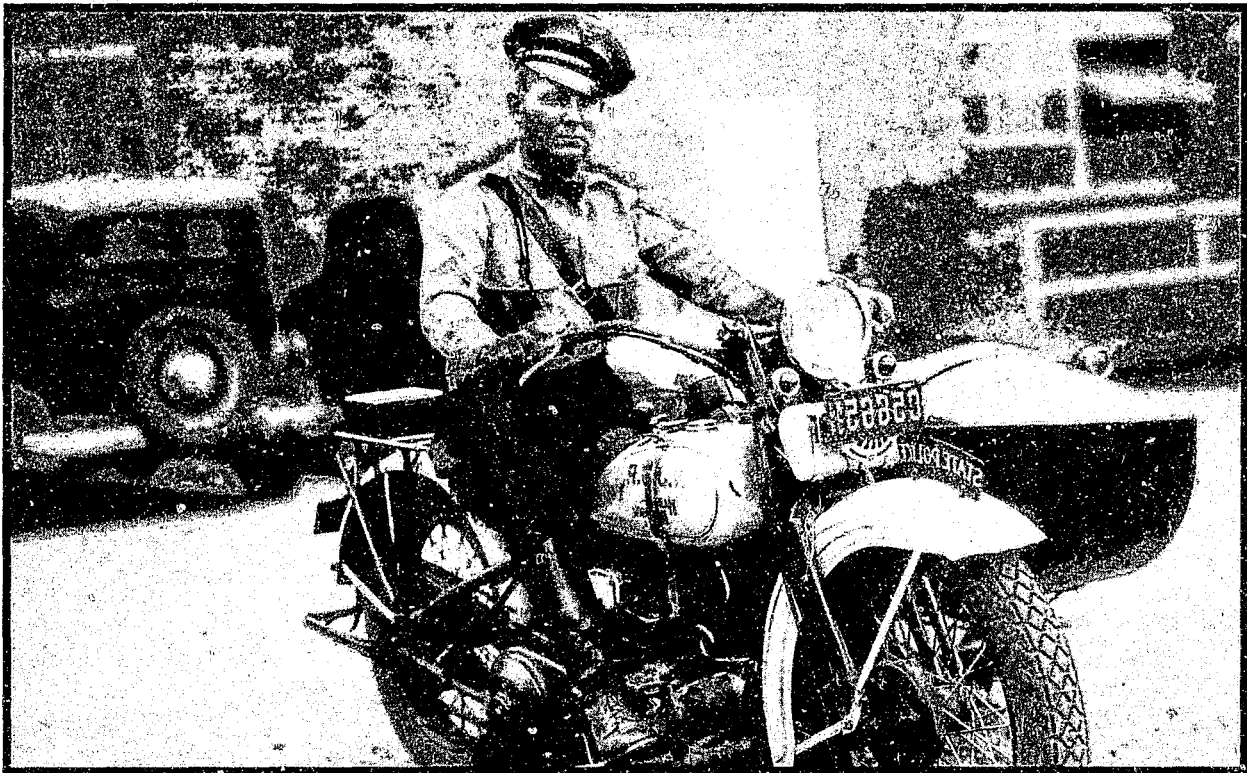
Energy, has patrolled the waterways for polluters in the state.

The Northstar and Southstar air ambulance helicopters provided 1,368 inter-hospital and on-scene missions throughout the state.

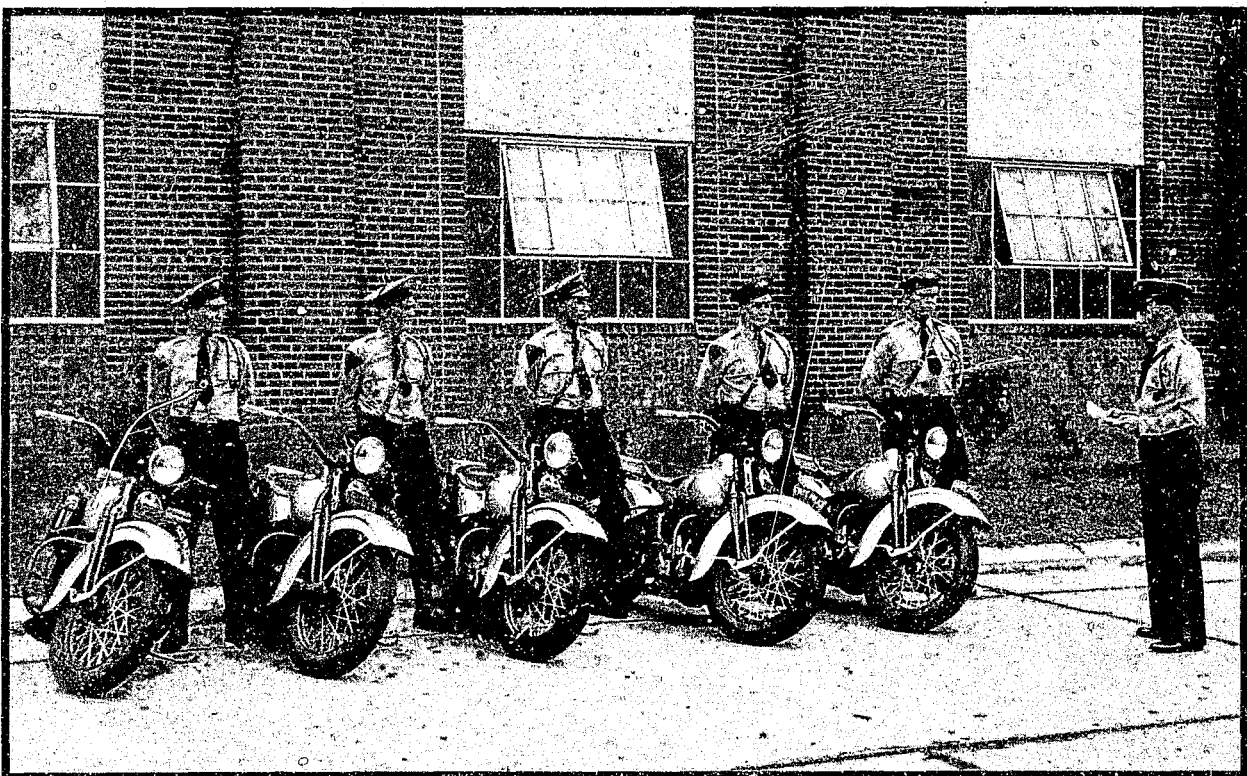
In cooperation with the New Jersey Department of Health, University Hospital of Newark and West Jersey Hospital in Voorhees, the medevac program has flown critically injured patients. The growing support of the program throughout the state is due to the 100 or more public safety and awareness demonstrations conducted by the flight crews of each unit. State Police medevac helicopters are based at the University Hospital of Newark and at the West Jersey Hospital in Voorhees.



Trooper Herbert Lauterwald - 480 stands beside an autogyro he piloted for the Division, circa 1938, Red Bank.



A Trooper departs the Wilburtha Training School and resumes patrol on his Harley Davidson motorcycle, circa 1934.



Troopers assigned to motorcycle duty receive a briefing prior to the start of their patrol, circa 1939, West Trenton.

FIELD OPERATIONS SECTION



Major T. Kinzer
Section Supervisor

The **Field Operations Section** has the obligation to coordinate all inter-troop and inter-agency operations having to do with special events, crowd control, prison riots, disasters, traffic programs, interstate highways, and other police-related activities as they apply to the goals of the Division. These areas are addressed by the Traffic Bureau, the Drug Interdiction Training Unit, the Operational Dispatch Unit, and the five general road duty Troops: A, B, C, D, and E.

The **Traffic Bureau** is responsible for coordinating the Division's overall highway safety effort. The bureau is comprised of four units: Research and Analysis, Breath Test, Hazardous Materials Transportation and Compliance Unit, and the Fatal Accident Unit. Each unit works closely with all the Troop Traffic Officers to ensure the effective and efficient delivery of police traffic services. The Traffic Bureau also oversees the regulation of the motor vehicle racing industry, including the licensing of all motor vehicle racetracks and the on-site inspection of all racetracks. These efforts have continually made New Jersey one of the safest motoring states in the nation.

One of the programs coordinated by the Traffic Bureau is "Operation ROADSIDE" (Reduction of Alcohol/Drugs Statewide through Interdiction, Detection and Education). This unique program, which has been in effect since 1990, extends the bureau's cooperative efforts to include state, federal and local enforcement authorities. This joint effort focuses on the commercial transportation industry, and is designed to interdict both alcohol and drugs, as well as to help educate those within the industry.

Another program coordinated by the bureau is the Holiday Safety Program, which maximizes our manpower during specific holiday periods. During the program, troopers concentrate on the apprehension of drinking drivers through both checkpoint and mobile patrols, speed enforcement through dedicated details, and station-selective assignments. These efforts have greatly benefited motorists during heavily traveled holiday periods.

These and other programs have enabled the Traffic Bureau to increase highway traffic safety throughout the state.

The **Research and Analysis Unit** provides information to management for use in formulating and evaluating the effectiveness of the traffic safety effort within the Division. This unit evaluates on-going programs and explores new methods, techniques and philosophies having a relationship to highway traffic safety.

Fatal Accident Unit personnel re-investigate all fatal motor vehicle accidents. The unit is staffed with personnel that are trained in traffic accident reconstruction and cause analysis. Data gathered in the investigation is compiled for the annual publication of the Fatal Motor Vehicle Accident Comparative Data Report.

The **Breath Test Unit** is responsible for evaluating and recommending all breath test operators for certification, as well as instructing and recommending members of the State Police as breath test coordinators. Other duties include inspecting certified breath testing instruments; maintaining a file of certified, suspended and revoked operators; instructing methods of detection and apprehension of the drinking driver; and giving testimony in state, county and municipal courts involving drink-

ing driver arrests.

Hazardous Materials Transportation Compliance and Enforcement Unit personnel are responsible for implementation and enforcement of the federal regulations governing commercial vehicle drivers, related safety equipment, and the transportation of hazardous materials on our highways. Having adopted the Federal Hazardous Materials Regulations and the Federal Motor Carrier Safety Regulations in March, 1985 and January 1987, respectively, the Division has assigned numerous teams of highly trained troopers to conduct roadside inspections of commercial vehicles, and enforce these complex and highly technical regulations.

As part of the federally funded Motor Carrier Safety Assistance Program, these troopers are also being assigned to conduct audits and safety inspections at both commercial freight terminals and roadside locations during "off hours" to apprehend violators and encourage greater compliance with all regulations impacting highway safety.

The **Drug Interdiction Training Unit (D.I.T.U.)** is a specialized unit assigned directly to the Field Operations Section. The unit was formed in response to the 1986 Comprehensive Drug Reform Act to provide "hands on" training in the area of patrol-related arrests for general road duty personnel.

The Drug Interdiction Training Unit consists of nine uniformed members. Each member is fully trained as advanced narcotics investigators, horizontal gaze nystagmus instructors, commercial vehicle/hazardous materials inspectors, U.S. customs officials and New Jersey State Police instructors.

Operation Pipeline began in the early 1980's with the New Jersey State Police and New Mexico Police operating in conjunction with the DEA. Operation Pipeline is presently operational in 48 states and is a major success.

Operation Pipeline is a coordinated effort between State Police agencies and the DEA to interdict the flow of narcotics on this nation's highways. It is also an effort to enlist the patrol officer as additional resource in the interdiction of narcotics. Through cooperative efforts between the New Jersey State Police and the DEA, the road trooper is offered a creative challenge. At the same time, his awareness and skills are increased by sharing observational and conversational techniques that can turn a traffic stop into a narcotic seizure.

During Fiscal Year 1992, the D.I.T.U. traveled

throughout the country lecturing for the Drug Enforcement Administration and the Federal Highway Administration. Approximately 500 troopers and police officers from 20 states and 80 local and county police agencies attended these lectures.

The unit also presented over 50 highway drug interdiction seminars for over 100 state, county and local police agencies within New Jersey.

D.I.T.U. personnel worked along with police personnel from various departments from Middlesex County during Operation Spinal Cord in a coordinated effort to identify and interdict the flow of narcotics along the Route 1 corridor.

The Drug Interdiction Training Unit has participated in all Operation Roadside details, working alongside the various truck enforcement units and assisting the NJSP narcotics and intelligence personnel on surveillance.

During the fiscal year, while conducting "Practical Exercises" and Operation Roadside details, the D.I.T.U. has reported the following statistics:

Criminal Investigations	61
Criminal Charges	126
Value of Cocaine Seized	\$68,247,880.00
Value of Heroin Seized	\$1,680.00
Value of Marijuana Seized	\$158,100.00
Value of Weapons Seized	\$23,195.00
Currency Seized	\$92,005.00
Value of Vehicles Seized	\$222,836.00
Fugitive Arrests	1

Total Value Recovered Property \$68,745,696.00

During 1992, the **Operational Dispatch Unit** was the Control Terminal Agency for the state of New Jersey with responsibility for the 24 hour a day C.J.I.S. terminal use within the state. Unit enlisted members act as the Division Assistant Duty Officers after hours, weekends and holidays. Additional responsibilities include monitoring and testing telephone "hot-lines" which are tied directly to the state's nuclear generating stations, and the operation of various other communications systems utilized by the division.

Troop A serves the southern geographical portion of the state from the Delaware River to the Atlantic Ocean, covering 3,034 square miles, with a population of over 1.6 million people.

Troop A consists of nine stations. The Atlantic City Expressway Station is responsible for all police functions on that 44-mile toll road. The Bellmawr Station has similar responsibilities on a 35-mile stretch of I-295, all of I-76, I-676,

SH 42 to the A.C. Expressway, and 20 miles of SH 55. Absecon, Bridgeton, Port Norris, Red Lion, Tuckerton, Woodbine and Woodstown have primary responsibilities for 36 municipalities in eight counties and also work with established municipal police departments within their geographical areas. Port Norris has an additional responsibility for 20 miles of SH 55, and Woodstown Station has 15 miles of responsibility on I-295.

There are four nuclear generating plants located in the Troop A area. Three are located on Artificial Island in Salem County, and the Oyster Creek Station is located in Ocean County. Also within the area are two race-tracks, four state correctional facilities, one federal correctional facility, and four state mental facilities. There are 12 casinos presently in operation in Atlantic City, and the Thomas H. Kean Aquarium opened in the city of Camden in March of this year.

There are 401 officers and troopers assigned to Troop A. This year, personnel investigated 5,130 motor vehicle accidents, issued 81,694 motor vehicle summonses and 60,228 written warnings, and arrested 2,807 drinking drivers. Troop A personnel conducted 7,450 criminal investigations, resulting in 8,344 arrests. A total of 209 stolen motor vehicles were recovered, valued at \$1,165,507. Property valued at \$1,109,395 was recovered, along with the confiscation of controlled dangerous substances (narcotics) valued at \$433,200. A total of \$261,760 in drug-related currency was also confiscated.

In addition to the above activity, personnel from the Troop A TEAMS Unit and Tactical Patrol Units are presently participating with the Violent Crime Task Force in the city of Camden in response to a request for assistance in helping that city combat the escalating war on drugs. The task force is comprised of seven agencies, including state, federal, county and municipal personnel. Since the inception of the task force in May of this year, 89 arrests have been made, two weapons valued at \$700 have been recovered, \$13,899 in drug-related currency has been confiscated and CDS valued at \$14,234 has been seized.

Troop B, which is headquartered in Totowa, serves the northern geographical portion of the state, covering 2,807 square miles, with a population of over 4.9 million people.

The Troop has a complement of 332 active officers and troopers. It has full responsibility for providing police services to 29 townships and villages, and part-time responsibilities for

many other municipalities. The Troop's responsibility also includes patrolling over 800 miles of interstate roads with an average daily use of 600,000 vehicles.

Troop B consists of seven stations: Hope, Netcong, Perryville, Sussex, Somerville, Totowa sub-station, and Washington, all have varying degrees of police functions and responsibilities within the ten northern counties of New Jersey. Somerville and Totowa sub-station have responsibility for patrolling the interstate system of I-78, I-80, I-95, I-280 and I-287. Netcong Station is responsible for patrolling I-80 and I-287 to its northern terminus, and is the responding police organization for the small hamlet of Victory Gardens, located in the center of Morris County. Hope, Perryville, Sussex and Washington are the only responding police personnel in many of the townships within their station areas, and are still responsible for patrolling portions of the interstate highway system. During Fiscal Year 1992, there have been additional responsibilities absorbed by these rural stations with the abolition of some small rural police departments.

Troop B has aided many of its cities and towns with additional police personnel. Operation Homestead, the deployment of 17 Troopers from the T.E.A.M.S. and Tactical Patrol Units to assist the Newark Police Department has been in effect during the entire fiscal year. This entailed the use of 10,950 man-hours. During the fall of the year, Troop B Headquarters personnel were responsible for security at the 38 day re-trial of Richard Williams; this entailed 5,320 man hours. Troop B personnel have been called upon often during the year to perform many security details for the President of the United States, the Vice President and other V.I.P.'s and visiting dignitaries.

Troop B personnel issued 82,703 summonses, 36,268 warnings, and arrested 1,640 drinking drivers. Troopers covered 8,125,182 miles, assisted 43,793 motorists, conducted 3,125 investigations, resulting in 3,946 arrests. A total of 111 stolen motor vehicles were recovered, valued at \$1,162,277. Property valued at \$121,832 was recovered, along with the confiscation of controlled dangerous substances (narcotics) and cash valued at \$3,714,328. Troop B also investigated 6,638 motor vehicle accidents, including 56 fatal accidents.

Troop C serves the central geographical portion of the state from the Delaware River to the Atlantic Ocean, covering 2,316 square miles with a population of over 2 million people.

Troop C consists of seven stations, located in: Allenwood, Bordentown, Edison, Flemington, Fort Dix, Hightstown and Wilburtha, covering Hunterdon, Mercer, Middlesex, Monmouth and the northern portions of Ocean and Burlington counties.

The present complement, consisting of 297 officers and troopers, is responsible for patrolling the highways throughout Troop C, and for full police function in areas not protected by local police. There were 70,102 summonses issued, including 1,936 drinking drivers, 48,676 warnings and 4,380 patrol-related arrests. Troop C patrols also rendered assistance to 21,706 motorists. In addition, the Troop C Truck Enforcement Unit, Tactical Patrol Units and Technical Emergency and Mission Specialists (T.E.A.M.S.) were all active in selective enforcement. These units issued 24,098 summonses, including 730 drinking drivers and 6,940 written warnings. Troopers assigned to truck weighing activity weighed 83,747 trucks and issued 2,490 summonses for overweight and over-dimension violations. The roadside examinations of 12,805 trucks detected 46,107 violations, of which 5,138 were equipment violations placing commercial vehicles out of service.

Troop C personnel conducted 3,185 investigations resulting in 4,380 arrests. A total of 97 stolen motor vehicles valued at \$323,168 were recovered. Property recovered valued at \$783,925, CDS confiscated were valued at \$142,548 and currency seized was valued at \$59,103.

Because the state capitol complex is located within the jurisdiction of Troop C, personnel have participated in numerous dignitary protection/escorts working in conjunction with the U.S. Secret Service and State Department, along with fulfilling its responsibilities in the areas of underwater recovery and other police services.

The New Jersey Turnpike, which is serviced by **Troop D**, is the nation's busiest limited access nonstop toll road, consisting of 141.5 linear miles. Incorporating areas of four to 12 lanes, it is 956 lane-miles long. Troop D Headquarters is located within the turnpike's administration building at Interchange 9 in East Brunswick, Middlesex County. Also located at Interchange 9 is the New Brunswick Station. Other stations are located at Moorestown and Newark. Each station patrols approximately one third of the 142-mile roadway. There are 230 officers and troopers assigned to Troop D.

Virtually all highway traffic between the great

seaports of New York and Philadelphia passes through New Jersey. In spite of this incredible volume of traffic, the New Jersey Turnpike has consistently been one of the safest major toll roads in the United States.

With 185 million vehicles traveling over 4.26 billion miles this year, the Turnpike had an accident rate of 90.2 and a fatality rate of .30 per 100 million vehicle miles traveled, making this the safest year in the 41-year history of the turnpike. As a result of a variety of enforcement strategies and techniques designed to reduce accidents and increase motorist compliance with traffic laws, Troop D experienced a 19% reduction in motor vehicle accidents in comparison with a 17.7% increase in traffic enforcement. Patrols issued 117,539 summonses and made 804 drinking-driver arrests. They assisted 66,066 disabled motorists and initiated 1,119 first aid and fire department calls.

Because of the easy accessibility to the Turnpike and the Turnpike's direct connection between major metropolitan areas, the type of criminal activity Troop D personnel confronted on a daily basis was no different than that of any large city.

Troop D personnel conducted 1,023 investigations, resulting in 1,300 arrests. A total of 136 stolen motor vehicles were recovered, valued at \$705,300. Property valued at \$984,984 was recovered, along with the confiscation of controlled dangerous substances (narcotics) valued at \$4,677,087.

Located just off the northern end of the Turnpike is the Meadowlands Sports Complex, consisting of a racetrack, stadium and sports arena. The complex has generated much more service area crime, such as breaking and entering, larcenies, stolen motor vehicles, armed robberies, credit card frauds, and prostitution.

During this fiscal year, much preparation has taken place for the assimilation of I-95 from MP 117.8 to MP 122 as part of the New Jersey Turnpike. This section of roadway consists of approximately 40 lane miles. This preparation included design changes in computer programming to record accident data as well as troopers' activities and coordination of emergency services such as towing, fire and rescue. Several meetings between the State Police, Turnpike Authority and local jurisdiction police departments and court administrations were held to assure mutual understanding and cooperation with respect to the change in ownership and policing of this roadway. This section of I-95 will be the patrol responsibility of Newark

Station.

The Garden State Parkway extends 173 miles from the southern tip of New Jersey to the New York Thruway in the north and provides easy access to most shore areas in the state. The New Jersey Highway Authority owns and maintains the parkway, which is the dominant roadway for access to Atlantic City and its casinos. The parkway offers one of the most pleasant and picturesque panoramas in the eastern portion of the state, and traverses 49 municipalities and ten counties.

Troop E which is headquartered at the New Jersey Highway Authority Administration Building in Woodbridge Township, has total police responsibility for the entire roadway, including the events at the Garden State Arts Center. This responsibility is accomplished with a complement consisting of 200 officers and troopers.

Troop E is divided into three station patrol areas: Bass River Station, charged with the responsibility for the southern section; Holmdel Station, charged with the responsibility for the central section; and Bloomfield Station, charged with the responsibility for the northern section.

Supplementing the station patrols are several specialist units assigned to Troop E Headquarters. There are three Task Force Units. One unit is assigned to each station area to enhance the apprehension of offenders of traffic and criminal laws and to reduce accidents.

The **Commercial Vehicle Inspection Unit** unilaterally, and at times in conjunction with the New Jersey Department of Transportation, conducts Level 2, Level 3 and Level 4 inspections on buses and other commercial vehicles. These inspections are conducted in two forms, either mobile or stationary. The stationary inspections are conducted at the bus and truck inspection facility located at the Herbertsville Rest Area in Wall Township.

During the past fiscal year, 98 bus checks were held, resulting in the inspection of 2,442 buses. There were 300 buses placed out of service, 8.1% of the total number of buses checked. There were 89 commercial vehicle inspections held. During those inspections, 335 out of 2,428 trucks were placed out of service. These inspections attempt to ensure that buses

and other commercial vehicles using the parkway are in a safe operating condition. The Herbertsville Inspection Facility is the only one of its kind on the east coast of the United States.

The eight-man **Construction Unit** has continued to ensure highway construction safety, both on the Parkway and in the classroom. Over 1,500 people from the public and private sector have attended the unit's safety seminar. The unit was assigned to monitor 70 construction contracts during the fiscal year. The safe movement of traffic through the construction areas is its prime responsibility.

The roadway continues to be rated one of the safest toll roads in the nation, and consists of 1,212 road miles which are divided into two, three, four, five and six-lane sections. Over 5,251,236,000 vehicle miles were recorded for the past fiscal year with 340,546,000 vehicles utilizing the road. During that period, State Police patrols issued 112,889 summonses, arrested 1,526 drinking drivers and rendered assistance to 45,570 motorists.

VASCAR-PLUS was implemented during the spring of 1989, and is being utilized by all three Task force units.

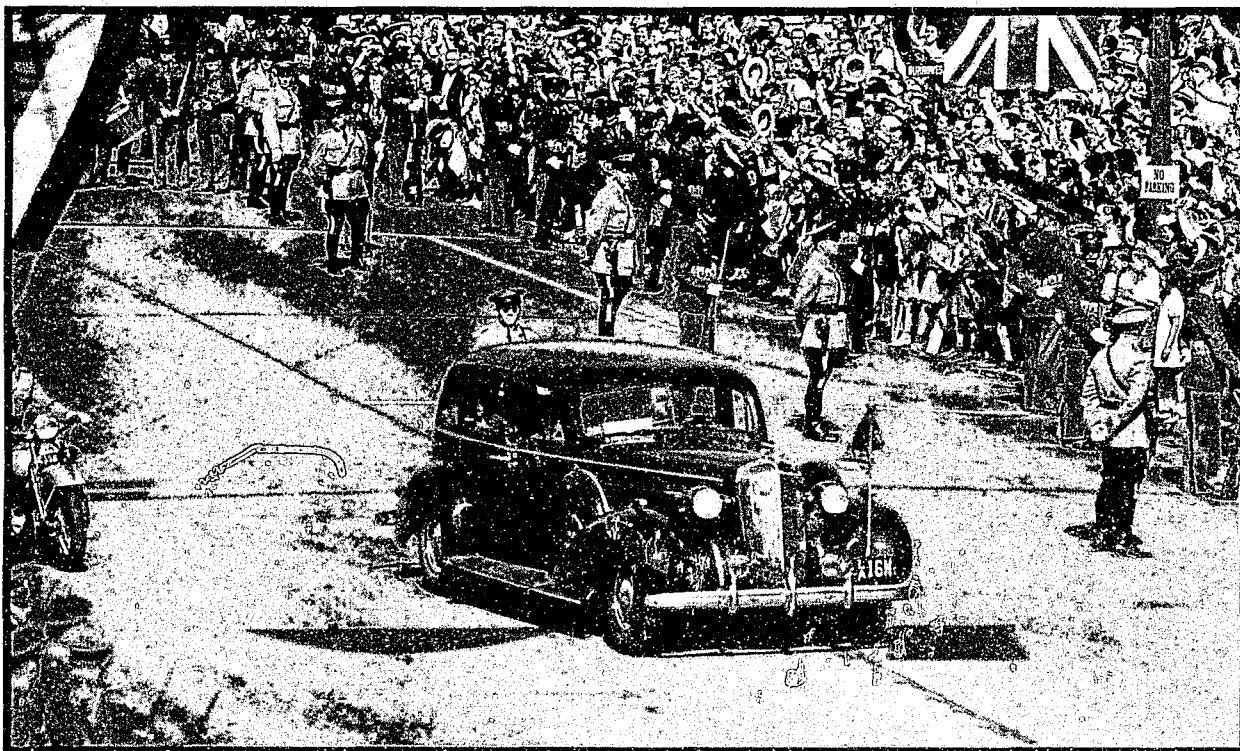
September 13, 1991 brought about the inception of Operation Slow-Down, instituted to insure a higher visibility of patrols and reduce average speeds. The program has shown positive results; reduced speeds and accidents, both serious and injury causing.

During the past fiscal year, 12,996 Toll Violator Summonses were issued as a result of security details by Highway Authority Personnel and State Police.

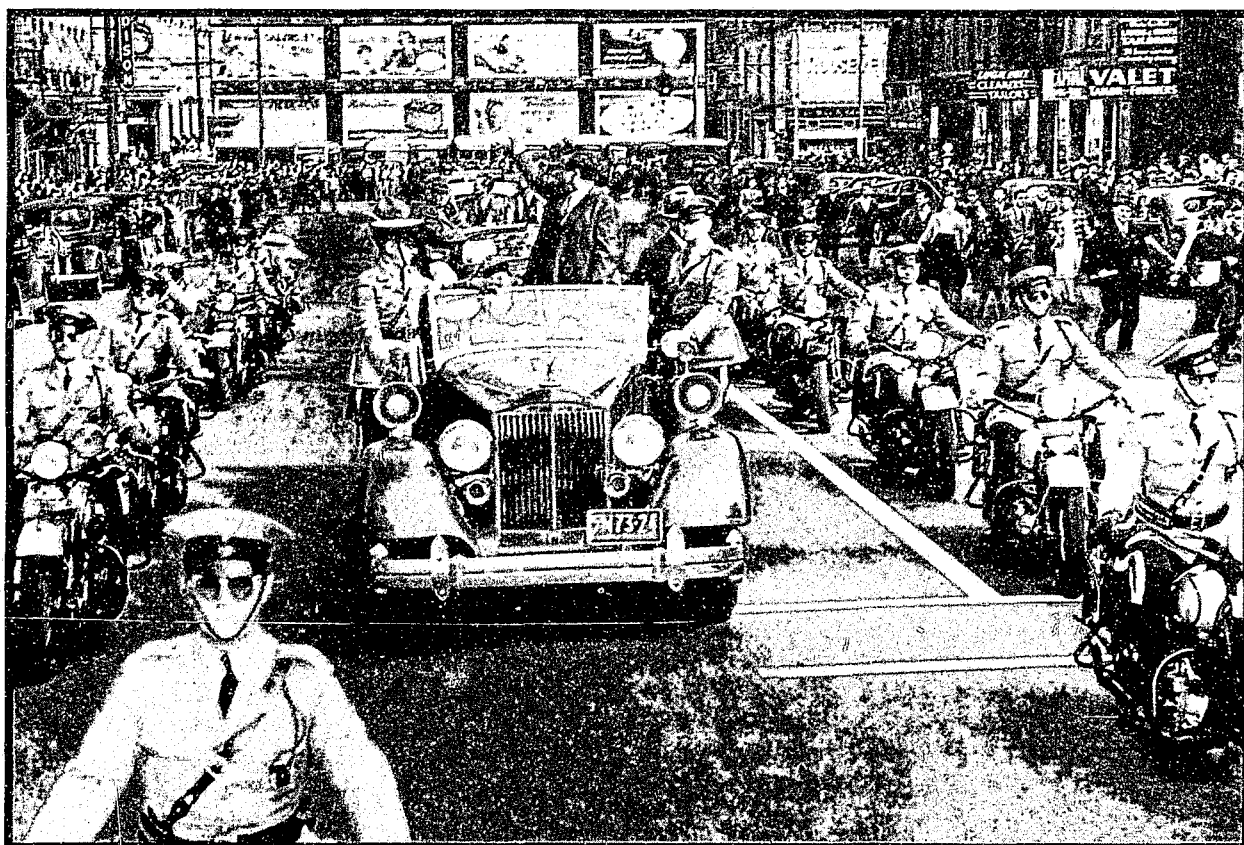
Troop E C.I.S. personnel are responsible for major criminal investigations, providing assistance, and following up on all arrests and investigations made by uniformed personnel.

Troop E personnel conducted 1,534 investigations, resulting in 2,710 arrests. A total of 70 stolen motor vehicles were recovered, valued at \$560,605. Property valued at \$205,160 was recovered, along with the confiscation of controlled dangerous substances (narcotics) valued at \$221,009.

Criminal activities have increased over the past several years, partly due to the casino traffic, but mainly to changing traffic patterns.



The New Jersey State Police are assigned the duty of protecting the King and Queen of England during their visit to the United States, photograph 1939, Red Bank.



Troopers flank the motorcade of presidential candidate Wendel Willkie during the 1944 campaign.

INTELLIGENCE SERVICES SECTION



Major M. Rowen
Section Supervisor

The **Intelligence Services Section** has been charged with collecting, extracting, summarizing, analyzing and disseminating criminal intelligence data received from a multitude of sources. The processing of this data is critical to the Division's strategic assault on crime within this state and is facilitated through the Intelligence Bureau, the Central Security Bureau, the Solid Hazardous Waste Background Investigation Bureau, the Casino Gaming Investigations Bureau and the Casino Operations Bureau.

The **Intelligence Bureau** is comprised of seven units: the Analytical Unit, Casino Intelligence Unit, Law Enforcement Liaison Services Unit, Electronic Surveillance Unit and three regional field units.

The Intelligence Bureau gathers intelligence data designed to provide criminal justice practitioners and administrators with a more accurate assessment of organized crime and the principle criminal problems confronting the state of New Jersey, and for use in the formulation of strategic public policy issues. The Intelligence Bureau also advises the Superintendent of any pertinent changes in the current structure of organized criminal groups and their enterprises.

In addition, the bureau projects future trends in organized crime activity in order to develop strategies for effective and efficient allocation of law enforcement resources. The bureau has continued to initiate strategic and tactical studies examining organized criminal involvement in narcotics, labor racketeering, political corruption, and other sophisticated criminal conspiracies. These studies recommend enhanced strategies for reducing and/or con-

trolling the influence of organized criminal groups in New Jersey's illegal economy.

The Intelligence Bureau coordinates the systematic collection of criminal intelligence data in order to assist the operational units of the Division in their investigations. Tactical analysts assigned to the various regional units collate and assess incoming raw intelligence data on a daily basis, enabling the bureau to continually monitor significant changes in the structure and functions of organized crime groups operating within the state. From this process, the Intelligence Bureau provides the appropriate operational units with recommendations for further investigation.

Analytical Unit personnel analyze criminal intelligence data relating to organized crime activity, apply it on a strategic level in order to establish the prevalence and/or significance of specific criminal activities, discern the effect of enforcement practices on a particular criminal network or activity, and determine the potential impact of proposed or existing legislation on organized crime enforcement. Tactical intelligence analysis is employed to derive patterns of communications, divisions of labor, and "chain-of-command" within specific criminal networks.

The Analytical Unit produces strategic assessments of New Jersey's illegal markets and organized criminal groups, and the evaluation of specific law enforcement policies and strategies. These strategic products provide the Attorney General and the Superintendent with background information essential to the policy-making process. In cooperation with bureau field units, the Analytical Unit also prepares tactical assessments which pertain to a particular

criminal network, illegal market, or organized crime group. In this capacity, unit personnel are frequently assigned to assist in the investigative components of the Division, as well as federal and local law enforcement agencies.

Although law enforcement has made large technical advances, the actual gathering of intelligence data for analytical purposes is still collected by the field personnel of the three **Regional Field Units** which are geographically assigned in the north, central and southern areas of the state. These units are responsible for gathering, evaluating, analyzing and disseminating intelligence data regarding organized criminal groups indigenous to their designated areas.

While monitoring the activities of organized crime groups such as the Bruno, Scarfo and Gambino crime families, these units have been directed by the Superintendent to also monitor evolving problems created by emerging "lesser" organized crime groups, including Hispanic, Jamaican, Asian, African American, Nigerian, and Columbian criminal cartels.

These intelligence units have provided federal, state, county and local law enforcement authorities with the probable cause necessary for those agencies to initiate criminal investigations in the areas of bank fraud, illegal gambling, loansharking, narcotics, labor racketeering and Alcoholic Beverage Control violations.

The **Casino Intelligence Unit** collects intelligence related to the casino industry and its ancillary services. Unit members focus on traditional and non-traditional organized criminal activity in the Atlantic City casinos. They identify, collect background information on, and monitor the activities of groups and individuals who threaten to negatively impact the casino industry in Atlantic and Cape May Counties.

The unit also provides the Intelligence Bureau's supervisory staff with strategic and tactical assessments that support the formulation of future legislation and regulation concerning the casino gaming industry.

The Casino Intelligence Unit maintains cooperative relationships with all law enforcement agencies whose responsibilities include the Atlantic City area and/or the casino gaming industry. Unit personnel also maintain professional relationships with law enforcement authorities throughout the country.

The primary function of the **Law Enforcement Liaison Services Unit** is to assist the New Jersey State Police and other law enforcement agen-

cies in their investigative efforts to combat organized crime by responding to their inquiries for information. Unit responsibilities include processing all requests from the members of the Law Enforcement Intelligence Unit, Middle Atlantic Great Lakes Organized Crime Law Enforcement Network (MAGLOCLEN) and INTERPOL. In addition, the unit is responsible for the acquisition of court-authorized telephone toll records requested by members of the Division. During the past year, unit personnel have responded to 18,178 requests for investigative assistance, processed 116 requests for telephone toll records, and 13,726 individual telephone listings. They are also responsible for the maintenance, security and processing of Intelligence Bureau reports. Personnel assigned to this unit enter, modify and retrieve data from the computerized Intelligence Data Base. During the past year, unit personnel processed 1,360 intelligence reports submitted by the regional field units, and responded to more than 20,764 requests for information from outside the bureau. In addition, 78 reports were transmitted to other divisions, sections, bureaus and units.

The **Electronic Surveillance Unit** was created in response to the Omnibus Crime Control and Safe Street Act of 1968 and formally established after the passage of the New Jersey Wiretapping and Electronic Surveillance Control Act in 1969. To meet the increasing demand for the installation and maintenance of covert electronic interceptions, the unit has established three field offices in north, central and south New Jersey.

For the past eight years, the New Jersey State Police has been considered the leader in the implementation of all types of electronic surveillance. Although unit personnel are responsible for all court-authorized audio and video surveillance conducted by the Division, they also offer technical, as well as operational, assistance to other local, state and federal investigative agencies.

Unit personnel survey, evaluate and utilize specific surveillance techniques for each individual job. Moreover, they install, repair and maintain all related electronic equipment. The unit also processes all audio taped evidence, and is responsible for the inventory and control of all court-authorized wiretaps and room bugs.

The Electronic Surveillance Unit has maintained its position in the forefront of technology by designing the most sophisticated

computer-aided equipment.

During Fiscal Year 1992, this unit implemented 33 wiretaps, 54 dialed-number retrievals, 17 video surveillances, and 14 government security checks. In addition, they investigated 15 illegal wiretaps, processed 1,520 official evidential recordings, duplicated 330 audio and 3,618 video tapes, and made 8 evidential composites, 7,320 consensual tapes, 57 transcripts, 1,124 tapes for discovery, and processed for outside agencies 18 wiretaps, 15 DNR's, 4 eavesdroppings, 23 videos and 39 enhanced tapes.

The **Central Security Bureau** reports to the supervisor of the Intelligence Services Section. The bureau's primary responsibility is to identify, reduce, control and prevent sociopolitical organized crime and terrorism in the state of New Jersey. In addition, the bureau has the responsibility of keeping the Superintendent and the Attorney General informed of any developing situations that may lead to civil disorders in the state, and to investigate all threats directed toward members of the New Jersey judiciary.

In order to fulfill the primary responsibility of the bureau, strategic intelligence assessments have been designed and developed to provide a descriptive analysis of sociopolitical organized crime systems and terrorist groups operating in the state. The bureau depicts their capabilities and assesses the efforts of law enforcement agencies in the control against these groups.

Since January 1985, the bureau has participated in a joint Terrorism Task Force with the FBI office in Newark in order to pursue mutual goals. A similar agreement was entered into in March 1986 with the FBI in Philadelphia, Pennsylvania.

The **Newark NJSP/FBI Terrorism Task Force** was established in January, 1985 to eliminate duplicated investigative efforts. Since its inception, the task force has received acclaim for the successful completion of several investigations involving both domestic and international terrorism. Through their efforts, terroristic acts that could have resulted in the loss of life and property were avoided. The success of the state/federal concept employed by the task force is being used as a model for joint investigations in other areas of mutual concern.

The **Philadelphia NJSP/FBI/PPD Terrorism Task Force** was formed in March 1986, and is comprised of FBI agents, a member of the Central Security Bureau, and Philadelphia Police Detectives.

The Philadelphia Terrorism Task Force has the responsibility of investigating all terrorism-related matters affecting the eastern district of Pennsylvania and the southern New Jersey counties of Salem, Gloucester, and Camden. This task force has continued to aggressively monitor group activities in an effort to anticipate future violent criminal acts by terrorist organizations.

In accordance with State Law A-901, the **Solid/Hazardous Waste Background Investigation Bureau** was created. This bureau's primary function is to prepare confidential investigative reports on each person applying for a license to collect, transport, store, and/or dispose of solid/hazardous waste within the boundaries established by the Attorney General.

Based on the information supplied by the investigative report, the Attorney General and/or Department of Environmental Protection can confidently assess the expertise and integrity of those individuals and corporations who apply for a license under the A-901 law.

The approximately 1,884 corporations along with the additional officers, primary personnel and second-level affiliated companies which comprise the waste industry, must submit to a mandatory confidential background investigation which is conducted by this unit. In addition, it is projected that 100 new companies will enter the market each year, thus necessitating a multitude of further investigations.

By responding to the serious threat of environmental contamination, the investigative unit ensures that licensed corporations and individuals have the required proficiency and expertise to protect the well-being of the general public.

The **Casino Gaming Bureau** is comprised of the Special Investigations Unit and the Casino Investigation Unit. The bureau still functions in concert with the Division of Gaming Enforcement by conducting criminal investigations.

The primary function of the Casino Investigation Bureau is to enforce all the rules and regulations of the Casino Control Act. The bureau is also empowered to investigate, apprehend, and assist with all criminal investigations; investigate all complaints of violations; and arrest/charge all violators of the Casino Control Act, as well as all crimes against New Jersey criminal statutes. Bureau personnel conducted 2,111 casino-related investigations that resulted in 1,892 arrests.

In addition to investigating and apprehending violators of the Casino Control Act, the

bureau monitors the surveillance and security departments of the various licensed casinos and insures the compliance of all internal control submissions. The Casino Investigation Bureau performs the above mentioned functions during the operational hours of the various casinos.

The primary function of the **Special Investigations Unit** is to handle the in-depth criminal investigations that occur within the casino industry. This calls for close liaison with local, county, and federal authorities within the framework of the casino industry. The unit also has developed a working relationship with the Nevada Gaming Board, Nevada Metro Police, and international police authorities throughout the world as they relate to the gaming industry.

Fulfilling the bureau's mandate, the Special Investigation Unit conducts investigations into criminal infractions occurring in the casino industry, including traditional and nontraditional organized crime infiltration and narcotic activity, and prepares these investigations for presentation at trial.

The **Casino Investigation Units** have the responsibility of enforcing the Casino Contract Rules and Regulations and the New Jersey Criminal Statutes. Unit personnel conduct investigations into administrative violations of the Casino Control Act Rules and Regulations and the respective casino's Certificate of Operation.

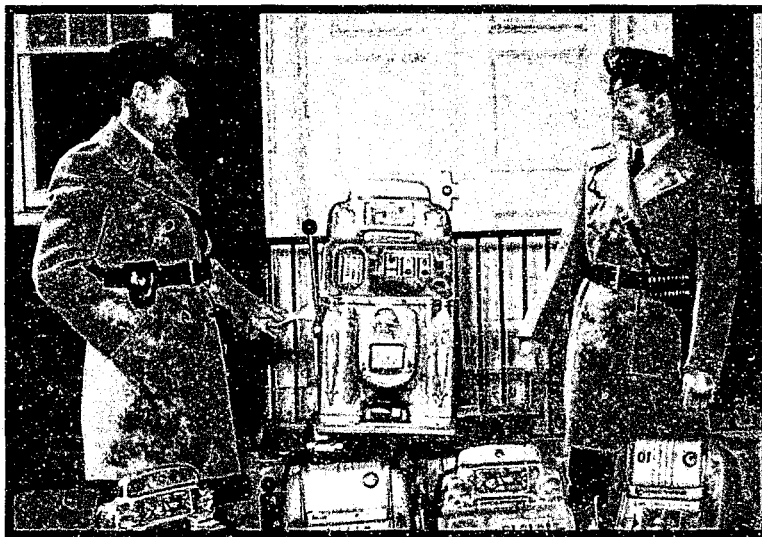
Personnel monitor licensed junket representatives that arrange junket trips into Atlantic City casinos to ensure compliance of the

Casino Control Act. Unit personnel also monitor lounge acts, theater acts and boxing events to ensure that agents, managers and performers are complying to licensing regulations.

Since 1989, the New Jersey State Police has acted as the host and policy board member for the Middle Atlantic Great Lakes Organized Crime Law Enforcement Network (MAGLOCLN).

MAGLOCLN is the newest of the 14-year-old Regional Information Sharing System (RISS) Projects. The RISS Projects encompass all 50 states, the District of Columbia and two provinces of Canada. MAGLOCLN serves over 1,000,000 law enforcement personnel by enhancing the ability of state and local criminal justice agencies to identify and remove criminal conspiracies and activities spanning jurisdictional boundaries. All of the RISS Projects are governed by the Federal Criminal Intelligence Systems Operating Policies. These policies insure that the data collected, stored, maintained and disseminated is accurate, reliable, relevant to criminal activity and secure.

Among the principal services offered to member agencies are: a computerized pointer-index database covering organized crime, analytical services (case analysis, telephone toll analysis, etc.), the loan of and assistance with technical equipment, training and conferences, monthly publication of the network, investigative support in the form of confidential funds, investigative travel, and toll-free WATS line telephone patching to support interagency and inter-regional communication.



Troopers examine slot machines confiscated during raids on illicit gambling establishments, circa 1950.

EMERGENCY MANAGEMENT SECTION



Major C.A. Williams
Section Supervisor

The **Emergency Management Section** conducts its emergency mitigation, preparedness, response, and recovery responsibilities through personnel which are located within the Regional Organization, Operational Planning, Training and Program Support, Communications, and Marine Police Bureaus. Within these five bureaus, 12 units are assigned specific duties and assignments related to the overall functioning of the section.

The following highlights of Fiscal Year 1992 reflect the section's commitment to addressing the top issues facing our state through emergency planning, first responder training, full-scale exercises, and emergency responses. The section focuses its work in four hazard-specific areas: severe weather; hazardous materials planning, training, and response; radiological preparedness; and emergency operations plan development.

Within the **Regional Organization Bureau**, the majority of FY '92's emergency responses were attributable to several types of incidents, including severe weather, major fires, environmental emergencies, water main breaks, dam failures, bus accidents and poisoning of municipal water supplies.

Some of the more notable EMS Regional Organization Bureau accomplishments include the response to the October 1991 and January 1992 coastal storms, which resulted in a federal disaster declaration for the state of New Jersey; response to the 1991 Halloween fires in Camden, which resulted in \$300,000 worth of damage; and April 1992 forest fires in Ocean and Monmouth counties, which resulted in the first declaration of Alert ever at the Oyster Creek Nuclear Generating Station.

Although their on-scene responses often put EMS regional personnel in the limelight, the bureau staff members are also highly involved in the day-to-day work of aiding local offices of emergency management in achieving excellence in their programs. This work includes, but is not limited to, assistance with the preparation of emergency operations plans, development of public education materials, acquisition of emergency resources, presentation of training programs, exercise design and participation in special operations.

The success of FY '92 emergency responses was directly attributable to full-scale exercises conducted at the county and municipal levels throughout the state. The adage "practice makes perfect" rings true when applied to emergency planning and response. During FY 92, Emergency Management Section personnel assisted county and municipal OEM's with the coordination of 158 emergency preparedness exercises relating to hazards which threaten their regions.

In addition, EMS personnel participated in the Union-Middlesex Hazardous Materials Advisory Council annual exercise at Port Newark/Elizabeth in conjunction with the Port Authority of New York and New Jersey.

During FY '92, the **Radiological Emergency Response Planning Unit (RERP)** coordinated the Oyster Creek (Ocean County) Nuclear Generating Station Annual exercises. These exercises, which passed highly successful evaluations by the Federal Emergency Management Agency, tested the emergency planning and response systems of the area in and around the Oyster Creek Nuclear Generating Station.

The RERP Unit also assisted with the funding

EMERGENCY MANAGEMENT SECTION

of new Emergency Operations Centers in the communities of Pine Beach and Harvey Cedars, and with the renovation of the State EOC at Division Headquarters in West Trenton. The State EOC renovation included the installation of an AT&T Difinity GE Electronic Switch (PBX) system, an improvement which has optimized speed and flexibility in telephone communication and realized cost savings due to a reduction in telephone lines serving the EMS.

The **EMS Operational Planning Bureau (OPB)** also reviewed and approved 160 local government emergency operations plans, which were submitted in accordance with P.L. 1989 Ch. 222. This means that approximately 96% of the state's population now lives in communities in which an emergency operations plan is either "up and running" or under development.

Other highlights of the bureau include enhancement of the Coastal Evacuation Route sign program; development of a mental health responders consortium and revision of the NJ Mental Health Emergency Response Plan; and augmentation of the Survivable Crisis Management Program through the arrangement of federal funding agreements with two counties for the construction of alternate State EOC's.

Hurricane preparedness was enhanced during a statewide exercise June 13, 1992, which was participated in by all 21 counties. The OPB also provided assistance to the Army Corps of Engineers in initiating a Metro New York Hurricane Transportation Study, and with final revisions to the Draft Technical Data Report of the NJ Hurricane Study.

Through the work of the **EMS Training and Program Support Bureau**, the section has continued to: provide a state-of-the-art training program designed to achieve an Integrated Emergency Management System aimed at addressing all hazards at the local, county and state levels; upgrade and maintain its local area computer network; convert single-user into multi-user programs, and update eligibility certifications of 172 auxiliary police programs and the Individual Mobilization Augmentee program, both of which are implemented throughout the state.

Professional Development Courses, offered by the bureau, are designed to improve the proficiency of county and municipal emergency management personnel. All professional development courses are recommended by the American council on Education for college credit equivalency.

During FY '92, 38 different courses were

offered by the **Field Training Unit**, which trained a total of 1,232 emergency services personnel. In addition, 155 individuals received training in radiological preparedness and response. The Field Training Unit also coordinated Incident Command System training for 5,000 students; and oversaw emergency preparedness exercises in which 6,124 emergency responders participated.

The **EMS Hazardous Materials Emergency Response Planning Unit** administers and coordinates a hazardous materials emergency response training program for police, fire, emergency medical, health officers, and emergency management responders. In the period from July 1, 1991 to June 30, 1992, the EMS HMERP Unit coordinated the training of approximately 13,223 individuals in all levels of hazardous materials planning and response.

Self-Protection for the Emergency Worker is a course offered through the **EMS Radiological Emergency Response Planning Unit**. During FY 92, approximately 2,400 responders in Ocean, Salem, and Cumberland Counties were trained in the various aspects of radiation protection.

During FY '92, the **Federal Surplus Property Unit** donated \$2,621,400 and collected \$335,100 in handling fees to cover operating costs. The unit also donated \$945,750 of excess Desert Storm food to various agencies within the state, including those which serve the homeless.

The **EMS Marine Law Enforcement Bureau** consists of a headquarters command, two repair facilities, nine stations and one tactical patrol unit. The bureau's jurisdiction and patrol area consists of New Jersey's territorial seas extending to three nautical miles offshore along the 127 miles of Atlantic Ocean coastline with an interior tidal shoreline of 1,750 miles, composed of the Delaware River and approximately 100 inland bays, creeks, coves and rivers. In addition, there are over 800 lakes and ponds within the state with a total of 700 square miles of surface area.

The bureau is the primary provider of police services on the waters and contiguous land areas of the state of New Jersey. It provides response to waterborne emergencies requiring police investigation, and is responsible for rescue and aid to the distressed boater. The bureau also provides basic criminal investigative services, including the investigations of vessel thefts and related equipment thefts.

During FY '92, the MLEB initiated 1,480 criminal investigations, investigated 299 boating

accidents, initiated 10,520 boater contacts, responded to 776 requests for assistance from boaters and provided service for 263 other requests.

The NJSP MLEB provides water management through boating safety courses, regulates and patrols marine regattas, races and events, and has sole statewide responsibility for the investigation of boating accidents. The bureau is also responsible for the administration of boating safety programs and offers training courses. The bureau conducted boating safety courses for 25,219 individuals and provided lectures for another 8,796 boating enthusiasts.

Bureau personnel enforce the state's boating laws and assist federal, state and local law enforcement agencies. They provide coordination in the placement of aids to navigation and also assist with the removal of debris from the water. Finally, the bureau shares responsibility with the Department of Environmental Protection for the enforcement of New Jersey's fish, game and shellfish laws.

Members of the Marine Bureau have been trained by U.S. Customs and are cross-trained as custom officers. Bureau members have worked closely with U.S. Customs and Immigration this past year assisting with ship searches resulting in narcotic arrests and the arrest of illegal aliens.

Pollution investigations range from the illegal disposal of household waste near waterways to the large company that blatantly dumps hazardous waste. Follow-up investigations reveal that many of these sites have been cleaned up after enforcement action by the bureau.

The bureau has initiated and sustained a pollution enforcement program which has realized a high degree of success. There were 943 pollution investigations initiated during calendar year 1991 resulting in 887 complaints. Indications for 1993 point to significant increases in pollution investigations and complaints.

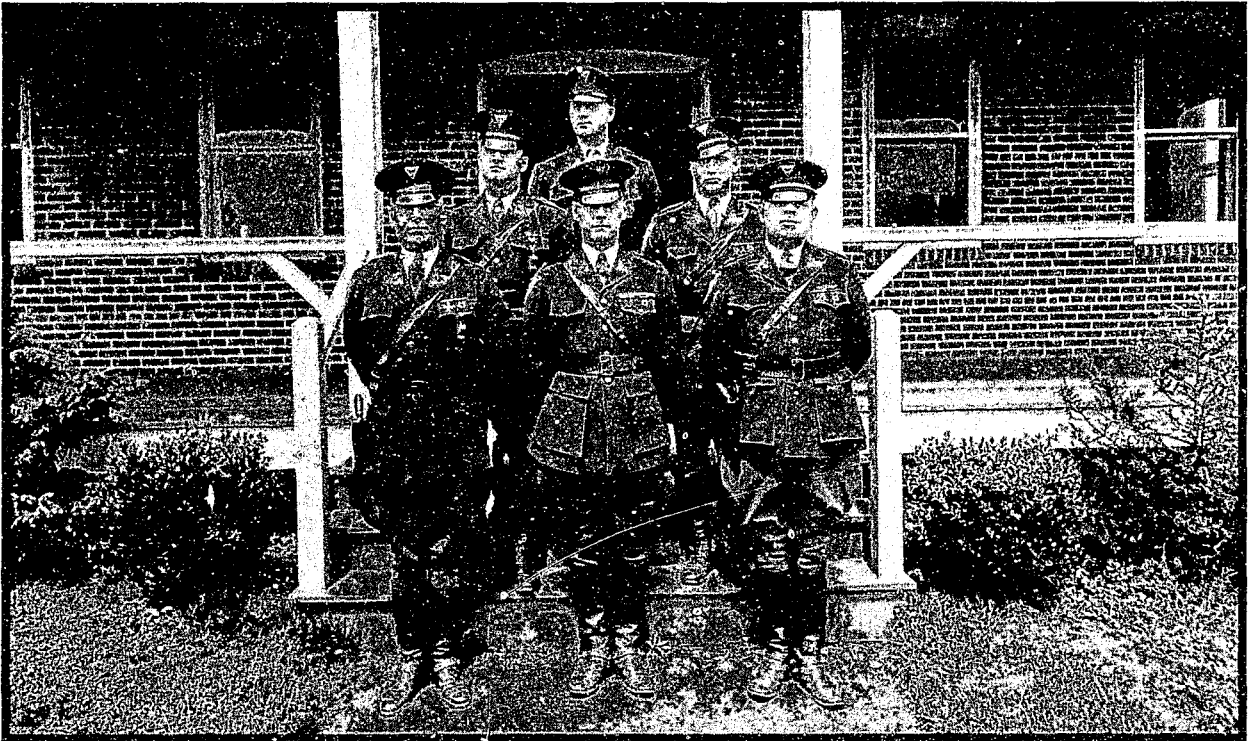
The EMS **Communications Bureau** is comprised of the Telecommunications Unit (TCU), the Radio/Electronics and Maintenance Unit (REMU), the Planning and Emergency Communications Unit (PECU), and the Office of Emergency Telecommunications Services (OETS).

During FY '92, the newly configured **Telecommunications Unit** was responsible for 24-hour-a-day operation of CJIS terminal user agencies, the entire Division's telephone needs, telephone "hotlines" tied directly to the state's nuclear generating stations, and the operation of various other communications systems utilized by the NJSP.

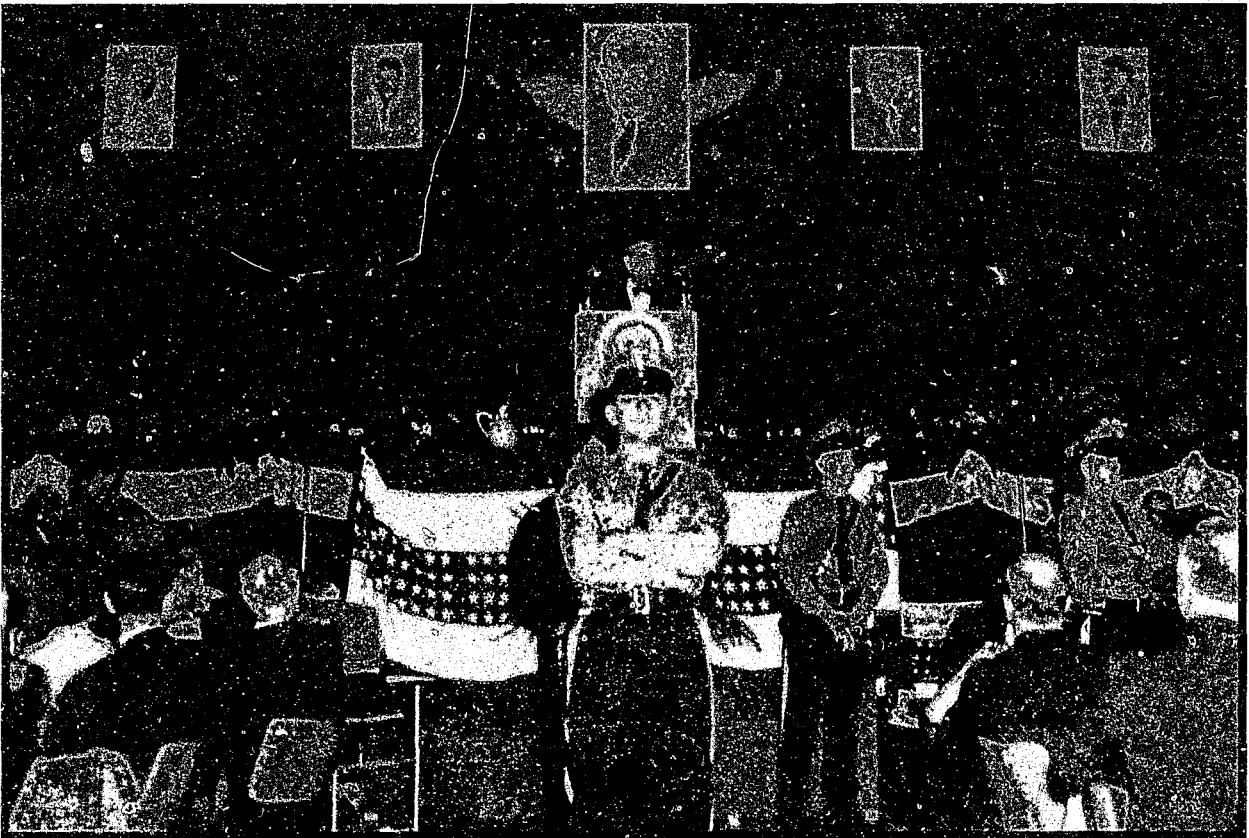
The **Radio/Electronics and Maintenance Unit** planned, designed, and fully maintained the statewide radio system during FY 92. The \$26 million facility and its network serve State Police and allied state agencies. It installed radios and equipment in 158 marked and 207 unmarked vehicles, along with removing same from 315 vehicles. All of the 3,988 radio repairs were made while 3,884 assorted tasks were completed. Programming of the radios involved 2,315 units.

The **Planning and Emergency Communications Unit** coordinates the radio frequency licensing process, and during FY '92, 192 applications were reviewed for New Jersey's public safety agencies. It also submitted comments for 105 applications for use of surrounding radio channels in surrounding states, an effort which reduced interference to radio users.

The **Office of Emergency Telecommunications Services** is responsible for the design, implementation and coordination of the statewide 9-1-1 system, and during FY '92, five counties came on line. OETS has held ongoing 9-1-1 training sessions throughout the state, resulting in a total of 250 instructors and 1,400 graduates of the Basic Telecommunicator Training Course. It has also designed a successful public information campaign for use by counties who are on line with the 9-1-1 system.



Colonel H. Norman Schwarzkopf (center) poses with his staff, circa 1928.



President Lyndon B. Johnson addresses the 1964 Democratic National Convention while troopers ensure the security of all participants.

ADMINISTRATION SECTION



Major R.D. Bloom
Section Supervisor

The **Administration Section** operates as the support function of the Division, providing services such as: the effecting and implementing of policy and procedure; the recruiting and testing of qualified applicants; acquisition, maintenance and replacement of transportation; accountability, coordination and distribution of fixed assets; the development, implementation and maintenance of all data processing initiatives; and the procurement of all commodities required to operate this Division. These services are offered through the Office of Affirmative Action, the Personnel Bureau, the Logistics Bureau, the Fiscal Control Bureau and the Planning Bureau.

The **Office of Affirmative Action** is responsible for monitoring and ensuring the Division's compliance with state statutes, federal statutes, rules and regulations, executive orders and guidelines as they relate to affirmative action in all phases of the employment process.

In accordance with the state and federal guidelines, the Office of Affirmative Action annually develops an Affirmative Action Plan which outlines the attainment of goals, identification of problem areas, and remedial action when necessary.

This office also provides information, training, and technical assistance to all Division members concerning various aspects of affirmative action and equal employment activities.

The Office of Affirmative Action also supervises and administratively controls the phases in the selection process for employment as a New Jersey State Trooper, Alcoholic Beverage Control Enforcement Investigator and Marine Law Enforcement Officer. In a continuing effort to recruit qualified applicants, career presentations

are made to educational, social and civic groups. In addition, the office is responsible for researching and developing the various phases in the selection process relative to fair and equitable employment practices.

The efficient operation of the Division Headquarters mail room and the performance of the personnel assigned there is the responsibility of the Affirmative Action Officer.

An **Employee Assistance Program** has been instituted within the Administration Section since March 12, 1982. The general purpose of the New Jersey State Police Employee Assistance Program is to help enlisted personnel overcome behavioral, medical or personal problems. The program provides information, confidential professional assistance and subsequent referral services.

The **Personnel Bureau** maintains records of all enlisted members of the Division of State Police, as well as all Civil Service employees working for the Division. Bureau personnel are responsible for payroll, health benefits, insurance, pension, and interviewing and hiring applicants for all civilian positions.

During the past year, 1,200 personnel action requests were prepared and forwarded to the Department of Personnel. The Division's authorized strength was 2,677 and the actual strength at the close of the year was 2,373. There were 1,193 civilian employees working for the Division, this number includes 208 Marine Police, A.B.C. and S.G.S.B. personnel.

The **Promotional Systems Unit** is responsible for administering promotions of Division personnel consistent with State Police policy and promotional agreements between the state of New Jersey and both the State Troopers Fraternal Association and the State Troopers N.C.O.

Association. The unit is also administratively responsible for the two and four-year enlistment and discharge reports for enlisted members, as well as maintaining the Division transfer system.

The **Payroll Unit** is responsible for preparing supplemental payrolls for over 3,600 employees, as well as insuring the proper distribution of their checks. This unit also processes all overtime payments. The unit is responsible for maintaining the time-keeping records (paid vacation, sick and personal leave time earned, used and remaining) for in excess of 1,100 civilian employees. This unit annually coordinates and processes shift differential payments for troopers and non-commissioned officers.

This unit is also responsible for preparing the Division's Personnel Orders; processing employment verifications; processing pension enrollments, transfers and buy back forms; preparing payroll certifications for retirees; processing pension loan deductions forms; placing employees on leaves of absences; administering the deferred compensation plan and coordinating all back pay awards (e.g., the 1990-1993 Troopers' contract).

Records Management Unit personnel are responsible for maintaining the 3,575 active personnel files of all enlisted and civilian personnel. The files of retired and former personnel are also maintained. The unit collects, updates and stores all data concerning personnel changes. Unit personnel are responsible for nearly 2,000 annual personnel changes entered into the Personnel Management Information System for the Division. These actions include position title changes, promotions, reclassification and relocations of all personnel. The unit was responsible for the processing and hearing of 100 annual Disciplinary Actions for the civilian staff. The unit administers the State Longevity Awards for approximately 425 personnel annually, and assures the remembrance of deceased sworn members on Memorial Day through the placement of flags and grave markers. Finally, the unit is responsible for the preparation and distribution of all the various Division rosters.

The **Personnel Services Office** is responsible for recruiting non-sworn employees for the Division of State Police. Administration of promotional actions for non-sworn personnel are also processed in this office. The planning and administering of in-service training and pre-retirement programs, Department of Person-

nel training programs, enrollment into health benefits and retirement systems, and tuition reimbursement programs for civilian employees are also managed in the Personnel Services Office. Counseling of employees regarding leaves of absence, coordination of PAR's (Performance Assessment Reviews) for non-sworn employees, and coordination of state reimbursement of Medicare expenses are handled through this office. In addition, the Personnel Services Office is the Division liaison with the Employee Advisory Service for non-sworn personnel.

The **New Jersey State Police Museum** is dedicated to preserving the memories and traditions of those who have served throughout the Division's 71-year history.

The museum is partially housed in one of the Division's oldest and most historic structures. The 1934 Log Cabin displays the progression of our transportation from 1921 to the present. The new wing of the museum displays exhibits and artifacts, as well as a complete library of historical records and photos. In addition, the New Jersey State Police is fortunate to have in its possession the original evidence presented at the 1935 "Trial of the Century." The Lindbergh Kidnapping Case generated over 200,000 pages of reports and documents which are on file at the State Police Archives.

The completion of the new Museum Complex enables the Division to continue to share its history with all those who visit and reflect on the pride and tradition that will guide us through the future.

The **Medical Services Unit** is responsible for maintaining comprehensive medical records, including sick leave and workers' compensation files on all Division members. The unit oversees the annual enrollment for the state health and dental programs, along with handling inquiries and changes concerning these programs. The unit also processes bills for the authorized medical services. Unit personnel supervise the selection process medical examinations for all Division law enforcement applicants, as well as the various Division medical programs, (e.g., semi-annual blood drive, Hepatitis B immunization, Public Employee Occupational Safety and Health Act (PEOSHA) obligations, etc.).

The unit plans and manages a "Well Trooper" annual medical examination or screening for all Division members. This preventative health program follows the recommendations of the American College of Physi-

cians and provides selective periodic examinations scheduled by age, sex and risk factors. Cancer screening procedures such as mammograms for females at age 35 and a flexible sigmoidoscopy for males ages 45 and 50 are included in the program. Several potentially serious health problems have been identified, as well as those members who have high risks for coronary artery disease.

The **Fiscal Control Bureau** incorporates the disciplines of the Budget Operations Unit, Budget Allocation Unit, Financial Information and Analytical Unit, Accounting Unit, and the Document Review and Billing Unit in administering the Division's budget of \$149,652,000. This bureau oversees the expenditure of these funds, under the auspices of the Division Administration Officer, Department of Law and Public Safety, and Office of Management and Budget (Department of Treasury).

During the fourth consecutive year of budget reductions and dwindling resources, the Fiscal Control Bureau implemented innovative adjustments to maximize thrift. These adjustments necessitated an exact monitoring of all Division programs to ensure all expenditures were absolutely necessary and in conformance with the Division Spending Plan.

The **Budget Operations Unit** formulates the annual budget for the Division of State Police. This involves coordinating the preparation of the annual budget with various administrative components of the Division, including the Personnel, Planning, and Logistics Bureaus, ensuring compliance with the Division's short and long-range plans.

The unit is the liaison with the Office of the Attorney General, and as such, acts as the Departmental approval authority for Division expenditures of reallocated funds. It also monitors and reviews all budget-related expenditures and the Division's disbursement plan.

In the planning capacity, the Budget Operations Unit prepares cost analyses for proposed expansion and new initiatives developed for the Division by the Superintendent.

The **Budget Allocation Unit** is responsible for evaluating the various Division sections' compliance with fiscal policies. This unit inputs data to the Analytical Unit, which is critical to the completion of an accurate and reliable Division Spending Plan. The Budget Allocation Unit constantly monitors account balances and tries to identify shortages in appropriated funds before they occur.

This unit prepares the monthly projection

report and quarterly spending plans. These reports delineate the "state of the budget" by analyzing the fiscal requirements of the Division and the availability of funds to meet these requirements. The purpose of these reports is to help management effectively utilize the funds available to the Division. The unit communicates on a regular basis with Department of Law and Public Safety analysts to satisfy various special requests and to ensure that Division and Department goals are in consonance.

Through the use of Treasury's FOCUS System, the Analytical Unit creates programs to access the Treasury mainframe in order to obtain information required by both Division and Department personnel.

The unit inputs all accounting documents into the Management Acquisition Control System (MACS) and the New Jersey Comprehensive Financial System (NJCFS). The purpose of these documents range from allocating funds at the onset of new fiscal years to purchase/payment documents.

The unit is also responsible for processing and maintaining documents for communication mileage according to S.O.P. C-17.

The **Accounting Unit** provides the expertise that enables the Division to accomplish its financial transactions in a manner conforming to the New Jersey Financial Information System. This unit monitors all grants and federal funds and ensures that reimbursements to the Division accounts are made in a timely manner. The Accounting Unit also ensures Division compliance with federally mandated rules pertaining to expenditures of Federal Funds. The Accounting Unit bills other state agencies and entities for goods and services provided by the Division.

The unit prepares, processes, records and stores the myriad of fiscal documents generated by the Division.

The **Logistics Bureau** is responsible for providing management of the logistical support as required by the Division of State Police in everyday operations and during civil disturbances and emergencies. This responsibility encompasses maintenance of facilities and equipment, preparation of Capital Budget, employee safety, space planning, fleet management, purchasing of supplies and equipment, property control, warehousing and printing for the Division. The Logistics Bureau is comprised of the following units: Facility Services, Transportation, Warehouse, Property Control, Pur-

chasing and Printing.

The **Facility Services Unit** is responsible for providing the management of the physical plant for all facilities utilized by the Division of State Police. Approximately 156 owned or leased sites are located throughout the state of New Jersey. The Facility Services Unit provides the preliminary planning, technical specifications and coordination for new construction, maintenance and renovation of existing structures, acquisition of new facilities, and ensuring a safe, hazard-free environment for its employees.

Within the Facility Services Unit are several distinct and specialized functions, including the Capital Budget and Planning Office, the Maintenance Office, the Space Planning Office and the Facilities and Employee Safety Office.

The **Capital Budget and Planning Office** implements the preparation for and coordinates the overall management of all capital construction or renovation projects for the Division of State Police. This includes the preparing of budget requests and the administration of expenditures.

The **Maintenance Office** is responsible for the repairs, renovations and overall maintenance, both preventative and emergency, for all facilities owned by the Division. During Fiscal Year 1992, the Maintenance Office continued to utilize a Computerized Preventative Maintenance Program, enabling Office Personnel to better schedule preventative maintenance and reduce costly and disruptive breakdowns of building systems. In addition, the computerized system allows improved management control and review of scheduled and completed work.

In addition to maintaining state-owned facilities, the Maintenance Office is responsible for coordinating repairs and planned work at leased facilities through the Department of the Treasury, Bureau of Lease Compliance and the various facility landlords.

The Maintenance Office has the responsibility for overseeing the Division Headquarters recycling program.

Over the past year, the Maintenance Office has received approximately 5,000 requests for work.

The Office of the Division's Space Planner, allocates work space into a more efficient, ambient environment. This is accomplished by finding new space or re-evaluating existing work space. Additionally, the office coordinates

lease renewals with other state agencies.

The **Facilities and Employee Safety Office** is responsible for our Division's compliance to all federal and state regulations pertaining to workplace safety. In striving to achieve this goal, unit personnel frequently interact with regulatory inspectors from the Departments of Community Affairs, Environmental Protection, Health, and Labor to ensure that our facilities are free of recognized hazards and in compliance with standards established by the N.J. Fire Code and the Public Employees Occupational Safety and Health Act.

The Facilities and Employee Safety Office is also responsible for coordinating and managing our Division's Right to Know Program, as mandated by the New Jersey Worker and Community Right to Know Act. The act requires safety training for employees who routinely handle hazardous chemicals, annual surveying of Division facilities for hazardous substances, and labeling of containers and pipelines that hold hazardous materials.

Unit personnel coordinate the proper handling and disposal of hazardous waste from Division facilities, and the annual reporting of the disposals to the Department of Environmental Protection and the U.S. Environmental Protection Agency. During Fiscal Year 1992, the Division of State Police safely disposed of over 17,000 pounds of hazardous waste.

Throughout Fiscal Year 1992, the unit continued coordinating emergency response plans for Division facilities with fire and rescue officials throughout the state.

During the past year, the Facility Services Unit has completed several projects, including the removal of several leaky gasoline tanks, renovation of Building 13 to accommodate the REMU, installation of storage trailers at Division Headquarters, Building 4, and the installation of office trailers at the Southern Regional Laboratory.

The **Fleet Management Unit** is responsible for purchasing and maintaining the 1,833 vehicles in the State Police fleet. The entire fleet is maintained by our present staff of 52 employees assigned to the nine State Police garage facilities and 27 gasoline service centers located throughout the state.

The State Police fleet traveled over 40 million miles, consuming 3 million gallons of gasoline in Fiscal Year 1992. As a result, 15,000 regular inspections and 7,000 emergency repairs were performed on the fleet vehicles by our staff. The vehicles serviced range from marked and

investigative to maintenance and utility equipment.

The Transportation clerical staff purchased and processed over \$6,500,000 in vehicles and equipment, taking full advantage of all discounts offered by various vendors and producing a savings to the state in excess of \$60,000. The unit's technical staff constantly researches the updating of vehicle and equipment specifications, operational procedures and practices, and tests and evaluates vehicle components and equipment.

Through close liaison with the National Association of Fleet Administrators and law enforcement agencies throughout the country, the Fleet Management Unit is able to keep abreast of all new vehicle modifications, thereby maintaining the State Police fleet at its required peak efficiency.

Warehouse Unit personnel are responsible for the acquisition, storage, and distribution of all uniforms, weapons and related equipment for members of the Division of State Police, and the receiving and shipping of all stationery, medical and janitorial supplies utilized by the Division. A computerized inventory is maintained on the approximately \$1.2 million stock on hand. Over \$350,000 annually is obligated to the unit to sustain adequate levels of inventory.

Approximately 5,000 requests for uniforms and equipment, as well as 2,800 requests for office, medical and janitorial supplies were processed. These requests involved the issuance of over 2,200 specific commodities.

The **Property Control Unit** is responsible for ensuring the Division's compliance with state statutes and department directives, which promulgate accountability and reporting requirements for all fixed assets. The unit fulfills the requirements by updating the Division's fixed asset inventory system, conducting on-site inspections, collecting excess/surplus property and making it available for distribution, transfer, or sale, and collecting and selling salvage/scrap property. In July, the unit began implementing and testing a bar coding system for tracking the Division's 38,000 fixed assets. The 1992 appraisal of the Division's fixed assets is approximately \$100,000,000.

The Property Control Unit provides the Division with the resident expertise for SOP D6 - Evidence and Property Control. The unit monitors the disposal of intangible evidence at the unit/bureau level, supervises the disposal of certain evidence, and receives tangible evi-

dence from adjudicated cases for disposal. This past year, the unit supervisor was appointed to a select committee which is recommending additional safeguards for the handling and storage of the Division's evidence. This unit is also responsible for providing vending machine services, operating the food services facility at Division Headquarters, and for purchasing catering services for special and emergency details.

The **Purchasing Unit** is involved in the procurement of all of the commodities required by the Division. The unit is directly responsible for the handling and procuring of the public utilities, office furniture and equipment, police equipment, supplies, photocopiers, stationery, medical and janitorial supplies amounting to over \$2.5 million annually, and maintains an inventory of all stock on hand. The unit coordinates and pays for repairs to all office machines, gymnasium equipment and certain items of police equipment within the Division.

The unit maintains files on state contract awards, which provide the information required by the various Division units to maximize their purchasing power. The unit also verifies and approves methods of procurement and processes invoices for payment of Division obligations.

The **Printing Unit** is comprised of a graphic arts studio and a print shop with press and bindery capabilities. The unit composes, prints and provides all standard forms, guides, booklets, manuals, reports, programs, graphic displays, projection overlays and rosters for the Division of State Police, as well as for other divisions and departments.

The **Graphic Arts Studio** is responsible for all pre-press production. This includes designing, typesetting, paste-up and camera work for all displays and overlays, as well as all printed materials.

The **Print Shop** is responsible for all offset printing, as well as post-production work, including folding, collating, binding, padding and packaging.

This year, the Printing Unit received 2,071 requests for printed material, and provided the Division of State Police, Division of Law & Public Safety and other departments and agencies within the state government with 12,864,882 forms and copies. The unit is also responsible for the publication of the *NJSP Triangle*, which is the official magazine of the New Jersey State Police.

The **Planning Bureau** is responsible for planning Division operations, both short and long range; coordinating and preparing Division orders, instructions and procedures to ensure that they are not in conflict with existing orders or rules and regulations; and planning, justifying, developing and implementing all data processing initiatives which originate within the Division of State Police. Bureau personnel conduct research projects and studies regarding various planning activities including, but not limited to, assisting other police departments with patrol scheduling, responding to inquiries and questionnaires from various criminal justice agencies, developing Division manpower allocation recommendations, and coordinating studies and recommendations regarding local police services performed by the Division of State Police.

All legislative bills and Appellate Court decisions pertaining to the Division are reviewed and brought to the attention of the personnel concerned. All enacted legislation which is of interest to or has a bearing on the Division is brought to the attention of the Superintendent. A member of this bureau serves as coordinator between the Division of State Police and the Office of Administrative Law in the promulgation of rules affecting the general public and maintains liaison with the New Jersey Legislative Office in Washington, D.C., concerning pending legislation bearing upon the Division.

The Planning Bureau, in conjunction with the State Governmental Security Bureau, was charged with the responsibility of providing transportation and security for governors, their families, and V.V.I.P.'s during the 84th National Governor's Association Annual Meeting, which was held in Princeton. In attendance were governors from 43 states, their spouses, family members, V.V.I.P.'s, and 1,100 registered attendees for scheduled business meetings and social events. Security was provided at all business sessions, social events and hotels. A comprehensive operations plan, developed by the Planning Bureau, enabled the Division to successfully fulfill these responsibilities.

The Planning Bureau also developed and coordinated a command post training exercise for the Division's staff officers, representatives from the Governor's Office, Attorney General's Office, National Guard, Department of Corrections and the Camden Police Department. The session required policy and operational decisions, and was designed to assist staff personnel from the organizations involved in imple-

menting a coordinated effort in emergency situations.

Planning, in conjunction with Field Operations, developed six and four-squad schedules for implementation with 4/10 schedule pilot program to be utilized by four selected road stations. The schedule was presented to NCO and STFA representatives with positive results. The pilot program was implemented on January 11, 1992.

The Bureau also conducted extensive research regarding changing the educational requirements for enlistment into the State Police. Research data was collected on both a four-year college degree and a 60 college credit requirement for enlistment. Based on the research conducted, the Planning Bureau recommended the four-year college degree requirement be established, with the 60 credit option as a viable alternative.

Members of Data Processing Services have the responsibility of developing and maintaining the high level of technical expertise which is required to satisfy the Division's diverse data processing needs. Personnel are involved in the support of a wide range of data processing applications, which include office automation, word processing, personal computer database applications, mainframe database applications, and the statewide police communications network (NJ CJIS).

The units continually monitor current trends and changes in the data processing industry. When feasible, the latest innovations in technology are implemented when it is to the advantage of the Division and its members.

The **System Development Unit** is responsible for the development and maintenance of all mainframe computer applications for the Division of State Police.

The unit conducts advisability studies for all new computer systems, recommends design alternatives to management, assists users with the purchase of hardware and software, designs databases and programs, develops software, and implements computerized systems which operate on the OTIS mainframe computers.

The **Programming Unit** is responsible for writing, maintaining, and documenting all software programs specified by the System Development Unit. These programs are combined into complex systems that perform the information processing needs of the Division.

The **Technical Services Unit** has the responsibility of managing the Division's personal

ADMINISTRATION SECTION

computers, local area network, and minicomputer resources. Management of these systems requires the unit to provide a multitude of support services that begin with the review and justification of a user's request for the purchase of a personal computer system. The justification process is coordinated with both the Department of Law and Public Safety and the Office of Telecommunications and Information Systems. Once a system is acquired, it will be tested, inventoried, and installed at the user's site by the Technical Services Unit personnel.

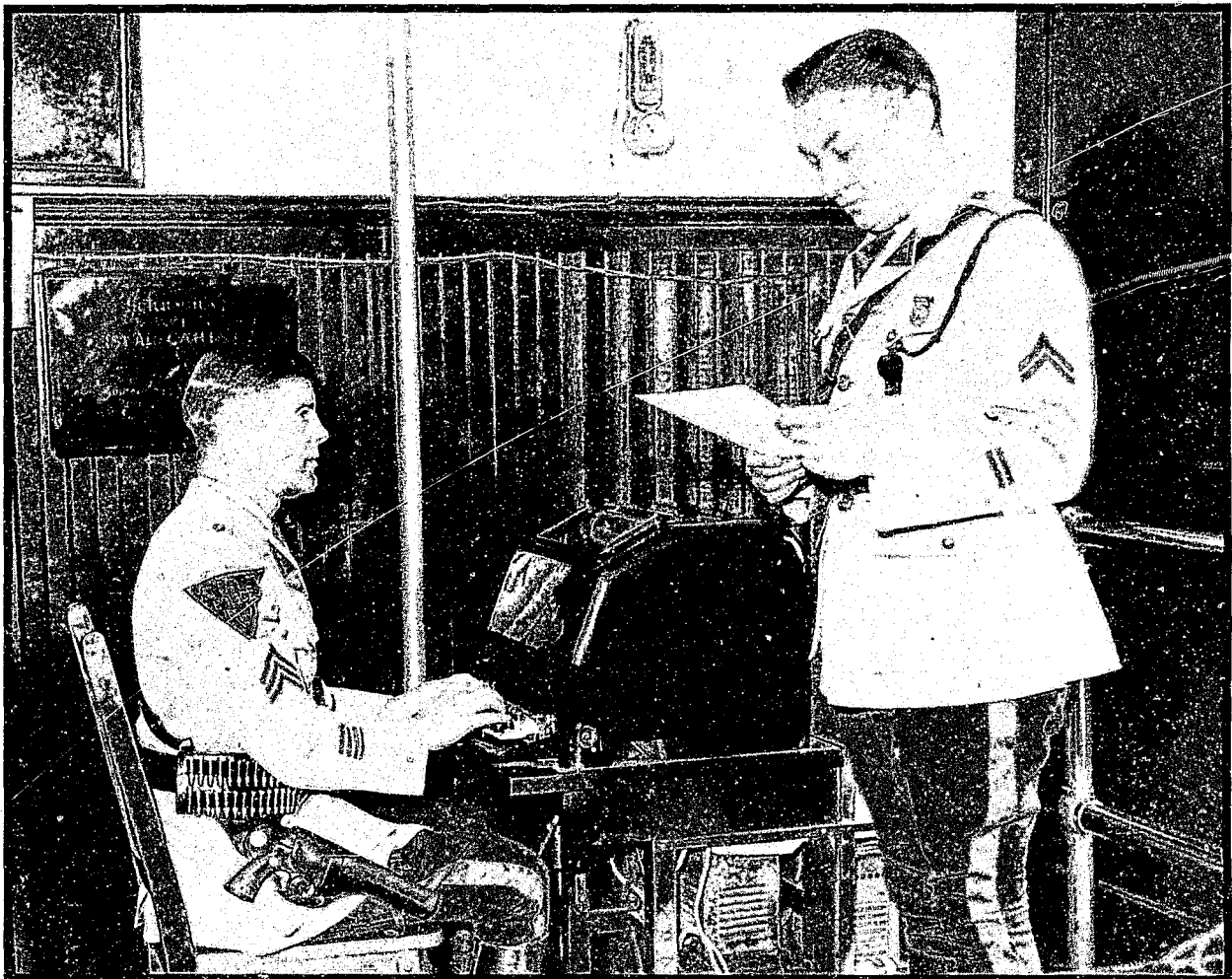
Other services provided include: troubleshooting and repair of personal computer systems, training of personal computer users, and the design and programming of internal applications, such as inventory, personnel, and document cataloging.

The **Data Entry Unit** is responsible for the data entry and verification of input documents

onto mainframe computer files for the Division of State Police. The major systems which the Data Entry Unit is currently supporting include: Transportation, Uniform Crime Reporting, Traffic Records, Daily Activities, and Summons Control. The unit is currently entering approximately 40,000 documents a month.

During the fiscal year which ended on June 30, 1992, members of the Systems Development Unit and the Programming Unit were involved in the development of two major mainframe systems: Computerized Criminal History and Message Switching. Both systems will replace obsolete systems which were developed during the early 1970's.

During the same period of time, members of the Technical Services Unit spent a majority of their time preparing for the enhancements which will be made to the Division's office automation systems.



Sergeant John Doyle Sr. - 287 aids Corporal Joseph Rutter - 498 in processing a teletype communication, circa 1930, Pompton Lakes.



Trooper Tom Condon - 724 assists state chemist Jack Brady in determining the contents of a suspicious package utilizing x-ray equipment, circa 1940.



Lieutenant DeGaetano - 419 and Trooper John Cook - 520 prepare a plaster cast at a crime scene, circa 1937.

SPECIAL & TECHNICAL SERVICES SECTION



Major G. Stith
Section Supervisor

The **Special and Technical Services Section** is responsible for directing, coordinating and controlling the personnel and functions of the Forensic Sciences Bureau, Technical Bureau, Equine Testing Bureau and State Regulatory Bureau.

The units of the **Forensic Sciences Bureau** provide scientific analysis of specimens related to the investigation of criminal matters submitted by the law enforcement community. The bureau provides expert testimony in all of the county and municipal courts of the state relative to the forensic analysis conducted. The bureau also provides a wide range of instruction and training to members of law enforcement agencies of the state relative to evidence submitted to the laboratories.

The New Jersey State Police laboratory system includes four forensic laboratories, located for geographical convenience at the following locations: The North Regional Laboratory in Little Falls, Passaic County; the South Regional Laboratory in Hammonton, Atlantic County; the East Regional Laboratory in Sea Girt, Monmouth County; and the Central Regional Laboratory in West Trenton, Mercer County. These laboratories provide full-time forensic laboratory services in the inspection and analysis of crime-related evidence. Drug, toxicological, bio-chemical analysis and trace examinations are some of the services conducted. Our scientists are able to extract vital information, through research and development, and provide the forensic science community with this data via the publishing of papers and books.

The laboratories are staffed by 83 scientists and technicians, and 11 clerical persons. There

were 31,837 cases received by the laboratories for analysis during this period.

Thirty-one thousand eight hundred thirty-five cases were completed this year. The laboratory personnel received 7,274 subpoenas, which led to 552 court appearances.

The renovations to the **South Regional Laboratory** began by the end of August, 1992. The purchase of initial equipment and supply orders has begun. This should enable the laboratory to start set-up and validation for PCR.

The **Ballistics Units**, located at the Central, North and South Regional Laboratories, provide technical services to all law enforcement agencies in matters which pertain to the use of firearms during the commission of crimes. Highly trained specialists conduct tests of all types of firearms and perform microscopic examinations of discharged bullets and shells to identify the particular firearm from which they were discharged. Other related services include the restoration of obliterated serial numbers, the examination of clothing for gunpowder residue, and the performance of tests to determine the distance from which a shot was fired. Expert testimony is provided during criminal trials. Ballistics personnel also receive, inventory, and destroy contraband firearms which are confiscated during investigations throughout the state.

During the year, there were 1,180 cases received for examination and 1,108 cases completed. Unit personnel tested 1,365 firearms, made 1,259 microscopic comparisons and examined 7,930 specimens of evidence. There were 51 obliterated serial numbers restored on weapons, and 166 test patterns were fired to

determine the distance from which shots were fired in 26 investigations. There were 272 subpoenas received, and ballistics experts appeared and testified in 66 trials. A total of 9,788 contraband firearms were received and inventoried while 8,074 were destroyed during the year.

Also assigned to this unit are the two Division Armorers, who are responsible for the maintenance and repair of all Division firearms. During the past year, the two armorers have inspected, retrofitted and repaired 2,148 Heckler and Koch P7M8 service pistols. This is done in conjunction with the in-service program. This program insures that each Division side-arm is inspected a minimum of once a year. The armorers also routinely maintain the Division's 59 AR-15 rifles, Walther PPK, and Remington Model 700 Sniper rifles.

The mission of the **Technical Bureau** is to support all law enforcement agencies of this state in the fulfillment of their responsibilities. This is accomplished by providing these agencies with technical assistance during their criminological endeavors utilizing the services of the Photography Unit, the Document/Voiceprint Unit, the Composite Drawing Unit and the Crime Scene Investigation Unit.

The goals and objectives of the **Crime Scene Investigation Units** are to progress in our job knowledge and to continue to provide professional crime scene investigation services to those authorities that have demonstrated a need for advisory, partial, or full service.

There are three units: North Unit, located at Totowa, Troop B State Police Headquarters; Central Unit, located at Princeton, Troop C State Police Headquarters; and South Unit, located at Hammonton, Troop A State Police Headquarters. The C.S.I. personnel investigate all types of crimes, i.e., homicides, rapes, arsons, assaults, etc. They furnish services that involve crime photography, latent fingerprint processing, criminal identification, evidence collecting, and labeling. During this period, the units handled 2,491 criminal investigations, including 159 homicides, 36 sexual assaults, 104 robberies, 138 aggravated assaults, 99 arsons, 32 suicides, 54 sudden deaths, 80 drug-related crimes, 1,189 burglaries, and 435 miscellaneous criminal investigations. In addition, the units also investigated 500 non-criminal cases, which included 252 motor vehicle accidents.

The **Document Examination/Voiceprint Identification Unit** provides a highly specialized technical service to all law enforcement and

state regulatory agencies, as well as to federal departments. Documents of evidential value are encountered throughout the full range of criminal activities. Examinations include, but are not limited to, handwriting identification, typewriter recognition, microscopic and chemical analysis of inks and papers, charred and water-soaked documents, indented writing, erasures, obliterations and alterations.

Voice identification is accomplished through the conversion of a magnetic tape medium into graphic renditions for contrast and comparisons.

Both document examinations and voiceprint identifications are used as a means to aid the investigator and the courts in arriving at successful conclusions. Unit members gave expert testimony in 24 court appearances during the past year.

There were 483 new document examination cases received, and 454 cases completed, which included the examination of 12,958 specimens submitted. Voice identification cases totaled four for the year.

The unit strives to stay abreast of the latest technology in the field of document examination. Unit personnel pride themselves on the high level of credibility they have achieved in the various courts within the state.

The **Forensic Photography Unit** is a full service laboratory within the Division in the area of photograph's, films, equipment, technicians and training. During Fiscal Year '92, requests for services increased over 14% (24% increase over the past two years) with a total of 3,084 requests.

Photographic applications involve evidence in the laboratory (weapons, explosives, clothing, altered writings, narcotics, etc.), as well as in the field (homicides, aggravated assaults, sexual assaults, burglaries, both fatal and serious M.V. accidents, etc.). In fact, some 22,239 black/white and 92,075 color negatives and prints were made in these areas, along with 7,968 slides (100% increase over Fiscal '91), which are utilized in court presentations, and training as well.

In the past fiscal year, this unit was also responsible for putting together two six-week (240 hour) Crime Scene Investigation Schools, in which some 31 investigators from police agencies throughout the state became Fingerprint Identification Experts, and gained invaluable knowledge in the area of crime scene photography and evidence gathering.

The photographic industry is a rapidly chang-

ing field where technology and equipment changes weekly. This unit is attempting to stay abreast of these many changes, and its personnel will continue to give the Division the best possible work product and service all of its photographic needs in an efficient and professional manner.

The **Composite Drawing Unit**, created in 1968, provides a wide range of forensic services to the law enforcement community. These services include the preparation of composite drawings of criminal suspects from witness' descriptions. By far, this service represents the greatest portion of the unit's work.

The unit's artists have been called upon to recreate tattoos to aid in identification, to age or alter the appearance of suspects or missing persons, and to reproduce from descriptions vehicles used in crimes and objects such as stolen pieces of jewelry.

The unit prepares detailed and scaled diagrams as well as charts and displays for courtroom presentation and major State Police cases, such as that involving the murder of Trooper Lamonaco.

The artists of the Composite Drawing Unit are capable of reconstructing a victim's appearance from decomposed remains. Within the last year the unit has been trained in, and now offers, three-dimensional reconstruction from skeletal remains, where a clay bust is created over a skull.

In the last year, the Composite Drawing Unit responded to 428 requests for services. In addition, the unit personnel continued to lecture at the F.B.I. Composite Drawing School in Quantico, Virginia.

The **State Regulatory Bureau** is charged with monitoring and regulating the private detective business and the diverse industry involved with the manufacture and sale of firearms within this state.

Private Detective Unit personnel have the statutory responsibilities for the administration and enforcement of all laws regulating the private detective industry, including pursuers and private detective/security agencies and their employees within the state of New Jersey. Personnel of this unit screen all applicants for licenses, in accordance with the Private Detective Act of 1939 and the New Jersey Administrative Code. Unit personnel maintain files and computer printouts of all licensed private detective agencies and their employees, conduct inspections and audits of agencies, and investigate complaints and violations of the

Private Detective Act, making arrests when necessary.

Private Detective licenses are issued for a two-year period, whereupon they become renewable. There are 1,437 licensed private detective agencies in the state of New Jersey. This year, 757 licenses were issued, of which 324 were corporations and 433 were individual. Unit personnel conducted 14,437 record checks on agency employees. A total of \$441,010 in license and employee fees were received, recorded and forwarded to the Fiscal Control Bureau, and 91 inspections were conducted.

The **Firearms Investigation Unit** in administering the state firearms control laws, is required to promulgate standards and qualifications for the manufacture and sale of firearms, as well as develop forms for distribution to firearms dealers, police departments and superior courts. A central repository of firearms information relating to the acquisition of firearms in this state is maintained by the unit. As of June 30, 1992, there have been 1,118,931 firearms registered with the Division. The unit maintains information on firearms applications processed by municipal police departments, as well as a file on applications processed by the Division of State Police. Since the enactment of the state gun control program, 1,691,444 applications have been processed and recorded including 30,873 during this period.

The unit has total responsibility to investigate applicants for a New Jersey license to retail, wholesale and manufacture firearms, and to investigate employees who will actively engage in the sale or purchase of firearms. During this period, there were 358 investigations of such applicants. In addition, the unit is required to investigate illegal firearms transactions occurring throughout the state and to assist other law enforcement agencies in firearm-related investigations. The unit conducted nine criminal investigations resulting in the confiscation of 518 firearms.

Each dealer, by statute, is required to keep a record of the acquisition and disposition of firearms. Unit detectives periodically inspect these records to assure that the dealer is complying with existing statutes, as well as regulations promulgated pursuant to these statutes. In this period, 709 inspections were conducted, which included examining the dealers' security systems to insure that minimum standards to safeguard firearms and ammunition at the business premises are met.

SPECIAL & TECHNICAL SERVICES SECTION

The **Equine Testing Bureau** is responsible for post-race testing of standardbred and thoroughbred horses, and random testing of drivers and jockeys. The analytical work encompasses testing specimens from the Meadowlands, Garden State, Freehold, Atlantic City and Monmouth Park Racetracks, and those non-parimutuel races (sire stakes) in Cumberland, Middlesex, Monmouth, Hunterdon and Ocean Counties.

The laboratories are staffed with technical personnel who perform testing and screening for drugs. A breakdown of testing conducted at the Meadowlands, Garden State and Freehold laboratories during this period resulted in 36,251 post-race specimens being analyzed, 51 of which were found to be positive, or containing prohibited medication or drugs. Of the 2,122 driver-jockey specimens examined, a total of 26 were found to be positive.



Corporal Authur Haussler - 471 is photographed with the Division's first mobile crime laboratory, circa 1935, West Trenton.

RECORDS & IDENTIFICATION SECTION



Major V. Littles
Section Supervisor

The **Records and Identification Section** contains the Criminal Justice Records Bureau, the State Bureau of Identification and the Field Services Unit. This section, through these bureaus, has the responsibility for the collection and storage of essential data necessary to fulfill the mandate of each law enforcement agency within the state.

The **Field Services Unit** coordinates the timely and correct submission of all documents relating to both the State Uniform Crime Reporting Program and the State Court Disposition Reporting Program.

The unit also monitors and audits the Statewide Court Disposition Reporting Program by ensuring that submitting agencies adhere to their statutory requirements as outlined under N.J.S.A. 53:1 et al. Field staff personnel are also responsible for the security of the State of New Jersey Computerized Criminal History (CCH) System. The CCH is utilized by over 650 federal, state and local agencies. Field Services Unit representatives provide the continuous training necessary to ensure proper security, integrity, and confidentiality of criminal history record information. This is accomplished by an auditing system that requires every CCH terminal to be inspected by a field representative at least four times per year.

Field Services Unit personnel, as part of the Uniform Crime Reporting Program, are called upon to perform statistical verifications (audits) whenever significant fluctuations in crime trends are detected in an agency's Uniform Crime Report. When the statistical verification has been completed, a comprehensive report is prepared by the field representative outlining

the causes of the fluctuations.

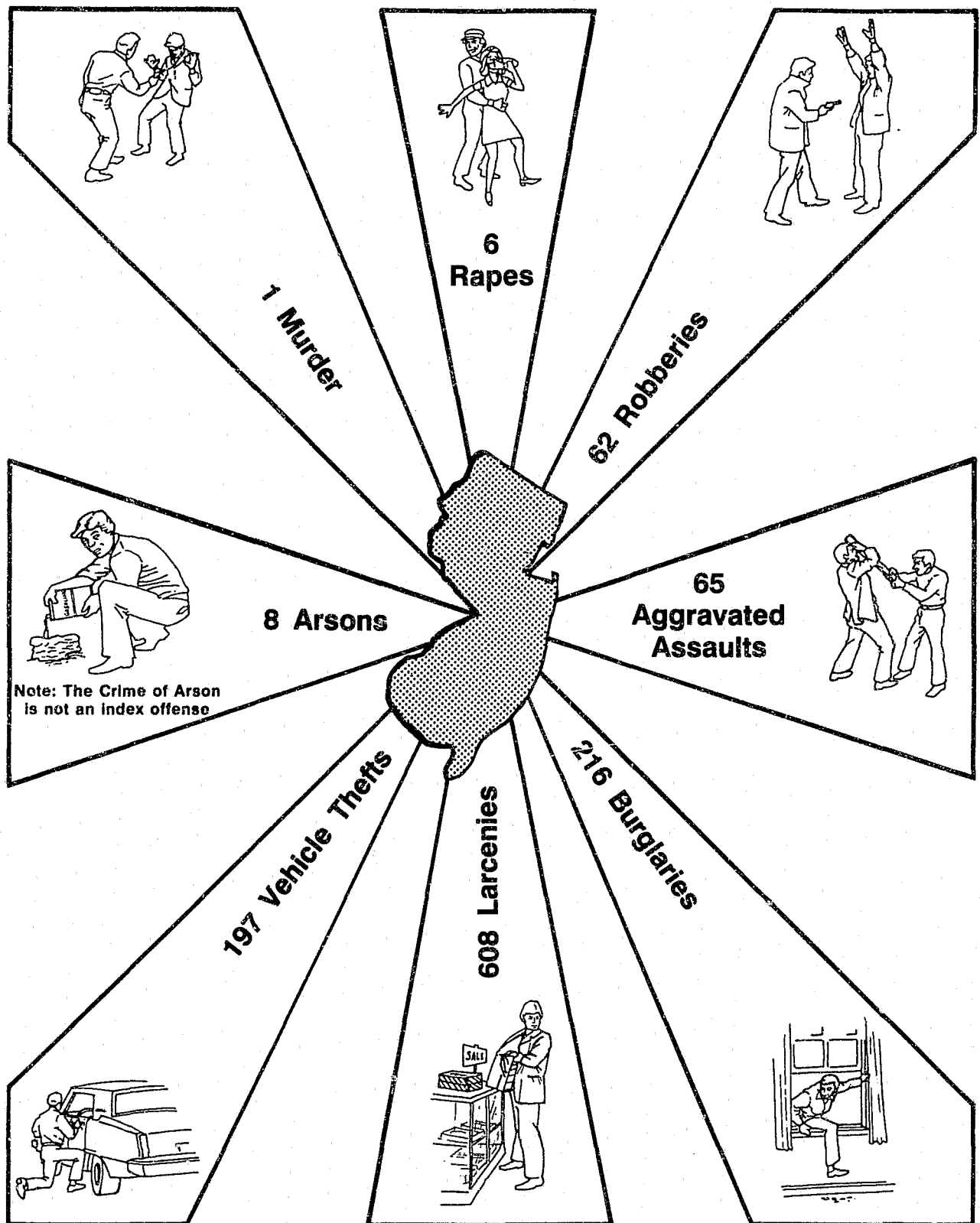
The Field Services Unit is also charged with the responsibility of providing assistance to the Criminal Justice Information System Control Unit (CJIS), with the biennial validation audit of all law enforcement agencies in the CJIS network. The network is comprised of over 600 agencies. The audit, conducted under national mandate, reviews the agency's compliance with the rules and regulations set forth by the federal government. It also reviews pending case files for accuracy and validity.

Upon completion of the audit, a report is submitted by the field representative to CJIS, highlighting any problems or deficiencies that may exist at that agency.

In addition to these duties, unit personnel continually present lectures and seminars to various criminal justice agencies to provide for proper reporting to the State Bureau of Identification and the Criminal Justice Records Bureau.

The **State Bureau of Identification** functions as the central repository for the receiving, verifying, coding, processing, and disseminating of all criminal history record information utilized by criminal justice and noncriminal justice agencies for licensing/employment purposes. Current computer technology allows for the input, update, and dissemination of accurate and timely criminal history record information. The bureau has management responsibility for the following statewide programs: Master Name Index, Computerized Criminal History System, Noncriminal User Fee System, Interstate Identification Index, Court Disposition Reporting System, and the Automated Fingerprint Identification System. Fed-

24 Hour Crime Cycle in New Jersey—1991



eral and state laws mandate that the services provided by the SBI be maintained at a high level of efficiency and accuracy.

Presently, there are 778 NJCJIS field terminals which access the bureau's computerized criminal history files for arrest, prosecutorial, and custody information. The State Bureau of Identification consists of eight operational units: Court Disposition Reporting, Data Reduction, Automated Fingerprint Identification, Records Assembly, Criminal Information, Identification Records, Expungement Unit and Criminal Justice Information System.

The **Criminal Justice Information System Control Unit** manages the New Jersey Criminal Justice Information System (CJIS). The system consists of over 600 New Jersey law enforcement terminal agencies and provides users with computerized data from the Division of Motor Vehicles (DMV), the State and National Crime Information Centers, and each state control center.

The unit is responsible for training, auditing, and the distribution of training manuals and information pertinent to CJIS users to ensure compliance with SCIC/NCIC policy. In addition, between 13,000 and 15,000 SCIC/NCIC records are tracked and validated by unit personnel. Biyearly audits are conducted to maintain system integrity, discipline, and security.

The **Court Disposition Reporting Unit** manually initiates CDR-7's (Conditional Discharge Reports). During the year, 5,356 CDR-7's were forwarded to the appropriate municipal courts.

The **Data Reduction Unit** searches, identifies, and inputs all criminal source documents into the Computerized Criminal History (CCH) and Master Name Index (MNI) systems. This unit also reviews the criminal history files to ensure accuracy. During the year, the unit created 110,421 automated name index files. The CCH files contain the criminal history records of 956,867 persons arrested and fingerprinted since January 1, 1972. Periodic audits are conducted to ensure that contributing agencies satisfy statutory requirements.

The **Automated Fingerprint Identification Unit** classifies, searches, and verifies all criminal and noncriminal fingerprint card submissions. The master fingerprint file contains 2,043,551 fingerprint cards of which 1,197,310 are criminal arrests. During the year, 237,810 fingerprint card submissions were processed, which accounted for 78,024 criminal and 14,692 noncriminal identifications being made by unit

personnel.

The AFIS latent fingerprint searching capability allowed for the identification of 559 possible criminal suspects from latent fingerprints taken from crime scenes. To assist all law enforcement agencies throughout the state, remote AFIS sites were established in Troop A Headquarters, Hammonton, on December 11, 1990, and Troop B Headquarters, Totowa, on April 23, 1991.

The **Records Assembly Unit** manually assembles all criminal record inquiries for licensing and employment purposes consistent with state and federal dissemination guidelines. The unit disseminates criminal history records not contained in the CCH file. During the year, the unit assembled 13,078 criminal history records.

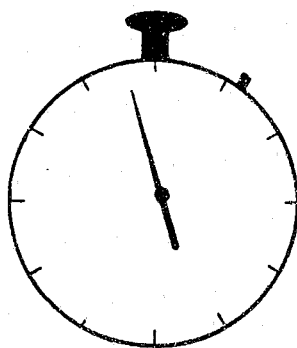
The **Criminal Information Unit** has the responsibility of processing criminal history record checks on name and noncriminal fingerprint card submissions, requests for visa, immigration, name changes, and grand jury inquiries. The unit also maintains a manual criminal index file, case jacket file, microfiche file, and photo file. During the year, the unit responded to 88,859 nonfingerprint inquiries, and conducted 128,042 noncriminal fingerprint card searches. Unit personnel assigned 23,509 new criminal jackets and filed 364,616 criminal documents.

The **Identification Records Unit** receives, sorts, counts, and records all source documents. It also has the responsibility of typing manual criminal history record responses assembled by the Records Assembly Unit, the mailing of all bureau correspondence, and the supplying of proper fingerprint cards to contributing agencies. The unit typed 7,432 manual criminal history record responses, processed 113,869 noncriminal fingerprint cards, 131,406 criminal fingerprint cards, and 712,412 court documents during the year.

The **Expungement Unit** ensures an individual's right to privacy with the sealing and expunging of all criminal records ordered by the court. The unit is responsible for reviewing motions and orders to determine if they conflict with the intent of the law. During the year, the unit received and processed 1,760 orders. The Expungement Unit is also responsible for receiving and processing requests from individuals who wish to challenge or review their criminal record. During the past year, the unit processed 467 record requests.

The **Criminal Justice Records Bureau** is com-

NEW JERSEY CRIME CLOCK 1991



**CRIME INDEX
OFFENSE**
1 every minute
and 15 seconds

VIOLENT CRIME
1 every 10 minutes
and 42 seconds

NON-VIOLENT CRIME
1 every minute
and 25 seconds

MURDER
1 every 21 hours 21
minutes and 58 seconds

RAPE
1 every 3 hours 52
minutes and 26 seconds

ROBBERY
1 every 23 minutes
and 8 seconds

**AGGRAVATED
ASSAULT**
1 every 22 minutes
and 10 seconds

BURGLARY
1 every 6 minutes
and 40 seconds

LARCENY-THEFT
1 every 2 minutes
and 22 seconds

**MOTOR
VEHICLE THEFT**
1 every 7 minutes
and 19 seconds

The Crime Clock should be viewed with care. Being the most aggregate representation of UCR data, it is designed to convey the annual reported crime experience by showing the relative frequency of occurrence of the index offenses. This mode of display should not be taken to imply a regularity in the commission of these offenses; rather, it represents the annual ratio of crime to fixed time intervals.

RECORDS & IDENTIFICATION SECTION

prised of four units: Uniform Crime Reporting Unit, Criminal Records Unit, Traffic Records Unit and Micrographics Unit. The bureau serves as the central repository for all division Drinking Driving Reports and criminal-related reports, as well as accident reports for Troops A, B, C, D & E.

The **Uniform Crime Reporting Unit (UCR)** personnel are responsible for the collection, compilation, and analysis of crime statistics reported by all law enforcement agencies within the state. An impartial and comprehensive account of the reported crime in the state is prepared and produced in the annual publication of *"Crime in New Jersey."* The unit collects and analyzes all domestic violence and bias incidents occurring statewide. Based on the data collected, the unit produces an annual *New Jersey Domestic Violence Report* and the *New Jersey Bias Incident Report*.

The **Criminal Records Unit** is responsible for processing and maintaining all state police

investigation, arrest, and criminal-related reports. All requests for discovery regarding investigations conducted by the Division of State Police are processed by the Criminal Records Unit. The unit processed 3,314 requests for discovery, as well as 137,598 investigation, arrest, and other criminal-related reports.

The **Traffic Records Unit** processes all state police reports of motor vehicle accidents, drinking driving and other traffic-related matters. A total of \$210,093 in fees were recovered and returned to the State Treasury for the reproduction of State Police Accident Reports, photographs and Drinking Driver Reports.

The **Micrographics Unit** provides for an efficient method of storage and retrieval and enhances document life perpetuation through microfilming. The unit prepared and filmed more than 1,237,303 documents during the last fiscal year.



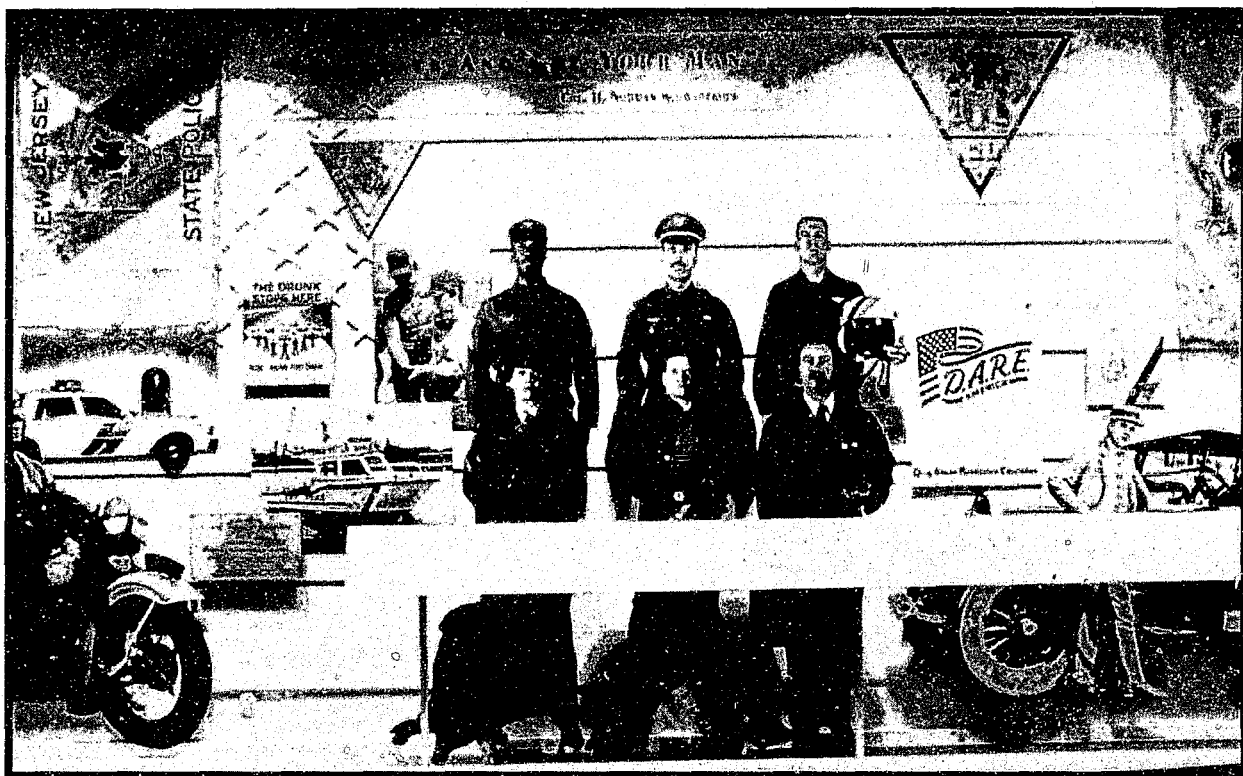
Cpl. Arthur Hausser - 471 and Sgt. Joseph Orzechowski - 310 process fingerprint evidence, circa 1945.



The Memorial Walkway, which connects the buildings of the Museum and Learning Center, offers a pictorial remembrance of all troopers fallen in the line of duty.



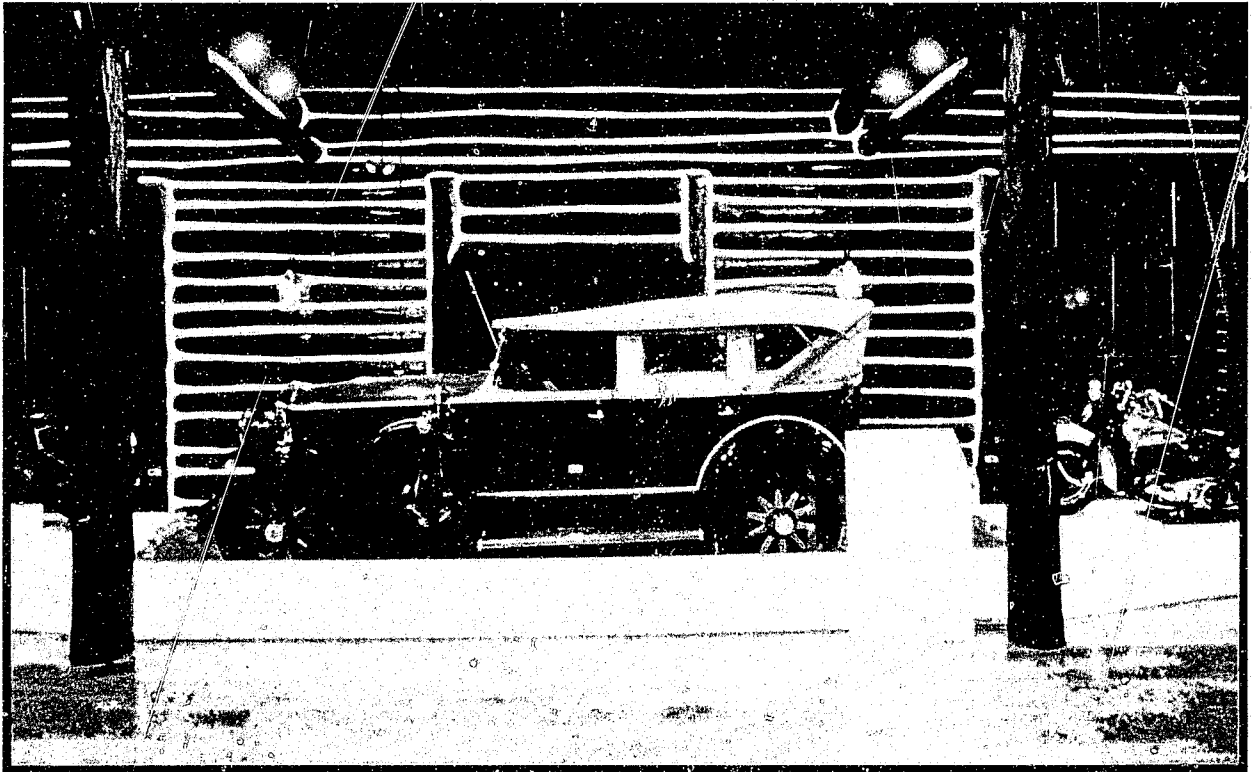
Governor Jim Florio officially opens the Museum and Learning Center with the participation of Attorney General Robert Del Tufo, Colonel Justin Dintino and his staff.



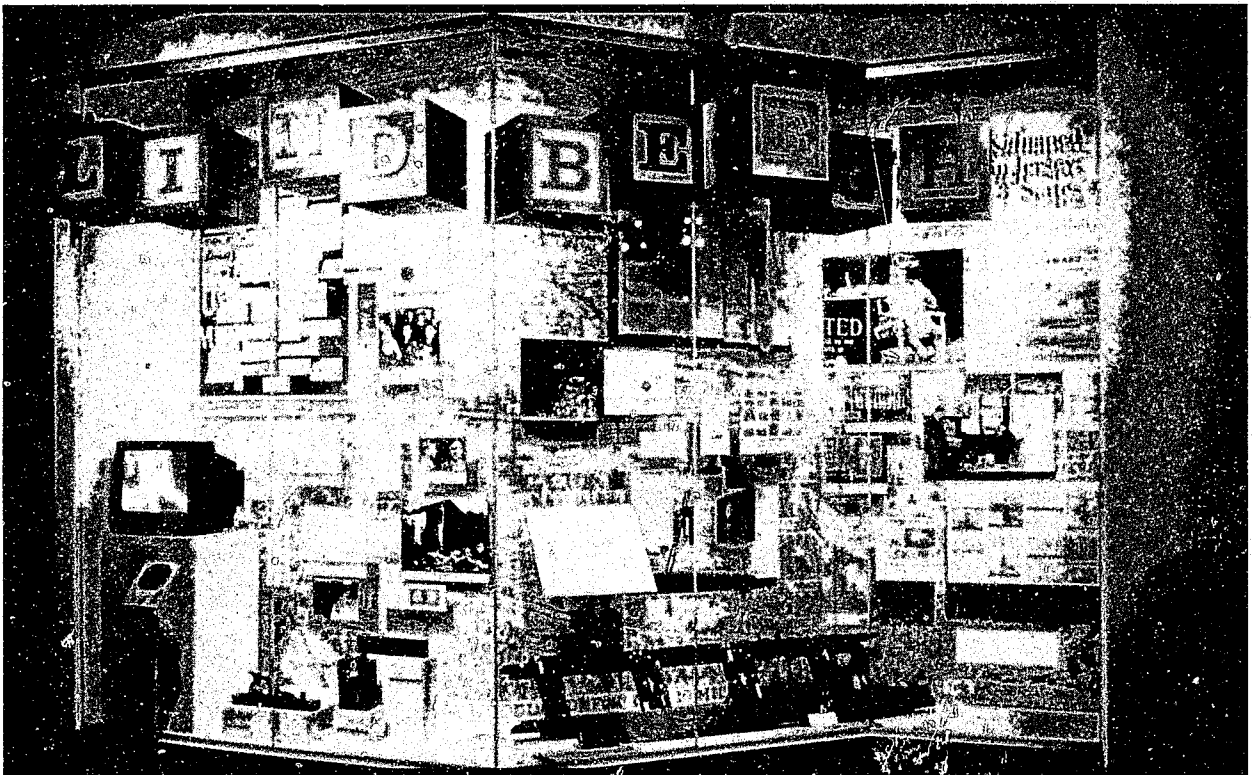
This collage, which adorns the wall in the museum's foyer, depicts the diverse components of the New Jersey State Police.



The Division's founding principles of Honor, Duty and Fidelity are represented in this exhibit displaying uniforms and weaponry from the past.



The log cabin portion of the Museum Complex houses several antique vehicles utilized by the Division, including this 1930 Buick Touring Car.



Evidence and artifacts from the Charles A. Lindbergh Jr. kidnapping are prominently displayed along with a video chronicling the trial of Bruno Hauptmann.



IN MEMORIAM

ACTIVE MEMBERS

NAME	BADGE	DECEASED
DSFC James E. Rocap	2411	1/13/92
Tpr. Thomas J. Hanratty	4971	4/02/92
DSG Thomas J. Wich	2682	6/01/92

RETIRED MEMBERS

Sgt. Francis W. Rathburn	1181	7/31/91
Lt. James M. Jones Jr.	1291	8/28/91
Tpr. Chester C. Hugg	50	9/07/91
SFC James A. Philburn	3926	10/05/91
Lt. William A. Lewis	664	11/19/91
Sgt. John A. Montgomery	832	12/10/91
Lt. Hugh Boyle	516	12/14/91
Lt. Vincent Brookes	458	12/24/91
Tpr. Albert G. Varrelman	159	2/24/92
Lt. Earl G. Clouse	1603	3/02/92
Tpr. Frederick Pfennig	1343	3/18/92
Lt. James J. Molnar	487	6/05/92