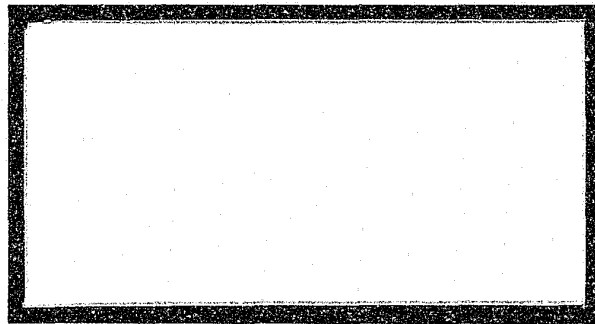


SAC

**Statistical
Analysis
Center**



Missouri State Highway Patrol

A division of the

Department of Public Safety

148808

148808

144808

**U.S. Department of Justice
National Institute of Justice**

This document has been reproduced exactly as received from the person or organization originating it. Points of view or opinions stated in this document are those of the authors and do not necessarily represent the official position or policies of the National Institute of Justice.

Permission to reproduce this copyrighted material has been granted by

Missouri State Highway
Patrol

to the National Criminal Justice Reference Service (NCJRS).

Further reproduction outside of the NCJRS system requires permission of the copyright owner.

1992

MISSOURI

CRIME AND ARREST

DIGEST

Principal Staff Researchers:

Phyllis Emmel, Research Analyst
Bill Aber, Data Processing Specialist

STATISTICAL ANALYSIS CENTER
1510 East Elm
Jefferson City, Missouri 65101
(314) 751-4026

FOREWORD

Crime continues to be one of this country's most serious social issues. A significant amount of public attention and resources are devoted to addressing this problem on a continual basis. This publication has been developed by the Missouri State Highway Patrol, Statistical Analysis Center. Its purpose is to provide criminal justice authorities, as well as other public officials, with a basic understanding of Missouri's crime problem and assist them in developing policies and programs to effectively address the issue.

It is recommended that Missouri law enforcement and criminal justice authorities take full advantage of this report. If additional research services or statistical information about Missouri's crime or traffic safety problems is required, please contact our agency's Statistical Analysis Center for assistance.

A handwritten signature in black ink, appearing to read "F. M. Mills", with a stylized, cursive script.

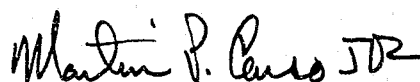
F. M. MILLS, Superintendent
Missouri State Highway Patrol

ACKNOWLEDGEMENTS

The Federal Bureau of Investigation's Uniform Crime Reporting Section provided the data used in this publication. On a yearly basis, they submit computer tapes to the Missouri State Highway Patrol, Statistical Analysis Center containing all Missouri crime and arrest data reported to their Program. In addition, they provide timely technical assistance in the interpretation and analysis of these data.

Most Missouri municipal and county law enforcement agencies voluntarily report their crime and arrest activity to the Federal Bureau of Investigation's Uniform Crime Reporting Program. Because of their efforts, the criminal justice community and other public officials are able to analyze the State's crime problems and law enforcement activity levels.

Finally, the U.S. Department of Justice, Bureau of Justice Statistics has, over the years, provided federal grant funds to support the development, printing, and dissemination of this report as well as other criminal justice publications produced by the Missouri Statistical Analysis Center.



Martin P. Carso Jr., Director
Missouri Statistical Analysis Center

CONTENTS

	PAGE
EXECUTIVE SUMMARY	ix
INTRODUCTION	1
1. MISSOURI CRIME CLOCK	3
2. MISSOURI CRIME INDEX COMPARISON ANALYSIS	7
3. MISSOURI ARREST ANALYSIS	17
4. MISSOURI DETAIL CRIME INDEX ANALYSIS	27
4.1 Murder	29
4.2 Forcible Rape	37
4.3 Robbery	43
4.4 Aggravated Assault	49
4.5 Burglary	55
4.6 Theft	61
4.7 Motor Vehicle Theft	67
4.8 Arson	73
5. MISSOURI LAW ENFORCEMENT AGENCY CRIME AND ARREST ANALYSIS..	79
GLOSSARY	103

TABLES

PAGE

MISSOURI CRIME INDEX COMPARISON ANALYSIS

2.0.1	Crime Index Offenses, State of Missouri, 1992	9
2.0.2	Actual Reported Crime Index Offenses, State of Missouri, 1983-1992	10
2.0.3	Estimated Crime Index Offenses, State of Missouri, 1983-1992	11
2.0.4	Crime Index Offense Rates, State of Missouri, 1983-1992	12
2.0.5	Property Crime Index Economic Analysis, 1992	13

MISSOURI ARREST ANALYSIS

3.0.1	Crime Index Clearance Rates, State of Missouri, 1983-1992	19
3.0.2	Crime Index Arrests, State of Missouri, 1983-1992	20
3.0.3	Crime Index Arrest Rates, State of Missouri, 1983-1992	21
3.0.4	Total Persons Arrested by Most Serious Offense, State of Missouri, 1992	22

MISSOURI DETAIL CRIME INDEX ANALYSIS

Murder

4.1.1	Murder Rates by Population Group, 1992	30
4.1.2	Murder Clearance Rates, 1991-1992	31
4.1.3	Murder Arrests by Sex and Age Group, 1992	31
4.1.4	Murder Arrests by Race and Age Group, 1992	31
4.1.5	Murder Victims by Sex and Age Group, 1992	32
4.1.6	Murder Victims by Race and Age Group, 1992	32
4.1.7	Type of Weapon Used by Offenders in Murders, 1992	33
4.1.8	Circumstances with Murders, 1992	34

Forcible Rape

4.2.1	Forcible Rape Rates by Population Group, 1992	38
4.2.2	Actual/Attempted Rape Offenses, 1992	39
4.2.3	Forcible Rape Clearance Rates, 1991-1992	39
4.2.4	Forcible Rape Arrests by Sex and Age Group, 1992	39
4.2.5	Forcible Rape Arrests by Race and Age Group, 1992	40

Robbery

4.3.1	Robbery Rates by Population Group, 1992	44
4.3.2	Type of Weapon Used in Robberies, 1992	45
4.3.3	Robbery Loss/Location, 1992	45
4.3.4	Robbery Clearance Rates, 1991-1992	46
4.3.5	Robbery Arrests by Sex and Age Group, 1992	46
4.3.6	Robbery Arrests by Race and Age Group, 1992	46

TABLES

	PAGE
 Aggravated Assault	
4.4.1 Aggravated Assault Rates by Population Group, 1992	50
4.4.2 Type of Weapon Used in Aggravated Assaults, 1992	51
4.4.3 Aggravated Assault Clearance Rates, 1991-1992	51
4.4.4 Aggravated Assault Arrests by Sex and Age Group, 1992	52
4.4.5 Aggravated Assault Arrests by Race and Age Group, 1992	52
 Burglary	
4.5.1 Burglary Rates by Population Group, 1992	56
4.5.2 Type of Burglary, 1992	57
4.5.3 Burglary Loss/Location/Time, 1992	57
4.5.4 Burglary Clearance Rates, 1991-1992	58
4.5.5 Burglary Arrests by Sex and Age Group, 1992	58
4.5.6 Burglary Arrests by Race and Age Group, 1992	58
 Theft	
4.6.1 Theft Rates by Population Group, 1992	62
4.6.2 Theft by Value of Stolen Items, 1992	63
4.6.3 Nature of Theft, 1992	63
4.6.4 Theft Clearance Rates, 1991-1992	64
4.6.5 Theft Arrests by Sex and Age Group, 1992	64
4.6.6 Theft Arrests by Race and Age Group, 1992	64
 Motor Vehicle Theft	
4.7.1 Motor Vehicle Theft Rates by Population Group, 1992	68
4.7.2 Type of Vehicle Stolen, 1992	69
4.7.3 Motor Vehicle Theft Yearly Loss, 1991-1992	69
4.7.4 Motor Vehicle Theft Clearance Rates, 1991-1992	70
4.7.5 Motor Vehicle Theft Arrests by Sex and Age Group, 1992	70
4.7.6 Motor Vehicle Theft Arrests by Race and Age Group, 1992	70
 Arson	
4.8.1 Arson Rates by Population Group, 1992	74
4.8.2 Arson Loss by Type of Property, 1992	75
4.8.3 Arson Clearance Rates, 1991-1992	76
4.8.4 Arson Arrests by Sex and Age Group, 1992	76
4.8.5 Arson Arrests by Race and Age Group, 1992	76

TABLES

PAGE

MISSOURI LAW ENFORCEMENT AGENCY CRIME AND ARREST ANALYSIS

5.0.1	Crime Index Offenses, Municipalities 25,000 and Over by Reporting Agency, 1992.....	81
5.0.2	Crime Index Offenses, Municipalities Under 25,000 by Reporting Agency, 1992	83
5.0.3	Crime Index Offenses, Suburban Counties by Reporting Agency, 1992	89
5.0.4	Crime Index Offenses, Rural Counties by Reporting Agency, 1992	91
5.0.5	Total Persons Arrested, Municipalities 25,000 and Over by Reporting Agency, 1992.....	93
5.0.6	Total Persons Arrested, Municipalities Under 25,000 by Reporting Agency, 1992	95
5.0.7	Total Persons Arrested, Suburban Counties by Reporting Agency, 1992	99
5.0.8	Total Persons Arrested, Rural Counties by Reporting Agency, 1992	101

FIGURES

	PAGE
MISSOURI CRIME INDEX COMPARISON ANALYSIS	
2.0.1 Crime Index Offense Rates, State of Missouri, Time Series	14
2.0.2 Crime Index Offense Rates, State of Missouri by County, 1992	14
2.0.3 Violent Index Offense Rates, State of Missouri, Time Series	15
2.0.4 Violent Index Offense Rates, State of Missouri by County, 1992	15
2.0.5 Property Index Offense Rates, State of Missouri, Time Series	16
2.0.6 Property Index Offense Rates, State of Missouri by County, 1992	16
MISSOURI ARREST ANALYSIS	
3.0.1 Crime Index Arrest Rates, State of Missouri, Time Series	23
3.0.2 Violent Index Arrest Rates, State of Missouri, Time Series	24
3.0.3 Property Index Arrest Rates, State of Missouri, Time Series	25
MISSOURI DETAIL CRIME INDEX ANALYSIS	
Murder	
4.1.1 Murder Offense Rates, State of Missouri, Time Series	35
Forcible Rape	
4.2.1 Rape Offense Rates, State of Missouri, Time Series	41
Robbery	
4.3.1 Robbery Offense Rates, State of Missouri, Time Series	47
Aggravated Assault	
4.4.1 Aggravated Assault Offense Rates, State of Missouri, Time Series	53
Burglary	
4.5.1 Burglary Offense Rates, State of Missouri, Time Series	59
Theft	
4.6.1 Theft Offense Rates, State of Missouri, Time Series	65
Motor Vehicle Theft	
4.7.1 Motor Vehicle Theft Offense Rates, State of Missouri, Time Series	71
Arson	
4.8.1 Arson Offense Rates, State of Missouri, Time Series	77

EXECUTIVE SUMMARY

The Digest is produced annually by the Missouri State Highway Patrol, Statistical Analysis Center (SAC). The primary source of data for the Digest is the Federal Bureau of Investigation's (FBI) Uniform Crime Reporting System (UCR). Although this publication contains statistics on Missouri crime and arrest activity from 1983 through 1992, emphasis is placed on the most recent year (1992).

For statewide crime activity, estimation routines have been used to better identify the actual number of crimes that have occurred in the State. These estimation routines are designed to compensate for those law enforcement agencies that did not report their crime activity into the FBI UCR Program. Please note that no estimation routines were employed in the presentation of arrest activity.

The Crime Index is the sum of eight major offenses and is used to measure the magnitude of crime in the United States. The major offenses are included in the Index because of their frequency of occurrence and the fact that they are most likely to be reported to law enforcement agencies. These eight offenses are: murder, forcible rape, robbery, aggravated assault, burglary, theft, motor vehicle theft, and arson. The first four make up the Violent Crime Index and the last four make up the Property Crime Index.

1992 Crime Index Offenses - - - 3.9% Decrease From 1991

In 1992, a total of 252,283 Crime Index offenses were reported in the State of Missouri. It is estimated that a total of 267,076 Crime Index offenses actually occurred on a statewide basis. This was a 3.9 percent decrease from 1991. In 1992, one Index Crime was committed every 2.0 minutes. In 23.9 of every 100 Crime Index offenses, the cases were cleared by arrest or exceptional means.

1992 Violent Offenses - - - 2.0% Decrease From 1991

Violent offenses made up 14.3 percent of the total 1992 Missouri Crime Index. There were 36,918 Violent Index offenses reported in 1992. It is estimated that a total of 38,242 Violent Index offenses actually occurred on a statewide basis. This was a decrease of 2.0 percent compared to 1991. A violent offense was committed in Missouri every 13.8 minutes. In 45.6 of every 100 Violent Index offenses, the cases were cleared by arrest or exceptional means. A brief analysis of each type of Violent Index offense is given below.

- There were 523 murders reported in 1992. It is estimated that a total of 544 murders actually occurred on a statewide basis. This was an increase of 3.6 percent compared to 1991. While murder is the most serious Index offense, it made up only 0.2 percent of the total 1992 Missouri Crime Index. One murder was committed in the State every 16.1 hours. In 73.8 of every 100 murders, the cases were cleared by arrest or exceptional means.
- There were 1,767 forcible rapes reported in 1992. It is estimated that a total of 1,861 rapes actually occurred on a statewide basis. This was an increase of 7.3 percent compared to 1991. Forcible rape accounted for 0.7 percent of the total 1992 Missouri Crime Index. One forcible rape was committed every 4.7 hours. In 55.9 of every 100 forcible rapes, the cases were cleared by arrest or exceptional means.

- There were 11,629 robberies reported in 1992. It is estimated that a total of 11,802 robberies actually occurred on a statewide basis. This was a decrease of 5.9 percent compared to 1991. Robbery accounted for 4.4 percent of the total 1992 Missouri Crime Index. One robbery occurred every 44.7 minutes. In 25.2 of every 100 robberies, the cases were cleared by arrest or exceptional means.
- There were 22,999 aggravated assaults reported in 1992. It is estimated that a total of 24,035 aggravated assaults actually occurred on a statewide basis. This was a decrease of 0.8 percent compared to 1991. Aggravated assault accounted for 9.0 percent of the total 1992 Missouri Crime Index. One aggravated assault occurred every 21.9 minutes. In 54.5 of every 100 aggravated assaults, the cases were cleared by arrest or exceptional means.

1992 Property Offenses - - - 4.3% Decrease From 1991

Property offenses made up 85.7 percent of the total 1992 Missouri Crime Index. There were 215,365 Property Index offenses reported in 1992. It is estimated that a total of 228,834 Property Index offenses actually occurred on a statewide basis. This was a decrease of 4.3 percent compared to 1991. It is estimated that property offenses accounted for \$279,414,437 in property stolen or destroyed. One such offense occurred every 2.3 minutes in the State. In 20.2 of every 100 Property Index offenses, the cases were cleared by arrest or exceptional means. A brief analysis of each type of Property Index offense is given below.

- There were 53,189 burglaries reported in 1992. It is estimated that a total of 57,223 burglaries actually occurred on a statewide basis. This was a decrease of 4.8 percent compared to 1991. Burglary accounted for 21.4 percent of the total 1992 Missouri Crime Index. One burglary occurred every 9.2 minutes and it is estimated that \$64,423,370 in property/cash was stolen in 1992 due to this offense. In 16.4 of every 100 burglaries, the cases were cleared by arrest or exceptional means.
- There were 134,824 thefts reported in 1992. It is estimated that a total of 143,270 thefts actually occurred on a statewide basis. This was a decrease of 2.9 percent compared to 1991. Theft accounted for 53.6 percent of the total 1992 Missouri Crime Index. One theft occurred every 3.7 minutes and it is estimated that \$56,588,785 in property/cash was stolen in 1992 due to this offense. In 22.3 of every 100 thefts, the cases were cleared by arrest or exceptional means.
- There were 25,039 motor vehicle thefts reported in 1992. It is estimated that a total of 25,878 motor vehicle thefts actually occurred on a statewide basis. This was a decrease of 10.7 percent compared to 1991. Motor vehicle theft accounted for 9.7 percent of the total 1992 Missouri Crime Index. One motor vehicle theft occurred every 20.4 minutes and it is estimated that \$114,210,742 in property was stolen in 1992 due to this offense. In 16.2 of every 100 motor vehicle thefts, the cases were cleared by arrest or exceptional means.
- There were 2,313 arsons reported in 1992. It is estimated that a total of 2,463 arsons actually occurred on a statewide basis. This was an increase of 6.3 percent compared to 1991. Arson accounted for 0.9 percent of the total 1992 Missouri Crime Index. One arson occurred every 3.6 hours and it is estimated that \$44,191,540 in property was destroyed due to arson in 1992. In 24.7 of every 100 arsons, the cases were cleared by arrest or exceptional means.

INTRODUCTION

This Digest is one in a series of publications prepared by the Missouri State Highway Patrol, Statistical Analysis Center (SAC). It is designed to present data on crime and arrest activity in Missouri from 1983 through 1992 with special emphasis on the most recent year's crime and arrest activity (1992).

The crime and arrest data contained in this publication are segmented into five parts. The first section displays the Missouri Crime Clock. This clock offers an overview of the frequency of occurrence of Crime Index offenses committed in the State in relation to time. The Crime Index is the sum of the eight major offenses used to indicate the occurrence of crime in the United States. The eight offenses making up the total Crime Index are: murder, forcible rape, robbery, aggravated assault, burglary, theft, motor vehicle theft, and arson. The second section provides data related to Crime Index offenses committed in the State of Missouri. Its purpose is to provide a comparison of the various types of Crime Index offenses so that their relative importance can be assessed. In addition, Crime Index activity is displayed by geographical regions of the State and also over time to observe trends. The third section presents data on arrest activity and clearance rates associated with Crime Index offenses as well as arrest activity associated with other classes of criminal offenses. These data provide an appreciation of criminal enforcement activity being performed in the State of Missouri by class of crime. The fourth section provides a series of data and analysis related to each of the eight types of Crime Index offenses. Data are provided on crime activity, clearance rates, crime patterns, and arrest activity associated with each of these offenses. Finally, the last section provides summary data on Crime Index offenses and arrest activity for specific law enforcement jurisdictions in the State of Missouri.

The data contained in this Digest were provided on a voluntary basis by Missouri law enforcement agencies to the Federal Bureau of Investigation's (FBI), Uniform Crime Reporting (UCR) Program.

The national UCR Program was initiated in 1930 by the Committee on Uniform Crime Reports of the International Association of Chiefs of Police (IACP). This committee developed uniform offense and arrest classifications as well as reporting procedures which could be used by law enforcement agencies throughout the nation. The FBI was designated to administer the Program and became the national clearinghouse for UCR data. The Committee on Uniform Crime Reports of the IACP continues to serve the national Program in an advisory capacity. In 1966, the National Sheriff's Association also established a Committee on Uniform Crime Reports to act as an advisory body for this program and to promote reporting to the UCR Program.

Crime and arrest data are, for the most part, collected on a monthly basis in the UCR Program. The FBI provides report forms, tally sheets, and self-addressed envelopes to Missouri law enforcement agencies who complete and return them to the FBI.

The fact that this program is voluntary in nature in the State of Missouri increases the problems associated with the completeness and representativeness of the information being captured and analyzed. Certain Missouri law enforcement agencies either do not report to the program or they send incomplete data. In most states, reporting to this program is mandatory for law enforcement agencies through the enactment of state statute.

To reduce the problems associated with both non-reporting and incomplete reporting, a number of techniques have been used for displaying statewide crime and arrest activity. For statewide arrest activity, reliance has been placed on displaying arrest rates on a per 100,000 population basis. This type of data display identifies arrest activity in relation to the population of only those jurisdictions that reported the activity. For statewide crime activity, mathematical routines have been employed to estimate the actual number of crimes that occurred in the State. Crime rates on a per 100,000 population basis also are included. These rates are based on the estimates of actual crimes being committed rather than on those that were reported. Individual data displays in the Digest fully identify whether reported, estimated, or rates per 100,000 population data are used in the display.

Data displays identifying a specific law enforcement jurisdiction's crime and arrest activity contain only the activity reported into the UCR Program. No effort has been made to estimate individual law enforcement agency's crime and arrest activity.

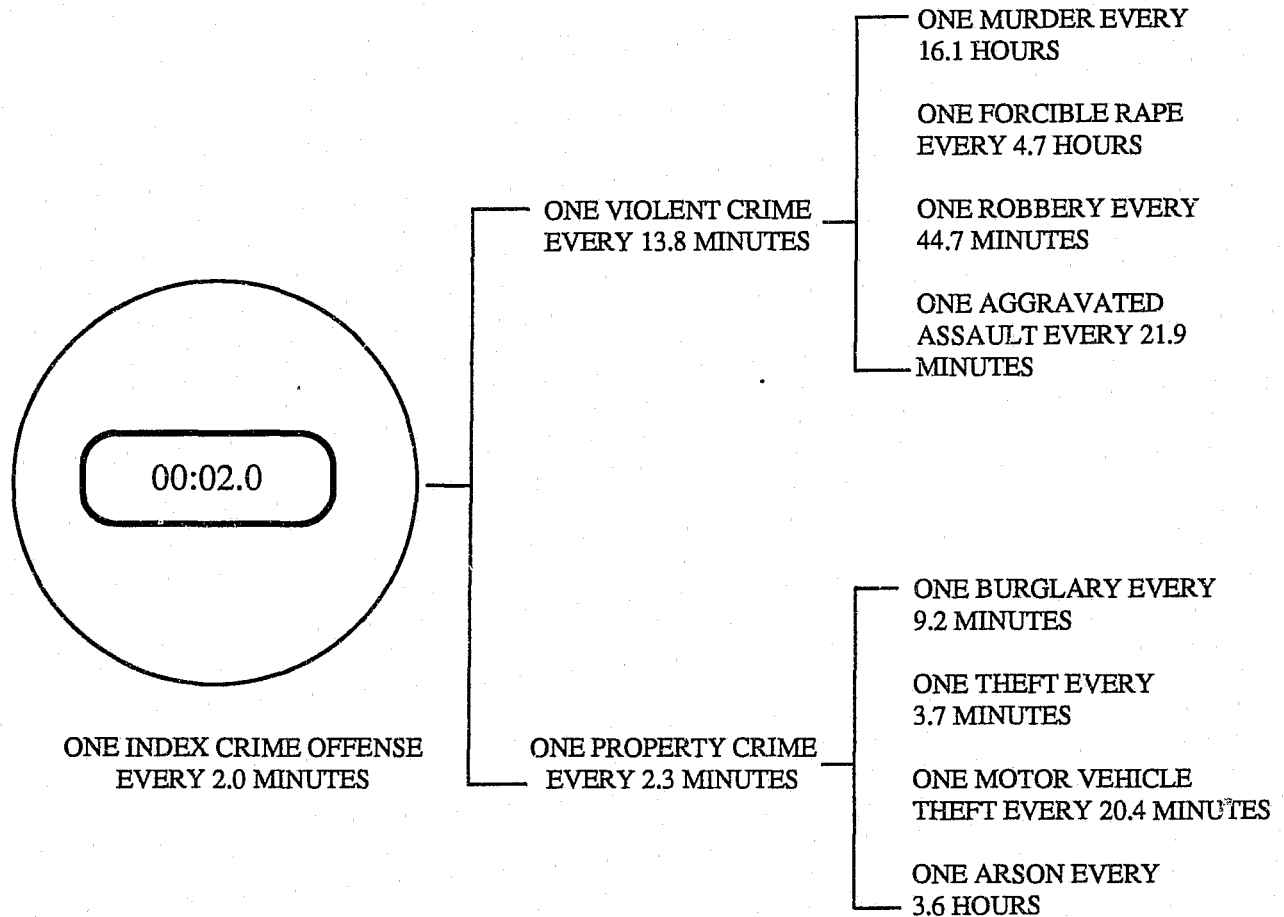
Slight discrepancies may be found if comparisons are made with FBI UCR publications and this Digest covering the same subject matter for the State of Missouri. Although similar, estimation routines and rates per 100,000 population calculations used by the FBI are not the same as those used in this Digest. Discrepancies also may be noted when examining actual reported figures. This is a result of updates having been made to the UCR files between the time the FBI data were processed and the time the SAC analysis was performed.

1.0 MISSOURI CRIME CLOCK

THE CRIME CLOCK SUMMARIZES ESTIMATED CRIMINAL ACTIVITY IN THE STATE OF MISSOURI DURING 1992 IN RELATION TO TIME. FROM THIS PERSPECTIVE, AN APPRECIATION OF THE RELATIVE FREQUENCY OF VARIOUS CRIMINAL OFFENSES CAN BE OBTAINED. THE CRIME CLOCK SHOULD BE VIEWED WITH CARE. IT IS DESIGNED TO CONVEY ANNUAL ESTIMATED CRIME EXPERIENCE BY SHOWING THE RELATIVE FREQUENCY OF OCCURRENCE OF THE INDEX OFFENSES. THIS MODE OF DISPLAY SHOULD NOT BE TAKEN TO IMPLY A REGULARITY IN THE COMMISSION OF CRIME; RATHER, IT REPRESENTS THE ANNUAL RATIO OF CRIME TO FIXED TIME INTERVALS.

MISSOURI CRIME CLOCK

1992



2.0 MISSOURI CRIME INDEX COMPARISON ANALYSIS

A SERIES OF TABLES AND FIGURES SUMMARIZES CRIME INDEX OFFENSES COMMITTED IN THE STATE OF MISSOURI. THE PURPOSE OF THESE DISPLAYS IS TO COMPARE THE VARIOUS TYPES OF CRIME INDEX OFFENSES BEING COMMITTED ACCORDING TO THEIR RELATIVE CONTRIBUTION TO THE CRIME INDEX. IN ADDITION, CRIME INDEX OFFENSE RATES ARE DISPLAYED BY GEOGRAPHICAL REGIONS OF THE STATE AND OVER TIME IN ORDER TO OBSERVE TRENDS.

CRIME INDEX OFFENSES, STATE OF MISSOURI

1992

OFFENSE	REPORTED	ESTIMATED ¹	% OF ESTIMATED TOTAL CRIME INDEX	% OF ESTIMATED VIOLENT CRIME INDEX	% OF ESTIMATED PROPERTY CRIME INDEX	RATE PER ² 100,000 POPULATION
TOTAL INDEX	252,283	267,076	100.0	-	-	5,139.4
VIOLENT INDEX	36,918	38,242	14.3	100.0	-	735.9
PROPERTY INDEX	215,365	228,834	85.7	-	100.0	4,403.5
MURDER	523	544	0.2	1.4	-	10.5
FORCIBLE RAPE	1,767	1,861	0.7	4.9	-	35.8
ROBBERY	11,629	11,802	4.4	30.9	-	227.1
AGGRAVATED ASSAULT	22,999	24,035	9.0	62.8	-	462.5
BURGLARY	53,189	57,223	21.4	-	25.0	1,101.1
THEFT	134,824	143,270	53.6	-	62.6	2,757.0
MOTOR VEHICLE THEFT	25,039	25,878	9.7	-	11.3	498.0
ARSON	2,313	2,463	0.9	-	1.1	47.4

¹See Glossary for an explanation of the computations used to obtain estimates of Missouri's Crime Index offenses.

²Crime Index Offense rates are based on estimated crime index offenses occurring in the State of Missouri. They are computed on a per 100,000 population basis. See Glossary for an explanation of the computations used to obtain these rates.

TABLE 2.0.1

ACTUAL REPORTED CRIME INDEX OFFENSES, STATE OF MISSOURI

1983 - 1992

OFFENSE	1983	1984	1985	1986	1987	1988	1989	1990	1991	1992
TOTAL INDEX	214,023	204,036	208,491	223,104	226,310	236,791	253,230	251,200	259,712	252,283
VIOLENT INDEX	22,884	22,027	24,247	27,998	26,504	27,228	31,421	35,357	37,281	36,918
PROPERTY INDEX	191,139	182,009	184,244	195,106	199,806	209,563	221,809	215,843	222,431	215,365
MURDER	379	333	381	437	394	388	392	427	501	523
FORCIBLE RAPE	1,266	1,243	1,389	1,382	1,372	1,404	1,496	1,578	1,611	1,767
ROBBERY	8,223	6,921	7,251	8,446	8,239	8,475	9,935	10,971	12,333	11,629
AGGRAVATED ASSAULT	13,016	13,530	15,226	17,733	16,499	16,961	19,598	22,381	22,836	22,999
BURGLARY	56,221	51,825	51,435	53,290	52,282	54,052	54,865	51,013	55,149	53,189
THEFT	118,295	112,760	113,623	118,486	124,824	131,774	138,674	135,811	137,219	134,824
MOTOR VEHICLE THEFT	15,055	15,776	17,576	21,358	20,811	21,557	26,299	26,942	27,861	25,039
ARSON	1,568	1,648	1,610	1,972	1,889	2,180	1,971	2,077	2,202	2,313
NUMBER OF REPORTING AGENCIES ¹	240	237	249	241	242	245	246	252	251	251

¹Number of law enforcement agencies that reported crime index offense activity to the UCR Program in a given year.

TABLE 2.0.2

ESTIMATED CRIME INDEX OFFENSES, STATE OF MISSOURI¹

1983 - 1992

OFFENSE	1983	1984	1985	1986	1987	1988	1989	1990	1991	1992
TOTAL INDEX	226,397	217,819	221,223	237,842	242,276	251,719	266,848	264,359	278,051	267,076
VIOLENT INDEX	23,795	23,083	25,311	29,362	27,862	28,519	32,658	36,631	39,025	38,242
PROPERTY INDEX	202,602	194,736	195,912	208,480	214,414	223,200	234,190	227,728	239,026	228,834
MURDER	409	362	411	467	426	412	411	449	525	544
FORCIBLE RAPE	1,327	1,322	1,484	1,476	1,470	1,500	1,588	1,667	1,734	1,861
ROBBERY	8,358	7,041	7,392	8,633	8,388	8,622	10,068	11,106	12,542	11,802
AGGRAVATED ASSAULT	13,701	14,358	16,024	18,786	17,578	17,985	20,591	23,409	24,224	24,035
BURGLARY	60,244	55,906	55,184	57,480	56,697	58,016	58,639	54,412	60,100	57,223
THEFT	124,895	120,415	120,642	126,550	133,957	140,510	146,374	143,472	147,624	143,270
MOTOR VEHICLE THEFT	15,756	16,582	18,353	22,315	21,723	22,351	27,067	27,655	28,986	25,878
ARSON	1,707	1,833	1,733	2,135	2,037	2,323	2,110	2,189	2,316	2,463

¹See Glossary for an explanation of the computations used to obtain estimates of Missouri's Crime Index offenses.

TABLE 2.0.3

CRIME INDEX OFFENSE RATES, STATE OF MISSOURI¹

1983 - 1992

OFFENSE	1983	1984	1985	1986	1987	1988	1989	1990	1991	1992
TOTAL INDEX	4,555.2	4,349.5	4,398.9	4,694.8	4,747.8	4,898.2	5,172.5	5,166.2	5,390.7	5,139.4
VIOLENT INDEX	478.8	460.9	503.3	579.6	546.0	554.9	633.0	715.8	756.6	735.9
PROPERTY INDEX	4,076.5	3,888.5	3,895.6	4,115.3	4,201.8	4,343.3	4,539.4	4,450.4	4,634.1	4,403.5
MURDER	8.2	7.2	8.2	9.2	8.4	8.0	8.0	8.8	10.2	10.5
FORCIBLE RAPE	26.7	26.4	29.5	29.1	28.8	29.2	30.8	32.6	33.6	35.8
ROBBERY	168.2	140.6	147.0	170.4	164.4	167.8	195.2	217.0	243.2	227.1
AGGRAVATED ASSAULT	275.7	286.7	318.6	370.8	344.5	350.0	399.1	457.5	469.7	462.5
BURGLARY	1,212.2	1,116.3	1,097.3	1,134.6	1,111.1	1,128.9	1,136.6	1,063.3	1,165.2	1,101.1
THEFT	2,513.0	2,404.5	2,398.9	2,498.0	2,625.1	2,734.2	2,837.2	2,803.8	2,862.1	2,757.0
MOTOR VEHICLE THEFT	317.0	331.1	365.0	440.5	425.7	434.9	524.6	540.4	562.0	498.0
ARSON	34.3	36.6	34.4	42.1	39.9	45.2	40.9	42.8	44.9	47.4

¹Crime Index offense rates are based on estimated crime index offenses occurring in the State of Missouri. They are computed on a per 100,000 population basis. See Glossary for an explanation of the computations used to obtain these rates.

TABLE 2.0.4

PROPERTY CRIME INDEX
ECONOMIC ANALYSIS
(PROPERTY STOLEN/DESTROYED)

1992

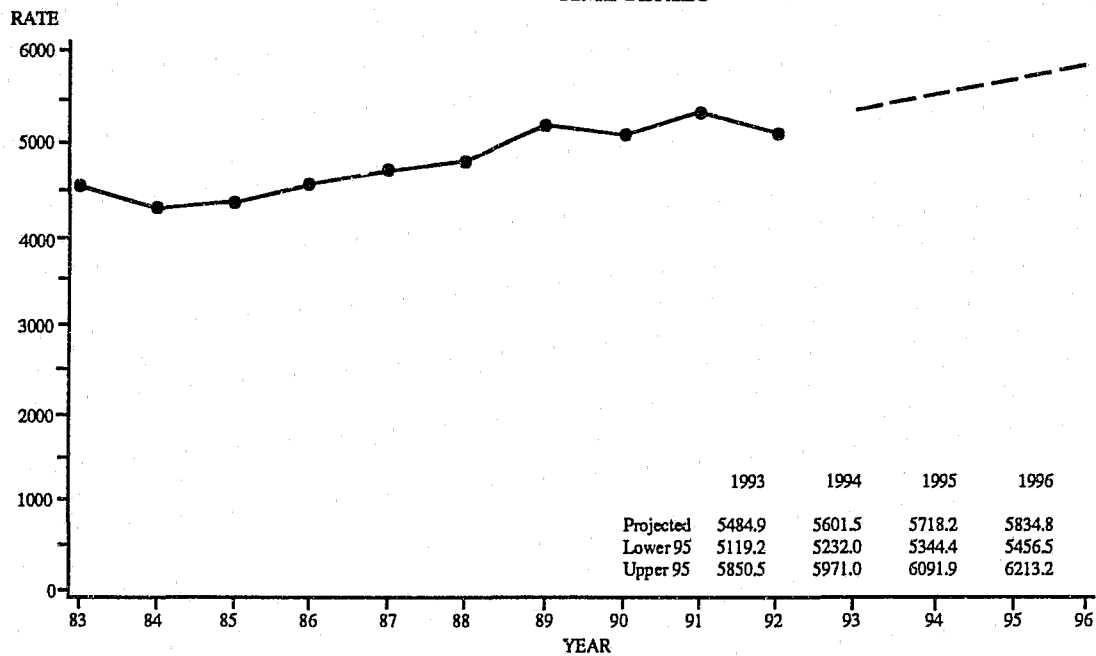
TYPE	LOSS PER ¹ OFFENSE	ESTIMATE ² TOTAL OFFENSES
BURGLARY	\$1,125.83	\$64,423,370
THEFT	394.98	56,588,785
MOTOR VEHICLE THEFT	4,413.43	114,210,742
ARSON	17,942.16	44,191,540
TOTAL	-----	\$279,414,437

¹The dollar loss per offense was calculated using only those property offenses for which law enforcement agencies reported an actual dollar amount for the property stolen or destroyed.

²The estimate was calculated by multiplying the dollar loss per offense by the estimated number of such offenses that occurred in 1992.

TABLE 2.0.5

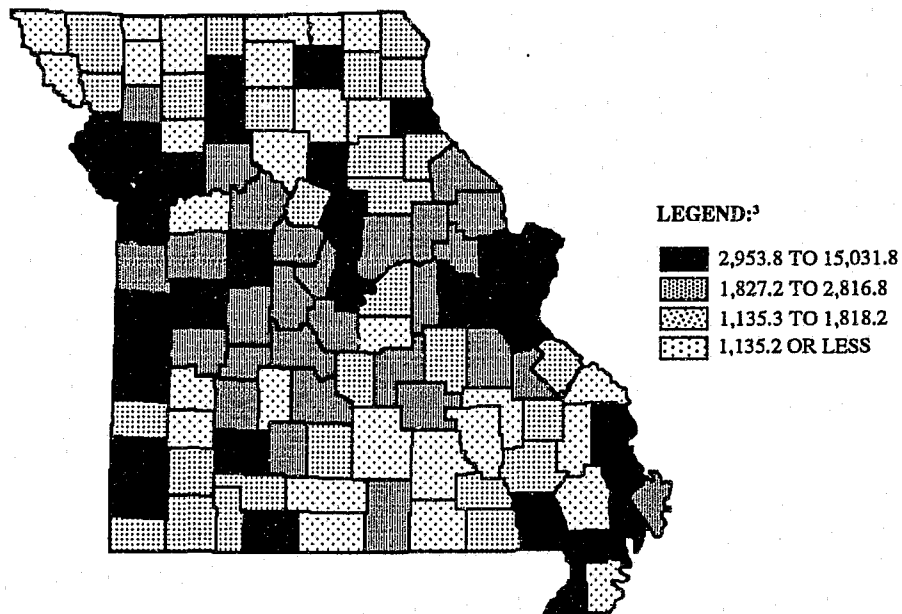
CRIME INDEX OFFENSE RATES, STATE OF MISSOURI¹ **TIME SERIES**



¹Crime Index offense rates are based on estimated crime index offenses occurring in the State of Missouri. They are computed on a per 100,000 population basis. See Glossary for an explanation of the computations used to obtain these rates.

FIGURE 2.0.1

CRIME INDEX OFFENSE RATES,¹ **STATE OF MISSOURI** **BY COUNTY / 1992²**

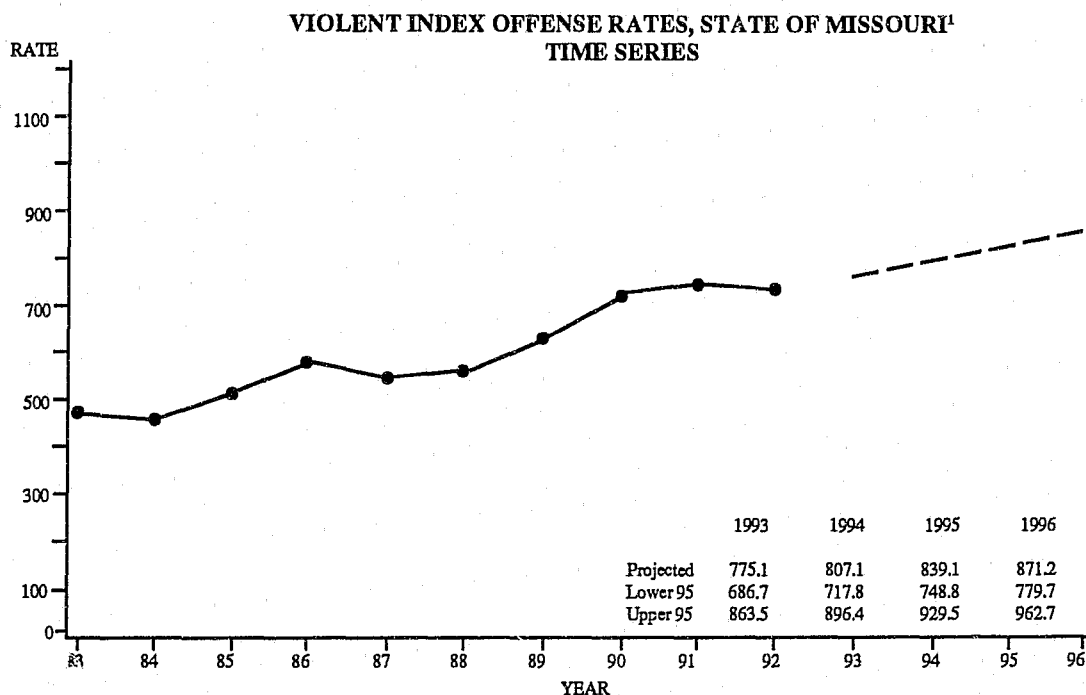


¹Crime Index offense rates are based on estimated crime index offenses occurring in the State of Missouri. They are computed on a per 100,000 population basis. See Glossary for an explanation of the computations used to obtain these rates.

²Because the jurisdictional boundaries of reporting agencies do not coincide with county boundaries in some instances, the following counties were combined: (Clay/Platte/Jackson) and (Scott/New Madrid).

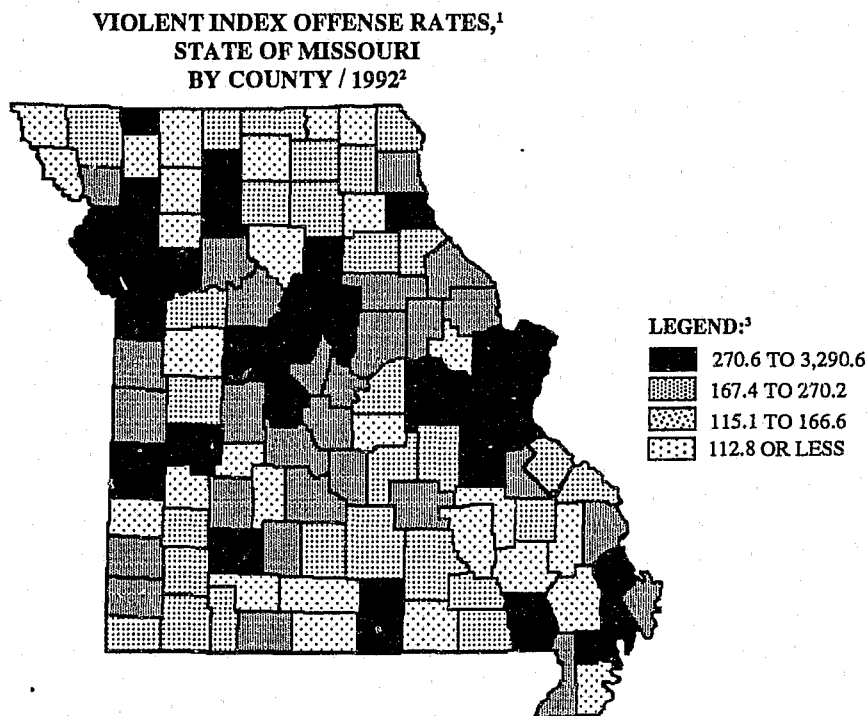
³Legend categories are based on quartiles of counties.

FIGURE 2.0.2



¹Violent Index offense rates are based on estimated violent index offenses occurring in the State of Missouri. They are computed on a per 100,000 population basis. See Glossary for an explanation of the computations used to obtain these rates.

FIGURE 2.0.3

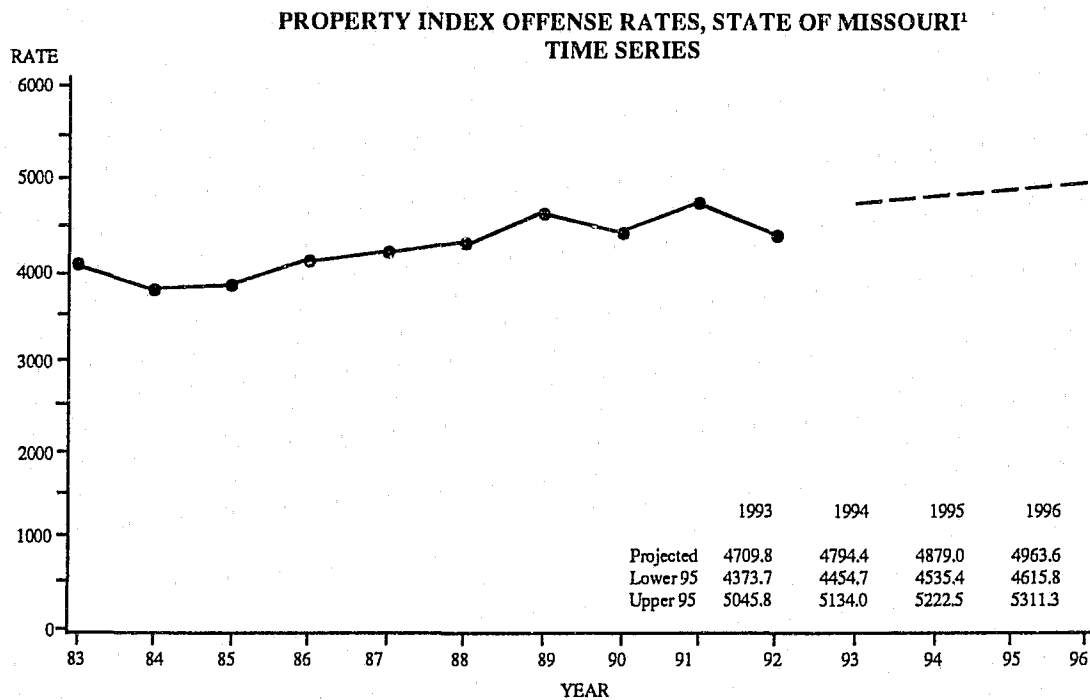


¹Violent Index offense rates are based on estimated violent index offenses occurring in the State of Missouri. They are computed on a per 100,000 population basis. See Glossary for an explanation of the computations used to obtain these rates.

²Because the jurisdictional boundaries of reporting agencies do not coincide with county boundaries in some instances, the following counties were combined: (Clay/Platte/Jackson) and (Scott/New Madrid).

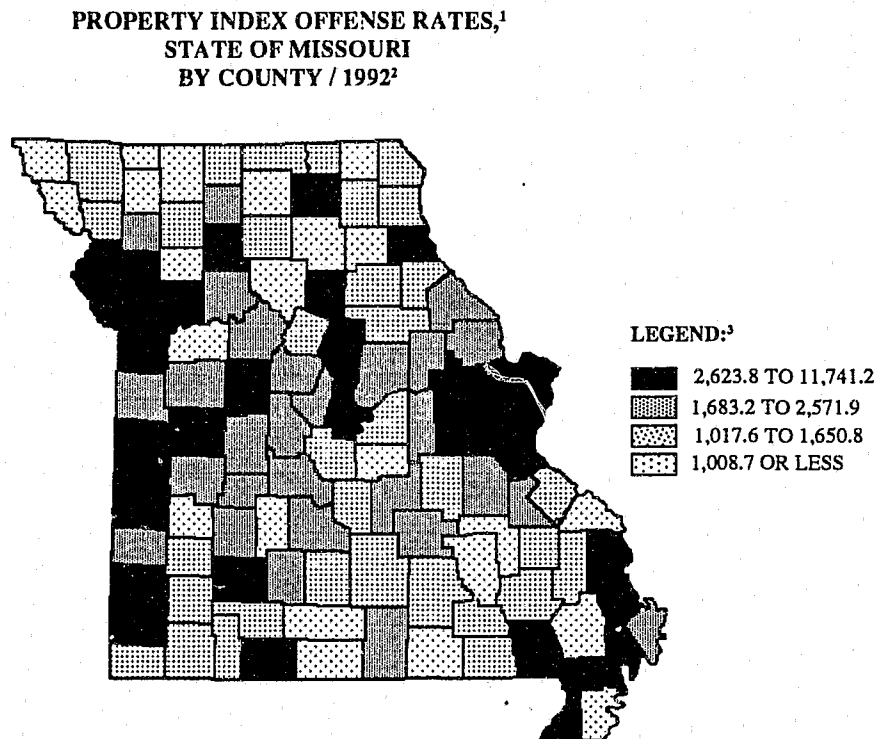
³Legend categories are based on quartiles of counties.

FIGURE 2.0.4



¹Property Index offense rates are based on estimated property index offenses occurring in the State of Missouri. They are computed on a per 100,000 population basis. See Glossary for an explanation of the computations used to obtain these rates.

FIGURE 2.0.5



¹Property Index offense rates are based on estimated property index offenses occurring in the State of Missouri. They are computed on a per 100,000 population basis. See Glossary for an explanation of the computations used to obtain these rates.

²Because the jurisdictional boundaries of reporting agencies do not coincide with county boundaries in some instances, the following counties were combined: (Clay/Platte/Jackson) and (Scott/New Madrid).

³Legend categories are based on quartiles of counties.

FIGURE 2.0.6

3.0 MISSOURI ARREST ANALYSIS

A SERIES OF TABLES AND FIGURES SUMMARIZES MISSOURI CRIME INDEX ARREST CLEARANCE RATES, ACTUAL ARREST ACTIVITY ASSOCIATED WITH CRIME INDEX OFFENSES, AND ARREST ACTIVITY ASSOCIATED WITH ALL OTHER CLASSES OF CRIMINAL ACTIVITY REPORTED TO THE UCR SYSTEM. THE PURPOSE OF THESE DISPLAYS IS TO PROVIDE AN OVERVIEW OF CRIMINAL ENFORCEMENT ACTIVITY BEING PERFORMED IN THE STATE OF MISSOURI BY CLASS OF CRIME. IN ADDITION, ARREST RATES ARE DISPLAYED OVER TIME IN ORDER TO OBSERVE TRENDS.

CRIME INDEX CLEARANCE RATES, STATE OF MISSOURI¹

1983 - 1992

19

OFFENSE	1983	1984	1985	1986	1987	1988	1989	1990	1991	1992
TOTAL INDEX	21.7	21.6	22.3	22.3	22.4	22.7	22.4	23.3	23.3	23.9
VIOLENT INDEX	50.0	50.6	51.2	49.7	50.6	51.0	48.4	47.8	44.7	45.6
PROPERTY INDEX	18.3	18.0	18.4	18.4	18.7	19.0	18.8	19.2	19.7	20.2
MURDER	79.5	76.1	77.8	74.7	71.5	88.0	87.5	82.6	76.7	73.8
FORCIBLE RAPE	59.2	54.1	60.0	55.0	57.3	61.4	60.5	59.8	58.1	55.9
ROBBERY	31.0	28.5	28.5	26.6	29.1	28.8	27.3	25.7	24.0	25.2
AGGRAVATED ASSAULT	60.4	61.0	60.6	59.9	60.5	60.6	57.6	57.3	54.3	54.5
BURGLARY	16.9	15.8	15.1	14.6	14.6	16.0	16.2	15.7	15.3	16.4
THEFT	19.2	19.6	20.5	20.7	21.0	20.8	20.2	21.3	22.4	22.3
MOTOR VEHICLE THEFT	15.9	14.1	14.6	15.1	14.5	15.3	16.1	15.4	15.1	16.2
ARSON	22.5	20.7	18.3	19.0	20.9	27.6	20.6	20.8	23.5	24.7

¹Clearance rates indicate the percent of reported offenses that were cleared by arrest or exceptional means. See Glossary for a further explanation.

TABLE 3.0.1

CRIME INDEX ARRESTS, STATE OF MISSOURI

1983 - 1992

OFFENSE	1983	1984	1985	1986	1987	1988	1989	1990	1991	1992
TOTAL INDEX	44,024	43,820	43,650	44,095	43,513	45,372	52,982	55,830	55,127	52,042
VIOLENT INDEX	11,196	12,351	11,094	9,600	9,578	9,754	12,722	14,405	13,302	11,861
PROPERTY INDEX	32,828	31,469	32,556	34,495	33,935	35,618	40,260	41,425	41,825	40,181
MURDER	332	313	259	390	362	390	478	494	553	471
FORCIBLE RAPE	978	997	981	775	760	708	766	778	762	725
ROBBERY	2,535	2,161	2,028	2,116	2,296	2,218	2,700	2,936	3,099	2,854
AGGRAVATED ASSAULT	7,351	8,880	7,826	6,319	6,160	6,438	8,778	10,197	8,888	7,811
BURGLARY	8,189	7,056	6,717	7,034	6,696	6,697	7,450	7,224	7,451	6,919
THEFT	23,244	22,686	23,849	24,875	24,926	25,984	29,065	30,304	30,440	29,383
MOTOR VEHICLE THEFT	1,099	1,407	1,689	2,210	1,963	2,556	3,417	3,527	3,568	3,435
ARSON	296	320	301	376	350	381	328	370	366	444
NUMBER OF REPORTING AGENCIES ¹	228	226	241	233	231	238	241	240	244	233

¹Number of law enforcement agencies that reported arrest activity to the UCR Program in a given year.

TABLE 3.0.2

CRIME INDEX ARREST RATES, STATE OF MISSOURI¹

1983 - 1992

OFFENSE	1983	1984	1985	1986	1987	1988	1989	1990	1991	1992
TOTAL INDEX	1,158.1	1,158.6	1,106.1	1,152.2	1,130.9	1,112.6	1,278.6	1,349.8	1,311.0	1,293.4
VIOLENT INDEX	294.5	326.6	281.1	250.8	248.9	239.2	307.0	348.3	316.3	294.8
PROPERTY INDEX	863.6	832.1	824.9	901.3	882.0	873.4	971.6	1,001.5	994.6	998.6
MURDER	8.7	8.3	6.6	10.2	9.4	9.6	11.5	11.9	13.2	11.7
FORCIBLE RAPE	25.7	26.4	24.9	20.3	19.8	17.4	18.5	18.8	18.1	18.0
ROBBERY	66.7	57.1	51.4	55.3	59.7	54.4	65.2	71.0	73.7	70.9
AGGRAVATED ASSAULT	193.4	234.8	198.3	165.1	160.1	157.9	211.8	246.5	211.4	194.1
BURGLARY	215.4	186.6	170.2	183.8	174.0	164.2	179.8	174.7	177.2	172.0
THEFT	611.5	599.8	604.3	650.0	647.8	637.2	701.4	732.7	723.9	730.3
MOTOR VEHICLE THEFT	28.9	37.2	42.8	57.7	51.0	62.7	82.5	85.3	84.9	85.4
ARSON	7.8	8.5	7.6	9.8	9.1	9.3	7.9	8.9	8.7	11.0

¹Crime Index arrest rates relate to arrests made for crime index offenses reported by law enforcement agencies in the State of Missouri. They are computed on a per 100,000 population basis. See Glossary for a further explanation of the computations used to obtain these rates. Due to a change in computation methods, crime index arrest rates in this Digest will vary slightly when compared to arrest rates found in earlier editions.

TABLE 3.0.3

TOTAL PERSONS ARRESTED BY MOST SERIOUS OFFENSE, STATE OF MISSOURI

1992

OFFENSES CHARGED	TOTAL	JUVENILE	ADULT	MALES	FEMALES
TOTAL ¹	268,266	36,605	231,661	214,796	53,470
Murder & Non-negligent Manslaughter	471	79	392	439	32
Forcible Rape	725	132	593	720	5
Robbery	2,854	664	2,190	2,626	228
Aggravated Assault	7,811	1,331	6,480	6,470	1,341
Burglary	6,919	1,880	5,039	6,337	582
Theft	29,383	7,195	22,188	20,418	8,965
Motor Vehicle Theft	3,435	1,305	2,130	3,107	328
Arson	444	161	283	377	67
Violent Crime ²	11,861	2,206	9,655	10,255	1,606
Property Crime ³	40,181	10,541	29,640	30,239	9,942
CRIME INDEX TOTAL ⁴	52,042	12,747	39,295	40,494	11,548
Other Assaults	32,511	3,596	28,915	27,546	4,965
Forgery & Counterfeiting	1,789	108	1,681	1,137	652
Fraud	3,502	80	3,422	2,049	1,453
Embezzlement	41	1	40	29	12
Stolen Property	1,647	306	1,341	1,426	221
Vandalism	8,309	2,458	5,851	7,222	1,087
Weapons	6,704	1,103	5,601	6,012	692
Prostitution	2,612	50	2,562	1,452	1,160
Sex Offenses	2,354	427	1,927	2,249	105
Drug Abuse Violations	13,940	1,256	12,684	11,768	2,172
Gambling	225	25	200	224	1
Offenses Against Family and Children	2,172	74	2,098	1,737	435
Driving under Influence	26,089	272	25,817	22,214	3,875
Liquor Laws	6,745	1,415	5,330	5,631	1,114
Drunkenness	1,417	37	1,380	1,262	155
Disorderly Conduct	11,289	1,345	9,944	8,901	2,388
Vagrancy	803	76	727	690	113
Other Offenses (except Traffic)	88,739	5,893	82,846	69,886	18,853
Suspicion ¹	1,403	172	1,231	1,215	188
Curfew and Loitering	2,037	2,037	0	1,407	630
Runaways	3,299	3,299	0	1,460	1,839

¹Arrests for suspicion are not included in Total.

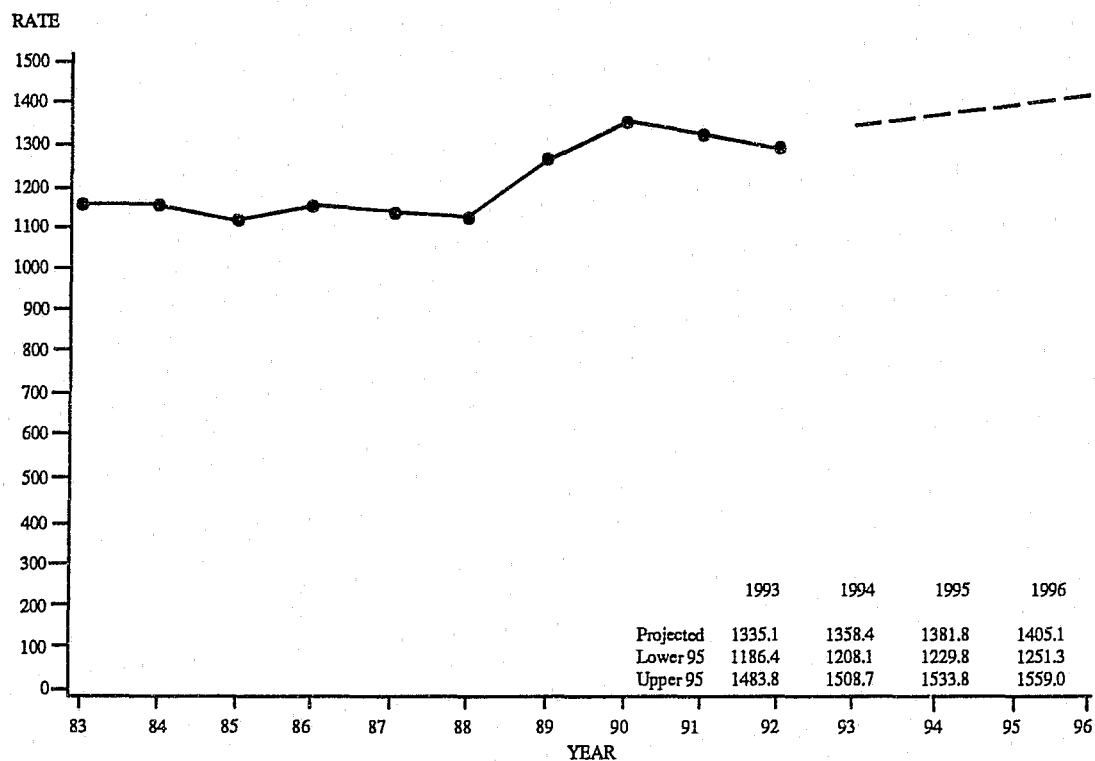
²Violent crimes include arrests for murder, forcible rape, robbery, and aggravated assault.

³Property crimes include arrests for burglary, theft, motor vehicle theft, and arson.

⁴Includes arson.

TABLE 3.0.4

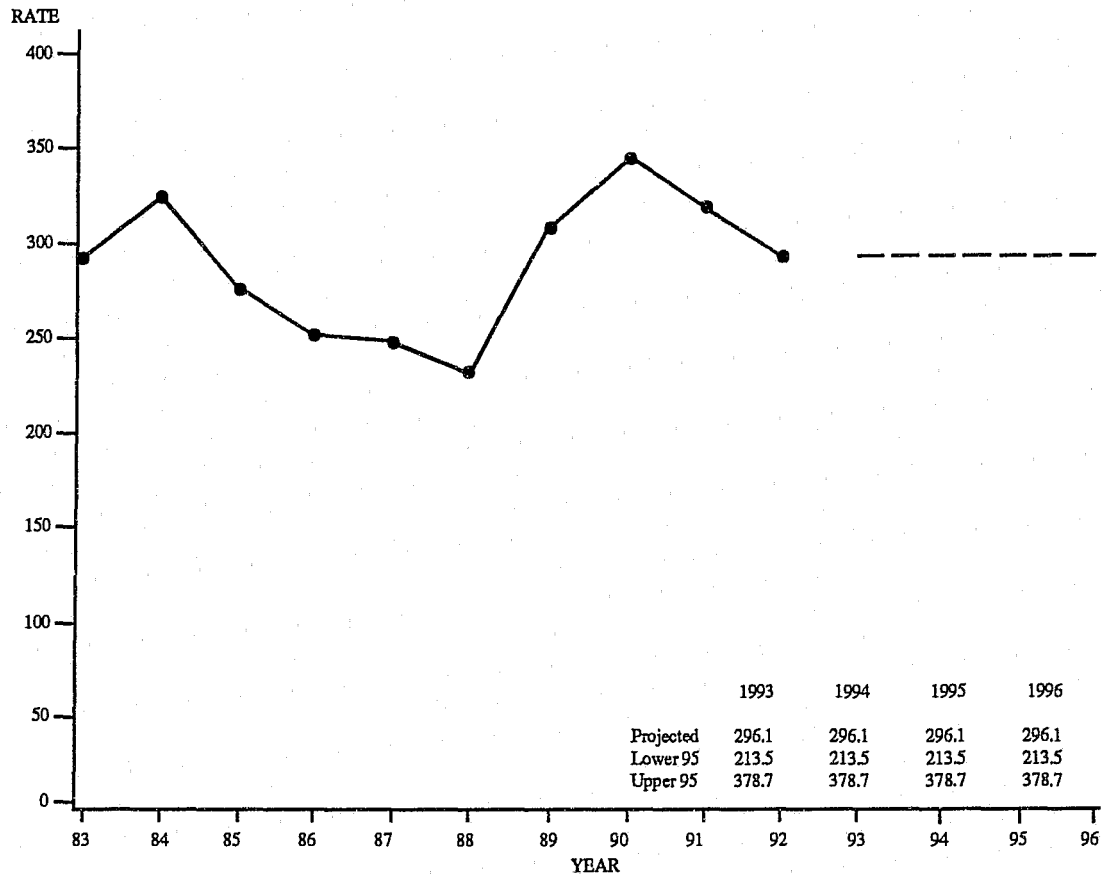
CRIME INDEX ARREST RATES, STATE OF MISSOURI¹ **TIME SERIES**



¹Crime Index arrest rates relate to arrests made for crime index offenses reported by law enforcement agencies in the State of Missouri. They are computed on a per 100,000 population basis. See Glossary for an explanation of the computations used to obtain these rates.

FIGURE 3.0.1

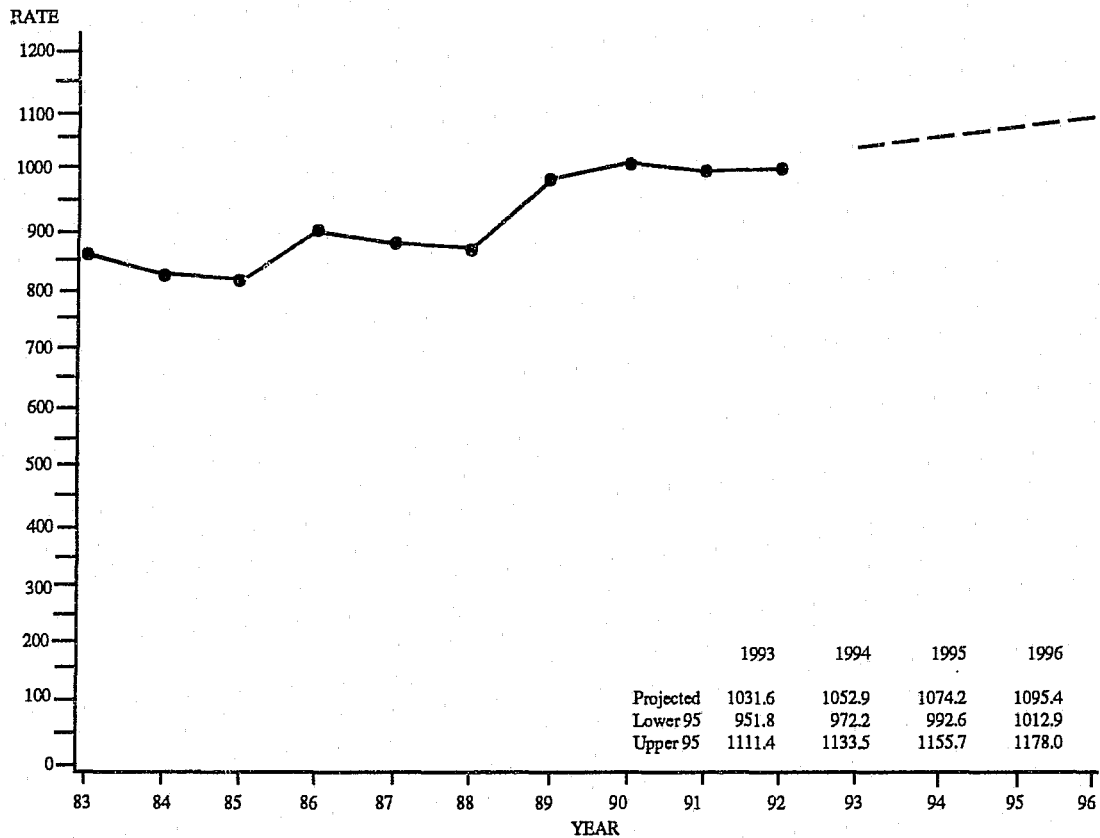
VIOLENT INDEX ARREST RATES, STATE OF MISSOURI¹ **TIME SERIES**



¹Violent Index arrest rates relate to arrests made for violent index offenses reported by law enforcement agencies in the State of Missouri. They are computed on a per 100,000 population basis. See Glossary for an explanation of the computations used to obtain these rates.

FIGURE 3.0.2

PROPERTY INDEX ARREST RATES, STATE OF MISSOURI¹ **TIME SERIES**



¹Property Index arrest rates relate to arrests made for property index offenses reported by law enforcement agencies in the State of Missouri. They are computed on a per 100,000 population basis. See Glossary for an explanation of the computations used to obtain these rates.

FIGURE 3.0.3

4.0 MISSOURI DETAIL CRIME INDEX ANALYSIS

A SERIES OF TABLES AND FIGURES SUMMARIZES CRIME ACTIVITY, CLEARANCE RATES, CRIME PATTERNS, AND ARREST ACTIVITY ASSOCIATED WITH SPECIFIC TYPES OF CRIME INDEX OFFENSES COMMITTED IN THE STATE OF MISSOURI. DETAIL ANALYSIS IS PROVIDED ON THE FOLLOWING TYPES OF CRIME:

- MURDER
- FORCIBLE RAPE
- ROBBERY
- AGGRAVATED ASSAULT
- BURGLARY
- THEFT
- MOTOR VEHICLE THEFT
- ARSON

4.1 MURDER

DEFINITION

Murder and non-negligent manslaughter are the willful killing of one human being by another. Not included in this offense classification are deaths caused by negligence, suicide, accident, justifiable homicide (the killing of a felon by a peace officer in the line of duty or a private citizen during the commission of a felony), and attempts to murder (these are classified as aggravated assaults). Murder offenses are reported on a per victim basis.

1991 SUMMARY ANALYSIS

- There were 523 murders reported during 1992. It is estimated that a total of 544 murders actually occurred on a statewide basis. Based on this estimate, this was a 3.6 percent increase over 1991.
- It is estimated that one murder occurred every 16.1 hours.
- Murder accounted for 0.2 percent of the Total Crime Index and 1.4 percent of all Violent Index offenses.
- The murder rate per 100,000 population was 10.5 in 1992 compared to 10.2 in 1991.
- In 1992, 73.8 of every 100 murders were cleared by arrest or exceptional means.
- 471 persons were reported arrested for murder in 1992. Of these, 83.2 percent were adults and 16.8 percent were juveniles.
- Of the murder victims reported, 77.1 percent were male and 22.9 percent were female. Of the total, 88.1 percent were adults, 10.6 percent were juveniles, and 1.3 percent had an unknown age.
- A firearm was used by 64.3 percent of the offenders associated with murders and 12.9 percent of the offenders used a knife.

MURDER SUMMARY: 1991 and 1992

Year	Number of Estimated Offenses	Rate per 100,000 Population
1991	525	10.2
1992	544	10.5
Percent of Change	+ 3.6	+ 2.9

MURDER RATES BY POPULATION GROUP

1992

POPULATION GROUP	REPORTED	ESTIMATED	% OF TOTAL	RATE PER 100,000 POPULATION
<u>Police Agencies</u>				
250,000 +	381	381	70.0	45.2
100,000 - 249,999	9	9	1.7	3.5
50,000 - 99,999	10	10	1.8	4.0
25,000 - 49,999	24	24	4.4	5.2
10,000 - 24,999	35	36	6.6	6.4
2,500 - 9,999	14	17	3.1	3.5
Under 2,500	3	4	0.7	9.4
Sheriff's Dept./County Police Suburban	25	28	5.1	2.5
Sheriff's Dept. -- Rural	22	35	6.4	3.0
TOTAL	523	544	100.0	10.5

TABLE 4.1.1

MURDER CLEARANCE RATES

1991 - 1992

YEAR	PERCENT CLEARED	% OF CLEARED OFFENSES ONLY JUVENILES
1991	76.7	14.2
1992	73.8	10.8

TABLE 4.1.2

MURDER ARRESTS BY SEX AND AGE GROUP

1992

SEX	AGE GROUPS	REPORTED	% OF TOTAL MURDER ARRESTS
MALE	ADULTS	361	76.6
	JUVENILES	78	16.6
FEMALE	ADULTS	31	6.6
	JUVENILES	1	0.2
TOTAL		471	100.0

TABLE 4.1.3

MURDER ARRESTS BY RACE AND AGE GROUP

1992

RACE	AGE GROUPS	REPORTED	% OF TOTAL MURDER ARRESTS
WHITE	ADULTS	99	21.2
	JUVENILES	11	2.4
BLACK	ADULTS	287	61.5
	JUVENILES	67	14.3
ASIAN/ OTHER	ADULTS	2	0.4
	JUVENILES	1	0.2
UNKNOWN		4	-
TOTAL		471	100.0

TABLE 4.1.4

MURDER VICTIMS BY SEX AND AGE GROUP

1992

SEX	AGE GROUPS	REPORTED ¹	% OF TOTAL
MALE	ADULTS	315	68.2
	JUVENILES	37	8.0
	UNKNOWN	4	0.9
FEMALE	ADULTS	92	19.9
	JUVENILES	12	2.6
	UNKNOWN	2	0.4
UNKNOWN	ADULTS	0	0.0
	JUVENILES	0	0.0
	UNKNOWN	1	-
TOTAL		463	100.0

¹Victim data were obtained from the UCR Supplemental Homicide Report. The total number of victims in this table does not correspond to the 523 murders reported in 1992 because law enforcement agencies report murder offenses on a separate form entitled the Return A. Discrepancies can occur as a result of an agency updating or adjusting only the Return A.

TABLE 4.1.5

MURDER VICTIMS BY RACE AND AGE GROUP

1992

RACE	AGE GROUPS	REPORTED ¹	% OF TOTAL
WHITE	ADULTS	134	29.1
	JUVENILES	7	1.5
	UNKNOWN	2	0.4
BLACK	ADULTS	270	58.6
	JUVENILES	42	9.1
	UNKNOWN	3	0.7
ASIAN / OTHER	ADULTS	3	0.7
	JUVENILES	0	0.0
	UNKNOWN	0	0.0
UNKNOWN	ADULTS	0	0.0
	JUVENILES	0	0.0
	UNKNOWN	2	-
TOTAL		463	100.0

¹Victim data were obtained from the UCR Supplemental Homicide Report. The total number of victims in this table does not correspond to the 523 murders reported in 1992 because law enforcement agencies report murder offenses on a separate form entitled the Return A. Discrepancies can occur as a result of an agency updating or adjusting only the Return A.

TABLE 4.1.6

TYPE OF WEAPON USED BY OFFENDERS IN MURDERS

1992

TYPE	REPORTED ¹	% OF TOTAL
FIREARM	314	64.3
KNIFE	63	12.9
BLUNT OBJECT	23	4.7
PERSONAL WEAPONS (Hands, Feet, etc.)	11	2.3
EXPLOSIVES	1	0.2
FIRE	3	0.6
NARCOTICS	1	0.2
DROWNING	1	0.2
STRANGULATION	4	0.8
ASPHYXIATION	2	0.4
OTHER	65	13.3
TOTAL	488	100.0

¹The 488 offenders in this table are directly associated with 466 victims murdered in 1992. Victim and offender data were both obtained from the UCR Supplemental Homicide Report.

TABLE 4.1.7

CIRCUMSTANCES WITH MURDERS

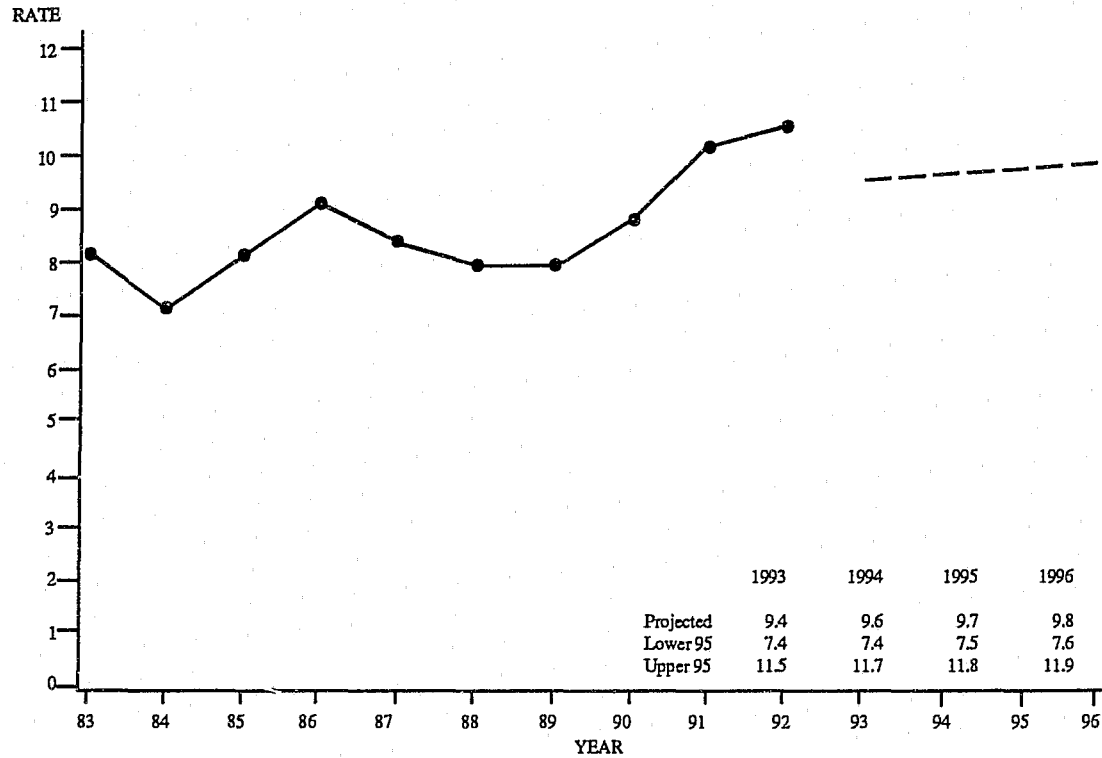
1992

TYPE	CIRCUMSTANCE	REPORTED ¹	% OF TOTAL
FELONY RELATED	RAPE	2	1.3
	ROBBERY	32	20.7
	BURGLARY	3	1.9
	MOTOR VEHICLE THEFT	1	0.7
	ARSON	1	0.7
	NARCOTICS LAWS	17	11.0
	SUSPECTED FELONY	2	1.3
NOT FELONY RELATED	GAMBLING	2	1.3
	LOVER'S TRIANGLE	1	0.7
	BRAWL INFLUENCED BY ALCOHOL	5	3.2
	ARGUMENT OVER MONEY/PROPERTY	3	1.9
	OTHER ARGUMENTS	41	26.5
	GANGLAND KILLING	2	1.3
	OTHER	43	27.7
UNKNOWN		291	-
TOTAL		446	100.0

¹The 446 circumstances in this table are directly associated with the first victim and first offender in a murder incident. Victim and offender data were both obtained from the UCR Supplemental Homicide Report.

TABLE 4.1.8

MURDER OFFENSE RATES, STATE OF MISSOURI¹ **TIME SERIES**



¹Murder offense rates are based on estimated murder offenses occurring in the State of Missouri. They are computed on a per 100,000 population basis. See Glossary for an explanation of the computations used to obtain these rates.

FIGURE 4.1.1

4.2 FORCIBLE RAPE

DEFINITION

Forcible rape is the carnal knowledge of a female forcibly and against her will. Assaults or attempts to commit rape by force or threat of force also are included. However, statutory rape (without force), sex attacks on males, and other types of sex offenses are not included in this category. Forcible rape offenses are reported on a per victim basis.

1992 SUMMARY ANALYSIS

- There were 1,767 rapes reported during 1992. It is estimated that a total of 1,861 rapes actually occurred on a statewide basis. Based on this estimate, this was a 7.3 percent increase over 1991.
- It is estimated that one rape occurred every 4.7 hours.
- Rape accounted for 0.7 percent of the Total Crime Index and 4.9 percent of all Violent Index offenses.
- The rape rate per 100,000 population was 35.8 in 1992 compared to 33.6 in 1991.
- Rape by force constituted 85.9 percent of the estimated rapes while attempted rapes accounted for 14.1 percent.
- In 1992, 55.9 of every 100 rapes were cleared by arrest or exceptional means.
- 725 persons were reported arrested for rape in 1992.
- Of those persons arrested for rape in 1992, 81.8 percent were adults and 18.2 percent were juveniles.

FORCIBLE RAPE SUMMARY: 1991 and 1992

Year	Number of Estimated Offenses	Rate per 100,000 Population
1991	1,734	33.6
1992	1,861	35.8
Percent of Change	+ 7.3	+ 6.5

FORCIBLE RAPE RATES BY POPULATION GROUP

1992

POPULATION GROUP	REPORTED	ESTIMATED	% OF TOTAL	RATE PER 100,000 POPULATION
<u>Police Agencies</u>				
250,000 +	913	913	49.0	108.2
100,000 - 249,999	85	85	4.6	33.1
50,000 - 99,999	76	76	4.1	30.4
25,000 - 49,999	130	130	7.0	28.1
10,000 - 24,999	161	169	9.1	29.9
2,500 - 9,999	83	94	5.1	20.0
Under 2,500	17	24	1.3	52.2
Sheriff's Dept./County Police Suburban	223	250	13.4	22.1
Sheriff's Dept. - Rural	79	120	6.4	10.3
TOTAL	1,767	1,861	100.0	35.8

TABLE 4.2.1

ACTUAL/ATTEMPTED RAPE OFFENSES

1992

TYPE	REPORTED	ESTIMATED	% OF TOTAL
FORCIBLE RAPE	1,521	1,599	85.9
ATTEMPTED RAPE	246	262	14.1
UNKNOWN	0	0	-
TOTAL	1,767	1,861	100.0

TABLE 4.2.2

FORCIBLE RAPE CLEARANCE RATES

1991 - 1992

YEAR	PERCENT CLEARED	% OF CLEARED OFFENSES ONLY JUVENILES
1991	58.1	13.5
1992	55.9	13.7

TABLE 4.2.3

FORCIBLE RAPE ARRESTS BY SEX AND AGE GROUP

1992

SEX	AGE GROUPS	REPORTED	% OF TOTAL RAPE ARRESTS
MALE	ADULTS	588	81.1
	JUVENILES	132	18.2
FEMALE	ADULTS	5	0.7
	JUVENILES	0	0.0
TOTAL		725	100.0

TABLE 4.2.4

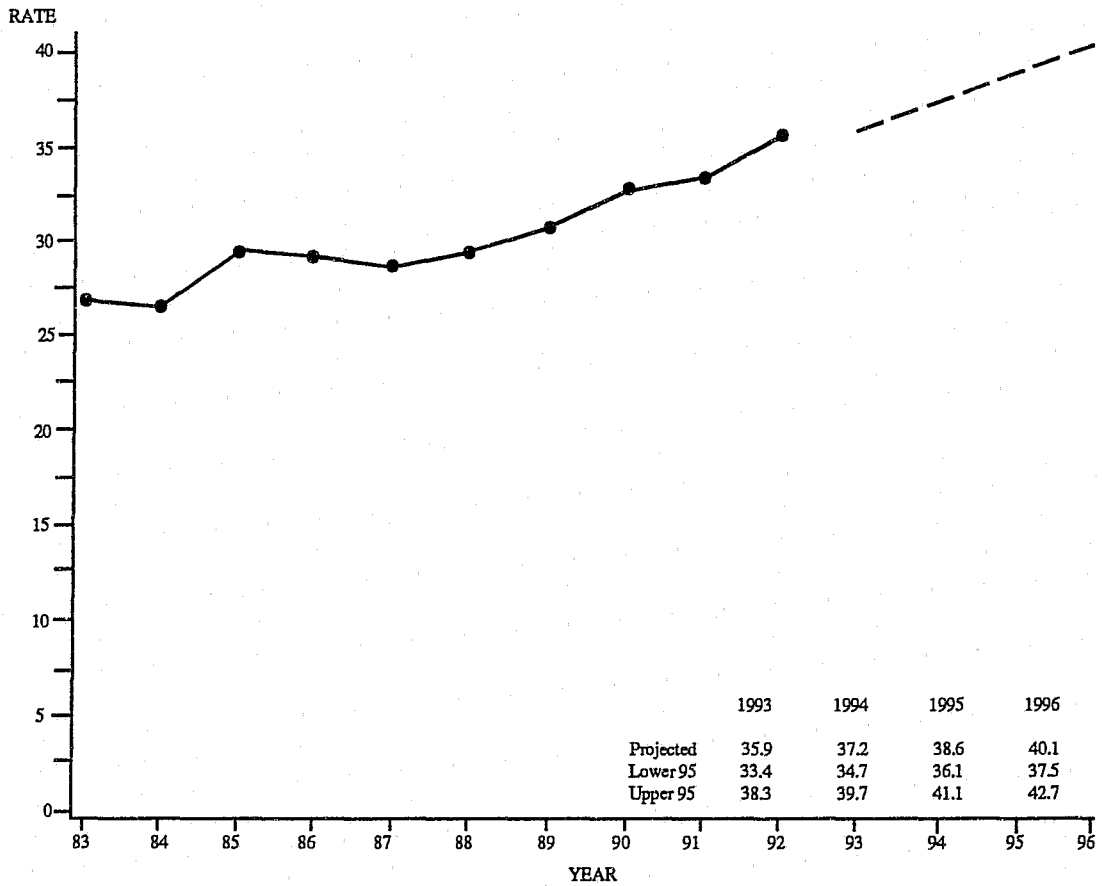
FORCIBLE RAPE ARRESTS BY RACE AND AGE GROUP

1992

RACE	AGE GROUPS	REPORTED	% OF TOTAL RAPE ARRESTS
WHITE	ADULTS	287	40.7
	JUVENILES	42	5.9
BLACK	ADULTS	291	41.2
	JUVENILES	83	11.8
AMERICAN INDIAN	ADULTS	2	0.3
	JUVENILES	0	0.0
ASIAN / OTHER	ADULTS	1	0.1
	JUVENILES	0	0.0
UNKNOWN		19	-
TOTAL		725	100.0

TABLE 4.2.5

RAPE OFFENSE RATES, STATE OF MISSOURI¹ **TIME SERIES**



¹Rape offense rates are based on estimated rape offenses occurring in the State of Missouri. They are computed on a per 100,000 population basis. See Glossary for an explanation of the computations used to obtain these rates.

FIGURE 4.2.1

4.3 ROBBERY

DEFINITION

Robbery is the taking or attempting to take anything of value from the care, custody, or control of a person or persons by force or threat of force or violence and/or by putting the victim in fear. Robbery involves a theft or larceny but is aggravated by the element of force or threat of force. Robbery offenses are reported on an incident-by-incident basis.

1992 SUMMARY ANALYSIS

- There were 11,629 robberies reported during 1992. It is estimated that a total of 11,802 robberies actually occurred on a statewide basis. Based on this estimate, this was a 5.9 percent decrease from 1991.
- It is estimated that one robbery occurred every 44.7 minutes.
- Robbery accounted for 4.4 percent of the Total Crime Index and 30.9 percent of all Violent Index offenses.
- The robbery rate per 100,000 population was 227.1 in 1992 compared to 243.2 in 1991.
- It is estimated that in 46.1 percent of all robberies, a firearm was used.
- Street robbery was the most prevalent class of robbery accounting for an estimated 67.3 percent of all such offenses.
- It is estimated that \$9,208,038 in property/cash was stolen in 1992 due to this offense.
- In 1992, 25.2 of every 100 robberies were cleared by arrest or exceptional means.
- 2,854 persons were reported arrested for robbery in 1992. Of these, 76.7 percent were adults and 23.3 percent were juveniles.

ROBBERY SUMMARY: 1991 and 1992

Year	Number of Estimated Offenses	Rate per 100,000 Population
1991	12,542	243.2
1992	11,802	227.1
Percent of Change	- 5.9	- 6.6

ROBBERY RATES BY POPULATION GROUP

1992

POPULATION GROUP	REPORTED	ESTIMATED	% OF TOTAL	RATE PER 100,000 POPULATION
<u>Police Agencies</u>				
250,000 +	9,430	9,430	79.9	1,117.6
100,000 - 249,999	320	320	2.7	124.7
50,000 - 99,999	271	271	2.3	108.2
25,000 - 49,999	409	409	3.5	88.4
10,000 - 24,999	514	541	4.6	95.7
2,500 - 9,999	262	314	2.7	66.6
Under 2,500	52	75	0.6	162.8
Sheriff's Dept./County Police Suburban	327	368	3.1	32.5
Sheriff's Dept. -- Rural	44	74	0.6	6.3
TOTAL	11,629	11,802	100.0	227.1

TABLE 4.3.1

TYPE OF WEAPON USED IN ROBBERIES

1992

TYPE	REPORTED	ESTIMATED	% OF TOTAL
FIREARMS	5,368	5,436	46.1
KNIVES OR CUTTING INSTRUMENTS	867	880	7.5
OTHER WEAPONS	898	912	7.7
STRONG ARMED (Hands, Feet, etc.)	4,494	4,573	38.8
UNKNOWN	2	1	-
TOTAL	11,629	11,802	100.0

TABLE 4.3.2

ROBBERY LOSS/LOCATION

1992

TYPE	REPORTED	ESTIMATED	% OF TOTAL	\$ LOSS ¹ / INCIDENT
SERVICE STATION	302	315	2.7	\$254.99
CONVENIENCE STORE	317	327	2.8	224.99
BANK	100	108	0.9	3,429.61
OTHER COMMERCIAL	1,147	1,183	10.3	556.29
STREET/HIGHWAY	7,707	7,758	67.3	828.83
RESIDENCE	1,131	1,153	10.0	799.83
MISCELLANEOUS	650	683	5.9	719.09
UNKNOWN	275	275	-	-
TOTAL	11,629	11,802	100.0	780.21
1992 TOTAL STATE LOSS ESTIMATE² = \$9,208,038				

¹The dollar loss per incident was calculated using only those robbery offenses for which law enforcement agencies reported an actual monetary loss.

²This estimate of property loss was calculated by multiplying the total dollar loss per offense by the estimated number of such offenses that occurred in 1992.

TABLE 4.3.3

ROBBERY CLEARANCE RATES

1991 - 1992

YEAR	PERCENT CLEARED	% OF CLEARED OFFENSES ONLY JUVENILES
1991	24.0	14.2
1992	25.2	15.0

TABLE 4.3.4

ROBBERY ARRESTS BY SEX AND AGE GROUP

1992

SEX	AGE GROUPS	REPORTED	% OF TOTAL ROBBERY ARRESTS
MALE	ADULTS	1,995	69.9
	JUVENILES	631	22.1
FEMALE	ADULTS	195	6.8
	JUVENILES	33	1.2
TOTAL		2,854	100.0

TABLE 4.3.5

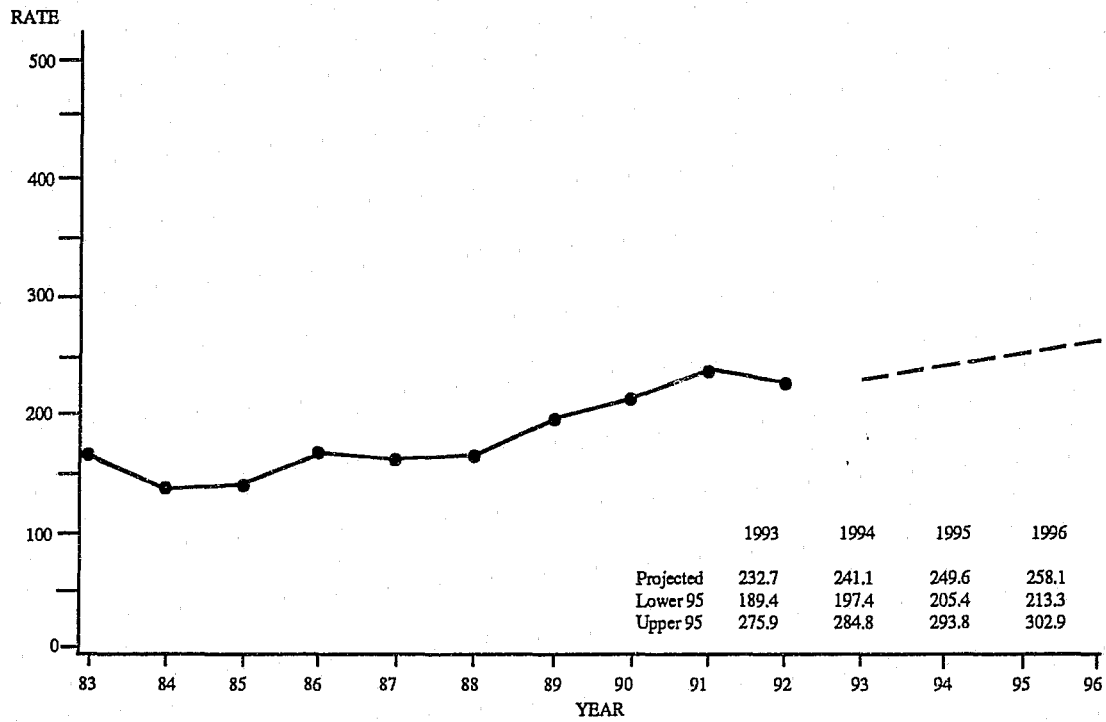
ROBBERY ARRESTS BY RACE AND AGE GROUP

1992

RACE	AGE GROUPS	REPORTED	% OF TOTAL ROBBERY ARRESTS
WHITE	ADULTS	552	19.5
	JUVENILES	130	4.6
BLACK	ADULTS	1,614	56.9
	JUVENILES	525	18.5
AMERICAN INDIAN	ADULTS	9	0.3
	JUVENILES	0	0.0
ASIAN/ OTHER	ADULTS	3	0.1
	JUVENILES	5	0.2
UNKNOWN		16	-
TOTAL		2,854	100.0

TABLE 4.3.6

ROBBERY OFFENSE RATES, STATE OF MISSOURI¹ **TIME SERIES**



¹Robbery offense rates are based on estimated robbery offenses occurring in the State of Missouri. They are computed on a per 100,000 population basis. See Glossary for an explanation of the computations used to obtain these rates.

FIGURE 4.3.1

4.4 AGGRAVATED ASSAULT

DEFINITION

Aggravated assault is an unlawful attack or attempted attack by one person upon another for the purpose of inflicting severe or aggravated bodily injury. This type of assault usually is accompanied by the use of a weapon or by means likely to produce death or great bodily harm. All assaults or attempted assaults by one person upon another with the intent to kill, maim, or inflict severe bodily injury with the use of any dangerous weapon are classified under this category of offense. Aggravated assault offenses are reported on a per victim basis.

1992 SUMMARY ANALYSIS

- There were 22,999 aggravated assaults reported in 1992. It is estimated that a total of 24,035 aggravated assaults actually occurred on a statewide basis. Based on this estimate, this was a 0.8 percent decrease from 1991.
- It is estimated that one aggravated assault occurred every 21.9 minutes.
- Aggravated assault accounted for 9.0 percent of the Total Crime Index and 62.8 percent of all Violent Index offenses.
- The aggravated assault rate per 100,000 population was 462.5 in 1992 compared to 469.7 in 1991.
- It is estimated that a firearm was used in 35.0 percent of the cases.
- In 1992, 54.5 of every 100 aggravated assaults were cleared by arrest or exceptional means.
- 7,811 persons were reported arrested for aggravated assault in 1992. Of these, 83.0 percent were adults and 17.1 percent were juveniles.

AGGRAVATED ASSAULT SUMMARY: 1991 and 1992

Year	Number of Estimated Offenses	Rate per 100,000 Population
1991	24,224	469.7
1992	24,035	462.5
Percent of Change	- 0.8	- 1.5

AGGRAVATED ASSAULT RATES BY POPULATION GROUP

1992

POPULATION GROUP	REPORTED	ESTIMATED	% OF TOTAL	RATE PER 100,000 POPULATION
<u>Police Agencies</u>				
250,000 +	15,117	15,117	62.9	1,791.7
100,000 - 249,999	813	813	3.4	316.9
50,000 - 99,999	722	722	3.0	288.4
25,000 - 49,999	972	972	4.0	210.1
10,000 - 24,999	1,267	1,331	5.5	235.4
2,500 - 9,999	1,518	1,794	7.5	380.8
Under 2,500	153	215	0.9	465.2
Sheriff's Dept./County Police Suburban	1,717	1,924	8.0	170.1
Sheriff's Dept. - Rural	720	1,147	4.8	98.1
TOTAL	22,999	24,035	100.0	462.5

TABLE 4.4.1

TYPE OF WEAPON USED IN AGGRAVATED ASSAULTS

1992

TYPE	REPORTED	ESTIMATED	% OF TOTAL
FIREARMS	8,290	8,413	35.0
KNIVES OR CUTTING INSTRUMENTS	3,605	3,705	15.4
OTHER WEAPONS	7,191	7,388	30.7
HANDS, FEET, ETC./ AGGRAVATED INJURY	3,913	4,529	18.8
UNKNOWN	0	0	0.2
TOTAL	22,999	24,035	100.0

TABLE 4.4.2

AGGRAVATED ASSAULT CLEARANCE RATES

1991 - 1992

YEAR	PERCENT CLEARED	% OF CLEARED OFFENSES ONLY JUVENILES
1991	54.3	13.3
1992	54.5	15.0

TABLE 4.4.3

AGGRAVATED ASSAULT ARRESTS BY SEX AND AGE GROUP

1992

SEX	AGE GROUPS	REPORTED	% OF TOTAL ASSAULT ARRESTS
MALE	ADULTS	5,332	68.3
	JUVENILES	1,138	14.6
FEMALE	ADULTS	1,148	14.7
	JUVENILES	193	2.5
TOTAL		7,811	100.0

TABLE 4.4.4

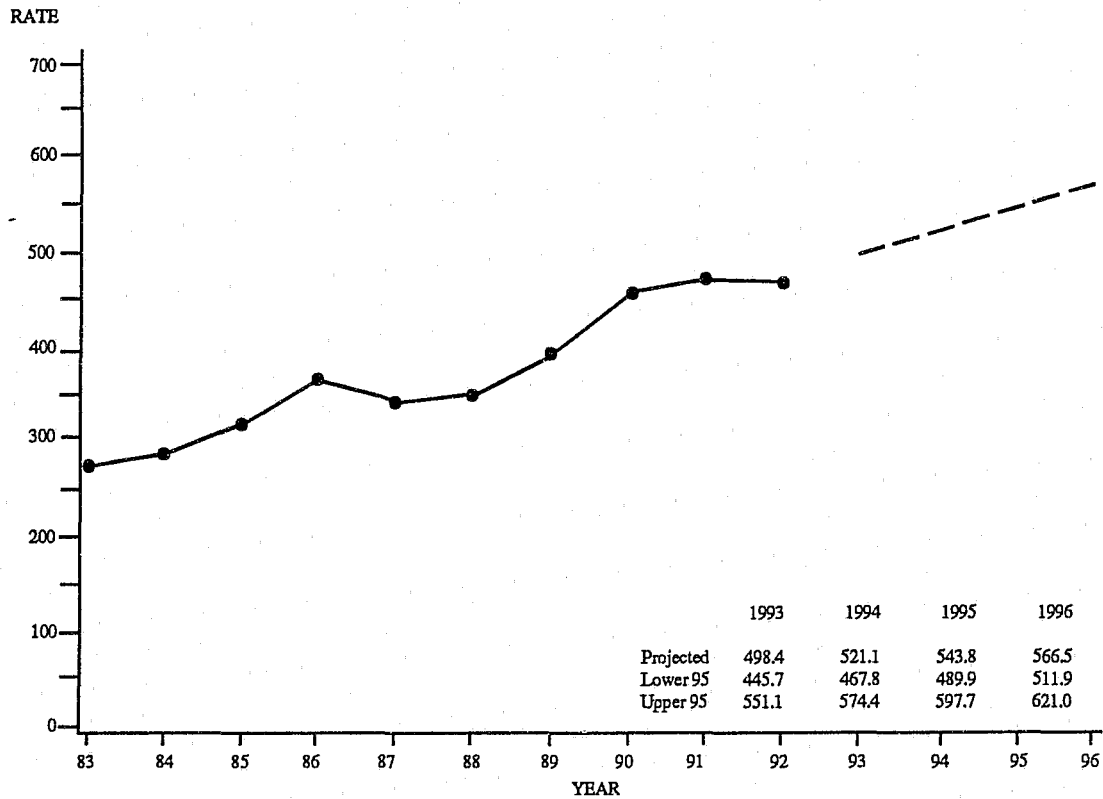
AGGRAVATED ASSAULT ARRESTS BY RACE AND AGE GROUP

1992

RACE	AGE GROUPS	REPORTED	% OF TOTAL ASSAULT ARRESTS
WHITE	ADULTS	2,865	37.5
	JUVENILES	503	6.6
BLACK	ADULTS	3,479	45.5
	JUVENILES	767	10.0
AMERICAN INDIAN	ADULTS	13	0.2
	JUVENILES	0	0.0
ASIAN / OTHER	ADULTS	13	0.2
	JUVENILES	5	0.1
UNKNOWN		166	-
TOTAL		7,811	100.0

TABLE 4.4.5

AGGRAVATED ASSAULT OFFENSE RATES, STATE OF MISSOURI¹ **TIME SERIES**



¹Aggravated assault offense rates are based on estimated aggravated assault offenses occurring in the State of Missouri. They are computed on a per 100,000 population basis. See Glossary for an explanation of the computations used to obtain these rates.

FIGURE 4.4.1

4.5 BURGLARY

DEFINITION

Burglary is the unlawful entry or attempted unlawful entry of a structure to commit a felony or a theft. Burglary offenses are reported on an incident-by-incident basis.

1992 SUMMARY ANALYSIS

- There were 53,189 burglaries reported during 1992. It is estimated that a total of 57,223 burglaries actually occurred on a statewide basis. Based on this estimate, this was a 4.8 percent decrease from 1991.
- It is estimated that one burglary occurred every 9.2 minutes.
- Burglary accounted for 21.4 percent of the Total Crime Index and 25.0 percent of all Property Index offenses.
- The burglary rate per 100,000 population was 1,101.1 in 1992 compared to 1,165.2 in 1991.
- It is estimated that 70.9 percent of all burglaries involved a residential dwelling and 69.2 percent were accomplished by forcible entry.
- It is estimated that \$64,423,370 in property/cash was stolen in 1992 due to this offense.
- In 1992, 16.4 of every 100 burglaries were cleared by arrest or exceptional means.
- 6,919 persons were reported arrested for burglary in 1992. Of these, 72.8 percent were adults and 27.2 percent were juveniles.

BURGLARY SUMMARY: 1991 and 1992

Year	Number of Estimated Offenses	Rate per 100,000 Population
1991	60,100	1,165.2
1992	57,223	1,101.1
Percent of Change	- 4.8	- 5.5

BURGLARY RATES BY POPULATION GROUP

1992

POPULATION GROUP	REPORTED	ESTIMATED	% OF TOTAL	RATE PER 100,000 POPULATION
<u>Police Agencies</u>				
250,000 +	24,854	24,854	43.4	2,945.7
100,000 - 249,999	3,414	3,414	6.0	1,330.8
50,000 - 99,999	2,262	2,262	4.0	903.5
25,000 - 49,999	4,271	4,271	7.5	923.3
10,000 - 24,999	4,574	4,819	8.4	852.0
2,500 - 9,999	3,218	3,795	6.6	805.5
Under 2,500	562	805	1.4	1,742.9
Sheriff's Dept./County Police Suburban	6,935	7,785	13.6	688.2
Sheriff's Dept. -- Rural	3,099	5,218	9.1	446.3
TOTAL	53,189	57,223	100.0	1,101.1

TABLE 4.5.1

TYPE OF BURGLARY

1992

TYPE	REPORTED	ESTIMATED	% OF TOTAL
FORCIBLE ENTRY	36,841	39,613	69.2
UNLAWFUL ENTRY NO FORCE	11,946	13,018	22.7
ATTEMPTED FORCIBLE ENTRY	4,314	4,592	8.0
UNKNOWN	88	0	-
TOTAL	53,189	57,223	100.0

TABLE 4.5.2

BURGLARY LOSS/LOCATION/TIME

1992

TYPE	REPORTED	ESTIMATED	% OF TOTAL	\$ LOSS ^{1/} INCIDENT
RESIDENCE				
NIGHT (6 p.m. to 6 a.m.)	9,911	10,839	20.3	\$965.35
DAY (6 a.m. to 6 p.m.)	10,135	10,868	20.3	1,148.65
TIME UNKNOWN	15,025	16,193	30.3	1,236.67
NON-RESIDENCE				
NIGHT (6 p.m. to 6 a.m.)	6,167	6,892	12.9	978.32
DAY (6 a.m. to 6 p.m.)	1,154	1,240	2.3	997.65
TIME UNKNOWN	7,000	7,390	13.8	1,226.67
UNKNOWN	3,797	3,801	-	-
TOTAL	53,189	57,223	100.0	1,125.83
1992 TOTAL STATE LOSS ESTIMATE² = \$64,423,370				

¹The dollar loss per incident was calculated using only those burglary offenses for which law enforcement agencies reported an actual monetary loss.

²This estimate of property loss was calculated by multiplying the total dollar loss per offense by the estimated number of such offenses that occurred in 1992.

TABLE 4.5.3

BURGLARY CLEARANCE RATES

1991 - 1992

YEAR	PERCENT CLEARED	% OF CLEARED OFFENSES ONLY JUVENILES
1991	15.3	15.6
1992	16.4	14.2

TABLE 4.5.4

BURGLARY ARRESTS BY SEX AND AGE GROUP

1992

SEX	AGE GROUPS	REPORTED	% OF TOTAL BURGLARY ARRESTS
MALE	ADULTS	4,629	66.9
	JUVENILES	1,708	24.7
FEMALE	ADULTS	410	5.9
	JUVENILES	172	2.5
TOTAL		6,919	100.0

TABLE 4.5.5

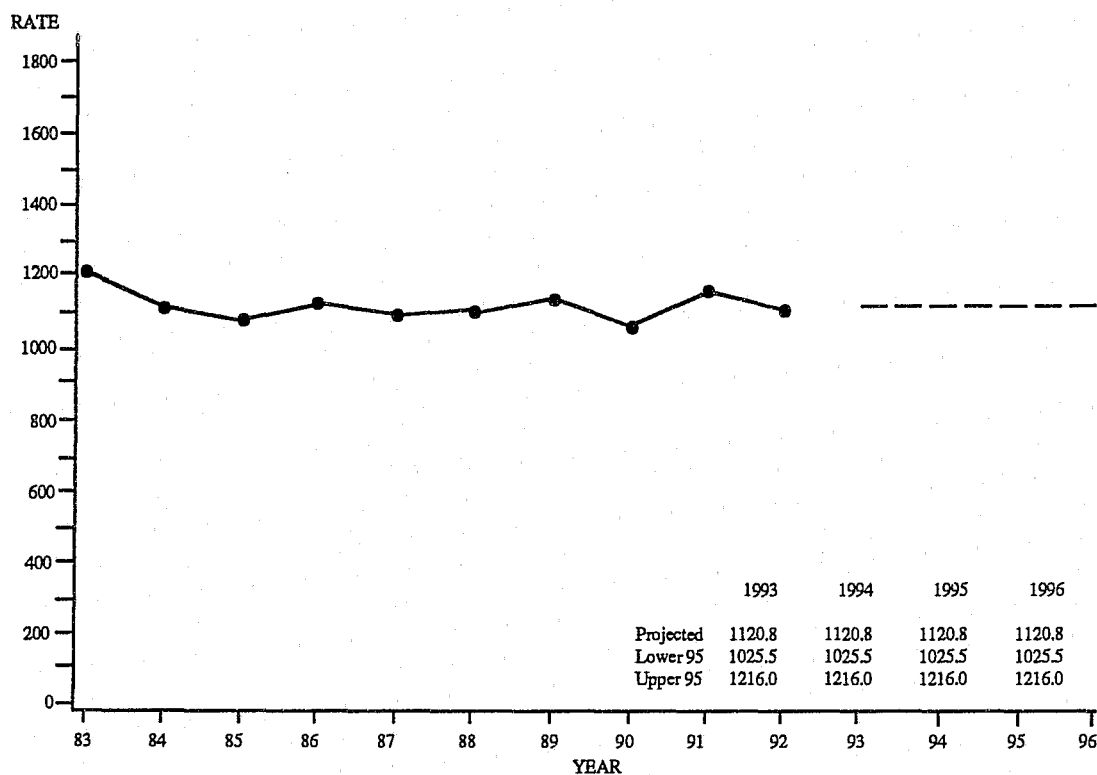
BURGLARY ARRESTS BY RACE AND AGE GROUP

1992

RACE	AGE GROUPS	REPORTED	% OF TOTAL BURGLARY ARRESTS
WHITE	ADULTS	2,703	40.4
	JUVENILES	1,282	19.2
BLACK	ADULTS	2,220	33.2
	JUVENILES	474	7.1
AMERICAN INDIAN	ADULTS	2	0.0
	JUVENILES	0	0.0
ASIAN/ OTHER	ADULTS	4	0.1
	JUVENILES	2	0.0
UNKNOWN		232	-
TOTAL		6,919	100.0

TABLE 4.5.6

BURGLARY OFFENSE RATES, STATE OF MISSOURI¹ **TIME SERIES**



¹Burglary offense rates are based on estimated burglary offenses occurring in the State of Missouri. They are computed on a per 100,000 population basis. See Glossary for an explanation of the computations used to obtain these rates.

FIGURE 4.5.1

4.6 THEFT

DEFINITION

Theft is the unlawful taking, carrying, leading, or riding away of property from the possession or constructive possession of another. Attempted thefts also are included. This category includes crimes such as shop-lifting, pocket-picking, purse-snatching, thefts from motor vehicles, thefts of motor vehicle parts or accessories, bicycle thefts, etc., in which no use of force, violence, or fraud occurs. It does not include embezzlement, "con" games, forgery, or worthless checks. Motor vehicle theft also is excluded inasmuch as it is a separate crime index offense. Theft offenses are reported on an incident-by-incident basis.

1992 SUMMARY ANALYSIS

- There were 134,824 thefts reported during 1992. It is estimated that a total of 143,270 thefts actually occurred on a statewide basis. Based on this estimate, this was a 2.9 percent decrease from 1991.
- It is estimated that one theft occurred every 3.7 minutes.
- Theft accounted for 53.6 percent of the Total Crime Index and 62.6 percent of all Property Index offenses.
- The theft rate per 100,000 population in 1992 was 2,757.0 compared to 2,862.1 in 1991.
- It is estimated that 40.3 percent of all thefts involved the taking of vehicle parts/accessories or other types of property from a vehicle.
- It is estimated that \$56,588,785 in property/cash was stolen in 1992 due to this offense.
- In 1992, 22.3 of every 100 thefts were cleared by arrest or exceptional means.
- 29,383 persons were reported arrested for theft in 1992. Of these, 75.6 percent were adults and 24.5 percent were juveniles.

THEFT SUMMARY: 1991 and 1992

Year	Number of Estimated Offenses	Rate per 100,000 Population
1991	147,624	2,862.1
1992	143,270	2,757.0
Percent of Change	- 2.9	- 3.7

THEFT RATES BY POPULATION GROUP

1992

POPULATION GROUP	REPORTED	ESTIMATED	% OF TOTAL	RATE PER 100,000 POPULATION
<u>Police Agencies</u>				
250,000 +	47,446	47,446	33.1	5,623.3
100,000 - 249,999	12,211	12,211	8.5	4,759.8
50,000 - 99,999	9,039	9,039	6.3	3,610.2
25,000 - 49,999	14,680	14,680	10.2	3,173.6
10,000 - 24,999	18,490	19,598	13.7	3,464.7
2,500 - 9,999	11,435	13,527	9.4	2,871.0
Under 2,500	1,933	2,735	1.9	5,919.7
Sheriff's Dept./County Police Suburban	16,013	17,977	12.5	1,589.2
Sheriff's Dept. - Rural	3,577	6,057	4.2	518.0
TOTAL	134,824	143,270	100.0	2,757.0

TABLE 4.6.1

THEFT BY VALUE OF STOLEN ITEMS

1992

AMOUNT	REPORTED	ESTIMATED	% OF TOTAL
\$200 AND OVER	41,754	45,499	33.5
\$50 TO \$200	31,304	34,023	25.1
UNDER \$50	52,951	56,197	41.4
UNKNOWN	8,815	7,551	-
TOTAL	134,824	143,270	100.0

TABLE 4.6.2

NATURE OF THEFT

1992

TYPE	REPORTED	ESTIMATED	% OF TOTAL	\$ LOSS/ INCIDENT
POCKET PICKING	260	284	0.2	\$211.19
PURSE SNATCHING	937	986	0.7	202.77
SHOPLIFTING	20,711	22,033	16.2	162.51
FROM MOTOR VEHICLE	24,325	26,281	19.4	490.34
MOTOR VEHICLE PARTS & ACC.	27,313	28,357	20.9	225.98
BICYCLES	4,696	5,088	3.7	177.70
FROM BUILDINGS	14,548	16,391	12.1	624.73
COIN OPERATED MACHINES	771	871	0.6	157.14
ALL OTHERS	32,486	35,426	26.1	554.19
UNKNOWN	8,777	7,553	-	-
TOTAL	134,824	143,270	100.0	394.98
1992 TOTAL STATE LOSS ESTIMATE² = \$56,588,785				

¹The dollar loss per incident was calculated using only those theft offenses for which law enforcement agencies reported an actual monetary loss.

²This estimate of property loss was calculated by multiplying the total dollar loss per offense by the estimated number of such offenses that occurred in 1992.

TABLE 4.6.3

THEFT CLEARANCE RATES

1991 - 1992

YEAR	PERCENT CLEARED	% OF CLEARED OFFENSES ONLY JUVENILES
1991	22.4	19.4
1992	22.3	20.2

TABLE 4.6.4

THEFT ARRESTS BY SEX AND AGE GROUP

1992

SEX	AGE GROUPS	REPORTED	% OF TOTAL THEFT ARRESTS
MALE	ADULTS	15,178	51.7
	JUVENILES	5,240	17.8
FEMALE	ADULTS	7,010	23.9
	JUVENILES	1,955	6.7
TOTAL		29,383	100.0

TABLE 4.6.5

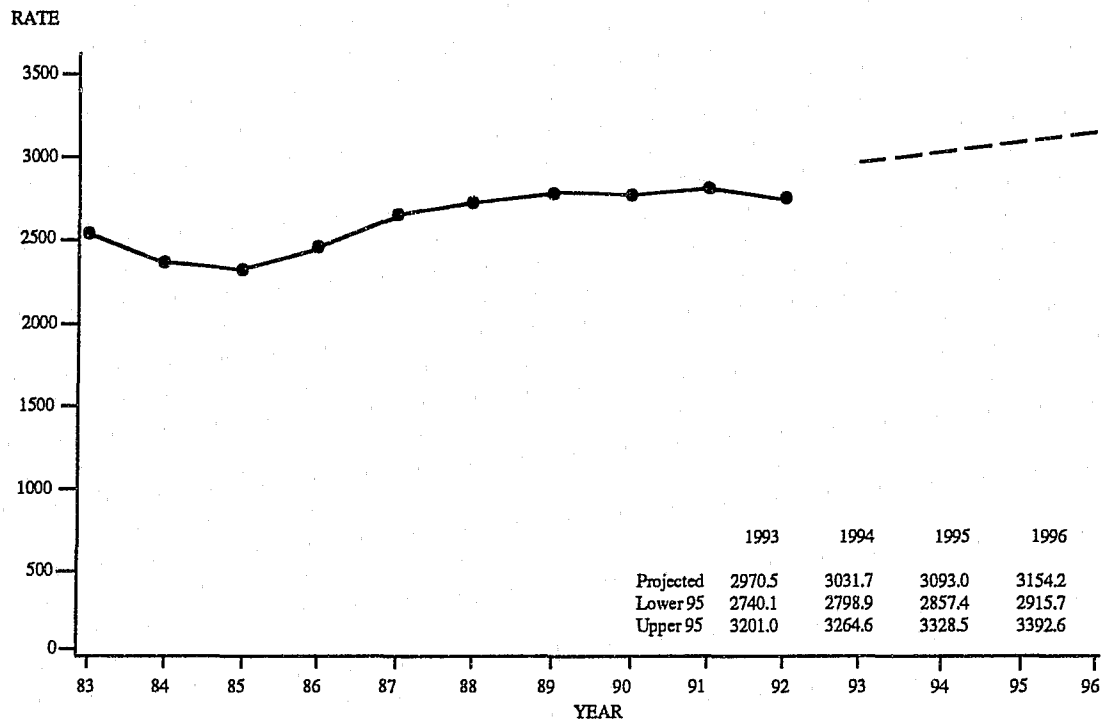
THEFT ARRESTS BY RACE AND AGE GROUP

1992

RACE	AGE GROUPS	REPORTED	% OF TOTAL THEFT ARRESTS
WHITE	ADULTS	10,915	37.5
	JUVENILES	5,057	17.4
BLACK	ADULTS	11,033	37.9
	JUVENILES	1,988	6.8
AMERICAN INDIAN	ADULTS	26	0.1
	JUVENILES	4	0.0
ASIAN/ OTHER	ADULTS	59	0.2
	JUVENILES	32	0.1
UNKNOWN		269	-
TOTAL		29,383	100.0

TABLE 4.6.6

THEFT OFFENSE RATES, STATE OF MISSOURI¹ **TIME SERIES**



¹Theft offense rates are based on estimated theft offenses occurring in the State of Missouri. They are computed on a per 100,000 population basis. See Glossary for an explanation of the computations used to obtain these rates.

FIGURE 4.6.1

4.7 MOTOR VEHICLE THEFT

DEFINITION

Motor vehicle theft is the theft or attempted theft of a motor vehicle. By definition, a motor vehicle is a self-propelled vehicle that runs on the surface and not on rails. Motor vehicles include automobiles, trucks, buses, motorcycles, motor scooters, snowmobiles, etc. Motor vehicle theft offenses are reported on a per vehicle basis.

1992 SUMMARY ANALYSIS

- There were 25,039 motor vehicle thefts reported during 1992. It is estimated that a total of 25,878 motor vehicle thefts actually occurred on a statewide basis. Based on this estimate, this was a 10.7 percent decrease from 1991.
- It is estimated that one motor vehicle theft occurred every 20.4 minutes.
- Motor vehicle theft accounted for 9.7 percent of the Total Crime Index and 11.3 percent of all Property Index offenses.
- The motor vehicle theft rate per 100,000 population was 498.0 in 1992 compared to 562.0 in 1991.
- Of vehicles stolen in 1992, it is estimated that 77.0 percent were recovered.
- It is estimated that the cost of vehicles stolen in 1992 was \$114,210,742.
- In 1992, 16.2 of every 100 motor vehicle thefts were cleared by arrest or exceptional means.
- 3,435 persons were reported arrested for motor vehicle theft in 1992. Of these, 62.1 percent were adults and 38.0 percent were juveniles.

MOTOR VEHICLE THEFT SUMMARY: 1991 and 1992

Year	Number of Estimated Offenses	Rate per 100,000 Population
1991	28,986	562.0
1992	25,878	498.0
Percent of Change	- 10.7	- 11.4

MOTOR VEHICLE THEFT RATES BY POPULATION GROUP

1992

POPULATION GROUP	REPORTED	ESTIMATED	% OF TOTAL	RATE PER 100,000 POPULATION
<u>Police Agencies</u>				
250,000 +	16,471	16,471	63.6	1,952.2
100,000 - 249,999	1,276	1,276	4.9	497.4
50,000 - 99,999	615	615	2.4	245.6
25,000 - 49,999	1,420	1,420	5.5	307.0
10,000 - 24,999	1,766	1,878	7.3	332.0
2,500 - 9,999	1,107	1,304	5.0	276.9
Under 2,500	184	264	1.0	571.9
Sheriff's Dept./County Police Suburban	1,877	2,109	8.1	186.4
Sheriff's Dept. - Rural	323	541	2.1	46.3
TOTAL	25,039	25,878	100.0	498.0

TABLE 4.7.1

TYPE OF VEHICLE STOLEN

1992

TYPE	REPORTED	ESTIMATED	% OF TOTAL
AUTOMOBILES	19,642	20,200	78.1
TRUCKS AND BUSES	4,080	4,262	16.5
OTHER VEHICLES	1,317	1,416	5.5
UNKNOWN	0	0	-
TOTAL	25,039	25,878	100.0

TABLE 4.7.2

MOTOR VEHICLE THEFT YEARLY LOSS

1991 - 1992

YEAR	\$ LOSS ¹ PER INCIDENT	ESTIMATED PERCENT ² RECOVERED
1991	\$4,704.99	78.4
1992	4,413.43	77.0
1992 TOTAL STATE LOSS ESTIMATE³ = \$114,210,742		

¹The dollar loss per incident was calculated using only those motor vehicle theft offenses for which law enforcement agencies reported an actual monetary loss.

²The estimated percent recovered was calculated using those motor vehicle theft offenses in which a motor vehicle was stolen locally and was recovered either locally or otherwise.

³This estimate of property loss was calculated by multiplying the total dollar loss per offense by the estimated number of such offenses that occurred in 1992.

TABLE 4.7.3

MOTOR VEHICLE THEFT CLEARANCE RATES

1991 - 1992

YEAR	PERCENT CLEARED	% OF CLEARED OFFENSES ONLY JUVENILES
1991	15.1	27.2
1992	16.2	26.4

TABLE 4.7.4

MOTOR VEHICLE THEFT ARRESTS BY SEX AND AGE GROUP

1992

SEX	AGE GROUPS	REPORTED	% OF TOTAL ARRESTS
MALE	ADULTS	1,905	55.5
	JUVENILES	1,202	35.0
FEMALE	ADULTS	225	6.6
	JUVENILES	103	3.0
TOTAL		3,435	100.0

TABLE 4.7.5

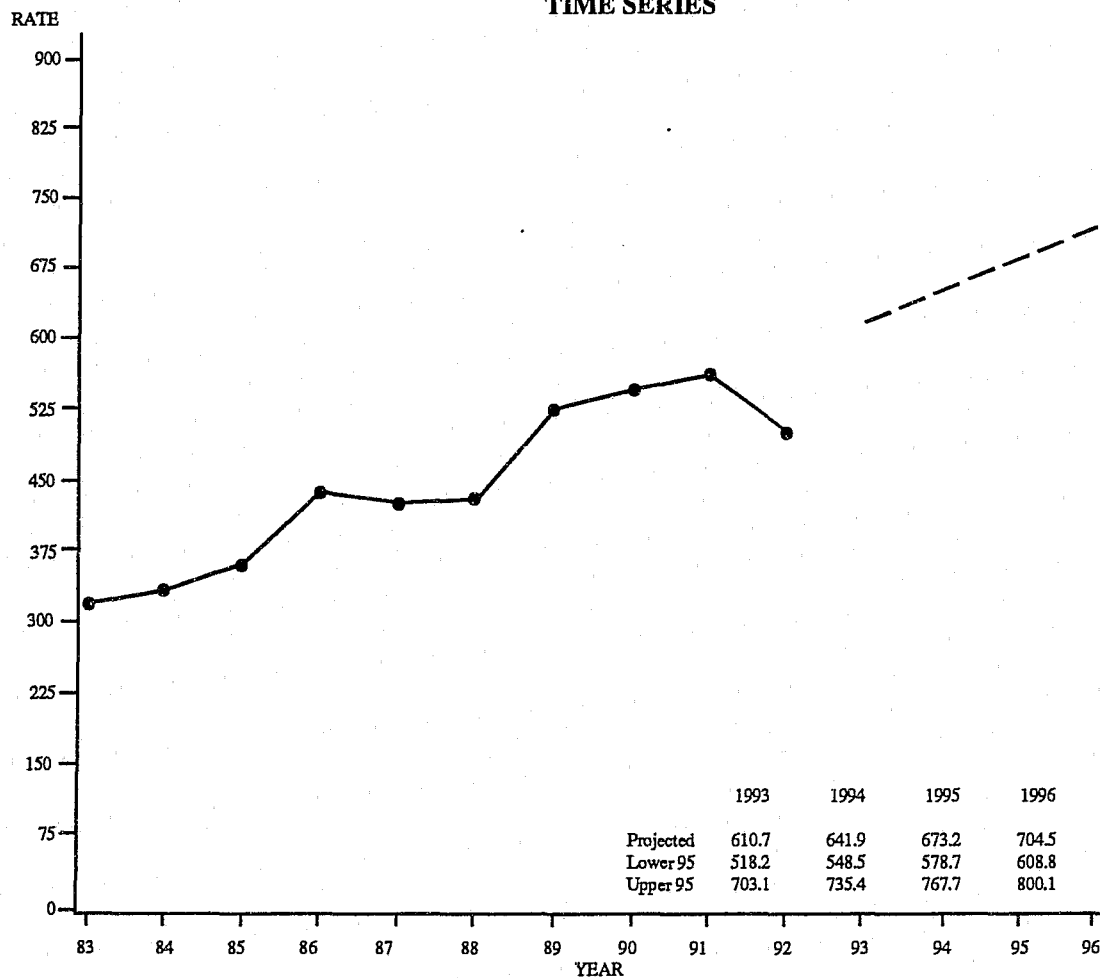
MOTOR VEHICLE THEFT ARRESTS BY RACE AND AGE GROUP

1992

RACE	AGE GROUPS	REPORTED	% OF TOTAL ARRESTS
WHITE	ADULTS	643	18.9
	JUVENILES	457	13.5
BLACK	ADULTS	1,467	43.2
	JUVENILES	821	24.2
AMERICAN INDIAN	ADULTS	1	0.0
	JUVENILES	0	0.0
ASIAN / OTHER	ADULTS	6	0.2
	JUVENILES	0	0.0
UNKNOWN		40	-
TOTAL		3,435	100.0

TABLE 4.7.6

MOTOR VEHICLE THEFT OFFENSE RATES, STATE OF MISSOURI¹ **TIME SERIES**



¹Motor Vehicle Theft offense rates are based on estimated motor vehicle theft offenses occurring in the State of Missouri. They are computed on a per 100,000 population basis. See Glossary for an explanation of the computations used to obtain these rates.

FIGURE 4.7.1

4.8 ARSON

DEFINITION

Arson is defined by the Uniform Crime Reporting Program as any willful or malicious burning or attempt to burn, with or without intent to defraud, a dwelling house, public building, motor vehicle or aircraft, personal property of another, etc. Only fires determined through investigation to have been willfully or maliciously set are classified as arsons. Fires of suspicious or unknown origins are excluded. Arson offenses are reported on an incident-by-incident basis.

1992 SUMMARY ANALYSIS

- There were 2,313 arsons reported during 1992. It is estimated that a total of 2,463 arsons actually occurred on a statewide basis. Based on this estimate, this was a 6.3 percent increase over 1991.
- It is estimated that one arson occurred every 3.6 hours.
- Arsons accounted for 0.9 percent of the Total Crime Index and 1.1 percent of all Property Index offenses.
- The arson rate per 100,000 population in 1992 was 47.4 compared to 44.9 in 1991.
- Residential dwellings accounted for an estimated 44.9 percent of all types of property destroyed by arson. Motor vehicles accounted for an estimated 22.2 percent.
- It is estimated that arson accounted for \$44,191,540 in property loss in 1992.
- In 1992, 24.7 of every 100 arsons were cleared by arrest or exceptional means.
- 444 persons were reported arrested for arson in 1992. Of these, 63.7 percent were adults and 36.3 percent were juveniles.

ARSON SUMMARY: 1991 and 1992

Year	Number of Estimated Offenses	Rate per 100,000 Population
1991	2,316	44.9
1992	2,463	47.4
Percent of Change	+ 6.3	+ 5.6

ARSON RATES BY POPULATION GROUP

1992

POPULATION GROUP	REPORTED	ESTIMATED	% OF TOTAL	RATE PER 100,000 POPULATION
<u>Police Agencies</u>				
250,000 +	1,443	1,443	58.6	171.0
100,000 - 249,999	141	141	5.7	55.0
50,000 - 99,999	119	125	5.1	49.8
25,000 - 49,999	144	150	6.1	32.5
10,000 - 24,999	108	120	4.9	21.2
2,500 - 9,999	102	144	5.9	30.6
Under 2,500	18	27	1.1	58.6
Sheriff's Dept./County Police Suburban	195	231	9.4	20.4
Sheriff's Dept. - Rural	43	82	3.3	7.0
TOTAL	2,313	2,463	100.0	47.4

TABLE 4.8.1

ARSON LOSS BY TYPE OF PROPERTY

1992

PROPERTY	REPORTED	ESTIMATED	% OF TOTAL	\$ LOSS/ INCIDENT
STRUCTURES				
Single Occupancy Dwelling	721	775	31.5	\$14,078.23
Other Residential	323	330	13.4	16,407.87
Storage	161	180	7.3	25,995.26
Industrial/Manufacturing	11	11	0.5	38,650.00
Other Commercial	125	136	5.5	104,386.67
Community/Public	99	108	4.4	567.12
All Other Structures or Type of Structure Not Known	56	59	2.4	2,674.10
MOBILE				
Motor Vehicle	520	547	22.2	3,007.30
All Mobile Property or Type of Mobile Property Known	36	40	1.6	6,518.11
OTHER				
Other Property or Type of Property Not Known	261	277	11.2	1,052.06
TOTAL	2,313	2,463	100.0	17,942.16
1992 TOTAL STATE LOSS ESTIMATE² = \$44,191,540				

¹The dollar loss per incident was calculated using only those arson offenses for which law enforcement agencies reported an actual monetary loss.

²This estimate of property loss was calculated by multiplying the total dollar loss per offense by the total number of such offenses that were reported in 1992.

TABLE 4.8.2

ARSON CLEARANCE RATES

1991 - 1992

YEAR	PERCENT CLEARED	% OF CLEARED OFFENSES ONLY JUVENILES
1991	23.5	38.4
1992	24.7	53.4

TABLE 4.8.3

ARSON ARRESTS BY SEX AND AGE GROUP

1992

SEX	AGE GROUPS	REPORTED	% OF TOTAL ARSON ARRESTS
MALE	ADULTS	235	52.9
	JUVENILES	142	32.0
FEMALE	ADULTS	48	10.8
	JUVENILES	19	4.3
TOTAL		444	100.0

TABLE 4.8.4

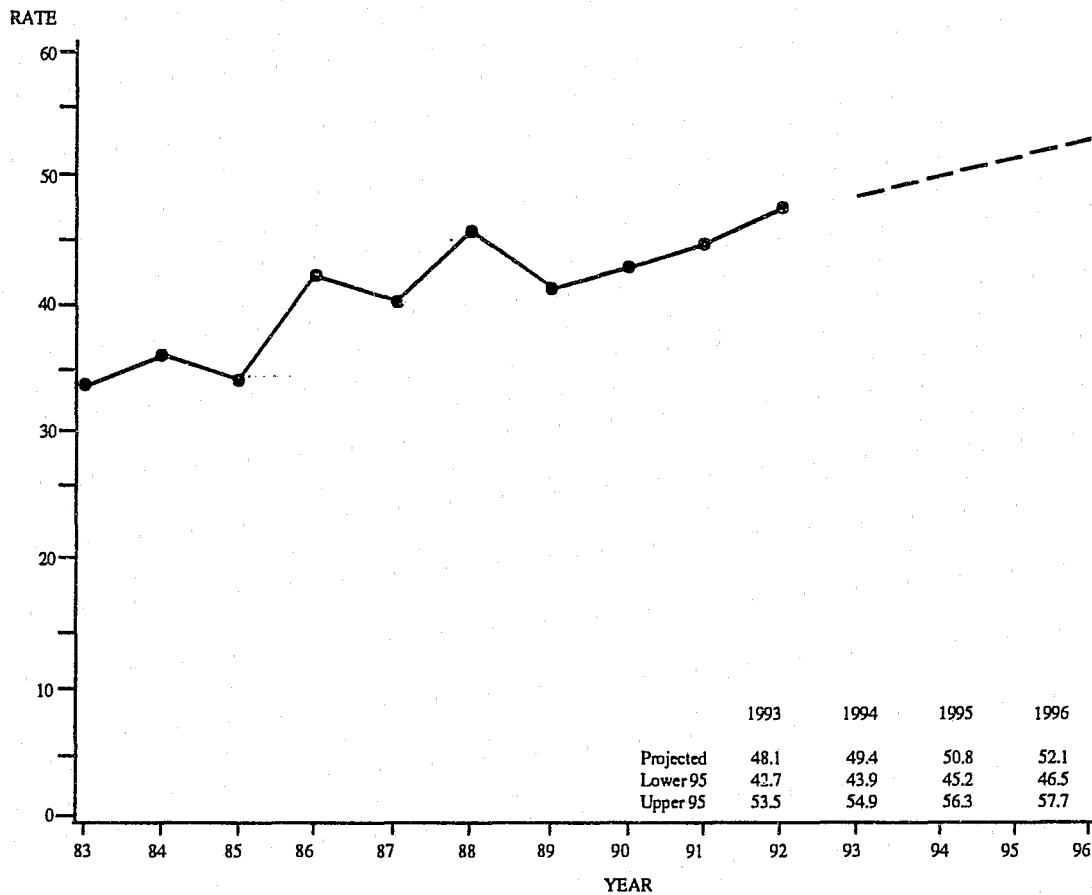
ARSON ARRESTS BY RACE AND AGE GROUP

1992

RACE	AGE GROUPS	REPORTED	% OF TOTAL ARSON ARRESTS
WHITE	ADULTS	141	32.2
	JUVENILES	128	29.2
BLACK	ADULTS	139	31.7
	JUVENILES	29	6.6
ASIAN/ OTHER	ADULTS	0	0.0
	JUVENILES	1	0.2
UNKNOWN		6	-
TOTAL		444	100.0

TABLE 4.8.5

ARSON OFFENSE RATES, STATE OF MISSOURI¹ **TIME SERIES**



¹Arson offense rates are based on estimated arson offenses occurring in the State of Missouri. They are computed on a per 100,000 population basis. See Glossary for an explanation of the computations used to obtain these rates.

FIGURE 4.8.1

5.0 MISSOURI LAW ENFORCEMENT AGENCY CRIME AND ARREST ANALYSIS

A SERIES OF TABLES SUMMARIZES CRIME INDEX OFFENSE AND ARREST ACTIVITY ASSOCIATED WITH LAW ENFORCEMENT JURISDICTIONS IN THE STATE OF MISSOURI. THESE DATA DISPLAYS PROVIDE AN OVERVIEW OF THE EXTENT OF THE CRIME PROBLEM WITHIN MISSOURI COMMUNITIES.

CRIME INDEX OFFENSES, MUNICIPALITIES 25,000 AND OVER

BY REPORTING AGENCY

1992

REPORTING AGENCY	MOS.	POPULATION	CRIME INDEX		VIOLENT CRIME					PROPERTY CRIME				
			TOTAL	RATE/100,000	TOTAL	MURDER	RAPE	ROBBERY	AGG. ASSAULT	TOTAL	BURGLARY	THEFT	M.V. THEFT	ARSON
BLUE SPRINGS	12	40,748	1,633	4,007.6	97	0	12	19	66	1,536	281	1,162	85	8
CAPE GIRARDEAU	12	34,948	2,535	7,253.6	124	5	11	31	77	2,411	357	1,979	75	0
CHESTERFIELD	12	38,554	1,087	2,819.4	41	1	2	7	31	1,046	240	773	28	5
COLUMBIA	12	70,125	4,931	7,031.7	472	3	31	137	301	4,459	667	3,585	169	38
FLORISSANT	12	51,965	1,483	2,853.8	93	1	8	35	49	1,390	252	1,045	86	7
GLADSTONE	12	26,631	751	2,820.0	89	0	6	21	62	662	168	451	37	6
GRANDVIEW	12	25,336	1,106	4,365.3	123	1	8	59	55	983	288	491	196	8
INDEPENDENCE	12	113,967	7,249	6,360.6	578	1	24	155	398	6,671	1,453	4,369	812	37
JEFFERSON CITY	12	36,006	1,687	4,685.3	107	0	12	26	69	1,580	254	1,253	60	13
JOPLIN	12	41,567	3,994	9,608.6	174	6	13	48	107	3,820	761	2,865	164	30
KANSAS CITY	12	441,162	55,541	12,589.7	12,594	150	564	4,494	7,386	42,947	12,551	21,846	8,042	508
KIRKWOOD	12	27,695	707	2,552.8	45	1	5	16	23	662	122	498	39	3
LEE'S SUMMIT	12	47,106	1,409	2,991.1	61	1	14	14	32	1,348	347	898	85	18
MARYLAND HEIGHTS	12	25,783	1,168	4,530.1	48	4	6	11	27	1,120	240	736	122	22
RAYTOWN	12	31,054	1,108	3,568.0	81	1	9	31	40	1,027	240	644	142	1
SAINT CHARLES	12	55,364	2,257	4,076.7	153	4	14	51	84	2,104	463	1,466	147	28
SAINT JOSEPH	12	72,917	4,443	6,093.2	361	2	23	48	288	4,082	880	2,943	213	46
SAINT LOUIS	12	402,573	60,514	15,031.8	13,247	231	349	4,936	7,731	47,267	12,303	25,600	8,429	935
SAINT PETERS	12	46,458	2,151	4,630.0	309	0	10	25	274	1,842	264	1,483	80	15
SPRINGFIELD	12	142,578	11,020	7,729.1	649	8	61	165	415	10,371	1,961	7,842	464	104
UNIVERSITY CITY	12	40,681	2,714	6,671.4	236	4	22	101	109	2,478	709	1,447	307	15
TOTAL	—	1,813,218	169,488	9,347.4	29,682	424	1,204	10,430	17,624	139,806	34,801	83,376	19,782	1,847

TABLE 5.0.1

CRIME INDEX OFFENSES, MUNICIPALITIES UNDER 25,000

BY REPORTING AGENCY

1992

REPORTING AGENCY	MOS.	POPULATION	CRIME INDEX		VIOLENT CRIME					PROPERTY CRIME				
			TOTAL	RATE/100,000	TOTAL	MURDER	RAPE	ROBBERY	AGG. ASSAULT	TOTAL	BURG-LARY	THEFT	M.V. THEFT	ARSON
ARNOLD	12	19,106	1,018	5,328.2	127	0	8	12	107	891	140	722	27	2
AURORA	12	6,554	264	4,028.1	21	0	0	2	19	243	43	180	10	10
BALLWIN	12	22,139	385	1,739.0	15	0	2	2	11	370	75	280	15	0
BEL-NOR	12	2,978	58	1,947.6	3	0	0	0	3	55	12	33	10	0
BEL-RIDGE	12	3,245	254	7,827.4	32	0	2	8	22	222	64	100	57	1
BELLEFONTAINE NBRS	12	11,083	587	5,296.4	12	0	1	8	3	575	60	473	42	0
BELTON	12	18,419	643	3,491.0	46	1	3	6	36	597	105	449	41	2
BERKELEY	12	12,634	797	6,308.4	128	5	8	41	74	669	177	360	127	5
BOLIVAR	1	6,945	3	43.2	3	0	1	0	2	0	0	0	0	-
BONNE TERRE	12	3,927	107	2,724.7	22	0	4	0	18	85	23	55	7	0
BOONVILLE	12	7,199	326	4,528.4	87	1	1	4	81	239	47	172	20	0
BRANSON	12	3,760	801	21,303.2	36	0	5	8	23	765	143	611	10	1
BRECKENRIDGE HILLS	12	5,483	292	5,325.6	24	1	1	9	13	268	56	200	12	0
BRENTWOOD	12	8,270	280	3,385.7	4	0	0	2	2	276	22	230	24	0
BRIDGETON	12	18,042	1,252	6,939.4	82	2	7	34	39	1,170	219	827	124	0
BROOKFIELD	12	4,960	154	3,104.8	9	0	0	0	9	145	38	102	3	2
BUCKNER	12	2,914	178	6,108.4	33	0	0	1	32	145	29	108	8	0
BUTLER	12	4,159	227	5,458.0	11	0	0	0	11	216	87	117	10	2
CALVERTON PARK	12	1,424	15	1,053.4	2	0	0	0	2	13	6	5	2	0
CAMERON	12	4,902	180	367.2	34	0	0	3	31	146	33	108	4	1
CANTON	12	2,660	55	2,067.7	10	0	0	1	9	45	19	23	3	0
CARROLLTON	1	4,471	11	246.0	3	0	0	0	3	8	4	4	0	0
CARTHAGE	12	10,905	495	4,539.2	17	0	3	7	7	478	120	346	10	2
CENT. MO. ST. UNIV.	12	0	231	-	2	0	0	1	1	229	61	162	2	4
CENTRALIA	12	3,464	73	2,107.4	5	0	0	0	5	68	13	54	0	1
CHAFFEE	12	3,103	108	3,480.5	23	0	0	0	23	85	18	65	0	2
CHARLACK	12	1,408	50	3,551.1	10	1	1	3	5	40	11	24	5	0
CLARKSON VALLEY	12	2,545	30	1,178.8	1	0	0	1	0	29	4	25	0	0
CLAYCOMO	12	1,692	141	8,333.3	10	0	0	3	7	131	18	94	19	0
CLAYTON	12	14,078	685	4,865.7	45	1	1	13	30	640	173	421	40	6
CLINTON	12	8,831	542	6,137.5	17	0	1	6	10	525	100	412	12	1
COOL VALLEY	12	1,427	127	8,899.8	16	0	0	9	7	111	20	67	22	2
COUNTRY CLUB HILLS	12	1,781	16	898.4	5	0	1	0	4	11	3	4	4	0
CRESTWOOD	12	11,399	540	4,737.3	21	0	1	14	6	519	57	433	27	2
CREVE COEUR	12	12,486	416	3,331.7	16	0	0	7	9	400	62	296	41	1
CRYSTAL CITY	12	4,147	311	7,499.4	28	0	1	1	26	283	57	202	24	-

TABLE 5.0.2

CRIME INDEX OFFENSES, MUNICIPALITIES UNDER 25,000

BY REPORTING AGENCY

1992

REPORTING AGENCY	MOS.	POPULATION	CRIME INDEX		VIOLENT CRIME					PROPERTY CRIME				
			TOTAL	RATE/100,000	TOTAL	MURDER	RAPE	ROBBERY	AGG. ASSAULT	TOTAL	BURGLARY	THEFT	M.V. THEFT	ARSON
DE SOTO	12	6,081	233	3,831.6	35	1	6	1	27	198	37	153	5	3
DELLWOOD	10	5,321	187	3,514.4	23	0	0	9	14	164	23	135	6	0
DES PERES	12	8,519	350	4,108.5	16	0	1	3	12	334	41	285	8	0
EDMUNDSON	12	1,126	55	4,884.5	1	0	1	0	0	54	11	31	12	0
ELLISVILLE	12	7,656	187	2,442.5	7	0	0	1	6	180	35	119	26	0
EUREKA	12	4,752	302	6,355.2	20	0	4	3	13	282	39	226	17	0
EXCELSIOR SPRINGS	12	10,506	615	5,853.8	32	1	14	4	13	583	97	458	19	9
FARMINGTON	10	11,769	428	3,636.7	31	0	5	4	22	397	33	342	21	1
FAYETTE	12	2,930	100	3,413.0	23	0	0	0	23	77	19	51	1	6
FENTON	12	3,394	261	7,690.0	9	0	1	3	5	252	24	212	16	0
FERGUSON	12	22,616	1,136	5,023.0	112	0	10	43	59	1,024	218	646	154	6
FESTUS	12	8,224	277	3,368.2	39	0	1	5	33	238	50	176	12	0
FLAT RIVER	12	4,894	152	3,105.8	19	0	1	0	18	133	31	90	11	1
FLORDELL HILLS	12	963	41	4,257.5	5	0	0	3	2	36	8	21	7	0
FRONTENAC	12	3,423	77	2,249.5	0	0	0	0	0	77	9	65	3	0
FULTON	12	10,181	663	6,512.1	42	1	5	7	29	621	141	459	20	1
GLENDALE	12	6,032	31	513.9	5	0	0	0	5	26	4	17	5	0
HANNIBAL	12	18,269	1,135	6,212.7	88	1	12	11	64	1,047	236	760	47	4
HARRISONVILLE	12	7,796	361	4,630.6	27	2	4	1	20	334	65	236	28	5
HAZELWOOD	12	15,550	889	5,717.0	64	4	2	17	41	825	147	556	114	8
HILLSDALE	11	1,976	222	11,234.8	17	2	1	14	0	205	94	68	43	0
IRONTON	12	10,884	32	294.0	2	0	1	0	1	30	2	27	1	0
JACKSON	12	9,393	213	2,267.6	12	0	0	0	12	201	38	157	5	1
JENNINGS	12	16,140	1,316	8,153.7	90	1	6	56	27	1,226	239	791	186	10
KEARNEY	12	1,816	82	4,515.4	22	0	2	0	20	60	14	41	3	2
KENNETT	9	11,102	590	5,314.4	35	0	1	10	24	555	124	402	29	0
KIRKSVILLE	12	17,406	736	4,228.4	20	0	8	3	9	716	132	559	25	0
LADUE	12	8,977	230	2,562.1	15	0	2	4	9	215	45	162	8	0
LAKE LOTAWANA	4	2,172	8	368.3	1	0	0	0	1	7	1	5	1	0
LAKE SAINT LOUIS	12	7,509	282	3,755.5	47	0	2	3	42	235	57	165	10	3
LAMAR	12	4,229	112	2,648.4	2	0	0	0	2	110	16	85	8	1
LEBANON	12	10,130	458	4,521.2	27	3	5	2	17	431	101	286	34	10
LEXINGTON	12	4,931	92	1,865.7	29	0	0	0	29	63	11	52	0	0
LINCOLN UNIVERSITY	12	0	93	—	7	0	1	2	4	86	5	80	1	0
MACON	12	5,653	51	902.2	14	1	1	0	12	37	12	25	0	0
MANCHESTER	12	6,638	231	3,480.0	12	0	1	5	6	219	48	157	11	3

TABLE 5.0.2

CRIME INDEX OFFENSES, MUNICIPALITIES UNDER 25,000

BY REPORTING AGENCY

1992

REPORTING AGENCY	MOS.	POPULATION	CRIME INDEX		VIOLENT CRIME					PROPERTY CRIME				
			TOTAL	RATE/100,000	TOTAL	MURDER	RAPE	ROBBERY	AGG. ASSAULT	TOTAL	BURGLARY	THEFT	M.V. THEFT	ARSON
MAPLEWOOD	12	10,109	700	6,924.5	71	2	3	29	37	629	93	473	55	8
MARCELINE	12	2,684	32	1,192.3	4	0	0	0	4	28	5	22	1	0
MARSHALL	12	12,898	267	2,070.1	8	0	3	2	3	259	57	192	9	1
MARYVILLE	12	10,820	262	2,421.4	9	0	1	1	7	253	36	215	2	0
MEXICO	12	11,457	218	1,902.8	22	0	0	4	18	196	77	107	9	3
MOBERLY	12	13,028	717	5,503.5	128	0	6	6	116	589	77	498	10	4
MOLINE ACRES	12	2,749	98	3,564.9	20	0	0	8	12	78	15	55	8	0
NEOSHO	12	9,391	599	6,378.4	14	1	1	3	9	585	94	476	15	0
NEVAJA	12	8,723	396	4,539.7	26	0	2	1	23	370	70	270	26	4
NORMANDY	12	4,545	206	4,532.5	37	2	3	12	20	169	33	91	45	0
NORTH KANSAS CITY	12	4,191	569	13,576.7	43	0	4	10	29	526	111	349	62	4
NORTHWOODS	12	5,180	284	5,482.6	65	0	1	18	46	219	38	139	42	0
O'FALLON	12	18,974	726	3,826.3	49	1	3	3	42	677	92	561	20	4
OAKLAND	12	1,615	34	2,105.3	1	0	0	1	0	33	10	21	2	0
OAKVIEW	12	355	14	3,943.7	0	0	0	0	0	14	5	8	0	1
ODESSA	12	3,749	76	2,027.2	4	0	0	0	4	72	21	44	6	1
OLIVETTE	12	7,684	203	2,641.9	35	0	0	6	29	168	43	105	20	0
OSAGE BEACH	12	2,636	296	11,229.1	15	0	0	2	13	281	64	209	7	1
OVERLAND	12	18,253	1,134	6,212.7	96	2	4	28	62	1,038	163	811	60	4
PACIFIC	12	4,413	254	5,755.7	32	0	0	2	30	222	39	175	7	1
PAGEDALE	11	3,826	279	7,292.2	51	0	1	19	31	228	69	107	42	10
PARKVILLE	12	2,437	141	5,785.8	13	0	0	0	13	128	27	97	4	0
PASADENA HILLS	12	1,181	39	3,302.3	4	0	1	0	3	35	12	16	7	0
PASADENA PARK	12	539	20	3,710.6	0	0	0	0	0	20	14	2	4	0
PEVELY	12	2,872	151	5,257.7	12	0	0	1	11	139	24	96	15	4
PINE LAWN	9	5,166	395	7,646.1	90	0	2	33	55	305	58	177	63	7
PLEASANT HILL	12	3,883	156	4,017.5	6	0	0	0	6	150	25	118	5	2
POPLAR BLUFF	12	17,247	1,214	7,038.9	97	5	6	20	66	1,117	178	866	73	0
POTOSI	12	2,722	216	7,935.3	51	0	0	0	51	165	24	135	5	1
REPUBLIC	12	6,385	255	3,993.7	8	0	1	1	6	247	53	179	14	1
RICHMOND	12	5,822	316	5,427.7	37	0	3	0	34	279	99	159	17	4
RICHMOND HEIGHTS	12	10,602	1,174	11,073.4	77	1	2	34	40	1,097	101	905	89	2
RIVERSIDE	12	3,054	259	8,480.7	7	0	0	2	5	252	62	175	15	0
RIVERVIEW	12	3,289	110	3,344.5	38	0	5	2	31	72	26	42	4	0
ROLLA	12	14,298	563	3,937.6	30	0	3	6	21	533	115	395	21	2
SAINT ANN	10	14,703	1,214	8,256.8	34	0	2	17	15	1,180	102	931	147	0

TABLE 5.0.2

CRIME INDEX OFFENSES, MUNICIPALITIES UNDER 25,000

BY REPORTING AGENCY

1992

REPORTING AGENCY	MOS.	POPULATION	CRIME INDEX		VIOLENT CRIME					PROPERTY CRIME				
			TOTAL	RATE/100,000	TOTAL	MURDER	RAPE	ROBBERY	AGG. ASSAULT	TOTAL	BURGLARY	THEFT	M.V. THEFT	ARSON
SAINT GEORGE	12	1,288	29	2,251.6	2	0	1	0	1	27	9	16	2	0
SAINT JOHN	12	7,576	249	3,286.7	34	2	0	7	25	215	51	138	26	0
SAINT ROBERT	12	1,754	322	18,358.0	46	0	5	5	36	276	70	190	15	1
SAINTE GENEVIEVE	12	4,476	100	2,234.1	13	0	1	5	7	87	39	44	3	1
SALEM	12	4,551	174	3,823.3	16	0	1	0	15	158	24	121	12	1
SAVANNAH	11	4,415	93	2,106.5	25	0	0	0	25	68	16	51	1	0
SEDALIA	12	20,093	1302	6,479.9	122	0	9	14	99	1,180	268	884	28	0
SHREWSBURY	12	6,510	240	3,686.6	24	0	1	7	16	216	33	163	20	0
SIKESTON	12	17,902	1170	6,535.6	71	3	11	28	29	1,099	301	745	50	3
SLATER	12	2,217	106	4,781.2	24	0	1	1	22	82	8	71	2	1
SMITHVILLE	12	2,562	100	3,903.2	3	0	0	0	3	97	30	60	6	1
SUGAR CREEK	12	4,040	246	6,089.1	16	1	0	4	11	230	61	130	39	0
SULLIVAN	12	5,743	220	3,830.8	18	0	0	1	17	202	52	138	12	0
SUNSET HILLS	12	4,987	265	5,313.8	29	1	2	5	21	236	18	195	22	1
TOWN AND COUNTRY	12	9,660	246	2,546.6	31	0	0	1	30	215	50	160	5	0
TRENTON	12	6,219	257	4,132.5	48	0	1	0	47	209	39	158	11	1
UNION	12	5,996	313	5,220.1	12	0	1	0	11	301	63	232	6	0
UNIV. MO. COLUMBIA	12	0	614	—	8	0	2	3	3	606	56	538	7	5
UNIV. MO. ST. LOUIS	12	0	158	—	2	0	0	2	0	156	44	112	0	0
VALLEY PARK	12	4,226	171	4,046.4	42	0	1	2	39	129	24	94	10	1
VANDALIA	12	2,722	30	1,102.1	11	0	0	1	10	19	3	15	1	0
VINITA PARK	12	2,030	48	2,364.5	8	0	0	4	4	40	10	22	8	0
WARRENSBURG	12	15,469	452	2,922.0	14	0	1	7	6	438	87	330	16	5
WARRENTON	12	3,616	286	7,909.3	10	0	2	0	8	276	28	239	8	1
WARSON WOODS	12	2,079	48	2,308.8	0	0	0	0	0	48	10	37	1	0
WASHINGTON	12	10,862	546	5,026.7	52	1	3	4	44	494	66	410	17	1
WASHINGTON UNIV.	12	0	176	—	1	0	0	1	0	175	11	156	8	0
WEBB CITY	12	7,558	272	3,598.8	4	0	0	1	3	268	68	196	4	0
WEBSTER GROVES	12	23,327	440	1,886.2	45	0	1	10	34	395	103	274	16	2
WELLSTON	7	3,664	243	6,632.1	41	0	3	13	25	202	48	110	36	8
WENTZVILLE	12	5,162	342	6,625.3	21	0	3	6	12	321	39	254	27	1
WEST PLAINS	12	9,045	544	6,014.4	104	1	3	3	97	440	88	331	19	2
WESTON	12	1,550	39	2,516.1	6	0	0	0	6	33	15	16	2	0
WESTWOOD	12	313	9	2,875.4	1	0	0	0	1	8	2	6	0	0
WINCHESTER	12	1,702	44	2,585.2	11	0	0	0	11	33	7	23	1	2

TABLE 5.0.2

CRIME INDEX OFFENSES, MUNICIPALITIES UNDER 25,000

BY REPORTING AGENCY

1992

REPORTING AGENCY	MOS.	POPULATION	CRIME INDEX		VIOLENT CRIME					PROPERTY CRIME				
			TOTAL	RATE/ 100,000	TOTAL	MUR- DER	RAPE	ROB- BERY	AGG. ASSAULT	TOTAL	BURG- LARY	THEFT	M.V. THEFT	ARSON
WINDSOR WOODSON TERRACE	8	3,088	71	2,299.2	4	0	0	0	4	67	17	44	6	0
	12	4,425	144	3,254.2	16	0	1	2	13	128	38	70	20	0
TOTAL	—	999,777	47,576	4,758.7	4,079	52	261	828	2,938	43,497	8,354	31,858	3,057	228

TABLE 5.0.2

CRIME INDEX OFFENSES, SUBURBAN COUNTIES

BY REPORTING AGENCY (SHERIFFS AND COUNTY POLICE DEPARTMENTS)

1992

REPORTING AGENCY	MOS.	POPULATION	CRIME INDEX		VIOLENT CRIME					PROPERTY CRIME				
			TOTAL	RATE/100,000	TOTAL	MURDER	RAPE	ROBBERY	AGG. ASSAULT	TOTAL	BURGLARY	THEFT	M.V. THEFT	ARSON
ANDREW	12	10,432	132	1,265.3	10	0	0	7	3	122	21	99	1	1
BOONE	12	40,454	646	1,596.9	81	1	18	5	57	565	149	380	34	2
BUCHANAN	4	11,396	51	447.5	7	0	1	0	6	44	13	28	3	0
CASS	12	33,411	214	640.5	58	0	2	0	56	156	153	0	3	0
CHRISTIAN	12	33,128	423	1,276.9	8	0	4	1	3	415	144	258	10	3
CLAY	12	22,870	225	983.8	58	0	5	2	51	167	87	68	11	1
FRANKLIN	12	55,909	1,537	2,749.1	208	6	14	12	176	1,329	565	678	86	0
GREENE	12	62,070	1,330	2,142.7	71	1	11	9	50	1,259	350	837	62	10
JACKSON	12	12,350	926	7,498.0	81	0	9	7	65	845	281	524	40	0
JASPER	12	35,056	618	1,762.9	16	0	13	3	0	602	250	307	45	0
JEFFERSON	12	133,625	4,244	3,176.1	466	2	46	29	389	3,778	1,394	2,081	245	58
LAFAYETTE	11	22,886	135	589.9	6	0	4	2	0	129	78	47	4	0
PLATTE	12	31,368	531	1,692.8	57	0	2	1	54	474	198	240	36	0
RAY	2	16,294	20	122.7	1	0	0	0	1	19	9	9	0	1
SAINT CHARLES	12	82,595	2,141	2,592.2	195	0	11	19	165	1,946	504	1,299	119	24
SAINT LOUIS POLICE	12	413,185	13,885	3,360.5	959	12	82	229	636	12,926	2,619	9,063	1,150	94
WARREN	12	16,206	254	1,567.3	10	3	1	1	5	244	120	95	28	1
TOTAL	—	1,033,235	27,312	2,643.3	2,292	25	223	327	1,717	25,020	6,935	16,013	1,877	195

TABLE 5.0.3

CRIME INDEX OFFENSES, RURAL COUNTIES

BY REPORTING AGENCY (SHERIFFS AND COUNTY POLICE DEPARTMENTS)

1992

REPORTING AGENCY	MOS.	POPULATION	CRIME INDEX		VIOLENT CRIME					PROPERTY CRIME				
			TOTAL	RATE/100,000	TOTAL	MURDER	RAPE	ROBBERY	AGG. ASSAULT	TOTAL	BURG-LARY	THEFT	M.V. THEFT	ARSON
ATCHISON	12	7,715	32	414.8	7	0	2	0	5	25	8	16	1	0
AUDRAIN	12	9,768	145	1,484.4	15	1	1	2	11	130	42	76	12	0
BARRY	11	23,224	59	254.0	17	0	1	0	16	42	21	19	2	0
BARTON	12	7,249	96	1,324.3	4	0	1	0	3	92	35	47	3	7
BATES	12	9,750	177	1,815.4	13	0	0	1	12	164	61	85	16	2
BENTON	12	14,063	323	2,296.8	38	0	2	0	36	285	115	158	12	0
BOLLINGER	12	10,775	120	1,113.7	8	0	2	0	6	112	40	66	4	2
BUTLER	10	22,091	256	1,158.8	8	0	1	1	6	248	116	132	0	0
CALDWELL	12	8,504	56	658.5	1	0	0	0	1	55	38	16	0	1
CAMDEN	12	25,265	437	1,729.7	50	1	2	3	44	387	247	130	8	2
CAPE GIRARDEAU	12	18,204	243	1,334.9	9	0	2	0	7	234	73	148	13	0
CARROLL	12	6,435	37	575.0	4	1	0	0	3	33	15	15	3	0
CEDAR	6	12,271	42	342.3	3	0	1	0	2	39	8	26	3	2
CHARITON	12	9,337	56	599.8	1	0	0	0	1	55	12	42	1	0
CLARK	2	7,658	11	143.6	0	0	0	0	0	11	9	1	1	0
COLE	12	28,514	490	1,718.5	21	0	5	1	15	469	130	324	14	1
COOPER	12	7,853	75	955.0	6	1	1	0	4	69	27	35	5	2
CRAWFORD	3	18,327	39	212.8	7	0	0	0	7	32	18	11	3	0
DALLAS	12	12,833	105	818.2	3	0	0	2	1	102	45	55	2	0
DAVIESS	12	7,980	107	1,340.9	9	0	2	0	7	98	51	42	5	0
DE KALB	7	7,662	38	496.0	0	0	0	0	0	38	15	19	4	0
DOUGLAS	12	12,052	23	190.8	12	0	3	0	9	11	9	0	2	0
DUNKLIN	12	17,300	183	1,057.8	19	2	2	2	13	164	58	96	7	3
GASCONADE	12	11,419	182	1,593.8	27	0	0	9	18	155	115	35	5	0
GENTRY	7	6,948	10	143.9	0	0	0	0	0	10	3	7	0	0
GRUNDY	12	4,472	64	1,431.1	1	0	0	0	1	63	26	37	0	0
HARRISON	9	8,593	45	523.7	2	0	0	0	2	43	20	22	0	1
HICKORY	12	7,443	136	1,827.2	6	0	0	1	5	130	60	70	0	0
HOLT	11	6,123	49	800.3	1	0	0	1	0	48	10	37	1	0
LINN	12	6,445	49	760.3	10	0	0	0	10	39	13	22	3	1
LIVINGSTON	12	5,873	84	1,430.3	10	0	3	0	7	74	27	43	4	0
MACON	9	9,918	52	524.3	3	0	1	0	2	49	22	27	0	0
MARIES	12	8,093	70	864.9	3	0	0	2	1	67	55	8	3	1
MARION	11	10,040	148	1,474.1	9	2	0	1	6	139	53	81	5	0
MCDONALD	3	17,188	20	116.4	11	0	7	0	4	9	3	4	2	0
MERCER	5	3,777	24	635.4	0	0	0	0	0	24	8	15	0	1

TABLE 5.0.4

CRIME INDEX OFFENSES, RURAL COUNTIES

BY REPORTING AGENCY (SHERIFFS AND COUNTY POLICE DEPARTMENTS)

1992

REPORTING AGENCY	MOS.	POPULATION	CRIME INDEX		VIOLENT CRIME					PROPERTY CRIME				
			TOTAL	RATE/100,000	TOTAL	MURDER	RAPE	ROBBERY	AGG. ASSAULT	TOTAL	BURGLARY	THEFT	M.V. THEFT	ARSON
MONROE	3	9,238	4	43.3	0	0	0	0	0	4	2	0	2	0
MONTGOMERY	11	11,522	212	1,840.0	22	0	0	0	22	190	100	79	10	1
MORGAN	12	15,804	398	2,518.3	74	1	4	0	69	324	169	150	5	0
NEW MADRID	12	17,838	163	913.8	42	2	14	3	23	121	32	84	4	1
NODAWAY	11	11,209	95	847.5	15	0	1	1	13	80	28	43	3	6
OREGON	12	9,609	31	322.6	9	1	2	0	6	22	9	11	2	0
OSAGE	1	12,196	8	65.6	3	0	0	0	3	5	4	0	1	0
OZARK	12	8,724	94	1,077.5	6	1	1	1	3	88	21	64	2	1
PEMISCOT	12	22,246	162	728.2	25	2	3	2	18	137	66	66	4	1
PERRY	12	16,894	154	911.6	22	0	0	1	21	132	42	86	4	0
PIKE	12	9,159	62	676.9	8	1	4	2	1	54	28	21	5	0
POLK	11	15,202	188	1,236.7	4	0	0	1	3	184	59	108	17	0
PULASKI	12	40,163	208	517.9	47	1	4	2	40	161	64	93	4	0
REYNOLDS	12	6,759	64	946.9	1	0	0	1	0	63	59	0	4	0
RIPLEY	2	12,485	7	56.1	0	0	0	0	0	7	6	1	0	0
SAINT CLAIR	12	8,581	221	2,575.5	44	0	0	0	44	177	77	88	10	2
SAINT FRANCOIS	12	29,035	233	802.5	10	0	0	2	8	223	59	147	17	0
SAINT EUGENIE	12	11,798	152	1,288.4	8	0	0	0	8	144	50	81	12	1
SALINE	12	8,754	129	1,473.6	12	0	3	0	9	117	39	70	6	2
SCHUYLER	12	4,297	48	1,117.1	1	0	0	0	1	47	46	0	1	0
SCOTLAND	12	4,892	29	592.8	0	0	0	0	0	29	29	0	0	0
SHELBY	12	7,044	62	880.2	0	0	0	0	0	62	20	39	3	0
STODDARD	9	29,323	153	521.8	17	0	1	0	16	136	77	49	10	0
SULLIVAN	12	6,419	38	592.0	0	0	0	0	0	38	14	21	3	0
TANEY	4	22,178	135	608.7	37	1	2	0	34	98	40	55	3	0
VERNON	12	10,598	284	2,679.8	72	0	1	2	69	212	102	85	23	2
WASHINGTON	11	17,959	336	1,870.9	21	0	0	0	21	315	179	119	17	0
WAYNE	12	11,714	133	1,135.4	13	4	0	0	9	120	63	50	7	0
WORTH	12	2,475	21	848.5	14	0	0	0	14	7	7	0	0	0
TOTAL	—	812,811	7,907	972.3	865	22	79	44	720	7,042	3,099	3,577	323	43

TABLE 5.0.4

TOTAL PERSONS ARRESTED, MUNICIPALITIES 25,000 AND OVER
BY REPORTING AGENCY

1992

REPORTING AGENCY	MOS.	POPULATION	TOTAL ¹ ARRESTS	TOTAL PART I ARRESTS	MURDER	RAPE	ROBBERY	AGG. ASSAULT	BURGLARY	THEFT	MOTOR VEHICLE THEFT	ARSON	TOTAL ¹ PART II ARRESTS
BLUE SPRINGS	11	40,748	1,633	312	1	2	12	32	34	216	11	4	1,321
CAPE GIRARDEAU	12	34,948	3,665	717	3	7	5	41	38	613	7	3	2,948
CHESTERFIELD	12	38,554	781	220	1	2	16	2	24	156	17	2	561
COLUMBIA	12	70,125	5,162	1,581	2	12	75	266	105	1,052	63	6	3,581
FLORISSANT	12	51,965	2,942	489	1	7	34	22	92	291	41	1	2,453
GLADSTONE	12	26,631	2,173	112	0	0	2	6	17	73	14	0	2,061
GRANDVIEW	12	25,336	1,725	452	2	3	20	30	64	284	45	4	1,273
INDEPENDENCE	12	113,967	6,594	1,645	1	1	63	109	155	1,212	95	9	4,949
JEFFERSON CITY	12	36,006	1,160	344	1	1	15	38	48	210	16	15	816
JOPLIN	12	41,567	2,770	775	8	3	21	109	83	525	17	9	1,995
KANSAS CITY	11	441,162	97,691	10,905	135	180	589	1,255	959	6,572	1,153	62	86,786
KIRKWOOD	12	27,695	1,698	293	1	2	8	27	20	222	13	0	1,405
LEE'S SUMMIT	12	47,106	2,013	167	0	2	6	11	24	113	7	4	1,846
MARYLAND HEIGHTS	12	25,783	1,033	274	2	5	2	19	63	148	26	9	759
RAYTOWN	12	31,054	766	248	0	2	10	22	30	161	23	0	518
SAINT CHARLES	12	55,364	3,273	722	4	8	36	62	112	461	33	6	2,551
SAINT JOSEPH	12	72,917	3,457	946	2	1	10	356	68	506	2	1	2,511
SAINT LOUIS	12	402,573	35,904	11,919	228	192	1,328	2,849	1,767	4,446	962	147	23,985
SAINT PETERS	12	46,458	1,420	636	0	4	12	177	38	401	1	3	784
SPRINGFIELD	12	142,578	8,888	2,016	11	17	81	263	199	1,383	59	3	6,872
UNIVERSITY CITY	12	40,681	3,636	619	3	18	52	58	113	297	71	7	3,017
TOTAL	-	1,813,218	188,384	35,392	406	469	2,397	5,754	4,053	19,342	2,676	295	152,992

¹Arrests for suspicion are not included in total.

TABLE 5.0.5

TOTAL PERSONS ARRESTED, MUNICIPALITIES UNDER 25,000

BY REPORTING AGENCY

1992

REPORTING AGENCY	MOS.	POPULATION	TOTAL ¹ ARRESTS	TOTAL PART I ARRESTS	MURDER	RAPE	ROBBERY	AGG. ASSAULT	BURG-LARY	THEFT	MOTOR VEHICLE THEFT	ARSON	TOTAL ¹ PART II ARRESTS
ARNOLD	12	19,106	900	173	0	4	6	21	21	111	9	1	727
AURORA	12	6,554	764	138	0	1	0	16	19	86	3	13	626
BALLWIN	12	22,139	438	156	0	2	1	4	21	124	0	4	282
BEL-NOR	12	2,978	300	26	0	0	0	2	9	9	6	0	274
BEL-RIDGE	4	3,245	359	33	0	0	2	5	5	13	8	0	326
BELLEFONTAINE NBR	10	11,083	301	281	0	1	1	1	10	268	0	0	20
BELTON	12	18,419	2,062	459	1	2	5	259	38	134	14	6	1,603
BERKELEY	12	12,634	825	196	6	5	14	56	52	31	32	0	629
BOLIVAR	1	6,945	12	1	0	0	1	0	0	0	0	0	11
BONNE TERRE	12	3,927	103	37	0	1	0	22	2	9	3	0	66
BOONVILLE	12	7,199	809	80	1	0	2	20	3	46	8	0	729
BRANSON	12	3,760	612	227	0	2	2	5	6	209	3	0	385
BRECKENRIDGE HILLS	11	5,483	637	80	1	1	3	10	3	62	0	0	557
BRENTWOOD	12	8,270	175	72	0	0	2	4	7	51	8	0	103
BRIDGETON	12	18,042	1,674	565	1	4	17	32	89	391	31	0	1,109
BROOKFIELD	12	4,960	213	54	0	0	0	2	16	35	1	0	159
BUCKNER	12	2,914	120	39	0	0	1	10	4	17	7	0	81
BUTLER	12	4,159	362	48	0	0	0	0	18	24	3	3	314
CALVERTON PARK	10	1,424	124	5	0	0	0	0	4	1	0	0	119
CAMERON	12	4,902	195	29	0	0	1	6	7	14	1	0	166
CANTON	11	2,660	39	8	0	0	0	1	0	7	0	0	31
CARTHAGE	12	10,905	984	73	0	0	3	2	25	37	6	0	911
CENT. MO. ST. UNIV.	12	0	187	4	0	0	0	0	2	2	0	0	183
CHAFFEE	12	3,103	162	14	0	0	0	2	5	6	1	0	148
CHARLACK	12	1,408	428	19	1	0	1	4	0	12	1	0	409
CLARKSON VALLEY	12	2,545	33	12	0	0	0	2	2	8	0	0	21
CLAYCOMO	12	1,692	217	19	0	0	0	0	3	13	3	0	198
CLAYTON	12	14,078	472	148	1	1	5	0	29	98	7	7	324
CLINTON	12	8,831	621	110	0	0	6	5	26	72	1	0	511
COOL VALLEY	12	1,427	244	78	0	0	1	4	0	70	3	0	166
COUNTRY CLUB HILLS	12	1,781	90	18	1	1	0	6	1	3	6	0	72
CRESTWOOD	12	11,399	673	334	0	1	4	32	17	275	1	4	339
CREVE COEUR	12	12,486	922	136	0	0	7	3	8	111	7	0	786
DE SOTO	12	6,081	257	41	1	1	0	0	5	34	0	0	216
DES PERES	12	8,519	306	159	0	0	2	5	7	145	0	0	147
EDMUNDSON	12	1,126	80	2	0	1	0	0	0	0	1	0	78

TABLE 5.0.6

TOTAL PERSONS ARRESTED, MUNICIPALITIES UNDER 25,000

BY REPORTING AGENCY

1992

REPORTING AGENCY	MOS.	POPULATION	TOTAL ¹ ARRESTS	TOTAL PART I ARRESTS	MURDER	RAPE	ROBBERY	AGG. ASSAULT	BURGLARY	THEFT	MOTOR VEHICLE THEFT	ARSON	TOTAL ¹ PART II ARRESTS
ELLISVILLE	12	7,656	212	71	0	1	0	2	9	47	12	0	141
EUREKA	12	4,752	322	61	0	6	1	4	10	35	4	1	261
EXCELSIOR SPRINGS	10	10,506	1,040	93	0	1	1	41	8	36	6	0	947
FARMINGTON	10	11,769	508	156	0	1	2	9	3	135	5	1	352
FAYETTE	12	2,930	100	38	1	0	0	15	7	11	0	4	62
FENTON	12	3,394	306	99	0	2	0	3	4	88	2	0	207
FERGUSON	11	22,616	2,370	516	0	5	24	30	36	387	32	2	1,854
FESTUS	12	8,224	556	30	0	0	2	0	18	7	3	0	526
FLAT RIVER	12	4,894	186	49	0	2	0	8	6	31	2	0	137
FLORDELL HILLS	12	963	22	3	0	0	2	1	0	0	0	0	19
FRONTENAC	12	3,423	269	32	0	0	0	0	2	29	1	0	237
FULTON	12	10,181	718	155	1	1	5	19	32	91	6	0	563
GLENDALE	12	6,032	236	15	0	0	0	4	1	10	0	0	221
HANNIBAL	12	18,269	2,265	269	2	3	5	1	44	203	8	3	1,996
HARRISONVILLE	12	7,796	831	122	0	2	2	8	10	91	6	3	709
HAZELWOOD	3	15,550	274	49	0	0	0	1	8	31	8	1	225
HILLSDALE	12	1,976	126	80	2	4	12	13	21	24	3	1	46
IRONTON	12	10,884	58	12	0	1	0	1	0	10	0	0	46
JACKSON	12	9,393	265	51	0	0	0	2	2	46	1	0	214
JENNINGS	12	16,140	789	503	1	1	10	13	17	455	5	1	286
KEARNEY	12	1,816	89	23	0	1	0	10	5	6	1	0	66
KENNETT	9	11,102	596	98	0	1	3	14	17	59	2	2	498
KIRKSVILLE	12	17,406	876	91	0	2	0	13	15	57	4	0	785
LADUE	12	8,977	155	50	0	0	5	2	9	30	4	0	105
LAKE LOTAWANA	4	2,172	17	1	0	0	0	0	0	1	0	0	16
LAKE SAINT LOUIS	12	7,509	179	44	0	0	0	18	7	19	0	0	135
LAMAR	12	4,229	214	20	0	0	0	2	0	13	5	0	194
LEBANON	12	10,130	1,045	174	2	6	1	4	23	124	12	2	871
LEXINGTON	9	4,931	0	0	0	0	0	0	0	0	0	0	0
LINCOLN UNIVERSITY	10	0	4	3	0	0	0	0	0	3	0	0	1
MACON	12	5,653	115	18	1	1	0	11	0	5	0	0	97
MANCHESTER	12	6,638	176	76	0	0	2	5	9	59	1	0	100
MAPLEWOOD	10	10,109	927	112	1	2	13	16	21	54	5	0	815
MARCELINE	10	2,684	34	9	0	0	0	1	0	5	3	0	25
MARSHALL	12	12,898	321	65	0	5	1	6	18	31	2	2	256
MARYVILLE	12	10,820	488	46	0	0	2	1	1	42	0	0	442

TABLE 5.0.6

TOTAL PERSONS ARRESTED, MUNICIPALITIES UNDER 25,000

BY REPORTING AGENCY

1992

REPORTING AGENCY	MOS.	POPULATION	TOTAL ¹ ARRESTS	TOTAL PART I ARRESTS	MURDER	RAPE	ROBBERY	AGG. ASSAULT	BURG-LARY	THEFT	MOTOR VEHICLE THEFT	ARSON	TOTAL ¹ PART II ARRESTS
MOBERLY	12	13,028	566	107	0	2	2	10	14	68	9	2	459
MOLINE ACRES	12	2,749	585	31	0	0	4	7	8	6	6	0	554
NEOSHO	12	9,391	701	92	0	0	2	5	11	71	3	0	609
NEVADA	12	8,723	1,005	110	0	0	0	2	26	72	8	2	895
NEW MADRID	1	3,398	13	2	0	0	0	0	0	0	2	0	11
NORMANDY	12	4,545	480	112	1	1	12	40	12	23	23	0	368
NORTH KANSAS CITY	12	4,191	377	75	0	2	3	8	4	47	10	1	302
NORTHWOODS	12	5,180	180	137	0	1	6	24	7	97	2	0	43
OFALLON	12	18,974	629	129	1	4	1	3	22	93	2	3	500
OAKLAND	10	1,615	23	5	0	0	1	0	1	3	0	0	18
OAKVIEW	12	355	3	3	0	0	3	0	0	0	0	0	0
ODESSA	12	3,749	138	36	0	0	0	2	18	14	2	0	102
OLIVETTE	12	7,684	245	83	0	0	6	36	3	22	16	0	162
OSAGE BEACH	12	2,636	177	39	0	0	0	6	0	31	2	0	138
OVERLAND	12	18,253	1,149	550	0	3	9	24	77	434	0	3	599
PACIFIC	12	4,413	519	96	0	0	1	7	15	69	3	1	423
PAGEDALE	6	3,826	179	17	0	0	1	3	2	0	9	2	162
PARKVILLE	12	2,437	471	24	0	0	0	7	0	11	0	6	447
PASADENA HILLS	12	1,181	10	10	0	0	0	4	3	3	0	0	0
PASADENA PARK	11	539	8	6	0	0	0	0	3	3	0	0	2
PEVELY	12	2,872	446	30	0	0	9	8	1	17	4	0	416
PINE LAWN	9	5,166	992	102	0	2	17	25	7	31	17	3	890
PLEASANT HILL	12	3,883	224	20	0	0	0	1	7	11	1	0	204
POPLAR BLUFF	12	17,247	2,263	403	4	3	11	45	46	271	20	3	1,860
POTOSI	12	2,722	239	28	0	0	0	0	3	23	2	0	211
REPUBLIC	12	6,385	149	18	0	0	0	0	3	14	0	1	131
RICHMOND	12	5,822	452	75	0	4	2	6	28	30	4	1	377
RICHMOND HEIGHTS	12	10,602	1,020	407	1	1	15	38	17	320	11	4	613
RIVERSIDE	12	3,054	543	28	0	0	3	0	0	24	1	0	515
RIVERVIEW	12	3,289	51	25	0	6	0	8	2	5	4	0	26
ROLLA	12	14,298	529	122	0	3	2	3	11	101	2	0	407
SAINT ANN	11	14,703	601	342	0	0	3	1	5	333	0	0	259
SAINT GEORGE	11	1,288	98	1	0	0	0	0	0	1	0	0	97
SAINT JOHN	12	7,576	372	104	0	0	4	50	17	30	3	0	268
SAINT ROBERT	12	1,754	337	86	0	2	0	8	5	68	3	0	251
SAINTE GENEVIEVE	12	4,476	419	30	0	1	5	4	9	10	1	0	389

TABLE 5.0.6

TOTAL PERSONS ARRESTED, MUNICIPALITIES UNDER 25,000

BY REPORTING AGENCY

1992

REPORTING AGENCY	MOS.	POPULATION	TOTAL ¹ ARRESTS	TOTAL PART I ARRESTS	MURDER	RAPE	ROBBERY	AGG. ASSAULT	BURGLARY	THEFT	MOTOR VEHICLE THEFT	ARSON	TOTAL ¹ PART II ARRESTS
SALEM	12	4,551	421	44	0	0	0	0	1	33	10	0	377
SAVANNAH	11	4,415	79	15	0	0	0	5	2	8	0	0	64
SEDALIA	12	20,093	1,314	206	0	3	8	12	18	155	9	1	1,108
SHREWSBURY	12	6,510	263	68	0	1	3	12	7	38	7	0	195
SIKESTON	12	17,902	1,015	260	2	3	2	14	43	193	1	2	755
SLATER	12	2,217	186	66	0	2	1	22	4	35	1	1	120
SMITHVILLE	12	2,562	302	18	0	0	0	1	8	8	1	0	284
SUGAR CREEK	12	4,040	408	27	0	0	5	1	2	14	5	0	381
SULLIVAN	12	5,743	381	26	0	1	1	2	4	18	0	0	355
SUNSET HILLS	12	4,987	164	87	1	0	2	11	0	71	2	0	77
TOWN AND COUNTRY	12	9,660	835	60	0	0	2	23	8	27	0	0	775
TRENTON	10	6,219	113	14	0	1	0	2	2	7	1	1	99
UNION	12	5,996	244	37	0	2	0	1	5	28	1	0	207
UNIV. MO. COLUMBIA	12	0	474	56	0	0	4	1	5	46	0	0	418
UNIV. MO. ST. LOUIS	11	0	20	10	0	0	0	1	1	8	0	0	10
VALLEY PARK	10	4,226	99	35	0	0	1	10	10	13	1	0	64
VANDALIA	12	2,722	143	35	0	0	1	13	2	19	0	0	108
VINITA PARK	12	2,030	83	24	0	0	1	13	7	1	2	0	59
WARRENSBURG	12	15,469	1,222	107	0	0	3	0	14	79	8	3	1,115
WARRENTON	12	3,616	279	85	0	0	0	7	12	63	2	1	194
WARSON WOODS	10	2,079	17	6	0	0	0	0	1	5	0	0	11
WASHINGTON	12	10,862	564	99	0	0	2	8	3	85	1	0	465
WEBB CITY	12	7,558	608	49	0	0	0	4	12	32	1	0	559
WEBSTER GROVES	12	23,327	320	122	0	0	5	28	26	59	4	0	198
WELLSTON	8	3,664	315	84	0	5	10	21	12	28	7	1	231
WENTZVILLE	12	5,162	777	99	0	1	3	7	13	67	8	0	678
WEST PLAINS	12	9,045	825	122	1	1	0	8	15	85	11	1	703
WESTON	12	1,550	30	8	0	0	0	2	2	1	2	1	22
WESTWOOD	12	313	6	1	0	0	0	0	0	1	0	0	5
WINCHESTER	12	1,702	92	14	0	0	0	9	1	4	0	0	78
WOODSON TERRACE	12	4,425	574	36	0	0	0	1	8	17	10	0	538
TOTAL	—	965,255	61,755	12,513	36	131	347	1,443	1,462	8,407	582	105	49,242

¹Arrests for suspicion are not included in total.

TABLE 5.0.6

TOTAL PERSONS ARRESTED, SUBURBAN COUNTIES
BY REPORTING AGENCY (SHERIFFS AND COUNTY POLICE DEPARTMENTS)

1992

REPORTING AGENCY	MOS.	POPULATION	TOTAL ¹ ARRESTS	TOTAL PART I ARRESTS	MURDER	RAPE	ROBBERY	AGG. ASSAULT	BURG-LARY	THEFT	MOTOR VEHICLE THEFT	ARSON	TOTAL ¹ PART II ARRESTS
ANDREW	5	10,432	66	3	0	0	0	0	0	0	2	1	63
BOONE	12	40,454	936	142	0	3	3	25	57	47	4	3	794
BUCHANAN	4	11,396	58	9	0	2	0	1	1	5	0	0	49
CHRISTIAN	12	33,128	339	63	0	1	0	6	26	24	4	2	276
FRANKLIN	12	55,909	1,220	252	4	10	11	28	93	102	2	2	968
GREENE	12	62,070	1,106	196	2	8	11	6	66	102	0	1	910
JACKSON	12	12,350	708	164	0	1	1	27	53	72	9	1	544
JASPER	12	35,056	1,183	226	0	2	7	6	83	126	0	2	957
JEFFERSON	12	133,625	1,214	528	1	15	8	141	154	174	29	6	686
PLATTE	12	31,368	528	174	0	6	3	31	51	65	18	0	354
RAY	2	16,294	53	12	0	0	0	0	6	6	0	0	41
SAINT CHARLES	12	82,595	1,568	444	3	22	20	42	127	221	5	4	1,124
WARREN	12	16,206	184	36	1	1	0	1	22	10	0	1	148
TOTAL	-	540,883	9,163	2,249	11	71	64	314	739	954	73	23	6,914

¹Arrests for suspicion are not included in total.

TABLE 5.0.7

TOTAL PERSONS ARRESTED, RURAL COUNTIES
BY REPORTING AGENCY (SHERIFFS AND COUNTY POLICE DEPARTMENTS)

1992

REPORTING AGENCY	MOS.	POPULATION	TOTAL ARRESTS	TOTAL PART I ARRESTS	MURDER	RAPE	ROBBERY	AGG. ASSAULT	BURGLARY	THEFT	MOTOR VEHICLE THEFT	ARSON	TOTAL PART II ARRESTS
ATCHISON	12	7,715	79	16	0	0	0	1	4	11	0	0	63
AUDRAIN	12	9,768	341	86	2	3	4	11	26	33	7	0	255
BARTON	12	7,249	206	41	0	1	0	3	7	26	4	0	165
BATES	9	9,750	46	25	0	0	2	2	17	0	4	0	21
BENTON	5	14,063	33	4	0	0	0	0	2	2	0	0	29
BOLLINGER	12	10,775	257	34	0	3	0	6	6	14	3	2	223
BUTLER	8	22,091	199	76	0	1	0	9	40	24	2	0	123
CALDWELL	12	8,504	27	7	0	1	0	2	1	3	0	0	20
CAPE GIRARDEAU	12	18,204	379	96	0	2	1	16	33	42	2	0	283
CARROLL	11	6,435	88	27	0	0	0	7	9	5	6	0	61
CEDAR	6	12,271	46	3	0	0	0	1	2	0	0	0	43
CHARITON	11	9,337	12	5	0	0	0	1	3	1	0	0	7
CLARK	2	7,658	19	5	0	0	2	0	2	1	0	0	14
COOPER	12	7,853	64	20	1	0	2	2	10	3	2	0	44
CRAWFORD	3	18,327	58	20	0	0	0	2	8	8	0	2	38
DALLAS	12	12,833	58	18	0	0	3	0	7	6	2	0	40
DAVISS	12	7,980	73	27	0	2	0	5	8	12	0	0	46
DE KALB	6	7,662	25	3	0	0	0	0	0	3	0	0	22
DOUGLAS	12	12,052	88	20	0	2	0	2	11	1	4	0	68
DUNKLIN	12	17,300	1,091	210	3	2	12	36	57	88	7	5	881
GASCONADE	2	11,419	0	0	0	0	0	0	0	0	0	0	0
GENTRY	7	6,948	2	2	0	0	0	0	0	2	0	0	0
GRUNDY	12	4,472	178	30	0	1	0	0	10	19	0	0	148
HARRISON	9	8,593	35	12	1	0	0	5	2	1	0	3	23
HICKORY	11	7,443	99	16	0	0	2	1	5	8	0	0	83
LINN	12	6,445	27	11	0	0	0	6	4	0	1	0	16
LIVINGSTON	12	5,873	242	33	0	2	0	2	11	18	0	0	209
MACON	9	9,918	16	3	0	0	0	0	3	0	0	0	13
MARIES	5	8,093	23	17	0	1	0	1	13	2	0	0	6
MARION	11	10,040	580	96	1	0	2	13	35	43	2	0	484
MCDONALD	3	17,188	163	30	0	7	0	10	5	7	1	0	133
MERCER	5	3,777	8	0	0	0	0	0	0	0	0	0	8
MONROE	3	9,238	3	3	0	0	0	0	3	0	0	0	0
MONTGOMERY	6	11,522	43	10	0	0	0	3	7	0	0	0	33
MORGAN	10	15,804	320	70	1	4	1	11	32	15	5	1	250
NODAWAY	9	11,209	104	4	0	0	0	1	0	2	0	1	100

TABLE 5.0.8

TOTAL PERSONS ARRESTED, RURAL COUNTIES
BY REPORTING AGENCY (SHERIFFS AND COUNTY POLICE DEPARTMENTS)

1992

REPORTING AGENCY	MOS.	POPULATION	TOTAL ¹ ARRESTS	TOTAL PART I ARRESTS	MURDER	RAPE	ROBBERY	AGG. ASSAULT	BURG-LARY	THEFT	MOTOR VEHICLE THEFT	ARSON	TOTAL ¹ PART II ARRESTS
OREGON	11	9,609	78	34	1	2	0	8	9	12	2	0	44
OSAGE	1	12,196	4	1	0	0	0	0	0	0	1	0	3
OZARK	11	8,724	59	23	0	0	1	3	5	14	0	0	36
PEMISCOT	6	22,246	137	42	0	3	1	10	13	15	0	0	95
PERRY	12	16,894	122	21	0	0	0	4	9	4	4	0	101
PIKE	12	9,159	159	26	1	2	3	3	1	13	3	0	133
POLK	11	15,202	112	8	0	0	0	1	4	3	0	0	104
PULASKI	12	40,163	163	44	0	3	0	21	8	9	0	3	119
REYNOLDS	12	6,759	24	9	2	0	1	0	2	1	3	0	15
RIPLEY	2	12,485	19	0	0	0	0	0	0	0	0	0	19
SAINT CLAIR	12	8,581	209	36	0	0	0	8	12	10	6	0	173
SAINT FRANCOIS	11	29,035	1,104	157	1	4	6	8	45	82	9	2	947
SAINTE GENEVIEVE	7	11,798	63	29	1	0	1	2	11	13	1	0	34
SALINE	10	8,754	249	53	0	3	0	7	26	14	2	1	196
SCHUYLER	11	4,297	29	12	0	1	0	1	4	6	0	0	17
SCOTLAND	12	4,892	2	0	0	0	0	0	0	0	0	0	2
SHELBY	12	7,044	38	10	0	0	0	0	8	1	1	0	28
STODDARD	9	29,323	290	97	0	3	0	11	53	23	6	1	193
SULLIVAN	11	6,419	2	2	0	0	0	0	0	2	0	0	0
TANEY	1	22,178	30	5	0	0	0	1	0	3	1	0	25
VERNON	12	10,598	462	118	0	1	1	46	27	35	8	0	344
WASHINGTON	11	17,959	400	39	0	0	0	2	24	12	1	0	361
WAYNE	11	11,714	157	40	3	0	1	3	21	8	4	0	117
WORTH	12	2,475	20	2	0	0	0	2	0	0	0	0	18
TOTAL	-	704,313	8,964	1,888	18	54	46	300	665	680	104	21	7,076

¹Arrests for suspicion are not included in total.

TABLE 5.0.8

GLOSSARY

ADULT: A person 18 years of age or older.

ARREST: Taking into physical or other legal custody for committing an offense in the local reporting jurisdiction. Arrests for all criminal offenses are scored. Arrests for ordinance violations are included. Arrests for traffic offenses, with the exception of driving under the influence of intoxicants and arrests in connection with negligent manslaughter in traffic accidents, are not scored. Included are those persons arrested but released without being formally charged.

CLEARANCE: The resolution of a criminal offense by the arrest, charging, and turning over to the court for prosecution one or more persons alleged to have committed a crime. An offense also can be cleared by exceptional means when the law enforcement agency has: 1) established the identity of the offender, 2) has enough information to support an arrest, charge, and prosecution in court, 3) the exact location of the offender is known so that he/she could be taken into custody, and 4) there is some reason outside law enforcement control that precludes arresting, charging, and prosecuting the offender, (Ex., offender dies).

CLEARED OFFENSES ONLY JUVENILES: The number of clearances for an offense in which only juveniles were arrested or were identified as the offender but for some valid reason could not be arrested divided by the total number of clearances for that offense expressed as a percentage. The formula is:

$$\frac{\text{Number of Offenses Cleared Involving Only Juveniles}}{\text{Number of Clearances}} \times 100$$

CLEARANCE RATES: The number of clearances divided by the total number of offenses, expressed as a percentage. The formula is:

$$\frac{\text{Number of Clearances}}{\text{Number of Offenses}} \times 100$$

CRIME INDEX: The Crime Index is the sum of the eight major offenses used to indicate the occurrence of crime in the United States. They were selected because of their frequency of occurrence and because they are most likely to be reported to a law enforcement agency. The eight offenses are: murder, forcible rape, robbery, aggravated assault, burglary, theft, motor vehicle theft, and arson. The first four make up the Violent Crime Index and the last four make up the Property Crime Index. Definitions of each of the offenses making up the Crime Index are provided in the section entitled "Missouri Detail Crime Index Analysis". In addition, refer to Crime Index Offense in this section for an explanation of how each type of offense is reported to the UCR Program.

CRIME INDEX OFFENSE: In the UCR Program, the offenses of murder, forcible rape, and aggravated assault are crimes against persons. For these crimes, one offense is counted for each victim. Robbery, burglary, theft, motor vehicle theft, and arson are crimes against property. For these crimes, with the exception of motor vehicle theft, one offense is counted for each distinct operation. In the case of motor vehicle theft, one offense is counted for each stolen vehicle.

CRIME INDEX OFFENSE ESTIMATES: Estimation routines were used in the Digest to identify the actual number of index crimes that occurred in the State on an annual basis. They are designed to compensate for non-reporting and incomplete reporting of such offenses by Missouri law enforcement agencies. The following procedures and formulas were used to obtain statewide crime index offense estimates:

- Law enforcement agencies in the State of Missouri were categorized into Groups. The following categories were used:

Municipal agency - 250,000 and over
 Municipal agency - population 100,000 - 249,999
 Municipal agency - population 50,000 - 99,999
 Municipal agency - population 25,000 - 49,999
 Municipal agency - population 10,000 - 24,999
 Municipal agency - population 2,500 - 9,999
 Municipal agency - population under 2,500
 Rural Sheriff's Department
 Suburban Sheriff's Department and County Police

- For those law enforcement agencies within a group that reported six months or more, a yearly estimate of their crime index offenses was obtained using the following formula:

$$\frac{\text{Crime Index Offenses Reported}}{\text{No. of Months Reported}} \times 12 = \text{Yearly Crime Index Offenses}$$

- For each group, the yearly crime index offenses for all law enforcement agencies reporting six months or more and their jurisdiction's population were summed and the following group crime index rate was computed.

$$\frac{\text{Sum of Rpt. Agency's Yearly Crime Index Offenses}}{\text{Sum of Rpt. Agency's Population}} = \text{Group Crime Index Rate}$$

- For those law enforcement agencies that reported less than six months or no activity at all within a group, their yearly crime index offenses were computed using the following formula:

$$\frac{\text{Law Enforcement Agency Population}}{\text{Group Crime Index Rate}} \times \text{Yearly Crime Index Offenses}$$

- Yearly crime index offenses computed above for all Missouri law enforcement agencies were then summed in order to obtain a statewide yearly crime index offense estimate for use in this Digest.

No estimation routines were used in data displays that identify specific law enforcement agency's yearly crime activity in the Digest. In these data displays, only crime activity that was reported into the UCR Program is displayed.

JUVENILE: A person under 18 years of age.

JUVENILE ARREST: Juvenile arrests do not include law enforcement contacts with juveniles where no offense has been committed. Juveniles taken into custody for their own protection, such as in neglect cases, are not scored since they have not committed any crime.

PERCENT CHANGE: The formula is:

$$\frac{\text{Value in Current Period} - \text{Value in Base Period}}{\text{Value in Base Period}} \times 100$$

POPULATION: The total number of persons residing in a jurisdiction based on United States Census data.

QUARTILE: The value that marks the boundary between two consecutive intervals in a frequency distribution of four intervals with each containing one quarter of the total population.

RATE PER 100,000 POPULATION: Rates per 100,000 population are indicators of activity standardized by the population of those law enforcement agencies associated with the activity. Three types of rates are provided: statewide crime index offense rates, reporting agency crime index offense rates, and arrest rates.

The statewide offense rate formula is:

$$\frac{\text{Number of Estimated Offenses Reported} \times 100,000}{\text{Population of all Agencies Used in Estimate}}$$

The reporting agency offense rate formula is:

$$\frac{\text{Number of Offenses Reported} \times 100,000}{\text{Population of Reporting Agency(ies)}}$$

The arrest rate formula is:

$$\frac{\text{Number of Arrests Reported} \times 100,000}{\text{Population of Reporting Agency(ies)}}$$

STRONG ARMED ROBBERY: A robbery wherein no weapons were used but tactics (limited to the use of personal weapons such as hands, arms, feet, fists, teeth, etc.) were employed to deprive the victim of his/her property.

TIME SERIES: Time-series analysis was used in the Digest to forecast future crime and arrest activity. With this technique, data for past periods were used as the basis for projecting levels of future activity. Ten years of past data were used to make these projections.

Crime and arrest rates on a per 100,000 population basis were used in making the forecasts. These rates reflect crime and arrest activity in relation to population.

The technique used to project crime and arrest activity was Exponential Smoothing (available through the SAS Econometrics and Time Series software package). Use of this technique took into consideration the limited number of data points in the time series, as well as whether or not the time series was best characterized as constant, linear, or non-linear. In applying the smoothing technique, greater weight was given to the more recent data values than to the earlier data values when projecting future levels of activity.