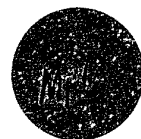


152639³



Crime In Nebraska 1993

NCJRS

FEB 1 1995

ACQUISITION

152639

U.S. Department of Justice
National Institute of Justice

This document has been reproduced exactly as received from the person or organization originating it. Points of view or opinions stated in this document are those of the authors and do not necessarily represent the official position or policies of the National Institute of Justice.

Permission to reproduce this copyrighted material has been granted by

Nebraska Comm. on Law Enforcement
and Criminal Justice

to the National Criminal Justice Reference Service (NCJRS).

Further reproduction outside of the NCJRS system requires permission of the copyright owner.

UNIFORM CRIME REPORTS



Nebraska Commission on Law Enforcement and Criminal Justice

E. Benjamin Nelson, Governor
Allen L. Curtis, Executive Director

Crime in Nebraska - 1993

Issued by :

The Nebraska Commission on Law Enforcement and Criminal Justice
(Nebraska Crime Commission)
301 Centennial Mall South
P.O. Box 94946
Lincoln, Nebraska 68509
(402) 471-2194

E. Benjamin Nelson, Governor
Allen L. Curtis, Executive Director

Uniform Crime Reporting Section

Marilyn K. Keelan, Statistical Analyst
Cheri L. Walz, Statistical Clerk

Nebraska Publication Clearinghouse Number L2500S001-1993

In accordance with the Americans with Disabilities Act, the Commission would like to provide reasonable accommodations with respect to persons with disabilities. If you need a reasonable accommodation, please contact the Nebraska Crime Commission. Upon request, this publication may be available in alternate formats.



printed on recycled paper



STATEWIDE CRIME SUMMARY 1993

- A total of 41,501 index offenses were reported or known to law enforcement in 1993.
- 2,176 violent crimes were reported in 1993:

Murder, Manslaughter	28
Forcible Rape	235
Robbery	252
Felony Assault	1,661

- 39,326 property crimes were reported in 1993:

Burglary	6,544
Larceny-Theft	31,103
Motor Vehicle Theft	1,478
Arson	201

- Larceny-theft accounted for 75 percent of the total crime index.
- 9,937 index offenses were reported cleared in 1993, a clearance rate of 23.9 percent.
- 75,169 arrests were reported in 1993, a decrease of 8 percent from 1992.
- Persons under the age of 18 accounted for 20.3 of the total arrests.
- 161 assaults on law enforcement officers were reported in 1993, a decrease of 24 percent from 1992.
- One law enforcement officer was killed in the line of duty during 1993.

CONTENTS

Uniform Crime Reporting Program	1
Crime Index Offenses - 1993	8
Murder, Manslaughter	11
Forcible Rape	14
Robbery	17
Felony Assault	20
Burglary	22
Larceny - Theft	25
Motor Vehicle Theft	27
Arson	29
Nebraska Arrest Data	31
Officers Killed and Assaulted	44
Law Enforcement Employee Data	46
Offense Data by County	52
Arrest Data by County	64

LIST OF TABLES

1	Index Offenses	9
2	Crimes of Violence and Crimes Against Property	10
2	Type and Value of Property Stolen and Recovered	10
4	Murder Victims by Age, Sex, and Race	12
5	Murder Perpetrators by Age, Sex, and Race	12
6	Murder, Manslaughter Circumstances	12
7	Murder, Manslaughter - Type of Weapon	13
8	Rape - Relationship of Victim to Offender	14
9	Rape - Place of Occurrence	15
10	Rape - Age Groups of Victims	15
11	Forcible Rape - Type of Property Stolen, Recovered	15
12	Robbery - Place of Occurrence	18
13	Robbery - Type of Property Stolen, Recovered	18
14	Burglary - Place and Time of Occurrence	23
15	Burglary - Type of Property Stolen and Recovered	23
16	Larceny - Theft	25
17	Larceny - Theft - Type of Property Stolen, Recovered	26
18	Motor Vehicle Theft - Type of Property Stolen, Recovered	28
19	Arson - Type of Property and Property Loss	30
20	Total Arrests	33
21	Comparison of Arrests, 1992 - 1993	34
22	Comparison of Adult and Juvenile Arrests	35
23	Total Arrests by Age	36
24	Juvenile and Adult Arrests, 1992 - 1993	38
25	Total Arrests by Sex	39
26	Total Arrests by Race	40
27	Total Arrests by Race, Under Age 18	41
28	Total Arrests by Race, Age 18 and Over	42
29	Drug Abuse Arrests by Sex and Race	43
30	Drug Abuse Arrests, 1992 - 1993	43
31	Officers Assaulted by Time, 1992 - 1993	44
32	Officers Assaulted - Type of Activity, 1992 - 1993	45
33	Officers Assaulted - Type of Weapon	45
34	Officers Assaulted - Type of Assignment	46
35	Law Enforcement Employee Data - County Sheriffs' Departments	47
36	Law Enforcement Employee Data - Cities Over 5,000 Population	49
37	Law Enforcement Employee Data - Cities Under 5,000 Population	50

LIST OF FIGURES

1	Murder, Manslaughter by Month	13
2	Relationship of Victim to Offender - Murder, Manslaughter	13
3	Forcible Rape by Month	16
4	Analysis of Forcible Rape by Type	16
5	Robbery by Month	19
6	Analysis of Robbery by Type of Weapon	19
7	Felony Assault by Month	21
8	Felony Assault by Type of Weapon	21
9	Burglary by Month	24
10	Larceny - Theft by Month	26
11	Motor Vehicle Theft by Month	28
12	Arson by Month	29

Nebraska Uniform Crime Reporting Program

INTRODUCTION

This annual report presents data on crimes and arrests reported by law enforcement agencies through the Nebraska Uniform Crime Reporting (UCR) Program. During 1993, 164 law enforcement agencies were required to submit monthly UCR's to the Nebraska Commission on Law Enforcement and Criminal Justice, hereafter referred to as the Commission, which administers the Nebraska UCR Program. The Nebraska UCR Program submits the data to the National UCR Program which is administered by the Federal Bureau of Investigation.

The National UCR Program - Historical Background*

Recognizing a need for national crime statistics, the International Association of Chiefs of Police (IACP) formed the Committee on Uniform Crime Records in the 1920's to develop a system of uniform police statistics. Establishing offenses known to law enforcement as the appropriate measure, the Committee evaluated various crimes on the basis of their seriousness, frequency of occurrence, pervasiveness in all geographic areas of the country, and likelihood of being reported to law enforcement. After studying state criminal codes and making an evaluation of the recordkeeping practices in use, the Committee in 1929 completed a plan for crime reporting which became the foundation of the UCR Program.

Seven offenses were chosen to serve as an index for gauging fluctuations in the overall volume and rate of crime. Known collectively as the Crime Index, these offenses included the violent crimes of murder and nonnegligent manslaughter, forcible rape, robbery, aggravated assault and the property crimes of burglary, larceny-theft, and motor vehicle theft. By congressional mandate, arson was added as the eighth index offense in 1979.

During the early planning of the program, it was recognized that the differences among criminal codes precluded a mere aggregation of state statistics to arrive at a national total. Further, because of the variances in punishment for the same offenses in different state codes, no distinction between felony and misdemeanor crimes was possible. To avoid these problems and provide nationwide uniformity in crime reporting, standardized offense definitions by which law enforcement agencies were to submit data, without regard for local statutes, were formulated.

*Crime in the U.S., 1989, FBI, Washington, D.C.

National Incident-Based Reporting System (NIBRS) - Redesigned UCR Program*

Throughout the years, the UCR Program has remained virtually unchanged in terms of data collected and disseminated. Recognizing the need for improved statistics, law enforcement called for a thorough evaluative study that would modernize the UCR Program. The FBI fully concurred with the need for an updated program and lent its complete support, formulating a comprehensive three-phase redesign effort. The first phase involved an examination of the historical evolution of the Program (1982). The second phase involved the examination of potential futures for UCR and concluded with a set of recommended changes set forth in the draft "Blueprint for the Future of the Uniform Crime Reporting Program" (1985). At the eighth National UCR Conference held in 1985, the phase two recommendations were presented and the overall concept for the revised Program was unanimously approved. One of the first steps taken by the FBI to implement the redesigned UCR was the development of new offense definitions and data elements. A pilot project was conducted during 1987 in South Carolina. In 1988, the FBI presented a draft of reporting guidelines to law enforcement executives at a national conference. At the conference, there was an endorsement that a new, incident-based reporting system be established. The National Incident-Based Reporting System (NIBRS) will collect data on each single incident and arrest within 22 crime categories. For each offense known to police within these categories, incident, victim, property, offender, and arrestee information will be gathered when available. The goal of the redesign is to modernize crime information by collecting data presently maintained in law enforcement records; the enhanced UCR Program is, therefore, a byproduct of current records systems. The FBI was able to accept NIBRS data as of January, 1989, and nine states have now been accepted for submission of NIBRS data.

The Nebraska UCR Program

During the 1970's, the FBI actively assisted individual states in the development of state UCR Programs which would be compatible with the national program. The Nebraska UCR Program became operational on January 1, 1971. Commencing on that date, law enforcement agencies in Nebraska began submitting UCR's to one central agency in Nebraska, the Commission, and the reports are in turn forwarded to the National Program after review and correction. The State Patrol, all sheriffs' departments, and police departments of municipalities of 1,500 population and over are required to submit UCR's by the seventh day after the end of the month. In 1982, the Nebraska Program became an "incident-based" reporting system. That is, crimes were reported by individual incident. This change in reporting has laid the groundwork for conversion to the new Nebraska Incident-Based Reporting System (NIBRS), which will be compatible with the National Incident-Based Reporting System. Law enforcement agencies may convert to NIBRS as they acquire the computer resources to submit NIBRS data.

*Crime in the U.S., 1989, FBI, Washington, D.C.

DEFINITIONS OF OFFENSES

Uniformity of reporting depends upon the proper classification of offenses by the law enforcement agencies. It must be emphasized that the following definitions are not meant to be legal definitions as they are written in the Nebraska Penal Code. The purpose of these classifications is to establish a uniform national system for classifying similar offenses even though their legal definitions may vary considerably from state to state.

PART I OFFENSES

Criminal Homicide - Murder and Nonnegligent Manslaughter - the willful (nonnegligent) killing of one human being by another. **Death by Negligence** - the killing of another person through gross negligence.

Forcible Rape - the carnal knowledge of a female forcibly and against her will. Does not include statutory rape or sex attacks on males.

Robbery - the taking or attempting to take anything of value from the care, custody, or control of a person or persons by force or threat of force or violence and/or by putting the victim in fear.

Felony (Aggravated) Assault - an unlawful attack by one person upon another for the purpose of inflicting severe or aggravated bodily injury. This type of assault usually is accompanied by the use of a weapon or by means likely to produce death or great bodily harm.

Burglary - the unlawful entry of a structure to commit a felony or a theft.

Larceny-Theft - the unlawful taking, carrying, leading, or riding away of property from the possession or constructive possession on another.

Motor Vehicle Theft - the theft or attempted theft of a motor vehicle.

Arson - any willful or malicious burning or attempt to burn, with or without intent to defraud, a dwelling house, public building, motor vehicle or aircraft, personal property of another, etc.

PART II OFFENSES

Misdemeanor (Simple) Assault - any assault which does not involve the use of a firearm, knife, cutting instrument, or other dangerous weapon and in which there was no serious or aggravated injury to the victim.

Forgery and Counterfeiting - all offenses dealing with the making, altering, uttering or possessing with intent to defraud anything false in the semblance of that which is true.

Fraud - Fraudulent conversion and obtaining money or property by false pretense. Includes bad checks, confidence games, etc.

Embezzlement - the misappropriation or misapplication of money or property entrusted to one's care, custody or control.

Stolen Property - all offenses of buying, receiving, possessing or concealing stolen property as well as all attempts to commit any of these offenses.

Vandalism-Destruction of Property - all willful or malicious destruction, injury, disfigurement or defacement of any public or private property, real or personal, without the consent of the owner or person having custody or control by cutting, tearing, breaking, marking, painting, drawing, covering with filth or any other such means as may be specified by law or ordinance.

Weapons - includes violations of weapons laws such as manufacture, sale or possession of deadly weapons; carrying deadly weapons; furnishing deadly weapons to minors; aliens possessing deadly weapons, and all attempts to commit any of the above offenses.

Prostitution and Commercialized Vice - includes the sex offenses of a commercialized nature such as prostitution; keeping bawdy house, disorderly house or house of ill repute; pandering, procuring, transporting or detaining women for immoral purposes, etc. and all attempts to commit any of the above.

Sex Offenses - includes all sex offenses other than forcible rape, prostitution and commercialized vice. This encompasses offenses against chastity, common decency, morals and the like such as adultery and fornication, buggery, incest, indecent exposure, sodomy, carnal abuse (no force) and all attempts to commit any of the above.

Drug Abuse Violations - statistics for these arrests are requested on the basis of the narcotics used. This includes all arrests for the violation of state and local ordinances, specifically those relating to the unlawful possession, sale, use, growing, manufacturing and making of narcotic drugs. Four divisions of narcotic drugs are recognized.

These are:

- (a) Opium and cocaine and their derivatives (morphine, heroin, codeine),
- (b) Marijuana,
- (c) Synthetic narcotics which can cause true addiction (demerol, methadones) and
- (d) Other dangerous non-narcotic drugs, (barbituates, benzedrine).

Gambling - includes all charges relating to promoting, permitting or engaging in gambling. This classification is broken into three divisions:

- (a) bookmaking (horse and sport book),
- (b) numbers and lottery and
- (c) all other gambling.

Offenses Against Family and Children - includes all charges of nonsupport, neglect or abuse of family and children such as desertion, abandonment or nonsupport, neglect or abuse of child, or nonpayment of alimony.

Driving Under the Influence - limited to driving or operating any vehicle while drunk or under the influence of liquor or narcotic drugs.

Liquor Laws - with the exception of drunkenness and driving under the influence, all state or local liquor law violations are placed in this class. Federal violations are not included. Include manufacturing, selling, transporting, furnishing as in maintaining unlawful drinking places, bootlegging, operating a still, furnishing liquor to a minor and using vehicle for illegal transportation of liquor.

Drunkenness-Intoxication - (Not a criminal offense in Nebraska)

Disorderly Conduct-Disturbing the Peace - includes all disorderly persons who cannot be classified under offenses 1 through 23 or under offenses 25.

Vagrancy - includes arrests for failure of an individual to give a good account of himself, begging, loitering, etc.

All Other Offenses - includes all violations of state and local laws not otherwise classified.

Suspicion - limited to suspicion arrests when the persons arrested are released by the police.

Curfew and Loitering Law Violations - (Juveniles) all arrests made for violations of local curfew or loitering ordinances.

Runaways - (Juveniles) limited to juveniles taken into custody who have run away from the reporting jurisdiction.

CRIME INDEX

The extent, fluctuation and distribution of crime in the state is measured by the crime index. The crime index is composed of the following offenses: murder, manslaughter, forcible rape, robbery, felony assault, burglary, larceny-theft, motor vehicle theft and arson. Many categories of crime are not of sufficient importance to be included in the index; some serious crimes, such as kidnapping, do not occur with enough regularity to be meaningful in the index. With these considerations in mind, the above offenses were selected as a group to serve as a measure of crime.

CLEARANCES

For UCR purposes, an offense can be cleared by arrest or by exceptional means. An offense can be cleared by arrest when the offender is identified, there is enough evidence to charge him and he is actually taken into custody. The arrest of one person can clear several offenses and several persons may clear one offense. When some element beyond police control precludes formal charges against the offender, such as the victim's refusal to prosecute or death of the offender, an offense can be cleared by exceptional means. There is no distinction made between cleared by arrest and cleared by exceptional means in this publication. A distinction is made between total clearances and those involving only persons under 18 years of age (juveniles). A juvenile clearance is counted only when juveniles are exclusively involved in the clearance of an offense.

CRIME RATES

Crime rates relate the incidence of crime to population. Estimates of current permanent population are used in computing crime rates. Crime rates allow for comparisons between several areas with different populations over a period of time without the information being biased by population differences. To compute a crime rate, first divide the population of the area by 100,000 and then divide the crime index by that answer. Throughout this report a crime rate per 1,000 population is used to be more meaningful for the state.

CRIME FACTORS

Statistics gathered under the UCR Program are law enforcement statistics. The agencies report the offense and arrest data according to the standard offense classifications and not according to state statutes or local ordinances. Offenses are related to municipality and county in which they occur, rather than to the agency which may investigate, arrest or otherwise dispose of the case. The clearance is attributed to the municipality or county in which the offense occurred, even though the arresting agency may not be the department originally reporting the offense.

The factors which influence crime rates are dependent upon many characteristics of the community, and therefore, when attempting to interpret the crime statistics presented herein, one should be aware of the social structure and the factors that lead to or cause criminal behavior.

Awareness of the presence of certain crime factors, which may influence the resulting volume and type of statistics presented, is necessary if fair and equitable conclusions are to be drawn. These crime influencing factors are present, to some degree, in every community and their presence affects, in varying degrees, the crime experience of that community. Attempts at comparison of crime figures between communities should not be made without first considering the individual factors present in each community. Below are some of the conditions which will by type and volume affect the crime that occurs from place to place:

Density and size of the community population and the metropolitan area of which it is a part.

Composition of the population with reference particularly to age, sex and race.

Economic status of the population.

Relative stability of populations, include commuters, seasonal and other transient types.

Climate, including seasonal weather changes.

Educational, recreational and religious characteristics.

Standards governing appointments to the police force.

Policies of the prosecuting officials and the courts.

Attitude of the public toward law enforcement problems.

The administrative and investigative efficiency of the local law enforcement agency, including the degree of adherence to crime reporting standards.

Caution should always be used when using the crime statistics presented herein, however, it should also be kept in mind that the data presented is the most accurate currently available. The law enforcement personnel who provide the data are to be commended for their efforts to provide accurate data. Without their sincere cooperation, this publication would not be possible. Crime is a social problem and therefore, should be a concern of the entire community.

CRIME INDEX OFFENSES

During 1993, 163 law enforcement agencies submitted Uniform Crime Reports on a monthly basis. These reports provided information on offenses that were reported or known to law enforcement, as well as information on persons arrested or cited for criminal violations. The Omaha Police Department was not able to provide information on offenses reported or known to them during 1993 and, therefore, they are not included in this or any other section on the individual index offenses.

Volume

A total of 41,501 index offenses were reported or known to law enforcement agencies, excluding the Omaha Police Department, in 1993. The violent crimes of murder, manslaughter, forcible rape, robbery, and felony assault accounted for 5.2 percent of the total index offenses. The property crimes of burglary, larceny-theft, motor vehicle theft, and arson accounted for 94.8 percent of the total offenses.

Larceny-theft was the most frequently reported crime, accounting for 74.9 percent of the total crimes reported.

Crime Rates

Based on an estimated population figure of 1,265,501 (excluding the City of Omaha), the crime rate per 1,000 population was 32.8 in 1993. The crime rate for violent crimes was 1.7 per 1,000 population. There were 31.1 property crimes per 1,000 population.

Clearances

A total of 9,937 index offenses were reported cleared during 1993, a clearance rate of 23.9 percent. Murder, manslaughter had the highest clearance rate, 92.6 percent. Violent crimes had a clearance rate of 69.3 percent and crimes against property had a clearance rate of 21.4 percent.

Table 1
Index Offenses, 1993

Index Offenses	Number of Index Offenses ¹	Rate Per 1,000 Population ²	Percent Distribution	Percent Cleared
Murder, Manslaughter	27	0.02	.1	92.6
Forcible Rape	235	.2	.6	51.9
Rape by Force	193			51.8
Attempt to Rape	42			52.4
Robbery	252	.2	.6	44.4
Firearm	54			44.4
Knife or Cutting Instrument	29			48.3
Other Dangerous Weapon	18			38.9
Strong Arm - No Weapon	151			44.4
Felony Assault	1,661	1.3	4.0	75.2
Firearm	132			72.7
Knife or Cutting Instrument	318			78.6
Other Dangerous Weapon	774			76.4
Hands, Fists, Feet, Etc.	437			71.4
Burglary	6,544	5.2	15.8	16.4
Forcible Entry	3,794			19.9
Unlawful Entry, No Force	1,972			13.5
Attempted Forcible Entry	778			7.1
Larceny - Theft	31,103	24.6	74.9	21.8
Motor Vehicle Theft	1,478	1.2	3.6	35.7
Autos	1,077			37.2
Trucks and Buses	263			34.2
Other Vehicles	138			26.1
Arson	201	0.2	.5	27.4
Structural	110			3.8
Mobile	36			8.3
Other	55			41.8
Total	41,501	32.8	100.0	23.9

¹ Does not include the Omaha Police Department

² 1993 Estimate of Population - 1,265,501 (excluding City of Omaha)

Table 2
Crimes of Violence and Crimes Against Property, 1993

Index Offenses	Number of Offenses	Percent Distribution	Rate Per 1,000 Population
Crimes of Violence	2,176	5.2	1.7
Murder, Manslaughter	28	1.3	0.02
Forcible Rape	235	10.8	0.2
Robbery	252	11.6	0.2
Felony Assault	1,661	76.3	1.3
Crimes Against Property	39,326	94.8	31.1
Burglary	6,544	16.6	5.2
Larceny-Theft	31,103	79.1	24.6
Motor Vehicle Theft	1,478	3.8	1.2
Arson	201	.5	0.2
Total	41,502	100.0	32.8

Table 3
Type and Value of Property Stolen, Recovered *

Type of Property	Value Stolen	Value Recovered	Percent Recovered
Currency, Notes, Etc.	\$ 2,639,009	\$ 191,584	7.3
Jewelry and Precious Metals	1,109,496	185,287	16.7
Clothing and Furs	529,086	116,307	22.0
Motor Vehicles	6,209,789	5,467,904	88.1
Office Equipment	212,511	28,152	13.2
Televisions, Radios, Cameras, Etc.	2,575,935	296,904	11.5
Firearms	353,951	75,353	21.3
Household Goods	559,838	38,709	6.9
Consumable Goods	364,480	45,893	12.6
Livestock	655,405	157,725	24.1
Miscellaneous	5,478,562	818,726	14.9
Total	\$ 20,688,062	\$ 7,422,544	35.9

* Does not include Douglas Co. S.O.

MURDER, MANSLAUGHTER

Murder and nonnegligent manslaughter are defined as the willful (nonnegligent) killing of one human being by another. Not included in this definition are deaths caused by negligence, suicide, or accidental deaths. Attempts to commit murder are classified as felony assault.

Volume and Rate

During 1993, a total of 27* murder, manslaughters were reported by law enforcement agencies in Nebraska. Murder, manslaughter accounted for 1.3 percent of all violent crimes and one-tenth of one percent of all index offenses. In 1993, there were .02 murders per 1,000 population. 25 murder, manslaughters were cleared in 1993, a clearance rate of 92.6 percent.

Murder, Manslaughter Analysis

In all cases of murder, manslaughter reported under the UCR Program, a supplementary report is submitted by the reporting agency. The supplementary report provides the age, sex, and race of the victim; type of weapon used to commit the offense; the relationship of the victim to the offender; and circumstances or motive leading to the crime.

In 1993, male victims accounted for 67 percent of the total murder victims and females accounted for 33 percent. An analysis of victims by race indicated that 89 percent were White and 11 percent were Black.

Of the known perpetrators, males accounted for 85 percent and 50 percent of those were in the age group of 18-24. Female perpetrators accounted for 15 percent. White perpetrators accounted for 88 percent and Blacks accounted for 12 percent.

Most murders, 77 percent, were committed either by a relative or an acquaintance of the victim. A further breakdown indicated that 33 percent were committed by a relative; 44 percent were committed by an acquaintance; 19 percent were committed by strangers and in 4 percent of the cases the relationship between the perpetrator(s) and victim(s) was unknown.

Handguns were used in 26 percent of the murders and shotguns were used in 19 percent of the incidents.

* Does not include the City of Omaha

Table 4
Murder Victims by Age, Sex, and Race

Age Group	Number	Percent Distribution	Sex		Race		
			Male	Female	White	Black	Asian
5 and Under	5	18.5	4	1	5	0	0
6-17	1	3.7	1	0	1	0	0
18-24	3	11.1	1	2	2	1	0
25-29	5	18.5	4	1	4	1	0
30-39	6	22.2	3	3	5	1	0
40-49	1	3.7	1	0	1	0	0
50-59	6	22.2	4	2	6	0	0
60-69	0	0	0	0	0	0	0
70-Above	0	0	0	0	0	0	0
Total	27	100.0	18	9	24	3	0

Table 5
Known Murder Perpetrators by Age, Sex, and Race

Age Group	Number	Percent Distribution	Sex		Race		
			Male	Female	White	Black	Asian
6-17	1	3.8	1	0	1	0	0
18-24	12	46.2	11	1	10	2	0
25-29	3	11.5	1	2	3	0	0
30-39	6	23.1	5	1	5	1	0
40-49	1	3.8	1	0	1	0	0
50-59	2	7.7	2	0	2	0	0
60-Above	1	3.8	1	0	1	0	0
Total	26	100.0	22	4	23	3	0

Table 6
Murder, Manslaughter Circumstances

Circumstance	Number	Percent Distribution
Family (Spouse/Spouse, Parent/Child)	8	29.6
Drug Related	0	0
Money/Property Argument	2	7.4
Drinking Argument	1	3.7
Boyfriend/Girlfriend	1	3.7
Other Quarrel	1	3.7
Killed by Felon	3	11.1
Other	4	14.8
Motive Unknown/Not Stated	7	25.9
Total	27	100.0

Table 7
Murder, Manslaughter - Type of Weapon

Type of Weapon	Number	Percent Distribution
Handgun	7	25.9
Shotgun	5	18.5
Rifle	1	3.7
Knife or Cutting Instrument	3	11.1
Personal Weapon	4	14.8
Other	7	25.9
Total	27	100.0

Figure 1
Murder, Manslaughter by Month

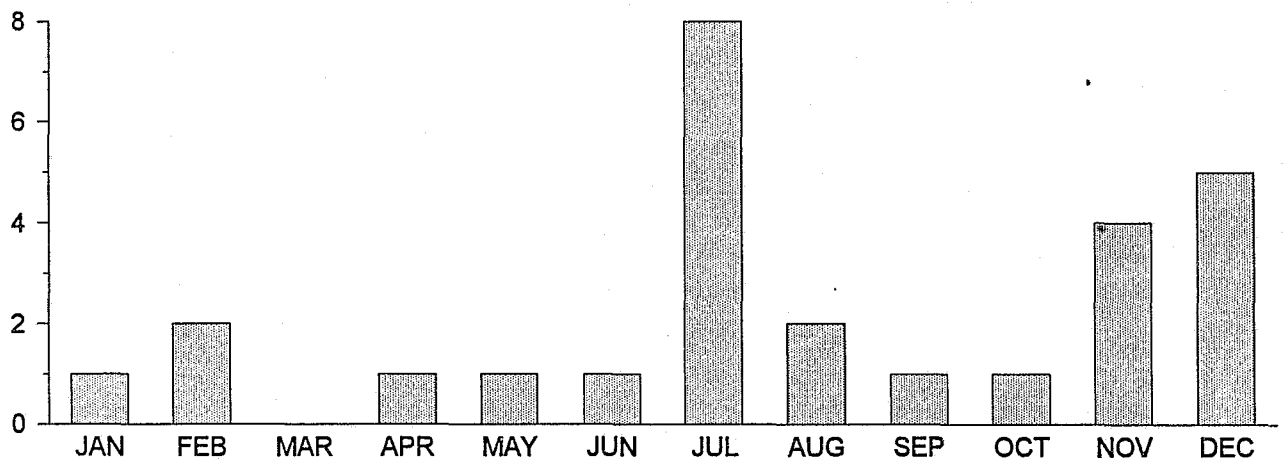
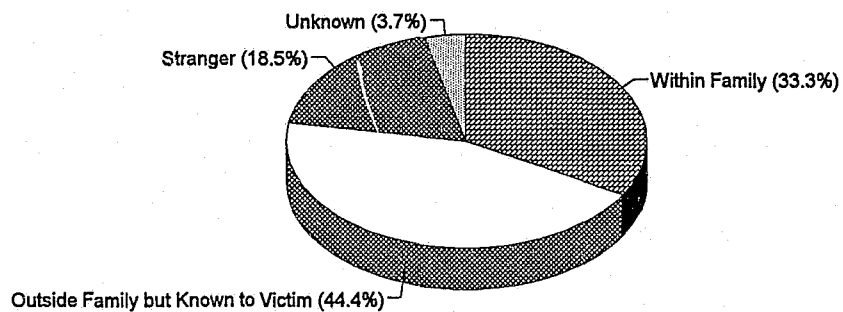


Figure 2
Relationship of Victim to Offender



FORCIBLE RAPE

Forcible rape is defined as the carnal knowledge of a female forcibly and against her will. All rapes and attempts to rape are counted. Carnal abuse, without force (statutory rape) and other sex offenses are not included.

Volume and Rate

During 1993, law enforcement agencies in Nebraska reported a total of 235* forcible rapes. Forcible rape accounted for 10.8 percent of all violent crimes and 0.6 percent of all index crimes. In 1993, there were 0.2 rapes per 1,000 population. A total of 122 forcible rapes, 51.9 percent, were cleared during 1993.

Analysis of Rape

Rape by force accounted for 82.1 percent of all forcible rapes and 17.9 percent were attempts to rape.

The age group of 25-29 accounted for the highest percentage of persons arrested for forcible rape, 16.1 percent. Juvenile arrests accounted for 16.5 percent of all persons arrested for forcible rape.

Rape Circumstances

Law enforcement agencies are asked to submit a supplementary report on the circumstances surrounding any rape by force and attempt to rape. Supplementary reports were received on 212 cases. Victims under the age of 25 accounted for 73 percent of the total victims. Of those victims under 25, 44 percent were in the age group of 18 thru 24 and 36 percent were in the age group of 11 thru 15. In 36 percent of the incidents, the victim was attacked in her own residence. A weapon was used in 7 percent of the incidents with the most common weapon being a knife.

Law enforcement agencies reported a total value of \$475 stolen in rape offenses.

* Does not include the City of Omaha

Table 8
Rape - Relationship of Victim to Offender

Relationship	Number	Percent Distribution
Relative	21	10.0
Acquaintance/Known to Victim	122	57.5
Stranger	42	19.8
Not Stated	27	12.7
Total	212	100.0

Table 9
Rape - Place of Occurrence

Location	Number	Percent Distribution
Victim's Residence	77	36.3
Offender's Residence	24	11.3
Other Residence (Relative/Friend's)	21	9.9
Hotel, Motel	5	2.4
Public Area	14	6.6
Vehicle	33	15.6
Building - Office/Business/School	10	4.7
Other	4	1.9
Not Stated	24	11.3
Total	212	100.0

Table 10
Rape - Age Groups of Victims

Age Group	Number	Percent Distribution
10 and Under	10	4.7
11-15	55	25.9
16-17	22	10.4
18-24	67	31.6
25-29	24	11.3
30-39	26	12.3
40-49	5	2.4
50-59	2	0.9
60 - Above	1	0.5
Total	212	100.0

Table 11
Forcible Rape
Type of Property Stolen, Recovered *

Type of Property	Value Stolen	Value Recovered
Currency, Notes, Etc.	\$ 270	0
Jewelry and Precious Metals	25	0
Clothing and Furs	0	0
Motor Vehicles	0	0
Office Equipment	0	0
Televisions/Radios/Cameras	50	0
Firearms	0	0
Household Goods	0	0
Consumable Goods	60	0
Livestock	0	0
Miscellaneous	70	0
Total	\$ 475	\$ 0

* Does not include Douglas Co. S.O.

Figure 3
Forcible Rape by Month

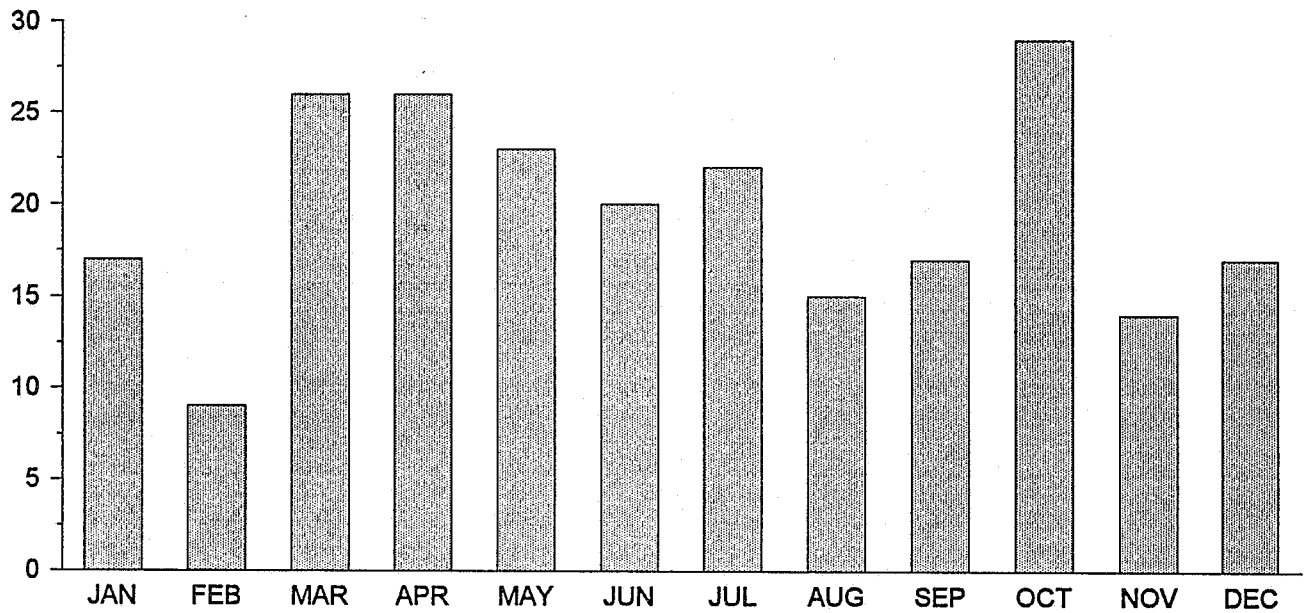
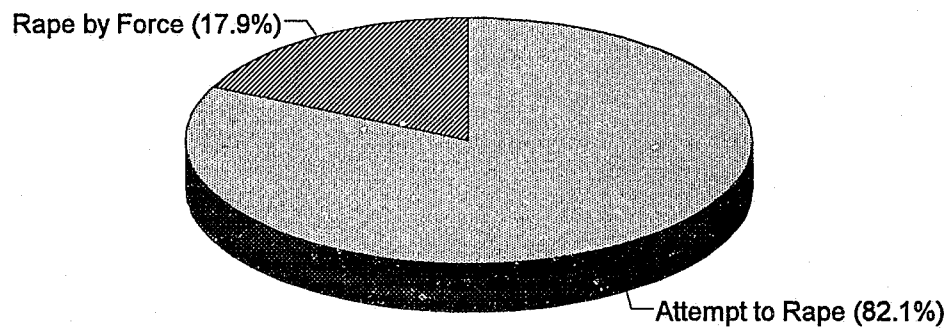


Figure 4
Analysis of Forcible Rape by Type



ROBBERY

Robbery is the taking or attempting to take anything of value from the care, custody, or control of a person or persons by force or threat of force or violence and/or by putting the victim in fear. Robbery takes place in the presence of the victim. The victim, who usually is the owner or person having custody of the property is directly confronted by the perpetrator and is threatened with force or fear that force will be used.

Volume and Rate

During 1993, a total of 252* robberies were reported by law enforcement agencies in Nebraska. Robbery accounted for 11.6 percent of all violent crimes and 0.6 percent of all index crimes. In 1993, there were 0.2 robberies per 1,000 population. A total of 112 robberies, 44.4 percent, were cleared in 1993.

Analysis of Robbery

A firearm was used in 21 percent of all robberies, a knife or cutting instrument was used in 12 percent, other dangerous weapons were used in 7 percent and strong-arm tactics were used in 60 percent of all robberies.

Robberies occurring on streets, highways, alleys, etc., accounted for 36 percent all robberies. Residential robberies accounted for 18 percent.

The age group of 25-34 accounted for the greatest percentage of persons arrested for robbery, 22 percent. Juveniles accounted for 37 percent of all arrests for robbery.

Of persons arrested for robbery, 51 percent were White, 46 percent were Black, 2 percent were Indian, and one percent were Asian/Pacific Islander.

Law enforcement agencies reported a total value of \$221,430 stolen in robbery offenses.

* Does not include the City of Omaha

Table 12
Robbery - Place of Occurrence

Classification	Number of Offenses	Percent Distribution	Total Value	Average Value
Highway (Streets/Alleys)	91	36.1	\$105,625	\$ 1,160.71
Commercial House	32	12.7	28,038	876.19
Gas or Service Station	8	3.2	2,025	253.13
Convenience Store	19	7.5	7,050	371.05
Residence	46	18.3	12,742	277.00
Bank	10	4.0	62,221	6,222.10
Miscellaneous	46	18.3	3,729	81.07
Total	252	100.0	\$ 221,430	\$ 876.40

Table 13
Robbery
Type of Property Stolen, Recovered *

Type of Property	Value Stolen	Value Recovered
Currency, Notes, Etc.	\$ 176,944	\$ 89,078
Jewelry and Precious Metals	30,731	15,368
Clothing and Furs	3,168	1,540
Motor Vehicles	0	0
Office Equipment	0	0
Televisions/Radios/Cameras	2,530	840
Firearms	440	0
Household Goods	155	150
Consumable Goods	247	0
Livestock	0	0
Miscellaneous	6,637	2,614
Total	\$220,852	\$ 109,590

* Does not include Douglas Co. S.O.

Figure 5
Robbery by Month

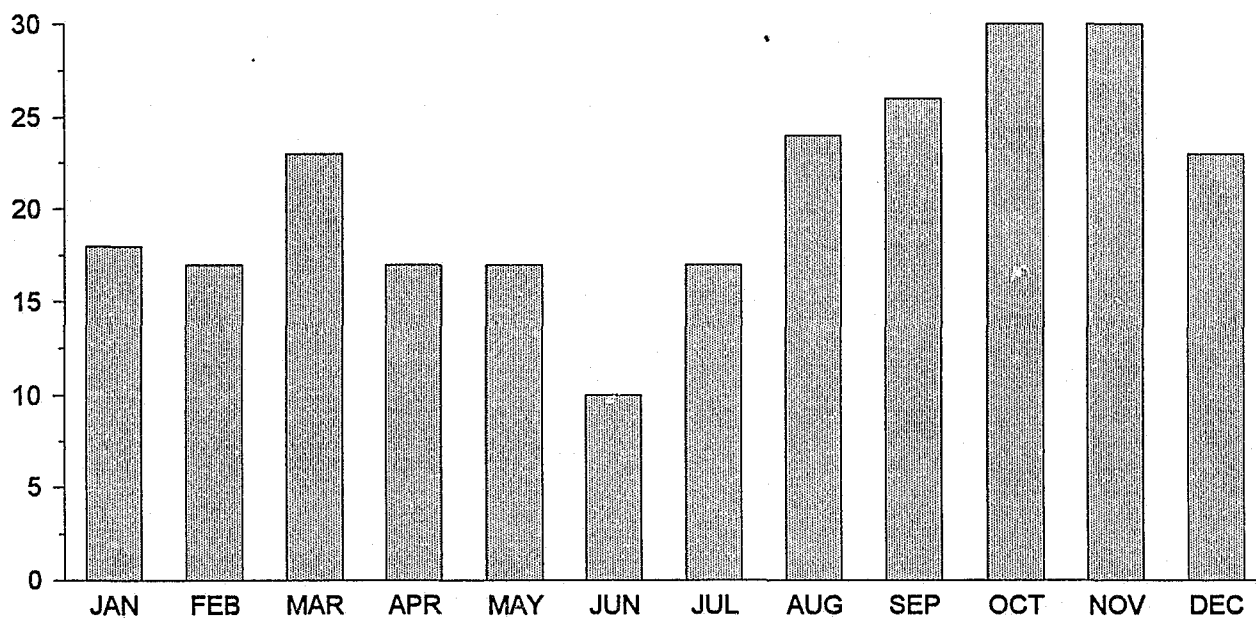
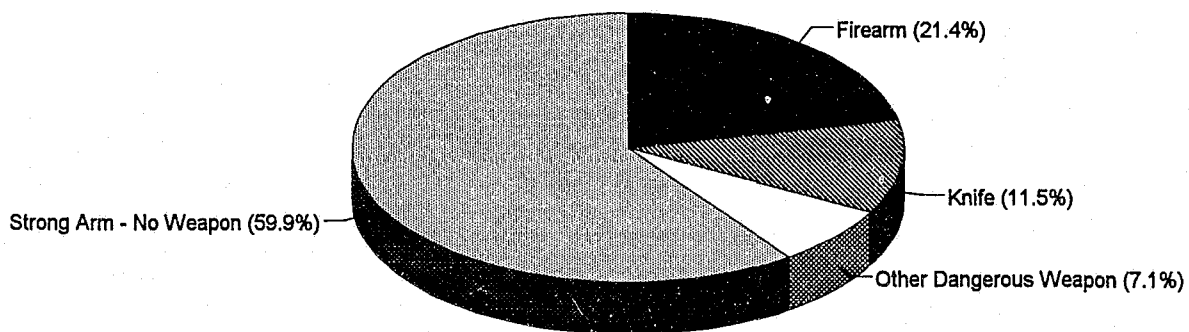


Figure 6
Analysis of Robbery by Type of Weapon



FELONY ASSAULT

Felony assault is an unlawful attack by one person upon another for the purpose of inflicting severe or aggravated bodily injury. Felony assault usually involves the use of a weapon or other means likely to produce death or great bodily injury.

Volume and Rate

During 1993, there were 1,661 * felony assaults reported by law enforcement agencies in Nebraska. Felony assaults accounted for 76.3 percent of all violent crimes and 4.0 percent of all index crimes. In 1993, there were 1.3 felony assaults per 1,000 population. A total of 1,249 felony assaults, 75.2 percent, were cleared in 1993.

Analysis of Felony Assault

The use of other dangerous weapons was involved in 47 percent of all felony assaults. A firearm was used in 8 percent, a knife was used in 19 percent, and hands/fists/feet were used in 26 percent.

The age group of 25-29 accounted for the highest percentage of persons arrested for felony assaults, 17 percent. Juveniles accounted for 14 percent of all arrests for felony assault.

An analysis of felony assault arrests revealed that 64 percent were White, 30 percent were Black, 5 percent were Indian, and one percent were Asian/Pacific Islander.

* Does not include the City of Omaha

Figure 7
Felony Assault by Month

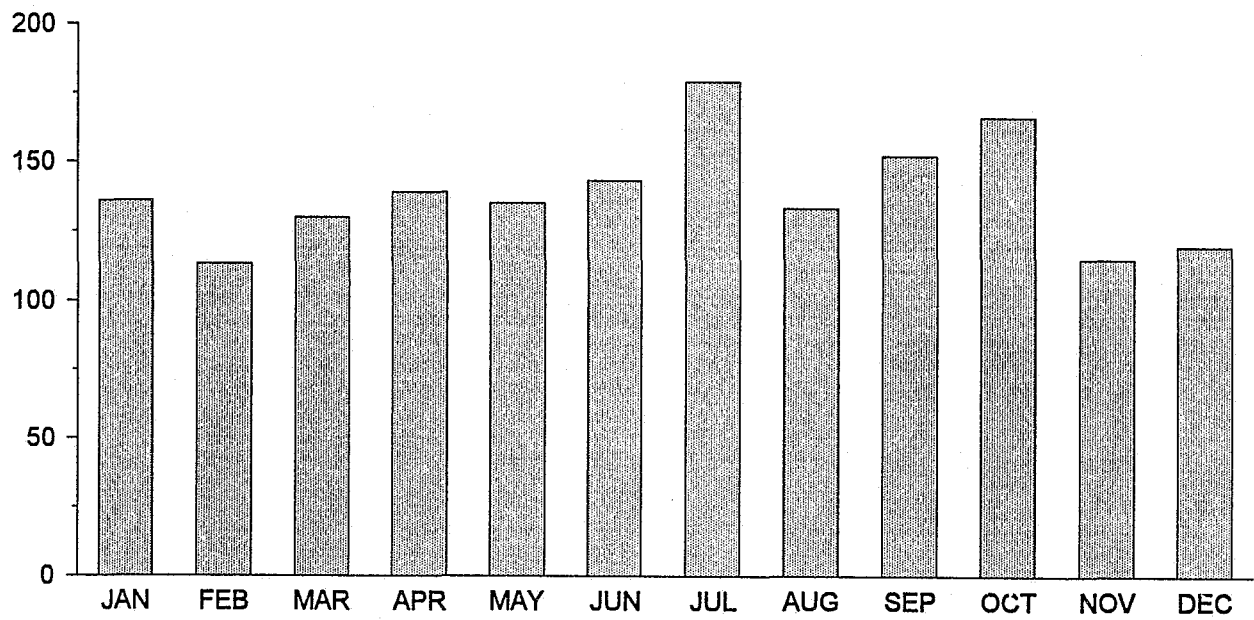
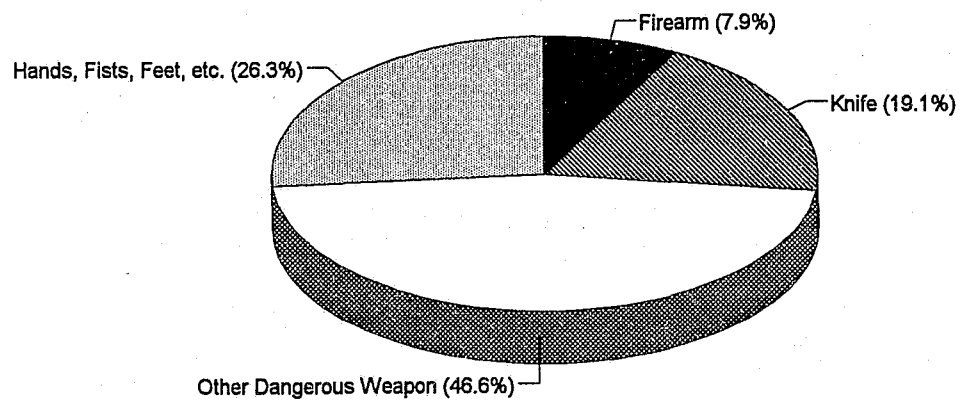


Figure 8
Felony Assault by Type of Weapon



BURGLARY

Burglary is defined as any unlawful entry or attempted forcible entry of any structure to commit a felony or theft. Burglary is divided into three categories: forcible entry, unlawful entry - no force, and attempted forcible entry.

Volume and Rate

During 1993, a total of 6,544* burglaries were reported by law enforcement agencies in Nebraska. Burglary accounted for 16.6 percent of all property crimes and 15.8 percent of all index crimes. In 1993, there were 5.2 burglaries per 1,000 population. A total of 1,075 burglaries, 16.4 percent, were cleared in 1993.

Analysis of Burglary

Of all burglaries reported, 58 percent involved residences and 42 percent involved non-residences. Of the residential burglaries, 23 percent occurred during the hours of 6:00 a.m. and 6:00 p.m., 34 percent occurred between 6:00 p.m. and 6:00 a.m., and in 43 percent the time of entry was unknown. Non-residential burglaries occurred most frequently during the night, 66 percent. Burglaries during the day accounted for 4 percent and in 30 percent the time of entry was unknown.

The age group of 13-14 accounted for the highest percentage of persons arrested for burglary, 13 percent. Juveniles accounted for 43 percent of all persons arrested for burglary.

Of persons arrested for burglary, 82 percent were White, 11 percent were Black, 7 percent were Indian, and one percent were Asian/Pacific Islander.

Law enforcement agencies reported property worth \$4,563,209 stolen in burglary offenses.

* Does not include the City of Omaha

Table 14
Burglary - Place and Time of Occurrence

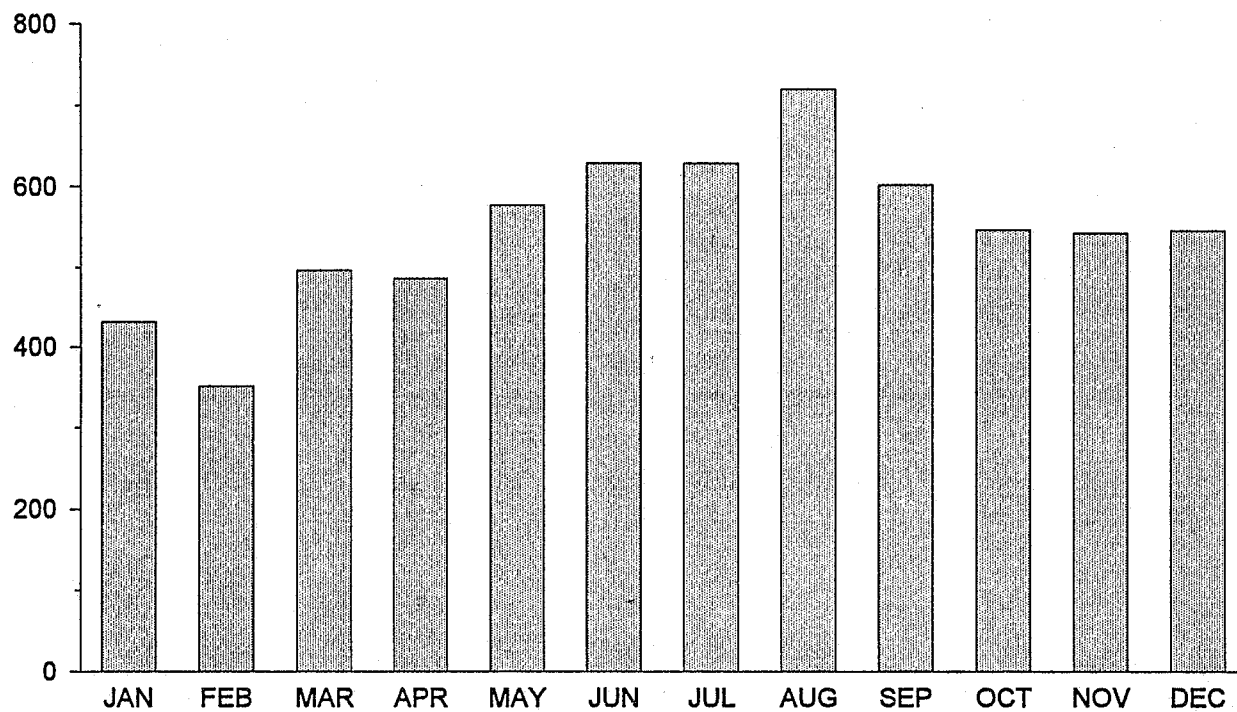
Classification	Number of Offenses	Percent Distribution	Total Value	Average Value
Residence	3,793	58.0	\$ 2,590,115	\$ 682.87
Night (6:00 p.m. to 6:00 a.m.)	1,295	34.1	832,212	642.63
Day (6:00 a.m. to 6:00 p.m.)	872	23.0	618,310	709.07
Unknown	1,626	42.9	1,139,593	700.86
Non-Residence	2,751	42.0	\$ 1,973,094	717.23
Night (6:00 p.m. to 6:00 a.m.)	1,825	66.3	1,356,189	743.12
Day (6:00 a.m. to 6:00 p.m.)	96	3.5	29,734	309.72
Unknown	830	30.2	587,171	707.43
Total	6,544	100.0	\$ 4,563,209	\$ 697.31

Table 15
Burglary
Type of Property Stolen, Recovered *

Type of Property	Value Stolen	Value Recovered
Currency, Notes, Etc.	\$ 537,069	\$ 22,844
Jewelry and Precious Metals	506,295	93,502
Clothing and Furs	145,629	17,951
Motor Vehicles	384,857	324,433
Office Equipment	107,526	18,238
Televisions/Radios/Cameras	641,927	98,644
Firearms	217,443	50,391
Household Goods	390,779	10,622
Consumable Goods	82,002	11,604
Livestock	140	0
Miscellaneous	1,389,490	169,999
Total	\$ 4,403,157	\$ 818,228

* Does not include Douglas Co. S.O.

Figure 9
Burglary by Month



LARCENY - THEFT

Larceny-theft is the unlawful taking of the property of another with the intent of depriving that person of ownership. Larceny-theft as an index offense includes larcenies under \$50 in value.

Volume and Rate

During 1993, a total of 31,103* larceny-thefts were reported by law enforcement agencies in Nebraska. Larceny-theft accounted for 79.1 percent of the crimes against property and 74.9 percent of all index crimes. In 1993, there were 24.6 larceny-thefts per 1,000 population. A total of 6,772 larceny-thefts, 21.8 percent, were cleared.

Analysis of Larceny-Theft

Of the total larceny-thefts reported, thefts from motor vehicles accounted for 19.5 percent, shoplifting accounted for 15.8 percent, and thefts from buildings accounted for 16.8 percent.

The age group of 13-14 accounted for 14 percent of the total number of persons arrested for larceny-theft. Juveniles accounted for 46 percent of the total number arrested.

Of the persons arrested for larceny-theft, 74 percent were White, 22 percent were Black, 3 percent were Indian, and one percent were Asian/Pacific Islander.

Law enforcement agencies reported a total value of \$10,419,317 stolen in larceny-theft offenses.

Table 16
Larceny-Theft

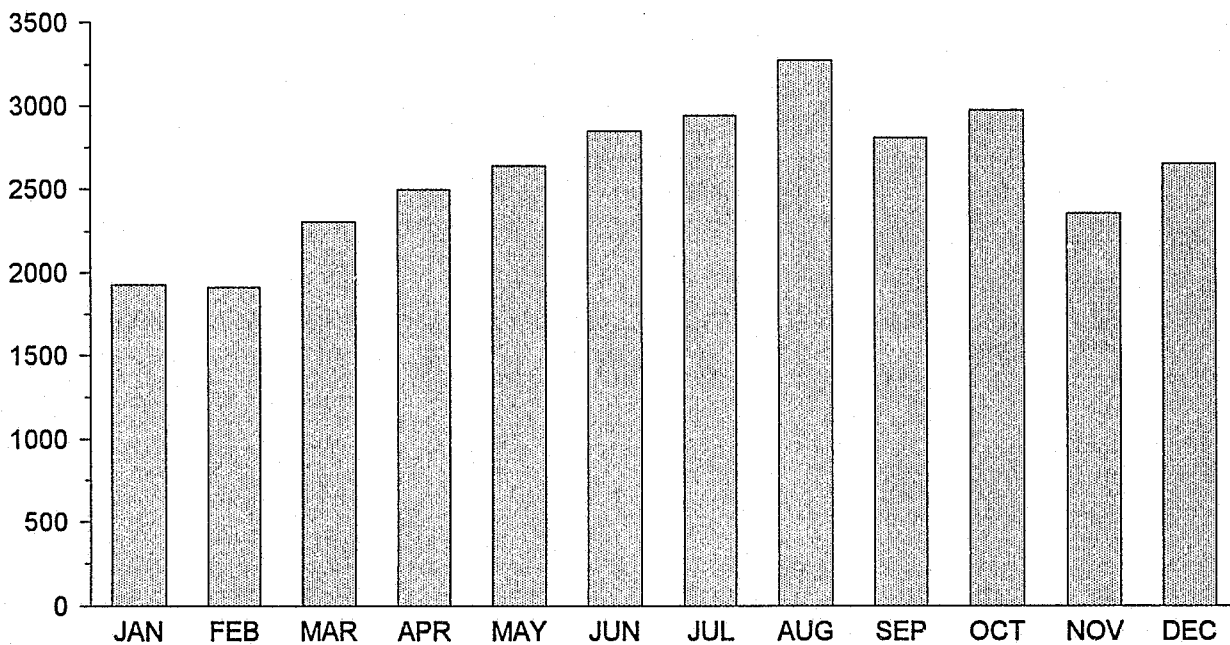
Classification	Number of Offenses	Percent Distribution	Total Value	Average Value
Pocket-Picking	18	.1	\$ 3,140	\$ 174.44
Purse Snatching	24	.1	2,381	99.21
Shoplifting	4,899	15.8	251,276	51.29
From Motor Vehicles	6,071	19.5	1,934,032	318.57
Motor Vehicle Parts/Access.	4,642	14.9	2,319,498	499.68
Bicycles	2,786	9.0	559,572	200.85
From Buildings	5,220	16.8	1,964,607	376.36
From Coin-Operated Machines	437	1.4	59,847	136.95
From Farmyard or Open Field	877	2.8	1,041,682	1,187.78
Other	6,129	19.7	2,283,282	372.54
Total	31,103	100.0	\$10,419,317	\$ 334.99

Table 17
Larceny - Theft
Type of Property Stolen, Recovered *

Type of Property	Value Stolen	Value Recovered
Currency, Notes, Etc.	\$ 1,916,720	\$ 78,636
Jewelry and Precious Metals	567,575	75,917
Clothing and Furs	372,723	95,387
Motor Vehicles	0	0
Office Equipment	89,675	9,904
Televisions/Radios/Cameras	1,906,279	195,815
Firearms	133,618	23,362
Household Goods	167,753	27,762
Consumable Goods	226,636	26,281
Livestock	655,265	157,725
Miscellaneous	4,042,155	636,128
Total	\$ 10,078,399	\$ 1,326,917

* Does not include Douglas Co. S.O.

Figure 10
Larceny-Theft by Month



MOTOR VEHICLE THEFT

Motor vehicle theft is defined as the theft or attempted theft of a motor vehicle, including joyriding. A motor vehicle is defined as a self-propelled vehicle that runs on land surface and not on rails. Examples of motor vehicles are automobiles, trucks, buses, motorcycles, motor scooters, snowmobiles, etc. Thefts of farm equipment, bulldozers, airplanes, and construction equipment are not included in the definition of a motor vehicle.

Volume and Rate

During 1993, there were 1,478* motor vehicle thefts reported by law enforcement agencies in Nebraska. Motor vehicle thefts accounted for 3.8 percent of all property crimes and 3.6 percent of all index offenses. In 1993, there were 1.2 motor vehicle thefts per 1,000 population. There were 527 motor vehicle thefts cleared in 1993, a clearance rate of 35.7 percent.

Analysis of Motor Vehicle Theft

During 1993, law enforcement agencies provided additional information regarding types of vehicles stolen. The agencies reported 1,077 autos, 263 trucks and buses, and 138 other vehicles stolen.

During 1993, there were 1,183 motor vehicles recovered; 79 percent were recovered within the same jurisdiction where they were stolen and 21 percent were recovered in another jurisdiction.

The age group of 13-14 accounted for the highest percentage of persons arrested for motor vehicle theft, accounting for 16 percent of the total. Juveniles accounted for 55 percent of all arrests for motor vehicle theft.

Of the persons arrested for motor vehicle theft, 70 percent were White, 25 percent were Black, and 5 percent were Indian.

Law enforcement agencies reported property worth \$5,978,079 stolen in motor vehicle thefts.

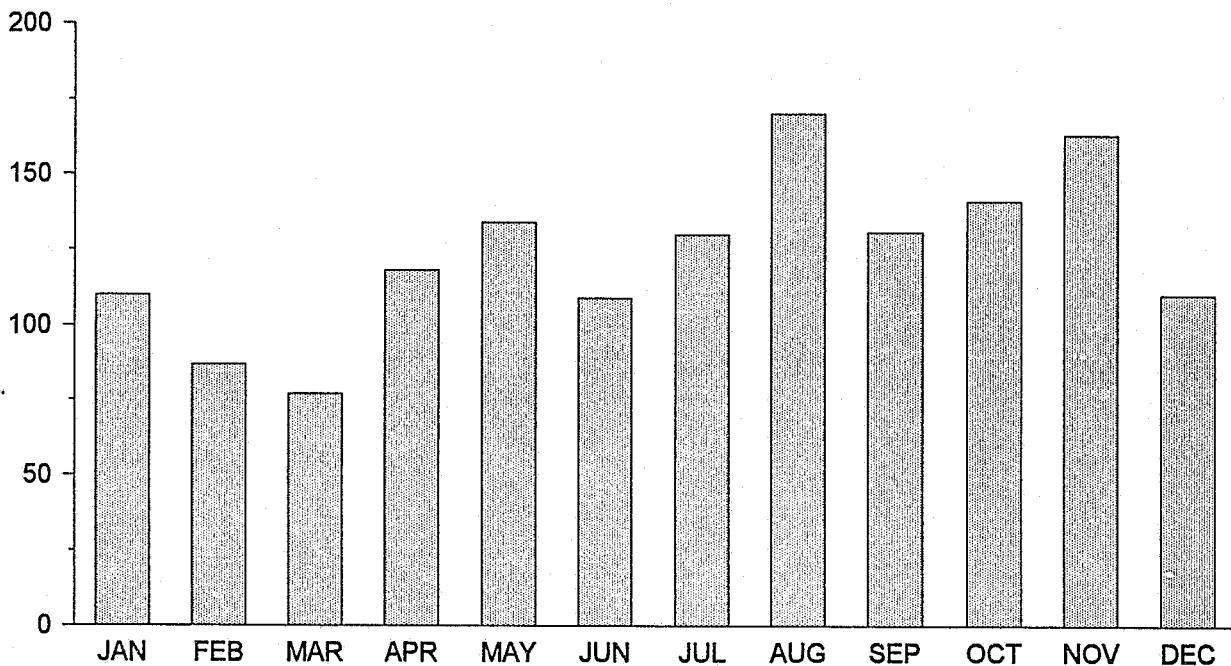
* Does not include the City of Omaha

Table 18
Motor Vehicle Theft
Type of Property Stolen, Recovered *

Type of Property	Value Stolen	Value Recovered
Currency, Notes, Etc.	\$ 8,006	\$ 1,026
Jewelry and Precious Metals	4,870	500
Clothing and Furs	7,566	1,429
Motor Vehicles	5,824,932	5,143,471
Office Equipment	15,310	10
Televisions/Radios/Cameras	25,149	1,605
Firearms	2,450	1,600
Household Goods	1,151	175
Consumable Goods	55,535	8,008
Livestock	0	0
Miscellaneous	40,210	9,985
Total	\$ 5,985,179	\$ 5,167,809

* Does not include Douglas Co. S.O.

Figure 11
Motor Vehicle Theft by Month



ARSON

Arson is any willful or malicious burning or attempt to burn, with or without intent to defraud, a dwelling house, public building, motor vehicle or aircraft, personal property of another, etc. The State Fire Marshal's office is the primary source of arson data.

Volume and Rate

During 1993, there were 201* offenses of arson reported. Arson accounted for 0.2 percent of the property crimes and 0.5 percent of all index offenses. There were 55 arsons cleared in 1993, a 27.4 percent clearance rate.

Analysis of Arson

The total estimated value of property damage due to arson amounted to \$816,360 in 1993. Property damage to 110 structures was \$708,620. The 36 mobile arsons (motor vehicles and mobile property - trailers, recreational vehicles, airplanes) resulted in \$88,225 worth of property damage. In 55 other types of arson, the property damage was \$19,515. The average value of property damage per arson incident was \$4,061.49.

* Does not include the City of Omaha

Figure 12
Arson by Month

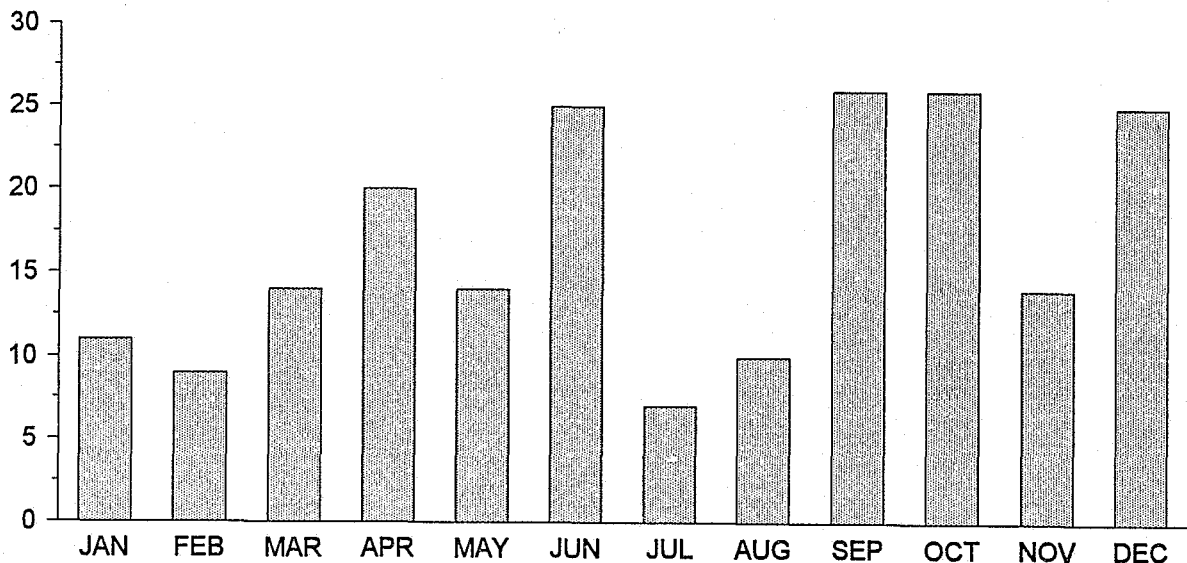


Table 19
Arson - Type of Property and Property

Property Classification		Number of Offenses	Percent Distribution	Value of Property Damage	Average Loss
S T R U C T U R A L	Single Occupancy Residential: House/Townhouse/Duplex/Etc.	38	18.9	\$ 197,500	\$ 5,197.37
	Other Residential: Apartment/Hotel/Motel/Dorm	26	12.9	340,350	13,090.38
	Storage: Barns/Garages/Warehouses/Etc.	16	8.0	61,700	3,856.25
	Industrial/Manufacturing	1	0.5	150	150.00
	Other Commercial: Stores/Restaurants/Offices/Etc.	9	4.5	41,550	4,616.67
	Community/Public: Churches/Jails/Schools/Colleges/ Hospitals/Etc.	20	10.0	67,370	3,368.50
	All Other Structures: Out Buildings/Monuments/Buildings Under Construction	0	0	0	0
M O B I L E	Motor Vehicles: Autos/Trucks/Buses/Motorcycles	34	16.9	76,225	2,241.91
	Other Mobile Property: Trailers/Recreational Vehicles/ Airplanes/Boats/Etc.	2	1.0	12,000	6,000.00
Other: Crops/Timber/Fences/Signs/Etc.		55	27.4	19,515	354.82
Total		201	100.0	\$ 816,360	\$ 4,061.49

ARREST DATA

Under the Uniform Crime Reporting Program, an arrest is counted each time a person is taken into custody, summoned, notified, or cited. When a person under the age of 18 commits an offense and the circumstances are such that if the offender were an adult an arrest would be made, the juvenile is counted as an arrest by the reporting agency.

For reporting purposes, one arrest is counted each time a person is taken into custody, regardless of the number of charges placed against him. If an individual is arrested more than once during the year, an arrest is counted each time. When several persons are arrested in connection with the same offense, each is counted as an arrest.

Arrest data for the Omaha Police Department are included in this section.

Volume and Rate

Law enforcement agencies in Nebraska reported 75,169 arrests in 1993. This represents an 8 percent decrease from 1992. There were 46.8 arrests per 1,000 population in 1993 as compared to 51.2 arrests per 1,000 population in 1992.

Arrests for Part I Offenses accounted for 18 percent of the total arrests. Of the arrests for Part I Offenses, larceny-theft accounted for the greatest portion, 74 percent. The greatest percentage of arrests for Part II Offenses was for Driving Under the Influence, 20 percent.

During 1993, arrests for crimes of violence (murder, manslaughter, forcible rape, robbery, and felony assault) accounted for 11 percent of all arrests for Part I Offenses and 2.0 percent of the total arrests. Arrests for crimes against property (burglary, larceny-theft, motor vehicle theft, and arson) accounted for 89 percent of all arrests for Part I Offenses and 16 percent of the total arrests.

Arrests for Part I Offenses decreased two percent over 1992. Arrests for Part II Offenses decreased 10 percent over 1992.

Arrests by Age

The number of persons under the age of 18 (juveniles) arrested during 1993 decreased 5 percent from 1992. The arrests of persons age 18 and over (adults) decreased 9 percent.

The arrest of persons under the age of 25 accounted for the following percentages of the total arrests for each index offense: murder, manslaughter - 59 percent; forcible rape - 42 percent; robbery - 66 percent; felony assault - 49 percent; burglary - 78 percent; larceny-theft - 70 percent; motor vehicle theft - 80 percent; and arson - 80 percent. Of those persons under the age of 25 arrested for index offenses, persons under the age of 18 accounted for 63 percent.

Larceny-theft was the offense resulting in the most arrests of persons under age 18, while adults were most often arrested for Driving Under the Influence.

Arrests by Sex

In 1992, males accounted for 78 percent of all arrests. Males accounted for 74 percent of arrests for Part I Offenses and 79 percent of arrests for Part II Offenses. Total male arrests decreased 7 percent from 1992 and female arrests decreased 7 percent.

Larceny-theft was the crime for which females were most often arrested. Men were most often arrested for Driving Under the Influence.

Arrests by Race

An analysis of total arrests by race for 1993 indicated 80 percent were White, 17 percent were Black, 3 percent were American Indian/Alaskan Native, and one percent were Asian/Pacific Islander.

Race distribution figures for the Part I Offenses revealed that 73 percent were White, 22 percent were Black, 4 percent were Indian/Alaskan Native and one percent were Asian/Pacific Islander. Race figures for Part II Offenses revealed that 81 percent were White, 16 percent were Black, 3 percent were Indian/Alaskan Native and one percent were Asian/Pacific Islander.

An analysis of arrests by race for crimes of violence (murder, manslaughter, forcible rape, robbery and felony assault) revealed that 62 percent were White, 33 percent were Black, 4 percent were American Indian/Alaskan Native, and one percent were Asian/Pacific Islander.

Race figures for crimes against property (burglary, larceny-theft, motor vehicle theft and arson) revealed that 75 percent were White, 21 percent were Black, 4 percent were Indian/Alaskan Native and one percent were Asian/Pacific Islander.

Table 20
Total Arrests

Offense Classification	Number	Percent Distribution	Rate Per 100,000 Population ¹
Murder, Manslaughter	49	.07	3.5
Death by Negligence	13	.02	0.8
Forcible Rape	224	.30	13.9
Robbery	365	.49	22.7
Felony Assault	891	1.19	55.4
Burglary	1,366	1.82	85.0
Larceny-Theft	9,895	13.16	615.7
Motor Vehicle Theft	482	.64	29.9
Arson	125	.17	7.8
Total Part I Offenses	13,410	17.84	834.5
Misdemeanor Assault	7,432	9.89	462.5
Forgery and Counterfeiting	536	.71	33.4
Fraud - O.M.F.P.	2,227	2.96	138.6
Embezzlement	61	.08	3.8
Possession of Stolen Property	1,290	1.72	80.3
Vandalism - Destruction of Property	2,582	3.43	160.7
Weapons-Carrying/Possessing/Etc.	1,180	1.57	73.4
Prostitution and Commercialized Vice	316	.42	19.7
Sex Offenses	769	1.02	47.9
Drug Abuse Violations	4,455	5.93	277.2
Gambling	50	.07	3.1
Offenses Against Family and Children	1,283	1.71	79.8
Driving Under the Influence	12,149	16.16	756.0
Liquor Law Violations	7,636	10.16	475.2
Disorderly Conduct/Disturbing the Peace	4,015	5.34	249.9
Vagrancy	9	.01	0.6
All Other Offenses (Except Traffic)	14,962	19.90	931.1
Curfew and Loitering Law Violations	390	.52	24.3
Runaways	417	.55	25.9
Total Part II Offenses	61,759	82.16	3,843.1
Total	75,169	100.00	4,677.6

¹ 1993 Estimate of Population - 1,607,000

Table 21
Comparison of Arrests, 1992 - 1993

Offense Classification	1992	1993	Percent Change
Murder, Manslaughter	59	49	-17
Death by Negligence	15	13	-13
Forcible Rape	229	224	- 2
Robbery	315	365	+16
Felony Assault	818	891	+ 9
Burglary	1,540	1,366	-11
Larceny-Theft	10,021	9,895	- 1
Motor Vehicle Theft	580	482	-17
Arson	165	125	-24
Total Part I Offenses	13,742	13,410	- 2
Misdemeanor Assault	7,073	7,432	+ 5
Forgery and Counterfeiting	637	536	-16
Fraud - O.M.F.P.	2,394	2,227	- 7
Embezzlement	71	61	-14
Possession of Stolen Property	1,346	1,290	- 4
Vandalism - Destruction of Property	2,916	2,582	-11
Weapons-Carrying/Possessing/Ect.	1,264	1,180	- 7
Prostitution and Commercialized Vice	214	316	+48
Sex Offenses	723	769	+ 6
Drug Abuse Violations	4,633	4,455	- 4
Gambling	55	50	- 9
Offenses Against Family and Children	1,139	1,283	+13
Driving Under the Influence	14,609	12,149	-17
Liquor Law Violations	8,751	7,636	-13
Disorderly Conduct/Disturbing the Peace	4,590	4,015	-13
Vagrancy	13	9	-31
All Other Offenses (Except Traffic)	17,056	14,962	-12
Curfew and Loitering Law Violations	473	390	-18
Runaways	452	417	- 8
Total Part II Offenses	68,409	61,759	-10
Total	82,151	75,169	- 8

Table 22
Comparison of Adult and Juvenile Arrests

Offense Classification	Total Arrests	Adult	Juvenile	Percent Distribution	
				Adult	Juvenile
Murder, Manslaughter	49	44	5	89.8	10.2
Death by Negligence	13	12	1	92.3	7.7
Forcible Rape	224	187	37	83.5	16.5
Robbery	365	231	134	63.3	36.7
Felony Assault	891	763	128	85.6	14.4
Burglary	1,366	779	587	57.0	43.0
Larceny-Theft	9,895	5,318	4,577	53.7	46.3
Motor Vehicle Theft	482	218	264	45.2	54.8
Arson	125	53	72	42.4	57.6
Total Part I Offenses	13,410	7,605	5,805	56.7	43.3
Misdemeanor Assault	7,432	6,077	1,355	81.8	18.2
Forgery and Counterfeiting	536	442	94	82.5	17.5
Fraud - O.M.F.P.	2,227	2,121	106	95.2	4.8
Embezzlement	61	56	5	91.8	8.2
Possession of Stolen Property	1,290	694	596	53.8	46.2
Vandalism - Destruction of Property	2,582	1,462	1,120	56.6	43.4
Weapons-Carrying/Possessing/Ect.	1,180	888	292	75.3	24.7
Prostitution and Commercialized Vice	316	315	1	99.7	0.3
Sex Offenses	769	636	133	82.7	17.3
Drug Abuse Violations	4,455	4,102	353	92.1	7.9
Gambling	50	48	2	96.0	4.0
Offenses Against Family and Children	1,283	1,268	15	98.8	1.2
Driving Under the Influence	12,149	11,960	189	98.4	1.6
Liquor Law Violations	7,636	5,632	2,004	73.8	26.2
Disorderly Conduct/Disturb. the Peace	4,015	3,410	605	84.9	15.1
Vagrancy	9	9	0	100.0	0.0
All Other Offenses (Except Traffic)	14,962	13,180	1,782	88.1	11.9
Curfew and Loitering Law Violations	390	--	390	100.0	0.0
Runaways	417	--	417	100.0	0.0
Total Part II Offenses	61,759	52,300	9,459	84.7	15.3
Total	75,169	59,905	15,264	79.7	20.3

Table 23
Total Arrests by Age

Offense Classification	Under 10	10- 12	13- 14	15	16	17	Total Under 18
Murder, Manslaughter	0	0	1	2	1	1	5
Death by Negligence	0	0	0	0	1	0	1
Forcible Rape	0	5	12	9	6	5	37
Robbery	4	14	29	35	31	21	134
Felony Assault	2	9	23	21	37	36	128
Burglary	19	65	173	117	92	121	587
Larceny-Theft	176	856	1,384	794	757	610	4,577
Motor Vehicle Theft	2	9	79	67	64	43	264
Arson	6	20	22	4	10	10	72
Total Part I Offenses	209	978	1,723	1,049	999	847	5,805
Misdemeanor Assault	32	193	365	206	288	271	1,355
Forgery and Counterfeiting	0	5	16	14	23	36	94
Fraud - O.M.F.P.	0	4	12	15	30	45	106
Embezzlement	0	0	0	1	2	2	5
Possession of Stolen Property	1	39	170	121	135	130	596
Vandalism - Destruction of Prop.	85	190	270	192	207	176	1,120
Weapons-Carrying/Poss./Etc.	4	15	55	45	82	91	292
Prostitution and Commercial. Vice	0	0	0	0	0	1	1
Sex Offenses	5	19	57	22	24	6	133
Drug Abuse Violations	0	3	38	67	85	160	353
Gambling	0	0	0	0	2	0	2
Offenses Against Family/Children	0	0	2	2	6	5	15
Driving Under the Influence	0	0	2	11	56	120	189
Liquor Law Violations	0	6	136	274	607	981	2,004
Disorderly Conduct/Disturb. Peace	5	39	150	96	158	157	605
Vagrancy	0	0	0	0	0	0	0
All Other Offenses (Excpt. Traffic)	15	110	264	249	548	596	1,782
Curfew and Loitering	0	12	141	120	63	54	390
Runaways	0	23	130	94	112	58	417
Total Part II Offenses	147	658	1,808	1,529	2,428	2,889	9,459
Total	356	1,636	3,531	2,578	3,427	3,736	15,264

Table 23 - Continued

Offense Classification	18	19	20	21	22	23	24	25-29	30-34	35-39	40-44	45-49	50-54	55-59	60-64	Over 65	Total 18 & Over
Murder, Manslaughter	3	7	3	1	2	3	5	8	2	5	2	1	1	0	1	0	44
Death by Negligence	1	0	0	0	0	1	2	1	5	0	1	0	0	1	0	0	12
Forcible Rape	9	13	7	8	8	7	4	36	35	25	16	12	3	2	1	1	187
Robbery	30	26	10	9	8	9	14	52	30	21	16	2	1	3	0	0	231
Felony Assault	55	60	45	32	47	48	21	154	109	97	46	27	10	3	3	6	73
Burglary	110	107	69	66	42	55	22	110	93	59	24	10	4	4	1	3	779
Larceny-Theft	574	464	364	308	228	217	180	804	755	524	335	176	116	83	61	129	5318
Motor Vehicle Theft	46	23	17	12	8	9	4	44	28	9	10	4	1	1	2	0	218
Arson	5	6	4	2	5	4	2	8	9	4	2	1	1	0	0	0	53
Total Part I Offenses	833	706	519	438	348	353	254	1217	1066	744	452	233	137	97	69	139	7605
Misdemeanor Assault	299	280	279	297	346	254	298	1296	1135	751	449	191	110	45	23	24	6077
Forgery and Counterfeiting	43	53	30	32	31	34	15	70	59	35	30	9	1	0	0	0	442
Fraud - O.M.F.P.	69	115	146	134	108	115	97	418	341	254	137	92	53	26	8	8	2121
Embezzlement	3	3	2	2	4	2	4	9	12	5	6	2	0	2	0	0	56
Possession of Stolen Property	116	91	71	55	39	28	24	112	78	41	24	8	0	4	2	1	694
Vandalism - Destruction of Prop.	213	110	95	91	78	85	65	258	216	137	58	31	11	7	3	4	1462
Weapons-Carrying/Poss./Etc.	77	84	53	66	45	40	37	160	144	83	44	18	11	15	4	7	888
Prostitution and Commercial. Vice	8	6	10	11	10	11	14	74	75	39	29	11	7	3	2	5	315
Sex Offenses	14	25	25	20	30	20	12	112	110	74	74	35	31	21	8	25	636
Drug Abuse Violations	263	255	262	273	249	235	162	835	738	471	213	91	31	11	11	2	4102
Gambling	0	2	4	3	1	1	1	4	2	7	7	5	6	1	3	1	48
Offenses Against Family/Children	18	23	25	51	39	56	45	259	315	207	125	60	19	11	13	2	1268
Driving Under the Influence	237	328	335	588	567	588	496	2387	2254	1547	1091	669	356	209	153	155	11960
Liquor Law Violations	1492	1454	1076	230	161	117	86	274	281	172	139	59	42	24	12	13	5632
Disorderly Conduct/Disturb. Peace	183	212	187	212	186	164	147	638	576	404	237	103	83	37	26	15	3410
Vagrancy	0	0	1	0	0	0	0	4	2	1	0	0	1	0	0	0	9
All Other Offenses (Excpt. Traffic)	877	851	846	888	756	690	601	2386	2130	1410	824	429	231	114	62	85	13180
Curfew and Loitering																	
Runaways																	
Total Part II Offenses	3912	3892	3447	2953	2650	2440	2104	9296	8468	5638	3487	1813	993	530	330	347	52300
Total	4745	4598	3966	3391	2998	2793	2358	10513	9534	6382	3939	2046	1130	627	399	486	59905

Table 24
Juvenile and Adult Arrests, 1992 - 1993

Offense Classification	Juvenile			Adult		
	1992	1993	Percent Change	1992	1993	Percent Change
Murder, Manslaughter	6	5	-17	53	44	-17
Death by Negligence	0	1	--	15	12	-20
Forcible Rape	34	37	+ 9	195	187	- 4
Robbery	113	134	+19	202	231	+14
Felony Assault	124	128	+ 3	694	763	+10
Burglary	703	587	-17	837	779	- 7
Larceny-Theft	4,500	4,577	+ 1	5,521	5,318	- 4
Motor Vehicle Theft	286	264	- 8	294	218	-26
Arson	111	72	-35	54	53	- 2
Total Part I Offenses	5,877	5,805	- 1	7,865	7,605	- 3
Misdemeanor Assault	1,293	1,355	+ 5	5,780	6,077	+ 5
Forgery and Counterfeiting	79	94	+19	558	442	-21
Fraud - O.M.F.P.	84	106	+26	2,310	2,121	- 8
Embezzlement	4	5	+25	67	56	-16
Possession of Stolen Property	539	596	+11	807	694	-14
Vandalism - Destruction of Prop.	1,343	1,120	-17	1,573	1,462	- 7
Weapons-Carrying/Poss./Etc.	266	292	+10	998	888	-11
Prostitution and Commercial. Vice	4	1	-75	210	315	+50
Sex Offenses	131	133	+ 2	592	636	+ 7
Drug Abuse Violations	292	353	+21	4,341	4,102	- 6
Gambling	1	2	+100	54	48	-11
Offenses Against Family/Children	8	15	+88	1,131	1,268	+12
Driving Under the Influence	223	189	-15	14,386	11,960	-17
Liquor Law Violations	2,272	2,004	-12	6,479	5,632	-13
Disorderly Conduct/Disturb. Peace	584	605	+ 4	4,006	3,410	-15
Vagrancy	0	0	--	13	9	-31
All Other Offenses (Excpt. Traffic)	2,066	1,782	-14	14,990	13,180	-12
Curfew and Loitering	473	390	-18	--	--	--
Runaways	452	417	- 8	--	--	--
Total Part II Offenses	10,114	9,459	- 6	58,295	52,300	-10
Total	15,991	15,264	- 5	66,160	59,905	- 9

Table 25
Total Arrests by Sex

Offense Classification	Persons Arrested		Percent	
	Male	Female	Male	Female
Murder, Manslaughter	43	6	87.8	12.2
Death by Negligence	11	2	84.6	15.4
Forcible Rape	221	3	98.7	1.3
Robbery	342	23	93.7	6.3
Felony Assault	777	114	87.2	12.8
Burglary	1,263	103	92.5	7.5
Larceny-Theft	6,667	3,228	67.4	32.6
Motor Vehicle Theft	420	62	87.1	12.9
Arson	112	13	89.6	10.4
Total Part I Offenses	9,856	3,554	73.5	26.5
Misdemeanor Assault	5,997	1,435	80.7	19.3
Forgery and Counterfeiting	305	231	56.9	43.1
Fraud - O.M.F.P.	1,390	837	62.4	37.6
Embezzlement	30	31	49.2	50.8
Possession of Stolen Property	1,138	152	88.2	11.8
Vandalism - Destruction of Property	2,254	328	87.3	12.7
Weapons-Carrying/Possessing/Ect.	1,076	104	91.2	8.8
Prostitution and Commercialized Vice	160	156	50.6	49.4
Sex Offenses	736	33	95.7	4.3
Drug Abuse Violations	3,753	702	84.2	15.8
Gambling	47	3	94.0	6.0
Offenses Against Family and Children	695	588	54.2	45.8
Driving Under the Influence	10,142	2,007	83.5	16.5
Liquor Law Violations	5,648	1,988	74.0	26.0
Disorderly Conduct/Disturbing the Peace	3,284	731	81.8	18.2
Vagrancy	7	2	77.8	22.2
All Other Offenses (Except Traffic)	11,913	3,049	79.6	20.4
Curfew and Loitering Law Violations	289	101	74.1	25.9
Runaways	162	255	38.8	61.2
Total Part II Offenses	49,026	12,733	79.4	20.6
Total	58,882	16,287	78.3	21.7

Table 26
Total Arrests by Race

Offense Classification	Total Arrested	White	Black	American Indian or Alaskan Native	Asian or Pacific Islander
Murder, Manslaughter	49	31	18	0	0
Death by Negligence	13	10	2	1	0
Forcible Rape	224	164	54	5	1
Robbery	365	188	168	7	2
Felony Assault	891	569	263	47	12
Burglary	1,366	1,118	151	90	7
Larceny-Theft	9,895	7,288	2,179	335	93
Motor Vehicle Theft	482	337	119	26	0
Arson	125	98	25	2	0
Total Part I Offenses	13,410	9,803	2,979	513	115
Misdemeanor Assault	7,432	5,732	1,307	356	37
Forgery and Counterfeiting	536	392	103	37	4
Fraud - O.M.F.P.	2,227	1,865	305	47	10
Embezzlement	61	52	9	0	0
Possession of Stolen Property	1,290	718	530	36	6
Vandalism - Destruction of Property	2,582	2,160	333	81	8
Weapons-Carrying/Possessing/Ect.	1180	709	439	28	4
Prostitution and Commercialized Vice	316	188	119	7	2
Sex Offenses	769	687	67	15	0
Drug Abuse Violations	4,455	3,232	1,153	54	16
Gambling	50	23	27	0	0
Offenses Against Family and Children	1,283	1,012	206	62	3
Driving Under the Influence	12,149	11,049	761	310	29
Liquor Law Violations	7,636	6,983	386	246	21
Disorderly Conduct/Disturbing the Peace	4,015	3,001	763	243	8
Vagrancy	9	9	0	0	0
All Other Offenses (Except Traffic)	14,962	11,358	3,030	533	41
Curfew and Loitering Law Violations	390	375	8	4	3
Runaways	417	389	6	15	7
Total Part II Offenses	61,759	49,934	9,552	2,074	199
Total	75,169	59,737	12,531	2,587	314

Table 27
Total Arrests by Race Under Age 18

Offense Classification	Total Arrested	White	Black	American Indian or Alaskan Native	Asian or Pacific Islander
Murder, Manslaughter	5	4	1	0	0
Death by Negligence	1	1	0	0	0
Forcible Rape	37	26	11	0	0
Robbery	134	68	63	3	0
Felony Assault	128	80	39	8	1
Burglary	587	490	50	43	4
Larceny-Theft	4,577	3,492	889	143	53
Motor Vehicle Theft	264	174	75	15	0
Arson	72	60	11	1	0
Total Part I Offenses	5,805	4395	1,139	213	58
Misdemeanor Assault	1,355	1,050	248	50	7
Forgery and Counterfeiting	94	83	2	8	1
Fraud - O.M.F.P.	106	80	24	2	0
Embezzlement	5	4	1	0	0
Possession of Stolen Property	596	286	285	24	1
Vandalism - Destruction of Property	1,120	949	133	35	3
Weapons-Carrying/Possessing/Ect.	292	204	82	6	0
Prostitution and Commercialized Vice	1	1	0	0	0
Sex Offenses	133	110	19	4	0
Drug Abuse Violations	353	237	108	6	2
Gambling	2	0	2	0	0
Offenses Against Family and Children	15	12	2	1	0
Driving Under the Influence	189	174	9	5	1
Liquor Law Violations	2,004	1,905	45	49	5
Disorderly Conduct/Disturbing the Peace	605	441	138	25	1
Vagrancy	0	0	0	0	0
All Other Offenses (Except Traffic)	1,782	1,465	267	47	3
Curfew and Loitering Law Violations	390	375	8	4	3
Runaways	417	389	6	15	7
Total Part II Offenses	9,459	7,765	1,379	281	34
Total	15,264	12,160	2,518	494	92

Table 28
Total Arrests by Race, Age 18 and Over

Offense Classification	Total Arrested	White	Black	American Indian or Alaskan Native	Asian or Pacific Islander
Murder, Manslaughter	44	27	17	0	0
Death by Negligence	12	9	2	1	0
Forcible Rape	187	138	43	5	1
Robbery	231	120	105	4	2
Felony Assault	763	489	224	39	11
Burglary	779	628	101	47	3
Larceny-Theft	5,318	3,796	1,290	192	40
Motor Vehicle Theft	218	163	44	11	0
Arson	53	38	14	1	0
Total Part I Offenses	7,605	5,408	1,840	300	57
Misdemeanor Assault	6,077	4,682	1,059	306	30
Forgery and Counterfeiting	442	309	101	29	3
Fraud - O.M.F.P.	2121	1,785	281	45	10
Embezzlement	56	48	8	0	0
Possession of Stolen Property	694	432	245	12	5
Vandalism - Destruction of Property	1,462	1,211	200	46	5
Weapons-Carrying/Possessing/Ect.	888	505	357	22	4
Prostitution and Commercialized Vice	315	187	119	7	2
Sex Offenses	636	577	48	11	0
Drug Abuse Violations	4,102	2,995	1,045	48	14
Gambling	48	23	25	0	0
Offenses Against Family and Children	1,268	1,000	204	61	3
Driving Under the Influence	11,960	10,875	752	305	28
Liquor Law Violations	5,632	5,078	341	197	16
Disorderly Conduct/Disturbing the Peace	3,410	2,560	625	218	7
Vagrancy	9	9	0	0	0
All Other Offenses (Except Traffic)	13,180	9,893	2,763	486	38
Curfew and Loitering Law Violations					
Runaways					
Total Part II Offenses	52,300	42,169	8,173	1,793	165
Total	59,905	47,577	10,013	2,093	222

Table 29
Drug Abuse Arrests by Sex and Race

Offense Classification	Total	Sex		Race			
		Male	Female	White	Black	Indian	Asian
Sale/Manufacturing	915	759	156	634	262	13	6
Opium/Cocaine/Derivatives	361	290	71	160	195	1	5
Marijuana	446	388	58	402	32	11	1
Synthetic Narcotics	24	14	10	24	0	0	0
Non-Narcotic Drugs	84	67	17	48	35	1	0
Possession	3,540	2,994	546	2,598	891	41	10
Opium/Cocaine/Derivatives	358	279	79	186	168	3	1
Marijuana	2,884	2,467	417	2,135	708	35	6
Synthetic Narcotics	17	15	2	16	0	1	0
Non-Narcotic Drugs	281	233	48	261	15	2	3
Total	4,455	3,753	702	3,232	1,153	54	16

Table 30
Drug Abuse Arrests, 1992 - 1993

Offense Classification	1992	1993	Percent Change	1993 Percent Distribution
Sale/Manufacturing	1,100	915	-17	20.5
Opium/Cocaine/Derivatives	409	361	-12	39.5
Marijuana	505	446	-12	48.7
Synthetic Narcotics	91	24	-74	2.6
Non-Narcotic Drugs	95	84	-16	9.2
Possession	3,533	3,540	+0.2	79.5
Opium/Cocaine/Derivatives	374	358	- 4	10.1
Marijuana	2,921	2,884	- 1	81.5
Synthetic Narcotics	47	17	-64	0.5
Non-Narcotic Drugs	191	281	+47	7.9
Total	4,633	4,455	-4	100.0

OFFICERS KILLED / ASSAULTED

The killing or assaulting of a law enforcement officer is a serious problem faced by the law enforcement administrator and should be of the gravest concern to the public at large. Such acts directly affect the functioning of proper law enforcement operations and thus reduce the ability of our law enforcement agencies to combat crime and maintain law and order. The ambitious young person who today considers a career in law enforcement must also consider the risk of being killed or assaulted by a member of the society he is sworn to protect. The Omaha Police Department did not provide any information regarding assaults on law enforcement officers during 1993.

Officers Killed

In October, 1993, a law enforcement officer lost his life in the line of duty. An officer with the Hastings Police Department was shot and killed as he responded to a domestic violence call. A 35 year-old male shot and killed the 37 year-old officer with a shotgun.

Officers Assaulted

During 1993, there were 161 assaults on law enforcement officers. This represents a 24 percent decrease from 1992. While every assault does not result in personal injury to the officer involved, many of them do result in physical harm to the officer and loss of duty time. During 1993, personal injury was involved in 24 percent of the assaults. Most of the assaults occurred while responding to disturbance calls and most of these were inflicted with hands, fists, or feet.

Table 31
Officers Assaulted by Time, 1992 - 1993

Time	1992		1993	
	Number of Assaults	Percent Distribution	Number of Assaults	Percent Distribution
12:00 Midnight - 2:00 a.m.	48	22.7	28	17.4
2:00 a.m. - 4:00 a.m.	33	15.6	18	11.2
4:00 a.m. - 6:00 a.m.	6	2.8	10	6.2
6:00 a.m. - 8:00 a.m.	3	1.4	9	5.6
8:00 a.m. - 10:00 a.m.	1	0.5	8	5.0
10:00 a.m. - 12:00 noon	17	8.1	5	3.1
12:00 noon - 2:00 p.m.	3	1.4	3	1.9
2:00 p.m. - 4:00 p.m.	9	4.3	2	1.2
4:00 p.m. - 6:00 p.m.	16	7.6	9	5.6
6:00 p.m. - 8:00 p.m.	16	7.6	13	8.1
8:00 p.m. - 10:00 p.m.	26	12.3	23	14.3
10:00 p.m. - 12:00 midnight	33	15.6	33	20.5
Total	211	100.0	161	100.0

Table 32
Officers Assaulted - Type of Activity, 1992 -1993

Circumstances	Total Assaults 1992	Total Assaults 1993	Percent Change	Percent Distribution
Disturbance Calls	92	74	-20	46.0
Burglaries in Progress	3	0	-100	0.0
Robberies in Progress	0	0	--	0.0
Attempting Other Arrests	24	20	-17	12.4
Civil Disorder	1	1	--	0.6
Prisoners in Custody	56	36	-36	22.4
Suspicious Persons/Circum.	9	8	-11	5.0
Ambush	1	0	-100	0.0
Mentally Deranged	1	3	+200	1.9
Traffic Pursuits	18	16	-11	9.9
All Other	6	3	-50	1.9
Total	211	161	-24	100.0

Table 33
Officers Assaulted - Type of Weapon

Circumstances	Firearm	Knife, Cutting Instrument	Other Weapon	Hands, Fists, Feet, Etc.
Disturbance Calls	5	4	2	63
Burglaries in Progress	0	0	0	0
Robberies in Progress	0	0	0	0
Attempting Other Arrests	1	2	0	17
Civil Disorder	0	0	0	1
Prisoners in Custody	0	0	6	30
Suspicious Persons/Circum.	0	0	4	4
Ambush	0	0	0	0
Mentally Deranged	0	0	0	3
Traffic Pursuits	0	0	3	13
All Other	0	0	1	2
Total	6	6	16	133
Number with Personal Injury	2	1	8	28
Number without Personal Injury	4	5	8	105

Table 34
Officers Assaulted - Type of Assignment

Circumstances	Two-Man Vehicle	One-Man Vehicle		Detective/ Special Assignment		Other	
		Alone	Assisted	Alone	Assisted	Alone	Assisted
Disturbance Calls	5	5	57	1	3	1	2
Burglaries in Progress	0	0	0	0	0	0	0
Robberies in Progress	0	0	0	0	0	0	0
Attempting Other Arrests	1	5	12	0	0	0	2
Civil Disorder	0	0	0	0	0	1	0
Prisoners in Custody	3	5	12	0	0	3	13
Suspicious Persons/Circum.	0	3	4	0	0	0	1
Ambush	0	0	0	0	0	0	0
Mentally Deranged	0	0	3	0	0	0	0
Traffic Pursuits	0	6	9	0	0	0	1
All Other	0	0	1	0	0	1	1
	9	24	98	1	3	6	20

LAW ENFORCEMENT EMPLOYEE DATA

The Nebraska Uniform Crime Reporting Program surveys law enforcement agencies each year concerning employee data. As of October 31, 1993, there were 3,991 persons employed full-time in 162 law enforcement agencies.

Of the 3,991 employees, there were 2,894 sworn officers and 1,097 civilian employees. Based upon an estimated population of 1,607,000 there were 1.8 sworn officers per 1,000 population in the State. The rate of law enforcement officers per 1,000 population for any given agency is influenced by many factors. The determination of law enforcement strength for a certain area is based on such factors as population density, size and character of the community, geographic location and other conditions which exist in the area.

Females accounted for 8 percent of the sworn personnel and 74 percent of the civilian personnel.

Table 35
Law Enforcement Employee Data -
County Sheriffs' Departments

Agency	Total Full-Time Employees	Sworn Officers		Civilian		Sworn Officers Per 1,000 Population	Number of Assaults on Sworn Personnel
		Male	Female	Male	Female		
Adams	18	16	0	0	2	2.4	0
Antelope	10	5	1	1	3	1.0	0
Arthur	1	1	0	0	0	2.2	0
Banner	1	1	0	0	0	1.2	0
Blaine	1	1	0	0	0	1.5	0
Boone	8	4	0	0	4	0.8	0
Box Butte	14	4	0	5	5	1.2	0
Boyd	2	2	0	0	0	0.7	0
Brown	7	2	1	0	4	0.8	0
Buffalo	46	16	0	11	19	1.2	3
Burt	7	4	0	1	2	0.7	0
Butler	8	4	0	0	4	0.7	0
Cass	29	14	1	6	8	1.0	0
Cedar	8	4	0	2	2	0.4	0
Chase	6	2	0	0	4	0.9	0
Cherry	11	4	0	1	6	1.1	0
Cheyenne	11	4	0	6	1	1.1	0
Clay	9	3	1	0	5	0.6	1
Colfax	11	4	0	2	5	0.8	0
Cuming	9	4	0	0	5	0.6	1
Custer	7	6	0	0	1	0.7	0
Dakota	21	8	0	6	7	1.1	0
Dawes	7	3	0	1	3	0.9	1
Dawson	18	16	0	0	2	2.5	8
Deuel	7	4	0	0	3	1.8	0
Dixon	8	4	0	0	4	0.6	0
Dodge	19	16	0	0	3	1.5	2
Douglas	150	95	10	27	18	1.4	1
Dundy	8	4	0	1	3	1.6	0
Fillmore	8	4	0	0	4	0.8	0
Franklin	6	2	0	0	4	0.5	0
Frontier	9	5	0	1	3	1.6	0
Furnas	13	8	0	0	5	1.4	0
Gage	15	9	0	0	6	1.0	0
Garden	10	5	0	1	4	2.1	2
Garfield	1	1	0	0	0	0.5	0
Gosper	5	4	0	0	1	2.0	0
Grant	2	2	0	0	0	2.5	0
Greeley	2	1	0	0	1	0.3	0
Hall	29	24	0	0	5	2.5	0
Hamilton	12	5	1	1	5	1.2	0
Harlan	10	5	0	1	4	1.3	0
Hayes	2	2	0	0	0	1.7	0
Hitchcock	7	4	0	0	3	1.1	0
Holt	10	4	0	2	4	0.5	0
Hooker	1	1	0	0	0	1.4	0
Howard	4	3	0	0	1	0.5	0

Table 35 - Continued
County Sheriffs' Departments

Agency	Total Full-Time Employees	Sworn Officers		Civilian		Sworn Personnel Per 1,000 Population	Number of Assaults on Sworn Personnel
		Male	Female	Male	Female		
Jefferson	9	5	0	0	4	1.2	0
Johnson	8	2	0	1	5	0.7	0
Kearney	11	5	1	3	2	1.5	0
Keith	15	9	0	3	3	2.7	0
Keya Paha	1	1	0	0	0	1.0	0
Kimball	7	2	1	0	4	2.0	0
Knox	12	4	0	0	8	0.4	2
Lancaster	77	56	4	4	13	2.7	2
Lincoln	39	21	0	7	11	2.1	2
Logan	4	2	2	0	0	2.3	0
Loup	1	1	0	0	0	1.4	0
McPherson	1	1	0	0	0	1.9	0
Madison	25	16	0	1	8	1.8	0
Merrick	10	5	0	0	5	1.0	0
Morrill	8	3	0	1	4	0.6	1
Nance	11	7	0	0	4	1.6	0
Nemaha	8	4	0	0	4	0.9	0
Nuckolls	6	4	0	0	2	1.2	0
Otoe	18	9	0	2	7	1.5	0
Pawnee	4	3	0	0	1	0.9	0
Perkins	No Report						0
Phelps	10	4	0	1	5	1.0	0
Pierce	8	4	0	0	4	0.8	0
Platte	12	10	1	0	1	1.1	0
Polk	12	6	0	0	6	1.1	0
Red Willow	5	4	0	0	1	1.2	0
Richardson	8	3	0	0	5	0.6	0
Rock	8	3	0	0	5	1.5	0
Saline	15	9	0	0	6	1.4	0
Sarpy	128	79	14	7	28	1.7	2
Saunders	19	9	0	4	6	0.7	2
Scotts Bluff	18	14	0	0	4	1.1	0
Seward	22	9	0	6	7	1.1	0
Sheridan	5	4	0	0	1	0.8	0
Sherman	3	2	0	0	1	0.5	0
Sioux	2	2	0	0	0	1.3	0
Stanton	5	4	0	0	1	0.9	0
Thayer	10	7	0	0	3	1.1	0
Thomas	2	1	0	0	1	1.2	0
Thurston	11	3	0	1	7	0.4	0
Valley	6	2	0	0	4	0.8	0
Washington	22	10	0	2	9	1.0	0
Wayne	5	3	1	0	1	1.0	0
Webster	9	4	1	1	3	1.2	0
Wheeler	1	1	0	0	0	1.1	0
York	18	8	0	3	7	1.2	0

Table 36
Law Enforcement Employee Data -
Cities Over 5,000 Population

Agency	Total Full-Time Employees	Sworn Officers		Civilian		Sworn Personnel Per 1,000 Population	Number of Assaults on Sworn Personnel
		Male	Female	Male	Female		
Alliance	27	18	2	2	5	2.1	3
Beatrice	26	18	2	0	6	1.6	1
Bellevue	64	46	3	2	13	1.6	3
Blair	11	10	0	0	1	1.4	0
Chadron	18	12	0	1	5	2.2	1
Columbus	35	24	1	2	8	1.3	0
Fremont	37	26	3	0	8	1.2	5
Gering	17	13	1	0	3	1.8	2
Grand Island	64	56	1	0	7	1.4	22
Hastings	54	34	3	1	16	1.6	0
Holdrege	13	8	1	3	1	1.6	1
Kearney	45	34	3	3	5	1.5	0
LaVista	22	17	2	1	2	1.8	0
Lexington	15	11	2	0	2	1.6	3
Lincoln	340	224	32	24	60	1.3	63
McCook	17	14	0	1	2	1.8	1
Nebraska City	12	11	0	0	1	1.7	1
Norfolk	49	31	4	1	13	1.6	0
North Platte	53	34	0	5	14	1.5	2
Ogallala	12	9	1	1	1	2.0	0
Omaha	782	541	86	43	112	1.8	0
Papillion	19	16	2	0	1	1.7	0
Plattsmouth	9	7	1	0	1	1.1	2
Ralston	12	11	0	0	1	1.7	0
Scottsbluff	32	27	1	0	4	2.0	1
Seward	12	7	1	1	3	1.4	3
Sidney	13	10	0	0	3	1.7	2
So. Sioux	18	16	1	0	1	1.7	0
Wayne	11	7	0	1	3	1.3	0
York	16	12	0	1	3	1.5	0

Table 37
Law Enforcement Employee Data -
Cities Under 5,000 Population and State Agencies

Agency	Total Full-Time Employees	Sworn Officers		Civilian		Sworn Personnel Per 1,000 Population	Number of Assaults on Sworn Personnel
		Male	Female	Male	Female		
Albion	3	3	0	0	0	1.6	0
Ashland	5	4	0	0	1	1.8	2
Auburn	5	5	0	0	0	1.5	0
Aurora	8	7	0	0	1	1.8	0
Broken Bow	9	8	0	0	1	2.1	0
Central City	6	5	0	0	1	1.7	0
Cozad	10	6	0	1	3	1.5	1
Crete	14	8	1	0	5	1.8	0
David City	6	5	0	0	1	2.0	0
Elkhorn	5	5	0	0	0	3.5	0
Fairbury	7	6	0	0	1	1.4	0
Falls City	13	9	0	1	3	1.9	0
Geneva	3	3	0	0	0	1.3	0
Gordon	7	5	0	0	2	2.8	8
Gothenburg	10	5	1	0	4	1.8	0
Imperial	4	4	0	0	0	2.0	0
Kimball	6	5	0	0	1	2.0	0
Madison	No Report						0
Milford	5	5	0	0	0	2.7	0
Minden	5	4	0	0	1	1.5	0
Mitchell	5	5	0	0	0	2.7	0
Neligh	3	3	0	0	0	1.7	0
O'Neill	12	7	0	0	5	1.8	1
Ord	8	4	0	0	4	1.6	0
Pierce	3	3	0	0	0	1.9	0
Plainview	4	2	0	1	1	1.5	0
Schuyler	6	6	0	0	0	1.4	1
Stanton	2	2	0	0	0	1.3	0
Superior	5	5	0	0	0	2.1	0
Syracuse	3	3	0	0	0	1.8	0
Tecumseh	4	3	0	0	1	1.8	0
Tekamah	4	4	0	0	0	2.2	1
Valentine	4	4	0	0	0	1.4	0
Valley	4	4	0	0	0	2.3	1
Wahoo	6	6	0	0	0	1.6	0
West Point	6	6	0	0	0	2.0	0
Wilber	4	4	0	0	0	2.7	0
Wymore	3	3	0	0	0	1.9	0
State Agencies							
State Patrol	625	462	20	54	89	--	3
UNL	42	19	4	11	8	--	1
UNK	6	4	1	0	1	--	0

OFFENSE DATA BY COUNTY

Estimates are provided for those agencies who reported more than 3 months but less than 12 months. The State Fire Marshal is the primary source for Arson data.

	Number of Months Reported	Population	Crime Rate Per 1,000 Population	Total Crime Index	Index Offenses Cleared	Murder, Manslaughter	Forcible Rape	Robbery	Felony Assault	Burglary	Larceny-Theft	Motor Vehicle Theft	Arson
Adams County		29,590	30.8	910	197	1	4	3	19	180	671	30	2
Sheriff's Office	11	6,765	21.9	148	19	0	0	0	2	37	99	8	2
Hastings P.D.	12	22,825	33.3	760	176	1	4	3	15	143	572	22	0
State Patrol	12	--	--	2	2	0	0	0	2	0	0	0	0
Antelope County		7,803	11.7	91	1	0	0	0	0	17	73	1	0
Sheriff's Office	12	6,087	10.8	66	1	0	0	0	0	15	50	1	0
Neligh P.D.	12	1,716	14.0	24	0	0	0	0	0	1	23	0	0
State Patrol	12	--	--	1	0	0	0	0	0	1	0	0	0
Arthur County		458	0.0	0	0	0	0	0	0	0	0	0	0
Sheriff's Office	12	458	0.0	0	0	0	0	0	0	0	0	0	0
State Patrol	12	--	--	0	0	0	0	0	0	0	0	0	0
Banner County		855	5.8	5	1	0	0	0	0	2	3	0	0
Sheriff's Office	12	855	3.5	3	1	0	0	0	0	1	2	0	0
State Patrol	12	--	--	2	0	0	0	0	0	1	1	0	0
Blaine County		669	0.0	0	0	0	0	0	0	0	0	0	0
Sheriff's Office	12	669	0.0	0	0	0	0	0	0	0	0	0	0
State Patrol	12	--	--	0	0	0	0	0	0	0	0	0	0
Boone County		6,570	6.8	45	4	0	0	1	0	20	23	0	1
Sheriff's Office	12	4,726	7.6	36	4	0	0	1	0	14	20	0	1
Albion P.D.	7	1,844	2.7	5	0	0	0	0	0	2	3	0	0
State Patrol	12	--	--	4	0	0	0	0	0	4	0	0	0
Box Butte County		13,001	32.7	425	204	0	3	2	29	53	317	20	1
Sheriff's Office	12	3,430	5.8	20	6	0	0	0	3	7	10	0	0
Alliance P.D.	12	9,571	42.1	403	198	0	3	2	24	46	307	20	1
State Patrol	12	--	--	2	0	0	0	0	2	0	0	0	0
Boyd County		2,709	15.1	41	14	0	0	0	2	21	12	6	0
Sheriff's Office	12	2,709	15.1	41	14	0	0	0	2	21	12	6	0
State Patrol	12	--	--	0	0	0	0	0	0	0	0	0	0
Brown County		3,634	18.2	66	13	0	1	0	3	20	38	4	0
Sheriff's Office	12	3,634	17.9	65	13	0	1	0	3	20	37	4	0
State Patrol	12	--	--	1	0	0	0	0	0	0	1	0	0
Buffalo County		38,290	41.4	1,586	291	0	4	2	29	257	1,229	48	17
Sheriff's Office	12	13,308	18.5	246	53	0	2	1	13	42	173	12	3
Kearney P.D.	12	24,982	48.6	1,215	236	0	2	1	15	202	947	34	14
UNK - Campus Security	12	--	--	122	1	0	0	0	0	13	107	2	0
State Patrol	12	--	--	3	1	0	0	0	1	0	2	0	0

AGENCY	Number of Months Reported	Population	Crime Rate Per 1,000 Population	Total Crime Index	Index Offenses Cleared	Murder, Manslaughter	Forcible Rape	Robbery	Felony Assault	Burglary	Larceny-Theft	Motor Vehicle Theft	Arson
Burt County		7,825	14.8	116	18	0	0	1	2	22	86	5	0
Sheriff's Office	11	6,028	13.6	82	7	0	0	0	0	15	64	3	0
Tekamah P.D.	11	1,797	18.4	33	10	0	0	0	2	7	22	2	0
State Patrol	12	--	--	1	1	0	0	1	0	0	0	0	0
Butler County		8,659	14.8	128	16	0	0	1	6	25	92	4	0
Sheriff's Office	12	6,112	10.8	66	3	0	0	0	2	18	46	0	0
David City P.D.	12	2,547	24.3	62	13	0	0	1	4	7	46	4	0
State Patrol	12	--	--	0	0	0	0	0	0	0	0	0	0
Cass County		22,158	26.2	580	61	0	1	1	10	110	428	26	4
Sheriff's Office	12	15,157	21.2	322	9	0	0	0	6	90	216	6	4
Plattsmouth P.D.	12	7,001	34.4	241	52	0	1	1	3	18	200	18	0
State Patrol	12	--	--	17	0	0	0	0	1	2	12	2	0
Cedar County		10,109	6.2	63	10	1	0	0	5	8	45	4	0
Sheriff's Office	12	10,109	6.0	61	10	1	0	0	5	6	45	4	0
State Patrol	12	--	--	2	0	0	0	0	0	2	0	0	0
Chase County		4,280	12.9	55	14	0	0	0	2	16	33	3	1
Sheriff's Office	12	2,289	8.7	20	2	0	0	0	0	8	11	1	0
Imperial P.D.	12	1,991	17.1	34	12	0	0	0	2	8	21	2	1
State Patrol	12	--	--	1	0	0	0	0	0	0	1	0	0
Cherry County		6,359	11.6	74	19	1	0	1	14	11	43	4	0
Sheriff's Office	12	3,525	8.2	29	5	1	0	0	4	10	14	0	0
Valentine P.D.	12	2,834	15.5	44	13	0	0	1	9	1	29	4	0
State Patrol	12	--	--	1	1	0	0	0	1	0	0	0	0
Cheyenne County		9,552	29.8	285	82	0	1	2	13	50	209	9	1
Sheriff's Office	12	3,569	25.2	90	23	0	0	1	0	25	57	6	1
Sidney P.D.	12	5,983	32.4	194	59	0	1	1	13	25	151	3	0
State Patrol	12	--	--	1	0	0	0	0	0	0	1	0	0
Clay County		7,181	12.8	92	25	0	3	0	4	28	52	5	0
Sheriff's Office	12	7,181	12.8	92	25	0	3	0	4	28	52	5	0
State Patrol	12	--	--	0	0	0	0	0	0	0	0	0	0
Colfax County		9,403	24.6	231	70	0	3	0	12	43	164	9	0
Sheriff's Office	12	5,106	17.2	88	27	0	1	0	4	23	54	6	0
Schuyler P.D.	12	4,297	33.0	142	43	0	2	0	8	20	109	3	0
State Patrol	12	--	--	1	0	0	0	0	0	0	1	0	0

AGENCY	Number of Months Reported	Population	Crime Rate Per 1,000 Population	Total Crime Index	Index Offenses Cleared	Murder, Manslaughter	Forcible Rape	Robbery	Felony Assault	Burglary	Larceny-Theft	Motor Vehicle Theft	Arson
Cuming County		9,971	8.1	81	8	0	0	0	4	25	49	3	0
Sheriff's Office	12	6,839	6.3	43	6	0	0	0	2	20	19	2	0
West Point P.D.	12	3,132	12.1	38	2	0	0	0	2	5	30	1	0
State Patrol	12	--	--	0	0	0	0	0	0	0	0	0	0
Custer County		12,324	14.3	176	53	0	1	1	0	22	141	10	1
Sheriff's Office	12	8,464	6.0	51	4	0	0	0	0	13	31	6	1
Broken Bow P.D.	12	3,860	32.4	125	49	0	1	1	0	9	110	4	0
State Patrol	12	--	--	0	0	0	0	0	0	0	0	0	0
Dakota County		17,221	30.3	521	115	0	2	5	12	68	401	30	3
Sheriff's Office	12	7,298	12.9	94	6	0	0	0	3	18	63	9	1
So. Sioux City P.D.	12	9,923	43.0	427	109	0	2	5	9	50	338	21	2
State Patrol	12	--	--	0	0	0	0	0	0	0	0	0	0
Dawes County		8,799	35.8	315	94	0	2	0	4	30	257	22	0
Sheriff's Office	12	3,291	8.8	29	7	0	1	0	3	4	20	1	0
Chadron P.D.	12	5,508	51.4	283	86	0	1	0	1	23	237	21	0
State Patrol	12	--	--	3	1	0	0	0	0	3	0	0	0
Dawson County		21,704	42.6	925	242	0	11	2	46	139	695	28	4
Sheriff's Office	12	6,403	26.4	169	33	0	3	0	8	24	124	9	1
Cozad P.D.	12	3,949	35.2	139	35	0	0	0	7	35	93	3	1
Gothenburg P.D.	12	3,337	37.8	126	8	0	0	0	3	18	103	1	1
Lexington P.D.	12	8,015	60.5	485	164	0	8	2	28	61	370	15	1
State Patrol	12	--	--	6	2	0	0	0	0	1	5	0	0
Deuel County		2,184	2.7	6	5	1	0	0	0	2	3	0	0
Sheriff's Office	12	2,184	2.7	6	5	1	0	0	0	2	3	0	0
State Patrol	12	--	--	0	0	0	0	0	0	0	0	0	0
Dixon County		6,173	11.0	68	21	0	0	0	3	24	36	4	1
Sheriff's Office	12	6,173	11.0	68	21	0	0	0	3	24	36	4	1
State Patrol	12	--	--	0	0	0	0	0	0	0	0	0	0
Dodge County		34,612	34.1	1,179	133	0	1	6	16	216	900	36	4
Sheriff's Office	12	10,918	15.4	168	8	0	1	0	1	41	125	0	0
Fremont P.D.	12	23,694	42.6	1,010	125	0	0	6	15	175	774	36	4
State Patrol	12	--	--	1	0	0	0	0	0	0	1	0	0

AGENCY	Number of Months Reported	Population	Crime Rate Per 1,000 Population	Total Crime Index	Index Offenses Cleared	Murder, Manslaughter	Forcible Rape	Robbery	Felony Assault	Burglary	Larceny-Theft	Motor Vehicle Theft	Arson
Douglas County		87,042	19.8	1,725	360	1	13	12	70	286	1,230	104	9
Sheriff's Office	12	77,561	19.0	1,472	317	1	12	11	59	247	1,050	87	5
Omaha P.D.	0												
Elkhorn P.D.	12	1,425	16.8	24	6	0	0	0	0	2	20	2	0
Ralston P.D.	12	6,300	26.7	168	22	0	0	1	6	31	118	8	4
Valley P.D.	12	1,756	29.6	52	13	0	0	0	4	6	36	6	0
State Patrol	12	--	--	9	2	0	1	0	1	0	6	1	0
Dundy County		2,458	16.3	40	6	0	0	0	0	8	31	1	0
Sheriff's Office	12	2,458	16.3	40	6	0	0	0	0	8	31	1	0
State Patrol	12	--	--	0	0	0	0	0	0	0	0	0	0
Fillmore County		7,003	8.7	61	10	1	1	0	1	21	35	2	0
Sheriff's Office	12	4,723	9.7	46	6	0	0	0	0	18	26	2	0
Geneva P.D.	12	2,280	6.1	14	4	1	0	0	1	3	9	0	0
State Patrol	12	--	--	1	0	0	1	0	0	0	0	0	0
Franklin County		3,886	8.7	34	5	0	0	0	1	7	23	2	1
Sheriff's Office	12	3,886	8.7	34	5	0	0	0	1	7	23	2	1
State Patrol	12	--	--	0	0	0	0	0	0	0	0	0	0
Frontier County		3,113	29.2	91	18	0	0	0	0	25	64	2	0
Sheriff's Office	11	3,113	29.2	91	18	0	0	0	0	25	64	2	0
State Patrol	12	--	--	0	0	0	0	0	0	0	0	0	
Furnas County		5,617	15.7	88	25	0	0	0	11	20	54	3	0
Sheriff's Office	12	5,617	15.7	88	25	0	0	0	11	20	54	3	0
State Patrol	12	--	--	0	0	0	0	0	0	0	0	0	0
Gage County		22,686	30.4	690	120	0	8	4	5	100	547	24	2
Sheriff's Office	12	8,727	13.8	120	11	0	0	1	0	37	81	1	0
Beatrice P.D.	12	12,345	43.1	532	107	0	5	3	4	54	442	22	2
Wymore P.D.	12	1,614	20.4	33	1	0	0	0	0	9	23	1	0
State Patrol	12	--	--	5	1	0	3	0	1	0	1	0	0
Garden County		2,333	16.9	44	12	0	2	0	2	9	31	0	0
Sheriff's Office	12	2,333	18.9	44	12	0	2	0	2	9	31	0	0
State Patrol	12	--	--	0	0	0	0	0	0	0	0	0	0
Garfield County		2,097	3.8	8	0	0	0	0	0	0	8	0	0
Sheriff's Office	9	2,097	3.8	8	0	0	0	0	0	0	8	0	0
State Patrol	12	--	--	0	0	0	0	0	0	0	0	0	0
Gosper County		2,020	14.4	29	5	1	0	0	0	7	21	0	0
Sheriff's Office	12	2,020	14.4	29	5	1	0	0	0	7	21	0	0
State Patrol	12	--	--	0	0	0	0	0	0	0	0	0	0

AGENCY	Number of Months Reported	Population	Crime Rate Per 1,000 Population	Total Crime Index	Index Offenses Cleared	Murder, Manslaughter	Forcible Rape	Robbery	Felony Assault	Burglary	Larceny-Theft	Motor Vehicle Theft	Arson
Grant County		785	5.1	4	0	0	0	0	0	4	0	0	0
Sheriff's Office	12	785	0.0	0	0	0	0	0	0	0	0	0	0
State Patrol	12	--	--	4	0	0	0	0	0	4	0	0	0
Greeley County		2,949	2.7	8	0	0	1	0	0	4	3	0	0
Sheriff's Office	12	2,949	0.0	0	0	0	0	0	0	0	0	0	0
State Patrol	12	--	--	8	0	0	1	0	0	4	3	0	0
Hall County		49,874	61.1	3,046	1,017	0	15	23	79	484	2,342	101	2
Sheriff's Office	12	9,688	32.7	317	25	0	1	1	4	74	224	11	2
Grand Island P.D.	12	40,186	67.4	2,708	989	0	14	21	75	409	2,100	89	0
State Patrol	12	--	--	21	3	0	0	1	0	1	18	1	0
Hamilton County		9,007	16.4	148	38	2	0	0	1	41	99	5	0
Sheriff's Office	12	5,175	16.6	86	15	2	0	0	1	36	42	5	0
Aurora P.D.	12	3,832	15.9	61	23	0	0	0	0	5	56	0	0
State Patrol	12	--	--	1	0	0	0	0	0	0	1	0	0
Harlan County		3,715	22.9	85	15	0	0	0	0	8	76	1	0
Sheriff's Office	12	3,715	22.9	85	15	0	0	0	0	8	76	1	0
State Patrol	12	--	--	0	0	0	0	0	0	0	0	0	0
Hayes County		1,187	3.4	4	1	0	1	0	1	1	1	0	0
Sheriff's Office	12	1,187	3.4	4	1	0	1	0	1	1	1	0	0
State Patrol	12	--	--	0	0	0	0	0	0	0	0	0	0
Hitchcock County		3,563	12.9	46	14	0	0	0	0	9	37	0	0
Sheriff's Office	12	3,563	12.6	45	14	0	0	0	0	9	36	0	0
State Patrol	12	--	--	1	0	0	0	0	0	0	1	0	0
Holt County		12,502	10.5	131	24	0	3	0	2	26	96	4	0
Sheriff's Office	12	8,674	4.8	42	4	0	2	0	0	12	27	1	0
O'Neill P.D.	12	3,828	23.2	89	20	0	1	0	2	14	69	3	0
State Patrol	12	--	--	0	0	0	0	0	0	0	0	0	0
Hooker County		730	0.0	0	0	0	0	0	0	0	0	0	0
Sheriff's Office	12	730	0.0	0	0	0	0	0	0	0	0	0	0
State Patrol	12	--	--	0	0	0	0	0	0	0	0	0	0
Howard County		6,229	19.4	121	20	0	0	0	0	23	89	9	0
Sheriff's Office	12	6,229	19.4	121	20	0	0	0	0	23	89	9	0
State Patrol	12	--	--	0	0	0	0	0	0	0	0	0	0

AGENCY	Number of Months Reported	Population	Crime Rate Per 1,000 Population	Total Crime Index	Index Offenses Cleared	Murder, Manslaughter	Forcible Rape	Robbery	Felony Assault	Burglary	Larceny-Theft	Motor Vehicle Theft	Arson
Jefferson County		8,558	20.2	173	29	1	1	0	4	21	139	7	0
Sheriff's Office	12	4,305	16.7	72	7	0	0	0	2	14	52	4	0
Fairbury P.D.	12	4,253	23.7	101	22	1	1	0	2	7	87	3	0
State Patrol	12	--	--	0	0	0	0	0	0	0	0	0	0
Johnson County		4,630	10.6	49	8	0	0	0	0	18	29	2	0
Sheriff's Office	12	2,967	12.1	36	7	0	0	0	0	15	19	2	0
Tecumseh P.D.	12	1,663	5.4	9	0	0	0	0	0	0	9	0	0
State Patrol	12	--	--	4	1	0	0	0	0	3	1	0	0
Kearney County		6,556	20.0	131	42	0	1	0	5	28	92	4	1
Sheriff's Office	12	3,881	14.2	55	7	0	0	0	0	12	41	2	0
Minden P.D.	12	2,675	28.0	75	35	0	1	0	4	16	51	2	1
State Patrol	12	--	--	1	0	0	0	0	1	0	0	0	0
Keith County		8,401	33.0	277	62	0	4	0	4	49	215	5	0
Sheriff's Office	12	3,383	20.1	68	11	0	1	0	1	11	53	2	0
Ogallala P.D.	12	5,018	40.5	203	49	0	3	0	3	38	156	3	0
State Patrol	12	--	--	6	2	0	0	0	0	0	6	0	0
Keya Paha County		958	1.0	1	1	0	0	0	0	0	1	0	0
Sheriff's Office	12	958	1.0	1	1	0	0	0	0	0	1	0	0
State Patrol	12	--	--	0	0	0	0	0	0	0	0	0	0
Kimball County		4,031	38.9	157	44	0	0	0	3	52	96	6	0
Sheriff's Office	11	1,480	11.5	17	5	0	0	0	1	11	4	1	0
Kimball P.D.	12	2,551	54.5	139	39	0	0	0	2	40	92	5	0
State Patrol	12	--	--	1	0	0	0	0	0	1	0	0	0
Knox County		9,356	4.7	44	12	0	0	0	4	16	24	0	0
Sheriff's Office	12	9,356	4.7	44	12	0	0	0	4	16	24	0	0
State Patrol	12	--	--	0	0	0	0	0	0	0	0	0	0
Lancaster County		220,404	69.1	15,236	3,913	7	89	133	929	2,170	11,349	476	83
Sheriff's Office	12	22,176	26.4	586	144	3	4	3	9	124	403	33	7
Lincoln P.D.	12	198,228	68.8	13,637	3,658	4	83	127	911	1,984	10,023	429	76
UNL - Campus Police	12	--	--	985	106	0	2	3	1	60	909	10	0
State Patrol	12	--	--	28	5	0	0	0	8	2	14	4	0
Lincoln County		33,227	53.0	1,762	370	0	10	5	66	290	1,341	42	8
Sheriff's Office	12	9,878	23.2	229	37	0	2	0	11	68	142	6	0
North Platte P.D.	12	23,349	65.6	1,532	333	0	8	5	55	222	1,198	36	8
State Patrol	12	--	--	1	0	0	0	0	0	0	1	0	0

AGENCY	Number of Months Reported	Population	Crime Rate Per 1,000 Population	Total Crime Index	Index Offenses Cleared	Murder, Manslaughter	Forcible Rape	Robbery	Felony Assault	Burglary	Larceny-Theft	Motor Vehicle Theft	Arson
Logan County		858	1.2	1	0	0	0	0	0	0	0	0	1
Sheriff's Office	12	858	1.2	1	0	0	0	0	0	0	0	0	1
State Patrol	12	--	--	0	0	0	0	0	0	0	0	0	0
Loup County		700	0.0	0	0	0	0	0	0	0	0	0	0
Sheriff's Office	12	700	0.0	0	0	0	0	0	0	0	0	0	0
State Patrol	12	--	--	0	0	0	0	0	0	0	0	0	0
McPherson County		529	3.8	2	0	0	0	0	0	2	0	0	0
Sheriff's Office	12	529	3.8	2	0	0	0	0	0	2	0	0	0
State Patrol	12	--	--	0	0	0	0	0	0	0	0	0	0
Madison County		33,154	3.3	110	26	0	2	0	11	25	65	5	2
Sheriff's Office	12	9,062	8.8	80	18	0	2	0	6	14	53	3	2
Norfolk P.D.	1	21,873	Information Incomplete										
Madison P.D.	12	2,219	5.4	12	6	0	0	0	4	5	3	0	0
State Patrol	12	--	--	18	2	0	0	0	1	6	9	2	0
Merrick County		8,080	19.1	154	27	0	1	0	1	24	118	10	0
Sheriff's Office	12	5,143	15.6	80	4	0	0	0	0	14	59	7	0
Central City P.D.	12	2,937	25.2	74	23	0	1	0	1	10	59	3	0
State Patrol	12	--	--	0	0	0	0	0	0	0	0	0	0
Morrill County		5,320	25.6	136	12	0	0	0	2	20	111	2	1
Sheriff's Office	12	5,320	24.8	132	11	0	0	0	2	19	109	1	1
State Patrol	12	--	--	4	1	0	0	0	0	1	2	1	0
Nance County		4,251	7.5	32	3	0	0	0	1	3	26	1	1
Sheriff's Office	12	4,251	7.5	32	3	0	0	0	1	3	26	1	1
State Patrol	12	--	--	0	0	0	0	0	0	0	0	0	0
Nemaha County		7,931	10.5	83	27	0	2	0	6	13	56	5	1
Sheriff's Office	12	4,555	11.4	52	15	0	1	0	2	9	35	4	1
Auburn P.D.	12	3,376	9.2	31	12	0	1	0	4	4	21	1	0
State Patrol	12	--	--	0	0	0	0	0	0	0	0	0	0
Nuckolls County		5,601	2.5	14	5	0	0	0	0	4	9	1	0
Sheriff's Office	12	3,247	3.1	10	2	0	0	0	0	3	7	0	0
Superior P.D.	12	2,354	1.7	4	3	0	0	0	0	1	2	1	0
State Patrol	12	--	--	0	0	0	0	0	0	0	0	0	0

AGENCY	Number of Months Reported	Population	Crime Rate Per 1,000 Population	Total Crime Index	Index Offenses Cleared	Murder, Manslaughter	Forcible Rape	Robbery	Felony Assault	Burglary	Larceny-Theft	Motor Vehicle Theft	Arson
Otoe County		14,348	26.1	375	68	0	4	1	10	80	251	26	3
Sheriff's Office	12	6,088	13.3	81	15	0	2	0	2	24	47	5	1
Nebraska City P.D.	12	6,615	39.0	258	42	0	0	1	8	53	174	21	1
Syracuse P.D.	12	1,645	20.1	33	11	0	0	0	0	2	30	0	1
State Patrol	12	--	--	3	0	0	2	0	0	1	0	0	0
Pawnee County		3,198	6.9	22	3	0	0	0	2	5	14	0	1
Sheriff's Office	12	3,198	6.9	22	3	0	0	0	2	5	14	0	1
State Patrol	12	--	--	0	0	0	0	0	0	0	0	0	0
Perkins County		3,192	8.8	28	1	0	0	0	0	8	19	1	0
Sheriff's Office	12	3,192	8.8	28	1	0	0	0	0	8	19	1	0
State Patrol	12	--	--	0	0	0	0	0	0	0	0	0	0
Phelps County		9,802	21.6	212	55	0	0	1	1	19	179	12	0
Sheriff's Office	12	4,078	8.6	35	1	0	0	0	0	0	35	0	0
Holdrege P.D.	12	5,724	30.7	176	54	0	0	1	0	19	144	12	0
State Patrol	12	--	--	1	0	0	0	0	1	0	0	0	0
Pierce County		7,810	11.7	91	18	1	0	0	4	18	60	2	6
Sheriff's Office	12	4,938	6.7	33	7	0	0	0	3	2	23	2	3
Pierce P.D.	12	1,541	18.8	29	5	1	0	0	0	11	15	0	2
Plainview P.D.	12	1,331	18.0	24	5	0	0	0	1	1	21	0	1
State Patrol	12	--	--	5	1	0	0	0	0	4	1	0	0
Platte County		30,228	28.8	870	149	1	3	3	27	113	695	22	6
Sheriff's Office	12	10,336	17.8	184	19	0	1	0	1	41	127	9	5
Columbus P.D.	12	19,892	34.4	685	130	1	2	3	25	72	568	13	1
State Patrol	12	--	--	1	0	0	0	0	1	0	0	0	0
Polk County		5,499	11.8	65	7	0	1	0	2	13	49	0	0
Sheriff's Office	12	5,499	11.8	65	7	0	1	0	2	13	49	0	0
State Patrol	12	--	--	0	0	0	0	0	0	0	0	0	0
Red Willow County		11,400	16.9	193	55	0	0	1	4	21	157	10	0
Sheriff's Office	12	3,435	12.5	43	5	0	0	0	1	9	31	2	0
McCook P.D.	12	7,965	18.7	149	49	0	0	1	3	12	126	7	0
State Patrol	12	--	--	1	1	0	0	0	0	0	0	1	0

AGENCY	Number of Months Reported	Population	Crime Rate Per 1,000 Population	Total Crime Index	Index Offenses Cleared	Murder, Manslaughter	Forcible Rape	Robbery	Felony Assault	Burglary	Larceny-Theft	Motor Vehicle Theft	Arson
Richardson County		9,802	13.8	135	24	3	1	0	0	38	86	7	0
Sheriff's Office	12	5,093	9.2	47	8	3	1	0	0	12	28	3	0
Falls City P.D.	12	4,709	18.5	87	16	0	0	0	0	25	58	4	0
State Patrol	12	--	--	1	0	0	0	0	0	1	0	0	0
Rock County		1,986	8.6	17	2	0	0	0	0	6	11	0	0
Sheriff's Office	12	1,986	8.6	17	2	0	0	0	0	6	11	0	0
State Patrol	12	--	--	0	0	0	0	0	0	0	0	0	0
Saline County		12,699	21.8	277	58	1	1	1	5	38	223	6	2
Sheriff's Office	12	6,258	16.0	100	28	0	0	0	4	22	69	3	2
Wilber P.D.	12	1,489	10.1	15	8	0	0	0	1	1	13	0	0
Crete P.D.	12	4,952	32.7	162	22	1	1	1	0	15	141	3	0
State Patrol	12	--	--	0	0	0	0	0	0	0	0	0	0
Sarpy County		107,614	27.2	2,928	724	2	5	26	48	419	2,280	143	5
Sheriff's Office	12	55,143	15.4	850	89	2	4	8	28	142	624	41	1
Bellevue P.D.	12	31,110	47.0	1,463	441	0	0	12	11	221	1,153	64	2
Papillion P.D.	12	10,880	19.2	209	47	0	0	2	4	22	169	10	2
LaVista P.D.	12	10,481	38.2	400	146	0	1	4	4	33	331	27	0
State Patrol	12	--	--	6	1	0	0	0	1	1	3	1	0
Saunders County		18,551	14.7	272	47	0	2	0	3	68	181	14	4
Sheriff's Office	12	12,606	14.2	179	16	0	0	0	2	54	113	7	3
Wahoo P.D.	12	3,768	13.3	50	19	0	1	0	1	7	38	3	0
Ashland P.D.	12	2,177	18.8	41	12	0	1	0	0	6	29	4	1
State Patrol	12	--	--	2	0	0	0	0	0	1	1	0	0
Scotts Bluff County		36,703	41.3	1,516	332	0	13	7	46	172	1,236	37	5
Sheriff's Office	12	12,752	16.2	207	39	0	2	3	7	41	147	6	1
* Scottsbluff P.D.	12	14,103	68.7	969	213	0	8	3	28	90	813	23	4
Gering P.D.	12	7,971	35.5	283	66	0	3	1	5	35	235	4	0
Mitchell P.D.	12	1,877	26.1	49	13	0	0	0	5	6	36	2	0
State Patrol	12	--	--	8	1	0	0	0	1	0	5	2	0
Seward County		15,645	20.0	313	58	0	3	2	8	59	231	8	2
Sheriff's Office	12	8,059	15.1	122	2	0	1	0	4	47	68	2	0
Seward P.D.	12	5,703	25.6	146	49	0	1	0	3	6	130	5	1
Milford P.D.	12	1,883	19.1	36	7	0	1	0	1	3	30	0	1
State Patrol	12	--	--	9	0	0	0	2	0	3	3	1	0

* Includes Terrytown

AGENCY	Number of Months Reported	Population	Crime Rate Per 1,000 Population	Total Crime Index	Index Offenses Cleared	Murder, Manslaughter	Forcible Rape	Robbery	Felony Assault	Burglary	Larceny-Theft	Motor Vehicle Theft	Arson
Sheridan County		6,589	35.8	236	82	0	1	0	8	65	144	15	3
Sheriff's Office	12	4,822	21.4	103	22	0	0	0	2	39	49	12	1
Gordon P.D.	12	1,767	74.1	131	59	0	1	0	6	24	95	3	2
State Patrol	12	--	--	2	1	0	0	0	0	2	0	0	0
Sherman County		3,673	12.5	46	4	0	0	1	0	7	37	1	0
Sheriff's Office	12	3,673	12.5	46	4	0	0	1	0	7	37	1	0
State Patrol	12	--	--	0	0	0	0	0	0	0	0	0	0
Sioux County		1,542	3.9	6	4	0	0	0	0	4	2	0	0
Sheriff's Office	12	1,542	3.2	5	4	0	0	0	0	3	2	0	0
State Patrol	12	--	--	1	0	0	0	0	0	1	0	0	0
Stanton County		6,205	9.5	59	21	0	4	0	1	11	40	2	1
Sheriff's Office	12	4,691	10.9	51	21	0	4	0	1	10	33	2	1
Stanton P.D.	12	1,514	5.3	8	0	0	0	0	0	1	7	0	0
State Patrol	12	--	--	0	0	0	0	0	0	0	0	0	0
Thayer County		6,528	17.6	115	21	0	0	0	7	24	83	1	0
Sheriff's Office	12	6,528	17.6	115	21	0	0	0	7	24	83	1	0
State Patrol	12	--	--	0	0	0	0	0	0	0	0	0	0
Thomas County		826	2.4	2	0	0	0	0	0	1	1	0	0
Sheriff's Office	12	826	2.4	2	0	0	0	0	0	1	1	0	0
State Patrol	12	--	--	0	0	0	0	0	0	0	0	0	0
Thurston County		6,953	2.6	18	2	0	0	0	1	7	7	0	3
Sheriff's Office	12	6,953	2.4	17	2	0	0	0	1	6	7	0	3
State Patrol	12	--	--	1	0	0	0	0	0	1	0	0	0
Valley County		5,027	11.7	59	13	0	0	0	2	19	34	4	0
Sheriff's Office	12	2,589	5.4	14	4	0	0	0	0	7	7	0	0
Ord P.D.	12	2,438	18.5	45	9	0	0	0	2	12	27	4	0
State Patrol	12	--	--	0	0	0	0	0	0	0	0	0	0
Washington County		17,041	13.4	229	37	0	2	1	2	41	170	11	2
Sheriff's Office	12	10,041	8.3	83	13	0	1	0	1	24	53	4	0
Blair P.D.	12	7,000	20.7	145	24	0	0	1	1	17	117	7	2
State Patrol	12	--	--	1	0	0	1	0	0	0	0	0	0
Wayne County		9,522	20.3	193	45	1	2	0	3	18	161	8	0
Sheriff's Office	12	4,323	9.9	43	8	0	1	0	0	7	35	0	0
Wayne P.D.	12	5,199	28.9	150	37	1	1	0	3	11	126	8	0
State Patrol	12	--	--	0	0	0	0	0	0	0	0	0	0

AGENCY	Number of Months Reported	Population	Crime Rate Per 1,000 Population	Total Crime Index	Index Offenses Cleared	Murder, Manslaughter	Forcible Rape	Robbery	Felony Assault	Burglary	Larceny-Theft	Motor Vehicle Theft	Arson
Webster County		4,190	12.9	54	8	0	0	0	4	6	42	2	0
Sheriff's Office	12	4,190	12.9	54	8	0	0	0	4	6	42	2	0
State Patrol	12	--	--	0	0	0	0	0	0	0	0	0	0
Wheeler County		934	4.3	4	1	0	0	0	0	0	3	1	0
Sheriff's Office	4	934	4.3	4	1	0	0	0	0	0	3	1	0
State Patrol	12	--	--	0	0	0	0	0	0	0	0	0	0
York County		14,560	19.6	286	89	0	1	3	7	43	222	7	3
Sheriff's Office	12	6,544	6.6	43	10	0	1	2	3	14	19	4	0
York P.D.	12	8,016	30.2	242	78	0	0	1	4	29	202	3	3
State Patrol	12	--	--	1	1	0	0	0	0	0	1	0	0
State Property	12	--	--	32	5	1	1	0	22	0	4	1	3

ARREST DATA BY COUNTY

ARREST DATA BY AGENCY	Total Arrests	Total Adult	Total Juvenile	Murder, Manslaughter	Death by Negligence	Forcible Rape	Robbery	Felony Assault	Burglary - Breaking and Entering	Larceny - Theft	Motor Vehicle Theft	Misdemeanor Assault	Arson	Forgery and Counterfeiting	Fraud - O.M.F.P.	Embezzlement	Stolen Property - Buying Receiving, Possessing	Vandalism - Destruction of Property	Weapons - Carrying, Possessing, Etc.	Prostitution and Commercialized Vice	Sex Offenses Except Forcible Rape and Prostitution	Narcotic Drug Laws - TOTAL	Gambling - TOTAL	Offenses Against Family and Children - Nonsupport	Driving Under the Influence	Liquor Laws	Disorderly Conduct Disturbing the Peace	Vagrancy	All Other Offenses (Except Traffic)	Curfew and Loitering Law Violations	Runaways	
Adams County	884	782	102	0	0	1	0	11	19	125	4	100	4	4	65	0	1	17	1	0	6	28	0	3	136	88	62	0	221	0	0	
Sheriff's Office*	300	298	2	0	0	0	0	2	4	2	2	9	0	2	55	0	0	0	0	0	3	13	0	1	33	1	0	0	173	0	0	
Hastings P.D.	557	462	95	0	0	1	0	8	15	123	2	91	3	2	0	0	1	17	1	0	3	10	0	2	92	76	62	0	48	0	0	
State Patrol	27	22	5	0	0	0	0	1	0	0	0	0	1	0	0	0	0	0	0	0	0	3	0	0	11	11	0	0	0	0	0	
Antelope County	33	29	4	0	0	0	0	0	0	1	0	2	0	0	0	0	0	0	0	0	1	2	0	0	18	3	0	0	6	0	0	
Sheriff's Office	12	11	1	0	0	0	0	0	0	1	0	2	0	0	0	0	0	0	0	0	1	0	0	0	4	0	0	0	4	0	0	
Neligh P.D.	4	4	0	0	0	0	0	0	0	0	0	0	0	0	0	0	0	0	0	0	0	0	0	0	4	0	0	0	0	0	0	
State Patrol	17	14	3	0	0	0	0	0	0	0	0	0	0	0	0	0	0	0	0	0	0	2	0	0	10	3	0	0	2	0	0	
Arthur County	1	1	0	0	0	0	0	0	0	0	0	0	0	0	0	0	0	0	0	0	0	0	0	0	1	0	0	0	0	0	0	
Sheriff's Office	1	1	0	0	0	0	0	0	0	0	0	0	0	0	0	0	0	0	0	0	0	0	0	0	1	0	0	0	0	0	0	
State Patrol	0	0	0	0	0	0	0	0	0	0	0	0	0	0	0	0	0	0	0	0	0	0	0	0	0	0	0	0	0	0	0	
Banner County	19	19	0	0	0	0	0	0	2	0	0	1	0	0	0	0	0	0	0	0	0	6	0	0	6	4	0	0	0	0	0	0
Sheriff's Office	5	5	0	0	0	0	0	0	2	0	0	1	0	0	0	0	0	0	0	0	0	0	0	0	2	0	0	0	0	0	0	
State Patrol	14	14	0	0	0	0	0	0	0	0	0	0	0	0	0	0	0	0	0	0	0	6	0	0	4	4	0	0	0	0	0	0
Blaine County	0	0	0	0	0	0	0	0	0	0	0	0	0	0	0	0	0	0	0	0	0	0	0	0	0	0	0	0	0	0	0	0
Sheriff's Office	0	0	0	0	0	0	0	0	0	0	0	0	0	0	0	0	0	0	0	0	0	0	0	0	0	0	0	0	0	0	0	0
State Patrol	0	0	0	0	0	0	0	0	0	0	0	0	0	0	0	0	0	0	0	0	0	0	0	0	0	0	0	0	0	0	0	0
Boone County	44	40	4	0	0	0	0	0	1	0	0	0	2	0	0	0	0	2	0	0	0	0	0	1	17	21	0	0	0	0	0	0
Sheriff's Office	21	20	1	0	0	0	0	0	1	0	0	0	0	0	0	0	0	0	0	0	0	0	0	1	7	12	0	0	0	0	0	0
Albion P.D.*	10	10	0	0	0	0	0	0	0	0	0	0	0	0	0	0	0	2	0	0	0	0	0	0	4	4	0	0	0	0	0	0
State Patrol	13	10	3	0	0	0	0	0	0	0	0	0	2	0	0	0	0	0	0	0	0	0	0	0	6	5	0	0	0	0	0	0
Box Butte County	1,231	818	413	0	0	3	2	24	21	127	13	216	0	12	38	0	4	69	16	0	8	47	0	32	89	108	109	0	256	1	35	
Sheriff's Office	181	154	27	0	0	0	0	4	2	3	2	3	0	0	34	0	0	9	0	0	0	1	0	8	2	16	0	0	96	0	0	0
Alliance P.D.	1,049	663	386	0	0	3	2	20	19	124	11	213	0	12	4	0	4	60	16	0	8	48	0	23	87	91	109	0	160	1	35	
State Patrol	1	1	0	0	0	0	0	0	0	0	0	0	0	0	0	0	0	0	0	0	0	0	0	0	0	1	0	0	0	0	0	0
Boyd County	25	18	7	0	0	0	0	1	7	1	1	1	0	1	5	0	0	0	0	0	0	0	0	0	6	0	0	0	2	0	0	
Sheriff's Office	20	13	7	0	0	0	0	1	7	1	1	1	0	1	5	0	0	0	0	0	0	0	0	0	2	0	0	0	1	0	0	
State Patrol	5	5	0	0	0	0	0	0	0	0	0	0	0	0	0	0	0	0	0	0	0	0	0	4	0	0	0	1	0	0	0	
Brown County	79	72	7	0	0	1	0	1	2	1	1	3	0	0	8	1	0	0	0	0	2	5	0	0	24	18	2	0	10	0	0	
Sheriff's Office	45	43	2	0	0	1	0	1	2	1	1	2	0	0	8	1	0	0	0	0	2	5	0	0	11	0	2	0	8	0	0	
State Patrol	34	29	5	0	0	0	0	0	0	0	0	1	0	0	0	0	0	0	0	0	0	0	0	13	18	0	0	2	0	0	0	
Buffalo County	1,909	1,553	356	0	1	0	0	12	31	181	13	213	2	10	156	1	22	77	14	0	13	34	0	12	413	331	58	1	268	0	48	
Sheriff's Office	532	440	92	0	1	0	0	5	15	17	8	27	1	1	80	0	5	28	4	0	2	7	0	1	146	51	1	0	108	0	18	
Kearney P.D.	1,249	1,007	242	0	0	0	0	6	16	164	5	185	1	8	66	1	10	51	10	0	11	16	0	11	226	214	57	1	157	0	32	
Campus Security-KSC	39	30	9	0	0	0	0	0	0	0	0	1	0	0	0	0	0	0	0	0	0	0	0	0	38	0	0	0	0	0	0	
State Patrol	89	76	13	0	0	0	0	1	0	0	0	0	0	0	0	7	0	0	0	0	11	0	0	41	28	0	0	1	0	0	0	
Burt County	131	122	9	0	0	0	2	0	2	8	0	10	0	0	2	0	1	0	2	0	0	6	0	0	42	29	4	0	23	0	0	
Sheriff's Office*	74	69	5	0	0	0	0	0	2	5	0	8	0	0	2	0	1	0	0	0	0	2	0	0	15	15	4	0	20	0	0	
Tekamah P.D.*	45	41	4	0	0	0	0	0	0	3	0	2	0	0	0	0	0	0	2	0	0	2	0	0	19	14	0	0	3	0	0	
State Patrol	12	12	0	0	0	0	2	0	0	0	0	0	0	0	0	0	0	0	0	0	2	0	0	8	0	0	0	0	0	0	0	0
Butler County	104	73	31	0	0	0	0	5	2	2	7	11	0	1	14	0	0	0	0	0	2	8	0	0	21	24	0	0	4	0	3	
Sheriff's Office	41	41	0	0	0	0	0	1	2	1	1	4	0	0	13	0	0	0	0	0	1	0	0	0	12	5	0	0	1	0	0	
David City P.D.	53	23	30	0	0	0	0	4	0	1	6	7	0	1	1	0	0	0	0	0	1	3	0	0	6	19	0	0	1	0	3	
State Patrol	10	9	1	0	0	0	0	0	0	0	0	0	0	0	0	0	0	0	0	0	5	0	0	3	0	0	0	2	0	0	0	

* Not a Complete 12-Month Total

ARREST DATA BY AGENCY	Total Arrests	Total Adult	Total Juvenile	Murder, Manslaughter	Death by Negligence	Forcible Rape	Robbery	Felony Assault	Burglary - Breaking and Entering	Larceny - Theft	Motor Vehicle Theft	Misdemeanor Assault	Arson	Forgery and Counterfeiting	Fraud - O.M.F.P.	Embezzlement	Stolen Property - Buying Receiving, Possessing	Vandalism - Destruction of Property	Weapons - Carrying, Possessing, Etc.	Prostitution and Commercialized Vice	Sex Offenses Except Forcible Rape and Prostitution	Narcotic Drug Laws - TOTAL	Gambling - TOTAL	Offenses Against Family and Children - Nonsupport	Driving Under the Influence	Liquor Laws	Disorderly Conduct Disturbing the Peace	Vagrancy	All Other Offenses (Except Traffic)	Curfew and Loitering Law Violations	Runaways
Cass County	868	746	122	0	0	1	0	6	8	57	9	70	2	2	137	0	5	1	3	0	8	54	0	12	125	85	6	0	256	21	0
Sheriff's Office	426	412	14	0	0	0	0	3	8	6	1	13	2	1	135	0	3	0	0	0	2	8	0	10	26	3	0	0	205	0	0
Plattsmouth P.D.	277	179	98	0	0	1	0	3	0	51	8	57	0	1	1	0	0	0	2	0	6	9	0	2	20	46	6	0	43	21	0
State Patrol	165	155	10	0	0	0	0	0	0	0	0	0	0	0	1	0	2	1	1	0	0	37	0	0	79	36	0	0	8	0	0
Cedar County	316	273	43	0	0	0	0	2	3	4	0	7	0	0	10	0	1	1	0	0	3	22	0	1	146	100	3	0	13	0	0
Sheriff's Office	177	159	18	0	0	0	0	2	3	4	0	7	0	0	10	0	1	1	0	0	3	2	0	1	78	58	3	0	4	0	0
State Patrol	139	114	25	0	0	0	0	0	0	0	0	0	0	0	0	0	0	0	0	0	20	0	0	68	42	0	0	9	0	0	
Chase County	76	54	22	0	0	0	0	2	2	0	0	1	0	0	2	0	0	2	0	0	1	0	0	1	12	41	9	0	3	0	0
Sheriff's Office	11	11	0	0	0	0	0	0	0	0	0	1	0	0	2	0	0	1	0	0	1	0	0	1	0	1	1	0	3	0	0
Imperial P.D.	53	38	15	0	0	0	0	2	2	0	0	0	0	0	0	0	0	1	0	0	0	0	0	0	11	29	8	0	0	0	0
State Patrol	12	5	7	0	0	0	0	0	0	0	0	0	0	0	0	0	0	0	0	0	0	0	0	1	11	0	0	0	0	0	0
Cherry County	241	203	38	3	0	0	1	9	0	3	1	5	0	1	4	0	0	0	1	0	1	10	0	1	78	67	38	0	18	0	0
Sheriff's Office	41	31	10	3	0	0	0	2	0	0	0	2	0	1	4	0	0	0	0	0	0	0	0	1	1	15	0	0	12	0	0
Valentine P.D.	134	121	13	0	0	0	1	6	0	3	1	3	0	0	0	0	0	0	1	0	1	2	0	0	53	24	38	0	1	0	0
State Patrol	66	51	15	0	0	0	0	1	0	0	0	0	0	0	0	0	0	0	0	0	0	8	0	0	24	28	0	0	5	0	0
Cheyenne County	386	308	90	0	0	1	0	15	18	36	1	35	0	2	12	0	1	30	2	0	3	65	0	4	38	38	22	1	71	0	1
Sheriff's Office	89	81	8	0	0	0	0	0	4	3	1	1	0	1	12	0	1	1	0	0	1	6	0	2	3	7	5	1	40	0	0
Sidney P.D.	232	155	77	0	0	1	0	15	14	33	0	34	0	1	0	0	0	20	2	0	2	22	0	2	23	28	17	0	17	0	1
State Patrol	75	70	5	0	0	0	0	0	0	0	0	0	0	0	0	0	9	0	0	0	0	37	0	0	12	3	0	0	14	0	0
Clay County	87	85	2	0	0	2	0	3	5	5	0	8	0	1	8	0	0	0	0	0	4	3	0	2	28	4	3	0	11	0	0
Sheriff's Office	80	79	1	0	0	2	0	3	5	5	0	8	0	1	8	0	0	0	0	0	4	2	0	2	26	0	3	0	11	0	0
State Patrol	7	6	1	0	0	0	0	0	0	0	0	0	0	0	0	0	0	0	0	0	1	0	0	2	4	0	0	0	0	0	0
Colfax County	381	289	92	0	0	2	0	7	15	34	6	26	0	5	23	0	4	16	5	0	4	15	0	13	59	30	16	0	83	5	13
Sheriff's Office	94	78	15	0	0	1	0	3	8	3	2	7	0	2	22	0	0	5	1	0	1	2	0	3	7	9	0	0	18	0	0
Schuyler P.D.	257	184	73	0	0	1	0	4	7	31	4	18	0	3	1	0	4	11	4	0	3	9	0	10	32	17	16	0	64	5	13
State Patrol	30	28	4	0	0	0	0	0	0	0	0	1	0	0	0	0	0	0	0	0	4	0	0	20	4	0	0	1	0	0	0
Cuming County	147	122	25	0	0	0	0	1	0	10	0	4	0	0	1	0	0	3	2	0	1	3	0	0	29	52	1	0	40	0	0
Sheriff's Office	20	15	5	0	0	0	0	1	0	2	0	2	0	0	1	0	0	3	0	0	1	0	0	0	5	5	0	0	0	0	0
West Point P.D.	102	85	17	0	0	0	0	0	0	8	0	2	0	0	0	0	0	0	1	0	0	2	0	0	14	39	1	0	35	0	0
State Patrol	25	22	3	0	0	0	0	0	0	0	0	0	0	0	0	0	0	0	1	0	0	1	0	0	10	8	0	0	5	0	0
Custer County	165	136	29	0	0	1	1	1	10	29	3	3	0	6	17	0	0	1	1	0	2	3	0	1	29	46	8	0	3	0	0
Sheriff's Office	53	50	3	0	0	0	0	0	3	0	3	0	0	2	17	0	0	1	1	0	0	0	0	0	10	13	0	0	3	0	0
Broken Bow P.D.	96	71	25	0	0	1	1	1	7	29	0	3	0	4	0	0	0	0	0	0	2	1	0	1	11	27	8	0	0	0	0
State Patrol	16	15	1	0	0	0	0	0	0	0	0	0	0	0	0	0	0	0	0	0	0	2	0	0	8	6	0	0	0	0	0
Dakota County	834	716	118	0	0	2	6	3	4	90	10	53	0	1	13	1	3	16	8	0	1	78	0	2	376	56	4	0	84	7	16
Sheriff's Office	129	127	2	0	0	0	0	0	0	2	2	21	0	0	11	0	0	0	0	0	0	2	0	0	47	8	0	0	38	0	0
So. Sioux City P.D.	329	222	107	0	0	2	6	3	4	88	8	32	0	1	2	1	3	16	4	0	1	3	0	2	77	23	4	0	26	7	16
State Patrol	376	367	9	0	0	0	0	0	0	0	0	0	0	0	0	0	0	0	4	0	0	73	0	0	252	25	0	0	22	0	0
Dawes County	425	352	73	0	0	1	1	3	18	54	2	49	0	3	12	0	3	18	3	0	1	16	0	3	74	104	32	0	28	0	0
Sheriff's Office	66	42	24	0	0	0	0	2	6	1	0	17	0	1	8	0	3	12	2	0	0	10	0	0	1	1	1	0	1	0	0
Chadron P.D.	292	246	46	0	0	1	1	1	8	53	2	32	0	2	4	0	0	4	1	0	1	6	0	3	41	76	31	0	25	0	0
State Patrol	67	64	3	0	0	0	0	0	4	0	0	0	0	0	0	0	0	2	0	0	0	0	0	0	32	27	0	0	2	0	0

ARREST DATA BY AGENCY	Total Arrests	Total Adult	Total Juvenile	Murder, Manslaughter	Death by Negligence	Forcible Rape	Robbery	Felony Assault	Burglary - Breaking and Entering	Larceny - Theft	Motor Vehicle Theft	Misdemeanor Assault	Arson	Forgery and Counterfeiting	Fraud - O.M.F.P.	Embezzlement	Stolen Property - Buying Receiving, Possessing	Vandalism - Destruction of Property	Weapons - Carrying, Possessing, Etc.	Prostitution and Commercialized Vice	Sex Offenses Except Forcible Rape and Prostitution	Narcotic Drug Laws - TOTAL	Gambling - TOTAL	Offenses Against Family and Children - Nonsupport	Driving Under the Influence	Liquor Laws	Disorderly Conduct Disturbing the Peace	Vagrancy	All Other Offenses (Except Traffic)	Curfew and Loitering Law Violations	Runaways
Dawson County	1,506	1,199	306	0	1	10	1	41	26	165	14	243	0	10	39	1	11	76	9	1	25	55	0	23	318	163	89	4	164	8	8
Sheriff's Office	218	197	21	0	1	3	0	9	2	15	2	42	0	0	4	0	2	13	2	0	9	22	0	0	48	12	10	0	24	0	0
Cozad P.D.	320	217	103	0	0	0	0	2	3	30	1	69	0	3	2	0	1	12	4	1	2	4	0	12	45	29	22	0	64	8	6
Gothenburg P.D.	60	56	4	0	0	0	0	1	0	5	0	17	0	0	0	0	0	1	0	2	1	0	8	14	8	3	0	0	0	0	
Lexington P.D.	796	630	166	0	0	7	1	29	21	112	11	114	0	7	32	0	5	47	2	0	12	14	0	3	162	85	54	4	72	0	2
State Patrol	111	89	12	0	0	0	0	0	0	3	0	1	0	0	1	1	3	4	0	0	0	14	0	0	51	29	0	0	4	0	0
Deuel County	37	37	0	1	0	0	0	0	4	2	0	2	0	0	2	0	0	0	0	0	0	12	0	0	7	1	1	0	5	0	0
Sheriff's Office	28	28	0	1	0	0	0	0	4	2	0	2	0	0	2	0	0	0	0	0	0	6	0	0	6	1	1	0	3	0	0
State Patrol	9	9	0	0	0	0	0	0	0	0	0	0	0	0	0	0	0	0	0	0	0	6	0	0	1	0	0	0	2	0	0
Dixon County	252	191	61	0	0	0	0	3	8	11	0	8	0	1	6	0	3	10	2	0	0	20	0	3	25	104	8	0	37	1	2
Sheriff's Office	223	164	59	0	0	0	0	3	8	11	0	8	0	1	6	0	3	10	1	0	0	4	0	3	15	104	8	0	35	1	2
State Patrol	29	27	2	0	0	0	0	0	0	0	0	0	0	0	0	0	0	0	1	0	0	16	0	0	10	0	0	0	2	0	0
Dodge County	1,137	882	255	0	1	0	0	7	18	145	1	38	0	18	73	0	9	18	9	1	5	50	0	15	263	162	46	0	222	0	35
Sheriff's Office	382	348	34	0	1	0	0	1	1	5	0	10	0	7	49	0	8	4	0	2	23	0	10	110	64	1	0	86	0	0	
Fremont P.D.	706	487	219	0	0	0	0	6	17	140	1	28	0	11	24	0	9	11	3	1	2	24	0	5	125	88	45	0	131	0	35
State Patrol	49	47	2	0	0	0	0	0	0	0	0	0	0	0	0	0	0	0	2	0	1	3	0	0	28	10	0	0	5	0	0
Douglas County	24,184	19,790	4,394	33	7	105	227	314	297	4,157	189	1,652	38	135	547	41	745	704	725	309	302	1,914	41	381	3,695	1,491	1,188	0	4,943	1	3
Sheriff's Office	1,109	838	271	1	1	5	4	10	16	88	20	132	1	5	34	0	66	61	34	0	9	138	0	22	105	165	9	0	183	0	0
Omaha P.D.	22,202	18,235	3,967	32	6	100	223	299	270	4,046	168	1,505	37	122	510	40	675	628	665	308	292	1,683	40	354	3,283	1,067	1,168	0	4,683	0	0
Elkhorn P.D.	19	16	3	0	0	0	0	0	1	3	1	0	0	1	0	0	0	1	0	0	0	0	0	1	4	2	0	0	5	0	0
Relston P.D.	390	297	93	0	0	0	0	4	2	12	0	13	0	7	2	1	2	10	24	0	1	29	0	3	133	105	13	0	27	0	2
Valley P.D.	68	48	20	0	0	0	0	1	8	5	0	1	0	0	0	0	1	2	1	0	0	1	0	0	31	15	0	0	1	1	1
State Patrol	396	356	40	0	0	0	0	0	0	3	0	1	0	0	1	0	1	2	1	1	0	63	1	1	139	137	0	0	45	0	0
Dundy County	26	25	1	0	0	0	0	0	1	0	0	3	0	0	0	0	0	0	0	0	0	1	0	0	6	15	0	0	0	0	0
Sheriff's Office	23	22	1	0	0	0	0	0	1	0	0	3	0	0	0	0	0	0	0	0	0	0	0	0	4	15	0	0	0	0	0
State Patrol	3	3	0	0	0	0	0	0	0	0	0	0	0	0	0	0	0	0	0	0	0	1	0	0	2	0	0	0	0	0	0
Fillmore County	94	84	10	1	0	0	0	0	1	3	1	4	0	1	6	1	3	0	1	0	3	1	0	6	43	15	3	0	1	0	0
Sheriff's Office	48	46	2	0	0	0	0	0	1	1	1	2	0	1	6	0	0	0	0	0	2	0	0	5	21	4	3	0	1	0	0
Geneva P.D.	14	13	1	1	0	0	0	0	0	2	0	2	0	0	0	1	0	0	0	0	1	0	0	1	3	3	0	0	0	0	0
State Patrol	32	26	7	0	0	0	0	0	0	0	0	0	0	0	0	0	3	0	1	0	0	1	0	0	19	8	0	0	0	0	0
Franklin County	35	31	4	0	0	0	0	0	5	0	1	3	0	1	9	0	0	0	0	0	1	0	0	2	2	2	1	0	8	0	0
Sheriff's Office	34	30	4	0	0	0	0	0	5	0	1	3	0	1	9	0	0	0	0	0	1	0	0	2	1	2	1	0	8	0	0
State Patrol	1	1	0	0	0	0	0	0	0	0	0	0	0	0	0	0	0	0	0	0	0	0	0	1	0	0	0	0	0	0	0
Frontier County	49	45	4	0	0	0	0	0	5	4	0	2	0	0	1	0	2	2	0	0	0	1	0	0	6	14	0	0	12	0	0
Sheriff's Office *	40	37	3	0	0	0	0	0	5	4	0	2	0	0	1	0	2	2	0	0	0	0	0	0	5	10	0	0	9	0	0
State Patrol	9	8	1	0	0	0	0	0	0	0	0	0	0	0	0	0	0	0	0	0	0	1	0	0	1	4	0	0	3	0	0
Furnas County	98	95	3	0	0	0	0	2	3	5	3	5	1	0	17	2	0	1	3	0	1	9	0	2	21	16	3	0	4	0	0
Sheriff's Office	95	92	3	0	0	0	0	2	3	5	3	5	1	0	17	1	0	1	3	0	1	9	0	2	19	16	3	0	4	0	0
State Patrol	3	3	0	0	0	0	0	0	0	0	0	0	0	0	0	1	0	0	0	0	0	0	0	2	0	0	0	0	0	0	0
Gage County	862	634	228	0	0	2	5	8	26	98	11	118	0	3	52	0	10	61	11	0	7	20	0	31	144	105	27	0	114	0	11
Sheriff's Office	146	135	11	0	0	0	1	0	8	4	1	6	0	0	48	0	2	5	2	0	3	5	0	10	16	16	0	0	19	0	0
Beatrice P.D.	661	448	213	0	0	2	4	6	18	94	10	112	0	3	4	0	8	56	9	0	4	13	0	21	92	78	27	0	81	0	11
Wymore P.D.	1	1	0	0	0	0	0	0	0	0	0	0	0	0	0	0	0	0	0	0	0	0	0	0	0	0	0	1	0	0	
State Patrol	54	50	4	0	0	0	0	0	0	0	0	0	0	0	0	0	0	0	0	0	2	0	0	36	13	0	0	3	0	0	

ARREST DATA BY AGENCY																															
	Total Arrests	Total Adult	Total Juvenile	Murder, Manslaughter	Death by Negligence	Forcible Rape	Robbery	Felony Assault	Burglary - Breaking and Entering	Larceny - Theft	Motor Vehicle Theft	Misdemeanor Assault	Arson	Forgery and Counterfeiting	Fraud - O.M.F.P.	Embezzlement	Stolen Property - Buying Receiving, Possessing	Vandalism - Destruction of Property	Weapons - Carrying, Possessing, Etc.	Prostitution and Commercialized Vice	Sex Offenses Except Forcible Rape and Prostitution	Narcotic Drug Laws - TOTAL	Gambling - TOTAL	Offenses Against Family and Children - Nonsupport	Driving Under the Influence	Liquor Laws	Disorderly Conduct Disturbing the Peace	Vagrancy	All Other Offenses (Except Traffic)	Curfew and Loitering Law Violations	Runaways
Garden County	39	37	2	0	0	1	0	1	0	0	0	2	0	0	0	0	0	0	0	0	1	1	0	3	19	4	2	0	5	0	0
Sheriff's Office	36	34	2	0	0	1	0	1	0	0	0	2	0	0	0	0	0	0	0	0	1	0	0	3	17	4	2	0	5	0	0
State Patrol	3	3	0	0	0	0	0	0	0	0	0	0	0	0	0	0	0	0	0	0	0	1	0	0	2	0	0	0	0	0	0
Garfield County	4	3	1	0	0	0	0	0	0	0	0	1	0	0	0	0	0	0	0	0	0	0	0	0	1	0	0	0	2	0	0
Sheriff's Office*	3	2	1	0	0	0	0	0	0	0	0	1	0	0	0	0	0	0	0	0	0	0	0	0	0	0	0	0	2	0	0
State Patrol	1	1	0	0	0	0	0	0	0	0	0	0	0	0	0	0	0	0	0	0	0	0	0	0	1	0	0	0	0	0	0
Gosper County	81	60	21	0	0	0	0	0	3	1	0	4	0	0	0	0	0	1	0	0	0	6	0	0	13	51	2	0	0	0	0
Sheriff's Office	74	54	20	0	0	0	0	0	3	1	0	4	0	0	0	0	0	1	0	0	0	4	0	0	11	48	2	0	0	0	0
State Patrol	7	6	1	0	0	0	0	0	0	0	0	0	0	0	0	0	0	0	0	0	2	0	0	2	3	0	0	0	0	0	0
Grant County	0	0	0	0	0	0	0	0	0	0	0	0	0	0	0	0	0	0	0	0	0	0	0	0	0	0	0	0	0	0	0
Sheriff's Office	0	0	0	0	0	0	0	0	0	0	0	0	0	0	0	0	0	0	0	0	0	0	0	0	0	0	0	0	0	0	0
State Patrol	0	0	0	0	0	0	0	0	0	0	0	0	0	0	0	0	0	0	0	0	0	0	0	0	0	0	0	0	0	0	0
Greeley County	11	10	1	0	0	0	0	0	0	0	0	1	0	0	0	0	0	0	0	0	0	0	0	0	3	7	0	0	0	0	0
Sheriff's Office	1	1	0	0	0	0	0	0	0	0	0	1	0	0	0	0	0	0	0	0	0	0	0	0	0	0	0	0	0	0	0
State Patrol	10	9	1	0	0	0	0	0	0	0	0	0	0	0	0	0	0	0	0	0	0	0	0	3	7	0	0	0	0	0	0
Hall County	4,986	4,018	978	0	0	15	20	75	137	783	24	588	13	59	144	0	70	193	60	0	79	216	0	22	832	295	129	3	1,111	78	50
Sheriff's Office	920	916	4	0	0	1	2	1	3	15	1	45	4	3	114	0	3	0	5	0	8	29	0	1	209	14	0	0	462	0	0
Grand Island P.D.	3,810	2,851	959	0	0	14	18	74	131	766	23	541	9	56	29	0	63	193	50	0	71	110	0	21	516	232	129	3	633	78	50
State Patrol	266	251	15	0	0	0	0	0	3	2	0	2	0	0	1	0	4	0	5	0	0	77	0	0	107	49	0	0	16	0	0
Hamilton County	332	306	26	0	0	0	0	2	10	17	0	11	0	0	18	0	1	8	0	0	1	49	0	6	83	14	7	0	101	0	4
Sheriff's Office	140	140	0	0	0	0	0	2	4	2	0	5	0	0	18	0	0	0	0	0	0	18	0	4	39	0	2	0	46	0	0
Aurora P.D.	121	96	25	0	0	0	0	0	6	15	0	6	0	0	0	0	0	8	0	0	1	0	0	2	18	6	5	0	50	0	4
State Patrol	71	70	1	0	0	0	0	0	0	0	0	0	0	0	0	0	1	0	0	0	31	0	0	26	8	0	0	5	0	0	
Harlan County	70	49	21	0	0	0	0	0	1	6	2	4	0	0	2	0	0	1	0	0	0	7	0	0	13	25	0	0	9	0	0
Sheriff's Office	47	27	20	0	0	0	0	0	1	6	2	4	0	0	2	0	0	1	0	0	0	1	0	0	10	18	0	0	2	0	0
State Patrol	23	22	1	0	0	0	0	0	0	0	0	0	0	0	0	0	0	0	0	0	6	0	0	3	7	0	0	7	0	0	
Hayes County	19	15	4	0	0	0	0	1	0	0	0	2	0	0	2	0	0	2	0	0	0	0	0	0	1	7	0	0	4	0	0
Sheriff's Office	15	13	2	0	0	0	0	1	0	0	0	2	0	0	2	0	0	2	0	0	0	0	0	0	0	4	0	0	4	0	0
State Patrol	4	2	2	0	0	0	0	0	0	0	0	0	0	0	0	0	0	0	0	0	0	0	0	1	3	0	0	0	0	0	
Hitchcock County	31	28	3	0	1	0	0	1	0	0	0	0	0	0	0	0	0	0	0	2	0	0	1	13	9	0	0	4	0	0	
Sheriff's Office	11	10	1	0	1	0	0	1	0	0	0	0	0	0	0	0	0	0	0	2	0	0	1	4	0	0	0	2	0	0	
State Patrol	20	18	2	0	0	0	0	0	0	0	0	0	0	0	0	0	0	0	0	0	0	0	0	8	9	0	0	2	0	0	
Holt County	251	206	45	0	0	3	0	2	5	17	1	34	0	0	14	0	0	6	3	0	6	3	0	20	32	56	19	0	29	0	1
Sheriff's Office	35	33	2	0	0	2	0	0	0	3	0	2	0	0	13	0	0	0	0	0	1	0	0	9	2	0	1	0	2	0	0
O'Neill P.D.	157	128	29	0	0	1	0	2	5	14	1	32	0	0	1	0	0	6	3	0	5	0	0	11	10	23	18	0	24	0	1
State Patrol	59	45	14	0	0	0	0	0	0	0	0	0	0	0	0	0	0	0	0	0	3	0	0	20	33	0	0	3	0	0	
Hooker County	5	5	0	0	0	0	0	0	0	0	0	0	0	0	0	0	0	0	0	0	0	0	0	2	3	0	0	0	0	0	0
Sheriff's Office	0	0	0	0	0	0	0	0	0	0	0	0	0	0	0	0	0	0	0	0	0	0	0	0	0	0	0	0	0	0	0
State Patrol	5	5	0	0	0	0	0	0	0	0	0	0	0	0	0	0	0	0	0	0	0	0	0	2	3	0	0	0	0	0	0
Howard County	80	72	8	0	0	0	0	0	0	2	1	1	0	0	1	0	0	1	0	0	2	1	0	0	41	24	1	0	5	0	0
Sheriff's Office	56	49	7	0	0	0	0	0	0	2	1	1	0	0	1	0	0	1	0	0	2	1	0	0	22	19	1	0	5	0	0
State Patrol	24	23	1	0	0	0	0	0	0	0	0	0	0	0	0	0	0	0	0	0	0	0	0	19	5	0	0	0	0	0	0

ARREST DATA BY AGENCY	Total Arrests	Total Adult	Total Juvenile	Murder, Manslaughter	Death by Negligence	Forcible Rape	Robbery	Felony Assault	Burglary - Breaking and Entering	Larceny - Theft	Motor Vehicle Theft	Misdemeanor Assault	Arson	Forgery and Counterfeiting	Fraud - O.M.F.P.	Embezzlement	Stolen Property - Buying Receiving, Possessing	Vandalism - Destruction of Property	Weapons - Carrying, Possessing, Etc.	Prostitution and Commercialized Vice	Sex Offenses Except Forcible Rape and Prostitution	Narcotic Drug Laws - TOTAL	Gambling - TOTAL	Offenses Against Family and Children - Nonsupport	Driving Under the Influence	Liquor Laws	Disorderly Conduct Disturbing the Peace	Vagrancy	All Other Offenses (Except Traffic)	Curfew and Loitering Law Violations	Runaways
Jefferson County	180	140	40	1	0	1	0	4	5	23	2	9	0	0	2	0	0	7	1	0	1	9	0	1	59	51	1	0	3	0	0
Sheriff's Office	35	33	2	0	0	0	0	2	2	1	2	0	0	0	0	0	0	2	0	0	0	0	0	0	19	7	0	0	0	0	0
Fairbury P.D.	106	75	31	1	0	1	0	2	3	22	0	9	0	0	2	0	0	5	1	0	1	8	0	1	20	26	1	0	3	0	0
State Patrol	39	32	7	0	0	0	0	0	0	0	0	0	0	0	0	0	0	0	0	0	0	1	0	0	20	18	0	0	0	0	0
Johnson County	98	88	10	0	0	0	0	0	5	3	0	9	0	0	22	1	0	0	0	0	4	0	0	7	9	10	0	0	28	0	0
Sheriff's Office	82	76	6	0	0	0	0	0	5	2	0	9	0	0	22	1	0	0	0	0	4	0	0	7	1	3	0	0	28	0	0
Tecumseh P.D.	8	4	4	0	0	0	0	0	0	0	0	0	0	0	0	0	0	0	0	0	0	0	0	3	5	0	0	0	0	0	0
State Patrol	8	8	0	0	0	0	0	0	0	1	0	0	0	0	0	0	0	0	0	0	0	0	0	5	2	0	0	0	0	0	0
Kearney County	107	86	21	0	0	1	0	1	3	21	1	26	2	0	3	0	0	2	0	0	0	9	0	1	11	9	1	0	12	0	4
Sheriff's Office	34	32	2	0	0	0	0	0	2	3	0	8	0	0	3	0	0	0	0	0	0	2	0	1	4	2	0	0	9	0	0
Minden P.D.	59	40	19	0	0	1	0	1	1	18	1	18	2	0	0	0	0	2	0	0	0	0	0	4	3	1	0	3	0	4	
State Patrol	14	14	0	0	0	0	0	0	0	0	0	0	0	0	0	0	0	0	0	0	0	7	0	0	3	4	0	0	0	0	0
Keith County	534	452	82	0	0	4	0	3	19	18	0	27	0	3	27	1	4	10	4	0	1	85	0	5	82	125	10	0	106	0	0
Sheriff's Office	125	96	29	0	0	2	0	0	11	2	0	7	0	2	22	0	0	1	1	0	1	3	0	5	24	32	1	0	11	0	0
Ogallala P.D.	168	128	40	0	0	2	0	3	8	15	0	20	0	1	5	1	1	9	0	0	0	7	0	0	20	15	9	0	52	0	0
State Patrol	241	228	13	0	0	0	0	0	0	1	0	0	0	0	0	0	3	0	3	0	0	75	0	0	38	78	0	0	43	0	0
Keya Paha County	10	7	3	0	0	0	0	0	0	0	0	0	0	0	0	0	1	0	0	0	0	0	0	0	2	7	0	0	0	0	0
Sheriff's Office	10	7	3	0	0	0	0	0	0	0	0	0	0	0	0	0	1	0	0	0	0	0	0	2	7	0	0	0	0	0	0
State Patrol	0	0	0	0	0	0	0	0	0	0	0	0	0	0	0	0	0	0	0	0	0	0	0	0	0	0	0	0	0	0	0
Kimball County	151	108	43	0	0	0	0	2	21	4	5	12	0	3	6	0	3	8	3	0	4	10	0	1	16	24	3	0	28	0	0
Sheriff's Office*	57	31	26	0	0	0	0	1	11	1	1	4	0	2	2	0	0	7	0	0	4	2	0	1	4	0	0	0	17	0	0
Kimball P.D.	75	60	15	0	0	0	0	1	10	3	4	8	0	1	4	0	3	1	3	0	0	4	0	0	8	14	3	0	8	0	0
State Patrol	19	17	2	0	0	0	0	0	0	0	0	0	0	0	0	0	0	0	0	0	4	0	0	4	10	0	0	1	0	0	
Knox County	142	112	30	0	0	1	0	4	13	6	0	20	0	1	3	0	0	0	0	0	1	4	0	4	21	30	13	0	21	0	0
Sheriff's Office	135	109	26	0	0	1	0	4	13	6	0	20	0	1	3	0	0	0	0	0	1	2	0	4	19	27	13	0	21	0	0
State Patrol	7	3	4	0	0	0	0	0	0	0	0	0	0	0	0	0	0	0	0	0	2	0	0	2	3	0	0	0	0	0	0
Lancaster County	15,271	11,951	3,320	4	1	31	69	159	243	1,753	53	2,286	29	135	165	2	222	679	157	3	153	845	6	369	1,425	1,004	1,298	0	4,380	0	0
Sheriff's Office	802	646	156	2	1	1	3	4	29	38	17	107	7	0	6	2	12	0	12	0	14	40	0	17	111	56	46	0	2,777	0	0
Lincoln P.D.	13,589	10,488	3,101	2	0	30	63	149	209	1,658	38	2,161	22	133	156	0	181	670	137	3	138	429	6	351	870	808	1,242	0	4,035	0	0
Campus Police - UNL	173	156	17	0	0	0	3	3	5	55	0	17	0	1	2	0	17	9	2	0	1	2	0	0	7	8	10	0	31	0	0
State Patrol	707	661	48	0	0	0	0	3	0	2	0	1	0	1	1	0	12	0	6	0	0	174	0	1	337	132	0	0	37	0	0
Lincoln County	2,559	2,039	520	1	0	14	0	27	66	304	17	430	1	37	98	2	35	100	20	1	31	140	0	33	278	267	274	0	323	22	38
Sheriff's Office	349	311	38	0	0	1	0	10	19	9	6	45	0	0	54	0	0	5	2	0	8	13	0	5	40	29	3	0	99	0	1
North Platte P.D.	1,844	1,493	451	1	0	13	0	17	47	295	11	385	1	37	44	2	28	95	17	1	23	30	0	28	192	166	271	0	183	22	37
State Patrol	266	235	31	0	0	0	0	0	0	0	0	0	0	0	0	0	9	0	1	0	0	97	0	0	48	72	0	0	41	0	0
Logan County	0	0	0	0	0	0	0	0	0	0	0	0	0	0	0	0	0	0	0	0	0	0	0	0	0	0	0	0	0	0	0
Sheriff's Office	0	0	0	0	0	0	0	0	0	0	0	0	0	0	0	0	0	0	0	0	0	0	0	0	0	0	0	0	0	0	0
State Patrol	0	0	0	0	0	0	0	0	0	0	0	0	0	0	0	0	0	0	0	0	0	0	0	0	0	0	0	0	0	0	0
Loup County	0	0	0	0	0	0	0	0	0	0	0	0	0	0	0	0	0	0	0	0	0	0	0	0	0	0	0	0	0	0	0
Sheriff's Office	0	0	0	0	0	0	0	0	0	0	0	0	0	0	0	0	0	0	0	0	0	0	0	0	0	0	0	0	0	0	0
State Patrol	0	0	0	0	0	0	0	0	0	0	0	0	0	0	0	0	0	0	0	0	0	0	0	0	0	0	0	0	0	0	0
McPherson County	2	2	0	0	0	0	0	0	0	0	0	0	0	0	0	0	0	0	0	0	0	2	0	0	0	0	0	0	0	0	0
Sheriff's Office	0	0	0	0	0	0	0	0	0	0	0	0	0	0	0	0	0	0	0	0	0	0	0	0	0	0	0	0	0	0	0
State Patrol	2	2	0	0	0	0	0	0	0	0	0	0	0	0	0	0	0	0	0	0	0	2	0	0	0	0	0	0	0	0	0

* Not a complete 12-month total

ARREST DATA BY AGENCY	Total Arrests	Total Adult	Total Juvenile	Murder, Manslaughter	Death by Negligence	Forcible Rape	Robbery	Felony Assault	Burglary - Breaking and Entering	Larceny - Theft	Motor Vehicle Theft	Misdemeanor Assault	Arson	Forgery and Counterfeiting	Fraud - O.M.F.P.	Embezzlement	Stolen Property - Buying Receiving, Possessing	Vandalism - Destruction of Property	Weapons - Carrying, Possessing, Etc.	Prostitution and Commercialized Vice	Sex Offenses Except Forcible Rape and Prostitution	Narcotic Drug Laws - TOTAL	Gambling - TOTAL	Offenses Against Family and Children - Nonsupport	Driving Under the Influence	Liquor Laws	Disorderly Conduct Disturbing the Peace	Vagrancy	All Other Offenses (Except Traffic)	Curfew and Loitering Law Violations	Runaways
Madison County	467	433	34	0	0	1	1	13	4	4	0	20	0	0	24	1	0	4	3	0	4	64	0	6	160	40	7	0	106	0	5
Sheriff's Office	181	164	17	0	0	1	1	8	3	3	0	13	0	0	24	1	0	0	0	0	2	30	0	6	32	8	4	0	40	0	5
Norfolk P.D.	Information Incomplete																														
Madison P.D.	109	101	8	0	0	0	0	4	1	0	0	6	0	0	0	0	0	3	0	0	1	2	0	0	18	13	3	0	58	0	0
State Patrol	177	168	9	0	0	0	0	1	0	1	0	1	0	0	0	0	0	1	3	0	1	32	0	0	110	19	0	0	8	0	0
Merrick County	186	149	37	0	0	0	0	1	4	26	3	11	0	1	16	0	0	0	0	0	0	2	0	7	30	46	3	0	35	0	1
Sheriff's Office	94	92	2	0	0	0	0	0	1	2	0	3	0	0	16	0	0	0	0	0	0	0	0	7	22	8	3	0	32	0	0
Central City P.D.	85	60	35	0	0	0	0	1	3	24	3	8	0	1	0	0	0	0	0	0	0	1	0	0	3	38	0	0	2	0	1
State Patrol	7	7	0	0	0	0	0	0	0	0	0	0	0	0	0	0	0	0	0	0	0	1	0	0	5	0	0	0	1	0	0
Morrill County	114	104	10	0	0	0	0	2	0	2	2	5	0	1	1	0	1	0	0	0	1	7	0	2	45	21	5	0	19	0	0
Sheriff's Office	80	74	6	0	0	0	0	2	0	2	1	5	0	1	1	0	0	0	0	0	1	2	0	2	32	11	5	0	15	0	0
State Patrol	34	30	4	0	0	0	0	0	0	0	1	0	0	0	0	0	1	0	0	0	0	5	0	0	13	10	0	0	4	0	0
Nance County	40	25	15	0	0	0	0	1	0	2	0	2	0	1	0	0	2	6	3	0	0	0	0	1	14	7	0	0	0	1	0
Sheriff's Office	37	22	15	0	0	0	0	1	0	2	0	2	0	1	0	0	2	6	3	0	0	0	0	1	11	7	0	0	0	1	0
State Patrol	3	3	0	0	0	0	0	0	0	0	0	0	0	0	0	0	0	0	0	0	0	0	0	3	0	0	0	0	0	0	0
Nemaha County	188	168	20	0	0	2	0	3	0	7	0	5	0	1	2	1	3	2	1	0	1	24	1	1	52	59	1	0	22	0	0
Sheriff's Office	48	42	6	0	0	1	0	2	0	0	0	2	0	0	0	0	2	0	0	0	0	2	0	0	24	9	0	0	6	0	0
Auburn P.D.	88	79	9	0	0	1	0	1	0	7	0	3	0	1	2	1	1	2	0	0	1	12	0	1	18	27	1	0	9	0	0
State Patrol	52	47	5	0	0	0	0	0	0	0	0	0	0	0	0	0	0	0	1	0	0	10	1	0	10	23	0	0	7	0	0
Nuckolls County	82	59	23	0	0	0	0	0	5	0	0	3	0	0	6	0	0	3	0	0	4	6	0	1	24	26	0	0	2	0	2
Sheriff's Office	56	35	21	0	0	0	0	0	5	0	0	0	0	0	6	0	0	1	0	0	4	3	0	1	7	25	0	0	2	0	2
Superior P.D.	16	15	1	0	0	0	0	0	0	0	0	3	0	0	0	0	0	2	0	0	0	0	0	0	11	0	0	0	0	0	0
State Patrol	10	9	1	0	0	0	0	0	0	0	0	0	0	0	0	0	0	0	0	0	0	3	0	0	6	1	0	0	0	0	0
Otoe County	388	299	89	0	0	0	0	6	26	30	7	28	1	4	2	1	4	25	5	0	2	29	0	3	73	84	17	0	18	5	10
Sheriff's Office	No Reports Submitted																														
Nebraska City P.D.	252	179	73	0	0	0	0	6	24	19	7	28	0	4	0	1	4	21	0	0	2	2	0	3	30	59	16	0	12	5	9
Syracuse P.D.	26	13	13	0	0	0	0	0	2	11	0	0	1	0	2	0	0	4	0	0	0	0	0	0	0	2	1	0	2	0	1
State Patrol	110	107	3	0	0	0	0	0	0	0	0	0	0	0	0	0	0	0	5	0	0	27	0	0	43	33	0	0	2	0	0
Pawnee County	53	43	10	0	0	1	0	2	0	0	0	2	0	0	0	0	0	0	0	0	0	1	0	0	31	14	0	0	2	0	0
Sheriff's Office	49	39	10	0	0	0	0	2	0	0	0	2	0	0	0	0	0	0	0	0	0	1	0	0	28	14	0	0	2	0	0
State Patrol	4	4	0	0	0	1	0	0	0	0	0	0	0	0	0	0	0	0	0	0	0	0	0	3	0	0	0	0	0	0	0
Perkins County	20	18	2	0	0	0	0	0	0	0	0	1	0	0	0	0	0	1	1	0	0	2	0	0	11	3	1	0	0	0	0
Sheriff's Office	20	18	2	0	0	0	0	0	0	0	0	1	0	0	0	0	0	1	1	0	0	2	0	0	11	3	1	0	0	0	0
State Patrol	0	0	0	0	0	0	0	0	0	0	0	0	0	0	0	0	0	0	0	0	0	0	0	0	0	0	0	0	0	0	0
Phelps County	267	212	55	0	0	0	0	0	6	20	4	33	2	0	4	0	0	15	0	0	4	5	0	3	48	70	15	0	40	0	0
Sheriff's Office	13	13	0	0	0	0	0	0	0	0	0	2	0	0	1	0	0	1	0	0	2	0	0	5	0	0	0	2	0	0	0
Holdrege P.D.	242	187	55	0	0	0	0	0	6	20	4	31	2	0	3	0	0	14	0	0	2	4	0	3	37	63	15	0	38	0	0
State Patrol	12	12	0	0	0	0	0	0	0	0	0	0	0	0	0	0	0	0	0	0	0	1	0	0	4	7	0	0	0	0	0
Pierce County	175	163	12	1	0	0	0	1	7	4	2	3	0	0	19	0	2	2	1	0	1	18	0	6	67	14	1	0	22	6	0
Sheriff's Office	89	85	4	0	0	0	0	1	3	2	2	2	0	0	18	0	1	2	0	0	1	1	0	6	34	2	1	0	13	0	0
Pierce P.D.	13	13	0	1	0	0	0	0	3	0	0	0	0	0	0	0	0	0	0	0	0	0	0	7	0	0	0	2	0	0	0
Plainview P.D.	11	5	6	0	0	0	0	0	0	2	0	1	0	0	1	0	0	0	0	0	0	0	0	1	0	0	0	0	6	0	0
State Patrol	62	60	2	0	0	0	0	0	1	0	0	0	0	0	0	0	1	0	1	0	0	15	0	0	25	12	0	0	7	0	0

ARREST DATA BY AGENCY	Total Arrests	Total Adult	Total Juvenile	Murder, Manslaughter	Death by Negligence	Forcible Rape	Robbery	Felony Assault	Burglary - Breaking and Entering	Larceny - Theft	Motor Vehicle Theft	Misdemeanor Assault	Arson	Forgery and Counterfeiting	Fraud - O.M.F.P.	Embezzlement	Stolen Property - Buying Receiving, Possessing	Vandalism - Destruction of Property	Weapons - Carrying, Possessing, Etc.	Prostitution and Commercialized Vice	Sex Offenses Except Forcible Rape and Prostitution	Narcotic Drug Laws - TOTAL	Gambling - TOTAL	Offenses Against Family and Children - Nonsupport	Driving Under the Influence	Liquor Laws	Disorderly Conduct Disturbing the Peace	Vagrancy	All Other Offenses (Except Traffic)	Curfew and Loitering Law Violations	Runaways
Platte County	865	493	162	2	0	1	1	6	5	101	1	70	0	5	3	0	4	35	8	0	4	31	0	0	170	124	6	0	50	21	7
Sheriff's Office	187	150	37	1	0	0	0	1	2	13	1	14	0	3	3	0	2	4	0	0	4	4	0	0	32	61	0	0	42	0	0
Columbus P.D.	414	284	120	1	0	1	1	5	3	88	0	56	0	2	0	0	2	31	8	0	0	12	0	0	116	50	6	0	4	21	7
State Patrol	54	49	5	0	0	0	0	0	0	0	0	0	0	0	0	0	0	0	0	0	0	15	0	0	22	13	0	0	4	0	0
Polk County	42	39	3	0	0	0	0	1	0	0	0	0	0	0	8	0	0	0	0	0	0	1	0	2	13	8	0	0	6	0	3
Sheriff's Office	39	36	3	0	0	0	0	1	0	0	0	0	0	0	8	0	0	0	0	0	0	1	0	2	10	8	0	0	6	0	3
State Patrol	3	3	0	0	0	0	0	0	0	0	0	0	0	0	0	0	0	0	0	0	0	0	0	0	3	0	0	0	0	0	0
Red Willow County	436	290	146	0	0	0	1	2	13	57	10	13	0	2	5	0	1	11	2	0	0	19	0	2	106	144	8	0	11	21	8
Sheriff's Office	36	26	10	0	0	0	0	0	2	6	1	2	0	0	5	0	0	3	1	0	0	1	0	1	2	1	2	0	6	0	3
McCook P.D.	333	207	126	0	0	0	1	2	11	51	8	11	0	2	0	0	0	8	1	0	0	10	0	1	77	118	6	0	0	21	5
State Patrol	67	57	10	0	0	0	0	0	0	0	1	0	0	0	0	0	1	0	0	0	0	8	0	0	27	25	0	0	5	0	0
Richardson County	184	152	32	0	0	0	0	1	14	13	1	24	0	4	21	0	0	21	4	0	2	3	0	11	29	6	7	0	22	0	1
Sheriff's Office	84	62	2	0	0	0	0	0	5	0	1	5	0	2	19	0	0	0	0	0	1	0	0	9	9	0	0	0	13	0	0
Falls City P.D.	104	75	29	0	0	0	0	1	9	13	0	19	0	2	2	0	0	21	0	0	0	3	0	2	10	6	7	0	8	0	1
State Patrol	16	15	1	0	0	0	0	0	0	0	0	0	0	0	0	0	0	0	4	0	1	0	0	0	10	0	0	0	1	0	0
Rock County	43	36	7	0	0	0	0	0	0	1	0	0	0	0	0	0	0	0	1	0	0	1	0	0	16	23	0	0	1	0	0
Sheriff's Office	17	15	2	0	0	0	0	0	0	1	0	0	0	0	0	0	0	0	1	0	0	0	0	0	5	9	0	0	1	0	0
State Patrol	26	21	5	0	0	0	0	0	0	0	0	0	0	0	0	0	0	0	0	0	0	1	0	0	11	14	0	0	0	0	0
Saline County	341	218	123	1	0	1	0	3	5	37	5	64	3	8	3	0	2	0	7	0	2	3	0	18	32	43	44	0	34	4	22
Sheriff's Office	74	68	8	0	0	0	0	1	4	8	3	8	0	1	3	0	1	0	1	0	2	2	0	17	8	6	5	0	4	0	0
Wilber P.D.	19	10	9	0	0	0	0	1	0	5	0	2	0	0	0	0	0	0	1	0	0	0	0	0	1	6	1	0	0	0	2
Crete P.D.	237	129	108	1	0	1	0	1	1	24	2	54	3	7	0	0	1	0	5	0	0	1	0	1	12	31	38	0	30	4	20
State Patrol	11	11	0	0	0	0	0	0	0	0	0	0	0	0	0	0	0	0	0	0	0	0	0	11	0	0	0	0	0	0	0
Sarpy County	4,500	3,087	1,403	0	0	2	18	32	74	722	18	425	9	21	127	1	62	192	54	0	27	298	0	132	735	350	198	0	801	158	44
Sheriff's Office	1,308	1,071	237	0	0	1	4	17	38	99	4	87	2	8	114	0	15	73	20	0	14	84	0	67	151	64	38	0	396	12	0
Bellevue P.D.	1,692	1,075	617	0	0	0	7	12	25	422	3	180	5	8	9	0	33	46	17	0	12	86	0	28	355	184	92	0	141	68	1
Papillion P.D.	427	257	170	0	0	0	4	2	0	36	1	65	2	0	1	1	7	32	2	0	1	38	0	12	67	85	8	0	53	10	0
LaVista P.D.	847	482	365	0	0	1	3	1	11	164	10	93	0	7	3	0	2	38	13	0	0	23	0	25	87	21	60	0	174	68	43
State Patrol	226	212	14	0	0	0	0	0	0	1	0	0	0	0	0	0	5	3	2	0	0	87	0	0	75	16	0	0	37	0	0
Saunders County	478	367	111	0	0	1	0	3	10	31	4	36	4	2	11	2	4	20	1	0	1	18	0	8	107	160	3	0	52	0	0
Sheriff's Office	199	160	39	0	0	0	0	2	6	7	2	6	4	2	9	0	0	12	0	0	0	1	0	7	38	68	1	0	34	0	0
Wahoo P.D.	83	56	27	0	0	0	0	1	3	18	1	13	0	0	2	2	1	0	0	0	0	0	0	0	21	20	1	0	0	0	0
Ashland P.D.	92	76	16	0	0	1	0	0	1	2	1	17	0	0	0	0	0	8	0	0	1	2	0	1	17	28	1	0	12	0	0
State Patrol	104	75	29	0	0	0	0	0	0	4	0	0	0	0	0	0	3	0	1	0	0	15	0	0	31	44	0	0	6	0	0
Scotts Bluff County	1,794	1,511	283	0	0	5	7	23	34	238	8	135	3	9	40	0	12	32	11	0	5	72	0	6	385	311	129	0	310	3	18
Sheriff's Office	397	397	0	0	0	1	2	4	9	27	4	21	1	4	34	0	0	4	3	0	2	18	0	3	54	7	5	0	196	0	0
Scottsbluff P.D.	732	598	134	0	0	4	2	9	12	140	1	70	2	2	0	0	2	11	1	0	1	21	0	0	165	168	84	0	37	0	0
Gering P.D.	410	296	114	0	0	0	3	2	13	64	0	30	0	2	4	0	8	17	4	0	2	8	0	3	74	74	23	0	58	3	18
Mitchell P.D.	82	57	25	0	0	0	0	8	0	7	0	14	0	0	2	0	0	0	0	0	0	0	0	0	12	12	17	0	10	0	0
State Patrol	173	163	10	0	0	0	0	0	0	0	1	0	0	1	0	0	2	0	3	0	0	27	0	0	80	50	0	0	9	0	0
Seward County	600	529	71	0	0	1	0	2	1	45	0	28	2	9	60	0	10	4	3	0	6	66	0	11	151	109	3	0	85	1	3
Sheriff's Office	166	164	2	0	0	0	0	0	1	3	0	2	0	2	41	0	3	0	0	0	2	12	0	5	56	1	0	0	38	0	0
Seward P.D.	176	125	51	0	0	1	0	1	0	33	0	19	2	3	18	0	6	4	0	0	3	4	0	1	23	30	0	0	26	1	3
Milford P.D.	131	117	14	0	0	0	0	1	0	9	0	5	0	4	1	0	0	0	1	0	1	14	0	3	26	56	3	0	7	0	0
State Patrol	127	123	4	0	0	0	0	0	0	0	0	2	0	0	2	0	1	0	2	0	0	38	0	2	46	22	0	0	14	0	0

ARREST DATA BY AGENCY	Total Arrests	Total Adult	Total Juvenile	Murder, Manslaughter	Death by Negligence	Forcible Rape	Robbery	Felony Assault	Burglary - Breaking and Entering	Larceny - Theft	Motor Vehicle Theft	Misdemeanor Assault	Arson	Forgery and Counterfeiting	Fraud - O.M.F.P.	Embezzlement	Stolen Property - Buying Receiving, Possessing	Vandalism - Destruction of Property	Weapons - Carrying/ Possessing, Etc.	Prostitution and Commercialized Vice	Sex Offenses Except Forcible Rape and Prostitution	Narcotic Drug Laws - TOTAL	Gambling - TOTAL	Offenses Against Family and Children - Nonsupport	Driving Under the Influence	Liquor Laws	Disorderly Conduct Disturbing the Peace	Vagrancy	All Other Offenses (Except Traffic)	Curfew and Loitering Law Violations	Runaways	
Sheridan County	569	453	116	0	1	1	0	5	24	55	8	47	1	6	16	0	0	12	2	0	1	12	0	16	131	135	30	0	66	0	0	
Sheriff's Office	205	174	31	0	1	0	0	0	11	10	7	13	0	0	10	0	0	7	2	0	1	2	0	4	52	55	11	0	19	0	0	
Gordon P.D.	252	177	75	0	0	1	0	5	12	45	1	34	1	6	6	0	0	5	0	0	0	5	0	12	21	36	19	0	43	0	0	
State Patrol	112	102	10	0	0	0	0	0	1	0	0	0	0	0	0	0	0	0	0	0	0	5	0	0	58	44	0	0	4	0	0	
Sherman County	9	5	4	0	0	0	0	1	0	2	0	0	0	0	0	0	0	0	0	0	0	0	0	1	2	0	2	0	0	0	1	
Sheriff's Office	8	4	4	0	0	0	0	1	0	2	0	0	0	0	0	0	0	0	0	0	0	0	0	1	1	0	2	0	0	0	1	
State Patrol	1	1	0	0	0	0	0	0	0	0	0	0	0	0	0	0	0	0	0	0	0	0	0	0	1	0	0	0	0	0	0	
Sioux County	7	6	1	0	0	0	0	0	2	0	0	0	0	0	0	0	0	0	0	0	0	0	0	0	3	2	0	0	0	0	0	
Sheriff's Office	3	2	1	0	0	0	0	0	2	0	0	0	0	0	0	0	0	0	0	0	0	0	0	0	1	0	0	0	0	0	0	
State Patrol	4	4	0	0	0	0	0	0	0	0	0	0	0	0	0	0	0	0	0	0	0	0	0	0	2	2	0	0	0	0	0	
Stanton County	200	143	57	0	0	3	0	5	1	21	3	18	0	2	5	0	3	6	2	0	0	8	0	1	41	67	8	0	5	0	1	
Sheriff's Office	155	117	38	0	0	3	0	5	1	12	3	12	0	0	5	0	3	3	2	0	0	6	0	1	31	63	2	0	3	0	0	
Stanton P.D.	34	16	18	0	0	0	0	0	0	9	0	5	0	2	0	0	0	3	0	0	0	0	0	0	4	2	6	0	2	0	1	
State Patrol	11	10	1	0	0	0	0	0	0	0	0	1	0	0	0	0	0	0	0	0	0	2	0	0	6	2	0	0	0	0	0	
Thayer County	154	138	16	0	0	0	0	0	3	2	0	1	0	1	13	0	2	0	0	0	1	10	0	4	34	64	0	0	18	0	0	
Sheriff's Office	128	112	16	0	0	0	0	0	3	2	0	1	0	0	13	0	0	0	0	0	1	5	0	4	24	62	0	0	13	0	0	
State Patrol	26	26	0	0	0	0	0	0	0	0	0	0	0	1	0	0	2	0	0	0	0	5	0	0	10	2	0	0	6	0	0	
Thomas County	1	1	0	0	0	0	0	0	0	0	0	0	0	0	0	0	0	0	0	0	0	0	0	0	1	0	0	0	0	0	0	
Sheriff's Office	0	0	0	0	0	0	0	0	0	0	0	0	0	0	0	0	0	0	0	0	0	0	0	0	0	0	0	0	0	0	0	
State Patrol	1	1	0	0	0	0	0	0	0	0	0	0	0	0	0	0	0	0	0	0	0	0	0	0	1	0	0	0	0	0	0	
Thurston County	105	101	4	0	0	0	0	1	1	1	0	0	0	0	0	0	0	0	0	0	1	8	0	0	83	9	0	0	1	0	0	
Sheriff's Office	87	87	0	0	0	0	0	1	1	1	0	0	0	0	0	0	0	0	0	0	1	2	0	0	59	1	0	0	1	0	0	
State Patrol	38	34	4	0	0	0	0	0	0	0	0	0	0	0	0	0	0	0	0	0	0	6	0	0	24	8	0	0	0	0	0	
Valley County	54	36	18	0	0	0	0	1	4	8	1	9	0	1	0	0	0	10	0	0	1	2	0	0	6	11	2	0	0	0	0	
Sheriff's Office	5	5	0	0	0	0	0	0	1	3	0	0	0	0	0	0	0	0	0	0	0	1	0	0	0	0	0	0	0	0	0	
Ord P.D.	45	27	18	0	0	0	0	1	3	3	1	9	0	0	0	0	0	10	0	0	1	1	0	0	3	11	2	0	0	0	0	
State Patrol	4	4	0	0	0	0	0	0	0	0	0	0	0	1	0	0	0	0	0	0	0	0	0	0	3	0	0	0	0	0	0	
Washington County	280	204	76	0	0	0	0	2	6	21	5	28	1	0	0	0	0	0	2	1	1	17	0	1	102	57	10	0	16	6	5	
Sheriff's Office	85	59	6	0	0	0	0	1	3	3	0	14	0	0	0	0	0	0	0	1	1	5	0	1	28	2	0	0	7	0	1	
Blair P.D.	174	107	67	0	0	0	0	1	3	18	5	14	1	0	0	0	0	0	2	0	0	7	0	0	49	51	9	0	4	6	4	
State Patrol	41	38	3	0	0	0	0	0	0	0	0	0	0	0	0	0	0	0	0	0	0	5	0	0	27	4	1	0	4	0	0	
Wayne County	334	289	65	1	0	1	0	1	14	33	3	11	0	0	0	1	6	7	0	0	0	13	0	0	54	170	1	0	17	0	1	
Sheriff's Office	31	19	12	0	0	1	0	0	11	5	0	4	0	0	0	1	0	0	0	0	0	3	0	0	3	3	0	0	0	0	0	
Wayne P.D.	277	224	53	1	0	0	0	1	3	28	3	7	0	0	0	0	6	7	0	0	0	2	0	0	44	157	1	0	16	0	1	
State Patrol	26	26	0	0	0	0	0	0	0	0	0	0	0	0	0	0	0	0	0	0	0	8	0	0	7	10	0	0	1	0	0	
Webster County	62	54	8	0	0	0	0	4	2	2	1	5	0	0	11	0	1	0	0	0	0	2	0	0	9	7	0	0	18	0	0	
Sheriff's Office	62	54	8	0	0	0	0	4	2	2	1	5	0	0	11	0	1	0	0	0	0	2	0	0	9	7	0	0	18	0	0	
State Patrol	0	0	0	0	0	0	0	0	0	0	0	0	0	0	0	0	0	0	0	0	0	0	0	0	0	0	0	0	0	0	0	
Wheeler County	6	5	1	0	0	0	0	0	0	0	0	0	0	0	0	0	0	0	0	0	0	2	0	0	2	2	0	0	0	0	0	
Sheriff's Office*	1	1	0	0	0	0	0	0	0	0	0	0	0	0	0	0	0	0	0	0	0	1	0	0	0	0	0	0	0	0	0	
State Patrol	5	4	1	0	0	0	0	0	0	0	0	0	0	0	0	0	0	0	0	0	0	1	0	0	2	2	0	0	0	0	0	
York County	588	409	179	0	0	0	2	8	4	71	1	36	0	2	50	0	7	24	2	0	6	39	0	16	122	71	11	0	87	16	13	
Sheriff's Office	211	211	0	0	0	0	1	2	1	0	0	12	0	0	42	0	0	0	0	0	2	7	0	14	79	0	0	0	51	0	0	
York P.D.	312	137	176	0	0	0	0	1	6	3	70	1	24	0	2	8	0	4	23	1	0	4	3	0	2	23	63	11	0	34	16	13
State Patrol	65	61	4	0	0	0	0	0	0	1	0	0	0	0	0	0	3	1	1	0	0	29	0	0	20	8	0	0	2	0	0	

* Not a Complete 12-Month Total

**Nebraska Commission on Law Enforcement
and Criminal Justice**

301 Centennial Mall South

P.O. Box 94946

Lincoln, Nebraska 68509

BULK RATE
U.S. POSTAGE
PAID
Lincoln, Nebraska
Permit No. 212