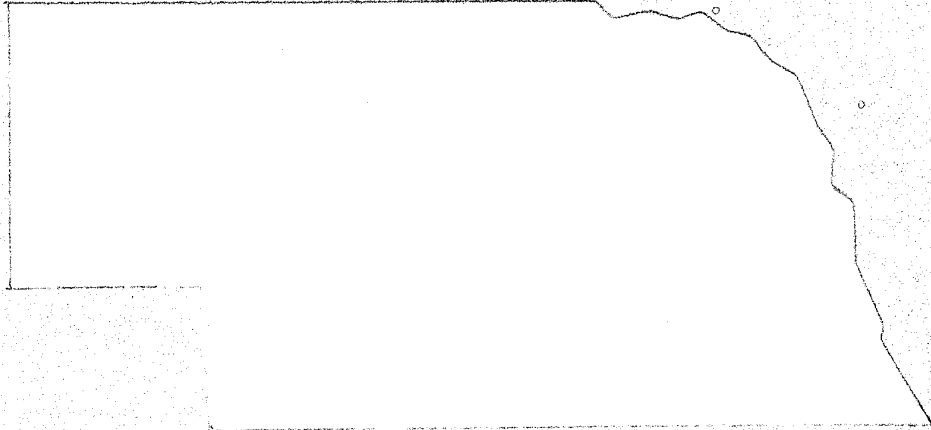




2



152867

7

152867

# Nebraska

## Department of Correctional Services

19th Annual Report  
FY 1992/93

152867

U.S. Department of Justice  
National Institute of Justice

This document has been reproduced exactly as received from the person or organization originating it. Points of view or opinions stated in this document are those of the authors and do not necessarily represent the official position or policies of the National Institute of Justice.

Permission to reproduce this copyrighted material has been granted by  
Nebraska Department of Correctional  
Services

to the National Criminal Justice Reference Service (NCJRS).

Further reproduction outside of the NCJRS system requires permission of the copyright owner.

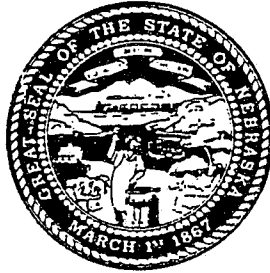
NCJRS

FEB 24 1995

ACQUISITIONS

E. Benjamin Nelson  
Governor

Nebraska  
Department of Correctional Services



**Harold W. Clarke**  
Director

Division of Administrative Services

**Jack L. Falconer**  
Assistant Director

Division of Adult Institutions

**Karen Shortridge**  
Assistant Director

Classification and Correctional Programming

**Larry A. Tewes**  
Assistant Director

Division of Juvenile Services

**Larry A. Tewes**  
Acting Assistant Director

Department of Correctional Services

P.O. Box 94661

Lincoln, Nebraska 68509-4661

Telephone: (402) 471-2654

FAX: (402) 479-5119



## ∞ TABLE OF CONTENTS ∞

DEPARTMENT DIVISION HEADS . . . . .	i
TABLE of CONTENTS . . . . .	iii
ROSTER of FACILITIES/PROGRAMS and FACILITY/PROGRAM HEADS . . . . .	vii
LOCATION of FACILITIES/PROGRAMS . . . . .	xi
DEPARTMENT of CORRECTIONAL SERVICES . . . . .	1
Organizational Chart. . . . .	3
Statutory Authority . . . . .	5
Purpose . . . . .	5
Goals . . . . .	5
History . . . . .	6
Accreditation . . . . .	6
Recidivism . . . . .	7
Table: Recidivism Data . . . . .	9
Chart: Incarcerated Population vs. Design Capacity . . . . .	10
Chart: Total Incarcerated Population - Adults/Juveniles/Community Centers . . . . .	11
Table: Average Monthly Population - Adults and Juveniles . . . . .	12
Table: Total Population as of June 30, 1993 . . . . .	13
DIVISION of ADMINISTRATIVE SERVICES . . . . .	15
Organizational Chart . . . . .	17
Program Statement . . . . .	19
Budget . . . . .	19
Fiscal Management . . . . .	19
Purchasing, Inventory & Food Service . . . . .	20
Engineering, Management Information & Records Management . . . . .	20
Medical Services . . . . .	21
Safety/Sanitation Program . . . . .	21
Cornhusker State Industries & Federal Surplus Property . . . . .	21
Legal Services . . . . .	23
Table: Inmate and Employee Actions . . . . .	23
Personnel Management & Staff Training. . . . .	23
Planning, Research & Accreditation . . . . .	24
Security Coordination . . . . .	24
Table: Per Capita Inmate/Student Costs - All Facilities and Programs, FY91, 92, 93 . . . . .	25
Table: Per Capita Statement by Facilities/Centers/Programs . . . . .	26
Table: Per Capita Statement Adult Facilities and Programs . . . . .	27
Table: Per Capita Statement by Juvenile Facilities and Programs . . . . .	28
Table: Fiscal Statement of the Department, Federal Surplus Property, Cornhusker . . . . .	

State Industries, Construction, Grants & Central Office . . . . .	29
<b>DIVISION OF ADULT INSTITUTIONS . . . . .</b>	<b>31</b>
Organizational Chart . . . . .	33
Program Statement . . . . .	35
Nebraska State Penitentiary . . . . .	35
Hastings Correctional Center . . . . .	36
Lincoln Correctional Center and Diagnostic & Evaluation Center . . . . .	36
Omaha Correctional Center . . . . .	37
OCC - Work Release Unit . . . . .	37
Nebraska Center for Women . . . . .	38
Community Corrections Center-Lincoln . . . . .	39
Chart: Areas of Commitment . . . . .	41
Chart: Total Adult Male and Female Admissions - Safekeepers, Evaluators and Regular Admissions by Fiscal Year . . . . .	42
Chart: Total Adult Male and Female Admissions - by Race, by Age & by Sex . . . . .	43
Chart: Total Adult Population by Race . . . . .	44
Chart: Total Adult Average Monthly Population by Fiscal Year . . . . .	45
Table: Length of Stay - Minimum/Maximum Sentence for Most Severe Offense . . . . .	46
Table: Length of Stay - Based Upon Incarcerated Males and Females as of the End of June in Each Fiscal Year (FY89, 90, 91, 92, 93) . . . . .	48
Table: Total Adult Population Currented Confined - by Age, by Mean Age, & by Most Serious Offense . . . . .	49
Chart: Total Adult Releases by Fiscal Year . . . . .	51
Chart: Total Adult Releases by Age & by Sex and Type . . . . .	52
Table: Institutional Releases - by Status, by Sex, by Race, & by Length of Stay . . . . .	53
Table: Release Information - Maximum/Minimum Sentence . . . . .	54
Table: Length of Stay - Based Upon Releases of Adult Males and Females as of the End of June in Each Fiscal Year (FY83 thru 93) . . . . .	55
Chart: Community Corrections - Average Monthly Population . . . . .	56
Table: Total Adult Admissions, Custody Levels, & Releases . . . . .	57
Chart: Escapes . . . . .	59
 <b>CLASSIFICATION and CORRECTIONAL PROGRAMMING . . . . .</b>	 <b>61</b>
Organizational Chart. . . . .	63
Program Statement . . . . .	64
Inmate Classification . . . . .	64
Mental Health Services. . . . .	64
Academic/Vocational Services . . . . .	65
Interstate Corrections Compact. . . . .	65
Volunteer Services . . . . .	66
Inmate Programs . . . . .	66
Adult Parole Administration . . . . .	66
Chart: Adult Parole Administration, Average Monthly Population by Fiscal Year . . . . .	68
Table: Adult Parole Revocations, Discharges, & Monthly Count Under Supervision . . . . .	69
Table: Releases to Parole - by Status, Sex, Race, & Length of Stay in the Institution . . . . .	70
Table: Releases to Parole - Minimum/Maximum Sentence . . . . .	71
 <b>DIVISION of JUVENILE SERVICES . . . . .</b>	 <b>73</b>
Organizational Chart . . . . .	75

Program Statement	77
Youth Development Center-Kearney	77
Youth Development Center-Geneva	78
Juvenile Parole Administration	79
Chart: <i>Juvenile Population - Areas of Commitment</i>	81
Chart: <i>Juvenile Population - Average Monthly Committed Population</i>	82
Chart: <i>Juvenile Population - Commitments by Delinquency</i>	83
Chart: <i>Juvenile Commitments At Admission- by Age &amp; by Race</i>	84
Chart: <i>Juvenile Evaluators - Number of Admissions</i>	85
Chart: <i>Juvenile Evaluators - by Age, by Gender, &amp; by Race</i>	86
Table: <i>Summary of Admissions, Releases, &amp; Length of Stay for Commitments</i>	87
Table: <i>Juvenile Parole - Paroled Cases by Race and Sex, Discharges by Race and Sex, &amp; Revocations by Race and Sex</i>	88
Table: <i>Juvenile Parole - Length of Stay on Parole, Foster Care Program Placements, Interstate Compact Services Placements, &amp; Movement of Juveniles</i>	89

\*\*\*\*\*





ROSTER OF FACILITIES and PROGRAMS

**DEPARTMENT of CORRECTIONAL SERVICES**

Harold W. Clarke, Director

P.O. Box 94661

Lincoln, NE 68509-4661

(402) 471-2654

FAX: (402) 479-5119

**COMMUNITY CORRECTIONS CENTER**

David S. Avery, Superintendent

2720 W. Van Dorn

P.O. Box 2200

Lincoln, NE 68542-2200

(402) 471-0740

FAX: (402) 471-6268

**HASTINGS CORRECTIONAL CENTER**

Gary Grammer, Superintendent

P.O. Box 2048

Hastings, NE 68902-2048

(402) 463-5600

FAX: (402) 463-7730

**LINCOLN CORRECTIONAL CENTER  
DIAGNOSTIC & EVALUATION CENTER**

John Dahm, Warden

P.O. Box 22800, Station B

Lincoln, NE 68542-2800

(402) 471-2861

FAX: (402) 479-6100

**NEBRASKA CENTER FOR WOMEN**

Larry Wayne, Warden

Route #1, Box 33

York, NE 68467-9714

(402) 362-3317

FAX: (402) 362-3317

**NEBRASKA STATE PENITENTIARY**

Frank X. Hopkins, Warden

P.O. Box 2500, Station B

Lincoln, Nebraska 68542-2500

(402) 471-3161

FAX: (402) 471-4326

**OMAHA CORRECTIONAL CENTER**

Robert Houston, Warden

P.O. Box 11099

Omaha, NE 68111-0099

(402) 595-3964

FAX: (402) 595-2227

**OCC - WORK RELEASE UNIT**

2320 East Avenue J

Omaha, NE 68110-2766

(402) 595-2010

**ADULT PAROLE ADMINISTRATION**

Dennis Bakewell, Administrator

P.O. Box 94661

Lincoln, NE 68509-4661

(402) 471-2654

FAX: (402) 471-5119

**JUVENILE PAROLE ADMINISTRATION**

Arthur W. Pohlen, Administrator

P.O. Box 94661

Lincoln, NE 68509-4661

(402) 471-2654

FAX: (402) 479-5119

**YOUTH DEVELOPMENT CENTER-  
GENEVA**

Allen Jensen, Superintendent

R.R. 1, Box 23A

Geneva, NE 68361-0273

(402) 759-3164

FAX: (402) 759-3164

**YOUTH DEVELOPMENT CENTER-  
KEARNEY**

Al Kulhanek, Superintendent

2802 30th Avenue

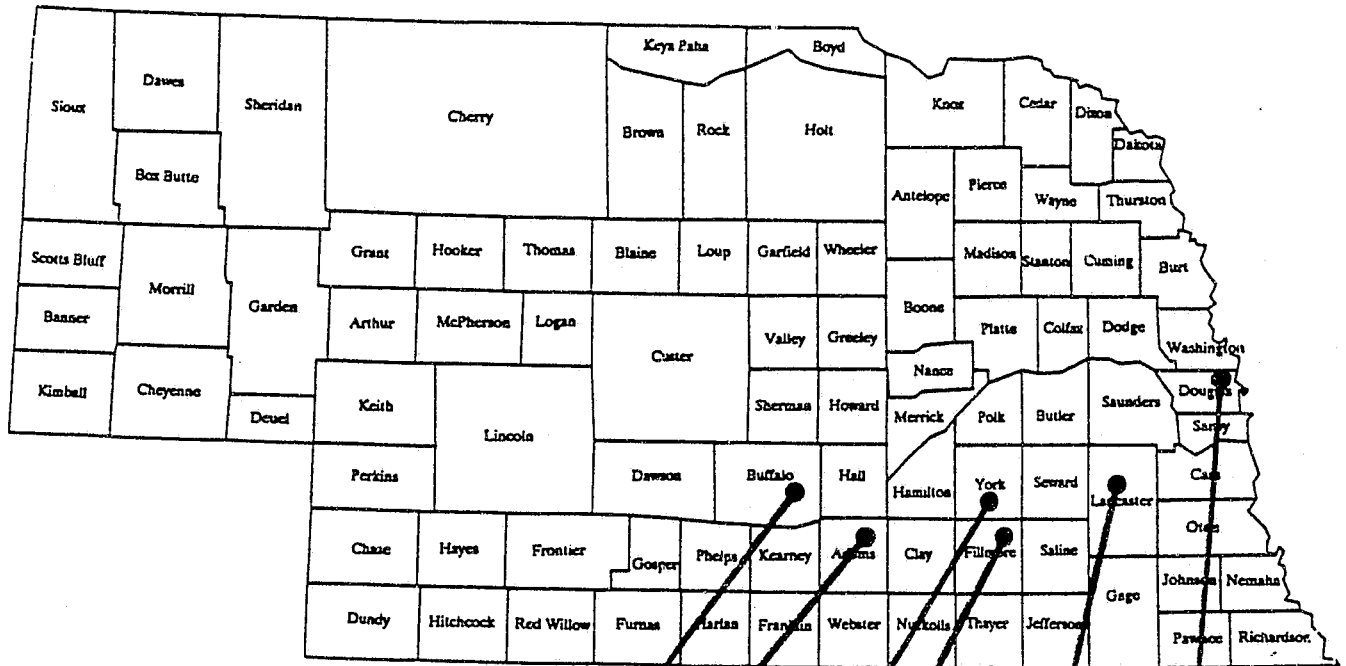
Kearney, NE 68847-9599

(308) 237-3181

FAX: (308) 234-8721



# 80 NEBRASKA CORRECTIONAL FACILITIES and PROGRAMS 83



Youth Development Center, KEARNEY

Hastings Correctional Center, HASTINGS

Nebraska Center for Women, YORK

Youth Development Center, GENEVA

DCS Central Office Administration  
Nebraska State Penitentiary  
Lincoln Correctional Center  
Community Corrections Center  
Adult Parole Administration  
Juvenile Parole Administration

LINCOLN

Omaha Correctional Center  
OCC Work Release Unit

OMAHA

***Department  
of  
Correctional  
Services***



GOVERNOR

DIRECTOR of CORRECTIONAL SERVICES

ASSISTANT DIRECTOR  
JUVENILE SERVICES

YDC - Kearney

YDC - Geneva

Juvenile Parole  
Administration

Legal Services

Personnel Management

Staff Training

Planning/Research/  
Accreditation

Security Coordination/  
Special Services Unit

ASSISTANT DIRECTOR  
ADMINISTRATIVE SERVICES

Budget

Fiscal Management

Purchasing/Inventory/  
Food Services

Engineering/  
Management Information

Records Management

Medical Services

Safety/Sanitation

Cornhusker State Industries

Federal Surplus Property

ASSISTANT DIRECTOR  
ADULT INSTITUTIONS

Nebraska State Penitentiary

Lincoln Correctional Center

Diagnostic & Evaluation Center

Omaha Correctional Center

Work Release Unit

Hastings Correctional Center

Nebraska Center for Women

Community Corrections  
Center-Lincoln

ASSISTANT DIRECTOR  
CLASS/CORR PROGRAMS

Mental Health Services

Academic/Vocational  
Services

Volunteer Services

Interstate Corrections  
Compact

Adult Inmate  
Classification

Adult Parole  
Administration

ORGANIZATIONAL CHART  
NEBRASKA Department of Correctional Services

FY/93



## DEPARTMENT of CORRECTIONAL SERVICES

### *Statutory Authority*

In early 1967, the Division of Corrections was created within the Department of Public Institutions. Legislative action in 1974 established the Department of Correctional Services as a separate agency of state government. Nebraska Revised Statutes 83-171 and 83-901 (Reissue 1981) charges the department with the custody, control, study, correctional treatment, training and rehabilitation of persons committed to it so that they may be prepared for lawful and productive community living.

### *Agency Purpose and Mission*

The department's statutory purpose is to provide for the custody, study, care, discipline, training, and treatment of persons in correctional institutions, and to supervise persons committed to the department on parole, as well as develop policies and programs for the correctional treatment and rehabilitation of those persons committed to it. Developed from this statutory directive, the mission of the Department of Correctional Services is to serve and protect the public by providing control, humane care and program opportunities for those individuals placed in its custody and supervision, thereby facilitating their return to society as responsible persons.

The Legislative Committee for the Development of the Statewide Correctional Improvement Plan of 1974 established the primary goal of corrections in Nebraska to be the successful reintegration of the inmate into the community, through functional and realistic programming, while providing for the protection of society. To fulfill the mission of the department, four major areas of operation oversee the various institutions and programs: the Division of Administrative Services; the Division of Adult Institutions; Classification & Correctional Programming; and, the Division of Juvenile Services. Within this organizational framework, the department seeks to refine its processes and policies and maintain the public's confidence and safety.

The philosophic framework for all actions planned by the department is found in the statutory requirements (Revised Statutes of Nebraska 83-171, 181, 182, 183, 901, 924, 927, 932, 936, 939, and 943).

### *Agency Goals*

The goals of the Department of Correctional Services for the biennium budget period of 1991-1993 are outlined below. All institutions and major program areas have formulated objectives based on these goals.

1. To operate the department in a safe and secure manner;
2. To maintain an adequate quality of life;
3. To provide for and maintain inmate rights under the U.S. Constitution and federal and state law;
4. To place inmates in appropriate custody levels from intake through release;
5. To operate the department in an efficient and effective manner;
6. To provide meaningful work for inmates;
7. To provide adequate programming for inmates;
8. To achieve and maintain accreditation; and,
9. To improve training.



## *History*

A barn-like structure erected on what were to become the Penitentiary grounds served Nebraska as its first territorial prison. The first commitment arrived on February 22, 1869. Prior to that time, prisoners were confined by the counties or in federal prisons. On March 4, 1870, the State Legislature approved the construction of the Nebraska State Penitentiary, to be located south of the city of Lincoln. Opened in 1896, the original structure was constructed of magnesia limestone and could house 375 inmates.

In 1879, the Legislature created the Nebraska State Reform School for Juvenile Offenders to be located in Kearney. The first offender was committed in July 1881. Ten years later, the Girls Industrial School was established by the Legislature. It opened in Geneva in 1892.

During the early 1920's, correctional services were expanded, raising the adult male and female inmate capacity to 750. Female prisoners were originally housed in separate quarters at the Nebraska State Penitentiary, however, on May 11, 1920, the newly authorized women's prison accepted its first inmate. Initially called the Reformatory for Women, the facility was a two-story frame house located on a farm at the outskirts of the community of York. Additional space for male inmates was created when the Men's Reformatory opened in 1921 at a site west of the city of Lincoln.

Nebraska's correctional needs have continued to grow and existing facilities have been enlarged and additional facilities opened. The department has been involved in well over a decade of rigorous prison reform and rebuilding. Beginning in 1975 and 1976, the initial Legislative authorizations were received. In FY93, the Department of Correctional Services provided care, custody, control and supervision for over 3800 individuals in five adult and two juvenile facilities, two community corrections centers, and the adult and juvenile parole programs.

## *Accreditation*

In 1978, the American Correctional Association and the Commission on Accreditation for Corrections implemented a national accreditation program for all segments of adult and juvenile corrections. In 1979, the Nebraska Legislature mandated that the facilities and programs of the Department of Correctional Services attain accredited status. The accreditation process involves coming into compliance with a set of separate and distinct standards developed by nationally recognized correctional professionals for all operation and program areas.

With society's sentiment remaining in favor of removing the criminal from the community, the ACA standards provide the basis for the humane administration and direction of institutional and program care for the resulting increase inmate populations. This is the foundation upon which is built the preservation of individual rights and responsibilities and ultimately, the protection of society.

This voluntary process offers the opportunity to evaluate operations against national standards, remedy deficiencies, and upgrade the quality of correctional programs and services. It supports improved management practices through better organization, forces the development and continual review of policies and procedures and the ascertainment of staff compliance with them. Accreditation contributes to the increased accountability and enhanced public credibility for administrative and line staff. It provides for the establishment of measurable criteria for upgrading programs, personnel and physical plant operations on a continuing basis. It also offers a defense against lawsuits through documentation and the demonstration of a "good faith" effort to improve the conditions of confinement. Overall, accreditation benefits both personnel and inmates/students in ensuring a safer and more humane living and working environment.

The department is dedicated to continuing its success in accreditation and supports this process by an accreditation/system review directed at evaluating accreditation compliance and general facility/program operations, conditions and procedures. On a regularly scheduled basis, each facility/program areas is audited by a team of staff members drawn from throughout the department. The intent of the review is to identify problem areas proactively before they become major concerns of the facility/program and the department and to make an assessment of accreditation readiness.

Since the department's involvement with the accreditation process, all facilities/programs have been accredited and have continued to work toward maintenance of compliance levels throughout the three-year accreditation award period. The current accreditation status for each facility and program may be found in the section devoted to each department division.

### ***Recidivism***

Many individuals in prison have been there before and many will return at some point after their next release. The effectiveness of the criminal justice system is often measured by the extent to which inmates continue to engage in criminal activity after their release from prison. The rate at which released prisoners return to confinement is termed "recidivism." While the definition, criteria and method of defining recidivism varies from state to state, the department utilizes the following standardized definition:

*"Recidivism is measured by criminal acts that result in conviction by a court when committed by inmates released from the Nebraska Prison System during a specified base time period who return to the Nebraska System within three years of their release date."*

The recidivist rate is the number of convictions for new crimes divided by the number of releases. This rate represents the proportion of inmates who left the Nebraska Prison System during a specified time period who were reincarcerated because of convictions for committing a new offense. The numbers compiled for FY93 reflect a 23.6% overall recidivism rate for both males and females. (The specific recidivism data follows on the next page of this report.)

\*\*\*\*\*



# **RECIDIVISM DATA by FISCAL YEAR**

(Recidivism consists of new crime commitments only.)

FISCAL YEAR	FEMALES			MALES			COMBINED		
	Paroles	Institution Discharges	Totals	Paroles	Institution Discharges	Totals	Paroles	Institution Discharges	Totals
<b>Number Released</b>									
80/81	25	19	44	238	305	543	263	324	587
81/82	22	18	40	244	291	535	266	309	575
82/83	27	32	59	289	359	648	316	391	707
83/84	34	22	56	307	352	659	341	374	715
84/85	24	26	50	268	372	640	292	398	690
85/86	22	28	50	277	357	634	299	385	684
86/87	31	27	58	364	459	823	395	486	881
87/88	70	26	96	486	326	812	556	352	908
88/89	58	29	87	412	463	875	470	492	962
89/90	62	51	113	448	559	1007	510	610	1120
<b>Number Recidivist</b>									
80/81	2	2	4	23	65	88	25	68	93
81/82	2	2	4	24	75	99	26	77	103
82/83	2	4	6	25	60	85	27	64	91
83/84	4	5	9	52	82	134	56	87	143
84/85	5	5	10	61	92	153	66	97	163
85/86	1	7	8	59	90	149	60	97	157
86/87	7	9	16	85	106	191	92	115	207
87/88	11	3	14	105	80	185	116	83	199
88/89	5	3	8	80	108	188	85	111	196
89/90	2	9	11	97	156	253	99	165	264
<b>Percent Recidivist</b>									
80/81	8.0	10.5	9.1	9.7	21.3	16.2	9.5	21.0	15.8
81/82	9.1	11.1	10.0	9.8	25.7	18.5	9.8	24.9	17.9
82/83	7.4	12.5	10.2	8.7	16.7	13.1	8.5	16.4	12.9
83/84	11.8	22.7	16.1	16.9	23.3	20.3	16.4	23.3	20.0
84/85	20.8	19.2	20.0	22.8	24.7	23.9	22.6	24.4	23.6
85/86	4.5	25.0	16.0	21.3	25.2	23.5	20.1	25.2	23.0
86/87	22.6	33.3	27.6	23.4	23.1	23.2	23.3	23.7	23.5
87/88	15.7	11.5	14.4	21.6	24.5	22.8	20.9	23.6	21.9
88/89	8.6	10.3	9.2	19.4	23.3	21.5	18.1	22.6	20.4
89/90	3.2	17.6	9.7	21.7	27.9	25.1	19.4	27.0	23.6

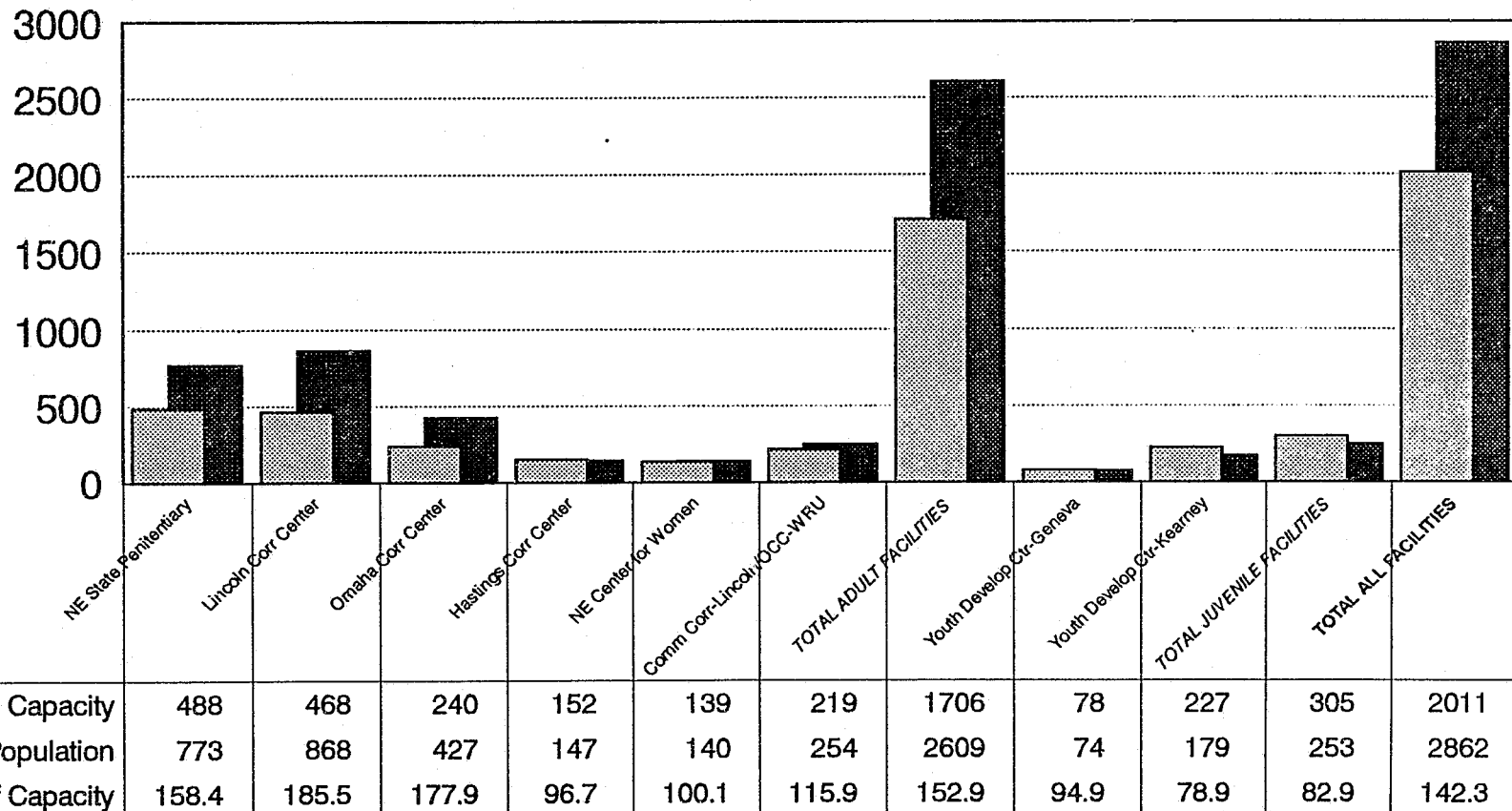
NOTE: Recidivism rates after FY83 also include parolees who were revoked for felonies.

DEFINITION: Recidivism is measured by criminal acts that result in conviction by a court when committed by inmates released from the Nebraska State Prison System during a specified base time period who return to the Nebraska System within three years of their release date.

# Incarcerated Population vs. Design Capacity

FY1993 Average Monthly Population

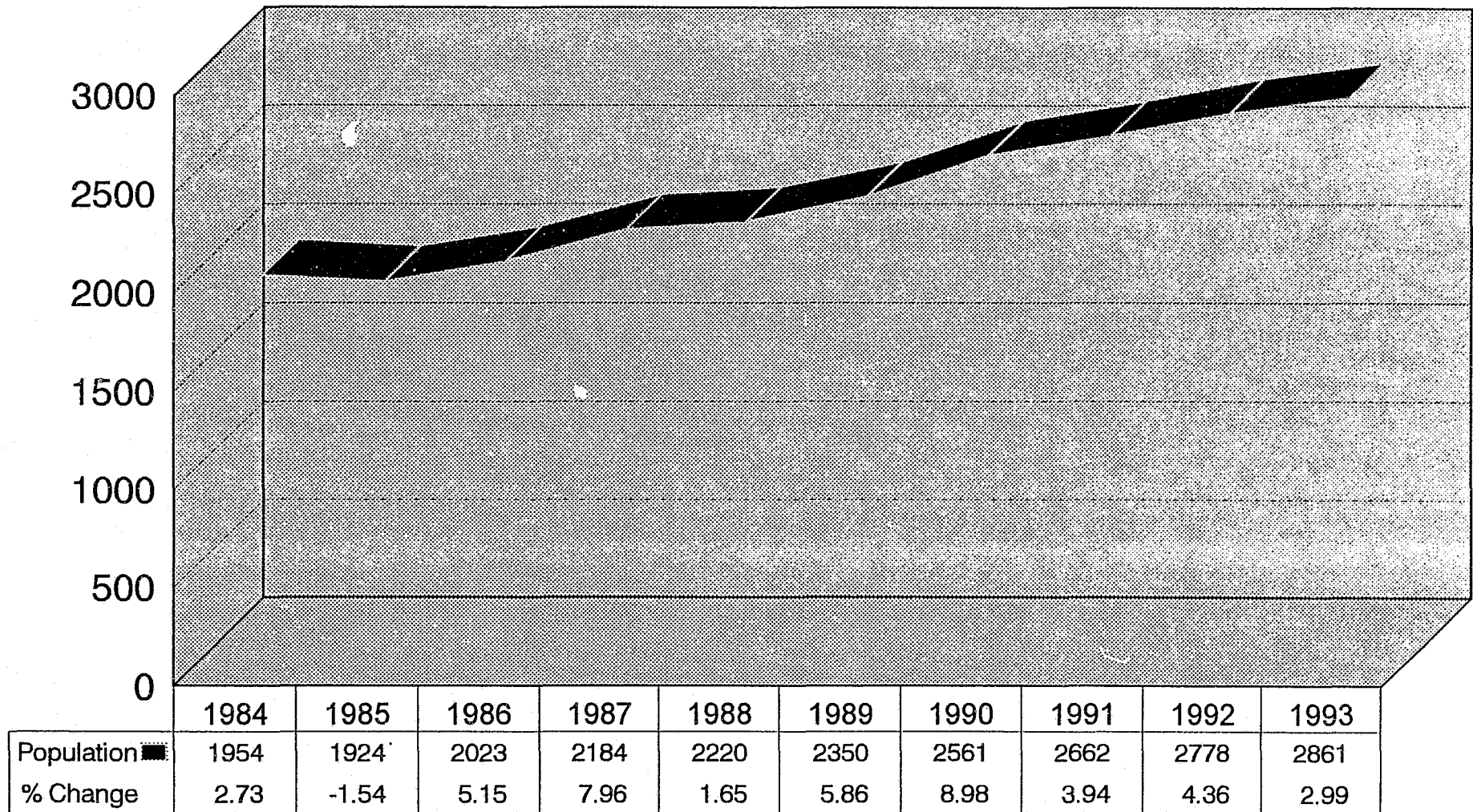
Design Capacity Average Population



# Total Incarcerated Population by Fiscal Year

Average Monthly Population

11



Includes Adults, Juveniles and Community Centers; does not include Adult and Juvenile Parole. Chart represents an overall increase of 46.4% in the incarcerated population.

## AVERAGE MONTHLY POPULATION

### Summary of Inmates/Students in INSTITUTIONS

<u>FACILITY / FISCAL YEAR</u>	<u>1984</u>	<u>1985</u>	<u>1986</u>	<u>1987</u>	<u>1988</u>	<u>1989</u>	<u>1990</u>	<u>1991</u>	<u>1992</u>	<u>1993</u>
Nebraska State Penitentiary	830	704	662	674	646	653	710	743	768	773
Lincoln Correctional Center	382	323	375	*667	676	696	758	791	828	868
Diagnostic & Evaluation Center	244	204	257	*-	-	-	-	-	-	-
Omaha Correctional Center	67	213	245	291	294	300	349	366	400	427
Hastings Correctional Center	-	-	-	-	59	137	147	145	150	147
Nebraska Center for Women	66	71	65	88	89	100	114	114	124	140
Community Corrections (Community Corrections-Lincoln and OCC-Work Release Unit)	168	198	207	240	231	226	244	268	268	254
Youth Development Center-Geneva	47	57	61	66	70	66	72	71	71	74
Youth Development Center-Kearney	<u>150</u>	<u>154</u>	<u>151</u>	<u>158</u>	<u>155</u>	<u>172</u>	<u>167</u>	<u>164</u>	<u>169</u>	<u>179</u>
TOTALS:	1954	1924	2023	2184	2220	2350	2561	2662	2778	2862
% Change:	-1.5%	+5.1%	+8.0%	+1.6%	+5.9%	+9.0%	+3.9%	+4.4%	+3.0%	

(NOTE: 46.5% Increase since FY84)

\* These two facilities became one institution in FY87.

### Summary of Inmates/Students on PAROLE

Adult Parole	301	302	251	300	452	431	476	563	625	653
Community Furlough Program	-	-	-	-	-	44	37	4	10	12
Juvenile Parole	<u>189</u>	<u>175</u>	<u>193</u>	<u>208</u>	<u>251</u>	<u>239</u>	<u>268</u>	<u>263</u>	<u>284</u>	<u>278</u>
TOTALS:	490	477	444	508	703	714	781	830	919	943
% Change:	-2.7%	-6.9%	+14.4%	+38.4%	+1.6%	+9.4%	+6.3%	+10.7%	+2.6%	

(NOTE: 92.4% Increase since FY84)

POPULATION as of JUNE 29, 1993  
All Facilities and Programs

		ADULT		
<u>Design Capacity</u>				<u>% of Capacity</u>
INSTITUTIONS				
488	Nebraska State Penitentiary (NSP)	755		154.71%
468	Lincoln Correctional Center (LCC)	867		185.26%
240	Omaha Correctional Center (OCC)	439		182.92%
152	Hastings Correctional Center (HCC)	159		104.61%
139	Nebraska Center for Women (NCW)	132		94.96%
INSTITUTIONAL TOTAL			2352	
COMMUNITY CORRECTIONS CENTERS				
129	Community Corrections Center-Lincoln (CCL)	139		107.75%
90	OCC Work Release Unit (OCC-WRU)	111		123.33%
COMMUNITY CORRECTIONS TOTAL			250	
1,706	INCARCERATED TOTAL		2,602	152.52%
COMMUNITY FURLOUGH PROGRAM				
	Omaha District	3		
	Lincoln District	2		
	Out State	0		
COMMUNITY FURLOUGH TOTAL			5	
ADULT PAROLE ADMINISTRATION				
	Omaha District	393		
	Lincoln District	320		
ADULT PAROLE TOTAL			713	
ADULT FACILITY and PROGRAM TOTAL.....			3,320	
JUVENILE				
Youth Development Centers				
78	Geneva (YDC-G)	80		97.5%
227	Kearney (YDC-K)	183		80.6%
INSTITUTION TOTAL			263	
Juvenile Parole Administration (JPA)		270		
COMMUNITY TOTAL			270	
JUVENILE FACILITY and PROGRAM TOTAL.....			533	
DEPARTMENTAL INSTITUTION AND PROGRAM TOTAL.....			3,853	

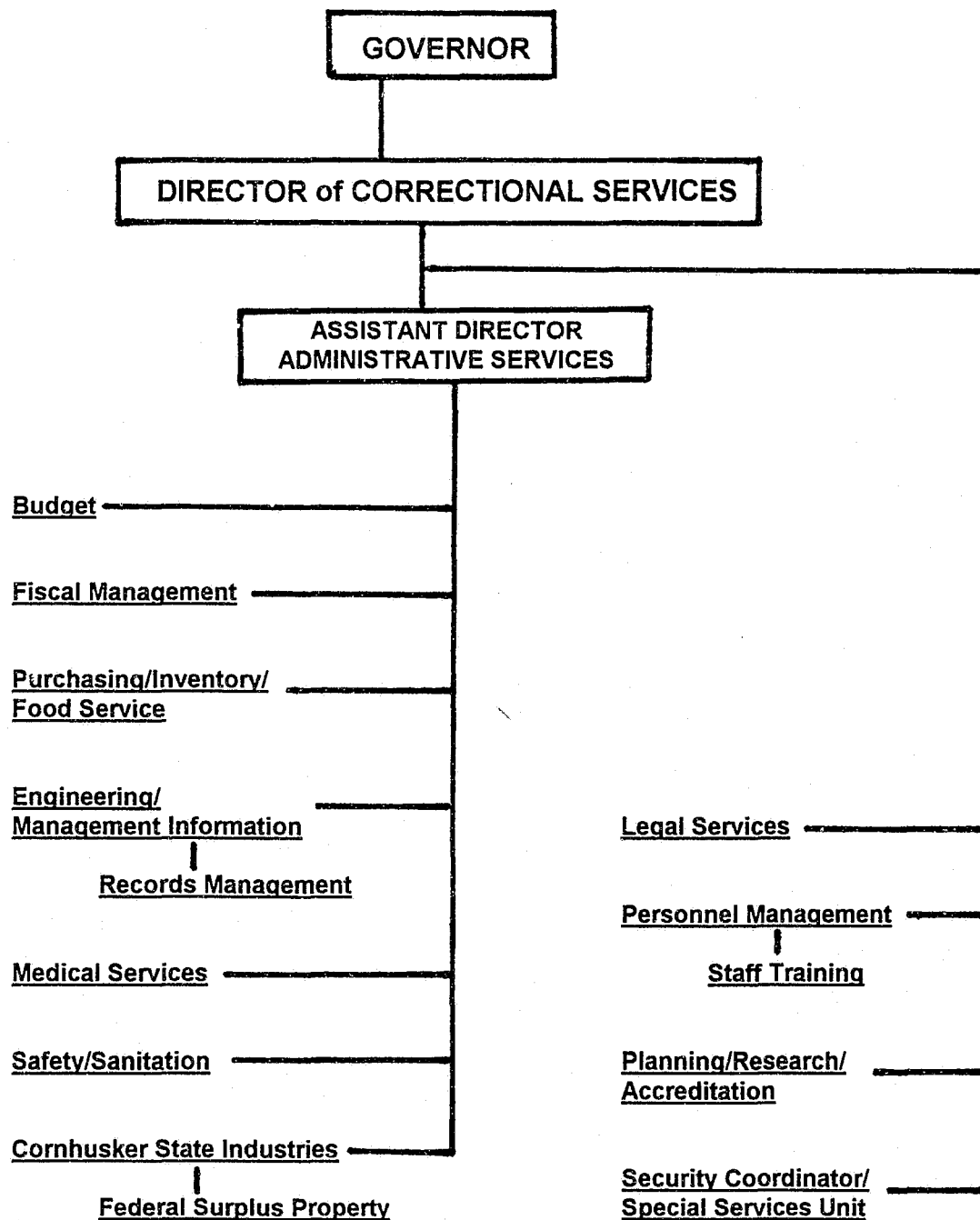




***Division  
of  
Administrative  
Services***



## DIVISION of ADMINISTRATIVE SERVICES





## ∞ DIVISION OF ADMINISTRATIVE SERVICES ∞

Established in accordance with Nebraska Revised Statute Section 83-922 (Reissue 1987), the Division of Administrative Services provides assistance and support services to the department's facilities and programs. State Statute 83-943 (Reissue 1987) instructs that the Division shall:

- 1) Coordinate and supervise services available to all divisions of the Department of Correctional Services from a centralized location;
- 2) Provide technical assistance on budget preparation, accounting procedures, federal funding administration, procurement, and inventory.
- 3) Provide assistance in the total concept of human resource management involving staffing, recruiting, and evaluation, and establishing and maintaining in-service training programs for existing programs, as well as future programs;
- 4) Provide technical assistance in the planning and development of new capital construction projects and supervising maintenance functions for all facilities within the department;
- 5) Provide data collection and analysis from Nebraska and other states to assist the director in the formulation of current and future corrections policy and to justify budgetary needs to implement policy decisions, and developing standards for evaluation of correctional programs to better evaluate social worth and budgetary performance;
- 6) Design and implement a comprehensive data record system for the disposition of the criminal records of adult inmates in the state.

Further, the Division:

- 7) Administers and supervises the Federal Surplus Property Program for the state of Nebraska;
- 8) Administers and supervises the Nebraska Cornhusker State Industries program, and
- 9) Administers and supervises the adult medical services program.

### ***Budget***

The Budget Officer is responsible for planning, organizing, and monitoring the department's fiscal allocations and fiscal reporting systems. Fiscal and accounting data are compiled to use in budget evaluation and adjustment, cost analysis and budget projections.

### ***Fiscal Management***

Central accounting and inmate trust fund personnel are under the supervision of the Accounting and Finance Manager. Central accounting is responsible for the coordination of the agency's accounting functions, including payment submissions and investment of surplus funds through the Investment Council. The accounting section is the clearing center for all transfer appropriations, expenditure documents and grant award monitoring and reporting.

The inmate trust fund section is responsible for the receipt and disbursement of individual inmate funds, inmate payroll and assisting inmates with their saving accounts.

### ***Purchasing/Inventory/Food Service***

The department's Material Administrator is responsible for the review, coordination, approval and/or placement of all purchases. While seeking an economical cost, quality control is emphasized in the procurement of all products and services. Purchasing is also responsible for ensuring that supplies are received as ordered and delivered at the required time. When appropriate, volume buying is coordinated with other state agencies.

Inventory responsibilities include the formulation of standardized inventories for all supplies and equipment throughout the department. Appropriate monitoring and reporting is completed on all state-owned property. Inventory personnel are also responsible for assessing and coordinating the motor vehicle needs of central office and the adult and juvenile facilities and programs.

Purchase and inventory control of food items, food equipment and commodities are also responsibilities of this section. Technical expertise is provided on a contractual basis with licensed dieticians for consulting, menu planning and special diet recommendations. Food service managers meet monthly, or more often as necessary, to discuss methods of procurement and vendor evaluations/new products. Coupled with Purchasing's expertise, the result is the provision of good, nutritional food prepared with the best quality product at the best price.

### ***Engineering, Management Information, and Records Management***

These functional areas are under the supervision of the Facilities Engineering Manager.

#### ***Engineering***

This section provides the department with technical and management assistance for construction projects of all sizes, from the preliminary planning stage to completion and readiness for occupancy. Guidance and assistance is also provided to assist the various facilities and programs with their maintenance programs.

#### ***Management Information***

Management information assistance is provided department-wide regarding data management, technical expertise and information retrieval. This includes such applications as the Corrections Tracking System (CTS) and the Conversational Monitoring System (CMS), which includes Structured Query Language (SQL). This area also handles personal computer hardware and software requirements.

#### ***Records Management***

This section serves as the records depository for all discharged adult inmate files. The office prepares records to be microfilmed pursuant to the department's Records Retention Schedule. Technical assistance in the form of intra-institution recordkeeping coordination and records retention is provided to the facility/program records offices. Interpretations of inmate Good Time laws and records statutes are provided to other state agencies, legislative entities and the courts.

### ***Medical Services***

The primary objective of this section is the provision of health care services throughout the department in order to ensure good health for all inmates and students. The program provides a wide range of medical services under the direction of a Health Care Administrator.

The department's adult and juvenile infirmaries and out-patient clinics are professionally staffed and licensed by the state. Medical services provided within these facilities include initial medical screening, comprehensive health care examinations, health care records, laboratory and radiology services, dental, optometry and pharmacy services, and sick call. Health education, including AIDS information, is provided to both staff and inmates/students.

Contractual arrangements with local hospitals and other specialized medical professionals are utilized to supplement institutional services.

### ***Safety/Sanitation***

The department's Safety Coordinator inspects all adult and juvenile facilities on a periodic basis in order to identify and assist in the correction of safety hazards and sanitation needs. Administrative regulations are developed and revised in order to comply with ACA standards or any of the numerous state and federal statutes, codes and regulations, including the Life Safety Code, OSHA regulations, the National Electrical Code and National Fire Prevention Administration standards.

The asbestos identification and control program continues in operation and involves complying with two components: 1) AHERA requirements involving the Youth Development Centers, and 2) OSHA, EPA and NESHAP requirements involving all but two of the department's other facilities. Designated maintenance personnel from the affected facilities have received the required EPA recertification training and Nebraska Department of Health certificates. Section employees have maintained certification as Asbestos Building Inspectors and Management Planners. Special equipment for minor asbestos removal and debris clean-up is in place and is replenished as required.

### ***Cornhusker State Industries and Federal Surplus Property***

#### ***Cornhusker State Industries***

Cornhusker State Industries (CSI) engages in the manufacture and sale of a variety of products and services to Nebraska state agencies, county and local governments, and registered non-profit organizations. Cornhusker State Industries is a diversified organization which employs inmates to work in both traditional industries programs and Private Venture Projects.

Traditional programs include: License plates, wood and metal furniture, janitorial products, printing, and finished textile products. Other services provided by CSI include braille transcription, data entry, telemarketing, trucking, moving, and warehousing. The inmates working at traditional industries programs are paid from a revolving fund, not by the institution, which reduces the cost of their incarceration.

The Private Venture Projects are operated under the sponsorship of the Private Sector/Prison Industry Enhancement Certification Program of the U.S. Department of Justice. In this program, the inmates work for a private company, within the confines of the institution, while fulfilling a variety of requirements imposed by the Federal Government. The inmates working in



these jobs are paid with outside funds, a portion of which goes to the Nebraska Crime Victim's Compensation Fund, to family support, restitution, room and board, and state and federal taxes.

*Federal Surplus Property*

Established by legislative act in 1947, Surplus Property was originally the responsibility of the Department of Public Institutions. Placed under the jurisdiction of several different state agencies in the ensuing years, it became a sub-program of the Department of Correctional Services in 1982.

This self-supporting program is responsible for the equitable distribution of federal surplus property to eligible public and non-profit organizations within the state of Nebraska. The structured requirements of the operation include the nationwide screening of property, transfer of the property to Nebraska, administration of the property, and marketing and placement of the property within the state. It provides employment for inmates in the areas of warehousing and refurbishing property, as well as in the maintenance and improvement of the physical facility.

\*\*\*

The following four operational areas report directly to the Director: Legal Services; Personnel Management and Staff Training; Planning, Research and Accreditation; and Security Coordination.

### ***Legal Services***

Under the supervision of the General Counsel, this section is involved in the promulgation of inmate rules and regulations, inmate grievances and disciplinary appeals, mental health hearings, legislation, real estate and contracts, representation of department interests in administrative proceedings, personnel issues and collective bargaining, and responses to inquiries from judges, attorneys, and the State Ombudsman.

Each facility and program has a designated employee to assist the Attorney General's Office in the discovery process following the commencement of new legal actions. Legal Services, which provides assistance to the facilities in such matters, handles its own litigation caseload and functions as the liaison between the department and the Attorney General's Office.

### ***Inmate/Employee Actions***

<b><u>Category/Fiscal Year</u></b>	<b><u>FY87</u></b>	<b><u>FY88</u></b>	<b><u>FY89</u></b>	<b><u>FY90</u></b>	<b><u>FY91</u></b>	<b><u>FY92</u></b>	<b><u>FY93</u></b>
Inmate Grievances Appealed to the Director	582	*1215	1072	+1172	949	1040	1204
Inmate Disciplinary Actions Appealed	666	672	670	684	599	878	983
Inmate/Employee State Claims Board Filings	80	167	133	126	151	111	209
Employee State Personnel Grievances/Hearings	16	30	1	42	34	NA	NA
Employee NE Equal Opportunity/EEOC Actions	0	14	0	5	10	NA	NA

NOTES: \* Nearly 300 grievances filed between two inmates.

+ Some 125+ grievances filed by one inmate.

NA Not available

### ***Personnel Management and Staff Training***

The Personnel Administrator is responsible for the management of the department's human resources.

#### ***Personnel***

The Personnel Section is responsible for providing all aspects of human resource management to the Department. In FY93, this included 1,519 employees working in 204 position classifications. The work rules for employees are found in three separate documents. Union agreements are with the Nebraska Association of Public Employees, State Code Agency Teachers Association and the Nebraska Classified System Rules and Regulations. The Personnel Administrator works in the area of labor relations which includes union negotiations, contract administration, discipline and grievance processes.

The Personnel Manager handles the office of special projects, which include such areas as classification, management information systems, wellness programs, employee assistance programs and affirmative action/equal opportunity monitoring. Turnover statistics continue to decrease, with the department showing a turnover rate of 9.5%.

The Personnel Officer works full time in the employment area. Personnel Support Specialists handle all NEIS/payroll operations for employees, including all benefits activities.

### ***Staff Training***

The activities of the Staff Training Academy are the responsibility of the Training Administrator. All new employees receive 160 hours of orientation and training prior to job assignment. Additional training hours vary, depending upon the employee's job classification, years of service and level of contact with inmates/students. Classroom training to meet these requirements is delivered by the Staff Training Academy in Lincoln and/or at each facility. On-the-job training is conducted on site by each supervisor.

### ***Planning/Research/Accreditation***

The staff members in this work area are responsible for providing assistance to the department's central office administration, facilities and programs through research and information gathering, planning management, system/program evaluation and monitoring, and federal grants coordination and review.

The administrative regulation process and the adult and juvenile accreditation program are also coordinated by this staff. This section monitors these areas throughout the adult and juvenile facilities/programs and the department's central office administration.

### ***Security Coordination***

The Security Coordinator is responsible for the development and coordination of regulations, policies and procedures pertaining to security and custody operations throughout the department. The Security Coordinator investigates incidents involving staff and/or inmates, conducts security audits, coordinates information pertaining to criminal threat groups and supervises the Special Services Unit. The training of the department's Emergency Response Team (REACT) and Hostage Negotiation Team are also responsibilities of this office.

The Special Services Unit issues warrants for department escapees and parole absconders and makes arrangements for their return when apprehended. The Unit handles adult and juvenile inter-institution transportation and provides assistance with local/county government prisoner transport when appropriate. Special Services also handles Inter-/Intrastate Detainer Compact Agreements.

\*\*\*\*\*

**PER CAPITA INMATE/STUDENT COSTS - FACILITIES and PROGRAMS**

Previous Three Fiscal Years  
(FY 1990/91, 1991/92 and 1992/93)

<u>FACILITY / PROGRAM</u>	<u>Average Daily Population</u>			<u>Per Capita Yearly Cost</u>			<u>Per Capita Daily Cost</u>		
	<u>90/91</u>	<u>91/92</u>	<u>92/93</u>	<u>90/91</u>	<u>91/92</u>	<u>92/93</u>	<u>90/91</u>	<u>91/92</u>	<u>92/93</u>
<b>ADULT</b>									
Nebraska State Penitentiary	743	768	773	\$20,803	\$19,916	\$21,335	\$56.99	\$54.42	\$58.29
Hastings Correctional Center	146	150	147	\$15,834	\$16,500	\$18,046	\$43.38	\$45.08	\$49.31
Lincoln Correctional Center	791	828	868	\$17,783	\$17,459	\$17,710	\$48.72	\$47.70	\$48.39
Omaha Correctional Center	366	400	427	\$16,983	\$16,098	\$17,311	\$46.53	\$43.98	\$47.30
OCC-Work Release Unit	108	110	106	\$ 7,839	\$ 8,056	\$8,696	\$21.48	\$22.01	\$23.76
Nebraska Center for Women	114	124	140	\$25,145	\$24,031	\$23,015	\$68.89	\$65.66	\$62.88
Community Corrections-Lincoln	160	158	148	\$10,924	\$11,470	\$12,450	\$29.93	\$31.34	\$34.02
Adult Parole Administration	567	635	666	\$ 1,829	\$ 1,889	\$2,022	\$ 5.01	\$ 5.16	\$5.53
<b>JUVENILE</b>									
Youth Development Center-Kearney	164	169	179	\$27,477	\$27,609	\$26,331	\$75.28	\$75.43	\$71.94
Youth Development Center-Geneva	71	71	74	\$34,276	\$35,135	\$35,640	\$93.91	\$96.00	\$97.38
Juvenile Parole Administration	263	284	278	\$ 2,826	\$ 2,675	\$2,872	\$ 7.74	\$ 7.31	\$7.85

**PER CAPITA STATEMENT by FACILITIES/CENTERS/PROGRAMS - FY1992/93**

(Note: Figures have been rounded)

<b>CATEGORY</b>	<b>All Facilities/ Centers/ Programs (1)</b>	<b>All Adult/Juvenile Facilities/Community Centers (2)</b>	<b>All Adult Facilities/ Centers (3)</b>	<b>All Adult/ Juvenile Facilities (4)</b>	<b>All Adult Facilities (5)</b>	<b>All Juvenile Facilities (6)</b>
Personal Services	\$35,614,592	\$34,100,866	\$28,801,150	\$32,616,814	\$27,317,098	\$ 5,299,716
Operating Expenses						
Administration	884,795	739,106	611,901	612,689	485,484	127,205
Utilities/Maintenance	2,580,707	2,577,050	2,224,818	2,431,674	2,079,442	352,232
Support	238,850	220,893	184,466	219,752	183,325	36,427
Per Diem	4,342,277	4,340,325	3,982,885	3,998,696	3,641,256	357,440
Medical	0	0	0	0	0	0
Education	89,816	89,816	1,939	89,816	1,939	87,877
Security	180,784	167,433	164,718	152,798	150,083	2,715
Other	211,297	55,232	12,783	55,232	12,783	42,449
<i>Total Operating</i>	<i>8,528,526</i>	<i>8,189,855</i>	<i>7,183,510</i>	<i>7,560,657</i>	<i>6,554,312</i>	<i>1,006,345</i>
Travel	303,772	179,097	143,640	125,023	89,566	35,457
Capital Outlay	147,547	146,150	127,993	146,095	127,938	18,157
Sub Totals	44,594,437	42,615,968	36,256,293	40,448,589	34,088,914	6,359,675
Allocation Expenses						
Direct:						
Equipment	321,536	321,016	264,345	306,191	249,520	56,671
Special Projects	266,945	266,945	234,658	263,656	231,369	32,287
Indirect:						
Medical	7,003,797	7,003,797	6,773,916	6,603,979	6,374,098	229,881
Education	887,907	887,907	887,351	887,349	886,793	556
Grants	167,104	167,104	132,994	154,170	120,060	34,110
Central Office Administration	4,115,842	3,950,642	3,333,670	3,788,813	3,171,841	616,972
<b>ADJUSTED TOTALS</b>	<b>57,357,568</b>	<b>55,213,379</b>	<b>47,883,227</b>	<b>52,452,747</b>	<b>45,122,595</b>	<b>7,330,152</b>
<b>ADJUSTED COST PER YEAR</b>	<b>\$15,077</b>	<b>\$19,300</b>	<b>\$18,357</b>	<b>20,110</b>	<b>\$19,163</b>	<b>\$29,042</b>
<b>ADJUSTED COST PER DAY</b>	<b>\$41.19</b>	<b>\$52.73</b>	<b>\$50.16</b>	<b>54.97</b>	<b>\$52.36</b>	<b>\$79.35</b>
<b>AVERAGE DAILY POPULATION</b>	<b>3804</b>	<b>2861</b>	<b>2608</b>	<b>2607</b>	<b>2355</b>	<b>252</b>
<b>AUTHORIZED FTE'S</b>	<b>1225</b>	<b>1172</b>	<b>989</b>	<b>1124</b>	<b>941</b>	<b>183</b>

- NOTES: (1) Does not include federal surplus, Cornhusker State Industries (CSI) or construction projects.  
 (2) Does not include Juvenile or Adult Parole, federal surplus, CSI or construction projects.  
 (3) Does not include juvenile facilities, Juvenile or Adult Parole, federal surplus, CSI or construction projects.  
 (4) Does not include community centers, Juvenile or Adult Parole, federal surplus, CSI or construction projects.  
 (5) Does not include community centers, juvenile facilities, Juvenile or Adult Parole, federal surplus, CSI or construction projects.  
 (6) Does not include community centers, Juvenile or Adult Parole, federal surplus, CSI or construction projects.

**PER CAPITA STATEMENT by ADULT FACILITIES and PROGRAMS -- FY1992/93**

(Note: Figures have been rounded)

<u>CATEGORY</u>	<u>Nebraska State Penitentiary</u>	<u>Hastings Correctional Center</u>	<u>Lincoln Correctional Center</u>	<u>Omaha Correctional Center</u>	<u>OCC Work Release Unit</u>	<u>Nebraska Center for Women</u>	<u>Community Corrections Ctr-Lincoln</u>	<u>Adult Parole Administration</u>
Personal Services	\$10,475,435	\$ 1,462,244	\$9,162,416	\$ 4,104,482	\$ 511,480	\$ 2,112,521	\$ 972,572	\$1,042,870
Operating Expenses								
Administration	124,487	40,105	151,628	117,151	14,306	52,113	112,111	96,257
Utilities/Maintenance	843,823	79,137	576,169	475,878	49,014	104,435	96,362	2,682
Support	54,748	7,632	94,437	21,893	134	4,615	1,007	7,325
Per Diem	1,149,023	318,158	1,326,489	647,562	143,163	200,024	198,466	
Medical								
Education						1,939		
Security	50,404	9,197	63,613	21,601	2,542	5,268	12,093	13,351
Other	2,836	648	1,804	356		7,139		
Total Operating	2,225,321	454,877	2,214,140	1,284,441	209,159	375,533	420,039	119,615
Travel	22,398	22,110	16,695	13,179	25,635	15,184	28,439	65,133
Capital Outlay	24,401	8,146	21,082	70,186		4,123	55	344
Sub Totals	12,747,555	1,947,377	11,414,333	5,472,288	746,274	2,507,361	1,421,105	1,227,962
Allocation Expenses								
Direct:								
Equipment	101,831	16,353	99,747	17,076	12,182	14,513	2,643	520
Special Projects	46,276	5,033	146,069	11,176	3,289	22,815		
Indirect:								
Medical	2,091,674	397,654	2,349,919	1,156,958	100,427	377,893	299,391	
Education	233,326	108,482	262,133	240,698	233	42,154	325	
Grants	39,398	7,490	44,262	21,792	5,403	7,118	7,531	
Central Office Administration	1,225,515	168,571	1,057,786	478,912	53,943	241,057	107,886	118,000
<b>ADJUSTED TOTALS</b>	<b>\$16,485,575</b>	<b>\$2,650,960</b>	<b>\$15,374,249</b>	<b>\$7,398,900</b>	<b>\$ 921,751</b>	<b>\$3,212,911</b>	<b>\$1,838,881</b>	<b>\$1346,482</b>
<b>ADJUSTED COST PER YEAR</b>	<b>\$21,335</b>	<b>\$18,046</b>	<b>\$17,710</b>	<b>\$17,311</b>	<b>\$8,696</b>	<b>\$23,015</b>	<b>\$12,450</b>	<b>\$2,022</b>
<b>ADJUSTED COST PER DAY</b>	<b>\$58.29</b>	<b>\$49.31</b>	<b>\$48.39</b>	<b>\$47.30</b>	<b>\$23.76</b>	<b>\$62.88</b>	<b>\$34.02</b>	<b>\$5.53</b>
AVERAGE DAILY POPULATION	773	147	868	427	106	140	148	666
AUTHORIZED FTE's	364	50	314	143	16	72	32	35

**PER CAPITA STATEMENT by JUVENILE FACILITIES and PROGRAMS - FY 1992/93**

(Note: Figures have been rounded)

<u>CATEGORY</u>	<u>Youth Development Center - Kearney</u>	<u>Youth Development Center - Geneva</u>	<u>Juvenile Parole Administration</u>
Personal Services	\$ 3,346,853	\$ 1,952,863	\$ 470,856
Operating Expenses			
Administration	75,423	51,782	49,432
Utilities/Maintenance	241,698	110,534	975
Support	32,859	3,568	10,632
Per Diem	261,948	95,492	1,952
Medical			
Education	75,957	11,920	
Security	1,270	1,445	
Other	30,018	12,431	156,065
Total Operating	719,173	287,172	219,056
Travel	24,566	10,891	59,542
Capital Outlay	10,430	7,727	1,053
Sub Totals	4,101,022	2,258,653	750,507
Allocation Expenses			
Direct:			
Equipment	30,375	26,296	
Special Projects	11,837	20,450	
Indirect:			
Medical	162,939	66,942	
Education	394	162	
Grants	16,519	17,591	
Central Office Administration	387,546	229,426	47,200
<b>ADJUSTED TOTALS</b>	<b>\$ 4,710,632</b>	<b>\$ 2,619,520</b>	<b>\$ 797,707</b>
<b>ADJUSTED COST PER YEAR</b>	<b>\$26,331</b>	<b>\$35,640</b>	<b>\$2,872</b>
<b>ADJUSTED COST PER DAY</b>	<b>\$71.94</b>	<b>\$97.38</b>	<b>\$7.85</b>
 AVERAGE DAILY POPULATION	 179	 74	 278
AUTHORIZED FTE's	115	68	14

**FISCAL STATEMENT OF THE DEPARTMENT for FY1992/93**

plus

**FEDERAL SURPLUS PROPERTY, CORNHUSKER STATE INDUSTRIES, CONSTRUCTION, GRANTS & CENTRAL OFFICE**

(Note: Figures have been rounded)

<u>CATEGORY</u>	<u>Federal Surplus Property</u>	<u>Cornhusker State Industries</u>	<u>Construction</u>	<u>Grants</u>	<u>Central Office Administration</u>	<u>TOTAL Department of Correctional Services</u>
Personal Services	\$ 124,686	\$ 1,205,120		\$ 98,344	\$ 6,298,575	\$ 43,341,317
Operating Expenses						
Administration	171,238	121,591		54,736	675,394	1,907,754
Utilities/Maintenance					21,633	2,602,340
Support				1,344	26,970	265,820
Per Diem					101,944	4,444,221
Medical					3,514,675	3,514,675
Education					887,907	977,723
Security						180,784
Other	26,609	2,526,956	279,792		430,287	3,474,941
Total Operating	197,847	2,648,547	279,792	54,736	5,658,810	17,368,258
Travel	9,916	38,853	1,479	726	69,670	424,416
Capital Outlay	263,551	184,324	7,621,888	657	745,128	8,963,095
Sub Totals	596,000	4,076,844	7,903,159	154,463	12,772,183	70,097,086
Allocation Expenses						
Direct:						
Equipment					(321,536)	0
Special Projects					(266,945)	0
Indirect:						
Medical					(7,003,797)	0
Education					(887,907)	0
Grants				(167,104)		0
Central Office Administration	20,229	143,286	0	12,641	(4,291,998)	0
ADJUSTED TOTALS	\$ 616,229	\$ 4,220,130	\$ 7,903,159	0	0	\$ 70,097,086

AVERAGE DAILY POPULATION

3804

AUTHORIZED FTE's

6

43

4

185

1458

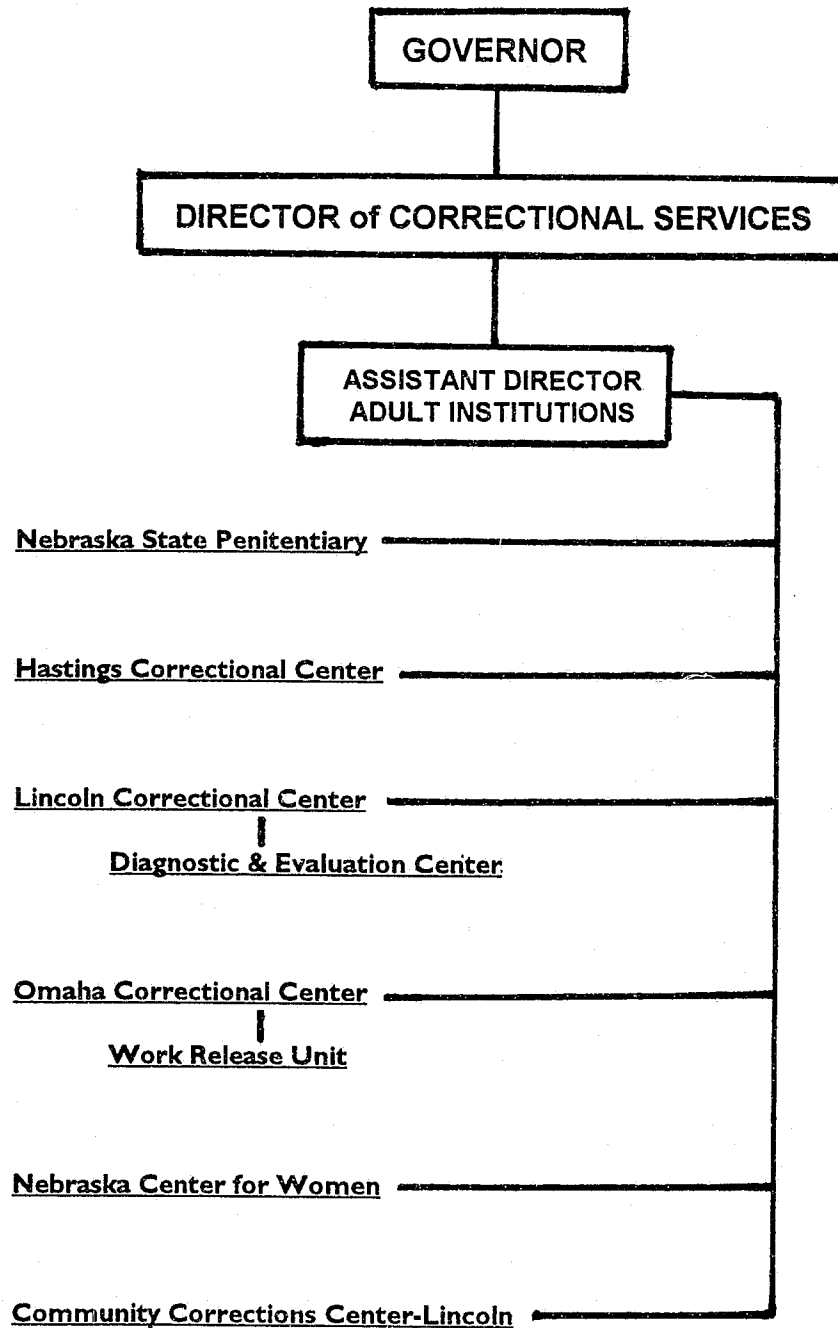




***Division  
of  
Adult  
Institutions***



## DIVISION of ADULT INSTITUTIONS





## ∞ DIVISION of ADULT INSTITUTIONS ∞

Organized under Section 83-939, Nebraska Revised Statutes (Reissue 1976), the Division of Adult Institutions administers and supervises the state's adult correctional facilities. Nebraska State Statutes 83-171 through 83-173, and statutes 83-177, 83-901, 83-905 and 83-941 provide for certain aspects of the administration, organization and management of the adult correctional institutions.

The Nebraska Center for Women receives all adult female inmates. Following evaluation and classification, the women are placed in programs and/or work assignments at that facility or if eligible, at one of the community centers. All adult male inmates are received at the Lincoln Correctional Center's Evaluation Unit, where screening and evaluation are performed and a mental health unit is maintained for special adjustment cases. Upon completion of evaluation, inmates are assigned to an appropriate adult facility/center, and are placed in program and/or work assignments at the respective facilities.

Release from any of the secure adult institutions is via placement in a DCS community center on a work or educational release program or community detail assignment, placement on parole or by expiration of sentence.

**Nebraska State Penitentiary**  
Frank X. Hopkins, Warden  
P.O. Box 2500  
Lincoln, Nebraska 68542-2500

**Opened:** 1869

**Security Level:** Maximum/Medium Custody Males

**Authorized FTE's:** 364

**Design Capacity:** 488

**Average Yearly Cost:** \$21,335

**ACA Accredited:** 1985

**FY93 Average Daily Population:** 773

**Average Daily Cost:** \$58.29

**Reaccredited:** 1988, 1991, Scheduled 1994

Located on the same site since 1869, the Nebraska State Penitentiary was the only adult facility until the Nebraska Center for Women opened in 1920 and the Men's Reformatory was established in 1921. The Penitentiary is for the care, custody, and program needs of older, multiple offender male inmates classified as maximum or medium level custody. Housing of medium custody inmates is divided between the maximum security housing units and the dormitory style Medium Security Unit.

New construction and renovation at the Penitentiary was completed during the fall of 1981. The physical plant includes four modular housing units, a central utility plant, and an administrative complex which houses the administrative offices, visiting area, inmate gymnasium, kitchen and hospital. Correctional industries, a chapel, an adjustment center (which also houses death row inmates), a library and mental health counseling facilities are also within the walled/fenced complex. Southeast Community College contracts with the department to provide educational opportunities.

The operation of the Penitentiary is the responsibility of the Warden, who is assisted by a Deputy Warden and two Associate Wardens.

**Hastings Correctional Center**  
Gary Grammer, Superintendent  
P.O. Box 2048  
Hastings, Nebraska 68902-2048

**Opened:** 1987

**Security Level:** Minimum Custody Males

**Authorized FTE's:** 50

**Design Capacity:** 152

**Average Yearly Cost:** \$18,046

**ACA Accredited:** 1990

**FY93 Average Daily Population:** 147

**Average Daily Cost:** \$49.31

**Reaccredited:** 1993

The Hastings Correctional Center is the department's newest adult facility, having received its first inmates in June 1987. Located in a remodeled building on the grounds of the Hastings Regional Center, the facility houses inmates who are close to the end of their sentence and who are often from that area of Nebraska. The inmate work programs include Cornhusker State Industries private venture employment and work details on the Regional Center campus, in the local community and in neighboring towns. Central Community College contracts with the department to provide educational programming for the inmates.

Responsibility for the management of the institution rests with the Superintendent, who is assisted by an Assistant Superintendent.

**Lincoln Correctional Center  
and  
Diagnostic and Evaluation Center**  
John J. Dahm, Warden  
P.O. Box 22800, Station B  
Lincoln, Nebraska 68542-2800

**Opened:** 1921

**Security Level:** Maximum, Medium, Minimum Custody Males

**Authorized FTE's:** 314

**Design Capacity:** 468

**Average Yearly Cost:** \$17,710

**ACA Accredited:** 1984

**FY93 Average Daily Population:** 868

**Average Daily Cost:** \$48.39

**Reaccredited:** 1987, 1990

Originally known as the Men's Reformatory, the present institution was provided for by the 1975 Legislature. The Lincoln Correctional Center, a medium-minimum security institution, and the Diagnostic and Evaluation Center, a maximum security institution, opened in August 1979. Located on land west of the city of Lincoln, both facilities were constructed near the site of the original institution. In July 1986, the two facilities were administratively combined into a single institution known as the Lincoln Correctional Center. In June of fiscal year 1993, the two facilities were again separated into individual facilities.

The Diagnostic and Evaluation Center provides reception, diagnostic, evaluation, classification, and assignment services to all adult male felons received from the district courts. It also contains a protective custody unit which serves the adult male facilities. Service is provided to the district courts in their requests for evaluation assistance in felony cases prior to the determining of sentence.

The operation of the facility rests with the Superintendent, who is assisted by an Assistant Superintendent.

The Lincoln Correctional Center provides care, custody and programming services to younger, first-time male inmates in a variety of custody levels. In conjunction with the DEC, facility consists of housing units which contain maximum and medium custody inmates and also includes a number of special populations. One-half of one housing unit serves the socially and developmentally impaired inmates and also serves as the in-patient mental health unit. Another housing unit contains an in-patient program for sex offenders and for inmates with a history of substance abuse. The remaining housing units are for general population inmates who are mostly involved in academic and vocational training programs and institutional maintenance and work programs.

Responsibility for the management of the institution resides with the Warden, who is assisted by a Deputy Warden and an Associate Warden.

**Omaha Correctional Center  
and**

**Work Release Unit**

Robert Houston, Warden

P.O. Box 11099

Omaha, Nebraska 68111-0099

**Omaha Correctional Center**

**Opened:** 1984

**Security Level:** Minimum Custody Males

**Authorized FTE's:** 142

**Design Capacity:** 240

**Average Yearly Cost:** \$17,311

**ACA Accredited:** 1986

**FY93 Average Daily Population:** 427

**Average Daily Cost:** \$47.30

**Reaccredited:** 1989, 1992

Located on a 37-acre site in east Omaha, the Omaha Correctional Center houses inmates who are close to the end of their sentence and who are often from Omaha or the Douglas and Sarpy County metropolitan area. Shorter and longer term nonviolent-violent males with minimum custody status are assigned to the facility.

A variety of self-improvement opportunities are provided at the facility, including but not limited to: mental health counseling, including substance abuse, alcoholics anonymous, library services/legal aid, self-betterment clubs, volunteer activities, pre-release preparation, survival skills training, social/leisure skills training, and self-interest classes.

The management team includes a Superintendent and three Assistant Superintendents, one of whom is officed at the Work Release Unit.

**OCC-Work Release Unit**

**Program Established:** 1971

**Security Level:** Community Custody Males & Females

**Authorized FTE's:** 16

**Design Capacity:** 90

**Average Yearly Cost:** \$8,696

**ACA Accredited:** 1981

**FY93 Average Daily Population:** 106

**Average Daily Cost:** \$23.76

**Reaccredited:** 1984, 1989, 1992

Since its establishment in 1971, community corrections programming had operated out of several Omaha locations until a new facility was constructed and occupied in July 1985. In



July 1987, the Omaha Correctional Center assumed management responsibility for the Community Corrections Center-Omaha. Located one block north of the OCC, the facility is a self-contained building, although it now shares some mutually utilized services with OCC. The facility is now identified as the OCC-Work Release Unit. It is in operation 24-hours a day, seven days a week.

The facility provides work and educational release opportunities for those inmates who have achieved community custody status. Inmates on work and educational release are responsible for paying all their own expenses, including clothing and personal items and room and board. Community detail assignment is available for other eligible inmates. Based on a classification/performance evaluation point total, increasing leave privileges in the form of passes and furloughs may be earned by the inmates to facilitate family involvement and community reintegration.

The WRU is under the direction of the OCC Superintendent, with an Assistant Superintendent officed at the Unit.

**Nebraska Center for Women**

Larry Wayne, Warden  
Route 1, Box 33  
York, Nebraska 68467

**Opened:** 1920

**Security Level:** All Custody Level Females

**Authorized FTE's:** 72

**Design Capacity:** 139

**Average Yearly Cost:** \$23,015

**ACA Accredited:** 1984

**FY93 Average Daily Population:** 140

**Average Daily Cost:** \$62.88

**Reaccredited:** 1987, 1990, Scheduled 1993

The Nebraska Center for Women receives all women committed to the department by the courts. Following initial orientation, evaluation, and classification, the women are assigned to the housing area, programming and work activities appropriate to their needs and requirements.

The academic needs of the women are met through the facility's state accredited school. Vocational skills are fostered by a variety of programs and employability is enhanced by the opportunities provided through the Cornhusker State Industries programs located on the grounds. The institution meets other needs of the inmates via individualized planning and goal setting. One of the more unique and innovative programs available is **Mother Offspring Life Development (MOLD)**, which allows eligible mothers to have their young children visit and stay for periodic overnight visits at the facility.

Located at the outskirts of York, Nebraska, the institution is under the direction of a Warden and an Associate Warden.

**Community Corrections Center - Lincoln**

David S. Avery, Superintendent  
4621 N.W. 45th Street  
Lincoln, Nebraska 68524-1724

**Program Established:** 1967

**Security Level:** Community Custody Males and Females

**Authorized FTE's:** 32

**Design Capacity:** 129

**Average Yearly Cost:** \$12,450

**ACA Accredited:** 1981, 1990

**FY93 Average Daily Population:** 148

**Average Daily Cost:** \$34.02

**Reaccredited:** 1984

This program, previously known as Post Care or the Work Release Program, was created by State Statute 83-184 (R.R.S. 1943). It allowed a select group of adult inmates to be employed in the community or attend an educational program not available within the confines of the institution. Initial participants were housed in the institution during non-working hours. In 1971, the program moved to a community residential facility in Lincoln. Eventually, additional facilities were opened in Omaha, Sidney, and Norfolk, with centers in Lincoln and Omaha remaining in operation. In 1974, female inmates were included in the program.

Work release, educational release, and community detail assignment opportunities are available to those inmates achieving community custody status who are nearing release by parole and/or discharge. Work release provides the opportunity to be employed in the community and receive competitive wages. Inmates on work release pay all applicable taxes on wages earned. Educational release provides an opportunity to attend various local vocational/technical schools, business and community colleges and other colleges and universities. Inmates assigned to community detail assignment provide services at the facility in the form of food service, maintenance, housekeeping, etc. or may be assigned to community service work such as maintaining state parks.

Participation in these programs is not a requirement for placement on parole or release from sentence, however, it may be included as a goal in the individual's correctional programming plan formulated at the time of incarceration or added as he/she progresses toward release. Increasing opportunities for inmate involvement with family and participation in community activities is available through community leave privileges which may be earned and taken in the form of passes and furloughs.

In the fall of 1992, ground was broken for the construction of a new 200-bed facility. Located in southwest Lincoln on state-owned property near the Lincoln Correctional Center and the Diagnostic & Evaluation Center, the facility will house 52 women and 148 men. Occupancy of the center is planned for July 1993.

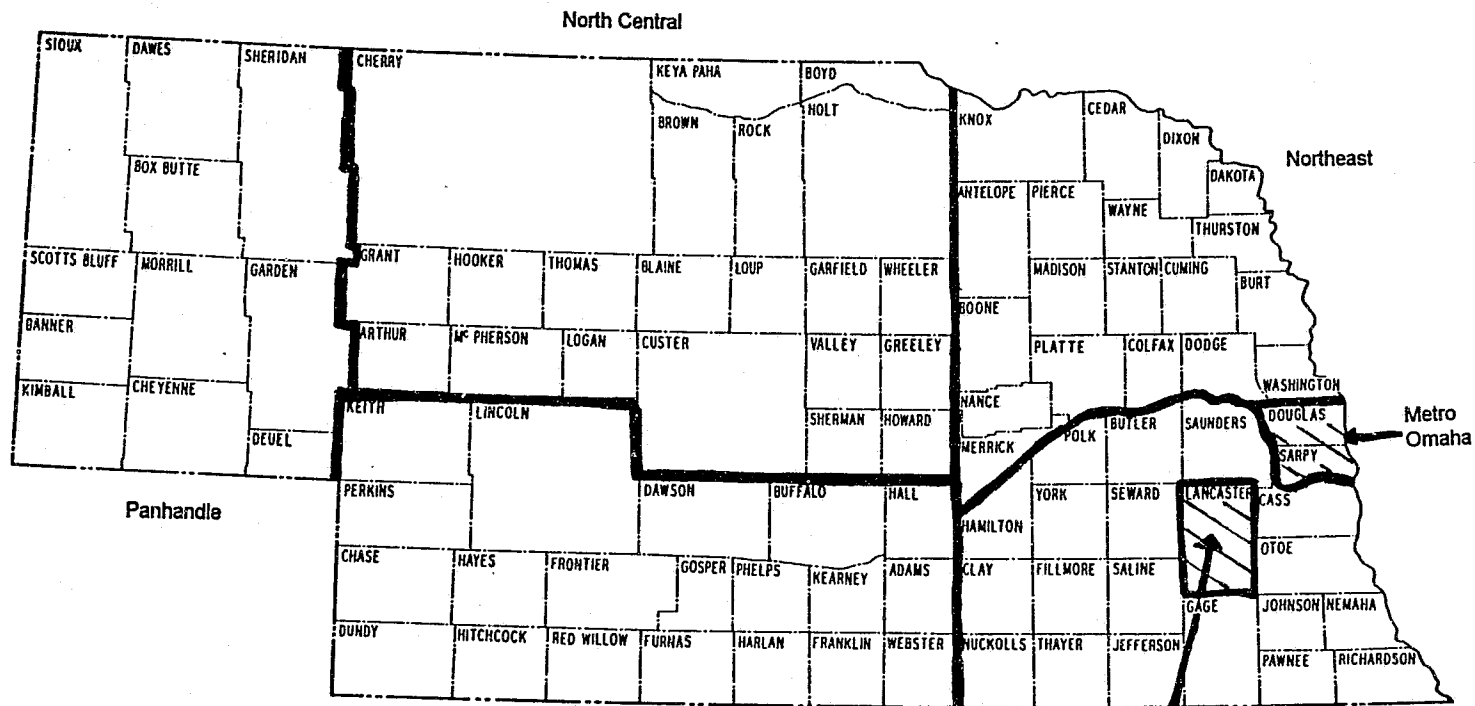
A Superintendent and an Assistant Superintendent are responsible for the management of the facility.

\*\*\*\*\*



**TOTAL ADULT POPULATION**  
(Does not include Adult Parole)

**AREAS OF COMMITMENT - Incarcerated as of June 1993**



**Males**

1198 (50%)  
324 (14%)  
196 ( 8%)  
248 (10%)  
119 ( 5%)  
19 (<1%)  
282 (12%)  
20 (<1%)

2406

Metro Omaha  
Metro Lincoln  
Southeast  
South Central  
Panhandle  
North Central  
Northeast  
Out of State

VALID DATA  
2590

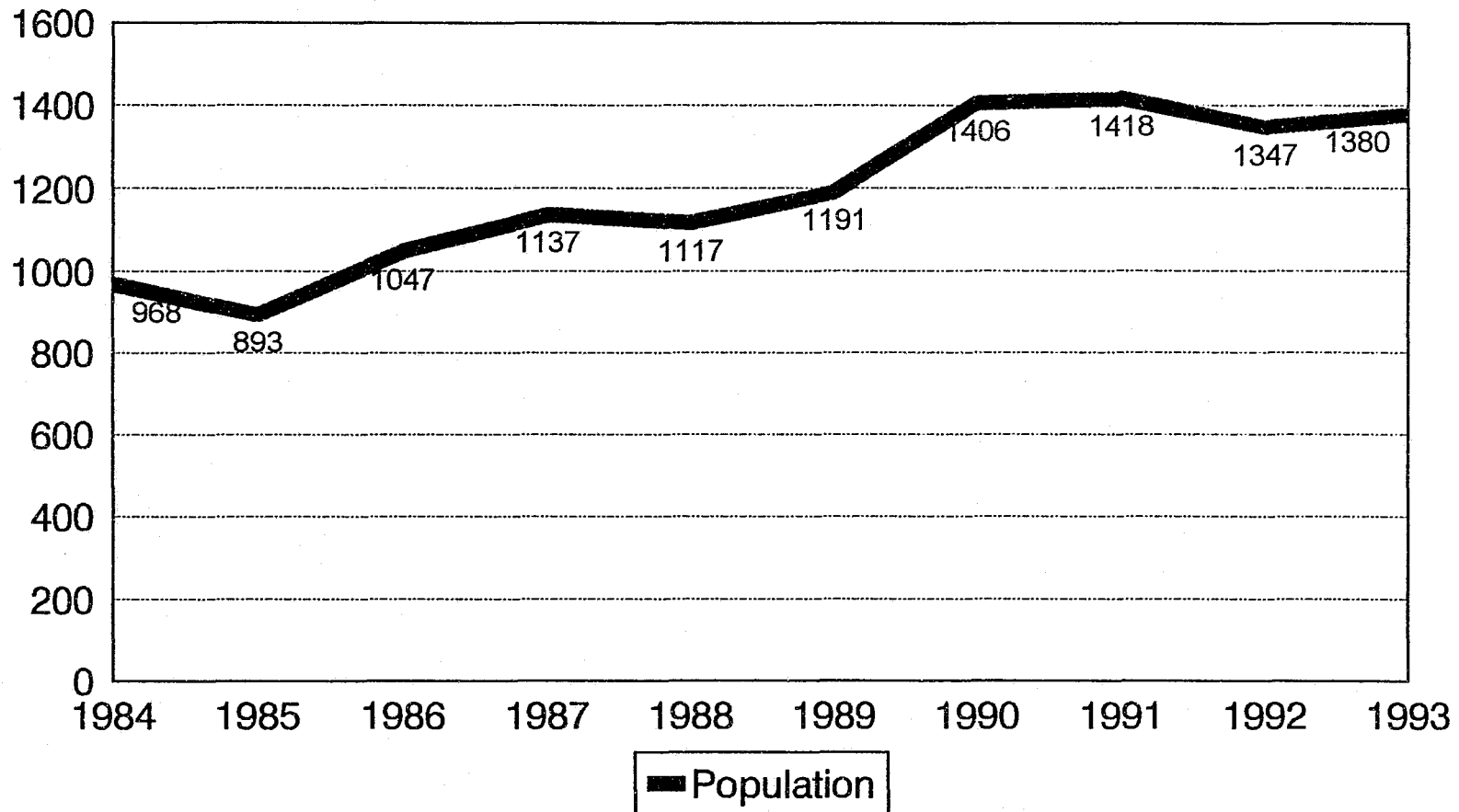
**Females**

103 (56%)  
20 (11%)  
16 ( 9%)  
16 ( 9%)  
10 ( 5%)  
0 ( 0%)  
18 (10%)  
1 (<1%)

184

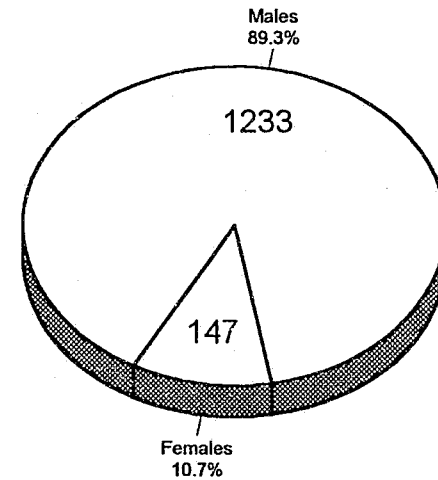
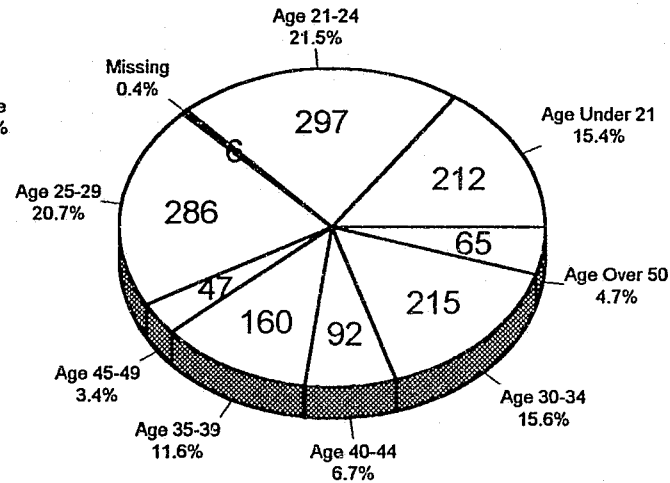
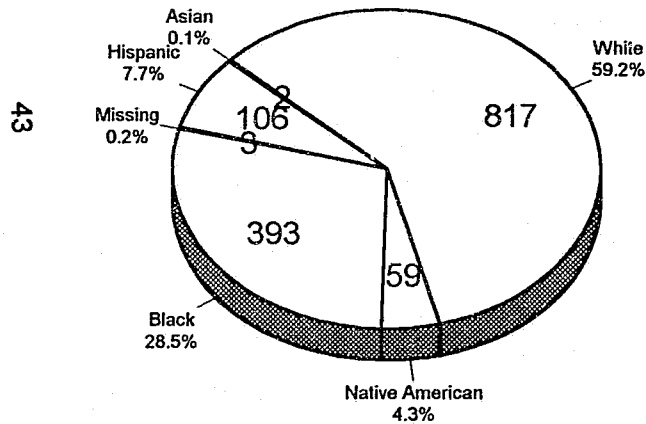
# Total Adult Male and Female Admissions

Safekeepers, Evaluators and Regular Admissions By Fiscal Year



# Total Adult Male and Female Admissions

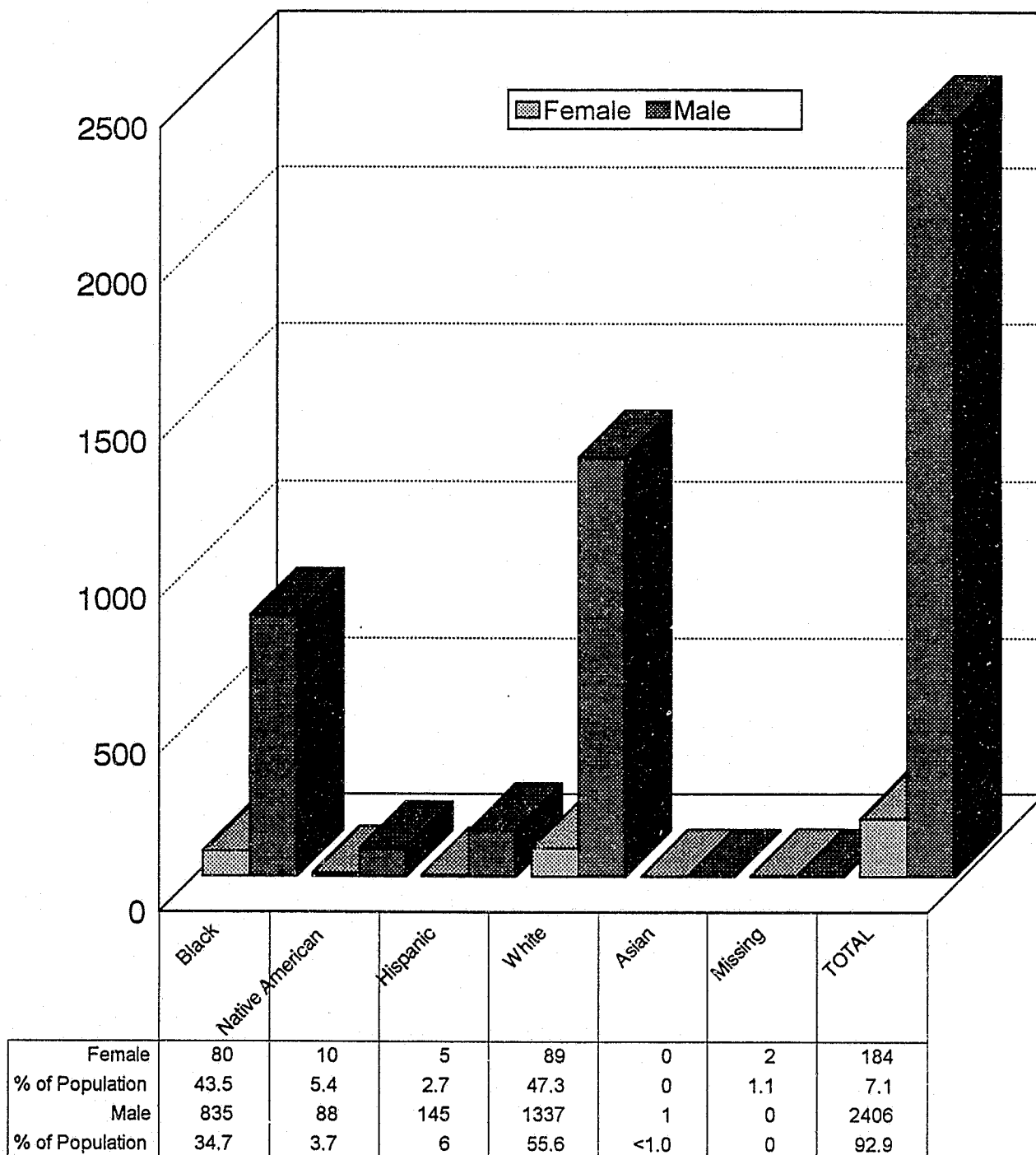
Safekeepers, Evaluators and Regular Admissions for FY1993  
By Race, By Age and By Sex



Total: 1380.....Females: 147 (9 Safekeeper/Evaluators, 138 Regular Admissions)  
..... Males: 1233 (77 Safekeeper/Evaluators, 1156 Regular Admissions)

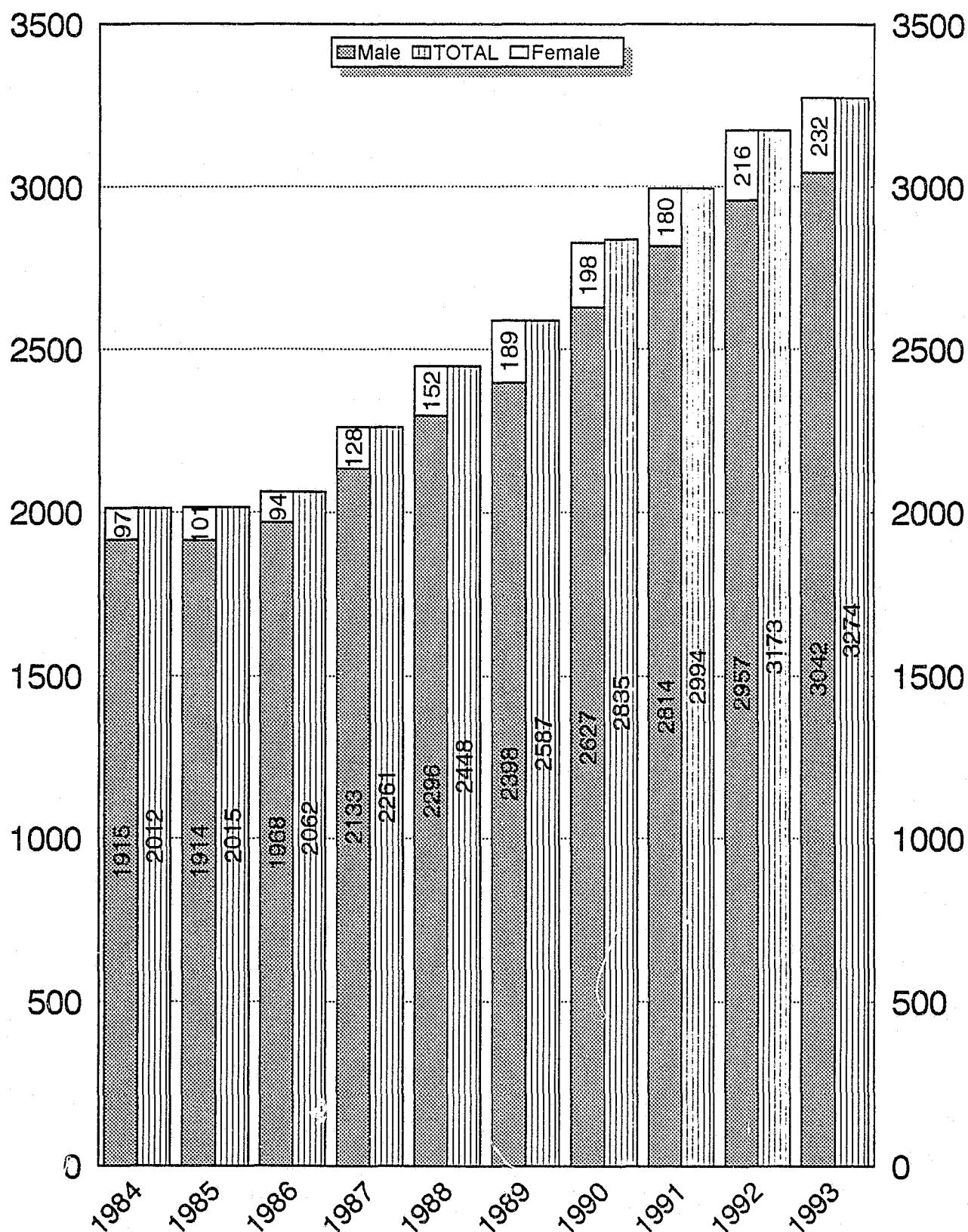
# Total Adult Population By Race

Current Incarcerations as of June 1993



# Total Average Monthly Adult Population by Fiscal Year

All Facilities, Centers and Programs





AVERAGE MINIMUM/MAXIMUM/LENGTH OF STAY IN MONTHS  
for  
FY93 RELEASES based on MOST SEVERE OFFENSE  
(Life and Death Sentences set to 50 years)

<u>OFFENSES</u>	<u>Number</u>	<u>Minimum Sentence Mean</u>	<u>Maximum Sentence Mean</u>	<u>Length of Stay Mean</u>
Total Population	1548	26.37	61.13	25.39
Criminal Attempt	2	108.00	216.00	44.50
Conspiracy	7	48.43	101.57	44.71
Accessory to Felony	5	16.40	40.80	11.40
Aiding in a Felony	11	9.36	28.36	12.73
Aiding and Abetting	10	11.20	26.40	8.40
First Degree Murder	6	362.00	690.00	182.33
Second Degree Murder	10	108.00	396.50	123.20
Manslaughter	11	52.73	126.55	48.82
Motor Vehicle Homicide	10	11.00	46.80	22.40
1st Degree Assault	29	42.03	92.86	42.03
2nd Degree Assault	31	18.26	46.45	20.16
3rd Degree Assault	19	4.74	26.05	10.84
Terroristic Threats	16	12.63	47.19	17.63
1st Degree Sexual Assault	61	58.02	112.61	51.21
2nd Degree Sexual Assault	6	25.50	49.00	21.50
3rd Degree Sexual Assault	4	0.00	21.00	13.00
Sexual Assault on a Child	50	19.04	50.24	23.26
Kidnapping	4	112.50	225.00	154.00
1st Degree False Imprisonment	5	15.00	38.40	18.60
Robbery	87	65.24	138.83	54.68
Dealing Drugs	3	24.00	54.00	53.67
Possession of a Controlled Substance	109	14.23	35.95	15.08
Possession of Marijuana over 1 lb.	7	6.57	21.43	8.57
Deliver Dangerous Substance	257	23.86	47.81	19.25
Acquire Controlled Substance by Fraud	4	15.00	31.50	13.50
1st Degree Arson	2	24.00	42.00	18.00
2nd Degree Arson	8	22.63	46.88	19.88
Burglary	199	26.64	61.30	28.34
Breaking and Entering	5	15.60	25.60	10.80
Receiving Stolen Property	9	25.56	54.00	25.33
Theft	213	18.31	46.54	20.00
Petty Larceny	3	19.33	56.00	28.67
Criminal Mischief	19	10.68	30.16	11.89
Criminal Trespass	3	0.00	16.00	11.33
1st Degree Forgery	2	16.00	36.00	20.50
2nd Degree Forgery	67	19.70	49.84	21.30
Forged Instrument \$300+	4	11.00	40.50	9.25
Forged Instrument \$76-\$300	2	0.00	18.00	9.50
Forged Instrument Under \$75	1	0.00	18.00	12.00
Possession of Forged Devices	1	18.00	36.00	8.00
Violation of a Financial Transaction Device	2	18.00	36.00	12.00
Bad Check \$1000+	2	66.00	123.00	72.00
Bad Check \$300-\$999	19	12.16	36.32	15.63
Bad Check \$75-\$299	4	5.25	24.75	7.75
No Account Check	2	9.00	33.00	14.00

<u>OFFENSES</u>	<u>Number</u>	<u>Minimum Sentence Mean</u>	<u>Maximum Sentence Mean</u>	<u>Length of Stay Mean</u>
Embezzlement	1	164.00	288.00	253.00
Bigamy	1	0.00	12.00	5.00
Incest	2	27.00	72.00	40.50
Criminal Non-Support	6	12.00	39.50	11.50
Child Abuse	15	9.13	33.60	14.67
Abuse of an Incompetent/Disabled Person	4	8.00	28.50	15.75
Contributing to Delinquency of a Minor	3	4.00	12.00	6.67
Pandering	1	18.00	36.00	10.00
Debauching Minor	1	12.00	36.00	18.00
Sell/Manufacture Pornography	1	48.00	72.00	30.00
Obstructing the Police	1	1.00	12.00	6.00
Resisting Arrest	6	5.17	21.67	7.17
Resisting Arrest with a Weapon	2	12.00	24.00	13.50
Operating a Motor Vehicle to Avoid Arrest	5	27.80	68.40	19.00
Motor Vehicle Violations	6	25.50	78.00	38.50
Escape	23	19.30	41.22	19.35
Failure to Appear	3	52.00	78.00	39.67
Perjury	3	10.00	94.00	16.33
Tampering	1	12.00	36.00	21.00
Tax Violation	1	0.00	18.00	5.00
2nd Degree Assault on Parole Officer/DCS Employee	2	6.00	15.00	6.50
3rd Degree Assault on Parole Officer/DCS Employee	12	7.25	21.50	9.75
Assaulting a Confined Person	3	12.67	32.00	20.67
Possession of a Concealed Weapon	2	9.00	36.00	15.50
Use of Firearm in a Felony	6	46.33	119.33	32.67
Possession of Firearm by Felon	11	13.55	31.73	14.36
Possession of a Defaced Firearm	3	17.67	43.00	21.33
Discharge Firearm	2	6.00	36.00	11.00
Driving Intoxicated - 3rd Offense	1	3.00	12.00	5.00
Driving Under Suspended License	86	12.55	34.21	12.21
Class II Misdemeanor	1	0.00	18.00	9.00
Class III Misdemeanor	1	0.00	18.00	5.00
Habitual Criminal	1	120.00	120.00	65.00

**LENGTH OF STAY**  
(Does not include Safekeepers/Evaluators)

Based Upon Incarcerated Adult Males and Females as of the End of June in each Fiscal Year

Number/% of Total LENGTH OF STAY	MALES					FEMALES				
	<u>88/89</u>	<u>89/90</u>	<u>90/91</u>	<u>91/92</u>	<u>92/93</u>	<u>88/89</u>	<u>89/90</u>	<u>90/91</u>	<u>91/92</u>	<u>92/93</u>
Zero - 1 year	819 38.5%	1017 45.3%	1029 44.4%	1040 42.3%	967 40.2%	88 59.5%	112 67.1%	98 63.2%	111 62.0%	107 58.2%
1.01 - 2 years	460 21.6%	415 18.5%	470 20.2%	477 19.4%	483 20.1%	29 19.6%	26 15.6%	31 20.0%	27 15.1%	37 20.1%
2.01 - 3 years	270 12.7%	240 10.7%	232 10.0%	282 11.5%	280 11.6%	13 8.8%	12 7.2%	9 5.8%	20 11.2%	14 7.6%
3.01 - 4 years	128 6.0%	140 6.2%	143 6.2%	159 6.5%	164 6.8%	8 5.4%	6 3.6%	4 2.6%	5 2.8%	10 5.4%
4.01 - 5 years	86 4.0%	89 4.0%	102 4.4%	107 4.4%	106 4.4%	2 1.4%	2 1.2%	3 1.9%	5 2.8%	4 2.2%
5.01 - 6 years	78 3.7%	62 2.8	56 2.4%	82 3.3%	77 3.2%	2 1.4%	2 1.2%	2 1.3%	3 1.7%	3 1.6%
6.01- 7 years	46 2.2%	52 2.3%	45 1.9%	48 2.0%	67 2.8%	1 0.7%	2 1.2%	2 1.3%	2 1.1%	3 1.6%
7.01 - 8 years	38 1.8%	33 1.5%	49 2.1%	38 1.5%	42 1.7%	2 1.4%	1 0.6%	2 1.3%	2 1.1%	1 0.5%
8.01 - 9 years	57 2.7%	30 1.3%	26 1.1%	38 1.5%	29 1.2%	0 -	2 1.2%	1 1.0%	2 1.1%	1 0.5%
9.01 - 10 years	26 1.2%	50 2.2%	27 1.2%	24 1.0%	28 1.2%	1 0.7%	0 -	1 1.0%	2 1.1%	2 1.1%
Over 10.01 years	121 5.7%	118 5.3%	141 6.1%	164 6.7%	163 6.8%	2 1.4%	2 1.2%	2 1.3%	0 -	2 1.1%
TOTALS	2129	2246	2320	2459	2406	148	167	155	179	184
Mean (In Months)	34.96	32.19	32.27	34.18	35.59	17.64	15.30	16.66	16.64	17.64

# **TOTAL ADULT POPULATION CURRENTLY CONFINED (June 1993)**

## ***By Age***

<u>CATEGORY</u>	<u>Males</u>	<u>Females</u>	<u>Total</u>	<u>% of Total</u>
Under 21	235	9	244	9.4%
21-22	198	18	216	8.3%
23-24	183	14	197	7.6%
25-29	493	41	534	20.6%
30-34	445	41	486	18.8%
35-39	375	27	402	15.5%
40-44	220	16	236	9.1%
45-49	115	8	123	4.8%
50-54	67	4	71	2.7%
55-59	38	1	39	1.5%
60 & Over		<u>37</u>	<u>3</u>	<u>40</u>
1.5%				
Totals	2406	182	2588	
Missing Values	0	2	2	

## ***By Mean Age at Facility/Center/Program***

Nebraska State Penitentiary.....	35.3
Lincoln Correctional Center.....	29.8
Diagnostic & Evaluation Center.....	28.5
Hastings Correctional Center.....	31.2
Omaha Correctional Center.....	31.6
Nebraska Center for Women.....	31.6
Community Corrections (Lincoln and Omaha)	
Males.....	32.6
Females.....	32.5
TOTAL Adult Male Population.....	32.0
TOTAL Adult Female Population.....	31.8

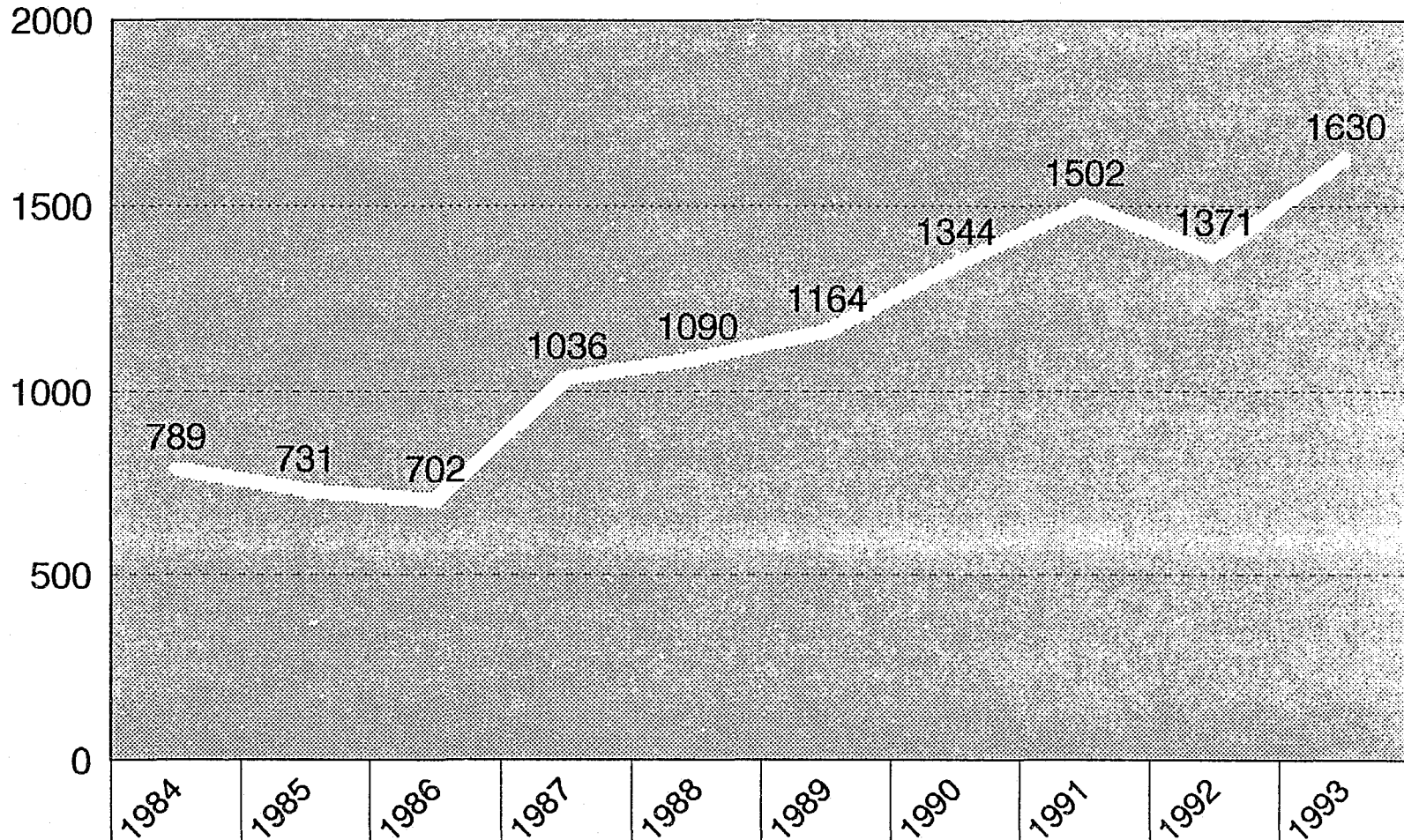
**TOTAL ADULT POPULATION CURRENTLY CONFINED (June 1993)**

***By Most Serious Offense***

<u>CATEGORY</u>	<u>Males</u>	<u>Females</u>	<u>Total</u>	<u>% of Total</u>
Homicide	299	23	322	12.3%
Robbery	247	8	255	9.8%
Burglary	280	4	284	11.0%
Assault	192	17	209	8.1%
Theft	194	25	229	8.5%
Sex Offenses	387	3	390	15.1%
Restraint	34	0	34	1.3%
Arson	16	2	18	0.7%
Drugs	444	54	498	19.2%
Fraud	71	33	104	4.0%
Weapons	40	1	41	1.6%
Morals	14	1	14	0.6%
Motor Vehicle	101	2	103	4.0%
Other	87	10	97	3.7%
Totals	2406	183	2589	
Missing Values	0	1	1	

# Total Adult Releases by Fiscal Year

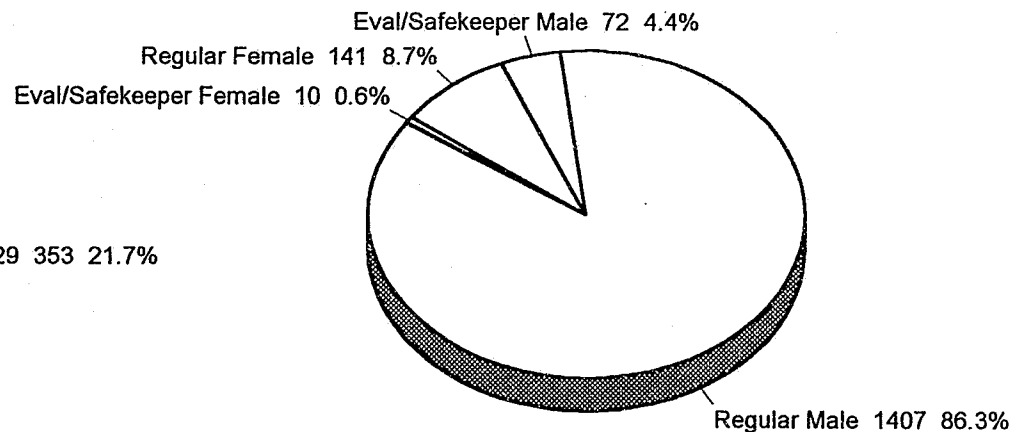
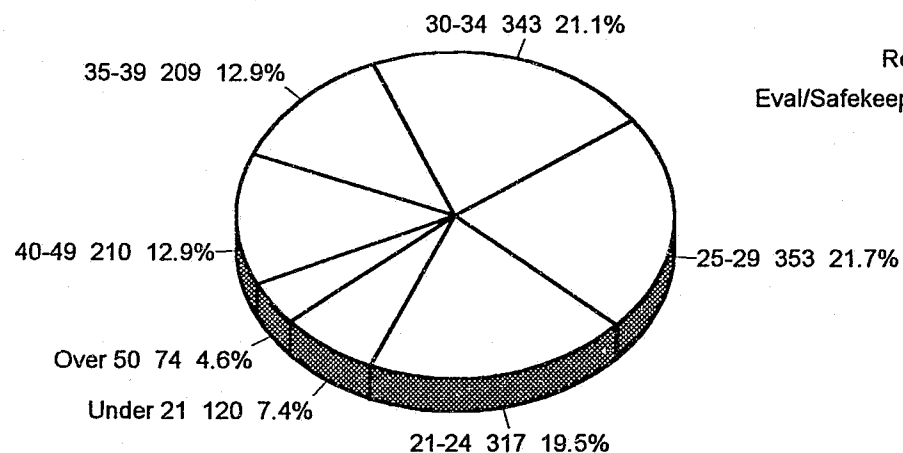
Includes Adult Male and Female Safekeeper, Evaluator and Regular Admissions



	1984	1985	1986	1987	1988	1989	1990	1991	1992	1993
# Paroled	407	330	340	424	648	548	585	785	665	739
# Discharged	382	401	362	477	344	491	621	628	642	809
# Eval/Safekeeper	NA	NA	NA	135	98	125	128	89	64	82

# Total Adult Releases For FY1993

Includes Adult Male and Female Safekeeper, Evaluator and Regular Admissions  
By Age and By Sex & Release Type



NOTES: Total Adult Releases: 1630.

Mean Age at Release: 31.5 (Regular Releases)

29.8 (Safekeepers/Evaluators).

**INSTITUTIONAL RELEASES**  
**Adult Male and Female Population**

<b>STATUS</b>	<b>FY 1991/92*</b>		<b>FY 1992/93**</b>	
	<b>Number</b>	<b>Percent</b>	<b>Number</b>	<b>Percent</b>
First Time Offender	872	64%	1017	62%
Multiple Offender	426	31%	527	32%
Interstate Transfer	7	<1%	5	<1%
County Safekeeper	27	2%	28	2%
Evaluator	37	3%	53	3%
Total	1369		1630	
Missing Values	2			
<b>SEX</b>	<b>FY 1991/92*</b>		<b>FY 1992/93**</b>	
	<b>Number</b>	<b>Percent</b>	<b>Number</b>	<b>Percent</b>
Male	1234	90%	1479	91%
Female	137	10%	151	9%
Total	1371		1630	
<b>RACE</b>	<b>FY 1991/92*</b>		<b>FY 1992/93**</b>	
	<b>Number</b>	<b>Percent</b>	<b>Number</b>	<b>Percent</b>
Asian	0	-	1	1%
Black	375	27%	471	29%
Hispanic	90	7%	113	7%
American Indian	63	5%	76	5%
Other	4	<1%	4	2%
White	837	61%	934	57%
Total	1369		1629	
Missing Values	2		1	
<b>LENGTH OF STAY IN INSTITUTION</b>				
Zero - 6 months	225	16%	366	22%
7 - 12 months	356	26%	360	22%
13 - 18 months	233	17%	223	14%
19 - 24 months	168	12%	172	11%
25 - 30 months	115	8%	128	9%
31 - 36 months	87	6%	98	6%
37 - 42 months	29	2%	67	4%
43 - 48 months	28	2%	45	3%
49 - 54 months	22	2%	15	<1%
55 - 60 months	25	2%	25	2%
Over 60 months	83	6%	131	8%
Total	1371		1630	
<b>Mean Length of Stay (In Months)</b>				
Safekeeper/Evaluators	2.36			
Regular Releases	23.73			

NOTES:     \* Includes 64 Safekeeper/Evaluators.  
              \*\* Includes 82 Safekeeper/Evaluators.



# RELEASE INFORMATION - MINIMUM and MAXIMUM SENTENCE\*

Adult Male and Female Population  
(Totals Do Not Include Safekeeper/Evaluators)

MINIMUM SENTENCE					MAXIMUM SENTENCE			
FY91/92		FY92/93		<u>Sentence</u>	FY91/92		FY92/93	
<u>No.</u>	<u>%</u>	<u>No.</u>	<u>%</u>		<u>No.</u>	<u>%</u>	<u>No.</u>	<u>%</u>
556	43%	636	41%	1.00 year or less	203	16%	233	15%
481	37%	533	34%	1.01-2.00 years	240	18%	254	16%
106	8%	137	9%	2.01-3.00 years	271	21%	350	23%
54	4%	64	4%	3.01-4.00 years	127	10%	148	10%
25	2%	66	4%	4.01-5.00 years	205	16%	230	15%
21	2%	24	2%	5.01-6.00 years	68	5%	63	4%
14	1%	18	1%	6.01-7.00 years	19	2%	42	3%
9	<1%	14	1%	7.01-8.00 years	29	2%	32	2%
3	<1%	3	<1%	8.01-9.00 years	10	<1%	12	1%
21	2%	21	1%	9.01-10.00 years	41	3%	54	4%
13	1%	43	3%	10.01-15.00 years	38	3%	56	4%
2	<1%	3	<1%	15.01-20.00 years	30	2%	33	2%
1	<1%	5	<1%	Over 20 years	20	2%	32	2%
<u>1</u>	<1%	<u>2</u>	<1%	Life	<u>6</u>	<1%	<u>9</u>	1%
1307		1548			1307		1548	

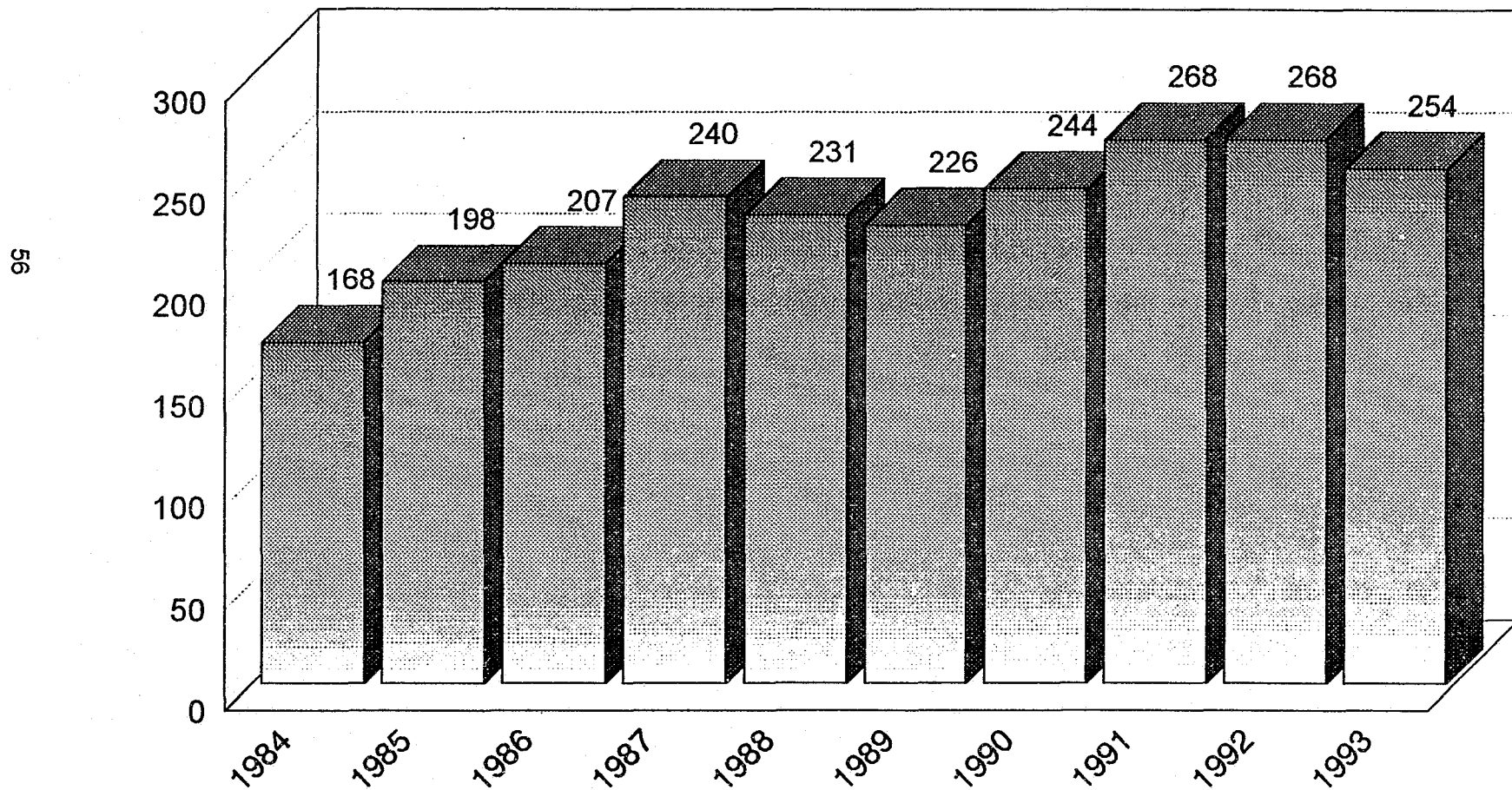
**LENGTH OF STAY**  
(Does not include Safekeeper/Evaluator releases)

Based Upon Releases of Adult Males and Females as of the End of June in each Fiscal Year

<u>Number/% of Total LENGTH OF STAY</u>	<u>83/84</u>	<u>84/85</u>	<u>85/86</u>	<u>86/87</u>	<u>87/88</u>	<u>88/89</u>	<u>89/90</u>	<u>90/91</u>	<u>91/92</u>	<u>92/93</u>
Zero - 1 year	236 35.3%	219 33.2%	251 35.8%	341 37.9%	387 39.0%	363 35.0%	472 39.1%	604 42.7%	517 40.0%	644 41.6%
1.01 - 2 years	178 26.6%	153 23.2%	178 25.4%	214 23.8%	260 26.2%	261 25.1%	330 27.4%	362 25.6%	401 30.7%	395 25.5%
2.01 - 3 years	110 16.4%	109 16.5%	99 14.1%	141 15.7%	121 12.2%	166 16.0%	186 15.4%	199 14.1%	202 15.5%	226 14.6%
3.01 - 4 years	60 9.0%	70 10.6%	65 9.3%	70 7.8%	63 6.4%	82 7.9%	73 6.0%	79 5.6%	57 4.4%	112 7.2%
4.01 - 5 years	27 4.0%	33 5.1%	33 4.7%	42 4.7%	53 5.3%	39 3.8%	35 2.9%	54 3.8%	47 3.6%	40 2.6%
5.01 - 6 years	22 3.3%	13 2.0%	28 4.0%	27 3.0%	36 3.6%	32 3.1%	24 2.0%	32 2.3%	21 1.6%	46 3.0%
6.01 - 7 years	9 1.4%	13 2.0%	12 1.7%	21 2.3%	8 0.8%	22 2.1%	23 1.9%	10 0.7%	17 1.3%	14 0.9%
7.01 - 8 years	8 1.2%	8 1.2%	10 1.4%	8 0.9%	12 1.2%	20 1.9%	11 0.9%	11 0.7%	12 0.9%	12 0.8%
8.01 - 9 years	3 0.5%	10 1.5%	2 0.3%	11 1.2%	7 0.7%	13 1.3%	8 0.7%	12 0.8%	9 0.7%	14 0.9%
9.01 - 10 years	6 0.9%	9 1.4%	8 1.1%	7 0.8%	7 0.7%	6 0.6%	13 1.1%	6 0.4%	2 0.2%	10 0.6%
Over 10.01 years	10 1.5%	22 3.3%	16 2.3%	19 2.1%	38 3.8%	35 3.4%	31 2.6%	44 3.1%	22 1.7%	35 2.3%
<b>TOTALS</b>	<b>669</b>	<b>659</b>	<b>702</b>	<b>901</b>	<b>992</b>	<b>1039</b>	<b>1206</b>	<b>1413</b>	<b>1307</b>	<b>1548</b>
Mean (In Months)	26.56	31.77	28.59	27.69	29.04	30.94	26.96	25.99	23.73	25.39

# Community Corrections Center-Lincoln and Omaha Correctional Center Work Release Unit

Average Monthly Population



**TOTAL ADULT ADMISSIONS**  
(Does not include Interstate Transfer Parolees)

FISCAL YEAR	REGULAR COMMITMENTS			EVALUATOR/SAFEKEEPERS			TOTAL
	<i>Males</i>	<i>Females</i>	<i>Total</i>	<i>Males</i>	<i>Females</i>	<i>Total</i>	
1978	566	38	604	0	0	0	604
1979	518	54	572	0	10	10	582
1980	592	46	638	91	17	108	746
1981	695	37	732	95	8	103	835
1982	793	55	848	143	13	156	1004
1983	654	65	719	117	9	126	845
1984	693	61	754	119	7	126	880
1985	641	41	682	127	8	135	817
1986	728	64	792	163	12	175	967
1987	885	89	974	149	14	163	1137
1988	885	109	994	116	7	123	1117
1989	956	104	1060	127	4	131	1191
1990	1163	135	1298	90	18	108	1406
1991	1211	123	1334	72	12	84	1418
1992	1151	127	1278	55	14	69	1347
1993	1156	138	1294	77	9	86	1380

**TOTAL ADULT POPULATION - CUSTODY LEVELS**

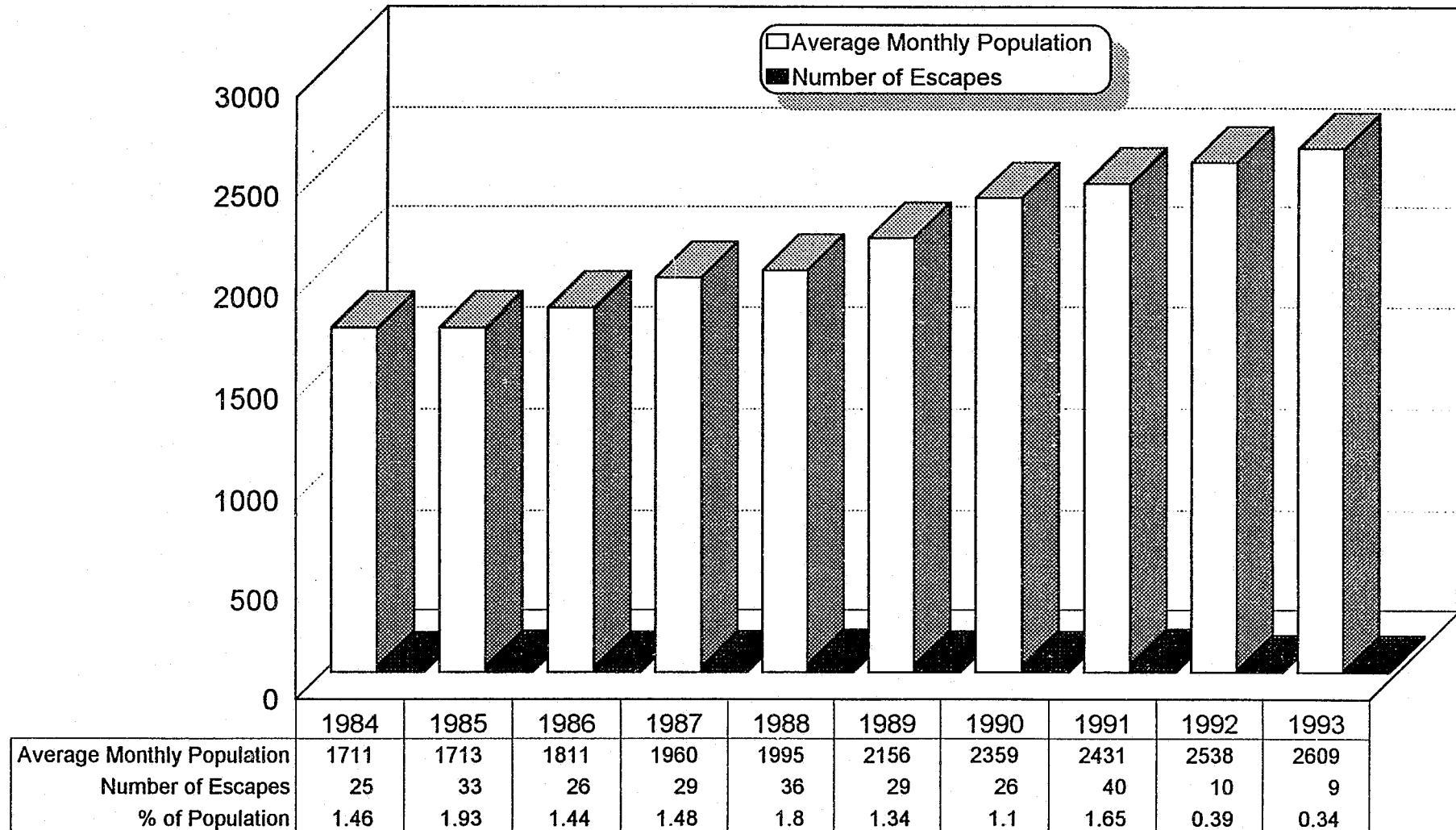
FISCAL YEAR	MAXIMUM		MEDIUM		MINIMUM		COMMUNITY		TOTAL
	<i>No.</i>	<i>%</i>	<i>No.</i>	<i>%</i>	<i>No.</i>	<i>%</i>	<i>No.</i>	<i>%</i>	
1984	572	32.8	307	17.6385	22.1		481	27.6	1745
1985	572	32.2	376	21.2517	29.2		306	17.3	1771
1986	745	39.4	361	19.1538	28.4		249	13.1	1893
1987	816	40.6	356	17.7521	26.9		297	14.8	2010
1988	873	41.7	420	20.0446	21.3		357	17.0	2096
1989	863	37.9	526	23.1561	24.6		327	14.4	2277
1990	940	39.0	580	24.0583	24.2		310	12.8	2413
1991	955	38.6	621	25.1595	24.0		304	12.3	2475
1992	1040	39.4	651	24.6664	25.2		283	10.8	2638
1993	1058	40.8	662	25.6586	22.6		284	11.0	2590

# TOTAL ADULT RELEASES FROM INSTITUTIONS

FISCAL YEAR	PAROLE			DISCHARGE			EVAL/SAFEKEEPER			TOTAL
	M	F	<u>Total</u>	M	F	<u>Total</u>	M	F	<u>Total</u>	
1978	-	-	418	-	-	324	-	-	-	742
1979	-	-	387	-	-	319	-	-	-	706
1980	-	-	376	-	-	275	-	-	-	651
1981	-	-	310	-	-	311	-	-	-	621
1982	-	-	322	-	-	311	-	-	-	633
1983	-	-	385	-	-	379	-	-	-	764
1984	-	-	407	-	-	382	-	-	-	789
1985	-	-	330	-	-	401	-	-	-	731
1986	-	-	340	-	-	362	-	-	-	702
1987	390	34	424	447	30	477	121	14	135	1036
1988	575	73	648	318	26	344	94	4	98	1090
1989	476	72	548	462	29	491	116	9	125	1164
1990	513	72	585	571	50	621	109	19	128	1334
1991	694	91	785	575	53	628	78	11	89	1502
1992	593	72	665	589	53	642	52	12	64	1371
1993	662	77	739	745	64	809	72	10	82	1630

# Escapes from All Adult Facilities By Fiscal Year

(Does Not Include Adult Parole Absconds)



Note: 1992 reflects a correction in Average Monthly Population (2548 in previous report).

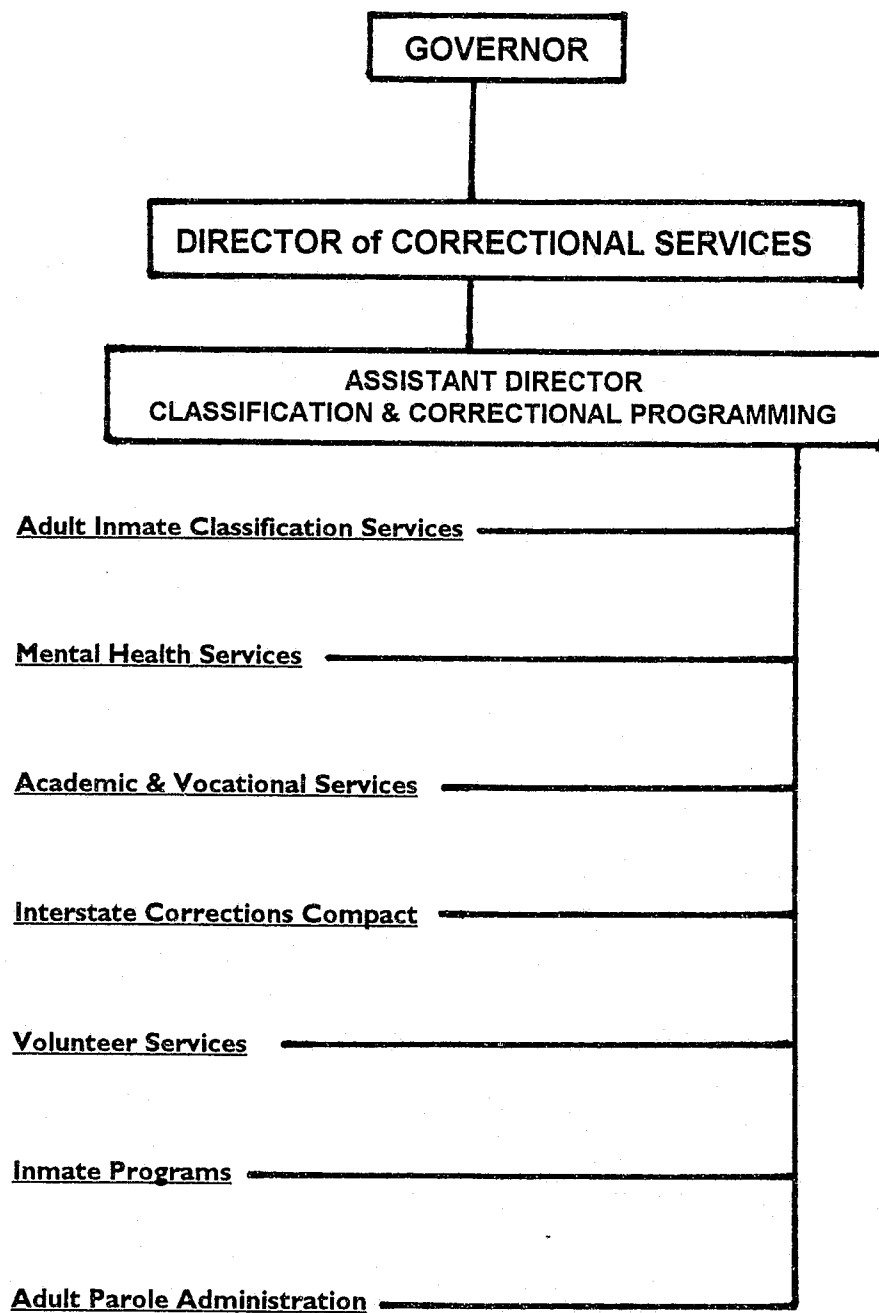


***Classification  
and  
Correctional  
Programming***





# CLASSIFICATION & CORRECTIONAL PROGRAMMING



## ∞ CLASSIFICATION and CORRECTIONAL PROGRAMMING ∞

Established by the director, Classification and Correctional Programming supervises the adult inmate classification system and various support programs for both adult and juvenile divisions. The section is organized into six functional areas, with a seventh, the Adult Parole Administration, providing programming services to the department's adult parolees.

### **Inmate Classification**

The department's mission of protecting the public and providing programs to return adult inmates and juvenile offenders to society as law-abiding citizens is realized via an accurate identification of the incarcerated's characteristics and needs. Once identified, they must be matched with appropriate physical security, supervision, and programming. Classification is a systematic process of coordinating assessment and assignment procedures with available resources. It is essential for appropriate management of the department's facilities and programs and is a basis for management decisions concerning facility planning and program development.

The DCS Adult Inmate Classification System is an adaptation of the Federal Bureau of Prison's Security Designation and Custody Classification System. It utilizes a mechanical scoring procedure in which specific factors are assigned point values. It is intended to identify those salient factors of the inmate's potential and level of functioning in determining his/her individual security and supervision needs by:

- A. Assigning each inmate to the least restrictive environment appropriate to maintain the public's confidence and safety;
- B. Facilitating the timely movement of inmates through the correctional system;
- C. Providing for the assignment, continuation and removal of inmates from administrative segregation status;
- D. Identifying inmate needs and recommending program involvement which will assist in meeting those needs; and,
- E. Assuring the most difficult classification decisions are made at the highest level of authority within the Department.

This classification process utilizes an objective rating instrument which permits the use of professional judgment and is not binding upon the classification authority. Although this process allows flexibility, it also provides a basis for consistent classification decisions.

### **Mental Health Services**

Under the supervision of the Mental Health Director, who is a certified clinical psychologist, this program provides mental health services for adult inmates. The program includes intensive in-patient programming and comprehensive out-patient programming. It is also responsible for substance abuse counseling and intervention services. Headquartered at the Lincoln Correctional Center, the program oversees the provision of mental health services by the department, or by contract, including those made available to the adult females at the Nebraska Center for Women.

In-patient treatment is provided at the Lincoln Correctional Center for sex offenders, the socially and/or developmentally impaired, inmates in need of substance abuse treatment and other inmates who would have difficulty in general population because of their mental health problems. The majority of in-patient treatment centers around group activities and therapy.

Programming for the socially and developmentally impaired is highly structured and includes, but is not limited to, activities such as life planning, awareness and relaxation. Higher functioning inmates with mental health problems participate in groups for conflict resolution, anger reduction, personal skills and adjustment, and others. Sex offenders and inmates receiving in-patient substance abuse treatment address their specific behavior needs through open-ended group participation, emphasizing needed changes in inappropriate behavior.

The out-patient treatment provided by Mental Health Services is modeled after the community mental health concept. Services are provided through individual counseling/treatment, group interaction (i.e. anger reduction, relaxation therapy) and crisis intervention. Groups are arranged according to similarity of problem areas. Although the majority of out-patient treatment is provided in the group setting, individual treatment is also available to all inmates in general population and is oriented toward resolution of situational problems.

Psychiatric care is provided by contract with several community psychiatrists. Inmates found to be treatable, mentally disordered sex offenders are transferred to the Lincoln Regional Center for intense in-patient treatment. After evaluation and a due process hearing, severe mentally ill inmates are also transferred to that facility or to the Hastings Regional Center for treatment.

#### **Academic/Vocational Services**

The department's Education Coordinator is responsible for planning, development, and providing assistance in the operation of the academic and vocational education and pre-release programs within the department. The department operates its own state-approved schools in its two juvenile facilities and the adult female institution. Lincoln-based facilities and the Nebraska Center for Women receive educational services through contract agreement with the Corrections Division of Southeast Community College. The women at the York facility who desire additional education after high school may take advantage of correspondence courses. The institutions located in Omaha have contract arrangements with Metropolitan Technical Community College. Hastings inmates have access to educational opportunities through Central Community College.

The academic programs available for adults include ABE/GED studies and college transfer programs and for juveniles, high school, independent living courses and Chapter I (math and reading). Juveniles may choose to be involved in building trades, welding/metals, auto mechanics and auto body, word processing and computers.

#### **Interstate Corrections Compact**

The department has entered into contracts with several states in order to provide inmates the opportunity to request a transfer to another state. The Interstate Corrections Compact Administrator, under the supervision of the Assistant Director for Classification & Correctional Programming, coordinates and documents action undertaken via the Compact provisions. Inmates are given consideration for transfer if the transfer will:

- 1) Enable an inmate to be closer to and maintain family ties;
- 2) Allow an inmate to concurrently serve sentences;
- 3) Provide for greater immediate personal safety of an inmate;
- 4) Provide for greater institutional security, custody, and control; and/or,
- 5) Provide specialized programs for treatment/rehabilitation not otherwise available.

During FY93, an average of 22 Nebraska inmates were housed in other states, with 21 inmates from other states housed by Nebraska. Further, ten Nebraska inmates were transferred to out-of-state facilities and four were accepted from other states.

### **Volunteer Services**

Each facility and program has a designated staff member who is responsible for recruiting, training, and the overall coordination of volunteer programs. The DCS Volunteer Services Coordinator has the overall departmental responsibility for the Volunteer Services Program. This person also chairs the Volunteer Services Committee, which is comprised of the facility and program coordinators, as well as volunteers. The committee works to ensure that appropriate policy and procedure are followed.

Volunteerism generates a variety of direct services for inmates/students through such areas as education, self-betterment groups, substance abuse treatment and mental health services, counseling, employment assistance, transportation and as community release sponsors. Staff receive direct and indirect help through the support and services volunteers provide. Over 1500 community individuals, and many organizations and groups have volunteered their time and energy at the adult and juvenile facilities during this past year, resulting in over 6000 volunteer contacts.

### **Inmate Programs**

Direct supervision of various inmate programs is the responsibility of the individual institution's administration. Classification and Correctional Programming functions in a coordinating role in an effort to ensure consistent programming activities for the individuals in the facilities. Currently, programs include religious services, recreational services, self-betterment clubs, and cultural organizations.

**Adult Parole Administration**  
Dennis Bakewell, Administrator  
P.O. Box 94661  
Lincoln, Nebraska 68509-4661

**Established:** 1893

**Authorized FTE's:** 35

**FY93 Average Daily Population:** 666 (Includes 12 on Community Furlough Program)

**Average Yearly Cost:** \$2,022

**Average Daily Cost:** \$5.53

**ACA Accredited:** 1981

**Reaccredited:** 1984, 1987, 1990, 1993

Established in Nebraska in 1893, the Governor originally held the sole power to parole. By Legislative action effective on August 23, 1969, the Parole Administration was established and was responsible for handling both juvenile and adult parole matters. In April 1979, the Parole Administration was divided into two separate programs: the Adult Parole Administration and the Juvenile Parole Administration, a program within the Division of Juvenile Services.

The Adult Parole Administration is responsible for providing statewide parole services in the community for all inmates paroled from Nebraska's adult correctional institutions. It is also responsible for those inmates from other states who have been transferred to Nebraska under the Interstate Compact.

The mission of the Adult Parole Administration is to protect the public and provide supervision and assistance to enable the paroled inmate to become a productive and law-abiding citizen. In support of this mission, Adult Parole helps the paroled inmate live his/her own life within the limits set by the community. By providing supervision, guidance, and assistance, and by relying on community resources and community cooperation, parole services may help the individual resume a responsible place in the community.

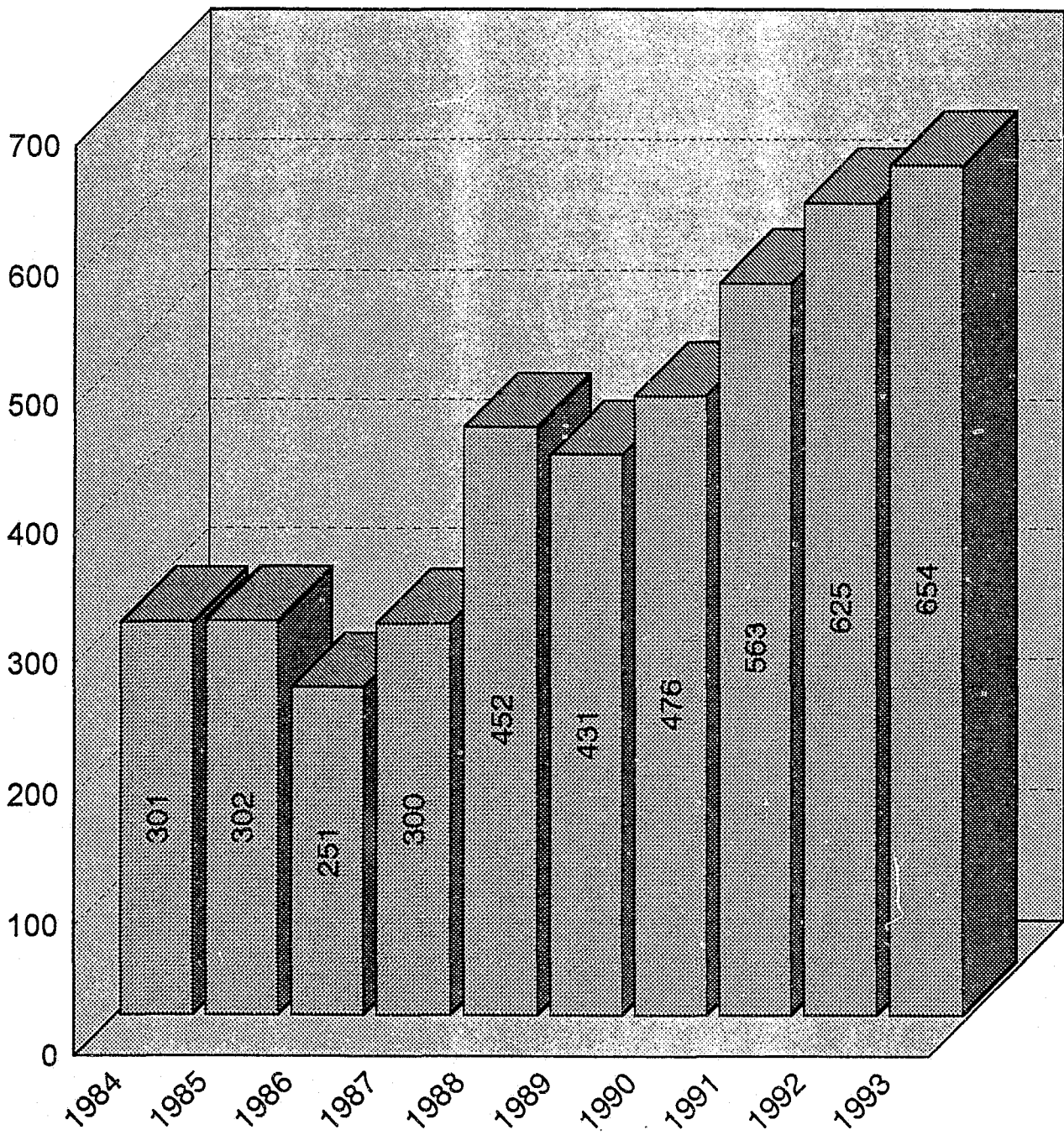
In response to increasing institutional populations, the Extended Leave Program (ELP) was implemented in December 1986. This program was temporarily suspended in early 1990, however, it was revised and reinstated late in 1990 as the Community Furlough Program (CFP). It permits selected inmates to reside at an approved private residence prior to parole release or expiration of sentence. Inmates approved to participate in the community furlough program are granted a furlough for the period of time remaining on their sentence prior to their parole hearing date or discharge date. Inmates on the program remain under the legal custody of the department.

The Adult Parole Administrator oversees the operation which includes district offices located in Omaha and Lincoln, which are each under the immediate supervision of a District Supervisor. Individual regional offices are established where necessary.

\*\*\*\*\*

# Adult Parole Administration

## Average Monthly Population By Fiscal Year



Note: Does not include inmates on the Community Furlough Program or interstate parolees in Nebraska.

**ADULT PAROLE ADMINISTRATION**  
Fiscal Year 1992/93

**NUMBER of PAROLE REVOCATIONS: 306**

Males:	278	(91%)
Females:	28	(9%)
Black:	146	(48%)
Hispanic:	8	(3%)
Native American:	14	(5%)
Other:	0	(-)
White:	138	(45%)
First Time Offender:	172	(56%)
Multiple Offender:	134	(44%)
Interstate Transfer:	0	(-)
Missing Value:	0	(-)

Mean Age at Parole:	30.2
Mean Age at Revocation:	30.9

Mean Length of Stay on Parole Before Revocation:	8.6 months
---	------------

**NUMBER of PAROLE DISCHARGES: 622**

Males:	557	(90%)
Females:	65	(10%)
Black:	167	(27%)
Hispanic:	32	(5%)
Native American:	16	(3%)
Other:	2	(<1%)
White:	405	(65%)
First Time Offender:	361	(58%)
Multiple Offender:	144	(23%)
Interstate Transfer:	116	(19%)
Missing Value:	1	(<1%)

Mean Age at Parole:	31.8
Mean Age at Release:	32.6

Mean Length of Stay on Parole Before Release:	9.8 months
--	------------

Mean Total Length of Stay in Institution and on Parole: 27.95 months

**MONTHLY PAROLE COUNT UNDER SUPERVISION \***  
(As of the Last Day of Each Month)

	<b>FISCAL YEAR</b>							
<b><u>MONTH</u></b>	<b><u>85/86</u></b>	<b><u>86/87</u></b>	<b><u>87/88</u></b>	<b><u>88/89</u></b>	<b><u>89/90</u></b>	<b><u>90/91</u></b>	<b><u>91/92</u></b>	<b><u>92/93</u></b>
July	343	361	469	587	590	600	827	854
August	323	373	506	584	598	647	838	865
September	332	379	549	567	590	668	837	836
October	337	376	563	574	581	687	828	833
November	324	365	550	567	582	713	845	828
December	344	379	550	548	600	753	839	860
January	346	384	560	548	620	762	827	876
February	326	371	579	531	609	737	830	878
March	329	391	574	548	622	770	828	886
April	333	391	591	554	592	808	799	890
May	333	434	584	540	573	827	812	893
June	357	456	588	564	599	834	830	894

\*NOTE: Includes department inmates paroled in Nebraska, or to detainers or other states, and interstate parolees in Nebraska. Does not include inmates on the Community Furlough Program.



# RELEASES TO PAROLE

## Adult Male and Female Population

<u>STATUS</u>	<u>FY1991/92</u>		<u>FY1992/93</u>	
	<u>Number</u>	<u>Percent</u>	<u>Number</u>	<u>Percent</u>
First Time Offender	530	59%	560	59%
Multiple Offender	244	27%	279	29%
Interstate Transfer	128	14%	118	12%
	902		957	
Missing Value	2		0	

<u>SEX</u>				
Male	811	90%	854	89%
Female	93	10%	103	11%
	904		957	

<u>RACE</u>				
Asian	0	-	1	<1%
Black	290	31%	321	34%
Hispanic	45	5%	47	5%
American Indian	28	3%	31	3%
Other	1	<1%	4	<1%
White	540	60%	553	58%
	904		957	

<u>LENGTH OF STAY IN INSTITUTION</u>				
Zero to 6 month	194	24%	225	25%
7 - 12 months	212	26%	209	24%
12 - 18 months	144	18%	168	19%
19 - 24 months	90	11%	73	8%
25 - 30 months	58	7%	60	7%
31 - 36 months	28	3%	26	3%
37 - 42 months	13	2%	29	3%
43 - 48 months	16	2%	20	2%
49 - 54 months	12	2%	8	1%
55 - 60 months	12	2%	10	1%
Over 60 months	36	4%	61	7%
	815		889	
Missing Values	89		68	

# RELEASES TO PAROLE - MINIMUM and MAXIMUM SENTENCE

Adult Male and Female Population

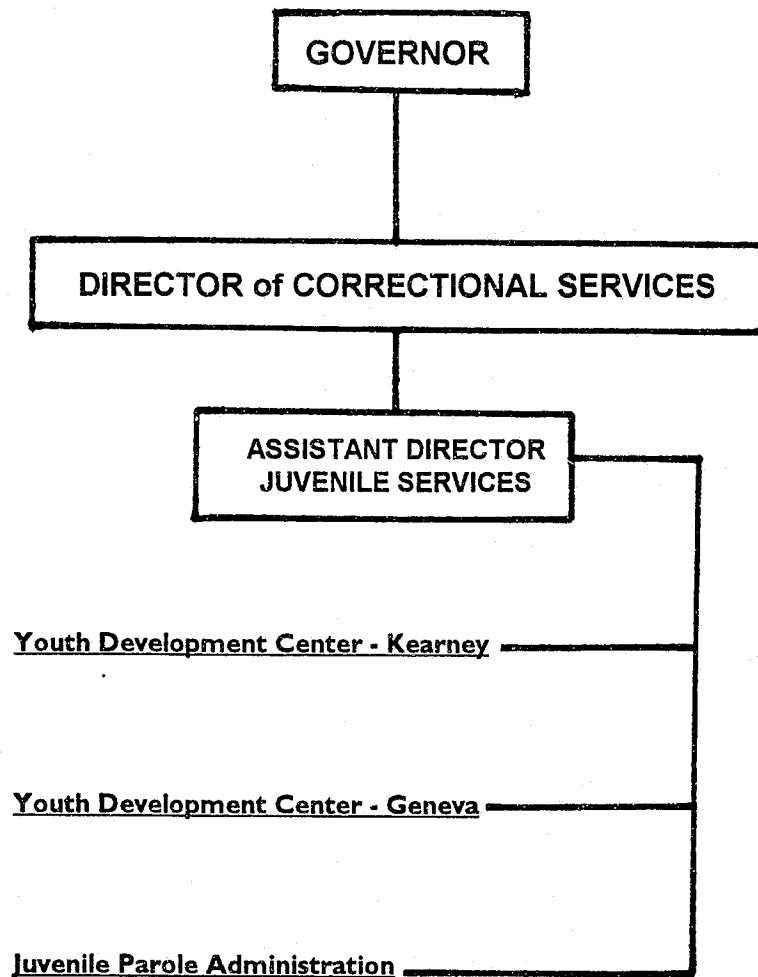
MINIMUM SENTENCE					MAXIMUM SENTENCE			
FY91/92		FY92/93		Sentence	FY91/92		FY92/93	
No.	%	No.	%		No.	%	No.	%
369	41%	371	39%	1.00 year or less	48	5%	36	4%
322	36%	332	35%	1.01-2.00 years	145	16%	147	15%
86	10%	96	10%	2.01-3.00 years	192	21%	244	26%
45	5%	35	4%	3.01-4.00 years	107	12%	87	9%
25	3%	45	5%	4.01-5.00 years	167	19%	186	19%
14	1%	22	2%	5.01-6.00 years	54	6%	38	4%
10	1%	11	1%	6.01-7.00 years	19	2%	30	3%
4	<1%	13	1%	7.01-8.00 years	30	3%	31	3%
2	<1%	1	<1%	8.01-9.00 years	6	1%	8	<1%
10	1%	10	1%	9.01-10.00 years	51	6%	48	5%
11	1%	14	1%	10.01-15.00 years	33	4%	45	5%
2	<1%	2	<1%	15.01-20.00 years	23	3%	25	3%
2	<1%	5	<1%	Over 20 years	21	2%	25	3%
0	-	0	-	Life	7	1%	7	<1%
904		957			904		957	



***Division  
of  
Juvenile  
Services***



## DIVISION of JUVENILE SERVICES





## **80 DIVISION of JUVENILE SERVICES 88**

The Legislature of 1879 passed a law establishing "The Nebraska State Reform School for Juvenile Offenders," which was to be located in Kearney, Nebraska. Both boys and girls were to be housed at the facility during the early years of operation. The first juvenile committed to the facility was a boy, who arrived on July 12, 1881. On March 4, 1891, the Legislature established the Girls' Industrial School to be built at Geneva, Nebraska. On March 14, 1892, a group of 57 girls were transferred from the school at Kearney to the new facility. Known by various names throughout the years, such as reform schools, industrial schools or training schools, the facilities are now identified as Youth Development Centers.

Nebraska State Statute 83-922 provided authority for the Department of Correctional Services to fulfill the functions of state government relating to the care, custody, discipline, training and treatment of persons in correctional and detention institutions. This statute also established the separate divisions within the department, of which the Division of Juvenile Services is one. Juvenile Services, organized under Sections 83-935 through 83-930 (Revised Statutes, Reissue 1976), is headed by an Assistant Director and exists to administer and supervise the State's juvenile correctional facilities and programs. The division includes the Youth Development Centers (YDC) in Geneva (for girls) and in Kearney (for boys) and the Juvenile Parole Administration.

The mission of the Division of Juvenile Services is to provide for the supervision, care, evaluation and treatment of juvenile offenders under the department's control enabling them to develop the skills necessary to return to the community as responsible, law-abiding individuals.

### **Youth Development Center - Kearney**

Al Kulhanek, Superintendent  
2802 30th Avenue  
Kearney, Nebraska 68447-9599

**Opened:** 1881

**Population:** Adjudicated Boys

**Authorized FTE's:** 115

**Design Capacity:** 227

**Average Yearly Cost:** \$26,331

**ACA Accredited:** 1981, 1986

**FY93 Average Daily Population:** 179

**Average Daily Cost:** \$71.94

**Reaccredited:** 1989, 1992

Opened in July 1881, the Youth Development Center-Kearney, is located on a tract of land donated by the city of Kearney to the state of Nebraska. The mission of the facility is to provide attention to the individual needs of each student in the least restrictive environment possible. Student programming is provided in psychological services, problem-solving, education, pre-vocational exposure/training, social skills, drug/alcohol education/prevention, recreation and religion. The YDC-K students are committed for an indeterminate stay and must be released on or before their 19th birthday.

Staff complete a classification study for each student that includes evaluation, assessment and recommendation in: social history and placement, psychological and personality, chemical dependency, academic, vocational and medical. This assessment, in conjunction with current behavior analysis, leads to the development of an Individual Treatment Plan for each student. The primary treatment modality utilized at YDC-K is Positive Peer Culture (PPC) which is a peer group program that encourages and leads students in assisting each other to work together to solve mutual problems. The three PPC concepts are related to the



psychology of giving, the power of peers as change agents, and the student's role in helping others of similar backgrounds and experience. Students are assigned to treatment groups based on physical size, maturity, and sophistication level.

The Youth Development Center-Kearney operates an on-campus special purpose junior-senior high school that is accredited by the Nebraska Department of Education and the North Central Association of Schools and Colleges. The nineteen member school staff develops an Individual Education Plan that leads students toward either a high school or G.E.D. diploma. The basic education program is supported by special education, speech pathology, Chapter One, career education, family/life skills, art, pre-vocational training and media/technology area. The school operates year round and students are enrolled each day.

The Youth Development Center-Kearney is under the direction of a Superintendent and an Assistant Superintendent.

**Youth Development Center - Geneva**

Allen Jensen, Superintendent

R.R. 1, Box 23A

Geneva, Nebraska 68361-0273

**Opened:** 1892

**Population:** Adjudicated Girls and both Boy and Girl Evaluators/Detainees

**Authorized FTE's:** 68

**Design Capacity:** 78

**Average Yearly Cost:** \$35,640

**Accredited:** 1981, 1987, 1990

**FY93 Average Daily Population:** 74

**Average Daily Cost:** \$97.38

The Youth Development Center at Geneva receives girls to serve an indeterminate sentence. These girls have been adjudicated as delinquent by the various courts of the state. They must be under age 18 at the time of their adjudication and must be released on or before their 19th birthday. Nebraska State Statute precludes the commitment of status offenders. In addition to regular commitments, YDC-G also provides predisposition evaluations for both female and male adolescents for the courts in an effort to determine the causes of particular behaviors and to provide appropriate treatment recommendations. Immediate, short-term detention services for female safekeepers are also available for those counties which do not have the facilities for the proper detention of youth.

The Geneva program is designed to meet the needs of each student under a plan which includes: 1) an individual profile with psychological testing and evaluation; 2) testing and placements; and 3) a classification study to determine background history and current needs. The primary goal is to bring about a self-development program for each student that provides a satisfactory and productive life with no further delinquency involvement. Positive Peer Culture (PPC) is the treatment philosophy around which individual programming for each student is structured.

The YDC-G educational program, under the supervision of a principal, is accredited by the State Department of Education as a special purposes school, with G.E.D. and independent living programs also available. Pre-vocational training is offered in the areas of business and clerical skills and in word processing/computers.

The Youth Development Center-Geneva is under the direction of a Superintendent and an Assistant Superintendent.

**Juvenile Parole Administration**  
Arthur W. Pohlen, Administrator  
P.O. Box 94661  
Lincoln, Nebraska 68509-4661

**Established:** 1969

**Authorized FTE's:** 14

**FY93 Average Daily Population:** 278

**Average Yearly Cost:** \$2,872

**ACA Accredited:** 1981

**Average Daily Cost:** \$7.85

**Reaccredited:** 1984, 1987, 1990, 1993

In April 1979, the Juvenile Parole Administration was established as a separate program of the Department of Correctional Services. Previously, the juvenile and adult parole responsibilities had been administered by a single Parole Administration. The separation of the two areas has enabled both to be more effective in serving and supervising the individuals in their care.

The Juvenile Parole Administration is responsible for the supervision and control of all juvenile persons paroled from Nebraska's juvenile institutions and those juvenile parolees who qualify for placement in Nebraska under the jurisdiction of the Interstate Compact on Juveniles. In addition, it is the responsibility of the Juvenile Parole Administration to supervise a limited number of juvenile probationers committed to the Department by order of the Nebraska Juvenile Courts.

During this fiscal year, 27 of the youth being released on parole were placed in foster care. Selected from successful foster care homes, a Mini-Group Home Program is also in operation. The families take up to three youths into their homes at any one time. This highly beneficial and successful program averages 15 active homes. Placement of juveniles via the Interstate Compact program for FY93 totaled seven youth placed in Nebraska from other states and 20 Nebraska youth placed in other states.

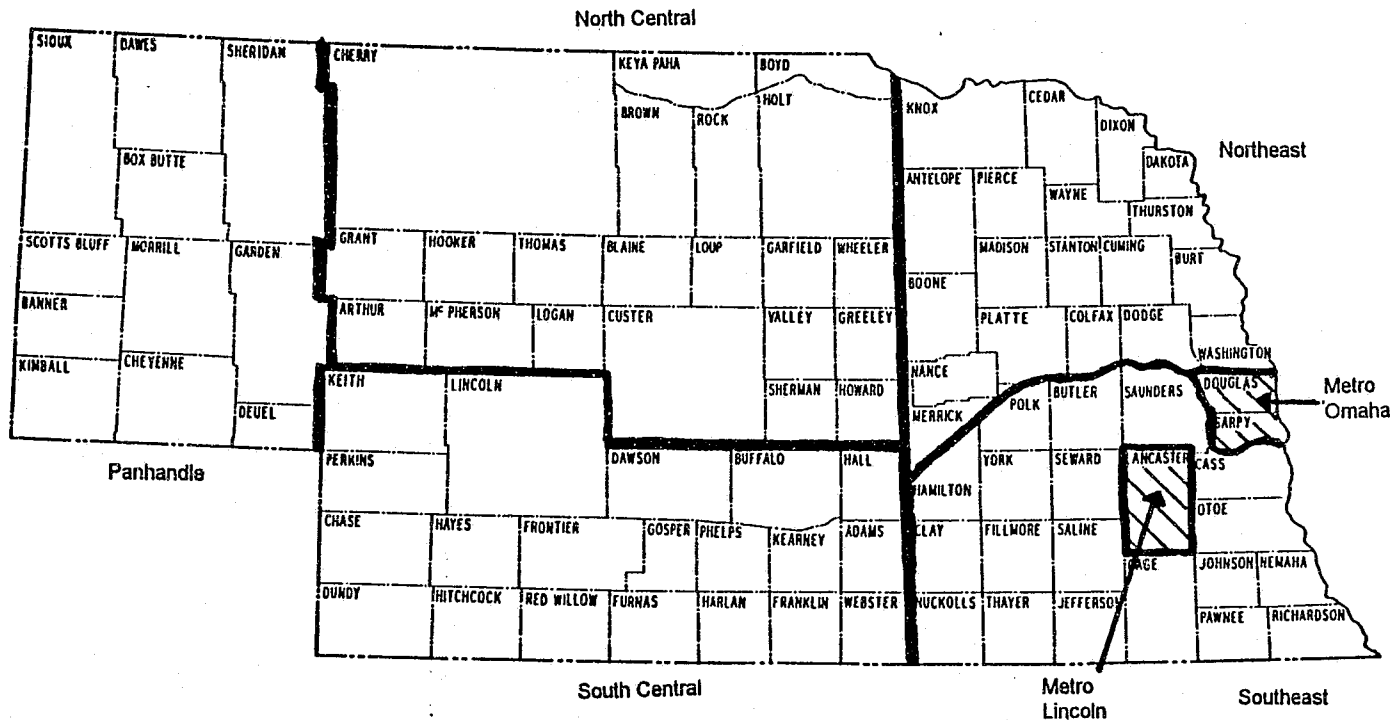
In addition to the administrative office, which is located in Lincoln, five satellite offices are maintained across the state, including a field office located at YDC-Kearney. Juvenile Parole is under the direction of an Administrator, who is assisted by a Deputy Parole Administrator.

\*\*\*\*\*



**JUVENILE POPULATION**  
(Does not include Juvenile Parole)

**AREAS OF COMMITMENT - Total for FY 1993**



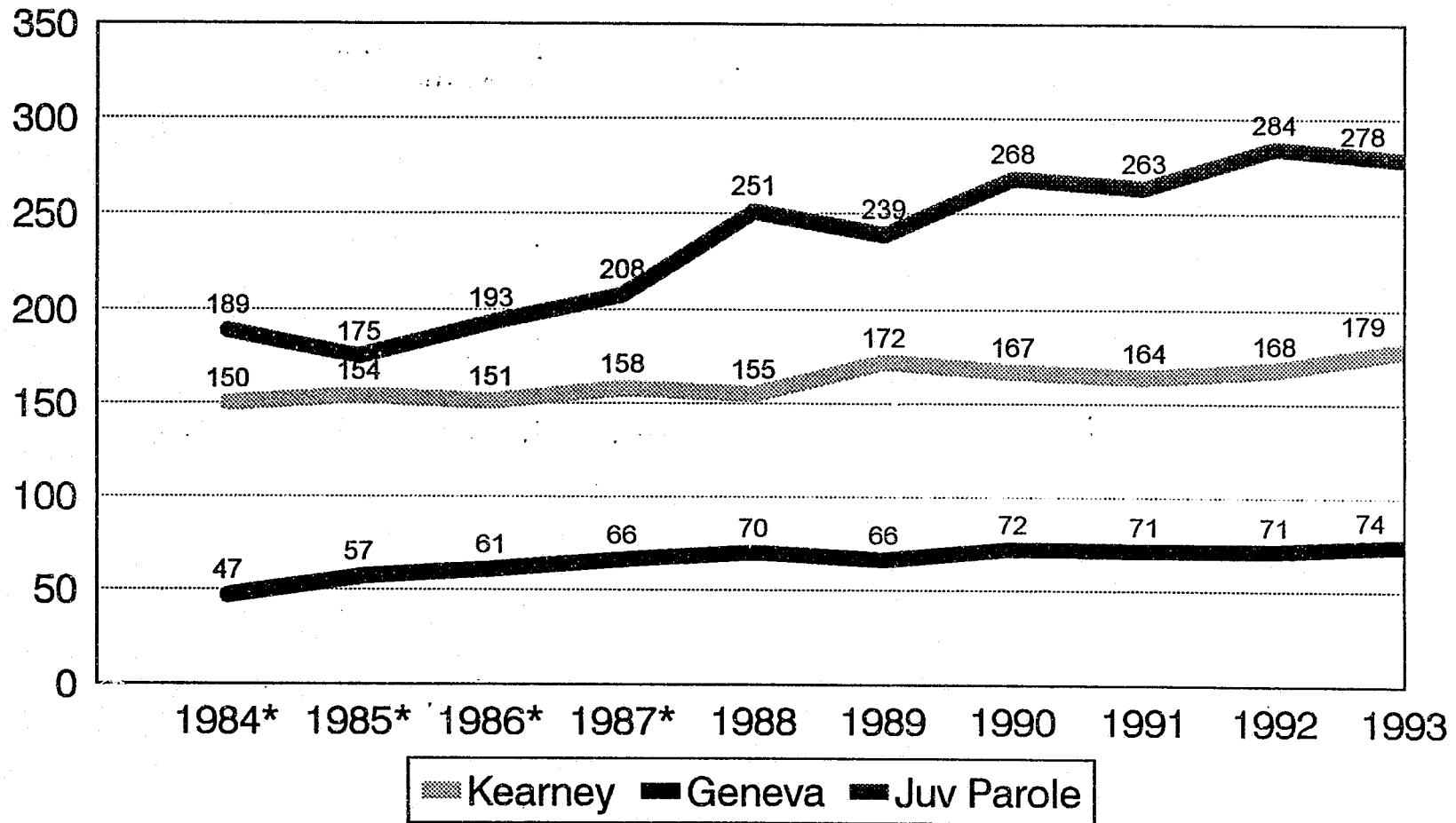
<b>COMMITMENTS</b>			
<u>YDC-Kearney</u>		<u>YDC-Geneva</u>	
(35%) 147		(31%) 21	
(11%) 46		( 6%) 4	
( 9%) 38		( 6%) 4	
(23%) 97		(31%) 21	
( 8%) 35		(18%) 12	
( 1%) 5		( 0%) 0	
(13%) 56		( 8%) 5	
424		67	
491			

<b>EVALUATORS</b>			
		<u>Males/Females</u>	
Metro Omaha		(40%) 218	
Metro Lincoln		(12%) 66	
Southeast		(11%) 61	
South Central		(16%) 87	
Panhandle		( 4%) 21	
North Central		( 2%) 9	
Northeast		(15%) 79	
VALID DATA		541	
TOTAL		541	

# Juvenile Population by Fiscal Year

Average Monthly Committed Population

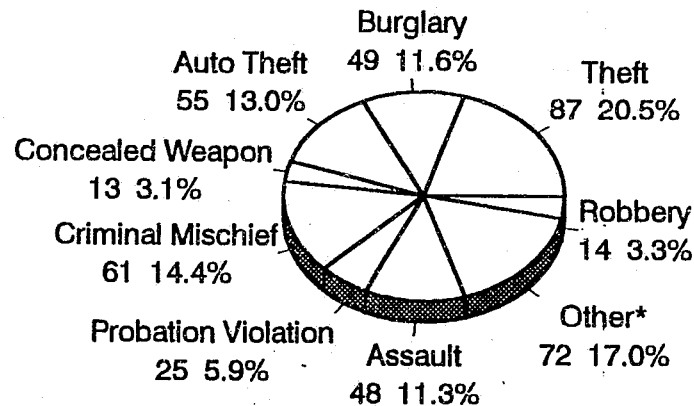
82



\*Figures revised from previous reports

# Juvenile Commitments by Delinquency

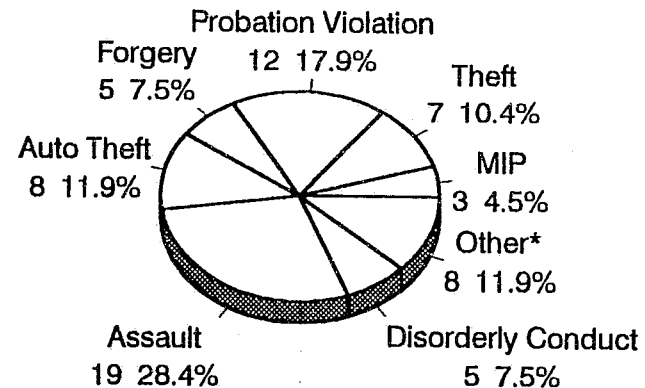
## Youth Development Center-Kearney



\*Includes Sexual Assault 12, Disorderly Conduct 12, MIP 9, Possess Drugs 7, Forgery 5, Arson 4, Distribute Drugs 4, DWI 4, Status Offense 4, Resisting Arrest 3, Driving w/o License 2, Escape 2, Shoplifting 2, Parole Violation 1, False Information 1.

TOTAL: 424

## Youth Development Center-Geneva

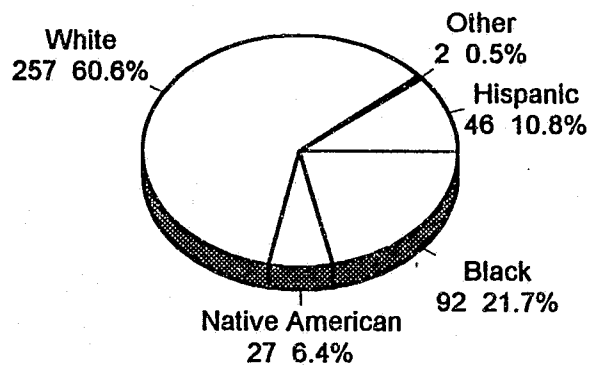
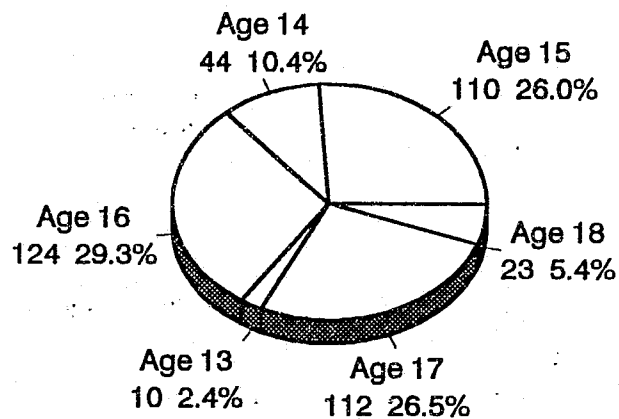


\*Includes: Criminal Mischief 2, Status Offense 2, Burglary 1, Distribute Drugs 1, False Information 1, Sexual Assault 1.

TOTAL: 67

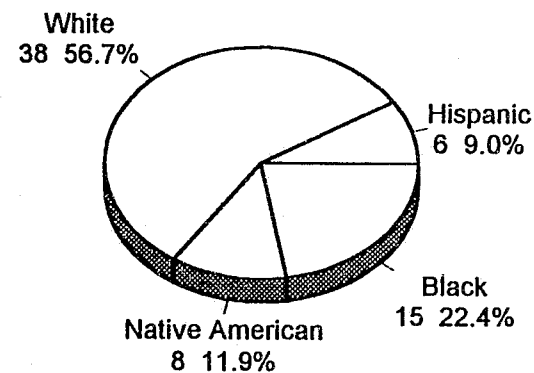
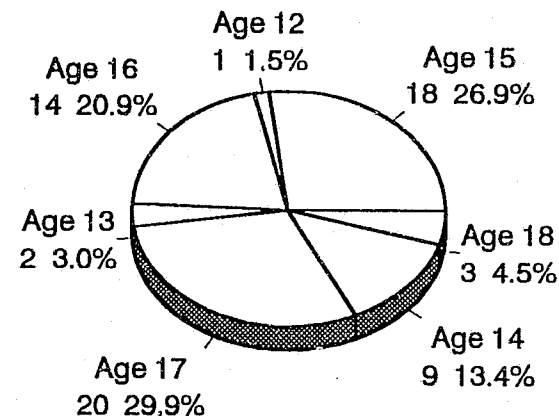
# Juvenile Commitments at Admission by Age and by Race

Youth Development Center-Kearney



TOTAL: 424

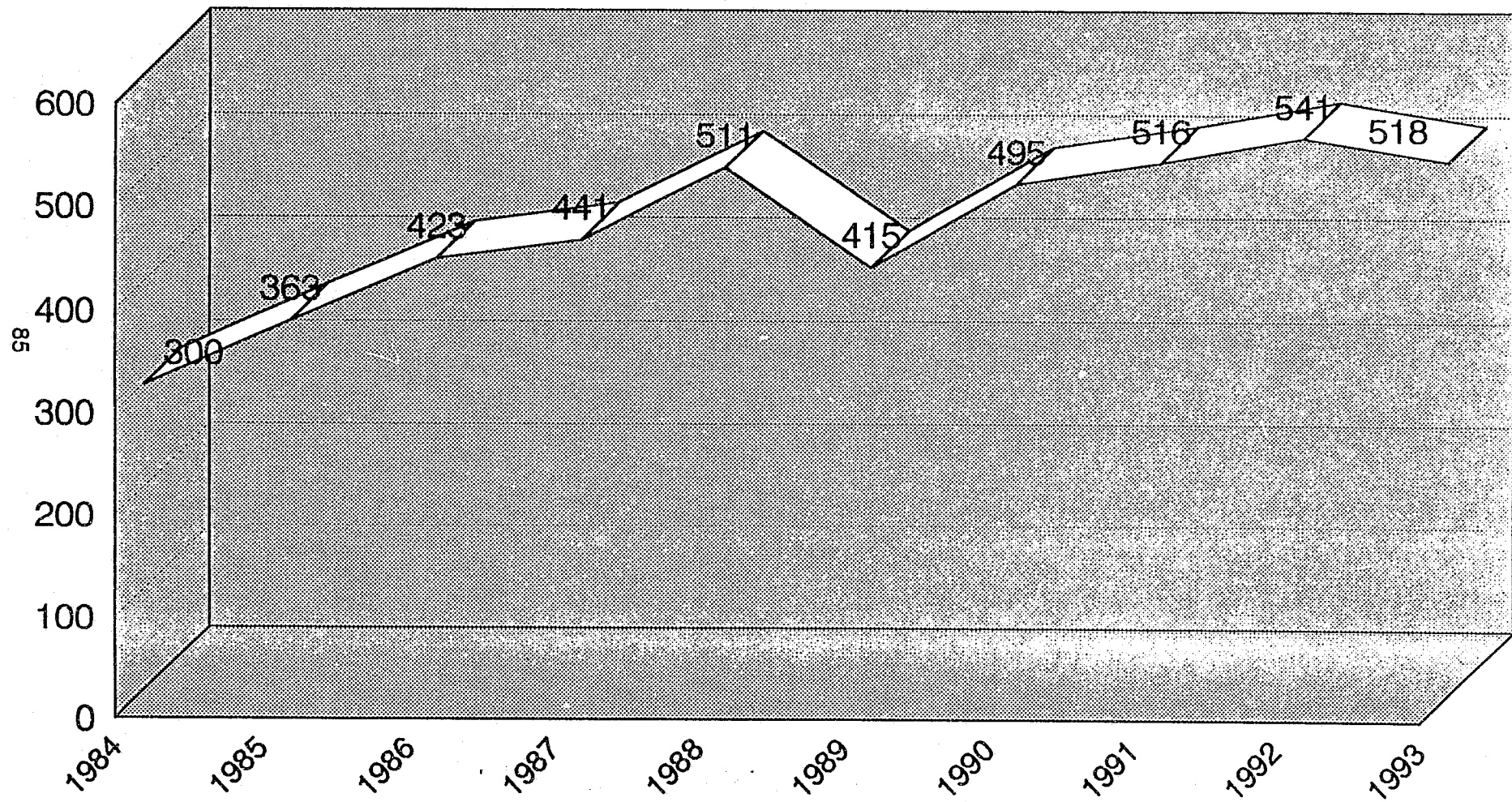
Youth Development Center-Geneva



TOTAL: 67

# Juvenile Court Evaluators -- Number of Admissions

Housed and Evaluated at the Youth Development Center-Geneva





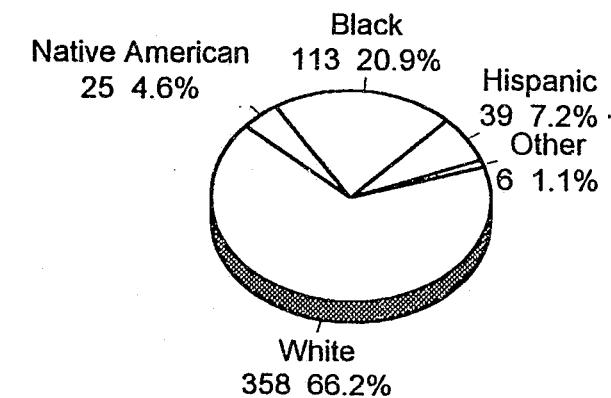
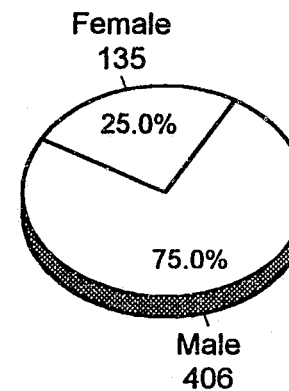
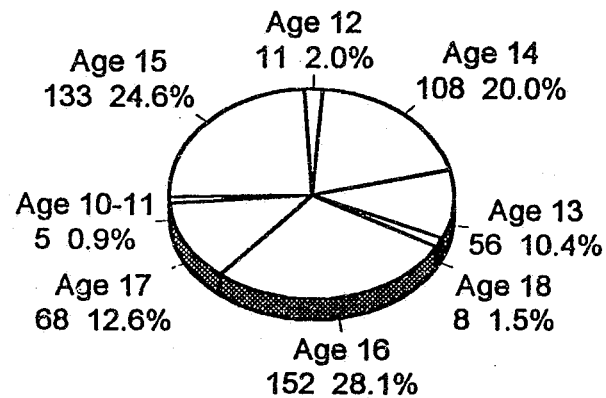
# Juvenile Court Evaluator Admissions

By Age

By Gender

By Race

88



TOTAL: 541 (Kearney 23, males only / Geneva 518, males and females)

# SUMMARY of ADMISSION and RELEASE INFORMATION

## Youth Development Center - Kearney and Geneva

FY1992/93

<u>CATEGORY</u>	<u>YDC - KEARNEY</u>		<u>YDC - GENEVA</u>	
	<u>Number</u>	<u>Percent</u>	<u>Number</u>	<u>Percent</u>
<b>ADMISSIONS</b>				
Commitments	301	59%	46	7%
Recommitments	29	6%	1	<1%
Direct Commitments	2	<1%	2	<1%
Court Evaluators	23	5%	518	84%
Court Safekeepers	26	5%	10	2%
Parole Violators	94	18%	20	3%
Parole Safekeepers	<u>35</u>	7%	<u>22</u>	4%
Total	510		619	

1129

## RELEASES

Administrative Parole	0	-	2	<1%
Parole Discharge	6	1%	0	-
Paroled	349	67%	67	11%
Reinstated to Parole	29	6%	21	3%
Institutional Discharge	93	18%	3	<1%
Court Evaluators	14	3%	507	83%
Parole Safekeepers	6	1%	0	-
Court Safekeepers	17	3%	10	2%
Parole Disch to Adult Sentence	3	<1%	0	-
Parole Violator	<u>8</u>	2%	<u>0</u>	-
Total	525		610	

1135

## LENGTH of STAY for COMMITMENTS

<u>FISCAL YEAR</u>	<u>YDC - KEARNEY</u>	<u>YDC - GENEVA</u>
1984/85	7 months, 23 days	9 months, 14 days
1985/86	7 months, 4 days	11 months, 15 days
1986/87	6 months, 1 day	11 months
1987/88	5 months	10 months
1988/89	4 months, 28 days	7 months, 18 days
1989/90	5 months, 7 days	6 months, 27 days
1990/91	5 months, 9 days	7 months, 21 days
1991/92	5 months, 18 days	6 months, 14 days
1992/93	4 months, 24 days	6 months, 28 days

# JUVENILE PAROLE

Fiscal Year 1992/93

## PAROLE ADMISSIONS by RACE and SEX

<u>RACE</u>	<u>TOTAL</u>	<u>Percent</u>	<u>Male</u>	<u>Percent</u>	<u>Female</u>	<u>Percent</u>
White	252	59%	207	59%	45	56%
Black	91	21%	68	19%	23	29%
Native American	46	11%	37	11%	9	11%
Hispanic	38	9%	35	10%	3	4%
Other	2	<1%	2	<1%	0	-
Total	429		349	81%	80	19%

## PAROLE DISCHARGES by RACE and SEX

White	163	64%	134	64%	29	64%
Black	39	15%	31	15%	8	18%
Native American	27	11%	23	11%	4	9%
Hispanic	22	9%	18	9%	4	9%
Other	3	1%	3	1%	0	-
Total	254		209	82%	45	18%

## REVOCATIONS by RACE and SEX

White	63	55%	55	59%	7	35%
Black	31	27%	26	28%	5	25%
Native American	11	10%	5	5%	6	30%
Hispanic	9	8%	7	7%	2	10%
Other	1	1%	1	1%	0	-
Missing frequency: 1)						
Total	115		94	84%	20	17%

## JUVENILE PAROLE

Fiscal Year 1992/93

### LENGTH of STAY on PAROLE

<u>MONTH</u>	<u>Number of Juveniles</u>	<u>Percent</u>
Less than 1 month	3	1%
1.0 - 1.9 months	4	2%
2.0 - 2.9 months	6	2%
3.0 - 3.9 months	12	5%
4.0 - 4.9 months	14	5%
5.0 - 5.9 months	18	7%
6.0 - 6.9 months	14	17%
7.0 - 7.9 months	33	13%
8.0 - 8.9 months	19	8%
9.0 - 9.9 months	21	8%
10.0 - 10.9 months	9	4%
11.0 - 11.9 months	9	4%
12 months and over	62	24%

### FOSTER CARE PROGRAM PLACEMENTS

<u>NUMBER</u>	<u>MALES</u>	<u>FEMALES</u>
27	18 (67%)	9 (33%)

### INTERSTATE COMPACT SERVICES PLACEMENTS

	<u>MALES</u>	<u>FEMALES</u>
Placed In Nebraska: (7)	6	1
Placed Out of Nebraska: (20)	14	6

### MOVEMENT of JUVENILES

Runaways/Escapees/Absconders from other states returned:	20
Nebraska Runaways/Escapees/Absconders returned to Nebraska:	20