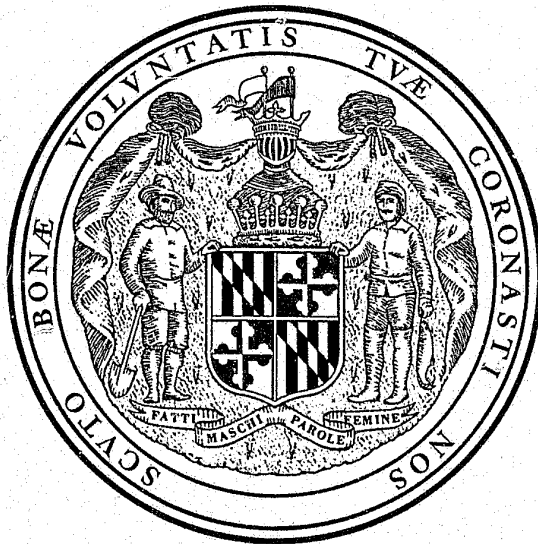


MARYLAND DEPARTMENT OF HEALTH  
AND MENTAL HYGIENE

Maryland -

DEPARTMENT  
OF  
JUVENILE SERVICES

ANNUAL REPORT



1974  
FISCAL YEAR

18365  
Dep.

STATE OF MARYLAND  
DEPARTMENT OF HEALTH AND MENTAL HYGIENE  
Neil Solomon, M.D., Ph.D., Secretary

Annual Statistical Report  
Fiscal Year 1974  
DEPARTMENT OF JUVENILE SERVICES  
Robert C. Hilson, Director

Prepared by  
Division of Special Services  
— Research and Analysis —

TABLE OF CONTENTS

	page
Director's Report .....	1
Major Program Organization Chart .....	3
Definition of Terms .....	4
Highlights: Juvenile Court Activities .....	10
Community Based Services .....	30
Maryland's Training Schools and Forestry Camps .....	36
Maryland's Children Centers .....	38
Appendix: Federal Grants in Operation During Fiscal 1974 .....	55

STATISTICS

Budget Expenditures

Figure 1: Department of Juvenile Services Fiscal 1974 Budget .....	7
Table 1: State Department of Juvenile Services, Summary of Budget Expenditures by Major Program, Fiscal 1968-1974 .....	8

Division of Juvenile Court Services

Table 2: Summary of Juvenile Probation & Court Service Expenditures and Services Rendered, Fiscal 1968-1974 .....	12
Table 3: Total Juvenile Court Dispositions, 1968-1974 Fiscal Years .....	13
Table 4: Formal Juvenile Court Dispositions, 1968-1974 Fiscal Years .....	14
Table 5: Informal Juvenile Court Dispositions, 1968-1974 Fiscal Years .....	15
Table 6: Juvenile Dispositions Disapproved or Closed at Intake, Fiscal 1970-1974 .....	16
Table 7: Total Case Rate & Total Delinquent Case Rate Per 1,000 Juveniles by County and Region, Fiscal 1974 .....	17
Table 8: Disposition by County & Region, Fiscal 1974 .....	18
Table 9: Type of Offense by County & Region, Fiscal 1974 .....	20
Table 10: Manner of Handling Cases by County, Region and Sex, Fiscal 1974 .....	21
Table 11: Manner of Handling Cases by County, Region and Race, Fiscal 1974 .....	22
Table 12: Total Cases Disposed of by the Department of Juvenile Services by County, Region and Source of Referral, Fiscal 1974 .....	23
Table 13: Total Cases Disposed of by the Department of Juvenile Services by County, Region and Age at Time of Referral, Fiscal 1974 .....	24
Table 14: Total Cases Disposed of by the Department of Juvenile Services by County, Region and Major Reason Referred, Fiscal 1974 .....	25
Table 15: Total Cases Disposed of by the Department of Juvenile Services by Major Reason and Age at Time of Referral, Fiscal 1974 .....	27

Division of Community Services

Table 16: Community and Residential Services Expenditures, Fiscal 1968-1974 .....	31
Table 17: Community and Residential Placements, Number of Juveniles Served, Fiscal 1968-1974 .....	31
Table 18: Residential & Emergency Placements by Sex and County, Fiscal 1974 .....	32
Table 19: Residential & Emergency Placements by Race and County, Fiscal 1974 .....	33
Table 20: Community and Residential Placements by Race, Fiscal 1974 .....	34
Table 21: Youth Service Center Admissions by Race and Sex, Fiscal 1974 .....	34

Division of Institutional Rehabilitation

Table 22: State Department of Juvenile Services, Summary of Institution Expenditures, Fiscal 1968-1974 .....	39
Table 23: Summary of Institution Admissions, Fiscal 1968-1974 .....	39
Figure 2: State Institution Admissions, Fiscal Years 1968-1974 .....	40
Table 24: Training School and Forestry Camp Admissions, Fiscal Year Comparisons 1973-1974 .....	41

	page
Table 25: Detention Center Admissions, Fiscal Year Comparisons, 1973-1974 . . . . .	41
Table 26: Number of Juveniles Admitted to Maryland's Training Schools, Forestry Camps and Detention Centers by County of Residence, Fiscal 1974 . . . . .	42
Table 27: Juveniles Admitted to State Training Schools by Type of Admission and Training School, Fiscal 1968-1974 . . . . .	43
Table 28: Number of Juveniles Admitted to Maryland's Training Schools & Forestry Camps by County of Residence and County of Admitting Court, Fiscal 1974 . . . . .	44
Table 29: Juveniles Admitted to Maryland's Training Schools & Forestry Camps by Offense and Age, Fiscal 1974 . . . . .	45
Figure 3: Juveniles Admitted to Training Schools & Forestry Camps by Age Per Cents, Fiscal 1974 . . . . .	46
Table 30: Juveniles Admitted to Maryland's Institutions by Race, Fiscal 1974 . . . . .	47
Table 31: Commitments to Maryland's Training Schools & Forestry Camps by Length of Stay (Based on Releases), Fiscal 1974 . . . . .	48
Table 32: Detention Center Admissions by Institution and Sex, Fiscal 1968-1974 . . . . .	49
Table 33: Admissions to Maryland's Children Centers by County of Residence and County of Admitting Court, Fiscal 1974 . . . . .	50
Table 34: Maryland's Children Center Admissions & Training School Detentions by Offense, Fiscal 1974 . . . . .	51
Table 35: Admissions to Maryland's Children Centers by Age and Race, Fiscal 1974 . . . . .	52

## DIRECTOR'S REPORT

Transmitted herewith is the Annual Statistical Report of the Department of Juvenile Services' activities for the 1974 fiscal year.

The number of cases coming to the attention of Juvenile Services continues to increase. There was a 16 percent increase in the number of complaints made in fiscal 1974 over fiscal 1973. The increase in the workload of the Department has, indeed, been considerably greater than the increase in resources needed to provide appropriate services and programs for each youth coming to our attention.

The Department is continuing to focus on the development of viable alternatives to both formal court intervention and to institutionalization. Several new community programs have been initiated, primarily through the use of federal funds (LEAA) as approved by the Governor's Commission on Law Enforcement and the Administration of Justice. Among these new approaches are: Pre-Trial Diversion projects; the development of Youth Services Bureaus (through consultative services and, in some instances, funding); Community Arbitration project; and additional training of our Intake Consultants to allow them to make decisions most appropriate to the child's needs and the community's protection.

Alternatives to institutionalization continue to expand and to be effective, although, in general, these programs are too newly established to reach valid evaluative conclusions. New programs in this direction include Community Detention, Pre-Trial Intervention, and Intensive Probation Supervision. Surrogate living arrangements, such as foster homes, group homes, and other community residential settings, continue to be an integral part of our overall program. The use of these homes has increased and has provided a viable alternative to institutionalization. More homes, however, are needed, but the Department's efforts to establish more such homes are often resisted by the local communities. During the present fiscal year (1975), we have been given the capability of purchasing non-residential services which will permit a youth to remain in his own home, if such is conducive to his well-being, and receive the necessary clinical, educational, or counselling assistance that he and/or his family may need.

During the past fiscal year, the Victor Cullen School was closed as a training school and converted to use by the Mental Retardation Administration. This was, in large part, due to the enactment of Senate Bill 1064 by the 1973 Session of the General Assembly which prohibited Children in Need of Supervision (CINS) from being committed to training schools or similar institutions. These are children who have not committed "criminal-type" offenses, but exhibit behavioral problems such as truancy, ungovern-

ability, or running away. This legislation became effective on January 1, 1974, and the closing of the Victor Cullen School was in keeping with the emphasis of the Department of Health and Mental Hygiene to reduce the use of institutionalization and move further into community-based treatment.

The Montrose School for Girls became a co-educational facility in September, 1973, and is now known as the Montrose School. The Maryland Training School for Boys has seen considerable administrative changes which have led to both more effective programming for youths committed or detained there, and less escapes from the facility. Boy's Village was phased down to serve 100 youths for fiscal 1975 and present plans call for its conversion to a regional detention facility in fiscal 1976. The four Boys' Forestry Camps located in Western Maryland continue to provide effective programming, and merits the confidence of staff, judges, legislators, and the general public which it now enjoys.

Despite many very positive and innovative programs that have been developed, the Department has some very pressing needs which must be met if the steadily increasing rise of juvenile delinquency is to be reduced. Primary among these needs is more resources and attention to delinquency prevention. A meager, but effective, beginning has been made in this direction, but a myriad of prevention programs across the State are needed. It would be difficult for anyone to argue that it is less costly, both in terms of dollars and human values, to prevent that behavior which might later have to be rehabilitated.

Caseloads for our staff providing services to the various juvenile courts continue to be too high to be truly effective, and yet we are simultaneously making additional demands upon the already over-laden juvenile counselors. Relief in the form of additional personnel is an absolute necessity if intake, probation, after-care, and other related court services are to have any meaning at all.

Although we are de-emphasizing the need for and use of institutional programs, training schools continue to be an integral part of the Department's continuum of services to youth. They must therefore, be adequately staffed, and given the necessary resources to effectively rehabilitate youngsters instead of "warehousing" them. It is gratifying to note that, in spite of limited resources, rehabilitative programs are in effect in our institutions. Certainly, though, they could be improved, as could all other areas of the Department's programming.

The past fiscal year saw several allegations of inhumane treatment, brutality, drug trafficking, etc. leveled

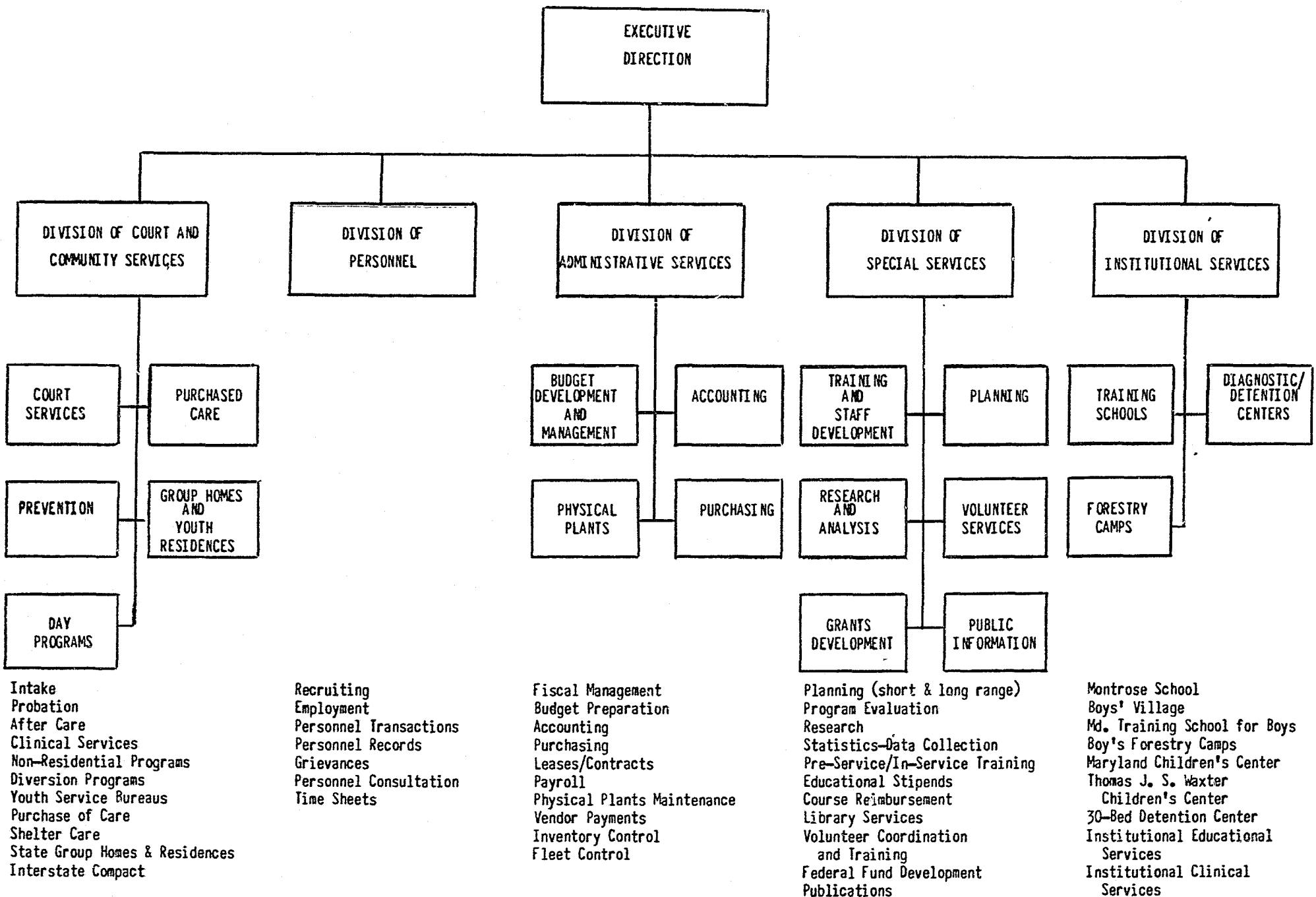
against two of the institutions. These allegations led to full scale investigations by the Maryland State Police and the Senate Finance Committee. The results of these investigations revealed that such incidents were isolated ones and not typical of the operation of Maryland's juvenile institutions. Corrective measures have been taken to minimize, if not completely eliminate, the basis for any such future allegations.

The Department is recognized as a national leader in treating troubled youth, and I am deeply grateful for the

continuing support of the Chief Executive, the legislature, Dr. Solomon's office, and a citizenry which has been aroused and made more aware of the problems and progress of the Department. Finally, I would indeed be remiss if I did not acknowledge the competent and dedicated efforts of all staff who have helped make this Department a national leader in the field.

ROBERT C. HILSON  
Director

TABLE OF ORGANIZATION  
MARYLAND STATE DEPARTMENT OF JUVENILE SERVICES



#### Definition of Terms

**THE UNIT OF COUNT** is a case referral to the Department of Juvenile Services. Such a case is counted each time a child is referred to the Department during the year on a new referral.

**MANNER OF HANDLING CASES** is classified as FORMAL, INFORMAL, or DISAPPROVED OR CLOSED AT INTAKE.

**DISAPPROVED CASES** are those referrals which are determined as lacking legal sufficiency.

**CLOSED AT INTAKE CASES** are those referrals which are resolved by the Intake office through minimum involvement of staff and usually during the initial contact period without need for subsequent follow up.

**INFORMAL ADJUSTMENT** involves those referrals resolved by giving counsel, guidance and/or referral to another agency, informal supervision or a combination of the above without the invocation of the court's jurisdiction through petition.

**FORMAL CASES** are those cases in which a petition has been authorized and filed requiring formal court action.

**DELINQUENCY CASES** are those cases referred to the Department for acts defined in the statutes of the State of Maryland as the violation of a State law or municipal ordinance by persons who have not reached their 18th birthday.

**CHILDREN IN NEED OF SUPERVISION (CINS)** are those cases referred to the Department for guidance, treat-

ment or rehabilitation for being habitually and without justification truant from school; for being habitually disobedient, ungovernable and beyond control; for deporting themselves as to injure or endanger themselves; or for committing an offense applicable only to children.

**NON-DELINQUENCY CASES** are those cases referred to the Department because of dependency, neglect, special proceedings or mental handicaps.

**DEPENDENCY CASES** are those cases involving a child who has been deprived of adequate support or care by reason of the death, continued absence from the home, or physical, mental or emotional incapacity or disability of his parent, guardian or other custodian.

**NEGLECT CASES** are those cases involving a child who requires the aid of the court and either has been abandoned or deserted by his parents, guardian or other custodian; whose parent, guardian or other custodian does not adequately care for him although financially able, or offered the financial means to do so; or who suffers or is likely to suffer serious harm from an improper home environment or guardianship, including the lack of moral supervision or guidance, of his parents, guardian or custodian.

**SPECIAL PROCEEDINGS** includes guardianship or custody cases or application for permission to marry, or to enlist in the armed forces, etc.

**MENTALLY HANDICAPPED** include those cases in which a mentally handicapped child is brought into court for the determination of proper care.

#### STATISTICS

FIGURE 1 .  
DEPARTMENT OF JUVENILE SERVICES  
FISCAL 1974 BUDGET

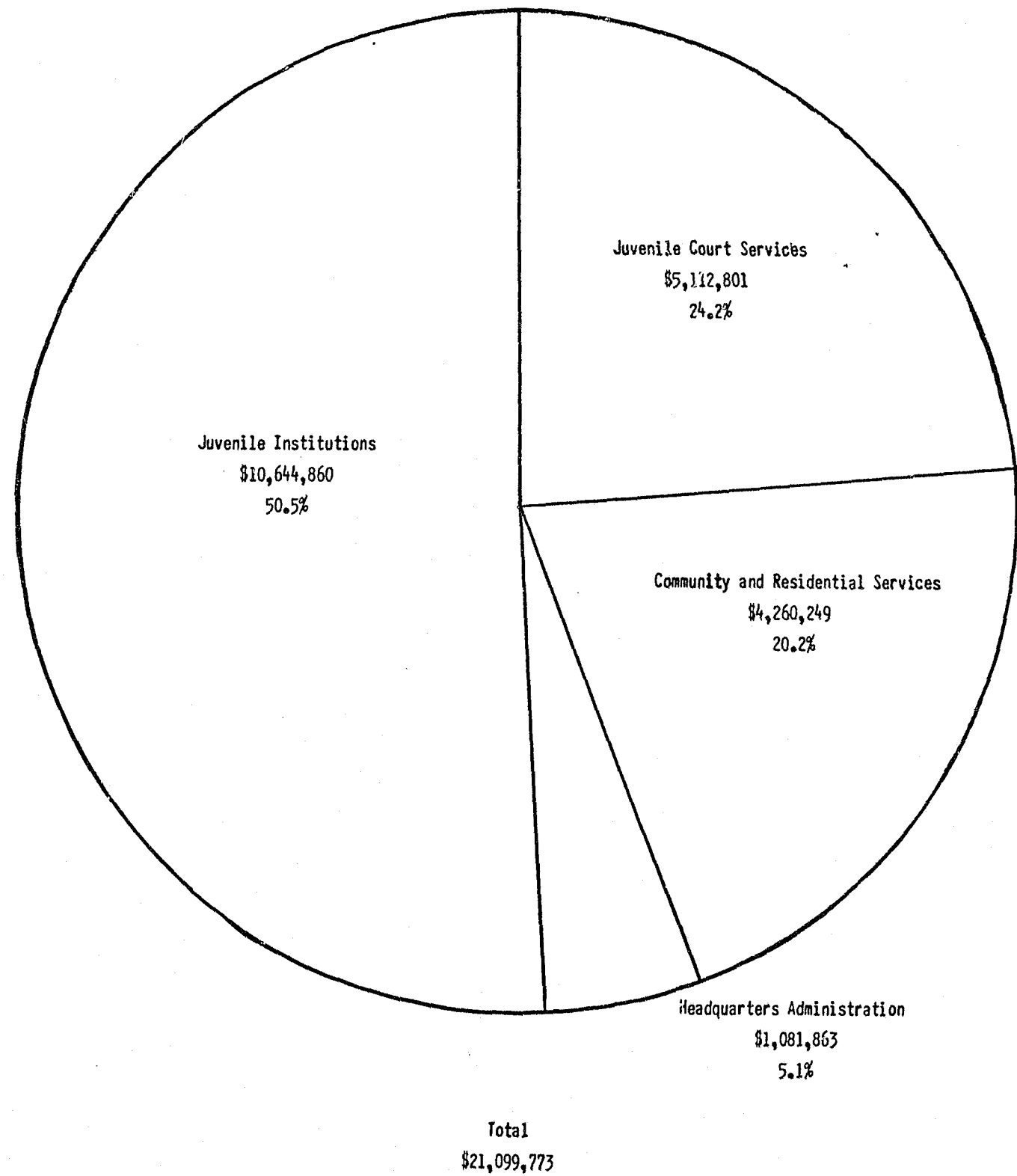


TABLE 1: STATE DEPARTMENT OF JUVENILE SERVICES  
SUMMARY OF BUDGET EXPENDITURES BY MAJOR PROGRAM  
FISCAL 1968 - 1974

Year (Fiscal)	Juvenile Institutions	Juvenile Court Services	Community and Residential Services*	Administration Headquarters	Total
1968	\$ 7,261,782	\$ 2,187,060		\$ 456,824	\$ 9,905,666
1969	\$ 7,344,951	\$ 2,130,139	\$ 380,242	\$ 458,217	\$10,313,549
1970	\$ 8,539,963	\$ 2,686,603	\$ 651,649	\$ 541,877	\$12,420,092
1971	\$10,222,861	\$ 3,755,940	\$ 1,439,488	\$ 598,619	\$16,016,908
1972	\$11,364,651	\$ 4,793,753	\$ 2,315,750	\$ 805,298	\$19,279,452
1973	\$11,330,290	\$ 4,916,722	\$ 3,075,350	\$ 740,626	\$20,062,988
1974	\$10,644,860	\$ 5,112,801	\$ 4,260,249	\$ 1,081,863	\$21,099,773

\* community and residential services were not separately budgeted for fiscal 1968

DIVISION OF  
JUVENILE COURT  
SERVICES



## HIGHLIGHTS OF JUVENILE COURT SERVICES

### Juvenile Court Trends

The total number of cases handled by the Department of Juvenile Services Statewide has steadily increased from the 19,183 cases disposed of during fiscal 1968 to the 47,905 cases disposed of during fiscal 1974. This represents a 14.7% increase over the six year period and a 14.2% increase from fiscal 1973 to fiscal 1974. Formal cases, while increasing 16.8% from fiscal 1968, have not shown any consistent trend over this six year period. The number of cases that were handled informally increased between fiscal 1968 and fiscal 1971, falling off sharply after fiscal 1971. In contrast, the trend for disapproved or closed at intake cases, a screening category which did not exist prior to fiscal 1970, has been a rapid increase since 1970. During fiscal 1974, the number of cases that were handled formally, which represented 39.1% of the total number of cases, decreased 2.5% from fiscal 1973, informal cases decreased 2.7% and disapproved or closed at intake cases, which accounted for 48.3% of the cases, increased 60.8%.

Juvenile referrals in Maryland continues to be urban oriented. Five political subdivisions with 1970 populations of 250,000 or more each, Baltimore City, Montgomery, Prince George's, Baltimore, and Anne Arundel Counties, reported 81.7% of the juvenile cases that were disposed of in fiscal 1974, with 39,130 of the 47,905 cases. This compares with 80.7% in fiscal 1970, 80.9% in fiscal 1971, 82.4% in fiscal 1973 and 82.6% in fiscal 1973.

### Juvenile Case Rates

The total juvenile case rate for Maryland during fiscal 1974 was 46 cases per 1,000 juveniles, 5 through 17 years of age. This ranged from a low of 17 cases per 1,000 juveniles in Garrett County to a high of 82 cases per 1,000 juveniles for Baltimore City. Although Worcester County had the highest case rate with 102 cases per 1,000 juveniles, this was due primarily to the summer influx of visitors to Ocean City. Looking only at the cases that involved delinquent offenses, the case rate was 37 cases per 1,000 juveniles.

### Source of Referral

Consistent with previous experience, a majority of the cases that were disposed of during fiscal 1974 were referred by the police (22.3%). Parents and relatives referred 8.5% of the cases followed by citizens with 6.8%, the Department of Social Services with 4.2%, Special Police with 3.1%, the Department of Education with 3.3% and "other" referrals with 1.5%.

### Major Reason for Referral

A majority of the cases that were disposed of by the Department of Juvenile Services during fiscal 1974 involved delinquent offenses (80.1%), 14.2% involved Children in Need of Supervision, and 5.7% involved neglect, dependency, mental handicaps or special proceedings. Of the cases involving delinquent offenses, the largest single offense category was "assault" with 14.6% of the cases, followed by "burglary/breaking and entering" with 13.4% of the cases, and "larceny" with 11.0%. Of the cases disposed of by the Department that involved delinquent offenses, 37.3% were handled formally, 11.2% were handled informally and 51.5% were disapproved or closed at intake. Of the cases involving Children in Need of Supervision, 29.3% were handled formally, 25.3% were handled informally and 45.4% were disapproved or closed at intake. A majority of the non-delinquent cases were handled formally (88.6%), 1.1% were handled informally, and 10.3% were disapproved or closed at intake. Most of the non-delinquent cases that required court intervention, however, involved very young children who were the victims of neglect and dependency.

### Disposition

Of the 47,905 cases disposed of by the Department of Juvenile Services during fiscal 1974, 39.1% were handled formally, 12.6% were handled informally and 48.3% were disapproved or closed at intake. Of those cases that were handled formally, 33.1% were "withdrawn," "dismissed", or "warned, adjusted or counselled"; 27.1% were placed on "probation," "protective supervision," or "probation without verdict"; 11.1% had "custody awarded" or were "committed to the Department of Social Services"; 7.3% were "continued without finding" or "Stet"; 5.7% were "committed to a training school or forestry camp"; 3.9% were "committed to the Department of Juvenile Services"; 2.8% had "jurisdiction waived"; 2.4% were "committed to a group home" or "purchase of care"; and 6.6% were disposed of in other ways.

### Sex

The sex ratio of cases disposed of by the Department of Juvenile Services during fiscal 1974 was three and a half males to every female. Of the cases that were handled formally, however, the ratio was four males to every female. For informal cases, the ratio was two and a half males to every female and for disapproved or closed at intake cases, the ratio was three and a half males to every female.

### Race

A majority of the cases disposed of by the Department of Juvenile Services during fiscal 1974 involved Caucasians (57.0%), 41.3% involved Negroes and 1.7% were classified as "other" or race information was not recorded. Of the 27,327 cases involving Caucasians, 35.7% were handled formally, 16.5% were handled informally and 47.8% were disapproved or closed at intake. Of the 19,762 cases that involved Negroes, 43.9% were handled formally, 7.4% were handled informally and 48.7% were disapproved or closed at intake.

### Age of Juvenile

Of the total number of cases disposed of by the Department of Juvenile Services during fiscal 1974, a majority involved juveniles between fifteen and seventeen years of age (57.6%). In general, the number of cases increased proportionately with an increase in age up to the age of sixteen, decreasing thereafter with the sixteen year old group comprising the largest single group with 20.1% of the cases. The average age of juveniles referred to the Department, however, was 14.5 years.

TABLE 2  
SUMMARY OF JUVENILE PROBATION & COURT SERVICE EXPENDITURES  
AND SERVICES RENDERED  
FISCAL 1968 - 1974

Year	Budget Expenditures	Juvenile Dispositions*	Probation, Probation Without Verdict & Protective Supervision Cases	Aftercare Cases
1968	\$ 2,187,060	19,782	4,274	1,518
1969	\$ 2,130,139	25,270	5,080	1,835
1970	\$ 2,686,603	26,236	4,671	1,911
1971	\$ 3,755,940	32,703	5,226	1,920
1972	\$ 4,793,753	37,242	6,019	1,888
1973	\$ 4,916,722	41,949	5,638	1,800
1974	\$ 5,112,801	47,905	5,064	1,409

\* Includes Formal, Informal, Change In Disposition and Disapproved/Closed at Intake Cases

12

TABLE 3  
TOTAL JUVENILE COURT DISPOSITIONS  
FORMAL, INFORMAL, CHANGE IN DISPOSITION & DISAPPROVED/CLOSED AT INTAKE  
1968 - 1974 FISCAL YEARS

	1968*		1969		1970		1971		1972		1973		1974		Per Cent Change 73-74
	N	%	N	%	N	%	N	%	N	%	N	%	N	%	
Region 1. Dorchester Somerset Wicomico Worcester	168 98 209 287	.8 .5 1.0 1.5	170 103 321 307	.7 .4 1.3 1.2	119 94 242 517	.5 .4 .9 2.0	209 120 233 818	.6 .4 .7 2.5	199 118 288 694	.5 .3 .8 1.9	308 148 338 610	.7 .4 .8 1.4	317 123 437 656	0.7 0.3 0.9 1.4	+ 2.9 - 16.9 + 29.3 + 7.5
Region 2. Caroline Cecil Kent Queen Anne's Talbot	63 245 114 91 114	.3 1.2 .6 .5 .6	128 371 116 117 63	.5 1.5 .4 .4 .2	83 267 138 118 115	.3 1.0 .5 .4 .4	123 428 128 245 181	.4 1.3 .4 .7 .5	129 483 139 163 144	.3 1.3 .4 .4 .4	108 533 151 163 175	.2 1.3 .4 .4 .4	150 481 214 181 195	0.3 1.0 0.4 0.4 0.4	+ 38.9 - 9.8 + 41.7 + 11.0 + 11.4
Region 3. Baltimore Harford	1,939 443	9.8 2.2	2,929 627	11.6 2.5	3,080 695	11.7 2.6	3,521 916	10.8 2.8	3,709 1,058	10.0 2.8	4,373 904	10.4 2.2	5,531 915	11.6 1.9	+ 26.5 + 1.2
Region 4. Allegany Garrett Washington	553 94 833	2.8 .5 4.2	346 89 416	1.4 .4 1.6	327 36 559	1.2 .1 2.1	422 120 511	1.3 .4 1.6	380 110 471	1.0 .3 1.3	464 135 750	1.1 .3 1.8	516 108 691	1.1 0.2 1.4	+ 11.2 - 20.0 - 7.9
Region 5. Anne Arundel Carroll Howard	931 130 226	4.7 .7 1.1	1,261 163 546	5.0 .6 2.2	1,559 223 486	6.0 .9 1.9	2,618 372 301	8.0 1.1 .9	2,408 231 416	6.5 .6 1.1	2,815 330 468	6.7 .8 1.1	3,706 549 789	7.7 1.1 1.6	+ 31.7 + 66.4 + 68.6
Region 6. Frederick Montgomery	367 2,091	1.9 10.6	354 2,724	1.4 10.8	441 2,590	1.7 9.9	362 2,950	1.1 9.0	450 3,677	1.2 9.8	567 3,031	1.4 7.2	760 3,532	1.6 7.4	+ 34.0 + 16.5
Region 7. Calvert Charles Prince George's St. Mary's	47 115 3,268 75	.2 .6 16.5 .4	129 162 5,101 218	.5 .6 20.2 .9	134 324 5,550 148	.5 1.2 21.2 .6	191 381 5,977 192	.6 1.2 18.3 .6	213 582 6,823 281	.6 1.6 18.3 .8	248 531 6,717 379	.6 1.3 16.0 .9	284 953 3,592 456	0.6 2.0 17.9 1.0	+ 14.5 + 79.5 + 27.9 + 20.3
Region 8. Baltimore City	7,281	36.8	8,509	33.7	8,391	32.0	11,384	34.8	14,076	37.8	17,703	42.2	17,769	37.1	+ 0.4
State	19,782	100.0	25,270	100.0	26,236	100.0	32,703	100.0	37,242	100.0	41,949	100.0	47,905	100.0	+ 14.2

\* Includes non-support cases and cases involving adults contributing to the delinquency of a minor

13

TABLE 4  
 FORMAL JUVENILE COURT DISPOSITIONS  
 1968 - 1974 FISCAL YEARS

	1968*		1969		1970		1971		1972		1973		1974		Per Cent Change 73-74
	N	%	N	%	N	%	N	%	N	%	N	%	N	%	
Region 1. Dorchester	120	.8	144	.8	93	.6	101	.6	86	.5	140	.7	176	0.9	+ 25.7
Somerset	63	.4	55	.3	49	.3	74	.5	57	.3	81	.4	73	0.4	- 9.9
Wicomico	133	.8	223	1.2	158	1.0	158	1.0	201	1.1	243	1.3	266	1.4	+ 9.5
Worcester	98	.6	88	.5	100	.6	102	.7	124	.7	108	.6	90	0.5	- 16.7
Region 2. Caroline	58	.4	96	.5	45	.3	61	.4	64	.3	52	.3	46	0.2	- 11.5
Cecil	120	.7	120	.7	86	.6	160	1.0	141	.8	148	.8	163	0.9	+ 10.1
Kent	106	.7	100	.6	99	.6	77	.5	63	.3	87	.4	87	0.5	N/C
Queen Anne's	90	.6	117	.7	115	.7	178	1.1	106	.6	113	.6	105	0.6	- 7.1
Talbot	94	.6	52	.3	41	.3	87	.6	73	.4	61	.3	91	0.5	+ 49.2
Region 3. Baltimore	1,887	11.8	1,881	10.6	1,564	9.8	1,362	8.8	1,661	9.0	1,513	7.9	1,515	8.1	+ 0.1
Harford	436	2.7	486	2.7	359	2.3	340	2.2	347	1.9	313	1.6	374	2.0	+ 19.5
Region 4. Allegany	488	3.0	309	1.7	309	2.0	398	2.6	346	1.9	333	1.7	391	2.1	+ 17.4
Garrett	92	.6	86	.5	31	.2	91	.6	77	.4	70	.4	65	0.3	- 7.2
Washington	744	4.6	383	2.2	498	3.1	491	3.2	419	2.3	513	2.7	544	2.9	+ 6.0
Region 5. Anne Arundel	631	3.9	906	5.1	665	4.2	1,164	7.5	999	5.4	1,049	5.4	1,384	7.4	+ 31.9
Carroll	128	.8	163	.9	102	.6	126	.8	124	.7	107	.5	161	0.8	+ 50.5
Howard	181	1.1	320	1.8	268	1.7	181	1.2	237	1.3	205	1.1	296	1.6	+ 44.4
Region 6. Frederick	43	.3	63	.4	135	.8	120	.8	150	.8	131	.7	175	0.9	+ 33.6
Montgomery	1,262	7.9	1,475	8.3	1,417	8.9	1,218	7.9	1,485	8.1	1,212	6.3	1,230	6.6	+ 1.5
Region 7. Calvert	45	.3	106	.6	49	.3	56	.4	85	.5	72	.4	93	0.5	+ 29.2
Charles	115	.7	145	.8	98	.6	109	.7	173	.9	119	.6	251	1.3	+ 110.9
Prince George's	3,228	20.1	3,540	19.9	3,129	19.7	2,800	18.1	3,002	16.4	2,867	14.9	3,259	17.4	+ 13.7
St. Mary's	69	.4	215	1.2	96	.6	87	.6	107	.6	148	.8	199	1.1	+ 34.5
Region 8. Baltimore City	5,812	36.2	6,715	37.7	6,395	40.2	5,892	38.2	8,213	44.8	9,529	49.6	7,701	41.1	- 19.2
STATE	16,043	100.0	17,788	100.0	15,901	100.0	15,433	100.0	18,340	100.0	19,214	100.0	18,735	100.0	- 2.5

\* Includes non-support cases and cases involving adults contributing to the delinquency of a minor

TABLE 5  
 INFORMAL JUVENILE COURT DISPOSITIONS  
 1968 - 1974 FISCAL YEARS

	1968*		1969		1970		1971		1972		1973		1974		Per Cent Change 73-74
	N	%	N	%	N	%	N	%	N	%	N	%	N	%	
Region 1. Dorchester	41	1.3	23	.3	20	.2	103	.8	73	.7	67	.8	31	0.5	- 53.7
Somerset	35	1.1	48	.7	45	.5	43	.4	39	.4	9	.1	1	0.0	- 88.9
Wicomico	74	2.3	93	1.4	83	1.0	70	.6	71	.7	6	.1	7	0.1	+ 16.7
Worcester	187	5.9	214	3.2	378	4.4	701	5.7	281	2.7			1	0.0	
Region 2. Caroline			31	.5	13	.2	56	.5	35	.3	16	.2	25	0.4	+ 56.3
Cecil	124	3.9	247	3.7	181	2.1	248	2.0	166	1.6	55	.7	33	0.6	- 40.0
Kent	8	.2	16	.2	8	.1	14	.1	55	.5	23	.3	21	0.4	- 8.7
Queen Anne's	1	.0					66	.5	48	.5	41	.5	76	1.3	+ 85.4
Talbot			11	.2	14	.2	65	.5	41	.4	32	.4	76	1.3	+ 137.5
Region 3. Baltimore	1	.0	1,016	15.4	1,308	15.2	1,558	12.7	1,614	15.6	1,781	21.3	1,149	19.0	- 35.5
Harford			139	2.1	272	3.2	510	4.2	653	6.3	489	5.8	430	7.1	- 12.1
Region 4. Allegany	65	2.0	36	.6	17	.2	17	.1	27	.3	52	.6	6	0.1	- 88.5
Garrett	1	.0			4	.0	2	.0	29	.3	50	.6	34	0.6	- 32.0
Washington	89	2.8	33	.5	55	.6	20	.2	13	.1	46	.5	25	0.4	- 45.7
Region 5. Anne Arundel	121	3.8	143	2.2	702	8.1	1,189	9.7	1,038	10.0	216	2.6	81	1.3	- 62.5
Carroll	1	.0			44	.5	28	.2	22	.2	34	.4	25	0.4	- 26.5
Howard					46	.5	81	.7	93	.9	2	.0	1	0.0	- 50.0
Region 6. Frederick	324	10.1	291	4.5	183	2.1	67	.5	111	1.1	98	1.2	72	1.2	- 26.5
Montgomery	791	24.7	1,184	17.9	1,164	13.5	1,378	11.2	1,961	19.0	1,293	15.5	1,858	30.7	+ 43.7
Region 7. Calvert	2	.1	23	.3	85	1.0	134	1.1	114	1.1	173	2.1	184	3.1	+ 6.4
Charles			16	.2	226	2.6	244	2.0	262	2.5	78	.9	39	0.6	- 50.0
Prince George's	1	.0	1,513	22.9	2,385	27.6	2,983	24.2	2,175	21.0	2,243	26.8	903	14.9	- 59.8
St. Mary's	3	.2	3	.0	21	.2	102	.8	148	1.4	176	2.1	22	0.4	- 87.5
Region 8. Baltimore City	1,332	41.6	1,536	23.2	1,378	16.0	2,623	21.3	1,284	12.4	1,378	16.5	945	15.6	- 31.4
STATE	3,201	100.0	6,616	100.0	8,632	100.0	12,302	100.0	10,353	100.0	8,358	100.0	6,045	100.0	- 27.7

\* Includes non-support cases and cases involving adults contributing to the delinquency of a minor

TABLE 6  
 JUVENILE DISPOSITIONS DISAPPROVED OR CLOSED AT INTAKE  
 FISCAL YEARS 1970 - 1974

	1970		1971		1972		1973		1974		Per Cent Change 1973-1974
	N	%	N	%	N	%	N	%	N	%	
Region 1. Dorchester Somerset Wicomico Worcester			2	.1	40	.5	101	.7	110	0.5	+ 8.9
					22	.3	58	.4	49	0.2	- 15.5
					16	.2	89	.6	164	0.7	+ 84.3
	33	2.7	15	.3	289	3.4	502	3.5	565	2.4	+ 12.5
Region 2. Caroline Cecil Kent Queen Anne's Talbot	24	2.0	3	.1	30	.3	40	.3	79	0.4	+ 97.5
	31	2.6	13	.3	176	2.1	330	2.3	285	1.2	- 13.6
	3	.3	37	.8	21	.2	41	.3	106	0.5	+ 158.5
	60	4.9	1	.0	9	.1	9	.1	28	0.1	- 65.9
			27	.6	30	.3	82	.6			
Region 3. Baltimore Harford	108	8.9	492	11.0	434	5.1	1,079	7.5	2,867	12.4	+ 165.7
	63	5.2	63	1.4	58	.7	102	.7	111	0.5	+ 8.8
Region 4. Allegany Garrett Washington					7	.1	79	.5	119	0.5	+ 50.6
	1	.1	20	.5	4	.0	15	.1	9	0.0	- 40.0
	4	.3			39	.5	191	1.3	122	0.5	- 36.1
Region 5. Anne Arundel Carroll Howard	27	2.2	68	1.5	371	4.3	1,550	10.8	2,241	9.7	+ 44.6
	77	6.3	218	4.9	85	1.0	189	1.3	363	1.6	+ 92.1
	1	.1	9	.2	86	1.0	261	1.8	492	2.1	+ 88.5
Region 6. Frederick Montgomery	123	10.1	172	3.9	189	2.2	338	2.3	513	2.2	+ 51.8
			354	7.9	231	2.7	526	3.7	444	1.9	- 15.6
Region 7. Calvert Charles Prince George's St. Mary's			28	.6	14	.2	3	.0	7	0.0	+ 133.3
	21	1.7	194	4.4	147	1.7	334	2.3	663	2.9	+ 98.5
	31	2.6	3	.1	1,646	19.2	1,607	11.2	4,430	19.2	+ 175.7
					26	.3	55	.4	235	1.0	+ 327.3
Region 8. Baltimore City	607	50.0	2,740	61.4	4,579	53.6	6,796	47.3	9,123	39.5	+ 34.2
STATE	1,214	100.0	4,459	100.0	8,549	100.0	14,377	100.0	23,125	100.0	+ 60.8

TABLE 7  
 TOTAL OFFENSE CASE RATE AND TOTAL DELINQUENT CASE RATE  
 PER 1,000 JUVENILES BY COUNTY AND REGION  
 FISCAL 1974

	Population Estimate 5 through 17 Years July 1, 1972*	Total Cases Disposed of by the Department of Juvenile Services	Total Case Rate Per 1,000 Juveniles	Total Delinquent Cases Disposed of by the Department of Juvenile Services	Delinquent Case Rate Per 1,000 Juveniles
REGION 1. DORCHESTER SOMERSET WICOMICO WORCESTER**	6,910 4,540 13,990 6,410	317 123 437 656	46 27 31 102	255 61 327 471	37 13 23 73
REGION 2. CAROLINE CECIL KENT QUEEN ANNE'S TALBOT	5,360 14,640 4,080 4,970 5,690	150 481 214 181 195	28 33 52 36 34	100 407 164 75 147	19 28 40 15 26
REGION 3. BALTIMORE HARFORD	158,120 34,820	5,531 915	35 26	4,498 687	28 20
REGION 4. ALLEGANY GARRETT WASHINGTON	19,300 6,200 25,820	516 108 691	27 17 27	339 51 446	18 8 17
REGION 5. ANNE ARUNDEL CARROLL HOWARD	85,880 18,600 21,610	3,706 549 789	43 30 37	2,809 366 704	33 20 33
REGION 6. FREDERICK MONTGOMERY	23,340 146,500	760 3,532	33 24	637 2,556	27 17
REGION 7. CALVERT CHARLES PRINCE GEORGE'S ST. MARY'S	6,800 17,200 179,330 13,790	284 953 8,592 456	42 55 48 33	216 662 7,253 353	32 38 40 26
REGION 8. BALTIMORE CITY	216,550	17,769	82	14,776	68
STATE	1,040,450	47,905	46	38,360	37

\* Population data supplied by the Maryland Center for Health Statistics

\*\* The high case rates for Worcester County are due primarily to the summer influx of visitors to Ocean City

TABLE 8  
DISPOSITION BY COUNTY & REGION  
FISCAL 1974

	Petition Withdrawn	Dismissed	Warned, Adjusted or Counselled	Jurisdiction Waived	Continue Case Without Finding	Custody Awarded	Committed to Department of Social Services	Committed to Training School	Probation	Referred to Other Agency	Restitution or Fine	Support Orderd or Revised	Suspended Sentence
REGION 1. DORCHESTER SOMERSET WICOMICO WORCESTER	2 8	21 3 27 19	3 3	28 10 43 13	12 1	10 2 8 4	23 38 49 7	13 22 2	50 11 68 34		9 1		1
REGION 2. CAROLINE CECIL KENT QUEEN ANNE'S TALBOT	16 2 5 5	1 22 9 23 8	2 2 1	5 15 11 1 4	4 1 2	3 4 3 3 12	4 15 14 13 7	3 7 4 3	15 41 25 10 29	1	1 1 1	46	1
REGION 3. BALTIMORE HARFORD		264 46	3	50 1		6 3	185 90	103 8	585 138	2 5	2 1		1
REGION 4. ALLEGANY GARRETT WASHINGTON	8 11	13 1 40	17 1 20	1 35	4	41 1 29	15 38	10 2 32	110 21 59	1 5 5	3 34	2	4 70
REGION 5. ANNE ARUNDEL CARROLL HOWARD	16 1	292 45 152	3	30 4 11	230 3 3	237 10	3 19 7	2 3	192 55 52	2	11 2 5	2	
REGION 6. FREDERICK MONTGOMERY	11 1	15 447	7	7 5	2 45	5	25 140	6 23	60 195		82		45
REGION 7. CALVERT CHARLES PRINCE GEORGE'S ST. MARY'S	2 5	23 26 562 43	3 7 3	1 1 12 1	6	7 3 119 1	13 36 299 14	1 9 122 16	32 85 674 107	1 2 1	4 1	1	1
REGION 8. BALTIMORE CITY	36	3,868	18	233	3	4	514	574	1,715	1	43		
STATE	129	5,970	91	522	316	515	1,568	965	4,363	26	201	51	123

TABLE 8 Continued  
DISPOSITION BY COUNTY & REGION  
FISCAL 1974

	Other	Committed to Mental Institution	Stet	Probation without Verdict	Committed to Department of Juvenile Services	Purchase of Care	Group Home	Protective Supervision	Committed to Forestry Camps	Total Formal	Informal	Disapproved/ Closed at Intake	GRAND TOTAL
REGION 1. DORCHESTER SOMERSET WICOMICO WORCESTER	4 8 3 2	4 1	4 1		4		1 1		1	176 73 266 90	31 1 7 1	110 49 164 565	317 123 437 656
REGION 2. CAROLINE CECIL KENT QUEEN ANNE'S TALBOT	9 11 2 1 3		1		8 1 1	4 2	4 4 2	8 1 15	2 4 5 1	46 163 87 105 91	25 33 21 76 76	79 285 106 181 28	150 481 214 181 195
REGION 3. BALTIMORE HARFORD	28 12	10 1	131 13	92 30	47 5	1	3	2 2	7 12	1,515 374	1,149 430	2,867 111	5,531 915
REGION 4. ALLEGANY GARRETT WASHINGTON	57 3 29	4 1 6	25 6 6	60 6 90	23 3 12	2 1	4	2 1 5	6 3 18	391 65 544	6 34 25	119 9 122	516 108 691
REGION 5. ANNE ARUNDEL CARROLL HOWARD	245 2 5	1 2 1	2 14		1 9 19			121 12 13	1 1	1,384 161 296	81 25 1	2,241 363 492	3,706 549 789
REGION 6. FREDERICK MONTGOMERY	17 45	5		60	3 107		7	16	8 16	175 1,230	72 1,858	513 444	760 3,532
REGION 7. CALVERT CHARLES PRINCE GEORGE'S ST. MARY'S	8 24 217 2	6	26 946 7	6 1 3	8 203 3		1 1	19 71	1 5	93 251 3,259 199	184 39 903 22	7 663 4,430 235	284 953 8,592 456
REGION 8. BALTIMORE CITY	49	38			230		3	367	5	7,701	945	9,123	17,769
STATE	786	80	1,176	348	687	10	31	681	96	18,735	6,045	23,125	47,905

TABLE 9  
TYPE OF OFFENSE BY COUNTY AND REGION  
FISCAL 1974

	Formal			Informal			Disapproved/Closed at Intake		
	Delinquent	CINS	Non-Delinquent	Delinquent	CINS	Non-Delinquent	Delinquent	CINS	Non-Delinquent
REGION 1. DORCHESTER SOMERSET WICOMICO WORCESTER	135 25 166 71	8 4 2 8	33 44 98 11	28 1 5 1	3 3 2 1		92 35 158 400	16 13 8 164	2 1 1 1
REGION 2. CAROLINE CECIL KENT QUEEN ANNE'S TALBOT	30 120 65 15 56	4 24 8 3 8	12 19 14 87 27	16 29 13 60 66	9 3 8 16 10	1	54 258 86 25	25 27 20 3	
REGION 3. BALTIMORE HARFORD	1,192 231	155 43	168 100	941 351	198 74	10 5	2,365 105	468 6	34
REGION 4. ALLEGANY GARRETT WASHINGTON	234 37 364	47 8 110	110 20 70	2 13 14	4 21 10	1	103 1 68	16 7 52	1 2
REGION 5. ANNE ARUNDEL CARROLL HOWARD	881 103 227	300 30 43	203 28 26	44 12 1	37 13		1,884 251 476	354 108 16	3 4
REGION 6. FREDERICK MONTGOMERY	121 984	27 97	27 149	56 1,170	16 685	3	460 402	51 42	2
REGION 7. CALVERT CHARLES PRINCE GEORGE'S ST. MARY'S	63 166 2,473 158	4 38 325 14	26 47 461 27	147 30 665 15	36 6 234 7	1 3 4	6 466 4,115 180	188 309 54	1 9 6 1
REGION 8. BALTIMORE CITY	6,405	685	611	612	331	2	7,759	1,149	215
STATE	14,322	1,995	2,418	4,291	1,724	30	19,747	3,096	282

TABLE 10  
MANNER OF HANDLING CASES BY COUNTY, REGION AND SEX  
FISCAL 1974

	Formal			Informal			Disapproved/Closed at Intake		
	Male	Female	Total	Male	Female	Total	Male	Female	Total
REGION 1. DORCHESTER SOMERSET WICOMICO WORCESTER	132 48 196 70	44 25 70 20	176 73 266 90	23 1 5	8 6 2 1	31 1 7 1	77 43 124 384	33 6 40 181	110 49 164 565
REGION 2. CAROLINE CECIL KENT QUEEN ANNE'S TALBOT	34 131 71 64 66	12 32 16 41 25	46 163 87 105 91	19 27 13 58 63	6 6 8 18 13	25 33 21 76 76	57 237 77 77 26	22 48 29 29 2	79 285 106 28
REGION 3. BALTIMORE HARFORD	1,224 282	291 92	1,515 374	858 314	291 116	1,149 430	2,278 87	589 24	2,867 111
REGION 4. ALLEGANY GARRETT WASHINGTON	273 45 385	118 20 159	391 65 544	5 22 17	1 12 8	6 34 25	103 6 69	16 3 53	119 9 122
REGION 5. ANNE ARUNDEL CARROLL HOWARD	1,059 122 248	325 39 48	1,384 161 296	62 11 1	19 14	81 25 1	1,775 287 395	466 76 97	2,241 363 492
REGION 6. FREDERICK MONTGOMERY	141 1,025	34 205	175 1,230	54 1,341	18 517	72 1,858	370 354	143 90	513 444
REGION 7. CALVERT CHARLES PRINCE GEORGE'S ST. MARY'S	75 188 2,510 166	18 63 749 33	93 251 3,259 199	138 30 658 16	46 9 245 6	184 39 903 22	5 504 3,360 181	2 159 1,070 54	7 663 4,430 235
REGION 8. BALTIMORE CITY	6,469	1,232	7,701	606	339	945	7,098	2,025	9,123
STATE	15,024	3,711	18,735	4,342	1,703	6,045	17,897	5,228	23,125

TABLE 11  
MANNER OF HANDLING CASES BY COUNTY, REGION AND RACE  
FISCAL 1974

	Formal			Informal			Disapproved/Closed at Intake		
	Caucasian	Negro	Information Not Recorded or Other	Caucasian	Negro	Information Not Recorded or Other	Caucasian	Negro	Information Not Recorded or Other
REGION 1. DORCHESTER SOMERSET WICOMICO WORCESTER	81 19 179 50	95 54 86 40	1	16 7 1	15 1		67 25 104 510	39 24 57 51	4 3 4
REGION 2. CAROLINE CECIL KENT QUEEN ANNE'S TALBOT	21 159 49 46 51	23 3 38 56 38	2 1 3 2	20 31 16 51 56	5 2 5 25 19	1	53 272 63 12	25 8 43 15	1 5 1
REGION 3. BALTIMORE HARFORD	1,300 316	201 42	14 16	1,002 375	130 51	17 4	2,496 94	341 16	30 1
REGION 4. ALLEGANY GARRETT WASHINGTON	379 62 497	12 3 43	4	6 34 25			116 9 114	3 6	2
REGION 5. ANNE ARUNDEL CARROLL HOWARD	1,043 149 226	277 10 68	64 2 2	67 25 1	11	3	1,849 331 411	308 19 81	84 13
REGION 6. FREDERICK MONTGOMERY	125 999	50 197	34	57 1,609	14 229	1 20	394 374	108 65	11 5
REGION 7. CALVERT CHARLES PRINCE GEORGE'S ST. MARY'S	62 179 1,855 147	31 71 1,348 37	1 56 15	136 26 686 17	46 13 204 5	2 13	7 482 2,592 182	173 1,715 36	8 123 17
REGION 8. BALTIMORE CITY	1,754	5,850	97	238	695	12	2,520	6,486	117
STATE	9,748	8,673	314	4,502	1,470	73	13,077	9,619	429

TABLE 12  
TOTAL CASES DISPOSED OF BY THE DEPARTMENT OF JUVENILE SERVICES BY COUNTY, REGION AND SOURCE OF REFERRAL  
FISCAL 1974

	Source of Referral									TOTAL
	Police	Department of Education	Parent/Relative	Dept. of Social Services	Other Social Agency	Court/Probation	Other	Citizen	Special Police	
REGION 1. DORCHESTER SOMERSET WICOMICO WORCESTER	255 42 319 594	8 5 1 21	20 15 5 14	18 47 90 16		1 1 5	1 9 2	14 5 18 3	3	317 123 437 656
REGION 2. CAROLINE CECIL KENT QUEEN ANNE'S TALBOT	80 354 99 60 134	32 13 47 12 18	4 24 12 68 14	13 18 14 26 12		1 3 1	5 3	16 43 39 13 9	25 2 1	150 481 214 181 195
REGION 3. BALTIMORE HARFORD	5,144 684	159 29	36 82	151 100	12 4	21 8	8 8			5,531 915
REGION 4. ALLEGANY GARRETT WASHINGTON	243 38 407	13 15 29	137 34 103	60 12 31	2 1 6	18 32	2 1 2	21 7 65	20 16	516 108 691
REGION 5. ANNE ARUNDEL CARROLL HOWARD	2,778 295 629	317 50 6	375 92 57	206 29 10	2 4 2	2 5	13 4 3	10 71 55	3 4 22	3,706 549 789
REGION 6. FREDERICK MONTGOMERY	580 3,312	47 3	40 75	33 123	10	2 6	4 2	28 1	26	760 3,532
REGION 7. CALVERT CHARLES PRINCE GEORGE'S ST. MARY'S	235 832 4,842 374	12 32 210 6	8 43 541 27	25 27 388 26	6 40 1	1 9 50 10	3 73	3 1 968 9	3 3 1,477 3	284 953 8,592 456
REGION 8. BALTIMORE CITY	12,318	474	2,254	553	28	13	120	1,831	178	17,769
STATE	34,648	1,559	4,080	2,028	125	189	263	3,230	1,783	47,905

TABLE 13  
TOTAL CASES DISPOSED OF BY THE DEPARTMENT OF JUVENILE SERVICES  
BY COUNTY, REGION AND AGE AT TIME OF REFERRAL - FISCAL 1974

	Under 10 years	10 years	11 years	12 years	13 years	14 years	15 years	16 years	17 years	18 years	Over 18 or unknown	Total
REGION 1. DORCHESTER	45	8	17	22	35	41	48	49	45	4	3	317
SOMERSET	35	4	5	9	15	17	8	15	14	1		123
WICOMICO	59	13	12	20	35	35	83	80	88	9	12	437
WORCESTER	16	5	5	11	34	81	125	171	198	6	4	656
REGION 2. CAROLINE	12		7	5	15	33	30	23	17	1	7	150
CECIL	26	4	14	23	29	64	100	97	107	6	11	481
KENT	17	5	4	15	15	25	46	46	39	2	1	214
QUEEN ANNE'S	67	13	10	7	7	11	23	20	23			181
TALBOT	18	5	4	9	17	28	32	37	40	4	1	195
REGION 3. BALTIMORE	206	86	123	249	467	822	1,043	1,276	1,141	91	27	5,531
HARFORD	76	17	31	43	89	131	155	176	167	20	10	915
REGION 4. ALLEGANY	51	12	15	20	41	68	92	85	76	6	49	516
GARRETT	10	3	2	5	6	12	25	22	23			108
WASHINGTON	42	10	20	24	72	97	152	136	126	5	7	691
REGION 5. ANNE ARUNDEL	176	54	84	173	335	545	839	735	634	72	59	3,706
CARROLL	27	4	12	11	32	76	94	112	104	11	66	549
HOWARD	18	9	19	35	43	97	146	183	214	14	11	789
REGION 6. FREDERICK	32	16	18	41	71	120	126	167	157	9	3	760
MONTGOMERY	112	36	44	123	262	546	842	815	689	52	11	3,532
REGION 7. CALVERT	21	5	12	19	18	36	57	68	45	2	1	284
CHARLES	54	31	39	51	74	155	205	172	150	11	11	953
PRINCE GEORGE'S	358	139	217	451	791	1,309	1,726	1,809	1,638	107	47	8,592
ST. MARY'S	22	6	17	31	39	60	94	79	73	8	27	456
REGION 8. BALTIMORE CITY	853	403	536	1,062	1,720	2,538	3,318	3,243	2,751	373	972	17,769
STATE	2,344	888	1,267	2,459	4,262	6,947	9,409	9,616	8,559	814	1,340	47,905

TABLE 14  
TOTAL CASES DISPOSED OF BY THE DEPARTMENT OF JUVENILE SERVICES BY COUNTY, REGION, AND MAJOR REASON REFERRED  
FISCAL 1974

	Arson	Assault	Auto Theft/ Unauthorized Use	Burglary/ Breaking and Entering	Larceny	Robbery	Disorderly Conduct	Sex Offense	Vandalism	Narcotics Violation	Glue Sniffing and Other Inhalants	Alcoholic Beverage Violation	Shoplifting	Purse Snatching	Firearms or Deadly Weapon Violation	Rec/Poss of Stolen Goods
REGION 1. DORCHESTER	5	25	4	28	39		11		26	21		17	49		5	6
SOMERSET		7	2	13	4		14	1	7	2			2		1	
WICOMICO	2	17	24	58	62	2	6	1	8	46		13	65	4	1	3
WORCESTER	1	13	21	37	43	1	12		28	166	2	11	32		5	15
REGION 2. CAROLINE		6	4	13	23	2		1	6	3	2	1	9		1	
CECIL	3	38	12	44	78		20	3		33		23	7		3	2
KENT	1	25	3	30	31		16	1	15	3		8	8			3
QUEEN ANNE'S		6	3	3	15		1		1	4		1	4	5		
TALBOT	2	17	12	10	20		5	1	17	20		12	10			1
REGION 3. BALTIMORE	14	629	239	595	523	26	283	23	264	539	17	269	445	3	18	20
HARFORD	8	46	16	111	101	6	16	2	74	94	5	39	98		2	4
REGION 4. ALLEGANY	3	18	14	41	42	1	1	3	24	15	4	23	61	5	2	1
GARRETT	2	6	4	5	11	1				3		1	1			1
WASHINGTON	4	43	28	44	64	1	16	4	31	17	7	39	78		3	5
REGION 5. ANNE ARUNDEL	28	347	169	382	274	8	220	16	58	329	2	186	189	6	39	40
CARROLL	3	34	28	48	34		31	5	6	66		36	3		5	9
HOWARD	7	59	57	103	52	10	33	4	47	149	1	45	57		4	20
REGION 6. FREDERICK	3	30	27	74	61	5	19	4	31	92		42	145		3	16
MONTGOMERY	19	178	222	351	424	70	110	28	163	181	11	99	57	3	29	14
REGION 7. CALVERT	12	15	5	51	40		1	2	23	34		10	8		2	
CHARLES	4	51	23	53	62	4	47	2	56	65		22	141	1	3	2
PRINCE GEORGE'S	72	829	382	836	603	123	260	16	304	605	18	134	1,674	6	129	125
ST. MARY'S	17	33	8	61	40	1	17	2	25	29		9	38		5	7
REGION 8. BALTIMORE CITY	101	3,116	868	2,131	1,591	228	1,349	67	552	744	334	144	1,005	101	230	103
STATE	311	5,588	2,175	5,132	4,237	489	2,488	186	1,766	3,260	403	1,184	4,186	134	490	401



TABLE 14  
(continued)

	Trespassing	False Fire Alarm	Violation of Supervision, Probation or Aftercare	Other	Total Delinquent	Runaway	Truancy	Ungovernable	Total CINS	Neglect	Dependency	Neglect and Dependency	Mentally Handicapped	Special Proceedings	Total Non-Delinquent	Grand Total
REGION 1. DORCHESTER	2			17	255	16	1	10	27	6	2	26	1		35	317
SOMERSET				8	61	4		11	17	18	27				45	123
WICOMICO	3	1	2	9	327	10	2	2	12	21	54	18		5	98	437
WORCESTER	3	2	4	75	471	135	19	19	173	3	4	5			12	656
REGION 2. CAROLINE	4			25	100	3	29	6	38	5	5	2			12	150
CECIL	21			120	407	13	18	23	54	1	4	14	1		20	481
KENT	3	2	4	11	164	7	12	17	36	8	2	4			14	214
QUEEN ANNE'S	7			25	75		9	10	19	8	77	2			87	181
TALBOT	6			14	147	2	9	10	21	14	12		1	1	27	195
REGION 3. BALTIMORE	231		6	354	4,498	296	213	312	821	65	49	95	3		212	5,531
HARFORD	26		2	37	687	21	29	73	123	59	38	5		3	105	915
REGION 4. ALLEGANY	3	1	1	76	339	18	8	41	67	29	6	31		44	110	516
GARRETT				16	51	13	9	14	36	8		11	1	1	21	108
WASHINGTON	3		16	43	446	72	27	73	172	12	29	32			73	691
REGION 5. ANNE ARUNDEL	123			393	2,809	142	253	296	691	92	95	11	8		206	3,706
CARROLL	5	2		50	366	39	47	65	151	8	18	3	3		32	549
HOWARD	19			38	704	29	4	26	59	6	7	9	1	3	26	789
REGION 6. FREDERICK	13	2	2	68	637	25	26	43	94	10	7	10	2		29	760
MONTGOMERY	69	5	4	519	2,556	591	7	226	824	2	136	14			152	3,532
REGION 7. CALVERT	2			11	216	11	12	17	40	1	1	23	3		28	284
CHARLES	22	5		99	662	132	48	52	232	16	12	30	1		59	953
PRINCE GEORGE'S	257	13		853	7,253	308	135	425	868	179	265	19	8		471	8,592
ST. MARY'S	2	1		58	353	43	5	27	75	22	4	1		1	28	456
REGION 8. BALTIMORE CITY	656	93		1,363	14,776	530	314	1,321	2,165	131	259	402	35	1	828	17,769
STATE	1,480	127	41	4,282	38,360	2,460	1,236	3,119	6,815	724	1,113	767	67	59	2,730	47,905

26

TABLE 15  
TOTAL CASES DISPOSED OF BY THE DEPARTMENT OF JUVENILE SERVICES  
BY MAJOR REASON AND AGE AT TIME OF REFERRAL  
FISCAL 1974

Major Reason	Under 10 years	10 years	11 years	12 years	13 years	14 years	15 years	16 years	17 years	18 years	Over 18 years or unknown	Total
Arson	16	16	18	40	41	53	52	33	35	2	5	311
Assault	144	134	169	352	598	800	973	985	925	80	428	5,588
Auto-Theft	8	1	15	31	114	294	570	650	426	53	13	2,175
Burglary	114	108	169	262	471	788	1,119	1,059	885	102	55	5,132
Larceny	80	74	129	257	385	651	783	924	806	83	65	4,237
Robbery	6	6	6	21	39	65	122	92	110	13	9	489
Disorderly Conduct	39	28	36	79	163	310	434	601	705	60	33	2,488
Sex Offense	11	3	9	10	19	22	45	28	28	6	5	186
Vandalism	89	106	115	173	225	252	265	264	209	12	56	1,766
Narcotics Violation	1	2	5	18	94	241	564	995	1,188	120	32	3,260
Glue Sniffing	7	1	10	16	37	84	103	90	46	5	4	403
Alcoholic Beverage Viol.	1		1	3	34	79	202	363	454	41	6	1,184
Shoplifting	76	82	137	304	472	675	735	806	803	71	24	4,186
Purse Snatching	2	3	2	9	9	17	40	28	20	2	2	134
Firearms Violation	3	4	5	10	33	55	114	120	123	19	4	490
Rec/Poss of Stolen Goods	4	8	2	15	36	57	78	97	93	10	1	401
Trespassing	14	15	25	60	126	233	323	348	294	28	14	1,480
False Fire Alarm	19	7	10	15	15	16	17	19	4	3	2	127
Other	97	63	104	204	377	651	952	715	698	70	351	4,282
Violation of Supervision				1	1	7	12	7	10	2	1	41
TOTAL DELINQUENT	731	661	967	1,880	3,289	5,350	7,504	8,224	7,862	782	1,110	38,360
Runaway	7	12	29	104	264	505	671	576	249	17	26	2,460
Truancy	45	33	46	109	202	336	364	48	18		35	1,236
Ungovernable	57	45	68	200	364	599	717	646	366	9	48	3,119
TOTAL CINS	109	90	143	413	830	1,440	1,752	1,270	633	26	109	6,815
Neglect	429	36	44	36	34	33	42	23	14		33	724
Dependency	603	65	68	84	62	64	63	56	25	5	18	1,113
Dependency & Neglect	459	32	40	42	38	46	41	27	16	1	25	767
Mentally Handicapped	11	3	4	3	6	12	5	14	7		2	67
Special Proceedings	2	1	1	1	3	2	2	2	2		43	59
TOTAL NON-DELINQUENT	1,504	137	157	166	143	157	153	122	64	6	121	2,730
GRAND TOTAL	2,344	888	1,267	2,459	4,262	6,947	9,409	9,616	8,559	814	1,340	47,905

27

DIVISION OF  
COMMUNITY SERVICES

COMMUNITY BASED SERVICES

Community and Residential Placements

The number of community based services has steadily increased from the 116 community and residential placements during fiscal 1968 to the 3,368 placements during fiscal 1974. These placements include admissions to the Maryland Youth Residence Center, Good Shepherd Center, three group homes operated by the Department of Juvenile Services, and care purchased from various group homes and residences operated by private agencies. In addition, there were 92 admissions to the Youth Service Center, a federally funded day program located in Baltimore City.

Of the total number of community and residential placements during fiscal 1974, over one-half (59.0%) were purchase of care emergency placements, 35.1% involved purchase of care residential placements, 2.6% were admissions to Good Shepherd Center, 2.3% were State-owned group home admissions, and 1.0% involved admissions to the Maryland Youth Residence Center.

Purchase of Care

Purchase of care placements, which include short-term shelter care provided by private families in their own homes, private group homes and specialized institutions, increased 65.3% from fiscal 1973. Emergency placements accounted for 62.7% of these placements during fiscal 1974, while private residential placements accounted for 37.3%.

A majority of the private residential placements involved males (67.7%), while females accounted for 32.3%. Of these placements, 70.0% involved Caucasians, 29.3% involved Negroes, and, in 0.7% of the cases, race was classified as "other" or was not reported. Baltimore City accounted for the greatest number of placements with 32.3% of the total, followed by Prince George's County (24.2%) and Montgomery County (10.3%).

Of the 1,987 emergency placements, 47.2% involved males, and 52.8% involved females. A majority of these admissions involved Caucasians (77.4%), with Negroes accounting for 20.5%. In 2.1% of the cases, race was classified as "other" or was not reported.

Prince George's County accounted for the largest number of placements with 38.1% of the total. This was followed by Baltimore City with 21.4% and Montgomery County with 18.1%.

Good Shepherd Center

Good Shepherd Center, which is a therapeutic residential facility for girls, reported 86 admissions during fiscal 1974. Of these, a majority involved Caucasians (86.1%), while Negroes accounted for 11.6%, and, in 2.3% of the cases race was classified as "other" or was not reported. Prince George's County accounted for the largest number of placements with 18.6% of the total, followed by Baltimore City with 17.4%, and Baltimore County with 14.0%.

State-Owned Group Homes

Admissions to the three state-owned group homes during fiscal 1974 decreased 7.3% from the 82 admissions reported during fiscal 1973. Of the 37 admissions to the two group homes for boys, a majority involved Negroes (91.9%), while Caucasians accounted for 8.1%. Of the 39 admissions to the girl's group home, 94.9% involved Negroes while Caucasians accounted for 5.1%.

Maryland Youth Residence Center

Maryland Youth Residence Center, which is a residential treatment facility for boys twelve years of age and younger, reported 35 admissions during fiscal 1974. Of these, a majority involved Negroes (71.4%) while Caucasians accounted for 11.4% and in 17.2% of the cases race was classified as "other" or was not reported.

Youth Service Center

The Youth Service Center, which is a federally funded day program located in Baltimore City, reported 92 admissions during fiscal 1974. Of these, a majority involved males (80.4%), while females accounted for 19.6%. All of these admissions involved Negroes.

TABLE 16  
COMMUNITY AND RESIDENTIAL SERVICES EXPENDITURES  
FISCAL 1968 - 1974

Type	1968	1969	1970	1971	1972	1973	1974
Good Shepherd Center	\$292,872	\$288,091	\$398,156	\$ 475,629	\$ 666,710	\$ 742,802	\$ 758,149
Residential Placements-private including Emergency Placements		\$ 92,151	\$182,959	\$ 740,271	\$1,389,901**	\$1,819,199	2,825,064
Group Homes-State Owned			\$ 70,534	\$ 223,588	\$ 208,979	\$ 201,154	236,514
Md. Youth Residence Center					\$ 50,160***	\$ 254,169	364,168
Program Direction						\$ 58,026	76,354
Total	\$292,872*	\$380,242	\$651,649	\$1,439,488	\$2,315,750	\$3,075,350	\$4,260,249

\* Not included in Operating Budget for 1968

\*\* \$100,000 included in this figure for initial payments to establish private Group Homes

\*\*\* This amount does not include \$34,924 in Federal Funds which the department received from the Governor's Commission on Law Enforcement and the Administration of Justice to facilitate implementing the Maryland Youth Residence Center.

TABLE 17  
COMMUNITY AND RESIDENTIAL PLACEMENTS  
NUMBER OF JUVENILES SERVED  
FISCAL 1968 - 1974

Type	1968	1969	1970	1971	1972	1973	1974
Good Shepherd Center	116	105	88	131	87	85	86
Residential Placements -private		16	130	276	601	850	1,184
Group Homes-State Owned			22	46	60	82	76
Md. Youth Residence Center					36	35	35
Emergency Placements					539	1,068	1,987
Total	116	121	240	453	1,323	2,120	3,368

TABLE 18  
RESIDENTIAL AND EMERGENCY PLACEMENTS BY SEX AND COUNTY  
FISCAL 1974

	Private Residential Placements			Emergency Placements		
	Male	Female	Total	Male	Female	Total
REGION 1. DORCHESTER SOMERSET WICOMICO WORCESTER	6 1 8 2	2  1	8 1 9 2	1  2	  1 1	1  3 1
REGION 2. CAROLINE CECIL KENT QUEEN ANNE'S TALBOT	2 14 2 2 8	2 6 5 5	4 20 7 2 13	4 28 2 6	5 53 3 1 4	9 81 3 3 10
REGION 3. BALTIMORE HARFORD	49 18	22 3	71 21	24 14	49 7	73 21
REGION 4. ALLEGANY GARRETT WASHINGTON	22 8 12	21  13	43 8 25	7 3	8 4 1	15 7 1
REGION 5. ANNE ARUNDEL CARROLL HOWARD	70 13 8	23 6 3	93 19 11	81 6 5	74 11 5	155 17 10
REGION 6. FREDERICK MONTGOMERY	10 68	5 54	15 122	3 169	8 190	11 359
REGION 7. CALVERT CHARLES PRINCE GEORGE'S ST. MARY'S	2 13 186 5	2  100	4 13 286 5	12 385 2	12 371	24 756 2
REGION 8. BALTIMORE CITY	272	110	382	183	242	425
STATE	801	383	1,184	937	1,050	1,987

TABLE 19  
RESIDENTIAL AND EMERGENCY PLACEMENTS BY RACE AND COUNTY  
FISCAL 1974

	Private Residential Placements				Emergency Placements				Good Shepherd Center			
	Caucasian	Negro	Other or Not Reported	Total	Caucasian	Negro	Other or Not Reported	Total	Caucasian	Negro	Other or Not Reported	Total
REGION 1. DORCHESTER SOMERSET WICOMICO WORCESTER	5 1 9	3  2		8 1 9 2	1  3 1			1 3 1	1 1 1			1 1 1
REGION 2. CAROLINE CECIL KENT QUEEN ANNE'S TALBOT	2 19 5 2 5	2 1 2 2 8		4 20 7 2 13	7 80 3 3 7	2  1		9 81 3 3 10	1 1 1			1 1 1
REGION 3. BALTIMORE HARFORD	67 21	4		71 21	71 21	2		73 21	12 4			12 4
REGION 4. ALLEGANY GARRETT WASHINGTON	41 8 24	1  1	1	43 8 25	15 7 1			15 7 1	3 1 6			3 1 6
REGION 5. ANNE ARUNDEL CARROLL HOWARD	87 2 10	6 17 1		93 19 11	144 17 8	9 2	2	155 17 10	7 1		1	8 1 2
REGION 6. FREDERICK MONTGOMERY	14 115	1 5	2	15 122	11 326	20	13	11 359	1 10			1 10
REGION 7. CALVERT CHARLES PRINCE GEORGE'S ST. MARY'S	3 12 232 5	1 1 52	2	4 13 286 5	22 623 2	2 115	18	24 756 2	13	3		16
REGION 8. BALTIMORE CITY	140	239	3	382	166	252	7	425	9	5	1	15
OUT-OF-STATE									1			1
STATE	829	347	8	1,184	1,539	407	41	1,987	74	10	2	86

TABLE 20  
COMMUNITY AND RESIDENTIAL PLACEMENTS BY RACE  
FISCAL 1974

Placement	Caucasian		Negro		Other or Not Recorded		Total	
	Number	Percent	Number	Percent	Number	Percent	Number	Percent
Good Shepherd Center	74	86.1	10	11.6	2	2.3	86	100.0
Residential Placements	829	70.0	347	29.3	8	0.7	1,184	100.0
Emergency Placements	1,539	77.4	407	20.5	41	2.1	1,987	100.0
State-Owned Group Homes								
Males	3	8.1	34	91.9			37	100.0
Females	2	5.1	37	94.9			39	100.0
Md. Youth Residence Center	4	11.4	25	71.4	6	17.2	35	100.0
TOTAL	2,451	72.8	860	25.5	57	1.7	3,368	100.0

DIVISION OF  
INSTITUTIONAL REHABILITATION

TABLE 21  
YOUTH SERVICE CENTER ADMISSIONS BY RACE AND SEX  
FISCAL 1974 \*

Sex	Caucasian		Negro		Not Recorded		Total	
	Number	Percent	Number	Percent	Number	Percent	Number	Percent
Male			74	100.0			74	100.0
Female			18	100.0			18	100.0
Total			92	100.0			92	100.0

\* The Youth Service Center is a federally funded day program

ADMISSIONS TO  
MARYLAND'S TRAINING SCHOOLS  
AND FORESTRY CAMPS

Maryland Training School

The number of admissions to Maryland Training School during fiscal 1974 increased 112.2% over the 1,355 admissions during fiscal 1973. This increase was due primarily to the 142.6% increase in the number of detentions, which accounted for 86.0% of the total number of admissions during fiscal 1974. Commitments, on the other hand, which involved only 14.0% of the admissions, increased 19.9%.

Although juveniles were admitted to the training school from twenty-two of Maryland's counties, from Baltimore City and from out-of-state, it is significant to note that Baltimore City accounted for 65.0% of the commitments and 85.1% of the detentions.

A majority of the 2,875 admissions to Maryland Training School involved Negroes (65.8%), 32.4% involved Caucasians and 1.8% were either classified as "other" or race was not indicated.

Of the total number of admissions, a majority involved juveniles between fifteen and seventeen years of age (78.1%). Juveniles over sixteen years of age accounted for 27.6% and 18.2% involved juveniles under fifteen years of age. In general, the number of admissions increased proportionately with an increase in age up to the age of sixteen, decreasing thereafter.

A majority of the admissions to the training school involved delinquent offenses (93.2%), 6.8% involved Children in Need of Supervision and one admission involved neglect and dependency. The largest single offense category was "assault" with 20.3% of the admissions. This was followed by "burglary-breaking and entering" with 19.4% and "auto theft-unauthorized use" with 13.1%. Of the commitments, 99.0% involved delinquent offenses and 1.0% were Children in Need of Supervision. Delinquent offenses accounted for 92.2% of the detentions, 7.7% were Children in Need of Supervision and 0.1% involved neglect and dependency.

Of the 404 juveniles released from commitments to Maryland Training School during fiscal 1974, the average length of stay was 5.9 months.

Montrose School

The 946 admissions to Montrose School during fiscal 1974 represents an increase of 19.4% over the 792

admissions during fiscal 1973. This increase was due primarily to the 28.5% increase in the number of detentions, which accounted for 63.3% of the admissions. Commitments, which involved 36.7% of the admissions, increased 6.4%.

Although juveniles were admitted to Montrose from nineteen counties of Maryland and Baltimore City, it is significant to note that Baltimore City accounted for 66.2% of these admissions (57.6% of the commitments and 69.9% of the detentions).

A majority of the admissions to Montrose involved Negroes (51.3%), while Caucasians accounted for 47.4% and 1.3% were classified as "other" or race was not recorded.

Of the total number of admissions, a majority involved juveniles between thirteen and fifteen years of age (63.0%). Juveniles fourteen years of age comprised the largest single group with 24.8% of the admissions. Juveniles under thirteen years accounted for 16.1% of the admissions and juveniles over fifteen years accounted for 20.6%.

During fiscal 1974, a majority of the admissions to Montrose involved delinquent offenses (77.8%) while Children in Need of Supervision accounted for 22.2%. The largest single offense category, however, was "ungovernable" with 14.1% of the admissions. This was followed by "burglary-breaking and entering" with 10.5% and "runaway" with 7.9%. Of the commitments to Montrose, 74.6% involved delinquent offenses, while Children in Need of Supervision accounted for 25.4%. Of the detentions, 79.6% involved delinquent offenses while 20.4% were Children in Need of Supervision.

Of the 419 juveniles released from commitments during fiscal 1974, the average length of stay was 7.5 months.

Boys' Village

During fiscal 1974, the number of admissions to Boys' Village decreased 14.9% from the 1,540 admissions during fiscal 1973. The number of detentions, which accounted for 73.3% of the admissions, decreased 17.1% while the number of commitments decreased 8.4%.

Although juveniles were admitted to Boys' Village from eighteen counties of Maryland and Baltimore City, Prince George's County and Baltimore City together ac-

counted for 77.6% of the admissions. Baltimore City accounted for 68.6% of the commitments and 2.7% of the detentions, while Prince George's County was responsible for 11.4% of the commitments and 64.1% of the detentions.

A majority of the admissions to Boys' Village involved Negroes (51.4%), while 47.9% involved Caucasians and 0.7% were either classified as "other" or race was not indicated.

Juveniles under fourteen years of age accounted for 14.3% of the total number of admissions to Boys' Village, juveniles fourteen to sixteen years of age accounted for 69.9%, and 15.1% involved juveniles over sixteen years of age.

Of the total number of admissions to Boys' Village during fiscal 1974, a majority involved delinquent offenses (87.9%), Children in Need of Supervision accounted for 9.4% and 2.7% involved dependency cases. The single largest offense category was "burglary-breaking and entering" with 19.0%. This was followed by "larceny" with 11.4% and "shoplifting" with 10.8%. Of the commitments, 94.9% involved delinquent offenses while Children in Need of Supervision accounted for 3.4% and 1.7% involved dependency cases. Delinquent offenses accounted for 85.4% of the detentions while 11.6% involved Children in Need of Supervision and 3.0% involved dependency cases.

Of the 426 juveniles released from commitments to Boys' Village during fiscal 1974, the average length of stay was 6.8 months.

Victor Cullen School

Of the 118 admissions to Victor Cullen School during fiscal 1974, 26.3% were commitments and 73.7% were detentions. Although this represents a decrease of 78.9% from the 559 admissions during fiscal 1973, the 1974 figures are based on only six months as Victor Cullen was no longer in operation as a training school after January 1, 1974.

During fiscal 1974, juveniles were admitted to Victor Cullen from four counties of Maryland and Baltimore City. It is significant to note, however, that Prince George's County accounted for 83.9% of the detentions, while Baltimore City was responsible for 51.6% of the commitments.

A majority of the admissions to Victor Cullen involved Caucasians (83.9%), while Negroes accounted for 16.1% of the admissions.

Of the total number of admissions during fiscal 1974, a majority involved juveniles between the ages of fourteen and sixteen years (68.6%). Juveniles under the age of fourteen accounted for 16.1% of the admissions and 13.6% involved juveniles over sixteen years.

Children in Need of Supervision accounted for a majority of the total number of admissions during fiscal 1974 (80.5%) while 19.5% involved delinquent offenses. The single largest offense category was "ungovernable" with 41.5% of the cases. This was followed by "runaway" with 39.0% and "larceny" with 7.6%.

The average length of stay was 6.3 months for the 235 juveniles released from commitments during fiscal 1974.

Boy's Forestry Camps

The number of admissions to the Forestry Camps during fiscal 1974 increased 0.7% over the total number of admissions during fiscal 1973. Of the 278 admissions during fiscal 1974, 206 or 74.1% were direct commitments to the Forestry Camps, 70 or 25.2% were transfers from other institutions and 2 or 0.7% returned from leave.

A majority of the admissions involved Caucasians (75.9%), while 23.7% involved Negroes and 0.4% were classified as "other" or race information was not recorded.

Of the 278 admissions during fiscal 1974, 29.5% involved juveniles fifteen years of age; juveniles sixteen years of age accounted for 41.7% of the admissions and juveniles over sixteen were responsible for 28.8% of the admissions.

During fiscal 1974, a majority of the admissions involved delinquent offenses (85.6%); 14.0% were Children in Need of Supervision and one case involved neglect and dependency. The largest single offense category, however, was "burglary-breaking and entering" with 29.1% of the admissions. This was followed by "auto theft-unauthorized use" with 12.9% and "larceny" with 11.5%.

The average length of stay was 7.0 months for the 279 juveniles released from commitments to the Forestry Camps during fiscal 1974.

ADMISSIONS TO  
MARYLAND'S CHILDREN CENTERS

The 1,446 admissions to Maryland's children centers during fiscal 1974 represent a decrease of 26.6% from the 1,970 admissions during fiscal 1973. The number of admissions to Maryland Children's Center, which is a detention hospital facility, decreased 5.0% from the 1,076 admissions during fiscal 1973, while the number of admissions to Waxter Children's Center, which is the State Reformatory Detention facility, decreased 40.4%.

Juveniles were admitted to Maryland Children's Center from twenty-two counties in Maryland and from Baltimore City. Over half of the admissions, however, were from Baltimore City (56.7%). This was followed by Prince George's County with 15.3% and Montgomery County with 6.4%. Juveniles were admitted to Waxter Children's Center from twelve counties in Maryland and Baltimore City. A majority of these admissions, however, were from Prince George's County (67.8%). This was followed by Anne Arundel County with 12.6% and Montgomery County with 9.1%.

Of the total number of admissions to Maryland's children centers, 72.0% involved males and 28.0% involved females. Of the admissions to Maryland Children's Center, 76.1% were male and 23.9% were female. Of the admissions to Waxter Children's Center, 67.8% were male and 32.2% were female.

A majority of the total number of admissions to Maryland's children centers involved Caucasians (57.8%). Negroes accounted for 41.8% and 0.2% were classified as "other" or race was not recorded. Caucasians accounted for

50.4% of Maryland Children's Center admissions and 65.4% of Waxter Children's Center admissions, while Negroes accounted for 48.7% of the admissions to Maryland Children's Center and 34.1% of the admissions to Waxter Children's Center.

Of the total number of admissions to Maryland's children centers, a majority involved juveniles between the ages of fifteen and seventeen (65.8%). Juveniles under twelve years of age accounted for 3.1% of the admissions while 30.0% were between twelve and fourteen years of age. In general, the number of admissions increased proportionately with an increase in age up to fifteen years of age, decreasing thereafter. While a majority of juveniles admitted to Maryland Children's Center (56.6%) and Waxter Children's Center (75.5%) were between fifteen and seventeen years of age, Maryland Children's Center admitted a larger proportion of younger juveniles with 42.6% under fifteen years of age compared to 23.5% for Waxter Children's Center.

A majority of the admissions to Maryland's children centers involved delinquent offenses (69.3%) while Children in Need of Supervision accounted for 30.6% and 0.1% involved neglect or dependency. The largest single offense category for Maryland Children's Center was "runaway" with 22.4%. This was followed by "burglary-breaking and entering" with 12.4% and "auto theft-unauthorized use" with 10.2%. Of the admissions to Waxter Children's Center, the largest single offense category was "ungovernable" with 19.2%. This was followed by "burglary-breaking and entering" with 14.8% and "assault" with 13.0%.

TABLE 22  
STATE DEPARTMENT OF JUVENILE SERVICES  
SUMMARY OF INSTITUTION EXPENDITURES  
FISCAL 1968 - 1974

Year	Training Schools	Detention Centers	Forestry Camps	Total
1968	\$ 5,632,139	\$ 1,039,728	\$ 589,915	\$ 7,261,782
1969	\$ 5,633,399	\$ 1,138,951	\$ 572,601	\$ 7,344,951
1970	\$ 6,513,389	\$ 1,342,038	\$ 684,536	\$ 8,539,963
1971	\$ 7,916,373	\$ 1,537,667	\$ 768,821	\$ 10,222,861
1972	\$ 8,700,095	\$ 1,782,315	\$ 882,241	\$ 11,364,651
1973	\$ 8,741,551	\$ 1,752,665	\$ 836,074	\$ 11,330,290
1974	\$ 7,981,170	\$ 1,832,283	\$ 831,407	\$ 10,644,860

TABLE 23  
SUMMARY OF INSTITUTION ADMISSIONS  
FISCAL 1968 - 1974

Year	Training School Admissions			Detention Center Admissions	Forestry Camp Admissions
	Commitments	Detentions	Total		
1968	1,648	949	2,597	3,303	266
1969	1,833	923	2,756	3,868	291
1970	1,822	912	2,734	4,441	318
1971	1,790	1,190	2,980	4,652	348
1972	1,801	1,843	3,644	4,131	288
1973	1,439	2,807	4,246	3,323	276
1974	1,131	4,118	5,249	2,440	278

FIGURE 2  
STATE INSTITUTION ADMISSIONS  
FISCAL YEARS 1968 - 1974

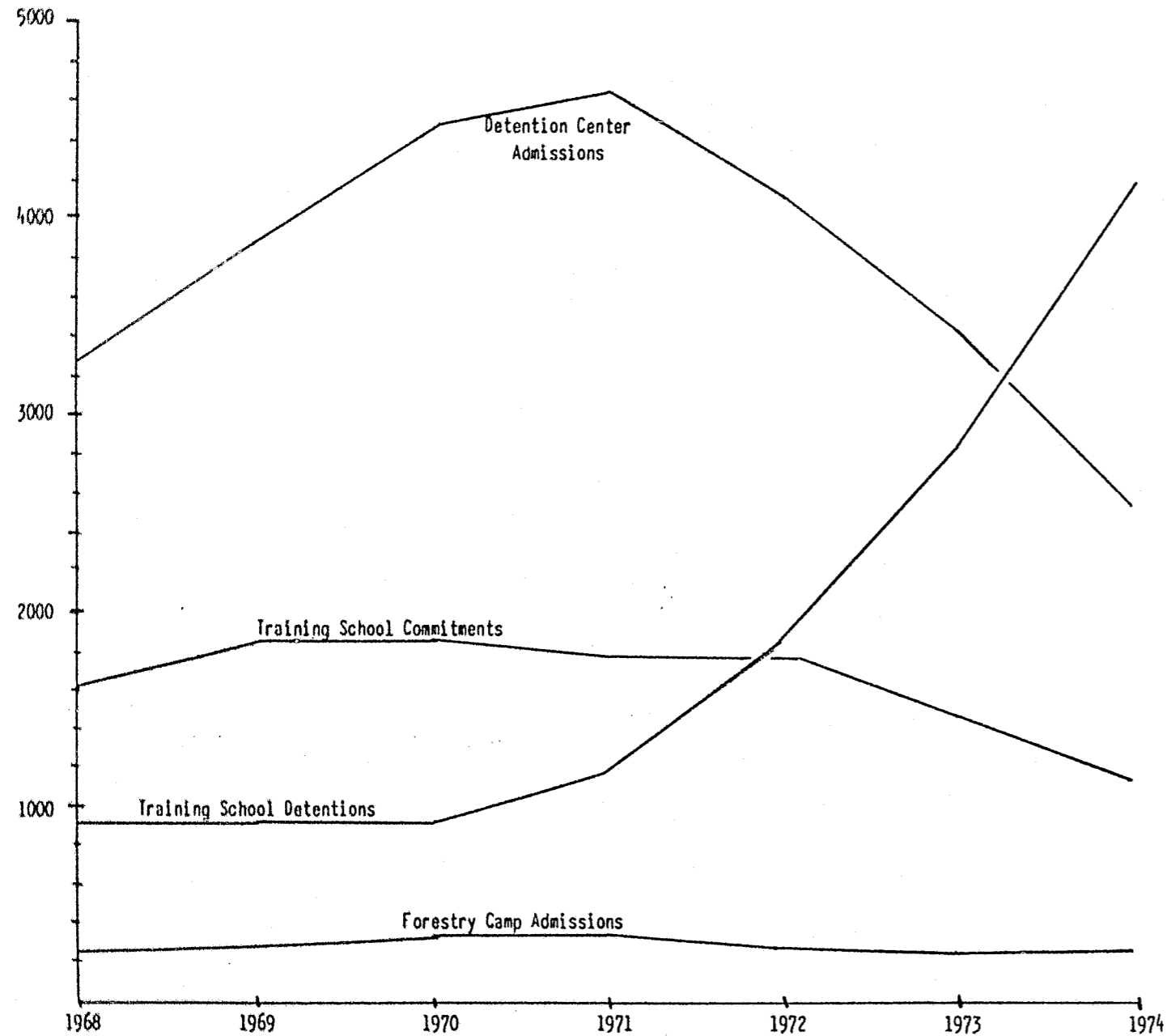


Figure 2 indicates increasing use of training schools as detention facilities. While the number of training school commitments gradually declined and detention center admissions decreased sharply after 1971, training school detentions increased sharply. Forestry Camp Admissions show only a slight increase from 1968.

TABLE 24  
TRAINING SCHOOL AND FORESTRY CAMP ADMISSIONS  
FISCAL YEAR COMPARISONS  
1973 - 1974

School	Fiscal 1973	Fiscal 1974	Percent Changes
Maryland Training School			
Commitments	336	403	+ 19.9
Detentions	1,019	2,472	+ 142.6
Montrose School			
Commitments	326	347	+ 6.4
Detentions	466	599	+ 28.5
Boys' Village			
Commitments	382	350	- 8.4
Detentions	1,158	960	- 17.1
Victor Cullen			
Commitments	395	31	- 92.2
Detentions	164	87	- 47.0
Total Training Schools			
Commitments	1,439	1,131	- 21.4
Detentions	2,807	4,118	+ 46.7
Forestry Camps			
Commitments	276	278	+ 0.7

TABLE 25  
DETENTION CENTER ADMISSIONS  
FISCAL YEAR COMPARISONS  
1973 - 1974

Center	Fiscal 1973	Fiscal 1974	Percent Changes
Maryland Children's Center	1,298	1,233	- 5.0
Waxter Children's Center	2,025	1,207	- 40.4
Total	3,323	2,440	- 26.6



TABLE 26  
NUMBER OF JUVENILES ADMITTED TO MARYLAND'S TRAINING SCHOOLS,  
FORESTRY CAMPS AND DETENTION CENTERS BY COUNTY OF RESIDENCE  
FISCAL YEAR 1974

	Total for Training Schools		Boys' Village		Maryland Training School		Montrose School		Victor Cullen		Forestry Camp Admissions	Detention Center Admissions
	Committed	Detained	Committed	Detained	Committed	Detained	Committed	Detained	Committed	Detained		
REGION 1. DORCHESTER SOMERSET WICOMICO WORCESTER	19	10	11	3	1	4	7	3			3	8 2 4 20
REGION 2. CAROLINE CECIL KENT QUEEN ANNES TALBOT	5	3	1	1	3	3	1	3			2	1 16 3 2 3
REGION 3. BALTIMORE HARFORD	112	113	11	1	38	92	54	20	5		26	50 43
REGION 4. ALLEGANY GARRETT WASHINGTON	8	3	1		4	2	3	1			11	15 5 17
REGION 5. ANNE ARUNDEL CARROLL HOWARD	7	65	4	61	2	1	1	3			14	165 24 45
REGION 6. FREDERICK MONTGOMERY	6	3	1	76	1	2	4	1	5	73	9	27 176
REGION 7. CALVERT CHARLES PRINCE GEORGE'S ST. MARY'S	3	4	2	3	1	1	3	1			1	8 23 763 8
REGION 8. BALTIMORE CITY	718	2,550	240	26	262	2,103	200	419	16	2	48	755
OUT-OF-STATE	9	168	4	117	4	24	1	16	11		6	257
TOTAL	1,131	4,118	350	960	403	2,472	347	599	31	87	278	2,440

TABLE 27  
JUVENILES ADMITTED TO STATE TRAINING SCHOOLS BY  
TYPE OF ADMISSION AND TRAINING SCHOOL  
FISCAL 1968 - 1974

Year	Maryland Training School	Boys' Village	Montrose School	Victor Cullen	Total
1968					
Commitments	782	381	291	194	1,648
Detentions	530	208	211		949
Total	1,312	589	502	194	2,597
1969					
Commitments	818	466	308	241	1,833
Detentions	493	219	211		923
Total	1,311	685	519	241	2,756
1970					
Commitments	761	406	336	319	1,822
Detentions	429	181	302		912
Total	1,190	587	638	319	2,734
1971					
Commitments	872	311	308	299	1,790
Detentions	655	173	362		1,190
Total	1,527	484	670	299	2,980
1972					
Commitments	498	420	402	481	1,801
Detentions	759	535	437	112	1,843
Total	1,257	955	839	593	3,644
1973					
Commitments	336	382	326	395	1,439
Detentions	1,019	1,158	466	164	2,807
Total	1,355	1,540	792	559	4,246
1974					
Commitments	403	350	347	31	1,131
Detentions	2,472	960	599	87	4,118
Total	2,875	1,310	946	118	5,249

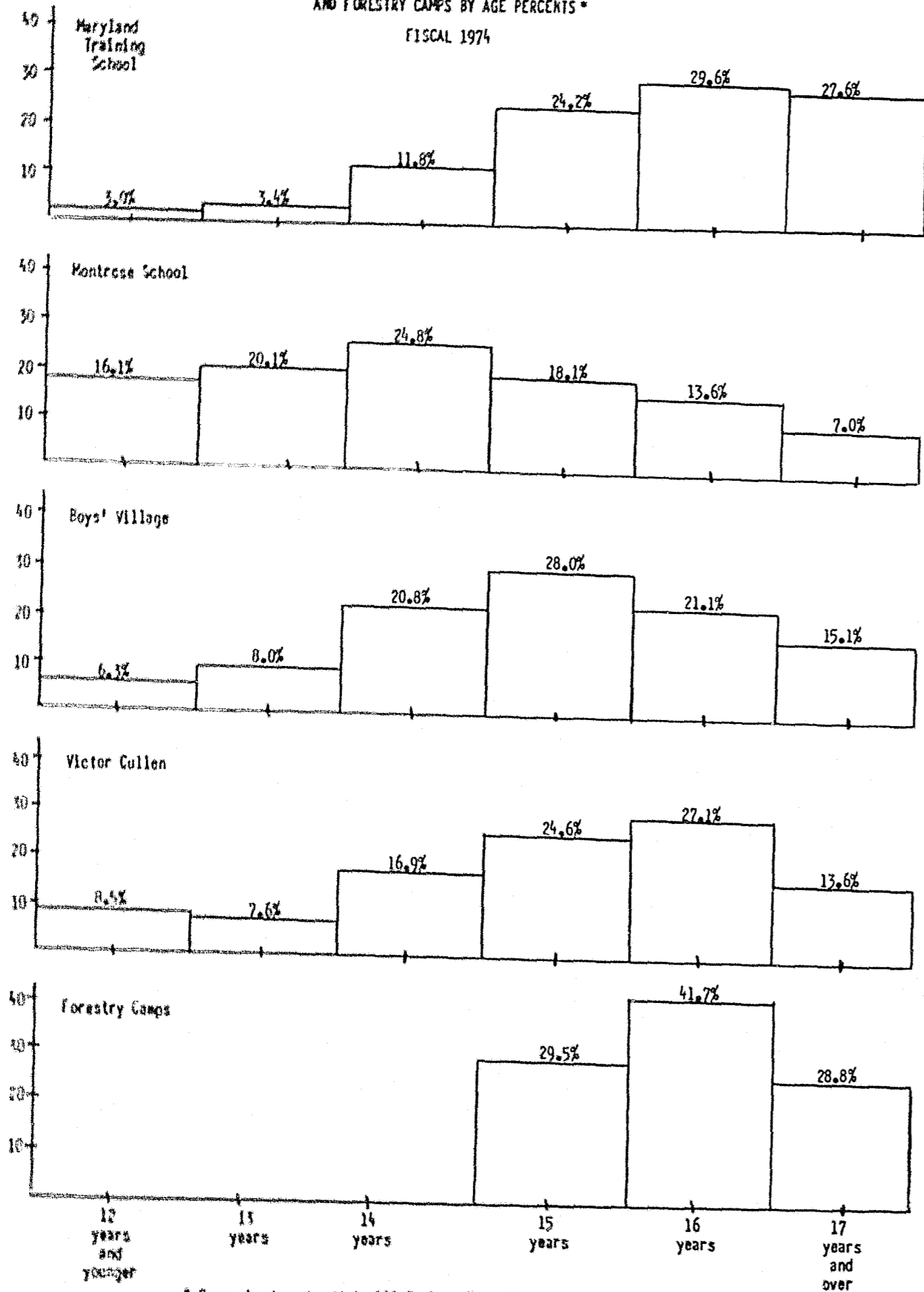
TABLE 28  
NUMBER OF JUVENILES ADMITTED TO MARYLAND'S TRAINING SCHOOLS AND FORESTRY CAMPS  
BY COUNTY OF RESIDENCE AND COUNTY OF ADMITTING COURT  
FISCAL 1974

	Boys' Village		Maryland Training School		Montrose School		Victor Cullen		Forestry Camps	
	County of Residence	Admitting Court	County of Residence	Admitting Court	County of Residence	Admitting Court	County of Residence	Admitting Court	County of Residence	Admitting Court
REGION 1. DORCHESTER	14	14	5	6	10	8			3	3
SOMERSET										
WICOMICO	9	9	19	18	3	3			2	2
WORCESTER			2	2			1	1	2	2
REGION 2. CAROLINE	1	1	6	6	1	1			2	2
CECIL	2	3	13	12	4	5			6	8
KENT	2	2	7	6	3	3			5	5
QUEEN ANNE'S			4	3	1	1				
TALBOT	3	3	2	2	2	1			5	5
REGION 3. BALTIMORE	12	12	130	149	74	75	9	9	26	27
HARFORD	1	1	24	21	13	12			11	12
REGION 4. ALLEGANY		1	6	8	4	4			11	11
GARRETT			4	4					3	3
WASHINGTON	12	12	5	5	21	21			19	19
REGION 5. ANNE ARUNDEL	65	77	3	1	4	1			14	12
CARROLL			24	26	6	8			8	5
HOWARD	5	5	19	20	5	6				1
REGION 6. FREDERICK	1	2	3	3	5	4			9	11
MONTGOMERY	76	82	125	125	105	115	78	89	32	32
REGION 7. CALVERT	5	6	2	3					1	2
CHARLES	31	33	2	1	4	4			8	8
PRINCE GEORGE'S	655	762	72	76	42	45	1	1	55	57
ST. MARY'S	29	30	5	5	3	3			2	2
REGION 8. BALTIMORE CITY	266	255	2,365	2,370	619	626	18	18	48	49
OUT-OF-STATE	121		28	3	17		11		6	
GRAND TOTAL	1,310	1,310	2,875	2,875	946	946	118	118	278	278

TABLE 29: JUVENILES ADMITTED TO MARYLAND'S TRAINING  
SCHOOLS & FORESTRY CAMPS BY OFFENSE & AGE  
FISCAL 1974

Offense	Maryland Training School		Montrose		Boys' Village		Victor Cullen		Forestry Camps	
	15 years & younger	16 - 18 years	15 years & younger	16 - 18 years	15 years & younger	16 - 18 years	15 years & younger	16 - 18 years	15 years & younger	16 - 18 years
Arson	11	14	9		14	4				3
Assault	239	345	62	11	76	45	1	2	6	8
Auto Theft	148	228	32	3	85	40			8	28
Burglary	258	300	96	3	180	69	2	1	21	60
Larceny	65	90	34	1	98	51	4	5	7	25
Robbery	76	86	13	1	42	20			1	2
Disorderly Conduct	21	46	7	5	14	16				2
Sex Offense	6	7	1		7					
Vandalism	5	13	5		22	8		1	3	3
Narcotics Violation	13	67	8	12	13	32	1	1	2	12
Glue Sniffing & Other Inhalents	27	32	4		4					1
Alcoholic Beverage Violation	1	6	1	1	3	8				
Shoplifting	27	31	26	5	78	64	1	1	1	3
Purse Snatching	23	33	8		16	1			1	
Firearms or Deadly Weapon Viol.	16	54	3	1	8	14				5
Rec/Poss of Stolen Goods	4	17	8		5	10				4
Trespassing	4	6	2		17	5			1	1
False Fire Alarm	2	5	3		1	1				
Other	95	142	230	86	22	35	1	1	3	10
Violation of Supervision, Probation or Aftercare	52	64	40	15	20	4	1		6	11
Total Delinquent	1,093	1,586	592	144	725	427	11	12	60	178
Runaway	107	62	51	24	60	32	27	19	10	10
Truancy	2		2		4				3	
Unmanageable	15	9	103	30	16	11	30	19	9	7
Total CINS	124	71	156	54	80	43	57	38	22	17
Dependency					22	13				
Dependency & Neglect		1								1
Total Non-Delinquent		1			22	13				1
Grand Total	1,217	1,658	748	198	827	483	68	50	82	196

FIGURE 3: JUVENILES ADMITTED TO TRAINING SCHOOLS AND FORESTRY CAMPS BY AGE PERCENTS \*



\* Percents do not add to 100.0 since "Age Unknown" is not included

TABLE 30  
JUVENILES ADMITTED TO MARYLAND'S INSTITUTIONS  
BY RACE - FISCAL 1974

Institution	Race			Total
	Caucasian	Negro	Other	
Maryland Training School				
Number	932	1,892	51	2,875
Percent	32.4%	65.8%	1.8%	100.0%
Montrose School				
Number	449	485	12	946
Percent	47.4%	51.3%	1.3%	100.0%
Boys' Village				
Number	627	674	9	1,310
Percent	47.9%	51.4%	0.7%	100.0%
Victor Cullen				
Number	99	19	-	118
Percent	83.9%	16.1%	-	100.0%
Boy's Forestry Camps				
Number	211	66	1	278
Percent	75.9%	23.7%	0.4%	100.0%

The above table suggests that of the total number of admissions to Maryland's institutions during fiscal 1974, a majority of the admissions to Victor Cullen (83.9%) and the Boy's Forestry Camps (75.9%) involved Caucasians while slightly more than half of the admissions to Maryland Training School (65.8%), Montrose School (51.3%) and Boys' Village (51.4%) involved Negroes.

TABLE 31  
 COMMITMENTS TO MARYLAND'S TRAINING SCHOOLS & FORESTRY CAMPS  
 BY LENGTH OF STAY (BASED ON RELEASES)  
 FISCAL 1974

Length of Stay (Months)	Maryland Training School	Montrose School	Boys' Village	Victor Cullen	Forestry Camps	Total
0-1	78	39	47	23	8	195
2	79	27	23	8	9	91
3	29	25	14	15	20	94
4	32	34	37	27	19	149
5	51	32	27	37	40	187
6	35	30	39	36	37	177
7	24	29	63	19	33	168
8	22	31	49	19	34	155
9	18	30	37	9	20	114
10	10	26	27	11	13	87
11	8	15	11	8	15	57
12	9	19	9	4	10	51
13	13	13	10	2	7	45
14	9	7	11	6	5	38
15	4	21	4	1	3	33
16	13	7	11	1		32
17	4	11		3	2	20
18	2	4	2	3		11
over 18	23	24	5	3	4	59
Total	404	419	426	235	279	1,763
Average	4.9	7.5	6.8	6.3	7.0	6.7

The above table suggests that the length of stay in Maryland's training schools and forestry camps during fiscal 1974 showed little variation between institutions. With an average of 6.7 months, the length of stay ranged from a low of 4.9 months for Maryland Training School to a high of 7.5 months for Montrose School.

TABLE 32  
 DETENTION CENTER ADMISSIONS  
 BY INSTITUTION AND SEX  
 FISCAL 1968 - 1974

Year	Maryland Children's Center	T. J. S. Waxter Children's Center	Total
1968			
Male Admissions	741	1,493	2,234
Female Admissions	266	803	1,069
Total	1,007	2,296	3,303
1969			
Male Admissions	868	1,748	2,616
Female Admissions	311	941	1,252
Total	1,179	2,689	3,868
1970			
Male Admissions	861	2,112	2,973
Female Admissions	332	1,136	1,468
Total	1,193	3,248	4,441
1971			
Male Admissions	933	2,154	3,087
Female Admissions	330	1,235	1,565
Total	1,263	3,389	4,652
1972			
Male Admissions	1,021	1,884	2,905
Female Admissions	334	892	1,226
Total	1,355	2,776	4,131
1973			
Male Admissions	973	1,189	2,162
Female Admissions	325	836	1,161
Total	1,298	2,025	3,323
1974			
Male Admissions	938	818	1,756
Female Admissions	295	389	684
Total	1,233	1,207	2,440

TABLE 33  
 ADMISSIONS TO MARYLAND'S CHILDREN CENTERS  
 BY COUNTY OF RESIDENCE AND COUNTY OF ADMITTING COURT  
 FISCAL 1974

	Maryland Children's Center		Waxter Children's Center		Total	
	County of Residence	County of Admitting Court	County of Residence	County of Admitting Court	County of Residence	County of Admitting Court
REGION 1. DORCHESTER SOMERSET WICOMICO WORCESTER	8 2 4 19	8 2 4 19	1		8 2 4 20	8 2 4 19
REGION 2. CAROLINE CECIL KENT QUEEN ANNE'S TALBOT	1 14 3 2 3	1 14 3 2 3	2	4	1 16 3 2 3	1 18 3 2 3
REGION 3. BALTIMORE HARFORD	43 38	43 38	7 5	7 5	50 43	50 43
REGION 4. ALLEGANY GARRETT WASHINGTON	15 5 17	17 5 17			15 5 17	17 5 17
REGION 5. ANNE ARUNDEL CARROLL HOWARD	41 12 8	41 12 8	124 12 37	152 11 55	165 24 45	193 23 63
REGION 6. FREDERICK MONTGOMERY	13 79	13 79	14 97	15 103	27 176	28 182
REGION 7. CALVERT CHARLES PRINCE GEORGE'S ST. MARY'S	11 188 4	11 188 4	8 12 575 4	6 15 758 4	8 23 763 8	6 26 946 8
REGION 8. BALTIMORE CITY	703	701	52	72	755	773
OUT-OF-STATE			257		257	
TOTALS	1,233	1,233	1,207	1,207	2,440	2,440

TABLE 34  
 MARYLAND'S CHILDREN CENTER ADMISSIONS  
 & TRAINING SCHOOL DETENTIONS BY OFFENSE  
 FISCAL 1974

Offense	Maryland's Children Centers			Maryland Training School	Montrose School	Boys' Village	Victor Cullen
	Maryland Children's Center	Waxter Children's Center	Total				
Arson	23	9	32	16	2	13	
Assault	160	108	268	532	40	73	3
Auto Theft	85	123	208	304	13	74	
Burglary	182	150	332	466	35	163	3
Larceny	41	92	133	121	14	115	7
Robbery	45	53	98	131	4	40	
Disorderly Conduct	22	18	40	59	7	25	
Sex Offense	19	4	23	10	1	3	
Vandalism	16	6	22	15	2	27	1
Narcotics Violation	13	56	69	67	9	40	2
Glue Sniffing & Other Inhalents	21	5	26	55	1	1	
Alcoholic Beverage Violation	2	11	13	6		11	
Shoplifting	29	120	149	47	17	132	2
Purse Snatching	24		24	44	2	3	
Firearms or Deadly Weapon Violation	22	11	33	62	3	18	
Rec/Poss of Stolen Goods	6	18	24	17	3	10	
Trespassing	6	6	12	9	2	14	
False Fire Alarm	6		6	6	1	1	
Other	21	59	80	216	305	49	2
Violation of Supervision, Probation or Aftercare	80	19	99	97	16	8	
Total Delinquent	823	868	1,691	2,280	477	820	20
Runaway	134	270	404	165	51	88	36
Truancy	38	1	39	2		2	
Ungovernable	237	67	304	24	71	21	31
Total CINS	409	338	747	191		111	67
Neglect Dependency Dependency & Neglect	1	1	1 1	1		29	
Total Non-Delinquent	1	1	2	1		29	
Grand Total	1,233	1,207	2,440	2,472	599	960	87

TABLE 35  
 ADMISSIONS TO MARYLAND'S CHILDREN CENTERS  
 BY AGE AND RACE  
 FISCAL 1974

Age	Maryland Children's Center				Waxter Children's Center				Total			
	Caucasian	Negro	Other	Total	Caucasian	Negro	Other	Total	Caucasian	Negro	Other	Total
under 10 years	4	10		14		1		1	4	11		15
10 years	11	12		23	5	3		8	16	15		31
11 years	15	12		27	3			3	18	12		30
12 years	49	36	1	86	10	10		20	59	46	1	106
13 years	64	79	1	144	53	31	1	85	117	110	2	229
14 years	121	110		231	108	59		167	229	169		398
15 years	170	145	5	320	205	82	1	288	375	227	6	608
16 years	116	119	3	238	214	128	4	346	330	247	7	584
17 years	69	70	1	140	182	94		276	251	164	1	416
18 years & over		5		5	8	4		12	8	9		17
Unknown	2	3		5	1			1	3	3		6
Total	621	601	11	1,233	789	412	6	1,207	1,410	1,013	17	2,440
Percent	50.4%	48.7%	0.9%	100.0%	65.4%	34.1%	0.5%	100.0%	57.8%	41.5%	0.7%	100.0%

52

APPENDIX

53

Federal Grants in Operation  
During Fiscal 1974

by Program Area

With the assistance of the Governor's Commission on Law Enforcement and the Administration of Justice, Federal funds were provided under the Omnibus Crime Control and Safe Streets Act of 1968 for the following programs during fiscal 1974:

<u>Juvenile Court Services</u>	<u>LEAA</u>	<u>State</u>
Community Treatment Intensive Probation Project (Baltimore City)	\$ 316,116	\$ 84,298
Improved Diagnostic and Classification Services (Prince George's County)	56,958	7,594
Improved Diagnostic, Classification and Treatment Services (Baltimore County)	27,500	3,055
Improved Diagnostic Assessment, Treatment Implementation and Follow-Up Services (Eastern Shore)	16,650	1,850
Expanding Diagnostic Services and Improving Treatment and Follow-Up Services (Allegany, Garrett and Washington Counties)	11,000	1,222
	<u>\$ 428,224</u>	<u>\$ 98,019</u>

<u>Community Services</u>	<u>LEAA</u>	<u>State</u>
Youth Residence Center (Baltimore City)	\$ 36,000	\$ 4,000
Youth Service Center (Baltimore City)	264,149	29,350
Shelter Care Facilities Via Family Type Residential Care Capabilities	120,000	13,333
Diversion of Impact Offenders	162,133	36,955
Residential Facilities Project	52,500	14,000
Differential Group Home and Treatment Project	200,000	53,969
House Detention	100,000	25,555
A Study and Evaluation of Prevention Programs	19,400	2,155
Regional Delinquency Prevention Specialists	40,000	9,213
Group Home Guidelines and Evaluation Study	36,000	4,000
Community Treatment of Impact Offenders and Families (Anne Arundel County)	36,864	4,096
Community Arbitration Program (Anne Arundel County)	51,850	5,761
Pre-Trial Intervention	314,969	34,997
Shelter and Foster Parents Training Program	8,323	925
Community Volunteer Program	42,596	4,733
	<u>\$1,484,784</u>	<u>\$243,042</u>

<u>Institutional Rehabilitation</u>	<u>LEAA</u>	<u>State</u>
Improved and Expanded Institutional Rehabilitation Program	\$ 30,068	\$ 3,340
Drug Training Program (Montrose)	6,539	726
Project ACE (MTSB)	7,792	1,038
Automated Drug Program (MTSB)	7,842	871
Orientation and Training in Guided Group Interaction or Positive Peer Culture Programs	14,798	
Health and Family Development (Montrose)	10,932	1,215
	<u>\$ 77,971</u>	<u>\$ 7,190</u>





**END**

*7. 11. 1944*