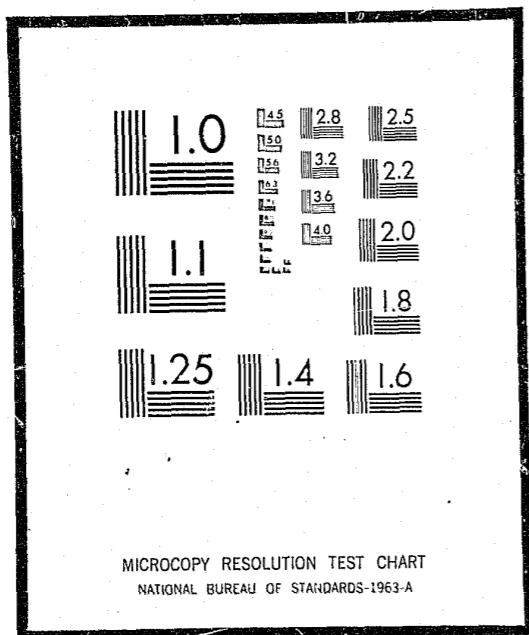


# NCJRS

This microfiche was produced from documents received for inclusion in the NCJRS data base. Since NCJRS cannot exercise control over the physical condition of the documents submitted, the individual frame quality will vary. The resolution chart on this frame may be used to evaluate the document quality.



Microfilming procedures used to create this fiche comply with the standards set forth in 41CFR 101-11.504

Points of view or opinions stated in this document are those of the author(s) and do not represent the official position or policies of the U.S. Department of Justice.

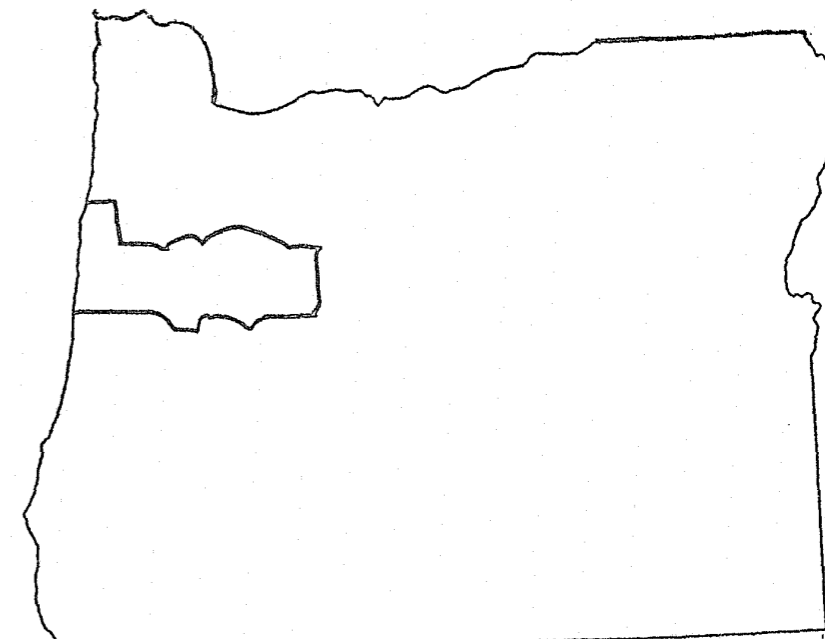
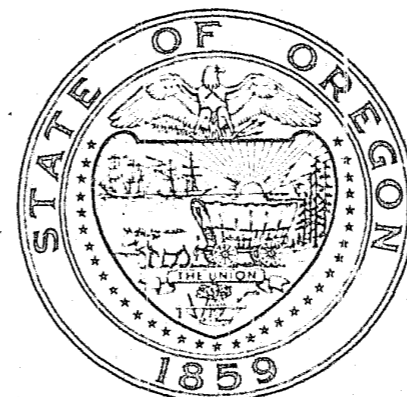
U.S. DEPARTMENT OF JUSTICE  
LAW ENFORCEMENT ASSISTANCE ADMINISTRATION  
NATIONAL CRIMINAL JUSTICE REFERENCE SERVICE  
WASHINGTON, D.C. 20531

Date filmed, 12/19/75

# RESEARCH FINDINGS

## DISTRICT 4

### CORRECTIONAL FEASIBILITY STUDY



TOM McCALL  
GOVERNOR

JACOB TANZER  
DIRECTOR  
DEPARTMENT OF  
HUMAN RESOURCES

AMOS E. REED  
ADMINISTRATOR  
CORRECTIONS DIVISION

Lester E. Belleque, Project Director  
Jerry R. Hawley, Project Consultant  
Wayne P. Rutledge, Project Consultant  
William M. Crooke, Project Consultant  
James F. Bartlett, Researcher  
Monica M. Akin, Project Secretary  
Diane E. Rush, Project Secretary

Report Prepared By  
Melinda E. Woodward, Project Consultant

January 26, 1973

18695  
56981

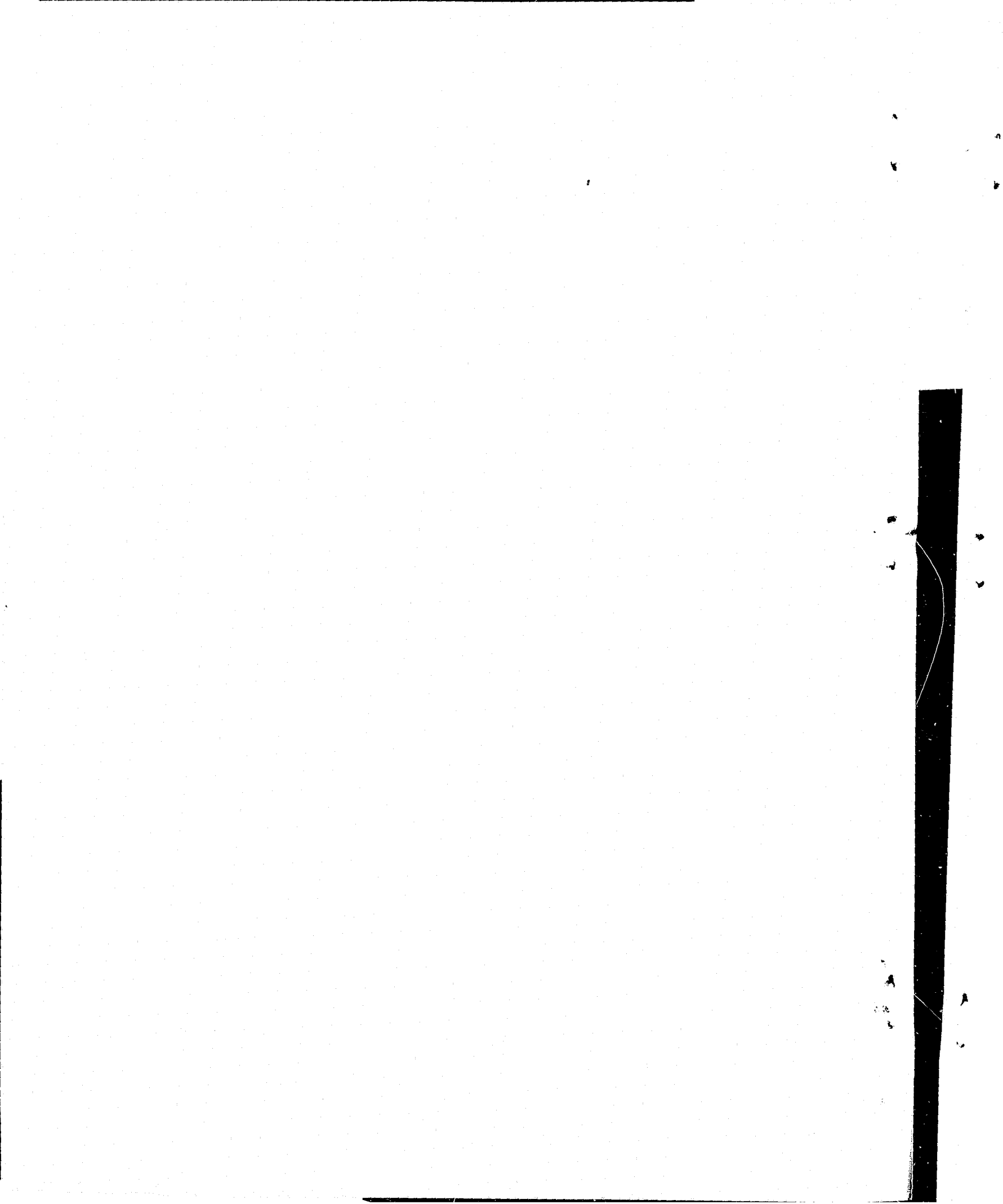


TABLE OF CONTENTS

	<u>Page</u>
FEASIBILITY STUDY ADVISORY BOARD . . . . .	i
ACKNOWLEDGMENT . . . . .	ii
LIST OF TABLES . . . . .	iii
INTRODUCTION . . . . .	1
Purpose . . . . .	2
Feasibility Study . . . . .	2
Feasibility Study Progress Report . . . . .	3
DISTRICT 4: POPULATION CHARACTERISTICS AND CRIMINAL JUSTICE SYSTEM . . . . .	4
Population Characteristics . . . . .	4
Criminal Justice System . . . . .	4
Law Enforcement Agencies . . . . .	4
Prosecution . . . . .	5
Court System . . . . .	5
Juvenile Departments . . . . .	7
Correctional System . . . . .	8
Parole and Probation Services . . . . .	8
Jails . . . . .	8
Benton County Jail . . . . .	10
Lincoln County Jail . . . . .	11
Linn County Jail . . . . .	13
Albany Jail . . . . .	14
Corvallis Jail . . . . .	15
Lebanon Jail . . . . .	16
Lincoln City Jail . . . . .	17
Mill City Jail . . . . .	17
Newport Jail . . . . .	18
Sweet Home Jail . . . . .	18
Map 1 - Benton County . . . . .	20
Map 2 - Lincoln County . . . . .	21
Map 3 - Linn County . . . . .	22
JAIL POPULATION AND LENGTHS OF STAY . . . . .	23
Summary . . . . .	23
District 4 Jail Populations . . . . .	23
Average Daily Populations, High And Low	
Counts, Average Lengths Of Stay . . . . .	24
Benton County Jail . . . . .	24
Lincoln County Jail . . . . .	25
Albany Jail . . . . .	25
Corvallis Jail . . . . .	25

Table Of Contents (Continued)

	<u>Page</u>
Lebanon Jail . . . . .	26
Lincoln City Jail . . . . .	26
Sweet Home Jail . . . . .	26
JAIL POPULATION CHARACTERISTICS . . . . .	37
BOOKINGS BY ARRESTING AGENCY . . . . .	44
OFFENSES . . . . .	46
PRETRIAL STATUS . . . . .	57
Court Of Jurisdiction . . . . .	57
Pretrial Release Actions . . . . .	57
Length Of Pretrial Stay . . . . .	58
Bail Amounts . . . . .	58
COURT DISPOSITION DATA . . . . .	66
JUVENILE DATA . . . . .	71
COURT DATA . . . . .	74
JUSTICE OF THE PEACE COURTS:	
Lincoln and Linn Counties . . . . .	74
Lincoln County Justice Of The Peace	
Court: Devil's Lake . . . . .	74
Linn County Justice Of The Peace	
Courts: Harrisburg, Lebanon	
and Sweet Home . . . . .	74
Arresting Agency . . . . .	74
Offenses . . . . .	74
Dispositions . . . . .	74
DISTRICT COURTS: Benton, Lincoln And Linn Counties . . . . .	75
Arresting Agency . . . . .	75
Offenses . . . . .	75
Dispositions . . . . .	76
CIRCUIT COURTS: Benton, Lincoln And Linn Counties . . . . .	76
Offenses . . . . .	76
Pretrial Actions . . . . .	76
Dispositions . . . . .	77
APPENDIX A - DATA SOURCES . . . . .	103
Form 1 - Data Collection Form . . . . .	104
Form 2 - Court Collection Form . . . . .	105

FEASIBILITY STUDY ADVISORY BOARD

Chairman

Eugene L. Bui, Director  
 Oregon Council on Crime and Delinquency  
 718 West Burnside  
 Portland, Oregon 97209

Members

Mr. William L. Bell  
 Training Coordinator  
 Police Standards & Training Board  
 326 Public Service Building  
 Salem, Oregon 97310

Mr. George Stadelman, Sr.  
 Stadelman Fruit Company  
 P. O. Box 143  
 The Dalles, Oregon 97058

Mr. Palmer G. Lee  
 Probation Officer  
 P. O. Box 350  
 Portland, Oregon 97207

Honorable Donald Blensly  
 District Attorney  
 Yamhill County Courthouse  
 McMinnville, Oregon 97128

Mr. Keith L. Jones  
 Administrative Assistant  
 to the Mayor  
 City Hall, Room 303  
 Portland, Oregon 97204

Honorable Loren Sawyer  
 Judge of the Circuit Court  
 Jackson County Courthouse  
 Medford, Oregon 97501

Chief John Richardson  
 McMinnville Police Department  
 McMinnville, Oregon 97128

Honorable James Ellis  
 District Judge  
 Multnomah County Courthouse  
 Portland, Oregon 97204

Ernest Timpani, Professor  
 Social Science Department  
 Oregon College of Education  
 Monmouth, Oregon 97361

Mr. Tom R. Williams  
 2773 Tomahawk Lane  
 Eugene, Oregon 97403

ACKNOWLEDGMENT

Acknowledgment of every person who contributed to the preparation of this report is impossible. The Study staff would like to express its appreciation to the police departments, sheriffs' officers and court personnel who provided invaluable help in the data collection effort. We also thank Mr. Martin Loring, Law Enforcement Planner for District 4, who gave many hours of his time toward this project.

Those persons involved in the collection and processing of this report's data deserve particular thanks, since their work produced the substance of this report.

Data Collectors

Mildred Burck

Marjorie Chilcote

Charles Dudley

Dee Dudley

Cheryl Frank

Greg Morton

Linda Palmer

John Potter

Neva Sutter

Norma Taylor

Data Processors

Sheila Rutledge

Jan Miller

We would also like to thank the Corrections Division Planning Section staff, who helped with designing forms, keypunching, computer programs and processing the data through the computer.

LIST OF TABLES

<u>Table Number</u>	<u>Description</u>	<u>Page</u>
<u>JAIL POPULATION AND LENGTHS OF STAY</u>		
JB-1	Comparison Of District 4 With Ten Other Districts: Total Bookings, Booking Rate, Juvenile Bookings And Alcohol-Related Bookings	27
JB-2	Jail By Number Of Bookings, By Age, By Sex	28
JB-3	Jail Population Size And Length Of Stay, By Month (Benton County Jail)	29
JB-4	Jail Population Size And Length Of Stay, By Month (Lincoln County Jail)	30
JB-5	Jail Population Size And Length Of Stay, By Month (Linn County Jail)	31
JB-6	Jail Population Size And Length Of Stay, By Month (Albany Jail)	32
JB-7	Jail Population Size And Length Of Stay, By Month (Corvallis Jail)	33
JB-8	Jail Population Size And Length Of Stay, By Month (Lebanon Jail)	34
JB-9	Jail Population Size And Length Of Stay, By Month (Lincoln City Jail)	35
JB-10	Jail Population Size And Length Of Stay, By Month (Sweet Home Jail)	36
<u>JAIL POPULATION CHARACTERISTICS</u>		
JB-11	Summary Of Selected Population Characteristics For District 4 Jails And Comparison With Ten Other Districts	39
JB-12	Distribution Of Persons Booked, By Age And By Jail	40
JB-13	Distribution Of Persons Booked, By Age, By Sex And By Jail	41
JB-14	Distribution Of Persons Booked, By Race, By Sex And By Jail	42
JB-15	Distribution Of Persons Booked, By Place Of Residence And By Jail	43

ACKNOWLEDGMENT

Acknowledgment of every person who contributed to the preparation of this report is impossible. The Study staff would like to express its appreciation to the police departments, sheriffs' officers and court personnel who provided invaluable help in the data collection effort. We also thank Mr. Martin Loring, Law Enforcement Planner for District 4, who gave many hours of his time toward this project.

Those persons involved in the collection and processing of this report's data deserve particular thanks, since their work produced the substance of this report.

Data Collectors

Mildred Burck

Marjorie Chilcote

Charles Dudley

Dee Dudley

Cheryl Frank

Greg Morton

Linda Palmer

John Potter

Neva Sutter

Norma Taylor

Data Processors

Sheila Rutledge

Jan Miller

We would also like to thank the Corrections Division Planning Section staff, who helped with designing forms, keypunching, computer programs and processing the data through the computer.

LIST OF TABLES

<u>Table Number</u>	<u>Description</u>	<u>Page</u>
<u>JAIL POPULATION AND LENGTHS OF STAY</u>		
JB-1	Comparison Of District 4 With Ten Other Districts: Total Bookings, Booking Rate, Juvenile Bookings And Alcohol-Related Bookings	27
JB-2	Jail By Number Of Bookings, By Age, By Sex	28
JB-3	Jail Population Size And Length Of Stay, By Month (Benton County Jail)	29
JB-4	Jail Population Size And Length Of Stay, By Month (Lincoln County Jail)	30
JB-5	Jail Population Size And Length Of Stay, By Month (Linn County Jail)	31
JB-6	Jail Population Size And Length Of Stay, By Month (Albany Jail)	32
JB-7	Jail Population Size And Length Of Stay, By Month (Corvallis Jail)	33
JB-8	Jail Population Size And Length Of Stay, By Month (Lebanon Jail)	34
JB-9	Jail Population Size And Length Of Stay, By Month (Lincoln City Jail)	35
JB-10	Jail Population Size And Length Of Stay, By Month (Sweet Home Jail)	36
<u>JAIL POPULATION CHARACTERISTICS</u>		
JB-11	Summary Of Selected Population Characteristics For District 4 Jails And Comparison With Ten Other Districts	39
JB-12	Distribution Of Persons Booked, By Age And By Jail	40
JB-13	Distribution Of Persons Booked, By Age, By Sex And By Jail	41
JB-14	Distribution Of Persons Booked, By Race, By Sex And By Jail	42
JB-15	Distribution Of Persons Booked, By Place Of Residence And By Jail	43

## List Of Tables (Continued)

<u>Table Number</u>	<u>Description</u>	<u>Page</u>
<u>BOOKINGS BY ARRESTING AGENCY</u>		
JB-16	Distribution Of Persons Booked, By Arresting Agency And By Jail	45
<u>OFFENSES</u>		
OD-1	Distribution Of Persons Booked By Jail, By Sex And By Class Of Offense	48
OD-2	Distribution Of Persons Booked By Offense, By County Jail, And Sex	49
OD-3	Offenses, By Jail And Sex	50
OD-4	Distribution Of Persons Booked, By Offense And By Age (Percentages)	51
OD-5	Distribution Of Persons Booked, By Offense And By Age (Numbers)	52
OD-6	Distribution Of Persons Booked By Number Of Arrests Per Person, By Age	53
OD-7	Distribution Of Persons Booked For Drunk Driving By Number Of Arrests Per Person, By Jail	54
OD-8	Distribution Of Persons Booked For Public Intoxication, By Number Of Arrests Per Person, By Jail	55
OD-9	Distribution Of Persons Booked For Disorderly Conduct By Number Of Arrests Per Person, By Jail	56
<u>PRETRIAL STATUS</u>		
PS-1	Distribution Of Persons Booked By District 4 Court In Which Case Was Adjudicated	60
PS-2	Distribution Of Persons Booked, By Pretrial Release Actions By Court	61
PS-3	Distribution Of Persons Booked, By Pretrial Release Action And By Place Of Residence	62
PS-4	Distribution Of Persons Booked Pretrial In District 4 Jails, By Length Of Pretrial Stay And By Jail	63

## List Of Tables (Continued)

<u>Table Number</u>	<u>Description</u>	<u>Page</u>
PS-5	Bail Amounts Of Persons Released On Bail, By Court	64
PS-6	Bail Amounts Of Persons Having Bail Set But Held Through Disposition, By Court	65
<u>COURT DISPOSITIONS</u>		
CD-1	Final Dispositions Of Cases Of Persons Booked, Whose Cases Were Adjudicated In District 4 Courts, By Court And By Sex	68
CD-2	Distribution Of Booked Persons Whose Cases Were Adjudicated In District 4 By Final Disposition And By Age	69
CD-3	Distribution Of Persons Who Served Sentences In District 4 Jails, Length Of Sentence Served, By Jail, By Sex	70
<u>JUVENILE DATA</u>		
J-1	Juveniles Booked, By Jail And Sex	72
J-2	Distribution Of Juveniles Booked By Offense Charged	73
<u>COURT DATA</u>		
<u>Devil's Lake Justice Court</u>		
C-1	Arresting Agency	78
C-2	Offense By Month	79
C-3	Disposition By Month	80
<u>Harrisburg Justice Court</u>		
C-4	Arresting Agency	81
C-5	Offense By Month	82
C-6	Disposition By Month	83
<u>Lebanon Justice Court</u>		
C-7	Arresting Agency	84
C-8	Offense By Month	35
C-9	Disposition By Month	86
<u>Sweet Home Justice Court</u>		
C-10	Arresting Agency	87
C-11	Offense By Month	88
C-12	Disposition By Month	89

List Of Tables (Continued)

<u>Table Number</u>	<u>Description</u>	<u>Page</u>
C-13	<u>Benton County District Court</u> Total Cases By Arresting Agency	90
C-14	Offenses By Month Of Disposition	91
C-15	Final Disposition By Month Of Disposition	92
C-16	<u>Lincoln County District Court</u> Total Cases By Arresting Agency	93
C-17	Offenses By Month Of Disposition	94
C-18	Final Disposition By Month Of Disposition	95
C-19	<u>Linn County District Court</u> Total Cases By Arresting Agency	96
C-20	Offenses By Month Of Disposition	97
C-21	Final Disposition By Month Of Disposition	98
C-22	<u>Circuit Court - Benton, Lincoln And Linn Counties</u> Offenses, By Court	99
C-23	Pretrial Release Actions, By Court	100
C-24	Bail Amounts: Persons Released On Bail And Persons Held Through Disposition	101
C-25	Final Dispositions, By Court	102

**INTRODUCTION**



## INTRODUCTION

Correctional services and research generally focus on the felon and juvenile offender. Misdemeanants form a far larger group than both of the others combined in terms of the number of cases handled by the criminal justice system. The Corrections Task Force of the President's Commission on Law Enforcement and Administration of Justice reported in 1967 that 93.5% of all defendants going through the courts annually were charged with misdemeanors. The Task Force report pointed out that there is a wide range and diversity of misdemeanor offenders and that the services for this misdemeanor group are extremely limited.

The Crime Commission made several recommendations for change in both misdemeanor programs and the organization and administration of misdemeanor services. Among the programs they endorsed are: (1) increased pretrial release; (2) better and quicker classification and diagnosis, and referral of misdemeanants to community treatment and resources; (3) increased diversion of "status" offenders (alcoholics, vagrants) and nonserious offenders (minor traffic violators) from jails; (4) increased community treatment involving partial release (work or education); (5) wider use of transitional programs; (6) more rehabilitative programs in local jails; and (7) less reliance on fines without regard for ability to pay. Organizational and administrative changes recommended by the Commission included: (1) divorcing operating of jails from law enforcement agencies' functions; (2) integration of misdemeanor corrections, parole and probation in a single administrative unit; (3) creation of state-wide jail and probation standards; (4) state subsidies for misdemeanor probation programs; (5) better pay and training for misdemeanor correctional officers; and (6) regionalization of misdemeanor institutions.

### Purpose

This report and the data gathering that preceded it are Phase I of the Oregon Correctional Feasibility Study for District 4 (Benton, Lincoln, Linn Counties). This report presents data gathered about jail facilities, populations and programs in District 4. It is not the purpose or intent of this report to make recommendations for consideration or for implementation in District 4.

### Feasibility Study

The Correctional Feasibility Study, funded by an LEAA block grant, began in 1970 as a pilot project to develop urban and rural regional correctional system models for Oregon. Although its scope has since expanded to provide planning assistance to 34 of the State's 36 counties, the Study's philosophy and process remain centered on local involvement in the planning process and community correctional programs for the misdemeanor.

To encourage rational regional planning, the Governor of Oregon has divided the state into administrative districts which comprise one to five counties. Many of these administrative districts contain councils of governments (COGS) which have responsibility for coordinating land use and service planning for the district. The Feasibility Study operates through these COGS or through the district law enforcement planner.

At the invitation of the COG or the planner, the Feasibility Study will enter a district and begin its three-phase process. First, the Study collects baseline data on the criminal justice system. Sources of these data are jail booking ledgers and files, court dockets and monthly court activity reports. Data are collected on each jail booking for a sample period, usually one year. Once collected, these data are keypunched for the computer analysis, cross-tabulated and analyzed in a report to the district. These data are contained in this report.

The Study's second phase focuses on local participation in analysis of the baseline information, identification of problems in the criminal justice system and selection of ways to deal with those problems. The Study staff provides staff support and consultants to the local planning groups during this process, and prepares a report summarizing the recommendations for change and the data which underlie them.

The third phase--implementation of recommendations--is what distinguishes the Feasibility Study from most kinds of technical assistance. The Study staff commits itself to working closely with a district to help make its recommendations concrete, whether by locating project funds, by assisting in organizing the community in support of a recommendation, by doing research and staff work to build the case for change, or by providing consultants on issues of interest to the district. This third phase is both the most crucial and the most difficult, both for the local planning group and the Study staff.

### Feasibility Study Progress Report

All but two counties in Oregon are now participating in the Correctional Feasibility Study. Their progress is as follows:

Districts 1, 3, 6, 8, 9, 10 and 13 have formulated recommendations for changes in their correctional systems and have begun implementation of these changes.

Districts 2, 5 and 12 are presently developing recommendations.

Districts 7 and 14 have completed data collection and research findings are now being prepared for display.

District 11 is not participating in the Study.

**DISTRICT 4: POPULATION CHARACTERISTICS  
AND  
CRIMINAL JUSTICE SYSTEM**

DISTRICT 4: POPULATION CHARACTERISTICS

AND CRIMINAL JUSTICE SYSTEM\*

Population Characteristics

District 4 consists of Benton, Lincoln and Linn Counties, with a combined 1971 population of 155,800. The District grew by 19% during the 1961-71 decade, with Benton County's population jumping by 38%, Linn County's by 23%, and Lincoln County's by 5%. Less than 1% of the District population is non-white.

Twenty incorporated cities lie within District 4 and account for 58% of its population. Eleven of these cities are within Linn County's borders, making up about 52% of its population. Lincoln County contains six incorporated cities, which include 57% of its population. The three cities within Benton County's borders account for 72% of its population, making Benton County the most urbanized of the three.

Criminal Justice System

Law Enforcement Agencies

Police agencies in District 4 include the following:

1. Benton County Sheriff's Office (Resident Deputy - Alsea)
2. Lincoln County Sheriff's Office (Resident Deputy - Lincoln City, Waldport, Yachats)
3. Linn County Sheriff's Office (Resident Deputy - Lyons, Sweet Home)
4. Albany Police Department
5. Brownsville Police Department
6. Corvallis Police Department
7. Lebanon Police Department

\*Information presented here is drawn primarily from The Oregon District 4 1973 Comprehensive Plan for the Criminal Justice System, Oregon District 4 Council of Governments.

8. Lincoln City Police Department
9. Mill City Police Department
10. Newport Police Department
11. Philomath Police Department
12. Sweet Home Police Department
13. Toledo Police Department
14. Oregon State Police

The full-time law enforcement officer staff of these agencies, with the exception of the State Police detachments, for the Fiscal Year 1972-73 was 181 persons. Their operating budgets for the same period totaled \$2,677,730.

In addition to providing law enforcement services to the unincorporated areas of the county, the Linn County Sheriff's Office provides police protection to the cities of Halsey, Harrisburg and Scio on a contract basis.

Prosecution

Prosecution of criminal cases is handled on a full-time basis by the following District 4 agencies:

1. Benton County District Attorney's Office
2. Lincoln County District Attorney's Office
3. Linn County District Attorney's Office
4. Corvallis City Attorney's Office

Part-time city attorneys are employed by Monroe and Philomath in Benton County; by Lincoln City, Newport, Siletz, Toledo and Waldport in Lincoln County; and by Albany, Halsey, Harrisburg, Lebanon, Lyons, Mill City, Scio, Sweet Home and Waterloo in Linn County.

Court System

The District 4 court system has the following components:

Circuit Court - 21st Judicial District-Albany (2 judges), Corvallis (1 judge), Newport (1 judge)

District Courts - 1) Benton County (1 judge)

2) Lincoln County (1 judge)

3) Linn County (1 judge)

Justice of the Peace Courts - Lincoln County

1) Devil's Lake (1 judge)

Linn County

2) Harrisburg (1 judge)

3) Lebanon (1 judge)

4) Sweet Home (1 judge)

Municipal Courts - Benton County

1) Corvallis

2) Monroe

3) Philomath

Lincoln County

4) Lincoln City

5) Siletz

6) Toledo

7) Waldport

Linn County

8) Albany

9) Brownsville

10) Halsey

11) Harrisburg

12) Mill City

13) Scio

14) Sweet Home

15) Waterloo

#### Juvenile Departments

Linn and Benton County Juvenile Departments operate under a single administrator who divides his time between the two offices in Albany and Corvallis. A more complete integration of the two departments is planned. The Lincoln County Juvenile Department is based in Newport.

Other District 4 resources for youth include the Children's Farm Home in Corvallis which also runs two youth care centers for boys in Albany and Corvallis, Sunflower House in Corvallis and the Hines Group Home for girls in Philomath. Newport plans to establish a youth care center and shelter care facility in the near future.

Correctional System

Parole And Probation Services

The Oregon Corrections Division provides parole and probation services for felons in District 4 through its regional office in Salem and district offices in Albany and Corvallis. Two full-time officers handle cases in Linn County, while Benton and Lincoln County cases are under the supervision of one full-time staff person. One additional officer works half-time in the District, supervising female probationers and parolees.

Jails

District 4 has three county jails and eight municipal jails and lock-ups. At the time of the Feasibility Study survey, the Toledo Police Department had discontinued overnight holding in its jail and had begun transferring prisoners immediately to the Lincoln County Jail at Newport. Since completion of the Study, the Corvallis and Newport Police Departments have also ceased to use their jails and begun booking prisoners in the Benton County and Lincoln County Jails, respectively. This report includes bookings data for the Corvallis and Newport Jails but not for the Toledo Jail.

The bed capacities of District 4 jails included in the Feasibility

Study are:

<u>Jail</u>	<u>Adult Male</u>	<u>Adult Female</u>	<u>Juvenile</u>	<u>General Purpose</u>	<u>Total</u>
Benton County Jail	12	4	6	-	22
Lincoln County Jail	33	4	(a)	-	37
Linn County Jail	30 +12(b)	4	11(c)	1(d)	46 +12
Albany Jail	16	4	2	-	22
Corvallis Jail	4	-	-	-	4
Lebanon Jail	6	-	-	2	8
Lincoln City Jail	-	-	-	3	3
Mill City Jail	-	-	-	4	4
Newport Jail(e)	2	-	-	-	2
Sweet Home Jail	4	2	2	-	8
	---	---	---	---	---
TOTAL	107 +12	18	21	10	156 +12

- (a) Adult female cells or adult male segregation cells used when available to house juveniles.
- (b) Trustys are housed in a dormitory area with 12 bunks, which will be converted to a 12-man misdemeanor tank.
- (c) Juvenile female cell (6 beds) also used, when available, to house adult females.
- (d) A maximum security segregation cell is suitable for men and women and is separated by sight and sound from the juvenile area.
- (e) An additional 10-bed dormitory has been converted to storage.

Following are brief descriptions of the physical structures and general operating procedures of jails in District 4. They supplement information available in the District 4 Criminal Justice annual planning document. No attempt is made to evaluate procedures, although structural obstacles to good jail administration are pointed out.

### Benton County Jail

The Benton County Sheriff's Office houses its prisoners in a small one-story Spanish-style building north of the county courthouse. Two doors, one barred and one solid, lead into the booking area of the jail. Officers are not permitted to wear guns in the cell areas. The booking area and all cells are monitored by closed circuit TV cameras and by sensitive microphones which connect to TV monitors at the dispatcher's desk in the courthouse. A jailer is on duty during the week, but these TV monitors are the primary method of supervision on weekends and at night.

The jail is divided into three sections. One section is used primarily for juveniles, but also houses adults if no juveniles are booked in. It is entered through a sally port and contains a 6-bed dormitory and dayroom, a shower, toilets and sinks. The area is enclosed with steel webbing, but has tempered glass window for visiting. Light fixtures are recessed and covered with wire mesh. Catwalks go along two sides of this area. Wire-mesh covered windows in one catwalk could allow the entrance of contraband.

The adult side of the jail houses men in three, 4-bed cells and women in one 4-bed cell. The adult male cells lie adjacent to a dayroom area which has a shower and a laundry sink. Doors to the cells are kept open during the day and are operated by a mechanical selector device. The outer door to the adult male area is of hinged construction, is key-locked and leads into a sally port. The men may watch a television set, located outside the dayroom bars and, like other inmates, have access to library books, many of which are supplied by the Corvallis Public Library. The barred and screened windows lining the catwalk present a contraband danger similar to that in the juvenile area.

The women's cell is a small dormitory-dayroom area with separate room containing a noninstitutional toilet, sink and shower. This area is also supervised by closed circuit TV.

All Benton County Jail inmates receive three meals a day, served by the jailer, at approximately 8:30 a.m., Noon and 4:30 p.m. Lunch and dinner are prepared TV dinners.

Trustys do inside and outside maintenance. Persons sentenced to terms of six months or longer are usually sent to the Tillamook Forest Camp.

Visiting hours are 3 to 4 p.m. on Tuesdays and 6 to 7 p.m. on Thursdays, or as needed. Visits take place at the bars of the dayrooms in each section. In addition to their families, several religious groups, Alcoholic Anonymous, student interns and tutors regularly visit jail inmates.

### Lincoln County Jail

Located on the top floor of the Lincoln County Courthouse in Newport, the Lincoln County Jail is the newest and best equipped facility in District 4. Its only serious structural drawback is the metal spiral staircase which connects the jail to the first floor sheriff's office. (The jail has two other entrances from the courthouse second floor.)

Housing areas of the Lincoln County Jail lie off a long central corridor. The first section after passing the security perimeter is the trusty quarters, consisting of two, 2-bed cells. Both cells contain toilets and sinks, and have barred, wire-mesh screened outside windows. Opposite the trusty quarters is the booking room, containing a Breathalyzer and videotape equipment for recording the DUI booking process.

A 12-bed dormitory, entered through a sally port, is the next housing section along the hall. This dormitory contains two toilets and sinks, one shower, as well as tables and benches and a television set. A catwalk

runs along the outside perimeter of the jail, starting behind this dormitory area. Maximum security prisoners are lodged in two, 2-bed interior cells, whose doors are individually controlled with an electric locking mechanism. Each of these cells contains a conventional-type toilet and sink. Farther along the interior wall is an isolation cell, containing a central floor drain. This cell has a solid metal door with slots for observation and for passing in food.

The male housing area of the jail also includes six, 2-bed cells, each entered through separate sally ports, and each containing a metal bench and table, institutional toilet and sink and a shower. Juveniles are occasionally held in these separate cells, which can be completely separated from adult cells by doors located along the perimeter catwalk.

The women's and juvenile girls' housing section is located in the back of the jail, separated from the male sections by a barred gate. This area contains two, 2-bed cells identical to those in the men's section.

The jail's service areas include a private visiting room for attorney visits, a secure public visiting area with three booths and a laundry wash-up room. The jail has four hours of visiting per week: Mondays and Wednesdays from 2 to 4 p.m. Outside the secure perimeter are the jailer's office, the jail kitchen and the trusty dining room. All inmates are given three meals a day, which are prepared in the jail and served in the cells.

The Lincoln County Jail has 24-hour supervision by a staff of jailers and matrons. The day shift matron doubles as cook, while the night shift matron serves as dispatcher in the sheriff's office.

#### Linn County Jail

The Linn County Jail, on the top floor of the Linn County Courthouse in Albany, is a secure and well-maintained facility. Parts of it have been remodeled recently and further remodeling is planned which will connect a large tank now used for storage, laundry and trusty quarters into a 12-bed misdemeanor dormitory. The jail operates on a ventilation, air-conditioning and plumbing system separate from the rest of the courthouse. It is serviced with 24-hour wide-awake supervision.

The jail is reached by a public elevator at the east end of the courthouse which must be key-operated to the fourth or jail floor. The jail also has a stairway exit to the third floor, and a door exit to the roof. The elevator entrance is protected by a sally port as are the entrances to the trusty quarters and to the maximum-security cell area. Most doors in the jail are double key-locked, and the maximum-security cell doors are controlled by a selector locking device.

The jail's service areas include a small but adequate kitchen where a trusty cook prepares three meals a day for all inmates; several storage rooms; two visiting rooms for attorneys, bondsmen or private visits; a darkroom; and office space.

Four cells lead directly off the lobby area. One is used for segregation, temporary holding or drunks and includes two bunks and a prison-type toilet and sink. Another is a maximum-security, single-man cell used for segregation. The other two cells each have four beds, a shower, toilet and sink. They are used for either adult men or women, depending on the jail's need. The cell doors are solid metal except for a food and observation slot.



As already mentioned, trustys are lodged in a large tank which is capable of holding 12 men. It contains a shower, one prison-type toilet and sink, and laundry and food storage equipment.

The maximum-security area contains three 8-man cells and a dayroom. Each cell contains a toilet and sink. Running along the cells is a hallway whose use as a dayroom has been discontinued because of inmate vandalism and access to windows on a roof courtyard. The maximum-security dayroom contains four telephones and windows in one wall, where visiting is allowed from 2 to 4 p.m. on Thursdays and Sundays. Inmates in this area are locked out of their cells into the dayroom from 8 a.m. to 6 p.m. daily. The dayroom contains tables and benches, a shower, toilets and sinks.

Juveniles and sometimes adult women are lodged in an area well separated from the adult section of the jail and reached through the jailer's office. It includes a small dayroom with a television, a room for females with six beds, a prison-type toilet and sink and a room for males with five beds, a toilet and sink. The Linn County Jail houses most juveniles detained in the county as well as most of Benton County's juvenile detainees, and some of its adult women.

#### Albany Jail

The Albany Jail is in the basement of the Albany City Hall. Prisoners are brought into the jail through a rear door, also on the city hall's basement level. They are booked in and their property stored in the jail's booking area. A matron is always on duty to supervise female prisoners at booking. Guns are not permitted in housing areas of the jail.

The jail's cells lie along an L-shaped corridor and are divided into three sections. One section houses adult males and includes a large but

bare dayroom adjacent to four, 4-man cells, two of which have tempered steel bars and are therefore suitable for maximum-security holding. This area is entered through a sally port. Men are locked out of their cells into the dayroom during days. Both the cells and the dayroom contain toilets and sinks and, in addition, the dayroom contains a shower. Visiting takes place at two screened windows in the dayroom wall.

The jail's juvenile cell, which is also used for segregation, is small and contains two beds and a prison-type toilet-sink. This cell's door, like all others in the jail, is key-locked and is solid metal with an observation window. Women are lodged in two, 2-bed cells, each containing a prison-type toilet-sink. The women's shower is at the end of the L-shaped corridor, outside the cells.

The jail is supervised by a sound monitor system which ties into the dispatcher's desk on the city hall's first floor. Police officers periodically walk through the jail area, usually at intervals of one hour but occasionally less often. A smoke detection system will be in operation in the cell areas by late 1972.

Meals consist of breakfast at about 7:30 a.m. and dinner at about 6 p.m. Trustys who are working are given a noon meal. Meals are provided by a local restaurant on a contract basis.

The jail maintains regular visiting hours at 2 to 4 p.m. on Tuesdays and Fridays. A lawyer-bondsman visiting room doubles as a conference room for police and civil defense staff.

#### Corvallis City Jail

Use of the Corvallis City Jail was discontinued in April 1972. Although the cell remains in place, arrestees who are to be detained are now taken immediately to the Benton County Jail, located nearby in Corvallis. The jail is in the rear of the Corvallis Police Department and consists

of a metal cage approximately 8 by 10 feet, with four bunks. The entire cell area was at one time part of the brig from the Battleship Oregon.

Walls of the jail cage are of solid steel on three sides with a lattice front. Two steel bunks are attached to the walls on each side of the cell. A commode and washbasin are located in the jail cage. There are no windows and the steel-screened door is locked by a padlock. The cell area is heated with a register located in the room outside the cage. This heater generally made the cell so warm that the bunk blankets were not used by prisoners. The jail has no fresh air or forced air circulation which made the jail room stuffy, malodorous and uncomfortable. When in use, supervision consisted of periodic checks by police officer and/or dispatcher.

#### Lebanon Jail

The Lebanon Police Department operates a jail located in the rear of their small office quarters. The jail consists of two cell areas. The smaller cell contains a two-bed bunk, toilet and sink and is ventilated through an observation window in the solid metal door. Although this is a general-purpose cell, it normally houses women or juveniles. The second housing area is a 6-bed dormitory where adult males are lodged. This cell is entered through a sally port area; during the day the inner door of the sally port is left open to allow inmates more room for movement. An institutional-type toilet and sink have recently been installed in this cell, which is ventilated by a wire-mesh screened window going on to a hallway. A shower in the adjoining fire station is available to the police department when needed.

Inmates in the Lebanon Jail are given two meals a day unless they are working, in which case they receive three meals. Meals are prepared in a nearby restaurant and served in the cells. Local physicians and the county health officer are on call to provide medical care to inmates.

The jail has two visiting hours per week: from 2 to 3 p.m. on Tuesday and from 7 to 8 p.m. on Thursday. The police officer on duty has responsibility for checking the jail cells, at intervals, determined by the inmates' physical or mental condition.

#### Lincoln City Jail

The Lincoln City Police Department maintains a two-cell lockup in the rear of the small police-firehall building. The two cells contain three beds, and each has a conventional-type toilet and sink. Each cell has barred and wire-mesh screened outside windows, and padlocked metal doors. In one cell door, the solid metal has been replaced with wire-mesh screening to allow better circulation of heat to the cell area. The other cell still has a solid metal door and is consequently difficult to heat.

Police officers and dispatchers supervise inmates of the jail 24 hours a day. Inmates are given two meals daily, consisting of TV dinners. The Lincoln City Jail seldom holds anyone more than five days, transferring persons serving longer sentences to the Lincoln County Jail 30 miles south. Like other municipalities in Lincoln County, Lincoln City pays the county \$5/day to lodge a municipal ordinance violator in the county jail.

#### Mill City Jail

The Mill City Police Department uses its small jail primarily for temporary holding of prisoners, most of whom are transferred by Linn County Sheriff's deputies to the Linn County Jail where they are lodged free of cost to Mill City. The jail consists of two cells leading off a corridor

from the police chief's office. Each cell is approximately 10 feet by 8 feet, and contains two beds and a noninstitutional toilet and sink. In addition, one cell has a shower. Cell doors are of metal lattice construction and fastened with a padlock. A fan provides ventilation. Both cells are clean and whitewashed.

#### Newport Jail

Within the past two years, the Newport Police have discontinued regular use of their jail and have begun booking their arrestees into the Lincoln County Jail. (Because the City Jail is used occasionally for short-term lodging, however, the Feasibility Study analyzed 1971 bookings there.)

The Newport Jail is in the daylight basement of the Newport City Hall, immediately below the Police Department offices. It consists of one, 2-man cell with conventional toilet and sink. The outside cell window is covered with wire-mesh screen. The cell has double padlocked doors, one with bars and one solid metal. A 10-bed dormitory, also in the City Hall basement, is no longer used for jailing and holds overflow contents from the evidence locker.

#### Sweet Home Jail

The Sweet Home Police Department maintains a small, steel-reinforced concrete jail in the daylight basement of the City Hall. It is supervised by police officers during the day and by a dispatcher at night. A sensitive sound monitoring system feeds into a speaker located at the dispatcher's desk, and augments supervision capability. The Sweet Home Jail houses arrestees of Sweet Home Police and for the State Police and two Linn County resident deputies in the area.

The jail has two housing areas, well separated from each other. Both areas lie off a central hallway which runs from the police offices to a locked exit door. Adult males are housed in two, 2-bed cells which contain prison-type toilets and sinks and are separated by a shower. Doors to these cells are of barred and hinged construction, and are double-locked. An L-shaped corridor goes past these cells and turns to lead into a small, bare room with a central floor drain, which houses drunks, both male and female. The barred door to this cell has been covered with soundproof tile to reduce noise. The drunk tank has barred window to the outside.

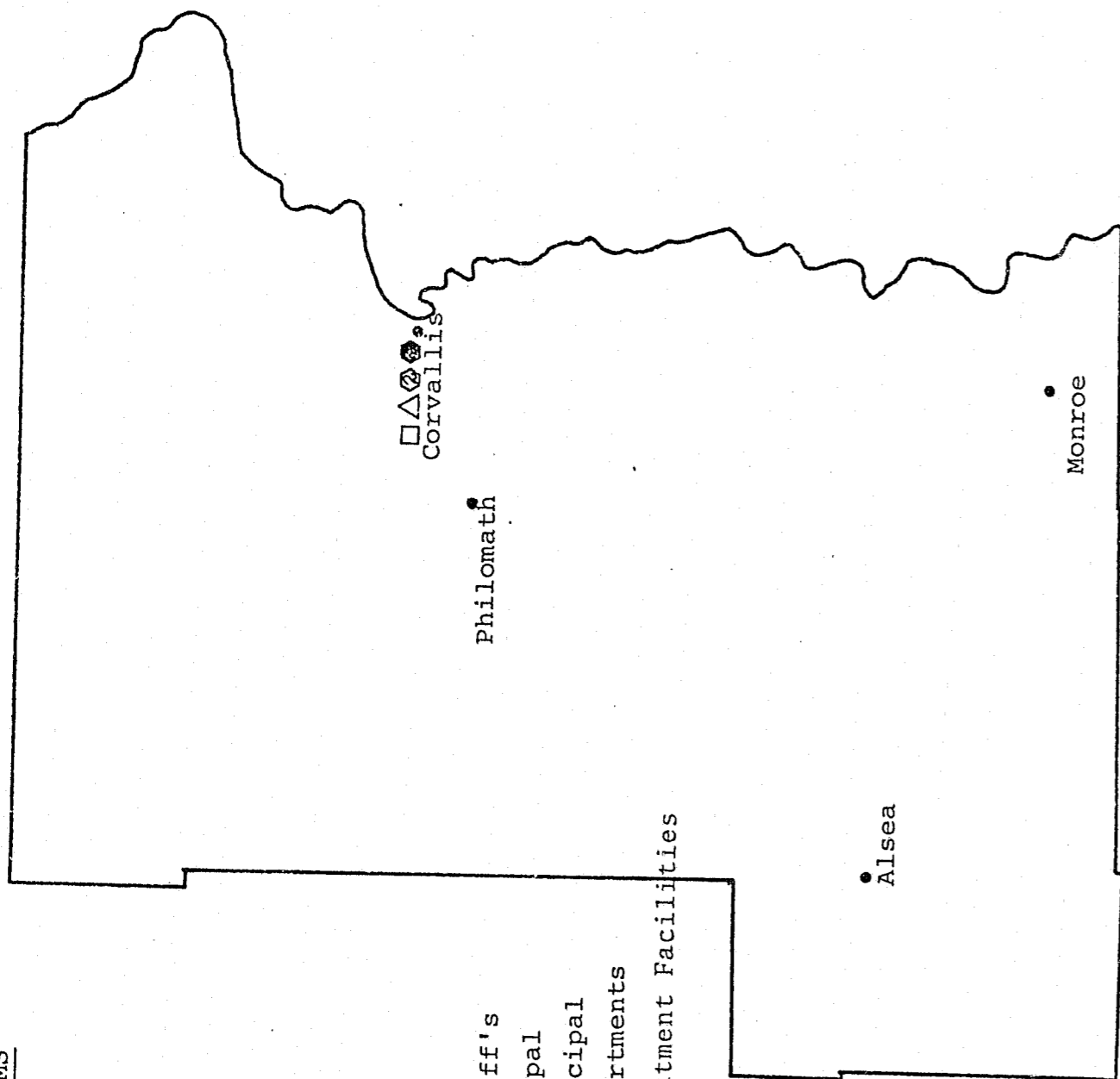
The other section of this jail houses women and juveniles in two, 2-bed cells, similar to the men's cells. Doors to the cells are hinged and double-locked, and contain slots for food trays to be passed in. There is no shower in this section. One of these cells is lighted by a potentially hazardous bare light bulb. A solid metal door closes off these two cells from the central corridor.

Visiting hours at the Sweet Home Jail are Thursday and Sunday from 2 to 4 p.m. or are flexibly scheduled as needed. Inmates are given two meals a day, or three if they are trustys doing work. Meals are provided by a local restaurant at \$.75 for breakfast and \$1.00 for dinner.

CORRECTIONS SYSTEMS

IN  
BENTON COUNTY

MAP 1



LEGEND:

- Jails, Sherriff's
- ▲ Jails, Municipal
- △ Lockups, Municipal
- Juvenile Departments
- Juvenile Treatment Facilities

SOURCE: Problems And Priorities  
In The Criminal Justice  
System - Oregon Dist. 4  
Council Of Governments

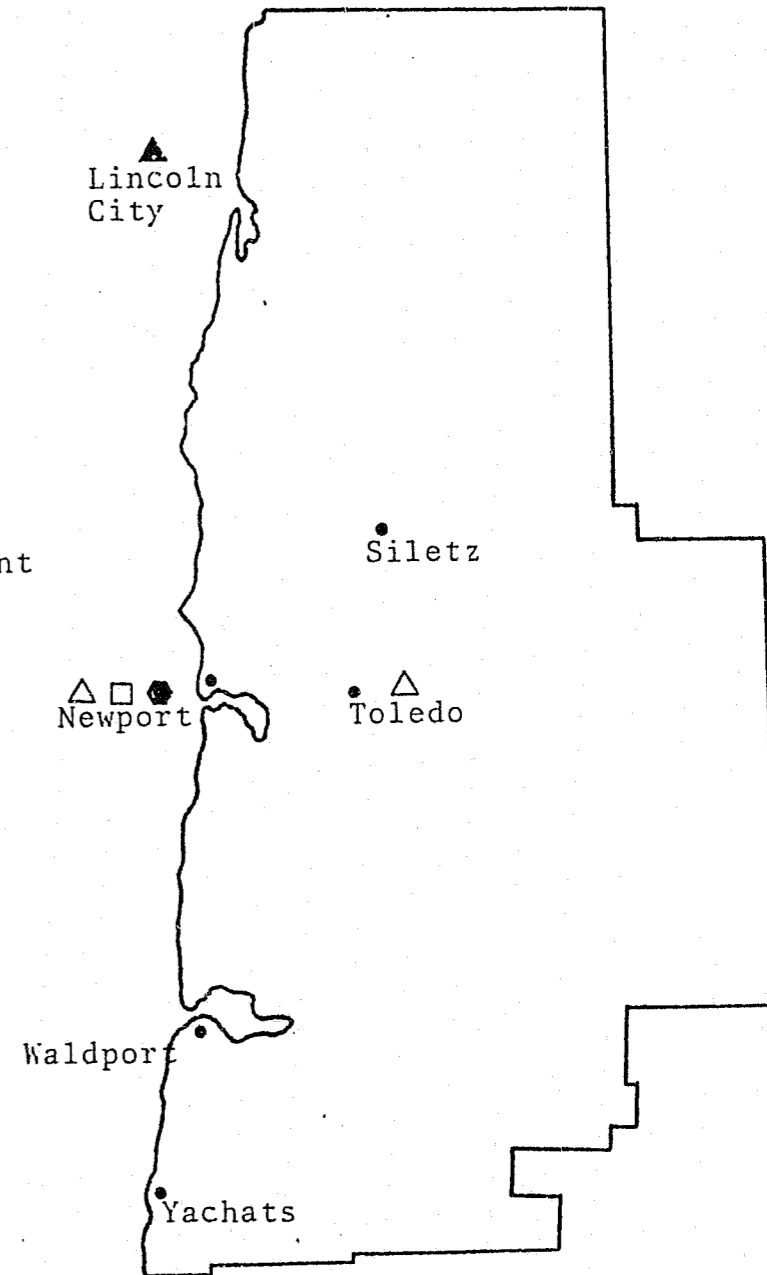
MAP 2

CORRECTIONS SYSTEMS  
IN  
LINCOLN COUNTY



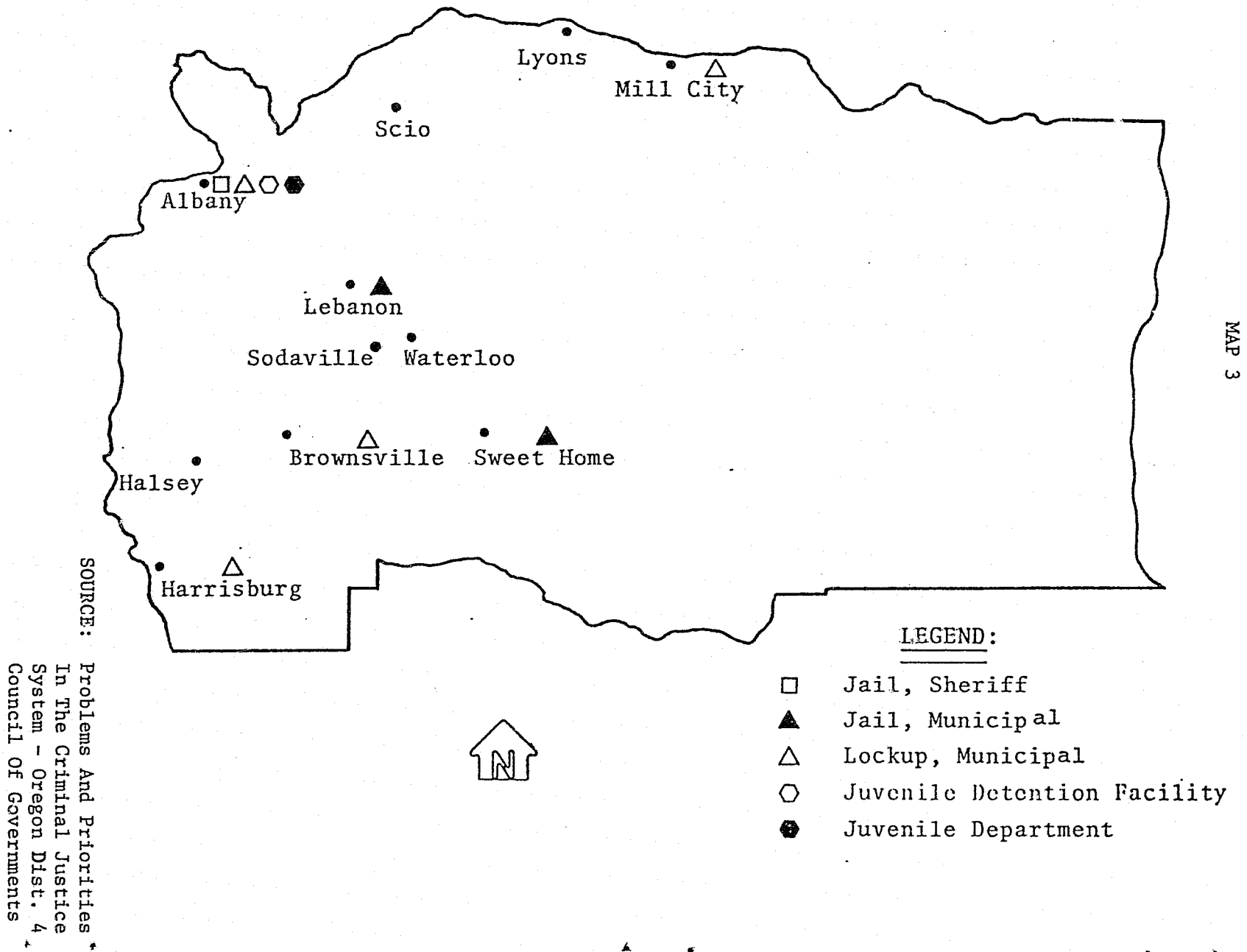
LEGEND:

- Jail, Sheriff
- ▲ Jail, Municipal
- △ Lockup, Municipal
- Juvenile Department



SOURCE: Problems And Priorities In The  
Criminal Justice System - Oregon  
District 4 Council Of Governments

CORRECTIONS SYSTEMS IN LINN COUNTY



**JAIL POPULATIONS  
AND  
LENGTHS OF STAY**

JAIL POPULATION AND LENGTHS OF STAY

(Tables JB-1 to JB-10)

Summary (Table JB-1)

The ten District 4 jails had total bookings of 4459 in 1971. The three county jails accounted for 2721 or 61% of those bookings, with the Linn County Jail alone booking 1336 or 30% of the total. Albany had the most active city jail, with 690 bookings in 1971 or 15% of the total.

The 4459 bookings represented 3414 different persons, for a rebooking rate within the year of 31%. (This is approximately equal to Lane County's rebooking rate for the same period.)

Table JB-1 compares District 4 jails with ten other districts with respect to their population, total bookings, booking rates per 1000 population and percentages of juvenile and alcohol-related bookings. District 4 has the fourth largest population in the state and stands fifth in the number of bookings. Its booking rate of 30, when compared with booking rates of districts surveyed in 1971, is second lowest in the state. The percent of 1971 juvenile bookings in District 4 jails was 19%, reflecting the absence of a juvenile detention home in the district. District 4 tied for fourth lowest in the percentage of drunk and alcohol-related bookings in its jails - 37% in 1971. It should be noted that these percentages have undoubtedly changed since July 1972 when public drunkenness ceased to be a criminal offense in Oregon.

District 4 Jail Populations (Table JB-2)

Table JB-2 compares total bookings in the ten District 4 jails for the years 1969-71. City jail bookings have fallen from 2241 in 1969 to 1738 in 1971, primarily because of the closure of the Corvallis and

Newport Jails. The Albany and Lincoln City Jails experienced a swell in bookings during 1970 (24% and 52% increases, respectively), but bookings at both jails dropped off again during 1971. The three County Jails also experienced a jump in bookings between 1969 and 1970, with a leveling off in 1971. Booking patterns for males and females over these three years are substantially similar to overall patterns, except that the female share of total bookings jumped from 10% in 1969 to 13% in 1970 and 1971.

Average Daily Populations, High And Low Counts, Average Lengths Of Stay  
(Tables JB-3 to JB-10)

Tables JB-3 through JB-10 examine the eight District 4 jails which booked more than 50 persons during 1971 in terms of their average daily populations and lengths of stay. (NOTE: High counts and low counts refer to the highest and lowest jail population on single days of the month. Average Daily Population is calculated by adding population counts for each day of a month and dividing by the number of days in that month. Averages less than 0.5 are omitted and indicated by a dash. Average Daily Pretrial Population and Average Daily Sentenced Population cannot be added to equal Average Daily Population because of double counting, i.e. a person can be in jail pretrial, go to court and begin to serve jail time on a single day and would appear in both the pretrial and sentenced courts for that day.)

Benton County Jail (Table JB-3)

The highest population count on any single day in 1971 was 19, during November. This jail's average daily population of persons awaiting trial was 6, while the ADP for sentenced prisoners was 4. The average lengths of stay varied from a low of 3 days for females awaiting trial to a high of 12 days for males on sentence.

Lincoln County Jail (Table JB-4)

This County Jail's highest population count occurred in February, when 20 were lodged on one day. The jail's ADP of pretrial inmates was 7; its ADP of sentenced inmates was 6. Average lengths of stay varied from 2 days for females pretrial to 10 days for males serving sentences.

Linn County Jail (Table JB-5)

The Linn County Jail is the largest in District 4, reflected in its high count for the year of 60 persons lodged on a single day in March. Its pretrial ADP was 21 persons, while 15 persons were the average daily sentenced population. Average lengths of stay were slightly larger than other jails', ranging from 4 days for females pretrial to 25 days for males serving sentences.

Albany Jail (Table JB-6)

High count for the Albany Jail occurred in December, with 18 persons lodged on a single day. This city jail had an ADP of 5 pretrial prisoners and 3 persons serving sentences. Average lengths of stay varied from 2 days for females awaiting trial to 9 days for males serving sentences.

Corvallis Jail (Table JB-7)

During 1971, the Corvallis Police Department began reducing its use of this jail. In spite of this reduction, the jail was occasionally filled to capacity, as indicated by the high count of 6 persons booked on a single day during August 1971. The jail's ADP of persons waiting to go to court was 2 persons while it had an insignificant ADP of sentenced persons. Average lengths of stay pretrial were 2 days for both sexes, while the few men who served sentences in this jail stayed an average of 3 days. (No females were booked on sentence during 1971.)

Lebanon Jail (Table JB-8)

Lebanon saw a high count of 10 persons booked into its jail during September 1971. This jail had an ADP of 2 pretrial and 1 sentenced inmate during the sample year, who stayed an averaged of 2 days and 8 days, respectively.

Lincoln City Jail (Table JB-9)

This two-cell jail held 6 persons on at least one day during February and June, its highest daily counts for the year. The Lincoln City Jail's pretrial ADP was 1 person, while its ADP of sentenced prisoners was insignificantly small. Persons booked pretrial stayed an average of 2 days while the males who served sentences stayed an average of 16 days. (No females were booked on sentence during 1971.)

Sweet Home Jail (Table JB-10)

Sweet Home experienced high counts of 6 during both September and October 1971, while the jail also stood empty for some period of each month of the sample year. The jail's pretrial and sentenced average daily population were both 1 person, although average lengths of stay varied from 2 days pretrial to 11 days for sentenced males. (No females were booked on sentence during 1971.)

TABLE JB-1

DISTRICT 4 - 1971

Comparison Of District 4 With Ten Other Districts:

Total Bookings, Booking Rate, Juvenile Bookings And Alcohol-Related Bookings

<u>District</u>	<u>1970 Population</u>	<u>Bookings<sup>1</sup></u>	<u>Bookings/1000</u>	<u>Percent Juvenile Bookings</u>	<u>Percent Public Intoxication Bookings</u>	<u>Percent Alcohol-Related Bookings<sup>4</sup></u>	<u>Percent Public Intoxication &amp; Alcohol-Related Bookings</u>
District 4	151,445	4,459	30	19%	10%	27%	37%
District 1	46,403	2,424	52	27%	10%	29%	39%
District 2 <sup>2</sup>	909,465	32,204	36	8%	28%	19%	47%
District 3	226,871	6,393	28	6%	19%	17%	36%
District 5	213,358	5,526	26	5%	21%	26%	47%
District 6	71,743	3,851	54	15%	11%	18%	29%
District 8	130,279	6,012	46	15%	15%	19%	34%
District 9	35,459	1,852	52	12%	36%	24%	60%
District 10	50,420	2,743	54	20%	28%	27%	55%
District 12	60,575	3,543	58	24%	17%	28%	45%
District 13	40,543	1,892	47	- <sup>3</sup>	10%	27%	37%

District 1 = Tillamook and Clatsop Counties.  
 District 2 = Clackamas, Washington, Multnomah and Columbia Counties.  
 District 3 = Marion, Polk and Yamhill Counties.  
 District 5 = Lane County.  
 District 6 = Douglas County.  
 District 8 = Jackson and Josephine Counties.  
 District 9 = Hood River, Sherman and Wasco Counties.  
 District 10 = Deschutes, Crook and Jefferson Counties.  
 District 12 = Gilliam, Grant, Morrow, Umatilla and Wheeler Counties.  
 District 13 = Baker, Union and Wallowa Counties.

- 1 Districts 3 and 9 are for calendar year 1969; Districts 1, 6, 10, 12 and 13 are for 1970; and Districts 2, 4, 5 and 8 are 1971 data.
- 2 District 2 represents an estimated number of bookings. The actual data collected there were sample months-- March, July and November 1971.
- 3 Not available.
- 4 Includes driving while intoxicated, drunk and disorderly, minor in possession of alcohol and vagrancy.



TABLE JB-2

## DISTRICT 4 - 1971

## JAIL BOOKINGS DATA, 1969, 1970, 1971

Jail By Number Of Bookings, By Age, By Sex

<u>County Jails</u>	<u>1969</u>	<u>Female</u>		<u>1969</u>	<u>Male</u>		<u>1969</u>	<u>Total</u>	
		<u>1970</u>	<u>1971</u>		<u>1970</u>	<u>1971</u>		<u>1970</u>	<u>1971</u>
Benton County	33	63	59	322	477	489	355	540	548
Lincoln County	86	104	115	696	717	722	782	821	837
Linn County	<u>145</u>	<u>181</u>	<u>197</u>	<u>1068</u>	<u>1187</u>	<u>1139</u>	<u>1213</u>	<u>1368</u>	<u>1336</u>
TOTAL	264	348	371	2086	2381	2350	2350	2729	2721
<hr/>									
<u>City Jails</u>									
Albany	67	118	114	575	677	576	642	795	690
Corvallis	30	81	1	514	625	372	544	706	373
Lebanon	26	25	35	290	257	283	316	282	318
Lincoln City	20	39	18	137	200	121	157	239	139
Mill City	0	0	1	38	19	11	38	19	12
Newport	54	72	7	319	247	31	373	319	38
Sweet Home	<u>14</u>	<u>10</u>	<u>18</u>	<u>157</u>	<u>154</u>	<u>150</u>	<u>171</u>	<u>164</u>	<u>168</u>
TOTAL	211	345	194	2030	2179	1544	2241	2524	1738
<hr/>									
TOTAL, ALL JAILS	475	693	565	4116	4560	3894	4591	5253	4459

TABLE JB-3

DISTRICT 4 - 1971

BENTON COUNTY JAIL

Jail Population Size And Length Of Stay, By Month

Month	Average Daily Population	High Count	Low Count	Pretrial Population			Average Length Of Stay		Sentenced Population			Average Length Of Stay	
				Male	Female	Total	Male	Female	Male	Female	Total	Male	Female
January	4.35	9	0	3	-	3	4 days	3 days	2	0	2	8 days	0 days
February	10.61	16	6	7	2	8	4 days	4 days	5	-	5	9 days	2 days
March	8.16	13	5	6	-	6	3 days	1 day	4	0	4	7 days	0 days
April	7.40	13	4	5	-	6	3 days	2 days	4	-	4	7 days	5 days
May	6.52	12	3	4	-	5	2 days	2 days	4	-	4	8 days	3 days
June	7.07	12	2	6	-	6	4 days	2 days	2	0	2	8 days	0 days
July	6.87	12	3	6	1	7	4 days	3 days	2	0	2	9 days	0 days
August	5.10	9	2	4	-	4	3 days	2 days	2	0	2	13 days	0 days
September	2.70	6	1	1	0	1	7 days	0 days	2	0	2	11 days	0 days
October	10.81	18	4	8	1	9	4 days	5 days	4	0	4	8 days	0 days
November	14.93	19	7	9	1	9	5 days	5 days	8	0	8	11 days	0 days
December	<u>7.16</u>	13	0	<u>5</u>	<u>-</u>	<u>5</u>	<u>3 days</u>	<u>2 days</u>	<u>4</u>	<u>-</u>	<u>4</u>	<u>9 days</u>	<u>3 days</u>
Annual Averages	7.64			5	-	6	4 days	3 days	3	-	4	12 days	3 days

Note: Averages less than 0.5% are omitted.  
Table explanation on page 24, paragraph 2.

TABLE JB-4

DISTRICT 4 1971

LINCOLN COUNTY JAIL

Jail Population Size And Length Of Stay, By Month

Month	Average Daily Population	High Count	Low Count	Pretrial Population			Average Length Of Stay		Sentenced Population			Average Length Of Stay			
				Average Daily Population			Male	Female	Male	Female	Average Daily Population			Male	Female
				Male	Female	Total					Male	Female	Total		
January	7.61	19	0	6	1	7	2 days	2 days	3	-	3	6 days	2 days		
February	13.07	20	8	9	1	10	3 days	2 days	6	-	6	9 days	2 days		
March	10.26	15	6	6	-	6	3 days	2 days	7	-	7	10 days	1 day		
April	7.30	11	4	6	1	6	2 days	2 days	4	-	4	6 days	1 day		
May	7.65	11	5	5	1	6	2 days	2 days	5	-	5	7 days	1 day		
June	7.03	15	2	5	-	5	3 days	2 days	4	-	4	6 days	6 days		
July	8.52	17	3	6	1	7	3 days	2 days	4	-	5	6 days	2 days		
August	7.87	17	5	6	1	6	3 days	2 days	4	1	4	7 days	8 days		
September	7.67	17	2	6	1	7	3 days	2 days	4	0	4	8 days	0 days		
October	11.74	17	6	6	-	6	3 days	2 days	4	-	8	9 days	1 day		
November	13.17	18	8	6	1	7	3 days	2 days	9	0	9	10 days	0 days		
December	<u>12.58</u>	18	7	<u>4</u>	-	<u>5</u>	<u>3 days</u>	<u>2 days</u>	<u>10</u>	<u>0</u>	<u>10</u>	<u>11 days</u>	<u>0 days</u>		
Annual Averages	9.54			6	1	7	3 days	2 days	6	-	6	10 days	4 days		

Note: Averages less than 0.5% are omitted.

Table explanation on page 24, paragraph 2.

TABLE JB-5

DISTRICT 4 - 1971

LINN COUNTY JAIL

Jail Population Size And Length Of Stay, By Month

Month	Average Daily Population	High Count	Low Count	Pretrial Population			Average Length Of Stay		Sentenced Population			Average Length Of Stay				
				Average Daily Population			Male	Female	Total	Male	Female	Average Daily Population			Male	Female
				Male	Female	Total						Male	Female	Total		
January	19.16	40	2	14	1	15	5 days	3 days	7	0	7	13 days	0 days			
February	31.29	43	22	22	2	24	5 days	4 days	11	1	12	12 days	15 days			
March	48.58	60	34	25	2	27	6 days	3 days	27	0	27	16 days	0 days			
April	39.30	55	22	21	3	24	5 days	4 days	20	-	21	17 days	5 days			
May	30.71	43	17	17	2	20	5 days	3 days	15	0	15	16 days	0 days			
June	30.13	40	21	15	2	17	4 days	3 days	18	0	18	18 days	0 days			
July	23.03	35	13	11	2	13	4 days	3 days	14	-	14	13 days	2 days			
August	22.71	31	15	16	1	17	5 days	2 days	10	-	10	8 days	3 days			
September	22.40	33	16	17	1	18	5 days	3 days	8	-	8	9 days	6 days			
October	37.42	51	25	24	3	27	7 days	4 days	14	0	14	18 days	0 days			
November	37.77	44	30	22	1	23	6 days	3 days	18	0	18	18 days	0 days			
December	<u>32.45</u>	<u>41</u>	<u>26</u>	<u>19</u>	<u>2</u>	<u>22</u>	<u>5 days</u>	<u>4 days</u>	<u>15</u>	<u>0</u>	<u>15</u>	<u>16 days</u>	<u>0 days</u>			
Annual Averages	31.25			19	2	21	6 days	4 days	15	-	15	25 days	6 days			

NOTE: Averages less than 0.5% are omitted.  
Table explanation on page 24, paragraph 2.

TABLE JB-6

DISTRICT 4 - 1971

ALBANY JAIL

Jail Population Size And Length Of Stay, By Month

Month	Average Daily Population	High Count	Low Count	Pretrial Population			Average Length Of Stay		Sentenced Population			Average Length Of Stay	
				Male	Female	Total	Male	Female	Male	Female	Total	Male	Female
January	4.71	8	0	5	1	5	3 days	2 days	1	-	1	6 days	3 days
February	6.39	16	0	5	1	5	3 days	2 days	3	0	3	4 days	0 days
March	5.23	10	2	5	1	5	2 days	2 days	3	-	3	5 days	2 days
April	6.43	12	3	4	1	5	2 days	2 days	3	-	3	10 days	4 days
May	3.71	9	1	3	1	4	2 days	2 days	2	0	2	6 days	0 days
June	5.70	11	2	4	1	5	2 days	2 days	3	-	3	8 days	1 days
July	5.00	10	2	4	1	5	2 days	2 days	2	-	2	13 days	3 days
August	5.65	9	3	4	-	5	2 days	2 days	3	0	3	9 days	0 days
September	4.60	10	1	4	-	4	2 days	2 days	2	0	2	7 days	0 days
October	4.81	10	1	4	1	5	2 days	2 days	2	-	2	6 days	2 days
November	6.00	10	2	4	-	4	3 days	2 days	4	-	4	8 days	5 days
December	<u>6.84</u>	<u>18</u>	<u>3</u>	<u>4</u>	<u>-</u>	<u>4</u>	<u>3 days</u>	<u>2 days</u>	<u>5</u>	<u>-</u>	<u>5</u>	<u>7 days</u>	<u>5 days</u>
Annual Averages	5.42			4	1	5	3 days	2 days	3	-	3	9 days	3 days

Table explanation on page 24, paragraph 2.

NOTE: Averages less than 0.5% are omitted.

TABLE JB-7

DISTRICT 4 - 1971

CORVALLIS JAIL

Jail Population Size And Length Of Stay, By Month

Month	Average Daily Population	High Count	Low Count	Pretrial Population			Average Length Of Stay		Sentenced Population			Average Length Of Stay	
				Male	Female	Total	Male	Female	Male	Female	Total	Male	Female
January	1.32	4	0	2	0	2	2 days	0 days	-	0	-	1 day	0 days
February	1.43	3	0	3	0	3	2 days	0 days	0	0	0	0 days	0 days
March	1.39	4	0	3	0	3	2 days	0 days	0	0	0	0 days	0 days
April	0.93	4	0	1	0	1	2 days	0 days	-	0	-	3 days	0 days
May	0.94	3	0	2	0	2	2 days	0 days	-	0	-	2 days	0 days
June	1.00	3	0	2	0	2	2 days	0 days	-	0	-	2 days	0 days
July	1.74	4	0	3	0	3	2 days	0 days	-	0	-	1 day	0 days
August	1.90	6	0	2	0	2	2 days	0 days	1	0	1	6 days	0 days
September	1.50	5	0	3	-	3	2 days	2 days	-	0	-	1 day	0 days
October	1.45	4	0	2	0	2	2 days	0 days	-	0	-	2 days	0 days
November	1.47	4	0	2	0	2	2 days	0 days	-	0	-	2 days	0 days
December	1.45	4	0	2	0	2	2 days	0 days	-	0	-	3 days	0 days
Annual Averages	1.38			2	-	2	2 days	2 days	-	0	-	3 days	0 days

Note: Averages less than 0.5% are omitted.  
Table explanation on page 24, paragraph 2.

- 33 -

TABLE JB-8

DISTRICT 4 - 1971

LEBANON JAIL

Jail Population Size And Length Of Stay, By Month

Month	Average Daily Population	High Count	Low Count	Pretrial Population			Average Length Of Stay		Sentenced Population			Average Length Of Stay	
				Male	Female	Total	Male	Female	Male	Female	Total	Male	Female
January	0.74	3	0	1	-	1	2 days	2 days	-	0	-	5 days	0 days
February	0.96	4	0	1	-	1	2 days	2 days	-	0	-	6 days	0 days
March	0.58	3	0	1	-	1	2 days	2 days	0	0	0	0 days	0 days
April	0.70	3	0	1	-	1	2 days	2 days	-	0	-	5 days	0 days
May	1.61	6	0	1	-	1	2 days	1 day	1	0	1	14 days	0 days
June	2.47	7	1	2	-	2	2 days	2 days	1	0	1	10 days	0 days
July	2.81	8	0	3	-	3	2 days	2 days	1	0	1	6 days	0 days
August	1.42	4	0	2	1	2	2 days	2 days	-	0	-	4 days	0 days
September	3.17	10	0	3	1	4	2 days	3 days	1	1	1	4 days	8 days
October	3.55	8	0	4	-	4	3 days	2 days	1	0	1	5 days	0 days
November	2.93	6	1	2	-	2	2 days	1 day	2	0	2	8 days	0 days
December	2.39	7	0	1	-	1	2 days	2 days	2	0	2	6 days	0 days
Annual Averages	1.94			2	-	2	2 days	2 days	1	-	1	8 days	8 days

Note: Averages less than 0.5% are omitted.  
Table explanation on page 24, paragraph 2.

TABLE JB-9

DISTRICT 4 - 1971

LINCOLN CITY JAIL

Jail Population Size And Length Of Stay, By Month

Month	Average Daily Population	High Count	Low Count	Pretrial Population			Average Length Of Stay		Sentenced Population			Average Length Of Stay			
				Average Daily Population			Male	Female	Male	Female	Male	Female	Total	Male	Female
				Male	Female	Total	Male	Female	Male	Female	Male	Female	Total	Male	Female
January	1.29	4	0	1	-	1	2 days	2 days	1	0	1	21 days	0 days		
February	1.82	6	1	1	-	1	2 days	1 day	1	0	1	8 days	0 days		
March	2.06	5	1	1	-	1	3 days	2 days	1	0	1	15 days	0 days		
April	1.87	5	0	1	-	1	4 days	2 days	1	0	1	11 days	0 days		
May	1.00	3	0	1	0	1	2 days	0 days	1	0	1	24 days	0 days		
June	0.80	6	0	1	-	1	2 days	2 days	-	0	-	7 days	0 days		
July	0.16	2	0	-	-	-	2 days	2 days	-	0	-	1 day	0 days		
August	0.26	5	0	-	-	1	2 days	2 days	0	0	0	0 days	0 days		
September	0.63	3	0	1	-	1	2 days	2 days	-	0	-	6 days	0 days		
October	0.35	3	0	1	0	1	2 days	0 days	0	0	0	0 days	0 days		
November	0.20	2	0	-	0	-	2 days	0 days	0	0	0	0 days	0 days		
December	<u>0.32</u>	<u>2</u>	<u>0</u>	<u>-</u>	<u>-</u>	<u>1</u>	<u>2 days</u>	<u>2 days</u>	<u>-</u>	<u>0</u>	<u>-</u>	<u>3 days</u>	<u>0 days</u>		
Annual Averages	0.90			1	-	1	2 days	2 days	-	0	-	16 days	0 days		

NOTE: Averages less than 0.5% are omitted.  
Table explanation on page 24, paragraph 2.



TABLE JB-10

DISTRICT 4 - 1971

SWEET HOME JAIL

Jail Population Size And Length Of Stay, By Month

Month	Average Daily Population	High Count	Low Count	Pretrial Population			Average Length Of Stay		Sentenced Population			Average Length Of Stay				
				Average Daily Population			Male	Female	Total	Male	Female	Average Daily Population			Average Length Of Stay	
				Male	Female	Total						Male	Female	Total	Male	Female
January	1.48	3	0	1	0	1	2 days	0 days	1	0	1	23 days	0 days			
February	0.71	3	0	1	0	1	2 days	0 days	-	0	-	5 days	0 days			
March	1.06	4	0	1	-	1	2 days	2 days	1	0	1	22 days	0 days			
April	1.10	3	0	1	-	1	2 days	2 days	1	0	1	10 days	0 days			
May	0.39	2	0	1	0	1	2 days	0 days	0	0	0	0 days	0 days			
June	0.23	2	0	-	-	-	1 day	2 days	0	0	0	0 days	0 days			
July	1.13	3	0	1	-	1	2 days	2 days	1	0	1	9 days	0 days			
August	1.03	3	0	-	-	1	2 days	2 days	1	0	1	12 days	0 days			
September	1.50	6	0	1	-	1	2 days	2 days	1	0	1	5 days	0 days			
October	1.81	6	0	2	-	2	3 days	2 days	1	0	1	5 days	0 days			
November	0.77	4	0	1	-	1	2 days	2 days	-	0	-	3 days	0 days			
December	<u>0.71</u>	<u>2</u>	<u>0</u>	<u>1</u>	<u>-</u>	<u>1</u>	<u>2 days</u>	<u>2 days</u>	<u>-</u>	<u>0</u>	<u>-</u>	<u>4 days</u>	<u>0 days</u>			
Annual Averages	0.99			1	-	1	2 days	2 days	1	0	1	11 days	0 days			

NOTE: Averages less than 0.5% are omitted.  
Table explanation on page 24, paragraph 2.

## **JAIL POPULATION CHARACTERISTICS**

### JAIL POPULATION CHARACTERISTICS

(Tables JB-11 through JB-15)

Data in this section concern the ages, sex, residence and race of persons booked during 1971 in District 4 jails. The upper part of Table JB-11 compares selected population characteristics for bookings in each District 4 jail. Males as a percentage of total bookings ranged from a low of 84% at the Albany Jail to a high of 99% at Corvallis. Juveniles' share of each jail's bookings varied more widely, from zero at Newport and Mill City which lodge juveniles directly in the county jail, to 28% at the Linn County Jail. Percentage of District 4 residents in each jail's bookings also varied widely, from 40% at Lincoln City to 87% at Newport. The county jails generally had the lowest percentages of local residents in their populations. Persons charged with misdemeanors accounted for 39% to 62% of county jail bookings and 68% to 97% of city jail bookings. Average lengths of stay both pretrial and on sentence also varied between county and city jails, with county jails registering longer average stays in both categories.

The lower part of Table JB-11 compares these characteristics across the eleven districts studied. District 4 ranks fairly low among the districts in its percentage of male bookings, local resident bookings and bookings of misdemeanants, and fairly high in its bookings of juveniles.

In Table JB-12, persons booked in District 4 county and city jails are grouped by age categories. Sixty-one percent of the bookings fell into the 25 years or younger category; an additional 21% were in the 26-40 age group, while persons 41 years or older made up only 15% of total bookings. Age distributions varied somewhat between city and county jails, with the

former booking fewer juveniles and proportionately more persons in the older age groups.

Table JB-13 further breaks down the age information presented in Table JB-11 by sex. It indicates that males are overrepresented in the 18-25 and 31-35-age groups, while females are overrepresented, in relation to total bookings, in the juvenile and 41-50-age groups. Thirty-four percent of females lodged into jail fall in the 17-or-under-age group although this age group accounts for only 19% of total bookings.

The race of persons booked is indicated in Table JB-14. Ninety-three percent of both male and female bookings were white persons, although the percentage was slightly higher at city than at county jails. American Indians, Blacks and Mexican-Americans each accounted for 1% of male bookings, contrasted with 2% of female bookings in the American Indian category and insignificant numbers of Black and Mexican-American females.

Table JB-15 compares the place of residence of persons booked at county and city jails in District 4. Sixty-three percent of county jail bookings were residents of District 4, compared with 75% of city jail bookings in this category.

TABLE JB-11

## DISTRICT 4 - 1971

Summary Of Selected Population Characteristics For District 4 Jails  
 And Comparison With Ten Other Districts<sup>1</sup>

<u>Jail</u>	<u>Total 1971 Bookings</u>	<u>Percent Males</u>	<u>Percent Juveniles</u> /4	<u>Percent Local Residents</u>	<u>Percent Charged With Misdemeanors</u>	<u>Average Stay Pretrial</u>	<u>Average Stay Sentenced</u>
Benton County	548	89%	9%	70%	59%	4 days	12 days
Lincoln County	837	86%	24%	59%	62%	3 days	10 days
Linn County	1,336	85%	28%	62%	39%	6 days	25 days
Albany	690	84%	18%	75%	68%	3 days	9 days
Corvallis	373	99%	3%	77%	97%	2 days	3 days
Lebanon	318	89%	10%	86%	92%	2 days	8 days
Lincoln City	139	87%	14%	40%	88%	2 days	16 days
Mill City	12	92%	-%	67%	83%	2 days	0 days
Newport	38	82%	-%	87%	87%	2 days	3 days
Sweet Home	168	89%	20%	80%	69%	2 days	11 days
District 4	4,459	87%	19%	68%	62%	3 days	10 days
District 1	2,424	87%	27%	51%	67%	/3	/3
District 2/2	32,204	88%	8%	59%	65%	3 days	7 days
District 3	6,393	90%	6%	68%	76%	2 days	7 days
District 5	5,526	92%	5%	76%	70%	3 days	5 days
District 6	3,851	89%	15%	65%	49%	2 days	18 days
District 8	6,012	89%	15%	68%	60%	3 days	18 days
District 9	1,852	/3	12%	48%	/3	/3	/3
District 10	2,743	86%	20%	75%	66%	4 days	18 days
District 12	3,543	87%	24%	71%	72%	/3	/3
District 13	1,892	86%	/3	56%	48%	4 days	8 days

1. Data for Districts 3 and 9 are for Calendar Year 1969; Districts 1, 6, 10, 12 and 13 for 1970; and Districts 2, 4, 5 and 8 are for 1971. For the counties in each district, see Table
2. District 2 bookings are estimated, and based on a three-month sample (March, July, November 1971).
3. Not available.
4. Juveniles: Anyone 17 years of age or younger.

TABLE JB-12

DISTRICT 4 - 1971

Distribution Of Persons Booked, By Age And By Jail

<u>County Jails</u>	<u>17 And Under</u>	<u>18-20 Years</u>	<u>21-25 Years</u>	<u>26-30 Years</u>	<u>31-35 Years</u>	<u>36-40 Years</u>	<u>41-50 Years</u>	<u>51-60 Years</u>	<u>61+ Years</u>	<u>Age Unknown</u>	<u>Total</u>
Benton County Jail	48	155	135	58	36	34	40	19	1	22	548
Lincoln County Jail	202	169	139	86	42	33	67	61	13	25	837
Linn County Jail	<u>373</u>	<u>277</u>	<u>252</u>	<u>129</u>	<u>73</u>	<u>63</u>	<u>93</u>	<u>56</u>	<u>7</u>	<u>13</u>	<u>1336</u>
TOTAL	623	601	526	273	151	130	200	136	21	60	2721
PERCENT	23%	22%	19%	10%	6%	5%	7%	5%	1%	2%	100%
<u>City Jails</u>											
Albany Jail	127	157	127	69	44	39	68	51	4	4	690
Corvallis Jail	8	67	105	41	43	26	29	38	3	13	373
Lebanon Jail	30	102	55	32	30	13	26	17	4	9	318
Lincoln City Jail	19	38	21	5	6	8	13	19	1	9	139
Mill City Jail	0	0	0	0	0	0	0	0	0	12	12
Newport Jail	0	19	3	4	1	4	2	4	1	0	38
Sweet Home Jail	<u>34</u>	<u>39</u>	<u>27</u>	<u>23</u>	<u>11</u>	<u>3</u>	<u>6</u>	<u>7</u>	<u>1</u>	<u>17</u>	<u>168</u>
TOTAL	218	422	338	174	135	93	144	136	14	64	1738
PERCENT	13%	24%	19%	10%	8%	5%	8%	8%	1%	4%	100%
TOTAL, ALL JAILS	841	1023	864	447	286	223	344	272	35	124	4459
PERCENT	19%	23%	19%	10%	6%	5%	8%	6%	1%	3%	100%

TABLE JB-13

DISTRICT 4 - 1971

Distribution Of Persons Booked, By Age, By Sex, And By Jail

<u>County Jails</u>	<u>Sex</u>	<u>17 And Under</u>	<u>18-20 Years</u>	<u>21-25 Years</u>	<u>26-30 Years</u>	<u>31-35 Years</u>	<u>36-40 Years</u>	<u>41-50 Years</u>	<u>51-60 Years</u>	<u>61+ Years</u>	<u>Age Unk.</u>	<u>Total</u>
Benton	Male	40	139	124	50	34	31	34	16	1	20	489
	Female	8	16	11	8	2	3	6	3	0	2	59
Lincoln	Male	162	155	127	75	37	27	58	48	13	20	722
	Female	40	14	12	11	5	6	9	13	0	5	115
Linn	Male	264	257	231	118	65	56	81	50	7	10	1139
	Female	109	20	21	11	8	7	12	6	0	3	197
TOTAL	Male	466	551	482	243	136	114	173	114	21	50	2350
	Female	157	50	44	30	15	16	27	22	0	10	371
<u>City Jails</u>												
Albany	Male	105	123	106	60	40	33	56	46	3	4	576
	Female	22	34	21	9	4	6	12	5	1	0	114
Corvallis	Male	8	67	105	41	42	26	29	38	3	13	372
	Female	0	0	0	0	1	0	0	0	0	0	1
Lebanon	Male	28	87	53	26	26	12	24	15	4	8	283
	Female	2	15	2	6	4	1	2	2	0	1	35
Lincoln City	Male	15	37	21	5	6	8	8	14	0	7	121
	Female	4	1	0	0	0	0	5	5	1	2	18
Mill City	Male	0	0	0	0	0	0	0	0	0	11	11
	Female	0	0	0	0	0	0	0	0	0	1	1
Newport	Male	0	15	2	4	0	3	2	4	1	0	31
	Female	0	4	1	0	1	1	0	0	0	0	7
Sweet Home	Male	27	37	27	21	9	3	4	6	1	15	150
	Female	7	2	0	2	2	0	2	1	0	2	18
TOTAL	Male	183	366	314	157	123	85	123	123	12	58	1544
	Female	35	56	24	17	12	8	21	13	2	6	194
TOTAL, ALL JAILS	Male	649	917	796	400	259	199	296	237	33	108	3894
	Female	192	106	68	47	27	24	48	35	2	16	565
PERCENT	Male	17%	24%	20%	10%	7%	5%	8%	6%	1%	3%	101%
	Female	34%	19%	12%	8%	5%	4%	9%	6%	-%	3%	100%
AGE GROUP AS % TOTAL BOOKINGS		19%	23%	19%	10%	6%	5%	8%	6%	1%	3%	100%

TABLE JB-14

DISTRICT 4 - 1971

Distribution Of Persons Booked, By Race, By Sex, And By Jail

<u>County Jails</u>	<u>Sex</u>	<u>White</u>	<u>American Indian</u>	<u>Black</u>	<u>Mexican- American</u>	<u>Mexican</u>	<u>Oriental</u>	<u>Other</u>	<u>Unknown</u>	<u>Total</u>
Benton	Male	455	9	6	1	4	3	0	11	489
	Female	51	2	1	1	0	0	0	4	59
Lincoln	Male	672	22	9	3	9	0	3	4	722
	Female	109	6	0	0	0	0	0	0	115
Linn	Male	1081	6	19	11	5	4	1	12	1139
	Female	194	2	0	0	0	0	0	1	197
TOTAL		2562	47	35	16	18	7	4	32	2721
PERCENT		94%	2%	1%	1%	1%	-%	-%	1%	100%

City Jails

Albany	Male	547	1	5	5	1	0	5	12	576
	Female	104	0	0	3	0	1	0	6	114
Corvallis	Male	349	4	4	7	3	0	2	3	372
	Female	1	0	0	0	0	0	0	0	1
Lebanon	Male	274	2	2	1	0	0	1	3	283
	Female	35	0	0	0	0	0	0	0	35
Lincoln City	Male	57	3	0	0	0	0	0	61	121
	Female	8	0	0	0	0	0	0	10	18
Mill City	Male	10	0	0	0	0	0	0	1	11
	Female	1	0	0	0	0	0	0	0	1
Newport	Male	30	1	0	0	0	0	0	0	31
	Female	6	0	0	0	0	0	0	1	7
Sweet Home	Male	150	0	0	0	0	0	0	0	150
	Female	18	0	0	0	0	0	0	0	18
TOTAL		1590	11	11	16	4	1	8	97	1738
PERCENT		92%	1%	1%	1%	-%	-%	-%	6%	101%
TOTAL, ALL JAILS		4152	58	46	32	22	8	12	129	4459
PERCENT		93%	1%	1%	1%	-%	-%	-%	3%	99%

NOTE: Percentages total other than 100% because of rounding. Percentages less than 0.5% are omitted.

TABLE JB-15

DISTRICT 4 - 1971

Distribution Of Persons Booked, By Place Of Residence And By Jail

	<u>Resident Of District 4</u>	<u>Resident Of Oregon, Not District 4</u>	<u>Not Oregon Resident</u>	<u>Residence Unknown</u>	<u>Total</u>
<u>COUNTY JAILS</u>					
BENTON COUNTY JAIL	385	108	40	15	548
LINCOLN COUNTY JAIL	494	233	88	22	837
LINN COUNTY JAIL	827	339	156	14	1336
TOTAL	1706	680	284	51	2721
PERCENT	63%	25%	10%	2%	100%
<u>CITY JAILS</u>					
ALBANY JAIL	517	86	63	24	690
CORVALLIS JAIL	288	49	28	8	373
LEBANON JAIL	274	27	10	7	318
LINCOLN CITY JAIL	56	22	4	57	139
MILL CITY JAIL	8	1	0	3	12
NEWPORT JAIL	33	1	2	2	38
SWEET HOME JAIL	134	15	15	4	168
TOTAL	1310	201	122	105	1738
PERCENT	75%	12%	7%	6%	100%
TOTAL, ALL JAILS	3016	881	406	156	4459
PERCENT	68%	20%	9%	3%	100%



**BOOKINGS  
BY  
ARRESTING AGENCY**

BOOKINGS BY ARRESTING AGENCY

(Table JB-16)

Table JB-16 reports the agencies responsible for the taking into custody of persons booked in District 4 jails during 1971. The three County Jails lodge prisoners for the greatest numbers of agencies at local, state and federal levels. The Oregon State Police lodged most of their District 4 prisoners in county jails, in fact, at the Lincoln County Jail in 1971 bookings resulting from Oregon State Police arrests (320) exceeded bookings resulting from county sheriff arrests (249).

TABLE JB-16

## DISTRICT 4 - 1971

Distribution Of Persons Booked, By Arresting Agency And By Jail

	<u>Benton</u> <u>County</u> <u>Jail</u>	<u>Lincoln</u> <u>County</u> <u>Jail</u>	<u>Linn</u> <u>County</u> <u>Jail</u>	<u>Albany</u> <u>Jail</u>	<u>Corvallis</u> <u>Jail</u>	<u>Lebanon</u> <u>Jail</u>	<u>Lincoln</u> <u>City</u> <u>Jail</u>	<u>Mill</u> <u>City</u> <u>Jail</u>	<u>Newport</u> <u>Jail</u>	<u>Sweet</u> <u>Home</u> <u>Jail</u>	<u>Total</u>
Benton Co. Sheriff	213	2	29	0	3	0	0	0	0	0	247
Lincoln Co. Sheriff	0	249	0	0	1	1	0	0	0	0	251
Linn County Sheriff	0	0	717	0	0	0	0	0	0	0	717
Albany Police Dept.	1	0	170	688	0	0	0	0	0	0	859
Corvallis Police Dept.	170	0	13	1	368	1	1	0	0	0	554
Lebanon Police Dept.	0	0	35	0	0	314	0	0	0	0	349
Lincoln City Police Dept.	0	22	0	0	0	0	124	0	0	0	146
Mill City Police Dept.	0	0	0	0	0	0	0	12	0	0	12
Newport Police Dept.	0	188	0	0	0	0	1	0	38	0	227
Sweet Home Police Dept.	0	0	46	0	0	0	0	0	0	168	214
Benton Co. Juvenile Dept.	1	0	3	0	0	0	0	0	0	0	4
Lincoln Co. Juvenile Dept.	0	5	0	0	0	0	0	0	0	0	5
Linn Co. Juvenile Dept.	0	2	17	0	0	0	0	0	0	0	19
O.L.C.C.	0	0	3	0	0	0	0	0	0	0	3
O.S.P.	62	320	284	0	1	0	12	0	0	0	679
Philomath Police Dept.	97	0	0	0	0	0	0	0	0	0	97
Toledo Police Dept.	0	27	0	0	0	0	0	0	0	0	27
Other Law Enforcement Agencies	1	8	2	0	0	0	0	0	0	0	11
Citizen's Arrest	2	1	3	0	0	1	0	0	0	0	7
Children's Services Div.	0	3	0	0	0	0	0	0	0	0	3
Oregon Corrections Div.	0	0	2	0	0	0	0	0	0	0	2
Federal Agencies	0	6	7	0	0	0	0	0	0	0	13
Arresting Agency Unknown	1	4	5	1	0	1	1	0	0	0	13
<b>TOTAL</b>	<b>548</b>	<b>837</b>	<b>1336</b>	<b>690</b>	<b>373</b>	<b>318</b>	<b>139</b>	<b>12</b>	<b>38</b>	<b>168</b>	<b>4459</b>

**OFFENSES**

OFFENSES

(Tables OD-1 to OD-9)

Tables OD-1 to OD-3 examine the distribution of persons booked by the class of offense (felony - misdemeanor) and by sex for each of the ten jails sampled in District 4. Table OD-1 shows that 62% of the total number of bookings in 1971 were charged with misdemeanor offenses. Twelve percent of the bookings were for crimes against property, 11% were miscellaneous felonies and indictable misdemeanors, and 4% were serious offenses. (Definitions of these offense groups can be found on Table OD-2, page 48.) The other 11% of the total bookings were juvenile offenses, holds for other jurisdictions and unknowns.

Tables OD-2 and OD-3 are a more complete breakdown of offense data during 1971 by county jails and city jails. The charge which occurred most often in the county jails' data (Table OD-2) was driving under the influence of alcohol at 10% or 466 bookings, followed by traffic offenses and public intoxication. The city jail offense distribution (Table OD-3) shows that the most numerous offenses are public intoxication with 243 bookings and driving under the influence of alcohol with 238 bookings. Both offenses are approximately 14% of the total number of bookings. A close third is traffic offenses with 233 bookings or 13% of the total. Tables OD-2 and OD-3 also show the total number of bookings in District 4 jails. The charge which most often resulted in jail detention in District 4 was driving under the influence of alcohol at 726 bookings, or 16% of the 1971 bookings.

The number of persons booked in District 4 jails are distributed by their offense categories and age in Tables OD-4 and OD-5. These two tables show that 71% of the offenses committed are in the age category of 30 years

or younger. If juvenile offenders are excluded, 52% or over half of the total number of offenses that occurred in 1971 were by young adults. Serious property crimes, serious crimes against persons and other felonies and indictable misdemeanors were committed by the younger offender age groups. Eighty-three percent of all serious property crimes were charged against persons aged 30 or younger. Individuals 35 years or younger accounted for 83% of the bookings for serious crimes against persons. Persons aged 18 to 25 accounted for 60% of the bookings for other felonies and indictable misdemeanors, yet account for only 42% of the total bookings. The age group of 36 to 60 totaled only 19% of the total bookings, but accounted for approximately 42% of all the bookings for public intoxication and D.U.I.L. combined.

Tables OD-6, OD-7, OD-8 and OD-9 examine the frequency or the number of times people were booked into District 4 jails in 1971. During 1971, a total of 4459 bookings occurred in which 3414 people were involved. This is demonstrated in Table OD-6. The age group with the largest number of persons being recycled is 18 to 20 years with 750 persons or 22% of 3414. The age group of 26 to 30 has one person lodged nine times in District 4 jails during 1971. Table OD-7 shows that 93% of those booked on drunk driving charges were booked only one time in 1971. Similarly, in Tables OD-8 and OD-9, a high percentage (91% and 92% respectively) of those booked for public intoxication and disorderly conduct were booked only once in 1971.

TABLE OD-1

DISTRICT 4 - 1971

Distribution Of Persons Booked By Jail, By Sex And By Class Of Offense

<u>Jail</u>	<u>Total Offenses</u>			<u>Misdemeanors</u>			<u>Serious Offenses Versus Person</u>			<u>Serious Offenses Versus Property</u>			<u>Miscellaneous Felonies And Indictable Misdemeanors</u>			<u>Juvenile Offenses, Holds And Unknown</u>		
	<u>M</u>	<u>F</u>	<u>T</u>	<u>M</u>	<u>F</u>	<u>T</u>	<u>M</u>	<u>F</u>	<u>T</u>	<u>M</u>	<u>F</u>	<u>T</u>	<u>M</u>	<u>F</u>	<u>T</u>	<u>M</u>	<u>F</u>	<u>T</u>
Benton County	489	59	548	289	36	325	23	0	23	73	6	79	81	12	93	23	5	28
Lincoln County	722	115	837	450	69	519	32	0	32	99	7	106	47	7	54	94	32	126
Linn County	1139	197	1336	474	50	524	79	3	82	237	20	257	208	26	234	142	97	239
Albany City	576	114	690	377	89	466	44	0	44	68	7	75	46	7	53	41	11	52
Corvallis City	372	1	373	361	1	362	1	0	1	1	0	1	4	0	4	5	0	5
Lebanon City	283	35	318	258	34	292	7	0	7	2	0	2	13	0	13	3	1	4
Lincoln City	121	18	139	105	17	122	2	0	2	2	0	2	7	0	7	5	1	6
Mill City	11	1	12	9	1	10	1	0	1	0	0	0	0	0	0	1	0	1
Newport City	31	7	38	27	6	33	1	0	1	2	0	2	1	0	1	0	1	1
Sweet Home	<u>150</u>	<u>18</u>	<u>168</u>	<u>105</u>	<u>10</u>	<u>115</u>	<u>3</u>	<u>0</u>	<u>3</u>	<u>12</u>	<u>0</u>	<u>12</u>	<u>8</u>	<u>0</u>	<u>8</u>	<u>22</u>	<u>8</u>	<u>30</u>
TOTAL	3894	565	4459	2455	313	2768	193	3	196	496	40	536	415	52	467	336	156	492
PERCENT OF TOTAL BOOKINGS	87%	13%	100%			62%			4%			12%			11%			11%

TABLE OD-2

DISTRICT 4

JAIL BOOKINGS DATA, 1971

Distribution Of Persons Booked By Offense, By County Jail, And Sex

Offense /1	Benton County Jail				Lincoln County Jail				Linn County Jail				County Jails Total				District 4 Totals			
	M	F	T	X	M	F	T	X	M	F	T	X	M	F	T	X	M	F	T	X
<b>Crimes Vs. Persons</b>																				
Homicide	0	0	0		2	0	2		0	0	0		2	0	2	-X	2	0	2	-X
Manslaughter	0	0	0		0	0	0		1	0	1		1	0	1	-X	1	0	1	-X
Kidnapping	1	0	1		0	0	0		1	1	2		2	1	3	-X	3	1	4	-X
Sexual Assault	6	0	6		1	0	1		4	0	4		11	0	11	-X	12	0	12	-X
Robbery	3	0	3		2	0	2		7	0	7		12	0	12	-X	15	0	15	-X
Assault (Felony and Misdemeanor)	13	0	13		27	0	27		65	3	68		105	3	108	2X	159	3	162	4X
Subtotal	23	0	23	1X	32	0	32	1X	78	4	82	2X	133	4	137	3X	192	4	196	4X
<b>Crimes V. Property</b>																				
Burglary	17	0	17		39	3	42		53	0	53		109	3	112	3X	146	3	149	3X
Grand Larceny	9	0	9		22	2	24		43	0	43		74	2	76	2X	89	4	93	2X
Stolen Vehicle	22	1	23		13	0	13		25	3	28		60	4	64	2X	65	6	70	2X
Forgery	1	1	2		2	0	2		12	2	14		15	3	18	-X	21	4	25	1X
Fraud	8	3	11		16	2	18		40	12	52		64	17	81	2X	76	20	96	2X
Embezzlement	1	0	1		1	0	1		0	0	0		2	0	2	-X	2	0	2	-X
Possession or Concealing Stolen Property	15	1	16		6	0	6		64	3	67		85	4	89	2X	96	4	100	2X
Subtotal	73	6	79	2X	99	7	106	2X	237	20	257	6X	409	33	442	10X	496	40	536	12X
<b>Miscellaneous Felonies and Indictable Misdemeanors</b>																				
Possession/Sale of Dangerous Drugs	57	9	66		20	2	22		101	16	117		178	27	205	5X	220	32	252	6X
Family Offenses	2	0	2		2	0	2		15	0	15		19	0	19	-X	21	0	21	-X
Escape	3	2	5		5	3	8		24	5	29		32	10	42	1X	38	12	50	1X
Weapons	4	0	4		4	0	4		8	0	8		16	0	16	-X	23	0	23	1X
Other Sex Offenses	4	0	4		5	1	6		7	0	7		16	1	17	-X	23	1	24	1X
Arson	0	0	0		0	0	0		3	1	4		3	1	4	-X	3	1	4	-X
Contributing to the Delinquency of a minor	4	0	4		4	1	5		11	2	13		19	3	22		28	3	31	1X
Probation/Parole Violation	7	1	8		6	0	6		39	2	41		52	3	55		57	3	60	1X
Other Felonies	0	0	0		1	0	1		0	0	0		1	0	1	-X	2	0	2	-X
Subtotal	81	12	93	2X	47	7	54	1X	208	26	234	5X	336	45	381	9X	415	52	467	10X
<b>Misdemeanors</b>																				
Traffic	38	4	42		121	3	124		60	4	64		219	11	230	5X	452	30	482	11X
Public Intoxification	26	3	29		67	13	80		65	5	70		158	21	179	4X	401	32	433	10X
Driving under the Influence of Liquor	143	18	161		113	28	141		147	17	164		403	63	466	10X	641	85	726	16X
Petty Larceny	16	5	21		15	13	28		39	3	42		70	21	91	2X	165	87	252	6X
Minor in Possession	27	2	29		29	6	35		55	9	64		111	17	128	3X	267	26	293	7X
Disorderly Conduct	8	0	8		18	2	20		16	2	18		42	4	46	1X	179	19	198	4X
Nonappearance, Contempt of Court	4	0	4		29	1	30		13	0	13		46	1	47	1X	90	6	96	2X
Game Violations	9	0	9		13	0	13		3	0	3		25	0	25	1X	26	0	26	1X
Other Misdemeanors	18	4	22		45	3	48		76	10	86		139	17	156	3X	234	28	262	6X
Subtotal	289	36	325	7X	450	69	519	12X	474	50	524	12X	1213	155	1368	31X	2455	313	2768	62X
Juvenile Delinquency /2	10	5	15		73	31	104	2X	114	93	207	5X	197	129	326	7X	236	149	385	9X
Holds for other Jurisdictions	12	0	12		18	1	19		24	4	28	1X	54	5	59	1X	91	7	98	2X
Unknowns	1	0	1		3	0	3		4	0	4	-X	8	0	8	-X	9	0	9	-X
GRAND TOTAL	489	59	548		722	115	837		1139	197	1336		2350	371	2721		3894	565	4459	99X*
Percentage			12%				19%				30%				61%					

\*Percentage differs from 100% due to rounding.

1. Offenses defined using criminal code of 1971.
2. Includes curfew violation, truancy, beyond parental control, ungovernable, runaway, etc.

TABLE OD-3

DISTRICT 4

JAIL BOOKINGS DATA, 1971

Offenses, By Jail And Sex

Offense/1	Albany		Corvallis		Lebanon		Lincoln City		Mill City		Newport		Sweet Home		City Jail Totals		District 4 Totals			
	M	F	M	F	M	F	M	F	M	F	M	F	M	F	M	F	M	F	T	X
<b>Crimes Vs. Persons</b>																				
Homicide	0	0	0	0	0	0	0	0	0	0	0	0	0	0	0	0	2	0	2	-X
Manslaughter	0	0	0	0	0	0	0	0	0	0	0	0	0	0	0	0	1	0	1	-X
Kidnapping	0	0	0	0	1	0	0	0	0	0	0	0	0	0	1	0	3	1	4	-X
Sexual Assault	1	0	0	0	0	0	0	0	0	0	0	0	0	0	1	0	12	0	12	-X
Robbery	3	0	0	0	0	0	0	0	0	0	0	0	0	3	0	15	0	15	-Z	
Assault (Felony & Misdemeanor)	40	0	1	0	6	0	2	0	1	0	1	0	3	0	54	0	159	3	162	4X
Subtotal	44	0	1	0	7	0	2	0	1	0	1	0	3	0	59	0	192	4	196	4X
<b>Crimes Vs. Property</b>																				
Burglary	30	0	0	0	0	0	1	0	0	0	1	0	5	0	37	0	146	3	149	3X
Grand Larceny	12	2	0	0	0	0	0	0	0	0	1	0	3	0	15	2	89	4	93	2X
Stolen Vehicle	4	1	0	0	0	0	0	0	0	0	0	0	1	0	5	1	65	5	70	2X
Forgery	5	1	0	0	0	0	0	0	0	0	0	0	1	0	6	1	21	4	25	1X
Fraud	10	3	0	0	1	0	1	0	0	0	0	0	0	0	12	3	76	20	96	2X
Embezzlement	0	0	0	0	0	0	0	0	0	0	0	0	0	0	0	0	2	0	2	-X
Possession Or Concealing Stolen Property	7	0	1	0	1	0	0	0	0	0	0	0	2	0	11	0	96	4	100	2X
Subtotal	68	7	1	0	2	0	2	0	0	0	2	0	12	0	87	7	496	40	536	12X
<b>Miscellaneous Felonies &amp; Indictable Misdemeanors</b>																				
Possession/Sale Dangerous Drugs	30	5	1	0	5	0	6	0	0	0	0	0	0	0	42	5	220	32	252	6X
Family Offenses	1	0	0	0	0	0	0	0	0	0	1	0	0	0	2	0	21	0	21	-X
Escape	4	2	0	0	0	0	0	0	0	0	0	0	2	0	6	2	38	12	50	1X
Weapons	3	0	0	0	4	0	0	0	0	0	0	0	0	0	7	0	23	0	23	1X
Other Sex Offenses	4	0	1	0	1	0	0	0	0	0	0	0	1	0	7	0	23	1	24	1X
Arson	0	0	0	0	0	0	0	0	0	0	0	0	0	0	0	0	3	1	4	-X
Contributing To The Delinquency Of A Minor	2	0	2	0	3	0	1	0	0	0	0	0	1	0	9	0	28	3	31	1X
Probation/Parole Violations	1	0	0	0	0	0	0	0	0	0	0	0	4	0	5	0	57	3	60	1X
Other Felonies	1	0	0	0	0	0	0	0	0	0	0	0	0	0	1	0	2	0	2	-X
Subtotal	46	7	4	0	13	0	7	0	0	0	1	0	8	0	79	7	415	52	467	10X
<b>Misdemeanors</b>																				
Traffic	63	3	39	0	88	14	19	2	2	0	2	0	20	0	233	19	452	30	482	11X
Public Intoxication	15	1	139	0	52	3	13	3	2	1	1	0	21	3	243	11	401	32	433	10X
Driving Under The Influence Of Liquor	42	5	117	1	31	5	34	10	3	0	1	0	10	1	238	22	641	85	726	16X
Petty Larceny	70	58	7	0	6	3	2	0	0	0	0	2	10	3	95	66	165	87	252	6X
Minor In Possession	38	0	15	0	61	6	24	2	0	0	9	1	9	0	156	9	267	26	293	7X
Disorderly Conduct	87	12	18	0	14	1	4	0	2	0	5	0	7	2	137	15	179	19	198	4X
Nonappearance, Contempt Of Court	25	2	2	0	2	0	7	0	0	0	7	3	1	0	44	5	90	6	96	2X
Game Violations	0	0	0	0	1	0	0	0	0	0	0	0	0	0	1	0	26	0	26	1X
Other Misdemeanors	37	8	24	0	3	2	2	0	0	0	2	0	27	1	95	11	234	28	262	6X
Subtotal	377	89	361	1	258	34	105	17	9	1	27	6	105	10	1242	158	2455	313	2768	62X
Juvenile Delinquency/2	28	11	0	0	0	1	0	0	0	0	0	0	11	8	39	20	236	149	385	9X
Holds For Other Jurisdictions	12	0	5	0	3	0	5	1	1	0	0	1	11	0	37	2	91	7	98	2X
Unknowns	1	0	0	0	0	0	0	0	0	0	0	0	0	0	1	0	9	0	9	-X
<b>GRAND TOTALS</b>	<b>576</b>	<b>114</b>	<b>372</b>	<b>1</b>	<b>283</b>	<b>35</b>	<b>121</b>	<b>18</b>	<b>11</b>	<b>1</b>	<b>31</b>	<b>7</b>	<b>150</b>	<b>18</b>	<b>1544</b>	<b>194</b>	<b>3894</b>	<b>565</b>	<b>4459</b>	<b>99X</b>
Percentage	15%		8%		7%		3%		-X		1%		4%		39%					

NOTE: Percentage differs from 100% due to rounding.

1. Offenses defined using criminal code of 1971.
2. Includes curfew violation, truancy, beyond parental control, ungovernable, runaway, etc..



TABLE OD-4

DISTRICT 4 - 1971  
Distribution Of Persons Booked, By Offense And By Age (Percentages)

Offense	Age										Total
	17 & Under	18-20	21-25	26-30	31-35	36-40	41-50	51-60	61 +	Unknown	
Serious Crimes Against Persons <sup>1</sup>	11%	24%	21%	15%	12%	7%	6%	2%	-%	2%	100%
Serious Crimes Against Property <sup>1</sup>	20%	29%	22%	12%	5%	2%	4%	3%	-%	3%	100%
Other Felonies & Indictable Misdemeanors <sup>1</sup>	15%	27%	33%	8%	6%	4%	4%	2%	-%	2%	101%
Public Intoxication	7%	8%	18%	13%	9%	10%	16%	15%	2%	3%	101%
D.U.I.L.	4%	7%	15%	12%	12%	10%	17%	16%	3%	5%	101%
M.I.P.	21%	78%	-%	-%	-%	-%	-%	-%	-%	1%	100%
Disorderly Conduct	6%	14%	21%	13%	12%	6%	10%	14%	1%	5%	102%
Petty Larceny	15%	33%	25%	10%	1%	3%	8%	3%	-%	2%	100%
Traffic Offenses <sup>2</sup>	9%	26%	29%	15%	7%	4%	5%	3%	-%	3%	101%
Nonappearance & Contempt Of Court	4%	18%	33%	13%	8%	12%	8%	4%	1%	-%	101%
Game Violations	19%	27%	31%	12%	4%	-%	4%	4%	-%	-%	101%
Other Misdemeanors	15%	31%	21%	9%	5%	3%	10%	3%	-%	3%	100%
Delinquency <sup>3</sup>	99%	-%	-%	-%	-%	-%	-%	-%	-%	1%	100%
Transferred Out Of District <sup>4</sup>	10%	30%	26%	17%	2%	6%	2%	1%	1%	5%	100%
Charge Unknown	<u>11%</u>	<u>33%</u>	<u>-%</u>	<u>11%</u>	<u>22%</u>	<u>-%</u>	<u>11%</u>	<u>11%</u>	<u>-%</u>	<u>-%</u>	<u>99%</u>
AGE GROUP AS % OF TOTAL BOOKINGS	19%	23%	19%	10%	6%	5%	8%	6%	1%	3%	100%

NOTE: Percentages total other than 100% due to rounding. Percentages less than 0.5 are indicated by a dash (-).

1. Refer to Page 48 or Page 49 for offense groupings.

2. All traffic offenses except driving under the influence of alcohol.

3. Includes curfew violation, ungovernable, beyond parental control, truancy, runaway, etc.

**CONTINUED**

**1 OF 2**

## TABLE OD-5

## DISTRICT 4 - 1971

Distribution Of Persons Booked, By Offense And By Age (Numbers)

<u>Offense</u>	<u>17 &amp; Under</u>	<u>18-20</u>	<u>21-25</u>	<u>26-30</u>	<u>31-35</u>	<u>36-40</u>	<u>41-50</u>	<u>51-60</u>	<u>61+</u>	<u>Age Unknown</u>	<u>Total</u>
Serious Crimes Against Persons <sup>1</sup>	22	47	42	29	23	14	12	3	1	3	196
Serious Crimes Against Property <sup>1</sup>	109	155	119	62	27	13	22	14	0	15	536
Other Felonies & Indictable Misdemeanors <sup>1</sup>	69	128	152	37	26	19	18	10	1	7	467
Public Intoxication	28	36	78	55	39	43	68	66	8	12	433
D. U. I. L.	29	52	105	88	86	71	124	116	19	36	726
M. I. P. <sup>2</sup>	61	223	3	0	1	0	0	1	0	4	293
Disorderly Conduct	11	27	41	26	23	12	19	27	2	10	198
Petty Larceny	37	84	64	24	3	7	19	8	1	5	252
Traffic Offenses <sup>3</sup>	44	124	140	70	32	19	25	13	0	15	482
Nonappearance & Contempt Of Court	4	16	31	12	8	12	8	4	1	0	96
Game Violations	5	7	8	3	1	0	1	1	0	0	26
Other Misdemeanors	39	83	55	23	13	7	25	7	1	9	262
Delinquency <sup>4</sup>	372	9	1	0	0	0	0	0	0	3	385
Transferred Out Of District 4	10	29	25	17	2	6	2	1	1	5	98
Charge Unknown	<u>1</u>	<u>3</u>	<u>0</u>	<u>1</u>	<u>2</u>	<u>0</u>	<u>1</u>	<u>1</u>	<u>0</u>	<u>0</u>	<u>9</u>
TOTAL	851	1023	864	447	285	223	344	272	35	124	4459

1. Refer to Page 48 or Page 49 for offense groupings.

2. Groupings show that five bookings were 21 or older because of error.

3. All traffic offenses except driving under the influence of alcohol.

4. Includes curfew violation, ungovernable, beyond parental control, runaway, etc. Ten cases were over 17 years and charged with "delinquency" because of error.

TABLE OD-6  
DISTRICT 4, ALL JAILS  
JAIL BOOKINGS DATA, 1971

Distribution Of Persons Booked By Number Of Arrests Per Person, By Age

Number Of <sup>1</sup> Bookings Per Person	0-17 Years		18-20 Years		21-25 Years		26-30 Years		31-35 Years		36-40 Years		41-50 Years		51-60 Years		61+ Years		Age Unk.	Total		
1	473	76%	572	76%	494	77%	274	80%	175	78%	157	85%	247	85%	164	79%	27	90%	120	98%	2703	79%
2	103	17%	118	16%	103	16%	46	13%	43	19%	23	12%	34	12%	32	15%	2	7%	2	2%	506	15%
3	25	4%	41	5%	28	4%	14	4%	5	2%	3	2%	5	2%	5	2%	0	-%	0	-%	126	4%
4	12	2%	9	1%	8	1%	7	2%	1	-%	1	1%	2	1%	4	2%	1	3%	0	-%	45	1%
5	6	1%	8	1%	7	1%	1	-%	1	-%	0	-%	0	-%	1	-%	0	-%	0	-%	24	1%
6	2	-%	2	-%	0	-%	1	-%	0	-%	0	-%	1	-%	0	-%	0	-%	0	-%	6	-%
7	1	-%	0	-%	0	-%	0	-%	0	-%	1	1%	0	-%	1	-%	0	-%	0	-%	3	-%
8	0	-%	0	-%	0	-%	0	-%	0	-%	0	-%	0	-%	0	-%	0	-%	0	-%	0	-%
9	0	-%	0	-%	1	-%	0	-%	0	-%	0	-%	0	-%	0	-%	0	-%	0	-%	1	-%
TOTAL	622	100%	750	99%	641	99%	343	99%	225	99%	185	101%	289	100%	207	98%	30	100%	122	100%	3414	101%
Age Group As % Of Total Persons Booked	18%		22%		19%		10%		7%		5%		8%		6%		1%		4%		100%	

NOTE: Percentages are calculated vertically. Totals are other than 100% because of rounding.

1. A man booked in a jail in District 4 and transferred to another jail in the district would be counted as two bookings.

TABLE OD-7

## DISTRICT 4, COUNTY AND CITY JAILS

## JAIL BOOKINGS DATA, 1971

Distribution Of Persons Booked For Drunk Driving By Number Of Arrests Per Person, By Jail

Number Of Bookings <sup>1</sup> Per Person	<u>County Jails</u>					<u>City Jails</u>							<u>Totals</u> <u>District</u>			
	Benton	Lincoln	Linn	Total	%	Albany	Corvallis	Lebanon	Lincoln City	Mill City	Newport	Sweet Home	Total	%	Total	%
1	137	127	147	411	94%	43	100	29	40	3	1	5	221	92%	632	93%
2	12	7	7	26	6%	2	9	2	2	0	0	3	18	7%	44	6%
3	0	0	1	1	-%	0	0	1	0	0	0	0	1	-%	2	-%
TOTAL	149	134	155	438	100%	45	109	32	42	3	1	8	240	99%	678	99%

NOTE: Percentages differ from 100% due to rounding.

1. Examples: If an individual was booked into Corvallis City Jail for drunk driving and transferred to the Benton County Jail he/she would be counted as two bookings.

TABLE OD-8

## DISTRICT 4, COUNTY AND CITY JAILS

## JAIL BOOKINGS DATA, 1971

Distribution Of Persons Booked For Public Intoxication, By Number Of Arrests Per Person, By Jail

Number Of Bookings <sup>1</sup> Per Person	County Jails					City Jails							District			
	Benton	Lincoln	Linn	Total	%	Albany	Corvallis	Lebanon	Lincoln City	Mill City	Newport	Sweet Home	Total	%	Total	%
1	27	57	62	146	91%	14	101	45	16	3	1	24	204	91%	350	91%
2	1	6	4	11	7%	1	11	5	0	0	0	0	17	8%	28	7%
3	0	1	0	1	1%	0	1	0	0	0	0	0	1	-%	2	1%
4	0	2	0	2	1%	0	0	0	0	0	0	0	0	-%	2	1%
5	0	0	0	0	-%	0	1	0	0	0	0	0	1	-%	1	-%
6	0	0	0	0	-%	0	0	0	0	0	0	0	0	-%	0	-%
7	0	0	0	0	-%	0	0	0	0	0	0	0	0	-%	0	-%
8	0	0	0	0	-%	0	1	0	0	0	0	0	1	-%	1	-%
TOTAL	28	66	66	160	100%	15	115	50	16	3	1	24	224	99%	384	100%

NOTE: Percentages differ from 100% due to rounding.

1. Example: If an individual was booked into Corvallis City Jail for public intoxication and transferred to the Benton County Jail he/she would be counted as two bookings.

TABLE OD-9

## DISTRICT 4, COUNTY AND CITY JAILS

## JAIL BOOKINGS DATA, 1971

Distribution Of Persons Booked For Disorderly Conduct By Number Of Arrests Per Person, By Jail

Number Of Bookings <sup>1</sup> Per Person	County Jails					City Jails							Totals			
	Benton	Lincoln	Linn	Total	%	Albany	Corvallis	Lebanon	Lincoln City	Mill City	Newport	Sweet Home	Total	%	District Total	%
1	4	20	18	42	95%	73	18	13	4	2	5	7	122	91%	164	92%
2	2	0	0	2	5%	6	0	1	0	0	0	1	8	6%	10	6%
3	0	0	0	0	-%	2	0	0	0	0	0	0	2	1%	2	1%
4	0	0	0	0	-%	2	0	0	0	0	0	0	2	1%	2	1%
TOTAL	6	20	18	44	100%	83	18	14	4	2	5	8	134	99%	178	100%

NOTE: Percentages differ from 100% due to rounding.

1. Example: If an individual was booked into Corvallis City Jail for disorderly conduct and transferred to the Benton County Jail he/she would be counted as two bookings.

## **PRETRIAL STATUS**

### PRETRIAL STATUS

(Tables PS-1 to PS-6)

The data in this section describe the method of pretrial release or holding, length of pretrial stay and bail levels set for persons booked pretrial in District 4 jails during 1971.

#### Court of Jurisdiction (Table PS-1)

Municipal Courts in the three counties handled the largest number of persons booked during 1971 (1563); 79% of these Municipal Court defendants were lodged in city jails. District Courts handled the next largest number of jailed defendants, 99% of whom were lodged in county jails. Similarly, 99% of Circuit Courts' defendants (393 in 1971) were lodged in county jails, while Justice Courts' defendants were distributed nearly equally between city and county jails.

#### Pretrial Release Actions (Tables PS-2 and PS-3)

Table PS-3 shows pretrial release actions of persons booked pretrial by the court of jurisdiction. Fifty-nine percent of these actions involved restoration of freedom, through release on own recognizance, bail, or to supervision by a parent or guardian. An additional 18% involved release to other jurisdictions or authorities. Fourteen percent of persons booked in 1971 were held through disposition of their cases, although 86% (528) of these had had bail set. This table also shows varied incidence of R.O.R. use among the courts, ranging from 8% of Municipal Court cases to 20% of District Court cases. The larger percentages of District and Circuit Court defendants jailed through disposition may result from these courts' relatively higher bail levels (see Tables PS-5 and PS-6).



Table PS-3 relates pretrial status to defendant's place of residence. District 4 residents had a higher percentage of released on own recognizance (R.O.R.) and released on bail than non-District 4 residents. Residents of Oregon outside District 4 and out-of-state residents had less numbers of persons released on bail or R.O.R. For example, although out-of-state residents accounted for only 9% of total pretrial actions (roughly equal to bookings), they accounted for 16% of persons with bail set who were jailed through disposition.

Length Of Pretrial Stay (Table PS-4)

By indicating the distribution of persons by their length of pretrial time in jail, Table PS-4 gives a more accurate picture of pretrial length of stay than do the data on average lengths of stay in Tables JB-3 through JB-10. Sixty-eight percent of all persons booked stayed one day or less pretrial; 81% of city jail bookings fell in this category. Ninety-five percent of all persons booked stayed less than 10 days pretrial; in city jails, this percentage was 97% while county jails had 92% in this category. Feasibility Study data indicate that 162 persons in county jails stayed in jail between 10 and 36 days pretrial. No one awaited trial in a city jail for longer than 24 days.

Bail Amounts (Tables PS-5 and PS-6)

A comparison of the bail levels of persons released on bail (Table PS-5) and persons having bail set but held through disposition (Table PS-6) indicates that one-quarter of each group had relatively low bails of \$50 or less, but that 12% of the released group had bails of \$600

or more while 21% of the retained group fell in this category. A comparison of bail levels by court reveals that Justice Court bail levels were the lowest, followed in order by Municipal, District and Circuit Court bails. Over one-half (55%) of Circuit Court defendants with bail set at \$301 or more obtained release on bail; surprisingly, this percentage rises to 62% for persons with bails of \$601 or higher.

TABLE PS-1

DISTRICT 4 - 1971

Distribution Of Persons Booked By District 4 Court In Which Case Was Adjudicated

	<u>Municipal Courts</u>	<u>District Court</u>	<u>Circuit Court</u>	<u>Justice Courts</u>	<u>Juvenile Court</u>	<u>TOTAL<sup>1</sup></u>
<u>COUNTY JAILS</u>						
BENTON	147	207	108	0	19	481
LINCOLN	129	424	51	12	158	774
LINN	55	464	230	25	48	822
TOTAL	331	1095	389	37	225	2077
PERCENT	16%	53%	19%	2%	11%	101%
<u>CITY JAILS</u>						
ALBANY	444	1	1	0	21	467
CORVALLIS	331	2	1	0	0	334
LEBANON	243	0	1	3	50	297
LINCOLN CITY	95	2	1	23	6	127
MILL CITY	10	1	0	0	0	11
NEWPORT	36	0	0	0	0	36
SWEET HOME	73	0	0	4	8	85
TOTAL	1232	6	4	30	85	1357
PERCENT	91%	-%	-%	2%	6%	99%
TOTAL, ALL JAILS	1563	1101	393	67	310	3434
PERCENT	46%	32%	11%	2%	9%	100%

Note: Percentages total other than 100% because of rounding. Percentages less than 0.5% are omitted.

<sup>1</sup>Total differs from the number of bookings by the number of persons whose cases were not adjudicated in District 4 courts.

TABLE PS-2

DISTRICT 4 - 1971

Distribution Of Persons Booked, By Pretrial Release Actions By Court

		Charge Dropped Released	Released on Bail <sup>1</sup>	Released on own Recog. <sup>2</sup>	Released to Parents/ Guardians	Released to other Juris- dictions <sup>3</sup>	Released to other Authorities <sup>4</sup>	Bail Set, Held through Disposition	Bail Not <sup>5</sup> Allowed	Other <sup>6</sup> and Unknown	TOTAL <sup>7</sup>
Municipal Courts	#	0	993	129	18	23	2	202	20	183	1570
	%	-	63%	8%	1%	2%	-	13%	1%	12%	100%
District Court	#	1	485	223	8	19	1	228	21	116	1102
	%	-	44%	20%	1%	2%	-	21%	2%	11%	101%
Circuit Court	#	2	144	71	2	14	9	78	26	51	397
	%	-	36%	18%	-	4%	2%	20%	7%	13%	100%
Justice Courts	#	0	78	13	0	1	1	11	2	8	114
	%	-	68%	11%	-	1%	1%	10%	2%	7%	100%
Juvenile Courts	#	0	9	4	133	96	3	1	7	13	266
	%	-	3%	2%	50%	36%	1%	-	3%	5%	100%
Not Adjudi- cated in Dist. 4	#	20	114	56	153	564	73	8	10	59	1057
	%	2%	11%	5%	14%	53%	7%	1%	1%	6%	100%
TOTAL	#	23	1823	496	314	717	89	528	86	430	4506
	%	1%	40%	11%	7%	16%	2%	12%	2%	9%	100%

Note: Percentages total other than 100% because of rounding. Percentages less than 0.5% are omitted.

<sup>1</sup>361 persons (20%) of those released on bail did not appear in court and forfeited their bail. 202 of these (56%) had been scheduled to appear in municipal courts in the district.

<sup>2</sup>18 persons (4%) of those released on their own recognizance failed to appear for trial.

<sup>3</sup>"Other Jurisdictions" include jails and law enforcement agencies both within and outside District 4.

<sup>4</sup>"Other Authorities" include the Oregon Corrections Division, the Immigration Service, and military police.

<sup>5</sup>Includes persons charged with crimes for which admission to bail is discretionary (murder, treason, parole and probation violations), and persons held on warrants.

<sup>6</sup>Includes persons booked only on sentence during 1971, and persons for whom pretrial actions were unknown.

<sup>7</sup>Total exceeds number of bookings because some persons received combinations of pretrial actions (e.g. R.O.R. and release to other jurisdiction) on different charges.

## TABLE PS-3

## DISTRICT 4 - 1971

Distribution Of Persons Booked, By Pretrial Release Action And By Place Of Residence

	Charge Dropped Released	Released on Bail	Released on own Recog.	Released to Parents/ Guardian	Released to other Juris- diction	Released to other Authori- ties	Bail Set, Held thru Disposition	Bail Not Allowed	Other and Unknown	TOTAL <sup>1</sup>	PERCENT
Resident of District 4	# 8 % -%	1375 45%	369 12%	170 6%	434 14%	33 1%	301 10%	46 2%	310 10%	3046 100%	68%
Resident of Oregon Not District 4	# 7 % 1%	288 32%	72 8%	92 10%	171 19%	34 4%	124 14%	25 3%	75 8%	888 99%	20%
Not Oregon Resident	# 8 % 2%	96 23%	28 7%	43 10%	91 22%	19 5%	83 20%	11 3%	33 8%	412 100%	9%
Residence Unknown	# 0 % -%	64 40%	27 17%	9 6%	21 13%	3 2%	20 12%	4 2%	12 8%	160 100%	4%
TOTAL	# 23 % 1%	1823 40%	496 11%	314 7%	717 16%	89 2%	528 12%	86 2%	430 10%	4506 101%	101%

Note: Percentages total other than 100% because of rounding. Percentages less than 0.5% are omitted.

<sup>1</sup>Total exceeds number of bookings because some persons received combination of pretrial actions on different charges; e.g. bail was set on one charge and the same defendant was released to another jurisdiction on a warrant.

TABLE PS-4

DISTRICT 4 - 1971

Distribution Of Persons Booked Pretrial In District 4 Jails, By Length Of Pretrial Stay<sup>1</sup> And By Jail

<u>County Jails</u>	<u>1 Day</u>	<u>2-3 Days</u>	<u>4-6 Days</u>	<u>7-9 Days</u>	<u>10-24 Days</u>	<u>25-36 Days</u>	<u>37-48 Days</u>	<u>49-64 Days</u>	<u>65-100 Days</u>	<u>101+ Days</u>	<u>Other<sup>2</sup> And Unknown</u>	<u>Total</u>
Benton Co. Jail	313	129	41	20	26	6	2	1	0	0	10	548
Lincoln County	660	109	30	7	14	6	2	0	1	0	8	837
Linn County	654	357	126	44	91	19	7	11	13	1	13	1336
TOTAL	1627	595	197	71	131	31	11	12	14	1	31	2721
PERCENT	60%	22%	7%	3%	5%	1%	-%	-%	1%	-%	1%	100%
<u>City Jails</u>												
Albany Jail	526	123	32	2	1	0	0	0	0	0	6	690
Corvallis Jail	302	62	7	0	0	0	0	0	0	0	2	373
Lebanon Jail	272	36	4	3	2	0	0	0	0	0	1	318
Lincoln City Jail	126	6	4	1	0	0	0	0	0	0	2	139
Mill City Jail	10	2	0	0	0	0	0	0	0	0	0	12
Newport Jail	38	0	0	0	0	0	0	0	0	0	0	38
Sweet Home Jail	153	8	2	0	1	0	0	0	0	0	4	168
TOTAL	1427	237	49	6	4	0	0	0	0	0	15	1738
PERCENT	82%	14%	3%	-%	-%	-%	-%	-%	-%	-%	1%	100%
TOTAL, ALL JAILS	3054	832	246	77	135	31	11	12	14	1	46	4459
PERCENT	68%	19%	6%	2%	3%	1%	-%	-%	-%	-%	1%	100%

NOTE: Percentages total other than 100% because of rounding. Percentages less than 0.5% are omitted.

1 One day means any part of that day; two days means any part of two consecutive days, etc.

2 Includes persons booked in jail during sample year only on sentence and persons for whom pretrial length of stay was not recorded.

TABLE PS-5

DISTRICT 4 - 1971

Bail Amounts Of Persons Released On Bail, By Court

Bail Amount	Municipal Court		District Court		Circuit Court		Justice Court		Not Adjudicated In District 4	Total*	Percent
\$ 1 - 10	6	1%	8	1%	1	1%	1	1%	-	16	1%
11 - 20	28	3%	15	3%	1	1%	6	8%	3	53	3%
21 - 50	214	22%	115	22%	7	4%	25	32%	26	387	21%
51 - 100	165	17%	50	10%	7	4%	22	27%	10	254	14%
101 - 300	311	31%	137	26%	15	9%	17	23%	10	490	27%
301 - 600	171	17%	114	22%	37	23%	3	4%	11	336	19%
601 - 1000	22	2%	50	10%	45	27%	2	3%	5	124	7%
1001 - 3000	12	1%	24	4%	40	24%	1	1%	2	79	4%
3001 +	1	-%	8	1%	11	7%	-	-	-	20	1%
Bail Amount Unknown	63	6%	0	-%	0	-%	1	1%	-	64	3%
TOTAL	993	100%	521	99%	164	100%	78	100%	67	1823	100%

\*Totals differ from those in Table PS-2 because some persons had more than one bail set for separate charges although they were booked only once.

NOTE: Percentages total other than 100% due to rounding. Percentages less than 0.5% are omitted.

TABLE PS-6

DISTRICT 4 - 1971

Bail Amounts Of Persons Having Bail Set

But Held Through Disposition, By Court

<u>Bail Amount</u>	<u>Municipal Court</u>		<u>District Court</u>		<u>Circuit Court</u>		<u>Justice Court</u>		<u>Not Adjudicated In District 4</u>	<u>Total</u>	<u>Percent</u>
\$ 1 - 10	1	1%	3	1%	-	-	-	-	-	4	1%
11 - 20	8	4%	8	4%	1	1%	1	9%	-	18	3%
21 - 50	48	24%	52	23%	3	4%	4	36%	1	108	21%
51 - 100	17	8%	26	11%	1	1%	-	-	-	44	8%
101 - 300	35	17%	41	18%	1	1%	3	27%	-	80	15%
301 - 600	25	12%	35	15%	11	14%	3	27%	1	75	14%
601 - 1000	7	4%	26	11%	24	31%	-	-	1	58	11%
1001 - 3000	1	1%	7	3%	20	26%	-	-	1	29	6%
3001 +	1	1%	3	1%	17	22%	-	-	-	21	4%
Bail Amount Unknown	<u>59</u>	<u>29%</u>	<u>27</u>	<u>12%</u>	<u>-</u>	<u>-</u>	<u>-</u>	<u>-</u>	<u>4</u>	<u>90</u>	<u>17%</u>
TOTAL	202	101%	228	99%	78	100%	11	99%	8	527	100%

NOTE: Percentages total other than 100% due to rounding. Percentages less than 0.5% are omitted.

**COURT DISPOSITIONS**



COURT DISPOSITION DATA

(Tables CD-1 to CD-3)

The tables in this section compare the final dispositions of cases of persons booked into District 4 jails, by the defendant's sex and age, as well as by the court of jurisdiction.

Table CD-1 indicates that imposition of a fine was the single most common disposition of District 4 courts, and that this disposition was used more frequently in District and Circuit Court cases than in Municipal and Justice court cases. Jail sentences accounted for 19% of total dispositions. Sentences of a fine which were worked off with jail time accounted for 4% of all dispositions, with 60% of these resulting from Municipal Court convictions. Local probation was the sentence in 10% of all cases, 44% of which were tried in Municipal Courts and 44% in District Courts. (It should be noted that 25% of all cases were pending disposition or were not traceable to court dispositions at the time of survey.)

A comparison of final dispositions by the sex of the defendant (Table CD-1) reveals that females were more likely than males to be placed on local probation or committed to the Children's Services Division, but were less likely to be fined and given jail or prison sentences.

Table CD-2 compares final dispositions by the defendants' ages. Persons in the younger age groups (18-35) were consistently overrepresented among persons committed to the Corrections Division but were also overrepresented among persons placed on local and state probation. Defendants 36 years and older were more likely to have their cases dismissed or to be fined and less likely to be given jail or prison sentences, or to be placed on probation.

Because it shows the disposition of persons by length of sentence served, Table CD-3 gives a more accurate description of the impact of sentenced persons in District 4 jails than do the average lengths of stay recorded in Tables JB-3 through JB-10. Eighteen percent of all persons (44% of females) served sentences of one day, while an additional 38% (41% of females) stayed 2 to 5 days. It is significant that 99% of persons who served sentences stayed 2 months or less in jail; the Study recorded only 8 persons who served sentences of 61 to 365 days. It is also significant that county jails lodged 72% of the sentence servers and that 93% of persons who served sentences in city jails stayed 20 days or less.

TABLE CD-1

## DISTRICT 4 - 1971

Final Dispositions Of Cases Of Persons Booked, Whose Cases WereAdjudicated In District 4 Courts, By Court And By Sex

		<u>Municipal Courts</u>	<u>District Courts</u>	<u>Circuit Courts</u>	<u>Justice Courts</u>	<u>Juvenile Courts</u>	<u>Total</u>
Charge Dismissed/ Found Not Guilty	Male	164	261	97	7	18	547 (15%)
	Female	25	30	5	0	5	65 (13%)
	Total	189 (11%)	291 (19%)	102 (17%)	7 (6%)	23 (9%)	612 (14%)
Fine	Male	304	356	144	17	23	844 (22%)
	Female	47	38	10	0	6	101 (20%)
	Total	351 (20%)	394 (26%)	154 (26%)	17 (14%)	29 (11%)	945 (22%)
Jail Sentence	Male	286	324	84	17	0	711 (20%)
	Female	59	25	5	1	0	90 (18%)
	Total	345 (19%)	349 (23%)	89 (15%)	18 (14%)	0	801 (19%)
Jail In Lieu Of Fine Payment	Male	97	55	3	11	0	166 (4%)
	Female	9	1	0	1	0	11 (2%)
	Total	106 (6%)	56 (4%)	3 (-%)	12 (10%)	0	177 (4%)
Local Probation	Male	134	164	33	8	3	342 (9%)
	Female	43	17	3	1	2	66 (13%)
	Total	177 (10%)	181 (12%)	36 (6%)	9 (7%)	5 (2%)	408 (10%)
Committed To Corrections Div.	Male	0	0	75	0	0	75 (2%)
	Female	0	0	1	0	0	1 (-%)
	Total	0	0	76 (13%)	0	0	76 (2%)
Corrections Division Probation	Male	0	22	98	0	0	120 (3%)
	Female	0	0	14	0	0	14 (3%)
	Total	0	22 (2%)	112 (19%)	0	0	134 (3%)
Committed To CSD	Male	0	0	0	0	32	32 (1%)
	Female	0	0	0	0	14	14 (3%)
	Total	0	0	0	0	46 (18%)	46 (1%)
Pending, Other And Unknown <sup>2</sup>	Male	531	195	27	55	121	929 (25%)
	Female	82	25	5	7	31	150 (29%)
	Total	613 (34%)	220 (15%)	32 (5%)	62 (50%)	<sup>3</sup> 152 (60%)	1079 (25%)
TOTAL	Male	1516	1377	561	115	197	3766 (101%)
	Female	265	136	43	10	58	512 (101%)
	Total	1781 (100%)	1513 (101%)	604 (101%)	125 (101%)	255 (100%)	4278 (100%)

1 Total exceeds number of persons booked whose cases were adjudicated in District 4 courts (see Table PS-1) because some persons received combinations of dispositions (e.g. fine and jail) and therefore were counted more than once.

2 Included in this category are persons whose cases were pending disposition at time of survey (Spring-Summer 1972); persons for whom dispositions were not known; and persons who forfeited bail or failed to appear in court on their own recognizance.

3 Most of the juveniles in this category had their cases disposed unofficially at intake. Other juveniles, not recorded here, were warned, counselled and released at intake.

TABLE CD-2

DISTRICT 4 - 1971

Distribution Of Booked Persons Whose Cases Were Adjudicated In District 4  
By Final Disposition And By Age

Age	Dismissed Or Found Not Guilty		Fined		Jail Sentence		Jail In Lieu Of Fine Payment		Local Probation		Committed To Corr. Division		Corrections Division Probation		Committed To C. S. D.		Pending <sup>/1</sup> Other And Unknown		Total <sup>/2</sup>	
17 Or Under <sup>/3</sup>	27	4%	42	4%	23	3%	6	3%	10	2%	0	-%	0	-%	46	100%	152	14%	306	7%
18 - 20	114	19%	161	17%	185	23%	51	29%	92	23%	22	29%	46	34%	0	-%	279	26%	950	22%
21 - 25	124	20%	168	18%	156	19%	38	21%	79	19%	17	22%	35	26%	0	-%	229	21%	846	20%
26 - 30	71	12%	110	12%	79	10%	18	10%	51	13%	10	13%	10	7%	0	-%	109	10%	458	11%
31 - 35	41	7%	78	8%	54	7%	7	4%	30	7%	6	8%	4	3%	0	-%	70	6%	290	7%
36 - 40	42	7%	65	7%	40	5%	6	3%	14	3%	1	1%	4	3%	0	-%	59	5%	231	5%
41 - 50	50	8%	99	10%	67	8%	15	8%	30	7%	2	3%	2	1%	0	-%	108	10%	373	9%
51 - 60	35	6%	71	8%	56	7%	11	6%	29	7%	4	5%	1	1%	0	-%	62	6%	269	6%
61+	6	1%	11	1%	10	1%	1	1%	2	-%	1	1%	0	-%	0	-%	11	1%	42	1%
Age Unk.	102	17%	140	15%	131	16%	24	14%	71	17%	13	17%	32	24%	0	-%	0	-%	513	12%
TOTAL	612	101%	945	100%	801	99%	177	99%	408	98%	76	99%	134	99%	46	100%	1079	99%	4278	100%
PERCENT	14%		22%		19%		4%		10%		2%		3%		1%		25%		100%	

1. Included in this category are persons whose cases were pending dispositions at the time of the survey (Spring-Summer 1972); persons for whom dispositions were not known; and persons who forfeited bail or failed to appear in court on their own recognizance.
2. Total exceeds number of persons booked whose cases were adjudicated in District 4 courts (see Table PS-1) because some persons received combinations of dispositions (e.g. fine and jail) and therefore were counted more than once.
3. Most of the juveniles in this category had their cases disposed unofficially at intake. Other juveniles not recorded here were warned, counselled and released at intake.

TABLE CD-3

DISTRICT 4 - 1971

Distribution Of Persons Who Served Sentences In District 4 Jails,\*Length Of Sentence Served, By Jail, By Sex

<u>County Jails</u>	<u>One Day</u>		<u>2-5 Days</u>		<u>6-20 Days</u>		<u>21-40 Days</u>		<u>41-60 Days</u>		<u>61-80 Days</u>		<u>81-100 Days</u>		<u>101-365 Days</u>		<u>Total</u>	
	<u>M</u>	<u>F</u>	<u>M</u>	<u>F</u>	<u>M</u>	<u>F</u>	<u>M</u>	<u>F</u>	<u>M</u>	<u>F</u>	<u>M</u>	<u>F</u>	<u>M</u>	<u>F</u>	<u>M</u>	<u>F</u>	<u>M</u>	<u>F</u>
Benton County	27	4	22	3	46	1	15	0	1	0	0	0	2	0	0	0	113	8
Lincoln County	28	7	105	3	56	2	17	0	2	0	0	0	2	0	0	0	210	12
Linn County	<u>26</u>	<u>1</u>	<u>54</u>	<u>4</u>	<u>57</u>	<u>1</u>	<u>55</u>	<u>0</u>	<u>22</u>	<u>0</u>	<u>2</u>	<u>0</u>	<u>0</u>	<u>0</u>	<u>1</u>	<u>0</u>	<u>217</u>	<u>6</u>
TOTAL	81	12	181	10	159	4	87	0	25	0	2	0	4	0	1	0	540	26
<u>City Jails</u>																		
Albany	30	5	60	5	24	1	5	0	1	0	1	0	0	0	0	0	121	11
Corvallis	10	0	7	0	2	0	0	0	0	0	0	0	0	0	0	0	19	0
Lebanon	1	0	19	1	15	1	2	0	0	0	0	0	0	0	0	0	37	2
Lincoln City	4	0	4	0	1	0	3	0	0	0	0	0	0	0	0	0	12	0
Newport	0	0	1	0	0	0	0	0	0	0	0	0	0	0	0	0	1	0
Sweet Home	<u>2</u>	<u>0</u>	<u>8</u>	<u>0</u>	<u>5</u>	<u>0</u>	<u>3</u>	<u>0</u>	<u>0</u>	<u>0</u>	<u>0</u>	<u>0</u>	<u>0</u>	<u>0</u>	<u>0</u>	<u>0</u>	<u>18</u>	<u>0</u>
TOTAL	47	5	99	6	47	2	13	0	1	0	1	0	0	0	0	0	208	13
TOTAL, ALL JAILS	128	17	280	16	206	6	100	0	26	0	3	0	4	0	1	0	748	39
PERCENT	17%	44%	37%	41%	28%	15%	13%	-%	4%	-%	-%	-%	1%	-%	-%	-%	100%	100%
% Of Total	18%		38%		27%		13%		3%		-%		-%		-%		99%	

\*The Mill City Jail lodged no one on sentence in 1971.

## JUVENILE DATA

### JUVENILE DATA

(Tables J-1 and J-2)

Although the following two tables include data appearing elsewhere in this report, they are presented here to improve focus on the incidence of juvenile bookings in adult jails in District 4.

Table J-1 shows that 44% of all juveniles (57% of female juveniles) were booked in the Linn County Jail during 1971, followed by 24% (21% of females) in the Lincoln County Jail, and 15% (11% of females) in the Albany City Jail. A total of 841 -- 649 boys and 192 girls -- were booked into juvenile cells in adult jails during 1971. Five hundred sixty-four (564) of these were booked into jails in Linn County; 221 in Lincoln County; and 56 in Benton County.

Table J-2 points out that 109 or 13% of all juveniles booked in District 4 adult jails were charged with serious property crimes. Thirteen percent were charged with public intoxication, possession of alcohol or drunk driving. By far, the single most frequent charge category on which juveniles were booked, however, was "delinquency". (Delinquency here includes: truancy, runaway, beyond parental control, ungovernable, curfew, etc.)

TABLE J-1

## DISTRICT 4, ALL JAILS - 1971

Juveniles Booked, By Jail And Sex\*

<u>Jail</u>	<u>Male</u>	<u>Female</u>	<u>Total</u>	<u>Percent</u>
Benton County	40	8	48	6%
Lincoln County	162	40	202	24%
Linn County	264	109	373	44%
Albany City	105	22	127	15%
Corvallis City	8	0	8	1%
Lebanon City	28	2	30	4%
Lincoln City	15	4	19	2%
Mill City	0	0	0	-%
Newport City	0	0	0	-%
Sweet Home City	27	7	34	4%
	<hr/>	<hr/>	<hr/>	<hr/>
TOTAL	649	192	841	100%
PERCENT	77%	23%	100%	

\* A juvenile is defined as a person less than 18 years of age.

TABLE J-2

DISTRICT 4, ALL JAILS - 1971

Distribution Of Juveniles Booked By Offense Charged

<u>Offense</u>	<u>Number Of Juveniles</u>	<u>Percent<sup>1</sup></u>
Serious Crimes Against Persons	22	3%
Serious Property Crimes	109	13%
Other Felonies And Indictable Misdemeanors	69	8%
Public Intoxication	28	3%
Minor In Possession	61	7%
Traffic Offenses	44	5%
Driving Under The Influence Of Liquor	29	3%
Petty Larceny	37	4%
Disorderly Conduct	11	1%
Nonappearance And Contempt Of Court	4	-%
Game Violations	5	1%
Miscellaneous Misdemeanors	39	5%
Delinquency <sup>2</sup>	372	44%
Held For Transfer	10	1%
Charge Unknown	<u>1</u>	<u>-%</u>
TOTAL	841	98%
PERCENT OF TOTAL BOOKINGS		19%

1. Percentage differs from 100% due to rounding.

2. Includes curfew, truancy, ungovernable, beyond parental control, runaway, etc.

**COURT DATA**



COURT DATA\*

(Tables C-1 through C-25)

JUSTICE OF THE PEACE COURTS: Lincoln and Linn Counties

Lincoln County Justice of the Peace Court: Devil's Lake (Tables C-1 through C-3)

The Devil's Lake Justice of the Peace Court handled 939 cases in 1971, 84% of which were traffic offenses and 6% were driving under the influence of liquor (D.U.I.L.). Ninety-nine percent of all this Justice of the Peace Court's cases had been arrested by the Oregon State Police. All but two of this court's cases were disposed of by fines.

Linn County Justice of the Peace Courts: Harrisburg, Lebanon and Sweet Home (Tables C-4 through C-12)

Arresting Agency (Tables C-4, C-7 and C-10)

The Oregon State Police accounted for 94% of Harrisburg Justice Court cases, 90% of Lebanon Justice Court cases, but only 59% of Sweet Home Justice Court cases. The lower percentage in Sweet Home is explained by the 41% of this court's cases resulting from Weighmaster citations, a common occurrence in logging areas.

Offenses (Tables C-5, C-8 and C-11)

Traffic offenses accounted for from 84% - 94% of the three Justice Courts' caseloads during 1971. The next most numerous offense category was game violations, which were 8% of Lebanon's cases, 5% of Sweet Home's cases and 2% of Harrisburg's.

Dispositions (Tables C-6, C-9 and C-12)

The single most common disposition of cases in all three courts was a fine, meted out in 100% of the filed cases at Harrisburg, 91% of Lebanon's

and 99% of Sweet Home's cases. The Lebanon Justice Court was the only one to impose jail sentences during 1971--to three persons, one of whom served in order to work off a fine.

DISTRICT COURTS: Benton, Lincoln and Linn Counties (Tables C-13 through C-21)

Arresting Agency (Tables C-13, C-16 and C-19)

In the three counties of District 4, the Oregon State Police (O.S.P.) were responsible for a low of 76% of 1971 Benton County District Court cases to a high of 90% of Linn County District Court cases. In all three counties, the Sheriff's Office accounted for the next largest number of District Court cases: 460 (14%) in Benton County; 406 (8%) in Lincoln County; and 361 (9%) in Linn County.

The Benton County District Court adjudicated 3196 cases in 1971, for a monthly average of 266. The Linn County Court adjudicated 3920 cases, for a monthly average of 327. The Lincoln County District Court adjudicated 5276 cases in 1971, for a monthly average of 440.

Offenses (Tables C-14, C-17 and C-20)

These tables reveal that traffic offenses were a consistent 75% - 81% of all District Court cases in 1971. (The three courts handled a total of 9788 traffic offenses in that year.) The three courts also adjudicated 374 D.U.I.L. cases in 1971, 3% of their workload. Game offenses were a significant offense category in both Benton and Lincoln County's District Courts (7% and 9% of their cases, respectively), while persons arrested for hitch-hiking accounted for 7% of the Linn County District Court workload. In 1971, 115 persons were tried in the three District Courts for possession or sale of drugs, accounting for about 1% of their cases.

\*See Appendix for explanation of sources of data in this section. It should be noted that these data include persons jailed as well as persons issued citations who were not booked into jail.

Dispositions (Tables C-15, C-18 and C-21)

The most common disposition in the three county District Courts was the fine, used in 74% of Benton County, 82% of Linn County and 93% of Lincoln County District Court cases. Jail sentences either alone or combined with fines were meted out to relatively small numbers of persons tried in District Court. Probation was used to any significant extent only by the Benton County District Court judge, who placed 198 persons or 6% of his cases on probation in 1971.

CIRCUIT COURTS: Benton, Lincoln and Linn Counties (Tables C-22 through C-25)

Offenses (Table C-22)

Table C-22 presents the offense distribution of cases handled by the District 4 Circuit Courts during 1971. A significant 243 or 50% of all cases involved serious crimes against property. An additional 137 cases (28% of the 486 handled by the Circuit Courts in 1971) involved charges of drug use or sale. Property crimes accounted for 58% of the Lincoln County Circuit Court's 1971 caseload, compared with 52% in Linn and 43% in Benton County. Drug cases, on the other hand, made up 40% of the Benton County Circuit Court caseload, compared with only 24% in Linn and 20% in Lincoln County.

Pretrial Actions (Tables C-23, C-24)

Table C-23 reveals varying use of bail and R.O.R. in the three counties' Circuit Courts. Nearly half the Benton County Courts' cases had bail set and posted bail for pretrial release, compared with only 28% of the Linn and 14% of the Lincoln County cases. On the other hand, the Lincoln County Circuit Court made much more use of R.O.R. than the other two, releasing 46% of its defendants on their own recognizance, compared with 19% in Benton and 14% in Linn County. (The large percentage of Linn County cases with unrecorded

pretrial actions explains its low standing in both these release categories.) A total of 84 persons in all three courts' jurisdiction had bail set but did not post it.

Table C-24 indicates that high bail was probably the reason why 84 persons were jailed through disposition of their cases in the three counties' Circuit Courts. Sixty-five percent of all persons released on bail paid \$1000 or less, compared to only 18% of persons jailed through disposition in these bail categories. High bail did not, however, prevent release, since six persons with bail set at over \$5000 posted it, compared to four who did not.

Dispositions (Table C-25)

The high dismissal rate recorded in Table C-25 for the three District 4 Circuit Courts probably reflects an unknown number of cases which involved plea bargaining--dismissal of a felony in return for a plea of guilty to a lesser misdemeanor charge.

One hundred and eleven persons (23% of all cases) were sentenced to prison by the three Circuit Courts in 1971. Eighty-one of these were sentenced by the Linn County Circuit Court. An additional 81 (17%) had their prison sentences suspended and were put on probation, a portion with some time in jail as a condition of probation. Probation was a part of the sentence in 149 cases (31% of 1971 cases). The Benton County Court used probation most frequently (45% of its cases), followed by Lincoln County (38% of cases) and Linn County (19%).

TABLE C-1

DISTRICT 4

DEVIL'S LAKE JUSTICE COURT DATA, 1971

Arresting Agency

	<u>Oregon State Police</u>	<u>County Sheriff</u>	<u>City Police</u>	<u>Citizen</u>	<u>Total</u>
January	67	1	0	0	68
February	114	0	0	0	114
March	95	1	0	0	96
April	74	1	0	1	76
May	84	0	0	1	85
June	112	1	0	0	113
July	121	1	0	0	122
August	53	0	2	0	55
September	58	2	0	0	60
October	49	1	0	0	50
November	51	0	0	0	51
December	47	2	0	0	49
	<hr/>	<hr/>	<hr/>	<hr/>	<hr/>
TOTAL	925	10	2	2	939
PERCENT	99%	1%	--	--	100%

NOTE: Percentages less than 1% are omitted.

## TABLE C-2

## DISTRICT 4

## DEVIL'S LAKE JUSTICE COURT DATA, 1971

Offense By Month

	<u>Traffic</u>	<u>Drunk</u>	<u>DUIL</u>	<u>Petty Larceny</u>	<u>Minor in Possession</u>	<u>Game</u>	<u>Other</u>	<u>Total</u>
January	58	1	3	0	3	1	2	68
February	101	0	7	0	5	0	1	114
March	82	0	6	0	1	1	6	96
April	62	0	8	0	2	1	3	76
May	70	0	4	0	1	8	2	85
June	89	0	7	1	1	5	10	113
July	105	0	5	0	1	3	8	122
August	43	0	2	1	2	3	4	55
September	49	0	1	0	0	3	7	60
October	45	0	2	0	1	0	2	50
November	41	0	2	0	0	0	8	51
December	40	0	6	0	1	0	2	49
TOTAL	785	1	53	2	18	25	55	939
PERCENT	84%	--	6%	---	2%	3%	6%	101%

NOTE: Percentages do not total 100% because of rounding. Percentages less than 1% are omitted.

TABLE C-3

DISTRICT 4

DEVIL'S LAKE JUSTICE COURT DATA, 1971

Disposition By Month

	<u>Fine</u>	<u>Fine Part Paid</u>	<u>Jail</u>	<u>Fine and Jail</u>	<u>Total</u>
January	67	1	0	0	68
February	112	2	0	0	114
March	91	5	0	0	96
April	68	7	0	1	76
May	84	1	0	0	85
June	112	1	0	0	113
July	118	4	0	0	122
August	53	2	0	0	55
September	58	2	0	0	60
October	50	0	0	0	50
November	48	3	0	0	51
December	46	2	1	0	49
	<hr/>	<hr/>	<hr/>	<hr/>	<hr/>
TOTAL	907	30	1	1	939
PERCENT	97%	3%	--	--	100%

NOTE: Percentages less than 1% are omitted.

## TABLE C-4

## DISTRICT 4

## HARRISBURG JUSTICE COURT DATA, 1971

Arresting Agency

	<u>Oregon State Police</u>	<u>County Sheriff</u>	<u>Citizen</u>	<u>Total</u>
January	38	1	0	39
February	35	1	0	36
March	55	1	0	56
April	28	0	0	28
May	70	2	0	72
June	68	9	0	77
July	65	7	0	72
August	90	7	0	97
September	80	3	1	84
October	70	8	0	78
November	62	3	0	65
December	45	3	0	48
	<hr/>	<hr/>	<hr/>	<hr/>
TOTAL	706	45	1	752
PERCENT	94%	6%	--	100%

NOTE: Percentages less than 1% are omitted.

TABLE C-5

DISTRICT 4

HARRISBURG JUSTICE COURT DATA, 1971

Offense By Month

	<u>Traffic</u>	<u>DUIL</u>	<u>Game</u>	<u>Other</u>	<u>Total</u>
January	38	0	0	1	39
February	34	0	2	0	36
March	53	0	0	3	56
April	25	0	0	3	28
May	69	0	1	2	72
June	74	0	2	1	77
July	62	0	2	8	72
August	87	0	0	10	97
September	70	1	0	13	84
October	73	0	1	4	78
November	55	0	5	5	65
December	41	0	3	4	48
	<hr/>	<hr/>	<hr/>	<hr/>	<hr/>
TOTAL	681	1	16	54	752
PERCENT	91%	--	2%	7%	100%

NOTE: Percentages less than 1% are omitted.

TABLE C-6

DISTRICT 4

HARRISBURG JUSTICE COURT DATA, 1971

Disposition By Month

	<u>Fine Paid</u>	<u>Fine All Suspended</u>	<u>Total</u>
January	35	4	39
February	30	6	36
March	49	7	56
April	23	5	28
May	59	13	72
June	67	10	77
July	60	12	72
August	77	20	97
September	70	14	84
October	65	13	78
November	57	8	65
December	45	3	48
	<hr/>	<hr/>	<hr/>
TOTAL	637	115	752
PERCENT	85%	15%	100%

- 83 -



## TABLE C-7

## DISTRICT 4

## LEBANON JUSTICE COURT DATA, 1971

Arresting Agency

	<u>Oregon State Police</u>	<u>County Sheriff</u>	<u>Weighmaster</u>	<u>Citizen</u>	<u>District Attorney</u>	<u>Total</u>
January	55	2	1	0	0	58
February	52	4	0	0	0	56
March	87	5	0	0	0	92
April	59	2	1	0	1	63
May	99	0	4	0	0	103
June	126	4	2	3	0	135
July	95	3	0	3	0	101
August	97	18	0	2	0	117
September	87	18	3	4	0	112
October	96	7	0	3	0	106
November	90	7	0	2	0	99
December	67	6	1	6	0	80
	<hr/>	<hr/>	<hr/>	<hr/>	<hr/>	<hr/>
TOTAL	1010	76	12	23	1	1122
PERCENT	90%	7%	1%	2%	--	100%

NOTE: Percentages less than 1% are omitted.

TABLE C-8

DISTRICT 4

LEBANON JUSTICE COURT DATA, 1971

Offense By Month

	<u>Traffic</u>	<u>Drunk</u>	<u>DUIL</u>	<u>Petty Larceny</u>	<u>Minor in Possession</u>	<u>Disorderly Conduct</u>	<u>Game</u>	<u>Other</u>	<u>Total</u>
January	53	0	0	0	0	0	4	1	58
February	54	0	0	0	0	0	0	2	56
March	87	0	1	0	0	0	0	4	92
April	60	0	1	0	0	0	1	1	63
May	94	0	0	0	0	0	8	1	103
June	98	1	0	1	1	0	11	23	135
July	71	0	0	0	0	1	16	13	101
August	97	0	0	1	2	1	11	5	117
September	88	0	0	0	1	0	16	7	112
October	88	0	0	0	2	2	12	2	106
November	83	0	0	0	1	0	7	8	99
December	65	0	0	0	3	1	6	5	80
TOTAL	938	1	2	2	10	5	92	72	1122
PERCENT	84%	--	--	--	1%	--	8%	6%	99%

NOTE: Percentages do not total 100% because of rounding. Percentages less than 1% are omitted.

## TABLE C-9

## DISTRICT 4

## LEBANON JUSTICE COURT DATA, 1971

Disposition By Month

	<u>Dismissed</u>	<u>Found Not Guilty</u>	<u>Fine</u>	<u>Fine Part or All Suspended</u>	<u>Jail</u>	<u>Jail in Lieu of Fine</u>	<u>Appeal</u>	<u>Driving School</u>	<u>Transfer to Juvenile Court</u>	<u>Total</u>
January	5	0	53	0	0	0	0	0	0	58
February	4	2	49	1	0	0	0	0	0	56
March	3	2	82	2	0	0	1	0	2	92
April	5	0	54	1	0	0	1	1	1	63
May	4	1	96	1	1	0	0	0	0	103
June	5	0	125	3	0	1	1	0	0	135
July	1	1	99	0	0	0	0	0	0	101
August	10	1	96	5	1	0	3	0	1	117
September	12	0	98	2	0	0	0	0	0	112
October	12	1	90	3	0	0	0	0	0	106
November	11	0	86	1	0	0	0	1	0	99
December	4	1	74	1	0	0	0	0	0	80
TOTAL	76	9	1002	20	2	1	6	2	4	1122
PERCENT	7%	1%	89%	2%	--	--	1%	--	--	100%

NOTE: Percentages less than 1% are omitted.

TABLE C-10

DISTRICT 4

SWEET HOME JUSTICE COURT DATA, 1971

Arresting Agency

	<u>Oregon State Police</u>	<u>Weighmaster</u>	<u>County Sheriff</u>	<u>State Fire Marshall</u>	<u>State Forester</u>	<u>Total</u>
January	33	16	0	0	0	49
February	16	9	0	0	0	25
March	53	10	0	0	0	63
April	49	19	0	0	0	68
May	36	47	1	0	0	84
June	46	33	0	0	0	79
July	36	15	0	0	1	52
August	78	49	0	1	0	128
September	39	42	0	0	0	81
October	55	60	0	0	0	115
November	57	35	0	0	0	92
December	39	39	1	0	0	79
	<hr/>	<hr/>	<hr/>	<hr/>	<hr/>	<hr/>
TOTAL	537	374	2	1	1	915
PERCENT	59%	41%	--	--	--	100%

NOTE: Percentages less than 1% are omitted.

## TABLE C-11

## DISTRICT 4

## SWEET HOME JUSTICE COURT DATA, 1971

Offense By Month

	<u>Traffic</u>	<u>Minor in Possession</u>	<u>Game</u>	<u>Other</u>	<u>Total</u>
January	46	0	3	0	49
February	22	1	2	0	25
March	59	0	1	3	63
April	56	0	12	0	68
May	81	0	2	1	84
June	73	0	4	2	79
July	48	0	2	2	52
August	117	0	9	2	128
September	77	0	3	1	81
October	109	0	6	0	115
November	90	0	2	0	92
December	78	0	1	0	79
	<hr/>	<hr/>	<hr/>	<hr/>	<hr/>
TOTAL	856	1	47	11	915
PERCENT	94%	--	5%	1%	100%

NOTE: Percentages less than 1% are omitted.

TABLE C-12

DISTRICT 4

SWEET HOME JUSTICE COURT DATA, 1971

Disposition By Month

	<u>Dismissed</u>	<u>Fine Paid</u>	<u>Remand to Juvenile Court</u>	<u>Total</u>
January	0	49	0	49
February	0	25	0	25
March	8	54	1	63
April	0	68	0	68
May	0	84	0	84
June	0	79	0	79
July	0	52	0	52
August	0	128	0	128
September	0	81	0	81
October	0	115	0	115
November	0	92	0	92
December	0	79	0	79
	<hr/>	<hr/>	<hr/>	<hr/>
TOTAL	8	906	1	915
PERCENT	1%	99%	--	100%

NOTE: Percentages less than 1% are omitted.

- 58 -

TABLE C-13

DISTRICT 4

BENTON COUNTY DISTRICT COURT DATA, 1971

Total Cases By Arresting Agency

	<u>Oregon State Police</u>	<u>County Sheriff</u>	<u>Weighmaster</u>	<u>City</u>	<u>District Attorney</u>	<u>State Forester</u>	<u>Total</u>
January	168	43	1	3	19	--	234
February	181	47	5	2	12	--	247
March	181	34	7	--	25	--	247
April	190	45	6	3	18	--	262
May	182	35	9	1	12	1	240
June	225	47	7	7	16	--	302
July	238	34	6	--	21	--	299
August	197	16	3	1	20	--	237
September	211	46	3	1	16	--	277
October	209	42	12	4	37	--	304
November	199	34	2	3	17	--	255
December	236	37	4	--	15	--	292
TOTAL	2417	460	65	25	228	1	3196
PERCENT	76%	14%	2%	1%	7%	--	100%

NOTE: Percentages less than 1% are omitted.

- 06 -

TABLE C-14

DISTRICT 4

BENTON COUNTY DISTRICT COURT DATA, 1971

Offenses By Month Of Disposition

	Traffic	Drunk	DUIL	MIP	Petty Larceny	Game	Sex Offenses	Robbery, Burglary, Grand Larceny	Assault	Possession of Stolen Property	Fraud And Extortion	Possession or Sale of Drug	Other Misdemeanor	Total
January	158	--	5	7	--	31	2	--	2	1	--	3	25	234
February	174	2	4	4	1	22	--	4	1	1	3	4	27	247
March	187	1	4	6	3	12	1	3	1	2	2	15	10	247
April	200	--	8	3	1	6	2	7	2	4	3	7	19	262
May	179	--	10	1	1	19	1	6	1	1	2	4	15	240
June	233	--	10	4	3	20	4	7	1	--	4	4	12	302
July	248	3	9	5	3	9	2	6	--	1	2	6	5	299
August	195	7	3	7	--	5	1	1	2	4	--	4	8	237
September	229	--	5	1	3	7	--	5	4	3	2	4	14	277
October	206	1	5	4	4	25	1	7	3	5	6	20	17	304
November	170	1	10	2	--	42	--	3	3	3	2	10	9	255
December	215	2	7	3	3	32	1	5	--	4	1	3	16	292
TOTAL	2394	17	80	47	22	230	15	54	20	29	27	84	177	3196
PERCENT	75%	1%	3%	1%	1%	7%	--	2%	1%	1%	1%	3%	5%	101%

NOTE: Percentages do not total 100% because of rounding. Percentages less than 1% are omitted.



TABLE C-15

## DISTRICT 4

## BENTON COUNTY DISTRICT COURT DATA, 1971

Final Disposition By Month Of Disposition

	Dismissed Or Found Not Guilty	Fined, Part Or All Fined	Suspended	Jail Sentence	Jail in Lieu of Fine	Jail And Fine	Suspended Sentence	Probation	Probation Revoked	Bound Over To Grand Jury	Appealed	Total
January	45	166	5	--	1	1	--	12	--	3	1	234
February	27	181	4	3	1	1	1	17	2	10	--	247
March	28	175	7	4	--	--	--	14	1	18	--	247
April	40	178	5	4	--	--	1	21	--	12	1	262
May	31	171	6	5	--	--	--	21	--	5	1	240
June	45	219	8	2	--	--	1	18	--	5	4	302
July	38	208	27	3	--	--	--	14	--	7	2	299
August	45	174	5	--	1	--	--	9	--	3	--	237
September	43	189	4	1	1	--	--	33	--	5	1	277
October	59	208	4	1	--	1	--	11	2	17	1	304
November	41	177	3	3	--	--	2	17	--	12	--	255
December	48	216	5	4	1	--	--	11	--	5	2	292
TOTAL	490	2262	83	30	5	3	5	198	5	102	13	3196
PERCENT	15%	71%	3%	1%	--	--	--	6%	--	3%	--	99%

NOTE: Percentages do not total 100% because of rounding. Percentages less than 1% are omitted.

TABLE C- 16

DISTRICT 4

LINCOLN COUNTY DISTRICT COURT DATA, 1971

Total Cases, By Arresting Agency

	<u>Oregon State Police</u>	<u>County Sheriff</u>	<u>Weighmaster</u>	<u>Newport Police Dept.</u>	<u>Toledo Police Dept.</u>	<u>Citizen's Arrest</u>	<u>District Attorney</u>	<u>State Forester</u>	<u>Total</u>
January	238	25	3	1	0	0	0	0	267
February	298	27	5	0	0	0	0	0	330
March	300	23	5	0	1	3	0	0	332
April	308	33	9	0	0	6	3	0	359
May	363	39	6	0	0	16	0	0	424
June	399	26	21	0	0	6	3	0	455
July	472	48	10	0	0	2	4	0	536
August	560	53	14	0	0	4	1	1	633
September	434	40	5	0	0	1	0	0	480
October	434	36	11	0	0	5	6	0	492
November	392	23	12	0	0	1	1	0	429
December	<u>491</u>	<u>33</u>	<u>15</u>	<u>0</u>	<u>0</u>	<u>0</u>	<u>0</u>	<u>0</u>	<u>539</u>
TOTAL	4689	406	116	1	1	44	18	1	5276
PERCENT	89%	8%	2%	-%	-%	1%	-%	-%	100%

TABLE C-17

DISTRICT 4

## LINCOLN COUNTY DISTRICT COURT DATA, 1971

## Offenses, By Month

	Traffic	Drunk	D.U.I.L.	Petty Larceny	M.I.P.	Dis- orderly Conduct	Game	Hitch- hiking	Other Misde- meanors	Assault	Burglary	Fraud	Posses- sion Or Sale Of Drugs	Other Felonies	Total
January	222	6	7	0	0	1	10	12	5	1	0	0	1	2	267
February	287	4	12	1	4	4	5	11	1	0	0	1	0	0	330
March	270	3	11	1	5	0	20	16	4	1	0	0	1	0	332
April	294	10	12	0	3	0	20	0	9	3	1	2	3	2	359
May	334	2	10	0	8	2	39	0	14	1	1	12	0	1	424
June	354	4	15	0	7	1	43	5	23	0	1	2	0	0	455
July	388	9	26	2	8	0	61	6	32	0	0	1	3	0	536
August	475	5	17	5	3	1	86	10	27	0	1	1	0	2	633
September	389	1	9	1	7	0	56	8	8	0	0	1	0	0	480
October	403	1	17	1	7	1	30	13	13	1	0	3	2	0	492
November	331	5	23	2	0	10	41	3	10	2	0	0	1	1	429
December	460	3	13	2	5	0	43	3	7	0	1	1	0	1	539
TOTAL	4207	53	172	15	57	20	454	87	153	9	5	24	11	9	5276
PERCENT	80%	1%	3%	-%	1%	-%	9%	2%	3%	-%	-%	1%	-%	-%	100%

- 76 -

TABLE C-18

DISTRICT 4

LINCOLN COUNTY DISTRICT COURT DATA, 1971

Final Disposition, By Month

	<u>Dismissed And Not Guilty</u>	<u>Fine</u>	<u>Fine, Part Suspended</u>	<u>Fine, All Suspended</u>	<u>Jail</u>	<u>Jail And Fine</u>	<u>Jail In Lieu Of Fine</u>	<u>Jail Suspended</u>	<u>Appealed</u>	<u>Total</u>
January	11	209	6	31	2	0	8	0	0	267
February	21	275	0	24	0	2	6	2	0	330
March	25	263	0	42	0	1	1	0	0	332
April	16	295	1	41	0	1	0	3	2	359
May	34	345	4	41	0	0	0	0	0	424
June	16	402	6	28	0	0	3	0	0	455
July	41	434	2	53	0	0	6	0	0	536
August	42	532	2	53	1	0	2	0	1	633
September	3	435	3	39	0	0	0	0	0	480
October	45	398	0	47	2	0	0	0	0	492
November	32	362	1	33	0	0	1	0	0	429
December	<u>15</u>	<u>491</u>	<u>0</u>	<u>30</u>	<u>0</u>	<u>0</u>	<u>3</u>	<u>0</u>	<u>0</u>	<u>539</u>
TOTAL	301	4441	25	462	5	4	30	5	3	5276
PERCENT	6%	84%	-%	9%	-%	-%	1%	-%	-%	100%

## TABLE C-19

## DISTRICT 4

## LINN COUNTY DISTRICT COURT DATA, 1971

Total Cases by Arresting Agency

	<u>Oregon State Police</u>	<u>County Sheriff</u>	<u>Weighmaster</u>	<u>Total</u>
January	298	17	--	315
February	240	15	2	257
March	249	26	4	279
April	280	32	3	315
May	269	32	2	303
June	274	28	--	302
July	373	25	--	398
August	356	31	--	387
September	328	37	2	367
October	328	23	2	353
November	242	41	--	283
December	305	54	2	361
	<hr/>	<hr/>	<hr/>	<hr/>
TOTAL	3542	361	17	3920
PERCENT	90%	9%	--	99%

NOTE: Percentages do not total 100% because of rounding. Percentages less than 1% are omitted.

TABLE C-20

DISTRICT 4

LINN COUNTY DISTRICT COURT DATA, 1971

Offenses by Month of Disposition

	Traffic	Drunk	DUIL	Petty Larceny	Minor in Possession	Disorderly Conduct	Game	Hitch- hiking	Assault	Burglary	Fraud	Drug	Other	Total
January	265	6	4	--	7	--	6	17	1	--	1	2	6	315
February	219	2	5	1	--	--	1	23	--	--	--	--	6	257
March	221	9	8	2	4	2	5	19	1	--	3	5	--	279
April	264	1	10	3	1	2	7	17	6	--	1	1	2	315
May	232	3	11	1	8	--	14	21	4	--	3	2	4	303
June	247	4	9	1	9	--	14	8	2	--	3	1	4	302
July	310	8	16	1	9	--	11	35	2	--	--	--	6	398
August	309	3	13	4	3	2	7	33	2	--	3	1	7	387
September	293	5	6	4	8	1	9	32	--	1	--	1	7	367
October	305	2	8	1	5	3	2	24	1	1	--	1	--	353
November	232	3	11	3	2	2	8	13	2	--	--	3	4	283
December	290	1	21	--	8	3	5	22	--	1	1	3	6	261
TOTAL	3187	47	122	21	64	15	89	264	21	3	15	20	52	3920
PERCENT	81%	1%	3%	1%	2%	--	2%	7%	1%	--	--	1%	2%	100%

NOTE: Percentages less than 1% are omitted.

## TABLE C-21

## DISTRICT 4

## LINN COUNTY DISTRICT COURT DATA, 1971

Final Dispositions by Month of Disposition

	<u>Dismissed</u>	<u>Not Guilty</u>	<u>Fine</u>	<u>Fine Part Suspended</u>	<u>Fine All Suspended</u>	<u>Jail</u>	<u>Jail and Fine</u>	<u>Jail in Lieu of Fine</u>	<u>Jail Suspended</u>	<u>Appealed</u>	<u>Remand to Juvenile Court</u>	<u>Total</u>
January	60	4	243	4	2	--	--	1	1	--	--	315
February	38	11	181	4	5	4	--	7	--	1	6	257
March	40	18	205	1	9	--	1	1	--	--	4	279
April	14	--	296	2	1	--	--	1	--	1	--	315
May	46	5	237	6	5	1	--	1	--	1	1	303
June	31	9	237	1	8	1	1	4	2	--	8	302
July	68	7	299	2	12	--	3	--	--	1	6	398
August	38	11	311	1	10	--	--	2	--	1	13	387
September	47	9	298	8	1	--	1	1	--	--	2	367
October	53	5	282	6	3	--	--	3	--	--	1	353
November	--	--	282	1	--	--	--	--	--	--	--	283
December	81	19	236	6	9	--	2	5	--	3	--	261
TOTAL	516	98	3107	42	65	6	8	26	3	8	41	3920
PERCENT	13%	3%	79%	1%	2%	--	--	1%	--	--	1%	100%

NOTE: Percentages less than 1% are omitted.

TABLE C-22

## DISTRICT 4 - BENTON, LINCOLN AND LINN COUNTIES

## CIRCUIT COURT DATA, 1971

Offenses, By Court

	<u>Benton County Circuit Court</u>	<u>Linn County Circuit Court</u>	<u>Lincoln County Circuit Court</u>	<u>Total</u>
<u>Felonies vs. Persons</u>				
Homicide	0	0	1	1
Manslaughter	0	2	1	3
Sexual Assault	3	7	2	12
Assault	8	16	4	28
SUBTOTAL	11 ( 7%)	25 (10%)	8 (10%)	44 ( 9%)
<u>Felonies vs. Property</u>				
Burglary	11	37	22	70
Grand Larceny	15	17	13	45
Stolen Vehicle	12	15	3	30
Forgery	1	6	1	8
Fraud	8	25	3	36
Embezzlement	0	0	0	0
Stolen Property	19	30	5	54
SUBTOTAL	66 (43%)	130 (52%)	47 (58%)	243 (50%)
Drug	62 (40%)	59 (24%)	16 (20%)	137 (28%)
<u>Other Felonies And Indictable Misdemeanors</u>				
Family Offenses	1	0	3	4
Escape	0	2	0	2
Other Sex Offenses	0	2	1	3
Contributing To Delinquency	0	1	0	1
Probation/Parole Violation	0	1	0	1
Other Felonies	6	12	1	19
SUBTOTAL	7 ( 5%)	18 ( 7%)	5 ( 6%)	30 ( 6%)
Others (Less Serious)	9 ( 6%)	18 ( 7%)	5 ( 6%)	32 ( 7%)
GRAND TOTAL	155 (101%)	250 (100%)	81 (100%)	486 (100%)

NOTE: Percentage differs from 100% due to rounding.



TABLE C-23

## DISTRICT 4 - BENTON, LINCOLN AND LINN COUNTIES

CIRCUIT COURT DATA, 1971

Pretrial Release Actions, By Court

	<u>Benton County Circuit Court</u>		<u>Linn County Circuit Court</u>		<u>Lincoln County Circuit Court</u>		<u>Total</u>	
Release On Own Recognizance	29	19%	35	14%	37	46%	101	21%
Bail Set, Held Through Disposition	14	9%	50	20%	20	25%	84	17%
Released On Bail	76	49%	70	28%	11	14%	157	32%
Jail, Bail Not Allowed	0	-%	5	2%	2	2%	7	1%
Other And Unknown	<u>36</u>	<u>23%</u>	<u>90</u>	<u>36%</u>	<u>11</u>	<u>13%</u>	<u>137</u>	<u>28%</u>
TOTAL	155	100%	250	100%	81	100%	486	99%

NOTE: Percentage differs from 100% due to rounding.

TABLE C-24

## DISTRICT 4 - BENTON, LINCOLN AND LINN COUNTIES

CIRCUIT COURT DATA, 1971

Bail Amounts: Persons Released On Bail And  
Persons Held Through Disposition

<u>Bail Amount</u>	<u>Persons Released On Bail</u>				<u>Persons Having Bail Set, But Held</u>			
	<u>Benton</u>	<u>Linn</u>	<u>Lincoln</u>	<u>Total</u>	<u>Benton</u>	<u>Linn</u>	<u>Lincoln</u>	<u>Total</u>
\$ 0 - 100	0	15	0	15 (10%)	0	0	0	0 (-%)
101 - 300	4	0	1	5 (3%)	0	0	0	0 (-%)
301 - 500	14	11	3	28 (18%)	0	2	2	4 (5%)
501 - 1000	22	27	4	53 (34%)	0	2	9	11 (13%)
1001 - 2000	13	10	0	23 (14%)	2	3	5	10 (12%)
2001 - 3000	9	4	2	15 (9%)	2	4	2	8 (10%)
3001 - 5000	9	1	1	11 (7%)	4	2	2	8 (10%)
5001 and Over	5	1	0	6 (4%)	1	3	0	4 (5%)
Unknown	<u>0</u>	<u>1</u>	<u>0</u>	<u>1 (1%)</u>	<u>5</u>	<u>34</u>	<u>0</u>	<u>39 (46%)</u>
TOTAL	76	70	11	157 (100%)	14	50	20	84 (101%)

NOTE: Percentage differs from 100% due to rounding.

**CONTINUED**

**2 OF 2**

TABLE C-25

## DISTRICT 4 - BENTON, LINCOLN AND LINN COUNTIES

## CIRCUIT COURT DATA, 1971

Final Dispositions, By Court

	<u>Dismissed Or Found Not Guilty</u>	<u>Prison</u>	<u>Jail &amp; Pro- bation</u>	<u>Prison &amp; Fine Or Resti- tution</u>	<u>Fine</u>	<u>Sent. Susp. &amp; Pro- bation</u>	<u>Probation &amp; Fine/ Restitution</u>	<u>Pro- bation</u>	<u>Pend- ing</u>	<u>Remand To Dis- trict Court</u>	<u>Re- leased To Other Juris- diction</u>	<u>Unknown And Other</u>	<u>Total</u>	
Benton County Circuit Court	52	20	5	1	0	47	11	7	8	2	1	1	155	101%
	34%	13%	3%	1%	-%	30%	7%	5%	5%	1%	1%	1%		
Linn County Circuit Court	95	80	22	1	9	0	11	15	9	4	2	2	250	101%
	38%	32%	9%	-%	4%	-%	4%	6%	4%	2%	1%	1%		
Lincoln County Circuit Court	36	9	2	0	0	5	1	23	3	0	0	2	81	100%
	44%	11%	3%	-%	-%	6%	1%	28%	4%	-%	-%	3%		
TOTAL	183	109	29	2	9	52	23	45	20	6	3	5	486	100%
	38%	22%	6%	-%	2%	11%	5%	9%	4%	1%	1%	1%		

NOTE: Percentages differ from 100% due to rounding.

## APPENDIX A

### DATA SOURCES

- I. Jail Data (see Form 1).
  1. Collected at jail from:
    - a. jail ledger or log.
    - b. individual inmate file or file card.
  2. Police records, if needed.
  3. Court dockets/files.
- II. Court Activity Data.
  1. Justice of the Peace Court and District Court data were tabulated from records ("continuation sheets") submitted by these courts to the State Revenue Department.
  2. Circuit Court data were hand-tabulated from court dockets (see Form 2). Only criminal ("State of Oregon vs.") cases were examined.
  3. Information on Municipal Court cases which involved defendants who were neither jailed before trial or on sentence was not collected because such data would have had to be gathered manually, resulting in expense which would have far outweighed its value to the Study.

CORRECTIONAL FEASIBILITY STUDY  
DATA COLLECTION FORM  
DISTRICT \_\_\_\_\_

SOURCE PFIME ID SEX FORM # ARREST DATE TIME FOR ADP USE ONLY

PERSON DATA  
A1 Name (Last, First, MI) A2 Birthdate ( / / )  
A3 ETHNIC GROUP: a Caucasian, b Negro, c Am. Ind., d Oriental, e Mex. Am., f Mexican, g Other, h Unknown  
A4 RESIDENCE: a Transient, b Transient O/S, c Local, d Unknown  
A5 PRIOR ARRESTS: a Yes, b No, c Unknown  
A6 PRIOR JAIL: a Yes, b No, c Unknown

ARREST AND BOOKING DATA  
Jail B1 ( ) Booking No. B2 ( ) Booking Date B3 ( / / )  
Arresting Agency B4 ( ) County of Offense B5 ( )  
Arrest Charges B6 ( ) B7 ( ) B8 ( )  
Code ( ) Code ( ) Code ( )

ARREST (PRE-TRIAL) DISPOSITION  
C1 Charges dropped, C2 Released own recog., C2a Released to parents or guardian, C3 Released on Bail (\$ ), C4 Jail in lieu of bail, C5 Jail, bail not allowed, C6 Released to immigration, C7 Released to military, C8 Released to Corrections, C9 Released to other jurisdiction ( ), C9a Other, specify ( )  
Initial Release Date D1 ( / / ) Time in jail before sentence date D2 ( ) Days  
Other Actions: E1 Bail forfeited, E2 Failed to return on own recog., E3 Other ( ), E4 Returned and held for trial, date ( / / ), E5 Unknown

TRIAL AND SENTENCING DATA  
COURT: F1 Justice, F2 Municipal, F3 District, F4 Circuit, F5 Juvenile  
Court hearing Date G1 ( / / ) Sentencing Date G2 ( / / )  
FORMAL CHARGES: H1 First, H2 Second, H3 Third  
PLEA: Guilty, Not Guilty (I1-I3, J1-J3)  
COURT DISPOSITIONS: CHARGE 1, 2, 3 and SENTENCE (K1-U3)

JAIL DATA  
Date committed to jail on sentence V1 ( / / )  
Sentences served concurrently V2 Consecutively V3  
Final Release Date V4 ( / / )

\_\_\_\_\_ COUNTY \_\_\_\_\_ Misdemeanor Docket \_\_\_\_\_ Felony Docket  
\_\_\_\_\_ COURTS

Name: \_\_\_\_\_ Docket No.: \_\_\_\_\_  
Arrest Date: \_\_\_\_\_ Complaint Filed: \_\_\_\_\_  
Court Date(s): \_\_\_\_\_ Final Release Date: \_\_\_\_\_  
Sex: M F Age: \_\_\_\_\_  
Crime Charged: \_\_\_\_\_  
Bail set, amount \_\_\_\_\_  
Booked into jail \_\_\_\_\_ days in jail before court appearance (sentencing)  
Posted bail \_\_\_\_\_ amount  
Posted bail, forfeit bail \_\_\_\_\_ amount  
Other \_\_\_\_\_ (write in)

\_\_\_\_\_ Appeared in district court  
plea: guilty not guilty Attorney: Yes No  
dismissed jury trial: Yes No  
fine \_\_\_\_\_ amount judge: \_\_\_\_\_ (write in)  
fine and jail \$ \_\_\_\_\_ and \_\_\_\_\_ days  
jail sentence \_\_\_\_\_ days  
sentence suspended  
portion of sentence suspended \_\_\_\_\_ portion  
fine or jail \$ \_\_\_\_\_ and \_\_\_\_\_ days  
probation \_\_\_\_\_ period  
released to other jurisdiction \_\_\_\_\_ (write in)  
other \_\_\_\_\_ (write in)  
Days served in jail on sentence: \_\_\_\_\_ days

Notes and remarks:

**END**