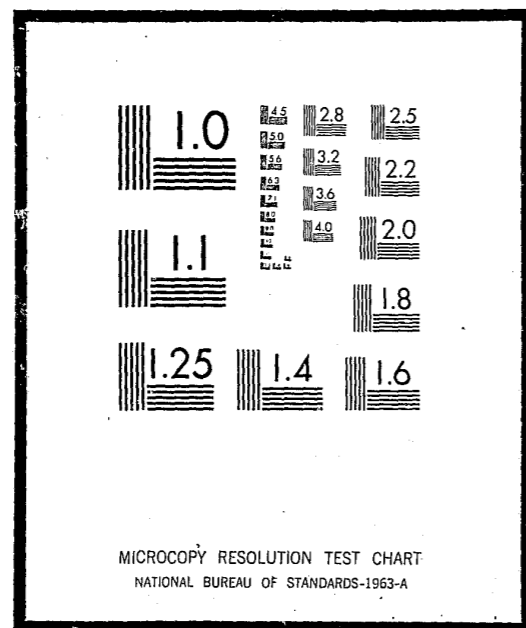


NCJRS

This microfiche was produced from documents received for inclusion in the NCJRS data base. Since NCJRS cannot exercise control over the physical condition of the documents submitted, the individual frame quality will vary. The resolution chart on this frame may be used to evaluate the document quality.



Microfilming procedures used to create this fiche comply with the standards set forth in 41CFR 101-11.504

Points of view or opinions stated in this document are those of the author(s) and do not represent the official position or policies of the U.S. Department of Justice.

U.S. DEPARTMENT OF JUSTICE
LAW ENFORCEMENT ASSISTANCE ADMINISTRATION
NATIONAL CRIMINAL JUSTICE REFERENCE SERVICE
WASHINGTON, D.C. 20531

Date filmed

7/20/76

LAW ENFORCEMENT ASSISTANCE ADMINISTRATION



CRIMINAL JUSTICE AGENCIES IN CALIFORNIA 1971

NATIONAL INSTITUTE OF LAW ENFORCEMENT AND CRIMINAL JUSTICE
STATISTICS DIVISION

WASHINGTON, D. C.

ISSUED FEBRUARY 1972

LAW ENFORCEMENT ASSISTANCE
ADMINISTRATION

Jerris Leonard
Administrator

Richard W. Velde
Clarence M. Coster
Associate Administrators

NATIONAL INSTITUTE OF LAW ENFORCEMENT
AND CRIMINAL JUSTICE

Martin B. Danziger, *Acting Assistant Administrator*

STATISTICS DIVISION

George E. Hall, *Director*

Statistical Programs
Anthony G. Turner, *Chief*

ACKNOWLEDGEMENTS

Preparation of this report was the responsibility of the Statistics Division, National Institute of Law Enforcement and Criminal Justice, Law Enforcement Assistance Administration. The original planning was the responsibility of Linda Well. This report was prepared by Karen Joerg. A statement covering definitions and limitations of data was prepared by the Bureau of the Census. Under LEAA design specifications, the Bureau of the Census conducted the directory survey and prepared the tabulations. The Federal Bureau of Investigation provided valuable assistance in the development of the code identifiers, and in the verification of some entries, particularly in the law enforcement sector.

LEAA-NILECJ STAT DIVISION PUBLICATION SD-D-6

Library of Congress Card Number 70-185037

For sale by the Superintendent of Documents, U.S. Government Printing Office
Washington, D.C. 20402 - Price 60 cents
Stock Number 2700-0084

TABLE OF CONTENTS

Section	Page
FOREWORD	v
NATIONAL SUMMARY	1
LIMITATIONS OF DATA	3
DEFINITIONS OF LEVELS OF GOVERNMENT	4
DEFINITIONS OF TYPES OF CRIMINAL JUSTICE AGENCIES	5
CODE IDENTIFIERS	9
SUMMARY TABLES	10
LISTINGS OF ADDRESSES OF AGENCIES	11
Prosecutors	11
Defenders	20
Enforcement Agencies	21
Courts	32
Probation and Parole Agencies	43
Adult Correctional Institutions	45
Juvenile Correctional Institutions	51
All Other Agencies	54

FOREWORD

Under Title I of Public Law 90-351, the Law Enforcement Assistance Administration is authorized "to collect, evaluate, publish, and disseminate statistics and other information on the condition and progress of law enforcement in the several States". In partial response to this authorization, LEAA's Statistics Division of the National Institute of Law Enforcement and Criminal Justice entered into an inter-agency agreement with the U. S. Bureau of the Census to conduct a survey in January of 1970 to develop a National Criminal Justice Directory.

The primary emphasis of the directory survey was to obtain the names and addresses of all criminal justice agencies and institutions in the United States. This report presents the individual names and addresses of enforcement agencies, courts (civil as well as criminal), prosecutors' offices, defenders' offices, adult correction agencies, juvenile correction agencies, probation offices, and "other" agencies in California, and counts of agencies by level of government and sector (enforcement, courts, corrections, etc.). While summary national statistics are given in this report, more detailed national findings and a description of the survey methodology may be found in the report "Criminal Justice Agencies in the United States - 1970 - Summary Report" (LEAA - Statistics Division, Report SD-D-1).

The directory is periodically updated. The counts that appear in this volume are as of October 1971 and therefore differ somewhat from those in the Summary Report.

NATIONAL SUMMARY

According to the national directory survey of criminal justice agencies, there are 46,197 public agencies in the criminal justice system which are administered at the state or local government level. This total was based on a census of all publicly financed agencies dealing with crime, criminals, or the administration of criminal justice. The census was conducted in January of 1970 in each state and county of the United States, plus all municipalities and townships with a 1960 population of 1,000 or more persons. The figures and list of agencies in this report represent the most recent update of the directory-- October 1971. The numbers therefore may differ somewhat from the counts cited in the Summary Report which provided data as of January 1970.

The results indicate the dispersion within the criminal justice community of the various types of agencies. For example, there are 14,901 ^{1/} enforcement agencies in the United States, of which over 14,000 are operated at the local level of government. It should be noted, however, from other available evidence ^{2/} that state-operated agencies are about 11 times larger on the average than local agencies, in terms of full-time personnel.

There are almost as many courts (13,033) as there are enforcement agencies (14,901). Not all courts, however, address all levels of crime, as do the general police agencies. This survey contains information, for example, about a number of courts which are not technically in the criminal justice system, such as probate courts and family relation courts. About seven-eighths of the courts surveyed are operated at the local level of government.

^{1/} According to the 1967 President's Commission on Law Enforcement and Administration of Justice, Task Force Report: The Police, page 7, there may be as many as 25,000 other police agencies in jurisdictions not covered by the directory survey, that is in townships, boroughs, or villages of under 1,000 population. More recent efforts place this number closer to 10,000, and the Statistics Division is planning to survey this sector of the criminal justice system.

^{2/} See, U. S. Department of Justice, Law Enforcement Assistance Administration and U. S. Department of Commerce, Bureau of the Census, Expenditure and Employment Data for the Criminal Justice System, 1968-69.

About one-fifth of the agencies identified deal with prosecution and defense. Prosecutors' offices, however, outnumber defenders' offices by a factor of 22 to 1; 8,487 to 378. Almost 30 percent of the defenders' offices are state operated but only 7 percent of the prosecutors' offices are operated by state governments.

There are 5,312 (11%) corrections agencies, including 4,503 for adults and 809 for juveniles. Probation offices account for another five percent (2,444 agencies), with the remaining four percent (1,642) of the "other" agencies consisting of such diverse functions as police academies, courts administration, state planning agencies, juvenile boards, and others. Local administration handles about nine in every ten of the adult correction facilities and three in every four of the probation offices.

In general, the concentration of agencies at the local level of government spans the range of criminal justice activities. Only those specialized agencies in the "other" category are more likely to be found at the state level of administration. Sixty-nine percent of the "other" agencies are state operated.

LIMITATIONS OF DATA

Readers should be cautious in interpretations of these counts, keeping in mind that this survey did not include agencies of those municipal governments with a 1960 population of less than 1,000. The figures in this report reflect the October 1971 update of the directory, particularly in the courts sector and the juvenile corrections sector, and consequently may differ from the figures presented in the Summary Report (Statistics Division Report SD-D-1). Moreover, in deciding whether an agency belonged in the directory or not, the general rule was to be inclusive rather than exclusive.

While numbers will help describe the scope and diversity of the system, the size and range of activity of criminal justice agencies within a state may not always be reflected by simple counts of agencies. Organizational complexity varies considerably from one governmental unit to another, even within a single state. Of the categories enumerated in the directory, the counts of local adult correctional facilities are the most reliable due to the refinement of this sector through the National Jail Census conducted in the Spring of 1970.

DEFINITIONS OF LEVELS OF GOVERNMENT

The criminal justice agencies reported were classified by type of government (state, county, municipality, or township) according to Census Bureau definitions as summarized below:

Counties

Organized county governments are found throughout California, the total of such governments being 57. Because San Francisco operates primarily as a city, it is counted, for Census purposes, as a municipality rather than as a county.

Cities

This category includes all active governmental units officially designated as cities, villages, boroughs, and towns. This concept generally corresponds to the "incorporated places" that are recognized in Census Bureau reporting of population and housing statistics. Municipalities which are governmentally inactive were excluded from the survey.

The government of San Francisco operates as a composite city-county. All criminal justice activities in this city are assigned to the city level of government.

Townships

There are no organized township governments in California.

Regional Agencies

An agency serving more than one local government was generally assigned to either the largest government involved or to the next highest level of government depending upon the type of agency involved. However, classification was often based on the unique factors involved in the particular case and a complete explanation of procedures would be impractical.

DEFINITIONS OF TYPES OF CRIMINAL JUSTICE AGENCIES

Names of criminal justice agencies were collected and classified under the following headings:

1. Courts
2. Enforcement agencies
3. Correctional institutions
4. Probation and parole agencies
5. Prosecutors
6. Public defenders
7. All other criminal justice agencies

Following is a more detailed explanation covering the types of agencies included in these categories and some comments concerning their limitations.

Courts

The survey included appellate courts, major trial courts of general jurisdiction, special courts (probate, juvenile, family, domestic relations courts) as well as other courts of limited jurisdiction (county, municipal, justice, magistrate, mayor, traffic and police courts).

Specifically excluded from the survey were minor courts of nominal participation in the criminal justice system where the judge's compensation was exclusively on a fee basis (unsalaried). Also excluded were Workmen's Compensation Boards, Bank, Tax, and Industrial Review Boards and Land Courts.

The counts for the "courts" sector include only independent court systems. Sub-units (divisions, departments, bureaus or branches), regardless of function or importance, were excluded.

Courts were classified by level of government based primarily on the geographical boundaries of the district served by the court. The Supreme Court and the Court of Appeals were counted at the state level in California. Reported at the county level were the Superior Court, Municipal Courts, Justice Courts, and Small Claims Courts. In San Francisco, which operates as a city-county unit, the Municipal Court, the Superior Court, and the Juvenile Court were counted as city-level courts. These three are the only city level courts identified in California.

Enforcement Agencies

Included in this sector are state, county, and municipal police or law enforcement agencies with sworn police officers.

Included are all major law enforcement agencies, including the state police, state bureau of investigation in some cases, the county sheriff and police department and county detectives, as well as municipal police departments. Included also are all identifiable and independently administered Park Ranger, Harbor Police, Airport Police, Housing Police, and Transit Police agencies with 50 or more sworn officers, and some smaller forces. Excluded are branches, divisions, or departments of a main law enforcement agency. For example, the Juvenile Division of a sheriff's department would not be counted as an independent law enforcement agency.

Those counties, cities, towns, and villages whose police services are provided for under a contractual agreement with another government or private agency were not considered to have a police department. Therefore, cities in Los Angeles County which contract with the Los Angeles Sheriff's Department for police services (the Lakewood Plan) are not included in the number of police departments shown for Los Angeles County. The same principle holds true for all similar contractual arrangements.

Marshals and constables whose primary duties are the serving of warrants were excluded from the survey where they were identifiable. Regulatory agencies were not included in most instances. Game Wardens, Alcoholic Beverage Control Boards, Bingo Boards, Gambling Boards and the like were excluded unless they operate a force of 50 or more sworn police officers.

It should be noted that state, county and municipal medical examiners and coroners were included in this sector.

Correctional Institutions

General Definition--An individual facility, such as a prison, jail, farm, or annex, which is either separately administered or administratively dependent upon a parent institution and located in a separate geographical area. Hospitals for the criminally insane and halfway houses for narcotic addicts and alcoholics were not counted in this sector but in the "all other criminal justice agencies" sector.

Juvenile Correctional Facilities--Included are those facilities which detain juveniles only, for 48 hours or more. This includes detention centers, reception and diagnostic centers, some halfway houses and other probation or work-release type facilities; that is, institutions detaining juveniles for court disposition as well as those holding juveniles for rehabilitation after court disposition. At the local level of government an agency was considered to be a juvenile agency if the administrator considered it as such. At the state level,

facilities were assigned juvenile status if they were administered by the state juvenile corrections agency (the Youth Authority).

Adult Correctional Facilities--Included are those institutions which detain adults only or a combination of prisoner populations. Drunk tanks, lock-ups and other facilities which detain persons for less than 48 hours are excluded.

Probation and Parole Agencies

Included are probation and parole departments, commissions, boards or agencies operated by the state or local government, including those administratively dependent on the courts. The assignment of a probation officer to a particular level of government was an involved process related to both the type of area served and administrative responsibility. As a rule, a probation department serving more than one county was assigned to the state level of government. Probation services provided on a contractual basis were not included.

Prosecutors

Included are agencies giving legal counsel to the county, municipal, or state government, most of whom have at least minimal prosecutorial responsibility.

In California, the Office of the Attorney General was counted as a state-level agency, County Attorneys and County Counsels were included at the county level, and City Attorneys were included at the city level of government.

Deputy prosecutors or deputy district attorneys and deputy circuit solicitors were not included separately, but were considered a part of the main prosecutor's office. Many city attorneys were included though they may prosecute few cases. It is virtually impossible to verify the prosecutorial nature of each city attorney's duties due to the large numbers of agencies involved. Consequently, city attorneys were included unless it was specifically stated that the attorney does not prosecute cases.

Wherever possible, welfare fraud investigators and similar activities were excluded from this category.

Public Defenders

Included in this category are state or city-dependent law schools with legal aid clinics, as well as public defender offices in the government. Court-appointed attorneys were not included.

Public defender offices are included where these are publicly financed and administered as a department of government. Any organization administered by a non-governmental body (legal aid society, bar association) was excluded even though supported entirely by public funds.

Other Criminal Justice Agencies

Included are any other criminal justice agencies operated by a government which could not be assigned to other categories, such as: police academies, crime commissions, grand juries, some identification bureaus, juvenile boards, court administrators, state planning agencies and regions where available, separate detention facilities or hospitals for the criminally insane, institutions, commissions, boards, or clinics for drug addicts and alcoholics, and administrative agencies such as a department of corrections or a department of public safety.

No attempt was made to include departments of colleges or universities with organized programs in fields of criminal justice.

CODE IDENTIFIERS

A seven or nine-digit code identifier was assigned to each agency in the Directory. Police agencies which have National Crime Information Center (NCIC) identifiers have retained this seven-digit number. All other agencies in the Directory were assigned a nine-digit identifier in accordance with the following scheme:

Digits 1-2	Two-letter state abbreviation
Digits 3-5	County number as designated by the NCIC Manual Exception - For Michigan, digits 3 and 4 are the county number; digit 5 is "0"
Digits 6-7	Unit number of agency by type within each level of government and county
Digit 8	Level of Government 0Special District 1City, town, or township 3County 5State
Digit 9	Type of Agency A - Prosecutor D - Defender M - Coroner or Medical Examiner C - Correctional Institution J - Court G - Probation or Parole Y - All other agencies E - State Planning Agency Z - Police agency not in NCIC

A description of the seven-digit identifiers used in the NCIC may be found in the NCIC Operating Manual, which is maintained by the Federal Bureau of Investigation.

The code identifier is found on the last line of each agency's address in the directory.

Table 1.--CALIFORNIA CRIMINAL JUSTICE AGENCIES BY FUNCTION AND LEVEL OF GOVERNMENT: OCTOBER 1971

Level of government	Total agencies	Enforcement agencies	Courts	Prosecutor's offices	Defender's offices	Adult corrections	Juvenile corrections	Probation and parole	All other agencies
Total	1,722	428	387	325	40	186	112	89	155
State	102	6	6	1	2	18	15	15	39
Local	1,620	422	381	324	38	168	97	74	116
County	963	84	378	92	37	108	94	71	99
City, township, and special district.	657	338	3	232	1	60	3	3	17

Table 2.--NUMBER AND PERCENT OF CALIFORNIA CRIMINAL JUSTICE AGENCIES BY LEVEL OF GOVERNMENT: OCTOBER 1971

Type of agency	Total number in California	Percent at state or local level	
		Total	Percent at local level
All agencies	1,722	100.0%	94.1%
Enforcement	428	100.0	98.6
Courts	387	100.0	98.4
Prosecutors	325	100.0	99.7
Defenders	40	100.0	95.0
Adult corrections	186	100.0	90.3
Juvenile corrections	112	100.0	86.6
Probation and parole	89	100.0	83.1
All other agencies	155	100.0	74.8

PROSECUTORS' OFFICES

STATE LEVEL

DEPT OF JUSTICE
OFC OF ATTY GEN
500 WELLS FARGO BK
5TH ST AND CAPITOL MALL
SACRAMENTO CA 95814
CA03494

CITY ATTORNEYS OFC
CITY ATTORNEY
CITY HALL
SANLEANDRO CA 94577
CA001101A

COUNTY COUNSEL S OFFICE
COUNTY COUNSEL
GOVERNMENT CENTER
SAN ANDREAS CA 95255
CA005023A

LOCAL LEVEL

DISTRICT ATTORNEY
ALAMEDA CO
1225 FALLON
OAKLAND CA 94612
CA001013A

UNION CITY ATTORNEYS OFC
CITY ATTORNEY
1154 WHIPPLE RD
UNION CITY CA 94587
CA001111A

ANGELS CITY ATTY S OFC
CITY ATTORNEY
CITY HALL
ANGELS CAMP CA 95222
CA005011A

COUNTY COUNSEL
ALAMEDA CO
1221 OAK
OAKLAND CA 94607
CA001023A

ALPINE CO DIST ATTYS OFF
DISTRICT ATTORNEY
COURTHOUSE
MARKLEEVILLE CA 96120
CA002013A

DISTRICT ATTY OFFICE
DISTRICT ATTORNEY
547 MARKET STREET
COLUSA CA 95932
CA006013A

ALAMEDA CITY ATTORNEY
CITY ATTORNEY
CITY HALL
ALAMEDA CA 94501
CA001011A

DISTRICT ATTORNEY S OFF
DISTRICT ATTORNEY
108 COURT ST
JACKSON CA 95642
CA003013A

CITY ATTORNEYS OFC
CITY ATTORNEY
CITY HALL
COLUSA CA 95932
CA006011A

CITY ATTORNEY
ATTORNEY
CITY HALL
EMERYVILLE CA 94608
CA001021A

IONE CITY ATTORNEYS OFC
CITY ATTORNEY
CITY HALL
IONE CA 95640
CA003011A

CITY ATTORNEYS OFC
CITY ATTORNEY
CITY HALL
WILLIAMS CA 95987
CA006021A

FREMONT CITY ATTORNEY
CITY ATTORNEY
CITY GOVT BLDG
FREMONT CA 94538
CA001031A

CITY ATTORNEYS OFC
CITY ATTORNEY
SUTTER CREEK
CA 95685
CA003021A

DISTRICT ATTORNEY
CONTRA COSTA CO
COURTHOUSE
MARTINEZ CA 94553
CA007013A

HAYWARD CITY ATTY S OFC
CITY ATTORNEY
CITY HALL
HAYWARD CA 94500
CA001041A

DISTRICT ATTY OFFICE
DISTRICT ATTORNEY
COURTHOUSE
OROVILLE CA 95965
CA004013A

COUNTY COUNSEL
CONTRA COSTA CO
COURTHOUSE
MARTINEZ CA 94553
CA007023A

CITY ATTORNEYS OFC
CITY ATTORNEY
395 LIVERMORE AVE
LIVERMORE CA 94550
CA001051A

COUNTY COUNSEL S OFFICE
COUNTY COUNSEL
COURTHOUSE
OROVILLE CA 95965
CA004023A

ATTORNEYS OFC
CITY ATTORNEY
CITY HALL
ANTIOCH CA 94509
CA007011A

NEWARK CITY ATTY S OFC
CITY ATTORNEY
37101 NEWARK BLVD
NEWARK CA 94560
CA001061A

CHICO CITY ATTORNEYS OFC
CITY ATTORNEY
CITY HALL
CHICO CA 95926
CA004011A

CONCORD ATTORNEYS OFC
CITY ATTORNEY
1950 PARKSIDE
CONCORD CA 94520
CA007021A

CITY ATTORNEY S OFFICE
CITY ATTORNEY
CITY HALL
14TH AND WASHINGTON
OAKLAND CA 94612
CA001071A

CITY ATTORNEYS OFC
CITY ATTORNEY
CITY HALL
GRIDLEY CA 95948
CA004021A

ATTORNEYS OFFICE
CITY ATTORNEY
CITY HALL
EL CERRITO CA 94530
CA007031A

CITY ATTORNEYS OFC
CITY ATTORNEY
CITY HALL
PIEDMONT CA 94611
CA001081A

CITY ATTORNEYS OFC
CITY ATTORNEY
CITY HALL
ORVILLE CA 95965
CA004031A

ATTORNEYS OFFICE
CITY ATTORNEY
CITY HALL
MARTINEZ CA 94553
CA007041A

CITY ATTORNEYS OFC
CITY ATTORNEY
480 ADAMS COURT
PLEASANTON CA 94566
CA001091A

DIST ATTORNEY S OFFICE
DISTRICT ATTORNEY
GOVERNMENT CENTER
SAN ANDREAS CA 95255
CA005013A

PINOLE ATTORNEYS OFC
CITY ATTORNEY
CITY HALL
PINOLE CA 94564
CA007051A

ATTORNEYS OFFICE CITY ATTORNEY CITY HALL RICHMOND CA 94804 CA007061A	DIST ATTORNEY S OFFICE DISTRICT ATTORNEY COURTHOUSE FRESNO CA 93721 CA010023A	DISTRICT ATTORNEY S OFF DISTRICT ATTORNEY COURTHOUSE WILLOWS CA 95988 CA011013A	COUNTY COUNSEL S OFFICE COUNTY COUNSEL COURTHOUSE EL CENTRO CA 92243 CA013023A	CITY ATTORNEYS OFC ATTORNEY CITY HALL SHAFTER CA 93263 CA015021A	CITY ATTORNEYS OFC ATTORNEY 445 N MAIN ST LAKEPORT CA 95453 CA017011A
CITY ATTORNEYS OFC CITY ATTORNEY CITY HALL SAN PABLO CA 94806 CA007071A	ATTORNEY S OFFICE CHIEF OF POLICE 529 POLLASKY CLOVIS CA 93612 CA010011A	CITY ATTORNEYS OFC CITY ATTORNEY CITY HALL ORLAND CA 95963 CA011011A	CITY ATTORNEYS OFC ATTORNEY PLAZA PARK BRAWLEY CA 92227 CA013011A	TAFT CITY ATTORNEYS OF ATTORNEY 209 E KERN ST TAFT CA 93268 CA015031A	DISTRICT ATTORNEY S OFF DIST ATTY COURTHOUSE SUSANVILLE CA 96130 CA018013A
CITY ATTORNEY S OFFICE ATTORNEY 1445 CIVIC DRIVE WALNUT CREEK CA 94596 CA007081A	CITY ATTORNEY S OFFICE CITY ATTORNEY CITY HALL 6 ELM STS COALINGA CA 93210 CA010021A	CITY ATTORNEYS OFC CITY ATTORNEY CITY HALL WILLOWS CA 95988 CA011021A	CITY ATTORNEYS OFC ATTORNEY CITY HALL CALEXICO CA 92231 CA013021A	CITY ATTORNEYS OFC ATTORNEY CITY HALL TECACHADI CA 93561 CA015041A	COUNTY COUNSEL S OFFICE COUNTY COUNSEL COURTHOUSE SUSANVILLE CA 96130 CA018023A
CITY ATTORNEY S OFFICE CITY ATTORNEY CITY HALL CLAYTON CA 94517 CA007091A	CITY ATTORNEY S OFF CITY ATTORNEY 107 S 6TH ST FOWLER CA 93625 CA010031A	DISTRICT ATTORNEY S OFF DISTRICT ATTORNEY HUMBOLDT COURTHOUS EUREKA CA 95501 CA012013A	CITY ATTORNEY S OFFICE CITY ATTORNEY P O BOX 1388 EL CENTRO CA 92243 CA013031A	WASCO ATTORNEYS OF CITY ATTORNEY CITY HALL WASCO CA 93280 CA015051A	CITY ATTORNEYS OFC ATTORNEY CITY HALL SUSANVILLE CA 96130 CA018011A
CITY ATTORNEY S OFFICE CITY ATTORNEY CITY HALL 3300 N MAIN ST PLEASANT HILL CA 94523 CA007101A	CITY ATTORNEY S OFF ATTORNEY 2326 FRESNO ST FRESNO CA 93721 CA010041A	COUNTY COUNSEL S OFFICE COUNTY COUNSEL HUMBOLDT COURTHOUS EUREKA CA 95501 CA012023A	CITY ATTORNEYS OFC ATTORNEY 222 WEST 5TH ST HOLTVILLE CA 92250 CA013041A	CITY ATTORNEYS OFC ATTORNEY COMMUNITY HALL MCFARLAND CA 93250 CA015061A	DISTRICT ATTORNEY LOS ANGELES CO 600 HALL OF JUSTICE 211 W TEMPLE LOS ANGELES CA 90012 CA019013A
DISTRICT ATTORNEY S OFF DISTRICT ATTORNEY COURTHOUSE CRESCENT CITY CA 95531 CA008013A	CITY ATTORNEYS OFC ATTORNEY CITY HALL KERMAN CA 93630 CA010051A	ARCATA CITY ATTY S OFC ATTORNEY CITY HALL ARCATA CA 95521 CA012011A	CITY ATTORNEYS OFC ATTORNEY CITY HALL IMPERIAL CA 92251 CA013051A	ARVIN CITY ATTORNEYS OFC ATTORNEY ARVIN CA 93203 CA015071A	COUNTY COUNSEL LOS ANGELES CO 500 W TEMPLE LOS ANGELES CA 90012 CA019023A
COUNTY COUNSEL S OFFICE COUNTY COUNSEL COURTHOUSE CRESCENT CITY CA 95531 CA008023A	CITY ATTORNEYS OFC ATTORNEY CITY HALL KINGSBURG CA 93631 CA010061A	CITY ATTORNEY S OFFICE CITY ATTORNEY 130 H ST BLUE LAKE CA 95525 CA012021A	CITY ATTORNEYS OFC ATTORNEY CITY HALL WESTMORLAND CA 92281 CA013061A	CITY ATTORNEYS OFC ATTORNEY CITY HALL RIDGECREST CA 93555 CA015081A	CITY PROSECUTORS OFFICE ATTORNEY 220 W WOODWARD AVE ALHAMBRA CA 91801 CA019011A
CITY ATTORNEYS OFC ATTORNEY CITY HALL CRESCENT CA 95531 CA008011A	CITY ATTORNEYS OFC ATTORNEY CITY HALL ORANGE COVE CA 93646 CA010071A	CITY ATTORNEYS OFC ATTORNEY 531 K STREET EUREKA CA 95501 CA012031A	DISTRICT ATTORNEY S OFF DISTRICT ATTORNEY 168 NORTH EDWARDS INDEPENDENCE CA 93526 CA014013A	DISTRICT ATTORNEY S OFF DISTRICT ATTORNEY COURTHOUSE BOX C HANFORD CA 93230 CA016013A	CITY ATTORNEYS OFC ATTORNEY CITY HALL ARCADIA CA 91006 CA019021A
DISTRICT ATTORNEY S OFC DISTRICT ATTORNEY PLACERVILLE CA 95667 CA009013A	CITY ATTORNEYS OFC ATTORNEY CITY HALL PARLIER CA 93648 CA010081A	CITY ATTORNEYS OFC ATTORNEY CITY HALL FERNDALE CA 95536 CA012041A	CITY ATTORNEY S OFFICE ATTORNEY P O BOX 846 BISHOP CA 93514 CA014011A	CITY ATTORNEY S OFFICE CITY ATTORNEY CITY HALL 1033 CHITTENDEN AVE CORCORAN CA 93212 CA016011A	CITY ATTORNEYS OFC ATTORNEY CITY HALL AVALON CA 90704 CA019031A
COUNTY COUNSEL S OFFICE COUNTY COUNSEL 2850 COLD SPRINGS PLACERVILLE CA 95667 CA009023A	CITY PROSECUTOR S OFFICE ATTORNEY 921 G ST REEDLEY CA 93654 CA010091A	CITY ATTORNEYS OFC ATTORNEY FORTUNA CA 95540 CA012051A	DISTRICT ATTORNEYS OFC DISTRICT ATTORNEY 1415 TRUKTUN AVE BAKERSFIELD CA 93301 CA015013A	CITY ATTORNEYS OFC ATTORNEY CIVIC AUDITORIUM HANFORD CA 93230 CA016021A	AZUSA ATTORNEYS OFC CITY ATTORNEY 213 E FOOTHILL BLV AZUSA CA 91702 CA019041A
CITY ATTORNEYS OFC ATTORNEY CITY HALL PLACERVILLE CA 95667 CA009011A	SANGER ATTORNEYS OFC CITY ATTORNEY CITY HALL SANGER CA 93657 CA010101A	CITY ATTORNEYS OFC ATTORNEY RIO DELL CA 95662 CA012061A	COUNTY COUNSELS OFC COUNTY COUNSEL 1415 TRUKTUN AVE BAKERSFIELD CA 93301 CA015023A	CITY ATTORNEYS OFC ATTORNEY CITY HALL 449 C ST LEMOORE CA 93245 CA016031A	CITY ATTORNEYS OFC ATTORNEY CITY HALL BALDWIN PARK CA 91706 CA019051A
COUNTY COUNSEL S OFFICE COUNTY COUNSEL COURTHOUSE FRESNO CA 93721 CA010013A	SELMA ATTORNEYS OFC CITY ATTORNEY 1814 TUCKER ST SELMA CA 93664 CA010111A	DISTRICT ATTORNEY S OFF DIST ATTORNEY COURTHOUSE EL CENTRO CA 92243 CA013013A	CITY ATTORNEY S OFFICE CITY ATTORNEY 1501 TRUKTUN AVE BAKERSFIELD CA 93301 CA015011A	LAKE CO DIST ATTY S OFC DISTRICT ATTORNEY MAIN ST LAKEPORT CA 95453 CA017013A	BELL CITY ATTORNEYS OF ATTORNEY CITY HALL BELL CA 90201 CA019061A

CITY ATTORNEYS OFC
ATTORNEY
CITY HALL
BEVERLY HILLS CA 90210
CA019071A

CITY ATTORNEY S OFFICE
ATTORNEY
275 EAST OLIVE AVE
BURBANK CA 91502
CA019081A

CITY ATTORNEY S OFFICE
CITY ATTORNEY
CLAREMONT CA 91711
CA019091A

CITY ATTORNEYS OFC
CITY ATTORNEY
205 SO WILLOWBROOK
COMPTON CA 90224
CA019101A

CITY ATTORNEYS OFC
ATTORNEY
CITY HALL
CULVER CITY CA 90230
CA019111A

CITY ATTORNEYS OFC
ATTORNEY
CITY HALL
ELMONTE CA 91731
CA019121A

CITY ATTORNEYS OFC
ATTORNEY
CITY HALL
EL SEGUNDO CA 90245
CA019131A

CITY ATTORNEYS OFC
ATTORNEY
1700 W 162ND ST
GARDENA CA 90247
CA019141A

CITY ATTORNEYS OFC
ATTORNEY
CITY HALL
GLENDALE CA 91200
CA019151A

CITY ATTORNEYS OFFICE
CITY PROSECUTOR
CITY HALL
4460 W 126TH ST
HAWTHORNE CA 90250
CA019161A

CITY PROSECUTOR S OFFICE
CITY PROSECUTOR
HERMOSA BEACH
CIVIC CENTER
HERMOSA BEACH CA 90254
CA019171A

CITY PROSECUTOR S OFFICE
CITY ATTORNEY
6548 MILES AVE
HUNTINGTON PARK CA 90255
CA019181A

CITY PROSECUTOR S OFC
CITY PROSECUTOR
105 E QUEEN ST
INGLEWOOD CA 90301
CA019191A

CITY ATTORNEY S OFFICE
CITY ATTORNEY
5050 CLARK AVE
LAKEWOOD CA 90714
CA019201A

CITY ATTORNEY S OFFICE
CITY ATTORNEY
CITY HALL
15900 MAIN ST
LA PUENTE CA 91744
CA001921A

CITY ATTORNEYS OFC
ATTORNEY
CITY HALL
LA VERNE CA 91750
CA019221A

CITY PROSECUTOR S OFFICE
CITY PROSECUTOR
400 W BROADWAY
LONG BEACH CA 90802
CA019231A

LAW DEPARTMENT
CITY ATTORNEY
CITY HALL
205 W BROADWAY
LONG BEACH CA 90802
CA019241A

CITY ATTORNEY S OFFICE
CITY ATTORNEY
205 S BROADWAY
LOS ANGELES CA 90012
CA019251A

CITY ATTORNEYS OFC
ATTORNEY
CITY HALL
LYNWOOD CA 90262
CA019261A

CITY ATTORNEYS OFC
ATTORNEY
CITY HALL
1601 VALLEY DR
MANHATTAN BENCH
CA019271A

CITY ATTORNEYS OFC
ATTORNEY
CITY HALL
MAYWOOD CA 90270
CA019281A

CITY ATTORNEYS OFC
ATTORNEY
CITY HALL
MONROVIA CA 91016
CA019291A

CITY ATTORNEYS OFC
ATTORNEY
CITY HALL
MONTEBELLO CA 90640
CA019301A

CITY ATTORNEYS OFC
ATTORNEY
FEWHEM HALL OF REC
MONTEREY PARK CA 91754
CA019311A

PROSECUTOR S OFFICE
CITY ATTORNEY
142 N ARROYO PKY
PASADENA CA 91101
CA019321A

CITY ATTORNEYS OFC
ATTORNEY
CITY HALL
POMONA CA 91766
CA019321A

PROSECUTOR S OFFICE
DUPTY CITY ATTY
REDONDO BEACH CA 90277
CA019331A

CITY ATTORNEY PROSECUTOR
CITY ATTORNEY
501 SO BRAND BLVD
SAN FERNANDO CA 91340
CA019341A

CITY ATTORNEYS OFC
ATTORNEY
CITY HALL
SAN GABRIEL CA 91778
CA019351A

CITY ATTORNEYS OFC
ATTORNEY
CITY HALL
SAN MARINO CA 91108
CA019361A

CITY ATTORNEY S OFC
ATTORNEY
CITY HALL
SANTA MONICA CA 90406
CA019371A

CITY PROSECUTOR S OFC
PROSECUTOR
CITY HALL
SANTA MONICA CA 90406
CA019381A

CITY ATTORNEY OFFICE
ATTORNEY
W SIERRA MADRE BLV
SIERRA MADRE CA 91024
CA019391A

CITY ATTORNEYS OFC
ATTORNEY
CITY HALL
SIGNAL HILL CA 90806
CA019401A

CITY ATTORNEYS OFC
ATTORNEY
CITY HALL
SOUTH GATE CA 90280
CA019411A

CITY ATTORNEYS OFC
ATTORNEY
CITY HALL
SOUTH PASADENA CA 91030
CA019421A

CITY PROSECUTOR S OFFICE
CITY ATTORNEY
3031 TORRANCE BLVD
TORRANCE CA 90503
CA019431A

CITY ATTORNEYS OFC
ATTORNEY
CITY HALL
WEST COVINA CA 91790
CA019441A

CITY ATTORNEYS OFC
ATTORNEY
CITY HALL
WHITTIER CA 90602
CA019451A

CITY ATTORNEYS OFC
ATTORNEY
CITY HALL
DOWNEY CA 90241
CA019461A

CITY ATTORNEY S OFC
CITY ATTORNEY
CITY HALL
BELLFLOWER CA 90706
CA019471A

CITY ATTORNEY S OFFICE
CITY ATTORNEY
CITY HALL
1634 E 3RD ST
DUARTE CA 91010
CA019481A

CITY ATTORNEY S OFFICE
CITY ATTORNEY
CITY HALL
16420 S COLORADO AVE
PARAMOUNT CA 90723
CA019491A

CITY ATTORNEY S OFFICE
CITY ATTORNEY
6615 PASSONS BLVD
PICO RIVERA CA 90660
CA019501A

CITY ATTORNEY S OFFICE
CITY ATTORNEY
CITY OFFICES
26940 ROLLING HILLS RD
ROLLING HILLS EST CA 90274
CA019511A

CITY ATTORNEY S OFFICE
CITY ATTORNEY
CITY HALL
11710 TELEGRAPH RD
SANTA FE SPRINGS CA 90670
CA019521A

CITY ATTORNEY S OFFICE
CITY ATTORNEY
1415 N TYLER AVE
SOUTH EL MONTE CA 91733
CA019531A

CITY ATTORNEY S OFFICE
CITY ATTORNEY
COMMUNITY CTR BLDG
18750 CLARKSDALE AVE
ARTESIA CA 90701
CA019541A

CITY ATTORNEY S OFFICE
CITY ATTORNEY
CIVIC CENTER
COMMERCE CA 90022
CA019551A

CITY ATTORNEY S OFFICE
CITY ATTORNEY
CITY HALL
2 PORTUGUESE BEND RD
ROLLING HILLS CA 90274
CA019561A

CITY ATTORNEY S OFFICE
CITY ATTORNEY
CITY HALL
7100 S GARFIELD AVE
BELL GARDENS CA 90201
CA019571A

CITY ATTORNEY S OFFICE
CITY ATTORNEY
CITY ATTORNEY
CUDAHY CA 90201
CA019581A

CITY ATTORNEY S OFFICE
CITY ATTORNEY
13700 S LA MIRADA
LA MIRADA CA 90638
CA019591A

CITY ATTORNEY S OFFICE
CITY ATTORNEY
CITY HALL
125 EXCHANGE PL
SAN DIMAS CA 91773
CA019601A

CITY ATTORNEY S OFFICE
CITY ATTORNEY
5938 N KAUFFMAN A
TEMPLE CITY CA 91780
CA019611A

CITY ATTORNEY S OFFICE
CITY ATTORNEY
8838 VALLEY BLVD
ROSEMEAD CA 91770
CA019621A

CITY ATTORNEY S OFFICE
CITY ATTORNEY
HAWAII GARDENS CA 92616
CA019631A

CITY ATTORNEY S OFFICE
CITY ATTORNEY
CITY HALL
24549 LONG VALLEY RD
HIDDEN HILLS CA 91302
CA019641A

CITY ATTORNEY S OFFICE
CITY ATTORNEY
LOHITA CA 90717
CA019651A

CITY ATTORNEY S OFFICE
CITY ATTORNEY
38260 N 10TH ST E
PALMDALE CA 93550
CA019661A

CITY ATTORNEYS OFFICE
ATTORNEY
19400 SO PIONEER B
CERRITOS CA 90701
CA019671A

DISTRICT ATTORNEYS OFF
DISTRICT ATTORNEY
GOVERNMENT CENTER
MADERA CA 93637
CA020013A

COUNTY COUNSELS OFFICE
COUNSLER
GOVERNMENT CENTER
MADERA CA 93637
CA020023A

CITY ATTORNEY S OFFICE
CITY ATTORNEY
CITY HALL
145 ROBERTSON BLVD
CHOWCHILLA CA 93610
CA020011A

CITY ATTORNEYS OFC
ATTORNEY
CITY HALL
MADERA CA 93637
CA020021A

DISTRICT ATTORNEYS OFC
DISTRICT ATTORNEY
CIVIC CENTER
SAN RAFAEL CA 94903
CA021013A

COUNTY COUNSEL S OFFICE
COUNTY COUNSEL
CIVIC CENTER
SAN RAFAEL CA 94903
CA021023A

CITY ATTORNEYS OFC
ATTORNEY
CITY HALL
BELVEDERE CA 94920
CA021011A

CITY ATTORNEYS OFC
ATTORNEY
TOWN HALL
CORTE MADERA CA 94925
CA021021A

CITY ATTORNEYS OFC
ATTORNEY
46 PARK RD
FAIRFAX CA 94930
CA021031A

CITY ATTORNEYS OFC
ATTORNEY
CITY HALL
LARKSPUR CA 94939
CA021041A

CITY ATTORNEYS OFC ATTORNEY CITY HALL MILL VALLEY CA 94941 CA021051A	COUNTY COUNSELS OFFICE COUNTY COUNSEL COUNTY COURTS BLDG MERCED CA 95340 CA024023A	CITY ATTORNEYS OFC ATTORNEY CITY HALL CARMEL CA 93921 CA027011A
ROSS ATTORNEYS OFC ATTORNEY TOWN HALL ROSS CA 94957 CA021061A	CITY ATTORNEYS OFC ATTORNEY CITY HALL ATWATER CA 95301 CA024011A	CITY ATTORNEYS OFC ATTORNEY CITY HALL DEL REY OAKS CA 93940 CA027021A
CITY ATTORNEYS OFC ATTORNEY CITY HALL SAN RAFAEL CA 94901 CA021071A	CITY ATTORNEYS OFC ATTORNEY CITY HALL DOS PALOS CA 93620 CA024021A	CITY ATTORNEYS OFC ATTORNEY CITY HALL GOMZALES CA 93926 CA027031A
ATTORNEY S OFFICE CITY ATTORNEY 1010 B ST SAN RAFAEL CA 94901 CA021081A	CITY ATTORNEYS OFC ATTORNEY CITY CO BLDG GUSTINE CA 95322 CA024031A	CITY ATTORNEYS OFC ATTORNEY GREENFIELD CA 93927 CA027041A
CITY ATTORNEYS OFC ATTORNEY 906 MACHIN AVE NOVATO CA 94947 CA021091A	CITY ATTORNEYS OFC ATTORNEY CITY HALL LIVINGSTON CA 95334 CA024041A	CITY ATTORNEYS OFC ATTORNEY CITY HALL KING CITY CA 93930 CA027051A
CITY ATTORNEYS OFC ATTORNEY CITY HALL TIBURON CA 94920 CA021101A	CITY ATTORNEYS OFC ATTORNEY CITY HALL LOS BANOS CA 93635 CA025051A	CITY ATTORNEYS OFC ATTORNEY CITY HALL MONTEREY CA 93940 CA027061A
COUNTY DIST ATTYS OFC DISTRICT ATTORNEY COURTHOUSE MARIPOSA CA 95338 CA022013A	MERCED CITY ATTORNEY ATTORNEY 530 W 21ST ST MERCED CA 95340 CA025061A	CITY ATTORNEY S OFFICE ATTORNEY CITY HALL PACIFIC GROVE CA 93950 CA027071A
DISTRICT ATTORNEY S OFF DISTRICT ATTORNEY COURTHOUSE UKIAH CA 95482 CA023013A	DISTRICT ATTORNEY S OFF DISTRICT ATTORNEY ALTURAS CA 96101 CA025013A	CITY ATTORNEY S OFF ATTORNEY 220 LINCOLN AVENUE SALINAS CA 93901 CA027081A
CITY ATTORNEYS OFC ATTORNEY CITY HALL FORT BRAGG CA 95437 CA023011A	CITY ATTORNEYS OFC ATTORNEY CITY HALL ALTURAS CA 96101 CA025011A	CITY ATTORNEYS OFC ATTORNEY CITY HALL SEASIDE CA 93955 CA027091A
CITY ATTORNEYS OFC ATTORNEY CITY HALL UKIAH CA 95482 CA023021A	DIST ATTORNEY S OFF DISTRICT ATTORNEY BRIDGEPORT CA 93517 CA026013A	CITY ATTORNEYS OFC ATTORNEY CITY HALL SOLEDAD CA 93955 CA027101A
CITY ATTORNEYS OFC ATTORNEY CITY HALL WILLITS CA 95490 CA023031A	DISTRICT ATTORNEY S OFF DISTRICT ATTORNEY P O BOX 1369 SALINAS CA 93901 CA027013A	DISTRICT ATTORNEY S OFF DISTRICT ATTORNEY 816 BROWN ST NAPA CA 94558 CA028013A
DISTRICT ATTORNEYS OFF DISTRICT ATTORNEY COUNTY CTS BLDG MERCED CA 95340 CA024013A	COUNTY COUNSELS OFFICE COUNTY COUNSEL COURTHOUSE SALINAS CA 93901 CA027023A	CITY ATTORNEYS OFC ATTORNEY 1232 WASH ST CALISTOGA CA 94515 CA028011A

CITY ATTORNEYS OFC ATTORNEY CITY HALL ST HELENA CA 94574 CA028021A	CITY ATTORNEY S OFFICE ATTORNEY 3300 N NEWPORT BLV NEWPORT BEACH CA 92660 CA030061A	COUNTY COUNSEL SAN BERNARDINO CO CO CIVIC BLDG 157 W 5TH SAN BERNARDINO CA 92401 CA036013A
CITY ATTORNEY S OFFICE CITY ATTOP CITY HALL YOUNTVILLE CA 94599 CA028031A	CITY ATTORNEY S OFFICE ATTORNEY 888 N MAIN SANTA ANA CA 92701 CA030071A	DISTRICT ATTORNEY SAN BERNARDINO CO COURTHOUSE 351 N ARROWHEAD SAN BERNARDINO CA 92401 CA036023A
DISTRICT ATTORNEY S OFF DISTRICT ATTORNEY COURTHOUSE ANNEX NEVADA CITY CA 95959 CA029013A	CITY ATTORNEY S OFFICE CITY ATTORNEY 31752 CAMINO CAPIS SAN JUAN CAPISTRAN CA 92675 CA030081A	CITY PROSECUTOR'S OFFICE ATTORNEY 220 E MT VIEW BARSTOW CA 92311 CA036011A
CITY ATTORNEY S OFF ATTORNEY 123 BANK STREET GRASS VALLEY CA 95945 CA029011A	DIST ATTORNEY S OFFICE DISTRICT ATTORNEY PLACER COUNTY COURTHOUSE AUBURN CA 95603 CA031013A	CITY ATTORNEY S OFF ATTORNEY 17005 UPLAND AVE FONTANA CA 92335 CA036021A
CITY ATTORNEYS OFC ATTORNEY CITY HALL NEVADA CITY CA 95959 CA029021A	DISTRICT ATTORNEY S OFF DISTRICT ATTORNEY COURTHOUSE QUINCY CA 95971 CA032013A	CITY ATTORNEY S OFC CITY ATTORNEY ONTARIO CA 91700 CA036031A
DISTRICT ATTORNEY ORANGE CO 700 CIVIC CNTR DR SANTA ANA CA 92701 CA030013A	DISTRICT ATTORNEY S OFC DISTRICT ATTORNEY POST OFFICE BOX 11 RIVERSIDE CA 92502 CA033013A	REDLANDS CITY ATTORNEY ATTORNEY CITY HALL REDLANDS CA 92373 CA036041A
COUNTY COUNSEL ORANGE CO 515 N SYCAMORE SANTA ANA CA 92701 CA030023A	COUNTY COUNSELS OFFICE COUNTY COUNCIL 4050 MAIN ST RIVERSIDE CA 92501 CA033023A	ATTORNEY S OFF CITY ATTORNEY CITY HALL SAN BERNARDINO CA 92401 CA036051A
CITY ATTORNEY S OFFICE CITY ATTORNEY 106 N CLAUDINA SUITE 607 ANAHEIM CA 92805 CA030011A	CITY ATTORNEYS OFFICE ATTORNEY 815 W 6TH CORONA CA 91720 CA033011A	CITY ATTORNEY S OFFICE CITY ATTORNEY 177 D STREET UPLAND CA 91786 CA036061A
CITY PROSECUTOR OFFICE CITY ATTORNEY 1500 ADAMS AVENUE COSTA MESA CA 92626 CA030021A	CITY ATTORNEY S OFF ATTORNEY 805 E FLORIDA AVE HEMET CA 92343 CA033021A	ATTORNEY OFFICE ATTORNEY 367 N 2ND ST UPLAND CA 91786 CA036071A
CITY ATTORNEY S OFFICE CITY ATTORNEY 303 W COMM AVE FULLERTON CA 92632 CA030031A	DISTRICT ATTORNEY OFF SACRAMENTO CO DIST ATTORNEY 720 9TH SACRAMENTO CA 95814 CA034013A	CITY ATTORNEY S OFFICE CITY ATTORNEY 14980 CIRCLE DRIVE VICTORVILLE CA 92392 CA036081A
CITY PROSECUTOR S OFF CITY ATTORNEY 12550 BROOKHURST GARDEN GROVE CA 92640 CA030041A	COUNTY COUNSEL SACRAMENTO CO 827 7TH SACRAMENTO CA 95814 CA034023A	COUNTY COUNSEL SAN DIEGO CO 1600 PACIFIC HWY SAN DIEGO CA 92101 CA037013A
CITY ATTORNEYS OFFICE ATTORNEY CIVIC CENTER LA HABRA CA 90631 CA030051A	DIST ATTORNEY S OFFICE ATTORNEY CHIEF 545 MONTEREY ST HOLLISTER CA 95023 CA035013A	DISTRICT ATTORNEY SAN DIEGO CO CTHSE 220 W BROADWAY SAN DIEGO CA 92101 CA037023A

CITY ATTORNEYS OFFICE
CITY ATTORNEY
276 GUAVA AVENUE
CHULA VISTA CA 92010
CA037011A

DISTRICT ATTORNEY S OFF
DISTRICT ATTORNEY
222 E WEBER AVE
STOCKTON CA 95202
CA039023A

COUNTY COUNSELS OFFICE
COUNTY COUNSEL
COUNTY COURTHOUSE
SANTA BARBARA CA 93104
CA042023A

CITY ATTORNEY S OFFICE
CITY ATTORNEY
18041 SARATOGA
LOS GATOS RD
MONTE SERNO CA 95030
CA043081A

DISTRICT ATTORNEY S OFC
DIS ATTORNEY
2555 MENDOCINO AVE
SANTA ROSA CA 95401
CA049013A

DISTRICT ATTORNEY S OFF
DISTRICT ATTORNEY
BOX 310
WEAVERVILLE CA 96093
CA053013A

CITY ATTORNEY S OFFICE
CITY ATTORNEY
1825 STRAND WAY
CORONADO CA 92118
CA037021A

CITY ATTORNEY
CITY ATTORNEY
CITY HALL
STOCKTON CA 95202
CA039011A

CITY ATTORNEY S OFFICE
CITY ATTORNEY
119 W WALNUT
LOMPOC CA 93436
CA042011A

DISTRICT ATTYS OFC
DISTRICT ATTORNEY
COURTHOUSE
SANTA CRUZ CA 95060
CA044013A

COUNTY COUNSEL S OFC
COUNTY COUNSEL
2555 MENDOCINO AVE
SANTA ROSA CA 95401
CA049023A

DISTRICT ATTORNEY S OFF
DISTRICT ATTORNEY
CIVIC CENTER
VISALIA CA 93277
CA054013A

CITY ATTORNEY S OFF
ATTORNEY
P O BOX #27
EL CAJON CA 90222
CA037031A

CITY ATTORNEY S OFF
ATTORNEY
990 PALM STREET
SAN LUIS OBISPO CA 93401
CA040011A

CITY ATTORNEY S OFFICE
CITY ATTORNEY
CITY HALL
P O DRAWER P P
SANTA BARBARA CA 93102
CA042021A

CITY ATTORNEYS OFFICE
ATTORNEY
CITY HALL
809 CENTER ST
SANTA CRUZ CA 95060
CA044011A

CITY ATTORNEY S OFFICE
ATTORNEY
C/O CITY HALL
SONOMA CA 95476
CA049011A

COUNTY COUNSEL S OFFICE
COUNTY COUNSEL
COURTHOUSE
VISALIA CA 93277
CA054023A

CITY ATTORNEYS OFFICE
CITY ATTORNEY
8130 ALLISON AVE
LA MESA CA 92041
CA037041A

DISTRICT ATTORNEY
SAN MATEO COUNTY
HALL OF JUST AND R
COUNTY GOVERNMENT CTR
REDWOOD CY CA 94063
CA041013A

CITY ATTORNEYS OFFICE
ATTORNEY
110 EAST COOK STRE
SANTA MARIA CA 93454
CA042031A

DISTRICT ATTORNEY S OFF
DIST ATTORNEY
REDDING CA 96001
CA045013A

DISTRICT ATTORNEY S OFF
DISTRICT ATTORNEY
P O BOX 442
MODESTO CA 95353
CA050013A

DISTRICT ATTORNEY S OFF
DISTRICT ATTORNEY
41 W YANEY AVE
SONORA CA 95370
CA055013A

CITY ATTORNEY S OFFICE
CITY ATTORNEY
1243 NATIONAL AVF
NATIONAL CITY CA 92050
CA037051A

CITY ATTORNEY S OFFICE
CITY ATTORNEY
P O BOX 391
REDWOOD CITY CA 94064
CA041011A

DISTRICT ATTORNEY
SANTA CLARA CO
190 W HEDDING
SAN JOSE CA 95110
CA043013A

COUNTY COUNSEL S OFFICE
COUNTY COUNSEL
COURTHOUSE
REDDING CA 96001
CA045023A

COUNTY COUNSEL S OFFICE
COUNTY COUNSEL
COURTHOUSE
MODESTO CA 95353
CA050023A

COUNTY COUNSEL S OFC
CO COUNSEL
501 POLI ST
VENTURA CA 93001
CA056013A

CITY ATTORNEY S OFFICE
SAN DIEGO
CITY ATTORNEY
CITY ADMIN BLDG
SAN DIEGO CA 92101
CA037061A

CITY ATTORNEY S OFF
ATTORNEY
1795 EL CAMINO REA
HILLBRAE CA 94030
CA041021A

COUNTY COUNSEL
SANTA CLARA CO
70 W HEDDING
SAN JOSE CA 95110
CA043023A

DISTRICT ATTORNEY S OFF
DISTRICT ATTORNEY
DOWNVILLE CA 95936
CA046013A

COUNTY COUNSELS OFFICE
COUNTY COUNSEL
COURTHOUSE
MODESTO CA 95353
CA050033A

DISTRICT ATTORNEY S OFC
DIST ATTORNEY
501 POLI ST
VENTURA CA 93001
CA056023A

CITY ATTORNEY S OFFICE
CITY ATTORNEY
CITY HALL
DEL MAR CA 92014
CA037071A

CITY ATTORNEY S OFFICE
CITY ATTORNEY
330 WEST 20TH AVE
SAN MATEO CA 94402
CA041021A

CITY ATTORNEY S OFF
ATTORNEY
75 NO CENTRAL AVE
CAMPBELL CA 95008
CA043011A

COUNTY COUNSEL S OFFICE
COUNTY COUNSEL
COURTHOUSE
DOWNVILLE CA 95936
CA046023A

CITY ATTORNEY
ATTORNEY
2755 3RD STREET
CERES CA 95307
CA050011A

CITY ATTORNEY S OFF
ATTORNEY
P O BOX 1192
OXNARD CA 93030
CA056011A

CITY ATTORNEY S OFFICE
CITY ATTORNEY
CITY HALL
312 W MISSION RD
SAN MARCOS CA 92069
CA037081A

CITY ATTORNEY S OFFICE
ATTORNEY
CITY HALL
P O BOX 711
SOUTH SAN FRAN CA 94080
CA041031A

CITY ATTORNEY S OFFICE
CITY ATTORNEY
CITY HALL
10300 TORRE AVE
CUPERTINO CA 95014
CA043021A

DISTRICT ATTORNEY S OFF
DISTRICT ATTORNEY
COURT HOUSE
YREKA CA 96097
CA047013A

CITY ATTORNEY OFFICE
CITY ATTORNEY
PO DRAWER T
TURLOCK CA 95380
CA050021A

ATTORNEY S OFFICE
ATTORNEY
625 S SANTA CLARA
VENTURA CA 93001
CA056021A

CITY ATTORNEY S OFFICE
CITY ATTORNEY
VISTA CA 92083
CA037091A

CITY ATTORNEY S OFFICE
CITY ATTORNEY
WOODSIDE CA 94062
CA041041A

CITY ATTORNEY S OFF
ATTORNEY
1 ST AND PRINCEVAL
GILROY CA 95020
CA043031A

COUNTY COUNSEL S OFFICE
COUNTY COUNSEL
COURTHOUSE
YREKA CA 96097
CA047023A

DISTRICT ATTORNEY S OFF
DISTRICT ATTORNEY
COURTHOUSE ANNEX
YUBA CITY CA 95991
CA051013A

CITY ATTORNEY S OFFICE
CITY ATTORNEY
1429 THOUSAND OAK
THOUSAND OAKS CA 91360
CA056031A

DISTRICT ATTORNEY
SAN FRANCISCO
HALL OF JUSTICE
880 BRYANT
SAN FRANCISCO CA 94103
CA038013A

BRISBANE ATTYS OFC
ATTORNEY
375 SOUTH MAYFAIR
DALY CITY CA 94015
CA041051A

CITY ATTORNEY S OFFICE
CITY ATTORNEY
TOWN HALL
26379 FREMONT RD
LOS ALTOS HILLS CA 94022
CA043041A

DISTRICT ATTORNEY S OFC
DIST ATTORNEY
COURTHOUSE
FAIRFIELD CA 94533
CA048013A

COUNTY COUNSELS OFFICE
COUNTY COUNSEL
COURTHOUSE
YUBA CITY CA 95991
CA051023A

DISTRICT ATTORNEY S OFC
DISTRICT ATTORNEY
COURTHOUSE
WOODLAND CA 95695
CA057013A

CITY ATTORNEY S OFFICE
SAN FRANCISCO
CITY ATTORNEY
CITY HALL RM 206
SAN FRANCISCO CA 94102
CA038023A

CITY ATTORNEY S OFFICE
CITY ATTORNEY
TOWN HALL
4141 ALPINE RD
PORTOLA VALLEY CA 94025
CA041061A

TOWN ATTORNEY S OFFICE
ATTORNEY
110 E MAIN ST
LOS GATOS CA 95030
CA043051A

COUNTY COUNSELS OFFICE
COUNTY COUNSEL
COURTHOUSE
FAIRFIELD CA 94533
CA048023A

CITY ATTORNEY
ATTORNEY
547 2ND ST
YUBA CITY CA 95991
CA051011A

COUNTY COUNSEL S OFFICE
COUNTY COUNSEL
COURTHOUSE
WOODLAND CA 95695
CA057023A

COUNTY COUNSEL S OFFICE
COUNTY COUNSEL
222 E WEBER AVE
STOCKTON CA 95202
CA039013A

DISTRICT ATTORNEY S OFC
DISTRICT ATTORNEY
118 E FIGUEROA ST
SANTA BARBARA CA 93104
CA042013A

CITY ATTORNEY S OFFICE
CITY ATTORNEY
13777 FRUITVALE AV
SARATOGA CA 95070
CA043071A

CITY ATTORNEY S OFFICE
CITY ATTORNEY
1 MAIN ST
RIO VISTA CA 94571
CA048011A

DISTRICT ATTORNEY S OFF
DISTRICT ATTORNEY
P O BOX 519
RED BLUFF CA 96080
CA052013A

DISTRICT ATTORNEY S OFF
DISTRICT ATTORNEY
COURTHOUSE
MARYSVILLE CA 95901
CA058013A

COUNTY COUNSELS OFFICE COUNTY COUNSEL CO COURTHOUSE MARYSVILLE CA 95901 CA058023A	PUBLIC DEFENDERS OFC PUBLIC DEFENDER 5 1 HABERFELDE BLD BAKERSFIELD CA 93301 CA015013D	PUBLIC DEFENDER SAN BERNARDINO CO 364 MT VIEW SAN BERNARDINO CA 92301 CA036013D
DEFENDERS' OFFICES STATE LEVEL LEGAL AID CLINIC DIRECTOR UNIV OF CALIFORNIA LOS ANGELES CA 90024 CA019015D	PUBLIC DEFENDER LOS ANGELES CO 402 HALL OF JUSTICE 211 W TEMPLE LOS ANGELES CA 90012 CA019013D	PUBLIC DEFENDER SAN FRANCISCO HALL OF JUSTICE RM 205 850 BYRANT SAN FRANCISCO CA 94102 CA038013D
LEGAL AID CLINIC DIRECTOR HASTINGS COLL OF L SAN FRANCISCO CA 94102 CA038015D	PUBLIC DEFENDERS OFC PUBLIC DEFENDER CIVIC CENTER SAN RAFAEL CA 94903 CA021013D	PUBLIC DEFENDER S OFF PUBLIC DEFENDER 26 S SAN JOAQUIN S STOCKTON CA 95202 CA039013D
LOCAL LEVEL PUBLIC DEFENDER ALAMEDA CO COURTHOUSE 1225 FALLON OAKLAND CA 94612 CA001013D	PUBLIC DEFENDER S OFFICE PUBLIC DEFENDER 116B SOUTH SCHOOL UKIAH CA 95482 CA023013D	PUBLIC DEFENDER S OFFICE PUBLIC DEFENDER COUNTY COURTHOUSE SANTA BARBARA CA 93104 CA042013D
PUBLIC DEFENDER S OFF PUBLIC DEFENDER ST CHARLES STREET SAN ANDREAS CA 95255 CA005013D	PUBLIC DEFENDER S OFF PUBLIC DEFENDER STODDARD BLDG MERCED CA 95340 CA024013D	PUBLIC DEFENDER SANTA CLARA CO 230 E GISH RD SAN JOSE CA 95110 CA043013D
PUBLIC DEFENDER CONTRA COSTA CO 901 PINE MARTINEZ CA 94553 CA007013D	PUBLIC DEFENDER S OFF PUB DEFENDER SOUTH LAKE TAHOE CA 95705 CA026013D	PUBLIC DEFENDER S OFC PUBLIC DEFENDER 55 RIVER ST P O BOX 1501 SANTA CRUZ CA 95060 CA044023A
PUBLIC DEFENDER S OFF PUBLIC DEFENDER 431 H ST CRESCENT CITY CA 95531 CA008013D	PUBLIC DEFENDER S OFFICE PUBLIC DEFENDER COURTHOUSE SALINAS CA 93901 CA027013D	PUBLIC DEFENDER S OFFICE PUBLIC DEFENDER 1538 WEST ST P O BOX 2006 REDDING CA 96002 CA045013D
PUBLIC DEFENDER S OFFICE PUBLIC DEFENDER 2850 COLD SPRINGS PLACERVILLE CA 95667 CA009013D	PUBLIC DEFENDER S OFFICE PUBLIC DEFENDER 140 HILL ST GRASS VALLEY CA 95945 CA029013D	PUBLIC DEFENDER S OFFICE PUBLIC DEFENDER COURT HOUSE YREKA CA 96097 CA047013D
PUBLIC DEFENDER S OFFICE PUBLIC DEFENDER RM 403 COURTHOUSE FRESNO CA 93721 CA010013D	PUBLIC DEFENDER ORANGE CO 700 CIVIC CNTR DR SANTA ANA CA 92701 CA030013D	PUBLIC DEFENDER S OFFICE PUBLIC DEFENDER 744 EMPIRE ST FAIRFIELD CA 94533 CA048013D
PUBLIC DEFENDER S OFFICE PUBLIC DEFENDER HUMBOLDT COURTHOUSE EUREKA CA 95501 CA012013D	PUBLIC DEFENDER S OFF PUBLIC DEFENDER 1115 HIGH STREET AUBURN CA 95603 CA031013D	PUBLIC DEFENDER OFC PUBLIC DEFENDER 2555 MINOCINO AVE SANTA ROSA CA 95401 CA049013D
PUBLIC DEFENDER S OFF PUBLIC DEFENDER 630 STATE STREET EL CENTRO CA 92243 CA013013D	PUBLIC DEFENDER S OFFICE PUBLIC DEFENDER 4050 MAIN ST RIVERSIDE CA 92501 CA033013D	PUBLIC DEFENDER S OFFICE PUBLIC DEFENDER 1024 J STREET ROOM 314 MODESTO CA 95353 CA050013D
PUBLIC DEFENDER S OFF PUBLIC DEFENDER 459 WEST LINE ST BISHOP CA 93514 CA014013D	PUBLIC DEFENDER S OFF SACRAMENTO CO PUB DEFENDER 720 9TH SACRAMENTO CA 95814 CA034013D	PUBLIC DEFENDER S OFFICE PUBLIC DEFENDER 439 CENTER ST YUBA CITY CA 95991 CA051013G

PUBLIC DEFENDER S OFFICE PUBLIC DEFENDER COURTHOUSE RED BLUFF CA 96080 CA052013D	ALAMEDA CO SHERIFF S DEPT SHERIFF 1225 FALLON CT HOUSE OAKLAND CA 94612 CA00100	PLEASANTON POL DEPT CHIEF 603 MAIN ST PLEASANTON CA 94566 CA00111
PUBLIC DEFENDER S OFF PUBLIC DEFENDER BK OF AMERICA BLDG VISALIA CA 93277 CA054013D	ALAMEDA POLICE DEPT CHIEF OF POLICE CITY HALL ALAMEDA CA 94501 CA00101	SAN LEANDRO POL DEPT CHIEF OF POLICE 901 E 14TH STREET SAN LEANDRO CA 94577 CA00112
PUBLIC DEFENDERS OFC PUBLIC DEFENDER 501 POLI ST VENTURA CA 93001 CA056013D	ALBANY POLICE DEPT CHIEF OF POLICE 1000 SAN PABLO AVE ALBANY CA 94706 CA00102	UNION CITY POLICE DEPT CHIEF 1154 WHIPPLE RD UNION CITY CA 94587 CA00113
PUBLIC DEFENDER S OFFICE PUBLIC DEFENDER 815 COURT ST WOODLAND CA 95695 CA057013D	BERKELEY POLICE DEPT CHIEF OF POLICE 2175 MCKINLEY AVE BERKELEY CA 94703 CA00103	ALPINE CO SHERIFFS DEPT SHERIFF COURTHOUSE MARKLEEVILLE CA 96120 CA00200
PUBLIC DEFENDER S OFFICE PUBLIC DEFENDER COURTHOUSE MARYSVILLE CA 95901 CA058013D	POLICE DEPARTMENT CHIEF OF POLICE 1333 PARK AVENUE EMERYVILLE CA 94608 CA00104	CO CORONER S OFFICE CORONER 415 BROADWAY JACKSON CA 95642 CA003013M
ENFORCEMENT AGENCIES STATE LEVEL DEPT OF CALIF HWY PATROL COMMISSIONER 2611 26TH ST SACRAMENTO CA 95814 CA03499	FREMONT POLICE DEPT CHIEF OF POLICE 3375 COUNTRY DR FREMONT CA 94536 CA00105	SHERIFF S DEPT SHERIFF 108 COURT ST JACKSON CA 95642 CA00300
CALIF STATE POLICE CHIEF 915 CAPITOL MALL OFFICE BLDG NO 1 RM 535 JACRAHMENTO CA 95814 CA00106	HAYWARD POLICE DEPT CHIEF OF POLICE 22738 MISSION BLVD HAYWARD CA 94541 CA00106	POLICE DEPT CHIEF OF POLICE BOX 815 TONE CA 95640 CA00302
UNIV OF CALIF POLICE DPT CHIEF OF POLICE BERKELEY CA 94720 CA00197	POLICE DEPARTMENT CHIEF OF POLICE P O BOX 288 LIVERMORE CA 94550 CA00107	JACKSON POLICE DEPT CHIEF OF POLICE JACKSON CA 95642 CA00303
UNIV OF CALIF POLICE DPT CHIEF OF POLICE LOS ANGELES CA 90024 CA01997	NEWARK POLICE DEPARTMENT CHIEF OF POLICE 37101 NEWARK BLVD NEWARK CA 94560 CA00108	POLICE DEPT CHIEF OF POLICE P O BOX 366 SUTTER CREEK CA 95685 CA00305
UNIV OF CALIF POLICE DPT CHIEF OF POLICE SANTA BARBARA CA 93106 CA04297	PARK RANGERS RANGER IV RANGER STATION JOAQUIN MILLER PARK OAKLAND CA 94606 CA00400	SHERIFF S DEPARTMENT SHERIFF 33 COUNTY CENTER D OROVILLE CA 95965 CA00400
UNIV OF CALIF POLICE DPT CHIEF OF POLICE WOODLAND CA 95695 CA05797	POLICE DEPARTMENT CHIEF OF POLICE 455 SEVENTH OAKLAND CA 94606 CA00109	CHICO POLICE DEPT CHIEF OF POLICE P O BOX 3420 CHICO CA 95926 CA00402
LOCAL LEVEL CORONER ALAMEDA CO 480 4TH OAKLAND CA 94607 CA001013M	PIEDMONT POLICE DEPT CHIEF OF POLICE 120 VISTA AVENUE PIEDMONT CA 94611 CA00110	POLICE DEPT CHIEF OF POLICE SPRUCE ST GRIDLEY CA 95948 CA00403

POLICE DEPT
CHIEF OF POLICE
1887 ARLIN RHINE D
OROVILLE CA 95965
CA00404

CO SHERIFF S DEPT
SHERIFF
BOX 1088
SAN ANDREAS CA 95249
CA00500

POLICE DEPT
CHIEF OF POLICE
P O BOX 667
ANGELS CAMP CA 95222
CA00501

CORONER S OFFICE
CORONER
547 MARKET STREET
COLUSA CA 95932
CA006013M

SHERIFF S DEPARTMENT
SHERIFF
929 BRIDGE STREET
COLUSA CA 95932
CA00600

COLUSA POLICE DEPARTMENT
CHIEF OF POLICE
740 MARKET STREET
COLUSA CA 95932
CA00601

WILLIAMS POLICE DEPT
CHIEF OF POLICE
P O BOX 125
WILLIAMS CA 95987
CA00602

SHERIFF S DEPT
SHERIFF
ADMINISTRATION BLD
P O BOX 391
MARTINEZ CA 94553
CA00700

ANTIOCH POLICE DEPT
CHIEF OF POLICE
212 H STREET
ANTIOCH CA 94509
CA00701

POLICE DEPT
CHIEF OF POLICE
708 THIRD STREET
BRENTWOOD CA 94513
CA00702

POLICE DEPARTMENT
CHIEF OF POLICE
WILLOW PASS RD
PARKSIDE DR
CONCORD CA 94520
CA00704

POLICE DEPT
CHIEF OF POLICE
10900 SAN PABLO AV
EL CERRITO CA 94530
CA00705

POLICE DEPARTMENT
CHIEF OF POLICE
525 HENRIETTA ST
MARTINEZ CA 94553
CA00714

PINOLE POLICE DEPARTMENT
CHIEF OF POLICE
2171 PEAR STREET
PINOLE CA 94564
CA00707

PITTSBURG POLICE DEPT
CHIEF OF POLICE
PITTSBURG CA 94565
CA00708

RICHMOND POLICE DEPT
CHIEF OF POLICE
HALL OF JUSTICE
RICHMOND CA 94804
CA00710

SAN PABLO POLICE
CHIEF OF POLICE
2021 MARKET
SAN PABLO CA 94806
CA00711

CITY POLICE DEPT
CHIEF OF POLICE
1649 N BROADWAY
WALNUT CREEK CA 94596
CA00712

LAFAYETTE POLICE DEPT
CHIEF OF POLICE
LAFAYETTE CA 94549
CA00715

SHERIFF S DEPARTMENT
SHERIFF
5TH AND G STS
CRESCENT CITY CA 95531
CA00800

CITY POLICE DEPT
CHIEF OF POLICE
450 H ST
CRESCENT CITY CA 95531
CA00801

COUNTY SHERIFF S DEPT
SHERIFF
495 MAIN ST
PLACERVILLE CA 95667
CA00900

POLICE DEPARTMENT
CHIEF OF POLICE
P O BOX 872
PLACERVILLE CA 95667
CA00901

SHERIFF S OFFICE
SHERIFF
2200 FRESNO STREET
FRESNO CA 93721
CA01000

POLICE DEPT
CHIEF OF POLICE
529 POLLASKY
CLOVIS CA 93612
CA01001

POLICE DEPARTMENT
CHIEF OF POLICE
CITY HALL
6 ELM STS
COALINGA CA 93210
CA01002

FIREBAUGH POLICE DEPT
CHIEF OF POLICE
FIREBAUGH CA 93622
CA01003

POLICE DEPT
CHIEF OF POLICE
CITY HALL
125 S 6TH
FOWLER CA 93625
CA01004

FRESNO CITY POLICE DEPT
CHIEF OF POLICE
2323 MARIPOSA
FRESNO CA 93721
CA01005

HURON CITY POLICE DEPT
CHIEF OF POLICE
HURON CA 93234
CA01006

KERMAN POLICE DEPT
CHIEF OF POLICE
850 S MADERA AVE
KERMAN CA 93630
CA01007

KINGSBURG POLICE DEPT
CHIEF OF POLICE
1518 MARION STREET
KINGSBURG CA 93631
CA01008

MENDOTA POLICE DEPT
CHIEF OF POLICE
1675 6TH STREET
MENDOTA CA 93640
CA01009

ORANGE COVE POLICE DEPT
CHIEF OF POLICE
557 6TH ST
ORANGE COVE CA 93646
CA01010

POLICE DEPARTMENT
CHIEF OF POLICE
580 TULARE STREET
PARLIER CA 93648
CA01011

REEDLEY POLICE DEPT
CHIEF OF POLICE
843 G ST
REEDLEY CA 93654
CA01012

SANGER POLICE DEPT
CHIEF OF POLICE
1300 JENSEN AVE
SANGER CA 93657
CA01013

SELMA POLICE DEPT
CHIEF OF POLICE
PO BOX 727
SELMA CA 93662
CA01015

SHERIFF S OFFICE
SHERIFF
543 W OAK
WILLOWS CA 95988
CA01100

ORLAND POLICE DEPT
CHIEF OF POLICE
501 WALKER ST
ORLAND CA 95963
CA01101

POLICE DEPT
CHIEF OF POLICE
201 N LASSEN
WILLOWS CA 95988
CA01102

CO CORONER S OFF
CORONER
COUNTY COURTHOUSE
EUREKA CA 95501
CA012013M

CO SHERIFF S OFF
SHERIFF
COUNTY COURTHOUSE
EUREKA CA 95501
CA01200

ARCATA POLICE DEPARTMENT
CHIEF OF POLICE
530 7TH ST
ARCATA CA 95521
CA01201

EUREKA POLICE DEPT
CHIEF OF POLICE
COURT HOUSE
EUREKA CA 95501
CA01203

FERNDALE POLICE DEPT
CHIEF OF POLICE
TOWN HALL
FERNDALE CA 95536
CA01204

POLICE DEPARTMENT
CHIEF OF POLICE
P O BOX 545
FORTUNA CA 95540
CA01205

RIO DELL POLICE DEPT
CHIEF
125 WILDWOOD AVE
RIO DELL CA 95562
CA01207

SHERIFF S OFFICE
SHERIFF
P O BOX 1040
EL CENTRO CA 92243
CA01300

BRAWLEY POLICE DEPT
CHIEF OF POLICE
790 B STREET
P O BOX 993
BRAWLEY CA 92227
CA01301

CALEXICO POLICE DEPT
CHIEF OF POLICE
353 FIRST STREET
CALEXICO CA 92231
CA01302

CALIPATRIA POLICE DEPT
CHIEF OF POLICE
CITY HALL
CALIPATRIA CA 92233
CA01303

POLICE DEPARTMENT
CHIEF OF POLICE
1107 BROADWAY
EL CENTRO CA 92243
CA01304

HOLTVILLE POLICE DEPT
CHIEF
222 WEST 4TH ST
HOLTVILLE CA 92250
CA01305

IMPERIAL POLICE DEPT
CHIEF OF POLICE
201 SO IMPERIAL AV
IMPERIAL CA 92251
CA01306

WESTMORLAND POL DEPT
CHIEF OF POLICE
P O BOX 698
WESTMORLAND CA 90281
CA01307

INYO CO CORONERS OFF
CORONER
325 WEST ELM
BISHOP CA 93514
CA014013M

INYO CO SHERIFFS DEPT
SHERIFF
101 EAST MARKET
INDEPENDENCE CA 93526
CA01400

POLICE DEPT
CHIEF OF POLICE
307 S MAIN
BISHOP CA 93514
CA01401

KERN CO CORONER S OFC
CORONER
1415 TRUXTUN AVE
BAKERSFIELD CA 93301
CA015013M

KERN CO SHERIFF S OFC
SHERIFF
1415 TRUXTUN AVE
BAKERSFIELD CA 93301
CA01500

POLICE DEPARTMENT
CHIEF OF POLICE
P O BOX 86
BAKERSFIELD CA 93302
CA01902

POLICE DEPARTMENT
CHIEF OF POLICE
P O BOX 218
DELANO CA 93215
CA01503

SHAFTER POLICE DEPT
CHIEF
336 PACIFIC AVE
SHAFTER CA 93263
CA01507

TAFT POLICE DEPT
CHIEF OF POLICE
209 E KERN ST
TAFT CA 93268
CA01508

POLICE DEPARTMENT
CHIEF OF POLICE
POST OFFICE BIN 66
TEHACHAPI CA 93561
CA01509

WASCO POLICE DEPT
CHIEF OF POLICE
764 E ST BOX 159
WASCO CA 93280
CA01510

MC FARLAND POLICE DEPT
CHIEF OF POLICE
P O BOX 1488
MC FARLAND CA 93250
CA01505

ARVIN POLICE DEPT
CHIEF OF POLICE
P O BOX 548
ARVIN CA 93203
CA01501

CITY POLICE DEPT
CHIEF OF POLICE
731 BALSAM ST
RIDGECREST CA 93555
CA01506

KINGS CO CORONER S OFF
CORONER
COURTHOUSE BOX C
HANFORD CA 93230
CA016013M

KINGS CO SHERIFF DEPT
SHERIFF
COURTHOUSE BOX C
HANFORD CA 93230
CA01600

POLICE DEPARTMENT
CHIEF
1033 CHITTENDEN AVE
CORCORAN CA 93212
CA01601

POLICE DEPARTMENT
CHIEF OF POLICE
120 COURT STREET
HANFORD CA 93230
CA01602

LEMOORE POLICE DEPT
CHIEF OF POLICE
119 FOX STREET
LEMOORE CA 93245
CA01603

COUNTY SHERIFFS DEPT
SHERIFF
LAKEPORT CA 95453
CA01700

LAKEPORT POLICE DEPT
CHIEF OF POLICE
P O BOX 115
LAKEPORT CA 95453
CA01701

LASSEN CO SHERIFF S DEPT
SHERIFF
COURTHOUSE
SUSANVILLE CA 96130
CA01800

SUSANVILLE POLICE DEPT
CHIEF OF POLICE
78 N LASSEN ST
SUSANVILLE CA 96130
CA01801

CH MED EXAMINER CORONER
LOS ANGELES CO
106 HALL OF JUSTIC
211 W TEMPLE
LOS ANGELES CA 90012
CA019013M

SHERIFF S DEPT
SHERIFF
226 HALL OF JUSTIC
211 W TEMPLE ST
LOS ANGELES CA 90012
CA01900

ALHAMBRA POLICE DEPT
CHIEF OF POLICE
220 W WOODWARD AVE
ALHAMBRA CA 91801
CA01901

ARCADIA POLICE DEPT
CHIEF OF POLICE
250 W HUNTINGTON D
ARCADIA CA 91006
CA01902

POLICE DEPARTMENT
CHIEF OF POLICE
P O BOX 707
AVALON CA 90704
CA01904

AZUSA POLICE DEPARTMENT
CHIEF OF POLICE
213 E FOOTHILL BLV
AZUSA CA 91702
CA01905

BALDWIN PK POL DEPT
CHIEF OF POLICE
14403 E
PACIFIC AVENUE
BALDWIN PARK CA 91706
CA01906

CITY OF BELL POLICE DEPT
CHIEF OF POLICE
6326 PINE AVE
BELL CA 90201
CA01907

POLICE DEPT
CHIEF OF POLICE
450 N CRESCENT DR
BEVERLY HILLS CA 90210
CA01910

BURBANK POLICE DEPT
CHIEF OF POLICE
272 EAST OLIVE AVE
BURBANK CA 91502
CA01912

POLICE DEPARTMENT
CHIEF OF POLICE
215 WEST 2ND ST
CLAREMONT CA 91711
CA01913

COMPTON POLICE DEPT
CHIEF OF POLICE
100 WEST ALMOND
COMPTON CA 90224
CA01915

COVINA POLICE DEPARTMENT
POLICE CHIEF
125 EAST COLLEGE S
COVINA CA 91722
CA01916

CULVER CITY POLICE DEPT
CHIEF OF POLICE
4090 DUQUESNE AVE
CULVER CITY CA 90230
CA01918

EL MONTE POLICE DEPT
CHIEF OF POLICE
11323 VALLEY BLVD
EL MONTE CA 91731
CA01922

EL SEGUNDO POLICE DEPT
CHIEF OF POLICE
348 MAIN STREET
EL SEGUNDO CA 90245
CA01923

POLICE DEPT
CHIEF OF POLICE
1718 W 162ND ST
GARDENA CA 90247
CA01924

GLENDALE POLICE DEPT
CHIEF OF POLICE
GLENDALE CA 91200
CA01925

CITY POLICE DEPT
CHIEF OF POLICE
150 SO GLENDORA AV
GLENDORA CA 91740
CA01926

POLICE DEPARTMENT
CHIEF OF POLICE
4440 W 126TH STREE
HAWTHORNE CA 90250
CA01928

POLICE DEPT
CHIEF OF POLICE
HERMOSA BEACH CA 90254
CA01929

CITY POLICE DEPT
CHIEF OF POLICE
6542 MILES AVENUE
HUNTINGTON PARK CA 90255
CA01931

INGLEWOOD POLICE DEPT
CHIEF OF POLICE
120 NORTH GREVILLE
INGLEWOOD CA 90301
CA01933

LA VERNE POLICE DEPT
CHIEF OF POLICE
2061 3RD ST
LA VERNE CA 91750
CA01938

POLICE DEPARTMENT
CHIEF OF POLICE
400 W BROADWAY
LONG BEACH CA 90802
CA01941

POLICE DEPARTMENT
CHIEF OF POLICE
150 N LOS ANGELES
LOS ANGELES CA 90012
CA01942

POLICE DEPARTMENT
CHIEF OF POLICE
11330 BULLIS RD
LYNWOOD CA 90252
CA01943

POLICE DEPARTMENT
CHIEF OF POLICE
420 15 ST
MANHATTAN BEACH CA 90266
CA01944

POLICE DEPT
CHIEF OF POLICE
4319 E SLAUSON AVE
MAYWOOD CA 90270
CA01945

POLICE DEPARTMENT
CHIEF OF POLICE
140 E LYME AVE
MONROVIA CA 91016
CA01946

MONTEBELLO POLICE DEPT
CHIEF OF POLICE
1600 W BEVERLY BLV
MONTEBELLO CA 90640
CA01947

POLICE DEPT
CHIEF OF POLICE
300 W NEWMARK AVE
MONTEREY PARK CA 91754
CA01948

POLICE DEPARTMENT
CHIEF OF POLICE
340 PALOS VERDES
PALOS VERDES EST CA 90274
CA01951

PASADENA POLICE DEPT
CHIEF OF POLICE
142 N ARROYO PKWY
PASADENA CA 91101
CA01953

POMONA POLICE DEPT
CHIEF
490 W MISSION BLVD
POMONA CA 91766
CA01955

POLICE DEPT
CHIEF OF POLICE
401 DIAMOND ST
REDONDO BEACH CA 90277
CA01956

SAN FERNANDO POLICE DEPT
CHIEF OF POLICE
120 MACNEIL ST
SAN FERNANDO CA 91340
CA01961

SAN GABRIEL POLICE DEPT
CHIEF OF POLICE
P O BOX 130
SAN GABRIEL CA 91778
CA01962

SAN MARINO POLICE DEPT
CHIEF OF POLICE
2200 HUNTINGTON DR
SAN MARINO CA 91108
CA01963

CITY POLICE DEPT
CHIEF OF POLICE
CITY HALL
SANTA MONICA CA 90406
CA01965

POLICE DEPT
CHIEF OF POLICE
SIERRA MADRE BLVD
SIERRA MADRE CA 91024
CA01966

SIGNAL HILL POLICE DEPT
CHIEF OF POLICE
1800 E HILL ST
SIGNAL HILL CA 90806
CA01967

SOUTH GATE POLICE DEPT
CHIEF OF POLICE
8620 CALIFORNIA AV
SOUTH GATE CA 90280
CA01969

POLICE DEPARTMENT
POLICE CHIEF
1422 MISSION STREE
SOUTH PASADENA CA 91030
CA01970

TORRANCE POLICE DEPT
CHIEF OF POLICE
3131 TORRANCE BLVD
TORRANCE CA 90503
CA01972

WEST COVINA POLICE DEPT
CHIEF OF POLICE
1444 W GARVEY
WEST COVINA CA 91790
CA01975

WHITTIER POLICE DEPT
CHIEF OF POLICE
7315 S PAINTER AVE
WHITTIER CA 90602
CA01976

DOWNY POLICE DEPT
CHIEF OF POLICE
8425 E 2ND ST
DOWNY CA 90241
CA01920

IRVINDALE POLICE DEPT
CHIEF OF POLICE
IRVINDALE CA 91706
CA01934

CARSON POLICE DEPT
CHIEF OF POLICE
CARSON CA 90744
CA01977

CERRITOS POLICE DEPT
CHIEF OF POLICE
CERRITOS CA 90701
CA01919

MADERA CO SHERIFF S DEPT
SHERIFF
201 WEST 6TH ST
MADERA CA 93637
CA02000

POLICE DEPARTMENT
POLICE CHIEF
CITY HALL
145 ROBERTSON BLVD
CHOWCHILLA CA 93610
CA02001

POLICE DEPARTMENT
POLICE CHIEF
CITY HALL
MADERA CA 93637
CA02002

CORONER S OFFICE
CORONER
CIVIC CENTER
SAN RAFAEL CA 94903
CA021013M

MARIN CO SHERIFF OFFICE
SHERIFF
CIVIC CENTER
SAN RAFAEL CA 94903
CA02100

BELVEDERE POLICE DEPT
CHIEF OF POLICE
450 SAN RAFAEL AVE
BELVEDERE CA 94920
CA02101

POLICE DEPT
CHIEF OF POLICE
TAMALPAIS PIXLEY
CORTE MADERA CA 94925
CA02102

POLICE DEPARTMENT
CHIEF
144 BOLINAS ROAD
FAIRFAX CA 94930
CA02103

LARKSPUR POLICE DEPT
CHIEF OF POLICE
402 MAGNOLIA AVE
LARKSPUR CA 94939
CA02104

MILL VALLEY POLICE DEPT
CHIEF OF POLICE
P O BOX 31
MILL VALLEY CA 94941
CA02105

POLICE DEPT
CHIEF OF POLICE
TOWN HALL
ROSS CA 94957
CA02107

POLICE DEPARTMENT
CHIEF OF POLICE
P O BOX 247
SAN ANSELMO CA 94960
CA02108

POLICE DEPT
CHIEF OF POLICE
14005 TH AVE
SAN RAFAEL CA 94901
CA02109

SAUSALITO POLICE DEPT
POLICE CHIEF
P O BOX 35
SAUSALITO CA 94965
CA02110

NOVATO POLICE DEPT
CHIEF OF POLICE
905 SHERMAN AVENUE
NOVATO CA 94947
CA02106

COUNTY SHERIFF DEPT SHERIFF MARIPOSA CA 95338 CA02200	MERCED POLICE DEPARTMENT CHIEF P O BOX 2068 MERCED CA 95340 CA02406	SALINAS POLICE DEPT CHIEF OF POLICE 222 LINCOLN AVENUE SALINAS CA 93901 CA02708	HARBOR DISTRICT PATROL CAPTAIN 1901 BAYSIDE DRIVE NEWPORT BEACH CA 92662 CA030013Z	PLACENTIA POLICE DEPT CHIEF OF POLICE 120 SO BRADFORD PLACENTIA CA 92670 CA03016	POLICE DEPT CHIEF OF POLICE 3980 ROCKLIN ROAD ROCKLIN CA 95677 CA03104
SHERIFF S DEPARTMENT SHERIFF COURTHOUSE UKIAH CA 95482 CA02300	SHERIFF S DEPT SHERIFF ALTURAS CA 96101 CA02500	SEASIDE POLICE DEPT CHIEF OF POLICE 440 HARCOURT AVE SEASIDE CA 93955 CA02710	POLICE DEPARTMENT CHIEF OF POLICE P O BOX 3369 ANAHEIM CA 92805 CA03001	POLICE DEPARTMENT CHIEF OF POLICE 100 AVENIDA PRESID SAN CLEMENTE CA 92672 CA03017	ROSEVILLE POLICE DEPT CHIEF OF POLICE 316 VERNON STREET ROSEVILLE CA 95678 CA03105
POLICE DEPT CHIEF OF POLICE 416 N FRANKLIN ST FORT BRAGG CA 95437 CA02301	POLICE DEPARTMENT POLICE CHIEF BOX 1037 ALTURAS CA 96101 CA02501	SOLEDAD POLICE DEPT CHIEF OF POLICE P O BOX 606 SOLEDAD CA 93960 CA02711	BREA POLICE DEPT CHIEF OF POLICE 401 SOUTH BREA BLV BREA CA 92621 CA03002	POLICE DEPT CHIEF OF POLICE POLICE DEPT SANTA ANA CA 92701 CA03019	SHERIFF S DEPARTMENT SHERIFF COURTHOUSE QUINCY CA 95971 CA03200
UKIAH POLICE DEPT CHIEF OF POLICE 280 E STANDLEY UKIAH CA 95482 CA02303	CO SHERIFF S DEPT SHERIFF BOX 616 BRIDGEPORT CA 93517 CA02600	SHERIFF S DEPARTMENT SHERIFF HALL OF RECORDS COOMBS ST NAPA CA 94558 CA02800	BUENA PARK POLICE DEPT CHIEF OF POLICE 6650 BEACH BLVD BUENA PARK CA 90620 CA03003	POLICE DEPT CHIEF OF POLICE 711 CENTRAL AVE SEAL BEACH CA 90740 CA03020	CITY POLICE DEPT CHIEF OF POLICE BOX 1154 PORTOLA CA 96122 CA03201
WILLITS POLICE DEPT CHIEF 74 E COMMERCIAL ST WILLITS CA 95490 CA02304	COUNTY CORONER S OFC CORONER P O BOX 582 SALINAS CA 93901 CA027013M	POLICE DEPT CHIEF OF POLICE 1232 WASH ST CALISTOGA CA 94515 CA02801	COSTA MESA POLICE DEPT CHIEF OF POLICE 99 FAIR DRIVE COSTA MESA CA 92626 CA03004	STANTON POLICE DEPT CHIEF OF POLICE 7800 KATELLA AVE STANTON CA 90680 CA03021	COUNTY CORONER S OFC CORONER P O BOX 113 RIVERSIDE CA 92502 CA033013M
CORONER S OFFICE CORONER COUNTY COURTS BLDG MERCED CA 95340 CA024013M	COUNTY SHERIFF S OFC SHERIFF P O BOX 809 SALINAS CA 93901 CA02700	NAPA POLICE DEPT POLICE CHIEF 1539 FIRST ST NAPA CA 94558 CA02802	FULLERTON POLICE DEPT CHIEF OF POLICE 237 W COMM AVE FULLERTON CA 92632 CA03008	TUSTIN POLICE DEPT CHIEF OF POLICE 14 S W THIRD ST TUSTIN CA 92680 CA03022	COUNTY SHERIFF S DEPT SHERIFF P O BOX 512 RIVERSIDE CA 92501 CA03300
MERCED CO SHERIFF S DEPT SHERIFF 700 W 22ND ST MERCED CA 95340 CA02400	POLICE DEPARTMENT CHIEF OF POLICE P O BOX 214 CARMEL CA 93921 CA02701	ST HELENA POLICE DEPT CHIEF OF POLICE 1480 MAIN ST ST HELENA CA 94574 CA02803	CITY POLICE DEPT CHIEF OF POLICE 11391 ACACIA AVE GARDEN GROVE CA 92640 CA03009	POLICE DEPT CHIEF OF POLICE 10200 SLATER FOUNTAIN VALLEY CA 92708 CA03007	POLICE DEPT CHIEF 133 E HAYS ST BANNING CA 92220 CA03301
ATWATER POLICE DEPT CHIEF OF POLICE 750 BELLEVUE ROAD ATWATER CA 95301 CA02401	DEL REY OAKS POLICE DEPT CHIEF OF POLICE 650 CANYON DEL REY DEL REY OAKS CA 93940 CA02702	NEVADA CO SHERIFF S DEPT SHERIFF COURTHOUSE ANNEX NEVADA CITY CA 95959 CA02900	POLICE DEPT CHIEF OF POLICE P O BOX 70 HUNTINGTON BEACH CA 92648 CA03010	POLICE DEPARTMENT CHIEF OF POLICE 5275 ORANGE AVENUE CYPRESS CA 90630 CA03005	BEAUMONT POLICE DEPT CHIEF OF POLICE 500 GRACE AVE BEAUMONT CA 92223 CA03302
POLICE DEPT CHIEF OF POLICE 1546 GOLDEN GATE A DOS PALOS CA 93620 CA02402	POLICE DEPARTMENT CHIEF OF POLICE P O BOX 647 GONZALES CA 93926 CA02703	CITY POLICE DEPT CHIEF OF POLICE CITY HALL GRASS VALLEY CA 95945 CA02901	POLICE DEPARTMENT CHIEF OF POLICE 505 FOREST AVE LAGUNA BEACH CA 92652 CA03011	POLICE DEPT CHIEF OF POLICE 3191 KATELLA AVE LOS ALAMITOS CA 90720 CA03013	BLYTHE POLICE DEPT CHIEF OF POLICE 240 N SPRING ST BLYTHE CA 92225 CA03303
GUSTINE POLICE DEPT CHIEF OF POLICE P O BOX 306 GUSTINE CA 95322 CA02403	POLICE DEPARTMENT CHIEF OF POLICE P O BOX 306 GREENFIELD CA 93927 CA02704	NEVADA CITY POLICE DEPT CHIEF OF POLICE 317 BROAD STREET NEVADA CITY CA 95959 CA02902	POLICE DEPARTMENT CHIEF OF POLICE 150 N EUCLID ST LA HABRA CA 90631 CA03012	WESTMINSTER POLICE DEPT CHIEF OF POLICE 8200 WESTMINSTER A WESTMINSTER CA 92683 CA03024	COACHELLA POLICE DEPT CHIEF OF POLICE 1515 SIXTH ST COACHELLA CA 92236 CA03305
POLICE DEPT CHIEF OF POLICE P O BOX 308 LIVINGSTON CA 95334 CA02404	POLICE DEPT CHIEF OF POLICE 114 NO THIRD KING CITY CA 93930 CA02705	CORONER ORANGE CO 4000 W CHAPMAN ORANGE CA 92668 CA030013M	POLICE DEPARTMENT CHIEF OF POLICE 425 32ND ST NEWPORT BEACH CA 92660 CA03014	SHERIFF S DEPARTMENT SHERIFF PLACER CO AUBURN CA 95603 CA03100	CORONA POLICE DEPT CHIEF OF POLICE 849 W 6TH CORONA CA 91720 CA03315
POLICE DEPT CHIEF OF POLICE 945 5TH STREET P O BOX 31 LOS BANOS CA 93635 CA02405	CITY POLICE DEPT POLICE CHIEF 351 MADISON ST MONTEREY CA 93940 CA02706	SHERIFF S OFFICE ORANGE CO SHERIFF 550 N FLOWER SANTA ANA CA 92703 CA03000	ORANGE POLICE DEPT CHIEF OF POLICE 300 E CHAPMAN AVE ORANGE CA 92669 CA03015	AUBURN POLICE DEPT CHIEF OF POLICE CITY HALL AUBURN CA 95603 CA03101	POLICE DEPT CHIEF OF POLICE 130 SO MAIN ST ELSNORE CA 92330 CA03307
	POLICE DEPT CHIEF OF POLICE CITY HALL PACIFIC GROVE CA 93950 CA02707			LINCOLN POLICE DEPT CHIEF OF POLICE 517 G ST LINCOLN CA 95648 CA03103	POLICE DEPARTMENT CHIEF OF POLICE 450 E LATHAM AVE HEMET CA 92343 CA03308

INDIO POLICE DEPT CHIEF 45 222 TOWNE STREE INDIO CA 92201 CA03309	POLICE DEPARTMENT CHIEF OF POLICE 813 6TH STREET SACRAMENTO CA 95816 CA03404	RIALTO POLICE DEPT CHIEF OF POLICE 145 SO RIVERSIDE A RIALTO CA 92376 CA03609	CITY POLICE DEPT CHIEF BOX 427 IMPERIAL BEACH CA 92032 CA03707	MANTECA POLICE DEPT CHIEF OF POLICE 125 SYCAMORE AVE MANTECA CA 95336 CA03903	SHERIFF SAN MATEO CNTY HALL OF JUSTICE RE CO GOVERNMENT CENTER REDWOOD CY CA 94063 CA04100
POLICE DEPT CHIEF P O BOX 1090 PALM SPRINGS CA 92262 CA03311	SHERIFFS OFFICE SHERIFF P O BOX 700 HOLLISTER CA 95023 CA03500	CITY POLICE DEPT CHIEF OF POLICE 453 ARROWHEAD SAN BERNARDINO CA 92401 CA03610	LAMESA POLICE DEPT CHIEF OF POLICE 8181 ALLISON AVENU LA MESA CA 92041 CA03708	RIPON POLICE DEPT CHIEF OF POLICE P O BOX 727 RIPON CA 95366 CA03904	ATHERTON POLICE DEPT CHIEF OF POLICE 83 ASHFIELD ROAD ATHERTON CA 94025 CA04101
PERRIS POLICE DEPT CHIEF OF POLICE 100 N PERRIS BLVD PERRIS CA 92370 CA03312	HOLLISTER POLICE DEPT CHIEF OF POLICE 339 5TH ST HOLLISTER CA 95023 CA03501	UPLAND POLICE DEPT CHIEF OF POLICE 177 D STREET UPLAND CA 91786 CA03611	POLICE DEPARTMENT POLICE CHIEF 1200 A AVE NATIONAL CITY CA 92050 CA03709	STOCKTON POLICE DEPT CHIEF OF POLICE 22 E MARKET STOCKTON CA 95202 CA03905	BELMONT POLICE DEPT CHIEF OF POLICE BELMONT CA 94002 CA04102
RIVERSIDE POLICE DEPT CHIEF OF POLICE P O BOX 88 RIVERSIDE CA 92502 CA03313	POLICE DEPARTMENT CHIEF 311 2ND ST SAN JUAN BAUTISTA CA 95045 CA03502	MONTCLAIR POLICE DEPT CHIEF 5111 BENITO ST MONTCLAIR CA 91763 CA03605	OCEANSIDE POLICE DEPT CHIEF OF POLICE OCEANSIDE CA 92054 CA03710	POLICE DEPT CHIEF OF POLICE P O BOX 1029 TRACY CA 95376 CA03906	POLICE DEPARTMENT CHIEF 1200 HOWARD P O BOX 551 BURLINGAME CA 94010 CA04104
SAN JACINTO POLICE DEPT POLICE CHIEF 460 SHERIFF AVE SAN JACINTO CA 92383 CA03314	CORONER SAN BERNARDINO CO 147 W 4TH SAN BERNARDINO CA 92401 CA036013M	PARK AND RECREATION DEPT SAN DIEGO CO CH PARK RANGER 1600 PACIFIC HWY SAN DIEGO CA 92101 CA03711	SAN DIEGO POLICE DEPT CHIEF OF POLICE 801 W MARKET SAN DIEGO CA 92101 CA03711	POLICE DEPARTMENT CHIEF OF POLICE PO BOX 248 ESCALON CA 95320 CA03901	DALY CITY POLICE DEPT POLICE CHIEF SULLIVAN AVE 90TH ST DALY CITY CA 94015 CA04106
DESERT HOT SPRINGS POLICE DEPT CHIEF OF POLICE DESERT HOT SPRINGS CA 92240 CA03306	SAN BERNARDINO CO SHERIFF S DEPT SHERIFF COURTHOUSE SAN BERNARDINO CA 92401 CA03600	CORONER SAN DIEGO CO 5555 OVERLAND SAN DIEGO CA 92123 CA037013M	CORONER S OFFICE SAN FRANCISCO CORONER 850 BRYANT SAN FRANCISCO CA 94103 CA038013M	COUNTY SHERIFF S DEPT SHERIFF RM 400 COURTHOUSE SAN LUIS OBISPO CA 93401 CA04000	POLICE DEPARTMENT CHIEF OF POLICE 1600 FLORIBUNDA AV HILLSBOROUGH CA 94010 CA04108
NORCO POLICE DEPT CHIEF OF POLICE NORCO CA 91760 CA03310	BARSTOW POLICE DEPT CHIEF OF POLICE 220 E MT VIEW BARSTOW CA 92311 CA03601	SAN DIEGO COUNTY SHERIFFS DEPT SHERIFF 222 WEST C SAN DIEGO CA 92101 CA03700	SAN FRANCISCO HARBOR POLICE CAPTAIN FERRY BLDG SAN FRANCISCO CA 94111 CA04001	POLICE DEPT POLICE CHIEF P O BOX 550 ARROYO GRANDE CA 93420 CA04001	POLICE DEPT CHIEF OF POLICE CITY HALL MENLO PARK CA 94025 CA04109
INDIAN WELLS POLICE DEPT CHIEF OF POLICE INDIAN WELLS CA 92260 CA03316	CHINO POLICE DEPT CHIEF OF POLICE 13233 CENTRAL AVE CHINO CA 91710 CA03602	POLICE DEPT CHIEF OF POLICE 1200 ELM AVE CARLSBAD CA 92008 CA03701	SHERIFFS OFFICE SAN FRANCISCO SHERIFF CITY HALL RM 331 SAN FRANCISCO CA 94102 CA03800	PASO ROBLES POLICE DEPT CHIEF OF POLICE 840 10TH ST PASO ROBLES CA 93446 CA04004	MILLBRAE POLICE DEPT CHIEF OF POLICE MILLBRAE CA 94030 CA04110
SACRAMENTO CO CORONER 4400 V ST SACRAMENTO CA 95817 CA034013M	COTTON POLICE DEPT CHIEF OF POLICE 650 NO LACADENA DR COLTON CA 92324 CA03603	POLICE DEPT CHIEF OF POLICE 276 GUAVA AVENUE CHULA VISTA CA 92010 CA03702	SAN FRANCISCO POLICE DPT CHIEF OF POLICE HALL OF JUSTICE 850 BRYANT SAN FRANCISCO CA 94103 CA03801	PISMO BEACH POLICE DEPT CHIEF OF POLICE P O BOX 3 PISMO BEACH CA 93449 CA04005	POLICE DEPT CHIEF OF POLICE P O BOX 189 REDWOOD CITY CA 94064 CA04113
SACRAMENTO CO SHERIFF S DEPT SHERIFF 800 7TH ST SACRAMENTO CA 95814 CA03400	POLICE DEPARTMENT POLICE CHIEF 8353 SIERRA AVE FOUNTANA CA 92335 CA03604	CORONADO POLICE DEPT CHIEF OF POLICE 578 ORANGE AVE CORONADO CA 92118 CA03703	GOLDEN GATE BRIDGE AND HIGHWAY DIST AUDITOR PO BOX 9000 PRESIDIO STA SAN FRANCISCO CA 94129 CA04006	POLICE DEPARTMENT CHIEF OF POLICE 575 SANTA ROSA ST SAN LUIS OBISPO CA 93401 CA04006	SAN BRUNO POLICE DEPT CHIEF OF POLICE 567 EL CAMINO REAL SAN BRUNO CA 94066 CA04114
FOLSOM POLICE DEPT CHIEF OF POLICE 50 NATOMA ST FOLSOM CA 95630 CA03401	NEEDLES POLICE DEPT CHIEF OF POLICE 1011 FRONT ST P O BOX 887 NEEDLES CA 92363 CA03606	CITY POLICE DEPT CHIEF OF POLICE 100 FLETCHER PKWAY EL CAJON CA 90222 CA03705	SHERIFF S OFFICE SHERIFF 222 E WEBER AVENUE ROOM 50 STOCKTON CA 95202 CA03900	POLICE DEPARTMENT CHIEF OF POLICE P O BOX 385 GROVER CITY CA 93433 CA04002	SAN CARLOS POLICE DEPT CHIEF OF POLICE 665 ELM STREET SAN CARLOS CA 94070 CA04115
POLICE DEPARTMENT CHIEF OF POLICE 807 C ST P O BOX 97 GALT CA 95635 CA03402	ONTARIO POLICE DEPT CHIEF OF POLICE ONTARIO CA 91700 CA03607	CITY POLICE DEPT CHIEF OF POLICE 100 VALLEY BLVD ESCONDIDO CA 92025 CA03706	LODI POLICE DEPT POLICE CHIEF CITY HALL 221 W PINE LODI CA 95240 CA03902	MORRO BAY POLICE DEPT POLICE CHIEF 850 MORRO BAY BLVD MORRO BAY CA 93442 CA04003	POLICE DEPARTMENT CHIEF OF POLICE 2000 SO DELAWARE S SAN MATEO CA 94403 CA04116
ISLETON POLICE DEPT CHIEF OF POLICE BOX 716 ISLETON CA 95641 CA03403	REDLANDS POLICE DEPT CHIEF OF POLICE 212 BROOKSIDE AVE REDLANDS CA 92373 CA03608			CORONER SAN MATEO CNTY 225 37TH AVE SAN MATEO CA 94403 CA041013M	POLICE DEPARTMENT CHIEF OF POLICE P O BOX 429 SOUTH SAN FRANCISCO CA 94080 CA04117

PACIFICA POLICE DEPT
CHIEF OF POLICE
171 SALADA AVE
PACIFICA CA 94044
CA04111

CITY POLICE DEPT
CHIEF OF POLICE
PO BOX 67
HALF MOON BAY CA 94019
CA04107

BRISBANE POLICE DEPT
CHIEF OF POLICE
44 VISITACION AVE
BRISBANE CA 94005
CA04103

COUNTY SHERIFF S OFC
SHERIFF
COUNTY COURTHOUSE
SANTA BARBARA CA 93104
CA04200

GUADALUPE POLICE DEPT
POLICE CHIEF
1025 GUADALUPE ST
GUADALUPE CA 93434
CA04201

LOMPOC POLICE DEPARTMENT
CHIEF OF POLICE
117 SO D ST
LOMPOC CA 93436
CA04202

SANTA BARBARA POL DEPT
CHIEF OF POLICE
215 EAST FIGUEROA
SANTA BARBARA CA 93104
CA04203

HARBOR PATROL AGCY
HARBOR MASTER
BREAKWATER
SANTA BARBARA CA 93105
CA0420112

POLICE DEPARTMENT
POLICE CHIEF
110 EAST COOK STRE
SANTA MARIA CA 93454
CA04204

CORONER
SANTA CLARA CO
751 S BASCOM
SAN JOSE CA 95128
CA043013M

SANTA CLARA CO
SHERIFF S DEPT
SHERIFF
180 W HEDDING
SAN JOSE CA 95110
CA04300

ALVISO POLICE DEPT
CHIEF OF POLICE
ALVISO CA 95002
CA04301

CAMPBELL POLICE DEPT
CHIEF OF POLICE
75 NO CENTRAL AVE
CAMPBELL CA 95008
CA04302

POLICE DEPT
CHIEF OF POLICE
7370 ROSANNA ST
GILROY CA 95020
CA04304

LOS ALTOS POLICE DEPT
CHIEF OF POLICE
P O BOX 69
1 NO SAN ANTONIO ROAD
LOS ALTOS CA 94022
CA04305

LOS GATOS POLICE DEPT
CHIEF OF POLICE
110 E MAIN ST
LOS GATOS CA 95030
CA04307

CITY POLICE DEPT
CHIEF OF POLICE
455 E CALAVERAS BL
MILPITAS CA 95035
CA043061A

MORGAN HILL POLICE DEPT
CHIEF OF POLICE
MORGAN HILL CA 95037
CA04310

POLICE DEPARTMENT
CHIEF OF POLICE
947 VILLA STREET
MOUNTAIN VIEW CA 94040
CA04311

POLICE DEPT
CHIEF OF POLICE
450 BRYANT ST
PALO ALTO CA 94301
CA04312

SAN JOSE POLICE DEPT
CHIEF OF POLICE
P O BOX 270
SAN JOSE CA 95103
CA04313

SANTA CLARA POLICE DEPT
CHIEF OF POLICE
1541 CIVIC CENTER
S CLARA CA 95050
CA04314

DEPT OF PUBLIC SAFETY
DIRECTOR
515 SOUTH MATHILDA
SUNNYVALE CA 94086
CA04316

COUNTY SHERIFFS DEPT
SHERIFF
SANTA CRUZ CA 95060
CA04400

CAPITOLA POLICE DEPT
CHIEF OF POLICE
422 CAPITOLA AVE
CAPITOLA CA 95010
CA04401

POLICE DEPARTMENT
CHIEF OF POLICE
809 CENTER ST
SANTA CRUZ CA 95060
CA04402

WATSONVILLE POLICE DEPT
CHIEF OF POLICE
P O BOX 1199
WATSONVILLE CA 95076
CA04403

POLICE DEPT
CHIEF OF POLICE
370 MT HERMAN RD
SCOTTS VALLEY CA 95060
CA04404

SHASTA CO CORONER S OFC
CORONER
P O BOX 506
REDDING CA 96001
CA045013M

SHASTA CO SHERIFF S OFC
SHERIFF
P O BOX 1600
REDDING CA 96001
CA04500

REDDING POLICE DEPT
CHIEF OF POLICE
1313 MARKET STREET
REDDING CA 96001
CA04502

ANDERSON POLICE DEPT
POLICE CHIEF
1887 HOWARD ST
ANDERSON CA 96007
CA04501

SHERIFF S DEPARTMENT
SHERIFF
DOWNIEVILLE CA 95936
CA04600

CO SHERIFF S OFF
SHERIFF
COURTHOUSE
YREKA CA 96097
CA04700

DUNSHUIR POLICE DEPT
CHIEF OF POLICE
5902 DUNSHUIR AVE
DUNSHUIR CA 96025
CA04702

POLICE DEPT
CHIEF OF POLICE
303 N MT SHASTA BL
MT SHASTA CA 96067
CA04706

YREKA POLICE DEPT
CHIEF OF POLICE
120 N MAIN
YREKA CA 96097
CA04709

WEED POLICE DEPT
POLICE CHIEF
PO BOX 470
WEED CA 96094
CA04708

CORONER
CORONER
321 TUOLUMNE ST
VALLEJO CA 94590
CA048013M

SOLANO CO SHERIFF S OFC
SHERIFF
500 TEXAS STREET
FAIRFIELD CA 94533
CA04800

BENICIA POLICE DEPT
POLICE CHIEF
200 EAST L STREET
BENICIA CA 94510
CA04801

CITY POLICE DEPT
CHIEF OF POLICE
195 NORTH SECOND S
DIXON CA 95620
CA04802

POLICE DEPT
POLICE CHIEF
CITY HALL
FAIRFIELD CA 94533
CA04803

SUISUN CITY POLICE
CHIEF OF POLICE
710 SUISUN ST
SUISUN CITY CA 94585
CA04805

POLICE DEPARTMENT
CHIEF OF POLICE
P O BOX 298
VACAVILLE CA 95688
CA04806

VALLEJO POLICE DEPT
CHIEF OF POLICE
111 AMADOR STREET
VALLEJO CA 94590
CA04807

SONOMA CO CORONER S OFC
CORONER
HALL OF JUSTICE
2555 MENDOCINO AVE
SANTA ROSA CA 95401
CA049013M

SONOMA CO SHERIFF S OFC
SHERIFF
HALL OF JUSTICE
2555 MENDOCINO AVE
SANTA ROSA CA 95401
CA04900

CLOVERDALE POLICE DEPT
CHIEF
124 N CLOVERDALE B
CLOVERDALE CA 95425
CA04901

HEALDSBURG POLICE DEPT
CHIEF OF POLICE
CITY HALL
HEALDSBURG CA 95448
CA04903

PETALUMA POLICE DEPT
CHIEF OF POLICE
22 BASSETT STREET
PETALUMA CA 94952
CA04908

SANTA ROSA POLICE DEPT
CHIEF OF POLICE
P O BOX 1678
SANTA ROSA CA 95403
CA04905

CITY POLICE DEPT
CHIEF OF POLICE
CITY HALL
SEBASTOPOL CA 95472
CA04906

SONOMA POLICE DEPT
CHIEF OF POLICE
18 PATTEN ST
SONOMA CA 95476
CA04907

COTATI POLICE DEPT
CHIEF OF POLICE
127 E COTATI AVE
COTATI CA 94928
CA04902

POLICE DEPT
CHIEF OF POLICE
435 S W BLVD
ROHNERT PK CA 94928
CA04904

CORONER S OFFICE
CORONER
COURTHOUSE
MODESTO CA 95353
CA050013M

COUNTY SHERIFF S DEPT
SHERIFF
P O BOX 858
MODESTO CA 95353
CA05000

CERES POLICE DEPARTMENT
CHIEF OF POLICE
2225 NORTH ST
CERES CA 95307
CA05001

POLICE DEPT
CHIEF OF POLICE
P O BOX 912
MODESTO CA 95353
CA05002

POLICE DEPARTMENT
CHIEF OF POLICE
P O BOX 787
NEWMAN CA 95360
CA05003

POLICE DEPARTMENT
CHIEF OF POLICE
P O BOX 305
OAKDALE CA 95301
CA05004

PATTERSON POLICE DEPT
CHIEF
P O BOX 667
PATTERSON CA 95363
CA05005

RIVERBANK POLICE DEPT
CHIEF OF POLICE
6707 THIRD STREET
RIVERBANK CA 95367
CA05006

POLICE DEPT
CHIEF OF POLICE
250 STARR AVE
TURLOCK CA 95380
CA05007

WATERFORD POLICE DEPT
CHIEF OF POLICE
WATERFORD CA 95386
CA05008

CO SHERIFFS DEPT
SHERIFF
COURTHOUSE
YUBA CITY CA 95991
CA05100

POLICE DEPARTMENT
CHIEF OF POLICE
2747 FIR STREET
LIVE OAK CA 95953
CA05101

CITY POLICE DEPARTMENT
CHIEF OF POLICE
P O BOX 1116
YUBA CITY CA 95991
CA05102

CORONER S OFFICE
CORONER
P O BOX 694
RED BLUFF CA 96080
CA052013M

SHERIFF S DEPARTMENT
SHERIFF
COURTHOUSE
RED BLUFF CA 96080
CA05200

POLICE DEPARTMENT
CHIEF OF POLICE
CITY HALL
CORNING CA 96021
CA05201

RED BLUFF POLICE DEPT
CHIEF OF POLICE
555 WASHINGTON
RED BLUFF CA 96080
CA05202

CO CORONER S OFFICE
CORONER
BOX 251
WEAVERVILLE CA 96093
CA053013M

CO SHERIFF S OFFICE
SHERIFF
BOX AD
WEAVERVILLE CA 96093
CA05300

SHERIFF S OFFICE
SHERIFF
CIVIC CENTER
VISALIA CA 93277
CA05400

POLICE DEPARTMENT
CHIEF OF POLICE
155 WEST KERN ST
DINUBA CA 93618
CA05401

EXETER POLICE DEPT CHIEF OF POLICE PO BOX 237 EXETER CA05402	CA 93221	CITY POLICE DEPT POLICE CHIEF 210 SO B ST OXNARD CA05604	CA 93030
LINDSAY POLICE DEPT CHIEF OF POLICE P O BOX 369 LINDSAY CA05404	CA 93247	CITY POLICE DEPT CHIEF OF POLICE P O BOX 115 PORT HUENEME CA05605	CA 93041
PORTERVILLE POLICE DEPT CHIEF OF POLICE 15 WEST THURMAN PORTERVILLE CA05405	CA 93257	VENTURA POLICE DEPT CHIEF OF POLICE 52 S GARDEN ST VENTURA CA05608	CA 93003
POLICE DEPT CHIEF OF POLICE 415 E KERN AVE TULARE CA05406	CA 93274	SANTA PAULA POLICE DEPT CHIEF OF POLICE 984 VENTURA STREET SANTA PAULA CA05606	CA 93060
POLICE DEPT CHIEF OF POLICE 215 SO JOHNSON VISALIA CA05407	CA 93277	CAMARILLO POLICE DEPT CHIEF OF POLICE CAMARILLO CA05601	CA 93010
WOODLAKE POLICE DEPT CHIEF OF POLICE 350 N VALENCIA BLV WOODLAKE CA05408	CA 93286	YOLO CO SHERIFF S OFC SHERIFF 814 NORTH ST WOODLAND CA05700	CA 95695
POLICE DEPARTMENT CHIEF OF POLICE 147 E FRONT STREET FARMERSVILLE CA05403	CA 93223	DAVIS CITY POLICE DEPT CHIEF OF POLICE 708 THIRD ST DAVIS CA05701	CA 95616
CO SHERIFF S DEPT SHERIFF 28 LOWER SUNSET DR SONORA CA05500	CA 95370	WINTERS POLICE DEPT CHIEF OF POLICE P O BOX 392 WINTERS CA05702	CA 95694
POLICE DEPARTMENT CHIEF OF POLICE 94 N WASHINGTON ST SONORA CA05501	CA 95370	POLICE DEPT CHIEF OF POLICE 300 FIRST STREET WOODLAND CA05703	CA 95695
COUNTY CORONER S OFC CORONER 3291 LOMA VISTA RD VENTURA CA056013M	CA 93003	SHERIFF S OFFICE SHERIFF COURTHOUSE MARYSVILLE CA05800	CA 95901
COUNTY SHERIFFS OFC SHERIFF 501 POLI ST VENTURA CA05600	CA 93001	MARYSVILLE POLICE DEPT CHIEF OF POLICE P O BOX 670 316 SIXTH STREET MARYSVILLE CA05801	CA 95901
POLICE DEPARTMENT CHIEF OF POLICE 524 SESPE AVENUE FILLMORE CA05602	CA 93015	COURTS STATE LEVEL STATE SUPREME COURT CLERK STATE BUILDING SAN FRANCISCO CA038015J	CA 94102
OJAI POLICE DEPT CHIEF OF POLICE 107 A W MATILIJAS OJAI CA05603	CA 93023	COURT OF APPEALS, DIST 1 CLERK STATE BLDG 350 MCALLISTER ST SAN FRANCISCO CA038025J	CA 94102

COURT OF APPEALS DIST 2 CLERK STATE BLDG 217 W FIRST ST LOS ANGELES CA019015J	CA 90012
3RD APPELLATE DISTRICT COURT OF APPEAL CLERK 119 LIBRARY AND CTS BLDG SACRAMENTO CA034015J	CA 95814
COURT OF APPEALS 4TH DISTRICT DISTRICT CLERK 303 WEST 3RD ST SAN BERNARDINO CA036015J	CA 92401
COURT OF APPEALS 5TH APPELLATE DIST CLERK 2550 MARIPOSA ST FRESNO CA010015J	CA 93721
LOCAL LEVEL SUPERIOR COURT ALAMEDA CO CT ADMINISTRATOR 1225 FALLON OAKLAND CA001013J	CA 94612
MUNICIPAL COURT ALAMEDA CT ADMINISTRATOR 1516 OAK ALAMEDA CA001023J	CA 94501
MUNICIPAL COURT BERKELEY CT ADMINISTRATOR 2120 GROVE BERKELEY CA001033J	CA 94604
MUNICIPAL COURT OAKLAND CT ADMINISTRATOR 600 WASHINGTON OAKLAND CA001043J	CA 94607
JUSTICE COURT LIVERMORE PRESIDING JUDGE 39 S LIVERMORE LIVERMORE CA001053J	CA 94550
JUSTICE COURT PLEASANTON PRESIDING JUDGE 30 W ANGELA PLEASANTON CA001063J	CA 94566
MUNICIPAL COURT FREMONT NEWARK CT ADMINISTRATOR 2550 PERALTA BLVD FREMONT CA001073J	CA 94536
MUNICIPAL COURT CT ADMINISTRATOR 224 W WINTON HAYWARD CA001083J	CA 94544

ALPINE CO SUPERIOR COURT JUDGE COURTHOUSE MARKLEEVILLE CA002013J	CA 96120
ALPINE CO JUSTICE COURT JUDGE COURTHOUSE MARKLEEVILLE CA002023J	CA 96120
SUPERIOR COURT JUDGE 108 COURT ST JACKSON CA003013J	CA 95642
JUSTICE COURT JUDGE 424 SUMMIT ST JACKSON CA003023J	CA 95642
SUPERIOR COURT PRESIDING JUDGE COURTHOUSE OROVILLE CA004013J	CA 95965
JUSTICE COURT JUDGE 117 B STREET BIGGS CA004023J	CA 95917
JUSTICE COURT JUDGE P O BOX 337 DURHAM CA004033J	CA 95936
JUSTICE COURT JUDGE P O BOX 85 GRIDLEY CA004043J	CA 95948
JUSTICE COURT JUDGE 1931 ARLIN RHINE OROVILLE CA004053J	CA 95965
JUSTICE COURT JUDGE 747 ELLIOTT ROAD PARADISE CA004063J	CA 95969
JUSTICE COURT JUDGE CHICO COURT BLDG CHICO CA004073J	CA 95926
SUPERIOR COURT JUDGE GOVERNMENT CENTER SAN ANDREAS CA005013J	CA 95249

JUSTICE COURT GOVERNMENT CENTER SAN ANDREAS CA005023J	CA 95249
JUSTICE COURT ANGELS CAMP CA005033J	CA 95222
JUSTICE COURT WEST POINT CA005043J	CA 95255
SUPERIOR COURT JUDGE 546 JAY STREET COLUSA CA006013J	CA 95932
JUSTICE COURT JUDGE 547 MARKET STREET COLUSA CA006023J	CA 95932
JUSTICE COURT JUDGE WILLIAMS CA006033J	CA 95987
SUPERIOR COURT CONTRA COSTA CO CT ADMINISTRATOR COURTHOUSE MARTINEZ CA007013J	CA 94553
MT DIABLO JUD DIST MUNICIPAL COURT CT ADMINISTRATOR 1950 PARKSIDE AVE CONCORD CA007023J	CA 94520
RICHMOND JUD DISTRICT MUNICIPAL COURT CT ADMINISTRATOR 100 37TH ST RICHMOND CA007033J	CA 94805
SAN PABLO JUD DISTRICT MUNICIPAL COURT CT ADMINISTRATOR 2021 MARKET ST SAN PABLO CA007043J	CA 94806
WALNUT DANVILLE JUD DIST MUNICIPAL COURT CT ADMINISTRATOR 1250 LOCUST WALNUT CRK CA007053J	CA 94596
CROCKETT P COSTA JUD DIS JUSTICE COURT PRESIDING JUDGE 45 CIVIC AVE PITTSBURG CA007063J	CA 94565

DELTA JUD DISTRICT JUSTICE COURT PRESIDING JUDGE 653 WALNUT P O 370 BRENTWOOD CA007073J	CA 94513
EL CERRITO JUD DIST JUSTICE COURT PRESIDING JUDGE 6323 MANILA ST EL CERRITO CA007083J	CA 94530
PINOLE RODEO JUD DIST JUSTICE COURT PRESIDING JUDGE 207 PACIFIC AVE RODEO CA007093J	CA 94272
SUPERIOR COURT JUDGE COURTHOUSE CRESCENT CITY CA008013J	CA 95531
JUSTICE COURT JUSTICE COURTHOUSE KLAMATH CA008023J	CA 95548
JUSTICE COURT JUSTICE COURTHOUSE CRESCENT CITY CA008033J	CA 95531
SUPERIOR COURT 1 2 JUDGE 2850 COLD SPRINGS PLACERVILLE CA009013J	CA 95667
EL DORADO JUSTICE COURT JUDGE P O BOX 232 EL DORADO CA009023J	CA 95623
GEORGETOWN JUSTICE COURT JUDGE 302 MAIN ST GEORGETOWN CA009033J	CA 95634
JUSTICE COURT JUDGE P O BOX 8496 SOUTH LAKE TAHOE CA009043J	CA 95705
JUSTICE COURT JUDGE 489 MAIN ST PLACERVILLE CA009053J	CA 95667
SUPERIOR COURT JUDGE RM 550 COURTHOUSE FRESNO CA010013J	CA 93721

MUNICIPAL COURT JUDGE RM 200 COURTHOUSE FRESNO CA 93721 CA010023J	JUSTICE COURT JUSTICE OF PEACE 3563 HENSON BOX 987 RIVERDALE CA 93656 CA010143J	SUPERIOR COURTS PRESIDING JUDGE COURTHOUSE EL CENTRO CA 92243 CA013013J
JUSTICE COURT JUSTICE OF PEACE 2416 TAHOE BOX 127 CARUTHERS CA 93609 CA010033J	JUSTICE COURT JUSTICE OF PEACE 619 D N ST SANGER CA 93657 CA010153J	WINTERHAVEN JUSTICE CT JUDGE WINTERHAVEN CA 92283 CA013023J
JUSTICE COURT JUSTICE OF PEACE 401 POLLASKY BOX 236 CLOVIS CA 93612 CA010043J	JUSTICE COURT JUSTICE OF PEACE 2117 SELMA ST SELMA CA 93662 CA010163J	BRAWLEY JUSTICE CT JUDGE JUSTICE CT BLDG BRAWLEY CA 92227 CA013033J
JUSTICE COURT JUSTICE OF PEACE CITY HALL ANNEX BOX 902 COALINGA CA 93210 CA010053J	SUPERIOR COURT JUDGE COURTHOUSE WILLOWS CA 95988 CA011013J	CALEXICO JUSTICE CT JUDGE P O BOX 652 CALEXICO CA 92231 CA013043J
JUSTICE COURT JUSTICE OF PEACE SQUAW VALLEY STAR ROUTE ORANGE COVE CA 93646 CA010063J	JUSTICE COURT JUSTICE OF PEACE COURTHOUSE WILLOWS CA 95988 CA011023J	CALIPATRIA JUSTICE CT JUDGE P O BOX 216 CALIPATRIA CA 92233 CA013053J
JUSTICE COURT JUSTICE OF PEACE 1325 O STREET FIREBAUGH CA 93622 CA010073J	JUSTICE COURT JUSTICE OF PEACE COUNTY BUILDING ORLAND CA 95963 CA011033J	EL CENTRO JUSTICE CT JUDGE COURTHOUSE EL CENTRO CA 92243 CA013063J
JUSTICE COURT JUSTICE OF PEACE 106 S 6TH ST BOX 605 FOWLER CA 93625 CA010083J	SUPERIOR COURT 1 2 3 JUDGE COURTHOUSE EUREKA CA 95501 CA012013J	HOLTVILLE JUSTICE CT JUDGE CITY HALL HOLTVILLE CA 92250 CA013073J
JUSTICE COURT JUSTICE OF PEACE 780 MADERA AVE BOX 415 KERMAN CA 93630 CA010093J	MUNICIPAL COURT JUDGE COURTHOUSE EUREKA CA 95501 CA012023J	IMPERIAL JUSTICE CT JUDGE COURTHOUSE IMPERIAL CA 92251 CA013083J
JUSTICE COURT JUSTICE OF PEACE 1380 DRAPER BOX 474 KINGSBURG CA 93631 CA010103J	JUSTICE COURT JUSTICE ARCATA CA 95521 CA012033J	WESTHORLAND JUSTICE CT JUDGE COURTHOUSE WESTHORLAND CA 92381 CA013093J
JUSTICE COURT JUSTICE OF PEACE 580 TULARE BOX 266 PARLATER CA 93648 CA010113J	JUSTICE COURT JUSTICE FORTUNA CA 95540 CA012043J	NORTH INYO JUSTICE COURT JUDGE 307 SOUTH MAIN BISHOP CA 93514 CA014013J
JUSTICE COURT JUSTICE OF PEACE P O BOX 294 AURERRY CA 93602 CA010123J	JUSTICE COURT JUSTICE GARBERVILLE CA 95440 CA012053J	SOUTH INYO JUSTICE COURT JUDGE 168 NORTH EDWARDS INDEPENDENCE CA 93526 CA014023J
JUSTICE COURT JUSTICE OF PEACE 815 G STREET BOX 366 REEDLY CA 93654 CA010133J	KLAMATH-TRINITY JUST CT JUSTICE HOOPA CA 95546 CA012063J	INYO CO SUPERIOR COURT JUDGE COURTHOUSE INDEPENDENCE CA 93637 CA014033J

KERN CO SUPERIOR COURT PRESIDING JUDGE 1415 TRUXTUN AVE BAKERSFIELD CA 93301 CA015013J	KINGS CO SUPERIOR COURT JUDGE COURTHOUSE BOX C HANFORD CA 93230 CA016013J	WESTWOOD HONEY LAKE CT JUDGE COURTHOUSE SUSANVILLE CA 96130 CA018023J
MUNICIPAL COURT PRESIDING JUDGE 1415 TRUXTUN AVE BAKERSFIELD CA 93301 CA015023J	JUSTICE COURT JUSTICE OF PEACE 449 C STREET LEMOORE CA 93245 CA016023J	BIG VALLEY JUSTICE CT JUDGE BIEBER CA 96009 CA018033J
ARVIN LAMONT JUD CT JUDGE 131 A ST LAMONT CA 93203 CA015033J	JUSTICE COURT JUSTICE OF PEACE COURTHOUSE BOX C HANFORD CA 93230 CA016033J	MADLINE JUSTICE COURT JUDGE MADLINE CA 96119 CA018043J
BUTTONWILLOW JUD DIST CT JUDGE E FIRST ST BUTTONWILLOW CA 93206 CA015043J	JUSTICE COURT JUSTICE OF PEACE 1015 CHITTENDEN CORCORAN CA 93212 CA016043J	SUPERIOR COURT LOS ANGELES CO CT ADMINISTRATOR 111 N HILL ST LOS ANGELES CA 90012 CA019013J
DELANO MCFARLAND DIST CT JUDGE 1122 JEFFERSON ST DELANO CA 93215 CA015053J	JUSTICE COURT JUSTICE OF PEACE 211 KINGS STREET AVENAL CA 93204 CA016053J	MUNICIPAL COURT L A JUDICIAL DIST PRESIDING JUDGE 110 N GRAND AVE LOS ANGELES CA 90012 CA019023J
INDIAN WELLS JUD DIST CT JUDGE 230 RIDGECREST BL RIOGECREST CA 93555 CA015063J	LAKE COUNTY SUPERIOR CT JUDGE MAIN ST LAKEPORT CA 95453 CA017013J	MUNICIPAL COURT ALHAMBIA JUD DIST PRESIDING JUDGE 200 W WOODWARD AVE ALHAMBIA CA 91801 CA019033J
KERN RR RAND JUD DIST CT JUDGE P O BOX 646 LAKE ISABELLA CA 93238 CA015073J	CLEARLAKE HGHLDS JUST CT JUSTICE LAKESHORE DR CLEARLAKE HIGHLAND CA 95422 CA017023J	MUNICIPAL COURT ANTELOPE JUD DIST PRESIDING JUDGE 1040 W EVE J LANCASTER CA 93534 CA019043J
HARICOPA TAFT JUD DIST CT JUDGE 336 CALIF ST HARICOPA CA 93252 CA015083J	KEJSEYVILLE JUSTICE CT JUSTICE KELSEYVILLE CA 95451 CA017033J	MUNICIPAL COURT BEV HILLS JUD DIST PRESIDING JUDGE 450 W CRESCENT DR BEVERLY HILLS CA 90210 CA019053J
MOJAVE JUD DIST CT JUDGE 16246 SIERRA HWY MOJAVE CA 93501 CA015093J	LAKEPORT JUSTICE COURT JUSTICE 285 N MAIN LAKEPORT CA 95453 CA017043J	MUNICIPAL COURT CITRUS JUD DIST PRESIDING JUDGE 1427 WEST SERVICE AVE WEST COVINA CA 91790 CA019063J
SHAFTER JUD DIST CT JUDGE 342 PACIFIC ST SHAFTER CA 93263 CA015103J	MIDDLETWN LOW LAKE COURT JUSTICE MIDDLETOWN CA 95461 CA017053J	MUNICIPAL COURT COMPTON JUD DIST PRESIDING JUDGE 212 SOUTH ACACIA ST COMPTON CA 90220 CA019073J
TEHACHAPI JUD DIST CT JUDGE 125 E F ST TEHACHAPI CA 93561 CA015113J	UPPER LAKE JUSTICE COURT JUSTICE 11 MAIN UPPER LAKE CA 95485 CA017063J	MUNICIPAL COURT CULVER JUD DIST PRESIDING JUDGE 4130 OVERLAND AVE CULVER CITY CA 90230 CA019083J
WASCO JUD DIST CT JUDGE 8TH AND F ST WASCO CA 93280 CA015123J	SUPERIOR COURT JUDGE COURTHOUSE SUSANVILLE CA 96130 CA018013J	MUNICIPAL COURT DOWNEY JUD DIST PRESIDING JUDGE 8206 E THIRD ST DOWNEY CA 90241 CA019093J

MUNICIPAL COURT
EAST L A JUD DISTR
PRESIDING JUDGE
4837 EAST THIRD ST
L A CA 90022
CA019103J

MUNICIPAL COURT
EL MONTE JUD DIST
PRESIDING JUDGE
11371 EAST VALLEY BLVD
EL MONTE CA 91731
CA019113J

MUNICIPAL COURT
GLENDALE JUD DISTR
PRESIDING JUDGE
600 EAST BROADWAY
GLENDALE CA 91205
CA019123J

MUNICIPAL COURT
INGLEWOOD JUD DIST
PRESIDING JUDGE
110 EAST REGENT ST
INGLEWOOD CA 90301
CA019133J

MUNICIPAL COURT
LONG BEACH JUD DIST
PRESIDING JUDGE
415 WEST OCEAN BLVD
LONG BEACH CA 90802
CA019143J

MUNICIPAL COURT
L CENITOS JUD DIST
PRESIDING JUDGE
10025 EAST FLOWER AVE
BELLFLOWER CA 90706
CA019153J

MUNICIPAL COURT
NEWHALL JUD DIST
PRESIDING JUDGE
22505 W MARKET ST
NEWHALL CA 91321
CA019163J

MUNICIPAL COURT
PASADENA JUD DIST
PRESIDING JUDGE
200 N GARFIELD AVE
PASADENA CA 91101
CA019173J

MUNICIPAL COURT
POMONA JUD DIST
PRESIDING JUDGE
350 WEST 5TH AVE
POMONA CA 91766
CA019183J

S ANTONIO JUD DIST
PRESIDING JUDGE
6548 MILES AVE
HUNTINGTON PARK CA 90255
CA019193J

MUNICIPAL COURT
SANTA ANITA JUD DT
PRESIDING JUDGE
300 W MAPLE AVE
MONTOVIA CA 91016
CA019203J

MUNICIPAL COURT
S MONICA JUD DIST
PRESIDING JUDGE
1725 MAIN ST
SANTA MONICA CA 90401
CA019213J

MUNICIPAL COURT
SOUTH BAY JUD DIST
PRESIDING JUDGE
825 MAPLE AVE
TORRANCE CA 90503
CA019223J

MUNICIPAL COURT
SOUTH GATE JUD DIST
PRESIDING JUDGE
8640 CALIF AVE
SOUTH GATE CA 90280
CA019233J

MUNICIPAL COURT
WHITTIER JUD DIST
PRESIDING JUDGE
7333 S PAINTER AVE
WHITTIER CA 90602
CA019243J

JUSTICE COURT
CATALINA JUD DIST
JUDGE HERBERT CAME
215 SUMMER AVE
AVALON CA 90704
CA019253J

JUSTICE COURT
MALIBU JUD DIST
JUDGE JOHN J MERRI
23525 W CIVIC CNTR WAY
MALIBU CA 90265
CA019263J

JUSTICE COURT
CALABASAS BRANCH
PRESIDING JUDGE
24121 W ARWOLINDA ST
CALABASAS CA 91302
CA019273J

MUNICIPAL COURT
BURBANK JUD DIST
PRESIDING JUDGE
300 E OLIVE AVE
BURBANK CA 91502
CA019283J

MADERA JUSTICE COURT
CLERK
GOVERNMENT CENTER
MADERA CA 93637
CA020013J

CHOWCHILLA JUSTICE COURT
CLERK
516 W ROBERTSON BL
CHOWCHILLA CA 93610
CA020023J

SIERRA JUSTICE COURT
CLERK
OAKHURST CA 93644
CA020033J

MADERA CO SUPERIOR COURT
CLERK
GOVERNMENT CENTER
MADERA CA 93637
CA020043J

SUPERIOR COURT
PRESIDING JUDGE
HALL OF JUSTICE
SAN RAFAEL CA 94903
CA021013J

JUSTICE COURT
JUDGE
PT REYES STATION CA 94956
CA021023J

MUNICIPAL COURT
PRESIDING JUDGE
HALL OF JUSTICE
SAN RAFAEL CA 94903
CA021033J

MARIPOSA CO SUPERIOR CT
JUDGE
COURTHOUSE
MARIPOSA CA 95338
CA022013J

MARIPOSA JUSTICE COURT
JUDGE
COURTHOUSE
MARIPOSA CA 95338
CA022023J

COULTERVILLE JUSTICE CT
JUDGE
JUSTICE
MAIN ST
COULTERVILLE CA 95311
CA022033J

ANDERSON JUSTICE COURT
JUDGE
BOONVILLE CA 95415
CA023013J

ARENA DIST JUSTICE COURT
JUDGE
POINT ARENA CA 95468
CA023023J

BIG RIVER JUSTICE COURT
JUDGE
MENDOCINO CA 95460
CA023033J

CUFFEYS COVE JUSTICE CT
JUDGE
ELK CA 95432
CA023043J

LITTLE LAKE JUSTICE CT
JUDGE
WILLITS CA 95490
CA023053J

LONG VALLEY JUSTICE CT
JUDGE
LEGGETT CA 95455
CA023063J

ROUND VALLEY JUSTICE CT
JUDGE
COVELO CA 95428
CA023073J

MENDOCINO CO SUPERIOR CT
JUDGE
UKIAH CA 95482
CA023083J

UKIAH JUSTICE COURT
JUDGE
COURTHOUSE
UKIAH CA 95482
CA023093J

SANEL JUSTICE COURT
JUDGE
COURTHOUSE
HOPLAND CA 95449
CA023103J

TEN MILE JUSTICE COURT
JUDGE
COURTHOUSE
FORT BRAGG CA 95437
CA023113J

MERCED CO SUPERIOR CT
JUDGE
COURTS BLDG
MERCED CA 95340
CA024013J

MERCED JUSTICE CT
JUDGE
P O BOX 512
MERCED CA 95340
CA024023J

ATWATER JUSTICE CT
JUDGE
P O BOX 456
ATWATER CA 95301
CA024033J

DOS PALOS JUSTICE CT
JUDGE
P O BOX 1088
DOS PALOS CA 93620
CA024043J

GUSTINE JUSTICE CT
JUDGE
682 3RD ST
GUSTINE CA 95322
CA024053J

LE GRAND JUSTICE CT
JUDGE
P O BOX 53
LE GRAND CA 95333
CA024063J

LIVINGSTON JUSTICE CT
JUDGE
1330 C ST
LIVINGSTON CA 95334
CA024073J

LOS BANOS JUSTICE CT
JUDGE
4TH F STS
LOS BANOS CA 93635
CA024083J

SNELLING JUSTICE CT
JUDGE
SNELLING CA 95369
CA024093J

SUPERIOR COURT
JUDGE
BOX 930
ALTURAS CA 96101
CA025013J

ALTURAS JUSTICE CT
JUDGE
ALTURAS CA 96101
CA025023J

ADIN JUSTICE CT
JUDGE
ALTURAS CA 96101
CA025033J

NEWELL JUSTICE CT
JUDGE
TULELAKE CA 96134
CA025043J

SURPRISE VALLEY JUST CT
JUDGE
FORT BIDWELL CA 96112
CA025053J

SUPERIOR COURT
CO JUDGE
BRIDGEPORT CA 93517
CA026013J

JUSTICE COURT
CO JUDGE
BRIDGEPORT CA 93517
CA026023J

SUPERIOR COURT
COUNTY CLERK
P O BOX 1819
SALINAS CA 93901
CA027013J

MUNICIPAL COURT
MUNICIPAL COURT CLK
P O BOX 1409
SALINAS CA 93901
CA027023J

MUNICIPAL COURT
MUNICIPAL COURT CLK
P O BOX 751
MONTEREY CA 93940
CA027033J

JUSTICE COURT PAJARO
JUDGE
P O BOX 718
CASTROVILLE CA 95012
CA027043J

JUSTICE COURT GONZALES
JUDGE
P O BOX 108
GONZALES CA 93926
CA027053J

JUSTICE COURT GREENFIELD
JUDGE
P O BOX 336
GREENFIELD CA 93927
CA027063J

JUSTICE COURT KING CITY
JUDGE
P O BOX 36
KING CITY CA 93930
CA027073J

JUSTICE COURT PACIFIC
JUDGE
716 LIGHTHOUSE AVE
PACIFIC GROVE CA 93950
CA027083J

JUSTICE COURT SOLEDAD
JUDGE
P O BOX 1166
SOLEDAD CA 93960
CA027093J

JUSTICE COURT SAN ARDO
JUDGE
SAN ARDO CA 93450
CA027103J

SUPERIOR COURT
JUDGE
COURTHOUSE
BROWN ST
NAPA CA 94558
CA028013J

JUSTICE COURT
JUDGE
THIRD STREET
NAPA CA 94558
CA028023J

JUSTICE COURT
JUDGE
1360 ADAMS ST
ST HELENA CA 94574
CA028033J

JUSTICE COURT
JUDGE
1441 LINCOLN
CALISTOGA CA 94515
CA028043J

SUPERIOR COURT
JUDGE
COURTHOUSE
NEVADA CITY CA 95959
CA029013J

NEVADA DIST JUSTICE CT
JUDGE
COURTHOUSE
NEVADA CITY CA 95959
CA029023J

GRASS VALLEY JUSTICE CT
JUDGE
255 S AUBURN ST
GRASS VALLEY CA 95945
CA029033J

LINCOLN JUSTICE COURT
JUDGE
453 E STREET
LINCOLN CA 95648
CA031053J

HEMET JUSTICE COURT
JUDGE
880 NORTH STATE ST
HEMET CA 92343
CA033053J

TRUCKEE DIST JUSTICE CT
JUDGE
TRUCKEE CA 95934
CA029043J

LOOMIS JUSTICE COURT
JUDGE
P O BOX 44
LOOMIS CA 95650
CA031063J

MURRIETA JUSTICE COURT
JUDGE
BOX 101
MURRIETA CA 92362
CA033063J

SUPERIOR COURT
ORANGE COUNTY
CT ADMINISTRATOR
700 CIVIC CENTER
SANTA ANA CA 92701
CA030013J

ROSEVILLE JUSTICE COURT
JUDGE
P O BOX 639
ROSEVILLE CA 95678
CA031073J

MECCA JUSTICE COURT
JUDGE
COURTHOUSE
MECCA CA 92254
CA033073J

CENTRAL ORANGE CO
MUNICIPAL COURT
CT ADMINISTRATOR
700 CIVIC CENTER
SANTA ANA CA 92701
CA030023J

TAHOE JUSTICE COURT
JUDGE
P O BOX 261
TAHOE CITY CA 95730
CA031083J

SAN JACINTO JUSTICE CT
JUDGE
COURTHOUSE
SAN JACINTO CA 92383
CA033083J

NORTH ORANGE CO
MUNICIPAL COURT
CT ADMINISTRATOR
1170 N ANAHEIM
ANAHEIM CA 92801
CA030033J

SUPERIOR COURT
JUDGE
COURTHOUSE
QUINCY CA 95971
CA032013J

SAN GORGONIO JUSTICE CT
JUDGE
COURTHOUSE
BANNING CA 92220
CA033093J

ORANGE CO HARBOR
MUNICIPAL COURT
CT ADMINISTRATOR
567 W 18TH
COSTA MESA CA 92627
CA030043J

PLUMAS JUSTICE COURT
JUDGE
COURTHOUSE
QUINCY CA 95971
CA032023J

COACHELLA JUSTICE COURT
JUDGE
COURTHOUSE
COACHELLA CA 92236
CA033103J

SOUTH ORANGE CO
MUNICIPAL COURT
CT ADMINISTRATOR
30143 CROWN VALLEY PKWY
LAGUNA NIGUEL CA 92677
CA030053J

ALMANOR JUSTICE COURT
JUDGE
JUSTICE COURT
CHESTER CA 95947
CA032033J

EL SINORE JUSTICE COURT
JUDGE
COURTHOUSE
EL SINORE CA 92330
CA033113J

WEST ORANGE CO
MUNICIPAL COURT
CT ADMINISTRATOR
8144 WESTMINSTER
WESTMINSTER CA 92683
CA030063J

BECKWORTH JUSTICE COURT
JUDGE
JUSTICE COURT
PORTOLA CA 96122
CA032043J

JURUPA JUSTICE COURT
JUDGE
COURTHOUSE
RIVERSIDE CA 92501
CA033123J

SUPERIOR COURT
PLACER COUNTY
JUDGE
COURT HOUSE
AUBURN CA 95603
CA031013J

SUPERIOR COURT
PRESIDING JUDGE
4050 MAIN STREET
RIVERSIDE CA 92502
CA033013J

BEAUMONT JUSTICE COURT
JUDGE
COURTHOUSE
BEAUMONT CA 92223
CA033133J

AUBURN JUSTICE COURT
JUDGE
PLACER COUNTY
COURTHOUSE
AUBURN CA 95603
CA031023J

RIVERSIDE MUNICIPAL CRT
PRESIDING JUDGE
3547 TENTH STREET
RIVERSIDE CA 92502
CA033023J

PERRIS JUSTICE COURT
JUDGE
COURTHOUSE
PERRIS CA 92370
CA033143J

COLFAX JUSTICE COURT
JUDGE
COURTHOUSE
COLFAX CO 95713
CA031033J

CORONA MUNICIPAL COURT
PRESIDING JUDGE
813 WEST SIXTH ST
CORONA CA 91720
CA033033J

PALO VERDE JUSTICE COURT
JUDGE
COURTHOUSE
BLYTHE CA 92225
CA033153J

FORESTHILL JUSTICE COURT
JUDGE
COURTHOUSE
FORESTVILLE CA 95631
CA031043J

DESERT MUNICIPAL COURT
PRESIDING JUDGE
POST OFFICE BOX BB
INDIO CA 92201
CA033043J

SUPERIOR COURT
SACRAMENTO CO
CT ADMINISTRATOR
720 9TH
SACRAMENTO CA 95814
CA034013J

MUNICIPAL COURT
SACRAMENTO
CT ADMINISTRATOR
720 9TH
SACRAMENTO CA 95814
CA034023J

MUNICIPAL COURT
DESERT DIV
CT ADMINISTRATOR
15579 8TH ST
VICTORVILLE CA 92392
CA036053J

JUSTICE COURT
HIGHLAND
PRESIDING JUDGE
27255 MESSINA
HIGHLAND CA 92346
CA036173J

FAIR OAKS FOLSOM
JUSTICE COURT
JUDGE
TEMESCLE AND SIERRA
FAIR OAKS CA 95628
CA034033J

MUNICIPAL COURT
CT ADMINISTRATOR
EAST DIV
216 BROOKSIDE AVE
REDLANDS CA 92373
CA036063J

JUSTICE COURT
MISSION
CT ADMINISTRATOR
11128 ANDERSON
LOMA LINDA CA 92354
CA036183J

ELK GROVE GALT
JUSTICE COURT
JUDGE
ELK GROVE BLVD
ELK GROVE GA 95624
CA034043J

JUSTICE COURT
BAKER
PRESIDING JUDGE
P O BOX 66
BAKER CA 92309
CA036073J

JUSTICE COURT
NEEDLES
PRESIDING JUDGE
1011 FRONT ST
NEEDLES CA 92363
CA036193J

WALNUT GROVE ISLETON
JUSTICE COURT
JUDGE
P O BLDG
WALNUT GROVE CA 95690
CA034053J

JUSTICE COURT
BARSTOW
PRESIDING JUDGE
301 E MTN VIEW
BARSTOW CA 92311
CA036083J

JUSTICE COURT
TRONA
PRESIDING JUDGE
13207 MARKET
TRONA CA 93562
CA036203J

SAN BENITO CO SUP COURT
JUDGE
73 ANDREWS DRIVE
HOLLISTER CA 95023
CA035013J

JUSTICE COURT
PRESIDING JUDGE
BIG BEAR LAKE
CO OFFICE BLDG
BIG BEAR LAKE CA 92315
CA036093J

JUSTICE COURT
TWENTYNINE PALMS
PRESIDING JUDGE
6136 ADOBE
29 PALMS CA 92277
CA036213J

HOLLISTER JUSTICE COURT
JUDGE
3105 FALLON RD
HOLLISTER CA 95023
CA035023J

JUSTICE COURT
BLOOMINGTON
PRESIDING JUDGE
18886 VALLEY
BLOOMINGTON CA 92316
CA036103J

JUSTICE COURT
YUCAIPA
PRESIDING JUDGE
34282 YUCAIPA
YUCAIPA CA 92399
CA036223J

SAN JUAN JUSTICE COURT
JUDGE
311 SECOND ST
SAN JUAN BAUTISTA CA 95045
CA035033J

JUSTICE COURT
CALZONA
PRESIDING JUDGE
P O BOX 31
PARKER DAM CA 92267
CA036113J

JUSTICE COURT
YERMO BELLVILLE
PRESIDING JUDGE
P O BOX 248
YERMO CA 92398
CA036233J

TRES PINOS JUSTICE COURT
JUDGE
9089 AIRLINE HWY
TRES PINOS CA 95075
CA035043J

JUSTICE COURT
CHINO
PRESIDING JUDGE
13271 CENTRAL AVE
CHINO CA 91710
CA036123J

JUSTICE COURT
AMBOY-LUDLOW
PRESIDING JUDGE
P O BOX 67
ESSEX CA 92332
CA036243J

SUPERIOR COURT
SAN BERNARDINO CO
CT ADMINISTRATOR
351 N ARROWHD
S BERNARDINO CA 92401
CA036013J

JUSTICE COURT
COLTON
PRESIDING JUDGE
CIVIC CENTER
COLTON CA 92324
CA036133J

SUPERIOR COURT
SAN DIEGO CO
CT ADMINISTRATOR
220 W BROADWAY
SAN DIEGO CA 92101
CA037013J

MUNICIPAL COURT
CENTRAL DIV
CT ADMINISTRATOR
351 N ARROWHD
S BERNARDINO CA 92401
CA036023J

JUSTICE COURT
CREST FOREST
PRESIDING JUDGE
23522 CREST FOREST
CRESTLINE CA 92325
CA036143J

EL CAJON JUDICIAL DIST
MUNICIPAL COURT
CT ADMINISTRATOR
110 E LEXINGTON
EL CAJON CA 92020
CA037023J

MUNICIPAL COURT
VALLEY DIV
CT ADMINISTRATOR
17005 UPLAND
FONTANA CA 92335
CA036033J

JUSTICE COURT
CUCAMONGA
PRESIDING JUDGE
8076 ARCHIBOLD
CUCAMONGA CA 91730
CA036153J

NO COUNTY JUDICIAL DIST
MUNICIPAL COURT
CT ADMINISTRATOR
1701 MISSION
OCEANSIDE CA 92054
CA037033J

MUNICIPAL COURT
WEST VALLEY DIV
CT ADMINISTRATOR
1050 W 6TH
ONTARIA CA 91762
CA036043J

JUSTICE COURT
ETIWANDA
PRESIDING JUDGE
7611 ETIWANDA
ETIWANDA CA 91739
CA036163J

SAN DIEGO JUDICIAL DIST
MUNICIPAL COURT
CT ADMINISTRATOR
220 W BROADWAY
SAN DIEGO CA 92101
CA037043J

CORONADO JUDICIAL DIST JUSTICE COURT JUDGE 1125 LOMA CORONADO CA 92118 CA037053J	MANTECA RIPON ESCALON JUSTICE COURT JUDGE P O BOX 671 MANTECA CA 95336 CA039053J	MUNICIPAL COURT PRESIDING JUDGE 118 E FIGUEROA ST SANTA BARBARA CA 93104 CA042023J	JUSTICE CT GILROY M HILL CLERK 50 ROSANNA GILROY CA 95020 CA043073J	REDDING JUSTICE COURT JUDGE COURTHOUSE REDDING CA 96001 CA045103J	MCCLOUD JUSTICE COURT JUDGE MCCLOUD CA 96057 CA047103J
FALLBROOK JUDICIAL DIST JUSTICE COURT JUDGE 130 EAST ALVARADO FALLBROOK CA 92028 CA037063J	JUSTICE COURT 1 JUDGE P O BOX 35 PASO ROBLES CA 93446 CA040013J	MUNICIPAL COURT PRESIDING JUDGE 312 E COOK ST SANTA MARIA CA 93454 CA042033J	SANTA CRUZ SUPERIOR CT JUDGE COURTHOUSE SANTA CRUZ CA 95060 CA044013J	SUPERIOR COURT JUDGE DOWNIEVILLE CA 95936 CA046013J	SUPERIOR COURT COURTHOUSE FAIRFIELD CA 94533 CA048013J
EAST CO JUDICIAL DIST JUSTICE COURT JUDGE HWY 80 BOULEVARD CA 92005 CA037073J	JUSTICE COURT 2 JUDGE 760 FIFTH STREET MORRO BAY CA 93442 CA040023J	JUSTICE COURT JUDGE 5141 CARPINTERIA A CARPINTERIA CA 93013 CA042043J	SANTA CRUZ CO MUNICIP CT MUNICIPAL JUDGE COURTHOUSE SANTA CRUZ CA 95060 CA044023J	JUSTICE COURT JUSTICE OF PEACE DOWNIEVILLE CA 95936 CA046023J	VALLEJO MUNICIPAL COURT CLERK 321 TUOLUMNE ST VALLEJO CA 94590 CA048023J
NATIONAL JUDICIAL DIST JUSTICE COURT JUDGE 1243 NATIONAL NATIONAL CITY CA 92050 CA037083J	JUSTICE COURT 3 JUDGE RM 302 COURTHOUSE SAN LOIS OBISPO CA 93401 CA040033J	LOMPOC JUSTICE COURT JUDGE 133 SOUTH D ST LOMPOC CA 93436 CA042053J	SHASTA CO SUPERIOR CT SUPERIOR CT JUDGE REDDING CA 96001 CA045013J	SISKIYOU CO SUPERIOR CT JUDGE COURT HOUSE YREKA CA 96097 CA047013J	FAIRFIELD MUNICIPAL CRT CLERK 729 JEFFERSON ST FAIRFIELD CA 94533 CA048033J
RAMONA JUDICIAL DIST JUSTICE COURT JUDGE 701 MAIN RAMONA CA 92065 CA037093J	JUSTICE COURT 4 JUDGE P O BOX 403 GROVER CITY CA 93433 CA040043J	SOLVANG JUSTICE COURT JUDGE 1745 MISSION DR SOLVANG CA 93463 CA042063J	ANDERSON JUSTICE COURT JUDGE COURTHOUSE ANDERSON CA 96007 CA045023J	DORRIS JUSTICE COURT JUDGE DORRIS CA 96023 CA047023J	BENICIA JUSTICE COURT JUDGE CITY HALL BENICIA CA 94510 CA048043J
SAN FRANCISCO MUN COURT PRESIDING RM 301 CITY HALL SAN FRANCISCO CA 94102 CA038013J	JUSTICE COURT 5 JUDGE VET S MEMORIAL BLD ATASCADERO CA 93422 CA040053J	GUADALUPE JUSTICE COURT JUSTICE CT JUDGE GUADALUPE MEM BLDG GUADALUPE CA 93434 CA042073J	BURNEY JUSTICE COURT JUDGE COURTHOUSE BURNEY CA 96013 CA045033J	HAPPY CAMP JUSTICE COURT JUDGE HAPPY CAMP CA 96039 CA047033J	DIXON JUSTICE CRT JUDGE CITY HALL DIXON CA 95620 CA048053J
SAN FRANCISCO SUP COURT PRESIDING ROOM 480 CITY HALL SAN FRANCISCO CA 94102 CA038023J	SUPERIOR COURT 1 JUDGE 301 COURTHOUSE ANN SAN LOIS OBISPO CA 93401 CA040063J	SANTA CLARA CNTY SUPERIOR COURT COURT ADMINISTRATO 191 N 1ST ST SAN JOSE CA 95113 CA043013J	CASTELLA JUSTICE COURT JUDGE COURTHOUSE LAKEHEAD CA 96051 CA045043J	DUNSHUIR JUSTICE COURT JUDGE DUNSHUIR CA 96025 CA047043J	RIO VISTA JUSTICE COURT JUDGE CITY HALL RIO VISTA CA 94571 CA048063J
SAN FRANCISCO JUV COURT PRESIDING 375 WOODSIDE AVE SAN FRANCISCO CA 94127 CA038033J	SAN MATEO CO SUPERIOR CT ADMINISTRATOR HALL OF JUSTICE AN RECORDS REDWOOD CITY CA 94063 CA041013J	MUNICIPAL CT LOS GATOS CLERK 14205 CAPRI DR LOS GATOS CA 95030 CA043023J	CENTRAL VALLEY JUS COURT JUDGE COURTHOUSE CENTRAL VALLEY CA 96019 CA045053J	MT SHASTA JUSTICE COURT JUDGE MT SHASTA CA 96067 CA047053J	VACAVILLE JUSTICE COURT JUDGE 600 MERCHANT STREE VACAVILLE CA 95688 CA048073J
SUPERIOR COURTS COUNTY CLERK 222 E WEBER AVE ROOM 303 STOCKTON CA 95202 CA039013J	MUNICIPAL COURT CENTRAL JUD DIST CT ADMINISTRATOR 800 N HUMBOLD DT SAN MATEO CA 94401 CA041023J	MUNICIPAL CT PALO ALTO CLERK 270 GRANT AVE PALO ALTO CA 94306 CA043033J	COTTONWOOD JUSTICE COURT JUDGE COURTHOUSE COTTONWOOD CA 96022 CA045063J	SCOTT VALLEY JUSTICE CT JUDGE P O BOX 264 FORT JONES CA 96032 CA047063J	SUPERIOR COURT PRESIDING JUDGE 2555 MENDOCINO AVE SANTA ROSA CA 95401 CA049013J
STOCKTON MUNICIPAL COURT CLERK 222 E WEBER AVE ROOM 201 STOCKTON CA 95202 CA039023J	MUNICIPAL COURT NORTHERN JUD DIST CT ADMINISTRATOR 1050 MISSION RD S SAN FRAN CA 94080 CA041033J	MUNICIPAL CT SAN JOSE CLERK 200 W HEDDING SAN JOSE CA 95110 CA043043J	FALL RIVER VALLEY JUS CT JUDGE COURTHOUSE FALL RIVER MILLS CA 96028 CA045073J	WEED JUSTICE COURT JUDGE WEED CA 96094 CA047073J	CENTRAL MUNICIPAL COURT MUNICIPAL CT CLERK 2555 MENDOCINO AVE SANTA ROSA CA 95401 CA049023J
LODI MUNICIPAL COURT CLERK 230 W ELM STREET LODI CA 95240 CA039033J	MUNICIPAL COURT SOUTHERN JUD DIST CT ADMINISTRATOR CTHOUSE CO GOV CTR REDWOOD CITY CA 94063 CA041043J	MUNICIPAL CT SANTA CLARA CLERK 1675 LINCOLN SANTA CLARA CA 95050 CA043053J	MOUNTAIN JUSTICE COURT JUDGE COURTHOUSE MONTGOMERY CREEK CA 96065 CA045083J	TULELAKE JUSTICE COURT JUDGE TULELAKE CA 96134 CA047083J	SOUTHERN MUNICIPAL COURT MUNICIPAL CT CLERK POST ENGLISH STS PETALUMA CA 94952 CA049033J
TRACY JUSTICE COURT JUDGE 475 E 10TH STREET TRACY CA 95376 CA039043J	SUPERIOR COURT PRESIDING JUDGE COUNTY COURTHOUSE SANTA BARBARA CA 93104 CA042013J	MUNICIPAL CT SUNNYVALE CLERK 605 W EL CAMINO SUNNYVALE CA 94087 CA043063J	ONO JUSTICE COURT JUDGE COURTHOUSE ONO CA 96072 CA045093J	YREKA JUSTICE COURT JUDGE COURT HOUSE YREKA CA 96097 CA047093J	CO SUPERIOR COURT JUDGE MODESTO CA 95353 CA050013J

MODESTO MUNICIPAL COURT JUDGE COURTHOUSE MODESTO CA 95353 CA050023J	CORNING JUSTICE COURT JUDGE 1207 SOLANO ST CORNING CA 96021 CA052033J	JUSTICE COURT JUDGE 151 NO PINE PIXLEY CA 93256 CA054073J	CAPAY JUSTICE COURT JUDGE P O BOX 910 CAPAY CA 95607 CA057023J	CAMPTONVILLE JUSTICE CT JUDGE CAMPTONVILLE CA 95922 CA058043J	PAROLE COMMUNITY SERVC L A REGION III REG ADMINISTRATOR RM 3110 107 S BOWY LOS ANGELES CA 90012 CA019035G
CERES JUSTICE COURT JUDGE COURTHOUSE CERES CA 95307 CA050033J	SUPERIOR COURT JUDGE BOX AK WEAVERVILLE CA 96093 CA053013J	JUSTICE COURT JUDGE 87 E MORTON PORTERVILLE CA 93257 CA054083J	COTTONWOOD JUSTICE COURT JUDGE P O BOX 43 MADISON CA 95653 CA057033J	DEPT OF CORRECTIONS PAROLE COMMUNITY SERVICES DIV 107 STATE OFFICE BLDG 1 SACRAMENTO CA 95814 CA034015G	PAROLE COMMUNITY SERVC SANTA ANA REG IV REG ADMINISTRATOR SUITE 1 1624 W 19TH ST SANTA ANA CA 92706 CA030025G
NEWMAN JUSTICE COURT JUDGE COURTHOUSE NEWMAN CA 95360 CA050043J	HAYFORK JUSTICE COURT JUDGE COURTHOUSE HAYFORK CA 96041 CA053023J	SUPERIOR COURT JUDGE COURTHOUSE VISALIA CA 93277 CA054093J	DAVIS JUSTICE COURT JUDGE 603 2ND ST DAVIS CA 95616 CA057043J	DEPT OF YOUTH AUTHORITY DIV OF PAROLE STATE OFFICE BLDG SACRAMENTO CA 95814 CA034025G	PAROLE COMMUNITY SERVC L A REGION V REG ADMINISTRATOR 1102 CRENSHAW BLVD LOS ANGELES CA 90019 CA019045G
OAKDALE WATERFORD JUS CT JUDGE COURTHOUSE OAKDALE CA 95361 CA050053J	JUNCTION CITY SALYER JC JUDGE COURTHOUSE JUNCTION CITY CA 96048 CA053033J	TUOLUMNE CO SUPERIOR CT JUDGE 41 W YANEY AVE SONORA CA 95370 CA055013J	GRAFTON JUSTICE COURT JUDGE P O BOX 155 KNIGHTS LANDING CA 95645 CA057053J	WOMEN S BOARD OF TERMS AND PAROLE CHAIRMAN 107 SOUTH BROADWAY LOS ANGELES CA 90012 CA019015G	PAROLE COMMUNITY SERVC L A REG VI ADD PAR REG ADMINISTRATOR ROOM 3110 107 S BOWY LOS ANGELES CA 90012 CA019055G
PATTERSON JUSTICE COURT JUDGE COURTHOUSE PATTERSON CA 95363 CA050063J	TRINITY CTR JUSTICE CT JUDGE COURTHOUSE TRINITY CENTER CA 96091 CA053043J	JUSTICE COURT JUD DIST 1 JUDGE 52 N WASHINGTON ST SONORA CA 95370 CA055023J	ESPARTO JUSTICE COURT JUDGE P O BOX 126 ESPARTO CA 95627 CA057063J	ADULT AUTHORITY PAROLE ADVISORY BD CHRMN STATE OFFICE BLDG 1 SACRAMENTO CA 95807 CA034035G	LOCAL LEVEL ALAMEDA CO PROBATION DEPT CH PROBATION OFF 400 BROADWAY OAKLAND CA 94607 CA001013G
RIVER BANK JUSTICE COURT JUDGE COURTHOUSE RIVERBANK CA 95367 CA050073J	WEAVERVILLE JUSTICE CT JUDGE BOX 399 WEAVERVILLE CA 96093 CA053053J	JUSTICE COURT JUD DIST 2 JUDGE COLUMBIA CA 95310 CA055033J	GUINDA JUSTICE COURT JUDGE P O BOX 35 RUMSEY CA 95679 CA057073J	DEPT OF YOUTH AUTHORITY PAROLE REGION I REGIONAL SUPERVISO 30 VAN NESS SAN FRANCISCO CA 94102 CA03892	ALPINE CO PROBATION DEPT PROBATION OFFICER COURTHOUSE MARKLEEVILLE CA 96120 CA002013G
TURLOCK JUSTICE COURT JUDGE COURTHOUSE TURLOCK CA 95380 CA050083J	HAD RIVER JUSTICE COURT JUDGE COURTHOUSE HAD RIVER CA 95552 CA053063J	JUSTICE COURT JUD DIST 3 JUDGE TUOLUMNE CITY CA 95379 CA055043J	WASHINGTON JUSTICE COURT JUDGE 908 SACRAMENTO AVE BRYTE CA 95605 CA057083J	DEPT OF YOUTH AUTHORITY PAROLE REGION II REGIONAL SUPERVISO 1700 33RD STREET SACRAMENTO CA 95816 CA034045G	PROBATION DEPT PROBATION OFFICER 40 SUMMIT ST JACKSON CA 95642 CA003013G
SUPERIOR COURT COUNTY CLERK 463 2ND ST YUBA CITY CA 95991 CA051013C	JUSTICE COURT JUDGE 350 NO VALENCIA WOODLAKE CA 93286 CA05400CB	JUSTICE COURT JUD DIST 4 JUDGE GROVELAND CA 95321 CA055053J	WINTERS JUSTICE COURT JUDGE 1ST RUSSEL ST WINTERS CA 95694 CA057093J	DEPT OF YOUTH AUTHORITY PAROLE REGION III REGIONAL SUPERVISO 512 E WILSON AVE GLENDALE CA 91206 CA019025G	BUTTE COUNTY PROBATION DEPT PROBATION OFFICER COURTHOUSE OROVILLE CA 95965 CA004013G
JUSTICE COURT COURT CLERK COURTHOUSE ANNEX YUBA CITY CA 95991 CA051023J	VISALIA MUNICIPAL COURT JUDGE 210 NO CHURCH VISALIA CA 93277 CA054033J	JUSTICE COURT JUD DIST 5 JUDGE JAMESTOWN CA 95327 CA055063J	WOODLAND JUSTICE COURT JUDGE 725 MAIN ST WOODLAND CA 95695 CA057103J	DEPT OF YOUTH AUTHORITY PAROLE REGION IV REGIONAL SUPERVISO 1634 W 19TH ST SANTA ANA CA 92706 CA030015G	PROBATION OFFICE PROBATION OFFICER GOVERNMENT CENTER SAN ANDREAS CA 95255 CA005013G
JUSTICE COURT COURT CLERK LIVE OAK CA 95953 CA051033J	JUSTICE COURT JUDGE 920 SO COLLEGE DINUBA CA 93618 CA054043J	MUNICIPAL COURT JUDGE 141 A STREET OXNARD CA 93030 CA056013J	SUPERIOR COURT PRESIDING JUDGE COURTHOUSE MARYSVILLE CA 95901 CA058013J	DEPT OF YOUTH AUTHORITY PAROLE REGION V REGIONAL SUPERVISO 108 S HILL LOS ANGELES CA 90012 CA01992	COUNTY PROBATION OFFICE PROBATION OFFICER 546 JAY STREET COLUSA CA 95932 CA006013G
SUPERIOR COURT JUDGE COURTHOUSE RED BLUFF CA 96080 CA052013J	JUSTICE COURT JUDGE 243 N FARMERSVILLE BLVD FARMERSVILLE CA 93223 CA054053J	SUPERIOR COURT PRESIDING JUDGE 501 POLI ST VENTURA CA 93001 CA056023J	MARYSVILLE JUSTICE COURT JUDGE COURTHOUSE MARYSVILLE CA 95901 CA058023J	PAROLE COMMUNITY SERVC SACRAMENTO REG I REG ADMINISTRATOR 1415 1/2 21ST ST SACRAMENTO CA 95814 CA034055G	CONTRA COSTA CO PROBATION DEPT DIRECTOR P O BOX 791 ADMINIST BLD MARTINEZ CA 94553 CA007013G
RED BLUFF JUSTICE COURT JUDGE 624 WASHINGTON ST RED BLUFF CA 96080 CA052023J	JUSTICE COURT JUDGE 251 E HONOLULU LINDSAY CA 93247 CA054063J	SUPERIOR COURT PRESIDING JUDGE COURTHOUSE WOODLAND CA 95695 CA057013J	WHEATLAND JUSTICE COURT JUDGE 4TH B STS WHEATLAND CA 95692 CA058033J	PAROLE COMMUNITY SERVC SAN FRAN REG II REG ADMINISTRATOR 69 11TH STREET SAN FRANCISCO CA 94103 CA038015G	PROBATION OFFICE PROBATION OFFICER COURTHOUSE CRESCENT CITY CA 95531 CA008013G

COUNTY PAROLE BOARD CHAIRMAN 5TH AND G STS CRESCENT CITY CA 95531 CA008023G	PROBATION DEPT CHF PROBAT OFFICER 540 HALL OF RECORD 320 W TEMPLE ST LOS ANGELES CA 90004 CA019013G	BD OF PAROLE COMM SHERIFF HALL OF RECORDS COOMBS ST NAPA CA 94558 CA028013G	PROBATION DEPT ADULT PROBATION PROBATION OFFICER 175 W 5TH ST SAN BERNARDINO CA 92401 CA036013G	PROBATION DEPT JUV PROBATION PROBATION OFFICER 840 GUADALUPE PK&Y SAN JOSE CA 95110 CA043023G	CO PROBATION DEPTMEN PROBATION OFFICER BOX 157 WEAVERVILLE CA 96093 CA053013G
EL DORADO PROBATION OFF PROBATION OFFICER 2850 COLD SPRINGS PLACERVILLE CA 95667 CA009013G	JUVENILE PROBAT DEPT PROBATION OFFICER CITY HALL SANTA MONICA CA 90406 CA019011G	PROBATION DEPT PROBATION OFFICER 2350 SONOMA ROAD NAPA CA 94558 CA028023G	PROBATION DEPT JUVENILE PROBATION PROBATION OFFICER 157 W 5TH ST SAN BERNARDINO CA 92401 CA036023G	COUNTY PROBATION DEPT PROBATION OFFICER ROOM 5 COURTHOUSE ANNEX SANTA CRUZ CA 95060 CA044013G	PROBATION DEPARTMENT PROBATION OFFICER COURTHOUSE VISALIA CA 93277 CA054013G
COUNTY PROBATION OFFICE PROBATION OFFICER RM 700 COURTHOUSE FRESNO CA 93721 CA010013G	PROBATION DEPT PROBATION OFFICER GOVERNMENT CENTER MADERA CA 93637 CA020013G	PROBATION OFFICE PROBATION OFFICER COURTHOUSE NEVADA CITY CA 95959 CA029013G	SAN DIEGO CO PROBATION DEPT CHIEF PROBATION OF 2901 MEADOW LARK DR SAN DIEGO CA 92123 CA037013G	PROBATION DEPARTMENT PROBATION OFFICER 1415 COURT STREET REDDING CA 96001 CA045013G	SPEC SERVICE PROB DEPT PROBATION OFFICER 1805 W MAIN STREET VISALIA CA 93277 CA054023G
PROBATION OFFICE PROBATION OFFICER COURTHOUSE WILLOWS CA 95988 CA011013G	YOUTH COMMSN PAROLE BD CO PROBATION OFCR GOVERNMENT CENTER MADERO CA 93637 CA020023G	PROBATION ORANGE CO ADULT AND JUVENILE DIRECTOR 301 S MANCHESTER ORANGE CA 92668 CA030013G	ADULT PROBATION DEPT CH PROB OFCR HALL OF JUSTICE 850 BRYANT SAN FRANCISCO CA 94103 CA038013G	PROBATION OFFICE PROBATION OFFICER COURTHOUSE DOWNIEVILLE CA 95936 CA046013G	PROBATION OFFICE PROBATION OFFICER 48 W YANEY AVE SONORA CA 95370 CA055013G
HUMBOLDT CO PROBATION BD PROBATION OFFICER COUNTY COURTHOUSE EUREKA CA 95501 CA012013G	PROBATION DEPARTMENT PROBATION OFFICER CIVIC CENTER SAN RAFAEL CA 94903 CA021013G	ORANGE CO PAROLE BD CHAIRMAN 550 W FLOWER SANTA ANA CA 92702 CA030023G	JUVENILE PROBATION DEPT SAN FRANCISCO CH PROB OFCR 375 WOODSIDE AVE SAN FRANCISCO CA 94127 CA038023G	SISKIYOU CO PROB OFC PROBATION OFFICER P O BOX 780 YREKA CA 96097 CA047013G	CO PROBATION DEPT CH PROBATION OFCR 218 W BEMAER ST WOODLAND CA 95695 CA057013G
PAROLE BOARD OFFICE PROBATION OFFICER COURTHOUSE EL CENTRO CA 92243 CA013013G	MARIPOSA CO PROBATION DEPT PROBATION OFFICER P O BOX 76 MARIPOSA CA 95338 CA022013G	PROBATION DEPT PROBATION OFFICER 360 ELM AVE AUBURN CA 95603 CA031013G	PROBATION DEPT PROBATION OFFICER 222 E WEBER AVE STOCKTON CA 95202 CA039013G	SISKIYOU CO PAROLE BOARD SHERIFF SHERIFF S OFFICE YREKA CA 96097 CA047023G	COUNTY PROBATION DEPT PROBATION OFFICER COURTHOUSE MARYSVILLE CA 95901 CA058013G
PROBATION DEPARTMENT CH PROBATION OFCR COURTHOUSE EL CENTRO CA 92243 CA013023G	PROBATION DEPARTMENT PROBATION OFFICER P O BOX 303 UKIAH CA 95338 CA023013G	PROBATION DEPARTMENT PROBATION OFFICER COURTHOUSE QUINCY CA 95971 CA032013G	PROBATION DEPT PROBATION OFCR 206 COURTHOUSE SAN LUIS OBISPO CA 93401 CA040013G	PROBATION OFFICE PROBATION OFFICER 2000 W TEXAS ST FAIRFIELD CA 94533 CA048013G	ADULT CORRECTIONAL INSTITUTIONS STATE LEVEL REHABILITATION CENTER SUPERINTENDENT BOX 841 CORONA CA 91720 CA033013G
INYO CO PROBATION DEPT PROBATION OFFICER 168 NORTH EDWARDS INDEPENDENCE CA 93526 CA014013G	PROBATION DEPARTMENT PROBATION OFFICER 670 W 2ND ST MERCED CA 95340 CA024013G	COUNTY PROBATION CH PROBATION OFCR POST OFFICE BOX 83 RIVERSIDE CA 92501 CA033013G	SAN MATEO CO PROBATION DEPT CH PROBATION OFFICER 21 TOWER RD BELMONT CA 94002 CA041013G	PROBATION DEPARTMENT CHF PROBATION OFCR 2555 MENDOCINO AVE SANTA ROSA CA 95401 CA049013G	INSTITUTION FOR MEN SUPERINTENDENT BOX 128 CHINO CA 91710 CA036013G
PROBATION DEPARTMENT CH PROBATION OFCR P O BOX 6 STATION BAKERSFIELD CA 93305 CA015013G	PROBATION DEPT OFFICER ALTURAS CA 96101 CA025013G	COUNTY PAROLE BOARD CH PROBATION OFCR POST OFFICE BOX 83 RIVERSIDE CA 92501 CA033023G	SAN MATEO CO PAROLE BRD PROBATION DEP CHAIRMAN COUNTY GOVERNMENT CTR REDWOOD CY CA 94063 CA041023G	CO PROBATION OFFICE PROBATION OFFICER 810 SCENIC DRIVE MODESTO CA 95353 CA050013G	CALIF INSTITUTION FOR WOMEN SUPERINTENDENT RURAL ROUTE NO 1 FRONTERA CA 91720 CA033025C
KINGS CO PROBATION DEPT PROBATION OFFICER COURTHOUSE BOX C HANFORD CA 93230 CA016013G	PROBATION DEPARTMENT PROBATION OFFICER P O BOX 596 BRIDGEPORT CA 93517 CA026013G	ADULT PROBATION DIV PROBATION OFFICER COUNTY COURTHOUSE 720 9TH SACRAMENTO CA 95814 CA034013G	DEPT OF PROBATION PROBATION OFFICER 118 E FIGUEROA ST SANTA BARBARA CA 93104 CA042013G	COUNTY PAROLE BD CHAIRMAN P O BOX 858 MODESTO CA 95353 CA050023G	CORRECTIONAL INSTITUTION AT TEHACHAPI SUPERINTENDENT BOX 1031 TEHACHAPI CA 93561 CA015013G
LAKE CO PROBATION DEPT PROBATION OFFICER P O BOX 1245 LAKEPORT CA 95453 CA017013G	PROBATION DEPT CHIEF PROBAT OFCR P O BOX 42 SALINAS CA 93901 CA027013G	JUVENILE PROBATION DIV PROBATION OFFICER JUVENILE CENTER 9601 KIEFER BLVD SACRAMENTO CA 95826 CA034023G	PAROLE COMMISSIONERS BD CHAIRMAN 118 E FIGUEROA ST SANTA BARBARA CA 93104 CA042023G	PROBATION DEPARTMENT PROBATION OFFICER COURTHOUSE YUBA CITY CA 95991 CA051013G	CORRECTIONAL TRAINING FACILITY SUPERINTENDENT BOX 686 SOLEDDAD CA 93960 CA027013G
CO PROBATION DEPT PROBATION OFFICER COURTHOUSE SUSANVILLE CA 96130 CA018013G	PAROLE BOARD UNDER SHERIFF P O BOX 809 SALINAS CA 93901 CA027023G	PROBATION DEPT PROBATION OFFICER RM 106 COURTHOUSE HOLLISTER CA 95023 CA035013G	PROBATION DEPT ADULT PROBATION PROBATION OFFICER 190 W HEDDING SAN JOSE CA 95110 CA043013G	PROBATION OFFICE PROBATION OFFICER P O BOX 99 RED BLUFF CA 96080 CA052013G	STATE PRISON AT SAN QUENTIN WARDEN SAN QUENTIN CA 94964 CA021013G

LOCAL LEVEL

STATE PRISON AT FOLSOM WARDEN BOX NO W REPRESA CA 95671 CA034015C	SANTA RITA REHABILITATION CTR CHIEF P O BOX 787 PLEASANTON CA 94566 CA001013C	SHERIFF S DEPARTMENT SHERIFF 5TH AND G STS CRESCENT CITY CA 95531 CA00800	BRAWLEY POLICE DEPT CHIEF OF POLICE 790 B STREET P O BOX 993 BRAWLEY CA 92227 CA01301	COUNTY SHERIFFS DEPT SHERIFF LAKEPORT CA 95453 CA01700	DETENTION CAMP 15 CAPTAIN 12400 MT GLEASON TUJUNGA CA 91042 CA019113C
DEUEL VOCATIONAL INSTITUTION SUPERINTENDENT BOX 400 TRACY CA 95376 CA039015C	ALAMEDA COUNTY JAIL SHERIFF 1225 FALLON ST OAKLAND CA 94612 CA001023C	COUNTY SHERIFF S DEPT SHERIFF 495 MAIN ST PLACERVILLE CA 95667 CA00900	CALEXICO POLICE DEPT CHIEF OF POLICE 353 FIRST STREET CALEXICO CA 92231 CA01302	LASSEN CO SHERIFF S DEPT SHERIFF COURTHOUSE SUSANVILLE CA 96130 CA01800	DETENTION CAMP 16 CAPTAIN 713 N MALIBU CANYON RD CALABASAS CA 91302 CA019123C
CALIF MEN S COLONY SUPERINTENDENT BOX 836 LOS PADRES CA 93401 CA040015C	OAKLAND CITY JAIL CAPTAIN 455 7TH ST OAKLAND CA 94606 CA001011C	EL DORADO CO JAIL CAPTAIN PO BOX 130 50 LAKE TAHOE CA 95705 CA009013C	POLICE DEPARTMENT CHIEF OF POLICE 1107 BROADWAY EL CENTRO CA 92243 CA01304	HALL OF JUSTICE JAIL CAPTAIN 306 N BROADWAY LOS ANGELES CA 90012 CA019013C	DETENTION CAMP 17 CAPTAIN 35100 N SAN FRANISQUITO CANYON SAUGUS CA 91350 CA019133C
HUPERT GRITTENDEN CENTER SUPERINTENDENT 2229 GROVE ST OAKLAND CA 94609 CA001015C	SAN LEANDRO POL DEPT CHIEF OF POLICE 901 E 14TH STREET SAN LEANDRO CA 94577 CA00112	SHERIFF S OFFICE SHERIFF 2200 FRESNO STREET FRESNO CA 93721 CA01000	HOLTVILLE POLICE DEPT CHIEF 222 WEST 4TH ST HOLTVILLE CA 92250 CA01305	BISCAILUZ CENTER ADULT DETENTN UNIT CAPTAIN 1600 N EASTERN AVE LOS ANGELES CA 90063 CA019023C	DETENTION CAMP 18 CAPTAIN STAR ROUTE LA CANADA CA 91011 CA019143C
VINEWOOD CENTER SUPERINTENDENT 1831 VINE LOS ANGELES CA 90028 CA019015C	SHERIFF S DEPT SHERIFF 108 COURT ST JACKSON CA 95642 CA00300	INDUSTRIAL FARM SHERIFF ELKHORN S ELM CARUTHERS CA 93721 CA010013C	INYO CO SHERIFFS DEPT SHERIFF 101 EAST MARKET INDEPENDENCE CA 93526 CA01400	LOS ANGELES CO CENTRAL MEN SJAIL CAPTAIN 441 BAUCHET ST LOS ANGELES CA 90012 CA019033C	POLICE DEPT CHIEF OF POLICE 450 N CRESCENT DR BEVERLY HILLS CA 90210 CA01910
CALIF CONSERVATION CT SUPERINTENDENT BOX 790 SUSANVILLE CA 96130 CA018015C	SHERIFF S DEPARTMENT SHERIFF 33 COUNTY CENTER D OROVILLE CA 95965 CA00400	POLICE DEPT CHIEF OF POLICE 529 POLLASKY CLOVIS CA 93612 CA01001	POLICE DEPT CHIEF OF POLICE 307 S MAIN BISHOP CA 93514 CA01401	MIRA LOMA FACILITY CAPTAIN 45000 60TH ST WEST LANCASTER CA 93534 CA019043C	BURBANK POLICE DEPT CHIEF OF POLICE 272 EAST OLIVE AVE BURBANK CA 91502 CA01912
SIERRA CONSERVATION CENTER SUPERINTENDENT BOX 497 JAMESTOWN CA 95327 CA055015C	CHICO POLICE DEPT CHIEF OF POLICE P O BOX 3420 CHICO CA 95926 CA00402	MENDOTA POLICE DEPT CHIEF OF POLICE 1675 6TH STREET MENDOTA CA 93640 CA01009	KERN COUNTY JAIL SHERIFF 1415 TRUXTON AVE BAKERSFIELD CA 93301 CA015013C	SYBIL BRAND INSTITUTE FOR WOMEN CAPTAIN 4500EAST CITY TERRACE DR LOS ANGELES CA 90063 CA019053C	CULVER CITY POLICE DEPT CHIEF OF POLICE 4040 DUQUESNE AVE CULVER CITY CA 90230 CA01918
SOUTHERN CONSERVATION CENTER SUPERINTENDENT BOX 368 CHINO CA 91710 CA036025C	CO SHERIFF S DEPT SHERIFF BOX 1088 SAN ANDREAS CA 95249 CA00500	SANGER POLICE DEPT CHIEF OF POLICE 1300 JENSEN AVE SANGER CA 93657 CA01013	SHERIFF S LERDO FACILITY SHERIFF ROUTE 1 BOX 715 BAKERSFIELD CA 93308 CA015023C	WAYSIDE HONOR RANCH CAPTAIN 23900 GOLDEN ST HW CASTAIC CA 91310 CA019063C	GLENDALE POLICE DEPT CHIEF OF POLICE GLENDALE CA 91200 CA01925
MEDICAL FACILITY SUPERINTENDENT BOX 568 VACAVILLE CA 95688 CA048015C	SHERIFF S DEPARTMENT SHERIFF 929 BRIDGE STREET COLUSA CA 95932 CA00600	SELMA POLICE DEPT CHIEF OF POLICE PO BOX 727 SELMA CA 93662 CA01015	SHERIFF S ARVIN FACILITY SHERIFF BOX 237 LAMONT CA 93241 CA015033C	DETENTION CAMP 11 CAPTAIN 8800 W SOLEDAD CANYON RD SAUGUS CA 91350 CA019073C	INGLEWOOD POLICE DEPT CHIEF OF POLICE 120 NORTH GREVILLE INGLEWOOD CA 90301 CA01933
DE WITT NELSON YOUTH CONSERVATION CENT SUPERINTENDENT STOCKTON CA 95206 CA039025C	CONTRA COSTA COUNTY JAIL SHERIFF POST OFFICE BOX 39 MARTINEZ CA 94553 CA007013C	SHERIFF S OFFICE SHERIFF 543 W OAK WILLOWS CA 95988 CA01100	POLICE DEPARTMENT CHIEF OF POLICE P O BOX 218 DELANO CA 93215 CA01503	DETENTION CAMP 12 CAPTAIN 29300 GOLDEN STATE HIGHWAY SAUGUS CA 91350 CA019083C	LONG BEACH CITY JAIL LIEUTENANT 400 WEST BROADWAY LONG BEACH CA 90802 CA019011C
CENTRAL CITY CENTER SUPERINTENDENT 3745 GRAND AVENUE LOS ANGELES CA 90007 CA019025C	CONTRA COSTA COUNTY REHABILITATION CTR SHERIFF POST OFFICE BOX 391 MARTINEZ CA 94553 CA007023C	CO SHERIFF S OFF SHERIFF COUNTY COURTHOUSE EUREKA CA 95501 CA01200	KINGS CO SHERIFF DEPT SHERIFF COURTHOUSE BOX C HANFORD CA 93230 CA01600	DETENTION CAMP 13 CAPTAIN 1250 S ENCINAL CANYON RD MALIBU CA 90265 CA019093C	LONG BEACH HONOR FARM POLICE CAPTAIN 400 WEST BROADWAY LONG BEACH CA 90802 CA019021C
PARKWAY CENTER SUPERINTENDENT 1212 SOUTH ELDORADO LOS ANGELES CA 90006 CA019035C	POLICE DEPT CHIEF OF POLICE 10900 SAN PABLO AV EL CERRITO CA 94530 CA00705	SHERIFF S OFFICE SHERIFF P O BOX 1040 EL CENTRO CA 92243 CA01300		DETENTION CAMP 14 CAPTAIN 23701 E SAN GABRIE CANYON RD AZUSA CA 91702 CA019103C	PASADENA POLICE DEPT CHIEF OF POLICE 112 N ARROYO PKWY PASADENA CA 91101 CA01953

POMONA POLICE DEPT CHIEF 490 W MISSION BLVD POMONA CA 91766 CA01955	REHABILITATION CENTER COUNTY SHERIFF 2045 W BELCHER RD MERCED CA 95340 CA024013C	ORANGE COUNTY JAIL SHERIFF 550 N FLOWER SANTA ANA CA 92702 CA030033C	COUNTY JAIL SHERIFF P O BOX 1617 INDIO CA 92201 CA033023C	SAN BERNADINO CO MAIN JAIL SHERIFF P O BOX 569 SAN BERNARDINO CA 92403 CA036013C	SAN DIEGO CO HONOR CAMPS CROFTON HOUSE DIRECTOR 5555 OVERLAND AVE SAN DIEGO CA 92123 CA037063C
POLICE DEPT CHIEF OF POLICE 401 DIAMOND ST REDONDO BEACH CA 90277 CA01956	POLICE DEPT CHIEF OF POLICE 945 5TH STREET P O BOX 31 LOS BANOS CA 93635 CA02405	POLICE DEPARTMENT CHIEF OF POLICE P O BOX 3369 ANAHEIM CA 92805 CA03001	COUNTY JAIL SHERIFF 260 N SPRING ST BLYTHE CA 92225 CA033033C	GLEN HELEN REHABILITATION CTR SHERIFF P O BOX 569 SAN BERNARDINO CA 92403 CA036023C	SAN DIEGO CO HONOR CAMPS LA CIMA CONS CAMP DIRECTOR 5555 OVERLAND AVE SAN DIEGO CA 92123 CA037083C
SAN FERNANDO POLICE DEPT CHIEF OF POLICE 120 MACNEIL ST SAN FERNANDO CA 91340 CA01961	SHERIFF S DEPT SHERIFF ALTURAS CA 96101 CA02500	BUENA PARK POLICE DEPT CHIEF OF POLICE 6650 BEACH BLVD BUENA PARK CA 90620 CA03003	RIVERSIDE CO HONOR CAMP SUPT P.O. BOX 688 BANNING CA 92220 CA033013C	POLICE DEPARTMENT POLICE CHIEF 8353 SIERRA AVE FOUNTANA CA 92335 CA03604	SAN DIEGO CO HONOR CAMPS VILLA DEL SOL CAMP DIRECTOR 5555 OVERLAND AVE SAN DIEGO CA 92123 CA037093C
SIGNAL HILL POLICE DEPT CHIEF OF POLICE 1800 E HILL ST SIGNAL HILL CA 90806 CA01967	CO SHERIFF S DEPT SHERIFF BOX 616 BRIDGEPORT CA 93517 CA02600	COSTA MESA POLICE DEPT CHIEF OF POLICE 99 FAIR DRIVE COSTA MESA CA 92626 CA03004	POLICE DEPT CHIEF OF POLICE 130 SO MAIN ST EL SINORE CA 92330 CA03307	NEEDLES POLICE DEPT CHIEF OF POLICE 1011 FRONT ST P O BOX 887 NEEDLES CA 92363 CA03606	SAN DIEGO CITY JAIL POLICE CAPTAIN 801 W MARKET SAN DIEGO CA 92101 CA037011C
SOUTH GATE POLICE DEPT CHIEF OF POLICE 8620 CALIFORNIA AV SOUTH GATE CA 90280 CA01969	COUNTY JAIL SHERIFF P O BOX 809 SALINAS CA 93901 CA027013C	FULLERTON POLICE DEPT CHIEF OF POLICE 237 W COMM AVE FULLERTON CA 92632 CA03008	POLICE DEPARTMENT CHIEF OF POLICE 450 E LATHAM AVE HEMET CA 92343 CA03308	REDLANDS POLICE DEPT CHIEF OF POLICE 212 BROOKSIDE AVE REDLANDS CA 92373 CA03608	SAN FRANCISCO CO JAIL NUMBERS 1 AND 3 SHERIFF CITY HALL SAN FRANCISCO CA 94102 CA038013C
TORRANCE POLICE DEPT CHIEF OF POLICE 3131 TORRANCE BLVD TORRANCE CA 90503 CA01972	CO DETENTION CAMP SHERIFF P O BOX 809 SALINAS CA 93901 CA027023C	POLICE DEPARTMENT CHIEF OF POLICE 425 32ND ST NEWPORT BEACH CA 92660 CA03014	FERRIS POLICE DEPT CHIEF OF POLICE 100 N PERRIS BLVD PERRIS CA 92370 CA03312	SAN DIEGO COUNTY SHERIFFS DEPT SHERIFF 222 WEST C SAN DIEGO CA 92101 CA03700	SAN FRANCISCO CO JAIL NUMBERS 2 AND 4 SHERIFF CITY HALL SAN FRANCISCO CA 94102 CA038023C
WHITTIER POLICE DEPT CHIEF OF POLICE 7315 S PAINTER AVE WHITTIER CA 90602 CA01976	SALINAS POLICE DEPT CHIEF OF POLICE 222 LINCOLN AVENUE SALINAS CA 93901 CA02708	POLICE DEPARTMENT CHIEF OF POLICE 100 AVENIDA PRESID SAN CLEMENTE CA 92672 CA03017	SACRAMENTO CO MAIN JAIL SHERIFF P O BOX 988 SACRAMENTO CA 95814 CA034013C	SAN DIEGO CO HONOR CAMP MONTEZUMA CAMP DIRECTOR 5555 OVERLAND AVE SAN DIEGO CA 92123 CA037073C	SAN FRANCISCO CO JAIL 5 WORK FURLOUGH FACL SHERIFF RM 333 CITY HALL SAN FRANCISCO CA 94102 CA038033C
MADERA CO SHERIFF S DEPT SHERIFF 201 WEST 6TH ST MADERA CA 93637 CA02000	SHERIFF S DEPARTMENT SHERIFF HALL OF RECORDS COOMBS ST NAPA CA 94558 CA02800	WESTMINSTER POLICE DEPT CHIEF OF POLICE 4200 WESTMINSTER A WESTMINSTER CA 92683 CA03024	SACRAMENTO CO BRANCH JAIL SHERIFF P O BOX 988 SACRAMENTO CA 95814 CA034023C	SAN DIEGO CO WORK FURLOUGH CTR DIRECTOR 2970 MARKET ST SAN DIEGO CA 92102 CA037013C	SAN FRANCISCO JAIL HALL OF JUSTICE CAPTAIN 850 BRYANT ST SAN FRANCISCO CA 94103 CA038043C
MARIN CO SHERIFF OFFICE SHERIFF CIVIC CENTER SAN RAFAEL CA 94903 CA02100	NEVADA CO SHERIFF S DEPT SHERIFF COURTHOUSE ANNEX NEVADA CITY CA 95959 CA02900	SHERIFF S DEPARTMENT SHERIFF PLACER CO AUBURN CA 95603 CA03100	POLICE DEPARTMENT CHIEF OF POLICE 813 6TH STREET SACRAMENTO CA 95816 CA03404	SAN DIEGO CO HONOR CAMPS BARRETT CAMP DIRECTOR 5555 OVERLAND AVE SAN DIEGO CA 92123 CA037023C	SHERIFF S OFFICE SHERIFF 222 E WEBER AVENUE ROOM 50 STOCKTON CA 95202 CA03900
COUNTY SHERIFF DEPT SHERIFF MARIPOSA CA 95338 CA02200	ORANGE COUNTY THEO LACY FACILITY SHERIFF 501 S MANCHESTER ORANGE CA 92668 CA030013C	SHERIFF S DEPARTMENT SHERIFF COURTHOUSE QUINCY CA 95971 CA03200	SHERIFFS OFFICE SHERIFF P O BOX 700 HOLLISTER CA 95023 CA03500	SAN DIEGO CO HONOR CAMPS SAN JOSE CAMP DIRECTOR 5555 OVERLAND AVE SAN DIEGO CA 92123 CA037033C	HONOR FARM SHERIFF MATHENS ROAD FRENCH CAMP CA 95231 CA039013C
SHERIFF S DEPARTMENT SHERIFF COURTHOUSE UKIAH CA 95482 CA02300	INDUSTRIAL HONOR FARM DIRECTOR 9551 TROBUCCO RD EL TORO CA 92630 CA030023C	COUNTY JAIL SHERIFF P O BOX 512 RIVERSIDE CA 92502 CA033013C	SAN DIEGO CO HONOR CAMPS VIEJAS CAMP DIRECTOR 5555 OVERLAND AVE SAN DIEGO CA 92123 CA037043C	COUNTY JAIL SHERIFF RM 400 COURTHOUSE SAN LUIS OBISPO CA 93401 CA040013C	
UKIAH POLICE DEPT CHIEF OF POLICE 280 E STANDLEY UKIAH CA 95482 CA02303			SAN DIEGO CO HONOR CAMPS WEST FORK CAMP DIRECTOR 5555 OVERLAND AVE SAN DIEGO CA 92123 CA037053C		

REHABILITATION FARM SHERIFF RM 400 COURTHOUSE SAN LUIS OBISPO CA 93401 CA040023C	SANTA CLARA CO MAIN JAIL SHERIFF 180 W HEDDING SAN JOSE CA 95110 CA043013C	COUNTY JAIL FAIRFIELD SHERIFF 500 TEXAS STREET FAIRFIELD CA 94533 CA048013C
SAN MATEO CO MAIN JAIL SHERIFF 450 BRADFORD ST REDWOOD CITY CA 94063 CA041013C	WOMENS DETENTN FCLTY ELMWOOD REHAB CTR SHERIFF 701 S ABEL ST MILPITAS CA 95035 CA043023C	COUNTY JAIL VALLEJO SHERIFF 1350 VIRGINIA ST VALLEJO CA 94590 CA048023C
SAN MATEO CO WK FURLOUGH FCLTY SHERIFF 1580 MAPLE REDWOOD CITY CA 94063 CA041023C	MENS DETENTION FACILITY ELMWOOD REHABIL CT SHERIFF S ABEL ST MILPITAS CA 95035 CA043033C	COUNTY JAIL SHERIFF ROOM 103J HALL JUS 2555 MENDOCINO AVE SANTA ROSA CA 95401 CA049013C
MEDIUM SECURITY FACILITY SHERIFF LA HONDA CA 94020 CA041033C	POLICE DEPT CHIEF OF POLICE 7370 ROSANNA ST GILROY CA 95020 CA04304	MINIMUM SECURITY JAIL SHERIFF ROOM 103J HALL JUS 2555 MENDOCINO AVE SANTA ROSA CA 95401 CA049023C
SHERIFFS HONOR CAMP NO 1 SHERIFF LA HONDA CA 94020 CA041043C	COUNTY SHERIFFS DEPT SHERIFF SANTA CRUZ CA 95060 CA04400	COUNTY SHERIFF S DEPT SHERIFF P O BOX 858 MODESTO CA 95353 CA05000
COUNTY JAIL SHERIFF COUNTY COURTHOUSE SANTA BARBARA CA 93104 CA042013C	SHASTA COUNTY JAIL SHERIFF P O BOX 1600 REDDING CA 96001 CA045013C	HONOR FARM SUPERINTENDENT P O BOX 3271 MODESTO CA 95353 CA050013C
HONOR FARM SHERIFF SAN ANTONIO ROAD SANTA BARBARA CA 93105 CA042023C	SHERIFF S DEPARTMENT SHERIFF DOWNIEVILLE CA 95936 CA04600	CO SHERIFFS DEPT SHERIFF COURTHOUSE YUBA CITY CA 95991 CA05100
LOMPOC POLICE DEPARTMENT CHIEF OF POLICE 117 SO D ST LOMPOC CA 93436 CA04202	CO SHERIFF S OFF SHERIFF COURTHOUSE YREKA CA 96097 CA04700	SHERIFF S DEPARTMENT SHERIFF COURTHOUSE RED BLUFF CA 96080 CA05200
SANTA BARBARA POL DEPT CHIEF OF POLICE 215 EAST FIGUEROA SANTA BARBARA CA 93104 CA04203	DUNSMUIR POLICE DEPT CHIEF OF POLICE 5902 DUNSMUIR AVE DUNSMUIR CA 96025 CA04702	CO SHERIFF S OFFICE SHERIFF BOX AD WEAVERVILLE CA 96093 CA05300
POLICE DEPARTMENT POLICE CHIEF 110 EAST COOK STRE SANTA MARIA CA 93454 CA04204	SHERIFF S OFFICE SHERIFF CIVIC CENTER VISALIA CA 93277 CA05400	SHERIFF S OFFICE SHERIFF CIVIC CENTER VISALIA CA 93277 CA05400
	CO INDUSTRIAL RD CAMP PROBATION OFFICE 32643 ROAD 196 WOODLAKE CA 93286 CA054013C	

CO SHERIFF S DEPT SHERIFF 28 LOWER SUNSET DR SONORA CA 95370 CA05500	YOLO COUNTY PRISON FARM SHERIFF ARMFIELD AVE C ST WOODLAND CA 95695 CA057023C	FRED C NELLES SCHOOL FOR BOYS SUPERINTENDENT 11850 E WHITTIER BLVD WHITTIER CA 90602 CA019055C
COUNTY JAIL SHERIFF 501 POLI ST VENTURA CA 93001 CA056013C	SHERIFF S OFFICE SHERIFF COURTHOUSE MARYSVILLE CA 95901 CA05800	O H CLOSE SCHOOL FOR BOYS SUPERINTENDENT P O BOX 6500 STOCKTON CA 95206 CA039045C
HONOR FARM SHERIFF RICE ROAD HIGHWAY 150 HEINERS OAKS CA 93022 CA056023C	JUVENILE CORRECTIONAL INSTITUTIONS STATE LEVEL	
VALLEY BRANCH JAIL SHERIFFS DEPT 501 POLI ST VENTURA CA 93001 CA056033C	NORTHERN CALIF RECEPTION CENTER AND CLINIC SUPERINTENDENT 3001 RAMONA AVENUE SACRAMENTO CA 95826 CA034025C	KARL HOLTON SCHOOL FOR BOYS SUPERINTENDENT P O BOX 6600 STOCKTON CA 95206 CA039055C
LOMA HALL SHERIFFS DEPT 501 POLI ST VENTURA CA 93001 CA056043C	SOUTHERN CALIF RECEPTION CENTER AND CLINIC SUPERINTENDENT 13200 S BLOOMFIELD AVE NORWALK CA 90650 CA019045C	YOUTH TRAINING SCHOOL SUPERINTENDENT P O BOX 800 ONTARIO CA 91761 CA036045C
OJAI POLICE DEPT CHIEF OF POLICE 107 A W MATILIJAS OJAI CA 93023 CA05603	MT BULLION YOUTH CONSERVATION CAMP SUPERINTENDENT MARIPOSA CA 95338 CA022015C	VENTURA RECEPTION CENTER AND CLINIC SUPERINTENDENT 3100 WRIGHT ROAD CAMARILLO CA 93010 CA056025C
CITY POLICE DEPT POLICE CHIEF 210 SO B ST OXNARD CA 93030 CA05604	BEN LOMOND YOUTH CONSERVATION CAMP SUPERINTENDENT 13575 EMPIRE GRADE SANTA CRUZ CA 95060 CA044015C	LOCAL LEVEL ALAMEDA CO CHABOT RANCH DIRECTOR 2500 150TH AVE SAN LEANDRO CA 94578 CA001033C
CITY POLICE DEPT CHIEF OF POLICE P O BOX 115 PORT HUENEME CA 93041 CA05605	WASHINGTON RIDGE YOUTH CONSERVATION CAMP SUPERINTENDENT WASHINGTON STAR ROUTE NEVADA CITY CA 95959 CA029015C	LOS VISTAS GIRLS HOME DIRECTOR 2300 150TH AVE SAN LEANDRO CA 94578 CA001043C
VENTURA POLICE DEPT CHIEF OF POLICE 52 S GARDEN ST VENTURA CA 93003 CA05608	PINE GROVE YOUTH CONSERVATION CAMP SUPERINTENDENT P O BOX 438 PINE GROVE CA 95665 CA003015C	SENIOR BOYS CAMP DIRECTOR 2600 150TH AVE SAN LEANDRO CA 94578 CA001053C
YOLO COUNTY JAIL SHERIFF 814 NORTH ST WOODLAND CA 95695 CA057013C	VENTURA SCHOOL SUPERINTENDENT 3100 WRIGHT ROAD CAMARILLO CA 93010 CA056015C	KINGS DAUGHTERS GRP RES SUPERINTENDENT 363 BELMONT ST OAKLAND CA 94610 CA001063C
	LOS GUILUCOS SCHOOL SUPERINTENDENT 7501 SONOMA HIGHWAY SANTA ROSA CA 95405 CA049015C	BOYS RECEIVING BRANCH SUPERINTENDENT JUVENILE HALL 400 BROADWAY OAKLAND CA 94607 CA001073C
	PRESTON SCHOOL OF INDUSTRY SUPERINTENDENT RURAL ROUTE BOX 5 10NE CA 95640 CA003025C	ALAMEDA CO JUVENILE HALL DIRECTOR 200 150TH AVE SAN LEANDRO CA 94578 CA001083C
	PASO ROBLES SCHOOL FOR BOYS SUPERINTENDENT DRAWER B PASO ROBLES CA 93446 CA040025C	JUVENILE HALL SUPERINTENDENT COURT HOUSE ORVILLE CA 95965 CA004013C

JUVENILE FACILITY COLUSA CO JAIL DIRECTOR 929 BRIDGE ST COLUSA CA006013C	CA 95932	JUVENILE FORESTRY CAMP PROBATION OFFICER KERNVILLE CA015013C	CA 93238	CAMP C B AFFLERBAUGH DIRECTOR 6631 N STEPHENS RC LA VERNE CA019263C	CA 91750
JUVENILE HALL SUPERINTENDENT 202 GLACIER DR MARTINEZ CA007033C	CA 94553	JUVENILE HALL PROBATION OFFICER 1831 RIDGE RD BAKERSFIELD CA015023C	CA 93305	JUVENILE HALL DIRECTOR 1605 EAST LAKE LOS ANGELES CA019273C	CA 90033
GIRLS RESIDENTIAL TREATMENT FACILITY SUPERINTENDENT 200 GLACIER DR MARTINEZ CA007043C	CA 94553	CAMP FRED MILLER DIRECTOR 433 S ENCINAL CYN MALIBU CA019153C	CA 90265	L PALMAS SCHL FOR GIRLS DIRECTOR 1500 S MCDONNELL AV LOS ANGELES CA019283C	CA 90022
BOYS RANCH BYRON SUPERINTENDENT RT 1 BOX 39B BYRON CA007053C	CA 94514	CAMP VERNON KILPATRICK DIRECTOR 427 S ENCINAL CYN MALIBU CA019163C	CA 90265	LOS PADRINOS JUV HALL DIRECTOR 7205 E QUILL DR DOWNEY CA019293C	CA 90242
GIRLS DAY TREATMENT FACILITY GUIDE DEPT PROBATION OF 6503 HAZEL ST RICHMOND CA007063C	CA 94805	CAMP DAVID GONZALES DIRECTOR 1301 N LAS VIRGENE CALABASAS CA019173C	CA 91302	SAN FERN VALLEY JUV HALL DIRECTOR 15900 FILBERT SYLMAR CA019303C	CA 91342
LAS TRAMPAS VILLAGE SUPERINTENDENT 36 HOLLY CT SAN RAMON CA007073C	CA 94583	CAMP KENYON SCUDDER DIRECTOR 28750 N BOUQUET CY SAUGUS CA019183C	CA 91350	CAMP FENNER CANYON SUPERINTENDENT PO BOX 8 VALYERMO CA019333C	CA 93563
JUVENILE DETENTION HALL PROBATION OFFICER COURTHOUSE CRESCENT CITY CA008013C	CA 95531	CAMP JOE SCOTT DIRECTOR 28700 N BOUQUET CY SAUGUS CA019193C	CA 91350	COMMUNITY DAY CENTER PROGRAM DIRECTOR 320 WEST TEMPLE ST LOS ANGELES CA019313C	CA 90012
BAR-O-BOYS RANCH DIRECTOR P O BOX 37 GASQUET CA008023C	CA 95543	CAMP ROCKEY DIRECTOR 1900 N SYCAMORE CY SAN DIMAS CA019203C	CA 91773	AFTERCARE DIRECTOR 1102 SO CRENSHAW B LOS ANGELES CA019323C	CA 90019
JUVENILE HALL PROBATION OFFICER 744 S TENTH STREET FRESNO CA010023C	CA 93702	CAMP JOSEPH M PAIGE DIRECTOR 6601 STEPHANS RNCH LA VERNE CA019213C	CA 91750	JUVENILE HALL PROBATION OFFICER 28261 AVE 14 MADERA CA020013C	CA 93637
YOUTH CENTER PROBATION OFFICER 748 S TENTH STREET FRESNO CA010033C	CA 93702	CAMP JOHN MUNZ DIRECTOR 42220 LAKE HUGHES LAKE HUGHES CA019233C	CA 93532	JUVENILE HALL PROBATION OFFICER LUCAS VALLEY RD SAN RAFAEL CA021013C	CA 94903
JUVENILE HALL SUPERINTENDENT P O BOX 723 EUREKA CA012013C	CA 95501	CAMP WM V MENDENHALL DIRECTOR 42230 LAKE HUGHES LAKE HUGHES CA019243C	CA 93532	JUVENILE HALL SUPERINTENDENT 890 N BUSH UKIAH CA023013C	CA 95482
JUVENILE HALL DIRECTOR PO BOX 547 IMPERIAL CA013013C	CA 92251	CAMP KARL HOLTON DIRECTOR 16691 N LITTLE TUJUNGA CYN RD SAN FERNANDO CA019253C	CA 91342	JUVENILE HALL PROBATION OFFICER P O BOX 1224 MERCED CA024023C	CA 95340

JUVENILE HALL PROBATION OFFICER P O BOX 42 SALINAS CA027013C	CA 93901	JUVENILE HALL SUPERINTENDENT 3933 HARRISON ST RIVERSIDE CA033033C	CA 92503	LOG CABIN RANCH SUPT 375 WOODSIDE SAN FRANCISCO CA038053C	CA 94127
NATIVIDAD RANCH PROBATION OFFICER P O BOX 42 SALINAS CA027023C	CA 93901	CARSON CREEK BOYS RANCH SUPERINTENDENT SCOTT RD RANCHO CORDOVA CA034013C	CA 95670	HIDDEN VALLEY RANCH SUPT 375 WOODSIDE SAN FRANCISCO CA038063C	CA 94127
JUVENILE HALL SUPERINTENDENT COURT HOUSE NAPA CA028013C	CA 94558	SACRAMENTO CO JUVENILE HALL SUPERINTENDENT 9601 KIEFER BL SACRAMENTO CA034023C	CA 95826	JUVENILE HALL SUPT 375 WOODSIDE SAN FRANCISCO CA038073C	CA 94127
JUVENILE HALL SUPERINTENDENT COURTHOUSE NEVADA CITY CA029013C	CA 95959	GIRLS SCHOOL DIRECTOR CO PROBATION DEPT 9601 KIEFER BLVD SACRAMENTO CA034033C	CA 95826	JUVENILE HALL SUPERINTENDENT MATHEWS ROAD FRENCH CAMP CA039023C	CA 95231
ORANGE COUNTY JOPLIN RANCH SUPERINTENDENT P O BOX 387 TRABUCO CANYON CA030043C	CA 92678	SAN BENITO SCH FOR BOYS SUPERINTENDENT 3230 SOUTHSIDE RD HOLLISTER CA035013C	CA 95023	JUVENILE HALL PROBATION OFFICER JOHNSON AVE SAN LUIS OBISPO CA040033C	CA 93401
ORANGE COUNTY RANCHO POTRERO DIRECTOR TRABUCO CANYON CA030053C	CA 92678	VERMONT BOYS RANCH SUPERINTENDENT 19555 CAJON BLVD SAN BERNARDINO CA036013C	CA 92407	SAN MATEO COUNTY JUVENILE HALL SUPERINTENDENT 21 TOWER RD BELMONT CA041053C	CA 94002
ORANGE COUNTY JUVENILE HALL SUPERINTENDENT 331 S MANCHESTER ORANGE CA030063C	CA 92668	JUVENILE HALL SUPERINTENDENT 750 E 16TH SAN BERNARDINO CA036023C	CA 92404	SAN MATEO CO BOYS RANCH CAMP GLENWOOD PROBATION DIRECTOR 35 TOWER RD BELMONT CA041063C	CA 94002
DAVID R MCHILLAN SCH SUPERINTENDENT 1207 EAST FRUIT SANTA ANA CA030073C	CA 92701	LIGHTNING TREATMENT UNIT ADMINISTRATOR 750 EAST 16TH ST SAN BERNARDINO CA036033C	CA 92404	LA MORADA GIRLS RES PROBATION OFFICER 66 S SAN ANTONIO R SANTA BARBARA CA042013C	CA 93105
LOS PINOS FORESTRY CAMP DIRECTOR 39251 ORTEGA HWY ELSINORE CA030083C	CA 92330	GIRLS TREATMENT UNIT UNIT ADMINISTRATOR 750 EAST 16TH ST SAN BERNARDINO CA036043C	CA 92404	JUVENILE HALL PROBATION OFFICER 4500 HOLLISTER AVE SANTA BARBARA CA042023C	CA 93105
YOUTH GUIDANCE CTR DIRECTOR 3030 N HESPERIAN SANTA ANA CA030093C	CA 92706	JUVENILE HALL SUPERINTENDENT 2801 MEADOW LARK D SAN DIEGO CA037013C	CA 92123	SANTA CLARA CO JUVENILE HALL SUPERINTENDENT 840 GUADALUPE PKWY SAN JOSE CA043043C	CA 95110
JUVENILE HALL SUPERINTENDENT 360 ELM AVE AUBURN CA031013C	CA 95603	LAS COLINAS GIRLS FACILITY SUPERINTENDENT 900 COTTONWOOD SANTEE CA037103C	CA 92071	MURIEL WRIGHT GIRLS RNCH SUPERINTENDENT BOX 262 400 W BERNAL RD COYOTE CA043053C	CA 95013
TWIN PINES RANCH SUPERINTENDENT P O BOX 576 BANNING CA033023C	CA 92220	RANCHO DEL CAMPO SUPERINTENDENT PO BOX 37 CAMPO CA037113C	CA 92006	WM JAMES BOYS RNCH NO 1 SUPERINTENDENT BOX 437 MALAQUERRA AVE MORGAN HILL CA043063C	CA 95037

WM JAMES BOYS RINCH NO 2 SUPERINTENDENT BOX 637 MALAGUERRA AVE MORGAN HILL CA 95037 CA043073C	JUVENILE HALL PROBATION OFFICER 310 N WEST 3RD ST VISALIA CA 93277 CA054033C	DEPT OF JUSTICE BUR OF CRIM STAT 7301 C ST P O BOX 1583 SACRAMENTO CA 95807 CA034025Y	DEPT OF JUSTICE LAW ENFORCEMENT COMMUNICATION SYS WELLS FARGO BANK BLDG SACRAMENTO CA 95814 CA034125Y	NON FELON NARCOTIC REHABILITATION CTR SUPERINTENDENT P O BOX 841 CORONA CA 91720 CA033035Y	POLICE CRIME LABORATORY SENIOR CRIMINALIST 455 SEVENTH OAKLAND CA 94606 CA001011Y
JUVENILE HALL SUPERINTENDENT 3650 GRAHAM HILL R SANTA CRUZ CA 95060 CA044013C	LOS PRIETOS BOYS CAMP PROBATION OFFICER STAR ROUTE SANTA BARBARA CA 93105 CA056053C	DEPT OF CORRECTIONS DEPT ADMINISTRATOR 246 STATE OFFICE B 1 SACRAMENTO CA 95814 CA034035Y	CALIF CRIME TECHNOLOG RESEARCH FOUNDATN JUSTICE DEPT WELLS FARGO BANK BLDG SACRAMENTO CA 95814 CA034135Y	CORRECTIONAL INDUSTRIES COMMISSION CHAIRMAN 1020 12TH STREET SACRAMENTO CA 95814 CA034205Y	JUVENILE JUSTICE COMMSN CHAIRMAN COURTHOUSE MARLEEVILLE CA 96120 CA002013Y
JUVENILE HALL SUPERINTENDENT 2680 RADIO LANE REDDING CA 96001 CA045013C	JUVENILE HALL PROBATION OFFICER 380 HILLMONT AVE VENTURA CA 93003 CA056063C	DEPT OF CORRECTIONS RESEARCH DIVISION DIRECTOR STATE OFFICE BLDG 1 SACRAMENTO CA 95814 CA034045Y	CALIFORNIA LAW REVISION COMMISSION CHAIRMAN SCHOOL OF LAW STANFORD CA 94305 CA043015Y	BOARD OF CORRECTIONS CHAIRMAN STATE OFFICE BLDG NO 1 SACRAMENTO CA 95814 CA034215Y	JUVENILE JUSTICE COMMSN CHAIRMAN 108 COURT ST JACKSON CA 95642 CA003013Y
JUVENILE HALL PROBATION OFFICER P O BOX 780 YREKA CA 96097 CA047013C	COLSTON S GIRLS HOME SUPERINTENDENT 375 HILLMONT AVE VENTURA CA 93003 CA056073C	DEPT OF CORRECTIONS CORRECTION CONSERV CAMP SERV DIV STATE OFFICE BLDG 1 SACRAMENTO CA 95814 CA034055Y	JOINT LEG COMM FOR REVIS OF THE PENAL CODE CHRMAN RM 358 BERKELEY CA 94720 CA001015Y	DELINQUENCY PREVENTION COMMISSION EXECUTIVE SECRETAR STATE BLDG 73 1 SACRAMENTO CA 95814 CA034225Y	BUTTE CO POLICE ACADEMY CO ORDINATOR BUTTE CO JR COLLEG DURHAM CA 95938 CA004013Y
JUVENILE HALL SUPERINTENDENT 2000 WEST TEXAS ST FAIRFIELD CA 94533 CA048013C	JUVENILE HALL CH PROBATION OFF 218 W BEAHER ST WOODLAND CA 95695 CA057033C	DEPT OF CORRECTIONS TRAINING FACILITY P O BOX 686 SOLEDAD CA 93960 CA027015Y	COMMISSION ON UNIFORM STATE LAWS CHAIRMAN 3021 STATE CAPITOL SACRAMENTO CA 95814 CA034145Y	COMMISSION ON JUDICIAL APPOINTMENTS STATE BLDG SAN FRANCISCO CA 94102 CA038045Y	JUVENILE JUSTICE COMMSN CHAIRMAN COURTHOUSE OROVILLE CA 95926 CA004023Y
FOUTS SPRINGS BOYS CAMP SUPERINTENDENT STONYFORD CA 95979 CA048023C	JUVENILE HALL PROBATION OFFICER COURTHOUSE MARYSVILLE CA 95901 CA058013C	DEPT OF CORRECTIONS CALIF CORRECTIONAL INDUSTRIES 1020 12TH ST SACRAMENTO CA 95814 CA034065Y	DEPT OF JUSTICE DIV OF LAW ENFORCE DIRECTOR WELLS FARGO BANK BLDG SACRAMENTO CA 95814 CA034155Y	PARKWAY CENTER SUPERVISOR 1212 S ALVARADO S LOS ANGELES CA 90006 CA019015Y	JUVENILE JUSTICE COMMSN CHAIRMAN GOVERNMENTS CTR SAN ANDREAS CA 95249 CA005013Y
JUVENILE HALL CH PROBATION OFF 3400 CHANATE RD SANTA ROSA CA 95404 CA049033C	ALL OTHER AGENCIES STATE LEVEL ATASCADERO HOSPITAL EL CAMINO REAL DRAWER A ATASCADERO CA 93422 CA040015Y	ADULT AUTHORITY ADMINISTRATOR ROOM 504 STATE OFC BLDG NO 1 SACRAMENTO CA 95814 CA034075Y	COMM ON PEACE OFFICERS STANDARDS AND TRNG DEPT OF JUSTICE WELLS FARGO BANK BLDG SACRAMENTO CA 95814 CA034165Y	AID TO VICTIMS OF CRIMES OF VIOLENCE BD OF CONTROL WELLS FARGO BANK BLDG SACRAMENTO CA 95814 CA034325Y	JUVENILE JUSTICE COMMSN CHAIRMAN COURTHOUSE COLUSA CA 95932 CA006013Y
MOBILE CAMP CH PROBATION OFF 3400 CHANATE RD SANTA ROSA CA 95404 CA049043C	ADMINISTRATIVE OFC OF THE COURTS ADHIN DIRECTOR 4200 STATE BLDG SAN FRANCISCO CA 94102 CA038015Y	YOUTH AUTHORITY DIRECTOR STATE OFC BLDG 1 SACRAMENTO CA 95814 CA03492	DEPT OF CALIF HWY PATROL OPERATIONAL PLANN AND ANALYSIS 2611 26TH ST SACRAMENTO CA 95814 CA034175Y	NORTHERN CALIFORNIA YOUTH CENTER SUPERINTENDENT PO BOX 6000 STOCKTON CA 95206 CA036015Y	GRAND JURY CONTRA COSTA CO FOREMAN COURTHOUSE MARTINEZ CA 94553 CA007013Y
JUVENILE HALL SUPERINTENDENT 949 OLD OAKDALE RD MODESTO CA 95350 CA050023C	COMMISSION ON JUDICIAL QUALIFICATIONS RM 3041 STATE BLDG SAN FRANCISCO CA 94102 CA038025Y	YOUTH AUTHORITY PERSONNEL TRNG AND RECRUITING STATE OFC BLDG NO 1 SACRAMENTO CA 95814 CA04085Y	ADMINISTRATIVE OFFICER US CAL ARNG MILITARY DEPT P O BOX 8143 SACRAMENTO CA 95818 CA034185Y	SOUTHERN CALIFORNIA YOUTH CENTER SUPERINTENDENT 5180 EUCLID AVE CHINO CA 91710 CA039015Y	ALCOHOLIC REHABILITATION SERVICE SUPERINTENDENT 85 CLEVELAND RD PLEASANT HILL CA 94523 CA007023Y
JUVENILE HALL MATRON COURTHOUSE YUBA CITY CA 95991 CA051013C	JUDICIAL COUNCIL OF CALIFORNIA DIRECTOR STATE BLDG RM 4200 SAN FRANCISCO CA 94102 CA038035Y	YOUTH AUTHORITY RESEARCH DIV STATE OFC BLDG 1 SACRAMENTO CA 95814 CA034095Y	NARCOTICS REHABILITATION ADVISORY COUNCIL CALIF REHAB CTR BOX 841 CORONA CA 91720 CA033015Y	LOCAL LEVEL GRAND JURY ALAMEDA CO COURTHOUSE 1225 FALLON OAKLAND CA 94612 CA001013Y	JURY COMMISSIONER CONTRA COSTA CO COURTHOUSE MARTINEZ CA 94553 CA007033Y
JUVENILE HALL PROBATION OFFICER P O BOX 99 RED BLUFF CA 96080 CA052013C	CALIFORNIA COUNCIL ON CRIMINAL JUSTIC EXEC DIRECTOR 1108 14TH ST SACRAMENTO CA 95814 CA034015E	YOUTH AUTHORITY DELINQUENCY PREV STATE OFC BLDG 1 SACRAMENTO CA 95814 CA034105Y	NARCOTIC ADDICT EVALUAT AUTHORITY CALIF REHAB CTR P O BOX 844 CORONA CA 91720 CA033025Y	ALCOHOLISM CLINIC SUPERINTENDENT 15001 FOOTHILL BL SAN LEANDRO CA 94578 CA001023Y	DRUG ABUSE COUNCIL CONTRA COSTA CO DIRECTOR 75 SANTA BARBARA RD PLEASANT HILL CA 94523 CA007043Y
BOYS CAMP PROBATION OFFICER 36008 ROAD 112 VISALIA CA 93277 CA054023C	DEPT OF JUSTICE BUR OF CRIM IOENT AND INVEST CHIEF SACRAMENTO CA 95807 CA034015Y	YOUTH AUTHORITY REHABILITATION DIV STATE OFC BLDG 1 SACRAMENTO CA 95814 CA034115Y	DEPT OF JUSTICE NARCOTIC ENFORCMT BUREAU CHIEF WELLS FARGO BANK BLDG SACRAMENTO CA 95814 CA034195Y	JURY COMMISSIONER ALAMEDA CO 1225 FALLON OAKLAND CA 94612 CA001033Y	JUVENILE JUSTICE COMM CHAIRMAN COURTHOUSE CRESCENT CITY CA 95531 CA008013Y

DELINQUENT PREVENT COMM CHAIRMAN COURTHOUSE CRESCENT CITY CA 95931 CA008023Y	JUVENILE JUSTICE COMM CHAIRMAN COURTHOUSE BOX C HANFORD CA 93230 CA016013Y	CRIME PREVENTION COMMIS CHAIRMAN P O BOX 2188 DUARTE CA 91010 CA019071Y	CLASSIFICATION COMM CAPT JAIL DIVISION P O BOX 809 SALINAS CA 93901 CA027023Y	FULLERTON POLICE TRAINING SCHOOL CHIEF OF POLICE 237 W COMMONWEALTH AVE FULLERTON CA 92632 CA030011Y	GRAND JURY SAN BERNARDINO CO FOREMAN 351 N ARROWHD SAN BERNARDINO CA 92401 CA036033Y
CO DELINQUENCY PREV COMM CHAIRMAN 2850 COLD SPRINGS PLACERVILLE CA 95667 CA009013Y	JUVENILE JUSTICE COMM CHAIRMAN P O BOX 1245 LAKEPORT CA 95453 CA017013Y	JURY COMMISSION JURY COMMISSIONER GOVERNMENT CENTER MADERA CA 93637 CA020013Y	JURY COMMISSION COMMISSIONER P O BOX 1819 SALINAS CA 93901 CA027033Y	JUVENILE JUSTICE COMM CHAIRMAN 134 MAPLE ST AUBURN CA 95603 CA031013Y	JURY COMMISSIONER SAN BERNARDINO CO RM 325 CO COURTHOUSE SAN BERNARDINO CA 92401 CA036043Y
JUVENILE JUSTICE COMM CHAIRMAN 2850 COLD SPRINGS PLACERVILLE CA 95667 CA009023Y	JUVENILE JUSTICE COMM CHAIRMAN COURTHOUSE SUSANVILLE CA 96130 CA018013Y	GRAND JURY SUPERIOR CT JUDGE GOVERNMENT CENTER MADERA CA 93637 CA020023Y	JUVENILE JUSTICE COMM CHAIRMAN 2350 SONOMA RD NAPA CA 94558 CA028013Y	JUVENILE JUSTICE COMM CHAIRMAN COURTHOUSE QUINCY CA 95971 CA032013Y	SAN DIEGO CO GRAND JURY FOREMAN 7003 COURTHOUSE 220 W BROADWAY SAN DIEGO CA 92101 CA037013Y
JUVENILE JUSTICE COMM CHAIRMAN COURTHOUSE FRESNO CA 93721 CA010013Y	SHERIFF S ACADEMY LOS ANGELES CO CAPTAIN 1060 N EASTERN LOS ANGELES CA 90063 CA019013Y	JUVENILE JUSTICE COMM CHAIRMAN 209 W YOSEMITE AVE MADERA CA 93637 CA020033Y	JUVENILE JUSTICE COMM CHAIRMAN COURTHOUSE ANNEP NEVADA CY CA 95959 CA029013Y	SHERIFF S ACADEMY SHERIFF 190 E BOX SPRINGS RIVERSIDE CA 92507 CA033013Y	JUVENILE JUSTICE COMM SAN DIEGO CO CHAIRMAN 220 W BROADWAY SAN DIEGO CA 92101 CA037023Y
JUVENILE JUSTICE COMM CHAIRMAN COURTHOUSE WILLOWS CA 95988 CA011013Y	GRAND JURY LOS ANGELES CO FOREMAN 211 W TEMPLE LOS ANGELES CA 90012 CA019023Y	JUVENILE JUSTICE COMM CHAIRMAN 1007 A ST SAN RAFAEL CA 94901 CA021013Y	GRAND JURY ORANGE CO 700 CIVIC CNTR DR SANTA ANA CA 92701 CA030013Y	JUVENILE JUSTICE COMM CH PROBATION OFCR POST OFFICE BOX 83 RIVERSIDE CA 92501 CA033023Y	DEPT OF PUBLIC HEALTH ALCOHOLISM CLINIC CHF HEALTH EDUCATO 565 WEST F SAN DIEGO CA 92101 CA037033Y
SPRUCE POINT HOUSE WELFARE DIRECTOR COUNTY COURTHOUSE EUREKA CA 95501 CA012013Y	SAUGUS REHABILITATION CT SHERIFF S DEPT DIV OF CORRECTIONS 211 W TEMPLE ST LOS ANGELES CA 90012 CA019033Y	JUVENILE JUSTICE COMM CHAIRMAN P O BOX 76 MARIPOSA CA 95338 CA022013Y	JURY COMMISSIONER ORANGE CO 700 CIVIC CNTR DR SANTA ANA CA 92701 CA030023Y	JURY COMMISSIONER SACRAMENTO CO 220 9TH ST SACRAMENTO CA 95814 CA034013Y	JURY COMMISSIONER SAN DIEGO CO 220 W BROADWAY SAN DIEGO CA 92101 CA037043Y
JURY COMMISSION COMMISSIONER HUMBOLDT COURTHOUS EUREKA CA 95501 CA012023Y	ALCOHOLIC REHABILITATION CENTER 2655 PINE LONG BEACH CA 90802 CA019011Y	JUVENILE JUSTICE COMM CHAIRMAN 303 N MAIN ST UKIAH CA 95482 CA023013Y	CRISIS AND SUICIDE CNTR ORANGE CO DIRECTOR 101 S MANCHESTER ORANGE CA 92668 CA030033Y	GRAND JURY SACRAMENTO CO FOREMAN 720 9TH ST SACRAMENTO CA 95814 CA034023Y	HONOR CAMPS BLDG 6 OPERATIONS CENTER DIRECTOR 5555 OVERLAND SAN DIEGO CA 92123 CA037053Y
JUVENILE JUSTICE COMM CHAIRMAN 929 EVE ST EUREKA CA 95501 CA012033Y	CRIME LABORATORY 400 W BROADWAY LONG BEACH CA 90802 CA019021Y	JUVENILE JUSTICE COMM CHAIRMAN C O 670 W 22ND ST RH 10 MERCED CA 95340 CA024013Y	CRIMINAL JUSTICE COUNCIL ORANGE CO 211 SANTA ANA BLVD OLD COURTHOUSE SANTA ANA CA 92706 CA030043Y	CRIME LAB SACRAMENTO CO 4400 V ST SACRAMENTO CA 95817 CA034033Y	SAN DIEGO CRIME LAB DIRECTOR 801 W MARKET SAN DIEGO CA 92101 CA037011Y
JUVENILE JUSTICE COMM CHAIRMAN COURTHOUSE EL CENTRO CA 92243 CA013013Y	BOARD OF POLICE COMMISS COMMISSIONER 150 N LOS ANGELES LOS ANGELES CA 90012 CA019031Y	JURY COMMISSION COMMISSIONER COUNTY COURTS BLDG MERCED CA 95340 CA024023Y	JUVENILE JUSTICE COMMISSION CHAIRMAN 301 SOUTH MANCHESTER ORANGE CA 92668 CA030053Y	SACRAMENTO CO PROBATION DEPT EXEC DIRECTOR 9601 KIEFER BLVD SACRAMENTO CA 95814 CA034043Y	SAN FRANCISCO MUN COURT JURY COMMISSIONER RM 305 CITY HALL SAN FRANCISCO CA 94102 CA038013Y
CO JUVENILE JUSTICE COMM CHAIRMAN 305 NORTH MAIN LONG PINE CA 93545 CA014013Y	LOS ANGELES POLICE DEPT TRAINING ACADEMY DIRECTOR 1880 NORTH ACADEMY DRIVE LOS ANGELES CA 90012 CA019041Y	JUVENILE JUSTICE COMM CHAIRMAN COURTHOUSE ALTURAS CA 96101 CA025013Y	DELINQUENCY PREVENTION COMMISSION CHAIRMAN 301 SOUTH MANCHESTER ORANGE CA 92668 CA030063Y	JUVENILE JUSTICE COMM CHAIRMAN COURTHOUSE HOLLISTER CA 95023 CA035013Y	BUREAU OF ALCOHOLISM DIRECTOR 101 GROVE SAN FRANCISCO CA 94102 CA038023Y
JUV DEL PREVENTION COMM CHAIRMAN 305 NORTH MAIN LONG PINE CA 93545 CA014023Y	SCIENTIFIC INVESTIG DIV LOS ANGELES POLICE COMMANDER ROOM 400 PARKER CENTER LOS ANGELES CA 90012 CA019051Y	JUVENILE JUSTICE COMM CHAIRMAN CO COURTHOUSE BRIDGEPORT CA 93517 CA026013Y	ORANGE CO COMMUNICATIONS CENTER DIRECTOR 445 CIVIC CENTER DR SANTA ANA CA 92701 CA030073Y	PROBATION DEPARTMENT SAN BERNARDINO CO EXECUTIVE DIR 157 W 5TH SAN BERNARDINO CA 92401 CA036013Y	GRAND JURY RM 165 CITY HALL SAN FRANCISCO CA 94102 CA038033Y
JUVENILE JUSTICE COMM CH AIRMAN 2005 RIDGE RD BAKERSFIELD CA 93305 CA019013Y	POLICE TRAINING CENTER DIRECTOR OF PARKS 2783 NEW YORK DR PASADENA CA 91007 CA019061Y	JUVENILE JUSTICE COMMSN CH PROBATION OFCR P O BOX 42 SALINAS CA 93901 CA027013Y	ORANGE CO MARSHALS ADMINISTRATOR 700 CIVIC CNTR DR SANTA ANA CA 92701 CA030083Y	CRIME LAB SAN BERNARDINO CO C/O SHERIFF 351 W ARROWHEAD SAN BERNARDINO CA 92401 CA036023Y	SFPD CRIME LABORATORY RM 435 HALL OF JUSTICE 850 BRYANT ST SAN FRANCISCO CA 94103 CA038043Y

SFPD IDENTIFICATION BUR
RM 475
HALL OF JUSTICE
850 BRYANT ST
SAN FRANCISCO CA 94103
CA038053Y

SFPD ACADEMY
RM 376
HALL OF JUSTICE
850 BRYANT ST
SAN FRANCISCO CA 94103
CA038063Y

CENTER FOR DRUG ABUSE
DIRECTOR
101 GROVE
SAN FRANCISCO CA 94102
CA038073Y

JUVENILE JUSTICE COMM
CHAIRMAN
COURTHOUSE
STOCKTON CA 95202
CA039013Y

JUVENILE JUSTICE COMM
CHAIRMAN
COURTHOUSE
PASO ROBLES CA 93446
CA040013Y

JURY COMMISSIONER
SAN MATEO COUNTY
HALL OF JUST AND R
COUNTY GOVERNMENT CTR
REDWOOD CY CA 94063
CA041013Y

SAN MATEO CO
GRAND JURY
FOREMAN
HALL OF JUST AND REC
REDWOOD CY CA 94063
CA041023Y

SHERIFFS CIVIL SERV COMM
SECRETARY
COURTHOUSE
SANTA BARBARA CA 93104
CA042013Y

JUVENILE JUSTICE COMMSN
CHAIRMAN
118 E FIGUEROA ST
SANTA BARBARA CA 93104
CA042023Y

ALCOHOLIC REHABIL CLINIC
SANTA CLARA CO
DIRECTOR
2320 MOORPARK
SAN JOSE CA 95128
CA043013Y

LAB OF CRIMINALISTICS
DIRECTOR
875 N SAN PEDRO
SAN JOSE CA 95110
CA063023Y

JURY COMMISSIONER
SANTA CLARA CO
191 N 1ST
SAN JOSE CA 95113
CA043033Y

SANTA CLARA CTNY
GRAND JURY
FOREMAN
191 N 1ST ST
SAN JOSE CA 95113
CA043043Y

JUVENILE JUSTICE COMM
CHAIRMAN
COURTHOUSE ANNEX
SANTA CRUZ CA 95060
CA044013Y

JUVENILE JUSTICE COMM
CHAIRMAN
COURTHOUSE
REDDING CA 96001
CA045013Y

JUVENILE JUSTICE COMM
CHAIRMAN
BOX 67
DOWNIEVILLE CA 95936
CA046013Y

JUVENILE JUSTICE COMM
CHAIRMAN
805 JUVENILE DR
YREKA CA 96097
CA047013Y

JUVENILE JUSTICE COMM
CHAIRMAN
2000 * TEX ST
FAIRFIELD CA 94534
CA048013Y

JUVENILE JUSTICE COMM
CHAIRMAN
HALL OF JUSTICE
SANTA ROSA CA 95401
CA049013Y

JUVENILE JUSTICE COMM
CHAIRMAN
810 SCENIC DR
MODESTO CA 95353
CA050013Y

JUVENILE JUSTICE COMM
CHAIRMAN
COURTHOUSE
YUBA CITY CA 95353
CA051013Y

JUVENILE JUSTICE COMM
CHAIRMAN
COURTHOUSE
RED BLUFF CA 96080
CA052013Y

JUVENILE JUSTICE COMM
CHAIRMAN
BOX 158
WEAVERVILLE CA 96093
CA053013Y

JUVENILE JUSTICE COMM
CHAIRMAN
COURTHOUSE
VISALIA CA 93277
CA054013Y

DELINQUENT PREVENT COMM
CHAIRMAN
TUOLUMNE COUNTY
SUPERIOR COURT
SONORA CA 95370
CA055013Y

JUVENILE JUSTICE COMM
CHAIRMAN
41 W YANEY AVE
SONORA CA 95370
CA055023Y

JUVENILE JUSTICE COMM
CHAIRMAN
COURTHOUSE
VENTURA CA 93001
CA056013Y

JUVENILE JUSTICE COMM
CHAIRMAN
BOX 176
WOODLAND CA 95695
CA057013Y

JUVENILE JUSTICE COMM
CHAIRMAN
COURTHOUSE
MARYSVILLE CA 95901
CA058013Y

END