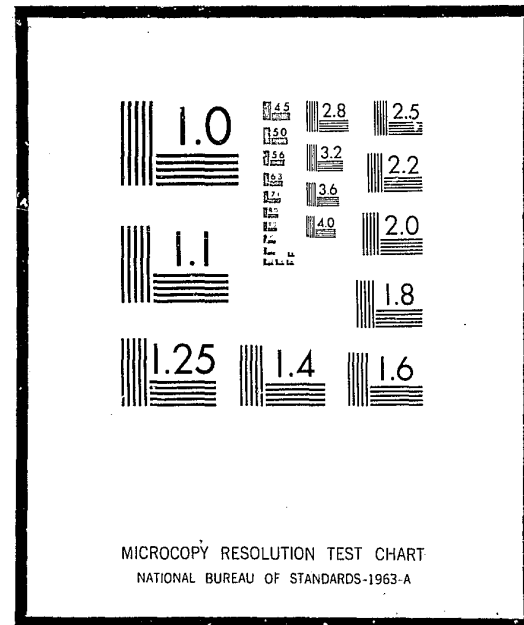


NCJRS

This microfiche was produced from documents received for inclusion in the NCJRS data base. Since NCJRS cannot exercise control over the physical condition of the documents submitted, the individual frame quality will vary. The resolution chart on this frame may be used to evaluate the document quality.



Microfilming procedures used to create this fiche comply with the standards set forth in 41CFR 101-11.504

Points of view or opinions stated in this document are those of the author(s) and do not represent the official position or policies of the U.S. Department of Justice.

U.S. DEPARTMENT OF JUSTICE
LAW ENFORCEMENT ASSISTANCE ADMINISTRATION
NATIONAL CRIMINAL JUSTICE REFERENCE SERVICE
WASHINGTON, D.C. 20531

Date filmed

7/20/76

NPS Bulletin

Cat 1

NUMBER 44

JULY, 1969

NATIONAL PRISONER STATISTICS

PRISONERS IN STATE AND FEDERAL INSTITUTIONS FOR ADULT FELONS

1967,

UNITED STATES DEPARTMENT OF JUSTICE
JOHN MITCHELL, ATTORNEY GENERAL

BUREAU OF PRISONS
Myrl E. Alexander, Director

NC 5-002172-41

PRISONERS IN STATE AND FEDERAL INSTITUTIONS 1967

GUIDE AND INDEX

SUBJECT	TEXT PAGES	TABLE NUMBERS	CHART NUMBERS
Authorized temporary absences	-	3,10,11	-
Boarded prisoners	-	10,11	-
Civilian population	-	1,4,5	1
Conditional release violators returned ..	2	3,5,9-11	4
Court commitments:			
General	1,2	2-5,8,10,11	4
By month	1,3	12	-
Court orders	-	3,10,11	-
Deaths	-	3,10,11	-
Escapes and escapees returned	-	3,10,11	-
Executions	-	3,10	-
Method of release:			
Conditional pardons	-	3	-
Full pardons	-	3	-
Other conditional releases	-	3	-
Paroles	-	3	-
Prison population:			
General	1,2	1,3-6,10,11,14	1-3
By month	1,3	13	-
Rate per 100,000 of civilian population:			
Court commitments	-	2,4	-
Prison population	1	1,4	-
Releases	2	3,5,10,11	5
Sex:			
Female	2	3,5,10,11	-
Male	-	3,5	-
Trend data:			
1939-1967	-	1	1
1940-1967	-	2,4	-
1950-1967	-	5-10	4,5
1966-1967	1,2	3-9,11	2
Transfers	-	3	-
Type of institution:			
Federal	1,2	1-5	1
State:			
Individually	1	6-13	2,3
Nation-wide	1-3	1-5	1,4,5
By specific institution	-	14	-
Combined Federal & State	1,2	1-5	-
Type of release:			
Conditional	2	3,5,10,11	-
Unconditional	-	3,5,10,11	-

COVERAGE OF THIS REPORT

This report presents summary information concerning sentenced prisoners admitted to, confined in, and released from State and Federal correctional institutions in the United States¹ during calendar year 1967. Also included are trend data on movement of the sentenced prison population since 1939.

The National Prisoner Statistics (NPS) program is a voluntary reporting system initiated by the Bureau of the Census in 1926, and transferred to the Federal Bureau of Prisons in 1950. In addition to the annual series of which this bulletin is a part, NPS publishes an annual bulletin on prisoners executed under civil authority, and occasional detailed reports on court commitments to, and first releases from, State institutions.²

We welcome comments from recipients concerning the contents of this issue, and invite suggestions for changes in future bulletins.

PRISON POPULATION DECLINES AGAIN

During 1967, the number of sentenced prisoners in State and Federal institutions decreased by 2.4 percent -- from 199,654 prisoners confined at the end of 1966, to a December 31, 1967 population of 194,896. This was the sixth consecutive year the prison population has fallen, and the lowest prison population figure since 1956. (Chart 1, and Tables 1, 3, and 5)

The ratio to the civilian population of prisoners confined decreased from 102.7 per 100,000 on December 31, 1966, to 99.1 per 100,000 at the end of 1967 -- the lowest figure ever recorded by the National Prisoner Statistics program. (Tables 1 and 3)

The decline in State prison population was 2.8 percent in 1967, compared to a 5.0 percent drop in 1966 -- while Federal institutions recorded an increase for the first time

since 1962, with a 1967 population rise of 1.7 percent (compared to a decrease of 8.5 percent in 1966).³ (Tables 1 and 5)

POPULATION IN STATE INSTITUTIONS

The 1967 year-end population in State institutions fell below the 1966 level in 37 States and the District of Columbia, and in all four major geographical regions. Decreases of five percent or more were recorded in 17 States and the District of Columbia, and in the Northeastern region, while only 3 States reported increases in excess of five percent. (Chart 2 and Table 6)

The average number of prisoners incarcerated (based on the month-end figures) fell 4.1 percent, from 186,390 in 1966, to 178,799 in 1967. (Figure 2 and Table 13)

COURT COMMITMENTS

The number of prisoners received from court by State and Federal institutions decreased for the sixth consecutive year, dropping very slightly from 77,857 in 1966, to 77,850 in 1967. Court commitments to State institutions increased by 0.1 percent, while the number committed to Federal institutions fell 0.5 percent. In 23 States and the District of Columbia, the number received from court was below the 1966 total, as compared to 44 jurisdictions below the 1965 total in 1966. (Chart 4, and Tables 2, 4, 5, and 7)

The smallest number of prisoners were received from court in State institutions during the third quarter (21.4 percent of the total for the year), with the highest in the second quarter (27.3 percent). (Figure 3 and Table 12)

¹See Table 14 for a breakdown of the institutions which are included in this report.

²A Third annual series, PERSONNEL IN STATE AND FEDERAL INSTITUTIONS, has been discontinued.

³Detailed data on Federal prisoners by fiscal year appears in the annual STATISTICAL REPORT series of the Bureau of Prisons.

VIOLATORS RETURNED

For the third straight year, the number of releasees returned after violating the terms of their parole or other type of conditional release declined. In 1967, 17,583 violators were returned, a decrease of 0.4 percent from the 1966 figure of 17,662. In State institutions, the number of violators returned fell by 0.7 percent, while increasing by 1.6 percent in Federal institutions. (Chart 4 and Table 5)

RELEASES

The combined total of conditional and unconditional releases from State and Federal institutions during 1967 was 96,377 -- a decrease of 5.8 percent from the 1966 figure of 102,335. Prisoners released conditionally -- i.e., to continue their sentences under supervision in the community -- accounted for 67.3 percent of the total. (Chart 5 and Tables 3 and 5)

State institutions released 4.1 percent fewer prisoners in 1967 than in 1966, and

Federal institutions 15.9 percent. The use by State institutions of conditional methods of release decreased by 1.5 percent in 1967 from 1966, while Federal usage declined by 13.3 percent. (Chart 5, and Tables 3 and 5)

WOMEN CONFINED IN STATE AND FEDERAL INSTITUTIONS

The December 31, 1967 total of 6,235 sentenced female prisoners confined was 10.3 percent below the 1966 figure of 6,950. The number of women incarcerated in State institutions was down 11.2 percent from 1966, while in the Federal system it fell by 1.5 percent. (Tables 3 and 5)

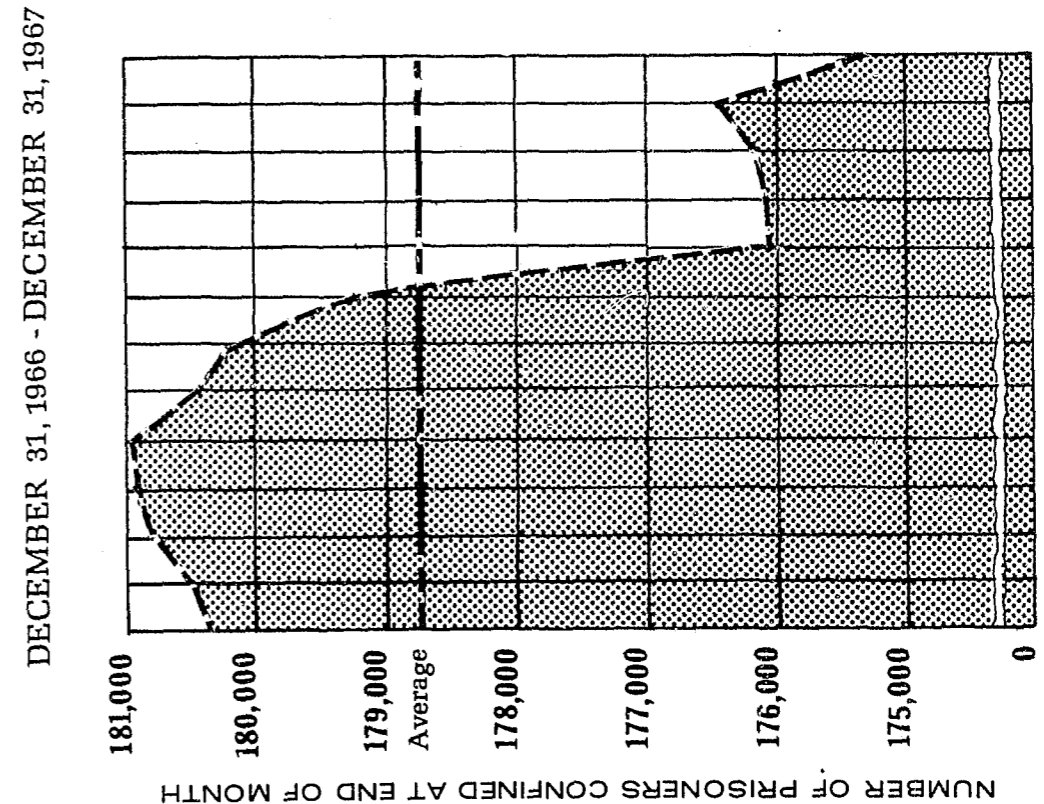
The number of female prisoners received from court decreased by 10.3 percent in State institutions, while there was an increase of 7.3 percent in the number of women committed by the courts to Federal institutions. State and Federal institutions recorded declines of 4.7 and 5.1 percent, respectively, in the number of female conditional release violators returned. (Tables 3, 5, and 11)

Figure 1. - PRIMARY ELEMENTS OF PRISON POPULATION MOVEMENT IN STATE INSTITUTIONS, BY THE 10 STATES WITH THE MOST PRISONERS CONFINED ON DECEMBER 31, 1967

State	Prisoners confined on Dec. 31, 1967	Percent of national total	Percent change, 1966-1967			
			Year-end prison population	Court commitments	Violators returned	Releases
UNITED STATES ..	175,317	100.0	-2.8	0.1	-0.7	-4.1
California	24,741	15.8	1.0	-6.9	-2.4	2.8
New York	14,085	8.0	-10.6	-1.0	-1.8	4.0
Texas	12,313	7.0	-0.6	2.0	-25.4	-7.0
Ohio	10,323	5.9	-3.5	5.1	8.7	-7.6
Florida	7,261	4.1	4.2	5.5	28.2	-8.0
Illinois	7,041	4.0	-6.0	8.0	4.3	0.3
Michigan	7,037	4.0	4.2	20.4	2.0	-8.0
Pennsylvania ...	5,674	3.2	-13.0	-14.7	0.8	2.3
North Carolina .	5,516	3.2	4.1	17.9	35.8	-17.6
Georgia	5,300	3.0	-1.6	5.2	-30.3	-23.5

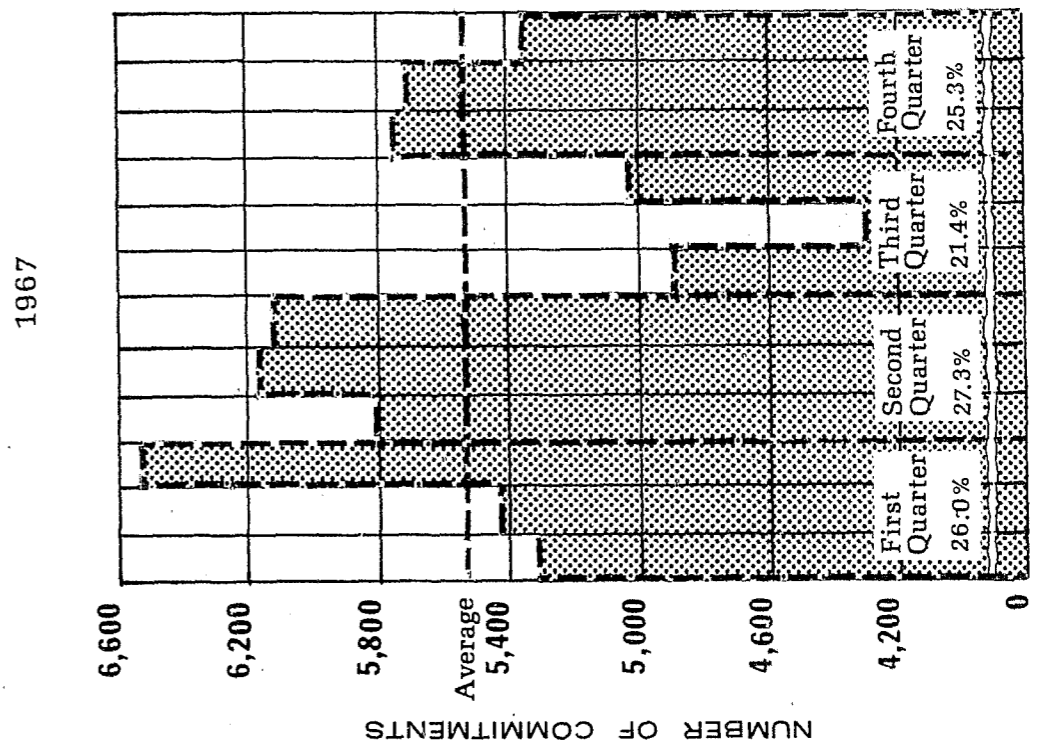
Source: Tables 6-10

FIGURE 2 - PRISONERS CONFINED IN STATE INSTITUTIONS BY MONTH: DECEMBER 31, 1966 - DECEMBER 31, 1967



Source: Table 13

FIGURE 3 - COURT COMMITMENTS TO STATE INSTITUTIONS BY MONTH: 1967



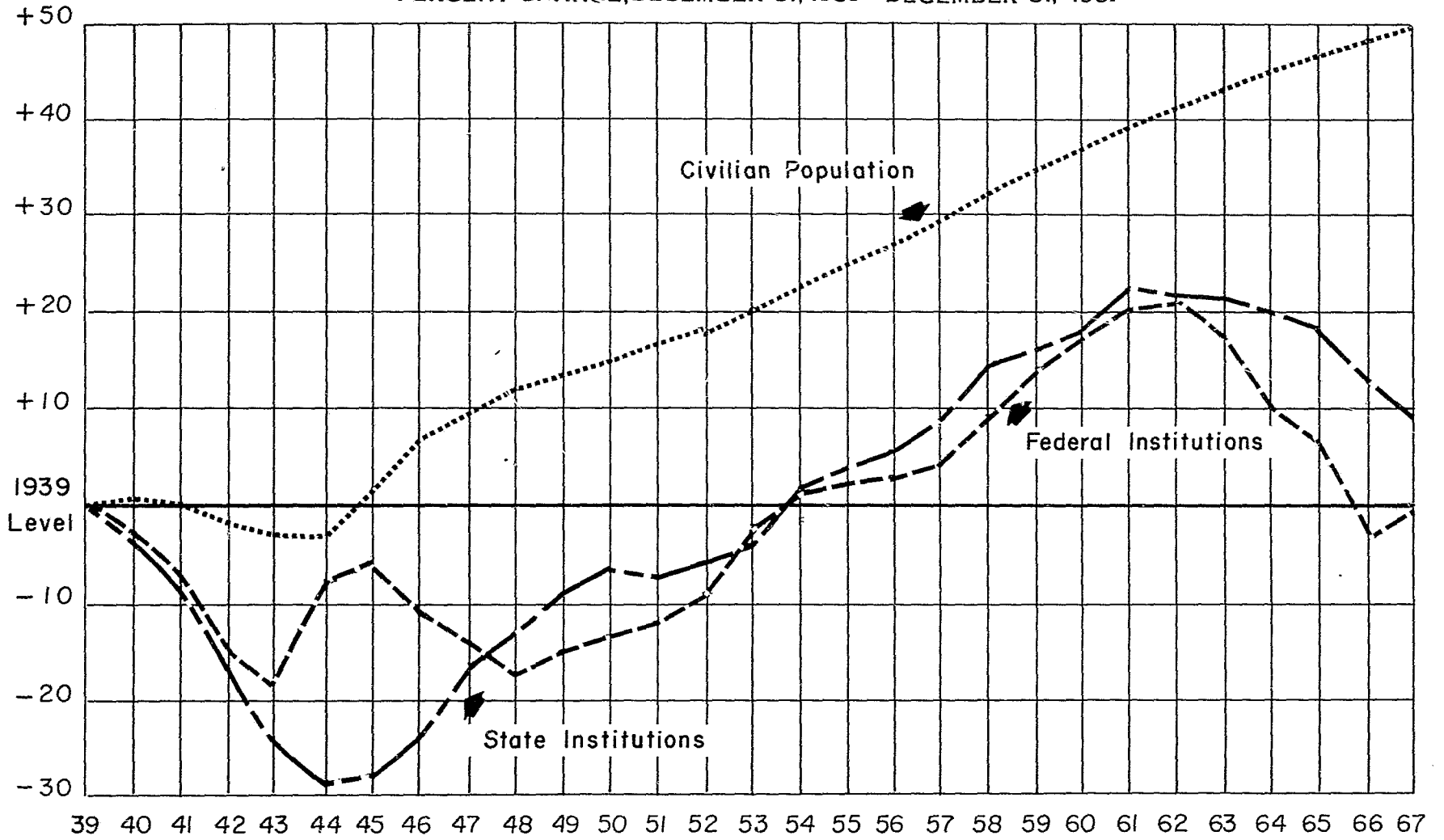
Source: Table 12

J F M A M J J A S O N D

D J F M A M J J A S O N D

CHART 1-Rate Of Growth Of State and Federal Prison Populations and of Civilian Population

PERCENT CHANGE, DECEMBER 31, 1939 - DECEMBER 31, 1967



Source: Table 1

CHART-2 Prisoners Confined In State Institutions On December 31, 1967

Percentage Difference In Number Confined Between 1966 And 1967

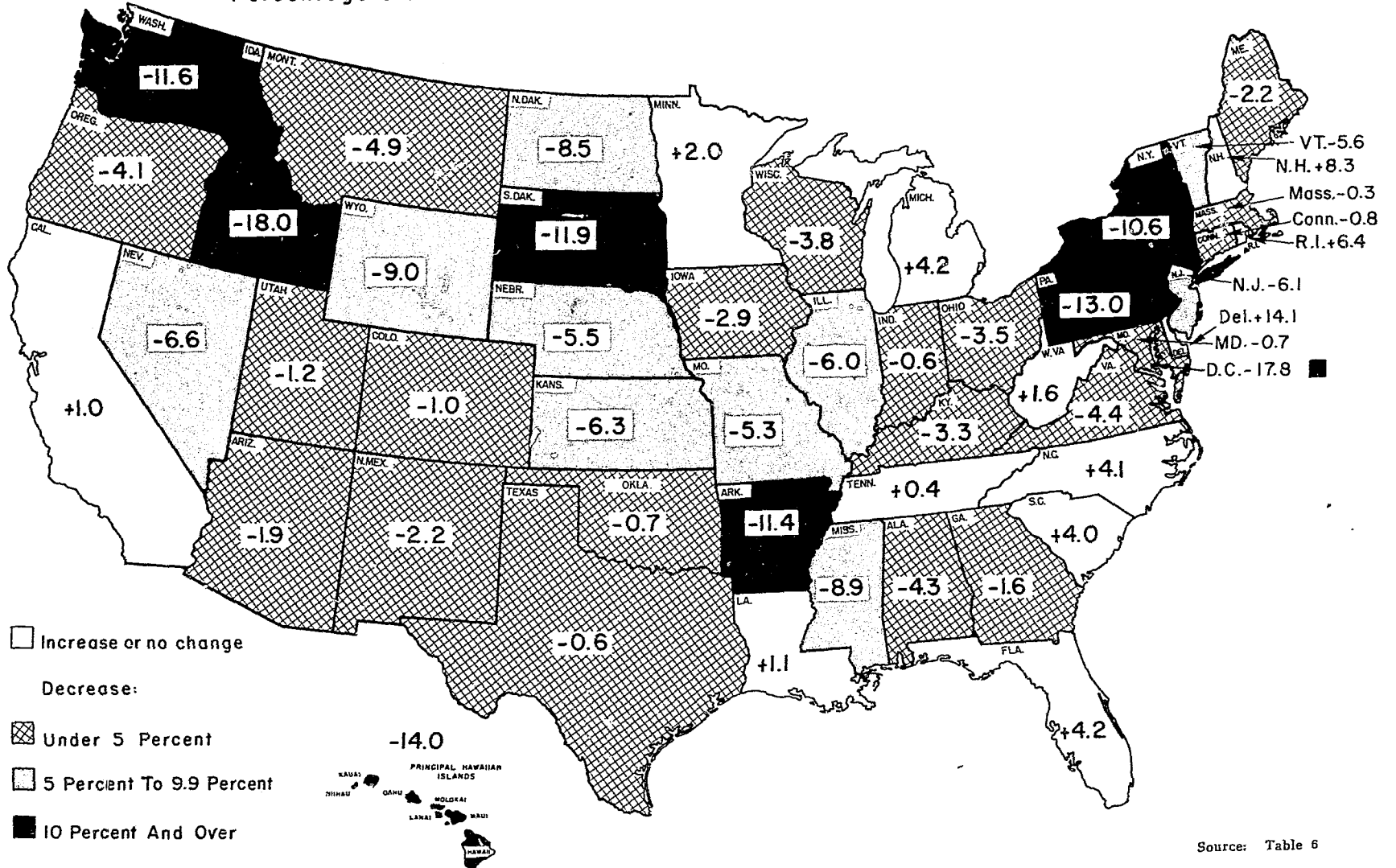


CHART-3 Prisoners Confined In State Institutions On December 31, 1967

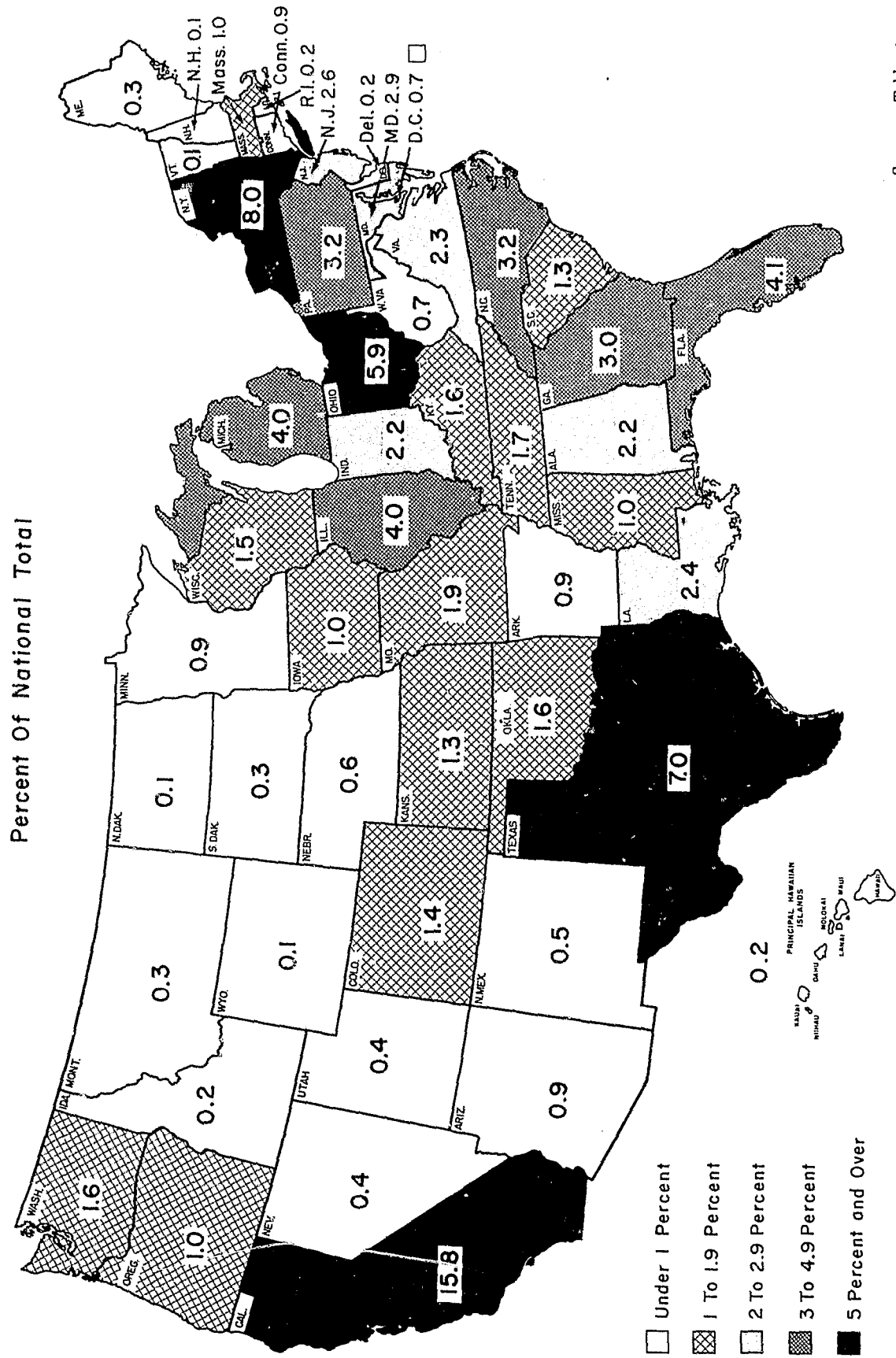


CHART 4 - COURT COMMITMENTS AND CONDITIONAL RELEASE VIOLATORS RETURNED TO STATE INSTITUTIONS

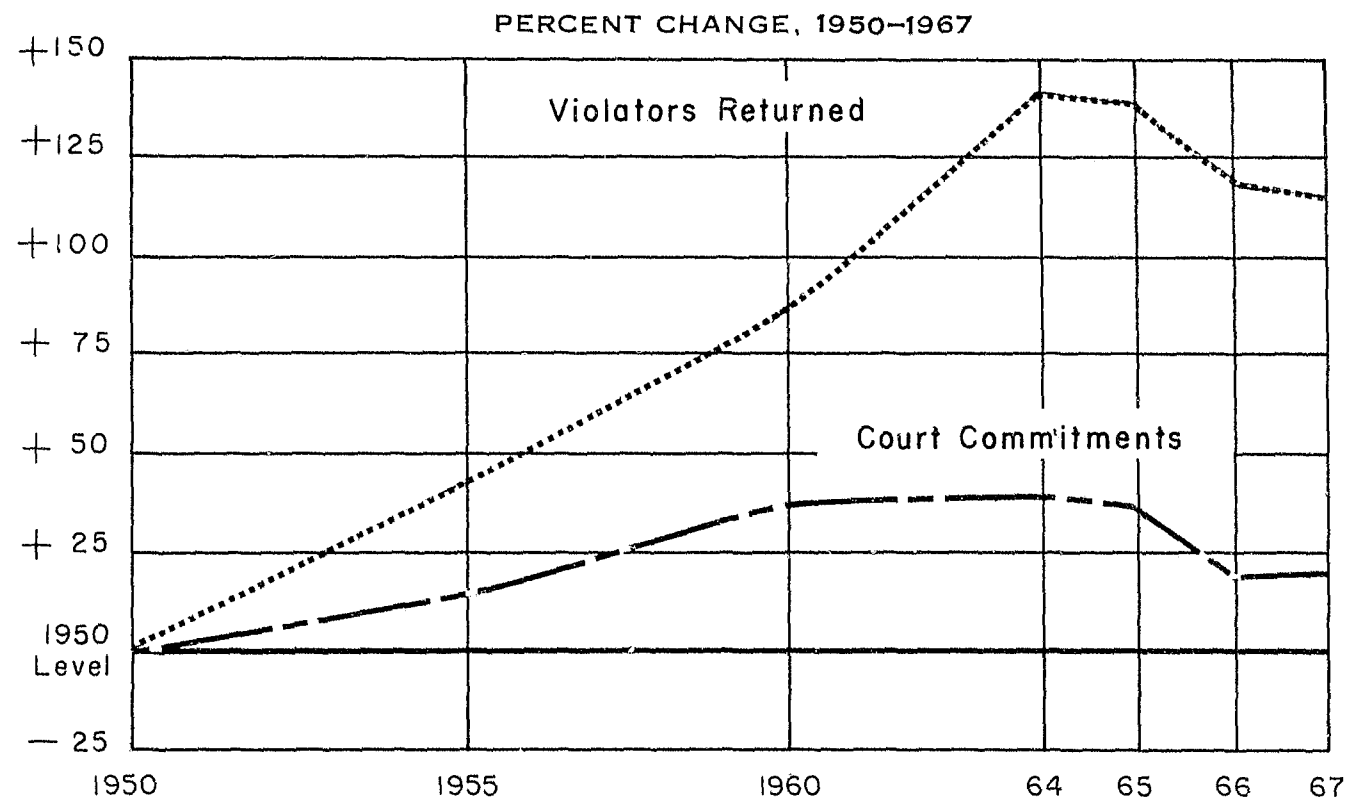


CHART 5 - PRISONERS RELEASED FROM STATE INSTITUTIONS, BY TYPE OF RELEASE

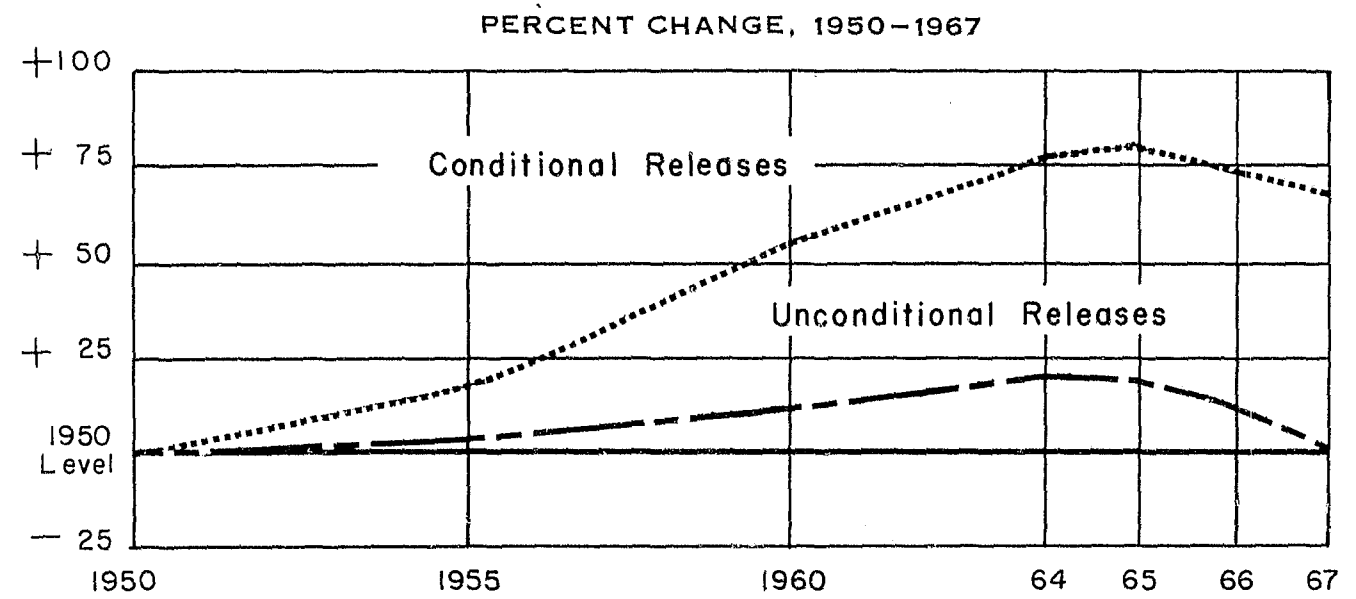


Table 1. - SENTENCED PRISONERS PRESENT AT END OF YEAR IN STATE AND FEDERAL INSTITUTIONS, FOR THE UNITED STATES: 1939-1967

(State figures exclude Hawaii prior to 1960 and Alaska for all years. This table supersedes Table 1, National Prisoner Statistics Bulletin No. 43)

Year	Number			Rate per 100,000 of the estimated civilian population of the U. S. (a)			Estimated year-end U. S. civilian population (b)
	All institutions	Federal institutions	State institutions	All institutions	Federal institutions	State institutions	
1967	194,896	19,579	175,317	99.1	10.0	89.2	196,583
1966	199,654	19,245	180,409	102.7	9.9	92.8	194,498
1965	210,895	21,040	189,855	109.5	10.9	98.6	192,602
1964	214,336	21,709	192,627	112.6	11.4	101.2	190,410
1963	217,283	23,128	194,155	115.7	12.3	103.4	187,808
1962	218,830	23,944	194,886	118.3	12.9	105.3	185,029
1961	220,149	23,696	196,453	120.8	13.0	107.8	182,306
1960	212,953	23,218	189,735	118.6	12.9	105.7	179,486
1959	207,446	22,492	184,954	117.7	12.8	104.9	176,242
1958	205,493	21,549	183,944	118.8	12.5	105.3	173,003
1957	195,256	20,420	174,836	114.9	12.0	102.9	169,942
1956	189,421	20,134	169,287	113.5	12.1	101.4	166,886
1955	185,780	20,088	165,692	113.4	12.3	101.1	163,842
1954	182,848	20,003	162,845	113.8	12.4	101.3	160,685
1953	173,547	19,363	154,184	110.2	12.3	97.9	157,517
1952	168,200	18,014	150,186	108.8	11.6	97.1	154,633
1951	165,640	17,395	148,245	108.9	11.4	97.4	152,150
1950	166,123	17,134	148,989	110.3	11.4	98.9	150,606
1949	163,749	16,868	146,881	110.0	11.3	98.6	148,890
1948	155,977	16,328	139,649	106.6	11.2	95.4	146,373
1947	151,304	17,146	134,158	105.2	11.9	93.3	143,867
1946	140,079	17,622	122,457	99.7	12.5	87.2	140,475
1945	133,649	18,638	115,011	100.5	14.0	86.5	132,979
1944	132,456	18,139	114,317	104.2	14.3	89.9	127,140
1943	137,220	16,113	121,107	108.0	12.7	95.3	127,103
1942	150,384	16,623	133,761	116.4	12.9	103.5	129,220
1941	165,439	18,465	146,974	126.0	14.1	112.0	131,268
1940	173,706	19,260	154,446	132.0	14.6	117.3	131,626
1939	179,818	19,750	160,088	137.1	15.0	122.0	131,170

(a) As rates were computed individually, sum of State and Federal rates may not exactly equal "All institutions" rate.

(b) Civilian population figures are in thousands. The 1967 figure is based upon interpolation of estimated figures published by the Bureau of the Census in Series P-25, Current Population Reports Numbers 398 and 403. For the remaining years, figures are based upon interpolations of estimated figures published in Series P-25, Numbers 380, 398 and 403 (1966), 398 and 403 (1960-1965), and 398 (1939-1959).

Table 2. - SENTENCED PRISONERS RECEIVED FROM COURT IN STATE AND FEDERAL INSTITUTIONS, FOR THE UNITED STATES: 1940-1967

(State figures exclude Hawaii prior to 1960 and Alaska for all years. Federal figures include a few prisoners committed from the Federal courts in Alaska and Hawaii. This table supersedes Table 2 in National Prisoner Statistics Bulletin Number 43)

Year	Number			Rate per 100,000 of the estimated civilian population of the U. S. (a)		
	All institutions	Federal institutions	State institutions	All institutions	Federal institutions	State institutions
1967	77,850	11,447	66,403	39.6	5.8	33.8
1966	77,857	11,508	66,349	40.0	5.9	34.1
1965	87,505	12,781	74,724	45.4	6.6	38.8
1964	87,578	12,482	75,096	46.0	6.6	39.4
1963	87,826	12,882	74,944	46.8	6.9	39.9
1962	89,082	13,514	75,568	48.1	7.3	40.8
1961	93,515	13,517	79,998	51.3	7.4	43.9
1960	88,575	13,723	74,852	49.3	7.6	41.7
1959	87,192	13,872	73,320	49.5	7.9	41.6
1958	88,633	13,803	74,830	51.2	8.0	43.3
1957	80,482	13,305	67,177	47.4	7.8	39.5
1956	77,924	13,454	64,470	46.7	8.1	38.6
1955	78,414	15,286	63,128	47.9	9.3	38.5
1954	80,900	16,685	64,215	50.3	10.4	40.0
1953	74,240	16,376	57,864	47.1	10.4	36.7
1952	70,892	15,305	55,587	45.8	9.9	35.9
1951	67,165	14,120	53,045	44.1	9.3	34.9
1950	69,473	14,237	55,236	46.1	9.5	36.7
1949	68,925	13,130	55,795	46.3	8.8	37.5
1948	63,777	12,430	51,347	43.6	8.5	35.1
1947	64,804	12,948	51,856	45.0	9.0	36.0
1946	61,338	14,950	46,388	45.7	10.6	33.0
1945	53,212	14,171	39,041	40.0	10.7	29.4
1944	50,162	14,047	36,115	39.5	11.0	28.4
1943	50,082	12,203	37,879	39.4	9.6	29.8
1942	58,858	13,725	45,133	45.5	10.6	34.9
1941	68,700	15,350	53,350	52.3	11.7	40.6
1940	73,104	15,109	57,995	55.5	11.5	44.1

(a) As rates were computed individually, sum of State and Federal rates may not exactly equal "All institutions" rate. See Table 1 for civilian population figures.

Table 3. - MOVEMENT OF SENTENCED PRISONERS IN STATE AND FEDERAL INSTITUTIONS, BY SEX, FOR THE UNITED STATES: CALENDAR YEAR 1967

Movement of sentenced prisoners	All institutions			Federal institutions			State institutions (a)		
	Total	Male	Female	Total	Male	Female	Total	Male	Female
Prisoners present:									
January 1, 1967	199,654	192,704	6,950	19,245	18,598	647	180,409	174,106	6,303
December 31, 1967	194,896	188,661	6,235	19,579	18,942	637	175,317	169,719	5,598
Percent change	-2.4	-2.1	-10.3	1.7	1.8	-1.5	-2.8	-2.5	-11.2
Admissions, total	220,932	213,685	6,947	23,376	22,631	745	197,556	191,354	6,202
Admitted except transfers	132,437	126,567	5,870	16,014	15,320	694	116,423	111,247	5,176
Court commitments	77,850	74,400	3,450	11,447	10,962	485	66,403	63,438	2,965
Returned as violators of conditional release (b) ..	17,583	16,821	762	1,774	1,718	56	15,809	15,103	706
Other admissions (c)	37,004	35,346	1,658	2,793	2,640	153	34,211	32,706	1,505
Transferred from other institutions	88,495	87,418	1,077	7,362	7,311	51	81,133	80,107	1,026
Departures, total	225,690	218,028	7,662	23,042	22,287	755	202,648	195,741	6,907
Discharged, except transfers	137,365	131,298	6,567	15,617	14,941	676	122,248	116,357	5,891
Releases, total	96,377	91,675	4,702	12,361	11,840	521	84,016	79,835	4,181
Conditional releases, total	64,830	61,341	3,489	8,037	7,677	360	56,793	53,664	3,129
Paroles	57,721	54,486	3,235	5,297	5,021	276	52,424	49,465	2,959
Other Conditional releases (d)	7,109	6,855	254	2,740	2,656	84	4,369	4,199	170
Unconditional releases, total (e)	31,547	30,334	1,213	4,324	4,163	161	27,223	26,171	1,052
Deaths, except executions	652	639	13	57	57	-	595	582	13
Executions	2	2	-	-	-	-	2	2	-
Other departures (f)	40,834	38,982	1,852	3,199	3,044	155	37,635	35,938	1,697
Transferred to other institutions	87,825	86,730	1,095	7,425	7,346	79	80,400	79,384	1,016

10

- (a) Excludes Alaska.
- (b) Figures shown do not include some violators who were returned with new or additional sentences and were included as "court commitments".
- (c) Includes escapees returned, returns from court orders and authorized temporary absences, and "other" admissions.
- (d) Includes 45 conditional pardons (44 male, 1 female).
- (e) Includes 12 full pardons (all male).
- (f) Includes escapes, court orders, authorized temporary absences, and "other" departures.

Table 4. - SENTENCED PRISONERS RECEIVED FROM COURT AND PRESENT AT END OF YEAR IN STATE AND FEDERAL INSTITUTIONS, FOR THE UNITED STATES: 1940-67
 (State figures exclude Hawaii prior to 1960 and Alaska for all years. Federal figures include a few prisoners committed from the Federal courts in Alaska and Hawaii. This table supersedes Table 4, National Prisoner Statistics Bulletin Number 43)

	1967	Per- cent change	1966	Per- cent change	1965	Per- cent change	1960	Per- cent change	1955	Per- cent change	1950	Per- cent change	1940
Estimated civilian population of the United States as of December 31 (a)	196,583	1.1	194,498	1.0	192,602	7.3	179,486	9.5	163,842	8.8	150,606	14.4	131,626
Present December 31:													
All institutions	194,896	-2.4	199,654	-5.3	210,895	-1.0	212,953	14.6	195,780	11.8	166,123	-4.4	175,706
Rate per 100,000 of civilian population (b) ..	99.1	-3.5	102.7	-6.2	109.5	-7.7	118.6	4.6	113.4	2.8	110.3	-16.4	132.0
Federal institutions	19,579	1.7	19,245	-8.5	21,040	-9.4	23,218	15.6	20,088	17.2	17,134	-11.0	19,260
Rate per 100,000 of civilian population	10.0	1.0	9.9	-9.2	10.9	-15.5	12.9	4.9	12.3	7.9	11.4	-21.9	14.6
State institutions	175,317	-2.8	180,409	-5.0	189,855	0.1	179,735	14.5	165,692	11.2	148,989	-3.5	154,446
Rate per 100,000 of civilian population	89.2	-3.9	92.8	-5.9	98.6	-6.7	105.7	4.6	101.1	2.2	96.9	-15.7	117.3
Received from court:													
All institutions	77,850	-(c)	77,857	-11.0	87,505	-1.2	88,575	13.0	78,414	12.9	69,473	-5.0	73,104
Rate per 100,000 of civilian population	39.6	-1.0	40.0	-11.9	45.4	-7.9	49.3	2.9	47.9	3.9	46.1	-16.9	55.5
Federal institutions	11,447	-0.5	11,508	-10.0	12,781	-6.9	13,723	-10.2	15,286	7.4	14,237	-5.8	15,109
Rate per 100,000 of civilian population	5.8	-1.7	5.9	-10.6	6.0	-13.2	7.6	-18.3	9.3	-2.1	9.5	-17.4	11.5
State institutions	66,403	0.1	66,349	-11.2	74,724	-0.2	74,852	18.6	63,128	14.3	55,236	-4.8	57,995
Rate per 100,000 of civilian population	33.8	-0.9	34.1	-12.1	38.8	-7.0	41.7	8.3	38.5	4.9	36.7	-16.8	44.1

11

- (a) The civilian population figures are in thousands. The 1967 figure is based upon interpolation of estimated figures published by the Bureau of the Census in Series P-25, Current Population Reports Numbers 398 and 403. For the remaining years, figures are based upon interpolations of estimated figures published in Series P-25, Numbers 390, 398 and 403 (1966), 398 and 403 (1960 and 1965), and 398 (1940-1955).
- (b) As rates were computed individually, the sum of the State and Federal rates may not exactly equal "All institutions" rate.
- (c) Percent change is less than 0.05 percent.

Table 5. - SUMMARY OF MOVEMENT OF SENTENCED PRISONERS, BY TYPE OF INSTITUTION AND SEX, FOR THE UNITED STATES: 1950-1967

(Excludes statistics on transfers, escapes and escapees returned, court orders, executions and other deaths, and authorized temporary absences. State figures exclude Hawaii prior to 1960 and Alaska for all years. Federal figures include a few prisoners committed from the Federal courts in Alaska and Hawaii. Refer to Tables 6-11 for detailed State figures and footnotes. This table supersedes Table 5 in National Prisoner Statistics Bulletin No. 43)

	1967	Per- cent change	1966	Per- cent change	1965	Per- cent change	1964	Per- cent change	1960	Per- cent change	1955	Per- cent change	1950	Percent change 1950-67
Estimated United States civilian population as of December 31 (a)	196,583	1.1	194,498	1.0	192,602	1.2	190,410	6.1	179,486	9.5	163,842	8.8	150,606	30.5
Present December 31:														
All institutions	194,896	-2.4	199,654	-5.3	210,895	-1.6	214,336	0.6	212,953	14.6	185,780	11.8	166,123	17.3
Male	188,661	-2.1	192,704	-5.2	203,327	-1.6	206,632	0.7	205,253	14.9	178,655	11.4	160,315	17.7
Female	6,235	-10.3	6,950	-8.2	7,568	-1.8	7,704	0.1	7,700	8.1	7,125	22.7	5,808	7.4
Federal institutions	19,579	1.7	19,245	-8.5	21,040	-3.1	21,709	-6.5	23,218	15.6	20,088	17.2	17,154	14.3
Male	18,942	1.8	18,598	-8.2	20,261	-3.0	20,882	-6.5	22,343	15.4	19,367	16.2	16,672	13.6
Female	637	-1.5	647	-16.9	779	-5.8	827	-5.5	875	21.4	721	56.1	462	37.9
State institutions	175,317	-2.8	180,409	-5.0	189,855	-1.4	192,627	1.5	189,735	14.5	155,692	11.2	148,989	17.7
Male	169,942	-2.5	174,106	-4.9	183,066	-1.4	185,750	1.6	182,910	14.8	149,288	10.9	143,643	18.2
Female	5,598	-11.2	6,303	-7.2	6,789	-1.3	6,877	0.8	6,825	6.6	6,404	19.8	5,346	4.7
Received from court:														
All institutions	77,850	-(b)	77,857	-11.0	87,505	-0.1	87,578	-1.1	88,575	13.0	78,414	12.9	69,473	12.1
Male	74,400	0.4	74,100	-11.0	83,241	-0.1	83,337	-1.1	84,264	13.3	74,368	12.4	66,161	12.5
Female	3,450	-8.2	3,757	-11.9	4,264	0.5	4,241	-1.6	4,311	6.5	4,046	22.2	3,312	4.2
Federal institutions	11,447	-0.5	11,508	-10.0	12,781	2.4	12,482	-9.0	13,723	-10.2	15,286	7.4	14,237	-19.6
Male	10,962	-0.9	11,056	-9.7	12,247	2.3	11,973	-9.0	13,161	-10.6	14,726	7.0	13,762	-20.3
Female	485	7.3	452	-15.4	534	4.9	509	-9.4	562	0.4	560	17.9	475	2.1
State institutions	66,403	0.1	66,349	-11.2	74,724	-0.5	75,096	0.3	74,852	18.6	63,128	14.3	55,236	20.2
Male	63,438	0.6	63,044	-11.2	70,994	-0.5	71,364	0.4	71,103	19.2	59,642	13.8	52,399	21.1
Female	2,965	-10.3	3,305	-11.4	3,730	-0.1	3,732	-0.5	3,749	7.5	3,486	22.9	2,837	4.5
Violators returned (c):														
All institutions	17,583	-0.4	17,662	-8.9	19,393	-0.8	19,558	30.2	15,023	38.2	10,872	25.1	8,692	102.3
Male	16,821	-0.2	16,862	-9.0	18,527	-0.6	18,647	30.3	14,307	38.7	10,317	26.4	8,164	106.0
Female	762	-4.8	800	-7.6	866	-4.9	911	27.2	716	29.0	555	5.1	528	44.3
Federal institutions	1,774	1.6	1,746	-4.2	1,823	7.8	1,691	16.1	1,456	48.6	980	-28.5	1,371	29.4
Male	1,718	1.8	1,687	-4.8	1,772	8.5	1,633	14.6	1,425	47.8	964	-28.6	1,350	27.3
Female	56	-5.1	59	15.7	51	-12.1	58	87.1	31	(a)	16	-(a)	21	(a)
State institutions	15,809	-0.7	15,916	-9.4	17,570	-1.7	17,867	31.7	13,567	37.2	9,892	35.1	7,321	115.9
Male	15,103	-0.5	15,175	-9.4	16,755	-1.5	17,014	32.1	12,882	37.7	9,353	37.3	6,814	121.6
Female	706	-4.7	741	-9.1	815	-4.5	853	24.5	685	27.1	539	6.3	507	39.3

12

	1967	Per- cent change	1966	Per- cent change	1965	Per- cent change	1964	Per- cent change	1960	Per- cent change	1955	Per- cent change	1950	Percent change 1950-67
All releases:														
All institutions	96,377	-5.8	102,335	-3.6	106,161	-0.4	106,633	10.7	96,284	16.1	82,924	10.4	75,088	28.4
Male	91,675	-5.8	97,309	-3.8	101,131	-0.3	101,485	11.0	91,405	16.3	78,569	10.9	70,863	29.4
Female	4,702	-6.4	5,026	-0.1	5,030	-2.3	5,148	5.5	4,879	12.0	4,355	3.1	4,225	11.3
Federal institutions	12,361	-15.9	14,695	-1.2	14,874	-1.5	15,100	6.4	14,196	-10.0	15,776	3.9	15,187	-18.6
Male	11,840	-15.9	14,072	-1.3	14,255	-1.4	14,455	6.2	13,613	-10.7	15,251	3.7	14,707	-19.5
Female	521	-16.4	623	0.6	619	-4.0	645	10.6	583	11.0	525	9.4	480	8.5
State institutions	84,016	-4.1	87,640	-4.0	91,287	-0.3	91,533	11.5	82,088	22.2	67,148	12.1	59,901	40.3
Male	79,835	-4.1	83,237	-4.2	86,876	-0.2	87,030	11.9	77,792	22.9	63,318	12.8	56,156	42.2
Female	4,181	-5.0	4,403	-0.2	4,411	-2.0	4,503	4.8	4,296	12.2	3,830	2.3	3,745	11.6
Conditional releases:														
All institutions	64,830	-3.1	66,908	-1.7	68,044	0.1	67,952	14.5	59,326	29.2	45,913	7.9	42,533	52.4
Male	61,341	-3.1	63,306	-1.9	64,537	0.1	64,450	14.7	56,194	29.9	43,271	8.2	40,006	53.3
Female	3,489	-3.1	3,602	2.7	3,507	0.1	3,502	11.8	3,132	18.5	2,642	4.6	2,527	38.1
Federal institutions	8,037	-13.3	9,273	6.6	8,696	-2.5	8,920	15.7	7,712	19.8	6,440	-32.0	9,466	-15.1
Male	7,677	-13.4	8,867	6.7	8,307	-2.5	8,520	14.7	7,427	20.2	6,179	-31.2	9,073	-15.4
Female	360	-11.3	406	4.4	389	-2.8	400	40.4	285	9.2	261	-33.6	393	-8.4
State institutions	56,793	-1.5	57,635	-2.9	59,348	0.5	59,032	14.4	51,614	30.8	39,473	19.4	33,067	71.8
Male	53,664	-1.4	54,439	-3.2	56,230	0.5	55,930	14.7	48,767	31.5	37,092	19.9	30,333	73.5
Female	3,129	-2.1	3,196	2.5	3,118	0.5	3,102	9.0	2,847	19.6	2,381	11.6	2,734	46.6
Unconditional releases:														
All institutions	31,547	-11.0	35,427	-7.1	38,117	-1.5	38,681	4.7	36,958	-0.1	37,011	13.7	32,555	-3.1
Male	30,334	-10.8	34,003	-7.1	36,594	-1.2	37,035	5.2	35,211	-0.2	35,298	14.4	30,857	-1.7
Female	1,213	-14.8	1,424	-6.5	1,523	-7.5	1,646	-5.8	1,747	2.0	1,713	0.7	1,698	-28.6
Federal institutions	4,324	-20.3	5,422	-12.2	6,178	-(b)	6,180	-4.7	6,484	-30.5	9,336	63.2	5,721	-24.4
Male	4,163	-20.0	5,205	-12.5	5,948	0.2	5,935	-4.1	6,186	-31.8	9,072	61.0	5,634	-26.1
Female	161	-25.8	217	-5.7	230	-6.1	245	-17.8	298	12.9	264	203.4	87	85.1
State institutions	27,223	-9.3	30,005	-6.1	31,939	-1.7	32,501	6.7	30,474	10.1	27,675	3.1	26,834	1.4
Male	26,171	-9.1	28,798	-6.0	30,646	-1.5	31,100	7.1	29,025	10.7	26,226	4.0	25,223	3.2
Female	1,052	-12.8	1,207	-6.7	1,293	-7.7	1,401	-3.3	1,449	-	1,449	-10.1	1,611	-34.7

13

(a) Civilian population figures are in thousands. The 1967 figure is based upon interpolation of estimated figures published by the Bureau of the Census in Series P-25, Current Population Reports 398 and 403. For the remaining years, figures are based upon interpolations of estimated figures published in Series P-25, Numbers 380, 398 and 403 (1966), 398 and 403 (1965, 1964, and 1960), and 398 (1955 and 1950).

(b) Percent change is less than 0.05 percent.

(c) Figures shown do not include some violators who were returned with new or additional sentences and were listed as "court commitments".

(d) Percent change not shown where beginning figure is less than 25.

Table 6. - YEAR-END PRISON POPULATION IN STATE INSTITUTIONS, BY STATE: 1950-1967

(Supersedes Table 6, National Prisoner Statistics Bulletin Number 43. Refer to Tables 10 and 11 for detailed footnotes concerning 1967 figures)

Region and State, and number of prisoners confined on Dec. 31, 1967 (a)	1967	Per- cent change	1966	Per- cent change	1965	Per- cent change	1964	Per- cent change	1960	Per- cent change	1955	Per- cent change	1950
United States (b)	175,317	-2.8	180,409	-5.0	189,855	-1.4	192,627	1.5	189,735	14.5	165,692	11.2	148,989
The South	64,508	-1.0	65,125	-5.1	68,648	-0.1	68,711	-4.1	71,641	17.4	61,028	13.9	53,597
The North Central Region	41,568	-2.7	42,732	-8.2	46,526	-4.7	48,845	-2.8	50,255	7.5	46,741	7.4	43,515
The West (b)	40,073	-1.2	40,561	1.0	40,178	0.6	39,951	18.6	33,675	34.3	25,067	23.9	20,232
The Northeastern Region	29,168	-8.8	31,991	-7.3	34,503	-1.8	35,120	2.8	34,164	4.0	32,856	3.8	31,645
10,000 and above:													
California	27,741	1.0	27,467	4.3	26,325	-0.6	26,483	22.3	21,660	42.2	15,230	37.8	11,056
New York (c)	14,085	-10.6	15,760	-10.0	17,504	-0.9	17,658	2.6	17,207	(d)	17,069	11.5	15,313
Texas	12,313	-0.6	12,392	-3.6	12,854	4.7	12,278	8.6	11,300	31.2	8,622	34.2	6,424
Ohio	10,323	-3.5	10,694	-6.0	11,374	-4.1	11,861	6.8	11,111	6.0	10,483	14.8	9,128
5,000 under 10,000:													
Florida	7,261	4.2	6,972	-0.3	6,995	4.0	6,725	-5.1	7,084	46.7	4,830	21.6	3,973
Illinois	7,041	-6.0	7,491	-9.8	8,306	-5.1	8,754	-3.4	9,064	11.5	8,130	3.1	7,886
Michigan	7,037	4.2	6,754	-8.0	7,342	-8.5	8,028	-15.9	9,550	(e)	9,547	11.1	8,591
Pennsylvania	5,674	-13.0	6,519	-8.4	7,116	-7.2	7,667	-1.7	7,802	6.3	7,342	-1.2	7,432
North Carolina (f)	5,516	4.1	5,297	-12.1	6,029	(d)	4,888	-18.2	5,977	12.1	5,334	6.6	5,004
Georgia (g)	5,300	-1.6	5,385	-9.7	5,966	-(d)	7,309	4.6	6,985	22.5	5,701	25.4	4,545
Maryland	5,083	-0.7	5,117	-6.4	5,467	0.3	5,453	2.6	5,316	13.5	4,685	20.4	3,892
3,000 under 5,000:													
New Jersey	4,614	-6.1	4,912	1.5	4,839	4.9	4,614	7.7	4,284	13.3	3,782	-5.2	3,991
Louisiana	4,112	1.1	4,068	5.8	3,844	7.9	3,564	-4.9	3,749	23.9	3,026	13.2	2,674
Virginia	4,033	-4.4	4,220	-7.3	4,553	-6.6	4,873	-15.6	5,775	18.6	4,869	9.7	4,439
Indiana	3,884	-0.6	3,907	-12.9	4,486	-6.5	4,797	-11.6	5,429	21.7	4,462	-5.8	4,738
Alabama	3,881	-4.3	4,056	-7.3	4,377	-4.6	4,586	-14.6	5,369	2.8	5,222	17.2	4,454
Missouri	3,263	-5.3	3,447	-2.0	3,517	-0.3	3,529	-4.6	3,698	-6.8	3,966	16.6	3,400
2,000 under 3,000:													
Tennessee	2,980	0.4	2,968	-7.6	3,213	0.8	3,187	1.7	3,134	15.1	2,723	-2.1	2,780
Kentucky	2,834	-3.3	2,932	4.2	2,813	-7.2	3,030	-15.9	3,603	7.6	3,349	2.8	3,259
Oklahoma	2,756	-0.7	2,776	-1.9	2,829	0.7	2,808	4.8	2,679	3.0	2,600	8.3	2,401
Washington	2,738	-11.6	3,098	-3.2	3,202	8.2	2,960	20.6	2,455	0.5	2,443	6.7	2,290
Wisconsin	2,607	-3.8	2,709	-4.3	2,830	-0.5	2,844	2.2	2,784	22.1	2,281	13.1	2,017
Colorado	2,514	-1.0	2,540	-8.2	2,766	3.8	2,666	28.3	2,078	15.4	1,800	20.8	1,490
South Carolina	2,337	4.0	2,248	-3.2	2,323	0.7	2,306	10.9	2,080	12.3	1,852	22.4	1,513
Kansas	2,289	-6.3	2,444	-12.4	2,791	-1.2	2,825	22.1	2,313	17.2	1,974	0.8	1,959

14

Region and State, and number of prisoners confined on Dec. 31, 1967 (a)	1967	Per- cent change	1966	Per- cent change	1965	Per- cent change	1964	Per- cent change	1960	Per- cent change	1955	Per- cent change	1950
1,000 under 2,000:													
Iowa	1,830	-2.9	1,885	-13.5	2,178	-3.5	2,256	2.4	2,204	(e)	2,203	5.7	2,084
Massachusetts	1,824	-0.3	1,829	-5.2	1,929	-2.6	1,980	3.1	1,920	-3.8	1,995	-16.0	2,375
Oregon	1,803	-4.1	1,880	-6.0	2,000	-2.7	2,056	20.2	1,710	10.2	1,552	1.2	1,534
Mississippi	1,667	-8.9	1,829	-9.4	2,019	-1.8	2,056	4.1	1,975	-5.0	2,080	-3.6	2,158
Minnesota	1,652	2.0	1,620	-8.6	1,772	-4.9	1,863	-9.5	2,059	4.8	1,964	4.5	1,879
Arkansas	1,651	-11.4	1,864	-5.4	1,970	-1.1	1,992	-1.2	2,016	15.1	1,751	13.6	1,541
Arizona	1,596	-1.9	1,627	-4.0	1,694	4.1	1,627	7.3	1,516	43.7	1,055	20.2	878
Connecticut	1,587	-0.8	1,599	-2.6	1,642	-4.3	1,716	14.6	1,497	18.8	1,260	23.5	1,020
District of Columbia	1,268	-17.8	1,542	-3.9	1,604	-3.0	1,653	-15.6	1,958	0.8	1,943	31.5	1,478
West Virginia	1,208	1.6	1,189	-19.5	1,477	14.2	1,722	-28.5	2,407	6.1	2,269	-21.9	2,904
500 under 1,000:													
Nebraska	971	-5.5	1,027	-10.8	1,151	-13.0	1,323	4.3	1,269	17.5	1,080	-5.8	1,147
New Mexico	892	-2.2	912	-9.0	1,002	1.5	987	-20.6	1,243	71.7	724	2.7	705
Utah	651	-1.2	659	-6.0	701	6.1	661	19.5	553	-0.2	554	-1.4	562
Nevada	608	-6.6	651	4.7	622	38.2	450	9.0	413	10.7	373	55.4	240
Maine	592	-2.1	605	-13.0	695	-3.3	719	-4.1	750	21.0	620	-15.8	736
Montana	521	-4.9	548	-6.5	586	-21.0	742	23.3	602	13.8	529	-11.1	595
Below 500:													
South Dakota	489	-11.9	555	-2.8	571	8.8	525	-0.2	526	24.3	423	-6.2	451
Idaho	391	-18.0	477	-0.8	481	1.1	476	-13.3	549	5.6	520	1.2	514
Hawaii	364	-13.9	423	-8.6	463	-8.1	504	-9.7	558	(h)	(h)	(h)	(h)
Rhode Island (i)	350	6.4	329	6.1	310	11.5	278	(d)	255	-(d)	305	7.4	284
Delaware (k)	308	14.1	270	-14.3	315	(a)	281	24.3	226	(a)	172	8.9	158
Wyoming	254	-9.0	279	-17.0	336	-0.9	339	0.3	338	17.8	287	-22.0	368
New Hampshire	222	8.3	205	-	205	3.5	198	10.0	180	-9.1	198	-15.7	235
Vermont	220	-5.6	233	-11.4	263	-9.3	290	7.8	269	-5.6	285	10.0	259
North Dakota	182	-8.5	199	-4.3	208	-13.3	240	-3.2	248	8.8	228	-3.0	235

15

(a) Boarded female prisoners are shown in State in which boarded rather than State from which boarded.
 (b) Excludes Hawaii in 1950 and 1955 and Alaska in all years.
 (c) Beginning in 1960, includes prisoners out of the institutions on temporary absences.
 (d) Percent change not shown as figures are not comparable.
 (e) Percent change less than 0.05 percent.
 (f) The 1965 figure was revised to include 1,061 prisoners who had erroneously been excluded from figures for 1965 and prior years.
 (g) Prior to 1965, includes misdemeanants and juveniles confined in State correctional institutions.
 (h) Figures not available.
 (i) Prior to 1960 includes male misdemeanants in adult correctional institutions. Excludes female misdemeanants beginning in 1965.
 (k) Includes only Superior Court cases. Prior to 1960 excludes Kent and Sussex County Workhouses. The 1965 figure was revised to include 34 prisoners who had erroneously been excluded from figures for 1965 and prior years.

Table 7. - COURT COMMITMENTS TO STATE INSTITUTIONS, BY STATE: 1950-1967

(Supersedes Table 7, National Prisoner Statistics Bulletin Number 43)

Region and State, and number of prisoners confined on Dec. 31, 1967	1967	Per- cent change	1966	Per- cent change	1965	Per- cent change	1964	Per- cent change	1960	Per- cent change	1955	Per- cent change	1950
United States (a)	66,403	0.1	66,349	-11.2	74,724	-0.5	75,096	0.3	74,852	18.6	63,128	14.3	55,236
The South	28,956	0.7	28,748	-13.2	33,129	-1.5	33,622	4.3	32,249	14.8	28,086	19.2	23,569
The North Central Region	16,351	5.2	15,544	-8.4	16,978	-4.4	17,753	-4.3	18,544	13.9	16,282	11.5	14,599
The West (a)	10,181	-2.7	10,465	-13.0	12,033	8.0	11,139	-6.9	11,969	47.3	8,123	2.9	7,896
The Northeastern Region	10,915	-5.8	11,592	-7.9	12,584	(b)	12,582	4.1	12,090	13.7	10,637	16.0	9,172
10,000 and above:													
California	5,144	-6.9	5,525	-8.0	6,004	13.1	5,307	-12.0	6,028	65.7	3,638	16.5	3,122
New York	4,686	-1.0	4,732	-13.6	5,474	3.9	5,269	1.6	5,186	15.0	4,510	30.5	3,456
Texas	5,020	2.0	4,921	-12.4	5,615	-1.9	5,723	13.5	5,043	27.8	3,947	31.7	2,996
Ohio	3,417	5.1	3,251	-5.0	3,421	1.0	3,388	-9.2	3,733	14.4	3,264	19.7	2,727
5,000 under 10,000:													
Florida	2,988	5.5	2,831	-11.3	3,193	-3.7	3,314	9.5	3,026	43.8	2,105	38.9	1,516
Illinois	2,232	8.0	2,067	-16.0	2,461	-5.4	2,601	-8.0	2,826	28.7	2,196	17.6	1,868
Michigan	3,719	20.4	3,088	-5.9	3,280	-12.3	3,741	0.9	3,706	13.2	3,275	6.5	3,076
Pennsylvania	1,598	-14.7	1,873	-7.0	2,015	-5.3	2,128	1.3	2,101	-3.9	2,187	17.1	1,867
North Carolina	2,000	17.9	1,697	-28.0	2,356	-4.3	2,461	-9.2	2,709	13.6	2,384	23.7	1,928
Georgia (c)	2,171	5.2	2,064	(d)	3,178	1.5	3,130	24.0	2,524	22.1	2,067	28.7	1,606
Maryland	4,257	-5.4	4,499	-5.8	4,775	2.1	4,675	7.0	4,369	13.3	3,855	26.0	3,060
3,000 under 5,000:													
New Jersey	2,253	-14.7	2,640	2.9	2,566	2.2	2,510	10.4	2,274	35.4	1,679	8.0	1,555
Louisiana	1,449	-17.1	1,748	-10.8	1,960	14.8	1,707	3.5	1,649	22.9	1,342	15.3	1,164
Virginia	1,480	3.9	1,424	-5.7	1,510	-7.3	1,629	-13.5	1,884	2.4	1,839	5.0	1,751
Indiana	1,372	12.6	1,219	-6.9	1,310	8.0	1,213	-13.1	1,396	4.9	1,331	17.4	1,134
Alabama (e)	1,481	-5.4	1,565	-16.4	1,873	-6.9	2,011	-14.7	2,357	(d)	3,065	21.9	2,514
Missouri	1,602	-7.3	1,729	-7.4	1,868	12.9	1,654	-10.2	1,841	8.8	1,692	9.2	1,550
2,000 under 3,000:													
Tennessee	1,313	8.2	1,214	-13.5	1,403	7.9	1,300	0.5	1,294	31.5	984	-4.1	1,026
Kentucky	1,255	-4.4	1,313	0.2	1,311	-17.6	1,591	-11.3	1,793	21.5	1,476	8.1	1,365
Oklahoma	1,664	0.2	1,660	-5.0	1,747	-2.8	1,797	18.9	1,511	22.2	1,237	4.6	1,183
Washington	976	-	976	-18.3	1,195	8.4	1,102	11.7	987	22.6	805	-13.7	933
Wisconsin	1,199	4.4	1,149	3.9	1,106	-19.0	1,365	3.8	1,315	4.0	1,265	20.4	1,051
Colorado	1,166	14.9	1,015	-21.7	1,296	-1.1	1,311	9.9	1,193	28.4	929	-2.9	957
South Carolina	1,315	10.1	1,194	-9.5	1,319	2.7	1,284	42.2	903	8.8	830	36.7	607
Kansas	771	-6.2	822	-26.3	1,115	2.1	1,092	10.9	985	22.8	802	-3.7	833

16

Region and State, and number of prisoners confined on Dec. 31, 1967	1967	Per- cent change	1966	Per- cent change	1965	Per- cent change	1964	Per- cent change	1960	Per- cent change	1955	Per- cent change	1950
1,000 under 2,000:													
Iowa	694	8.6	639	-7.9	694	-16.7	833	-1.4	845	13.7	743	17.6	632
Massachusetts	745	-9.9	827	0.2	825	-5.4	872	-8.7	955	10.9	861	1.2	851
Oregon	859	0.1	858	-8.6	939	6.8	879	-1.3	891	39.0	641	-7.0	689
Mississippi	572	-9.1	629	-8.2	685	-14.1	797	-6.9	856	16.1	737	-2.1	753
Minnesota	450	-5.5	476	-4.0	496	-16.6	595	-6.0	633	-3.1	653	-3.8	679
Arkansas	924	1.3	912	-10.7	1,021	1.8	1,003	0.5	998	26.8	787	13.2	695
Arizona	626	7.0	585	-20.5	736	-0.5	740	-9.3	816	51.1	540	19.5	452
Connecticut	874	4.2	839	0.5	835	-3.6	866	28.3	675	14.2	591	34.3	440
District of Columbia	501	-20.0	626	-6.1	667	8.3	616	6.6	578	-14.9	679	17.1	580
West Virginia	387	32.1	293	-15.8	348	-5.4	368	-28.0	511	-18.2	625	-11.0	702
500 under 1,000:													
Nebraska	543	-11.9	616	-11.7	698	-7.8	757	-1.3	767	19.1	644	3.4	623
New Mexico	367	13.6	323	-19.9	403	-0.2	404	-18.4	495	22.8	403	-7.8	437
Utah	206	6.2	194	-35.8	302	22.3	247	-7.8	268	59.5	168	-29.7	239
Nevada	203	-17.8	247	-23.3	322	42.5	226	1.8	222	1.8	218	26.7	172
Maine	368	34.8	273	-34.7	418	-6.9	449	-9.3	495	52.3	325	-31.0	471
Montana	262	-15.5	310	-10.7	347	-10.8	389	-8.5	425	11.3	382	-6.8	410
Below 500:													
South Dakota	265	-29.7	377	-3.3	390	3.7	376	3.6	363	24.7	291	-3.6	302
Idaho	193	-11.5	218	-6.0	232	-2.5	238	-13.5	275	18.0	233	-19.7	290
Hawaii	58	-30.1	83	36.1	61	-24.7	81	-39.6	134	(f)	(f)	(f)	(f)
Rhode Island (g)	110	-17.3	133	-1.5	135	(d)	152	46.2	104	(d)	201	-19.6	250
Delaware (h)	179	13.3	158	-6.0	168	-22.2	216	-11.5	244	(d)	127	3.3	123
Wyoming	121	-7.6	131	-33.2	196	-8.8	215	-8.5	235	41.6	166	-14.9	195
New Hampshire	113	22.8	92	-4.2	96	6.7	90	8.4	83	9.2	76	5.6	72
Vermont	168	-8.2	183	-16.8	220	-10.6	246	13.4	217	4.8	207	-1.4	210
North Dakota	87	-21.6	111	-20.1	139	0.7	138	3.0	134	6.3	126	1.6	124

17

(a) Excludes Hawaii in 1950 and 1955, and Alaska in all years.
 (b) Percent change less than 0.05 percent.
 (c) Prior to 1965, includes misdemeanants and juveniles received from court in State correctional institutions.
 (d) Percent change not shown as figures are not comparable.
 (e) Prior to 1960 includes misdemeanants received from court.
 (f) Figures not available.
 (g) Prior to 1960 includes male misdemeanants in adult correctional institutions. Excludes female misdemeanants beginning in 1965.
 (h) Prior to 1960 excludes Kent and Sussex County Workhouses.

Table 8. - VIOLATORS RETURNED TO STATE INSTITUTIONS, BY STATE: 1950-1967

(Figures shown do not include some violators who were returned with new or additional sentences and were included as "court commitments". Supercedes Table 8, National Prisoner Statistics Bulletin Number 43)

Region and State, and number of prisoners confined on Dec. 31, 1967	1967	Per-cent change	1966	Per-cent change	1965	Per-cent change	1964	Per-cent change	1960	Per-cent change	1955	Per-cent change	1950
United States (a)	15,809	-0.7	15,916	-9.4	17,570	-1.7	17,867	31.7	13,567	37.2	9,892	35.1	7,321
The South	3,375	-1.6	3,430	-9.3	3,783	0.1	3,778	42.7	2,647	53.7	1,722	46.1	1,179
The North Central Region	3,894	-1.6	3,956	-10.9	4,439	-13.7	5,141	19.3	4,310	19.0	3,621	49.1	2,429
The West (a)	4,562	-1.1	4,611	-13.7	5,344	8.0	4,950	50.9	3,280	82.0	1,802	34.9	1,336
The Northeastern Region	3,978	1.5	3,919	-2.1	4,004	0.2	3,998	20.1	3,330	21.2	2,747	15.6	2,377
10,000 and above:													
California	3,270	-2.4	3,349	-15.4	3,960	11.7	3,545	55.3	2,283	102.9	1,125	24.4	904
New York	1,903	-1.8	1,938	-1.8	1,973	-0.3	1,978	9.6	1,805	28.4	1,406	12.3	1,252
Texas	417	-25.4	559	-24.5	740	-2.1	756	76.2	429	113.4	201	136.5	85
Ohio	702	8.7	646	-9.5	714	-36.8	1,130	29.7	871	-7.7	944	67.1	565
5,000 under 10,000:													
Florida	232	28.2	181	-38.4	294	-0.7	296	32.1	224	183.5	79	2.6	77
Illinois	657	4.3	630	-9.9	699	0.4	696	66.1	419	46.5	286	38.8	206
Michigan	879	2.0	862	0.2	860	-8.5	940	17.1	803	5.7	760	14.8	662
Pennsylvania	496	0.8	492	-14.1	573	-1.9	584	9.0	536	8.9	492	34.1	367
North Carolina (b)	478	35.8	352	-5.6	373	-10.3	416	43.4	290	(c)	37	(d)	15
Georgia (e)	161	-30.3	231	(c)	294	6.5	276	43.8	192	102.1	95	(d)	21
Maryland (f)	306	4.8	292	16.3	251	5.5	238	-0.4	239	37.4	174	357.9	38
3,000 under 5,000:													
New Jersey	618	20.7	512	34.0	382	19.4	320	14.7	279	-29.0	393	36.9	287
Louisiana	228	-18.9	281	12.0	251	0.8	249	156.7	97	83.0	53	-39.8	88
Virginia	142	-	142	-4.7	149	-9.7	165	12.2	147	-19.7	183	39.7	131
Indiana	418	-17.9	509	-13.6	589	-15.5	697	23.1	566	-1.6	575	40.6	409
Alabama	379	-0.8	382	26.1	303	-13.4	350	60.6	218	-	218	39.7	156
Missouri	188	48.0	127	-7.3	137	19.1	115	2.7	112	33.1	61	-7.6	66
2,000 under 3,000:													
Tennessee	97	-4.9	102	-30.6	147	51.5	97	12.8	86	22.9	70	20.7	58
Kentucky	161	0.6	160	-9.6	177	2.9	172	43.3	120	-13.0	138	-4.8	145
Oklahoma	109	-14.2	127	53.0	83	22.1	68	94.3	35	6.1	33	-45.9	61
Washington	378	6.5	355	-7.6	384	4.1	369	69.3	218	-3.1	225	44.2	156
Wisconsin	379	-16.3	453	-34.2	688	-7.4	743	-4.0	774	103.7	380	216.7	120
Colorado	327	-8.9	359	-8.9	394	-20.4	495	51.8	326	33.1	245	380.4	51
South Carolina	136	67.9	81	-18.2	99	30.3	76	24.6	61	90.6	32	-3.0	33
Kansas	172	-20.0	215	-12.6	246	9.3	225	-20.8	284	6.0	268	47.3	182

18

Region and State, and number of prisoners confined on Dec. 31, 1967	1967	Per-cent change	1966	Per-cent change	1965	Per-cent change	1964	Per-cent change	1960	Per-cent change	1955	Per-cent change	1950
1,000 under 2,000:													
Iowa	167	-0.6	168	6.3	158	-3.7	164	33.3	123	115.8	57	-14.9	67
Massachusetts	411	-	411	-11.0	462	3.6	446	36.4	327	63.5	200	-1.0	202
Oregon	163	37.0	119	-19.0	147	33.6	110	-9.8	122	84.8	66	-10.8	74
Mississippi	112	86.7	60	-47.4	114	29.5	88	83.3	48	(a)	24	-7.7	26
Minnesota	228	-5.8	242	9.5	221	-29.8	315	21.2	260	23.8	210	84.2	114
Arkansas	160	-13.0	184	2.2	180	16.1	155	14.8	135	84.9	73	-	73
Arizona	39	50.0	26	-63.9	72	5.7	35	(a)	23	(a)	20	(a)	12
Connecticut	307	10.4	278	4.1	267	-18.1	326	65.5	197	45.9	135	6.3	127
District of Columbia	171	-2.8	176	-0.6	177	-1.7	180	12.5	160	8.8	147	20.5	122
West Virginia	86	-28.3	120	-14.3	140	-21.8	179	8.5	165	0.6	164	234.7	49
500 under 1,000:													
Nebraska	56	36.6	41	-32.8	61	29.8	47	-4.1	49	8.9	45	(d)	10
New Mexico	87	-10.3	97	-17.1	117	0.9	116	46.8	79	(d)	13	-72.3	47
Utah	75	-31.8	110	69.2	65	-	65	109.7	31	(d)	11	-59.3	27
Nevada	60	87.5	32	(d)	15	(d)	5	-	5	-	5	-(d)	7
Maine	166	-25.6	223	-14.2	260	0.4	259	91.9	135	64.6	82	22.4	67
Montana	82	-2.4	84	-	84	-20.8	106	8.2	98	216.1	31	(d)	1
Below 500:													
South Dakota	23	-25.8	31	-3.1	32	-13.5	37	15.6	32	(d)	21	(d)	15
Idaho	32	-11.1	36	-5.3	38	2.7	37	12.1	33	-40.0	55	7.8	51
Hawaii	47	20.5	39	-37.1	62	5.1	59	3.5	57	(g)	(g)	(g)	(g)
Rhode Island	21	(d)	9	-(d)	18	-(d)	21	(d)	4	-(d)	7	-(d)	16
Delaware (h)	-	-	-	-(d)	11	-(d)	17	(d)	1	-	1	-	1
Wyoming (i)	2	-(d)	5	-(d)	6	-(d)	8	(d)	5	-(d)	6	(d)	6
New Hampshire	31	10.7	28	-9.7	31	(d)	23	(d)	22	(d)	15	-50.0	30
Vermont	25	-10.7	28	-26.3	38	-7.3	41	64.0	25	(d)	17	-41.4	29
North Dakota	25	-21.9	32	-5.9	34	6.3	32	(d)	17	(d)	14	(d)	13

19

(a) Excludes Hawaii in 1950 and 1955, and Alaska in all years.
 (b) After 1955 includes Highway Road Camp felony prisoners.
 (c) Percent change not shown as figures are not comparable.
 (d) Percent change not shown where beginning figure is less than 25.
 (e) Prior to 1965, includes misdemeanants and juveniles returned as violators to State correctional institutions. After 1950 includes prisoners not subject to imprisonment in the State Penitentiary.
 (f) Includes estimated figures for House of Correction for last four months of 1965.
 (g) Figures not available.
 (h) Prior to 1960 excludes Kent and Sussex County Workhouses.
 (i) After 1955 excludes Wyoming Industrial Institute.

Table 9. - RELEASES FROM STATE INSTITUTIONS, BY STATE: 1950-1967

(Includes prisoners discharged conditionally and unconditionally; excludes deaths, executions, court orders, authorized temporary absences, transfers, escapes, and "other" departures. Supersedes Table 9, National Prisoner Statistics Bulletin Number 43)

Region and State, and number of prisoners confined on Dec. 31, 1967	1967	Per- cent change	1966	Per- cent change	1965	Per- cent change	1964	Per- cent change	1960	Per- cent change	1955	Per- cent change	1950
United States (a)	84,009	-4.1	87,640	-4.0	91,287	-0.3	91,533	11.5	82,088	22.2	67,148	12.1	59,901
The South	31,426	-6.8	33,733	-2.2	34,498	-4.5	36,123	9.9	32,873	(b)	26,488	(b)	25,133
The North Central Region	20,752	-8.8	22,754	-3.6	23,593	0.6	23,459	6.9	21,950	17.4	18,701	18.9	15,730
The West (a)	14,890	2.8	14,491	-12.4	16,540	6.2	15,577	21.7	12,797	32.4	9,669	23.6	7,822
The Northeastern Region	16,941	1.7	16,662	(c)	16,656	1.7	16,374	13.2	14,468	17.7	12,290	9.6	11,216
10,000 and above:													
California	7,980	2.8	7,766	-20.0	9,710	11.3	8,724	44.2	6,050	29.7	4,666	42.1	3,284
New York	7,904	4.0	7,602	3.6	7,335	2.1	7,186	11.4	6,450	25.6	5,136	14.3	4,493
Texas	5,418	-7.0	5,824	4.3	5,582	-8.7	6,115	19.1	5,134	31.7	3,897	57.1	2,481
Ohio	4,287	-7.6	4,642	-3.4	4,807	7.8	4,460	-9.4	4,921	27.5	3,861	30.7	2,955
5,000 under 10,000:													
Florida	2,666	-8.0	2,899	2.2	2,837	-3.8	2,949	-1.3	2,987	82.4	1,638	15.0	1,424
Illinois	3,407	0.3	3,396	-7.8	3,682	(c)	3,681	34.0	2,748	24.7	2,203	10.0	2,002
Michigan	3,778	-8.0	4,108	-8.4	4,483	-2.2	4,586	5.5	4,345	19.9	3,623	-0.1	3,627
Pennsylvania	2,694	2.3	2,633	-11.6	2,977	8.2	2,752	4.6	2,631	6.0	2,482	39.7	1,777
North Carolina (d)	2,243	-17.6	2,722	3.5	2,630	-10.5	2,937	-1.6	2,984	(b)	1,518	29.7	1,170
Georgia (e)	2,087	-23.5	2,728	(b)	3,179	-4.9	3,342	27.8	2,615	40.7	1,858	(b)	4,402
Maryland (f)	4,024	-4.0	4,190	5.2	3,984	3.1	3,864	1.7	3,800	6.4	3,572	23.1	2,902
3,000 under 5,000:													
New Jersey	3,105	6.4	2,918	9.7	2,659	-2.1	2,717	22.9	2,211	9.8	2,014	1.1	1,992
Louisiana	1,595	-8.4	1,741	-7.3	1,879	-11.7	2,129	40.2	1,519	30.3	1,166	11.7	1,044
Virginia	1,771	-3.1	1,827	-4.5	1,914	-2.3	1,959	-8.2	2,133	5.0	2,032	22.3	1,661
Indiana	1,731	-20.8	2,186	2.2	2,139	15.5	1,852	10.3	1,679	-10.6	1,879	34.8	1,394
Alabama	2,214	0.7	2,198	-12.6	2,514	-10.6	2,813	10.0	2,557	-20.7	3,223	-0.8	3,250
Missouri	1,951	-0.2	1,955	-3.0	2,015	-2.4	2,064	11.3	1,854	9.8	1,689	20.3	1,404
2,000 under 3,000:													
Tennessee	1,426	-8.5	1,558	-1.8	1,586	8.2	1,466	26.7	1,157	12.8	1,026	2.1	1,005
Kentucky	1,490	11.2	1,340	-20.2	1,679	-3.2	1,734	0.4	1,727	5.8	1,632	15.2	1,417
Oklahoma	1,750	-4.0	1,822	2.4	1,780	-1.3	1,803	17.1	1,540	36.0	1,132	1.0	1,121
Washington	1,693	21.7	1,391	5.9	1,314	30.7	1,005	-37.8	1,617	66.0	974	17.8	827
Wisconsin	1,765	-5.4	1,866	-6.0	1,986	-9.9	2,203	11.8	1,970	21.2	1,626	38.5	1,174
Colorado	1,494	-7.3	1,612	-0.2	1,615	-7.1	1,739	21.0	1,437	24.3	1,156	32.0	876
South Carolina	1,322	-0.1	1,323	0.5	1,316	0.8	1,305	24.0	1,052	19.7	879	50.5	584
Kansas	1,001	-16.5	1,199	5.2	1,140	-1.2	1,154	-0.8	1,163	-1.3	1,178	47.3	800

20

Region and State, and number of prisoners confined on Dec. 31, 1967	1967	Per- cent change	1966	Per- cent change	1965	Per- cent change	1964	Per- cent change	1960	Per- cent change	1955	Per- cent change	1950
1,000 under 2,000:													
Iowa	900	-17.1	1,085	19.8	906	-11.4	1,023	5.4	971	31.6	738	11.8	660
Massachusetts	1,110	-16.4	1,327	1.8	1,304	-5.9	1,386	8.2	1,281	14.9	1,115	-4.5	1,168
Oregon	1,035	0.5	1,030	-6.6	1,103	13.8	969	15.4	840	28.0	656	6.3	617
Mississippi	826	-4.3	863	7.5	803	-13.3	926	2.2	906	42.0	638	9.8	581
Minnesota	810	-16.8	974	2.6	949	-0.3	952	1.8	935	11.7	837	29.2	648
Arkansas	1,260	12.2	1,123	-3.9	1,168	4.2	1,121	16.6	961	25.3	767	-6.7	822
Arizona	674	6.5	633	-11.3	714	-16.0	850	6.3	800	57.2	509	8.3	469
Connecticut	1,163	4.4	1,114	-2.3	1,140	5.7	1,079	26.5	853	26.2	676	0.7	671
District of Columbia	773	11.5	693	-13.7	803	-3.9	836	5.8	790	26.2	626	13.6	551
West Virginia	421	-37.9	678	-1.2	686	-	686	-11.5	775	1.6	763	28.2	595
500 under 1,000:													
Nebraska	644	-17.4	780	-15.1	919	2.6	896	15.3	777	27.2	611	-5.6	647
New Mexico	457	-	457	2.5	446	-28.1	620	35.7	457	45.1	315	-21.6	402
Utah	282	-16.3	337	4.0	324	-5.8	344	27.4	270	50.0	180	5.9	170
Nevada	310	32.5	234	47.2	159	-24.3	210	2.4	205	10.2	186	-21.2	236
Maine	546	-7.0	587	-17.3	710	0.3	708	24.9	567	41.0	402	-10.7	450
Montana	359	-17.5	435	-23.8	571	23.6	462	-9.6	511	-8.1	556	40.1	397
Below 500:													
South Dakota	353	-14.1	411	13.2	363	-14.8	426	2.7	415	27.7	325	17.3	277
Idaho	300	24.5	241	-2.0	246	-20.1	308	20.8	255	-5.2	269	-11.8	305
Hawaii	157	-6.5	168	21.7	138	0.7	137	-1.4	139	(g)	(g)	(g)	(g)
Rhode Island (h)	111	-12.6	127	5.8	120	(b)	138	17.9	117	(b)	185	-36.0	289
Delaware (i)	140	-31.4	204	29.1	158	14.5	138	-41.5	236	(b)	121	-1.6	123
Wyoming (k)	149	-20.3	187	-6.5	200	-4.3	209	-3.2	216	(b)	202	15.5	239
New Hampshire	123	5.1	117	-1.7	119	-2.5	122	69.4	72	18.0	61	-45.0	111
Vermont	185	-21.9	237	-18.8	292	2.1	286	-	286	30.6	219	-17.4	265
North Dakota	125	-17.8	152	-25.5	204	25.9	162	-5.8	172	31.3	131	-7.7	142

21

(a) Excludes Hawaii in 1950 and 1955, and Alaska in all years.
 (b) Percent change not shown as figures are not comparable.
 (c) Percent change less than 0.05 percent.
 (d) After 1955 includes Highway Road Camp prisoners.
 (e) Prior to 1965, includes misdemeanants and juveniles released from State correctional institutions. After 1950 excludes prisoners not subject to imprisonment in the State Penitentiary.
 (f) Includes estimated figures for House of Correction for last four months of 1965.
 (g) Figures not available.
 (h) Prior to 1960 includes male misdemeanants released from Adult Correctional Institutions. Beginning in 1965, excludes female misdemeanants.
 (i) Prior to 1960 excludes Kent and Sussex County Workhouses.
 (k) After 1955 excludes Wyoming Industrial Institute.

Table 10. - MOVEMENT OF SENTENCED PRISONERS IN STATE INSTITUTIONS, BY REGION AND STATE: CALENDAR YEAR 1967

(Includes both females and males. Excludes Alaska)

Region and State	Prisoner population		Admissions during the year				Departures during the year						
	Present Dec. 31, 1967 (a)	Percent of national total (b)	Total	Court commitments	Violators returned (c)	Other admissions (d)	Total	Releases			Deaths (e)	Other departures (f)	
								Total	Number	Percent			Unconditional
United States	175,317	100.0	116,423	66,403	15,809	34,211	122,248	84,016	56,793	67.6	27,223	597	37,635
NORTHEAST	29,168	16.6	15,474	10,915	3,978	4,581	22,499	16,948	14,331	84.6	2,617	82	5,469
Maine	592	0.3	624	368	166	90	660	546	426	78.0	120	-	114
New Hampshire	222	0.1	144	113	31	-	124	123	122	99.2	1	-	1
Vermont	220	0.1	219	168	25	26	224	192	143	74.5	49	1	31
Massachusetts	1,824	1.0	1,352	745	411	196	1,425	1,110	776	69.9	334	11	304
Rhode Island(g)	350	0.2	131	110	21	-	111	111	65	58.6	46	-	-
Connecticut	1,587	0.9	1,262	874	307	81	1,267	1,163	929	79.9	234	4	100
New York(h)	14,085	8.0	6,594	4,686	1,903	5	8,175	7,904	6,924	87.6	980	47	224
New Jersey	4,614	2.6	3,987	2,253	618	1,116	4,426	3,105	2,625	84.5	480	2	1,319
Pennsylvania	5,674	3.2	5,161	1,598	496	3,067	6,087	2,694	2,321	86.2	373	17	3,376
NORTH CENTRAL	41,568	23.7	28,187	16,351	3,894	7,942	29,883	20,752	15,849	76.4	4,903	139	8,992
Ohio	10,323	5.9	4,197	3,417	702	78	4,697	4,287	4,031	94.0	256	32	310
Indiana(i)	3,894	2.2	7,023	1,372	418	5,233	7,047	1,731	1,333	77.0	398	16	5,300
Illinois	7,041	4.0	3,308	2,232	657	419	3,930	3,407	2,406	70.6	1,001	28	495
Michigan	7,037	4.0	5,445	3,719	879	847	5,142	3,778	3,168	83.9	610	16	1,348
Wisconsin	2,607	1.5	2,247	1,199	379	669	2,583	1,765	1,625	92.1	140	5	813
Minnesota(k)	1,652	0.9	757	450	228	79	892	810	613	75.7	197	5	77
Iowa(l)	1,830	1.0	1,078	694	167	217	1,135	900	534	59.3	366	8	227
Missouri	3,263	1.9	1,918	1,602	188	128	2,109	1,951	742	38.0	1,209	8	150
North Dakota	182	0.1	112	87	25	-	129	125	90	72.0	35	1	3
South Dakota	489	0.3	323	265	23	35	393	353	117	33.1	236	1	39
Nebraska(m)	971	0.6	627	543	56	28	677	644	205	31.8	439	1	32
Kansas	2,289	1.3	1,152	771	172	209	1,149	1,001	985	98.4	15	18	130
SOUTH	64,508	36.8	40,197	28,956	3,375	7,866	40,788	31,426	14,443	46.0	16,983	247	9,115
Delaware(n)	308	0.2	179	179	-	-	141	140	47	33.6	93	-	1
Maryland	5,083	2.9	4,883	4,257	306	320	4,784	4,024	1,871	46.5	2,153	19	741
Dist. of Columbia	1,268	0.7	2,646	501	171	1,974	2,948	773	585	75.7	188	4	2,171
Virginia(o)	4,033	2.3	2,622	1,480	142	1,000	2,801	1,771	873	49.3	898	16	1,014
West Virginia	1,208	0.7	578	387	86	105	560	421	311	73.9	110	8	131
North Carolina	5,516	3.2	2,978	2,000	478	500	2,759	2,243	1,093	48.7	1,150	-	516
South Carolina	2,337	1.3	1,457	1,315	136	6	1,368	1,322	365	27.6	957	13	33
Georgia(p)	5,300	3.0	2,657	2,171	161	325	2,742	2,087	863	41.4	1,224	26	629
Florida(q)	7,261	4.1	4,537	2,988	232	1,317	4,277	2,666	1,124	42.2	1,542	63	1,548

22

Region and State	Prisoner population		Admissions during the year				Departures during the year						
	Present Dec. 31, 1967 (a)	Percent of national total (b)	Total	Court commitments	Violators returned (c)	Other admissions (d)	Total	Releases			Deaths (e)	Other departures (f)	
								Total	Number	Percent			Unconditional
Kentucky	2,834	1.6	1,445	1,255	161	29	1,543	1,490	657	44.1	833	9	44
Tennessee	2,980	1.7	1,485	1,313	97	75	1,531	1,426	509	35.7	917	13	92
Alabama	3,881	2.2	2,160	1,481	379	300	2,335	2,214	1,166	52.7	1,048	19	102
Mississippi	1,667	1.0	1,016	572	112	332	1,178	826	442	53.5	384	7	345
Arkansas	1,651	0.9	1,143	924	160	59	1,370	1,260	894	71.0	366	8	102
Louisiana	4,112	2.4	2,282	1,449	228	605	2,232	1,595	907	56.9	688	14	623
Oklahoma	2,756	1.6	1,851	1,664	109	78	1,863	1,750	945	54.0	805	9	104
Texas	12,313	7.0	6,278	5,020	417	841	6,356	5,418	1,791	33.1	3,627	19	919
WEST	40,073	22.9	28,565	10,181	4,562	13,822	29,078	14,890	12,170	81.7	2,720	129	14,059
Montana	521	0.3	352	262	82	8	373	359	206	57.4	153	2	12
Idaho	391	0.2	276	193	32	51	361	300	192	64.0	108	2	59
Wyoming	254	0.1	127	121	2	4	154	149	13	8.7	136	1	4
Colorado	2,514	1.4	1,586	1,166	327	93	1,505	1,494	1,098	73.5	396	11	100
New Mexico	892	0.5	468	367	87	14	488	457	262	57.3	195	2	29
Arizona	1,596	0.9	821	626	39	156	852	674	313	46.4	361	6	172
Utah	651	0.4	288	206	75	7	296	282	262	92.9	20	1	13
Nevada	608	0.4	277	203	60	14	324	310	263	84.8	47	-	14
Washington	2,738	1.6	1,610	976	378	256	2,004	1,693	1,690	99.8	3	10	301
Oregon	1,803	1.0	2,313	859	163	1,291	2,389	1,035	415	40.1	620	3	1,351
California(r)	27,741	15.8	20,248	5,144	3,270	11,834	19,974	7,980	7,332	91.9	648	90	11,904
Hawaii(s)	364	0.2	199	58	47	94	258	157	124	79.0	33	1	100

23

- (a) Figures include 1 female prisoner boarded in Maine from New Hampshire, 2 boarded in Massachusetts from New Hampshire, 2 boarded in Massachusetts from Rhode Island, 1 boarded in Massachusetts from Vermont, 12 boarded in Nebraska from South Dakota, and 6 boarded in Nebraska from Wyoming.
- (b) Due to independent rounding of figures, the regional and national totals may not exactly equal the sum of the corresponding States.
- (c) Figures shown do not include some violators who were returned with new or additional sentences and were included as "court commitments".
- (d) Includes escapees returned, returns from court orders and authorized temporary absences, and "other" admissions.
- (e) Includes two executions. Detailed data on use of the death penalty are presented in National Prisoner Statistics Bulletin Number 42, of June, 1968.
- (f) Includes escapes, court orders, authorized temporary absences, and "other" departures.
- (g) Reformatory for Women excluded from all but December 31, 1967 population figure. December 31 figure excludes female misdemeanants.
- (h) Population figure excludes 583 inmates at Matteawan State Hospital. Court commitment figure excludes 139 new court commitments to Matteawan State Hospital.
- (i) Population figure excludes two Safekeepers at the State Prison.
- (k) Population figure includes 394 Youthful Offenders (ages 18-20, inclusive) at the Reformatory for Men, and 16 at the Reformatory for Women; 97 Youthful Offenders at Willow River Camp and at the Reception Centers are excluded.
- (l) Population figure excludes 36 unsentenced male prisoners at the Iowa Security Medical Facility, and 3 women at the Cherokee Mental Health Institute.
- (m) Population figure excludes 10 Safekeepers at the Penal & Correctional Complex.
- (n) Includes only Superior Court cases.
- (o) Population figure excludes 1,536 misdemeanants confined in State institutions.
- (p) Excludes misdemeanants and juveniles confined in State correctional institutions.
- (q) Excludes infants, State narcotic patients, Safekeepers, and persons held for parole revocation hearings.
- (r) Population figure includes 1,245 Youth Authority Wards, 2,353 civil narcotic addicts, and 475 other non-felons.
- (s) Population figure excludes 16 prisoners not in residence on December 31, 1967.

Table 11. - MOVEMENT OF SENTENCED FEMALE PRISONERS IN STATE INSTITUTIONS, BY REGION AND STATE: CALENDAR YEAR 1967

(Statistics on transfers which bring this table into balance are excluded. Excludes Alaska)

Region and State	Prisoner population		Admissions during the year				Departures during the year					Deaths	Other departures (e)
	Present Jan. 1, 1967 (a)	Present Dec. 31, 1967 (b)	Total	Court commitments	Violators returned (c)	Other admissions (i)	Total	Releases					
								Total	Conditional	Unconditional			
								Number	Percent				
United States	6,298	5,596	5,179	2,365	706	1,508	5,891	4,181	3,129	74.8	1,052	13	1,697
NORTHEAST	1,474	1,215	1,059	668	214	237	1,331	1,050	870	82.9	180	1	280
Maine	52	45	61	37	5	12	71	56	54	96.4	2	-	15
New Hampshire	1	3	5	4	1	-	3	3	3	100.0	-	-	1
Vermont	4	3	7	6	-	1	8	7	6	85.7	1	-	-
Massachusetts	104	112	204	123	34	47	197	144	63	43.8	81	-	53
Rhode Island (f)	10	7	(g)	(g)	(g)	(g)	(g)	(g)	(g)	(g)	(g)	(g)	(g)
Connecticut	119	104	174	75	62	37	182	143	128	89.5	15	-	32
New York (h)	611	477	285	199	86	-	414	336	349	88.1	47	1	17
New Jersey	345	294	234	117	20	97	306	200	180	90.0	20	-	106
Pennsylvania	228	170	89	47	6	36	150	101	87	86.1	14	-	49
NORTH CENTRAL	1,270	1,102	1,142	704	120	318	1,339	967	763	78.9	204	2	370
Ohio	380	335	208	173	21	8	260	217	193	88.9	24	1	42
Indiana	65	68	90	41	8	41	87	49	44	89.8	5	-	38
Illinois	223	176	121	96	16	9	174	160	98	61.3	62	-	14
Michigan	156	131	178	106	31	41	196	146	134	91.8	12	-	50
Wisconsin	143	130	150	107	21	22	178	152	136	89.5	16	-	26
Minnesota (i)	41	53	35	14	7	14	34	21	17	81.0	4	-	13
Iowa (k)	60	44	216	34	7	175	232	54	35	64.8	19	-	178
Missouri	90	70	52	40	5	7	70	63	28	44.4	35	-	7
North Dakota	1	3	4	4	-	-	2	2	2	100.0	-	-	-
South Dakota	16	12	8	8	-	-	13	12	6	50.0	6	1	-
Nebraska	30	25	30	29	-	1	35	33	12	36.4	21	-	2
Kansas	65	55	50	46	4	-	58	58	58	100.0	-	-	-
SOUTH	2,023	1,902	1,441	1,195	78	168	1,529	1,283	689	53.7	594	5	241
Delaware (l)	9	11	6	6	-	-	4	4	-	-	4	-	-
Maryland	160	130	189	178	7	4	215	182	84	46.2	98	-	33
District of Columbia	31	13	33	16	8	9	27	18	15	83.3	3	-	2
Virginia (m)	131	121	76	57	4	15	86	71	41	57.7	30	-	15
West Virginia	25	34	24	21	1	2	15	7	7	100.0	-	-	8
North Carolina	199	159	74	74	-	-	114	114	70	61.4	44	-	-
South Carolina	81	83	78	65	13	-	76	72	30	41.7	42	2	2
Georgia (n)	175	175	113	108	4	1	113	94	44	46.8	50	-	19
Florida (o)	306	284	159	137	7	15	179	157	79	50.3	78	-	22

Region and State	Prisoner population		Admissions during the year				Departures during the year					Deaths	Other departures (e)
	Present Jan. 1, 1967 (a)	Present Dec. 31, 1967 (b)	Total	Court commitments	Violators returned (c)	Other admissions (d)	Total	Releases					
								Total	Conditional	Unconditional			
								Number	Percent				
Kentucky	49	45	34	32	2	-	38	37	23	62.2	14	-1	-
Tennessee	55	60	45	41	3	1	41	38	18	47.4	20	-	3
Alabama	127	110	71	58	9	4	88	87	49	56.3	38	1	-
Mississippi	70	58	43	27	3	13	55	42	27	64.3	15	-	13
Arkansas	49	42	35	32	3	-	42	39	30	76.9	9	1	2
Louisiana	145	128	125	67	7	51	142	88	59	67.0	29	-	54
Oklahoma	57	58	61	58	2	1	60	60	46	76.7	14	-	-
Texas	354	331	275	218	5	52	234	173	67	38.7	106	-	61
WEST	1,531	1,377	1,537	458	294	785	1,692	881	807	91.6	74	5	806
Montana	8	9	15	13	2	-	14	14	10	71.4	4	-	-
Idaho	12	7	7	4	1	2	12	9	7	77.8	2	-	3
Wyoming	8	6	2	2	-	-	4	4	1	25.0	3	-	-
Colorado	51	54	34	26	8	-	31	31	27	87.1	4	-	-
New Mexico	21	22	24	20	4	-	23	23	15	65.2	8	-	-
Arizona	48	47	35	23	3	9	36	27	17	63.0	10	2	7
Utah	11	19	15	14	1	-	7	7	6	85.7	1	-	-
Nevada	21	16	12	9	3	-	18	18	16	88.9	2	-	-
Washington	83	71	61	33	7	21	73	55	55	100.0	-	-	18
Oregon	49	43	80	40	7	33	86	51	29	56.9	22	-	35
California (p)	1,219	1,083	1,249	272	258	719	1,385	641	623	97.2	18	3	741
Hawaii (q)	-	-	3	2	-	1	3	1	1	100.0	-	-	2

(a) The 16 prisoners from South Dakota and the 8 from Wyoming were boarded in Nebraska; the one from New Hampshire was boarded in Vermont.
 (b) Two of the New Hampshire prisoners were boarded in Massachusetts, and the other in Maine; two of the prisoners from Rhode Island were boarded in Massachusetts; one of the Vermont prisoners was boarded in Massachusetts; the 12 prisoners from South Dakota and the 6 from Wyoming were boarded in Nebraska.
 (c) Figures shown do not include some violators who were returned with new or additional sentences and were included as "court commitments".
 (d) Includes escapees returned, returns from court orders and authorized temporary absences, and "other" admissions.
 (e) Includes escapees, court orders, authorized temporary absences, and "other" departures.
 (f) Excludes misdemeanants.
 (g) Figures not available.
 (h) Population figures exclude 76 prisoners under custody at Matteawan State Hospital on January 1, 1967, and 65 under custody at Matteawan on December 31, 1967.
 (i) Population figures include 9 Youthful Offenders (ages 18-20, inclusive) at the Reformatory for Women on January 1, 1967, and 16 at the Reformatory on December 31, 1967. Excluded are 3 Youthful Offenders at the Reception Center on January 1, and 4 at the Center on December 31.
 (k) December 31, 1967 population figure excludes 3 prisoners at the Cherokee Mental Health Institute.
 (l) Includes only Superior Court cases.
 (m) Population figures exclude 138 prisoners at the State Industrial Farm for Women on January 1, 1967, and 126 at the Farm on December 31, 1967.
 (n) Excludes misdemeanants and juveniles confined in State correctional institutions.
 (o) Excludes infants, State narcotic patients, safekeepers, and persons held for parole revocation hearings.
 (p) January 1, 1967 population figure includes 22 Youth Authority Wards, 272 civil narcotic addicts, and 28 other non-felons. December 31, 1967 figure includes 17 Youth Authority Wards, 283 civil narcotic addicts, and 19 other non-felons.
 (q) Population figure excludes 2 prisoners not in residence on December 31, 1967.

Table 12. - MONTHLY BREAKDOWN OF COURT COMMITMENTS TO STATE INSTITUTIONS, BY REGION AND STATE: CALENDAR YEAR 1967

(Excludes Alaska)

Region and State	Total court commitments	Month during which committed												Monthly average (a)
		Jan.	Feb.	Mar.	Apr.	May	Jun.	July	Aug.	Sept.	Oct.	Nov.	Dec.	
United States	66,403	5,330	5,415	6,535	5,807	6,182	6,146	4,846	4,298	5,025	5,760	5,702	5,357	5,534
NORTHEAST	10,915	969	881	996	1,044	1,080	1,183	845	556	690	933	880	858	910
Maine	368	46	25	18	25	31	39	21	22	42	51	19	29	31
New Hampshire	113	9	10	7	8	10	10	4	6	7	27	11	4	9
Vermont	168	28	6	16	11	19	12	15	10	11	14	13	13	14
Massachusetts	745	100	60	64	42	82	85	61	17	44	86	65	39	62
Rhode Island ^(b)	110	15	13	10	10	7	12	11	6	9	10	2	5	9
Connecticut	874	72	67	79	79	97	115	39	35	60	76	62	93	73
New York	4,686	394	359	427	455	490	532	333	238	307	365	405	381	391
New Jersey	2,253	184	193	215	229	221	232	241	105	99	183	182	169	188
Pennsylvania	1,598	121	148	160	185	123	146	120	117	111	121	121	125	133
NORTH CENTRAL	16,351	1,168	1,314	1,575	1,379	1,422	1,464	1,254	1,121	1,294	1,455	1,421	1,484	1,363
Ohio	3,417	256	270	332	256	319	301	275	246	254	323	284	301	285
Indiana	1,372	116	104	150	111	137	117	95	66	101	127	120	128	114
Illinois	2,232	138	145	203	228	152	193	216	190	230	201	173	163	186
Michigan	3,719	202	317	378	309	349	403	282	259	238	278	336	368	310
Wisconsin	1,199	94	97	102	107	109	98	95	110	104	100	93	90	100
Minnesota	450	39	34	46	31	45	43	28	30	28	39	43	44	38
Iowa	694	50	67	69	58	53	49	48	49	55	58	74	64	58
Missouri	1,602	135	121	130	142	125	151	104	75	136	177	144	162	134
North Dakota	87	10	11	6	5	7	7	6	6	6	8	5	10	7
South Dakota	265	21	26	25	18	15	15	21	28	31	21	27	17	22
Nebraska	543	42	56	53	48	52	33	37	26	52	38	46	60	45
Kansas	771	65	66	81	66	59	54	47	36	59	85	76	77	64

26

Region and State	Total court commitments	Month during which committed												Monthly average (a)
		Jan.	Feb.	Mar.	Apr.	May	June	July	Aug.	Sept.	Oct.	Nov.	Dec.	
SOUTH	28,956	2,289	2,339	2,948	2,445	2,742	2,665	2,010	1,802	2,252	2,612	2,598	2,254	2,413
Delaware	179	8	17	25	11	18	19	17	7	4	16	20	17	15
Maryland	4,257	352	324	395	354	340	384	311	300	356	385	414	342	355
Dist. of Columbia	501	52	32	35	30	40	57	41	40	36	53	48	37	42
Virginia	1,480	152	89	128	117	139	152	107	84	68	149	151	144	123
West Virginia	387	21	33	35	28	39	48	35	14	28	36	39	31	32
North Carolina	2,000	172	189	166	195	191	133	126	142	192	165	193	136	167
South Carolina	1,315	117	87	146	85	88	139	84	48	183	124	88	126	110
Georgia	2,171	199	153	254	174	194	117	170	157	179	230	167	177	181
Florida	2,988	225	242	293	247	305	314	216	189	246	242	218	251	249
Kentucky	1,255	66	141	126	94	154	120	73	54	90	150	119	68	105
Tennessee	1,313	105	84	134	113	134	120	94	86	93	82	144	124	109
Alabama	1,481	89	121	169	161	183	136	87	79	102	151	142	61	123
Mississippi	572	37	42	65	64	51	27	46	33	40	31	50	86	48
Arkansas	924	57	64	109	98	84	55	51	54	75	91	100	86	77
Louisiana	1,449	125	80	164	116	131	165	102	59	117	174	83	133	121
Oklahoma	1,664	123	144	171	143	181	157	71	102	127	153	143	149	139
Texas	5,020	389	497	533	415	470	522	379	354	316	380	479	286	418
WEST	10,181	904	881	1,016	939	938	834	737	819	789	760	803	761	848
Montana	262	21	20	25	30	21	15	16	16	32	21	17	28	22
Idaho	193	21	16	21	16	19	11	11	13	18	18	17	12	16
Wyoming	121	16	10	15	10	9	9	12	6	10	11	6	7	10
Colorado	1,166	100	80	121	109	112	102	62	120	86	93	89	92	97
New Mexico	367	37	29	41	38	43	41	24	15	27	24	36	12	31
Arizona	626	59	48	54	79	51	51	49	45	45	33	66	46	52
Utah	206	14	21	17	15	19	20	15	16	16	14	19	20	17
Nevada	203	12	26	16	21	21	17	13	22	17	10	16	12	17
Washington	976	79	76	111	80	102	86	80	60	64	72	87	79	81
Oregon	859	87	84	92	69	99	54	74	55	72	49	74	50	72
California	5,144	455	462	495	465	437	423	380	448	399	413	370	397	429
Hawaii	58	3	9	8	7	5	5	1	3	3	2	6	6	5

27

(a) Due to independent rounding of figures, U.S. and regional totals may not exactly equal sum of corresponding States.
 (b) Excludes Rhode Island Reformatory for Women.

Table 13. - MONTH-END STATE PRISON POPULATION FIGURES, BY REGION AND STATE: CALENDAR YEAR 1967

(Boarded female prisoners are shown in State from which boarded rather than State in which boarded. Excludes Alaska)

Region and State	Prisoners confined on last day of:													Month-end average Dec. '66 through Dec. '67
	Dec. 1966	Jan. 1967	Feb. 1967	Mar. 1967	Apr. 1967	May 1967	June 1967	July 1967	Aug. 1967	Sept. 1967	Oct. 1967	Nov. 1967	Dec. 1967	
United States ...	180,409	180,506	180,806	180,903	180,928	180,403	180,176	179,218	177,065	176,079	176,122	176,449	175,317	178,799
NORTHEAST	31,991	31,930	31,703	31,550	31,515	31,376	31,382	31,241	30,633	30,133	30,009	29,845	29,168	30,960
Maine	605	622	632	627	617	613	608	584	540	561	595	579	591	598
New Hampshire	206	212	214	214	215	223	229	221	210	208	227	236	225	218
Vermont	232	248	240	243	239	252	231	232	232	230	232	227	221	235
Massachusetts	1,829	1,848	1,825	1,838	1,828	1,860	1,883	1,897	1,851	1,832	1,870	1,854	1,819	1,849
Rhode Island (b)	329	344	349	354	353	353	363	359	360	362	361	357	352	354
Connecticut	1,599	1,631	1,615	1,601	1,616	1,640	1,657	1,633	1,599	1,570	1,585	1,591	1,587	1,610
New York	15,760	15,747	15,596	15,450	15,439	15,300	15,354	15,293	15,027	14,831	14,690	14,624	14,085	15,169
New Jersey	4,912	4,840	4,820	4,834	4,819	4,840	4,824	4,875	4,793	4,639	4,629	4,626	4,614	4,774
Pennsylvania	6,519	6,438	6,412	6,389	6,389	6,295	6,233	6,147	6,021	5,900	5,820	5,751	5,674	6,153
NORTH CENTRAL	42,724	42,668	42,681	42,546	42,570	42,401	42,264	42,062	41,613	41,491	41,555	41,682	41,562	42,140
Ohio	10,694	10,657	10,654	10,545	10,496	10,486	10,393	10,421	10,349	10,295	10,383	10,320	10,323	10,463
Indiana	3,907	3,949	3,988	4,048	4,077	4,088	4,119	4,051	3,935	3,889	3,887	3,921	3,884	3,980
Illinois	7,491	7,365	7,256	7,135	7,157	7,068	7,003	6,995	6,958	7,015	7,034	7,060	7,041	7,121
Michigan	6,754	6,811	6,859	6,899	6,962	7,007	7,146	7,088	7,019	6,971	6,978	7,066	7,037	6,969
Wisconsin	2,709	2,705	2,704	2,691	2,701	2,695	2,684	2,702	2,743	2,723	2,665	2,653	2,607	2,691
Minnesota	1,620	1,660	1,669	1,673	1,657	1,644	1,645	1,633	1,641	1,641	1,650	1,659	1,652	1,650
Iowa	1,885	1,863	1,872	1,889	1,878	1,882	1,864	1,851	1,835	1,829	1,812	1,820	1,830	1,855
Missouri	3,447	3,453	3,456	3,449	3,429	3,371	3,315	3,276	3,167	3,183	3,213	3,252	3,263	3,329
North Dakota	199	200	206	211	198	199	195	199	191	187	184	181	182	195
South Dakota	571	579	575	559	553	541	524	506	503	511	501	517	501	534
Nebraska	1,003	989	993	995	1,008	988	983	968	954	964	957	951	953	977
Kansas	2,444	2,437	2,449	2,452	2,454	2,432	2,393	2,372	2,318	2,283	2,291	2,282	2,289	2,377

28

Region and State	Prisoners confined on last day of:													Month-end average Dec. '66 through Dec. '67 (a)
	Dec. 1966	Jan. 1967	Feb. 1967	Mar. 1967	Apr. 1967	May 1967	Jun. 1967	Jul. 1967	Aug. 1967	Sep. 1967	Oct. 1967	Nov. 1967	Dec. 1967	
SOUTH	65,125	65,122	65,497	65,824	65,904	66,130	66,239	65,827	64,980	64,752	64,863	65,044	64,508	65,370
Delaware	270	270	278	289	282	283	280	282	276	275	280	297	308	282
Maryland	5,117	5,185	5,284	5,207	5,214	5,178	5,195	5,164	5,103	5,142	5,184	5,230	5,083	5,176
Dist. of Columbia	1,542	1,485	1,458	1,419	1,404	1,394	1,385	1,329	1,294	1,295	1,301	1,283	1,268	1,374
Virginia	4,220	4,189	4,159	4,173	4,127	4,107	4,117	4,099	4,025	3,940	3,934	3,942	4,033	4,082
West Virginia	1,189	1,180	1,179	1,163	1,136	1,142	1,161	1,174	1,180	1,184	1,197	1,204	1,208	1,177
North Carolina	5,297	5,337	5,404	5,436	5,477	5,502	5,485	5,450	5,439	5,496	5,471	5,531	5,516	5,449
South Carolina	2,248	2,248	2,232	2,291	2,272	2,252	2,294	2,274	2,210	2,308	2,343	2,311	2,337	2,278
Georgia	5,385	5,416	5,428	5,515	5,508	5,556	5,507	5,538	5,475	5,458	5,466	5,458	5,300	5,462
Florida	6,972	7,018	7,094	7,127	7,192	7,271	7,332	7,329	7,278	7,307	7,280	7,282	7,261	7,211
Kentucky	2,932	2,897	2,946	2,990	2,978	2,989	3,003	2,966	2,887	2,851	2,897	2,913	2,834	2,929
Tennessee	2,968	2,971	2,946	2,970	2,989	3,009	3,035	3,016	3,005	2,975	2,965	2,999	2,980	2,987
Alabama	4,056	3,900	3,906	3,937	3,996	4,004	4,014	3,982	3,983	3,936	3,898	3,896	3,881	3,953
Mississippi	1,829	1,821	1,806	1,801	1,790	1,756	1,750	1,752	1,747	1,733	1,696	1,682	1,667	1,756
Arkansas	1,864	1,843	1,810	1,769	1,812	1,806	1,759	1,713	1,708	1,683	1,660	1,667	1,651	1,750
Louisiana	4,068	4,100	4,063	4,125	4,131	4,160	4,155	4,141	4,094	4,060	4,125	4,079	4,112	4,109
Oklahoma	2,776	2,861	2,896	2,910	2,906	2,993	2,963	2,894	2,850	2,793	2,824	2,835	2,756	2,866
Texas	12,392	12,401	12,608	12,702	12,690	12,728	12,804	12,724	12,426	12,316	12,332	12,435	12,313	12,529
WEST	40,569	40,786	40,925	40,983	40,939	40,496	40,291	40,088	39,839	39,703	39,695	39,878	40,079	40,329
Montana	548	536	537	529	530	530	535	536	513	524	519	516	521	529
Idaho	477	474	468	465	454	452	435	427	418	424	420	405	391	439
Wyoming	287	293	286	287	281	266	271	265	260	265	267	263	260	273
Colorado	2,540	2,565	2,568	2,601	2,616	2,609	2,645	2,556	2,567	2,528	2,527	2,516	2,514	2,566
New Mexico	912	924	935	951	970	983	981	982	959	953	942	930	892	947
Arizona	1,627	1,627	1,628	1,623	1,656	1,660	1,650	1,640	1,630	1,614	1,590	1,590	1,596	1,625
Utah	659	675	687	668	653	652	654	654	645	631	633	639	651	654
Nevada	651	642	647	651	658	651	637	619	624	623	614	619	608	634
Washington	3,098	3,056	3,027	2,976	2,912	2,858	2,836	2,809	2,734	2,700	2,700	2,720	2,738	2,859
Oregon	1,880	1,901	1,895	1,909	1,903	1,924	1,911	1,900	1,889	1,861	1,834	1,839	1,803	1,881
California	27,467	27,682	27,827	27,901	27,889	27,499	27,326	27,302	27,206	27,188	27,263	27,466	27,741	27,520
Hawaii	423	411	420	422	417	412	410	398	394	392	386	375	364	402

29

(a) Due to independent rounding of figures, U.S. and regional totals may not exactly equal sum of corresponding States.
 (b) Includes estimated figures for Women's Reformatory for months of February through November.

Table 14. - SENTENCED PRISONERS IN STATE INSTITUTIONS, BY INSTITUTION AND SEX: DECEMBER 31, 1967

Table 14. - SENTENCED PRISONERS IN STATE INSTITUTIONS, BY INSTITUTION AND SEX: DECEMBER 31, 1967 (Continued)

State and institution	Total	Male	Female	State and institution	Total	Male	Female
United States ^(a)	175,217	169,719	5,598	Iowa (Board of Control of State Institutions, Div. of Corr.) ⁽¹⁾	1,830	1,786	44
Alabama (State Board of Corrections)	2,881	3,771	110	State Penitentiary; Ft. Madison	1,006	1,006	-
Albany Prison; Montgomery	641	641	-	Men's Reformatory; Anamosa	639	639	-
Atmore Prison Farm; Atmore	1,173	1,173	-	Women's Reformatory; Rockwell City	44	-	44
Braxton Correctional Center; Elmore	664	668	-	Release Center; Newton	98	98	-
Tracy Reformatory; Montgomery	14	14	-	Security Medical Facility	46	46	-
State Cattle Ranch; Greensboro	21	21	-	Kansas	2,389	2,334	55
Frank Lee Youth Center; Leathville	21	21	-	State Penitentiary; Lansing	1,451	1,451	-
Elby Hospital; Montgomery	33	33	-	State Industrial Ref.; Hutchinson	666	666	-
Marquette, Mo.; Montgomery	43	43	-	Reception & Diagnostic Center; Topeka	117	117	-
State Reformatory; Wetumpka	119	-	119	State Indust. Farm for Women; Lansing	55	-	55
State Farm	857	857	-	Kentucky	2,824	2,739	85
Arizona (State Prison; Florence)	1,596	1,549	47	State Penitentiary; Eddyville	1,153	1,153	-
Arkansas	1,651	1,609	42	State Reformatory; La Grange	1,636	1,636	-
State Penitentiary; Cummins Unit	1,326	1,326	42	Corr. Inst. for Women; Peewee Valley	45	-	45
State Penitentiary; Tucker Unit	293	293	-	Louisiana	4,112	3,984	128
California (Department of Corrections) ^(b)	27,741	26,658	1,083	State Penitentiary; Angola	3,650	3,522	128
State Prison; San Quentin	3,839	3,839	-	Corr. and Indust. School; DeQuincy	462	462	-
State Prison; Folsom	2,586	2,586	-	Maine ^(k)	592	546	46
Corr. Training Facility; Colcord	2,767	2,767	-	State Prison; Thomaston	257	257	-
Correctional Institution; Tehachapi	1,054	1,054	-	State Ref. for Men; South Windham	189	189	-
Institution for Men; Chino	1,642	1,642	-	State Ref. for Women; Skowhegan	46	-	46
Men's Colony; Los Padres	3,764	3,764	-	Maryland	5,283	4,953	330
Deuel Vocational Institution; Tracy	1,811	1,811	-	Penitentiary; Baltimore	759	759	-
Calif. Conservation Ctr.; Eucalyptus	2,278	2,278	-	House of Correction; Jessup ⁽¹⁾	2,246	2,246	-
Sierra Conservation Ctr.; Jamestown	1,737	1,737	-	Correctional Institution; Hagerstown	1,492	1,492	-
Southern Conservation Center; Chino	1,119	1,119	-	Reception, Diag. & Class. Center; Baltimore ^(e)	456	456	-
Medical Facility; Vacaville	2,051	2,051	-	Corr. Inst. for Women; Jessup	130	-	130
Rehabilitation Center; Corona	2,290	1,988	302	Massachusetts ^(m)	1,824	1,707	117
Institution for Women; Frontera	779	-	779	Corr. Inst., Concord; West Concord	375	375	-
Work Furlough	24	22	2	Corr. Inst., Norfolk; Norfolk	691	691	-
Colorado	2,514	2,460	54	Corr. Inst., Walpole; South Walpole	504	504	-
State Penitentiary; Canon City	1,967	1,913	54	Corr. Inst., Framingham; Framingham	117	-	117
State Reformatory; Buena Vista	547	-	-	Corr. Inst., Plymouth; South Carver	51	51	-
Connecticut	1,587	1,483	104	Corr. Inst., Monroe; Readsboro, Vt.	42	42	-
State Prison; Somers	1,159	1,159	-	Corr. Inst., Warwick; Orange	44	44	-
Reformatory; Cheshire	324	324	-	Michigan (Dept. of Corrections)	7,037	6,906	131
State Farm & Pris. for Women; Niantic	104	-	104	State Prison of So. Mich.; Jackson	3,193	3,193	-
Delaware (Dept. of Corr.; Wilmington)	368	297	11	Reformatory; Ionia	1,006	1,006	-
(No breakdown available) ^(c)	-	-	-	Training Unit; Ionia	459	459	-
District of Columbia	1,268	1,255	13	House of Correction and Branch Prison; Marquette	729	729	-
Reformatory; Lorton, Va.	958	958	-	Cassidy Lake Tech. School; Chelsea	184	184	-
Women's Detention Center; Wash., D.C.	13	-	13	Detroit House of Corr.; Plymouth	161	30	131
Youth Center; Lorton, Va.	297	297	-	Camps	675	675	-
Florida (Division of Corrections) ^(d)	7,261	6,975	286	Federal Pre-Release Guidance Center	12	12	-
State Prison; Buford	3,263	3,263	-	Reception-Diagnostic Center; Jackson	618	618	-
Apalachee Corr. Inst.; Chattahoochee	723	723	-	Minnesota (Dept. of Corrections) ⁽ⁿ⁾	1,652	1,599	53
Avon Park Corr. Inst.; Avon Park	564	564	-	State Prison; Stillwater	901	901	-
Florida Corr. Inst.; Lowell	420	420	280	State Reformatory for Men; St. Cloud	698	698	-
Glades Corr. Inst.; Belle Glade	460	460	-	State Ref. for Women; Shakopee	53	-	53
Duval Corr. Inst.; Bushnell	170	170	-	Mississippi (State Prison; Parchman)	1,667	1,609	58
Santa Fe Corr. Farm; Gainesville	45	45	-	Missouri	3,363	3,193	170
State Hospital; Chattahoochee	25	13	6	State Pen. for Men; Jefferson City	1,979	1,979	-
Road Prisons	1,442	1,442	-	Intermediate Ref.; Jefferson City	439	439	-
Reception & Med. Ctr.; Lake Butler ^(e)	149	149	-	Reception Center; Jefferson City	178	178	-
Georgia (Board of Corrections; Atlanta)	5,300	5,125	175	Training Center for Men; Moberly	597	597	-
(No breakdown available) ^(f)	-	-	-	State Pen. for Women; Tipton	70	-	70
Hawaii (Dept. of Social Services, Correction Division) ^(g)	364	364	-	Montana (State Prison; Deer Lodge)	521	512	9
State Prison; Honolulu	296	296	-	Nebraska ^(o)	971	928	43
Kalani Honor Camp; Hilo	38	38	-	Penal & Corr. Complex; Lincoln	928	928	-
Alinda Honor Camp; Makawao, Maui	30	30	-	State Ref. for Women; York	43	-	43
Idaho (State Penitentiary; Boise)	391	384	7	Nevada (State Prison; Carson City)	608	592	16
Illinois	7,041	6,865	176	New Hampshire (State Prison; Concord)	222	222	(p)
State Pen., Joliet Branch; Joliet	3,744	3,744	-	New Jersey (Dept. of Inst. & Agencies)	4,614	4,320	294
State Pen., Pontiac Branch; Pontiac	1,202	1,202	-	State Prison; Trenton	2,776	2,776	-
State Reformatory for Women; Dwight	176	-	176	Male Reformatory Complex; Yardville	1,544	1,544	-
State Pen., Newark Branch; Newark	1,919	1,919	-	Reformatory for Women; Clinton	294	-	294
Indiana ^(h)	3,884	3,816	68	New Mexico (Penitentiary; Santa Fe)	892	870	22
State Prison; Michigan City	1,853	1,853	-				
Reformatory; Fountain	1,963	1,963	-				
Women's Prison; Indianapolis	68	-	68				

State and institution	Total	Male	Female	State and institution	Total	Male	Female
New York (Dept. of Correction) ^(q)	14,085	13,608	477	South Dakota	489	480	(t)
Attica Prison; Attica	1,830	1,830	-	Penitentiary; Sioux Falls	456	456	(t)
Auburn Prison; Auburn	1,543	1,543	-	Reformatory; Sioux Falls	33	33	(t)
Clinton Prison; Dannemora	1,591	1,591	-	Tennessee	2,980	2,920	60
Green Haven Prison; Stormville	1,653	1,653	-	State Penitentiary; Nashville	2,011	2,011	-
Sing Sing Prison; Ossining	1,565	1,565	-	Brushy Mountain Pen.; Petros	498	498	-
Wallkill Prison; Wallkill	483	483	-	Fort Pillow State Farm; Ft. Pillow	411	411	-
Westfield Prison; Bedford Hills	223	-	223	Prison for Women; Nashville	60	-	60
State Vocational Inst.; W. Coxsackie	550	550	-	Texas (Dept. of Corrections)	12,313	11,922	391
Elmira Reformatory; Elmira	1,196	1,196	-	Central Unit; Sugarland	917	917	-
Great Meadow Corr. Inst.; Comstock	1,043	1,043	-	Clemens Unit; Brazoria	728	728	-
Catskill Reformatory; Napanoch	822	822	-	Coffield Unit; Tennessee Colony	352	352	-
Westfield Ref.; Bedford Hills	120	-	120	Darrington Unit; Rosharon	516	516	-
Western Ref. for Women; Albion	119	-	119	Diagnostic Unit; Huntsville	409	409	-
Beacon State Institution; Beacon	290	290	-	Eastham Unit; Weldon	1,192	1,192	-
Albion State Training School; Albion	15	-	15	Ellis Unit; Huntsville	1,515	1,515	-
Reception Center; Elmira	308	308	-	Ferguson Unit; Midway	770	770	-
Dannemora State Hospital; Dannemora	400	400	-	Goree Unit; Huntsville	391	-	391
Youth Camps	334	334	-	Jeeter Unit; Richmond	652	652	-
North Carolina (Prison Dept.; Raleigh)	5,516	5,357	159	Huntsville Unit; Huntsville	1,493	1,493	-
(No breakdown available)	-	-	-	Ramsey Unit; Rosharon	1,427	1,427	-
North Dakota (Penitentiary; Bismarck)	182	179	3	Retrieve Unit; Angleton	395	395	-
Ohio (Division of Correction)	10,323	9,988	335	Wynne Unit; Huntsville	1,556	1,556	-
Penitentiary; Columbus	2,947	2,947	-	Utah (State Prison; Draper)	651	632	19
State Reformatory; Mansfield	2,274	2,274	-	Vermont ^(u)	220	218	2
Lebanon Corr. Inst.; Lebanon	1,086	1,086	-	State Prison & House of Corr. for Men; Windsor	218	218	-
London Corr. Inst.; London	1,694	1,694	-	Women's Reformatory; Rutland	2	-	2
Marion Corr. Inst.; Marion	1,225	1,225	-	Virginia (Div. of Corrections) ^(v)	4,033	3,912	121
Ref. for Women; Marysville	335	-	335	Penitentiary; Richmond	1,344	1,344	-
Chillicothe Corr. Inst.; Chillicothe ^(r)	762	762	-	State Prison Farm; State Farm	790	790	-
Oklahoma	2,756	2,698	58	Southampton Farm; Capron	318	318	-
State Penitentiary; McAlester	2,261	2,203	58	Bland Corr. Farm; Bland	12	12	-
State Reformatory; Granite	495	495	-	State Convict Road Force; Richmond	1,406	1,406	-
Oregon	1,803	1,760	43	Lime Plant	19	19	-
State Penitentiary; Salem	1,391	1,348	43	Sanitoria (Custodial Workers)	23	23	-
State Corr. Inst.; Salem	412	412	-	State Indust. Farm for Women; Goochland	121	-	121
Pennsylvania (Bureau of Corr.)	5,674	5,504	170	Washington (Dept. of Institutions)	2,738	2,667	71
Eastern Diag. & Class. Ctr.; Phila.	187	187	-	State Penitentiary; Walla Walla	1,344	1,344	-
Western Diag. & Class. Ctr.; Pitta.	69	69	-	State Reformatory; Monroe	641	641	-
State Corr. Inst.; Camp Hill	866	866	-	Corr. Center, Reception; Shelton	160	160	-
State Corr. Inst.; Dallas	451	451	-	Clallam Bay Honor Camp; Clallam	36	36	-
State Corr. Inst.; Graterford	1,249	1,249	-	Larch Mountain Honor Camp; Yacolt	66	66	-
State Corr. Inst.; Huntingdon	747	747	-	Washougal Honor Camp; Washougal	56	56	-
State Corr. Inst.; Muncy	170	-	170	Corr. Center, Institution; Shelton	326	326	-
State Corr. Inst.; Philadelphia	664	664	-	West Virginia	1,208	1,174	34
State Corr. Inst.; Pittsburgh	694	694	-	Penitentiary; Moundsville	853	853	-
State Corr. Inst.; Rockview	577	577	-	Medium Security Prison; Huttonsville	321	321	-
Rhode Island ^(s)	350	345	5	State Pris. for Women; Pence Springs	34	-	34
Adult Corr. Institutions; Howard	345	345	-	Wisconsin (Div. of Corrections, State Dept. of Public Welfare)	2,607	2,477	130
Reformatory for Women; Howard	5	-	5	State Prison; Waupun	923	923	-
South Carolina (Dept. of Corrections)	2,337	2,254	83	State Reformatory; Green Bay	713	713	-
Central Corr. Inst.; Columbia	1,302	1,302	-	Correctional Institution; Fox Lake	453	453	-
Manning Corr. Inst.; Columbia	338	338	-	Correctional Camp System; Madison	388	388	-
Walden Corr. Inst.; Columbia	79	79	-	Home for Women; Taycheedah	130	-	130
Wateree River Corr. Inst.; Boykin	201	201	-	Wyoming (State Penitentiary; Rawlins)	254	254	(w)
Harbison Corr. Inst. for Women; Irma	83	-	83				
Pre-Release Center; Columbia	138	138	-				
Youth Correction Center; Ridgeville	116	116	-				
Receiving and Eval. Ctr.; Columbia	80	80	-				

(a) Excludes Alaska.
 (b) Male figures include 1,228 Youth Authority Wards (Tracy: 1,129; Vacaville: 58; Corona: 26; Inst. for Men, Chino: 14; San Quentin: 1); 2,070 civil narcotic addicts (Corona: 1,895; Tehachapi: 123; Inst. for Men, Chino: 21; Vacaville 20; Los Padres: 11); and 456 other non-felons (no inst. breakdown available). Female figures include 17 Youth Authority Wards (Frontera: 12; Corona: 5); 283 civil narcotic addicts (Corona: 279; Frontera: 4); and 19 other non-felons (no inst. breakdown available).
 (c) Includes only Superior Court cases.
 (d) Excludes infants, State narcotic patients, safekeepers, and persons held for parole revocation hearings.
 (e) Opened July 1, 1967.
 (f) Excludes misdemeanants and juveniles confined in State correctional institutions.
 (g) Excludes 14 males and 2 females not in residence Dec. 31.
 (h) Excludes 2 safekeepers at the State Prison.
 (i) Excludes 36 unsentenced male pris. at the Security-Med. Facility, and 3 women at the Cherokee Mental Health Inst.
 (k) Includes 1 boarded female prisoner from New Hampshire.
 (l) Includes Correction Camps.
 (m) Includes 2 boarded female prisoners from New Hampshire, 2 from Rhode Island, and one from Vermont.
 (n) Includes 394 Youthful Offenders (ages 18-20) at the Ref. for Men, and 16 at the Ref. for Women; 97 Youthful Offenders at Willow River Camp and at the Reception Center (incl. 4 women at the Centers) are excluded.
 (o) Includes 12 boarded female pris. from S. Dakota, and 6 from Wyoming. Excludes 6 safekeepers at the Penal & Corr. Complex.
 (p) One prisoner boarded in Maine State Ref. for Women.
 (q) Excludes 583 inmates (518 men, 65 women) at Mattewan State Hospital. Eff. Oct. 1967, Woodhaven Corr. Inst. was temporarily turned over to the Narcotic Addiction Control Commission.
 (r) Opened July 10, 1968.
 (s) Two more women boarded in Mass. Corr. Inst., Framingham.
 (t) Eleven women from the Penitentiary and one from the Reformatory boarded in Nebraska Ref. for Women.
 (u) One more woman boarded in Mass. Corr. Inst., Framingham.
 (v) Excludes 1,536 misdemeanants confined in State Corr. Insts. (Convict Road Force

END