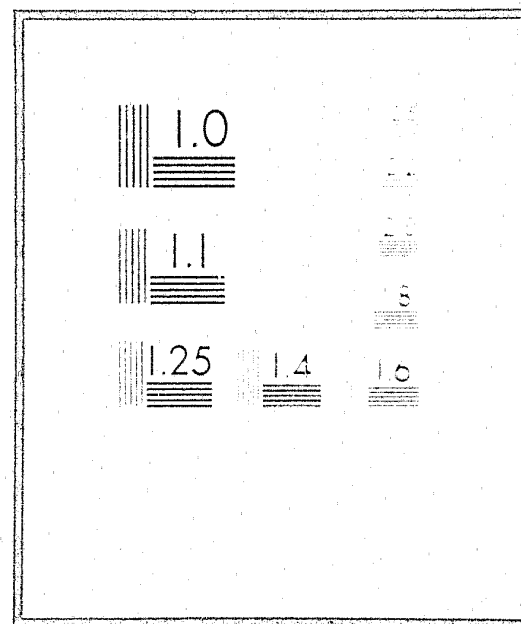


NCJRS

This microfiche was produced from documents received for inclusion in the NCJRS data base. Since NCJRS cannot exercise control over the physical condition of the documents submitted, the individual frame quality will vary. The resolution chart on this frame may be used to evaluate the document quality.



Microfilming procedures used to create this fiche comply with the standards set forth in 41CFR 101-11.504

Points of view or opinions stated in this document are those of the author(s) and do not represent the official position or policies of the U.S. Department of Justice.

U.S. DEPARTMENT OF JUSTICE
LAW ENFORCEMENT ASSISTANCE ADMINISTRATION
NATIONAL CRIMINAL JUSTICE REFERENCE SERVICE
WASHINGTON, D.C. 20531

12 16 76

3 a 5 1 m e d

ADULT PROBATION ADMISSIONS 1973



DIVISION OF CORRECTIONS
BUREAU OF PLANNING, DEVELOPMENT, AND RESEARCH
MADISON, WISCONSIN 53701

STICAL BULLETIN C-55A

OCTOBER 1974

27013
C.3

STATE OF WISCONSIN

DIVISION OF CORRECTIONS
DEPARTMENT OF HEALTH AND SOCIAL SERVICES
Roland E. McCauley, Acting Administrator

BUREAU OF PLANNING, DEVELOPMENT, AND RESEARCH
Paul H. Kusuda, Director
Perry C. Baker, Chief, Research and Evaluation Section
Theodore H. Johnson, Chief, Information and Systems Development Section

It is within the discretion of Wisconsin courts to grant probation to persons convicted of felonies or misdemeanors. Persons convicted of felonies may be placed on probation for not less than one year nor for more than the statutory maximum term of imprisonment for the crime, or for three years, whichever is greater. Persons convicted of a misdemeanor may be placed on probation for a term not to exceed two years.

Adults from all of Wisconsin's 72 counties were placed under probation supervision of the Division of Corrections during 1973. Milwaukee County (2,954 cases), Dane County (392 cases), and Waukesha County (335 cases) accounted for one-half of all admissions to probation. Eight out of 10 persons placed on adult probation were males.

Offenses committed by adults granted probation in 1973 are grouped into five major categories: offenses against persons, property offenses, drug offenses, sex offenses, and all other offenses. The order of offense categories by frequency of commitment is as follows: property offenses, drug offenses, all other offenses, offenses against persons, and sex offenses. This indicates a slight change from 1972 when sex offenses ranked fourth and crimes against persons ranked last.

Tables 4 through 20 are arranged so that comparisons may be made among persons in each of the five major offense categories in terms of such characteristics as age on admission, period of probation, and marital status.

Type of Disposition

Withheld sentences were received by about three-fourths (73 percent) of the men and four-fifths (81 percent) of the women placed on probation during calendar year 1973. If a person receiving a withheld sentence violates the terms and conditions of probation, he or she must be returned to the committing court for sentencing. Persons placed on probation for drug offenses received withheld sentences in 9 out of 10 cases. The majority of these people were probably supervised under the "probation without conviction" provisions of the 1971 Uniform Controlled Substances Act. (See Statistical Bulletin C-55A, Adult Probation Admissions, 1972 for a detailed explanation of this type of probation.)

Slightly more than one-fourth (27 percent) of the men and one-fifth of the women received imposed and stayed probation sentences. If, because of alleged probation violation, a probation and parole agent recommends revocation, the offender has the option to request an administrative hearing. If, as a result of this hearing, the agent's decision to seek revocation is upheld, a recommendation for revocation is made to the Secretary of the Department of Health and Social Services. If the Secretary concurs, the revocation becomes effective and the offender may be sent to an adult correctional institution to serve the sentence originally imposed. If, as a result of the hearing, it is found that revocation is unwarranted, or the Department Secretary decided that revocation is unnecessary, the person may be reinstated on probation supervision. If an offender waives rights to an administrative hearing, he or she may be sent to a correctional institution to serve the sentence originally imposed by the court. (See Table 4.)

Period of Probation

Almost three-fifths (57 percent) of all men placed on probation received sentences of less than two years. Men convicted of offenses against persons and of property offenses received sentences of less than two years in 4 out of 10 cases; those convicted of drug-related offenses received such sentences in 8 out of 10 cases. Women placed on probation received sentences of less than two years in 6 out of 10 cases. Terms of more than three years were received by 15 percent of the men and 10 percent of the women placed on probation supervision during 1973. (See Table 5.)

Age on Admission to Probation

Almost two-thirds (65 percent) of the men admitted to probation during 1973 were under the age of 25. Four out of 10 crimes against persons, 7 out of 10 property crimes, 9 out of 10 drug offenses, and 5 out of 10 sex offenses were committed by persons under the age of 25. Six out of 10 women placed on probation were less than 25 years old. (See Table 6.)

Marital Status and Marital Adjustment

Six out of 10 men and almost one-half (47 percent) of the women were reported as being single at the time of placement on probation. One-fifth of the men and women were listed as being married. (See Table 7.) Less than one-tenth of the men and women reported as being married were listed as having a good marital adjustment. (See Table 8.)

Time Employed

Almost one-half (47 percent) of the men and slightly more than one-fourth (26 percent) of the women were employed at least 75 percent of the time during the six months prior to placement on probation. Two out of 10 men and 4 out of 10 women were employed less than 25 percent of the time prior to placement on supervision. Less than one-fifth (18 percent) of the women were reported to have been employed as "homemakers" prior to placement. (See Table 9.)

Average Income

About one-fourth of the men and less than one-fifth of the women placed under supervision were reported to have earned average gross monthly incomes of less than \$200. One-third of the men placed on supervision in 1973 were listed as earning at least \$400 per month. This was true for only one-fourth of the men placed under supervision in 1972. (See Table 10.)

Prepared by: Barbara Drown, Social Research Analyst
Bureau of Planning, Development, and Research
Division of Corrections
P.O. Box 669
Madison, Wisconsin 53701

Table 1
Admissions to Adult Probation by Sex
Calendar Years 1950-1973

Calendar Year	Total	Male	Female
1950	968	904	64
1951	1,033	945	88
1952	1,100	999	101
1953	1,290	1,171	119
1954	1,433	1,325	108
1955	1,379	1,274	105
1956	1,370	1,229	141
1957	1,481	1,336	145
1958	1,838	1,648	190
1959	1,922	1,669	253
1960	2,031	1,778	253
1961	2,218	1,940	278
1962	2,371	2,053	318
1963	2,586	2,242	344
1964	2,278	1,966	312
1965	2,343	2,021	322
1966	2,078	1,793	285
1967	2,142	1,853	289
1968	2,462	2,147	315
1969	2,660	2,305	355
1970	3,142	2,753	389
1971	3,663	3,186	477
1972	5,366	4,600	766
1973	7,402	6,228	1,174

Table 2
Admissions to Adult Probation by County of Commitment
January 1 - December 31, 1973

County of Commitment	Adult		
	Total	Male	Female
<u>Total</u>	<u>7,402</u>	<u>6,228</u>	<u>1,174</u>
Adams	18	16	2
Ashland	38	36	2
Barron	32	27	5
Bayfield	13	13	-
Brown	50	45	5
Buffalo	24	23	1
Burnett	12	11	1
Calumet	12	11	1
Chippewa	47	46	1
Clark	22	20	2
Columbia	64	57	7
Crawford	17	15	2
Dane	392	314	78
Dodge	86	76	10
Door	31	29	2
Douglas	119	110	9
Dunn	40	38	2
Eau Claire	180	145	35
Florence	9	8	1
Fond du Lac	83	71	12
Forest	8	8	-
Grant	36	34	2
Green	38	30	8
Green Lake	7	6	1
Iowa	15	14	1
Iron	10	8	2
Jackson	62	54	8
Jefferson	70	58	12
Juneau	21	18	3
Kenosha	207	179	28
Kewaunee	2	1	1
LaCrosse	122	101	21
Lafayette	6	6	-
Langlade	26	21	5
Lincoln	30	26	4
Manitowoc	62	53	9
Marathon	157	135	22
Marinette	58	56	2
Marquette	11	8	3
Menominee	5	5	-

Table 2 (Concluded)

County of Commitment	Adult		
	Total	Male	Female
Milwaukee	2,954	2,395	559
Monroe	26	24	2
Oconto	10	8	2
Oneida	68	61	7
Outagamie	81	60	21
Ozaukee	79	73	6
Pepin	7	6	1
Pierce	40	37	3
Polk	61	55	6
Portage	85	63	22
Price	13	12	1
Racine	197	158	39
Richland	17	17	-
Rock	271	228	43
Rusk	26	26	-
St. Croix	85	79	6
Sauk	87	80	7
Sawyer	33	29	4
Shawano	37	31	6
Sheboygan	147	120	27
Taylor	17	15	2
Trempealeau	14	14	-
Vernon	17	16	1
Vilas	19	17	2
Walworth	115	102	13
Washburn	8	7	1
Washington	91	82	9
Waukesha	335	289	46
Waupaca	78	71	7
Waushara	22	21	1
Winnebago	70	60	10
Wood	50	40	10

Table 3
Admissions to Adult Probation by Offense
January 1 - December 31, 1973

Type of Offense	Total		Male		Female	
	Number	Percent	Number	Percent	Number	Percent
<u>Total</u>	<u>7,402</u>	<u>100.0</u>	<u>6,228</u>	<u>100.0</u>	<u>1,174</u>	<u>100.0</u>
<u>Offenses Against Persons</u>	<u>856</u>	<u>11.5</u>	<u>772</u>	<u>12.4</u>	<u>84</u>	<u>7.2</u>
Murder	3	0.1	1	0.1	2	0.2
Manslaughter	3	0.1	1	0.1	2	0.2
Negligent homicide	40	0.5	36	0.6	4	0.3
Aggravated assault	31	0.4	28	0.4	3	0.3
Other assault	321	4.3	289	4.6	32	2.6
Armed robbery	18	0.2	18	0.3	-	-
Unarmed robbery	71	1.0	68	1.1	3	0.3
Rape	9	0.1	9	0.1	-	-
Carnal knowledge and abuse	46	0.6	45	0.7	1	0.1
Carrying deadly weapon	84	1.1	76	1.2	8	0.7
Other offenses against persons	230	3.1	201	3.2	29	2.5
<u>Property Offenses</u>	<u>2,955</u>	<u>39.8</u>	<u>2,358</u>	<u>37.9</u>	<u>597</u>	<u>50.8</u>
Arson of dwelling	19	0.3	18	0.3	1	0.1
Burglary, armed	7	0.1	7	0.1	-	-
Burglary, unarmed	558	7.4	543	8.7	15	1.3
Larceny	947	12.7	748	12.0	199	16.9
Auto theft	147	2.0	141	2.3	6	0.5
Receiving stolen property	127	1.7	119	1.9	8	0.7
Embezzlement	-	-	-	-	-	-
Obtaining money by false pretenses	198	2.7	130	2.1	68	5.8
Fraud	204	2.8	79	1.3	125	10.6
Worthless checks	408	5.5	250	4.0	158	13.5
Transfer of encumbered property	9	0.1	8	0.1	1	0.1
Malicious destruction	258	3.5	248	4.0	10	0.8
Other property offenses	73	1.0	67	1.1	6	0.5
<u>Drug Offenses</u>	<u>1,886</u>	<u>25.6</u>	<u>1,675</u>	<u>26.9</u>	<u>211</u>	<u>18.0</u>

Table 3 (Concluded)

Type of Offense	Total		Male		Female	
	Number	Percent	Number	Percent	Number	Percent
<u>Sex Offenses</u>	<u>390</u>	<u>5.3</u>	<u>326</u>	<u>5.2</u>	<u>64</u>	<u>5.4</u>
Adultery	3	0.1	3	0.1	-	-
Polygamy	-	-	-	-	-	-
Lewd and lascivious conduct	64	0.9	62	0.9	2	0.2
Soliciting female for prostitution	-	-	-	-	-	-
Prostitution	32	0.4	-	-	32	2.6
Incest	5	0.1	5	0.1	-	-
Obscene literature	3	0.1	3	0.1	-	-
Indecent exposure	-	-	-	-	-	-
Indecent liberties	32	0.4	31	0.5	1	0.1
Sodomy	12	0.2	12	0.2	-	-
Other sex offenses	239	3.1	210	3.3	29	2.5
<u>Other offenses</u>	<u>1,315</u>	<u>17.8</u>	<u>1,097</u>	<u>17.6</u>	<u>218</u>	<u>18.6</u>
Abandonment, non-support	329	4.4	322	5.1	7	0.6
Lottery and gambling	25	0.3	23	0.4	2	0.2
Disorderly conduct	535	7.2	387	6.1	148	12.7
Vagrancy	1	0.1	1	0.1	-	-
Resisting officer	170	2.3	146	2.3	24	2.0
Road law violations	117	1.6	99	1.6	18	1.5
Game law violations	2	0.1	1	0.1	1	0.1
Liquor law violations	39	0.5	35	0.6	4	0.3
All other offenses	97	1.3	83	1.3	14	1.2

- 70 -

- 11 -

- 11 -

- 11 -

- 11 -

[illegible]

Table 7
Admissions to Adult Probation by Offense Groupings and
Marital Status
January 1 - December 31, 1973

Marital Status	Total		Offenses Against Persons		Property Offenses		Drug Offenses		Sex Offenses		Other Offenses	
	Number	Percent	Number	Percent	Number	Percent	Number	Percent	Number	Percent	Number	Percent
<u>Males</u>	<u>6,228</u>	<u>100.0</u>	<u>772</u>	<u>100.0</u>	<u>2,358</u>	<u>100.0</u>	<u>1,675</u>	<u>100.0</u>	<u>326</u>	<u>100.0</u>	<u>1,097</u>	<u>100.0</u>
Single	3,752	60.2	309	40.0	1,483	62.9	1,399	83.5	178	54.6	383	35.0
Married, living with spouse	1,346	21.6	275	35.6	505	21.4	161	9.6	93	28.5	312	28.4
Divorced or separated	1,098	17.6	184	23.9	356	15.1	115	6.9	50	15.4	393	35.8
Widowed	30	0.5	4	0.5	12	0.5	-	-	5	1.5	9	0.8
Unknown	2	0.1	-	-	2	0.1	-	-	-	-	-	-
<u>Females</u>	<u>1,174</u>	<u>100.0</u>	<u>84</u>	<u>100.0</u>	<u>597</u>	<u>100.0</u>	<u>211</u>	<u>100.0</u>	<u>64</u>	<u>100.0</u>	<u>218</u>	<u>100.0</u>
Single	554	47.2	24	28.6	225	37.7	156	73.9	29	45.3	120	55.1
Married, living with spouse	253	21.5	27	32.1	153	25.6	23	10.9	16	25.0	34	15.6
Divorced or separated	351	29.9	28	33.3	210	35.2	32	15.2	19	29.7	62	28.4
Widowed	16	1.4	5	6.0	9	1.5	-	-	-	-	2	0.9
Unknown	-	-	-	-	-	-	-	-	-	-	-	-

Table 8
Admissions to Adult Probation by Offense Groupings and
Marital Adjustment Prior to Admission
January 1 - December 31, 1973

Marital Adjustment During Six Months Prior to Admission/a	Total		Offenses Against Persons		Property Offenses		Drug Offenses		Sex Offenses		Other Offenses	
	Number	Percent	Number	Percent	Number	Percent	Number	Percent	Number	Percent	Number	Percent
<u>Males</u>	<u>6,228</u>	<u>100.0</u>	<u>772</u>	<u>100.0</u>	<u>2,358</u>	<u>100.0</u>	<u>1,675</u>	<u>100.0</u>	<u>326</u>	<u>100.0</u>	<u>1,097</u>	<u>100.0</u>
Not married	4,296	69.0	387	50.1	1,663	70.5	1,447	86.4	213	65.4	586	53.4
Good adjustment	596	9.6	104	13.5	224	9.5	99	5.9	36	11.0	133	12.1
Fair adjustment	465	7.5	92	11.9	184	7.8	50	3.0	33	10.1	106	9.7
Poor adjustment	832	13.3	185	24.0	261	11.1	76	4.5	43	13.2	267	24.3
Not reported	39	0.6	4	0.5	26	1.1	3	0.2	1	0.3	5	0.5
<u>Females</u>	<u>1,174</u>	<u>100.0</u>	<u>84</u>	<u>100.0</u>	<u>597</u>	<u>100.0</u>	<u>211</u>	<u>100.0</u>	<u>64</u>	<u>100.0</u>	<u>218</u>	<u>100.0</u>
Not married	734	62.5	41	48.8	345	57.8	165	78.2	34	53.1	149	68.4
Good adjustment	93	7.9	7	8.3	56	9.4	14	6.6	6	9.4	10	4.6
Fair adjustment	103	8.8	13	15.5	65	10.9	11	5.2	5	7.8	9	4.1
Poor adjustment	237	20.2	23	27.4	127	21.3	21	10.0	17	26.6	49	22.5
Not reported	7	0.6	-	-	4	0.6	-	-	2	3.1	1	0.4

/a An unknown number of persons divorced, separated, or widowed at time of admissions are distributed in the various adjustment categories.

Table 9

Admissions to Adult Probation by Offense Groupings and
Time Employed Prior to Admission
January 1 - December 31, 1973

Percent of Time Employed During Six Months Prior to Admission	Total		Offense Against Persons		Property Offenses		Drug Offenses		Sex Offenses		Other Offenses	
	Number	Percent	Number	Percent	Number	Percent	Number	Percent	Number	Percent	Number	Percent
Males	6,228	100.0	772	100.0	2,358	100.0	1,675	100.0	326	100.0	1,097	100.0
75 percent or more	2,950	47.4	436	56.4	906	38.5	836	49.9	175	53.7	597	54.4
50-74 percent	775	12.4	89	11.5	337	14.3	172	10.3	37	11.4	140	12.8
25-49 percent	585	9.4	50	6.5	274	11.6	130	7.8	33	10.1	98	8.9
0-24 percent	1,409	22.6	135	17.5	655	27.8	351	21.0	61	18.7	207	18.9
Incapacitated	138	2.2	37	4.8	55	2.3	9	0.5	6	1.8	31	2.8
In school	323	5.2	19	2.5	102	4.3	169	10.1	13	4.0	20	1.8
Homemaker	-	-	-	-	-	-	-	-	-	-	-	-
Not reported	48	0.8	6	0.8	29	1.2	8	0.4	1	0.3	4	0.4
Females	1,174	100.0	84	100.0	597	100.0	211	100.0	64	100.0	218	100.0
75 percent or more	302	25.7	22	26.2	153	25.6	70	33.2	14	21.9	43	19.7
50-74 percent	72	6.1	7	8.3	35	5.9	18	8.5	5	7.8	7	3.2
25-49 percent	67	5.7	6	7.1	27	4.5	17	8.1	3	4.7	14	6.4
0-24 percent	438	37.4	23	27.4	208	34.9	66	31.3	32	50.0	109	50.0
Incapacitated	33	2.8	5	6.0	18	3.0	4	1.9	1	1.6	5	2.3
In school	50	4.3	1	1.2	21	3.5	22	10.4	2	3.1	4	1.8
Homemaker	207	17.6	20	23.8	133	22.3	14	6.6	5	7.8	35	16.1
Not reported	5	0.4	-	-	2	0.3	-	-	2	3.1	1	0.5

Table 10

Admissions to Adult Probation by Offense Groupings and
Average Gross Monthly Income Prior to Admission
January 1 - December 31, 1973

Average Gross Monthly Income During Six Months Prior to Admission	Total		Offense Against Persons		Property Offenses		Drug Offenses		Sex Offenses		Other Offenses	
	Number	Percent	Number	Percent	Number	Percent	Number	Percent	Number	Percent	Number	Percent
Males	6,228	100.0	772	100.0	2,358	100.0	1,675	100.0	326	100.0	1,097	100.0
Less than \$200.00	1,501	24.1	112	14.5	720	30.5	382	22.8	82	25.2	205	18.7
\$200.00, less than \$400.00	1,612	25.9	185	24.0	602	25.5	465	27.8	76	23.3	284	25.8
\$400.00 or more	2,125	34.1	351	45.5	589	25.0	585	34.8	136	41.7	464	42.3
No income	747	12.0	77	10.0	338	14.3	207	12.4	21	6.4	104	9.5
Receiving public assistance	177	2.8	38	4.9	72	3.1	20	1.2	10	3.1	37	3.4
Not reported	66	1.1	9	1.1	37	1.6	16	1.0	1	0.3	3	0.3
Females	1,174	100.0	84	100.0	597	100.0	211	100.0	64	100.0	218	100.0
Less than \$200.00	190	16.2	8	9.5	91	15.2	52	24.6	9	14.1	30	13.8
\$200.00, less than \$400.00	268	22.8	22	26.2	131	22.0	61	28.9	17	26.6	37	17.0
\$400.00 or more	152	12.9	14	16.7	86	14.4	29	13.7	3	4.7	20	9.2
No income	232	19.8	16	19.0	107	17.9	39	18.5	21	32.7	49	22.5
Receiving public assistance	318	27.1	24	28.6	179	30.0	28	13.3	11	17.2	76	34.8
Not reported	14	1.2	-	-	3	0.5	2	1.0	3	4.7	6	2.7

Table 11

Admissions to Adult Probation by Offense Groupings and
Dependency Obligation Prior to Admission
January 1 - December 31, 1973

Dependency Obligation During Six Months Prior to Admission	Total		Offense Against Persons		Property Offenses		Drug Offenses		Sex Offenses		Other Offenses	
	Number	Percent	Number	Percent	Number	Percent	Number	Percent	Number	Percent	Number	Percent
<u>Males</u>	<u>6,228</u>	<u>100.0</u>	<u>772</u>	<u>100.0</u>	<u>2,358</u>	<u>100.0</u>	<u>1,675</u>	<u>100.0</u>	<u>326</u>	<u>100.0</u>	<u>1,097</u>	<u>100.0</u>
Supported self and others	1,506	24.2	293	38.0	494	21.0	257	15.3	103	31.6	359	32.7
Supported self	2,858	45.9	303	39.2	1,003	42.5	923	55.1	126	38.6	503	45.9
Supported by others	1,810	29.1	171	22.2	828	35.1	486	29.1	96	29.5	229	20.9
Not reported	54	0.8	5	0.6	33	1.4	9	0.5	1	0.3	6	0.5
<u>Females</u>	<u>1,174</u>	<u>100.0</u>	<u>84</u>	<u>100.0</u>	<u>597</u>	<u>100.0</u>	<u>211</u>	<u>100.0</u>	<u>64</u>	<u>100.0</u>	<u>218</u>	<u>100.0</u>
Supported self and others	158	13.5	12	14.3	94	15.7	24	11.4	9	14.1	19	8.7
Supported self	295	25.1	21	25.0	118	19.8	92	43.6	13	20.3	51	23.4
Supported by others	711	60.6	51	60.7	384	64.3	94	44.5	38	59.4	144	66.1
Not reported	10	0.8	-	-	1	0.2	1	0.5	4	6.2	4	1.8

- 16 -

Table 12

Admissions to Adult Probation by Offense Groupings and
Type of Alcohol Use Prior to Admission
January 1 - December 31, 1973

Type of Alcohol Use During Six Months Prior to Admission	Total		Offenses Against Persons		Property Offenses		Drug Offenses		Sex Offenses		Other Offenses	
	Number	Percent	Number	Percent	Number	Percent	Number	Percent	Number	Percent	Number	Percent
<u>Males</u>	<u>6,228</u>	<u>100.0</u>	<u>772</u>	<u>100.0</u>	<u>2,358</u>	<u>100.0</u>	<u>1,675</u>	<u>100.0</u>	<u>326</u>	<u>100.0</u>	<u>1,097</u>	<u>100.0</u>
Abstainer or light drinker	2,811	45.2	261	33.8	1,010	42.8	998	59.6	156	47.9	386	35.2
Heavy drinker, not disruptive	549	8.8	87	11.3	208	8.8	122	7.3	35	10.7	97	8.8
Disruptive use of alcohol	1,497	24.0	302	39.1	614	26.0	136	8.1	77	23.6	368	33.6
Not reported	1,371	22.0	122	15.8	526	22.4	419	25.0	58	17.8	246	22.4
<u>Females</u>	<u>1,174</u>	<u>100.0</u>	<u>84</u>	<u>100.0</u>	<u>597</u>	<u>100.0</u>	<u>211</u>	<u>100.0</u>	<u>64</u>	<u>100.0</u>	<u>218</u>	<u>100.0</u>
Abstainer or light drinker	665	56.6	44	52.4	340	57.0	137	64.9	43	67.2	101	46.3
Heavy drinker, not disruptive	57	4.9	7	8.3	27	4.5	8	3.8	1	1.6	14	6.4
Disruptive use of alcohol	121	10.3	13	15.5	56	9.4	8	3.8	5	7.8	39	17.9
Not reported	331	28.2	20	23.8	174	29.1	58	27.5	15	23.4	64	29.4

- 17 -

Table 13

Admissions to Adult Probation by Offense Groupings and
Social Identification Prior to Admission
January 1 - December 31, 1973

Character of Most Significant Persons Identified with Socially During Six Months Prior to Admission	Total		Offenses Against Persons		Property Offenses		Drug Offenses		Sex Offenses		Other Offenses	
	Number	Percent	Number	Percent	Number	Percent	Number	Percent	Number	Percent	Number	Percent
<u>Males</u>	<u>6,228</u>	<u>100.0</u>	<u>772</u>	<u>100.0</u>	<u>2,358</u>	<u>100.0</u>	<u>1,675</u>	<u>100.0</u>	<u>326</u>	<u>100.0</u>	<u>1,097</u>	<u>100.0</u>
Reputable	1,653	26.5	239	31.0	468	19.8	479	28.6	117	35.9	350	31.9
Fringe or delinquent	2,454	39.4	233	30.2	1,193	50.6	622	37.1	117	35.9	289	26.3
Not reported	2,121	34.1	300	38.8	697	29.6	574	34.3	92	28.2	458	41.8
<u>Females</u>	<u>1,174</u>	<u>100.0</u>	<u>84</u>	<u>100.0</u>	<u>597</u>	<u>100.0</u>	<u>211</u>	<u>100.0</u>	<u>64</u>	<u>100.0</u>	<u>218</u>	<u>100.0</u>
Reputable	270	23.0	21	25.0	149	25.0	57	27.0	7	10.9	36	16.5
Fringe or delinquent	407	34.7	24	28.6	194	32.5	90	42.7	25	39.1	74	33.9
Not reported	497	42.3	39	46.4	254	42.5	64	30.3	32	50.0	108	49.6

Table 14
Admissions to Adult Probation by Offense Groupings and
Acceptance of Responsibility Prior to Admission
January 1 - December 31, 1973

Acceptance of Responsibility During Six Months Prior to Admission*	Total		Offense Against Persons		Property Offenses		Drug Offenses		Sex Offenses		Other Offenses	
	Number	Percent	Number	Percent	Number	Percent	Number	Percent	Number	Percent	Number	Percent
<u>Males</u>	<u>6,228</u>	<u>100.0</u>	<u>772</u>	<u>100.0</u>	<u>2,358</u>	<u>100.0</u>	<u>1,675</u>	<u>100.0</u>	<u>326</u>	<u>100.0</u>	<u>1,097</u>	<u>100.0</u>
Accepts entirely	1,227	19.7	143	18.5	475	20.1	360	21.5	55	16.9	194	17.7
Accepts mostly	2,333	37.5	287	37.2	855	36.3	691	41.2	123	37.7	377	34.4
Accepts only slightly	1,488	23.9	203	26.3	575	24.4	333	19.9	83	25.4	294	26.8
Does not accept	550	8.8	77	10.0	221	9.4	100	6.0	40	12.3	112	10.2
Not reported	630	10.1	62	8.0	232	9.8	191	11.4	25	7.7	120	10.9
<u>Females</u>	<u>1,174</u>	<u>100.0</u>	<u>84</u>	<u>100.0</u>	<u>597</u>	<u>100.0</u>	<u>211</u>	<u>100.0</u>	<u>64</u>	<u>100.0</u>	<u>218</u>	<u>100.0</u>
Accepts entirely	198	16.9	17	20.2	106	17.7	42	19.9	9	14.1	24	11.0
Accepts mostly	385	32.7	23	27.4	208	34.8	76	36.0	18	28.1	60	27.5
Accepts only slightly	284	24.2	18	21.4	144	24.1	44	20.8	17	26.6	61	28.0
Does not accept	164	14.0	13	15.5	78	13.1	13	6.2	16	25.0	44	20.2
Not reported	143	12.2	13	15.5	61	10.3	36	17.1	4	6.2	29	13.3

* Accepts responsibility for the offense as charged.

- 18 -

Table 15
Admissions to Adult Probation by Offense Groupings and
Problems with Hostility Prior to Admission
January 1 - December 31, 1973

Problems with Hostility During Six Months Prior to Admission	Total		Offenses Against Persons		Property Offenses		Drug Offenses		Sex Offenses		Other Offenses	
	Number	Percent	Number	Percent	Number	Percent	Number	Percent	Number	Percent	Number	Percent
<u>Males</u>	<u>6,228</u>	<u>100.0</u>	<u>772</u>	<u>100.0</u>	<u>2,358</u>	<u>100.0</u>	<u>1,675</u>	<u>100.0</u>	<u>326</u>	<u>100.0</u>	<u>1,097</u>	<u>100.0</u>
Few problems with hostile feelings	2,708	43.5	234	30.3	954	40.5	936	55.9	146	44.8	438	39.9
Moderate problem	2,035	32.7	317	41.1	825	35.0	408	24.4	112	34.3	373	34.0
Serious problem	599	9.6	145	18.8	229	9.7	67	4.0	29	8.9	129	11.8
Not reported	886	14.2	76	9.8	350	14.8	264	15.7	39	12.0	157	14.3
<u>Females</u>	<u>1,174</u>	<u>100.0</u>	<u>84</u>	<u>100.0</u>	<u>597</u>	<u>100.0</u>	<u>211</u>	<u>100.0</u>	<u>64</u>	<u>100.0</u>	<u>218</u>	<u>100.0</u>
Few problems with hostile feelings	470	40.0	26	31.0	235	39.4	111	52.6	28	43.7	70	32.1
Moderate problem	396	33.7	27	32.1	216	36.2	62	29.4	23	35.9	68	31.2
Serious problem	107	9.1	16	19.0	46	7.7	6	2.8	4	6.3	35	16.1
Not reported	201	17.2	15	17.9	100	16.7	32	15.2	9	14.1	45	20.6

- 19 -

Table 16

Admissions to Adult Probation by Offense Group ings and
Ability to Make Judgments Prior to Admission
January 1 - December 31, 1973

Ability to Make Judgments During Six Months Prior to Admission	Total		Offenses Against Persons		Property Offenses		Drug Offenses		Sex Offenses		Other Offenses	
	Number	Percent	Number	Percent	Number	Percent	Number	Percent	Number	Percent	Number	Percent
<u>Males</u>	<u>6,228</u>	<u>100.0</u>	<u>772</u>	<u>100.0</u>	<u>2,358</u>	<u>100.0</u>	<u>1,675</u>	<u>100.0</u>	<u>326</u>	<u>100.0</u>	<u>1,097</u>	<u>100.0</u>
Good judgment	545	8.8	58	7.5	121	5.1	231	13.8	35	10.7	100	9.1
Fairly good judgment	2,276	36.4	302	39.1	706	30.0	789	47.1	104	31.9	375	34.2
Poor judgment	2,862	46.0	351	45.5	1,337	56.7	492	29.4	171	52.5	511	46.6
Not reported	545	8.8	61	7.9	194	8.2	163	9.7	16	4.9	111	10.1
<u>Females</u>	<u>1,174</u>	<u>100.0</u>	<u>84</u>	<u>100.0</u>	<u>597</u>	<u>100.0</u>	<u>211</u>	<u>100.0</u>	<u>64</u>	<u>100.0</u>	<u>218</u>	<u>100.0</u>
Good judgemnt	87	7.4	7	8.3	33	5.5	33	15.6	-	-	14	6.4
Fairly good judgment	417	35.5	27	32.1	208	34.8	86	40.8	24	37.5	72	33.0
Poor judgment	544	46.3	42	50.0	293	49.1	72	34.1	36	56.2	101	46.4
Not reported	126	10.8	8	9.6	63	10.6	20	9.5	4	6.3	31	14.2

Table 17

Admissions to Adult Probation by Offense Groupings and
Emotial Stability Prior to Admission
January 1 - December 31, 1973

Emotional Stability During Six Months Prior to Admissions	Total		Offenses Against Persons		Property Offenses		Drug Offenses		Sex Offenses		Other Offenses	
	Number	Percent	Number	Percent	Number	Percent	Number	Percent	Number	Percent	Number	Percent
<u>Males</u>	<u>6,228</u>	<u>100.0</u>	<u>772</u>	<u>100.0</u>	<u>2,358</u>	<u>100.0</u>	<u>1,675</u>	<u>100.0</u>	<u>326</u>	<u>100.0</u>	<u>1,097</u>	<u>100.0</u>
Emotionally stable	1,823	29.3	167	21.6	578	24.5	731	43.6	78	23.9	269	24.5
Mildly unstable	2,643	42.4	375	48.6	1,056	44.8	566	33.8	161	49.4	485	44.2
Very unstable	719	11.5	135	17.5	323	13.7	72	4.3	50	15.3	139	12.7
Not reported	1,043	16.8	95	12.3	401	17.0	306	18.3	37	11.4	204	18.6
<u>Females</u>	<u>1,174</u>	<u>100.0</u>	<u>84</u>	<u>100.0</u>	<u>597</u>	<u>100.0</u>	<u>211</u>	<u>100.0</u>	<u>64</u>	<u>100.0</u>	<u>218</u>	<u>100.0</u>
Emotionally stable	275	23.4	10	11.9	130	21.8	83	39.3	13	20.3	39	17.9
Mildly unstable	522	44.5	42	50.0	270	45.2	84	39.8	31	48.4	95	43.6
Very unstable	150	12.8	18	21.4	79	13.2	12	5.7	9	14.1	32	14.7
Not reported	227	19.3	14	16.7	118	19.8	32	15.2	11	17.2	52	23.8

Table 18

Admissions to Adult Probation by Offense Groupings and
Ability to Plan for the Future
January 1 - December 31, 1973

Ability to Plan for the Future	Total		Offenses Against Persons		Property Offenses		Drug Offenses		Sex Offenses		Other Offenses	
	Number	Percent	Number	Percent	Number	Percent	Number	Percent	Number	Percent	Number	Percent
<u>Males</u>	<u>6,228</u>	<u>100.0</u>	<u>772</u>	<u>100.0</u>	<u>2,358</u>	<u>100.0</u>	<u>1,675</u>	<u>100.0</u>	<u>326</u>	<u>100.0</u>	<u>1,097</u>	<u>100.0</u>
Plans constructively for the future	930	14.9	113	14.6	227	9.6	363	21.7	78	17.8	149	13.6
Some planning for the future	2,868	46.1	378	49.0	975	41.4	864	51.6	161	43.3	490	44.7
Lives for immediate present	1,945	31.2	236	30.6	964	40.9	332	19.8	50	33.4	363	33.1
Not reported	485	7.8	45	5.8	192	8.1	116	6.9	37	5.5	95	8.6
<u>Females</u>	<u>1,174</u>	<u>100.0</u>	<u>84</u>	<u>100.0</u>	<u>597</u>	<u>100.0</u>	<u>211</u>	<u>100.0</u>	<u>64</u>	<u>100.0</u>	<u>218</u>	<u>100.0</u>
Plans constructively for the future	167	14.2	16	19.1	68	11.4	48	22.7	13	3.1	22	10.1
Some planning for the future	533	45.4	30	35.7	281	47.1	108	51.2	31	50.0	83	38.1
Lives for immediate present	340	29.0	27	32.1	184	30.8	39	18.5	9	39.1	81	37.2
Not reported	134	11.4	11	13.1	64	10.7	16	7.6	11	7.8	32	14.6

Table 19
Admission to Adult Probation by Offense Groupings and
Grade Completed
January 1 - December 31, 1973

Grade Completed	Total		Offense Against Persons		Property Offenses		Drug Offenses		Sex Offenses		Other Offenses	
	Number	Percent	Number	Percent	Number	Percent	Number	Percent	Number	Percent	Number	Percent
<u>Males</u>	<u>6,228</u>	<u>100.0</u>	<u>772</u>	<u>100.0</u>	<u>2,358</u>	<u>100.0</u>	<u>1,675</u>	<u>100.0</u>	<u>326</u>	<u>100.0</u>	<u>1,097</u>	<u>100.0</u>
First through sixth	149	2.4	35	4.5	48	2.0	7	0.4	12	3.7	47	4.3
Seventh through ninth	897	14.4	149	19.3	418	17.7	74	4.4	56	17.2	200	18.2
Tenth and eleventh	1,975	31.7	245	31.8	863	36.6	425	25.4	107	32.8	335	30.5
High school graduate	1,959	31.4	218	28.2	656	27.8	696	41.5	99	30.4	290	26.4
College or vocational training beyond high school	832	13.4	73	9.5	193	8.2	403	24.1	44	13.5	119	10.9
Unknown	416	6.7	52	6.7	180	7.7	70	4.2	8	2.4	106	9.7
<u>Females</u>	<u>1,174</u>	<u>100.0</u>	<u>84</u>	<u>100.0</u>	<u>597</u>	<u>100.0</u>	<u>211</u>	<u>100.0</u>	<u>64</u>	<u>100.0</u>	<u>218</u>	<u>100.0</u>
First through sixth	23	2.0	7	8.3	10	1.7	1	0.5	-	-	5	2.3
Seventh through ninth	173	14.7	16	19.0	84	14.1	16	7.6	17	26.6	40	18.4
Tenth and eleventh	378	32.2	29	34.5	212	35.5	33	15.6	20	31.2	84	38.4
High school graduate	363	30.9	23	27.4	179	30.0	89	42.2	17	26.6	55	25.2
College or vocational training beyond high school	165	14.1	5	6.0	72	12.1	69	32.7	4	6.2	15	6.9
Unknown	72	6.1	4	4.8	40	6.6	3	1.4	6	9.4	19	8.7

Table 20
Admissions to Adult Probation by Offense Groupings and
Race
January 1 - December 31, 1973

Race	Total		Offenses Against Persons		Property Offenses		Drug Offenses		Sex Offenses		Other Offenses	
	Number	Percent	Number	Percent	Number	Percent	Number	Percent	Number	Percent	Number	Percent
<u>Males</u>	<u>6,228</u>	<u>100.0</u>	<u>772</u>	<u>100.0</u>	<u>2,358</u>	<u>100.0</u>	<u>1,675</u>	<u>100.0</u>	<u>326</u>	<u>100.0</u>	<u>1,097</u>	<u>100.0</u>
<u>White</u>	<u>4,905</u>	<u>78.8</u>	<u>493</u>	<u>63.9</u>	<u>1,873</u>	<u>79.4</u>	<u>1,471</u>	<u>87.8</u>	<u>271</u>	<u>83.2</u>	<u>797</u>	<u>72.7</u>
<u>White (Mexican Origin)</u>	<u>95</u>	<u>1.5</u>	<u>17</u>	<u>2.2</u>	<u>38</u>	<u>1.6</u>	<u>18</u>	<u>1.1</u>	<u>6</u>	<u>1.8</u>	<u>16</u>	<u>1.5</u>
<u>Non-white</u>	<u>1,228</u>	<u>19.7</u>	<u>262</u>	<u>33.9</u>	<u>447</u>	<u>18.0</u>	<u>186</u>	<u>11.1</u>	<u>49</u>	<u>15.0</u>	<u>284</u>	<u>25.8</u>
Black	1,040	16.7	230	29.8	366	15.5	163	9.7	36	11.0	245	22.3
Native American (Indian)	143	2.3	23	3.0	63	2.7	15	0.9	11	3.4	31	2.8
Other	45	0.7	9	1.1	18	0.8	8	0.5	2	0.6	8	0.7
<u>Females</u>	<u>1,174</u>	<u>100.0</u>	<u>84</u>	<u>100.0</u>	<u>597</u>	<u>100.0</u>	<u>211</u>	<u>100.0</u>	<u>64</u>	<u>100.0</u>	<u>218</u>	<u>100.0</u>
<u>White</u>	<u>735</u>	<u>62.6</u>	<u>36</u>	<u>42.9</u>	<u>395</u>	<u>66.2</u>	<u>180</u>	<u>85.3</u>	<u>34</u>	<u>53.1</u>	<u>90</u>	<u>41.4</u>
<u>White (Mexican Origin)</u>	<u>16</u>	<u>1.4</u>	<u>2</u>	<u>2.4</u>	<u>8</u>	<u>1.3</u>	<u>1</u>	<u>0.5</u>	<u>1</u>	<u>1.6</u>	<u>4</u>	<u>1.8</u>
<u>Non-white</u>	<u>423</u>	<u>36.0</u>	<u>46</u>	<u>54.7</u>	<u>194</u>	<u>32.5</u>	<u>30</u>	<u>14.2</u>	<u>29</u>	<u>45.3</u>	<u>124</u>	<u>56.8</u>
Black	376	32.0	42	50.0	174	29.2	27	12.8	29	45.3	104	47.7
Native American (Indian)	35	3.0	3	3.6	14	2.3	2	0.9	-	-	16	7.3
Other	12	1.0	1	1.1	6	1.0	1	0.5	-	-	4	1.8

END

7/11/1944