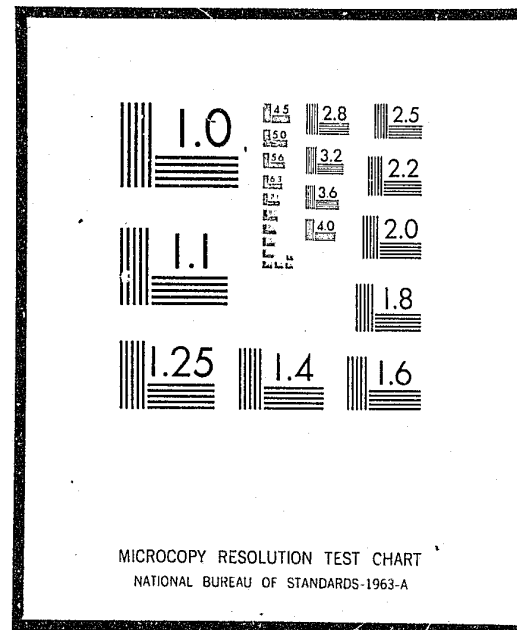


NCJRS

This microfiche was produced from documents received for inclusion in the NCJRS data base. Since NCJRS cannot exercise control over the physical condition of the documents submitted, the individual frame quality will vary. The resolution chart on this frame may be used to evaluate the document quality.



Microfilming procedures used to create this fiche comply with the standards set forth in 41CFR 101-11.504

Points of view or opinions stated in this document are those of the author(s) and do not represent the official position or policies of the U.S. Department of Justice.

U.S. DEPARTMENT OF JUSTICE
LAW ENFORCEMENT ASSISTANCE ADMINISTRATION
NATIONAL CRIMINAL JUSTICE REFERENCE SERVICE
WASHINGTON, D.C. 20531

DIRECTORY OF CRIME LABORATORIES
IN THE UNITED STATES

JOSEPH L. PETERSON
RESEARCH OPERATIONS DIVISION
NATIONAL INSTITUTE OF LAW ENFORCEMENT
AND CRIMINAL JUSTICE
LAW ENFORCEMENT ASSISTANCE ADMINISTRATION

MARCH, 1973

Date filmed

3/25/76

28246

CRIMINALISTICS LABORATORIES

ALABAMA

Director
Alabama State
Department of Toxicology and
Criminal Investigation
P.O. Box 231
Auburn, Alabama 36830

Director
Alabama Toxicology Department
P.O. Box 2591
Birmingham, Alabama 35233

Director
Alabama Toxicology Department
P.O. Box 580
Huntsville, Alabama 35804

Director
Department of Toxicology and
Criminal Investigation
Court House
Church and Royal Streets
Mobile, Alabama 36602

Director
State Health Department
Montgomery, Alabama 36104

CRIMINALISTICS LABORATORY

ALASKA

Director
General Laboratory Studies
Toxicology and Drug Analysis
Alaska Medical Laboratories
P.O. Box 4-1539
Anchorage, Alaska 99503

CRIMINALISTICS LABORATORIES

ARIZONA

Director
Criminalistics Laboratory
Phoenix Police Department
17 South 2nd Avenue
Phoenix, Arizona 85003

Director
Criminalistics Laboratory
Department of Public Safety
2016 W. Encanto Blvd.
Phoenix, Arizona 85005

Director
City-County Criminalistics Laboratory
P.O. Box 1071
Tucson, Arizona 85716

UNIVERSITY PROGRAM

Chairman
Department of Police Science Administration
Northern Arizona University
P.O. Box 6014
Flagstaff, Arizona 86001

CRIMINALISTICS LABORATORY

ARKANSAS

Director
Criminalistics Laboratory
Arkansas State Police
Little Rock, Arkansas 72201

CRIMINALISTICS LABORATORIES

CALIFORNIA

Director
Criminalistics Laboratory
Kern County Sheriff's Office
P.O. Box 2208
Bakersfield, California 93303

Director
Criminalistics Laboratory El Cajon Police Department
100 Fletcher Parkway
El Cajon, California 92020

Director
Criminalistics Laboratory
Huntington Beach Police Department
P.O. Box 70
Huntington Beach, California 92648

Director
Criminalistics Laboratory
Long Beach Police Department
400 West Broadway
Long Beach, California 90802

Director
Criminalistics Laboratory
Los Angeles Police Department
150 North Los Angeles Street
Los Angeles, California 90012

Director
Criminalistics Laboratory
Los Angeles County Sheriff's Office
501 N. Main Street
Los Angeles, California 90012

Director
Criminalistics Laboratory
Contra Costa County Sheriff's Office
P.O. Box 391
Martinez, California 94553

Director
Criminalistics Section
Oakland Police Department
455 7th Street
Oakland, California 94607

Director
Criminalistics Laboratory
Alameda County Sheriff's Office
P.O. Box 787
Pleasanton, California 94566

Director
Criminalistics Laboratory
San Mateo County Sheriff's Office
Hall of Justice
Redwood City, California 94063

Director
Criminalistics Laboratory
Riverside County Sheriff's Department
P.O. Box 512
Riverside, California 92502

Director
Sacramento County Crime Laboratory
Office of the District Attorney
4400 "V" Street
Sacramento, California 95817

State of California
Bureau of Criminal Identification
and Investigation
Criminalistics Laboratory
P.O. Box 1859
Sacramento 14, California 95809

Director
San Bernardino County Sheriff's Department
P.O. Box 569
San Bernardino, California 92403

Crime Laboratory
San Diego Police Department
801 West Market Street
San Diego, California 92101

Director
Criminalistics Laboratory
San Diego County Sheriff's Office
222 W. "C" Street
San Diego, California 92101

Director
Criminalistics Laboratory
San Francisco Police Department
850 Bryant Street
Room 435
San Francisco, California 94103

Director
United States Army Crime Laboratory
515th Military Police Detachment
APO San Francisco, California 96343

Director
Criminalistics Laboratory
Department of District Attorney
Santa Clara County
875 San Pedro Street
San Jose, California 95110

Director
Criminalistics Laboratory
Santa Ana Police Department
Santa Ana, California 92702

Director
Criminalistics Laboratory
Orange County Sheriff's Office
P.O. Box 449
Santa Ana, California 92702

Director
Criminalistics Laboratory
Ventura County Sheriff's Office
501 POLI Street
Ventura, California 93001

University Programs

Director
Forensic Science Program
School of Criminology
University of California
Berkeley, California 94720

Director
Department of Police Science and Administration
California State College at Los Angeles
5151 State College Drive
Los Angeles, California 90032

Director
Department of Police Science and Administration
Sacramento State College
6000 Jay Street
Sacramento, California 95819

CRIMINALISTICS LABORATORIES

COLORADO

Director
Criminalistics Laboratory
Colorado Bureau of Investigation
1550 Lincoln Street
Denver, Colorado 80204

Director
Criminal Investigation and
Forensic Sciences Laboratory
West 6th Avenue & Cherokee
Denver, Colorado 80204

Director
Criminalistics Laboratory
Denver Police Department
13th and Champa Street
Denver, Colorado 80204

CRIMINALISTICS LABORATORIES

CONNECTICUT

Director
Criminalistics Laboratory
Hartford Police Department
155 Morgan Street
Hartford, Connecticut 06103

Director
State Bureau of Identification
Connecticut State Police
100 Washington Street
Hartford, Connecticut 06106

University Program

Director
Forensic Science Program
Division of Criminal Justice
University of New Haven
West Haven, Connecticut 06516

CRIMINALISTICS LABORATORY

DELAWARE

Director
Criminalistics Laboratory
Delaware State Police
Box 430
Dover, Delaware 10101

CRIMINALISTICS LABORATORIES

DISTRICT OF COLUMBIA

Director
Police Laboratory
Metropolitan Police Department
300 Indiana Ave., N.W.
Washington, D.C. 20001

Director
Criminalistics Laboratory
Federal Bureau of Investigation
Ninth and Pennsylvania Ave., N.W.
Washington, D.C. 20535

Director
Alcohol, Tobacco and Firearms Laboratory
Internal Revenue Service
Washington, D.C. 20224

Director
Secret Service Laboratory
1800 G Street, N.W.
Washington, D.C. 20226

Director
U.S. Postal Service Crime Laboratory
1100 L Street, N.W.
Washington, D.C. 20260

Director
Forensic Sciences Division
Armed Forces Institute of Pathology
Washington, D.C. 20012

Director
Regional Criminalistics Advisor
AID - OPS/LA
Department of State
Crime Laboratory
Washington, D.C. 20523

DISTRICT OF COLUMBIA

Director
Questioned Document Laboratory
Department of Army
Washington, D.C.

University Programs

Director
Forensic Science Center
Reiss Science Building
Georgetown University
Washington, D.C. 20007

Director
Department of Forensic Science
The George Washington University
Washington, D.C. 20006

CRIMINALISTICS LABORATORIES

FLORIDA

Director
Criminalistics Laboratory
City Police Department
Jacksonville, Florida 32201

Director
Dade County Crime Laboratory
1320 N.W. 14th Street
Miami, Florida 33125

Director
Criminalistics Laboratory
Florida Department of Law Enforcement
P.O. Box 654
Tallahassee, Florida 32302

Director
Crime Laboratory, P.B.I.A.
P.O. Box 670
West Palm Beach, Florida 33402

Director
Criminalistics Laboratory
Region IV
P.O. Box 1737
Sanford, Florida

Proposed University Program

Director
Criminalistics Project
Chemistry Department
Florida Technological University
Box 25000
Orlando, Florida 32816

CRIMINALISTICS LABORATORIES

GEORGIA

Director
Georgia State Crime Laboratory
Department of Public Safety
P.O. Box 1456
Atlanta, Georgia 30301

Director
Laboratory Branch ATF
Federal Office Building
P.O. Box 926
Atlanta, Georgia 30301

Director
U.S. Army Criminal Investigation
Laboratory
Fort Gordon, Georgia 30905

Director
Georgia State Crime Laboratory
Chatham County Branch
Box 523
Savannah, Georgia 31402

CRIMINALISTICS LABORATORY

HAWAII

Director
Crime Laboratory
Honolulu Police Department
1455 S. Beretania Street
Honolulu, Hawaii 96814

CRIMINALISTICS LABORATORY

IDAHO

Director
Idaho Department of Health
Laboratories Division
2120 Warm Springs Avenue
Boise, Idaho 83702

CRIMINALISTICS LABORATORIES

ILLINOIS

Director
Criminalistics Division
Chicago Police Department
1121 South State Street
Chicago, Illinois 60605

Director
Illinois Bureau of Identification
Highway 51
DeSoto, Illinois 62924

Director
Northern Illinois Police Laboratory
1677 Old Deerfield Road
Highland Park, Illinois 60035

Director
Criminalistics Laboratory
Illinois Bureau of Identification
515 East Woodruff Road
Joliet, Illinois 60035

Director
Illinois Bureau of Identification
229 1/2 Court Street
Pekin, Illinois 61554

Director
Illinois Bureau of Identification
c/o Pump Handle Inn
2620 11th Street
Rockford, Illinois 61101

Director
Illinois Bureau of Identification
333 15th Street
Rock Island, Illinois 61201

Director
Criminalistics Laboratory
Illinois Bureau of Identification
415 Iles Park Place
Springfield, Illinois 62703

Director
Du Page County Crime Laboratory
Du Page County Sheriff's Office
P.O. Box 300, 205 Reber Street
Wheaton, Illinois 60187

University Program

Director
University of Illinois
Administration of Criminal Justice
Box 4348
Chicago, Illinois 60680

CRIMINALISTICS LABORATORIES

INDIANA

Director
Criminalistics Laboratory
City Police Department
Bloomington, Indiana

Director
Criminalistics Laboratory
Fort Wayne Police Department
Fort Wayne, Indiana 46802

Director
Forensic Sciences Division
Indiana State Police Department
100 N. Senate Avenue
Indianapolis, Indiana 46204

Director
Criminalistics Laboratory
Indianapolis Police Department
Indianapolis, Indiana 46201

University Program

Director
Department of Police Administration
Indiana University
Room 120, Sycamore
Bloomington, Indiana 47401

CRIMINALISTICS LABORATORY

IOWA

Director
Iowa Crime Laboratory
E. 7th & Court Street
Des Moines, Iowa 50319

CRIMINALISTICS LABORATORIES

KANSAS

Director
Criminalistics Laboratory
Bureau of Investigation
State of Kansas
Topeka, Kansas 66612

Director
Forensic Laboratory
Wichita Police Department
115 East William
Wichita, Kansas 67202

Proposed University Program

Director
Administration of Justice
Wichita State University
1845 Fairmont
Wichita, Kansas

CRIMINALISTICS LABORATORY

KENTUCKY

Director
Criminalistics Laboratory
State Police Division
1250 Louisville Road
Frankfort, Kentucky 40601

CRIMINALISTICS LABORATORIES

LOUISIANA

Director
Criminalistics Laboratory
Department of Public Safety
Louisiana State Police
P.O. Box 1791
Baton Rouge, Louisiana 70806

Director
Criminalistics Laboratory
Calcasieu Sheriff's Laboratory
Lake Charles, Louisiana 70823

Director
Criminalistics Laboratory
Police Department
Box 51480
New Orleans, Louisiana 70150

Director
Acadiana Criminalistics Laboratory
P.O. Box 643
New Iberia, Louisiana 70560

Director
Northwestern Regional
Criminalistics Laboratory
Box 4
Shreveport, Louisiana 71102

CRIMINALISTICS LABORATORIES

MAINE

Director
State Police Crime Laboratory
36 Hospital Street
Augusta, Maine

Director
Maine Department of
Health and Welfare
State House
Augusta, Maine

University Programs

Director
Criminal Justice Program
University of Maine
Augusta, Maine

Director
Criminal Justice Program
University of Maine
Bangor, Maine

CRIMINALISTICS LABORATORIES

MARYLAND

Director
Criminalistics Laboratory
Baltimore Police Department
601 E. Fayette Street
Baltimore, Maryland 21202

Director
Criminalistics Laboratory
Hagerstown Jr. College
Hagerstown, Maryland 21740

Director
Criminalistics Laboratory
Maryland State Police
Pikesville, Maryland 21209

Director
Criminalistics Laboratory
Montgomery County Police Department
108 S. Perry Street
Rockville, Maryland

Director
Criminalistics Laboratory
Prince George's County Police Department
410 Addison Road
Seat Pleasant, Maryland 20027

Director
Criminalistics Laboratory
Ocean City Police Department
Snow Hill, Maryland 21863

Director
Criminalistics Laboratory (Baltimore County P.D.)
Bosley Ave. and Kenilworth Drive
Towson, Maryland 21204

CRIMINALISTICS LABORATORIES

MASSACHUSETTS

Director
Criminalistics Laboratory
Boston Police Department
154 Berkeley Street
Boston, Massachusetts 02116

Director
Criminalistics Laboratory
Department of Public Safety
1010 Commonwealth Avenue
Boston, Massachusetts 02215

University Program

Director
Chemistry Department
Boston State College
625 Huntington Avenue
Boston, Massachusetts 02120

CRIMINALISTICS LABORATORIES

MICHIGAN

Director
Criminalistics Laboratory
City Police Department
Records and Identification Bureau
Dearborn, Michigan 48125

Director
Scientific Bureau
Detroit Police Department
1300 Beaubien Street
Detroit, Michigan 48226

Director
Michigan State Police
Scientific Laboratory
714 South Harrison Road
East Lansing, Michigan 48828

Director Criminalistics Laboratory
Police Headquarters
333 Monroe Avenue, N.W.
Grand Rapids, Michigan 49502

Director
Criminalistics Laboratory
Police Department
Identification Bureau
Highland Park, Michigan

Director
Michigan State Police
Crime Laboratory
304 Garden Street
P.O. Box 1115C
Holland, Michigan 49423

Director
Division of Crime Detection
Bureau of Laboratories
Lansing Police Department
Lansing, Michigan 48933

Director
Chemist-Crime Laboratory
Prosecuting Attorney's Office
105 Courthouse
Flint, Michigan 48208

CRIMINALISTICS LABORATORIES

MICHIGAN

Director
Michigan Department of Health
3500 N. Logan Street
Lansing, Michigan 48914

Director
Criminalistics Laboratory
Michigan State Police
186 S. Main Street
Plymouth, Michigan 48170

Director
Crime Laboratory
Oakland County Sheriff's Department
Pontiac, Michigan

Director
Michigan State Police
Crime Laboratory
30950 Van Dyke
Warren, Michigan 48089

University Program

Director
School of Police Administration
and Public Safety
Forensic Sciences Program
Michigan State University
East Lansing, Michigan 16802

MINNESOTA

Director
Criminalistics Laboratory
Bureau of Criminal Apprehension
Minnesota Department of Public Safety
1246 University Avenue
St. Paul, Minnesota 55104

Director
Criminalistics Laboratory
Police Department
101 East 10th Street
St. Paul, Minnesota 55101

CRIMINALISTICS LABORATORIES

MISSISSIPPI

Director
Criminalistics Laboratory
Jackson Police Department
P.O. Box 17
Jackson, Mississippi 39205

Director
Criminalistics Laboratory
Department of Public Safety
P.O. Box 6097
Jackson, Mississippi 39208

CRIMINALISTICS LABORATORIES

MISSOURI

Director
LEAC Crime Laboratory
Southeast Missouri State College
Cape Girardeau, Missouri 63701

Director
St. Louis County Crime Laboratory
226 S. Central
Clayton, Missouri 63105

Director
Northwest Missouri Regional
Criminalistics Laboratory
2100 North Noland Road
Independence, Missouri 64051

Director
Criminalistics Division
Missouri State Highway Patrol
1710 East Elm Street
Jefferson City, Missouri 65101

Director
Region 9 Crime Laboratory
Missouri Western College
Newman Road
Joplin, Missouri 64802

Director
Region 2 Crime Laboratory and
Identification Center
321 East Chestnut Expressway
Springfield, Missouri 65802

Director
Criminalistics Laboratory
St. Louis Police Department
1200 Clark Street
St. Louis, Missouri 63103

CRIMINALISTICS LABORATORIES

NEBRASKA

Director
Criminalistics Laboratory
Law Enforcement and Safety Bureau
of Criminal Investigation and
Identification
14th and Burnham
Lincoln, Nebraska 68509

Director
Criminalistics Laboratory
Omaha Police Department
Omaha, Nebraska

CRIMINALISTICS LABORATORIES

NEVADA

Director
Criminalistics Laboratory
Clark County Sheriff's Office
200 East Carson Street
Las Vegas, Nevada 89101

Director
State Criminalistics Laboratory
790 Sutro Street
Reno, Nevada 89507

Director
Criminalistics Laboratory
Washoe County Sheriff's Office
Box 2915
Reno, Nevada 89505

University Program

Director
University Criminalistics Laboratory
University of Nevada
Department of Law Enforcement
Reno, Nevada 89507

CRIMINALISTICS LABORATORY

NEW HAMPSHIRE

Director
Criminalistics Laboratory
Department of Public Safety
John O. Morton Building
Concord, New Hampshire 03301

CRIMINALISTICS LABORATORIES

NEW JERSEY

Director
Chemist-Newark Police Laboratory
Police Academy
10008 - 18th Avenue
Newark, New Jersey 07106

Director
Criminalistics Laboratory
New Jersey State Police
P.O. Box 68
West Trenton, New Jersey 08625

CRIMINALISTICS LABORATORIES

NEW MEXICO

Director
Criminalistics Laboratory
Department of Pathology
University of New Mexico
School of Medicine
Albuquerque, New Mexico 87109

Director
New Mexico State Police
State Crime Laboratory
P.O. Box 1628
Santa Fe, New Mexico 87501

CRIMINALISTICS LABORATORIES

NEW YORK

Director
Criminalistics Laboratory
New York State Police
Building #22
State Campus
Albany, New York 12226

Director
Buffalo Police Crime Laboratory
74 Franklin Avenue
Buffalo, New York 14202

Herbert L. MacDonnell
Consulting Criminalist
P.O. Box 1111
Corning, New York 14830

Director
Criminalistics Laboratory
Suffolk County Police Department
Veterans Memorial Highway
Hauppauge, New York 11787

Director
Nassau County Police Department
Scientific Investigation Bureau
1490 Franklin Avenue
Mineola, New York 11501

Director
Criminalistics Laboratory
New York City Police Department
235 E. 20th Street
New York, New York 10003

Director
Criminalistics Laboratory
Department of Public Safety
Police Division
209 Niagara Street
Niagara Falls, New York

Director
Public Safety Laboratory
Monroe County
150 Plymouth Avenue South
Rochester, New York 14614

Director
Syracuse Police Laboratory
Public Safety Building
511 South State Street
Syracuse, New York 13202

Director
Criminalistics Laboratory
Westchester County
Grasslands Reservation
Valhalla, New York 10595

Director
Laboratory for Forensic Sciences
87 Nepperha Avenue
Yonkers, New York 10701

Director
New York Regional Laboratory
Bureau of Narcotics and Dangerous Drugs
90 Church Street
New York, New York 10007

University Program

Director
Forensic Science Program
John Jay College of Criminal Justice
315 Park Avenue South
New York, New York 10010

CRIMINALISTICS LABORATORIES

OHIO

Director
Criminalistics Laboratory
Hamilton County
3223 Eden Avenue
Cincinnati, Ohio 45219

Director
Criminalistics Laboratory
Cleveland Police Department
2001 Payne Avenue - Room 301
Cleveland, Ohio 44114

Director
Criminalistics Laboratory
Cuyhoga County Coroner's Office
1212 Adelbert Road
Cleveland, Ohio 44106

Director
Criminalistics Laboratory
Columbus Police Department
Columbus, Ohio 43215

Director
Ohio State Highway Patrol
Investigation & Laboratory Section
Columbus 5, Ohio 43224

Director
Criminalistics Laboratory
Dayton Police Department
335 West 3rd Street
Dayton, Ohio 45401

Director
N.W. Ohio BCI&I Laboratory
405 Pint Street
Fremont, Ohio

Criminal Identification and
Investigation Bureau
Northeast Ohio Regional Crime
Laboratory
Kent State University
Kent, Ohio 44240

Director
Criminalistics Laboratory
Ohio Bureau of C.I.I.
P.O. Box 365
London, Ohio 43140

Director
BCI Regional Laboratory
Administration Building
30335 Oregon Road
Perrysburg, Ohio 43601

Director
Criminalistics Laboratory
Toledo Police Department
525 Erie Street
Toledo, Ohio 43601

Director
Worthington Police Department
789 High Street
Worthington, Ohio 43085

Director
Crime Laboratory and Records
Police Department
Youngstown, Ohio 44501

CRIMINALISTICS LABORATORIES

OKLAHOMA

Director
Oklahoma State Bureau of Investigation
Laboratory Division
4363 N.W. 10th Street
Box 7-F, Farley Station
Oklahoma City, Oklahoma 73107

Director
Criminalistics Laboratory
Oklahoma City Police Department
Oklahoma City, Oklahoma

CRIMINALISTICS LABORATORIES

OREGON

Director
Crime Laboratory
Eugene Police Department
777 Pearl Street
Eugene, Oregon 97401

Director
Oregon State Police Crime
Detection Laboratory
364 1/2 West 7th
Eugene, Oregon 97401

Director
Oregon State Police Crime
Detection Laboratory
P.O. Box 1648
Medford, Oregon 97501

Director
Oregon State Police Crime
Detection Laboratories
Blue Mountain Community College
P.O. Box 1519
Pendleton, Oregon 97801

Director
Crime Detection Laboratory
Oregon State Police
University of Oregon Medical School
3181 S.W. Sam Jackson Park Road
Portland, Oregon 97201

Director
Criminalistics Laboratory
Portland Police Department
222 S.W. Pine Street
Portland, Oregon 97204

CRIMINALISTICS LABORATORIES

PENNSYLVANIA

Director
Bethlehem Criminalistics Laboratory
Pennsylvania State Police
2930 Allentown-Schoenersville Road
P.O. Box 2005
Bethlehem, Pennsylvania 19001

Director
Regional Criminalistics Laboratory
Pennsylvania State Police, Troop "A"
P.O. Box 38
Greensburg, Pennsylvania 15601

Director
Criminalistics Laboratory
Pennsylvania State Police
21st and Herr Street
Harrisburg, Pennsylvania 17013

Director
Buck's County Criminalistics
Laboratory
2659 Trenton Road
Levittown, Pennsylvania 10056

Director
Forensic Chemist
Office of the District Attorney
Delaware County
Media, Pennsylvania 19063

Director
Police Chemical Laboratory
Room 305
Police Headquarters
Franklin Square
Philadelphia, Pennsylvania 19106

Director
Pittsburgh-Allegheny County
Crime Laboratory
401 Courthouse
Pittsburgh, Pennsylvania 15219

PENNSYLVANIA

Director
Criminalistics Laboratory
Pennsylvania State Police
475 Wyoming Avenue
Wyoming, Pennsylvania 18644

University Programs

Director
Division of Police and Public Administration
Harrisburg Area Community College
3300 Cameron Street Road
Harrisburg, Pennsylvania 17110

Director
Forensic Chemistry Program
Department of Chemistry
University of Pittsburgh
Pittsburgh, Pennsylvania 15213

Director
212 Whitmore Laboratory
Pennsylvania State University
University Park, Pennsylvania 16802

CRIMINALISTICS LABORATORIES

PUERTO RICO

Director
Criminal Laboratory
Puerto Rico Police
G.P.O. Box 938
Hato Rey, Puerto Rico 00919

Director
U.S. Customs Laboratory
P.O. Box 2112
Old San Juan Station
San Juan, Puerto Rico 00903

CRIMINALISTICS LABORATORIES

RHODE ISLAND

Director
Laboratories for Scientific
Criminal Investigation
University of Rhode Island
Kingston, Rhode Island

Director
Rhode Island State Police Mobile
Crime Lab
Rhode Island State Police Headquarters
P.O. Box 185
North Scituate, Rhode Island

Director
Rhode Island Division of Criminal
Identification
Providence Courthouse
250 Benefit Street
Providence, Rhode Island 02903

CRIMINALISTICS LABORATORIES

SOUTH CAROLINA

Director
Criminalistics Laboratory
South Carolina Law Enforcement Division
P.O. Box 1166
Columbia, South Carolina 29202

Director
Pathology and Chemistry Department
Medical University of South Carolina
Charleston, South Carolina 29401

CRIMINALISTICS LABORATORY

SOUTH DAKOTA

Director
Crime Laboratory
Division of Criminal Investigation
State Capitol Building
Pierre, South Dakota

CRIME LABORATORIES

TEXAS

Manager
Crime Laboratories Bureau
Texas Department of Public Safety
Box 4143
Austin, Texas 78765

Headquarters Laboratory - Austin
*Field Laboratories - Dallas
- Tyler
- Houston
- Corpus Christi
- Midland
- El Paso
- Lubbock
- Waco

*Operational May 1, 1972

Director
Dallas County Criminal Investigation Laboratory
Southwestern Institute of Forensic Sciences
5230 Medical Center Drive
Box 35728
Dallas, Texas 75235

Director
Criminalistics Laboratory
Fort Worth Police Department
1000 Throckmorton Street
Fort Worth, Texas 76102

Director
Police Laboratory
Houston Police Department
61-Riesner Street
Houston, Texas 77002

Director
Criminalistics Laboratory
San Antonio Police Department
Box 9346
San Antonio, Texas 78204

CRIMINALISTICS LABORATORIES

UTAH

Director
Crime Laboratory
Davis County Sheriff's Office
Davis County Courthouse
Farmington, Utah 84025

Director
Crime Laboratory
Cache County Sheriff's Office
Logan, Utah 84321

Director
Crime Laboratory
Ogden Police Department
Ogden, Utah 84401

Director
Crime Laboratory
Weber County Sheriff's Office
Ogden, Utah 84401

Director
Division of Health
44 Medical Drive
Salt Lake City, Utah 84113

University Program

Director
Police Science Department
Weber State College
Ogden, Utah 84401

CRIMINALISTICS LABORATORY

VERMONT

Director
Vermont State Police Laboratory
Redstone
Montpelier, Vermont 05602

CRIMINALISTICS LABORATORIES

VIRGINIA

Director
Northern Virginia Police Laboratory*
4250 North Fairfax Drive
Arlington, Virginia 22203

Director
Tidewater Regional Crime Laboratory*
711 Crawford Street
Portsmouth, Virginia 23704

Director
Division of Consolidated Laboratory Services
Bureau of Forensic Science
404 N. 12th Street
Richmond, Virginia 23219

Parent Laboratory - Richmond

Regional Laboratories - Norfolk
Roanoke
Fairfax

*To become integral parts of State Bureau of Forensic Science

CRIMINALISTICS LABORATORIES

WASHINGTON

Director
Crime Laboratory
Bellevue Police Department
111 116 S.E.
Bellevue, Washington 98004

Director
Crime Laboratory
Seattle Police Department
Room 219
Public Safety Building
Seattle, Washington 98104

Director
King County Crime Laboratory
King County Courthouse
516 3rd Avenue
Seattle, Washington 98104

Director
Drug Control Assistance Unit
Spokane Regional Laboratory
Room 1120 Public Safety Building
Spokane, Washington 99201

Director
Crime Laboratory
Tacoma Police Department
County-City Building
Tacoma, Washington 98402

University Programs

Director
Police Science Department
106 Van Doren
Washington State University
Pullman, Washington 99163

Director
Department of Law Enforcement Studies
Spokane Community College
Mission Avenue Campus
Spokane, Washington

CRIMINALISTICS LABORATORY

WEST VIRGINIA

Director
Criminalistics Laboratory
West Virginia State Police
725 Jefferson Road
South Charleston, West Virginia
25303

CRIMINALISTICS LABORATORIES

WISCONSIN

Director
Glendale Crime Laboratory
5909 N. Milwaukee Parkway
Glendale, Wisconsin 53209

Director
Crime Laboratory
Sheriff's Department
Kenosha, Wisconsin 53141

Director
Wisconsin State Crime Laboratory
4706 University Avenue
Madison, Wisconsin 53705

Director
Bureau of Laboratories
Health Department
Municipal Building
841 North Broadway
Milwaukee, Wisconsin 53203

CRIMINALISTICS LABORATORY

WYOMING

Director
Criminalistics Laboratory
P.O. Box 3228
Laramie, Wyoming 82970

Based upon previously discussed criteria, the following States have
no active criminalistics laboratories:

Montana
North Dakota
Tennessee

END