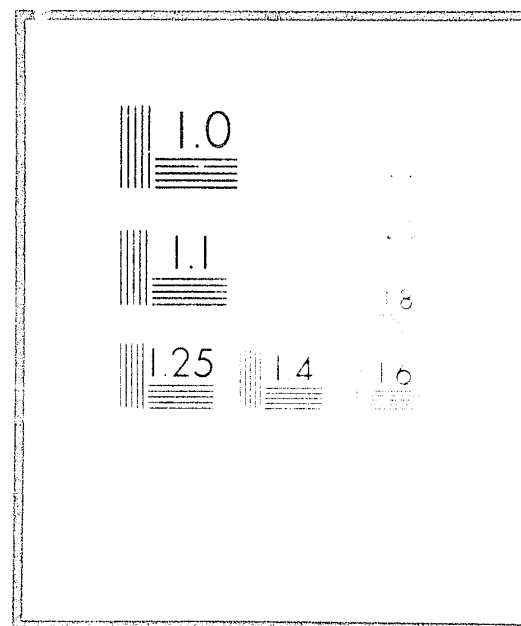


NCJRS

This microfiche was produced from documents received for inclusion in the NCJRS data base. Since NCJRS cannot exercise control over the physical condition of the documents submitted, the individual frame quality will vary. The resolution chart on this frame may be used to evaluate the document quality.



Microfilming procedures used to create this fiche comply with the standards set forth in 41CFR 101-11.504.

Points of view or opinions stated in this document are those of the author(s) and do not represent the official position or policies of the U.S. Department of Justice.

U.S. DEPARTMENT OF JUSTICE
LAW ENFORCEMENT ASSISTANCE ADMINISTRATION
NATIONAL CRIMINAL JUSTICE REFERENCE SERVICE
WASHINGTON, D.C. 20531

12-7-76

30447 c4



a nonprofit corporation dedicated to the justice system . . .

1620 35th AVENUE / SUITE 200 / SACRAMENTO, CALIFORNIA 95822 / (916) 392-2550

SUPPLEMENT TO
TECHNICAL REPORT NO. 10

OBSCIS
OFFENDER-BASED STATE
CORRECTIONS INFORMATION SYSTEM

VOLUME 3
OBSCIS DATA DICTIONARY

LOAN DOCUMENT

RETURN TO:
NCJRS
P. O. BOX 24036 S.W. POST OFFICE
WASHINGTON, D.C. 20024

SEARCH GROUP Inc.

MEMBERSHIP GROUP
SEARCH GROUP, INCORPORATED

Chairman: Gary D. McAlvey Vice Chairman: Lester Earl Cingcade

Alabama: Robert Davis, Director, Law Enforcement Planning Agency
Alaska: James P. Wellington, Deputy Commissioner, Department of Public Safety
Arizona: Robert J. Edgren, Department of Public Safety
Arkansas: Charles C. McCarty, Manager, Statistical Analysis Center, Arkansas Criminal Justice/Highway Safety Information System
California: R. James Rasmussen, Chief, Bureau of Identification, Department of Justice
Colorado: John W. Hornbeck, First Assistant Attorney General, Criminal Justice Division
Connecticut: (vacant)
Delaware: George Theis, Director, Delaware State Central Data Processing
Florida: Fred Johns, Director, Division of Criminal Justice Information Systems, Florida Department of Law Enforcement
Georgia: Ed Sills, Assistant Director, Crime Information Center, Department of Public Safety
Hawaii: Lester Earl Cingcade, Administrative Director of the Courts, Supreme Court
Idaho: John Bender, Director, Idaho Department of Law Enforcement
Illinois: Gary D. McAlvey, Superintendent, Bureau of Identification, Department of Law Enforcement
Indiana: Sgt. James Kinder, Indiana State Police Data Systems
Iowa: Marvin R. Selden, Jr., State Comptroller
Kansas: James T. McDonald, Secretary of Revenue
Kentucky: Captain James H. Hosley, Commander, State Police Data Processing Section, Department of Justice
Louisiana: Eugene Freeman, Director, Louisiana Criminal Justice Information System, Department of Justice
Maine: (vacant)
Maryland: James R. Donovan, Chief of Information Systems, Department of Public Safety and Correctional Services
Massachusetts: (vacant)
Michigan: Dr. Noel Bufe, Administrator, Office of Criminal Justice Programs
Minnesota: Robert E. Crew, Jr., Executive Director, Governor's Commission on Crime Prevention and Control
Mississippi: Noah L. Mitchell, Project Coordinator, Division of Law Enforcement Assistance
Missouri: Dr. Robert J. Bradley, Director, Information Systems, Missouri Highway Patrol
Montana: Laurence L. Lytle, Police Planner, Board of Crime Control
Nebraska: Major John H. Ayers, Special Services Division, Nebraska State Patrol
Nevada: Ron Stroup, Chief, Bureau of Identification and Communications
New Hampshire: R. J. Crowley, Jr., Director of the Governor's Commission on Crime & Delinquency
New Jersey: Captain Ronald E. Ayres, Assistant Director, Division of Systems & Communications, Department of Law & Public Safety
New Mexico: Captain David Kingsbury, Director, Planning and Research Division, New Mexico State Police
New York: (vacant)
North Carolina: Dr. Howard Livingston, Director, Police Information Network
North Dakota: Robert Holte, Law Enforcement Coordinator, State of North Dakota
Ohio: Wendell Metz, Assistant Deputy Director, Administration of Justice Div., Department of Development
Oklahoma: John Robertson, Supervisor, Data Processing, State Bureau of Investigation
Oregon: Gerald C. Schmitz, Administrator, Data Systems Division, Oregon Executive Department
Pennsylvania: John Snively, Executive Director, Governor's Justice Commission, Department of Justice
Puerto Rico: Lady Alfonso de Cumpiano, Assistant Attorney General
Rhode Island: Donald P. Fleming, Director, Rhode Island Criminal Justice Information System
South Carolina: Lt. Carl B. Stokes, South Carolina Law Enforcement Division
South Dakota: Harry Martens, Data Processing Coordinator, State Police Radio System
Tennessee: William Thompson, Supervisor of Criminal Justice, Bureau of Criminal Identification, Department of Public Safety
Texas: Jerry Clay, Director of Science and Technology Programs, Texas Criminal Justice Council
Utah: Raymond Jackson, Commissioner, Utah Department of Public Safety
Vermont: Sgt. Edward M. Prescott, Coordinator, Vermont Crime Information Center
Virginia: Richard N. Harris, Director, Division of Justice and Crime Prevention
Virgin Islands: Emory W. Reisinger, II, Assistant Attorney General, Office of the Governor
Washington: James N. O'Connor, Director, Criminal Justice Standards and Goals Development Project
Washington, D.C.: Captain William I. Harlowe, Operations Planning and Data Processing Division, Metropolitan Police Department
West Virginia: Captain O. S. Neely, Criminal Identification Bureau, West Virginia State Police
Wisconsin: Dennis A. Katter, Office of the Chancellor, University of Wisconsin
Wyoming: Rodrick Janney, Administrative Assistant, Governor's Planning Committee on Criminal Administration

LEAA APPOINTEES

Pennsylvania: Larry Polansky, Chief Deputy Court Administrator, Common Pleas Court of Philadelphia
Texas: Charles M. Friel, Ph. D., Director of Research, Sam Houston State University
Texas: Thomas J. Stovall, Jr., Judge, 129th District of Texas
Wisconsin: Sanger B. Powers

STAFF

Executive Director: O. J. Hawkins
Deputy Director, Administration and Finance Division: Edward R. Cooper
Deputy Director, Plans and Programs Division: Steve E. Kolodney

Supplement to
TECHNICAL REPORT NO. 10
MAY, 1975

OBSCIS
OFFENDER-BASED STATE
CORRECTIONS INFORMATION SYSTEM

VOLUME 3
OBSCIS Data Dictionary

NC 153

NOV 9 1975

ACQUISITION

Final Report of work performed under Law Enforcement Assistance Administration
Grant No. 75-SS-6010, awarded to SEARCH Group, Inc.

Submitted by SEARCH Group, Inc.
1620 35th Avenue, Suite 200, Sacramento, California 95822
(916) 392-2550

Copyright © SEARCH Group, Inc., 1975

FOREWORD

This volume is one of five that constitute the OBSCIS Report, a definitive work developed by the Offender-Based State Corrections Information System (OBSCIS) Committee. OBSCIS is a Project of SEARCH Group, Inc. (SGI). It has been funded by a grant from the Law Enforcement Assistance Administration (LEAA), U. S. Department of Justice.

The five volumes, their purposes, and their interrelationships are described below:

- I. THE OBSCIS APPROACH.** This is an overview description of the needs for corrections information reporting and how these needs can be met by the OBSCIS model and its accompanying tools. *This volume is prerequisite reading for all the others.*
- II. OBSCIS APPLICATION GUIDE.** This is a reference workbook that describes and provides system development selection criteria for 20 separate information processing applications, which can be incorporated into OBSCIS systems in individual states on a modular basis. This guide will be for structuring and developing the applications in each state's system.
- III. OBSCIS DATA DICTIONARY.** This volume contains descriptions, definitions, and suggested coding structures for the data elements used to establish the data base for an OBSCIS system. It will be used as a reference guide in the development of each state's data base.
- IV. OBSCIS IMPLEMENTATION PLAN.** This volume contains a detailed listing of a sequence of activities, tasks, and subtasks to be performed in the specification, design, and development of an OBSCIS system. This, in effect, is a reference guide describing the development methodology for establishing an OBSCIS system within any participating state.
- V. LAUNCHING OBSCIS — A COMPOSITE EXAMPLE.** This is a hypothetical example of how one imaginary state, named Composite, proceeds with the planning and analysis phases which initiate an OBSCIS project. The project is carried through the initial procedures for tailoring system specifications to the needs of a specific corrections authority.

NOTE: *Volume I in this series is prerequisite to all of the others. The remaining volumes are resource workbooks for the guidance of persons involved in the implementation of OBSCIS systems.*

TABLE OF CONTENTS

Page

PREFACE	iv
Admission Date	2
Adult Criminal Commitment History	2-6
Alias	6
Birth Date	6
Birthplace	6
Citizenship	6
Commitment Name	6
Consecutive/Concurrent Indicator	6, 7
County of Commitment	7
Cultural Identification	7
Current Address	7
Current Parole Eligibility Date	7
Detainer/Warrant	7, 8
Employment	8-14
Ethnic Origin	15
FBI Number	15
Financial Source	15
Good Time	15
Infractions	15
Infraction Disposition	16
Infraction Issuing Officer	16
Infraction Law Enforcement Disposition	16
Infraction Location	16
Infraction Plea/Appeal	16, 17
Infraction Violence Type	17
Institution Security Level	17
Intelligence	17
Juvenile Commitment History	17
Last Grade Completed	17, 18
Legal Name	18
Marital Status	18
Medical Exam	18
Military Data	18, 19
Minimum Eligible Parole Data	19
Next Eligible Parole Date	19
Number of Dependents	19
Number of Parole Board Hearings	19

TABLE OF CONTENTS (Continued)

OBTS Identification Number	19, 20
Offense Code	20-23
Parole Address/Habitation Unit	23, 24
Parole Board Decisions	24
Parole Board Hearing Date - Last	24
Parole Destination	24
Parole Education	24
Parole Employment/Employer	25
Parole Financial Status	25
Parole History	25
Parole Income	25
Parole Officer	25
Parole Performance	25, 26
Parole Program	26
Parole Special Conditions	26
Parole Supervisory Level	26
Parole Violation Action Date	26
Parole Violation Date	26
Parole Violation/New Offense	26
Parole Vocational Training	27
Physical and Other Disabilities	27, 28
Probation History	28
Program Assignment	28
Program Needs Perceived	28
Program Performance Evaluation - Final	28
Program Performance Evaluation - Interim	29
Programs Prescribed	29
Program Terminated Reasons	29
Psychiatric Treatment	29
Religious Preference	29, 30
Sentence Effective Date	30
Sentence Minimum/Maximum	30
Sentence Modification	30, 31
Sex	31
Social Security Number	31
State Identification Number	31
State Corrections Identification Number	31
Status Action	31, 32
Status Date	32
Status Jurisdiction	32
Status Location	32
Status Type	32, 33
Tested Grade Level	33
Time Served With Other Agencies	33
Vocational Education	33
Work Furlough Eligibility	33

PREFACE

This book and its companion works are about cooperation. They result from cooperation. They are tools for implementing cooperation on a national scale between state and federal programs for the gathering and reporting of information on criminal offenders under the care of state corrections organizations nationally.

OBSCIS stands for Offender-Based State Corrections Information System. This name alone describes some of the uniqueness of the OBSCIS project. Creation of OBSCIS has been federally initiated and federally funded — through grants from the Law Enforcement Assistance Administration (LEAA) of the Department of Justice. Yet, in name and in fact, OBSCIS systems are state programs. An implemented OBSCIS system becomes a first-line management tool in each state corrections authority.

The approach is designed so that everyone associated with OBSCIS comes out a winner — the whole of the results should be greater than the sum of the parts. The underlying need at the national level is for a comprehensive criminal justice information system. To accomplish this, it is necessary to set in motion data gathering, processing, and reporting systems covering law enforcement agencies, the courts, and corrections authorities. OBSCIS represents the corrections segment of this total.

The logic for making OBSCIS happen is based on an approach of pragmatic cooperation: in order to report data so vitally needed at the national level, individual states will require information processing systems. Thus, the national program has opted to assist the states in funding and implementing these prerequisite systems.

The theory is relatively simple, straightforward. But making OBSCIS happen has been something else. Responsibility for developing OBSCIS has fallen to a group of representatives from 10 states selected for implementation of pilot systems, plus others serving on a voluntary basis.

Outwardly, the charge given to this Committee might seem relatively simple: to find information common denominators of the corrections process and to specify them for inclusion in state information and national reporting systems.

But anyone familiar with the workings of government will realize that the efforts required were both herculean and horrendous. Representatives on the Committee came from many separate and individually sovereign states as well as from a number of federal agencies.

More than a year of determined, dedicated effort — thousands of working days of toil — went into the development of the OBSCIS model described in this multi-volume report. Members of the OBSCIS Committee have constructed an important segment of the foundation of our future criminal justice information system. It is a pleasure to recognize them in the listing that follows.

OBSCIS is a project of SEARCH Group, Inc. It has been funded through a grant by LEAA. Steve E. Kolodney, Deputy Director of SEARCH Group, Inc., has been a primary force in keeping the work of the Committee moving and on track through publication of this document.

Thanks are due to the Management Services organization of Touche Ross & Co., who served as staff and technical mainstay for the work of the OBSCIS Committee. Their in-depth experience in the design and implementation of criminal justice information systems has been vital to the success of the OBSCIS Committee in developing the model and the accompanying guides and tools documented here.

Finally, thanks are due, in advance, for the dedicated efforts which will lead to implementation of OBSCIS systems in each separate and sovereign state.

Huntsville, Texas
May, 1975

Charles M. Friel, Ph.D.
Chairman, OBSCIS Committee

OBSCIS COMMITTEE MEMBERS

Chairman

Charles M. Friel, Ph.D., Director of Research, Sam Houston State University

Project Coordinator

Steve E. Kolodney, Deputy Director, SEARCH Group, Inc.

Participating States

California Department of Corrections: Marie Vida Ryan, Chief Statistician
Colorado Division of Correctional Services: Norma T. Phillips, Chief, Office of Research, Planning, and Program Development
Florida Division of Corrections: G. Ray Worley, Ph.D., Chief of Research
Georgia Department of Offender Rehabilitation: L. Benjamin Wyckoff, Ph.D., Director of Systems Development
Hawaii Corrections Research and Statistics Bureau: Conroy Chow, Project Director
Illinois Department of Corrections: Russell H. Levy, Ph.D., Director of Corrections, Information Systems
Maryland Division of Corrections: Joseph Varese, Director of Planning and Research
Massachusetts Department of corrections: Carroll Miller, Administrative Director of Information Systems
Minnesota Department of corrections: Phillip Allivato, Director of Research
Oregon Corrections Division: Lou Lewandowski, Manager, ADP Support Services

Other Members

John Adams, Uniform Crime Reports, Federal Bureau of Investigation
William Albers, Management and Program Branch, Federal Bureau of Prisons
Hubert M. Clements, Ed.D., Deputy Director South Carolina Department of Corrections
Donald Gottfredson, Ph.D., Dean, School of Criminal Justice, Rutgers State University of New Jersey
Paul Kusuda, Director Bureau of Planning, Development, and Research, Wisconsin Division of Corrections
A. Lamont Smith, D.P.A., Deputy Director Arizona State Department of Corrections
Paul White, Law Enforcement Assistance Administration, NCJISS

Observer

Ken Brimmer, National Prisoner Statistics, Bureau of Census

LEAA Monitor

Bernard Shipley, Law Enforcement Assistance Administration, NCJISS

Former Members

David Asch, Louisiana Department of Justice
Michael Hagberg, Minnesota Department of Corrections
Dale Hodgins, Georgia Department of Offender Rehabilitation
T. P. Jones, Florida Division of Corrections
Steve E. Kolodney, New York State Division of Criminal Justice Services
Walter LaMendola, Minnesota Department of Corrections
Andrew McKean, Federal Bureau of Investigation
Duke Morton, Oregon Department of Human Resources
Robert Trujillo, Colorado Division of Corrections

Project Consultants — Touche Ross & Co.

Inwin T. David } Project Directors
David L. Caudill }
James D. Hempleman Project Manager
Robert E. Chana
John P. Demetra
Patricia G. Dolan
Gordon W. Hunt
Benedict W. Kruse
Paul F. LeFort

OBSCIS DATA DICTIONARY

This volume of the OBSCIS Report contains the OBSCIS data elements in alphabetical order and, where appropriate, provides a uniform coding structure. Data elements are presented at three levels:

CORE

The OBSCIS Core Data Base elements have been established on the basis of extensive reviews. They are specifically structured to meet the national reporting requirements of OBSCIS and OBTS/CCH, and to meet national and state information sharing needs. Elements found in the Core requirement include basic items such as sex, birth date, offense, sentence, etc. Where applicable, a uniform coding structure is provided to standardize the data among all states.

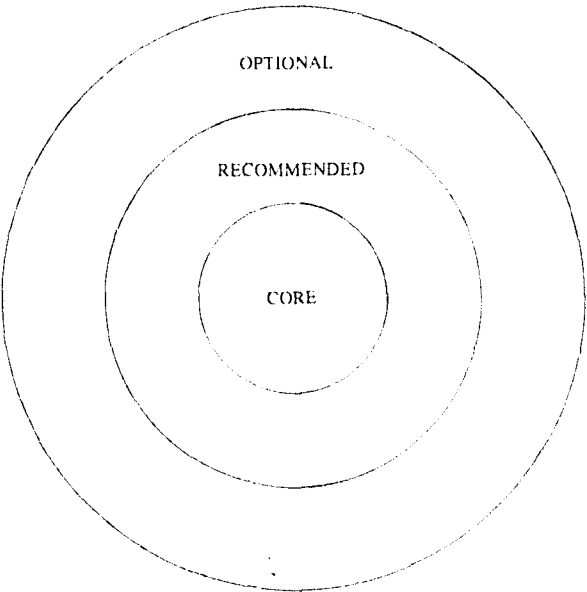
RECOMMENDED

The OBSCIS Committee has recommended that states collect data in addition to the Core level. The elements include items which are not found in the Core list such as parole board decisions, birthplace, and alias. Some elements found in the Core Data Base have expanded definitions at the Recommended level. Where possible, standard coding structures are specified.

OPTIONAL

For those states that are developing additional capabilities and features, a potential list of optional elements is provided. These elements include items not found in the Core and Recommended categories. They also include several elements that appear in the Core and Recommended lists but have expanded definitions and more detailed coding. For instance, in the standard list, offender's alias is specified with a yes/no indicator. In the optional category, a list of all known aliases can be collected.

The three levels are shown conceptually below. Note that each level encompasses all lower levels.



The OBSCIS Data Base

ADMISSION DATE

Core

The admission date is the month, day, and year that an offender who is not currently under a corrections jurisdiction is placed under a state corrections jurisdiction, or the date that a prior offender who has been completely discharged from the corrections system is placed under a state corrections jurisdiction.

Recommended

No change from Core level.

ADULT CRIMINAL COMMITMENT HISTORY

Core

This element indicates the number of times the offender has been incarcerated with a sentence of one year or more, excluding the present incarceration.

Recommended

This expansion of the Core data element specifies the number of times the offender has been incarcerated with a sentence of one year or more. It includes federal, in-state, out-of-state, and other incarcerations.

Optional

State of last adult commitment. Code using the state/country code developed by NCIC:

ADULT CRIMINAL COMMITMENT HISTORY

State/Country Codes

States and Territorial Possessions

Alabama	AL	Louisiana	LA
Alaska	AK		
Arizona	AZ	Maine	ME
Arkansas	AR	Maryland	MD
		Massachusetts	MA
California	CA	Michigan	MI
Colorado	CO	Minnesota	MN
Connecticut	CT	Mississippi	MS
		Missouri	MO
Delaware	DE	Montana	MT
District of Columbia	DC		
		Nebraska	NE
Florida	FL	Nevada	NV
		New Hampshire	NH
Georgia	GA	New Jersey	NJ
		New Mexico	NM
Hawaii	HI	New York	NY
		North Carolina	NC
Idaho	ID	North Dakota	ND
Illinois	IL		
Indiana	IN	Ohio	OH
Iowa	IA	Oklahoma	OK
		Oregon	OR
Kansas	KS		
Kentucky	KY	Pennsylvania	PA
		Rhode Island	RI

South Carolina	SC	Vermont	VT
South Dakota	SD	Virginia	VA
Tennessee	TN		
Texas	TX	Washington	WA
		West Virginia	WV
United States	US ¹	Wisconsin	WI
Utah	UT	Wyoming	WY
American Samoa (Islands)	AM	Marshall Islands	MH
Canal Zone	CZ	Midway Islands	MW
Caroline Islands	CG	Puerto Rico	PR
Guam	GM	Virgin Islands of the U.S.	VI
Marianas Islands	MK	Wake Island	WK

¹Enter code US for "Birthplace" element for native Americans whose state of birth is unknown.

CANADIAN PROVINCES

Alberta	AB	Ontario	ON
British Columbia	BC	Prince Edward Island	PE
Manitoba	MB	Quebec	PQ
New Brunswick	NK	Saskatchewan	SN
Newfoundland (includes Labrador)	NF	Yukon (Territory)	YT
Nova Scotia	NS	Northwest Territories	NT

MEXICAN STATES

Border States		Other States	
Baja California (Northern Section)	BA	Aguascalientes	AG
Baja California (Southern Section)	BJ	Campeche	CE
Chihuahua	CH	Chiapas	CI
Coahuila	CU	Colima	CL
Neuvo Leon	NL	Distrito Federal (Mexico, D.F.)	DF
Sonora	SO	Guanajuato	GU
Tamaulipas	TA	Guerrero	GR
		Hidalgo	HL
		Jalisco	JL
		Mexico (State)	MX
		Michoacan	MC
		Morelos	MR
Durango	DO	Nayarit	NA
San Luis Potosi	SL	Oaxaca	OA
Sinaloa	SI	Puebla	PB
Veracruz	VC	Queretaro	QU
Zacatecas	ZA	Quintana Roo	QR
		Tabasco	TB
		Tlaxcala	TL
		Yucatan	YU

Afghanistan	AF	East Germany		Kenya	KE	Qatar	QA
Africa	AC	(includes East Berlin)	EM	Korea	KR		
Albania	AA		EU	Kuwait	KU	Reunion	RE
Algeria	AN	Ecuador	EY			Rhodesia	RH
Andorra	AD	Egypt	EL	Laos	LS	Rumania	
Angola	AO	El Salvador	EN	Latvia	LT	(Romania/Roumania)	RU
Antarctica	AY	England	EK	Lebanon	LN	Russia (see USSR)	SX
Antigua	AI	Equatorial Guinea	ES	Lesotho	LE	Rwanda	RW
Argentina	AT	Estonia	ED	Liberia	LB		
Australia	AS	Ethiopia		Libya	LY	San Marino	SH
Austria	AU			Liechtenstein	LI	Saudi Arabia	SB
		Fiji Islands	FJ	Lithuania	LH	Scotland	SS
Bahama Islands	BD	Finland	FD	Luxembourg	LX	Senegal	SG
Bahrain/Bahrein Islands	BE	France	FN			Seychelles	SE
Barbados	BB			Malagasy Republic		Sierra Leone	SA
Belgium	BG	Gabon	GB	(includes Madagascar)	MP	Sikkim	SK
Bermuda	BM	Gambia	GK	Malawi	MF	Singapore	SR
Bhutan	BN	Germany (also see EM and WG)	GE	Malaysia	MZ	Somalia	SM
Bolivia	BV		GG	Maldives	MV	South Africa	SF
Botswana	BT	Ghana		Mali	ML	Southern Yemen	ST
Brazil	BZ	Great Britain (see EN, SS, WL)		Malta	MY	South-West Africa	SJ
British Honduras	BH			Martinique	ZB	Soviet Union	SX
Brunei	BX	Greece	GC	Mauritania	MU	Spain	SP
Bulgaria	BU	Greenland	GN	Mexico ³	MM	Sudan	SU
Burma	BR	Grenada	GJ	Monaco	MJ	Surinam	ZC
Burundi	BI	Guadeloupe	GP	Mongolia	MG	Svalbard	SV
		Guatemala	GT	Morocco	MQ	Swaziland	SW
Cambodia	CJ	Guinea	GI			Sweden	SQ
Cameroon	CM	Guiana/Guyana	GY	Namibia (see SJ)	SJ	Switzerland	SZ
Canada ²	CD			Nauru	NR	Syria	SY
Cape Verde	CV	Haiti	HT	Nepal	NP	Tanzania	TZ
Cayman Islands	CP	Holland (see NE)	NE	Netherlands	NE	Thailand	TH
Central African Republic	CW	Honduras	HD	Netherlands Antilles	NX	Togo	TO
Ceylon (Sri Lanka)	CY	Hong Kong	HK	New Caledonia	NQ	Tonga	TG
Chad	CF	Hungary	HU	New Guinea	NO	Trinidad and Tobago	TT
Chile	CQ			New Zealand	NZ	Trucial States	TC
China	CN	Iceland	IC	Nicaragua	NU	Tunisia	TU
Colombia	CB	India	II	Niger	NN	Turkey	TY
Congo (Brazzaville or Kinshasa)	CX	Indonesia	IO	Nigeria	NG	Uganda	UG
Costa Rica	CR	Iran	IR	Northern Ireland	NI	United Arab Republic	UA
Cuba	CC	Iraq	IQ	Norway	NW	United Kingdom (see EN, SS, WL, and NI)	
Cyprus	CS	Ireland	IE			Upper Volta	UV
Czechoslovakia	CK	Israel	IS	Pakistan	PK	Uruguay	UY
		Italy (includes Sicily)	IT	Panama	PM	USSR/Soviet Union	SX
		Ivory Coast	IY	Paraguay	PV		
				Peru	PU	Venezuela	VZ
Dahomey	DH			Philippines	PI	Viet Nam	VM
Denmark	DK	Jamaica	JM	Pitcairn Island	PC		
Dominica	DM	Japan	JA	Poland	PO		
Dominican Republic	DR	Jordan	JO	Portugal	PT	Wales	WL

²See separate list of Canadian Provinces. Use CD code only when province is not known.

³See separate list of Mexican States. Use code MM only when State not known.

West Germany (includes West Berlin)	WG	(See Martinique)	ZB
West Indies	WN	(See Surinam)	ZC
Western Samoa	WS	Zambia	ZM
Yemen	YE	All Others ¹	YY
Yugoslavia	YG		

¹Any foreign countries not included in above abbreviation list are to be designated by code YY.

ALIAS

Definition: Any last name, or nickname unaccompanied by a last name, which sounds different from the legal name; exclude variations in spelling of last name.

Core

This element is not collected at the Core level.

Recommended

This element indicates whether or not the offender has ever been known to use an alias.

The codes are:

- Y Offender has been known to use an alias
- N Offender has no known alias

Optional

At the optional level, this element provides for the collection of all known aliases.

BIRTH DATE

Core

Birth date of offender, verified when possible. Code by month/day/year.

Recommended

No change from Core level.

BIRTHPLACE

Core

This element is not collected at the Core level.

Recommended

State or country (if outside of United States) of

birth, using State/Country code developed by NCIC. See element "Adult Commitment History" for coding structure.

Optional

County of birth. Use if individual was born in state in which committed. Coding structure will be specific to each state.

CITIZENSHIP

Core

This element is not collected at the Core level.

Recommended

This element is not collected at the Recommended level.

Optional

The coding structure of this element will be specific to each state, depending upon the uses to which it will be put.

COMMITMENT NAME

Core

Name which appears on mittimus or commitment document:

- Last name
- First and middle names

Recommended

No change from Core level.

CONSECUTIVE/CONCURRENT INDICATOR

Core

In the case of multiple sentences, this data ele-

ment indicates whether the offenses for which the offender was committed are to run consecutively or concurrently.

- CS Consecutive
- CC Concurrent

Recommended

At the recommended level, this element will indicate the overall effect of all sentences upon each other. Each state must develop its own coding to handle individual needs and restrictions.

COUNTY OF COMMITMENT

Core

A code for the county in which the offender was committed is recorded by this element. The coding structure will be unique to each state.

Recommended

No change from Core level.

CULTURAL IDENTIFICATION

This code is used to indicate environmental identification which might influence housing and treatment decisions. It includes the offender's indication of participation in or identification with street gangs, militant groups, political activist groups, etc.

Core

This element is not collected at the Core level.

Recommended

Yes/no indicator of whether offender identifies with any of the above-mentioned types or groups.

Optional

Specific group(s) with which offender identifies. This code will be specific to each state.

CURRENT ADDRESS

Core

The name of the state and county in which the

offender lives at the time of his arrest will be recorded under this element. The state code is standardized and may be found under the element "Adult Commitment History". The county code will be specific to each state.

Recommended

No change from Core level.

Optional

The expansion of this element includes the mailing address and zip code of the offender at the time of arrest.

CURRENT PAROLE ELIGIBILITY DATE

Core

This element is not collected at the Core level.

Recommended

This element is not collected at the Recommended level.

Optional

Date on which offender currently will be eligible for parole. Code in month/day/year.

DETAINER/WARRANT

Core

This element is not collected at the Core level.

Recommended

At the Recommended level, the Detainer/Warrant element is a three-part code. (1) The first part indicates the number of detainers or warrants currently out on an offender, (2) the second provides for a general code indicating the type(s) of warrants or detainers. The coding structure is as follows:

- 1 Bond issued
- 2 Escape lost time
- 3 Federal warrant
- 4 State warrant
- 5 Out-of-state warrant
- 6 Parole violation warrant
- 7 Detainer
- 8 Other

(3) The third part includes an indication of notification of each applicable agency.

Optional

The expanded level of this element identifies the agency which is issuing the detainer or warrant. The coding structure will be specific to each state.

EMPLOYMENT

Core

This element is not collected at the Core level.

Recommended

This is a five-part code at the Recommended level:

(1) **Job Classification** — the job which the offender perceives as being his most usual occupation. It is coded by the two-digit occupational divisions code outlined in the *Dictionary of Occupational Titles*:

TWO DIGIT OCCUPATIONAL DIVISIONS

Professional, Technical, and Managerial Occupations

- 00 Occupations in architecture and engineering
- 01 Occupations in architecture and engineering
- 02 Occupations in mathematics and physical sciences
- 04 Occupations in life sciences
- 05 Occupations in social sciences
- 07 Occupations in medicine and health
- 09 Occupations in education
- 10 Occupations in museum, library, and archival sciences
- 11 Occupations in law and jurisprudence
- 12 Occupations in religion and theology
- 13 Occupations in writing
- 14 Occupations in art
- 15 Occupations in entertainment and recreation
- 16 Occupations in administrative specializations
- 18 Managers and officials
- 19 Miscellaneous professional, technical, and managerial occupations

Clerical and Sales Occupations

- 20 Stenography, typing, filing, and related occupations
- 21 Computing and account-recording occupations
- 22 Material and production recording occupations
- 23 Information and message distribution occupations
- 24 Miscellaneous clerical occupations
- 25 Salesmen, services
- 26 Salesmen and salespersons, commodities
- 27 Salesmen and salespersons, commodities
- 28 Salesmen and salespersons, commodities
- 29 Merchandising occupations, except salesmen

Service Occupations

- 30 Domestic service occupations
- 31 Food and beverage preparation and service occupations
- 32 Lodging and related service occupations
- 33 Barbering, cosmetology, and related service occupations
- 34 Amusement and recreation service occupations
- 35 Miscellaneous personal service occupations
- 36 Apparel and furnishing service occupations
- 37 Protective service occupations
- 38 Building and related service occupations

Farming, Fishery, Forestry, and Related Occupations

- 40 Plant farming occupations
- 41 Animal farming occupations
- 42 Miscellaneous farming and related occupations
- 43 Fishery and related occupations
- 44 Forestry occupations
- 45 Hunting, trapping, and related occupations
- 46 Agricultural service occupations

Processing Occupations

- 50 Occupations in processing of metal
- 51 Ore refining and foundry occupations
- 52 Occupations in processing of food, tobacco, and related products
- 53 Occupations in processing of paper and related materials
- 54 Occupations in processing of petroleum, coal, natural and manufactured gas, and related products

- 55 Occupations in processing of chemicals, plastics, synthetics, rubber, paint, and related products
- 56 Occupations in processing of wood and wood products
- 57 Occupations in processing of stone, clay, glass, and related products
- 58 Occupations in processing of leather, textiles, and related products
- 59 Processing occupations

Machine Trades Occupations

- 60 Metal machining occupations
- 61 Metal working occupations
- 62 Mechanics and machinery repairmen
- 63 Mechanics and machinery repairmen
- 64 Paperworking occupations
- 65 Printing occupations
- 66 Wood machining occupations
- 67 Occupations in machining stone, clay, glass, and related materials
- 68 Textile occupations
- 69 Machine trades occupations

Bench Work Occupations

- 70 Occupations in fabrication, assembly, and repair of metal products
- 71 Occupations in fabrication and repair of scientific and medical apparatus, photographic and optical goods, watches and clocks, and related products
- 72 Occupations in assembly and repair of electrical equipment
- 73 Occupations in fabrication and repair of products made from assorted materials
- 74 Painting, decorating, and related occupations
- 75 Occupations in fabrication and repair of plastics, synthetics, rubber, and related products.
- 76 Occupations in fabrication and repair of wood products
- 77 Occupations in fabrication and repair of sand, clay, and glass products.
- 78 Occupations in fabrication and repair of textile, leather, and related products.
- 79 Bench work occupations

Structural Work Occupations

- 80 Occupations in metal fabricating

- 81 Welders, flame cutters, and related occupations
- 82 Electrical assembling, installing, and repairing
- 84 Painting, plastering, waterproofing, cementing, and related occupations
- 85 Excavating, grading, paving, and related occupations
- 86 Construction occupations
- 89 Structural work occupations

Miscellaneous Occupations

- 90 Motor freight occupations
- 91 Transportation occupations
- 92 Packaging and materials handling occupations
- 93 Occupations in extraction of minerals
- 94 Occupations in logging
- 95 Occupations in production and distribution of utilities
- 96 Amusement, recreation, and motion picture occupations
- 97 Occupations in graphic art work

(2) **Employment Status at time of arrest:**

- 1 Employed full time
- 2 Employed part time (not a student)
- 3 Unemployed (not a student)
- 4 Never worked (not a student)
- 5 Student
- 6 Dependent (not a student and not hospitalized)
- 7 Hospitalized
- 8 Military
- 9 Other
- 0 Unknown

(3) **Skill Level** — the level of skill used by the offender in his most usual occupation:

- 0 Not applicable
- 1 Helper, entry, aid, new careerist
- 2 Apprentice, technical assistant
- 3 Journeyman, technological associate
- 4 Master, professional, specialist
- 5 Supervisory

(4) **Pay Rate** — the highest gross income attained in a one-week period in any job(s), coded in dollars.

(5) **Length of Employment** — the longest period of continuous employment of any type, coded in months.

Optional

The expansion is a two-part code:

(1) **Job classification** — the job which the individual perceives as being his most usual occupation. Use three-digit code as delineated in the *Dictionary of Occupational Titles*:

160 - Accountant
150 - Actor or Actress
096 - Agricultural Agent, County
950 - Air Compressor Operator
196 - Airplane Pilot, Aviator
737 - Ammunition Worker
960 - Amusement Occupation Worker
723 - Appliance Worker (Electrical)
191 - Appraiser
991 - Apprentice, General
001 - Architect
368 - Armed Forces
970 - Artist
141 - Artist, Commercial
863 - Asbestos and Insulation Worker
189 - Association Officer or Executive
153 - Athletic Coach
355 - Attendant
110 - Attorney
294 - Auctioneer
160 - Auditor
620 - Auto Serviceman
620 - Automobile Mechanic
196 - Aviator

910 - Baggage man, Train
526 - Baker
526 - Bakery Products Maker
330 - Barber
312 - Bartender
332 - Beautician, Cosmetologist
324 - Bellboy, Bellman
520 - Beverage Maker
041 - Biologist and Life Scientist
610 - Blacksmith
859 - Blaster
805 - Boiler Maker, Boiler Operator or Repairman
950 - Boiler Room Helper
612 - Bolt Setter
210 - Bookkeeper
366 - Bootblack
790 - Bottle Gager
910 - Brakeman, Railroad
861 - Bricklayer

705 - Buffer and Finisher
187 - Building Manager
913 - Bus Driver
187 - Business Agency, Union
316 - Butcher and Meat Cutter
162 - Buyer

660 - Cabinet Maker
520 - Candy Maker Helper
529 - Cannery Worker
293 - Canvasser
860 - Carpenter
211 - Cashier
739 - Casket Maker
780 - Casket Trimmer
852 - Cement Finisher
844 - Cement Mason
407 - Cemetery Worker
381 - Charwoman, Cleaner
913 - Chauffeur
558 - Chemical Worker
022 - Chemist
151 - Chorus Girl
573 - Clay Products Maker
369 - Cleaner and Presser
120 - Clergyman
209 - Clerk, General
219 - Clerk, General Office
153 - Coach
368 - Coast Guardsman
090 - College Faculty Member
141 - Commercial Artist
822 - Communication Man
973 - Composer
852 - Concrete Finisher
852 - Concrete Finishing Machine Operator
570 - Concrete Mixer Operator
198 - Conductor, Passenger Car and Railroad
529 - Confectioner
840 - Construction and Maintenance Painter
869 - Construction Equipment Operator, Construction Worker
313 - Cook (Except Private Family)
940 - Corwood Cutter
332 - Cosmetologist
402 - Cotton Farmer
461 - Cotton Ginner
096 - County Agricultural Agent
921 - Crane Operator
168 - Credit Man
780 - Cushion Maker

529 - Dairy Helper
529 - Dairy Products Maker or Processor
151 - Dancer, Chorus Girl
301 - Day Worker
298 - Decorator and Window Dresser
297 - Demonstrator
079 - Dental Assistant
072 - Dentist
298 - Department Head
930 - Derrickman
612 - Die Setter
625 - Diesel Mechanic
356 - Dog Boy or Keeper
159 - Dog Trainer
306 - Domestic Servant
324 - Doorman
017 - Draftsman
785 - Dressmaker
930 - Driller (Mining and Quarrying)
362 - Dry Cleaner
207 - Duplicating Machine Operator
582 - Dyer

131 - Editor
721 - Electric Motor Manufacturing Worker or Repairman
723 - Electrical Appliance Worker
824 - Electrician
500 - Electroplating Laborer
091 - Elementary School Teacher
002 - Engineer
019 - Engineering Asst., Technical
704 - Engraver
368 - Enlisted Man
230 - Errand Boy
389 - Exterminator

754 - Fabricator of Plastic Products
710 - Fabricator of Professional and Scientific Apparatus
769 - Fabricator of Wood Products
409 - Farm Equipment Operator
419 - Farm Hand, Animal
402 - Farm Hand, Cotton
404 - Farm Hand, Fruit
421 - Farm Hand, General
401 - Farm Hand, Grain
413 - Farm Hand, Livestock
405 - Farm Hand, Peanuts
412 - Farm Hand, Poultry
405 - Farm Hand, Tobacco

403 - Farm Hand, Vegetable
409 - Farm Manager
421 - Farmer, General
206 - File Clerk
705 - Filer
915 - Filling Station Attendant
206 - Fingerprint Clerk
910 - Fireman, Locomotive
430 - Fisherman, General
432 - Fisherman, Line
431 - Fisherman, Netter
816 - Flame Cutter
529 - Food Preserver and Canner
612 - Forgerman
519 - Foundryman or Foundry Worker
404 - Fruit Farmer
763 - Furniture Finisher
909 - Furniture Mover
783 - Fur Worker
142 - Furrier

407 - Gardener
781 - Garment Maker
862 - Gas Fitter
219 - General Office Clerk
575 - Glass Blower
572 - Glass Maker
865 - Glazier (Glass)
589 - Grader, Fruit and Vegetables
401 - Grain Farmer
521 - Grain Mill Products Maker or Producer
705 - Grinder
407 - Grounds Keeper
372 - Guard

612 - Hammerman
612 - Hatcheryman
504 - Heat Treater
091 - High School Teacher
921 - Hoistman
355 - Hospital Attendant
355 - Hospital Orderly
310 - Hostess
321 - Hotel Housekeeper
323 - Hotel Maid and Houseman
187 - Hotel Manager
321 - Housekeeper, Hotel and Restaurant
304 - Houseman
289 - House-to-House Salesman
451 - Hunter and Trapper

737 - Inspector (Ammunition)
 669 - Inspector (Lumber)
 822 - Installer, Telephone and Telegraph

 382 - Janitor
 700 - Jeweler
 111 - Judge

 318 - Kitchen Helper and Worker
 685 - Knitter, Maker of Knit Goods
 685 - Knitting Machine Helper

 029 - Laboratory Assistant
 737 - Laborer (Ammunition Manufacture)
 529 - Laborer (Bakery)
 579 - Laborer (Batching Plant)
 579 - Laborer (Brick and Tile)
 559 - Laborer (Chemical Processing)
 579 - Laborer (Concrete Mixing Plant)
 952 - Laborer (Electronic Power and Transmission Line)
 500 - Laborer (Electroplating)
 754 - Laborer (Fabric Making)
 990 - Laborer (General)
 892 - Laborer (Hoisting)
 509 - Laborer (Iron and Steel)
 422 - Laborer (Irrigation)
 582 - Laborer (Knit Goods)
 609 - Laborer (Machine Goods)
 406 - Laborer (Nursery)
 519 - Laborer (Ore Melting and Refining)
 539 - Laborer (Paper Making)
 852 - Laborer (Paving)
 939 - Laborer (Petroleum Production)
 549 - Laborer (Petroleum Refinery)
 850 - Laborer (Pile Driving)
 559 - Laborer (Plastics Manufacture)
 720 - Laborer (Radio and Phonograph)
 413 - Laborer (Ranch)
 809 - Laborer (Shipyards)
 788 - Laborer (Shoe Manufacture)
 869 - Laborer (Wrecking)
 361 - Laundry Worker
 110 - Lawyer
 580 - Leather Goods Maker
 711 - Lens Grinder
 110 - Librarian
 249 - Library Assistant
 079 - Licensed Practical Nurse
 041 - Life Scientist
 379 - Lighthouse Keeper

821 - Lineman (Utility)
 972 - Lithographer
 910 - Locomotive Engineer
 910 - Locomotive Fireman
 187 - Lodge and Society Officials
 941 - Log Grader
 941 - Log Inspector
 940 - Logger, General
 911 - Longshoreman, Stevedore
 669 - Lumber Grader and Inspector

 609 - Machine Shop Worker
 600 - Machinist, Machinist Apprentice
 323 - Maid and Houseman for Hotel or Restaurant
 306 - Maid, General
 233 - Mail Carrier
 231 - Mail Clerk, Railroad
 231 - Mail Clerk
 187 - Manager, Building
 299 - Manager, Department
 187 - Manager, Restaurant
 187 - Managers and Officials
 331 - Manicurist
 368 - Marine
 197 - Marine Pilot
 197 - Maritime Occupations
 198 - Mate, Ship
 316 - Meat Cutter
 525 - Meat Products Maker
 620 - Mechanic, Automobile
 625 - Mechanic, Diesel
 079 - Medical Assistant
 355 - Medical Attendant
 230 - Messenger, Errand Boy
 518 - Metal Casting
 809 - Metal Fabricating Foreman
 616 - Metal Fabricating Machine Worker
 800 - Metal Fabricator
 705 - Metal Polisher and Buffer
 354 - Midwife
 368 - Military Service Man
 521 - Miller
 784 - Milliner
 638 - Millwright
 181 - Mine Foreman
 850 - Miner
 930 - Mining Machine Operator
 661 - Model Maker (Wood)
 518 - Molder (Metal Castings)
 909 - Moving Man
 152 - Musician

291 - Newboy, Newspaper Carrier
 075 - Nurse
 354 - Nurse, Practical
 355 - Nursing Aid

 230 - Office Boy or Girl
 208 - Office Machine Operator
 187 - Officials of Lodges and Societies
 699 - Oiler
 631 - Operator, Powerhouse
 829 - Organ Tuner
 619 - Ornamental Metal Worker

 920 - Packer
 920 - Packer, Agricultural Products
 550 - Paint Maker
 840 - Painter
 970 - Painter (Artist)
 539 - Paper Processing Worker
 794 - Paper Goods Maker
 841 - Paperhanger
 915 - Parking Lot Attendant
 781 - Pattern Maker
 219 - Paymaster
 215 - Payroll Clerk
 405 - Peanut Farmer
 291 - Peddler
 540 - Petroleum Products Maker
 206 - Photo Clerk
 971 - Photoengraver
 143 - Photographer
 714 - Photographic Process Attendant
 070 - Physician and Surgeon
 730 - Piano Tuner
 850 - Pile Driver
 197 - Pilot, Marine
 862 - Pipe Line Worker
 899 - Pipeliner
 669 - Planer
 842 - Plasterer
 557 - Plastics Extruder
 559 - Plastics Maker
 651 - Plate Printer
 862 - Plumber
 705 - Polisher
 232 - Post Office Clerk
 737 - Powderman (Ammunition)
 850 - Power Shovel Operator
 631 - Powerhouse Operator or Repairman
 079 - Practical Nurse, Licensed

354 - Practical Nurse, Unlicensed
 369 - Presser
 651 - Pressman
 973 - Printer
 659 - Printing Foreman
 710 - Professional and Scientific Apparatus Fabricator
 090 - Professor
 188 - Public Officials
 530 - Pulp Maker (Paper)
 162 - Purchasing Agent

 930 - Quarryman

 193 - Radio Operator
 720 - Radio Repairman
 942 - Raftsman (Logs)
 910 - Railroad Brakeman
 198 - Railroad Conductor
 910 - Railroad Gateman
 231 - Railroad Mail Clerk
 184 - Railroad Station Master
 910 - Railroad Transportation Worker
 910 - Railway Express Agent
 222 - Receiving Clerk
 546 - Refineryman (Petroleum)
 950 - Refrigerating Machine Operator
 075 - Registered Nurse
 631 - Repairman, Powerhouse
 365 - Repairman, Shoe
 822 - Repairman, Telephone
 321 - Restaurant Housekeeper
 323 - Restaurant Maid and Houseman
 187 - Restaurant Manager
 185 - Retail Store Manager
 921 - Rigger, Craneman
 866 - Roofer
 292 - Routeman
 559 - Rubber Products Maker

 368 - Sailor
 290 - Sales Clerk
 292 - Salesman Driver, Routeman
 250 - Salesman, General
 667 - Sawmill Worker
 785 - Seamstress
 201 - Secretary
 620 - Serviceman, Auto
 941 - Scaler
 148 - Sculptor

804 - Sheet Metal Worker
 197 - Ship Captain
 197 - Ship Engineer
 232 - Shipping Clerk
 809 - Shipyard Laborer
 364 - Shoe Dyer
 365 - Shoe Repairman
 365 - Shoemaker
 366 - Shoe Shine Boy
 293 - Shopper
 850 - Shovelman
 436 - Shrimper
 979 - Silk Screen Maker and Layout Man
 700 - Silversmith
 525 - Slaughterer
 780 - Slip Cover Cutter
 050 - Social Scientist
 368 - Soldier
 293 - Solicitor
 153 - Sports Instructor, Coach
 154 - Sports Official
 741 - Spray Painter
 184 - Station Master (Railroad)
 950 - Stationery Engineer
 216 - Statistical Clerk
 862 - Steam Fitter
 202 - Stenographer
 975 - Stereotyper
 911 - Stevedore
 223 - Stock Clerk
 711 - Stonecutter
 861 - Stone Mason
 185 - Store Manager
 922 - Stores Laborer
 801 - Structural Steel Worker
 998 - Student
 070 - Surgeon
 018 - Surveyor
 910 - Switchman
 785 - Tailor
 913 - Taxi Driver
 091 - Teacher, High School or Elementary
 919 - Teamster
 019 - Technical Assistant, (Engineering)
 236 - Telegraph Operator
 822 - Telephone Installer
 235 - Telephone Operator
 822 - Telephone Repairman
 720 - Television Repairman
 389 - Termite Treater or Exterminator

638 - Textiles Maker
 861 - Tile Setter
 219 - Timekeeper
 804 - Tinsmith
 405 - Tobacco Grower
 920 - Tobacco Packer
 529 - Tobacco Products Maker
 701 - Tool Sharpener or Grinder
 601 - Toolmaker
 806 - Transportation Equipment Builder
 451 - Trapper
 905 - Truck Driver
 403 - Truck Farmer
 973 - Typesetter
 203 - Typist
 999 - Unemployed
 187 - Union Official
 780 - Upholsterer
 344 - Usher
 953 - Utility Service Foreman
 950 - Utility Worker (General)
 553 - Varnish Maker
 403 - Vegetable Farmer
 950 - Ventilating Man
 073 - Vegetarian
 350 - Waiter and Waitress
 922 - Warehouseman and Stores Laborer
 915 - Watchmaker
 372 - Watchman
 683 - Weaver
 811 - Welder
 165 - Wholesale Store Manager
 763 - Wicker Worker
 298 - Window Dresser
 729 - Wireman
 940 - Wood Chopper
 769 - Wood Products Fabricator
 669 - Woodworking, General
 131 - Writer and Editor

(2) **Most recent occupation.** Indicate name and address of employer at time of arrest or, if unemployed, with most recent employer and individual's position with that employer. An employment history will be kept with this element.

ETHNIC ORIGIN

Core

The ethnic group with whom the offender identifies most strongly will be coded using the coding structure established by CCH:

W—White (includes Mexicans and Latins)
 N—Negro
 I—Indian (American)
 C—Chinese
 J—Japanese
 O—All others (Asian Indians, Eskimos, Filipinos, Indonesians, Korean, Polynesians, and other non-white)

Recommended

No change from Core level.

FBI NUMBER

Core

The number assigned to the offender by the Federal Bureau of Investigation is collected by this element.

Recommended

No change from Core level.

FINANCIAL SOURCE

Core

This element is not collected at the Core level.

Recommended

Financial source indicates the primary source of offender's income at time of arrest:

0 Employment (self or other)
 1 Public assistance
 2 Parents
 3 Spouse or children
 4 Relatives
 5 Friends
 6 Pension/social security
 7 Unemployment compensation
 8 Other
 9 Unknown

Optional

The expansion includes:

- (1) Secondary source of offender's income at time of arrest. Use same code as primary source.
- (2) Major source of income of offender's family. If married, code spouse's income; otherwise, code parents'. Use same code as for offender's primary source of income.

GOOD TIME

Core

This element is not collected at the Core level.

Recommended

This is a two-part data element:

- (1) Indication of total accumulated statutory or compensatory time the offender has received during present commitment. Code in days.
- (2) Indication of total statutory or compensatory time revoked during offender's current commitment. Code in days.

INFRACTIONS

Core

This element is not collected at the Core level.

Recommended

This is a three-part code:

- (1) Infraction Type is a code which specifies the category of the most recent infraction or incident. It is coded as follows:
 - 1 Escape
 - 2 Felony Offenses
 - 3 Physical Violence
 - 4 Other
- (2) Number of Incidents indicates the total occurrences of disciplinary infractions (i.e., tickets issued) during the offender's incarceration.
- (3) Infraction Date is the month, day, and year that the most recent incident, infraction or escape occurred while the offender is incarcerated or in a partial-release program.

INFRACTION DISPOSITION

- Core
- This element is not collected at the Core level.
- Recommended
- This is a two-part element:
- (1) Infraction Actions indicate the total number of times that an offender has been officially disciplined during his current period of incarceration.
 - (2) Action Date indicates the date that the most recent disciplinary infraction action was taken.

INFRACTION ISSUING OFFICER

- Core
- This element is not collected at the Core level.
- Recommended
- This element is not collected at the Recommended level.

- Optional
- Indication of name or number of person reporting institutional or partial-release program incident or escape. This code will be specific to each state.

INFRACTION LAW ENFORCEMENT DISPOSITION

- Core
- This element is not collected at the Core level.
- Recommended
- This element is not collected at the Recommended level.
- Optional
- Law enforcement disposition of incident which occurs while offender is incarcerated or in partial-release program excluding parole.
- The NCIC/CCH codes for court disposition which are suggested as a coding structure for this element are as follows:

301 Acquitted

- 302 Acquitted by reason of insanity
- 303 Acquitted by reason of mental incompetence
- 304 Case continued without findings
- 305 Charge dismissed
- 306 Charge dismissed due to insanity
- 307 Charge dismissed due to mental incompetence
- 308 Charge still pending due to insanity
- 309 Charge still pending due to mental incompetence
- 310 Convicted
- 311 Deceased
- 312 Deferred disposition
- 313 Dismissed - civil action
- 314 Extradited
- 322 Found insane
- 323 Found mentally incompetent
- 315 Pardoned
- 316 Probation before conviction
- 317 Sentence commuted
- 318 Ajudication withheld
- 320 Mistrial — defendant discharged
- 321 Executive clemency granted

INFRACTION LOCATION

- Core
- This element is not collected at the Core level.
- Recommended
- This element is not collected at the Recommended level.
- Optional
- Indication of location where incident occurred or from where escape was made or attempted while offender is incarcerated or on partial-release program using status location code. This code will be specific to each state.

INFRACTION PLEA/APPEAL

- Core
- This element is not collected at the Core level.
- Recommended
- This element is not collected at the Recommended level.

- Optional
- Yes/No indicator of whether offender offered a plea or objected to disposition of corrections authority regarding incident or escape while incarcerated or in partial-release program excluding parole.

INFRACTION VIOLENCE TYPE

- Core
- This element is not collected at the Core level.
- Recommended
- This element is not collected at the Recommended level.
- Optional
- Type of violence involved in recorded infraction or escape while offender is incarcerated or in partial-release program:
- 1 Use of weapon(s)
 - 2 Use of instrument other than weapons
 - 3 Physical violence only (no instruments involved)
 - 4 Other
 - 5 No violence involved

INSTITUTION SECURITY LEVEL

- Core
- This element is not collected in the Core level.
- Recommended
- The indication of offender's required security level within the institution, camp or on partial-release program, excluding parole, is coded as follows:
- 1 Maximum
 - 2 Medium
 - 3 Minimum

INTELLIGENCE

- Core
- At the Core level, this element contains an intelligence category which is established through testing and/or interviews:
- 1 Very superior
 - 2 Superior

- 3 Bright normal
- 4 Normal
- 5 Dull normal
- 6 Borderline
- 7 Mental defective

- Recommended
- At the Recommended level, this element includes the above definition and a three-part code:
- (1) Score of test administered during assessment process.
 - (2) Name of test administered during assessment process:
 - 1 AGCT
 - 2 Army BETA
 - 3 Wechsler — Bellevue
 - 4 WISC
 - 5 WAIS
 - 6 Stanford — Binet
 - 7 Other
 - (3) The date test was administered during assessment process: Code in month/day/year.

JUVENILE COMMITMENT HISTORY

- Core
- This element is not collected at the Core level.
- Recommended
- This element is not collected at the Recommended level.
- Optional
- Number of prior juvenile commitments, in and out of state. Code using two-digit number. It must be noted that in some states this may be restricted by legislation or policy.

LAST GRADE COMPLETED

- Core
- Highest academic school grade completed by offender at time of arrest is indicated by this element:
- 0 None
 - 1-12 Elementary, junior and high school (Number reflects grade)
 - 13 Some college

- 14 College graduate
- 15 Some graduate
- 16 Graduate degree
- 17 Ungraded
- 18 Special education
- 19 GED or HED

Recommended

In addition to the information noted above, the expansion of this element indicates the source of the information concerning the last grade completed. It will be coded as follows:

- 0 Claimed by offender
- 1 Verified by academic institution

LEGAL NAME

Core

This element is not collected at the Core level.

Recommended

The legal name includes the last, first, and middle names as used by the offender for legal transactions.

MARITAL STATUS

Core

This element is not collected at the Core level.

Recommended

Marital status, current and at time of admission:

- 0 Single, never married
- 1 Married, living with spouse
- 2 Common law
- 3 Separated
- 4 Divorced
- 5 Widow(er)
- 6 Divorced and remarried
- 7 Widowed and remarried
- 8 Other
- 9 Unknown

Optional

Living arrangement at time of admission:

- 00 Both natural parents
- 01 Mother only
- 02 Father only
- 03 Mother and stepfather

- 04 Father and stepmother
- 05 Adoptive parents
- 06 Spouse only
- 07 Spouse and children
- 08 Children only
- 09 Spouse and in-laws or parents
- 10 Relatives
- 11 Friend
- 12 Independent
- 13 Boarding, foster home
- 14 Work home
- 15 Group home
- 16 Residential institution (half-way house)
- 17 Maternity home
- 18 Treatment institution
- 19 Correctional institution, jail, workhouse
- 10 Other
- 21 Unknown

MEDICAL EXAM

Core

This element is not collected at the Core level.

Recommended

This element indicates the date of offender's most recent medical and dental exam, while under jurisdiction of corrections authority. Code in month/day/year.

Optional

Indication of whether treatment is required for the physiological or psychological problems indicated in the element "Physical and Other Disabilities":

- 1 Close attention required
- 2 Periodic attention required
- 3 Little attention required
- 4 Minor consideration required
- 5 Unlikely to require attention
- 6 Condition cleared

MILITARY DATA

Core

This element is not collected at the Core level.

Recommended

This element is not collected at the Recommended level.

Optional

Branch of military in which offender served:

- 1 Army
- 2 Navy
- 3 Air Force
- 4 Marines
- 5 Coast Guard
- 6 National Guard
- 7 Nonveteran
- 8 Unknown

Type of discharged received:

- 1 Honorable
- 2 Other than honorable
- 3 General (honorable conditions)
- 4 Dishonorable
- 5 Not applicable
- 6 Unknown

Entrance and exit dates of military service. Code in month/day/year.

MINIMUM ELIGIBLE PAROLE DATE

Core

This is the date on which offender will first be eligible for parole, considering the date of custody or admission, the sentence, time credit deductions, and other factors, determined at time of admission or as first set by parole board action. Code in month/day/year.

Recommended

No change from Core level.

NEXT ELIGIBLE PAROLE DATE

Core

This element is not collected at the Core level.

Recommended

This element indicates the date on which offender is next scheduled to appear before parole board. Code in month/day/year.

NUMBER OF DEPENDENTS

Core

This element is not collected at the Core level.

Recommended

This element is recorded by a one-digit number indicating the number of dependents claimed on most recent income tax return:

- 0 None
- 1 One
- 2 Two
- 3 Three
- 4 Four
- 5 Five
- 6 Six
- 7 Seven
- 8 Eight
- 9 Nine or more
- Unknown

Optional

Indicate nature of dependencies of those for whom offender claims to have financial responsibility:

- 0 Children
- 1 Present spouse
- 2 Ex-spouse
- 3 Spouse and children
- 4 Parents
- 5 Other relatives
- 6 Friends
- 7 Other
- 8 Unknown

NUMBER OF PAROLE BOARD HEARINGS

Core

This element is not collected at the Core level.

Recommended

This element is not collected at the Recommended level.

Optional

Total number of times offender has appeared before parole board on present commitment. Code with two-digit number.

OBTS IDENTIFICATION NUMBER

Core

This number will be assigned to offender by

Offender-Based Transaction System.

Note: This element is for future use.

Recommended

No change from Core level.

OFFENSE CODE

Core

The offense code indicates the offense for which the offender was committed on the current sentence. The coding structure consists of two parts: (1) A code for the major offense which will be specific to each state, depending on the particular state's statutes. (2) The second section of the offense code enables individual states to 'translate' their own offense codes into a standardized code to allow for national comparability of offenses. The offense indicated is that for which the offender was committed. The coding structure suggested by OBSCIS is that currently being proposed by NCIC. At this level, a general classification of the major offense codes utilizes the first two digits of that code. The major offense will be determined by specifying the first item (lowest code) found on the OBSCIS (NCIC) list:

Violent Crime

- 01 Murder
- 02 Manslaughter
- 03 Rape
- 94 Robbery
- 05 Kidnapping
- 06 Assault

Property Crime

- 07 Extortion
- 08 Burglary
- 09 Larceny
- 10 Motor Vehicle Theft
- 11 Arson
- 12 Stolen Property
- 13 Forgery
- 14 Counterfeiting
- 15 Embezzlement
- 16 Fraud
- 17 Vandalism

Public Health, Safety, Morals

- 18 Drug Abuse

- 19 Sex and Obscenity Offenses
- 20 Prostitution
- 21 Gambling
- 22 Bribery
- 23 Weapon Offenses
- 24 Offenses Against Family
- 25 Liquor Laws
- 26 Health, Safety, Adulteration, Misbranding
- 27 Invasion of Privacy
- 28 Public Peace
- 29 Traffic

Offenses Against State

- 30 Sovereignty
- 31 Immigration
- 32 Court/Correction
- 33 Flight/Escapes
- 34 Obstructing Law Enforcement
- 35 Tax/Revenue
- 36 Election Law
- 37 Civil Rights
- 38 Smuggling
- 39 Anti trust
- 40 Conservation Law Violations

Miscellaneous Offenses

- 41 Possession of Burglary Tools
- 42 All Other (Free Text)

Recommended

At the Recommended level, this element includes (1) a code for each offense for which the offender was committed on the current sentence, the coding structure of which will be specific to each state; (2) a specific classification of each offense, using the four-digit coding structure established by NCIC:

Violent Crime

- 0110 Murder and Nonnegligent Manslaughter — Firearms
- 0120 Murder and Nonnegligent Manslaughter — Knife or Cutting Instrument
- 0130 Murder and Nonnegligent Manslaughter — Arson
- 0140 Murder and Nonnegligent Manslaughter — Motor Vehicle
- 0150 Murder and Nonnegligent Manslaughter — Other Dangerous Weapon
- 0160 Murder and Nonnegligent Manslaughter — Personal Weapons (Hands, Fists, Feet, etc.)

- 0190 Murder and Nonnegligent Manslaughter — Unknown Weapon
- 0210 Manslaughter by Negligence — Firearm
- 0220 Manslaughter by Negligence — Knife or Cutting Instrument
- 0230 Manslaughter by Negligence — Motor Vehicle
- 0240 Manslaughter by Negligence — Other Dangerous Weapon
- 0250 Manslaughter by Negligence — Personal Weapon (Hands, Fists, Feet, etc.)
- 0290 Manslaughter by Negligence — Unknown Weapon
- 0310 Rape — Forcible Rape
- 0320 Rape — Attempted Forcible Rape
- 0410 Robbery — Firearm
- 0420 Robbery — Knife or Cutting Instrument
- 0430 Robbery — Other Dangerous Weapon
- 0440 Robbery — Armed (Weapon Unknown)
- 0450 Robbery — Threat (Written or Oral)
- 0460 Robbery — Strong-arm
- 0490 Robbery — Weapon and Circumstances Unknown
- 0510 Kidnapping — Ransom
- 0520 Kidnapping — Other
- 0610 Assault — Firearms
- 0620 Assault — Knife or Cutting Instrument
- 0630 Assault — Arson
- 0640 Assault — Motor Vehicle
- 0650 Assault — Other Dangerous Weapon
- 0660 Assault — Personal Weapons (Hands, Fists, Feet, etc.)
- 0670 Assault — Aggravated Assault (Weapon Unknown)
- 0680 Assault — Other Assaults — Simple, Not Aggravated
- 0710 Extortion — Person
- 0720 Extortion — Property
- 0730 Extortion — Reputation (Blackmail)
- 0740 Extortion — Unknown
- 0810 Burglary (Breaking and Entering) — Forcible Entry
- 0820 Burglary (Breaking and Entering) — No Force — Trespass or Unlawful Entry
- 0830 Burglary (Breaking and Entering) — Attempted Forcible Entry
- 0890 Burglary (Breaking and Entering) — Other (Circumstances Unknown)
- 0910 Larceny — Theft — Pocket Picking

- 0920 Larceny — Theft — Purse Snatching
- 0930 Larceny — Theft — Shoplifting
- 0940 Larceny — Theft — From Motor Vehicles
- 0950 Larceny — Theft — Motor Vehicle Parts and Accessories
- 0960 Larceny — Theft — Bicycles
- 0970 Larceny — Theft — From Buildings
- 0980 Larceny — Theft — Coin-Operated Machines
- 0990 Larceny — Theft — Aircraft
- 0995 Larceny — Theft — Ships, Boats, and Vessels
- 0999 Larceny — Theft — All Other
- 1010 Motor Vehicle Theft — Autos
- 1020 Motor Vehicle Theft — Trucks
- 1030 Motor Vehicle Theft — Buses
- 1040 Motor Vehicle Theft — Motorcycles
- 1050 Motor Vehicle Theft — All Other Vehicles
- 1090 Motor Vehicle Theft — Unknown Vehicle
- 1110 Arson — School
- 1120 Arson — Residence
- 1130 Arson — Business
- 1140 Arson — Public Buildings
- 1150 Arson — Other Location
- 1190 Arson — Circumstances Unknown
- 1210 Stolen Property — Buying
- 1220 Stolen Property — Receiving
- 1230 Stolen Property — Possessing
- 1240 Stolen Property — Selling
- 1250 Stolen Property — Interstate Transportation
- 1290 Stolen Property — Other
- 1310 Forgery — Checks
- 1320 Forgery — Credit Cards
- 1330 Forgery — Other
- 1410 Counterfeiting — U.S. Currency
- 1420 Counterfeiting — Other
- 1510 Embezzlement — Financial Institution
- 152 Embezzlement — Government
 - 1 — Local
 - 2 — State
 - 3 — Federal
- 1530 Embezzlement — Other
- 1610 Fraud — Fraudulent Checks
- 1620 Fraud — Illegal Use of Credit Cards
- 1630 Fraud — False Statement
- 1640 Fraud — Defraud Innkeeper
- 1650 Fraud — Fraud by Wire
- 1660 Fraud — All Other

1710 Vandalism or Malicious Destruction of Property — School
 1720 Vandalism or Malicious Destruction of Property — Residence
 1730 Vandalism or Malicious Destruction of Property — Business
 1740 Vandalism or Malicious Destruction of Property — Public Buildings
 1750 Vandalism or Malicious Destruction of Property — Other
 181 Drug Abuse — Possessing
 182 Drug Abuse — Distributing
 183 Drug Abuse — Selling
 184 Drug Abuse — Manufacturing
 185 Drug Abuse — Smuggling
 186 Drug Abuse — Administering
 1870 Drug Abuse — Circumstances/Drug Unknown
 1 — Heroin and Opiate Derivatives
 2 — Marijuana
 3 — Synthetic Narcotics
 4 — Other Dangerous Drugs
 191 Sodomy
 192 Homosexual Act
 193 Incest
 194 Carnal Abuse
 1950 Statutory Rape
 1960 Obscenity Offenses
 1970 All Other
 1 — Juvenile Victim
 2 — Adult Victim
 3 — Insane or Mentally Deficient Victim
 2010 Prostitution and Commercialized Sex — Prostitution
 2020 Prostitution and Procuring Women for Immoral Purposes (Pimping, Pandering, and Transportation)
 2030 Prostitution and Commercialized Sex — Keep Bawdy House, Disorderly House, House of Ill Fame
 2040 Prostitution and Commercialized Sex — Other
 211 Gambling — Numbers — Lottery
 212 Gambling — Card Game
 213 Gambling — Dice Game
 214 Gambling Place
 1 — Operating
 2 — Playing
 3 — Frequenting
 2150 Gambling Bookmaking
 216 Gambling Devices or Goods
 1 — Possessing
 2 — Transporting
 2170 Gambling — Sports Tampering
 2180 Gambling — Other Gambling
 221 Bribery — Bribe
 222 Bribery — Gratuity
 223 Bribery — Kickback
 1 — Giving
 2 — Offering
 3 — Receiving
 4 — Soliciting
 2240 Bribery — Unknown Circumstances
 2310 Weapon Offenses — Unlawful Manufacture, Alteration, Sale, Possession, or Transportation of Deadly Weapon
 2320 Weapon Offenses — Carrying Concealed Deadly Weapon
 2330 Weapon Offenses — Felon in Possession of Firearm
 2340 Weapon Offenses — Altering Serial Number
 2350 Weapon Offenses — Explosives and Incendiary Devices
 1 — Illegal Possession
 2 — Illegal Use
 3 — Illegal Transporting
 4 — Illegal Manufacture
 2360 Weapon Offenses — Other
 2410 Offenses Against Family — Nonsupport
 2420 Offenses Against Family — Desertion
 2430 Offenses Against Family — Neglect or Abuse of Children
 2440 Offenses Against Family — Nonpayment of Alimony
 2450 Offenses Against Family — Bigamy
 2460 Offenses Against Family — Other
 251 Liquor Laws — Illegal or Untaxed Liquor
 1 — Possessing
 2 — Distributing
 3 — Selling
 4 — Manufacturing
 5 — Transporting
 252 Liquor Law
 1 — Operating Illegal or After Hours Drinking Place
 2 — Furnishing to Minor
 3 — Other

2600 Health, Safety, Adulteration, Misbranding
 2700 Invasion of Privacy
 2810 Public Peace — Anarchism
 2820 Public Peace — Riot (Inciting, Engaging In)
 2830 Public Peace — Unlawful Assembly
 2840 Public Peace — Disturbing Peace
 2850 Public Peace — Loitering
 2860 Public Peace — Vagrancy
 2870 Public Peace — Curfew
 2880 Public Peace — Disorderly Conduct
 2890 Public Peace — Other
 2910 Traffic Offenses — Hit and Run
 292 Traffic Offenses — Driving Under the Influence
 1 — Liquor
 2 — Drugs
 2930 Traffic Offenses — Other
 3010 Sovereignty — Treason
 3020 Sovereignty — Espionage
 3030 Sovereignty — Sabotage
 3040 Sovereignty — Sedition
 3050 Sovereignty — Selective Service
 3060 Sovereignty — Desertion from Armed Forces
 3110 Immigration Violations — Illegal entry
 3120 Immigration Violations — False Citizenship
 3130 Immigration Violations — Smuggling Aliens
 3140 Immigration Violations — Other
 3210 Court/Corrections Matters — Probation Violation
 3220 Court/Corrections Matters — Parole Violation
 3230 Court/Corrections Matters — Bail or Bond Jumping and Failure to Appear
 3240 Court/Corrections Matters — Conditional Release Violation
 325 Obstruction of Justice
 1 — Evidence — Destroying, Tampering, or — Fabricating
 2 — Witness — Dissuading, Threatening, Deceiving, or Obstructing
 3 — Jury Tampering
 3260 Perjury
 3290 Other
 3310 Flight — Escape — Flight to Avoid Prosecution
 3320 Flight — Escape — Flight to Avoid Confinement or Testimony
 3330 Flight — Escape — Escape
 3340 Flight — Escape — Other
 3410 Obstructing Law Enforcement — Resisting Arrest
 3420 Obstructing Law Enforcement — Interfering with Police Activity
 3430 Obstructing Law Enforcement — False Report
 3440 Obstructing Law Enforcement — Harboring Fugitive
 3490 Obstructing Law Enforcement — Other
 3510 Tax — Revenue Violations — Federal
 3520 Tax — Revenue Violations — State
 3530 Tax — Revenue Violations — County
 3540 Tax — Revenue Violations — Municipal or Other
 3600 Election Law Violations
 3700 Civil Rights Violations (Including Involuntary Servitude)
 3800 Smuggling (Except Aliens or Drugs)
 3900 Antitrust Violations
 4000 Conservation Law Violations
 4100 Possession of Burglary Tools
 4200 All Other (Free Text)
Optional
 The individual state may expand the coding structure of the element according to its own statutes and needs. It may also include techniques for weighing the offenses for seriousness.
PAROLE ADDRESS/HABITATION UNIT
Core
 This element is not collected at the Core level.
Recommended
 This element indicates the present location of the parolee. Use state/county code. For state code, see element "Adult Commitment History." The county code will be specific to each state.
Optional
 Living situation of parolee:

- 00 Both natural parents
- 01 Mother only
- 02 Father only
- 03 Mother and stepfather
- 04 Father and stepmother
- 05 Adoptive parents
- 06 Spouse only
- 07 Spouse and children
- 08 Children only
- 09 Spouse and in-laws or parents
- 10 Relatives
- 11 Friends
- 12 Independent
- 13 Boarding, foster homes
- 14 Work home
- 15 Group home
- 16 Residential institution, half-way house
- 17 Maternity home
- 18 Treatment institution
- 19 Correctional institution, jail, workhouse
- 20 Other
- 21 Unknown

PAROLE BOARD DECISIONS

Core

This element is not collected at the Core level.

Recommended

The most recent parole board hearing disposition is specified by this element:

- 1 Continued
- 2 Denied
- 3 Executive clemency or pardon
- 4 Granted
- 5 Parole continued
- 6 Declared violator
- 7 Discharged
- 8 Other

PAROLE BOARD HEARING DATE — LAST

Core

This element is not collected at the Core level.

Recommended

This element is not collected at the Recommended level.

Optional

Date on which offender last appeared before parole board. Code in month/day/year.

PAROLE DESTINATION

Core

This element is not collected at the Core level.

Recommended

This element is not collected at the Recommended level.

Optional

Location to which offender is to be paroled:

- 1 In-state
- 2 Out-of-state

PAROLE EDUCATION

Core

This element is not collected at the Core level.

Recommended

This element is not collected at the Recommended level.

Optional

(1) Indication of parolee's academic status:

- 0 Not in school
- 1 Part-time student
- 2 Full-time

(2) If parolee is attending school, enter the current grade:

- 1 First grade
- 2 Second grade, etc.
- 13 College freshman
- 14 College sophomore
- 15 College junior
- 16 College senior
- 17 Master's Program
- 18 Doctoral program
- 19 Not applicable

PAROLE EMPLOYMENT/EMPLOYER

Core

This element is not collected at the Core level.

Recommended

This is a two-part code which indicates:

(1) Employment status. Indicate employment status of offender while on parole:

- Employed full time
- 1 Employed part time
- 2 Irregular (odd jobs)
- 3 Not employed, not in school
- 4 Housewife only
- 5 Not employed, in school
- 6 Employed, in school

(2) Occupational Classification of job in which parolee is employed, using two-digit *Dictionary of Occupational Titles* code. See the element "Employment" for coding structure.

Optional

(1) Occupation. Indicate parolee's occupation, using three-digit *Dictionary of Occupational Titles* code. See the element "Occupation" for coding structure.

(2) Employer. Indicate name and address of present employer, if applicable.

PAROLE FINANCIAL STATUS

Core

This element is not collected at the Core level.

Recommended

The primary source of parolee's income is coded as follows:

- 1 Employment (self or other)
- 2 Public assistance
- 3 Parents
- 4 Spouse or children
- 5 Relative
- 6 Friend
- 7 Pension/social security
- 8 Unemployment compensation
- 9 Other
- 0 Unknown

PAROLE HISTORY

Core

This element is not collected at the Core level.

Recommended

The parole history is an indication of the number of times the offender has previously been released on parole, excluding the current parole. Code using two-digit number.

Optional

Entrance and exit dates of each prior parole period. Code month/day/year for each.

Type of release from parole. Includes items such as revocation due to parole violation, discharge from corrections jurisdiction, etc.

Related offense. Offense for which offender was committed prior to each parole period. Use state offense codes.

PAROLE INCOME

Core

This element is not collected at the Core level.

Recommended

This is the average monthly income, in dollars, of the offender while on parole or other supervised release.

PAROLE OFFICER

Core

This element is not collected at the Core level.

Recommended

This element is not collected at the Recommended level.

Optional

Indication of the name or number of parole officer in charge of offender's parole supervision. This code will be specific to each state.

PAROLE PERFORMANCE

Core

This element is not collected at the Core level.

Recommended

Parole performance refers to the parolee's community adjustment as assessed by parole officer:

- 1 Good
- 2 Fair
- 3 Poor
- 4 In jeopardy

PAROLE PROGRAM

Core

This element is not collected at the Core level.

Recommended

This element is not collected at the Recommended level.

Optional

Indication of any program in which parolee is participating as part of his parole plan:

- 1 Alcohol treatment program
- 2 Drug treatment program
- 3 Mental health treatment/counseling
- 4 Other
- 5 None

PAROLE SPECIAL CONDITIONS

Core

This element is not collected at the Core level.

Recommended

Any special conditions that the parole board imposed on the offender as a result of the hearing are specified by this element. The coding will be specified by each state to indicate items such as Alcoholics Anonymous, drug programs, etc.

PAROLE SUPERVISORY LEVEL

Core

This element is not collected at the Core level.

Recommended

This element is an indication of the level of supervision as determined in the parole plan. States may code this element to satisfy their own needs and requirements.

PAROLE VIOLATION ACTION DATE

Core

This element is not collected at the Core level.

Recommended

This date indicates the month, day, and year that a disposition was made by the corrections authority concerning a parole violation.

PAROLE VIOLATION DATE

Core

This element is not collected at the Core level.

Recommended

The date parolee violated parole agreement is indicated by this element. Code in month/day/year.

PAROLE VIOLATION/NEW OFFENSE

Core

This element is not collected at the Core level.

Recommended

The type of reported violation or offense committed while on parole is recorded with a one-digit code. Code most serious parole violation:

- 0 Technical violation of conditions of parole
- 1 Returned because of minor arrest or voluntary appearance when no charge, returned for failure to report to parole agent or absconded
- 2 Arrest on minor charge, no conviction
- 3 Arrest on felony charge, no conviction
- 4 Misdemeanor offense, no conviction. Returned in lieu of prosecution
- 5 Misdemeanor conviction, minor court
- 6 Felony offense, no conviction. Returned in lieu of prosecution
- 7 Felony conviction, resulting in jail sentence or felony probation
- 8 Felony conviction, felony sentence, other states or federal jurisdiction
- 9 Felony conviction, superior court, this state
- Other

States may expand this to meet their own restrictions.

PAROLE VOCATIONAL TRAINING

Core

This element is not collected at the Core level.

Recommended

This element is not collected at the Recommended level.

Optional

Indication of participation in formal vocational training program while on parole:

- 0 Not attending, needs training
- 1 Attending Full time
- 2 Attending part time
- 3 Not attending, no need for training

PHYSICAL AND OTHER DISABILITIES

Core

Yes/No indicator of whether the individual's activities (work, program, etc.) must be restricted due to physiological and/or psychological disabilities.

Recommended

General type of offender's disabilities found during assessment process is noted by this element:

- 1 Missing or defective limbs
- 2 Injured or weak back
- 3 Defective senses (vision/hearing)
- 4 Defective internal organs
- 5 Mental deficiencies
- 6 Long-term disease
- 7 Other
- 8 None

Optional

Specific disabilities found during assessment process. Use three-digit code:

000 - None

Prefix

- S - Suspected
- D - Diagnosed

Physical

- 01 - Visual impairment
- 02 - Hearing impairment
- 03 - Speech impairment

- 04 - Orthopedic impairment
- 05 - Absence or amputation of extremities
- 06 - Undernourishment
- 07 - Complications of pregnancy
- 08 - Cancer
- 09 - Hay fever and/or asthma
- 10 - Other allergies
- 11 - Diabetes
- 12 - Epilepsy
- 13 - Heart disease
- 14 - Circulatory conditions
- 15 - Skin disease
- 16 - Lung disease
- 17 - Digestive system disorder
- 18 - Conditions of genito-urinary system (including VD)
- 19 - Other conditions not elsewhere classified
- 51 - Neurological diseases/impairments
- 52 - Arthritis, rheumatism
- 53 - Obesity
- 54 - Aging

Mental

- 21 - Psychosis
- 22 - Psychophysiologic disorder
- 23 - Brain syndrome
- 24 - Brain syndrome with psychosis
- 25 - Psychoneurosis
- 26 - Personality disorder
- 27 - Behavior disorder — child and youth
- 28 - Transient situational personality
- 29 - Special symptoms
- 30 - Mental condition, type not specific
- 31 - Drug addiction
- 32 - Alcoholism

Mental Retardation

- 41 - Mild — Capable of social and vocational adequacy with proper education and training. Frequently needs supervision and guidance under serious social or economic stress.
- 42 - Moderate — Capable of self-maintenance in unskilled or semiskilled occupations; needs supervision and guidance when under mild social or economic stress.
- 43 - Severe — Can contribute partially to self-support under complete supervision; can develop self-protection skills

to a minimal useful level in controlled environment.

- 44 - Profound — Some motor and speech development; totally incapable of self-maintenance; needs complete care and supervision.

PROBATION HISTORY

Core

This element is not collected at the Core level.

Recommended

This two-part element including the following:

- (1) Two-digit number indicating the number of previous felony probations.
- (2) Two-digit number indicating the number of previous misdemeanor probations.

Optional

- (1) Entrance and exit dates of each prior probation period. Code month/day/year for each.
- (2) Total number of probation revocations.
- (3) Related offense for each probation.
- (4) Type of release from each probation.

PROGRAM ASSIGNMENT

Core

This element is not collected at the Core level.

Recommended

Program Assignment is a four-part element which includes the following:

- (1) The general program type to which the offender has been assigned:
 - 1 Educational
 - 2 Vocational
 - 3 Work assignment
 - 4 Counseling
 - 5 Other
- (2) The specific name of the program to which the offender has been assigned. The coding structure will be specific to each state.
- (3) The date the offender entered the program.
- (4) The date the offender left the program.

Note: Provision should be made for more than one program assignment.

PROGRAM NEEDS PERCEIVED

Core

This element is not collected at the Core level.

Recommended

This element is not collected at the Recommended level.

Optional

Program needs as perceived by the offender:

- 0 Education program
- 1 Vocational training
- 2 Work assignment
- 3 Counseling
- 4 Other

PROGRAM PERFORMANCE EVALUATION — FINAL

Definition: Evaluation of offender's participation and accomplishments in educational, work, vocational, and other programs, submitted by person in charge of the particular program. One evaluation should be made for each program in which offender has participated.

Core

This element is not collected at the Core level.

Recommended

This element is not collected at the Recommended level.

Optional

A potential basic coding structure is as follows:

- 0 Completed program, passed formal evaluation or completed requirements (earned degree, for example)
- 1 Completed program, satisfactorily — subjective judgment
- 2 Did not complete program

States developing formal program evaluation applications must develop their own unique coding structures.

PROGRAM PERFORMANCE EVALUATION — INTERIM

Definition: Evaluation of offender's progress in work, education, vocational, and other programs, submitted by person in charge of the particular program. One evaluation should be made for each program in which offender participates.

Core

This element is not collected at the Core level.

Recommended

This element is not collected at the Recommended level.

Optional

A potential basic coding structure is as follows:

- 0 Above average participation
- 1 Satisfactory participation
- 2 Unsatisfactory participation

States developing formal program evaluation applications must develop their own unique coding structures.

PROGRAMS PRESCRIBED

Core

This element is not collected at the Core level.

Recommended

The programs prescribed refer to those programs recommended for the offender by the reception/classification team or by institutional personnel. It is a two-part element, coded for each program that is prescribed: (1) Program category, which includes educational, vocational, work assignment, counseling, and other. (2) Specific programs recommended for the offender by the reception/classification team or by institutional personnel. The coding structure will be specific to each state. (3) A coding of the relative priority of each program.

PROGRAM TERMINATION REASONS

Core

This element is not collected at the Core level.

Recommended

This element is not collected at the Recommended level.

Optional

- 1 Release or transfer from institution
- 2 Completion of program
- 3 Transfer to another program.
- 4 Program not suited to needs/capabilities of individual
- 5 Unsatisfactory performance/lack of interest
- 6 Other
- 7 Unknown

PSYCHIATRIC TREATMENT

Core

This element is not collected at the Core level.

Recommended

This element is not collected at the Recommended level.

Optional

- (1) History of psychiatric treatment individual has had prior to this commitment:
 - 0 Hospitalization
 - 1 Outpatient
 - 2 Hospital and outpatient
 - 3 None
 - 4 Unknown
- (2) Length of time: Indicate dates each treatment began and ended. Code month/day/year for each.

RELIGIOUS PREFERENCE

Core

This element is not collected at the Core level.

Recommended

This element indicates the religious denomination or sect with which the offender identifies.

- 01 Adventists
- 02 Agnostic
- 03 Assemblies of God
- 04 Atheist

- 05 Baha'i
- 06 Baptist - American
- 07 Baptist - Southern
- 09 Baptist - Negro
- 10 Baptist - General Conf.
- 11 Baptist - Conservative
- 12 Baptist - Free Will
- 13 Baptist - General
- 14 Baptist - Primitive
- 15 Baptist - Seventh Day
- 16 Baptist - Other
- 17 Black Muslims
- 18 Brethren
- 19 Buddhist
- 20 Christian Missionary
- 21 Roman Catholic
- 22 Churches of Christ
- 23 Christian - Disciples
- 24 Christ - Scientist
- 25 Christ - Holiness
- 26 Congreg. - Nat'l. Assoc.
- 27 East Orthodox - Greek
- 28 East Orthodox - Other
- 29 Evangelical Conventant
- 30 Federated Churches
- 31 Foursquare
- 32 Friends
- 33 Holiness
- 34 Independent Churches
- 35 Jehovah's Witnesses
- 36 Jewish - Orthodox
- 37 Jewish - Reform
- 38 Jewish - Conservative
- 39 Lutheran - A L C
- 40 Lutheran - L C A
- 41 Lutheran - Missouri
- 42 Lutheran - Wisconsin
- 43 Lutheran - Other
- 44 Mennonites
- 45 Methodist - United
- 46 Methodist - Afr. Episc.
- 47 Meth. - Christian Episc.
- 48 Methodist - Free
- 49 Methodist - Other
- 50 Mohammedan
- 51 Mormon
- 52 Nazarene
- 53 No Preference
- 54 Other
- 55 Pentecostal
- 56 Presbyterian - United

- 57 Presbyterian - Other
- 58 Protestant - Other
- 59 Satanist
- 60 Protestant Episcopal
- 61 Reformed
- 62 Salvation Army
- 63 Spiritualists
- 64 Unitarian
- 65 United Church of Christ
- 66 Volunteers
- 67 Christian Faith
- 68 Christian - Other
- 69 Unknown

SENTENCE EFFECTIVE DATE

Core

This level is not collected at the Core level.

Recommended

Date offender's sentence or commitment began, depending on the individual state's method of computation. Code in month/day/year.

SENTENCE MINIMUM/MAXIMUM

Core

This is a two-part element specifying the cumulative sentence for the offender. It is coded in years/months/days. The two parts consist of the overall minimum and the overall maximum sentence (i.e., the largest minimum and maximum in the case of consecutive sentences). Life, death and undetermined sentences will be specified as required by individual states.

Recommended

This element is recorded for each offense for which the offender is committed. It consists of two parts, the minimum and the maximum, each coded in years/months/days.

SENTENCE MODIFICATION

Core

In those states where it is applicable, this will be a Yes/No indicator of whether the offender's sentence has been modified as a result of aggravation.

Recommended

No change from Core level.

Optional

Time added to sentence as a result of aggravation. Code in days, months, years.

SEX

Core

- F Female
- M Male
- N Not reported

Recommended

No change from Core level.

SOCIAL SECURITY NUMBER*

Core

This element is not collected at the Core level.

Recommended

This number is not collected at the Recommended level.

Optional

Offender's social security number; if more than one, code most recent.

**Section 7 of the Privacy Act of 1974 (Public Law 93-579) prohibits any federal, state, or local government agency from denying to any individual "any right, benefit, or privilege provided by law because of such individual's refusal to disclose his social security account number." This law should be examined prior to the establishment of an OBSCIS Data Base.*

STATE IDENTIFICATION NUMBER

Core

This element records the number assigned to offender by the State Bureau of Identification.

Recommended

No change from Core level.

STATE CORRECTIONS IDENTIFICATION NUMBER

Core

The state corrections identification number is that which is assigned to the offender by the State Department or Division of Corrections or by the correctional institution to which the offender is assigned. States may, under certain circumstances, have the need to assign more than one number. In those cases, the Core requirement is the most recent number.

Recommended

The Recommended Data Base includes the recording of all numbers assigned to the offender by the State Department or Division of Corrections or by the correctional institution to which the offender is assigned.

STATUS ACTION

Core

The Status Action element specifies the reason for the offender's latest status change:

Admissions

- 10 New commitment from court
- 11 Parole or other supervised release violator returned
- 12 Escapee or absconder returned
- 13 Return from authorized absence
- 14 Return from other jurisdiction
- 15 Other admission

Conditional Release

- 20 Parole or other supervised release
- 21 Temporary release (furlough, etc.)
- 22 Partial release (work-release, study-release, training-release, etc.)
- 23 Transfer to another jurisdiction (court, federal, mental health institutions, etc.)

Unconditional Release

- 30 Expiration of sentence
- 31 Commutation or pardon
- 32 Death
- 33 Execution
- 34 Other unconditional release

Escape

40 Escape

Transfer

50 Internal corrections transfer

Recommended

There is no specified change from the Core level. However, each state may have individual restrictions and policies that affect the coding of this element. The state must further develop this element to provide assurance that each code is mutually exclusive.

STATUS DATE

Core

This date reflects the month, day, and year that any element of the offender's status changes. The date, in effect, indicates the termination of one status and the beginning of the next.

Recommended

No change from Core level.

STATUS JURISDICTION

Core

This element is an indication of the entity which has overall legal authority for the offender:

- 1 State
- 2 Federal
- 3 Out-of-state
- 4 Court
- 5 Discharged
- 6 Other

Recommended

This is a two-part code at the Recommended level:

- (1) Primary Jurisdiction consists of an indication of the entity which has overall legal authority for the offender. Use the coding structure from the Core level.
- (2) State Jurisdiction is an indication of the agency within the state which has jurisdiction over the offender. The coding structure

will be specific to each state and will include agencies such as the Department or Division of Corrections, Board of Pardon and Paroles, institutions, partial-release, other state agencies, out-of-state jurisdiction, and other.

STATUS LOCATION

Core

The Status Location refers to the actual physical location of the offender. The coding of this element will be specific to each state. It would best be designed to include the specific names of locations, such as:

Institutions
Parole offices
Work release centers
Community centers
Half-way houses
Reception, diagnostic, or classification centers
Hospitals
Courts
Jails
Unknown
Other

Note: In some cases, it may be necessary for the state to develop a code which is a combination of the above items.

Recommended

No change from Core level.

STATUS TYPE

Core

Status Type refers to the actual status of the offender within the jurisdiction:

- 1 Diagnostic (undetermined or awaiting classification)
- 2 Institutional — no access to community
- 3 Institutional with access to community (work-release, training-release, etc.)
- 4 Conditional release (parole, etc.)
- 5 Unconditional release (expiration of sentence, commutation, etc.)

- 6 Death
- 7 Execution
- 8 Escaped or absconded
- 9 Out of corrections jurisdiction
- 0 Other

Recommended

No change from the Core level.

TESTED GRADE LEVEL

Core

Score of reading or grade level test administered during assessment and diagnostic process:

- 3 2.5 - 3.4
- 4 3.5 - 4.4
- 5 4.5 - 5.4
- 6 5.5 - 6.4
- 7 6.5 - 7.4
- 8 7.5 - 8.4
- 9 8.5 - 9.4
- 0 9.5 - 11.4
- 1 11.5 - and over
- Not tested, because illiterate or below 2.5
- 2 Not tested for other reasons: Non-English speaking, score not recorded, etc.

Recommended

This is a two-part element: (1) Grade Level is the score of the reading or grade level tests taken by the offender while under corrections jurisdiction. (2) Test Name indicates the type of each reading or grade level test that is administered. The coding structure will be specific to each state.

TIME SERVED WITH OTHER AGENCIES

Core

This element is not collected at the Core level.

Recommended

At the Recommended level, this element is the net time credits allowed from jail and other agencies.

Optional

This element is a two-part code used as many times as applicable.

- (1) Indication of the time offender is supervised by agencies outside the division or department of corrections, which is charged against sentence. Code in days.
- (2) Indication of agency in which above time was served:
 - 1 Jail time
 - 2 Mental health
 - 3 Hospital
 - 4 Juvenile facility
 - 5 Military facility
 - 6 Other

VOCATIONAL EDUCATION

Core

This element is not collected at the Core level.

Recommended

This element is not collected at the Recommended level.

Optional

- (1) Type of formal vocational education in which offender was engaged before commitment.
- (2) For each course or type, indicate number of months and years involved in each program.

WORK FURLOUGH ELIGIBILITY

Core

This element is not collected at the Core level.

Recommended

This element is not collected at the Recommended level.

Optional

Yes/No indicator of whether offender is eligible for work furlough.

100 - 2 100 - 0