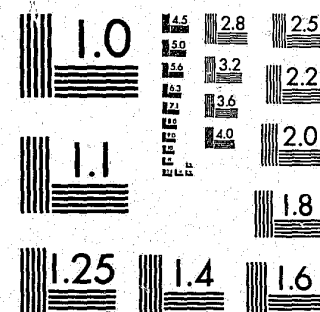


National Criminal Justice Reference Service

ncjrs

This microfiche was produced from documents received for inclusion in the NCJRS data base. Since NCJRS cannot exercise control over the physical condition of the documents submitted, the individual frame quality will vary. The resolution chart on this frame may be used to evaluate the document quality.



MICROCOPY RESOLUTION TEST CHART
NATIONAL BUREAU OF STANDARDS-1963-A

Microfilming procedures used to create this fiche comply with the standards set forth in 41CFR 101-11.504.

Points of view or opinions stated in this document are those of the author(s) and do not represent the official position or policies of the U. S. Department of Justice.

National Institute of Justice
United States Department of Justice
Washington, D. C. 20531

3/8/82

CAPITAL PUNISHMENT 1975

NPS National Prisoner Statistics
BULLETIN
No. SD-NPS-CP-4 July 1976

U.S. DEPARTMENT OF JUSTICE
Law Enforcement Assistance Administration
National Criminal Justice
Information and Statistics Service

34733
Dup

Other National Prisoner Statistics Reports:

Capital Punishment 1974, 1973, 1971-72 (3 vols.)
Prisoners in State and Federal Institutions on
December 31, 1974
Census of State Correctional Facilities, 1974: Advance
Report

Census of Prisoners in State Correctional Facilities
1973
Survey of Inmates of State Correctional Facilities
1974: Advance Report

Other National Criminal Justice Information and Statistics Service Reports:

The Nation's Jails: A report on the census of jails
from the 1972 Survey of Inmates of Local Jails
Survey of Inmates of Local Jails 1972:
Advance Report

Children in Custody:
Advance Report on the Juvenile Detention and
Correctional Facility Census of 1972-1973
Report on the Juvenile Detention and Correctional
Facility Census of 1971

Victimization Surveys:
Criminal Victimization in the United States:
A Comparison of 1973 and 1974 Findings
Criminal Victimization in the United States: 1973
Advance Report

Crimes and Victims: A Report on the Dayton-San Jose
Pilot Survey of Victimization

Criminal Victimization Surveys in the Nation's Five
Largest Cities: National Crime Panel Surveys in
Chicago, Detroit, Los Angeles, New York, and
Philadelphia

Crime in Eight American Cities: National Crime
Panel Surveys in Atlanta, Baltimore, Cleveland,
Dallas, Denver, Newark, Portland, and St. Louis
— Advance Report

Criminal Victimization Surveys in 13 American
Cities: National Crime Panel Surveys in Boston,
Buffalo, Cincinnati, Houston, Miami, Milwaukee,
Minneapolis, New Orleans, Oakland, Pittsburgh,
San Diego, San Francisco, and Washington, D.C.

Trends in Expenditure and Employment Data for the
Criminal Justice System: 1971 to 1974
Expenditure and Employment Data for the Criminal
Justice System: 1974 (annual)

Criminal Justice Agencies in Regions 1-10 (10 vols.)
National Survey of Court Organization (1971)
National Survey of Court Organization

1975 Supplement to State Judicial Systems
Utilization of Criminal Justice Statistics Project
Sourcebook of Criminal Justice Statistics 1974
Public Opinion Regarding Crime, Criminal Justice, and
Related Topics

New Directions in Processing of Juvenile Offenders:
The Denver Model

Who Gets Detained? An Empirical Analysis of the
Pre-adjudicatory Detention of Juveniles in Denver
Juvenile Dispositions: Social and Legal Factors
Related to the Processing of Denver Delinquency
Cases

Offender-Based Transaction Statistics: New
Directions in Data Collection and Reporting
Sentencing of California Felony Offenders

The Judicial Processing of Assault and Burglary
Offenders in Selected California Counties

Pre-Adjudicatory Detention in Three Juvenile
Courts: An Empirical Analysis of the Factors
Related to Detention Decision Outcomes

Delinquency Dispositions: An Empirical Analysis of
Processing Decisions in Three Juvenile Courts

U.S. Department of Justice National Institute of Justice

This document has been reproduced exactly as received from the
person or organization originating it. Points of view or opinions stated
in this document are those of the authors and do not necessarily
represent the official position or policies of the National Institute of
Justice.

Permission to reproduce this ~~copyrighted~~ material has been
granted by

U.S. Department of Justice/
Public Domain

to the National Criminal Justice Reference Service (NCJRS).

Further reproduction outside of the NCJRS system requires permis-
sion of the ~~copyright~~ owner.

ERRATA

CAPITAL PUNISHMENT, 1975

On the bottom of page 5, column 1, before footnote 6, and after the line reading "designed to comply with the U.S. Supreme Court ruling," the text should read:

to the effect that, under the old laws, the death penalty

CAPITAL PUNISHMENT 1975

NPS National Prisoner Statistics
BULLETIN
No. SD-NPS-CP-4 July 1976

NCJRS

APR 25 1977

ACQUISITIONS

U.S. DEPARTMENT OF JUSTICE
Law Enforcement Assistance Administration
National Criminal Justice
Information and Statistics Service

U.S. DEPARTMENT OF JUSTICE
Law Enforcement Assistance Administration

Richard W. Velde, Administrator

Henry F. McQuade
Deputy Administrator
for Policy Development

Paul K. Wormeli
Deputy Administrator
for Administration

Harry Bratt, Assistant Administrator
National Criminal Justice Information and Statistics Service

Benjamin H. Renshaw, Director
Statistics Division

ACKNOWLEDGMENTS

This report was prepared for the Law Enforcement Assistance Administration by the Bureau of the Census. In the Law Enforcement Assistance Administration, general supervision was supplied by Charles R. Kindermann, assisted by Paul D. White. Collection and processing of data was conducted in the Bureau of the Census under the general supervision of Marvin M. Thompson, Demographic Surveys Division. Kenneth R. Brimmer, chief of the National Prisoner Statistics Branch, directed the collection and processing activities, assisted by Thomas W. Petersik and Arlene J. Rasmussen. The report was written in the Crime Statistics Analysis Staff under the supervision of Robert P. Parkinson. John F. Wallerstedt directed the project. The text was prepared by Mark S. Russell.

The generous assistance of correctional officials in providing data is gratefully acknowledged.

Library of Congress Cataloging in Publication Data

United States. National Criminal Justice Information
and Statistics Service.
Capital punishment, 1975.

(National prisoner statistics bulletin; no. SD-NPS-CP-4)
Chiefly tables.

Supt. of Docs. no.: J 1.42/3:SD-NPS-CP-4

1. Capital punishment—United States—Statistics

I. Title. II. Series.

HV8699.U5U53 1976 364.6'6'0973 75-619081

For sale by the Superintendent of Documents, U.S. Government Printing Office
Washington, D.C. 20402 - Price \$1.20
Stock No. 027-000-00446-6

PREFACE

This report, one in the series on *Capital Punishment* published as part of the National Prisoner Statistics (NPS) program, provides information on prisoners who, at any time during the calendar year 1975, were both under a sentence of death and confined in a facility under the jurisdiction of the correctional authorities of a State or the District of Columbia. Not included in the report were persons under the death penalty whose scheduled admission to such a facility had not been effected as of December 31, 1975, or who were scheduled to be retained in a facility under the jurisdiction of local government authorities.

The report specifies the number of persons comprising the death row population for both the beginning and the end of the year and, further, distributes this population by region and by State. Inmates are differentiated by age, sex, race, marital status, level of educational attainment, legal status at the time of arrest, offense for which sentenced, and length of stay on death row. The report also gives data on the number of new death sentences meted out and on the number of sentences disposed of by means other than execution. It also includes information showing trends in the numbers of executions carried out during the period from 1930

to 1967, the year of the most recent execution in the United States, and data on developments affecting the status of capital punishment laws during 1975.

One change in concept and format differentiates this report from earlier issues of this NPS series. Prior to 1974, all prisoners sentenced in previous years but reported late to NPS program authorities, as well as prisoners returned to death row after previously being reported as either escaped or transferred to a mental hospital, were enumerated under the category "other admissions." Beginning in 1974, however, such prisoners were included in the count of those reported under sentence of death on January 1. This change has resulted in the elimination of the "other admissions" category from the 1975 study.

Based on a voluntary reporting system, the NPS program was instituted to collect and interpret data on inmates of State and Federal correctional institutions. The program was initiated by the Bureau of the Census in 1926 and was transferred to the Bureau of Prisons in 1950 and to the Law Enforcement Assistance Administration (LEAA) in 1971. Since 1972, the Bureau of the Census, acting as collecting agent for LEAA, has had responsibility for compiling the relevant statistical data.

CONTENTS

	Page
Preface	iii
General findings	1
Prisoners under sentence of death	2
Death sentences imposed	3
Dispositions from the death penalty	4
Executions	4
Status of death penalty laws	5
Methodology	

CHARTS

1. Prisoners under sentence of death: December 31, 1975 10
2. Prisoners executed under civil authority in the United States: 1930-75 11

TABLES

1. Prisoners executed under civil authority in the United States, by race, offense, and year: 1930-75 14
2. Prisoners executed under civil authority in the United States, by State and year: 1930-75 16

	Page
3. Prisoners executed under civil authority in the United States, by offense, race, and State: 1930-75	18
4. Movement of prisoners under sentence of death: 1966-75	20
5. Movement of prisoners under sentence of death, by offense and race: calendar year 1975	21
6. Movement of prisoners under sentence of death, by race and State: calendar year 1975	22
7. Prisoners received from court under sentence of death, by race, offense, and State, and by age and State: calendar year 1975	24
8. Prisoners received from court under sentence of death, by highest grade of schooling completed, race, and State: calendar year 1975	26
9. Prisoners received from court under sentence of death, by marital status at time of imprisonment, race, and State: calendar year 1975	28
10. Prisoners received from court under sentence of death, by legal status at time of arrest, race, and State: calendar year 1975	30
11. Prisoners disposed of by means other than execution, by race, offense, and State, and by method of disposition, offense, and State: calendar year 1975	32
12. Prisoners disposed of by means other than execution, by age at disposition and State, and by time elapsed from sentencing to disposition and State: calendar year 1975	34
13. Prisoners disposed of by means other than execution, by highest grade of schooling completed, race, and State: calendar year 1975	36
14. Prisoners disposed of by means other than execution, by marital status at time of imprisonment, race, and State: calendar year 1975	38

	Page
15. Prisoners disposed of by means other than execution, by legal status at time of arrest, race, and State: calendar year 1975	40
16. Prisoners under sentence of death, by offense, race, and State, and by year received, race, and State: December 31, 1975	42
17. Prisoners under sentence of death, by age and State: December 31, 1975	44
18. Prisoners under sentence of death, by time elapsed since sentencing and State: December 31, 1975	46
19. Prisoners under sentence of death, by highest grade of schooling completed, race, and State: December 31, 1975	48
20. Prisoners under sentence of death, by marital status at time of imprisonment, race, and State: December 31, 1975	50
21. Prisoners under sentence of death, by legal status at time of arrest, race, and State: December 31, 1975	52
22. Women executed under civil authority in the United States, by year, offense, race, and State: 1930-75	54
23. Federal executions in the United States, by year, offense, race, and State: 1930-75	55
24. Status of death penalty statutes in the United States as of December 31, 1975, by jurisdiction	56

GENERAL FINDINGS

The number of prisoners under sentence of death in the United States rose by 84 percent during 1975, the second consecutive year in which the death row population was higher at the end of the year than at the beginning. In fact, for the 2-year period 1974-75, the number of inmates under sentence of death more than tripled. The growth in the death row population during 1974 and 1975 was in marked contrast to the situation in 1972 and 1973, when the number of inmates under sentence of death declined dramatically in the wake of the U.S. Supreme Court finding in the case of *Furman v. Georgia*, June 29, 1972, that the death penalty, as imposed up to that time, amounted to "cruel and unusual punishment" in violation of the Eighth Amendment to the U.S. Constitution. No capital sentences were carried out during 1975, the eighth year in a row in which there were no executions of prisoners under sentence of death in the United States.

On January 1, 1975, a total of 261 persons were under sentence of death.¹ During 1975, an additional 285 persons who had received the death penalty for

their crimes were admitted to State correctional systems, 65 prisoners had their death penalty status changed, and 2 inmates died. Thus, on December 31, 1975, the death row population numbered 479. All were under the jurisdiction of State authorities; no inmates were under sentence of death in Federal prisons at any time during the year.

The total of 285 persons sentenced to death during 1975 was 89 percent higher than the number sentenced during 1974 and was more than double the number in any other year since collection of such information began in 1960. It was more than six times greater than the figure for 1973 and more than three times larger than that for 1972. Increasing recourse to the death penalty, following the period of legal uncertainty after the *Furman* decision, reflects action by most State legislatures in passing new or revised death penalty statutes in an effort to comply with the finding of the Court. Only 7 States invoked the death penalty in 1973; the number climbed to 18 in 1974 and to 27 in 1975.

At the beginning of 1975, 23 States held prisoners under sentence of death, whereas 27 States and the District of Columbia had no inmates on death row. By the end of the year, 30 States had at least one death row inmate. During 1975, the number of prisoners being held for execution rose in 23 States, including 8 that held no such prisoners at the start of the year. Twelve of the

¹The total of 261 reflects a revision of the figure appearing in *Capital Punishment 1974*, NPS Bulletin No. SD-NPS-CP-3, November 1975, to include 10 prisoners who were not reported by the States in their 1974 death row count and to exclude 3 inmates who were erroneously reported on death row in 1974.

States registering increases were in the South.² In contrast, the number of persons under sentence of death declined in five States, including Missouri, where the number was reduced to zero.

Of the total death row population, 72 percent were held in States in the South, 16 percent in the West, 9 percent in the North Central Region, and 3 percent in the Northeast. Fourteen of the 17 jurisdictions in the South had prisoners awaiting execution, compared with 4 of the 9 States in the Northeast, 4 of the 12 in the North Central Region, and 8 of the 13 in the West. Furthermore, a majority of death row inmates in the Northeast, the North Central Region, and the West were held in one State only. Massachusetts, for example, accounted for 56 percent of all prisoners under sentence of death in the Northeast, Ohio for 73 percent of those in the North Central Region, and California for 52 percent of those in the West.

North Carolina, with 103 persons on death row at the end of 1975, had a larger number of prisoners awaiting execution than any other State and accounted for more than one-fifth of the national total. Florida, with 62 prisoners, and California, with 39, ranked second and third. Collectively, the number of inmates under sentence of death in these three jurisdictions made up more than 40 percent of the total death row population in the United States.

Prisoners under sentence of death

The typical death row inmate, at the end of 1975, was a young male who had not completed high school and who had been sentenced to death during 1975 for the crime of murder. Blacks outnumbered whites on death row; more inmates were single than married.

As a group, prisoners under sentence of death were young: a majority were in their 20's. The median age of such prisoners, as of December 31, 1975, was 26 years, compared with 27 years at the end of 1974. The youngest inmate was 16 years old and the oldest was age 67. By region, the median age of death row inmates

²See Chart 1 or Table 2 for the States within each region.

varied only slightly. It was 28 years in the Northeast, 26 years in both the South and the West, and 25 years in the North Central Region. The median age of Oklahoma's death row population (22 years) was the lowest among the States and that of Indiana's inmates (35 years) was the highest.

Males predominated overwhelmingly on death row, as they have in the past. At the end of 1975, only eight females were under sentence of death; they accounted for less than 2 percent of the total death row population. Of these inmates, three were held in North Carolina, two in Ohio, and one each in California, Georgia, and Oklahoma.

Blacks historically have made up a proportion of the death row population in excess of their representation in the national population. At the end of 1975, they accounted for 53 percent of the total, compared with 45 percent for whites and 2 percent for members of races other than white or black. On a regional basis, the proportion of blacks among prisoners under sentence of death was highest in the North Central Region (62 percent) and lowest in the West (33 percent). The proportion of blacks on death row was 57 percent in the South and 50 percent in the Northeast. When considered in relation to the proportion of blacks in the total population of each region, black overrepresentation was shown to be less pronounced in the South than in the other three regions.

Persons sentenced to death for murder accounted for most of those on death row, as has been true in previous years. At the end of 1975, 436 prisoners, or 91 percent of those under sentence of death, had received the death penalty for the crime of murder. Of those inmates sentenced for murder, three had also been sentenced to death for rape, two for arson, and one for kidnaping and armed robbery. Of the remaining 43 inmates, 39 had received the death penalty for rape and 4 for kidnaping. Two of those under sentence of death for rape also had been convicted for a second offense—one for kidnaping and one for burglary. As has been true each year since at least 1971, all prisoners under sentence of death for rape at the end of 1975 had been sentenced by jurisdictions in the South. Among those awaiting execution for rape, blacks made up 77 percent; 52 percent of those under sentence of death for murder were black.

Among the 474 death row inmates for whom marital status was reported, 46 percent had never been married, 35 percent were married, 17 percent were

divorced or separated, and 2 percent were widowed. The proportion of black inmates who had never been married was 57 percent, compared with 32 percent among white prisoners.

The majority of death row inmates had failed to complete high school. Information on the number of years of schooling completed was reported for 402 of the 479 prisoners under sentence of death at the end of 1975. Of these, 30 percent had quit school at the time of or before finishing the eighth grade, 42 percent had attended but not graduated from high school, 23 percent had terminated their formal education after receiving a high school diploma, and 5 percent had attended college. White inmates had somewhat more schooling than blacks. Even among whites, however, a majority lacked a high school diploma. Some 7 percent of the white inmates on death row, compared with 4 percent of their black counterparts, had attended college.

Of the 372 prisoners on death row at the end of 1975 for whom the relevant information was reported, 79 percent (82 percent of the blacks and 76 percent of the whites) had not been under the jurisdiction of court or correctional authorities at the time they were arrested for their capital offense. Of the remaining prisoners, totaling 79, 48 were on parole at the time of their arrest, 14 were in prison, 13 were escaped convicts, 3 were on probation, and 1 was appealing his conviction for another offense.

About three-fifths of the inmates under sentence of death on December 31, 1975, had received the death penalty during 1975; the others had been sentenced at an earlier date. The median length of time spent on death row, as of yearend 1975, was 9 months, a figure about the same as that at the end of 1974 although substantially lower than the median time of more than 3 years reported for the end of 1972 and 1973. A total of 15 prisoners had spent more than 8 years on death row, the longest period of time being 18½ years. Regionally, inmates in the Northeast had spent the longest time under sentence of death—a median of 44 months; the shortest median time elapsed (7 months) was recorded among inmates in the North Central Region. Among the 18 States with 5 or more death row inmates, the median number of months spent on death row was highest for prisoners in Pennsylvania (62), followed by Massachusetts (45). No other jurisdiction recorded a median of more than 18 months.

Death sentences imposed

Two hundred and eighty-five persons who had been sentenced to death were admitted to State correctional systems in the United States during 1975, more than in any year since collection of such data began in 1960. Of the total, 264, or 93 percent, were given the death penalty for murder;³ 17, or 6 percent, for rape; and 4, or 1 percent, for kidnaping. More persons were committed in North Carolina (51) than in any other jurisdiction. Florida, with 30, was second, followed by California and Ohio, each with 28. Together, these four States accounted for nearly half of all death sentences handed down during 1975. Sixty-nine percent of all capital sentences meted out in 1975 were in the South. Blacks made up 54 percent of all those receiving the death penalty; whites, 45 percent; and members of races other than white or black, 1 percent. Five women were given death sentences during 1975.

Persons committed to death row during 1975 were, on the average, young, almost 46 percent having been under age 25. However, 31 persons age 40 and over also received the death penalty. Among the 219 prisoners for whom educational attainment was reported, 28 percent had quit school at the time of or before completing the eighth grade, 43 percent had dropped out of high school before receiving a diploma, 23 percent had received their high school diploma but not gone on to college, and 6 percent had attended college. Whites who received the death penalty in 1975 had slightly more schooling than their black counterparts.

Of the 283 newly committed inmates for whom marital status was reported, 49 percent had never been married, 34 percent were married, 15 percent were divorced or separated, and 2 percent were widowed. Black inmates were much more likely than whites never to have been married. Among the 209 prisoners for whom prearrest legal status was reported, only 36 had been under the jurisdiction of court or correctional authorities at the time of arrest for their capital

³One inmate sentenced to death for murder received a second death sentence for rape.

offense—25 on parole, 7 in prison, 3 escapees from prison, and 1 on appeal for his conviction for another offense. The remaining 173 were not under legal custody or supervision at the time of arrest.

Dispositions from the death penalty

A total of 65 death row inmates experienced sentence changes during 1975, mostly as the result of commutations, resentencings, reversals of judgment, or grants for new trials. An additional two prisoners died while under sentence for murder. Among those who received dispositions from the death penalty, a majority were black. Fifty-four of the inmates whose status underwent change had been sentenced to death for murder,⁴ 10 had received the death penalty for rape, and 3 had been sentenced for one of three other offenses—assault by a prisoner serving a life term, burglary, and arson. The median age of those removed from death row was 31 years, compared with 33 years during 1974. The median length of time spent on death row by this group was 40 months, a figure substantially below the median of 55 months recorded in 1974.

Executions

The year 1975 was the eighth in a row during which there were no executions of prisoners under sentence of death in the United States. The last such execution took place in Colorado on June 2, 1967. During the period 1930-67, 3,859 persons were executed under civil jurisdiction—3,826 by State authorities and 33 by the Federal Government.⁵ Of the total executed, 3,334, or 86 percent had been convicted of murder; 455 or 12 percent had been sentenced for rape; and the remainder had been found guilty of such offenses as robbery,

⁴Includes one prisoner sentenced to death for murder and arson.

⁵During this period, the U.S. Army (including the Air Force) carried out 160 executions—148 in 1942-50; 3 each in 1954, 1955, and 1957; and 1 each in 1958, 1959, and 1961. Of the total, 106 were for murder (including 21 involving rape), 53 were rape, and 1 for desertion. The U.S. Navy has executed no one since 1849.

Percent of executions in the U.S., by region, 1930-67

Total	100%
Federal	1%
State	99%
Northeast	16%
North Central	10%
South	60%
West	13%

kidnaping, burglary, sabotage, aggravated assault, and espionage.

Some three-fifths of the executions in the United States during 1930-67 were carried out in the South, as shown in the accompanying table. The largest single number of executions (366) took place in Georgia, followed by New York (329). Three other States—California, North Carolina, and Texas—each carried out more than 200 executions during the 1930-67 period.

Over the 38-year period, blacks accounted for 54 percent of those executed, whites for 45 percent, and members of other races for 1 percent. The proportion of executions involving blacks varied significantly from year to year. Blacks made up some 72 percent of all those executed in the South during 1930-67; corresponding proportions for the Northeast, North Central Region, and the West were 29 percent, 36 percent, and 16 percent, respectively. The imbalance in the proportion of executions involving blacks was most pronounced with respect to rape. Whereas blacks accounted for 49 percent of those executed for murder during 1930-67 (and 44 percent of those executed for "other" offenses), they made up 89 percent of those put to death for rape. In 9 of the years during the 1930-67 period, blacks constituted all of those executed for rape, and in only 3 years did the proportion fall below 80 percent. With the exception of seven executions in Missouri, all executions of blacks for rape took place in the South.

Of the total of 42 executions of members of races other than white or black, 19 involved American Indians; 13, Filipinos; 8, Chinese; and 2, Japanese. Except for two American Indians executed for rape, all had been convicted of murder. During 1930-67, a total of 32 women were executed, including 2 who were put to death by Federal civil authorities.

Status of death penalty laws

As of December 31, 1975, the death penalty was illegal in 10 States that had no statutory provisions for capital punishment. In 11 other jurisdictions (10 States and the District of Columbia), the death penalty statutes predated the *Furman* decision and were either of questionable validity or, as in the cases of Massachusetts, Missouri, New Jersey,⁶ and Washington, had specifically been declared unconstitutional by the courts. Legislatures in the remaining 30 States had enacted new or revised death penalty statutes since *Furman*. These statutes provide the courts authority to invoke the death penalty for a restricted number of crimes, usually specific types of murder or rape. In Illinois, however, the revised statutes were declared unconstitutional during 1975. The Federal Criminal Code contains death penalty statutes predating *Furman*; these have not been revised except for that section of the Code relating to the death penalty for aircraft piracy, which was revised in 1974.

Revised capital punishment statutes have been designed to comply with the U.S. Supreme Court ruling

⁶The 1971-72, 1973, and 1974 *Capital Punishment* reports indicated that the death penalty in New Jersey had been abolished in January 1972. Capital punishment statutes in New Jersey were declared unconstitutional at that time, but the death penalty, as such, was not made illegal.

tended to be imposed in an arbitrary and capricious manner, inconsistent with the Eighth Amendment prohibition against "cruel and unusual punishment." The revised statutes reflect the goal of eliminating the discretionary application of the death penalty by requiring that it be mandatory for persons found guilty of committing certain crimes. Specifically defined types of murder, such as the killing of a law enforcement officer, murder by a prisoner serving a life sentence, murder for pecuniary gain, and murder during the perpetration of a felony are included among the relevant offenses. Some States continue to authorize the death penalty for premeditated murder, for rape, and, more rarely, for treason. In addition to stipulating in detail the types of offenses requiring the death penalty, many of the revised statutes also make imposition of capital punishment contingent upon the existence of at least one aggravating circumstance and no mitigating circumstances to the crime. These circumstances, varying according to jurisdiction, are spelled out separately in the statutes and are generally weighed by the jury or judge at separate sentence hearings.

In addition to the revised laws, pre-*Furman* statutes in some States provide mandatory death penalties for certain types of murder, in the manner of some of the newly enacted ones. In Virginia, for example, the death penalty is mandatory for the murder of a correctional institution employee by an inmate thereof. In this State, the death penalty was imposed under the statute in the aftermath of the *Furman* decision. Further court tests are pending as to the constitutionality of existing capital punishment statutes, whether pre-*Furman* or revised.

METHODOLOGY

This report is based upon information for 1975 provided by correctional authorities in the 50 States and the District of Columbia in response to a mail canvass and upon historical data appearing in previous reports in the *Capital Punishment* series.

In the mail canvass, each jurisdiction was asked to complete a form for each prisoner under sentence of death during 1975, providing information on such characteristics as sex, race, date of birth, offense for which sentenced, legal status at time of arrest, marital status and educational attainment at time of imprisonment, date of first sentence to death, and status as of December 31, 1975. Included in the count were condemned persons in States granting principal jurisdiction

to the county of conviction if such persons had at any time entered a State correctional facility. Excluded were prisoners under sentence of death who remained within local correctional systems pending exhaustion of the appellate process or who for other reasons had not been committed to prison at the time of the canvass. If a capital sentence was imposed for more than one offense, only the most serious was tallied, although secondary offenses were footnoted. Multiple counts of the same offense were treated as a single offense. Incomplete data, as well as information inconsistent with earlier years, were augmented or clarified through telephone follow-ups to the mail canvass. The final response rate was 100 percent.

CHARTS

Chart 1. Prisoners under sentence of death: December 31, 1975

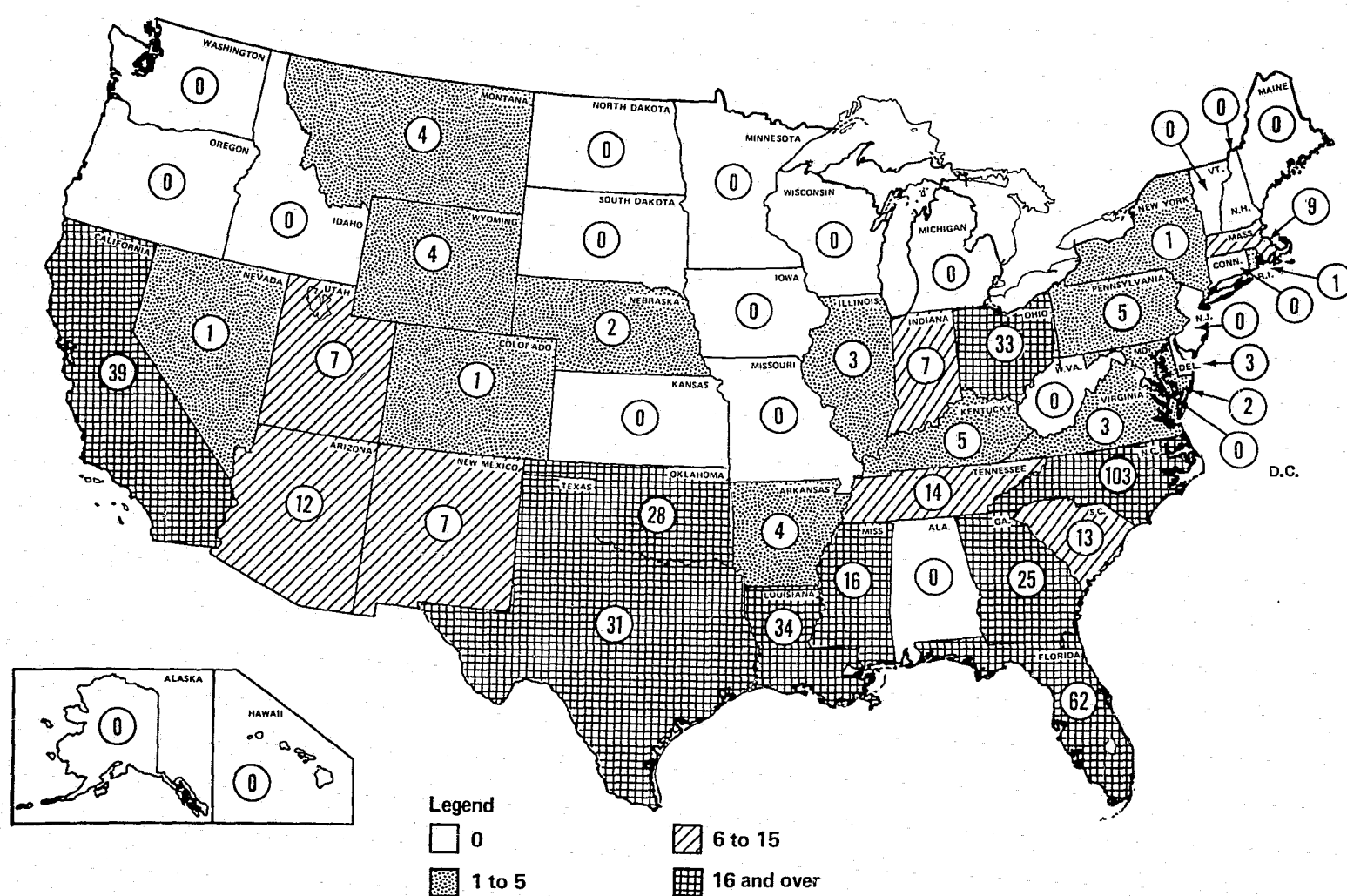
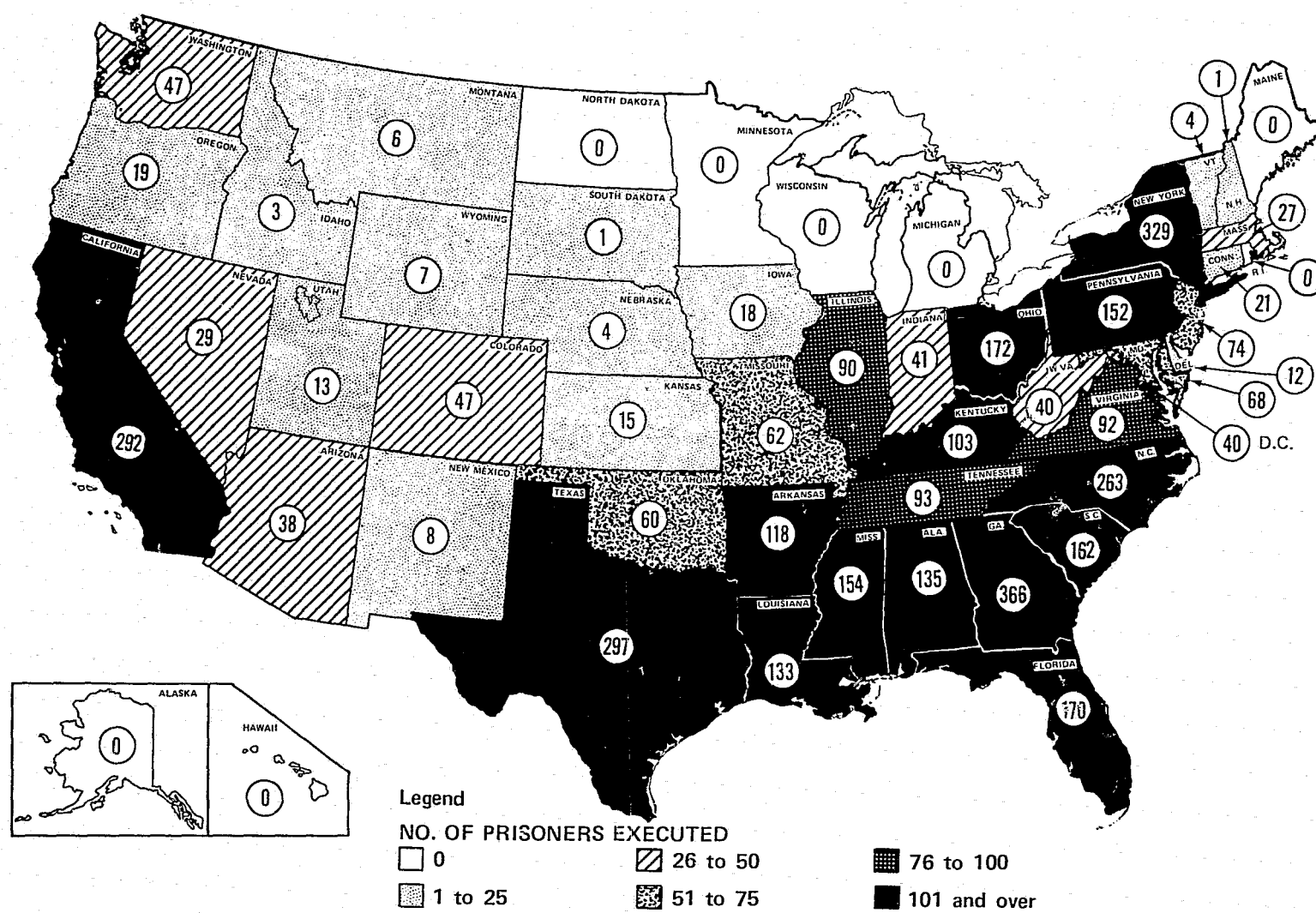


Chart 2. Prisoners executed under civil authority In the United States, 1930-75



NOTE: Excludes 33 Federal executions carried out in the United States during the period covered.

TABLES

Table 1. Prisoners executed under civil authority in the United States, by race, offense, and year: 1930-75

(For years 1930-59 excludes Alaska and Hawaii except for three Federal executions in Alaska: 1939, 1948, 1950)

Year	All offenses				Murder				Rape				Other offenses ¹		
	Total	White	Black	Other	Total	White	Black	Other	Total	White	Black	Other	Total	White	Black
All years	3,859	1,751	2,066	42	3,334	1,664	1,630	40	455	48	405	2	70	39	31
Percent	100.0	45.4	53.5	1.1	100.0	49.9	48.9	1.2	100.0	10.6	89.0	0.4	100.0	55.7	44.3
1975	0	0	0	0	0	0	0	0	0	0	0	0	0	0	0
1974	0	0	0	0	0	0	0	0	0	0	0	0	0	0	0
1973	0	0	0	0	0	0	0	0	0	0	0	0	0	0	0
1972	0	0	0	0	0	0	0	0	0	0	0	0	0	0	0
1971	0	0	0	0	0	0	0	0	0	0	0	0	0	0	0
1970	0	0	0	0	0	0	0	0	0	0	0	0	0	0	0
1969	0	0	0	0	0	0	0	0	0	0	0	0	0	0	0
1968	0	0	0	0	0	0	0	0	0	0	0	0	0	0	0
1967	2	1	1	0	2	1	1	0	0	0	0	0	0	0	0
1966	1	1	0	0	1	1	0	0	0	0	0	0	0	0	0
1965	7	6	1	0	7	6	1	0	0	0	0	0	0	0	0
1964	15	8	7	0	9	5	4	0	0	0	0	0	0	0	0
1963	21	13	8	0	18	12	6	0	2	0	2	0	1	0	0
1962	47	28	19	0	41	26	15	0	4	2	2	0	2	1	0
1961	42	20	22	0	33	18	15	0	8	1	7	0	1	0	0
1960	56	21	35	0	44	18	26	0	8	0	8	0	4	3	1
1959	49	16	33	0	41	15	26	0	8	1	7	0	0	0	0
1958	49	20	28	1	41	20	20	1	7	0	7	0	1	0	0
1957	65	34	31	0	54	32	22	0	10	2	8	0	1	0	0
1956	65	21	43	1	52	20	31	1	12	0	12	0	1	1	0
1955	76	44	32	0	65	41	24	0	7	1	6	0	4	2	2
1954	81	38	42	1	71	37	33	1	9	1	8	0	1	0	0
1953	62	30	31	1	51	25	25	1	7	1	6	0	4	0	0
1952	83	36	47	0	71	35	36	0	12	1	11	0	0	0	0
1951	105	57	47	1	87	55	31	1	17	2	15	0	1	0	0
1950	82	40	42	0	68	36	32	0	13	4	9	0	1	0	1

Table 1. Prisoners executed under civil authority in the United States, by race, offense, and year: 1930-75—continued

(For years 1930-59 excludes Alaska and Hawaii except for three Federal executions in Alaska: 1939, 1948, 1950)

Year	All offenses				Murder				Rape				Other offenses ¹		
	Total	White	Black	Other	Total	White	Black	Other	Total	White	Black	Other	Total	White	Black
1949	119	50	67	2	107	49	56	2	10	0	10	0	2	1	1
1948	119	35	82	2	95	32	61	2	22	1	21	0	2	2	0
1947	153	42	111	0	129	40	89	0	23	2	21	0	1	0	1
1946	131	46	84	1	107	45	61	1	22	0	22	0	2	1	1
1945	117	41	75	1	90	37	52	1	25	4	22	0	1	0	0
1944	120	47	70	3	96	45	48	3	24	2	22	0	0	0	0
1943	131	54	74	3	118	54	63	1	13	0	13	0	0	0	0
1942	147	67	80	0	115	57	58	0	25	4	21	0	7	6	1
1941	123	59	63	1	102	55	46	1	20	4	16	0	1	0	1
1940	124	49	75	0	105	44	61	0	15	2	13	0	4	3	1
1939	160	80	77	3	145	79	63	3	12	0	12	0	3	1	2
1938	190	96	92	2	154	89	63	2	25	1	24	0	11	6	5
1937	147	69	74	4	133	67	62	4	13	2	11	0	1	0	0
1936	195	92	101	2	181	86	93	2	10	2	8	0	4	4	0
1935	199	119	77	3	184	115	66	3	13	2	11	0	2	2	0
1934	168	65	102	1	154	64	89	1	14	1	13	0	0	0	0
1933	160	77	81	2	151	75	74	2	7	1	6	0	2	1	1
1932	140	62	75	3	128	62	63	3	10	0	10	0	2	0	0
1931	153	77	72	4	137	76	57	4	15	1	14	0	1	0	0
1930	155	90	65	0	147	90	57	0	6	0	6	0	2	0	2

¹Includes 25 armed robbery, 20 kidnaping, 11 burglary, 6 sabotage, 6 aggravated assault, and 2 espionage.

Table 2. Prisoners executed under civil authority in the United States,
by State and year: 1930-75

Region and State	Total	1975	1974	1973	1972	1971	1970	1965-69	1960-64	1955-59	1950-54	1945-49	1940-44	1935-39	1930-34
United States	3,859	0	0	0	0	0	0	10	181	304	413	639	645	891	776
Federal	33	0	0	0	0	0	0	0	1	3	6	6	7	9	1
State	3,826	0	0	0	0	0	0	10	180	301	407	633	638	882	775
Northeast	608	0	0	0	0	0	0	0	17	51	56	74	110	145	155
Maine	xx	xx	xx	xx	xx	xx	xx	xx	xx	xx	xx	xx	xx	xx	xx
New Hampshire	1	0	0	0	0	0	0	0	0	0	0	0	0	0	0
Vermont	4	0	0	0	0	0	0	0	0	0	0	0	0	0	0
Massachusetts	27	0	0	0	0	0	0	0	0	0	0	0	0	0	0
Rhode Island	0	0	0	0	0	0	0	0	0	0	0	0	0	0	0
Connecticut	21	0	0	0	0	0	0	0	1	5	0	5	5	3	2
New York	329	0	0	0	0	0	0	0	10	25	27	36	78	73	80
New Jersey	74	0	0	0	0	0	0	0	3	9	8	8	6	16	24
Pennsylvania	152	0	0	0	0	0	0	0	3	12	19	21	15	41	41
North Central	403	0	0	0	0	0	0	5	16	16	42	64	42	113	105
Ohio	172	0	0	0	0	0	0	0	7	12	20	36	15	39	43
Indiana	41	0	0	0	0	0	0	0	1	0	2	5	5	20	11
Illinois	90	0	0	0	0	0	0	0	2	1	8	5	13	27	34
Michigan	0	xx	xx	xx	xx	xx	xx	xx	0	0	0	0	0	0	0
Wisconsin	xx	xx	xx	xx	xx	xx	xx	xx	xx	xx	xx	xx	xx	xx	xx
Minnesota	xx	xx	xx	xx	xx	xx	xx	xx	xx	xx	xx	xx	xx	xx	xx
Iowa	18	xx	xx	xx	xx	xx	xx	xx	2	0	1	4	3	7	1
Missouri	62	0	0	0	0	0	0	1	3	2	5	9	6	20	16
North Dakota	0	0	0	0	0	0	0	0	0	0	0	0	0	0	0
South Dakota	1	0	0	0	0	0	0	0	0	0	0	0	0	xx	xx
Nebraska	4	0	0	0	0	0	0	0	0	1	1	2	0	0	0
Kansas	15	0	0	0	0	0	0	4	1	0	5	2	3	0	xx

Table 2. Prisoners executed under civil authority in the United States,
by State and year: 1930-75—continued

Region and State	Total	1975	1974	1973	1972	1971	1970	1965-69	1960-64	1955-59	1950-54	1945-49	1940-44	1935-39	1930-34
South	2,306	0	0	0	0	0	0	2	102	183	244	419	413	524	419
Delaware	12	0	0	0	0	0	0	0	0	0	0	2	2	6	2
Maryland	68	0	0	0	0	0	0	0	1	4	2	19	26	10	6
District of Columbia	40	0	0	0	0	0	0	0	0	1	3	13	3	5	15
Virginia	92	0	0	0	0	0	0	0	6	8	15	22	13	20	8
West Virginia	40	xx	xx	xx	xx	xx	xx	xx	0	4	5	9	2	10	10
North Carolina	263	0	0	0	0	0	0	0	1	5	14	62	50	80	51
South Carolina	162	0	0	0	0	0	0	0	8	10	16	29	32	30	37
Georgia	366	0	0	0	0	0	0	0	14	34	51	72	58	73	64
Florida	170	0	0	0	0	0	0	0	12	27	22	27	38	29	15
Kentucky	103	0	0	0	0	0	0	0	1	8	8	15	19	34	18
Tennessee	93	0	0	0	0	0	0	0	1	7	1	12	19	31	16
Alabama	135	0	0	0	0	0	0	1	4	6	14	21	29	41	19
Mississippi	154	0	0	0	0	0	0	0	10	21	15	26	34	22	26
Arkansas	118	0	0	0	0	0	0	0	9	7	11	18	20	33	20
Louisiana	133	0	0	0	0	0	0	0	1	13	14	23	24	19	39
Oklahoma	60	0	0	0	0	0	0	1	5	3	4	7	6	9	25
Texas	297	0	0	0	0	0	0	0	29	25	49	36	38	72	48
West	509	0	0	0	0	0	0	3	45	51	65	76	73	100	96
Montana	6	0	0	0	0	0	0	0	0	0	0	0	1	4	1
Idaho	7	0	0	0	0	0	0	0	0	1	2	0	0	1	3
Wyoming	47	0	0	0	0	0	0	1	0	0	0	0	2	1	9
Colorado	8	0	0	0	0	0	0	0	5	2	1	7	6	9	16
New Mexico	38	0	0	0	0	0	0	0	1	1	2	2	0	0	2
Arizona	13	0	0	0	0	0	0	0	4	6	2	3	6	10	7
Utah	29	0	0	0	0	0	0	0	1	4	2	1	3	2	0
Nevada	47	0	0	0	0	0	0	0	2	0	9	5	5	3	5
Washington	19	xx	xx	xx	xx	xx	xx	xx	2	2	4	7	9	13	10
Oregon	292	0	0	0	0	0	0	1	1	0	4	6	6	1	1
California	292	0	0	0	0	0	0	1	29	35	39	45	35	57	51
Alaska ²	xx	xx	xx	xx	xx	xx	xx	xx	xx	0	0	0	0	0	0
Hawaii ²	xx	xx	xx	xx	xx	xx	xx	xx	xx	0	0	0	0	0	0

NOTE: xx signifies that the death penalty was illegal.

²The 1971-72, 1973, and 1974 issuances of this National Prisoner Statistics (NPS) series incorrectly stated that the death penalty in New Jersey had been abolished in January 1972. These publications should be annotated to reflect the fact that the capital punishment provisions in this State were declared unconstitutional but not abolished.

²Alaska and Hawaii are included in the series beginning January 1, 1960, except for three Federal executions in Alaska.

Table 3. Prisoners executed under civil authority in the United States,
by offense, race, and State: 1930-75

Region and State	All offenses				Murder				Rape				Other offenses							
	Total	White	Black	Other	Total	White	Black	Other	Total	White	Black	Other	Total	White	Black	Armed robbery	Kidnaping	Other ¹		
United States	3,859	1,751	2,066	42	3,334	1,664	1,630	40	455	48	405	2	70	39	31	6	19	20	13	12
Percent	100.0				85.4				11.8				1.8							
Federal	33	28	3	2	15	10	3	2	2	2	0	0	16	16	0	2	0	6	8	0
State	3,826	1,723	2,063	40	3,319	1,654	1,627	38	453	46	405	2	54	23	31	4	19	14	5	12
Northeast	608	424	177	7	606	422	177	7	0	0	0	0	2	2	0	0	0	2	0	0
Maine	xx	xx	xx	xx	xx	xx	xx	xx	xx	xx	xx	xx	xx	xx	xx	xx	xx	xx	xx	xx
New Hampshire	1	1	0	0	1	1	0	0	0	0	0	0	0	0	0	0	0	0	0	0
Vermont	4	4	0	0	4	4	0	0	0	0	0	0	0	0	0	0	0	0	0	0
Massachusetts	27	25	2	0	27	25	2	0	0	0	0	0	0	0	0	0	0	0	0	0
Rhode Island	0	0	0	0	0	0	0	0	0	0	0	0	0	0	0	0	0	0	0	0
Connecticut	21	18	3	0	21	18	3	0	0	0	0	0	0	0	0	0	0	0	0	0
New York	329	234	90	5	327	232	90	5	0	0	0	0	2	2	0	0	0	2	0	0
New Jersey	74	47	25	2	74	47	25	2	0	0	0	0	0	0	0	0	0	0	0	0
Pennsylvania	152	95	57	0	152	95	57	0	0	0	0	0	0	0	0	0	0	0	0	0
North Central	403	257	144	2	393	254	137	2	10	3	7	0	0	0	0	0	0	0	0	0
Ohio	172	104	67	1	172	104	67	1	0	0	0	0	0	0	0	0	0	0	0	0
Indiana	41	31	10	0	41	31	10	0	0	0	0	0	0	0	0	0	0	0	0	0
Illinois	90	59	31	0	90	59	31	0	0	0	0	0	0	0	0	0	0	0	0	0
Michigan ²	0	0	0	0	0	0	0	0	0	0	0	0	0	0	0	0	0	0	0	0
Wisconsin ²	0	0	0	0	0	0	0	0	0	0	0	0	0	0	0	0	0	0	0	0
Minnesota	xx	xx	xx	xx	xx	xx	xx	xx	xx	xx	xx	xx	xx	xx	xx	xx	xx	xx	xx	xx
Iowa ²	18	18	0	0	18	18	0	0	0	0	0	0	0	0	0	0	0	0	0	0
Missouri	62	29	33	0	52	26	26	0	10	3	7	0	0	0	0	0	0	0	0	0
North Dakota	0	0	0	0	0	0	0	0	0	0	0	0	0	0	0	0	0	0	0	0
South Dakota ²	1	1	0	0	1	1	0	0	0	0	0	0	0	0	0	0	0	0	0	0
Nebraska	4	3	0	1	4	3	0	1	0	0	0	0	0	0	0	0	0	0	0	0
Kansas ²	15	12	3	0	15	12	3	0	0	0	0	0	0	0	0	0	0	0	0	0

Table 3. Prisoners executed under civil authority in the United States,
by offense, race, and State: 1930-75—continued

Region and State	All offenses				Murder				Rape				Total			Other offenses			Other ¹	
	Total	White	Black	Other	Total	White	Black	Other	Total	White	Black	Other	Total	White	Black	Armed robbery	White	Black	Kidnaping	White
South	2,306	637	1,659	10	1,824	585	1,231	8	443	43	398	2	39	9	30	4	19	5	0	11
Delaware ²	12	5	7	0	8	4	4	0	4	1	3	0	0	0	0	0	0	0	0	0
Maryland	68	13	55	0	44	7	37	0	24	6	18	0	0	0	0	0	0	0	0	0
District of Columbia	40	3	37	0	37	3	34	0	3	0	3	0	0	0	0	0	0	0	0	0
Virginia	92	17	75	0	71	17	54	0	21	0	21	0	0	0	0	0	0	0	0	0
West Virginia ²	40	31	9	0	36	28	8	0	1	0	1	0	3	3	0	0	0	3	0	0
North Carolina	263	59	199	5	207	55	149	3	47	4	41	2	9	0	9	0	0	0	0	9
South Carolina	162	35	127	0	120	30	90	0	42	5	37	0	0	0	0	0	0	0	0	0
Georgia	366	68	298	0	299	65	234	0	61	3	58	0	6	0	6	0	6	0	0	0
Florida	170	57	113	0	133	55	78	0	36	1	35	0	1	1	0	0	0	1	0	0
Kentucky	103	51	52	0	88	47	41	0	10	1	9	0	5	3	2	3	2	0	0	0
Tennessee	93	27	66	0	66	22	44	0	27	5	22	0	0	0	0	0	0	0	0	0
Alabama	135	28	107	0	106	26	80	0	22	2	20	0	7	0	7	0	5	0	0	2
Mississippi	154	30	124	0	130	30	100	0	21	0	21	0	3	0	3	0	3	0	0	0
Arkansas	118	27	90	1	99	25	73	1	19	2	17	0	0	0	0	0	0	0	0	0
Louisiana	133	30	103	0	116	30	86	0	17	0	17	0	0	0	0	0	0	0	0	0
Oklahoma	60	42	15	3	54	40	11	3	4	0	4	0	2	2	0	1	0	1	0	0
Texas	297	114	182	1	210	101	108	1	84	13	71	0	3	0	3	0	3	0	0	0
West	509	405	83	21	496	393	82	21	0	0	0	0	13	12	1	0	0	7	5	1
Montana	6	4	2	0	6	4	2	0	0	0	0	0	0	0	0	0	0	0	0	0
Idaho	3	3	0	0	3	3	0	0	0	0	0	0	0	0	0	0	0	0	0	0
Wyoming	7	6	1	0	77	6	1	0	0	0	0	0	0	0	0	0	0	0	0	0
Colorado	47	41	5	1	47	41	5	1	0	0	0	0	0	0	0	0	0	0	0	0
New Mexico	8	6	2	0	8	6	2	0	0	0	0	0	0	0	0	0	0	0	0	0
Arizona	38	28	10	0	38	28	10	0	0	0	0	0	0	0	0	0	0	0	0	0
Utah	13	13	0	0	13	13	0	0	0	0	0	0	0	0	0	0	0	0	0	0
Nevada	29	27	2	0	29	27	2	0	0	0	0	0	0	0	0	0	0	0	0	0
Washington	47	40	5	2	46	39	5	2	0	0	0	0	1	1	0	0	0	1	0	0
Oregon ²	19	16	3	0	19	16	3	0	0	0	0	0	0	0	0	0	0	0	0	0
California	292	221	53	18	280	210	52	18	0	0	0	0	12	11	1	0	0	6	5	1
Alaska ³	0	0	0	0	0	0	0	0	0	0	0	0	0	0	0	0	0	0	0	0
Hawaii ³	0	0	0	0	0	0	0	0	0	0	0	0	0	0	0	0	0	0	0	0

NOTE: xx signifies that the death penalty was illegal during entire period covered by this table.

¹In this category, the 8 Federal executions were for sabotage (6) and espionage (2). The 9 executions in North Carolina and the 2 in Alabama were for burglary. In California, the 6 executions were for aggravated assault committed by prisoners under a life sentence.

²See Table 24, for periods during which death penalty was in effect.

³Alaska and Hawaii abolished capital punishment in 1957, when territories. As States, Alaska and Hawaii are included in the series beginning January 1, 1960.

Table 4: Movement of prisoners under sentence of death: 1966-75

Number of prisoners	1975	1974	1973	1972	1971	1970	1969	1968	1967	1966
Under sentence of death, January 1	261	158	329	620	407	524	479	434	415	351
Received death sentence during year	285	151	42	75	104	127	97	102	85	118
Other admissions ^a	0	0	30	0	11	33	33	20	5	0
Executed during year	0	0	0	0	0	0	0	0	2	1
Median time elapsed from sentencing to execution (in months)	-	-	-	-	-	-	-	-	-	-
Other dispositions ^b	67	55	239	365	102	76	85	77	69	53
Median time elapsed from sentencing to disposition (in months) ^c	40	55	44	47	52	54	36	33	41	32
Under sentence of death, December 31	479	254	162	330	620	608	524	479	434	415
Median time elapsed from sentencing to December 31 (in months)	9	10	38	37	40	37	39	33	28.9	29.5

- Not applicable.

^aTotal for January 1, 1975, was revised from that reported in *Capital Punishment 1974*, NPS Bulletin SD-NPS-CP-3, November 1975, to include two prisoners in Florida, two in Georgia, one in Louisiana, one in Massachusetts, one in North Carolina, and three in Texas who were not reported by these jurisdictions in their counts of those awaiting execution on December 31, 1974. In addition, the figure excludes one prisoner in Georgia, one in Louisiana, and one in Pennsylvania who were incorrectly reported as awaiting execution on December 31, 1974.

^bTotal for January 1, 1974, was revised from that reported in *Capital Punishment 1973*, NPS Bulletin SD-NPS-CP-2, March 1975, to exclude one prisoner in Alabama, two in Arizona, and one in Florida who were incorrectly reported as awaiting execution on December 31, 1973. In addition, the figure includes one prisoner in Massachusetts who was incorrectly excluded from the count of those awaiting execution on December 31, 1973, but it excludes another Massachusetts prisoner who was incorrectly reported as awaiting execution on December 31, 1973, but had actually been relieved of the death sentence in September 1972.

^cTotal for January 1, 1973, was revised from that reported in *Capital Punishment 1971-72*, NPS Bulletin SD-NPS-CP-1, December 1974, to include one prisoner in California who was incorrectly reported as awaiting execution on December 31, 1972.

^dTotal for January 1, 1971, was revised from that reported in NPS Bulletin No. 46, August 1971, to exclude two prisoners in Florida, one in Louisiana, and one in Georgia who were incorrectly reported as awaiting execution on December 30, 1970, and to include one prisoner in Louisiana and two in Pennsylvania who were incorrectly excluded from the count of those awaiting execution on December 30, 1970.

^ePrior to 1974, includes prisoners sentenced in previous years but reported late to the NPS program, as well as prisoners returned to death row after previously being reported as either escaped or transferred to a mental hospital.

^fIncludes commutations, resentencings, reversals, grants for new trials, other forms of release from the death sentence, and deaths other than executions.

^gPrior to 1968, includes those prisoners who were not reported to the NPS program until the following year.

Table 5. Movement of prisoners under sentence of death, by offense and race: calendar year 1975

Offense	Reported under sentence of death on 1-1-75 ¹	Received from court	Dispositions			Reported under sentence of death on 12-31-75		
			Total	Removed from under sentence of death ²	Died	Total ³	Received in 1975	Received in prior years
Total United States	4261	285	67	65	2	479	283	196
White	118	127	31	30	1	214	125	89
Black	136	155	35	34	1	256	155	101
Other	7	3	1	1	0	9	3	6
Murder	8,7226	264	54	52	2	8,436	262	8,7174
White	8,8108	121	26	25	1	8,8203	119	8,884
Black	8,8112	110	27	26	1	7,1225	110	8,8185
Other	6	3	1	1	0	8	3	5
Rape	12,132	17	10	10	0	12,139	17	12,122
White	138	3	3	3	0	138	3	135
Black	123	14	7	7	0	123	14	109
Other	1	0	0	0	0	1	0	1
Kidnaping	0	4	0	0	0	4	4	0
White	0	3	0	0	0	3	3	0
Black	0	1	0	0	0	1	1	0
Robbery	0	0	0	0	0	0	0	0
White	0	0	0	0	0	0	0	0
Black	0	0	0	0	0	0	0	0
Assault by life prisoner	1	0	1	1	0	0	0	0
White	1	0	1	1	0	0	0	0
Black	0	0	0	0	0	0	0	0
Burglary	1	0	1	1	0	0	0	0
White	0	0	0	0	0	0	0	0
Black	1	0	1	1	0	0	0	0
Arson	1	0	1	1	0	0	0	0
White	1	0	1	1	0	0	0	0
Black	0	0	0	0	0	0	0	0

¹Prior to 1974 all prisoners sentenced in previous years but reported late to the NPS program, as well as prisoners returned to death row after previously being reported as either escaped or transferred to a mental hospital, were enumerated under the category "other admissions." Beginning in 1974, however, such prisoners were included in the count of those reported under sentence of death on January 1. This change has thus resulted in the elimination of the category "other admissions."

²Includes commutations, resentencings, grants for new trials, and other forms of release from the death sentence.

³The number of prisoners under sentence of death as of December 31, 1975, included eight females sentenced to death for murder. Of this total, four were white, three black, and one an American Indian. Refer to Prisoners under Sentence of Death Section of the General Findings for additional details on female prisoners.

⁴See Table 4, footnote 1.

⁵Includes three prisoners sentenced for murder and arson.

⁶Includes one prisoner sentenced for murder, kidnaping, and armed robbery.

⁷Includes two prisoners sentenced for murder and rape.

⁸Includes one prisoner sentenced for murder and rape.

⁹Includes one prisoner sentenced for murder and arson.

¹⁰Includes three prisoners sentenced for murder and rape.

¹¹Includes two prisoners sentenced for murder and arson.

¹²Includes one prisoner sentenced for rape and kidnaping.

¹³Includes one prisoner sentenced for rape and burglary.

Table 6. Movement of prisoners under sentence of death,
by race and State: calendar year 1975

Region and State	Reported under sentence of death on 1-1-75 ¹				Received from court				Dispositions				Reported under sentence of death on 12-31-75			
	Total	White	Black	Other	Total	White	Black	Other	Total	White	Black	Other	Total	White	Black	Other
United States	261	118	136	7	285	127	155	3	67	31	35	1	479	214	256	9
Northeast	23	10	13	0	4	2	2	0	11	4	7	0	16	8	8	0
Maine	xx	xx	xx	xx	xx	xx	xx	xx	xx	xx	xx	xx	xx	xx	xx	xx
New Hampshire	0	0	0	0	0	0	0	0	0	0	0	0	0	0	0	0
Vermont	0	0	0	0	0	0	0	0	0	0	0	0	0	0	0	0
Massachusetts	18	6	12	0	1	1	0	0	10	3	7	0	9	4	5	0
Rhode Island	0	0	0	0	1	0	1	0	0	0	0	0	1	0	1	0
Connecticut	0	0	0	0	0	0	0	0	0	0	0	0	0	0	0	0
New York	0	0	0	0	1	0	1	0	0	0	0	0	1	0	1	0
New Jersey ²	0	0	0	0	0	0	0	0	0	0	0	0	0	0	0	0
Pennsylvania	5	4	1	0	1	1	0	0	1	1	0	0	5	4	1	0
North Central	12	4	8	0	38	16	22	0	5	3	2	0	45	17	28	0
Ohio	5	0	5	0	28	11	17	0	0	0	0	0	33	11	22	0
Indiana	2	1	1	0	6	4	2	0	1	1	0	0	7	4	3	0
Illinois	4	3	1	0	2	0	2	0	3	2	1	0	3	1	2	0
Michigan	xx	xx	xx	xx	xx	xx	xx	xx	xx	xx	xx	xx	xx	xx	xx	xx
Wisconsin	xx	xx	xx	xx	xx	xx	xx	xx	xx	xx	xx	xx	xx	xx	xx	xx
Minnesota	xx	xx	xx	xx	xx	xx	xx	xx	xx	xx	xx	xx	xx	xx	xx	xx
Iowa	xx	xx	xx	xx	xx	xx	xx	xx	xx	xx	xx	xx	xx	xx	xx	xx
Missouri	1	0	1	0	0	0	0	0	1	0	1	0	0	0	0	0
North Dakota	0	0	0	0	0	0	0	0	0	0	0	0	0	0	0	0
South Dakota	0	0	0	0	0	0	0	0	0	0	0	0	0	0	0	0
Nebraska	0	0	0	0	2	1	1	0	0	0	0	0	2	1	1	0
Kansas	0	0	0	0	0	0	0	0	0	0	0	0	0	0	0	0
South	180	73	101	6	197	79	116	2	34	11	22	1	343	141	195	7
Delaware	0	0	0	0	3	2	1	0	0	0	0	0	3	2	1	0
Maryland	3	0	3	0	0	0	0	0	1	0	1	0	2	0	2	0
District of Columbia	0	0	0	0	0	0	0	0	0	0	0	0	0	0	0	0

Table 6. Movement of prisoners under sentence of death,
by race and State: calendar year 1975—continued

Region and State	Reported under sentence of death on 1-1-75 ¹				Received from court				Dispositions				Reported under sentence of death on 12-31-75			
	Total	White	Black	Other	Total	White	Black	Other	Total	White	Black	Other	Total	White	Black	Other
Virginia	4	2	2	0	0	0	0	0	1	1	0	0	3	1	2	0
West Virginia	xx	xx	xx	xx	xx	xx	xx	xx	xx	xx	xx	xx	xx	xx	xx	xx
North Carolina	66	21	40	5	51	13	37	1	14	4	9	1	103	30	68	5
South Carolina	0	0	0	0	13	8	5	0	0	0	0	0	13	8	5	0
Georgia	21	12	9	0	9	1	8	0	5	3	2	0	25	10	15	0
Florida	38	19	19	0	30	14	16	0	6	1	5	0	62	32	30	0
Kentucky	4	3	1	0	3	3	0	0	2	1	1	0	5	5	0	0
Tennessee	1	1	0	0	13	7	6	0	0	0	0	0	14	8	6	0
Alabama	0	0	0	0	0	0	0	0	0	0	0	0	0	0	0	0
Mississippi	3	0	3	0	14	3	11	0	1	0	1	0	16	3	13	0
Arkansas	1	1	0	0	3	2	1	0	0	0	0	0	4	3	1	0
Louisiana	19	2	17	0	18	3	15	0	3	0	3	0	34	5	29	0
Oklahoma	8	5	2	1	21	10	10	1	1	1	0	0	28	14	12	2
Texas	12	7	5	0	19	13	6	0	0	0	0	0	31	20	11	0
West	46	31	14	1	46	30	15	1	17	13	4	0	75	48	25	2
Montana	0	0	0	0	4	3	1	0	0	0	0	0	4	3	1	0
Idaho	0	0	0	0	0	0	0	0	0	0	0	0	0	0	0	0
Wyoming	4	2	2	0	0	0	0	0	0	0	0	0	4	2	2	0
Colorado	0	0	0	0	1	1	0	0	0	0	0	0	1	1	0	0
New Mexico	7	7	0	0	4	3	1	0	4	4	0	0	7	6	1	0
Arizona	8	5	3	0	5	4	1	0	1	1	0	0	12	8	4	0
Utah	5	3	2	0	3	3	0	0	1	1	0	0	7	5	2	0
Nevada	0	0	0	0	1	1	0	0	0	0	0	0	1	1	0	0
Washington	0	0	0	0	0	0	0	0	0	0	0	0	0	0	0	0
Oregon	xx	xx	xx	xx	xx	xx	xx	xx	xx	xx	xx	xx	xx	xx	xx	xx
California	22	14	7	1	28	15	13	0	11	7	4	0	39	22	16	1
Alaska	xx	xx	xx	xx	xx	xx	xx	xx	xx	xx	xx	xx	xx	xx	xx	xx
Hawaii	xx	xx	xx	xx	xx	xx	xx	xx	xx	xx	xx	xx	xx	xx	xx	xx

NOTE: xx signifies that the death penalty was illegal during the entire year.

¹See Table 5, footnote 1.²See Table 4, footnote 1.³See Table 2, footnote 1.

Table 7. Prisoners received from court under sentence of death, by race, offense, and State, and by age and State: calendar year 1975

Region and State	Total	Race							Under 20	20-24	Age at sentencing				35-39	40 and over
		White			Black		Other Murder									
		Murder	Rape	Aggravated kidnapping	Murder ¹	Rape		Aggravated kidnapping								
United States	285	121	3	3	140	14	1	3	39	92	65	44	14	31		
Northeast	4	2	0	0	2	0	0	0	0	2	0	0	1	1		
Maine	xx	xx	xx	xx	xx	xx	xx	xx	xx	xx	xx	xx	xx	xx		
New Hampshire	0	0	0	0	0	0	0	0	0	0	0	0	0	0		
Vermont	0	0	0	0	0	0	0	0	0	0	0	0	0	0		
Massachusetts	1	1	0	0	0	0	0	0	0	1	0	0	0	0		
Rhode Island	1	0	0	0	1	0	0	0	0	1	0	0	0	0		
Connecticut	0	0	0	0	0	0	0	0	0	0	0	0	0	0		
New York	1	0	0	0	1	0	0	0	0	0	0	0	1	0		
New Jersey ^a	0	0	0	0	0	0	0	0	0	0	0	0	0	0		
Pennsylvania	1	1	0	0	0	0	0	0	0	0	0	0	0	1		
North Central	38	16	0	0	22	0	0	0	6	14	4	8	3	3		
Ohio	28	11	0	0	17	0	0	0	5	11	4	4	2	2		
Indiana	6	4	0	0	2	0	0	0	0	0	0	4	1	1		
Illinois	2	0	0	0	2	0	0	0	0	2	0	0	0	0		
Michigan	xx	xx	xx	xx	xx	xx	xx	xx	xx	xx	xx	xx	xx	xx		
Wisconsin	xx	xx	xx	xx	xx	xx	xx	xx	xx	xx	xx	xx	xx	xx		
Minnesota	xx	xx	xx	xx	xx	xx	xx	xx	xx	xx	xx	xx	xx	xx		
Iowa	xx	xx	xx	xx	xx	xx	xx	xx	xx	xx	xx	xx	xx	xx		
Missouri	0	0	0	0	0	0	0	0	0	0	0	0	0	0		
North Dakota	0	0	0	0	0	0	0	0	0	0	0	0	0	0		
South Dakota	0	0	0	0	0	0	0	0	0	0	0	0	0	0		
Nebraska	2	1	0	0	1	0	0	0	1	1	0	0	0	0		
Kansas	0	0	0	0	0	0	0	0	0	0	0	0	0	0		
South	197	76	3	0	102	14	0	2	32	64	47	26	8	20		
Delaware	3	2	0	0	1	0	0	0	1	0	0	1	1	0		
Maryland	0	0	0	0	0	0	0	0	0	0	0	0	0	0		
District of Columbia	0	0	0	0	0	0	0	0	0	0	0	0	0	0		

Table 7. Prisoners received from court under sentence of death, by race, offense, and State, and by age and State: calendar year 1975—continued

Region and State	Total	Race						Age at sentencing						
		White			Black			Under 20	20-24	25-29	30-34	35-39	40 and over	
		Murder	Rape	Aggravated kidnapping	Murder ¹	Rape	Aggravated kidnapping							Other Murder
Virginia	0	0	0	0	0	0	0	0	0	0	0	0	0	0
West Virginia	xx	xx	xx	xx	xx	xx	xx	xx	xx	xx	xx	xx	xx	xx
North Carolina	51	12	1	0	33	4	0	1	6	14	7	6	1	7
South Carolina	13	8	0	0	5	0	0	0	0	3	2	5	0	3
Georgia	9	1	0	0	8	0	0	0	3	2	3	0	0	1
Florida	30	12	2	0	16	0	0	0	4	8	10	2	3	3
Kentucky	3	3	0	0	0	0	0	0	0	1	1	0	0	1
Tennessee	13	7	0	0	6	0	0	0	2	3	4	3	1	0
Alabama	0	0	0	0	0	0	0	0	0	0	0	0	0	0
Mississippi	14	3	0	0	11	0	0	0	4	8	1	1	0	0
Arkansas	3	2	0	0	1	0	0	0	1	2	0	0	0	0
Louisiana	18	3	0	0	5	10	0	0	4	7	4	1	1	1
Oklahoma	21	10	0	0	10	0	0	1	6	9	1	3	0	2
Texas	19	13	0	0	6	0	0	0	1	7	4	4	1	2
West	46	27	0	3	14	0	1	1	1	12	14	10	2	7
Montana	4	0	0	3	0	0	1	0	0	1	1	2	0	0
Idaho	0	0	0	0	0	0	0	0	0	0	0	0	0	0
Wyoming	0	0	0	0	0	0	0	0	0	0	0	0	0	0
Colorado	1	1	0	0	0	0	0	0	0	1	0	0	0	0
New Mexico	4	3	0	0	0	0	0	1	0	1	2	1	0	0
Arizona	5	4	0	0	1	0	0	0	0	1	1	1	1	1
Utah	3	3	0	0	0	0	0	0	0	1	1	1	0	0
Nevada	1	1	0	0	0	0	0	0	0	0	0	0	0	1
Washington	0	0	0	0	0	0	0	0	0	0	0	0	0	0
Oregon	xx	xx	xx	xx	xx	xx	xx	xx	xx	xx	xx	xx	xx	xx
California	28	15	0	0	13	0	0	0	1	7	9	5	1	5
Alaska	xx	xx	xx	xx	xx	xx	xx	xx	xx	xx	xx	xx	xx	xx
Hawaii	xx	xx	xx	xx	xx	xx	xx	xx	xx	xx	xx	xx	xx	xx

NOTE: xx signifies that the death penalty was illegal during the entire year.

¹Includes one prisoner sentenced for murder and rape in Georgia.²See Table 2, footnote 1.

Table 8. Prisoners received from court under sentence of death, by highest

Region and State	Total				6th grade or less			7th grade		
	Total	White	Black	Other	Total	White	Black	Total	White	Black
United States	285	127	155	3	18	8	10	18	8	10
Northeast	4	2	2	0	1	0	1	0	0	0
Maine	xx	0x	xx	xx	xx	xx	xx	xx	xx	xx
New Hampshire	0	0	0	0	0	0	0	0	0	0
Vermont	0	0	0	0	0	0	0	0	0	0
Massachusetts	1	1	0	0	0	0	0	0	0	0
Rhode Island	1	0	1	0	1	0	1	0	0	0
Connecticut	0	0	0	0	0	0	0	0	0	0
New York	1	0	1	0	0	0	0	0	0	0
New Jersey ^a	1	0	0	0	0	0	0	0	0	0
Pennsylvania	1	1	0	0	0	0	0	0	0	0
North Central	38	16	22	0	1	0	1	7	3	4
Ohio	28	11	17	0	1	0	1	6	2	4
Indiana	6	4	2	0	0	0	0	1	1	0
Illinois	2	0	2	0	0	0	0	0	0	0
Michigan	xx	xx	xx	xx	xx	xx	xx	xx	xx	xx
Wisconsin	xx	xx	xx	xx	xx	xx	xx	xx	xx	xx
Minnesota	xx	xx	xx	xx	xx	xx	xx	xx	xx	xx
Iowa	xx	xx	xx	xx	xx	xx	xx	xx	xx	xx
Missouri	0	0	0	0	0	0	0	0	0	0
North Dakota	0	0	0	0	0	0	0	0	0	0
South Dakota	0	0	0	0	0	0	0	0	0	0
Nebraska	2	1	1	0	0	0	0	0	0	0
Kansas	0	0	0	0	0	0	0	0	0	0
South	197	79	116	2	14	7	7	11	5	6
Delaware	3	2	1	0	0	0	0	1	1	0
Maryland	0	0	0	0	0	0	0	0	0	0
District of Columbia	0	0	0	0	0	0	0	0	0	0
Virginia	0	0	0	0	0	0	0	0	0	0
West Virginia	xx	xx	xx	xx	xx	xx	xx	xx	xx	xx
North Carolina	51	13	37	1	3	0	3	3	1	2
South Carolina	13	8	5	0	3	2	1	2	1	1
Georgia	9	1	8	0	1	0	1	1	0	1
Florida	30	14	16	0	2	2	0	0	0	0
Kentucky	3	3	0	0	0	0	0	0	0	0
Tennessee	13	7	6	0	1	1	0	1	1	0
Alabama	0	0	0	0	0	0	0	0	0	0
Mississippi	14	3	11	0	0	0	0	0	0	0
Arkansas	3	2	1	0	1	1	0	0	0	0
Louisiana	18	3	0	0	2	0	2	0	0	0
Oklahoma	21	10	1	0	0	0	0	0	0	0
Texas	19	13	6	0	1	1	0	1	1	0
West	46	30	15	1	2	1	1	0	0	0
Montana	4	3	1	0	0	0	0	0	0	0
Idaho	0	0	0	0	0	0	0	0	0	0
Wyoming	0	0	0	0	0	0	0	0	0	0
Colorado	1	1	0	0	0	0	0	0	0	0
New Mexico	4	3	0	1	1	1	0	0	2	4
Arizona	5	4	1	0	1	0	1	0	0	0
Utah	3	3	0	0	0	0	0	0	0	0
Nevada	1	1	0	0	0	0	0	0	0	0
Washington	0	0	0	0	0	0	0	0	0	0
Oregon	xx	xx	xx	xx	xx	xx	xx	xx	xx	xx
California	28	15	13	0	0	0	0	0	0	0
Alaska	xx	xx	xx	xx	xx	xx	xx	xx	xx	xx
Hawaii	xx	xx	xx	xx	xx	xx	xx	xx	xx	xx

NOTE: xx signifies that the death penalty was illegal during the entire year.
¹See Table 2, footnote 1.

grade of schooling completed, race, and State: calendar year 1975

8th grade				9th-11th grades				12th grade				Any college				Not reported			
Total	White	Black		Total	White	Black	Other	Total	White	Black		Total	White	Black		Total	White	Black	Other
25	16	9		94	34	58	2	51	24	27		13	7	6		66	30	35	1
0	0	0		2	1	1		1	1	0		0	0	0		0	0	0	0
xx	xx	xx		xx	xx	xx	xx	xx	xx	xx	xx	xx	xx	xx		xx	xx	xx	xx
0	0	0		0	0	0	0	0	0	0	0	0	0	0		0	0	0	0
0	0	0		xx	xx	xx	xx	xx	xx	xx	xx	xx	xx	xx		xx	xx	xx	xx
0	0	0		0	0	0	0	0	0	0	0	0	0	0		0	0	0	0
0	0	0		1	1	0	0	0	0	0	0	0	0	0		0	0	0	0
0	0	0		0	0	0	0	0	0	0	0	0	0	0		0	0	0	0
0	0	0		0	0	0	0	0	0	0	0	0	0	0		0	0	0	0
0	0	0		1	0	1	0	0	0	0	0	0	0	0		0	0	0	0
0	0	0		0	0	0	0	0	0	0	0	0	0	0		0	0	0	0
0	0	0		0	0	0	0	1	1	0		0	0	0		0	0	0	0
7	3	4		11	4	7	0	9	5	4		2	0	2		1	1	0	0
7	3	0		8	3	1	0	5	3	2		1	0	1		1	0	0	0
0	0	0		0	1	0	0	1	1	0		1	0	1		1	1	0	0
0	0	0		0	0	0	0	2	0	2		0	0	0		0	0	0	0
xx	xx	xx		xx	xx	xx	xx	xx	xx	xx	xx	xx	xx	xx	xx	xx	xx	xx	xx
xx	xx	xx		xx	xx	xx	xx	xx	xx	xx	xx	xx	xx	xx	xx	xx	xx	xx	xx
xx	xx	xx		xx	xx	xx	xx	xx	xx	xx	xx	xx	xx	xx	xx	xx	xx	xx	xx
0	0	0		0	0	0	0	0	0	0		0	0	0		0	0	0	0
0	0	0		0	0	0	0	0	0	0		0	0	0		0	0	0	0
0	0	0		1	0	1	0	0	1	0		0	0	0		0	0	0	0
0	0	0		0	0	0	0	0	0	0		0	0	0		0	0	0	0
14	9	5		78	27	50	1	35	12	23		8	5	3		37	14	22	1
0	0	0		1	0	0	0	0	0	0		0	0	0		0	0	0	0
0	0	0		0	0	0	0	0	0	0		0	0	0		0	0	0	0
0	0	0		0	0	0	0	0	0	0		0	0	0		0	0	0	0
xx	xx	xx		xx	xx	xx	xx	xx	xx	xx	xx	xx	xx	xx	xx	xx	xx	xx	xx
2	0	2		27	6	20	1	11	5	6		1	1	0		4	0	4	0
1	1	0		2	2	0	0	3	1	2		2	1	1		0	0	0	0
0	0	0		12	6	5	0	9	0	1		0	0	0		1	1	0	0
2	2	1		1	1	0	0	0	3	0		0	0	0		2	2	1	0
0	0	0		6	4	2	0	5	1	4		0	0	0		0	0	0	0
0	0	0		0	0	0	0	0	0	0		0	0	0		0	0	0	0
1	0	1		3	0	3	0	1	1	0		0	0	0		9	2	7	0
0	0	0		2	1	1	0	0	0	0		0	0	0		0	0	0	0
3	2	1		9	0	9	0	0	0	1		1	1	0		0	0	0	0
0	0	0		0	0	0	0	0	0	0		0	0	0		21	10	10	1
2	2	0		9	6	3	0	4	1	3		2	2	0		0	0	0	0
4	4	0		3	2	0	1	6	6	0		3	2	1		28	15	13	0
1	1	0		1	0	0	0	1	1	0		1	0	0		0	0	0	0
0	0	0		0	0	0	0	0	0	0		0	0	0		0	0	0	0
0	0	0		0	0	0	0	1	1	0		0	0	0		0	0	0	0
1	1	0		1	0	0	1	1	1	0		0	0	0		0	0	0	0
0	0	0		1	1	0	0	1	1	0		2	2	0		0	0	0	0
2	2	0		0	0	0	0	1	1	0		0	0	0		0	0	0	0
0	0	0		0	0	0	0	1	1	0		0	0	0		0	0	0	0
0	0	0		0	0	0	0	0	0	0		0	0	0		0	0	0	0
xx	xx	xx		xx	xx	xx	xx	xx	xx	xx	xx	xx	xx	xx	xx	xx	xx	xx	xx
0	0	0		0	0	0	0	0	0	0		0	0	0		28	15	13	0
xx	xx	xx		xx	xx	xx	xx	xx	xx	xx	xx	xx	xx	xx	xx	xx	xx	xx	xx
xx	xx	xx		xx	xx	xx	xx	xx	xx	xx	xx	xx	xx	xx	xx	xx	xx	xx	xx

Table 9. Prisoners received from court under sentence of death, by marital status at time of imprisonment, race, and State: calendar year 1975

Region and State	Total				Married				Divorced or separated				Widowed			Never married				Not reported		
	Total	White	Black	Other	Total	White	Black	Other	Total	White	Black	Other	Total	White	Black	Total	White	Black	Other	Total	White	Black
United States	285	127	155	3	96	56	39	1	44	25	18	1	5	4	1	138	41	96	1	2	1	1
Northeast	4	2	2	0	1	0	1	0	0	0	0	0	0	0	0	3	2	1	0	0	0	0
Maine	xx	xx	xx	xx	xx	xx	xx	xx	xx	xx	xx	xx	xx	xx	xx	xx	xx	xx	xx	xx	xx	xx
New Hampshire	0	0	0	0	0	0	0	0	0	0	0	0	0	0	0	0	0	0	0	0	0	0
Vermont	0	0	0	0	0	0	0	0	0	0	0	0	0	0	0	0	0	0	0	0	0	0
Massachusetts	1	1	0	0	0	0	0	0	0	0	0	0	0	0	0	1	1	0	0	0	0	0
Rhode Island	1	0	1	0	0	0	0	0	0	0	0	0	0	0	0	1	0	1	0	0	0	0
Connecticut	0	0	0	0	0	0	0	0	0	0	0	0	0	0	0	0	0	0	0	0	0	0
New York	1	0	1	0	1	0	0	0	0	0	0	0	0	0	0	0	0	0	0	0	0	0
New Jersey	0	0	0	0	0	0	0	0	0	0	0	0	0	0	0	0	0	0	0	0	0	0
Pennsylvania	1	1	0	0	0	0	0	0	0	0	0	0	0	0	0	1	1	0	0	0	0	0
North Central	38	16	22	0	9	7	2	0	7	3	4	0	0	0	0	22	6	16	0	0	0	0
Ohio	28	11	17	0	5	4	1	0	6	2	4	0	0	0	0	17	5	12	0	0	0	0
Indiana	6	4	2	0	4	3	1	0	1	1	0	0	0	0	0	1	0	1	0	0	0	0
Illinois	2	0	2	0	0	0	0	0	0	0	0	0	0	0	0	2	0	2	0	0	0	0
Michigan	xx	xx	xx	xx	xx	xx	xx	xx	xx	xx	xx	xx	xx	xx	xx	xx	xx	xx	xx	xx	xx	xx
Wisconsin	xx	xx	xx	xx	xx	xx	xx	xx	xx	xx	xx	xx	xx	xx	xx	xx	xx	xx	xx	xx	xx	xx
Minnesota	xx	xx	xx	xx	xx	xx	xx	xx	xx	xx	xx	xx	xx	xx	xx	xx	xx	xx	xx	xx	xx	xx
Iowa	xx	xx	xx	xx	xx	xx	xx	xx	xx	xx	xx	xx	xx	xx	xx	xx	xx	xx	xx	xx	xx	xx
Missouri	0	0	0	0	0	0	0	0	0	0	0	0	0	0	0	0	0	0	0	0	0	0
North Dakota	0	0	0	0	0	0	0	0	0	0	0	0	0	0	0	0	0	0	0	0	0	0
South Dakota	0	0	0	0	0	0	0	0	0	0	0	0	0	0	0	0	0	0	0	0	0	0
Nebraska	2	1	1	0	0	0	0	0	0	0	0	0	0	0	0	2	1	1	0	0	0	0
Kansas	0	0	0	0	0	0	0	0	0	0	0	0	0	0	0	0	0	0	0	0	0	0
South	197	79	116	2	70	40	30	0	26	14	11	1	1	1	0	98	23	74	1	2	1	1
Delaware	3	2	1	0	1	1	0	0	1	1	0	0	0	0	0	1	0	1	0	0	0	0
Maryland	0	0	0	0	0	0	0	0	0	0	0	0	0	0	0	0	0	0	0	0	0	0
District of Columbia	0	0	0	0	0	0	0	0	0	0	0	0	0	0	0	0	0	0	0	0	0	0

Table 9. Prisoners received from court under sentence of death, by marital status at time of imprisonment, race, and State: calendar year 1975—continued

Region and State	Total				Married				Divorced or separated				Widowed			Never married				Not reported		
	Total	White	Black	Other	Total	White	Black	Other	Total	White	Black	Other	Total	White	Black	Total	White	Black	Other	Total	White	Black
Virginia	0	0	0	0	0	0	0	0	0	0	0	0	0	0	0	0	0	0	0	0	0	0
West Virginia	xx	xx	xx	xx	xx	xx	xx	xx	xx	xx	xx	xx	xx	xx	xx	xx	xx	xx	xx	xx	xx	xx
North Carolina	51	13	37	1	17	7	10	0	8	4	3	1	1	1	0	25	1	24	0	0	0	0
South Carolina	13	8	5	0	7	4	3	0	0	0	0	0	0	0	0	6	4	2	0	0	0	0
Georgia	9	1	8	0	3	1	2	0	0	0	0	0	0	0	0	5	0	5	0	1	0	0
Florida	30	14	16	0	14	8	6	0	6	3	0	0	0	0	0	10	3	7	0	0	0	0
Kentucky	3	3	0	0	1	1	0	0	1	0	0	0	0	0	0	1	0	0	0	0	0	0
Tennessee	13	7	6	0	8	7	1	0	0	0	0	0	0	0	0	5	0	5	0	0	0	0
Alabama	0	0	0	0	0	0	0	0	0	0	0	0	0	0	0	0	0	0	0	0	0	0
Mississippi	14	3	11	0	2	0	2	0	2	1	0	0	0	0	0	9	1	8	0	1	1	0
Arkansas	3	2	1	0	1	1	0	0	0	0	0	0	0	0	0	2	1	1	0	0	0	0
Louisiana	18	3	15	0	4	1	3	0	3	1	2	0	0	0	0	11	1	10	0	0	0	0
Oklahoma	21	10	10	1	5	3	2	0	2	0	2	0	0	0	0	14	7	6	1	0	0	0
Texas	19	13	6	0	7	6	1	0	3	3	0	0	0	0	0	9	4	5	0	0	0	0
West	46	30	15	1	16	9	6	1	11	8	3	0	4	3	1	15	10	5	0	0	0	0
Montana	4	3	1	0	2	2	0	0	1	1	0	0	0	0	0	1	0	1	0	0	0	0
Idaho	0	0	0	0	0	0	0	0	0	0	0	0	0	0	0	0	0	0	0	0	0	0
Wyoming	0	0	0	0	0	0	0	0	0	0	0	0	0	0	0	0	0	0	0	0	0	0
Colorado	1	1	0	0	1	1	0	0	0	0	0	0	0	0	0	0	0	0	0	0	0	0
New Mexico	4	3	0	1	2	1	0	1	1	1	0	0	1	1	0	1	1	0	0	0	0	0
Arizona	5	4	1	0	1	1	0	0	3	2	1	0	0	0	0	1	1	0	0	0	0	0
Utah	3	3	0	0	1	1	0	0	1	1	0	0	0	0	0	1	1	0	0	0	0	0
Nevada	1	1	0	0	0	0	0	0	0	0	0	0	0	0	0	0	0	0	0	0	0	0
Washington	0	0	0	0	0	0	0	0	0	0	0	0	0	0	0	0	0	0	0	0	0	0
Oregon	xx	xx	xx	xx	xx	xx	xx	xx	xx	xx	xx	xx	xx	xx	xx	xx	xx	xx	xx	xx	xx	xx
California	28	15	13	0	9	3	6	0	5	3	2	0	3	2	1	11	7	4	0	0	0	0
Alaska	xx	xx	xx	xx	xx	xx	xx	xx	xx	xx	xx	xx	xx	xx	xx	xx	xx	xx	xx	xx	xx	xx
Hawaii	xx	xx	xx	xx	xx	xx	xx	xx	xx	xx	xx	xx	xx	xx	xx	xx	xx	xx	xx	xx	xx	xx

NOTE: xx signifies that the death penalty was illegal during the entire year.
*See Table 2, footnote 1.

Table 10. Prisoners received from court under sentence of death, by legal

Region and State	Total				Not under sentence				On probation		
	Total	White	Black	Other	Total	White	Black	Other	Total	White	Black
United States	285	127	155	3	173	68	104	1	0	0	0
Northeast	4	2	2	0	3	2	1	0	0	0	0
Maine	xx	xx	xx	xx	xx	xx	xx	xx	xx	xx	xx
New Hampshire	0	0	0	0	0	0	0	0	0	0	0
Vermont	0	0	0	0	0	0	0	0	0	0	0
Massachusetts	1	1	0	0	1	1	0	0	0	0	0
Rhode Island	1	0	1	0	0	0	0	0	00	0	0
Connecticut	0	0	0	0	0	0	0	0	0	0	0
New York	1	0	1	0	1	0	1	0	0	0	0
New Jersey ²	0	0	0	0	0	0	0	0	0	0	0
Pennsylvania	1	1	0	0	1	1	0	0	0	0	0
North Central	38	16	22	0	26	9	17	0	0	0	0
Ohio	28	11	17	0	20	7	13	0	0	0	0
Indiana	6	6	0	0	2	1	1	0	0	0	0
Illinois	2	0	2	0	2	0	2	0	0	0	0
Michigan	xx	xx	xx	xx	xx	xx	xx	xx	xx	xx	xx
Wisconsin	xx	xx	xx	xx	xx	xx	xx	xx	xx	xx	xx
Minnesota	xx	xx	xx	xx	xx	xx	xx	xx	xx	xx	xx
Iowa	xx	xx	xx	xx	xx	xx	xx	xx	xx	xx	xx
Missouri	0	0	0	0	0	0	0	0	0	0	0
North Dakota	0	0	0	0	0	0	0	0	0	0	0
South Dakota	0	0	0	0	0	0	0	0	0	0	0
Nebraska	2	1	1	0	2	1	1	0	0	0	0
Kansas	0	0	0	0	0	0	0	0	0	0	0
South	197	79	116	2	127	43	84	0	0	0	0
Delaware	3	2	1	0	3	2	1	0	0	0	0
Maryland	0	0	0	0	0	0	0	0	0	0	0
District of Columbia	0	0	0	0	0	0	0	0	0	0	0
Virginia	0	0	0	0	0	0	0	0	0	0	0
West Virginia	xx	xx	xx	xx	xx	xx	xx	xx	xx	xx	xx
North Carolina	51	13	37	1	44	12	32	0	0	0	0
South Carolina	13	8	5	0	1	0	1	0	0	0	0
Georgia	9	1	8	0	5	1	4	0	0	0	0
Florida	30	14	16	0	28	13	15	0	0	0	0
Kentucky	3	3	0	0	0	0	0	0	0	0	0
Tennessee	13	7	6	0	12	6	6	0	0	0	0
Alabama	0	0	0	0	0	0	0	0	0	0	0
Mississippi	14	3	11	0	14	3	11	0	0	0	0
Arkansas	3	2	1	0	2	2	0	0	0	0	0
Louisiana	18	3	15	0	17	3	14	0	0	0	0
Oklahoma	21	10	10	1	1	1	0	0	0	0	0
Texas	19	13	6	0	0	0	0	0	0	0	0
West	46	30	15	1	17	14	2	1	0	0	0
Montana	4	3	1	0	4	3	1	0	0	0	0
Idaho	0	0	0	0	0	0	0	0	0	0	0
Wyoming	0	0	0	0	0	0	0	0	0	0	0
Colorado	1	1	0	0	1	1	0	0	0	0	0
New Mexico	4	3	0	1	4	3	0	1	0	0	0
Arizona	5	4	1	0	5	4	1	0	0	0	0
Utah	3	3	0	0	3	3	0	0	0	0	0
Nevada	1	1	0	0	0	0	0	0	0	0	0
Washington	0	0	0	0	0	0	0	0	0	0	0
Oregon	xx	xx	xx	xx	xx	xx	xx	xx	xx	xx	xx
California	28	15	13	0	0	0	0	0	0	0	0
Alaska	xx	xx	xx	xx	xx	xx	xx	xx	xx	xx	xx
Hawaii	xx	xx	xx	xx	xx	xx	xx	xx	xx	xx	xx

NOTE: xx signifies that the death penalty was illegal during the

¹One prisoner arrested on a murder charge in North Carolina was appealing his conviction for manslaughter at the time he was arrested.

²See Table 2, footnote 1.

status at time of arrest, race, and State: calendar year 1975

On parole				In prison			Escaped from prison			On appeal ¹				Not reported			
Total	White	Black		Total	White	Black	Total	White	Black	Total	White	Black	Other	Total	White	Black	Other
25	13	12		7	4	3	3	0	3	1	0	0	1	76	42	33	1
0	0	0		0	0	0	1	0	1	0	0	0	0	0	0	0	0
xx	xx	xx		xx	xx	xx	xx	xx	xx	xx	xx	xx	xx	xx	xx	xx	xx
0	0	0		0	0	0	0	0	0	0	0	0	0	0	0	0	0
0	0	0		0	0	0	0	0	0	0	0	0	0	0	0	0	0
0	0	0		0	0	0	0	0	0	0	0	0	0	0	0	0	0
0	0	0		0	0	0	1	0	1	0	0	0	0	0	0	0	0
0	0	0		0	0	0	0	0	0	0	0	0	0	0	0	0	0
0	0	0		0	0	0	0	0	0	0	0	0	0	0	0	0	0
0	0	0		0	0	0	0	0	0	0	0	0	0	0	0	0	0
0	0	0		0	0	0	0	0	0	0	0	0	0	0	0	0	0
0	0	0		0	0	0	0	0	0	0	0	0	0	0	0	0	0
10	6	4		0	0	0	1	0	1	0	0	0	0	1	1	0	0
7	4	3		0	0	0	1	0	1	0	0	0	0	0	0	0	0
3	2	1		0	0	0	0	0	0	0	0	0	0	1	1	0	0
0	0	0		0	0	0	0	0	0	0	0	0	0	0	0	0	0
xx	xx	xx		xx	xx	xx	xx	xx	xx	xx	xx	xx	xx	xx	xx	xx	xx
xx	xx	xx		xx	xx	xx	xx	xx	xx	xx	xx	xx	xx	xx	xx	xx	xx
xx	xx	xx		xx	xx	xx	xx	xx	xx	xx	xx	xx	xx	xx	xx	xx	xx
xx	xx	xx		xx	xx	xx	xx	xx	xx	xx	xx	xx	xx	xx	xx	xx	xx
0	0	0		0	0	0	0	0	0	0	0	0	0	0	0	0	0
0	0	0		0	0	0	0	0	0	0	0	0	0	0	0	0	0
0	0	0		0	0	0	0	0	0	0	0	0	0	0	0	0	0
0	0	0		0	0	0	0	0	0	0	0	0	0	0	0	0	0
0	0	0		0	0	0	0	0	0	0	0	0	0	0	0	0	0
15	7	8		6	3	3	1	0	1	1	0	0	1	47	26	20	1
0	0	0		0	0	0	0	0	0	0	0	0	0	0	0	0	0
0	0	0		0	0	0	0	0	0	0	0	0	0	0	0	0	0
0	0	0		0	0	0	0	0	0	0	0	0	0	0	0	0	0
xx	xx	xx		xx	xx	xx	xx	xx	xx	xx	xx	xx	xx	xx	xx	xx	xx
4	0	4		2	1	1	0	0	0	1	0	0	1	0	0	0	0
2	2	0		0	0	0	0	0	0	0	0	0	0	10	6	4	0
2	1	2		0	0	0	1	0	1	0	0	0	0	0	0	0	0
2	1	1		0	0	0	0	0	0	0	0	0	0	0	0	0	0
1	0	0		0	0	0	0	0	0	1	1	0	0	0	0	0	0
0	0	0		0	0	0	0	0	0	0	0	0	0	0	0	0	0
0	0	0		0	0	0	0	0	0	0	0	0	0	0	0	0	0
1	0	1		0	0	0	0	0	0	0	0	0	0	0	0	0	0
0	0	0		1	0	1	0	0	0	0	0	0	0	0	0	0	0
0	0	0		0	0	0	0	0	0	0	0	0	0	0	0	0	0
1	1	0		2	2	0	0	0	0	0	0	0	0	20	9	10	1
0	0	0		0	0	0	0	0	0	0	0	0	0	16	10	6	0
0	0	0		1	1	0	0	0	0	0	0	0	0	28	15	13	0
0	0	0		0	0	0	0	0	0	0	0	0	0	0	0	0	0
0	0	0		0	0	0	0	0	0	0	0	0	0	0	0	0	0
0	0	0		0	0	0	0	0	0	0	0	0	0	0	0	0	0
0	0	0		0	0	0	0	0	0	0	0	0	0	0	0	0	0
0	0	0		0	0	0	0	0	0	0	0	0	0	0	0	0	0
0	0	0		0	0	0	0	0	0	0	0	0	0	0	0	0	0
0	0	0		1	1	0	0	0	0	0	0	0	0	0	0	0	0
0	0	0		0	0	0	0	0	0	0	0	0	0	0	0	0	0
xx	xx	xx		xx	xx	xx	xx	xx	xx	xx	xx	xx	xx	xx	xx	xx	xx
0	0	0		0	0	0	0	0	0	0	0	0	0	28	15	13	0
xx	xx	xx		xx	xx	xx	xx	xx	xx	xx	xx	xx	xx	xx	xx	xx	xx
xx	xx	xx		xx	xx	xx	xx	xx	xx	xx	xx	xx	xx	xx	xx	xx	xx

Table 11. Prisoners disposed of by means other than execution, by race, offense, and State, and by method of disposition, offense, and State: calendar year 1975¹

Region and State	Race												Method of disposition				Died	
	Total				White				Black				Other				Murder	Rape
	Total	Murder ²	Rape	Other ³	Total	Murder	Rape	Other	Total	Murder	Rape	Other	Total	Murder	Removed from under sentence of death ¹	Other ³		
United States	67	54	10	3	31	26	3	2	35	27	7	1	1	1	52	10	3	2
Northeast	11	11	0	0	4	4	0	0	7	7	0	0	0	0	11	0	0	0
Maine	xx	xx	xx	xx	xx	xx	xx	xx	xx	xx	xx	xx	xx	xx	xx	xx	xx	xx
New Hampshire	0	0	0	0	0	0	0	0	0	0	0	0	0	0	0	0	0	0
Vermont	0	0	0	0	0	0	0	0	0	0	0	0	0	0	0	0	0	0
Massachusetts	10	10	0	0	3	3	0	0	7	7	0	0	0	0	10	0	0	0
Rhode Island	0	0	0	0	0	0	0	0	0	0	0	0	0	0	0	0	0	0
Connecticut	0	0	0	0	0	0	0	0	0	0	0	0	0	0	0	0	0	0
New York	0	0	0	0	0	0	0	0	0	0	0	0	0	0	0	0	0	0
New Jersey ⁴	0	0	0	0	0	0	0	0	0	0	0	0	0	0	0	0	0	0
Pennsylvania	1	1	0	0	1	1	0	0	0	0	0	0	0	0	1	0	0	0
North Central	5	5	0	0	3	3	0	0	2	2	0	0	0	0	5	0	0	0
Ohio	0	0	0	0	0	0	0	0	0	0	0	0	0	0	0	0	0	0
Indiana	1	1	0	0	1	1	0	0	0	0	0	0	0	0	1	0	0	0
Illinois	3	3	0	0	2	2	0	0	1	1	0	0	0	0	3	0	0	0
Michigan	xx	xx	xx	xx	xx	xx	xx	xx	xx	xx	xx	xx	xx	xx	xx	xx	xx	xx
Wisconsin	xx	xx	xx	xx	xx	xx	xx	xx	xx	xx	xx	xx	xx	xx	xx	xx	xx	xx
Minnesota	xx	xx	xx	xx	xx	xx	xx	xx	xx	xx	xx	xx	xx	xx	xx	xx	xx	xx
Iowa	xx	xx	xx	xx	xx	xx	xx	xx	xx	xx	xx	xx	xx	xx	xx	xx	xx	xx
Missouri	1	1	0	0	0	0	0	0	1	1	0	0	0	0	1	0	0	0
North Dakota	0	0	0	0	0	0	0	0	0	0	0	0	0	0	0	0	0	0
South Dakota	0	0	0	0	0	0	0	0	0	0	0	0	0	0	0	0	0	0
Nebraska	0	0	0	0	0	0	0	0	0	0	0	0	0	0	0	0	0	0
Kansas	0	0	0	0	0	0	0	0	0	0	0	0	0	0	0	0	0	0
South	34	22	10	2	11	7	3	1	22	14	7	1	1	1	21	10	2	1
Delaware	0	0	0	0	0	0	0	0	0	0	0	0	0	0	0	0	0	0
Maryland	1	1	0	0	0	0	0	0	1	1	0	0	0	0	1	0	0	0
District of Columbia	0	0	0	0	0	0	0	0	0	0	0	0	0	0	0	0	0	0
Virginia	1	1	0	0	1	1	0	0	0	0	0	0	0	0	1	0	0	0

Table 11. Prisoners disposed of by means other than execution, by race, offense, and State, and by method of disposition, offense, and State: calendar year 1975—continued

Region and State	Race												Method of disposition				Died	
	Total				White				Black				Other				Murder	Rape
	Total	Murder ²	Rape	Other ³	Total	Murder	Rape	Other	Total	Murder	Rape	Other	Total	Murder	Removed from under sentence of death ¹	Other ³		
West Virginia	xx	xx	xx	xx	xx	xx	xx	xx	xx	xx	xx	xx	xx	xx	xx	xx	xx	xx
North Carolina	14	6	6	2	4	1	2	1	9	4	4	1	1	1	6	2	0	0
South Carolina	0	0	0	0	0	0	0	0	0	0	0	0	0	0	0	0	0	0
Georgia	5	4	1	0	3	2	1	0	2	2	0	0	0	0	4	1	0	0
Florida	6	4	2	0	1	1	0	0	5	3	2	0	0	0	4	1	0	0
Kentucky	2	2	0	0	1	1	0	0	1	1	0	0	0	0	2	0	0	0
Tennessee	0	0	0	0	0	0	0	0	0	0	0	0	0	0	0	0	0	0
Alabama	0	0	0	0	0	0	0	0	0	0	0	0	0	0	0	0	0	0
Mississippi	1	1	0	0	0	0	0	0	1	1	0	0	0	0	1	0	0	0
Arkansas	0	0	0	0	0	0	0	0	0	0	0	0	0	0	0	0	0	0
Louisiana	3	2	1	0	0	0	0	0	3	2	1	0	0	0	2	1	0	0
Oklahoma	1	1	0	0	1	1	0	0	0	0	0	0	0	0	1	0	0	0
Texas	0	0	0	0	0	0	0	0	0	0	0	0	0	0	0	0	0	0
West	17	16	0	1	13	12	0	1	4	4	0	0	0	0	15	0	1	0
Montana	0	0	0	0	0	0	0	0	0	0	0	0	0	0	0	0	0	0
Idaho	0	0	0	0	0	0	0	0	0	0	0	0	0	0	0	0	0	0
Wyoming	0	0	0	0	0	0	0	0	0	0	0	0	0	0	0	0	0	0
Colorado	0	0	0	0	0	0	0	0	0	0	0	0	0	0	0	0	0	0
New Mexico	4	4	0	0	4	4	0	0	0	0	0	0	0	0	4	0	0	0
Arizona	1	1	0	0	1	1	0	0	0	0	0	0	0	0	1	0	0	0
Utah	1	1	0	0	1	1	0	0	0	0	0	0	0	0	1	0	0	0
Nevada	0	0	0	0	0	0	0	0	0	0	0	0	0	0	0	0	0	0
Washington	0	0	0	0	0	0	0	0	0	0	0	0	0	0	0	0	0	0
Oregon	xx	xx	xx	xx	xx	xx	xx	xx	xx	xx	xx	xx	xx	xx	xx	xx	xx	xx
California	11	10	0	1	7	6	0	1	4	4	0	0	0	0	9	1	1	0
Alaska	xx	xx	xx	xx	xx	xx	xx	xx	xx	xx	xx	xx	xx	xx	xx	xx	xx	xx
Hawaii	xx	xx	xx	xx	xx	xx	xx	xx	xx	xx	xx	xx	xx	xx	xx	xx	xx	xx

NOTE: xx signifies that the death penalty was illegal during the entire year.
¹Includes commutations, resentencings, reversals, grants for new trials, and other forms of release from the death sentence.
²Includes one prisoner sentenced for murder and arson in North Carolina.
³Includes one assault by life prisoner in California, one arson in North Carolina, and one burglary in North Carolina.
⁴See Table 2, footnote 1.

Table 12. Prisoners disposed of by means other than execution, by age at disposition and State, and by time elapsed from sentencing to disposition and State: calendar year 1975

(Includes commutations, resentencings, reversals, grants for new trials, other forms of release from the death sentence, and deaths other than executions)

Region and State	Total dispositions	Age at time of disposition						Elapsed time (in months)					
		Under 20	20-24	25-29	30-34	35-39	40 and over	Under 12	12-23	24-35	36-47	48-71	Over 71
United States	67	0	16	16	12	14	9	5	23	4	5	9	21
Northeast	11	0	3	1	2	3	2	0	3	1	1	0	6
Maine	xx	xx	xx	xx	xx	xx	xx	xx	xx	xx	xx	xx	xx
New Hampshire	0	0	0	0	0	0	0	0	0	0	0	0	0
Vermont	0	0	0	0	0	0	0	0	0	0	0	0	0
Massachusetts	10	0	0	0	0	0	0	0	0	0	0	0	0
Rhode Island	0	0	0	0	0	0	0	0	0	0	0	0	0
Connecticut	0	0	0	0	0	0	0	0	0	0	0	0	0
New York	0	0	0	0	0	0	0	0	0	0	0	0	0
New Jersey ¹	0	0	0	0	0	0	0	0	0	0	0	0	0
Pennsylvania	1	0	0	0	0	1	0	0	0	0	0	1	3
North Central	5	0	0	1	1	3	0	0	0	0	0	0	1
Ohio	0	0	0	0	0	1	0	0	0	0	0	0	2
Indiana	1	0	0	0	0	2	0	0	0	0	0	0	xx
Illinois	3	0	0	1	0	xx	xx	xx	xx	xx	xx	xx	xx
Michigan	xx	xx	xx	xx	xx	xx	xx	xx	xx	xx	xx	xx	xx
Wisconsin	xx	xx	xx	xx	xx	xx	xx	xx	xx	xx	xx	xx	xx
Minnesota	xx	xx	xx	xx	xx	xx	xx	xx	xx	xx	xx	xx	xx
Iowa	xx	xx	xx	xx	xx	xx	xx	xx	xx	xx	xx	xx	xx
Missouri	1	0	0	0	0	0	0	0	0	0	0	0	0
North Dakota	0	0	0	0	0	0	0	0	0	0	0	0	0
South Dakota	0	0	0	0	0	0	0	0	0	0	0	0	0
Nebraska	0	0	0	0	0	0	0	0	0	0	0	0	0
Kansas	0	0	0	0	0	0	0	0	0	0	0	0	0
South	34	0	10	8	4	7	5	4	15	1	1	4	9
Delaware	0	0	0	0	0	0	0	0	0	0	0	0	0
Maryland	1	0	0	0	0	0	1	0	0	0	0	0	0
District of Columbia	0	0	0	0	0	0	0	0	0	0	0	0	0
Virginia	1	0	0	0	1	0	0	0	0	0	0	1	0

Table 12. Prisoners disposed of by means other than execution, by age at disposition and State, and by time elapsed from sentencing to disposition and State: calendar year 1975—continued

(Includes commutations, resentencings, reversals, grants for new trials, other forms of release from the death sentence, and deaths other than executions)

Region and State	Total dispositions	Age at time of disposition						Elapsed time (in months)					
		Under 20	20-24	25-29	30-34	35-39	40 and over	Under 12	12-23	24-35	36-47	48-71	Over 71
West Virginia	xx	xx	xx	xx	xx	xx	xx	xx	xx	xx	xx	xx	xx
North Carolina	14	0	7	4	0	2	1	2	11	1	0	0	0
South Carolina	0	0	0	0	0	0	0	0	0	0	0	0	0
Georgia	5	0	0	0	1	1	3	0	0	0	0	0	0
Florida	6	0	2	1	1	2	0	1	3	0	0	0	2
Kentucky	2	0	0	1	0	1	0	0	0	0	0	1	1
Tennessee	0	0	0	0	0	0	0	0	0	0	0	0	0
Alabama	0	0	0	0	0	0	0	0	0	0	0	0	0
Mississippi	1	0	0	1	0	0	0	0	1	0	0	0	0
Arkansas	0	0	0	0	0	0	0	0	0	0	0	0	0
Louisiana	3	0	1	0	1	1	0	0	0	0	1	1	1
Oklahoma	1	0	1	0	0	0	0	1	0	0	0	0	0
Texas	0	0	0	0	0	0	0	0	0	0	0	0	0
West	17	0	3	6	5	1	2	1	5	1	3	4	3
Montana	0	0	0	0	0	0	0	0	0	0	0	0	0
Idaho	0	0	0	0	0	0	0	0	0	0	0	0	0
Wyoming	0	0	0	0	0	0	0	0	0	0	0	0	0
Colorado	0	0	0	0	0	0	0	0	0	0	0	0	0
New Mexico	4	0	1	1	2	0	0	0	4	0	0	0	0
Arizona	1	0	1	0	0	0	0	0	1	0	0	0	0
Utah	1	0	0	0	1	0	0	0	0	1	0	0	0
Nevada	0	0	0	0	0	0	0	0	0	0	0	0	0
Washington	0	0	0	0	0	0	0	0	0	0	0	0	0
Oregon	xx	xx	xx	xx	xx	xx	xx	xx	xx	xx	xx	xx	xx
California	11	0	1	5	2	1	2	1	0	0	3	4	3
Alaska	xx	xx	xx	xx	xx	xx	xx	xx	xx	xx	xx	xx	xx
Hawaii	xx	xx	xx	xx	xx	xx	xx	xx	xx	xx	xx	xx	xx

NOTE: xx signifies that the death penalty was illegal during the entire year.
¹See Table 2, footnote 1.

Table 13. Prisoners disposed of by means other than execution, by highest grade of schooling completed, race, and State: calendar year 1975

(Includes commutations, resentencings, reversals, grants for new trials, other forms of release from the death sentence, and deaths other than executions)																										
Region and State	Total				6th grade or less			7th grade			8th grade			9th-11th grades			12th grade			Any college			Not reported			
	Total	White	Black	Other	Total	White	Black	Total	White	Black	Total	White	Black	Other	Total	White	Black	Total	White	Black	Total	White	Black			
United States	67	31	35	1	8	4	4	5	5	0	8	1	6	1	22	10	12	9	2	7	3	1	2	12	8	4
Northeast	11	4	7	0	2	2	0	0	0	0	1	0	1	0	5	2	3	2	0	2	1	0	1	0	0	0
Maine	xx	xx	xx	xx	xx	xx	xx	xx	xx	xx	xx	xx	xx	xx	xx	xx	xx	xx	xx	xx	xx	xx	xx	xx	xx	xx
New Hampshire	0	0	0	0	0	0	0	0	0	0	0	0	0	0	0	0	0	0	0	0	0	0	0	0	0	0
Vermont	0	0	0	0	0	0	0	0	0	0	0	0	0	0	0	0	0	0	0	0	0	0	0	0	0	0
Massachusetts	10	3	7	0	2	2	0	0	0	0	1	0	1	0	4	1	3	2	0	2	1	0	1	0	0	0
Rhode Island	0	0	0	0	0	0	0	0	0	0	0	0	0	0	0	0	0	0	0	0	0	0	0	0	0	0
Connecticut	0	0	0	0	0	0	0	0	0	0	0	0	0	0	0	0	0	0	0	0	0	0	0	0	0	0
New York	0	0	0	0	0	0	0	0	0	0	0	0	0	0	0	0	0	0	0	0	0	0	0	0	0	0
New Jersey ¹	0	0	0	0	0	0	0	0	0	0	0	0	0	0	0	0	0	0	0	0	0	0	0	0	0	0
Pennsylvania	1	1	0	0	0	0	0	0	0	0	0	0	0	0	1	1	0	0	0	0	0	0	0	0	0	0
North Central	5	3	2	0	1	0	1	0	0	0	1	1	0	0	2	2	0	1	0	1	0	0	0	0	0	0
Ohio	0	0	0	0	0	0	0	0	0	0	0	0	0	0	0	0	0	0	0	0	0	0	0	0	0	0
Indiana	1	1	0	0	0	0	0	0	0	0	0	0	0	0	1	1	0	0	0	0	0	0	0	0	0	0
Illinois	3	2	1	0	1	0	1	0	0	0	1	1	0	0	1	1	0	0	0	0	0	0	0	0	0	0
Michigan	xx	xx	xx	xx	xx	xx	xx	xx	xx	xx	xx	xx	xx	xx	xx	xx	xx	xx	xx	xx	xx	xx	xx	xx	xx	xx
Wisconsin	xx	xx	xx	xx	xx	xx	xx	xx	xx	xx	xx	xx	xx	xx	xx	xx	xx	xx	xx	xx	xx	xx	xx	xx	xx	xx
Minnesota	xx	xx	xx	xx	xx	xx	xx	xx	xx	xx	xx	xx	xx	xx	xx	xx	xx	xx	xx	xx	xx	xx	xx	xx	xx	xx
Iowa	xx	xx	xx	xx	xx	xx	xx	xx	xx	xx	xx	xx	xx	xx	xx	xx	xx	xx	xx	xx	xx	xx	xx	xx	xx	xx
Missouri	1	0	1	0	0	0	0	0	0	0	0	0	0	0	0	0	1	0	1	0	0	0	0	0	0	
North Dakota	0	0	0	0	0	0	0	0	0	0	0	0	0	0	0	0	0	0	0	0	0	0	0	0	0	
South Dakota	0	0	0	0	0	0	0	0	0	0	0	0	0	0	0	0	0	0	0	0	0	0	0	0	0	0
Nebraska	0	0	0	0	0	0	0	0	0	0	0	0	0	0	0	0	0	0	0	0	0	0	0	0	0	0
Kansas	0	0	0	0	0	0	0	0	0	0	0	0	0	0	0	0	0	0	0	0	0	0	0	0	0	0
South	34	11	22	1	4	1	3	4	4	0	6	0	5	1	13	4	9	5	1	4	1	0	1	1	1	0
Delaware	0	0	0	0	0	0	0	0	0	0	0	0	0	0	0	0	0	0	0	0	0	0	0	0	0	
Maryland	1	0	1	0	0	0	0	0	0	0	1	0	1	0	0	0	0	0	0	0	0	0	0	0	0	
District of Columbia	0	0	0	0	0	0	0	0	0	0	0	0	0	0	0	0	0	0	0	0	0	0	0	0	0	
Virginia	1	1	0	0	0	0	0	0	0	0	0	0	0	0	1	1	0	0	0	0	0	0	0	0	0	

Table 13. Prisoners disposed of by means other than execution, by highest grade of schooling completed, race, and State: calendar year 1975—continued

(Includes commutations, resentencings, reversals, grants for new trials, other forms of release from the death sentence, and deaths other than executions)																								
Region and State	Total			6th grade or less			7th grade			8th grade			9th-11th grades			12th grade			Any college			Not reported		
	Total	White	Black	Other	Total	White	Black	Other	Total	White	Black	Other	Total	White	Black	Other	Total	White	Black	Total	White	Black	Other	
West Virginia	xx	xx	xx	xx	xx	xx	xx	xx	xx	xx	xx	xx	xx	xx	xx	xx	xx	xx	xx	xx	xx	xx	xx	
North Carolina	14	4	9	1	0	0	0	0	3	3	0	0	3	0	2	1	3	0	3	5	1	4	0	
South Carolina	0	0	0	0	0	0	0	0	0	0	0	0	0	0	0	0	0	0	0	0	0	0		
Georgia	5	3	2	0	2	1	1	1	1	1	0	0	0	0	2	1	2	1	1	0	0	0		
Florida	6	1	5	0	0	0	0	0	0	0	0	0	2	0	2	0	4	1	1	0	0	0		
Kentucky	2	1	1	0	0	0	0	0	0	0	0	0	0	0	0	1	1	0	0	0	0	0		
Tennessee	0	0	0	0	0	0	0	0	0	0	0	0	0	0	0	0	0	0	0	0	0	0		
Alabama	0	0	0	0	0	0	0	0	0	0	0	0	0	0	0	0	0	0	0	0	0	0		
Mississippi	1	0	1	0	0	0	0	0	0	0	0	0	0	0	0	1	0	1	0	0	0	0		
Arkansas	0	0	0	0	0	0	0	0	0	0	0	0	0	0	0	0	0	0	0	0	0	0		
Louisiana	3	0	3	0	2	0	2	0	0	0	0	0	0	0	1	0	1	0	0	0	0	0		
Oklahoma	1	1	0	0	0	0	0	0	0	0	0	0	0	0	0	0	0	0	0	0	0	1		
Texas	0	0	0	0	0	0	0	0	0	0	0	0	0	0	0	0	0	0	0	0	0	0		
West	17	13	4	0	1	1	0	0	1	1	0	0	0	0	2	2	0	1	1	0	1	1		
Montana	0	0	0	0	0	0	0	0	0	0	0	0	0	0	0	0	0	0	0	0	0	0		
Idaho	0	0	0	0	0	0	0	0	0	0	0	0	0	0	0	0	0	0	0	0	0	0		
Wyoming	0	0	0	0	0	0	0	0	0	0	0	0	0	0	0	0	0	0	0	0	0	0		
Colorado	0	0	0	0	0	0	0	0	0	0	0	0	0	0	0	0	0	0	0	0	0	0		
New Mexico	4	4	0	0	0	0	0	0	0	0	0	0	0	0	0	0	0	0	0	0	0	0		
Arizona	1	1	0	0	0	0	0	0	0	0	0	0	0	0	0	0	0	0	0	0	0	0		
Utah	1	1	0	0	1	1	0	0	0	0	0	0	0	0	0	0	0	0	0	0	0	0		
Nevada	0	0	0	0	0	0	0	0	0	0	0	0	0	0	0	0	0	0	0	0	0	0		
Washington	xx	xx	xx	xx	xx	xx	xx	xx	xx	xx	xx	xx	xx	xx	xx	xx	xx	xx	xx	xx	xx	xx		
Oregon	xx	xx	xx	xx	xx	xx	xx	xx	xx	xx	xx	xx	xx	xx	xx	xx	xx	xx	xx	xx	xx	xx		
California	11	7	4	0	0	0	0	0	0	0	0	0	0	0	0	0	0	0	0	0	0			
Alaska	xx	xx	xx	xx	xx	xx	xx	xx	xx	xx	xx	xx	xx	xx	xx	xx	xx	xx	xx	xx	xx	xx		
Hawaii	xx	xx	xx	xx	xx	xx	xx	xx	xx	xx	xx	xx	xx	xx	xx	xx	xx	xx	xx	xx	xx	xx		

NOTE: xx signifies that the death penalty was illegal during the entire year.
¹See Table 2, footnote 1.

Table 14. Prisoners disposed of by means other than execution, by marital status at time of imprisonment, race, and State: calendar year 1975

(Includes commutations, resentencings, reversals, grants for new trials, other forms of release from the death sentence, and deaths other than executions)

Region and State	Total				Married			Divorced or separated			Widowed			Never married				Not reported		
	Total	White	Black	Other	Total	White	Black	Total	White	Black	Total	White	Black	Total	White	Black	Other	Total	White	Black
United States	67	31	35	1	25	9	16	9	5	4	1	1	0	31	16	14	1	1	0	1
Northeast	11	4	7	0	2	1	1	1	0	1	0	0	0	8	3	5	0	0	0	0
Maine	xx	xx	xx	xx	xx	xx	xx	xx	xx	xx	xx	xx	xx	xx	xx	xx	xx	xx	xx	xx
New Hampshire	0	0	0	0	0	0	0	0	0	0	0	0	0	0	0	0	0	0	0	0
Vermont	0	0	0	0	0	0	0	0	0	0	0	0	0	0	0	0	0	0	0	0
Massachusetts	10	3	7	0	2	1	1	1	0	0	0	0	0	0	0	0	0	0	0	0
Rhode Island	0	0	0	0	0	0	0	0	0	0	0	0	0	0	0	0	0	0	0	0
Connecticut	0	0	0	0	0	0	0	0	0	0	0	0	0	0	0	0	0	0	0	0
New York	0	0	0	0	0	0	0	0	0	0	0	0	0	0	0	0	0	0	0	0
New Jersey ¹	0	0	0	0	0	0	0	0	0	0	0	0	0	0	0	0	0	0	0	0
Pennsylvania	1	1	0	0	0	0	0	0	0	0	0	0	0	0	0	0	0	0	0	0
North Central	5	3	2	0	3	2	1	1	1	0	0	0	0	1	0	1	0	0	0	0
Ohio	0	0	0	0	1	1	0	0	0	0	0	0	0	0	0	0	0	0	0	0
Indiana	1	1	0	0	1	1	0	0	0	0	0	0	0	0	0	0	0	0	0	0
Illinois	3	2	1	0	1	1	0	0	0	0	0	0	0	0	0	0	0	0	0	0
Michigan	xx	xx	xx	xx	xx	xx	xx	xx	xx	xx	xx	xx	xx	xx	xx	xx	xx	xx	xx	xx
Wisconsin	xx	xx	xx	xx	xx	xx	xx	xx	xx	xx	xx	xx	xx	xx	xx	xx	xx	xx	xx	xx
Minnesota	xx	xx	xx	xx	xx	xx	xx	xx	xx	xx	xx	xx	xx	xx	xx	xx	xx	xx	xx	xx
Iowa	xx	xx	xx	xx	xx	xx	xx	xx	xx	xx	xx	xx	xx	xx	xx	xx	xx	xx	xx	xx
Missouri	1	0	1	0	1	0	1	0	0	0	0	0	0	0	0	0	0	0	0	0
North Dakota	0	0	0	0	0	0	0	0	0	0	0	0	0	0	0	0	0	0	0	0
South Dakota	0	0	0	0	0	0	0	0	0	0	0	0	0	0	0	0	0	0	0	0
Nebraska	0	0	0	0	0	0	0	0	0	0	0	0	0	0	0	0	0	0	0	0
Kansas	0	0	0	0	0	0	0	0	0	0	0	0	0	0	0	0	0	0	0	0
South	34	11	22	1	19	5	14	4	1	3	0	0	0	11	5	5	1	0	0	0
Delaware	0	0	0	0	0	0	0	0	0	0	0	0	0	0	0	0	0	0	0	0
Maryland	1	0	1	0	0	0	0	1	0	1	0	0	0	0	0	0	0	0	0	0
District of Columbia	0	0	0	0	0	0	0	0	0	0	0	0	0	0	0	0	0	0	0	0

Table 14. Prisoners disposed of by means other than execution, by marital status at time of imprisonment, race, and State: calendar year 1975—continued

(Includes commutations, resentencings, reversals, grants for new trials, other forms of release from the death sentence, and deaths other than executions)

Region and State	Total				Married			Divorced or separated			Widowed			Never married				Not reported		
	Total	White	Black	Other	Total	White	Black	Total	White	Black	Total	White	Black	Total	White	Black	Other	Total	White	Black
Virginia	1	1	0	0	1	1	0	0	0	0	0	0	0	0	0	0	0	0	0	0
West Virginia	xx	xx	xx	xx	xx	xx	xx	xx	xx	xx	xx	xx	xx	xx	xx	xx	xx	xx	xx	xx
North Carolina	14	4	9	1	7	2	5	2	1	1	0	0	0	5	1	3	1	0	0	0
South Carolina	0	0	0	0	0	0	0	0	0	0	0	0	0	0	0	0	0	0	0	0
Georgia	5	3	2	0	4	2	2	0	0	0	0	0	0	1	1	0	0	0	0	0
Florida	6	1	5	0	3	0	3	0	0	0	0	0	0	3	1	2	0	0	0	0
Kentucky	2	1	1	0	1	0	1	0	0	0	0	0	0	1	1	0	0	0	0	0
Tennessee	0	0	0	0	0	0	0	0	0	0	0	0	0	0	0	0	0	0	0	0
Alabama	0	0	0	0	0	0	0	0	0	0	0	0	0	0	0	0	0	0	0	0
Mississippi	1	0	1	0	1	0	1	0	0	0	0	0	0	0	0	0	0	0	0	0
Arkansas	0	0	0	0	0	0	0	0	0	0	0	0	0	0	0	0	0	0	0	0
Louisiana	3	0	3	0	2	0	2	1	0	1	0	0	0	0	0	0	0	0	0	0
Oklahoma	1	1	0	0	0	0	0	0	0	0	0	0	0	1	1	0	0	0	0	0
Texas	0	0	0	0	0	0	0	0	0	0	0	0	0	0	0	0	0	0	0	0
West	17	13	4	0	1	1	0	3	3	0	1	1	0	11	8	3	0	1	0	1
Montana	0	0	0	0	0	0	0	0	0	0	0	0	0	0	0	0	0	0	0	0
Idaho	0	0	0	0	0	0	0	0	0	0	0	0	0	0	0	0	0	0	0	0
Wyoming	0	0	0	0	0	0	0	0	0	0	0	0	0	0	0	0	0	0	0	0
Colorado	0	0	0	0	0	0	0	0	0	0	0	0	0	0	0	0	0	0	0	0
New Mexico	4	4	0	0	0	0	0	0	0	0	0	0	0	2	2	0	0	0	0	0
Arizona	1	1	0	0	0	0	0	0	0	0	0	0	0	1	1	0	0	0	0	0
Utah	0	0	0	0	0	0	0	0	0	0	0	0	0	1	1	0	0	0	0	0
Nevada	0	0	0	0	0	0	0	0	0	0	0	0	0	0	0	0	0	0	0	0
Washington	0	0	0	0	0	0	0	0	0	0	0	0	0	0	0	0	0	0	0	0
Oregon	xx	xx	xx	xx	xx	xx	xx	xx	xx	xx	xx	xx	xx	xx	xx	xx	xx	xx	xx	xx
California	11	7	4	0	1	1	0	1	1	0	1	1	0	7	4	3	0	1	0	1
Alaska	xx	xx	xx	xx	xx	xx	xx	xx	xx	xx	xx	xx	xx	xx	xx	xx	xx	xx	xx	xx
Hawaii	xx	xx	xx	xx	xx	xx	xx	xx	xx	xx	xx	xx	xx	xx	xx	xx	xx	xx	xx	xx

NOTE: xx signifies that the death penalty was illegal during the entire year.
¹See Table 2, footnote 1.

Table 15. Prisoners disposed of by means other than execution, by legal status at time of arrest, race, and State: calendar year 1975

(Includes commitments, resentencings, reversals, grants for new trials, other forms of release from the death sentence, and deaths other than executions)																							
Region and State	Total				Not under sentence				On probation			On parole			In prison			Escaped from prison			Not reported		
	Total	White	Black	Other	Total	White	Black	Other	Total	White	Black	Total	White	Black	Total	White	Black	Total	White	Black	Total	White	Black
United States	67	31	35	1	47	19	27	1	3	0	3	4	3	1	2	2	0	0	0	0	11	7	4
Northeast	11	4	7	0	8	3	5	0	2	0	2	1	1	0	0	0	0	0	0	0	0	0	0
Maine	xx	xx	xx	xx	xx	xx	xx	xx	xx	xx	xx	xx	xx	xx	xx	xx	xx	xx	xx	xx	xx	xx	xx
New Hampshire	0	0	0	0	0	0	0	0	0	0	0	0	0	0	0	0	0	xx	xx	xx	xx	xx	xx
Vermont	0	0	0	0	0	0	0	0	0	0	0	0	0	0	0	0	0	0	0	0	0	0	0
Massachusetts	10	3	7	0	7	2	5	0	2	0	2	1	1	0	0	0	0	0	0	0	0	0	0
Rhode Island	0	0	0	0	0	0	0	0	0	0	0	0	0	0	0	0	0	0	0	0	0	0	0
Connecticut	0	0	0	0	0	0	0	0	0	0	0	0	0	0	0	0	0	0	0	0	0	0	0
New York	0	0	0	0	0	0	0	0	0	0	0	0	0	0	0	0	0	0	0	0	0	0	0
New Jersey*	0	0	0	0	0	0	0	0	0	0	0	0	0	0	0	0	0	0	0	0	0	0	0
Pennsylvania	1	1	0	0	1	1	0	0	0	0	0	0	0	0	0	0	0	0	0	0	0	0	0
North Central	5	3	2	0	2	0	2	0	0	0	0	1	1	0	2	2	0	0	0	0	0	0	0
Ohio	0	0	0	0	0	0	0	0	0	0	0	1	1	0	0	0	0	0	0	0	0	0	0
Indiana	1	1	0	0	0	0	0	0	0	0	0	0	0	0	0	0	0	0	0	0	0	0	0
Illinois	3	2	1	0	1	0	1	0	0	0	0	1	1	0	0	0	0	0	0	0	0	0	0
Michigan	xx	xx	xx	xx	xx	xx	xx	xx	xx	xx	xx	xx	xx	xx	xx	xx	xx	xx	xx	xx	xx	xx	xx
Wisconsin	xx	xx	xx	xx	xx	xx	xx	xx	xx	xx	xx	xx	xx	xx	xx	xx	xx	xx	xx	xx	xx	xx	xx
Minnesota	xx	xx	xx	xx	xx	xx	xx	xx	xx	xx	xx	xx	xx	xx	xx	xx	xx	xx	xx	xx	xx	xx	xx
Iowa	xx	xx	xx	xx	xx	xx	xx	xx	xx	xx	xx	xx	xx	xx	xx	xx	xx	xx	xx	xx	xx	xx	xx
Missouri	1	0	1	0	1	0	1	0	xx	xx	xx	xx	xx	xx	xx	xx	xx	xx	xx	xx	xx	xx	xx
North Dakota	0	0	0	0	0	0	0	0	0	0	0	0	0	0	0	0	0	xx	xx	xx	xx	xx	xx
South Dakota	0	0	0	0	0	0	0	0	0	0	0	0	0	0	0	0	0	0	0	0	0	0	0
Nebraska	0	0	0	0	0	0	0	0	0	0	0	0	0	0	0	0	0	0	0	0	0	0	0
Kansas	0	0	0	0	0	0	0	0	0	0	0	0	0	0	0	0	0	0	0	0	0	0	0
South	34	11	22	1	31	10	20	1	1	0	1	2	1	1	0	0	0	0	0	0	0	0	0
Delaware	0	0	0	0	0	0	0	0	0	0	0	0	0	0	0	0	0	0	0	0	0	0	
Maryland	1	0	1	0	1	0	1	0	0	0	0	0	0	0	0	0	0	0	0	0	0	0	0
District of Columbia	0	0	0	0	0	0	0	0	0	0	0	0	0	0	0	0	0	0	0	0	0	0	0

Table 15. Prisoners disposed of by means other than execution, by legal status at time of arrest, race, and State: calendar year 1975—continued

(Includes commutations, resentencings, reversals, grants for new trials, other forms of release from the death sentence, and deaths other than executions)																							
Region and State	Total				Not under sentence				On probation			On parole			In prison			Escaped from prison			Not reported		
	Total	White	Black	Other	Total	White	Black	Other	Total	White	Black	Total	White	Black	Total	White	Black	Total	White	Black	Total	White	Black
Virginia	1	1	0	0	1	1	0	0	0	0	0	0	0	0	0	0	0	0	0	0	0	0	0
West Virginia	xx	xx	xx	xx	xx	xx	xx	xx	xx	xx	xx	xx	xx	xx	xx	xx	xx	xx	xx	xx	xx	xx	xx
North Carolina	14	4	9	1	12	4	7	1	1	1	0	1	xx	xx	1	0	0	xx	xx	0	xx	xx	0
South Carolina	0	0	0	0	0	0	0	0	0	0	0	0	0	0	0	0	0	0	0	0	0	0	
Georgia	5	3	2	0	4	2	2	0	0	0	0	1	1	0	0	0	0	0	0	0	0	0	
Florida	6	1	5	0	6	1	5	0	0	0	0	0	0	0	0	0	0	0	0	0	0	0	
Kentucky	2	1	1	0	2	1	1	0	0	0	0	0	0	0	0	0	0	0	0	0	0	0	
Tennessee	0	0	0	0	0	0	0	0	0	0	0	0	0	0	0	0	0	0	0	0	0	0	
Alabama	0	0	0	0	0	0	0	0	0	0	0	0	0	0	0	0	0	0	0	0	0	0	
Mississippi	1	0	1	0	1	0	1	0	0	0	0	0	0	0	0	0	0	0	0	0	0	0	
Arkansas	0	0	0	0	0	0	0	0	0	0	0	0	0	0	0	0	0	0	0	0	0	0	
Louisiana	3	0	3	0	3	0	3	0	0	0	0	0	0	0	0	0	0	0	0	0	0	0	
Oklahoma	1	1	0	0	1	1	0	0	0	0	0	0	0	0	0	0	0	0	0	0	0	0	
Texas	0	0	0	0	0	0	0	0	0	0	0	0	0	0	0	0	0	0	0	0	0	0	
West	17	13	4	0	6	6	0	0	0	0	0	0	0	0	0	0	0	0	0	11	7	4	
Montana	0	0	0	0	0	0	0	0	0	0	0	0	0	0	0	0	0	0	0	0	0	0	
Idaho	0	0	0	0	0	0	0	0	0	0	0	0	0	0	0	0	0	0	0	0	0	0	
Wyoming	0	0	0	0	0	0	0	0	0	0	0	0	0	0	0	0	0	0	0	0	0	0	
Colorado	0	0	0	0	0	0	0	0	0	0	0	0	0	0	0	0	0	0	0	0	0	0	
New Mexico	4	4	0	0	4	4	0	0	0	0	0	0	0	0	0	0	0	0	0	0	0	0	
Arizona	1	1	0	0	1	1	0	0	0	0	0	0	0	0	0	0	0	0	0	0	0	0	
Utah	1	1	0	0	1	1	0	0	0	0	0	0	0	0	0	0	0	0	0	0	0	0	
Nevada	0	0	0	0	0	0	0	0	0	0	0	0	0	0	0	0	0	0	0	0	0	0	
Washington	0	0	0	0	0	0	0	0	0	0	0	0	0	0	0	0	0	0	0	0	0	0	
Oregon	xx	xx	xx	xx	xx	xx	xx	xx	xx	xx	xx	xx	xx	xx	xx	xx	xx	xx	xx	xx	xx	xx	
California	11	7	4	0	0	0	0	0	0	0	0	0	0	0	0	0	0	0	0	11	7	4	
Alaska	xx	xx	xx	xx	xx	xx	xx	xx	xx	xx	xx	xx	xx	xx	xx	xx	xx	xx	xx	xx	xx	xx	
Hawaii	xx	xx	xx	xx	xx	xx	xx	xx	xx	xx	xx	xx	xx	xx	xx	xx	xx	xx	xx	xx	xx	xx	

NOTE: xx signifies that the death penalty was illegal during the entire year.
1 See Table 2, footnote 1.

Table 16. Prisoners under sentence of death, by offense, race, and State, and by year received, race, and State: December 31, 1975

Region and State	Total	All offenses			Murder ^{1,2,3}			Rape ^{4,5}			Kidnaping		Robbery	Arson	Burglary	Year received							
		White	Black	Other	White	Black	Other	White	Black	Other	White	Black	White	Black	White	1975					Prior years		
																White	Black	Other	White	Black	Other	White	Black
United States	479	214	256	9	203	225	8	8	30	1	3	1	0	0	0	125	155	3	89	101	6		
Northeast	16	8	8	0	8	8	0	0	0	0	0	0	0	0	0	2	2	0	6	6	0		
Maine	xx	xx	xx	xx	xx	xx	xx	xx	xx	xx	xx	xx	xx	xx	xx	xx	xx	xx	xx	xx	xx		
New Hampshire	0	0	0	0	0	0	0	0	0	0	0	0	0	0	0	0	0	0	0	0	0		
Vermont	0	0	0	0	0	0	0	0	0	0	0	0	0	0	0	0	0	0	0	0	0		
Massachusetts	9	4	5	0	4	5	0	0	0	0	0	0	0	0	0	0	0	0	0	0	0		
Rhode Island	1	0	1	0	0	1	0	0	0	0	0	0	0	0	0	1	0	0	3	5	0		
Connecticut	0	0	0	0	0	0	0	0	0	0	0	0	0	0	0	0	0	0	0	0	0		
New York	1	0	1	0	0	1	0	0	0	0	0	0	0	0	0	0	1	0	0	0	0		
New Jersey ⁶	0	0	0	0	0	0	0	0	0	0	0	0	0	0	0	0	0	0	0	0	0		
Pennsylvania	5	4	1	0	4	1	0	0	0	0	0	0	0	0	0	1	0	0	3	1	0		
North Central	45	17	28	0	17	28	0	0	0	0	0	0	0	0	0	16	22	0	1	6	0		
Ohio	33	11	22	0	11	22	0	0	0	0	0	0	0	0	0	11	17	0	0	5	0		
Indiana	7	4	3	0	4	3	0	0	0	0	0	0	0	0	0	4	2	0	0	1	0		
Illinois	3	1	2	0	1	2	0	0	0	0	0	0	0	0	0	0	2	0	1	0	0		
Michigan	xx	xx	xx	xx	xx	xx	xx	xx	xx	xx	xx	xx	xx	xx	xx	xx	xx	xx	xx	xx	xx		
Wisconsin	xx	xx	xx	xx	xx	xx	xx	xx	xx	xx	xx	xx	xx	xx	xx	xx	xx	xx	xx	xx	xx		
Minnesota	xx	xx	xx	xx	xx	xx	xx	xx	xx	xx	xx	xx	xx	xx	xx	xx	xx	xx	xx	xx	xx		
Iowa	xx	xx	xx	xx	xx	xx	xx	xx	xx	xx	xx	xx	xx	xx	xx	xx	xx	xx	xx	xx	xx		
Missouri	0	0	0	0	0	0	0	0	0	0	0	0	0	0	0	0	0	0	0	0	0		
North Dakota	0	0	0	0	0	0	0	0	0	0	0	0	0	0	0	0	0	0	0	0	0		
South Dakota	0	0	0	0	0	0	0	0	0	0	0	0	0	0	0	0	0	0	0	0	0		
Nebraska	2	1	1	0	1	1	0	0	0	0	0	0	0	0	0	0	0	0	0	0	0		
Kansas	0	0	0	0	0	0	0	0	0	0	0	0	0	0	0	1	1	0	0	0	0		
South	343	141	195	7	133	165	6	8	30	1	0	0	0	0	0	78	116	2	63	79	5		
Delaware	3	2	1	0	2	1	0	0	0	0	0	0	0	0	0	2	1	0	0	0	0		
Maryland	2	0	2	0	0	2	0	0	0	0	0	0	0	0	0	0	0	0	0	2	0		
District of Columbia	0	0	0	0	0	0	0	0	0	0	0	0	0	0	0	0	0	0	0	0	0		

Table 16. Prisoners under sentence of death, by offense, race, and State, and by year received, race, and State: December 31, 1975—continued

Region and State	Total	All offenses			Murder ^{1,2,3}			Rape ^{4,5}			Kidnaping		Hobbery	Arson	Burglary	Year received					
		White	Black	Other	White	Black	Other	White	Black	Other	White	Black				1975			Prior years		
																White	Black	Other	White	Black	Other
Virginia	3	1	2	0	1	2	0	0	0	0	0	0	0	0	0	0	0	1	2	0	
West Virginia	xx	xx	xx	xx	xx	xx	xx	xx	xx	xx	xx	xx	xx	xx	xx	xx	xx	xx	xx	xx	
North Carolina	103	30	68	5	26	56	4	4	12	1	0	0	0	xx	0	13	37	1	17	31	
South Carolina	13	8	5	0	8	5	0	0	0	0	0	0	0	0	0	8	5	0	0	0	
Georgia	25	10	15	0	9	12	0	1	3	0	0	0	0	0	0	1	8	0	9	7	
Florida	62	32	30	0	30	30	0	2	0	0	0	0	0	0	0	14	16	0	18	14	
Kentucky	5	5	0	0	5	0	0	0	0	0	0	0	0	0	0	3	0	0	2	0	
Tennessee	14	8	6	0	8	6	0	0	0	0	0	0	0	0	0	7	6	0	1	0	
Alabama	0	0	0	0	0	0	0	0	0	0	0	0	0	0	0	0	0	0	0	0	
Mississippi	16	3	13	0	3	13	0	0	0	0	0	0	0	0	0	3	11	0	0	2	
Arkansas	4	3	1	0	3	1	0	0	0	0	0	0	0	0	0	2	1	0	1	0	
Louisiana	34	5	29	0	4	14	0	1	15	0	0	0	0	0	0	3	15	0	2	14	
Oklahoma	28	14	12	2	14	12	2	0	0	0	0	0	0	0	0	9	10	1	5	2	
Texas	31	20	11	0	20	11	0	0	0	0	0	0	0	0	0	13	6	0	7	5	
West	75	48	25	2	45	24	2	0	0	0	3	1	0	0	0	29	15	1	19	10	
Montana	4	3	1	0	0	0	0	0	0	0	3	1	0	0	0	3	1	0	0	0	
Idaho	0	0	0	0	0	0	0	0	0	0	0	0	0	0	0	0	0	0	0	0	
Wyoming	4	2	2	0	2	2	0	0	0	0	0	0	0	0	0	0	0	0	2	2	
Colorado	1	1	0	0	1	0	0	0	0	0	0	0	0	0	0	1	0	0	0	0	
New Mexico	7	6	0	1	6	0	1	0	0	0	0	0	0	0	0	3	0	1	3	0	
Arizona	12	8	4	0	8	4	0	0	0	0	0	0	0	0	0	4	1	0	4	3	
Utah	7	5	2	0	5	2	0	0	0	0	0	0	0	0	0	3	0	0	2	2	
Nevada	1	1	0	0	1	0	0	0	0	0	0	0	0	0	0	1	0	0	0	0	
Washington	0	0	0	0	0	0	0	0	0	0	0	0	0	0	0	0	0	0	0	0	
Oregon	xx	xx	xx	xx	xx	xx	xx	xx	xx	xx	xx	xx	xx	xx	xx	xx	xx	xx	xx	xx	
California	39	22	16	1	22	16	1	0	0	0	0	0	0	0	0	14	13	0	8	3	
Alaska	xx	xx	xx	xx	xx	xx	xx	xx	xx	xx	xx	xx	xx	xx	xx	xx	xx	xx	xx	xx	
Hawaii	xx	xx	xx	xx	xx	xx	xx	xx	xx	xx	xx	xx	xx	xx	xx	xx	xx	xx	xx	xx	

NOTE: xx signifies that the death penalty was illegal during the entire year.

¹Includes two prisoners (one black and one white) sentenced for murder and rape in North Carolina and one prisoner (black) sentenced to murder and rape in Georgia.

²Includes two prisoners (both black) sentenced for murder and arson in North Carolina.

³Includes one prisoner (white) sentenced for murder, kidnaping, and armed robbery in Georgia.

⁴Includes one prisoner (white) sentenced for rape and burglary in North Carolina.

⁵Includes one prisoner (black) sentenced for rape and kidnaping in Georgia.

⁶See Table 2, footnote 1.

Table 17. Prisoners under sentence of death, by age and State: December 31, 1975

Region and State	Total	Age									Not reported	Median age
		Under 20	20-24	25-29	30-34	35-39	40-44	45-49	50-54	55 and over		
United States	479	43	139	129	75	34	26	11	12	10	0	26
Northeast	16	0	3	5	2	2	1	1	0	2	0	28
Maine	xx	xx	xx	xx	xx	xx	xx	xx	xx	xx	xx	xx
New Hampshire	0	0	0	0	0	0	0	0	0	0	0	-
Vermont	0	0	0	0	0	0	0	0	0	0	0	-
Massachusetts	9	0	2	4	0	1	0	0	0	2	0	26
Rhode Island	1	0	1	0	0	0	0	0	0	0	0	*
Connecticut	6	0	0	0	0	0	0	0	0	0	0	*
New York	1	0	0	0	0	1	0	0	0	0	0	*
New Jersey ¹	0	0	0	0	0	0	0	0	0	0	0	-
Pennsylvania	5	0	0	1	2	0	1	1	0	0	0	30
North Central	45	6	16	6	8	4	1	1	2	1	0	25
Ohio	33	5	13	6	5	2	1	0	1	0	0	24
Indiana	7	0	0	0	3	2	0	0	1	1	0	35
Illinois	3	0	2	0	0	0	0	0	0	0	0	*
Michigan	xx	xx	xx	xx	xx	xx	xx	xx	xx	xx	xx	xx
Wisconsin	xx	xx	xx	xx	xx	xx	xx	xx	xx	xx	xx	xx
Minnesota	xx	xx	xx	xx	xx	xx	xx	xx	xx	xx	xx	xx
Iowa	xx	xx	xx	xx	xx	xx	xx	xx	xx	xx	xx	xx
Missouri	0	0	0	0	0	0	0	0	0	0	0	-
North Dakota	0	0	0	0	0	0	0	0	0	0	0	-
South Dakota	0	0	0	0	0	0	0	0	0	0	0	-
Nebraska	2	1	1	0	0	0	0	0	0	0	0	*
Kansas	0	0	0	0	0	0	0	0	0	0	0	-
South	343	35	99	96	52	21	18	8	9	5	0	26
Delaware	3	1	0	0	1	1	0	0	0	0	0	*
Maryland	2	0	0	0	0	0	0	0	2	0	0	*
District of Columbia	0	0	0	0	0	0	0	0	0	0	0	-

Table 17. Prisoners under sentence of death, by age and State:
December 31, 1975—continued

Region and State	Total	Age									Not reported	Median age
		Under 20	20-24	25-29	30-34	35-39	40-44	45-49	50-54	55 and over		
Virginia	3	0	0	2	0	0	0	1	0	0	0	*
West Virginia	xx	xx	xx	xx	xx	xx	xx	xx	xx	xx	xx	xx
North Carolina	103	9	27	35	15	3	5	3	3	3	0	26
South Carolina	13	0	3	2	4	1	2	0	0	0	0	33
Georgia	25	3	5	8	5	1	2	0	1	0	0	27
Florida	62	5	12	22	7	0	0	0	1	1	0	28
Kentucky	5	0	1	3	4	1	0	0	0	0	0	27
Tennessee	14	0	4	0	0	0	0	0	0	0	0	-
Alabama	0	0	0	0	0	0	0	0	0	0	0	23
Mississippi	16	5	7	3	1	0	0	0	0	0	0	*
Arkansas	4	1	3	0	0	0	0	0	0	0	0	25
Louisiana	34	4	13	8	4	2	1	0	1	0	0	22
Oklahoma	28	5	12	7	6	3	2	1	0	0	0	27
Texas	31	0	12	7	6	3	2	1	0	0	0	26
West	75	2	21	22	13	7	6	1	1	2	0	*
Montana	4	0	1	0	0	0	0	0	0	0	0	-
Idaho	0	0	0	0	0	0	0	0	0	0	0	*
Wyoming	4	0	1	0	0	0	0	0	0	0	0	*
Colorado	1	0	1	0	0	0	0	0	0	0	0	25
New Mexico	7	1	2	2	2	0	1	0	0	0	0	28
Arizona	12	0	5	3	1	2	1	0	0	0	0	28
Utah	7	0	3	1	2	1	1	0	0	0	0	*
Nevada	1	0	0	0	0	0	0	0	0	0	0	-
Washington	0	0	0	xx	xx	xx	xx	xx	xx	xx	xx	xx
Oregon	xx	xx	xx	13	5	4	4	1	1	2	0	28
California	39	1	8	xx	xx	xx	xx	xx	xx	xx	xx	xx
Alaska	xx	xx	xx	xx	xx	xx	xx	xx	xx	xx	xx	xx
Hawaii	xx	xx	xx	xx	xx	xx	xx	xx	xx	xx	xx	xx

NOTE: xx signifies that the death penalty was illegal during the entire year.
* Median cannot be computed for States with no prisoners under sentence of death.
* Median not computed for States with one to four prisoners under sentence of death.
¹ See Table 2, footnote 1.

Table 18. Prisoners under sentence of death, by time elapsed since sentencing and State: December 31, 1975

Region and State	Total	Elapsed time (in months)												Median elapsed time
		Less than 4	4-6	7-12	13-18	19-24	25-36	37-48	49-60	61-72	73-84	85-96	97 and over	
United States	479	90	76	130	84	52	19	5	2	1	3	2	15	9
Northeast	16	2	1	1	1	1	1	4	0	1	0	1	3	44
Maine	xx	xx	xx	xx	xx	xx	xx	xx	xx	xx	xx	xx	xx	xx
New Hampshire	0	0	0	0	0	0	0	0	0	0	0	0	0	-
Vermont	0	0	0	0	0	0	0	0	0	0	0	0	0	-
Massachusetts	9	0	1	0	1	1	0	0	0	0	0	0	0	45
Rhode Island	1	0	0	1	0	0	0	0	0	0	0	0	0	*
Connecticut	0	0	0	0	0	0	0	0	0	0	0	0	0	-
New York	1	1	0	0	0	0	0	0	0	0	0	0	0	*
New Jersey	0	0	0	0	0	0	0	0	0	0	0	0	0	-
Pennsylvania	5	1	0	0	0	0	1	0	0	1	0	0	2	62
North Central	45	11	10	17	5	1	0	0	0	0	0	0	1	7
Ohio	33	8	9	11	4	1	0	0	0	0	0	0	0	6
Indiana	7	2	0	4	1	0	0	0	0	0	0	0	0	7
Illinois	3	0	0	2	0	0	0	0	0	0	0	0	1	*
Michigan	xx	xx	xx	xx	xx	xx	xx	xx	xx	xx	xx	xx	xx	xx
Wisconsin	xx	xx	xx	xx	xx	xx	xx	xx	xx	xx	xx	xx	xx	xx
Minnesota	xx	xx	xx	xx	xx	xx	xx	xx	xx	xx	xx	xx	xx	xx
Iowa	xx	xx	xx	xx	xx	xx	xx	xx	xx	xx	xx	xx	xx	xx
Missouri	0	0	0	0	0	0	0	0	0	0	0	0	0	-
North Dakota	0	0	0	0	0	0	0	0	0	0	0	0	0	-
South Dakota	0	0	0	0	0	0	0	0	0	0	0	0	0	-
Nebraska	2	1	1	0	0	0	0	0	0	0	0	0	0	*
Kansas	0	0	0	0	0	0	0	0	0	0	0	0	0	-
South	343	58	58	89	59	48	18	1	1	0	3	0	8	9
Delaware	3	2	0	1	0	0	0	0	0	0	0	0	0	*
Maryland	2	0	0	0	0	0	0	0	0	0	0	0	0	*
District of Columbia	0	0	0	0	0	0	0	0	0	0	0	0	0	-

Table 18. Prisoners under sentence of death, by time elapsed since sentencing and State: December 31, 1975—continued

Region and State	Total	Elapsed time (in months)												Median elapsed time
		Less than 4	4-6	7-12	13-18	19-24	25-36	37-48	49-60	61-72	73-84	85-96	97 and over	
Virginia	3	0	0	0	1	0	1	0	0	0	0	0	1	*
West Virginia	xx	xx	xx	xx	xx	xx	xx	xx	xx	xx	xx	xx	xx	xx
North Carolina	103	15	17	22	25	13	11	0	0	0	0	0	0	12
South Carolina	13	6	4	3	0	0	0	0	0	0	0	0	0	4
Georgia	25	1	1	8	4	9	0	0	0	0	1	0	1	18
Florida ²	62	10	9	14	7	17	5	0	0	0	0	0	0	12
Kentucky	5	3	0	0	0	0	0	0	0	0	1	0	1	3
Tennessee	14	3	1	9	1	0	0	0	0	0	0	0	0	8
Alabama	0	0	0	0	0	0	0	0	0	0	0	0	0	-
Mississippi	16	2	6	6	2	0	0	0	0	0	0	0	0	7
Arkansas	4	1	0	3	0	0	0	0	0	0	0	0	0	*
Louisiana	34	2	11	5	7	2	1	1	0	0	1	0	3	9
Oklahoma	28	7	6	7	5	3	0	0	0	0	0	0	0	8
Texas	31	6	3	11	7	4	0	0	0	0	0	0	0	9
West	75	19	7	23	19	2	0	0	1	0	0	1	3	9
Montana	4	3	0	1	0	0	0	0	0	0	0	0	0	*
Idaho	0	0	0	0	0	0	0	0	0	0	0	0	0	-
Wyoming	4	0	0	0	2	2	0	0	0	0	0	0	0	*
Colorado	1	1	0	0	0	0	0	0	0	0	0	0	0	*
New Mexico	7	2	0	2	3	0	0	0	0	0	0	0	0	10
Arizona	12	0	1	8	3	0	0	0	0	0	0	0	0	12
Utah	7	0	3	1	0	0	0	0	0	0	0	0	0	13
Nevada	1	0	0	1	0	0	0	0	0	0	0	0	0	*
Washington	0	0	0	0	0	0	0	0	0	0	0	0	0	-
Oregon	xx	xx	xx	xx	xx	xx	xx	xx	xx	xx	xx	xx	xx	xx
California	39	13	3	11	9	0	0	0	1	0	0	1	1	8
Alaska	xx	xx	xx	xx	xx	xx	xx	xx	xx	xx	xx	xx	xx	xx
Hawaii	xx	xx	xx	xx	xx	xx	xx	xx	xx	xx	xx	xx	xx	xx

NOTE: xx signifies that the death penalty was illegal during the entire year.

*Median cannot be computed for States with one to four prisoners under sentence of death.

*Median not computed for States with one to four prisoners under sentence of death.

²See Table 2, footnote 1.

²Includes one prisoner sentenced to death in 1972, resented to life imprisonment after the Furman decision, but once again given the capital penalty in 1975 following a successful appeal by the State of Florida. For the purposes of this table, the sentencing date used for this inmate was the appropriate month in 1975 during which the prisoner received his most recent death sentence.

Table 19. Prisoners under sentence of death, by highest grade of

Region and State	Total				6th grade or less				7th grade			
	Total	White	Black	Other	Total	White	Black	Other	Total	White	Black	Other
United States	479	214	256	9	37	16	20	1	34	15	18	1
Northeast	16	8	8	0	2	1	1	0	2	2	0	0
Maine	xx	xx	xx	xx	xx	xx	xx	xx	xx	xx	xx	xx
New Hampshire	0	0	0	0	0	0	0	0	0	0	0	0
Vermont	0	0	0	0	0	0	0	0	0	0	0	0
Massachusetts	9	4	5	0	1	1	0	0	0	0	0	0
Rhode Island	1	0	1	0	1	0	1	0	0	0	0	0
Connecticut	0	0	0	0	0	0	0	0	0	0	0	0
New York	1	0	1	0	0	0	0	0	0	0	0	0
New Jersey	0	0	0	0	0	0	0	0	0	0	0	0
Pennsylvania	5	4	1	0	0	0	0	0	2	2	0	0
North Central	45	17	28	0	1	0	1	0	9	3	6	0
Ohio	33	11	22	0	1	0	1	0	8	2	6	0
Indiana	7	4	3	0	0	0	0	0	1	1	0	0
Illinois	3	1	2	0	0	0	0	0	0	0	0	0
Michigan	xx	xx	xx	xx	xx	xx	xx	xx	xx	xx	xx	xx
Wisconsin	xx	xx	xx	xx	xx	xx	xx	xx	xx	xx	xx	xx
Minnesota	xx	xx	xx	xx	xx	xx	xx	xx	xx	xx	xx	xx
Iowa	xx	xx	xx	xx	xx	xx	xx	xx	xx	xx	xx	xx
Missouri	0	0	0	0	0	0	0	0	0	0	0	0
North Dakota	0	0	0	0	0	0	0	0	0	0	0	0
South Dakota	0	0	0	0	0	0	0	0	0	0	0	0
Nebraska	2	1	1	0	0	0	0	0	0	0	0	0
Kansas	0	0	0	0	0	0	0	0	0	0	0	0
South	343	141	195	7	32	14	17	1	22	10	11	1
Delaware	3	2	1	0	0	0	0	0	1	1	0	0
Maryland	2	0	2	0	1	0	1	0	1	0	1	0
District of Columbia	0	0	0	0	0	0	0	0	0	0	0	0
Virginia	3	1	2	0	0	0	0	0	0	0	0	0
West Virginia	xx	xx	xx	xx	xx	xx	xx	xx	xx	xx	xx	xx
North Carolina	103	30	68	5	12	3	8	1	6	3	2	1
South Carolina	13	8	5	0	3	2	1	0	2	1	1	0
Georgia	25	10	15	0	2	0	2	0	2	0	2	0
Florida	62	32	30	0	7	5	2	0	2	2	0	0
Kentucky	5	5	0	0	0	0	0	0	0	0	0	0
Tennessee	14	8	6	0	1	1	0	0	2	2	0	0
Alabama	0	0	0	0	0	0	0	0	0	0	0	0
Mississippi	16	3	13	0	0	0	0	0	1	0	1	0
Arkansas	4	3	1	0	1	1	0	0	0	0	0	0
Louisiana	34	5	29	0	3	1	2	0	4	0	4	0
Oklahoma	28	14	12	2	0	0	0	0	0	0	0	0
Texas	31	20	11	0	2	1	1	0	1	1	0	0
West	75	48	25	2	2	1	1	0	1	0	1	0
Montana	4	3	1	0	0	0	0	0	0	0	0	0
Idaho	0	0	0	0	0	0	0	0	0	0	0	0
Wyoming	4	2	2	0	0	0	0	0	0	0	0	0
Colorado	1	1	0	0	0	0	0	0	0	0	0	0
New Mexico	7	6	0	1	1	1	0	0	0	0	0	0
Arizona	12	8	4	0	1	0	1	0	0	0	0	0
Utah	7	5	2	0	0	0	0	0	0	0	0	0
Nevada	1	1	0	0	0	0	0	0	0	0	0	0
Washington	0	0	0	0	0	0	0	0	0	0	0	0
Oregon	xx	xx	xx	xx	xx	xx	xx	xx	xx	xx	xx	xx
California	39	22	16	1	0	0	0	0	0	0	0	0
Alaska	xx	xx	xx	xx	xx	xx	xx	xx	xx	xx	xx	xx
Hawaii	xx	xx	xx	xx	xx	xx	xx	xx	xx	xx	xx	xx

NOTE: xx signifies that the death penalty was illegal during the entire year.
See Table 2, footnote 1.

schooling completed, race, and State: December 31, 1975

8th grade	9th-11th grades				12th grade				Any college			Not reported			
Total	White	Black	Other	Total	White	Black	Other	Total	White	Black	Other	Total	White	Black	Other
50	28	22		167	64	99	4	93	42	50	1	21	13	8	
1	0	1		9	4	5	0	2	1	1	0	0	0	0	
xx	xx	xx		xx	xx	xx	xx	xx	xx	xx	xx	xx	xx	xx	xx
0	0	0		0	0	0	0	0	0	0	0	0	0	0	
0	0	0		0	0	0	0	0	0	0	0	0	0	0	
0	0	0		7	3	4	0	1	0	1	0	0	0	0	
0	0	0		0	0	0	0	0	0	0	0	0	0	0	
0	0	0		0	0	0	0	0	0	0	0	0	0	0	
0	0	0		1	0	1	0	0	0	0	0	0	0	0	
0	0	0		0	0	0	0	0	0	0	0	0	0	0	
1	0	1		1	1	0	0	1	1	0	0	0	0	0	
9	4	5		13	4	9	0	10	5	5	0	2	0	2	
8	3	5		10	3	7	0	5	3	2	0	1	0	1	
0	0	0		2	1	1	0	2	1	1	0	1	0	1	
1	1	0		0	0	0	0	2	0	2	0	0	0	0	
xx	xx	xx		xx	xx	xx	xx	xx	xx	xx	xx	xx	xx	xx	xx
xx	xx	xx		xx	xx	xx	xx	xx	xx	xx	xx	xx	xx	xx	xx
xx	xx	xx		xx	xx	xx	xx	xx	xx	xx	xx	xx	xx	xx	xx
xx	xx	xx		xx	xx	xx	xx	xx	xx	xx	xx	xx	xx	xx	xx
0	0	0		0	0	0	0	0	0	0	0	0	0	0	
0	0	0		0	0	0	0	0	0	0	0	0	0	0	
0	0	0		0	0	0	0	0	0	0	0	0	0	0	
0	0	0		1	0	1	0	1	1	0	0	0	0	0	
0	0	0		0	0	0	0	0	0	0	0	0	0	0	
30	16	14		138	51	84	3	70	28	41	1	14	9	5	
0	0	0		2	1	1	0	0	0	0	0	0	0	0	
0	0	0		0	0	0	0	0	0	0	0	0	0	0	
0	0	0		0	0	0	0	0	0	0	0	0	0	0	
1	0	1		1	0	1	0	0	0	0	0	1	1	0	
xx	xx	xx		xx	xx	xx	xx	xx	xx	xx	xx	xx	xx	xx	xx
6	2	4		51	13	36	2	21	7	13	1	3	2	1	
1	1	0		2	2	0	0	3	1	2	0	2	1	1	
2	1	1		13	5	8	0	5	3	2	0	3	0	3	
6	3	3		22	11	11	0	20	10	10	0	3	0	3	
2	2	0		2	2	0	0	0	0	0	0	1	1	0	
0	0	0		6	4	2	0	5	1	4	0	0	0	0	
0	0	0		0	0	0	0	0	0	0	0	0	0	0	
1	0	1		3	0	3	0	2	1	1	0	0	0	0	
1	1	0		15	0	15	0	9	0	0	0	0	0	0	
0	0	0		4	2	1	1	4	3	1	0	0	0	0	
3	3	0		15	10	5	0	7	2	5	0	3	3	0	
10	8	2		7	5	1	1	11	8	3	0	5	4	1	
1	0	0		0	0	0	0	1	0	0	0	1	0	0	
0	0	0		2	1	1	0	1	1	0	0	0	0	0	
0	0	0		0	0	0	0	1	1	0	0	0	0	0	
1	1	0		3	2	0	1	1	1	0	0	1	1	0	
5	3	2		1	1	0	0	2	1	1	0	3	3	0	
3	3	0		0	0	0	0	4	2	2	0	0	0	0	
0	0	0		0	0	0	0	1	1	0	0	0	0	0	
xx	xx	xx		xx	xx	xx	xx	xx	xx	xx	xx	xx	xx	xx	xx
0	0	0		0	0	0	0	0	0	0	0	0	0	0	
xx	xx	xx		xx	xx	xx	xx	xx	xx	xx	xx	xx	xx	xx	xx
xx	xx	xx		xx	xx	xx	xx	xx	xx	xx	xx	xx	xx	xx	xx

Table 20. Prisoners under sentence of death, by marital status at time of imprisonment, race, and State: December 31, 1975

Region and State	Total				Married				Divorced or separated				Widowed				Never married				Not reported		
	Total	White	Black	Other	Total	White	Black	Other	Total	White	Black	Other	Total	White	Black	Other	Total	White	Black	Other	Total	White	Black
United States	479	214	256	9	167	91	75	1	79	45	32	2	11	7	2	2	217	68	145	4	5	3	2
Northeast	16	8	8	0	7	4	3	0	3	2	1	0	0	0	0	0	6	2	4	0	0	0	0
Maine	xx	xx	xx	xx	xx	xx	xx	xx	xx	xx	xx	xx	xx	xx	xx	xx	xx	xx	xx	xx	xx	xx	xx
New Hampshire	0	0	0	0	0	0	0	0	0	0	0	0	0	0	0	0	0	0	0	0	0	0	0
Vermont	0	0	0	0	0	0	0	0	0	0	0	0	0	0	0	0	0	0	0	0	0	0	0
Massachusetts	9	4	5	0	3	2	1	0	2	1	1	0	0	0	0	0	4	1	3	0	0	0	0
Rhode Island	1	0	1	0	0	0	0	0	0	0	0	0	0	0	0	0	1	0	1	0	0	0	0
Connecticut	0	0	0	0	0	0	0	0	0	0	0	0	0	0	0	0	0	0	0	0	0	0	0
New York	1	0	1	0	1	0	1	0	0	0	0	0	0	0	0	0	0	0	0	0	0	0	0
New Jersey ¹	0	0	0	0	0	0	0	0	0	0	0	0	0	0	0	0	0	0	0	0	0	0	0
Pennsylvania	5	4	1	0	3	2	1	0	1	1	0	0	0	0	0	0	1	1	0	0	0	0	0
North Central	45	17	28	0	11	7	4	0	8	3	5	0	0	0	0	0	26	7	19	0	0	0	0
Ohio	33	11	22	0	7	4	3	0	7	2	5	0	0	0	0	0	19	5	14	0	0	0	0
Indiana	7	4	3	0	4	3	1	0	1	1	0	0	0	0	0	0	2	0	2	0	0	0	0
Illinois	3	1	2	0	0	0	0	0	0	0	0	0	0	0	0	0	3	1	2	0	0	0	0
Michigan	xx	xx	xx	xx	xx	xx	xx	xx	xx	xx	xx	xx	xx	xx	xx	xx	xx	xx	xx	xx	xx	xx	xx
Wisconsin	xx	xx	xx	xx	xx	xx	xx	xx	xx	xx	xx	xx	xx	xx	xx	xx	xx	xx	xx	xx	xx	xx	xx
Minnesota	xx	xx	xx	xx	xx	xx	xx	xx	xx	xx	xx	xx	xx	xx	xx	xx	xx	xx	xx	xx	xx	xx	xx
Iowa	xx	xx	xx	xx	xx	xx	xx	xx	xx	xx	xx	xx	xx	xx	xx	xx	xx	xx	xx	xx	xx	xx	xx
Missouri	0	0	0	0	0	0	0	0	0	0	0	0	0	0	0	0	0	0	0	0	0	0	0
North Dakota	0	0	0	0	0	0	0	0	0	0	0	0	0	0	0	0	0	0	0	0	0	0	0
South Dakota	0	0	0	0	0	0	0	0	0	0	0	0	0	0	0	0	0	0	0	0	0	0	0
Nebraska	2	1	1	0	0	0	0	0	0	0	0	0	0	0	0	0	2	1	1	0	0	0	0
Kansas	0	0	0	0	0	0	0	0	0	0	0	0	0	0	0	0	0	0	0	0	0	0	0
South	343	141	195	7	125	65	60	0	48	26	20	2	7	4	1	2	158	43	112	3	5	3	2
Delaware	3	2	1	0	1	1	0	0	1	1	0	0	0	0	0	0	1	0	1	0	0	0	0
Maryland	2	0	2	0	0	0	0	0	0	0	0	0	0	0	0	0	2	0	2	0	0	0	0
District of Columbia	0	0	0	0	0	0	0	0	0	0	0	0	0	0	0	0	0	0	0	0	0	0	0

Table 20. Prisoners under sentence of death, by marital status at time of imprisonment, race, and State: December 31, 1975—continued

Region and State	Total				Married				Divorced or separated				Widowed				Never married				Not reported		
	Total	White	Black	Other	Total	White	Black	Other	Total	White	Black	Other	Total	White	Black	Other	Total	White	Black	Other	Total	White	Black
Virginia	3	1	2	0	1	0	1	0	0	0	0	0	0	0	0	0	2	1	1	0	0	0	0
West Virginia	xx	xx	xx	xx	xx	xx	xx	xx	xx	xx	xx	xx	xx	xx	xx	xx	xx	xx	xx	xx	xx	xx	xx
North Carolina	103	30	68	5	34	16	18	0	17	7	8	2	5	2	1	2	47	5	41	1	0	0	0
South Carolina	13	8	5	0	7	4	3	0	0	0	0	0	0	0	0	0	6	4	2	0	0	0	0
Georgia	25	10	15	0	9	2	7	0	2	2	0	0	0	0	0	0	12	5	7	0	2	1	1
Florida	62	32	30	0	29	16	13	0	12	6	6	0	1	1	0	0	19	8	11	0	1	1	0
Kentucky	5	5	0	0	2	2	0	0	1	1	0	0	1	1	0	0	1	1	0	0	0	0	0
Tennessee	14	8	6	0	8	7	1	0	1	1	0	0	0	0	0	0	5	0	5	0	0	0	0
Alabama	0	0	0	0	0	0	0	0	0	0	0	0	0	0	0	0	0	0	0	0	0	0	0
Mississippi	16	3	13	0	2	0	2	0	2	1	1	0	0	0	0	0	11	1	10	0	1	1	0
Arkansas	4	3	1	0	1	1	0	0	0	0	0	0	0	0	0	0	3	2	1	0	0	0	0
Louisiana	34	5	29	0	11	3	8	0	3	1	2	0	0	0	0	0	19	1	18	0	1	0	1
Oklahoma	28	14	12	2	8	5	3	0	2	0	2	0	0	0	0	0	18	9	7	2	0	0	0
Texas	31	20	11	0	12	8	4	0	7	6	1	0	0	0	0	0	12	6	6	0	0	0	0
West	75	48	25	2	24	15	8	1	20	14	6	0	4	3	1	0	27	16	10	1	0	0	0
Montana	4	3	1	0	2	2	0	0	1	1	0	0	0	0	0	0	1	0	1	0	0	0	0
Idaho	0	0	0	0	0	0	0	0	0	0	0	0	0	0	0	0	0	0	0	0	0	0	0
Wyoming	4	2	2	0	4	2	2	0	0	0	0	0	0	0	0	0	0	0	0	0	0	0	0
Colorado	1	1	0	0	1	1	0	0	0	0	0	0	0	0	0	0	0	0	0	0	0	0	0
New Mexico	7	4	0	1	3	2	0	1	1	1	0	0	1	1	0	0	2	2	0	0	0	0	0
Arizona	12	8	4	0	3	3	0	0	5	3	2	0	0	0	0	0	4	2	2	0	0	0	0
Utah	7	5	2	0	2	2	0	0	2	2	0	0	0	0	0	0	3	1	2	0	0	0	0
Nevada	1	1	0	0	0	0	0	0	0	0	0	0	0	0	0	0	1	1	0	0	0	0	0
Washington	0	0	0	0	0	0	0	0	0	0	0	0	0	0	0	0	0	0	0	0	0	0	0
Oregon	xx	xx	xx	xx	xx	xx	xx	xx	xx	xx	xx	xx	xx	xx	xx	xx	xx	xx	xx	xx	xx	xx	xx
California	39	22	16	1	9	3	6	0	11	7	4	0	3	2	1	0	16	10	5	1	0	0	0
Alaska	xx	xx	xx	xx	xx	xx	xx	xx	xx	xx	xx	xx	xx	xx	xx	xx	xx	xx	xx	xx	xx	xx	xx
Hawaii	xx	xx	xx	xx	xx	xx	xx	xx	xx	xx	xx	xx	xx	xx	xx	xx	xx	xx	xx	xx	xx	xx	xx

NOTE: xx signifies that the death penalty was illegal during the entire year.
¹See Table 2, footnote 1.

Table 21. Prisoners under sentence of death, by legal status

Region and State	Total				Not under sentence				On probation		
	Total	White	Black	Other	Total	White	Black	Other	Total	White	Black
United States	479	214	256	9	293	116	174	3	3	2	1
Northeast	16	8	8	0	12	5	7	0	0	0	0
Maine	xx	xx	xx	xx	xx	xx	xx	xx	xx	xx	xx
New Hampshire	0	0	0	0	0	0	0	0	0	0	0
Vermont	0	0	0	0	0	0	0	0	0	0	0
Massachusetts	9	4	5	0	8	3	5	0	0	0	0
Rhode Island	1	0	1	0	0	0	0	0	0	0	0
Connecticut	0	0	0	0	0	0	0	0	0	0	0
New York	1	0	1	0	1	0	1	0	0	0	0
New Jersey ²	0	0	0	0	0	0	0	0	0	0	0
Pennsylvania	5	4	1	0	3	2	1	0	0	0	0
North Central	45	17	28	0	31	10	21	0	0	0	0
Ohio	33	11	22	0	24	7	17	0	0	0	0
Indiana	7	4	3	0	2	1	1	0	0	0	0
Illinois	3	1	2	0	2	1	1	0	0	0	0
Michigan	xx	xx	xx	xx	xx	xx	xx	xx	xx	xx	xx
Wisconsin	xx	xx	xx	xx	xx	xx	xx	xx	xx	xx	xx
Minnesota	xx	xx	xx	xx	xx	xx	xx	xx	xx	xx	xx
Iowa	xx	xx	xx	xx	xx	xx	xx	xx	xx	xx	xx
Missouri	0	0	0	0	0	0	0	0	0	0	0
North Dakota	0	0	0	0	0	0	0	0	0	0	0
South Dakota	0	0	0	0	0	0	0	0	0	0	0
Nebraska	2	1	1	0	2	1	1	0	0	0	0
Kansas	0	0	0	0	0	0	0	0	0	0	0
South	343	141	195	7	221	80	139	2	3	2	1
Delaware	3	2	1	0	3	2	1	0	0	0	0
Maryland	2	0	2	0	2	0	2	0	0	0	0
District of Columbia	0	0	0	0	0	0	0	0	0	0	0
Virginia	3	1	2	0	1	1	0	0	0	0	0
West Virginia	xx	xx	xx	xx	xx	xx	xx	xx	xx	xx	xx
North Carolina	103	30	68	5	86	25	59	2	2	2	0
South Carolina	13	8	5	0	1	0	1	0	0	0	0
Georgia	25	10	15	0	14	6	8	0	0	0	0
Florida	62	32	30	0	51	27	24	0	1	1	0
Kentucky	5	5	0	0	2	2	0	0	0	0	0
Tennessee	14	8	6	0	13	7	6	0	0	0	0
Alabama	0	0	0	0	0	0	0	0	0	0	0
Mississippi	16	3	13	0	16	3	13	0	0	0	0
Arkansas	4	3	1	0	2	2	0	0	0	0	0
Louisiana	34	5	29	0	30	5	25	0	0	0	0
Oklahoma	28	11	12	2	0	0	0	0	0	0	0
Texas	31	20	11	0	0	0	0	0	0	0	0
West	75	48	25	2	29	21	7	1	0	0	0
Montana	4	3	1	0	4	3	1	0	0	0	0
Idaho	0	0	0	0	0	0	0	0	0	0	0
Wyoming	4	2	2	0	4	2	2	0	0	0	0
Colorado	1	1	0	0	1	1	0	0	0	0	0
New Mexico	7	6	0	1	6	5	0	1	0	0	0
Arizona	12	8	4	0	9	7	2	0	0	0	0
Utah	7	5	2	0	5	3	2	0	0	0	0
Nevada	1	1	0	0	0	0	0	0	0	0	0
Washington	0	0	0	0	0	0	0	0	0	0	0
Oregon	xx	xx	xx	xx	xx	xx	xx	xx	xx	xx	xx
California	39	22	16	1	0	0	0	0	0	0	0
Alaska	xx	xx	xx	xx	xx	xx	xx	xx	xx	xx	xx
Hawaii	xx	xx	xx	xx	xx	xx	xx	xx	xx	xx	xx

NOTE: xx signifies that the death penalty was illegal during the entire year.

¹One prisoner arrested on a murder charge in North Carolina was appealing his conviction for manslaughter at the time he was arrested.²See Table 2, footnote 1.

at time of arrest, race, and State: December 31, 1975

On parole				In prison				Escaped from prison			On appeal ¹				Not reported				
Total	White	Black		Total	White	Black	Other	Total	White	Black		Total	White	Black	Other	Total	White	Black	Other
48	24	24		14	5	7	2	13	6	7		1	0	0	1	107	61	43	3
3	3	0		0	0	0	0	1	0	1		0	0	0	0	0	0	0	0
xx	xx	xx		xx	xx	xx	xx	xx	xx	xx		xx	xx	xx	xx	xx	xx	xx	xx
0	0	0		0	0	0	0	0	0	0		0	0	0	0	0	0	0	0
0	0	0		0	0	0	0	0	0	0		0	0	0	0	0	0	0	0
1	1	0		0	0	0	0	0	0	0		0	0	0	0	0	0	0	0
0	0	0		0	0	0	0	1	0	1		0	0	0	0	0	0	0	0
0	0	0		0	0	0	0	0	0	0		0	0	0	0	0	0	0	0
0	0	0		0	0	0	0	0	0	0		0	0	0	0	0	0	0	0
0	0	0		0	0	0	0	0	0	0		0	0	0	0	0	0	0	0
2	2	0		0	0	0	0	0	0	0		0	0	0	0	0	0	0	0
12	6	6		0	0	0	0	1	0	1		0	0	0	0	1	1	0	0
8	4	4		0	0	0	0	0	0	0		0	0	0	0	0	0	0	0
4	2	2		0	0	0	0	0	0	0		0	0	0	0	1	1	0	0
0	0	0		0	0	0	0	0	0	0		0	0	0	0	0	0	0	0
xx	xx	xx		xx	xx	xx	xx	xx	xx	xx		xx	xx	xx	xx	xx	xx	xx	xx
xx	xx	xx		xx	xx	xx	xx	xx	xx	xx		xx	xx	xx	xx	xx	xx	xx	xx
xx	xx	xx		xx	xx	xx	xx	xx	xx	xx		xx	xx	xx	xx	xx	xx	xx	xx
xx	xx	xx		xx	xx	xx	xx	xx	xx	xx		xx	xx	xx	xx	xx	xx	xx	xx
0	0	0		0	0	0	0	0	0	0		0	0	0	0	0	0	0	0
0	0	0		0	0	0	0	0	0	0		0	0	0	0	0	0	0	0
0	0	0		0	0	0	0	0	0	0		0	0	0	0	0	0	0	0
0	0	0		0	0	0	0	0	0	0		0	0	0	0	0	0	0	0
0	0	0		0	0	0	0	0	0	0		0	0	0	0	0	0	0	0
27	11	16		13	4	7	2	11	6	5		1	0	0	1	67	38	27	2
0	0	0		0	0	0	0	0	0	0		0	0	0	0	0	0	0	0
0	0	0		0	0	0	0	0	0	0		0	0	0	0	0	0	0	0
0	0	0		0	0	0	0	0	0	0		0	0	0	0	0	0	0	0
0	0	0		2	0	2	0	0	0	0		0	0	0	0	0	0	0	0
xx	xx	xx		xx	xx	xx	xx	xx	xx	xx		xx	xx	xx	xx	xx	xx	xx	xx
7	0	7		5	2	1	2	2	1	1		1	0	0	1	0	0	0	0
4	2	2		1	0	0	0	0	0	0		0	0	0	0	0	0	0	0
6	1	3		1	0	1	0	6	3	3		0	0	0	0	0	0	0	0
2	2	0		0	0	0	0	0	0	0		0	0	0	0	0	0	0	0
1	1	0		0	0	0	0	0	0	0		0	0	0	0	1	1	0	0
0	0	0		0	0	0	0	0	0	0		0	0	0	0	0	0	0	0
0	0	0		0	0	0	0	0	0	0		0	0	0	0	0	0	0	0
2	1	1		0	0	0	0	0	0	0		0	0	0	0	0	0	0	0
2	0	2		0	0	2	0	0	0	0		0	0	0	0	0	0	0	0
0	0	0		0	0	0	0	0	0	0		0	0	0	0	0	0	0	0
1	1	0		2	2	0	0	0	0	0		0	0	0	0	28	14	12	2
6	4	2		1	0	0	0	0	0	0		0	0	0	0	28	17	11	0
0	0	0		0	0	0	0	0	0	0		0	0	0	0	39	22	16	1
0	0	0		0	0	0	0	0	0	0		0	0	0	0	0	0	0	0
0	0	0		0	0	0	0	0	0	0		0	0	0	0	0	0	0	0
0	0	0		0	0	0	0	0	0	0		0	0	0	0	0	0	0	0
1	1	0		0	0	0	0	0	0	0		0	0	0	0	0	0	0	0
3	1	2		0	0	0	0	0	0	0		0	0	0	0	0	0	0	0
2	2	0		0	0	0	0	0	0	0		0	0	0	0	0	0	0	0
0	0	0		1	1	0	0	0	0	0		0	0	0	0	0	0	0	0
xx	xx	xx		xx	xx	xx	xx	xx	xx	xx		xx	xx	xx	xx	xx	xx	xx	xx
0	0	0		0	0	0	0	0	0	0		0	0	0	0	39	22	16	1
xx	xx	xx		xx	xx	xx	xx	xx	xx	xx		xx	xx	xx	xx	xx	xx	xx	xx
xx	xx	xx		xx	xx	xx	xx	xx	xx	xx		xx	xx	xx	xx	xx	xx	xx	xx

Table 22. Women executed under civil authority in the United States,
by year, offense, race, and State: 1930-75

(Includes State and Federal executions)

Year	Total	Offense		Race		State in which executed
		Murder	Other ¹	White	Black	
All years	32	30	2	20	12
1962	1	1	0	1	0	California
1957	1	1	0	1	0	Alabama
1955	1	1	0	1	0	California
1954	2	2	0	1	1	Ohio
1953	3	1	2	3	0	Alabama, Federal (Missouri and New York)
1951	1	1	0	1	0	New York
1947	2	2	0	1	1	California, South Carolina
1946	1	1	0	0	1	Pennsylvania
1945	1	1	0	0	1	Georgia
1944	3	3	0	0	3	Mississippi, New York, North Carolina
1943	3	3	0	1	2	South Carolina, Mississippi, North Carolina
1942	1	1	0	1	0	Louisiana
1941	1	1	0	1	0	California
1938	2	2	0	2	0	Illinois, Ohio
1937	1	1	0	0	1	Mississippi
1936	1	1	0	1	0	New York
1935	3	3	0	2	1	Delaware
1934	1	1	0	1	0	New York
1931	1	1	0	1	0	Pennsylvania
1930	2	2	0	1	1	Arizona, Alabama

NOTE: There have been no executions of women since 1962.

¹Includes one kidnaping and one espionage case (both Federal).

Table 23. Federal executions in the United States, by year,
offense, race, and State: 1930-75

Year	Total	Offense			Race			State in which executed
		Murder	Kidnaping ¹	Other ²	White	Black	American Indian	
All years	33	15	6	12	28	3	2
1963	1	0	1	0	1	0	0	Iowa
1957	2	0	0	2	2	0	0	Georgia
1956	1	0	1	0	1	0	0	Missouri
1954	1	1	0	0	1	0	0	New York
1953	4	0	2	2	4	0	0	Missouri (2), New York (2)
1950	1	1	0	0	0	1	0	Alaska
1948	5	5	0	0	3	2	0	California (3), Alaska (1), Florida (1)
1945	1	1	0	0	1	0	0	Wyoming
1943	1	1	0	0	1	0	0	Tennessee
1942	6	0	0	6	6	0	0	District of Columbia
1939	1	1	0	0	0	0	1	Alaska
1938	5	2	1	2	5	0	0	Kansas (2), Illinois (1), Indiana (1), Michigan (1)
1936	3	2	1	0	2	0	1	Indiana (1), Arizona (1), Oklahoma (1)
1930	1	1	0	0	1	0	0	Kansas

NOTE: There have been no Federal executions since 1963.

¹Under the Federal kidnaping statute prior to 1968, the death penalty could be imposed if the victim was not released unharmed. In all of the cases in this table but the one in 1936, the victim was killed by the kidnaper.

²Includes 2 cases of rape on a Federal reservation (1957), 2 cases of espionage (1935), 6 cases of sabotage (1942), and 2 cases of bank robbery with homicide (1938).

Table 24. Status of death penalty statutes in the United States as of December 31, 1975, by jurisdiction

Jurisdiction	Status	Jurisdiction	Status
Capital punishment provisions, post-Furman statutes¹			
Federal	Section of the United States Code relating to death penalty for aircraft piracy revised 1974. All other pre-Furman Federal death penalty statutes unchanged.	Rhode Island	Death penalty partially abolished 1852. ⁵ Statutes revised June 26, 1973.
Arizona	Death penalty partially abolished 1916 ² and restored 1918. Statutes revised May 14, 1973.	South Carolina	Statutes revised July 2, 1974.
Arkansas	Death penalty abolished February 1972, and restored by referendum November 1972. Statutes revised January 1, 1974.	Tennessee	Death penalty partially abolished 1915 ⁶ and restored 1919. Statutes revised May 8, 1973, but declared unconstitutional by the State Supreme Court. Statutes revised again February 1974.
California	Death penalty abolished February 1972, and restored by referendum November 1972. Statutes revised January 1, 1974.	Texas	Statutes revised June 14, 1973.
Connecticut	Statutes revised October 1, 1973.	Utah	Statutes revised July 1, 1973.
Delaware	Death penalty abolished 1958 and restored 1961. Discretionary provisions of the 1961 legislation struck down by the State Supreme Court November 1, 1972, and remaining provisions declared constitutional. Statutes revised March 29, 1974.	Wyoming	Statutes revised February 24, 1973.
Florida	Statutes revised December 8, 1972.	Capital punishment provisions, pre-Furman statutes¹	
Georgia	Statutes revised March 28, 1973.	Alabama	Death penalty legal at time of Furman decision.
Idaho	Statutes revised March 17, 1973.	Colorado	Death penalty abolished 1897 and restored 1901.
Illinois	Statutes revised November 8, 1973, but declared unconstitutional by the State Supreme Court September 29, 1975.	District of Columbia	Death penalty legal at time of Furman decision.
Indiana	Statutes revised April 24, 1973.	Kansas	Death penalty abolished 1907 and restored 1935.
Kentucky	Death penalty legal at time of Furman decision, but declared unconstitutional by the State Court of Appeals February 16, 1973. Statutes revised January 1, 1975.	Massachusetts	Death penalty legal at time of Furman decision, but declared unconstitutional by the State Supreme Court December 22, 1975.
Louisiana	Statutes revised July 2, 1973.	Missouri	Death penalty abolished 1917 and restored 1919, but declared unconstitutional by the State Supreme Court September 11, 1972.
Maryland	Death penalty legal at time of Furman decision, but declared unconstitutional by the State Court of Appeals. Statutes revised July 1, 1975.	New Jersey	Death penalty declared unconstitutional by the State Supreme Court January 1972. ⁷
Mississippi	Statutes revised April 23, 1974.	South Dakota	Death penalty abolished 1915 and restored 1939.
Montana	Statutes revised January 1, 1974.	Vermont	Death penalty partially abolished 1965. ⁸
Nebraska	Statutes revised April 21, 1973.	Virginia	Death penalty legal at time of Furman decision.
Nevada	Statutes revised July 1, 1973.	Washington	Death penalty abolished 1913 and restored 1919, but declared unconstitutional by the State Supreme Court March 22, 1973. ⁹
New Hampshire	Pre-Furman statutes declared unconstitutional by the State Supreme Court. Statutes revised April 15, 1974.	No statutory provisions for capital punishment	
New Mexico	Death penalty partially abolished 1969. ⁴ Statutes revised March 20, 1973.	Alaska	Death penalty abolished 1957.
New York	Death penalty partially abolished 1969. ⁴ Statutes revised September 1, 1974.	Hawaii	Death penalty abolished 1957.
North Carolina	Discretionary provisions of the pre-Furman statutes struck down by the State Supreme Court January 18, 1973, and the remaining provisions declared constitutional. Statutes revised April 8, 1974.	Iowa	Death penalty abolished 1872, restored 1878, and reabolished 1965.
Ohio	Statutes revised December 22, 1972, and again January 1, 1974.	Maine	Death penalty abolished 1876, restored 1883, and reabolished 1887.
Oklahoma	Statutes revised May 2, 1973.	Michigan	Death penalty partially abolished 1847 ¹⁰ and abolished 1963.
Pennsylvania	Statutes revised March 26, 1974.	Minnesota	Death penalty abolished 1911.

NOTE: "Legal" signifies that the death penalty could be imposed for murder.

¹In the case of *Furman v. Georgia*, June 29, 1972, the U.S. Supreme Court found that, as being administered, the death penalty constituted "cruel and unusual punishment" in violation of the Eighth Amendment to the U.S. Constitution. The revised statutes, most of which provide a mandatory death penalty for specified types of murder, represent an attempt on the part of the States to enact capital punishment statutes that will eliminate the possibility of arbitrary application and thus conform to the standards set down in the *Furman* decision. The constitutionality of such statutes remains to be determined by the courts.

²Death penalty retained for treason.

³Death penalty retained for the crime of killing a police officer or prison or jail guard while performing his duties, and in cases where the jury recommends the death penalty and the defendant commits a second capital felony after time for due deliberation following commission of first capital felony.

⁴Death penalty retained for persons found guilty of killing a police officer acting in line of duty and for prisoners under a life sentence who murder a guard or inmate while in confinement or while escaping from confinement.

⁵Death penalty retained for persons convicted of committing murder while serving a life sentence for any offense.

⁶Death penalty retained for rape.

⁷The 1971-72, 1973, and 1974 issuances of this National Prisoner Statistics (NPS) series incorrectly stated that the death penalty in New Jersey had been abolished in January 1972. These publications should be annotated to reflect the fact that the capital punishment provisions in this State were declared unconstitutional but not abolished.

⁸Death penalty retained for persons convicted of first-degree murder who commit a second "unrelated" murder and for the first-degree murder of any law enforcement officer or prison employee performing official duties.

⁹The 1973 and 1974 issuances of this NPS series should be annotated to reflect this development.

¹⁰Death penalty retained for treason. Partial abolition voted in 1846 but not put into effect until 1847.

END