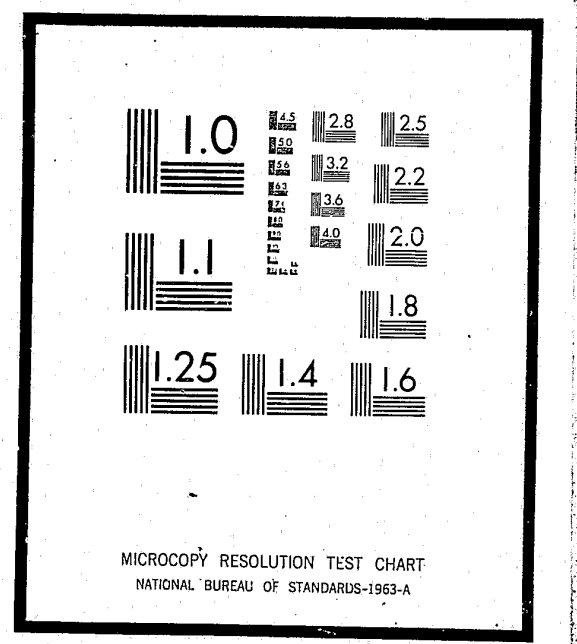


00347

NCJRS

This microfiche was produced from documents received for inclusion in the NCJRS data base. Since NCJRS cannot exercise control over the physical condition of the documents submitted, the individual frame quality will vary. The resolution chart on this frame may be used to evaluate the document quality.



Microfilming procedures used to create this fiche comply with the standards set forth in 41CFR 101-11.504

Points of view or opinions stated in this document are those of the author(s) and do not represent the official position or policies of the U.S. Department of Justice.

**U.S. DEPARTMENT OF JUSTICE
LAW ENFORCEMENT ASSISTANCE ADMINISTRATION
NATIONAL CRIMINAL JUSTICE REFERENCE SERVICE
WASHINGTON, D.C. 20531**

National Criminal Justice Information and Statistics Service, Series SC-EE No. 1
Bureau of the Census, State and Local Government Special Studies No. 56

Expenditure and Employment Data for the Criminal Justice System 1968-69

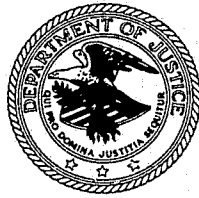
Issued December 1970

U.S. DEPARTMENT OF JUSTICE
John N. Mitchell,
Attorney General

U.S. DEPARTMENT OF COMMERCE
Maurice H. Stans,
Secretary

Date filmed

7/16/76



**LAW ENFORCEMENT ASSISTANCE
ADMINISTRATION**

**Richard W. Velde
Clarence M. Coster**

Associate Administrators

National Criminal Justice
Information and Statistics
Service

--Statistics Center,
George E. Hall, Director

PROGRAMS DIVISION
Anthony G. Turner, Director



BUREAU OF THE CENSUS

**George Hay Brown, Director
Robert F. Drury, Deputy Director**

Walter F. Ryan, Associate Director
for Economic Fields

Dino S. Vilia, Deputy Associate
Director

GOVERNMENTS DIVISION
David P. McNelis, Chief

ACKNOWLEDGMENTS

This report was prepared jointly by the Bureau of the Census and the Law Enforcement Assistance Administration. In accordance with specifications established by the Law Enforcement Assistance Administration, the Bureau of the Census, under a contractual agreement, participated in most aspects of survey planning, collected the data, and carried out the statistical processing. Primary responsibility for this work in the Bureau of the Census rested with David P. McNelis, Chief of the Governments Division. General supervision for the project was provided by Charles R. Kindermann and Dawn D. Nelson, Programs Division, National Criminal Justice Statistics Center, and by Kenneth E. Anderson and John Coleman, Governments Division, Bureau of the Census. In addition, significant contributions were made in the preparation of this report by Daniel L. Pflum, James J. Saxon, Jr., and Helen D. Files, of the Governments Division.

Library of Congress Card No. 71-609542

Suggested Citation

U.S. Law Enforcement Assistance Administration and U.S. Bureau of the Census, Expenditure and Employment for Criminal Justice System: 1968-69, U.S. Government Printing Office, Washington, D.C. 1970.

CONTENTS

	Page
Introduction	1
Table	
1. Expenditure for the Criminal Justice System, by Level of Government: Fiscal Year 1968-69	11
2. Employment and Payrolls for the Criminal Justice System, by Level of Government: October 1969	11
3. Expenditure of Federal, State, and Local Governments for Police Protection, Judicial, Legal, and Correctional Activities: Fiscal Year 1968-69	11
4. Direct Expenditure of State and Local Governments for Criminal Justice Activities, by Level of Government: Fiscal Year 1968-69	12
5. Expenditure of State and Local Governments for Police Protection, Judicial, Legal, and Correctional Activities, by Percent of General Expenditure, by Level of Government, and by State: Fiscal Year 1968-69	13
6. Expenditure of State and Local Governments for Police Protection, Judicial, Legal, and Correctional Activities, by Character, by Level of Government, and by State: Fiscal Year 1968-69	16
7. Employment and Payrolls of State and Local Governments for Police Protection, Judicial, Legal, and Correctional Activities, by Level of Government and by State: October 1969	22
8. Full-Time Equivalent Employment of State and Local Governments for Police Protection, Judicial, Legal, and Correctional Activities, by Percent of Total Full-Time Equivalent Employment, by Level of Government, and by State: October 1969	28
9. Employment and Payrolls, October 1968, and Expenditure, Fiscal Year 1968-69, of the Federal Government for Criminal Justice Activities	31
10. Expenditure of State Governments for Police Protection, Judicial, Correctional, Prosecution, and Indigent Defense Activities: Fiscal Year 1968-69	32
11. Per Capita Expenditure of State Governments for Police Protection, Judicial, Correctional, Prosecution, and Indigent Defense Activities: Fiscal Year 1968-69	33
12. Expenditure of State Governments for Police Protection: Fiscal Year 1968-69	34
13. Expenditure of State Governments for Judicial Activities: Fiscal Year 1968-69	35
14. Expenditure of State Governments for Correctional Activities: Fiscal Year 1968-69	36
15. Employment and Payrolls, October 1969, and Expenditure, Fiscal Year 1968-69, for State Government Prosecution and Indigent Defense Activities	37

CONTENTS—Continued

Table	Page
16. Full-Time Employment of State Governments for Police Protection, Judicial, Correctional, Prosecution, and Indigent Defense, and Related Activities: October 1969	38
17. Employment and Payrolls of State Governments for Police Protection: October 1969	39
18. Employment and Payrolls of State Governments for Judicial Activities: October 1969	40
19. Employment and Payrolls of State Governments for Correctional Activities: October 1969	42
20. Expenditure of the 55 Largest County Governments for Police Protection, Judicial, Prosecution, Indigent Defense, and Correctional Activities: Fiscal Year 1968-69	45
21. Per Capita Expenditure of the 55 Largest County Governments for Police Protection, Judicial, Prosecution, Indigent Defense, and Correctional Activities: Fiscal Year 1968-69	46
22. Expenditure of the 55 Largest County Governments for Law Enforcement and Other Related Functions: Fiscal Year 1968-69	47
23. Expenditure of the 55 Largest County Governments for Judicial Activities: Fiscal Year 1968-69	48
24. Expenditure of "Special Status" Cities for Judicial Activities: Fiscal Year 1968-69	49
25. Expenditure of the 55 Largest County Governments for Correctional Activities: Fiscal Year 1968-69	50
26. Employment and Payrolls of the 55 Largest County Governments for Police Protection and Correction: October 1969	51
27. Expenditure of the 43 Largest City Governments for Police Protection, Judicial, Prosecution, Indigent Defense, and Correctional Activities: Fiscal Year 1968-69	52
28. Expenditure of the 43 Largest City Governments for Police Protection and Judicial Activities: Fiscal Year 1968-69	53
29. Expenditure of the 43 Largest City Governments for Correctional Activities: Fiscal Year 1968-69	54
30. Employment and Payrolls of the 43 Largest City Governments for Police Protection and Correction: October 1969	55

INTRODUCTION

This report consists of financial and employment data on the criminal justice activities of Federal, State, and local governments. The local government data are estimates derived from a sample of counties, cities, and townships. In addition, data are presented for the individual 55 largest counties and the 43 largest cities. Financial figures pertain to fiscal year 1968-69; employment data shown are for October 1969.

In two previous editions of this report, the expenditure and employment data on prosecution and indigent defense activities of the various governments were not included as part of the criminal justice system totals; instead, available data were shown as exhibits. Additional research conducted this year has focused on these activities and has resulted in the inclusion of available data in the totals for the system. The unavailability of complete prosecution and indigent defense data for some units necessitated the exclusion of these data (except on an exhibit basis) in the individual county and city tables.

EXPENDITURE AND EMPLOYMENT BY LEVEL OF GOVERNMENT

Criminal justice is primarily a function of local government. Local governments accounted for 64 percent of the direct criminal justice expenditures, State governments 25 percent, and the Federal Government 11 percent. In terms of the direct expenditures for each criminal justice activity, local governments accounted for at least one-third of the expenditures for each of the five criminal justice activities and for more than half of the expenditures for three activities: 75 percent for police protection activities; 66 percent for judicial activities; 56 percent for prosecution

activities; 40 percent for indigent defense activities; and 33 percent for correctional activities.

State governments accounted for more than half of the expenditures in only one area, correctional activities (63 percent), and for one-fourth or less of the expenditures in the remaining four criminal justice activities. Similarly, the Federal Government accounted for more than half of the expenditures only for indigent defense activities (51 percent), and for less than one-fourth of the expenditures for the other four criminal justice activities.

Relationships, similar to those found for expenditures, also exist for employment figures. That is, local governments employed more than two-thirds (70 percent) of the full-time equivalent workers in criminal justice. State governments employed 22 percent and the Federal Government employed 8 percent. With respect to the individual criminal justice activities, local governments employed more than half of the full-time equivalent workers in four of the five criminal justice activities: police protection (81 percent); judicial (74 percent); prosecution (64 percent); and indigent defense (54 percent). Only in correctional activities, where State governments employed 61 percent of the full-time equivalent workers, did local governments employ less than half of the work force.

The Federal Government

The Federal Government spent \$828.9 million for activities of the criminal justice system in fiscal year 1968-69. That amount was less than 0.6 percent of the 1969 Federal general expenditure

Table A. Percent of Direct Expenditures for the Criminal Justice System by Level of Government: Fiscal Year 1968-69

Level of government	Total	Police protection	Judicial activities	Prosecution	Indigent defense	Correctional activities
Total.....	100.0	100.0	100.0	100.0	100.0	100.0
Federal.....	10.9	11.1	10.6	24.9	51.3	4.9
State.....	25.2	14.0	23.6	19.2	9.0	62.5
Local.....	63.9	74.9	65.9	56.1	39.7	32.6

(excluding education) of \$150.7 billion. About \$491.6 million was spent for law enforcement activities; \$105.5 million for judicial activities; \$91.5 million for prosecution; \$39.8 million for indigent defense; \$71.3 million for correction; and \$29.2 million for other criminal justice activities, mainly the program of the Law Enforcement Assistance Administration.

Total Federal employment on a full-time equivalent basis in October 1969 was 2,875,000. Of that number, 55,485 worked in criminal justice activities: 35,634 in law enforcement; 6,670 in the judiciary; 5,796 in prosecution; 1,800 in indigent defense; 5,388 in correction; and 197 in other criminal justice activities, mainly the Law Enforcement Assistance Administration.

State governments

State government general expenditure, excluding education, totaled \$40.8 billion in fiscal year 1968-69. About \$1.9 billion, or 4.6 percent of that sum, went for criminal justice activities, consisting of 1.5 percent for police protection, 0.6 percent for judicial activities, 0.2 percent for prosecution and indigent defense, and 2.3 percent for correctional activities. The relative weights of expenditure for the component parts of the system varied considerably from State to State, but consistently showed the largest expenditure for correction and the least for prosecution and indigent defense activities.

In per capita terms, the States spent \$9.42 per person for criminal justice activities, consisting of \$3.09 for police protection, \$1.17 for judicial activities, \$39 for prosecution and indigent defense activities, and \$4.77 for correction.

At the State level, judicial expenditure is primarily for major trial courts. In the aggregate, States spent \$113 million for major trial courts as compared with nearly \$23 million for courts of last resort, \$19 million for intermediate appellate courts, \$40 million for various other courts, and approximately \$35 million for a variety of judicial support activities.

The greatest proportion of correction expenditure at the State level was for the operation of correctional institutions. In the aggregate, States spent \$959 million for correction, of which \$695 million, or 72.4 percent, went for the operation of institutions; \$79 million for probation, parole, and pardon activities; and \$30 million for administration. Intergovernmental payments for such activities as the transportation and boarding of prisoners by other governments, and the distribution of LEAA grant funds amounted to \$45 million. Capital outlay and miscellaneous activities accounted for the remaining \$110 million.

State governments employed a full-time equivalent number of workers totaling slightly more than 1.4 million persons (1,432,888 exclusive of education employees) in October 1969. Of that number 160,339, or 7.4 percent, were engaged in criminal justice activities; 53,746, or 2.5 percent, worked in police protection; 15,576, or 0.7 percent, were engaged in judicial activities; 6,377, or 0.3 percent, worked in prosecution and indigent defense activities; and 84,640, or 3.9 percent, were engaged in correctional activities.

State payrolls for criminal justice activities totaled \$116 million in October 1969. Estimates based on October 1969 data indicate that more than 73 percent of the total annual State expenditure of \$1.9 billion for all criminal justice activities went for salaries and wages. State government police protection payrolls for October 1969 totaled slightly more than \$38 million. Judicial employees received more than \$15 million; prosecution and indigent defense employees earned nearly \$6 million; and correction employees were paid more than \$56 million.

Local government

Local government general expenditure, excluding education, totaled \$39.1 billion in fiscal year 1968-69. About \$4.7 billion, or 11.8 percent of that sum, went for criminal justice activities. About \$3.3 billion, or 8.4 percent, was spent for police protection; \$660 million, or 1.7 percent,

went for judicial activities; \$207 million, or 0.5 percent, was spent for prosecution; \$30 million, or 0.1 percent, was spent for defense of the indigent; and \$477 million, or 1.2 percent, went for correction.

State to State variation was also found in the relative expenditures by the two levels of government. Local governments accounted for 75 percent of the total State and local expenditures in the 13 States with the 15 largest SMSA's and only 61 percent of the expenditures in the remaining 37 States.

In per capita terms, the local governments spent \$23.33 per person for the five parts of the criminal justice system. This consists of \$16.49 for police protection; \$3.28 for judicial activities; \$1.03 for prosecution; \$0.15 for indigent defense; and \$2.37 for correction.

Local governments employed a full-time equivalent number of workers totaling slightly more than 2.6 million (2,664,075) workers, excluding those engaged in education, in October 1969. Of that number 513,337, or 19.3 percent, were employed in the criminal justice system; 377,227, or 14.2 percent, performed police protection duties; 63,736, or 2.4 percent, were engaged in judicial activities; 21,797, or 0.8 percent, work in prosecutory activities; 2,099, or 0.1 percent, provided defense services to the indigent; and 48,478, or 1.8 percent, were engaged in correctional activities.

Local government payrolls for criminal justice system employees totaled \$341.5 million in October 1969. Annual payroll extrapolations from these October data indicate that slightly more than 87 percent of the total annual local expenditure of \$4.7 billion for all criminal justice activities was expended for salaries and wages. Local government police protection payrolls in October 1969 totaled \$253.3 million. Judicial employees earned \$41.5 million; prosecution employees were paid \$14.7 million; indigent defense employees earned \$1.5 million; and correctional employees were paid \$30.2 million.

The data presented for local governments are based on estimates derived from a mail canvass survey of a stratified random sample of 6,000 local governments. The survey responses were checked for completeness and accuracy by a series of edit procedures, and by reference to available budget and audit documents. The expenditure data presented for selected large counties and cities included in the survey design with certainty were obtained by trained field representatives and were inserted into the sample frame.

Selected county governments

The total general expenditure in fiscal year 1968-69 of the 55 largest counties with more than 500,000 population was about \$6.2 billion, of which \$756 million, or 12.2 percent, went for criminal justice activities. Of that total expenditure, \$258 million, or 4.2 percent, was spent for police protection; \$223 million, or 3.6 percent, for judicial activities; \$49 million, or 0.8 percent, for prosecution; \$11 million, or 0.2 percent, for indigent defense activities; and \$214 million, or 3.5 percent, for correction.

Per capita expenditure of the 55 major county governments for criminal justice activities was \$12.49, of which \$4.27 went for police protection, \$3.69 for judicial activities, \$82 for prosecution, \$1.18 for indigent defense, and \$3.53 for correction.

At the county level, as at the State level, the primary judicial expenditure was for major trial courts, but some other courts of more restricted or specialized jurisdiction also spent sizable amounts. The 55 largest counties spent nearly \$85 million for the operation of major trial courts, \$98 million for all other courts, and \$37 million for law libraries and other miscellaneous judicial support activities.

Probation, parole, and pardon, which account for only 8.2 percent of the State correction expenditure, constitutes 36.1 percent of correction expenditure at the county level. In the 55 largest counties, \$112 million was spent for the operation

Table B. Percent of Full-Time Equivalent Employment in the Criminal Justice System by Level of Government: October 1969

Level of government	Total	Police protection	Judicial activities	Prosecution	Indigent defense	Correctional activities
Total.....	100.0	100.0	100.0	100.0	100.0	100.0
Federal.....	7.6	7.6	7.8	17.1	46.2	3.9
State.....	22.0	11.5	18.1	18.8	-	61.1
Local.....	70.4	80.8	74.1	64.2	53.8	35.0

- Represents zero.

Table C. State-Local Expenditures for Criminal Justice Activities Fiscal Year 1968-1969 (13 States With 15 Largest SMSA's vs. All Others)

State area groups	State and local expenditures	State governments		Local governments	
		Total expenditure ^a	Percent of State and local total	Total expenditures	Percent of State and local total
Total.....	6,233,649	1,816,201	29.2	4,417,458	70.9
13 States with 15 largest SMSA's.	4,287,203	1,034,449	24.8	3,222,754	75.2
Remaining 37 States.....	1,946,446	751,752	38.6	1,194,704	61.4

of correctional institutions, and \$77 million was spent for probation and parole. Together these items constituted the major part of the county correction expenditure total of \$214 million.

Selected city governments

In the 43 largest cities, police protection accounts for 10.4 percent of general expenditure as compared with 1.0 percent for judicial activities, 0.3 percent for prosecution, and 1.2 percent for correction. The disproportionately high percentage for police protection is explained by the fact that judicial, prosecution, and correctional activities are primarily performed by the county and State governments.

Of the 43 major local governments classed as cities for Census Bureau reporting on governments, Baltimore City, Norfolk, St. Louis City, and Washington, D.C. are entirely outside any county area. The following governments, either specifically by law or substantially in fact, operate as composite city-counties: Boston, Denver, Honolulu, New Orleans, New York City, Philadelphia, and San Francisco. Amounts expended by these "special status" cities for judicial activities in fiscal year 1968-69 are shown in table 24. These data are included with judicial expenditure data for the other 32 cities in table 28. A total of \$131.5 million was spent for judicial activities by the 43 cities--\$114.7 million by the 11 "special status" cities and \$16.8 million by the other 32 cities reported.

Most of the current operation expenditure of cities for correction is for institutions (an aggregate of \$101 million for the 43 cities) with relatively little being spent for probation and parole (\$26 million).

SOURCES AND LIMITATIONS OF THE DATA

The data presented in this report for individual States, large counties, and large cities were gathered in connection with the 1968-69 Annual Survey of Governmental Finance and the October 1969 Annual Survey of Public Employment. The recurrent series of annual Bureau of the Census publications on governmental finance (series GF) and public employment (series GE) which utilize these surveys, provide data on expenditures and employment, by function, including summary figures on police protection, correction, and general control. In both series of reports, judicial functions are included with other related functions in the general control category, but are not always shown separately.

In this report, the same sources were used to provide individual government data; judicial items were tabulated separately, when available. The

State by State estimates of local government expenditure and employment for the criminal justice system were developed in part from responses to a mail canvass questionnaire sent to a sample of approximately 6,200 local governments to elicit judicial data.

The State by State estimates are presented in several new tables which provide local government expenditure and employment data in each of the five "sectors" of the criminal justice system. These sample estimates, combined with actual State and Federal government expenditure and employment data, provide a measure of the nationwide support for the criminal justice system.

All data are classified according to Census Bureau categories and totals are obtained for each function.

The mail canvass and field survey efforts were supplemented by reference to a variety of published government documents such as budgets, financial statements, and organization manuals. In some cases, such sources were the basis for breakdowns of totals into more detailed employment and expenditure figures.

The figures presented in this report may in some cases differ from previously published totals, due to refinements of earlier-published data. Still further refinements in the Census Bureau classifications will result from a continuing effort to produce more detailed statistics on government services. The available sources did not consistently provide full itemizations of expenditures or employment for functional sub-categories presented in this report. As a result, itemized breakdowns may be incomplete for particular governmental units.

Readers should be cautious in comparing governments, remembering that these data are not the product of a survey design specifically developed to elicit criminal justice information and that there are various limitations on the comparability of governmental finance and employment data. For example, some State governments directly administer certain activities which elsewhere are undertaken by local governments, with or without fiscal aid. Also, the relative financial scale of counties and cities is strongly affected by variations in the scope of responsibilities of the individual governments for various services and activities.

In most instances, the State data presented in this report pertain to the respective States' fiscal year (which end June 30 in all except three instances: New York, March 31; Texas, August 31; and Alabama, September 30). However, there are some State government agencies which operate

on a different fiscal year basis. In such instances, figures shown are for the agency's fiscal year that ended within the State's regular fiscal year. For cities and counties, the 1968-69 fiscal years reported are those which closed between July 1, 1968, and June 30, 1969. Most municipalities and counties ended their fiscal years either on December 31, 1968, or June 30, 1969. Employment data shown are for October 1969.

The Budget of the United States Government for the Fiscal Year 1971 (which presents actual data for 1969) is the source of most of the Federal Government financial information in this report. Federal employment data were obtained from the U.S. Civil Service Commission. All Federal data were recast as necessary to conform with Census Bureau classification of governmental statistics.

Summary expenditure data for each of the five major functional areas of criminal justice are shown in relation to the total general expenditure, less education expenditures, of the level or type of government and in relation to population. Employment data by function are provided, as available.

Population data used to calculate the per capita figures for States were based on provisional estimates of State populations for July 1, 1969, from Bureau of the Census Current Population Reports, series P-25, No. 437; and for counties on preliminary 1970 Decennial Census of Population data. Per capita figures were not calculated for cities because 1960 population figures are outdated and 1970 population figures for individual cities were not available when this report was being prepared. The selection of the 55 largest counties and 43 largest cities which are individually identified was made on the basis of internal operating procedures. Coverage and procedures will be revised for subsequent reports in this series when final figures are issued from the 1970 Census of Population.

The particular sample selected to develop local government figures is one of the large number of all possible samples of the same size that could have been selected using the same sample design. Estimates derived from the different samples would differ from each other, and from the results of a complete census using the same procedures. This variation among the possible estimates is sampling error. The statistics in this report that are based wholly or partly on sample data are subject to sampling error.

Computations made for local government police protection expenditures show a relative standard error of less than 2 percent for virtually all States and 1 percent or less for more than two-thirds of the States. This means that there is a

two out of three probability that an estimated total is within the indicated percent of the total that would have been obtained from a complete enumeration. While estimates of sampling error have not as yet been computed for other items, experience from previous surveys would indicate that similar relative standard errors might be expected for estimates of major sector totals, i.e., judicial, prosecution, indigent defense, and correction. Estimates of more detailed categories may vary more widely.

Since State government figures are not subject to sampling error, comprehensive State-local aggregates shown for individual States are relatively more reliable than the local government estimates they include.

The estimates are also subject to the inaccuracies in classification, response, and processing which would occur if a complete census had been conducted under the same conditions as the sample. Every effort was made to keep such errors to a minimum through care in examining, editing, and tabulating the data submitted by government officials.

DEFINITION OF TERMS

Following is a glossary of concepts, categories, terms, and symbols used in this publication and comments concerning their limitations.

Government finance

Expenditure comprises all amounts of money paid out (net of any correcting transactions) other than for retirement of debt, investment in securities, extension of loans, or agency transactions. Expenditure includes only external cash payments and excludes any intragovernmental transfers and noncash transactions, such as the provision of meals or housing of employees. It includes any payments financed from borrowing or fund balances as well as from intergovernmental revenue and other current revenue. In several instances, two or more governments share the expense of maintaining a court or other criminal justice agency. In these cases, the allocable direct expenditure amount is reported for each government in the appropriate category.

Total expenditure (for a particular function) includes all amounts, direct and intergovernmental, spent primarily for a particular function. When a government pays pensions directly to retired employees from appropriated funds, or contributes to a retirement system which it does not administer (private or administered by another government), such payments are treated as direct expenditures of the government concerned. How-

ever, State government payments to State administered systems, and local government payments to locally administered systems are not considered expenditures and are not reported in this publication. Such transactions are excluded from the various functional categories and the totals.

Direct expenditure comprises all expenditures other than that classed as intergovernmental.

Total general expenditure includes all expenditure other than utility system expenditure, liquor store expenditure, and insurance trust expenditure.

Capital outlay consists of direct expenditure for construction, for purchase of equipment, and for purchase of land and existing structures.

Intergovernmental expenditure comprises payments from one government to another, including grants-in-aid, shared revenues, payments in lieu of taxes, and amounts for services performed by one government for another on a reimbursable or cost-sharing basis, for example payments by one government to another for boarding prisoners. Because the amounts involved elsewhere were very small and/or unsegregable, intergovernmental expenditure is shown separately for the individual States and counties only in the correction tables. Intergovernmental amounts for other criminal justice activities of States and counties are merged in the "total expenditure" column. Intergovernmental expenditure amounts for the individual cities are not shown for any of the criminal justice activities.

Government employment

Total number of employees (for a particular function) includes all full-time and part-time employees primarily employed in the function in October 1969.

Total monthly payroll is the amount paid to all employees in October 1969.

Number of full-time employees only (for a particular function) includes all full-time employees primarily employed in the function in October 1969.

Number of full-time equivalent employees is the total number of employees, discounted by applying average full-time earning rates. The total full-time equivalent employment of a county government excludes all employees of utility systems and dependent school systems. Full-time equivalent employment totals for individual city governments are shown for common municipal functions, described below, and exclude employ-

ment in functions which are highly variable in their incidence among municipalities. Although correction is not usually considered a major function of city government, employees in this category have been included in the common function total so that derivative statistics could be calculated.

The concept of common municipal functions, as used in this report, includes the following activities: Highways, police protection, fire protection, sewerage, sanitation other than sewerage, parks and recreation, libraries, financial administration, general control, corrections, and water supply systems. Public welfare, hospitals, health, housing and urban renewal, airports, water transport and terminals, electric power, gas supply, transit systems, and "other and unallocable" are considered variable municipal functions and are excluded.

Governmental functions

Police protection is the function of enforcing the law, preserving order, maintaining traffic safety, and apprehending those who violate the laws, disregarding whether these activities are performed by a police department, the office of the sheriff, or by other agencies. It includes regular police service, traffic control, and traffic safety activities, including related traffic engineering activities (but not highway planning and engineering), vehicular inspection, and the maintenance of buildings used exclusively for police purposes. Park police, marine law enforcement officials, game wardens, and similar officials and activities are not included unless they are an unsegregable part of the regular police.

At the county government level, both county police agencies and the office of the sheriff, where such an office exists, are included in the law enforcement category, unless research has indicated that the sheriff has no substantial responsibility for law enforcement. The lack of needed information has prevented the proration of expenditure or employees of the sheriff's office where that office is multifunctional.

Those few sheriffs who operate at the municipal level are all found in cities designated as having "special status." Since it appears that the duties of the sheriff in each of these cities are judicial in nature, the data are included in table 24.

Short-term custody and detention are traditionally assumed to be part of the police protection function. Therefore, for this publication, expenditure and employment for detention and custody of persons awaiting trial are classified as "police protection" at the municipal level and in the one county (Los Angeles) in which they could be

separately identified. Otherwise, data for jails and closely related activities and institutions at the county level were assumed to be correction data.

Police communications expenditure includes data on the operation of police radio systems, telegraph, street call boxes, and similar systems. Expenditure for conventional telephone service is included with data on general police activities.

Police training encompasses the operation of various programs for the instruction of police cadets and the development of additional skills in career officers. This includes the operation of police academies, periodic seminar or short-term institute programs, and participation of police officers of a government in the training or career development programs of another government, i.e., in the FBI academy. Salaries of police officers while in training are not included if such data are segregable, while salaries of instructors are a training expense and are included.

Traffic control includes police agency expenditure which can be identified as being for the control and management of traffic, as distinct from other police activities.

Judicial activities comprise all courts and activities associated with courts (for example, law libraries, medical and social service activities, and juries). Since the names of the courts with similar functions and legal jurisdictions vary from State to State and even within States, data have been categorized by type of court rather than by court name.

Court of Last Resort is the court of final appeal within a State's judicial structure. It is called the "Supreme Judicial Court" in Maine and Massachusetts; the "Supreme Court of Appeals" in Virginia and West Virginia; and the "Court of Appeals" in Kentucky, Maryland, and New York. In Texas and Oklahoma two courts of last resort are authorized--the "Court of Criminal Appeals" for criminal cases and a "Supreme Court" for civil cases. In every other State the court of last resort is titled the "Supreme Court."

Appellate Courts include courts of last resort and intermediate appellate courts.

Intermediate Appellate Courts are those which hear cases appealed from trial court decisions prior to review by the court of last resort. In 12 of 19 States with an operating court of this type, the name "Court of Appeals" is used. In Illinois and Indiana the title is "Appellate Court"; in Maryland, "Court of Special Appeals"; in New Jersey, "Appellate Division of the Superior Court"; in New York, "Appellate Division of the Supreme

Court"; in Pennsylvania, "Superior Court"; and in Texas, "Court of Civil Appeals." In Tennessee the "Court of Appeals" hears only civil cases; a separate "Court of Criminal Appeals" reviews criminal cases prior to final review by the "Supreme Court." The States of Colorado, Oklahoma, Oregon, and Washington have passed legislation establishing an intermediate appellate court; however, none of these legislative actions were effective in fiscal year 1968-69. Alabama has replaced its "Court of Appeals" with separate tribunals for civil and criminal cases; however, this action was not in effect in fiscal year 1968-69.

Major trial courts are trial courts of general jurisdiction, the names of which vary considerably. The following tabulation lists the title used in each State. Several States are listed more than once because local situations led to the development of separate courts to hear cases involving different types of pleadings. Thus, Arkansas, for example, has a "Circuit Court" system to hear cases at law and a separate "Chancery Court" system to hear pleadings in equity.

Circuit Court

Alabama	Mississippi
Arkansas	Missouri
Florida	Oregon
Hawaii	South Carolina
Illinois	South Dakota
Indiana	Tennessee
Kentucky	Virginia
Maryland	West Virginia
Michigan	Wisconsin

District Court

Colorado	Nevada
Idaho	New Mexico
Iowa	North Dakota
Kansas	Oklahoma
Louisiana	Texas
Minnesota	Utah
Montana	Wyoming
Nebraska	

Superior Court

Alaska	Maine
Arizona	Massachusetts
California	New Hampshire
Connecticut	New Jersey
Delaware	North Carolina
Georgia	Rhode Island
Indiana	Washington

Chancery Court

Arkansas	Mississippi
Delaware	Tennessee

County Court

New Jersey
Vermont
Wisconsin

Common Pleas Court

Ohio
Pennsylvania

Supreme Court

New York

Probate Courts are also called Orphans Courts, Surrogate's Courts, or Courts of Ordinary. The subject jurisdiction varies from place to place, but generally includes estate settlement; probate and contest of wills; adoption; commitment of the insane; administration of the affairs of orphans, mental defectives, and incompetents; guardianship of minors; apprenticeship; receivership; change of name proceedings; and administration of trusts.

Juvenile and Family Courts deal primarily with juvenile cases and are sometimes called juvenile courts or juvenile and domestic relations courts. The jurisdiction of these courts can include crimes of persons under legal age; offenses against children; probation of minor delinquents; adoption, custody, or disposition of minor and mentally incompetent children; child neglect or abandonment; child and wife support; truancy; and paternity.

Other Courts of Restricted Jurisdiction may include probate, juvenile, and family or other courts if it is not possible to separate these items. This category also includes county courts, municipal courts, the minor judiciary (justices of the peace, trial magistrates, and the like), traffic courts, or other special jurisdiction courts. In several counties, these specialized activities are handled by a division of the major trial court.

The Other Courts category varies in composition for each of the several tables. In each instance that category includes courts which are relatively rare for that level of government.

Law Libraries include expenditures for separately maintained law libraries, identifiable law book expenditures for the various individual courts, or that portion of the total expenditure of the general State library made for the law library collection.

Correction is that function of government involving the confinement and correction of adults and minors convicted of offenses against the law,

as well as the pardon, parole, and probation activities. If it could be separately identified, probation expenditure is shown with correction data, even if the courts control the probation programs. Expenditure and employment data for county jails and other closely related items are included, except in Los Angeles county, where it was possible to separate detention data from other data elements. City jail expenditure is considered to be for detention and is included under police protection. Other correctional activities are often handled by a surrounding county rather than by the city, resulting in a low city expenditure.

Correctional institutions include prisons, reformatories, houses of correction, and other institutions for the confinement and correction of convicted adults and juveniles. When an institution maintains a prison industry program, data on the cost of production or the value of prison labor used by other agencies of the same government, if identifiable, are excluded. Data are included on the manufacture, sale, and distribution of goods produced for sale or use outside the institution.

Institutions for youthful offenders are those under the control of a youth authority, or a similarly designated administrative body, as well as independently administered institutions where examination of supplementary documents have indicated that the institution primarily houses persons under 21. The expenditure data included under this category are only for the operation of the institution and do not include the cost of administration. Where such cost is identifiable, it has been shifted into the General Administration category.

Due to the great variability of the age limits for defining juveniles (for example, "16 and up," "16 to 21," "15 to 30," "17 to 25"), an allocation to this category was sometimes relatively arbitrary and sometimes not possible because data items could not be separated into their elements.

Institutions for Women include identifiable expenditure and data for an institution for female offenders. Where segregable, administrative expense is included in the General Administration category.

Other institutions are primarily institutions for adult male offenders, which may, from time to time, house females and youths. This category also includes female and youth institutions for which expenditures or employment could not be segregated. For example, Colorado, Delaware, Louisiana, New York, Ohio, Rhode Island, and Texas data include separate institutions for

women, juveniles, and for adult males for which expenditures were not separable. Wyoming has no correctional institution for women, but boards female offenders in the Nebraska Reformatory for Women.

General administration consists of expenditure data for administration of the correctional system. This new category includes expenditure data for the overall administration of a correction department or other general administrative body (for example, a youth authority administering many institutions for youthful offenders) as well as the administration of each individual institution. Correctional administration employment data could not be segregated and are included in the miscellaneous category.

Prosecution includes the activities of the attorneys general and their staffs involving advice to the Governor on the legality of proposed actions, representation of the State in all law suits, and prosecution of violators of criminal law. If the State pays the salary of the county attorney, district attorney, State's attorney or their counterparts, the data are included under this heading at the State level. Expenditure for both civil and criminal activities are included.

At the county and city levels this category includes data on locally paid district attorneys, their counterparts, and staffs.

Indigent defense activities include the governmental provision of counsel, whether through a Public Defender Office or other publicly financed agency. If attorney fees are paid by the court, the data are included under this heading after having been deducted from the judicial data. Data on privately financed Legal Aid Bureau's and bar association programs for defense of the indigent are excluded, but governmental contributions to such programs or retainers to attorneys are included.

The Probation, parole, and pardon category includes data on boards of parole, boards of pardons, probation agencies, and their variously named equivalents. Although probation agencies frequently function under the administration of the major trial court, the data are presented here, after having been deducted from the judicial data, because of the correctional nature of the probation function. The overlapping character of the probation and parole functions prevent the separate presentation of these data.

The Miscellaneous category includes expenditure or employment data not elsewhere classified, or data which may cut across more than one category or be unallocable to separate categories. For the judicial function, the category may include data on judicial councils, jury and witness fees, court administrators (in those cases where they could be identified), and other miscellaneous data not elsewhere classified.

Table 1. Expenditure for the Criminal Justice System, by Level of Government: Fiscal Year 1968-69

(Thousands of dollars)

Activity	All governments	Federal Government	State governments	Local governments	Activity	All governments	Federal Government	State governments	Local governments
All activities.....	17,340,305	828,956	1,894,044	4,742,566	Prosecution.....	1368,932	91,501	70,507	207,007
Direct expenditure.....	7,340,305	799,996	1,849,078	4,691,231	Direct expenditure.....	368,932	91,501	70,507	206,924
Intergovernmental expenditure	(1)	28,960	44,966	51,335	Intergovernmental expenditure	(1)	-	-	83
Police protection.....	14,429,672	491,664	621,113	3,326,223	Indigent defense.....	177,721	39,790	7,336	30,703
Direct expenditure.....	4,429,672	491,664	621,113	3,316,895	Direct expenditure.....	77,721	39,790	7,336	30,595
Intergovernmental expenditure	(1)	-	-	9,228	Intergovernmental expenditure	(1)	-	-	108
Judicial.....	1,001,842	105,531	236,068	670,077	Correction.....	1,461,929	71,301	959,020	508,656
Direct expenditure.....	1,001,842	105,531	236,068	660,243	Direct expenditure.....	1,461,929	71,301	914,054	476,574
Intergovernmental expenditure	(1)	-	-	8,834	Intergovernmental expenditure	(1)	-	44,966	32,082
					Other criminal justice.....	209	29,189	-	-
					Direct expenditure.....	209	209	-	-
					Intergovernmental expenditure	(1)	28,960	-	-

- Represents zero or rounds to zero.
 1 Duplicative transactions between levels of government are excluded. Direct expenditure figures may include nonsegregable intergovernmental amounts. Federal intergovernmental data are not segregable for distinctive categories and are classed under the residual "Other Criminal Justice."

Table 2. Employment and Payrolls for the Criminal Justice System, by Level of Government: October 1969

(Dollar amounts in thousands)

Activity	All governments	Federal Government	State governments	Local governments	Activity	All governments	Federal Government	State governments	Local governments
All activities.....	798,685	56,364	163,125	579,196	Indigent defense.....	4,287	1,800	(NA)	2,487
Full-time employees....	710,529	55,193	158,906	496,430	Full-time employees....	3,695	1,800	(NA)	1,895
Full-time equivalent...	729,161	55,485	160,339	513,337	Full-time equivalent...	3,899	1,800	(NA)	2,099
October payroll.....	518,825	81,717	115,604	341,504	October payroll.....	3,172	1,665	(NA)	1,507
Police protection.....	523,052	36,177	54,496	432,379	Correction.....	142,097	5,432	85,880	50,785
Full-time employees....	454,712	35,453	53,475	365,784	Full-time employees....	136,871	5,374	83,816	47,681
Full-time equivalent...	466,607	35,834	53,748	377,227	Full-time equivalent...	138,506	5,388	84,640	48,478
October payroll.....	331,425	40,010	38,047	253,368	October payroll.....	91,559	5,011	56,345	30,203
Judicial.....	92,240	8,786	16,091	69,363	Other criminal justice...	227	227	-	-
Full-time employees....	83,122	6,631	15,358	61,133	Full-time employees....	187	187	-	-
Full-time equivalent...	85,082	6,670	15,576	63,736	Full-time equivalent...	197	197	-	-
October payroll.....	64,639	7,458	15,494	41,687	October payroll.....	271	271	-	-
Prosecution.....	36,782	5,942	6,658	24,182					
Full-time employees....	31,942	5,748	6,257	19,937					
Full-time equivalent...	33,970	5,796	6,377	21,787					
October payroll.....	27,759	7,302	5,718	14,739					

- Represents zero or rounds to zero.
 NA Not available.

Table 3. Expenditure of Federal, State, and Local Governments for Police Protection, Judicial, Legal, and Correctional Activities: Fiscal Year 1968-69

(Dollar amounts, except per capita, in thousands)

Level of government	Police protection, judicial, legal, and correctional activities		Police protection activities		Judicial activities		Legal activities				Correctional activities	
	Amount	Per capita	Amount	Per capita	Amount	Per capita	Prosecution		Indigent defense		Amount	Per capita
							Amount	Per capita	Amount	Per capita		
United States, total.	7,340,305	36.50	4,429,881	22.03	1,001,842	4.98	368,932	1.83	77,721	0.39	1,461,929	7.27
Federal.....	799,996	3.98	491,873	2.45	105,531	0.52	91,501	0.45	39,790	0.20	71,301	0.35
State-local.....	6,540,309	32.52	3,938,008	19.58	896,311	4.46	277,431	1.38	37,931	0.19	1,390,628	6.91
State.....	1,849,078	9.19	621,113	3.09	236,068	1.17	70,507	0.35	7,336	0.04	914,054	4.54
Local.....	4,691,231	23.33	3,316,895	16.49	660,243	3.28	206,924	1.03	30,595	0.15	476,574	2.37

Note: Per capita amounts are based on estimated 1969 population of 201,123,000; see table 11.

Table 5. Expenditure of State and Local Governments for Police Protection, Judicial, Legal, and Correctional Activities, by Percent of General Expenditure, by Level of Government, and by State: Fiscal Year 1968-69—Continued

(Dollar amounts in thousands)

State and level of government	Total general expenditure excluding education	Police protection, judicial, legal, and correctional activities		Police protection activities		Judicial activities		Legal activities				Correctional activities	
		Amount ¹	Per-cent of total	Amount ¹	Per-cent of total	Amount ¹	Per-cent of total	Prosecution		Indigent defense		Amount ¹	Per-cent of total
								Amount ¹	Per-cent of total	Amount ¹	Per-cent of total		
Louisiana.....	1,361,088	92,511	6.8	61,293	4.6	11,904	0.9	3,601	0.3	26	(Z)	15,687	1.2
State.....	896,589	28,108	3.2	10,148	1.2	4,205	0.5	1,372	0.2	-	-	12,381	1.4
Local.....	494,499	64,414	13.0	51,160	10.3	7,699	1.6	2,229	0.5	26	(Z)	3,310	0.7
Maine.....	340,927	21,241	6.2	11,180	3.3	3,265	1.0	581	0.2	41	(Z)	6,174	1.8
State.....	186,097	11,510	6.2	3,688	2.0	1,823	1.0	473	0.3	-	-	5,626	3.0
Local.....	154,830	9,731	6.3	7,492	4.8	1,442	0.9	108	0.1	41	(Z)	648	0.4
Maryland.....	1,607,545	183,214	11.4	117,810	7.3	18,390	1.1	4,578	0.3	639	(Z)	41,797	2.6
State.....	789,446	76,720	9.7	34,015	4.3	7,443	0.9	736	0.1	195	(Z)	34,331	4.3
Local.....	818,099	106,722	13.0	83,860	10.3	10,947	1.3	3,842	0.5	445	0.1	7,628	0.9
Massachusetts.....	2,740,156	198,192	7.2	119,269	4.4	28,834	1.1	4,445	0.2	844	(Z)	44,800	1.6
State.....	1,439,794	49,398	3.4	10,291	0.7	6,447	0.4	853	0.1	820	0.1	30,987	2.2
Local.....	1,300,362	157,288	12.1	108,978	8.4	30,791	2.4	3,592	0.3	24	(Z)	13,903	1.1
Michigan.....	3,343,964	286,205	8.6	174,523	5.2	43,010	1.3	10,955	0.3	2,180	0.1	55,537	1.7
State.....	1,644,362	72,822	4.4	26,143	1.6	7,322	0.4	2,566	0.2	-	-	38,891	2.2
Local.....	1,699,602	216,553	12.7	148,679	8.7	35,765	2.1	8,389	0.5	2,180	0.1	21,640	1.3
Minnesota.....	1,682,094	90,009	5.4	48,449	2.9	12,695	0.8	4,099	0.2	475	(Z)	24,291	1.4
State.....	808,567	27,458	3.4	7,565	0.9	2,677	0.3	806	0.1	163	(Z)	16,447	2.0
Local.....	873,527	64,418	7.4	41,111	4.7	10,430	1.2	3,516	0.4	345	(Z)	9,016	1.0
Mississippi.....	677,878	35,717	5.3	23,523	3.5	4,510	0.7	933	0.1	55	(Z)	6,696	1.0
State.....	409,748	15,408	3.8	8,529	2.1	1,236	0.3	498	0.1	-	-	5,145	1.3
Local.....	268,130	20,329	7.6	15,014	5.6	3,274	1.2	435	0.2	55	(Z)	1,551	0.6
Missouri.....	1,338,491	127,800	9.5	81,496	6.1	18,024	1.3	4,145	0.3	213	(Z)	23,922	1.8
State.....	741,190	33,147	4.5	12,190	1.6	6,062	0.8	789	0.1	-	-	14,106	1.9
Local.....	597,301	94,751	15.9	69,327	11.6	11,964	2.0	3,356	0.6	213	(Z)	9,891	1.7
Montana.....	244,301	15,785	6.5	8,154	3.3	2,217	0.9	1,089	0.4	74	(Z)	4,251	1.7
State.....	157,401	6,878	4.4	2,240	1.4	647	0.4	393	0.2	-	-	3,596	2.3
Local.....	86,900	8,914	10.3	5,914	6.8	1,574	1.8	697	0.8	74	0.1	655	0.8
Nebraska.....	505,279	34,092	6.7	22,434	4.4	3,511	0.7	1,786	0.4	164	(Z)	6,197	1.2
State.....	234,383	11,396	4.9	4,500	1.9	1,420	0.6	274	0.1	-	-	5,202	2.2
Local.....	270,896	22,753	8.4	17,934	6.6	2,091	0.8	1,513	0.6	167	0.1	1,048	0.4
Nevada.....	249,456	27,221	10.9	15,746	6.3	4,004	1.6	1,694	0.7	220	0.1	5,557	2.2
State.....	124,075	7,881	6.2	2,606	2.1	679	0.5	278	0.2	-	-	4,118	3.3
Local.....	125,381	19,604	15.6	13,146	10.5	3,325	2.7	1,416	1.1	220	0.2	1,497	1.2
New Hampshire.....	212,520	13,986	6.6	8,649	4.1	2,280	1.1	423	0.2	110	0.1	2,524	1.2
State.....	126,032	5,652	4.5	2,137	1.7	1,160	0.9	236	0.2	110	0.1	2,009	1.6
Local.....	86,488	8,344	9.6	6,512	7.5	1,130	1.3	187	0.2	-	-	515	0.6
New Jersey.....	2,588,728	273,677	10.6	177,028	6.8	35,372	1.4	11,695	0.5	2,786	0.1	46,796	1.8
State.....	1,117,684	64,508	5.8	24,687	2.2	8,653	0.8	2,547	0.2	2,673	0.2	25,948	2.3
Local.....	1,471,044	209,281	14.2	152,347	10.4	26,825	1.8	9,148	0.6	113	(Z)	20,848	1.4
New Mexico.....	327,379	26,927	8.2	16,603	5.1	2,977	0.9	1,698	0.5	104	(Z)	5,545	1.7
State.....	218,709	12,990	5.9	5,729	2.6	1,383	0.6	984	0.4	104	(Z)	4,790	2.2
Local.....	108,671	13,938	12.8	10,874	10.0	1,594	1.5	714	0.7	-	-	756	0.7
New York.....	12,723,049	1,006,391	7.9	644,346	5.1	131,667	1.0	42,938	0.3	3,495	(Z)	183,945	1.4
State.....	5,399,630	199,037	3.7	48,494	0.9	26,768	0.5	11,269	0.2	500	(Z)	112,006	2.1
Local.....	7,323,419	839,788	11.5	595,854	8.1	104,906	1.4	31,669	0.4	2,995	(Z)	104,364	1.4
North Carolina.....	1,244,460	107,316	8.6	57,982	4.7	11,582	0.9	1,183	0.1	767	0.1	35,802	2.9
State.....	731,242	57,195	7.8	13,863	1.9	10,589	1.4	936	0.1	767	0.1	31,040	4.2
Local.....	513,218	50,121	9.3	44,119	8.6	993	0.2	247	(Z)	-	-	4,762	0.9
North Dakota.....	241,372	11,174	4.6	6,171	2.6	2,304	1.0	903	0.4	39	(Z)	1,757	0.7
State.....	156,123	3,452	2.2	1,117	0.7	574	0.4	220	0.1	-	-	1,541	1.0
Local.....	85,249	7,722	9.1	5,054	5.9	1,730	2.0	683	0.8	39	(Z)	216	0.3
Ohio.....	3,352,119	299,190	8.9	167,593	5.0	50,567	1.5	10,580	0.3	852	(Z)	69,598	2.1
State.....	1,595,697	81,847	5.1	18,193	1.1	6,537	0.4	2,209	0.1	-	-	54,908	3.4
Local.....	1,756,422	218,612	12.4	149,460	8.5	44,129	2.5	8,371	0.5	852	(Z)	15,800	0.9
Oklahoma.....	858,639	51,131	6.0	30,633	3.6	6,988	0.8	4,102	0.5	141	(Z)	9,267	1.1
State.....	598,509	21,329	3.6	7,128	1.2	2,105	0.5	2,989	0.5	-	-	8,107	1.4
Local.....	260,130	29,802	11.5	23,505	9.0	3,883	1.5	1,113	0.4	141	0.1	1,160	0.4

See footnotes At end of table.

Table 5. Expenditure of State and Local Governments for Police Protection, Judicial, Legal, and Correctional Activities, by Percent of General Expenditure, by Level of Government, and by State: Fiscal Year 1968-69—Continued

(Dollar amounts in thousands)

State and level of government	Total general expenditure excluding education	Police protection, judicial, legal, and correctional activities		Police protection activities		Judicial activities		Legal activities				Correctional activities	
		Amount ¹	Per-cent of total	Amount ¹	Per-cent of total	Amount ¹	Per-cent of total	Prosecution		Indigent defense		Amount ¹	Per-cent of total
								Amount ¹	Per-cent of total	Amount ¹	Per-cent of total		
Oregon.....	783,815	62,256	7.9	33,083	4.2	8,737	1.1	3,360	0.4	216	(Z)	16,860	2.2
State.....	436,443	21,650	4.9	5,966	1.4	2,342	0.5	1,017	0.2	78	(Z)	12,147	2.8
Local.....	347,372	40,733	11.7	27,117	7.8	6,395	1.8	2,343	0.7	138	(Z)	4,740	1.4
Pennsylvania.....	3,790,914	334,249	8.8	200,144	5.3	49,654	1.3	13,996	0.4	2,145	0.1	68,310	1.8
State.....	2,210,685	88,576	4.0	36,865	1.6	8,065	0.4	1,054	-	-	-	43,592	2.0
Local.....	1,580,229	264,887	16.8	164,284	10.4	41,603	2.6	12,976	0.8	2,168	0.1	43,856	2.8
Rhode Island.....	367,851	26,964	7.3	16,408	4.5	4,411	1.2	658	0.2	172	(Z)	5,315	1.4
State.....	243,804	12,932	5.3	2,702	1.1	4,388	1.8	356	0.1	171	0.1	5,315	2.2
Local.....	124,047	14,039	11.3	13,706	11.0	23	(Z)	309	0.2	1	(Z)	-	-
South Carolina.....	592,013	44,861	7.6	28,447	4.8	5,578	0.9	1,050	0.2	13	(Z)	9,773	1.7
State.....	389,769	17,784	4.6	8,685	2.2	1,006	0.3	623	0.2	-	-	7,470	1.9
Local.....	202,244	27,085	13.4	19,765	9.8	4,577	2.3	427	0.2	13	(Z)	2,303	1.1
South Dakota.....	221,003	13,128	5.9	7,304	3.3	2,227	1.0	922	0.4	49	(Z)	2,626	1.2
State.....	139,946	4,668	3.3	1,918	1.4	561	0.4	152	0.1	-	-	2,037	1.5
Local.....	81,057	8,464	10.5	5,386	6.6	1,689	2.1	771	1.0	49	0.1	589	0.7
Tennessee.....	1,142,486	77,488	6.8	44,955	3.9	10,355	0.9	3,636	0.3	273	(Z)	18,269	1.6
State.....	601,543	28,120	4.7	7,025	1.2	2,686	0.4	2,539	0.4	145	(Z)	15,725	2.6
Local.....	540,943	50,477	9.3	38,042	7.0	7,828	1.4	1,097	0.2	128	(Z)	3,382	0.6
Texas.....	2,708,858	251,593	9.3	137,200	5.8	38,199	1.4	15,067	0.6	624	(Z)	40,503	1.5
State.....	1,395,082	69,850	5.0	30,618	2.2	7,169	0.5	2,483	0.2	-	-	29,580	2.1
Local.....	1,313,776	181,761	13.8	126,596	9.6	31,031	2.4	12,585	1.0	626	(Z)	10,923	0.8
Utah.....	297,079	20,979	7.1	12,386	4.2	2,862	1.0	1,098	0.4	5	(Z)	4,628	1.6
State.....	192,141	8,808	4.6	2,753	1.4	1,631	0.8	453	0.2	-	-	3,971	2.1
Local.....	104,938	12,317	11.7	9,639	9.2	1,233	1.2	645	0.6	5	(Z)	795	0.8
Vermont.....	179,214	11,572	6.5	5,383	3.0	1,850	1.0	357	0.2	-	-	3,982	2.2
State.....	140,428	9,315	6.6	3,173	2.3	1,850	1.3	342	0.2	-	-	3,050	2.8
Local.....	38,786	2,291	5.9	2,244	5.8	-	-	15	(Z)	-	-	32	0.1
Virginia.....	1,298,363	103,589	8.0	69,498	5.4	11,859	0.9	4,413	0.3	31	(Z)	17,788	1.4
State.....	724,162	45,676	6.3	20,540	2.8	5,600	0.8	2,531	0.3	-	-	17,005	2.3
Local.....	574,201	59,676	10.										

Table 6. Expenditure of State and Local Governments for Police Protection, Judicial, Legal, and Correctional Activities, by Character, by Level of Government, and by State: Fiscal Year 1968-69

(Thousands of dollars)

State and level of government	Police protection, judicial, legal and correctional activities				Police protection activities				Judicial activities			
	Total ¹	Direct current ²	Capital outlay	Inter-governmental ³	Total ¹	Direct current ²	Capital outlay	Inter-governmental ³	Total ¹	Direct current ²	Capital outlay	Inter-governmental ³
United States, total.....	6,540,309	6,170,659	369,650	96,301	3,938,008	3,738,135	199,873	9,228	896,311	878,118	20,193	9,834
State.....	1,894,044	1,696,015	153,063	44,966	821,113	577,432	43,681	-	236,068	230,834	5,234	-
Local.....	4,742,536	4,474,644	218,587	51,335	3,326,123	3,160,703	156,192	9,228	660,243	647,284	14,959	9,834
Alabama.....	60,344	55,093	5,251	965	35,537	33,748	1,889	-	11,147	11,107	40	1
State.....	19,654	15,157	3,533	964	5,958	5,558	400	-	2,543	2,538	5	-
Local.....	41,656	39,936	1,718	1	29,579	28,190	1,489	-	8,605	8,569	35	1
Alaska.....	15,742	15,308	434	54	6,121	5,851	270	46	3,533	3,451	82	8
State.....	11,763	11,525	238	-	2,782	2,681	81	-	3,282	3,207	75	-
Local.....	4,033	3,783	196	54	3,405	3,170	189	46	259	244	15	8
Arizona.....	56,983	53,993	2,987	1	38,437	34,187	2,250	1	8,693	8,282	411	-
State.....	16,384	14,003	1,481	-	8,893	7,557	1,136	-	1,081	1,041	40	-
Local.....	40,600	39,993	1,506	1	27,745	26,630	1,114	1	7,612	7,241	371	-
Arkansas.....	24,504	23,107	1,397	2	18,129	15,139	990	2	3,375	3,345	30	-
State.....	9,248	8,452	796	-	4,345	3,911	434	-	1,582	1,579	3	-
Local.....	15,256	14,655	601	2	11,786	11,228	556	2	1,793	1,766	27	-
California.....	999,850	963,398	36,452	20,345	563,745	539,650	24,095	7,618	109,329	108,483	846	-
State.....	253,965	234,480	8,325	11,160	94,157	88,832	5,325	-	14,599	14,559	40	-
Local.....	766,230	728,918	28,127	9,185	477,206	450,818	18,770	7,618	94,730	93,924	806	-
Colorado.....	64,237	60,336	3,901	287	32,351	30,338	2,013	-	11,701	11,632	69	1
State.....	22,817	20,358	2,173	286	7,933	7,131	802	-	1,964	1,955	9	-
Local.....	41,707	39,978	1,728	1	24,418	23,207	1,211	-	9,738	9,677	60	1
Connecticut.....	97,469	93,896	3,573	93	58,985	57,307	1,678	96	18,822	17,741	1,081	-
State.....	48,153	45,262	2,891	-	10,812	9,821	991	-	18,678	17,598	1,080	-
Local.....	49,412	48,634	688	96	48,269	47,486	687	96	144	143	1	-
Delaware.....	21,050	16,442	4,608	-	9,387	8,805	582	-	3,564	3,512	52	-
State.....	14,440	9,913	4,527	-	4,194	3,693	501	-	2,418	2,355	52	-
Local.....	6,810	6,529	81	-	5,193	5,112	81	-	1,146	1,146	-	-
District of Columbia (local).....	88,251	86,841	1,410	-	49,599	49,174	425	-	10,572	10,572	-	-
Florida.....	199,911	178,678	12,233	18	113,400	107,347	6,053	11	38,102	34,822	3,280	5
State.....	50,584	47,328	3,256	-	16,582	15,412	1,170	-	6,832	6,723	109	-
Local.....	140,343	131,350	8,977	16	96,820	91,935	4,883	11	31,270	28,099	3,171	5
Georgia.....	100,283	92,955	7,328	1,105	54,617	51,595	3,022	612	17,635	17,460	175	-
State.....	33,022	28,304	4,233	485	9,224	8,869	355	-	3,046	3,037	9	-
Local.....	68,366	64,651	3,095	620	46,005	42,726	2,667	612	14,589	14,423	166	-
Hawaii.....	28,672	27,934	738	-	17,224	16,792	432	-	5,289	5,184	85	-
State.....	9,879	9,579	300	-	109	-	-	-	5,258	5,175	83	-
Local.....	18,793	18,355	438	-	17,115	16,683	432	-	11	9	2	-
Idaho.....	16,765	14,557	2,208	22	9,315	8,712	603	-	3,689	2,553	1,136	22
State.....	7,045	5,238	1,807	-	2,308	2,061	247	-	2,083	966	1,117	-
Local.....	9,742	9,319	401	22	7,007	6,651	356	-	1,628	1,587	19	22
Illinois.....	372,148	352,465	19,683	705	245,207	235,260	9,947	3	51,140	50,905	235	2
State.....	90,848	79,873	10,975	-	23,979	22,216	1,763	-	16,936	16,851	85	-
Local.....	282,005	272,592	8,708	705	221,231	213,044	8,184	3	34,206	34,054	150	2
Indiana.....	102,022	94,525	7,497	440	62,411	59,863	2,548	-	12,829	12,762	67	3
State.....	39,469	30,396	5,873	-	12,972	11,884	1,128	-	2,480	2,422	58	-
Local.....	65,993	63,929	1,624	440	49,439	48,019	1,420	-	10,352	10,340	9	3
Iowa.....	61,524	56,702	4,822	285	34,610	32,732	1,878	1	9,018	8,995	23	264
State.....	27,268	23,402	3,866	-	10,889	9,913	976	-	2,167	2,165	2	-
Local.....	34,541	33,300	956	285	23,722	22,819	902	1	7,115	6,830	21	264
Kansas.....	47,553	45,114	2,439	25	26,898	25,624	1,274	22	7,618	7,011	607	3
State.....	17,644	16,604	1,040	-	5,805	5,258	547	-	2,201	2,192	9	-
Local.....	29,934	28,510	1,399	25	21,115	20,366	727	22	5,420	4,819	598	3
Kentucky.....	64,519	59,618	4,901	159	40,035	37,165	2,870	1	8,402	8,398	4	-
State.....	30,281	26,909	3,372	-	12,593	11,163	1,430	-	6,011	6,007	4	-
Local.....	34,397	32,709	1,529	159	27,443	26,002	1,440	1	2,391	2,391	4	-
Louisiana.....	92,511	85,946	6,565	9	61,293	57,181	4,112	5	11,904	11,637	267	-
State.....	28,106	26,084	2,022	-	10,148	9,639	509	-	4,205	4,205	-	-
Local.....	64,414	59,862	4,543	9	51,150	47,542	3,603	5	7,699	7,432	267	-

See footnotes at end of table.

Table 6. Expenditure of State and Local Governments for Police Protection, Judicial, Legal, and Correctional Activities, by Character, by Level of Government, and by State: Fiscal Year 1968-69—Continued

(Thousands of dollars)

State and level of government	Legal activities								Correctional activities			
	Prosecution				Indigent defense				Total ¹	Direct current ²	Capital outlay	Inter-governmental ³
	Total ¹	Direct current ²	Capital outlay	Inter-governmental ³	Total ¹	Direct current ²	Capital outlay	Inter-governmental ³				
United States, total.....	277,431	276,550	881	83	37,931	37,865	66	108	1,390,628	1,241,991	148,637	77,048
State.....	70,507	70,507	-	-	7,336	7,336	-	108	959,020	809,906	104,148	44,966
Local.....	207,007	206,043	881	83	30,703	30,529	66	-	508,656	432,085	44,489	32,082
Alabama.....	2,222	2,222	-	-	-	-	-	-	11,338	8,016	3,322	964
State.....	1,081	1,081	-	-	-	-	-	-	10,072	5,980	4,092	904
Local.....	1,141	1,141	-	-	-	-	-	-	2,230	2,036	194	-
Alaska.....	1,614	1,614	-	-	-	-	-	-	4,474	4,392	82	-
State.....	1,245	1,245	-	-	-	-	-	-	4,474	4,392	82	-
Local.....	369	369	-	-	-	-	-	-	-	-	-	-
Arizona.....	2,878	2,873	5	-	349	349	-	-	8,628	6,305	321	-
State.....	478	478	-	-	-	-	-	-	6,131	5,826	305	-
Local.....	2,399	2,394	5	-	349	349	-	-	2,495	2,478	16	-
Arkansas.....	952	936	16	-	15	15	-	-	4,033	3,672	361	-
State.....	234	234	-	-	15	15	-	-	3,087	2,728	359	-
Local.....	718	702	16	-	-	-	-	-	946	944	2	-
California.....	54,403	54,242	161	1	16,160	16,122	38	-	256,213	244,901	11,312	12,728
State.....	10,309	10,309	-	-	775	775	-	-	134,125	120,005	14,120	11,160
Local.....	44,095	43,933	161	1	15,385	15,347	38	-	134,814	124,896	8,252	1,568
Colorado.....	3,510	3,485	25	-	400	400	-	-	16,275	14,481	1,794	286
State.....	299	299	-	-	-	-	-	-	12,821	10,973	1,862	266
Local.....	3,211	3,186	25	-	400	400	-	-	3,940	3,508	432	-
Connecticut.....	1,735	1,735	-	-	-	-	-	-	17,927	17,107	820	-
State.....	736	736	-	-	-	-	-	-	17,927	17,107	820	-
Local.....	999	999	-	-	-	-	-	-	-	-	-	-
Delaware.....	516	516	-	-	126	126	-	-	7,457	3,483	3,974	-
State.....	300	300	-	-	125	125	-	-	7,403	3,429	3,974	-
Local.....	216	216	-	-	1	1	-	-	54	54	-	-
District of Columbia (local).....	1,630	1,630	-	-	-	-	-	-	26,450	25,465	985	-
Florida.....	9,100	9,051	49	-	1,343	1,342	1	-	28,966</			

Table 6. Expenditure of State and Local Governments for Police Protection, Judicial, Legal, and Correctional Activities, by Character, by Level of Government, and by State: Fiscal Year 1968-69—Continued

(Thousands of dollars)

State and level of government	Police protection, judicial, legal, and correctional activities				Police protection activities				Judicial activities			
	Total ¹	Direct current ²	Capital outlay	Inter-governmental ³	Total ¹	Direct current ²	Capital outlay	Inter-governmental ³	Total ¹	Direct current ²	Capital outlay	Inter-governmental ³
Maine.....	21,241	19,870	1,371	-	11,180	10,726	454	-	3,265	3,155	100	-
State.....	11,510	10,368	1,142	-	3,688	3,462	226	-	1,823	1,713	110	-
Local.....	9,731	9,502	229	-	7,492	7,264	228	-	1,442	1,442	-	-
Maryland.....	183,214	173,216	9,998	228	117,810	111,366	6,444	65	18,390	18,248	142	-
State.....	76,720	73,717	2,863	140	34,015	32,939	1,076	-	7,443	7,441	2	-
Local.....	106,722	99,499	7,135	88	83,860	78,427	5,368	65	10,947	10,807	140	-
Massachusetts.....	198,192	189,493	8,699	8,494	119,269	113,777	5,492	-	28,834	28,748	86	8,404
State.....	49,398	46,447	2,951	-	10,291	9,856	436	-	6,447	6,446	1	-
Local.....	157,288	143,046	5,748	8,494	108,978	103,922	5,056	-	30,791	22,302	85	8,404
Michigan.....	288,205	275,747	10,458	3,270	174,523	168,387	6,136	199	43,010	41,956	1,054	77
State.....	72,922	68,030	4,185	707	26,143	24,309	1,834	-	7,322	6,797	525	-
Local.....	216,553	207,717	6,273	2,563	148,579	144,078	4,302	199	35,765	35,159	529	77
Minnesota.....	90,009	86,257	3,752	1,887	48,449	47,246	1,203	227	12,695	12,649	46	412
State.....	27,458	25,303	1,805	350	7,565	7,525	39	-	2,677	2,675	2	-
Local.....	64,418	60,954	1,947	1,517	41,111	39,720	1,164	227	10,430	9,974	44	412
Mississippi.....	35,717	32,929	2,788	20	23,523	21,907	1,616	20	4,510	4,504	6	-
State.....	15,408	14,073	1,335	-	8,529	8,026	503	-	1,236	1,234	2	-
Local.....	20,329	18,856	1,453	20	15,014	13,881	1,113	20	3,274	3,270	4	-
Missouri.....	127,800	118,847	8,953	98	81,496	77,296	4,200	21	18,024	17,919	105	2
State.....	33,147	30,214	2,933	-	12,190	11,336	854	-	6,062	6,061	1	-
Local.....	94,751	88,633	6,020	98	69,327	65,960	3,346	21	11,964	11,858	104	2
Montana.....	15,785	15,019	766	5	8,154	7,845	309	-	2,217	2,182	35	4
State.....	6,876	6,303	573	-	2,240	2,097	143	-	647	632	15	-
Local.....	8,914	8,716	193	5	5,914	5,748	166	-	1,574	1,550	20	4
Nebraska.....	34,092	28,873	5,219	57	22,434	17,522	4,912	-	3,511	3,500	11	-
State.....	11,396	10,480	916	-	4,500	3,868	632	-	1,420	1,420	-	-
Local.....	22,753	18,393	4,303	57	17,934	13,654	4,280	-	2,091	2,080	11	-
Nevada.....	27,221	26,079	1,142	64	15,746	15,117	629	6	4,004	3,938	66	-
State.....	7,681	7,120	503	58	2,603	2,406	200	6	679	674	5	-
Local.....	19,604	18,959	639	6	13,146	12,711	429	6	3,325	3,264	61	-
New Hampshire.....	13,986	13,005	981	10	8,649	8,363	286	-	2,280	1,743	537	10
State.....	5,652	4,864	788	-	2,137	1,989	148	-	1,160	628	532	-
Local.....	8,344	8,141	193	10	6,512	6,374	138	-	1,120	1,115	5	10
New Jersey.....	273,677	262,821	10,856	112	177,028	171,601	5,427	6	35,372	33,958	1,414	106
State.....	64,508	59,121	5,387	-	24,687	22,187	2,500	6	8,653	8,637	16	-
Local.....	209,281	203,700	5,469	112	152,347	149,414	2,927	6	26,825	25,321	1,398	106
New Mexico.....	26,927	25,249	1,678	1	16,603	15,219	1,384	-	2,977	2,911	66	-
State.....	12,990	12,325	665	-	5,729	5,345	384	-	1,383	1,317	66	-
Local.....	13,938	12,924	1,013	1	10,874	9,874	1,000	-	1,594	1,594	-	-
New York.....	1,008,391	940,478	65,913	32,434	644,346	607,301	37,045	2	131,667	128,010	3,657	7
State.....	199,037	160,097	13,036	25,904	48,494	45,285	3,209	-	26,768	26,661	104	-
Local.....	839,788	780,391	52,877	6,530	595,854	562,016	33,836	2	104,906	101,346	3,553	7
North Carolina.....	107,316	97,177	10,139	-	57,982	52,938	5,044	-	11,582	10,878	704	-
State.....	57,195	53,263	3,932	-	13,863	12,782	1,081	-	10,589	9,914	675	-
Local.....	50,121	43,914	6,207	-	44,119	40,156	3,963	-	993	964	29	-
North Dakota.....	11,174	10,882	292	-	6,171	5,919	252	-	2,304	2,297	7	-
State.....	3,452	3,336	116	-	1,117	1,034	83	-	574	574	-	-
Local.....	7,722	7,546	176	-	5,054	4,885	169	-	1,730	1,723	7	-
Ohio.....	299,190	282,308	16,882	1,269	167,593	159,420	8,173	60	50,567	50,160	407	99
State.....	81,847	72,811	8,654	382	18,193	17,455	738	-	6,537	6,480	57	-
Local.....	218,612	209,497	8,228	887	149,460	141,965	7,435	60	44,129	43,680	350	99
Oklahoma.....	51,131	48,818	2,313	-	30,633	28,713	1,920	-	6,985	6,975	13	-
State.....	21,329	20,274	1,055	-	7,128	6,432	696	-	3,105	3,097	8	-
Local.....	29,802	28,544	1,258	-	23,505	22,281	1,224	-	3,883	3,878	5	-
Oregon.....	62,256	60,327	1,929	27	33,083	31,805	1,278	-	8,737	8,574	163	-
State.....	21,550	20,998	525	27	9,966	9,620	346	-	2,342	2,342	-	-
Local.....	40,733	39,329	1,404	-	27,117	26,185	932	-	6,395	6,232	163	-

See footnotes at end of table.

Table 6. Expenditure of State and Local Governments for Police Protection, Judicial, Legal, and Correctional Activities, by Character, by Level of Government, and by State: Fiscal Year 1968-69—Continued

(Thousands of dollars)

State and level of government	Legal activities								Correctional activities			
	Prosecution				Indigent defense				Total ¹	Direct current ²	Capital outlay	Inter-governmental ³
	Total ¹	Direct current ²	Capital outlay	Inter-governmental ³	Total ¹	Direct current ²	Capital outlay	Inter-governmental ³				
Maine.....	581	581	-	-	41	41	-	-	6,174	5,367	807	-
State.....	473	473	-	-	-	-	-	-	5,526	4,720	806	-
Local.....	108	108	-	-	41	41	-	-	648	647	1	-
Maryland.....	4,578	4,566	12	-	639	639	-	1	41,797	38,397	3,400	162
State.....	736	736	-	-	195	195	-	-	34,331	32,406	1,785	140
Local.....	3,842	3,830	12	-	445	444	-	1	7,628	5,991	1,615	22
Massachusetts.....	4,445	4,445	-	-	844	844	-	-	44,800	41,679	3,121	90
State.....	853	853	-	-	820	820	-	-	30,987	28,473	2,514	-
Local.....	3,592	3,592	-	-	24	24	-	-	13,903	13,206	607	90
Michigan.....	10,955	10,935	20	-	2,180	2,180	-	-	55,537	52,289	3,248	2,994
State.....	2,566	2,566	-	-	-	-	-	-	36,891	34,358	1,826	707
Local.....	8,389	8,369	20	-	2,180	2,180	-	-	21,640	17,931	1,422	2,287
Minnesota.....	4,099	4,088	11	23	475	475	-	33	24,291	21,799	2,492	1,172
State.....	606	606	-	-	163	163	-	-	16,447	14,933	1,764	350
Local.....	3,516	3,482	11	23	345	312	-	33	9,016	7,466	728	822
Mississippi.....	933	933	-	-	55	55	-	-	6,696	5,630	1,166	-
State.....	498	498	-	-	-	-	-	-	5,145	4,315	830	-
Local.....	435	435	-	-	55	55	-	-	1,551	1,215	336	-
Missouri.....	4,145	4,134	11	-	213	213	-	-	23,922	19,285	4,637	75
State.....	789	789	-	-	-	-	-	-	14,106	12,028	2,078	-
Local.....	3,356	3,345	11	-	213	213	-	-	9,891	7,257	2,559	75
Montana.....	1,089	1,083	6	1	74	74	-	-	4,251	3,835	416	-
State.....	393	393	-	-	-	-	-	-	3,596	3,181	415	-
Local.....	697	690	6	1	74	74	-	-	655	654	1	-
Nebraska.....	1,786	1,781	5	1	164	164	-	3	6,197	5,906	291	53
State.....	274	274	-	-	-	-	-	-	5,202	4,918	284	-
Local.....	1,513	1,507	5	1	167	164	-	3	1,048	988	7	53
Nevada.....	1,694	1,682	12	-	220	209	11	-	5,557	5,133	424	58
State.....	278	278	-	-	-	-	-	-	4,118	3,762	298	58
Local.....	1,416	1,404	12	-	220	209	11	-	1,439	1,371	126	-
New Hampshire.....	423	420	3	-	110	110						

Table 6. Expenditure of State and Local Governments for Police Protection, Judicial, Legal, and Correctional Activities, by Character, by Level of Government, and by State: Fiscal Year 1968-69—Continued

(Thousands of dollars)

State and level of government	Police protection, judicial, legal, and correctional activities				Police protection activities				Judicial activities			
	Total ¹	Direct current ²	Capital outlay	Inter-governmental ³	Total ¹	Direct current ²	Capital outlay	Inter-governmental ³	Total ¹	Direct current ²	Capital outlay	Inter-governmental ³
Pennsylvania.....	334,240	310,967	17,282	10,214	200,144	191,248	8,896	5	49,654	49,452	202	14
State.....	88,576	76,584	10,008	1,034	35,865	33,487	2,378	5	8,065	8,065	-	-
Local.....	264,887	240,383	7,214	17,390	164,384	157,761	6,618	5	41,603	41,387	202	14
Rhode Island.....	36,964	36,137	827	7	16,408	15,918	490	-	4,411	4,231	180	-
State.....	12,032	12,537	395	-	2,702	2,642	60	-	4,388	4,208	180	-
Local.....	14,039	13,600	432	7	13,706	13,276	430	-	23	23	-	-
South Carolina.....	44,881	41,787	3,104	8	28,447	28,501	1,946	3	5,578	5,564	14	5
State.....	17,784	15,703	2,081	-	8,685	7,628	1,057	-	1,006	993	13	-
Local.....	27,086	26,084	1,023	8	19,762	18,873	889	3	4,572	4,571	1	5
South Dakota.....	13,128	12,386	742	24	7,304	7,182	122	-	2,227	2,223	4	23
State.....	4,668	4,347	321	-	1,918	1,918	-	-	661	661	-	-
Local.....	8,460	8,039	421	24	5,386	5,264	122	-	1,666	1,662	4	23
Tennessee.....	77,488	69,870	7,618	1,109	44,955	41,642	3,313	112	10,355	10,282	73	150
State.....	28,120	22,982	4,356	802	7,025	6,461	564	-	2,686	2,641	45	-
Local.....	50,477	46,908	3,262	307	38,042	35,181	2,749	112	7,669	7,641	28	150
Texas.....	251,593	235,523	18,070	18	157,200	147,443	9,757	14	38,199	35,968	2,231	1
State.....	69,850	62,430	7,420	-	30,618	27,375	3,243	-	7,169	7,165	4	-
Local.....	181,761	171,093	10,650	18	126,582	120,068	6,514	14	31,031	28,803	2,227	1
Utah.....	20,979	20,050	929	146	12,386	11,791	595	6	2,862	2,845	17	2
State.....	8,808	8,231	439	138	2,753	2,517	236	-	1,631	1,619	12	-
Local.....	12,317	11,819	490	8	9,633	9,274	359	6	1,231	1,226	5	2
Vermont.....	11,572	10,465	1,107	34	5,383	5,180	223	34	1,850	1,850	-	-
State.....	9,315	8,319	996	-	3,173	3,054	119	-	1,850	1,850	-	-
Local.....	2,291	2,146	111	34	2,210	2,126	104	34	-	-	-	-
Virginia.....	103,589	97,710	5,879	1,763	69,498	65,144	4,354	-	11,859	11,783	76	123
State.....	45,876	42,644	1,431	1,601	20,540	20,414	126	-	5,600	5,600	-	-
Local.....	59,676	55,066	4,448	162	48,958	44,730	4,228	-	6,382	6,183	76	123
Washington.....	105,523	96,864	8,659	46	57,123	52,090	5,033	1	10,170	10,016	154	7
State.....	42,840	37,351	5,451	38	11,893	9,750	2,143	-	1,716	1,701	15	-
Local.....	62,729	59,513	3,208	8	45,231	42,340	2,890	1	8,461	8,315	139	7
West Virginia.....	25,402	23,745	1,657	24	14,203	13,475	728	-	3,106	3,047	59	-
State.....	10,742	10,035	707	-	4,312	3,881	431	-	1,290	1,231	59	-
Local.....	14,664	13,710	950	24	9,891	9,594	297	-	1,816	1,816	-	-
Wisconsin.....	139,125	128,155	10,970	1,429	81,662	76,501	5,161	28	17,401	17,339	62	60
State.....	43,430	38,220	5,210	-	7,730	7,329	401	-	5,382	5,377	5	-
Local.....	97,124	89,935	5,760	1,429	73,960	69,172	4,780	28	12,085	11,962	57	60
Wyoming.....	8,974	8,730	244	7	5,222	5,102	120	1	1,363	1,361	2	4
State.....	3,657	3,541	116	-	1,355	1,355	-	-	491	491	-	-
Local.....	5,324	5,189	128	7	3,868	3,747	120	1	876	870	2	4

- Represents zero or rounds to zero.
¹Duplicative transactions between levels of government are excluded; see text.
²State intergovernmental expenditure amounts not segregable.

Table 6. Expenditure of State and Local Governments for Police Protection, Judicial, Legal, and Correctional Activities, by Character, by Level of Government, and by State: Fiscal Year 1968-69—Continued

(Thousands of dollars)

State and level of government	Legal activities								Correctional activities			
	Prosecution				Indigent defense				Total ¹	Direct current ²	Capital outlay	Inter-governmental ³
	Total ¹	Direct current ²	Capital outlay	Inter-governmental ³	Total ¹	Direct current ²	Capital outlay	Inter-governmental ³				
Pennsylvania.....	13,096	13,050	37	34	2,145	2,143	2	23	68,310	60,168	8,145	10,138
State.....	1,054	1,054	-	-	-	-	-	-	43,592	33,978	7,600	1,024
Local.....	12,076	12,005	37	34	2,188	2,143	2	23	43,856	26,187	455	17,214
Rhode Island.....	658	656	2	7	172	172	-	-	5,315	5,160	155	-
State.....	356	356	-	-	171	171	-	-	5,315	5,160	155	-
Local.....	309	300	2	7	1	1	-	-	-	-	-	-
South Carolina.....	1,050	1,049	1	-	13	13	-	-	9,773	8,630	1,143	-
State.....	623	623	-	-	-	-	-	-	7,470	6,450	1,011	-
Local.....	427	426	1	-	13	13	-	-	2,303	2,171	132	-
South Dakota.....	922	920	2	1	40	40	-	-	2,626	2,012	614	-
State.....	152	152	-	-	-	-	-	-	2,037	1,716	321	-
Local.....	771	768	2	1	40	40	-	-	589	296	293	-
Tennessee.....	3,636	3,635	1	-	273	273	-	-	18,269	14,038	4,231	838
State.....	2,539	2,539	-	-	145	145	-	-	15,725	11,176	3,747	802
Local.....	1,097	1,096	1	-	128	128	-	-	3,382	2,862	484	36
Texas.....	15,047	14,758	309	1	624	615	9	2	40,503	34,739	5,764	-
State.....	2,483	2,483	-	-	-	-	-	-	20,580	25,407	4,173	-
Local.....	12,564	12,275	309	1	624	615	9	2	10,923	9,332	1,591	-
Utah.....	1,098	1,096	2	-	5	5	-	-	4,628	4,313	315	138
State.....	453	453	-	-	-	-	-	-	3,971	3,642	191	138
Local.....	645	643	2	-	5	5	-	-	795	671	124	-
Vermont.....	357	357	-	-	-	-	-	-	3,982	3,098	884	-
State.....	342	342	-	-	-	-	-	-	3,950	3,073	877	-
Local.....	15	15	-	-	-	-	-	-	32	25	7	-
Virginia.....	4,413	4,403	10	5	31	31	-	29	17,788	16,349	1,439	1,606
State.....	2,531	2,531	-	-	-	-	-	-	17,005	14,099	1,305	1,001
Local.....	1,887	1,872	10	5	60	31	-	29	2,389	2,250	134	5
Washington.....	4,244	4,213	31	-	133	133	-	-	33,853	30,412	3,441	38
State.....	593	593	-	-	-	-	-	-	28,638	25,307	3,293	38
Local.....	3,651	3,620	31	-	133	133	-	-	5,253	5,105	148	-
West Virginia.....	1,297	1,283	34	1	10	19	-	-	6,777	5,941	836	23
State.....	363	363	-	-	-	-	-	-	4,777	4,360	217	-
Local.....	935	900	34	1	19	19	-	-	2,023	1,581	619	23
Wisconsin.....	4,777	4,708	9	6	114	114	-	-	35,171	29,438	5,738	1,329
State.....	1,455	1,455	-	-	43	43	-	-	28,820	24,016	4,804	-
Local.....	3,328	3,253	9	6	71	71	-	-	7,680	5,417	934	1,329
Wyoming.....	562	557	5	-	9	8	1	2	1,818	1,702	116	-
State.....	110	110	-	-	-	-	-	-	1,701	1,585	116	-
Local.....	452	447	5	-	11	8	1	2	117	117	-	-

Table 7. Employment and Payrolls of State and Local Governments for Police Protection, Judicial, Legal, and Correctional Activities, by Level of Government and by State: October 1969

(Dollar amounts in thousands)

Table with columns for State and level of government, Police protection, judicial, legal, and correctional activities, Police protection activities, and Judicial activities. Rows include United States total, Alabama, Alaska, Arizona, Arkansas, California, Colorado, Connecticut, Delaware, District of Columbia, Florida, Georgia, Hawaii, Idaho, Illinois, Indiana, Iowa, Kansas, Kentucky, Louisiana, and various state sub-totals.

See footnotes at end of table.

Table 7. Employment and Payrolls of State and Local Governments for Police Protection, Judicial, Legal, and Correctional Activities, by Level of Government and by State: October 1969—Continued

(Dollar amounts in thousands)

Table with columns for State and level of government, Legal activities (Prosecution, Indigent defense), and Correctional activities. Rows include United States total, Alabama, Alaska, Arizona, Arkansas, California, Colorado, Connecticut, Delaware, District of Columbia, Florida, Georgia, Hawaii, Idaho, Illinois, Indiana, Iowa, Kansas, Kentucky, Louisiana, and various state sub-totals.

Table 7. Employment and Payrolls of State and Local Governments for Police Protection, Judicial, Legal, and Correctional Activities, by Level of Government and by State: October 1969—Continued

(Dollar amounts in thousands)

State and level of government	Police protection, judicial, legal and correctional activities				Police protection activities				Judicial activities			
	Employees			October payroll	Employees			October payroll	Employees			October payroll
	Total	Full-time only	Full-time equivalent		Total	Full-time only	Full-time equivalent		Total	Full-time only	Full-time equivalent	
Maine.....	3,087	2,214	2,339	1,391	2,029	1,286	1,350	770	334	270	296	162
State.....	1,111	1,047	1,078	691	346	346	346	225	153	116	130	93
Local.....	1,976	1,167	1,261	700	1,683	940	1,004	545	181	154	166	69
Maryland.....	16,434	15,173	15,491	11,409	10,996	10,018	10,218	7,010	1,304	1,170	1,218	970
State.....	5,019	4,924	4,978	4,189	1,513	1,513	1,513	1,103	258	250	251	275
Local.....	11,415	10,249	10,513	7,220	9,483	8,505	8,705	5,907	1,046	920	967	695
Massachusetts.....	22,507	18,789	19,544	13,726	15,776	12,377	12,943	9,008	2,009	1,970	1,994	1,574
State.....	3,953	3,921	3,936	2,973	858	858	858	613	190	187	189	233
Local.....	18,554	14,868	15,608	10,753	14,918	11,519	12,085	8,395	1,819	1,783	1,805	1,341
Michigan.....	29,219	26,350	26,805	20,665	19,567	17,180	17,451	13,823	3,696	3,503	3,582	2,580
State.....	5,796	5,708	5,737	4,992	2,243	2,196	2,211	1,965	376	375	375	524
Local.....	23,423	20,642	21,068	15,673	17,324	14,984	15,240	11,858	3,320	3,128	3,207	2,056
Minnesota.....	10,165	8,895	9,160	6,196	5,762	5,115	5,219	3,636	1,461	1,167	1,226	844
State.....	2,086	2,058	2,066	1,612	541	537	538	445	118	116	117	155
Local.....	8,079	6,837	7,094	4,584	5,221	4,578	4,681	3,191	1,343	1,051	1,109	689
Mississippi.....	4,944	4,305	4,449	1,988	3,709	3,250	3,331	1,468	621	532	565	288
State.....	1,235	1,229	1,231	638	770	770	770	385	81	81	81	90
Local.....	3,709	3,076	3,218	1,350	2,939	2,480	2,561	1,083	540	451	484	198
Missouri.....	15,733	13,701	14,072	8,265	10,889	9,525	9,706	5,812	1,742	1,393	1,484	942
State.....	3,254	3,152	3,181	1,878	1,384	1,363	1,367	862	293	293	293	249
Local.....	12,479	10,549	10,891	6,387	9,505	8,162	8,339	4,950	1,449	1,100	1,191	693
Montana.....	2,548	2,140	2,232	1,067	1,490	1,334	1,360	602	321	235	250	146
State.....	815	720	747	429	278	263	266	139	46	45	46	49
Local.....	1,733	1,420	1,485	638	1,212	1,071	1,094	463	275	190	204	97
Nebraska.....	4,092	3,443	3,598	1,989	2,693	2,360	2,406	1,336	479	303	371	247
State.....	997	997	997	620	375	375	375	266	97	97	97	106
Local.....	3,095	2,446	2,601	1,369	2,318	1,985	2,031	1,070	382	206	274	141
Nevada.....	2,999	2,756	2,805	1,976	1,743	1,617	1,641	1,162	451	386	401	267
State.....	562	556	558	408	107	107	107	77	51	51	51	48
Local.....	2,437	2,200	2,247	1,568	1,636	1,510	1,534	1,085	400	335	350	219
New Hampshire.....	2,403	1,526	1,647	962	1,641	989	1,068	609	278	163	193	128
State.....	490	487	490	328	175	171	171	116	57	57	57	58
Local.....	1,901	1,039	1,157	634	1,466	818	897	493	221	106	136	70
New Jersey.....	35,716	27,534	29,278	19,636	24,854	17,822	19,161	12,982	4,244	3,409	3,639	2,391
State.....	5,587	5,379	5,423	4,032	1,968	1,912	1,914	1,347	682	594	594	606
Local.....	30,129	22,155	23,855	15,604	22,886	15,910	17,247	11,635	3,562	2,815	3,045	1,785
New Mexico.....	3,306	3,103	3,156	1,690	1,978	1,915	1,934	1,026	437	340	359	251
State.....	1,124	1,111	1,116	675	356	353	354	213	149	147	147	145
Local.....	2,182	1,992	2,040	1,015	1,622	1,562	1,580	813	288	193	212	106
New York.....	101,051	93,299	95,077	73,964	67,456	61,551	62,770	49,265	11,534	10,164	10,557	8,689
State.....	16,227	15,856	15,945	12,755	4,393	4,304	4,319	3,515	1,550	1,517	1,525	1,457
Local.....	84,824	77,443	79,132	61,209	63,063	57,247	58,451	45,750	9,984	8,647	9,032	7,232
North Carolina.....	13,767	12,461	12,708	6,990	8,101	7,018	7,169	3,985	1,987	1,940	1,960	1,136
State.....	6,409	6,305	6,359	3,685	1,379	1,379	1,379	895	1,808	1,808	1,808	1,067
Local.....	7,358	6,156	6,349	3,305	6,722	5,639	5,790	3,090	179	132	152	69
North Dakota.....	1,739	1,368	1,442	761	967	798	817	429	345	256	281	157
State.....	380	355	360	214	119	112	113	65	49	47	47	41
Local.....	1,359	1,013	1,082	547	848	686	704	364	296	209	234	116
Ohio.....	34,341	29,714	30,640	20,540	21,720	17,872	18,501	12,113	5,309	5,003	5,130	3,854
State.....	6,627	6,627	6,690	5,150	1,723	1,716	1,716	1,120	397	394	394	864
Local.....	27,516	23,087	23,950	15,390	19,997	16,161	16,785	10,993	4,912	4,609	4,736	2,990
Oklahoma.....	6,982	6,362	6,519	3,343	4,507	4,065	4,161	2,030	957	903	924	583
State.....	2,392	2,356	2,368	1,388	752	752	752	407	370	370	370	353
Local.....	4,590	4,006	4,151	1,955	3,755	3,313	3,409	1,623	587	533	554	230
Oregon.....	7,550	6,833	6,955	4,726	4,317	3,932	3,957	2,564	850	705	740	594
State.....	2,368	2,293	2,312	1,853	714	714	714	536	163	142	145	216
Local.....	5,182	4,540	4,643	2,873	3,603	3,218	3,243	2,028	687	563	595	378

See footnotes at end of table.

Table 7. Employment and Payrolls of State and Local Governments for Police Protection, Judicial, Legal, and Correctional Activities, by Level of Government and by State: October 1969—Continued

(Dollar amounts in thousands)

State and level of government	Legal activities								Correctional activities			
	Prosecution				Indigent defense				Employees			
	Employees			October payroll	Employees			October payroll	Employees			October payroll
	Total	Full-time only	Full-time equivalent		Total	Full-time only	Full-time equivalent		Total	Full-time only	Full-time equivalent	
Maine.....	66	39	55	82	14	5	7	3	644	614	631	374
State.....	32	32	32	28	-	-	-	-	580	553	570	345
Local.....	34	7	23	54	14	5	7	3	64	61	61	29
Maryland.....	372	347	357	315	31	18	21	15	3,731	3,620	3,677	3,099
State.....	53	53	53	55	-	-	-	-	3,195	3,108	3,161	2,756
Local.....	319	294	304	260	31	18	21	15	536	512	516	343
Massachusetts.....	636	488	615	431	3	1	2	1	4,083	3,953	3,990	2,712
State.....	220	216	218	185	-	-	-	-	2,685	2,660	2,671	1,942
Local.....	416	272	397	246	3	1	2	1	1,398	1,293	1,319	770
Michigan.....	1,039	920	968	749	52	25	43	25	4,865	4,722	4,761	3,488
State.....	153	146	148	167	-	-	-	-	3,024	2,991	3,003	2,336
Local.....	886	774	820	582	52	25	43	25	1,841	1,731	1,758	1,152
Minnesota.....	546	362	419	272	66	15	33	18	2,330	2,236	2,263	1,426
State.....	60	52	54	39	-	-	-	-	1,367	1,353	1,357	973
Local.....	468	310	365	233	66	15	33	18	963	883	906	453
Mississippi.....	141	75	100	54	18	1	4	3	455	447	449	175
State.....	25	25	25	21	-	-	-	-	359	353	355	142
Local.....	116	50	75	33	18	1	4	3	96	94	94	33
Missouri.....	530	353	425	267	22	22	22	17	2,550	2,408	2,435	1,227
State.....	75	58	63	47	-	-	-	-	1,502	1,438	1,458	720
Local.....	455	295	362	220	22	22	22	17	1,048	970	977	507
Montana.....	229	108	145	76	15	7	9	4	493	456	468	239
State.....	77	21	34	26	-	-	-	-	414	391	401	215
Local.....	152	87	111	50	15	7	9	4	79	65	67	24
Nebraska.....	272	186	222	123	31	2	6	4	617	592	593	279
State.....	13	13	13	13	-	-	-	-	512	512	512	235
Local.....	259	173	209	110	31	2	6	4	105	80	81	44
Nevada.....	182	150	156	136	21	18	19	15	602	585	588	396
State.....	23	23	23	25	-	-	-	-	381	376	377	258
Local.....	159	128	133	111	21	18	19	15	221	209	211	138
New Hampshire.....	136	44	53	36	-	-	-	-	348	330	333	189
State.....	24	24	24	20	-	-	-	-	246	235	238	134
Local.....	112	20	29	16	-	-	-	-	102	95	95	55
New Jersey.....	1,537	1,371	1,459	1,028	12	12	12	8	5,069	4,920	5,007	3,227
State.....	433	432	432	350	-	-	-	-	2,504	2,441	2,483	1,729
Local.....	1,104	939	1,027	678	12	12	12	8	2,565	2,479	2,524	1,498
New Mexico.....	255	231	236	125	-	-	-	-	636	617	627	288
State.....	122	122	122	75	-	-	-	-	497	489	493	242
Local.....	133	109	114	50	-	-	-	-	139	128	134	46
New York.....	3,871	3,833	3,855	3,275	2							

Table 7. Employment and Payrolls of State and Local Governments for Police Protection, Judicial, Legal, and Correctional Activities, by Level of Governments and by State: October 1969—Continued
(Dollar amounts in thousands)

State and level of government	Police protection, judicial, legal, and correctional activities				Police protection activities				Judicial activities			
	Employees			October payroll	Employees			October payroll	Employees			October payroll
	Total	Full-time only	Full-time equivalent		Total	Full-time only	Full-time equivalent		Total	Full-time only	Full-time equivalent	
Pennsylvania.....	43,085	35,746	37,337	24,284	30,163	23,324	24,762	15,796	4,977	4,772	4,820	3,655
State.....	8,876	8,840	8,848	6,861	4,471	4,471	4,471	3,273	802	802	802	1,057
Local.....	34,209	26,906	28,489	17,423	25,692	18,853	20,291	12,523	4,175	3,970	4,018	2,598
Rhode Island.....	3,233	2,875	2,779	1,868	2,441	1,940	2,020	1,252	266	252	253	185
State.....	847	844	847	758	217	217	217	165	217	252	252	184
Local.....	2,286	1,731	1,832	1,108	2,224	1,723	1,803	1,087	14	-	1	1
South Carolina.....	6,280	5,234	5,487	2,725	3,974	3,389	3,498	1,749	875	603	677	339
State.....	1,754	1,690	1,714	1,018	752	743	743	473	60	60	60	87
Local.....	4,526	3,544	3,753	1,707	3,222	2,646	2,755	1,276	815	543	617	272
South Dakota.....	2,031	1,882	1,832	841	1,288	942	979	489	303	233	245	152
State.....	495	457	468	289	227	206	210	128	29	29	29	43
Local.....	1,536	1,105	1,164	552	1,059	736	769	361	274	204	216	109
Tennessee.....	10,511	9,236	9,507	5,268	6,886	5,831	6,002	3,901	1,044	969	992	618
State.....	2,725	2,607	2,710	1,584	706	705	705	537	224	224	224	181
Local.....	7,786	6,539	6,797	3,684	6,180	5,126	5,297	2,864	820	745	768	437
Texas.....	30,483	27,658	28,398	18,561	19,834	17,941	18,385	10,741	3,881	3,880	3,511	2,252
State.....	5,157	5,128	5,138	3,208	1,203	1,203	1,203	796	101	398	308	517
Local.....	25,326	22,530	23,260	13,953	18,631	16,738	17,182	9,945	3,780	2,982	3,113	1,735
Utah.....	2,979	2,458	2,587	1,477	1,982	1,625	1,709	943	280	237	246	155
State.....	883	838	854	558	206	205	295	194	106	106	106	81
Local.....	2,096	1,618	1,733	919	1,688	1,390	1,414	749	174	131	140	74
Vermont.....	1,378	1,108	1,154	720	819	582	620	359	128	112	116	94
State.....	813	785	792	527	265	259	259	187	128	112	116	94
Local.....	565	323	362	193	554	323	361	192	-	-	-	-
Virginia.....	13,077	11,859	12,215	7,071	8,589	7,865	8,002	4,721	988	774	871	530
State.....	4,249	4,098	4,155	2,432	1,777	1,721	1,732	1,026	182	157	158	119
Local.....	8,828	7,763	8,060	4,639	6,812	6,144	6,270	3,695	806	617	713	411
Washington.....	10,690	9,885	10,095	6,091	5,975	5,621	5,674	4,030	1,070	892	962	656
State.....	3,523	3,468	3,483	2,636	980	980	758	132	131	131	131	133
Local.....	7,168	6,419	6,612	4,455	4,995	4,641	4,916	3,272	938	761	831	523
West Virginia.....	3,559	3,165	3,289	1,598	2,329	2,048	2,134	1,036	355	307	321	185
State.....	1,239	1,177	1,195	632	544	530	530	301	114	78	90	67
Local.....	2,320	1,988	2,094	966	1,785	1,518	1,604	735	241	229	231	118
Wisconsin.....	15,307	13,216	13,536	9,488	10,450	8,840	8,876	6,070	1,691	1,612	1,631	1,218
State.....	3,238	3,205	3,207	2,523	873	653	653	455	359	358	358	307
Local.....	12,069	10,011	10,329	6,965	9,577	7,987	8,223	5,615	1,332	1,254	1,293	821
Wyoming.....	1,300	1,095	1,145	590	805	699	714	358	185	128	140	89
State.....	363	350	356	217	137	137	137	93	35	34	35	33
Local.....	937	745	789	373	668	562	577	265	150	94	105	56

- Represents zero or rounds to zero.
NA Not available.

Table 7. Employment and Payrolls of State and Local Governments for Police Protection, Judicial, Legal, and Correctional Activities, by Level of Government and by State: October 1969—Continued
(Dollar amounts in thousands)

State and level of government	Legal activities								Correctional activities			
	Prosecution				Indigent defense				Correctional activities			
	Employees			October payroll	Employees			October payroll	Employees			October payroll
Total	Full-time only	Full-time equivalent	Total		Full-time only	Full-time equivalent	Total		Full-time only	Full-time equivalent		
Pennsylvania.....	1,687	1,600	1,647	998	316	268	271	144	5,942	5,792	5,837	3,691
State.....	477	476	476	389	-	-	-	-	3,126	3,091	3,099	2,142
Local.....	1,210	1,124	1,171	609	316	268	271	144	2,816	2,701	2,738	1,549
Rhode Island.....	93	53	73	56	-	-	-	-	433	430	433	373
State.....	45	45	45	36	-	-	-	-	433	430	433	373
Local.....	48	8	28	20	-	-	-	-	-	-	-	-
South Carolina.....	100	96	120	75	2	2	2	1	1,239	1,144	1,170	561
State.....	49	43	44	43	-	-	-	-	893	844	865	435
Local.....	141	53	76	32	2	2	2	1	346	300	305	126
South Dakota.....	157	130	142	65	0	2	4	2	276	255	262	133
State.....	12	12	12	9	-	-	-	-	227	210	217	111
Local.....	145	118	130	56	9	2	4	2	49	45	45	22
Tennessee.....	316	188	250	189	12	12	12	8	2,273	2,236	2,251	1,062
State.....	125	125	125	104	-	-	-	-	1,670	1,643	1,656	772
Local.....	191	63	125	85	12	12	12	8	603	593	595	290
Texas.....	1,927	1,636	1,781	1,170	42	34	36	11	4,799	4,667	4,703	2,387
State.....	257	257	257	254	-	-	-	-	3,206	3,270	3,278	1,731
Local.....	1,670	1,379	1,524	916	42	34	36	11	1,593	1,397	1,425	656
Utah.....	173	123	146	92	4	-	-	-	540	471	486	287
State.....	77	59	68	44	-	-	-	-	404	378	385	239
Local.....	96	64	78	48	4	-	-	-	136	93	101	48
Vermont.....	47	38	39	35	-	-	-	-	384	376	379	232
State.....	38	38	38	34	-	-	-	-	382	376	379	232
Local.....	9	-	1	1	-	-	-	-	2	-	-	-
Virginia.....	294	150	220	151	-	-	-	-	3,206	3,070	3,122	1,669
State.....	(NA)	(NA)	(NA)	(NA)	-	-	-	-	2,310	2,218	2,265	1,287
Local.....	294	150	220	151	-	-	-	-	896	852	857	382
Washington.....	522	406	453	349	12	2	5	2	3,111	2,964	3,001	1,954
State.....	105	95	98	92	-	-	-	-	2,305	2,260	2,274	1,553
Local.....	417	311	355	257	12	2	5	2	806	704	727	401
West Virginia.....	198	177	185	113	3	3	3	1	674	632	646	263
State.....	56	53	54	49	-	-	-	-	525	516	521	215
Local.....	142	124	131	64	3	3	3	1	149	116	125	48
Wisconsin.....	543	437	474	331	30	4	9	5	2,893	2,523	2,546	1,864
State.....	85	73	75	82	-	-	-	-	2,121	2,121	2,121	1,589
Local.....	458	364	399	249	30	4	9	5	472	402	425	275
Wyoming.....	100	66	79	42	6	-	1	1	224	202	211	100
State.....	8	8	8	6	-	-	-	-	182	171	176	85
Local.....	91	58	71	36	6	-	1	1	42	31	35	15

Table 8. Full-Time Equivalent Employment of State and Local Governments for Police Protection, Judicial, Legal, and Correctional Activities, by Percent of Total Full-Time Equivalent Employment, by Level of Government, and by State: October 1969

Table with 15 columns: State and level of government, Total excluding education employees, Police protection, judicial, legal, and correctional activities (Full-time equivalent employees, Percent of total), Police protection activities (Full-time equivalent employees, Percent of total), Judicial activities (Full-time equivalent employees, Percent of total), Legal activities (Prosecution, Indigent defense) (Full-time equivalent employees, Percent of total), and Correctional activities (Full-time equivalent employees, Percent of total).

See footnotes at end of table.

Table 8. Full-Time Equivalent Employment of State and Local Governments for Police Protection, Judicial, Legal, and Correctional Activities, by Percent of Total Full-Time Equivalent Employment, by Level of Government, and by State: October 1969—Continued

Continuation of Table 8, containing data for states including Louisiana, Maine, Maryland, Massachusetts, Michigan, Minnesota, Mississippi, Missouri, Montana, Nebraska, Nevada, New Hampshire, New Jersey, New Mexico, New York, North Carolina, North Dakota, Ohio, Oklahoma, and Oregon. Columns are identical to the first table.

See footnotes at end of table.

Table 8. Full-Time Equivalent Employment of State and Local Governments for Police Protection, Judicial, Legal, and Correctional Activities, by Percent of Total Full-Time Equivalent Employment, by Level of Government, and by State: October 1969—Continued

State and level of government	Total, excluding education employees	Police protection, judicial, legal, and correctional activities		Police protection activities		Judicial activities		Legal activities				Correctional activities	
		Full-time equivalent employees	Percent of total	Full-time equivalent employees	Percent of total	Full-time equivalent employees	Percent of total	Prosecution		Indigent defense		Full-time equivalent employees	Percent of total
								Full-time equivalent employees	Percent of total	Full-time equivalent employees	Percent of total		
Oregon	41,260	6,985	16.9	3,857	8.8	740	1.8	410	1.0	14	(Z)	1,834	4.4
State	18,049	2,312	12.8	714	4.0	146	0.8	139	0.8	-	-	1,314	7.3
Local	23,211	4,673	20.0	3,243	14.0	595	2.6	271	1.2	14	(Z)	520	2.2
Pennsylvania	210,363	37,337	17.7	24,762	11.8	4,820	2.3	1,647	0.8	271	0.1	5,837	2.8
State	93,123	8,848	9.5	4,471	4.8	802	0.9	476	0.5	-	-	3,099	3.3
Local	117,240	28,489	24.3	20,291	17.3	4,018	3.4	1,171	1.0	271	0.2	2,738	2.3
Rhode Island	17,951	2,779	15.5	2,020	11.3	252	1.4	73	0.4	-	-	433	2.4
State	9,687	947	9.8	217	2.2	252	2.6	45	0.5	-	-	433	4.5
Local	8,264	1,832	22.2	1,803	21.8	-	-	28	0.3	-	-	-	-
South Carolina	42,302	5,487	12.9	3,498	8.3	677	1.6	120	0.3	2	(Z)	1,170	2.8
State	20,364	1,714	8.4	745	3.7	60	0.3	44	0.2	-	-	855	4.2
Local	21,938	3,773	17.1	2,753	12.5	617	2.8	76	0.3	2	(Z)	305	1.4
South Dakota	13,504	1,632	12.1	979	7.2	245	1.8	142	1.1	4	(Z)	262	1.9
State	6,266	468	7.5	210	3.4	29	0.5	12	0.2	-	-	217	3.5
Local	7,238	1,164	16.1	769	10.6	216	3.0	130	1.8	4	0.1	46	0.6
Tennessee	83,280	9,507	11.4	6,002	7.2	992	1.2	250	0.3	12	(Z)	2,251	2.7
State	28,418	2,710	9.5	700	2.5	224	0.8	125	0.4	-	-	1,650	5.8
Local	54,862	6,797	12.4	5,297	9.7	768	1.4	125	0.2	12	(Z)	595	1.1
Texas	193,861	28,396	14.6	18,368	9.5	3,511	1.8	4,781	0.9	36	(Z)	4,703	2.4
State	63,029	6,136	8.1	1,203	1.9	398	0.6	257	0.4	-	-	3,278	5.2
Local	130,832	22,260	17.8	17,162	13.1	3,113	2.4	1,524	1.2	36	(Z)	1,425	1.1
Utah	17,188	2,087	15.1	1,709	9.9	246	1.4	140	0.8	-	-	486	2.8
State	8,091	854	9.9	295	3.4	106	1.2	68	0.8	-	-	385	4.5
Local	8,997	1,233	20.2	1,414	16.4	140	1.6	78	0.9	-	-	101	1.2
Vermont	8,122	1,154	14.2	620	7.6	116	1.4	38	0.5	-	-	379	4.7
State	5,409	792	14.6	259	4.8	116	2.1	38	0.7	-	-	379	7.0
Local	2,713	362	13.3	361	13.3	-	-	-	-	-	-	-	-
Virginia	80,938	12,215	15.1	8,002	9.9	871	1.1	220	0.3	-	-	3,122	3.9
State	42,661	4,155	9.7	1,732	4.1	168	0.4	(NA)	(NA)	-	-	2,265	5.3
Local	38,277	8,060	21.1	6,270	16.4	713	1.9	220	0.6	-	-	857	2.2
Washington	73,756	10,095	13.7	5,674	7.7	962	1.3	453	0.6	5	(Z)	3,001	4.1
State	29,788	3,483	11.7	980	3.3	131	0.4	98	0.3	-	-	2,274	7.6
Local	43,968	6,612	15.0	4,694	10.7	831	1.9	355	0.8	5	(Z)	727	1.7
West Virginia	30,830	3,289	10.7	2,134	6.9	321	1.0	185	0.6	3	(Z)	646	2.1
State	20,366	1,195	5.9	530	2.6	90	0.4	64	0.3	-	-	521	2.6
Local	10,464	2,094	20.0	1,604	15.3	231	2.2	131	1.3	3	(Z)	125	1.2
Wisconsin	84,343	13,536	16.0	8,876	10.5	1,631	1.9	474	0.6	9	(Z)	2,546	3.1
State	22,818	3,207	14.1	653	2.9	358	1.6	75	0.3	-	-	2,122	9.3
Local	61,525	10,329	16.8	8,223	13.4	1,273	2.1	399	0.6	9	(Z)	425	0.7
Wyoming	9,887	1,145	11.6	714	7.2	140	1.4	79	0.8	1	(Z)	211	2.1
State	4,510	356	7.9	137	3.0	38	0.8	8	0.2	-	-	176	3.9
Local	5,377	789	14.7	577	10.7	105	2.0	71	1.3	1	(Z)	35	0.7

-Represents zero or rounds to zero.

NA Not available.

Z Less than 0.05 percent.

¹Total full-time equivalent employment, excluding employees engaged in education activities.

Table 9. Employment and Payrolls, October 1969, and Expenditure, Fiscal Year 1968-69, of the Federal Government for Criminal Justice Activities

(Dollar amounts in thousands)

Item	General expenditure	Number of employees			October payroll
		Total	Full-time only	Full-time equivalent	
Total Federal Government ¹	150,704,000	2,956,791	2,800,258	2,874,768	2,326,718
Total criminal justice activities	828,950	56,364	55,193	55,485	61,717
Total law enforcement	491,664	36,177	35,453	35,634	40,010
Bureau of Customs	149,035	9,764	9,429	9,513	11,590
Bureau of Narcotics and Dangerous Drugs	17,051	1,277	1,260	1,264	1,248
Federal Bureau of Investigation	217,560	16,696	16,693	16,694	17,871
Immigration and Naturalization Service	90,013	6,929	6,560	6,652	7,477
Secret Service	23,705	1,511	1,511	1,511	1,824
Total judiciary	105,531	6,786	6,691	6,670	7,458
Federal judiciary except Supreme Court ²	³ 102,004	6,575	6,448	6,480	7,237
Supreme Court	2,867	211	183	190	221
Total prosecution	21,501	5,942	5,748	5,796	7,302
Department of Justice, legal and administrative	91,501	5,942	5,748	5,796	7,302
Total indigent defense	39,790	1,800	1,800	1,800	1,865
Federal judiciary	4,028	(NA)	(NA)	(NA)	(NA)
Office of Economic Opportunity, legal aid program	35,762	1,800	1,800	1,800	1,665
Total correction	71,301	5,432	5,374	5,388	5,011
Bureau of Prisons	71,301	5,432	5,374	5,388	5,011
Total other criminal justice	29,169	227	187	197	271
Law Enforcement Assistance Administration	28,960	180	169	172	240
Study commissions	209	47	18	25	31

(NA) Not available

¹Excludes figures for Federal education expenditure and employment.

²Excludes expenditure and employment figures for The Tax Court of the United States.

³Excludes expenditure for the defense of the indigent which is shown separately.

Table 10. Expenditure of State Governments for Police Protection, Judicial, Correctional, Prosecution, and Indigent Defense Activities: Fiscal Year 1968-69

(Dollar amounts in thousands)

State	Total general expenditure	Total		Police protection activities		Judicial activities		Correctional activities		Prosecution and indigent defense activities	
		Amount	Percent of total	Amount	Percent of total	Amount	Percent of total	Amount	Percent of total	Amount	Percent of total
Total.....	68,014,129	1,894,044	2.8	621,113	0.9	236,068	0.3	959,020	1.4	77,843	0.1
Alabama.....	1,065,695	19,654	1.8	5,958	0.5	2,543	0.2	10,072	0.9	1,081	0.1
Alaska.....	275,691	11,763	4.3	2,782	1.0	3,282	1.1	4,474	1.6	1,245	0.5
Arizona.....	649,766	16,384	2.5	8,693	1.3	1,081	0.2	6,131	0.9	479	0.1
Arkansas.....	552,243	9,248	1.7	4,345	0.8	1,582	0.3	3,087	0.6	234	(Z)
California.....	8,560,998	253,665	3.0	94,157	1.1	14,599	0.2	134,125	1.6	11,084	0.1
Colorado.....	719,864	22,817	3.2	7,933	1.1	1,964	0.3	12,621	1.8	299	(Z)
Connecticut.....	990,243	48,153	4.9	10,812	1.1	18,678	1.9	17,927	1.8	736	0.1
Delaware.....	14,440	2,418	5.2	4,194	1.5	2,418	0.9	7,403	2.7	425	0.2
Florida.....	1,773,394	50,584	2.9	16,582	0.9	6,832	0.4	23,815	1.3	3,355	0.2
Georgia.....	1,359,936	33,022	2.7	9,224	0.7	3,046	0.2	20,033	1.5	719	0.1
Hawaii.....	504,867	9,879	2.0	109	(Z)	5,258	1.0	3,727	0.7	785	0.2
Idaho.....	231,325	7,045	3.0	2,308	1.0	2,083	0.9	2,444	1.1	210	0.1
Illinois.....	3,008,087	90,848	3.0	23,979	0.8	16,936	0.6	46,653	1.6	3,280	0.1
Indiana.....	1,451,734	36,469	2.5	12,972	0.9	18,996	0.2	18,021	1.3	2,021	0.1
Iowa.....	1,008,611	27,268	2.7	10,889	1.1	2,167	0.2	13,577	1.2	635	0.1
Kansas.....	643,898	17,644	2.7	5,805	0.9	2,201	0.3	9,296	1.4	342	0.1
Kentucky.....	1,162,328	30,281	2.6	12,593	1.1	6,011	0.5	10,832	0.9	845	0.1
Louisiana.....	1,417,296	28,106	2.0	10,148	0.8	4,205	0.3	12,381	0.9	1,372	0.1
Maine.....	11,510	290,374	4.0	3,688	1.3	1,823	0.6	5,526	1.9	473	0.2
Maryland.....	1,225,489	76,720	6.3	34,015	2.8	7,443	0.6	34,331	2.8	931	0.1
Massachusetts.....	1,869,839	49,398	2.6	10,291	0.6	6,447	0.3	30,987	1.7	1,673	0.1
Michigan.....	3,158,499	72,922	2.3	26,143	0.8	7,322	0.2	36,891	1.2	2,566	0.1
Minnesota.....	1,399,339	27,458	2.0	7,565	0.5	2,677	0.2	16,447	1.2	769	0.1
Mississippi.....	723,128	15,408	2.1	8,529	1.2	1,236	0.2	5,145	0.7	498	0.1
Missouri.....	1,241,364	33,147	2.7	12,190	1.0	6,062	0.5	14,106	1.1	789	0.1
Montana.....	249,901	6,876	2.8	2,240	0.9	647	0.3	3,596	1.4	393	0.2
Nebraska.....	386,413	11,396	3.0	4,500	1.2	1,420	0.4	5,202	1.3	274	0.1
Nevada.....	200,872	7,681	3.8	2,606	1.3	679	0.3	4,118	2.1	278	0.1
New Hampshire.....	189,944	5,652	3.0	2,137	1.1	1,160	0.6	2,009	1.1	346	0.2
New Jersey.....	1,692,167	64,508	3.7	24,687	1.5	8,653	0.5	25,948	1.5	5,220	0.3
New Mexico.....	459,416	12,990	2.8	5,729	1.2	1,383	0.3	4,790	1.0	1,088	0.2
New York.....	8,444,670	199,037	2.4	48,494	0.6	26,768	0.3	112,006	1.3	11,769	0.1
North Carolina.....	1,500,022	57,195	3.8	13,863	0.9	10,589	0.7	31,040	2.1	1,703	0.1
North Dakota.....	249,407	3,452	1.3	1,117	0.4	574	0.2	1,541	0.6	220	0.1
Ohio.....	2,558,728	81,847	3.2	18,193	0.7	6,537	0.3	54,908	2.1	2,209	0.1
Oklahoma.....	951,960	21,329	2.2	7,128	0.7	3,105	0.3	8,107	0.9	2,989	0.3
Oregon.....	717,437	21,550	3.0	5,966	0.8	2,342	0.3	12,147	1.7	1,095	0.2
Pennsylvania.....	3,705,903	88,576	2.4	35,865	1.0	8,065	0.2	43,592	1.2	1,054	(Z)
Rhode Island.....	366,969	12,932	3.5	2,702	0.7	4,388	1.2	5,315	1.5	527	0.1
South Carolina.....	750,728	17,784	2.4	8,685	1.2	1,006	0.1	7,470	1.0	623	0.1
South Dakota.....	221,171	4,668	2.1	1,918	0.9	561	0.3	2,037	0.9	152	0.1
Tennessee.....	1,069,282	28,120	2.6	7,025	0.7	2,686	0.3	15,725	1.5	2,684	0.3
Texas.....	2,751,503	69,850	2.5	30,618	1.1	7,169	0.3	29,580	1.1	2,483	0.1
Utah.....	418,541	8,808	2.1	2,753	0.7	1,631	0.4	3,971	0.9	453	0.1
Vermont.....	217,278	9,315	4.3	3,173	1.5	1,850	0.9	3,950	1.8	342	0.2
Virginia.....	1,330,132	45,676	3.3	20,540	1.5	5,600	0.4	17,005	1.3	2,531	0.2
Washington.....	1,480,245	42,840	2.9	11,893	0.8	1,716	0.1	28,638	1.9	593	(Z)
West Virginia.....	655,884	10,742	1.6	4,312	0.7	1,290	0.2	4,777	0.7	363	0.1
Wisconsin.....	1,709,113	43,430	2.5	7,730	0.5	5,382	0.3	28,820	1.7	1,498	0.1
Wyoming.....	176,296	3,657	2.1	1,355	0.8	491	0.3	1,701	1.0	110	0.1

Z Less than 0.05 percent.

Table 11. Per Capita Expenditure of State Governments for Police Protection, Judicial, Correctional, Prosecution, and Indigent Defense Activities: Fiscal Year 1968-69

(Per capita figures in dollars)

State	Estimated 1969 population ¹	Total	Police protection activities	Judicial activities	Correctional activities	Prosecution and indigent defense activities
All States.....	201,123,000	9.42	3.09	1.17	4.77	.39
Alabama.....	3,531,000	5.57	1.69	.72	2.85	.31
Alaska.....	282,000	41.72	9.79	11.64	15.87	4.42
Arizona.....	1,693,000	9.68	5.14	.64	3.62	.28
Arkansas.....	1,995,000	4.64	2.18	.79	1.55	.12
California.....	19,443,000	13.06	4.84	.75	6.90	.57
Colorado.....	2,100,000	10.87	3.78	.94	6.01	.14
Connecticut.....	3,000,000	16.05	3.60	6.23	5.98	.25
Delaware.....	540,000	26.74	7.77	4.48	13.71	.79
Florida.....	6,354,000	7.96	2.61	1.08	3.75	.53
Georgia.....	4,641,000	7.12	1.99	.66	4.32	.16
Hawaii.....	794,000	12.44	.14	6.62	4.69	.99
Idaho.....	718,000	9.81	3.21	2.90	3.40	.20
Illinois.....	11,047,000	8.22	2.17	1.53	4.22	.30
Indiana.....	5,118,000	7.13	2.54	.49	3.71	.40
Iowa.....	2,781,000	9.81	3.92	.78	4.88	.23
Kansas.....	2,321,000	7.60	2.50	.95	4.01	.15
Kentucky.....	3,232,000	9.37	3.90	1.86	3.35	.26
Louisiana.....	3,745,000	7.51	1.12	3.31	3.07	.37
Maine.....	978,000	11.77	1.86	5.65	3.31	.48
Maryland.....	3,765,000	20.38	3.77	1.98	9.12	.25
Massachusetts.....	5,467,000	9.04	1.88	1.18	5.67	.31
Michigan.....	8,766,000	8.32	2.98	.84	4.21	.29
Minnesota.....	3,700,000	7.42	2.05	.72	4.45	.21
Mississippi.....	2,360,000	6.53	3.61	.52	2.18	.21
Missouri.....	4,651,000	7.13	2.62	1.30	3.03	.17
Montana.....	694,000	9.91	3.23	.93	5.18	.57
Nebraska.....	1,449,000	7.87	3.11	.98	3.59	.19
Nevada.....	457,000	16.81	5.70	1.49	9.01	.61
New Hampshire.....	717,000	7.88	2.98	1.62	2.80	.48
New Jersey.....	7,148,000	9.03	3.45	1.21	3.63	.73
New Mexico.....	994,000	13.07	5.76	1.39	4.82	1.10
New York.....	18,321,000	10.96	2.65	1.46	6.11	.64
North Carolina.....	5,205,000	10.99	2.66	2.03	5.95	.33
North Dakota.....	615,000	5.61	1.82	.93	2.51	.36
Ohio.....	10,740,000	7.62	1.69	.61	5.11	.21
Oklahoma.....	2,568,000	8.31	2.78	1.21	3.16	1.16
Oregon.....	2,032,000	10.61	2.94	1.15	5.98	.54
Pennsylvania.....	11,803,000	7.51	3.04	.68	3.69	.09
Rhode Island.....	811,000	14.20	2.97	4.82	5.83	.58
South Carolina.....	2,692,000	6.61	3.23	.37	2.78	.23
South Dakota.....	659,000	7.08	2.91	.85	3.09	.23
Tennessee.....	3,985,000	7.06	1.76	.67	3.96	.67
Texas.....	11,187,000	6.25	2.74	.64	2.65	.22
Utah.....	1,045,000	8.42	2.63	1.56	3.80	.43
Vermont.....	439,000	21.22	7.23	4.21	9.00	.78
Virginia.....	4,669,000	9.78	4.40	1.20	3.64	.54
Washington.....	3,402,000	12.59	3.50	.50	8.42	.17
West Virginia.....	1,819,000	5.91	2.37	.71	2.63	.20
Wisconsin.....	4,233,000	10.26	1.83	1.27	6.81	.35
Wyoming.....	320,000	11.43	4.23	1.53	5.32	.34

¹Bureau of the Census, Current Population Reports, Series P-25, No. 437.

CRIMINAL JUSTICE EXPENDITURE AND EMPLOYMENT

Table 12. Expenditure of State Governments for Police Protection: Fiscal Year 1968-69

(Thousands of dollars)

State	Total police protection expenditure	Capital outlay	Other than capital outlay			
			Total	Communications	Training	Miscellaneous
Total.....	821,113	43,681	577,432	12,702	8,420	556,310
Alabama.....	5,968	400	5,568	203	70	5,166
Alaska.....	2,762	81	2,681	-	-	2,681
Arizona.....	8,693	1,136	7,557	36	-	7,521
Arkansas.....	4,345	434	3,911	23	142	3,746
California.....	94,157	5,325	88,832	2,783	1,079	84,070
Colorado.....	7,933	802	7,131	10	32	7,089
Connecticut.....	10,812	991	9,821	604	179	9,038
Delaware.....	4,194	501	3,693	151	-	3,542
Florida.....	16,593	1,170	15,422	-	-	15,412
Georgia.....	9,224	355	8,869	124	-	8,745
Hawaii.....	109	-	109	-	-	109
Idaho.....	2,308	247	2,061	-	-	2,061
Illinois.....	23,970	1,763	22,207	1,088	1,706	20,412
Indiana.....	12,072	1,128	11,444	-	31	11,413
Iowa.....	10,889	978	9,911	574	232	9,107
Kansas.....	5,805	517	5,288	-	-	5,288
Kentucky.....	12,593	1,430	11,163	-	-	11,163
Louisiana.....	10,148	509	9,639	-	-	9,639
Maine.....	3,888	226	3,462	52	-	3,410
Maryland.....	34,015	1,078	32,937	599	276	32,064
Massachusetts.....	10,291	436	9,855	124	131	9,600
Michigan.....	26,143	1,834	24,309	1,269	416	23,034
Minnesota.....	7,965	39	7,926	97	62	7,367
Mississippi.....	8,229	503	7,726	-	311	7,668
Missouri.....	12,190	854	11,336	-	12	11,324
Montana.....	2,240	143	2,097	17	-	2,080
Nebraska.....	4,500	632	3,868	-	-	3,868
Nevada.....	2,608	200	2,408	-	-	2,408
New Hampshire.....	2,137	148	1,989	102	5	1,882
New Jersey.....	24,887	2,500	22,187	-	292	21,895
New Mexico.....	5,720	384	5,336	-	-	5,336
New York.....	48,494	3,209	45,285	-	320	44,965
North Carolina.....	13,883	1,081	12,782	552	94	12,136
North Dakota.....	1,117	83	1,034	123	-	911
Ohio.....	18,193	738	17,455	-	15	17,440
Oklahoma.....	7,128	896	6,232	34	-	6,208
Oregon.....	5,966	346	5,620	-	79	5,541
Pennsylvania.....	35,805	2,378	33,427	812	1,157	31,518
Rhode Island.....	2,702	60	2,642	117	23	2,502
South Carolina.....	8,685	1,057	7,628	-	30	7,598
South Dakota.....	1,918	-	1,918	-	8	1,910
Tennessee.....	7,023	564	6,459	-	172	6,287
Texas.....	30,618	3,243	27,375	63	53	27,312
Utah.....	2,753	236	2,517	243	0	2,221
Vermont.....	3,173	119	2,954	259	0	2,780
Virginia.....	20,540	128	20,412	1,044	180	19,190
Washington.....	11,893	2,143	9,750	1,515	268	7,997
West Virginia.....	4,312	431	3,881	-	64	3,817
Wisconsin.....	7,730	401	7,329	-	-	7,329
Wyoming.....	1,355	-	1,355	-	-	1,355

- Represents zero or rounds to zero.
Note: Because of rounding, detail may not add to totals.

CRIMINAL JUSTICE EXPENDITURE AND EMPLOYMENT

Table 13. Expenditure of State Governments for Judicial Activities: Fiscal Year 1968-69

(Thousands of dollars)

State	Total judicial expenditure	Capital outlay	Other than capital outlay						
			Total	Courts of last resort	Intermediate appellate courts	Major trial courts	Other courts	Law libraries	Miscellaneous
Total.....	236,068	5,234	230,834	22,741	19,472	113,070	40,289	2,272	32,900
Alabama.....	2,543	5	2,538	363	130	1,162	259	27	591
Alaska.....	3,282	75	3,207	553	(X)	1,487	1,197	-	-
Arizona.....	1,081	40	1,041	273	205	478	-	5	-
Arkansas.....	1,582	3	1,579	277	(X)	1,255	-	15	32
California.....	14,599	40	14,559	1,369	3,896	4,273	-	191	830
Colorado.....	1,964	9	1,955	319	(X)	1,463	-	20	53
Connecticut.....	18,678	1,080	17,598	392	(X)	6,539	10,139	188	340
Delaware.....	2,418	52	2,366	141	(X)	521	1,087	17	-
Florida.....	6,822	100	6,722	558	1,270	4,841	-	-	54
Georgia.....	3,046	9	3,037	430	558	2,024	-	25	-
Hawaii.....	5,258	83	5,175	786	(X)	2,941	1,284	115	49
Idaho.....	2,083	1,117	966	249	(X)	674	-	40	3
Illinois.....	16,939	85	16,854	955	2,287	10,721	53	-	2,825
Indiana.....	2,480	56	2,422	320	370	1,595	-	-	137
Iowa.....	2,167	2	2,165	459	(X)	1,603	-	72	31
Kansas.....	2,201	9	2,192	469	(X)	1,688	-	6	31
Kentucky.....	6,011	4	6,007	612	(X)	2,576	1,739	55	1,025
Louisiana.....	4,205	-	4,205	965	1,030	1,812	256	78	64
Maine.....	1,823	110	1,713	194	(X)	353	1,053	9	104
Maryland.....	7,443	2	7,441	132	300	2,408	2,729	63	1,809
Massachusetts.....	6,447	1	6,446	569	(X)	1,503	3,798	7	672
Michigan.....	7,322	525	6,797	1,056	1,402	3,656	11	-	972
Minnesota.....	2,677	2	2,675	506	(X)	1,704	-	110	295
Mississippi.....	1,236	2	1,234	323	(X)	836	-	47	28
Missouri.....	6,062	1	6,061	519	545	2,343	2,101	23	530
Montana.....	647	15	632	167	(X)	451	-	11	3
Nebraska.....	1,420	-	1,420	335	(X)	1,020	-	66	-
Nevada.....	679	5	674	262	(X)	413	-	-	-
New Hampshire.....	1,160	532	628	171	(X)	274	164	-	19
New Jersey.....	8,653	16	8,637	268	372	2,066	-	63	5,868
New Mexico.....	1,383	66	1,317	246	162	370	-	68	471
New York.....	26,768	104	26,664	1,067	4,266	10,132	6,899	267	4,033
North Carolina.....	10,589	675	9,914	509	326	5,796	2,038	25	320
North Dakota.....	574	-	574	173	(X)	381	-	21	-
Ohio.....	6,537	67	6,470	382	(NA)	-	-	-	6,088
Oklahoma.....	3,105	8	3,097	737	(X)	2,359	1	-	-
Oregon.....	2,342	-	2,342	471	(NA)	1,776	-	63	32
Pennsylvania.....	8,065	-	8,065	860	612	5,750	943	-	-
Rhode Island.....	4,388	180	4,208	329	(X)	1,586	1,179	62	1,052
South Carolina.....	1,006	13	993	269	(X)	608	-	14	12
South Dakota.....	561	-	561	156	(X)	405	-	-	-
Tennessee.....	2,986	45	2,941	338	373	1,616	-	80	230
Texas.....	7,169	4	7,165	698	1,382	4,125	-	-	960
Utah.....	1,631	12	1,619	182	(X)	534	817	-	80
Vermont.....	1,850	-	1,850	148	(X)	586	996	77	41
Virginia.....	5,600	-	5,600	511	(X)	1,917	46	38	3,088
Washington.....	1,716	15	1,701	696	(NA)	644	-	130	231
West Virginia.....	1,290	59	1,231	309	(X)	593	-	71	258
Wisconsin.....	5,382	5	5,377	418	(X)	4,772	-	76	111
Wyoming.....	491	-	491	146	(X)	323	-	22	-

- Represents zero or rounds to zero.
NA Not available.
X Not applicable.
Note: Because of rounding, detail may not add to total.

Table 14. Expenditure of State Governments for Correctional Activities: Fiscal Year 1968-69
(Thousands of dollars)

State	Total correctional expenditure	Direct expenditure									Inter-governmental expenditure
		Total	Capital outlay	Direct current expenditure						Miscellaneous	
				Total	Institutions			Administration	Probation parole and pardon		
					For youths	For women	Other				
Total	959,020	814,054	104,148	809,906	233,005	16,910	444,951	30,017	78,881	6,142	44,966
Alabama	10,072	9,108	3,128	5,980	1,135	409	3,480	-	895	61	964
Alaska	4,474	4,474	82	4,392	1,512	-	2,364	-	518	-	-
Arizona	6,131	6,131	305	5,826	2,934	-	2,784	-	108	-	-
Arkansas	3,087	3,087	359	2,728	859	-	1,801	22	46	-	-
California	134,125	122,965	2,960	120,005	29,408	3,256	64,204	6,080	15,748	1,309	11,160
Colorado	12,021	12,335	1,362	10,973	2,899	-	17,018	-	1,056	-	286
Connecticut	17,927	17,927	820	17,107	2,588	1,345	11,363	428	1,383	-	-
Dalavare	7,403	7,403	3,974	3,429	1,304	-	2,108	-	17	-	-
Florida	23,815	23,815	1,977	21,838	5,608	-	12,889	386	2,955	-	-
Georgia	20,033	19,548	3,869	15,679	4,068	-	9,600	-	2,011	-	485
Hawaii	3,727	3,727	217	3,510	983	-	1,954	77	432	64	-
Idaho	2,444	2,444	443	2,001	780	-	1,045	-	176	-	-
Illinois	46,653	46,653	9,127	37,526	14,006	933	18,011	3,158	1,171	247	-
Indiana	18,996	18,996	4,087	14,309	4,024	489	8,545	209	1,027	15	-
Iowa	13,577	13,577	2,888	10,689	2,731	322	7,129	-	506	1	-
Kansas	9,298	9,296	484	8,812	4,043	372	4,022	-	375	-	-
Kentucky	10,832	10,832	1,938	8,894	2,455	230	4,784	595	818	12	-
Louisiana	12,381	12,381	1,513	10,868	3,087	-	4,774	-	2,973	34	-
Louisiana	5,526	5,520	806	4,720	2,093	362	1,808	-	457	-	-
Maryland	34,331	34,191	1,785	32,406	11,057	941	15,296	2,947	2,185	10	140
Massachusetts	30,987	30,987	2,514	28,473	5,107	1,336	17,432	2,469	1,873	256	-
Michigan	36,891	36,184	1,826	34,358	9,480	-	21,147	775	2,956	-	707
Minnesota	16,447	16,097	1,764	14,333	3,769	314	7,864	2,092	294	-	350
Mississippi	5,145	5,145	830	4,315	1,005	-	3,080	-	230	-	-
Missouri	14,106	14,106	2,078	12,028	2,660	224	6,835	768	1,541	-	-
Montana	3,596	3,596	415	3,181	1,368	-	1,688	-	127	-	-
Nebraska	5,202	5,202	284	4,918	1,405	147	2,886	-	223	257	-
Nevada	4,118	4,060	298	3,762	1,434	-	2,032	-	296	-	58
New Hampshire	2,009	2,009	108	1,901	825	-	628	-	448	-	-
New Jersey	25,948	25,948	2,871	23,077	9,200	1,594	10,316	-	1,967	-	-
New Mexico	4,790	4,790	215	4,575	1,916	-	2,049	-	610	-	-
New York	112,006	86,102	9,723	76,379	16,930	-	47,050	2,560	9,447	392	25,904
North Carolina	31,040	31,040	2,176	28,864	7,398	802	16,360	1,505	2,799	-	-
North Dakota	1,541	1,541	33	1,508	588	-	812	-	108	-	-
Ohio	54,908	54,526	7,859	46,667	13,204	-	26,005	4,252	2,463	743	382
Oklahoma	8,107	8,107	351	7,756	2,047	-	5,059	640	10	-	-
Oregon	12,147	12,120	179	11,941	4,352	-	6,495	-	1,094	-	27
Pennsylvania	43,592	41,668	7,690	33,978	12,315	973	18,534	-	2,796	1,360	1,924
Rhode Island	5,315	5,315	155	5,160	1,537	-	2,545	118	935	25	-
South Carolina	7,470	7,470	1,011	6,459	1,739	139	3,749	-	832	-	-
South Dakota	2,037	2,037	321	1,716	538	-	1,000	-	178	-	-
Tennessee	15,725	14,923	3,747	11,176	3,431	310	5,942	298	1,195	-	802
Texas	29,580	29,580	4,173	25,407	7,109	-	17,119	-	1,178	1	-
Utah	3,971	3,833	191	3,642	1,344	-	1,901	24	373	-	138
Vermont	3,950	3,950	877	3,073	1,150	38	1,360	-	455	70	-
Virginia	17,005	15,404	1,305	14,099	4,698	1,115	6,161	176	1,447	502	1,601
Washington	28,638	28,600	3,293	25,307	10,351	-	11,614	176	2,588	578	38
West Virginia	4,777	4,777	217	4,560	1,431	118	2,504	-	317	190	-
Wisconsin	28,820	28,820	4,804	24,016	6,443	1,141	11,002	262	5,168	-	-
Wyoming	1,701	1,701	116	1,585	659	-	803	-	108	15	-

- Represents zero or rounds to zero.
 1 Includes amount for separate institution for women.
 Note: Because of rounding, detail may not add to totals.

Table 15. Employment and Payrolls, October 1969, and Expenditure, Fiscal Year 1968-69, for State Government Prosecution and Indigent Defense Activities
(Dollar amounts in thousands)

State	Employment				Expenditure		
	Number of employees			October payroll	Total	Prosecution	Indigent defense
	Total	Full-time only	Full-time equivalent				
Total	6,658	6,257	6,377	5,718	77,843	70,507	7,336
Alabama	38	36	37	36	1,081	1,081	-
Alaska	72	72	72	98	1,245	1,245	-
Arizona	34	32	34	27	479	479	-
Arkansas	42	42	42	33	234	234	-
California	618	618	618	613	11,084	10,309	775
Colorado	31	31	31	25	299	299	-
Connecticut	68	68	68	67	736	736	-
Dalavare	57	40	54	39	425	300	125
Florida	371	356	360	306	3,355	2,720	635
Georgia	60	60	60	53	719	719	-
Hawaii	59	59	59	114	785	785	-
Idaho	22	22	22	17	210	210	-
Illinois	482	302	347	245	3,280	3,280	-
Indiana	194	194	194	156	2,021	1,989	32
Iowa	47	40	41	42	635	635	-
Kansas	23	23	23	18	342	342	-
Kentucky	35	35	35	29	846	846	-
Louisiana	58	56	56	34	1,372	1,372	-
Maine	32	32	32	28	473	473	-
Maryland	53	53	53	55	931	736	195
Massachusetts	220	216	218	185	1,673	853	820
Michigan	153	146	148	167	2,566	2,566	-
Minnesota	60	62	54	39	769	606	163
Mississippi	25	25	25	21	498	498	-
Missouri	75	68	63	47	789	789	-
Montana	77	21	34	26	393	393	-
Nebraska	13	13	13	13	274	274	-
Nevada	23	22	23	25	278	278	-
New Hampshire	24	24	24	20	346	236	110
New Jersey	433	432	432	350	5,220	2,547	2,673
New Mexico	122	122	122	75	1,088	984	104
New York	886	884	884	927	11,769	11,269	500
North Carolina	63	63	63	54	1,703	936	767
North Dakota	22	21	21	17	220	220	-
Ohio	268	243	255	194	2,209	2,209	-
Oklahoma	322	321	321	232	2,989	2,989	-
Oregon	141	139	139	149	1,095	1,017	78
Pennsylvania	477	476	476	389	1,054	1,054	-
Rhode Island	45	45	45	36	527	356	171
South Carolina	49	43	44	43	623	623	-
South Dakota	12	12	12	9	152	152	-
Tennessee	125	125	125	104	2,684	2,539	145
Texas	257	257	257	254	2,483	2,483	-
Utah	77	59	68	44	453	453	-
Vermont	38	38	38	34	342	342	-
Virginia	(NA)	(NA)	(NA)	(NA)	2,531	2,531	-
Washington	105	95	98	92	593	593	-
West Virginia	56	53	54	49	363	363	-
Wisconsin	85	73	75	82	1,498	1,455	43
Wyoming	9	8	8	6	110	110	-

- Represents zero or rounds to zero.
 NA Not available.

Table 16. Full-Time Employment of State Governments for Police Protection, Judicial, Correctional, Prosecution, and Indigent Defense, and Related Activities: October 1969

State	Total full-time equivalent State employment ¹	Total		Police protection activities		Judicial activities		Correctional activities		Prosecution, indigent defense and related activities	
		Number of employees	Percent of total	Number of employees	Percent of total	Number of employees	Percent of total	Number of employees	Percent of total	Number of employees	Percent of total
Total.....	2,179,227	160,339	7.4	53,746	2.5	15,576	0.7	84,640	3.9	6,377	0.3
Alabama.....	37,777	1,843	4.9	664	1.8	274	0.7	868	2.3	37	0.1
Alaska.....	7,962	642	8.1	140	1.8	147	1.8	283	3.6	72	0.9
Arizona.....	19,935	1,578	7.9	767	3.8	245	1.2	532	2.7	34	0.2
Arkansas.....	23,113	885	3.8	500	2.2	74	0.3	269	1.2	42	0.2
California.....	191,591	18,868	9.8	8,151	4.3	277	0.1	9,822	5.1	618	0.3
Colorado.....	30,608	1,879	6.1	636	2.1	140	0.5	1,072	3.5	31	0.1
Connecticut.....	37,264	4,115	11.0	947	2.5	1,377	3.7	1,723	4.6	68	0.2
Delaware.....	10,666	1,169	11.0	363	3.4	346	3.2	406	3.8	54	0.5
Florida.....	66,597	5,920	8.9	1,900	2.9	316	0.5	3,344	5.0	360	0.5
Georgia.....	47,424	3,336	7.0	1,142	2.4	249	0.5	1,885	4.0	60	0.1
Hawaii.....	25,389	856	3.3	-	-	468	1.8	329	1.3	59	0.2
Idaho.....	9,796	465	4.7	145	1.5	71	0.7	227	2.3	22	0.2
Illinois.....	97,987	7,699	7.9	2,134	2.2	1,096	1.1	4,122	4.2	347	0.4
Indiana.....	50,540	3,275	6.5	1,220	2.4	213	0.4	1,648	3.3	194	0.4
Iowa.....	32,612	2,030	6.2	767	2.4	108	0.3	1,114	3.4	41	0.1
Kansas.....	29,834	1,569	5.2	411	1.4	157	0.5	978	3.2	23	0.1
Kentucky.....	37,172	2,156	5.8	1,052	2.8	131	0.4	938	2.5	35	0.1
Louisiana.....	54,001	2,617	4.8	411	0.8	887	1.6	1,263	2.3	56	0.1
Maine.....	15,312	1,078	7.0	346	2.3	130	0.8	570	3.7	32	0.2
Maryland.....	44,116	4,978	11.2	1,513	3.4	251	0.6	3,161	7.1	53	0.1
Massachusetts.....	54,620	3,936	7.2	858	1.6	189	0.3	2,671	4.8	218	0.4
Michigan.....	88,118	5,737	6.5	2,211	2.5	375	0.4	3,003	3.4	148	0.2
Minnesota.....	42,019	2,066	4.9	538	1.3	117	0.3	1,357	3.2	54	0.1
Mississippi.....	25,742	1,231	4.7	770	3.0	81	0.3	355	1.3	25	0.1
Missouri.....	50,732	3,181	6.3	1,367	2.7	293	0.6	1,458	2.9	63	0.1
Montana.....	12,261	747	6.1	266	2.2	46	0.4	401	3.2	34	0.3
Nebraska.....	20,588	997	4.8	375	1.8	97	0.5	512	2.5	13	0.1
Nevada.....	6,493	558	8.6	107	1.6	51	0.8	377	5.8	23	0.4
New Hampshire.....	9,714	490	5.0	171	1.8	57	0.6	238	2.4	24	0.2
New Jersey.....	53,263	5,423	10.1	1,914	3.6	594	1.1	2,483	4.6	432	0.8
New Mexico.....	18,202	1,116	6.1	354	1.9	147	0.8	493	2.7	122	0.7
New York.....	177,316	15,945	8.9	4,319	2.4	1,525	0.9	9,217	5.1	884	0.5
North Carolina.....	56,462	6,359	11.2	1,379	2.4	1,808	3.2	3,109	5.5	63	0.1
North Dakota.....	10,264	360	3.5	113	1.1	47	0.5	179	1.7	21	0.2
Ohio.....	83,088	6,690	8.1	1,716	2.1	394	0.5	4,325	5.2	255	0.3
Oklahoma.....	35,741	2,368	6.6	752	2.1	370	1.0	925	2.5	321	0.9
Oregon.....	30,585	2,312	7.5	714	2.3	145	0.5	1,314	4.2	139	0.5
Pennsylvania.....	114,458	8,848	7.7	4,471	3.9	802	0.7	3,099	2.7	476	0.4
Rhode Island.....	13,466	947	7.0	217	1.6	252	1.9	433	3.2	45	0.3
South Carolina.....	30,645	1,714	5.5	745	2.4	60	0.2	865	2.8	44	0.1
South Dakota.....	10,002	468	4.6	210	2.1	29	0.3	217	2.1	12	0.1
Tennessee.....	44,474	2,710	6.1	705	1.6	224	0.5	1,656	3.7	125	0.3
Texas.....	101,124	5,136	5.0	1,203	1.2	398	0.4	3,278	3.2	257	0.3
Utah.....	16,410	854	5.2	295	1.8	106	0.6	385	2.3	68	0.4
Vermont.....	7,580	792	10.4	259	3.4	116	1.5	379	5.0	38	0.5
Virginia.....	64,009	4,155	6.4	1,732	2.7	158	0.2	2,265	3.5	(NA)	(NA)
Washington.....	51,947	3,483	6.7	980	1.9	131	0.3	2,274	4.3	98	0.2
West Virginia.....	28,976	1,195	4.1	530	1.8	90	0.3	521	1.7	54	0.2
Wisconsin.....	44,801	3,207	7.4	653	1.5	358	0.8	2,121	4.7	75	0.2
Wyoming.....	6,434	356	5.6	137	2.1	35	0.5	176	2.7	8	0.1

NA Not available
¹Includes data on all functions of State government.

Table 17. Employment and Payrolls of State Governments for Police Protection: October 1969

(Dollar amounts in thousands)

State	State police and law enforcement				State	State police and law enforcement			
	Number of employees			Total October payroll		Number of employees			Total October payroll
	Total	Full-time only	Full-time equivalent			Total	Full-time only	Full-time equivalent	
Total.....	54,496	53,475	53,746	38,047	Montana.....	278	263	266	139
Alabama.....	664	664	664	413	Nebraska.....	375	375	375	266
Alaska.....	140	140	140	150	Nevada.....	107	107	107	77
Arizona.....	771	765	767	548	New Hampshire.....	175	171	171	116
Arkansas.....	500	500	500	235	New Jersey.....	1,968	1,912	1,914	1,347
California.....	8,494	7,962	8,151	6,601	New Mexico.....	356	353	354	213
Colorado.....	636	636	636	428	New York.....	4,393	4,304	4,319	3,615
Connecticut.....	952	947	947	641	North Carolina.....	1,379	1,379	1,379	895
Delaware.....	364	363	363	231	North Dakota.....	119	112	113	65
Florida.....	1,900	1,900	1,900	1,051	Ohio.....	1,723	1,711	1,716	1,120
Georgia.....	1,142	1,142	1,142	704	Oklahoma.....	752	752	752	407
Hawaii.....	-	-	-	-	Oregon.....	714	714	714	536
Idaho.....	145	145	145	96	Pennsylvania.....	4,471	4,471	4,471	3,273
Illinois.....	2,134	2,134	2,134	1,534	Rhode Island.....	217	217	217	165
Indiana.....	1,246	1,220	1,220	866	South Carolina.....	752	743	745	473
Iowa.....	803	754	767	526	South Dakota.....	227	206	210	126
Kansas.....	414	410	411	308	Tennessee.....	706	705	705	527
Kentucky.....	1,062	1,050	1,052	588	Texas.....	1,203	1,203	1,203	796
Louisiana.....	887	887	887	479	Utah.....	296	295	295	194
Maine.....	346	346	346	225	Vermont.....	265	259	259	167
Maryland.....	1,513	1,513	1,513	1,103	Virginia.....	1,777	1,721	1,732	1,026
Massachusetts.....	858	858	858	613	Washington.....	980	980	980	758
Michigan.....	2,243	2,196	2,211	1,965	West Virginia.....	544	530	530	301
Minnesota.....	541	537	538	445	Wisconsin.....	673	653	653	455
Mississippi.....	770	770	770	385	Wyoming.....	137	137	137	93
Missouri.....	1,384	1,363	1,367	862					

- Represents zero or rounds to zero.
¹Revised data.

Table 18. Employment and Payrolls of State Governments for Judicial Activities: October 1969 (Dollar amounts in thousands)

State	All judicial activities				Court of last resort				Intermediate appellate courts			
	Number of employees			Total October payroll	Number of employees			Total October payroll	Number of employees			Total October payroll
	Total	Full-time only	Full-time equivalent		Total	Full-time only	Full-time equivalent		Total	Full-time only	Full-time equivalent	
Total.....	16,091	15,358	15,576	15,494	1,475	1,460	1,463	1,523	1,284	1,280	1,280	1,672
Alabama.....	275	274	274	241	35	34	34	36	9	9	9	10
Alaska.....	187	138	147	195	(NA)	(NA)	(NA)	(NA)	(X)	(X)	(X)	(X)
Arizona.....	250	241	245	186	25	25	25	24	34	34	34	34
Arkansas.....	74	74	74	82	27	27	27	24	(X)	(X)	(X)	(X)
California.....	278	275	277	301	76	74	76	103	173	172	172	221
Colorado.....	141	138	140	98	34	34	34	35	(X)	(X)	(X)	(X)
Connecticut.....	1,003	1,230	1,377	1,170	24	24	24	31	(X)	(X)	(X)	(X)
Delaware.....	352	346	346	207	9	8	8	9	(X)	(X)	(X)	(X)
Florida.....	316	316	316	460	39	39	39	42	94	94	94	100
Georgia.....	249	249	249	194	27	27	27	35	15	15	15	9
Hawaii.....	469	468	468	335	37	37	37	40	(X)	(X)	(X)	(X)
Idaho.....	71	71	71	79	23	23	23	21	(X)	(X)	(X)	(X)
Illinois.....	1,096	1,096	1,096	1,306	55	55	55	61	97	97	97	142
Indiana.....	214	213	213	184	41	40	40	38	29	29	29	32
Iowa.....	108	108	108	163	33	33	33	31	(X)	(X)	(X)	(X)
Kansas.....	163	156	157	167	36	32	33	34	(X)	(X)	(X)	(X)
Kentucky.....	132	131	131	174	18	17	17	10	(X)	(X)	(X)	(X)
Louisiana.....	421	406	411	310	32	32	32	31	85	85	85	79
Maine.....	153	116	130	93	13	13	13	13	(X)	(X)	(X)	(X)
Maryland.....	258	250	251	275	18	18	18	26	21	21	21	21
Massachusetts.....	190	187	189	233	41	41	41	45	(X)	(X)	(X)	(X)
Michigan.....	376	375	375	524	61	60	60	57	76	76	76	96
Minnesota.....	118	116	117	155	38	38	38	20	(X)	(X)	(X)	(X)
Mississippi.....	81	81	81	90	33	33	33	26	(X)	(X)	(X)	(X)
Missouri.....	293	293	293	249	47	47	47	44	46	46	46	45
Montana.....	46	45	46	49	16	16	16	13	(X)	(X)	(X)	(X)
Nebraska.....	97	97	97	106	25	25	25	22	(X)	(X)	(X)	(X)
Nevada.....	51	51	51	48	19	19	19	19	(X)	(X)	(X)	(X)
New Hampshire.....	57	57	57	58	10	10	10	16	(X)	(X)	(X)	(X)
New Jersey.....	682	594	594	606	28	28	28	38	36	36	36	51
New Mexico.....	149	147	147	145	18	18	18	17	14	14	14	13
New York.....	1,550	1,517	1,525	1,457	78	78	78	66	296	296	296	343
North Carolina.....	1,808	1,808	1,808	1,067	34	34	34	36	34	34	34	35
North Dakota.....	49	47	47	41	14	14	14	14	(X)	(X)	(X)	(X)
Ohio.....	397	394	394	864	35	35	35	29	74	71	71	251
Oklahoma.....	370	370	370	353	61	61	61	61	(X)	(X)	(X)	(X)
Oregon.....	163	142	145	216	32	31	31	33	17	17	17	18
Pennsylvania.....	802	802	802	1,057	7	7	7	22	7	7	7	21
Rhode Island.....	252	252	252	184	31	31	31	27	(X)	(X)	(X)	(X)
South Carolina.....	60	60	60	67	24	24	24	13	(X)	(X)	(X)	(X)
South Dakota.....	29	29	29	43	8	8	8	11	(X)	(X)	(X)	(X)
Tennessee.....	224	224	224	181	16	16	16	17	24	24	24	24
Texas.....	401	398	398	517	62	60	60	57	103	103	103	127
Utah.....	108	106	106	81	19	19	19	14	(X)	(X)	(X)	(X)
Vermont.....	128	112	116	94	7	7	7	9	(X)	(X)	(X)	(X)
Virginia.....	162	157	158	119	(NA)	(NA)	(NA)	(NA)	(X)	(X)	(X)	(X)
Washington.....	132	131	131	133	44	43	43	50	(NA)	(NA)	(NA)	(NA)
West Virginia.....	114	78	90	67	20	20	20	26	(X)	(X)	(X)	(X)
Wisconsin.....	359	358	358	397	34	34	34	38	(X)	(X)	(X)	(X)
Wyoming.....	35	34	35	33	11	11	11	9	(X)	(X)	(X)	(X)

See footnotes at end of table.

Table 18. Employment and Payrolls of State Governments for Judicial Activities: October 1969—Continued (Dollar amounts in thousands)

State	Major trial courts				Other courts				Miscellaneous			
	Number of employees			Total October payroll	Number of employees			Total October payroll	Number of employees			Total October payroll
	Total	Full-time only	Full-time equivalent		Total	Full-time only	Full-time equivalent		Total	Full-time only	Full-time equivalent	
Total.....	8,848	8,614	8,683	8,953	3,134	2,774	2,803	2,292	1,350	1,230	1,257	1,054
Alabama.....	231	231	231	195	-	-	-	-	-	-	-	-
Alaska.....	(NA)	(NA)	(NA)	(NA)	(NA)	(NA)	(NA)	(NA)	187	138	147	195
Arizona.....	191	182	180	108	-	-	-	-	-	-	-	-
Arkansas.....	47	47	47	59	-	-	-	-	-	-	-	-
California.....	(X)	(X)	(X)	(X)	-	-	-	-	29	29	29	37
Colorado.....	107	104	106	63	-	-	-	-	-	-	-	-
Connecticut.....	477	320	305	420	1,065	849	931	889	37	37	37	21
Delaware.....	74	74	74	87	266	261	261	140	3	3	3	1
Florida.....	179	179	179	316	-	-	-	-	4	4	4	2
Georgia.....	207	207	207	150	-	-	-	-	-	-	-	-
Hawaii.....	258	267	267	202	164	164	164	93	-	-	-	-
Idaho.....	48	48	48	58	-	-	-	-	-	-	-	-
Illinois.....	914	914	914	1,084	9	9	9	4	21	21	21	15
Indiana.....	132	132	132	106	8	8	8	6	4	4	4	2
Iowa.....	75	75	75	131	-	-	-	-	-	-	-	-
Kansas.....	123	123	123	132	-	-	-	-	4	1	1	1
Kentucky.....	110	110	110	162	-	-	-	-	4	4	4	2
Louisiana.....	194	193	194	146	92	92	92	49	18	4	8	5
Maine.....	23	23	23	22	111	80	91	37	6	-	3	1
Maryland.....	98	90	91	132	114	114	114	90	7	7	7	6
Massachusetts.....	88	88	88	132	59	57	58	55	2	1	2	1
Michigan.....	89	89	89	116	150	150	150	225	-	-	-	-
Minnesota.....	72	70	71	129	-	-	-	-	8	8	8	6
Mississippi.....	48	48	48	64	-	-	-	-	-	-	-	-
Missouri.....	200	200	200	160	-	-	-	-	-	-	-	-
Montana.....	28	28	28	35	-	-	-	-	2	1	2	1
Nebraska.....	72	72	72	84	-	-	-	-	-	-	-	-
Nevada.....	32	32	32	29	-	-	-	-	-	-	-	-
New Hampshire.....	19	19	19	29	28	28	28	13	-	-	-	-
New Jersey.....	317	317	317	270	88	88	88	87	213	213	213	160
New Mexico.....	21	21	21	33	-	-	-	-	96	94	94	82
New York.....	635	635	635	567	172	164	150	180	369	364	367	301
North Carolina.....	1,703	1,703	1,703	971	-	-	-	-	37	37	37	25
North Dakota.....	32	32	32	26	-	-	-	-	3	1	1	1
Ohio.....	288	288	288	584	-	-	-	-	-	-	-	-
Oklahoma.....	309	309	309	292	-	-	-	-	-	-	-	-
Oregon.....	106	89	92	161	-	-	-	-	8	5	5	4
Pennsylvania.....	226	226	226	565	565	555	565	439	7	7	7	10
Rhode Island.....	81	81	81	70	140	140	140	87	-	-	-	-
South Carolina.....	36	36	36	54	-	-	-	-	-	-	-	-
South Dakota.....	21	21	21	32	-	-	-	-	-	-	-	-
Tennessee.....	151	151	151	127	-	-	-	-	33	33	33	13
Texas.....	184	184	184	307	-	-	-	-	52	51	51	26
Utah.....	40	40	40	41	47	47	47	26	-	-	-	-
Vermont.....	36	36	36	26	66	66	66	52	19	3	7	7
Virginia.....	(NA)	(NA)	(NA)	(NA)	(NA)	(NA)	(NA)	(NA)	162	157	158	119
Washington.....	88	88	88	83	-	-	-	-	-	-	-	-
West Virginia.....	88	52	64	38	-	-	-	-	6	6	6	3
Wisconsin.....	318	318	318	353	-	-	-	-	7	6	6	6
Wyoming.....	22	22	22	23	-	-	-	-	2	1	2	1

- Represents zero or rounds to zero.
 X Not applicable
 NA Not available

Table 19. Employment and Payrolls of State Governments for Correctional Activities:
October 1969
(Dollar amounts in thousands)

State	All correctional activities				Institutions for youthful offenders				Institutions for women			
	Number of employees			Total October payroll	Number of employees			Total October payroll	Number of employees			Total October payroll
	Total	Full-time only	Full-time equivalent		Total	Full-time only	Full-time equivalent		Total	Full-time only	Full-time equivalent	
Total.....	85,880	83,816	84,640	56,345	23,812	22,804	23,280	14,525	1,453	1,404	1,421	974
Alabama.....	874	861	868	497	211	203	208	80	-	-	-	-
Alaska.....	285	282	283	247	(NA)	(NA)	(NA)	(NA)	(NA)	(NA)	(NA)	(NA)
Arizona.....	532	532	532	280	156	156	156	67	-	-	-	-
Arkansas.....	269	269	269	107	147	147	147	55	(NA)	(NA)	(NA)	(NA)
California.....	10,017	9,723	9,822	8,404	2,698	2,618	2,663	2,101	260	244	248	212
Colorado.....	1,085	1,050	1,072	702	299	280	289	167	-	-	-	-
Connecticut.....	1,732	1,721	1,723	1,173	309	306	307	199	(NA)	(NA)	(NA)	(NA)
Delaware.....	422	397	406	229	168	150	157	80	-	-	-	-
Florida.....	3,399	3,344	3,344	1,809	948	948	948	518	-	-	-	-
Georgia.....	1,890	1,884	1,885	950	554	548	549	255	-	-	-	-
Hawaii.....	334	323	329	259	35	35	35	19	-	-	-	-
Idaho.....	229	225	227	125	93	89	91	50	-	-	-	-
Illinois.....	4,169	4,036	4,122	2,694	1,975	1,966	1,940	1,277	(NA)	(NA)	(NA)	(NA)
Indiana.....	1,672	1,630	1,648	925	506	474	488	262	68	61	64	29
Iowa.....	1,137	1,105	1,114	687	299	279	280	164	41	39	40	20
Kansas.....	996	968	978	582	222	202	207	115	55	50	53	24
Kentucky.....	943	923	938	427	173	164	170	46	30	30	30	15
Louisiana.....	1,273	1,260	1,263	631	554	540	550	253	(NA)	(NA)	(NA)	(NA)
Maine.....	580	553	570	345	274	251	268	162	48	46	46	27
Maryland.....	3,195	3,108	3,161	2,756	874	842	871	591	111	108	107	81
Massachusetts.....	2,685	2,660	2,671	1,942	744	738	741	423	130	130	130	105
Michigan.....	3,024	2,991	3,003	2,336	909	894	900	623	-	-	-	-
Minnesota.....	1,367	1,353	1,357	873	(NA)	(NA)	(NA)	(NA)	(NA)	(NA)	(NA)	(NA)
Mississippi.....	359	353	355	142	155	151	153	59	-	-	-	-
Missouri.....	1,502	1,438	1,458	720	397	370	378	185	(NA)	(NA)	(NA)	(NA)
Montana.....	414	391	401	215	187	165	175	95	-	-	-	-
Nebraska.....	512	512	512	235	(NA)	(NA)	(NA)	(NA)	(NA)	(NA)	(NA)	(NA)
Nevada.....	381	376	377	258	136	135	136	74	(NA)	(NA)	(NA)	(NA)
New Hampshire.....	246	235	238	134	109	107	108	61	-	-	-	-
New Jersey.....	2,504	2,441	2,483	1,729	858	821	845	568	190	189	189	127
New Mexico.....	497	489	493	242	231	223	227	105	(NA)	(NA)	(NA)	(NA)
New York.....	9,393	9,151	9,217	6,856	3,303	3,122	3,178	2,282	327	325	325	237
North Carolina.....	3,159	3,055	3,109	1,669	(NA)	(NA)	(NA)	(NA)	(NA)	(NA)	(NA)	(NA)
North Dakota.....	190	175	179	91	76	72	74	39	-	-	-	-
Ohio.....	4,437	4,279	4,325	2,972	1,919	1,803	1,832	1,228	148	143	147	82
Oklahoma.....	948	913	925	396	275	259	267	102	-	-	-	-
Oregon.....	1,350	1,298	1,314	952	(NA)	(NA)	(NA)	(NA)	(NA)	(NA)	(NA)	(NA)
Pennsylvania.....	3,126	3,091	3,099	2,142	859	854	838	502	(NA)	(NA)	(NA)	(NA)
Rhode Island.....	433	430	433	373	133	133	133	103	-	-	-	-
South Carolina.....	893	844	865	435	255	235	243	111	22	21	21	10
South Dakota.....	227	210	217	111	79	75	79	33	-	-	-	-
Tennessee.....	1,670	1,643	1,656	772	(NA)	(NA)	(NA)	(NA)	(NA)	(NA)	(NA)	(NA)
Texas.....	3,296	3,270	3,278	1,731	1,130	1,117	1,117	529	(NA)	(NA)	(NA)	(NA)
Utah.....	404	378	385	239	155	137	142	86	-	-	-	-
Vermont.....	382	376	379	232	(NA)	(NA)	(NA)	(NA)	(NA)	(NA)	(NA)	(NA)
Virginia.....	2,310	2,218	2,265	1,287	(NA)	(NA)	(NA)	(NA)	(NA)	(NA)	(NA)	(NA)
Washington.....	2,905	2,260	2,274	1,553	1,138	1,112	1,124	742	-	-	-	-
West Virginia.....	525	516	521	215	181	179	181	74	23	20	21	5
Wisconsin.....	2,121	2,121	2,121	1,589	(NA)	(NA)	(NA)	(NA)	(NA)	(NA)	(NA)	(NA)
Wyoming.....	182	171	176	85	90	81	85	40	-	-	-	-

See footnotes at end of table.

Table 19. Employment and Payrolls of State Governments for Correctional Activities:
October 1969--Continued
(Dollar amounts in thousands)

State	Other institutions				Probation, parole, and pardons			
	Number of employees			Total October payroll	Number of employees			Total October payroll
	Total	Full-time only	Full-time equivalent		Total	Full-time only	Full-time equivalent	
Total.....	37,578	36,985	37,320	25,714	6,449	6,286	6,329	4,616
Alabama.....	530	520	530	247	133	129	130	80
Alaska.....	(NA)	(NA)	(NA)	(NA)	(NA)	(NA)	(NA)	(NA)
Arizona.....	312	312	312	145	5	5	5	14
Arkansas.....	(NA)	(NA)	(NA)	(NA)	17	17	17	8
California.....	5,276	5,170	5,197	4,518	1,277	1,212	1,229	1,104
Colorado.....	661	657	660	442	111	111	111	85
Connecticut.....	1,269	1,269	1,269	867	133	125	126	88
Delaware.....	254	245	247	148	2	2	2	1
Florida.....	2,023	1,943	1,968	1,047	428	428	428	244
Georgia.....	1,054	1,054	1,054	539	282	282	282	156
Hawaii.....	274	263	269	224	25	25	25	16
Idaho.....	107	107	107	59	16	16	16	9
Illinois.....	2,032	1,988	2,040	1,327	133	133	133	81
Indiana.....	933	930	931	541	(NA)	(NA)	(NA)	(NA)
Iowa.....	643	630	640	401	97	94	97	62
Kansas.....	602	599	601	376	42	42	42	20
Kentucky.....	565	557	564	279	145	142	144	72
Louisiana.....	388	384	386	197	189	189	189	92
Maine.....	210	209	209	122	48	47	47	34
Maryland.....	1,631	1,486	1,605	1,081	242	242	242	171
Massachusetts.....	1,550	1,532	1,540	1,216	145	145	145	111
Michigan.....	2,115	2,097	2,103	1,713	(NA)	(NA)	(NA)	(NA)
Minnesota.....	(NA)	(NA)	(NA)	(NA)	(NA)	(NA)	(NA)	(NA)
Mississippi.....	175	175	175	69	29	27	27	14
Missouri.....	931	894	906	434	174	174	174	101
Montana.....	212	212	212	112	18	14	14	8
Nebraska.....	480	480	480	219	32	32	32	16
Nevada.....	211	208	208	159	34	33	33	25
New Hampshire.....	85	82	82	44	52	46	48	20
New Jersey.....	1,105	1,082	1,090	784	7	7	7	7
New Mexico.....	207	207	207	105	59	59	59	32
New York.....	4,695	4,655	4,663	3,408	900	876	878	781
North Carolina.....	(NA)	(NA)	(NA)	(NA)	369	369	369	223
North Dakota.....	102	91	93	46	12	12	12	6
Ohio.....	2,027	1,995	2,005	1,422	213	212	212	140
Oklahoma.....	554	547	549	231	85	74	76	43
Oregon.....	(NA)	(NA)	(NA)	(NA)	117	112	113	74
Pennsylvania.....	(NA)	(NA)	(NA)	(NA)	308	304	307	212
Rhode Island.....	191	191	191	162	109	106	109	78
South Carolina.....	445	427	437	224	142	133	136	71
South Dakota.....	122	119	120	67	26	16	18	11
Tennessee.....	(NA)	(NA)	(NA)	(NA)	(NA)	(NA)	(NA)	(NA)
Texas.....	2,034	2,017	2,019	1,115	142	142	142	87
Utah.....	204	201	202	124	(NA)	(NA)	(NA)	(NA)
Vermont.....	(NA)	(NA)	(NA)	(NA)	(NA)	(NA)	(NA)	(NA)
Virginia.....	(NA)	(NA)	(NA)	(NA)	(NA)	(NA)	(NA)	(NA)
Washington.....	978	959	960	674	137	135	136	92
West Virginia.....	306	304	306	130	(NA)	(NA)	(NA)	(NA)
Wisconsin.....	(NA)	(NA)	(NA)	(NA)	(NA)	(NA)	(NA)	(NA)
Wyoming.....	75	73	74	36	17	17	17	9

See footnotes at end of table.

Table 19. Employment and Payrolls of State Governments for Correctional Activities: October 1969—Continued (Dollar amounts in thousands)

Table with 9 columns: State, Correctional administration (Total, Full-time only, Full-time equivalent, Total October payroll), Miscellaneous (Total, Full-time only, Full-time equivalent, Total October payroll). Rows include states like Alabama, Alaska, Arizona, etc.

- Represents zero or rounds to zero. NA Not available. Revised data.

Table 20. Expenditure of the 55 Largest County Governments for Police Protection, Judicial, Prosecution, Indigent Defense, and Correctional Activities: Fiscal Year 1968-69 (Dollar amounts in thousands)

Table with 14 columns: County, Total general expenditure, Total (Amount, Percent of total), Police protection activities (Amount, Percent of total), Judicial activities (Amount, Percent of total), Prosecution activities (Amount, Percent of total), Indigent defense activities (Amount, Percent of total), Correctional activities (Amount, Percent of total). Rows include counties like Alameda, Calif., Allegheny, Pa., Baltimore, Md., etc.

- Represents zero or rounds to zero. Z Less than 0.05 percent. Includes expenditure for county-dependent school systems.

Note: Figures relate only to identifiable county government amounts and do not include expenditures of other local governments within the county areas. (See introductory text.)

Table 21. Per Capita Expenditure of the 55 Largest County Governments for Police Protection, Judicial, Prosecution, Indigent Defense, and Correctional Activities: Fiscal Year 1968-69

(Per capita figures in dollars)

County	Population, 1970 census (preliminary)	Total	Other than capital outlay				
			Police protection activities	Judicial activities	Prosecution activities	Indigent defense activities	Correctional activities
Total.....	60,518,200	12.49	4.27	3.69	0.82	0.19	3.53
Alameda, Calif.....	1,057,754	19.59	2.96	4.39	1.36	0.49	10.39
Allegheny, Pa.....	1,590,059	9.28	1.83	3.05	0.31	0.14	3.35
Baltimore, Md.....	815,654	24.29	20.50	2.13	0.48	-	1.17
Bergen, N.J.....	886,803	7.47	1.90	2.91	0.63	(Z)	2.03
Bexar, Tex.....	830,656	4.13	1.11	1.06	0.63	0.06	1.28
Contra Costa, Calif.....	551,608	21.59	5.39	3.67	1.60	0.44	10.49
Cook, Ill.....	5,430,075	7.18	0.87	4.49	0.88	0.15	0.98
Cuyahoga, Ohio.....	1,702,353	6.98	1.07	2.05	0.44	0.25	2.56
Dade, Fla.....	1,259,184	17.86	8.48	7.26	0.80	0.06	1.26
Dallas, Tex.....	1,316,222	6.04	1.40	2.33	0.56	0.05	1.69
Delaware, Pa.....	596,559	7.07	0.57	2.23	0.60	0.18	3.49
Erie, N.Y.....	1,103,413	11.18	2.08	2.38	0.57	0.22	5.95
Essex, Mass.....	631,000	3.29	0.08	2.78	0.07	-	2.36
Essex, N.J.....	925,651	13.77	1.50	4.10	1.33	-	6.84
Franklin, Ohio.....	822,328	5.66	1.26	2.70	0.42	0.07	1.21
Fulton, Ga.....	594,608	12.07	2.34	5.78	1.08	0.21	2.68
Hamilton, Ohio.....	915,348	7.90	2.42	3.18	0.31	0.07	1.92
Harris, Tex.....	1,722,533	7.83	1.54	3.33	0.64	-	2.32
Hennepin, Minn.....	955,617	10.38	2.28	3.67	0.51	-	3.92
Hudson, N.J.....	597,061	11.89	3.72	4.03	0.82	0.13	3.19
Jackson, Mo.....	644,947	7.32	1.32	2.54	0.89	-	2.58
Jefferson, Ala.....	639,468	6.04	1.92	3.09	0.39	-	0.63
Jefferson, Ky.....	689,975	7.45	4.67	1.11	0.41	-	1.26
King, Wash.....	1,130,526	8.03	3.20	2.27	0.67	0.02	1.87
Lake, Ind.....	543,162	6.11	2.12	2.63	0.66	-	0.70
Los Angeles, Calif.....	6,070,733	21.31	9.04	4.83	1.37	0.63	5.45
Macomb, Mich.....	619,164	6.14	1.90	2.21	0.67	0.13	1.24
Maricopa, Ariz.....	963,132	9.00	3.43	3.79	-	0.22	1.55
Marion, Ind.....	783,891	7.02	1.97	2.92	0.43	-	1.70
Middlesex, Mass.....	1,388,129	6.35	0.09	3.45	0.37	-	2.44
Middlesex, N.J.....	576,989	6.68	0.40	2.92	0.83	0.02	2.51
Milwaukee, Wis.....	1,046,217	10.90	2.08	4.40	0.51	-	3.91
Monroe, N.Y.....	706,644	12.86	2.91	4.10	1.20	0.31	4.35
Montgomery, Ohio.....	599,957	8.28	2.18	3.06	0.64	0.08	2.32
Montgomery, Pa.....	618,017	5.05	0.69	2.05	0.48	0.09	1.76
Multnomah, Oreg.....	547,865	14.40	6.25	3.49	1.16	-	3.50
Nassau, N.Y.....	1,413,012	40.51	27.77	5.69	1.63	0.44	4.99
Norfolk, Mass.....	605,414	4.17	0.10	2.66	0.12	-	1.29
Oakland, Mich.....	900,691	6.30	1.89	2.74	0.63	-	1.04
Orange, Calif.....	1,408,969	15.09	3.21	3.79	1.46	0.41	6.22
Prince Georges, Md.....	637,710	15.07	11.26	1.94	0.68	0.11	1.07
Sacramento, Calif.....	636,137	21.39	7.61	3.69	1.94	0.51	7.64
St. Louis, Mo.....	947,198	7.87	3.45	2.47	0.31	0.05	1.60
San Bernardino, Calif.....	671,198	21.24	7.33	4.96	0.93	0.50	7.53
San Diego, Calif.....	1,310,837	18.56	4.08	5.17	1.39	-	7.91
San Mateo, Calif.....	550,786	22.23	4.03	5.64	1.58	-	10.98
Santa Clara, Calif.....	1,037,032	18.04	4.44	3.65	1.45	0.43	8.07
Shelby, Tenn.....	718,777	8.13	3.64	2.56	0.25	0.15	1.52
Suffolk, N.Y.....	1,107,786	28.39	13.77	3.49	1.03	0.19	3.91
Summit, Ohio.....	550,234	8.15	3.14	2.79	0.42	-	1.80
Tarrant, Tex.....	711,387	4.14	1.26	1.42	0.65	0.08	0.74
Union, N.J.....	539,327	8.04	0.47	3.80	1.21	-	2.57
Wayne, Mich.....	2,641,805	11.13	0.89	4.50	0.70	0.05	4.99
Westchester, N.Y.....	888,314	10.00	2.83	1.90	1.08	0.25	3.93
Worcester, Mass.....	628,295	5.62	0.14	3.66	-	-	1.82

- Represents zero or rounds to zero.
Z Less than \$0.05.

Table 22. Expenditure of the 55 Largest County Governments for Law Enforcement and Other Related Functions: Fiscal Year 1968-69

(Thousands of dollars)

County	Total law enforcement expenditure	Capital outlay	Other than capital outlay					
			Total	Law enforcement	Coroners and medical examiners	Police training	Police communications	Miscellaneous
Total.....	258,477	8,464	250,013	214,157	11,523	1,462	5,464	17,407
Alameda, Calif.....	3,133	52	3,081	2,526	407	99	49	-
Allegheny, Pa.....	2,910	49	2,861	2,209	582	-	-	70
Baltimore, Md.....	12,628	443	12,183	11,162	28	336	320	387
Bergen, N.J.....	1,684	-	1,684	1,563	80	41	-	-
Bexar, Tex.....	922	40	876	745	100	-	15	7
Contra Costa, Calif.....	2,974	95	2,879	2,423	131	-	325	-
Cook, Ill.....	4,743	79	4,664	3,736	693	41	162	32
Cuyahoga, Ohio.....	1,817	20	1,797	1,349	409	28	19	4
Dade, Fla.....	10,680	485	10,195	9,094	256	185	656	50
Dallas, Tex.....	1,845	121	1,724	1,523	82	-	63	-
Delaware, Pa.....	342	8	334	293	41	-	-	-
Erie, N.Y.....	2,271	134	2,137	1,922	83	-	97	35
Essex, Mass.....	50	-	50	-	50	-	-	-
Essex, N.J.....	1,384	53	1,331	980	143	-	8	197
Franklin, Ohio.....	1,032	88	944	871	76	-	-	-
Fulton, Ga.....	1,393	84	1,309	568	135	-	1	605
Hamilton, Ohio.....	2,215	676	1,539	1,093	229	-	217	-
Harris, Tex.....	2,648	159	2,489	2,156	333	-	-	-
Hennepin, Minn.....	2,182	22	2,160	1,797	188	15	160	-
Hudson, N.J.....	2,222	43	2,179	2,036	143	-	-	-
Jackson, Mo.....	849	21	828	713	87	-	28	-
Jefferson, Ala.....	1,226	92	1,134	1,073	48	2	10	1
Jefferson, Ky.....	3,224	145	3,079	2,878	50	-	7	135
King, Wash.....	3,617	105	3,512	3,017	316	50	120	-
Lake, Ind.....	1,149	-	1,149	1,001	132	10	-	-
Los Angeles, Calif.....	63,000	1,123	61,877	45,149	1,268	-	397	15,093
Macomb, Mich.....	1,173	35	1,138	1,024	30	3	36	45
Maricopa, Ariz.....	3,306	179	3,127	2,954	101	-	72	-
Marion, Ind.....	1,544	137	1,407	1,279	89	2	37	-
Middlesex, Mass.....	131	-	131	-	131	-	-	-
Middlesex, N.J.....	228	-	228	175	53	-	-	-
Milwaukee, Wis.....	2,175	28	2,147	1,897	235	-	-	15
Monroe, N.Y.....	2,054	115	1,939	1,457	226	25	168	63
Montgomery, Ohio.....	1,306	134	1,172	1,006	166	-	-	-
Montgomery, Pa.....	424	10	414	226	47	-	112	29
Multnomah, Oreg.....	3,422	90	3,332	3,152	113	8	-	59
Nassau, N.Y.....	39,240	1,500	37,644	36,767	505	274	88	10
Norfolk, Mass.....	63	-	63	63	63	-	-	-
Oakland, Mich.....	1,703	25	1,678	1,518	80	2	32	37
Orange, Calif.....	4,629	92	4,437	3,898	400	-	43	88
Prince Georges, Md.....	7,412	446	6,966	6,357	28	104	477	-
Sacramento, Calif.....	4,838	55	4,783	4,309	285	-	189	-
St. Louis, Mo.....	3,263	126	3,137	2,713	75	98	251	-
San Bernardino, Calif.....	4,921	210	4,711	4,194	222	-	81	214
San Diego, Calif.....	5,354	16	5,338	4,699	441	125	73	-
San Mateo, Calif.....	2,222	37	2,185	1,817	308	-	60	-
Santa Clara, Calif.....	4,690	101	4,589	4,071	238	5	72	203
Shelby, Tenn.....	2,620	174	2,446	2,318	128	-	-	-
Suffolk, N.Y.....	21,905	501	21,404	20,110	404	-	890	-
Summit, Ohio.....	1,727	72	1,655	1,489	166	-	-	-
Tarrant, Tex.....	892	42	850	744	106	-	-	-
Union, N.J.....	251	-	251	183	68	-	-	-
Wayne, Mich.....	2,341	26	2,315	1,713	483	3	14	102
Westchester, N.Y.....	2,515	77	2,438	2,210	114	-	114	-
Worcester, Mass.....	90	-	90	-	90	-	-	-

- Represents zero or rounds to zero.

Note: Because of rounding, detail may not add to totals.

Table 23. Expenditure of the 55 Largest County Governments for Judicial Activities: Fiscal Year 1968-69
(Thousands of dollars)

County	Total judicial expenditure	Capital outlay	Other than capital outlay						
			Total	Major trial courts	Probate courts	Juvenile courts	Other courts of restricted jurisdiction	Law libraries	Miscellaneous
Total.....	223,086	3,800	219,286	84,732	9,814	16,070	72,126	3,502	33,342
Alameda, Calif.....	4,644	159	4,485	1,219	-	-	2,166	-	1,098
Allegheny, Pa.....	5,807	112	5,695	3,793	479	111	723	94	535
Baltimore, Md.....	1,311	5	1,306	687	22	-	597	-	-
Bergen, N.J.....	2,583	-	2,583	1,249	161	281	509	15	368
Bexar, Tex.....	877	5	872	361	-	-	221	36	255
Contra Costa, Calif.....	2,027	6	2,021	496	-	-	1,398	-	127
Cook, Ill.....	24,408	198	24,300	17,155	479	3,223	-	392	3,051
Cuyahoga, Ohio.....	4,923	65	4,458	1,736	1,239	772	425	26	260
Dade, Fla.....	9,151	96	9,055	1,830	432	734	5,306	156	577
Dallas, Tex.....	3,076	13	3,063	879	101	40	918	55	1,270
Delaware, Pa.....	1,329	-	1,329	388	93	-	20	19	811
Erie, N.Y.....	2,621	31	2,590	848	316	547	378	25	476
Essex, Mass.....	1,757	6	1,751	245	27	-	667	36	786
Essex, N.J.....	3,793	-	3,793	2,231	231	186	677	18	450
Franklin, Ohio.....	2,226	-	2,226	745	327	4	404	39	707
Fulton, Ga.....	3,426	97	3,329	1,084	233	703	926	24	359
Hamilton, Ohio.....	2,907	29	2,878	537	408	431	493	17	990
Harris, Tex.....	5,735	2,143	3,592	1,038	141	30	800	82	1,451
Hennepin, Minn.....	3,504	17	3,487	1,478	267	-	1,267	60	415
Hudson, N.J.....	2,406	15	2,391	1,265	129	353	431	4	209
Jackson, Mo.....	1,639	12	1,627	741	3	231	458	-	194
Jefferson, Ala.....	1,979	31	1,948	681	285	508	448	-	26
Jefferson, Ky.....	763	-	763	141	-	-	606	16	-
King, Wash.....	2,565	49	2,516	1,445	-	-	951	120	-
Lake, Ind.....	1,430	-	1,430	507	-	-	-	-	923
Los Angeles, Calif.....	33,640	105	33,535	12,029	-	-	19,710	1,649	147
Macomb, Mich.....	1,367	-	1,367	282	146	370	51	6	512
Maricopa, Ariz.....	3,652	93	3,559	2,658	-	-	785	116	-
Marion, Ind.....	2,282	-	2,282	625	-	-	-	24	1,643
Middlesex, Mass.....	4,795	30	4,765	1,447	28	-	2,562	68	640
Middlesex, N.J.....	1,687	-	1,687	379	87	-	223	31	967
Milwaukee, Wis.....	4,598	43	4,555	2,560	-	-	1,881	98	16
Monroe, N.Y.....	2,898	36	2,862	656	161	1,151	427	16	452
Montgomery, Ohio.....	1,837	-	1,837	54	296	135	388	15	454
Montgomery, Pa.....	1,265	14	1,251	1,124	75	-	52	-	-
Multnomah, Oreg.....	1,912	6	1,906	1,283	76	-	234	-	313
Nassau, N.Y.....	8,036	73	7,963	2,202	483	952	3,545	95	868
Norfolk, Mass.....	1,609	-	1,609	509	44	-	647	10	399
Oakland, Mich.....	2,469	3	2,466	579	316	875	-	22	674
Orange, Calif.....	5,336	43	5,293	1,139	-	-	2,830	-	1,324
Prince Georges, Md.....	1,274	17	1,257	528	21	44	646	18	-
Sacramento, Calif.....	2,346	9	2,337	694	-	-	967	-	676
St. Louis, Mo.....	2,337	18	2,319	866	2	829	281	-	341
San Bernardino, Calif.....	3,329	47	3,282	827	-	-	1,563	-	892
San Diego, Calif.....	6,772	53	6,719	1,629	-	-	5,024	3	63
San Mateo, Calif.....	3,106	62	3,044	745	-	-	1,409	-	890
San Clara, Calif.....	3,863	9	3,854	1,102	-	-	2,179	-	573
Shelby, Tenn.....	1,841	-	1,841	532	114	144	741	-	310
Suffolk, N.Y.....	3,671	51	3,620	522	280	307	1,689	7	1,015
Summit, Ohio.....	1,533	-	1,533	630	209	137	26	19	512
Tarrant, Tex.....	1,010	-	1,010	104	34	-	428	7	437
Union, N.J.....	2,049	-	2,049	1,343	128	161	337	13	47
Wayne, Mich.....	11,892	62	11,830	4,351	1,108	2,330	1,528	-	2,513
Westchester, N.Y.....	1,686	25	1,661	44	299	461	216	23	618
Worcester, Mass.....	2,297	2	2,295	379	234	-	924	50	708

- Represents zero or rounds to zero.

Note: Because of rounding, detail may not add to totals.

Table 24. Expenditure of "Special Status" Cities for Judicial Activities: Fiscal Year 1968-69
(Thousands of dollars)

Special status city ¹	Total	Capital outlay	Other than capital outlay				
			Total	Major trial courts	Other courts of restricted jurisdiction	Sheriff	Miscellaneous
Total.....	114,711	3,462	111,249	46,342	48,244	6,323	10,340
Baltimore, Md.....	4,208	84	4,124	2,644	1,044	409	27
Boston, Mass.....	6,986	41	6,945	3,567	3,201	-	177
Denver, Colo.....	3,634	20	3,614	986	1,626	638	364
Honolulu, Hawaii.....	(X)	(X)	(X)	(X)	(X)	(X)	(X)
New Orleans, La.....	3,692	208	3,484	692	1,125	643	1,024
New York, N.Y.....	57,259	2,040	54,319	23,413	28,298	1,249	1,359
Norfolk, Va.....	850	4	846	235	386	-	225
Philadelphia, Pa.....	18,248	109	18,139	8,132	6,830	1,684	1,493
St. Louis, Mo.....	3,181	17	3,164	1,351	1,058	587	168
San Francisco, Calif.....	6,081	39	6,042	1,313	2,347	1,113	1,269
Washington, D.C. ²	10,572	-	10,572	4,009	2,329	-	4,234

- Represents zero or rounds to zero.

X Not applicable.

¹Special status cities are combined city-counties or independent cities without overlying county government.

²The Court of General Sessions has been classified as the major trial court for the District of Columbia because of the unique jurisdiction of the U.S. District Court for the District of Columbia.

Table 25. Expenditure of the 55 Largest County Governments for Correctional Activities: Fiscal Year 1968-69

(Thousands of dollars)

County	Total expenditure	Direct expenditure							Inter-Governmental Expenditure
		Total direct expenditure	Capital outlay	Other than capital outlay					
				Total	Institutions For youth	Other	Probation and parole	Miscellaneous	
Total.....	213,805	201,820	12,112	189,708	48,588	63,223	77,279	618	11,985
Alameda, Calif.....	10,987	10,889	768	10,121	2,660	2,445	5,016	-	98
Allegheny, Pa.....	5,332	3,459	20	3,439	1,504	1,705	230	-	1,873
Baltimore, Md.....	718	718	11	707	-	430	277	-	-
Bergen, N.J.....	1,802	1,802	10	1,492	-	923	569	-	300
Bexar, Tex.....	1,067	1,067	-	-	128	632	307	-	-
Contra Costa, Calif.....	5,786	5,738	392	5,346	2,567	884	1,895	-	48
Cook, Ill.....	5,332	4,634	34	4,600	-	2,966	1,634	-	698
Cuyahoga, Ohio.....	4,369	3,740	5	3,735	2,486	324	925	-	629
Dade, Fla.....	1,581	1,581	30	1,551	-	1,551	-	-	-
Dallas, Tex.....	2,226	2,226	52	2,174	514	930	730	-	-
Delaware, Pa.....	2,081	1,284	9	1,275	359	594	322	-	797
Erie, N.Y.....	6,568	5,971	1,021	4,950	710	3,095	1,145	-	597
Essex, Mass.....	1,489	1,489	28	1,461	318	684	459	-	-
Essex, N.J.....	6,335	6,335	2	6,333	1,027	3,368	1,938	-	-
Franklin, Ohio.....	994	994	-	994	270	196	528	-	-
Fulton, Ga.....	1,593	1,593	14	1,579	-	725	854	-	-
Hamilton, Ohio.....	1,759	1,759	6	1,753	859	641	253	-	-
Harris, Tex.....	4,000	4,000	1,717	2,283	469	737	1,077	-	-
Hennepin, Minn.....	3,750	3,856	611	3,045	6	209	2,830	-	94
Hudson, N.J.....	1,903	1,903	14	1,889	383	853	560	93	-
Jackson, Mo.....	1,661	1,638	9	1,629	967	209	453	-	23
Jefferson, Ala.....	406	406	4	402	-	402	-	-	-
Jefferson, Ky.....	871	714	-	714	379	-	299	36	157
King, Wash.....	2,115	2,115	12	2,103	-	325	1,778	-	-
Lake, Ind.....	379	179	-	179	122	55	-	2	200
Los Angeles, Calif.....	37,970	37,465	1,845	35,620	7,342	9,606	18,672	-	505
Macomb, Mich.....	769	769	288	481	-	348	133	-	-
Maricopa, Ariz.....	1,493	1,493	10	1,483	934	-	549	-	-
Marion, Ind.....	1,330	1,129	1	1,128	388	740	-	-	201
Middlesex, Mass.....	3,382	3,382	-	3,382	651	1,660	1,071	-	-
Middlesex, N.J.....	1,451	1,451	9	1,442	-	1,027	415	-	-
Milwaukee, Wis.....	4,092	4,092	97	3,995	-	2,011	1,984	-	-
Monroe, N.Y.....	3,073	2,101	4	2,097	275	1,378	444	-	972
Montgomery, Ohio.....	1,391	1,391	-	1,391	444	255	692	-	-
Montgomery, Pa.....	1,085	673	3	670	115	334	221	-	412
Multnomah, Oreg.....	1,919	1,919	17	1,902	1,620	282	-	-	-
Nassau, N.Y.....	7,047	5,953	155	5,798	525	2,414	2,859	-	1,094
Norfolk, Mass.....	780	780	1	779	31	411	337	-	-
Oakland, Mich.....	936	936	8	928	324	456	148	-	-
Orange, Calif.....	8,763	8,677	207	8,470	2,496	2,564	3,345	65	86
Prince Georges, Md.....	703	703	8	695	-	445	250	-	-
Sacramento, Calif.....	4,857	4,857	46	4,811	1,245	1,428	1,882	256	-
St. Louis, Mo.....	1,514	1,514	1,103	411	-	293	118	-	-
San Bernardino, Calif.....	5,052	5,052	55	4,997	1,213	1,790	1,994	-	-
San Diego, Calif.....	10,371	10,239	1,099	9,140	3,471	716	4,953	-	132
San Mateo, Calif.....	6,047	6,047	233	5,814	2,122	1,310	2,382	-	-
Santa Clara, Calif.....	8,527	8,527	43	8,484	2,021	1,832	4,631	-	-
Shelby, Tenn.....	1,092	1,072	302	770	-	770	-	-	20
Suffolk, N.Y.....	4,328	4,154	1,317	2,837	876	704	1,257	-	174
Summit, Ohio.....	992	992	-	992	575	13	404	-	-
Tarrant, Tex.....	527	527	-	527	130	58	339	-	-
Union, N.J.....	1,385	1,385	-	1,385	250	512	623	-	-
Wayne, Mich.....	13,186	10,311	43	10,268	5,686	2,621	1,961	-	2,875
Westchester, N.Y.....	3,494	3,494	449	3,045	126	1,752	1,167	-	-
Worcester, Mass.....	1,145	1,145	-	1,145	-	610	369	166	-

- Represents zero or rounds to zero.

Note: Because of rounding detail may not add to totals.

Table 26. Employment and Payrolls of the 55 Largest County Governments for Police Protection and Correction: October 1969

(Dollar amounts in thousands)

County	Total full-time equivalent county employment ¹	Police protection				October payroll	Correction				October payroll
		Number of employees			Percent of total full-time equivalent employment		Number of employees			Percent of total full-time equivalent employment	
		Total	Full-time only	Full-time equivalent			Total	Full-time only	Full-time equivalent		
Total.....	302,058	30,282	28,059	28,629	9.5	22,783	21,018	20,061	20,444	6.8	14,089
Alameda, Calif.....	7,600	328	302	307	4.0	283	1,007	937	954	12.5	806
Allegheny, Pa. ²	7,089	366	366	366	5.1	225	419	419	419	5.9	221
Baltimore, Md.....	4,507	1,295	1,068	1,104	24.4	852	81	71	75	1.6	53
Bergen, N.J.....	3,269	194	194	194	5.9	153	188	188	188	5.7	130
Bexar, Tex.....	1,071	170	162	163	15.2	79	188	161	176	16.4	75
Contra Costa, Calif.....	4,790	283	280	282	5.8	257	476	403	442	9.2	343
Cook, Ill.....	21,485	1,493	1,424	1,428	6.6	860	873	873	873	4.0	523
Cuyahoga, Ohio.....	9,202	269	267	267	2.9	163	85	43	52	0.5	52
Dade, Fla.....	11,440	1,168	1,168	1,168	10.2	909	312	301	307	2.6	231
Dallas, Tex.....	1,918	391	388	390	20.3	257	178	176	178	9.2	99
Delaware, Pa.....	1,640	53	42	44	2.6	32	84	84	84	5.1	40
Erie, N.Y.....	8,499	313	294	298	3.5	215	533	504	510	6.0	340
Essex, Mass. ³	425	1	1	1	0.2	1	192	136	160	37.6	94
Essex, N.J.....	6,881	260	260	260	3.7	220	583	583	583	8.4	450
Franklin, Ohio.....	2,830	139	138	138	4.8	81	115	115	115	4.0	59
Fulton, Ga.....	2,077	82	82	82	3.9	523	271	271	271	13.0	165
Hamilton, Ohio.....	3,614	186	186	186	5.1	105	158	158	158	4.4	73
Harris, Tex.....	2,928	375	375	375	12.8	287	335	335	335	11.4	186
Hennepin, Minn.....	4,166	189	182	184	4.4	138	527	483	508	12.1	194
Hudson, N.J. ³	4,190	136	136	136	3.2	66	242	242	242	5.7	108
Jackson, Mo.....	1,710	60	60	60	3.5	33	289	289	289	16.9	132
Jefferson, Ala.....	2,251	185	185	185	8.2	124	139	139	139	6.1	76
Jefferson, Ky.....	3,015	451	353	375	12.4	253	141	132	135	4.4	65
King, Wash.....	4,201	318	310	312	7.4	226	350	319	324	7.7	199
Lake, Ind.....	1,970	136	119	123	6.2	73	92	92	92	4.6	45
Los Angeles, Calif.....	62,499	6,463	6,228	5,309	10.0	5,296	3,809	3,669	3,790	6.0	2,969
Macomb, Mich.....	1,354	134	129	130	9.6	93	20	20	20	1.4	15
Maricopa, Ariz.....	3,535	384	381	382	10.8	246	189	189	189	5.3	94
Marion, Ind.....	2,135	51	51	51	2.3	21	342	342	342	16.0	181
Middlesex, Mass. ³	1,331	16	16	16	1.2	10	344	312	318	23.9	200
Middlesex, N.J.....	1,975	23	23	23	1.1	13	177	177	177	8.9	102
Milwaukee, Wis.....	8,116	241	241	241	2.9	183	297	297	297	3.6	204
Monroe, N.Y.....	3,809	196	196	196	5.1	161	227	208	217	5.6	156
Montgomery, Ohio.....	1,978	119	119	119	6.0	130	172	172	172	8.6	81
Montgomery, Pa.....	985	50	31	36	3.6	20	81	74	76	7.7	39
Multnomah, Oreg.....	2,991	309	309	309	10.3	195	168	168	168	5.6	96
Nassau, N.Y.....	14,878	4,079	3,697	3,826	25.7	3,225	740	740	740	4.9	531
Norfolk, Mass. ³	507	1	1	1	0.2	1	88	84	86	17.0	51
Oakland, Mich.....	1,800	157	154	155	8.6	57	228	211	217	12.1	154
Orange, Calif.....	7,145	601	505	527	7.3	488	970	898	920	12.8	752
Prince Georges, Md.....	4,034	906	735	771	19.0	592	83	81	82	2.0	58
Sacramento, Calif.....	6,313	519	506	510	8.0	407	554	457	468	7.4	348
St. Louis, Mo.....	3,266	547	542	544	16.6	334	139	133	135	4.1	69
San Bernardino, Calif.....	5,430	679	566	582	10.7	490	459	387	416	7.6	305
San Diego, Calif.....	7,604	1,014	811	865	11.3	800	850	828	834	10.9	670
San Mateo, Calif.....	3,766	508	508	508	13.4	358	470	470	470	12.4	361
Santa Clara, Calif.....	6,239	619	574	583	9.3	554	571	514	523	8.3	457
Shelby, Tenn.....	2,313	343	312	319	13.7	188	289	289	289	12.4	139
Suffolk, N.Y.....	6,419										

Table 27. Expenditure of the 43 Largest City Governments for Police Protection, Judicial, Prosecution, Indigent Defense, and Correctional Activities: Fiscal Year 1968-69

(Dollar amounts in thousands)

City	Total general expenditure	Total		Police protection activities		Judicial activities		Correctional activities		Prosecution activities		
		Amount	Percent of total	Amount	Percent of total	Amount	Percent of total	Amount	Percent of total	Amount	Percent of total	Indigent defense
Total.....	12,966,655	1,684,604	13.0	1,351,992	10.4	131,500	1.0	156,018	1.2	45,094	0.3	2,733
Atlanta, Ga.....	94,668	11,774	12.4	10,066	10.6	745	0.8	632	6.7	331	0.3	-
Baltimore, Md.....	1509,977	54,531	10.7	43,724	8.6	4,208	0.8	4,736	0.9	1,863	0.4	-
Birmingham, Ala.....	30,179	6,003	19.9	5,306	17.6	160	0.5	386	1.3	151	0.5	-
Boston, Mass.....	1384,252	41,989	10.9	30,349	7.9	6,986	1.8	4,010	1.0	644	0.2	-
Buffalo, N.Y.....	172,363	17,131	9.9	15,725	9.1	827	0.5	-	-	579	0.3	45
Chicago, Ill.....	625,744	142,293	22.7	135,509	21.7	82	(Z)	4,764	0.8	1,938	0.3	-
Cincinnati, Ohio.....	181,882	14,295	7.9	12,244	6.7	979	0.5	707	0.4	365	0.2	-
Cleveland, Ohio.....	140,699	32,236	22.9	27,796	19.8	2,077	1.5	1,639	1.2	724	0.5	-
Columbus, Ohio.....	72,220	12,389	17.2	10,225	14.2	1,236	1.7	549	0.8	379	0.5	19
Dallas, Tex.....	103,445	16,365	15.8	15,430	14.9	575	0.6	-	-	360	0.3	-
Denver, Colo.....	147,511	16,379	11.1	8,884	6.0	3,634	2.5	2,981	2.0	880	0.6	224
Detroit, Mich.....	325,755	64,177	19.7	57,583	17.7	3,121	1.0	2,665	0.8	808	0.2	1,097
Fort Worth, Tex.....	38,078	6,369	16.7	6,006	15.8	135	0.4	91	0.2	137	0.4	-
Honolulu, Hawaii.....	115,226	14,531	12.6	13,150	11.4	(X)	(X)	521	0.5	860	0.7	-
Houston, Tex.....	119,251	20,144	16.9	18,708	15.7	798	0.7	174	0.1	464	0.4	-
Indianapolis, Ind.....	59,463	10,552	17.7	10,433	17.5	-	-	-	-	119	0.2	-
Kansas City, Mo.....	100,058	16,094	16.1	13,654	13.6	438	0.4	1,565	1.6	437	0.4	-
Long Beach, Calif.....	66,979	12,706	19.0	11,866	17.7	(X)	(X)	-	-	840	1.3	-
Los Angeles, Calif.....	436,555	95,110	21.8	91,929	21.1	(X)	(X)	29	(Z)	3,152	0.7	-
Louisville, Ky.....	193,541	8,484	9.1	7,960	8.5	203	0.2	131	0.1	190	0.2	-
Memphis, Tenn.....	156,029	12,227	7.8	11,180	7.2	265	0.2	609	0.4	173	0.1	-
Milwaukee, Wis.....	155,607	24,791	15.9	23,846	15.3	85	0.1	95	0.1	765	0.5	-
Minneapolis, Minn.....	70,765	9,347	13.2	8,072	11.4	-	-	899	1.3	376	0.5	-
Newark, N.J.....	172,051	21,777	12.7	20,955	12.2	518	0.3	-	-	304	0.2	-
New Orleans, La.....	106,792	20,373	19.1	14,691	13.8	3,692	3.5	1,479	1.4	511	0.5	-
New York, N.Y.....	15,877,823	567,385	9.7	423,720	7.2	57,259	1.0	69,924	1.2	16,482	0.3	-
Norfolk, Va.....	188,181	7,061	8.0	5,313	6.0	850	1.0	649	0.7	249	0.3	-
Oakland, Calif.....	76,672	12,242	16.0	12,063	15.7	(X)	(X)	-	-	179	0.2	-
Oklahoma City, Okla.....	42,959	5,439	12.7	4,958	11.5	230	0.5	-	-	251	0.6	-
Omaha, Nebr.....	39,622	9,319	23.5	8,748	22.1	257	0.6	53	0.1	261	0.7	-
Philadelphia, Pa.....	504,138	115,682	22.9	75,101	14.9	18,248	3.6	18,800	3.7	3,533	0.7	765
Phoenix, Ariz.....	66,412	11,052	16.6	10,393	15.6	503	0.8	-	-	156	0.2	-
Pittsburgh, Pa.....	84,117	17,647	21.0	16,938	20.1	315	0.4	-	-	394	0.5	-
Portland, Oreg.....	73,272	10,785	14.7	9,817	13.4	533	0.7	110	0.2	325	0.4	-
Rochester, N.Y.....	128,078	8,284	6.5	7,524	5.9	498	0.4	-	-	262	0.2	-
St. Louis, Mo.....	139,849	33,692	24.1	27,162	19.4	3,181	2.3	2,933	2.1	416	0.3	111
St. Paul, Minn.....	54,167	6,876	12.7	5,204	9.6	364	0.7	997	1.8	311	0.6	7
San Antonio, Tex.....	58,625	8,344	14.2	7,626	13.0	362	0.6	-	-	356	0.6	-
San Diego, Calif.....	84,881	13,280	15.6	12,589	14.8	(X)	(X)	-	-	691	0.8	-
San Francisco, Calif.....	373,829	40,623	10.9	26,597	7.1	6,081	1.6	6,305	1.7	1,640	0.4	449
Seattle, Wash.....	89,895	16,713	18.6	14,719	16.4	899	1.0	662	0.7	433	0.5	-
Toledo, Ohio.....	99,072	9,862	16.7	8,630	14.6	584	1.0	473	0.8	175	0.3	16
Washington, D.C.....	1645,973	88,251	13.7	49,599	7.7	10,572	1.6	26,450	4.1	1,630	0.3	-

- Represents zero or rounds to zero.
 X Not applicable.
 Z Less than 0.05 percent.
 1 Includes expenditure of city-operated school systems.

Note: Figures comprise only identifiable amounts for the city governments and do not include amounts for overlying or underlying local governments. (see introductory text.)

Table 28. Expenditure of the 43 Largest City Governments for Police Protection and Judicial Activities: Fiscal Year 1968-69

(Thousands of dollars)

City	Total police protection expenditure	Capital outlay	Police protection activities					Judicial activities		
			Total	Communications	Training	Traffic control	Miscellaneous	Total judicial expenditure	Capital outlay	Other than capital outlay
Total.....	1,351,992	72,909	1,279,083	24,118	10,350	79,767	1,164,848	131,500	3,594	127,906
Atlanta, Ga.....	10,066	634	9,432	57	6	977	8,392	745	12	733
Baltimore, Md.....	43,724	3,560	40,164	2,057	1,088	11,917	25,102	4,208	84	4,124
Birmingham, Ala.....	5,306	350	4,956	57	-	521	4,378	160	1	159
Boston, Mass.....	30,349	1,518	28,831	183	178	1,158	27,312	6,986	41	6,945
Buffalo, N.Y.....	15,725	438	15,287	611	75	1,633	12,768	827	3	824
Chicago, Ill.....	135,509	2,945	132,564	4,398	903	9,728	117,535	82	-	82
Cincinnati, Ohio.....	12,244	693	11,551	57	18	1,158	10,320	979	1	979
Cleveland, Ohio.....	27,796	559	27,237	1,011	35	876	25,315	2,077	9	2,068
Columbus, Ohio.....	10,225	587	9,638	143	-	1,100	8,395	1,236	19	1,217
Dallas, Tex.....	15,430	357	15,073	81	-	676	14,316	575	-	575
Denver, Colo.....	8,884	621	8,263	-	-	-	8,263	3,634	20	3,614
Detroit, Mich.....	57,583	1,219	56,364	1,648	845	7,768	46,103	3,121	19	3,102
Fort Worth, Tex.....	6,006	44	5,962	107	224	308	5,323	133	1	134
Honolulu, Hawaii.....	13,150	398	12,752	642	-	1,689	10,421	-	-	-
Houston, Tex.....	18,708	1,425	17,283	112	650	1,006	15,515	798	9	789
Indianapolis, Ind.....	10,433	508	9,925	678	10	113	9,124	-	-	-
Kansas City, Mo.....	13,654	1,642	12,012	346	-	536	11,130	438	-	438
Long Beach, Calif.....	11,866	1,286	10,580	114	161	266	10,039	-	-	-
Los Angeles, Calif.....	91,929	3,496	88,433	27	3,037	6,689	78,680	-	-	-
Louisville, Ky.....	7,960	393	7,567	-	-	1,198	6,369	203	-	203
Memphis, Tenn.....	11,180	680	10,500	-	-	624	9,876	265	4	261
Milwaukee, Wis.....	23,846	1,466	22,380	1,237	482	736	19,925	85	-	85
Minneapolis, Minn.....	8,072	41	8,031	187	-	1,086	6,758	-	-	-
Newark, N.J.....	20,955	572	20,383	194	31	1,866	18,292	518	15	503
New Orleans, La.....	14,691	1,443	13,248	223	401	1,373	11,251	3,692	208	3,484
New York, N.Y.....	423,720	31,927	391,793	5,741	-	11,038	375,014	57,259	2,940	54,319
Norfolk, Va.....	5,313	337	4,976	-	14	-	4,962	850	4	846
Oakland, Calif.....	12,063	127	11,936	413	826	1,696	9,001	-	-	-
Oklahoma City, Okla.....	4,958	271	4,687	-	-	501	4,186	230	1	229
Omaha, Nebr.....	8,748	3,947	4,801	173	30	-	4,598	257	2	255
Philadelphia, Pa.....	75,101	2,186	72,915	-	-	1,444	71,471	18,248	109	18,139
Phoenix, Ariz.....	10,393	554	9,839	724	237	843	8,035	503	2	501
Pittsburgh, Pa.....	16,938	810	16,128	178	22	1,287	14,641	315	2	313
Portland, Oreg.....	9,817	227	9,590	382	318	1,189	7,701	533	5	528
Rochester, N.Y.....	7,524	238	7,286	66	122	669	6,429	498	8	490
St. Louis, Mo.....	27,162	682	26,480	199	-	1,167	25,114	3,181	17	3,164
St. Paul, Minn.....	5,204	280	4,924	26	8	319	4,571	364	1	363
San Antonio, Tex.....	7,626	289	7,337	348	191	1,311	5,487	362	-	362
San Diego, Calif.....	12,589	1,213	11,376	562	120	1,176	9,518	-	-	-
San Francisco, Calif.....	26,597	998	25,599	744	255	332	24,268	6,081	39	6,042
Seattle, Wash.....	14,719	1,259	13,460	61	-	1,400	11,999	899	15	884
Toledo, Ohio.....	8,630	264	8,366	122	-	-	8,244	584	4	580
Washington, D.C.....	49,599	425	49,174	209	63	195	48,707	10,572	-	10,572

- Represents zero or rounds to zero.
 Note: Because of rounding, detail may not add to totals.

Table 29. Expenditure of the 43 Largest City Governments for Correctional Activities:
Fiscal Year 1968-69
(Thousands of dollars)

City	Total correctional expenditure	Capital outlay	Other than capital outlay			
			Total	Institutions	Probation and parole	Miscellaneous
Total.....	156,018	17,369	138,649	100,870	26,310	11,469
Atlanta, Ga.....	632	43	589	581	8	-
Baltimore, Md.....	4,738	1,454	3,282	2,503	779	-
Birmingham, Ala.....	386	4	382	367	15	-
Boston, Mass.....	4,010	13	3,997	2,300	1,607	90
Buffalo, N.Y.....	-	-	-	-	-	-
Chicago, Ill.....	4,764	118	4,646	4,646	-	-
Cincinnati, Ohio.....	707	-	707	616	91	-
Cleveland, Ohio.....	1,639	67	1,572	1,358	214	-
Columbus, Ohio.....	549	16	533	483	50	-
Dallas, Tex.....	-	-	-	-	-	-
Denver, Colo.....	2,981	420	2,561	1,967	509	85
Detroit, Mich.....	2,665	143	2,522	2,435	-	87
Fort Worth, Tex.....	91	-	91	91	-	-
Honolulu, Hawaii.....	521	1	520	520	-	-
Houston, Tex.....	174	-	174	174	-	-
Indianapolis, Ind.....	-	-	-	-	-	-
Kansas City, Mo.....	1,565	918	647	647	-	-
Long Beach, Calif.....	-	-	-	-	-	-
Los Angeles, Calif.....	29	-	29	-	-	29
Louisville, Ky.....	131	-	131	131	-	-
Memphis, Tenn.....	609	-	609	105	504	-
Milwaukee, Wis.....	95	-	95	-	-	95
Minneapolis, Minn.....	899	35	864	864	-	-
Newark, N.J.....	-	-	-	-	-	-
New Orleans, La.....	1,479	42	1,437	1,257	180	-
New York, N.Y.....	69,924	12,429	57,495	37,969	16,706	2,820
Norfolk, Va.....	649	7	642	467	175	-
Oakland, Calif.....	-	-	-	-	-	-
Oklahoma City, Okla.....	-	-	-	-	-	-
Omaha, Nebr.....	53	-	53	-	-	53
Philadelphia, Pa.....	18,800	93	18,707	8,867	1,723	8,117
Phoenix, Ariz.....	-	-	-	-	-	-
Pittsburgh, Pa.....	-	-	-	-	-	-
Portland, Ore.....	110	1	109	-	109	-
Rochester, N.Y.....	-	-	-	-	-	-
St. Louis, Mo.....	2,933	296	2,637	1,532	1,074	31
St. Paul, Minn.....	997	22	975	975	-	-
San Antonio, Tex.....	-	-	-	-	-	-
San Diego, Calif.....	-	-	-	-	-	-
San Francisco, Calif.....	6,305	232	6,073	3,825	2,248	-
Seattle, Wash.....	662	-	662	662	-	-
Toledo, Ohio.....	473	30	443	358	85	-
Washington, D.C.....	26,450	985	25,465	25,170	233	62

- Represents zero or rounds to zero.

Note: Because of rounding, detail may not add to totals.

Table 30. Employment and Payrolls of the 43 Largest City Governments for Police Protection and Correction: October 1969
(Dollar amounts in thousands)

City	Total full-time equivalent municipal employment for common functions ¹	Police protection				October payroll	Correction				October payroll
		Number of employees			Percent of total full-time equivalent employment		Number of employees			Percent of total full-time equivalent employment	
		Total	Full-time only	Full-time equivalent			Total	Full-time only	Full-time equivalent		
Total.....	429,911	135,056	129,037	130,707	30.4	99,452	10,936	10,851	10,890	2.5	7,703
Atlanta, Ga.....	6,284	1,162	1,023	1,063	16.9	660	57	57	57	0.9	31
Baltimore, Md.....	14,410	4,556	4,556	4,556	31.6	2,965	234	234	234	1.6	162
Birmingham, Ala.....	2,922	625	625	625	21.3	409	39	39	39	1.3	22
Boston, Mass.....	9,540	3,059	3,059	3,059	32.0	2,118	259	259	259	2.7	171
Buffalo, N.Y.....	5,429	1,823	1,612	1,720	30.6	1,351	-	-	-	-	-
Chicago, Ill.....	34,894	16,228	14,796	15,315	43.9	10,058	498	498	498	1.4	309
Cincinnati, Ohio.....	5,064	1,229	1,090	1,115	22.0	809	66	64	65	1.2	41
Cleveland, Ohio.....	9,435	2,995	2,595	2,649	28.1	1,964	131	131	131	1.4	88
Columbus, Ohio.....	4,242	956	955	955	22.5	667	55	55	55	1.2	33
Dallas, Tex.....	7,456	2,151	1,874	1,942	26.0	1,586	-	-	-	-	-
Denver, Colo.....	6,295	1,145	1,145	1,145	18.1	833	301	301	301	4.7	198
Detroit, Mich.....	17,762	5,626	5,351	5,395	30.3	4,795	219	214	217	1.2	166
Fort Worth, Tex.....	3,018	726	726	726	24.0	467	26	26	26	0.8	18
Honolulu, Hawaii.....	5,577	1,191	1,191	1,191	21.3	917	57	57	57	1.0	37
Houston, Tex.....	7,776	2,094	1,941	1,996	25.6	1,476	19	19	19	0.2	10
Indianapolis, Ind.....	3,896	1,511	1,236	1,274	32.6	360	-	-	-	-	-
Kansas City, Mo.....	4,651	1,363	1,252	1,310	28.1	876	78	78	78	1.6	54
Long Beach, Calif.....	2,892	898	817	820	29.3	778	-	-	-	-	-
Los Angeles, Calif.....	25,089	8,445	8,161	8,241	32.8	7,545	-	-	-	-	-
Louisville, Ky.....	3,449	869	869	869	25.1	480	-	-	-	-	-
Memphis, Tenn.....	6,572	1,442	1,199	1,238	18.8	887	-	-	-	-	-
Milwaukee, Wis.....	7,087	2,210	2,210	2,210	31.1	1,823	-	-	-	-	-
Minneapolis, Minn.....	4,528	857	857	857	18.4	876	66	64	65	1.4	51
Newark, N.J.....	5,022	1,852	1,712	1,757	34.9	1,261	-	-	-	-	-
New Orleans, La.....	7,471	1,661	1,594	1,621	21.6	888	369	365	372	4.9	88
New York, N.Y.....	110,736	37,544	37,544	37,544	33.9	30,649	4,813	4,813	4,813	4.3	3,521
Norfolk, Va.....	2,915	705	616	635	21.7	386	135	132	133	4.5	54
Oakland, Calif.....	3,147	926	894	895	28.8	837	55	55	55	1.7	44
Oklahoma City, Okla.....	2,913	584	516	534	18.2	336	-	-	-	-	-
Omaha, Nebr.....	1,992	605	583	588	29.5	383	-	-	-	-	-
Philadelphia, Pa.....	26,381	8,503	7,690	7,907	29.9	5,700	913	913	913	3.4	706
Phoenix, Ariz.....	4,490	1,020	1,020	1,020	22.7	701	-	-	-	-	-
Pittsburgh, Pa..... ²	6,572	1,736	1,525	1,603	24.3	1,940	7	7	7	0.1	3
Portland, Ore.....	3,963	925	925	925	23.3	667	-	-	-	-	-
Rochester, N.Y.....	3,489	877	768	789	22.5	560	-	-	-	-	-
St. Louis, Mo.....	7,782	2,923	2,786	2,812	36.1	1,936	357	357	357	4.5	210
St. Paul, Minn.....	2,383	520	513	514	21.5	406	-	-	-	-	-
San Antonio, Tex.....	3,782	1,139	910	979	25.8	667	78	24	41	1.0	13
San Diego, Calif.....	4,280	1,138	1,133	1,134	26.4	985	-	-	-	-	-
San Francisco, Calif.....	9,543	2,184	2,184	2,184	22.8	2,100	579	579	579	6.0	465
Seattle, Wash.....	5,590	1,325	1,263	1,276	22.8	1,083	92	77	86	1.5	67
Toledo, Ohio.....	3,119	824	824	824	26.4	706	36	36	36	1.1	27
Washington, D.C.....	16,073	4,904	4,897	4,897	30.4	3,761	1,397	1,397	1,397	8.6	1,114

- Represents zero or rounds to zero.

¹Revised data.

²Excludes employees of city-operated utility systems other than water, city-operated school systems, public welfare, hospitals, health, housing and urban renewal, airports, water transport and terminals, and "other and unallocable."

³Data presented are for October 1967.

Note: Because of rounding, detail may not add to totals.

END