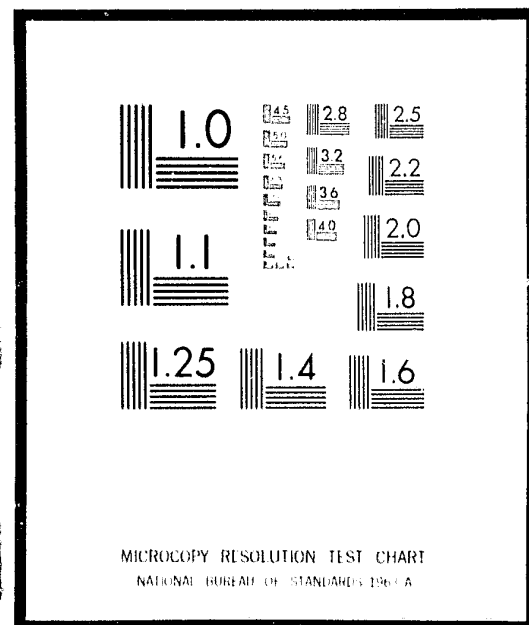


NCJRS

This microfiche was produced from documents received for inclusion in the NCJRS data base. Since NCJRS cannot exercise control over the physical condition of the documents submitted, the individual frame quality will vary. The resolution chart on this frame may be used to evaluate the document quality.



Microfilming procedures used to create this fiche comply with the standards set forth in 41CFR 101-11.504

Points of view or opinions stated in this document are those of the author(s) and do not represent the official position or policies of the U.S. Department of Justice.

U.S. DEPARTMENT OF JUSTICE
LAW ENFORCEMENT ASSISTANCE ADMINISTRATION
NATIONAL CRIMINAL JUSTICE REFERENCE SERVICE
WASHINGTON, D.C. 20531

12/29/76

Date filmed

CHARACTERISTICS OF CHILDREN COMMITTED
TO THE
VIRGINIA DEPARTMENT OF CORRECTIONS
IN
1975
STATUS/DELINQUENT

NCJRS

AUG 11 1976

ACQUISITIONS

Program Evaluation Unit
Division of Youth Services
May, 1976

35719

CHARACTERISTICS OF YOUTHS COMMITTED

JANUARY TO DECEMBER, 1975

FOREWORD

Since the publication of a report on Status Offenders in the Direct Care of the Division of Youth Services numerous people have asked for additional information differentiating the characteristics of delinquent youth and of status offenders.

This report presents the same data as have been reported on the direct care population since January 1974. It has been broken down into status offense and delinquent grouping for purposes of comparison. A summary of this comparison is found at the back of the report.

Youths entering the Reception and Diagnostic Center for children upon commitment to the Department of Corrections are assessed by the Mobile Psychiatric Clinic. The following information which describes these youths was taken from assessments of 1375 youths committed between January 1, 1975 and December 31, 1975. In some incidents the assessments were not complete so the total on some items may vary.

GENERAL CHARACTERISTICS

SEX:

	<u>All Commitments</u>		<u>* Status</u>		<u>* Delinquent</u>	
Female	325	(23.6)	211	(54.7)	114	(11.5)
Male	1047	(76.1)	173	(44.8)	874	(88.4)
Missing Code	3	(0.3)	2	(0.6)	1	(0.1)
Totals	1375	(100.0)	386	(100.0)	989	(100.0)

RACE:

White	791	(57.5)	260	(67.4)	531	(53.7)
Black	582	(42.3)	126	(32.6)	456	(46.1)
Other	2	(0.1)	0	(0.0)	2	(0.2)
Total	1375	(100.0)	386	(100.0)	989	(100.0)

AGE:

9	4	(0.3)	4	(1.0)	0	(0.0)
10	7	(0.5)	6	(1.6)	1	(0.1)
11	11	(0.8)	7	(1.8)	4	(0.4)
12	26	(1.9)	14	(3.6)	12	(1.2)
13	99	(7.2)	38	(9.8)	61	(6.2)
14	248	(18.0)	77	(19.9)	171	(17.3)
15	357	(26.0)	104	(26.9)	253	(25.6)
16	386	(28.1)	93	(24.1)	293	(29.6)
17	193	(14.0)	24	(6.2)	169	(17.1)
18	7	(0.5)	2	(0.5)	5	(0.5)
Missing Code	37	(2.7)	17	(4.5)	20	(2.0)
Total	1375	(100.0)	386	(100.0)	989	(100.0)

* For the purpose of this report delinquent offenses are defined as those offenses which if committed by an adult would constitute a criminal act punishable by the court, where as status offenses are those offenses which if committed by an adult would not have criminal connotations and would carry no sanctions. In the State of Virginia committable status offenses are running away from home, incorrigibility, and beyond parental control.

<u>PLACE OF BIRTH:</u>	<u>ALL COMMITMENTS</u>		<u>STATUS</u>		<u>DELINQUENT</u>	
Virginia	820	(59.6)	204	(52.8)	616	(62.3)
Out of State	273	(19.9)	87	(22.5)	186	(18.8)
Out of Country	29	(2.1)	11	(2.8)	18	(1.8)
Missing Code	253	(18.4)	84	(21.8)	169	(17.1)
Total	1375	(100.0)	386	(100.0)	989	(100.0)

<u>INTELLIGENCE:</u>						
Missing Code	25	(1.8)	8	(2.1)	17	(1.7)
Well Above Average (over 119)	6	(0.4)	1	(0.3)	5	(0.5)
Above Average (110-119)	55	(4.0)	13	(3.4)	42	(4.2)
Average (90-109)	573	(41.7)	165	(42.7)	408	(41.3)
Below Average (75-89)	506	(36.8)	146	(37.8)	360	(36.4)
Retarded (60-74)	178	(12.9)	41	(10.6)	137	(13.9)
Severely Retarded (Below 60)	32	(2.3)	12	(3.1)	20	(2.0)
Total	1375	(100.0)	386	(100.0)	989	(100.0)

<u>NUMBER OF COMMITMENTS:</u>						
1st	1114	(81.0)	321	(83.2)	793	(80.2)
2nd	203	(14.8)	46	(11.9)	157	(15.9)
3rd	27	(2.0)	2	(0.5)	25	(2.5)
4th	2	(0.1)	1	(0.3)	1	(0.1)
5th	1	(0.1)	0	(0.0)	1	(0.1)
Missing Code	28	(2.0)	16	(4.1)	12	(1.2)
Total	1375	(100.0)	386	(100.0)	989	(100.0)

COMMITMENT MONTH

January	147	(10.7)	41	(10.6)	106	(10.7)
February	119	(8.7)	31	(8.0)	88	(8.9)
March	129	(9.4)	40	(10.4)	89	(9.0)
April	138	(10.0)	38	(9.8)	100	(10.1)
May	150	(10.9)	45	(11.7)	105	(10.6)
June	110	(8.0)	29	(7.5)	81	(8.2)
July	115	(8.4)	36	(9.3)	79	(8.0)
August	93	(6.8)	24	(6.2)	69	(7.0)
September	121	(8.8)	34	(8.8)	87	(8.8)
October	108	(7.9)	20	(5.2)	88	(8.9)
November	96	(7.0)	29	(7.5)	67	(6.8)
December	19	(1.4)	4	(1.0)	15	(1.5)
Missing Code	30	(2.1)	15	(3.9)	15	(1.5)
Total	1375	(100.0)	386	(100.0)	989	(100.0)

COMMITTING COURTS

ALL COMMITMENTS

Accomack	5	(0.4)	Dickenson	0	(0.0)
Albemarle	3	(0.2)	Dinwiddie	2	(0.1)
Alleghany	6	(0.4)	Essex	1	(0.1)
Amherst	6	(0.4)	Fairfax Co.	26	(1.9)
Appomattox	3	(0.2)	Fauquier	3	(0.2)
Arlington	18	(1.3)	Floyd	1	(0.1)
Augusta	1	(0.1)	Fluvanna	0	(0.0)
Bath	0	(0.0)	Franklin Co.	4	(0.3)
Bedford	17	(1.2)	Frederick	6	(0.4)
Bland	0	(0.0)	Giles	1	(0.1)
Botetourt	7	(0.5)	Gloucester	4	(0.3)
Brunswick	1	(0.1)	Goochland	2	(0.1)
Buchanan	5	(0.4)	Grayson	4	(0.3)
Buckingham	3	(0.2)	Greene	1	(0.1)
Campbell	6	(0.4)	Greensville	2	(0.1)
Caroline	4	(0.3)	Halifax	3	(0.2)
Carroll	0	(0.0)	Hanover	12	(0.9)
Charles City	2	(0.1)	Henrico	41	(3.0)
Charlotte	1	(0.1)	Henry	9	(0.7)
Chesterfield	21	(1.5)	Highland	1	(0.1)
Clarke	1	(0.1)	Isle of Wight	8	(0.6)
Craig	0	(0.0)	James City	7	(0.5)
Culpeper	7	(0.5)	King & Queen	0	(0.0)
Cumberland	0	(0.0)	King William	2	(0.1)

COMMITTING COURTS (CONTINUED)

ALL COMMITMENTS

Counties			Cities		
Lancaster	6	(0.4)	Alexandria	37	(2.7)
Lee	5	(0.4)	Bedford	4	(0.3)
Loudoun	12	(0.9)	Bristol	6	(0.4)
Louisa	7	(0.5)	Buena Vista	2	(0.1)
Lunenburg	1	(0.1)	Charlottesville	16	(1.2)
Madison	0	(0.0)	Chesapeake	68	(4.9)
Mathews	1	(0.1)	Clifton Forge	1	(0.1)
Mecklenburg	5	(0.4)	Colonial Heights	2	(0.1)
Middlesex	2	(0.1)	Covington	0	(0.0)
Montgomery	5	(0.4)	Danville	14	(1.0)
Nansemond	0	(0.0)	Emporia	4	(0.3)
Nelson	3	(0.2)	Fairfax	10	(0.7)
New Kent	1	(0.1)	Falls Church	0	(0.0)
Northampton	2	(0.1)	Franklin	5	(0.4)
Northumberland	3	(0.2)	Fredericksburg	10	(0.7)
Nottoway	4	(0.3)	Galax	7	(0.5)
Orange	3	(0.2)	Hampton	54	(3.9)
Page	3	(0.2)	Harrisonburg	3	(0.2)
Patrick	0	(0.0)	Hopewell	12	(0.9)
Pittsylvania	8	(0.6)	Lexington	0	(0.0)
Powhatan	5	(0.4)	Lynchburg	13	(0.9)
Prince Edward	5	(0.4)	Martinsville	16	(1.2)
Prince George	5	(0.4)	Newsport News	75	(5.5)
Prince William	50	(3.6)	Norfolk	109	(7.9)
Pulaski	6	(0.4)	Norfolk Project OA	0	(0.0)
Rappahannock	2	(0.1)	Norton	0	(0.0)
Richmond Co.	17	(1.2)	Petersburg	27	(2.0)
Roanoke Co.	11	(0.8)	Portsmouth	43	(3.1)
Rockbridge	0	(0.0)	Radford	2	(0.1)
Rockingham	4	(0.3)	Richmond	112	(8.1)
Russell	2	(0.1)	Roanoke	58	(4.2)
Scott	4	(0.3)	Salem	5	(0.4)
Shenandoah	3	(0.2)	South Boston	0	(0.0)
Smyth	11	(0.8)	Staunton	6	(0.4)
Southampton	1	(0.1)	Suffolk	26	(1.9)
Spotsylvania	6	(0.4)	Virginia Beach	54	(3.9)
Stafford	26	(1.9)	Waynesboro	6	(0.4)
Surry	0	(0.0)	Williamsburg	4	(0.3)
Sussex	5	(0.4)	Winchester	4	(0.3)
Tazewell	7	(0.5)	Missing	6	(0.6)
Warren	4	(0.3)	TOTAL	1375	(100.0)
Washington	12	(0.9)			
Westmoreland	14	(1.0)			
Wise	20	(1.5)			
Wythe	1	(0.1)			
York	3	(0.2)			

COMMITTING COURTS

STATUS & DELINQUENT

Counties	Status	Delinquent
Accomack	2	(0.5)
Albemarle	1	(0.3)
Alleghany	1	(0.3)
Amherst	5	(1.3)
Appomattox	0	(0.0)
Arlington	4	(1.0)
Augusta	0	(0.0)
Bedford	4	(1.0)
Botetourt	1	(0.3)
Brunswick	0	(0.0)
Buchanan	1	(0.3)
Buckingham	0	(0.0)
Campbell	2	(0.5)
Caroline	1	(0.3)
Charles City	1	(0.3)
Charlotte	1	(0.3)
Chesterfield	7	(1.8)
Clarke	0	(0.0)
Culpeper	2	(0.5)
Dinwiddie	2	(0.5)
Essex	0	(0.0)
Fairfax Co.	5	(1.3)
Fauquier	2	(0.5)
Floyd	0	(0.0)
Franklin Co.	2	(0.5)
Frederick	0	(0.0)
Giles	0	(0.0)
Gloucester	2	(0.5)
Goochland	0	(0.0)
Grayson	1	(0.3)
Greene	0	(0.0)
Greensville	1	(0.3)
Halifax	2	(0.5)
Hanover	2	(0.5)
Henrico	14	(3.6)
Henry	0	(0.0)
Highland	0	(0.0)
Isle of Wight	2	(0.5)
James City	2	(0.5)
King George	0	(0.0)
King William	0	(0.0)
Lancaster	0	(0.0)
Lee	1	(0.3)
Loudoun	2	(0.5)
Louisa	1	(0.3)
Lunenburg	1	(0.3)
Mathews	0	(0.0)
Mecklenburg	0	(0.0)
Middlesex	1	(0.3)
Montgomery	0	(0.0)

Counties (continued)

Nelson	0	(0.0)	3	(0.3)
New Kent	0	(0.0)	1	(0.1)
Northampton	0	(0.0)	2	(0.2)
Northumberland	1	(0.3)	2	(0.2)
Nottoway	0	(0.0)	4	(0.4)
Orange	0	(0.0)	3	(0.3)
Page	0	(0.0)	3	(0.3)
Pittsylvania	3	(0.8)	5	(0.5)
Powhatan	1	(0.3)	4	(0.4)
Prince Edward	1	(0.3)	4	(0.4)
Prince George	3	(0.8)	2	(0.2)
Prince William	12	(3.1)	38	(3.8)
Pulaski	1	(0.3)	5	(0.5)
Rappahannock	2	(0.5)	0	(0.0)
Richmond Co.	4	(1.0)	13	(1.3)
Roanoke Co.	3	(0.8)	8	(0.8)
Rockingham	1	(0.3)	3	(0.3)
Russell	0	(0.0)	2	(0.2)
Scott	1	(0.3)	3	(0.3)
Shenandoah	1	(0.3)	2	(0.2)
Smyth	3	(0.8)	8	(0.8)
Southampton	0	(0.0)	1	(0.1)
Spotsylvania	2	(0.5)	4	(0.4)
Stafford	13	(3.4)	13	(1.3)
Sussex	2	(0.5)	3	(0.3)
Tazewell	1	(0.3)	6	(0.6)
Warren	2	(0.5)	2	(0.2)
Washington	2	(0.5)	1	(0.1)
Westmoreland	2	(0.5)	12	(1.2)
Wise	4	(1.0)	16	(1.6)
Wythe	0	(0.0)	1	(0.1)
York	0	(0.0)	3	(0.3)

Cities

Alexandria	9	(2.3)	28	(2.8)
Bedford	2	(0.5)	2	(0.2)
Bristol	3	(0.8)	3	(0.3)
Buena Vista	0	(0.0)	2	(0.2)
Charlottesville	2	(0.5)	14	(1.4)
Chesapeake	22	(5.7)	46	(4.7)
Clifton Forge	0	(0.0)	1	(0.1)
Colonial Heights	1	(0.3)	1	(0.1)
Danville	4	(1.0)	10	(1.0)
Emporia	2	(0.5)	2	(0.2)
Fairfax	1	(0.3)	9	(0.9)
Franklin	1	(0.3)	4	(0.4)
Fredericksburg	1	(0.3)	9	(0.9)

Cities (continued)

Galax	1	(0.3)	6	(0.6)
Hampton	16	(4.1)	38	(3.8)
Harrisonburg	0	(0.0)	3	(0.3)
Hopewell	3	(0.8)	9	(0.9)
Lynchburg	5	(1.3)	8	(0.8)
Martinsville	5	(1.3)	11	(1.1)
Newport News	22	(5.7)	53	(5.4)
Norfolk	38	(9.8)	71	(7.2)
Petersburg	5	(1.3)	22	(2.2)
Portsmouth	13	(3.4)	30	(3.0)
Radford	0	(0.0)	2	(0.2)
Richmond	31	(8.0)	81	(8.2)
Roanoke	24	(6.2)	34	(3.4)
Salem	0	(0.0)	5	(0.5)
Staunton	2	(0.5)	4	(0.4)
Suffolk	5	(1.3)	21	(2.1)
Virginia Beach	21	(5.4)	33	(3.3)
Waynesboro	2	(0.5)	4	(0.4)
Williamsburg	1	(0.3)	3	(0.3)
Winchester	1	(0.3)	3	(0.3)
Missing	3	(0.8)	3	(0.3)
Totals	386	(100.0)	989	(100.0)

SUMMARY

To summarize, approximately 24% of the youths committed were females and 76% were males. However, there were approximately 10% more females committed for status offenses than males while 8 males to every one female were being committed for delinquent offenses. Approximately 58% of the youths committed were white while 42% were black. Breaking this down there were about 24% more whites than blacks committed for status offenses and approximately 8% more whites than blacks committed for delinquent acts. In overall comparison 28% of the population committed status offenses while 72% committed delinquent offenses.

Well over 50% of the total population were 15 and 16 years old (this also holds true for those youths committed for both status and delinquent offenses). Approximately 46% of the youths had average or above average intelligence while 52% had below average intelligence. Those youths committed for delinquent acts maintained about the same percentage for intelligence as the overall population while those committed for status offenses had a 10% increase in average and above average intelligence.

The largest number of youths committed by any one jurisdiction was 109 and the smallest was 0. The heaviest commitment months across the board were January thru May with spot increases in July and September while the lightest months were December, August, November, October and June respectively. Approximately 81% of the youths were committed for the first time while 17% were committed for 2 or more times. Status offenders had a smaller recidivism rate as 83% were committed for the first time and 13% were committed for second or more times. Delinquent offenders returned more often with 80% committed for the first time while 19% were recidivists. It should be noted here that not all youths who are recommitted repeat the intake process so the recidivism rate is actually higher than shown here.

In 1974, 33% of the youths committed status offenses and 67% committed delinquent offenses. In comparing these figures to 1975 figures, we find that 5% fewer youths are being committed for status offenses. Also in 1974, 88% of the youths were on their first commitment and 12% were recidivists. In comparing these figures to 1975 figures, we find that about 5% more youths are recidivists. This becomes more interesting when we look at the shift in ages. In 1974, 16% of the youths were 13 and under and 39% were 16 and over. In 1975, about 11% were 13 and under and 43% were 16 and over.

SOCIAL SITUATIONAGE AT COMMUNITY CONTACT:

Age at Contact	All Commitments	Status	Delinquent
1	9 (0.7)	3 (0.8)	6 (0.6)
2	12 (0.9)	5 (1.3)	7 (0.7)
3	13 (0.9)	4 (1.0)	9 (0.9)
4	5 (0.4)	3 (0.8)	2 (0.2)
5	13 (0.9)	4 (1.0)	9 (0.9)
6	34 (2.5)	13 (3.4)	21 (2.1)
7	36 (2.6)	15 (3.9)	21 (2.1)
8	62 (4.5)	12 (3.1)	50 (5.1)
9	63 (4.6)	22 (5.7)	41 (4.1)
10	78 (5.7)	24 (6.2)	54 (5.5)
11	107 (7.8)	29 (7.5)	78 (7.9)
12	150 (10.9)	42 (10.9)	108 (10.9)
13	229 (16.7)	73 (18.9)	156 (15.8)
14	243 (17.7)	67 (17.4)	176 (17.8)
15	196 (14.3)	44 (11.4)	152 (15.4)
16	92 (6.7)	16 (4.1)	76 (7.7)
17	12 (0.9)	1 (0.3)	11 (1.1)
Missing Code	21 (1.6)	9 (2.3)	12 (1.2)
Total	1375 (100.0)	386 (100.0)	989 (100.0)

TYPE OF CONTACT:

School Psychologist	72 (5.2)	24 (6.2)	48 (4.9)
Soc. Service Bureau	85 (6.2)	42 (10.9)	43 (4.3)
Juv. & Dom. Rel. Court	1050 (76.4)	253 (65.5)	797 (80.6)
Dept. of Public Welfare	14 (1.0)	4 (1.0)	10 (1.0)
Mental Health Center	65 (4.7)	25 (6.5)	40 (4.0)
Other	79 (5.7)	35 (9.1)	44 (4.4)
Missing Code	10 (0.7)	3 (0.8)	7 (0.7)
Total	1375 (100.0)	386 (100.0)	989 (100.0)

LIVING SITUATION AT TIME OF COMMITMENT:

	All Commitments		Status		Delinquent	
Both Natural Parents	378	(27.5)	76	(19.7)	302	(30.5)
1 Parent - 1 Step Parent	165	(12.0)	49	(12.7)	116	(11.7)
Father Only	60	(4.4)	17	(4.4)	43	(4.3)
Mother Only	451	(32.8)	108	(28.0)	343	(34.7)
Step Parent Only	1	(0.1)	0	(0.0)	1	(0.1)
Not in Parental Home	21	(1.5)	9	(2.3)	12	(1.2)
Adoptive Home	44	(3.2)	17	(4.4)	27	(2.7)
Foster Home	89	(6.5)	56	(14.5)	33	(3.3)
Residential Treatment	10	(0.7)	6	(1.6)	4	(0.4)
Other	131	(9.5)	39	(10.1)	92	(9.3)
No Response	1	(0.1)	1	(0.3)	0	(0.0)
Missing Code	24	(1.8)	8	(2.1)	16	(1.6)
Total	1375	(100.0)	386	(100.0)	989	(100.0)

EARLIER LIVING SITUATION:

Both Natural Parents	471	(34.3)	90	(23.3)	381	(38.5)
1 Parent - 1 Step Parent	21	(1.5)	6	(1.6)	15	(1.5)
Father Only	2	(0.1)	1	(0.3)	1	(0.1)
Mother Only	84	(6.1)	23	(6.0)	61	(6.2)
Not in Parental Home	9	(0.7)	3	(0.8)	6	(0.6)
Adoptive Home	26	(1.9)	10	(2.6)	16	(1.6)
Foster Home	7	(0.5)	3	(0.8)	4	(0.4)
Residential Treatment	1	(0.1)	1	(0.3)	0	(0.0)
Other	32	(2.3)	12	(3.1)	20	(2.0)
No Response	9	(0.7)	4	(1.0)	5	(0.5)
Multiple	690	(50.2)	226	(58.5)	464	(46.9)
Missing Code	23	(1.7)	7	(1.9)	16	(1.6)
Total	1375	(100.0)	386	(100.0)	989	(100.0)

SUMMARY

To summarize, approximately 80% of all youths committed made community contact at the ages from 10-16. Proportionately 76% of youths committed for status offenses made community contact at these ages while 81% of those committed for delinquent offenses ranged in this age group. The most frequent community contact was made by the juvenile court. Approximately 76% of all youths committed had made prior contact with the juvenile court. Status offenders at about 66% fell below the average for prior court contact while 81% of the youths who committed delinquent acts had prior contact with the juvenile court.

In reviewing the living situation of children at the time of commitment it is significant that 80% of committed children come from a home with parent(s) or step-parent(s). The largest per cent of children committed came from mother only homes. About 33% of all committed children come from mother only homes. Proportionately 28% of the children committed for status offenses and 35% of those committed for delinquent offenses were from mother only homes. Conversely only about 4% of the children in each of the respective categories of commitments were living in father only homes. The second most frequent living situation was that of both natural parents comprising 28% of all commitments. About 20% of the status offenders and 31% of the delinquent commitments came from homes where both natural parents were present. Parent-step parent homes comprised about 12% of all commitments while foster homes comprised only about 7%.

Approximately 50% of children committed had multiple earlier living situations. About 59% of these were status offenders while 47% were committed for delinquent offenses. Earlier living situations of both natural parents comprised the next highest category with about 34% of all commitments coming from this situation. The only other significant category of earlier living situations is that of mother only homes comprising about 6% of all committed.

In addition to gathering basic descriptive data on the youths committed to the Department of Corrections, the Mobile Psychiatric Clinic gathers the following medical and educational data:

MEDICAL

PREVIOUS NEUROLOGICAL

	All Commitments		Status		Delinquent	
Yes	71	(5.2)	24	(6.2)	47	(4.8)
No	1270	(92.4)	348	(90.2)	922	(93.2)
Multiple	24	(1.7)	9	(2.3)	15	(1.5)
Missing	10	(0.7)	5	(1.3)	5	(0.5)
Total	1375	(100.0)	386	(100.0)	989	(100.0)

PREVIOUS PSYCHOLOGICAL

Yes	503	(36.6)	155	(40.2)	348	(35.2)
No	608	(44.2)	122	(31.6)	486	(49.1)
Multiple	261	(19.0)	107	(27.7)	154	(15.6)
Missing	3	(0.2)	2	(0.5)	1	(0.1)
Total	1375	(100.0)	386	(100.0)	989	(100.0)

PREVIOUS PSYCHIATRIC

Yes	251	(18.3)	75	(19.4)	176	(17.8)
No	884	(64.3)	211	(54.7)	673	(68.0)
Multiple	237	(17.2)	99	(25.6)	138	(14.0)
Missing	3	(0.2)	1	(0.3)	2	(0.2)
Total	1375	(100.0)	386	(100.0)	989	(100.0)

PREVIOUS PLACEMENT

Yes	204	(14.8)	80	(20.7)	124	(12.5)
No	1116	(81.2)	285	(73.8)	831	(84.0)
Multiple	46	(3.3)	17	(4.4)	29	(2.9)
Missing	9	(0.7)	4	(1.1)	5	(0.5)
Total	1375	(100.0)	386	(100.0)	989	(100.0)

PREVIOUS HOSPITALIZATION

	All Commitments		Status		Delinquent	
Yes	139	(10.1)	61	(15.8)	78	(7.9)
No	1183	(86.0)	299	(77.5)	884	(89.4)
Multiple	39	(2.8)	22	(5.7)	17	(1.7)
Missing	14	(1.0)	4	(1.0)	10	(1.0)
Total	1375	(100.0)	386	(100.0)	989	(100.0)

OVER WEIGHT

Yes	367	(26.7)	135	(35.0)	232	(23.5)
No	986	(71.7)	246	(63.7)	740	(74.8)
Missing	22	(1.6)	5	(1.3)	17	(1.7)
Total	1375	(100.0)	386	(100.0)	989	(100.0)

UNDER WEIGHT

Yes	200	(14.5)	40	(10.4)	160	(16.2)
No	1153	(83.9)	341	(88.3)	812	(82.1)
Missing	22	(1.6)	5	(1.3)	17	(1.7)
Total	1375	(100.0)	386	(100.0)	989	(100.0)

OVER AVERAGE HEIGHT

Yes	126	(9.2)	36	(9.3)	90	(9.1)
No	1227	(89.2)	346	(89.6)	881	(89.1)
Missing	22	(1.6)	4	(1.0)	18	(1.8)
Total	1375	(100.0)	386	(100.0)	989	(100.0)

UNDER AVERAGE HEIGHT

Yes	149	(10.8)	37	(9.6)	112	(11.3)
No	1204	(87.6)	345	(89.4)	859	(86.9)
Missing	22	(1.6)	4	(1.0)	18	(1.8)
Total	1375	(100.0)	386	(100.0)	989	(100.0)

VISUAL DISORDER

	All Commitments		Status		Delinquent	
Yes	369	(26.8)	126	(32.6)	243	(24.6)
No	982	(71.4)	255	(66.1)	727	(73.5)
Missing	24	(1.8)	5	(1.3)	19	(1.9)
Total	1375	(100.0)	386	(100.0)	989	(100.0)

DENTAL DISORDER

Yes	392	(28.5)	82	(21.2)	310	(31.3)
No	961	(69.9)	299	(77.5)	662	(66.9)
Missing	22	(1.6)	5	(1.3)	17	(1.7)
Total	1375	(100.0)	386	(100.0)	989	(100.0)

SPEECH DISORDER

Not Significant	1039	(75.6)	298	(77.2)	741	(74.9)
Minimal	146	(10.6)	30	(7.8)	116	(11.7)
Moderate	29	(2.1)	10	(2.6)	19	(1.9)
Missing	161	(11.7)	48	(12.4)	113	(11.4)
Total	1375	(100.0)	386	(100.0)	989	(100.0)

HEARING DISORDER

Not Significant	1107	(80.5)	302	(78.2)	805	(81.4)
Minimal	65	(4.7)	18	(4.7)	47	(4.8)
Moderate	3	(0.2)	0	(0.0)	3	(0.3)
Missing	200	(14.5)	66	(17.1)	134	(13.5)
Total	1375	(100.0)	386	(100.0)	989	(100.0)

OTHER MEDICAL DISORDERS

Yes	333	(24.2)	109	(28.2)	224	(22.6)
No	1005	(73.1)	271	(70.2)	734	(74.2)
Missing	37	(2.7)	6	(1.6)	31	(3.1)
Total	1375	(100.0)	386	(100.0)	989	(100.0)

BENDER SIGNS

	All Commitments		Status		Delinquent	
Not Significant	618	(44.9)	166	(43.0)	452	(45.7)
Minimal	493	(35.9)	133	(34.5)	360	(36.4)
Moderate	163	(11.9)	52	(13.5)	111	(11.2)
Severe	19	(1.4)	7	(1.8)	12	(1.2)
Missing	82	(6.0)	28	(7.2)	54	(5.5)
Total	1375	(100.0)	386	(100.0)	989	(100.0)

SUMMARY

To summarize, approximately 5% of the youths committed have had previous neurological evaluations, 37% have had previous psychological evaluations, 18% have had previous psychiatric evaluations, 15% have had previous placements, and 10% have had previous hospitalization. Approximately 28% of the youths were over weight and 15% were under weight while 9% were over average height and 11% were under average height. Approximately 27% of the youths had visual disorders, 29% had dental disorders, 13% had significant speech disorders, 5% had significant hearing disorders, and 24% had other medical disorders.

There are slight differences between these figures and the 1974 figures, but the differences do not follow a trend.

EDUCATIONALNUMERATION

	All Commitments		Status		Delinquent	
Level 1	20	(1.5)	4	(1.0)	16	(1.6)
2	45	(3.3)	18	(4.7)	27	(2.7)
3	161	(11.7)	59	(15.3)	102	(10.3)
4	164	(11.9)	47	(12.2)	117	(11.8)
5	582	(42.3)	167	(43.3)	415	(42.0)
6	47	(3.4)	18	(4.7)	29	(2.9)
7	13	(0.9)	2	(0.5)	11	(1.1)
8	95	(6.9)	18	(4.7)	77	(7.8)
9	211	(15.3)	42	(10.9)	169	(17.1)
Missing	37	(2.7)	11	(2.8)	26	(2.6)
Total	1375	(100.0)	386	(100.0)	989	(100.0)

ADDITION

	All Commitments		Status		Delinquent	
Level 1	5	(0.4)	2	(0.5)	3	(0.3)
2	14	(1.0)	2	(0.5)	12	(1.2)
3	48	(3.5)	12	(3.1)	36	(3.6)
4	28	(2.0)	6	(1.6)	22	(2.2)
5	176	(12.8)	48	(2.4)	128	(12.9)
6	84	(6.1)	18	(4.7)	66	(6.7)
7	356	(25.9)	130	(33.7)	226	(22.9)
8	472	(34.3)	121	(31.3)	351	(35.5)
9	155	(11.3)	36	(9.3)	119	(12.0)
Missing	37	(2.7)	11	(2.8)	26	(2.6)
Total	1375	(100.0)	386	(100.0)	989	(100.0)

SUBTRACTION

	All Commitments		Status		Delinquent	
Level 1	5	(0.4)	2	(0.5)	3	(0.3)
2	23	(1.7)	3	(0.8)	20	(2.0)
3	58	(4.2)	13	(3.4)	45	(4.6)
4	78	(5.7)	31	(8.0)	47	(4.8)
5	266	(19.3)	77	(19.9)	189	(19.1)
6	89	(6.5)	21	(5.4)	68	(6.9)
7	336	(24.4)	106	(27.5)	230	(23.3)
8	359	(26.1)	92	(23.8)	267	(27.0)
9	122	(8.9)	29	(7.5)	93	(9.4)
Missing	39	(2.8)	12	(3.1)	27	(2.7)
Total	1375	(100.0)	386	(100.0)	989	(100.0)

MULTIPLICATION

	All Commitments		Status		Delinquent	
Level 1	24	(1.7)	6	(1.6)	18	(1.8)
2	34	(2.5)	9	(2.3)	25	(2.5)
3	224	(16.3)	53	(13.7)	171	(17.3)
4	292	(21.2)	89	(23.1)	203	(20.5)
5	194	(14.1)	74	(19.2)	120	(12.1)
6	153	(11.1)	32	(8.3)	121	(12.2)
7	196	(14.3)	55	(14.2)	141	(14.3)
8	64	(4.7)	17	(4.4)	47	(4.8)
9	132	(9.6)	33	(8.5)	99	(10.0)
Missing	62	(4.5)	18	(4.7)	44	(4.4)
Total	1375	(100.0)	386	(100.0)	989	(100.0)

DIVISION

	All Commitments		Status		Delinquent	
Level 1	37	(2.7)	9	(2.3)	28	(2.8)
2	68	(4.9)	23	(6.0)	45	(4.6)
3	208	(15.1)	53	(13.7)	155	(15.7)
4	327	(23.8)	104	(26.9)	223	(22.5)
5	169	(12.3)	51	(13.2)	118	(11.9)
6	140	(10.2)	24	(6.2)	116	(11.7)
7	192	(14.0)	62	(16.1)	130	(13.1)
8	118	(8.6)	35	(9.1)	83	(8.4)
9	36	(2.6)	6	(1.6)	30	(3.0)
Missing	80	(5.8)	19	(4.9)	61	(6.2)
Total	1375	(100.0)	386	(100.0)	989	(100.0)

FRACTIONS

	All Commitments		Status		Delinquent	
Level 1	42	(3.1)	8	(2.1)	34	(3.4)
2	400	(29.1)	118	(30.6)	282	(28.5)
3	356	(25.9)	114	(29.5)	242	(24.5)
4	152	(11.1)	52	(13.5)	100	(10.1)
5	139	(10.1)	29	(7.5)	110	(11.1)
6	128	(9.3)	26	(6.7)	102	(10.3)
7	74	(5.4)	14	(3.6)	60	(6.1)
8	19	(1.4)	5	(1.3)	14	(1.4)
9	19	(1.4)	7	(1.8)	12	(1.2)
Missing	46	(3.3)	13	(3.4)	33	(3.3)
Total	1375	(100.0)	386	(100.0)	989	(100.0)

MIXED

	All Commitments		Status		Delinquent	
Level 1	39	(2.8)	7	(1.8)	32	(3.2)
2	109	(7.9)	28	(7.3)	81	(8.2)
3	160	(11.6)	45	(11.7)	115	(11.6)
4	305	(22.2)	80	(20.7)	225	(22.8)
5	193	(14.0)	64	(16.6)	129	(13.0)
6	379	(27.6)	113	(29.3)	266	(26.9)
7	57	(4.1)	17	(4.4)	40	(4.0)
8	78	(5.7)	12	(3.1)	66	(6.7)
9	8	(0.6)	5	(1.3)	3	(0.3)
Missing	47	(3.4)	15	(3.9)	32	(3.2)
Total	1375	(100.0)	386	(100.0)	989	(100.0)

MONEY

	All Commitments		Status		Delinquent	
Level 1	4	(0.3)	1	(0.3)	3	(0.3)
2	32	(2.3)	10	(2.6)	22	(2.2)
3	74	(5.4)	27	(7.0)	47	(4.8)
4	77	(5.6)	28	(7.3)	49	(5.0)
5	256	(18.6)	72	(18.7)	184	(18.6)
6	435	(31.6)	124	(32.1)	311	(31.4)
7	450	(32.7)	109	(28.2)	341	(34.5)
8	0	(0.0)	0	(0.0)	0	(0.0)
9	0	(0.0)	0	(0.0)	0	(0.0)
Missing	47	(3.4)	15	(3.9)	32	(3.2)
Total	1375	(100.0)	386	(100.0)	989	(100.0)

TIME

	All Commitments		Status		Delinquent	
Level 1	2	(0.1)	1	(0.3)	1	(0.1)
2	106	(7.7)	30	(7.8)	76	(7.7)
3	56	(4.1)	17	(4.4)	39	(3.9)
4	121	(8.8)	35	(9.1)	86	(8.7)
5	262	(19.1)	88	(22.8)	174	(17.6)
6	311	(22.6)	75	(19.4)	236	(23.9)
7	396	(28.8)	107	(27.7)	289	(29.2)
8	71	(5.2)	18	(4.7)	53	(5.4)
9	1	(0.1)	0	(0.0)	1	(0.1)
Missing	49	(3.6)	15	(3.9)	34	(3.4)
Total	1375	(100.0)	386	(100.0)	989	(100.0)

MEASUREMENTS

	All Commitments		Status		Delinquent	
Level 1	48	(3.5)	8	(2.1)	40	(4.0)
2	573	(41.7)	211	(54.7)	362	(36.6)
3	126	(9.2)	32	(8.3)	94	(9.5)
4	61	(4.4)	9	(2.3)	52	(5.3)
5	140	(10.2)	37	(9.6)	103	(10.4)
6	163	(11.9)	32	(8.3)	131	(13.2)
7	89	(6.5)	18	(4.7)	71	(7.2)
8	110	(8.0)	21	(5.4)	89	(9.0)
9	7	(0.5)	3	(0.8)	4	(0.4)
Missing	58	(4.2)	15	(3.9)	43	(4.3)
Total	1375	(100.0)	386	(100.0)	989	(100.0)

VOCABULARY

	All Commitments		Status		Delinquent	
Grade 1	93	(6.7)	20	(5.3)	73	(7.4)
2	131	(9.6)	37	(9.5)	94	(9.5)
3	166	(12.0)	48	(12.5)	118	(11.9)
4	225	(16.3)	60	(15.6)	165	(16.7)
5	163	(12.0)	53	(13.7)	110	(11.1)
6	169	(12.2)	47	(12.2)	122	(12.1)
7	73	(5.3)	21	(5.5)	52	(5.1)
8	91	(6.5)	32	(8.3)	59	(6.0)
9	71	(5.1)	20	(5.3)	51	(5.2)
10	35	(2.6)	11	(3.0)	24	(2.4)
11	17	(1.3)	3	(0.8)	14	(1.4)
12	59	(4.4)	16	(4.1)	43	(4.3)
Missing	82	(6.1)	18	(4.7)	64	(6.5)
Total	1375	(100.0)	386	(100.0)	989	(100.0)

COMPREHENSION

	All Commitments		Status		Delinquent	
Grade 1	104	(7.6)	23	(6.0)	81	(8.2)
2	155	(11.3)	45	(11.7)	110	(11.1)
3	174	(12.5)	56	(14.6)	118	(11.9)
4	187	(13.6)	48	(12.5)	139	(14.1)
5	140	(10.2)	45	(11.6)	95	(9.6)
6	129	(9.3)	41	(10.7)	88	(8.9)
7	93	(6.7)	21	(5.6)	72	(7.3)
8	67	(4.8)	23	(6.0)	44	(4.4)
9	50	(3.6)	17	(4.5)	33	(3.3)
10	59	(4.2)	14	(3.6)	45	(4.6)
11	43	(3.1)	13	(3.5)	30	(3.0)
12	82	(6.0)	20	(5.2)	62	(6.3)
Missing	92	(6.8)	20	(5.2)	72	(7.3)
Total	1375	(100.0)	386	(100.0)	989	(100.0)

SUMMARY

Numeration, addition, subtraction, multiplication, division, fraction, mixed, money, time and measurements are tests taken from the Individual Mathematic System. They are used to place children in the Individual Mathematic System which is used in the learning centers. These tests are reported in levels from lowest to highest and do not reflect grade level. The average level for each overall category was as follows: numeration 5.2, addition 6.8, subtraction 6.3, multiplication 5.0, division 4.7, fractions 3.5, mixed 4.6, money 5.6, time 5.4, and measurements 3.7. The average level for each category for status offenders was as follows: numeration 4.9, addition 6.8, subtraction 6.3, multiplication 5.0, division 4.7, fractions 3.4, mixed 4.6, money 5.4, time 5.3, and measurements 3.3. The average level for each category for delinquency offenders was as follows: numeration 5.4, addition 6.8, subtraction 6.4, multiplication 5.0, division 4.7, fractions 3.6, mixed 4.6, money 5.6, time 5.4, and measurements 3.8.

All of these overall categories have decreased in average level since 1974: numeration 5.3, addition 7.1, subtraction 6.4, multiplication 5.5, division 5.2, fractions 4.0, mixed 4.9, money 5.8, time 5.6, and measurements 4.4.

Vocabulary and comprehension are Gates MacGinitie tests and are used in reading class placement in the learning centers. The tests are reported in grade equivalents and the average grade equivalent for each was as follows:

	All Commitments	Status	Delinquency
Vocabulary	5.4	5.6	5.4
Comprehension	5.5	5.7	5.5

These overall scores have also decreased since 1974: vocabulary 6.7 and comprehension 7.1.

It is interesting to note here the intelligence of the youths committed. In 1975, 4% of the youths had above average intelligence and 15% were retarded. In 1974, 5% of the youths had above average intelligence and 14% were retarded. Thus it can be noted that of all the youths committed there has been a decrease of 1% in those that had above average intelligence and a 1% increase in those that were retarded in 1975.

GENERAL SUMMATION OF DIFFERENCES BETWEEN
STATUS AND DELINQUENT OFFENDERS

In final summary it is interesting to note some general comparisons between status offenders committed to the State Board of Corrections and the delinquent offenders committed. Again it can be generally noted that females are committed more often than males for status offenses, while males are committed more often for delinquent offenses. In both the status and delinquent categories, white children are committed more often than black children.

The overall age of children committed for status offenses is lower than for those committed for delinquent offenses.

There appears to be no significant differences in intelligence between children committed for status and delinquent offenses.

Generally status offenders have a lower recidivism rate than do delinquent offenders, 13% compared to 19%. This is due at least in part to the age differential.

Generally status offenders are younger at the time of their first community contact than are delinquent offenders. The vast majority (82%) having had community contact prior to age 14. Also the types of contact for status offenders are more often psychological or mental health related, or are with social services agencies. Delinquent offenders are more often in contact first with the juvenile court than are status offenders.

In comparing living situations, it can be seen that delinquent offenders are more often than status offenders come from homes where both natural parents are present or are from mother only homes. However, the status offenders more often than delinquent offenders come from foster homes, adoptive homes, other homes where neither natural parent is present, or from homes with 1 parent and 1 step-parent. Status offenders also have a slightly higher rate for cultural deprivation than do delinquent offenders. They also have had previous neurological, psychological, psychiatric, hospital, or other placements more often than delinquent offenders.

In physical characteristics it can be noted that status offenders more often are overweight and less often underweight than delinquent offenders. They more often have visual disorders but less often have dental disorders than delinquent offenders. These characteristics seem to support the theory that status offenders may more often have a very poor self image. However, there seems to be no significant difference in height, speech, hearing, other disorders, or bender signs between status and delinquent offenders.

Finally it is noted that in the average overall educational ability delinquent offenders perform on a slightly higher level than status offenders. However, status offenders perform on a slightly higher average grade level in vocabulary and comprehension than delinquent offenders.

END