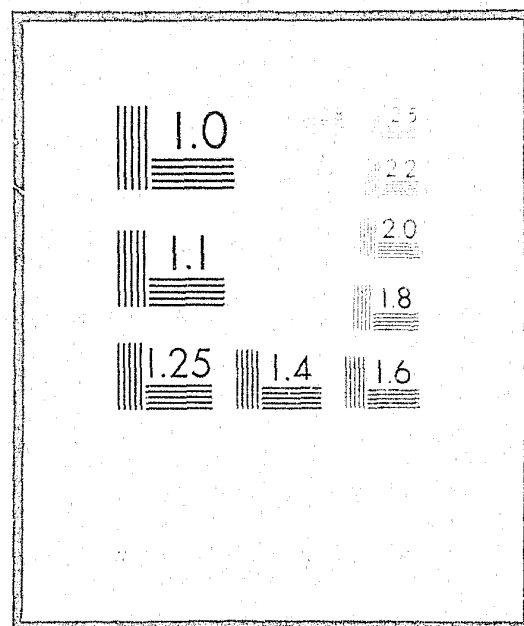


# NCJRS

This microfiche was produced from documents received for inclusion in the NCJRS data base. Since NCJRS cannot exercise control over the physical condition of the documents submitted, the individual frame quality will vary. The resolution chart on this frame may be used to evaluate the document quality.



Microfilming procedures used to create this fiche comply with the standards set forth in 41CFR 101-11.504

Points of view or opinions stated in this document are those of the author(s) and do not represent the official position or policies of the U.S. Department of Justice.

U.S. DEPARTMENT OF JUSTICE  
LAW ENFORCEMENT ASSISTANCE ADMINISTRATION  
NATIONAL CRIMINAL JUSTICE REFERENCE SERVICE  
WASHINGTON, D.C. 20531

1/25/77

36629  
J a n u a r y 1 9 7 7  
f i l m e d

## JUVENILE PROBATION ADMISSIONS 1975



DEPARTMENT OF HEALTH AND SOCIAL SERVICES  
DIVISION OF CORRECTIONS  
BUREAU OF PLANNING, DEVELOPMENT, AND RESEARCH  
MADISON, WISCONSIN 53701

STATISTICAL BULLETIN C-55B

SEPTEMBER 1976

JUVENILE PROBATION ADMISSIONS TO  
WISCONSIN DIVISION OF CORRECTIONS

NCJRS

1975

SEP 24 1976

STATE OF WISCONSIN

ACQUISITIONS

H I G H L I G H T S

1. Admissions to state-supervised juvenile probation decreased from 335 cases in 1974 to 269 cases in 1975. (See Table 1.) The juvenile male total declined after two years of increase in 1973 and 1974. The female total, 25, is the lowest number admitted in 20 years.
2. Thirty-nine counties placed juveniles under Wisconsin Division of Corrections probation supervision during calendar year 1975. (See Table 2.)
3. Almost three-fifths (58 percent) of the boys and slightly less than two-thirds (64 percent) of the girls placed under supervision were 16 or 17 years of age. (See Table 4.)
4. Four out of 10 boys and girls placed under probation supervision had completed the tenth or eleventh grade. (See Table 5.)
5. Four out of 10 boys and girls were reported to have been enrolled in school at the time of placement on supervision. (See Table 7.)
6. Slightly over one-third of the boys (36 percent) and three-fifths of the girls reported as attending school during the six months prior to placement on supervision were described as having made less than satisfactory school adjustments. (See Table 6.)
7. Nine out of 10 boys and 8 out of 10 girls placed under supervision were White. (See Table 16.)

DEPARTMENT OF HEALTH AND SOCIAL SERVICES

Manuel Carballo, Secretary

DIVISION OF CORRECTIONS

Fred W. Hinickle, Acting Administrator

BUREAU OF PLANNING, DEVELOPMENT, AND RESEARCH

Paul H. Kusuda, Director

Perry C. Baker, Chief, Research and Evaluation Section

Theodore H. Johnson, Chief, Information and Systems Development Section

Juvenile probation services in Wisconsin are, for the most part, provided by county courts and social service departments. Juvenile probation services on the state level are provided by the Division of Corrections if (1) county courts request such services for youths whose needs cannot be adequately met on the county level (juvenile regular probation); or (2) legal custody of the child is transferred to the Department of Health and Social Services (juvenile "C" probation).

Thirty-nine of the state's 72 counties requested Division of Corrections probation supervision for children who came under their jurisdiction during calendar year 1975. Kenosha County (52 cases, Milwaukee County (39 cases), and Price County (28 cases) made the greatest use of state supervision. Nine out of 10 youths placed under state-supervised juvenile probation in 1975 were boys. Tables 3 through 16 are arranged so that comparisons may be made between juvenile "C" and juvenile regular probation admissions in terms of age at admission, length of probation term, school adjustment, etc.

#### Period of Probation

Youths placed under juvenile regular probation receive a definite term which is set by the county court. Nine out of 10 boys and all girls placed under juvenile regular probation received terms of less than two years. Juvenile "C" probation terms extend from the time of placement until attainment of the age of majority (18 years). Almost three-fifths (58 percent) of the boys and two-thirds of the girls placed under "C" supervision had less than two years remaining before reaching the age of majority. It should be noted that early discharges, if warranted, may be granted to youths under both types of supervision. (See Table 3.)

#### Age on Admission

The median age of boys and girls placed under juvenile probation supervision in 1975 was 16.3 years. Two boys were less than 12 years old at the time of placement. Slightly less than three-fifths (58 percent) of the boys and almost two-thirds (64 percent) of the girls placed under supervision were 16 or 17 years of age. (See Table 4.)

Prepared by: Barbara Drown, Research Analyst  
Research and Evaluation Section  
Bureau of Planning, Development, and Research  
Division of Corrections  
P.O. Box 669  
Madison, Wisconsin 53701



Table 1  
Admissions to Juvenile Probation by Sex  
Calendar Years 1950-1975

Calendar Year	Total	Male	Female
1950	25	25	-
1951	60	57	3
1952	77	74	3
1953	47	44	3
1954	36	34	2
1955	108	92	16
1956	156	129	27
1957	127	99	28
1958	216	166	50
1959	182	136	46
1960	199	161	38
1961	152	119	33
1962	213	154	59
1963	165	121	44
1964	198	131	67
1965	224	168	56
1966	322	243	79
1967	240	173	67
1968	368	273	95
1969	327	236	91
1970	419	297	122
1971	326	236	90
1972	218	185	33
1973	267	217	50
1974	335	272	63
1975	269	244	25

Table 2  
Admissions to Juvenile Probation by  
TYPE OF DISPOSITION AND COUNTY OF COMMITMENT  
January 1-December 31, 1975

County of Commitment	Total Cases			Boys			Girls		
	Total	Juvenile "C" Probation	Juvenile Regular Probation	Total Boys	Juvenile "C" Probation	Juvenile Regular Probation	Total Girls	Juvenile "C" Probation	Juvenile Regular Probation
TOTAL	269	212	57	244	191	53	25	21	4
Adams	-	-	-	-	-	-	-	-	-
Ashland	-	-	-	-	-	-	-	-	-
Barron	-	-	-	-	-	-	-	-	-
Bayfield	7	7	-	5	5	-	2	2	-
Brown	-	-	-	-	-	-	-	-	-
Buffalo	-	-	-	-	-	-	-	-	-
Burnett	2	2	-	2	2	-	-	-	-
Calumet	-	-	-	-	-	-	-	-	-
Chippewa	6	3	3	6	3	3	-	-	-
Clark	3	3	-	3	3	-	-	-	-
Columbia	3	3	-	2	2	-	1	1	-
Crawford	-	-	-	-	-	-	-	-	-
Dane	1	1	-	1	1	-	-	-	-
Dodge	2	1	1	2	1	1	-	-	-
Door	-	-	-	-	-	-	-	-	-
Douglas	3	3	-	-	-	-	3	3	-
Dunn	1	-	1	1	-	1	-	-	-
Eau Claire	25	25	-	24	24	-	1	1	-
Florence	2	-	2	1	-	1	1	-	1
Fond du Lac	8	8	-	7	7	-	1	1	-
Forest	-	-	-	-	-	-	-	-	-
Grant	-	-	-	-	-	-	-	-	-
Green	-	-	-	-	-	-	-	-	-
Green Lake	-	-	-	-	-	-	-	-	-
Iowa	-	-	-	-	-	-	-	-	-
Iron	-	-	-	-	-	-	-	-	-
Jackson	2	2	-	2	2	-	-	-	-
Jefferson	1	1	-	1	1	-	-	-	-
Juneau	-	-	-	-	-	-	-	-	-
Kenosha	52	51	1	48	47	1	4	4	-
Kewaunee	-	-	-	-	-	-	-	-	-
LaCrosse	-	-	-	-	-	-	-	-	-
Lafayette	-	-	-	-	-	-	-	-	-
Langlade	1	1	-	1	1	-	-	-	-
Lincoln	1	1	-	1	1	-	-	-	-
Manitowoc	5	5	-	5	5	-	-	-	-
Marathon	-	-	-	-	-	-	-	-	-
Marinette	-	-	-	-	-	-	-	-	-
Marquette	-	-	-	-	-	-	-	-	-
Menominee	2	2	-	2	2	-	-	-	-

Table 2 (Concluded)

County of Commitment	Total Cases			Boys			Girls		
	Total	Juvenile "C" Probation	Juvenile Regular Probation	Total Boys	Juvenile "C" Probation	Juvenile Regular Probation	Total Girls	Juvenile "C" Probation	Juvenile Regular Probation
Milwaukee	39	39	-	36	36	-	3	3	-
Monroe	-	-	-	-	-	-	-	-	-
Oconto	-	-	-	-	-	-	-	-	-
Oneida	-	-	-	-	-	-	-	-	-
Outagamie	3	3	-	3	3	-	-	-	-
Ozaukee	5	5	-	5	5	-	-	-	-
Pepin	-	-	-	-	-	-	-	-	-
Pierce	-	-	-	-	-	-	-	-	-
Polk	1	1	-	1	1	-	-	-	-
Portage	1	1	-	1	1	-	-	-	-
Price	28	3	25	26	2	24	2	1	1
Racine	2	2	-	1	1	-	1	1	-
Richland	-	-	-	-	-	-	-	-	-
Rock	1	1	-	-	-	-	1	1	-
Rusk	-	-	-	-	-	-	-	-	-
St. Croix	7	7	-	7	7	-	-	-	-
Sauk	7	7	-	6	6	-	1	1	-
Sawyer	1	1	-	1	1	-	-	-	-
Shawano	-	-	-	-	-	-	-	-	-
Sheboygan	5	5	-	5	5	-	-	-	-
Taylor	20	-	20	18	-	18	2	-	2
Trempealeau	1	1	-	1	1	-	-	-	-
Vernon	5	4	1	5	4	1	-	-	-
Vilas	5	2	3	5	2	3	-	-	-
Walworth	-	-	-	-	-	-	-	-	-
Washburn	1	1	-	1	1	-	-	-	-
Washington	1	1	-	1	1	-	-	-	-
Waukesha	7	7	-	5	5	-	2	2	-
Waupaca	-	-	-	-	-	-	-	-	-
Waushara	-	-	-	-	-	-	-	-	-
Winnebago	-	-	-	-	-	-	-	-	-
Wood	2	2	-	2	2	-	-	-	-

Table 3  
Admissions to Juvenile Probation by  
TYPE OF DISPOSITION AND PERIOD OF PROBATION  
January 1-December 31, 1975

Period of Probation*	Boys						Girls					
	Total Probation		Juvenile "C" Probation		Juvenile Regular Probation		Total Probation		Juvenile "C" Probation		Juvenile Regular Probation	
	Number	Percent	Number	Percent	Number	Percent	Number	Percent	Number	Percent	Number	Percent
TOTAL	244	100.0	191	100.0	53	100.0	25	100.0	21	100.0	4	100.0
Less than one year	64	26.2	53	27.8	11	20.7	5	20.0	4	19.1	1	25.0
1 year, less than 2	95	38.9	57	29.8	38	71.7	13	52.0	10	47.6	3	75.0
2 years, less than 3	52	21.3	49	25.7	3	5.7	3	12.0	3	14.2	-	-
3 years, less than 4	26	10.7	25	13.1	1	1.9	4	16.0	4	19.1	-	-
4 years, less than 5	5	2.1	5	2.6	-	-	-	-	-	-	-	-
5 years and over	2	0.8	2	1.0	-	-	-	-	-	-	-	-

\*This is the length of time for which the juvenile has been placed on probation supervision.

Table 4  
Admissions to Juvenile Probation by  
TYPE OF DISPOSITION AND AGE ON ADMISSION  
January 1-December 31, 1975

Age on Admission	Boys						Girls					
	Total Probation		Juvenile "C" Probation		Juvenile Regular Probation		Total Probation		Juvenile "C" Probation		Juvenile Regular Probation	
	Number	Percent	Number	Percent	Number	Percent	Number	Percent	Number	Percent	Number	Percent
TOTAL	244	100.0	191	100.0	53	100.0	25	100.0	21	100.0	4	100.0
Under 12 years	2	0.8	1	0.5	1	1.9	-	-	-	-	-	-
12	2	0.8	1	0.5	1	1.9	-	-	-	-	-	-
13	10	4.1	5	2.6	5	9.4	-	-	-	-	-	-
14	28	11.5	24	12.6	4	7.6	6	24.0	4	19.1	2	50.0
15	60	24.6	48	25.1	12	22.6	3	12.0	3	14.3	-	-
16	69	28.3	55	28.8	14	26.4	11	44.0	10	47.5	1	25.0
17	73	29.9	57	29.9	16	30.2	5	20.0	4	19.1	1	25.0

Table 5  
Admissions to Juvenile Probation by  
TYPE OF DISPOSITION AND GRADE COMPLETED  
January 1-December 31, 1975

Grade Completed	Boys						Girls					
	Total Probation		Juvenile "C" Probation		Juvenile Regular Probation		Total Probation		Juvenile "C" Probation		Juvenile Regular Probation	
	Number	Percent	Number	Percent	Number	Percent	Number	Percent	Number	Percent	Number	Percent
TOTAL	244	100.0	191	100.0	53	100.0	25	100.0	21	100.0	4	100.0
First through sixth	3	1.2	2	1.0	1	1.9	-	-	-	-	-	-
Seventh through ninth	137	56.2	105	55.0	32	60.4	11	44.0	9	42.9	2	50.0
Tenth through eleventh	97	39.8	78	40.9	19	35.8	11	44.0	9	42.9	2	50.0
High school graduate	3	1.2	2	1.0	1	1.9	-	-	-	-	-	-
Unknown	4	1.6	4	2.1	-	-	3	12.0	3	14.2	-	-

Table 6  
Admissions to Juvenile Probation by  
TYPE OF DISPOSITION AND SCHOOL ADJUSTMENT PRIOR TO ADMISSION  
January 1-December 31, 1975

School Social Adjustment During Six Months Prior to Admission	Boys						Girls					
	Total Probation		Juvenile "C" Probation		Juvenile Regular Probation		Total Probation		Juvenile "C" Probation		Juvenile Regular Probation	
	Number	Percent	Number	Percent	Number	Percent	Number	Percent	Number	Percent	Number	Percent
TOTAL	244	100.0	191	100.0	53	100.0	25	100.0	21	100.0	4	100.0
Satisfactory	104	42.6	68	35.6	36	67.9	5	20.0	2	9.5	3	75.0
Not satisfactory	89	36.5	78	40.8	11	20.8	15	60.0	14	66.7	1	25.0
Not in school	49	20.1	43	22.5	6	11.3	5	20.0	5	23.8	-	-
Not reported	2	0.8	2	1.1	-	-	-	-	-	-	-	-

Table 7  
Admissions to Juvenile Probation by  
TYPE OF DISPOSITION AND TIME EMPLOYED PRIOR TO ADMISSION  
January 1-December 31, 1975

Time Employed During Six Months Prior to Admission	Boys						Girls					
	Total Probation		Juvenile "C" Probation		Juvenile Regular Probation		Total Probation		Juvenile "C" Probation		Juvenile Regular Probation	
	Number	Percent	Number	Percent	Number	Percent	Number	Percent	Number	Percent	Number	Percent
TOTAL	244	100.0	191	100.0	53	100.0	25	100.0	21	100.0	4	100.0
75 percent or more	12	4.9	11	5.8	1	1.9	-	-	-	-	-	-
50-74 percent	11	4.5	9	4.7	2	3.8	-	-	-	-	-	-
25-49 percent	16	6.6	13	6.8	3	5.7	-	-	-	-	-	-
0-24 percent	94	38.5	76	39.7	18	34.0	13	52.0	12	57.1	1	25.0
Incapacitated	-	-	-	-	-	-	-	-	-	-	-	-
In school	107	43.9	79	41.4	28	52.7	12	48.0	9	42.9	3	75.0
Homemaker	-	-	-	-	-	-	-	-	-	-	-	-
Not reported	4	1.6	3	1.6	1	1.9	-	-	-	-	-	-

Table 8  
Admissions to Juvenile Probation by  
TYPE OF DISPOSITION AND AVERAGE GROSS MONTHLY INCOME PRIOR TO ADMISSION  
January 1-December 31, 1975

Average Gross Monthly Income During Six Months Prior to Admission	Boys						Girls					
	Total Probation		Juvenile "C" Probation		Juvenile Regular Probation		Total Probation		Juvenile "C" Probation		Juvenile Regular Probation	
	Number	Percent	Number	Percent	Number	Percent	Number	Percent	Number	Percent	Number	Percent
TOTAL	244	100.0	191	100.0	53	100.0	25	100.0	21	100.0	4	100.0
Less than \$200.00	66	27.1	46	24.0	20	37.7	1	4.0	-	-	1	25.0
\$200.00, less than \$400.00	8	3.3	8	4.2	-	-	2	8.0	-	-	2	50.0
\$400.00 or more	4	1.6	3	1.6	1	1.9	1	4.0	-	-	1	25.0
No income	142	58.2	111	58.1	31	58.5	17	68.0	17	80.9	-	-
Receiving public assistance	21	8.6	20	10.5	1	1.9	4	16.0	4	19.1	-	-
Not reported	3	1.2	3	1.6	-	-	-	-	-	-	-	-

Table 9  
Admissions to Juvenile Probation by  
TYPE OF DISPOSITION AND USE OF ALCOHOL PRIOR TO ADMISSION  
January 1-December 31, 1975

Use of Alcohol During Six Months Prior to Admission	Boys						Girls					
	Total Probation		Juvenile "C" Probation		Juvenile Regular Probation		Total Probation		Juvenile "C" Probation		Juvenile Regular Probation	
	Number	Percent	Number	Percent	Number	Percent	Number	Percent	Number	Percent	Number	Percent
TOTAL	244	100.0	191	100.0	53	100.0	25	100.0	21	100.0	4	100.0
Abstainer or light drinker	147	60.3	114	59.7	33	62.2	11	44.0	8	38.1	3	75.0
Heavy drinker, not disruptive	9	3.7	9	4.7	-	-	2	8.0	1	4.8	1	25.0
Disruptive use of alcohol	34	13.9	31	16.2	3	5.7	7	28.0	7	33.3	-	-
Not reported	54	22.1	37	19.4	17	32.1	5	20.0	5	23.8	-	-

Table 10  
Admissions to Juvenile Probation by  
TYPE OF DISPOSITION AND SOCIAL IDENTIFICATIONS PRIOR TO ADMISSION  
January 1-December 31, 1975

Most Significant Persons Identified with Socially During Six Months Prior to Admission	Boys						Girls					
	Total Probation		Juvenile "C" Probation		Juvenile Regular Probation		Total Probation		Juvenile "C" Probation		Juvenile Regular Probation	
	Number	Percent	Number	Percent	Number	Percent	Number	Percent	Number	Percent	Number	Percent
TOTAL	244	100.0	191	100.0	53	100.0	25	100.0	21	100.0	4	100.0
Reputable	31	12.7	18	9.4	13	24.5	2	8.0	1	4.8	1	25.0
Fringe or delinquent	185	75.8	156	81.7	29	54.7	22	88.0	20	95.2	2	50.0
Not reported	28	11.5	17	8.9	11	20.8	1	4.0	-	-	1	25.0

Table 11  
Admissions to Juvenile Probation by  
TYPE OF DISPOSITION AND ACCEPTANCE OF RESPONSIBILITY PRIOR TO ADMISSION  
January 1-December 31, 1975

Acceptance of Responsibility During Six Months Prior to Admission*	Boys						Girls					
	Total Probation		Juvenile "C" Probation		Juvenile Regular Probation		Total Probation		Juvenile "C" Probation		Juvenile Regular Probation	
	Number	Percent	Number	Percent	Number	Percent	Number	Percent	Number	Percent	Number	Percent
TOTAL	244	100.0	191	100.0	53	100.0	25	100.0	21	100.0	4	100.0
Accepts entirely	23	9.4	19	10.0	4	7.5	6	24.0	3	14.3	3	75.0
Accepts mostly	87	35.7	67	35.1	20	37.7	7	28.0	7	33.3	-	-
Accepts only slightly	89	36.5	73	38.2	16	30.2	5	20.0	4	19.1	1	25.0
Does not accept	24	9.8	22	11.5	2	3.8	7	28.0	7	33.3	-	-
Not reported	21	8.6	10	5.2	11	20.8	-	-	-	-	-	-

\*Accepts responsibility for offense as charged.

Table 12  
Admissions to Juvenile Probation by  
TYPE OF DISPOSITION AND PROBLEMS WITH HOSTILITY PRIOR TO ADMISSION  
January 1-December 31, 1975

PROBLEMS WITH HOSTILITY DURING SIX MONTHS PRIOR TO ADMISSION	Boys						Girls					
	Total Probation		Juvenile "C" Probation		Juvenile Regular Probation		Total Probation		Juvenile "C" Probation		Juvenile Regular Probation	
	Number	Percent	Number	Percent	Number	Percent	Number	Percent	Number	Percent	Number	Percent
TOTAL	244	100.0	191	100.0	53	100.0	25	100.0	21	100.0	4	100.0
Few problems with hostile feelings	91	37.3	63	33.0	28	52.8	5	20.0	3	14.3	2	50.0
Moderate problem	107	43.8	90	47.1	17	32.0	10	40.0	10	47.6	-	-
Serious problem	27	11.1	23	12.0	4	7.6	9	36.0	8	38.1	1	25.0
Not reported	19	7.8	15	7.9	4	7.6	1	4.0	-	-	1	25.0

Table 13  
Admissions to Juvenile Probation by  
TYPE OF DISPOSITION AND ABILITY TO MAKE JUDGEMENTS PRIOR TO ADMISSION  
January 1-December 31, 1975

ABILITY TO MAKE JUDGE- MENTS DURING SIX MONTHS PRIOR TO ADMISSION	Boys						Girls					
	Total Probation		Juvenile "C" Probation		Juvenile Regular Probation		Total Probation		Juvenile "C" Probation		Juvenile Regular Probation	
	Number	Percent	Number	Percent	Number	Percent	Number	Percent	Number	Percent	Number	Percent
TOTAL	244	100.0	191	100.0	53	100.0	25	100.0	21	100.0	4	100.0
Good judgement	5	2.1	5	2.6	-	-	1	4.0	-	-	1	25.0
Fairly good judgement	68	27.9	41	21.5	27	50.9	7	28.0	5	23.8	2	50.0
Poor judgement	157	64.3	134	70.2	23	43.4	17	68.0	16	76.2	1	25.0
Not reported	14	5.7	11	5.7	3	5.7	-	-	-	-	-	-

Table 14  
Admissions to Juvenile Probation by  
TYPE OF DISPOSITION AND EMOTIONAL STABILITY PRIOR TO ADMISSION  
January 1-December 31, 1975

EMOTIONAL STABILITY DURING SIX MONTHS PRIOR TO ADMISSION	Boys						Girls					
	Total Probation		Juvenile "C" Probation		Juvenile Regular Probation		Total Probation		Juvenile "C" Probation		Juvenile Regular Probation	
	Number	Percent	Number	Percent	Number	Percent	Number	Percent	Number	Percent	Number	Percent
TOTAL	244	100.0	191	100.0	53	100.0	25	100.0	21	100.0	4	100.0
Emotionally stable	55	22.5	41	21.5	14	26.4	6	24.0	3	14.3	3	75.0
Mildly unstable	151	61.9	120	62.8	31	58.5	13	52.0	13	61.9	-	-
Very unstable	20	8.2	17	8.9	3	5.7	5	20.0	4	19.0	1	25.0
Not reported	18	7.4	13	6.8	5	9.4	1	4.0	1	4.8	-	-



Table 15  
Admissions to Juvenile Probation by  
TYPE OF DISPOSITION AND ABILITY TO PLAN FOR THE FUTURE  
January 1-December 31, 1975

ABILITY TO PLAN FOR FUTURE	Boys						Girls					
	Total Probation		Juvenile "C" Probation		Juvenile Regular Probation		Total Probation		Juvenile "C" Probation		Juvenile Regular Probation	
	Number	Percent	Number	Percent	Number	Percent	Number	Percent	Number	Percent	Number	Percent
TOTAL	244	100.0	191	100.0	53	100.0	25	100.0	21	100.0	4	100.0
Plans constructively for the future	7	2.9	6	3.1	1	1.9	1	4.0	-	-	1	25.0
Some planning for the future	93	38.1	68	35.6	25	47.2	11	44.0	9	42.9	2	50.0
Lives for immediate present	127	52.0	105	55.0	22	41.5	12	48.0	11	52.4	1	25.0
Not reported	17	7.0	12	6.3	5	9.4	1	4.0	1	4.7	-	-

Table 16  
Admissions to Juvenile Probation by  
TYPE OF DISPOSITION AND RACE  
January 1-December 31, 1975

RACE	Boys						Girls					
	Total Probation		Juvenile "C" Probation		Juvenile Regular Probation		Total Probation		Juvenile "C" Probation		Juvenile Regular Probation	
	Number	Percent	Number	Percent	Number	Percent	Number	Percent	Number	Percent	Number	Percent
TOTAL	244	100.0	191	100.0	53	100.0	25	100.0	21	100.0	4	100.0
White	206	84.4	155	81.2	51	96.2	21	84.0	17	81.0	4	100.0
White (Mexican Origin)	4	1.6	4	2.1	-	-	-	-	-	-	-	-
Non-white	34	14.0	32	16.7	2	3.8	4	16.0	4	19.0	-	-
Black	27	11.1	26	13.6	1	1.9	2	8.0	2	9.5	-	-
Native American (Indian)	6	2.5	5	2.6	1	1.9	2	8.0	2	9.5	-	-
Other	1	0.4	1	0.5	-	-	-	-	-	-	-	-

END