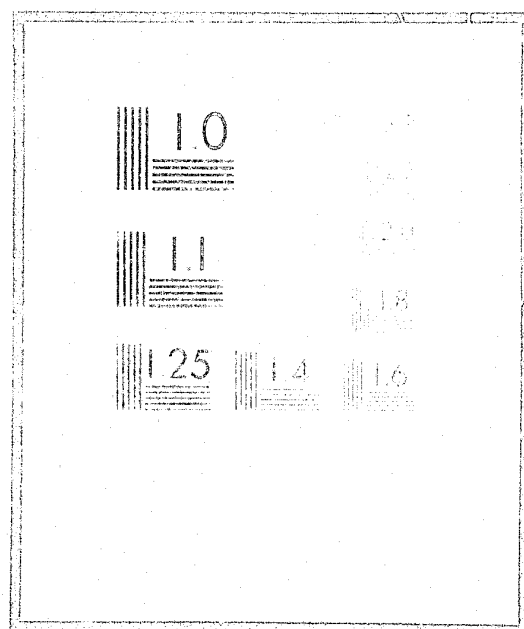


NCJRS

This microfiche was produced from documents received for inclusion in the NCJRS data base. Since NCJRS cannot exercise control over the physical condition of the documents submitted, the individual frame quality will vary. The resolution chart on this frame may be used to evaluate the document quality.



Microfilming procedures used to create this fiche comply with the standards set forth in 41CFR 101-11.604.

Points of view or opinions stated in this document are those of the author(s) and do not represent the official position or policies of the U.S. Department of Justice.

U.S. DEPARTMENT OF JUSTICE
LAW ENFORCEMENT ASSISTANCE ADMINISTRATION
NATIONAL CRIMINAL JUSTICE REFERENCE SERVICE
WASHINGTON, D.C. 20531

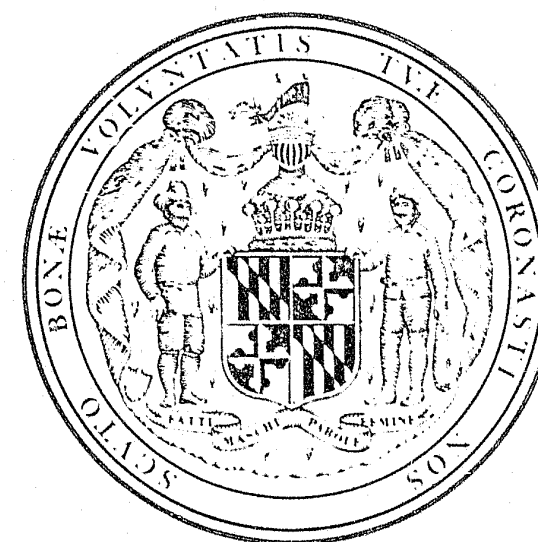
6 8 77

1 5 1 1 m e d

MARYLAND DEPARTMENT OF HEALTH AND MENTAL HYGIENE

DEPARTMENT OF JUVENILE SERVICES

ANNUAL REPORT



1976
FISCAL YEAR

39028c3

STATE OF MARYLAND
DEPARTMENT OF HEALTH AND MENTAL HYGIENE
Neil Solomon, M.D., Ph.D., Secretary

Annual Statistical Report
Fiscal Year 1976
JUVENILE SERVICES ADMINISTRATION
Robert C. Hilson, Director

NCJ 115

FEB 9 1977

ACQUISITIONS

Prepared by
Division of Special Services
— Research and Analysis —



JUVENILE SERVICES ADMINISTRATION
DEPARTMENT OF HEALTH AND MENTAL HYGIENE
201 WEST PRESTON STREET • BALTIMORE, MARYLAND 21201 • AREA CODE 301 383-3773

Neil Solomon, M.D., Ph.D., Secretary

December 14, 1976

THE HONORABLE MARVIN MANDEL
GOVERNOR OF THE STATE OF MARYLAND

THE HONORABLE NEIL SOLOMON, M.D., Ph.D.
SECRETARY, DEPARTMENT OF HEALTH AND MENTAL HYGIENE

It is with pleasure that I herewith submit the report of the Department of Juvenile Services for the 1976 fiscal year.

It is extremely significant that, contrary to the trend which has been evidenced for the past several years, the number of cases coming to our attention during the past fiscal year increased by only 1.5 percent over the number of cases in fiscal year 1975. Comparatively, our 1975 cases represented an increase of 19.3 percent over 1974; and for the period 1968 to 1976, the number of cases served increased by 193.4 percent, or an average yearly increase of 15 percent for this period.

When attempting to analyze the reasons why the workload for Juvenile Services increased at a less than projected rate, one finds many possible factors, including greater attention being paid to the problem of juvenile delinquency by local units of government; improved methods instituted by the court system; and, possibly, the effects of a declining birthrate. However, equally, if not more important, is the significance of many new programs which have been developed in the past three to five years which are now beginning to have some impact upon our juvenile population. These programs cover a myriad of program areas in community-based settings, institutions, and court services.

Certainly, a reduction in the rate of increase of cases as experienced in fiscal year 1976 does not establish a trend. It can, however, become the beginning of a trend towards decreasing juvenile delinquency. To reach that status, adequate funding and staffing must be made available to increase the quantities of effective programs and to enhance the quality of services being rendered. It is felt that we have the nucleus and the basic ingredients of sound measures to effectively combat the juvenile crime problem in Maryland; but without the required support and resources, the task will be much more difficult.

We are well aware that whatever progress we have made would not have been possible without the interest and support of the Executive Office, the Legislature, the Judiciary, and many community groups and organizations. We are deeply appreciative to all of their concern.

ROBERT C. HILSON
Director

TABLE OF CONTENTS

| | |
|----------------------------------------------------------------------------|-----------|
| Table of Organization, Juvenile Services Administration | page 1 |
| Definition of Terms | 2 |
| Maryland Juvenile Services Administration Flow Chart, Fiscal 1976 | 3 |
| Highlights: Juvenile Court Services | 11 |
| Community Services | 40 |
| Institutional Services | 48 |
| Appendix: Federal Grants in Operation During Fiscal 1976 | 64 |

STATISTICS

Budget Expenditures

| | |
|--------------------------------------------------------------------------------------------------------------------------------|---|
| Figure 1: Maryland Juvenile Services Administration Fiscal 1976 Budget | 7 |
| Table 1: Maryland Juvenile Services Administration, Summary of Budget Expenditures by Major Program, Fiscal 1968-1976 | 8 |

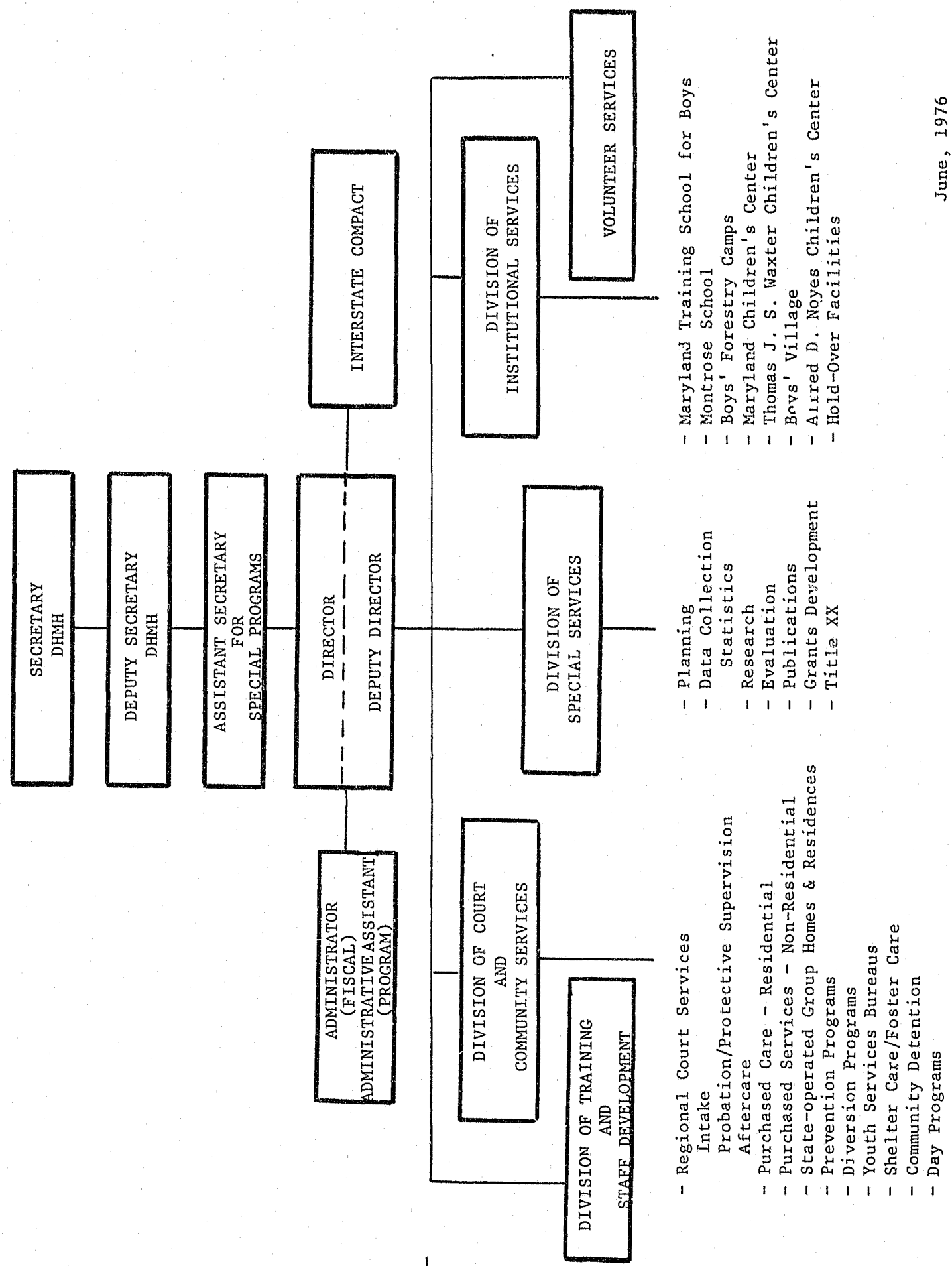
Division of Juvenile Court Services

| | |
|---------------------------------------------------------------------------------------------------------------------------------------------------------------------------------------------------------------|----|
| Table 2: Summary of Juvenile Probation and Court Services Expenditures and Services Rendered, Fiscal 1968-1976 | 14 |
| Table 3: Total Cases Handled by the Juvenile Services Administration by County and Region; Formal, Informal, Change in Disposition and Disapproved/Closed at Intake Cases, 1968-1976 Fiscal Years | 15 |
| Table 4: Formal Juvenile Court Dispositions by County and Region, 1968-1976 Fiscal Years | 16 |
| Table 5: Total Number of Cases Handled Informally by the Juvenile Services Administration by County and Region, 1968-1976 Fiscal Years | 17 |
| Table 6: Total Number of Juvenile Cases Disapproved or Closed at Intake by County and Region, Fiscal Years 1970-1976 | 18 |
| Table 7: Total Offense Case Rate and Total Delinquent Case Rate Per 1,000 Juveniles by County and Region, Fiscal 1976 | 19 |
| Table 8: Disposition by County and Region, Fiscal 1976 | 20 |
| Table 9: Manner of Handling Cases by County, Region and Type of Offense, Fiscal 1976 | 22 |
| Table 10: Manner of Handling Cases by County, Region and Sex, Fiscal 1976 | 23 |
| Table 11: Manner of Handling Cases by County, Region and Race, Fiscal 1976 | 24 |
| Table 12: Total Cases Handled by the Juvenile Services Administration by County, Region and Source of Referral, Fiscal 1976 | 25 |
| Table 13: Total Cases Handled by the Juvenile Services Administration by County, Region and Age, Fiscal 1976 | 26 |
| Table 14: Total Cases Handled by the Juvenile Services Administration by County, Region and Major Reason Referred, Fiscal 1976 | 27 |
| Table 15: Total Cases Handled by the Juvenile Services Administration by Major Reason and Age at Time of Referral, Fiscal 1976 | 29 |
| Table 16: Formal Cases Handled by the Juvenile Services Administration by Major Reason and Disposition, Fiscal 1976 | 30 |
| Table 17: Comparison of the Number of Cases Handled by the Maryland Juvenile Services Administration by Major Reason for Referral - Fiscal 1975-1976 | 32 |
| Table 18: Total Cases Handled by the Maryland Juvenile Services Administration by County and Parental Status, Fiscal 1976 | 33 |
| Table 19: Total Cases Handled by the Maryland Juvenile Services Administration by County and Type of Guardian, Fiscal 1976 | 34 |
| Table 20: Maryland Juvenile Services Administration Multiple Offense Counts, Formal and Informal Cases, Fiscal 1976 | 35 |
| Table 21: Maryland Juvenile Services Administration, Baltimore City and Prince George's County, Adoption and Custody Cases, Fiscal 1976 | 36 |

Division of Community Services
Table 22: Community and Residential Expenditures, Fiscal 1968-1976
Table 23: Community Residential Placements, Number of Juveniles Served, Fiscal 1968-1976
Table 24: Residential and Emergency Placements by Sex and County, Fiscal 1976
Table 25: Residential and Emergency Placements by Race and County, Fiscal 1976
Table 26: Community Residential Placements by Race, Fiscal 1976
Table 27: Youth Service Center Admissions by Age and Sex, Fiscal 1976
Table 28: Maryland Juvenile Services Administration, Total Formally Counseled Cases Served by Youth Services Bureaus by Location, Sex and Race, Fiscal 1976

Division of Institutional Services
Table 29: Maryland Juvenile Services Administration, Summary of Institution Expenditures, Fiscal 1968-1976
Table 30: Summary of Institution Admissions, Fiscal 1968-1976
Table 31: Admissions to Maryland's Juvenile Institutions, Fiscal Year Comparisons, 1975-1976
Table 32: Admissions to Maryland's Juvenile Institutions by County of Residence, Fiscal 1976
Table 33: Admissions to Maryland Training School, Montrose School, Boys' Village and Victor Cullen by Type of Admissions, Fiscal 1968-1976
Table 34: Admissions to Maryland's Training Schools, Forestry Camps and Boys' Village by County of Residence and County of Admitting Court, Fiscal 1976
Table 35: Admissions to Maryland's Juvenile Institutions by Facility and Offense, Fiscal 1976
Figure 2: Admissions to Maryland's Juvenile Institutions by Age Percents, Fiscal 1976
Table 36: Admissions to Maryland's Training Schools, Forestry Camps and Boys' Village by Age and Race, Fiscal 1976
Table 37: Commitments to Maryland's Training Schools and Forestry Camps by Length of Stay (Based on Releases), Fiscal 1976
Table 38: Average Length of Stay for Detentions in Maryland's Juvenile Institutions, Fiscal 1976
Table 39: Admissions to Maryland's Children Centers by Center and Sex, Fiscal 1968-1976
Table 40: Admissions to Maryland's Children Centers by County of Residence and County of Admitting Court, Fiscal 1976
Table 41: Admissions to Maryland's Children Centers by Age and Race, Fiscal 1976

TABLE OF ORGANIZATION
JUVENILE SERVICES ADMINISTRATION



Definition of Terms

THE UNIT OF COUNT is a case referred to the Juvenile Services Administration. Such a case is counted each time a child is referred during the year on a new referral.

COURT means the circuit court of a county or Baltimore City sitting as the juvenile court. In Montgomery County, it means the District Court sitting as a juvenile court.

DELINQUENCY CASES are those cases referred to the Department for acts defined in the statutes of the State of Maryland as the violation of a State law or municipal ordinance by persons who have not reached their 18th birthday.

CHILDREN IN NEED OF SUPERVISION (CINS) are those cases referred to the Juvenile Services Administration involving children who are in need of guidance, treatment, or rehabilitation because they are habitually truant; habitually disobedient, ungovernable or beyond control; deport themselves so as to injure or endanger themselves or others; or commit an offense applicable only to children.

CHILDREN IN NEED OF ASSISTANCE (CINA) are those cases referred to the Juvenile Services Administration which involve children who need the assistance of the court because of dependency, neglect or mental handicaps.

DEPENDENCY CASES are those cases involving a child who has been deprived of adequate support or care by reason of the death, continued absence from the home, or physical, mental or emotional incapacity or disability of his parent, guardian or other custodian.

NEGLECT CASES are those cases involving a child who requires the aid of the court and either has been abandoned or deserted by his parents, guardian or other custodian; whose parent, guardian or other custodian does not adequately care for him although financially able, or offered the financial means to do so; or who suffers or is likely to suffer serious harm from an improper home environment or guardianship, including the lack of moral supervision or guidance, of his parents, guardian or custodian.

MENTALLY HANDICAPPED CASES are those cases in which a mentally retarded or mentally ill child is brought into court for the determination of proper care.

SPECIAL PROCEEDINGS includes guardianship or custody cases or application for permission to marry, or enlist in the armed forces, etc.

MANNER OF HANDLING CASES is classified as FORMAL, INFORMAL, DISAPPROVED OR CLOSED AT INTAKE.

DISAPPROVED CASES are those referrals which are determined as lacking legal sufficiency.

CLOSED AT INTAKE CASES are those referrals which are resolved by an Intake Officer through minimal involvement of staff when the facts and circumstances of the offense and the child's background indicate that no supervision or further counselling from Juvenile Services or intervention by the court is necessary or desirable for effecting a positive adjustment by the child.

INFORMAL ADJUSTMENT involves those referrals which are resolved by an Intake Officer by giving voluntary informal supervision for up to 90 days and/or referral to another agency when it appears that the child and his/her parent need assistance in preventing further violations of the law, but will not require nor benefit from judicial proceedings.

FORMAL CASES are those cases in which a petition has been authorized and filed requiring formal court action.

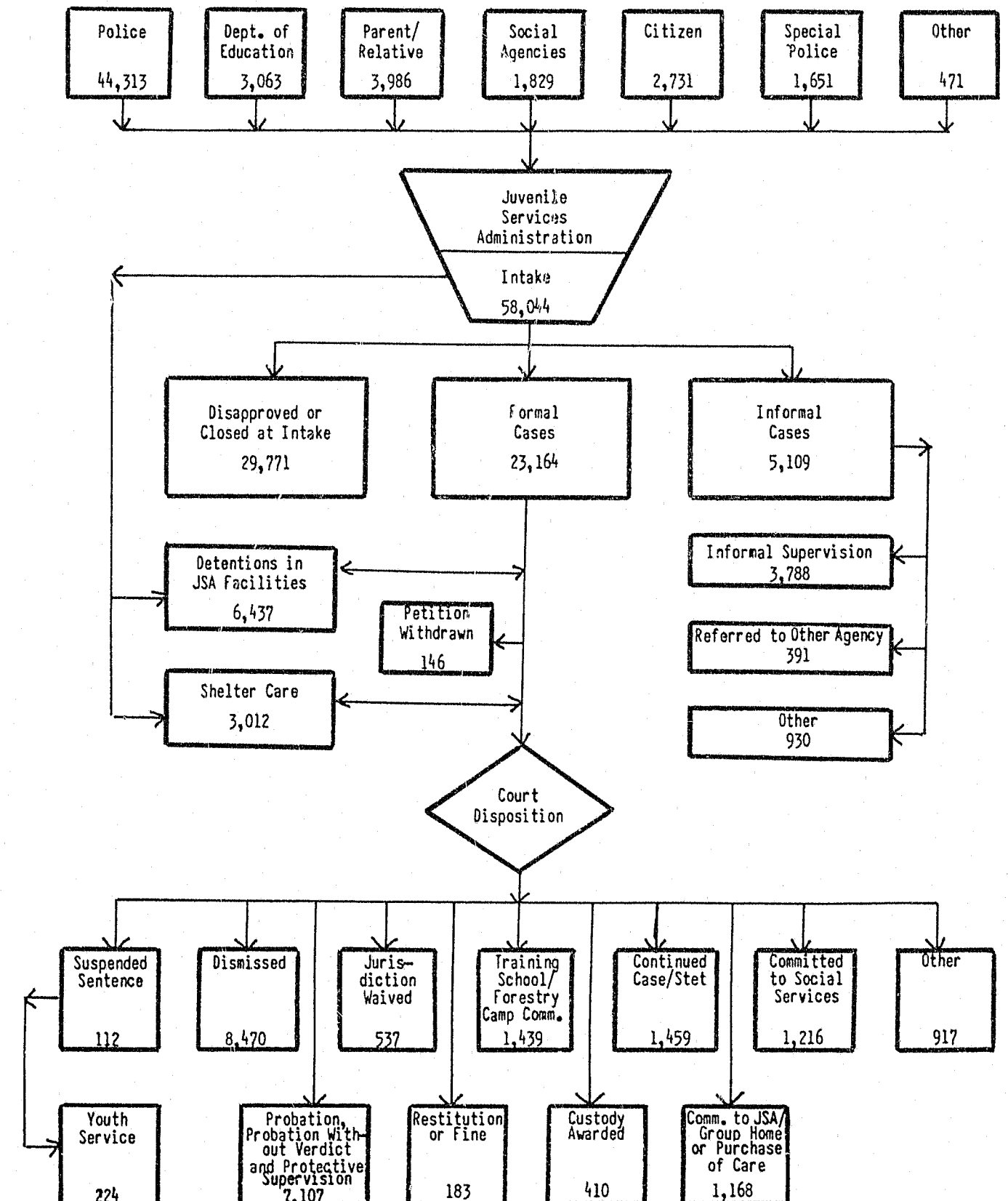
INSTITUTIONAL ADMISSIONS include both commitments and detentions. Such an admission is counted each time a child is either detained or committed to a facility during the year.

COMMITMENT means the transfer of legal custody.

DETENTION means the temporary care of children who, pending court disposition, require secure custody for the protection of themselves and/or the community, in physically restricting facilities.

SHELTER CARE means the temporary care of children in physically unrestricting facilities, pending court disposition.

MARYLAND JUVENILE SERVICES ADMINISTRATION FLOW CHART FISCAL 1976



STATISTICS

FIGURE I
MARYLAND JUVENILE SERVICES ADMINISTRATION
FISCAL 1976 BUDGET

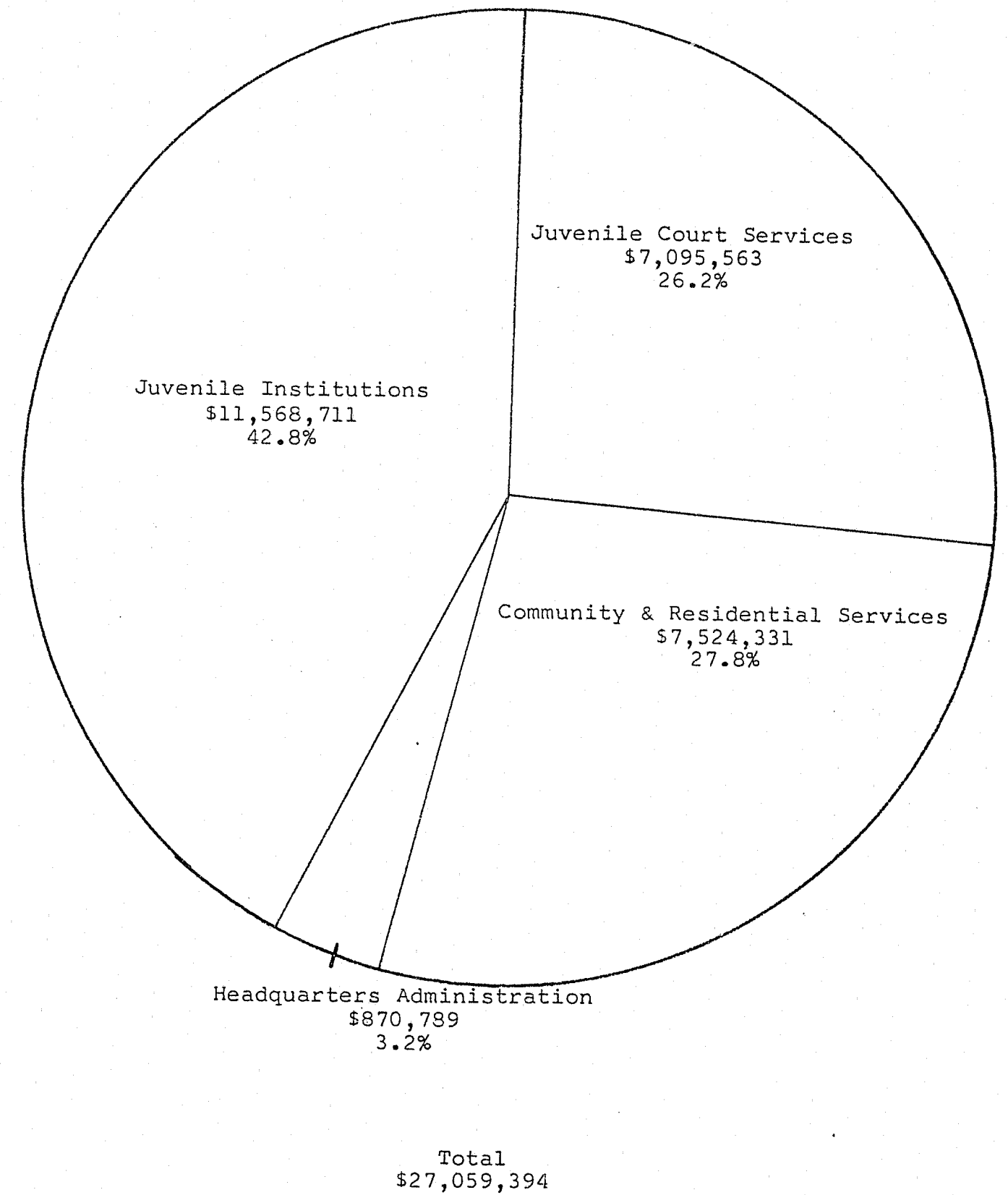


TABLE 1: MARYLAND JUVENILE SERVICES ADMINISTRATION
SUMMARY OF BUDGET EXPENDITURES BY MAJOR PROGRAM
FISCAL 1968 - 1976

| Fiscal Year | Juvenile Institutions | Juvenile Court Services | Community and Residential Services ¹ | Administration, Headquarters ² | Total |
|-------------|--------------------------|----------------------------|----------------------------------------------------|----------------------------------------------|---------------|
| 1968 | \$ 7,261,782 | \$ 2,187,060 | | \$ 456,824 | \$ 9,905,666 |
| 1969 | \$ 7,344,951 | \$ 2,130,139 | \$ 380,242 | \$ 458,217 | \$ 10,313,549 |
| 1970 | \$ 8,539,963 | \$ 2,686,603 | \$ 651,649 | \$ 541,877 | \$ 12,420,092 |
| 1971 | \$ 10,222,861 | \$ 3,755,940 | \$ 1,439,488 | \$ 598,619 | \$ 16,016,908 |
| 1972 | \$ 11,364,651 | \$ 4,793,753 | \$ 2,315,750 | \$ 805,298 | \$ 19,279,452 |
| 1973 | \$ 11,330,290 | \$ 4,916,722 | \$ 3,075,350 | \$ 740,626 | \$ 20,062,988 |
| 1974 | \$ 10,644,860 | \$ 5,112,801 | \$ 4,260,249 | \$ 1,081,863 | \$ 21,099,773 |
| 1975 | \$ 10,512,767 | \$ 6,123,325 | \$ 6,147,085 | \$ 1,097,982 | \$ 23,881,159 |
| 1976 | \$ 11,568,711 | \$ 7,095,563 | \$ 7,524,331 | \$ 870,789 | \$ 27,059,394 |

¹Community and Residential Services were not separately budgeted for fiscal 1968

²The decrease in Administration Headquarters' budget from fiscal 1975 to fiscal 1976 was due to the assimilation of JSA within the Department of Health and Mental Hygiene

DIVISION OF
JUVENILE COURT
SERVICES

HIGHLIGHTS OF JUVENILE COURT SERVICES

Source of Referral

Consistent with previous years experience, a majority of the 58,044 cases that were handled by the Maryland Juvenile Services Administration during fiscal 1976 were "referred by the police" (76.3%). "Parents and other relatives" referred 6.9%, followed by the "Department of Education" with 5.3%, "citizens" with 4.8%, the "Department of Social Services" with 3.0%, "Special Police" with 2.8% and "other" referrals with 0.9%.

Manner of Handling Cases

Whenever a case is referred to the Maryland Juvenile Services Administration, a preliminary inquiry is conducted by the intake unit to determine whether the case should be disapproved because of legal insufficiency, closed at intake, handled informally by an Intake Officer or referred for formal court action.

During fiscal 1976, 51.3% of the 58,044 cases that were handled by the Juvenile Services Administration were disapproved or closed at intake, 8.8% were handled informally at intake and 39.9% received formal court action. The number of cases that were disapproved or closed at intake increased 3.9% over fiscal 1975. Similarly, the number of formal court cases increased 9.9% while the number of cases that were handled informally at intake decreased 31.4%.

Disposition

Of the 23,164 cases that were handled formally during fiscal 1976, 37.6% were "withdrawn", "dismissed", or "warned, adjusted or counselled"; 30.7% were placed on "probation", "protective supervision", or "probation without verdict"; 7.0% had "custody awarded" or were "committed to the Department of Social Services"; 6.3% were "continued without finding" or "stet"; 6.2% were "committed to a training school or forestry camp"; 5.1% were "committed to the Maryland Juvenile Services Administration", "purchase of care" or "group home"; 2.3% had "jurisdiction waived"; and 4.8% were disposed of in other ways.

While the total number of cases that were handled formally during fiscal 1976 increased 9.9% from fiscal 1975, the number of cases that were "withdrawn", "dismissed" or "warned, adjusted or counselled" increased 29.1%, the number that were placed on "probation", "protective supervision" or "probation without verdict" increased 9.9%, "commitments to a training school or forestry camp" increased 6.1% and "commitments to the Maryland Juvenile Services Administra-

tion", "purchase of care" or "group home" increased 0.3%. The number of cases that had "jurisdiction waived", on the other hand, decreased 14.1%, "commitments to the Department of Social Services" and cases in which "custody was awarded" decreased 9.0%, cases "continued without finding" or "stet" decreased 7.0% and the number of cases that were handled in other ways decreased 18.2%.

Juvenile Court Trends

Between 1968 and 1975, the number of cases handled by the Juvenile Services Administration increased steadily from 19,782 in 1968 to 57,162 in 1975, at an annual average increase of almost 21%; however, in a significant departure from this trend, the increase from 1975 to 1976 was only 1.5%, considerably less than the average for the previously mentioned period. The number of cases that were handled formally by the courts, while increasing 44.4% since fiscal 1968, did not show any consistent trend over the period from fiscal 1968 to fiscal 1973. Over the past three years, however, formal court cases have steadily increased from 18,735 during fiscal 1974 to 23,164 during fiscal 1976. The number of cases that were handled informally increased between fiscal 1968 and fiscal 1971, decreasing thereafter, with the exception of an increase during fiscal 1975. The trend for disapproved or closed at intake cases, a screening category which did not exist prior to fiscal 1970, has been to rapidly increase since that time.

Juvenile referrals in Maryland continue to be an urban oriented problem. Five political subdivisions with 1974 populations of 250,000 or more each, reported 83.8% of the juvenile cases handled during fiscal 1976 with 48,628 of the 58,044 cases. Of the five largest political subdivisions, Baltimore City was responsible for the largest percentage of cases with 42.9%. This was followed by Prince George's County with 15.6%, Baltimore County with 9.0%, 8.7% from Anne Arundel County and 7.6% from Montgomery County.

Juvenile Case Rates

The total juvenile case rate for Maryland during fiscal 1976 was 57 cases per 1,000 juveniles, five through seventeen years of age, an increase of only one case per 1,000 juveniles reported during fiscal 1975. This rate ranged from a low of 24 cases per 1,000 juveniles in Wicomico County to a high of 124 cases per 1,000 juveniles in Baltimore City. Although Worcester County again revealed the highest case rate with 129 cases per 1,000 juveniles, this was due primarily to the summer influx of youth to Ocean City.

Of those cases involving delinquent offenses, the case rate was 49 cases per 1,000 juveniles, an increase of only two cases per 1,000 juveniles reported during fiscal 1975. This ranged from a low of 15 cases per 1,000 juveniles in Allegany County to a high of 111 cases per 1,000 juveniles in Baltimore City.

Major Reason for Referral

A majority of the cases that were handled by the Maryland Juvenile Services Administration during fiscal 1976 involved delinquent offenses (49,798 or 85.8%). Of these cases, the largest single offense category was "assault" with 7,011 cases or 12.1% of the cases. This was followed by "burglary-breaking and entering" with 6,746 cases (11.6%), "shoplifting" with 6,294 cases (10.9%) and "larceny" with 5,850 cases (10.1%). Over half of the cases that were referred for delinquent offenses were disapproved or closed at intake (25,495 or 51.2%), 8.8% or 4,377 cases were handled informally at intake and 40.0% or 19,926 cases were handled formally by the courts.

The total number of delinquent cases handled during fiscal 1976 increased 3.0% over fiscal 1975. Of this group, the number of "robbery" cases showed the largest increase, 29.4%, followed by "vandalism" with a 19.0% increase. "Purse Snatching" revealed the largest decrease with 18.7%, followed by "alcoholic beverage violations" with a 12.4% decrease. The number of delinquent cases that were handled formally increased 15.9%, disapproved or closed at intake cases increased 2.7%, while, on the other hand, the number of delinquent cases that were handled informally decreased 30.9%.

Cases involving Children in Need of Supervision (CINS) accounted for 6,133 cases or 10.6% of the total number of cases handled during fiscal 1976. Of these cases, 40.8% involved "ungovernable" behavior, "runaways" accounted for 39.2% and 20.0% involved "truants." A majority of the CINS cases were disapproved or closed at intake (4,141 or 67.5%), 11.5% of 707 cases were handled informally and 21.0% or 1,285 cases received formal court action. The total number of CINS cases handled during fiscal 1976 decreased 4.6% from the number handled during fiscal 1975. "Runaway" cases decreased 9.2% and "ungovernable" cases decreased 5.1% while "truancy" cases increased 7.1%. Of the 6,133 CINS cases handled during fiscal 1976, the number that were handled formally decreased 24.4% from fiscal 1975, informal handling decreased 33.6% while the number that were disapproved or closed at intake increased 13.0%.

Only 2,051 or 3.5% of the cases handled by the Maryland Juvenile Services Administration during fiscal 1976 involved Children in Need of Assistance. Referrals

for "dependency" accounted for 54.4% of these cases, "neglect" cases accounted for 19.0%, 24.1% involved "mental handicaps." A majority of these 2,051 cases were handled formally (92.2%), while 1.2% were handled informally and 6.6% were disapproved or closed at intake. The total number of cases involving Children in Need of Assistance that were handled during fiscal 1976 decreased 10.8% from the 2,300 cases handled during fiscal 1975. "Neglect" cases decreased 40.7% and "neglect and dependency" cases decreased 1.4% while "dependency" cases increased 2.2% and cases involving "mental handicaps" increased 4.1%. Of the 2,051 cases handled during fiscal 1976 that involved Children in Need of Assistance, the number that were disapproved or closed at intake decreased 4.3%, informal handlings decreased 43.2% and formal handlings decreased 10.6%.

Sex Ratio

The sex ratio of cases disposed of by the Maryland Juvenile Services Administration during fiscal 1976 was 3.7 males to every female with 78.9% of the cases involving males and 21.1% involving females. Of the 23,164 cases that were handled formally, however, the sex ratio was 5.2 males to every female with 83.8% of the formal cases involving males and 16.2% involving females. The ratio for the 5,109 informal cases was three males to every female with 75.2% of the cases involving males and 24.8% involving females. Similarly, males accounted for 75.7% of the 29,771 cases that were disapproved or closed at intake, while 24.3% involved females for a rate of 3.1 males for every female.

Of the 45,794 cases handled during fiscal 1976 that involved males, 49.2% were disapproved or closed at intake; by comparison, 12,250 or 59.1% of the cases involving females were similarly handled. Informal handling of cases accounted for 8.4% of the cases involving males and 10.3% of the cases involving females. Formal court action handled 42.4% of the male cases while only 30.6% of the female cases were handled in this manner.

Race

A majority of the cases handled by the Maryland Juvenile Services Administration during fiscal 1976 involved whites (30,893 or 53.2%), while 46.5% or 26,976 involved blacks and 0.3% or 175 were classified as "other" or race information was not recorded. Of the cases involving whites, 53.5% or 16,518 were disapproved or closed at intake, 11.2% or 3,458 were handled informally and 35.3% or 10,917 received formal court action. Of the 26,976 cases involving blacks, 48.8% were disapproved or closed at intake, 6.0% were handled informally and 45.2% received formal court action.

Age of Juvenile

A majority of the cases handled by the Maryland Juvenile Services Administration during fiscal 1976 involved juveniles between fifteen and seventeen years of age (34,986 or 60.3%). In general, the number of cases increased proportionately with an increase in age up to the age of sixteen, decreasing thereafter. Sixteen year olds comprised the largest single age group with 20.7% of the cases followed by fifteen year olds with 20.2% of the cases. The average age of juveniles handled by Juvenile Services, however, was 14.6% years. This was approximately the same regardless of the manner of handling. Thus, the average age was 14.6 years for formal cases, 14.5 years for informal cases and 14.7 years for cases that were disapproved or closed at intake.

Age By Type of Case

Of the 49,798 delinquency cases handled during fiscal 1976, 63.0% involved juveniles who were between the age of fifteen and seventeen years with juveniles sixteen years of age accounting for the largest percentage of such cases (21.7%). The average age of juveniles referred for delinquent offenses, however, was 14.9 years.

A majority of the 6,133 cases involving Children in Need of Supervision consisted of juveniles who were between the ages of fourteen and sixteen years (67.0%) with the largest group comprising the fifteen year olds (26.3%). The average age of juveniles referred as Children in Need of Supervision was 14.5 years.

By way of contrast, juveniles under the age of ten accounted for over half of the 2,051 cases involving Children in Need of Assistance (55.1%) with an average age of 8.3 years for such cases.

Parental Status

Information concerning parental status was available for 41,956 cases or 72.3% of the total number of cases handled during fiscal 1976. For those cases providing this information, 52.9% of the parents were living together; in 6.5% of the cases either the father, the mother or both parents were deceased; 25.9% of the parents were separated; 11.8% of the parents were divorced; 1.9% of the parents were unmarried; and 1.0% of the cases listed parental status as "other".

Type of Guardian

Of the 47,165 cases that provided information during fiscal 1976 concerning type of guardian (81.3% of the total cases handled), approximately half of the juveniles were living with both parents (46.5%). Juveniles living with their mother accounted for 38.6% of the cases, juveniles living with their father accounted for 4.4%, 3.4% of the juveniles were living with their mother and step-father, 0.7% were living with their father and step-mother, 1.2% were living in a foster home, 3.0% in another type of family home, 0.6% were living in an institution (either in-state or out-of-state), 0.6% with non-relatives, 0.1% alone and 0.9% of the cases listed type of guardian as "other".

TABLE 2
SUMMARY OF JUVENILE PROBATION AND COURT SERVICES
EXPENDITURES AND SERVICES RENDERED
FISCAL 1968 - 1976

| Fiscal Year | Budget Expenditures | Juvenile Dispositions* | Probation, Probation Without Verdict and Protective Supervision Cases | Aftercare Cases |
|-------------|---------------------|------------------------|-----------------------------------------------------------------------|-----------------|
| 1968 | \$2,187,060 | 19,782 | 4,274 | 1,518 |
| 1969 | \$2,130,139 | 25,270 | 5,080 | 1,835 |
| 1970 | \$2,686,603 | 26,736 | 4,671 | 1,911 |
| 1971 | \$3,755,940 | 32,703 | 5,226 | 1,920 |
| 1972 | \$4,793,753 | 37,242 | 6,019 | 1,888 |
| 1973 | \$4,916,722 | 41,949 | 5,638 | 1,800 |
| 1974 | \$5,112,801 | 47,905 | 5,064 | 1,409 |
| 1975 | \$6,123,325 | 57,162 | 6,468 | 1,601 |
| 1976 | \$7,095,563 | 58,044 | 7,107 | 1,621 |

* Includes formal, informal, change in disposition and disapproved/closed at intake cases

TABLE 3
TOTAL CASES HANDLED BY THE JUVENILE SERVICES ADMINISTRATION BY COUNTY AND REGION
FORMAL, INFORMAL, CHANGE IN DISPOSITION & DISAPPROVED/CLOSED AT INTAKE CASES
1968 - 1976 FISCAL YEARS

| | 1968 * | | 1969 | | 1970 | | 1971 | | 1972 | | 1973 | | 1974 | | 1975 | | 1976 | | Percent Change 75-76 |
|--------------------------|--------|-------|--------|-------|--------|-------|--------|-------|--------|-------|--------|-------|--------|-------|--------|-------|--------|-------|----------------------|
| | N | % | N | % | N | % | N | % | N | % | N | % | N | % | N | % | N | % | |
| Region 1. Dorchester | 168 | .8 | 170 | .7 | 119 | .5 | 209 | .6 | 199 | .5 | 308 | .7 | 317 | .7 | 300 | .5 | 212 | .4 | - 29.3 |
| Somerset | 98 | .5 | 103 | .4 | 94 | .4 | 120 | .4 | 118 | .3 | 148 | .4 | 123 | .3 | 144 | .3 | 152 | .3 | + 5.6 |
| Wicomico | 209 | 1.0 | 321 | 1.3 | 242 | .9 | 233 | .7 | 238 | .8 | 338 | .8 | 437 | .9 | 413 | .7 | 320 | .5 | - 22.5 |
| Worcester | 287 | 1.5 | 307 | 1.2 | 517 | 2.0 | 818 | 2.5 | 694 | 1.9 | 610 | 1.4 | 656 | 1.4 | 750 | 1.3 | 816 | 1.4 | + 8.8 |
| Region 2. Caroline | 63 | .3 | 128 | .5 | 83 | .3 | 123 | .4 | 129 | .3 | 108 | .2 | 150 | .3 | 206 | .4 | 146 | .2 | - 29.1 |
| Cecil | 245 | 1.2 | 371 | 1.5 | 267 | 1.0 | 428 | 1.3 | 483 | 1.3 | 533 | 1.3 | 481 | 1.0 | 472 | .8 | 548 | .9 | + 16.1 |
| Kent | 114 | .6 | 116 | .4 | 138 | .5 | 123 | .4 | 139 | .4 | 151 | .4 | 214 | .4 | 210 | .4 | 146 | .2 | - 30.5 |
| Queen Anne's | 91 | .5 | 117 | .4 | 118 | .4 | 245 | .7 | 163 | .4 | 163 | .4 | 181 | .4 | 129 | .2 | 154 | .3 | + 19.4 |
| Talbot | 114 | .6 | 63 | .2 | 115 | .4 | 181 | .5 | 144 | .4 | 175 | .4 | 195 | .4 | 254 | .4 | 233 | .4 | - 8.3 |
| Region 3. Baltimore | 1,939 | 9.8 | 2,929 | 11.6 | 3,680 | 11.7 | 3,521 | 10.8 | 3,709 | 10.0 | 4,373 | 10.4 | 5,531 | 11.6 | 6,838 | 12.0 | 5,229 | 9.0 | - 23.5 |
| Harford | 443 | 2.2 | 627 | 2.5 | 695 | 2.6 | 916 | 2.8 | 1,038 | 2.8 | 904 | 2.2 | 915 | 1.9 | 998 | 1.7 | 1,005 | 1.7 | + 0.7 |
| Region 4. Allegany | 553 | 2.8 | 346 | 1.4 | 327 | 1.2 | 422 | 1.3 | 380 | 1.0 | 464 | 1.1 | 516 | 1.1 | 560 | 1.0 | 458 | .8 | - 18.2 |
| Garrett | 94 | .5 | 89 | .4 | 36 | .1 | 120 | .4 | 110 | .3 | 135 | .3 | 108 | .2 | 115 | .2 | 161 | .3 | + 40.0 |
| Washington | 833 | 4.2 | 416 | 1.6 | 559 | 2.1 | 511 | 1.6 | 471 | 1.3 | 750 | 1.8 | 691 | 1.4 | 842 | 1.5 | 850 | 1.5 | + 1.0 |
| Region 5. Anne Arundel | 931 | 4.7 | 1,261 | 5.0 | 1,559 | 6.0 | 2,618 | 8.0 | 2,408 | 6.5 | 2,815 | 6.7 | 3,706 | 7.7 | 5,296 | 9.3 | 5,048 | 8.7 | - 4.7 |
| Carroll | 130 | .7 | 163 | .6 | 223 | .9 | 372 | 1.1 | 231 | .6 | 330 | .8 | 549 | 1.1 | 669 | 1.2 | 621 | 1.1 | - 7.2 |
| Howard | 226 | 1.1 | 546 | 2.2 | 486 | 1.9 | 301 | .9 | 416 | 1.1 | 468 | 1.1 | 789 | 1.6 | 942 | 1.6 | 991 | 1.7 | + 5.2 |
| Region 6. Frederick | 367 | 1.9 | 354 | 1.4 | 441 | 1.7 | 362 | 1.1 | 450 | 1.2 | 567 | 1.4 | 760 | 1.6 | 800 | 1.4 | 832 | 1.4 | + 4.0 |
| Montgomery | 2,091 | 10.6 | 2,724 | 10.8 | 2,590 | 9.9 | 2,950 | 9.0 | 3,677 | 9.8 | 3,031 | 7.2 | 3,532 | 7.4 | 5,253 | 9.2 | 4,399 | 7.6 | - 16.3 |
| Region 7. Calvert | 47 | .2 | 129 | .5 | 134 | .5 | 191 | .6 | 213 | .6 | 245 | .6 | 284 | .6 | 433 | .8 | 310 | .5 | - 28.4 |
| Charles | 115 | .6 | 162 | .6 | 324 | 1.2 | 381 | 1.2 | 532 | 1.6 | 531 | 1.3 | 953 | 2.0 | 937 | 1.7 | 960 | 1.7 | - 2.7 |
| Prince George's | 3,268 | 16.5 | 5,101 | 20.2 | 5,550 | 21.2 | 5,377 | 18.3 | 6,823 | 18.3 | 6,717 | 16.0 | 8,592 | 17.9 | 9,320 | 16.3 | 9,074 | 15.6 | - 2.6 |
| St. Mary's | 75 | .4 | 218 | .9 | 148 | .6 | 132 | .6 | 281 | .8 | 379 | .9 | 456 | 1.0 | 541 | .9 | 501 | .9 | - 7.4 |
| Region 8. Baltimore City | 7,281 | 36.3 | 8,509 | 33.7 | 8,391 | 32.0 | 11,384 | 34.8 | 14,076 | 37.8 | 17,703 | 42.2 | 17,769 | 37.1 | 20,690 | 36.2 | 24,878 | 42.9 | + 20.2 |
| STATE | 19,782 | 100.0 | 25,270 | 100.0 | 26,236 | 100.0 | 32,703 | 100.0 | 37,242 | 100.0 | 41,949 | 100.0 | 47,905 | 100.0 | 57,162 | 100.0 | 58,044 | 100.0 | + 1.5 |

* Includes non-support cases and cases involving adults contributing to the delinquency of a minor

TABLE 4
 FORMAL JUVENILE COURT DISPOSITIONS BY COUNTY AND REGION
 1968 - 1976 FISCAL YEARS

| | 1968* | | 1969 | | 1970 | | 1971 | | 1972 | | 1973 | | 1974 | | 1975 | | 1976 | | Percent Change 75-76 |
|--------------------------|--------|-------|--------|-------|--------|-------|--------|-------|--------|-------|--------|-------|--------|-------|--------|-------|--------|-------|----------------------------|
| | N | % | N | % | N | % | N | % | N | % | N | % | N | % | N | % | N | % | |
| Region 1. Dorchester | 120 | .8 | 144 | .8 | 93 | .6 | 101 | .6 | 86 | .5 | 140 | .7 | 176 | .9 | 142 | .7 | 106 | .5 | - 25.4 |
| Somerset | 63 | .4 | 55 | .3 | 49 | .3 | 74 | .5 | 57 | .3 | 81 | .4 | 73 | .4 | 59 | .3 | 91 | .4 | + 54.2 |
| Wicomico | 133 | .8 | 223 | 1.2 | 158 | 1.0 | 158 | 1.0 | 201 | 1.1 | 243 | 1.3 | 266 | 1.4 | 214 | 1.0 | 167 | .7 | - 22.0 |
| Worcester | 98 | .6 | 88 | .5 | 100 | .6 | 102 | .7 | 124 | .7 | 108 | .6 | 90 | .5 | 144 | .7 | 106 | .5 | - 26.4 |
| Region 2. Caroline | 58 | .4 | 96 | .5 | 45 | .3 | 61 | .4 | 64 | .3 | 52 | .3 | 46 | .2 | 50 | .2 | 39 | .2 | - 22.0 |
| Cecil | 120 | .7 | 120 | .7 | 86 | .6 | 160 | 1.0 | 141 | .8 | 148 | .8 | 163 | .9 | 121 | .6 | 169 | .7 | + 39.7 |
| Kent | 106 | .7 | 100 | .6 | 99 | .6 | 77 | .5 | 63 | .3 | 87 | .4 | 87 | .5 | 73 | .3 | 74 | .3 | + 1.4 |
| Queen Anne's | 90 | .6 | 117 | .7 | 115 | .7 | 178 | 1.1 | 106 | .6 | 113 | .6 | 105 | .6 | 72 | .3 | 50 | .2 | - 30.6 |
| Talbot | 94 | .6 | 52 | .3 | 41 | .3 | 87 | .6 | 73 | .4 | 61 | .3 | 91 | .5 | 61 | .3 | 55 | .2 | - 9.8 |
| Region 3. Baltimore | 1,887 | 11.8 | 1,881 | 10.6 | 1,564 | 9.8 | 1,362 | 8.8 | 1,661 | 9.0 | 1,513 | 7.9 | 1,515 | 8.1 | 1,751 | 8.3 | 1,261 | 5.4 | - 28.0 |
| Harford | 436 | 2.7 | 486 | 2.7 | 359 | 2.3 | 340 | 2.2 | 347 | 1.9 | 313 | 1.6 | 374 | 2.0 | 404 | 1.9 | 418 | 1.8 | + 3.5 |
| Region 4. Allegany | 488 | 3.0 | 309 | 1.7 | 309 | 2.0 | 398 | 2.6 | 346 | 1.9 | 333 | 1.7 | 391 | 2.1 | 463 | 2.2 | 402 | 1.7 | - 13.2 |
| Garrett | 92 | .6 | 86 | .5 | 31 | .2 | 91 | .6 | 77 | .4 | 70 | .4 | 65 | .3 | 83 | .4 | 93 | .4 | + 12.0 |
| Washington | 744 | 4.6 | 383 | 2.2 | 498 | 3.1 | 491 | 3.2 | 419 | 2.3 | 513 | 2.7 | 544 | 2.9 | 609 | 2.9 | 494 | 2.1 | - 18.9 |
| Region 5. Anne Arundel | 631 | 3.9 | 906 | 5.1 | 665 | 4.2 | 1,164 | 7.5 | 999 | 5.4 | 1,049 | 5.4 | 1,384 | 7.4 | 1,514 | 7.2 | 1,441 | 6.3 | - 4.8 |
| Carroll | 128 | .8 | 163 | .9 | 102 | .6 | 126 | .8 | 124 | .7 | 137 | .5 | 161 | .8 | 223 | 1.1 | 193 | .8 | - 13.5 |
| Howard | 181 | 1.1 | 320 | 1.8 | 268 | 1.7 | 181 | 1.2 | 237 | 1.3 | 205 | 1.1 | 296 | 1.6 | 329 | 1.6 | 289 | 1.2 | - 12.2 |
| Region 6. Frederick | 43 | .3 | 63 | .4 | 135 | .8 | 120 | .8 | 150 | .8 | 131 | .7 | 175 | .9 | 166 | .8 | 209 | .9 | + 25.9 |
| Montgomery | 1,262 | 7.9 | 1,475 | 8.3 | 1,417 | 8.9 | 1,218 | 7.9 | 1,485 | 8.1 | 1,212 | 6.3 | 1,230 | 6.6 | 2,076 | 9.8 | 1,653 | 7.2 | - 20.4 |
| Region 7. Calvert | 45 | .3 | 106 | .6 | 49 | .3 | 56 | .4 | 85 | .5 | 72 | .4 | 93 | .5 | 168 | .8 | 116 | .5 | - 31.0 |
| Charles | 115 | .7 | 145 | .8 | 98 | .6 | 109 | .7 | 173 | .9 | 119 | .6 | 251 | 1.3 | 288 | 1.4 | 389 | 1.7 | + 35.1 |
| Prince George's | 3,228 | 20.1 | 3,540 | 19.9 | 3,129 | 19.7 | 2,800 | 18.1 | 3,002 | 16.4 | 2,867 | 14.9 | 3,259 | 17.4 | 3,473 | 16.9 | 3,679 | 15.9 | + 5.9 |
| St. Mary's | 69 | .4 | 215 | 1.2 | 96 | .6 | 87 | .6 | 107 | .6 | 148 | .8 | 199 | 1.1 | 219 | 1.0 | 139 | .6 | - 36.5 |
| Region 8. Baltimore City | 5,812 | 36.2 | 6,715 | 37.7 | 6,395 | 40.2 | 5,892 | 38.2 | 8,213 | 44.8 | 9,529 | 49.6 | 7,701 | 41.1 | 8,377 | 39.7 | 11,531 | 49.8 | + 37.7 |
| STATE | 16,043 | 100.0 | 17,788 | 100.0 | 15,901 | 100.0 | 15,433 | 100.0 | 18,340 | 100.0 | 19,214 | 100.0 | 18,735 | 100.0 | 21,079 | 100.0 | 23,164 | 100.0 | + 9.9 |

* Includes non-support cases and cases involving adults contributing to the delinquency of a minor

TABLE 5
 TOTAL NUMBER OF CASES HANDLED INFORMALLY
 BY THE JUVENILE SERVICES ADMINISTRATION BY COUNTY AND REGION
 1968 - 1976 FISCAL YEARS

| | 1968* | | 1969 | | 1970 | | 1971 | | 1972 | | 1973 | | 1974 | | 1975 | | 1976 | | Percent Change 75-76 |
|--------------------------|-------|-------|-------|-------|-------|-------|--------|-------|--------|-------|-------|-------|-------|-------|-------|-------|-------|-------|----------------------------|
| | N | % | N | % | N | % | N | % | N | % | N | % | N | % | N | % | N | % | |
| Region 1. Dorchester | 41 | 1.3 | 23 | .3 | 20 | .2 | 103 | .8 | 73 | .7 | 67 | .8 | 31 | .5 | 57 | .8 | 31 | .6 | - 45.6 |
| Somerset | 35 | 1.1 | 48 | .7 | 45 | .5 | 43 | .4 | 39 | .4 | 9 | .1 | 1 | .0 | 1 | | | | |
| Wicomico | 74 | 2.3 | 93 | 1.4 | 83 | 1.0 | 70 | .6 | 71 | .7 | 6 | .1 | 7 | .1 | 1 | | 13 | .3 | + 1200.0 |
| Worcester | 187 | 5.9 | 214 | 3.2 | 378 | 4.4 | 701 | 5.7 | 281 | 2.7 | | | 1 | .0 | 5 | .1 | 5 | .1 | N/C |
| Region 2. Caroline | 124 | 3.9 | 31 | .5 | 13 | .2 | 56 | .5 | 35 | .3 | 16 | .2 | 25 | .4 | 20 | .3 | 27 | .5 | + 35.0 |
| Cecil | 8 | .2 | 16 | .2 | 8 | .1 | 14 | .1 | 55 | .5 | 23 | .3 | 21 | .4 | 19 | .2 | 62 | 1.2 | + 129.6 |
| Kent | 1 | .0 | | | | | 66 | .5 | 48 | .5 | 41 | .5 | 76 | 1.3 | 57 | .8 | 28 | .5 | - 31.6 |
| Queen Anne's | | | 11 | .2 | 14 | .2 | 65 | .5 | 41 | .4 | 32 | .4 | 76 | 1.3 | 165 | 2.2 | 95 | 1.9 | + 50.9 |
| Talbot | | | | | | | | | | | | | | | | | | | - 42.4 |
| Region 3. Baltimore | 1 | .0 | 1,016 | 15.4 | 1,308 | 15.2 | 1,558 | 12.7 | 1,614 | 15.6 | 1,781 | 21.3 | 1,149 | 19.0 | 3,513 | 47.2 | 781 | 15.3 | - 77.8 |
| Harford | | | 139 | 2.1 | 272 | 3.2 | 510 | 4.2 | 653 | 6.3 | 489 | 5.3 | 430 | 7.1 | 34 | .4 | 18 | .4 | - 47.1 |
| Region 4. Allegany | 65 | 2.0 | 36 | .6 | 17 | .2 | 17 | .1 | 27 | .3 | 52 | .6 | 6 | .1 | 6 | .1 | 5 | .1 | - 16.7 |
| Garrett | 1 | .0 | | | 4 | .0 | 2 | .0 | 29 | .3 | 50 | .6 | 34 | .6 | 24 | .3 | 43 | .8 | + 79.2 |
| Washington | 89 | 2.8 | 33 | .5 | 55 | .6 | 20 | .2 | 13 | .1 | 46 | .5 | 25 | .4 | 97 | 1.3 | 245 | 4.8 | + 152.6 |
| Region 5. Anne Arundel | 121 | 3.8 | 143 | 2.2 | 702 | 8.1 | 1,189 | 9.7 | 1,038 | 10.0 | 216 | 2.6 | 81 | 1.3 | 865 | 11.6 | 993 | 19.4 | + 14.2 |
| Carroll | 1 | .0 | | | 44 | .5 | 28 | .2 | 22 | .2 | 34 | .4 | 25 | .4 | 131 | 1.7 | 113 | 2.2 | - 13.7 |
| Howard | | | | | 46 | .5 | 81 | .7 | 93 | .9 | 2 | .0 | 1 | .0 | 12 | .2 | 12 | .2 | N/C |
| Region 6. Frederick | 324 | 10.1 | 291 | 4.5 | 183 | 2.1 | 67 | .5 | 111 | 1.1 | 98 | 1.2 | 72 | 1.2 | 112 | 1.5 | 90 | 1.8 | - 19.6 |
| Montgomery | 791 | 24.7 | 1,164 | 17.9 | 1,164 | 13.5 | 1,378 | 11.2 | 1,961 | 19.0 | 1,293 | 15.5 | 1,858 | 30.7 | 770 | 10.3 | 601 | 11.8 | - 21.9 |
| Region 7. Calvert | 2 | .1 | 23 | .3 | 85 | 1.0 | 134 | 1.1 | 114 | 1.1 | 173 | 2.1 | 184 | 3.1 | 253 | 3.5 | 183 | 3.3 | - 34.9 |
| Charles | 1 | .0 | 16 | .2 | 226 | 2.6 | 244 | 2.0 | 262 | 2.5 | 78 | .9 | 39 | .6 | 66 | .9 | 26 | .5 | - 60.6 |
| Prince George's | 3 | .2 | 1,513 | 22.9 | 2,395 | 27.6 | 2,983 | 24.2 | 2,175 | 21.0 | 2,243 | 26.3 | 903 | 14.9 | 557 | 7.5 | 777 | 13.8 | + 26.9 |
| St. Mary's | | | 3 | .0 | 21 | .2 | 102 | .8 | 143 | 1.4 | 176 | 2.1 | 22 | .4 | 1 | | 1 | .0 | N/C |
| Region 8. Baltimore City | 1,332 | 41.6 | 1,536 | 23.2 | 1,378 | 16.0 | 2,623 | 21.3 | 1,284 | 12.4 | 1,378 | 16.5 | 345 | 15.6 | 645 | 8.7 | 1,032 | 20.2 | + 60.0 |
| STATE | 3,201 | 100.0 | 6,616 | 100.0 | 8,632 | 100.0 | 12,392 | 100.0 | 10,353 | 100.0 | 8,358 | 100.0 | 6,045 | 100.0 | 7,443 | 100.0 | 5,199 | 100.0 | - 31.4 |

* Includes non-support cases and cases involving adults contributing to the delinquency of a minor

TABLE 6
TOTAL NUMBER OF JUVENILE CASES DISAPPROVED OR CLOSED AT INTAKE BY COUNTY AND REGION
FISCAL YEARS 1970 - 1976

| | 1970 | | 1971 | | 1972 | | 1973 | | 1974 | | 1975 | | 1976 | | Percent Change 1975-1976 |
|--------------------------|-------|-------|-------|-------|-------|-------|--------|-------|--------|-------|--------|-------|--------|-------|--------------------------------|
| | N | % | N | % | N | % | N | % | N | % | N | % | N | % | |
| Region 1. Dorchester | | | 2 | .1 | 40 | .5 | 101 | .7 | 110 | .5 | 101 | .4 | 75 | .2 | - 25.7 |
| Somerset | | | | | 22 | .3 | 58 | .4 | 49 | .2 | 84 | .3 | 61 | .2 | - 27.4 |
| Wicomico | | | | | 16 | .2 | 89 | .6 | 164 | .7 | 198 | .7 | 140 | .5 | - 29.3 |
| Worcester | 33 | 2.7 | 15 | .3 | 239 | 3.4 | 502 | 3.5 | 565 | 2.4 | 601 | 2.1 | 705 | 2.4 | + 17.3 |
| Region 2. Caroline | 24 | 2.0 | 3 | .1 | 30 | .3 | 40 | .3 | 79 | .4 | 136 | .5 | 80 | .3 | - 41.2 |
| Cecil | | | 13 | .3 | 175 | 2.1 | 330 | 2.3 | 285 | 1.2 | 324 | 1.1 | 317 | 1.1 | - 2.2 |
| Kent | 31 | 2.6 | 37 | .8 | 21 | .2 | 41 | .3 | 106 | .5 | 118 | .4 | 59 | .2 | - 50.0 |
| Queen Anne's | 3 | .3 | 1 | .0 | 9 | .1 | 9 | .1 | | | | | 76 | .2 | |
| Talbot | 60 | 4.3 | 27 | .6 | 30 | .3 | 82 | .6 | 28 | .1 | 28 | .1 | 33 | .3 | + 196.4 |
| Region 3. Baltimore | 108 | 8.9 | 492 | 11.0 | 434 | 5.1 | 1,079 | 7.5 | 2,867 | 12.4 | 1,574 | 5.5 | 3,187 | 10.7 | + 102.5 |
| Harford | 63 | 5.2 | 63 | 1.4 | 58 | .7 | 102 | .7 | 111 | .5 | 560 | 2.0 | 569 | 1.9 | + 1.6 |
| Region 4. Allegany | | | | | 7 | .1 | 79 | .5 | 119 | .5 | 91 | .3 | 51 | .2 | - 44.0 |
| Garrett | 1 | .1 | 20 | .5 | 4 | .0 | 15 | .1 | 9 | .0 | 8 | | 25 | .1 | + 212.5 |
| Washington | 4 | .3 | | | 39 | .5 | 191 | 1.3 | 122 | .5 | 136 | .5 | 111 | .4 | - 18.4 |
| Region 5. Anne Arundel | 27 | 2.2 | 68 | 1.5 | 371 | 4.3 | 1,550 | 10.8 | 2,241 | 9.7 | 2,917 | 10.2 | 2,614 | 8.8 | - 10.4 |
| Carroll | 77 | 6.3 | 218 | 4.9 | 85 | 1.0 | 177 | 1.3 | 363 | 1.6 | 315 | 1.1 | 315 | 1.0 | N/C |
| Howard | 1 | .1 | 9 | .2 | 86 | 1.0 | 261 | 1.8 | 492 | 2.1 | 601 | 2.1 | 690 | 2.3 | + 14.8 |
| Region 6. Frederick | 123 | 10.1 | 172 | 3.9 | 189 | 2.2 | 338 | 2.3 | 513 | 2.2 | 522 | 1.8 | 533 | 1.8 | + 2.1 |
| Montgomery | | | 354 | 7.9 | 231 | 2.7 | 526 | 3.7 | 444 | 1.9 | 2,407 | 8.4 | 2,145 | 7.2 | - 10.9 |
| Region 7. Calvert | | | | | 14 | .2 | 3 | .0 | 7 | .0 | 7 | | 26 | .1 | + 271.4 |
| Charles | | | 28 | .6 | 147 | 1.7 | 334 | 2.3 | 663 | 2.9 | 633 | 2.2 | 545 | 1.8 | - 13.9 |
| Prince George's | 21 | 1.7 | 194 | 4.4 | 1,646 | 19.2 | 1,607 | 11.2 | 4,439 | 19.2 | 5,290 | 18.5 | 4,688 | 15.7 | - 11.4 |
| St. Mary's | 31 | 2.6 | 3 | .1 | 26 | .3 | 55 | .4 | 235 | 1.0 | 321 | 1.1 | 361 | 1.2 | + 12.5 |
| Region 8. Baltimore City | 607 | 50.0 | 2,740 | 61.4 | 4,579 | 53.6 | 6,796 | 47.3 | 9,123 | 39.5 | 11,668 | 40.7 | 12,315 | 41.4 | + 5.5 |
| STATE | 1,214 | 100.0 | 4,459 | 100.0 | 8,549 | 100.0 | 14,377 | 100.0 | 23,125 | 100.0 | 28,640 | 100.0 | 29,771 | 100.0 | + 3.9 |

TABLE 7
TOTAL OFFENSE CASE RATE AND TOTAL DELINQUENT CASE RATE
PER 1,000 JUVENILES BY COUNTY AND REGION - FISCAL 1976

| | Population Estimate 5 through 17 years July 1, 1974* | Total Cases Handled by Juvenile Services Administration | Total Case Rate Per 1,000 Juveniles | Total Delinquent Cases Handled by Juvenile Services Administration | Delinquent Case Rate Per 1,000 Juveniles |
|--------------------------|------------------------------------------------------------|------------------------------------------------------------------|----------------------------------------|-----------------------------------------------------------------------------|------------------------------------------------|
| Region 1. Dorchester | 6,680 | 212 | 32 | 165 | 25 |
| Somerset | 4,470 | 152 | 34 | 116 | 26 |
| Wicomico | 13,600 | 320 | 24 | 262 | 19 |
| Worcester** | 6,340 | 816 | 129 | 627 | 99 |
| Region 2. Caroline | 5,200 | 146 | 28 | 114 | 22 |
| Cecil | 14,700 | 543 | 37 | 523 | 36 |
| Kent | 3,890 | 146 | 38 | 107 | 28 |
| Queen Anne's | 4,760 | 154 | 32 | 140 | 29 |
| Talbot | 5,640 | 233 | 41 | 209 | 37 |
| Region 3. Baltimore | 151,270 | 5,229 | 35 | 4,593 | 30 |
| Harford | 35,370 | 1,005 | 28 | 824 | 23 |
| Region 4. Allegany | 13,640 | 458 | 25 | 285 | 15 |
| Garrett | 6,030 | 161 | 27 | 104 | 17 |
| Washington | 25,520 | 850 | 33 | 618 | 24 |
| Region 5. Anne Arundel | 87,670 | 5,048 | 58 | 4,452 | 51 |
| Carroll | 19,450 | 621 | 32 | 483 | 25 |
| Howard | 24,240 | 991 | 41 | 920 | 38 |
| Region 6. Frederick | 23,920 | 832 | 35 | 727 | 30 |
| Montgomery | 144,340 | 4,399 | 30 | 3,226 | 22 |
| Region 7. Calvert | 6,990 | 310 | 44 | 225 | 32 |
| Charles | 18,410 | 960 | 52 | 692 | 38 |
| Prince George's | 173,230 | 9,074 | 52 | 7,651 | 44 |
| St. Mary's | 14,160 | 501 | 35 | 414 | 29 |
| Region 8. Baltimore City | 201,410 | 24,878 | 124 | 22,321 | 111 |
| STATE | 1,015,930 | 58,044 | 57 | 49,798 | 49 |

* Population data supplied by the Maryland Center for Health Statistics

** The high case rates for Worcester County are due to the summer influx of youth to Ocean City

TABLE 8
DISPOSITION BY COUNTY AND REGION
FISCAL 1976

| | Petition Withdrawn | Dismissed | Warned, Adjusted or Counselled | Jurisdiction Waived | Continue Case without finding | Custody Awarded | Committed to Department of Social Services | Committed to Training School | Probation | Referred to other agency | Restitution or Fine | Support Ordered or Revised | Suspended Sentence | Other |
|--------------------------|-----------------------|-----------|--------------------------------------|------------------------|-------------------------------------|--------------------|--------------------------------------------------|---------------------------------|-----------|-----------------------------|------------------------|-------------------------------|-----------------------|-------|
| Region 1. Dorchester | 2 | 15 | | 15 | | 15 | 9 | 15 | 16 | | | | | 4 |
| Somerset | | 12 | | 19 | | | 14 | 5 | 29 | | 1 | | | |
| Wicomico | 2 | 19 | 1 | 17 | 6 | 24 | 20 | 11 | 51 | | | | | 6 |
| Worcester | 1 | 23 | 1 | 23 | 6 | 1 | 3 | 2 | 32 | | | | | 5 |
| Region 2. Caroline | 5 | 7 | | 2 | | 5 | 5 | 2 | 11 | | | | | 1 |
| Cecil | 11 | 40 | | 8 | | | 1 | 10 | 45 | | 2 | | 2 | 16 |
| Kent | | 12 | | 8 | | 4 | 7 | 5 | 20 | | | 12 | | |
| Queen Anne's | | 9 | | 3 | | | 3 | 8 | 19 | | | 1 | | 3 |
| Talbot | 1 | 20 | 2 | 3 | | 1 | | 5 | 17 | 1 | | | | 1 |
| Region 3. Baltimore | 3 | 334 | 3 | 58 | 4 | | 117 | 96 | 490 | 2 | 2 | 3 | 2 | 37 |
| Harford | 1 | 91 | | 2 | 2 | | 47 | 17 | 146 | | 1 | | | 16 |
| Region 4. Allegany | 8 | 34 | 17 | 1 | 2 | 67 | 3 | 13 | 39 | | 20 | 1 | 7 | 77 |
| Garrett | 5 | 5 | 1 | 3 | 1 | 4 | 2 | 14 | 31 | 1 | | | | 3 |
| Washington | 3 | 29 | 18 | 19 | 3 | 22 | 37 | 35 | 56 | 2 | 29 | | 69 | 39 |
| Region 5. Anne Arundel | 12 | 308 | | 10 | 207 | 91 | 155 | 3 | 311 | | 1 | | | 190 |
| Carroll | | 25 | 1 | 5 | 1 | 3 | 17 | 6 | 47 | 4 | 8 | | | 9 |
| Howard | 2 | 123 | | 2 | 1 | 10 | 5 | 5 | 103 | | | | | 8 |
| Region 6. Frederick | 18 | 31 | | 7 | 1 | 2 | 9 | 3 | 77 | | | | | 26 |
| Montgomery | | 533 | 3 | 15 | 8 | 5 | 104 | 55 | 585 | | 89 | | 28 | 65 |
| Region 7. Calvert | | 14 | 1 | 4 | | 1 | 14 | 10 | 46 | 2 | | | 2 | 6 |
| Charles | 22 | 11 | | 6 | | 1 | 35 | 2 | 146 | | | | | 5 |
| Prince George's | 2 | 728 | 25 | 48 | 1 | 143 | 259 | 168 | 979 | | 24 | | 2 | 21 |
| St. Mary's | | 16 | 3 | 3 | | | 6 | 4 | 77 | | | | | 1 |
| Region 8. Baltimore City | 48 | 6,031 | 27 | 256 | 11 | 6 | 344 | 836 | 3,085 | | 6 | | | 161 |
| STATE | 146 | 8,470 | 103 | 537 | 254 | 410 | 1,216 | 1,330 | 6,508 | 12 | 183 | 17 | 112 | 700 |

TABLE 8
(continued)

| | Committed to Mental Institution | Referred to Psychiatric Care | Settled | Probation without verdict | Committed to Juvenile Services Administration/ Purchase of Care | Group Home | Protective Supervision | Committed to Forestry Camp | Referred to Mental Retardation Administration | Total Formal | Total Informal | Total Disapproved/ Closed at Intake | GRAND TOTAL |
|--------------------------|---------------------------------------|---------------------------------|---------|---------------------------------|--------------------------------------------------------------------------|---------------|---------------------------|-------------------------------|-----------------------------------------------------|-----------------|-------------------|----------------------------------------|-------------|
| Region 1. Dorchester | | | | | 6 | 1 | 8 | | | 106 | 31 | 75 | 212 |
| Somerset | | | | | 3 | | 7 | | | 91 | | 61 | 152 |
| Wicomico | | | 1 | | | 3 | 6 | 1 | | 167 | 13 | 140 | 320 |
| Worcester | | | | | 6 | | 3 | | | 106 | 5 | 705 | 816 |
| Region 2. Caroline | | | 1 | | | | | | | 39 | 27 | 80 | 146 |
| Cecil | 1 | | 2 | 1 | 10 | 8 | | 12 | | 169 | 62 | 317 | 548 |
| Kent | | | | | 2 | 2 | 1 | 1 | | 74 | 13 | 59 | 146 |
| Queen Anne's | | | | | | 1 | 1 | 2 | | 50 | 28 | 76 | 154 |
| Talbot | | | | | 2 | 1 | 1 | | | 55 | 95 | 83 | 233 |
| Region 3. Baltimore | 6 | | 28 | 1 | 62 | | 7 | 1 | | 1,261 | 781 | 3,187 | 5,229 |
| Harford | | | 4 | 28 | 26 | | 25 | 12 | | 418 | 18 | 569 | 1,005 |
| Region 4. Allegany | | 1 | 15 | 29 | 15 | | | | | 402 | 5 | 51 | 458 |
| Garrett | 2 | | | 9 | 4 | 4 | 4 | 3 | | 93 | 43 | 25 | 161 |
| Washington | | | 3 | 83 | 20 | | 27 | | | 494 | 245 | 111 | 850 |
| Region 5. Anne Arundel | 1 | | 22 | 17 | 73 | | 79 | 1 | | 1,441 | 993 | 2,614 | 5,048 |
| Carroll | | | 4 | | 12 | | 13 | 2 | | 193 | 113 | 315 | 621 |
| Howard | | | | | 15 | | 6 | 5 | | 289 | 12 | 690 | 991 |
| Region 6. Frederick | 1 | | | | 7 | | | | | 209 | 90 | 533 | 832 |
| Montgomery | 17 | 4 | | 8 | 58 | 43 | 17 | 10 | | 1,653 | 601 | 2,145 | 4,399 |
| Region 7. Calvert | | | 7 | | 4 | 2 | 2 | 1 | | 116 | 168 | 26 | 310 |
| Charles | 2 | | 117 | | 10 | | 25 | 7 | | 389 | 26 | 545 | 960 |
| Prince George's | 12 | | 977 | | 218 | | 69 | 2 | | 3,679 | 707 | 4,688 | 9,074 |
| St. Mary's | 1 | | 23 | | 3 | | 1 | 1 | 1 | 139 | 1 | 361 | 501 |
| Region 8. Baltimore City | 24 | | 1 | | 546 | 1 | 121 | 15 | 12 | 11,531 | 1,032 | 12,315 | 24,878 |
| STATE | 67 | 5 | 1,205 | 176 | 1,102 | 66 | 423 | 109 | 13 | 23,164 | 5,109 | 29,771 | 58,044 |

TABLE 9
MANNER OF HANDLING CASES BY COUNTY, REGION AND TYPE OF OFFENSE
FISCAL 1976

| | Formal | | | | Informal | | | Disapproved/Closed at Intake | | |
|---------------------------------------------------------------|-----------------------------|---------------------|-------------------------|---------------------|---------------------------|-----------------------|--------|------------------------------|--------------------------|-----------------------|
| | Delinquent | CINS | CINA | Special Proceedings | Delinquent | CINS | CINA | Delinquent | CINS | CINA |
| Region 1. Dorchester Somerset Wicomico Worcester | 73 73 111 93 | 6 3 1 8 | 27 15 54 4 | 1 1 | 29 13 4 | 2 1 | | 63 43 138 530 | 11 18 2 172 | 1 1 2 3 |
| Region 2. Caroline Cecil Kent Queen Anne's Talbot | 22 162 50 43 47 | 1 5 7 | 16 2 24 7 1 | | 21 59 9 25 91 | 6 3 4 3 4 | | 71 302 48 72 71 | 9 14 11 4 12 | 1 1 1 1 1 |
| Region 3. Baltimore Harford | 1,036 321 | 83 36 | 142 61 | | 651 18 | 126 | 4 | 2,906 485 | 244 84 | 37 |
| Region 4. Allegany Garrett Washington | 234 67 356 | 40 18 33 | 72 5 105 | 56 3 | 2 24 190 | 3 19 41 | 14 | 49 13 72 | 2 12 37 | 2 |
| Region 5. Anne Arundel Carroll Howard | 1,065 142 254 | 181 28 19 | 195 22 16 | 1 | 960 101 11 | 33 12 1 | | 2,427 240 655 | 186 74 34 | 1 1 1 |
| Region 6. Frederick Montgomery | 176 1,366 | 20 134 | 13 153 | | 71 548 | 18 52 | 1 1 | 480 1,312 | 52 833 | 1 |
| Region 7. Calvert Charles Prince George's St. Mary's | 96 316 2,993 130 | 6 40 250 6 | 14 33 436 3 | | 118 25 625 1 | 50 1 80 | 2 | 11 351 4,033 283 | 14 187 644 78 | 1 7 11 1 |
| Region 8. Baltimore City | 10,700 | 360 | 471 | | 781 | 248 | 3 | 10,840 | 1,407 | 68 |
| STATE | 19,926 | 1,285 | 1,891 | 62 | 4,377 | 707 | 25 | 25,495 | 4,141 | 135 |

TABLE 10
MANNER OF HANDLING CASES BY COUNTY, REGION AND SEX
FISCAL 1976

| | Formal | | | Informal | | | Disapproved/Closed at Intake | | |
|---------------------------------------------------------------|-----------------------------|-------------------------|-----------------------------|----------------------------|------------------------|----------------------------|------------------------------|---------------------------|-----------------------------|
| | Male | Female | Total | Male | Female | Total | Male | Female | Total |
| Region 1. Dorchester Somerset Wicomico Worcester | 76 69 115 82 | 30 22 52 24 | 106 91 167 106 | 18 12 2 | 13 1 3 | 31 13 5 | 53 44 92 490 | 22 17 48 215 | 75 61 140 705 |
| Region 2. Caroline Cecil Kent Queen Anne's Talbot | 32 145 60 43 47 | 7 24 14 7 8 | 39 169 74 50 55 | 23 53 11 23 71 | 4 9 2 5 24 | 27 62 13 28 95 | 66 266 40 68 70 | 14 51 19 8 13 | 80 317 59 76 83 |
| Region 3. Baltimore Harford | 1,070 353 | 191 65 | 1,261 418 | 570 17 | 211 1 | 781 18 | 2,492 436 | 695 133 | 3,187 569 |
| Region 4. Allegany Garrett Washington | 289 75 366 | 113 18 128 | 402 93 494 | 3 27 162 | 2 16 83 | 5 43 245 | 46 18 71 | 5 7 40 | 51 25 111 |
| Region 5. Anne Arundel Carroll Howard | 1,110 154 237 | 331 39 52 | 1,441 193 289 | 761 92 7 | 232 21 5 | 993 113 12 | 2,127 230 530 | 487 85 160 | 2,614 315 690 |
| Region 6. Frederick Montgomery | 164 1,406 | 45 247 | 209 1,653 | 67 493 | 23 108 | 90 601 | 393 1,417 | 140 728 | 533 2,145 |
| Region 7. Calvert Charles Prince George's St. Mary's | 96 321 3,011 113 | 20 68 658 26 | 116 389 3,679 139 | 132 14 547 1 | 36 12 160 | 168 26 707 1 | 7 386 3,498 274 | 19 159 1,190 87 | 26 545 4,688 361 |
| Region 8. Baltimore City | 9,985 | 1,546 | 11,531 | 736 | 296 | 1,032 | 9,419 | 2,896 | 12,315 |
| STATE | 19,419 | 3,745 | 23,164 | 3,842 | 1,267 | 5,109 | 22,533 | 7,238 | 29,771 |

TABLE 11
MANNER OF HANDLING CASES BY COUNTY, REGION AND RACE
FISCAL 1976

| | Formal | | | | Informal | | | | Disapproved/Closed at Intake | | | |
|---------------------------------------------------------------|-----------------------------|--------------------------|------------------------|-----------------------------|---------------------------|------------------------|------------------------|----------------------------|------------------------------|----------------------------|------------------------|-----------------------------|
| | white | Black | Other or Unknown | Total | white | Black | Other or Unknown | Total | white | Black | Other or Unknown | Total |
| Region 1. Dorchester Somerset Wicomico Worcester | 43 52 92 85 | 63 39 73 21 | 2 | 106 91 157 106 | 18 11 5 | 13 2 | | 31 13 5 | 52 39 84 627 | 23 22 55 77 | 1 1 | 75 61 140 705 |
| Region 2. Caroline Cecil Kent Queen Anne's Talbot | 26 162 41 43 37 | 13 6 33 7 18 | 1 | 39 169 74 50 55 | 21 58 9 23 57 | 5 2 4 5 38 | 1 2 | 27 62 13 28 95 | 58 301 39 62 58 | 22 16 20 14 25 | | 80 317 59 76 83 |
| Region 3. Baltimore Harford | 1,016 352 | 244 66 | 1 | 1,261 418 | 647 16 | 133 2 | 1 | 781 18 | 2,563 479 | 620 90 | 4 | 3,187 569 |
| Region 4. Allegany Garrett Washington | 385 85 456 | 17 8 38 | | 402 93 494 | 5 43 229 | | | 5 43 245 | 50 25 109 | 1 2 | | 51 25 111 |
| Region 5. Anne Arundel Carroll Howard | 1,173 174 199 | 263 18 90 | 5 1 | 1,441 193 239 | 807 106 5 | 185 7 7 | 1 | 993 113 12 | 2,198 308 577 | 409 7 113 | 7 | 2,614 315 690 |
| Region 6. Frederick Montgomery | 163 1,333 | 46 316 | 4 | 209 1,653 | 68 511 | 22 85 | 5 | 90 601 | 436 1,751 | 97 379 | 15 | 533 2,145 |
| Region 7. Calvert Charles Prince George's St. Mary's | 71 285 1,969 108 | 45 104 1,699 31 | 11 | 116 389 3,679 139 | 119 20 397 1 | 49 6 301 | 9 | 168 26 707 1 | 22 410 2,635 277 | 4 134 2,021 84 | 1 32 | 26 545 4,688 361 |
| Region 8. Baltimore City | 2,567 | 8,920 | 44 | 11,531 | 282 | 747 | 3 | 1,032 | 3,358 | 8,934 | 23 | 12,315 |
| STATE | 10,917 | 12,178 | 69 | 23,164 | 3,458 | 1,629 | 22 | 5,109 | 16,518 | 13,169 | 84 | 29,771 |

TABLE 12
TOTAL CASES HANDLED BY THE JUVENILE SERVICES ADMINISTRATION
BY COUNTY, REGION AND SOURCE OF REFERRAL - FISCAL 1976

| | Source of Referral | | | | | | | | | TOTAL |
|---------------------------------------------------------------|-------------------------------|-------------------------------|------------------------|----------------------------------------|---------------------------|---------------------|-------------------|--------------------------|-------------------|---------------------------------|
| | Police | Department of Education | Parent/ Relative | Department of Social Services | Other Social Agency | Court/ Probation | Other | Citizen | Special Police | |
| Region 1. Dorchester Somerset Wicomico Worcester | 157 105 250 781 | 2 2 1 13 | 21 13 21 13 | 24 27 36 5 | | 1 3 2 | 1 | 7 4 5 1 | 4 1 | 212 152 320 316 |
| Region 2. Caroline Cecil Kent Queen Anne's Talbot | 94 478 61 136 179 | 13 4 25 6 21 | 5 7 10 1 8 | 16 1 25 6 | | 2 | 14 1 2 4 | 4 34 21 1 19 | 21 2 4 | 146 548 146 154 233 |
| Region 3. Baltimore Harford | 4,916 823 | 42 28 | 87 75 | 113 55 | 6 | | 71 16 | | 2 | 5,229 1,005 |
| Region 4. Allegany Garrett Washington | 196 81 505 | 14 17 17 | 159 39 67 | 4 5 96 | 3 1 | 15 2 11 | 2 2 2 | 11 12 67 | 17 84 | 458 161 850 |
| Region 5. Anne Arundel Carroll Howard | 4,303 485 801 | 213 32 2 | 194 43 43 | 296 24 8 | 3 3 | 1 1 | 25 5 3 | 2 24 47 | 11 4 87 | 5,048 621 991 |
| Region 6. Frederick Montgomery | 672 3,575 | 46 2 | 48 694 | 9 93 | 3 | 25 | 5 5 | 43 2 | 9 | 832 4,399 |
| Region 7. Calvert Charles Prince George's St. Mary's | 257 874 5,236 447 | 20 35 375 14 | 19 33 563 29 | 12 15 39 7 | 1 24 | 2 86 2 | 99 | 2 899 2 | 1,393 | 310 960 3,074 501 |
| Region 8. Baltimore City | 18,901 | 2,119 | 1,794 | 445 | 23 | 25 | 35 | 1,524 | 12 | 24,878 |
| STATE | 44,313 | 3,063 | 3,986 | 1,761 | 68 | 179 | 292 | 2,731 | 1,651 | 58,044 |

TABLE 13
TOTAL CASES HANDLED BY THE JUVENILE SERVICES ADMINISTRATION
BY COUNTY, REGION AND AGE - FISCAL 1976

| | Under 10 years | 10 years | 11 years | 12 years | 13 years | 14 years | 15 years | 16 years | 17 years | 18 years | Over 18 or Unknown | Total |
|---------------------------------------------------------------|--------------------------|-----------------------|------------------------|-------------------------|---------------------------|---------------------------|-----------------------------|-----------------------------|-----------------------------|------------------------|--------------------------|---------------------------------|
| Region 1. Dorchester Somerset Wicomico Worcester | 31 17 23 22 | 5 2 3 6 | 11 4 9 8 | 8 7 13 17 | 22 15 36 37 | 32 23 37 80 | 36 25 57 153 | 34 27 65 234 | 28 28 64 244 | 4 4 7 14 | 1 1 1 1 | 212 152 320 816 |
| Region 2. Caroline Cecil Kent Queen Anne's Talbot | 15 13 16 6 5 | 4 6 5 2 5 | 7 10 8 5 3 | 9 28 4 7 16 | 17 45 5 12 25 | 9 77 31 19 35 | 32 110 22 29 35 | 25 126 24 31 56 | 25 111 29 38 45 | 2 15 2 5 7 | 1 7 1 1 1 | 146 548 146 154 233 |
| Region 3. Baltimore Harford | 117 61 | 58 21 | 114 33 | 247 62 | 447 106 | 795 144 | 1,070 199 | 1,160 172 | 1,096 170 | 122 35 | 3 2 | 5,229 1,005 |
| Region 4. Allegany Garrett Washington | 75 8 84 | 8 3 17 | 6 7 27 | 8 7 32 | 32 12 67 | 41 23 147 | 69 38 135 | 82 30 165 | 76 32 159 | 4 1 11 | 57 6 | 458 161 850 |
| Region 5. Anne Arundel Carroll Howard | 250 28 19 | 101 14 6 | 128 10 14 | 255 32 40 | 489 52 77 | 763 70 144 | 1,021 115 187 | 1,021 155 218 | 912 122 249 | 85 11 30 | 23 12 7 | 5,048 621 991 |
| Region 6. Frederick Montgomery | 22 84 | 17 32 | 23 65 | 42 139 | 74 311 | 129 675 | 155 1,017 | 173 1,026 | 188 936 | 7 98 | 2 16 | 832 4,399 |
| Region 7. Calvert Charles Prince George's St. Mary's | 23 35 439 15 | 6 22 168 8 | 9 22 218 21 | 21 67 463 28 | 35 95 771 24 | 35 154 1,253 76 | 48 217 1,862 109 | 62 181 1,915 91 | 64 153 1,810 102 | 7 12 150 17 | 2 25 10 | 310 960 9,074 501 |
| Region 8. Baltimore City | 810 | 513 | 753 | 1,362 | 2,474 | 3,887 | 4,979 | 4,948 | 4,564 | 421 | 167 | 24,878 |
| STATE | 2,223 | 1,032 | 1,515 | 2,914 | 5,280 | 8,679 | 11,720 | 12,021 | 11,245 | 1,071 | 344 | 58,044 |

TABLE 14
TOTAL CASES HANDLED BY THE JUVENILE SERVICES ADMINISTRATION
BY COUNTY, REGION AND MAJOR REASON REFERRED - FISCAL 1976

| | Arson | Assault | Auto Theft/ Unauthorized Use | Burglary/ Breaking and Entering | Larceny | Robbery | Disorderly Conduct | Sex Offense | Vandalism | Narcotics Violation | Glue Sniffing | Alcoholic Beverage Violation | Shoplifting | Purse Snatching | Firearms Violation | Rec/Poss of Stolen Goods |
|---------------------------------------------------------------|-------------------|----------------------------|------------------------------------|---------------------------------------|---------------------------|------------------|-------------------------|------------------|--------------------------|--------------------------|------------------|------------------------------------|-------------------------|--------------------|-----------------------|-----------------------------|
| Region 1. Dorchester Somerset Wicomico Worcester | 1 2 1 | 23 10 19 34 | 10 4 12 18 | 15 21 40 44 | 21 20 59 41 | 2 2 2 1 | 3 3 3 24 | 1 | 15 23 16 37 | 14 2 19 192 | | 2 2 3 40 | 31 9 51 59 | | 1 1 8 | 5 18 |
| Region 2. Caroline Cecil Kent Queen Anne's Talbot | 2 1 2 1 | 13 54 15 14 24 | 5 24 6 3 | 28 70 22 7 6 | 8 68 18 39 24 | 2 2 2 2 | 1 23 7 12 3 | 2 3 1 6 | 7 27 5 24 32 | 6 35 11 8 24 | 2 | 1 25 2 5 18 | 5 21 7 5 19 | | 3 5 | 8 1 |
| Region 3. Baltimore Harford | 22 11 | 577 92 | 218 21 | 709 146 | 508 84 | 24 3 | 251 18 | 10 1 | 283 89 | 333 60 | 16 | 90 9 | 1,017 125 | 5 | 33 9 | 45 29 |
| Region 4. Allegany Garrett Washington | 2 16 | 14 18 45 | 1 2 6 | 31 21 73 | 24 6 89 | 1 1 10 | 3 6 34 | 1 | 10 3 50 | 26 6 34 | 2 3 | 24 49 | 48 6 122 | 3 2 | 2 3 | 4 |
| Region 5. Anne Arundel Carroll Howard | 33 5 10 | 548 34 84 | 128 14 35 | 598 32 131 | 483 104 80 | 14 2 21 | 336 11 64 | 12 1 6 | 222 62 63 | 374 53 94 | 10 2 | 157 30 19 | 542 26 132 | 3 | 18 1 13 | 69 18 17 |
| Region 6. Frederick Montgomery | 10 25 | 67 241 | 21 243 | 72 488 | 80 581 | 1 75 | 21 94 | 2 10 | 63 155 | 91 275 | 1 | 29 122 | 129 113 | 2 | 5 55 | 10 37 |
| Region 7. Calvert Charles Prince George's St. Mary's | 3 7 77 7 | 21 67 782 37 | 6 25 323 10 | 44 115 1,122 55 | 33 99 686 62 | | 11 35 224 11 | 1 3 19 | 36 94 364 38 | 23 69 579 58 | | 7 15 84 9 | 14 75 1,619 55 | 4 6 | 5 6 154 16 | 7 4 112 3 |
| Region 8. Baltimore City | 121 | 4,178 | 1,012 | 2,856 | 2,633 | 605 | 1,888 | 93 | 750 | 1,269 | 317 | 293 | 2,064 | 166 | 492 | 140 |
| STATE | 359 | 7,011 | 2,161 | 6,746 | 5,850 | 999 | 3,086 | 172 | 2,468 | 3,655 | 357 | 1,035 | 6,294 | 191 | 830 | 527 |

TABLE 14
(continued)

| | Trespassing | False Fire Alarm | Violation of Supervision | Other | TOTAL DELIQUENT | Runaway | Truancy | Ungovernable | TOTAL CINS | Neglect | Dependency | Dependency and Neglect | Mentally Handicapped | TOTAL CINA | Special Proceedings | GRAND TOTAL |
|---------------------------------------------------------------|---------------------|------------------------|-----------------------------|----------------------------|---------------------------------|------------------------|-----------------------|------------------------|---------------------------|------------------|--------------------|---------------------------|-------------------------|-------------------------|------------------------|---------------------------------|
| Region 1. Dorchester Somerset Wicomico Worcester | 5 2 3 19 | 1 | 1 4 2 | 21 19 23 88 | 165 116 262 627 | 8 3 2 154 | 4 4 15 | 7 14 1 12 | 19 21 3 181 | 1 6 1 | 22 7 48 2 | 5 2 6 4 | | 28 15 54 7 | 1 1 | 212 152 320 816 |
| Region 2. Caroline Cecil Kent Queen Anne's Talbot | 5 22 10 17 | 1 | 1 | 29 136 3 17 30 | 114 523 107 140 209 | 6 15 3 2 2 | 9 2 2 15 | 1 5 10 3 6 | 16 22 15 7 23 | 5 1 6 1 | 6 11 3 1 | 5 7 2 | 2 2 1 | 16 3 24 7 1 | | 146 548 146 154 233 |
| Region 3. Baltimore Harford | 167 14 | 1 | 1 | 283 113 | 4,593 824 | 171 9 | 61 38 | 221 73 | 453 120 | 5 20 | 153 25 | 22 15 | 3 1 | 183 61 | | 5,229 1,005 |
| Region 4. Allegany Garrett Washington | 2 2 13 | 1 1 | 6 3 10 | 71 29 54 | 285 104 618 | 10 11 58 | 13 13 18 | 22 25 35 | 45 49 111 | 2 1 33 | 52 1 10 | 18 2 76 | 1 2 | 72 5 121 | 56 3 | 458 161 850 |
| Region 5. Anne Arundel Carroll Howard | 268 14 64 | 3 | 3 1 | 634 73 84 | 4,452 483 920 | 73 47 23 | 147 32 3 | 180 35 28 | 400 114 54 | 59 4 7 | 74 15 6 | 60 3 3 | 3 1 1 | 196 23 17 | 1 | 5,048 621 991 |
| Region 6. Frederick Montgomery | 14 124 | 2 2 | 3 13 | 107 570 | 727 3,226 | 34 777 | 22 3 | 34 239 | 90 1,019 | 9 1 | 5 70 | 1 83 | | 15 154 | | 832 4,399 |
| Region 7. Calvert Charles Prince George's St. Mary's | 23 363 16 | 26 1 | 1 | 14 51 874 35 | 225 692 7,651 414 | 37 95 365 21 | 14 77 164 31 | 19 56 445 32 | 70 228 974 84 | 6 149 | 1 33 274 | 13 12 3 | 1 1 14 | 15 40 449 3 | | 310 960 9,074 501 |
| Region 8. Baltimore City | 1,175 | 94 | 1 | 2,174 | 22,321 | 475 | 540 | 1,000 | 2,015 | 73 | 297 | 152 | 20 | 542 | | 24,878 |
| STATE | 2,342 | 133 | 50 | 5,532 | 49,798 | 2,401 | 1,229 | 2,503 | 6,133 | 390 | 1,116 | 494 | 51 | 2,051 | 62 | 58,044 |

TABLE 15
TOTAL CASES HANDLED BY THE JUVENILE SERVICES ADMINISTRATION
BY MAJOR REASON AND AGE AT TIME OF REFERRAL - FISCAL 1976

| Major Reason | Under 10 years | 10 years | 11 years | 12 years | 13 years | 14 years | 15 years | 16 years | 17 years | 18 years | Over 18 or Unknown | Total |
|--------------------------|-------------------|----------|----------|----------|----------|----------|----------|----------|----------|----------|--------------------------|--------|
| Arson | 23 | 12 | 20 | 30 | 50 | 62 | 52 | 54 | 50 | 6 | | 359 |
| Assault | 160 | 164 | 193 | 418 | 723 | 1,140 | 1,332 | 1,348 | 1,332 | 130 | 71 | 7,011 |
| Auto Theft/Unauth. Use | 5 | 5 | 19 | 51 | 122 | 338 | 529 | 537 | 513 | 39 | 3 | 2,161 |
| Burglary/B & E | 146 | 122 | 251 | 349 | 656 | 985 | 1,378 | 1,481 | 1,224 | 140 | 14 | 6,746 |
| Larceny | 86 | 120 | 159 | 327 | 522 | 868 | 1,129 | 1,310 | 1,178 | 132 | 19 | 5,850 |
| Robbery | 9 | 12 | 11 | 41 | 71 | 164 | 222 | 238 | 186 | 37 | 8 | 999 |
| Disorderly Conduct | 25 | 17 | 26 | 87 | 221 | 429 | 592 | 756 | 852 | 72 | 9 | 3,086 |
| Sex Offense | 3 | 6 | 4 | 13 | 31 | 30 | 36 | 21 | 27 | 1 | | 172 |
| Vandalism | 132 | 107 | 129 | 218 | 296 | 384 | 438 | 364 | 332 | 49 | 19 | 2,468 |
| Narcotics Violation | 1 | 3 | 6 | 32 | 86 | 312 | 701 | 1,052 | 1,320 | 127 | 15 | 3,655 |
| Glue Sniffing | 1 | 5 | 7 | 16 | 42 | 70 | 75 | 65 | 66 | 8 | 2 | 357 |
| Alcoholic Beverage Viol. | 1 | 2 | 1 | 6 | 20 | 69 | 174 | 305 | 424 | 28 | 5 | 1,035 |
| Shoplifting | 123 | 120 | 213 | 445 | 698 | 894 | 1,166 | 1,293 | 1,234 | 92 | 16 | 6,294 |
| Purse Snatching | 3 | 4 | 4 | 8 | 17 | 25 | 41 | 48 | 37 | 3 | 1 | 191 |
| Firearms Violation | 1 | 4 | 3 | 20 | 62 | 103 | 171 | 214 | 232 | 15 | 5 | 830 |
| Rec/Poss of Stolen Goods | 5 | 1 | 6 | 14 | 22 | 75 | 123 | 124 | 141 | 15 | 1 | 527 |
| Trespassing | 37 | 31 | 52 | 110 | 251 | 389 | 557 | 501 | 381 | 27 | 6 | 2,342 |
| False Fire Alarm | 15 | 17 | 7 | 11 | 21 | 14 | 15 | 22 | 10 | 1 | | 133 |
| Violation of Supervision | | | 1 | 1 | 2 | 3 | 18 | 12 | 8 | 4 | 1 | 50 |
| Other | 217 | 102 | 156 | 265 | 482 | 798 | 1,227 | 1,055 | 1,049 | 113 | 68 | 5,532 |
| Total Delinquent | 993 | 854 | 1,268 | 2,462 | 4,395 | 7,152 | 9,976 | 10,800 | 10,596 | 1,039 | 263 | 49,798 |
| Runaway | 15 | 11 | 26 | 89 | 261 | 539 | 616 | 537 | 284 | 14 | 9 | 2,401 |
| Truancy | 37 | 25 | 47 | 104 | 215 | 354 | 351 | 66 | 25 | 2 | 3 | 1,229 |
| Ungovernable | 45 | 33 | 62 | 144 | 286 | 510 | 644 | 489 | 274 | 10 | 6 | 2,503 |
| Total CINS | 97 | 69 | 135 | 337 | 762 | 1,403 | 1,611 | 1,092 | 583 | 26 | 18 | 6,133 |
| Neglect | 239 | 22 | 13 | 19 | 20 | 20 | 28 | 21 | 6 | | 2 | 390 |
| Dependency | 593 | 53 | 61 | 61 | 72 | 70 | 71 | 85 | 40 | 4 | 6 | 1,116 |
| Dependency & Neglect | 285 | 32 | 34 | 28 | 27 | 29 | 29 | 16 | 10 | 2 | 2 | 494 |
| Mentally Handicapped | 12 | 2 | 3 | 6 | 4 | 5 | 4 | 6 | 9 | | | 51 |
| Total CINA | 1,129 | 109 | 111 | 114 | 123 | 124 | 132 | 128 | 65 | 6 | 10 | 2,051 |
| Special Proceedings | 4 | | 1 | 1 | | | 1 | 1 | 1 | | 53 | 62 |
| GRAND TOTAL | 2,223 | 1,032 | 1,515 | 2,914 | 5,280 | 8,679 | 11,720 | 12,021 | 11,245 | 1,071 | 344 | 58,044 |

TABLE 16
FORMAL CASES HANDLED BY THE JUVENILE SERVICES ADMINISTRATION
BY MAJOR REASON AND DISPOSITION
FISCAL 1976

| Major Reason | Petition Withdrawn | Dismissed | Warned, Adjusted or Counseled | Jurisdiction Waived | Continue Case Without Finding | Custody Awarded To | Com. to Dept. of Social Services | Committed to Training School | Probation | Referred to Other Agency | Restitution or Fine | Support Ordered or Revised |
|--------------------------|--------------------|-----------|-------------------------------|---------------------|-------------------------------|--------------------|----------------------------------|------------------------------|-----------|--------------------------|---------------------|----------------------------|
| Arson | 3 | 51 | | 3 | 2 | 1 | 2 | 7 | 74 | | 2 | |
| Assault | 7 | 1,619 | 9 | 89 | 26 | 11 | 11 | 173 | 936 | | 6 | |
| Auto Theft/Unauth. Use | 2 | 568 | 3 | 42 | 19 | 2 | 5 | 129 | 462 | | 3 | |
| Burglary/B & E | 19 | 1,364 | 13 | 164 | 78 | 30 | 11 | 345 | 1,811 | 1 | 29 | |
| Larceny | 12 | 1,070 | 13 | 69 | 21 | 6 | 4 | 176 | 837 | | 16 | |
| Robbery | | 302 | 1 | 53 | 2 | 3 | 1 | 91 | 276 | | 4 | |
| Disorderly Conduct | 2 | 395 | 3 | 7 | 2 | 2 | 1 | 19 | 133 | 2 | | |
| Sex Offense | 1 | 41 | | 3 | 2 | 2 | | 11 | 22 | | | |
| Vandalism | 6 | 381 | | 8 | 7 | | | 37 | 203 | | 10 | |
| Narcotics Violation | 9 | 261 | 11 | 19 | 7 | 2 | 4 | 21 | 255 | 1 | 3 | |
| Glue Sniffing | | 106 | | 1 | 1 | | | 25 | 47 | | | |
| Alcoholic Beverage Viol. | 1 | 28 | | 4 | 4 | | | 5 | 24 | | 1 | |
| Shoplifting | 9 | 594 | 11 | 21 | 11 | 4 | 6 | 102 | 534 | | 19 | |
| Purse Snatching | | 56 | | 8 | 1 | | 1 | 13 | 47 | | 1 | |
| Firearms Violation | 1 | 218 | 3 | 9 | 2 | 2 | | 25 | 130 | | | |
| Rec/Poss of Stolen Goods | 1 | 93 | | 6 | 9 | 1 | 1 | 9 | 68 | 1 | 3 | |
| Trespassing | 1 | 200 | 2 | 3 | 9 | 1 | | 22 | 94 | | 2 | |
| False Fire Alarm | | 24 | | | | | 1 | | 9 | | | |
| Violation of Supervision | | 1 | 1 | | 1 | 2 | 1 | 8 | 11 | | 1 | |
| Other | 19 | 628 | 9 | 27 | 11 | 30 | 129 | 75 | 392 | 1 | 81 | |
| Total Delinquent | 93 | 8,000 | 81 | 536 | 215 | 99 | 180 | 1,293 | 6,365 | 6 | 181 | |
| Runaway | 7 | 40 | 4 | 1 | 4 | 6 | 15 | 9 | 27 | 1 | 1 | |
| Truancy | 6 | 32 | 5 | | 2 | 5 | 14 | 3 | 23 | 1 | | |
| Ungovernable | 18 | 89 | 5 | | 12 | 20 | 53 | 8 | 84 | 3 | 1 | |
| Total CINS | 31 | 161 | 14 | 1 | 18 | 31 | 82 | 20* | 134 | 5 | 2 | |
| Neglect | 5 | 43 | | | 8 | 35 | 199 | | 2 | | | 2 |
| Dependency | 10 | 161 | 1 | | 8 | 197 | 527 | 13 | 4 | | | 12 |
| Dependency & Neglect | 5 | 95 | 6 | | 3 | 44 | 221 | 1 | 2 | 1 | | 2 |
| Mentally Handicapped | 2 | 10 | | | | 1 | 7 | 2 | 1 | | | |
| Total CIMA | 22 | 309 | 7 | | 19 | 277 | 954 | 16 | 9 | 1 | | 16 |
| Special Proceedings | | | 1 | | 2 | 3 | | 1 | | | | 1 |
| GRAND TOTAL | 146 | 8,470 | 103 | 537 | 254 | 410 | 1,216 | 1,330 | 6,508 | 12 | 183 | 17 |

* Includes Interstate Compact cases

TABLE 16
(continued)

| Major Reason | Suspended Sentence | Other | Committed to Mental Inst. | Referred to Psychiatric Care | Stet | Probation without Verdict | Com. to Juvenile Services Admin./Purchase of Care | Group Home | Protective Supervision | Committed to Forestry Camp | Referred to Mental Institution | Total |
|--------------------------|--------------------|-------|---------------------------|------------------------------|-------|---------------------------|---------------------------------------------------|------------|------------------------|----------------------------|--------------------------------|--------|
| Arson | 1 | 4 | | | 9 | 4 | 9 | | | | | 172 |
| Assault | 5 | 71 | 7 | | 106 | 9 | 100 | 6 | 7 | 12 | | 3,210 |
| Auto Theft/Unauth. Use | 6 | 46 | 6 | | 74 | 6 | 74 | 5 | 1 | 16 | | 1,469 |
| Burglary/B & E | 19 | 88 | 2 | | 240 | 26 | 183 | 11 | 7 | 24 | | 4,465 |
| Larceny | 23 | 56 | 3 | 1 | 138 | 21 | 102 | 3 | 1 | 19 | 1 | 2,592 |
| Robbery | 7 | 14 | 2 | | 40 | | 39 | 1 | 1 | 5 | | 842 |
| Disorderly Conduct | | 10 | 4 | | 35 | 3 | 21 | 1 | | 3 | | 643 |
| Sex Offense | | 2 | 1 | | 4 | | 8 | | | | | 97 |
| Vandalism | 9 | 24 | 1 | 1 | 92 | 22 | 26 | | 4 | 2 | | 837 |
| Narcotics Violation | 6 | 23 | | | 118 | 12 | 25 | 1 | 4 | 8 | | 790 |
| Glue Sniffing | 2 | 1 | 2 | | 1 | | 9 | | | | | 195 |
| Alcoholic Beverage Viol. | 3 | 8 | | | 3 | 16 | 3 | 1 | 1 | | | 102 |
| Shoplifting | 11 | 21 | 2 | | 144 | 22 | 55 | | 1 | 4 | 1 | 1,572 |
| Purse Snatching | 1 | 1 | | | 1 | | 9 | | | | | 139 |
| Firearms Violation | 1 | 1 | 1 | | 15 | 1 | 9 | 1 | 2 | 3 | | 424 |
| Rec/Poss of Stolen Goods | 1 | 8 | | | 27 | 7 | 3 | | | 1 | 1 | 240 |
| Trespassing | | 10 | 2 | | 33 | 6 | 12 | 1 | | 1 | | 399 |
| False Fire Alarm | 1 | | | | 2 | | | | | 1 | | 38 |
| Violation of Supervision | 1 | 1 | 1 | | | | 8 | 2 | | 2 | | 41 |
| Other | 14 | 89 | 7 | 1 | 62 | 20 | 37 | 3 | 15 | 7 | 2 | 1,659 |
| Total Delinquent | 111 | 478 | 41 | 3 | 1,144 | 175 | 732 | 36 | 44 | 108 | 5 | 19,926 |
| Runaway | | 20 | 2 | | 10 | | 99 | 2 | 57 | 1 | | 306 |
| Truancy | | 29 | 2 | | 7 | | 30 | | 89 | | | 248 |
| Ungovernable | | 52 | 9 | 1 | 13 | | 201 | 24 | 136 | | 2 | 731 |
| Total CINS | | 101 | 13 | 1 | 30 | | 330 | 26 | 282 | 1 | 2 | 1,285 |
| Neglect | | 22 | | | 8 | | 8 | | 16 | | | 348 |
| Dependency | | 37 | 2 | | 17 | | 25 | 1 | 34 | | | 1,049 |
| Dependency & Neglect | | 9 | 2 | 1 | 3 | | 6 | 2 | 47 | | 1 | 451 |
| Mentally Handicapped | 1 | 1 | 9 | | 2 | | 1 | 1 | | | 5 | 43 |
| Total CIMA | 1 | 69 | 13 | 1 | 30 | | 40 | 4 | 97 | | 6 | 1,891 |
| Special Proceedings | | 52 | | | 1 | 1 | | | | | | 62 |
| GRAND TOTAL | 112 | 700 | 67 | 5 | 1,205 | 176 | 1,102 | 66 | 423 | 109 | 13 | 23,164 |

TABLE 17
COMPARISON OF THE NUMBER OF CASES HANDLED BY
THE MARYLAND JUVENILE SERVICES ADMINISTRATION
BY MAJOR REASON FOR REFERRAL - FISCAL 1975-FISCAL 1976

| Major Reason | Formal | | | Informal | | | Disapproved/Closed at Intake | | | Total | | |
|--------------------------|---------|---------|----------------|----------|---------|----------------|------------------------------|---------|----------------|---------|---------|----------------|
| | FY 1975 | FY 1976 | Percent Change | FY 1975 | FY 1976 | Percent Change | FY 1975 | FY 1976 | Percent Change | FY 1975 | FY 1976 | Percent Change |
| Arson | 175 | 172 | - 1.7 | 50 | 29 | - 42.0 | 152 | 158 | + 3.9 | 377 | 359 | - 4.8 |
| Assault | 2,693 | 3,210 | + 19.2 | 713 | 584 | - 18.1 | 3,221 | 3,217 | - 0.1 | 6,627 | 7,011 | + 5.8 |
| Auto Theft/Unauth. Use. | 1,510 | 1,469 | - 2.7 | 231 | 141 | - 39.0 | 609 | 551 | - 9.5 | 2,350 | 2,161 | - 8.0 |
| Burglary/B & E | 4,185 | 4,465 | + 6.7 | 755 | 510 | - 32.5 | 1,869 | 1,771 | - 5.2 | 6,809 | 6,746 | - 0.9 |
| Larceny | 2,038 | 2,592 | + 27.2 | 797 | 580 | - 27.2 | 2,579 | 2,678 | + 3.8 | 5,414 | 5,850 | + 8.1 |
| Robbery | 631 | 842 | + 33.4 | 33 | 32 | - 3.0 | 108 | 125 | + 15.7 | 772 | 999 | + 29.4 |
| Disorderly Conduct | 523 | 643 | + 22.9 | 365 | 197 | - 46.0 | 2,208 | 2,246 | + 1.7 | 3,096 | 3,086 | - 0.3 |
| Sex Offense | 90 | 97 | + 7.8 | 26 | 20 | - 23.1 | 72 | 55 | - 23.6 | 188 | 172 | - 8.5 |
| Vandalism | 676 | 837 | + 23.8 | 395 | 259 | - 34.4 | 1,003 | 1,372 | + 36.8 | 2,074 | 2,468 | + 19.0 |
| Narcotics Violation | 783 | 790 | + 0.9 | 619 | 306 | - 50.6 | 2,664 | 2,559 | - 3.9 | 4,066 | 3,655 | - 10.1 |
| Glue Sniffing | 130 | 195 | + 50.0 | 31 | 25 | - 19.4 | 244 | 137 | - 43.9 | 405 | 357 | - 11.9 |
| Alcoholic Beverage Viol. | 146 | 102 | - 30.1 | 213 | 115 | - 46.0 | 822 | 818 | - 0.5 | 1,181 | 1,035 | - 12.4 |
| Shoplifting | 1,087 | 1,572 | + 44.6 | 1,053 | 826 | - 21.6 | 3,352 | 3,896 | + 16.2 | 5,492 | 6,294 | + 14.6 |
| Purse Snatching | 184 | 139 | - 24.5 | 8 | 8 | N/C | 43 | 44 | + 2.3 | 235 | 191 | - 18.7 |
| Firearms Violation | 351 | 424 | + 20.8 | 73 | 47 | - 35.6 | 370 | 359 | - 3.0 | 794 | 830 | + 4.5 |
| Rec/Poss of Stolen Goods | 190 | 240 | + 26.3 | 94 | 42 | - 55.3 | 288 | 245 | - 14.9 | 572 | 527 | - 7.9 |
| Trespassing | 304 | 399 | + 31.3 | 244 | 163 | - 33.2 | 1,676 | 1,780 | + 6.2 | 2,224 | 2,342 | + 5.3 |
| False Fire Alarm | 41 | 38 | - 7.3 | 21 | 9 | - 57.1 | 89 | 86 | - 3.4 | 151 | 133 | - 11.9 |
| Violation of Supervision | 37 | 41 | + 10.8 | 1 | 3 | + 200.0 | 7 | 6 | - 14.3 | 45 | 50 | + 11.1 |
| Other | 1,418 | 1,659 | + 17.0 | 612 | 481 | - 21.4 | 3,458 | 3,392 | - 1.9 | 5,488 | 5,532 | + 0.8 |
| Total Delinquent | 17,192 | 19,926 | + 15.9 | 6,334 | 4,377 | - 30.9 | 24,834 | 25,495 | + 2.7 | 48,360 | 49,798 | + 3.0 |
| Runaway | 468 | 306 | - 34.6 | 402 | 214 | - 46.8 | 1,773 | 1,881 | + 6.1 | 2,643 | 2,401 | - 9.2 |
| Truancy | 237 | 248 | + 4.6 | 207 | 165 | - 20.3 | 704 | 816 | + 15.9 | 1,148 | 1,229 | + 7.1 |
| Ungovernable | 994 | 731 | - 26.5 | 456 | 328 | - 28.1 | 1,188 | 1,444 | + 21.5 | 2,638 | 2,503 | - 5.1 |
| Total CINS | 1,699 | 1,285 | - 24.4 | 1,065 | 707 | - 33.6 | 3,665 | 4,141 | + 13.0 | 6,429 | 6,133 | - 4.6 |
| Neglect | 593 | 348 | - 41.3 | 14 | 9 | - 35.7 | 51 | 33 | - 35.3 | 658 | 390 | - 40.7 |
| Dependency | 1,027 | 1,049 | + 2.1 | 25 | 8 | - 68.0 | 40 | 59 | + 47.5 | 1,092 | 1,116 | + 2.2 |
| Dependency & Neglect | 449 | 451 | + 0.4 | 5 | 8 | + 60.0 | 47 | 35 | - 25.5 | 501 | 494 | - 1.4 |
| Mentally Handicapped | 46 | 43 | - 6.5 | | | | 3 | 8 | + 166.7 | 49 | 51 | + 4.1 |
| Total CINA | 2,115 | 1,891 | - 10.6 | 44 | 25 | - 43.2 | 141 | 135 | - 4.3 | 2,300 | 2,051 | - 10.8 |
| Special Proceedings | 73 | 62 | - 15.1 | | | | | | | 73 | 62 | - 15.1 |
| GRAND TOTAL | 21,079 | 23,164 | + 9.9 | 7,443 | 5,109 | - 31.4 | 28,640 | 29,771 | + 3.9 | 57,162 | 58,044 | + 1.5 |

TABLE 18
TOTAL CASES HANDLED BY THE MARYLAND JUVENILE SERVICES ADMINISTRATION
BY COUNTY AND PARENTAL STATUS - FISCAL 1976

| | Parents Living Together | Mother Deceased | Father Deceased | Both Parents Deceased | Parents Separated | Parents Divorced | Parents Unmarried | Other | Information Not Provided | Total |
|--------------------------|-------------------------|-----------------|-----------------|-----------------------|-------------------|------------------|-------------------|-------|--------------------------|--------|
| Region 1. Dorchester | 72 | 10 | 5 | 1 | 26 | 30 | 55 | 1 | 12 | 212 |
| Somerset | 60 | 2 | 12 | | 47 | 30 | 1 | | | 152 |
| Wicomico | 118 | 13 | 26 | 5 | 38 | 82 | 37 | | 1 | 320 |
| Worcester | 469 | 20 | 44 | 3 | 89 | 162 | 20 | 3 | 6 | 816 |
| Region 2. Caroline | 67 | | 7 | | 13 | 44 | 14 | | 1 | 146 |
| Cecil | 315 | 14 | 16 | 4 | 40 | 104 | 8 | | 38 | 548 |
| Kent | 58 | 2 | 5 | 3 | 13 | 45 | 20 | 9 | | 146 |
| Queen Anne's | 86 | | 5 | | 19 | 29 | 5 | | 10 | 154 |
| Talbot | 135 | 2 | 12 | 1 | 15 | 36 | 28 | 2 | 2 | 233 |
| Region 3. Baltimore | 2,976 | 94 | 280 | 16 | 84 | 301 | 16 | 4 | 1,458 | 5,229 |
| Harford | 575 | 13 | 37 | 2 | 45 | 305 | 26 | | 2 | 1,005 |
| Region 4. Allegany | 221 | 6 | 24 | | 30 | 88 | 9 | 2 | 78 | 458 |
| Garrett | 123 | 7 | 8 | 1 | 7 | 14 | 1 | | | 161 |
| Washington | 403 | 16 | 31 | 6 | 55 | 90 | 35 | | 214 | 850 |
| Region 5. Anne Arundel | 1,255 | 3 | 10 | 2 | 12 | 33 | 4 | | 3,729 | 5,048 |
| Carroll | 362 | 2 | 17 | 1 | 38 | 59 | 4 | 5 | 133 | 621 |
| Howard | 497 | 7 | 20 | 1 | 27 | 118 | 25 | | 296 | 991 |
| Region 6. Frederick | 492 | 19 | 44 | 3 | 57 | 147 | 39 | 2 | 29 | 832 |
| Montgomery | 2,282 | 28 | 71 | 21 | 185 | 631 | 16 | 2 | 1,163 | 4,339 |
| Region 7. Calvert | 203 | 14 | 14 | 1 | 26 | 44 | 1 | | 7 | 310 |
| Charles | 555 | 22 | 58 | 1 | 85 | 77 | 16 | 4 | 142 | 960 |
| Prince George's | 4,594 | 182 | 585 | 54 | 1,143 | 2,035 | 245 | 65 | 171 | 9,074 |
| St. Mary's | 347 | 6 | 29 | 1 | 21 | 53 | 9 | 3 | 32 | 501 |
| Region 8. Baltimore City | 5,940 | 237 | 475 | 38 | 8,754 | 373 | 169 | 328 | 8,564 | 24,878 |
| STATE | 22,205 | 719 | 1,835 | 165 | 10,869 | 4,930 | 803 | 430 | 16,088 | 58,044 |

TABLE 19
TOTAL CASES HANDLED BY THE MARYLAND JUVENILE SERVICES ADMINISTRATION
BY COUNTY AND TYPE OF GUARDIAN - FISCAL 1976

| | Both Parents | Mother | Father | Mother and Step- Father | Father and Step- Mother | Foster Home | Other Family Home | Insti- tution | Non- Relatives | Alone | Out-of State Insti- tution | Other | Informa- tion Not Provided | Total |
|---------------------------------------------------------------|------------------------------|----------------------------|-------------------------|----------------------------------|----------------------------------|-----------------------|-------------------------|------------------|-------------------|-------------|-------------------------------------|------------------------|-------------------------------------|---------------------------------|
| Region 1. Dorchester Somerset Wicomico Worcester | 75 59 110 457 | 73 52 103 169 | 16 10 10 54 | 19 6 15 53 | 3 1 5 9 | 2 7 25 10 | 16 13 45 27 | 1 3 7 | 2 3 3 | 3 8 | 1 | 1 4 12 | 5 6 | 212 152 320 816 |
| Region 2. Caroline Cecil Kent Queen Anne's Talbot | 62 301 55 86 135 | 46 84 52 24 56 | 2 13 3 5 15 | 12 43 15 13 13 | 5 16 2 7 3 | 1 2 1 1 2 | 8 35 15 8 5 | 2 4 1 1 | 3 4 1 1 | 1 6 | 1 | 4 10 1 3 1 | 31 5 2 | 146 548 146 154 233 |
| Region 3. Baltimore Harford | 2,943 564 | 1,262 223 | 233 41 | 22 83 | 5 13 | 59 14 | 50 39 | 30 6 | 11 2 | 1 4 | | 17 14 | 596 2 | 5,229 1,005 |
| Region 4. Allegany Garrett Washington | 192 113 397 | 68 21 229 | 12 5 34 | 25 4 55 | 1 14 | 35 1 11 | 37 8 31 | 2 4 9 | 2 12 | 1 2 1 | 2 | 4 3 16 | 79 39 | 458 161 850 |
| Region 5. Anne Arundel Carroll Howard | 1,269 353 486 | 248 92 221 | 69 23 109 | 27 51 88 | 4 7 8 | 5 24 6 | 11 14 36 | 5 5 7 | 4 10 4 | 1 1 7 | 2 | 20 12 | 3,385 39 7 | 5,048 621 991 |
| Region 6. Frederick Montgomery | 477 2,184 | 142 814 | 35 240 | 69 81 | 11 17 | 10 22 | 34 78 | 7 13 | 5 8 | 3 2 | 3 2 | 10 6 | 26 932 | 832 4,399 |
| Region 7. Calvert Charles Prince George's St. Mary's | 202 546 4,425 352 | 57 216 2,674 72 | 21 31 413 7 | 11 67 602 29 | 5 5 80 8 | 4 11 208 | 3 31 368 13 | 1 3 65 | 4 8 77 2 | 20 1 | 14 | 1 3 60 1 | 1 39 68 16 | 310 960 9,074 501 |
| Region 8. Baltimore City | 6,066 | 11,228 | 690 | 182 | 98 | 108 | 481 | 76 | 105 | 7 | 3 | 233 | 5,601 | 24,878 |
| STATE | 21,909 | 18,226 | 2,091 | 1,585 | 327 | 568 | 1,406 | 249 | 271 | 69 | 28 | 436 | 10,879 | 58,044 |

TABLE 20
MARYLAND JUVENILE SERVICES ADMINISTRATION
MULTIPLE OFFENSE COUNTS
FORMAL & INFORMAL CASES
FISCAL 1976

| Offense | Formal Cases | | Informal Cases | |
|-----------------------------------|------------------------------|--------------------------|------------------------------|--------------------------|
| | Major Reason for Referral | Additional Complaints | Major Reason for Referral | Additional Complaints |
| Arson | 172 | 206 | 29 | 32 |
| Assault | 3,210 | 3,817 | 584 | 635 |
| Auto Theft/Unauthorized Use | 1,469 | 1,809 | 141 | 150 |
| Burglary/Breaking & Entering | 4,465 | 5,726 | 510 | 558 |
| Larceny | 2,592 | 4,427 | 580 | 728 |
| Robbery | 842 | 1,685 | 32 | 90 |
| Disorderly Conduct | 643 | 886 | 197 | 247 |
| Sex Offense | 97 | 110 | 20 | 21 |
| Vandalism | 837 | 1,756 | 259 | 405 |
| Narcotics Violation | 790 | 1,058 | 306 | 345 |
| Glue Sniffing/Other Inhalents | 195 | 218 | 25 | 28 |
| Alcoholic Beverage Violation | 102 | 194 | 115 | 148 |
| Shoplifting | 1,572 | 1,720 | 826 | 869 |
| Purse Snatching | 139 | 177 | 8 | 8 |
| Firearms/Deadly Weapons Violation | 424 | 759 | 47 | 67 |
| Rec/Poss of Stolen Goods | 240 | 886 | 42 | 63 |
| Trespassing | 399 | 567 | 163 | 207 |
| False Fire Alarm | 38 | 43 | 9 | 10 |
| Violation of Supervision | 41 | 41 | 3 | 3 |
| Other | 1,659 | 2,966 | 481 | 752 |
| Total Delinquent | 19,926 | 29,051 | 4,377 | 5,366 |
| Runaway | 306 | 333 | 214 | 224 |
| Truancy | 248 | 262 | 165 | 172 |
| Ungovernable | 731 | 802 | 328 | 395 |
| Total CINS | 1,285 | 1,397 | 707 | 791 |
| Neglect | 348 | 353 | 9 | 9 |
| Dependency | 1,049 | 1,062 | 8 | 8 |
| Dependency & Neglect | 451 | 463 | 8 | 13 |
| Mentally Handicapped | 43 | 45 | | |
| Total CINA | 1,891 | 1,923 | 25 | 30 |
| Special Proceedings | 62 | 62 | | |
| GRAND TOTAL | 23,164 | 32,433 | 5,109 | 6,187 |

TABLE 21
MARYLAND JUVENILE SERVICES ADMINISTRATION
BALTIMORE CITY AND PRINCE GEORGE'S COUNTY
ADOPTION AND CUSTODY CASES
FISCAL 1976

| Type of Case | Baltimore City | Prince George's County |
|----------------------------------------------------|----------------|------------------------|
| Adoptions | | |
| Pending at Beginning of Year | 80 | 40 |
| Assigned During Year | 350 | 186 |
| Completed During Year | 371 | 181 |
| Pending at End of Year | 59 | 45 |
| Custodies | | |
| Pending at Beginning of Year | 106 | 6 |
| Assigned During Year | 236 | 65 |
| Completed During Year | 248 | 71 |
| Pending at End of Year | 94 | 0 |
| Guardianship | | |
| Pending at Beginning of Year | 26 | |
| Assigned During Year | 38 | |
| Completed During Year | 51 | |
| Pending at End of Year | 13 | |
| Out-of-Town Inquiries (Requests from other Courts) | | |
| Pending at Beginning of Year | 1 | |
| Assigned During Year | 33 | |
| Completed During Year | 32 | |
| Pending at End of Year | 2 | |
| Guardianships with Right to Consent to Adoption | | |
| Pending at Beginning of Year | 0 | |
| Assigned During Year | 113 | |
| Completed During Year | 113 | |
| Pending at End of Year | 0 | |

Prior to July 1, 1967, responsibilities for certain adoption, custody and guardianship services were the responsibility of several local juvenile probation agencies. The Courts of Baltimore City and Prince George's County certified several positions performing said services pursuant to Article 52A, Section 16, "In any event, a court, . . . shall not have fewer personnel as a result of the operation of the Department of Juvenile Services than it had authorized as of 7/1/66, as certified by the Chief Judge of each judicial circuit."

It was felt that these valuable services, thus provided, should be reflected in this and future Annual Reports.

DIVISION OF
COMMUNITY SERVICES

COMMUNITY BASED SERVICES

The number of admissions to community based programs has steadily increased from a mere 116 community residential placements during fiscal 1968 to the 4,304 placements during fiscal 1976, exemplifying the rapid expansion of this service program. These placements include admissions, both emergency and regular, to the Maryland Youth Residence Center, Good Shepherd Center, three group homes operated by the Maryland Juvenile Services Administration and care purchased from foster and shelter care homes and various group homes and residences operated by private agencies. In addition to these residential placements, there were 224 referrals to the Youth Service Center and 5,285 referrals to Maryland's Youth Services Bureaus, both of which are day programs.

Of the total number of community residential placements during fiscal 1976, 95.8% or 4,121 were purchase of care placements, 2.3% or 98 were admissions to Good Shepherd Center, 1.4% or 61 were State-owned group home admissions and 0.5% or 24 involved admissions to Maryland Youth Residence Center.

Purchase of Care

Placements in Purchase of Care facilities, which include private residential placements made up of private group homes, specialized institutions and foster homes, and emergency shelter care provided by private families in their own homes, increased 6.7% from fiscal 1976. Emergency shelter care placements accounted for 73.1% of these placements during fiscal 1976, while private residential placements accounted for 26.9%.

A majority of the 1,109 private residential placements involved males (72.1%), while females accounted for 27.9%. Of these placements, 74.0% involved whites, 25.4% involved blacks and in 0.6% of the cases, race was classified as "other". Baltimore City was responsible for the greatest number of placements with 25.2% of the total, followed by Prince George's County with 21.3% and Montgomery County with 13.3%.

Of the 3,012 emergency shelter care placements, 52.3% involved males, while females accounted for 47.7%. A majority of these admissions involved whites (68.8%), blacks accounted for 30.8% and in 0.4% of the cases, race was classified as "other". Prince George's County accounted for the largest number of placements with 39.2% of the total. This was followed by Baltimore City with 29.9% of the placements and Montgomery County with 11.0%.

Good Shepherd Center

Good Shepherd Center, which is a therapeutic residential facility for girls, reported 98 admissions during fiscal 1976, an increase of 7.7% from fiscal 1975. These admissions involved 82.7% whites, while blacks accounted for 17.3%. Baltimore City was responsible for the largest number of admissions with 25.5%, followed by Prince George's County with 17.3% and Baltimore County with 12.2%.

State-Owned Group Homes

Admissions to the three state-owned group homes during fiscal 1976 increased 35.6% from the 45 admissions reported during fiscal 1975 to 61. Most of the admissions reported during fiscal 1976 involved males (68.9%), while females accounted for 31.1%. Of the 42 admissions to the two boys' group homes, 97.6% involved blacks while one admission was classified as "other". Of the 19 admissions to the girls' group home, 94.7% were black while one admission was white. The three group homes involved admissions of juveniles from Baltimore City (95.1%) and three admissions were males from Prince George's County.

Maryland Youth Residence Center

Maryland Youth Residence Center, which is a residential treatment facility for boys twelve years of age and younger, reported 24 admissions during fiscal 1976. This represents an increase of 9.1% from fiscal 1976. A majority involved blacks (91.7%), while whites accounted for 8.3%. Most of the admissions involved juveniles from Baltimore City (95.8%), while one admission involved a juvenile from Prince George's County.

Youth Service Center

The Youth Service Center, which is a day program offering specialized services to delinquent youth, reported 224 referrals during fiscal 1976. This represents an increase of 9.8% from fiscal 1975. These referrals involved 85.7% males and 14.3% females, all of whom were black. While these referrals involved juveniles fourteen to nineteen years of age, a majority involved juveniles who were sixteen to seventeen years of age (74.1%).

Youth Services Bureaus

Youth Services Bureaus in Maryland are local community agencies which provide services to youth on a voluntary basis. The primary purpose of these community-operated programs is youth development and juvenile delinquency prevention. Seventy-five percent of the funds required to operate Bureaus are provided by the State of Maryland through grants from the Juvenile Services Administration. The remaining twenty-five percent of the funds are provided to Bureaus by their local units of government.

During fiscal 1976, Youth Services Bureaus serviced 5,285 formal cases. Formal cases in this context are not "court-related" case, but are cases which receive regularly scheduled counselling, have a complete case file developed and have a specific counselor assigned. A majority of these cases involved males (58.3%), while

females accounted for 41.7%. Whites accounted for 63.8% of the cases, 35.4% involved blacks and 0.8% were classified as "other".

In addition to formal counselling, however, Youth Services Bureaus provide a broad range of services including the following: Informal Counselling, Crisis Intervention, Information and Referral, Tutoring, Leisure Time Activities, Mobilizing Community Resources, Job Placement Assistance, Community Education, Consultation and/or Training, and Drug Education. The above figures do not reflect the number of cases served in these other areas.

Seventeen Youth Services Bureaus are funded through the Maryland Juvenile Services Administration. Two are located in Anne Arundel County, five in Prince George's County, three in Baltimore County, three in Baltimore City, two in Montgomery County and one each in Carroll County and Charles County.

TABLE 22
COMMUNITY AND RESIDENTIAL EXPENDITURES
FISCAL 1968 - 1976

| Fiscal Year | Good Shepherd Center | Purchase of Care | State-Owned Group Homes | Md. Youth Residence Center | Program Direction | Youth Service Bureaus | Youth Service Center | Total |
|-------------|----------------------|------------------|-------------------------|----------------------------|-------------------|-----------------------|----------------------|--------------|
| 1968 | \$ 292,872 | | | | | | | \$ 292,872 * |
| 1969 | \$ 288,091 | \$ 92,151 | | | | | | \$ 380,242 |
| 1970 | \$ 398,156 | \$ 182,959 | \$ 70,534 | | | | | \$ 651,649 |
| 1971 | \$ 475,629 | \$ 740,271 | \$ 223,588 | | | | | \$ 1,439,488 |
| 1972 | \$ 666,710 | \$ 1,389,901 | \$ 208,979 | \$ 50,160 | | | | \$ 2,315,750 |
| 1973 | \$ 742,802 | \$ 1,819,199 | \$ 201,154 | \$ 254,169 | \$ 58,026 | | | \$ 3,075,350 |
| 1974 | \$ 758,149 | \$ 2,825,064 | \$ 236,514 | \$ 364,168 | \$ 76,354 | | | \$ 4,260,249 |
| 1975 | \$ 809,205 | \$ 4,238,650 | \$ 238,570 | \$ 346,831 | \$ 77,240 | \$ 436,589 | | \$ 6,147,085 |
| 1976 | \$ 868,106 | \$ 4,826,722 | \$ 254,846 | \$ 396,300 | \$ 81,834 | \$ 790,493 | \$ 306,030 | \$ 7,524,331 |

* Not included in Operating Budget for 1968

TABLE 23
COMMUNITY RESIDENTIAL PLACEMENTS
NUMBER OF ADMISSIONS
FISCAL 1968 - 1976

| Fiscal Year | Good Shepherd Center | Purchase of Care | | State-Owned Group Homes | Maryland Youth Residence Center | Total |
|-------------|----------------------|------------------|-----------|-------------------------|---------------------------------|-------|
| | | Residential | Emergency | | | |
| 1968 | 116 | | | | | 116 |
| 1969 | 105 | 16 | | | | 121 |
| 1970 | 88 | 130 | | 22 | | 240 |
| 1971 | 131 | 276 | | 46 | | 453 |
| 1972 | 87 | 601 | 539 | 60 | 36 | 1,323 |
| 1973 | 85 | 850 | 1,068 | 82 | 35 | 2,120 |
| 1974 | 86 | 1,184 | 1,987 | 76 | 35 | 3,368 |
| 1975 | 91 | 1,067 | 2,794 | 45 | 22 | 4,019 |
| 1976 | 98 | 1,109 | 3,012 | 61 | 24 | 4,304 |

TABLE 24
RESIDENTIAL AND EMERGENCY PLACEMENTS BY SEX AND COUNTY
FISCAL 1976

| | Private Residential Placements | | | Emergency Placements | | |
|---------------------------------------------------------------|--------------------------------|------------------|------------------------|----------------------|---------------------|-------------------------|
| | Male | Female | Total | Male | Female | Total |
| Region 1. Dorchester Somerset Wicomico Worcester | 9 5 8 4 | 4 1 1 4 | 13 6 9 8 | 1 1 1 4 | 1 1 1 4 | 1 1 1 1 |
| Region 2. Caroline Cecil Kent Queen Anne's Talbot | 22 5 5 4 | 1 1 4 4 | 1 22 6 5 8 | 3 45 2 8 | 3 18 2 9 | 6 63 2 2 17 |
| Region 3. Baltimore Harford | 74 34 | 26 6 | 100 40 | 45 8 | 81 4 | 126 12 |
| Region 4. Allegany Garrett Washington | 9 8 12 | 12 1 6 | 21 9 18 | 2 3 3 | 12 4 14 | 14 7 17 |
| Region 5. Anne Arundel Carroll Howard | 60 13 13 | 26 9 2 | 86 22 15 | 74 14 24 | 79 39 18 | 153 53 42 |
| Region 6. Frederick Montgomery | 8 104 | 6 43 | 14 147 | 9 158 | 10 172 | 19 330 |
| Region 7. Calvert Charles Prince George's St. Mary's | 4 17 165 14 | 6 71 2 | 4 23 236 16 | 26 636 12 | 1 23 544 4 | 1 49 1,180 16 |
| Region 8. Baltimore City | 203 | 77 | 280 | 501 | 400 | 901 |
| STATE | 800 | 309 | 1,109 | 1,575 | 1,437 | 3,012 |

TABLE 25
RESIDENTIAL AND EMERGENCY PLACEMENTS BY RACE AND COUNTY
FISCAL 1976

| | Private Residential Placements | | | | Emergency Placements | | | | Good Shepherd Center | | |
|---------------------------------------------------------------|--------------------------------|--------------|-------|------------------------|-------------------------|---------------|-------|-------------------------|----------------------|-------|--------------|
| | White | Black | Other | Total | White | Black | Other | Total | White | Black | Total |
| | | | | | | | | | | | |
| Region 1. Dorchester Somerset Wicomico Worcester | 4 6 6 8 | 9 3 | | 13 6 9 8 | 1 1 | | | 1 1 | 2 | | 2 |
| Region 2. Caroline Cecil Kent Queen Anne's Talbot | 1 20 2 5 4 | 1 4 4 | 1 | 1 22 6 5 8 | 4 62 2 2 14 | 2 | 1 | 6 63 2 2 17 | 1 | | 1 |
| Region 3. Baltimore Harford | 90 39 | 9 1 | 1 | 100 40 | 112 12 | 14 | | 126 12 | 12 7 | | 12 7 |
| Region 4. Allegany Garrett Washington | 21 9 17 | 1 | | 21 9 18 | 14 7 15 | 2 | | 14 7 17 | 5 | 1 | 6 |
| Region 5. Anne Arundel Carroll Howard | 79 22 12 | 7 3 | | 86 22 15 | 142 53 42 | 10 | 1 | 153 53 42 | 9 2 | 1 | 10 2 |
| Region 6. Frederick Montgomery | 11 139 | 3 8 | | 14 147 | 18 298 | 1 28 | 4 | 19 330 | 1 11 | | 1 11 |
| Region 7. Calvert Charles Prince George's St. Mary's | 4 19 193 12 | 4 41 4 | 2 | 4 23 236 16 | 1 41 903 12 | 8 273 4 | | 1 49 1,180 16 | 1 3 14 | 3 | 1 3 17 |
| Region 8. Baltimore City | 98 | 180 | 2 | 280 | 317 | 583 | 1 | 901 | 13 | 12 | 25 |
| STATE | 821 | 282 | 6 | 1,109 | 2,073 | 928 | 11 | 3,012 | 81 | 17 | 98 |

TABLE 26
COMMUNITY RESIDENTIAL PLACEMENTS BY RACE
FISCAL 1976

| Placement | White | | Black | | Other | | Total | |
|--------------------------------------------|--------|---------|--------|---------|--------|---------|--------|---------|
| | Number | Percent | Number | Percent | Number | Percent | Number | Percent |
| Good Shepherd Center | 81 | 82.7 | 17 | 17.3 | | | 98 | 100.0 |
| Purchase of Care Residential Placements | 821 | 74.0 | 282 | 25.4 | 6 | 0.6 | 1,109 | 100.0 |
| Purchase of Care Emergency Placements | 2,073 | 68.8 | 928 | 30.8 | 11 | 0.4 | 3,012 | 100.0 |
| State-Owned Group Homes | | | | | | | | |
| Males | | | 41 | 97.6 | 1 | 2.4 | 42 | 100.0 |
| Females | 1 | 5.3 | 18 | 94.7 | | | 19 | 100.0 |
| Maryland Youth Residence Center | 2 | 8.3 | 22 | 91.7 | | | 24 | 100.0 |

TABLE 27
YOUTH SERVICE CENTER ADMISSIONS BY AGE AND SEX *
FISCAL 1976

| Age | Male | | Female | | Total | |
|-------|--------|---------|--------|---------|--------|---------|
| | Number | Percent | Number | Percent | Number | Percent |
| 14 | 2 | 1.1 | | | 2 | 0.9 |
| 15 | 32 | 16.7 | 10 | 31.3 | 42 | 18.8 |
| 16 | 69 | 35.9 | 15 | 46.9 | 84 | 37.5 |
| 17 | 77 | 40.1 | 5 | 15.6 | 82 | 36.6 |
| 18 | 11 | 5.7 | 2 | 6.2 | 13 | 5.8 |
| 19 | 1 | 0.5 | | | 1 | 0.4 |
| Total | 192 | 100.0 | 32 | 100.0 | 224 | 100.0 |

* The Youth Service Center is a day program offering specialized services to delinquent youth.

TABLE 28
MARYLAND JUVENILE SERVICES ADMINISTRATION
TOTAL FORMALLY COUNSELLED CASES SERVED BY YOUTH SERVICES BUREAUS
BY LOCATION, SEX AND RACE
FISCAL 1976

| Bureau | Location | Male | | | Female | | | Total |
|---------------------|---------------------|-------|-------|-------|--------|-------|-------|-------|
| | | Black | White | Other | Black | White | Other | |
| Annapolis | Anne Arundel County | 167 | 57 | | 168 | 26 | | 418 |
| Bowie | Prince George's Co. | 43 | 103 | | 23 | 117 | | 286 |
| Carroll County | Carroll County | 6 | 222 | | 4 | 119 | | 351 |
| College Park | Prince George's Co. | 8 | 91 | 3 | 6 | 58 | 2 | 168 |
| Dundalk | Baltimore County | 7 | 246 | 4 | 15 | 167 | | 439 |
| East Baltimore | Baltimore City | 142 | 7 | | 182 | | | 331 |
| Glenarden | Prince George's Co. | 77 | | | 28 | | | 105 |
| Greenbelt | Prince George's Co. | 6 | 128 | 3 | 5 | 140 | 3 | 285 |
| Harundale | Anne Arundel County | 11 | 119 | | 4 | 88 | | 222 |
| Laurel | Prince George's Co. | 6 | 67 | | 6 | 45 | | 124 |
| Lighthouse | Baltimore County | 14 | 88 | | 7 | 45 | | 154 |
| Listening Post | Montgomery County | 5 | 25 | 13 | 7 | 14 | 8 | 72 |
| North Central | Baltimore City | 53 | 31 | | 19 | 7 | | 110 |
| Northwest Baltimore | Baltimore City | 376 | 7 | | 191 | | | 574 |
| PCA | Baltimore County | | 63 | | 2 | 46 | | 111 |
| Rockville | Montgomery County | 11 | 147 | 2 | 15 | 179 | 3 | 357 |
| Iri-County | Charles County | 157 | 568 | | 98 | 355 | | 1,178 |
| | Totals | 1,089 | 1,969 | 25 | 780 | 1,406 | 16 | 5,285 |

DIVISION OF
INSTITUTIONAL
SERVICES

ADMISSIONS TO MARYLAND'S JUVENILE INSTITUTIONS

Maryland Training School

Maryland Training School, which is a training school for boys with a rated capacity of 301, reported 2,997 admissions during fiscal 1976, which includes 2,327 commitments and 670 detentions. This represents a decrease of 19.2% from the number of admissions reported during fiscal 1975. The number of detentions, which accounted for 77.6% of the total number of admissions during fiscal 1976, decreased 23.7%. The number of commitments, on the other hand, which accounted for 22.4% of the total number of admissions, increased 1.7%.

Although juveniles were admitted to the training school from all of Maryland's counties, from Baltimore City and from out-of-state, it is significant to note that Baltimore City accounted for 64.3% of the commitments and 78.0% of the detentions.

A majority of the admissions involved blacks (67.8%), 32.0% involved whites and 0.2% were classified as "other".

Of the total number of admissions to the training school, a majority involved juveniles between fifteen and seventeen years of age (79.0%). In general, the number of admissions increased proportionately with an increase in age up to the age of sixteen, decreasing thereafter. Juveniles under fifteen years of age accounted for 17.8% of the admissions, 22.7% involved juveniles fifteen years of age, 29.9% involved sixteen year olds, 26.4% were seventeen years of age and 3.2% involved juveniles eighteen years of age.

The largest single age group for blacks involved sixteen year olds with 29.6% of the admissions. Of those admissions involving whites, on the other hand, seventeen year olds comprised the largest single group with 30.5%.

Cases involving "burglary-breaking and entering" accounted for 23.3% of the 670 commitments. This was the largest single offense category. Following this, "assault" accounted for 14.9% of the commitments, "auto theft-unauthorized use" accounted for 13.1% and 8.2% involved "larceny". Of the detentions, "burglary-breaking and entering" accounted for 22.3%, followed by "assault" with 21.7%, "auto theft-unauthorized use" with 10.2% and "larceny" with 9.8%.

Of the 610 juveniles released from commitments to Maryland Training School during fiscal 1976, the average length of stay was 6.0 months. This represents an increase of 1.2 months from fiscal 1975. Of the 2,324 juveniles released from detentions, the average length of stay was 15 days. This represents a decrease of two days from fiscal 1975.

Montrose School

Montrose School, which is a co-educational training school with a rated capacity of 255, reported 981 admissions during fiscal 1976, of which 668 were commitments and 313 were detentions. This represents a 5.8% increase from the number reported during fiscal 1975. This increase was due to the 28.7% increase in the number of commitments, which accounted for 68.1% of the total number of admissions. The number of detentions, on the other hand, which accounted for 31.9% of the total number of admissions, decreased 23.3%.

Although juveniles were admitted to Montrose from twenty of Maryland's counties, from Baltimore City and from out-of-state, it is significant to note that 64.7% of the admissions involved juveniles from Baltimore City. Of the commitments, 68.6% involved juveniles from Baltimore City and of the detentions, 56.5% were from Baltimore City.

A majority of the 981 admissions to Montrose involved blacks (62.4%), while whites accounted for 37.1% and 0.5% were classified as "other".

Of the total number of admissions, a majority involved juveniles between fourteen and fifteen years of age (62.2%). Juveniles fifteen years of age comprised the largest single group with 32.6% of the admissions. Juveniles under fourteen years accounted for 19.8% of the admissions, while juveniles over fifteen accounted for 18.0%. Of those admissions involving whites, however, the largest single age group involved fourteen year olds with 31.0% of the admissions, while juveniles fifteen years of age comprised the largest single age group for admissions involving blacks with 34.0%.

Cases involving "burglary-breaking and entering" accounted for 20.8% of the total number of 668 commitments to Montrose. This was the largest single offense category. Cases involving "assault" accounted for 16.5% of the commitments, followed by "violations of supervision, probation or aftercare" with 12.1% and "auto theft-unauthorized use" with 9.1%. Of the 313 detentions, "assault" was the largest single offense category with 16.9%. This was followed by "violations of supervision, probation or aftercare" with 13.7%, "shoplifting" with 13.4% and "runaway" with 9.9%. It should be pointed out, however, that a majority of the "runaway" cases involve Interstate Compact cases.

Of the 620 juveniles released from commitments during fiscal 1976, the average length of stay was 6.1 months. This represents a decrease of 0.1 month from fiscal 1975. Of the 307 juveniles released from detentions during fiscal 1976, the average length of stay was 13 days. This is the same figure as was reported for fiscal 1975.

Boys' Village

Boys' Village, which is now a detention center for boys with a rated capacity of 56, reported 1,225 detentions during fiscal 1976. This represents an increase of 5.2% from the number of admissions during fiscal 1975 and an increase of 12.6% from the number of detentions. It should be pointed out, however, that Boys' Village was phased out as a training school with a rated capacity of 275 during fiscal 1975.

Although juveniles were admitted to Boys' Village from six of Maryland's counties, from Baltimore City and from out-of-state, a vast majority of the admissions involved juveniles from Prince George's County (88.8%).

Of the total number admitted during fiscal 1976, 51.3% involved blacks, whites accounted for 48.6% and 0.1% were classified as "other".

A majority involved juveniles between the ages of fifteen and seventeen years of age (73.2%). Juveniles under fifteen years of age accounted for 23.0% of the admissions, juveniles fifteen years of age accounted for 22.9%, 29.0% involved sixteen year olds, 21.3% involved seventeen year olds, eighteen year olds accounted for 3.3% and in 0.5% of the cases, age was unknown.

Cases involving "burglary-breaking and entering" accounted for 21.1% of the total number of detentions. This was the largest single offense category. Cases involving "shoplifting" accounted for 15.3%, followed by "larceny" with 11.3% and "auto theft-unauthorized use" with 8.8%.

Of the 1,169 juveniles released from detentions to Boys' Village during fiscal 1976, the average length of stay was 22 days. This represents a decrease of 10 days from fiscal 1975.

Boys' Forestry Camps

The Boys' Forestry Camps, which have a rated capacity of 140, reported 283 commitments during fiscal 1976. This represents a decrease of 18.2% from fiscal 1975. Of the total number of admissions reported during fiscal 1976, 187 or 66.1% were direct commitments to the Forestry Camps and 96 or 33.9% were transfers from other institutions.

Juveniles were admitted to the Forestry Camps from twenty-two counties of Maryland, from Baltimore City and from out-of-state. Over half of the admissions, however, involved juveniles from Prince George's County (23.0%), Montgomery County (19.1%) and Baltimore City (17.0%).

A majority of the admissions involved whites (68.6%) while blacks accounted for 31.4%.

Of the 283 admissions, a majority involved juveniles sixteen to seventeen years of age (76.7%). Only 17.7% of the admissions involved juveniles under sixteen years of age, while 43.1% involved sixteen year olds, seventeen year olds accounted for 33.6% and eighteen year olds accounted for 5.3%.

Cases involving "burglary-breaking and entering" accounted for 26.9% of the admissions to the Forestry Camps. This was followed by "violations of supervision, probation or aftercare" with 14.1%, "larceny" with 10.2%, and "assault" and "auto theft-unauthorized use" each with 9.5%.

The average length of stay was 6.9 months for the 281 juveniles released from commitments to the Forestry Camps during fiscal 1976. This represents an increase of 0.7 months from fiscal 1975.

Maryland Children's Center

Maryland Children's Center, which is a diagnostic and evaluation center with a rated capacity of 112, reported 1,296 admissions during fiscal 1976. This represents a decrease of 1.7% from fiscal 1975. Whereas the evaluation process previously required a 30 day stay, it has now been reduced to 21 days with the same service provided.

While juveniles were admitted to Maryland Children's Center from all but one of Maryland's counties, from Baltimore City and from out-of-state, almost half of the admissions during fiscal 1976 were from Baltimore City (46.1%). This was followed by Prince George's County with 16.2% and Montgomery County with 10.2%.

Of the 1,296 admissions during fiscal 1976, a majority involved males (71.5%), while females accounted for 28.5%. Over half of these admissions involved whites (52.4%), while blacks accounted for 47.3% and 0.3% were classified as "other".

A majority of the admissions involved juveniles between the ages of fourteen and sixteen (66.2%). Juveniles under fourteen years of age accounted for 21.0% of the admissions, while juveniles over sixteen accounted for 12.3%. The largest single age group, however, involved fifteen year olds with 25.8%. This was approximately the same, regardless of race.

Cases involving "ungovernable" behavior accounted for 24.8% of the total number of admissions. This represents the largest single offense category. Cases involving "burglary-breaking and entering" accounted for 13.7% of the admissions, "assault" accounted for 13.3% and 6.9% involved "violations of supervision, probation and aftercare".

The average length of stay was 21 days for the 1,269 juveniles released during fiscal 1976. This represents a decrease of nine days from fiscal 1975.

Waxter Children's Center

Waxter Children's Center, which is a detention facility with a rated capacity of 40, reported 1,276 admissions during fiscal 1976. This represents an increase of 10.1% from fiscal 1975.

Juveniles were admitted to the center from fourteen of Maryland's counties, from Baltimore City and from out-of-state. Montgomery County, however, was responsible for the largest percentage of admissions with 31.2%. This was followed by Anne Arundel County with 22.0%, out-of-state admissions with 19.3% and Prince George's County with 10.3%.

Of the 1,276 admissions during fiscal 1976, a majority involved males (70.1%), with females accounting for 29.9%. Nearly three-quarters of these admissions involved whites, while blacks accounted for 26.0% and 0.7% were classified as "other".

A majority of the admissions to Waxter Children's Center involved juveniles between the ages of fifteen and seventeen (75.5%). Juveniles under fifteen years of age accounted for 20.6%, while eighteen year olds accounted for 3.0%. In general, the number of admissions increased proportionately with an increase in age up to the age of seventeen, with the seventeen year olds comprising the largest single age group with 26.1%. Of those admissions involving blacks, however, the number of admissions increased proportionately with an increase in age up to the age of fifteen, decreasing thereafter. Fifteen year olds comprised the largest single age group with 25.6%.

The largest single offense category for Waxter Children's Center was "burglary-breaking and entering" with 16.0% of the admissions. This was followed by "runaway" (14.8%) which includes Interstate Compact cases, "shoplifting" with 11.4% and "assault" with 9.6%.

Of the 1,248 juveniles released from detentions during fiscal 1976, the average length of stay was twelve days. This represents a decrease of one day from the average length of stay during fiscal 1975.

TABLE 29
MARYLAND JUVENILE SERVICES ADMINISTRATION
SUMMARY OF INSTITUTION EXPENDITURES
FISCAL 1968 - 1976

| Fiscal Year | Training Schools | Detention Centers | Forestry Camps | Total |
|-------------|------------------|-------------------|----------------|---------------|
| 1968 | \$ 5,632,139 | \$ 1,039,728 | \$ 589,915 | \$ 7,261,782 |
| 1969 | \$ 5,633,399 | \$ 1,138,951 | \$ 572,601 | \$ 7,344,951 |
| 1970 | \$ 6,513,389 | \$ 1,342,038 | \$ 684,536 | \$ 8,539,963 |
| 1971 | \$ 7,916,373 | \$ 1,537,667 | \$ 768,821 | \$ 10,222,861 |
| 1972 | \$ 8,700,095 | \$ 1,782,315 | \$ 882,241 | \$ 11,364,651 |
| 1973 | \$ 8,741,551 | \$ 1,752,665 | \$ 836,074 | \$ 11,330,290 |
| 1974 | \$ 7,981,170 | \$ 1,832,283 | \$ 831,407 | \$ 10,644,860 |
| 1975 | \$ 7,426,182 | \$ 2,095,326 | \$ 991,259 | \$ 10,512,767 |
| 1976 | \$ 6,277,419 | \$ 4,190,101 | \$ 1,101,191 | \$ 11,568,711 |

TABLE 30
SUMMARY OF INSTITUTION ADMISSIONS
FISCAL 1968 - 1976

| Fiscal Year | Training School Admissions | | | Detention Center Admissions | Forestry Camp Admissions |
|-------------|----------------------------|------------|-------|-----------------------------|--------------------------|
| | Commitments | Detentions | Total | | |
| 1968 | 1,648 | 949 | 2,597 | 3,303 | 266 |
| 1969 | 1,833 | 923 | 2,756 | 3,868 | 291 |
| 1970 | 1,822 | 912 | 2,734 | 4,441 | 318 |
| 1971 | 1,790 | 1,190 | 2,980 | 4,652 | 348 |
| 1972 | 1,801 | 1,843 | 3,644 | 4,131 | 288 |
| 1973 | 1,439 | 2,807 | 4,246 | 3,323 | 276 |
| 1974 | 1,131 | 4,118 | 5,249 | 2,440 | 278 |
| 1975 | 1,255 | 4,544 | 5,799 | 2,477 | 346 |
| 1976 | 1,338 | 2,640 | 3,978 | 3,797 | 283 |

TABLE 31
ADMISSIONS TO MARYLAND'S JUVENILE INSTITUTIONS
FISCAL YEAR COMPARISONS
1975 - 1976

| Institution | Fiscal 1975 | Fiscal 1976 | Percent Change |
|----------------------------|-------------|-------------|----------------|
| Maryland Training School | 659 | 670 | + 1.7 |
| Commitments | 3,048 | 2,327 | - 23.7 |
| Detentions | 3,707 | 2,997 | - 19.2 |
| Total Admissions | | | |
| Montrose School | 519 | 668 | + 28.7 |
| Commitments | 408 | 313 | - 23.3 |
| Detentions | 927 | 981 | + 5.8 |
| Total Admissions | | | |
| Boys' Village | 77 | - | + 12.6 |
| Commitments | 1,088 | 1,225 | + 12.6 |
| Detentions | 1,165 | 1,225 | + 5.2 |
| Total Admissions | | | |
| Boys' Forestry Camps | 346 | 283 | - 18.2 |
| Total Admissions | | | |
| Maryland Children's Center | 1,318 | 1,296 | - 1.7 |
| Total Admissions | | | |
| Waxter Children's Center | 1,159 | 1,276 | + 10.1 |
| Total Admissions | | | |

TABLE 32
ADMISSIONS TO MARYLAND'S JUVENILE INSTITUTIONS
BY COUNTY OF RESIDENCE - FISCAL 1976

| | Maryland Training School | | Montrose School | | Total for Training Schools | | Forestry Camp Admissions | Boys' Village Admissions | Maryland Children's Center | Waxter Children's Center |
|---------------------------------------------------------------|--------------------------|--------------------------|-------------------|--------------|----------------------------|--------------------------|--------------------------|--------------------------|----------------------------|--------------------------|
| | Committed | Detained | Committed | Detained | Committed | Detained | | | | |
| Region 1. Dorchester Somerset Wicomico Worcester | 5 4 9 | 6 4 22 4 | 9 5 8 | 4 | 14 9 17 | 6 4 26 4 | 1 1 2 | | 2 8 8 | |
| Region 2. Caroline Cecil Kent Queen Anne's Talbot | 1 7 2 9 8 | 4 38 10 5 13 | 2 4 1 | 4 1 | 1 9 6 9 9 | 4 42 11 5 13 | 1 10 1 2 2 | 1 | 3 13 3 4 | 1 1 1 |
| Region 3. Baltimore Harford | 40 13 | 144 48 | 27 10 | 13 2 | 67 23 | 157 50 | 6 13 | | 49 21 | 10 2 |
| Region 4. Allegany Garrett Washington | 8 11 17 | 6 34 | 7 1 13 | 4 | 15 12 30 | 6 38 | 6 3 2 | | 12 8 15 | 2 |
| Region 5. Anne Arundel Carroll Howard | 10 6 2 | 13 35 6 | 4 2 5 | 2 6 | 14 8 7 | 15 41 6 | 27 3 3 | 2 | 104 13 16 | 281 78 |
| Region 6. Frederick Montgomery | 4 13 | 21 | 3 25 | 4 6 | 7 38 | 4 27 | 11 54 | | 16 132 | 24 398 |
| Region 7. Calvert Charles Prince George's St. Mary's | 8 1 52 2 | 2 1 41 | 6 7 63 4 | 5 67 1 | 14 8 115 6 | 2 6 108 1 | 3 7 65 6 | 24 70 1,088 37 | 5 39 210 16 | 2 6 131 6 |
| Region 8. Baltimore City | 431 | 1,815 | 458 | 177 | 889 | 1,992 | 48 | 1 | 598 | 87 |
| Out-of-State | 7 | 55 | 4 | 17 | 11 | 72 | 6 | 2 | 1 | 246 |
| TOTAL | 670 | 2,327 | 668 | 313 | 1,338 | 2,640 | 283 | 1,225 | 1,296 | 1,276 |

TABLE 33
ADMISSIONS TO MARYLAND TRAINING SCHOOL, MONTROSE SCHOOL,
BOYS' VILLAGE AND VICTOR CULLEN BY TYPE OF ADMISSION
FISCAL 1968 - 1976

| Year and Type of Admission | Maryland Training School | Montrose School | Boys' Village | Victor Cullen* | Total |
|----------------------------|--------------------------|-----------------|---------------|----------------|-------|
| 1968 | | | | | |
| Commitments | 782 | 291 | 381 | 194 | 1,648 |
| Detentions | 530 | 211 | 208 | | 949 |
| Total | 1,312 | 502 | 589 | 194 | 2,597 |
| 1969 | | | | | |
| Commitments | 818 | 308 | 466 | 241 | 1,833 |
| Detentions | 493 | 211 | 219 | | 923 |
| Total | 1,311 | 519 | 685 | 241 | 2,756 |
| 1970 | | | | | |
| Commitments | 761 | 336 | 406 | 319 | 1,822 |
| Detentions | 429 | 302 | 181 | | 912 |
| Total | 1,190 | 638 | 587 | 319 | 2,734 |
| 1971 | | | | | |
| Commitments | 872 | 308 | 311 | 299 | 1,790 |
| Detentions | 655 | 362 | 173 | | 1,190 |
| Total | 1,527 | 670 | 484 | 299 | 2,980 |
| 1972 | | | | | |
| Commitments | 498 | 402 | 420 | 481 | 1,801 |
| Detentions | 759 | 437 | 535 | 112 | 1,843 |
| Total | 1,257 | 839 | 955 | 593 | 3,644 |
| 1973 | | | | | |
| Commitments | 336 | 326 | 382 | 395 | 1,439 |
| Detentions | 1,019 | 466 | 1,158 | 164 | 2,807 |
| Total | 1,355 | 792 | 1,540 | 559 | 4,246 |
| 1974 | | | | | |
| Commitments | 403 | 347 | 350 | 31 | 1,131 |
| Detentions | 2,472 | 599 | 960 | 87 | 4,118 |
| Total | 2,875 | 946 | 1,310 | 118 | 5,249 |
| 1975 | | | | | |
| Commitments | 659 | 519 | 77 | | 1,255 |
| Detentions | 3,048 | 408 | 1,088 | | 4,544 |
| Total | 3,707 | 927 | 1,165 | | 5,799 |
| 1976 | | | | | |
| Commitments | 670 | 668 | | | 1,338 |
| Detentions | 2,327 | 313 | 1,225 | | 3,865 |
| Total | 2,997 | 981 | 1,225 | | 5,203 |

* Victor Cullen School was closed as a training school at the end of fiscal 1974 and converted to use by the Mental Retardation Administration.

TABLE 34
ADMISSIONS TO MARYLAND'S TRAINING SCHOOLS, FORESTRY CAMPS AND BOYS' VILLAGE
BY COUNTY OF RESIDENCE AND COUNTY OF ADMITTING COURT
FISCAL 1976

| | Maryland Training School | | Montrose School | | Boys' Village | | Boys' Forestry Camps | |
|---------------------------------------------------------------|---------------------------|---------------------------|---------------------|---------------------|-------------------------|-------------------------|------------------------|------------------------|
| | County of Residence | Admitting Court | County of Residence | Admitting Court | County of Residence | Admitting Court | County of Residence | Admitting Court |
| Region 1. Dorchester Somerset Wicomico Worcester | 11 8 31 4 | 12 7 32 6 | 9 5 12 | 9 5 13 | | | 1 1 2 | 1 1 2 |
| Region 2. Caroline Cecil Kent Queen Anne's Talbot | 5 45 12 14 21 | 6 54 12 21 18 | 6 5 1 | 6 5 1 | 1 | 1 | 1 10 1 2 2 | 1 11 1 2 2 |
| Region 3. Baltimore Harford | 184 61 | 205 59 | 40 12 | 41 12 | | | 6 13 | 6 13 |
| Region 4. Allegany Garrett Washington | 14 11 51 | 19 16 54 | 7 1 17 | 7 1 17 | | | 6 3 2 | 6 5 2 |
| Region 5. Anne Arundel Carroll Howard | 23 41 8 | 14 40 5 | 6 8 5 | 6 8 5 | 2 | 2 | 27 3 3 | 26 3 5 |
| Region 6. Frederick Montgomery | 4 34 | 4 32 | 7 31 | 7 33 | | 1 | 11 54 | 12 55 |
| Region 7. Calvert Charles Prince George's St. Mary's | 10 2 93 2 | 10 2 98 2 | 6 12 130 5 | 6 15 141 5 | 24 70 1,088 37 | 26 69 1,088 37 | 3 7 65 6 | 3 7 64 6 |
| Region 8. Baltimore City | 2,246 | 2,269 | 635 | 638 | 1 | 1 | 48 | 49 |
| Out-of-State | 62 | | 21 | | 2 | | 6 | |
| STATE | 2,997 | 2,997 | 981 | 981 | 1,225 | 1,225 | 283 | 283 |

TABLE 35
ADMISSIONS TO MARYLAND'S JUVENILE INSTITUTIONS
BY FACILITY AND OFFENSE
FISCAL 1976

| Offense | Maryland Children's Center | Waxter Children's Center | Boys' Village | Maryland Training School | | | Montrose School | | | Boys' Forestry Camps |
|----------------------------------|----------------------------|--------------------------|---------------|--------------------------|------------|-------|-----------------|------------|-------|----------------------|
| | Evaluations | Detentions | Detentions | Commitments | Detentions | Total | Commitments | Detentions | Total | Commitments |
| Arson | 18 | 5 | 6 | 3 | 11 | 14 | 7 | 7 | 14 | 1 |
| Assault | 173 | 122 | 91 | 100 | 505 | 605 | 110 | 53 | 163 | 27 |
| Auto Theft/Unauthorized Use | 54 | 103 | 108 | 88 | 237 | 325 | 61 | 12 | 73 | 27 |
| Burglary/Breaking & Entering | 177 | 204 | 258 | 156 | 520 | 676 | 139 | 23 | 162 | 76 |
| Larceny | 67 | 114 | 139 | 55 | 229 | 284 | 52 | 14 | 66 | 29 |
| Robbery | 62 | 27 | 66 | 46 | 79 | 125 | 44 | 9 | 53 | 9 |
| Disorderly Conduct | 29 | 41 | 22 | 7 | 62 | 69 | 8 | 21 | 29 | 9 |
| Sex Offense | 21 | 4 | 8 | | 20 | 20 | 7 | 5 | 12 | |
| Vandalism | 29 | 37 | 21 | 21 | 50 | 71 | 15 | 11 | 26 | 15 |
| Narcotics Violation | 21 | 63 | 55 | 12 | 38 | 50 | 5 | 13 | 18 | 15 |
| Glue Sniffing/Other Inhalents | 13 | 6 | 1 | 8 | 36 | 44 | 16 | | 16 | |
| Alcoholic Beverage Violation | 3 | 11 | 9 | 2 | 4 | 6 | | 2 | 2 | 2 |
| Shoplifting | 43 | 146 | 187 | 34 | 114 | 148 | 48 | 42 | 90 | 8 |
| Purse Snatching | 6 | | 4 | 10 | 47 | 57 | 13 | 1 | 14 | |
| Firearms/Deadly Weapon Violation | 18 | 8 | 21 | 18 | 43 | 61 | 9 | 2 | 11 | 8 |
| Rec/Poss of Stolen Goods | 5 | 11 | 22 | 13 | 14 | 27 | 10 | 2 | 12 | 5 |
| Trespassing | 11 | 15 | 33 | 7 | 24 | 31 | 8 | 1 | 9 | 3 |
| False Fire Alarm | 3 | 1 | | 1 | 1 | 2 | | | | |
| Runaway * | 63 | 189 | 50 | 4 | 35 | 39 | 9 | 31 | 40 | 2 |
| Truancy * | 16 | | 2 | | | | | | | |
| Ungovernable * | 321 | 4 | 7 | | 2 | 2 | | | | |
| Other * | 51 | 102 | 29 | 32 | 167 | 199 | 26 | 21 | 47 | 7 |
| Dependency & Neglect | 1 | | | | | | | | | |
| Special Proceedings | 1 | | | | | | | | | |
| Violation of Supervision * | 90 | 63 | 86 | 53 | 89 | 142 | 81 | 43 | 124 | 40 |
| Total | 1,296 | 1,276 | 1,225 | 670 | 2,327 | 2,997 | 668 | 313 | 981 | 283 |

* Includes Interstate Compact cases

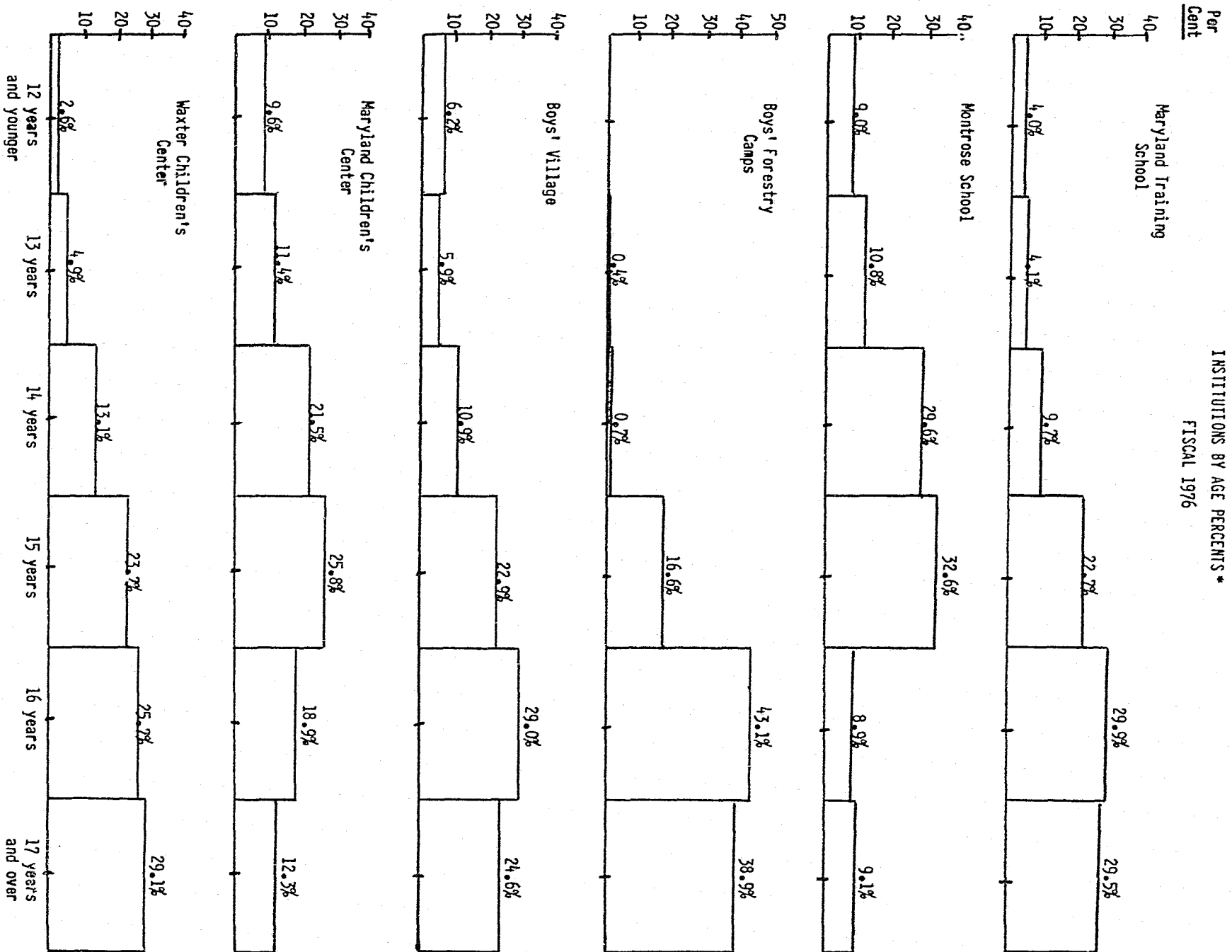


TABLE 36
ADMISSIONS TO MARYLAND'S TRAINING SCHOOLS,
FORESTRY CAMPS AND BOYS' VILLAGE BY AGE AND RACE
FISCAL 1976

| Race by Institution | Age of Juvenile | | | | | | | | | | | Total | |
|--------------------------|-----------------|----|----|-----|-----|-----|-----|-----|-----|-----|---------|--------|---------|
| | Under 10 | 10 | 11 | 12 | 13 | 14 | 15 | 16 | 17 | 18 | Unknown | Number | Percent |
| Maryland Training School | | | | | | | | | | | | | |
| White | 1 | | 6 | 8 | 28 | 87 | 212 | 291 | 292 | 33 | | 958 | 32.0 |
| Black | 3 | 11 | 37 | 54 | 94 | 204 | 467 | 602 | 499 | 59 | 3 | 2,033 | 67.8 |
| Other | | | | | | 1 | | 4 | 1 | | | 6 | 0.2 |
| Total | 4 | 11 | 43 | 62 | 122 | 292 | 679 | 897 | 792 | 92 | 3 | 2,997 | 100.0 |
| Montrose School | | | | | | | | | | | | | |
| White | 1 | 1 | 5 | 14 | 44 | 113 | 109 | 37 | 32 | 7 | 1 | 364 | 37.1 |
| Black | 2 | 3 | 16 | 45 | 61 | 177 | 208 | 50 | 46 | 4 | | 612 | 62.4 |
| Other | 1 | | | | 1 | | 3 | | | | | 5 | 0.5 |
| Total | 4 | 4 | 21 | 59 | 106 | 290 | 320 | 87 | 78 | 11 | 1 | 981 | 100.0 |
| Total Training Schools | | | | | | | | | | | | | |
| White | 2 | 1 | 11 | 22 | 72 | 200 | 321 | 328 | 324 | 40 | 1 | 1,322 | 33.2 |
| Black | 5 | 14 | 53 | 99 | 155 | 381 | 675 | 652 | 545 | 63 | 3 | 2,645 | 66.5 |
| Other | 1 | | | | 1 | 1 | 3 | 4 | 1 | | | 11 | 0.3 |
| Total | 8 | 15 | 64 | 121 | 228 | 582 | 999 | 984 | 870 | 103 | 4 | 3,978 | 100.0 |
| Boys' Village | | | | | | | | | | | | | |
| White | 7 | | 4 | 12 | 26 | 57 | 146 | 185 | 131 | 25 | 3 | 596 | 48.6 |
| Black | 10 | 6 | 7 | 30 | 46 | 77 | 133 | 170 | 130 | 15 | 4 | 628 | 51.3 |
| Other | | | | | | | 1 | | | | | 1 | 0.1 |
| Total | 17 | 6 | 11 | 42 | 72 | 134 | 280 | 355 | 261 | 40 | 7 | 1,225 | 100.0 |
| Boys' Forestry Camps | | | | | | | | | | | | | |
| White | | | | | 1 | 1 | 32 | 85 | 63 | 12 | | 194 | 68.6 |
| Black | | | | | | 1 | 15 | 37 | 32 | 3 | 1 | 89 | 31.4 |
| Other | | | | | | | | | | | | | |
| Total | | | | | 1 | 2 | 47 | 122 | 95 | 15 | 1 | 283 | 100.0 |

TABLE 37
COMMITMENTS TO MARYLAND'S TRAINING SCHOOLS
AND FORESTRY CAMPS BY LENGTH OF STAY (BASED ON RELEASES)
FISCAL 1976

| Length of Stay (Months) | Maryland Training School | Montrose School | Boys' Forestry Camps | Total |
|-------------------------|--------------------------|-----------------|----------------------|-------|
| 0-1 | 79 | 61 | 10 | 150 |
| 2 | 33 | 39 | 6 | 78 |
| 3 | 33 | 31 | 13 | 77 |
| 4 | 75 | 74 | 31 | 180 |
| 5 | 90 | 92 | 42 | 224 |
| 6 | 74 | 87 | 36 | 197 |
| 7 | 61 | 79 | 39 | 179 |
| 8 | 47 | 39 | 33 | 119 |
| 9 | 23 | 25 | 16 | 64 |
| 10 | 20 | 26 | 22 | 68 |
| 11 | 19 | 14 | 11 | 44 |
| 12 | 7 | 8 | 8 | 23 |
| 13 | 16 | 9 | 3 | 28 |
| 14 | 13 | 8 | 2 | 23 |
| 15 | 6 | 9 | 3 | 18 |
| 16 | 4 | 4 | 2 | 10 |
| 17 | 6 | 3 | 2 | 11 |
| 18 | | 2 | 1 | 3 |
| Over 18 | 4 | 10 | 1 | 15 |
| Total | 610 | 620 | 281 | 1,511 |
| Average | 6.0 | 6.1 | 6.9 | 6.3 |

TABLE 38
AVERAGE LENGTH OF STAY FOR DETENTIONS
IN MARYLAND'S JUVENILE INSTITUTIONS
FISCAL 1976

| Institution | Total Releases | Average Length of Stay (Days) |
|----------------------------|----------------|-------------------------------|
| Maryland Training School | 2,324 | 15 |
| Montrose School | 307 | 13 |
| Boys' Village | 1,169 | 22 |
| Maryland Children's Center | 1,269 | 21 |
| Waxter Children's Center | 1,248 | 12 |
| Total | 6,317 | 17 |

TABLE 39
ADMISSIONS TO MARYLAND'S CHILDREN CENTERS
BY CENTER AND SEX
FISCAL 1968 - 1976

| Year and Sex | Maryland Children's Center | T. J. S. Waxter Children's Center | Total |
|-------------------|----------------------------|-----------------------------------|-------|
| Fiscal 1968 | | | |
| Male Admissions | 741 | 1,493 | 2,234 |
| Female Admissions | 266 | 803 | 1,069 |
| Total | 1,007 | 2,296 | 3,303 |
| Fiscal 1969 | | | |
| Male Admissions | 868 | 1,748 | 2,616 |
| Female Admissions | 311 | 941 | 1,252 |
| Total | 1,179 | 2,689 | 3,868 |
| Fiscal 1970 | | | |
| Male Admissions | 861 | 2,112 | 2,973 |
| Female Admissions | 332 | 1,136 | 1,468 |
| Total | 1,193 | 3,248 | 4,441 |
| Fiscal 1971 | | | |
| Male Admissions | 933 | 2,154 | 3,087 |
| Female Admissions | 330 | 1,235 | 1,565 |
| Total | 1,263 | 3,389 | 4,652 |
| Fiscal 1972 | | | |
| Male Admissions | 1,021 | 1,884 | 2,905 |
| Female Admissions | 334 | 892 | 1,226 |
| Total | 1,355 | 2,776 | 4,131 |
| Fiscal 1973 | | | |
| Male Admissions | 973 | 1,189 | 2,162 |
| Female Admissions | 325 | 836 | 1,161 |
| Total | 1,298 | 2,025 | 3,323 |
| Fiscal 1974 | | | |
| Male Admissions | 938 | 818 | 1,756 |
| Female Admissions | 295 | 389 | 684 |
| Total | 1,233 | 1,207 | 2,440 |
| Fiscal 1975 | | | |
| Male Admissions | 980 | 906 | 1,886 |
| Female Admissions | 338 | 253 | 591 |
| Total | 1,318 | 1,159 | 2,477 |
| Fiscal 1976 | | | |
| Male Admissions | 927 | 894 | 1,821 |
| Female Admissions | 369 | 382 | 751 |
| Total | 1,296 | 1,276 | 2,572 |

TABLE 40
ADMISSIONS TO MARYLAND'S CHILDREN CENTERS
BY COUNTY OF RESIDENCE AND COUNTY OF ADMITTING COURT
FISCAL 1976

| | Maryland Children's Center | | Waxter Children's Center | | Total | |
|---------------------------------------------------------------|----------------------------|---------------------------|--------------------------|---------------------------|----------------------|---------------------------|
| | County of Residence | County of Admitting Court | County of Residence | County of Admitting Court | County of Residence | County of Admitting Court |
| Region 1. Dorchester Somerset Wicomico Worcester | 2 8 8 | 2 8 8 | | 1 | 2 8 8 | 2 8 9 |
| Region 2. Caroline Cecil Kent Queen Anne's Talbot | 3 13 3 4 | 3 14 2 4 | 1 1 1 | 5 2 1 1 | 3 14 4 5 | 3 19 4 1 5 |
| Region 3. Baltimore Harford | 49 21 | 51 20 | 10 2 | 12 | 59 23 | 63 20 |
| Region 4. Allegany Garrett Washington | 12 8 15 | 12 8 15 | 2 | | 14 8 15 | 12 8 15 |
| Region 5. Anne Arundel Carroll Howard | 104 13 16 | 103 13 16 | 281 ¹ 78 | 346 105 | 385 13 94 | 449 13 121 |
| Region 6. Frederick Montgomery | 16 132 | 17 132 | 24 398 | 33 484 | 40 530 | 50 616 |
| Region 7. Calvert Charles Prince George's St. Mary's | 5 39 210 16 | 4 39 212 16 | 2 6 131 6 | 2 9 182 5 | 7 45 341 22 | 6 48 394 21 |
| Region 8. Baltimore City | 598 | 596 | 87 | 87 | 685 | 683 |
| Out-of-State | 1 | 1 | 246 | 1 | 247 | 2 |
| STATE | 1,296 | 1,296 | 1,276 | 1,276 | 2,572 | 2,572 |

TABLE 41
ADMISSIONS TO MARYLAND'S CHILDREN CENTERS
BY AGE AND RACE
FISCAL 1976

| Age | Maryland Children's Center | | | | Waxter Children's Center | | | | Total | | | |
|----------------|----------------------------|-------|-------|-------|--------------------------|-------|-------|-------|-------|-------|-------|-------|
| | Black | White | Other | Total | Black | White | Other | Total | Black | White | Other | Total |
| Under 10 years | 3 | 3 | | 6 | | 2 | | 2 | 3 | 5 | | 8 |
| 10 years | 9 | 5 | | 14 | 2 | 1 | | 3 | 11 | 6 | | 17 |
| 11 years | 14 | 12 | | 26 | 1 | 2 | | 3 | 15 | 14 | | 29 |
| 12 years | 45 | 34 | | 79 | 11 | 14 | | 25 | 56 | 48 | | 104 |
| 13 years | 71 | 77 | | 148 | 16 | 46 | | 62 | 87 | 123 | | 210 |
| 14 years | 122 | 156 | 1 | 279 | 41 | 126 | | 167 | 163 | 282 | 1 | 446 |
| 15 years | 158 | 176 | 1 | 335 | 85 | 217 | 1 | 303 | 243 | 393 | 2 | 638 |
| 16 years | 116 | 128 | 1 | 245 | 81 | 243 | 4 | 328 | 197 | 371 | 5 | 573 |
| 17 years | 68 | 77 | 1 | 146 | 75 | 255 | 3 | 333 | 143 | 332 | 4 | 479 |
| 18 years | 5 | 9 | | 14 | 14 | 23 | 1 | 38 | 19 | 32 | 1 | 52 |
| Unknown | 2 | 2 | | 4 | 6 | 6 | | 12 | 8 | 8 | | 16 |
| Total | 613 | 679 | 4 | 1,296 | 332 | 935 | 9 | 1,276 | 945 | 1,614 | 13 | 2,572 |
| Percent | 47.3 | 52.4 | 0.3 | 100.0 | 26.0 | 73.3 | 0.7 | 100.0 | 36.7 | 62.8 | 0.5 | 100.0 |

Federal Grants in Operation
During Fiscal 1976

By Program Area

With the assistance of the Governor's Commission on Law Enforcement and the Administration of Justice, Federal funds were provided under the Omnibus Crime Control and Safe Streets Act of 1973 for the following on-going programs during fiscal 1976.

| <u>Juvenile Court Services</u> | LEAA | STATE* |
|------------------------------------------------------------------|-------------------|------------------|
| Community Treatment Intensive Probation Project (Baltimore City) | \$ 474,894 | \$ 52,766 |
| Diagnostic and Treatment Services (Prince George's County) | 69,000 | 7,666 |
| Diagnostic and Treatment Services (Baltimore County) | 30,584 | 3,398 |
| Diagnostic and Treatment Services (Eastern Shore) | 17,000 | 1,888 |
| Diagnostic and Treatment Services (Western Maryland) | 11,000 | 1,222 |
| Diagnostic and Treatment Services (Anne Arundel County) | 55,894 | 6,210 |
| Diagnostic and Treatment Services (Baltimore City) | 15,000 | 1,666 |
| | <u>\$ 673,372</u> | <u>\$ 74,816</u> |

| <u>Community Services</u> | LEAA | STATE* |
|-------------------------------------------------------------------------------|--------------------|------------------|
| Shelter Care Facilities Via Family Type Residential Care Capabilities | \$ 39,012 | \$ 4,332 |
| Diversion of Impact Offenders | 405,195 | 45,021 |
| Residential Facilities Project | 30,000 | 3,330 |
| Differential Group Home and Treatment Project | 106,936 | 11,882 |
| House Detention | 107,000 | 11,888 |
| A Study and Evaluation of Prevention Programs | 9,700 | 1,077 |
| Regional Delinquency Prevention Specialists | 46,500 | 5,160 |
| Community Treatment of Impact Offenders and Families (Anne Arundel County) | 44,316 | 4,920 |
| Community Arbitration Program (Anne Arundel County) | 73,982 | 8,220 |
| Shelter and Foster Parents Training Program | 11,415 | 1,268 |
| Community Volunteer Program | 43,460 | 4,828 |
| Non-Residential Care Supplemental Project (Prince George's County) | 75,000 | 8,333 |
| Community Diversion Youthful Offenders (Prince George's County) | 50,735 | 5,635 |
| Urban County House Detention (Prince George's County) | 34,648 | 3,848 |
| | <u>\$1,077,899</u> | <u>\$119,742</u> |

| <u>Institutional Rehabilitation</u> | LEAA | STATE* |
|------------------------------------------------------------|------------------|-----------------|
| Automated Drug Program (Maryland Training School for Boys) | \$ 1,572 | \$ 174 |
| Health and Family Development (Montrose School) | 11,000 | 1,222 |
| | <u>\$ 12,572</u> | <u>\$ 1,396</u> |

| <u>Multi-Functional</u> | LEAA | STATE* |
|-----------------------------------------------------------------------------------------------------------|-------------------|------------------|
| In-Service Training for Juvenile Services and Private Agencies Personnel (with University of Maryland) | \$ 63,496 | \$ 6,752 |
| Public Information Program | 4,000 | 444 |
| Management Information Needs Study | 29,176 | 3,234 |
| Training of Trainers and Management Level Training Project | 25,008 | 2,772 |
| Parent Effectiveness Training for Selected Personnel Who Serve Juvenile Services Clients | 19,998 | 2,220 |
| Training Seminars for Juvenile Court Judges, Masters, and Certain Juvenile Services Staff | 12,978 | 1,456 |
| | <u>\$ 154,656</u> | <u>\$ 16,878</u> |

TOTAL \$1,918,499 \$212,832

*The State must contribute in cash a portion of the total cost of all projects funded by the Governor's Commission.

The services and facilities of the Maryland State Department of Health and Mental Hygiene are operated on a non-discriminatory basis. This policy prohibits discrimination on the basis of race, color, sex, or national origin and applies to the provision of service, use of facilities, opportunity to participate, practice of employment and granting of advantages, privileges and accommodations.

END