

1.0 1.1 1.25 1.4 1.6 1.8 2.0 2.2 2.5 2.8 3.2 3.6 4.0 4.5 5.0

MICROCOPY RESOLUTION TEST CHART
NATIONAL BUREAU OF STANDARDS-1963-A

U.S. DEPARTMENT OF JUSTICE
LAW ENFORCEMENT ASSISTANCE ADMINISTRATION
NATIONAL CRIMINAL JUSTICE REFERENCE SERVICE
WASHINGTON, D.C. 20531

7/1/77

Date filmed

39863

200

1944

SECRET

 $\frac{1}{2}$

MICHIGAN CRIME PREVENTION ASSOCIATION
MARCH 13, 1974

METHODS AND PROCEDURES FOR EVALUATING CRIME PREVENTION PROGRAMS

39893

METHODS AND PROCEDURES FOR EVALUATING
CRIME PREVENTION PROGRAMS

AGENDA

- INTRODUCTION TO CRIME PREVENTION THEORY
- CRIME PREVENTION PROGRAMS AND EVALUATION MEASUREMENTS
 - TRADITIONAL PROGRAMS
 - OTHER PROGRAMS
- GENERAL METHODOLOGY FOR EVALUATING PROGRAM EFFECTIVENESS
- EVALUATION CRITERIA FOR A PREMISES SURVEY/OPERATION
IDENTIFICATION PROGRAM

INTRODUCTION TO CRIME PREVENTION THEORY

- . "CRIME PREVENTION IS THE ANTICIPATION, THE RECOGNITION, AND THE APPRAISAL OF A CRIME RISK AND THE INITIATION OF SOME ACTION TO REMOVE OR REDUCE IT"
- . CRIME RESULTS FROM:
 - DESIRE TO COMMIT THE CRIME (ECONOMIC, PSYCHOLOGICAL)
 - BELIEF THAT AN OPPORTUNITY TO COMMIT THE CRIME EXISTS
- . THE NUMBER OF CRIMINAL OPPORTUNITIES CORRESPONDS TO THE NUMBER OF CRIMINAL ATTEMPTS
- . ROLE OF POLICE IN CRIME PREVENTION
 - RECOGNIZE WHEN A HIGH CRIME RISK SITUATION EXISTS
 - APPRAISE THE SERIOUSNESS OF THE PARTICULAR RISK
 - INITIATE SOME POSITIVE ACTION TO REMOVE OR REDUCE RISK

CRIME PREVENTION THEORY (CONTINUED)

CRIME PREVENTION CATEGORIES

- INSTITUTIONAL

- .. PUNITIVE: FEAR OF PUNISHMENT
- .. CORRECTIVE: REHABILITATION OF KNOWN CRIMINALS AND ELIMINATION OF SITUATIONS WHICH BREED CRIME

-- ELIMINATION OF INDIVIDUAL RECIDIVISM

-- ALTERATION OF SOCIAL CONDITIONS

- ... EMPLOYMENT
- ... SLUM CLEARANCE
- ... NEW PUBLIC HOUSING
- ... EDUCATION

- MECHANICAL: TARGET HARDENING TO REDUCE OPPORTUNITY BUT MAY ONLY DISPLACE CRIME RATHER THAN PREVENT

- .. ARCHITECTURAL PLANNING
- .. STREET LIGHTING
- .. BUILDING SECURITY ANALYSIS

- PEOPLE

- .. POLICE
- .. CITIZENS

CRIME PREVENTION THEORY (CONTINUED)

• POLICE CRIME PREVENTION DUTIES

- INFORMATION

- .. INCREASE CITIZEN AWARENESS OF CRIME IN NEIGHBORHOOD
- .. PROMOTE USE OF GOOD SECURITY DEVICES AND DESIGN

- AID

- .. ASSIST IN THE IDENTIFICATION OF SECURITY HAZARDS FOR RESIDENCES AND BUSINESSES
- .. WORK WITH PRIVATE SECURITY AGENCIES AND SECURITY INDUSTRY REPRESENTATIVES

- ENFORCEMENT

- .. ALLOCATION OF RESOURCES TO HIGH CRIME AREAS FOR IMPROVED RESPONSE AND INVESTIGATION
- .. PERIODIC CHECKS OF BUSINESS SECURITY
- .. DISCOURAGE OPPORTUNITIES FOR AUTO THEFT BY ISSUING CITATIONS FOR UNLOCKED CARS

TRADITIONAL CRIME PREVENTION PROGRAMS

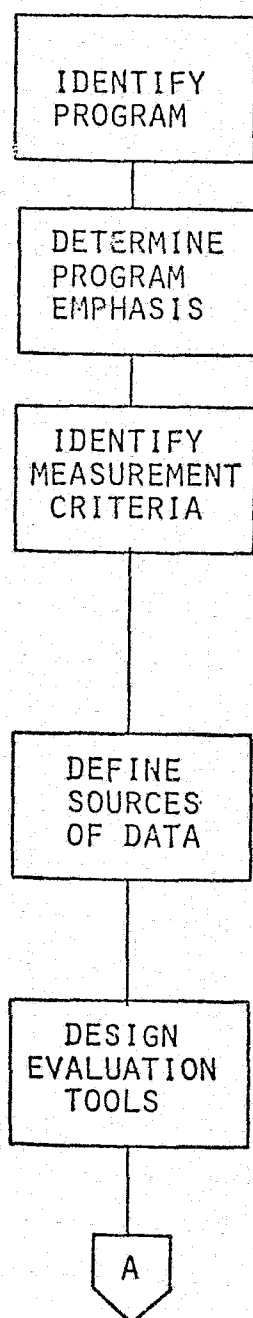
| <u>PROGRAM</u> | <u>POTENTIAL EVALUATION MEASUREMENT</u> |
|--|--|
| . OPPORTUNITY REDUCTION <ul style="list-style-type: none">- IMPROVED LOCKS, LIGHTING- ARCHITECTURAL DESIGN, CODE CHANGES- OPERATION IDENTIFICATION | . NUMBER OF CRIMES AGAINST PROPERTY REPORTED FOR LOCATIONS EMPLOYING OPPORTUNITY REDUCTION TECHNIQUES |
| . DRUG/ALCOHOL CENTER | . NUMBER OF CRIMES COMMITTED WHERE PERSON RESPONSIBLE IS AN ALCOHOLIC OR A DRUG ADDICT |
| . JUVENILE DELINQUENCY PREVENTION <ul style="list-style-type: none">- RECREATION CENTERS- YOUTH SERVICE BUREAU | . NUMBER OF CRIMES COMMITTED BY JUVENILES PARTICIPATING IN PROGRAMS . RECIDIVISM RATE FOR JUVENILE OFFENDERS UTILIZING SERVICES |
| . REHABILITATION <ul style="list-style-type: none">- PUBLIC EMPLOYMENT OF CONVICTED PERSONS, DISADVANTAGED, AND EX-ADDICTS- WORK RELEASE AND HALF-WAY HOUSE | . RECIDIVISM RATE FOR INDIVIDUALS PARTICIPATING IN REHABILITATION PROGRAMS |

OTHER CRIME PREVENTION PROGRAMS

| <u>PROGRAM</u> | <u>POTENTIAL EVALUATION MEASUREMENT</u> |
|--|---|
| <ul style="list-style-type: none"> • POLICE DEPARTMENT PROGRAMS <ul style="list-style-type: none"> - REPLACE SECURITY GUARDS WITH POLICE, AND BILL PRIVATE INSTITUTIONS FOR SERVICE - CHANGE POLICE TACTICS <ul style="list-style-type: none"> ,, PATROL ALLEYS AND SIDE STREETS ,, FOOT PATROL OF HIGH RISE BUILDINGS ,, REMOVE LIGHTS FROM TOP OF PATROL CAR • LICENSE GUN OWNERS WITH A REQUIREMENT TO PASS A TEST AND CARRY LIABILITY INSURANCE • JUVENILE DELINQUENCY PREVENTION <ul style="list-style-type: none"> - CRIME EDUCATION PROGRAM - DROP-OUT PROGRAMS, INCLUDING VOC. ED, • COURTS/REHABILITATION <ul style="list-style-type: none"> - DIVERSION OF SOME OFFENDERS TO COUNSELING OR REHABILITATION WITHOUT TRIAL OR CORRECTIONS - ELIMINATION OF PLEA BARGAINING - BONDING PROCEDURES MODIFICATION <ul style="list-style-type: none"> ,, RELEASE ON RECOGNIZANCE FOR MINOR OFFENDERS ,, ELIMINATE BONDING FOR SECOND OFFENDERS AND CRIMES AGAINST PERSONS ,, NEED FOR SPEEDY TRIAL - ASSIST CONVICTED PERSONS TO GAIN EMPLOYMENT | <ul style="list-style-type: none"> • NUMBER OF BURGLARIES, LARCENIES, AND ROBBERIES REPORTED BY INSTITUTIONS BEFORE AND AFTER CHANGE IN SECURITY FORCE • NUMBER OF INCIDENTS REPORTED IN NEW PATROL AREAS BEFORE AND AFTER CHANGES IN TACTICS • NUMBER OF APPREHENSIONS ON IN-PROGRESS CALLS • NUMBER OF CRIMES COMMITTED IN WHICH GUNS ARE USED, BEFORE AND AFTER CHANGE IN POLICY • NUMBER/SEVERITY OF CRIMES COMMITTED BY JUVENILES ENROLLED IN PROGRAMS • RECIDIVISM RATES OF INDIVIDUALS IN EACH PROGRAM |

GENERAL METHODOLOGY FOR EVALUATING PROGRAM EFFECTIVENESS

PROCEDURE FLOW



DESCRIPTION OF PROCEDURES

- DETERMINE SERVICE/PROGRAM TO BE UNDERTAKEN

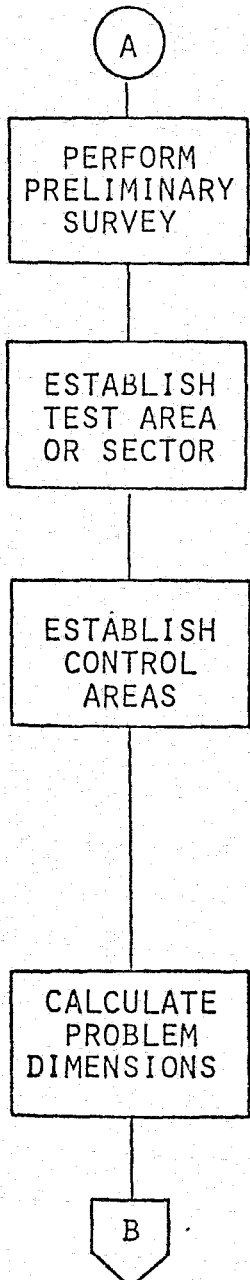
- ISOLATE PROGRAM EMPHASIS IN ORDER TO CONCENTRATE EFFORTS OF AVAILABLE RESOURCES

- IDENTIFY CRITERIA FOR MEASURING PROGRAM EFFECTIVENESS
 - NUMBER OF REPORTED CRIMES RELEVANT TO PROGRAM
 - CITIZEN LEVEL OF KNOWLEDGE OR AWARENESS
 - PERCENTAGE OF CRIMES WHERE RESPONSIBLE IDENTIFIED
 - .. PROMPT, INVOLVED REPORTING BY CITIZENS
 - .. CITIZEN TIPS
 - .. OVERALL LEVEL OF CITIZEN COOPERATION DURING INVESTIGATION

- IDENTIFY SOURCES OF RELEVANT DATA AND METHOD OF OBTAINING MEASUREMENTS
 - UCR REPORTING BY POLICE DEPARTMENT
 - CITIZEN INTERVIEWS
 - INDIVIDUAL INCIDENT REPORTS FOR CRIME TYPE, OR AREA, OR TIME OF DAY, ETC.

- DESIGN PROGRAM EVALUATION TOOLS
 - QUESTIONNAIRE FORMS
 - DATA RECORDING SHEETS
 - SUMMARY WORKSHEETS
 - PERFORMANCE REPORTS
 - INCIDENT PLOTTING MAPS

PROCEDURE FLOW



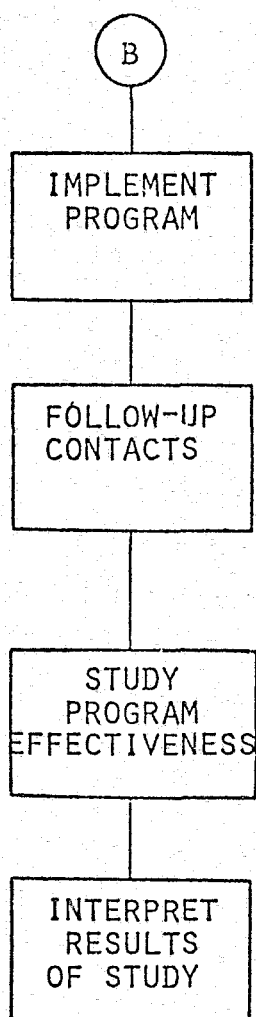
GENERAL METHODOLOGY (CONTINUED)

DESCRIPTION OF PROCEDURES

- 1. PERFORM A PRELIMINARY SURVEY USING EVALUATION TOOLS TO DETERMINE EXTENT AND CHARACTERISTICS OF CRIME PROBLEM
- 2. ESTABLISH GEOGRAPHIC TEST AREA, OR SEGMENT OF POPULATION TO BE SERVED
- 3. ESTABLISH A CONTROL AREA FOR COMPARISON TO MEASURE CHANGES WROUGHT BY PROGRAM
 - ANOTHER AREA SIMILAR TO TEST AREA
 - .. DEMOGRAPHY
 - .. PHYSICAL SIZE
 - SAME AREA ON A HISTORICAL BASIS
 - ADJOINING AREAS TO MEASURE DISPLACEMENT EFFECT
- 4. CALCULATE CURRENT DIMENSIONS OF PROBLEM WITHIN TEST AND CONTROL AREAS

GENERAL METHODOLOGY (CONTINUED)

PROCEDURE FLOW



DESCRIPTION OF PROCEDURES

- INITIATE PROGRAM AND MAINTAIN COMPLETE RECORDS
 - ALL CITIZENS CONTACTED BY PROGRAM
 - TYPE OF SERVICES RECEIVED
- UTILIZE RECORDS OF CITIZEN CONTACTS FOR FOLLOW-UP CONTACTS TO DETERMINE EFFECT OF INITIAL CONTACT
- PERFORM AN EVALUATION STUDY OF PROGRAM EFFECTIVENESS AT REGULAR INTERVALS UTILIZING PROGRAM EVALUATION TOOLS
- INTERPRET RESULTS OF EVALUATION STUDY AND MODIFY EMPHASIS OF PROGRAM AS REQUIRED

EVALUATION CRITERIA FOR A PREMISES SURVEY PROGRAM

PROCEDURE FLOW

IDENTIFY
PROGRAM

DETERMINE
PROGRAM
EMPHASIS

IDENTIFY
MEASUREMENT
CRITERIA

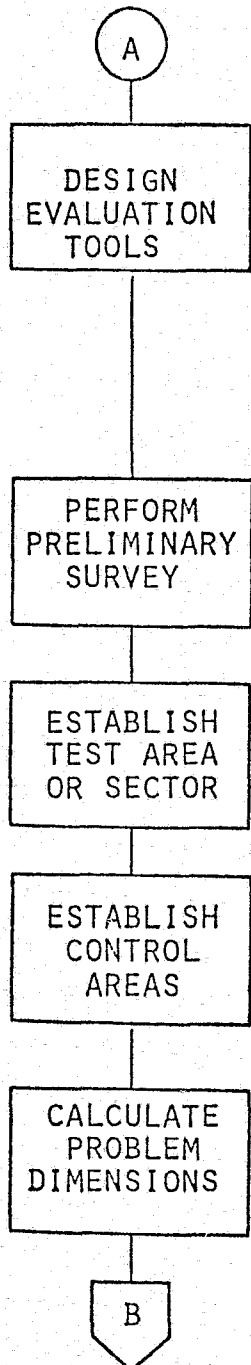
DEFINE
SOURCES
OF DATA

A

DESCRIPTION OF PROCEDURES

- PREMISES SURVEY/OPERATION IDENTIFICATION
- REDUCTION OF INCIDENCE OF BURGLARIES
- COMPARATIVE BURGLARY RATES BEFORE AND AFTER INITIATING PROGRAM
 - TEST AREA
 - CONTROL AREA
 - AREA ADJOINING TEST AREA
 - HOMES SURVEYED WITHIN TEST AREA VS THOSE NOT RECEIVING SERVICES
 - SUCCESS RATE ON ATTEMPTED BURGLARIES
 - .. PROTECTED HOMES
 - .. UNPROTECTED HOMES
- NUMBER OF HOME SURVEYS CONDUCTED AND AS A PERCENT OF TOTAL HOUSES IN TEST AREA
- INCIDENT REPORTS FOR ATTEMPTED AND ACTUAL BURGLARIES
- CENSUS DATA FOR NUMBER OF HOUSES BY SECTION
- TELEPHONE SURVEYS TO DETERMINE CITIZEN AWARENESS OF AVAILABLE SERVICES
 - HOW CITIZEN LEARNED OF SERVICE
 - REASONS WHY SERVICE NOT UTILIZED
 - PERCENT OF HOUSEHOLDS CONTACTED WHICH WERE AWARE OF SERVICE

PROCEDURE FLOW

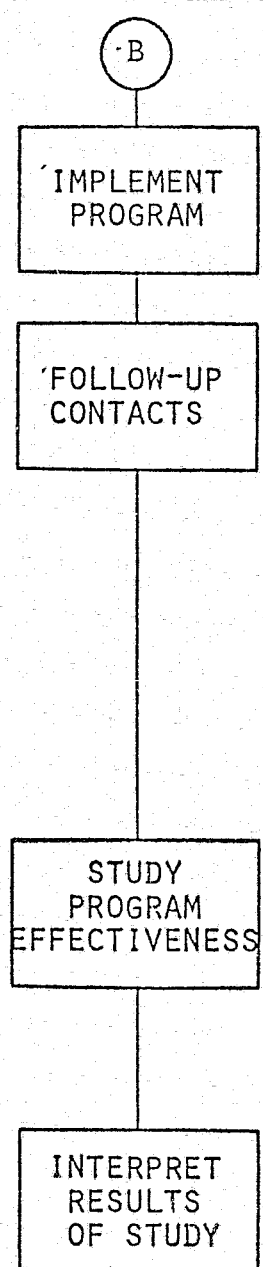


DESCRIPTION OF PROCEDURES

- TELEPHONE SURVEY FORM
- TELEPHONE SURVEY SUMMARY
- PREMISES SECURITY SURVEY SHEET
- FOLLOW-UP ANALYSIS
- PROGRAM EVALUATION FORM
- INCIDENT PLOTTING OF BURGLARIES TO DETERMINE DISPLACEMENT EFFECT

PREMISES SURVEY PROGRAM (CONTINUED)

PROCEDURE FLOW



DESCRIPTION OF PROCEDURES

- FOLLOW-UP VISITS TO HOMES TO DETERMINE EFFECTIVENESS OF INITIAL CONTACT
 - INSTALLATION OF IMPROVED LOCKS (BASED ON METHOD OF ENTRY PATTERNS)
 - IMPLEMENTATION OF OTHER SECURITY MEASURES
 - PERCENTAGE IMPLEMENTATION OF SECURITY ADVICE
 - .. INEXPENSIVE MEASURES (LOCKS)
 - .. MODERATELY EXPENSIVE (NEW DOORS, IMPROVED LIGHTING)
 - .. SIGNIFICANT EXPENSE (ALARM SYSTEMS)
- RESIDENTIAL BURGLARY RATE COMPARISON
- CITIZEN UTILIZATION OF SERVICE
- CITIZEN ACCEPTANCE OF SUGGESTIONS
- HOW CITIZENS LEARNED ABOUT PROGRAM
- REASONS WHY CITIZENS WON'T PARTICIPATE

_____ POLICE DEPARTMENT
PREMISES SURVEY/OPERATION IDENTIFICATION
TELEPHONE SURVEY FORM

DATE: _____

NAME _____ PHONE No: _____

ADDRESS _____

GIVE BRIEF DESCRIPTION OF PROGRAM

WAS CITIZEN AWARE OF PROGRAM? Yes No

IF YES:

HOW DID CITIZEN LEARN ABOUT PROGRAM? _____

WHY HASN'T CITIZEN UTILIZED SERVICE? _____

GIVE DETAILED DESCRIPTION OF PROGRAM AND ITS BENEFITS TO THE CITIZEN

IS THE CITIZEN INTEREST IN RECEIVING A PREMISES SURVEY?

Yes No

IF YES: TIME: _____ DATE: _____

_____ POLICE DEPARTMENT
PREMISES SURVEY/OPERATION IDENTIFICATION
TELEPHONE SURVEY SUMMARY

I. HOW CITIZENS LEARNED ABOUT PROGRAM

| <u>SOURCE</u> | <u>PERCENT OF TOTAL</u> |
|-------------------------------|-------------------------|
| NEWSPAPER STORY | _____ |
| RADIO ADVERTISEMENT | _____ |
| CITY PUBLICATION | _____ |
| SAW DISPLAY IN A PUBLIC PLACE | _____ |
| CHURCH | _____ |
| FRIEND | _____ |
| OTHER | _____ |

II. REASONS WHY CITIZENS WON'T PARTICIPATE

| <u>REASON</u> | <u>PERCENT OF TOTAL</u> |
|----------------------------|-------------------------|
| NOT AT HOME | _____ |
| NO TIME | _____ |
| NOT INTERESTED | _____ |
| DO NOT NEED SERVICE | _____ |
| DO NOT WANT POLICE IN HOME | _____ |
| OTHER | _____ |

III. CITIZEN AWARENESS OF PROGRAM

| | |
|---------------------------------------|-------|
| NUMBER OF CITIZENS INTERVIEWED | _____ |
| NUMBER OF CITIZENS AWARE OF PROGRAM | _____ |
| PERCENTAGE LEVEL OF CITIZEN AWARENESS | _____ |

POLICE DEPARTMENT

NAME: _____ SS No. _____

ADDRESS: _____

[illegible][illegible]

_____ POLICE DEPARTMENT
PREMISES SURVEY/OPERATION IDENTIFICATION
FOLLOW-UP ANALYSIS

DATE: _____ NUMBER OF FOLLOW-UP VISITS: _____

CITIZEN ACCEPTANCE OF SUGGESTIONS

| <u>SECURITY SUGGESTION</u> | <u>NO OF TIMES RECOMMENDED</u> | <u>NO OF TIMES IMPLEMENTED</u> | <u>PERCENT SUCCESS</u> |
|--|------------------------------------|------------------------------------|----------------------------|
| INEXPENSIVE MEASURES: NEW/IMPROVED DOOR LOCKS | | | |
| WINDOW LOCKS | | | |
| MODERATELY EXPENSIVE: IMPROVED LIGHTING | | | |
| STRONGER DOORS/FRAMES | | | |
| SIGNIFICANT EXPENSE: ALARM SYSTEM | | | |

PROGRAM COVERAGE

NUMBER OF HOUSES IN TEST AREA TO BE VISITED _____
(INITIAL SURVEYS ONLY)

NUMBER OF INITIAL SURVEY VISITS MADE _____

PERCENTAGE OF COVERAGE ACHIEVED BY PROGRAM _____

END