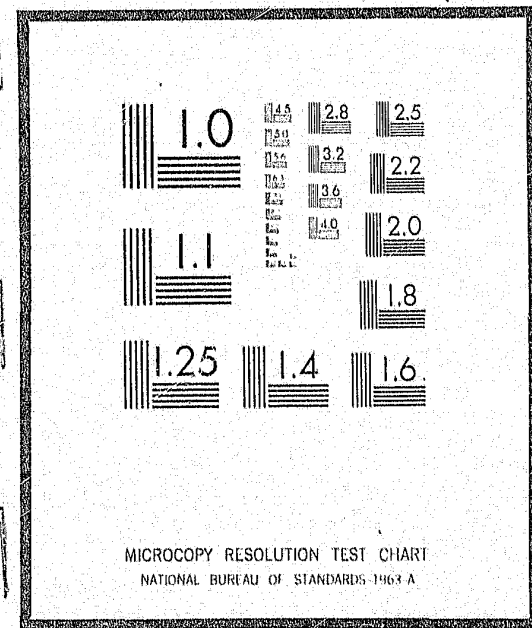


# NCJRS

This microfiche was produced from documents received for inclusion in the NCJRS data base. Since NCJRS cannot exercise control over the physical condition of the documents submitted, the individual frame quality will vary. The resolution chart on this frame may be used to evaluate the document quality.



Microfilming procedures used to create this fiche comply with the standards set forth in 41CFR 101-11.504

Points of view or opinions stated in this document are those of the author(s) and do not represent the official position or policies of the U.S. Department of Justice.

U.S. DEPARTMENT OF JUSTICE  
LAW ENFORCEMENT ASSISTANCE ADMINISTRATION  
NATIONAL CRIMINAL JUSTICE REFERENCE SERVICE  
WASHINGTON, D.C. 20531

6/23/77

Date filmed

Iowa Department of Social Services Division of Administrative Services Bureau of Management Information  
Statistics Section Prepared for Administrative Use Only June 15, 1976 Report Number 1077

## JUVENILE COURT CASES REPORTED BY THE JUVENILE PROBATION OFFICERS

Calendar Year 1975

We would like to thank all the Juvenile Probation Officers for supplying the data for this report.

Juvenile Probation Officers serving 81 counties sent the Juvenile Court Statistical Cards to the State Office for tabulation. A three page summary sheet was completed by the Juvenile Probation Officers for another 15 counties.

Information was received from the probation officer for two counties on an obsolete form. This is not included in the detailed portion of the report.

There was only one county that did not submit data.

The Probation Officers that sent Juvenile Court Statistical Cards to the State Office will be provided with a report for each of the counties in his jurisdiction. This composite report is being sent to all probation officers in the state.

NCJRS

FFR 18 1977

A

S

39891

# INDEX TO TABLES IN THIS REPORT

	<u>Page</u>
Juvenile Court Cases Reported to State - Years 1950-1975	2
Type of Cases by Population Area	3
All Cases Reported by Type of Case by County	5
Detailed Information for:	
State Summary (Includes 96 counties)	7
Seven Metropolitan Counties (Black Hawk, Dubuque, Linn, Polk, Pottawattamie, Scott and Woodbury)	13
Eighty-nine Non-Metropolitan Counties	19

10893

JUVENILE COURT CASES REPORTED FOR YEARS 1950-1975

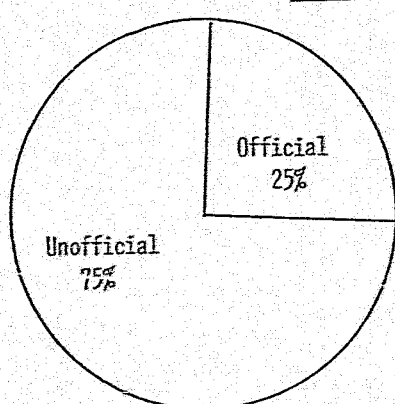
Year	OFFICIAL CASES				UNOFFICIAL CASES				TOTAL CASES				All Cases Reported
	Delinquency Boys	Delinquency Girls	Child In Need of Assistance	Special Proceedings	Delinquency Boys	Delinquency Girls	Child In Need of Assistance	Special Proceedings	Delinquency Boys	Delinquency Girls	Child In Need of Assistance	Special Proceedings	
1950	860	232	990		778	142	273		1,638	374	1,263		3,275
1951	1,142	285	923		808	160	210		1,950	345	1,133		3,428
1952	1,152	310	989		1,355	235	296		2,507	543	1,285		4,335
1953	1,022	254	936		1,469	276	460		2,491	530	1,396		4,417
1954	1,232	224	1,046		1,773	380	627		3,005	604	1,673		5,282
1955	1,289	253	994		2,165	475	878		3,454	728	1,872		6,054
1956	1,554	262	1,021		3,257	584	1,121		4,811	846	2,142		7,799
1957	1,865	348	923		3,621	710	861		5,486	1,058	1,784		8,328
1958	1,872	307	1,002		3,407	740	953		5,279	1,047	1,955		8,281
1959	1,841	345	1,073		3,581	834	1,169		5,422	1,179	2,242		8,843
1960	1,745	302	1,133		3,340	821	1,038		5,085	1,123	2,171		8,379
1961	1,652	352	1,336		3,476	683	1,115		5,128	1,035	2,451		8,614
1962	1,001	192	835		2,766	681	630		3,767	873	1,465		6,105
1963	1,679	414	1,059		3,900	883	842		5,579	1,297	1,901		8,777
1964	1,964	420	1,102		4,511	1,069	960		6,475	1,483	2,062		10,026
1965	1,899	429	1,139		4,939	1,129	837		6,838	1,558	1,976		10,372
1966	1,737	314	1,248		4,692	1,044	745		6,429	1,358	1,993		9,780
1967	1,448	305	824		4,798	1,131	405		6,246	1,436	1,229		8,911
1968	2,277	515	1,282		6,332	1,601	556		8,609	2,116	1,838		12,563
1969	2,511	485	1,417		6,549	2,271	551		9,060	2,756	1,968		13,784
1970	2,506	601	1,274		7,214	2,513	866		9,720	3,114	2,140		14,974
1971	2,332	671	1,168		8,617	2,874	560		10,949	3,545	1,728		16,222
1972	2,439	587	1,105	71	8,462	2,933	664	27	10,901	3,520	1,769	38	16,288
1973	2,684	692	992	128	10,337	3,492	429	36	13,021	4,184	1,421	74	18,790
1974	3,238	752	1,016	157	11,076	3,704	573	69	14,314	4,456	1,589	116	20,585
1975	3,754	804	1,023	149	11,590	3,889	446	30	15,344	4,693	1,469	173	21,685



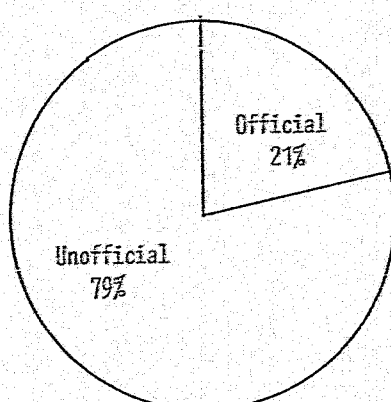
TYPE OF CASES BY POPULATION AREA

	DELINQUENCY				CHILDREN IN NEED OF ASSISTANCE				SPECIAL PROCEEDINGS				TOTAL CASES			
	Boys	Girls	Total	% Of Total	Boys	Girls	Total	% Of Total	Boys	Girls	Total	% Of Total	Boys	Girls	Total	% Of Total
OFFICIAL CASES	3,754	804	4,558		502	521	1,023		86	63	149		4,342	1,385	5,727	
Metropolitan Courts	1,841	425	2,266	49.7	317	344	661	64.6	65	52	117	78.5	2,223	821	3,044	53.1
All Other Courts	1,913	379	2,292	50.3	185	177	362	35.4	21	11	32	21.5	2,119	567	2,686	46.9
UNOFFICIAL CASES	11,590	3,889	15,479		215	231	446		18	12	30		11,823	4,162	15,985	
Metropolitan Courts	4,834	1,777	6,611	42.7	106	116	222	49.8	15	9	24	80.0	4,955	1,902	6,857	43.0
All Other Courts	6,756	2,112	8,868	57.3	109	115	224	50.2	3	3	6	20.0	6,868	2,260	9,128	57.0
TOTAL CASES	15,344	4,693	20,037		717	752	1,469		104	75	179		16,165	5,547	21,712	
Metropolitan Courts	6,675	2,202	8,877	44.3	423	460	883	60.1	80	61	141	78.8	7,178	2,723	9,901	45.7
All Other Courts	8,669	2,491	11,160	55.7	294	292	586	39.9	24	14	38	21.2	8,987	2,824	11,811	54.3

Manner of Handling Delinquency Cases by Population Area

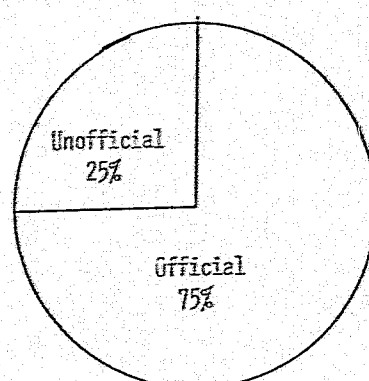


Metropolitan Courts

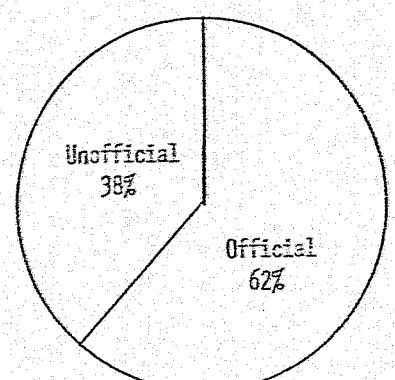


Other Courts

Manner of Handling Children In Need of Assistance Cases by Population Area

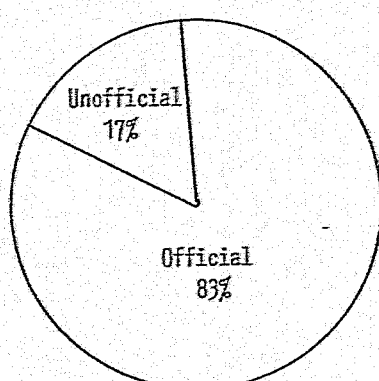


Metropolitan Courts

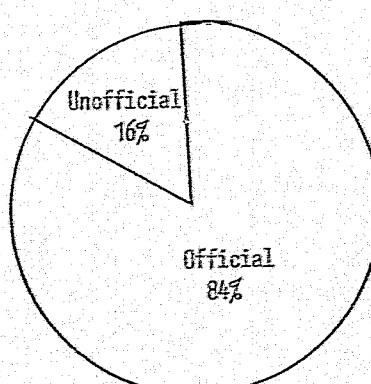


Other Courts

Manner of Handling Special Proceedings by Population



Metropolitan Courts



Other Courts

The seven (8) Metropolitan counties are: Black Hawk, Dubuque, Linn, Polk, Pottawattamie, Scott and Woodbury. These seven counties with 36% of the State's population reported 47% of all Juvenile Court Cases for the year.

## CALENDAR YEAR

1975

	Official Cases								Unofficial Cases							
	Total Cases Reported	Total	Children						Children							
			In Need				Special		In Need				Special			
			Delinquency		Of Assistance		Proceedings		Delinquency		Of Assistance		Proceedings			
		Boys	Girls	Boys	Girls	Boys	Girls	Total	Boys	Girls	Boys	Girls	Boys	Girls		
Adair	65	3	-	-	-	3	-	-	62	50	11	-	1	-	-	
Adams	19	4	3	-	1	-	-	-	15	13	2	-	-	-	-	
Allamakee	103	16	15	-	1	-	-	-	87	76	11	-	-	-	-	
Appanoose	114	20	15	-	1	4	-	-	94	70	24	-	-	-	-	
Audubon	59	11	7	2	-	2	-	-	48	35	12	1	-	-	-	
Benton	104	10	4	5	1	-	-	-	94	65	28	1	-	-	-	
Black Hawk	1,595	375	304	58	9	4	-	-	1,220	844	364	4	8	-	-	
Boone	135	25	21	1	2	1	-	-	110	90	16	3	1	-	-	
Bremer	111	7	5	2	-	-	-	-	104	86	18	-	-	-	-	
Buchanan	169	4	4	-	-	-	-	-	165	113	52	-	-	-	-	
Buena Vista	101	18	16	2	-	-	-	-	83	62	21	-	-	-	-	
Butler	87	3	2	1	-	-	-	-	84	72	12	-	-	-	-	
Calhoun	47	9	9	-	-	-	-	-	38	31	7	-	-	-	-	
Carroll	68	32	26	2	1	-	1	2	36	32	4	-	-	-	-	
Cass	80	15	14	-	1	-	-	-	65	41	24	-	-	-	-	
Cedar	112	15	9	5	1	-	-	-	97	71	24	2	-	-	-	
Cerro Gordo	411	56	38	7	4	1	4	2	355	287	68	-	-	-	-	
Cherokee	15	15	14	1	-	-	-	-	-	-	-	-	-	-	-	
Chickasaw	132	5	5	-	-	-	-	-	127	97	30	-	-	-	-	
Clarke	58	12	9	2	-	1	-	-	46	34	10	1	1	-	-	
Clay	167	38	31	3	2	2	-	-	129	91	38	-	-	-	-	
Clayton	117	15	14	-	1	-	-	-	102	73	29	-	-	-	-	
Clinton	503	239	148	16	36	35	3	1	264	197	65	1	1	-	-	
*Crawford	182	48	47	1	-	-	-	-	134	119	15	-	-	-	-	
Dallas	277	55	29	9	6	11	-	-	222	174	28	9	10	-	1	
Davis	5	5	5	-	-	-	-	-	-	-	-	-	-	-	-	
Decatur	72	13	10	1	1	1	-	-	59	43	15	1	-	-	-	
Delaware	64	7	6	1	-	-	-	-	57	42	15	-	-	-	-	
Des Moines	316	54	45	9	-	-	-	-	262	211	51	-	-	-	-	
Dickinson	169	36	27	6	-	2	-	1	133	103	30	-	-	-	-	
Dubuque	895	226	60	8	51	42	41	24	669	514	150	-	2	-	3	
Emmet	157	32	27	4	-	1	-	-	125	95	29	-	1	-	-	
Fayette	249	16	10	1	3	2	-	-	233	161	64	4	4	-	-	
Floyd	168	8	1	6	1	-	-	-	160	133	27	-	-	-	-	
Franklin	41	1	1	-	-	-	-	-	40	28	12	-	-	-	-	
Fremont	35	16	9	6	1	-	-	-	19	15	4	-	-	-	-	
Greene	38	6	2	1	2	1	-	-	32	24	8	-	-	-	-	
Grundy	109	4	4	-	-	-	-	-	105	76	29	-	-	-	-	
Guthrie	92	25	18	2	3	2	-	-	67	50	16	-	1	-	-	
Hamilton	80	31	23	3	4	1	-	-	49	37	12	-	-	-	-	
Hancock	49	4	4	-	-	-	-	-	45	36	8	-	1	-	-	
Hardin	51	31	19	3	4	5	-	-	20	16	4	-	-	-	-	
Harrison	74	33	29	1	2	1	-	-	41	29	9	1	2	-	-	
Henry	101	72	38	23	6	5	-	-	29	22	7	-	-	-	-	
Howard	67	4	4	-	-	-	-	-	63	48	14	-	1	-	-	
Humboldt	71	21	19	1	1	-	-	-	50	44	6	-	-	-	-	

	Official Cases								Unofficial Cases								
	Total Cases Reported	Total	Children						Children								
			Delinquency		In Need Of Assistance		Special Proceedings		Delinquency		In Need Of Assistance		Special Proceedings				
			Boys	Girls	Boys	Girls	Boys	Girls	Total	Boys	Girls	Boys	Girls	Boys	Girls		
*Ida	Total for Crawford, Ida and Monona shown under Crawford																
Iowa	74	2	1	1	-	-	-	-	72	56	15	1	-	-	-	-	
Jackson	No Report																
Jasper	218	38	27	5	4	2	-	-	180	147	33	-	-	-	-	-	
Jefferson	31	17	15	2	-	-	-	-	14	11	3	-	-	-	-	-	
Johnson	521	104	71	9	9	12	2	1	417	280	107	14	16	-	-	-	
Jones	216	34	28	2	2	2	-	-	182	122	47	3	10	-	-	-	
Kookuk	86	12	12	-	-	-	-	-	74	59	9	4	2	-	-	-	
Kossuth	73	24	23	1	-	-	-	-	49	37	12	-	-	-	-	-	
Lee	430	253	151	63	18	21	-	-	177	120	56	1	-	-	-	-	
Linn	1,824	377	191	42	75	67	1	1	1,447	962	471	5	4	3	2	-	
Louisa	37	12	7	2	2	1	-	-	25	18	7	-	-	-	-	-	
Lucas	113	27	22	5	-	-	-	-	86	56	30	-	-	-	-	-	
Lyon	15	14	14	-	-	-	-	-	1	1	-	-	-	-	-	-	
Madison	118	27	13	6	3	5	-	-	91	56	24	2	8	1	-	-	
Mahaska	247	21	17	2	-	2	-	-	226	141	59	14	12	-	-	-	
Marion	166	26	15	1	5	5	-	-	140	112	24	-	3	1	-	-	
Marshall	529	27	24	3	-	-	-	-	502	385	117	-	-	-	-	-	
Mills	54	7	7	-	-	-	-	-	47	34	11	-	2	-	-	-	
Mitchell	70	3	3	-	-	-	-	-	67	58	9	-	-	-	-	-	
*Monona	Total for Crawford, Ida and Monona shown under Crawford.																
Monroe	16	10	10	-	-	-	-	-	6	6	-	-	-	-	-	-	
Montgomery	103	20	19	1	-	-	-	-	83	65	18	-	-	-	-	-	
Muscatine	300	70	48	11	5	5	-	1	230	179	50	1	-	-	-	-	
O'Brien	51	48	41	5	1	1	-	-	3	3	-	-	-	-	-	-	
Osceola	31	31	22	9	-	-	-	-	-	-	-	-	-	-	-	-	
Page	108	9	8	1	-	-	-	-	99	68	30	-	1	-	-	-	
Palo Alto	67	18	15	3	-	-	-	-	49	35	14	-	-	-	-	-	
Plymouth	16	16	15	1	-	-	-	-	-	-	-	-	-	-	-	-	
Pocahontas	64	12	12	-	-	-	-	-	52	43	7	2	-	-	-	-	
Polk	2,862	806	427	127	108	134	5	5	2,056	1,440	449	73	82	9	3	-	
Pottawattamie	1,278	465	281	51	37	56	18	22	813	580	191	21	18	2	1	-	
Poweshiek	209	29	11	1	7	5	4	1	180	114	55	6	5	-	-	-	
Ringgold	6	2	2	-	-	-	-	-	4	3	-	-	1	-	-	-	
Sac	33	14	12	2	-	-	-	-	19	19	-	-	-	-	-	-	
Scott	825	420	305	47	29	39	-	-	405	303	96	3	2	1	-	-	
Shelby	78	20	14	2	1	2	1	-	58	30	15	5	8	-	-	-	
Sioux	46	45	44	1	-	-	-	-	1	-	1	-	-	-	-	-	
Story	293	70	60	9	1	-	-	-	223	174	48	-	1	-	-	-	
Tama	253	35	28	6	1	-	-	-	218	179	39	-	-	-	-	-	
Taylor	29	14	7	-	5	2	-	-	15	11	4	-	-	-	-	-	
Union	179	50	40	5	3	2	-	-	129	73	41	6	9	-	-	-	
Van Buren	2	-	-	-	-	-	-	-	2	2	-	-	-	-	-	-	
Wapello	78	37	34	3	-	-	-	-	41	30	11	-	-	-	-	-	
Warren	488	70	42	18	4	6	-	-	418	295	94	18	11	-	-	-	
Washington	158	27	16	6	3	2	-	-	131	98	27	4	2	-	-	-	
Wayne	32	3	2	1	-	-	-	-	29	25	3	1	-	-	-	-	
Webster	677	263	150	62	25	21	5	-	414	267	142	2	-	1	2	-	
Winnebago	63	2	2	-	-	-	-	-	61	50	11	-	-	-	-	-	
Winneshiok	83	6	6	-	-	-	-	-	77	60	16	1	-	-	-	-	
Woodbury	622	375	273	92	8	2	-	-	247	191	56	-	-	-	-	-	
Worth	37	1	1	-	-	-	-	-	36	30	6	-	-	-	-	-	
Wright	42	22	16	3	-	-	1	2	20	12	8	-	-	-	-	-	
TOTAL	21,685	5,730	3,754	804	502	521	86	63	15,955	11,590	3,889	215	231	18	12	-	

STATE SUMMARY  
(96 Counties Included)

AGE OF CHILD	OFFICIAL CASES								UNOFFICIAL CASES							
	Total	Delinquency		Children In Need Of Assistance		Special Proceedings		Total	Delinquency		Children In Need Of Assistance		Special Proceedings		Total	
		Boys	Girls	Boys	Girls	Boys	Girls		Boys	Girls	Boys	Girls	Boys	Girls		
Under 2 years	172	-	-	77	66	16	13	42	-	1	22	18	-	1		
2 years	73	-	-	28	32	8	5	29	-	-	15	12	2	-		
3 years	62	-	-	30	23	4	5	30	1	1	15	12	1	-		
4 years	52	-	-	29	15	4	4	18	1	-	9	8	-	-		
5 years	51	-	-	24	16	6	5	35	3	1	15	15	1	-		
6 years	40	1	-	17	15	7	-	32	10	4	11	6	1	-		
7 years	43	-	2	17	19	3	2	65	34	7	14	9	-	1		
8 years	48	1	1	17	20	6	3	99	69	10	11	7	1	1		
9 years	44	10	1	18	11	1	3	183	146	14	14	8	-	1		
10 years	64	22	1	19	15	5	2	271	224	35	7	5	-	-		
11 years	80	28	6	22	16	2	6	387	324	46	11	6	-	-		
12 years	162	111	13	22	11	2	3	688	509	153	12	13	-	1		
13 years	374	220	71	35	43	1	4	1,260	861	369	12	18	-	-		
14 years	732	466	154	37	66	6	3	2,279	1,495	736	13	29	3	3		
15 years	1,047	724	209	38	67	6	3	2,894	1,974	871	10	34	2	3		
16 years	1,228	966	168	37	48	7	2	3,763	2,831	899	12	17	4	-		
17 years	1,096	982	90	10	12	2	-	3,609	2,920	667	7	11	3	1		
18 years and over	37	34	2	1	-	-	-	60	41	12	4	3	-	-		
Age not specified	-	-	-	-	-	-	-	5	5	-	-	-	-	-		
SUMMARY TOTAL	5,405	3,565	718	478	495	86	63	15,749	11,448	3,826	214	231	18	12		

STATE SUMMARY  
(96 Counties Included)

PLACE OF CARE*	OFFICIAL CASES								UNOFFICIAL CASES							
	Total	Delinquency		Children In Need Of Assistance		Special Proceedings		Total	Delinquency		Children In Need Of Assistance		Special Proceedings		Total	
		Boys	Girls	Boys	Girls	Boys	Girls		Boys	Girls	Boys	Girls	Boys	Girls		
No detention or shelter care overnight	3,619	2,654	438	239	207	42	39	14,372	10,607	3,411	165	168	12	9		
Jail or police station	513	453	56	4	-	-	-	578	417	157	-	3	1	-		
Detention Home	560	300	158	40	61	1	-	419	203	172	14	29	1	-		
Foster family home	354	21	17	122	140	35	19	56	24	14	9	7	-	2		
Other (specify)	361	130	56	75	86	8	6	237	127	55	26	24	4	1		
Not specified	37	32	-	1	4	-	-	103	78	25	-	-	-	-		
DISPOSITION																
Waived to criminal court	266	246	12	8	-	-	-	66	56	10	-	-	-	-		
Dismissed: Not proved or found not involved	343	218	43	41	41	-	-	819	571	199	25	24	-	-		
No Transfer of Legal Custody																
Dismissed: Warned, adjusted, counseled	173	118	30	10	15	-	-	5,201	3,687	1,423	33	58	-	-		
Held open without further action	218	124	22	30	42	-	-	1,301	904	295	51	51	-	-		
Probation officer to supervise	2,302	1,906	296	46	54	-	-	5,381	4,299	1,056	14	12	-	-		
Referred to another agency or individual for supervision or service	532	273	110	76	73	-	-	2,111	1,380	565	86	80	-	-		
Runaway returned to	15	7	8	-	-	-	-	330	151	179	-	-	-	-		

\*Multiple care in some cases.

STATE SUMMARY  
(96 Counties Included)

	OFFICIAL CASES								UNOFFICIAL CASES							
	Total	Delinquency		Children In Need Of Assistance		Special Proceedings		Total	Delinquency		Children In Need Of Assistance		Special Proceedings		Total	
		Boys	Girls	Boys	Girls	Boys	Girls		Boys	Girls	Boys	Girls	Boys	Girls		
Other (specify)	113	50	21	20	22	-	-	438	347	84	3	4	-	-		
<u>Transfer of Legal Custody Committed to:</u>																
Public institution for delinquents	261	212	46	-	3	-	-	15	13	2	-	-	-	-		
Other public institution	84	54	15	8	7	-	-	9	6	3	-	-	-	-		
Public agency or department (Including court)	762	252	91	210	209	-	-	24	14	7	2	1	-	-		
Private agency or institution	94	64	15	6	9	-	-	9	8	1	-	-	-	-		
Individual	70	28	6	20	16	-	-	7	5	1	-	1	-	-		
Other (specify)	23	13	3	3	4	-	-	8	7	1	-	-	-	-		
Special proceedings	149	-	-	-	-	86	63	30	-	-	-	-	18	12		
<u>SOURCE OF REFERRAL</u>																
Law enforcement agency	3,905	3,207	484	106	98	6	4	13,778	10,399	3,250	58	70	-	1		
School department	84	38	23	17	6	-	-	240	157	70	3	10	-	-		
Social agency	730	45	62	263	284	43	33	249	25	34	90	96	1	3		
Probation officer	88	43	19	7	4	11	4	115	67	42	2	2	1	1		
Parents or relatives	357	115	104	57	77	6	3	533	216	250	35	30	1	1		
Other court	134	84	10	3	7	15	15	540	431	84	5	3	13	4		
Other source	107	33	16	25	24	5	4	294	153	96	21	20	2	2		
Not given	-	-	-	-	-	-	-	-	-	-	-	-	-	-		

STATE SUMMARY  
(96 Counties Included)

	OFFICIAL CASES								UNOFFICIAL CASES							
	Total	Delinquency		Children In Need Of Assistance		Special Proceedings		Total	Delinquency		Children In Need Of Assistance		Special Proceedings		Total	
		Boys	Girls	Boys	Girls	Boys	Girls		Boys	Girls	Boys	Girls	Boys	Girls		
<u>REASON FOR REFERRAL</u>																
Offenses applicable to both juveniles & adults (excluding traffic)																
Murder and non- negligent manslaughter	3	1	2	-	-	-	-	2	2	-	-	-	-	-		
Manslaughter by negligence	1	1	-	-	-	-	-	-	-	-	-	-	-	-		
Forcible rape	22	22	-	-	-	-	-	4	4	-	-	-	-	-		
Robbery: Purse snatching by force	18	17	1	-	-	-	-	10	10	-	-	-	-	-		
Robbery: All except purse snatching	88	81	7	-	-	-	-	31	29	2	-	-	-	-		
Assault: Aggravated	63	54	9	-	-	-	-	93	74	19	-	-	-	-		
Assault: All except aggravated	140	115	25	-	-	-	-	363	282	81	-	-	-	-		
Burglary - breaking or entering	899	857	42	-	-	-	-	1,070	1,011	59	-	-	-	-		
Auto theft: Unauthorized use	199	188	11	-	-	-	-	269	232	37	-	-	-	-		
Auto theft: All except unauthorized use	178	170	8	-	-	-	-	247	230	17	-	-	-	-		
Larceny: Shoplifting	188	128	60	-	-	-	-	1,922	1,138	784	-	-	-	-		
Larceny: All except shoplifting	603	560	43	-	-	-	-	1,628	1,468	160	-	-	-	-		
Weapons - carrying, possessing, etc.	18	18	-	-	-	-	-	69	67	2	-	-	-	-		



STATE SUMMARY  
(96 Counties Included)

REASON FOR REFERRAL (Continued)	OFFICIAL CASES								UNOFFICIAL CASES							
	Total	Delinquency		Children In Need Of Assistance		Special Proceedings		Total	Delinquency		Children In Need Of Assistance		Special Proceedings		Total	
		Boys	Girls	Boys	Girls	Boys	Girls		Boys	Girls	Boys	Girls	Boys	Girls		
Sex offenses (except forcible rape)	19	18	1	-	-	-	-	43	32	11	-	-	-	-		
Violation of drug laws: Narcotic	127	120	7	-	-	-	-	267	203	64	-	-	-	-		
Violation of drug laws: All except narcotic	143	124	19	-	-	-	-	520	416	104	-	-	-	-		
Drunkenness	57	49	8	-	-	-	-	396	350	46	-	-	-	-		
Disorderly conduct	54	47	7	-	-	-	-	507	392	115	-	-	-	-		
Vandalism	156	147	9	-	-	-	-	1,075	997	78	-	-	-	-		
Other (specify)	422	352	70	-	-	-	-	1,637	1,373	264	-	-	-	-		
Offenses applicable to juveniles only (excluding traffic)																
Running away	219	87	132	-	-	-	-	1,271	486	783	2	-	-	-		
Truancy	60	33	21	2	4	-	-	185	113	71	1	-	-	-		
Violation of curfew	14	5	9	-	-	-	-	412	296	116	-	-	-	-		
Ungovernable behavior	412	206	198	7	1	-	-	781	348	430	2	1	-	-		
Possessing or drinking of liquor	88	75	13	-	-	-	-	2,215	1,694	521	-	-	-	-		
Other (specify)	25	15	7	3	-	-	-	116	78	38	-	-	-	-		
Traffic offenses																
Driving while intoxicated	62	58	4	-	-	-	-	54	47	7	-	-	-	-		
Hit and run	2	2	-	-	-	-	-	2	2	-	-	-	-	-		
Reckless driving	-	-	-	-	-	-	-	8	8	-	-	-	-	-		

STATE SUMMARY  
(96 Counties Included)

REASON FOR REFERRAL (Continued)	OFFICIAL CASES								UNOFFICIAL CASES							
	Total	Delinquency		Children In Need Of Assistance		Special Proceedings		Total	Delinquency		Children In Need Of Assistance		Special Proceedings		Total	
		Boys	Girls	Boys	Girls	Boys	Girls		Boys	Girls	Boys	Girls	Boys	Girls		
Driving without a license	5	5	-	-	-	-	-	27	23	4	-	-	-	-		
All other traffic (specify)	10	10	-	-	-	-	-	54	43	11	-	-	-	-		
Neglect (abuse, desertion, inadequate care, etc.)																
Abuse	122	-	1	56	65	-	-	138	-	-	63	75	-	-		
All other neglect (specify)	839	-	4	410	425	-	-	303	-	2	146	155	-	-		
Special proceedings (adoption, consent to marry, etc.)																
(Specify)	149	-	-	-	-	86	63	30	-	-	-	-	18	12		
RACE																
White	4,906	3,197	646	448	470	82	63	14,892	10,835	3,620	193	216	16	12		
Negro	363	280	51	17	14	1	-	644	459	153	18	12	2	-		
Indian	59	32	18	8	1	-	-	56	33	19	2	2	-	-		
Other	42	26	3	4	6	3	-	55	43	10	1	1	-	-		
Not Given	35	30	-	1	4	-	-	102	78	24	-	-	-	-		

We find that in the reason for referral section the incidents of violent crimes has increased 50% in the past two years. Violent crimes include murder and non-negligent manslaughter, forcible rape, robbery-purse snatching by force and aggravated-assault. Non-violent crimes for the same period of time has increased 15%.



## SEVEN (7) METROPOLITAN COUNTIES

AGE OF CHILD	OFFICIAL CASES								UNOFFICIAL CASES							
	Children In Need				Special Proceedings				Children In Need				Special Proceedings			
	Total	Delinquency	Boys	Girls	Boys	Girls	Boys	Girls	Total	Delinquency	Boys	Girls	Boys	Girls	Boys	Girls
Under 2 years	105	-	-	-	50	41	5	9	16	-	-	10	6	-	-	-
2 years	51	-	-	-	14	26	6	5	17	-	-	8	7	2	-	-
3 years	42	-	-	-	19	15	3	5	14	1	-	7	5	1	-	-
4 years	38	-	-	-	20	11	4	3	9	-	-	6	3	-	-	-
5 years	39	-	-	-	17	13	4	5	12	1	-	4	6	1	-	-
6 years	30	-	-	-	10	13	7	-	13	4	-	4	4	1	-	-
7 years	33	-	2	-	11	15	3	2	23	12	3	3	4	-	1	-
8 years	31	1	1	-	12	13	2	2	43	30	3	5	3	1	1	-
9 years	33	4	1	-	16	8	1	3	84	67	4	7	5	-	1	-
10 years	42	11	1	-	12	12	4	2	113	92	15	4	2	-	-	-
11 years	48	10	6	-	17	10	2	3	171	139	24	5	3	-	-	-
12 years	107	61	12	-	19	10	2	3	313	218	80	6	8	-	1	-
13 years	247	131	47	-	27	37	1	4	635	437	178	8	12	-	-	-
14 years	401	246	86	-	22	39	6	2	1,113	723	361	9	15	2	3	-
15 years	589	390	120	-	25	46	6	2	1,367	921	416	8	18	2	2	-
16 years	642	491	96	-	18	28	7	2	1,496	1,076	401	6	10	3	-	-
17 years	554	484	53	-	8	7	2	-	1,392	1,095	287	4	4	2	-	-
18 years and over	12	12	-	-	-	-	-	-	26	18	5	2	1	-	-	-
Age not Specified	-	-	-	-	-	-	-	-	-	-	-	-	-	-	-	-
TOTAL	3,044	1,841	425	-	317	344	65	52	6,857	4,834	1,777	106	116	15	9	-

## SEVEN (7) METROPOLITAN COUNTIES (cont'd)

PLACE OF CARE*	OFFICIAL CASES								UNOFFICIAL CASES							
	Children In Need				Special Proceedings				Children In Need				Special Proceedings			
	Total	Delinquency	Boys	Girls	Boys	Girls	Boys	Girls	Total	Delinquency	Boys	Girls	Boys	Girls	Boys	Girls
No detention or shelter care overnight	2,024	1,379	258	-	164	151	38	34	6,127	4,439	1,537	68	65	10	8	-
Jail or police station	238	206	29	-	3	-	-	-	238	155	81	-	1	1	-	-
Detention home	391	191	102	-	38	59	1	-	306	141	121	14	29	1	-	-
Foster family home	164	9	6	-	60	58	18	13	18	6	5	4	2	-	1	-
Other (specify)	236	61	30	-	54	77	8	6	170	93	35	20	19	3	-	-
Not specified	1	1	-	-	-	-	-	-	1	-	1	-	-	-	-	-
DISPOSITION																
Waived to criminal court	134	121	5	-	8	-	-	-	6	6	-	-	-	-	-	-
Dismissed: Not proved or found not involved	264	161	34	-	36	33	-	-	373	274	89	4	6	-	-	-
No Transfer of Legal Custody:																
Dismissed: Warned, adjusted, counseled	79	51	11	-	7	10	-	-	2,206	1,521	632	14	39	-	-	-
Held open without further action	165	86	12	-	29	38	-	-	587	430	120	23	14	-	-	-
Probation officer to supervise	1,165	906	175	-	35	49	-	-	2,480	1,910	549	10	11	-	-	-
Referred to another agency or individual for supervision or service	309	155	68	-	44	42	-	-	977	564	318	53	42	-	-	-
Runaway returned to	6	2	4	-	-	-	-	-	110	61	49	-	-	-	-	-
Other (specify)	67	19	13	-	14	21	-	-	64	42	17	2	3	-	-	-

\* Multiple care in some cases

## SEVEN (7) METROPOLITAN COUNTIES (Cont'd)

	OFFICIAL CASES							UNOFFICIAL CASES						
	Total	Delinquency		Children In Need Of Assistance		Special Proceedings		Total	Delinquency		Children In Need Of Assistance		Special Proceedings	
		Boys	Girls	Boys	Girls	Boys	Girls		Boys	Girls	Boys	Girls	Boys	Girls

DISPOSITION (cont'd)Transfer of Legal  
Custody Committed to:

Public institution for delinquents	127	107	18	-	2	-	-	11	10	1	-	-	-	-
Other public institution	34	20	6	5	3	-	-	5	4	1	-	-	-	-
Public agency or department (Including court)	466	152	65	123	126	-	-	6	4	1	-	1	-	-
Private agency or institution	52	34	7	3	8	-	-	3	3	-	-	-	-	-
Individual	43	20	5	10	8	-	-	3	3	-	-	-	-	-
Other (specify)	16	7	2	3	4	-	-	2	2	-	-	-	-	-
Special proceedings	117	-	-	-	-	65	52	24	-	-	-	-	15	9

SOURCE OF REFERRAL

Law enforcement agency	2,189	1,694	311	89	90	2	3	6,215	4,540	1,564	50	60	-	1
School department	42	14	15	12	1	-	-	42	20	17	1	4	-	-
Social agency	428	19	32	151	170	30	26	43	3	10	12	15	1	2
Probation officer	47	16	7	5	4	11	4	24	13	10	-	1	-	-
Parents or relatives	207	63	49	40	53	2	-	235	79	112	26	17	-	1
Other court	62	25	1	1	5	15	15	163	117	21	5	3	13	4
Other source	69	10	10	19	21	5	4	135	62	43	12	16	1	1
Not given	-	-	-	-	-	-	-	-	-	-	-	-	-	-

## SEVEN (7) METROPOLITAN COUNTIES (Cont'd)

	OFFICIAL CASES							UNOFFICIAL CASES						
	Total	Delinquency		Children In Need Of Assistance		Special Proceedings		Total	Delinquency		Children In Need Of Assistance		Special Proceedings	
		Boys	Girls	Boys	Girls	Boys	Girls		Boys	Girls	Boys	Girls	Boys	Girls

REASON FOR REFERRAL

Offenses applicable to both juveniles and adults (excluding traffic)

Murder & non-negligent manslaughter	1	-	1	-	-	-	-	2	2	-	-	-	-	-
Manslaughter by negligence	1	1	-	-	-	-	-	-	-	-	-	-	-	-
Forcible rape	11	11	-	-	-	-	-	1	1	-	-	-	-	-
Robbery: Purse snatching by force	13	12	1	-	-	-	-	8	8	-	-	-	-	-
Robbery: All except purse snatching	67	62	5	-	-	-	-	24	23	1	-	-	-	-
Assault: Aggravated	49	44	5	-	-	-	-	51	43	8	-	-	-	-
Assault: All except aggravated	84	66	18	-	-	-	-	215	168	47	-	-	-	-
Burglary-breaking or entering	454	425	29	-	-	-	-	511	486	25	-	-	-	-
Auto Theft: Unauthorized Use	104	98	6	-	-	-	-	135	120	15	-	-	-	-
Auto Theft: All Except unauthorized use	110	106	4	-	-	-	-	155	141	14	-	-	-	-
Larceny: Shoplifting	137	92	45	-	-	-	-	925	525	400	-	-	-	-
Larceny: All except shoplifting	302	278	24	-	-	-	-	785	710	75	-	-	-	-
Weapons - carrying, possessing, etc.	10	10	-	-	-	-	-	32	32	-	-	-	-	-
Sex offenses (except forcible rape)	7	7	-	-	-	-	-	26	19	7	-	-	-	-
Violation of drug laws: Narcotic	95	90	5	-	-	-	-	122	92	30	-	-	-	-

## SEVEN (7) METROPOLITAN COUNTIES (cont'd)

[illegible]



NON-METROPOLITAN COUNTIES  
(89 County Totals)

	OFFICIAL CASES								UNOFFICIAL CASES							
	Children				Children				Children				Children			
	In Need				In Need				In Need				In Need			
	Delinquency	Of Assistance	Special		Delinquency	Of Assistance	Special		Delinquency	Of Assistance	Special		Delinquency	Of Assistance	Special	
	Total	Boys	Girls		Total	Boys	Girls		Total	Boys	Girls		Total	Boys	Girls	
AGE OF CHILD																
Under 2 years	67	-	-	27	25	11	4		26	-	1	12	12	-	1	
2 years	22	-	-	14	6	2	-		12	-	-	7	5	-	-	
3 years	20	-	-	11	8	1	-		16	-	1	8	7	-	-	
4 years	14	-	-	9	4	-	1		9	1	-	3	5	-	-	
5 years	12	-	-	7	3	2	-		23	2	1	11	9	-	-	
6 years	10	1	-	7	2	-	-		19	6	4	7	2	-	-	
7 years	10	-	-	6	4	-	-		42	22	4	11	5	-	-	
8 years	17	-	-	5	7	4	1		56	39	7	6	4	-	-	
9 years	11	6	-	2	3	-	-		99	79	10	7	3	-	-	
10 years	22	11	-	7	3	1	-		158	132	20	3	3	-	-	
11 years	32	18	-	5	6	-	3		216	185	22	6	3	-	-	
12 years	55	50	1	3	1	-	-		375	291	73	6	5	-	-	
13 years	127	89	24	8	6	-	-		625	424	191	4	6	-	-	
14 years	331	220	68	15	27	-	1		1,166	772	375	4	14	1	-	
15 years	458	334	89	13	21	-	1		1,527	1,053	455	2	16	-	1	
16 years	586	475	72	19	20	-	-		2,267	1,755	498	6	7	1	-	
17 years	542	498	37	2	5	-	-		2,217	1,825	380	3	7	1	1	
18 years and over	25	22	2	1	-	-	-		34	23	7	2	2	-	-	
Age not specified	-	-	-	-	-	-	-		5	5	-	-	-	-	-	
TOTAL	2,361	1,724	293	161	151	21	11		8,892	6,614	2,049	108	115	3	3	

NON-METROPOLITAN COUNTIES  
(89 County Totals)

	OFFICIAL CASES								UNOFFICIAL CASES							
	Children				Children				Children				Children			
	In Need				In Need				In Need				In Need			
	Delinquency	Of Assistance	Special		Delinquency	Of Assistance	Special		Delinquency	Of Assistance	Special		Delinquency	Of Assistance	Special	
	Total	Boys	Girls		Total	Boys	Girls		Total	Boys	Girls		Total	Boys	Girls	
PLACE OF CARE*																
No detention or shelter care overnight	1,595	1,275	180	75	56	4	5		8,245	6,168	1,874	97	103	2	1	
Jail or police station	275	247	27	1	-	-	-		340	262	76	-	2	-	-	
Detention home	169	109	56	2	2	-	-		113	62	51	-	-	-	-	
Foster family home	190	12	11	62	82	17	6		38	18	9	5	5	-	1	
Other (specify)	125	69	26	21	9	-	-		67	34	20	6	5	1	1	
Not specified	36	31	-	1	4	-	-		102	78	24	-	-	-	-	
DISPOSITION																
Waived to criminal court	132	125	7	-	-	-	-		60	50	10	-	-	-	-	
Dismissed: Not proved or found not involved	79	57	9	5	8	-	-		446	297	110	21	18	-	-	
No Transfer of Legal Custody																
Dismissed: Warned, adjusted, counseled	94	67	19	3	5	-	-		2,995	2,166	791	19	19	-	-	
Held open without further action	53	38	10	1	4	-	-		714	474	175	28	37	-	-	
Probation officer to supervise	1,137	1,000	121	11	5	-	-		2,901	2,389	507	4	1	-	-	
Referred to another agency or individual for supervision or service	223	118	42	32	31	-	-		1,134	816	247	33	38	-	-	
Runaway returned to	9	5	4	-	-	-	-		220	90	130	-	-	-	-	
Other (specify)	46	31	8	6	1	-	-		374	305	67	1	1	-	-	

\*Multiple care in some cases

NON-METROPOLITAN COUNTIES  
(89 County Totals)

	OFFICIAL CASES								UNOFFICIAL CASES							
	Children In Need				Children In Need				Children In Need				Children In Need			
	Total	Delinquency Boys Girls	Of Assistance Boys Girls	Special Proceedings Boys Girls	Total	Delinquency Boys Girls	Of Assistance Boys Girls	Special Proceedings Boys Girls	Total	Delinquency Boys Girls	Of Assistance Boys Girls	Special Proceedings Boys Girls	Total	Delinquency Boys Girls	Of Assistance Boys Girls	Special Proceedings Boys Girls
<u>DISPOSITION (Cont'd)</u>																
<u>Transfer of Legal Custody Committed to:</u>																
Public institution for delinquents	134	105	28	-	1	-	-	-	4	3	1	-	-	-	-	-
Other public institution	50	34	9	3	4	-	-	-	4	2	2	-	-	-	-	-
Public agency or department (including court)	296	100	26	87	83	-	-	-	18	10	6	2	-	-	-	-
Private agency or institution	42	30	8	3	1	-	-	-	6	5	1	-	-	-	-	-
Individual	27	8	1	10	8	-	-	-	4	2	1	-	1	-	-	-
Other (specify)	7	6	1	-	-	-	-	-	6	5	1	-	-	-	-	-
Special proceedings	32	-	-	-	-	21	11	-	6	-	-	-	3	3	-	-
<u>SOURCE OF REFERRAL</u>																
Law enforcement agency	1,716	1,513	173	17	8	4	1	7,563	5,859	1,686	8	10	-	-	-	-
School department	42	24	8	5	5	-	-	198	137	53	2	6	-	-	-	-
Social agency	302	26	30	112	114	13	7	206	22	24	78	81	-	1	-	-
Probation officer	41	27	12	2	-	-	-	91	54	32	2	1	1	1	-	-
Parole or relatives	150	52	55	17	19	4	3	298	137	138	9	13	1	-	-	-
Other court	72	59	9	2	2	-	-	377	314	63	-	-	-	-	-	-
Other source	38	23	6	6	3	-	-	159	91	53	9	4	1	1	-	-
Not given	-	-	-	-	-	-	-	-	-	-	-	-	-	-	-	-

NON-METROPOLITAN COUNTIES  
(89 County Totals)

	OFFICIAL CASES								UNOFFICIAL CASES							
	Children In Need				Children In Need				Children In Need				Children In Need			
	Total	Delinquency Boys Girls	Of Assistance Boys Girls	Special Proceedings Boys Girls	Total	Delinquency Boys Girls	Of Assistance Boys Girls	Special Proceedings Boys Girls	Total	Delinquency Boys Girls	Of Assistance Boys Girls	Special Proceedings Boys Girls	Total	Delinquency Boys Girls	Of Assistance Boys Girls	Special Proceedings Boys Girls
<u>REASON FOR REFERRAL</u>																
Offenses applicable to both juvenile and adults (excluding traffic)																
Murder and non- negligent manslaughter	2	1	1	-	-	-	-	-	-	-	-	-	-	-	-	-
Manslaughter by negligence	-	-	-	-	-	-	-	-	-	-	-	-	-	-	-	-
Forcible rape	11	11	-	-	-	-	-	-	3	3	-	-	-	-	-	-
Robbery: Purse snatching by force	5	5	-	-	-	-	-	-	2	2	-	-	-	-	-	-
Robbery: All except purse snatching	21	19	2	-	-	-	-	-	7	6	1	-	-	-	-	-
Assault: Aggravated	14	10	4	-	-	-	-	-	42	31	11	-	-	-	-	-
Assault: All except aggravated	56	49	7	-	-	-	-	-	148	114	34	-	-	-	-	-
Burglary - breaking or entering	445	432	13	-	-	-	-	-	559	525	34	-	-	-	-	-
Auto theft: Unauthorized Use	95	90	5	-	-	-	-	-	134	112	22	-	-	-	-	-
Auto theft: All except unauthor- ized use	68	64	4	-	-	-	-	-	92	89	3	-	-	-	-	-
Larceny: Shoplifting	51	36	15	-	-	-	-	-	997	613	384	-	-	-	-	-
Larceny: All except shoplifting	301	282	19	-	-	-	-	-	843	758	85	-	-	-	-	-
Weapons - carrying, possessing, etc.	8	8	-	-	-	-	-	-	37	35	2	-	-	-	-	-
Sex offenses (except forcible rape)	12	11	1	-	-	-	-	-	17	13	4	-	-	-	-	-

## NON-METROPOLITAN COUNTIES

(89 County Totals)

REASON FOR REFERRAL (Continued)	OFFICIAL CASES								UNOFFICIAL CASES							
	Total	Delinquency		Children In Need Of Assistance		Special Proceedings		Total	Delinquency		Children In Need Of Assistance		Special Proceedings		Total	
		Boys	Girls	Boys	Girls	Boys	Girls		Boys	Girls	Boys	Girls	Boys	Girls		
Violation of drug laws; Narcotic	32	30	2	-	-	-	-	145	111	34	-	-	-	-	-	-
Violation of drug laws; All except narcotic	86	71	15	-	-	-	-	330	259	71	-	-	-	-	-	-
Drunkennness	26	24	2	-	-	-	-	157	146	11	-	-	-	-	-	-
Disorderly conduct	27	25	2	-	-	-	-	303	240	63	-	-	-	-	-	-
Vandalism	125	118	7	-	-	-	-	702	647	55	-	-	-	-	-	-
Other (specify)	197	166	31	-	-	-	-	775	661	114	-	-	-	-	-	-
Offenses applicable to juveniles only (excluding traffic)																
Running away	85	42	43	-	-	-	-	608	229	377	2	-	-	-	-	-
Tuancy	35	20	11	-	4	-	-	136	85	50	1	-	-	-	-	-
Violation of curfew	2	2	-	-	-	-	-	286	218	68	-	-	-	-	-	-
Unreasonable behavior	193	91	97	4	1	-	-	320	179	138	2	1	-	-	-	-
Possessing or drinking of liquor	65	59	6	-	-	-	-	1,860	1,411	499	-	-	-	-	-	-
Other (specify)	11	9	2	-	-	-	-	77	53	24	-	-	-	-	-	-
Traffic offenses																
Driving while intoxicated	46	42	4	-	-	-	-	29	26	3	-	-	-	-	-	-
Hit and run	1	1	-	-	-	-	-	2	2	-	-	-	-	-	-	-
Reckless driving	-	-	-	-	-	-	-	5	5	-	-	-	-	-	-	-

## NON-METROPOLITAN COUNTIES

(89 County Totals)

REASON FOR REFERRAL (Continued)	OFFICIAL CASES								UNOFFICIAL CASES							
	Total	Delinquency		Children In Need Of Assistance		Special Proceedings		Total	Delinquency		Children In Need Of Assistance		Special Proceedings		Total	
		Boys	Girls	Boys	Girls	Boys	Girls		Boys	Girls	Boys	Girls	Boys	Girls		
Driving without a license	1	1	-	-	-	-	-	13	11	2	-	-	-	-	-	-
All other traffic (specify)	5	5	-	-	-	-	-	40	30	10	-	-	-	-	-	-
Neglect (abuse, desertion, inadequate care, etc.)																
Abuse	47	-	-	21	26	-	-	115	-	-	51	64	-	-	-	-
All other neglect (specify)	256	-	-	136	120	-	-	102	-	-	52	50	-	-	-	-
Special proceedings (adoption, consent to marry, etc.)																
(Specify)	32	-	-	-	-	21	11	6	-	-	-	-	-	-	3	3
RACE																
White	2,285	1,667	285	157	146	19	11	8,687	6,455	2,005	106	115	3	3	-	-
Negro	26	20	5	1	-	-	-	65	50	14	1	-	-	-	-	-
Indian	8	4	3	1	-	-	-	21	16	5	-	-	-	-	-	-
Other	7	3	-	1	1	2	-	17	15	1	1	-	-	-	-	-
Not Given	35	30	-	1	4	-	-	102	78	24	-	-	-	-	-	-



**END**

*1. 10. 1944*

10. 10. 1944