

Neglected or Delinquent Children Living in State Operated or Supported Institutions

Fiscal Year 1972



44873

Neglected or Delinquent Children Living in State Operated or Supported Institutions Fiscal Year 1972

By
Lawrence Siegel
National Center for Education Statistics
Education Division

NCJRS
JAN 30 1978
ACQUISITION

U.S. DEPARTMENT OF HEALTH, EDUCATION, AND WELFARE
Caspar W. Weinberger, *Secretary*
Education Division
Virginia Y. Trotter, *Assistant Secretary for Education*
National Center for Education Statistics
Dorothy M. Gilford, *Acting Administrator*

NATIONAL CENTER FOR EDUCATION STATISTICS

"The purpose of the Center shall be to collect and disseminate statistics and other data related to education in the United States and in other nations. The Center shall . . . collect, collate, and, from time to time, report full and complete statistics on the conditions of education in the United States; conduct and publish reports on specialized analyses of the meaning and significance of such statistics; . . . and review and report on education activities in foreign countries."--Section 406(b) of the General Education Provisions Act, as amended (20 U.S.C. 1221e-1).

**U.S. GOVERNMENT PRINTING OFFICE
WASHINGTON: 1974**

For sale by the Superintendent of Documents, U.S. Government Printing Office, Washington, D.C. 20402 - Price \$1.05

Stock Number 1780—01367

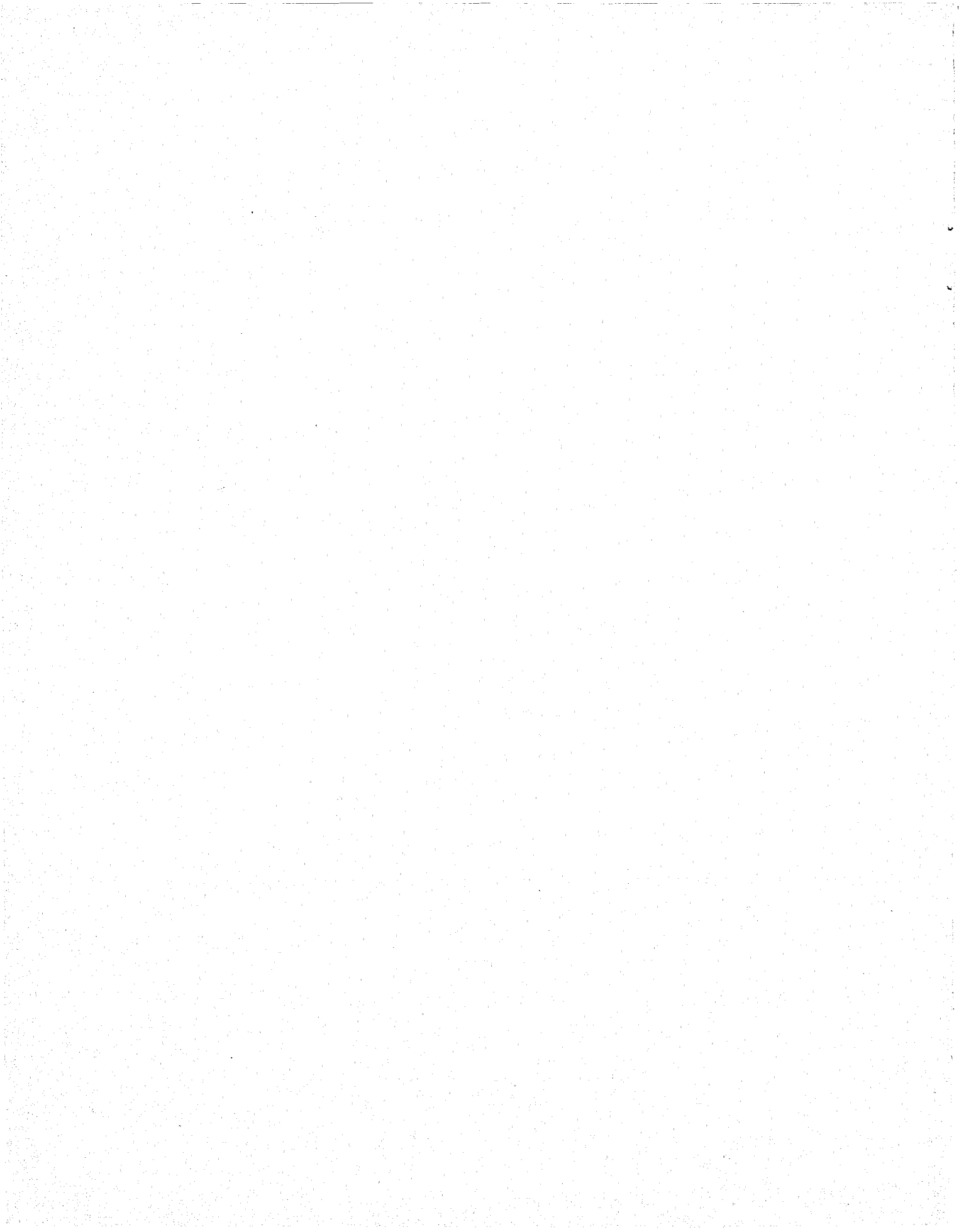
FOREWORD

Fiscal year 1972 was the sixth year in which funds were provided under title I of the Elementary and Secondary Education Act (ESEA), Public Law 89-10 as amended by Public Law 89-750, for supplementary services for neglected or delinquent children in State operated or supported institutions.

This statistical report, prepared by the National Center for Education Statistics (NCES), is based on fiscal year 1972 data submitted by administrators of State institutions. Data relating to neglected children and delinquent children are presented in separate sections of the report. Major areas discussed include participation, staff training, and expenditures.

NCES gratefully acknowledges the cooperation of the State coordinators of the Consolidated Program Information Report (CPIR), the title I coordinators for State education agencies (SEA's), and the institutional officials who were responsible for supplying data for this survey.

Yeuell Y. Harris, Chief
Survey Design and Implementation
Branch



CONTENTS

	Page
Foreword	iii
Introduction	1
Source of Data	3
Programs for Neglected or Delinquent Children	5
Neglected Children	5
Participants	5
Staff	6
Number of Staff and Expenditures	6
Training	6
Services	6
Direct Educative Services	8
Supporting Services	8
Other Services	8
Delinquent Children	8
Participants	8
Staff	9
Number of Staff and Expenditures	9
Training	9
Services	9
Direct Educative Services	9
Supporting Services	10
Other Services	10
Appendixes	
A. Response Rate	35
B. Report Form	37

TEXT TABLES

Page

A. Expenditures for services and activities for neglected or delinquent children in State operated or supported institutions: ESEA title I funds, United States, fiscal year 1972	5
B. Participation in ESEA title I programs for neglected children in State operated or supported institutions, by enrollment status, type of school attended, and level of instruction: United States, fiscal year 1972	6
C. Participation in and expenditures for services for neglected children in State operated or supported institutions: ESEA title I funds, United States, fiscal year 1972	7
D. Participation in ESEA title I programs for delinquent children in State operated or supported institutions, by enrollment status, type of school attended, and level of instruction: United States, fiscal year 1972	8
E. Participation in and expenditures for services for delinquent children in State operated or supported institutions: ESEA title I funds, United States, fiscal year 1972	11

BASIC TABLES*

Neglected Children

1. Number of participants in ESEA title I programs for neglected children residing in State-operated institutions, by school enrollment status and level of instruction and by State: United States, fall 1971	15
2. Number of participants in ESEA title I programs for neglected children residing in State-operated institutions, by type of school attended and level of instruction and by State: United States, fall 1971	15
3. Number of staff members and amount of salaries paid from ESEA title I funds in programs for neglected children residing in State-operated institutions, by staff position and by State: United States, fiscal year 1972	16
4. Number of teachers receiving preservice or inservice training in ESEA title I programs for neglected children residing in State-operated institutions, with total and average hours of training, by State: United States, fiscal year 1972	16
5. Number of nonteaching professional staff receiving preservice or inservice training in ESEA title I programs for neglected children residing in State-operated institutions, with total and average hours of training, by State: United States, fiscal year 1972	17

*In the basic data tables, the designation "State-operated institutions" may also include private institutions which receive State-administered funds for neglected or delinquent children.

6. Number of education aides receiving preservice or inservice training in ESEA title I programs for neglected children residing in State-operated institutions, with total and average hours of training, by State: United States, fiscal year 1972 17
7. Number of nonprofessional staff (other than education aides) receiving preservice or inservice training in ESEA title I programs for neglected children residing in State-operated institutions, with total and average hours of training, by State: United States, fiscal year 1972 18
8. ESEA title I expenditures for neglected children residing in State-operated institutions, by service or activity and by State: United States, fiscal year 1972 18

Delinquent Children

9. Number of participants in ESEA title I programs for delinquent children residing in State-operated institutions, by school enrollment status and level of instruction and by State or other area: United States, fall 1971 21
10. Number of participants in ESEA title I programs for delinquent children residing in State-operated institutions, by type of school attended and level of instruction and by State or other area: United States, fall 1971 22
11. Number of staff members and amount of salaries paid from ESEA title I funds in programs for delinquent children residing in State-operated institutions, by staff position and by State or other area: United States, fiscal year 1972 23
12. Number of teachers receiving preservice or inservice training in ESEA title I programs for delinquent children residing in State-operated institutions, with total and average hours of training, by State or other area: United States, fiscal year 1972 24
13. Number of nonteaching professional staff receiving preservice or inservice training in ESEA title I programs for delinquent children residing in State-operated institutions, with total and average hours of training, by State or other area: United States, fiscal year 1972 25
14. Number of education aides receiving preservice or inservice training in ESEA title I programs for delinquent children residing in State-operated institutions, with total and average hours of training, by State or other area: United States, fiscal year 1972 26
15. Number of nonprofessional staff (other than education aides) receiving preservice or inservice training in ESEA title I programs for delinquent children residing in State-operated institutions, with total and average hours of training, by State or other area: United States, fiscal year 1972 27
16. ESEA title I expenditures for delinquent children residing in State-operated institutions, by service or activity and by State or other area: United States, fiscal year 1972 28

*In the basic data tables, the designation "State-operated institutions" may also include private institutions which receive State-administered funds for neglected or delinquent children.

INTRODUCTION

The Elementary and Secondary Education Act (ESEA) of 1965 empowers the Commissioner of Education to make payments to State education agencies (SEA's) for grants to local education agencies (LEA's) to expand and improve educational programs to meet the special needs of educationally deprived children. Title I of the Act was amended in November 1966 to expand eligibility to include neglected or delinquent children living in State or locally operated or supported institutions. The data in this report include only those submitted by State operated or supported institutions. For this reason, participant and expenditure figures in this report are higher for delinquent than for neglected children, since the latter are more often assigned to locally operated facilities.

The legislation requires that programs be designed to supplement, but not supplant, existing educational programs for these children. Funds may be used to purchase educational materials, to pay the salaries of additional teachers and staff members, for staff training, and for other education-related activities to improve the educational programs offered neglected or delinquent children.

The guidelines* developed for the program define an institution for neglected children as "a public or private nonprofit residential facility (other than a foster home) which is operated primarily for the care of . . . children for whom the institution has assumed or been granted custodial responsibility pursuant to applicable State law. . . ." An institution for delinquent children is "a public or private nonprofit residential facility which is operated primarily for the care of . . . children who have been adjudicated to be delinquent. . . ."

*Code of Federal Regulations, title 45, part 116, sec. 1-p,q.

SOURCE OF DATA

The survey for this report was conducted as part of a larger survey, the Consolidated Program Information Report (CPIR). The data-gathering instrument used to collect information from institutions for the neglected or delinquent was the CPIR – Supplemental Form A (form OE 4484-1) (appendix B). This questionnaire was designed to obtain data on participation in title I programs by type of school attended and grade level; on staff positions, salaries, and training paid from title I funds; on participation and expenditures for instructional and supporting services; and on operational costs and capital outlay.

On December 2, 1972, the National Center for Education Statistics (NCES) sent the questionnaire to the State education agency (SEA) of each State or other area which maintained participating State operated or supported institutions. Forty-nine of the 50 States maintained such institutions and are therefore included in this report. (Hawaii was the only exception.) The District of Columbia, Puerto Rico, and the Virgin Islands maintained participating institutions. The title I coordinator of each SEA, in turn, passed the questionnaire to the State applicant agencies (SAA's). The questionnaire was then distributed to the participating institutions. An official at each institution completed the questionnaire and returned it to the SEA by way of the SAA. At the SEA, the title I coordinator reviewed and verified the data and then returned the questionnaire to NCES. NCES staff edited each returned questionnaire and checked for internal consistency. Letters were written and telephone calls made to obtain any missing data and to resolve questions.

For fiscal year 1972, 254 State operated or supported institutions received title I funds. Of these, 33 were for neglected children and 221 were for delinquent children. Questionnaires were returned by 31 of the institutions for the neglected (94 percent) and by 218 of those for the delinquent (99 percent) (appendix A). The response rate, overall, was 98 percent. Alaska, the District of Columbia, Utah, Wisconsin, and the Virgin Islands each maintained one institution from which no survey form was received. Of these five nonresponding institutions, those in the District of Columbia and Wisconsin were for neglected children and those in Alaska, Utah, and the Virgin Islands were for delinquents.

The text and basic data tables are derived from the data gathered by report form OE 4484-1 (appendix B). The basic data tables are presented by State. Because of the volume of detail elicited by item 7 on the report form, data on participation by type of service or activity are given in summary form only in text tables C and E. Expenditure data in tables 8 and 16 have been collapsed for remedial and nonremedial direct educative services. These data are summarized in text tables C and E.

The data tape with all of the information on the questionnaire entitled "Consolidated Program Information Report – Supplemental Form A, ESEA Title I Program Activities for Neglected or De-

linquent Children Living in State Institutions (For Fiscal Year Ending June 30, 1972)" may be purchased from NCES. Further information may be obtained from Mr. Robert A. Heintze, National Center for Education Statistics, Office of the Assistant Secretary for Education, HEW, Washington, D. C. 20202.

PROGRAMS FOR NEGLECTED OR DELINQUENT CHILDREN

The 249 responding institutions reported expenditures in fiscal year 1972 of \$16,130,001 from ESEA title I funds. The expenditures presented in table A are derived from tables 8 and 16.

Table A.—Expenditures for services and activities for neglected or delinquent children in State operated or supported institutions: ESEA title I funds, United States, fiscal year 1972

Services	Total	Neglected	Delinquent
Total	\$16,130,001	\$1,601,205	\$14,528,796
Direct educative services	9,976,484	894,791	9,081,693
Supporting services	2,094,706	325,437	1,769,269
Other services	2,839,875	294,408	2,545,467
Capital outlay	1,218,936	86,569	1,132,367

There were 50,573 participants, of whom 4,963 were neglected and 45,610 were delinquent (tables 1 and 9).

NEGLECTED CHILDREN

Participants

State operated or supported institutions for neglected children in 19 States reported 4,963 children participating in title I programs as of October 1971 (table 1). This report classifies the children as (1) enrolled in schools within the institutions, (2) enrolled in public schools outside the institutions, (3) enrolled in nonpublic schools outside the institutions, or (4) not enrolled in any school. Participation is classified as either elementary or secondary¹ (tables 1 and 2).

Overall, 59 percent of the 4,963 participating children were secondary students and 41 percent were elementary (table 1). However, this ratio varied substantially among the States. Of all participating children, 71 percent were enrolled in schools within the institutions. Of these, 45 percent were elementary and 55 percent were secondary students. Twenty-nine percent were enrolled in public schools outside the institution. A summary of participation appears in table B.

¹"Elementary" and "secondary" as used in this publication refer to level of performance. The terms do not necessarily refer to chronological age or to a particular grade level.

Table B.—Participation in ESEA title I programs for neglected children in State operated or supported institutions, by enrollment status, type of school attended, and level of instruction:
United States, fiscal year 1972

Enrollment status and type of school attended	Participants					
	Total		Elementary		Secondary	
	Number	Percent	Number	Percent	Number	Percent
Total	4,963	100	2,031	100	2,932	99
Enrolled:						
Within institution	3,512	71	1,593	78	1,919	65
Outside, public	1,445	29	438	22	1,007	34
Outside, nonpublic	2	(*)	0	---	2	(*)
Not enrolled	4	(*)	0	---	4	(*)

*Less than 0.5 percent.

All of the States except Wyoming reported participants enrolled in schools within the institutions (table 2). In Wyoming, all participants were in public schools outside the institutions. Illinois, Nebraska, Oklahoma, South Carolina, and Texas also reported participants in public schools outside the institutions. Rhode Island was the only State to report children attending nonpublic schools outside the institution. There were two students in this category, both at the secondary level. Nebraska reported four neglected children who were not enrolled in any school but who received services under title I (table 1).

Staff

Number of staff and expenditures

A total of \$1,117,077 in title I funds was expended to support, wholly or in part, salaries for 379 staff members in State operated or supported institutions for neglected children (table 3). Of these staff members, 185, or 49 percent, were teachers who, on the average, received \$3,405. Fifty-three other professionals (14 percent) received an average of \$4,040. A total of 81 education aides (21 percent) received an average of \$2,089. Nonprofessionals, numbering 60, comprised the remaining 16 percent and received \$1,730.

Training

A total of 190 staff members received inservice or preservice education or training funded under title I (tables 4, 5, 6, and 7). Of these, 83, or 44 percent, were teachers who, on the average, received 34 hours of training. Eighteen other professionals (9 percent) received an average of 24 hours of training. A total of 43 education aides (23 percent) received 20 hours of training. Forty-six other nonprofessionals (24 percent) received an average of 42 hours of training.

Services

Neglected children may benefit from many different services funded under title I. These are categorized as direct educative services, supporting services, and other services (including costs for ad-

ministration, personnel and program development, operation of plant and facilities, capital outlay, etc.). The participating institutions reported expenditures for these services totaling \$1,601,205 during fiscal year 1972. Of this amount, \$894,791, or 56 percent, was spent for direct educative services; \$325,437, or 20 percent, for supporting services; and \$380,977, or 24 percent, for other services. The average per-pupil expenditure was \$323. A summary of participation in an expenditures for services rendered to neglected children appears in table C.

Table C.—Participation in and expenditures for services for neglected children in State operated or supported institutions: ESEA title I funds, United States, fiscal year 1972

Service or activity	Participants				Expenditures	
	Total		Elementary	Secondary	Total	Average per child
	Number	Percent				
Total	4,963	(*)	2,031	2,932	\$1,601,205	\$323
Direct educative services						
Remedial						
English language arts (except reading)	1,322	27	631	691	82,209	62
Reading	2,434	49	1,197	1,237	209,520	86
Cultural arts	1,182	24	531	651	49,865	42
Social science/social studies	724	15	365	359	21,092	29
Natural science and mathematics	908	18	427	481	67,612	74
Other	805	16	351	454	101,632	126
Nonremedial						
English language arts (except reading)	274	6	32	242	5,202	19
Reading	839	17	391	448	15,299	18
Cultural arts	1,740	35	805	935	103,462	59
Social sciences/social studies	148	3	32	116	3,860	26
Natural science and mathematics	349	7	159	190	6,865	20
Other	1,465	30	700	765	118,728	81
Curriculum for the handicapped	33	1	1	32	10,372	314
Vocational skills and attitudes	986	20	325	661	90,225	92
Textbooks	681	14	209	472	8,848	13
Supporting services						
Vocation counseling	105	2	0	105	33,021	314
Other counseling	1,121	23	430	691	40,628	36
Testing	893	18	321	572	9,941	11
School psychological services	249	5	89	160	17,435	70
Attendance and school social work	0	--	0	0	0	0
Health services	1,767	36	517	1,250	54,239	31
Pupil transportation	1,624	33	584	1,040	16,047	10
Food services	536	11	264	272	5,420	10
Clothing	272	5	127	145	2,554	9
Student subsidies	284	6	127	157	4,932	17
Special services for the handicapped	78	2	25	53	8,472	109
Other pupil services	1,694	34	727	967	132,748	78
Other services						
Audiovisual materials	1,938	39	789	1,149	38,172	20
All other**	---	--	---	---	342,805	---

*Percentages do not add to 100 because a child may have participated in more than one service.

**Includes library and media personnel, administration, program and personnel development, operation of plant, fixed charges, capital outlay, and other administrative costs.

Direct Educative Services

Although one-half of the students received remedial instruction in reading, the per-pupil cost was only \$86 compared to the per-pupil expenditure of \$314 for the handicapped. Over one-third of the students participated in nonremedial activities related to the cultural arts at an average per-pupil cost of \$59.

Supporting Services

Supporting services were provided for one-third or more of the participating neglected children in the form of health services, transportation, and other pupil services at an average per-pupil cost of \$31, \$10, and \$78, respectively. The average per-pupil costs for supporting services ranged from a low of \$9 for clothing to a high of \$314 for vocational counseling.

Other Services

Expenditures for other services and activities amounted to \$380,977. Administration and program development accounted for 25 percent (table 8). Capital outlay accounted for another 23 percent. The balance of the money was used for other operational expenditures (audiovisual materials, salaries for library and media personnel, personnel development, and miscellaneous services and activities).

DELINQUENT CHILDREN

Participants

State operated or supported institutions for delinquent children in 48 States, the District of Columbia, and Puerto Rico reported 45,610 children participating in title I services and activities during fiscal year 1972 (table 9). The types of schools in which delinquent children were enrolled were the same as those for neglected children; i.e., schools inside the institutions and public or private schools outside the institutions. Students were classified as either elementary or secondary.² A State-by-State examination shows no consistent elementary-to-secondary enrollment ratio although most States reported more secondary participants. Only six States (Georgia, Illinois, Louisiana, New Hampshire, New Jersey, North Carolina) and Puerto Rico reported more elementary than secondary pupils. A summary of participation appears in table D.

Table D.—Participation in ESEA title I programs for delinquent children in State operated or supported institutions, by enrollment status, type of school attended, and level of instruction:
United States, fiscal year 1972

Enrollment status and type of school attended	Participants					
	Total		Elementary		Secondary	
	Number	Percent	Number	Percent	Number	Percent
Total	45,610	99	17,134	99	28,476	100
Enrolled:						
Within institution	44,347	97	16,945	99	27,402	96
Outside, public	541	1	104	(*)	438	2
Outside, nonpublic	40	(*)	12	(*)	28	(*)
Not enrolled	681	1	73	(*)	608	2

*Less than 0.5 percent.

²“Elementary” and “secondary” as used in this publication refer to level of performance. The terms do not necessarily refer to chronological age or to a particular grade level.

The vast majority (97 percent) of delinquent children participating in title I programs were enrolled in schools within the institutions. Of these 44,347 participants, 16,945, or 38 percent, were elementary pupils and 27,402, or 62 percent, were secondary students. Seven States (Arizona, Florida, Maryland, New Mexico, Ohio, Pennsylvania, and Washington) reported children enrolled in public schools outside the institutions (table 10). Of the 542 participants in these States, 19 percent were elementary pupils and 81 percent were secondary students. A majority of the children in each of the seven States were secondary students.

Only four States (Arkansas, Florida, Maryland, and Pennsylvania) reported children enrolled in nonpublic schools outside the institutions. Ten States and the District of Columbia reported title I participants who were not enrolled in any school (table 9).

Staff

Number of Staff and Expenditures

A total of \$9,887,278 in title I funds was expended to support, wholly or in part, salaries for 2,566 staff members in State operated or supported institutions for delinquent children (table 11). Of these staff members, 1,270, or 49 percent, were teachers who, on the average, received \$4,274. Other professionals, numbering 371 (14 percent), received an average of \$4,965. A total of 647 education aides (25 percent) received an average of \$2,651. Nonprofessionals, numbering 278, comprised the remaining 11 percent and received \$3,237. California, Illinois, Massachusetts, New York, Pennsylvania, and Texas employed 45 percent of these personnel.

Training

A total of 1,139 staff members received inservice or preservice education or training funded from title I (tables 12, 13, 14, and 15). Of these, 528, or 46 percent, were teachers who, on the average, received 26 hours of training. A total of 198 other professionals (17 percent) received an average of 29 hours of training. Comprising 29 percent, 332 education aides averaged 19 hours of training. Eighty-one other nonprofessionals (7 percent) received 25 hours of training.

Services

Delinquent children living in State operated or supported institutions benefited from a variety of services supported with ESEA title I funds. The institutions spent \$14,528,796 for the 45,610 participants in fiscal year 1972. Of this amount, \$9,081,693, or 63 percent, was spent for direct educative services; \$1,769,269, or 12 percent, for supporting services; and \$3,677,834, or 25 percent, for other services. The average per-pupil expenditure was \$319. A summary of participation in and expenditures for services rendered to delinquent children appears in table E.

Direct Educative Services

Greatest participation in direct educative services (24,336 children) occurred in remedial reading skill programs. Instructional activities focusing on remedial natural science and mathematics ranked second with 16,182 participants. Services and activities classified as "remedial - other" ranked third with 13,953 participants. The per-pupil expenditure ranged from \$11 for textbooks to \$131 for services for the handicapped.

Supporting Services

As with direct educative services, the amount of participation in supporting services and activities varied from activity to activity. The largest numbers of participants received counseling, testing, psychological, and transportation services. The per-pupil cost ranged from \$14 for transportation and food services to \$76 for vocational counseling.

Other Services

A total of \$3,677,834 was expended for other services. Capital outlay accounted for 31 percent (table 16). Another 31 percent supported a variety of operational expenses such as maintenance and operation of plant and fixed charges. Administration and program development utilized an additional 17 percent. The balance of the money was spent for audiovisual materials, personnel development, and salaries for school library and media personnel.

Table E.—Participation in and expenditures for services for delinquent children in State operated or supported institutions:
ESEA title I funds, United States, fiscal year 1972

Service or activity	Participants				Expenditures	
	Total		Elementary	Secondary	Total	Average per child
	Number	Percent				
Total	45,610	(*)	17,134	28,476	\$14,528,796	\$319
Direct educative services						
Remedial						
English language arts (except reading)	7,648	17	2,601	5,047	489,719	64
Reading	24,336	53	8,142	16,194	2,936,858	121
Cultural arts	8,528	19	4,114	4,414	366,145	43
Social science/social studies	7,846	17	2,326	5,520	265,348	34
Natural science and mathematics	16,182	35	4,365	11,817	1,385,708	86
Other	13,953	31	4,690	9,263	1,015,494	73
Nonremedial						
English language arts (except reading)	4,334	10	1,457	2,877	159,557	37
Reading	2,726	6	740	1,986	81,596	30
Cultural arts	8,201	18	3,639	4,562	320,930	39
Social science/social studies	3,239	7	857	2,382	86,915	27
Natural science and mathematics	3,132	7	848	2,284	106,613	34
Other	9,755	21	3,956	5,799	637,491	65
Curriculum for the handicapped	1,080	2	165	915	141,688	131
Vocational skills and attitudes	7,946	17	1,926	6,020	994,648	125
Textbooks	8,214	18	1,382	6,832	92,383	11
Supporting services						
Vocational counseling	2,840	6	1,007	1,833	217,190	76
Other counseling	6,593	14	1,821	4,772	407,268	62
Testing	7,877	17	2,016	5,861	146,533	19
School psychological services	5,964	13	1,457	4,507	284,085	48
Attendance and school social work	3,904	9	1,677	2,227	195,893	50
Health services	2,584	6	1,141	1,443	77,784	30
Pupil transportation	5,007	11	1,834	3,173	71,680	14
Food services	2,102	5	519	1,583	29,881	14
Clothing	619	1	120	499	10,080	16
Student subsidies	424	1	84	340	17,004	40
Special services for the handicapped	1,312	3	452	860	70,705	54
Other pupil services	3,996	9	1,546	2,450	241,166	60
Other services						
Audiovisual materials	16,814	37	5,610	11,204	315,925	19
All other**	---	--	---	---	3,361,909	---

*Percentages do not total 100 percent because a child may have participated in more than one service or activity.

**Includes library and media personnel, administration, program and personnel development, operation of plant, fixed charges, capital outlay, and other administrative costs.

BASIC TABLES

In the following tables, the designation "State-operated institutions" may also include other institutions which are not run by the State but which receive State-administered funds for neglected or delinquent children.

TABLE 1.--NUMBER OF PARTICIPANTS IN ESEA TITLE I PROGRAMS FOR NEGLECTED CHILDREN RESIDING IN STATE-OPERATED INSTITUTIONS, BY SCHOOL ENROLLMENT STATUS AND LEVEL OF INSTRUCTION AND BY STATE: UNITED STATES, FALL 1971

STATE	PARTICIPANTS								
	TOTAL			ENROLLED			NOT ENROLLED		
	TOTAL	ELEMENTARY	SECONDARY	TOTAL	ELEMENTARY	SECONDARY	TOTAL	ELEMENTARY	SECONDARY
U.S. TOTAL	4,963	2,031	2,532	4,959	2,031	2,928	4	0	4
COLORADO	80	0	80	80	0	80	0	0	0
CONNECTICUT	102	102	0	102	102	0	0	0	0
ILLINOIS	418	302	116	418	302	116	0	0	0
INDIANA	272	127	145	272	127	145	0	0	0
IOWA	331	146	185	331	146	185	0	0	0
MICHIGAN	28	17	11	28	17	11	0	0	0
MONTANA	35	35	0	35	35	0	0	0	0
NEBRASKA	87	37	50	83	37	46	4	0	4
NEW YORK	67	67	0	67	67	0	0	0	0
NEVADA	35	0	35	35	0	35	0	0	0
OHIO	238	155	83	238	155	83	0	0	0
OKLAHOMA	627	37	590	627	37	590	0	0	0
PENNSYLVANIA	475	192	283	475	192	283	0	0	0
RHODE ISLAND	74	28	46	74	28	46	0	0	0
SOUTH CAROLINA	159	110	49	159	110	49	0	0	0
TENNESSEE	598	153	445	598	153	445	0	0	0
TEXAS	1,191	440	751	1,191	440	751	0	0	0
WEST VIRGINIA	56	45	11	56	45	11	0	0	0
WYOMING	90	38	52	90	38	52	0	0	0

TABLE 2.--NUMBER OF PARTICIPANTS IN ESEA TITLE I PROGRAMS FOR NEGLECTED CHILDREN RESIDING IN STATE-OPERATED INSTITUTIONS, BY TYPE OF SCHOOL ATTENDED AND LEVEL OF INSTRUCTION AND BY STATE: UNITED STATES, FALL 1971

STATE	PARTICIPANTS ENROLLED IN--								
	SCHOOLS WITHIN STATE INSTITUTIONS			PUBLIC SCHOOLS			NONPUBLIC SCHOOLS		
	TOTAL	ELEMENTARY	SECONDARY	TOTAL	ELEMENTARY	SECONDARY	TOTAL	ELEMENTARY	SECONDARY
U.S. TOTAL	3,512	1,593	1,519	1,445	438	1,007	2	0	2
COLORADO	80	0	80	0	0	0	0	0	0
CONNECTICUT	102	102	0	0	0	0	0	0	0
ILLINOIS	257	257	0	161	45	116	0	0	0
INDIANA	272	127	145	0	0	0	0	0	0
IOWA	331	146	185	0	0	0	0	0	0
MICHIGAN	28	17	11	0	0	0	0	0	0
MONTANA	35	35	0	0	0	0	0	0	0
NEBRASKA	40	17	22	43	20	23	0	0	0
NEW YORK	67	67	0	0	0	0	0	0	0
NEVADA	35	0	35	0	0	0	0	0	0
OHIO	238	155	83	0	0	0	0	0	0
OKLAHOMA	356	34	324	269	3	266	0	0	0
PENNSYLVANIA	475	192	283	0	0	0	0	0	0
RHODE ISLAND	72	28	44	0	0	0	2	0	2
SOUTH CAROLINA	110	110	0	49	0	49	0	0	0
TENNESSEE	598	153	445	0	0	0	0	0	0
TEXAS	358	108	250	833	332	501	0	0	0
WEST VIRGINIA	56	45	11	0	0	0	0	0	0
WYOMING	0	0	0	90	38	52	0	0	0

TABLE 3.--NUMBER OF STAFF MEMBERS AND AMOUNT OF SALARIES PAID FROM ESEA TITLE I FUNDS IN PROGRAMS FOR NEGLECTED CHILDREN RESIDING IN STATE-OPERATED INSTITUTIONS, BY STAFF POSITIONS AND BY STATE: UNITED STATES, FISCAL YEAR 1972

STATE	STAFF POSITION					SALARIES				
	TOTAL	TEACHERS	OTHER PRO- FESSIONALS	EDUCATION AIDES	OTHER NONPRO- FESSIONALS	TOTAL	TEACHERS	OTHER PRO- FESSIONALS	EDUCATION AIDES	OTHER NONPRO- FESSIONALS
U.S. TOTAL	379	185	53	81	60	\$1,117,077	\$629,524	\$214,118	\$169,223	\$103,812
COLORADO	4	1	1	1	1	2,140	485	530	485	640
CONNECTICUT	7	7	0	0	0	37,518	37,518	0	0	0
ILLINOIS	14	5	1	2	0	76,378	32,913	13,995	29,470	0
INDIANA	51	19	5	15	12	53,456	34,637	1,585	8,919	8,315
ICWA	33	17	4	7	5	79,679	36,151	18,554	19,474	5,500
MICHIGAN	5	4	0	0	1	7,880	7,321	0	0	559
MONTANA	5	4	0	0	1	23,622	23,322	0	0	300
NEBRASKA	8	6	1	1	0	23,374	16,292	1,982	5,100	0
NEW YORK	13	13	0	0	0	5,830	9,830	0	0	0
NEVADA	8	3	1	4	0	30,880	12,680	2,200	15,800	0
OHIO	48	23	10	3	12	86,202	45,239	23,082	2,692	15,189
OKLAHOMA	26	15	2	9	0	125,904	92,454	10,400	23,050	0
PENNSYLVANIA	46	19	9	14	4	119,349	51,588	38,291	12,774	16,456
RHODE ISLAND	11	3	3	4	1	37,629	12,594	18,468	4,506	2,057
SOUTH CAROLINA	0	0	0	0	0	0	0	0	0	0
TENNESSEE	27	9	6	3	9	184,488	78,064	64,654	15,120	26,450
TEXAS	56	34	5	11	6	185,519	118,274	13,306	29,233	24,706
WEST VIRGINIA	12	2	1	1	8	15,281	3,214	6,267	2,600	3,200
WYOMING	5	1	4	0	0	17,952	17,148	804	0	0

TABLE 4.--NUMBER OF TEACHERS RECEIVING PRESERVICE OR INSERVICE TRAINING IN ESEA TITLE I PROGRAMS FOR NEGLECTED CHILDREN RESIDING IN STATE-OPERATED INSTITUTIONS, WITH TOTAL AND AVERAGE HOURS OF TRAINING, BY STATE: UNITED STATES, FISCAL YEAR 1972

STATE	NUMBER OF TEACHERS TRAINED	TOTAL CLOCK HOURS OF TRAINING	AVERAGE HOURS OF TRAINING			
			1-10	11-20	21-30	31 AND OVER
U.S. TOTAL	83	2,783	33	20	19	11
COLORADO	0	0	0	0	0	0
CONNECTICUT	0	0	0	0	0	0
ILLINOIS	5	151	3	1	0	1
INDIANA	14	420	0	0	14	0
ICWA	12	1,516	0	3	4	5
MICHIGAN	4	36	4	0	0	0
MONTANA	0	0	0	0	0	0
NEBRASKA	6	30	6	0	0	0
NEW YORK	0	0	0	0	0	0
NEVADA	3	18	3	0	0	0
OHIO	5	86	0	4	0	1
OKLAHOMA	7	65	7	0	0	0
PENNSYLVANIA	8	64	8	0	0	0
RHODE ISLAND	9	134	0	8	0	1
SOUTH CAROLINA	0	0	0	0	0	0
TENNESSEE	0	0	0	0	0	0
TEXAS	9	211	2	4	1	2
WEST VIRGINIA	0	0	0	0	0	0
WYOMING	1	48	0	0	0	1

TABLE 5.--NUMBER OF NONT EACHING PROFESSIONAL STAFF RECEIVING PRESERVICE OR INSERVICE TRAINING IN ESEA TITLE I PROGRAMS FOR NEGLECTED CHILDREN RESIDING IN STATE-OPERATED INSTITUTIONS, WITH TOTAL AND AVERAGE HOURS OF TRAINING, BY STATE: UNITED STATES, FISCAL YEAR 1972

STATE	NUMBER OF NONT EACHING PROFESSIONAL STAFF TRAINED	TOTAL CLOCK HOURS OF TRAINING	AVERAGE HOURS OF TRAINING			
			1-10	11-20	21-30	31 AND OVER
U.S. TOTAL	18	438	12	3	1	2
COLORADO	0	0	0	0	0	0
CONNECTICUT	0	0	0	0	0	0
ILLINOIS	1	150	0	0	0	1
INDIANA	0	0	0	0	0	0
ICWA	2	43	0	1	1	0
MICHIGAN	0	0	0	0	0	0
MONTANA	0	0	0	0	0	0
NEBRASKA	1	5	1	0	0	0
NEW YORK	0	0	0	0	0	0
NEVADA	1	6	1	0	0	0
CHIC.	0	0	0	0	0	0
OKLAHOMA	2	26	1	1	0	0
PENNSYLVANIA	9	100	9	0	0	0
RHODE ISLAND	0	0	0	0	0	0
SOUTH CAROLINA	0	0	0	0	0	0
TENNESSEE	0	0	0	0	0	0
TEXAS	1	12	0	1	0	0
WEST VIRGINIA	0	0	0	0	0	0
WYOMING	1	96	3	0	0	1

TABLE 6.--NUMBER OF EDUCATION AIDES RECEIVING PRESERVICE OR INSERVICE TRAINING IN ESEA TITLE I PROGRAMS FOR NEGLECTED CHILDREN RESIDING IN STATE-OPERATED INSTITUTIONS, WITH TOTAL AND AVERAGE HOURS OF TRAINING, BY STATE: UNITED STATES, FISCAL YEAR 1972

STATE	NUMBER OF EDUCATION AIDES TRAINED	TOTAL CLOCK HOURS OF TRAINING	AVERAGE HOURS OF TRAINING			
			1-10	11-20	21-30	31 AND OVER
U.S. TOTAL	43	863	18	4	16	5
COLORADO	1	50	0	0	0	1
CONNECTICUT	0	0	0	0	0	0
ILLINOIS	0	0	0	0	0	0
INDIANA	15	450	3	0	15	0
ICWA	5	28	0	2	0	0
MICHIGAN	0	0	0	0	0	0
MONTANA	0	0	0	0	0	0
NEBRASKA	1	5	1	0	0	0
NEW YORK	0	0	0	0	0	0
NEVADA	4	24	4	0	0	0
CHIC.	0	0	0	0	0	0
OKLAHOMA	6	35	6	0	0	0
PENNSYLVANIA	4	16	4	0	0	0
RHODE ISLAND	0	0	0	0	0	0
SOUTH CAROLINA	0	0	0	0	0	0
TENNESSEE	5	182	0	2	0	3
TEXAS	1	25	0	0	1	0
WEST VIRGINIA	1	48	0	0	0	1
WYOMING	1	48	0	0	0	1

TABLE 7.--NUMBER OF NONPROFESSIONAL STAFF (OTHER THAN EDUCATION AIDES) RECEIVING PRE-SERVICE OR INSERVICE TRAINING IN ESEA TITLE I PROGRAMS FOR NEGLECTED CHILDREN RESIDING IN STATE-OPERATED INSTITUTIONS, WITH TOTAL AND AVERAGE HOURS OF TRAINING, BY STATE: UNITED STATES, FISCAL YEAR 1972

STATE	NUMBER OF OTHER NONPROFESSIONAL STAFF TRAINED	TOTAL CLOCK HOURS OF TRAINING	AVERAGE HOURS OF TRAINING			
			1-10	11-20	21-30	31 AND OVER
U.S. TOTAL	46	1,934	6	0	0	40
COLORADO	1	40	0	0	0	1
CONNECTICUT	0	0	0	0	0	0
ILLINOIS	0	0	0	0	0	0
INDIANA	0	0	0	0	0	0
IOWA	0	0	0	0	0	0
MICHIGAN	1	4	1	0	0	0
MONTANA	0	0	0	0	0	0
NEBRASKA	0	0	0	0	0	0
NEW YORK	0	0	0	0	0	0
NEVADA	0	0	0	0	0	0
OHIO	7	280	0	0	0	7
OKLAHOMA	0	0	0	0	0	0
PENNSYLVANIA	4	16	4	0	0	0
RHODE ISLAND	0	0	0	0	0	0
SOUTH CAROLINA	0	0	0	0	0	0
TENNESSEE	1	10	1	0	0	0
TEXAS	0	0	0	0	0	0
WEST VIRGINIA	0	0	0	0	0	0
WYOMING	32	1,584	0	0	0	32

TABLE 8.--ESEA TITLE I EXPENDITURES FOR NEGLECTED CHILDREN RESIDING IN STATE-OPERATED INSTITUTIONS, BY SERVICE OR ACTIVITY AND BY STATE: UNITED STATES, FISCAL YEAR 1972

STATE	TOTAL EXPENDITURES	DIRECT EDUCATIVE SERVICES AND ACTIVITIES ^{1/}			
		ENGLISH LANGUAGE ARTS (EXCLUDING READING)	READING	CULTURAL ENRICHMENT	SOCIAL SCIENCE/ SOCIAL STUDIES
U.S. TOTAL	\$1,601,205	\$87,411	\$224,819	\$153,327	\$24,552
COLORADO	40,135	0	7,700	300	525
CONNECTICUT	43,505	2,788	16,215	2,293	0
ILLINOIS	114,638	5,323	19,051	16,077	5,323
INDIANA	89,612	5,000	5,000	0	0
IOWA	102,565	8,114	8,062	7,198	6,379
MICHIGAN	8,287	0	0	0	0
MONTANA	27,207	0	11,829	0	0
NEBRASKA	32,773	642	6,328	0	0
NEW YORK	14,900	750	4,237	672	0
NEVADA	34,964	15,980	7,500	0	0
OHIO	106,169	7,507	9,755	2,402	0
OKLAHOMA	136,943	25,572	13,375	0	9,065
PENNSYLVANIA	219,608	0	28,106	43,874	0
RHODE ISLAND	45,821	0	2,075	0	0
SOUTH CAROLINA	24,260	0	3,921	4,697	0
TENNESSEE	227,827	0	39,985	33,879	0
TEXAS	277,994	10,405	38,870	41,045	770
WEST VIRGINIA	20,538	0	1,920	0	0
WYOMING	33,459	890	890	890	890

1/ INCLUDES BOTH REMEDIAL AND NONREMEDIAL. SEE REPORT FORM (APPENDIX B).

TABLE 8.--ESEA TITLE I EXPENDITURES FOR NEGLECTED CHILDREN RESIDING IN STATE-OPERATED INSTITUTIONS, BY SERVICE OR ACTIVITY AND BY STATE: UNITED STATES, FISCAL YEAR 1972--CONTINUED

STATE	DIRECT EDUCATIVE SERVICES AND ACTIVITIES--CONTINUED				
	NATURAL SCIENCE AND MATHEMATICS	OTHER	DIFFERENTIALIZED CURRICULUM FOR THE HANDICAPPED	VOCATIONAL SKILLS AND ATTITUDES	TEXTBOOKS
U.S. TOTAL	\$74,477	\$220,360	\$10,372	\$90,225	\$8,848
COLORADO	2,500	0	10,300	100	200
CONNECTICUT	1,689	0	0	20,490	0
ILLINOIS	8,729	13,585	0	5,768	0
INDIANA	5,000	22,900	0	5,000	0
IOWA	8,147	15,774	0	11,152	0
MICHIGAN	0	6,325	0	0	0
MONTANA	11,829	0	0	0	0
NEBRASKA	1,094	6,664	0	1,687	586
NEW YORK	823	4,430	0	0	0
NEVADA	2,235	0	0	0	0
OHIO	9,435	15,874	0	2,762	0
OKLAHOMA	0	17,700	0	3,520	918
PENNSYLVANIA	0	42,503	0	17,225	7,144
RHODE ISLAND	0	4,318	0	9,429	0
SOUTH CAROLINA	0	0	0	0	0
TENNESSEE	0	6,645	0	0	0
TEXAS	22,108	39,201	0	13,092	0
WEST VIRGINIA	0	13,421	0	0	0
WYOMING	890	1,000	72	0	0

TABLE 8.--ESEA TITLE I EXPENDITURES FOR NEGLECTED CHILDREN RESIDING IN STATE-OPERATED INSTITUTIONS, BY SERVICE OR ACTIVITY AND BY STATE: UNITED STATES, FISCAL YEAR 1972--CONTINUED

STATE	SUPPORTING SERVICES AND ACTIVITIES				
	GUIDANCE AND COUNSELING ^{1/}	TESTING	SCHOOL PSYCHOLOGICAL SERVICES	ATTENDANCE AND SCHOOL SOCIAL WORK	HEALTH SERVICES
U.S. TOTAL	\$73,649	\$9,941	\$17,435	\$0	\$54,239
COLORADO	2,050	3,300	1,200	0	100
CONNECTICUT	0	30	0	0	0
ILLINOIS	0	278	14,035	0	0
INDIANA	5,720	0	0	0	0
IOWA	3,875	160	0	0	0
MICHIGAN	565	0	0	0	0
MONTANA	0	0	0	0	0
NEBRASKA	0	0	0	0	0
NEW YORK	0	0	0	0	0
NEVADA	0	0	2,200	0	0
OHIO	1,493	184	0	0	18,867
OKLAHOMA	28,500	0	0	0	3,650
PENNSYLVANIA	0	0	0	0	2,227
RHODE ISLAND	0	0	0	0	0
SOUTH CAROLINA	0	0	0	0	0
TENNESSEE	29,096	0	0	0	15,000
TEXAS	2,350	5,989	0	0	14,395
WEST VIRGINIA	0	0	0	0	0
WYOMING	0	0	0	0	0

^{1/} INCLUDES BOTH VOCATIONAL AND OTHER. SEE REPORT FORM (APPENDIX B).

TABLE 8.--ESEA TITLE I EXPENDITURES FOR NEGLECTED CHILDREN RESIDING IN STATE-OPERATED INSTITUTIONS, BY SERVICE OR ACTIVITY AND BY STATE: UNITED STATES, FISCAL YEAR 1972--CONTINUED

STATE	SUPPORTING SERVICES AND ACTIVITIES				
	PUPIL TRANSPORTATION	FOOD SERVICE	CLOTHING	SPECIAL SERVICES FOR THE HANDICAPPED	OTHER SUP- PORTING SERVICES ^{1/}
U.S. TOTAL	\$16,047	\$5,420	\$2,554	\$8,472	\$137,680
COLORADO	0	0	0	700	700
CONNECTICUT	0	0	0	0	0
ILLINOIS	0	0	0	0	0
INDIANA	1,982	2,158	2,554	0	4,832
IOWA	0	0	0	0	356
MICHIGAN	0	0	0	0	0
MONTANA	0	0	0	0	0
NEBRASKA	0	0	0	0	2,439
NEW YORK	0	0	0	0	0
NEVADA	0	0	0	0	0
OHIO	206	0	0	0	14,351
OKLAHOMA	0	0	0	7,000	0
PENNSYLVANIA	7,958	0	0	0	0
RHODE ISLAND	0	0	0	0	1,181
SOUTH CAROLINA	0	0	0	0	770
TENNESSEE	780	0	0	0	100,442
TEXAS	4,182	2,807	0	772	11,566
WEST VIRGINIA	939	455	0	0	43
WYOMING	0	0	0	0	0

^{1/} ALSO INCLUDES STUDENT SUBSIDIES, SEE REPORT FORM (APPENDIX B).

TABLE 8.--ESEA TITLE I EXPENDITURES FOR NEGLECTED CHILDREN RESIDING IN STATE-OPERATED INSTITUTIONS, BY SERVICE OR ACTIVITY AND BY STATE: UNITED STATES, FISCAL YEAR 1972--CONTINUED

STATE	OTHER SERVICES AND ACTIVITIES					
	AUDIOVISUAL AND PRINTED MATERIALS (EXCLUDING TEXTBOOKS)	SCHOOL LIBRARY AND MEDIA PERSONNEL	ADMINISTRATION AND PROGRAM DEVELOPMENT	PERSONNEL DEVELOPMENT	OTHER OPERATIONAL EXPENDITURES ^{1/}	CAPITAL OUTLAY (SITES, BUILDINGS AND EQUIPMENT)
U.S. TOTAL	\$38,172	\$25,617	\$96,776	\$27,345	\$106,498	\$86,569
COLORADO	0	1,500	3,100	3,300	1,500	1,060
CONNECTICUT	0	0	0	0	0	0
ILLINOIS	402	0	4,688	4,972	16,188	199
INDIANA	13,500	3,400	0	3,200	5,038	4,328
IOWA	2,071	11,285	354	1,411	7,762	4,465
MICHIGAN	0	0	0	1,000	397	0
MONTANA	0	0	372	0	3,177	0
NEBRASKA	464	0	0	1,382	6,528	3,939
NEW YORK	1,095	0	0	0	2,853	0
NEVADA	3,000	0	0	1,500	2,551	0
OHIO	1,323	0	5,273	3,572	8,721	444
OKLAHOMA	241	5,122	4,000	0	9,880	0
PENNSYLVANIA	13,906	0	16,486	676	15,260	24,243
RHODE ISLAND	0	0	21,163	239	7,251	165
SOUTH CAROLINA	0	0	0	0	0	14,872
TENNESSEE	0	0	0	0	0	0
TEXAS	1,716	310	25,405	6,073	16,409	20,529
WEST VIRGINIA	0	0	2,240	0	1,520	0
WYOMING	454	0	13,695	0	1,463	12,325

^{1/} INCLUDES MAINTENANCE AND OPERATION OF PLANT, FIXED CHARGES, OTHER SUPPORTING SERVICES, AND ANCILLARY SERVICES. SEE REPORT FORM (APPENDIX B).

TABLE 9.--NUMBER OF PARTICIPANTS IN ESEA TITLE I PROGRAMS FOR DELINQUENT CHILDREN RESIDING IN STATE-OPERATED INSTITUTIONS, BY SCHOOL ENROLLMENT STATUS AND LEVEL OF INSTRUCTION AND BY STATE OR OTHER AREA: UNITED STATES, FALL 1971

STATE OR OTHER AREA	PARTICIPANTS								
	TOTAL			ENROLLED			NOT ENROLLED		
	TOTAL	ELEMENTARY	SECONDARY	TOTAL	ELEMENTARY	SECONDARY	TOTAL	ELEMENTARY	SECONDARY
AGGREGATE U.S.	45,610	17,134	28,476	44,929	17,061	27,868	681	73	608
ALABAMA	504	222	282	504	222	282	0	0	0
ALASKA	51	0	51	51	0	51	0	0	0
ARIZONA	854	67	787	512	67	445	342	0	342
ARKANSAS	674	120	554	636	118	518	38	2	36
CALIFORNIA	3,932	533	3,399	3,932	523	3,399	0	0	0
COLORADO	285	0	285	285	0	285	0	0	0
CONNECTICUT	153	70	83	153	70	83	0	0	0
DELAWARE	502	0	502	502	0	502	0	0	0
DISTRICT OF COLUMBIA	175	351	424	150	274	102	25	77	13
FLORIDA	1,534	390	1,144	1,521	350	1,171	13	0	13
GEORGIA	1,045	702	343	1,045	702	343	0	0	0
IDaho	224	7	217	224	7	217	0	0	0
ILLINOIS	1,512	5,389	23	5,412	5,389	23	0	0	0
INDIANA	404	0	404	364	0	364	40	0	40
IOWA	278	0	278	278	0	278	0	0	0
KANSAS	307	0	307	299	0	299	8	0	8
KENTUCKY	150	71	79	150	71	79	0	0	0
LOUISIANA	1,075	702	373	1,075	702	373	0	0	0
MAINE	290	23	267	290	23	267	0	0	0
MARYLAND	1,954	713	1,241	1,954	713	1,241	0	0	0
MASSACHUSETTS	533	0	533	533	0	533	0	0	0
MICHIGAN	1,900	0	1,900	1,900	0	1,900	0	0	0
MINNESOTA	371	0	371	371	0	371	0	0	0
MISSISSIPPI	568	189	379	568	189	379	0	0	0
MISSOURI	824	150	674	824	150	674	0	0	0
MONTANA	174	9	165	174	9	165	0	0	0
NEBRASKA	162	20	142	162	20	142	0	0	0
NEVADA	75	0	75	75	0	75	0	0	0
NEW HAMPSHIRE	171	104	67	152	92	60	19	12	7
NEW JERSEY	1,593	1,127	466	1,593	1,127	466	0	0	0
NEW MEXICO	953	186	767	953	186	767	0	0	0
NEW YORK	2,344	1,145	1,195	2,344	1,149	1,195	0	0	0
NORTH CAROLINA	2,136	1,249	887	2,136	1,249	887	0	0	0
NORTH DAKOTA	135	0	135	135	0	135	0	0	0
OHIO	681	30	651	681	30	651	0	0	0
OKLAHOMA	543	184	359	543	184	359	0	0	0
OREGON	503	95	408	503	95	408	0	0	0
PENNSYLVANIA	2,348	320	2,018	2,328	330	1,998	20	0	20
RHODE ISLAND	146	146	0	146	146	0	0	0	0
SOUTH CAROLINA	1,162	380	782	1,162	380	782	0	0	0
SOUTH DAKOTA	218	22	196	218	22	196	0	0	0
TENNESSEE	1,125	356	769	1,125	356	769	0	0	0
TEXAS	2,294	1,031	1,263	2,234	997	1,237	60	34	26
VERMONT	80	32	48	80	32	48	0	0	0
VIRGINIA	2,373	40	1,333	1,373	40	1,333	0	0	0
WASHINGTON	867	46	821	849	46	803	18	0	18
WEST VIRGINIA	454	137	317	433	137	296	21	0	21
WISCONSIN	604	125	475	604	129	475	0	0	0
WYOMING	122	25	97	122	25	97	0	0	0
PUERTO RICO	997	784	213	997	784	213	0	0	0

1/ REPORTED 5,222 STUDENTS AS UNGRADED WHO WERE CLASSIFIED AS "ELEMENTARY" FOR THIS REPORT.
2/ REPORTED 1,333 STUDENTS AS UNGRADED WHO WERE CLASSIFIED AS "SECONDARY" FOR THIS REPORT.

TABLE 10.--NUMBER OF PARTICIPANTS IN ESEA TITLE I PROGRAMS FOR DELINQUENT CHILDREN RESIDING IN STATE-OPERATED INSTITUTIONS, BY TYPE OF SCHOOL ATTENDED AND LEVEL OF INSTRUCTION AND BY STATE OR OTHER AREA: UNITED STATES, FALL 1971

STATE OR OTHER AREA	PARTICIPANTS ENROLLED IN--								
	SCHOOLS WITHIN STATE INSTITUTIONS			PUBLIC SCHOOLS			NONPUBLIC SCHOOLS		
	TOTAL	ELEMENTARY	SECONDARY	TOTAL	ELEMENTARY	SECONDARY	TOTAL	ELEMENTARY	SECONDARY
AGGREGATE U.S.	44,347	16,945	27,402	542	104	438	40	12	28
ALABAMA	504	222	282	0	0	0	0	0	0
ALASKA	51	0	51	0	0	0	0	0	0
ARIZONA	511	67	444	1	0	1	0	0	0
ARKANSAS	624	106	518	0	0	0	12	12	0
CALIFORNIA	3,932	533	3,399	0	0	0	0	0	0
COLORADO	285	0	285	0	0	0	0	0	0
CONNECTICUT	153	70	83	0	0	0	0	0	0
DELAWARE	502	0	502	0	0	0	0	0	0
DISTRICT OF COLUMBIA	424	150	274	0	0	0	0	0	0
FLORIDA	1,454	289	1,165	66	1	65	1	0	1
GEORGIA	1,045	702	343	0	0	0	0	0	0
IDAHO	224	7	217	0	0	0	0	0	0
ILLINOIS	5,412	5,389	23	0	0	0	0	0	0
INDIANA	364	0	364	0	0	0	0	0	0
IOWA	278	0	278	0	0	0	0	0	0
KANSAS	299	0	299	0	0	0	0	0	0
KENTUCKY	150	71	79	0	0	0	0	0	0
LOUISIANA	1,075	702	373	0	0	0	0	0	0
MAINE	290	23	267	0	0	0	0	0	0
MARYLAND	1,894	713	1,181	38	0	38	22	0	22
MASSACHUSETTS	533	0	533	0	0	0	0	0	0
MICHIGAN	1,900	0	1,900	0	0	0	0	0	0
MINNESOTA	371	0	371	0	0	0	0	0	0
MISSISSIPPI	568	189	379	0	0	0	0	0	0
MISSOURI	824	150	674	0	0	0	0	0	0
MONTANA	174	9	165	0	0	0	0	0	0
NEBRASKA	162	20	142	0	0	0	0	0	0
NEVADA	75	0	75	0	0	0	0	0	0
NEW HAMPSHIRE	152	92	60	0	0	0	0	0	0
NEW JERSEY	1,593	1,127	466	0	0	0	0	0	0
NEW MEXICO	703	86	617	250	100	150	0	0	0
NEW YORK	2,344	1,149	1,195	0	0	0	0	0	0
NORTH CAROLINA	2,136	1,249	887	0	0	0	0	0	0
NORTH DAKOTA	135	0	135	0	0	0	0	0	0
OHIO	589	29	560	92	1	91	0	0	0
OKLAHOMA	543	184	359	0	0	0	0	0	0
OREGON	503	95	408	0	0	0	0	0	0
PENNSYLVANIA	2,280	330	1,950	43	0	43	5	0	5
RHODE ISLAND	146	146	0	0	0	0	0	0	0
SOUTH CAROLINA	1,162	380	782	0	0	0	0	0	0
SOUTH DAKOTA	218	22	196	0	0	0	0	0	0
TENNESSEE	1,125	356	769	0	0	0	0	0	0
TEXAS	2,234	997	1,237	0	0	0	0	0	0
VERMONT	80	32	48	0	0	0	0	0	0
VIRGINIA	1,373	40	1,333	0	0	0	0	0	0
WASHINGTON	797	44	753	52	2	50	0	0	0
WEST VIRGINIA	433	137	296	0	0	0	0	0	0
WISCONSIN	604	129	475	0	0	0	0	0	0
WYOMING	122	25	97	0	0	0	0	0	0
PUERTO RICO	997	784	213	0	0	0	0	0	0

TABLE 11.--NUMBER OF STAFF MEMBERS AND AMOUNT OF SALARIES PAID FROM ESEA TITLE I FUNDS IN PROGRAMS FOR DELINQUENT CHILDREN RESIDING IN STATE-OPERATED INSTITUTIONS, BY STAFF POSITION AND BY STATE OR OTHER AREA: UNITED STATES, FISCAL YEAR 1972

STATE OR OTHER AREA	STAFF POSITION					SALARIES				
	TOTAL	TEACHERS	OTHER PRO-FESSIONALS	EDUCATION AIDES	OTHER NONPRO-FESSIONALS	TOTAL	TEACHERS	OTHER PRO-FESSIONALS	EDUCATION AIDES	OTHER NONPRO-FESSIONALS
AGGREGATE U.S.	2,566	1270	371	647	278	\$9,887,278	\$5,427,529	\$1,842,191	\$1,715,385	\$900,002
ALABAMA	57	35	7	13	2	213,890	123,216	51,855	28,267	10,452
ALASKA	2	1	1	0	0	20,461	1,458	19,003	0	0
ARIZONA	31	17	6	7	1	139,295	79,763	31,514	22,238	5,780
ARKANSAS	22	15	7	0	0	158,115	103,923	54,192	0	0
CALIFORNIA	143	38	21	62	22	1,261,291	540,914	257,018	336,274	127,085
COLORADO	15	3	4	4	4	94,860	21,515	23,470	21,515	28,360
CONNECTICUT	26	8	13	0	5	74,194	20,549	37,097	0	16,548
DELAWARE	10	8	1	0	1	52,785	37,259	10,152	0	5,374
DISTRICT OF COLUMBIA	30	17	3	8	2	125,681	78,677	14,960	29,015	2,829
FLORIDA	25	8	2	14	1	44,101	8,336	3,837	28,647	3,281
GEORGIA	65	18	9	26	12	318,338	179,580	52,021	44,768	41,569
IDAH0	16	7	5	0	0	43,944	9,148	34,796	0	0
ILLINOIS	146	86	7	45	8	586,850	425,825	32,127	75,920	52,878
INDIANA	38	16	13	4	5	179,100	78,100	73,800	13,900	13,300
ICWA	12	4	6	2	0	85,686	34,748	43,665	7,273	0
KANSAS	18	13	1	2	2	87,204	77,614	405	2,630	6,350
KENTUCKY	5	5	0	0	0	21,956	21,956	0	0	0
LOUISIANA	55	30	11	3	11	370,575	272,104	50,378	10,269	37,824
MAINE	22	12	4	6	0	95,620	74,498	2,235	17,309	0
MARYLAND	36	3	3	16	14	134,426	21,030	37,517	50,745	25,134
MASSACHUSETTS	125	38	34	53	0	164,467	49,617	81,178	33,672	0
MICHIGAN	56	23	2	16	15	293,823	142,755	12,226	78,044	60,758
MINNESOTA	26	16	0	10	0	81,315	51,375	0	29,940	0
MISSISSIPPI	30	14	4	1	11	182,962	101,262	24,000	4,800	52,800
MISSOURI	61	44	10	0	7	261,025	164,833	66,385	0	29,807
MONTANA	20	9	6	4	1	59,218	27,539	17,148	10,437	4,094
NEBRASKA	21	1	18	2	0	40,900	5,000	35,200	700	0
NEVADA	5	0	2	2	1	32,354	0	14,532	14,737	3,085
NEW HAMPSHIRE	19	10	2	5	2	51,535	21,517	11,425	10,513	8,080
NEW JERSEY	85	50	9	18	8	421,167	211,543	99,329	74,461	35,744
NEW MEXICO	19	8	4	7	0	78,227	53,611	19,172	5,144	0
NEW YORK	407	302	22	43	40	699,668	502,605	52,081	57,351	87,634
NORTH CAROLINA	51	27	0	24	0	372,521	247,607	0	124,914	0
NORTH DAKOTA	13	9	3	1	0	51,770	33,550	13,420	4,800	0
OHIO	70	21	14	30	5	342,218	138,522	110,039	74,181	19,476
OKLAHOMA	47	34	2	10	1	142,332	99,110	9,637	32,584	1,000
OREGON	42	29	8	2	3	157,438	100,343	39,617	8,208	5,270
PENNSYLVANIA	123	74	29	6	14	340,164	237,391	76,447	4,510	21,816
RHODE ISLAND	15	8	7	0	0	9,417	2,642	7,375	0	0
SOUTH CAROLINA	22	15	4	0	3	162,823	125,574	19,355	0	17,894
SOUTH DAKOTA	17	7	3	7	0	31,334	11,025	19,309	1,000	0
TENNESSEE	62	14	22	6	20	249,683	90,487	89,216	17,393	52,587
TEXAS	200	49	11	116	24	538,298	160,048	88,845	236,545	52,860
VERMONT	22	20	1	1	0	44,728	36,161	3,237	5,330	0
VIRGINIA	74	26	4	24	20	313,000	192,000	31,000	58,000	22,000
WASHINGTON	79	29	9	34	7	270,700	166,398	21,682	77,746	4,874
WEST VIRGINIA	16	8	6	0	2	65,419	22,601	35,677	0	7,141
WISCONSIN	49	35	1	10	1	282,491	199,016	6,402	57,595	19,478
WYOMING	16	6	6	2	1	37,909	23,284	8,215	4,010	2,400
PUERTO RICO	0	0	0	0	0	0	0	0	0	0

TABLE 12.--NUMBER OF TEACHERS RECEIVING PRESERVICE OR INSERVICE TRAINING IN ESEA TITLE I PROGRAMS FOR DELINQUENT CHILDREN RESIDING IN STATE-OPERATED INSTITUTIONS, WITH TOTAL AND AVERAGE HOURS OF TRAINING, BY STATE OR OTHER AREA: UNITED STATES, FISCAL YEAR 1972

STATE OR OTHER AREA	NUMBER OF TEACHERS TRAINED	TOTAL CLOCK HOURS OF TRAINING	AVERAGE HOURS OF TRAINING			
			1-10	11-20	21-30	31 AND OVER
AGGREGATE U.S.	528	13,667	205	76	68	179
ALABAMA	28	876	12	2	4	10
ALASKA	0	0	0	0	0	0
ARIZONA	6	42	5	1	0	0
ARKANSAS	0	0	0	0	0	0
CALIFORNIA	0	0	0	0	0	0
COLORADO	1	80	0	0	0	1
CONNECTICUT	0	0	0	0	0	0
DELAWARE	7	104	5	0	2	0
DISTRICT OF COLUMBIA	14	832	0	0	0	14
FLORIDA	4	103	1	0	0	3
GEORGIA	9	156	2	5	1	1
IDaho	0	0	0	0	0	0
ILLINOIS	62	2,191	39	1	2	20
INDIANA	0	0	0	0	0	0
ICHA	0	0	0	0	0	0
KANSAS	13	180	2	7	4	0
KENTUCKY	25	300	0	25	0	0
LOUISIANA	0	0	0	0	0	0
MAINE	9	20	0	9	0	0
MARYLAND	38	610	0	0	14	24
MASSACHUSETTS	0	0	0	0	0	0
MICHIGAN	13	288	6	0	1	6
MINNESOTA	16	183	13	0	0	3
MISSISSIPPI	0	0	0	0	0	0
MISSOURI	21	525	6	0	0	15
MONTANA	0	0	0	0	0	0
NEBRASKA	1	16	0	1	0	0
NEVADA	0	0	0	0	0	0
NEW HAMPSHIRE	0	0	0	0	0	0
NEW JERSEY	34	339	30	0	4	0
NEW MEXICO	0	0	0	0	0	0
NEW YORK	28	532	10	17	0	1
NORTH CAROLINA	27	730	1	3	8	15
NORTH DAKOTA	0	0	0	0	0	0
OHIO	14	742	1	0	8	5
OKLAHOMA	0	0	0	0	0	0
OREGON	19	730	0	0	0	19
PENNSYLVANIA	12	519	0	0	0	12
RHODE ISLAND	8	10	8	0	0	0
SOUTH CAROLINA	15	150	15	0	0	0
SOUTH DAKOTA	7	70	7	0	0	0
TENNESSEE	9	540	0	1	0	8
TEXAS	49	580	33	1	12	3
VERMONT	0	0	0	0	0	0
VIRGINIA	0	0	0	0	0	0
WASHINGTON	5	33	5	0	0	0
WEST VIRGINIA	0	0	0	0	0	0
WISCONSIN	27	1,970	4	3	1	19
WYOMING	7	210	0	0	7	0
PUERTO RICO	0	0	0	0	0	0

TABLE 13.--NUMBER OF NONTTEACHING PROFESSIONAL STAFF RECEIVING PRESERVICE OR INSERVICE TRAINING IN ESEA TITLE 1 PROGRAMS FOR DELINQUENT CHILDREN RESIDING IN STATE-OPERATED INSTITUTIONS, WITH TOTAL AND AVERAGE HOURS OF TRAINING, BY STATE OR OTHER AREA: UNITED STATES, FISCAL YEAR 1972

STATE OR OTHER AREA	NUMBER OF NONTTEACHING PROFESSIONAL STAFF TRAINED	TOTAL CLOCK HOURS OF TRAINING	AVERAGE HOURS OF TRAINING			
			1-10	11-20	21-30	31 AND OVER
AGGREGATE U.S. . . .	198	5,780	22	54	40	82
ALABAMA	7	144	3	0	2	2
ALASKA	0	0	0	0	0	0
ARIZONA	2	12	2	0	0	0
ARKANSAS	0	0	0	0	0	0
CALIFORNIA	1	15	0	1	0	0
COLORADO	1	10	0	0	0	1
CONNECTICUT	0	0	0	0	0	0
DELAWARE	0	0	0	0	0	0
DISTRICT OF COLUMBIA	16	1,664	0	0	0	16
FLORIDA	0	0	0	0	0	0
GEORGIA	3	73	1	0	0	2
IDaho	1	50	0	0	0	1
ILLINOIS	1	72	1	0	0	0
INDIANA	0	0	0	0	0	0
IOWA	0	0	0	0	0	0
KANSAS	1	2	1	0	0	0
KENTUCKY	0	0	0	0	0	0
LOUISIANA	0	0	0	0	0	0
MAINE	4	20	0	4	0	0
MARYLAND	6	188	0	0	4	2
MASSACHUSETTS	0	0	0	0	0	0
MICHIGAN	12	158	1	10	0	1
MINNESOTA	0	0	0	0	0	0
MISSISSIPPI	0	0	0	0	0	0
MISSOURI	9	279	0	0	0	9
MONTANA	0	0	0	0	0	0
NEBRASKA	13	234	0	13	0	0
NEVADA	0	0	0	0	0	0
NEW HAMPSHIRE	0	0	0	0	0	0
NEW JERSEY	6	89	2	4	0	0
NEW MEXICO	0	0	0	0	0	0
NEW YORK	4	46	3	1	0	0
NORTH CAROLINA	0	0	0	0	0	0
NORTH DAKOTA	0	0	0	0	0	0
OHIO	0	0	0	0	0	0
OKLAHOMA	0	0	0	0	0	0
OREGON	6	205	1	0	0	5
PENNSYLVANIA	67	1,309	0	20	20	27
RHODE ISLAND	1	10	1	0	0	0
SOUTH CAROLINA	4	40	4	0	0	0
SOUTH DAKOTA	3	90	0	0	3	0
TENNESSEE	13	646	0	0	2	11
TEXAS	11	294	2	0	4	5
VERMONT	0	0	0	0	0	0
VIRGINIA	0	0	0	0	0	0
WASHINGTON	6	130	0	1	5	0
WEST VIRGINIA	0	0	0	0	0	0
WISCONSIN	0	0	0	0	0	0
WYOMING	0	0	0	0	0	0
PUERTO RICO	0	0	0	0	0	0

TABLE 14.--NUMBER OF EDUCATION AIDES RECEIVING PRESERVICE OR INSERVICE TRAINING IN ESEA
TITLE I PROGRAMS FOR DELINQUENT CHILDREN RESIDING IN STATE-OPERATED
INSTITUTIONS, WITH TOTAL AND AVERAGE HOURS OF TRAINING, BY STATE OR OTHER
AREA: UNITED STATES, FISCAL YEAR 1972

STATE OR OTHER AREA	NUMBER OF EDUCATION AIDES TRAINED	TOTAL CLOCK HOURS OF TRAINING	AVERAGE HOURS OF TRAINING			
			1-10	11-20	21-30	31 AND OVER
AGGREGATE U.S. . . .	332	6,357	133	97	49	53
ALABAMA	13	405	2	0	0	11
ALASKA	0	0	0	0	0	0
ARIZONA	6	40	6	0	0	0
ARKANSAS	0	0	0	0	0	0
CALIFORNIA	5	100	0	5	0	0
COLORADO	4	150	0	0	0	4
CONNECTICUT	0	0	0	0	0	0
DELAWARE	0	0	0	0	0	0
DISTRICT OF COLUMBIA	0	0	0	0	0	0
FLORIDA	8	300	1	0	2	5
GEORGIA	23	236	17	4	1	1
IDAHO	0	0	0	0	0	0
ILLINOIS	40	728	34	0	0	6
INDIANA	0	0	0	0	0	0
IOWA	0	0	0	0	0	0
KANSAS	2	50	0	0	2	0
KENTUCKY	13	156	0	13	0	0
LOUISIANA	0	0	0	0	0	0
MAINE	4	20	0	4	0	0
MARYLAND	14	245	5	0	4	5
MASSACHUSETTS	0	0	0	0	0	0
MICHIGAN	16	424	3	0	2	11
MINNESOTA	9	37	9	0	0	0
MISSISSIPPI	0	0	0	0	0	0
MISSOURI	0	0	0	0	0	0
MONTANA	0	0	0	0	0	0
NEBRASKA	2	36	0	2	0	0
NEVADA	0	0	0	0	0	0
NEW HAMPSHIRE	0	0	0	0	0	0
NEW JERSEY	10	155	7	0	0	3
NEW MEXICO	0	0	0	0	0	0
NEW YORK	9	136	0	9	0	0
NORTH CAROLINA	8	120	0	8	0	0
NORTH DAKOTA	0	0	0	0	0	0
OHIO	13	156	0	13	0	0
OKLAHOMA	0	0	0	0	0	0
OREGON	2	70	0	0	0	2
PENNSYLVANIA	0	0	0	0	0	0
RHODE ISLAND	0	0	0	0	0	0
SOUTH CAROLINA	7	35	7	0	0	0
SOUTH DAKOTA	2	106	1	0	0	1
TENNESSEE	109	1,670	39	38	32	0
TEXAS	0	0	0	0	0	0
VERMONT	0	0	0	0	0	0
VIRGINIA	0	0	0	0	0	0
WASHINGTON	2	20	2	0	0	0
WEST VIRGINIA	0	0	0	0	0	0
WISCONSIN	10	532	0	1	5	4
WYOMING	1	30	0	0	1	0
PUERTO RICO	0	0	0	0	0	0

TABLE 15.--NUMBER OF NONPROFESSIONAL STAFF (OTHER THAN EDUCATION AIDES) RECEIVING PRE-SERVICE OR INSERVICE TRAINING IN ESEA TITLE I PROGRAMS FOR DELINQUENT CHILDREN RESIDING IN STATE-OPERATED INSTITUTIONS, WITH TOTAL AND AVERAGE HOURS OF TRAINING, BY STATE OR OTHER AREA: UNITED STATES, FISCAL YEAR 1972

STATE OR OTHER AREA	NUMBER OF OTHER NONPROFESSIONAL STAFF TRAINED	TOTAL CLOCK HOURS OF TRAINING	AVERAGE HOURS OF TRAINING			
			1-10	11-20	21-30	31 AND OVER
AGGREGATE U.S. . . .	81	2,039	26	4	34	17
ALABAMA	2	16	2	0	0	0
ALASKA	0	0	0	0	0	0
ARIZONA	0	0	0	0	0	0
ARKANSAS	0	0	0	0	0	0
CALIFORNIA	0	0	0	0	0	0
COLORADO	1	40	0	0	0	1
CONNECTICUT	0	0	0	0	0	0
DELAWARE	0	0	0	0	0	0
DISTRICT OF COLUMBIA	0	0	0	0	0	0
FLORIDA	1	6	1	0	0	0
GEORGIA	7	350	0	0	0	7
IDAH0	0	0	0	0	0	0
ILLINOIS	1	48	1	0	0	0
INDIANA	0	0	0	0	0	0
IOWA	0	0	0	0	0	0
KANSAS	1	25	0	0	1	0
KENTUCKY	0	0	0	0	0	0
LOUISIANA	0	0	0	0	0	0
MAINE	0	0	0	0	0	0
MARYLAND	2	62	0	0	1	1
MASSACHUSETTS	0	0	0	0	0	0
MICHIGAN	14	405	0	0	14	0
MINNESOTA	0	0	0	0	0	0
MISSISSIPPI	0	0	0	0	0	0
MISSOURI	2	62	0	0	0	2
MONTANA	0	0	0	0	0	0
NEBRASKA	0	0	0	0	0	0
NEVADA	0	0	0	0	0	0
NEW HAMPSHIRE	0	0	0	0	0	0
NEW JERSEY	0	0	0	0	0	0
NEW MEXICO	0	0	0	0	0	0
NEW YORK	8	104	4	4	0	0
NORTH CAROLINA	0	0	0	0	0	0
NORTH DAKOTA	0	0	0	0	0	0
OHIO	0	0	0	0	0	0
OKLAHOMA	0	0	0	0	0	0
OREGON	1	10	1	0	0	0
PENNSYLVANIA	0	0	0	0	0	0
RHODE ISLAND	0	0	0	0	0	0
SOUTH CAROLINA	0	0	0	0	0	0
SOUTH DAKOTA	0	0	0	0	0	0
TENNESSEE	16	550	0	0	10	6
TEXAS	17	196	14	0	3	0
VERMONT	0	0	0	0	0	0
VIRGINIA	0	0	0	0	0	0
WASHINGTON	6	125	2	0	4	0
WEST VIRGINIA	0	0	0	0	0	0
WISCONSIN	2	40	1	0	1	0
WYOMING	0	0	0	0	0	0
PUERTO RICO	0	0	0	0	0	0

TABLE 16.--ESEA TITLE I EXPENDITURES FOR DELINQUENT CHILDREN RESIDING IN STATE-OPERATED INSTITUTIONS, BY SERVICE OR ACTIVITY AND BY STATE OR OTHER AREA: UNITED STATES, FISCAL YEAR 1972

STATE OR OTHER AREA	TOTAL EXPENDITURES	DIRECT EDUCATIVE SERVICES AND ACTIVITIES ^{1/}			
		ENGLISH LANGUAGE ARTS (EXCLUDING READING)	READING	CULTURAL ENRICHMENT	SOCIAL SCIENCE/ SOCIAL STUDIES
AGGREGATE U.S. . . .	\$14,528,796	\$645,276	\$3,018,454	\$687,075	\$352,263
ALABAMA	279,173	6,211	51,562	37,334	6,159
ALASKA	40,515	0	0	0	0
ARIZONA	218,655	2,000	49,973	12,745	1,013
ARKANSAS	215,706	21,627	14,667	4,321	6,561
CALIFORNIA	1,631,449	0	753,881	0	0
COLORADO	142,808	0	27,300	900	2,435
CONNECTICUT	153,525	20,000	20,000	20,000	20,000
DELAWARE	70,873	0	20,188	0	0
DISTRICT OF COLUMBIA	155,594	18,500	47,156	1,677	0
FLORIDA	218,228	1,700	18,771	27,238	10,724
GEORGIA	401,447	13,311	71,467	14,239	21,356
IDAHO	77,042	1,575	1,500	0	1,410
ILLINOIS	684,299	15,316	183,460	104,565	32,357
INDIANA	251,620	14,500	10,700	0	0
IOWA	111,059	0	20,862	8,796	0
KANSAS	110,029	4,143	10,385	20,024	11,468
KENTUCKY	43,178	0	19,500	0	0
LOUISIANA	509,580	6,465	77,503	0	0
MAINE	110,120	6,345	18,392	7,448	1,175
MARYLAND	354,660	7,566	26,671	9,974	0,079
MASSACHUSETTS	211,481	0	83,289	24,273	0
MICHIGAN	426,718	0	107,871	13,396	21,492
MINNESOTA	172,739	10,230	89,132	0	0
MISSISSIPPI	229,321	0	74,011	26,737	0
MISSOURI	335,029	12,135	45,528	0	13,573
MONTANA	80,153	24,263	11,645	0	0
NEBRASKA	63,955	0	275	0	0
NEVADA	56,371	1,705	3,411	1,705	1,705
NEW HAMPSHIRE	78,579	0	11,789	7,229	0
NEW JERSEY	445,559	25,593	13,300	45,304	0
NEW MEXICO	89,721	8,000	10,000	6,187	8,000
NEW YORK	1,210,425	54,756	271,386	40,626	42,145
NORTH CAROLINA	649,876	57,615	121,700	103,473	0
NORTH DAKOTA	51,770	0	27,773	0	0
OHIO	538,247	7,385	222,156	0	4,000
OKLAHOMA	158,899	15,214	17,656	18,150	15,240
OREGON	202,380	31,955	32,576	20,931	28,897
PENNSYLVANIA	648,849	0	3,240	38,666	0
RHODE ISLAND	15,686	1,951	1,951	0	1,951
SOUTH CAROLINA	203,073	43,468	34,174	0	18,234
SOUTH DAKOTA	37,050	0	0	0	0
TENNESSEE	347,304	3,000	57,891	26,495	8,616
TEXAS	743,236	28,034	129,245	5,193	4,500
VERMONT	50,222	6,170	6,990	840	6,170
VIRGINIA	521,274	37,167	54,800	10,000	20,700
WASHINGTON	375,240	52,569	16,230	15,044	10,982
WEST VIRGINIA	140,535	0	9,752	0	0
WISCONSIN	353,473	75,859	64,730	13,565	16,161
WYOMING	55,278	3,944	12,015	0	6,360
PUERTO RICO	252,633	0	0	0	0

^{1/} INCLUDES BOTH REMEDIAL AND NONREMEDIAL. SEE REPORT FORM (APPENDIX B).

TABLE 16.--ESEA TITLE I EXPENDITURES FOR DELINQUENT CHILDREN RESIDING IN STATE-OPERATED INSTITUTIONS, BY SERVICE OR ACTIVITY AND BY STATE OR OTHER AREA: UNITED STATES, FISCAL YEAR 1972--
CONTINUED

STATE OR OTHER AREA	DIRECT EDUCATIVE SERVICES AND ACTIVITIES--CONTINUED				
	NATURAL SCIENCE AND MATHEMATICS	OTHER	DIFFERENTIALIZED CURRICULUM FOR THE HANDICAPPED	VOCATIONAL SKILLS AND ATTITUDES	TEXTBOOKS
AGGREGATE U.S.	\$1,492,321	\$1,652,585	\$141,688	\$994,648	\$92,903
ALABAMA	23,938	50,941	0	14,885	2,000
ALASKA	0	1,458	0	19,004	0
ARIZONA	5,919	35,656	0	0	357
ARKANSAS	5,302	16,706	8,028	15,460	2,393
CALIFORNIA	786,245	0	0	0	0
COLORADO	8,900	0	36,700	250	550
CONNECTICUT	20,000	20,000	10,000	10,000	12,525
DELAWARE	10,905	3,474	0	2,692	1,280
DISTRICT OF COLUMBIA	25,392	22,781	0	12,000	1,200
FLORIDA	12,600	15,645	3,264	11,021	723
GEORGIA	39,989	37,633	0	24,508	1,587
IDAHO	7,457	26,389	0	0	563
ILLINOIS	41,625	66,192	0	4,200	0
INDIANA	28,900	19,100	26,600	11,000	17,600
IOWA	0	5,566	0	0	326
KANSAS	9,071	2,415	0	0	939
KENTUCKY	0	0	0	0	300
LOUISIANA	12,763	120,728	0	38,751	0
MAINE	7,007	15,658	0	10,609	293
MARYLAND	11,561	26,644	0	9,850	2,772
MASSACHUSETTS	0	57,623	0	0	2,905
MICHIGAN	40,000	68,283	26,251	2,818	0
MINNESOTA	26,112	0	0	0	0
MISSISSIPPI	0	51,483	0	0	0
MISSOURI	34,102	122,843	0	0	0
MONTANA	2,555	0	0	1,500	88
NEBRASKA	275	0	0	0	0
NEVADA	3,411	0	0	1,705	0
NEW HAMPSHIRE	0	6,759	0	5,455	3,842
NEW JERSEY	15,188	68,618	8,985	16,002	2,100
NEW MEXICO	8,000	11,437	0	3,451	0
NEW YORK	66,341	138,714	0	146,015	13,391
NORTH CAROLINA	0	0	0	54,055	0
NORTH DAKOTA	0	0	0	0	0
OHIO	38,335	0	0	0	7,982
OKLAHOMA	24,125	21,764	1,800	5,657	0
OREGON	28,969	2,741	0	0	0
PENNSYLVANIA	4,796	65,357	0	370,200	11,502
RHODE ISLAND	1,951	1,613	0	0	0
SOUTH CAROLINA	25,759	23,294	0	0	0
SOUTH DAKOTA	0	0	12,020	0	0
TENNESSEE	16,243	71,634	8,040	7,591	0
TEXAS	20,626	180,907	0	49,650	0
VERMONT	6,170	5,250	0	0	1,007
VIRGINIA	12,600	134,150	0	8,500	0
WASHINGTON	14,848	95,544	0	95,520	215
WEST VIRGINIA	0	5,617	0	0	151
WISCONSIN	31,151	33,764	0	42,299	0
WYOMING	13,190	2,400	0	0	2,592
Puerto Rico	0	0	0	0	0

TABLE 16.--ESEA TITLE I EXPENDITURES FOR DELINQUENT CHILDREN RESIDING IN STATE-OPERATED INSTITUTIONS, BY SERVICE OR ACTIVITY AND BY STATE OR OTHER AREA: UNITED STATES, FISCAL YEAR 1972--
CONTINUED

STATE OR OTHER AREA	SUPPORTING SERVICES AND ACTIVITIES				
	GUIDANCE AND COUNSELING ^{1/}	TESTING	SCHOOL PSYCHOLOGICAL SERVICES	ATTENDANCE AND SCHOOL SOCIAL WORK	HEALTH SERVICES
AGGREGATE U.S.	\$624,458	\$146,532	\$284,085	\$195,893	\$77,784
ALABAMA	21,191	1,000	0	0	17,780
ALASKA	0	0	0	0	0
ARIZONA	9,080	5,200	9,598	0	0
ARKANSAS	59,576	0	0	0	11,794
CALIFORNIA	0	0	0	0	0
COLORADO	7,350	11,500	4,200	0	515
CONNECTICUT	0	0	0	0	0
DELAWARE	0	847	0	0	0
DISTRICT OF COLUMBIA	0	519	0	0	0
FLORIDA	1,865	3,544	0	0	0
GEORGIA	13,272	7,440	8,810	6,828	0
IDaho	0	0	9,266	0	0
ILLINOIS	91,967	27,516	0	15,423	0
INDIANA	14,200	0	0	0	6,500
IOWA	0	5,624	0	36,671	0
KANSAS	19,812	0	0	0	0
KENTUCKY	0	0	0	0	0
LOUISIANA	33,150	0	7,700	0	0
MAINE	0	2,082	7,875	3,291	0
MARYLAND	11,198	6,746	0	0	1,500
MASSACHUSETTS	0	0	0	0	0
MICHIGAN	48,446	3,600	0	0	0
MINNESOTA	0	0	0	0	0
MISSISSIPPI	0	0	10,561	9,395	12,050
MISSOURI	8,469	4,200	0	0	0
MONTANA	803	32	7,106	13,690	0
NEBRASKA	0	12,250	25,000	0	0
NEVADA	0	1,705	1,705	0	0
NEW HAMPSHIRE	0	200	7,607	4,666	2,060
NEW JERSEY	10,000	0	0	0	0
NEW MEXICO	0	0	13,592	0	0
NEW YORK	9,352	3,585	2,600	7,289	50
NORTH CAROLINA	76,963	0	0	0	1,402
NORTH DAKOTA	0	10,208	0	0	0
OHIO	32,563	13,926	982	0	0
OKLAHOMA	7,800	9,638	0	0	0
OREGON	0	67	10,290	49	21
PENNSYLVANIA	42,476	0	4,009	0	0
RHODE ISLAND	5,350	0	0	0	0
SOUTH CAROLINA	0	104	0	0	0
SOUTH DAKOTA	19,300	0	0	0	0
TENNESSEE	0	0	95,640	2,800	3,500
TEXAS	7,784	400	34,279	53,534	13,698
VERMONT	968	0	0	0	1,200
VIRGINIA	57,500	14,000	16,000	0	0
WASHINGTON	6,791	100	0	0	0
WEST VIRGINIA	7,232	0	7,265	41,099	674
WISCONSIN	0	0	0	0	5,040
WYOMING	0	0	0	1,158	0
PUERTO RICO	0	0	0	0	0

1/ INCLUDES BOTH VOCATIONAL AND OTHER. SEE REPORT FORM (APPENDIX B).

TABLE 16.--ESEA TITLE I EXPENDITURES FOR DELINQUENT CHILDREN RESIDING IN STATE-OPERATED INSTITUTIONS, BY SERVICE OR ACTIVITY AND BY STATE OR OTHER AREA: UNITED STATES, FISCAL YEAR 1972--
CONTINUED

STATE OR OTHER AREA	SUPPORTING SERVICES AND ACTIVITIES--CONTINUED				
	PUPIL TRANSPORTATION	FOOD SERVICE	CLOTHING	SPECIAL SERVICES FOR THE HANDICAPPED	OTHER SUPPORT- ING SERVICES ^{1/}
AGGREGATE U.S.	\$71,680	\$29,881	\$10,080	\$70,705	\$258,170
ALABAMA	0	0	0	0	84
ALASKA	0	0	0	0	0
ARIZONA	5,241	12,000	4,600	0	6,065
ARKANSAS	0	0	0	0	185
CALIFORNIA	0	0	0	0	0
COLORADO	0	0	0	2,500	2,600
CONNECTICUT	0	0	0	0	0
DELAWARE	0	0	0	0	0
DISTRICT OF COLUMBIA	0	0	0	0	0
FLORIDA	0	0	0	0	0
GEORGIA	0	0	0	0	44,540
IDAHO	0	0	0	0	0
ILLINOIS	0	0	0	0	32,412
INDIANA	7,800	0	0	10,700	4,800
IOWA	0	0	0	0	0
KANSAS	232	0	0	0	0
KENTUCKY	0	0	0	0	0
LOUISIANA	0	0	0	24,236	13,195
MAINE	0	0	0	0	0
MARYLAND	6,744	258	0	10,007	5,304
MASSACHUSETTS	0	0	0	0	0
MICHIGAN	0	0	0	0	0
MINNESOTA	0	0	0	0	0
MISSISSIPPI	0	0	3,680	14,093	0
MISSOURI	0	0	0	0	2,590
MONTANA	4,094	0	0	0	888
NEBRASKA	0	0	0	0	0
NEVADA	0	0	0	0	0
NEW HAMPSHIRE	0	0	0	0	0
NEW JERSEY	900	0	0	0	12,805
NEW MEXICO	0	0	0	2,840	2,541
NEW YORK	19,138	15,031	950	0	6,056
NORTH CAROLINA	12,751	0	0	0	918
NORTH DAKOTA	0	0	0	0	0
OHIO	0	0	0	6,129	66,156
OKLAHOMA	0	0	0	0	0
OREGON	1,522	1,970	850	0	744
PENNSYLVANIA	8,966	0	0	0	18,800
RHODE ISLAND	0	0	0	0	0
SOUTH CAROLINA	0	0	0	0	0
SOUTH DAKOTA	0	0	0	0	344
TENNESSEE	0	0	0	200	4,356
TEXAS	0	0	0	0	7,740
VERMONT	0	0	0	0	0
VIRGINIA	0	300	0	0	0
WASHINGTON	0	0	0	0	3,647
WEST VIRGINIA	292	322	0	0	0
WISCONSIN	0	0	0	0	21,000
WYOMING	0	0	0	0	0
PUERTO RICO	0	0	0	0	0

^{1/} ALSO INCLUDES STUDENT SUBSIDIES. SEE REPORT FORM (APPENDIX B).

TABLE 16.--ESEA TITLE I EXPENDITURES FOR DELINQUENT CHILDREN RESIDING IN STATE-OPERATED INSTITUTIONS, BY SERVICE OR ACTIVITY AND BY STATE OR OTHER AREA: UNITED STATES, FISCAL YEAR 1972--
CONTINUED

STATE OR OTHER AREA	OTHER SERVICES AND ACTIVITIES					
	AUDIODVISUAL AND PRINTED MATERIALS (EXCLUDING TEXTBOOKS)	SCHOOL LIBRARY AND MEDIA PERSONNEL	ADMINISTRATION AND PROGRAM DEVELOPMENT	PERSONNEL DEVELOPMENT	OTHER OPERATIONAL ^{1/} EXPENDITURES	CAPITAL OUTLAY (SITES, BUILDINGS AND EQUIPMENT)
AGGREGATE U.S.	\$315,925	\$243,648	\$612,897	\$248,483	\$1,124,514	\$1,132,367
ALABAMA	3,000	0	6,786	2,901	25,549	7,452
ALASKA	0	0	0	0	0	20,053
ARIZONA	13,264	332	19,678	4,000	6,759	11,175
ARKANSAS	6,354	14,636	0	0	25,075	2,621
CALIFORNIA	572	0	0	1,075	2,552	47,124
COLORADO	0	5,500	10,900	11,700	5,200	3,788
CONNECTICUT	0	0	0	0	0	0
DELAWARE	5,599	0	10,152	971	10,254	4,511
DISTRICT OF COLUMBIA	0	2,134	11,079	4,032	1,730	7,254
FLORIDA	19,639	22	14,100	11,062	3,301	58,405
GEORGIA	13,094	3,389	29,426	24,890	5,613	15,655
IDaho	3,666	0	0	3,511	6,583	13,122
ILLINOIS	3,361	0	29,434	7,968	14,808	13,695
INDIANA	17,600	11,000	13,300	0	17,020	20,300
IOWA	125	5,624	6,707	174	16,650	3,934
KANSAS	2,311	0	11,067	2,395	5,623	10,144
KENTUCKY	6,963	0	3,000	1,500	3,215	8,700
LOUISIANA	0	2,556	4,431	0	85,189	82,469
MAINE	1,505	8,190	3,076	2,163	5,839	5,172
MARYLAND	4,244	4,558	43,257	17,876	29,018	110,433
MASSACHUSETTS	5,136	0	23,555	0	14,700	0
MICHIGAN	8,560	0	0	25,213	40,024	20,764
MINNESOTA	26,169	0	0	0	456	20,640
MISSISSIPPI	0	0	5,818	0	21,157	336
MISSOURI	15,024	7,142	29,387	4,600	31,711	6,725
MONTANA	207	0	31	0	7,372	5,879
NEBRASKA	1,598	0	17,200	400	2,750	4,207
NEVADA	0	0	32,355	0	5,386	1,578
NEW HAMPSHIRE	945	0	8,080	0	14,237	5,610
NEW JERSEY	20,600	34,487	37,582	64,801	62,351	6,583
NEW MEXICO	1,151	6,978	0	0	0	7,544
NEW YORK	27,877	5,267	50,219	2,067	224,249	63,321
NORTH CAROLINA	45,878	0	0	8,530	158,793	7,798
NORTH DAKOTA	0	0	9,540	0	4,249	0
OHIO	665	0	30,284	4,808	71,567	30,505
OKLAHOMA	0	0	1,000	0	3,855	13,000
OREGON	367	4,755	2,200	663	15,494	13,319
PENNSYLVANIA	46	0	19,412	17,690	10,235	33,454
RHODE ISLAND	0	500	0	0	214	205
SOUTH CAROLINA	3,177	0	19,073	0	15,506	16,284
SOUTH DAKOTA	0	0	120	765	1,976	2,565
TENNESSEE	0	350	14,733	0	2,237	23,578
TEXAS	16,673	59,066	46,112	16,047	38,783	30,565
VERMONT	727	0	12,170	0	2,414	146
VIRGINIA	2,000	30,300	16,000	4,550	24,617	78,050
WASHINGTON	3,343	8,709	6,475	1,631	2,273	50,645
WEST VIRGINIA	28,654	0	15,158	0	8,565	11,388
WISCONSIN	710	0	0	500	46,477	1,257
WYOMING	5,121	0	0	0	3,988	4,110
PUERTO RICO	0	27,313	0	0	0	225,320

^{1/} INCLUDES MAINTENANCE AND OPERATION OF PLANT, FIXED CHARGES, OTHER SUPPORTING SERVICES, AND ANCILLARY SERVICES.
SEE REPORT FORM (APPENDIX B).

APPENDIXES

- A. Response Rate
- B. Report Form

Appendix A

Response rate of institutions returning report form OE 4484-1, by State or other area:
United States, fiscal year 1972

State or other area	Number of institutions receiving title I funds		Number of institutions responding		Response rate (percent)	
	Neglected	Delinquent	Neglected	Delinquent	Neglected	Delinquent
Totals	33	221	31	218	94	99
1 Alabama	--	3	--	3	---	100
2 Alaska	--	2	--	1	---	50
3 Arizona	--	3	--	3	---	100
4 Arkansas	--	3	--	3	---	100
5 California	--	3	--	3	---	100
6 Colorado	2	3	2	3	100	100
7 Connecticut	1	1	1	1	100	100
8 Delaware	--	3	--	3	---	100
9 District of Columbia	1	2	0	2	0	100
10 Florida	--	12	--	12	---	100
11 Georgia	--	10	--	10	---	100
12 Hawaii*	--	---	--	---	---	---
13 Idaho	--	1	--	1	---	100
14 Illinois	3	18	3	18	100	100
15 Indiana	1	1	1	1	100	100
16 Iowa	2	1	2	1	100	100
17 Kansas	--	2	--	2	---	100
18 Kentucky	--	1	--	1	---	100
19 Louisiana	--	3	--	3	---	100
20 Maine	--	2	--	2	---	100
21 Maryland	--	6	--	6	---	100
22 Massachusetts	--	1	--	1	---	100
23 Michigan	1	6	1	6	100	100
24 Minnesota	--	5	--	5	---	100
25 Mississippi	--	1	--	1	---	100
26 Missouri	--	4	--	4	---	100
27 Montana	1	3	1	3	100	100
28 Nebraska	1	2	1	2	100	100
29 Nevada	1	1	1	1	100	100
30 New Hampshire	--	1	--	1	---	100
31 New Jersey	--	5	--	5	---	100
32 New Mexico	--	2	--	2	---	100
33 New York	4	34	4	34	100	100
34 North Carolina	--	8	--	8	---	100
35 North Dakota	--	1	--	1	---	100

*No State operated or supported institutions for neglected or delinquent children participating in ESEA title I programs.

APPENDIX A—Continued

State or other area	Number of institutions receiving title I funds		Number of institutions responding		Response rate (percent)	
	Neglected	Delinquent	Neglected	Delinquent	Neglected	Delinquent
36 Ohio	1	1	1	1	100	100
37 Oklahoma	2	3	2	3	100	100
38 Oregon	--	3	--	3	---	100
39 Pennsylvania	1	7	1	7	100	100
40 Rhode Island	1	1	1	1	100	100
41 South Carolina	1	1	1	1	100	100
42 South Dakota	--	1	--	1	---	100
43 Tennessee	1	5	1	5	100	100
44 Texas	5	4	5	4	100	100
45 Utah	--	1	--	0	---	0
46 Vermont	--	1	--	1	---	100
47 Virginia	--	8	--	8	---	100
48 Washington	--	12	--	12	---	100
49 West Virginia	1	4	1	4	100	100
50 Wisconsin	1	5	0	5	0	100
51 Wyoming	1	2	1	2	100	100
52 Puerto Rico	--	7	--	7	---	100
53 Virgin Islands	--	1	--	0	---	0

APPENDIX B-REPORT FORM

DEPARTMENT OF HEALTH, EDUCATION, AND WELFARE OFFICE OF EDUCATION WASHINGTON, D.C. 20202	O.M.B. NO. 51-R0874 APPROVAL EXPIRES: 6/30/73 FOR USE ONLY 1. FILE CONTROL NUMBER 2. STATE CODE 3. COUNTY CODE
---	--

CONSOLIDATED PROGRAM INFORMATION REPORT - SUPPLEMENTAL FORM A
ESEA TITLE I PROGRAM ACTIVITIES FOR NEGLECTED OR DELINQUENT
CHILDREN LIVING IN STATE INSTITUTIONS
(For Fiscal Year Ending June 30, 1972)

SECTION I - REVIEW OF TITLE I PROGRAM ACTIVITIES (To be completed by SEA and applicant agency)		
I CERTIFY THAT TO THE BEST OF MY KNOWLEDGE, THE INFORMATION CONTAINED IN THIS REPORT IS CORRECT AND COMPLETE		
NAME OF STATE EDUCATIONAL AGENCY	SIGNATURE OF SEA TITLE I COORDINATOR	DATE
NAME OF APPLICANT STATE AGENCY	SIGNATURE OF AUTHORIZED AGENCY REPRESENTATIVE	DATE

SECTION II - STATISTICAL INFORMATION ON TITLE I ACTIVITIES (To be completed by participating institution)			
1. NAME AND ADDRESS OF INSTITUTION	NAME AND SIGNATURE OF INSTITUTION OFFICIAL OR CONTACT PERSON		
	AREA CODE	TELEPHONE NUMBER	DATE
2. TYPE OF CHILDREN SERVED BY THIS INSTITUTION (Check one) a. <input type="checkbox"/> NEGLECTED CHILDREN b. <input type="checkbox"/> DELINQUENT CHILDREN			
3. NUMBER OF RESIDENT SCHOOL-AGE CHILDREN AT BEGINNING OF SCHOOL TERM (on/as of October 1, 1971) AND CHILDREN WHO PARTICIPATED IN TITLE I ACTIVITIES, BY TYPE OF SCHOOL ATTENDED AND GRADE LEVEL			

MEMBERSHIP STATUS (1)	NUMBER OF RESIDENT CHILDREN (2)	NUMBER OF CHILDREN WHO PARTICIPATED		
		ELEMEN- TARY (3)	SECON- DARY (4)	TOTAL (Columns 3 + 4) (5)
A. Enrolled in -				
1. Schools within the institution				
2. Public schools outside of institution				
3. Nonpublic schools outside of institution				
B. Not enrolled in any school				
C. TOTAL (A1, 2, 3, + B) number of children				
D. Number of dropouts (in C, Columns 2, 3, 4 and 5) prior to admission to institution				

4. NUMBER OF STAFF MEMBERS AND SALARIES PAID FROM TITLE I FUNDS, BY TYPE OF POSITION, FISCAL YEAR 1972		
STAFF MEMBER BY TYPE OF POSITION (1)	TOTAL NUMBER OF STAFF MEMBERS (2)	SALARIES PAID FROM TITLE I FUNDS (Round to nearest dollar) (3)
A. Teachers		
B. Other professionals		
C. Education aides		
D. All other nonprofessionals		
E. TOTAL		

5. NUMBER OF TITLE I STAFF MEMBERS WHO RECEIVED INSERVICE OR PRESERVICE EDUCATION OR TRAINING FUNDED UNDER ESEA, TITLE I PROGRAM DURING FISCAL YEAR 1972 (NOTE: Number of staff members reported in Columns 4, 5, 6, and 7, Lines A, B, C, D, and E should be less than or equal to the number of staff members reported in Column 2, Lines A, B, C, D, and E)

STAFF MEMBER BY TYPE OF POSITION (1)	TOTAL NUMBER OF STAFF MEMBERS TRAINED (2)	TOTAL CLOCK HOURS OF TRAINING RECEIVED (3)	NUMBER OF STAFF MEMBERS BY AVERAGE NUMBER OF TRAINING HOURS RECEIVED			
			0-10 HRS. (4)	11-20 HRS. (5)	21-30 HRS. (6)	31 AND OVER (7)
A. Teachers						
B. All other professionals						
C. Education aides						
D. All other nonprofessionals						
E. TOTAL						

How many of the total number in Column 2, line E, received college credit for their effort?

LINE N.O.	SERVICES AND ACTIVITIES (1)	CODE NO. (2)	NUMBER OF CHILDREN WHO PARTICIPATED IN						TOTAL (Sum of columns 3-8) (9)	COST OF EACH ACTIVITY (Round to nearest dollar) (10)
			SCHOOLS WITHIN THE INSTITUTION		PUBLIC SCHOOLS OUTSIDE THE INSTITUTION		NONPUBLIC SCHOOLS OUTSIDE THE INSTITUTION			
			ELE- MEN- TARY*	SEC- OND- ARY*	ELE- MEN- TARY*	SEC- OND- ARY*	ELE- MEN- TARY*	SEC- OND- ARY*		
			(3)	(4)	(5)	(6)	(7)	(8)	(9)	(10)
PART I - PARTICIPANTS AND CURRENT OPERATIONAL EXPENDITURES (Cont.)	B. Supporting services (Cont.)									
	2. Pupil services									
	(1) Vocational	2411								
	(2) Other	2419								
	b. Testing	2420								
	c. School psychological services	2430								
	d. Attendance and school social work	2440								
	e. Health services	2450								
	f. Pupil transportation	2460								
	g. Food service	2470								
	h. Clothing	2475								
	i. Student subsidies	2480								
	j. Special services for handicapped children	2490								
	k. Other pupil services	2495								
	3. Administration and program development	2110 to 2190								
	4. Personnel development**	2200								
	5. School library, audio-visual and other media personnel	2330								
	6. Maintenance and operation of plant	2500								
	7. Fixed charges	2600								
	8. Other supporting services	2700								
	C. Ancillary services	2800								
	TOTAL CURRENT OPERATIONAL EXPENDITURES (Sum of lines 1-33)	2999								
PART II - CAPITAL OUTLAY	A. Sites and buildings	3100								
	B. Equipment									
	1. Audiovisual	3101								
	2. Other instructional equipment	3102								
	3. Noninstructional equipment	3103								
	TOTAL CAPITAL OUTLAY (Sum of lines 37-40)	3199								
	TOTAL EXPENDITURES (Sum of lines 36 and 41)	9999								

*Include prekindergarten or kindergarten if you operate such levels

** Inservice and preservice education or training

**CONSOLIDATED PROGRAM INFORMATION REPORT - SUPPLEMENTAL FORM A
ESEA TITLE I PROGRAM ACTIVITIES FOR NEGLECTED OR DELINQUENT
CHILDREN LIVING IN STATE INSTITUTIONS
FOR FISCAL YEAR ENDING JUNE 30, 1972 (OE Form 4484-1)**

GENERAL INSTRUCTIONS. The 1972 Consolidated Program Information Report-Supplemental Form A, Title I Program Activities for Neglected or Delinquent Children Living in Institutions shall be prepared by each State Institution regardless of where Title I activities and services for its children were conducted.

Please complete, sign and submit an original and one copy of this report not later than December 1, 1972 to:

Office of Education
National Center for Educational Statistics
Division of Intergovernmental Statistics
400 Maryland Avenue, SW.
Washington, D.C. 20202

Detailed Instructions

SECTION I - REVIEW OF TITLE I PROGRAM ACTIVITIES. To be completed by the SEA and the applicant State. Indicate that the information reported by the institution under Section II is complete and correct and that the Title I program has been administered in accordance with the provisions of the Elementary and Secondary Education Act of 1965, under P.L. 89-10, as amended.

SECTION II - STATISTICAL INFORMATION ON TITLE I ACTIVITIES. To be completed by each State Institution Participating in the Title I program.

Item 1 - Name of Institution and Authorized Official. Enter the (1) legal name and address of reporting institution (2) name and signature of the institution official responsible for the data and (3) area code and telephone number where he may be contacted.

Item 2 - Type of Children Served by Institution. Check box indicating whether the institution serves primarily neglected or delinquent children.

Item 3 - Number of Resident School-age Children at Beginning of School Term on/as of October 1, 1971. Number of Children who Participated in Title I Activities, by Type of School and Grade span.

Report the number of children residing in the reporting institution in column 2.

Report the number of children participating in Title I activities in columns 3 through 5.

Column 2 - Total Number of Resident Children.

Line A-1. Enter the number of school-age children enrolled in schools located within the institution on/as of October 1, 1971.

Line A, 2 and 3. Enter the number of school-age children enrolled in public and nonpublic schools located outside the grounds of the institution on or as of October 1, 1971.

Line B. Enter the number of school-age children not enrolled in any school, fiscal year 1972.

Line C. Total of lines A-1, 2, 3 and B.

Line D. Enter the number of resident school-age children included in line C, columns 2, 3, 4 and 5 who were dropouts of a regular school program prior to admission to the institution.

Columns 3, 4 and 5 - Number of Children Who Participated in Title I Activities by Grade Level.

Columns 3 and 4: Elementary and Secondary. Of the total number reported in column 2, enter the number who participated in Title I activities according to the type of school (lines A-1, 2, 3 and B) in which they were enrolled.

Column 5 - Total Number of Children. Sum of columns 3 and 4 for lines A-1, 2, 3, B, C, and D. This will be the unduplicated count of the number of children who participated in the Title I activities, fiscal year 1972.

Item 4 - Number of Staff Members in Title I Activities and Salaries Paid from Title I Funds.

Column 2 - Enter the number of staff members who received salary payments from Title I funds for service performed in this program. Do not include staff members participating in Title I projects for which salary received was solely from local or State funds.

Column 3 - Enter the total salary (round to nearest dollar) received from Title I funds to staff member(s) by type of position.

Item 5 - Number of Title I Staff Members Who Received Inservice or Preservice Education or Training and Average Number of Training Hours Per Staff Member Funded by Title I.

Column 2 - Enter the total number of staff members who received inservice or preservice education or training funded by Title I specifically designed to assist staff members in carrying out Title I activities by type of position.

Columns 4, 5, 6 and 7 - Report in the appropriate columns under the average number of training hours received the number of staff members in column 2.

Item 6 - Amount of Title I Funds Approved and Expended Fiscal Year ending June 30, 1972. Enter amount of Title I funds approved and expended for Title I activities conducted. The amount expended represents all Title I expenditures for the entire fiscal year 1972. "Project expenditures" include disbursements and unliquidated obligations as of August 31, 1972, and approved amounts, if any, reserved for construction or administrative activities related to the fiscal year 1972 program.

Item 7 - Instructional and Service Activities Funded under Title I, Number of Institutionalized Children Who Participated by Type of School Attended and Grade Level, and Total Estimated Cost of Each Activity.

Columns 3 and 4 - Institutional Schools. Enter total number of institutionalized children who participated in instructional and service activities (as designated in column 1) which were funded under the Title I program and conducted at schools located within the institution. Report each child, by grade level in which the activities were offered. A child may participate in more than one activity and therefore may be counted more than once (i.e. a child may be counted in reading and also in cultural).

Columns 5 through 8 - Public and Nonpublic School. Enter total number of institutionalized children by grade level who participated in Title I activities which were conducted in public and nonpublic schools located outside the institution.

Column 9 - Total Number of Participants, line 1 through 28 of columns 3 through 8, total number of institutionalized children who participated in each Title I activities.

Column 10- Cost of Each Activity. Distribute the total amount of Title I funds expended (reported in Item 6B) by the institution for Title I program activities reports. This amount represents all costs such as salaries, supplies, equipment, construction, inservice or preservice education or training, contracted services, etc., relative to the Title I activity reported.

Line 42 - Total Expenditures. Total lines 35 through 40, column 10. This amount must agree with Item 6B.

UNITED STATES
GOVERNMENT PRINTING OFFICE
PUBLIC DOCUMENTS DEPARTMENT
WASHINGTON, D.C. 20402
OFFICIAL BUSINESS

POSTAGE AND FEES PAID
U.S. GOVERNMENT PRINTING OFFICE
NEW 395



U.S. DEPARTMENT OF HEALTH, EDUCATION, AND WELFARE
Education Division

75-322

END