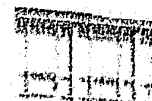
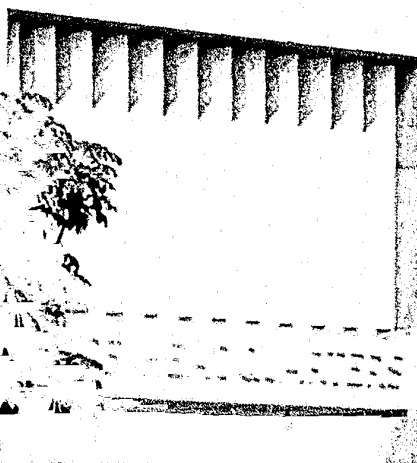
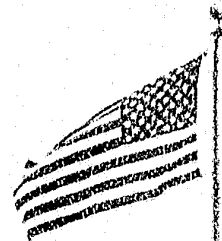
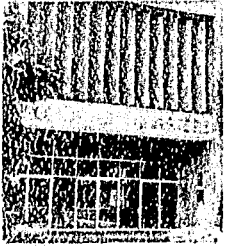


# TAMPA POLICE DEPARTMENT



55520

ANNUAL REPORT



## TABLE OF CONTENTS

---

City Government	
Mayor William F. Poe	1
City Council	2
Chief's Letter to the Mayor	3
Table of Organization	4
Charles Otero, Chief of Police	
Criminal Intelligence Unit	5
Operations	6
Deputy Chief of Operations	
Uniform Districts	
Tactical Division	12
Vice Control Bureau	
Selective Enforcement Unit	
Detective Division	14
Homicide and Robbery Bureau	
Burglary Bureau	
Larceny Bureau	
Juvenile Bureau	
Administration	18
Deputy Chief of Administration	
Staff and Inspections Division	20
Services Division	26
Crime Data	30
Traffic Data	31
Fiscal Data	32

---

---

Compiled by Resources Management Bureau  
Research and Evaluation Section  
Tampa Police Department

---

Photographs by Police Officer David Faucher

---

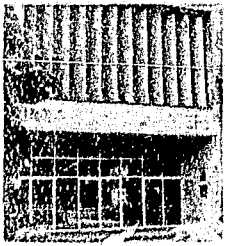
FIGURE 1

MAR 19 9

ACQUISITIONS

**THE HONORABLE WILLIAM F. POE, MAYOR**





## CITY GOVERNMENT

---



Left to Right:  
Lloyd Copeland  
Lee Duncan  
Charles Spicola, Jr.  
Jan Platt  
Sandra Freedman  
Catherine Barja  
Charles Miranda

## CHIEF'S LETTER TO THE MAYOR

---



30 May 1978

The Honorable William F. Poe  
Mayor, City of Tampa  
Tampa, Florida

Dear Sir:

It is my pleasure to be able to submit the 1977 Annual Report of the Police Department which describes the basic functions and illustrates the individual divisions of the Department.

It is with great pride that I am able to report a decrease in major crimes with a corresponding increase in arrests during 1977, when compared with the previous twelve months.

A reduction in property losses from crime continues to be one of our top priorities with a reported loss of \$7,232,707.00 during the past calendar year. This problem is being addressed in a number of ways to include a recovery rate of 33.7 percent during 1977.

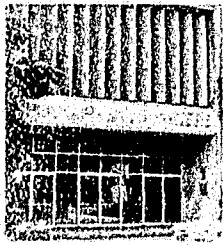
Assaults on Police Officers in Tampa totaled 439 during the year, which reflects a serious increase of 12.9 percent over 1976. This area of concern is being researched for positive and appropriate action at the present time.

A philosophy of total community involvement is seen as one of the main forces behind the current reduction in serious crimes. People helping one another and thus assisting their Police Department is seen as a positive indication that our city is a good place to live.

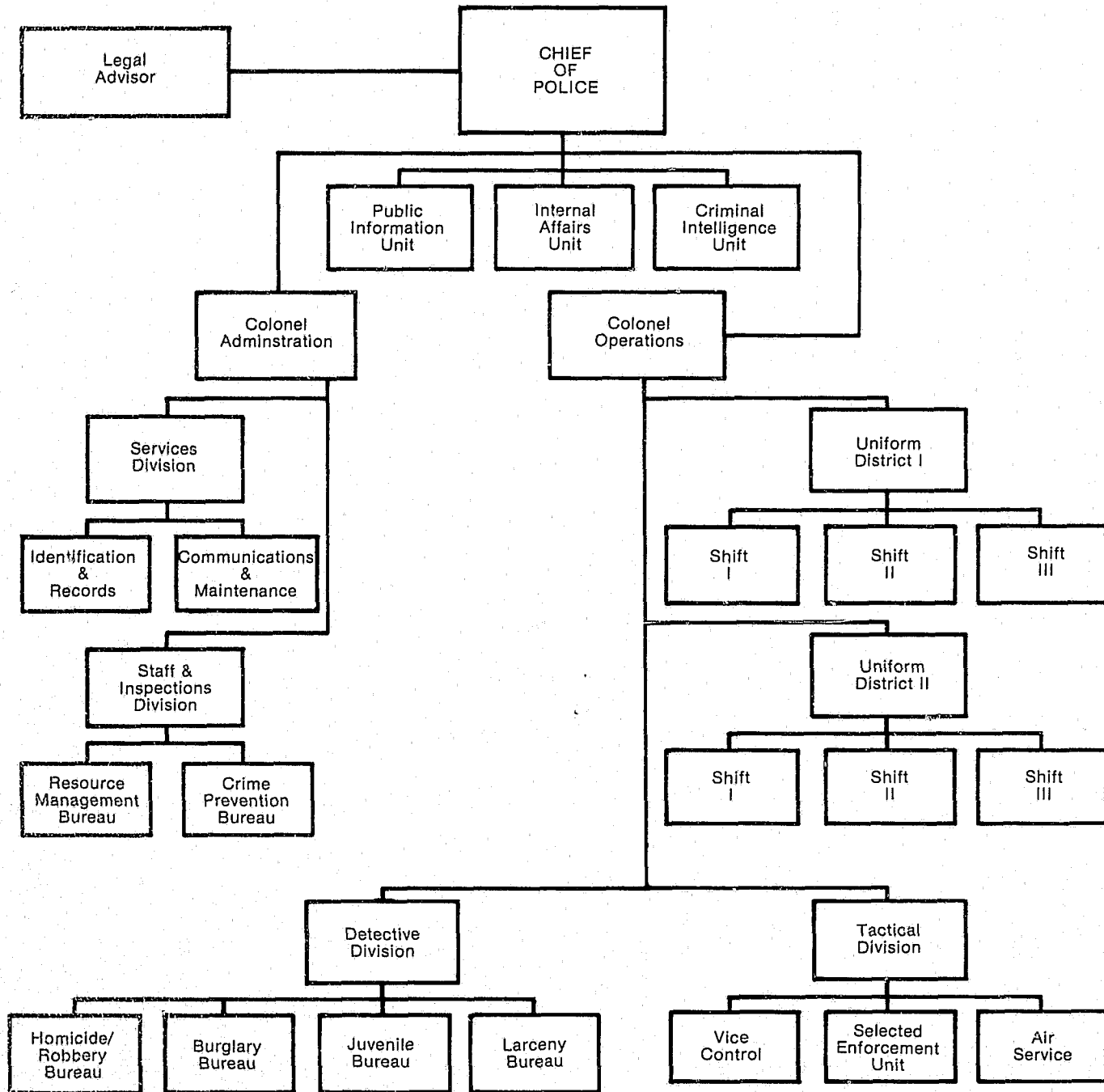
Respectfully submitted,

A handwritten signature in cursive script that reads "Charles Otero".

CHARLES OTERO  
Chief of Police



# TABLE OF ORGANIZATION



## **CRIMINAL INTELLIGENCE UNIT**

---

The Criminal Intelligence Unit of the Tampa Police Department is a non-operational unit with primary responsibilities of receiving, collecting, evaluating, and disseminating criminal information from all sources. Irregular, but frequent surveillances are conducted on local as well as visiting criminals.

During 1977, this unit, in conjunction with the larceny bureau, the Sheriff's Office, and members of the F.B.I., conducted an investigation into a hijacking ring operating in Florida, Georgia, and Alabama. An around-the-clock surveillance which lasted approximately one month resulted in the arrest of seven individuals and the recovery of over \$800,000 worth of stolen property.

Officers of the Criminal Intelligence Unit assisted members of the Pasco County Sheriff's Office in locating and apprehending two members of the Outlaw Motorcycle Gang wanted for first degree murder.

As a result of information received by this office, members of this unit, working with detectives of the larceny bureau, apprehended three subjects operating a bogus inspection sticker ring, and recovered the plates and other materials used in making the bogus stickers.

Officers of the Criminal Intelligence Unit assisted members of the United States Secret Service in providing security for visiting dignitaries who visited Tampa during 1977.

A cooperative program started last year with security officers of the major department stores has continued, and approximately \$5,000 in stolen merchandise has been recovered by this unit and returned to various stores.

Members of the Criminal Intelligence Unit were assigned to the high crime area of Central Park Village, and as a result of months of investigation, 17 wanted fugitives were apprehended; 14 people were arrested for various

narcotics violations, and three persons were arrested as a result of armed robberies, committed in other areas of the city. Stolen property worth \$2,500 was recovered, and an unknown amount of heroin, cocaine, and marijuana was confiscated.

Members of Criminal Intelligence Unit assisted agents of the Treasury Department (AT&F) on several surveillances, and started a program in which we furnish AT&F the names and addresses of all persons arrested for possession of firearms, in an attempt to establish a federal firearms violation.

During 1977, a total of 10,950 Field Interrogation cards were processed into Criminal Intelligence Unit files and distributed to other divisions; a total of 700 investigative reports were supplemented into existing files, and 35 new organizational and/or local subjects files were added to the existing ones.



## OPERATIONS

---



JIM DIAMOND, COLONEL, DEPUTY CHIEF OF OPERATIONS

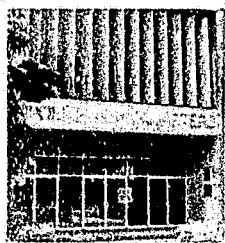
The Uniform Districts, Detective Division, and Tactical Division are under the direct supervision of the Colonel of Operations. This office is responsible for a myriad of operational functions expected of the Tampa Police Department.

The daily morning meeting held in the Colonel's office with his four operational majors has proven to be very beneficial to all concerned. Events of the previous 24 hour period, major developments in their areas, and upcoming events and plans are discussed, and a report is submitted to the Chief of Police to apprise him of the daily activities.

This office also serves as a clearing house for a multitude of operational requests from citizens and other agencies within and outside city government.







## UNIFORM DISTRICTS

---



Major Earl G. Haynie  
Commanding Officer  
Uniform District I



Major Winfield S. Whitehurst  
Commanding Officer  
Uniform District II

The combined authorized strength of both Uniform Districts sworn personnel is 380. It is the largest unit within the Department and encompasses the total police function on a continuous 24 hour basis. The function involves: crime prevention, protection of life and property, crime detection, criminal apprehension, traffic control, and traffic accident investigation.

The uniform divisions initiate all investigations of reported and detected crimes as well as all traffic accident investigative reports.

As a result of this function, the uniform officer has become the primary symbol of law enforcement to all citizens of our community.







## UNIFORM DISTRICTS CONTINUED

### RESPONSIBILITY

1977 was the eighth year of operation under the Uniform District System. The district concept divides the city into east and west districts. Uniform District I is responsible for the western district, and Uniform District II the eastern district.

During the year 1977, Uniform District I and Uniform District II had a reduction in the total target crimes reported. The target crimes are those considered, in part, preventable by selective uniform patrol.

Uniform District I had an overall reduction of target crimes reported of 879 or 11.1% in 1977 as compared to 1976. Uniform District II was credited with a reduction of 807 or 10.0%.

During 1977, the Uniform Districts continued to utilize the Special Assignment Squads. District I and District II continued to deploy the Special Assignment Squads in high crime areas and based on past performance and results, this tactic continues to prove effective in reducing criminal activity in these areas.

### SPECIAL PROJECTS

During the month of March, 1977, Uniform District I and District II initiated a program of contacting various civic groups in each district by mail, offering these groups the opportunity to have a supervisor meet with the groups in an effort to establish means of solving mutual problems.

Uniform District I mailed approximately 147 of these letters which resulted in nine requests for a supervisor to attend a particular meeting. All such meetings appeared to have produced the desired results and were received favorably by the interested groups.

Uniform District II mailed approximately 50 of these letters with no response from a civic group in their district.

### UNIFORM DISTRICTS I & II ACTIVITIES

	1976	1977	Increase or Decrease
Radio Dispatchers			
a. Calls for Police Service	287,176	319,178	+ 11.1%
b. Administrative Dispatches	212,975	200,877	- 5.7%
c. Total	500,151	520,055	+ 4.0%

When an offense occurs, it is the responsibility of the Uniform Districts to conduct the preliminary investigation. This phase of the investigation is vital and in most cases will determine the success of the investigation.

During 1977, there were 25,434 Part I Offenses reported to the police—a decrease of 9.8% compared to 1976. Of this number, 824 were unfounded as a result of latent investigation. During 1977 the overall crime rate was reduced by 9.8%.

### TRAFFIC ENFORCEMENT

The Uniform Districts have the responsibility of traffic enforcement and accident investigation as well as criminal offenses. During 1977 the Uniform Districts investigated a total of 13,604 traffic accidents. This represents a decrease of 4.4% compared with 1976. There were 78,978 citations issued in 1977, as compared with 63,470 in 1976, which is an increase of 24.4%.

During 1977 the City of Tampa documented 41 fatalities which were attributed to traffic accidents. This was a 10.8% increase over 1976.

---

From the total citations issued, District I was responsible for 42.3%. District II was responsible for 57.6%.

In the year 1977 we experienced decreases in traffic accidents and reported crimes. This decrease should be attributed to the dedicated and energetic performance of the uniform officers of this department.

Personnel shortages consisting of a reduction of 36 authorized personnel, and an additional shortage of six to ten officers per district were experienced during 1977, due to hiring problems.

On the positive side, the Assigned Car Program initiated in 1975 continues to be a factor in the overall reductions noted.

The Assigned Car Program role in the reduction of criminal offenses reported is difficult to accurately measure, due to the numerous and varied efforts in crime prevention by this department and citizens of this community.

Traffic accidents, however, decreased with no specifically known traffic accident prevention program other than this department's "Hazardous Moving Violations" citation efforts, which has remained constant in 1976 and 1977.

It is, therefore, apparent that traffic accidents have been reduced primarily due to the increased number of marked police cars, their high visibility, and their transit on public streets and highways during peak traffic hours which fall within the time frame of this department's shift changes.



## TACTICAL DIVISION



Major Robert L. Smith  
Commanding Officer  
Tactical Division

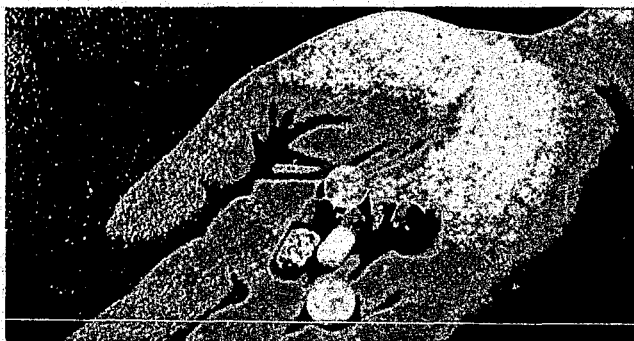
The Tactical Division was initiated on May 26, 1974, as an operational division. The division consists of the Vice Control Bureau and the Selective Enforcement Unit which also encompasses the Tampa Police Department Marine Patrol and the Air Service.

### VICE CONTROL BUREAU

The Vice Control Bureau is made up of one captain, one lieutenant, three sergeants and 29 detectives. The primary function of the bureau is the enforcement of laws pertaining to narcotics, gambling, morals, and beverage violations.

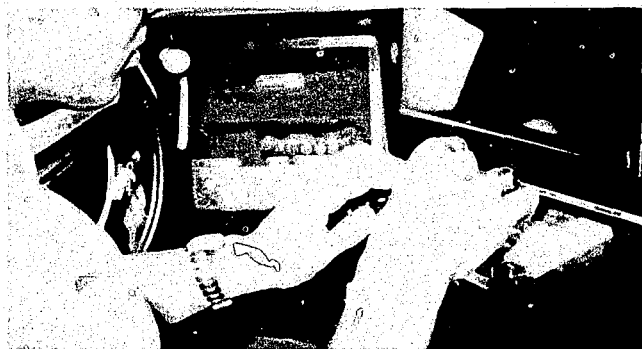
During 1977 the Vice Control Bureau processed 2,215 criminal cases with a 93% clearance percentage rate. The number of narcotics charges made totaled 730 with a confiscated street value of \$1,529,900. Morals investigation brought 204 prostitution-related charges, and gambling activities resulted in 72 arrests.

Associated closely with the enforcement of law violations, the Vice Control Bureau is involved in education



and prevention programs. These programs are carried out by lectures to civic groups and at recruit schools, junior colleges, and universities.

During the year of 1977, 150 charges were made in reference to obscene materials. One such case was a result of an intra-state transportation investigation conducted by approximately 13 law enforcement agencies throughout the state of Florida. Coordinated state-wide raids were made, and the Tampa Police Department Vice Control seized approximately \$114,000 worth of obscene books and films from a local warehouse.



### SELECTIVE ENFORCEMENT UNIT

The primary responsibility of the Selective Enforcement Unit is that of a supportive unit of the Department, skillfully trained to serve as an initial striking force to combat unexpected crime rises, public demonstrations, riots, strikes, natural disasters, or traffic problems beyond the normal need for police services. Unlike the two Uniform Districts, which are assigned to definite areas or zones in the city, the Selective Enforcement Unit is assigned throughout the city wherever the need for prompt, effective police action arises.

During 1977 the Selective Enforcement Unit made a total of 787 arrests and recovered \$46,240 in stolen property.

The unit obtained three mobile digital computers during the latter part of the year, and this has resulted in an

improved information flow and has also increased the arrest rate.

The "Fishing Hole Swap Shop" was operated by the Selective Enforcement Unit during 1977 to gain knowledge of the perpetration of burglaries and thefts and to recover stolen property and to make the necessary arrests. This operation resulted in the recovery of stolen property valued at \$16,451.

The Selective Enforcement Unit operates the Tampa Police Department Marine Patrol.

The year 1977 was rewarding for the Marine Patrol, finding less violations and more people wanting to learn boating safety and seamanship. The results of 328 safety checks were as follows:

Boats Cited .....	36
Warnings Given .....	138
Boats Approved .....	154

In addition to its work with the Selective Enforcement Unit, the Marine Patrol assisted the United States Customs Agents in a search of two vessels out of Miami believed to have contraband aboard.

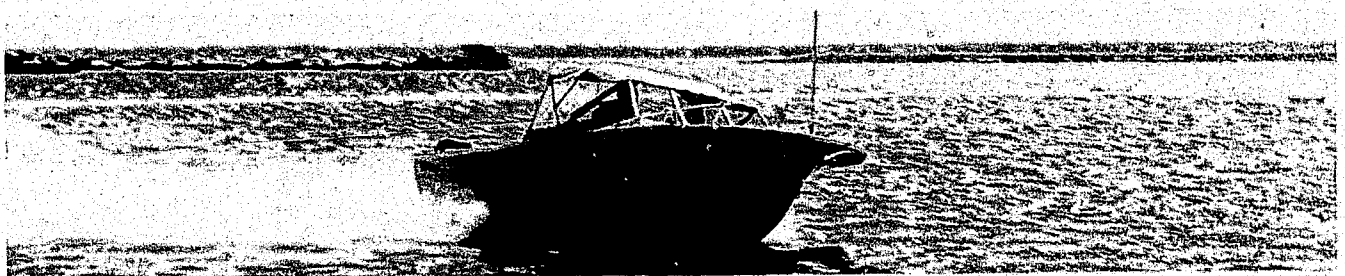
During the year, the Marine Patrol assisted in numerous community

functions. It was used to patrol the Hillsborough River for the College Skill Boat Race, and worked the First Annual Raft Race, as well as assisting in the patrolling of boat races sponsored by various organizations.

On May 15, 1977, the Air Service was reorganized and became a squad of the Selective Enforcement Unit.

During the year of 1977, the Air Service flew 2094 hours. Of this amount 1709.2 hours were helicopter time, and 384.8 hours were airplane time. This figure represents an average of 5.8 hours of flight time per day.

Airborne units responded to 4200 requests for assistance from ground units. As a result, 204 subjects were apprehended who might have otherwise avoided arrest. In addition, 13 wanted vehicles were located; 15 fires were detected and reported; 20 boaters in distress were assisted; two persons were rescued in the Bay; 23 photo flights were flown; the helicopter was demonstrated to nine different groups; other jurisdictions were assisted 22 times; eleven articles of stolen property were recovered, and seventy surveillance flights were flown, totaling 180.2 hours of flight time.





## DETECTIVE DIVISION

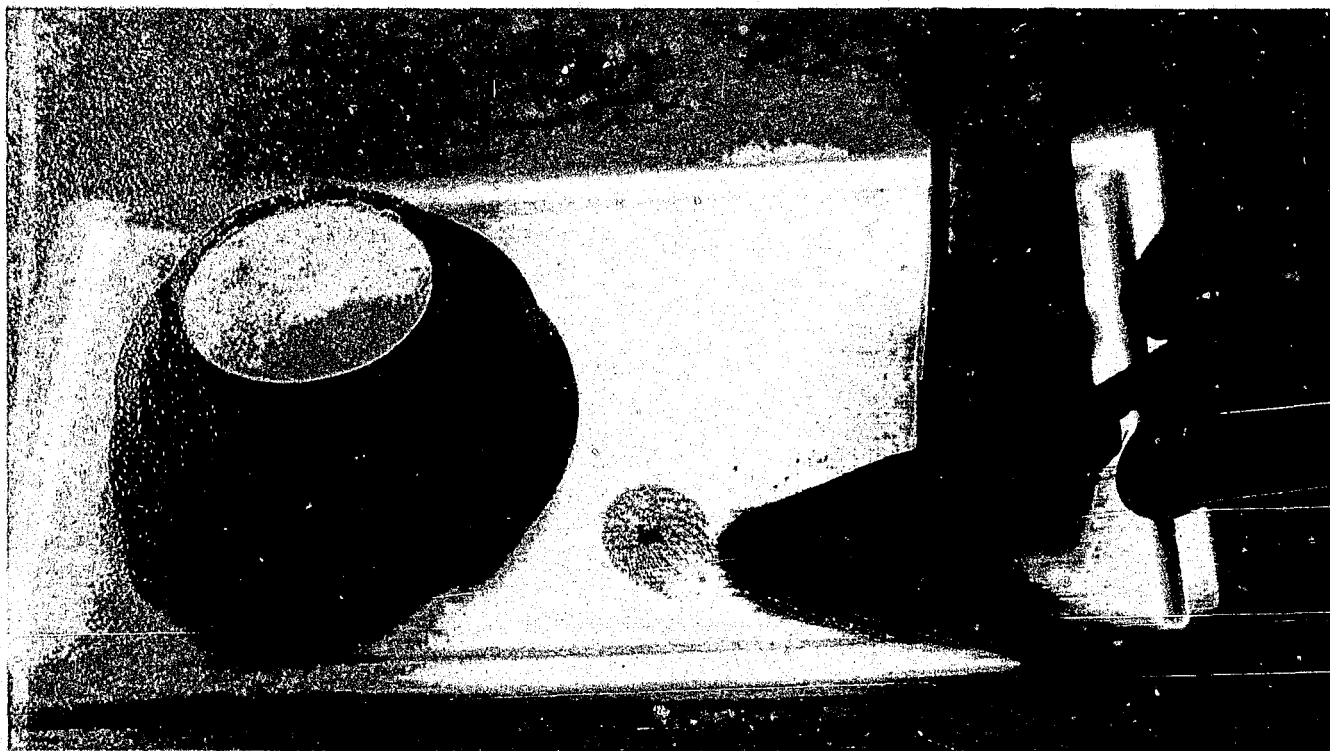


Major Norman H. Brown  
Commanding Officer  
Detective Division

The Detective Division's primary responsibility is to conduct the latent investigation of criminal offenses that are reported to the Police Department.

This division is comprised of four bureaus: Homicide and Robbery, Burglary, Larceny, and Juvenile. Each bureau is assigned specific investigative responsibilities.

During 1977, there were 19,945 offenses referred for latent investigation and 14,548 offenses satisfactorily cleared, resulting in a Division clearance rate of 72.9%



---

## **HOMICIDE AND ROBBERY BUREAU**

---

The Homicide and Robbery Bureau is charged with the responsibility of investigation of crimes of violence against the person. Primarily, the nature of cases are of homicides, involuntary sexual battery, robbery, aggravated battery, aggravated assault, and misdemeanor battery. Some natural deaths, suicides, bomb threats, throwing deadly missiles into buildings and vehicles, threatening and harassing phone calls, and weapons violations are also handled by this bureau. Detectives handle all types of criminal investigations during their work period. The bureau also expends numerous man hours assisting other jurisdictions in criminal investigations that have undeveloped leads in Tampa.

---

## **BURGLARY BUREAU**

---

There were 7,168 burglary offenses reported to the Department during 1977, of which 147 were unfounded, leaving a total of 7,021 offenses. The Department cleared 1,519 of the offenses in 1977, resulting in a clearance rate of 21.6%.

Of the 7,021 burglary offenses reported in 1977, 4,259 were residential, and 2,762 were non-residential. There was a total of \$1,783,007 in property stolen.

There were 1,481 persons arrested for burglary during the year.

---

## **LARCENY BUREAU**

---

During the calendar year 1977, a total of 9,847 cases were referred to the Larceny Bureau for investigation. Based upon an average strength of 22 detectives, this amounts to a monthly case load of 37.3 cases per man. A total of 7,199 cases were satisfactorily cleared, producing an annual Bureau clearance rate of 73.1%. Average monthly cases cleared per man was 27.3 cases.

Reassigned cases for the year totaled 317 for a grand total of 10,164 cases handled by the Bureau. The above figures represent an increase of 164 cases over 1976, an increase of 1,113 cases cleared over 1976, and an increase of 9.9% in the satisfactory clearance rate over 1976.

---

## **JUVENILE BUREAU**

---

The broad field of police-juvenile work is becoming increasingly important in our attempt to control and prevent delinquency. Although the true extent of juvenile delinquency is difficult to determine, it is well established that the youthful offender contributes more to the high crime incidence than his proportionate share. There can be no doubt of the tremendous importance of the early relationships developed between police officers and youth. The quality of these relationships should be such that the children and youth will be guided toward constructive citizenship instead of causing them to intensify their anti-social feelings. The Juvenile Bureau continues to be very active working with state and local agencies in order to continuously improve upon the handling and treatment of juvenile offenders.



## DETECTIVE DIVISION ACTIVITIES

Offenses	Assigned	Satisfactory Clearance	Clearance Rate
Homicide	36	27	75.0%
Rape	220	162	73.6%
Robbery	1,066	360	33.8%
Felony Assaults	949	814	85.8%
Other Assaults	379	318	83.9%
Larceny	2,518	1,336	53.1%
Auto Theft	1,466	780	53.2%
B & E Auto	580	299	51.6%
Bad Checks	1,562	1,526	97.7%
Burglary	2,944	1,906	64.7%
Fugitive	1,778	1,782	100.2%
Hit and Run	1,147	638	55.6%
Fatal Accidents	33	27	81.8%
Sex Crimes	136	107	78.7%
Runaway	1,400	1,421	101.5%
Missing Persons	200	192	96.0%
Other	3,531	2,853	80.8%







## ADMINISTRATION

---



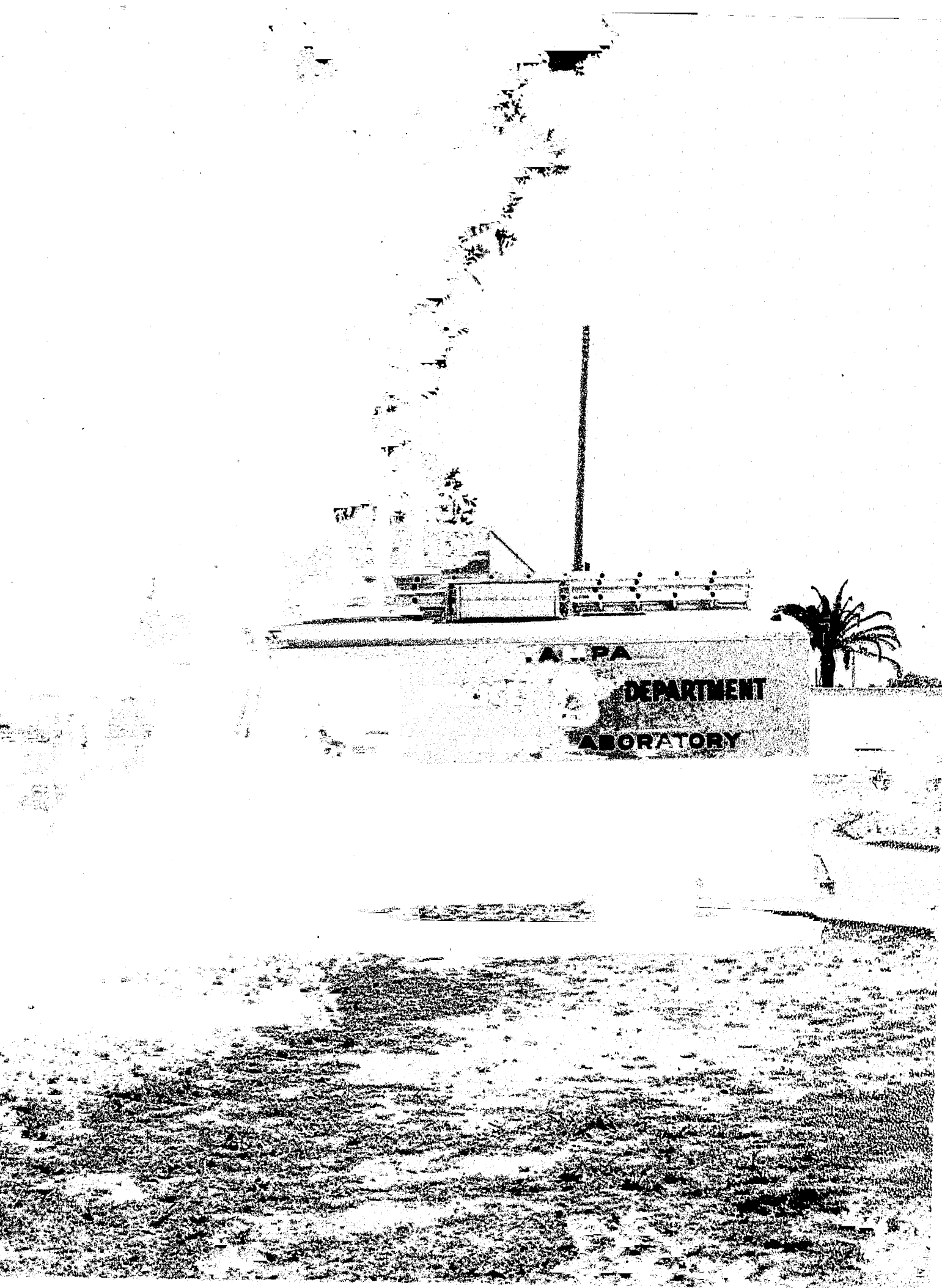
Colonel Clayton Briggs  
Deputy Chief of Administration

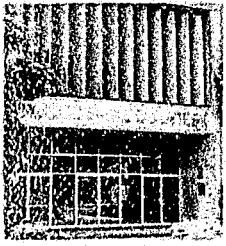
The Colonel of Administration is in command of the Administrative branch of the Tampa Police Department and has the responsibility to see that all duties are fulfilled as efficiently and expeditiously as possible to best serve the line or field operations.

The Administrative branch of the Tampa Police Department is comprised of the Services Division and Staff & Inspections Division, and referred to as Staff Services.

The Staff Services are primarily to implement the filed operations by providing trained personnel, records, budgeting, communications, statistical data, material and supplies, housing and maintenance.





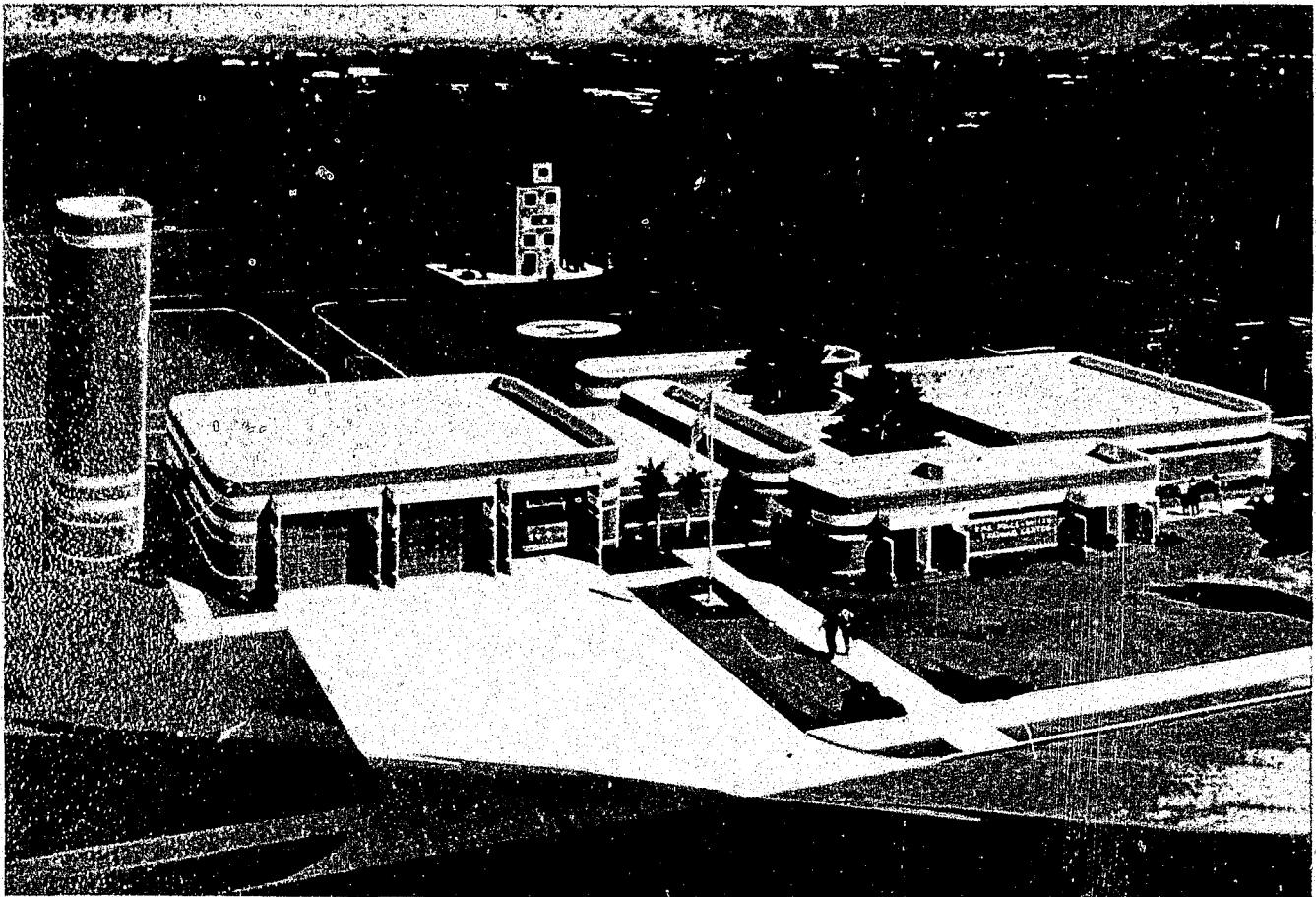


## STAFF AND INSPECTIONS DIVISION



Major M. E. Noblitt  
Commanding Officer  
Staff & Inspections Division

The Staff & Inspections Division consists of the Resource Management Bureau and the Crime Prevention Bureau. The purpose of the Division is to provide fiscal, personnel, planning, training, and crime prevention services for the Tampa Police Department.



---

## **RESOURCE MANAGEMENT BUREAU**

---

The newly-formed Resource Management Bureau was created in response to the need to coordinate those functions associated with resource allocation. It encompasses Personnel, Research and Evaluation, Fiscal Management (budget, payroll, and accounting), Training, and Vehicle Coordinator.

---

## **CRIME PREVENTION BUREAU**

---

The Crime Prevention Bureau is divided into two sections: the School Resource Officer Section and the Crime Prevention Section.

The School Resource Officers are charged with the responsibility of creating a positive image of law enforcement among the students in the schools to which they are assigned. They accomplish this by conducting guest lectures in classes, conducting informal rap sessions with students, and participating with students at sporting activities. By working closely with the students, the School Resource Officers are often able to identify pre-delinquent youths.

The primary objective of the Crime Prevention Section is to create an awareness of the importance of crime prevention among the citizens of the community. They achieve this objective by presenting crime prevention programs in schools and for civic, church, and other groups. Through these programs they instruct the public on how they can protect their property and themselves by following a few simple rules. By following these rules, the public becomes crime prevention conscious, thereby reducing the probability of their becoming a victim of a criminal act.

---

## **RESEARCH AND EVALUATION UNIT**

---

The major focus for the unit is the initial effort to establish long range planning goals in the area of space utilization, management information systems, and reporting formats, as well as other areas of concern for the Department. The major vehicle for this process has been the establishment of a Departmental Planning Committee with staff support from the Research and Evaluation Unit. During the upcoming year this process is expected to intensify, and with additional personnel, the value of long-range planning will be realized.

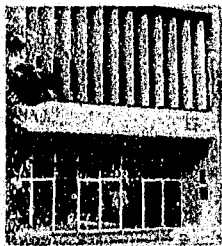
The Research and Evaluation Unit was also able to accomplish a number of important tasks. Utilizing the services of two summer students and one Planning Research Analyst, they produced two major studies: one dealing with traffic court scheduling and the other on the police legal coordinator. They also submitted two proposals to the Hillsborough Criminal Justice Planning Council for the establishment of an Expanded Research and Evaluation Unit and a Crime Analysis Unit. By combining these two functions, they were able to receive favorable consideration for LEAA funding for the 1978 fiscal year.

---

## **PAYROLL AND ACCOUNTING SECTION**

---

Departmental payroll continues to be the greatest item of police budget expenditures during fiscal year 1977 — a total of \$10,096,458 was expended for salaries. The state funded incentive pay, for police personnel, increased from \$394,465 to \$477,219 for fiscal year 1976-77. This increase is due to more of our police officers completing college courses, plus intermediate and advanced



## **STAFF AND INSPECTIONS DIVISION**

training courses, which qualify them for additional monies. Salaries for fiscal year 1977 consumed 56.6% of the total police expenditures. This figure does not include incentive pay or any of the other fringe benefits. The total percentage of the budget consumed by salaries and all fringes was 85.2%

During Fiscal year 1977, many budget program areas were changed to set up computer accounting procedures. This has caused many definition changes in certain specific budget lines.

Budget computations for salary cost projections, annual leave, sick leave, overtime, workmen's compensation, and all payroll records for sworn and civilian personnel are maintained by this section. In addition, special payroll for the bomb squad — hazardous duty pay — was started.

A personnel Position Master List (Slot Accounting) is maintained by this section that assists in updating data runs, whereby each position is assigned a slot number. This slot number assures that the authorized strength is always balanced with positions that have been budgeted. The maintenance of this program requires that departmental records be current and up to date concerning promotions, transfers, dismissals, etc. Status changes of slot numbers are forwarded to our computer and regular printouts are returned for verification and file information. We are now utilizing the results of the Position Master List which allows constant assurance of proper budgetary control of salaries for departmental personnel.

Departmental purchases are processed in this section, and records are maintained that relate to purchase requisitions and the fiscal management of the Departmental Budget. Revenues collected by our department are audited and deposited on a daily basis.

The overall increase of the department's budget was 11.6% over last year. One reason that this increase was

so low is attributed to the reduction of personnel through attrition.

---

### **TRAINING TAMPA POLICE ACADEMY**

---

During 1977, the Tampa Police Academy conducted over 66,793 class hours of instruction. This is an increase in excess of 40,000 hours. The class hours included basic recruit class, in-service training, and numerous specialized courses. The basic recruit class varied in length from 472 hours to 552 hours in an effort to fulfill the varied needs of the law enforcement community. The in-service training class was designed to broaden the base of the officers' knowledge and increase the overall efficiency of the Department.

---

### **TAMPA POLICE PISTOL RANGE**

---

Throughout 1977, numerous training classes were conducted by the training staff at the Tampa Police Pistol Range. Included were in-service requalification training for all police officers, and training sessions for the Tampa Police Academy. These sessions covered service weapon training and qualifications, chemical agents, and delivery systems, shotgun familiarization, specialized weapon training, and weapon safety and maintenance.

---

### **FLEET MANAGEMENT**

---

Fleet Management activity is the responsibility of a coordinator who provides liaison between Tampa Central Municipal Garage and the Police Department. Additional duties include follow-through for vehicle maintenance, a monthly speedometer calibration check, and record keeping which includes a monthly vehicle use summary.

The police fleet averaged 441 units during the year with a total mileage of 7,539,014 during the 12 month period.

---

## **PERSONNEL SECTION**

---

The Personnel Section is primarily responsible for the recruitment, investigation, interviewing, selection, and processing of Tampa Police Department personnel—both sworn and civilian.

The Personnel Section, through the implementation of the Equal Employment Opportunity Program (Affirmative Action Plan), strives toward high standards of Employee Relations. The Personnel Section is an integral part of a department-wide effort to employ and retain qualified females and minority groups. Throughout 1977 the Personnel Section maintained high quality in selection of personnel and management.

Considerable effort on the part of the Personnel Section is directed toward the development, revision, and updating of the Department's policies, rules, and regulations. Another segment of this effort is to assure the information is properly disseminated throughout the Department.

The Personnel Section maintains a book library and a film library for departmental usage. The book library has numerous legal periodicals, law enforcement text books, state statute books, and other reference material for use in promotional examination study. The film library has many films that are used in crime prevention seminars, school resource curriculum, and various public information programs. The films are also widely used in the Tampa area high schools for their student law enforcement programs and driver education courses.

In 1977, the Personnel Section conducted numerous background checks of present and former employees for other law enforcement agencies, civilian organizations, and private enterprises. Inquiries and surveys from other law enforcement agencies and municipalities were researched and properly replied to.

The Personnel Section sergeant is assigned as liaison officer to the Tampa Auxiliary Police Patrol in cooperation with the Office of Emergency Preparedness. The sergeant helps supervise the patrol and coordinates their training to insure they retain their professional appearance when representing the City of Tampa and the Tampa Police Department.

---

## **CRIME PREVENTION BUREAU**

---

The Crime Prevention Section is composed of one sergeant who supervises the section, three corporals and one detective who present crime prevention oriented programs to the community; one corporal who coordinates the Tampa Police Explorer Program; one corporal who is assigned to the Police Athletic League; one civilian who coordinates the Robles Park Crime Prevention Program, and one civilian who coordinates the Ponce De Leon Crime Prevention Program.

The School Resource Officer Section is composed of two squads. One sergeant, one corporal, and seven school resource officers are assigned to the seven seventh grade centers, and one sergeant, one corporal and eight school resource officers are assigned to the eight eighth and ninth grade centers.

The expansion of the School Resource Officer Program into the seventh grade centers was a result of the success of the program in the eighth and ninth grade centers.

Prior to entering the schools in March, the new school resource officer received two weeks of specialized training from the Tampa Police Academy training staff, Hillsborough County School personnel, and members of the Division of Youth Services and the Division of Family Services.

At the close of the school year, all the principals of the seventh grade centers submitted letters to the Department



## **STAFF AND INSPECTIONS DIVISION**

---

commending the program. Interviews were conducted with the principals of the eighth and ninth grade centers, and they also enthusiastically supported the program.

During the summer, some of the school resource officers were assigned to schools conducting summer sessions. The remaining officers were assigned to work in the Juvenile Bureau of the Detective Division to gain additional training in conducting latent investigations.

The summer break was utilized to develop a brochure on the School Resource Officer Program and an "Attitude Survey" which was given at the beginning of the 1977-78 school year and will be given again at the close of the school term in June of 1978.

Prior to beginning the 1977-78 school year, all school resource officers attended a specially designed one-week in-service training class at the Tampa Police Academy to keep them current on juvenile laws and procedures.

During 1977 school resource officers conducted a total of 969 programs, utilizing 1561 man hours and involving 58,886 students. They also handled 2183 assigned cases of which 2045 were successfully cleared for a clearance rate of 93.7%.

During 1977 the Crime Prevention Section developed several innovative programs and ideas aimed at creating a "crime prevention" conscious public.

Brochures were developed to support the Senior Power and Child Molester Programs. Public service crime prevention announcements were developed for broadcast on local radio and television stations. Crime prevention articles were written for publication in local news publications. Several local banks utilized crime prevention tips for showing on their "telespots" and included them in their monthly statements and newsletters.

A logo was designed to identify the Department's crime prevention program and was placed on bureau-designed brochures. The logo was also utilized by the news media and others in conjunction with their crime prevention articles.

In order to reach as many citizens as possible, crime prevention displays were set up in several local shopping malls where crime prevention officers demonstrated home security devices and provided information on how citizens could properly protect their property and themselves.

During the year, crime prevention officers also appeared on several local television talk shows, where they discussed a variety of crime prevention topics.

During 1977, crime prevention officers expended 1,177 man hours presenting crime prevention and community relations programs to 35,007 children and adults.

---

## **POLICE ATHLETIC LEAGUE**

---

During 1977, 14,818 youths and 10,559 adults engaged in programs provided by the Police Athletic League. The programs consisted of a variety of sports such as: weightlifting, wrestling, boxing, football, basketball, and soccer.

---

## **COMMUNITY SERVICE**

---

The Robles Park and Ponce De Leon Projects Crime Prevention Programs were involved in numerous activities designed to promote pride among citizens of these areas. Block Clubs, Youth Clubs, Boy Scout, and Girl Scout units were formed through these groups, and crime prevention and self-help programs were presented to the community.

In October of 1977, ten community service representatives were employed to serve in the Robles and Ponce programs.

With these additional employees, we will be better able to achieve our goal in these areas.

In 1977 personnel of the Robles Park Program expended 1,112 hours presenting crime prevention and community relations programs to 12,107 citizens.

During the same year, personnel of the Ponce De Leon program expended 920 hours presenting crime prevention and community relations programs to 6,041 citizens.

---

## **POLICE EXPLORERS' ACTIVITY**

---

During 1977, the Tampa Police Explorers Post 275 participated in their First Florida Association of Police Explorers (FAPE) state competition. Even though this was their first state competition, the Tampa Police Explorers brought honor to themselves and the Tampa Police Department by placing first in the Crime Scene Investigation.

During the year, the Explorers also assisted the Department by working traffic control assignments for the day and night Gasparilla parades and assisting with crime prevention displays in the shopping malls and other areas.

---

## **POLICE AUXILIARY**

---

The Tampa Auxiliary Police Patrol is composed of approximately 50 citizens who do police work on a volunteer basis in their spare time. The Auxiliary Police Patrol is the Tampa Police Department's Reserve Force. They are authorized to make such arrests, investigations, and interviews as may be necessary to fulfill their obligations when on duty representing the City of Tampa and the Tampa Police Department.

These persons reflect a dedication to the City of Tampa, its citizens, and the Tampa Police Department far beyond their normal capacities. They are willing

to report for duty on short notice, whenever and wherever they are needed, regardless of the situation or the weather conditions. To be an Auxiliary Police Officer involves a large amount of time and expense on the part of the individual.

Auxiliary Police Officers work thousands of man hours annually with the Tampa Police Department. This includes working normal tours of duty with regular police officers, working crowd and traffic control during parades, public functions, sporting events, and security in disaster areas. They are on stand-by for emergencies of any nature, with the City of Tampa or the Hillsborough County Office of Emergency Preparedness. They are required to honor all subpoenas and testify in court regarding cases made by officers they were assigned to work with during tours of duty.

During 1977, the Tampa Auxiliary Police Patrol contributed in excess of 9,600 hours of work to the City of Tampa and the Tampa Police Department. Based on a starting police officer salary, this represents almost \$52,000 of paid man hours.

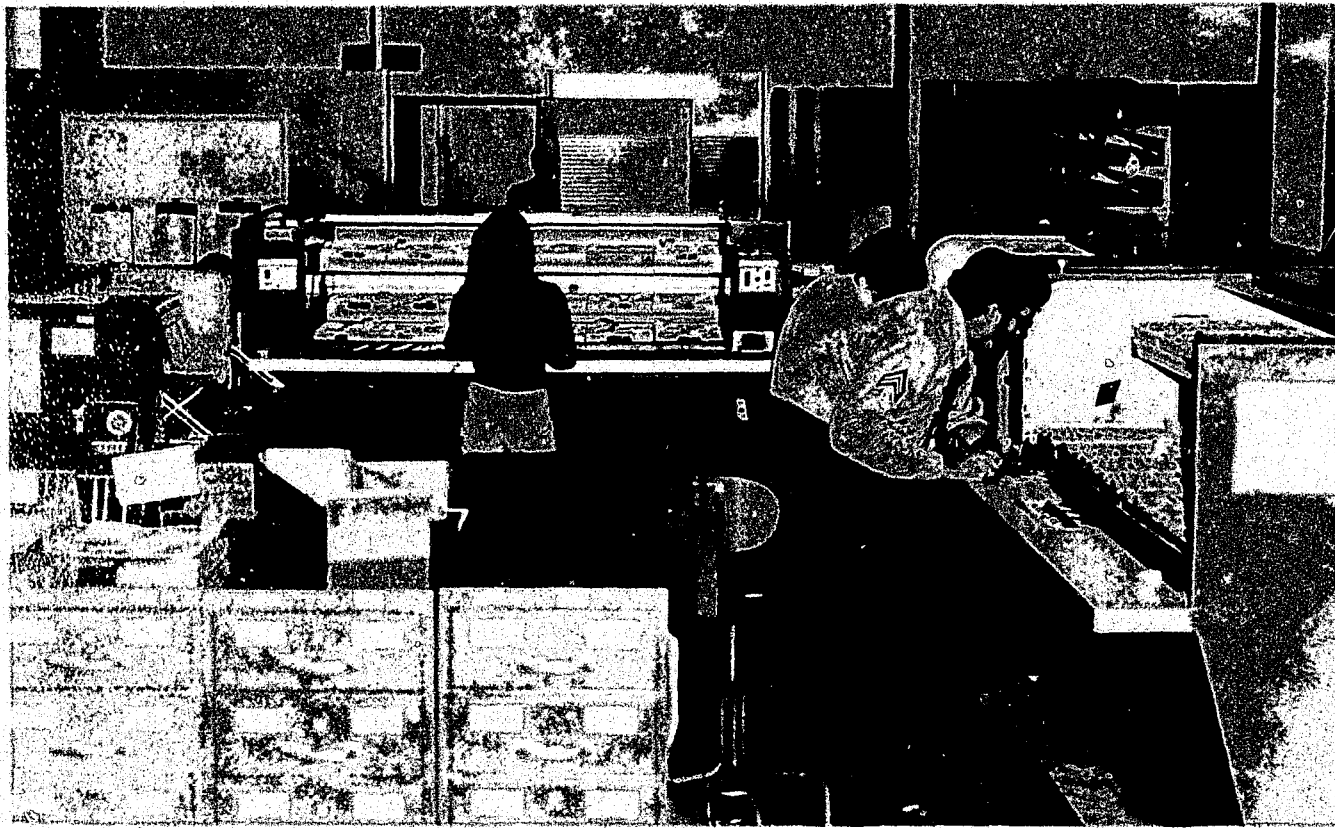


## SERVICES DIVISION



Major Joe A. Diaz, Jr.  
Commanding Officer  
Services Division

The Services Division provides essential support to police operational field forces in serving as a communications link, in providing records storage and access, and in housekeeping for the Police Department. This division also gathers crime and arrest data from records generated daily for computerization and submission to state and federal crime data gathering agencies.



---

## COMMUNICATIONS SECTION

---

The Communications Section handles all telephone calls for police service and all radio dispatches. In addition, the Centrex switchboard for the City of Tampa is housed within this section.

The Communications Section also maintains a special complaint section consisting of two officers whose duty is originating and supplementing certain reports by phone that do not require the presence of an officer at the scene. In 1977, this section documented 1,385 original reports, 629 supplemental reports, and answered 2,000 phone calls of an informative nature. This function allows more patrol time for field units and more expedient service to the public.

In July of 1977, a new FCIC/NCIC computer terminal (Burroughs TC 4000) was installed. This terminal improved speed of messages and reduced the noise level of operation.



---

## BUILDING MAINTENANCE SECTION

---

The Building Maintenance Section is comprised of ten employees. They are responsible for a 24 hour operation that consists of climate control, custodial service, furniture maintenance, and miscellaneous carpentry duties.

During 1977, this section handled 8,886 projects, or an average of 24.3 projects per 24 hours. These projects varied from hanging a bulletin board to building a ballistics test box for the Homicide Bureau.

---

## PROPERTY SECTION

---

The Property Section maintains the storage and accountability of all departmental evidence, found properties, and impounded vehicles. Uniforms are received and distributed by the Property Section, as well as expendable supply items and equipment for the entire department.

As of October, 1977, the printing was removed from the Property Section to the City's central printing and publishing area. However, the Property Section continues to coordinate printing orders.

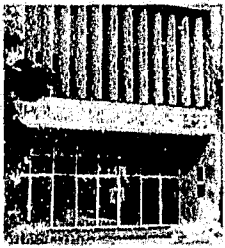
A perpetual computer inventory of evidence and property is instrumental in the efficient accountability and management of this section.

---

## ANALYTICAL SECTION

---

The Analytical Section is concerned with the maintenance of statistical summaries and information essential to the smooth operation and intelligent planning needed by a metropolitan police department.



## SERVICE DIVISION

### RECORDS SECTION STATISTICS

#### 1977 Compared to 1976

	1977	1976	Amt. of Change	% of Change
Criminal Offense Reports	55,549	56,582	—1,033	—1.8%
Juvenile Age, Sex, & Race Supplements	5,018	3,959	+1,059	+26.7%
Adult Misdemeanor & Felony Arrests	14,067	14,655	—588	—4.0%
Traffic Accident Reports	13,604	14,235	—631	—4.4%
Traffic Citations	78,987	63,470	+15,508	+24.4%
D. W. I. Citations	4,009	5,459	—1,450	—26.6%
TOTALS	171,225	158,360	+12,865	+8.1%

### RECORDS SECTION

The Records Section maintains, in an orderly manner, the reports and all other criminal records originated by all divisions of the Tampa Police Department. This information is available to all officers on a 24 hour basis.

### IDENTIFICATION SECTION

The Identification Section is responsible for the housing of all criminal and applicant history information. Identification technicians are responsible for responding to all types of crime scenes and processing for evidence and photographs.

### LATENT COMPARISONS

Latent fingerprint comparisons for the year 1977 totaled 4,017. Of these comparisons, there were several thousand individual latents lifted in those offenses which had to be compared with the suspect's fingerprints. There were approximately 442 positive identifications made from these comparisons, which

resulted in several cases being cleared for each positive comparison made.

### CRIME LAB SERVICES

Requests for Crime Lab Service totaled 1,821 in 1977. The services rendered included 15,170 crime scene and traffic photos taken; 1,067 crime scenes processed for latent prints; 62 plaster casts made, and eight paraffin or neutron activation tests run.

### PHOTOGRAPHY LAB SERVICES

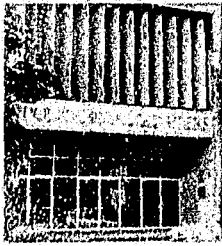
Film developed for photographic services in 1977 totaled 11,292 rolls. Black & White - 3,489 rolls, Color - 7,803 rolls. Contact prints totaled 1,189. Photographs required by Tampa Police Department totaled 17,537.

# CRIME DATA

OFFENSE	1977	1976	NUMERICAL CHANGE	PERCENT CHANGE
Murder, Non-Neg. Manslaughter	32	40	-8	-20.0
Rape, Forcible	191	153	+38	+24.8
Robbery	1,057	1,071	-14	-1.3
Aggravated Assault	1,838	1,733	+105	+6.1
Burglary	7,030	8,075	-1,045	-12.9
Larceny	14,155	15,935	-1,780	-11.2
Auto Theft	1,131	1,197	-66	-5.5
<b>TOTAL</b>	<b>25,434</b>	<b>28,204</b>	<b>-2,770</b>	<b>-9.8</b>

<b>ARREST DATA</b>	1977	1976	NUMERICAL CHANGE	PERCENT CHANGE
Murder, Non-Neg. Manslaughter	27	32	-5	-15.6
Rape, Forcible	94	74	+20	+27.0
Robbery	294	284	+10	+3.5
Aggravated Assault	808	601	+207	+34.4
Burglary	1,392	1,266	+126	+10.0
Larceny	3,121	2,933	+188	+8.4
Auto Theft	137	138	-1	-0.7
<b>TOTAL</b>	<b>5,873</b>	<b>5,328</b>	<b>+545</b>	<b>+10.2</b>

<b>STOLEN PROPERTY AND PERCENTAGE RECOVERED</b>		VALUE STOLEN		VALUE RECOVERED		PERCENT RECOVERY	
		1977	1976	1977	1976	1977	1976
Currency	1,136,185	1,600,252	111,035	51,924		9.8	3.2
Jewelry & Precious Metals	952,714	1,540,866	61,768	717,718		6.5	46.6
Clothing & Furs	172,651	242,629	24,598	42,959		14.2	17.7
Locally Stolen Autos	2,666,645	3,157,781	1,785,883	2,379,259		67.0	75.3
Miscellaneous	2,304,512	4,371,295	455,718	812,969		19.8	18.6
<b>TOTAL</b>	<b>7,232,707</b>	<b>10,912,823</b>	<b>2,439,002</b>	<b>4,004,829</b>		<b>33.7</b>	<b>36.7</b>
		NUMERICAL CHANGE STOLEN PROPERTY		PERCENT OF CHANGE		CHANGE IN PERCENT RECOVERY	
Currency		-464,067		-29.0		+6.6	
Jewelry & Precious Metals		-588,152		-38.2		-40.1	
Clothing & Furs		-69,978		-28.8		-3.5	
Locally Stolen Autos		-491,136		-15.6		-8.3	
Miscellaneous		-2,066,783		-47.3		+1.2	



## TRAFFIC DATA

**TABLE A - ACCIDENT SEVERITY**

	TO DATE	
	THIS YEAR	LAST YEAR
FATAL ACCIDENTS	41	37
PERSONS KILLED	47	41
P.I. ACCIDENTS	4350	4155
PERSONS INJURED	6755	6250
P.D. ACCIDENTS	9213	10043
PEDESTRIANS KILLED	9	12
PEDESTRIANS INJURED	204	232
TOTAL PED. ACC.	210	232
TOTAL ACCIDENTS	13604	14235
# ACC. RESLT 1 OR MORE ARRESTS	10858	11621
NUMBER ARRESTED	11072	13865

**TABLE B - ACCIDENT CAUSES  
VS. HAZARDOUS MOVING VIOLATIONS**

CAUSE OR HAZ. MOVING VIOLATION	NO. OF ACC	% OF TOTAL	NO. OF VIOL.	% OF TOTAL
SPEED TOO FAST	229	1.7	9092	18.9
FAILED TO YIELD	3049	22.3	3738	7.8
DROVE LEFT OF CNTR.	77	0.6	189	0.4
IMPROPER OVERTAK.	126	0.9	340	0.7
PASSED STOP SIGN	450	3.3	3879	8.1
DISREGARD. TFC. SIG.	787	5.8	12283	25.5
FOLLOW TOO CLOSE	1158	8.5	1377	2.9
MADE IMPROPER TURN	671	4.9	2262	4.7
OTHER HAZ. MOV. VIO.	6206	45.5	10500	21.8
INADEQUATE BRAKES	38	0.2	75	0.2
OTHER MECH. DEFS.	144	1.1	405	0.8
HAD BEEN DRINKING	714	5.2	4032	8.4
TOTALS	13644	100%	48172	100%

**TABLE C - ACCIDENTS VS. HAZARDOUS MOVING VIOLATIONS**

TIME OF DAY	NUMBER OF ACCIDENTS	% OF ACCIDENTS	HAZARDOUS MOVING VIOLATIONS	% OF VIOLATIONS
2400-0059	254	1.9	1305	2.7
0100-0159	185	1.4	1200	2.5
0200-0259	179	1.3	1144	2.4
0300-0359	161	1.2	937	1.9
0400-0459	50	0.4	274	0.6
0600-0659	158	1.2	671	1.4
0700-0759	631	4.6	1700	3.5
0800-0859	700	5.1	2536	5.3
0900-0959	515	3.8	2258	4.7
1000-1059	593	4.4	2630	5.5
1100-1159	753	5.5	2707	5.6
1200-1259	898	6.6	2762	5.7
1300-1359	873	6.4	2773	5.8
1400-1459	1020	7.5	2793	5.8
1500-1559	1091	8.0	2517	5.2
1600-1659	1319	9.7	3556	7.4
1700-1759	1207	8.9	4005	8.3
1800-1859	732	5.4	2318	4.8
1900-1959	545	4.0	1946	4.0
2000-2059	463	3.4	1932	4.0
2100-2159	429	3.2	1978	4.1
2200-2259	365	2.7	2035	4.2
2300-2359	386	2.8	1839	3.8
NOT STATED	30	0.2	2	N.S.
TOTALS	13604	100%	48172	100%

**TABLE D - ADMINISTRATIVE CHECKS**

RATES	DESIRED RATES	THIS YEAR	TO DATE LAST YEAR	% OF CHANGE
ACC. REPORTING RATIO	1-55-200	1-101-214	1-112-271	
ACC. ARREST RATE	90%	79.9	81.6	-1.7
ACC. ARREST CONV. RATE	95%	N/A	N/A	N/A
CONVICTION RATE	95%	N/A	N/A	N/A
ENFORCEMENT INDX	25%	N/A	N/A	N/A

**TABLE E - ACCIDENT VS. ARREST DAY OF WEEK**

DAY OF WK.	NO. OF ACC	% OF TOTAL	NO. OF VIOL.	% OF TOTAL
MONDAY	2099	15.4	7067	14.7
TUESDAY	1886	13.8	7088	14.7
WEDNESDAY	2062	15.2	7427	15.4
THURSDAY	2093	15.4	6994	14.5
FRIDAY	2479	18.2	7398	15.4
SATURDAY	1803	13.3	6941	14.4
SUNDAY	1182	8.7	5257	10.9
NOT STATED				
TOTALS	13604	100%	48172	100%

**TABLE F - TYPE OF VEHICLE**

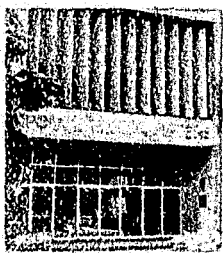
VEHICLES	ACC. VIOL.	% OF TOTAL	NO. ACC. VIOL.	% OF TOTAL
Pass. Car	8052	85.1	33417	80.3
Truck	1207	12.8	3897	10.1
Taxi Cab	18	0.2	112	0.3
Bus	25	0.3	30	0.1
Motor Bike				
Cycle-Scooter	124	1.3	1156	3.0
Others & Not Stated	39	0.4	95	0.2
TOTALS	9465	100%	38707	100%

**TABLE G - TRAFFIC ACCIDENT AND CITATION COMPARISONS**

CATEGORY	YEAR TO DATE THIS YEAR	YEAR TO DATE THIS YEAR	NUMBER CHANGE	PERCENT CHANGE
FATAL ACCIDENTS	41	37	+4	+10.8
NON-FATAL INJURY ACCIDENTS	4350	4155	+195	+4.7
PEDESTRIAN ACCIDENTS	210	232	-22	-9.5
ALL ACCIDENTS	13604	14235	-631	-4.4
PEDESTRIANS KILLED	9	12	-3	-25.0
PEDESTRIANS INJURED	204	232	-28	-12.1
TOTAL PERSONS KILLED	47	41	+6	+14.6
TOTAL PERSONS INJURED	6755	6250	+505	+8.1
HAZARDOUS MOVING VIOLATIONS	48172	45196	+2976	+6.6
ALL CITATIONS	78978	63470	+15508	+24.4

**TABLE H - ARRESTS BY UNIT**

UNIT	ACCIDENT (NON-HAZ.)		ACCIDENT (HAZ.)		NO-ACCIDENT (NON-HAZ.)		NO-ACCIDENT (HAZ.)		TOTAL (NON-HAZ.)		TOTAL (HAZARDOUS)	
	No.	%	No.	%	No.	%	No.	%	No.	%	No.	%
DISTRICT I	702	43.6	4608	48.7	10896	37.3	16436	42.5	11598	37.6	21044	43.7
DISTRICT II	881	54.8	4807	50.8	17467	59.8	21206	54.8	18348	59.6	26013	54.9
S.E.U.	12	0.7	11	0.1	279	1.0	456	1.2	291	0.9	467	1.0
OTHERS & NOT STD.	14	0.9	39	0.4	555	1.9	609	1.6	569	1.8	648	1.3
TOTALS	1609	100%	9465	100%	29197	100%	38707	100%	30806	100%	48172	100%



## FISCAL DATA

### POLICE BUDGET

1 OCTOBER 1976 THROUGH 30 SEPTEMBER 1977

ACCOUNT ITEM	AMOUNT EXPENDED 1975-76 BUDGET	AMOUNT EXPENDED 1976-77 BUDGET	INCREASE OR DECREASE OVER PREVIOUS YEAR
150-10 Salaries - Regular	9,993,955.97	10,096,458.00	102,502.03
150-11 Salaries - Overtime	14,264.16	337,240.00	332,975.84
150-12 Salaries - Terminal Leave	94,884.57	123,335.00	28,450.43
150-13 Salaries - Service Awards	227,201.86	233,962.63	6,760.77
150-14 Salaries - Police & Fire Incentive Pay	394,465.00	477,219.00	82,754.00
150-20 Employee Life Insurance	54,868.06	59,985.00	4,116.90
150-21 Employee AD & D Insurance	10,919.19	11,716.00	796.81
150-22 Employee Health Insurance	288,841.57	385,944.00	97,102.43
150-23 Workmen's Compensation	126,406.40	209,117.00	82,710.60
150-24 Indv. Pension Matching	3,014,613.33	3,247,107.37	232,494.04
150-26 Other Employee Costs	1,491.00	70,156.00	68,665.00
150-28 Unemployment Compensation	5,725.24	7,468.00	1,742.76
150-30 Office & Print Supplies	36,838.78	36,117.20	-721.58
150-31 Fuel, Oils, Lube, Veh. & Mach. Equip.	24,459.02	20,250.00	-4,209.02
150-32 Fuels - Heating	14,404.79	0	0
150-33 Chemicals	2,370.87	4,213.00	1,842.13
150-34 Uniforms	39,826.49	45,499.00	5,672.51
150-35 Other Supplies	24,098.97	69,143.00	45,044.03
150-36 Materials	71,184.65	64,338.70	-6,845.95
150-37 Tools & Equipment	1,308.59	4,950.00	3,641.41
150-37 Employee Clothing Allowance	30,450.00	30,900.00	450.00
150-39 Medical Supplies	454.89	3,356.00	2,901.11
150-43 Cont. Svs. - Repair	113,660.67	80,001.00	-33,659.67
150-44 Cont. Svs - Laundry Uniform Rental	465.72	53,625.00	53,159.28
150-47 Cont. Svs. - Other	42,910.84	135,955.00	93,044.16
150-48 Cont. Svs. - Inter Dept. Charges	8,326.67	13,730.00	5,403.33
150-50 Telephone, Telegraph & Postage	63,930.00	88,764.00	24,834.00
150-51 Travel	12,325.84	22,817.00	10,491.16
150-52 Rent - Motor Pool Vehicle & Radio	1,187,742.30	1,770,039.00	582,296.70
150-53 Rent	57,924.55	66,929.00	9,004.45
150-54 Freight	182,594.85	170,564.00	-12,030.85
150-55 Advertising	13,785.50	15,000.00	1,214.50
150-57 Utilities - City	15,640.92	21,900.00	6,259.08
150-58 Utilities - Other	78,070.81	100,820.00	22,749.19
150-60 Bad Dept.	66.00	0	0
150-62 Judgments & Damages	128.29	413.00	284.71

ACCOUNT ITEM	AMOUNT EXPENDED 1975-76 BUDGET	AMOUNT EXPENDED 1976-77 BUDGET	INCREASE OR DECREASE OVER PREVIOUS YEAR
150-63 Dues, Subscriptions & Memberships	662.23	700.00	37.77
150-64 Taxes & Licenses	214.50	994.00	779.50
150-70 Transfer to other funds	0	18,000.00	18,000.00
150-72 Discount Lost	0	3.64	3.64
150-73 Employee Auto Allowance	0	304.00	304.00
150-83 Interest on Debt	77,579.50	0	0
150-93 Trans. Equipment	0	38,097.45	38,097.45
150-94 Mach. & Equipment	58,629.70	65,226.07	6,596.37
150-95 Furniture & Fixtures	3,394.55	5,758.48	2,363.93
150-96 Film	4,614.51	550.00	-4,064.51
<b>TOTAL EXPENDED 150 ACCOUNTS</b>	<b>16,395,701.35</b>	<b>17,904,145.90</b>	<b>1,904,014.44</b>



# FISCAL DATA

## POLICE PERSONNEL DATA

SALARY SCALE AND DISTRIBUTION OF POLICE PERSONNEL AS OF 31 DECEMBER 1977

RANK	ANNUAL SALARY	CHIEF	COL. OF ADMIN.	COL. OF OPERS.	STAFF AND INSP.	TACTICAL	SERVICES	DETECTIVE	DISTRICT I	DISTRICT II	
CHIEF OF POLICE	UNC.	1									1
COLONEL	25,437 — 27,735		1	1							2
MAJOR	22,895 — 24,288				1	1	1	1	1	1	6
CAPTAIN	20,332 — 22,166	1			2	2	4	3	3		18
LIEUTENANT	17,878 — 19,448				2	2	2		6	6	18
SERGEANT	15,204 — 15,890	1			5	7	5	6	18	17	59
DETECTIVE	13,945 — 14,564	5			3	30		63			101
CORPORAL	13,945 — 14,564	1	1	1	7	4	4		19	19	56
SCHOOL RESOURCE OFFICER	13,945 — 14,564				15						15
AIRCRAFT ASSISTANT	15,890 — 16,597					1					1
AIRCRAFT PILOT	15,182 — 16,575					6					6
POLICE OFFICER	11,226 — 13,348					30	8		133	143	314

TOTAL		9	2	2	36	83	22	74	180	189	597
-------	--	---	---	---	----	----	----	----	-----	-----	-----

# POLICE PERSONNEL DATA

## SALARY SCALE AND DISTRIBUTION OF CIVILIAN PERSONNEL AS OF 31 DECEMBER 1977

CLASSIFICATION	ANNUAL SALARY		CHIEF	COL. ADMIN.	S&I	TACTICAL	SERVICES	COL. OPERS	DETECTIVE	DIST. I	DIST. II	
	MIN	MAX										
I.D. Tech. IV	12,334	15,600				3						3
I.D. Tech III	11,232	14,206				2						2
I.D. Tech. II	10,732	13,540				4						4
I.D. Tech I	9,360	11,772				2						2
I.D. Tech. Trainee	7,259	8,985				3						3
Adm. Asst. II	10,233	12,937	1			1						2
Secretary II	8,611	10,732		1			1					2
Secretary I	7,550	9,360			1	1	1	1	1	1		6
Adm. Aide	8,611	10,372				3						3
Clerk III	6,656	8,236			3							3
Pers. Asst. I	8,236	10,233			1							1
Data Term Operator	7,259	8,985				5						5
Clerk Steno II	6,947	8,611	1	1		3		1				6
Clerk Typist III	6,947	8,611				1	9	2				12
Clerk Typist II	6,406	7,883	1	1		1			1	1		5
Clerk Typist I	5,907	7,259				1						1
Clerk IV	7,259	8,985				3						3
Armorer	7,550	9,360				1						1
Storekeeper II	6,947	8,611				8						8
Comm. Tech.	8,236	10,233				15						15
Radio Disp. II	7,550	9,360				11						11
Central Swbd. Oper. II	6,947	8,611				1						1
Central Swbd. Oper. I	6,136	7,550				11						11
Bldg. Maint. Supv.	12,937	17,118				1						1
Climate Control Oper. I	10,732	13,540				5						5
Maint. Repairman I	7,550	9,360				1						1
Serv. Attend. II	6,406	7,883				1						1
Custodial Attend II	6,406	7,883				2						2
Aircraft Mechanic	11,772	14,872				1						1
Range Officer	6,947	8,611			1							1
Adm. Asst. I	9,360	11,772			1							1
Storekeeper IV	8,985	11,232				1						1
Storekeeper III	7,883	9,776				1						1
Police Legal Coord.	UNC.		1									1
<b>TOTAL</b>			<b>4</b>	<b>1</b>	<b>9</b>	<b>3</b>	<b>100</b>	<b>1</b>	<b>4</b>	<b>2</b>	<b>2</b>	<b>126</b>



# FISCAL DATA

## POLICE PERSONNEL DATA - C.E.T.A.

### SALARY SCALE AND DISTRIBUTION OF CIVILIAN PERSONNEL AS OF 31 DECEMBER 1977

CLASSIFICATION	ANNUAL SALARY		Chief	Col. Admin.	S & I	Tactical	Services	Col. Ops.	Detective	Dist. I	Dist. II	Total
	MIN.	MAX.										
Clerk Typist I	5,907	7,259		1		3		1				5
Clerk Typist II	6,406	7,883		3		6		1				10
Pol. Data Term Oper.	7,259	8,985				1						1
I.D. Tech. I	9,360	11,772				2						2
I.D. Tech. Trainee	7,259	8,985				7						7
Radio Disp. II	7,550	9,360				5						5
Radio Disp. I	6,136	7,550				6						6
Range Master	UNC			1								1
Research Analyst I	10,732	13,540				1						1
Research Analyst II	11,772	14,872		1								1
Pol. Info. Coord.	14,206	18,782	1									1
I.D. Tech. II	10,732	13,540										0
Storekeeper II	6,947	8,611				5						5
Com. Serv. Repr. I	UNC			10								10
Clerk III	6,656	8,236		3								3
Pol. Veh. Coord.	UNC			1								1
Coord. Youth Develop.	UNC			1								1
TOTAL			1	0	21	0	36	0	2	0	0	60

Crime Prevention (HUD) Program Coordinator	UNC	1										1
---	-----	---	--	--	--	--	--	--	--	--	--	---

TOTAL		1	0	0	0	0	0	0	0	0	0	1
-------	--	---	---	---	---	---	---	---	---	---	---	---







TAMPA POLICE DEPARTMENT • 1710 TAMPA ST. • TAMPA, FL. 33606