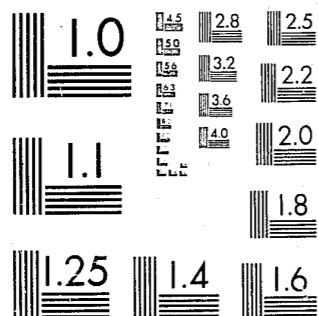


National Criminal Justice Reference Service



This microfiche was produced from documents received for inclusion in the NCJRS data base. Since NCJRS cannot exercise control over the physical condition of the documents submitted, the individual frame quality will vary. The resolution chart on this frame may be used to evaluate the document quality.



MICROCOPY RESOLUTION TEST CHART
NATIONAL BUREAU OF STANDARDS-1963-A

Microfilming procedures used to create this fiche comply with the standards set forth in 41CFR 101-11.504.

Points of view or opinions stated in this document are those of the author(s) and do not represent the official position or policies of the U. S. Department of Justice.

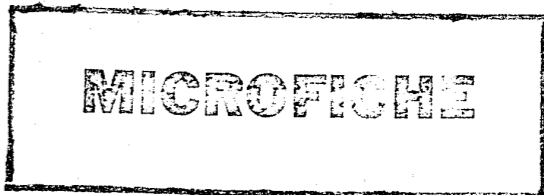
National Institute of Law Enforcement and Criminal Justice
Law Enforcement Assistance Administration
United States Department of Justice
Washington, D. C. 20531

DATE FILMED
2/12/80

55658



A Statistical Analysis Center Special Report



Felony Processing

Arkansas

Procedural Manual

DECEMBER, 1977

STATE OF ARKANSAS

Criminal Justice & Highway Safety Information Center



A Statistical Analysis Center Special Report

NCJRS

MAR 23 1978

ACQUISITIONS

FELONY PROCESSING
ARKANSAS
PROCEDURAL MANUAL

DECEMBER 1977

STATE OF ARKANSAS
CRIMINAL JUSTICE & HIGHWAY SAFETY
INFORMATION CENTER
BOX 7445
Little Rock, Arkansas

ACKNOWLEDGEMENT

The concept of Offender-Based Transaction Statistics was used in the collection of data for the report -- *Felony Processing* Arkansas published in December, 1977. The successful completion of the study was made possible by the cooperation and participation of many people in criminal justice agencies throughout the seventy-five counties in Arkansas. Contributions of state agency personnel from the Judicial Department, Department of Corrections, and the Department of Public Safety were also invaluable in compiling the data.

This procedural manual documents the tasks undertaken in collecting Offender-Based Transaction Statistics for use in this report.

PREFACE

This study, concerning the operation of the criminal justice system, and specifically felony-processing in each of the seventy-five Arkansas counties, was initiated by the Arkansas Criminal Justice & Highway Safety Information Center (CJ/HSIC). The Offender-Based Transaction Statistics (OBTS) concepts and techniques were used to portray the information obtained in the study.

The Offender-Based Transaction Statistics (OBTS) is defined as:

a statistical system that describes the aggregate experiences of an individual in the terms of the types and sequences of criminal justice processes they encounter. More simply put, the system is to collect key data elements on defendants as they flow through the criminal justice process and summarize this data to be used for intelligent decision-making in the criminal justice system.¹

Comprehensive in-depth planning must be undertaken to provide for effective criminal justice system administration within a state. Toward this goal, it is imperative to accurately measure and objectively analyze crime within the context of the criminal justice system. Using analyses which define the scope, nature, and trends of crime, it is possible to assess present programs, (re)evaluate capabilities, identify problem areas and provide realistic bases

for the allocation of funds and resources commensurate with established goals and standards.

The present system of data collection in the State of Arkansas consists of police counting arrests, courts counting cases, and corrections counting individuals. Consequently, present data do not show the proportion of offenders who are released at the various levels of processing. Similarly, we are unable on all occasions to account for the time required for the criminal justice system to carry out its functions. In addition, present criminal justice statistics do not describe the "clients" of the system; therefore, programs cannot be specifically designed for certain categories of offenders. Offender-Based Transaction Statistics offer a solution to this information gap. By monitoring the various paths of the offenders, the functioning of the criminal justice system can be described in terms of the aggregate experiences of those who have passed through it.

The succeeding sections provide background to the planning, procedures, and methodology used in conducting this OBTS study.

CONTENTS

Section Title	Page
INTRODUCTION.....	1
PROCEDURES AND METHODOLOGY.....	3
Planning.....	3
Data Collection.....	6
Processing of Data.....	9
Data Analysis and Presentation....	11
APPENDICES	
A: OBTS Data Collection Form.....	15
B: OBTS Data Coding Form.....	20
C: Edits.....	26
D: Display.....	34
E: Survey Data Elements.....	36
F: Coding Supplement.....	42
G: Selected Charts and Tables....	64
FOOTNOTES.....	69
BIBLIOGRAPHY.....	70

INTRODUCTION

An operational, Offender-Based Transaction Statistics system does not exist at present in the State of Arkansas. Such a system would allow analysis of the criminal justice system as a whole, rather than in its distinct parts, and the identification of problem areas. This study illustrated the benefits offered by such a system. Advantages and objectives of OBTS are depicted in the following excerpts from criminal justice literature:

"Offender-based transaction statistics are a relatively new phenomenon. Because they explain more about what agencies do and what happens to individuals, they open up new vistas for examining and administering the criminal justice system."²

"The very heart of the OBTS concept is that the information, from which statistics are derived, is laid out so as to appear to be one continuous record reflecting the offender's progress through the system. The objective, then, is to interconnect the three main components of the system, law enforcement, courts and corrections; and the regional information systems with the state information systems."³

"This new system, appropriately titled Offender-Based Transaction Statistics (OBTS), provides statistical information based on those offenders being processed. These data are 'transactional';

the individual offender is the unit of court as he proceeds through the various processing stages of the criminal justice system, and thus provides the means of linking various segments to one another."⁴

"The alternative system (OBTS) makes possible the historical analysis of the behavior of groups of and the actions of the criminal justice system toward them. The basic unit is the person, whether suspect or offender. There is no other unit that is common to all agencies."⁵

Thus, with the objective of obtaining a comprehensive data base that would include information on offender flow and processing time, an OBTS Study was undertaken that encompassed each of the seventy-five counties in Arkansas. At the time of completion, this data base offered the most precise up-to-date information concerning the criminal justice system in the state.

The following pages describe the steps required to complete the manual collection and processing of OBTS data. The procedures and methodology used in the Arkansas OBTS study are portrayed in the commentary section in this text.

PROCEDURES AND METHODOLOGY

The procedures and methodology involved in conducting an Offender-Based Transaction Statistics (OBTS) study consists of the following major steps:

1. Planning
2. Data Collection
3. Processing of Data
4. Data Analysis and Presentation

PLANNING

Initial planning is probably the most important phase of an OBTS study. The project should be carefully organized to achieve the predetermined objectives by:

- A. Determining the scope of the project by deciding on which offense data will be collected.
- B. Establishing the time frames for each stage of the project to insure completion of the study in a specified amount of time.
- C. Developing a budget which includes the assessment of costs for each stage of the project.
- D. Hiring additional personnel to handle the workload of the data collection, if necessary.
- E. Training personnel in OBTS data collection.
- F. Designing data collection and coding forms along national OBTS guidelines, to meet the specific needs of the state.
- G. Contacting local agencies to explain the purpose of the survey and obtain their assistance.
- H. Designing a report format.

COMMENTARY (ARKANSAS)

PLANNING

The first step in the planning procedure was the selection of the data base. Planners of the Arkansas OBTS study chose to collect data on every felony arrest in Arkansas in the calendar year 1974 including adult and juvenile offenders. The choice of the year, 1974, insured that the majority of court cases were concluded, rather than still in a pending status.

Approximately one year was allowed to complete this project which was estimated to include about 12,000 felony arrests. The actual total number of felony arrests on which data were collected was 10,462.

The cost of \$35,000 (approximately \$3.50 per offender record in the study) was divided into the following subdivisions:

1. Personnel - nine part-time employees
2. Travel
3. Contractual - software vendor
4. Other - keypunching, computer time and printing.

However, this cost figure does not include the salaries of CJ/HSIC staff who worked many hours on the OBTS project.

A special staff of nine field personnel was hired and geographically located throughout the state. The field personnel contacted CJ/HSIC project staff daily to report on their progress and to obtain new work assignments.

CJ/HSIC personnel conducted a training course describing OBTS and data collection formats. The collector established a data collection procedure in each county after he ascertained the county's method of operation. Due to different processing procedures, there is no standardized pattern of flow through-out all counties of Arkansas.

Separate collection and coding forms were developed. The data were transferred from the collection form onto the coding form. (In the future surveys, one form to serve both of these purposes seems feasible. In that way, a time-consuming step would be eliminated. The collectors would be equipped with a coding form and coding booklet with definitions of the codes to be used for various data elements.)

CJ/HSIC personnel contacted each local agency, first by a telephone call from the project sponsor and later by a letter from the agency administrator to explain the purpose of the study and to secure their approval and assistance before any collection efforts in their respective counties were begun.

The collected data will serve multiple purposes. Not only did the data assist the state planning agency in its FY78 Comprehensive Plan, but it also enabled the publication of a general report on felony processing in Arkansas to be described by charts, graphs and narrative. The general report included various data and time elements broken out with analyses. Smaller reports on specialized crime-related topics will be generated from the data base.

DATA COLLECTION

The data collection process in each county normally begins at the law enforcement level. One exception, however, is if the sheriff's office or police department keep records in an alphabetized filing system without a separate section by year. In an instance such as this, the collector would begin data collection at the circuit court and work backwards. The data collection process includes:

- A. Determining the agencies in each county which have the desired data;
- B. Ascertaining a starting point in each county from the agencies which have the desired data;
- C. Collecting data in the county;
- D. Observing the quality and type record system in operation in each county for future reference;
- E. Collecting additional data from state agencies;
- F. Accounting for daily progress.

COMMENTARY (ARKANSAS)

DATA COLLECTION

CJ/HSIC personnel tried to make a determination by calling the local agencies of the location of records in each county. This information gave the collectors a starting point. For example, in one small county, the police department transferred all felony arrests and corresponding records to the sheriff's office. Thus, the researcher did not need to check the police records. In another county, the jail log contained the county's arrest information.

In each county, a starting point was ascertained from the available records. Due to the differences of various counties, no standard method for data collection could be established.

The collector continued by tracking the offender, by name, to the necessary local agencies. The following example describes two possible paths of flow.

1. Law Enforcement (jail docket) - Prosecutor -
Municipal Court - Circuit Court
or
2. Law Enforcement (police and sheriff records) -
Prosecutor - Circuit Court.

In the first example, the cases are filed by the prosecutor to municipal court and bound over from municipal court to circuit court for action. In the second example, the cases were filed directly to circuit court by the prosecutor.

A vast difference was noted among counties in their record-keeping. Some counties kept extensive information on the offender while other counties might only retain the offender's name. The type of record system also varied within the county. (Arkansas counties function as separate entities with little or no coordination between. Even court terminology varied in geographical sections of the state. For example, "archived" was a frequently used disposition in the southern portion of the state denoting that the case is removed from the active docket. This term was not used in some other parts of the state.)

After the completion of the county data collection, other information was needed. This information included previous criminal conviction, appellate information and correctional data. Collectors gathered data from the appropriate Arkansas state agencies--State Police Identification Bureau; Supreme Court Records Sections and Department of Corrections Records Sections, including records at Cummins Prison and Probations and Paroles. The manual collection of information concerning previous convictions of offenders at the Identification Bureau of State Police took well over three months. (One person working every day.) The data retrieved was probably not worth this time expenditure. (The records at Probations and Paroles furnished not only correctional data, but also occupational and educational information. By collaborating with these state agencies, researchers retrieved missing data elements.)

PROCESSING OF DATA

Processing of data begins when the collection is completed. This step includes the following phases:

- A. Quality control of the collection forms to insure data accuracy;
- B. Coding of data by entering correct codes into proper blocks on the coding form;
- C. Keypunching of data;
- D. Developing a system of edits to catch coding errors;
- E. Development of software to process data;
- F. Checking computer runs to verify figures.

COMMENTARY (ARKANSAS)

PROCESSING OF DATA

The data collection forms were quality controlled to check for errors and the correct codes were listed above the appropriate data.

The data was transferred to coding sheets and then automated utilizing a key to tape system.

CJ/HSIC personnel developed a system of edits to check for errors in the data. In this manner, the errors were listed on a printout and corrected. The program was perfected so that each of the seventy-five counties could be automated with the elimination of manual tabulation.

CJ/HSIC programmers designed, programmed and implemented a sequential process batch computer system with records on a master tape. The computer program was devised to enable a selected data request to be entered by cards and the appropriate output retrieved. Reports were generated from the master tape with report generator card decks.

Samples of compiled data on the computer output were checked to insure accuracy of the program and the input. Certain checks were established. For example, if there were 40 plea trials under the plea type, there must be 40 pleas of guilty, initially or finally. (Pleas of nolo contendere are counted as guilty pleas.)

DATA ANALYSIS AND PRESENTATION

After data is processed with errors edited, the analysis process begins. The data analysis procedure and presentation includes:

- A. Selecting methods of data analysis to use.
- B. Choosing data relationships to explore.
- C. Developing charts and tables to depict the data.
- D. Presenting the data in a general report.
- E. Presenting the data in several smaller reports.

COMMENTARY (ARKANSAS)

DATA ANALYSIS AND PRESENTATION

Once the data processing stage is completed, a very interesting phase of the survey begins. Methods of analyzing the data must be selected. For use in the general report, frequency distributions, flow charts, and tables were employed to depict the information. Various percentages and ratios were incorporated in conjunction with the charts and tables to display the statistical data.

The large data base offered unlimited possibilities for exploration. The general report depicts various data grouping: educational levels, personal characteristics, etc. The data base affords many other avenues of possible analyses for the investigation of statistical relationships. For example, another report might deal with the number of persons convicted of a felony having a sixth grade education or less, compared with the number of convicted felons having higher than a sixth grade education.

In the general report, tables and charts were developed to give a clear picture of the statistical information. A short narrative accompanies each table and chart providing further explanation.

The general report attempted to furnish an overview of the data collected in the OBTS study, presenting tables and charts that depicted events at the various levels of the criminal justice system.

Future reports are to be generated from the data base. Examples of the possible topics for the reports include: rape, race of the offenders convicted for murder, and females in the criminal justice system. Statistical requests will be answered from the information contained in the data base. This information on the 10,462 felony arrests will provide invaluable data to persons involved in the criminal justice system throughout the state.

APPENDICES

Appendix A: OBTS DATA COLLECTION FORM

The following form was used by collectors to record the data. The name of each person arrested for a felony in the calendar year 1974 was placed on a separate form and the offender tracked through the system with data being recorded on the collection form at each level of the criminal justice system.

COLLECTION FORM

IDENTIFICATION		Name: (Last) (First) (Middle)			Alias:	
DOB:	Age:	Race: <input type="checkbox"/> W <input type="checkbox"/> B <input type="checkbox"/> O	Sex: <input type="checkbox"/> M <input type="checkbox"/> F	Education Level:	Occupation:	
LAW ENFORCEMENT		Case No.:	Charge:	Arresting Agency:		
Date of Arrest:	Disposition:	Date of Disposition:	County:	Remarks:		
PROSECUTOR/GRAND JURY		Case No.:	Action Taken:	Date of Action:		
Delay:		Remarks:				
PRE-TRIAL INCARCERATION		Date Confined:	Date Released:	Amount of Bail (final):	Fugitive: <input type="checkbox"/> Yes <input type="checkbox"/> No	
LOWER COURT		Docket No.:	Court Identification:	Initial Plea:	Final Plea:	COUNSEL TYPE
Initial Charge:	Final Charge:	Disposition:		SENTENCE DATA		
Date Filed:	Date-Initial Appear.:	Date-Disposition:	FINE	SUSP/PROB	CONF.	<input type="checkbox"/> Private <input type="checkbox"/> Appointed <input type="checkbox"/> Public Def. <input type="checkbox"/> Self <input type="checkbox"/> Other
Remarks:						
CIRCUIT COURT		Docket No.:	Court Identification:	Initial Plea:	Final Plea:	COUNSEL TYPE
Date Filed:	Jud. Dist.:	Date-Initial Appear.:	Initial Charge:	Final Charge:	SENTENCE DATA	
Trial Type: <input type="checkbox"/> Jury <input type="checkbox"/> Bench <input type="checkbox"/> Plea	Date-Disposition:	Disposition:	Date-Sentencing	FINE	SUSP/PROB	CONF.
Remarks:						
SUPREME COURT		Appealed: <input type="checkbox"/> Yes <input type="checkbox"/> No	Docket No.:	Date Appealed:	Date-Disposition:	Disposition: <input type="checkbox"/> Modified <input type="checkbox"/> Affirmed <input type="checkbox"/> Reversed
CORRECTIONS		CSN:	Date Admitted:	Paroled: <input type="checkbox"/> Yes <input type="checkbox"/> No	Date Released:	Date Parole Terminates:
Institution:		Remarks:				
PREVIOUS CRIMINAL HISTORY		Initial Conviction: <input type="checkbox"/> Felony <input type="checkbox"/> Misd.	Date of Init. Conv.:	Age at Initial Conviction:	Charge-Initial Conviction:	
No. Felony Conv.:	No. Misd. Conv.:	Remarks:				
LAW ENFORCEMENT	LOWER COURT	PROSECUTOR	CIRCUIT COURT	CORRECTIONS	SUPREME COURT	
Ultimate Disposition:			Name: (Last)			

SUPREME COURT

1. Appealed (yes, no)
2. Docket Number
3. Date Appealed
4. Date – Disposition
5. Disposition (affirmed, modified, reversed)

The data elements listed above were found solely in the Supreme Court records. The time lapse between date appealed and disposition was ascertained from this information, as well as the number of cases appealed.

CORRECTIONS

1. Central Systems Number (CSN)
2. Date, Admitted
3. Paroled (yes, no)
4. Date Released
5. Date Parole Terminates
6. Institution

This information was retrieved from various record sections within the Department of Corrections including Records Section – Cummins Prison, Records Section – Probation and Parole, and Department of Corrections automated reports. An Arkansas Department of Corrections (ADC) number was also collected when available.

PREVIOUS CRIMINAL HISTORY

1. Initial Conviction (felony, misdemeanor)
2. Date of Initial Conviction
3. Age at Initial Conviction
4. Charge – Initial Conviction
5. Number of Felony Convictions
6. Number of Misdemeanor Convictions

The previous criminal history data elements were found primarily in the Identification Bureau's files. This information was occasionally located in the records at the county law enforcement level.

COLLECTION FORM

IDENTIFICATION 0001		Name: (Last) (First) (Middle)		Alias:	
DOB: 2-7-52		Age: 22		Race: <input checked="" type="checkbox"/> W <input type="checkbox"/> B <input type="checkbox"/> O	
		Sex: <input checked="" type="checkbox"/> M <input type="checkbox"/> F		Education Level: 9	
				Occupation: General Labor	
LAW ENFORCEMENT		Case No.: 041		Charge: Burglary	
				Arresting Agency: Pulaski County Sheriff	
Date of Arrest: 3-10-74		Disposition: Bound over to Circuit Court		Date of Disposition: 3-11-74	
		County: Pulaski		Remarks: Filed Direct	
PROSECUTOR/GRAND JURY		Case No.:		Action Taken:	
Delay:		Remarks:			
PRE-TRIAL INCARCERATION		Date Confined: 3-10-74		Date Released: 3-12-74	
				Amount of Bail (final): Released \$5,000.00 on bond	
				Fugitive: <input type="checkbox"/> Yes <input checked="" type="checkbox"/> No	
LOWER COURT		Docket No.:		Court Identification:	
Initial Charge:		Final Charge:		Disposition:	
				SENTENCE DATA	
Date Filed:		Date-Initial Appear.:		Date-Disposition:	
Remarks:					
CIRCUIT COURT		Docket No.: 74-3205		Court Identification: Pulaski Co. Circuit Ct.	
Date Filed: 3-11-74		Jud. Dist.: 6		Date-Initial Appear.: 3-18-74	
		Initial Charge: Burglary		Final Charge: Burglary	
Trial Type: <input type="checkbox"/> Jury <input type="checkbox"/> Bench <input checked="" type="checkbox"/> Plea		Date-Disposition: 4-2-74		Disposition: Guilty of a Felony	
				Date-Sentencing: 4-2-74	
				SENTENCE DATA	
				FINE 0 SUSP/PROB 0 CONF. 5 yrs.	
Remarks:					
SUPREME COURT		Appealed: <input type="checkbox"/> Yes <input checked="" type="checkbox"/> No		Docket No.:	
				Date Appealed:	
				Date-Disposition:	
				Disposition: <input type="checkbox"/> Modified <input type="checkbox"/> Affirmed <input type="checkbox"/> Reversed	
CORRECTIONS		CSN: 0496870		Date Admitted: 4-4-74	
				Paroled: <input checked="" type="checkbox"/> Yes <input type="checkbox"/> No	
				Date Released: 1-6-76	
				Date Parole Terminates: 2-4-80	
Institution: Cummins Prison		Remarks:			
PREVIOUS CRIMINAL HISTORY		Initial Conviction: <input type="checkbox"/> Felony <input checked="" type="checkbox"/> Misd.		Date of Init. Conv.: 5-6-70	
				Age at Initial Conviction: 18	
				Charge-Initial Conviction: D.W.I.	
No. Felony Conv.: 00		No. Misd. Conv.: 03		Remarks:	
LAW ENFORCEMENT		LOWER COURT		PROSECUTOR	
Ultimate Disposition: Guilty of a felony/burglary		Name: (Last) Smith, J. J.			

Example of Completed Collection Form

The collection form on the following page illustrates how a person might be processed through the criminal justice system. The offender, John J. Smith, was arrested for burglary (as noted, Smith was a white male with a 9th grade education and occupation listed as general labor). The burglary charge was filed directly to circuit court. The arrestee was confined for two days before posting a \$5,000.00 bail bond. At the circuit court level, John J. Smith plead not guilty initially, but changed his plea to one of guilty. The offender was convicted of a felony and sent to prison for five years. He did not appeal his conviction to the Supreme Court. He was paroled on January 6, 1976. Before his conviction he had three misdemeanor convictions, the first for driving while intoxicated at the age of eighteen.

Appendix B: OBTS DATA CODING FORM

Information on data collection form was transferred to the coding form by coders. In future surveys, it seems feasible to use coding forms in the initial collection effort and eliminate the collection form entirely. This method will require a more detailed briefing of various codes and collection procedures.

IDENTIFICATION / ARREST
P.T. CONFINEMENT / PREVIOUS CONVICTION

IDENTIFIER 1 2 3 4 C O -				CENTRAL SYSTEM NUMBER (CSN) 5 6 7 8 9 10 11							DOB 12 13 14 15 16 17 MO. DAY YR.					AGE 18 19		RACE 20	SEX 21
EDUCATION 22 23		OCCUPATION 24 25 26			CHARGE 27 28 29 A R O			ARRESTING AGENCY 30 31 32 33 34 35					DATE OF ARREST 36 37 38 39 40 41 MO. DAY YR.				DISPOSITION 42		
DATE OF DISPOSITION 43 44 45 46 47 48 MO. DAY YR.					DATE CONFINED 49 50 51 52 53 54 MO. DAY YR.					DATE RELEASED 55 56 57 58 59 60 MO. DAY YR.				AMOUNT OF BAIL 61 62 63 64 65 66			BOND/RELEASE 67		
TOTAL NUMBER OF PREV. FELONIES 68 69			TOTAL NUMBER OF PREV. MISDEMEANORS 70 71				AGE AT INITIAL CONV. 72 73		CHARGE AT INITIAL CONV. 74 75 76 77			STATUS AT ARREST 78		SEQUENCE 79 80					

LOWER / CIRCUIT COURT DATA

IDENTIFIER 1 2 3 4 C O -				LOWER COURT IDENTIFIER 5 6 7 8 C R T				INITIAL PLEA 9	FINAL PLEA 10	INITIAL CHARGE 11 12 13			FINAL CHARGE 14 15 16			CHARGE CHANGED 17
DISPOSITION 18 19		DATE FILED 20 21 22 23 24 25 MO. DAY YR.			DATE INITIAL APPEARANCE 26 27 28 28 30 31 MO. DAY YR.				DATE-DISPOSITION 32 33 34 35 36 37 MO. DAY YR.				ATTY. DATA 38			
CIRCUIT COURT IDENTIFIER 39 40 41 42 C R T				INITIAL PLEA 43	FINAL PLEA 44	INITIAL CHARGE 45 46 47			FINAL CHARGE 48 49 50		CHARGE CHANGE 51	DISPOSITION 52 53		TYPE TRIAL 54		
DATE FILED 55 56 57 58 59 60 MO. DAY YR.				DATE INITIAL APPEARANCE 61 62 63 64 65 66 MO. DAY YR.				DATE-DISPOSITION 67 68 69 70 71 72 MO. DAY YR.				ATTY. DATA 73	DELAY 74	SEQUENCE 79 80 2		

SUPREME COURT / SENTENCE / CORRECTIONS

IDENTIFIER				APPEAL	DATE APPEALED						DATE-DISPOSITION						DISPOSITION				
C	O	-	1	2	3	4	5	6	7	8	9	9	11	12	13	14	15	16	17	18	
COURT TYPE		TOTAL SENTENCE				TOTAL TIME SUSP / PROB			TOTAL FINE						CORRECTIONS IDENTIFIER						CYCLE NUMBER
19	20	21	22	23	24	25	26	27	28	29	30	31	32	33	34	35	36	37			
																		1			
INITIAL STATUS	DATE ADMITTED					DATE TERMINATED					REASON FOR TERMINATION	SEQUENCE									
38	39	40	41	42	43	44	45	46	47	48	49	50	51	79	80						
														3							
	MO.	DAY	YR.	MO.	DAY	YR.															

SUBSEQUENT CORRECTIONS

IDENTIFIER				DATE ADMITTED				DATE TERMINATED						SEQUENCE						
C	O	-	1	2	3	4	7	8	9	10	11	12	13	14	15	16	17	18	79	80
CYCLE NUMBER		SUBSEQUENT STATUS		DATE ADMITTED				DATE TERMINATED						REASON FOR TERMINATION						
5	6	7	8	9	10	11	12	13	14	15	16	17	18	19						
2																				
20	21	22	23	24	25	26	27	28	29	30	31	32	33	34						
3																				
35	36	37	38	39	40	41	42	43	44	45	46	47	48	49						
4																				
50	51	52	53	54	55	56	57	58	59	60	61	62	63	64						
5																				
		MO.	DAY	YR.	MO.	DAY	YR.													

Example of Completed Coding Form

The coding form on the following page depicts how the collected data (from the collection form in Appendix A) is transferred to a coding form. Since the offender goes to prison and is later placed on parole his information occupies four cards. If the offender had been released at the law enforcement subsection, then only one card would be needed to portray the data. If the arrestee was bound over to circuit court, but dismissed at that level, only two cards would be used to depict the information.

IDENTIFICATION / ARREST
P.T. CONFINEMENT / PREVIOUS CONVICTION

IDENTIFIER 1 2 3 4 C O - 0 0 0 1				CENTRAL SYSTEM NUMBER (CSN) 5 6 7 8 9 10 11 0 4 9 6 8 7 0							DOB 12 13 14 15 16 17 0 2 0 7 5 2 MO. DAY YR.					AGE 18 19 2 2		RACE 20 W	SEX 21 M
EDUCATION 22 23 0 9		OCCUPATION 24 25 26 9 9 0			CHARGE 27 28 29 0 8 0			ARRESTING AGENCY 30 31 32 33 34 35 A R O 6 0 0 0 0 0					DATE OF ARREST 36 37 38 39 40 41 0 3 1 0 7 4 MO. DAY YR.				DISPOSITION 42 8		
DATE OF DISPOSITION 43 44 45 46 47 48 0 3 1 1 7 4 MO. DAY YR.					DATE CONFINED 49 50 51 52 53 54 0 3 1 0 7 4 MO. DAY YR.				DATE RELEASED 55 56 57 58 59 60 0 3 1 2 7 4 MO. DAY YR.				AMOUNT OF BAIL 61 62 63 64 65 66 0 0 5 0 0 0			BOND/RELEASE 67 D			
TOTAL NUMBER OF PREV. FELONIES 68 69 0 0				TOTAL NUMBER OF PREV. MISDEMEANORS 70 71 0 3				AGE AT INITIAL CONV. 72 73 1 8		CHARGE AT INITIAL CONV. 74 75 76 77 2 9 1 M				STATUS AT ARREST 78	SEQUENCE 79 80 1 4				

LOWER / CIRCUIT COURT DATA

IDENTIFIER 1 2 3 4 C O - 0 0 0 1				LOWER COURT IDENTIFIER 5 6 7 8 C R T				INITIAL PLEA 9	FINAL PLEA 10	INITIAL CHARGE 11 12 13			FINAL CHARGE 14 15 16			CHARGE CHANGED 17
DISPOSITION 18 19		DATE FILED 20 21 22 23 24 25 MO. DAY YR.			DATE INITIAL APPEARANCE 26 27 28 28 30 31 MO. DAY YR.				DATE-DISPOSITION 32 33 34 35 36 37 MO. DAY YR.				ATTY. DATA 38			
CIRCUIT COURT IDENTIFIER 39 40 41 42 C R T 6 0 5 1				INITIAL PLEA 43 2	FINAL PLEA 44 1	INITIAL CHARGE 45 46 47 0 8 0			FINAL CHARGE 48 49 50 0 8 0		CHARGE CHANGE 51 N	DISPOSITION 52 53 2 6		TYPE TRIAL 54 3		
DATE FILED 55 56 57 58 59 60 0 3 1 1 7 4 MO. DAY YR.				DATE INITIAL APPEARANCE 61 62 63 64 65 66 0 3 1 8 7 4 MO. DAY YR.				DATE-DISPOSITION 67 68 69 70 71 72 0 4 0 2 7 4 MO. DAY YR.				ATTY. DATA 73 2	DELAY 74	SEQUENCE 79 80 2 4		

SUPREME COURT / SENTENCE / CORRECTIONS

IDENTIFIER 1 2 3 4 C O - 0 0 0 1				APPEAL 5 N	DATE APPEALED 6 7 8 9 9 11 MO. DAY YR.					DATE-DISPOSITION 12 13 14 15 16 17 MO. DAY YR.					DISPOSITION 18		
COURT TYPE 19 C	TOTAL SENTENCE 20 21 22 0 5 Y			TOTAL TIME SUSP / PROB 23 24 25 0 0 Y			TOTAL FINE 26 27 28 29 30 0 0 0 0 0					CORRECTIONS IDENTIFIER 31 32 33 34 35 36					CYCLE NUMBER 37 1
INITIAL STATUS 38 1	DATE ADMITTED 39 40 41 42 43 44 0 4 0 4 7 4 MO. DAY YR.					DATE TERMINATED 45 46 47 48 49 50 0 1 0 6 7 6 MO. DAY YR.					REASON FOR TERMINATION 51 3	SEQUENCE 79 80 3 4					

SUBSEQUENT CORRECTIONS

IDENTIFIER 1 2 3 4 C O - 0 0 0 1				CYCLE NUMBER 5 2		SUBSEQUENT STATUS 6 7		DATE ADMITTED 7 8 9 10 11 12 0 1 0 6 7 6 MO. DAY YR.					DATE TERMINATED 13 14 15 16 17 18 0 0 0 0 0 0 MO. DAY YR.					REASON FOR TERMINATION 19
20 3		21		22 23 24 25 26 27					28 29 30 31 32 33					34				
35 4		36		37 38 39 40 41 42					43 44 45 46 47 48					49				
50 5		51		52 53 54 55 56 57 MO. DAY YR.					58 59 60 61 62 63 MO. DAY YR.					64				
													SEQUENCE 79 80 4 4					

Appendix C: EDITS

Edits were designed to eliminate errors in the program by isolating the incorrect data so the analysts could correct and reenter the corrected data. It was obvious immediately that some particular edits would be needed. For example, the coding form was designed so that all shaded blocks would contain an alphabetical entry. Thus one edit to be the program is: "All shaded blocks must contain an alphabetical entry. If the shaded block does not contain an alphabetical entry, it is an error." Other edits were only ascertained after checking output and finding errors. When an error was found, a new edit would be designed to elide that particular error.

The edits are listed on the following pages.

EDITS

CARD 1

1. Only certain offense codes can be scored on card 1, blocks 27-29, since this survey is only concerned with felony arrests. The codes that are acceptable to these blocks are:

010, 011, 012, 013, 014, 015, 020, 030, 031, 032, 033,
034, 040, 041, 042, 050, 051, 052, 053, 062, 063, 064,
069, 070, 080, 081, 082, 083, 084, 090, 092, 094, 096,
100, 110, 111, 120, 122, 124, 125, 130, 131, 132, 133,
140, 141, 142, 150, 151, 160, 162, 164, 168, 170, 171,
180, 183, 184, 185, 186, 187, 188, 190, 192, 193, 194,
196, 197, 198, 203, 204, 205, 206, 207, 208, 210, 217,
220, 221, 222, 232, 241, 242, 243, 246, 250, 253, 271,
272, 274, 300, 302, 303, 304, 305, 310, 320, 321, 322,
325, 326, 331, 334, 340, 342, 344, 346, 347, 355, 360,
361, 362, 363, 364, 365, 370, 380, 403, 412, 417, 420,
422, 430, 431, 432, 433, 436, 442, 443, 456, 471, 480.

2. The designators 6, 7, and 8 should never be used as the disposition on card 1, block 42, if only one card is used for the offender's information.
3. If card 1, blocks 68-69 and 70-71 contain zeros, then card 1, blocks 72-76 must contain zeros; with card 1, block 77 containing an N. If card 2, blocks 68-69 or 70-71 contain a numeric entry greater than zero; with a M or F placed in card 1, block 77.

4. Card 2, blocks 12-17 (date of birth) must correspond mathematically with card 1, blocks 18-19 (age) and card 1, blocks 36-41 (date of arrest).
5. Card 1, block 42 (disposition) must contain a 6, 7, or 8 for a second card to be used. If any other numeric entry is placed on block 42, only one card can be used.
6. The identifier blocks (card 1, blocks 14) will always contain four digits beginning with 0001 and running in numerical sequence, without deletion, to the last identifier for that county.

CARD 2

7. Certain dispositions can never be used as the final disposition or fallout point. The dispositions which cannot be used are 6, 7, 8, 11, and 15. If anyone of the dispositions are depicted as the final disposition on an offender, they should be identified by the edit program as incorrect.
8. If the offender is initially processed to circuit court, then the date filed (card 2, blocks 55-60) must be identical to the law enforcement date of disposition (card 1, blocks 43-48).
9. If card 2, blocks 52-53 contains 26 or 28, card 2, block 54 must contain a 1, 2, or 3.

10. The numbers 14 and 15 should never be used as the disposition on card 2, block 18-19 if that is the only disposition on card 2.
11. If both card 2, blocks 5-8 and card 2, blocks 39-42 contain an entry, then card 2, blocks 18-19 must contain either 14 or 15.
12. All dates beginning with date of arrest, card 1, blocks 36-41, and proceeding through date of disposition, card 1, blocks 43-48, lower court filing date, card 2, blocks 20-25, date of lower court initial appearance, card 2, blocks 26-31, lower court date of disposition, card 2, blocks 32-37, circuit court filing date, card 2, blocks 50-60, circuit court initial appearance, card 2, blocks 61-66 and circuit court date of disposition, card 2, blocks 67-72 must be in chronological sequence if an entry is made.
13. When an offender is initially processed to lower court, the date filed, card 2, blocks 20-25, the date must be identical to the law enforcement date of disposition card 1, blocks 43-48. If the offender is then processed to circuit court, the date filed, card 2, blocks 55-60 must be identical to the lower court date of disposition, card 2, blocks 32-37.
14. If card 2, block 54 contains a 3, then card 2, blocks 43 and 44 must contain a 1 or 3 in either block, but not in both.

15. If card 2, blocks 43 and 44 contain either a 1 or 3, then card 2, block 54 (type trial) must contain a 3.

16. If the "charge at arrest" is changed before the final disposition, it must be reflected in either card 2, block 17 or card 2, block 51. If the figure on card 1, block 27-29 or card 2, block 11-13 is not identical to the figure on card 2, block 14-16, an A must be placed on card 2, block 17. If the figure in all three sets of blocks (card 1, blocks 27-29; card 2, blocks 11-13; card 2, blocks 14-16) is identical N is placed on card 2, block 17. If the figure on card 2, block 14-16 or card 2, blocks 45-47 is not identical to the figure on card 2, blocks 48-50, A must be placed in card 2, block 51. If the figure in all three sets of blocks (card 2, 14-16; card 2, 45-47; card 2, 48-50) is identical N is placed on card 2, block 51.

CARD 3

17. The court type (card 3, block 19) must correspond with the appropriate court through which the offender was sentenced. If the lower court identifier (card 2, blocks 5-8) is used and if card 2, blocks 18-19 contain a 12, then an L must be placed in card 3, block 19. If the circuit court identifier is used (card 2, blocks 39-42) and if card 2, blocks 52-53 contain a 26 or 28; then a C must be placed in card 3, block 19.

18. If lower court disposition (card 2, block 18-19) is a 12; initial status (card 3, block 38) can be a 2-7; but not a 1.

19. The following conditions must be met before data can be counted as a part of "from circuit court, initial status from crt:"

1. A 26 or 28 must be placed in card 2, blocks 52-53.
2. A third card must be used.

20. If lower court disposition of 12 (card 2, blocks 18-19) initial status, card 3, block 38 can not be a 1.

21. If card 2, blocks 18-19 contain an entry of 12, this entry must be accounted for in the initial status section, card 3, block 38, unless the following conditions are present.

22. If card 2, blocks 52-53 contain an entry of 26 or 28, this section must be accounted for in the initial status section, card 3, block 38. If there is no entry on card 3, block 38, but card 3, blocks 26-30 contain a number greater than zero and blocks 20-21 and 23-24 contain zeros, a fine will be counted and listed under fine/rest/costs on the printout. If card 3, block 19 contains an entry and blocks 20-21, 23-24, and 26-30 are blank, this will be counted as unknown and listed on the printout under the Unk category.

23. Card 2, blocks 18-19 (disposition) must contain a 12 if a third card is used and if card 2, blocks 39-42 is blank. If any other numeric entry is placed in blocks 18-19, a third card cannot be used.

24. If card 3, block 38 is blank, and card 3, blocks 26-30 contain a number greater than zero and blocks 20-21 and 23-24 contain zeros, this will be counted as a fine and placed under fine/rest/costs on the print-out.
25. If card 3, block 38 is blank and card 3, block 19 contains an entry of L with blocks 20-21, 23-24, and 26-30 being blank, this will be counted as unknown and listed on the printout under the Unk category.
26. When appropriate, an unknown category should be displayed beside the fine/rest/costs category from lower and circuit court respectively. A row of X's should separate this category from the fine/rest/costs category. If card 3, block 19 contains a C or an L and blocks 20-30 are blank; then this numerical listing would be counted as unknown and placed in the appropriate category. If an L is scored in card 3, block 19 and the above conditions are present, the unknown is listed beside the lower court section. If a C is scored in card 3, block 19 and the above conditions are present, the unknown is listed by the circuit court section.
27. The dates relating to Supreme Court data, (date appealed, card 3, blocks 6-11, and date disposition, card 3, blocks 12-17) must follow in a sequential fashion. The date of disposition must be a later date than the data appealed.
28. The fine/restitution/costs category should be displayed beside the status from lower court and circuit court respectively. A row of X's should separate this

category from the status. If card 3, block 19 contains a C or L and card 3, blocks 20-21 and 23-24 contain zeros; and card 3, blocks 26-30 have a numeric listing between 00001 and 99999; then the numeric listing will be counted as a fine and included in the total fine to be displayed in the fine/restitution/costs category. If an L is printed on card 3, block 19 and the above conditions are present, the fine is listed beside the lower court section. If a C is present on card 3, block 19 and the above conditions are present, the fine is listed beside the circuit court section.

CARD 4

29. Two consecutive statuses of the same numeric figure are unacceptable. For example "an initial status of 1, followed by a subsequent status of 1 is unacceptable." (Card 3 and Card 4.)

ALL CARDS

30. All shaded blocks must contain an alphabetic entry.
31. All unshaded blocks must contain a numeric entry.

Appendix D: DISPLAY

The display, like the edit, is a method of identifying errors in automated data. The edit eliminates any data that does not meet certain criteria from the data set and depicts this data as an error. The display, however, lists data, which is questionable but not necessarily in error. The researcher can check and correct if errors exist. The display does not remove data from the data set, merely lists data for examination by the researcher.

The display is listed on the following page.

DISPLAY

Display any form that contains the following criteria:

If card 2, block 52-53 contains a 26 or 28
and card 2, block 54 does not contain a 1,
2, or 3.

Appendix E: SURVEY DATA ELEMENTS

At each level of the criminal justice system, the researcher looked for certain data elements. These survey data elements are depicted in the following pages. Knowing where to find certain data aided in gathering a more complete record of information.

SURVEY DATA ELEMENTS

IDENTIFICATION

1. Name
2. Alias
3. Date of Birth
4. Age
5. Race
6. Sex
7. Educational Level
8. Occupation
9. Status at Arrest

The offender's name functioned as the major tracking element. Generally, this data element was obtained from police, sheriff, or jail records. However, if the law enforcement agencies did not keep yearly records for 1974, the circuit court docket book served as the source of this element.

Identification elements 2-9 were collected from police, sheriff, or jail records; Identification Bureau, or Department of Corrections. These elements supplied additional information for the tracking of the offender and will serve as a source of analysis for mini-reports.

LAW ENFORCEMENT

1. Case Number
2. Charge
3. Arresting Agency
4. Date of Arrest
5. Disposition
6. Date of Disposition
7. County

The data elements listed above were collected from the police, sheriff, and jail records. The quality and location of the records varied by county.

PROSECUTOR/GRAND JURY

1. Case Number
2. Action Taken
3. Date of Action
4. Delay

The prosecutor's records were not always a distinct segment of data. In some counties, all the required information was contained in the circuit court docket with the prosecutor retaining few additional records. In other counties, such as Pulaski, the prosecutor's records were a necessary part of the collection procedure filling an information void by recording certain cases that are nolle prosequi and are not noted in the court docket books.

PRE-TRIAL INCARCERATION

1. Date Confined
2. Date Released
3. Amount of Bail (final)
4. Fugitive (yes, no)

The data elements listed above were normally found in the jail docket. Occasionally the amount of bail (No. 3) and fugitive (No. 4) would be found in the court docket or in sheriff or police records.

These elements allow the analysis of a number of issues including time in confinement awaiting trial, amounts of bail in relation to the type of crime (seriousness, violent, etc.), and number of escapes from jail. The pre-trial incarceration data can be used to calculate the facilities necessary for the jail populations.

LOWER COURT

1. Docket Number
2. Court Identification
3. Initial Plea
4. Final Plea
5. Counsel Type
6. Initial Charge
7. Final Charge
8. Disposition
9. Sentence Data--Fine, Suspension/Probation, Confinement
10. Date Filed
11. Date--Initial Appearance
12. Date--Disposition

All data elements listed in the "lower court" segment were found in the lower court records.

CIRCUIT COURT

1. Docket Number
2. Court Identification
3. Initial Plea
4. Final Plea
5. Counsel Type

6. Date Filed
7. Judicial District
8. Date Initial Appearance
9. Initial Charge
10. Final Charge
11. Sentence Date--Fine, Suspension/Probation, Confinement
12. Trial Type
13. Date--Disposition
14. Disposition
15. Date--Sentencing

All data elements listed above were found in the Circuit Court docket book and/or accompanying records or files.

SUPREME COURT

1. Appealed (yes, no)
2. Docket Number
3. Date Appealed
4. Date--Disposition
5. Disposition (affirmed, modified, reversed)

The data elements listed above were found solely in the Supreme Court records. The time lapse between date appealed and disposition was ascertained from this information, as well as the number of cases appealed.

CORRECTIONS

1. Central Systems Number (CSN)
2. Date, Admitted
3. Paroled (yes, no)
4. Date Released
5. Date Parole Terminates
6. Institution

This information was retrieved from various record sections within the Department of Corrections including Records Section--Cummins Prison; Records Section--Probation and Parole; Department of Corrections Automated Inmate Record System. An Arkansas Department of Corrections (ADC) number was also collected when available.

PREVIOUS CRIMINAL HISTORY

1. Initial Conviction (felony, misdemeanor)
2. Date of Initial Conviction
3. Age at Initial Conviction
4. Charge--Initial Conviction
5. Number of Felony Convictions
6. Number of Misdemeanor Convictions

The previous criminal history data elements were found primarily in the Identification Bureau's files. This information was occasionally located in the records at the county law enforcement level.

Appendix F: CODING SUPPLEMENT

The supplement portrays the codes used in the OBTS Survey. The codes were designed to meet certain specific needs in Arkansas, but could be applied to almost any OBTS study. An example of the coding supplement usage follows: The offender is a white male, so a W is placed on card 1, block 20, and an M is placed on card 1, block 21. (Refer to Appendix B: OBTS Data Coding Form.)

The coding supplement was compiled by CJ/HSIC personnel. The offense charges were obtained from the Arkansas Statutes, before the new code was passed into law. (The new Arkansas Criminal Code became effective on January 1, 1976.) The earlier statutes were used in the coding supplement, since only 1974 felony arrests were collected. Thus, the earlier statutes were applicable with the criminal charges available in 1974.

CODING SUPPLEMENT

Race

W = White
B = Black
O - Other

Sex

F = Female
M = Male

Educational Level

01 1st year, Grammar School	12 High School Graduate
02 2nd year,	13 1st year, College
03 3rd year,	14 2nd year, College
04 4th year,	15 3rd year, College
05 5th year,	16 College Degree
06 6th year,	17 MA Degree
07 7th year,	18 MA Plus 1 year
08 8th year,	19 Advanced Prof. Degree
09 1st year, High School	(Veterinarian, Dentist,
10 2nd year, High School	Doctor, Lawyer)
11 3rd year, High School	20 Ph.D.

Disposition

Law Enforcement

1. Transferred to other agency (mental institution, medical clinic or hospital, etc.)
2. Transferred to other law enforcement agency (F.B.I., military police, etc.) (can include a direct return to Department of Corrections)
3. Released
4. Transferred to juvenile authority
5. Fugitive (escape of defendant)
6. Misdemeanor complaint filed to lower court
7. Felony complaint filed to lower court (preliminary hearing)
8. Felony complaint filed direct to circuit court
9. Undetermined

Municipal Court

10. Dismissed or dismissed with prejudice
11. Nolle Prosequi or "dismissed without prejudice"

12. Guilty of misdemeanor (incl. later expungement of rec.)
13. Acquitted of misdemeanor - not guilty
14. Bound over to cir. ct. after waiver of prelim. hearing
15. Bound over to cir. ct. after preliminary hearing
16. Pending (case continued)
17. Archived - case removed from docket and placed in the inactive files
18. Death of offender
19. Remanded to Juvenile Court/Authority
20. Deferred - Case taken under advisement; adjudication of guilt deferred contingent upon good behavior restitution and/or payment of costs
21. Transferred to other agency (mental institution, medical clinic or hospital, etc.)
22. Undetermined

Circuit Court

23. Dismissed or dismissed with prejudice
24. Nolle Prosequi or "dismissed without prejudice"
25. Remanded to municipal court
26. Guilty of felony
27. Acquitted of felony - not guilty
28. Guilty of misdemeanor
29. Acquitted of misdemeanor
30. Pending (case continued)
31. Archived - case removed from docket and placed in inactive files
32. Death of offender
33. Remanded to Juvenile Court/Authority
34. Deferred - Case taken under advisement, adjudication of guilt deferred contingent upon good behavior, restitution and/or payment of costs. (with a subsequent dismissal possible)
35. Transferred to other agency (mental institution, medical clinic, hospital)
36. Undetermined

Delay

0. Due to deferment of case, with defendant being placed on a suspension or probation status until a later date when a disposition is handed down
1. Change of attorney
2. Lack of witness
3. Fugitive status (escape of offender)
4. Failure of def. to appear - bond forfeit. and alias warrant issued
5. Defense motion (Bill of Particulars, continuance, discovery or inspec. of evidence, change of venue, etc.)

6. Prosecution motion (continuance, etc.)
7. Mental observation and evaluation
8. Medical attention/hospitalization
9. Other (continuance by bench, etc.) undet. but more than 90 days)

Bond/Release Data

- A. Personal recognizance, appearance bond
- B. Second party custody that includes to juvenile agency
- C. Unknown
- D. Released on bond
- E. Bond set but not released
- F. None set, but not released
- G. Released to other law enforcement agency (military police) (includes return to Department of Corrections)
- H. Fugitive
- I. Released - charges dropped

Initial Plea

1. Guilty
2. Not Guilty
3. Nolo Contendre
4. Not guilty by insanity
5. Not Applicable
6. Not Guilty - Self Defense

Final Plea

1. Guilty
2. Not Guilty
3. Nolo Contendre
4. Not Guilty by insanity
5. Not Applicable
6. Not Guilty - Self Defense

Charge Change

A = Affirmative
N = No

Attorney Data

1. Private
2. Appointed
3. Public Defender
4. Self
5. Parent or guardian

Trial Type

1. Jury
2. Bench
3. Plea
4. No Trial - Conducted

Charge at Initial Conviction (Block 77)

M = Misdemeanor
F = Felony
N = Not Applicable - No previous criminal record

Appeal

A = Affirmative
N = No

Units of Total Sentence/Total Time Susp/Prob. (Blocks 22 and 25)

D = Day
M = Month
Y = Year

Court Type

1. L = Lower Court
2. C = Circuit Court

Status (Initial/Subsequent)

1. Prison Confinement
2. Jail Confinement
3. Suspended sentence
4. Probation (includes advisement)
5. Probation/suspended
6. Fugitive
7. Parole (includes work release)

Reason for Termination

1. Completed sentence
2. Parole violation
3. Paroled
4. Probation violation
5. Re-arrested on other charge
6. Escape from confinement
7. Apprehended as fugitive

Status at Arrest

1. Parole
2. Probation
3. Fugitive
4. Prison Confinement - returned for trial
5. No Status or Free Status

Supreme Court Disposition

0. Pending
1. Affirmed
2. Reversed and Dismissed
3. Modified
4. Reversed and Remanded
5. Affirmed with remittitur
6. Dismissed on Behalf of Appellant
7. Affirmed in part/Reversed in part
8. Pro se (Rule 1 or 37) granted
9. Pro se (Rule 1 or 37) denied

CODING SUPPLEMENT

Charges

010 Capital Felony Murder (Fel. 41-4701 et. seq.)
011 Murder in First Degree (Fel. 41-2227)
012 Murder in Second Degree (Fel. 41-2228)
013 Voluntary Manslaughter (Fel. 41-2229)
014 Mother concealing child's Death (Fel. 41-2225)
015 Death resulting from night riding - murder in first degree (Fel. 41-2604)

020 Involuntary Manslaughter (Fel. 41-2230)
021 Excusable Homicide (No criminal offense)
022 Justifiable Homicide or Accidental Shooting (No criminal offense)
023 Negligent Homicide (Misd. 75-1001)

030 Rape - First Degree (Fel. 41-3403)
031 Rape - Second Degree (Fel. 41-3403)
032 Attempted forcible rape (Fel. 43-2150)
033 Third Degree or statutory rape (Fel. 43-2150)
034 Accessory to rape (Fel. 41-3404)

040 Armed Robbery or Robbery with a firearm (Fel. 41-3602)
041 Robbery (Fel. 41-3602)
042 Strong-arm robbery or Purse Snatching (Fel. 41-3602)

050 Kidnapping (Fel. 41-2303)
051 Accessory to kidnapping for ransom or felony (Fel. 41-2302, 2303)
052 Abduction (Fel. 41-3407)
053 Seduction (Fel. 41-3408)

060 Assault (Misd. 41-602)
061 Assault and Battery (Misd. 41-603)
062 Assault with intent to kill (Fel. 41-606)
063 Assault with intent to rape (Fel. 41-607)
064 Assault with intent to rob (Fel. 41-609)
065 Assault with intent to commit larceny (Misd. 41-608)
066 Assault with intent to commit mayhem or maim (Misd. 41-608)

067 Assault with a deadly weapon (Misd. 41-605)
068 Assaulting an officer while on duty (Misd. 41-2802)
069 Night riding (Fel. 41-2601)
070 Blackmail (Extortion) (Fel. 41-4002)

080 Burglary (Fel. 41-1003)
081 Burglary and Grand Larceny (Fel. 41-1003)
082 Breaking and Entering (Fel. 41-1005)
083 Possession or Manufacture of Burglary Tools (Fel. 41-1006)
084 Attempted Burglary (Fel. 41-1005)

090 Grand Larceny - Property exceeding \$35 in value (Fel. 41-3907)
091 Petit Larceny - Property worth \$35 or less (Misd. 41-3907)
092 Pickpocketing - Second Offense (Fel. 41-4909)
093 Pickpocketing - First Offense (Misd. 41-4909)
094 Shoplifting - Third Offense (Fel. 41-3941)
095 Shoplifting - First & Second Offenses (Misd. 41-3941)
096 Rustling of Cattle and other animals (Fel. 41-3917)
097 Ticket Scalping (Misd. 41-4602)

100 Motor Vehicle Theft (Fel. 41-3907)
101 Motor Vehicle - Taking w/out owner's consent (Misd. 41-3919)

110 Arson (Fel. 41-501)
111 Attempt to Burn Property - Accomplice to Arson (Fel. 41-504)

120 Possession of stolen goods - worth more than \$35 (Fel. 41-3938)
121 Possession of stolen goods - worth \$35 or less (Misd. 41-3938)
122 Receiving or buying stolen goods - worth more than \$35 (Fel. 41-3934)
123 Receiving or buying stolen goods - worth \$35 or less (Misd. 41-3934)
124 Receiving or buying stolen animals (Fel. 41-3937)
125 Opening coin-operated vending machines (Fel. 41-3944, 3945)

- 130 Forgery (Fel. 41-1810)
- 131 Forgery and Uttering (Fel. 41-1810)
- 132 False Entries in Bank Books or Public Account Books
(Fel. 41-1819, 1820)
- 133 Uttering (Felony)

- 140 Counterfeiting (Fel. 41-1810)
- 141 Possession of counterfeiting tools and devices (Fel.
41-1809)
- 142 Possession of counterfeit bank bills, notes, checks,
drafts, etc. (Fel. 41-1806)

- 150 Embezzlement (Fel. 41-3925)
- 151 Larceny by Bailee - property worth more than \$35
(Fel. 41-3929)
- 152 Larceny by bailee - property worth \$35 or less (Misd.
41-3929)

- 160 Fraud - property worth more than \$35 (Fel. 41-1901)
- 161 Fraud - property worth \$35 or less/False Advertising
(Misd. 41-1901 et. seq.)
- 162 Defrauding an innkeeper - property/services worth more
than \$35 (Fel. 41-1908)
- 163 Defrauding an innkeeper - property/services worth \$35
or less (Misd. 41-1908)
- 164 Obtaining money or property by false pretenses - or
False Pretenses - worth more than \$35 (Fel. 41-
1901)
- 165 Obtaining money or property by false pretenses - worth
\$35 or less (Misd. 41-1901)
- 166 Misrepresentation as to credit (Misd. 41-1901 et. seq.)
- 167 Manufacture, use, or sale of slugs (Misd. 41-1913)
- 168 Removal of mortgaged property from state or sale thereof -
debt secured by lien exceeds \$10 (Fel. 41-1930)
- 169 Removal of property subject to lien - debt secured is \$10
or less (Misd. 41-1930)

- 170 Hot Checks - third conviction regardless of amount (Fel.
67-723)
- 171 Hot Checks - amount of check, draft, or order is \$50 or
more (Fel. 67-723)
- 172 Hot Checks - first or second conviction/amount less than
\$50 (Misd. 67-723)

- 180 Violation of Ark. Drug Abuse Control Act/Act 492 of
1967 (Act 590) (Felony)
- 181 "Glue sniffing" (Misd. 41-1439)
- 182 Possession of Marijuana - less than 1 oz. (Misd. 82-
2915 et. seq.)
- 183 Possession of Marijuana with intent to sell, deliver,
distribute, or exchange (Fel. 82-2615 et. seq.)
- 184 Manufacturing, distributing, or selling marijuana or
other controlled substance (Fel. 82-2615 et. seq.)
- 185 Possession of marijuana - third conviction (Fel. 82-
2615 et. seq.)
- 186 Distributing controlled substance to minors (Fel. 82-2622)
- 187 Creation, delivery, possession with intent to deliver a
counterfeit substance which is narcotic drug or
controlled substance (Fel. 82-2617)
- 188 Possession of Controlled Substance (Fel. - opiates or
opium derivatives, etc.)
- 189 Possession of Controlled Substance (Misd. - depressants,
stimulants, etc.)
- 190 Illegal Cohabitation - 3rd offense (Fel. 41-805)
- 191 Illegal Cohabitation - 1st or 2nd offense (Misd. 41-805)
- 192 Bigamy (Fel. 41-804)
- 193 Incest (Fel. 41-812)
- 194 Sodomy or buggery (Fel. 41-813)
- 195 Annoying or Molesting child; Loitering near school
children (Misd. 41-1125)
- 196 Indecent proposals to minors under age of fourteen
(Fel. 41-1126)
- 197 Indecent exposure of person to minor under age of
sixteen (Fel. 41-1127)
- 198 Unlawful fondling of child under age of fourteen
years (Fel. 41-1128)
- 199 Indecent exposure in public (Misd. 41-2701)

- 200 Offering, receiving, or transporting another for
prostitution; owning or letting building or
conveyance for prostitution (Misd. 41-3201)
- 201 Engaging in or soliciting another to commit act of
prostitution (Misd. 41-3202)
- 202 Keeping or residing in house of prostitution (Misd.
41-3205)
- 203 Pandering (Fel. 41-3208)
- 204 Receiving earnings of prostitution (Fel. 41-3210)
- 205 Transporting women for prostitution (Fel. 41-3212)
- 206 Enticing female under age of 18 for prostitution
(Fel. 41-3217)

- 207 Detention of female in house of prostitution because of indebtedness (Fel. 41-3211)
- 208 Concealing female of good moral character in house of prostitution (Fel. 41-3215)
- 210 Keeping a gambling house (Fel. 41-2001)
- 211 Keeping or exhibiting any gaming table or gaming device (Misd. 41-2003)
- 212 Being interested in gaming device (Misd. 41-2004)
- 213 Betting on gaming device, cards, or game of hazard or skill (Misd. 41-2005, 2011)
- 214 Permitting gaming in houses or steamboats (Misd. 41-2006)
- 215 Exhibiting or setting up "Keno" and similar devices (Misd. 41-2018)
- 216 Possession, sale, interest in lottery tickets (Misd. 41-2024, 2029)
- 217 Promotion of lottery through sale of property, goods, etc. (Fel. 41-2037, 2039)
- 218 Horse racing/cock fighting on Sunday or near church or school (Misd. 41-1417)
- 219 Gaming with Minors (Misd. 41-1111)
- 220 Bribery involving legislators and public offenders (Fel. 41-901)
- 221 Public officer influencing member of general assembly (Fel. 41-902)
- 222 Bribery of professional and amateur sports participants (Fel. 41-903)
- 230 Wearing or carrying certain weapons or concealed weapon -- dirk or bowie knife, sword in a cane, brass knucks, blackjack, razor, billie or sap, ice pick -- unless upon a journey or upon own premises (Misd. 41-4501)
- 231 Sale or exchange or barter of any dirk, sword in cane, brass knucks (Misd. 41-4502)
- 232 Possession or use of machine gun in perpetration of crime (Fel. 41-4508)
- 233 Carrying or possessing tear gas (Misd. 41-4518)
- 240 Parent/Spouse abandoning child or spouse - 1st offense (Misd. 41-204, 41-205)
- 241 Parent/Spouse abandoning child or spouse - 2nd offense (Fel. 41-204, 41-205)

- 242 Abandonment and nonsupport of pregnant or invalid wife and/or children (Fel. 41-215)
- 243 Failure of father to support illegitimate child (Fel. 41-216)
- 244 Enticement of minor from parent or guardian (Misd. 41-1101, 1102)
- 245 Willful abandonment and/or cruelty to children (Misd. 41-1105, 1106)
- 246 Removing child from state after court awards custody to another (Fel. 41-1121)
- 247 Neglect by parent or guardian of a child, resulting in delinquency (Misd. 41-1136)
- 250 Illicit still - unlawful manufacture of intoxicants (Fel. 48-936.1, 48-936.2)
- 251 Drinking and drunkenness in public places (Misd. 48-943)
- 252 Unlawful sale of intoxicating liquor - to a minor, habitual drunkard, intoxicated person; during polling hours; on Sunday; on Christmas; to a retailer who does not have a valid license tax receipt (Misd. 48-901)
- 253 Sale of alcoholic beverage to minor - 2nd offense within 3 years (Fel. 48-903)
- 254 Purchase or possession of alcoholic beverage by minor (Misd. 48-903.1)
- 255 Overpossession of intoxicating liquor in dry territory (Misd. 48-918, 919)
- 256 Sale or possession of intoxicating liquor without a license (Misd. 48-912, 913)
- 257 Possession of unstamped liquor or wine (Misd. 48-953)
- 258 Procuring liquor for another in dry territory (Misd. 48-914)
- 259 Illegal transportation of intoxicating liquor in motor vehicle (Misd. 48-922.3)
- 260 Processing for, sale, offering for sale, transportation, delivery, or receiving for transportation in intrastate commerce uninspected meat food product (Misd. for 1st and 2nd offenses 82-2007, 2011; Fel. for 3rd conviction)
- 261 Sale of disposition of adulterated meat food products (Misd. 82-2007)
- 262 Altering, forging, simulating, counterfeiting, etc. official meat inspection identification or certificates (Misd. 82-2007)
- 263 Delivering, receiving, transporting intrastate commerce of any adulterated meat (Misd. 82-2007)
- 264 False or misleading advertising with respect to meat products (Misd. 82-2007)

265 Violation of Ark. Meat and Meat Products Inspection Act (Misd. 82-2007)

270 Criminal Libel (Misd. 41-2402)
 271 Criminal Slander (Fel. 41-2405)
 272 Proclaiming one as a coward for not fighting a duel (Fel. 41-2404)
 273 Violation Ark. Peeping Tom Law (Misd. 41-1426 - 1st offense)
 274 Violation Ark. Peeping Tom Law (Fel. 41-1426 - 2nd or subsequent offense)
 275 Abusive or Obscene telephone calls (Misd. 41-1437, 1438)
 276 False Imprisonment (Misd. 41-1601, 1602)
 277 Impersonation

280 Disturbing Public Peace (Misd. 41-1401)
 281 Unlawful assembly, rout, riot (Misd. 41-1402)
 282 Disturbers failing to disperse (Misd. 41-1403)
 283 Affray and aggravated affray (Misd. 41-1404, 1406)
 284 Use of profane or abusive language (Misd. 14-1410, 1412)
 285 Disturbing an assemblage (Misd. 14-1416)
 286 Disruption of campus activities (Misd. 14-1447, 1448)
 287 Inciting to riot (Misd. 14-1445, 1446)
 288 Picketing a dwelling house (Misd. 14-1427)
 289 Creating a disturbance in a public place (Misd. 41-1432)

290 Driving vehicle in unsafe condition (Misd. 72-701)
 291 DWI (Misd. 75-1029, 1030)
 292 Driving Under the Influence of Drugs (Misd. 75-1026.1)
 293 Failure to stop after accident (Misd. 75-901)
 294 Moving traffic violation (Misd. 75-1038)
 295 Racing on highways (Misd. 75-603)
 296 Reckless Driving (Misd. 75-1003)
 297 Violation Motor Vehicle Traffic Act generally (Misd. 75-1004)
 298 Weight or oversize violations (Misd. 75-801)
 300 Treason (Fel. 41-4101, 4102)
 301 Misprison of Treason (Misd. 41-4103, 41-4104)
 302 Usurping government (Fel. 41-4109)
 303 Attempt or conspiracy to subvert government, etc. (Fel. 41-4112)
 304 Subversive activities (Fel. 41-4113, 41-4111)
 305 Attempts or conspiracy to violate Sabotage Prevention Act (Fel.)

310 Immigration Laws (Fel.)
 311 Immigration Laws (Misd.)

320 Smuggling firearms, intoxicants, and narcotic drugs into prison or jail (Fel. 41-3110, 3111)
 321 Intentional self-maiming by prisoner (Fel. 41-3112, 3113)
 322 Open Rebellion of Prisoner (Fel. 41-3106)
 323 Jailor refusing to receive prisoner (Misd. 41-3101)
 324 Competition of penal with free labor (Misd. 41-3106, 3107)
 325 Permitting escape of convict (Fel. 41-3501) - aiding escape
 326 Escape from penitentiary (Fel. 41-3508)

330 Obstructing or resisting or assaulting an officer (Misd. 41-2801, 41-2802)
 331 Threatening an officer with a gun or other deadly weapon (Fel. 41-2803)
 332 Attempt at escape of aiding in escape or at rescue (Misd. 41-3504)
 333 Officer permitting escape (Misd. 41-3506)
 334 Rescue of felon (Fel. 41-3503)
 335 Rescue of misdemeanant (Misd. 41-3503)
 336 Officer failing to execute process (Misd. 41-3507)
 337 Conveying instruments, firearms, etc. to jail (Misd. 41-3511)
 338 Officer permitting introduction of instruments (Misd. 41-3512)
 339 Escape from officer, jail, or other place of confinement (Misd. 41-3513)

340 Perjury or subornation of perjury in the first degree (Fel. 41-3005)
 341 Perjury or subornation of perjury in the second degree or attempt to entice perjury or false swearing (Misd. 41-3010, 3011, 3006)
 342 Jury tampering or misconduct of a juror (Fel. 41-2807)
 343 Bribing a witness (Misd. 41-2804)
 344 Juror, arbitrator, or referee accepting a bribe (Fel. 41-2805)
 345 Misconduct of officer summoning a juror (Misd. 41-2908)
 346 Approaching jury commissioners to have person placed on jury (Fel. 41-2809, 2810, 2811)

- 347 Taking or destruction of record by legal custodian - value greater than \$35 (Fel. 41-2815)
- 348 Defacing or destroying legal advertisement or notice (Misd. 41-2817)
- 349 Assault, reprisals or pressure on juror for action taken a juror (Misd. 41-2818)

- 350 Willful evasion or failure to pay tax (Misd. 84-1722, 84-1734)
- 351 Willful failure to assess property (Misd. 84-440)
- 352 Estate tax violations (Misd 63-112, 141-143)
- 353 Income tax violations (Misd. 84-2036)
- 354 Capital stock violations (Misd. 84-502)
- 355 Failing or refusing to make a return or rendering a false or fraudulent return (Fel. 84-3125)
- 356 Disposing of property to avoid assessment (Misd. 84-1617)
- 357 Noncompliance with tax law by officials (Misd. 84-1601)
- 358 Violation of assessment or equalization laws (Misd. 84-1603)
- 359 Other tax violations (Misd.)

- 360 Tampering with voting machine (Fel. 3-1105)
- 361 Voting in same election more than once (Fel. 3-1105)
- 362 Fraudulent alteration, etc. of poll books, ballot box seals, etc. (Fel. 31-1105)
- 363 Influencing a voter (Fel. 3-1105)
- 364 Counterfeiting, altering, destroying, etc. election returns or materials (Fel. 3-1105)
- 365 Threatening or attempting to intimidate a voter (Fel. 3-1105)
- 366 Use of public buildings, cars, etc. for partisan political campaigns (Misd. 3-1104)
- 367 Violation of political advertising provisions (Misd. 3-1104)
- 368 Violation of campaign financing, and reporting requirements (Misd. 3-1118)
- 369 Other election violations (Misd.)

- 370 Civil rights (Fel.)
- 371 Civil rights (Misd.)
- 372 Discrimination against military uniform (Misd. 41-1301)

- 380 Smuggling (Fel.)
- 381 Smuggling (Misd.)

- 390 Conspiracies or combinations to fix prices or quantity of products (Misd. 70-101)
- 391 Formation of monopoly (Misd. 70-105)
- 392 Creation of a monopoly by driving out competition (Misd. 70-106)
- 393 Discrimination in price of goods (Misd. 70-120, 121)
- 394 Contracts as to minimum price (Misd. 70-202)
- 395 Destruction of competition (Misd. 70-301, 311)
- 396 Sale at less than cost or with intent to injure competition (Misd. 70-303, 311)
- 397 Secret payments or allowance of rebates, refunds, commission or unearned discounts (Misd. 70-307)
- 398 Other violations of Unfair Practices Act (Misd. 70-311)
- 399 Violations of Fair Trade Act (Misd. 70-201-208)

- 400 Hunting, trapping, fishing without a license (Misd. 47-201 et. seq.)
- 401 Operating a wildlife club or hunting/fishing guide service without a license (Misd. 47-201 et. seq.)
- 402 Violation of hunting and fishing regulations re: limits, methods, etc. (Misd. 47-301 et. seq.)
- 403 Stealing licensed hunting dog - worth more than \$35 (Fel. 47-502)
- 404 Setting fires in woods or marshlands of another (Misd. 47-502)
- 405 Obstructing or lowering of streams (Misd. 47-514, 515)
- 406 Pollution of streams (Misd. 47-801)
- 407 Hunting or fishing on posted land (Misd. 47-534)
- 408 Taking fish from enclosed lake or pond without consent of owner (Misd. 47-516)
- 409 Other violations of fish and game, wildlife, or conservation regulations (Misd.)

- 410 Malicious mischief (Misd.) disorderly person
- 411 Compounding a felony (Misd. 41-2813)
- 412 Accessory to a felony (Fel. - punished as principal 41-118, except in cases of murder in first degree an accessory shall be punished as a principal to murder in second degree)
- 413 Accessory to a misdemeanor (Misd. - punished as principal 41-118)

- 414 Conspiracy to commit a felony - felony not actually committed (Misd. 41-1201)
- 415 Conspiracy to cheat/obtain property by false pretenses (Misd. 41-1202)
- 416 Conspiracy to have one indicted (Misd. 41-1203)
- 417 Harboring a fugitive (Fel. 41-118)

- 420 Possession with intent to sale or distribution, sale or distribution of obscene material (Fel. 41-2716, 2731)
- 421 Possession of obscene materials (Misd. 41-2761)
- 422 Sale, production, circulation, distribution of obscene film (Fel. 41-2731)
- 423 Possession of obscene film (Misd. 41-2731)
- 424 Sale or loan of pornographic literature or material to minors (Misd. 41-2734)
- 425 Advocating nudism (Misd. 41-2711)

- 430 Opening a grave (Fel. 41-3701)
- 431 Removal of body from grave (Fel. 41-3701)
- 432 Purchasing a dead body (Fel. 41-3702)
- 433 Malicious injury to grave or monument (Fel. 41-3706)
- 434 Placing debris in cemetery or removal of marker (Misd. 41-3714)
- 435 Enclosing a cemetery (Misd. 41-3712)
- 436 Mining or making a slope, pit, etc. in cemetery (Fel. 41-3709)

- 440 Cruelty to animals (Misd. 41-409)
- 441 Selling diseased animals (Misd. 41-415)
- 442 Marking or altering brand of another's animal - animal worth more than \$35 (Fel. 41-426)
- 443 Administering poison to animals - value of animal exceeds \$35 (Fel. 41-403)
- 444 Administering poison to animals - animal worth \$35 or less (Misd. 41-403)
- 445 Malicious killing or wounding of animals (Misd. 41-405)
- 446 Leaving cottonseed accessible to swine (Misd. 41-404)
- 447 Disfiguring horse, mule, or other animal (Misd. 41-406)
- 448 Permitting stock, goats, hogs, etc. on highways or to run at large (Misd. 41-431, 432)

- 450 Unlawful possession of land, dwellings, premises, etc. (Misd. 41-4201)
- 451 Forcible taking or keeping possession of land (Misd. 41-4202)
- 452 Advertising on property without owner's permission (Misd. 41-4203)
- 453 Dumping trash on premises of another (Misd. 41-4295)
- 454 Dumping garbage or offensive matter on highways, private or public property (Misd. 41-4207)
- 455 Cutting wire fences, trees, etc. (Misd. 41-4219)
- 456 Willful cutting of trees of value exceeding \$10 on state or private lands (Fel. 41-2221)
- 457 Damaging public or private buildings or property (Misd. 41-4231)
- 458 Removal or destruction of landmarks or boundary monuments (Misd. 41-4238)
- 459 Trespass to public utility, radio, or television facilities, equipment, etc. (Misd. 41-4231)

- 460 Obstructing public road or highway (Misd. 41-2101)
- 461 Erection or gate across public road (Misd. 41-2102, 2103)
- 462 Injury or destruction to bridges and guide-posts (Misd. 41-2104)
- 463 Crossing toll-bridge without paying toll (Misd. 41-2113)
- 464 Removing, defacing, etc. highway guide boards, etc. (Misd. 41-2105)
- 465 Placement of advertising signs on highway right-of-way (Misd. 41-2110, 2111)

- 470 Military offenses - AWOL, Desertion (Misd.)
- 471 Military offenses (Fel.)

- 480 Other Felony offenses

- 490 Other Misdemeanor offenses
- 491 Vagrancy

Occupational Codes

001	Architect	049	Bus Driver
002	Engineer	050	Social Scientist
003	Medical Asst.	051	Concrete Finisher
004	Librarian	052	Food Preserver and Canner
005	Union Official	053	Laborer (Bakery)
006	Building Manager	054	Dairy Helper
007	Ship Engineer	055	Dairy Products Maker/Processor
008	Ship Captain or boat pilot	056	Cannery Worker
009	Mate, Ship	058	Bolt Setter
010	Timekeeper	059	Hammerman
011	Railroad Mail Clerk	060	Farm Hand, Tobacco
012	Peddler	061	Farm Manager
013	Practical Nurse	062	Buffer and Finisher
014	Nursing Aid	063	Grinder
015	Shoemaker	064	Elementary School Teacher
016	Peanut Farmer	065	Fabricator of Plastic Prod.
017	Draftsman	066	Laborer (Chem. Proc.)
018	Surveyor	067	Laborer (Shipyard)
019	Technical Asst. (Eng.)	068	Bricklayer
020	Radio Repairman	070	Physician and Surgeon
021	Milliner	072	Dentist
022	Chemist	073	Veterinarian
023	Dressmaker	075	Registered Nurse
024	Metal Fabricating Foreman	076	Medical Technician
025	Shovelman	079	Dental Asst.
026	Laborer (Pile Driving)	090	College Faculty Member
027	Plumber	091	High School Teacher
028	Switchman	092	Teacher - general
029	Laboratory Asst.	096	County Agri. Agent
030	Railroad Transportation Worker	110	Attorney
031	Railway Express Agent	111	Judge
032	Railroad Gateman	120	Clergyman
035	Parking Lot Attendant	131	Writer and Editor
036	Watchmaker	141	Commercial Artist
037	Wood Chopper	142	Furrier
038	Ventilating Man	143	Photographer
039	Refrigerating Machine Operator	148	Sculptor
040	Composer	150	Actor or Actress
041	Biologist and Life Scientist	151	Dancer, Chorus Girl
042	Typesetter	152	Musician
044	Brakeman, Railroad	153	Athletic Coach
045	Fireman, Locomotive	154	Sports Official
046	Bakery Products Maker	159	Dog Trainer
047	Accountant	160	Auditor
048	Hotel Manager	162	Purchasing Agent

168	Credit Man	304	Houseman
181	Mine Foreman	306	Domestic Servant
184	Railroad Station Master	310	Hostess
185	Store Manager or Storekeeper	312	Bartender
187	Foreman - general	313	Cooks (except Private Family)
188	Public Officials	316	Butcher and Meat Cutter
189	Assoc. Officer or Exec.	318	Kitchen Helper and Worker
191	Appraiser	321	Hotel Housekeeper
193	Radio Operator	323	Hotel Maid and Houseman
196	Airplane Pilot, Aviator	324	Bellboy, Bellman
197	Maritime Occupations	330	Barber
198	Conductor, Passenger Car	331	Manicurist
201	Secretary	332	Beautician, Cosmetologist
202	Stenographer	344	Usher
203	Typist	350	Waiter and Waitress
204	Military	353	Hospital Orderly
206	File Clerk	354	Practical Nurse, Unlicensed
207	Duplicating Machine Operator	355	Attendant
208	Office Machine Operator	356	Dog Boy or Keeper
209	Clerk, General	361	Laundry Worker
210	Bookkeeper	362	Dry Cleaner
211	Cashier	364	Hospital Worker
215	Payroll Clerk	365	Shoe Repairman
216	Statistical Clerk	366	Shoe Shine Boy
219	General Office Clerk	369	Cleaner and Presser
222	Shipping Clerk	372	Watchman
223	Stock Clerk	379	Lighthouse Keeper
230	Messenger, Errand Boy	381	Charwoman, Cleaner
231	Mail Clerk	382	Janitor
232	Post Office Clerk	389	Termite Treater or Exterm.
233	Mail Carrier	401	Farm Hand, Grain
234	Post Office - General	402	Cotton Farmer
235	Telephone Operator	403	Farm Hand, Vegetable/Truck
236	Telegraph Operator	404	Farm Hand, Fruit
249	Library Asst.	405	Farm Hand, Peanuts
250	Salesman, General	406	Laborer (Nursery)
289	House-to-House Salesman	407	Gardener
290	Sales Clerk	409	Farm Equipment Operator
291	Newsboy, Newspaper Carrier	412	Farm Hand, Poultry
292	Routeman	413	Laborer (Ranch)
293	Solicitor	419	Farm Hand, Animal
294	Auctioneer	421	Farm Hand, General
296	Shopper	422	Laborer (Irrigation)
297	Demonstrator	430	Fisherman, General
298	Decorator and Window Dress	431	Fisherman, Netter
299	Department Head	432	Fisherman, Line
301	Day Worker	436	Shrimper

451 Hunter and Trapper
 461 Cotton Ginner
 500 Laborer (Electroplating)
 504 Heat Treater
 509 Laborer (Iron and Steel)
 510 Factory Laborer
 518 Metal Casting
 519 Foundryman or Foundry Worker
 520 Beverage Maker
 521 Grain Mill Products Maker
 525 Slaughterer
 526 Bakery Products Maker
 529 Confectioner
 530 Pulp Maker (Paper)
 539 Paper Processing Worker
 540 Petroleum Products Maker
 546 Refineryman (Petroleum)
 549 Laborer (Petroleum Refinery)
 550 Paint Maker
 553 Varnish Maker
 557 Plastics Extruder
 558 Chemical Worker
 559 Laborer (Plastics Manu.)
 560 Farmer - Sm. Farm
 561 Security Guards
 562 Machine Operator
 563 Businessman
 564 Pool Hall Worker
 570 Concrete Mixer Operator
 572 Glass Maker
 573 Clay Products Maker
 575 Glass Blower
 579 Laborer (Brick and Tile)
 580 Leather Goods Maker
 582 Laborer (Knit Goods)
 589 Grader, Fruit and Vegetable
 600 Machinist, Machinist Appren.
 601 Toolmaker
 609 Machine Shop Worker
 610 Blacksmith
 612 Forgeman
 616 Metal Fabricating Machine Work
 619 Ornamental Metal Worker
 620 Automobile Mechanic
 621. Mechanic (General)
 625 Diesel Mechanic
 631 Powerhouse Oper. or Repairman

638 Millwright
 651 Pressman
 659 Printing Foreman
 660 Cabinet Maker
 661 Model Maker (Wood)
 667 Sawmill Worker
 669 Woodworking, General
 683 Textiles Maker
 685 Knitter, Maker of Knit Goods
 699 Oiler
 700 Jeweler
 701 Tool Sharpener or Grinder
 704 Engraver
 705 Filer
 710 Professional/Scient. Appar. Fab.
 711 Lens Grinder
 714 Photographic Proc. Attend.
 720 Television Repairman
 721 Elec. Motr. Man. Worker/Repair
 723 Elec. Appliance Worker
 729 Wireman
 730 Piano Tuner
 737 Laborer (Ammunition Manu.)
 738 Embalmer
 739 Casket Maker
 741 Spray Painter
 754 Laborer (Fabric Making)
 763 Furniture Finisher
 769 Wood Products Fabricator
 771 Stonecutter
 780 Cushion Maker or Upholsterer
 781 Garment Maker
 783 Fur Worker
 785 Tailor
 788 Laborer (Shoe Manu.)
 790 Bottle Gager
 794 Paper Goods Maker
 800 Metal Fabricator
 801 Structural Steel Worker
 802 Policeman
 803 U.S. Government employee - gen.
 804 Tin Smith
 805 Boiler Maker, Oper. or Repair
 806 Trans. Equipment Builder
 807 Body and Fender Repair
 809 Foreman, Metal Fabricating
 811 Welder

816 Flame Cutter
 821 Lineman (Utility)
 822 Installer, Telephone/Telegraph
 824 Electrician
 829 Organ Tuner
 840 Painter, house, etc.
 841 Paperhanger
 842 Plasterer
 844 Cement Mason
 850 Miner
 852 Concrete Finishing Machine Op.
 859 Blater
 860 Carpenter
 861 Stone Mason
 862 Pipe Line Worker
 863 Asbestos and Insulation Worker
 865 Glazier (Glass)
 866 Roofer
 869 Laborer (Wrecking)
 892 Laborer (Hoisting)
 899 Pipeliner
 905 Truck Driver
 909 Moving Man
 910 Baggage Man, Train
 911 Longshoreman, Stevedore
 913 Chaffeur
 915 Filling Station Attendant
 919 Teamster
 920 Packer, Agri. Produce
 921 Crane Operator
 922 Warehouseman and Stores
 930 Driller (Mining and Quarrying)
 939 Laborer (Petroleum Prod.)
 940 Logger, General, timber worker
 941 Scaler
 942 Raftsman (Logs)
 950 Heating and Ventilating Man
 953 Utility Service Foreman
 960 Amusement Occupation Worker
 970 Painter (Artist)
 971 Photoengraver
 972 Lithographer
 973 Printer
 974 Taxi Driver
 975 Stereotyper
 979 Silk Screen Maker and Layout Man
 980 Caretaker - general

981 Public Works
 982 Housewife
 983 Porter
 984 Disabled Veteran
 985 Job Corps
 990 Laborer (General)
 991 Apprentice, General
 992 Laborer (Construction)
 993 Heavy Equip. Operator
 994 Locksmith
 995 Tree Surgeon-Tree Trimmer
 996 Self-employed
 997 Vocational Student
 998 Student
 999 Unemployed

Appendix G: SELECTED CHARTS AND TABLES

The following charts were selected from the general report to illustrate some of the types of analyses and presentations that are possible with OBTS data.

The first chart, Felony Processing-State of Arkansas-1974, depicts the disposition of all persons arrested for a felony in 1974. This data can be viewed in conjunction with the second chart that portrays dispositions at the circuit court level. (Circuit Court Subsystem).

The third example, Table 1 - Circuit Court Sentencing by Race, portrays the convicted offenders divided into categories by race and sentence type.

These charts and tables depict a few of the possible methods of representing specific portions of the data. Numerous other choices are available to the analyst, when an OBTS data base has been collected.

The chart, concerning felony processing, gives a detailed break-out of dispositions at each level of the criminal justice system.

By way of a starting point on the Felony Processing Chart (Chart 1), the first two blocks present the figure 10,462 as the total felony arrests in 1974 and the number of survey arrests collected in this OBTS survey. This figure may be slightly low, due to lack of useable records in several counties.

Three thousand and three cases were filed to lower court, while prosecutors filed 5,043 cases directly to circuit court.

At the lower court segment, 130 youths proceeded to a juvenile authority and 1,821 offenders exited the system due to other dispositions. These dispositions are depicted in Chart 3. Of the 3,003 filings at lower court, 1,052 individuals were processed to circuit court.

A total of 6,095 persons were filed upon in circuit court. Judges transferred 113 juveniles to a juvenile authority. A total of 2,062 individuals exit the system from the circuit court subsystem due to other dispositions which are depicted in Chart 4, while 3,920 are found guilty of a felony or misdemeanor at the circuit court level.

Of the 3,920 convicted offenders, 1,785 were institutionalized in either jail or prison. Of this number 1,045 were known to have been paroled by the state system. Of the 1,950 offenders placed in a probation/suspension status, only 113 were known to have been returned to incarcerated status; however, this figure is not absolute since all files at Cummins/Tucker prisons were not counter-checked with county records.

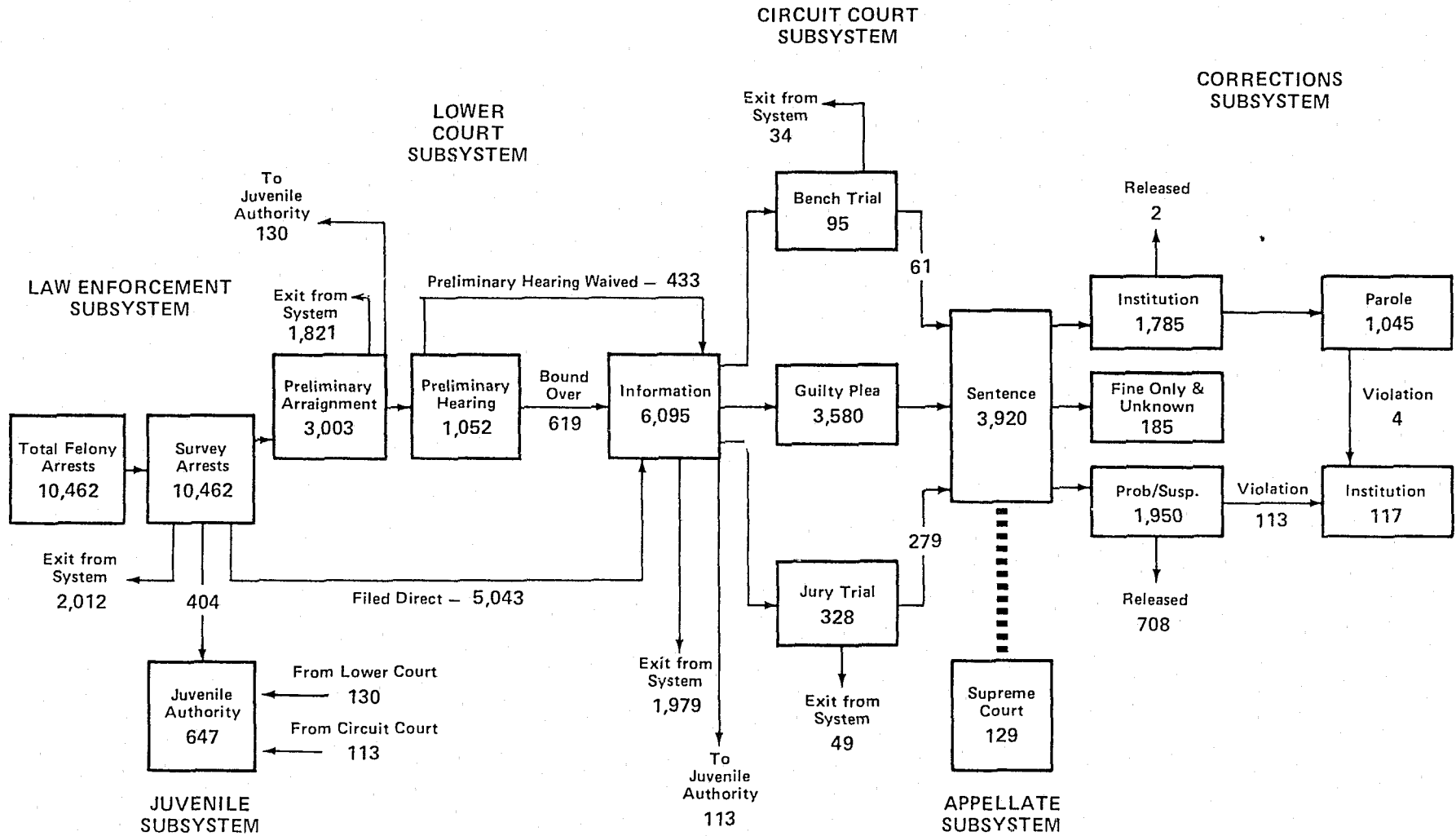


CHART 1

FELONY PROCESSING — STATE OF ARKANSAS
1974

Circuit Court filings are depicted in Chart 2. All dispositions depicted in Chart 2 are final ones. Of the 6,095 filings, 3,404 offenders were convicted of a felony and 516 individuals received a misdemeanor conviction, totaling 3,920 convicted offenders.

CHART 2 – CIRCUIT COURT SUBSYSTEM

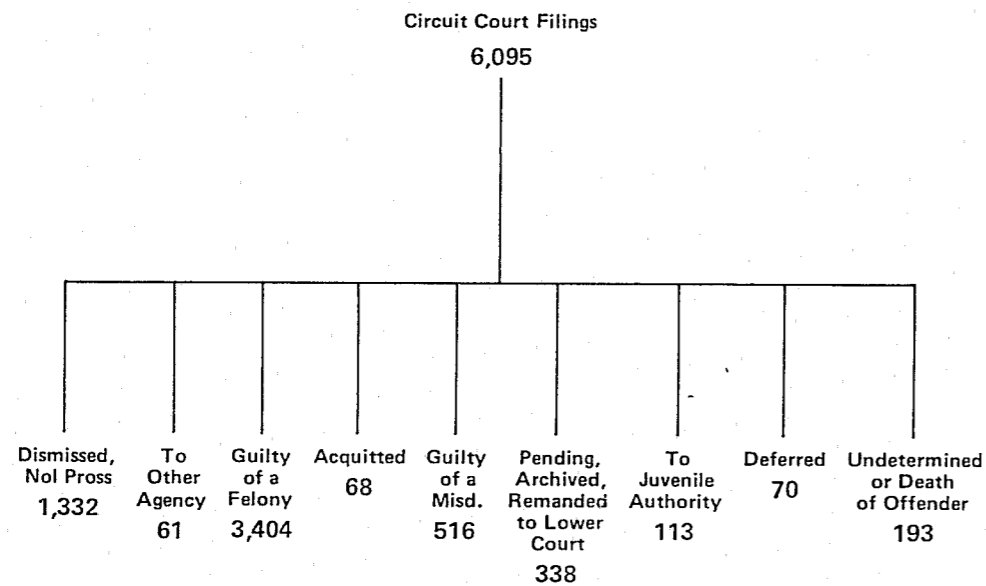


Table 1 portrays circuit court sentencing by race. The race of the offender was not always listed in arrest books or available records, thus 326 persons are listed as unknown. Nine hundred and fifty-three whites and 619 blacks received a prison sentence from circuit courts.

TABLE 1 – CIRCUIT COURT SENTENCE TYPE BY RACE

SENTENCE TYPE	RACE				Total
	White	Black	Other	Unknown	
Prison	953	619	8	43	1,623
Jail	99	36	1	26	162
Suspension	328	126	1	83	538
Probation	304	94	0	77	475
Prob/Susp.	538	299	3	97	937
Fugitive	0	0	0	0	0
Parole	0	0	0	0	0
TOTAL	2,222	1,174	13	326	3,735

FOOTNOTES

1. Charles C. McCarty, Offender-Based Transaction Statistics - Fantasy or Fact. Project SEARCH/Second Integrated Symposium on Criminal Justice Information and Statistical Systems (California Project SEARCH, 1974), pp. 285-287.
2. Michael A. Zimmerman, Evaluation of the Felony Defendant Disposition File, (California: Public Systems, Inc.), p. iv.
3. Oregon Justice Data Analysis Center, Oregon's Offender Based Transaction Statistics System, (Oregon: State Government, 1973), p. 1.
4. Carl E. Pope, Offender-Based Transaction Statistics: New Directions in Data Collection and Reporting, (New York: U.S. Dept. of Justice 1975) pp. 12-13.
5. Search Technical Report No. 3, (November, 1970), p. 3-1.

BIBLIOGRAPHY

- Georgia State Crime Commission. An Instructional Manual for Conducting Offender-Based Transaction Statistics Studies. Oregon-Office of State Crime Commission, November, 1976.
- Oregon Justice Data Analysis Center. Oregon's Offender Based Transaction Statistics System. Oregon: State Government, 1973.
- Pope, Carl E. Offender-Based Transaction Statistics: New Directions in Data Collection and Reporting. Analytic Report No. 5. New York; U.S. Department of Justice (Criminal Justice Research Center), 1975.
- Pope, Carl E. Sentencing of California Felony Offenders. Analytic Report No. 6. New York: U.S. Department of Justice (Criminal Justice Research Center), 1975.
- Project SEARCH. Designing Statewide Criminal Justice Statistics Systems - The Demonstrations of a Prototype. Technical Report No. 3. California: Project SEARCH Staff (California Crime Technological Research Foundation), 1970.
- Project SEARCH. Second Symposium on Criminal Justice Information and Statistical Systems. Offender-Based Transaction Statistics-Fantasy or Fact, by Charles C. McCarty, California Project SEARCH, 1974.
- U.S. Department of Commerce. Estimates of the Population of Arkansas Counties and Metropolitan Areas; July, 1974 and 1975. Federal-State Cooperative Program for Population Estimates. Bureau of the Census. Washington, D.C.: U.S. Government Printing Office, May-1976.

Zimmerman, Michael A. Evaluation of the Felony Defendant
Disposition File. Bureau of Criminal Statistics.
California Public Systems Incorporated, 1973.

END