

**MURAL IN THE  
LOUISIANA SUPREME COURT BUILDING  
NEW ORLEANS, LOUISIANA  
By  
Conrad Albrizio**

**Legend:**

In this Mosaic the artist has endeavored to portray a recurrent subject throughout the ages, mainly those elements that constitute Law, Order, and Government.

**Reading from left to right on opened cover:**

The first group in the composition refers to antiquity, as symbolized by the figure of Hammurabi, together with the Greek Philosophers who contributed so much to the development of the ideas on Law and Government. On a pedestal is a symbol of the protector of that order.

In the next group is a symbol of a Roman Emperor who was both ruler and military, who represented both law and order in himself.

The next group represents the Medieval Period in which are shown the first, second and third estates; the King, the Church and the King, the Church and the Soldier.

Then follows the introduction of the Napoleonic Code by the French.

After which we pass into our contemporary idea of law and order.

The large female figure symbolizes Louisiana in the guise of providing and protecting the younger and growing generation.



X  
**THE JUDICIAL COUNCIL  
OF  
THE SUPREME COURT  
OF  
LOUISIANA**

NCJRS

MAY - 8 1979

ACQUISITIONS

**ANNUAL REPORT  
WITH  
1978 STATISTICS  
AND RELATED DATA**



**TABLE OF CONTENTS**

**1978 ANNUAL REPORT OF THE JUDICIAL COUNCIL**

**SUPREME COURT OF LOUISIANA**  
301 Loyola Avenue  
New Orleans, Louisiana 70112

**Eugene J. Murret**  
Judicial Administrator

Letter of Transmittal .....	5
Supreme Court .....	7
Judicial Council .....	11
Judicial Administrator's Report .....	14
Judicial Planning Committee .....	16
Judicial College .....	18
Judiciary Commission .....	19

**THE LOUISIANA JUDICIARY**

Courts of Appeal .....	20
District Courts .....	23
Family and Juvenile Courts	
City and Parish Courts .....	31

**STATISTICAL SECTION**

Budget Graph .....	34
Introduction .....	35
Supreme Court .....	36
Courts of Appeal .....	38
District Courts .....	39
Family and Juvenile Courts .....	42
City and Parish Courts .....	43
Maps .....	49

**EDITOR**

**Paulette Holahan**

**STATISTICAL SECTION**

**Dr. Hugh Collins**

**Roy Evans**

**Lansing L. Mitchell, Jr.**

**SECRETARIAL ASSISTANCE**

**Wanda Wilson**



# Supreme Court

STATE OF LOUISIANA  
301 LOYOLA AVENUE

**New Orleans**  
70112

(504) 568-5747

CHIEF JUSTICE

JOE W. SANDERS

ASSOCIATE JUSTICES

FRANK W. SUMMERS

ALBERT TATE, JR.

JOHN A. DIXON, JR.

PASCAL F. CALOGERO, JR.

WALTER F. MARCUS, JR.

JAMES L. DENNIS

JUDICIAL ADMINISTRATOR

EUGENE J. MURRET

December 31, 1978

To the Members of the Supreme Court of Louisiana  
and the Board of Governors of the  
Louisiana State Bar Association

Gentlemen:

In accordance with the provisions of subsection (e) of Section 5 of Rule XXII of the Revised Rules of the Louisiana Supreme Court, I am pleased to submit herewith the twenty-third annual report of the Judicial Council of the Supreme Court.

With respect to the work of the Supreme Court, filings in 1978 increased by approximately 9%. The average annual rate of increase in filings in recent years has been consistently about 14%. A recent report of the Internal Study Committee of the Supreme Court concludes that current and proposed stop-gap measures to deal with the caseload, such as the central screening staff, summary docket procedures, improved case processing operations, and automation of the clerk's office and legal research, will be insufficient if filings continue to rise at the same rate in the next few years.

At the same time, filings in the Courts of Appeal decreased by about 13% in 1978, although the Fourth Circuit continues to have a heavy caseload. The caseload imbalance between the Supreme Court and the Courts of Appeal continues to widen.

The broadly-based Committee to Study Appellate Caseloads and Procedures recently concluded that the caseload situation in the Supreme Court is critical, and recommends that a major portion of the Court's criminal appellate jurisdiction should be transferred to the Courts of Appeal or a Court of Appeal or to some other court or courts. A subcommittee is meeting to draft proposals to accomplish this result.

Generally speaking, caseloads in the district courts are manageable, primarily due to the foresight of the Judicial Council over the past several years in recommending needed new judgeships to the Legislature. A subcommittee of the Council is presently working to refine the criteria and standards used for determining additional judgeship needs.

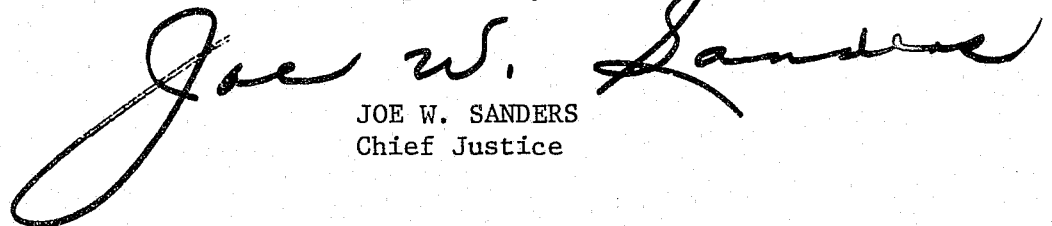
I am happy to report that the Committee on Court Records, chaired by Clerk of Court Ambroise H. Landry of Lafourche Parish, was successful in having the Legislature enact its recommendations for an improved, systematic program of preserving historical records and centrally storing inactive records. Members of the Committee are currently assessing the condition of court records throughout the state with a view toward implementing the legislative requirements.

The Committee on Science and Technology in the Courts, chaired by Judge Luther F. Cole, had a successful demonstration of computer-aided transcription at the Fall seminar and has laid plans for extending that Baton Rouge system into each of the parishes comprising the area of the First Circuit. An application for funding the project has been filed.

The Committee on the Trial Judges Benchbook, chaired by Judge Hillary J. Crain, has published the first phase of its work, jury instructions in criminal cases. Subsequent phases have been started by the Committee, under the auspices of the Louisiana Judicial College. Publication of pattern jury instructions in civil cases is also being undertaken.

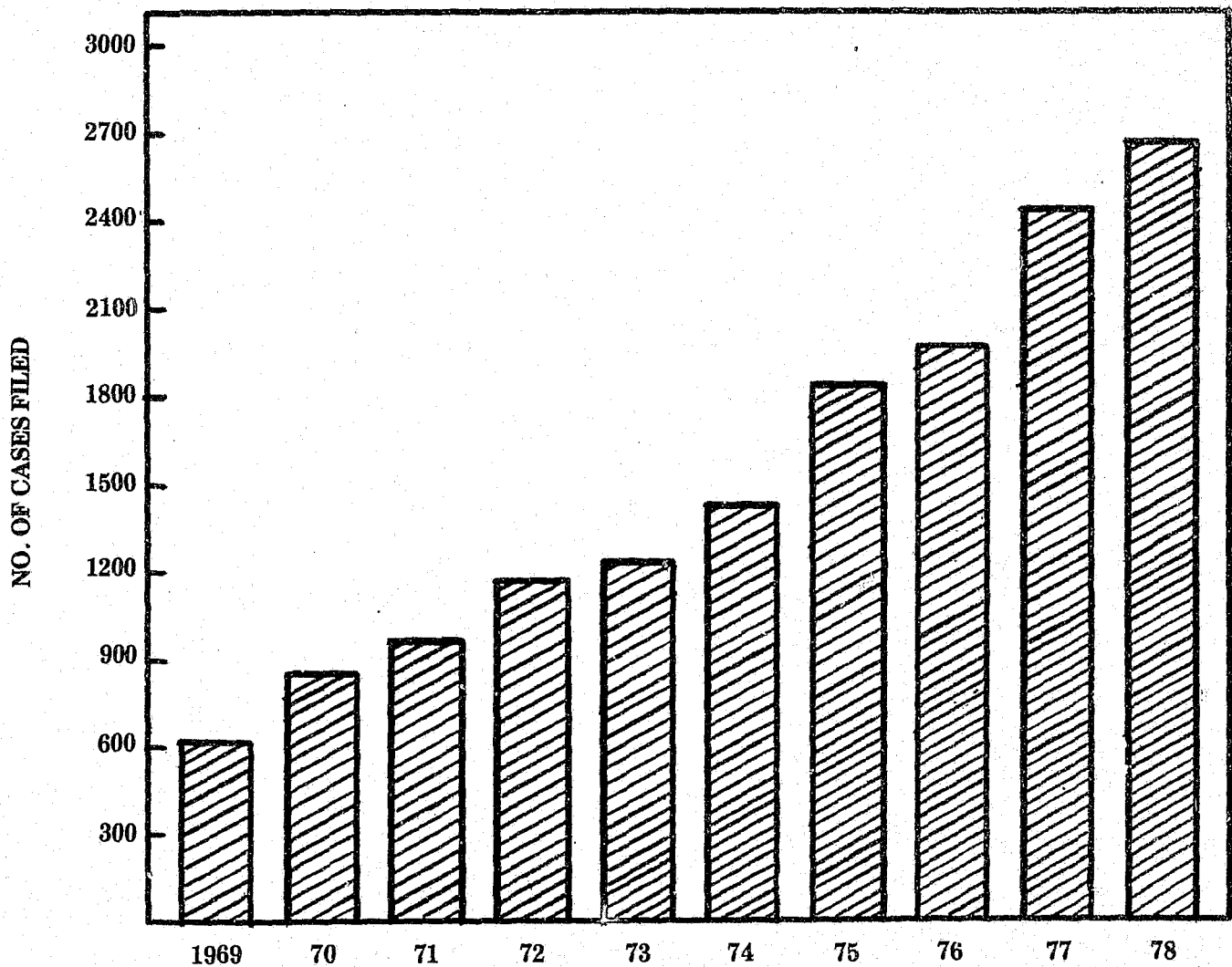
I want to take this opportunity, as I leave full-time judicial service, to thank all my fellow judges and members of the Bar who have cooperated so splendidly during my tenure as Chief Justice. Without your help and support, we could not have achieved the various improvements outlined in this and previous reports.

Respectfully submitted,

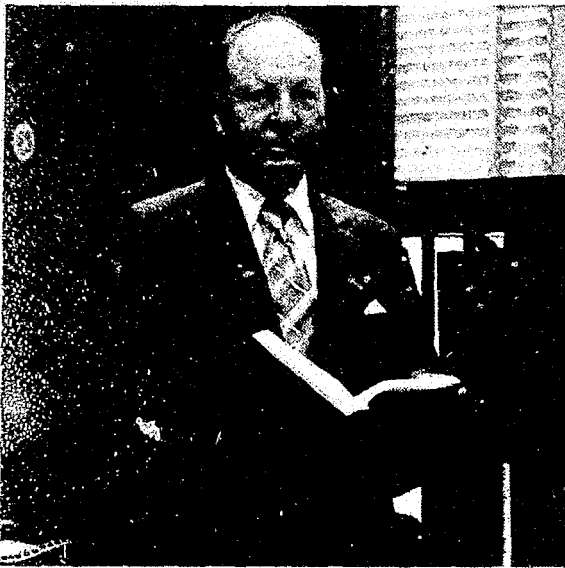
A large, stylized handwritten signature in cursive script that reads "Joe W. Sanders". The signature is written in dark ink and is positioned to the left of the typed name and title.

JOE W. SANDERS  
Chief Justice

# SUPREME COURT OF LOUISIANA TEN YEAR FILING TREND [1969-1978]



\* See Statistical Appendix for map and additional data.



**CHIEF JUSTICE  
JOE W. SANDERS\*1**

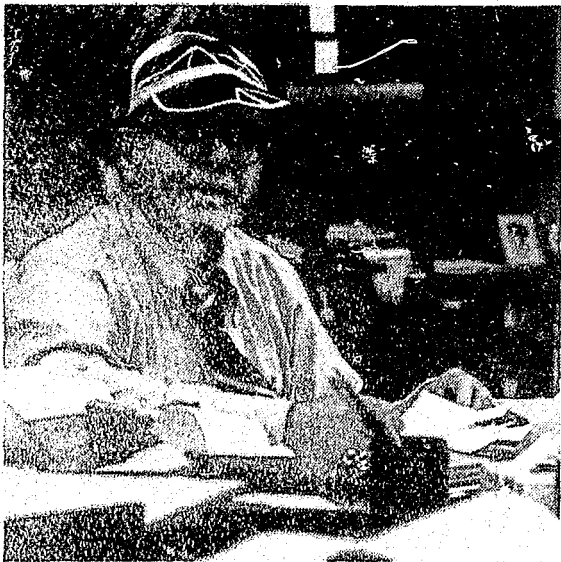
Chief Justice Sanders is elected from the Fifth Supreme Court District comprised of the following parishes: EAST BATON ROUGE, EAST FELICIANA, IBERVILLE, LIVINGSTON, POINT COUPEE, ST. HELENA, ST. LANDRY, ST. TAMMANY, TANGIPAOHA, WASHINGTON, WEST BATON ROUGE and WEST FELICIANA.



**ASSOCIATE JUSTICE  
FRANK W. SUMMERS\*2**

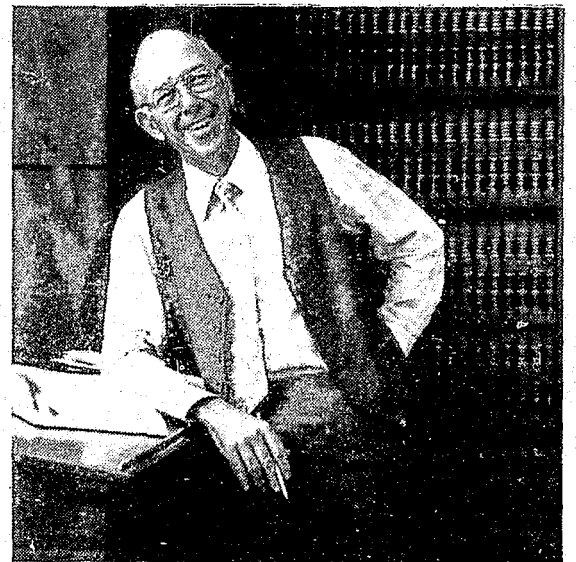
Justice Summers is elected from the Sixth Supreme Court District comprised of the following parishes: ASCENSION, ASSUMPTION, IBERIA, LAFOURCHE, ST. CHARLES, ST. JAMES, ST. JOHN THE BAPTIST, ST. MARY, ST. MARTIN, TERREBONNE, AND VERMILION.

## THE SUPREME COURT OF LOUISIANA



**ASSOCIATE JUSTICE  
ALBERT TATE, JR.**

Justice Tate is elected from the Third Supreme Court District comprised of the following parishes: ACADIA, ALLEN, AVOYELLES, BEAUREGARD, CALCASIEU, CAMERON, EVANGELINE, GRANT, JEFFERSON DAVIS, LAFAYETTE, AND RAPIDES.



**ASSOCIATE JUSTICE  
JOHN A. DIXON, JR.**

Justice Dixon is elected from the Second Supreme Court District comprised of the following parishes: BIENVILLE, BOSSIER, CADDO, CLAIBORNE, DESOTO, NATCHITOCHEs, RED RIVER, SABINE, VERNON, WEBSTER, AND WINN.

\*1 Retired December 31, 1978.

\*2 Became Chief Justice January 1, 1979.





**ASSOCIATE JUSTICE  
PASCAL F. CALOGERO, JR.**

Justice Calogero is elected from the First Supreme Court District comprised of the following parishes: JEFFERSON, ORLEANS, PLAQUEMINES, AND ST. BERNARD.



**ASSOCIATE JUSTICE  
WALTER F. MARCUS, JR.**

Justice Marcus is elected from the First Supreme Court District comprised of the following parishes: JEFFERSON, ORLEANS, PLAQUEMINES, AND ST. BERNARD.

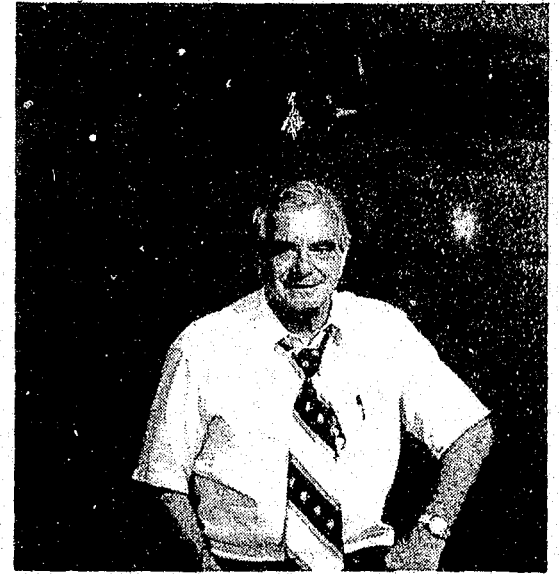
**CLERK OF COURT  
THE HONORABLE  
FRANS J. LABRANCHE, JR.**



**ASSOCIATE JUSTICE  
JAMES L. DENNIS\***

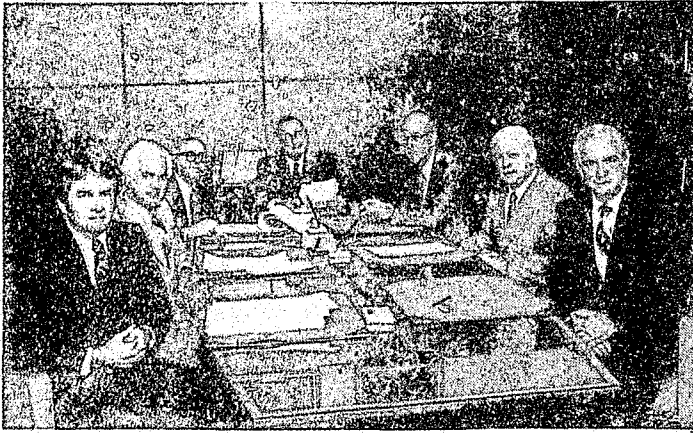
Justice Dennis is elected from the Fourth Supreme Court District comprised of the following parishes: CALDWELL, CATAHOULA, CONCORDIA, EAST CARROLL, FRANKLIN, JACKSON, LA SALLE, LINCOLN, MADISON, MOREHOUSE, OUACHITA, RICHLAND, TENSAS, UNION, AND WEST CARROLL.

\* Left to right: Law Clerk Rick Curry, Justice Dennis, Law Clerk Sue Knight, Margery Dallam, Secretary.



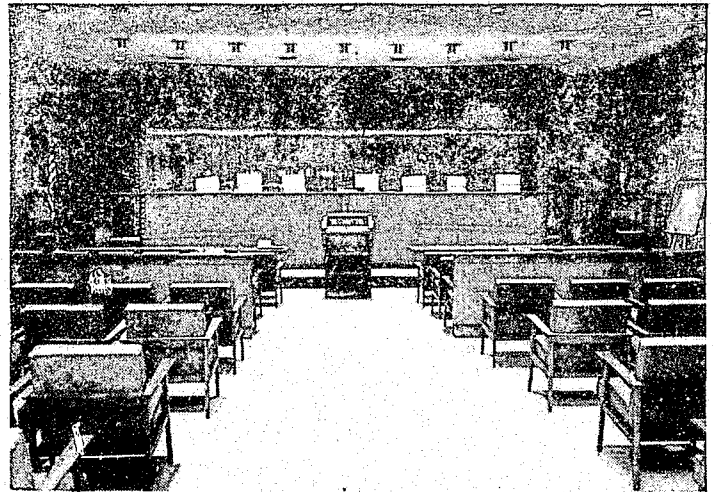
**ASSOCIATE JUSTICE  
FRED A. BLANCHE, JR.**

Justice Blanche was sworn in on January 5, 1979 succeeding Chief Justice Joe W. Sanders from the Fifth Supreme Court District. Associate Justice Summers became Chief Justice January 1, 1979.



**Left: The Justices of the Supreme Court pictured in the Conference Room of the Court. This is where the decisions are made.**

**Right: The Courtroom of the Supreme Court of Louisiana. The panel in back of the Justice's chairs is of black marble.**



**Left: Pictured is one level of the Louisiana Law Library located in the Supreme Court Building.**

# THE JUDICIAL COUNCIL

---

## 12 new judgeships result from Judicial Council recommendations . . .

---

Resulting from recommendations by the Judicial Council of Louisiana to the state legislature, Act 39 of the 1978 Session of the Legislature created one judgeship each for the following judicial districts: 1st — Caddo Parish; 2nd — Bienville, Claiborne and Jackson Parishes; 5th — Franklin, Richland, and West Carroll Parishes; 7th — Catahoula and Concordia Parishes; 9th — Rapides Parish; 15th — Acadia, Lafayette, and Vermilion Parishes; 19th — East Baton Rouge Parish; 22nd — Ascension, Assumption and St. James Parishes; and the 29th — St. Charles and St. John Parishes.

The 24th Judicial District — Jefferson Parish — received two new judgeships. The 14th Judicial District which was composed of Calcasieu and Cameron Parishes was split and a new district — the 38th — was created. The 38th Judicial District will service Cameron Parish and one judgeship was created for this purpose.

---

## Legislation to fix a deadline for filing pre-trial criminal motions passes legislature . . .

---

In another area, the Judicial Council was effective in securing final passage of legislation to fix a deadline for filing pre-trial criminal motions, a recurring recommendation of the Council.

The Judicial Council of the Supreme Court of Louisiana was established in 1950 and received its first funding by the state legislature in 1954. Its task is to evaluate and monitor the operations and

procedures of the judicial system of the state.

In this capacity, it serves as a clearinghouse for ideas for simplifying and expediting judicial procedures and for correcting shortcomings in the system.

An important facet of the task of the Judicial Council is the recommendation, to the state legislature, of new judgeships and new judicial districts, where crowded dockets and a growing backlog of cases reflect this need.

---

## Subcommittee appointed to draft plan for judgeship recommendations . . .

---

To facilitate the deliberations of the Council in this regard, the Judicial Administrator's Office undertook a survey of methods, in use in other states, with the intention of suggesting a systematic, standardized procedure for the recommendation of new judgeships.

As a result of this survey, the Judicial Council approved in principle the adoption of a ranking system for the consideration of these new judgeships. A subcommittee of the Judicial Council — The Subcommittee on Standards and Procedures for Evaluating Requests for Additional Judgeships, chaired by Judge Thomas W. Tanner — was appointed to draft a plan.

Under a ranking system, each factor that the Judicial Council feels is an important indicator of judicial need is listed according to priority. Of prime consideration in this method is a close look at caseload statistics of the courts requesting additional judgeships. Flexibility would be included which would allow for the introduction of contributing factors in explaining the low rankings of an individual court.

# MEMBERSHIP OF THE JUDICIAL COUNCIL

[As of December 31, 1978]



Honorable Joe W. Sanders,  
Chairman  
Chief Justice,  
Supreme Court of Louisiana



Honorable Frank W. Summers,\*1  
Vice Chairman  
Associate Justice,  
Supreme Court of Louisiana



Honorable L. Julian Samuel,  
Chairman, Conference of Court of  
Appeal Judges



Honorable Frederick S. Ellis,  
Representing Conference of Court  
of Appeal Judges



Honorable Thomas W. Tanner,  
Representing Louisiana District  
Judges Association



Honorable Douglas J. Nehrass,  
Representing Louisiana District  
Judges Association



Honorable Donald A. Beslin,  
Representing Louisiana City  
Judges Association



Honorable Sol Gothard,  
Representing Juvenile and Family  
Court Judges Association



Mr. Samuel C. Gainsburgh,\*2  
Representing Louisiana State  
Bar Association

\*1 Became Chief Justice and Chairman 1/1/79.

\*2 Mr. Bob Wright, Pres. LSBA served part of 1978.



**Mr. Ben Richard Hanchey,  
Representing Young Lawyers  
Section, Louisiana State  
Bar Association**



**Mr. M. Truman Woodward, Jr.,  
Representing Louisiana State  
Law Institute**



**Honorable Thomas A. Casey  
State Senator**



**Honorable John J. Hainkel, Jr.  
State Representative**



**Honorable Ossie Brown,  
President, Louisiana District  
Attorneys Association**



**Mr. Marlin Risinger  
Attorney-At-Law**



**Mr. Kernit "Hart" Bourque,  
President, Louisiana Clerks of  
Court Association**



**Dr. Charles T. Beard,  
Publisher,  
The Shreveport Journal**

<b>NON-VOTING</b>
Honorable J. Cleveland Fruge, Retired Third Circuit Court of Appeal-Secretary
<b>EX-Officio</b>
Honorable Albert, Tate, Jr., Associate Justice, Supreme Court of Louisiana
Honorable John A. Dixon, Jr. Associate Justice, Supreme Court of Louisiana
Honorable Pascal F. Calogero, Jr. Associate Justice, Supreme Court of Louisiana
Honorable Walter F. Marcus, Jr., Associate Justice, Supreme Court of Louisiana
Honorable James L. Dennis Associate Justice, Supreme Court of Louisiana
<b>STAFF</b>
Mr. Eugene J. Murret Judicial Administrator



# The Judicial Administrator Reports

The year just ended marked the close of full-time judicial service for Joe W. Sanders, Retired Chief Justice. It is fitting therefore in this report that I point to some of the highlights of his tenure as chief administrative officer of our judicial system commencing in March 1973.

Immediately upon assuming the highest judicial office in our state, Chief Sanders appointed a 22-man advisory committee to develop a modern Code of Judicial Conduct for the guidance of our judges. The Code was promulgated by the Supreme Court in early 1975.

Upon his inauguration, the Chief also appointed a committee to simplify and update the rules of practice and procedure before the Court. Adopted in August of 1973, the new rules include such innovative features as certified questions from Federal courts, continuous rules revision committee, limited participation of law students in trial work, reducing the categories for exemptions of jurors, unified post-conviction proceedings, and rules for election contest appeals.

Later, he appointed an Internal Study Committee which initiated new operating practices for helping the Court to maintain a current docket. These include a criminal appeal screening procedure by central staff attorneys; a summary docket for prompt disposition of criminal appeals presenting no substantial legal question; statistical methods for predicting monthly fluctuations in court filings, and docketing those cases to ensure an even judicial workload throughout the year; accurate system of scheduling cases for conference, thereby permitting better preparation for and less time needed for conferences, and thus freeing more time sorely needed for research and opinion writing.

In 1975, well ahead of most states, Chief Sanders established a Judicial Planning Committee to develop plans and programs for improvement of our judicial system. Recently, the committee received national recognition as one of the outstanding judicial planning committees among the states.

In 1976 the Chief set in motion the development of a benchbook for trial judges, the first two volumes of which are now in use. He also initiated a feasibility study for a sound program of continuing judicial education, resulting in the establishment of our Judicial College.

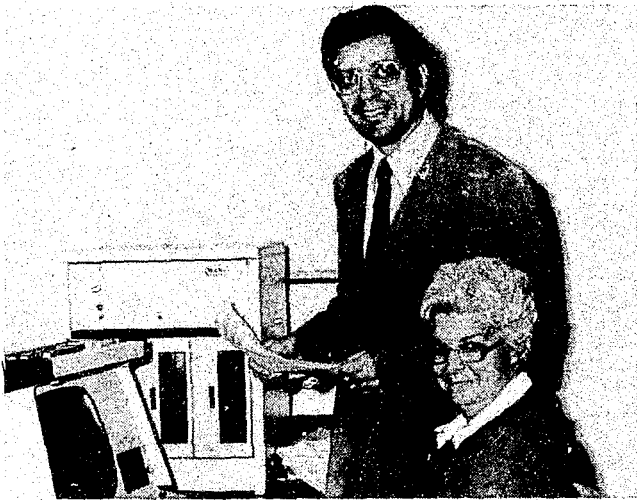
In 1977 he gave impetus to a public



Left to Right: Judicial Administrator Eugene J. Murret and Deputy Judicial Administrator Frank Moise are pictured in Murret's office in the Supreme Court Building.



Left to Right: Paulette Holahan, Deputy Judicial Administrator for Public Information, Lansing Mitchell, Court Planning Assistant and Dr. Hugh Collins, Deputy Judicial Administrator during a planning session for the Annual Report.



**Marco Tumminello, Deputy Judicial Administrator for Fiscal Affairs and Secretary Fay Courville "feed" data to the Wang [a mini computer].**



**Roy Evans, Deputy Judicial Administrator in charge of Data Systems, works over one of many computer print outs.**



**Left to Right: Danielle Schott, Wanda Wilson and Mary Lynn Murret handle the substantial secretarial workload of the Judicial Administrator's office.**

information program for our courts, resulting in a permanent position of court public information officer, a bi-monthly judicial newsletter, and bench/bar/media committees. He also encouraged a pilot program for TV coverage of a selected trial court. That same year he instituted a new practice for our state by delivering a "State of the Judiciary Address" to a joint session of the Legislature as an aid to them in considering matters affecting the courts.

Other strong and supportive actions taken by Justice Sanders during his tenure as Chief include the computer-aided transcription system in the 19th Judicial District; the Committee on Science and Technology for introducing the latest useful technology and equipment to our courts, both urban and rural; a statewide computerized court statistical information system to provide ready information for planning; and regional conferences on the courts to acquaint citizens with court operations and problems.

Last but not least, he established a broadly based committee to develop a court records management system, designated to preserve historic records and establish a sound system of maintaining current records. The plan recommended by the Committee was implemented by the 1978 Legislature.

I think you will agree that the foregoing narration of administrative accomplishments reveal a man gifted with the leadership qualities of foresight, initiative, and consistent dedication to achievable goals. I am confident that I speak for all of us in thanking Chief Justice Sanders for his efforts in substantially improving our judicial system, and wishing him every success and happiness in his future years of activity.

*Eugene J. Murret*  
**EUGENE J. MURRET**  
**JUDICIAL ADMINISTRATOR**

# THE JUDICIAL PLANNING COMMITTEE

---

## JPC Subcommittees plan for future of Louisiana Courts . . .

---

The planning responsibility of the JPC is comprehensive in nature, requiring it to consider the problems relating to court services for the entire judicial system. To accomplish this, the JPC has established subcommittees to study these areas of need in the court system: small claims; court reporting; sentencing; priorities in allocation of LEAA funds; juvenile procedures and detention facilities; use of retired judges; civil commitments; court delays; public relations; and long-range planning.

A Small Claims Workshop under the auspices of the JPC was sponsored by the Louisiana Judicial College. Over a hundred people participated including city court judges, clerks, constables, city marshalls, and attorneys. The seminar explained procedure and substance of the small claims courts. Judge Emanuel Rissman, of the Circuit Court of Cook County, Chicago, was principal speaker.

A 76 page manual on small claims procedures was completed by a subcommittee of the JPC and was distributed at the workshop. The manual includes model court rules and model forms; information for use by city court clerks, judges, and citizens utilizing the small claims procedures. As a direct result of this conference, 26 city courts have established small claims procedures, and 12 plan to do so early in 1979; it is expected that most of the remaining 26 city courts will follow suit during 1979.

---

## Juvenile Facilities . . .

---

This subcommittee was expanded in 1978 to include persons dealing in all areas of the juvenile system.

Substantive changes in the new juvenile code resulted from action by the Juvenile Facilities Subcommittee which suggested changes to the appropriate legislators during the 1978 session.

---

## Public Relations . . .

---

Through the Public Relations Subcommittee of the JPC, the Public Information Office with the Press Club of New Orleans, and Sigma Delta Chi (National Journalism Fraternity) co-sponsored a highly successful Judicial/Media Seminar in New Orleans. This was the first time such a meeting was held and it drew over a hundred and twenty-five participants from around the state and some from

## JUDICIAL PLANNING COMMITTEE

Associate Justice Albert Tate, Jr., Chairman

Judge Patrick M. Schott

Judge Benjamin I. Berry

Judge Guy E. Humphries, Jr.

Judge C. J. Bolin, Jr.

Judge Prentice L. G. Smith, Jr., Retired

Judge Joan B. Armstrong

Judge Cleveland J. Marcel, Sr.

Judge Cecil C. Cutrer

Judge Melvin A. Shortess

Judge Bernard J. Bagert

Judge Frank V. Zaccaria

Hon. John M. Mamoulides

Mr. Edward M. Baldwin

Judge Kenneth Boagni, Jr.

Dr. Raymond P. Witte

Hon. Clyde R. Webber

Mr. Lawrence P. Simon, Jr.

Mr. Richard F. Knight

Judge Cyril J. Gracianette

Staff support is provided by:

Dr. Hugh M. Collins

Lansing Mitchell, Jr.

out-of-state.

As a result of the seminar, New Orleans, Jefferson, St. Bernard, and Baton Rouge have established Bench/Bar/Media Committees.

The Public Information Office has begun work on a film explaining Small Claims Courts. This film will be available to educational institutions; speakers bureaus; and civic organizations.

In addition to these efforts to assure better understanding of the problems and needs of the judicial system, the Public Relations subcommittee is concerned with the need to alleviate justified complaints of court delay and unnecessary inconvenience to those members of the public participating in judicial proceedings. A special committee has been formed to address itself to the problems of court-users, such as witnesses and jurors, with the view of making creative and practical recommendations to improve the operations of the court system in this regard.

The Louisiana Judicial Newsletter continues to be published serving as a clearinghouse for the exchange of information and ideas of the Louisiana judiciary.

---

### Courts of Limited Jurisdiction . . .

---

The Louisiana Constitution of 1974 provides that existing city courts and other courts of limited jurisdiction be continued but that only parish courts of uniform jurisdiction may be established in the future.

In this regard, the JPC prepared parish court legislation providing for uniform jurisdiction and procedure. This was introduced at the 1978 legislative session. The legislation was referred to a joint legislative study committee and the JPC advisory committee is working with this committee to prepare Parish Court: jurisdiction; procedure; administration; and enabling acts for introduction at the 1979 session.

The JPC advisory committee has also prepared, for introduction at the 1979 session, a revision of Book VIII of the Louisiana Code of Civil Procedure. This revision modernizes the procedures

and expands the jurisdiction of courts of limited jurisdiction.

---

### Long-Range Planning . . .

---

The long-range planning subcommittee has divided itself into 5 task forces: court structure; trial courts; judicial personnel; facilities; and court administration. These subcommittees are in the process of making studies in preparation for reports addressing needed improvements in our judicial system.

The goal of the long-range planning subcommittee is to prepare a plan for future judicial structure. It is hoped that by 1985 the goals set by this process of study will be accomplished by a statewide implementation effort sponsored by interested professional, and civic groups.

---

### Court Reporting . . .

---

To improve the operations of court reporters, the committee recommended and was instrumental in the passage of a revised and modernized General Court Reporters Act in 1978. The committee has also undertaken a continuing study of the feasibility of new methods of furnishing transcripts of evidence, such as by computerized transcription, and of methods of providing more effective management of court reporting services.

---

### Priorities And Steering . . .

---

The JPC priorities subcommittee develops the general areas where the use of LEAA funding will be of the greatest benefit to the courts of Louisiana. Subsequently, the JPC steering subcommittee evaluates each application made to the Louisiana Commission on Law Enforcement for LEAA funds, relating to judicial improvement projects. The Louisiana Commission on Law Enforcement has consistently followed the subcommittee's recommendation.

---

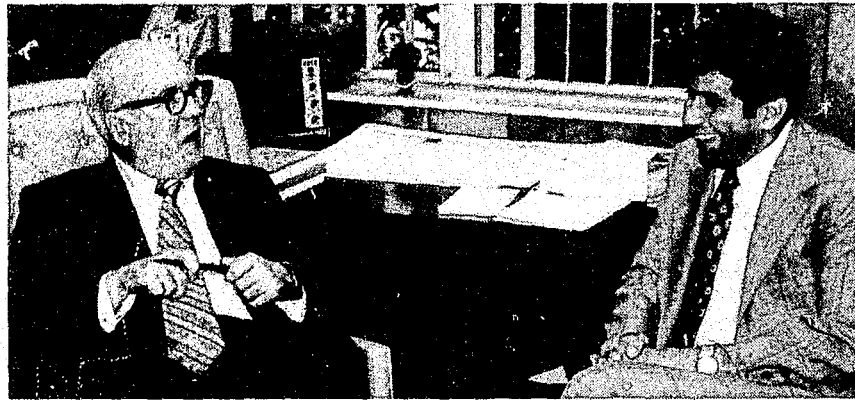
*Editor's note: The above report was prepared by Lansing Mitchell of the Judicial Administrator's office.*

# THE LOUISIANA JUDICIAL COLLEGE

As part of its mandate to provide continuing legal education programs for judges and court personnel in Louisiana, the Judicial College sponsored the Annual Judicial Seminar and planned the programming at various annual meetings of the City, District and Courts of Appeal Judges. These programs were designed to afford the opportunity for the state's judiciary to analyze common problems and to discuss the most recent developments in the law.

In addition to these annual meetings, the College presented a panel during the Louisiana State Bar Association convention dealing with sentencing in captial cases; a Small Claims Workshop for City Judges and Clerks of Court; and an Orientation Seminar for the new Louisiana judges.

The College distributed the first two volumes of the Louisiana Judges' Benchbook and is formulating plans to publish additional sections and to update the original two volumes.



Left to Right: Professor Francis C. Sullivan, former Acting Dean of the LSU Law Center, the College's Executive Director and Joseph J. Baiamonte, Assistant to the Dean, LSU Law Center, Associate Director of the Judicial College.

## THE BOARD OF GOVERNORS OF THE JUDICIAL COLLEGE

The Judges serving on the board are:

Justice James L. Dennis, New Orleans, Louisiana, Chairman  
Justice Fred A. Blanche, Jr., New Orleans, Louisiana  
Honorable Bernard L. Knobloch, Thibodaux, Louisiana  
Honorable Leon Ford, III, Hammond, Louisiana  
Honorable Kaliste J. Saloom, Lafayette, Louisiana  
Honorable Elvis C. Stout, Monroe, Louisiana  
Honorable Thomas C. Wicker, Jr., Gretna, Louisiana

The remaining members of the board are:

The president of the Louisiana Bar Association (presently Bob F. Wright, Lafayette, Louisiana)

The Governor or his representative (Camille Gravel, Jr., Executive Counsel to the Governor, Baton Rouge, currently represents the Governor)

One state representative appointed by the Governor (Rep. Robert Freeman of Plaquemines currently fills this position)

One state senator appointed by the Governor (Senator Nat G. Kiefer of New Orleans, currently fills this position)

The Judicial Administrator, Mr. Eugene J. Murret, serves as the Board's secretary.



# THE JUDICIARY COMMISSION OF LOUISIANA

The Judiciary Commission, was created by constitutional amendment adopted November 5, 1968. By that amendment (Article IX, Section 4, Constitution of 1921), the Commission was composed of seven members - four judges, two attorneys, and one lay citizen. The Judicial Administrator was the Chief Executive Officer.

That Article provided that "a justice or judge may be removed from office or retired involuntarily for willful misconduct relating to his official duty or willful or persistent failure to perform his duty, or habitual intemperance, or for conviction, while in office, of a felony." It also provided that "a justice or judge may be retired involuntarily for disability that seriously interferes with the performance of his duties and that is, or is likely to become, of a permanent character."

Those actions are pursued as a result of a complaint or on the Commission's own motion, by investigation, adversary hearings and recommendation to the Supreme Court. All Commission proceedings, evidence and documents filed with the Commission, are confidential. Proceedings before the Supreme Court on recommendation of the Commission are not confidential.

Article V, Section 25, Constitution of 1974, continues the Judiciary Commission as a constitutional body with the same purposes and procedures but with changes in membership and additional disciplinary powers. The membership is now nine persons: three judges appointed by the Supreme Court; three attorneys appointed by the Conference of Court of Appeal Judges; and three lay persons appointed by the Louisiana District Judges Association.

The Judicial Administrator remains the Chief Executive Officer, however, this is now provided for by Supreme Court rule under that court's authority to make rules implementing the constitutional provision.

The powers of the Commission now include to recommend, in addition to removal and involuntary retirement, censure, and suspension with or without salary. Additional causes for disciplinary action are: persistent and public conduct pre-judicial to the administration of justice that brings the judicial office into disrepute, and conduct while in office which would constitute a felony. All other matters originally provided remain the same.

---

*Editor's Note: Complaints may be made to the office of the Chief Executive Officer of the Commission, Eugene J. Murret, 109 Supreme Court Building, New Orleans, Louisiana 70112, Tel.: [504] 568-5747.*

## MEMBERSHIP OF THE JUDICIARY COMMISSION

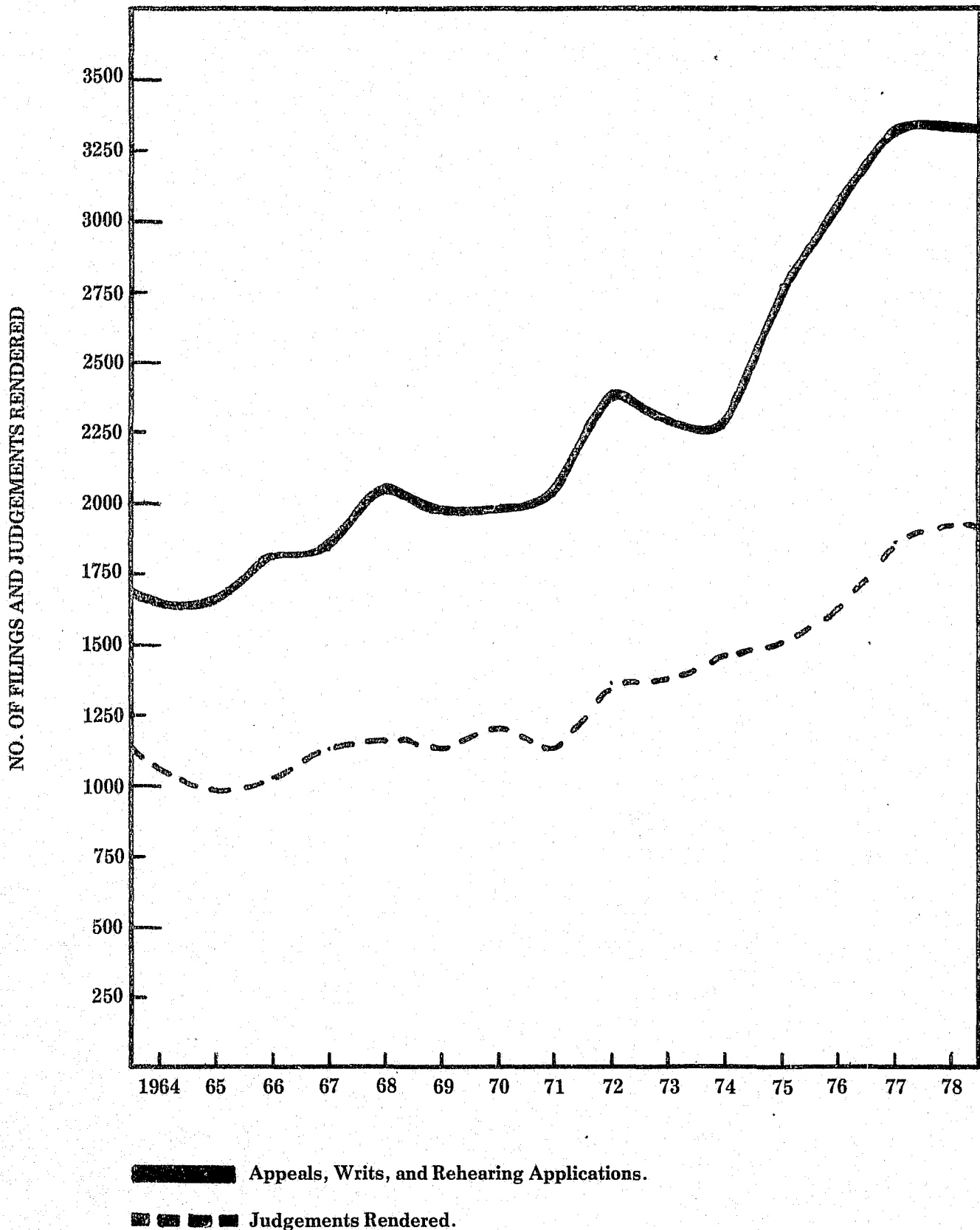
[As of December 31, 1978]

Judge S. Sanford Levy, Chairman  
Charles H. Heck, Vice-Chairman  
Richard E. Gerard, Sr.  
Dr. Monroe Jackson Rathbone  
Judge Guy E. Humphries

Dr. Warren V. Ales  
Sidney Flynn  
Judge James E. Bolin  
Henry A. Politz  
Eugene J. Murret, Chief Executive Officer

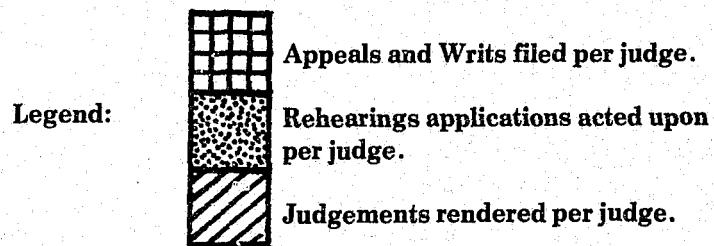
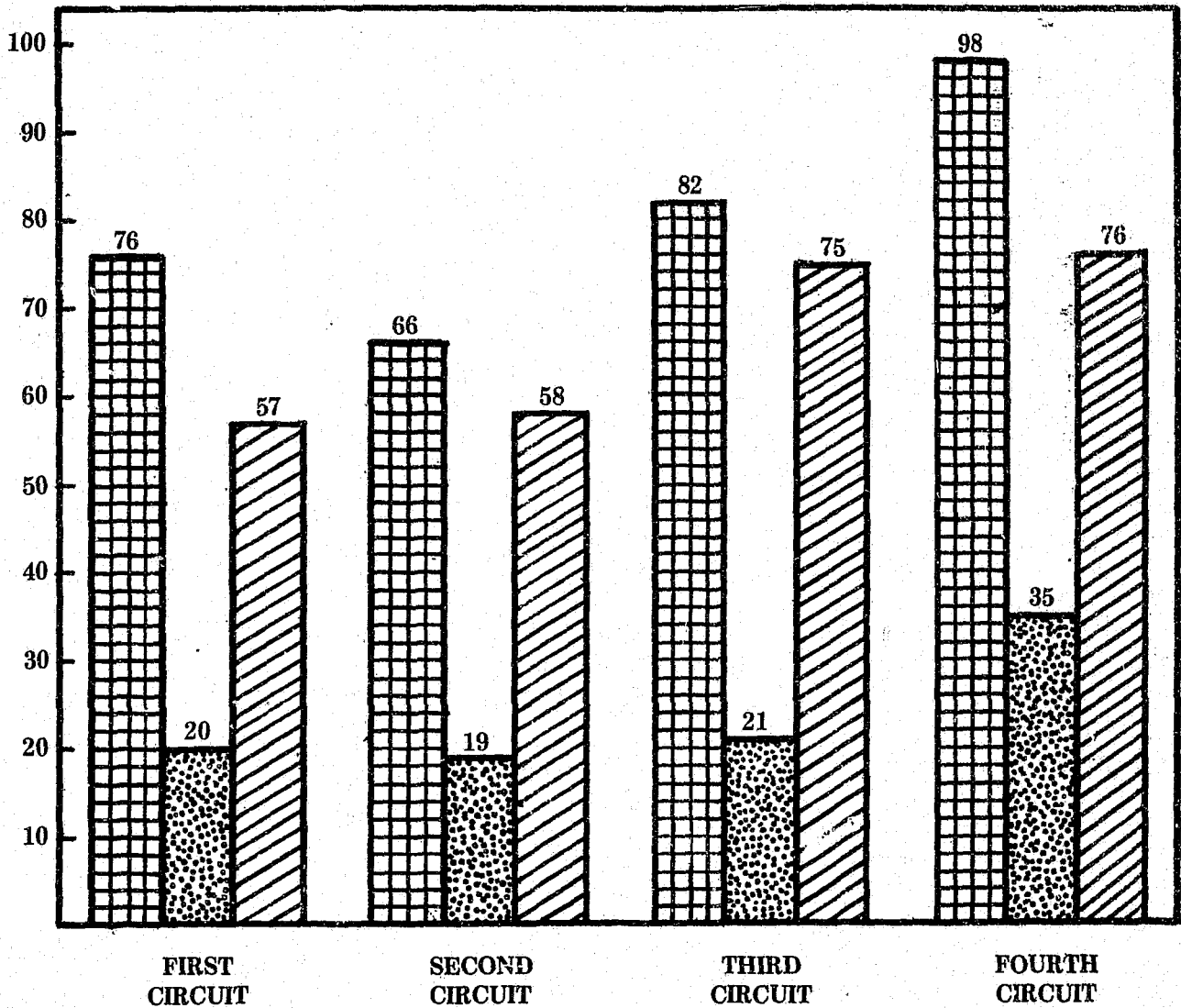
# LOUISIANA COURTS OF APPEAL

## Growth of Filings and Judgements Rendered



\* See Statistical Appendix for map and additional data.

# LOUISIANA COURTS OF APPEAL WORKLOAD COMPARISON



\* See Statistical Appendix for map and additional data.

**THE LOUISIANA COURTS OF APPEAL  
Roster of Judges and Clerks**



**Paul B. Landry, Jr.  
Chief Judge**

**Judges**  
**FIRST CIRCUIT (Baton Rouge)**  
 Paul B. Landry, Jr., Chief Judge  
 Frederick S. Ellis  
 C. Lenton Sartain (Retired, Assigned)  
 Grover L. Covington  
 Morris Lottinger, Jr.  
 Remy Chiasson  
 Wallace A. Edwards  
 Elven E. Ponder  
 Julian E. Bailes (Retired, Assigned)

<b>Domicile</b>	<b>District</b>
Port Allen	First
Covington	Third
Baton Rouge	Second
Hammond	Third
Houma	First
Thibodaux	First
Covington	Third
Baton Rouge	Second

Clerk: Edward C. Seghers



**James E. Bolin  
Chief Judge**

**SECOND CIRCUIT (Shreveport)**  
 James E. Bolin, Chief Judge  
 O. E. Price  
 Pike Hall, Jr.  
 Charles A. Marvin  
 Jasper E. Jones

<b>Domicile</b>	<b>District</b>
Minden	At Large
Bossier City	At Large
Shreveport	Third
Minden	Second
West Monroe	First

Clerk: Harold L. Booth



**W. A. Culpepper  
Chief Judge**

**THIRD CIRCUIT (Lake Charles)**  
 W. A. Culpepper, Chief Judge  
 Jerome E. Domengeaux  
 Jack C. Watson  
 Edmond L. Guidry, Jr.  
 J. Burton Foret  
 Cecil C. Cutrer  
 \*G. William Swift, Jr.  
 \*Jimmy M. Stoker  
 \*Ned E. Doucet, Jr.

<b>Domicile</b>	<b>District</b>
Alexandria	First
Lafayette	At Large
Lake Charles	At Large
St. Martinville	Third
Ville Platte	At Large
Lake Charles	Second
Lake Charles	Second
Alexandria	First
Kaplan	Third

Clerk: Kenneth J. deBlanc



**L. Julian Samuel  
Chief Judge**

**FOURTH CIRCUIT (New Orleans)**  
 L. Julian Samuel, Chief Judge  
 William V. Redmann  
 Harry T. Lemmon  
 James C. Gulotta  
 Edward J. Stoulig  
 John C. Boutall  
 Patrick M. Schott  
 Peter H. Beer  
 Jim Garrison

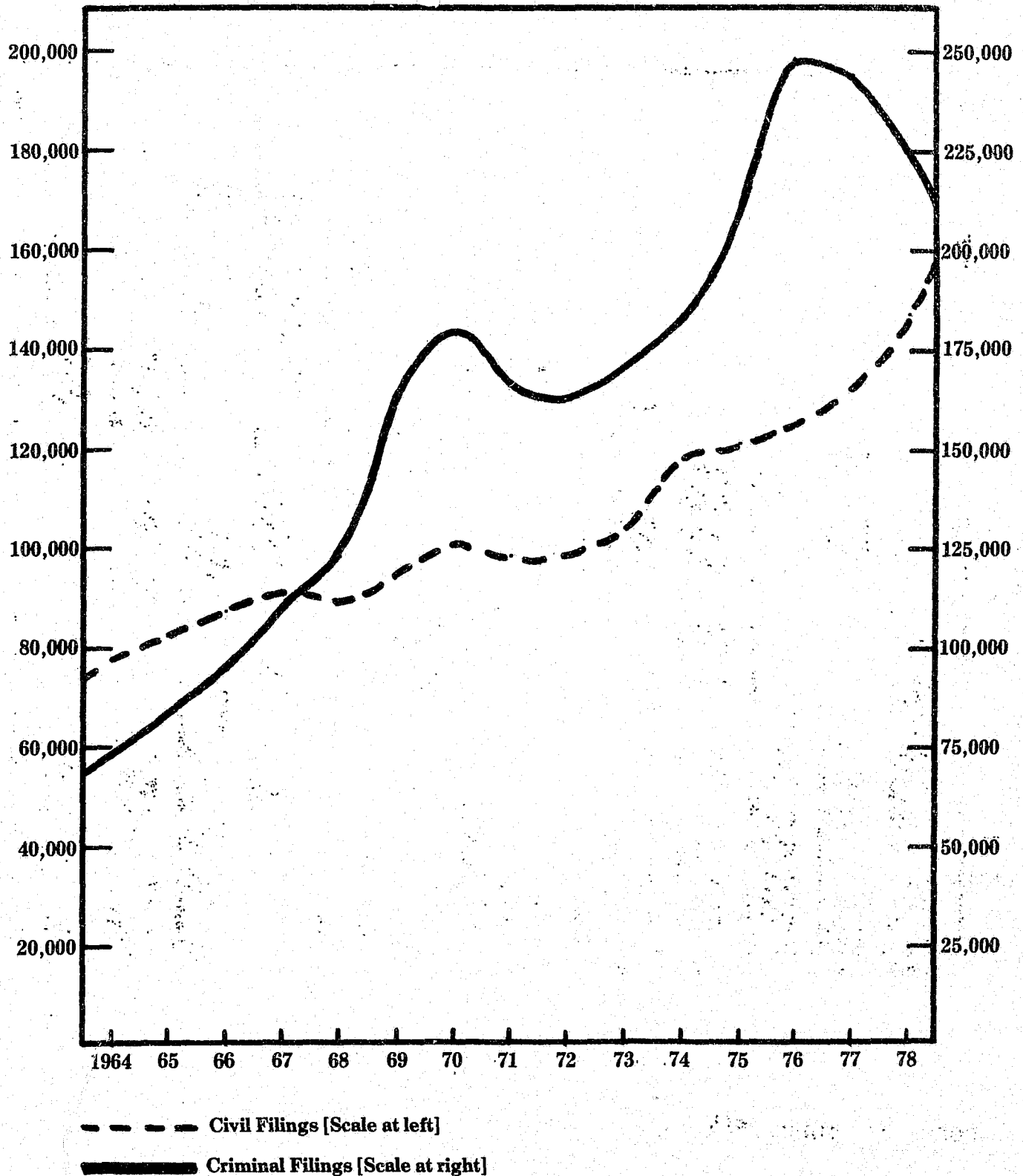
<b>Domicile</b>	<b>District</b>
Gretna	First
New Orleans	Second
Hahnville	Third
New Orleans	Second
Kenner	First
Metairie	First
New Orleans	Second
New Orleans	Second
New Orleans	Second

Clerk: Marjorie R. Cambre

\*Took office on or after Jan. 1, 1979.

# LOUISIANA DISTRICT COURTS

## Growth of Civil and Criminal Case Filings

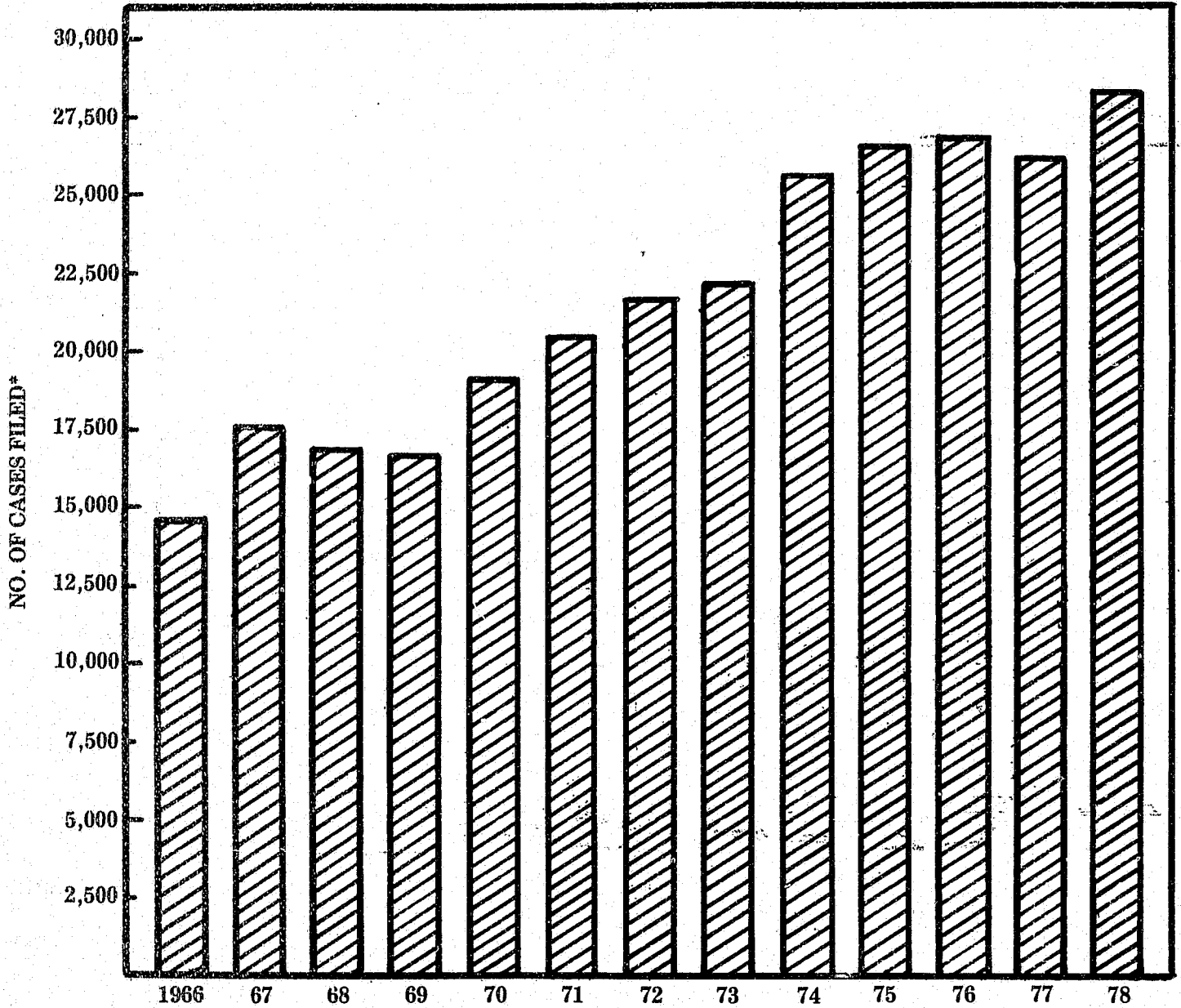


\* See Statistical Appendix for map and additional data.



# LOUISIANA FAMILY AND JUVENILE COURTS

## Year By Year Filing Trend\*

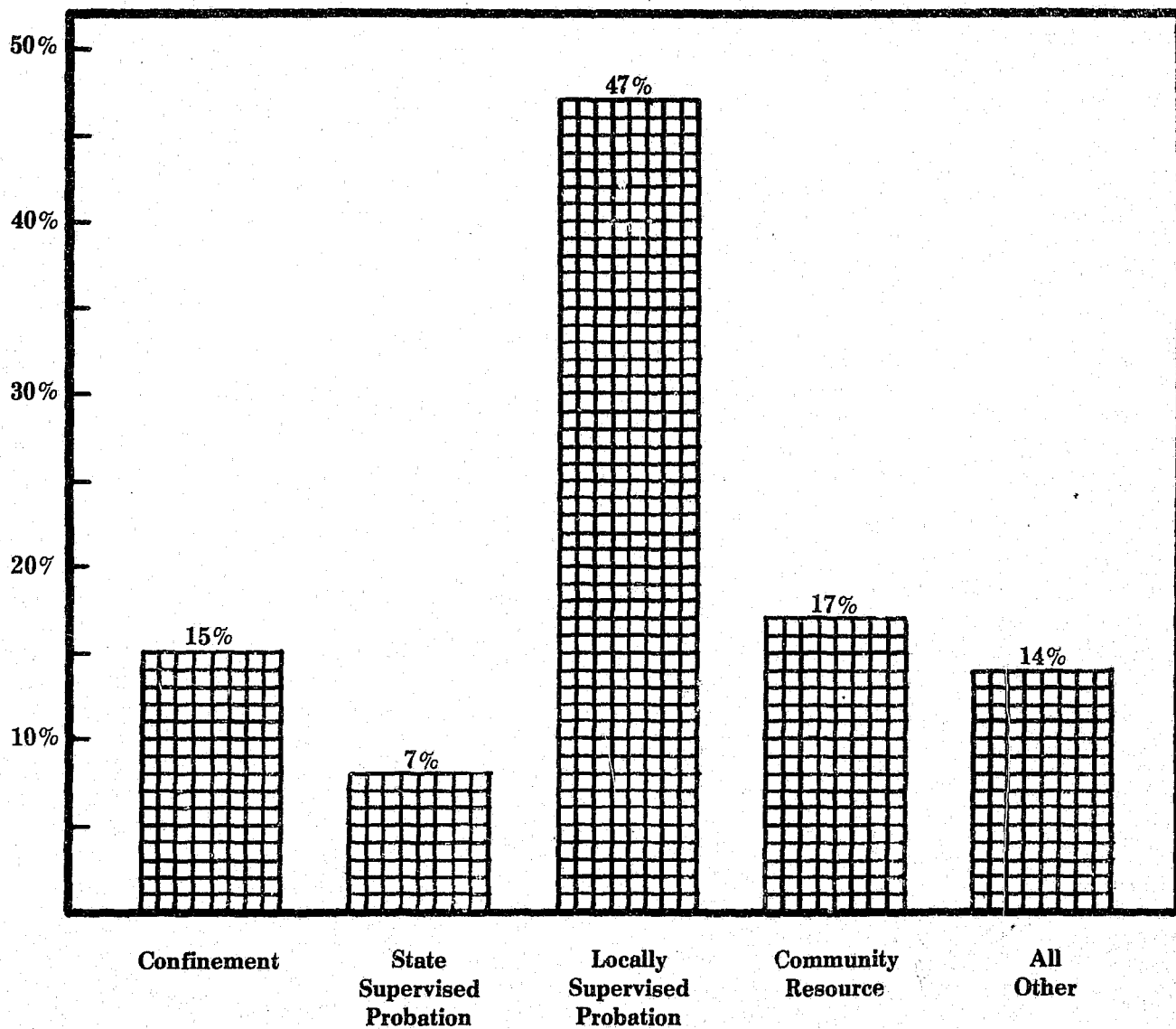


\*-DOES NOT INCLUDE REHEARINGS.

\* See Statistical Appendix for map and additional data.

# LOUISIANA FAMILY AND JUVENILE COURTS

## Type of Referral — For Delinquency Cases



\* See Statistical Appendix for map and additional data.

DISTRICT COURTS OF LOUISIANA

Roster of Judges and Clerks

<u>Judges</u>	<u>Parishes Within District</u>	<u>Parish Seats</u>	<u>Clerks Of Court</u>
<b>FIRST DISTRICT</b>			
C. J. Bolin, Jr., Chief Judge James E. Clark Fred C. Sexton, Jr. John R. Ballard Gayle K. Hamilton Charles R. Lindsay *Eugene W. Bryson *Paul Lynch	Caddo	Shreveport	D. D. Pyburn
<b>CADDO PARISH JUVENILE COURT</b>			
Gorman E. Taylor, Chief Judge Andrew B. Gallagher			
<b>SECOND DISTRICT</b>			
David T. Caldwell, Chief Judge Paul A. Newell *Robert Y. Butler	Jackson Claiborne Bienville	Jonesboro Homer Arcadia	A. Walsworth B. A. Gladney H. R. Sledge
<b>THIRD DISTRICT</b>			
Fred W. Jones, Jr., Chief Judge *O. L. Waltman, Jr.	Lincoln Union	Ruston Farmerville	R. N. Cobb J. A. Brantley
<b>FOURTH DISTRICT</b>			
Robert T. Farr, Chief Judge Fred Fudickar, Jr. Lemmie O. Hightower William Norris, III John R. Joyce	Morehouse Ouachita	Bastrop Monroe	A. T. Goodnight B. Downey
<b>FIFTH DISTRICT</b>			
John C. Morris, Jr., Chief Judge B. I. Berry *Sonny N. Stephens	Franklin Richland West Carroll	Winnsboro Rayville Oak Grove	R. Lowe D. B. McKay M. N. Oldham
<b>SIXTH DISTRICT</b>			
Cliff C. Adams, Chief Judge Alwine M. Ragland	Madison East Carroll Tensas	Tallulah Lake Providence St. Joseph	J. K. Post, Jr. E. B. Brock J. A. Kitchen
<b>SEVENTH DISTRICT</b>			
Richard P. Boyd, Chief Judge *W. C. Falkenheiner	Catahoula Concordia	Harrisonburg Vidalia	W. A. Book C. R. Webber, Jr.
<b>EIGHTH DISTRICT</b>			
Hiram J. Wright, Chief Judge	Winn	Winnfield	J. O. Anders
<b>NINTH DISTRICT</b>			
Guy E. Humphries, Jr., Chief Judge Jules L. Davidson, Jr. Robert P. Jackson *Alfred A. Mansour *Richard E. "Dick" Lee *Lloyd G. Teekell	Rapides	Alexandria	P. M. Dyer, Jr.

\*Took office on or after January 1, 1979.

DISTRICT COURTS OF LOUISIANA

Roster of Judges and Clerks

<u>Judges</u>	<u>Parishes Within District</u>	<u>Parish Seats</u>	<u>Clerks Of Court</u>
<b>TENTH DISTRICT</b>			
Richard B. Williams, Chief Judge W. Peyton Cunningham, Jr.	Natchitoches Red River	Natchitoches Coushatta	I. L. Knotts, Jr. E. V. Womack
<b>ELEVENTH DISTRICT</b>			
John S. Pickett, Jr., Chief Judge *W. Charles Brown	DeSoto Sabine	Mansfield Many	W. A. Porter, Jr. J. E. Wright
<b>TWELFTH DISTRICT</b>			
*James N. Lee, Chief Judge	Avoyelles	Marksville	G. H. Couvillon
<b>THIRTEENTH DISTRICT</b>			
Joseph E. Coreil, Chief Judge	Evangeline	Ville Platte	W. Lee
<b>FOURTEENTH DISTRICT</b>			
Henry L. Yelverton Warren E. Hood, Chief Judge L. E. Hawsey, Jr. A. J. Planchard *W. Ellis Bond *Charles S. King	Calcasieu	Lake Charles	A. Hillebrandt
<b>FIFTEENTH DISTRICT</b>			
Carrol L. Spell Lucien C. Bertrand, Jr. Douglas J. Nehrass * Allen M. Babineaux * G. Bradford Ware, Chief Judge Hugh E. Brunson **Sue Fontenot	Acadia Lafayette Vermilion	Crowley Lafayette Abbeville	J. A. Barousse D. Guillot I. Hebert
<b>SIXTEENTH DISTRICT</b>			
Edward A. de la Houssaye, III Robert M. Fleming Robert E. Johnson C. Thomas Bienvenu, Jr., Chief Judge *John M. Duhe, Jr.	Iberia St. Martin St. Mary	New Iberia St. Martinville Franklin	O. LeBlanc J. A. Theriot B. A. Blakeman
<b>SEVENTEENTH DISTRICT</b>			
Bernard L. Knobloch, Chief Judge Walter I. Lanier, Jr. Wollen J. Falgout P. Davis Martinez (Ret., Assigned)	Lafourche	Thibodaux	A. H. Landry
<b>EIGHTEENTH DISTRICT</b>			
Daniel P. Kimball Edward N. Engolio Ian W. Claiborne, Chief Judge	W. Baton Rouge Pointe Coupee Iberville	Port Allen New Roads Plaquemines	T. J. LeBlanc I. G. Olinde J. G. Dupont

\*Took office on or after January 1, 1979.

**DISTRICT COURTS OF LOUISIANA**

**Roster of Judges and Clerks**

<u>Judges</u>	<u>Parishes Within District</u>	<u>Parish Seats</u>	<u>Clerks Of Court</u>
<b>NINETEENTH DISTRICT</b>			
Elmo E. Lear Luther F. Cole, Chief Judge Lewis S. Doherty, III Donovan W. Parker Melvin A. Shortess John S. Covington Daniel W. LeBlanc Steve A. Alford, Jr. Frank Foil Douglas M. Gonzales *Carl A. Guidry *Charles W. "Bill" Roberts *William H. "Bill" Brown	E. Baton Rouge	Baton Rouge	M. Cannon
<b>EAST BATON ROUGE FAMILY COURT</b>			
Thomas B. Pugh, Chief Judge *E. Donald Moseley *Anthony J. Graphia			
<b>TWENTIETH DISTRICT</b>			
William F. Kline, Jr., Chief Judge	E. Feliciana W. Feliciana	Clinton St. Francisville	I. M. Durham R. P. Daniel
<b>TWENTY-FIRST DISTRICT</b>			
Gordon E. Causey, Chief Judge Leon Ford, III Burrell J. Carter Samuel L. Rowe *Edward Brent Dufreche	Livingston St. Helena Tangipahoa	Livingston Greensburg Amite	L. W. Patterson B. S. Chappel C. Moore
<b>TWENTY-SECOND DISTRICT</b>			
Hillary J. Crain Thomas W. Tanner Stephen A. Duczer John W. Greene, Chief Judge *A. Clayton James	St. Tammany Washington	Covington Franklinton	L. R. Rausch D. Seal
<b>TWENTY-THIRD DISTRICT</b>			
Leon L. Lesueur, Chief Judge Penrose C. St. Amant *Charles S. Becnel	Assumption St. James Ascension	Napoleonville Convent Donaldsonville	R. J. Marquette E. E. Kinler, Jr. K. H. Bourque
<b>TWENTY-FOURTH DISTRICT</b>			
Fred S. Bowes Frank V. Zaccaria H. Charles Gaudin Floyd W. Newlin Nestor L. Currault, Jr. Louis G. DeSonier, Jr., Chief Judge Thomas C. Wicker, Jr. Wallace C. LeBrun Alvin R. Eason Patrick E. Carr *Lionel R. Collins *Walter E. Kollin *Robert J. Burns	Jefferson	Gretna	W. M. Justice, Jr.

\*Took office on or after January 1, 1979.



**DISTRICT COURTS OF LOUISIANA**

Roster of Judges and Clerks

<u>Judges</u>	<u>Parishes Within District</u>	<u>Parish Seats</u>	<u>Clerks Of Court</u>
<b>JEFFERSON PARISH JUVENILE COURT</b>			
Sol Gothard, Chief Judge Thomas P. McGee			
<b>TWENTY-FIFTH DISTRICT</b>			
Eugene E. Leon, Jr. Preston H. Hufft, Chief Judge	Plaquemines	Point-a-la-Hache	A. L. Lobrano
<b>TWENTY-SIXTH DISTRICT</b>			
Monty W. Wyche, Chief Judge Cecil C. Lowe	Webster	Minden	H. S. Matthews
*Graydon K. Kitchens, Jr.	Bossier	Benton	W. Mabry
*Cecil P. Campbell, II			
<b>TWENTY-SEVENTH DISTRICT</b>			
Joseph A. LaHaye, Chief Judge H. Garland Pavy Isom J. Guillory, Jr.	St. Landry	Opelousas	D. W. Doga
<b>TWENTY-EIGHTH DISTRICT</b>			
Edwin R. Hughes, Chief Judge	LaSalle	Jena	J. D. Nugent
<b>TWENTY-NINTH DISTRICT</b>			
C. William Bradley Ruche J. Marino, Chief Judge Thomas J. Malik	St. Charles St. John	Hahnville Edgard	C. J. Oubre H. L. Montegut
*Edward A. Dufresne, Jr.			
<b>THIRTIETH DISTRICT</b>			
James C. Terrell, Jr., Chief Judge Ted R. Broyles	Vernon	Leesville	C. N. Hyde
<b>THIRTY-FIRST DISTRICT</b>			
Walter C. Peters, Chief Judge	Jefferson Davis	Jennings	G. B. Huff
<b>THIRTY-SECOND DISTRICT</b>			
Baron B. Bourg, Chief Judge Cleveland J. Marcel, Sr. Ashby W. Pettigrew, Jr. Wilmore J. Broussard, Jr.	Terrebonne	Houma	I. R. Boudreaux
<b>THIRTY-THIRD DISTRICT</b>			
Edward M. Mouser, Chief Judge	Allen	Oberlin	R. L. Thomas
<b>THIRTY-FOURTH DISTRICT</b>			
Richard H. Gauthier, Chief Judge *Thomas M. McBride, III *Melvyn J. Perez	St. Bernard	Chalmette	S. D. Torres
<b>THIRTY-FIFTH DISTRICT</b>			
W. T. McCain, Chief Judge	Grant	Colfax	J. E. Lemoine
<b>THIRTY-SIXTH DISTRICT</b>			
Leland H. Coltharp, Jr., Chief Judge	Beauregard	DeRidder	R. B. Nichols
<b>THIRTY-SEVENTH DISTRICT</b>			
Ronald L. Lewellyan, Chief Judge	Caldwell	Columbia	A. L. Darden

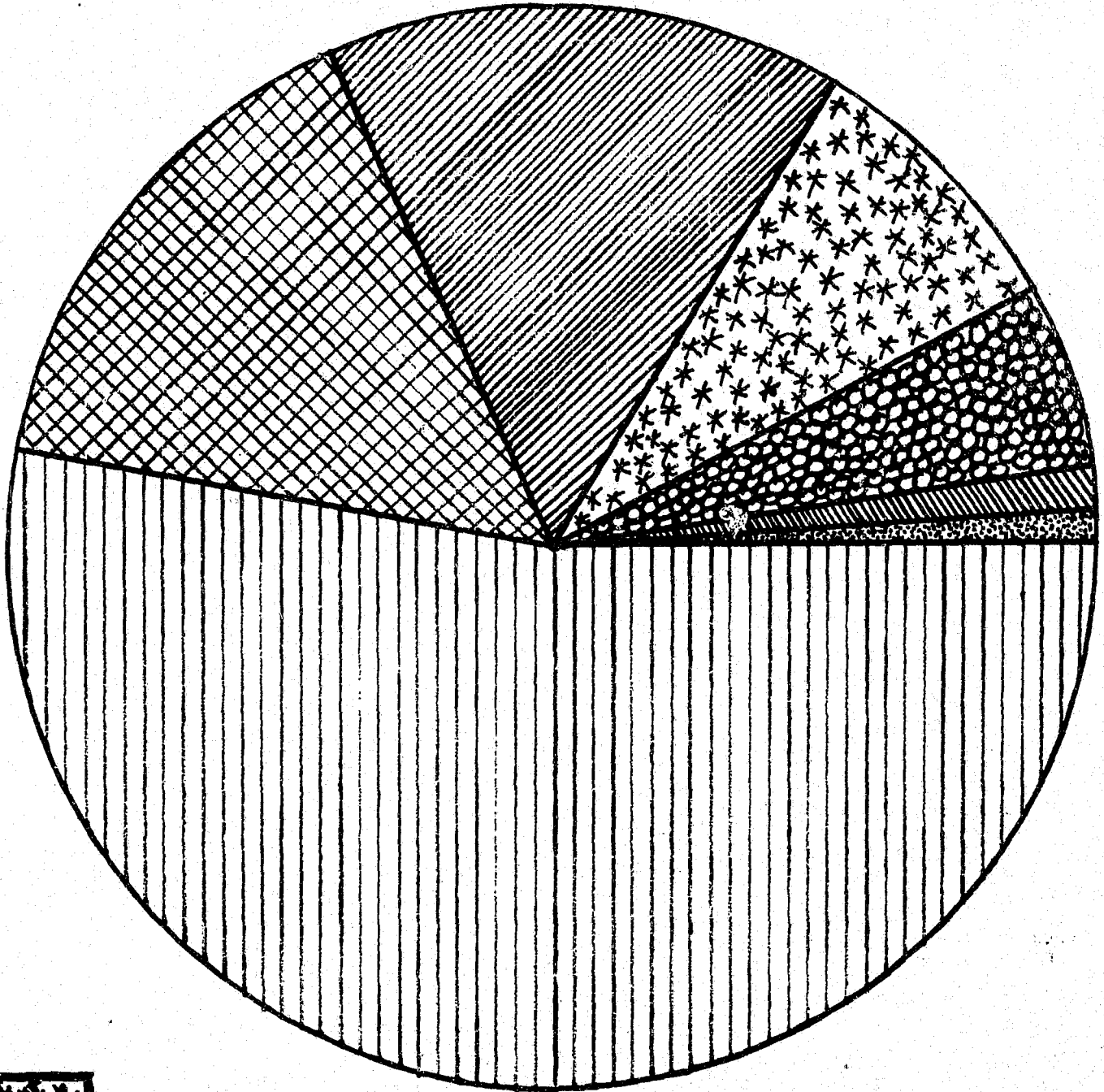
\*Took office on or after January 1, 1979.

**DISTRICT COURTS OF LOUISIANA**  
Roster of Judges and Clerks

<u>Judges</u>	<u>Parishes Within District</u>	<u>Parish Seats</u>	<u>Clerks Of Court</u>
<b>THIRTY-EIGHTH DISTRICT</b>			
*H. Ward Fontenot, Chief Judge	Cameron	Cameron	R. U. Primeaux
<b>ORLEANS PARISH CIVIL DISTRICT COURT</b>			
Thomas A. Early, Jr.			Division
Robert A. Katz			A
Richard J. Garvey, Chief Judge			B
S. Sanford Levy			C
Gerald P. Fedoroff			D
Henry J. Roberts, Jr.			E
Paul P. Garofalo (Ret., Assigned)			F
Oliver P. Carriere (Ret., Assigned)			G
Melvin J. Duran			H
George J. Connolly, Jr.			I
Charles L. Rivet			J
John M. Holahan			Commissioner
Anthony J. Vesich, Jr.			Commissioner
	Clerk: Richard J. Ganuchau		Commissioner
<b>ORLEANS PARISH CRIMINAL DISTRICT CT.</b>			
Charles R. Ward			Division
Matthew S. Braniff			A
Jerome M. Winsberg			B
Frank A. Marullo, Jr.			C
Rudolph F. Becker, III			D
Oliver P. Schulingkamp			E
Frank J. Shea, Jr.			F
Bernard J. Bagert, Chief Judge			G
Israel M. Augustine, Jr.			H
Alvin V. Oser			I
Gerard J. Hansen			J
Nils R. Douglas			Magistrate
Anthony J. Russo			Commissioner
*George G. Kiefer			Commissioner
*Andrew Sciambra			Commissioner
	Clerk: Edwin A. Lombard		
<b>ORLEANS PARISH JUVENILE COURT</b>			
Joan B. Armstrong, Administrative Judge			Section
*Clarence B. Giarrusso, Jr.			A
Salvadore T. Mule			B
Edward G. Gillin			C
			D
	Clerk: Joseph L. Peyton		

\*Took office on or after January 1, 1979.

# LOUISIANA CITY AND PARISH COURTS Cases Processed



- CIVIL 8.4%
- CRIMINAL — STATE 5.5%
- CRIMINAL — LOCAL 15.3%
- TRAFFIC — STATE 15.3%
- TRAFFIC — LOCAL 53.5%
- JUVENILE DEL. 1.2%
- JUVENILE TRAFFIC 0.8%

\* See Statistical Appendix for map and additional data.

# THE CITY AND PARISH COURTS OF LOUISIANA

## Roster of Judges and Locations of Courts

### CITIES

Abbeville  
Alexandria  
Ascension Parish  
Baker  
Bastrop  
Baton Rouge:  
  Division A  
  Division B  
  Division C  
Bogalusa  
Bossier City  
Breaux Bridge  
Bunkie  
Crowley  
Denham Springs  
DeRidder  
Eunice  
Franklin  
Hammond  
Houma  
Jeanerette  
Jefferson Parish:  
  1st Parish Court  
  Division A  
  Division B  
  2nd Parish Court  
Jennings  
Kaplan  
Lafayette  
  
Lake Charles  
  Division A  
  Division B  
Leesville  
Marksville  
Minden  
Monroe

### PARISHES

Vermilion  
Rapides  
Ascension  
E. Eaton Rouge  
Morehouse  
  
E. Baton Rouge  
  
Washington  
Bossier  
St. Martin  
Avoyelles  
Acadia  
Livingston  
Beauregard  
St. Landry  
St. Mary  
Tangipahoa  
Terrebonne  
Iberia  
  
Jefferson  
  
Jefferson  
Jefferson Davis  
Vermilion  
Lafayette  
  
Calcasieu  
  
Vernon  
Avoyelles  
Webster  
Ouachita

### JUDGES

Marcus A. Broussard, Jr.  
George M. Foote  
A. J. Kling, Jr.  
Bryant W. Conway\*  
Woodrow Wilson  
  
Michael E. Ponder\*  
Doug Moreau  
Darrell D. White\*  
Jim W. Richardson, Jr.\*  
Billy Ross Robinson\*  
W. Glenn Soileau\*  
James H. Mixon\*  
Don Aaron, Jr.  
Raymond S. Bennett  
William E. Hall, Jr.  
J. Nilas Young  
Charles R. Prevost  
John D. Kopfler\*  
Jude T. Fanguy\*  
John D. Rogers  
  
Cyril A. Gracianette  
James M. Lockhart  
John J. Molaison\*  
Herb G. Gautreaux\*  
William N. Knight  
Reule P. Bourque\*  
Kaliste J. Saloom, Jr.  
  
Thomas P. Quirk\*  
Ralph J. Hanks, Jr.  
S. Chris Smith, III\*  
Benjamin C. Bennett, Jr.  
R. Harmon Drew\*  
Elvis C. Stout  
John Larry Lolley\*

\*Took office on or after January 1, 1979.

**CITY COURTS OF LOUISIANA (Continued)**

**CITIES**

Morgan City  
 Natchitoches  
 New Iberia  
 New Orleans:  
   1st City Court  
   1st City Court  
   1st City Court  
   2nd City Court  
   Municipal Court  
   Municipal Court  
   Municipal Court  
   Municipal Court  
   Traffic Court  
   Traffic Court  
   Traffic Court  
   Traffic Court  
 Oakdale  
 Opelousas  
 Pineville  
 Plaquemine  
 Port Allen  
 Rayne  
 Ruston  
 Slidell  
 Shreveport:  
   Division A  
   Division B  
   Division C  
 Springhill  
 Sulphur  
 Thibodaux  
 Vidalia  
 Ville Platte  
 West Monroe  
 Winnfield  
 Winnsboro  
 Zachary

**PARISHES**

St. Mary  
 Natchitoches  
 Iberia  
  
 Orleans  
  
  
  
 Allen  
 St. Landry  
 Rapides  
 Iberville  
 W. Baton Rouge  
 Acadia  
 Lincoln  
 St. Tammany  
  
 Caddo  
  
  
 Webster  
 Calcasieu  
 Lafourche  
 Concordia  
 Evangeline  
 Ouachita  
 Winn  
 Franklin  
 E. Baton Rouge

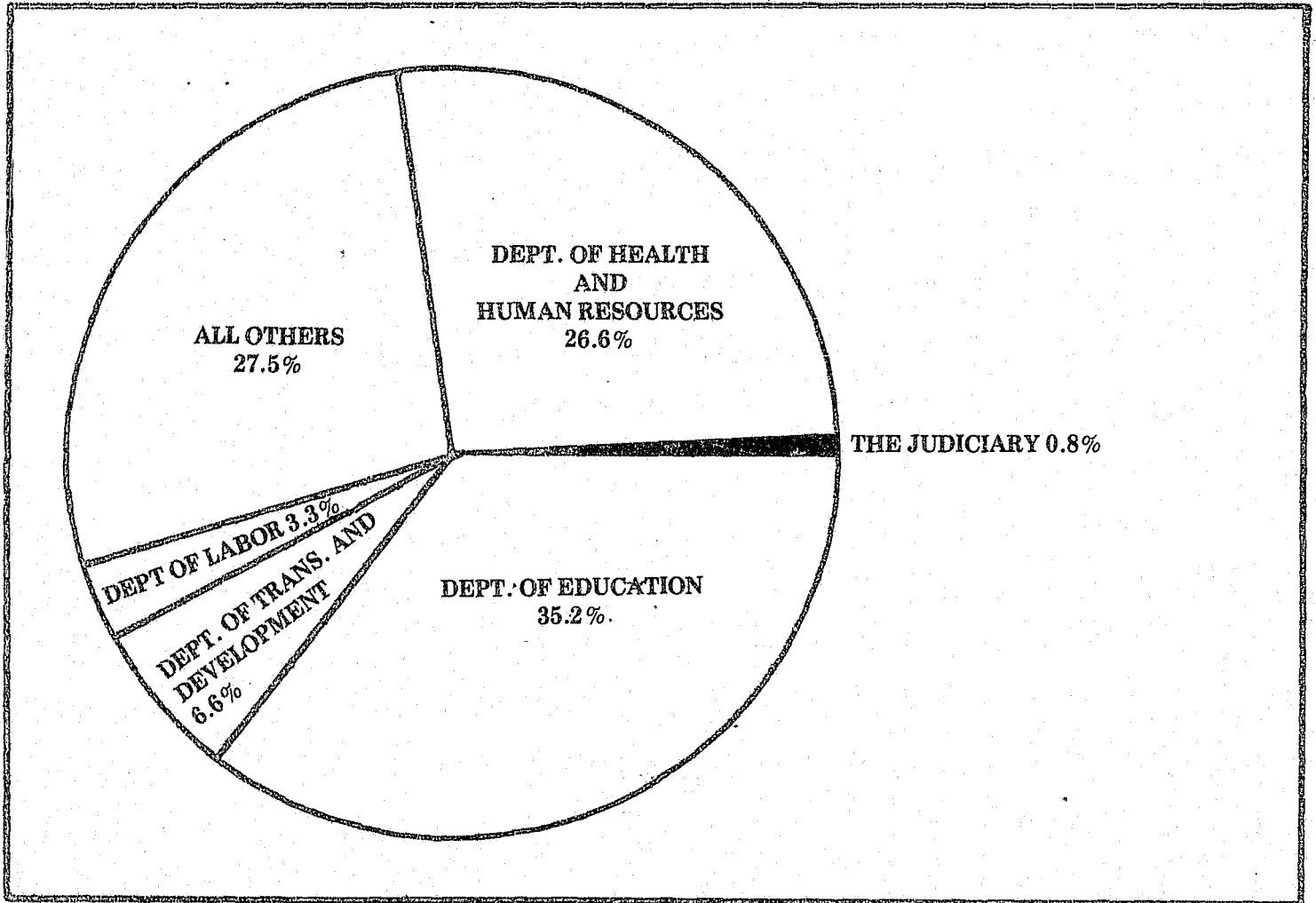
**JUDGES**

Robert S. Robertson  
 Marvin F. Gahagan  
 Ward L. Tilly  
  
 Dominic C. Grieshaber  
 Arthur J. O'Keefe, Jr.  
 Marion G. Seeber  
 Lorain F. Wingerter  
 John A. Shea\*  
 Joseph R. Bossetta  
 Eddie L. Sapir  
 James E. Glancey, Jr.  
 Lambert J. Hassinger  
 Thomas L. Giraud  
 Oliver S. Delery  
 Louis P. Trent  
 John P. Navarre  
 Kenneth Boagni, Jr.  
 F. Jean Pharis\*  
 Joseph B. Dupont, Sr.  
 Philip N. Pecquet  
 Denald A. Beslin  
 Kenneth W. Campbell  
 Gus A. Fritchie, Jr.  
  
 Garner A. Miller  
 Nolan Harper  
 H. Dan Sawyer  
 N. J. McConnell  
 Ellis W. Thompson  
 David M. Richard  
 George C. Murray\*  
 J. Wendell Fusilier  
 Charles A. Traylor  
 Jim W. Wiley\*  
 E. Rudolph McIntyre  
 Russell Bankston

\*Took office on or after January 1, 1979.

# STATISTICAL APPENDIX

## STATE BUDGET FISCAL YEAR 1978-1979



\* Statistical Data for the 1978 court year on the Following: Supreme Court, Court of Appeal, District Courts, Family and Juvenile Courts, City and Parish Courts.



# INTRODUCTION TO STATISTICAL SECTION

Statistical information presented in this section was compiled from data submitted to the Judicial Administrator's Office by the various Louisiana courts during calendar year 1978.

This data was computer processed, on a monthly basis, by the Judicial Administrator's Management Information System (JAMIS) which consists of four interrelated sub-systems, and runs on two separate computer systems. Upon full systems integration and implementation, each respective sub-system will interface with the other to generate valuable judicial management information regarding Louisiana Appellate Courts, Louisiana District and Juvenile Courts, and Louisiana City and Parish Courts. The financial sub-system is currently in full operation and performs expense and reimbursement accounting for most state court judges.

During the last decade, filings in the Supreme Court have increased by 399 percent, representing an average annual increase of 39.9 percent over the base year. In 1978, a record 2,654 matters were filed, resulting in an increase of 8.9 percent over the previous year. Although the number of appeals filed in 1978 decreased to 536 from 608 in 1977, the number of writ applications filed increased from 1,622 to 1,813. The number of applications for rehearings increased from 169 to 249, original jurisdiction petitions decreased from 31 to 18, and other matters filed increased from 5 to 11. Thus, the final result shows a net increase in filings of 219 matters above the previous year. The number of opinions rendered in the Supreme Court also reflect a substantial increase during the past decade. In 1969, a total of 141 opinions were rendered as compared to 725 in 1978, representing an average annual increase of 41.4 percent over the base year. The number of written opinions for appeals has decreased over the last 3 years; while the number of per curiam affirmances has increased during the same period.

In the Louisiana Courts of Appeal, filings have increased from 1,997 to 3,098 in the last decade, resulting in an increase of over 55 percent. During 1978, however, the total number of filings declined from the record 3,338 filing level in 1977 to 3,098. While the number of appeals filed showed a slight decline from the 2,092 record high of 1977, the number of writ applications filed increased from 315 to 344 in 1978. The number of judgements rendered in the Louisiana Courts of Appeal reached an all-time high of 1,930 in 1978, representing an increase of over 68 percent during the past decade.

Similarly, caseloads in the Louisiana District Courts have shown an increasing trend over the past 15 years. In 1964, 1969, and 1978, case filings were 151,659; 258,933, and 370,541 respectively. This trend shows an increase in case filings of more than 144 percent over the past 15 years, and more than 43 percent during the past decade. During 1978, the number of criminal cases filed showed a decline from the record high of 249,458 recorded in 1976, and 236,010 recorded last year, to a level of 229,541. During the same period, the number of civil case filings recorded reflect an offsetting increasing trend. The net result shows an increasing District Court caseload trend.

Through the years, the number of new cases filed in the Louisiana Family and Juvenile Courts has steadily increased. In 1978, a record 28,240 new cases were filed, which represented an increase of nearly 8 percent over 1977. Although the 1978 filing level represents an all-time high, it does not include rehearings which account for much of the court's docket.

Since 1972, the Judicial Administrator's Office has maintained Louisiana City and Parish Court statistics. During the past seven years, cases filed and terminated in these courts have increased in number at a rate of nearly 7 percent annually. In 1978, 570,661 cases were filed, and 464,632 cases were terminated. Consistent with prior years, local traffic violations occupied the greatest portion of the docket with a reported 53.5 percent. Local criminal cases and state traffic cases each represented 15.3 percent of the caseload. Civil cases occupied 8.4 percent of the caseload, while state criminal cases occupied 5.5 percent of the docket. The smallest caseload representation were Juvenile Delinquency cases and Juvenile Traffic cases, which represented 1.2 and 0.8 percent of the caseload respectively.

This section amply illustrates that the Judicial System faces great challenges represented by an ever increasing caseload burden. As the Judiciary strains under a continuing information explosion, innovative ways to increase court efficiency while maintaining high judicial standards of justice are continually sought. Moreover, operating within the constraints of 0.8 percent of the states' operating budget imposes additional judicial challenges and difficulties. Accordingly, state budgetary considerations and priorities play an important part in helping the judiciary to meet its challenges.

**SUPREME COURT OF LOUISIANA**

**TEN YEAR RECAP OF FILINGS**

	<u>APPEALS FILED</u>	<u>WRITS FILED</u>	<u>REHEARINGS APPLICATIONS FILED</u>	<u>ORIGINAL JURISDICTION PETITIONS FILED</u>	<u>TOTAL FILINGS</u>	<u>FILINGS PER JUSTICE*</u>
1969	74	523	64	4	665	95
1970	105	646	92	4	847	121
1971	151	699	96	13	959	137
1972	214	822	123	8	1,167	167
1973	204	873	139	6	1,222	175
1974	235	1,014	175	9	1,433	205
1975	358	1,240	229	8	1,835	262
1976	461	1,278	212	22	1,973	282
1977	608	1,622	169	31	2,435	347
1978	563	1,813	249	29	2,654	379

TABLE 1-B

\*Figures rounded to nearest whole number.

SUPREME COURT OF LOUISIANA  
THREE YEAR TREND IN ACTIVITY

	1976	1977	1978
<b>APPEALS:</b>			
Filed	461	608	563
Dismissed	13	15	15
Opinions Rendered			
-with written opinions	331	275	274
-per curiam affirmances	61	200	285
<b>WRITS:</b>			
Applications Filed	1,278	1,622	1,813
Granted	248	317	472
-to be argued	148	149	212
-with orders	100	168	260
Dismissed	5	15	22
Not considered	37	52	41
Denied	946	1,155	1,299
Opinions Rendered	145	123	148
<b>REHEARINGS:</b>			
Applied for	212	169	249
Granted	14	11	19
Denied	208	170	227
Opinions Rendered	28	12	8
<b>ORIGINAL JURISDICTION:</b>			
Petitions filed	22	31	18
Opinions rendered	8	5	7
<b>OTHER MATTERS:</b>			
Filed		5	11
Opinions Rendered		5	3
Other per curiam opinions rendered			46
<b>TOTAL FILINGS:</b>			
-Per Justice	1,973	2,435	2,654
	282	348	379
<b>Total Opinions Rendered</b>	<b>573</b>	<b>620</b>	<b>771</b>

LOUISIANA COURTS OF APPEAL  
THREE YEAR TREND IN ACTIVITY

	1976	1977	1978
<b>FIRST CIRCUIT:</b>			
Appeals Filed	429	550	596
Writs Filed	48	76	85
Writs Refused	32	53	56
Writs Granted	7	19	17
Cases Dismissed	35	36	32
Judgments Rendered	458	502	512
Rehearings Acted Upon	233	241	177
Cases Pending			
Argued But Not Decided	52	75	31
To Be Argued	120	105	152
<b>SECOND CIRCUIT:</b>			
Appeals Filed	328	324	302
Writs Filed	25	33	27
Writs Refused	22	28	22
Writs Granted	3	5	5
Cases Dismissed	12	12	8
Judgments Rendered	282	323	289
Rehearings Acted Upon	147	156	95
Cases Pending			
Argued But Not Decided	26	30	58
To Be Argued	89	60	106
<b>THIRD CIRCUIT:</b>			
Appeals Filed	484	549	445
Writs Filed	47	41	47
Writs Refused	41	34	42
Writs Granted	5	5	5
Cases Dismissed	37	41	31
Judgments Rendered	397	431	448
Rehearings Acted Upon	245	245	128
Cases Pending			
Argued But Not Decided	11	9	24
To Be Argued	148	155	330
<b>FOURTH CIRCUIT:</b>			
Appeals Filed	706	669	699
Writs Filed	122	165	185
Writs Refused	83	94	119
Writs Granted	36	60	44
Cases Dismissed	91	94	67
Judgments Rendered	490	615	681
Rehearings Acted Upon	271	289	312
Cases Pending			
Argued But Not Decided	95	102	148
To Be Argued	377	373	546
<b>TOTAL FOR ALL CIRCUITS:</b>			
Appeals Filed	1,947	2,092	2,042
Writs Filed	242	315	344
Writs Refused	178	209	239
Writs Granted	51	89	71
Cases Dismissed	175	183	138
Judgments Rendered	1,627	1,871	1,930
Rehearings Acted Upon	896	931	712
Cases Pending			
Argued But Not Decided	184	216	261
To Be Argued	734	693	1,134

LOUISIANA DISTRICT COURTS  
THREE YEAR TREND IN ACTIVITY

DISTRICT	PARISH	CASES FILED				
		1976 TOTAL	1977 TOTAL	1978 TOTAL	1978 CIVIL	1978 CRIMINAL
1	Caddo	14,297	17,129	17,469	8,224	9,245
	<b>District Totals</b>	<b>14,297</b>	<b>17,129</b>	<b>17,469</b>	<b>8,224</b>	<b>9,245</b>
2	Bienville	1,739	1,547	1,991	592	1,399
	Claiborne	2,390	2,002	2,033	453	1,580
	Jackson	1,735	1,817	1,844	664	1,180
	<b>District Totals</b>	<b>5,684</b>	<b>5,366</b>	<b>5,868</b>	<b>1,709</b>	<b>4,159</b>
3	Lincoln	1,300	1,423	2,826	918	1,908
	Union	1,839	1,847	2,421	825	1,596
	<b>District</b>	<b>3,139</b>	<b>3,270</b>	<b>5,247</b>	<b>1,743</b>	<b>3,504</b>
4	Morehouse	2,115	2,552	2,662	916	1,746
	Ouachita	15,405	18,264	6,683	3,894	2,789
	<b>District Totals</b>	<b>17,520</b>	<b>20,816</b>	<b>9,345</b>	<b>4,810</b>	<b>4,535</b>
5	Franklin	1,395	1,302	2,436	706	1,730
	Richland	2,305	2,676	2,664	703	1,961
	W. Carrol	1,117	1,497	750	545	205
	<b>District Totals</b>	<b>4,817</b>	<b>5,475</b>	<b>5,850</b>	<b>1,954</b>	<b>3,896</b>
6	E. Carrol	1,300	1,203	7,385	331	7,054
	Madison	2,842	2,294	1,668	442	1,226
	Tensas	1,067	1,307	1,706	332	1,374
	<b>District Totals</b>	<b>5,209</b>	<b>4,804</b>	<b>10,759</b>	<b>1,105</b>	<b>9,654</b>
7	Catahoula	2,623	2,526	3,099	791	2,308
	Concordia	3,118	3,342	2,286	364	1,922
	<b>District Totals</b>	<b>5,741</b>	<b>5,868</b>	<b>5,385</b>	<b>1,155</b>	<b>4,230</b>
8	Winn	1,862	2,027	2,167	1,025	1,142
	<b>District Totals</b>	<b>1,862</b>	<b>2,027</b>	<b>2,167</b>	<b>1,025</b>	<b>1,142</b>
9	Rapides	15,995	14,880	13,803	4,515	9,288
	<b>District Totals</b>	<b>15,995</b>	<b>14,880</b>	<b>13,803</b>	<b>4,515</b>	<b>9,288</b>
10	Natchitoches	4,313	4,599	5,558	1,740	3,818
	Red River	1,702	1,699	1,652	404	1,248
	<b>District Totals</b>	<b>6,015</b>	<b>6,298</b>	<b>7,210</b>	<b>2,144</b>	<b>5,066</b>
11	De Soto	2,701	2,929	3,117	895	2,222
	Sabine	1,176	1,366	3,022	726	2,296
	<b>District Totals</b>	<b>3,877</b>	<b>4,295</b>	<b>6,139</b>	<b>1,621</b>	<b>4,518</b>
12	Avoyelles	3,795	3,566	3,280	1,400	1,880
	<b>District Totals</b>	<b>3,795</b>	<b>3,566</b>	<b>3,280</b>	<b>1,400</b>	<b>1,880</b>
13	Evangeline	2,970	2,888	3,098	1,499	1,599
	<b>District Totals</b>	<b>2,970</b>	<b>2,888</b>	<b>3,098</b>	<b>1,499</b>	<b>1,599</b>
14	Calcasieu	22,611	19,215	19,930	8,445	11,485
	Cameron	2,095	1,977	2,011	414	1,597
	<b>District Totals</b>	<b>24,706</b>	<b>21,192</b>	<b>21,941</b>	<b>8,859</b>	<b>13,082</b>

LOUISIANA DISTRICT COURTS  
THREE YEAR TREND IN ACTIVITY

DISTRICT	PARISH	CASES FILED				
		1976 TOTAL	1977 TOTAL	1978 TOTAL	1978 CIVIL	1978 CRIMINAL
15	Acadia	3,524	3,079	5,630	1,855	3,775
	Lafayette	12,230	13,581	13,637	5,602	8,035
	Vermillion	3,216	3,122	3,487	1,626	1,861
	<b>District Totals</b>	<b>18,970</b>	<b>19,782</b>	<b>22,754</b>	<b>9,083</b>	<b>13,671</b>
16	Iberia	5,788	5,616	5,860	2,214	3,646
	St. Martin	2,860	4,434	3,854	1,272	2,582
	St. Mary	8,604	9,171	8,386	2,483	5,903
	<b>District Totals</b>	<b>17,252</b>	<b>19,221</b>	<b>18,100</b>	<b>5,969</b>	<b>12,131</b>
17	Lafourche	9,072	9,009	7,539	2,167	5,372
	<b>District Totals</b>	<b>9,072</b>	<b>9,009</b>	<b>7,539</b>	<b>2,167</b>	<b>5,372</b>
18	Iberville	6,743	5,082	6,122	1,133	4,989
	Pointe Coupee	2,868	3,518	2,814	700	2,114
	W. Baton Rouge	5,334	6,550	5,277	772	4,505
	<b>District Totals</b>	<b>14,945</b>	<b>15,150</b>	<b>14,213</b>	<b>2,605</b>	<b>11,608</b>
19	E. Baton Rouge	19,363	21,185	21,664	12,628	9,036
	<b>District Totals</b>	<b>19,363</b>	<b>21,185</b>	<b>21,664</b>	<b>12,628</b>	<b>9,036</b>
20	E. Feliciana	1,627	1,917	1,991	675	1,316
	W. Feliciana	1,735	1,718	1,559	328	1,231
	<b>District Totals</b>	<b>3,362</b>	<b>3,635</b>	<b>3,550</b>	<b>1,003</b>	<b>2,547</b>
21	Livingston	3,857	4,516	4,761	2,007	2,754
	St. Helena	462	458	773	341	432
	Tangipahoa	9,065	9,592	10,563	2,876	7,687
	<b>District Totals</b>	<b>13,384</b>	<b>14,566</b>	<b>16,097</b>	<b>5,224</b>	<b>10,873</b>
22	St. Tammany	9,425	10,218	9,518	3,968	5,550
	Washington	3,465	5,338	4,247	1,955	2,292
	<b>District Totals</b>	<b>12,890</b>	<b>15,556</b>	<b>13,765</b>	<b>5,923</b>	<b>7,842</b>
23	Ascension	6,271	9,408	12,167	1,620	10,547
	Assumption	2,471	2,393	2,714	586	2,128
	St. James	1,519	1,590	2,028	541	1,487
	<b>District Totals</b>	<b>10,261</b>	<b>13,391</b>	<b>16,909</b>	<b>2,747</b>	<b>14,162</b>
24	Jefferson	15,314	15,539	15,597	12,575	3,022
	<b>District Totals</b>	<b>15,314</b>	<b>15,539</b>	<b>15,597</b>	<b>12,575</b>	<b>3,022</b>
25	Plaquemines	5,162	5,025	5,183	858	4,325
	St. Bernard	6,483	7,359	6,109	2,127	3,982
	<b>District Totals</b>	<b>11,645</b>	<b>12,384</b>	<b>11,292</b>	<b>2,985</b>	<b>8,307</b>
26	Bossier	3,656	3,932	7,848	2,358	5,490
	Webster	3,530	3,631	1,887	1,157	730
	<b>District Totals</b>	<b>7,186</b>	<b>7,563</b>	<b>9,735</b>	<b>3,515</b>	<b>6,220</b>
27	St. Landry	6,591	6,840	4,381	2,834	1,547
	<b>District Totals</b>	<b>6,591</b>	<b>6,840</b>	<b>4,381</b>	<b>2,834</b>	<b>1,547</b>



LOUISIANA DISTRICT COURTS  
THREE YEAR TREND IN ACTIVITY

DISTRICT	PARISH	CASES FILED				
		1976 TOTAL	1977 TOTAL	1978 TOTAL	1978 CIVIL	1978 CRIMINAL
28	LaSalle	2,367	2,303	2,559	715	1,844
	<b>District Totals</b>	<b>2,367</b>	<b>2,303</b>	<b>2,559</b>	<b>715</b>	<b>1,844</b>
29	St. Charles	9,832	11,701	10,075	1,299	8,776
	St. John	8,010	6,186	4,864	895	3,969
	<b>District Totals</b>	<b>17,842</b>	<b>17,887</b>	<b>14,939</b>	<b>2,194</b>	<b>12,745</b>
30	Beauregard	4,249	4,328	4,157	887	3,270
	Vernon	7,024	7,542	9,844	1,174	8,670
	<b>District Totals</b>	<b>11,273</b>	<b>11,870</b>	<b>14,001</b>	<b>2,061</b>	<b>11,940</b>
31	Jefferson Davis	3,198	3,045	2,703	999	1,704
	<b>District Totals</b>	<b>3,198</b>	<b>3,045</b>	<b>2,703</b>	<b>999</b>	<b>1,704</b>
32	Terrebonne	9,777	11,215	10,585	3,501	7,084
	<b>District Totals</b>	<b>9,777</b>	<b>11,215</b>	<b>10,585</b>	<b>3,501</b>	<b>7,084</b>
33	Allen	2,900	2,690	2,589	773	1,816
	<b>District Totals</b>	<b>2,900</b>	<b>2,690</b>	<b>2,589</b>	<b>773</b>	<b>1,816</b>
35	Grant	2,725	2,832	2,713	551	2,162
	<b>District Totals</b>	<b>2,725</b>	<b>2,832</b>	<b>2,713</b>	<b>551</b>	<b>2,162</b>
37	Caldwell	1,127	1,380	3,086	303	2,783
	<b>District Totals</b>	<b>1,127</b>	<b>1,380</b>	<b>3,086</b>	<b>303</b>	<b>2,783</b>
Orleans	Civil	19,837	19,636	18,882	18,882	None
	Criminal	5,077	4,827	5,327	None	5,327
	<b>District Totals</b>	<b>24,914</b>	<b>24,463</b>	<b>24,209</b>	<b>18,882</b>	<b>5,327</b>
<b>Statewide Totals</b>		<b>350,326</b>	<b>369,379</b>	<b>370,541</b>	<b>141,000</b>	<b>229,541</b>

LOUISIANA FAMILY AND JUVENILE COURTS

THREE YEAR TREND IN ACTIVITY

	CASES FILED		
	<u>1976</u>	<u>1977</u>	<u>1978</u>
Caddo Juvenile	4,767	5,153	6,868
East Baton Rouge Family	8,103	8,219	8,008
Jefferson Juvenile	4,807	4,300	5,197
Orleans Juvenile	9,184	8,545	8,167
State Totals	<u>26,861</u>	<u>26,217</u>	<u>28,240</u>

LOUISIANA CITY AND PARISH COURTS — CASES PENDING\*

CITY	JAN.	FEB.	MAR.	APR.	MAY	JUN.	JUL.	AUG.	SEP.	OCT.	NOV.	DEC.
Abbeville	5	11	7	8	5	11	12	17	10	9	12	12
Alexandria	0	0	0	0	0	0	0	0	0	0	0	0
Ascension Parish	0	0	0	0	0	0	0	0	0	0	0	0
Baker	349	301	395	362	362	352	358	305	294	304	352	322
Bastrop	174	136	97	122	198	210	189	310	271	252	220	229
Baton Rouge	0	0	0	0	117	380	335	843	925	634	677	691
Bogalusa	2486	2477	2457	2486	2514	2577	2636	2620	0	0	0	0
Bossier City	0	1764	1764	1797	1998	2030	2080	2063	2108	2212	2463	2512
Breaux Bridge	340	354	332	449	424	442	411	451	422	485	0	459
Bunkie	98	98	101	104	107	105	105	96	94	93	80	74
Crowley	309	303	249	321	317	329	290	323	298	234	352	402
Denham Springs	87	57	53	52	73	74	62	49	76	75	78	82
De Ridder	36	50	20	22	56	37	39	69	35	47	46	17
Eunice	273	187	189	227	190	212	174	170	145	152	166	168
Franklin	154	155	188	197	195	210	227	271	260	263	294	256
Hammond	130	94	103	100	76	76	107	109	152	105	104	77
Houma	0	0	0	0	0	0	0	0	0	0	0	0
Jeanerette	13	10	11	14	8	23	26	23	8	4	30	34
Jeff. 1st Par. Ct.	2273	1732	2406	2021	2342	2693	1921	1949	2350	2647	2817	3026
Jeff. 2nd Par. Ct.	0	0	0	0	0	0	0	0	0	0	0	0
Jennings	6	14	12	5	19	2	12	7	38	27	19	10
Kaplan	180	144	125	104	126	109	132	112	103	154	140	154
Lafayette	505	357	370	482	488	400	401	299	303	291	359	379
Lake Charles	0	0	0	0	0	0	0	0	0	0	0	0
Leesville	135	115	231	188	209	108	152	236	202	261	286	208
Marksville	0	0	0	0	0	0	0	437	0	0	0	0
Minden	12	15	15	9	8	14	6	3	7	5	0	0
Monroe	224	487	306	472	716	4555	495	526	450	394	459	441
Morgan City	120	101	143	123	166	174	159	163	175	186	223	170
Natchitoches	0	0	0	0	0	0	0	0	0	0	0	0
New Iberia	207	189	214	207	214	206	210	208	241	235	288	249
N.O. 1st City	1893	1533	1716	1413	998	1427	1107	1585	490	1378	1019	0
N.O. 2nd City	0	0	0	0	0	0	0	0	0	0	0	0
N.O. Municipal	3682	2879	3633	3601	3560	3615	3505	3499	3342	3507	3474	4302
N.O. Traffic	0	0	0	0	0	0	0	0	0	0	0	0
Oakdale	252	270	352	385	380	400	422	437	437	458	440	448
Opelousas	277	191	270	136	149	184	146	212	226	196	245	380
Pineville	0	0	0	0	0	0	0	0	0	0	0	0
Plaquemine	0	0	0	0	0	0	0	0	0	0	0	0
Port Allen	73	68	57	55	60	65	35	26	28	0	0	0
Rayne	408	379	381	377	376	440	554	453	372	399	394	382
Ruston	0	0	0	0	0	0	0	0	0	0	0	0
Shreveport	5189	5753	6240	5650	5779	5992	5962	6358	6477	6978	7042	7133
Slidell	565	477	539	0	0	0	0	0	0	0	0	0
Springhill	0	0	0	0	0	0	0	0	0	0	0	0
Sulphur	202	195	190	184	149	145	143	120	132	132	109	92
Thibodaux	88	84	63	50	47	43	35	36	39	33	42	32
Vidalia	185	175	184	180	162	166	12	174	138	174	183	192
Ville Platte	7	22	8	17	13	28	17	11	33	26	21	24
West Monroe	832	822	831	895	976	1106	1176	1319	1431	1500	1472	1623
Winnfield	35	30	38	52	56	45	0	0	0	0	0	0
Winnsboro	13	5	2	5	13	9	5	16	15	17	16	19
Zachary	30	34	36	54	44	54	50	82	94	67	64	69

\*Only reported cases are shown.

LOUISIANA CITY AND PARISH COURTS\*— WORKLOAD BASED ON TERMINATIONS\*

City	CIVIL	CRIMINAL		TRAFFIC		JUVENILE CASES				
		State	Ordin.	State	Ordin.	Delinq.	Neglt.	Spcl.	Trf. Cty.	Trf. St.
Abbeville	7	1	15	17	52	2	0	0	2	0
Alexandria	10	5	18	1	54	6	0	0	3	0
Ascension Parish	0	99	0	0	0	0	0	0	0	0
Baker	3	33	1	56	1	0	0	0	0	3
Bastrop	24	0	24	3	39	2	0	0	4	0
Baton Rouge	3	0	6	2	88	0	0	0	0	0
Bogalusa	16	10	29	5	22	6	4	1	0	2
Bossier City	7	9	11	27	37	1	0	0	1	1
Breaux Bridge	8	6	0	73	6	1	0	0	0	2
Bunkie	3	0	52	0	37	5	0	0	1	0
Crowley	5	17	14	20	24	13	0	0	2	0
Denahm Springs	5	1	11	39	35	1	1	0	1	1
De Ridder	1	0	14	0	76	5	0	0	2	0
Eunice	9	5	14	42	26	1	0	0	0	0
Franklin	3	6	29	7	37	11	0	0	2	0
Hammond	2	23	5	31	32	2	0	0	1	0
Houma	0	0	0	0	0	0	0	0	0	0
Jeanerette	11	27	0	21	32	6	0	0	0	0
Jeff. 1st Par. Ct.	6	5	0	86	0	0	0	0	0	0
Jeff. 2nd Par. Ct.	0	0	0	0	0	0	0	0	0	0
Jennings	5	0	9	0	75	0	0	0	8	0
Kaplan	7	2	15	43	23	1	0	0	2	2
Lafayette	4	6	3	5	74	1	0	0	3	0
Lake Charles	9	1	5	12	66	0	0	0	3	0
Leesville	1	8	23	10	55	0	0	0	0	0
Marksville	0	0	0	0	0	0	0	0	0	0
Minden	44	0	17	0	33	4	0	0	0	0
Monroe	15	0	27	0	52	0	0	0	2	0
Morgan City	1	24	14	31	26	2	0	0	0	0
Natchitoches	7	0	31	4	49	4	0	0	2	0
New Iberia	11	0	25	5	52	1	0	0	3	0
N.O. 1st City	100	0	0	0	0	0	0	0	0	0
N.O. 2nd City	100	0	0	0	0	0	0	0	0	0
N.O. Municipal	0	0	100	0	0	0	0	0	0	0
N.O. Traffic	0	0	0	9	90	0	0	0	0	0
Oakdale	15	4	32	15	25	3	0	0	1	0
Opelousas	1	11	4	55	20	5	0	0	0	0
Pineville	0	0	0	0	0	0	0	0	0	0
Plaquemine	0	0	0	0	0	0	0	0	0	0
Port Allen	1	24	0	71	0	0	0	0	1	0
Rayne	14	8	23	18	23	3	0	0	4	2
Ruston	0	0	0	0	0	0	0	0	0	0
Shreveport	9	8	6	7	68	0	0	0	0	0
Slidell	3	0	7	9	77	1	0	0	0	0
Springhill	40	0	19	2	26	6	0	0	2	0
Sulphur	8	14	6	32	28	1	0	2	2	3
Thibodaux	1	18	12	14	49	3	0	0	0	0
Vidalia	1	26	1	62	0	2	0	0	4	0
Ville Platte	33	29	1	11	4	8	0	2	3	5
West Monroe	15	7	20	0	45	1	0	0	4	3
Winnfield	3	5	23	11	53	0	0	0	0	0
Winnsboro	8	0	63	1	26	0	0	0	0	0
Zachary	10	0	14	0	70	0	0	0	3	0

\*Only reported cases are shown.

LOUISIANA CITY AND PARISH COURTS

CASES PROCESSED\*

City	CIVIL		CRIMINAL		TRAFFIC		JUVENILE		TOTAL CASES	
	Filed	Term	Filed	Term	Filed	Term	Filed	Term	Filed	Term
Abbeville	237	241	577	576	1602	2300	172	172	2588	3289
Alexandria	2015	964	2258	2258	5302	5302	940	940	10515	9464
Ascension Parish	207	---	10146	8814	---	---	144	53	10497	8867
Baker	142	64	494	560	941	936	63	60	1640	1620
Bastrop	1023	1029	1025	1038	1976	1808	322	302	4346	4177
Baton Rouge	4532	2808	9263	4508	64368	66396	2282	0	80445	73712
Bogalusa	359	201	499	486	333	331	189	190	1380	1208
Bossier City	875	506	1527	1452	4983	4397	404	369	7789	6724
Breaux Bridge	160	140	204	110	1235	1285	86	78	1685	1613
Bunkie	88	83	1111	1111	793	793	105	136	2097	2123
Crowley	180	184	1050	1006	1418	1406	528	528	3176	3124
Denham Springs	238	201	775	516	3084	2961	363	242	4460	3920
De Ridder	19	20	393	257	1569	1356	138	150	2119	1783
Eunice	463	430	937	916	3179	3181	73	58	4652	4585
Franklin	38	36	414	363	497	443	219	146	1168	988
Hammond	578	144	2114	1634	3870	3648	404	299	6966	5725
Houma	0	0	0	0	0	0	0	0	0	0
Jeanerette	129	133	361	334	663	659	83	81	1236	1207
Jeff. 1st Par. Ct.	3898	2746	2397	2492	32456	34709	0	0	38751	39947
Jeff. 2nd Par. Ct.	0	0	0	0	0	0	0	0	0	0
Jennings	157	84	165	138	1164	1104	132	132	1618	1458
Kaplan	136	79	158	192	672	711	87	74	1053	1056
Lafayette	1207	1032	2315	2284	18490	18658	1322	1312	23334	23286
Lake Charles	2008	1481	2343	1056	18377	12626	687	23415	15850	
Leesville	76	74	1760	1663	3917	3389	64	64	5817	5190
Marksville	0	0	0	0	0	0	0	0	0	0
Minden	586	586	226	229	436	438	64	64	1312	1317
Monroe	4099	2935	11240	5302	10536	9798	862	662	26737	18697
Morgan City	66	56	2003	1969	2934	2925	158	145	5161	5095
Natchitoches	626	193	1373	827	2096	1374	194	191	4289	2585
New Iberia	883	889	2158	2120	4643	4631	407	395	8091	8035
N.O. 1st City	24901	14193	0	0	0	0	0	0	24901	14193
N.O. 2nd City	3089	1087	0	0	0	0	0	0	3089	1087
N.O. Municipal	0	0	45350	40012	0	0	0	0	45350	40012
N.O. Traffic	0	0	0	0	137117	85513	0	0	137117	85513
Oakdale	256	226	639	554	684	618	120	103	1699	1501
Opelousas	401	63	1629	755	4799	3595	384	287	7213	4700
Pineville	0	0	0	0	0	0	0	0	0	0
Plaquemine	0	0	0	0	0	0	0	0	0	0
Port Allen	13	12	184	175	560	507	22	19	779	713
Rayne	255	196	473	448	590	575	149	147	1467	1366
Ruston	0	0	0	0	0	0	0	0	0	0
Shreveport	4502	3901	6023	6197	32274	31020	0	0	42799	41118
Slidell	83	31	98	81	865	877	28	26	1074	1015
Springhill	498	498	248	248	348	348	124	124	1218	1218
Sulphur	514	370	992	969	3162	2781	466	417	5134	4537
Thibodaux	79	40	1007	763	1682	1571	132	77	2900	2451
Vidalia	19	12	233	286	610	625	97	84	959	1007
Ville Platte	350	258	305	239	132	124	219	157	1006	778
West Monroe	1379	800	1750	1470	2229	2340	508	559	5866	5169
Winnfield	4	10	95	89	211	198	4	4	314	301
Winnsboro	110	53	447	383	181	170	0	0	738	606
Zachary	97	74	105	102	465	497	34	29	701	702
State Total	61575	39163	118864	96982	377443	318924	12779	9563	570661	464632

\*-Only reported cases are shown.

LOUISIANA CITY AND PARISH COURTS

CRIMINAL CASES PROCESSED\*

CITY	STATE MISDEMEANORS		ORDINANCE VIOLATIONS	
	Filed	Term	Filed	Term
Abbeville	53	54	524	522
Alexandria	493	493	1765	1765
Ascension Parish	10146	8814	0	0
Baker	475	543	19	17
Bastrop	0	0	1025	1038
Baton Rouge	0	0	9263	4508
Bogalusa	144	126	355	360
Bossier City	678	671	849	781
Breaux Bridge	204	110	0	0
Bunkie	1	1	1110	1110
Crowley	581	550	469	456
Denham Springs	311	50	464	466
De Ridder	0	0	393	257
Eunice	253	246	684	670
Franklin	74	67	340	296
Hammond	1583	1345	531	289
Houma	0	0	0	0
Jeanerette	361	334	0	0
Jeff. 1st Par. Ct.	2071	2260	326	232
Jeff. 2nd Par. Ct.	0	0	0	0
Jennings	0	0	165	138
Kaplan	10	27	148	165
Lafayette	1454	1446	861	838
Lake Charles	477	202	1866	854
Leesville	328	420	1432	1243
Marksville	0	0	0	0
Minden	0	0	226	229
Monroe	236	184	11004	5118
Morgan City	1273	1250	730	719
Natchitoches	0	0	1373	827
New Iberia	86	76	2072	2044
N.O. 1st City	0	0	0	0
N.O. 2nd City	0	0	0	0
N.O. Municipal	0	0	45350	40012
N.O. Traffic	0	0	0	0
Oakdale	84	71	555	483
Opelousas	1245	537	384	218
Pineville	0	0	0	0
Plaquemine	0	0	0	0
Port Allen	182	172	2	3
Rayne	122	121	351	327
Ruston	0	0	0	0
Shreveport	3520	3494	2503	2703
Slidell	0	0	98	81
Springhill	11	11	237	237
Sulphur	668	668	324	301
Thibodaux	609	457	398	306
Vidalia	217	267	16	19
Ville Platte	281	227	24	12
West Monroe	424	387	1326	1083
Winnfield	19	17	76	72
Winnsboro	0	0	447	383
Zachary	0	0	105	102

\*-Only reported cases are shown.



LOUISIANA CITY AND PARISH COURTS

TRAFFIC CASES PROCESSED\*

CITY	STATE CASES		ORDINANCE CASES	
	Filed	Term	Filed	Term
Abbeville	580	575	1022	1725
Alexandria	166	166	5136	5136
Ascension Parish	0	0	0	0
Baker	922	918	19	18
Bastrop	172	166	1804	1642
Baton Rouge	957	1494	63411	64902
Bogalusa	74	63	259	268
Bossier City	2092	1867	2891	2530
Breaux Bridge	1140	1184	95	101
Bunkie	4	4	789	789
Crowley	625	648	793	758
Denham Springs	1476	1554	1608	1407
De Ridder	0	0	1569	1356
Eunice	1970	1962	1209	1219
Franklin	88	76	409	367
Hammond	1939	1789	1931	1859
Houma	0	0	0	0
Jeanerette	263	263	400	396
Jeff. 1st Par. Ct.	32432	34649	24	60
Jeff. 2nd Par. Ct.	0	0	0	0
Jennings	0	0	1164	1104
Kaplan	446	461	226	250
Lafayette	1220	1301	17270	17357
Lake Charles	2571	2023	15806	10603
Leesville	584	530	3333	2859
Marksville	0	0	0	0
Minden	0	0	436	438
Monroe	0	0	10536	9798
Morgan City	1612	1600	1322	1325
Natchitoches	195	105	1901	1269
New Iberia	428	423	4215	4208
N.O. 1st City	0	0	0	0
N.O. 2nd City	0	0	0	0
N.O. Municipal	0	0	0	0
N.O. Traffic	15183	8064	121934	77449
Oakdale	260	230	424	388
Opelousas	3481	2612	1318	983
Pineville	0	0	0	0
Plaquemine	0	0	0	0
Port Allen	560	507	0	0
Rayne	250	252	340	323
Ruston	0	0	0	0
Shreveport	3649	2940	28625	28080
Slidell	110	93	755	784
Springhill	29	29	319	319
Sulphur	1674	1473	1488	1308
Thibodaux	427	361	1255	1210
Vidalia	610	625	0	0
Ville Platte	94	92	38	32
West Monroe	0	0	2229	2340
Winnfield	46	36	165	162
Winnsboro	12	12	169	158
Zachary	0	0	465	497

\*-Only reported cases are shown.

LOUISIANA CITY AND PARISH COURTS

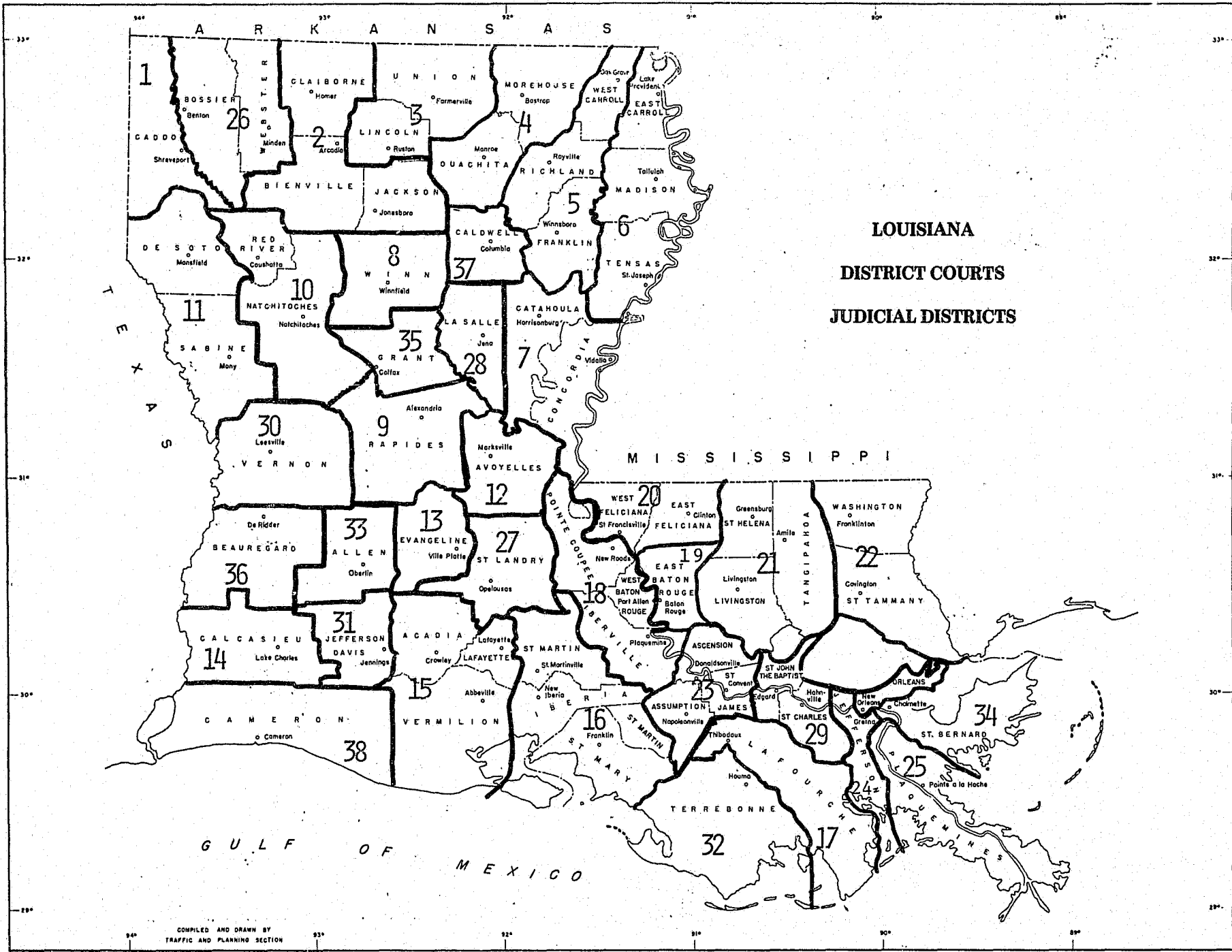
JUVENILE CASES PROCESSED

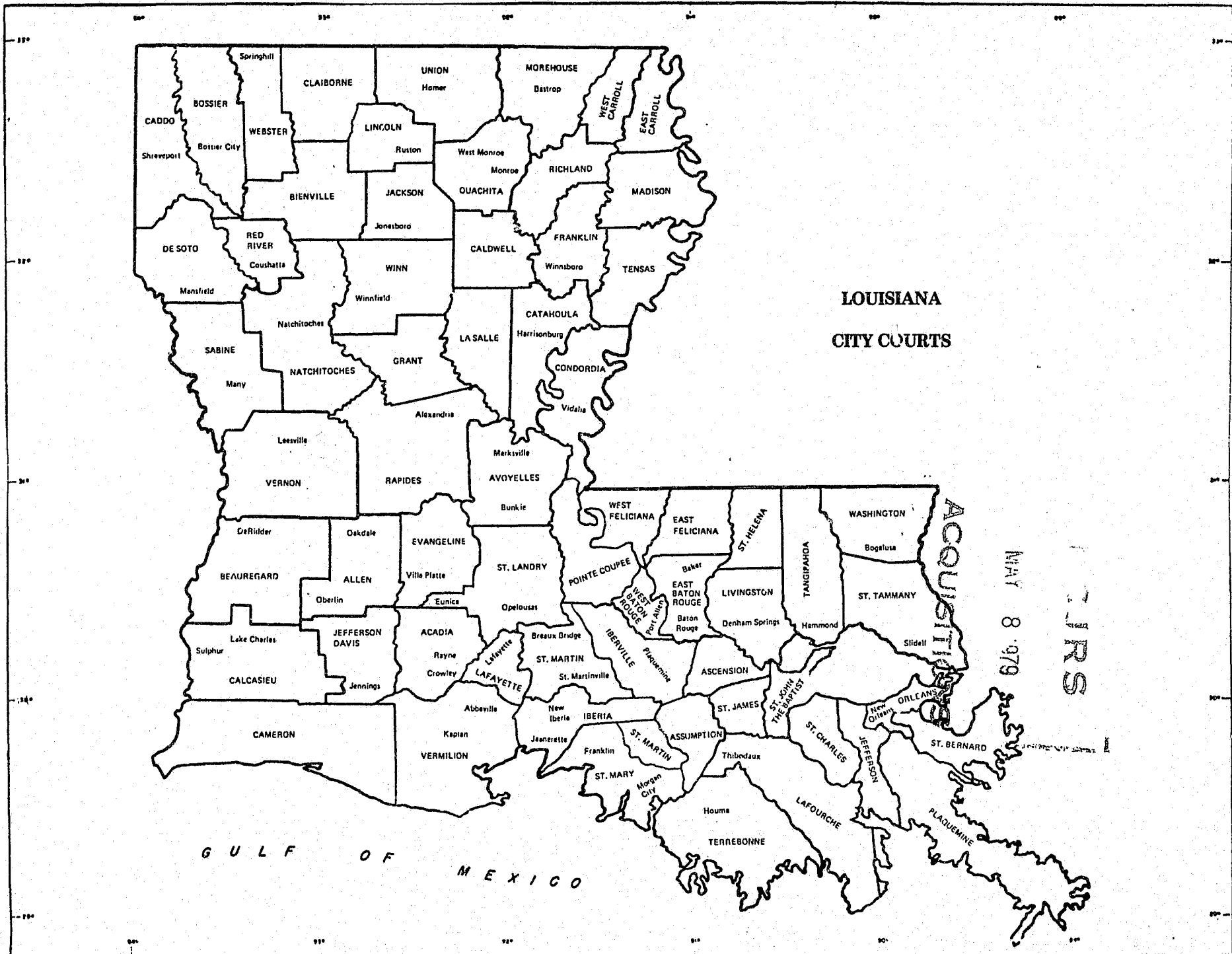
CITY	DELINQUENCY		NEGLECT		SPECIAL PROC.		TRAFFIC CITY		TRAFFIC STATE	
	Filed	Term	Filed	Term	Filed	Term	Filed	Term	Filed	Term
Abbeville	83	83	0	0	0	0	89	89	0	0
Alexandria	610	610	0	0	5	5	325	325	0	0
Ascension Parish	62	5	82	48	0	0	0	0	0	0
Baker	0	0	0	0	0	0	0	0	63	60
Bastrop	128	116	0	0	0	0	194	186	0	0
Baton Rouge	0	0	0	0	0	0	2272	0	10	0
Bogalusa	90	74	55	60	12	21	0	0	32	35
Bossier City	101	83	21	17	19	17	125	124	138	128
Breaux Bridge	32	22	0	0	0	0	11	12	43	44
Bunkie	76	107	0	0	0	0	25	25	4	4
Crowley	415	415	14	14	3	3	66	66	30	30
Denham Springs	109	67	25	40	16	16	114	59	99	60
De Ridder	84	98	0	0	0	0	54	52	0	0
Eunice	73	58	0	0	0	0	0	0	0	0
Franklin	183	115	0	0	0	0	30	25	6	6
Hammond	166	116	25	19	12	12	134	98	67	54
Houma	0	0	0	0	0	0	0	0	0	0
Jeanerette	83	81	0	0	0	0	0	0	0	0
Jeff. 1st Par. Ct.	0	0	0	0	0	0	0	0	0	0
Jeff. 2nd Par. Ct.	0	0	0	0	0	0	0	0	0	0
Jennings	0	10	0	0	0	0	132	122	0	0
Kaplan	23	16	0	0	3	2	27	26	34	30
Lafayette	319	314	116	111	24	24	853	853	10	10
Lake Charles	0	0	0	0	0	0	575	575	112	112
Leesville	33	33	0	0	2	2	29	29	0	0
Marksville	0	0	0	0	0	0	0	0	0	0
Minden	56	56	0	0	0	0	7	7	1	1
Monroe	383	183	0	0	0	0	476	476	0	0
Morgan City	131	122	3	3	0	2	0	0	25	21
Natchitoches	123	123	0	0	2	0	71	68	0	0
New Iberia	102	90	0	0	0	0	261	261	44	44
N.O. 1st City	0	0	0	0	0	0	0	0	0	0
N.O. 2nd City	0	0	0	0	0	0	0	0	0	0
N.O. Municipal	0	0	0	0	0	0	0	0	0	0
N.O. Traffic	0	0	0	0	0	0	0	0	0	0
Oakdale	57	51	0	0	0	6	20	18	14	14
Opelousas	332	246	18	14	11	33	7	5	2	1
Pineville	0	0	2	2	41	0	0	0	0	0
Piaquemine	0	0	0	0	0	0	0	0	0	0
Port Allen	12	7	0	0	0	2	10	10	0	0
Rayne	44	46	0	0	0	0	64	59	29	29
Ruston	0	0	12	13	0	0	0	0	0	0
Shreveport	0	0	0	0	0	0	0	0	0	0
Slidell	15	15	0	0	0	0	3	3	8	8
Springhill	80	80	0	0	2	2	34	34	5	5
Sulphur	72	66	3	3	2	94	102	93	192	164
Thibodaux	132	77	0	0	100	0	0	0	0	0
Vidalia	33	27	0	0	0	2	48	50	13	5
Ville Platte	96	65	1	0	2	18	27	27	63	41
West Monroe	99	95	9	6	24	0	242	254	158	201
Winnfield	2	2	9	9	0	0	2	2	0	0
Winnsboro	0	0	0	0	0	0	0	0	0	0
Zachary	7	6	0	0	0	0	27	23	0	0

\*-Only reported cases are shown.









MAY 8 979  
 137RS



**This Annual Report is printed at a cost of \$3.34 a copy.**