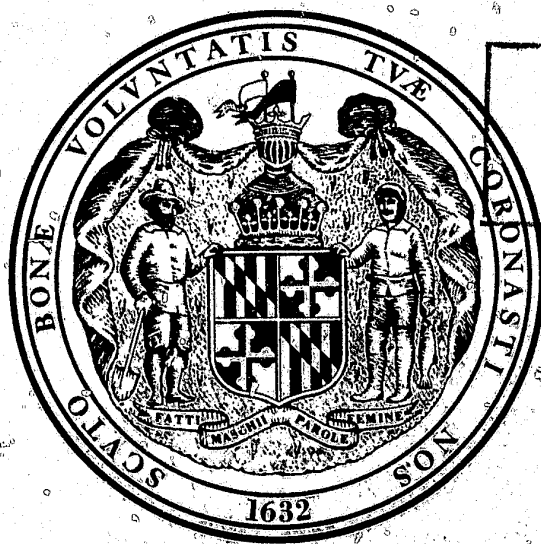


MARYLAND DEPARTMENT OF HEALTH
AND MENTAL HYGIENE

JUVENILE SERVICES

ADMINISTRATION

ANNUAL REPORT



MICROFICHE

1978

FISCAL YEAR

588941

STATE OF MARYLAND
DEPARTMENT OF
HEALTH AND MENTAL HYGIENE

Charles R. Buck Jr., Sc. D., Secretary

Annual Statistical Report
Fiscal Year 1978
JUVENILE SERVICES ADMINISTRATION
Rex C. Smith, Director

NCJRS

JUL 2 1979 4/2

ACQUISITIONS

Prepared by
Division of Special Services
— Research and Analysis —



JUVENILE SERVICES ADMINISTRATION
DEPARTMENT OF HEALTH AND MENTAL HYGIENE
201 WEST PRESTON STREET • BALTIMORE, MARYLAND 21201 • AREA CODE 301-383-3773

Charles R. Buck Jr., Sc.D., Secretary

February 28, 1979

THE HONORABLE HARRY HUGHES
GOVERNOR FOR THE STATE OF MARYLAND

THE HONORABLE CHARLES R. BUCK, JR., Sc. D.
SECRETARY, DEPARTMENT OF HEALTH AND MENTAL HYGIENE

It is my privilege to present the Annual Report of the Juvenile Services Administration for fiscal year 1978.

During this past year, considerable effort was undertaken towards the implementation and evaluation of program, policies and procedures designed to increase the efficiency and effectiveness of community-based resources in concert with the institutional facilities. Major efforts have been initiated to increase the integrity and credibility of community programs which act in tandem with institutional programs geared for the most serious chronic youthful offender.

The downward trend in juvenile referrals continued during fiscal 1978. This trend is in part a result of the recent decline of the population in the 10-17 age group. However, I believe that a major factor in this downward trend of referrals is the fact that joint governmental planning and program implementation coupled with the support of private sector and community groups is dealing more effectively in recent years with delinquents and other troubled youth. Prevention programming and victim assistance efforts will receive substantial attention during the next year as this Administration moves closer to the origin of the problem and becomes more and more relevant as an agency serving the community, the neighborhood and its troubled youth.

With the continuing support of the Executive Office of the Governor, the Department of Health and Mental Hygiene, the Legislature, and concerned groups in both the public and private sector, I anticipate further enhancement of the quality of services provided to the youth of our communities. We express our deepest appreciation to all who through their concern and help have contributed to our efforts to aid troubled youth.

REX C. SMITH
Director

TABLE OF CONTENTS

| | |
|---|-----------|
| Table of Organization, Juvenile Services Administration | Page 1 |
| Definition of Terms | 2 |
| Maryland Juvenile Services Administration Flow Chart, Fiscal 1978 | 3 |
| Highlights: Juvenile Court Services | 9 |
| Community Services | 39 |
| Institutional Services | 51 |

STATISTICS

| | |
|---|----|
| Budget Expenditures | |
| Figure 1: Maryland Juvenile Services Administration Fiscal 1978 Budget | 7 |
| Table 1: Maryland Juvenile Services Administration, Summary of Budget Expenditures by Major Program, Fiscal 1969-1978 | 8 |
| Division of Juvenile Court Services | |
| Table 2: Summary of Juvenile Probation and Court Services Expenditures and Services Rendered, Fiscal 1969-1978 | 14 |
| Table 3: Total Cases Handled by the Juvenile Services Administration by County and Region; Formal, Informal, Change in Disposition and Disapproved/Closed at Intake Cases, 1969-1978 Fiscal Years | 15 |
| Table 4: Formal Juvenile Court Dispositions by County and Region, 1969-1978 Fiscal Years | 16 |
| Table 5: Total Number of Cases Handled Informally by the Juvenile Services Administration by County and Region, 1969-1978 Fiscal Years | 17 |
| Table 6: Total Number of Juvenile Cases Disapproved or Closed at Intake by County and Region, Fiscal Years 1971-1978 | 18 |
| Table 7: Total Offense Case Rate and Total Delinquent Case Rate Per 1,000 Juveniles by County and Region, Fiscal 1978 | 19 |
| Table 8: Disposition by County and Region, Fiscal 1978 | 20 |
| Table 9: Manner of Handling Cases by County, Region and Type of Offense, Fiscal 1978 | 22 |
| Table 10: Manner of Handling Cases by County, Region and Sex, Fiscal 1978 | 23 |
| Table 11: Manner of Handling Cases by County, Region and Race, Fiscal 1978 | 24 |
| Table 12: Total Cases Handled by the Juvenile Services Administration by County, Region and Source of Referral, Fiscal 1978 | 25 |
| Table 13: Total Cases Handled by the Juvenile Services Administration by County, Region and Age, Fiscal 1978 | 26 |
| Table 14: Total Cases Handled by the Juvenile Services Administration by County, Region and Major Reason Referred, Fiscal 1978 | 27 |
| Table 15: Total Cases Handled by the Juvenile Services Administration by Major Reason and Age at Time of Referral, Fiscal 1978 | 29 |
| Table 16: Formal Cases Handled by the Juvenile Services Administration by Major Reason and Disposition, Fiscal 1978 | 30 |
| Table 17: Comparison of the Number of Cases Handled by the Maryland Juvenile Services Administration by Major Reason for Referral, Fiscal 1977-1978 | 32 |
| Table 18: Total Cases Handled by the Maryland Juvenile Services Administration by County and Parental Status, Fiscal 1978 | 33 |
| Table 19: Total Cases Handled by the Maryland Juvenile Services Administration by County and Type of Guardian, Fiscal 1978 | 34 |
| Table 20: Maryland Juvenile Services Administration, Baltimore City and Prince George's County, Adoption and Custody Cases, Fiscal 1978 | 35 |
| Figure 2: Case Processing Time—Statewide—1978 | 36 |
| Figure 3: First and Repeat Offenders—Statewide—1978 | 37 |
| Division of Community Services | |
| Table 21: Maryland Juvenile Services Administration Community Detention | 42 |
| Table 22: Community and Residential Expenditures, Fiscal 1969-1978 | 43 |
| Table 23: Community Residential Placements, Number of Juveniles Served, Fiscal 1969-1978 | 43 |
| Table 24: Residential and Emergency Placements by Sex and County, Fiscal 1978 | 44 |
| Table 24A: Private Residential Placements by Type of Services and County, Fiscal 1978 | 45 |
| Table 25: Residential and Emergency Placements by Race and County, Fiscal 1978 | 46 |
| Table 26: Community Residential Placements by Race, Fiscal 1978 | 47 |
| Table 27: Youth Service Center Admissions by Age and Sex, Fiscal 1978 | 47 |
| Table 28: Maryland Juvenile Services Administration, Total Formally Counseled Cases Served by Youth Services Bureaus by Location, Sex and Race, Fiscal 1978 | 48 |
| Table 29: Total Counseled Cases Served by Youth Diversion Programs in Baltimore City by Location, Sex, Race, Age, and Offense | 49 |

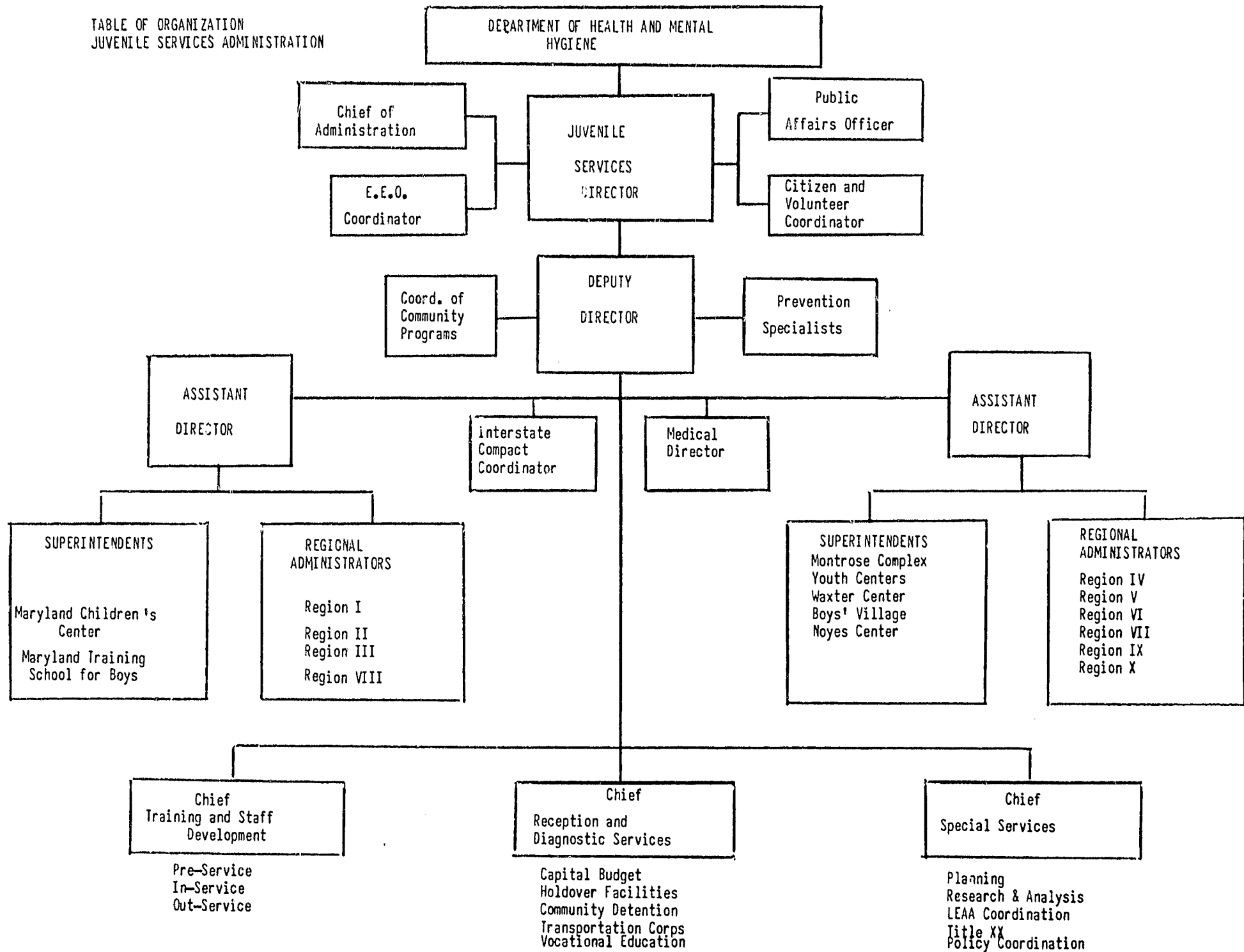
Division of Institutional Services

| | | |
|-----------|--|----|
| Table 30: | Maryland Juvenile Services Administration, Summary of Institution Expenditures, Fiscal 1969-1978 | 55 |
| Table 31: | Summary of Institution Admissions, Fiscal 1969-1978 | 55 |
| Table 32: | Admissions to Maryland's Juvenile Institutions, Fiscal Year Comparisons, 1977-1978 | 56 |
| Table 33: | Admissions to Maryland's Juvenile Institutions by County of Residence, Fiscal 1978 | 57 |
| Table 34: | Admissions to Maryland's Training School, Montrose School, Boys' Village and Victor Cullen by Type of Admissions, Fiscal 1969-1978 | 58 |
| Table 35: | Admissions to Maryland's Training School, Forestry Camps and Boys' Village by County of Residence and County of Admitting Court, Fiscal 1978 | 59 |
| Table 36: | Admissions to Maryland's Juvenile Institutions by Facility and Offense, Fiscal 1978 | 60 |
| Table 37: | Admissions to Maryland's Training Schools, Forestry Camps and Boys' Village by Age and Race, Fiscal 1978 | 61 |
| Table 38: | Commitments to Maryland's Training Schools and Forestry Camps by Length of Stay (Based on Releases), Fiscal 1978 | 62 |
| Table 39: | Average Length of Stay of Detentions in Maryland's Juvenile Institutions, Fiscal 1978 | 62 |
| Table 40: | Admissions to Maryland's Children Centers by Center and Sex, Fiscal 1969-1978 | 63 |
| Table 41: | Admissions to Maryland's Children Centers by County of Residence and County of Admitting Court, Fiscal 1978 | 64 |
| Table 42: | Admissions to Maryland's Children Centers by Age and Race, Fiscal 1978 | 65 |

Federal Grants

| | | |
|-----------|--|----|
| Table 43: | Federal Grants in Operation During Fiscal 1978 | 68 |
| Table 44: | Number of Youth served by Federal Grants | 68 |

TABLE OF ORGANIZATION
JUVENILE SERVICES ADMINISTRATION



Definition of Terms

THE UNIT OF COUNT is a case referred to the Juvenile Services Administration. Such a case is counted each time a child is referred during the year on a new referral.

COURT means the circuit court of a county or Baltimore City sitting as the juvenile court. In Montgomery County, it means the District Court sitting as a Juvenile Court.

DELINQUENCY CASES are those cases referred to the Administration for acts defined in the statutes of the State of Maryland as the violation of a State law or municipal ordinance by persons who have not reached their 18th birthday.

CHILDREN IN NEED OF SUPERVISION (CINS) are those cases referred to the Juvenile Services Administration involving children who are in need of guidance, treatment, or rehabilitation because they are habitually truant; habitually disobedient, ungovernable or beyond control; deport themselves so as to injure or endanger themselves or others; or commit an offense applicable only to children.

CHILDREN IN NEED OF ASSISTANCE (CINA) are those cases referred to the Juvenile Services Administration which involve children who need the assistance of the court because of dependency, neglect or mental handicaps.

DEPENDENCY CASES are those cases involving a child who has been deprived of adequate support or care by reason of the death, continued absence from the home, or physical, mental or emotional incapacity or disability of his parent, guardian or other custodian.

NEGLECT CASES are those cases involving a child who requires the aid of the court and either has been abandoned or deserted by his parents, guardian or other custodian; whose parent, guardian or other custodian does not adequately care for him although financially able, or offered the financial means to do so; or who suffers or is likely to suffer serious harm from an improper home environment or guardianship, including the lack of moral supervision or guidance, of his parents, guardian or custodian.

MENTALLY HANDICAPPED CASES are those cases in which a mentally retarded or

mentally ill child is brought into court for the determination of proper care.

SPECIAL PROCEEDINGS includes guardianship or custody cases or application for permission to marry, enlist in the armed forces, etc.

MANNER OF HANDLING CASES is classified as FORMAL, INFORMAL, DISAPPROVED OR CLOSED AT INTAKE.

DISAPPROVED CASES are those referrals which are determined as lacking legal sufficiency.

CLOSED AT INTAKE CASES are those referrals which are resolved by an Intake Officer through minimal involvement of staff when the facts and circumstances of the offense and the child's background indicate that no supervision or further counselling from Juvenile Services or intervention by the court is necessary or desirable for effecting a positive adjustment by the child.

INFORMAL ADJUSTMENT involves those referrals which are resolved by an Intake Officer by giving voluntary informal supervision for up to 90 days and/or referral to another agency when it appears that the child and his/her parent need assistance in preventing further violations of the law, but will not require nor benefit from judicial proceedings.

FORMAL CASES are those cases in which a petition has been authorized and filed requiring formal court action.

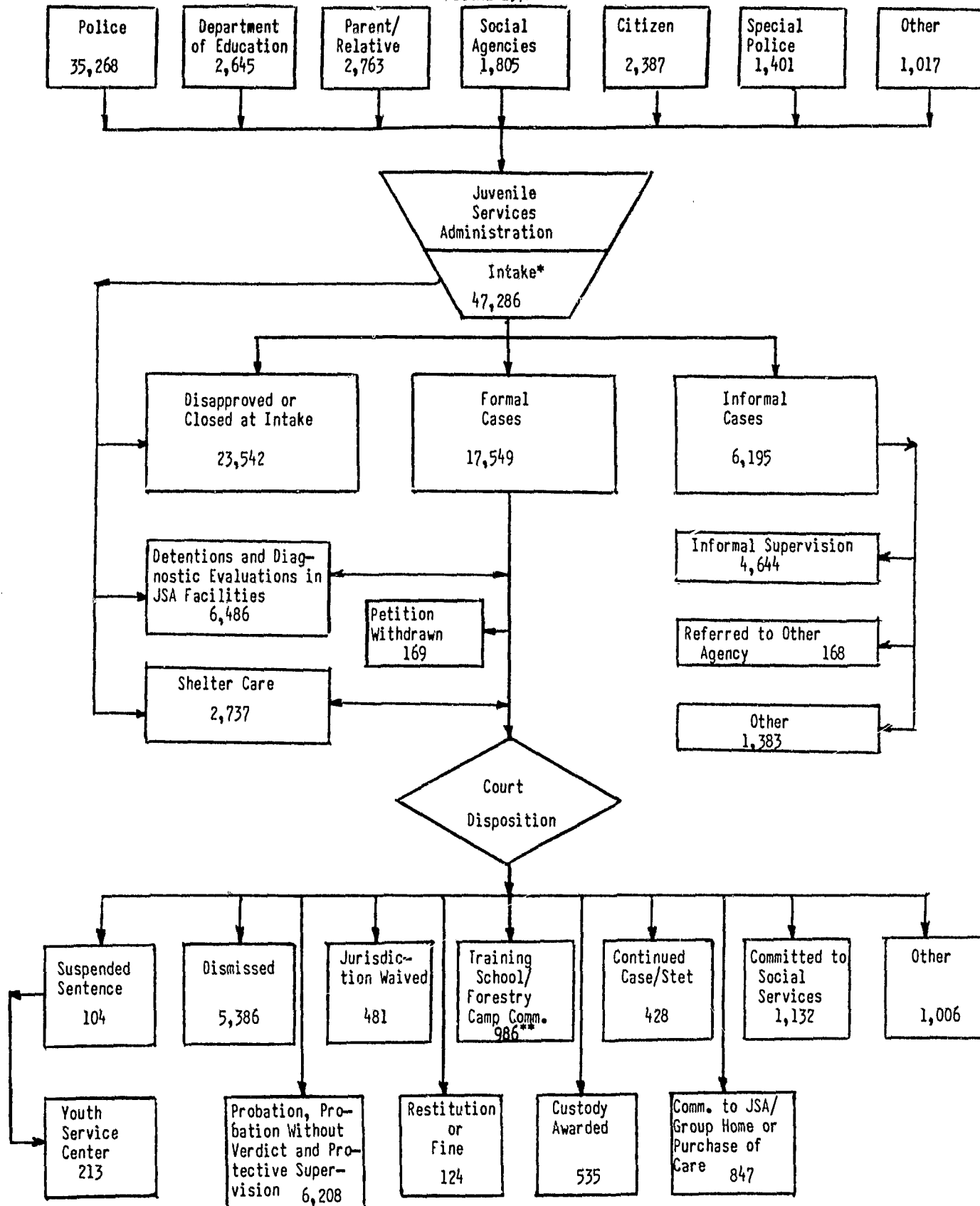
INSTITUTIONAL ADMISSIONS include both commitments and detentions. Such an admission is counted each time a child is either detained or committed to a facility during the year.

COMMITMENT means the transfer of legal custody.

DETENTION means the temporary care of children who, pending court disposition, require secure custody for the protection of themselves and/or the community, in physically restricting facilities.

SHELTER CARE means the temporary care of children in physically unrestricting facilities, pending court disposition.

MARYLAND JUVENILE SERVICES ADMINISTRATION
FLOW CHART OF CASE REFERRALS
FISCAL 1978



*This figure does not include cases that were referred to JSA prior to July 1, 1978.

**This total does not include 410 cases which were committed through other than regular procedures due to two different methods of reporting commitments.

STATISTICS

FIGURE I
MARYLAND JUVENILE SERVICES ADMINISTRATION
FISCAL 1978 BUDGET

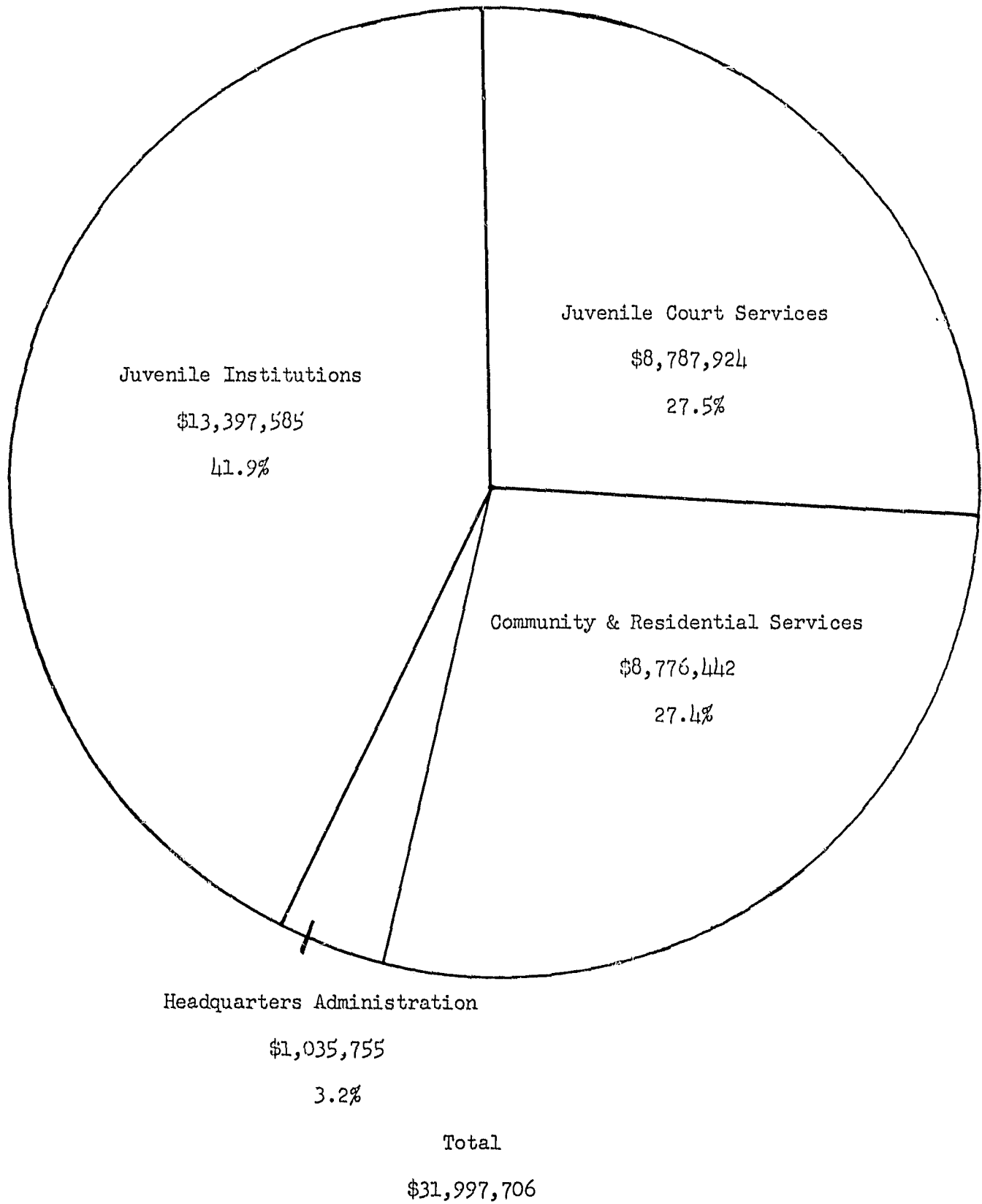


TABLE 1: MARYLAND JUVENILE SERVICES ADMINISTRATION
SUMMARY OF BUDGET EXPENDITURES BY MAJOR PROGRAM
FISCAL 1969 - 1978

| Fiscal Year | Juvenile Institutions | Juvenile Court Services | Community and Residential Services ¹ | Administration Headquarters ² | Total |
|-------------|--------------------------|----------------------------|--|---|---------------|
| 1969 | \$ 7,344,951 | \$ 2,130,139 | \$ 380,242 | \$ 458,217 | \$ 10,313,549 |
| 1970 | 8,539,963 | 2,686,603 | 651,649 | 541,877 | 12,420,092 |
| 1971 | 10,222,861 | 3,755,940 | 1,439,488 | 598,619 | 16,016,908 |
| 1972 | 11,364,651 | 4,793,753 | 2,315,750 | 805,298 | 19,279,452 |
| 1973 | 11,330,290 | 4,916,722 | 3,075,350 | 740,626 | 20,062,988 |
| 1974 | 10,644,860 | 5,112,801 | 4,260,249 | 1,081,863 | 21,099,773 |
| 1975 | 10,512,767 | 6,123,325 | 6,147,085 | 1,097,982 | 23,881,159 |
| 1976 | 11,568,711 | 7,095,563 | 7,524,331 | 870,789 | 27,059,394 |
| 1977 | 12,147,884 | 7,957,519 | 8,047,093 | 927,398 | 29,079,894 |
| 1978 | 13,397,585 | 8,787,924 | 8,776,442 | 1,035,755 | 31,997,706 |

¹ Community and Residential Services were not separately budgeted for fiscal 1969

² The decrease in Administration Headquarters' budget from 1975 to fiscal 1976 was due to the assimilation of JSA within the Department of Health and Mental Hygiene

DIVISION OF
JUVENILE COURT
SERVICES

HIGHLIGHTS OF JUVENILE COURT SERVICES

Manner of Handling Cases

Whenever a case is referred to the Maryland Juvenile Services Administration, inquiries are conducted by the intake unit to determine whether the case should be disapproved because of legal insufficiency, closed at intake, handled informally by the Intake Officer or referred for formal court action.

Of the 47,286 cases that were handled during fiscal 1978 by the Juvenile Services Administration, 49.8% (23,542) were disapproved or closed at intake, 37.1% (17,549) received formal court action, and 13.1% (6,195) were handled informally at intake. The number of cases that were disapproved or closed at intake decreased 10.5% over fiscal 1977. Also, the number of cases handled formally decreased 5.4% over fiscal 1977. However, the number of cases handled informally increased 29.4%.

Source of Referral

During fiscal 1978, 35,268 cases (74.6%) were "referred by the police." "Parents and other relatives" referred 2,763 cases (5.8%); followed by the "Department of Education", 2,645 (5.6%); citizens, 2,387 (5.0%); the "Department of Social Services," 1,805 (3.8%); "Special Police," 1,401 (3.0%); and "other", 1,017 (2.2%).

Juvenile Court Trends

Between 1969 and 1976, the number of cases handled by the Juvenile Services Administration increased steadily from 25,270 in 1968 to 58,044 in 1976. However, during fiscal 1977, there was a significant departure from this trend with an actual decrease of 12.7% in the number of cases handled. This downward trend continued during fiscal 1978 with a decrease of 6.6% in the number of cases handled by the Juvenile Services Administration.

The number of cases handled formally has not shown a consistent pattern since 1969, and, in fact, fewer cases were handled formally during fiscal 1978 (17,549) than in fiscal 1969 (17,788). The number of cases handled informally increased from fiscal 1969 through 1971, but has shown no consistent trend since then. However, during fiscal 1978, the number of cases handled informally (6,195) was actually less than the fiscal 1969 figure (6,616). The number of cases disapproved or closed at intake increased from fiscal 1969 through 1976 but has declined thereafter.

The majority of juvenile referrals continue to occur in metropolitan environments. Baltimore

City accounted for 33.6% of the total referrals for fiscal 1978, followed by Prince George's County, 17.3%; Baltimore County, 11.7%; Anne Arundel County, 9.3%; and Montgomery County, 6.4%.

Disposition

Of the 17,549 cases handled formally in fiscal 1978, 32.0% were "withdrawn", "dismissed", "warned, adjusted or counselled"; 35.4% were placed on "probation", "protective supervision", or "probation without verdict"; 9.5% had "custody awarded" or were "committed to the Department of Social Services"; 2.4% were "continued without finding" or "stet"; 5.6% were "committed to a training school or forestry camp"; 4.8% were "committed to the Maryland Juvenile Services Administration," "purchase of care" or "group home"; 2.7% had "jurisdiction waived"; and 5.7% were disposed of in other ways.

The number of cases that were "withdrawn", "dismissed" or "warned, adjusted or counselled" decreased 8.6% from fiscal 1977 to 1978. The number that were placed on "probation", "protective supervision" or "probation without verdict" decreased 9.3%. "Commitments to the Maryland Juvenile Services Administration," "purchase of care", or "group home" decreased 20.8%. The number of cases that had "jurisdiction waived" increased 13.2%, while cases "continued without finding" or "stet" decreased 65.7%. The number of commitments to the "Department of Social Services" and cases in which "custody was awarded" increased by less than one percent. The number of cases that were handled in other ways decreased by 22.6%.

¹Court record figures on commitments to training school or forestry camps are higher than some previous years because of improved reporting; however, they do not reflect actual increases.

Juvenile Case Rates

The juvenile case rate for Maryland during fiscal 1978 was 48 cases per 1,000 juveniles five through seventeen years of age, a decrease of 3 cases per 1,000 juveniles reported during fiscal 1977. This rate ranged from a low of 14 cases per 1,000 juveniles in Wicomico County to a high of 101 cases per 1,000 juveniles in Worcester County. This latter figure was due primarily to the influx of youth during the summer months at Ocean City and is not reflective of a high incidence of referrals among residents of Worcester County. Baltimore City had the next highest juvenile case rate with 89 per 1,000 juveniles. This represented a reduction of 10 per 1,000 juveniles from the case rate of 99 reported during fiscal 1977.

Of those cases involving delinquent offenses, the case rate was 41 cases per 1,000 juveniles, a decrease of 2 cases per 1,000 juveniles from the figure reported during fiscal 1977. This ranged from a low of 13 cases per 1,000 juveniles in Wicomico County to a high of 82 cases per 1,000 juveniles in Worcester County. Baltimore City had the second highest delinquent rate, 79 cases per 1,000 juveniles.

Major Reason for Referral: Delinquency

A majority of the cases handled by the Maryland Juvenile Services Administration during fiscal 1978 involved delinquent offenses (40,331 or 85.3%). The largest single offense category was "assault" with 5,934 cases representing 14.7% of all delinquent cases. This was followed by "burglary-breaking and entering" with 5,775 cases (14.3%), "larceny" with 4,878 cases (12.1%), and "shoplifting" with 4,486 cases (11.1%). Over half of the cases that were referred for delinquent offenses were disapproved or closed at intake (20,441 or 50.7%), 14,535 or 36.0% were handled formally and 13.3% or 5,355 were handled informally.

The total number of delinquent cases handled during fiscal 1978 decreased 6.1% from fiscal 1977. Of those major reasons for which the total number of cases exceeded 1,000, disorderly conduct showed the largest decrease (18.3%), while vandalism showed the largest increase (11.7%), in fact, the only increase for this group of major reasons.

The number of delinquency cases handled formally showed a decrease of 10.9%. The number of informally handled delinquent cases, on the other hand, showed an increase of 35.6%. The number of disapproved or closed delinquency cases showed a 9.9% decrease.

CINS

Cases involving children in need of supervision (CINS) accounted for 4,813 cases or 10.2% of the total number of cases handled during fiscal 1978. Of these cases, 44.9% involved "ungovernable" behavior, "runaway" behavior accounted for 31.8%, while "truancy" accounted for the remaining 23.3% of the cases.

The total number of CINS cases decreased 12.3% in fiscal 1978 as compared to fiscal 1977. All three categories of CINS offenses showed declines: "runaway" cases dropped off by 23.3%; "ungovernable" cases by 7.8%; and "truancy" cases by less than one percent.

Most CINS cases were disapproved or closed at intake (61.9%). A total of 1,012 (21.0%) of CINS cases received formal action, while 820 (17.0%)

were handled informally. During fiscal 1978 the number of formal CINS cases decreased by 11.9%; and the number of disapproved or closed cases decreased by 15.1%. The number of informal cases increased by less than one percent.

CINA

A total of 2,115 cases involving children in need of Assistance (CINA) were handled by the Juvenile Services Administration during fiscal 1978. This represents 4.5% of all referrals. Referrals for "dependency" accounted for 48.3% of all CINA referrals, "dependency and neglect" cases accounted for 34.2%; "neglect" cases accounted for 16.7%; and "mentally handicapped" cases accounted for less than one percent. A majority of the 2,115 CINA cases were handled formally (93.4%) while .9% were handled informally, and 5.6% were disapproved or closed at intake.

During fiscal 1978 CINA cases declined by 3.9% compared to fiscal 1977. "Dependency cases", however, increased by 5.4%. "Neglect" cases declined by 8.1%, "dependency and neglect" cases by 10.9%, and "mentally handicapped" cases by 51.4% (from 37 to 18).

Sex Ratio

During fiscal 1978, 37,103 cases involved males and 10,183 cases involved females. This translates to a male to female ratio of 3.6. In percentage terms, 78.5% of the cases involved males and 21.5% involved females. Of the 17,549 cases handled formally, 81.9% involved males. For informal cases, 76.0% of the 6,195 cases involved males. For disapproved or closed at intake cases, 76.6% of the 23,542 cases involved males. Cases involving males were more likely to be handled formally than those involving females. That is, 38.7% of cases involving males were handled formally compared to 31.2% for females. Females, on the other hand, were more likely to have their cases disapproved or closed at intake (54.2% disapproved or closed vs. 48.6% for males). Females were also more likely to have their cases handled informally (6.0% informally handled vs. 4.2% for males).

Race

Whites were involved in 26,720 cases or 56.5% of the total referrals to the Juvenile Services Administration during fiscal 1978. Blacks were involved in 20,408 cases or 43.2% of the total referrals. The remaining 158 cases (.3%) comprised referrals for which race was unknown or consisted of youth of "other" racial groups. Of the cases involving whites, 34.0% were handled formally; 13.7%, informally; and 52.3% were disapproved or closed at

intake. Of the cases involving blacks, 41.1% were handled formally; 12.3% informally; and 46.6% were disapproved or closed at intake.

Age of Juvenile

The age group of fifteen through seventeen was involved in 61.3% of the total referrals for fiscal 1978. Sixteen year olds were more often referred than other age groups, comprising 21.4% of all referrals. Generally, the number of cases increased proportionately with an increase in age up to the age of sixteen and decreased thereafter. The average age of youth handled by the Juvenile Services Administration was 14.9 years. The manner of handling was not a major factor related to age: the average age in formal cases was 15.0 years; in informal cases, 14.6 years; and in disapproved or closed cases, 14.8 years.

Age by Type of Case

Of the 40,331 delinquency cases handled during fiscal 1978, 56.3% involved youth in the fifteen through seventeen age group. Youth of sixteen years of age were most often referred (9,108 cases). However, youth of seventeen years of age had nearly as many referrals (9,085). The average age of juveniles referred for delinquent offenses was 15.5 years.

Of the 4,813 referrals involving Children in Need of Supervision, 67.1% pertained to children between fourteen and sixteen years of age. The average age of juveniles referred as Children in Need of Supervision was 14.4 years.

Juveniles under ten years of age accounted for 51.8% of the Children in Need of Assistance cases. Only 11.3% of these youth were sixteen years of age or older.

Parental Status

Information concerning parental status was available on 36,844 cases or 77.9% of the total number of referrals made to the Juvenile Services Administration in fiscal 1978. For those cases in which information was provided, 46.1% indicated parents were living together, in 5.8% of the cases, the father, mother or both parents were deceased;

parents were separated in 28.9% of the cases; 12.8% indicated that parents were divorced; in 4.1% of the cases, parents were unmarried; and 2.4% of the cases listed parental status as "other".

Type of Guardian

A total of 39,828 cases (84.2%) had information available concerning type of guardian. In 42.1% of these cases, youth reported living with both parents. Juveniles living with their mother accounted for 39.8% of the cases, while those living with their father accounted for 5.6% of the cases. Juveniles were living with their mother and stepfather in 4.0% of the cases, with their father and stepmother in .9% of the cases, in a foster home in 1.3% of the cases, in another type of family home in 4.2% of the cases and in either an in-state or out-of-state institution in .5% of the cases. In .5% of the cases youth were living with non-relatives, in .1% of the cases they were living alone, and, finally, in 1.2% of the cases, the guardian was listed as "other".

Case Processing Time

The time lapse between the date of referral to the Juvenile Services Administration and the date when a disposition is reached is known as "case processing time."

During fiscal 1978, nearly half (49.7%) of the cases handled by the Juvenile Services Administration were processed within one month of referral date. Approximately 19.0% of the cases had a processing time of between one and two months. Another 10.3% of the cases were processed within two to three months of the referral date. A total of 93.8% of the cases were processed within six months of referral date.

First and Repeat Offenders

During fiscal 1978, 69.0% of those referred to the Juvenile Services Administration were first-time offenders. Of these offenders, 14.9% had one previous referral to the Juvenile Services Administration; 6.5% had two previous referrals; and 3.6% had three previous referrals. Only 0.8% of all delinquent offenders during fiscal 1978 had more than nine previous referrals.

TABLE 2
SUMMARY OF JUVENILE PROBATION AND COURT SERVICES
EXPENDITURES AND SERVICES RENDERED
FISCAL 1969 - 1978

| Fiscal Year | Budget Expenditures | Juvenile Dispositions* | Probation, Probation Without Verdict and Protective Supervision Cases | Aftercare Cases |
|-------------|---------------------|------------------------|---|-----------------|
| 1969 | \$ 2,130,139 | 25,270 | 5,080 | 1,835 |
| 1970 | 2,686,603 | 26,236 | 4,671 | 1,911 |
| 1971 | 3,755,940 | 32,703 | 5,226 | 1,920 |
| 1972 | 4,793,753 | 37,242 | 6,019 | 1,888 |
| 1973 | 4,916,722 | 41,949 | 5,638 | 1,800 |
| 1974 | 5,112,801 | 47,905 | 5,064 | 1,409 |
| 1975 | 6,123,325 | 57,162 | 6,468 | 1,601 |
| 1976 | 7,095,563 | 58,044 | 7,107 | 1,621 |
| 1977 | 7,957,519 | 50,702 | 6,841 | 1,588 |
| 1978 | 8,787,924 | 47,286 | 6,206 | 1,396 |

* Includes Formal, Informal, Change in Disposition and Disapproved/Closed at Intake cases

TABLE 3

TOTAL CASES HANDLED BY THE JUVENILE SERVICES ADMINISTRATION BY COUNTY AND REGION
 FORMAL, INFORMAL, CHANGE IN DISPOSITION & DISAPPROVED/CLOSED AT INTAKE CASES
 1969 - 1978 FISCAL YEARS

| | 1969 | | 1970 | | 1971 | | 1972 | | 1973 | | 1974 | | 1975 | | 1976 | | 1977 | | 1978 | | Percent Change 77-78 |
|-----------------|--------|-------|--------|-------|--------|-------|--------|-------|--------|-------|--------|-------|--------|-------|--------|-------|--------|-------|--------|-------|----------------------------|
| | N | % | N | % | N | % | N | % | N | % | N | % | N | % | N | % | N | % | N | % | |
| Region 1 | | | | | | | | | | | | | | | | | | | | | |
| Dorchester | 170 | .7 | 119 | .5 | 209 | .6 | 199 | .5 | 308 | .7 | 317 | .7 | 300 | .5 | 212 | .4 | 197 | .4 | 216 | .5 | + 9.6 |
| Somerset | 103 | .4 | 94 | .4 | 120 | .4 | 118 | .3 | 148 | .4 | 123 | .3 | 144 | .3 | 152 | .3 | 100 | .2 | 91 | .2 | - 9.0 |
| Wicomico | 321 | 1.3 | 242 | .9 | 233 | .7 | 288 | .8 | 338 | .8 | 437 | .9 | 413 | .7 | 320 | .5 | 302 | .6 | 190 | .4 | - 37.1 |
| Worcester | 307 | 1.2 | 517 | 2.0 | 818 | 2.5 | 694 | 1.9 | 610 | 1.4 | 656 | 1.4 | 750 | 1.3 | 816 | 1.4 | 790 | 1.6 | 622 | 1.3 | - 21.3 |
| Region 2 | | | | | | | | | | | | | | | | | | | | | |
| Caroline | 128 | .5 | 83 | .3 | 123 | .4 | 129 | .3 | 108 | .2 | 150 | .3 | 206 | .4 | 146 | .2 | 134 | .3 | 167 | .4 | + 24.6 |
| Cecil | 371 | 1.5 | 267 | 1.0 | 428 | 1.3 | 483 | 1.3 | 533 | 1.3 | 481 | 1.0 | 472 | .8 | 548 | .9 | 502 | 1.0 | 482 | 1.0 | - 4.0 |
| Kent | 116 | .4 | 138 | .5 | 128 | .4 | 139 | .4 | 151 | .4 | 214 | .4 | 210 | .4 | 146 | .2 | 203 | .4 | 137 | .3 | - 32.5 |
| Queen Anne's | 117 | .4 | 118 | .4 | 245 | .7 | 163 | .4 | 163 | .4 | 181 | .4 | 129 | .2 | 154 | .3 | 155 | .3 | 127 | .3 | - 18.1 |
| Talbot | 63 | .2 | 115 | .4 | 181 | .5 | 144 | .4 | 175 | .4 | 195 | .4 | 254 | .4 | 233 | .4 | 224 | .4 | 220 | .5 | - 1.8 |
| Region 3 | | | | | | | | | | | | | | | | | | | | | |
| Baltimore | 2,929 | 11.6 | 3,080 | 11.7 | 3,521 | 10.8 | 3,709 | 10.0 | 4,373 | 10.4 | 5,531 | 11.6 | 6,838 | 12.0 | 5,229 | 9.0 | 5,024 | 9.9 | 5,068 | 10.7 | + .9 |
| Harford | 627 | 2.5 | 695 | 2.6 | 916 | 2.8 | 1,058 | 2.8 | 904 | 2.2 | 915 | 1.9 | 998 | 1.7 | 1,005 | 1.7 | 1,237 | 2.4 | 1,193 | 2.5 | - 3.6 |
| Region 4 | | | | | | | | | | | | | | | | | | | | | |
| Allegany | 346 | 1.4 | 327 | 1.2 | 422 | 1.3 | 380 | 1.0 | 464 | 1.1 | 516 | 1.1 | 560 | 1.0 | 458 | .8 | 437 | .9 | 434 | 1.0 | - .7 |
| Garrett | 89 | .4 | 36 | .1 | 120 | .4 | 110 | .3 | 135 | .3 | 108 | .2 | 115 | .2 | 161 | .3 | 161 | .3 | 138 | .3 | - 14.3 |
| Washington | 416 | 1.6 | 559 | 2.1 | 511 | 1.6 | 471 | 1.3 | 750 | 1.8 | 691 | 1.4 | 842 | 1.5 | 850 | 1.5 | 843 | 1.7 | 764 | 1.6 | - 9.3 |
| Region 5 | | | | | | | | | | | | | | | | | | | | | |
| Anne Arundel | 1,261 | 5.0 | 1,559 | 6.0 | 2,618 | 8.0 | 2,408 | 6.5 | 2,815 | 6.7 | 3,706 | 7.7 | 5,296 | 9.3 | 5,048 | 8.7 | 5,035 | 9.9 | 4,947 | 10.4 | - 1.7 |
| Carroll | 163 | .6 | 223 | .9 | 372 | 1.1 | 231 | .6 | 330 | .8 | 549 | 1.1 | 669 | 1.2 | 621 | 1.1 | 742 | 1.5 | 636 | 1.3 | - 14.3 |
| Howard | 546 | 2.2 | 486 | 1.9 | 301 | .9 | 416 | 1.1 | 468 | 1.1 | 789 | 1.6 | 942 | 1.6 | 991 | 1.7 | 984 | 1.9 | 877 | 1.9 | - 10.9 |
| Region 6 | | | | | | | | | | | | | | | | | | | | | |
| Frederick | 354 | 1.4 | 441 | 1.7 | 362 | 1.1 | 450 | 1.2 | 567 | 1.4 | 760 | 1.6 | 800 | 1.4 | 832 | 1.4 | 860 | 1.7 | 877 | 1.9 | + 2.0 |
| Montgomery | 2,724 | 10.8 | 2,590 | 9.9 | 2,950 | 9.0 | 3,677 | 9.8 | 3,031 | 7.2 | 3,532 | 7.4 | 5,253 | 9.2 | 4,399 | 7.6 | 3,174 | 6.3 | 2,763 | 5.8 | - 12.9 |
| Region 7 | | | | | | | | | | | | | | | | | | | | | |
| Calvert | 129 | .5 | 134 | .5 | 191 | .6 | 213 | .6 | 248 | .6 | 284 | .6 | 433 | .8 | 310 | .5 | 377 | .7 | 425 | .9 | + 12.7 |
| Charles | 162 | .6 | 324 | 1.2 | 381 | 1.2 | 582 | 1.6 | 531 | 1.3 | 953 | 2.0 | 987 | 1.7 | 960 | 1.7 | 953 | 1.9 | 1,089 | 2.3 | + 14.3 |
| Prince George's | 5,101 | 20.2 | 5,550 | 21.2 | 5,977 | 18.3 | 6,823 | 18.3 | 6,717 | 16.0 | 8,592 | 17.9 | 9,320 | 16.3 | 9,074 | 15.6 | 8,786 | 17.3 | 8,353 | 17.6 | - 4.9 |
| St. Mary's | 218 | .9 | 148 | .6 | 192 | .6 | 281 | .8 | 379 | .9 | 456 | 1.0 | 541 | .9 | 501 | .9 | 623 | 1.2 | 693 | 1.5 | + 11.2 |
| Region 8 | | | | | | | | | | | | | | | | | | | | | |
| Baltimore City | 8,509 | 33.7 | 8,391 | 32.0 | 11,384 | 34.8 | 14,076 | 37.8 | 17,703 | 42.2 | 17,769 | 37.1 | 20,690 | 36.2 | 24,878 | 42.9 | 18,859 | 37.2 | 16,777 | 35.4 | - 11.0 |
| STATE | 25,270 | 100.0 | 26,236 | 100.0 | 32,703 | 100.0 | 37,242 | 100.0 | 41,949 | 100.0 | 47,905 | 100.0 | 57,162 | 100.0 | 58,044 | 100.0 | 50,702 | 100.0 | 47,286 | 100.0 | - 6.7 |

TABLE 4
FORMAL JUVENILE COURT DISPOSITIONS BY COUNTY AND REGION
1969 - 1978 FISCAL YEARS

| | 1969** | | 1970** | | 1971** | | 1972 | | 1973 | | 1974 | | 1975 | | 1976 | | 1977 | | 1978 | | Percent Change 77-78 |
|-----------------|--------|-------|--------|-------|--------|-------|--------|-------|--------|-------|--------|-------|--------|-------|--------|-------|--------|-------|--------|-------|----------------------------|
| | N | % | N | % | N | % | N | % | N | % | N | % | N | % | N | % | N | % | N | % | |
| Region 1 | | | | | | | | | | | | | | | | | | | | | |
| Dorchester | 144 | .8 | 93 | .6 | 101 | .6 | 86 | .5 | 140 | .7 | 176 | .9 | 142 | .7 | 106 | .5 | 99 | .5 | 83 | .5 | - 16.2 |
| Somerset | 55 | .3 | 49 | .3 | 74 | .5 | 57 | .3 | 81 | .4 | 73 | .4 | 59 | .3 | 91 | .4 | 50 | .3 | 57 | .3 | + 14.0 |
| Wicomico | 223 | 1.2 | 158 | 1.0 | 158 | 1.0 | 201 | 1.1 | 243 | 1.3 | 266 | 1.4 | 214 | 1.0 | 167 | .7 | 236 | 1.2 | 129 | .7 | - 45.3 |
| Worcester | 88 | .5 | 100 | .6 | 102 | .7 | 124 | .7 | 108 | .6 | 90 | .5 | 144 | .7 | 106 | .5 | 125 | .6 | 101 | .6 | - 19.2 |
| Region 2 | | | | | | | | | | | | | | | | | | | | | |
| Caroline | 96 | .5 | 45 | .3 | 61 | .4 | 64 | .3 | 52 | .3 | 46 | .2 | 50 | .2 | 39 | .2 | 61 | .3 | 67 | .4 | + 9.8 |
| Cecil | 120 | .7 | 86 | .6 | 160 | 1.0 | 141 | .8 | 148 | .8 | 163 | .9 | 121 | .6 | 169 | .7 | 171 | .9 | 168 | 1.0 | - 1.8 |
| Kent | 100 | .6 | 99 | .6 | 77 | .5 | 63 | .3 | 87 | .4 | 87 | .5 | 73 | .3 | 74 | .3 | 98 | .5 | 78 | .4 | - 20.4 |
| Queen Anne's | 117 | .7 | 115 | .7 | 178 | 1.1 | 106 | .6 | 113 | .6 | 105 | .6 | 72 | .3 | 50 | .2 | 71 | .4 | 45 | .3 | - 36.6 |
| Talbot | 52 | .3 | 41 | .3 | 87 | .6 | 73 | .4 | 61 | .3 | 91 | .5 | 61 | .3 | 55 | .2 | 92 | .5 | 98 | .6 | + 6.5 |
| Region 3 | | | | | | | | | | | | | | | | | | | | | |
| Baltimore | 1,881 | 10.6 | 1,564 | 9.8 | 1,362 | 8.8 | 1,661 | 9.0 | 1,513 | 7.9 | 1,515 | 8.1 | 1,751 | 8.3 | 1,261 | 5.4 | 1,280 | 6.5 | 1,238 | 7.0 | - 3.2 |
| Harford | 486 | 2.7 | 359 | 2.3 | 340 | 2.2 | 347 | 1.9 | 313 | 1.6 | 374 | 2.0 | 404 | 1.9 | 418 | 1.8 | 489 | 2.5 | 409 | 2.3 | - 16.4 |
| Region 4 | | | | | | | | | | | | | | | | | | | | | |
| Allegany | 309 | 1.7 | 309 | 2.0 | 398 | 2.6 | 346 | 1.9 | 333 | 1.7 | 391 | 2.1 | 463 | 2.2 | 402 | 1.7 | 383 | 2.0 | 328 | 2.1 | - 14.4 |
| Garrett | 86 | .5 | 31 | .2 | 91 | .6 | 77 | .4 | 70 | .4 | 65 | .3 | 83 | .4 | 93 | .4 | 119 | .6 | 102 | .6 | - 14.3 |
| Washington | 383 | 2.2 | 498 | 3.1 | 491 | 3.2 | 419 | 2.3 | 513 | 2.7 | 544 | 2.9 | 609 | 2.9 | 494 | 2.1 | 303 | 1.5 | 381 | 2.2 | + 25.7 |
| Region 5 | | | | | | | | | | | | | | | | | | | | | |
| Anne Arundel | 906 | 5.1 | 665 | 4.2 | 1,164 | 7.5 | 999 | 5.4 | 1,049 | 5.4 | 1,384 | 7.4 | 1,514 | 7.2 | 1,441 | 6.3 | 1,734 | 8.8 | 1,663 | 9.4 | - 4.1 |
| Carroll | 163 | .9 | 102 | .6 | 126 | .8 | 124 | .7 | 107 | .5 | 161 | .8 | 223 | 1.1 | 193 | .8 | 291 | 1.5 | 212 | 1.2 | - 27.1 |
| Howard | 320 | 1.8 | 268 | 1.7 | 181 | 1.2 | 237 | 1.3 | 205 | 1.1 | 296 | 1.6 | 329 | 1.6 | 289 | 1.2 | 233 | 1.2 | 227 | 1.3 | - 2.6 |
| Region 6 | | | | | | | | | | | | | | | | | | | | | |
| Frederick | 63 | .4 | 135 | .8 | 120 | .8 | 150 | .8 | 131 | .7 | 175 | .9 | 166 | .8 | 209 | .9 | 161 | .8 | 221 | 1.3 | + 37.3 |
| Montgomery | 1,475 | 8.3 | 1,417 | 8.9 | 1,218 | 7.9 | 1,485 | 8.1 | 1,212 | 6.3 | 1,230 | 6.6 | 2,076 | 9.8 | 1,653 | 7.2 | 677 | 3.5 | 917 | 5.2 | + 35.4 |
| Region 7 | | | | | | | | | | | | | | | | | | | | | |
| Calvert | 106 | .6 | 49 | .3 | 56 | .4 | 85 | .5 | 72 | .4 | 93 | .5 | 168 | .8 | 116 | .5 | 135 | .7 | 165 | .9 | + 22.2 |
| Charles | 145 | .8 | 98 | .6 | 109 | .7 | 173 | .9 | 119 | .6 | 251 | 1.3 | 288 | 1.4 | 389 | 2.2 | 341 | 1.7 | 449 | 2.6 | + 31.7 |
| Prince George's | 3,540 | 19.9 | 3,129 | 19.7 | 2,800 | 18.1 | 3,002 | 16.4 | 2,867 | 14.9 | 3,259 | 17.4 | 3,473 | 16.5 | 3,679 | 15.9 | 3,869 | 19.7 | 3,452 | 19.6 | - 10.8 |
| St. Mary's | 215 | 1.2 | 96 | .6 | 87 | .6 | 107 | .6 | 148 | .8 | 199 | 1.1 | 219 | 1.0 | 139 | .6 | 215 | 1.1 | 243 | 1.4 | + 13.0 |
| Region 8 | | | | | | | | | | | | | | | | | | | | | |
| Baltimore City | 6,715 | 37.7 | 6,395 | 40.2 | 5,892 | 38.2 | 8,213 | 44.8 | 9,529 | 49.6 | 7,701 | 41.1 | 8,377 | 39.7 | 11,531 | 49.8 | 8,366 | 42.7 | 6,716 | 38.1 | - 19.7 |
| STATE | 17,788 | 100.0 | 15,901 | 100.0 | 15,433 | 100.0 | 18,340 | 100.0 | 19,214 | 100.0 | 18,735 | 100.0 | 21,079 | 100.0 | 23,164 | 100.0 | 19,599 | 100.0 | 17,549 | 100.0 | - 10.5 |

* Excludes changes in disposition

TABLE 5
TOTAL NUMBER OF CASES HANDLED INFORMALLY
BY THE JUVENILE SERVICES ADMINISTRATION BY COUNTY AND REGION
1969 - 1978 FISCAL YEARS

| | 1969** | | 1970** | | 1971** | | 1972 | | 1973 | | 1974 | | 1975 | | 1976 | | 1977 | | 1978 | | Percent Change 77-78 |
|-----------------|--------|-------|--------|-------|--------|-------|--------|-------|-------|-------|-------|-------|-------|-------|-------|-------|-------|-------|-------|-------|----------------------------|
| | N | % | N | % | N | % | N | % | N | % | N | % | N | % | N | % | N | % | N | % | |
| Region 1 | | | | | | | | | | | | | | | | | | | | | |
| Dorchester | 23 | .3 | 20 | .2 | 103 | .8 | 73 | .7 | 67 | .8 | 31 | .5 | 57 | .8 | 31 | .6 | 41 | .9 | 31 | .5 | - 24.4 |
| Somerset | 48 | .7 | 45 | .5 | 43 | .4 | 39 | .4 | 9 | .1 | 1 | .0 | 1 | .0 | 1 | .0 | 41 | .9 | 2 | .0 | |
| Wicomico | 93 | 1.4 | 83 | 1.0 | 70 | .6 | 71 | .7 | 6 | .1 | 7 | .1 | 1 | .1 | 13 | .3 | 9 | .2 | 2 | .0 | - 77.8 |
| Worcester | 214 | 3.2 | 378 | 4.4 | 701 | 5.7 | 281 | 2.7 | | | 1 | .0 | 5 | .1 | 5 | .1 | 4 | .1 | 11 | .2 | + 175.0 |
| Region 2 | | | | | | | | | | | | | | | | | | | | | |
| Caroline | 31 | .5 | 13 | .2 | 56 | .5 | 35 | .3 | 16 | .2 | 25 | .4 | 20 | .3 | 27 | .5 | 13 | .3 | 20 | .3 | + 53.8 |
| Cecil | 247 | 3.7 | 181 | 2.1 | 248 | 2.0 | 166 | 1.6 | 55 | .7 | 33 | .6 | 27 | .4 | 62 | 1.2 | 30 | .6 | 18 | .3 | - 40.0 |
| Kent | 16 | .2 | 8 | .1 | 14 | .1 | 55 | .5 | 23 | .3 | 21 | .4 | 19 | .2 | 13 | .3 | 7 | .2 | 9 | .1 | + 28.6 |
| Queen Anne's | | | | | 66 | .5 | 48 | .5 | 41 | .5 | 76 | 1.3 | 57 | .8 | 28 | .5 | 16 | .3 | 17 | .3 | + 6.3 |
| Talbot | 11 | .2 | 14 | .2 | 65 | .5 | 41 | .4 | 32 | .4 | 76 | 1.3 | 165 | 2.2 | 95 | 1.9 | 79 | 1.7 | 72 | 1.2 | - 8.9 |
| Region 3 | | | | | | | | | | | | | | | | | | | | | |
| Baltimore | 1,016 | 15.4 | 1,308 | 15.2 | 1,558 | 12.7 | 1,614 | 15.6 | 1,781 | 21.3 | 1,149 | 19.0 | 3,513 | 47.2 | 781 | 15.3 | 441 | 9.2 | 1,069 | 17.3 | + 142.4 |
| Harford | 139 | 2.1 | 272 | 3.2 | 510 | 4.2 | 653 | 6.3 | 489 | 5.8 | 430 | 7.1 | 34 | .4 | 18 | .4 | 58 | 1.2 | 90 | 1.5 | + 55.2 |
| Region 4 | | | | | | | | | | | | | | | | | | | | | |
| Allegany | 36 | .6 | 17 | .2 | 17 | .1 | 27 | .3 | 52 | .6 | 6 | .1 | 6 | .1 | 5 | .1 | 4 | .1 | 9 | .1 | + 125.0 |
| Garrett | | | 4 | .0 | 2 | .0 | 29 | .3 | 50 | .6 | 34 | .6 | 24 | .3 | 43 | .8 | 20 | .4 | 30 | .5 | + 50.0 |
| Washington | 33 | .5 | 55 | .6 | 20 | .2 | 13 | .1 | 46 | .5 | 25 | .4 | 97 | 1.3 | 245 | 4.8 | 131 | 2.7 | 92 | 14.8 | - 29.8 |
| Region 5 | | | | | | | | | | | | | | | | | | | | | |
| Anne Arundel | 143 | 2.2 | 702 | 8.1 | 1,189 | 9.7 | 1,038 | 10.0 | 216 | 2.6 | 81 | 1.3 | 865 | 11.6 | 993 | 19.4 | 902 | 18.8 | 1,090 | 17.6 | + 20.8 |
| Carroll | | | 44 | .5 | 28 | .2 | 22 | .2 | 34 | .4 | 25 | .4 | 131 | 1.7 | 113 | 2.2 | 19 | .4 | 22 | .4 | + 15.8 |
| Howard | | | 46 | .5 | 81 | .7 | 93 | .9 | 2 | .0 | 1 | .0 | 12 | .2 | 12 | .2 | 10 | .2 | 8 | .1 | - 20.0 |
| Region 6 | | | | | | | | | | | | | | | | | | | | | |
| Frederick | 291 | 4.5 | 183 | 2.1 | 67 | .5 | 111 | 1.1 | 98 | 1.2 | 72 | 1.2 | 112 | 1.5 | 90 | 1.8 | 66 | 1.4 | 60 | 1.0 | - 9.1 |
| Montgomery | 1,184 | 17.9 | 1,164 | 13.5 | 1,378 | 11.2 | 1,961 | 19.0 | 1,293 | 15.5 | 1,858 | 30.7 | 770 | 10.3 | 601 | 11.8 | 385 | 8.0 | 334 | 5.4 | - 13.2 |
| Region 7 | | | | | | | | | | | | | | | | | | | | | |
| Calvert | 23 | .3 | 85 | 1.0 | 134 | 1.1 | 114 | 1.1 | 173 | 2.1 | 184 | 3.1 | 258 | 3.5 | 168 | 3.3 | 220 | 4.6 | 184 | 3.0 | - 16.4 |
| Charles | 16 | .2 | 226 | 2.6 | 244 | 2.0 | 262 | 2.5 | 78 | .9 | 39 | .6 | 66 | .9 | 26 | .5 | 21 | .4 | 21 | .3 | 0.0 |
| Prince George's | 1,513 | 22.9 | 2,385 | 27.6 | 2,983 | 24.2 | 2,175 | 21.0 | 2,243 | 26.8 | 903 | 14.9 | 557 | 7.5 | 707 | 13.8 | 813 | 17.0 | 830 | 13.4 | + 2.1 |
| St. Mary's | 3 | .0 | 21 | .2 | 102 | .8 | 148 | 1.4 | 176 | 2.1 | 22 | .4 | 1 | .0 | 1 | .0 | 14 | .3 | 26 | .4 | + 85.7 |
| Region 8 | | | | | | | | | | | | | | | | | | | | | |
| Baltimore City | 1,536 | 23.2 | 1,378 | 16.0 | 2,623 | 21.3 | 1,284 | 12.4 | 1,378 | 16.5 | 945 | 15.6 | 645 | 8.7 | 1,032 | 20.2 | 1,486 | 31.0 | 2,148 | 34.7 | + 44.6 |
| STATE | 6,616 | 100.0 | 8,632 | 100.0 | 12,302 | 100.0 | 10,353 | 100.0 | 8,358 | 100.0 | 6,045 | 100.0 | 7,443 | 100.0 | 5,109 | 100.0 | 4,789 | 100.0 | 6,195 | 100.0 | + 29.4 |

* Excludes changes in disposition

TABLE 6
TOTAL NUMBER OF JUVENILE CASES DISAPPROVED OR CLOSED AT INTAKE BY COUNTY AND REGION
FISCAL YEARS 1971 - 1978

| | 1971 | | 1972 | | 1973 | | 1974 | | 1975 | | 1976 | | 1977 | | 1978 | | Percent Change 1977-1978 |
|-----------------|-------|-------|-------|-------|--------|-------|--------|-------|--------|-------|--------|-------|--------|-------|--------|-------|--------------------------------|
| | N | % | N | % | N | % | N | % | N | % | N | % | N | % | N | % | |
| Region 1 | | | | | | | | | | | | | | | | | |
| Dorchester | 2 | .1 | 40 | .5 | 101 | .7 | 110 | .5 | 101 | .4 | 75 | .2 | 57 | .2 | 102 | .4 | + 78.9 |
| Somerset | | | 22 | .3 | 58 | .4 | 49 | .2 | 84 | .3 | 61 | .2 | 50 | .2 | 32 | .1 | - 36.0 |
| Wiconico | | | 16 | .2 | 89 | .6 | 164 | .7 | 198 | .7 | 140 | .5 | 57 | .2 | 59 | .3 | + 3.5 |
| Worcester | 15 | .3 | 289 | 3.4 | 502 | 3.5 | 565 | 2.4 | 601 | 2.1 | 705 | 2.4 | 661 | 2.5 | 510 | 2.2 | - 22.8 |
| Region 2 | | | | | | | | | | | | | | | | | |
| Caroline | 3 | .1 | 30 | .3 | 40 | .3 | 79 | .4 | 136 | .5 | 80 | .3 | 60 | .2 | 80 | .3 | + 33.3 |
| Cecil | 13 | .3 | 176 | 2.1 | 330 | 2.3 | 285 | 1.2 | 324 | 1.1 | 317 | 1.1 | 301 | 1.1 | 296 | 1.3 | - 1.7 |
| Kent | 37 | .8 | 21 | .2 | 41 | .3 | 106 | .5 | 118 | .4 | 59 | .2 | 98 | .4 | 50 | .2 | - 49.0 |
| Queen Anne's | 1 | .0 | 9 | .1 | 9 | .1 | | | | | 76 | .2 | 68 | .3 | 65 | .3 | - 4.4 |
| Talbot | 27 | .6 | 30 | .3 | 82 | .6 | 28 | .1 | 28 | .1 | 83 | .3 | 53 | .2 | 50 | .2 | - 5.7 |
| Region 3 | | | | | | | | | | | | | | | | | |
| Baltimore | 492 | 11.0 | 434 | 5.1 | 1,079 | 7.5 | 2,867 | 12.4 | 1,574 | 5.5 | 3,187 | 10.7 | 3,303 | 12.6 | 2,761 | 11.7 | - 16.4 |
| Harford | 63 | 1.4 | 58 | .7 | 102 | .7 | 111 | .5 | 560 | 2.0 | 569 | 1.9 | 690 | 2.6 | 694 | 2.9 | + .6 |
| Region 4 | | | | | | | | | | | | | | | | | |
| Allegany | | | 7 | .1 | 79 | .5 | 119 | .5 | 91 | .3 | 51 | .2 | 50 | .2 | 97 | .4 | + 94.0 |
| Garrett | 20 | .5 | 4 | .0 | 15 | .1 | 9 | .0 | 8 | | 25 | .1 | 22 | .1 | 6 | .0 | - 72.7 |
| Washington | | | 39 | .5 | 191 | 1.3 | 122 | .5 | 136 | .5 | 111 | .4 | 409 | 1.6 | 291 | 1.2 | - 28.9 |
| Region 5 | | | | | | | | | | | | | | | | | |
| Anne Arundel | 68 | 1.5 | 371 | 4.3 | 1,550 | 10.8 | 2,241 | 9.7 | 2,917 | 10.2 | 2,614 | 8.8 | 2,399 | 9.1 | 2,194 | 9.3 | - 8.5 |
| Carroll | 218 | 4.9 | 85 | 1.0 | 189 | 1.3 | 363 | 1.6 | 315 | 1.1 | 315 | 1.0 | 432 | 1.6 | 402 | 1.7 | - 6.9 |
| Howard | 9 | .2 | 86 | 1.0 | 261 | 1.8 | 492 | 2.1 | 601 | 2.1 | 690 | 2.3 | 741 | 2.8 | 642 | 2.7 | - 13.4 |
| Region 6 | | | | | | | | | | | | | | | | | |
| Frederick | 172 | 3.9 | 189 | 2.2 | 338 | 2.3 | 513 | 2.2 | 522 | 1.8 | 533 | 1.8 | 633 | 2.4 | 596 | 2.5 | - 5.8 |
| Montgomery | 354 | 7.9 | 231 | 2.7 | 526 | 3.7 | 444 | 1.9 | 2,407 | 8.4 | 2,145 | 7.2 | 2,112 | 8.0 | 1,512 | 6.4 | - 28.4 |
| Region 7 | | | | | | | | | | | | | | | | | |
| Calvert | | | 14 | .2 | 3 | .0 | 7 | .0 | 7 | | 26 | .1 | 22 | .1 | 76 | .3 | + 245.5 |
| Charles | 28 | .6 | 147 | 1.7 | 334 | 2.3 | 663 | 2.9 | 633 | 2.2 | 545 | 1.8 | 591 | 2.3 | 619 | 2.6 | + 4.7 |
| Prince George's | 194 | 4.4 | 1,646 | 19.2 | 1,607 | 11.2 | 4,430 | 19.2 | 5,290 | 18.5 | 4,688 | 15.7 | 4,104 | 15.6 | 4,071 | 17.3 | - .8 |
| St. Mary's | 3 | .1 | 26 | .3 | 55 | .4 | 235 | 1.0 | 321 | 1.1 | 361 | 1.2 | 394 | 1.5 | 424 | 1.8 | + 7.6 |
| Region 8 | | | | | | | | | | | | | | | | | |
| Baltimore City | 2,749 | 61.4 | 4,579 | 53.6 | 6,796 | 47.3 | 9,123 | 39.5 | 11,668 | 40.7 | 12,315 | 41.4 | 9,007 | 34.2 | 7,913 | 33.6 | - 12.1 |
| STATE | 4,459 | 100.0 | 8,549 | 100.0 | 14,377 | 100.0 | 23,125 | 100.0 | 28,640 | 100.0 | 29,771 | 100.0 | 26,314 | 100.0 | 23,542 | 100.0 | - 10.5 |

TABLE 7

TOTAL OFFENSE CASE RATE AND TOTAL DELINQUENT CASE RATE
PER 1,000 JUVENILES BY COUNTY AND REGION - FISCAL 1978

| | Population Estimate 5 through 17 years July 1, 1976 | Total Cases Handled by Juvenile Services Administration | Total Case Rate Per 1,000 Juveniles | Total Delinquent Cases Handled by Juvenile Services Administration | Delinquent Case Rate Per 1,000 Juveniles |
|---|---|--|--|---|--|
| Region 1. Dorchester Somerset Wicomico Worcester | 6,610 4,490 13,480 6,170 | 216 91 190 622 | 33 20 14 101 | 185 62 171 506 | 28 14 13 82 |
| Region 2. Caroline Cecil Kent Queen Anne's Talbot | 5,120 14,540 3,680 4,890 5,120 | 167 482 137 127 220 | 33 33 37 26 43 | 116 459 89 114 176 | 23 32 24 23 34 |
| Region 3. Baltimore Harford | 144,980 36,400 | 5,068 1,193 | 35 33 | 4,475 1,055 | 31 29 |
| Region 4. Allegany Garrett Washington | 17,840 6,310 25,150 | 434 138 764 | 24 22 30 | 299 97 607 | 17 15 24 |
| Region 5. Anne Arundel Carroll Howard | 87,960 20,570 26,290 | 4,947 636 877 | 56 31 33 | 4,066 510 799 | 46 25 30 |
| Region 6. Frederick Montgomery | 24,870 138,910 | 877 2,763 | 35 20 | 790 2,484 | 32 18 |
| Region 7. Calvert Charles Prince George's St. Mary's | 7,270 19,200 166,230 14,190 | 425 1,089 8,353 693 | 58 57 50 49 | 293 787 6,808 525 | 40 41 41 37 |
| Region 8. Baltimore City | 188,590 | 16,777 | 89 | 14,858 | 79 |
| STATE | 989,080 | 47,286 | 48 | 40,331 | 41 |

TABLE 8

DISPOSITION BY COUNTY AND REGION
FISCAL 1978

| | Petition Withdrawn | Dismissed | Warned, Adjusted or Counselled | Jurisdiction Waived | Continue Case without Finding | Custody Awarded | Committed to Department of Social Services | Committed to Training School | Probation | Referred to Other Agency | Restitution or Fine | Support Ordered or Revised | Suspended Sentence | Other |
|---|-----------------------|--------------------------|--------------------------------------|------------------------|-------------------------------------|--------------------|--|------------------------------------|----------------------------|-----------------------------|------------------------|-------------------------------|-----------------------|----------------------|
| Region 1. Dorchester Somerset Wicomico Worcester | | 12 2 8 19 | | 16 18 18 22 | 8 | 5 4 10 5 | 12 14 1 7 | 4 2 10 3 | 18 17 59 39 | | 1 | | | 2 7 |
| Region 2. Caroline Cecil Kent Queen Anne's Talbot | 6 6 1 1 | 2 36 18 4 12 | | 1 11 5 2 3 | 2 | | 31 3 1 | 1 8 4 7 10 | 13 58 10 22 46 | 1 | 3 | 19 | 6 | 7 13 7 4 |
| Region 3. Baltimore Harford | 6 4 | 351 75 | 8 | 37 3 | 1 | 2 1 | 127 34 | 70 20 | 464 159 | 2 1 | 11 8 | 5 | 11 | 60 20 |
| Region 4. Allegany Garrett Washington | 15 | 11 22 25 | 11 | 2 10 | 9 | 40 1 11 | 4 5 38 | 7 20 27 | 114 35 31 | 1 3 | 12 1 26 | | 8 66 | 36 1 36 |
| Region 5. Anne Arundel Carroll Howard | 31 2 | 256 22 122 | 1 | 11 4 | 176 1 | 158 17 | 122 30 | 34 7 1 | 381 79 80 | 5 | 17 3 | | | 321 16 |
| Region 6. Frederick Montgomery | 6 40 | 50 328 | 13 | 5 | 23 | 2 | 8 105 | 16 18 | 101 255 | 4 | 1 5 | | 5 | 17 41 |
| Region 7. Calvert Charles Prince George's St. Mary's | 33 | 17 9 1175 22 | 1 1 18 3 | 6 10 15 2 | 1 4 1 | 2 5 253 1 | 8 15 273 34 | 5 6 128 10 | 90 185 1062 109 | 1 1 | 36 | 1 1 | 1 | 9 71 271 20 |
| Region 8. Baltimore City | 18 | 2783 | 12 | 294 | 5 | 2 | 260 | 494 | 2290 | 5 | | | 1 | 37 |
| STATE | 169 | 5381 | 71 | 495 | 231 | 534 | 1132 | 912 | 5717 | 24 | 124 | 26 | 98 | 996 |

TABLE 8

(continued)

| | Committed to Mental Institution | Referred to Psychiatric Care | Stet | Probation without Verdict | Committed to Juvenile Services Administration/ Purchase of Care | Committed to Juvenile Services Administration/ Purchase of Serv. | Group Home | Protective Supervision | Committed to Forestry Camp | Total Fornal | Total Informal | Total Disapproved | Total Closed at Intake | GRAND TOTAL |
|---|---------------------------------------|------------------------------------|---------------------|---------------------------------|--|---|------------------|---------------------------|-------------------------------|-----------------------------|---------------------------|--------------------------|------------------------------|---------------------------------|
| Region 1. Dorchester Somerset Wicomico Worcester | | | | | 2 5 | 2 | 5 3 | 1 1 | 5 3 | 83 57 129 101 | 31 2 2 11 | 11 86 | 91 32 59 424 | 216 91 190 622 |
| Region 2. Caroline Cecil Kent Queen Anne's Talbot | | | 3 1 2 3 | 1 | 1 5 11 | 1 1 1 1 | 6 1 1 1 | 1 1 2 2 | 4 2 1 1 | 67 168 78 45 98 | 20 18 9 17 72 | 5 41 14 8 10 | 75 255 36 57 40 | 167 482 137 127 220 |
| Region 3. Baltimore Harford | 1 | | 45 2 | 1 22 | 44 24 | | | 1 18 | 4 5 | 1238 409 | 1069 90 | 227 57 | 2534 637 | 5068 1193 |
| Region 4. Allegany Garrett Washington | 2 | | 3 9 | 26 50 | 17 3 24 | 1 2 | 3 6 | 1 11 | 6 5 14 | 328 102 381 | 9 30 92 | 2 | 95 6 188 | 434 138 764 |
| Region 5. Anne Arundel Carroll Howard | 5 | | 1 6 1 | 9 | 68 17 | 1 | | 83 5 4 | 3 2 | 1663 212 227 | 1090 22 8 | 433 41 55 | 1761 361 587 | 4947 636 877 |
| Region 6. Frederick Montgomery | 2 1 | | 2 | 2 | 1 65 | 2 | 1 | 7 | 2 10 | 221 917 | 60 334 | 14 31 | 582 1481 | 877 2763 |
| Region 7. Calvert Charles Prince George's St. Mary's | 1 1 17 2 | | 15 77 2 20 | | 6 7 128 13 | | 1 | 2 23 68 3 | 1 3 2 | 165 449 3452 243 | 184 21 830 26 | 5 16 138 17 | 71 603 3933 407 | 425 1089 8353 693 |
| Region 8. Baltimore City | 3 | 2 | 1 | | 365 | | | 144 | | 6716 | 2148 | 1171 | 6742 | 16777 |
| STATE | 35 | 2 | 193 | 111 | 806 | 12 | 29 | 378 | 73 | 17549 | 6195 | 2485 | 21057 | 47286 |

TABLE 9
MANNER OF HANDLING CASES BY COUNTY, REGION AND TYPE OF OFFENSE*
FISCAL 1978

| | Formal | | | Informal | | | Disapproved | | | Closed at Intake | | |
|---|-----------------------------|------------------------|-----------------------|---------------------------|-------------------------|------|-------------------------|--------------------|-----------|-----------------------------|-------------------------|--------------|
| | Delinquent | CINS | CINA | Delinquent | CINS | CINA | Delinquent | CINS | CINA | Delinquent | CINS | CINA |
| Region 1. Dorchester Somerset Wicomico Worcester | 60 37 111 84 | 1 2 3 5 | 22 18 15 12 | 30 2 2 11 | 1 | | 11 66 | 20 | | 84 23 58 345 | 7 9 1 79 | |
| Region 2. Caroline Cecil Kent Queen Anne's Talbot | 33 153 41 44 87 | 3 3 1 1 11 | 31 12 36 | 10 17 5 16 60 | 10 1 2 1 12 | 2 | 5 41 13 8 2 | 1 8 | | 68 248 30 46 27 | 7 7 5 11 13 | 1 |
| Region 3. Baltimore Harford | 1,023 330 | 36 41 | 179 38 | 979 86 | 82 4 | 8 | 204 57 | 16 | 7 | 2,269 582 | 221 55 | 44 |
| Region 4. Allegany Garrett Washington | 205 82 292 | 51 12 16 | 48 8 73 | 6 13 73 | 3 17 14 | 5 | 1 75 | 1 25 | 3 | 87 2 167 | 8 4 16 | 5 |
| Region 5. Anne Arundel Carroll Howard | 1,173 158 192 | 221 18 20 | 269 34 15 | 1,088 21 4 | 2 1 4 | | 424 27 52 | 9 12 3 | 2 | 1,381 304 551 | 377 57 35 | 3 1 |
| Region 6. Frederick Montgomery | 198 744 | 10 49 | 13 124 | 57 315 | 3 19 | | 11 25 | 3 6 | | 524 1,400 | 56 78 | 2 3 |
| Region 7. Calvert Charles Prince George's St. Mary's | 139 378 2,704 181 | 8 23 210 48 | 18 48 538 14 | 132 11 750 21 | 50 10 80 5 | 2 | 4 12 133 16 | 1 3 5 1 | 1 | 18 386 3,221 307 | 53 205 708 94 | 12 3 6 |
| Region 8. Baltimore City | 6,086 | 219 | 411 | 1,646 | 499 | 3 | 1,037 | 131 | 3 | 6,089 | 630 | 23 |
| STATE | 14,535 | 1,012 | 1,976 | 5,355 | 820 | 20 | 2,224 | 245 | 16 | 18,217 | 2,736 | 103 |

*Does not include "special proceedings" cases

TABLE 10

MANNER OF HANDLING CASES BY COUNTY, REGION AND SEX
FISCAL 1978

| | Formal | | | Informal | | | Disapproved at Intake | | | Closed at Intake | | |
|---|-----------------------------|---------------------------|-----------------------------|---------------------------|------------------------|---------------------------|------------------------|-----------------------|--------------------------|-----------------------------|---------------------------|-----------------------------|
| | Male | Female | Total | Male | Female | Total | Male | Female | Total | Male | Female | Total |
| Region 1. Dorchester Somerset Wicomico Worcester | 61 46 99 81 | 22 11 30 20 | 83 57 129 101 | 26 1 10 | 5 2 1 1 | 31 2 2 11 | 10 58 | 1 28 | 11 86 | 59 23 46 286 | 32 9 13 138 | 91 32 59 424 |
| Region 2. Caroline Cecil Kent Queen Anne's Talbot | 49 136 57 36 79 | 18 32 21 9 19 | 67 168 78 45 98 | 12 16 3 13 46 | 8 2 6 4 26 | 20 18 9 17 72 | 2 36 9 5 6 | 3 5 5 3 4 | 5 41 14 8 10 | 58 196 27 32 24 | 17 59 9 25 16 | 75 255 36 57 40 |
| Region 3. Baltimore Harford | 1,036 353 | 202 56 | 1,238 409 | 783 84 | 286 6 | 1,069 90 | 188 50 | 39 7 | 227 57 | 1,919 491 | 615 146 | 2,534 637 |
| Region 4. Allegany Garrett Washington | 229 71 265 | 99 31 116 | 328 102 381 | 8 26 70 | 1 4 22 | 9 30 92 | 1 67 | 1 36 | 2 103 | 75 2 142 | 20 4 46 | 95 6 188 |
| Region 5. Anne Arundel Carroll Howard | 1,301 169 181 | 362 43 46 | 1,663 212 227 | 874 18 4 | 216 4 4 | 1,090 22 8 | 359 25 45 | 74 16 10 | 433 41 55 | 1,321 293 463 | 440 68 124 | 1,761 361 587 |
| Region 6. Frederick Montgomery | 186 748 | 35 169 | 221 917 | 46 287 | 14 47 | 60 334 | 11 24 | 3 7 | 14 31 | 454 1,214 | 128 267 | 582 1,481 |
| Region 7. Calvert Charles Prince George's St. Mary's | 118 348 2,766 171 | 47 101 686 72 | 165 449 3,452 243 | 139 12 671 19 | 45 9 159 7 | 184 21 830 26 | 4 12 105 13 | 1 4 33 4 | 5 16 138 17 | 21 399 2,984 284 | 50 204 949 123 | 71 603 3,933 407 |
| Region 8. Baltimore City | 5,785 | 953 | 6,716 | 1,542 | 606 | 2,148 | 929 | 242 | 1,171 | 5,252 | 1,490 | 6,742 |
| STATE | 14,369 | 3,180 | 17,549 | 4,710 | 1,485 | 6,195 | 1,959 | 526 | 2,485 | 16,065 | 4,992 | 21,057 |

TABLE 11

MANNER OF HANDLING CASES BY COUNTY, REGION AND RACE
FISCAL 1978

| | Formal | | | Informal | | | Disapproved at Intake | | | Closed at Intake | | |
|--------------------------|--------|-------|--------|----------|-------|--------|-----------------------|-------|--------|------------------|-------|--------|
| | White | Black | Total* | White | Black | Total* | White | Black | Total* | White | Black | Total* |
| Region 1. Dorchester | 56 | 27 | 83 | 23 | 8 | 31 | 1 | 10 | 11 | 58 | 33 | 91 |
| Somerset | 23 | 34 | 57 | | 2 | 2 | | | | 19 | 13 | 32 |
| Wicomico | 76 | 53 | 129 | 1 | 1 | 2 | | | | 42 | 17 | 59 |
| Worcester | 74 | 27 | 101 | 9 | 2 | 11 | 82 | 3 | 86 | 386 | 38 | 424 |
| Region 2. Caroline | 48 | 19 | 67 | 14 | 5 | 20 | 3 | 2 | 5 | 67 | 8 | 75 |
| Cecil | 157 | 11 | 168 | 18 | | 18 | 41 | | 41 | 243 | 11 | 255 |
| Kent | 47 | 30 | 78 | 7 | 2 | 9 | 7 | 7 | 14 | 26 | 10 | 36 |
| Queen Anne's | 35 | 10 | 45 | 12 | 5 | 17 | 7 | 1 | 8 | 35 | 21 | 57 |
| Talbot | 63 | 35 | 98 | 48 | 24 | 72 | 9 | 1 | 10 | 28 | 12 | 40 |
| Region 3. Baltimore | 1,038 | 198 | 1,238 | 859 | 207 | 1,069 | 189 | 38 | 227 | 2,061 | 472 | 2,534 |
| Harford | 353 | 54 | 409 | 75 | 15 | 90 | 46 | 11 | 57 | 551 | 85 | 637 |
| Region 4. Allegany | 320 | 7 | 328 | 9 | | 9 | 2 | | 2 | 93 | 2 | 95 |
| Garrett | 101 | 1 | 102 | 30 | | 30 | | | | 6 | | 6 |
| Washington | 353 | 27 | 381 | 87 | 5 | 92 | 99 | 4 | 103 | 172 | 16 | 188 |
| Region 5. Anne Arundel | 1,295 | 358 | 1,663 | 869 | 220 | 1,090 | 362 | 71 | 433 | 1,548 | 212 | 1,761 |
| Carroll | 202 | 8 | 212 | 22 | | 22 | 39 | 2 | 41 | 343 | 15 | 361 |
| Howard | 144 | 82 | 227 | 6 | 2 | 8 | 34 | 21 | 55 | 471 | 115 | 587 |
| Region 6. Frederick | 159 | 62 | 221 | 44 | 16 | 60 | 13 | 1 | 14 | 490 | 92 | 582 |
| Montgomery | 685 | 219 | 917 | 284 | 48 | 334 | 20 | 11 | 31 | 1,147 | 331 | 1,481 |
| Region 7. Calvert | 126 | 39 | 165 | 143 | 41 | 184 | 4 | 1 | 5 | 57 | 14 | 71 |
| Charles | 331 | 116 | 449 | 16 | 5 | 21 | 13 | 3 | 16 | 493 | 108 | 603 |
| Prince George's | 1,610 | 1,828 | 3,452 | 488 | 337 | 830 | 53 | 85 | 138 | 1,946 | 1,949 | 3,933 |
| St. Mary's | 194 | 49 | 243 | 21 | 5 | 26 | 13 | 4 | 17 | 317 | 90 | 407 |
| Region 8. Baltimore City | 1,600 | 5,103 | 6,716 | 577 | 1,568 | 2,148 | 303 | 867 | 1,171 | 2,029 | 4,686 | 6,742 |
| STATE | 9,090 | 8,397 | 17,549 | 3,662 | 2,518 | 6,195 | 1,340 | 1,143 | 2,485 | 12,628 | 8,350 | 21,057 |

* Total figures may include cases in which race was Other or Unknown. There were 158 such cases for Fiscal Year 1978.

TABLE 12

TOTAL CASES HANDLED BY THE JUVENILE SERVICES ADMINISTRATION
BY COUNTY, REGION AND SOURCE OF REFERRAL - FISCAL 1978

| | Source of Referral | | | | | | | | | TOTAL |
|--------------------------|--------------------|-------------------------------|---------------------|-------------------------------------|---------------------------|---------------------|-------|---------|-------------------|--------|
| | Police | Department of Education | Parent/ Relative | Department of Social Services | Other Social Agency | Court/ Probation | Other | Citizen | Special Police | |
| Region 1. Dorchester | 171 | | 6 | 18 | | 1 | 1 | 17 | 2 | 216 |
| Somerset | 48 | 8 | 11 | 21 | | | 1 | 2 | | 91 |
| Wicomico | 159 | 2 | 11 | 4 | | 9 | | 3 | 2 | 190 |
| Worcester | 585 | 2 | 19 | 9 | 1 | 3 | 2 | 1 | | 622 |
| Region 2. Caroline | 83 | 22 | 3 | 30 | | | 16 | 13 | | 167 |
| Cecil | 431 | 4 | 1 | 10 | | | 1 | 26 | 9 | 482 |
| Kent | 65 | 9 | 9 | 39 | 2 | | 3 | 10 | | 137 |
| Queen Anne's | 88 | 23 | 4 | | | | 10 | 2 | | 127 |
| Talbot | 172 | 23 | 10 | | 1 | | 1 | 11 | 2 | 220 |
| Region 3. Baltimore | 4,891 | 5 | 14 | 21 | 1 | | 135 | 1 | | 5,068 |
| Harford | 1,049 | 14 | 75 | 32 | 7 | 3 | 13 | | | 1,193 |
| Region 4. Allegany | 160 | 15 | 114 | 43 | | 29 | 1 | 15 | 57 | 434 |
| Garrett | 74 | 14 | 23 | 12 | | 4 | 2 | 9 | | 138 |
| Washington | 472 | 2 | 62 | 77 | | 41 | 1 | 75 | 34 | 764 |
| Region 5. Anne Arundel | 4,049 | 209 | 226 | 344 | 14 | | 104 | 1 | | 4,947 |
| Carroll | 488 | 29 | 24 | 39 | 3 | | 8 | 42 | 3 | 636 |
| Howard | 819 | 9 | 16 | 14 | | | 3 | 6 | 10 | 877 |
| Region 6. Frederick | 776 | 21 | 39 | 14 | 1 | | 2 | 22 | 2 | 877 |
| Montgomery | 2,576 | 11 | 41 | 121 | 4 | | 1 | 6 | 3 | 2,763 |
| Region 7. Calvert | 378 | 20 | 8 | 16 | | | 1 | 2 | | 425 |
| Charles | 926 | 33 | 74 | 28 | | 19 | 7 | 2 | | 1,089 |
| Prince George's | 3,754 | 739 | 635 | 524 | 31 | 21 | 472 | 905 | 1,272 | 8,353 |
| St. Mary's | 586 | 37 | 20 | 45 | | 3 | | 2 | | 693 |
| Region 8. Baltimore City | 12,468 | 1,394 | 1,318 | 344 | 18 | 2 | 14 | 1,214 | 5 | 16,777 |
| STATE | 35,268 | 2,645 | 2,763 | 1,805 | 83 | 135 | 799 | 2,387 | 1,401 | 47,286 |

TABLE 13
TOTAL CASES HANDLED BY THE JUVENILE SERVICES ADMINISTRATION
BY COUNTY, REGION AND AGE - FISCAL 1978

| | Under 10 Years | 10 Years | 11 Years | 12 Years | 13 Years | 14 Years | 15 Years | 16 Years | 17 Years | 18 Years | Over 18 or Unknown | Total |
|--------------------------|-------------------|----------|----------|----------|----------|----------|----------|----------|----------|----------|--------------------------|--------|
| Region 1. Dorchester | 23 | 6 | 7 | 9 | 22 | 18 | 37 | 42 | 51 | 1 | | 216 |
| Somerset | 17 | 1 | | 3 | 10 | 8 | 15 | 18 | 19 | | | 91 |
| Wicomico | 7 | 2 | 1 | 4 | 19 | 19 | 37 | 52 | 44 | 4 | 1 | 190 |
| Worcester | 14 | 4 | 5 | 15 | 38 | 76 | 98 | 168 | 193 | 11 | | 622 |
| Region 2. Caroline | 20 | 5 | 8 | 10 | 18 | 24 | 35 | 20 | 26 | 1 | | 167 |
| Cecil | 20 | 6 | 8 | 27 | 51 | 56 | 82 | 101 | 115 | 16 | | 482 |
| Kent | 25 | 3 | 6 | 8 | 13 | 16 | 18 | 18 | 27 | 2 | 1 | 137 |
| Queen Anne's | | | 4 | 6 | 8 | 17 | 29 | 28 | 35 | | | 127 |
| Talbot | 9 | 8 | 7 | 8 | 25 | 37 | 43 | 33 | 46 | 4 | | 220 |
| Region 3. Baltimore | 127 | 55 | 98 | 198 | 381 | 695 | 980 | 1,234 | 1,187 | 101 | 12 | 5,068 |
| Harford | 41 | 23 | 33 | 62 | 129 | 167 | 246 | 245 | 214 | 33 | | 1,193 |
| Region 4. Allegany | 32 | 11 | 12 | 15 | 34 | 65 | 88 | 73 | 67 | 11 | 26 | 434 |
| Garrett | 9 | 1 | 2 | 4 | 11 | 16 | 34 | 30 | 25 | 6 | | 138 |
| Washington | 71 | 12 | 16 | 31 | 53 | 103 | 157 | 163 | 146 | 12 | | 764 |
| Region 5. Anne Arundel | 255 | 71 | 110 | 218 | 421 | 686 | 1,068 | 1,081 | 939 | 83 | 15 | 4,947 |
| Carroll | 44 | 12 | 15 | 27 | 42 | 80 | 125 | 148 | 123 | 16 | 4 | 636 |
| Howard | 22 | 13 | 18 | 43 | 82 | 136 | 179 | 191 | 180 | 13 | | 877 |
| Region 6. Frederick | 43 | 19 | 33 | 35 | 66 | 113 | 178 | 200 | 173 | 17 | | 877 |
| Montgomery | 85 | 30 | 38 | 77 | 189 | 385 | 590 | 628 | 655 | 79 | 7 | 2,763 |
| Region 7. Calvert | 18 | 10 | 10 | 36 | 34 | 78 | 78 | 76 | 75 | 9 | 1 | 425 |
| Charles | 76 | 22 | 35 | 60 | 102 | 204 | 185 | 216 | 173 | 15 | 1 | 1,089 |
| Prince George's | 364 | 163 | 218 | 437 | 764 | 1,355 | 1,715 | 1,658 | 1,557 | 112 | 10 | 8,353 |
| St. Mary's | 58 | 11 | 32 | 22 | 58 | 90 | 133 | 98 | 108 | 14 | 69 | 693 |
| Region 8. Baltimore City | 592 | 286 | 425 | 850 | 1,661 | 2,461 | 3,208 | 3,585 | 3,342 | 286 | 81 | 16,777 |
| STATE | 1,972 | 774 | 1,141 | 2,205 | 4,231 | 6,905 | 9,358 | 10,106 | 9,520 | 846 | 228 | 47,286 |

TABLE 14
TOTAL CASES HANDLED BY THE JUVENILE SERVICES ADMINISTRATION
BY COUNTY, REGION AND MAJOR REASON REFERRED - FISCAL 1978

| | Arson | Assault | Auto Theft/ Unauthorized Use | Burglary/ Breaking and Entering | Larceny | Robbery | Disorderly Conduct | Sex Offense | Vandalism | Narcotics Violation | Glue Sniffing and Other Inhalants | Alcoholic Beverage Violation | Shoplifting | Purse Snatching | Firearms or Deadly Weapons Violation | Rec/Poss of Stolen Goods |
|---|---------------------|----------------------------|------------------------------------|---------------------------------------|---------------------------|--------------------|-----------------------|------------------|---------------------------|--------------------------|---|------------------------------------|-------------------------|-----------------|--|-----------------------------|
| Region 1. Dorchester Somerset Wicomico Worcester | 1 2 | 17 4 10 26 | 7 4 11 10 | 21 17 34 42 | 28 5 26 51 | 1 1 1 3 | 13 14 2 37 | 1 1 1 1 | 31 3 5 24 | 7 1 3 171 | | 1 7 15 | 25 4 30 52 | 2 | 2 4 | 2 5 |
| Region 2. Caroline Cecil Kent Queen Anne's Talbot | 3 | 20 59 11 19 12 | 1 18 7 8 | 22 61 10 11 21 | 12 37 18 7 26 | 1 | 8 29 2 1 | 1 3 2 | 14 31 4 13 18 | 7 81 8 25 21 | | 2 17 4 3 5 | 8 24 3 3 22 | | 2 5 1 1 1 | 9 4 12 5 |
| Region 3. Baltimore Harford | 46 8 | 584 137 | 276 21 | 562 163 | 395 128 | 45 4 | 169 21 | 15 1 | 336 95 | 515 69 | 1 1 | 145 17 | 691 154 | 1 1 | 33 9 | 40 15 |
| Region 4. Allegany Garrett Washington | 4 1 | 25 20 65 | 10 8 14 | 31 18 104 | 36 8 60 | 4 | 2 21 | 5 | 11 3 63 | 28 6 27 | 3 5 | 15 76 | 72 13 65 | | 1 1 | 1 1 |
| Region 5. Anne Arundel Carroll Howard | 37 8 8 | 522 35 60 | 138 13 55 | 616 31 156 | 450 50 71 | 23 23 | 204 6 31 | 27 4 8 | 246 75 56 | 398 83 66 | 3 | 124 31 18 | 409 41 75 | 9 | 44 8 18 | 54 7 12 |
| Region 6. Frederick Montgomery | 5 24 | 52 185 | 25 155 | 91 290 | 99 392 | 9 55 | 16 36 | 22 | 92 175 | 100 171 | 1 | 24 170 | 110 252 | 1 | 2 27 | 14 23 |
| Region 7. Calvert Charles Prince George's St. Mary's | 9 11 71 12 | 34 89 797 71 | 7 42 226 20 | 58 132 1,072 67 | 39 106 754 61 | 1 1 202 1 | 16 8 155 20 | 5 44 2 | 45 120 404 64 | 31 59 456 49 | | 6 41 25 11 | 13 52 1,447 4 | 1 11 | 2 2 99 6 | 7 95 4 |
| Region 8. Baltimore City | 105 | 3,080 | 800 | 2,145 | 2,019 | 414 | 1,016 | 112 | 831 | 817 | 120 | 124 | 872 | 55 | 330 | 153 |
| STATE | 355 | 5,934 | 1,876 | 5,775 | 4,878 | 789 | 1,827 | 254 | 2,759 | 3,199 | 134 | 881 | 4,486 | 81 | 598 | 465 |

TABLE 14
(continued)

| | Trespassing | False Fire Alarm | Violation of Supervision | Other | Total Delinquent | Runaway | Tuancy | Ungovernable | Total CINS | Neglect | Dependency | Dependency and Neglect | Mentally Handicapped | Total CINA | Special Proceedings | GRAND TOTAL |
|--------------------------|-------------|------------------|--------------------------|-------|------------------|---------|--------|--------------|------------|---------|------------|------------------------|----------------------|------------|---------------------|-------------|
| Region 1. Dorchester | 3 | | | 29 | 185 | 8 | | 1 | 9 | | 21 | 1 | | 22 | | 216 |
| Somerset | 1 | | | 7 | 62 | 5 | 1 | 5 | 11 | | 8 | 8 | | 18 | | 91 |
| Wicomico | 8 | | 8 | 18 | 171 | 2 | | 2 | 4 | 2 | 13 | | | 15 | | 190 |
| Worcester | 11 | | 3 | 49 | 506 | 95 | 2 | 7 | 104 | 2 | 7 | 5 | | 12 | | 622 |
| Region 2. Caroline | 3 | | | 17 | 116 | 2 | 16 | 2 | 20 | 8 | 13 | 9 | 1 | 31 | | 167 |
| Cecil | 13 | | | 74 | 459 | 2 | 7 | 2 | 11 | 7 | 4 | 1 | | 12 | | 482 |
| Kent | 3 | | | 16 | 89 | | 4 | 5 | 9 | | 39 | | | 39 | | 137 |
| Queen Anne's | 2 | | | 13 | 114 | 9 | | 4 | 13 | | | | | | | 127 |
| Talbot | 5 | 2 | | 23 | 176 | 16 | 17 | 11 | 44 | | | | | | | 220 |
| Region 3. Baltimore | 212 | 8 | | 401 | 4,475 | 195 | 32 | 128 | 355 | 7 | 216 | 14 | 1 | 238 | | 5,068 |
| Harford | 12 | | | 199 | 1,055 | 6 | 15 | 79 | 100 | 4 | 16 | 18 | | 38 | | 1,193 |
| Region 4. Allegany | | 2 | 12 | 45 | 299 | 14 | 11 | 38 | 63 | 2 | 28 | 18 | | 48 | 24 | 434 |
| Garrett | 1 | | 4 | 12 | 97 | 8 | 10 | 15 | 33 | 4 | 3 | 1 | | 8 | | 138 |
| Washington | 26 | 3 | 29 | 42 | 607 | 28 | 1 | 42 | 71 | 20 | 63 | 3 | | 86 | | 764 |
| Region 5. Anne Arundel | 200 | 2 | 1 | 559 | 4,066 | 114 | 191 | 304 | 609 | 21 | 65 | 181 | 5 | 272 | | 4,947 |
| Carroll | 22 | | 8 | 88 | 510 | 37 | 26 | 25 | 88 | 9 | 27 | | | 36 | 2 | 636 |
| Howard | 54 | 1 | 2 | 85 | 799 | 37 | 12 | 13 | 62 | 1 | 9 | 6 | | 16 | | 877 |
| Region 6. Frederick | 31 | 1 | | 119 | 790 | 16 | 17 | 39 | 72 | 9 | 3 | 3 | | 15 | | 877 |
| Montgomery | 76 | 10 | | 419 | 2,484 | 72 | 14 | 66 | 152 | 5 | 25 | 97 | | 127 | | 2,763 |
| Region 7. Calvert | 6 | | | 19 | 293 | 84 | 18 | 10 | 112 | 2 | 4 | 13 | 1 | 20 | | 425 |
| Charles | 15 | | | 103 | 787 | 120 | 42 | 79 | 241 | 15 | 45 | | 1 | 61 | | 1,089 |
| Prince George's | 268 | 44 | 2 | 636 | 6,808 | 221 | 254 | 528 | 1,003 | 181 | 351 | 3 | 6 | 541 | 1 | 8,353 |
| St. Mary's | 6 | 4 | | 78 | 525 | 50 | 49 | 49 | 148 | 7 | 3 | 10 | | 20 | | 693 |
| Region 8. Baltimore City | 582 | 107 | | 1,176 | 14,858 | 389 | 381 | 709 | 1,479 | 48 | 57 | 332 | 3 | 440 | | 16,777 |
| STATE | 1,560 | 184 | 69 | 4,227 | 40,331 | 1,530 | 1,120 | 2,163 | 4,813 | 354 | 1,020 | 723 | 18 | 2,115 | 27 | 47,286 |

TABLE 15

TOTAL CASES HANDLED BY THE JUVENILE SERVICES ADMINISTRATION
BY MAJOR REASON AND AGE AT TIME OF REFERRAL - FISCAL 1978

| Major Reason | Under 10 Years | 10 Years | 11 Years | 12 Years | 13 Years | 14 Years | 15 Years | 16 Years | 17 Years | 18 Years | Over 18 or Unknown | Total |
|--------------------------|-------------------|------------|--------------|--------------|--------------|--------------|--------------|---------------|--------------|------------|--------------------------|---------------|
| Arson | 37 | 8 | 14 | 34 | 46 | 57 | 56 | 58 | 41 | 4 | | 355 |
| Assault | 130 | 101 | 186 | 321 | 655 | 910 | 1,093 | 1,195 | 1,194 | 104 | 45 | 5,934 |
| Auto Theft/Unauth. Use | 8 | 6 | 11 | 35 | 86 | 234 | 448 | 517 | 484 | 42 | 5 | 1,876 |
| Burglary/B & E | 115 | 108 | 150 | 292 | 512 | 857 | 1,188 | 1,338 | 1,074 | 117 | 24 | 5,775 |
| Larceny | 81 | 84 | 101 | 257 | 454 | 679 | 959 | 1,051 | 1,098 | 106 | 8 | 4,878 |
| Robbery | 7 | 7 | 10 | 15 | 53 | 109 | 183 | 214 | 175 | 16 | | 789 |
| Disorderly Conduct | 20 | 15 | 20 | 54 | 114 | 223 | 322 | 460 | 542 | 49 | 8 | 1,827 |
| Sex Offense | 11 | 7 | 9 | 17 | 33 | 32 | 51 | 36 | 56 | 1 | 1 | 254 |
| Vandalism | 149 | 118 | 141 | 214 | 335 | 421 | 434 | 462 | 438 | 25 | 22 | 2,759 |
| Narcotics Violation | 4 | 3 | 9 | 35 | 127 | 325 | 622 | 897 | 1,077 | 96 | 4 | 3,199 |
| Glue Sniffing | 1 | 1 | 1 | 9 | 15 | 16 | 25 | 30 | 32 | 2 | 2 | 134 |
| Alcoholic Beverage Viol. | | | | 3 | 15 | 64 | 135 | 245 | 381 | 35 | 3 | 881 |
| Shoplifting | 64 | 72 | 142 | 249 | 463 | 686 | 844 | 985 | 911 | 62 | 8 | 4,486 |
| Purse Snatching | | | | 2 | 5 | 5 | 15 | 32 | 22 | | | 81 |
| Firearms Violation | 2 | 4 | 4 | 16 | 53 | 70 | 113 | 153 | 162 | 19 | 2 | 598 |
| Rec/Poss of Stolen Goods | 5 | 5 | 8 | 16 | 24 | 80 | 84 | 119 | 115 | 9 | | 465 |
| Trespassing | 26 | 12 | 27 | 70 | 151 | 252 | 348 | 371 | 286 | 16 | 2 | 1,560 |
| False Fire Alarm | 21 | 6 | 10 | 18 | 19 | 32 | 35 | 18 | 24 | 1 | | 184 |
| Violation of Supervision | | 1 | | 1 | 2 | 9 | 20 | 17 | 18 | 1 | | 69 |
| Other | 60 | 35 | 62 | 176 | 329 | 586 | 964 | 910 | 955 | 118 | 32 | 4,227 |
| Total Delinquent | 740 | 593 | 905 | 1,834 | 3,491 | 5,647 | 7,939 | 9,108 | 9,085 | 823 | 166 | 40,331 |
| Runaway | 9 | 8 | 18 | 47 | 170 | 346 | 432 | 342 | 139 | 5 | 14 | 1,530 |
| Truancy | 58 | 29 | 48 | 82 | 158 | 334 | 330 | 59 | 16 | 2 | 4 | 1,120 |
| Ungovernable | 69 | 32 | 47 | 115 | 281 | 432 | 516 | 439 | 215 | 6 | 11 | 2,163 |
| Total CINS | 136 | 69 | 113 | 244 | 609 | 1,112 | 1,278 | 840 | 370 | 13 | 29 | 4,813 |
| Neglect | 206 | 13 | 26 | 18 | 25 | 14 | 16 | 25 | 6 | 1 | 4 | 354 |
| Dependency | 468 | 54 | 55 | 63 | 67 | 85 | 94 | 88 | 40 | 4 | 2 | 1,020 |
| Dependency & Neglect | 418 | 44 | 41 | 44 | 35 | 46 | 29 | 44 | 15 | 4 | 3 | 723 |
| Mentally Handicapped | 4 | 1 | 1 | 2 | 4 | 1 | 2 | | 3 | | | 18 |
| Total CINA | 1,096 | 112 | 123 | 127 | 131 | 146 | 141 | 157 | 64 | 9 | 9 | 2,115 |
| Special Proceedings | | | | | | | | 1 | 1 | 1 | 24 | 27 |
| GRAND TOTAL | 1,972 | 774 | 1,141 | 2,205 | 4,231 | 6,905 | 9,358 | 10,106 | 9,520 | 846 | 228 | 47,286 |

TABLE 16
 FORMAL CASES HANDLED BY THE JUVENILE SERVICES ADMINISTRATION
 BY MAJOR REASON AND DISPOSITION
 FISCAL 1978

| Major Reason | Petition Withdrawn | Dismissed | Warned, Adjusted or Counselled | Juris- diction Waived | Continue Case Without Finding | Custody Awarded To | Comm. to Dept. of Social Services | Committed to Training School | Probation | Referred to Other Agency | Restitution or Fine | Support Ordered or Revised |
|--------------------------|-----------------------|--------------|---|-----------------------------|--|--------------------------|--|---------------------------------------|--------------|-----------------------------------|---------------------------|-------------------------------------|
| Arson | 2 | 70 | | 1 | 1 | 3 | 2 | 11 | 65 | 1 | 2 | |
| Assault | 20 | 964 | 10 | 85 | 19 | 8 | 6 | 133 | 798 | 3 | 8 | |
| Auto Theft/Unauth. Use | 5 | 304 | | 46 | 11 | 7 | 2 | 95 | 426 | | 6 | |
| Burglary/B & E | 15 | 943 | 4 | 133 | 64 | 35 | 12 | 245 | 1,577 | 2 | 38 | |
| Larceny | 15 | 765 | 10 | 67 | 23 | 19 | 2 | 109 | 803 | 3 | 23 | |
| Robbery | 2 | 240 | 1 | 40 | | 6 | 4 | 79 | 184 | | 2 | |
| Disorderly Conduct | 3 | 120 | 3 | 11 | 3 | 3 | | 9 | 123 | | | |
| Sex Offense | 1 | 43 | | 3 | 1 | 1 | | 7 | 56 | | | |
| Vandalism | 11 | 388 | 5 | 7 | 12 | 4 | | 22 | 232 | 1 | 8 | |
| Narcotics Violation | 11 | 176 | 3 | 25 | 11 | 6 | | 29 | 289 | 2 | 2 | |
| Glue Sniffing | | 15 | | | | | | 5 | 43 | | | |
| Alcoholic Beverage Viol. | 3 | 20 | | 3 | 2 | | | 2 | 44 | | 7 | |
| Shoplifting | 5 | 370 | 8 | 22 | 16 | 4 | 1 | 56 | 397 | | 5 | |
| Purse Snatching | | 19 | | 3 | | | | 5 | 21 | | 1 | |
| Firearms Violation | 1 | 84 | 2 | 13 | 1 | 2 | | 20 | 74 | | | |
| Rec/Poss of Stolen Goods | | 64 | | 8 | 3 | 1 | | 10 | 68 | | 2 | |
| Trespassing | | 109 | 3 | 2 | 3 | | | 13 | 75 | | | |
| False Fire Alarm | 1 | 23 | | | 1 | | | 2 | 19 | | | |
| Violation of Supervision | | 1 | 1 | | 6 | 1 | | 16 | 10 | | | |
| Other | 10 | 305 | 4 | 25 | 9 | 12 | 3 | 44 | 306 | 2 | 19 | |
| Total Delinquent | 105 | 5,023 | 54 | 494 | 186 | 112 | 32 | 912 | 5,610 | 14 | 123 | |
| Runaway | 6 | 30 | 5 | | 2 | 10 | 8 | | 37 | 2 | | |
| Truancy | 1 | 38 | 3 | | 1 | 2 | 20 | | 16 | 1 | | |
| Ungovernable | 12 | 67 | 7 | 1 | 15 | 43 | 57 | | 47 | 3 | | |
| Total CINS | 19 | 135 | 15 | 1 | 18 | 55 | 85 | | 100 | 6 | | |
| Neglect | 2 | 32 | | | 1 | 53 | 212 | | | 2 | | |
| Dependency | 17 | 101 | 1 | | 7 | 268 | 419 | | 4 | 1 | 1 | 21 |
| Dependency & Neglect | 25 | 89 | | | 19 | 45 | 382 | | 3 | | | 4 |
| Mentally Handicapped | 1 | 1 | 1 | | | 1 | 2 | | | | | 1 |
| Total CINA | 45 | 223 | 2 | | 27 | 367 | 1,015 | | 7 | 3 | 1 | 26 |
| Special Proceedings | | | | | | | | | | 1 | | |
| GRAND TOTAL | 169 | 5,381 | 71 | 495 | 231 | 534 | 1,132 | 912 | 5,717 | 24 | 124 | 26 |

TABLE 16
(continued)

| Major Reason | Suspended Sentence | Other | Committed to Mental Inst. | Ref. to Psychiatric Care | Stet | Probation without Verdict | Comm. to JSA/ Purchase of Care | Comm. to JSA/ Purchase of Services | Group Home | Protective-Supervision | Committed to Forestry Camp | Total |
|--------------------------|--------------------|-------|---------------------------|--------------------------|------|---------------------------|--------------------------------|------------------------------------|------------|------------------------|----------------------------|--------|
| Arson | | 16 | | | 1 | | 5 | | | 2 | | 182 |
| Assault | 6 | 82 | 2 | | 17 | 9 | 80 | 1 | 1 | 4 | 8 | 2,264 |
| Auto Theft/Unauth. Use | 7 | 64 | 2 | | 11 | 3 | 49 | | 2 | 2 | 10 | 1,052 |
| Burglary/B & E | 32 | 179 | 6 | | 42 | 27 | 120 | | 4 | 1 | 21 | 3,500 |
| Larceny | 11 | 121 | | | 24 | 20 | 79 | 1 | 4 | 1 | 12 | 2,112 |
| Robbery | 2 | 27 | 1 | | 2 | | 28 | | | | 1 | 619 |
| Disorderly Conduct | 1 | 10 | 2 | | | | 14 | | 1 | 2 | | 305 |
| Sex Offense | | 6 | | | 4 | | 10 | | | | | 133 |
| Vandalism | 5 | 51 | 2 | | 14 | 10 | 27 | 1 | 1 | 3 | 3 | 807 |
| Narcotics Violation | 7 | 43 | | | 41 | 10 | 16 | 1 | | 2 | 4 | 678 |
| Glue Sniffing | 2 | 1 | | | | 2 | 4 | | | | | 72 |
| Alcoholic Beverage Viol. | 6 | 13 | | | 6 | 5 | 3 | | 1 | 5 | | 120 |
| Shoplifting | 8 | 79 | 1 | | 7 | 4 | 50 | 1 | 6 | | 1 | 1,041 |
| Purse Snatching | | | | | | | 1 | | | | | 50 |
| Firearms Violation | | 3 | | 1 | | 1 | 8 | | | | | 210 |
| Rec/Poss of Stolen Goods | | 9 | | | | | 3 | | 1 | | | 169 |
| Trespassing | | 12 | | | 1 | 2 | 8 | | | | 1 | 229 |
| False Fire Alarm | | | | | | | 5 | | | | | 51 |
| Violation of Supervision | 6 | 2 | | | | | 15 | | | | 6 | 64 |
| Other | 5 | 56 | 4 | | 14 | 15 | 32 | 1 | 1 | 5 | 5 | 877 |
| Total Delinquent | 98 | 774 | 20 | 1 | 184 | 108 | 557 | 6 | 22 | 27 | 73 | 14,535 |
| Runaway | | 29 | 3 | | 1 | | 46 | 2 | 1 | 39 | | 221 |
| Truancy | | 12 | 1 | | | | 29 | | | 68 | | 192 |
| Ungovernable | | 71 | 4 | | | 2 | 142 | 4 | 6 | 118 | | 599 |
| Total CINS | | 112 | 8 | | 1 | 2 | 217 | 6 | 7 | 225 | | 1,012 |
| Neglect | | 11 | 1 | | | | 5 | | | 8 | | 327 |
| Dependency | | 51 | 1 | | 7 | | 17 | | | 27 | | 943 |
| Dependency & Neglect | | 24 | | 1 | 1 | | 9 | | | 91 | | 693 |
| Mentally Handicapped | | | 5 | | | | 1 | | | | | 13 |
| Total CINA | | 86 | 7 | 1 | 8 | | 32 | | | 126 | | 1,976 |
| Special Proceedings | | 24 | | | | 1 | | | | | | 26 |
| GRAND TOTAL | 98 | 996 | 35 | 2 | 193 | 111 | 806 | 12 | 29 | 378 | 73 | 17,549 |

TABLE 17
COMPARISON OF THE NUMBER OF CASES HANDLED BY
THE MARYLAND JUVENILE SERVICES ADMINISTRATION
BY MAJOR REASON FOR REFERRAL - FISCAL 1977 - FISCAL 1978

| Major Reason | Formal | | | Informal | | | Disapproved* | | | Closed* | | |
|--------------------------|---------|---------|----------------|----------|---------|----------------|--------------|---------|----------------|---------|---------|----------------|
| | FY 1977 | FY 1978 | Percent Change | FY 1977 | FY 1978 | Percent Change | FY 1977 | FY 1978 | Percent Change | FY 1977 | FY 1978 | Percent Change |
| Arson | 183 | 182 | - 0.5 | 45 | 34 | - 24.4 | | 14 | | | 125 | |
| Assault | 2,713 | 2,264 | - 16.5 | 618 | 795 | + 22.2 | | 498 | | | 2,377 | |
| Auto Theft/Unauth. Use | 1,174 | 1,052 | - 10.3 | 142 | 165 | + 13.9 | | 96 | | | 563 | |
| Burglary/B & E | 3,798 | 3,500 | - 7.8 | 458 | 535 | + 14.3 | | 176 | | | 1,564 | |
| Larceny | 2,153 | 2,112 | - 1.9 | 570 | 642 | + 11.2 | | 236 | | | 1,888 | |
| Robbery | 656 | 619 | - 5.6 | 23 | 42 | + 45.2 | | 38 | | | 90 | |
| Disorderly Conduct | 490 | 305 | - 37.7 | 150 | 216 | + 30.5 | | 165 | | | 1,141 | |
| Sex Offense | 171 | 133 | - 22.2 | 27 | 40 | + 32.5 | | 19 | | | 62 | |
| Vandalism | 715 | 807 | + 11.4 | 296 | 460 | + 35.6 | | 176 | | | 1,316 | |
| Narcotics Violation | 773 | 678 | - 12.2 | 274 | 431 | + 36.4 | | 181 | | | 1,909 | |
| Glue Sniffing | 107 | 72 | - 32.7 | 17 | 13 | - 23.5 | | 6 | | | 43 | |
| Alcoholic Beverage Viol. | 118 | 120 | + 1.6 | 70 | 70 | 0 | | 28 | | | 663 | |
| Shoplifting | 1,251 | 1,041 | - 16.7 | 575 | 839 | + 31.4 | | 108 | | | 2,498 | |
| Purse Snatching | 73 | 50 | - 31.5 | 10 | 8 | - 20.0 | | 3 | | | 20 | |
| Firearms Violation | 256 | 210 | - 17.9 | 50 | 74 | + 32.4 | | 49 | | | 265 | |
| Rec/Poss of Stolen Goods | 182 | 169 | - 7.1 | 49 | 71 | + 30.9 | | 24 | | | 201 | |
| Trespassing | 306 | 229 | - 25.1 | 135 | 221 | + 38.9 | | 114 | | | 996 | |
| False Fire Alarm | 46 | 51 | + 9.8 | 21 | 34 | + 38.2 | | 6 | | | 93 | |
| Violation of Supervision | 46 | 64 | + 28.1 | | 1 | + 100.0 | | 0 | | | 4 | |
| Other | 1,104 | 877 | - 20.5 | 419 | 664 | + 36.8 | | 287 | | | 2,399 | |
| Total Delinquent | 16,315 | 14,535 | - 10.9 | 3,949 | 5,355 | + 26.2 | | 2,224 | | | 18,217 | |
| Runaway | 289 | 221 | - 23.5 | 218 | 213 | - 2.2 | | 113 | | | 983 | |
| Truancy | 210 | 192 | - 8.5 | 240 | 217 | - 9.5 | | 55 | | | 656 | |
| Ungovernable | 650 | 599 | - 7.8 | 370 | 390 | + 5.1 | | 77 | | | 1,097 | |
| Total CINS | 1,149 | 1,012 | - 11.9 | 828 | 820 | - 0.9 | | 245 | | | 2,736 | |
| Neglect | 363 | 327 | - 9.9 | | 2 | + 100.0 | | 4 | | | 21 | |
| Dependency | 899 | 943 | + 4.6 | 11 | 15 | + 26.6 | | 9 | | | 53 | |
| Dependency & Neglect | 785 | 693 | - 11.7 | 1 | 3 | + 66.6 | | 3 | | | 24 | |
| Mentally Handicapped | 32 | 13 | - 59.3 | | 0 | 0 | | 0 | | | 5 | |
| Total CINA | 2,079 | 1,976 | - 4.9 | 12 | 20 | + 40.0 | | 16 | | | 103 | |
| Special Proceedings | 56 | 26 | - 53.5 | | 0 | 0 | | 0 | | | 1 | |
| GRAND TOTAL | 19,599 | 17,549 | - 10.4 | 4,789 | 6,195 | + 22.6 | | 2,485 | | | 21,057 | |

* In Fiscal 1978 disapproved and closed cases were separated for statistical purposes for the first time.

TABLE 18

TOTAL CASES HANDLED BY THE MARYLAND JUVENILE SERVICES ADMINISTRATION
BY COUNTY AND PARENTAL STATUS - FISCAL 1978

| | Parents Living Together | Mother Deceased | Father Deceased | Both Parents Deceased | Parents Separated | Parents Divorced | Parents Unmarried | Other | Information Not Provided | Total |
|--------------------------|-------------------------------|--------------------|--------------------|-----------------------------|----------------------|---------------------|----------------------|-------|--------------------------------|--------|
| Region 1. Dorchester | 84 | 8 | 19 | 3 | 26 | 36 | 36 | | 4 | 216 |
| Somerset | 33 | 2 | 6 | | 20 | 23 | 6 | | 1 | 91 |
| Wicomico | 64 | 6 | 12 | 4 | 10 | 64 | 29 | | 1 | 190 |
| Worcester | 347 | 10 | 38 | 2 | 50 | 145 | 9 | 1 | 20 | 622 |
| Region 2. Caroline | 95 | 2 | 2 | 1 | 5 | 54 | 5 | | 3 | 167 |
| Cecil | 271 | 6 | 30 | 4 | 30 | 117 | 14 | 3 | 7 | 482 |
| Kent | 40 | 2 | 5 | 2 | 27 | 21 | 9 | | 31 | 137 |
| Queen Anne's | 66 | 4 | 6 | | 16 | 20 | 7 | 1 | 7 | 127 |
| Talbot | 116 | 4 | 7 | | 6 | 45 | 42 | | | 220 |
| Region 3. Baltimore | 2,724 | 19 | 112 | 4 | 196 | 195 | 4 | 6 | 1,808 | 5,068 |
| Harford | 752 | 14 | 37 | 5 | 43 | 316 | 12 | 5 | 9 | 1,193 |
| Region 4. Allegany | 253 | 6 | 12 | 2 | 20 | 97 | 10 | | 34 | 434 |
| Garrett | 91 | | 6 | | 4 | 33 | 3 | 1 | | 138 |
| Washington | 389 | 15 | 27 | | 37 | 84 | 35 | 1 | 176 | 764 |
| Region 5. Anne Arundel | 572 | 8 | 11 | 3 | 21 | 86 | 9 | 3 | 4,234 | 4,947 |
| Carroll | 321 | 6 | 23 | 4 | 46 | 95 | 16 | 1 | 124 | 636 |
| Howard | 402 | 8 | 18 | | 28 | 176 | 5 | 5 | 235 | 877 |
| Region 6. Frederick | 430 | 12 | 50 | 2 | 61 | 144 | 26 | 4 | 148 | 877 |
| Montgomery | 1,902 | 39 | 38 | 8 | 173 | 344 | 71 | 15 | 173 | 2,763 |
| Region 7. Calvert | 244 | 12 | 16 | | 42 | 73 | 22 | | 16 | 425 |
| Charles | 588 | 16 | 63 | 5 | 85 | 100 | 20 | 1 | 211 | 1,089 |
| Prince George's | 3,579 | 194 | 505 | 51 | 1,541 | 1,895 | 269 | 144 | 175 | 8,353 |
| St. Mary's | 317 | 7 | 32 | | 31 | 101 | 18 | 2 | 185 | 693 |
| Region 8. Baltimore City | 3,288 | 138 | 385 | 23 | 8,137 | 458 | 834 | 674 | 2,840 | 16,777 |
| STATE | 16,968 | 538 | 1,460 | 123 | 10,655 | 4,722 | 1,511 | 867 | 10,442 | 47,286 |

TABLE 19

TOTAL CASES HANDLED BY THE MARYLAND JUVENILE SERVICES ADMINISTRATION
BY COUNTY AND TYPE OF GUARDIAN - FISCAL 1978

| | Both Parents | Mother | Father | Mother and Step- Father | Father and Step- Mother | Foster Home | Other Family Home | Insti- tution | Non- Relatives | Alone | Out-of- State Insti- tution | Other | Inform- ation Not Provided | Total |
|--------------------------|-----------------|--------|--------|----------------------------------|----------------------------------|----------------|-------------------------|------------------|-------------------|-------|--------------------------------------|-------|-------------------------------------|--------|
| Region 1. Dorchester | 80 | 81 | 9 | 12 | 3 | 6 | 16 | | 2 | | | 3 | 4 | 216 |
| Somerset | 21 | 24 | 5 | 11 | 3 | | 18 | | 6 | 1 | | 1 | 1 | 91 |
| Wicomico | 63 | 63 | 3 | 19 | 3 | 5 | 30 | 2 | | | 1 | 1 | | 190 |
| Worcester | 335 | 163 | 35 | 33 | 2 | 5 | 23 | 8 | 3 | 2 | 1 | 5 | 8 | 622 |
| Region 2. Caroline | 93 | 29 | 8 | 13 | 6 | 2 | 11 | | 2 | | | | 3 | 167 |
| Cecil | 265 | 89 | 23 | 37 | 11 | 18 | 12 | 2 | 4 | 2 | 3 | 10 | 6 | 482 |
| Kent | 40 | 48 | 2 | 8 | 3 | 3 | 15 | 1 | | 1 | | 2 | 14 | 137 |
| Queen Anne's | 64 | 32 | 0 | 0 | 2 | 3 | 2 | | | 1 | | | 5 | 127 |
| Talbot | 112 | 56 | 11 | 14 | | 4 | 9 | 11 | | 2 | | 1 | | 220 |
| Region 3. Baltimore | 2,709 | 1,350 | 253 | 35 | 3 | 12 | 29 | 26 | 2 | 3 | | 5 | 641 | 5,068 |
| Harford | 723 | 171 | 39 | 113 | 31 | 12 | 48 | 6 | 10 | 9 | 4 | 18 | 9 | 1,193 |
| Region 4. Allegany | 240 | 71 | 7 | 26 | 5 | 18 | 19 | 6 | 1 | | 1 | 5 | 35 | 434 |
| Garrett | 84 | 30 | 4 | 2 | 4 | 3 | 8 | | | 1 | | 1 | 1 | 138 |
| Washington | 382 | 214 | 16 | 49 | 9 | 7 | 40 | 3 | 2 | | | 28 | 14 | 764 |
| Region 5. Anne Arundel | 638 | 422 | 179 | 55 | 11 | 2 | 15 | 3 | 5 | | 1 | 5 | 3,611 | 4,947 |
| Carroll | 312 | 132 | 25 | 48 | 15 | 23 | 22 | 13 | 2 | 2 | 3 | 8 | 31 | 636 |
| Howard | 400 | 217 | 88 | 52 | 16 | 10 | 19 | | 2 | 1 | | 2 | 70 | 877 |
| Region 6. Frederick | 411 | 171 | 27 | 60 | 7 | 14 | 25 | 4 | 4 | 2 | 1 | 13 | 138 | 877 |
| Montgomery | 1,869 | 385 | 96 | 78 | 22 | 26 | 71 | 12 | 17 | 5 | 4 | 25 | 153 | 2,763 |
| Region 7. Calvert | 222 | 86 | 11 | 18 | 3 | 50 | 24 | 4 | 2 | | 1 | 2 | 2 | 425 |
| Charles | 576 | 282 | 49 | 78 | 10 | 11 | 34 | | 8 | | 2 | 3 | 36 | 1,089 |
| Prince George's | 3,471 | 2,856 | 405 | 532 | 102 | 195 | 483 | 49 | 89 | 23 | 3 | 76 | 69 | 8,353 |
| St. Mary's | 508 | 174 | 15 | 30 | 10 | 6 | 5 | 3 | | 2 | 3 | 4 | 133 | 693 |
| Region 8. Baltimore City | 3,336 | 8,602 | 911 | 256 | 65 | 100 | 679 | 37 | 38 | 2 | | 277 | 2,474 | 16,777 |
| STATE | 16,754 | 15,748 | 2,230 | 1,588 | 346 | 535 | 1,657 | 190 | 199 | 59 | 27 | 495 | 7,458 | 47,286 |

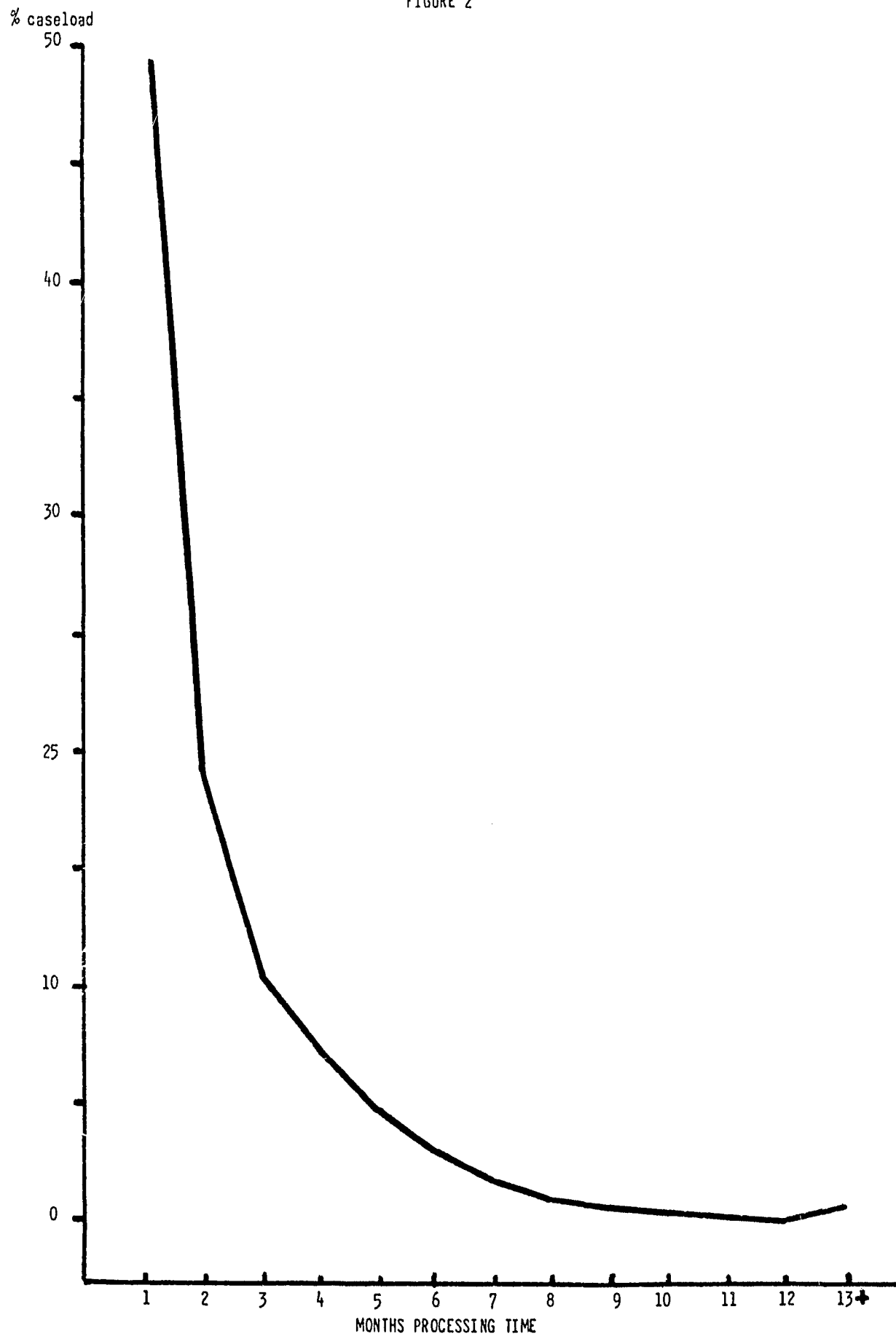
TABLE 20
MARYLAND JUVENILE SERVICES ADMINISTRATION
BALTIMORE CITY AND PRINCE GEORGE'S COUNTY
ADOPTION AND CUSTODY CASES
FISCAL 1978

| Type of Case | Baltimore City | Prince George's County |
|--|----------------|------------------------|
| Adoptions | | |
| Pending at Beginning of Year | 36 | 9 |
| Assigned During Year | 300 | 15 |
| Completed During Year | 278 | 16 |
| Pending at End of Year | 58 | 8 |
| Custodies | | |
| Pending at Beginning of Year | 72 | 1 |
| Assigned During Year | 264 | 42 |
| Completed During Year | 227 | 22 |
| Pending at End of Year | 110 | 21 |
| Guardianship | | |
| Pending at Beginning of Year | 19 | |
| Assigned During Year | 33 | |
| Completed During Year | 36 | |
| Pending at End of Year | 16 | |
| Out-of-Town Inquiries (Requests from other courts) | | |
| Pending at Beginning of Year | 2 | |
| Assigned During Year | 19 | |
| Completed During Year | 19 | |
| Pending at End of Year | 2 | |
| Guardianships with Right to Consent to Adoption | | |
| Pending at Beginning of Year | | |
| Assigned During Year | 103 | |
| Completed During Year | 103 | |
| Pending at End of Year | | |

Prior to July 1, 1967, responsibilities for certain adoption, custody and guardianship services were the responsibility of several local juvenile probation agencies. The Courts of Baltimore City and Prince George's County certified several positions performing said services pursuant to Article 52A, Section 16, "In any event, a court, . . . shall not have fewer personnel as a result of the operation of the Department of Juvenile Services than it had authorized as of 7/1/66, as certified by the Chief Judge of each judicial circuit."

It was felt that these valuable services, thus provided, should be reflected in this and future Annual Reports.

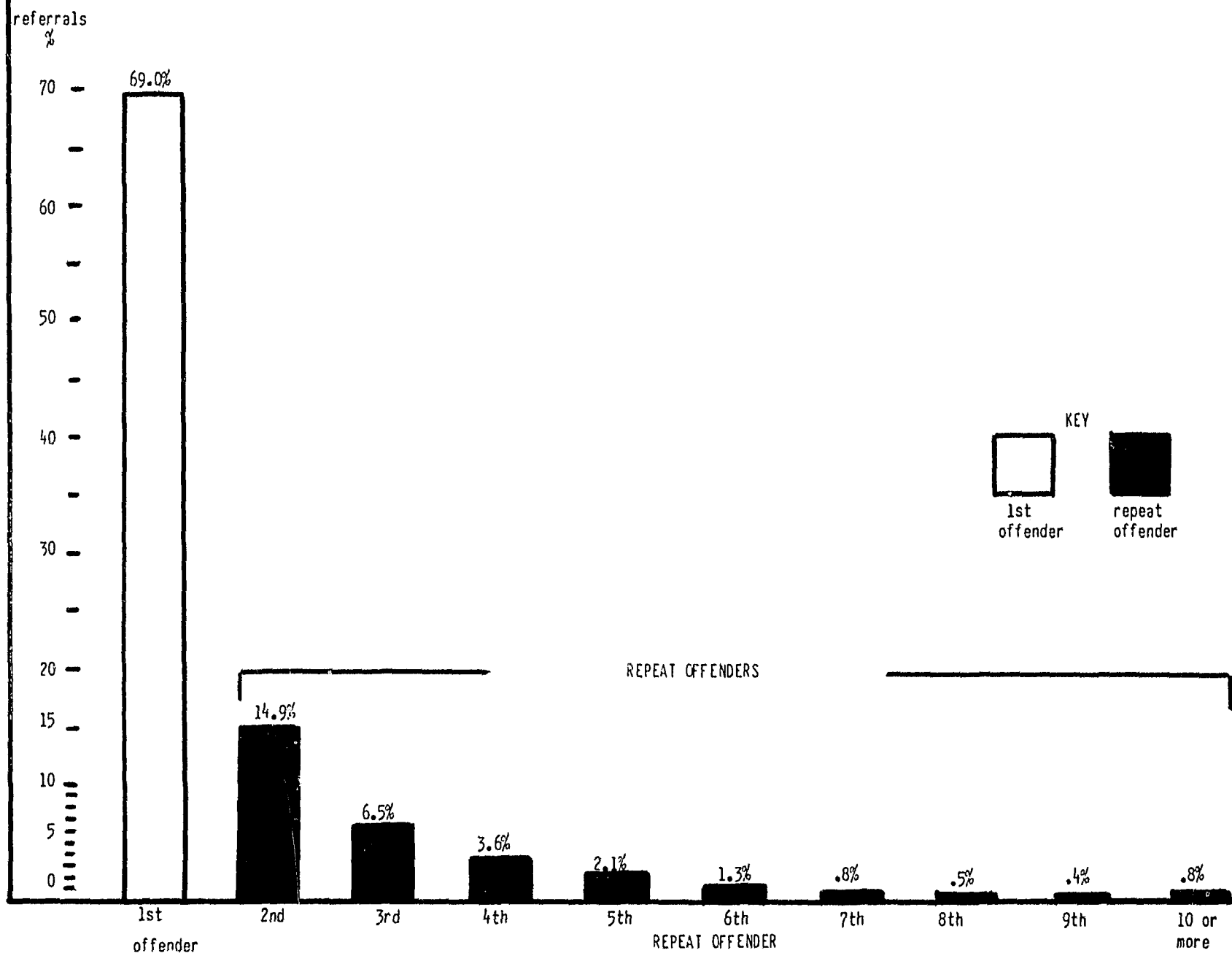
CASE PROCESSING TIME - STATEWIDE - 1978
TIME LAPSE BETWEEN REFERRAL AND DISPOSITION
FIGURE 2



FIRST AND REPEAT OFFENDERS - STATEWIDE 1978

PERCENT - TOTAL REFERRALS

FIGURE 3



DIVISION OF
COMMUNITY SERVICES

COMMUNITY BASED SERVICES

Between fiscal 1969 and fiscal 1976, the number of admissions to community-based programs increased from 121 to 4,304. During fiscal 1977, there was an actual decline in admissions to community-based programs. However, during fiscal 1978, admissions once again increased—this time to a figure of 4,219, nearly 8% greater than the fiscal 1977 figure of 3,920.

Placements to community-based programs include emergency and planned admissions to the Maryland Youth Residence Center, Good Shepherd Center and three group homes operated by the Maryland Juvenile Services Administration. These placements also include care purchased from foster and shelter care homes, group homes, and various residential treatment facilities. In addition to these residential placements, there were 177 admissions to the Youth Service Center, 5,284 formally counselled cases in Maryland's Youth Service Bureaus, and 1,052 counselled cases in diversion programs.

Of the total number of community residential placements during fiscal 1978, 3,947 (93.6%) were purchase of care placements, 141 (3.3%) were admissions to the Good Shepherd Center, 67 (1.6%) were state-owned group home admissions, and 64 (1.5%) were admissions to the Maryland Youth Residence Center.

Purchase of Care

Placements in Purchase of Care facilities, which included private residential placements made up of private group homes, specialized institutions and foster homes, and emergency shelter care provided by private families in their own homes, increased 7.0% over fiscal year 1977 figures. Emergency shelter care placements accounted for 69.3% of these placements during fiscal 1978, with the remaining 30.7% accounted for by private residential placements. Of the 1,210 private residential placements, 880 (72.7%) involved males. Furthermore, whites accounted for 68.3% of the placements, blacks for 30.8%, and other races for .9% of the placements. Baltimore City was responsible for 29.9% of the placements, Prince George's County for 17.6% and Montgomery County for 13.2% of the placements.

Of the 2,737 emergency shelter care placements, 58.9% involved males during fiscal 1978. This figure can be contrasted to the fiscal 1977 data which indicated that 49% of the emergency shelter care placements were to males. A majority of these admissions involved whites (68.7%), blacks accounted for 30.9%, and other races for the remaining .4%. Baltimore City accounted for the

largest number of emergency placements (31.3%), followed by Prince George's County (25.1%), and Montgomery County (12.4%).

Good Shepherd Center

Good Shepherd Center, a therapeutic residential facility for girls, reported 141 admissions during fiscal 1978, an increase of 22.6% from fiscal 1977. These admissions involved 102 whites (72.3%) and 39 blacks (27.7%). Baltimore City was responsible for the largest number of admissions with 33.3%.

State-Owned Group Homes

Admissions to the three state-owned group homes during fiscal 1978 decreased 9.4% from fiscal 1977 with 67 reported admissions as opposed to 74 for the previous year. Most admissions during fiscal 1978 involved black youth (65 or 97.0%).

Maryland Youth Residence Center

The Maryland Youth Residence Center, a residential treatment facility for boys twelve years of age or younger, reported 64 admissions during fiscal 1978. This figure represented an increase of 56.1% over the 41 admissions reported during fiscal 1977. A majority of the admissions involved black youngsters (79.7%).

Youth Service Center

The Youth Service Center is a day program offering specialized services to delinquent youth. During fiscal 1978, a total of 213 referrals were made to the Youth Service Center. This represented a 27.3% decrease from the 293 referrals reported during fiscal 1977. Referrals during fiscal 1978 consisted of 177 males and 36 females. Seventeen year olds comprised the majority of referrals with a total of 141 or 66.2% of all youth served.

Youth Service Bureaus

Youth Service Bureaus in Maryland are local community agencies which provide services to youth on a voluntary basis. The primary purpose of these community operated programs is youth development and juvenile delinquency prevention. Seventy-five percent of the funds required to operate Bureaus are provided by the State of Maryland through grants from the Juvenile Services Administration. The remaining 25% of the funds are provided to Bureaus by their local units of government.

During fiscal 1978, Youth Service Bureaus serviced 5,284 formal cases, a decline of 6.8% from the 5,667 formal cases serviced during fiscal 1977. Formal cases in this context are not "court-related" cases, but are cases which receive regularly scheduled counseling, have a complete case file developed and have a specific counselor assigned.

Males accounted for 2,915 or 55.2% of these cases, while females accounted for 2,369 or 44.8% of these cases. The majority of the youth served were white (3,293 or 62.3%). Black youth comprised 1,950 or 36.9% of those served.

It should be added that in addition to formal counseling, Youth Service Bureaus provide a broad range of services which include: informal counseling, crisis intervention, information and referral, tutoring, leisure time activities, mobilizing community resources, job placement assistance, community education, consultation and/or training, and drug education. The above figures do not reflect the number of cases served in these other areas.

Seventeen Youth Service Bureaus are funded through the Maryland Juvenile Services Administration. Two are located in Anne Arundel County, five in Prince George's County, three in Baltimore City, two in Montgomery County, one in Charles County, one in Carroll County and three in Baltimore County.

Diversion Program

During fiscal 1978, a total of 1,250 counseled cases were served by five diversion programs. These programs, all located in Baltimore City, were Pre-Trial Intervention, Baltimore Urban League, Communities Organized to Improve Life, East Baltimore Community Organization, and Southeast Community Organization.

All counseled cases involved delinquent youth who had been referred to the Juvenile Services Administration. Most of the Youth served were male (978 or 78.2%) and most were black (1,052 or 84.2%). Youth of thirteen through fifteen comprised 58.2% of those served. Their most frequent offense was "assault" (231 cases), followed by "larceny" (200 cases), "burglary-breaking and entering" (188 cases), and "shoplifting" (142 cases).

TABLE 21
MARYLAND JUVENILE SERVICES ADMINISTRATION
COMMUNITY DETENTION
FISCAL 1978

| Detentions | Baltimore City | Prince George's County |
|--|----------------|------------------------|
| Number Detained | 1,903 | 1,096 |
| Number Not Eligible for Community Detention | 513 | 927 |
| Number Eligible for Community Detention | 1,390 | 169 |
| Number Not Accepted into Community Detention | 733 | 4 |
| Number Accepted into Community Detention | 657 | 165 |

Community Detention is a viable alternative to detaining youth in detention centers. It provides youth with intensive supervision in their own or surrogate home for the period between initial court appearance and disposition. The objective of community detention is to keep the youth trouble-free, and available to the court.

JSA has two community detention programs. They are the "Urban County House Detention" in Prince George's County, and the "House Detention Program" in Baltimore City. They were designed to demonstrate that youth can be successfully supervised outside the institutional setting typically used for detained children.

TABLE 22
COMMUNITY AND RESIDENTIAL EXPENDITURES
FISCAL 1969 - 1978

| Fiscal Year | Good Shepherd Center | Purchase of Care | State-Owned Group Homes | Md. Youth Residence Center | Program Direction | Youth Service Bureaus | Youth Service Center | Total |
|-------------|----------------------|------------------|-------------------------|----------------------------|-------------------|-----------------------|----------------------|----------------|
| 1969 | \$ 288,091 | \$ 92,151 | | | | | | \$ 380,242 |
| 1970 | \$ 398,091 | \$ 182,959 | \$ 70,534 | | | | | \$ 651,649 |
| 1971 | \$ 475,629 | \$ 740,271 | \$ 223,588 | | | | | \$ 1,439,488 |
| 1972 | \$ 666,710 | \$ 1,389,901 | \$ 208,979 | \$ 50,026 | | | | \$ 2,315,750 |
| 1973 | \$ 742,802 | \$ 1,819,199 | \$ 201,154 | \$ 254,169 | \$ 58,026 | | | \$ 3,075,350 |
| 1974 | \$ 758,149 | \$ 2,825,064 | \$ 236,514 | \$ 154,168 | \$ 76,354 | | | \$ 4,260,249 |
| 1975 | \$ 809,205 | \$ 4,238,650 | \$ 238,570 | \$ 346,831 | \$ 77,240 | \$ 436,589 | | \$ 6,147,085 |
| 1976 | \$ 868,106 | \$ 4,826,722 | \$ 254,846 | \$ 396,300 | \$ 81,834 | \$ 790,493 | \$ 306,030 | \$ 7,524,331 |
| 1977 | \$ 952,436 | \$ 5,045,029 | \$ 252,676 | \$ 353,059 | \$ 67,122 | \$ 1,018,418 | \$ 316,992 | \$ 8,005,732* |
| 1978 | \$ 965,423 | \$ 5,543,910 | \$ 293,008 | \$ 374,838 | \$ 72,646 | \$ 1,111,332 | \$ 346,164 | \$ 8,707,321** |

* This amount excludes \$41,361 which is Direct Administrative cost related to earning Federal Title XX Funding.

** This amount excludes \$48,686 which is Direct Administrative Cost related to earning Federal Title XX Funding and \$20,435 allocated to the Differential Group Home and Treatment Project.

TABLE 23
COMMUNITY RESIDENTIAL PLACEMENTS
NUMBER OF ADMISSIONS
FISCAL 1969 - 1978

| Fiscal Year | Shepherd Center | Purchase of Care | | State-Owned Group Homes | Maryland Youth Residence Center | Total |
|-------------|-----------------|------------------|-----------|-------------------------|---------------------------------|-------|
| | | Residential | Emergency | | | |
| 1969 | 105 | 16 | | | | 121 |
| 1970 | 88 | 130 | | 22 | | 240 |
| 1971 | 131 | 276 | | 46 | | 453 |
| 1972 | 87 | 601 | 539 | 60 | 36 | 1,323 |
| 1973 | 85 | 850 | 1,068 | 82 | 35 | 2,120 |
| 1974 | 86 | 1,184 | 1,987 | 76 | 35 | 3,368 |
| 1975 | 91 | 1,067 | 2,794 | 45 | 22 | 4,019 |
| 1976 | 98 | 1,109 | 3,012 | 61 | 24 | 4,304 |
| 1977 | 115 | 1,047 | 2,643 | 74 | 41 | 3,920 |
| 1978 | 141 | 1,210 | 2,737 | 67 | 64 | 4,219 |

TABLE 24
RESIDENTIAL AND EMERGENCY PLACEMENTS BY SEX AND COUNTY
FISCAL 1978

| | Private Residential Placements | | | Emergency Placements | | |
|--------------------------|--------------------------------|--------|-------|----------------------|--------|-------|
| | Male | Female | Total | Male | Female | Total |
| Region 1. Dorchester | 8 | 6 | 14 | 15 | 4 | 19 |
| Somerset | 1 | | 1 | 5 | | 5 |
| Wicomico | 5 | 5 | 10 | 24 | 9 | 33 |
| Worcester | 7 | 3 | 10 | 23 | 7 | 30 |
| Region 2. Caroline | 4 | | 4 | 4 | | 4 |
| Cecil | 17 | 5 | 22 | 26 | 16 | 42 |
| Kent | 4 | | 4 | 5 | | 5 |
| Queen Anne's | 3 | 3 | 6 | 2 | 6 | 8 |
| Talbot | 10 | 5 | 15 | 17 | 9 | 26 |
| Region 3. Baltimore | 52 | 19 | 71 | 36 | 47 | 83 |
| Harford | 29 | 4 | 33 | 20 | 9 | 29 |
| Region 4. Allegany | 17 | 11 | 28 | 4 | 8 | 12 |
| Garrett | 9 | 3 | 12 | 3 | 2 | 5 |
| Washington | 15 | 13 | 28 | 5 | 14 | 19 |
| Region 5. Anne Arundel | 76 | 25 | 101 | 134 | 103 | 237 |
| Carroll | 26 | 3 | 29 | 25 | 29 | 54 |
| Howard | 19 | 7 | 26 | 31 | 38 | 69 |
| Region 6. Frederick | 9 | 2 | 11 | 5 | 2 | 7 |
| Montgomery | 106 | 54 | 160 | 174 | 135 | 339 |
| Region 7. Calvert | 6 | 2 | 8 | 6 | 16 | 22 |
| Charles | 24 | 3 | 27 | 42 | 58 | 100 |
| Prince George's | 153 | 60 | 213 | 387 | 299 | 686 |
| St. Mary's | 19 | 3 | 22 | 17 | 29 | 46 |
| Region 8. Baltimore City | 261 | 94 | 355 | 502 | 355 | 857 |
| STATE | 880 | 330 | 1,210 | 1,512 | 1,225 | 2,737 |

TABLE 24 A
PRIVATE RESIDENTIAL PLACEMENTS
TYPE OF SERVICES BY COUNTY AND REGION
FISCAL 1978

| | Private Residential Placements | | | |
|--------------------------|--------------------------------|----------------------|--------------|-------|
| | Basic Service | Intermediate Service | Full Service | Total |
| Region 1. Dorchester | 6 | 7 | 1 | 14 |
| Somerset | | 1 | | 1 |
| Wicomico | 5 | 4 | 1 | 10 |
| Worcester | 2 | 7 | 1 | 10 |
| Region 2. Caroline | 1 | 3 | | 4 |
| Cecil | 4 | 12 | 6 | 22 |
| Kent | | 4 | | 4 |
| Queen Anne's | 3 | 3 | | 6 |
| Talbot | 4 | 9 | 2 | 15 |
| Region 3. Baltimore | 18 | 37 | 16 | 71 |
| Harford | 10 | 20 | 3 | 33 |
| Region 4. Allegany | 19 | 4 | 5 | 28 |
| Garrett | 6 | 3 | 3 | 12 |
| Washington | 10 | 11 | 7 | 28 |
| Region 5. Anne Arundel | 53 | 35 | 13 | 101 |
| Carroll | 15 | 12 | 2 | 29 |
| Howard | 20 | 3 | 3 | 26 |
| Region 6. Frederick | 6 | 4 | 1 | 11 |
| Montgomery | 82 | 45 | 33 | 160 |
| Region 7. Calvert | 1 | 7 | | 8 |
| Charles | 7 | 19 | 1 | 27 |
| Prince George's | 120 | 71 | 22 | 213 |
| St. Mary's | 9 | 11 | 2 | 22 |
| Region 8. Baltimore City | 164 | 148 | 43 | 355 |
| STATE | 565 | 480 | 165 | 1,210 |

TABLE 25
RESIDENTIAL AND EMERGENCY PLACEMENTS BY RACE AND COUNTY
FISCAL 1978

| | Private Residential Placements | | | | Emergency Placements | | | | Good Shepherd Center | | | |
|---|--------------------------------|----------------------|-------------------|-------------------------|-------------------------|---------------------|-------------------|-------------------------|----------------------|-------------------|------------------|--------------------|
| | White | Black | Other | Total | White | Black | Other | Total | White | Black | Other | Total |
| Region 1. Dorchester Somerset Wicomico Worcester | 9 1 8 6 | 5 2 4 | | 14 1 10 10 | 15 4 27 24 | 4 1 6 5 | 1 1 | 19 5 33 30 | 1 1 | 1 | | 1 2 |
| Region 2. Caroline Cecil Kent Queen Anne's Talbot | 2 22 3 5 10 | 2 1 1 5 | | 4 22 4 6 15 | 3 41 5 8 18 | 1 1 8 | | 4 42 5 8 26 | 3 4 | | | 3 4 |
| Region 3. Baltimore Harford | 60 32 | 10 1 | 1 | 71 33 | 72 26 | 11 3 | | 83 29 | 14 5 | 1 | | 14 6 |
| Region 4. Allegany Garrett Washington | 27 12 27 | 1 1 | | 28 12 28 | 12 5 19 | | | 12 5 19 | 2 4 6 | | | 2 4 6 |
| Region 5. Anne Arundel Carroll Howard | 96 29 25 | 5 1 | | 101 29 26 | 218 53 60 | 18 9 | 1 1 | 237 54 69 | 13 5 2 | 1 | | 13 5 3 |
| Region 6. Frederick Montgomery | 8 133 | 3 24 | 3 | 11 160 | 7 303 | 34 | 2 | 7 339 | 7 | 3 | | 10 |
| Region 7. Calvert Charles Prince George's St. Mary's | 8 23 153 19 | 4 56 3 | 4 | 8 27 213 22 | 18 88 509 44 | 4 12 175 2 | 2 | 22 100 686 46 | 1 3 12 1 | 2 | | 1 3 14 1 |
| Region 8. Baltimore City | 108 | 244 | 3 | 355 | 301 | 551 | 5 | 857 | 16 | 31 | | 47 |
| Out-of-State | | | | | | | | | 2 | | | 2 |
| STATE | 826 | 373 | 11 | 1,210 | 1,880 | 845 | 12 | 2,737 | 102 | 39 | | 141 |

TABLE 26
COMMUNITY RESIDENTIAL PLACEMENTS BY RACE
FISCAL 1978

| Placement | White | | Black | | Other | | Total | |
|--|--------|---------|--------|---------|--------|---------|--------|---------|
| | Number | Percent | Number | Percent | Number | Percent | Number | Percent |
| Good Shepherd Center | 102 | 72.3 | 39 | 27.7 | | | 141 | 100.0 |
| Purchase of Care Residential Placements | 826 | 68.3 | 373 | 30.8 | 11 | 0.9 | 1,210 | 100.0 |
| Purchase of Care Emergency Placements | 1,880 | 68.7 | 845 | 30.9 | 12 | 0.4 | 2,737 | 100.0 |
| State-Owned Group Homes | 2 | 3.0 | 65 | 97.0 | | | 67 | 100.0 |
| Maryland Youth Residence Center | 12 | 18.7 | 51 | 79.7 | 1 | 1.6 | 64 | 100.0 |

TABLE 27
YOUTH SERVICE CENTER ADMISSIONS BY AGE AND SEX*
FISCAL 1978

| Age | Male | | Female | | Total | |
|-------|--------|---------|--------|---------|--------|---------|
| | Number | Percent | Number | Percent | Number | Percent |
| 14 | | | | | | |
| 15 | | | | | | |
| 16 | 45 | 25.4 | 10 | 27.8 | 55 | 25.8 |
| 17 | 121 | 68.4 | 20 | 55.5 | 141 | 66.2 |
| 18 | 8 | 4.5 | 6 | 16.7 | 14 | 6.6 |
| 19 | 3 | 1.7 | | | 3 | 1.4 |
| Total | 177 | 100.0 | 36 | 100.0 | 213 | 100.0 |

* The Youth Service Center is a day program offering specialized services to delinquent youth.

TABLE 28

TOTAL FORMALLY COUNSELLED CASES SERVED BY YOUTH SERVICES BUREAUS

BY LOCATION, SEX AND RACE *

FISCAL 1978

| Bureau | Location | Male | | | Female | | | Total |
|---------------------|---------------------|-------|-------|-------|--------|-------|-------|-------|
| | | Black | White | Other | Black | White | Other | |
| Annapolis | Anne Arundel County | 318 | 37 | | 257 | 16 | | 628 |
| Bowie | Prince George's Co. | 101 | 127 | | 78 | 190 | | 496 |
| Carroll County | Carroll County | 1 | 101 | 2 | | 54 | | 158 |
| College Park | Prince George's Co. | 1 | 133 | 3 | 12 | 83 | 3 | 235 |
| Dundalk | Baltimore County | 10 | 241 | 4 | 6 | 133 | 3 | 397 |
| East Baltimore | Baltimore City | 113 | 4 | | 196 | 2 | | 315 |
| Glenarden | Prince George's Co. | 46 | | | 45 | | | 91 |
| Greenbelt | Prince George's Co. | 5 | 142 | 5 | 4 | 162 | 7 | 325 |
| Harundale | Anne Arundel County | 1 | 56 | | 2 | 28 | | 87 |
| Laurel | Prince George's Co. | 7 | 54 | | 9 | 40 | | 110 |
| Lighthouse | Baltimore County | 10 | 57 | | 3 | 54 | | 124 |
| Listening Post | Montgomery County | 3 | 12 | 2 | | 23 | 3 | 43 |
| North Central | Baltimore City | 76 | 21 | | 37 | 6 | | 140 |
| Northwest Baltimore | Baltimore City | 208 | 2 | | 117 | 2 | | 329 |
| PCA | Baltimore County | 4 | 71 | | 2 | 43 | | 120 |
| Rockville | Montgomery County | 44 | 180 | 5 | 26 | 214 | 4 | 473 |
| Tri-County | Charles County | 128 | 560 | | 60 | 445 | | 1,193 |
| | TOTALS | 1,076 | 1,798 | 21 | 854 | 1,495 | 20 | 5,264 |

* Formal counseling only comprise a small portion of total services and total actual clients served by Youth Service Bureaus.

TABLE 29
TOTAL COUNSELED CASES SERVED BY YOUTH DIVERSION
PROGRAMS IN BALTIMORE CITY BY LOCATION, SEX, RACE, AGE,
AND OFFENSE

| Category of Data | Diversion Program | | | | | |
|--------------------|------------------------|------------------------|---------------------------------------|---------------------------------------|----------------------------------|-----------|
| | Pre-Trial Intervention | Baltimore Urban League | Communities Organized to Improve Life | East Baltimore Community Organization | Southeast Community Organization | Total |
| Race: | | | | | | |
| Black | 400 | 207 | 112 | 257 | 76 | 1,052 |
| White | 31 | 1 | 44 | 8 | 104 | 188 |
| Other | | | | | 10 | 10 |
| Sex: | | | | | | |
| Male | 346 | 164 | 128 | 225 | 125 | 988 |
| Female | 85 | 44 | 28 | 40 | 65 | 262 |
| Age: | | | | | | |
| 10 or under | | 12 | 11 | 15 | 17 | 55 |
| 11 | | 11 | 11 | 21 | 13 | 56 |
| 12 | | 31 | 16 | 15 | 7 | 69 |
| 13 | | 59 | 31 | 97 | 18 | 205 |
| 14 | | 81 | 47 | 89 | 49 | 266 |
| 15 | 141 | 10 | 30 | 28 | 48 | 257 |
| 16 | 149 | | 9 | | 28 | 186 |
| 17 | 129 | | | | 10 | 139 |
| 18 | 12 | | 1 | | | 13 |
| Unknown | | 4 | | | | 4 |
| Offense:* | | | | | | |
| Assault | 71 | 37 | 24 | 62 | 37 | 231 |
| Assault/Robbery | 51 | 23 | 2 | 19 | 13 | 108 |
| Burglary/B & E | 70 | 30 | 38 | 31 | 19 | 188 |
| Larceny | 55 | 26 | 26 | 49 | 44 | 200 |
| Shoplifting | 69 | 17 | 20 | 32 | 4 | 142 |
| Dis. Conduct | 12 | 19 | 7 | 4 | 8 | 50 |
| Vandalism | 5 | 15 | 5 | 14 | 20 | 59 |
| Trespassing | 10 | 11 | 10 | 19 | 19 | 69 |
| Unauth. Use | 17 | 7 | 1 | 4 | 5 | 34 |
| Poss/Deadly Weapon | 13 | 6 | 6 | 4 | 5 | 34 |
| Narcotics Viol. | 32 | 2 | 4 | | | 38 |
| Other or Unknown | 38 | 41 | 13 | 17 10 | 16 | 109 26 |
| Total | 443 | 234 | 156 | 265 | 190 | 1,288 |

* May include more than one offense in some cases.

DIVISION OF
INSTITUTIONAL
SERVICES

ADMISSIONS TO MARYLAND'S JUVENILE INSTITUTIONS

Maryland Training School

Maryland Training School, a training school for boys with a rated capacity of 301, reported 2,444 admissions during fiscal 1978. These admissions included 624 commitments (average length of stay, 7.1 months) and 1,820 detentions (average length of stay, 11 days). The number of admissions for fiscal 1978 declined 13.9% from the 2,838 reported during fiscal 1977. The number of commitments declined by 13.7% from the 723 reported during fiscal 1977, and the number of detentions declined by 13.9% from the 2,115 reported during fiscal 1977.

The majority of admissions to the Maryland Training School involved residents of Baltimore City (1,867 admissions) comprising 76.4% of the total. Most of the admissions involved black youth (1,667 or 68.2%).

The majority of the admissions to the Maryland Training School involved juveniles between fifteen and seventeen years of age (83.1%). Admissions increased from the ten year age group through the sixteen year group and dropped slightly for seventeen year olds. Juveniles under fifteen years of age accounted for 14.6% of all admissions. Fifteen year olds comprised 18.9% of the admissions; sixteen year olds, 32.6%; seventeen year olds, 31.5%; eighteen year olds, 2.2%; and those of unknown age, 0.2%. The largest single age group involving whites was seventeen (36.8% of the total). For blacks, the largest single age group was sixteen (32.2% of the total).

The largest offense category for admissions to the Maryland Training School was "burglary—breaking and entering" which was the major reason for 22.8% of the admissions. This was followed by "assault" (20.0%), "auto theft—unauthorized use" (10.3%), and "larceny" (8.7%).

In the case of commitments, the largest single offense category, "burglary—breaking and entering", accounted for 24.8% of the total. This was followed by "assault" with 16.5%, "auto theft—unauthorized use" with 11.2%, and "larceny" with 9.3%. For detentions, "burglary—breaking and entering" was again the largest single offense category with 22.1% of the total. "Assault" was the second largest category of offense, comprising 21.2% of the total, followed by "auto theft—unauthorized use" with 9.9% and "larceny" with 8.5%.

Montrose School

A co-educational training school, Montrose, with a rated capacity of 255, reported 1,025 admissions during fiscal 1978. This figure represented a 8.2% increase from the 947 admissions reported during fiscal 1977. This increase was due to a 40.6% increase in detentions. The number of commitments actually declined 10.5%—from 600 during fiscal 1977 to 537 during fiscal 1978.

A majority (59.6%) of the admissions involved females. However, most commitments involved males—410 out of 537 or 76.4%. Out of 488 detentions, 484 or 99.1% involved females.

Baltimore City residents accounted for 46.0% of the admissions, down from fiscal 1977 when 56.5% of the admissions were accounted for by Baltimore City residents. Of the commitments, 57.5% involved residents of Baltimore City, while 34.4% of the detentions involved residents of Baltimore City.

A majority of the 1,025 admissions to Montrose involved blacks (54.0%); whites accounted for 45.6% of the admissions and youth of "other" races accounted for 0.4% of the admissions.

Of the total admissions to Montrose, 57.8% involved youth of fourteen or fifteen years of age. The largest single age group represented was the fifteen year old group which accounted for 328 admissions or 32.0% of the total. Juveniles under fourteen comprised 15.9% of the total.

Cases involving "burglary—breaking and entering" accounted for 18.6% of the 537 commitments to Montrose. "Assault" cases were the second most frequent category of offense, accounting for 15.6% of the commitments. The most frequent reason for detention was "shoplifting", accounting for 84 or 17.2% of the detentions.

For the 467 youth released from commitment during fiscal 1978, the average length of stay was 8.5 months. This represents an increase of 1.5 months from the average figure reported for fiscal 1977, 7.0 months. For the 438 juveniles released from detention during fiscal 1978, the average length of stay was fifteen days, an increase of three days from the fiscal 1977 figure of twelve days.

Boy's Village

Boy's Village, now a detention center with a rated capacity of 56, reported 1,408 detentions during fiscal 1978 and 1,349 releases. The number of detentions declined 3.3% from the figure of 1,456 reported during fiscal 1977.

The majority of the admissions to Boy's Village were accounted for by Prince George's County residents with a total of 883 or 62.7% of all admissions. Out-of-state residents accounted for 386 or 27.4% of admissions.

Of the total number of youth admitted during fiscal 1978, 63.8% were black. Whites accounted for 36.9% of the admissions, while those youngsters of "other" races accounted for less than one percent.

A majority of the admissions involved youth in the fifteen through seventeen age group (1,006 or 71.4%). Juveniles under fifteen years of age accounted for 25.6% of all admissions. Fifteen year olds accounted for 23.2% of the admissions; sixteen year olds for 25.5%; seventeen year olds for 22.8%, and eighteen year olds for 2.8%.

"Burglary—breaking and entering" accounted for 331 or 23.5% of admissions during fiscal 1978. "Shoplifting", the next largest single offense category, accounted for 295 or 21.0% of admissions. Next in order was "larceny" accounting for 157 admissions (11.7%) followed by "assault" with 108 admissions (7.7%).

For the 1,349 youth released during fiscal 1978, the average length of stay was fourteen days, a *decline* of seven days from the figure of 21 reported during fiscal 1977.

Boy's Forestry Camps

The Boy's Forestry Camps, now known as the Juvenile Services Administration Youth Centers, have a rated capacity of 140. During fiscal 1978, 235 commitments were reported to the Boy's Forestry Camps. This figure represents a decline of 12.3% from the 268 reported commitments during fiscal 1977.

Baltimore City residents accounted for 41 or 17.4% of admissions, followed by Prince George's County with 37 admissions (15.7%), Montgomery County with 29 admissions (12.3%), and Anne Arundel County with 21 admissions (8.9%). Whites accounted for 73.2% of the admissions, while blacks accounted for 26.8%.

Of the 235 admissions, 179 (76.2%) involved youth of sixteen or seventeen years of age. Only 19.6% involved juveniles fifteen years of age or younger.

Cases involving "burglary—breaking and entering" accounted for 65 admissions (27.7%). This was followed by "violation of supervision" accounting for 32 cases (13.6%), "auto theft—unauthorized use" with 29 cases (12.3%), "assault" with 23 cases (9.8%), and "larceny" with 20 cases (8.5%). The average length of stay was 9.1 months for the 236 juveniles released from commitment during fiscal 1978. This figure represents an increase of 1.7 months over the average length of stay during fiscal 1977, 7.4 months.

Maryland Children's Center

Maryland Children's Center, a diagnostic and evaluation center with a rated capacity of 112,

reported 1,176 admissions during fiscal 1978. This represents a decline of 12.5% from the 1,344 admissions reported during fiscal 1977. The Center required a stay of 21 days during fiscal 1978.

Baltimore City residents accounted for the largest portion of admissions to Maryland Children's Center during fiscal 1978 with 508 admissions or 43.2% of the total. This was followed by Prince George's County with 166 admissions (14.1%), Anne Arundel County with 113 admissions (9.6%), Montgomery County with 86 admissions (7.3%), and Baltimore County with 57 admissions (4.8%).

Of the 1,176 admissions during fiscal 1978, a majority involved males (936 or 79.6%). Whites accounted for 672 admissions (57.1%) and blacks accounted for 498 admissions (42.4%). The remaining six admissions were, of course, accounted for by youth of "other races".

A total of 791 admissions (67.3%) were accounted for by youth between fourteen and sixteen years of age. Juveniles under fourteen accounted for 221 admissions or 18.8% of the total. Juveniles over sixteen accounted for the remaining 164 admissions or 13.9% of the total. The most frequent reason stated was "burglary—breaking and entering" accounting for 178 cases, 15.1% of the total. "Assault" was listed as the next most frequent offense, accounting for 155 admissions or 13.2% of the total. Cases involving "ungovernable" behavior were responsible for 145 admissions, 12.3% of the total.

Waxter Children's Center

Waxter Children's Center, a detention facility with a rated capacity of 40, reported 973 admissions during fiscal 1978. This represents a decline of 30.3% from the 1,395 admissions reported during fiscal 1977.

Juveniles were admitted from Baltimore City, nineteen Maryland Counties, and from out-of-state. Baltimore City residents accounted for the highest number of admissions with a total of 303 or 31.1% of all admissions. Anne Arundel County was second in number of admissions with 251, 25.8% of all admissions. There was a total of 148 out-of-state admissions which represented 15.2% of all admissions.

Most admissions involved males (882 or 90.6%). White youth accounted for 53.8% of admissions, blacks for 42.9%, and "other" races for 0.3%.

A majority (77.3%) of the admissions involved youth between the ages of fifteen to seventeen. Those admitted who were less than fifteen represented 20.7% of the total. Eighteen year olds accounted for 1.6% of the admissions, while those of "unknown" age accounted for less than one percent. Admissions involving both blacks and

whites increased proportionately through sixteen years of age and declined thereafter.

"Burglary—breaking and entering" was the largest single category of offense for those admitted to the Waxter Center during fiscal 1978. For this category, there were 216 admissions which represents 22.2% of the total. Second most frequent was "auto theft—unauthorized use" with a total of 118 cases or 12.2% of the total admissions.

The average length of stay was 12 days for the 973 releases from detention reported in fiscal 1978. This represented a decline of three days from the reported average length of stay of fifteen days during fiscal 1977.

Alfred D. Noyes Children's Center

The Noyes Center, a detention center for children, officially began operations in September, 1977. During fiscal 1978 there was a total of 621

admissions to the Noyes Center. Of these admissions, 519 (83.6%) involved males and 102 (16.4%) involved females. A total of 483 (77.8%) of the admissions involved white youth; 136 (28.1%), black youth; and 2 (0.1%), children of "other" races.

The majority of the admissions (513 or 82.6%) involved residents of Montgomery County. Washington County was next in resident admissions with 57 followed by Frederick County with 26.

The most frequently stated reason for detention at the Noyes Center was "burglary—breaking and entering" with 74 cases. This was followed by "auto theft—unauthorized use" with 68 cases and "larceny" with 67 cases.

There was a total of 606 releases during fiscal 1978 at the Noyes Center with an average length of stay of twelve days.

TABLE 30
MARYLAND JUVENILE SERVICES ADMINISTRATION
SUMMARY OF INSTITUTION EXPENDITURES
FISCAL 1969 - 1978

| Fiscal Years | Training Schools | Detention Centers | Forestry Camps | Total |
|--------------|------------------|-------------------|----------------|--------------|
| 1969 | \$ 5,633,399 | \$ 1,138,951 | \$ 572,601 | \$ 7,344,951 |
| 1970 | 6,513,389 | 1,342,138 | 684,536 | 8,539,953 |
| 1971 | 7,916,373 | 1,537,667 | 768,821 | 10,222,861 |
| 1972 | 8,700,095 | 1,782,315 | 882,241 | 11,364,651 |
| 1973 | 8,741,551 | 1,752,665 | 836,074 | 11,330,290 |
| 1974 | 7,981,170 | 1,832,283 | 831,407 | 10,644,860 |
| 1975 | 7,426,182 | 2,095,326 | 991,259 | 10,512,767 |
| 1976 | 6,277,419 | 4,190,100 | 1,101,191 | 11,568,711 |
| 1977 | 6,420,088 | 4,641,308 | 1,086,488 | 12,147,884 |
| 1978 | 7,101,322 | 5,098,427 | 1,197,836 | 13,397,585 |

TABLE 31
SUMMARY OF INSTITUTION ADMISSIONS
FISCAL 1969 - 1978

| Fiscal Years | Training School Admissions | | | Detention Center Admissions | Forestry Camp Admissions |
|--------------|----------------------------|------------|-------|-----------------------------|--------------------------|
| | Commitments | Detentions | Total | | |
| 1969 | 1,833 | 923 | 2,756 | 3,868 | 291 |
| 1970 | 1,822 | 912 | 2,734 | 4,441 | 318 |
| 1971 | 1,790 | 1,190 | 2,980 | 4,652 | 348 |
| 1972 | 1,801 | 1,843 | 3,644 | 4,131 | 288 |
| 1973 | 1,439 | 2,807 | 4,246 | 3,323 | 276 |
| 1974 | 1,131 | 4,118 | 5,249 | 2,440 | 278 |
| 1975 | 1,255 | 4,544 | 5,799 | 2,477 | 346 |
| 1976 | 1,338 | 2,640 | 3,978 | 3,797 | 283 |
| 1977 | 1,323 | 2,462 | 3,785 | 4,195 | 268 |
| 1978 | 1,161 | 2,308 | 3,469 | 4,178 | 235 |

TABLE 32
ADMISSIONS TO MARYLAND'S JUVENILE INSTITUTIONS
FISCAL YEAR COMPARISONS
1977 - 1978

| Institution | Fiscal Year 1977 | Fiscal Year 1978 | Percent Change |
|----------------------------|------------------|------------------|----------------|
| Maryland Training School | | | |
| Commitments | | | |
| Male | 723 | 624 | - 13.7 |
| Detentions | | | |
| Male | 2,115 | 1,820 | - 13.9 |
| Total Admissions | 2,838 | 2,444 | - 13.9 |
| Montrose School | | | |
| Commitments | | | |
| Male | 443 | 410 | - 7.4 |
| Female | 157 | 127 | - 19.1 |
| Detentions | | | |
| Male | 3 | 4 | + 33.3 |
| Female | 344 | 484 | + 40.7 |
| Admissions | | | |
| Male | 446 | 414 | - 7.2 |
| Female | 501 | 611 | + 22.0 |
| Total Admissions | 947 | 1,025 | + 8.2 |
| Boys' Village | | | |
| Detentions | | | |
| Male | 1,456 | 1,408 | - 3.3 |
| Total Admissions | 1,456 | 1,408 | - 3.3 |
| Boys' Forestry Camps | | | |
| Commitments | | | |
| Male | 268 | 235 | - 12.3 |
| Total Admissions | 268 | 235 | - 12.3 |
| Maryland Children's Center | | | |
| Male | 977 | 936 | - 4.2 |
| Female | 367 | 240 | - 34.6 |
| Total Admissions | 1,344 | 1,176 | - 12.5 |
| Waxter Children's Center | | | |
| Male | 940 | 881 | - 6.3 |
| Female | 455 | 92 | - 79.8 |
| Total Admissions | 1,395 | 973 | - 30.3 |
| Noyes Center | | | |
| Male | | 519 | |
| Female | | 102 | |
| Total Admissions | | 621 | |

TABLE 33

ADMISSIONS TO MARYLAND'S JUVENILE INSTITUTIONS
BY COUNTY OF RESIDENCE - FISCAL 1978

| | Maryland Training School | | Montrose School | | Forestry Camp Admissions | Boys' Village Admissions | Maryland Children's Center | Waxter Children's Center | Noyes Center |
|---|-----------------------------|-------------------------|------------------|----------------------|--------------------------------|--------------------------------|----------------------------------|--------------------------------|-----------------|
| | Committed | Detained | Committed | Detained | | | | | |
| Region 1. Dorchester Somerset Wicomico Worcester | 3 4 2 | 15 2 22 9 | 2 2 5 1 | 3 1 3 | 5 4 | | 3 7 13 | 4 8 | |
| Region 2. Caroline Cecil Kent Queen Anne's Talbot | 2 8 2 2 7 | 8 56 7 1 15 | 5 3 4 6 | 4 2 2 4 | 2 10 2 4 2 | | 7 5 2 2 5 | 4 17 3 1 | 1 |
| Region 3. Baltimore Harford | 33 10 | 107 33 | 29 16 | 27 5 | 13 8 | | 57 35 | 31 13 | 1 2 |
| Region 4. Allegany Garrett Washington | 4 1 20 | 1 1 2 | 4 14 8 | 1 9 | 7 4 14 | 1 | 17 9 18 | 1 2 17 | 8 13 57 |
| Region 5. Anne Arundel Carroll Howard | 28 7 1 | 10 26 2 | 12 2 2 | 32 5 14 | 21 6 1 | | 113 21 16 | 251 8 42 | |
| Region 6. Frederick Montgomery | 7 15 | 2 4 | 8 15 | 2 5 | 8 28 | | 17 86 | 8 61 | 26 513 |
| Region 7. Calvert Charles Prince George's St. Mary's | 6 4 42 2 | 1 1 12 2 | 15 65 3 | 1 15 117 16 | 1 4 36 8 | 25 74 833 38 | 6 37 166 22 | 7 43 1 | |
| Region 8. Baltimore City | 405 | 1462 | 312 | 160 | 42 | 1 | 508 | 303 | |
| Out-of-State | 9 | 21 | 3 | 6 | 5 | 386 | 4 | 148 | |
| Total | 624 | 1820 | 537 | 488 | 235 | 1408 | 1176 | 973 | 621 |

TABLE 34
ADMISSIONS TO MARYLAND TRAINING SCHOOL, MONTROSE SCHOOL,
BOYS' VILLAGE AND VICTOR CULLEN BY TYPE OF ADMISSION
FISCAL 1969 - 1978

| Year & Type of Admission | Maryland Training School | Montrose School | Boys' Village | Victor Cullen* | Total |
|--------------------------------|--------------------------------|--------------------|------------------|-------------------|-------|
| 1969 | | | | | |
| Commitments | 818 | 308 | 466 | 241 | 1,833 |
| Detentions | 493 | 211 | 219 | | 923 |
| Total | 1,311 | 519 | 685 | 241 | 2,756 |
| 1970 | | | | | |
| Commitments | 761 | 336 | 406 | 319 | 1,822 |
| Detentions | 429 | 302 | 181 | | 912 |
| Total | 1,190 | 638 | 587 | 319 | 2,734 |
| 1971 | | | | | |
| Commitments | 872 | 308 | 311 | 299 | 1,790 |
| Detentions | 655 | 362 | 173 | | 1,190 |
| Total | 1,527 | 670 | 484 | 299 | 2,980 |
| 1972 | | | | | |
| Commitments | 498 | 402 | 420 | 481 | 1,801 |
| Detentions | 759 | 437 | 535 | 112 | 1,843 |
| Total | 1,257 | 839 | 955 | 593 | 3,644 |
| 1973 | | | | | |
| Commitments | 336 | 326 | 382 | 395 | 1,439 |
| Detentions | 1,019 | 466 | 1,158 | 164 | 2,807 |
| Total | 1,355 | 792 | 1,540 | 559 | 4,246 |
| 1974 | | | | | |
| Commitments | 403 | 347 | 350 | 31 | 1,131 |
| Detentions | 2,472 | 599 | 960 | 87 | 4,118 |
| Total | 2,875 | 946 | 1,310 | 118 | 5,249 |
| 1975 | | | | | |
| Commitments | 659 | 519 | 77 | | 1,255 |
| Detentions | 3,048 | 408 | 1,088 | | 4,544 |
| Total | 3,707 | 927 | 1,165 | | 5,799 |
| 1976 | | | | | |
| Commitments | 670 | 668 | | | 1,338 |
| Detentions | 2,327 | 313 | 1,225 | | 3,865 |
| Total | 2,997 | 981 | 1,225 | | 5,203 |
| 1977 | | | | | |
| Commitments | 723 | 600 | | | 1,323 |
| Detentions | 2,115 | 347 | 1,456 | | 3,918 |
| Total | 2,838 | 947 | 1,456 | | 5,241 |
| 1978 | | | | | |
| Commitments | 624 | 537 | | | 1,161 |
| Detentions | 1,820 | 488 | 1,408 | | 3,716 |
| Total | 2,444 | 1,025 | 1,408 | | 4,877 |

*No longer a JSA facility.

CONTINUED

1 OF 2

TABLE 35

ADMISSIONS TO MARYLAND'S TRAINING SCHOOLS, FORESTRY CAMPS AND BOYS' VILLAGE
BY COUNTY OF RESIDENCE AND COUNTY OF ADMITTING COURT
FISCAL

| | Maryland Training School | | Montrose School | | Boys' Village | | Boys' Forestry Camps | |
|---|--------------------------|--------------------------|----------------------|----------------------|-----------------------|-------------------------|------------------------|------------------------|
| | County of Residence | Admitting Court | County of Residence | Admitting Court | County of Residence | Admitting Court | County of Residence | Admitting Court |
| Region 1. Dorchester Somerset Wicomico Worcester | 18 2 26 11 | 21 29 14 | 5 2 6 4 | 5 2 5 9 | | | 5 4 | 5 4 1 |
| Region 2. Caroline Cecil Kent Queen Anne's Talbot | 10 64 9 3 22 | 10 67 7 3 25 | 9 5 6 10 | 11 3 7 10 | | | 2 10 2 4 2 | 2 10 3 3 2 |
| Region 3. Baltimore Harford | 140 43 | 145 46 | 56 21 | 74 24 | | | 13 8 | 8 13 |
| Region 4. Allegany Garrett Washington | 5 2 22 | 9 5 24 | 5 14 17 | 6 15 11 | 1 | 1 | 7 4 14 | 7 4 15 |
| Region 5. Anne Arundel Carroll Howard | 38 33 3 | 43 35 3 | 44 7 16 | 52 9 20 | | | 21 6 1 | 21 6 2 |
| Region 6. Frederick Montgomery | 7 19 | 7 13 | 10 21 | 9 28 | | 1 | 8 28 | 8 29 |
| Region 7. Calvert Charles Prince George's St. Mary's | 7 5 54 4 | 7 4 58 5 | 1 30 182 19 | 3 30 195 19 | 25 74 883 38 | 27 68 1,244 38 | 1 4 36 8 | 1 5 37 8 |
| Region 8. Baltimore City | 1,867 | 1,863 | 472 | 477 | 1 | | 42 | 41 |
| Out-of-State | 30 | 1 | 63 | | 386 | 29 | 5 | |
| State | 2,444 | 2,444 | 1,025 | 1,025 | 1,408 | 1,408 | 235 | 235 |

TABLE 36
ADMISSIONS TO MARYLAND'S JUVENILE INSTITUTIONS
BY FACILITY AND OFFENSE
FISCAL 1978

| Offense | Maryland Children's Center | Waxter Children's Center | Boys' Village | Noyes Center | Maryland Training School | | Montrose School | | Boys' Forestry Camps |
|----------------------------------|----------------------------|--------------------------|---------------|--------------|--------------------------|------------|-----------------|------------|----------------------|
| | Evaluations | Detentions | Detentions | Detentions | Commitments | Detentions | Commitments | Detentions | Commitments |
| Arson | 27 | 4 | 4 | 2 | 6 | 19 | 7 | 2 | 1 |
| Assault | 153 | 99 | 108 | 56 | 103 | 386 | 84 | 73 | 23 |
| Auto Theft/Unauthorized Use | 75 | 118 | 134 | 68 | 70 | 181 | 37 | 27 | 29 |
| Burglary/Breaking & Entering | 178 | 216 | 331 | 74 | 155 | 403 | 100 | 34 | 65 |
| Larceny | 80 | 88 | 157 | 67 | 58 | 154 | 36 | 29 | 20 |
| Robbery | 55 | 52 | 58 | 29 | 37 | 51 | 27 | 5 | 6 |
| Disorderly Conduct | 30 | 16 | 16 | 7 | 5 | 45 | 8 | 21 | 4 |
| Sex Offense | 27 | 8 | 12 | 2 | 2 | 22 | 5 | 2 | |
| Vandalism | 38 | 23 | 37 | 15 | 7 | 33 | 11 | 13 | 5 |
| Narcotics Violation | 24 | 30 | 23 | 15 | 16 | 35 | 16 | 15 | 13 |
| Glue Sniffing/Other Inhalents | 8 | 3 | | | 2 | 14 | 3 | | 1 |
| Alcoholic Beverage Violation | 4 | 5 | 7 | 3 | 2 | | | 1 | 1 |
| Shoplifting | 50 | 63 | 295 | 36 | 28 | 86 | 34 | 84 | 7 |
| Purse Snatching | 5 | 4 | 7 | 1 | 13 | 42 | 5 | 2 | 4 |
| Firearms/Deadly Weapon Violation | 13 | 14 | 19 | 4 | 13 | 43 | 6 | 3 | 3 |
| Rec/Poss of Stolen Goods | 10 | 11 | 11 | 5 | 16 | 19 | 6 | 5 | 2 |
| Trespassing | 6 | 3 | 26 | 10 | 6 | 12 | 6 | 12 | 2 |
| False Fire Alarm | 2 | 3 | 2 | | | 10 | 2 | | |
| Runaway* | 47 | 4 | 5 | 20 | | 2 | | 23 | |
| Truancy* | 7 | | | 1 | | | | | |
| Ungovernable* | 145 | 1 | 2 | 2 | | | | | |
| Other | 92 | 158 | 80 | 134 | 28 | 189 | 46 | 101 | 16 |
| Dependency & Neglect | 12 | | | 3 | 1 | | | 2 | |
| Special Proceedings | 3 | 1 | 1 | 3 | | | | | 1 |
| Violation of Supervision* | 85 | 49 | 73 | 64 | 56 | 74 | 98 | 34 | 32 |
| TOTAL | 1,176 | 973 | 1,408 | 621 | 624 | 1,820 | 537 | 488 | 235 |

*Of these, 34 were detained less than 24 hours; therefore, these figures are not inconsistent with federal guidelines.

TABLE 37
ADMISSIONS TO MARYLAND'S TRAINING SCHOOLS,
FORESTRY CAMPS AND BOYS' VILLAGE BY AGE AND RACE
FISCAL 1978

| Race By Institution | Age of Juvenile | | | | | | | | | | | Total | |
|--------------------------|-----------------|----|----|----|-----|-----|-----|-----|-----|----|---------|--------|--------------|
| | Under 10 | 10 | 11 | 12 | 13 | 14 | 15 | 16 | 17 | 18 | Unknown | Number | Per- Cent |
| Maryland Training School | | | | | | | | | | | | | |
| White | | | 4 | 13 | 21 | 54 | 115 | 258 | 285 | 22 | 2 | 774 | 31.7 |
| Black | | 3 | 6 | 24 | 67 | 164 | 348 | 537 | 484 | 31 | 3 | 1,667 | 68.2 |
| Other | | | | | | | | 2 | 1 | | | 3 | .1 |
| Total | | 3 | 10 | 37 | 88 | 218 | 463 | 797 | 770 | 53 | 5 | 2,444 | 100.0 |
| Montrose School | | | | | | | | | | | | | |
| White | | | 6 | 12 | 44 | 115 | 159 | 72 | 56 | 3 | | 467 | 45.6 |
| Black | 1 | 4 | 4 | 25 | 65 | 150 | 168 | 76 | 60 | 1 | | 554 | 54.0 |
| Other | | | | 1 | 1 | | 1 | 1 | | | | 4 | .4 |
| Total | 1 | 4 | 10 | 38 | 110 | 265 | 328 | 149 | 116 | 4 | | 1,025 | 100.0 |
| Total Training Schools | | | | | | | | | | | | | |
| White | | | 10 | 25 | 65 | 169 | 274 | 330 | 341 | 25 | 2 | 1,241 | 35.8 |
| Black | 1 | 7 | 10 | 49 | 132 | 314 | 516 | 613 | 544 | 32 | 3 | 2,221 | 64.0 |
| Other | | | | 1 | 1 | | 1 | 3 | 1 | | | 7 | .2 |
| Total | 1 | 7 | 20 | 75 | 198 | 483 | 791 | 946 | 886 | 57 | 5 | 3,469 | 100.0 |
| Boys' Village | | | | | | | | | | | | | |
| White | | 1 | 3 | 12 | 32 | 78 | 104 | 145 | 126 | 18 | | 519 | 36.9 |
| Black | 2 | 10 | 13 | 33 | 55 | 122 | 221 | 211 | 195 | 22 | 1 | 885 | 62.8 |
| Other | | | | | | | 1 | 3 | | | | 4 | .3 |
| Total | 2 | 11 | 16 | 45 | 87 | 200 | 326 | 359 | 321 | 40 | 1 | 1,408 | 100.0 |
| Boys' Forestry Camps | | | | | | | | | | | | | |
| White | | | | | | 1 | 34 | 68 | 63 | 6 | | 172 | 73.2 |
| Black | | | | | | | 11 | 28 | 19 | 4 | | 62 | 26.4 |
| Other | | | | | | | | | 1 | | | 1 | .4 |
| Total | | | | | | 1 | 45 | 96 | 83 | 10 | | 235 | 100.0 |

TABLE 38
COMMITMENTS TO MARYLAND'S TRAINING SCHOOLS
AND FORESTRY CAMPS BY LENGTH OF STAY (BASED ON RELEASES)
FISCAL 1978

| Length of Stay (Months) | Maryland Training School | Montrose School | Boys' Forestry Camps | Total |
|-------------------------|--------------------------|-----------------|----------------------|-------|
| 0-1 | 71 | 20 | 5 | 96 |
| 2 | 12 | 21 | 6 | 39 |
| 3 | 30 | 30 | 2 | 62 |
| 4 | 42 | 30 | 15 | 87 |
| 5 | 94 | 40 | 13 | 147 |
| 6 | 80 | 44 | 17 | 141 |
| 7 | 76 | 48 | 34 | 158 |
| 8 | 56 | 47 | 31 | 134 |
| 9 | 47 | 34 | 21 | 102 |
| 10 | 24 | 31 | 25 | 80 |
| 11 | 27 | 21 | 16 | 64 |
| 12 | 22 | 20 | 9 | 51 |
| 13 | 15 | 15 | 11 | 41 |
| 14 | 7 | 16 | 8 | 31 |
| 15 | 8 | 7 | 5 | 20 |
| 16 | 5 | 8 | 6 | 19 |
| 17 | 10 | 7 | 1 | 18 |
| 18 | 2 | 6 | 2 | 10 |
| Over 18 | 19 | 22 | 9 | 50 |
| Average Length of Stay | 7.1 | 8.5 | 9.1 | 8.4 |

TABLE 39
AVERAGE LENGTH OF STAY FOR DETENTIONS
IN MARYLAND'S JUVENILE INSTITUTIONS
FISCAL 1978

| Institution | Total Releases | Average Length of Stay (Days) |
|----------------------------|----------------|-------------------------------|
| Maryland Training School | 1,874 | 11 |
| Montrose School | 438 | 15 |
| Boys' Village | 1,349 | 14 |
| Maryland Children's Center | 1,182 | 21 |
| Waxter Children's Center | 973 | 12 |
| Moyes Center | 606 | 12 |
| Total | 6,422 | 14 |

TABLE 40
ADMISSIONS TO MARYLAND'S CHILDREN CENTERS
BY CENTER AND SEX
FISCAL 1969 - 1978

| Year and Sex | Maryland Children's Center | T. J. S. Waxter Children's Center | Total |
|-------------------|----------------------------------|---|-------|
| Fiscal 1969 | | | |
| Male Admissions | 868 | 1,748 | 2,616 |
| Female Admissions | 311 | 941 | 1,252 |
| Total | 1,179 | 2,689 | 3,868 |
| Fiscal 1970 | | | |
| Male Admissions | 861 | 2,112 | 2,973 |
| Female Admissions | 332 | 1,136 | 1,468 |
| Total | 1,193 | 3,248 | 4,441 |
| Fiscal 1971 | | | |
| Male Admissions | 933 | 2,154 | 3,087 |
| Female Admissions | 3330 | 1,235 | 1,565 |
| Total | 1,263 | 3,389 | 4,652 |
| Fiscal 1972 | | | |
| Male Admissions | 1,021 | 1,884 | 2,905 |
| Female Admissions | 334 | 892 | 1,226 |
| Total | 1,355 | 2,776 | 4,131 |
| Fiscal 1973 | | | |
| Male Admissions | 973 | 1,189 | 2,162 |
| Female Admissions | 325 | 836 | 1,161 |
| Total | 1,298 | 2,025 | 3,323 |
| Fiscal 1974 | | | |
| Male Admissions | 938 | 818 | 1,756 |
| Female Admissions | 295 | 389 | 684 |
| Total | 1,233 | 1,207 | 2,440 |
| Fiscal 1975 | | | |
| Male Admissions | 980 | 906 | 1,886 |
| Female Admissions | 338 | 253 | 591 |
| Total | 1,318 | 1,159 | 2,477 |
| Fiscal 1976 | | | |
| Male Admissions | 927 | 894 | 1,821 |
| Female Admissions | 369 | 382 | 751 |
| Total | 1,296 | 1,276 | 2,572 |
| Fiscal 1977 | | | |
| Male Admissions | 977 | 940 | 1,917 |
| Female Admissions | 367 | 455 | 822 |
| Total | 1,344 | 1,395 | 2,739 |
| Fiscal 1978 | | | |
| Male Admissions | 936 | 881 | 1,817 |
| Female Admissions | 240 | 92 | 332 |
| Total | 1,176 | 973 | 2,149 |

TABLE 41

ADMISSIONS TO MARYLAND'S CHILDREN CENTERS
BY COUNTY OF RESIDENCE AND COUNTY OF ADMITTING COURT
FISCAL 1978

| | Maryland Children's Center | | Waxter Children's Center | | Total | |
|--------------------------|----------------------------|---------------------------|--------------------------|---------------------------|---------------------|---------------------------|
| | County of Residence | County of Admitting Court | County of Residence | County of Admitting Court | County of Residence | County of Admitting Court |
| Region 1. Dorchester | 3 | 3 | 4 | 3 | 7 | 6 |
| Somerset | 7 | 7 | 8 | 7 | 15 | 14 |
| Wicomico | 13 | 13 | | | 13 | 13 |
| Worcester | | | | | | |
| Region 2. Caroline | 7 | 7 | 4 | 4 | 11 | 11 |
| Cecil | 5 | 6 | 17 | 31 | 22 | 37 |
| Kent | 2 | 2 | 3 | 3 | 5 | 5 |
| Queen Anne's | 2 | 1 | | | 2 | 1 |
| Talbot | 5 | 5 | 1 | 2 | 6 | 7 |
| Region 3. Baltimore | 57 | 52 | 31 | 39 | 88 | 91 |
| Harford | 35 | 37 | 13 | 19 | 48 | 56 |
| Region 4. Allegany | 17 | 17 | 1 | 3 | 18 | 20 |
| Garrett | 9 | 9 | 2 | 2 | 11 | 11 |
| Washington | 18 | 18 | 17 | 16 | 35 | 34 |
| Region 5. Anne Arundel | 113 | 116 | 251 | 293 | 364 | 409 |
| Carroll | 21 | 21 | 8 | 8 | 29 | 29 |
| Howard | 16 | 18 | 42 | 52 | 58 | 70 |
| Region 6. Frederick | 17 | 17 | 8 | 9 | 25 | 26 |
| Montgomery | 86 | 87 | 61 | 88 | 147 | 175 |
| Region 7. Calvert | 6 | 6 | | 1 | 6 | 7 |
| Charles | 37 | 37 | 7 | 6 | 44 | 43 |
| Prince George's | 166 | 167 | 43 | 74 | 209 | 241 |
| St. Mary's | 22 | 23 | 1 | 1 | 23 | 24 |
| Region 8. Baltimore City | 508 | 507 | 303 | 312 | 811 | 819 |
| Out-of-State | 4 | | 148 | | 152 | |
| STATE | 1,176 | 1,176 | 973 | 973 | 2,149 | 2,149 |

TABLE 42
ADMISSIONS TO MARYLAND'S CHILDREN CENTERS
BY AGE AND RACE
FISCAL 1978

| Age | Maryland Children's Center | | | | Waxter Children's Center | | | | Total | | | |
|----------------|----------------------------|-------|-------|-------|--------------------------|-------|-------|-------|-------|-------|-------|-------|
| | Black | White | Other | Total | Black | White | Other | Total | Black | White | Other | Total |
| Under 10 Years | 1 | 3 | | 4 | 5 | 1 | | 6 | 6 | 4 | | 10 |
| 10 Years | 5 | 4 | | 9 | | | | | 5 | 4 | | 9 |
| 11 Years | 10 | 8 | | 18 | 2 | 3 | | 5 | 12 | 11 | | 23 |
| 12 Years | 28 | 30 | | 58 | 15 | 8 | | 23 | 43 | 38 | | 81 |
| 13 Years | 56 | 75 | 1 | 132 | 20 | 25 | | 45 | 76 | 100 | 1 | 177 |
| 14 Years | 99 | 134 | 1 | 234 | 52 | 70 | | 122 | 151 | 204 | 1 | 356 |
| 15 Years | 141 | 167 | 3 | 311 | 102 | 120 | 3 | 225 | 243 | 287 | 6 | 536 |
| 16 Years | 92 | 154 | | 246 | 118 | 158 | | 276 | 210 | 312 | | 522 |
| 17 Years | 66 | 95 | 1 | 162 | 96 | 155 | | 251 | 162 | 250 | 1 | 413 |
| 18 Years | | 2 | | 2 | 4 | 12 | | 16 | 4 | 14 | | 18 |
| unknown | | | | | 3 | 1 | | 4 | 3 | 1 | | 4 |
| Total | 498 | 672 | 6 | 1,176 | 417 | 553 | 3 | 973 | 915 | 1,225 | 9 | 2,149 |
| Percent | 42.4 | 57.1 | 0.5 | 100.0 | 42.9 | 56.8 | 0.3 | 100.0 | 42.6 | 57.0 | 0.4 | 100.0 |

FEDERAL GRANTS

TABLE 43
FEDERAL GRANTS IN OPERATION
DURING FISCAL 1978
By Program Area

With the assistance of the Governor's Commission on Law Enforcement and the Administration of Justice, Federal funds were provided under the Omnibus Crime Control and Safe Streets Act of 1973 for the following on-going programs during fiscal 1978.

| Juvenile Court Services | LEAA | STATE* |
|--|-----------|----------|
| Diagnostic and Treatment Services (Eastern Shore) | \$ 5,730 | \$ 636 |
| Community Services | LEAA | STATE* |
| Community Arbitration Program (Baltimore County) | \$ 98,885 | \$10,987 |
| Experimental School—Juvenile Counselor for Delinquent Youth | 43,964 | 4,830 |
| Twenty-four Hour Intake Coverage Program (Region V) | 56,500 | 6,278 |
| Transportation Corps—Eastern Shore | 68,103 | 7,560 |
| Non-Residential Care Supplemental Project (Prince George's County) | 82,915 | 9,213 |
| Community Diversion Youthful Offenders (Prince George's County) | 120,000 | 13,393 |
| Urban County House Detention (Prince George's County) | 57,200 | 6,355 |
| | \$527,567 | \$58,616 |
| Institutional Rehabilitation | LEAA | STATE* |
| Cumberland Center—Detention Hold over Facility | \$ 67,237 | \$ 7,471 |
| Institutional Community Placement (Montrose School) | 19,789 | 2,204 |
| | \$ 87,026 | \$ 9,675 |
| Multi-Functional | LEAA | STATE* |
| Training of Trainers and Management Level Training Project | \$ 49,400 | \$ 5,489 |
| Group Home Evaluation System Development Project | 49,288 | 5,476 |
| Staff Training in Alcohol Training | 7,499 | 833 |
| Night Intake Community System (Baltimore County, City and Prince George's County) | 1,796 | 199 |
| Night Communication System (Washington and Somerset Counties) | 1,091 | 121 |
| | \$109,074 | \$12,118 |
| TOTAL | \$729,397 | \$81,045 |

*This State must contribute in cash a portion of the total cost of all projects funded by the Governor's Commission.

TABLE 44
NUMBER OF YOUTH SERVED BY FEDERAL GRANTS
Fiscal 1978

| Federal Grant | Male | Female | Total |
|--|------|--------|-------|
| Community Services: | | | |
| Community Arbitration Program (Baltimore County) | 976 | 325 | 1,301 |
| Experimental School—Juvenile Counselor for Delinquent Youth | 96 | 13 | 109 |
| Twenty-four Hour Intake Coverage Program (Region V) | 615 | 347 | 962 |
| Transportation Corps—Eastern Shore | 225 | 67 | 292 |
| Non-Residential Care Supplemental Project (Prince George's County) | 18 | 9 | 27 |
| Community Diversion Youthful Offenders (Prince George's County) | 206 | 37 | 243 |
| Urban County House Detention (Prince George's County) | 155 | 11 | 166 |
| Institutional Rehabilitation: | | | |
| Cumberland Center—Detention Holdover Facility | 113 | 53 | 166 |
| Institutional Community Placement (Montrose School) | 67 | 10 | 77 |

END