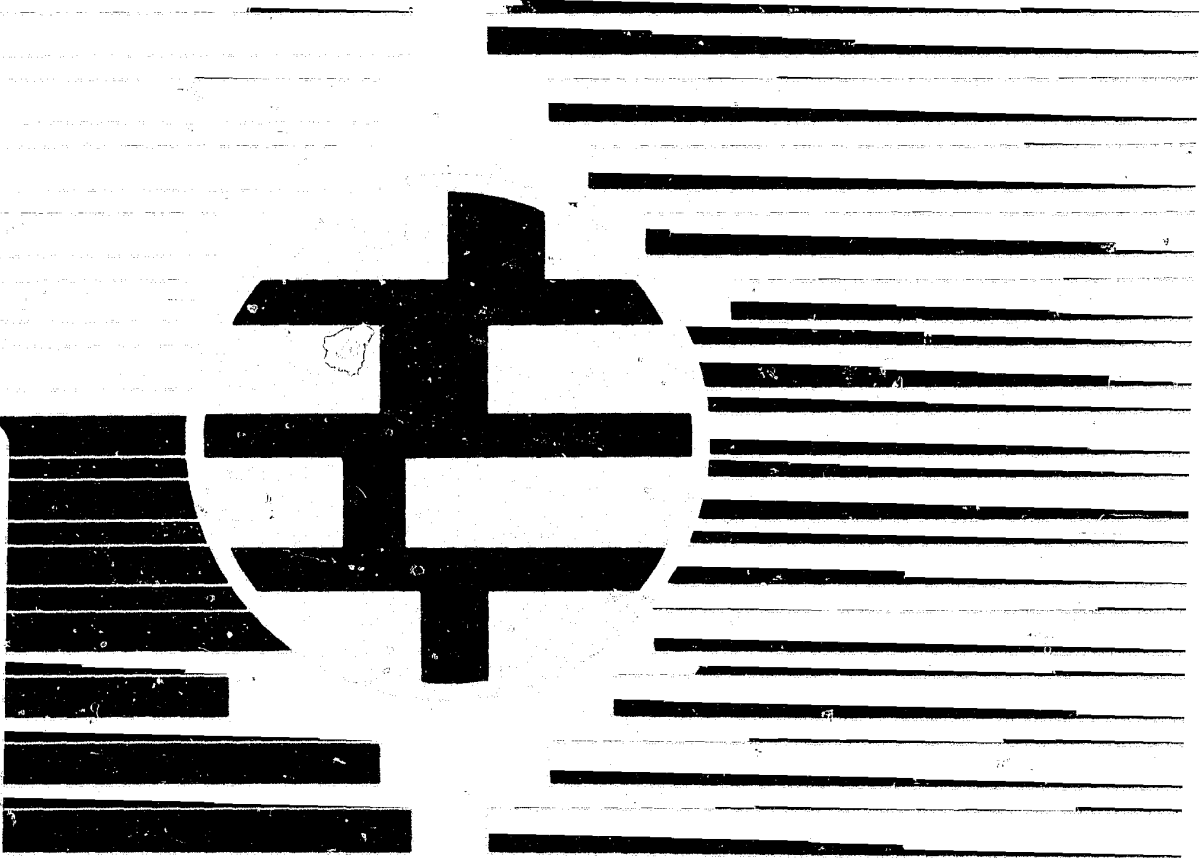


STATISTICAL ANALYSIS CENTER

59167



A Guide To The Sources of Data
On Criminal Cases Processed In
The Cook County Circuit Court

December 1, 1978

Revised June 27, 1979

By Karen P. Smith
and
James Zuehl

Statistical Analysis Center

CRIMINAL JUSTICE INFORMATION SYSTEMS
J. David Coldren, Director

ILLINOIS LAW ENFORCEMENT COMMISSION
Daniel W. Weil, Chairman
Samuel Buckwalter, Acting Executive Director

NCJRS

JUL 11 1979

ACQUISITIONS

TABLE OF CONTENTS

Introduction	1
The Organization of the Cook County Circuit Court	1
Description of the Illinois Court System	2
Description of the Circuit Court of Cook County	3
Summary	11
The Processing of Felony Cases in Cook County Circuit Court	12
Processing of Felony Cases Begun in the County Department	15
Summary	18
The Clerk's Office and the Nature of Court Records	20
The Organization and Role of the Clerk's Office	20
Description of the Clerk's Manual Record System	21
The Development of the Clerk's Computer System	24
Current Operation of the Clerk's Information System (CIS)	26
CIS Statistical Reports	31
Current Operation of the County Felony System (CFS)	33
Criminal Division (CFS) Statistical Reports	34
Summary	36
Appendix A Branch Court Locations in Municipal Department, Assigned Judges and Courtrooms in County Department	
Appendix B Sample Monthly Statistical Reports Produced by the Administrative Office of the Illinois Courts	
Appendix C Listings of Disposition Codes for Clerk's Information System and County Department Computer System	
Appendix D Samples of Criminal Division Reports	

INTRODUCTION

As part of its continuing effort to upgrade the quality and availability of criminal justice data in Illinois, the Statistical Analysis Center (SAC) presents the following report on data maintained by the Circuit Court of Cook County. Because Cook County processes by far the largest number of criminal cases in Illinois, it was selected as the starting point for a statewide project on the availability of Courts data. This preliminary report is designed to aid the researcher or policy maker interested in studying cases processed in the Cook County Court.

In three sections, the report provides a brief and basic guide to the formal organization of the Court, discusses in somewhat greater detail the procedures by which criminal cases are presented, and examines at length the sources of useful data which are currently generated by or are available through the court system. In addition, the four appendices to this report contain several samples of the forms used and the statistical reports regularly produced by the courts.

THE ORGANIZATION OF THE COOK COUNTY CIRCUIT COURT

Any study which contemplates the use of Cook County courts data must begin with an understanding of how the court system operates. Structurally, the Cook County criminal court system is the only one of its kind in the state of Illinois, and a full description of the court's intricacies is beyond the scope of this report. Instead, the following section will give the reader a basic introduction to the formal aspects of criminal court organization in Cook County.

Description of the Illinois Court System

Overall administrative control of the courts in Illinois is vested in the Supreme Court of the state. The court carries out this responsibility through its Administrative Office which is directly responsible to the Chief Justice. Although the mandate of the office is rather loosely defined (Administrative Office of the Illinois Courts, 1977: 78), at least one of its major activities is of substantial interest to researchers.

This is the collection and compilation of statistics concerning the number, kinds and dispositions of cases in the various components of the judicial system. To facilitate this process, the office solicits monthly reports from the clerks of the various courts in the state, compiles and in some cases transforms them, and publishes them in the form of a yearly report. In addition, a monthly summary of Cook County statistics is compiled and submitted to the judges of the court. Sample monthly reports are shown in Appendix B.¹

The Circuit Courts are the courts of general jurisdiction, the trial courts, for virtually all legal proceedings in Illinois. Civil and criminal cases are disposed of in the Circuit Courts, on the basis of the evidence in such matters. Cases in which retrials have been granted are also handled by the Circuit Courts. Appeals from Circuit Court decisions must be based on procedural issues, and go either to the Illinois Appellate Court (the 'intermediate court of appeals) or directly to the Illinois Supreme Court. Of the twenty-one judicial circuits in Illinois, only two consist of a single county, the 18th Circuit (Du Page County) and the Cook County Circuit; all others contain two or more contiguous counties.

¹The form and content of these monthly reports has recently changed. Appendix B contains a monthly report for June of 1977, and a report in the new form for February, 1979. Anthony Valaika of the Administrative Office of the Illinois Courts deserves our gratitude for supplying the new report and other helpful information regarding the data maintained by his office.

Immediate administrative control over the operation of a Circuit Court is delegated to the Chief Judge, who is elected by and serves at the pleasure of the judges of the court. The role of Chief Judge does not appear to be clearly defined, although it seems to have considerable influence over the assignment of judges, budgetary matters, changes in the organization and procedures of the court, appointment of the Public Defender, and negotiations between the judiciary and other branches of government. The Chief Judge in Cook County is Harry G. Comerford.

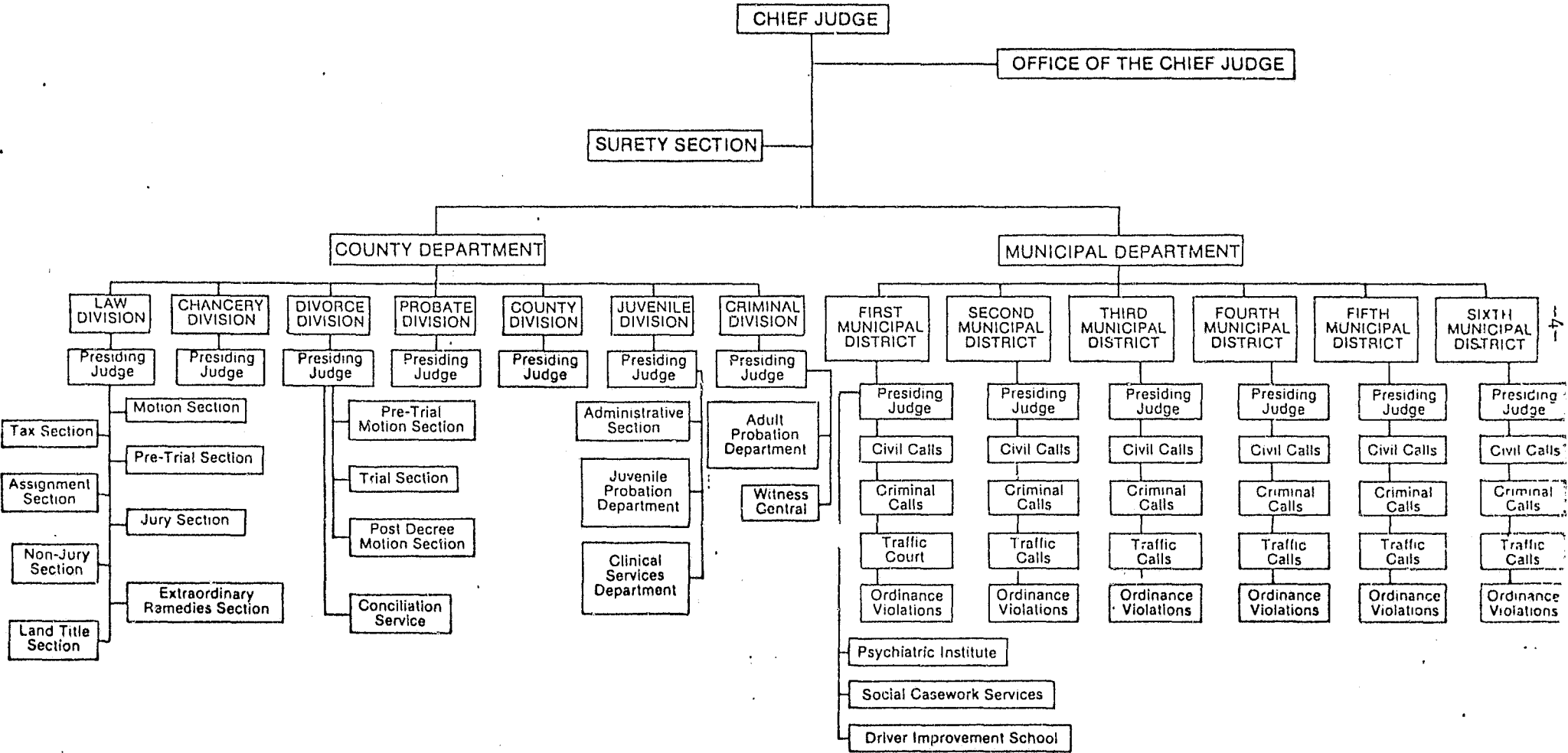
Description of the Circuit Court of Cook County

The organization of the Circuit Court in Cook County, illustrated in Figure 1, is unique in the state and complicates the work of the researcher. The basic difference between this and the other circuits is that it is divided into two departments, each of which handles criminal cases, and each of which is a distinct administrative unit. The major divisions of the Cook County Circuit Court are the Municipal Department and the County Department.

The Municipal Department handles a wide variety of civil cases as well as traffic offenses, misdemeanors, and a large number of felony cases. The County Department encompasses five Civil Divisions, the Juvenile Division, and the Criminal (or Felony) Division. As will be discussed in the next section of this report, felonies may be initiated by several methods in either the Municipal or the County Department. Therefore, the researcher must become familiar with these differing processes and the data collection and analysis problems which they present.

FIGURE 1

CIRCUIT COURT OF COOK COUNTY



Source: Administrative Office of the Illinois Courts, 1977 Annual Report to the Supreme Court of Illinois

The Municipal Department is subdivided into six Municipal districts, each of which is administered by a presiding judge. These districts are geographically based as illustrated in Figure 2; the First District is the city of Chicago, and Districts Two through Six cover the suburban area. The Districts are in turn subdivided into Branches, largely on the basis of the types of cases they handle.² Appendix A lists the locations of the Branches which make up the First Municipal District.³

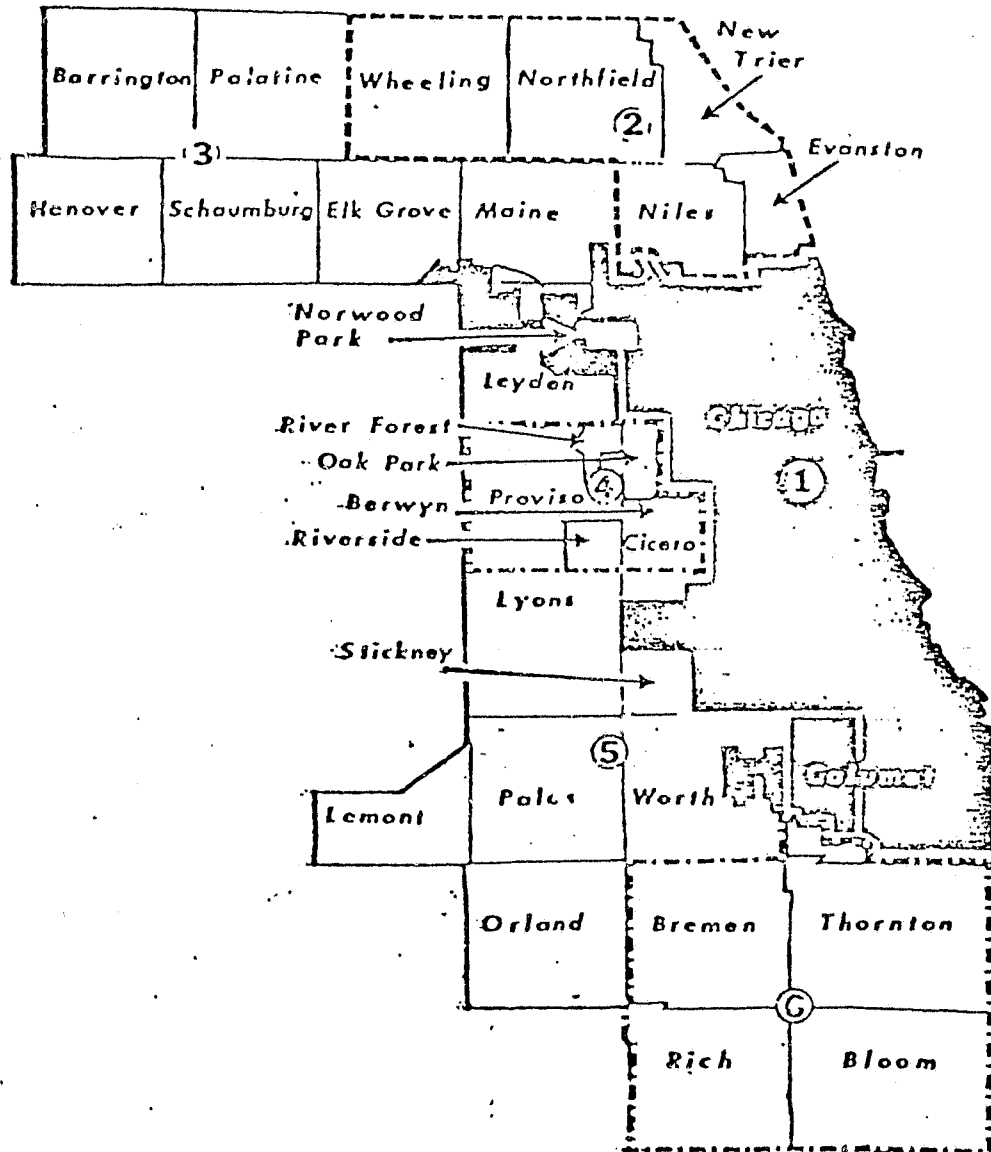
The First District differs from the suburban districts in that no felony trials are heard there. Preliminary hearings are held in all Municipal Districts, but in the First District only those felony cases in which the defendant enters a guilty plea, or which are dismissed are disposed of in the Municipal District. Felony trials from District One take place in the County Department Criminal Division. Felony trials are held in the suburban districts, but at the option of the state's attorney, a trial can be transferred to the County Department Criminal Division. This option is frequently exercised when a notorious case is involved.

Unlike the geographically-based districts of the Municipal Department, divisions in the County Department are defined by the types of cases which they handle. Hence, within the County Department, the Criminal Division handles only felony cases, and the branches or courtrooms which make up the

²Actually, the specialization of judges and courtrooms is more prevalent in the First District than any of the others since the volume of cases in the city is much higher than in the suburban districts. Figures for criminal cases begun in 1977 indicate that nearly 6 times as many criminal cases were begun in the 1st District (301,603) as in all the suburban districts combined (51,022) (Administrative Office of the Illinois Courts, 1977: 181). This difference in volume leads to some differences in record keeping which will be discussed later in this report.

³These branch court locations, and the judges assigned to the Criminal Division courtrooms may have changed since this list was published. The lists are included here only to demonstrate the number and functions of these branches and courtrooms.

FIGURE 2
COOK COUNTY CIRCUIT COURT - MUNICIPAL DISTRICTS



MUNICIPAL DISTRICTS OF THE CIRCUIT COURT OF COOK COUNTY.

Source: Community Education on Law and Justice. League of Women Voters, 1975 "Criminal Justice Study Manual,"

Criminal Division sometimes specialize in particular felony cases. Appendix A contains a listing of the Criminal Division courtrooms and the judges assigned to them.⁴

By virtue of their locations, the Criminal Division Branches tend to specialize according to defendants' custody status. Because of their proximity to the county jail, the branch courts in the Criminal Courts Building at 26th and California deal mainly with defendants in custody. Defendants who are out on bond are assigned primarily to courtrooms in the Daley Center. Newly-constructed courtrooms at 1340 S. Michigan were designed to specialize in the processing of recidivists' cases; these courtrooms typically handle in-custody defendants.

For statistical reporting of Cook County Circuit Court activity, the Administrative Office of the Illinois Courts receives separate monthly reports from the clerks of each of the Districts in the Municipal Department and each of the Divisions in the County Department. In terms of criminal cases, the reports focus on the total number of cases processed, backlogs, felonies disposed of at the municipal level and at the county level, and the major categories of dispositions (e.g., conviction or acquittal by plea, bench trial or jury trial). Figure 3 presents a sample report from the Criminal Division of the County Department to the Administrative Office.⁵

The Annual Report of the Administrative Office of the Illinois Courts gives somewhat more detailed information, particularly regarding the operation

⁴See footnote 3 on previous page.

⁵The content and format of this report may change with the unification of data processing in the Cook County Circuit Court under the Clerk's Information System. See "The Clerk's Office and the Nature of Court Records."

of the Criminal Division (see pages 180-201 of the 1977 Report). Here, statistics are classified by type of offense, disposition, and sentence. The annual report takes about nine to ten months after the first of the year to be completed and published. The monthly summaries done for the Cook County Circuit Court (illustrated in Appendix B) are prepared by the Administrative Office within three or four weeks after the end of the month.

FIGURE 3
SAMPLE MONTHLY REPORT FROM COOK COUNTY
CRIMINAL DIVISION TO ADMINISTRATIVE OFFICE

IN THE CIRCUIT COURT OF COOK COUNTY
 CRIMINAL DIVISION, COUNTY DEPARTMENT

STATISTICAL REPORT FOR JUNE, 1977
 (month)

REPORT 4-CR

Trend of Cases Charging Defendants With Offenses In the Criminal Division

Cases Commenced By	Cases Pending at Start of Period	Cases Filed During Period	Cases Reinstated During Period	Cases Disposed Of During Period	Cases Pending at End of Period
Indictment	3487	211	43	512	3229
Information	3436	331	2	510	3259
Total	6923	542	45	1022	6488

REPORT 5-CR

Disposition of Defendants During The Period

1. Number of Defendants Disposed of During The Period Where Charge was Commenced By:

(A) Indictment	<u>663</u>
(B) Information	<u>647</u>
Total*	<u>1310</u>

*Total of item 1 must equal totals of items 2 and 3.

2. Number of Defendants Not Convicted During The Period:

Charge Commenced By	Dismissal By			Acquitted By		Unfit to be Tried/Sexually Dangerous
	SOL	Writs Prossed	Other Discharge	Court	Jury	
Indictment	111	38	87	62	9	1
Information	53	37	43	38	8	7
Totals	164	75	130	100	17	8

3. Number of Convicted Defendants Sentenced During The Period:

Charge Commenced By	Convicted By		
	Guilty-Plea	Court	Jury
Indictment	305	35	15
Information	396	50	15
Totals	701	85	30

4. Number of Writs and Petitions Filed & Disposed of During The Period:

	Number of Writs & Petitions	
	Filed	Disposed of
Habeas Corpus	11	8
Post-Conviction	9	5
Modify/Revoke Probation, Conditional Discharge, or Periodic Imprisonment	X	
Expungement	X	
		65
		148

5. Number of Defendants Remanded from Reviewing Court for Resentencing only: 42

FIGURE 3 (CONT'D)

REPORT 5A--CR

IN THE CRIMINAL DIVISION, COUNTY DEPARTMENT, CIRCUIT COURT OF COOK COUNTY

TYPE OF SENTENCE* IMPOSED ON DEFENDANTS

DURING JUNE, 1977

Sentence Imposed	INF.	Number of Defendants
(1) Death		
(2) Imprisonment (Ill. Dept. Corrections)	291	208
(3) Imprisonment (Ill. Dept. Corrections) and Fine		
(4) Periodic Imprisonment (Ill. Dept. Corrections)		
(5) Periodic Imprisonment (Ill. Dept. Corrections) and Fine		
(6) Periodic Imprisonment (Cook Co. Dept. Corrections)		
(7) Periodic Imprisonment (Cook Co. Dept. Corrections) and Fine		
(8) Probation only--No Discretionary Conditions	113	98
(9) Probation and Periodic Imprisonment		
(10) Probation and Jail	48	36
(11) Probation and Fine		
(12) Probation, Periodic Imprisonment and Fine		
(13) Probation, Jail and Fine		
(14) Probation and Other Discretionary Conditions		
(15) Conditional Discharge only--No Discretionary Conditions	2	6
(16) Conditional Discharge and Periodic Imprisonment		
(17) Conditional Discharge and Jail		
(18) Conditional Discharge and Fine		
(19) Conditional Discharge, Periodic Imprisonment and Fine		
(20) Conditional Discharge, Jail and Fine		
(21) Conditional Discharge and Other Discretionary Conditions		
(22) Jail only	7	6
(23) Fine only		1
(24) Jail and Fine		
(25) Unfit to be Sentenced	7	1
(26) Other (specify)		
TOTALS	468	356

*Do not include sentences imposed on probation revocation hearings and sentences imposed after remandment from reviewing court for resentencing.

Summary

While the rest of Illinois is divided into judicial circuits which handle all types of legal matters, Cook County is a special case. The Cook County Circuit Court is divided into a Municipal and a County Department. The two Departments are subdivided geographically and/or functionally, as follows: Municipal District One covers Chicago only, and Districts Two through Six cover the Cook County suburbs. These Municipal courts process all kinds of cases, including felonies, though District One handles felonies to disposition only if there is a plea or dismissal. The County Department takes in the whole county, but its criminal caseload is confined to felonies; it functions as the trial court for all felony cases from Municipal District One and for some cases transferred from the suburbs.

The next section of this report will describe the actual processing of felony cases in Cook County Circuit Court, to prepare the researcher for working with the different methods of record-keeping employed by the two Departments.

THE PROCESSING OF FELONY CASES IN COOK COUNTY
CIRCUIT COURT

Criminal cases are of three types: felony, misdemeanor and quasi-criminal (ordinance violations). Of these three, felonies are the most serious and present the greatest procedural complexities. Because of these factors and because felonies invoke the greatest public interest, this report will deal primarily with the manner in which felony matters are processed in Cook County. Only those procedures which are common to most cases and which are likely to be of interest to most researchers are discussed.

PROCESSING OF FELONY CASES BEGUN IN THE MUNICIPAL DEPARTMENT

Most felony cases in Cook County begin with an arrest by the local (city) police department. Occasionally, cases begin with an indictment by the (county) Grand Jury, followed by sheriff's arrest. In the typical felony case, the defendant's first court appearance takes place in a branch court of the Municipal Department. This "initial appearance" must take place "without unnecessary delay." (Illinois Revised Statutes, 1975, Ch.38, sec. 109-1).

Usually, arrestees are brought before the nearest judge within a few working hours of the arrest. The purposes of the initial appearance are to advise defendants as to the charges being brought against them and of their right to counsel, and to set bail.⁶ The judge may also proceed with the "preliminary examination" at this point, reviewing the State's evidence to determine whether there is probable cause to believe the defendant has committed an offense.

⁶ For misdemeanors, bail is usually set by the desk sergeant at the lockup, in accordance with guidelines set by the Illinois Supreme Court.

Usually, however, the "preliminary examination" or "probable cause hearing" will take place at the defendant's second court appearance. Such hearings are required by Illinois statute in all felony cases begun by complaint (after arrest with or without a warrant) or information (issued by the State's Attorney), but may be waived by the defendant. All other felony cases must proceed by grand jury indictment unless the defendant "understandingly waives" this requirement. Hence, the usual procedure in Cook County is for the police to file a complaint in the Municipal Department; the judge then rules on the probable cause issue and either sends the case on to the Grand Jury for indictment, or dismisses the case.

The State's Attorney may also file an information against the defendant or seek an indictment at any point in this process, especially if the judge finds "no probable cause." More often than not, though, the prosecutor will drop such cases or wait for further police investigation. Either defense or prosecution may choose to dispose of cases in the Municipal Department by guilty plea or dismissal, and in Districts Two through Six, felony cases may be tried in the Municipal Department. Thus relatively few felonies ever reach the County Department. The researcher who wants to study felony court processing in Cook County should be aware that the more accessible County Department data present only a partial picture, without the Municipal Department data which are much harder to obtain. The County Department data reflect only those cases which either bypassed the Municipal Department (direct grand jury indictments) or survived the Municipal Department's screening process.

To summarize, there are a number of possible paths which felony cases begun in the Municipal Department may take:

- 1) Defendant waives the right to a preliminary hearing and pleads guilty to the complaint or information, and is sentenced in the Municipal Department.

- 2) Judge finds probable cause to hold defendant for prosecution by indictment, but defendant pleads guilty to the complaint or information, and is sentenced in the Municipal Department.
- 3) Judge finds no probable cause to hold defendant, and State's Attorney or defendant moves to dismiss the charge. Case is disposed of in the Municipal Department.
- 4) Judge finds no probable cause but State's Attorney seeks an indictment from the grand jury. If an indictment is returned, case may be disposed of in Criminal Court (County Department).
- 5) Felony charges are reduced to misdemeanors and defendant pleads guilty or demands trial. Case disposed of in the Municipal Department.
- 6) Judge finds probable cause to hold defendant, and case is referred to grand jury which will probably return an indictment. Case may be disposed of in Criminal Court (County Department).
- 7) Judge finds probable cause against one of several defendants but not against others. State's Attorney takes the whole case to grand jury, which may return indictments against any or all defendants. If indictments result, case may be disposed of in Criminal Court (County Department).
- 8) Defendant waives the preliminary hearing, or requests a continuance at the preliminary hearing when the State is ready to proceed. State's Attorney may take the case to the grand jury for indictment, or proceed on an information. Case may be disposed of in Criminal Court (County Department).

It should be noted that these paths may be and frequently are terminated by a guilty plea resulting from a negotiated settlement between the defendant and the State's Attorney.

Processing of Felony Cases Begun In the County Department

The workload of the Cook County Grand Jury has decreased significantly since October 1975 when a change in the law governing the use of informations allowed prosecutors to bring cases to trial by information rather than by seeking indictments. Previously, informations could substitute for indictments only when the defendant agreed to plead guilty. Now that the grand jury has fewer cases before it, the State's Attorney's office in turn has greater flexibility to use either method of initiating prosecution. This has resulted in the practice of seeking indictment as a way of speeding disposition where the defendant has postponed the preliminary hearing.

The deliberations of the grand jury can result in any one of three possible outcomes. The jury can return an indictment (true bill); it can refuse to indict (no bill); or it can recommend that the case be treated as a misdemeanor and send it back to the Municipal Department. A prosecutor wishing not to prosecute must make that intention clear in court by moving to dismiss the charge; the prosecutor cannot stop the processing of the case informally.⁷

⁷There are three forms of dismissal on motion of the State, and although the Administrative Office of the Illinois Courts does not count them separately, the Clerk's records show them as "S.O.L." (Striken with Leave to Reinstate), "DWP" (Dismissed for Want of Prosecution) and "Nolle Pros" (short for Nolle Prosequi, indicating the prosecution will proceed no further). See Appendix C for a full listing of disposition codes used in the Municipal and County Departments.

The first step in the processing of a case in the County Department is arraignment. At the arraignment, the judge simply reads the formal charges to the defendant and asks for the defendant's plea in response. But because this highly routine procedure is the first stage in the trial process where the defendant must plead, defendants are usually represented by an attorney at this point. Bail must also be reset for the proceeding in the County Department, since bail set in the Municipal Department applies only to proceedings at that level and is technically refundable when those proceedings are complete. Probably the most frequent outcome of the bail setting process is for bail to be held over from the Municipal Department. Motions for reduction or elimination of bail are usually postponed until after the case has been assigned to a trial judge. Once the case has been assigned to a new judge, it is often possible for the bail motion to be heard on that same day. In the County Department all arraignments are heard by the presiding judge, Judge Fitzgerald. He assigns cases to the other judges based on the decision of a computer which combines random selection with the satisfaction of certain geographical and court room specialization requirements.

After the arraignment, the typical felony case proceeds by way of negotiation between the State's Attorney and defense attorney. From this point on, disposition of the case depends on the many factors which influence the choices between quick and slow adjudication. In Cook County, the majority of felony charges are disposed of by dismissal or guilty pleas, leaving a small percentage which go to trial and most of those are decided by a County Department judge rather than by a jury. Dismissed charges may be reinstated later, depending on the type of dismissal employed, but guilty plea cases are completed as soon as the judge determines that the

defendant has entered the plea voluntarily. In very rare instances, a tried case may be retried in the County Department, but usually the final judgement signals the close of the case at that level.

Summarizing seven possible paths which felony cases begun in the County Department may take:

- 1) At arraignment on the indictment, defendant pleads guilty (with or without the advice of counsel) to the charges named. This is a rare occurrence, as counsel is required to be appointed at this stage if the defendant has not retained a lawyer. The established practice is for defendants to plead not guilty, and to ask for a continuance, to afford time for consultation between client and counsel.

- 2) At arraignment, defendant pleads not guilty and case is assigned to a particular judge for adjudication later:
 - a. Prosecutor and defense attorney negotiate as to what charges may be dropped or sentence offered in exchange for defendant's plea of guilty. They reach an agreement, which is then ratified by the judge assigned to the case, and defendant pleads guilty accordingly.
 - b. Same as 2a.) above but defendant does not agree to plead and demands trial. After numerous continuances, the State's case becomes weaker and a more attractive sentence offer induces defendant to plead guilty. Case is disposed of by plea.
 - c. Same as 2a.) above, but no satisfactory agreement is reached at any time up until the trial date. However, in the course of the trial, defendant reconsiders and decides to plead guilty after all. Case is disposed of by plea.

- d. Same as 2b.)above, but the weakness of the State's case instead strengthens defendant's resolve to go to trial, and State moves to dismiss the charges. Case is disposed of by dismissal.
- e. The charge is a very serious one (e.g., murder) and defendant asserts his or her innocence, and/or the State's sentence offer is no more appealing than the sentence expected on conviction; no agreement is reached at any point. Case proceeds to trial, and defendant is convicted; the defense moves for a new trial, and the motion is denied or (infrequently) granted. If motion is denied, the case is closed in the Circuit Court; if granted, it must be retried in the Circuit Court.
- f. Same as 2e.)above, but defendant is acquitted. Case is closed in the Circuit Court.

Summary

The purpose of this section was to guide the reader through the two-level system of processing felony cases in Cook County. Most cases enter the courts at the Municipal District level, via police complaint. In the Municipal District, bond is set, and preliminary hearings are held to determine whether there is probable cause to bind defendants over for trial and final adjudication. Many cases are dismissed and many others are disposed of by trial or guilty plea in a Municipal District, so they never go to the County Department.

Felony cases from Municipal District One, and some felony cases from Districts Two through Six are transferred to the County Department Criminal Division, also called Felony Court, for trial. Defendants are asked to

plead to the charges; generally, plea negotiations begin after a plea of not guilty. From this point, cases may be settled through plea bargaining, dismissed on motion of the State, or tried by a judge or jury.

In the next sections, the Clerk's office will be described and its manual and computerized record-keeping systems will be explained.

THE CLERK'S OFFICE AND THE NATURE OF COURT RECORDS

The Organization And Role of The Clerk's Office

The Clerk of the Circuit Court is responsible for keeping the records of the court. To accomplish this task, the Clerk's office is organized along lines which reflect the organization of the court. For instance, one subdivision of the Clerk's office keeps the records of the Criminal Division, and each of the districts of the Municipal Department has its own office.

The records of the court are of two types, legal and management; both are useful for research purposes. The former involves the case document file which is kept on each case brought before the court. Each case must have a complete written record of each legal event which takes place throughout its processing. This record is kept in a file maintained by the Clerk's office. The file must be in the courtroom whenever the case is brought before the court, and is updated by the clerk in the courtroom after each appearance. These records provide the legal record of the case for use on appeal or in pursuit of other legal remedies; it must be maintained for several years after the case's final disposition. The structure of this file will be discussed shortly.

The second type of record maintained by the Clerk's office is statistical in nature and is kept primarily for management purposes. Certain aggregate figures regarding the number, kind and disposition of cases brought before the court are generated on a regular basis. In addition to being supplied to the Administrative Office of the Illinois Courts, these figures are used in reports published directly by the Clerk's office.

They are also distributed to the court and to governmental and non-governmental agencies concerned with the operation of the judicial system.

Description of The Clerk's Manual Record System

Probably the most common source of data for studying criminal case processing is the case document file. The case file is a legal document and is likely to be the most complete source of information on the events involved in the processing of a case. As a source of research data its completeness is a significant advantage. In many Circuit courts outside of Cook County, where automated data processing systems are unavailable, it is the only source of individual case level data. It also has disadvantages which can make computerized data more attractive.

A significant disadvantage in Cook County is the case file's complexity and frequent illegibility. Documents are often not arranged in chronological order, and when located, may be difficult to read. At best, obtaining information in this fashion can be time-consuming, even if all the needed files are readily available.

If research focuses on pending cases, availability of files can also become a problem. Files may be located in the courtroom where the case is being handled rather than in a central location. The substantial time consumed in using case files almost always necessitates sampling, and without a computerized listing of cases, it is often difficult to generate a sample having the particular characteristics in which the researcher is interested.

Despite these limitations, and despite the existence of computerized records in Cook County, the case file remains the only source of certain kinds of information. For example, the computer record does not contain data on when the defendant demands trial, or consistent records of the

amounts of bail set, or whether or not bond is made. In studies requiring information such as this, computerized records can still be extremely helpful since they can assist in defining a sample and can supply a good deal of the necessary information. The case file generally consists of the following documents:

- Arrest Report
- Complaint

Both of these documents are supplied by the arresting agency. They describe the alleged criminal acts of the defendant, detail the charges, and give demographic information about the defendant.

- Preliminary Hearing Court Sheet
- D Bond

These documents are issued by the Municipal Department during the initial stages of the case's processing. The court sheet documents all dispositions in that Department. A bond sheet will only be present if bond is made.

- Witness Memorandum

This document is prepared by the State's Attorney office when the case is initiated in the County Department and summarizes much of the important information found in the other sources listed here.

- Court Order Sheet or "Half Sheet"

Used by the clerk in the courtroom to document all dispositions and court orders.

- Indictment or Information

These documents are prepared by the State's Attorney office.

In many cases, needed information can be obtained from more than one document. The following information can be obtained from any of the listed documents:

Indictment Date	-	Witness Memo Indictment Order
Information Date	-	Witness Memo Information Order
Offense	-	Witness Memo Arrest Report D Bond (yellow sheet)
Date of Birth (age)	-	Witness Memo Arrest Report D Bond (yellow sheet)
Sex	-	Witness Memo Arrest Report D Bond (yellow sheet)
Race	-	Witness Memo Arrest Report
IR# (Incident ⁸ Report Number)	-	Witness Memo Arrest Report
Date of Probable Cause Finding	-	Witness Memo Preliminary Hearing Court Sheet - back of complaint

⁸ An identifying number used by the Chicago Police Department.

Branch - Witness Memo
Preliminary Hearing Court Sheet - judge's name

Arrest Date - Witness Memo
Indictment
Information

Case files are stored for a number of years in a vault at the Criminal Division Clerk's office at 26th and California. Access to the vault is controlled, but may be obtained through the Clerk's office. Limited work space is available in the vault for research purposes. Files are arranged by case number, and an alphabetical index of case numbers is available. Case files are also color-coded for identification. The location of missing files is noted through the use of markers where the missing files should be.

The Development Of The Clerk's Computer Systems

The extremely large volume of criminal cases processed by the Cook County Circuit Court (it is thought to be one of the largest in the world) led in 1966 to the experimental use of computers for immediate court management purposes in the Municipal Departments. A record of each criminal case, focusing primarily on the next court date and location, was entered into the computer by way of batch-processed punched cards. This facilitated the production of daily court sheets for each courtroom. The court sheets listed the cases which were scheduled days before the court date telling the Clerk's office which case files to have ready for which locations.

In 1971, a private consulting firm (Touche, Ross & Co.) was commissioned, with the support of a grant from the Illinois Law Enforcement Commission (ILEC), to design a more comprehensive and versatile computer system.

They supplied a rather intricate design called the Clerk's Information System (CIS), which has to date been only partially implemented. Failure of the projected system to be implemented on schedule may have been the result, in part, of an overly complex and ambitious design.

Implementation of the CIS began in the First District of the Municipal Department around 1973 and followed within about six months in the other districts. In the estimation of one employee in the Clerk's office, however, the data did not become fairly reliable until 1975.

It soon became clear that a total implementation of the CIS would take some time to accomplish. To meet the short-term needs of the Criminal Division, a temporary computerized data processing system was designed and initiated in 1972. This second system will be referred to in this report as the County Felony System (CFS). The CFS did not have the capabilities of the CIS for immediate retrieval of data; nonetheless, it facilitated the production of a number of useful statistical reports and handled such functions as the production of daily court sheets.

In the years since their introduction, both the CIS and CFS have probably improved in efficiency and reliability; at least, those individuals associated with the systems believe this to be true. However, the existence of two separate data processing systems creates substantial problems for the researcher. Each system is discussed in detail below, but a general problem is the lack of an interface between them. When a felony case leaves the Municipal Department and is bound over to the County Department, the CIS record is terminated and a new record is begun in the CFS. The new record is given a new number and nowhere in the record does the old Municipal number appear. No list of cross-referenced numbers is available, and the

two computer systems are not directly linked. The result of this division is that it is currently impossible through any single computer report to obtain a complete record of the processing of any felony case that was initiated at the Municipal level.

A unification of the Municipal and County criminal records in one data processing system would rectify this problem. This would be accomplished by the implementation of the full CIS design and is a goal which the Clerk's office has long sought to attain. According to the statistician for the Administrative Office of the Courts, the initial steps toward unification have recently been taken. Computer programs and report formats for the Criminal Division are being developed, and the full conversion should occur in 1979.

Current Operation of The Clerk's Information System (CIS)

Information regarding the processing of felony, misdemeanor, and quasi-criminal cases in the Municipal Department is currently being handled by the Clerk's Information System (CIS). The system in its present state has the capacity to store and integrate information about each criminal case from arrest to final disposition in the Municipal Department or until the case is transferred to the Criminal Division of the County Department. Although the system was originally designed to have parallel on-line and off-line components, only the on-line component is currently in use. To say that the system operates on-line means that information is stored in a manner which allows it to be immediately retrieved in visual or printed form. The visual display of information is accomplished through the use of screens

called cathode ray tubes (CRT) which are attached to terminals. These terminals are also used for entering data and are located in the offices of the district clerks.

Information is stored in the CIS by "case" and by charge. In all Municipal Districts, an attempt is made to group all charges and defendants involved in a single incident into a single case. "Case" in this sense means all charges arising from one incident. This case is given a single number and all records are associated with and identified by that number. All charges and defendants involved in a single incident are identified by one case number, but individual charges against each defendant within the case are identified as well. Each charge is given its own number for the purpose of generating court sheets and statistical reports. That is, all available CIS statistical reports reflect charges, not cases. In this way, felonies, misdemeanors and other categories of offenses can be counted separately.

A computer record of a case is established through a process which the Clerk's office calls "Initiation." Initiation means that a Clerk's office employee enters basic information about the defendant and the charge onto the computer by means of a CRT. In Chicago (District One), the information is taken from documents supplied to the Clerk's office by the police agency which is filing the complaint. Suburban Districts Two through Six initiate computerized case records using more information (input) than the complaint. They enter data from the complaint and usually from the arrest report or arrest card as well. The following information typically forms the basis for case initiation in the Clerk's computer system for Districts Two through Six:

- Defendant's Name
- Case Initiation date
- Arrest date
- Booking number (Arresting agency)
- Sex
- Race
- Address
- Height/Weight
- Eye/Hair color
- Complexion
- Arresting Agency Code
- Charge(s)
- Bond number and amount if bond is made (nothing is recorded if bond is not made)
- Next Court date, time and location

Once the computer record is initiated when a complaint is filed, the CRT operator updates the record after each subsequent court appearance. Information regarding the disposition of the case and the scheduling of the next court date and location are communicated to the operator by the clerk in the courtroom, through the use of a Daily Court Sheet (illustrated in Figure 4). The court sheets for each courtroom list the cases which appeared in the courtroom that day and their dispositions and schedulings. Codings are done on certain items, such as the dispositions and judges, by a coder working with the CRT operator. These sheets are then used directly by the operator to update records. Disposition codes are listed in Appendix C.

Circuit Court of Cook County, Illinois

HEADING		ROOM	SHEET	DATE	CALL	JUDGE										
CASE NUMBER	DEF CHRG NO	NAME OF DEFENDANT BOARD NUMBER - AMOUNT	ARREST DATE	SEX	AGE	DEPTS	IDENT. NUMBER	NAME OF ATTORNEY DISPOSITION	PREVIOUS LOC. - DATE	LINE	NEW COURT DATE	DISP. CODE	TRANSACTION NUMBERS	CASH	EX PARTE	BOND AMOUNT
1										1						
2										2						
3										3						
4										4						
5										5						
6										6						
7										7						
8										8						
9										9						
10										10						
11										11						
12										12						
13										13						
14										14						
15										15						
16										16						
17										17						
18										18						
19										19						
20										20						
21										21						
22										22						
23										23						
24										24						
25										25						
26										26						
27										27						
28										28						
29										29						
30										30						
31										31						
32										32						
33										33						
34										34						
35										35						

CRIMINAL COURT SHEET

FIRST MUNICIPAL DISTRICT DAILY COURT SHEET

FIGURE 4

Under the current CIS arrangement, case initiation differs between the city and suburban districts because the First District must handle such a large volume of cases. In order to process the Chicago cases more quickly, streamlined procedures for case initiation were introduced in the First District. Instead of using the more detailed complaints and arrest records as the suburban districts do, the First District initiates cases using "transmittal lists," which are simply the lists which the police send to the courts to inform them of the names and charges of defendants to be brought to court. This procedure saves considerable time, but limits the amount of information available to the CRT operator (and therefore the researcher), as the following listing demonstrates.⁹

- Defendant's Name
- Chicago booking number and numbers of other defendants being charged in the incident
- Charge
- Case Initiation date
- Arrest date
- Identification (IR) number (from Chicago Police Identification Department fingerprint file)

Once a case has received a final disposition, a computer record is maintained in the on-line file for a short time before being transferred to a storage tape. Cases which are discharged are maintained for a minimum of 30 days, while those involving orders which may be reinstated are maintained for 90 days. Old cases are purged from the active file and placed on a

9

Actually, more extensive case initiation procedures would be wasteful for the 1st District to utilize, at least with regard to felony cases, until the pending unification of the CIS and CFS systems takes place. When the proposed unification takes place, the First District plans to expand its felony case initiation process to the fuller version. After unification, then, a rather complete computer record of the processing of felony cases will be available to the researcher.

storage tape approximately once a month. The storage tape is called a Case History Tape and will be maintained permanently.¹⁰ This means that the researcher can be fairly sure that case history information exists on tape for all felony cases which began in the Municipal Department processing in 1975 or later.

CIS Statistical Reports

If the data entry process in District One is any indication, the reliability of CIS data is probably very high. A daily printout of all data entered into the system is produced and checked against the previous day's court sheets. Errors are corrected immediately by the CRT operator who made the error. Of course, mistakes made in the court sheets themselves cannot be easily monitored and appear not to be formally checked, although errors detected by the courtroom clerk at a subsequent appearance can be corrected at that time.

Besides the daily court sheets and pull lists, the Municipal Department system produces one basic monthly report, a breakdown by branch and district of the major dispositions of cases. The report gives totals for both current month and the year-to-date. This is a modification of an earlier report which did not break down the case by type, e.g., preliminary hearing, misdemeanor and traffic. For an example of each report, see Figure 5.

CIS is programmed to produce a wide variety of other reports which are not currently being generated. These reports apparently have little value for the internal management of the Clerk's office; because of this and because of the limited demand for them, it is probably inefficient for the Clerk's office to produce these reports.

¹⁰Starting November 1977, certain of these tapes are being "purged" periodically. For misdemeanors and preliminary hearings, the tapes will be purged every ten (10) years, and for city ordinances, every five (5) years.

FIGURE 5
SAMPLE MONTHLY REPORTS FROM
CLERK'S INFORMATION SYSTEM (CIS)

EARLIER FORMAT

DISTRICT 1		CLERK OF THE CIRCUIT COURT OF COOK COUNTY			
BRANCH 149		DISPOSITION REPORT			
		CURRENT MONTH		YEAR TO DATE	
DISPOSITION CODE	DESCRIPTION	TOTAL	FINE	COST	TOTAL FINE
1	FINE	14			14
2	COUNTY DEPT. OF CORR	18			18
4	PROBATION	36			36
5	DISCHARGED	36			36
6	LFD	392			392
7	S-D-I.	250			250
8	NON-SUIT	75			75
9	DWP	3			3
10	NOLLE PRDS	13			13
11	OTHER	6			6
12	CONTINUANCES	652			652
14	WARRANTS	66			66
15	APPEALS AND PROBABLE CAUSE	24			24
16	SUPERVISION	6			6
19	TOTAL NEW CASES/CHARGES	1,096			1,096
TOTAL BRANCH		2,689			2,689

CURRENT FORMAT

3473/77		CLERK OF CIRCUIT COURT OF COOK COUNTY		
DISTRICT 1		REPORT FOR MONTH OF -- 04/77		
DISPOSITION	PRELIM HEARINGS	MISDEMEANORS	TRAFFIC	
FINE	14	458	2	
COUNTY DEPT. OF CORR	77	637	3	
STATE DEPT. OF CORR.	11	4		
PROBATION	144	237		
DISCHARGED	497	1619	7	
LFD	7	5065		
S.G.L.	813	4420	98	
NON-SUIT	8	3683	107	
DWP		1637		
NOLLE PRDS	401	245	8	
OTHER	13	192	1	
CONTINUANCES	5971	16230	913	
WARRANTS	436	2012	17	
APPEALS AND PROBABLE CAUSE	419	52	3	
SUPERVISION	3	106	1	
PRELIMINARY HEARINGS/CHARGES	2188			
TRAFFIC CASES/CHARGES			1496	
CRIMINAL CASES/CHARGES		21855		
TOTAL NEW CASES/CHARGES	2188	21855	1496	

The CIS also produces a yearly case history report on all cases initiated, which is similar to that of the CFS system (see below); a twice-yearly alphabetical index of case listings, and a monthly alphabetical word index. A monthly alphabetical index of all cases purged from the active file is planned. This will be superseded every six months by a microfiche record. Also, a monthly breakdown of dispositions by crime type is contemplated, although the charge categories which will be used have not yet been decided. Copies of CIS reports are available through Bob Grossman, Chief Deputy Clerk of the First Municipal District.

Current Operation of the County Felony System (CFS)

There are two basic differences between the CIS (Municipal) and CFS (County) systems. The first involves their content. The CIS documents the processing of cases in the Municipal Department while the CFS serves the same function for the county Department. The second difference concerns how they work. The CIS is an on-line system where information can be added to and retrieved from the file instantaneously. The CFS is off-line, i.e., data are entered in batches by data cards and can only be accessed through reports.

Either system can be used as a source of research data, but the fact that the records of many cases are divided between two systems is troublesome. The source of the trouble lies in the fact that it is not easy to integrate the two separate sets of information. All information is organized by case and identified by case number, but the case number changes when the defendant is transferred within the court from the Municipal to the County Department. Although records include names in both systems, duplicate names will cause difficulty in linking records, and linking records is precisely what will need to be done where the research interest involves studying the processing of all felony cases.

The basic unit of analysis for the County system is the case. A "case" is treated in the Criminal Division as all charges arising out of a single incident. This is the same definition as that used by the Municipal Department. When an information is filed by the State's Attorney, or an indictment is returned by a grand jury, the case is given a number by the Clerk's office. Both a physical file and the computer file are labeled and indexed by that number. The computer file is started with very little information, almost all of which is taken from the indictment or information when it arrives in the Clerk's office. This includes the defendant's name, the charge, the arraignment date, judge and location. The defendant's police identification (IR) number is also sometimes included. Additional information about the case is contained in a document prepared by the State's Attorney for the grand jury; this "Witness Memorandum" is available at the time of case initiation, but generally is not used. See Appendix C for disposition codes.

New information is added to the Criminal Division's computer record following each court appearance. Information regarding dispositions, next court date, location and judge are recorded on Daily Court Sheets by the clerk in each courtroom. This information is placed on code sheets (called transmittal lists) and sent to the central data processing office at the Daley Center for key punching and cardbatch input into the computer.

The County Department computer maintains a file of active cases which is purged of cases approximately six months after their disposition. Purged cases are transferred to a Case History File for permanent storage.

Criminal Division (CFS) Statistical Reports

In contrast to the Municipal system, a number of reports are currently

being generated by the County computer system. Most of these reports are produced monthly, and are listed below. Appendix D contains an example of each report, except the first. Please note that the format and content of these reports will change with the unification of court recordkeeping under the CIS.

- 1) CRFL 020; Case History Report (weekly and yearly). The yearly report contains the date, location and disposition of all court appearances for all cases pending or disposed of during the calendar year. The contents of the weekly report are more problematic. Not all previous appearances are shown and it is not possible to determine which are excluded.
- 2) CRFL 072; Summary of Indictments, Reinstatements and Disposals (weekly). This report gives weekly and year-to-date totals of the number of cases and defendants by type of case.
- 3) CRFL 074 (874); Report of Indictments (weekly). This report gives the number of indictments disposed by judge during the past week, the past month, and the year-to-date. The difference between 074 and 874, if any, is unknown.
- 4) CRFL 078; Criminal Division Statistical Report by Charge (monthly). Gives the number of informations, indictments and defendants by charge for the month and year-to-date.
- 5) CRFL 080; Statistical Report by Judge and Disposition (monthly). Shows the number of each type of disposition per judge for this month, last month, and year-to-date.
- 6) CR 090; Statistical Report by Charge and Disposition (monthly). Dispositions by charge are shown for each judge.

- 7) CR 198; Modified Case History Report (monthly). Shows cases disposed of and defendants sentenced during the month.

Very limited copies of these reports are printed. A complete set is kept at the Criminal Division Clerk's office at 26th and California, and access can be obtained through that office.

SUMMARY

This section has outlined the organization of the Cook County Circuit Court Clerk's office. The structure tends to follow that of the Circuit Court generally, with the County Department and Municipal Department maintaining separate records and submitting separate reports. Samples of regular forms and reports produced by the computer systems are presented in the text and appendices.

Each Department has the usual manual record-keeping system involving updating and storage of individual case files, which are official legal documents. The courts also maintain a certain amount of statistical information, which they use for management or administrative purposes. The case files are still the most complete, if cumbersome, record of court dispositions in Cook County.

The Municipal Department instituted an automated record-keeping system (CIS) in the First Municipal District in 1973, and later in the suburban districts. There are some differences between the city and suburban systems, particularly in the amount of data they record.

The chief problem for the researcher is that the Municipal and County computer systems are not linked directly; therefore it is not yet possible to get a single computer record of any felony case which went through both court systems.

Appendix A

BRANCH COURT LOCATIONS IN MUNICIPAL DEPARTMENT
ASSIGNED JUDGES AND COURTROOMS IN COUNTY
DEPARTMENT

BRANCH COURT LOCATIONS - FIRST MUNICIPAL DISTRICT
CRIMINAL DEPARTMENT

-38-

BRANCH 5

Room 1410 Daley Center
Randolph & Clark 443-8260

BRANCH 20 - 21

Room 1402 Daley Center
Randolph & Clark 443-8268

BRANCH 25

Room 102 - 26th. & California
542-3373

BRANCH 26

Room 1100 - 1121 S. State
443-8033

BRANCH 27

Room 1 - 3151 W. Harrison
443-4653

BRANCH 28

2nd. floor - 100 S. Racine
443-8038

BRANCH 29

Room 1 2452 W. Belmont
443-4698

BRANCH 30

Room 1109 - Daley Center
Randolph & Clark - 2:00 PM
443-4532

BRANCH 31

Room 1109 - Daley Center
Randolph & Clark - 9:30 AM
443-4532

BRANCH 33

2nd. floor - 113 W. Chicago
443-8035

BRANCH 34

Room 101 - 151 W. 51st. St.
443-8842

BRANCH 38

2nd. floor - 8855 S. Exchange
443-6308

BRANCH 40

Room 800 - 1121 S. State St.

BRANCH 41

Room 900 - 1121 S. State -443-8024

BRANCH 42

Room 2 - 2452 W. Belmont Ave.
443-4577 - 78

BRANCH 43

2nd. floor - 937 N. Wood St.
443-4652

BRANCH 44

Room 402 - 2600 S. California Ave.
542-3207

BRANCH 46

Room 9 - 321 N. La Salle St.
443-6026

BRANCH 48

Room 2 - 151 W. 51st. St.
443-8843

BRANCH 49

2nd. floor - 6100 S. Racine Ave.
443-8046

BRANCH 57

Room 101 - 2600 S. California Ave.
542-3072

BRANCH 58

Room 1401 - Daley Center - 2:00 PM
443-8277

BRANCH 59

Room 1401 - Daley Center - 2:00 PM
443-8277

BRANCH 60

937 N. Wood St. - 2nd. floor
443-8041

BRANCH 64

Room 1000 - 1121 S. State St.
443-8258

BRANCH 65

Room 800 - 1121 S. State St.
443-8021

-#2.
BRANCH COURT LOCATIONS

BRANCH 66

Room 502 - 2600 S. California
542-3193

BRANCH 68

Room 1104 - Daley Center
Randolph & Clark - 9:30 AM
443-4546

BRANCH 69

Room 1401 - Daley Center
443-4538

BRANCH 91

Room 1303 - Daley Center
443-8144 - 45

BRANCH 95

Room 102 - 321 N. La Salle St.
2:00 PM 443-6030

BRANCH 96

2nd. floor. - 321 N. La Salle St.
443-6055

BRANCH 97

Room 1408 - Daley Center
9:30 AM 443-8262

BRANCH 98

2nd. floor - 937 N. Wood St.
11:00 AM 443-8041

BOND WRITING FACILITIES

Night Bond Facilities
2600 S. California Ave.

8:30 AM to 10:00 PM

542-3155

Night Bond Facilities
Room 1100 - 1121 S. State St.

443-8034

8:00 PM to 3:00 AM

Day Bond Facilities
Room 1100 - 1121 S. State St.

443-8034

SUPERVISOR: 1121 S. State St. 443-8034

2600 S. California 542-3155

COURTROOM LOCATIONS, ASSIGNED JUDGES, AND TYPICAL CUSTODY STATUS OF DEFENDANTS - THE CRIMINAL DIVISION OF THE CIRCUIT COURT OF COOK COUNTY

CRIMINAL COURTS BUILDING- MAINLY DEFENDANTS IN CUSTODY BECAUSE OF PROXIMITY TO JAIL. ALL COURTS HAVE PUBLIC DEFENDERS.

JUDGE RICHARD J. FITZGERALD.	404
JUDGE FRANCIS J. MAHON	400
JUDGE FRANK W. BARBARO	500
JUDGE JAMES BAILEY	504
JUDGE FRANK J. WILSON	506
JUDGE LOUIS B. GARIPPO	600
JUDGE FRED G. SURIA, JR.	602
JUDGE WILLIAM COUSINS, JR.	604
JUDGE JOHN J. MORAN	606
JUDGE FRANK B. MACHALA	700
JUDGE R. EUGENE PINCHAM	702
JUDGE JAMES E. STRUNCK	704
JUDGE EARL E. STRAYHORN	706

RICHARD J. DALEY CENTER-MAINLY DEFENDANTS THAT ARE OUT ON BOND. PUBLIC DEFENDERS IN COURTS IN PARENTHESES.

JUDGE BENJAMIN MAC. OFF	1510
JUDGE WARREN D. WOLFSON	1503
JUDGE BRIAN DUFF	1504
JUDGE DANIEL J. WHITE	(1505)
JUDGE MARK E. HONES	1506
JUDGE ROBERT L. MASSEY	1510
JUDGE KENNETH R. WENDT	(2105)
JUDGE LOUIS A. WEXLER	2106
JUDGE AUBREY F. KAPLAN	(2303)
JUDGE DANIEL J. RYAN	2304
JUDGE ROBERT COLLINS	2307
JUDGE ALBERT GREEN	(2309)

MAYBROOK COURTS BUILDING-HAS BOTH ON BOND AND IN CUSTODY DEFENDANTS WITH PUBLIC DEFENDERS IN ALL COURT ROOMS. Most cases here arise out of Police Areas 3 or 4 ARRESTS.

JUDGE ROBERT J. SULSKI	J 101
JUDGE VINCENT BENTIVENGA	F 105
JUDGE ADAM N. STILLO	E 106
JUDGE ROGER KILEY	D 107
JUDGE ANTHONY J. SCOTILLO	C 108

1340 S. MICHIGAN COURT-HAS MAINLY IN CUSTODY DEFENDANTS. THERE ARE ALSO 3 COURTROOMS DESIGNATED AS RECIDIVIST COURTS. ALL COURTROOMS HAVE PUBLIC DEFENDERS.

JUDGE GARLAND W. WATT	201
JUDGE JOHN A. NORDBERG	202
JUDGE HOWARD MILLER (RECIDIVIST)	203
JUDGE ROBERT L. SKLODOWSKI	501
JUDGE THOMAS FITZGERALD (RECIDIVIST)	502
JUDGE GEORGE MAROVICH	503
JUDGE THOMAS CAWLEY	601
JUDGE LAWRENCE I. GENESEN	602
JUDGE THEODORE SWAIN	701
JUDGE SYLVESTER CLOSE (RECIDIVIST)	702
JUDGE ROMIE PALMER	703

Appendix B

SAMPLE MONTHLY STATISTICAL REPORTS
PRODUCED BY THE ADMINISTRATIVE OFFICE
OF THE ILLINOIS COURTS



ADMINISTRATIVE OFFICE OF THE ILLINOIS COURTS

ROY O. GULLEY
DIRECTOR
SUPREME COURT BUILDING
SPRINGFIELD 62706

30 NORTH MICHIGAN AVENUE
CHICAGO 60602

April 16, 1979

To the Chief Judge and the Judges of the Circuit Court of Cook County:

Enclosed herewith is the February, 1979 statistical report for the Circuit Court of Cook County.

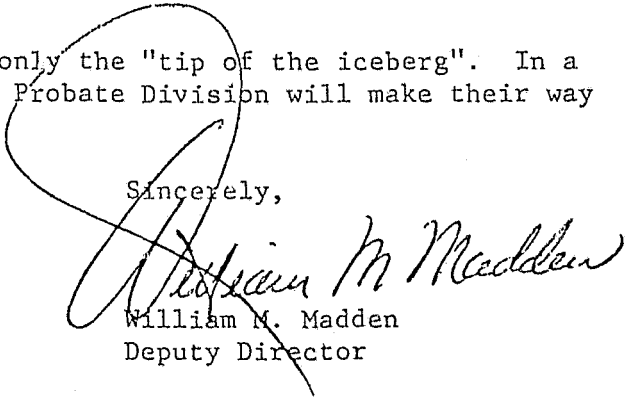
Probate

The first "fruits" of the complex physical inventory taken in the Probate Division have been realized. For the month of February, 1979 - 1,778 cases were reported terminated. This figure reflects the largest number of cases closed in any one month in the Probate Division, and practically triples the terminations reported in January.

The inventory review began with cases filed during the year 1968. As of February 28, 1979, only 127 1968 cases remained out of a total of 11,865 cases filed that year.

And this, apparently, is only the "tip of the iceberg". In a matter of weeks the staff of the Probate Division will make their way into the 1969 files.

Sincerely,



William M. Madden
Deputy Director

WMM/ad



ADMINISTRATIVE OFFICE OF THE ILLINOIS COURTS

ROY O. GULLEY
DIRECTOR
SUPREME COURT BUILDING
SPRINGFIELD 62706

30 NORTH MICHIGAN AVENUE
CHICAGO 60602

STATISTICAL REPORT ON THE CIRCUIT COURT
OF COOK COUNTY, ILLINOIS FOR FEBRUARY 1979

TREND OF CASES IN THE CIRCUIT COURT OF COOK COUNTY

DIVISION	COUNTY DEPARTMENT	TYPE OF CASE	PENDING AT START	FILED	REINSTATED	TRANSFERRED	TOTAL ADDED	TERMINATED	PENDING AT END	INVENTORY INCREASE (+) DECREASE (-)
L	AD DAMNUM OVER \$15,000	JURY	48024 ^a	339	45	+ 1013	1397	1245	48173 ^c	+149
		NON-JURY	12557 ^b	1605 ^e	144	- 1013	736	754	12542 ^d	-15
A	TAX		6345	4276 ^e	121	0	4397	553	10189	+3844
M		CONDOMINIUM	217	7	0	0	7	9	215	-2
		MISCELLANEOUS REMEDY	2218 ^c	160	5	0	165	123	2260 ^d	+42
		SUBTOTALS	69361	6387	315	0	6702	2684	73379 ^d	+4018
CHANCERY	CHANCERY		6070	592	12	0	604	451	6223	+153
DOMESTIC RELATIONS	DOMESTIC RELATIONS		22095	2170	164	0	2334	2162	22267	+172
C	TAX		22530	823	0	0	823	1629 ^f	21724	-806
O	MENTAL HEALTH		47	339 ^g	0	0	339	323	63	+16
U	ADOPTION, MARITAGE OF MINORS AND RECIPROCAL NON-SUPPORT		9440	603 ^g	0	0	603	331	9712	+272
N	MUNICIPAL CORPORATIONS		271	6	0	0	6	0	277	+6
Y		SUBTOTALS	32288	1771	0	0	1771	2283 ^f	31776	-512
PROBATE	ESTATES, GUARDIANSHIPS & CONSERVATORSHIPS *			776 ⁱ	0	0	776	1778 ^j		
JUVENILE	DELINQUENCY, DEFERENCY, NEGLECT & SUPERVISION		7143	1360 ⁱ	72	0	1432	1407 ^j	7168	+25
CRIMINAL	FELONY (INDICTMENT & INFORMATION)		6059	547 ^k	153	0	700	726 ^l	6033	-26
		SUBTOTALS	143016	13603	716	0	14319	11491	146846	+3830
MUNICIPAL DEPARTMENT										
D	LAW AD DAMNUM \$15,000 OR LESS	JURY	15821	427 ^m	111	+ 319	857	905	15773	-48
		NON-JURY	40329	9545 ^m	122	- 318	9349	9331	40347	+18
I	SMALL CLAIMS		8811	6016 ⁿ	73	-1	6088	5840	9059	+248
S	TAX		103622	12098 ⁿ	402	0	12500	1346	114776	+11154
T	FURNISH JUDGMENTS, ESTRAYS, ETC. (DIST. 1) ***			36	0	0	36	36		
R	FELONY (INFORMATION)		944	388	5	0	393	415 ^o	922	-22
I	FELONY (PRELIMINARY HEARINGS) *		4474 ^p	3141	0	0	3141	2338	4714 ^p	+240
C	HOUSING		12314	572	0	0	572	2166 ^q	10720	-1594
T	PATERNITY		**	**	**	**	**	**	**	**
S	MISDEMEANORS AND ORDINANCE VIOLATIONS *		30685 ^r	20832	0	0	20832	18442	30513 ^r	-172
O	TRAFFIC			399411 ^r	0	0	399411	166280 ^r		
N		SUBTOTALS	217000	452466	713	0	453179	207099	226824	+9824
GRAND TOTALS			360016	466069	1429	0	467498	218590	373670	+13654

FOOTNOTES: (*) Preliminary figures on pending counts in the Probate Division and Municipal District One will be forthcoming; (**) Paternity actions are not yet accountable in the 1st, 3rd, and 4th Municipal Districts; (***) Includes Auto Forfeitures; (a) Computer adjustment of -1 case; (b) Computer adjustment of +3 cases; (c) Computer adjustment of +1 case; (d) Computer adjustment of -3 Law jury cases and +3 Law non-jury cases, but does not include 171 Law jury and 63 Law non-jury cases on Special Calendars (Military, appeal, bankruptcy, and insurance liquidation); (e) Indicates 2nd month of high volume of new Tax cases filed in the Law Division; (f) Indicates terminations as a result of Special Call on Tax Objections; (g) Indicates high volume of new civil Non-Support cases; (h) Indicates large number of terminations reported by Probate Division as a result of inventory and includes 8 cases closed on Petitions for Spread of Records; (i) Includes 55 cases filed against adults for abuse of children per General Order 78-9; (j) Includes 40 cases terminated against adults for abuse of children per General Order 78-9; (k) Includes 47 Indictments transferred to Suburban Municipal Districts; (l) Does not include terminations on those Indictments heard in the 2nd and 3rd Municipal Districts; (m) Does include non-jury transfer cases; (n) Indicates 1st month of new Tax cases filed in specific Municipal Districts; (o) Includes some Felony terminations which should be credited to judges in the Criminal Division; (p) Does not include Paternity actions, pending Felony preliminary hearings and pending Misdemeanor and Ordinance Violations in the 1st Municipal District; (q) Indicates results of Special Call on Housing cases in the 1st Municipal District; and (r) Includes both moving and parking violations.

CIRCUIT COURT OF COOK COUNTY DURING FEBRUARY 1995

1995

	PENDING AT START	FILED	REINSTATED	TRANSFERRED	TOTAL ADDED	TERMINATED	PENDING AT END	INVENTORY INCREASE (+) DECREASE (-)	
LAW JURY CASES \$15,000 OR LESS	DIST. 1	14445	419	103	+ 231	753	798	14400	-45
	DIST. 2	169	2	1	+ 10	13	13	169	-
	DIST. 3	305	3	2	+ 22	27	26	306	+1
	DIST. 4	362	1	0	+ 10	11	20	353	-9
	DIST. 5	196	1	1	+ 19	21	16	201	+5
	DIST. 6	344	1	4	+ 27	32	32	344	-
LAW NON-JURY CASES \$15,000 OR LESS	DIST. 1	38614	9123 ^a	97	- 231	8989	9042	38561	-53
	DIST. 2	185	48	0	- 10	38	10	213	+28
	DIST. 3	345	80	10	- 22	68	63	350	+5
	DIST. 4	351	104	5	- 10	99	84	366	+15
	DIST. 5	373	63	4	- 19	48	58	363	-10
	DIST. 6	461 ^b	127	6	- 26	107	74	494 ^b	+33
SMALL CLAIMS	DIST. 1	5128 ^b	4883	0	0	4883	4883	5128 ^b	-
	DIST. 1 PRO SE	1705	448	62	0	510	422	1793	+88
	DIST. 2	508	97	0	0	97	33	572	+64
	DIST. 3	314	156	4	0	160	120	354	+40
	DIST. 4	257	69	1	0	70	52	275	+18
	DIST. 5	326	100	1	0	101	117	310	-16
TAX	DIST. 6	573	263 ^c	5	-1	267	213	627	+54
	DIST. 1	99325	5400 ^c	402	0	5802	915 ^j	104212	+4887
	DIST. 2	836	0 ^c	0	0	0	351 ^j	485	-351
	DIST. 3	516 ^b	4179 ^c	0	0	4179	56	4639 ^b	+4123
	DIST. 4	1910 ^b	0 ^c	0	0	0	2	1908 ^b	-2
	DIST. 5	486	1439 ^c	0	0	1439	7	1918	+1432
FOREIGN JUDGEMENTS, ESTRAYS, ETC.	DIST. 6	549	1080 ^c	0	0	1080	15	1614	+1065
	DIST. 1		36	0	0	36	36		
	DIST. 1	0	221	0	0	221	221	0	-
	DIST. 2	67	36	0	0	36	27	76	+9
	DIST. 3	143	19	2	0	21	41	123	-20
	DIST. 4	360	33	3	0	36	37 ⁱ	359	-1
FELONY (INFORMATION)	DIST. 5	142	44	0	0	44	44	142	-
	DIST. 6	232	35	0	0	35	45	222	-10
	DIST. 1		2408	0	0	2408	1845		
	DIST. 2	971	124 ^e	0	0	124	114	981	+10
	DIST. 3	1819	190 ^e	0	0	190	65	1944	+125
	DIST. 4	162	207 ^e	0	0	207	116	253	+91
FELONY (LIMITARY HEARINGS) **	DIST. 5	218	78	0	0	78	92	204	-14
	DIST. 6	1304	134	0	0	134	106	1332	+28
	DIST. 1	12300/*	512/14 ^d	0/0	0/0	512/14 ^d	2166/14 ^d	10646/*	-1654/*
	DIST. 2	0/99	0/1	0/16	0/0	0/17	0/12	0/104	-/+5
	DIST. 3	0/1	0/*	0/*	0/*	0/*	0/*	0/1	-/*
	DIST. 4	0/*	0/*	0/*	0/*	0/*	0/*	0/*	-/*
HOUSING/PATERNITY*	DIST. 5	0/19	0/0	0/0	0/0	0/0	0/2	0/17	-/-2
	DIST. 6	14/123	60 ^h /49	0/1	0/0	60/50	0/36	74/137	+60/+14
	DIST. 1		17609	0	0	17609	15047		
	DIST. 2	2638	364	0	0	364	406	2596	-42
	DIST. 3	4862	718	0	0	718	755	4825	-37
	DIST. 4	7617	549	0	0	549	429	7737	+120
MISDEMEANORS AND FINANCE VIOLATIONS **	DIST. 5	5473	648	0	0	648	781	5340	-133
	DIST. 6	10095	944	0	0	944	1024	10015	-80
	DIST. 1		50599	0	0	50599	54381		
	DIST. 1 HANG-ON		311586	0	0	311586	69585 ^f		
	DIST. 2		6201	0	0	6201	8811		
	DIST. 3		9541	0	0	9541	10410		
TRAFFIC ***	DIST. 4		7842	0	0	7842	7153		
	DIST. 5		7658	0	0	7658	8658 ^g		
	DIST. 6		5984 ^k	0 ^k	0 ^k	5984 ^k	7282 ^k		
	DIST. 1	171517 ^k	403258 ^k	664 ^k	0 ^k	403922 ^k	159355 ^k	174740 ^k	+3223
	DIST. 2	5473	6873	17	0	6890	9777	5196	-277
	DIST. 3	8305 ^l	14886 ^l	18 ^l	0 ^l	14904 ^l	11536 ^l	12542 ^l	+4237
TOTALS	DIST. 4	11019	8805	9	0	8814	7893	11251	+232
	DIST. 5	7233	10031	6	0	10037	9775	8495	+1262
	DIST. 6	13695	8677	16	0	8693	8827	14859	+1164
	GRAND TOTALS	217242	452530	730	0	453260	207163	227083	+9841

NOTES: (A) Paternity actions not yet accountable in the 1st, 3rd, and 4th Municipal Districts; (**) Indicates the trends of charges and not cases per CIS Computer System; (***) Includes both parking and moving violations; (****) Includes Auto Forfeitures; (a) Does include non-jury transfer cases; (b) Inventories sought in these case categories; (c) Indicates the month of new Tax cases filed in these Municipal Districts; (d) Includes civil Paternity actions only filed, and terminated in the 1st Municipal District; (e) Indicates high volume of new Felony charges filed in these Municipal Districts; (f) Indicates continuation of a Special Call on parking violations in the 2nd Municipal District; (g) Indicates results of Special Call on parking violations in the 5th Municipal District; (h) Indicates high volume of new Housing cases filed in the 6th Municipal District; (i) Includes some Felony terminations which should be credited to judges in the Criminal Division; (j) Indicates results of inventory on Tax cases in the 2nd Municipal District; (k) Does not include Paternity actions, and (l) Includes the results of the Special Call on parking violations in the 1st Municipal District.

IN THE LAW DIVISION, COUNTY DEPARTMENT, CIRCUIT COURT OF COOK COUNTY
 STATISTICAL REPORT ON LAW CASES DURING FEBRUARY 1979

AGE OF PENDING LAW CASES

LAW CASES OVER \$15,000	JURY	NUMBER PENDING	1974 & EARLIER	DURING 1975	DURING 1976	DURING 1977	DURING 1978	DURING 1979	TOTALS
			% OF TOTAL PENDING INVENTORY	1623	7182	10074	13194	15014	1086
NON-JURY	NUMBER PENDING	1974 & EARLIER	DURING 1975	DURING 1976	DURING 1977	DURING 1978	DURING 1979	TOTALS	
		12	104	585	3023	6103	2715	12542*	
% OF TOTAL PENDING INVENTORY	0.1%	0.8%	4.7%	24.1%	48.7%	21.6%	100.0%		

*Does not include 171 Law jury and 63 Law non-jury cases on Special Calendars.

AGE OF LAW JURY CASES DISPOSED OF DURING THE PERIOD*

LAW JURY CASES DISPOSED OF DURING THE PERIOD		1974 & EARLIER	DURING 1975	DURING 1976	DURING 1977	DURING 1978	DURING 1979	TOTALS
		NUMBER	254	492	182	190	187	6
PERCENTAGE	19.4%	37.5%	13.9%	14.5%	14.3%	0.4%	100.0%	

*Includes multiple dispositions of cases.

AGE OF LAW NON-JURY CASES DISPOSED OF DURING THE PERIOD*

LAW NON-JURY CASES DISPOSED OF DURING THE PERIOD		1974 & EARLIER	DURING 1975	DURING 1976	DURING 1977	DURING 1978	DURING 1979	TOTALS
		NUMBER	6	13	379	173	132	62
PERCENTAGE	0.8%	1.7%	49.5%	22.6%	17.3%	8.1%	100.0%	

*Includes multiple dispositions of cases.

LAW CASES TERMINATED DURING THE PERIOD

TERMINATIONS CREDITED BY CLERK	NUMBER OF TERMINATIONS		NUMBER OF TERMINATIONS PER JUDGE		AVERAGE MONTHS ELAPSED BETWEEN DATE OF FILING AND DATE OF TERMINATION	
	JURY	NON-JURY	JURY	NON-JURY	JURY	NON-JURY
ASSIGNMENT JUDGE	366	481	183	241	26.4	24.8
PRE-TRIAL JUDGES	376	10	54	1	37.9	16.3
MOTION JUDGES	127	73	32	18	19.0	9.8
FULL-TIME TRIAL JUDGES*	363	30	15	1	46.4	14.4
PART-TIME TRIAL JUDGES**	60	6	8	1	46.1	13.2
NO PROGRESS CALL	19	165	19	165	21.9	20.4
TOTAL***	1311	765	28	17	35.3	21.8

*Includes only judges who spent 75% or more of their time hearing Law cases.

**Includes only judges who spent less than 75% of their time hearing Law cases.

***Does include multiple dispositions of cases, but does not include 13 Law jury and 82 Law non-jury cases terminated by judges in the Miscellaneous Section.

IN THE CIRCUIT COURT OF COOK COUNTY
 COUNTY DEPARTMENT, LAW DIVISION, LAW JURY TRIAL SECTION
 DURING FEBRUARY 1979

AVERAGE TIME INTERVAL BETWEEN DATE OF FILING AND DATE OF TERMINATION OF LAW JURY CASES

CASES TERMINATED BY VERDICT				
CALENDAR	NUMBER OF VERDICTS REACHED DURING THE PERIOD	MONTHS ELAPSED BETWEEN DATE OF FILING AND DATE OF VERDICT *		
		MAXIMUM	MINIMUM	AVERAGE
STANDARD	44	73.6	8.5	45.3
SPECIAL	0	-	-	-
TOTAL	44	73.6	8.5	45.3

*Reflects only time case is handled in Law Division.

CASES TERMINATED BY ANY MEANS INCLUDING VERDICT				
CALENDAR	TOTAL NUMBER OF CASES TERMINATED* DURING THE PERIOD	MONTHS ELAPSED BETWEEN DATE OF FILING AND DATE OF VERDICT		
		MAXIMUM	MINIMUM	AVERAGE
STANDARD	1308	100.5	0.8	35.3
SPECIAL	3	66.3	42.0	55.8
TOTAL	1311	100.5	0.8	35.3**

*Includes multiple dispositions of cases.

**Does not reflect time on Special Calendars.

ANALYSIS OF LAW JURY CASES PROCESSED BY THE TRIAL JUDGES OF THE LAW DIVISION
 COMPARISONS WITH PRECEDING YEARS

	NUMBER OF LAW JURY CASES		NUMBER OF VERDICTS	PERCENT OF CONTESTED VERDICTS TO TOTAL CASES TERMINATED *	LAW JURY TRIAL JUDGES	
	TOTAL ADDED	TOTAL*** TERMINATED			SUBSTANTIALLY FULL-TIME	PART-TIME
NUMBER FOR Feb. '79	1397	1245	44	3.5%	24	8**
'79 MONTHLY AVERAGE	1373	1290	38	3.0%	27	5
'78 MONTHLY AVERAGE	1526	1281	44	3.4%	30	9
'77 MONTHLY AVERAGE	1450	1083	36	2.8%	27	2
'76 MONTHLY AVERAGE	1417	1051	43	4.1%	27	8
'75 MONTHLY AVERAGE	1480	1097	42	3.8%	24	8

*For purposes of analysis, all jury verdicts are considered contested.

**Includes 2 Downstate judges and 6 Cook County judges on vacation.

***Does not include multiple dispositions of cases.

IN THE JUVENILE DIVISION, CIRCUIT COURT OF COOK COUNTY
 STATISTICAL REPORT ON JUVENILE CASES DURING FEBRUARY 1979

NATURE AND NUMBER OF TERMINATIONS OF JUVENILE CASES IN THE JUVENILE DIVISION

CALENDARS	METHOD OF DISPOSITION						
	DISMISSAL			SOL ^a	TRANSFER TO OTHER COURT ^b	COURT FINDING	TOTAL
	Without Prejudice	With Prejudice	Other				
Delinquency ^c	126	3	13	444	0	199	785
Dependency/Neglect ^c	38	0	20	1	0	165	224
MINS/Minors in Need of Supervision ^c	36	0	2	0	0	62	100
Paternity & Waiver	0	3	34	4	0	3	44
Custody	0	0	0	10	0	4	14
SUBURBAN: ^d							
District 2	17	0	0	0	0	17	34
District 3	36	0	0	0	0	20	56
District 4	6	0	0	6	0	11	23
District 5	16	0	0	2	0	12	30
District 6	37	0	1	1	0	8	47
Adult Prosecutions ^e	0	0	0	23	0	17	40
Miscellaneous	1	0	0	3	1	5	10
Totals	313	6	70	494	1	523	1407

^aStricken off with Leave to Reinstate.

^bIndicates court approval for such actions as trying juvenile as an adult in felony case, etc.

^cIncludes only City of Chicago - District 1 cases.

^dSuburban Court Calendars include all delinquency, dependency/neglect, and MINS cases.

^eIncludes cases filed against adults for abuse of children per Cook County General Order 78-9.

IN THE MUNICIPAL DEPARTMENT, CIRCUIT COURT OF COOK COUNTY DURING FEBRUARY 1979
AGE OF PENDING LAW CASES

DISTRICT 1			1974 & EARLIER	DURING 1975	DURING 1976	DURING 1977	DURING 1978	DURING 1979	TOTALS
LAW CASES \$15,000 OR LESS	JURY	NUMBER PENDING	311	1208	2397	4862	5135	487	14400
		% OF TOTAL PENDING INVENTORY	2.2%	8.4%	16.6%	33.8%	35.6%	3.4%	100.0%
LAW CASES \$15,000 OR LESS	NON-JURY	NUMBER PENDING	18	826	1062	7788	18020	10847	38561
		% OF TOTAL PENDING INVENTORY	0.1%	2.1%	2.8%	20.2%	46.7%	28.1%	100.0%

DISTRICT 2			1974 & EARLIER	DURING 1975	DURING 1976	DURING 1977	DURING 1978	DURING 1979	TOTALS
LAW CASES \$15,000 OR LESS	JURY	NUMBER PENDING	1	2	7	25	110	24	169
		% OF TOTAL PENDING INVENTORY	0.6%	1.2%	4.1%	14.8%	65.1%	14.2%	100.0%
LAW CASES \$15,000 OR LESS	NON-JURY	NUMBER PENDING	3	16	17	60	36	81	213
		% OF TOTAL PENDING INVENTORY	1.4%	7.5%	8.0%	28.2%	16.9%	38.0%	100.0%

DISTRICT 3			1974 & EARLIER	DURING 1975	DURING 1976	DURING 1977	DURING 1978	DURING 1979	TOTALS
LAW CASES \$15,000 OR LESS	JURY	NUMBER PENDING	0	0	11	83	201	11	306
		% OF TOTAL PENDING INVENTORY	0	0	3.6%	27.1%	65.7%	3.6%	100.0%
LAW CASES \$15,000 OR LESS	NON-JURY	NUMBER PENDING	0	2	4	12	205	127	350
		% OF TOTAL PENDING INVENTORY	0	0.6%	1.1%	3.4%	58.6%	36.3%	100.0%

DISTRICT 4			1974 & EARLIER	DURING 1975	DURING 1976	DURING 1977	DURING 1978	DURING 1979	TOTALS
LAW CASES \$15,000 OR LESS	JURY	NUMBER PENDING	0	7	22	92	228	4	353
		% OF TOTAL PENDING INVENTORY	0	2.0%	6.2%	26.1%	64.6%	1.1%	100.0%
LAW CASES \$15,000 OR LESS	NON-JURY	NUMBER PENDING	0	2	4	18	180	162	366
		% OF TOTAL PENDING INVENTORY	0	0.5%	1.1%	4.9%	49.2%	44.3%	100.0%

DISTRICT 5			1974 & EARLIER	DURING 1975	DURING 1976	DURING 1977	DURING 1978	DURING 1979	TOTALS
LAW CASES \$15,000 OR LESS	JURY	NUMBER PENDING	0	0	1*	42	144	14	201
		% OF TOTAL PENDING INVENTORY	0	0	0.5%	20.9%	71.6%	7.0%	100.0%
LAW CASES \$15,000 OR LESS	NON-JURY	NUMBER PENDING	0	1	0	51*	196*	115	363
		% OF TOTAL PENDING INVENTORY	0	0.3%	0	14.0%	54.0%	31.7%	100.0%

DISTRICT 6			1974 & EARLIER	DURING 1975	DURING 1976	DURING 1977	DURING 1978	DURING 1979	TOTALS
LAW CASES \$15,000 OR LESS	JURY	NUMBER PENDING	0	0	3	69	247	25	344
		% OF TOTAL PENDING INVENTORY	0	0	0.9%	20.0%	71.8%	7.3%	100.0%
LAW CASES \$15,000 OR LESS	NON-JURY	NUMBER PENDING	0	0	3	29	252	210	494
		% OF TOTAL PENDING INVENTORY	0	0	0.6%	5.9%	51.0%	42.5%	100.0%

DISTRICT TOTALS			1974 & EARLIER	DURING 1975	DURING 1976	DURING 1977	DURING 1978	DURING 1979	TOTALS
LAW CASES \$15,000 OR LESS	JURY	NUMBER PENDING	312	1217	2441	5173	6065	565	15773
		% OF TOTAL PENDING INVENTORY	2.0%	7.7%	15.5%	32.8%	38.4%	3.6%	100.0%
LAW CASES \$15,000 OR LESS	NON-JURY	NUMBER PENDING	21	847	1090	7958	18889	11542	40347
		% OF TOTAL PENDING INVENTORY	0.1%	2.1%	2.7%	19.7%	46.8%	28.6%	100.0%

*Includes cases on 5th District Special Calendars.

IN THE CIRCUIT COURT OF COOK COUNTY MUNICIPAL DEPARTMENT, DISTRICTS ONE THRU SIX
 STATISTICAL REPORT ON LAW CASES DURING FEBRUARY 1979

AGE OF PENDING LAW CASES

LAW CASES \$15,000 OR LESS	JURY	NUMBER PENDING % OF TOTAL PENDING INVENTORY	1974 & EARLIER	DURING 1975	DURING 1976	DURING 1977	DURING 1978	DURING 1979	TOTALS
						312	1217	2441*	5173
			2.0%	7.7%	15.5%	32.8%	38.4%	3.6%	100.0%
	NON-JURY	NUMBER PENDING % OF TOTAL PENDING INVENTORY	21	847	1090	7958*	18889*	11542	40347
			0.1%	2.1%	2.7%	19.7%	46.8%	28.6%	100.0%

*Includes cases on 5th District Special Calendars.

AGE OF LAW JURY CASES DISPOSED OF DURING THE PERIOD*

LAW JURY CASES DISPOSED OF DURING THE PERIOD		1974 & EARLIER	DURING 1975	DURING 1976	DURING 1977	DURING 1978	DURING 1979	TOTALS
			NUMBER	15	149	482	178	186
	PERCENTAGE	1.5%	14.6%	47.3%	17.5%	18.3%	0.8%	100.0%

*Includes multiple dispositions of cases.

LAW JURY CASES TERMINATED DURING THE PERIOD

TERMINATIONS CREDITED BY CLERK TO	DISTRICT NUMBER	NUMBER OF TERMINATIONS	NUMBER OF TERMINATIONS PER JUDGE	AVERAGE MONTHS ELAPSED BETWEEN DATE OF FILING AND DATE OF TERMINATION
ASSIGNMENT JUDGE (300,000 Series)	1	269	269	25.9
ASSIGNMENT JUDGE (Torts, Contracts, etc.)	1	195	195	21.6
FULL-TIME TRIAL JUDGES *				
(300,000 SERIES)	1	291	58	34.9
(TORTS, CONTRACTS, ETC.)	1	122	122	29.7
(SUBURBAN MUNICIPAL DISTRICTS)				
" " "	2	13	13	11.5
" " "	3	26	26	17.0
" " "	4	20	10	15.8
" " "	5	16	8	15.6
" " "	6	32	16	11.6
PART-TIME TRIAL JUDGES **				
(300,000 SERIES)	1	17	9	11.0
(TORTS, CONTRACTS, ETC.)	1	17	6	20.7
(SUBURBAN MUNICIPAL DISTRICTS)				
" " "	2	0	-	-
" " "	3	0	-	-
" " "	4	0	-	-
" " "	5	0	-	-
" " "	6	0	-	-
TOTAL ***	ALL DISTRICTS	1018	48	26.6

*Includes only judges who spent 75% or more of their time hearing Law jury cases in the Municipal Department.

**Includes only judges who spent less than 75% of their time hearing Law jury cases in the Municipal Department.

***Includes multiple dispositions of cases.

IN THE CIRCUIT COURT OF COOK COUNTY
MUNICIPAL DEPARTMENT, DISTRICTS ONE THRU SIX, LAW JURY CASES
DURING FEBRUARY 1979

AVERAGE TIME INTERVAL BETWEEN DATE OF FILING AND DATE OF TERMINATION OF LAW JURY CASES

		CASES TERMINATED BY VERDICT			
		NUMBER OF VERDICTS REACHED DURING THE PERIOD	MONTHS ELAPSED BETWEEN DATE OF FILING AND DATE OF VERDICT		
			MAXIMUM	MINIMUM	AVERAGE
DISTRICT ONE	300,000 Series (Personal Injury)	13*	47.9	13.3	37.5
	Torts, Contracts, etc.	28**	51.6	4.0	27.2
	Subtotal	41	51.6	4.0	30.4
DISTRICT TWO	-----	0	-	-	-
DISTRICT THREE	-----	1	55.6	55.6	55.6
DISTRICT FOUR	-----	0	-	-	-
DISTRICT FIVE	-----	1	11.2	11.2	11.2
DISTRICT SIX	-----	2	21.6	15.2	18.4
TOTALS	-----	45	55.6	4.0	30.0

*Includes 1 verdict on a transfer case from the Law Division, and 1 verdict on a case that should have been reported in January. **Includes 2 verdicts on Small Claims cases.

		CASES TERMINATED BY ANY MEANS INCLUDING VERDICT			
		TOTAL NUMBER OF CASES TERMINATED DURING THE PERIOD *	MONTHS ELAPSED BETWEEN DATE OF FILING AND DATE OF TERMINATION		
			MAXIMUM	MINIMUM	AVERAGE
DISTRICT ONE	300,000 Series (Personal Injury)	577	67.8	0.9	30.0
	Torts, Contracts, etc.	334**	93.0	2.6	24.5
	Subtotal	911	93.0	0.9	28.0
DISTRICT TWO	-----	13	24.6	4.7	11.5
DISTRICT THREE	-----	26	55.6	1.6	17.0
DISTRICT FOUR	-----	20	34.3	2.7	15.8
DISTRICT FIVE	-----	16	53.1	0.9	15.6
DISTRICT SIX	-----	32	30.0	0.8	11.6
TOTALS	-----	1018	93.0	0.8	26.6

*Does not reflect multiple dispositions of cases.

**Includes small claims cases transferred as a result of jury demands entered and includes

IN THE CIRCUIT COURT OF COOK COUNTY
 COUNTY DEPARTMENT, DOMESTIC RELATIONS DIVISION
 DURING FEBRUARY 1979

MAXIMUM, MINIMUM AND AVERAGE PRODUCTIVITY OF JUDGES AND STAGES
 AT WHICH JUDGES TERMINATED DOMESTIC RELATIONS
 CASES DURING THE PERIOD

	TOTAL DOMESTIC RELATIONS CASES TERMINATED	CONTESTED MATTERS		UNCONTESTED MATTERS			
		TRIED BY COURT	TRIED BY COURT AS NO-CONTEST	** DEFAULT	STIPULATION	DISMISSAL	AGREEMENT
MAXIMUM*	583	33	101	149	100	560	12
MINIMUM*	0	0	0	0	0	0	0
AVERAGE	162.6	14.5	23.4	56.4	26.4	34.2	1.1

*Maximum and Minimum reported by any judge in each category, not necessarily the same judge in each category.

**Not a final disposition, Assignment Judge reassigns these cases.

ANALYSIS OF DOMESTIC RELATIONS CASES AND COMPARISONS WITH PRECEDING YEARS

	NUMBER OF DOMESTIC RELATIONS CASES		NUMBER OF JUDGMENTS				PERCENT OF JUDGMENTS TO TOTAL CASES TERMINATED	DOMESTIC RELATIONS TRIAL JUDGES	
	TOTAL ADDED	TOTAL TERMINATED	DISSOLUTION OF MARRIAGE	LEGAL SEPARATION	DECLARATION OF INVALIDITY	TOTAL		SUBSTANTIALLY FULL-TIME	PART-TIME *
NUMBER FOR Feb. '79	2334	2162	1572	2	4	1578	73.0%	17	5
'79 MONTHLY AVERAGE	2152	2106	1689	3	3	1695	80.5%	17	5
'78 MONTHLY AVERAGE	2720	2378	1849	4	6	1859	78.2%	15	5
'77 MONTHLY AVERAGE	2451	2510	1837	7	16	1860	74.1%	13	7
'76 MONTHLY AVERAGE	2705	2460	1870	8	23	1901	77.3%	12	6
'75 MONTHLY AVERAGE	2665	2467	1894	9	23	1926	78.1%	12	6

*Includes those judges previously assigned as full-time with matters pending past that period of assignment, newly assigned judges, etc.

IN THE CRIMINAL DIVISION, COUNTY DEPARTMENT
AND IN THE MUNICIPAL DEPARTMENT, CIRCUIT COURT OF COOK COUNTY

REPORT ON DISPOSITION OF DEFENDANTS CHARGED WITH OFFENSES IN THE CRIMINAL DIVISION
AND WITH FELONIES BY INFORMATIONS IN THE MUNICIPAL DEPARTMENT

DURING FEBRUARY 1979

NATURE OF TERMINATION OF PRELIMINARY HEARINGS IN THE MUNICIPAL DEPARTMENT

	METHOD OF TERMINATION OR DISPOSITION *									
	TRANSFERRED TO CRIMINAL DIVISION OR SUPERSEDED BY INFORMATION OR INDICTMENT OR PROBABLE CAUSE FINDING	NO PROBABLE CAUSE	BOND FORFEITURE W/ OR W/O WARRANT	DISMISSED FOR WANT OF PROSECUTION	NOLLE PROSEQUI	NON-SUIT	STRICKEN OFF-- LEAVE TO REINSTATE	LEAVE TO FILE DENIED	OFF CALL AND OTHER DISMISSAL	TOTALS
DISTRICT 1	882	75	169	0	111	7**	597	0	4	1845
DISTRICT 2	70	22	0	0	4	0	18	0	0	114
DISTRICT 3	32	2	0	4	0	0	27	0	0	65
DISTRICT 4	56	5	0	0	37**	0	18	0	0	116
DISTRICT 5	35	15	1	0	5	0	36	0	0	92
DISTRICT 6	58	6	1	0	0	0	37	0	4	106
TOTALS	1133	125	171	4	157	7	733	0	8	2338

*Indicates the dispositions of felony charges and not cases.

**Unknown computer adjustment.

DISPOSITION OF DEFENDANTS* CHARGED WITH OFFENSES BY INDICTMENT & INFORMATION IN THE CRIMINAL DIVISION
AND CHARGED WITH FELONIES BY INFORMATION IN THE MUNICIPAL DEPARTMENT

NUMBER OF DEFENDANTS		NOT CONVICTED			CONVICTED		
		DISMISSED	ACQUITTED BY		GUILTY PLEA	BENCH TRIAL	JURY TRIAL
			BENCH TRIAL	JURY TRIAL			
	CRIMINAL DIVISION **	292***	59	8	429	57	27
	MUNICIPAL DISTRICT 1	0	0	0	221	0	0
	MUNICIPAL DISTRICT 2***	6	0	1	33	0	0
	MUNICIPAL DISTRICT 3***	16	3	0	35	1	0
	MUNICIPAL DISTRICT 4***	12	1	0	29	0	1
	MUNICIPAL DISTRICT 5**	2	7	0	35	0	0
	MUNICIPAL DISTRICT 6	2	4	0	39	2	4
	TOTALS	330	74	9	821	60	32

*Not necessarily different defendants. **Does not include dispositions on Indictments in the 2nd and 3rd Municipal Districts.

Includes actions taken by Criminal Division Judges. *Indictment dispositions included here.

***Includes defendants declared unfit to be tried/sexually dangerous.

TYPES OF SENTENCES IMPOSED ON CONVICTED DEFENDANTS* CHARGED WITH OFFENSES BY INDICTMENT & INFORMATION
IN THE CRIMINAL DIVISION AND CHARGED WITH FELONIES BY INFORMATION IN THE MUNICIPAL DEPARTMENT

NUMBER OF DEFENDANTS		ILLINOIS DEPT. CORR.	COOK COUNTY DEPT. CORR.	PROBATION, CONDITIONAL DISCHARGE, PERIODIC IMPRISONMENT		OTHER
				WITHOUT JAIL TIME	WITH SOME JAIL TIME	
				CRIMINAL DIVISION **	285	
MUNICIPAL DISTRICT 1	47	0	90	84	0	
MUNICIPAL DISTRICT 2***	5	0	13	11	4***	
MUNICIPAL DISTRICT 3***	17	0	14	5	0	
MUNICIPAL DISTRICT 4	14	1	11	3	1***	
MUNICIPAL DISTRICT 5	5	0	27	2	1***	
MUNICIPAL DISTRICT 6	1	22	1	10	1***	
TOTALS	1	395	30	285	195	7

*Not necessarily different defendants. **See (**note above). ***Indictment actions included here.

****Reduced and sentenced on Misdemeanor charges. *****Defendant on HAP 91.5 Relief.

*****Sentence imposed on one defendant in District 6.

IN THE CRIMINAL DIVISION, COUNTY DEPARTMENT
AND IN THE MUNICIPAL DEPARTMENT, CIRCUIT COURT OF COOK COUNTY

ANALYSIS OF FELONY CASES PROCESSED DURING MARCH 1976 THROUGH FEBRUARY 1979

NUMBER OF FELONY CASES										
	INDICTMENTS				INFORMATIONS					
	Pending	Filed*	Trans./ Reinstated	Terminated	Pending	Pending	Filed	Reinstated	Terminated	Pending
Criminal Division	5774	8206	125 5025	16700	***** 2621	720	12811	2026	12260	3111
Municipal Dist. 1	0	0	0	0	0	0	8396	0	8396	0
Municipal Dist. 2	0	110	-3 1	83	25	43	972	0	894	*** 76
Municipal Dist. 3	0	282	-7 0	194	*** 81	12	880	17	786	*** 123
Municipal Dist. 4	0	89	-6 8	50	41	56	1637	49 2 ^a	1350	*** 359
Municipal Dist. 5**	0	159	-102 0	30	27	6	871	1 2 ^b	738	**** 115 27
Municipal Dist. 6	0	344	-7 27	237	127	55	1742	25	1600	222
TOTALS	5774	9190	0 5061	17294	2922	892	27309	2122	26024	4033

-54-

FOOTNOTES: (*) Indicates that Felony Indictments are filed in the Criminal Division, but then certain cases are transferred to the respective Suburban Municipal Districts. Filing figures are from Criminal Division at point of transfer; (**) Indicates no jury courtrooms. Most cases, Indictments or Informations, in which defendants enter a plea of not guilty at arraignment in the 5th Municipal District, are transferred to other Districts or are heard by judges in the Criminal Division; (***) Indicates a case inventory was taken during the reported time period; (****) Indicates upon observation that of total pending Information figure, only 27 cases actually awaiting action in the 5th Municipal District and remaining 115 cases were transferred to the Criminal Division; (*****): Figure includes 277 cases terminated in the 2nd and 3rd Municipal District but have not been counted because the files are still outstanding; (a) Reflects 2 cases transferred from the 3rd Municipal District; and (b) Reflects 2 cases transferred from the 4th Municipal District.

FELONY

IN THE CRIMINAL DIVISION, COUNTY DEPARTMENT
AND IN THE MUNICIPAL DEPARTMENT, CIRCUIT COURT OF COOK COUNTY

AGE OF PENDING FELONY CASES - FEBRUARY 28, 1979
(Does Not Include Post Trial Proceedings)

	NUMBER OF FELONY CASES PENDING													
	INDICTMENTS							INFORMATIONS						
	YEAR CASE FILED							YEAR CASE FILED						
	Prior 1975	1975	1976	1977	1978	1979	TOTAL	Prior 1975	1975	1976	1977	1978	1979	TOTAL
Criminal Division	47	64	118	335	1622	435	2621**	0	4	76	376	2058	597	3111
Municipal Dist. 1*	0	0	0	0	0	0	0	0	0	0	0	0	0	0
Municipal Dist. 2	0	0	0	4	13	8	25	0	0	0	0	46	30	76
Municipal Dist. 3	0	0	0	23	46	12	81	0	0	1	16	71	35	123
Municipal Dist. 4	0	0	2	7	23	9	41	0	0	3	27	262	67	359
Municipal Dist. 5	0	0	0	0	10	17	27	0	0	1	10	79	52	142
Municipal Dist. 6	0	0	3	28	78	18	127	0	0	0	8	176	38	222
TOTALS	47	64	123	397	1792	499	2922	0	4	81	437	2692	819	4033

*Pre-defined procedures in the 1st Municipal District do not allow for pending Felony cases.

**Figures include 277 cases terminated in the 2nd and 3rd Municipal Districts which upon review on Page 11 of this report should have been previously reported as terminated.



ADMINISTRATIVE OFFICE OF THE ILLINOIS COURTS

ROY O. GULLEY
DIRECTOR
SUPREME COURT BUILDING
SPRINGFIELD 62706
217/782-7770

July 29, 1977

30 NORTH MICHIGAN AVENUE
CHICAGO 60602
312/793-3250

To: The Chief Judge and Judges of the Circuit Court of Cook County:

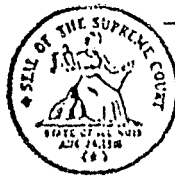
Please find enclosed herewith the June 1977 statistical report for the Circuit Court of Cook County.

A preliminary analysis of the statistical data for January through June 1977 reveals the status of the caseload in the Circuit Court of Cook County to be as follows:

COUNTY DEPARTMENT	Pending on 1-1-77	Pending on 6-30-77	Inventory (+) (-) % of inc. or decrease
<u>Law Division</u> (Division Total)	56216	65548	+9332 (+16.6%)
Law Jury	40163	42956	+2793 (+7%)
Law Nonjury	9487	10044	+557 (+5.9%)
Tax	4195	10391	+6196 (+147.7%)
Condemnation	238	245	+7 (+2.9%)
Miscellaneous Remedy	2133	1912	-221 (-10.4%)
<u>Chancery Division</u> (Division Total)	26242	29911	+3669 (+14%)
Chancery	704	7952	+907 (+12.9%)
Housing	1919	21959	+2762 (+14.4%)
<u>Divorce Division</u> (Division Total)	18767	17035	-1732 (-9.2%)
<u>County Division</u> (Division Total)	34625	31753	-2872 (-8.3%)
Tax	27852	24956	-2896 (-10.4%)
Mental Health	54	42	-12 (-22.2%)
Adoption, Non-Support, etc.	6482	6509	+27 (+0.4%)
Municipal Corporations	237	246	+9 (+3.8%)
<u>Juvenile Division</u> (Division Total)	5148	2935	-2213 (-43%)
<u>Criminal Division</u> (Division Total)	6963	6488	-475 (-6.8%)
<u>County Department Total</u>	147961	153670	+5709 (+3.9%)
<u>MUNICIPAL DEPARTMENT</u> (Districts 1 - 6) Total:	140413	153731	+13323 (+9.5%)
Law Jury	16479	16607	+128 (+0.8%)
Law Nonjury	30561	33928	+3367 (+11%)
Small Claims	10076	7110	-2966 (-29.4%)
Tax	82802	95499	+12697 (+15.3%)
Felony	495	592	+97 (+19.6%)
GRAND TOTAL	288374	307405	+19032 (+6.6%)

Respectfully submitted,

Dennis Dohm
Dennis Dohm
Assistant Director



ADMINISTRATIVE OFFICE OF THE ILLINOIS COURTS

ROY O. GULLEY
DIRECTOR

SUPREME COURT BUILDING
SPRINGFIELD 62706
217/782-7770

30 NORTH MICHIGAN AVENUE
CHICAGO 60602
312/793-3250

STATISTICAL REPORT ON THE CIRCUIT COURT OF COOK COUNTY, ILLINOIS FOR JUNE 1977

TREND OF CASES IN THE CIRCUIT COURT OF COOK COUNTY

Division	COUNTY DEPARTMENT		PENDING AT START	BEGUN	REINSTATED	TRANSFERRED	TOTAL ADDED	TERMINATED	PENDING AT END	INVENTORY INCREASE (+) DECREASE (-)
	Type of Case									
A W	Ad damnum \$15,000 & over	Jury	42561 ^a	329	34	+ 1130	1493	1098	42956 ^c	+395
		Non-Jury	9787 ^b	1764	29	- 1130	663	406	10044 ^c	+257
	Tax		12870	40	198	0	238	2717	10391	-2479
	Condemnation		247	9	1	0	10	12	245	-2
	Miscellaneous Remedy		1830 ^d	197	6	0	203	121	1912	+82
	Subtotals		(67295)	(2339)	(268)	(0)	(2607)	(4354)	(65548)	(-1747)
CHANCERY	Chancery		7722	920	7	0	927	697	7952	+230
	Housing		21436	1020	0	0	1020	497	21959	+523
	Subtotals		(29158)	(1940)	(7)	(0)	(1947)	(1194)	(29911)	(+753)
FORCE	Divorce		17202	2411	514	0	2925	3092	17035	-167
C O U N T Y	Tax		25349	1671	0	0	1671	2064	24959	-393
	Mental Health		46	344	0	0	344	348	42	-4
	Adoption, Marriage of Minors & Reciprocal Non-Support		6482	415	0	0	415	388	6579	+27
	Municipal Corporations		246	2	0	0	2	2	246	-
	Subtotals		(32123)	(2432)	(0)	(0)	(2432)	(2802)	(31753)	(-370)
ESTATE	Estates, Guardianships & Conservatorships			987	0	0	987	701		
WENTLE	Delinquency, Dependency, Neglect & Supervision		3120	1311	32	0	1343	1528	2935	-185
CRIMINAL	Felony (Indictment & Information)		6923	542	45	0	587	1022	6488	-435
COUNTY DEPARTMENT Subtotal			(155821)	(11932)	(866)	(0)	(12828)	(14693)	(153670)	(-2151)
MUNICIPAL DEPARTMENT										
M U N I C I P A L	Type of Case									
	Law Ad damnum under \$15,000	Jury	16493	415	139	+ 416	970	856	16607	+114
		Non-Jury	30974	11407	91	- 412	11086	8132	33928	+2954
	Small Claims		7101	7441	46	-4	7483	7474	7110	+9
	Tax		93403	7203	334	0	7537	5441	95499	+2096
	Felony (Information)		606	444	0	0	444	458	592	-14
	Misdemeanors, Ordinance Violations & Preliminary Hearings (Felony)			27728	0	0	27728	27496		
	Traffic			137340	0	0	137340	123069		
Subtotals		(148577)	(191979)	(610)	(0)	(192588)	(172920)	(153736)	(+5159)	
GRAND TOTAL			304308	203349	1476	0	205416	187619	307406	+3063

Notes: (a) Computer adjustment of -2 cases; (b) Computer adjustment of +3 cases; (c) Does not include 103 law jury and 44 law nonjury cases on Special Calendars (military, appeal, bankruptcy and insurance liquidation); (d) Computer adjustment

TREND OF CASES IN THE MUNICIPAL DEPARTMENT, CIRCUIT COURT OF COOK COUNTY DURING

JUNE 1977

		PENDING AT START	BEGUN	REINSTATED	TRANSFERRED	TOTAL ADDED	TERMINATED	PENDING AT END	INVENTORIES INCREASE / DECREASE
LAW JURY CASES UNDER \$15,000	DIST. 1	15380	401	132	+ 370	843	747	15476	+96
	DIST. 2	121	3	1	+ 15	19	16	124	+3
	DIST. 3	251	1	0	+ 23	24	26	249	-2
	DIST. 4	322	2	4	+ 18	24	23	323	+1
	DIST. 5	199	1	0	+ 17	18	15	203	+3
	DIST. 6	220	7	2	+ 33	42	29	233	+13
LAW NON-JURY CASES UNDER \$15,000	DIST. 1	29830	11027	72	- 310	10789	7848	32771	+2941
	DIST. 2	167	50	0	- 15	35	35	167	-
	DIST. 3	180	75	3	- 23	55	39	196	+16
	DIST. 4	263	91	4	- 16	79	64	278	+15
	DIST. 5	173	51	1	- 17	35	32	176	+3
	DIST. 6	361	113	11	- 31	93	114	340	-21
SMALL CLAIMS	DIST. 1	3138	6248	0	0	6248	6308	3138	-60
	DIST. 1 PRO SE	1900	522	28	0	550	456	1924	+94
	DIST. 2-6	2093	671	18	-4	685	710	1978	-25
TAXES	DIST. 1	72109	6620	334	0	6954	3917	75146	+3037
	DIST. 2-6	21294	583	0	0	583	1524	20353	-941
FELONY (INFORMATION)	DIST. 1	0	272	0	0	272	272	0	-
	DIST. 2-6	606	172	0	0	172	186	592	-14
MISDEMEANORS, OBSCENITY VIOLATIONS & PRELIMINARY ARRESTS (IFELONY)	DIST. 1		23367	0	0	23367	23872		
	DIST. 2-6		4361	0	0	4361	3624		
TRAFFIC	DIST. 1		89002	0	0	89002	75782		
	DIST. 2-6		48338	0	0	48338	47287		
TOTALS		149577	191978	610	0	192588	172926	153736	+5150

IN THE CRIMINAL DIVISION (COUNTY DEPARTMENT) AND IN THE MUNICIPAL DEPARTMENT, CIRCUIT COURT OF COOK COUNTY
 REPORT ON DISPOSITION OF DEFENDANTS CHARGED WITH OFFENSES IN THE CRIMINAL DIVISION AND WITH FELONIES BY INFORMATIONS IN THE MUNICIPAL DEPARTMENT
 DURING June 1977

DISPOSITION OF DEFENDANTS* CHARGED WITH OFFENSES BY INDICTMENT & INFORMATION IN THE CRIMINAL DIVISION
 AND CHARGED WITH FELONIES BY INFORMATION IN THE MUNICIPAL DEPARTMENT

NUMBER OF DEFENDANTS		NOT CONVICTED			CONVICTED		
		DISMISSED	ACQUITTED BY		GUILTY PLEA	BENCH TRIAL	JURY TRIAL
			BENCH TRIAL	JURY TRIAL			
	CRIMINAL DIVISION	377	100	17	701	85	30
	MUNICIPAL DISTRICT 1	0	0	0	272	0	0
	MUNICIPAL DISTRICTS 2-6	33	2	0	171	2	6
	TOTALS	410	102	17	1144	87	36

TYPE OF SENTENCES IMPOSED ON CONVICTED DEFENDANTS* CHARGED WITH OFFENSES BY INDICTMENT & INFORMATION
 IN THE CRIMINAL DIVISION AND CHARGED WITH FELONIES BY INFORMATION IN THE MUNICIPAL DEPARTMENT

NUMBER OF DEFENDANTS		INCARCERATION	PROBATION, CONDITIONAL DISCHARGE, FERTICID IMPRISONMENT		OTHER
			WITHOUT JAIL TIME	WITH SOME JAIL TIME	
	CRIMINAL DIVISION	512	219	84	1
	MUNICIPAL DISTRICT 1	38	161	73	0
	MUNICIPAL DISTRICTS 2-6	54	94	31	0
	TOTALS	604	474	188	1

NOT NECESSARILY DIFFERENT DEFENDANTS

Appendix C

LISTINGS OF DISPOSITION CODES
FOR
CLERK'S INFORMATION SYSTEM (CIS)
AND
COUNTY (FELONY) DEPARTMENT COMPUTER SYSTEM ("CFS")

CLERK OF THE CIRCUIT COURT OF COOK COUNTY

TABLE FILE LIST

TABLE NO. 25 DISPOSITION CODES

TABLE ENTRY	TABLE DESCRIPTION		
	DISPOSITION CODES	048	REFERRED TO CLINICAL SERVICES
	DISPOSITION CODES	049	SOCIAL INVESTIGATION ORDERED
001	TRANS TO OTHER JURIS IN COOK	050	COMM ON MENTAL RESTORATION APT
002	MOT SUB JUDGE, TRANS PRES JOGE	051	COMMIT TO ILL DEPT MENTAL HLTH
003	TRANS TO PRES JUDGE FOR REASGN	052	COMMIT TO CHGO PARENTAL SCHGOL
004	TRANS TO NEW JUDGE FOR ADJUG	053	COMMIT TO HSE GCCD SHEPHERD
005	CASE ASSIGNED FROM OTHER JUDGE	054	COMMIT TO ILLINGIS DOC
006	TRANS TO NEW JUDGE FOR DISP	055	COMMIT TO COOK COUNTY DOC
007	OBJ JV JDG RMY CSE REF CHF JOE	056	HOLD IN CUSTODY
008	MINOR'S NAME AMENDED	057	COMMITMENT VACATED
009	ORDER TO AMEND COMPL OR PETN	058	PLACED ON GUARDIANSHIP CALNDR
010	SUPPLEMENTAL PETN DISMISSED	059	CONTINUED FOR COLLECTION
011	GUARD AD LITEN APPTD FOR MINOR	060	PLACED ON PATERNITY CALENDAR
012	PRIVATE ATTORNEY APPOINTED	061	PLACED ON PROBATION CALENDAR
013	APPTMENT PRVT ATTORNEY VACATED	062	PLACED ON HENT. RETARDED CAL
014	PUBLIC DEFENDER APPOINTED	063	RULE ISS, MOT SHOW CAUSE SUST
015	APPT ATTY APPEAL - FREE TNSCPT	064	RULE QUASHED
016	FINDING OF DELINQUENCY	065	RULE DISCHARGED
017	FINDING OF DEPENDENCY	066	CONTEMPT PROCEEDINGS DISMISD
018	FINDING MINOR IN NEED SUPERVSN	067	HOLD IN CONTEMPT
019	FINDING OF NEGLECT	068	FINDING OF CONTEMPT VACATED
020	FINDING OF PATERNITY	069	JUV WARRANT TO ISSUE
021	FINDING OF TRUANCY	070	QUASH JUVENILE WARRANT
022	MNR ADJUDGED MENTALLY RETARDED	071	WAR ISS, RET INSTATER BOND SET
023	FINDING VACATED - NEW TRIAL	072	WARRANT EXTENDED
024	COMPLAINT DISMISSED	073	WARRANT EXCUSED
025	NO OBJ RMVL, PIN OSMO CS CLSD	074	WARRANT EXCUSED UNTIL FUR. ORD
026	CRIM PROCS INST, PIN OSMO	076	WRIT ATTACH ISS, RET INST DU ST
027	PETITION DISMISSED	077	WRIT OF ATTACHMENT QUASHED
028	M/S - DISMISSED W/OUT PREJUDCE	078	ISSUE WRIT (HADLAS CORPUS ETC)
029	WARDSHIP TERM - PROCS-CLOSED	079	SUMMONS QUASHED
030	CASE CLOSED	080	SUBPOENA QUASHED
031	CONDITIONAL DISCHARGE	081	BOND EXCUSED TIL FURTHER ORDER
032	FINAL MISC ADJUDICATION	082	BOND FORF, WAR-ISS, RET INST
033	PLACED ON SUPERVISION, SEC 4-7	083	DCF RELEASED PERS PERF BOND
034	PLCD SPRVSN SEC 5-2 CHL/FAHSAV	084	DEF RELEASED RECOGNIZANCE BOND
035	SUPERVISION EXTENDED	085	FATHER DEFAULTED
036	VACATE CADER OF SUPERVISION	086	MOTHER DEFAULTED
037	SPRVSN TERM SAT, PROCS CLOSE	087	PARENTS DEFAULTED
038	SPRVSN TERM UNSAT PROCS CLOSED	088	ORDER OF PROTECTION ENTERED
039	GUARDIAN APPOINTED FOR MINOR	089	VACATE ORDER OF PROTECTION
040	GUARD APPTD WITH RIGHT CONSENT	090	PERMISSIGN TO LEAVE JURIS
041	RICHARD S LAYMON APPTD GUARD	091	PERMSN LEAVE JURIS VACATED
042	RS LAYMON APPT WITH RGT CNSENT	092	VAC CTY FUNDS, TRANS PUB AID
043	MENTAL HEALTH PETITION	093	COUNTY FUND
045	GUARDIANSHIP VACATED	094	MISC ORDER PRIOR ADJUDICATION
046	CUSTODIAN APPOINTED FOR MINOR	095	MISC ORDER AFTER ADJUDICATION
047	CUSTODIANSHIP VACATED	099	BOND SET BY RULE OF COURT

TABLE FILE LIST

01/01/77

TABLE NO. 25 DISPOSITION CODES

101	LEAVE TO FILE DENIED (LFD)	312	MOTION TO DISMISS INDICTMENT
102	STRICKEN OFF, LEAVE REINSTATE	313	MOTION TO QUASH INDICTMENT
103	NOLLE PROSECUT	314	MOTION TO TRANSFER
104	NON-SUIT	315	MOTION TO SUBSTITUTE JUDGE
105	DISMISS WANT PROSECUTION, DWP	316	MOTION FOR CHANGE OF VENUE
108	DISCHARGED	317	MOTION TO SUBSTITUTE ATTORNEY
109	DISMISSED - 4TH TERM	318	MOTION FOR JOINDER
110	DEATH SUGGESTED - CAUSE ABATED	319	MOTION FOR SEVERANCE
111	MISTRIAL	320	MOTION TO WITHDRAW
115	NO FILE, NO ORDER	321	MOTION FOR BILL OF PARTICULARS
120	MADATE FILCO	322	MOTION FOR DISCOVERY
121	REINSTATEMENT OF SCL	323	MOTION FOR LIST OF WITNESSES
122	REINSTATEMENT - MISCELLANEOUS	324	MOTION TO PRODUCE CONFESSION
123	REINSTATEMENT - VIOL PROBATION	325	MOTION TO DISCHARGE JURY PANEL
124	REINSTATEMENT - HC/PC ORDER	326	M/D PATH FOR TRNSCT, COM LAW RCD
201	PLEA NG, JURY DEMAND	327	MOTION FOR RULE TO SHOW ENTERD
202	PLEA NG, JURY DEMAND, TRANSFER	328	CUSTODIANSHIP TO STAND
203	PLEA NOT GUILTY, JURY WAIVED	329	GUARDIANSHIP TO STAND
205	PLEA GLTY, JW, FNDG GUILTY	330	MOTION TO SUPPRESS
210	PNG, JW, FNDG GUILTY	331	MOTION TO SUPPRESS CONFESSION
211	PLEA NG, JW, FNDG GLTY, FINE PD	332	MOTION TO SUPPRESS EVIDENCE
212	PLEA NG, JW, FNDG GLTY, DEDUCT	333	MOT TO SUPPRESS EVID ILL SZD
213	PLEA NG, JW, FNDG GLTY, PER PNT	334	MOT TO SUPPRESS IN COURT IDENT
215	PNG, JW, FG, MTV ENT & CONT	335	MOT TO SUPPRESS OUT CRT IDENT
218	PNG, JW, FG, FINE & COSTS	335	MOT TO SUPPRESS WRITTEN STAT
220	PNG, JW, FNDG NOT GUILTY	337	MOT TO SUPPRESS OFAL STATEMENT
221	PLEA G, FNDG GLTY, FINE PAID	338	MOT TO SUPPRESS LINE-UP
222	PLEA G, FNDG GLTY, DEDUCT	339	MOT TO SUPPRESS DYING DECLRN
223	PLEA G, FNDG GLTY, PER PAYMENT	340	MOTION TO VACATE
225	PLEA G, FG, MTV ENT & CONT	343	MOTION STATES - SOL
228	PLEA GUILTY ACCEPT JOG ABSTAIN	349	MOTION TO VACATE FINDING OF CU
295	MOTION CONTINUANCE - DENIED	351	MOTION FOR COMPETENCY HEARING
296	MOTION DIRECT VERD OR FINDING	352	MOTION FOR PSYCHIATRIC EXAM
297	MOTION VILLAGE	360	MOT TO VAC EXPARTE CONT
298	COMPLAINING HIT NOT IN CRT	362	MOTION TO INCREASE BAIL
299	CASE ADVANCED	363	MOTION FOR BAIL REDUCTION
300	WITNESSES ORDERED TO APPEAR	364	MOTION TO VACATE BOND FORF
301	MOTION STATE - CONTINUANC - H/S	365	MOTION TO VACATE EXPARTE
302	MOTION CITY - CONTINUANC	366	MOT VACATE EXPARTE SUST, SE:
303	MOTION DEPT - CONTINUANC - MD	367	STAY OF EXECUTION
304	CONTINUANCE BY ORDER OF COURT	368	MOTION TO VACATE JUDGEMENT
305	CONTINUANCE BY AGREEMENT	370	MOTION TO MODIFY SENTENCE
306	CONTINUANCE - CONT, GENERALLY	371	MOTION DEFENDANT - NEW TRIAL
307	TRIAL COMENCED AND CONTINUED	372	M/D NEW TRIAL ENTERED AND CONT
308	CONTINUED BENCH TRIAL	373	M/D VACATE PLEA, FNDG, VRDCT
309	CONTINUED JURY TRIAL	374	M/S VACATE PLEA, FNDG, VRDCT
310	MOTION TO ADVANCE	376	MOTION FOR ARREST OF JUDGMENT
311	MOTION TO DISMISS CHARGES	377	MOT ARST JOGHT ENT AND CONT

CLERK OF THE CIRCUIT COURT OF COOK COUNTY

TABLE FILE LIST

TABLE NO. 25 DISPOSITION CODES

381	MOTION STATE TO DISMISS HC/PC	483	HC/PC WITHOUT COST
390	MOTION TO REINSTATE PETITION	484	HC REMAND TO CUST DEMAND STATE
391	MOTION TO REINSTATE COMPLAINT	485	ILL STATE DEFENDER PROJ APPTD
395	MOTION FOR PUBLIC DEFENDER	490	REVIEW COURT US*SL, WANT PROSC
399	CHARGE AMENDED	491	CONTINUED FOR APPEAL
401	PRELIM HRNG WAIVED TRF PREJDD	492	NOTICE OF APPEAL FILED, TRNSFM
402	PRELIM HRNG WAIVED - BY ADRPT	493	APPELLATE COURT NUMBER ASSGD
403	PRELIM HRNG COMNCD AND CONT	494	REVIEW COURT AFFIRMANCE
404	SUPERSEDED BY INFORMATION	495	REVIEW COURT REVERSAL-NO REMND
405	SUPERSEDED BY DIRECT INDICTMENT	496	REVIEW COURT REVERSAL-NEW TRN
406	FINDING NG PROB CAUSE - DISMSD	497	REVIEW COURT REVERSAL-RPD ORTN
407	FNDC PROB CAUSE TRANS PREJDD	498	REVIEW COURT AFFIRM-MOIFY SENT
408	FNDC PROB CAUSE BY AGREEMENT	499	STRICKEN FROM RECORD- APL COMF
410	FNDC PROB CAUSE	501	PRE-SENTENCE INVEST. ORDERED
411	TRUE BILL	502	PRE-SENT INVEST. ORD, CMTD TO
412	QUASHED OR DISMISSED	511	DEF SENTENCED TO COCK CNTY DOC
413	NO BILL	512	DEF SENT CCDC, TIME CON SERV
414	RETURN TO LOWER COURT	513	DEF SENT CCDC, FOR PART SENT
415	INDICTMENT ASSIGNED	514	DEF SENT CCDC, PERIODIC IMP
416	DEFENDANT ARRAIGNED	515	DEF SENT WORK RELEASE PROGRAM
419	PRE-TRIAL INVESTIGATION WRDR	516	DEF SENTENCED ILLINOIS DJC
420	PNQ, JW, PD APPTD, CAUSE ASSGD	517	DEF SENT TO H/C CONS & ACT SER
421	PLEA OF GUILTY	518	DEF SENT TO C/D CONS AND ACTUA
422	PLEA OF NOT GUILTY	519	DEF SENT CONDITIONAL DISCHARGE
423	TECH PLEA NG, STIP TO FACTS	527	RELEASE FROM CUSTODY V.O.P.
424	REDUCE TECH PLEA OF GUILTY	529	PROBATION CONTINUED - ORIGINAL
425	JURY DEMAND	530	APLO FOR PROB WORK ALL, INV CTO
426	JURY WAIVED	531	DEF SENTENCED TO PROBATION
427	JURY IMPANELED AND SWORN	532	DEF SENT PROB, DRUG ABUSE PRGM
428	PLEA AGREEMENT WITH STATE -P/A	533	DEF SENT PROB, PSYCHIATRIC INS
429	TECH PLEA OF GUILTY	534	DEF SENT PROB, WITH RESTITUTH
431	FINDING OF GUILTY	535	DEF SENT PROB, WITH REST--IND
432	FINDING OF NOT GUILTY	536	DEF SENT PROB AND CCDC
433	VERDICT OF GUILTY	537	DEF SENT PROB AND FINE
434	VERDICT OF NOT GUILTY	538	DRUG ABUSE PROGRAM
435	JGKT ON FINDING/VERDICT/PLEA	539	DISCHARGED FROM DRUG ABUSE PRG
437	DEF SENT ON VERDICT	540	PROB HEARING DATE ASSIGNED
441	JUDGMENT VACATED	541	PROB TERMINATED- RLVCKFD
442	VACATE ORDER	542	PROB TERMINATED- TERMINATEL
443	ORDER TO STAND	543	PROBATION EXTENDED
445	TRANS CHG JUDGE FOR REASONS	544	RECONMITTED TO PROBATION
446	TRANSFERRED	545	VIOLATION OF PROBATION
447	TRANSFER INSTANTER	546	CONDITIONAL DISCHARGE TERMINATD
450	CHANGE OF VENUE ORDERED	547	VIOL PROB - "1000"
460	CHAP 110 SEC 72 PETITION FILED	548	VIOL PROB - CCDC
480	HC/PC MOTION DISMISS/SUST	549	DEF FINED SATIS BY TIME SERV
481	HC/PC NEW TRIAL - INSTANT-RNST	550	DEFENDANT FINED
482	HC/PC PETITION WITHDRAWN	551	DEFENDANT FINED - FINE PAID

CLERK OF THE CIRCUIT COURT OF COOK COUNTY

TABLE FILE LIST

TABLE NO. 25 DISPOSITION CODES

552	DEFENDANT FINED - DEDUCT	647	SUPERVISION WITH FINE/COST
553	DEF FINED - PERIODIC PAYMENT	656	MOTION TO QUASH WARRANT
554	DEF FINED - FINE SUSPENDED	657	WARRANT NOT SERVED
555	DEF FINED - FINE COSTS CLNT	699	DEF ARRESTED ON WARRANT
556	DEF FINED - FINE/COSTS SUSP	700	WARRANT OUTSTANDING
557	DEF FINED - COSTS SUSPENDED	701	WARRANT DND, WARRANT ISSUED
559	COURT COSTS	702	WARRANT, VIOLATION OF PROB
560	COURT COSTS/BOND DEDUCT	703	WARRANT QUASHED
561	COSTS WAIVED	704	WARRANT RETURNED, EXECUTED, FILED
562	PRE COURT PAYMENT	705	WARRANT RETURNED, NOT FOUND
563	JCD DIARY	706	RECALL WARRANT
564	BRING BACK MONEY	707	CONTINUE WARRANT FOR SERVICE
565	PAYMENT REDUCED	708	WRONG DEFENDANT/REISSUE WARRANT
566	DISMISS APPEAL SUSTAINED	710	WARRANT TO STAND
589	SOM TERMINATED	711	PROPERTY FOUND, CONFISCATED
590	SOM DISMISSED	712	NO PROPERTY FOUND
591	ORDER OF CRT, STAY OF MITTIMUS	713	ORDER CRT - PROPERTY CONFISCATED
592	LET MITTIMUS ISSUE/MITT TO ISS	714	CONFISCATE, DISTINGUISH WEAPON
593	STAY OF MITTIMUS EXTENDED	715	ORDER CRT - RETURN PROP OWNER
594	STAY OF MITTIMUS VACATED	716	ALIAS WARRANT TO ISSUE
595	CORRECTED MITTIMUS TO ISSUE	721	SUMMONS TO ISSUE
596	SOM DENIED	722	INPLEAD - SUMMONS TO ISSUE
597	DEF SENT TO INDETERMINATE TERM	723	ALIAS SUMMONS TO ISSUE
598	DEF SENT TO LIFE IMPRISONMENT	724	ALIAS SUMMONS TO ISSUE, SPL SRV
599	DEF SENTENCED TO DEATH	725	CONTINUE SUMMONS
600	DEF RELEASED ON BOND	726	REISSUE WARRANT
601	BAIL AMOUNT SET	728	FUGITIVE WARRANT
602	BAIL INCREASED	729	GOVERNORS WARRANT
603	BAIL REDUCED	730	SUBPOENA ISSUED
604	BOND TO STAND	731	WARRANT VACATED
605	DEFENDANT RELEASED ON 1 BOND	801	MANDATORY ORDER INSPECTION
611	CASH BOND REFUND	802	MANDATORY ORDER FULL COMPLIANCE
612	CASH BOND REFUND TO ATTORNEY	803	MANDATORY ORDER FOR PERMIT
621	EX PARTE FINE	804	PETITION FOR RULE
630	BOND FORFEITURE	805	RULE TO SHOW CAUSE
631	BOND FORFEITURE/WARRANT	806	ORDER OF DEFAULT
633	JUDGEMENT ON BOND FORFEITURE	812	IMPRISONMENT FOR CONTEMPT
634	EXECUTION OF ISSUE	813	CONTEMPT WITHDRAWN - DEF DISCHRG
635	BOND FORFEITURE VACATED	820	BODY ATTACHMENT
636	BOND JUDGEMENT VACATED	821	NON-SUIT, FULL COMPLIANCE
637	JUDGEMENT TO STAND	822	NON-SUIT RECOMMEND CHANCERY
640	RESTITUTION MADE IN OPEN COURT	823	NON-SUIT RECORD UCH - NO COMP
641	SUPERVISION - COURT	824	NON-SUIT CURRENT CHAN PENO
642	SUPERVISION - SOCIAL SERV DEPT	825	CAUSE DISHD WITH PYMT OF COST
643	SUPERVISION TERM/DISCHARGED	830	BLOOD TEST ORDERED
644	SUPERVISION EXTENDED	831	PLEA NG, JW, FROG GLTY, CLERK
645	SUPERVISION REVOKED	833	PLEA-G, FROG GLTY, CLERK PAYEE
646	SUPERVISION TERM/UNSAT	837	JUDGEMENT AS PER DRAFT ORDER

CLERK OF THE CIRCUIT COURT OF COOK COUNTY

TABLE FILE LIST

TABLE NO. 25 DISPOSITION CODES

TABLE ENTRY	TABLE DESCRIPTION
841	ARRAERS WAIVED
842	ARRAERS REDUCED TO A JUDGMENT
843	CRD OLF, PAY DIRECT RELATRX
844	OLF ORDERED TO PAY PERIODIC CNT
845	DEF ORDERED TO PAY PERIOD
846	PAY ORDER VACATED
851	PLEA NG, NO FNDG, TEMP ORDER
852	PLEA NG, NO FNDG, 3 YEAR ORDER
853	PLEA G, FNDG GLTY, 3 YR CRD CK
860	CRDR EXTENDED, NUNG PKO TUNG
861	FIRST PAYMENT CONTINUED
862	CREDIT DEF, PAY TO WIFE
863	CREDIT DEF, PAY TO CLERK
864	RESTITUTION TO COMPLAINING-WIT
901	PUBLIC DEFENDER APPOINTED
902	WAIVER OF COUNSEL
903	INTERPRETER APPOINTED
905	HOLD IN CUSTODY
906	HOLD ON CALL
911	DEF SERVED COPY OF COMPLAINT
912	OLF DEMAND FOR HEARING
913	DEF DEMAND FOR TRIAL
914	DEFENDANT NOT IN COURT
915	DEF WAIVES RIGHT TO BE PRESENT
916	DEF SURRENDERED TO OPEN CRT
917	EVIDENCE HEARD BY STIPULATION
921	RETURN TO TRAFFIC COURT
922	APPEARANCE FILED
923	NOTION ATTORNEY FEE ALLOWED
924	SUBSTITUTION OF ATTORNEY
930	PSYCHIATRIC EXAM ORDERED
931	BEHAVIOR CLINIC EXAM ORDERED
932	PSYCHIATRIC EXAM REPORT FILED
933	DEFENDANT FOUND COMPETENT
934	DEFENDANT FOUND INCOMPETENT
935	REFERRED TO ILL DEP MEN HEALTH
936	DEF RECOMMITTED TO MENTAL HLTH
941	DEF ADVISED OF RIGHT TO APPEAL
942	TRANSCRIPT RECEIVED AND FILED
943	OFF CALL
944	NO ORDER
945	PG FND PAT BY DEF ADM
946	APPEAL DISMISSED
950	ON SHEET IN ERROR
960	OFF CALL/WARR OUTSTANDING
970	RELEASE FROM CUSTODY
980	RECORD EXPUNGED
999	SPECIAL CRDR

COUNTY DEPARTMENT (FELONY) COMPUTER SYSTEM (CFS)

DISPOSITION CODES

CRIMINAL COURT

TABLE TYPE	DISP CODE	DESCRIPTION OF DISPOSITION	DISP CLOSE
D	02	FINE	DI P
D	03	FINE/DEPT OF CORRECTIONS	
D	03	FINE & COST SUSPENDED	
D	05	H.C. RELATOR DISCHARGED	
D	06	H.C. MOTION DISMISS/ANSWER SUSTAINED	
D	07	P.C. PETITION DISCHARGED	
D	08	P.C. MOTION DISMISS/ANSWER SUSTAINED	
D	09		
D	09		
D	09		
D	12	INDICTMENTS QUASHED OR DISMISSED	
D	13	TRUE BILL	
D	14	RETURN TO LOWER COURT	
D	15	NO BILL CASES	
D	16	V.D.P./DEPT. OF CORRECTIONS	
D	03		
D	18	PROBATION-MENTAL HEALTH	
D	19	PROBATION	
D	20	PROBATION/DEPT. OF CORRECTIONS	
D	21	PROBATION/FINE	
D	22	PROBATION/DRUG ABUSE PROGRAM	
D	23	PROBATION RESTITUTION	
D	24	PROBATION EXTENDED OR RECOMMITTED	
D	25		
D	26	DEFENDANT SENTENCED ON PLEA OF GUILTY	
D	27	DEFENDANT SENTENCED ON FINDING	
D	28	DEFENDANT SENTENCED ON VERDICT	
D	29	DEATH SENTENCE	
D	09		
D	31	ILLINOIS MENTAL HEALTH	
D	32	JAIL-DEPT. OF CORRECTIONS	
D	33	JAIL-ILL. DEPT. OF CORRECTIONS	
D	00		
D	35	WORK RELEASE PROGRAM	
D	36	CONDITIONAL DISCHARGE	
D	37	CONDITIONAL DISCHARGE/DEPT OF CORRECTIONS	
D	38	DISCHARGED ON FINDINGS	
D	39	DISCHARGED ON VERDICT	
D	40	DEFENDANT NOT GUILTY	
D	41	DISCHARGED	
D	42	DISCHARGED DRUG ABUSE PROGRAM	
D	43	STRICKEN OFF WITH LEAVE TO REINSTATE	
D	44	DISMISS 4TH TERM	
D	45	DISCHARGED FOR WANT OF PROSECUTION	
D	00		
D	47	NOLLE PROSEQUI	
D	48	DRUG ABUSE PROGRAM	
D	49	DEATH SUGGESTED-CAUSE ABATED	
D	50	O/C STAY OF MITTIMUS	
D	00		

CRIMINAL COURT

PA.

TABLE TYPE	DISP CODE	DESCRIPTION OF DISPOSITION	DISP CLOSE
D	52	CONTINUED FOR APPEAL	
D	53	TRANSFER TO CHIEF JUSTICE	
D	54	CONTINUED JURY CALL	
D	55	CONTINUED BENCH TRIAL	
D	56	CONTINUED/MOTION STATE	
D	57	CONTINUED O/C	
D	58	CONTINUED BY AGREEMENT	
D	59	CONTINUED/MOTION DEFENDANT	
D	60	BOND FORFEITURE	
D	61	BOND FORFEITURE VACATED	
D	62	BOND FORFEITURE WARRANT	
D	63	HEARING BOND FORFEITURE	
D	64	JUDGEMENT ON BOND FORFEITURE	
D	65	APPELATE COURT NO. ASSIGNED	
D	66	REVIEW COURT OR REV/REM NEW TRIAL	
D	67	REVIEW COURT OR REV/REM WITH DIRECTIVES	
D	68	CORRECT OR MODIFY SENTENCE	
D	69	V.O.P. WARRANT	
D	70	REVIEW COURT AFFIRMANCE	
D	71	REVIEW COURT REV/WITHOUT REM DEFT REL	
D	72	NOTICE OF APPEAL FILE	
D	73	TRANSFER OF FUNDS	
D	74	H.C./P.C. PETITION WITHDRAWN	
D	75	P.C. NEW TRIAL-INDICTMENT REINSTATED	
D	76	H.C. P.C. WITHOUT COST	
D	77	BEHAVIOR CLINIC EXAM ORDERED	
D	78	PSYCHIATRIC REPORT FILED	
D	79	JUDGEMENT VACATED	
D	80	PROBATION TERMINATED SATISFACTORY	
D	81	PROBATION TERMINATED UNSATISFACTORY	
D	82	PUBLIC DEFENDER APPOINTED	
D	83	ARREST WARRANT ISSUED	
D	84	CONTEMPT CASES	
D	85	WARRANT QUASHED	
D	86	PRE-SENTENCE INVESTIGATION ORDERED	
D	87	INDICTMENTS APRAIGNED	
D	88	REINSTATEMENT (S.B.I.)	
D	89	REINSTATEMENT (V.O.P.)	
D	90	MOTION TO SUPPRESS SUSTAINED	
D	91	LET MITTINUS ISSUE	
D	92	POST CONVICTIONS	
D	93	REINSTATEMENT ADJUSTMENTS	
D	94	MISTRIAL	
D	95	RECORD EXPUNGED	
D	96	ERROR-CASE ADVANCED	
D	97	APPEARANCE	
D	98	ERROR	
D	99	CASE CLOSED	

TOTAL DISPS 99 PEJECTS 0

Appendix D

SAMPLES OF CRIMINAL DIVISION (CFS) REPORTS

SAMPLE OF CRIMINAL DIVISION REPORT # CRFL072
SUMMARY OF INDICTMENTS, REINSTATEMENTS
AND DISPOSALS

CRFL072 07/21/77

CLERK OF THE CIRCUIT COURT OF COOK COUNTY

CRIMINAL DIVISION

SUMMARY OF INDICTMENTS, REINSTATEMENTS AND DISPOSALS

FOR WEEK ENDING 06/30/77

DESCRIPTION OF CATEGORIES	CURRENT WEEK		YEAR TO DATE	
	NUMBER CASES	NUMBER DEFENDANTS	NUMBER CASES	NUMBER DEFENDANTS
PENDING CASES, PREVIOUS YEAR(S)				
CONTEMPT			6	7
HABEAS CORPUS			12	12
POST CONVICTION			37	39
INDICTMENTS			2,257	2,765
INFORMATIONS			1,419	1,847
TOTAL NUMBER OF CASES			3,731 *	4,450
PENDING CASES, CURRENT YEAR				
CONTEMPT	4	4	13	15
HABEAS CORPUS	8	10	46	48
POST CONVICTION	9	9	32	32
INDICTMENTS	270	323	1,377	1,644
INFORMATIONS	358	421	2,037	2,394
TOTAL NUMBER OF CASES	649 *	767 *	3,505 *	4,133
TOTAL NUMBER OF ALL PENDING CASES			7,236 *	8,583
DISPOSED CASES				
CONTEMPT	2	2	6	6
HABEAS CORPUS	3	8	28	28
POST CONVICTION	5	5	28	24
INDICTMENTS	512	650	1,296	1,621
INFORMATIONS	510	615	1,229	1,472
TOTAL NUMBER OF CASES	1,037 *	1,280 *	2,585 *	3,171

SAMPLE OF CRIMINAL DIVISION REPORT # CRFL074
REPORT OF INDICTMENTS - BY JUDGE

CRFL074 07/21/77

CRIMINAL DIVISION OF THE CIRCUIT

COURT

FOR PERIOD ENDING 06/30/77

REPORT OF INDICTMENTS

JUDGE	CODE	DISPOSED		
		LAST WEEK	THIS MONTH	YEAR TO D
JUDGE JAMES D. CROSSON	26			
JUDGE RICHARD J. FITZGERALD	43	56	56	
JUDGE ROBERT L. MASSEY	59	35	35	
JUDGE ROBERT J. COLLINS	93	15	15	
JUDGE JAMES MURRAY	97			
JUDGE EARL STRAYHORN	99	40	40	
JUDGE MARVIN E. ASPEN	101	3	3	
JUDGE B. HACKOFF	104	8	8	
JUDGE RICHARD L. CURRY	108	3	3	
JUDGE GARLINO W. WATT	113	32	32	
JUDGE WARREN WOLFSON	114	9	9	
JUDGE ROGER J. KILEY JR.	115	20	20	
JUDGE JOHN A. NORDBERG	116	23	23	
JUDGE VINCENT BENTIVENGA	117	16	16	
JUDGE SYLVESTER C. CLOSE	121	13	13	
JUDGE WILLIAM COUSINS JR.	122	30	30	
JUDGE BRIAN DUFF	123	28	28	
JUDGE THOMAS R. FITZGERALD	124	19	19	
JUDGE JOSEPH GORDON	128			
JUDGE ALBERT GREEN	129	13	13	
JUDGE GEORGE M. MAKOVICH	135	13	13	
JUDGE THOMAS J. O BRIEN	139	1	1	
JUDGE RONIE J. PALMER	140	12	12	
JUDGE R. EUGENE PINCHAM	142	10	10	
JUDGE GERALD L. SBARBARO	144	1	1	
JUDGE ROBERT L. SKLODOWSKI	145	11	11	
JUDGE THEODORE M. SWAIN	146	23	23	
JUDGE MARK E. JONES	318	15	15	
JUDGE NORMAN A. KORFIST	321			
JUDGE WALTER J. KOWALSKI	322			
JUDGE FRANK B. MACHALA	326	32	32	
JUDGE WAYNE W. OLSON	337			
JUDGE DANIEL J. RYAN	340	15	15	
JUDGE FRED G. SURIA	351	31	31	
JUDGE KENNETH R. WENDT	352	38	38	
JUDGE LOUIS WEXLER	353	15	15	
JUDGE FRANK J. WILSON	354	40	40	
JUDGE JOHN F. HECHINGER	358	1	1	
JUDGE THOMAS ROSENBERG	363			
JUDGE LOUIS D. GARIPPO	365	47	47	
JUDGE ROBERT J. SULSKI	368	30	30	
JUDGE ALBERT PORTER	378			
JUDGE JAMES E. STRUNCK	379	38	38	
JUDGE AUBREY F. KAPLAN	401	8	8	
JUDGE MATTHEW J. MORAN	408			
JUDGE FRANCIS J. MAHON	414	21	21	
JUDGE HOWARD M. MILLER	415	13	13	
JUDGE JAMES M. SCHREIER	458			

SAMPLE OF CRIMINAL DIVISION REPORT # CRFL874
REPORT OF INDICTMENTS - BY JUDGE

CRFL874 07/21/77 CRIMINAL DIVISION OF THE CIRCUIT COURT PAGE 7
FOR PERIOD ENDING 06/30/77 REPORT OF INDICTMENTS

JUDGE	CODE	DISPOSED		
		LAST WEEK	THIS MONTH	YEAR TO DATE
JUDGE JAMES D. CROSSON	26			1
JUDGE RICHARD J. FITZGERALD	43	49	49	105
JUDGE ROBERT L. HASSEY	59	24	24	47
JUDGE ROBERT J. COLLINS	93	13	13	37
JUDGE JAMES HURRAY	97			1
JUDGE EARL STRAYHORN	99	22	22	52
JUDGE HARVIN E. ASPEN	101	2	2	6
JUDGE B. HACKOFF	104	8	8	13
JUDGE RICHARD L. CURRY	108	2	2	4
JUDGE GARLIND W. WATT	113	21	21	47
JUDGE WARREN WOLFSUN	114	6	6	29
JUDGE ROGER J. KILLY JR.	115	10	10	28
JUDGE JOHN A. NORDBERG	116	6	6	21
JUDGE VINCENT BENTIVENGA	117	9	9	16
JUDGE SYLVESTER C. CLOSE	121	7	7	12
JUDGE WILLIAM COUSINS JR.	122	16	16	27
JUDGE BRIAN DUFF	123	14	14	29
JUDGE THOMAS R. FITZGERALD	124	6	6	23
JUDGE JOSEPH GORDON	128			1
JUDGE ALBERT GREEN	129	6	6	12
JUDGE GEORGE M. HAROVICH	135	7	7	14
JUDGE RONIE J. PALMER	140	6	6	11
JUDGE R. EUGENE PINCHANE	142	4	4	17
JUDGE ROBERT L. SKLODOWSKI	145	5	5	24
JUDGE THEODORE M. SWAIN	146	6	6	16
JUDGE MARK E. JONES	148	11	11	29
JUDGE NORMAN A. KORFIST	311			1
JUDGE WALTER J. KOWALSKI	32			2
JUDGE FRANK B. MACHALA	326	7	7	35
JUDGE DANIEL J. RYAN	340	7	7	17
JUDGE FRED G. SURIA	351	18	18	35
JUDGE KENNETH R. WENDT	352	25	25	42
JUDGE LOUIS WEXLER	353	9	9	23
JUDGE FRANK J. WILSON	354	14	14	31
JUDGE JOHN F. HECHINGER	358	1	1	1
JUDGE THOMAS ROSENBERG	363			1
JUDGE LOUIS D. GARIPPO	365	21	21	72
JUDGE ROBERT J. SULSKI	368	15	15	26
JUDGE ALBERT PORTER	378			1
JUDGE JAMES E. STRUHCK	379	10	10	23
JUDGE AUDREY F. KAPLAN	401	4	4	13
JUDGE MATTHEW J. MORAN	408			2
JUDGE FRANCIS J. MAHON	414	7	7	19
JUDGE HOWARD M. MILLER	415	3	3	24
JUDGE EARL ARKISS	598			3
JUDGE JAMES M. BAILLY	599	17	17	55
JUDGE FRANK W. DAPPARO	601	11	11	32
JUDGE ARTHUR L. DUNNE	613			5

CRFL078

07/21/77

CLERK OF CIRCUIT COURT OF COOK COUNTY

06/30/77

CRIMINAL DIVISION STATISTICAL REPORT BY CHARGE

CHARGE	***** JUNE *****		***** YEAR OF 1977 *****	
	INDICTMENTS	DEFENDANTS	INDICTMENTS	DEFENDANTS
INDICTMENTS				
CONSPIRACY ETC.	2	6	4	14
MURDER	12	16	73	82
MURDER ETC.	2	3	32	45
ATTEMPT MURDER			7	11
ATTEMPT MURDER ETC.	12	15	79	102
INVOL MANSLAUGHTER			5	5
INV MANSLAUGHTER ETC			2	3
AGGR KIDNAPING ETC	1	1	2	2
RAPE	1	1	7	7
RAPE ETC.	7	7	31	40
CONSPIRACY RAPE	1	1	1	1
ATTEMPT-RAPE	1	1	4	4
DEVIATE SEXUAL ASST			2	3
DEV SEXUAL ASST ETC	1	1	5	7
INDECENT LIB W/CHILD	4	4	16	16
IND LIB W/CHILD ETC			6	6
AGGRAVATED INCEST			2	2
PANDERING			4	4
BATTERY ETC.			1	4
AGGRAVATED BATTERY	1	1	4	4
AGGR BATTERY ETC.	7	9	39	51
UNLAWFUL USES CR CAR			1	1
THEFT	4	4	27	40

SAMPLE OF CRIMINAL DIVISION REPORT # CRFL078
SUMMARY STATISTICS ON INDICTMENTS, DEFENDANTS - BY CHARGE

SAMPLE OF CRIMINAL DIVISION REPORT # CR080
SUMMARY STATISTICS ON DISPOSITIONS - BY JUDGE

CRIMINAL DIVISION OF THE CIRCUIT COURT
STATISTICAL REPORT BY JUDGE AND DISPOSITION

CR080 07/20/77,
06/77

JUDGE	JUDGE DANIEL J. WHITE DISPOSITIONS	COUNT THIS MONTH	COUNT LAST MONTH	YEAR TO DATE COUNT
	P.C. PETITION DISCHARGED	1	0	1
	V.O.P./DEPT. OF CORRECTIONS	0	2	2
	PROBATION	6	10	17
	PROBATION/DEPT. OF CORRECTIONS	3	0	3
	PROBATION EXTENDED OR RECOMMITTED	0	0	1
	DEFENDANT SENTENCED ON PLEA OF GUILTY	15	15	30
	DEFENDANT SENTENCED ON FINDING	2	1	7
	DEFENDANT SENTENCED ON VERDICT	1	2	3
	JAIL-DEPT. OF CORRECTIONS	6		6
	JAIL-ILL. DEPT OF CORRECTIONS	9	8	20
	WORK RELEASE PROGRAM	2	0	2
	DISCHARGED ON FINDINGS	3	3	6
	DISCHARGED N VERDICT	1	1	2
	DEFENDANT NOT GUILTY	4	4	8
	STRICKEN OFF WITH LEAVE TO REINSTATE	2	4	16
	NOLLE PROSEQUI	2	0	2
	O/C STAY OF JUDGMENT	0	3	3
	CONTINUED FOR APPEAL	0	1	1
	TRANSFER TO CHIEF JUSTICE	4	9	68
	CONTINUED JURY CALL	3	6	22
	CONTINUED BENCH TRIAL	0	2	15
	CONTINUED/MOTION STATE	41	44	186
	CONTINUED O/C	55	55	271
	CONTINUED BY AGREEMENT	123	111	849
	CONTINUED/MOTION DEFENDANT	32	41	173
	BOND FORFEITURE VACATED	8	9	49

CRIMINAL DIVISION REPORT # CR080, contd.

CRIMINAL DIVISION OF THE CIRCUIT COURT
 STATISTICAL REPORT BY JUDGE AND DISPOSITION
 CR080 07/20/77
 06/77

JUDGE	JUDGE DANIEL J. WHITE DISPOSITIONS	COUNT THIS MONTH	COUNT LAST MONTH	YEAR TO DATE COUNT
	BOND FORFEITURE WARRANT	20	13	68
	JUDGEMENT ON BOND FORFEITURE	2	3	17
	CORRECT OR MODIFY SENTENCE	2	1	4
	V.O.P. WARRANT	3	1	5
	NOTICE OF APPEAL FILE	2	2	4
	TRANSFER OF FUNDS	2	1	4
	BEHAVIOR CLINIC EXAM ORDERED	0	1	3
	JUDGEMENT VACATED	0	0	1
	WARRANT QUASHED	8	1	40
	PRE-SENTENCE INVESTIGATION ORDERED	4	4	15
	REINSTATEMENT (S.O.L.)	3	3	8
	REINSTATEMENT (V.O.P.)	5	2	14
	LET MITTAKUS ISSUE	6	4	13
	REINSTATEMENT ADJUSTMENTS	5	1	11
	MISTRIAL	0	0	1
	APPEARANCE	2	0	6
	PAGE NO 2	388	378	1,995

CRIMINAL DIVISION OF THE CIRCUIT COURT
 STATISTICAL REPORT BY JUDGE AND DISPOSITION
 CR080 07/20/77
 06/77

JUDGE	JUDGE DANIEL J. WHITE CATAGORIES	COUNT THIS MONTH	COUNT LAST MONTH	YEAR TO DATE COUNT
	INDICTMENTS RETURNED AND REINSTATED	13		31
	INDICTMENTS PENDING	79		79
	INDICTMENTS DISPOSED	21		54
	INDICTMENTS QUASHED	0		0
	INDICTMENTS TRANSFERRED TO CHIEF JUDGE	4		74
	CONTEHPT CASES	0		0
	CASES ON DAILY COURT CALL	226		453
	CASES CONTINUED	201		325
	NUMBER OF JURY TRIALS	4		6
	NUMBER OF JURY DAYS	6		31

CRC90 02/14/77

CRIMINAL DIVISION OF THE CIRCUIT COURT

01/11/77

STATISTICAL REPORT BY CHARGE AND DISPOSITION

PAGE NO. 1

INFORMATIONS AND INDICTMENTS

JUDGE VINCENT BENTWENGA

CHARGE	DEFTS	JURY	NOT GUILTY	SENTENCES									
		TRIAL	GTY PLEAS	ILLINOIS	DEPT. OF	ILL. DEPT. OF	DEATH PROB	FINED	COND	QUASHED	NCLLE	SOL	MISC
		C	A	C	A	MENTAL HEALTH	CORRECTIONS	CORRECTION		DISC. DWP-ABATED	PRCSE		

RAPE	1101	1											
------	------	---	--	--	--	--	--	--	--	--	--	--	--

INDECENT LIB V/CHILD	1104	1											
----------------------	------	---	--	--	--	--	--	--	--	--	--	--	--

ATTEMPT THEFT	1601.4	2											2
---------------	--------	---	--	--	--	--	--	--	--	--	--	--	---

RECEERY	1801	3											
---------	------	---	--	--	--	--	--	--	--	--	--	--	--

ARMED RECEERY	1802	1											1
---------------	------	---	--	--	--	--	--	--	--	--	--	--	---

ATTEMPT ARMED RCBB	1802.4	1											
--------------------	--------	---	--	--	--	--	--	--	--	--	--	--	--

BURGLARY	1901	9											1 2
----------	------	---	--	--	--	--	--	--	--	--	--	--	-----

BURGLARY ETC.	1901.2	1											
---------------	--------	---	--	--	--	--	--	--	--	--	--	--	--

UNLAWFUL USE WEAPONS	2401	3											
----------------------	------	---	--	--	--	--	--	--	--	--	--	--	--

PCCS CTL SLESTANCE	561402	2	1	1	1	1							
TOTALS	24	1	1	1	16	9			8			2	1 5

STATISTICS ON CHARGES AND DISPOSITIONS

RECAP BY DISPOSITION

JUDGE VINCENT BENTWENGA

DESCRIPTION	METHOD OF CONVICTION/ACQUITTAL	DESCRIPTION	DESCRIPTION
JURY	1	ACTUAL CONVICTIONS	17 ABATED ETC
JURY WAIVER	1	MISC DISPOSITIONS	3 S.C.L. 1
PLEA	16	ACQUITTALS	1 NOLLE PROSSC 2
TOTAL	17 1	PROBATION WITH SENTENCE	3 TOTAL 3

CRIMINAL DIVISION REPORT # CR090, contd.

CRIMINAL DIVISION OF THE CIRCUIT COURT

07/21/77

CASE HISTORY REPORT

CASE NO	DEPT CD	I. R. NO.	JD CD	ROOM CHARGE	BOND NO	ARREST DATE	TRIAL DATE	COURT DATES		S J P.W	DISP CD	DEFENDANTS NAME	ATTORNEYS NAME
								PREVIOUS	CURRENT				
11-C-77079 00			599	504 0104		06/02/77		06/02/77	06/02/77		87	THOMAS MCNAHARA	
			599	504				06/02/77	06/02/77		31	ILLINOIS MENTAL HEALTH	
8-C-04161 00			351	602 1802		02/24/77		02/24/77	02/24/77		93	MIMS THOMAS	
			351	602				06/24/77	06/24/77		24	PROBATION EXTENDED OR RECOMMITTED	
8-C-04162 00			351	602 1802		02/24/77		02/24/77	02/24/77		93	MIMS THOMAS	
			351	602				06/24/77	06/24/77		24	PROBATION EXTENDED OR RECOMMITTED	
9-C-01942 00			70	404 0901 4		01/28/75		01/28/75	01/28/75		98	BOWDRY CORNELIUS	
			93	2307				06/27/77	06/27/77		26	DEFENDANT SENTENCED ON PLEA OF GUILTY	
			93	2307				06/27/77	06/27/77		20	PROBATION/DEPT. OF CORRECTIONS	
9-C-01943 00			70	404 1802		01/28/75		01/28/75	01/28/75		88	BOWDRY CORNEILUS	
			93	2307				07/11/77	06/27/77		26	DEFENDANT SENTENCED ON PLEA OF GUILTY	
			93	2307				06/27/77	06/27/77		20	PROBATION/DEPT. OF CORRECTIONS	
0-C-00922 00			351	602 1901		02/22/77		02/22/77	02/22/77		93	MIMS THOMAS	
			351	602				06/24/77	06/24/77		26	DEFENDANT SENTENCED ON PLEA OF GUILTY	
			351	602				06/24/77	06/24/77		19	PROBATION	
0-C-00961 00			43	404 1802 Z		10/14/76		10/14/76	10/14/76		93	COLLINS JOHN S	
			622	3602				06/14/77	06/14/77		28	DEFENDANT SENTENCED ON VERDICT.	
			622	3602				06/14/77	06/14/77		33	JAIL-ILL. DEPT OF CORRECTIONS	
70-C-01431 00			351	602 1901 Z		02/22/77		02/22/77	02/22/77		93	MIMS THOMAS	
			351	602				06/24/77	06/24/77		26	DEFENDANT SENTENCED ON PLEA OF GUILTY	
			351	602				06/24/77	06/24/77		19	PROBATION	
70-C-01951 00			70	404 3210		01/28/75		01/28/75	01/28/75		88	BOWDRY CORNELIUS	
			93	2307				06/27/77	06/27/77		26	DEFENDANT SENTENCED ON PLEA OF GUILTY	
			93	2307				06/27/77	06/27/77		20	PROBATION/DEPT. OF CORRECTIONS	
71-C-00287 00			352	2105 1901		09/01/76		09/01/76	09/01/76		93	BARJAS MANUEL	
			379	704				06/13/77	06/13/77		26	DEFENDANT SENTENCED ON PLEA OF GUILTY	
			379	704				06/13/77	06/13/77		33	JAIL-ILL. DEPT OF CORRECTIONS	
71-C-00770 00			351	602 3210		02/22/77		02/22/77	02/22/77		93	MIMS THOMAS	
			351	602				06/24/77	06/24/77		26	DEFENDANT SENTENCED ON PLEA OF GUILTY	
			351	602				06/24/77	06/24/77		19	PROBATION	
71-C-00978 00			351	602 3210		02/22/77		02/22/77	02/22/77		93	MIMS THOMAS	
			351	602				06/24/77	06/24/77		26	DEFENDANT SENTENCED ON PLEA OF GUILTY	
			351	602				06/24/77	06/24/77		19	PROBATION	

SAMPLE OF CRIMINAL DIVISION REPORT # CR193
MODIFIED CASE HISTORY REPORT

END