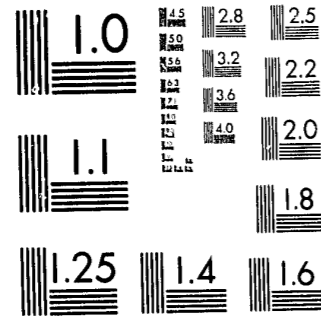


National Criminal Justice Reference Service



This microfiche was produced from documents received for inclusion in the NCJRS data base. Since NCJRS cannot exercise control over the physical condition of the documents submitted, the individual frame quality will vary. The resolution chart on this frame may be used to evaluate the document quality.



MICROCOPY RESOLUTION TEST CHART
NATIONAL BUREAU OF STANDARDS-1963-A

Microfilming procedures used to create this fiche comply with the standards set forth in 36 CFR 101-11.504.

Points of view or opinions stated in this document are those of the author(s) and do not represent the official position or policies of the U. S. Department of Justice.

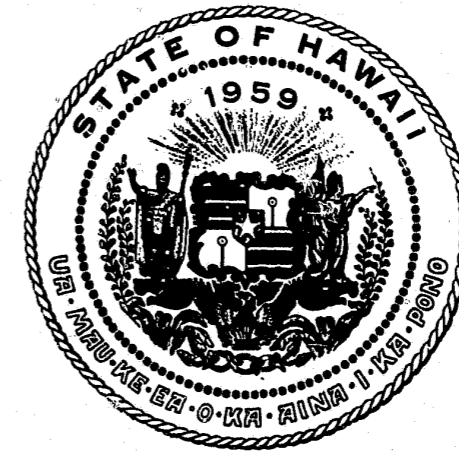
National Institute of Law Enforcement and Criminal Justice
Law Enforcement Assistance Administration
United States Department of Justice
Washington, D. C. 20531

DATE FILMED

3-27-80

CRIME IN HAWAII

1976



A REVIEW OF UNIFORM CRIME REPORTS

STATISTICAL ANALYSIS CENTER

60475

CRIME IN HAWAII

1976



NCJRS

AUG 6 1979

ACQUISITIONS

A REVIEW OF UNIFORM CRIME REPORTS

HAWAII CRIMINAL JUSTICE
STATISTICAL ANALYSIS CENTER

TAKASHI KITAOKA, Director

April 1977

TABLE OF CONTENTS

* * *

	Page
Acknowledgements	i
Foreword	ii
List of Tables	iii
Introduction	1
Types of Crime Statistics	3
Part I Offenses	4
Persons Arrested	16
Hawaii Crime Summary	36
Definition of Terms	39

Prepared by the
UNIFORM CRIME REPORTING DIVISION
HAWAII CRIMINAL JUSTICE
STATISTICAL ANALYSIS CENTER
Emogene Estores, Chief
Elberta Usui, Statistics Clerk

The Hawaii Criminal Justice Statistical Analysis Center wishes to express its appreciation to Roy K. Hiram, Chief of Police, Kauai Police Department; Francis Keala, Chief of Police, Honolulu Police Department; Guy Paul, Chief of Police, Hawaii Police Department; John San Diego, Sr., Chief of Police, Maui Police Department, and to their respective research staffs for providing the accurate and necessary data reported herein; to Mr. Ernest Yonamine, Director of the Bureau of Crime Statistics and Identification for his helpful comments and criticisms; to the Federal Bureau of Investigation which provided assistance and guidance in the collection of the Uniform Crime Reports; to Mrs. Kathy Miyamoto and Miss Susan Doi of the SAC staff for their assistance in typing this report. Their assistance is gratefully acknowledged.

FOREWORD

The socio-economic and legal impacts of crime touch every citizen's life in every State of the Union. Planning programs for the effective prevention and curbing of criminal activity must be based on reliable data.

This publication was made possible by the cooperation and dedicated support of the four county police departments which provided the basic data. The Hawaii Criminal Justice Statistical Analysis Center submits to you, our Second Annual Report entitled, "Crime In Hawaii 1976: A Review of Uniform Crime Reports". Needless to say, cooperation on the part of all police departments is the key to the successful functioning of the Uniform Crime Reporting system.

This report has been prepared to serve as a summary on statistics of crime in the State of Hawaii and contains data on reported crimes and arrests in 1976 with special reference to 1975 for particular comparisons. While this publication serves as an aid to administrative and operational decisions, it also serves to inform others as to the extent of criminal activity in Hawaii.

It is through this and similar reports that we are able to keep law officers, prosecutors, judges, correctional administrators, legislators, and the general public informed as to the crime trends in Hawaii.

We believe that through enlightenment, the crusade against crime will gain support.

This report has been made possible through a grant awarded to the Hawaii Judiciary by the Law Enforcement Assistance Administration (LEAA).



TAKASHI KITAOKA
 Director
 Hawaii Criminal Justice
 Statistical Analysis Center

April 1977

1976

LIST OF TABLES

<u>Tables</u>	<u>Page</u>
1 Hawaii Crime Index 1976.	6
2 Index of Crime United States and Hawaii.	7
3 Actual Index Offenses Known to Police by County Cleared by Arrest or Otherwise	8
4 Actual Part I Offenses Reported by Month, 1976	9
5 Value of Property Reported Stolen and Value of Stolen Property Recovered by County10
6 Value of Property Stolen and Value of Stolen Property Recovered State of Hawaii11
7 Value of Property Stolen by Type of Offense.12
8 Value of Property Stolen - Larceny-Theft Analysis13
9 Value of Property Stolen by County and Type of Offense.14
10 Population and Arrests as a Percentage of Ethnic Stock.17
11 Age and Sex of Adults Arrested for Part I Offenses18
12 Age and Sex of Adults Arrested for Part II Offenses19
13 Race of Adults Arrested for Part I offenses.20
14 Race of Adults Arrested for Part II Offenses21
15 Part I Arrests of Adults by County22
16 Age and Sex of Adults Arrested by Offense.23

1976

LIST OF TABLES
(cont.)

<u>Tables</u>		<u>Page</u>
17	Race of Adults Arrested by Offense.	25
18	Age and Sex of Juveniles Arrested for Part I Offenses.	27
19	Age and Sex of Juveniles Arrested for Part II Offenses.	28
20	Race of Juveniles Arrested for Part I Offenses.	29
21	Race of Juveniles Arrested for Part II Offenses.	30
22	Part I Arrests of Juveniles by County	31
23	Age and Sex of Juveniles Arrested by Offense	32
24	Race of Juveniles Arrested by Offense	34

INTRODUCTION

The development of State UCR programs is a relatively new approach to the collection of UCR data. An important aspect of the transference of this collection responsibility from the FBI to a State agency is to ensure consistency and comparability in the data collected by the State programs.

Following are the conditions set by the FBI under which a State program is developed and by which it must operate:

- (1) The State program must conform to the national Uniform Crime Reports standards, definitions, and information required. This, of course, does not prohibit the State from collecting other statistical data beyond the national collection.
- (2) The State agency must have a proven, effective, mandatory, statewide program and have instituted acceptable quality control procedures.
- (3) Coverage within the State by a State agency must at least be equal to that attained by Uniform Crime Reports.
- (4) The State agency must have adequate field staff assigned to assist local units in record practices and crime reporting procedures.
- (5) The State agency must furnish to the FBI all of the detailed data regularly collected by the FBI in the form of duplicate returns, computer printouts, and/or magnetic tape.

- (6) The State must have the proven capability (tested over a period of time) to supply all the statistical data required to the FBI in time to meet national Uniform Crime Reports publication deadlines.
- (7) The FBI will continue its internal procedures of verifying and reviewing individual agency reports for both completeness and quality.
- (8) The FBI will continue to have direct contact with individual reporting units within the State where necessary in connection with crime reporting matters, but will coordinate such contacts with the State agency.
- (9) Upon request, the FBI will continue its training programs within the State with respect to police records and crime reporting procedures. For mutual benefit these will be coordinated with the State agency.
- (10) Should circumstances develop whereby the State agency cannot provide the data required by the national program, the FBI will reinstitute a direct collection of Uniform Crime Reports from police units within the State.

TYPES OF CRIME STATISTICS

Seven offenses were chosen in the UCR program because of their seriousness and frequency of occurrence as indicators of crime in the United States - these are known as Index Crimes.

It must be kept in mind that all offenses reported herein are known offenses to the police. There has been no consideration taken of any unreported crimes. Because not all crimes come to the attention of the police, the International Association of Chiefs of Police (IACP) limited the reporting of offenses known to the following crime classifications because these are assumed to be the crimes which are most likely to be reported and which occur with sufficient frequency to provide an adequate basis for comparison. They are also serious crimes by nature and/or volume. The chosen offenses are:

1. Criminal Homicide
2. Forcible Rape
3. Robbery
4. Aggravated Assault
5. Burglary
6. Larceny-Theft
7. Motor Vehicle Theft

PART I OFFENSES

The Part I Offenses or Index Crimes are as follows:

1. Criminal Homicide:
 - a. Murder and non-negligent manslaughter
 - b. Manslaughter by negligence
2. Forcible Rape:
 - a. Rape by force
 - b. Attempts to commit rape
3. Robbery:
 - a. Firearm
 - b. Knife or cutting instrument
 - c. Other dangerous weapon
 - d. Strong-arm - hands, fists, feet, etc.
4. Aggravated Assault:
 - a. Firearm
 - b. Knife or cutting instrument
 - c. Other dangerous weapon
 - d. Hands, fists, feet, etc., - aggravated injury
5. Burglary:
 - a. Forcible entry
 - b. Unlawful entry - no force
 - c. Attempted forcible entry
6. Larceny-Theft (except motor vehicle):
7. Motor Vehicle Theft:
 - a. Autos
 - b. Trucks and buses
 - c. Other vehicles

Essential to the maintaining of uniform and consistent data is the establishment of a standard definition of the offenses to be used in the program. Each of the Part I Offenses has been defined specifically in UCR. The Crime Index offenses are all of the Part I Offenses with the exception of 1b, manslaughter by negligence.

During 1976, a total of 56,039 Index Crimes were reported to the police. These Index Crimes are grouped into two categories: violent crimes and nonviolent crimes.

Violent crimes, or crimes against persons include: murder, forcible rape, robbery and aggravated assault. In 1976, these offenses made up 3.6 percent of all reported Index Offenses as compared with the U. S. national figure (1975) of 9.1 percent. There has been no change in the reported violent crime as a percentage of total reported Index Offenses in Hawaii from 1975 to 1976.

Maintaining conformity within the FBI's Uniform Crime Reporting scheme, nonviolent crimes include the offenses of burglary (breaking and entering), larceny-theft, and motor vehicle theft. The number of nonviolent crimes constitute 96.4 percent of all Index Crimes reported in Hawaii, while nationwide (1975) 90.9 percent of all reported Index Crimes were in the nonviolent category.

The following tables depict the number of reported Part I crimes and clearances by the police.

TABLE 1
HAWAII CRIME INDEX
1976

<u>Index Offenses</u>	<u>Number of Offenses</u>	<u>Percent Change Over Previous Year</u>	<u>Rate Per 100,000 Population¹</u>	<u>Percent Change Over Previous Year</u>
Murder	55	-17.9	6.2	-20.5
Forcible Rape	208	- 2.8	23.5	- 4.9
Robbery	1,180	6.9	133.1	4.3
Aggravated Assault	588	16.7	66.3	13.7
Burglary-Breaking & Entering	16,682	5.6	1881.6	3.0
Larceny-Theft (except Motor Vehicle)	32,521	8.8	3668.1	6.2
Motor Vehicle Theft	4,805	6.1	542.0	3.5
Personal Crimes ²	2,031	7.5	229.1	4.9
Property Crimes ³	54,008	7.6	6091.6	4.9
TOTAL FOR HAWAII	56,039	7.6	6320.7	4.9

¹Population figures from State of Hawaii, Department of Planning & Economic Development.

²Personal Crimes include the crimes of murder, rape, robbery and aggravated assault.

³Property Crimes include the crimes of burglary, larceny-theft and motor vehicle theft.

TABLE 2
INDEX OF CRIME UNITED STATES AND HAWAII
1975
(RATES PER 100,000 INHABITANTS)¹

<u>Index Offenses</u>	<u>U.S. Total</u>	<u>Rate</u>	(1974-1975)	<u>Hawaii Total</u>	<u>Rate</u>	(1974-1975)
			<u>Percentage Change in Rate</u>			<u>Percentage Change in Rate</u>
Murder	20,505	9.6	-1.0	67	7.8	- 3.7
Forcible Rape	56,093	26.3	.4	214	24.7	- 5.7
Robbery	464,973	218.2	4.3	1,104	127.6	6.2
Aggravated Assault	484,713	227.4	5.4	504	58.3	- .2
Burglary-Breaking & Entering	3,252,129	1,525.9	6.1	15,797	1,826.5	2.4
Larceny-Theft (except Motor Vehicle)	5,977,698	2,804.8	12.7	29,884	3,455.5	.9
Motor Vehicle Theft	1,000,455	469.4	1.6	4,529	523.6	- 9.5
Total Personal Crimes ²	1,026,284	481.5	4.4	1,889	218.4	2.8
Total Property Crimes ³	10,230,282	4,800.2	9.4	50,210	5,805.4	-11.1
Total Crime Index	11,256,566	5,281.7	8.9	52,099	6,023.7	-10.7

¹Population figures from State of Hawaii, Department of Planning & Economic Development.

²Personal Crimes include the crimes of murder, rape, robbery and aggravated assault.

³Property Crimes include the crimes of burglary, larceny-theft and motor vehicle theft.

TABLE 3

ACTUAL INDEX OFFENSES KNOWN TO POLICE BY COUNTY AND OFFENSES CLEARED BY ARREST OR OTHERWISE

1976	ACTUAL OFFENSES KNOWN TO POLICE					CLEARED BY ARREST OR OTHERWISE	
	STATE TOTAL	CITY & COUNTY HONOLULU	HAWAII COUNTY	MAUI COUNTY	KAUAI COUNTY	NUMBER	PERCENT
Total Resident Population ¹	886,600	719,919	77,134	55,856	33,691		
Percent Distribution	100	81.2	8.7	6.3	3.8		
Total Index Offenses	56,039	45,766	3,904	4,200	2,169	14,102	25.2
Percent Distribution	100	81.7	7.0	7.5	3.8		
Violent Crimes	2,031	1,696	141	95	99	1,313	64.6
Murder & Non-negligent Manslaughter	55	40	6	8	1	41	74.5
Forcible Rape	208	164	16	16	12	113	54.3
Robbery	1,180	1,112	35	19	14	444	37.6
Aggravated Assault	588	380	84	52	72	378	64.3
Non-Violent Crimes	54,008	44,070	3,763	4,105	2,070	12,789	23.7
Burglary	16,682	13,728	1,101	1,117	736	4,290	25.7
Larceny-Theft	32,521	26,082	2,493	2,701	1,245	7,555	23.2
Motor Vehicle Theft	4,805	4,260	169	287	89	944	19.6

¹ Provisional estimate by percentage based on 1975 population.

TABLE 4

ACTUAL PART I OFFENSES REPORTED BY MONTH

1976

	<u>MURDER</u>	<u>FORCIBLE RAPE</u>	<u>ROBBERY</u>	<u>AGGRAVATED ASSAULT</u>	<u>BURGLARY</u>	<u>LARCENY THEFT</u>	<u>MOTOR VEHICLE THEFT</u>
JANUARY	4	18	100	50	1,422	2,524	314
FEBRUARY	8	13	98	42	1,587	2,712	390
MARCH	5	18	102	48	1,452	2,841	417
APRIL	6	17	81	27	1,219	2,669	378
MAY	6	16	108	41	1,350	2,829	339
JUNE	2	16	89	53	1,442	2,810	475
JULY	2	18	97	63	1,456	3,007	495
AUGUST	4	15	95	50	1,341	3,059	404
SEPTEMBER	4	19	102	57	1,280	2,354	402
OCTOBER	2	25	83	48	1,327	2,470	413
NOVEMBER	7	15	88	46	1,336	2,512	402
DECEMBER	5	18	137	63	1,470	2,734	376
TOTAL	55	208	1,180	588	16,682	32,521	4,805

TABLE 5

VALUE OF PROPERTY REPORTED STOLEN AND
 VALUE OF STOLEN PROPERTY RECOVERED BY COUNTY 1976

	Value of Property Reported Stolen (\$1,000)	Value of Stolen Property Recovered (\$1,000)	Percent Recovered
State Total	19,975.7	5,473.0	27.4
City and County of Honolulu	17,096.5	4,527.1	26.5
Hawaii County	1,028.5	346.5	33.7
Maui County	1,219.7	408.0	33.4
Kauai County	630.9	191.5	30.4

*Figures may not add to totals due to rounding.

TABLE 6

VALUE OF PROPERTY STOLEN AND
VALUE OF STOLEN PROPERTY RECOVERED
STATE OF HAWAII, 1976

Property By Type and Value

Type of Property	Value of Property Stolen and Recovered (\$1,000)	
	<u>Stolen</u>	<u>Recovered</u>
(A) Currency, Notes, etc.	3,020.8	196.4
(B) Jewelry and Precious Metals	4,336.8	285.1
(C) Clothing and Furs	330.3	75.2
(D) Locally Stolen Motor Vehicles	5,732.7	4,243.4
(E) Office Equipment	231.8	13.6
(F) Televisions, Radios, Stereos, etc.	2,457.4	160.7
(G) Firearms	116.9	14.6
(H) Household Goods	205.8	25.4
(I) Consumable Goods	114.0	13.6
(J) Livestock	39.2	8.6
(K) Miscellaneous	3,389.8	436.5
TOTAL	19,975.6	5,473.0

*Figures may not add to totals due to rounding.

TABLE 7

VALUE OF PROPERTY STOLEN BY TYPE OF OFFENSE

1976

	<u>Number of Offenses</u>	<u>Amount (\$1,000)</u>
Murder	52	3.00
Forcible Rape	207	.08
Robbery		
Highway	203	48.9
Commercial House	220	255.8
Service Station	36	7.5
Chain Store	22	10.3
Residence	138	156.9
Bank	32	32.1
Miscellaneous	529	126.9
TOTAL ROBBERY	1,180	638.3
Burglary-Breaking and Entering		
Residence		
Night	4,379	1,989.5
Day	6,219	3,213.2
Unknown	407	109.9
Non-Residence		
Night	2,682	857.7
Day	2,535	656.1
Unknown	460	124.0
TOTAL BURGLARY	16,682	6,950.4
Motor Vehicle Theft	4,808	5,512.2

*Figures may not add to totals due to rounding

TABLE 8

VALUE OF PROPERTY STOLEN -- LARCENY-THEFT ANALYSIS

1976

	<u>Number of Offenses</u>	<u>Amount (\$1000)</u>
Larceny-Theft (Except Motor Vehicle)		
\$200 and over	6,311	5,602.9
\$50 to \$200	8,826	943.9
Under \$50	17,384	324.9
TOTAL LARCENY	32,521	6,871.7
Nature of Larcenies		
a. Pocket-Picking	232	82.0
b. Purse-Snatching	318	64.8
c. Shoplifting	4,964	237.8
d. From Motor Vehicles	6,691	1,794.9
e. Motor Vehicle Parts and Accessories	5,236	381.5
f. Bicycles	2,411	280.7
g. From Buildings (Except c and h)	5,073	2,341.5
h. From Coin Operated Machines	376	12.4
i. All Other	7,220	1,676.0
TOTAL LARCENY	32,521	6,871.7

*Figures may not add to totals due to rounding

TABLE 9

VALUE OF PROPERTY STOLEN BY COUNTY AND TYPE OF OFFENSE

1976

	HONOLULU		HAWAII		MAUI		KAUAI	
	No. of Offenses	Amount (\$1,000)	No. of Offenses	Amount (\$1,000)	No. of Offenses	Amount (\$1,000)	No. of Offenses	Amount (\$1,000)
Murder	40		6	3.0	5		1	
Rape	164		16	.02	16		11	.06
Robbery								
Highway	183	39.5	17	6.1	2	3.3	1	.01
Commercial House	206	253.6	6	.6	5	.6	3	1.0
Service Station	35	7.4	1	.1	--	--		
Chain Store	21	10.0	--	--	1	.3		
Residence	129	153.6	4	.8	2	2.4	3	.04
Bank	29	31.0	--	--	3	1.0		
Miscellaneous	509	124.4	7	.6	6	1.4	7	.5
Total	1,112	619.6	35	8.2	19	9.0	14	1.5
Burglary--Breaking & Entering Residence								
Night	4,063	1,903.0	71	20.0	175	48.6	70	17.9
Day	5,550	3,034.7	230	62.7	298	62.6	141	53.2
Unknown	--	--	270	76.4	22	2.9	115	30.6
Non-Residence								
Night	1,855	565.1	180	43.5	411	151.7	123	97.4
Day	2,260	543.8	48	4.4	186	76.2	55	31.7
Unknown	--	--	302	88.8	25	2.6	112	32.6
Total	13,728	6,046.6	1,101	295.9	1,117	344.6	553	263.4

TABLE 9 (cont.)

VALUE OF PROPERTY STOLEN BY COUNTY AND TYPE OF OFFENSE

1976

	HONOLULU		HAWAII		MAUI		KAUAI	
	No. of Offenses	Amount (\$1,000)	No. of Offenses	Amount (\$1,000)	No. of Offenses	Amount (\$1,000)	No. of Offenses	Amount (\$1,000)
Larceny-Theft (Except Motor Vehicle)								
\$200 and over	5,000	4,729.2	439	356.6	561	320.5	311	196.6
\$50 to \$200	6,932	746.7	764	76.7	763	82.3	367	38.2
Under \$50	14,150	272.8	1,290	19.6	1,377	23.6	567	8.9
Total	26,082	5,748.7	2,493	452.8	2,701	426.4	1,245	243.8
Motor Vehicle Theft	4,260	4,681.6	169	268.6	287	439.7	89	122.2
GRAND TOTAL		17,096.5		1,028.5		1,219.7		630.9

*Figures may not add to totals due to rounding

PERSONS ARRESTED

The number of persons arrested of all violations except traffic in the reporting jurisdictions is compiled from monthly returns submitted by the contributing agencies. The age, sex and race of these persons is recorded and data are collected for juveniles as well as adults for the purpose of computing arrest trends and volume.

The Age, Sex, and Race of Persons Arrested form is used to collect data on the number of persons arrested and not the number of persons charged. The same person may be arrested several times during a month for similar or several different violations within a jurisdiction; each separate arrest is counted. It is also possible that a person is arrested on several charges at one time; however, in this instance only one arrest is scored.

Effective January 1, 1976, State of Hawaii Uniform Crime Reporting forms were distributed to all participating agencies. The arrest data now show the unique racial mix in Hawaii with the inclusion of five additional categories: Filipino, Samoan, Korean, Hawaiian/Part Hawaiian and all others.

The following tables present data on persons arrested by age, sex and race.

TABLE 10
POPULATION AND ARRESTS AS A PERCENTAGE OF ETHNIC STOCK
1976

	POPULATION ¹		ARRESTS	
	Number	Percent	Number	Percent
TOTAL	812,090	100.0	31,322	100.0
CAUCASIAN	242,349	29.8	11,347	36.2
NEGRO	5,846	.7	1,279	4.1
INDIAN ²			7	.02
CHINESE	34,558	4.3	684	2.2
JAPANESE	223,130	27.5	2,489	7.9
FILIPINO	79,664	9.8	3,304	10.5
SAMOAN	6,786	.8	1,086	3.5
KOREAN	6,521	.8	304	1.0
HAWAIIAN/PART HAWAIIAN	144,293	17.8	3,570	11.4
OTHER	68,943	8.5	7,252	23.2

¹Population - ethnic stock breakdown for 1973.

Source - Department of Planning and Economic Development
Research and Economic Analysis Division
Statistical Report 110

²Indian not classified in Hawaii.

TABLE 11
AGE & SEX OF ADULTS ARRESTED FOR PART I OFFENSES

1976

Month	Sex	AGE															Total 18 & over	
		18	19	20	21	22	23	24	25-29	30-34	35-39	40-44	45-49	50-54	55-59	60-64		65 & over
Jan.	M	52	33	41	18	13	13	9	47	20	8	3	3	8	6	1	2	277
	F	17	10	11	6	1	5	12	15	4	2				3	1	1	88
Feb.	M	55	26	34	17	14	14	6	40	15	12	9	6	2	1	5	4	260
	F	5	16	5	3	6	7		21	11	6	2	3	3	2	2	2	94
March	M	41	36	34	19	16	19	9	34	25	7	7	5	9	4	1	6	272
	F	12	10	6	3	6	8	10	17	9	3	4	2	5	3	1	1	100
April	M	37	28	29	30	5	22	7	52	14	9	3	5	3		1	2	247
	F	12	6	5	8	11	7	3	23	8	8	3	3	3	4		3	107
May	M	62	55	37	18	20	21	17	44	23	13	3	4	3	4	2	4	330
	F	15	16	10	7	4	10	5	18	7	5	5	5	3	2	3	1	116
June	M	38	42	23	34	17	15	15	43	19	9	7	4	5	8	1	1	278
	F	7	15	11	5	10	7	2	17	10	6	3	3			2	4	102
July	M	63	42	39	30	19	7	13	43	11	7	9	10	7	3	1	5	309
	F	14	9	8	7	8	1	7	29	13	6	4	3	2	3	3	2	119
Aug.	M	60	53	43	24	17	14	11	60	28	15	7	8	1	4	6	4	354
	F	19	19	9	10	10	4	4	22	6	7	6	5	3	2	4	2	133
Sept.	M	51	34	37	29	18	14	18	55	15	13	11	9	7	4	1	8	324
	F	15	11	5	8	8	7	6	17	14	2	5	2	2		1		103
Oct.	M	54	37	31	27	24	22	16	47	27	5	4	3	4	5	4	7	317
	F	11	6	9	11	12	5	6	31	8	5	3	8	6	2		2	125
Nov.	M	34	35	25	14	14	9	15	55	20	9	15	7	4	3	5	4	268
	F	14	13	7	16	8	2	9	20	17	4	3		2	3	1	3	122
Dec.	M	48	19	35	19	23	16	6	54	26	12	8	4	8	4	6	6	294
	F	17	14	15	2	3	6	5	22	14	8	2	4	4	2	1		119
Total	M	595	440	408	279	200	186	142	574	243	119	86	68	61	46	34	53	3,530
	F	158	145	101	86	87	69	69	252	121	62	40	38	33	26	19	21	1,328

TABLE 12
AGE & SEX OF ADULTS ARRESTED FOR PART II OFFENSES

1976

Month	S E X	AGE															Total 18 & over	
		18	19	20	21	22	23	24	25-29	30-34	35-39	40-44	45-49	50-54	55-59	60-64		65 & over
Jan.	M	65	93	95	75	70	52	52	230	133	71	66	50	33	15	16	17	1,133
	F	17	15	11	13	15	7	16	51	25	12	14	4	4	2	3	1	210
Feb.	M	54	61	81	56	66	51	40	188	120	72	49	91	32	30	11	12	1,014
	F	8	15	12	18	9	6	11	53	26	8	3	3	4		1	2	179
March	M	61	78	91	76	79	62	44	225	137	93	67	49	43	26	20	19	1,170
	F	10	13	20	6	10	6	4	40	23	7	6	6	2	4			157
April	M	59	95	89	93	58	62	54	180	112	84	54	51	33	22	26	19	1,091
	F	19	16	19	21	11	12	25	45	35	9	6	5	2	2	1		228
May	M	79	76	91	93	55	55	49	165	121	75	53	56	46	24	13	30	1,081
	F	10	10	10	16	6	9	14	48	20	7	4	8	4	1			167
June	M	71	89	85	78	55	64	44	172	115	73	54	70	26	26	21	13	1,056
	F	10	16	20	17	14	9	12	33	27	10	10	4	5	4	2	1	194
July	M	56	84	87	73	59	34	53	187	109	60	50	41	37	21	21	23	995
	F	5	20	10	12	5	14	10	31	18	12	8	3	1		1	2	152
Aug.	M	51	120	85	79	78	66	80	223	154	63	57	43	43	22	22	19	1,205
	F	13	12	9	21	14	8	11	28	26	9	10	2	5		1	1	170
Sept.	M	69	97	110	89	71	55	59	243	120	79	60	50	33	24	8	12	1,179
	F	16	21	19	10	10	14	8	41	34	22	13	3	8	1	1	2	223
Oct.	M	55	87	140	123	74	84	57	218	120	86	62	55	40	23	23	14	1,261
	F	15	17	17	21	12	25	10	49	12	11	21	8	7	4	1	2	232
Nov.	M	47	92	70	96	63	50	57	213	91	73	48	41	32	25	22	19	1,039
	F	18	16	13	17	11	17	7	50	22	12	14	7	5	4		1	214
Dec.	M	84	108	104	78	101	88	60	211	158	90	51	33	41	21	18	18	1,264
	F	20	14	20	13	15	9	8	38	29	12	18	7	6	1	2	2	214
Total	M	751	1,080	1,128	1,009	829	723	649	2,455	1,490	919	671	630	439	279	221	215	13,488
	F	161	185	180	185	132	136	136	507	297	131	127	60	53	23	13	14	2,340

TABLE 13
RACE OF ADULTS ARRESTED FOR PART I OFFENSES

MONTH	CAUCASIAN	NEGRO	INDIAN	CHINESE	JAPANESE	ALL OTHER	FILIPINO	HAWAIIAN	KOREAN	SAMOAN	OTHER
JAN.	134	14	1	13	24	179	35	80	4	11	49
FEB.	142	11	1	14	21	165	42	69	5	15	34
MARCH	141	16		16	46	153	40	55	5	11	42
APRIL	163	10		18	22	141	27	46	3	21	44
MAY	193	24		24	29	176	36	76	4	21	39
JUNE	140	15		14	29	182	32	78	8	23	41
JULY	169	25		16	34	184	40	77	8	13	46
AUG.	190	36	1	9	26	225	49	105	6	19	46
SEPT.	182	23		11	24	187	51	74	5	19	38
OCT.	176	20		15	39	192	34	77	1	13	67
NOV.	181	14		17	24	154	38	71	6	10	29
DEC.	170	22		12	24	185	40	72	10	23	40
TOTAL	1,981	230	3	179	342	2,123	464	880	65	199	515

TABLE 14
RACE OF ADULTS ARRESTED FOR PART II OFFENSES

MONTH	CAUCASIAN	NEGRO	INDIAN	CHINESE	JAPANESE	ALL OTHER	FILIPINO	HAWAIIAN	KOREAN	SAMOAN	OTHER
JAN.	697	74	1	33	124	414	129	150	11	23	101
FEB.	511	61		37	133	451	133	145	9	38	126
MARCH	585	65	1	37	163	476	192	123	11	35	115
APRIL	583	97		44	121	474	177	149	9	36	103
MAY	566	72	1	24	116	469	166	158	21	33	91
JUNE	565	70		15	118	482	170	175	11	32	94
JULY	481	74		32	110	450	167	156	12	24	91
AUG.	630	101		35	132	477	144	173	19	31	110
SEPT.	670	103	1	28	99	501	134	167	8	41	151
OCT.	729	85		30	115	534	140	160	18	40	176
NOV.	608	78		27	127	413	143	136	19	34	81
DEC.	663	103		42	157	513	167	187	19	41	99
TOTAL	7,288	983	4	384	1,515	5,654	1,862	1,879	167	408	1,338

TABLE 15
PART I ARRESTS OF ADULTS BY COUNTY

	HAWAII STATE TOTAL	CITY & COUNTY HONOLULU	COUNTY OF HAWAII	COUNTY OF MAUI	COUNTY OF KAUAI
Murder					
1975	53	47	3	3	0
1976	50	37	6	5	2
Forcible Rape					
1975	68	51	6	8	3
1976	109	84	10	10	5
Robbery					
1975	291	253	16	15	7
1976	391	364	18	7	2
Aggravated Assault					
1975	214	143	38	9	24
1976	275	180	43	27	25
Burglary--Breaking & Entering					
1975	675	512	87	65	11
1976	786	552	101	96	37
Larceny-Theft (Except Motor Vehicle Theft)					
1975	2,524	2,142	236	93	53
1976	2,883	2,469	204	160	50
Motor Vehicle Theft					
1975	273	214	36	18	5
1976	364	307	17	27	13
TOTAL					
1975	4,098	3,362	422	211	103
1976	4,858	3,993	399	332	134

TABLE 16
AGE AND SEX OF ADULTS ARRESTED BY OFFENSE
STATE OF HAWAII 1976

OFFENSE	SEX	AGE																Total 18 & over
		18	19	20	21	22	23	24	25-29	30-34	35-39	40-44	45-49	50-54	55-59	60-64	65 & over	
TOTAL		1,666	1,850	1,819	1,559	1,250	1,114	997	3,792	2,151	1,232	925	796	586	374	287	303	20,698
Murder	M		2	5	2	6	1	1	12	8	4		1		1		1	44
	F			1		1			2	1			1					6
Manslaughter	M	1		1		2		1	4		1	1						11
	F			1														1
Rape	M	6	10	8	14	10	5	9	16	12	8	3	4	1	1		1	108
	F						1											1
Robbery	M	88	64	58	25	16	18	11	45	13	16	5	2	1	1	1	1	365
	F	7	5	1	5		1	3	2	2								26
Aggravated Assault	M	12	12	23	10	12	14	5	74	31	12	13	5	6	5	2	6	242
	F	1		2	3	1		5	7	5	2	2	3		1		1	33
Burglary	M	157	121	84	67	41	42	21	110	39	15	13	6	1		2		716
	F	12	7	8	3	2	5	6	16	5	3		1	1	1			70
Larceny-Theft	M	241	179	180	124	95	91	81	284	128	60	47	50	50	37	29	44	1,719
	F	132	128	86	73	80	59	54	222	107	57	37	33	32	24	19	20	1,164
Motor Vehicle Theft	M	91	52	50	37	20	15	14	33	12	4	5		2	1			336
	F	6	5	3	2	3	3	1	3	1		1						28
Other Assaults	M	73	71	70	58	62	69	47	163	94	67	34	19	20	12	2	6	867
	F	9	12	15	15	9	14	10	34	16	6	6	3	4		1	1	155
Arson	M	1		2		1	3		3	2	1						1	14
	F						1					1						2
Forgery and Counterfeiting	M	2	2	1	4	2	4	1	25	5	4	4	1	1				56
	F		6	2	2		1	2	2		1		1					17
Fraud	M	7	10	13	24	11	7	3	39	16	9	23	5	4	3	1		175
	F	1	2	4	6	2	3	1	11	11	4	12	3	1				61
Embezzlement	M					1			3							1		5
	F							1	1		1							3

TABLE 16
AGE AND SEX OF ADULTS ARRESTED BY OFFENSE (cont.)
STATE OF HAWAII 1976

OFFENSE	S e x	AGE															Total 18 & over	
		18	19	20	21	22	23	24	25-29	30-34	35-39	40-44	45-49	50-54	55-59	60-64		65 & over
Stolen Property	M	5	6	5	2	4	3	2	5	5	1			2		1	41	
	F	1	2		2			1								1	7	
Vandalism	M	27	28	18	13	15	13	7	36	30	10	7	5	4		3	4	220
	F	2	5	2	2	3		1	5	7	2	4		1				34
Weapons	M	39	30	28	50	25	32	25	117	77	37	24	8	6	14	5	4	521
	F	4	8	1	1	1	1	1	8		2	1	1					29
Prostitution	M	3	4	7	8	3	5		8	11	2	2				2		55
	F	22	26	33	40	17	21	26	86	17	8		1	1		1		299
Sex Offenses (Except Forcible Rape & Prostitution)	M	4	6	4	1	5	2	5	10	8	3	4	2	2	3		1	60
	F			2		1	1						1					5
Drug Abuse Violations	M	118	141	146	132	133	96	95	352	144	59	21	20	3	1	2	4	1,467
	F	41	23	26	25	16	16	12	51	25	11	2		1				249
Gambling	M	8	9	14	19	16	17	16	130	176	157	110	173	114	50	71	81	1,161
	F	3			2	1			6	22	4	19	11	13	5		6	92
Offense Against Family and Children	M									1								1
	F																	
Driving Under The Influence	M	42	70	81	71	81	71	71	300	269	224	165	160	140	98	48	18	1,909
	F	8	4	6	8	5	5	3	19	26	10	19	12	15	6	1	3	150
Liquor Laws	M	22	31	20	25	9	10	11	37	22	6	5	6	4	5	2		215
	F	3	1		2		2		3	4	3		1	1			1	21
Disorderly Conduct	M	39	58	67	51	33	36	27	130	81	37	43	27	25	18	5	6	683
	F	8	10	13	11	8	8	8	35	41	14	11	5	2	6	3		183
All Other Offenses (Except Traffic)	M	361	614	652	549	426	355	339	1,095	549	302	229	204	116	73	79	89	6,032
	F	59	86	76	69	69	63	70	246	128	65	52	21	15	5	6	3	1,033
Suspicion	M				2	2			2									6
	F																	

TABLE 17
RACE OF ADULTS ARRESTED BY OFFENSE
STATE OF HAWAII 1976

OFFENSE	CAUCASIAN	NEGRO	INDIAN	CHINESE	JAPANESE	ALL OTHER	FILIPINO	HAWAIIAN	KOREAN	SAMOAN	OTHER
Murder	20	2		1	2	25	5	11		5	4
Manslaughter	6	2			1	3		1	1		1
Rape	31	9		2	7	60	13	27		4	16
Robbery	115	26		13	18	219	41	110	7	22	39
Aggravated Assault	60	12	1	1	17	184	67	60	4	15	38
Burglary	309	33	1	15	50	378	60	174	2	18	124
Larceny-Theft	1,322	126	1	144	228	1,062	252	400	51	114	245
Motor Vehicle Theft	124	22		3	20	195	26	98	1	21	49
Other Assaults	399	55		17	56	495	67	219	19	51	139
Arson	5			1	2	8		5		2	1
Forgery and Counterfeiting	37	5			2	29	5	18		1	5
Fraud	162	17		1	3	53	13	21		2	17
Embezzlement	3	3		1	1						
Stolen Property	19	2			4	23	3	12			8
Vandalism	116	8	1	4	17	108	17	42	6	7	36
Weapons	224	37		18	32	239	86	78	3	16	56
Prostitution	186	69		3	22	74	24	21	8	4	17

TABLE 17 (cont.)
RACE OF ADULTS ARRESTED BY OFFENSE
STATE OF HAWAII 1976

OFFENSE	CAUCASIAN	NEGRO	INDIAN	CHINESE	JAPANESE	ALL OTHER	FILIPINO	HAWAIIAN	KOREAN	SAMOAN	OTHER
Sex Offenses (Except Forcible Rape and Prostitution)	31	3			2	29	11	10	1		7
Drug Abuse Violations	1,058	109		28	105	416	90	165	3	14	144
Gambling	85	7		77	351	733	518	96	25	13	81
Offenses Against Family and Children						1		1			
Driving Under The Influence	1,017	38	2	42	416	544	131	194	37	41	141
Liquor Laws	150	14			10	62	4	28	1	9	20
Disorderly Conduct	356	64		18	37	391	54	148	10	48	131
All Other Offenses (Except Traffic)	3,436	552	1	174	455	2,447	839	821	54	200	533
Suspicion	4					2					2
TOTAL	9,275	1,215	7	563	1,858	7,780	2,326	2,760	233	607	1,854

TABLE 18

AGE AND SEX OF JUVENILES ARRESTED FOR PART I OFFENSES

1976

MONTH	SEX	AGE						TOTAL under 18
		10 and under	11 - 12	13 - 14	15	16	17	
January	M	13	40	97	89	78	73	390
	F	1	11	30	18	16	5	81
February	M	13	47	120	77	85	59	401
	F	4	11	41	12	9	13	90
March	M	25	50	139	78	89	80	461
	F	5	17	35	28	14	10	109
April	M	35	43	133	64	64	43	382
	F	8	17	58	30	10	15	138
May	M	29	48	125	76	81	63	422
	F	9	23	50	20	21	18	141
June	M	21	35	130	72	82	38	378
	F	7	19	45	21	36	16	144
July	M	41	53	97	55	74	58	378
	F	8	29	38	20	17	24	136
August	M	25	47	100	59	60	61	352
	F	7	24	48	23	18	21	141
September	M	20	33	87	46	57	49	292
	F	4	19	31	15	11	19	99
October	M	16	41	101	43	68	40	309
	F	4	17	38	20	17	13	109
November	M	32	29	119	63	66	55	364
	F	12	11	33	19	16	16	107
December	M	6	33	76	56	64	45	280
	F	6	29	64	24	18	9	150
Total	M	276	499	1,324	778	868	664	4,409
	F	75	227	511	250	203	179	1,445

TABLE 19

AGE AND SEX OF JUVENILES ARRESTED FOR PART II OFFENSES

1976

MONTH	SEX	AGE						TOTAL under 18
		10 and under	11 - 12	13 - 14	15	16	17	
January	M	11	21	91	82	53	68	326
	F	1	7	47	33	32	19	139
February	M	10	21	63	45	61	50	250
	F	1	9	34	26	23	16	109
March	M	8	24	93	70	53	76	324
	F		18	61	43	31	29	182
April	M	7	13	69	58	57	62	266
	F	1	11	48	32	18	22	132
May	M	16	23	62	66	75	64	306
	F	4	6	52	37	26	15	140
June	M	6	24	52	38	61	57	238
	F	3	13	59	34	24	19	134
July	M	19	14	56	44	50	56	239
	F	4	2	22	17	16	7	68
August	M	3	14	60	51	65	72	265
	F	1	1	29	24	23	17	95
September	M	6	10	69	46	58	46	235
	F	4	3	41	31	12	9	100
October	M	7	18	52	70	66	76	289
	F	3	3	56	26	26	11	125
November	M	13	11	60	60	64	62	270
	F	11	7	68	40	23	16	165
December	M	5	14	44	58	56	52	229
	F	6	12	46	29	30	20	143
Total	M	111	207	771	688	719	741	3,237
	F	39	92	563	372	284	200	1,532

TABLE 20

RACE OF JUVENILES ARRESTED FOR PART I OFFENSES

MONTH	CAUCASIAN	NEGRO	INDIAN	CHINESE	JAPANESE	ALL OTHER	FILIPINO	HAWAIIAN	KOREAN	SAMOAN	OTHER
JAN.	72	2		3	26	368	39	39	4	23	263
FEB.	66			6	34	385	50	25	5	20	285
MARCH	85	3		5	33	444	48	31	6	37	322
APRIL	105	4		5	47	359	52	18	6	24	259
MAY	106	4		10	46	397	68	34	7	19	269
JUNE	86	5		19	36	376	63	33	5	30	245
JULY	95	3		9	41	366	52	22		21	271
AUG.	89	5		7	32	360	40	42	4	16	258
SEPT.	69	4		2	25	291	39	50		9	193
OCT.	64	2		4	37	311	36	40	6	33	196
NOV.	68	2		5	24	372	53	64	4	24	227
DEC.	84	2		20	14	310	42	36		23	209
TOTAL	989	36		95	395	4,339	582	434	47	279	2,997

TABLE 21

RACE OF JUVENILES ARRESTED FOR PART II OFFENSES

MONTH	CAUCASIAN	NEGRO	INDIAN	CHINESE	JAPANESE	ALL OTHER	FILIPINO	HAWAIIAN	KOREAN	SAMOAN	OTHER
JAN.	89	6		1	16	353	54	34	2	21	242
FEB.	67	3			20	269	16	21	6	28	198
MARCH	101	1		2	30	372	46	31	5	19	271
APRIL	86	1		4	25	282	37	33	1	11	200
MAY	124	6		2	14	300	26	41		27	206
JUNE	99	3		3	13	254	23	33	2	24	172
JULY	69	2			18	218	30	10		11	167
AUG.	103	1			26	230	43	20	2	7	158
SEPT.	62			2	18	253	26	32	3	18	174
OCT.	97	2		2	17	296	34	57	2	10	193
NOV.	99	2		2	24	308	38	32		13	225
DEC.	87	1		8	15	261	22	32	1	11	195
TOTAL	1,083	28		26	236	3,396	395	376	24	200	2,401

TABLE 22
PART I ARRESTS OF JUVENILES BY COUNTY

	HAWAII STATE TOTAL	CITY & COUNTY HONOLULU	COUNTY OF HAWAII	COUNTY OF MAUI	COUNTY OF KAUAI
Murder					
1975	8	7	1	-	-
1976	6	6	-	-	-
Forcible Rape					
1975	31	28	2	1	-
1976	18	17	-	-	1
Robbery					
1975	265	250	9	2	4
1976	289	270	18	1	
Aggravated Assault					
1975	38	27	1	-	10
1976	37	32	4	1	-
Burglary--Breaking & Entering					
1975	1,202	857	175	109	61
1976	1,307	974	131	136	66
Larceny-Theft (Except Motor Vehicle Theft)					
1975	2,828	2,573	112	68	75
1976	3,529	3,164	157	88	120
Motor Vehicle Theft					
1975	675	622	28	19	6
1976	668	542	46	59	21
TOTAL					
1975	5,047	4,364	328	199	156
1976	5,854	5,005	356	285	208

TABLE 23
AGE AND SEX OF JUVENILES ARRESTED BY OFFENSE
STATE OF HAWAII 1976

OFFENSE	SEX	AGE						TOTAL under 18
		10 and under	11 - 12	13 - 14	15	16	17	
TOTAL		501	1,025	3,169	2,088	2,074	1,785	10,624
Murder	M					2	4	6
	F							
Manslaughter	M						1	1
	F							
Rape	M			5	4	2	7	18
	F							
Robbery	M	2	12	58	48	81	61	262
	F		7	5	9	1	5	27
Aggravated Assault	M		1	1	9	9	13	33
	F					3	1	4
Burglary	M	61	106	394	236	229	190	1,216
	F	8	13	27	16	18	9	91
Larceny-Theft	M	209	364	727	353	379	270	2,302
	F	67	206	446	201	159	148	1,227
Motor Vehicle Theft	M	4	16	139	128	166	119	572
	F		1	33	24	22	16	96
Other Assaults	M	4	18	86	68	94	102	372
	F	1	9	48	34	19	9	120
Arson	M	1	3	6	3	1	1	15
	F				1			1
Forgery and Counterfeiting	M		1		1		5	7
	F				1	1	2	4
Fraud	M					4	6	10
	F				1	1	4	6
Embezzlement	M							
	F							
Stolen Property	M			2	3	4	8	17
	F					1		1
Vandalism	M	26	32	66	37	45	46	252
	F	1	3	8	6	6	7	31

TABLE 23 (cont.)
AGE AND SEX OF JUVENILES ARRESTED BY OFFENSE
STATE OF HAWAII 1976

OFFENSE	SEX	AGE						TOTAL under 18
		10 and under	11 - 12	13 - 14	15	16	17	
Weapons	M		3	7	15	16	19	60
	F				1	2	2	5
Prostitution	M					4	4	8
	F				4		9	13
Sex Offenses (Except Forcible Rape & Prostitution)	M	1	2	7	13	3	7	33
	F	1	1					2
Drug Abuse Violations	M	1	2	39	39	79	105	265
	F		3	15	11	5	13	47
Gambling	M	2	4	31	35	15	14	101
	F			6		1		7
Offenses Against Family and Children	M	4						4
	F	6	1	4	2	2		15
Driving Under The Influence	M				2	4	7	13
	F							
Liquor Laws	M		1	12	19	37	50	119
	F			5	4	3	2	14
Drunkenness	M							
	F							
Disorderly Conduct	M			3	5	12	22	42
	F			3	2	3	6	14
Vagrancy	M							
	F							
All Other Offenses (Except Traffic)	M	54	60	252	233	302	271	1,172
	F	25	21	145	100	92	75	458
Suspicion	M			2	1			3
	F							
Curfew and Loitering Law Violations	M	2	33	93	101	25	24	278
	F	2	9	75	35	3	3	127
Run-Aways	M	16	48	165	113	74	50	466
	F	3	45	254	170	145	68	667

TABLE 24
RACE OF JUVENILES ARRESTED BY OFFENSE
STATE OF HAWAII 1976

OFFENSE	CAUCASIAN	NEGRO	INDIAN	CHINESE	JAPANESE	ALL, OTHER	FILIPINO	HAWAIIAN	KOREAN	SAMOAN	OTHER
Murder					2	4					4
Manslaughter						1	1				
Rape					4	14	1	2			11
Robbery	14	1		2	7	265	8	24		51	182
Aggravated Assault	2					35	6	8		7	14
Burglary	236	7		5	65	994	116	121	7	53	697
Larceny-Theft	648	27		83	296	2,475	404	235	39	136	1,661
Motor Vehicle Theft	89	1		5	21	552	47	44	1	32	428
Other Assaults	65	4		3	23	397	27	62	2	45	261
Arson	3				1	12	5	1			6
Forgery and Counterfeiting					1	10	2	2			6
Fraud	4	1			1	10	1	2			7
Embezzlement											
Stolen Property	4					14	2	3			9
Vandalism	71	1		3	19	189	31	41	1	6	110
Weapons	11	1		2	7	44	8	3		3	30
Prostitution	4				1	16			2		14

TABLE 24 (cont.)
RACE OF JUVENILES ARRESTED BY OFFENSE
STATE OF HAWAII 1976

OFFENSE	CAUCASIAN	NEGRO	INDIAN	CHINESE	JAPANESE	ALL OTHER	FILIPINO	HAWAIIAN	KOREAN	SAMOAN	OTHER
Sex Offenses(Except Forcible Rape and Prostitution)	12	1			3	19	2	1			16
Drug Abuse Violations	103			2	25	182	21	31		2	128
Gambling	14	2		2	1	89	20	4		10	55
Offenses Against Family and Children	5					14		1			13
Driving Under The Influence	5				2	6		4			2
Liquor Laws	27			1	11	94	11	19		4	60
Disorderly Conduct	13			1	2	40	2	1		4	33
All Other Offenses (Except Traffic)	377	12		11	80	1,150	134	74	8	63	871
Suspicion						3		1			2
Curfew and Loitering Law Violations	90				28	287	51	36	4	30	166
Run-Aways	275	6		1	31	820	78	90	7	33	612
TOTAL	2,072	64		121	631	7,736	978	810	71	479	5,398

HAWAII CRIME SUMMARY

INDEX CRIMES

The seven most serious crimes (Index Crimes) reported in 1976 totaled 56,039 as compared with 1975, in which 52,099 Index Crimes were reported. The reported Index Crime rates were 6,023.7 and 6,320.7 per 100,000 population for 1975 and 1976 respectively.

LARGEST CATEGORY OF INDEX CRIMES

Consistent with the trend across the nation, larceny-theft remained the largest category of the Index Crimes. Larcenies reported numbered 32,521 or an increase of 8.8 percent over the previous year and constituted 58 percent of all Index Crimes.

VIOLENT CRIMES

Crimes against persons, or violent crimes totaled 2,031 in 1976, registering a 7.5 percent increase over the previous year of the four categories of crimes in this group, murder and forcible rape decreased in number while incidents of robbery and aggravated assault increased. Incidents of reported murder and rape have been decreasing during the past two years.

PROPERTY CRIMES

Crimes involving property and committed without the use of force totaled 54,008, or an increase of 7.6 percent over 1975. Of this total, larceny-theft accounted for 60.2 percent of all property crimes with burglary and motor vehicle theft accounting for 30.9 and 8.9 percent respectively.

Residential burglaries accounted for 66 percent of all burglaries reported with more than half or 56.5 percent committed during the day.

RATE OF CRIME CLEARANCE

For crime reporting purposes, an offense is cleared by arrest or solved when at least one person is arrested, charged with the commission of the offense and turned over to the courts for prosecution. An exceptional clearance is recorded when some element beyond law enforcement control precludes the placing of formal charges against an offender (e.g. death of a suspect). There was a 25.2 percent clearance rate recorded for Index Crimes in 1976 as compared with 21.6 percent for 1975.

VALUE OF PROPERTY STOLEN

The total value of property reported stolen in Hawaii during 1976 was \$19,975,700. The police departments were successful in recovering 27.4 percent of the loss or \$5,473,000.00 as compared with a 24.9 percent recovery rate in 1975. Property loss was reported as a result of 208 rapes, 1,180 robberies, 16,682 burglaries (breaking and entering), 4,805 motor vehicle thefts and 32,521 larceny-thefts.

ARRESTS REPORTED FOR INDEX CRIMES

A total of 10,712 arrests were made for Index Crimes accounting for 34.2 percent of all arrests.

TOTAL ARRESTS REPORTED

A total of 31,309 arrests for all non-traffic offenses were

were reported in 1976. Juvenile arrests accounted for 33.9 percent of all persons arrested for the year.

NARCOTIC DRUG ARRESTS

A total of 2,028 arrests for drug violations was reported in 1976 as compared with 1,662 in 1975. Of this number 18.2 percent were persons under 18 years of age.

GAMBLING ARRESTS

A reported 1,361 arrests were made on charges of gambling in 1976. A total of 108 arrests or 7.9 percent were juveniles under 18 years of age. This compares with 8.7 percent for the same period in 1975.

UNIFORM CRIME REPORTING DEFINITIONS PART I OFFENSES

1. Criminal Homicide

1a. Murder and non-negligent Manslaughter is defined as the willful (non-negligent) killing of one human being by another.

Suicides, accidental deaths, assaults to murder and attempted murders are not counted in 1a. Certain willful killings are classified as justifiable or excusable. Justifiable homicide is defined and limited to:

- 1) the killing of a felon by a police officer in the line of duty, or
- 2) the killing of a felon by a private citizen

1b. Manslaughter by negligence is defined as the killing of another person through gross negligence.

All traffic deaths which are found through police investigation to be accidental (without gross negligence) are included.

2. Forcible Rape

2a. Rape by force

2b. Attempts to commit forcible rape

Rape is defined as the carnal knowledge of a female forcibly and against her will.

Statutory rape or carnal knowledge or the attempted carnal knowledge of a female with no force used and wherein the female victim is under the legal age of consent is not counted. Sex attack on a male is counted as "Other Sex Offenses" in Part II Offenses.

3. Robbery

Definition - the taking or attempting to take anything of value from the care, custody, or control of a person or persons by force or threat of force or violence and/or by putting the victim in fear.

Robbery involves a theft or larceny, but aggravated by the element of force or threat of force. If no force or threat of force is used such as in pocket picking or purse snatching, the offense must be scored as a larceny, rather than robbery.

Cases involving pretended weapons or those in which the weapon is not seen by the victim, but the robber claims to have in his possession is scored as armed robbery.

4. Aggravated Assault

Defined as an unlawful attack by one person upon another for the purpose of inflicting severe or aggravated bodily injury. This type of assault usually is accompanied by the use of a weapon or by means likely to produce death or great bodily harm.

Attempt to murder or assault to murder are reported as aggravated assault.

5. Burglary-Breaking or Entering

Defined as the unlawful entry of a structure to commit a felony or a theft.

5a. Forcible Entry

All offenses are counted as burglary where force of any kind is used to unlawfully enter a structure for the purpose of committing a theft or any felony. Burglary by concealment inside a building followed by an exiting of the structure is included in this category.

5b. Unlawful Entry - no force

Entry in this situation for the purpose of committing a theft or other felony involves no force and is achieved by use of an unlocked door or window. If the area entered were one of open access, thefts from the area would not involve an unlawful trespass and would be counted as a larceny.

5c. Attempted Forcible Entry

Only those situations in which a forcible entry burglary is attempted is counted. A forcible entry or unlawful entry where no theft or felony is committed, but where acts of vandalism, malicious mischief, etc., are committed is not scored as a burglary.

6. Larceny-Theft (Except Motor Vehicle)

Definition - the unlawful taking, carrying, leading, or riding away of property from the possession or constructive possession of another.

All thefts which are not part of a robbery, burglary, or motor vehicle theft are classified under this category.

7. Motor Vehicle Theft

Defined as the attempted theft of a motor vehicle. Included in this category are automobiles, trucks and buses and other vehicles including: motorcycles, motor scooters, trailbikes, etc. Also scored as larceny-thefts are thefts of the following: farm equipment, bulldozers, airplanes, construction equipment and the new motorized bicycles.

UNIFORM CRIME REPORTING DEFINITIONS
PART II OFFENSES

8. Other Assaults

All assaults other than aggravated are included in this category.

9. Arson

Included are all arrests relating to arson or attempted arson. If personal injury results from the arson, the situation would be classified as aggravated assault. In the event a death results from arson, the incident would be classified as a murder.

10. Forgery and Counterfeiting

Included in this classification are all offenses dealing with or attempting to deal with the making, altering, or possessing, with intent to defraud, anything false in the semblance of that which is true.

11. Fraud

Fraudulent conversion and obtaining money or property by false pretenses; includes bad checks, confidence games, etc., except forgeries and counterfeiting.

12. Embezzlement

Misappropriation or misapplication of money or property entrusted to one's care, custody, or control.

13. Stolen Property: Buying, Receiving, Possessing

Included in this category are all offenses of buying, receiving, and possessing stolen property, as well as all attempts to commit any of these offenses.

14. Vandalism

Vandalism consists of the willful or malicious destruction, injury, disfigurement, or defacement of any public or private property, real or personal, without consent of the owner or person having custody or control, by cutting, tearing, breaking, marking, painting, drawing, covering with filth, or any other such means as may be specified by local law.

This offense covers a wide range of malicious behaviour directed at property such as: cutting auto tires, drawing

obscene pictures on public restroom walls, smashing windows, destroying school records, tipping over gravestones, defacing library books, etc.

All arrests including attempts are scored as vandalism.

15. Weapons: Carrying, Possessing, Etc.

This class deals with weapon offenses, regulatory in nature, such as: manufacture, sale, or possession of deadly weapons; carrying deadly weapons, concealed or openly; using, manufacturing, etc., silencers; furnishing deadly weapons to minors; aliens possessing deadly weapons.

All attempts to commit any of the above.

16. Prostitution and Commercialized Vice

Include in this class the sex offenses of a commercialized nature, such as: prostitution; keeping bawdy house, disorderly house, or house of ill fame; pandering, procuring, transporting, or detaining women for immoral purposes, etc.

All attempts to commit any of the above.

17. Sex Offenses (Except forcible rape and prostitution and commercialized vice)

Included are offenses against chastity, common decency, morals, etc.; adultery and fornication; buggery; incest; indecent exposure; indecent liberties; intercourse with an insane, epileptic, or venereally diseased person; seduction; sodomy or crime against nature; statutory rape (no force).

All attempts to commit any of the above.

18. Narcotic Drug Laws

Narcotic drug law arrests are made on the basis of the narcotics used. The following are subdivisions of narcotic drug law arrests:

Included are all arrests for violations of State and local laws, specifically those relating to the unlawful possession, sale, use, growing, manufacturing, and making of narcotic drugs.

- 1) opium or cocaine and their derivatives (morphine, heroin, codeine)

- 2) marijuana
- 3) synthetic narcotics - manufactured narcotics which can cause true drug addiction (demerol, methadones)
- 4) dangerous nonnarcotic drugs (barbiturates, benzedrine)

19. Gambling

All charges which relate to promoting, permitting, or engaging in gambling are included in this category.

To provide a more refined collection of gambling arrests, the following breakdown of gambling arrests are furnished:

- 1) bookmaking (horse and sport book)
- 2) numbers and lottery
- 3) all other

20. Offenses Against The Family And Children

Included here are all charges of nonsupport and neglect or abuse of family and children:

- 1) dessertion, abandonment, or nonsupport of wife or child
- 2) neglect or abuse of child (if injury is serious, score as aggravated assault)
- 3) nonpayment of alimony

All attempts to commit any of the above.

21. Driving Under The Influence

This class is limited to the driving or operating of any vehicle or common carrier while drunk or under the influence of liquor or narcotics. Included are: operating a motor vehicle while intoxicated; operating an engine, train, streetcar, boat, etc., while intoxicated.

22. Liquor Laws

With the exception of "drunkenness", liquor law violations, State or local, are placed in this class. Included are: manufacture, sale, transporting, furnishing, possessing,

etc., intoxicating liquor; maintaining unlawful drinking places; advertising and soliciting orders for intoxicating liquor; bootlegging; operating still; furnishing liquor to a minor or intemperate person; using a vehicle for illegal transportation of liquor; drinking on train or public conveyance.

All attempts to commit any of the above.

23. Drunkenness

Included in this class are all offenses of drunkenness or intoxication, with the exception of "Driving Under the Influence" (Offense No. 21).

- 1) drunkenness
- 2) drunk and disorderly
- 3) common or habitual drunkard
- 4) intoxication

This class is omitted in the State of Hawaii. There are no arrests made under this section. Chapter 737-1 of the Hawaii Revised Statute repealed by Act 9 Session Laws of Hawaii Effective January 1, 1972.

24. Disorderly Conduct

All charges of committing a breach of the peace are placed in this class. Included are: affray; unlawful assembly; disturbing the peace; disturbing meetings; disorderly conduct in State institutions, at court, at fairs, on trains, or public conveyances, etc.; prize fights; blasphemy, profanity, and obscene language; desecrating flag; refusing to assist an officer.

All attempts to commit any of the above.

25. Vagrancy

Persons prosecuted on the charge of being a "suspicious character or person, etc." are included in this class. Included are: vagrancy; begging; loitering (persons 18 and over); vagabondage.

26. All Other Offenses

Included in this class are all other State or local offenses not included elsewhere such as:

- 1) admitting minors to improper places
- 2) abduction and compelling to marry
- 3) abortion (death resulting from abortion is a homicide, offense class 1a)

Abortion by a physician is now legal in the State of Hawaii. The crime of abortion (Chapter 768-6, Hawaii Revised Statutes) was repealed under Act 9, Effective January 1, 1973.

- 4) bigamy and polygamy
- 5) blackmail and extortion
- 6) bribery
- 7) combination in restraint of trade; trusts, monopolies
- 8) contempt of court
- 9) criminal anarchism
- 10) criminal syndicalism
- 11) discrimination; unfair competition
- 12) kidnapping
- 13) marriage within prohibited degrees

Offenses contributing to juvenile delinquency (except as provided for in offenses 1 to 28 inclusive) such as employment of children in immoral vocations or practices, admitting minors to improper places, etc.

- 1) perjury and subornation of perjury
- 2) possession, repair, manufacture, etc. of burglar's tools
- 3) possession or sale of obscene literature, pictures, etc.
- 4) public nuisances
- 5) riot and rout
- 6) trespass

- 7) unlawfully bringing weapons into prisons or hospitals
- 8) unlawfully bringing drugs or liquor into State prisons, hospitals, etc.; furnishing to convicts
- 9) unlawful disinterment of the dead and violation of sepulture
- 10) unlawful use, possession, etc., of explosives

Violations of State regulatory laws and municipal ordinances (this does not include those offenses or regulations which belong in the above classes).

- 11) violation of quarantine

All offenses not otherwise classified.

All attempts to commit any of the above.

27. Suspicion

While "suspicion" is not an offense, it is the ground for many arrests in those jurisdictions where the law permits.

After examination by the police, the prisoner is either formally charged or released. Those formally charged are entered in one of the Part I or II Offense Classes. This class is limited to "suspicion" arrests where persons arrested are released by the police.

28. Curfew and Loitering Laws - (Juveniles)

All arrest made for violation of local curfew or loitering ordinances.

29. Runaway - (Juveniles)

For purposes of the Uniform Crime Reporting program, reported in this category are apprehensions for protective custody, as defined by your local statute. Arrests made by other jurisdictions of runaways from your jurisdiction are also counted. Not included are protective custody actions with respect to runaways taken for other jurisdictions.

END