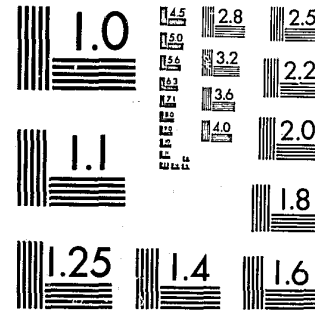


National Criminal Justice Reference Service



This microfiche was produced from documents received for inclusion in the NCJRS data base. Since NCJRS cannot exercise control over the physical condition of the documents submitted, the individual frame quality will vary. The resolution chart on this frame may be used to evaluate the document quality.



MICROCOPY RESOLUTION TEST CHART
NATIONAL BUREAU OF STANDARDS-1963-A

Microfilming procedures used to create this fiche comply with the standards set forth in 41CFR 101-11.504.

Points of view or opinions stated in this document are those of the author(s) and do not represent the official position or policies of the U. S. Department of Justice.

National Institute of Justice
United States Department of Justice
Washington, D. C. 20531

Date Filmed

4/7/81

ANNUAL REPORT

1979

POLICE DIVISION

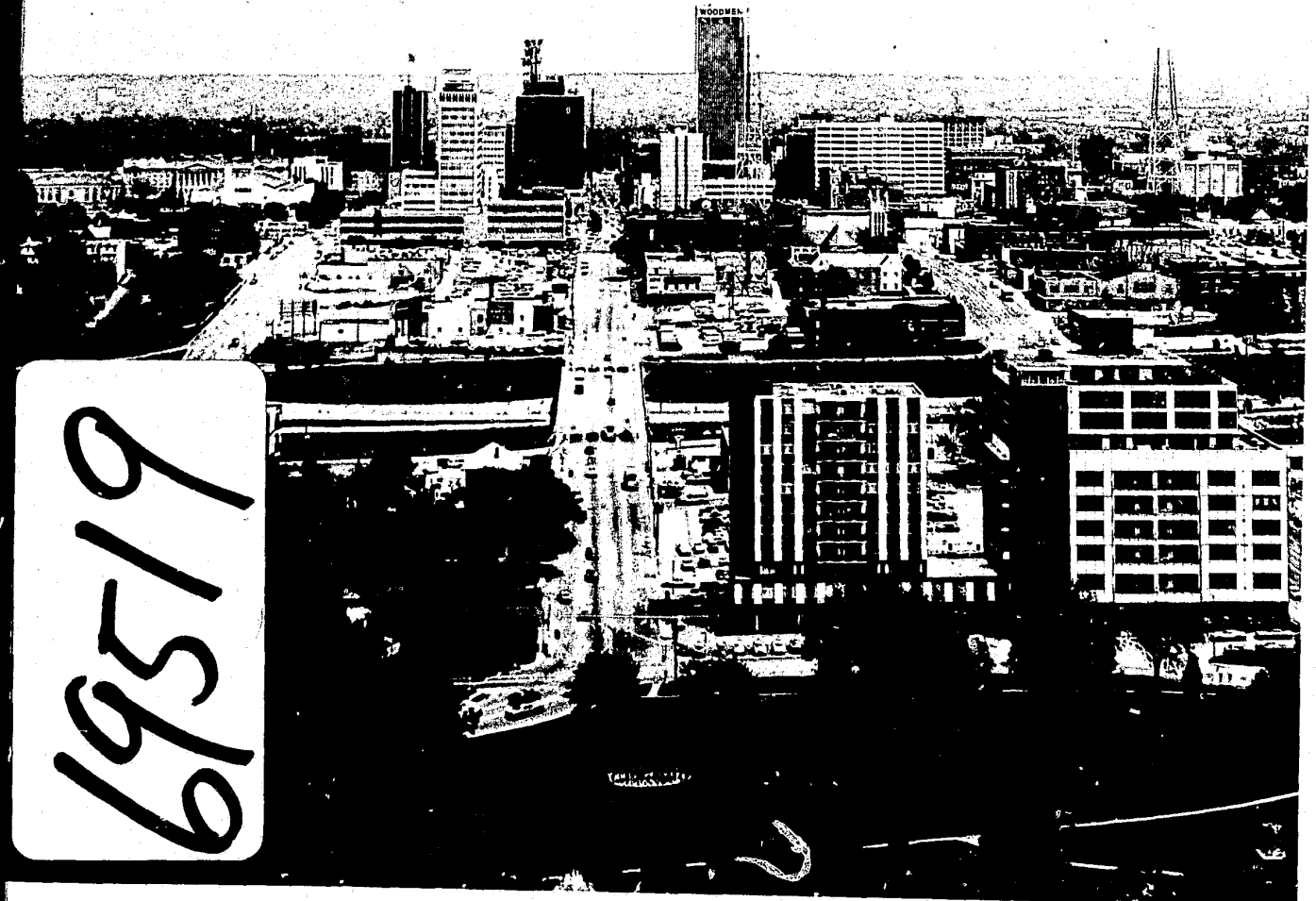
DEPARTMENT OF PUBLIC SAFETY

CITY OF OMAHA, NEBRASKA

AL VEYS
MAYOR

WILLIAM C. McDONNELL
PUBLIC SAFETY DIRECTOR

RICHARD R. ANDERSEN
CHIEF OF POLICE



Address All Communications To
RICHARD R. ANDERSEN
CHIEF OF POLICE

City of Omaha

POLICE DIVISION

505 South 15th Street
Omaha, Nebraska 68102

1 January 1980

AL VEYS
Mayor

WILLIAM C. McDONNELL
Public Safety Director

Mr. William C. McDonnell
Director, Public Safety Department
City of Omaha
Omaha, Nebraska

Dear Mr. McDonnell:

It is my privilege to submit herewith the Annual Report of the Omaha Police Division, Department of Public Safety for the year 1979.

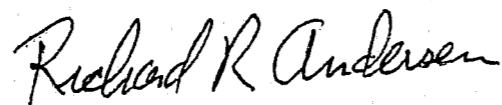
This report is designed to provide a statistical summary of the activities of the Police Division. It also serves as a basis for comparison of police performance through prior years. It is offered in the hope that it will serve in promoting the general welfare of the City of Omaha and the safety of its citizens.

Police Division manpower decreased from 563 sworn personnel in December, 1978 to 551 sworn personnel in December, 1979. In the general demand for police services, the number of police cars assigned to citizen request for police service decreased approximately 1/2% for the year 1979 over the year 1978 to a total of 209,155 dispatches of called for police service for the year.

Crime in Omaha as reported to the Federal Bureau of Investigation for the year 1979 increased 13% over 1978. This is the first year to show an increase in the past four years.

I would like to take this opportunity to convey my sincere appreciation to you, to the Honorable Mayor Al Veys, to the members of the City Council and to the citizens of Omaha for the cooperation that has made it possible for us to provide what we consider the best possible police service for the City of Omaha.

Very truly yours,



Richard R. Andersen
Chief of Police

NCJRS

JUL 28 1980

ACQUISITIONS



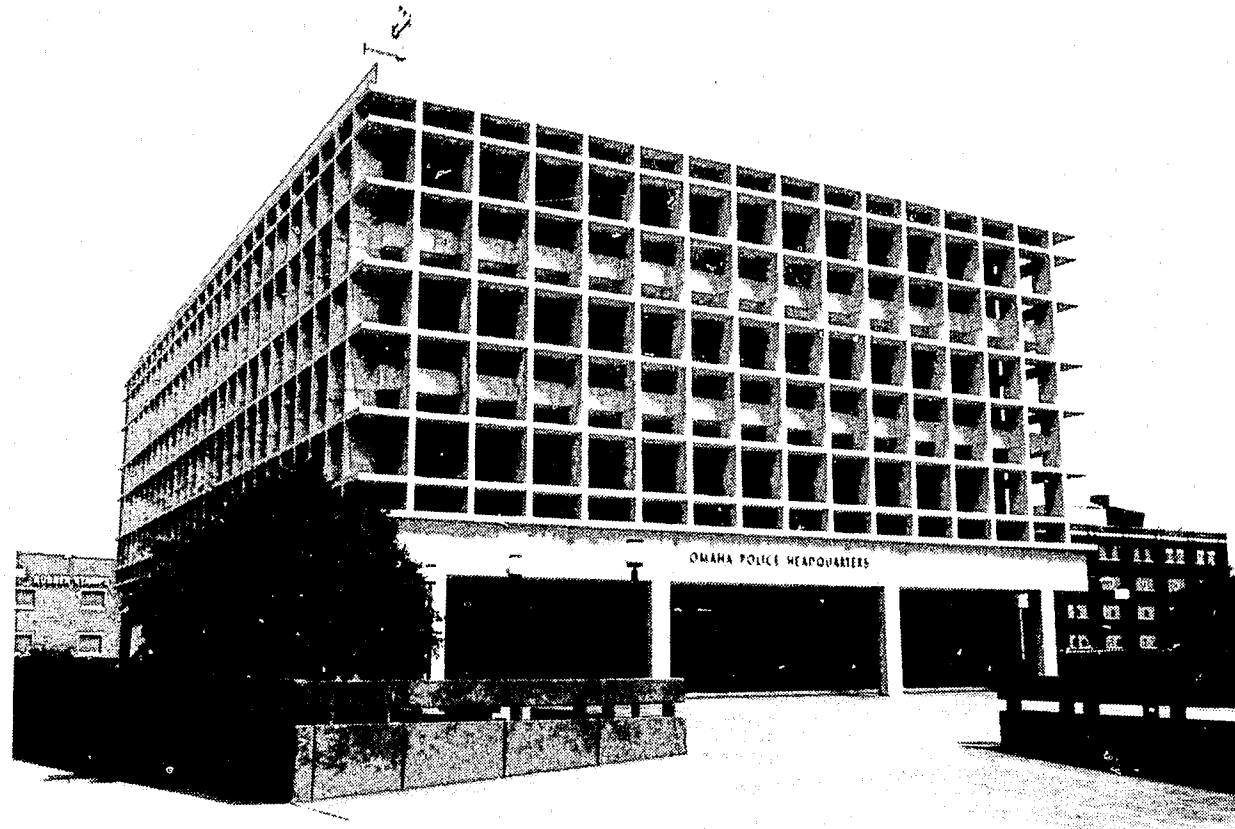
Law Enforcement Code of Ethics

As a Law Enforcement Officer, my fundamental duty is to serve mankind; to safeguard lives and property; to protect the innocent against deception, the weak against oppression or intimidation, and the peaceful against violence or disorder; and to respect the Constitutional rights of all men to liberty, equality and justice.

I will keep my private life unsullied as an example to all; maintain courageous calm in the face of danger, scorn, or ridicule; develop self-restraint; and be constantly mindful of the welfare of others. Honest in thought and deed in both my personal and official life, I will be exemplary in obeying the laws of the land and the regulations of my department. Whatever I see or hear of a confidential nature or that is confided to me in my official capacity will be kept ever secret unless revelation is necessary in the performance of my duty.

I will never act officiously or permit personal feelings, prejudices, animosities or friendships to influence my decisions. With no compromise for crime and with relentless prosecution of criminals, I will enforce the law courteously and appropriately without fear or favor, malice or ill will, never employing unnecessary force or violence and never accepting gratuities.

I recognize the badge of my office as a symbol of public faith, and I accept it as a public trust to be held so long as I am true to the ethics of the police service. I will constantly strive to achieve these objectives and ideals, dedicating myself before God to my chosen profession . . . law enforcement.



OMAHA POLICE HEADQUARTERS

Omaha, Nebraska - 1979

POPULATION 364,446	POLICE OFFICERS 551 (actual) 565 (authorized)	MOTOR VEHICLES REGISTERED DOUGLAS COUNTY 206,316
SQUARE MILES 92.18	POLICE OFFICERS PER 1,000 POPULATION 1.5 (actual) 1.5 (authorized)	
MILES OF STREETS 1,265 (actual) 3,018.9 (lane miles)		



PUBLIC SAFETY DIRECTOR WILLIAM C. McDONNELL

On June 15, 1977, Mr. William C. McDonnell was appointed Public Safety Director by Mayor Al Veys.

Mr. McDonnell was born April 16, 1928 in Omaha, Nebraska. He attended Omaha Public and parochial schools, and Technical High School.

He served in the U. S. Navy in 1945 and 1946 with the majority of his time assigned to the Ammunition Depot on Guam.

On August 1, 1949, Mr. McDonnell was appointed to the Omaha Fire Division and was assigned to Engine Company No. 10 at 50th and Pine. On August 16, 1949 he was transferred to 19th and Harney Headquarters Station where he was eventually assigned as driver of a 100 foot aerial rig.

In 1961 he was promoted to Lieutenant, then Captain in 1963. In 1973 Mr. McDonnell was promoted to Battalion Chief and was stationed at 21st and Lake, District No. 1 for over two years.

On May 1, 1977 he was promoted to Assistant Chief and was placed in charge of the "C" Shift.

Previous to his appointment as Public Safety Director, Mr. McDonnell served as president of the Fire Fighter's Local No. 385 for fifteen years and attended numerous collective bargaining seminars and schools. He was Chairman of the Fire Fighter's negotiating team that negotiated the first contract between the City of Omaha and the Fire Fighters.



CHIEF OF POLICE RICHARD R. ANDERSEN

Richard R. Andersen was born in Omaha, Nebraska on January 17, 1924. He attended Henry W. Yates Grade School and graduated from Central High School in Omaha, Nebraska in 1941. He is a graduate of the University of Omaha with a Bachelor of Science Degree in Law Enforcement and Security. He did his graduate work at the University of Nebraska at Omaha obtaining his Master's Degree in Public Administration.

Since joining the Omaha Police Division on June 25, 1951, he has progressed steadily through the ranks and was appointed provisional Chief of Police on August 5, 1967, probationary Chief of Police on November 1, 1967 and was confirmed under Civil Service as Chief of Police on May 1, 1968.

Besides the formal education background, he has attended numerous law enforcement seminars and training schools in the field of law enforcement. He is a 1959 graduate of the Keeler Polygraph School, Chicago, Illinois, and a graduate of the first police management course held at the School of Business Administration, Harvard University in 1966. On July 17, 1977 Chief Anderson graduated from the National Institute of the U. S. Department of Justice.

Chief Andersen was a part-time faculty member of the University of Nebraska at Omaha for eight years lecturing on various subjects in the criminal justice system.

Among the positions of appointment that Chief Andersen has held are Vice-Chairman of the Nebraska Commission on Law Enforcement and Criminal Justice, member of the International Association of Chiefs of Police, and member of the Legislative Committee of the Police Officers' Association of Nebraska. He was appointed by the Attorney General of the United States as a member of the National Advisory Commission on Criminal Justice Standards and Goals from 1971 to 1973. He was also an appointed chairman of the Advisory Committee of the National Clearing House for Criminal Justice Planning and Architecture regarding guidelines for the planning and design of the police programs and facilities. He was actively involved by presidential appointment as a member of the National Commission for the Review of Federal and State Laws Relating to Wire-tapping and Electronic Surveillance.



COORDINATOR OF COMMUNITY RELATIONS ALFRED PATTAVINA

Alfred Pattavina was appointed to the Omaha Police Division on May 16, 1947, promoted to Sergeant in 1954, Lieutenant in 1960, Captain in 1962, Deputy Chief in 1964 and Coordinator in 1967. Mr. Pattavina served as Public Safety Director from 1969 to 1974.

Mr. Pattavina graduated from Omaha Central High in 1942. He attended Creighton University 1942-43 and 1946, City College of New York in 1943 and University of Vienna Austria in 1953. He received a Bachelor of Education Degree in 1969 from the University of Nebraska at Omaha and a Bachelor of Science in Law Enforcement in 1965.

In addition to his police duties, Mr. Pattavina teaches courses in Law Enforcement and Fire Technology at the University of Nebraska at Omaha and Lincoln campuses and at the Iowa Western Community College.

Mr. Pattavina served in the United States Army Infantry during World War II in the Pacific Theater in 1943 to 1946. He was recalled to active Military duty in 1952 to 1954 and served as Military Police Officer in Trieste, Italy. He is presently retired Lieutenant Colonel, Military Police Corps.



DEPUTY CHIEF MONROE COLEMAN

Deputy Chief Monroe Coleman has been a member of the Omaha Police Division since September 16, 1947. In September, 1976 he commanded the Administrative Services Bureau.

Deputy Chief Coleman served in World War II as a commissioned officer with duty in the Asiatic-Pacific Theater. He was recalled to military duty in 1951 and served in Europe until 1954. He is presently retired from the United States Army Reserve with the rank of Colonel.

The Deputy Chief is a graduate of South High School and attended the University of Nebraska at Omaha. He has completed the Military Police Career Officer's Course at Fort Gordon, Georgia, United States Army Command and General Staff College, Fort Leavenworth, Kansas, the Industrial College Armed Forces and has also attended special courses of instruction at Michigan State University and the F.B.I. Academy, Quantico, Virginia.

Deputy Chief Coleman has served as a Beat Patrolman, Detective Sergeant, Lieutenant of Police and Captain of Police.



DEPUTY CHIEF JOSEPH L. FRIEND

Deputy Chief Joseph L. Friend was appointed to the Omaha Police Division on October 2, 1950. As a patrolman he walked a beat, worked in a cruiser car and worked the desk, Detention, Records and Identification Bureau. He also served short tours with the Vice Detail and Juvenile Sections.

Deputy Chief Friend was promoted to the rank of Sergeant on March 1, 1957 and served in the Uniform Field Bureau and also two years on the Vice Detail.

On September 1, 1965, Deputy Chief Friend was promoted to Lieutenant and served various assignments in the Criminal Investigation Bureau including two years in charge of the Vice Unit. He also served two years in the Community Relations Unit of the Community Services Bureau.

The Deputy Chief was promoted to the rank of Captain on September 1, 1972 and served as "C" Shift Captain for two years and "A" Shift Captain for one year after which, on August 16, 1975, he was elevated to the rank of Deputy Chief.

During his years of service with the Omaha Police Division, Deputy Chief Friend has attended many schools, conferences, seminars and conventions, where he received a vast amount of valuable information on subjects such as homicide, narcotics, organized crime, police-community relations and supervision of police personnel. He has accumulated eighteen hours at the University of Nebraska at Omaha in the Criminal Justice Field.



DEPUTY CHIEF JACK SWANSON

Deputy Chief Jack Swanson was born in Greeley, Nebraska on May 28, 1936. He graduated from Technical High School in 1954 and served in the United States Marine Corps from 1954 through 1957 serving with the occupation forces in Japan.

Deputy Chief Swanson was appointed to the Omaha Police Division as a patrolman on April 4, 1960. He served in cruiser patrol, beat patrol, solo motorcycle, and the Criminal Investigation Bureau.

He was appointed Sergeant on 16 November 1967, worked various assignments in the Criminal Investigation Bureau, and helped form the Intelligence Unit.

Deputy Chief Swanson became Lieutenant on 26 November 1972. He commanded the Juvenile Unit for two months and was the commanding officer of the Vice/Narcotics Unit for two and one half years.

On 22 August 1975 Deputy Chief Swanson was promoted to his present rank and was assigned the command of the Technical Services Bureau. In January 1976 he was assigned to the Criminal Investigation Bureau and has been in command of that Bureau for the past four years.

Deputy Chief Swanson is a graduate of the University of Nebraska at Omaha with a Bachelor of Science degree in Criminal Justice. He has also attended many seminars in connection with law enforcement problems and assisted as an instructor at the University in various classes, dealing specifically with narcotics.



DEPUTY CHIEF ELWIN L. STOKES

Deputy Chief Elwin L. Stokes has been a member of the Omaha Police Division since April 2, 1951. As a patrolman he worked in the Patrol and Traffic Sections.

He was promoted to the rank of Sergeant on March 1, 1957 and served in the Patrol, Training Section and Criminal Investigation Bureau.

Deputy Chief Stokes became Lieutenant on May 1, 1962. He held assignments in the Uniform Field Bureau "A-C" Shifts and organized the Metro Squad under Chief L. K. Smith in 1964. He remained as head of the Metro Squad until his promotion to Captain on September 1, 1965.

As a Captain he commanded the "A-B-C" Shift Patrol Sections and also the Inspectional Services Section which includes Research & Planning, Internal Security, Inspections and Crime Analysis Units. He was promoted to Deputy Chief on February 6, 1976 and was assigned command of the Inspectional Services Bureau.

Deputy Chief Stokes has attended the University of Nebraska at Omaha where he has completed courses in Criminal Justice. He has also attended numerous seminars and conferences dealing with such topics as Human Relations, Police Discipline and Police Civil Liability.



DEPUTY CHIEF KEITH LANT

Deputy Chief Keith E. Lant was born in Omaha on 20 February 1932, attended Technical High School and graduated in 1949. He has also attended the University of Nebraska at Omaha.

He joined the Omaha Police Division in 1956 as a patrolman and served in this capacity in the Patrol, Traffic, Juvenile and Records Sections.

Deputy Chief Lant was promoted to the rank of Sergeant in 1968 and held assignments in the Patrol Section until his promotion to the rank of Lieutenant in 1971.

As a Lieutenant he was assigned to the Inspections Section, Inspectional Services Bureau, Patrol Section, Uniform Field Bureau, Community Relations Section, Community Services Bureau and Personnel Section, Administrative Services Bureau.

On February 6, 1976 Deputy Chief Lant was promoted to his present rank and was assigned to command the Technical Services Bureau.

Deputy Chief Lant has attended seminars and conferences dealing with such subjects as equal employment opportunities, recruit selection and testing, police personnel problems, data processing and computer possibilities and record security and privacy.

DEPARTMENT OF PUBLIC SAFETY
POLICE DIVISION
EXPENDITURES—1979

DIVISION PAYROLL	
Sworn	\$11,235,845.00
Civilian	1,796,582.00
NON-PERSONAL	2,151,114.00
SWORN & CIVILIAN FRINGE BENEFITS	942,974.00
CAPITAL IMPROVEMENTS	None
TOTAL POLICE DIVISION BUDGET	\$16,126,515.00

OMAHA POLICE DIVISION

FEDERAL ACTION GRANTS (LEAA)

	<u>State and Federal Funds</u>	<u>Local Funds</u>	<u>Project Totals</u>
Febr. 1970 - Dec. 31, 1971	\$ 300,231.93	\$ 124,090.65	\$ 424,322.58
1972	243,882.86	31,323.00	275,205.86
1973	355,071.84	123,674.87	478,746.71
1974	602,824.26	193,961.32	796,785.58
1975	346,460.27	281,440.13	627,900.40
1976	271,485.26	14,285.14	285,770.40
1977	124,161.50	98,455.43	222,616.93
1978	131,344.67	161,080.25	292,424.92
1979	<u>80,685.37</u>	<u>21,231.51</u>	<u>101,916.88</u>
Total	\$2,456,147.96	\$1,049,542.30	\$3,505,690.26

The above figures represent federal action funds that the Omaha Police Division have received for particular projects from 1970 through 1979. The matching funds are listed to indicate the amount the Police Division contributed in order to receive state and federal money. The project totals are a combination of state, federal and local matching funds.

OTHER GRANTS

	<u>Discretionary Federal Funds</u>	<u>Local Funds</u>	<u>Project Totals</u>
1972	\$ 76,687.00	-0-	\$ 76,687.00
	<u>Nebraska Highway Safety Program</u>		
1974	\$ 108,000.00	-0-	\$ 108,000.00
1975	\$ 100,000.00	-0-	\$ 100,000.00
1978	\$ 299,262.00	-0-	\$ 299,262.00
1979	<u>\$ 301,600.00</u>	<u>-0-</u>	<u>\$ 301,600.00</u>
Total Other Grants	\$ 885,549.00	-0-	\$ 885,549.00
Grand Totals for All Grants	\$3,341,696.96	\$1,049,542.30	\$4,391,239.26

**NUMERICAL STRENGTH OF PERSONNEL
December 31, 1979**

TOTAL MEMBERS OF POLICE DIVISION AT CLOSE OF YEAR - Sworn	551
TOTAL MEMBERS OF POLICE DIVISION AT CLOSE OF YEAR - Civilian	143
TOTAL PERSONNEL	694

COMPARISON OF RANK AND FILE WITH FOUR PREVIOUS YEARS

<u>RANK</u>	<u>1975</u>	<u>1976</u>	<u>1977</u>	<u>1978</u>	<u>1979</u>
CHIEF	1	1	1	1	1
PCR COORDINATOR	1	1	1	1	1
DEPUTY CHIEF	3	5	5	5	5
CAPTAIN	11	8	7	7	7
LIEUTENANT	27	29	26	28	29
SERGEANT	110	108	111	107	107
POLICE OFFICER	414	385	378	399	401
RECRUITS	-----	-----	-----	15	-----
SWORN TOTALS	567	537	529	563	551
CIVILIAN PERSONNEL	123	129	127	130	152
SWORN & CIV. TOTALS	690	666	656	693	703

AUTHORIZED COMPLEMENT FOR 1979

SWORN	579
CIVILIAN	<u>143</u>
TOTAL	722

ASSIGNMENT OF PERSONNEL

1979

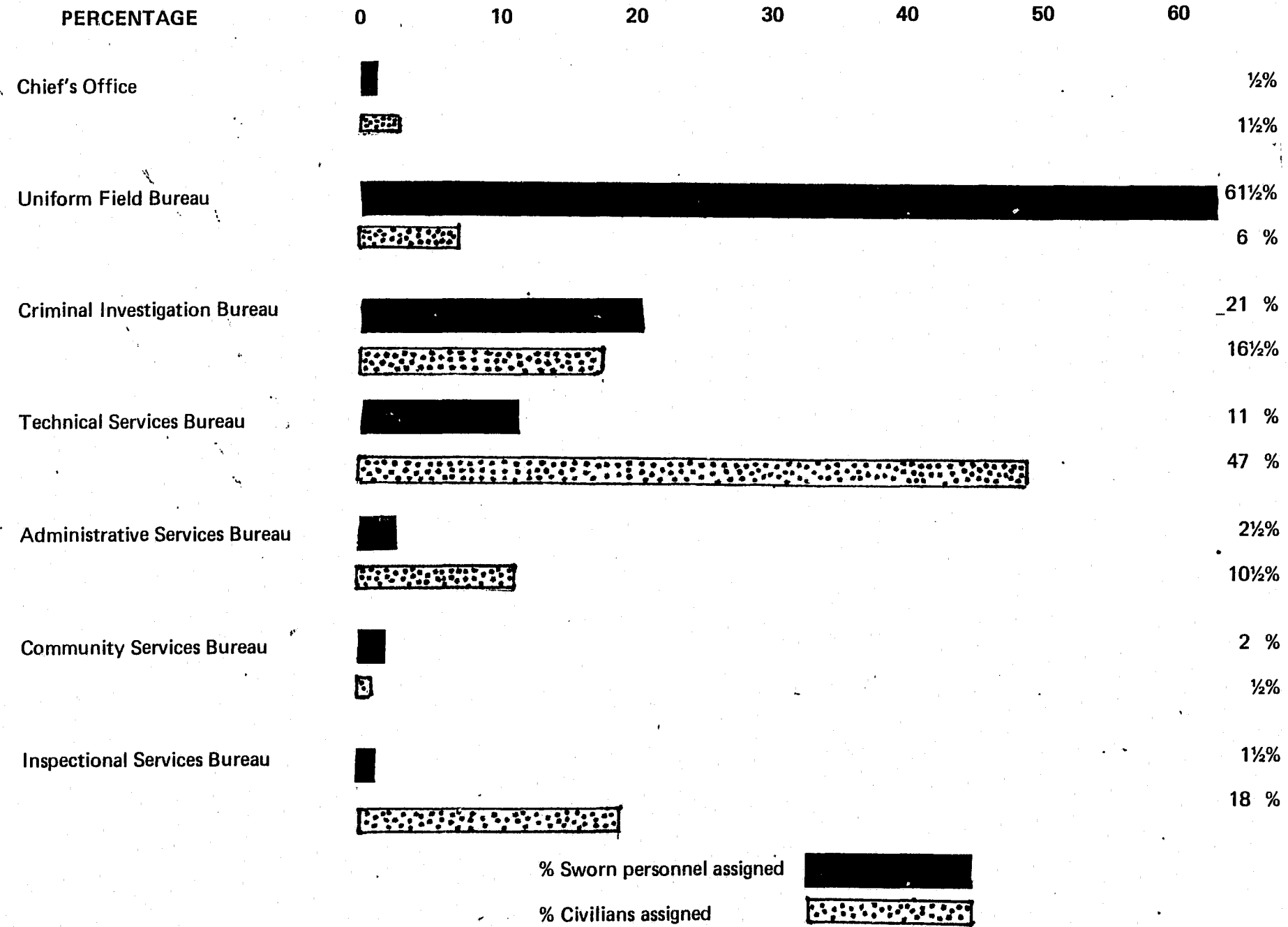
Chief's Office		
Sworn		4*
Civilian		2
Uniform Field Bureau		
Sworn		338
Civilian		9
Criminal Investigation Bureau		
Sworn		116
Civilian		25
Technical Services Bureau		
Sworn		61
Civilian		72
Administrative Services Bureau		
Sworn		13
Civilian		16
Community Services Bureau		
Sworn		11
Civilian		1
Inspectional Services Bureau		
Sworn		9
Civilian		27

* Includes Safety Director's Administrative Assistant and Arson Investigators
 ** Includes probationary officers and recruits in training

TOTAL PERSONNEL

Sworn	552
Civilian	<u>152</u>
	704

PERCENTAGE OF PERSONNEL ASSIGNED TO EACH BUREAU



**OMAHA POLICE DIVISION
BUREAU VEHICLE
SUMMARY REPORT - 1979**

<u>BUREAU</u>	<u>Number of Vehicles Assigned</u>	<u>Total Miles for 1979</u>
Chief's Office & Administrative Staff	3	16,125
Community Services Bureau	10	88,252
Administrative Services Bureau	7	53,520
Criminal Investigation Bureau	59	614,421
Inspectional Services Bureau	8	38,381
Technical Services Bureau	13	138,100
Uniform Field Bureau	129	3,230,308
TOTALS:	226	4,179,107

OMAHA POLICE OFFICERS ASSAULTED - 1979

<u>Circumstances</u>	<u>TYPE OF WEAPON</u>				<u>Total Assault</u>
	<u>Firearm</u>	<u>Knife/ Cutting</u>	<u>Other Weapon</u>	<u>Hands Fists</u>	
Disturbance Calls	4	3	10	43	60
Burglaries in Progress	0	0	0	1	1
Robberies in Progress	0	0	0	0	0
Attempting Other Arrests	0	2	6	11	19
Civil Disorder	0	0	0	0	0
Prisoners in Custody	0	0	0	12	12
Susp. Persons/Circumstances	3	0	1	3	7
Ambush	0	0	0	0	0
Mentally Deranged	0	0	0	4	4
Traffic Stops	0	0	6	12	18
All Other	1	0	1	4	6
TOTALS	8	5	24	90	127

<u>Circumstances</u>	<u>TYPE OF ASSIGNMENT</u>							<u>Police Aslts. Cleared</u>
	<u>Two-Man Car</u>	<u>One-Man Car</u>		<u>Detective/Spec</u>		<u>OTHER</u>		
		<u>Alone</u>	<u>Assisted</u>	<u>Alone</u>	<u>Assisted</u>	<u>Alone</u>	<u>Assisted</u>	
Disturbance Calls	15	2	36	0	1	1	5	59
Burglary in Progress	0	1	0	0	0	0	0	1
Robberies in Progress	0	0	0	0	0	0	0	0
Att. Other Arrests	5	1	8	0	1	0	4	19
Civil Disorder	0	0	0	0	0	0	0	0
Prisoners in Custody	3	0	4	0	0	1	4	12
Susp. Persons/Circum.	1	3	2	0	1	0	0	4
Ambush	0	0	0	0	0	0	0	0
Mentally Deranged	1	0	3	0	0	0	0	4
Traffic Stops	2	3	13	0	0	0	0	18
All Other	2	1	0	0	1	2	0	6
TOTALS	29	11	66	0	4	4	13	123

Times of Assaults:

12:01 A.M.	16	2:00 A.M.	13	4:00 A.M.	4	6:00 A.M.	1	8:00 A.M.	0	10:00 A.M.	10
12:01 P.M.	1	2:00 P.M.	3	4:00 P.M.	15	6:00 P.M.	17	8:00 P.M.	22	10:00 P.M.	25

Officers Killed by Felonious Act: 0

Officers Killed by Accident or Negligence: 0



1979 DIVISION FIREARM TRAINING SHOOT

The Omaha Police Division Training Unit conducted a division firearm training shoot in 1979 at the Nebraska National Guard Training Camp located at Ashland, Nebraska. Five hundred and forty-four officers participated. Each officer fired 125 rounds of 38 caliber ammunition and twenty rounds of 12 gauge shotgun shells at moving and still targets. The moving target, an invention of the unit, was an eighteen inch diameter metal disk moving back and forth in front of the shooter at chest height.

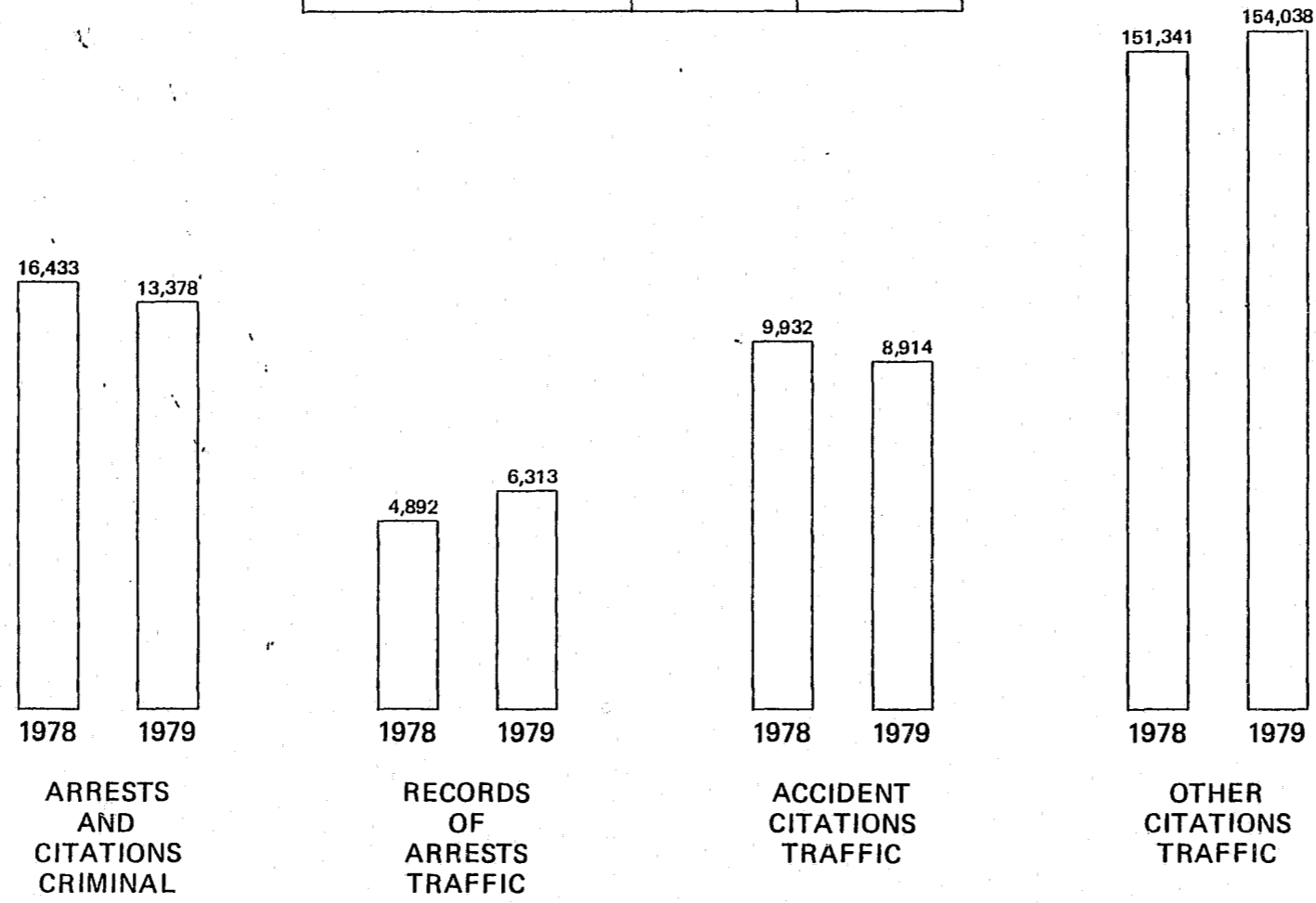
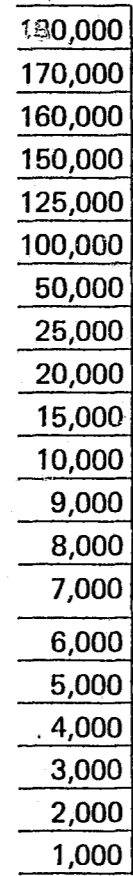
OMAHA POLICE DIVISION
ANNUAL CRIME COMPARISON FOR 1979

<u>OFFENSES</u>	<u>1978</u>	<u>1979</u>	<u>Amount of Inc/Dec</u>	<u>% of Inc/Dec</u>
1. Criminal Homicide	24	40	+ 16	+67%
2. Forcible Rape	162	193	+ 31	+19%
3. Robbery	878	954	+ 76	+ 9%
4. Aggravated Assault	792	830	+ 38	+ 5%
5. Burglary	5,048	5,140	+ 92	+ 2%
6. Larceny - Theft	12,811	14,875	+2064	+16%
7. Motor Vehicle Theft	<u>1,744</u>	<u>2,320</u>	+ 576	+33%
TOTAL CRIME INDEX OFFENSES	21,459	24,352	+2893	+13%

**OMAHA POLICE DIVISION
STATISTICS**

TOTALS	1978	1979
Records of Arrest	21,325	19,691
Traffic Citations	161,273	162,952
Total	182,598	182,643

21


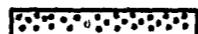


**FIVE YEAR COMPARISON OF
MAJOR CRIMES
IN OMAHA**

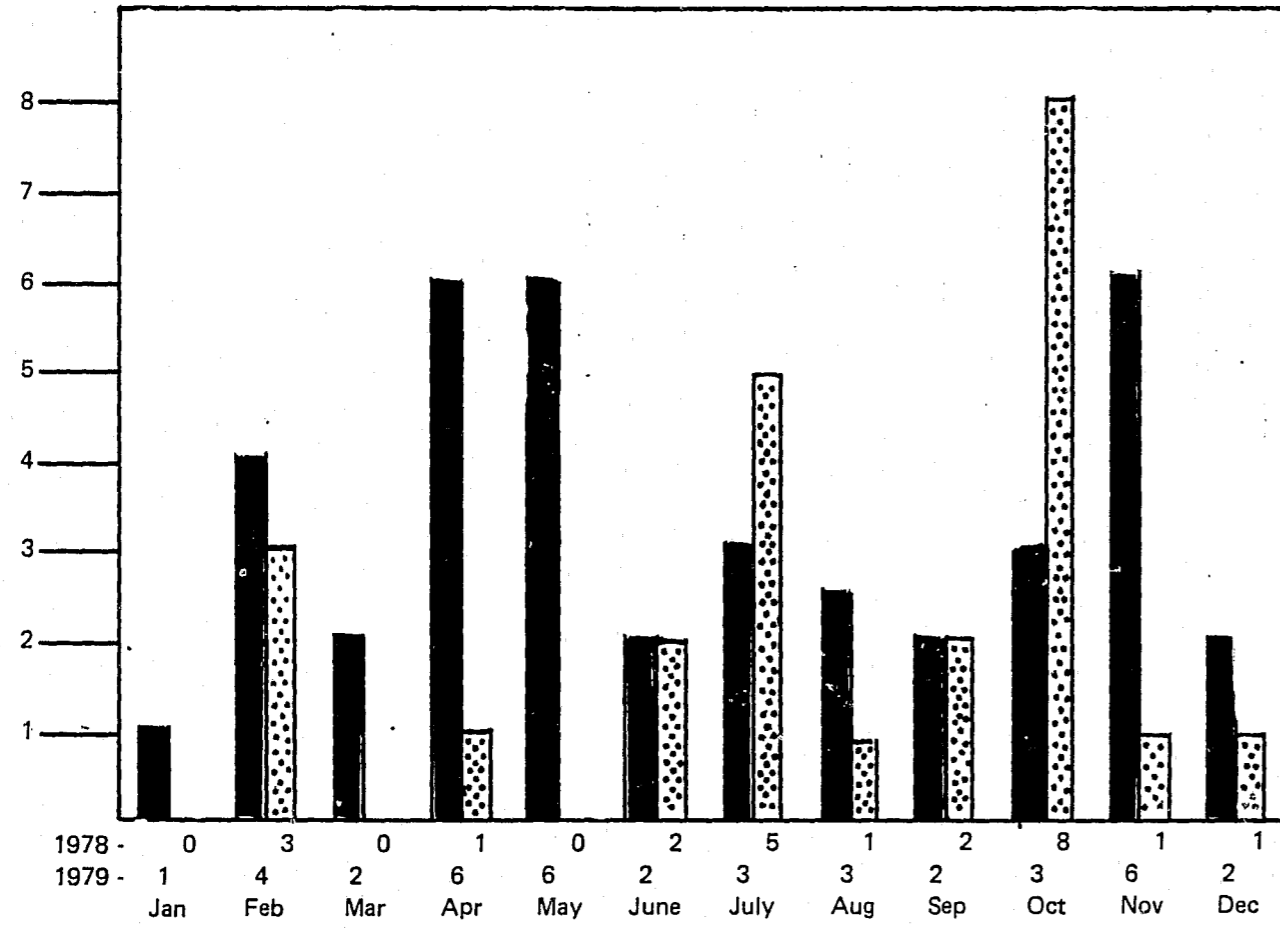
OFFENSES	1975		1976		1977		1978		1979	
	ACTUAL OFFENSES	% CHNG/ PREV YR	ACTUAL OFFENSES	% CHNG/ PREV YR	ACTUAL OFFENSES	% CHNG/ PREV YR	ACTUAL OFFENSES	% CHNG/ PREV YR	ACTUAL OFFENSES	% CHNG/ PREV YR
MURDER	36	0%	19	-47%	31	+63%	24	-23%	40	+67%
FORCIBLE RAPE	178	- 5%	193	+ 8%	172	-11%	162	- 6%	193	+19%
ROBBERY	1,211	- 2%	788	-35%	809	+ 3%	878	+ 9%	954	+ 9%
AGGRAVATED ASSAULT	1,115	+ 5%	1,008	-10%	906	-10%	792	-13%	830	+ 5%
BURGLARY	5,225	-14%	4,323	-17%	4,930	+14%	5,048	+ 2%	5,140	+ 2%
LARCENY - THEFT	13,872	+10%	13,983	+ 1%	12,895	- 8%	12,811	- 1%	14,875	+16%
MOTOR VEHICLE THEFT	2,134	-26%	2,098	- 2%	2,277	+ 9%	1,744	-23%	2,320	+33%
TOTALS	23,771	- 1%	22,412	- 6%	22,020	- 2%	21,459	- 3%	24,352	+13%

23

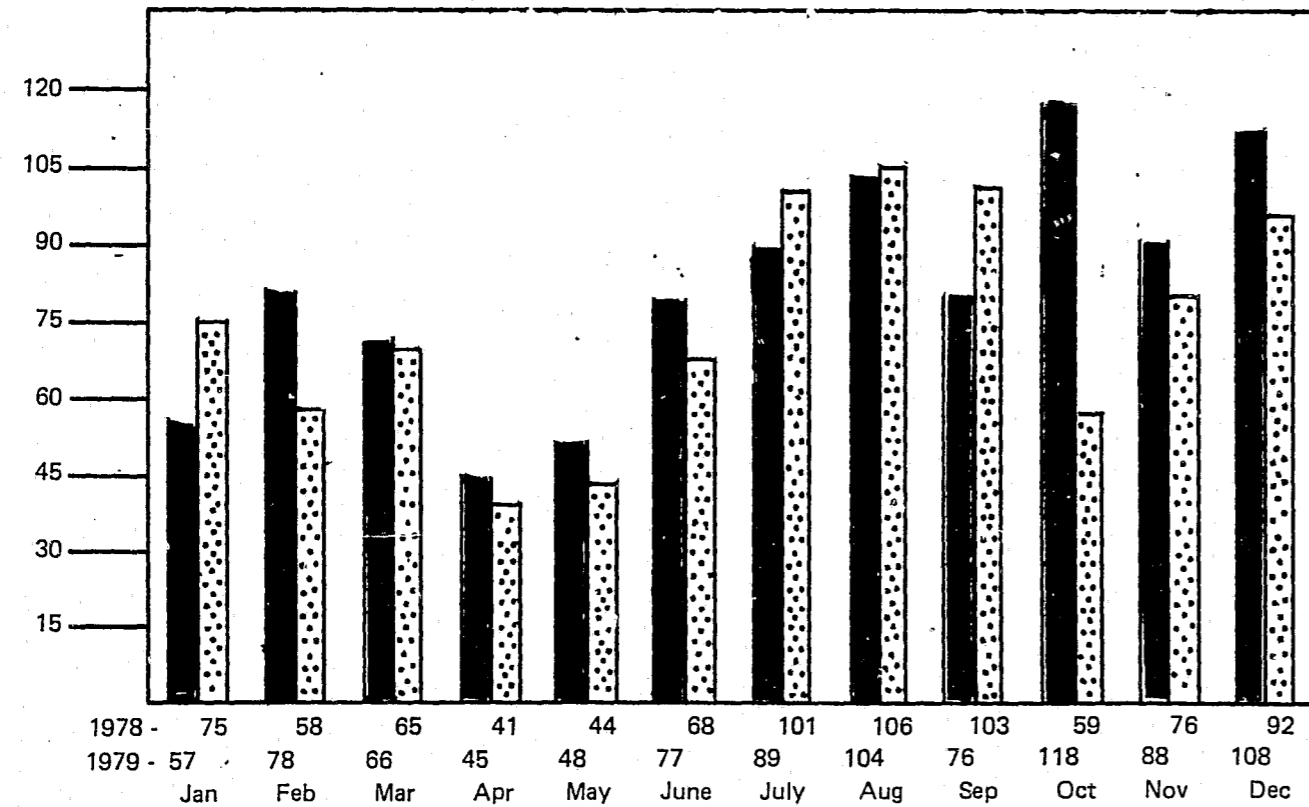
MONTHLY COMPARISON - PART ONE OFFENSES

1979 
1978 

MURDER



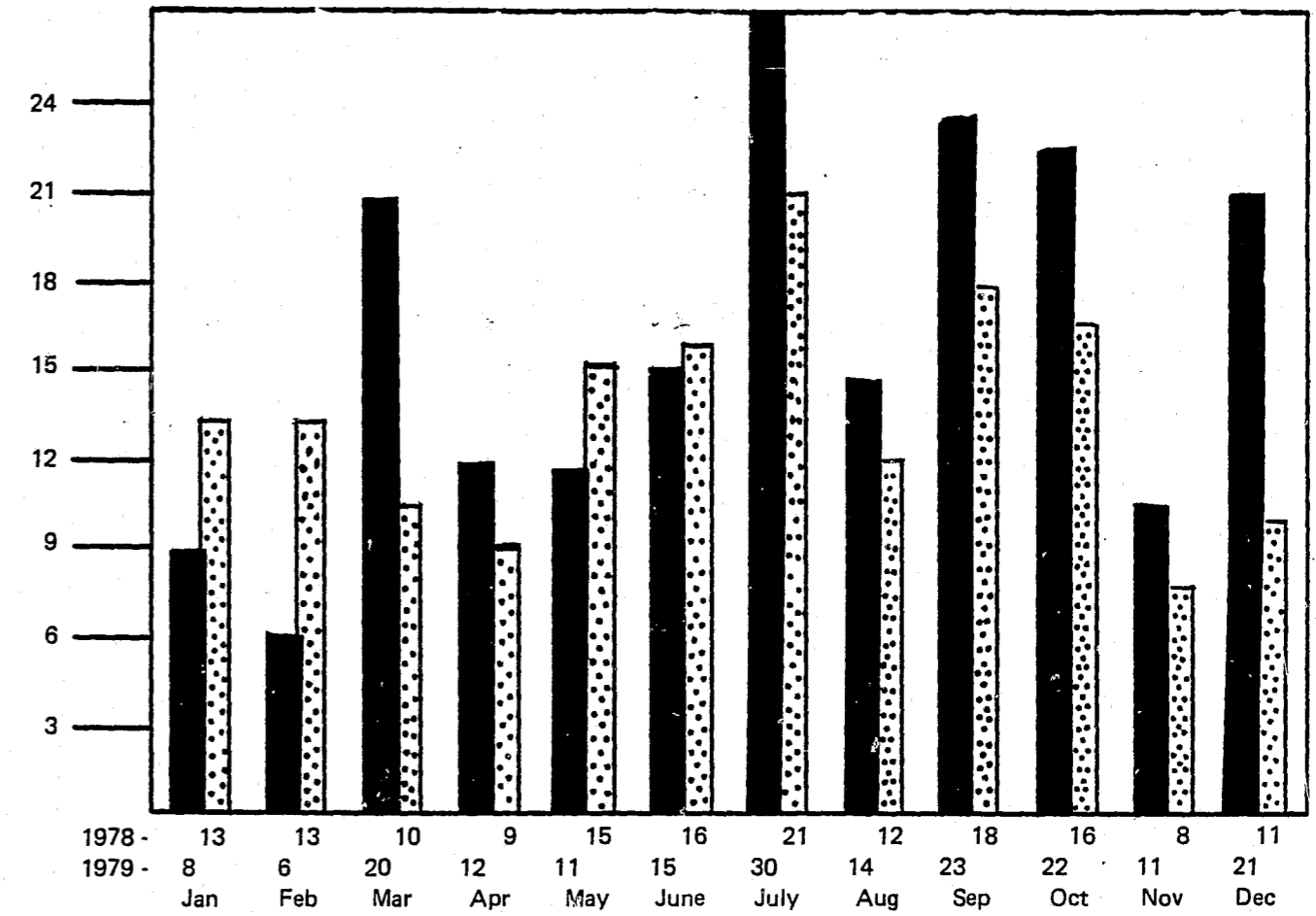
ROBBERY



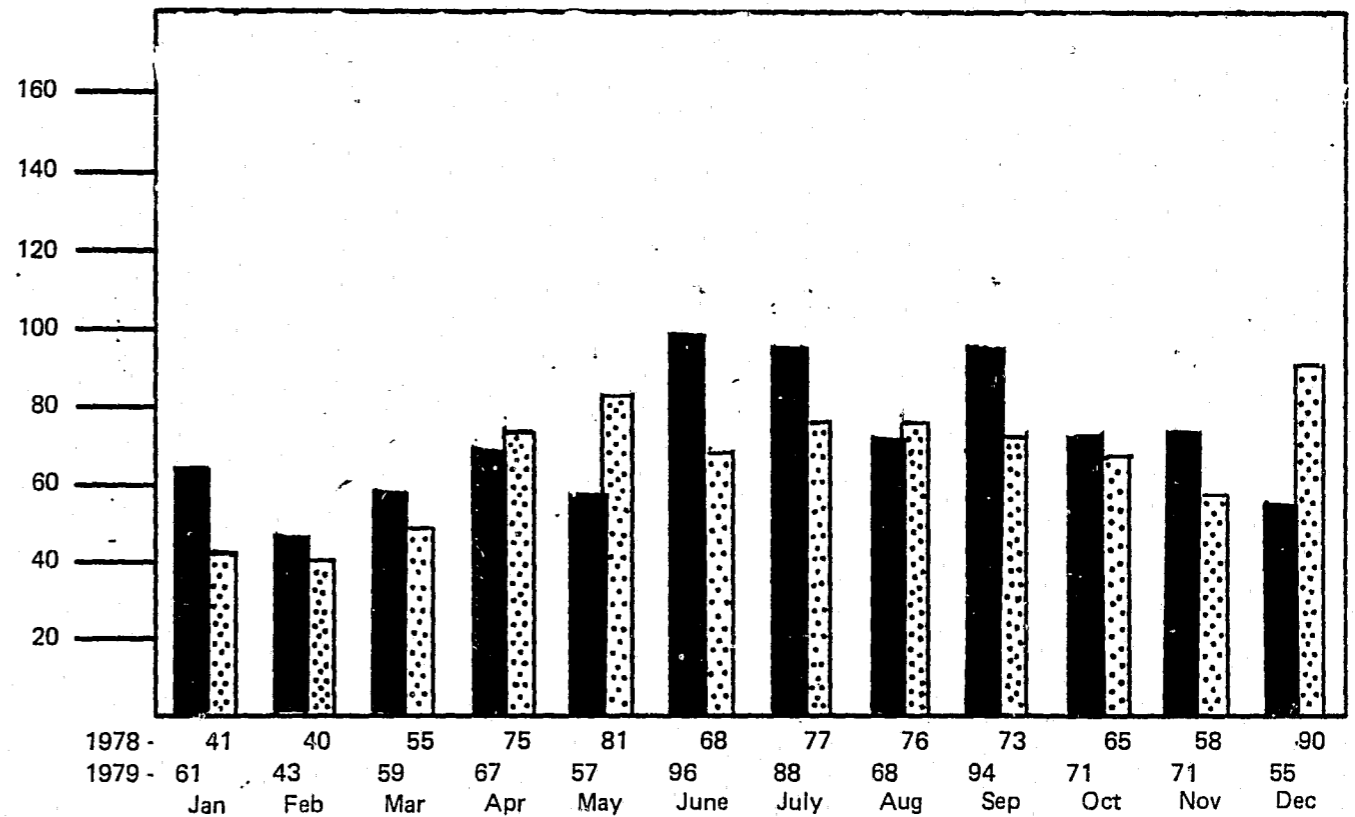
MONTHLY COMPARISON - PART ONE OFFENSES

1979 
1978 

RAPE



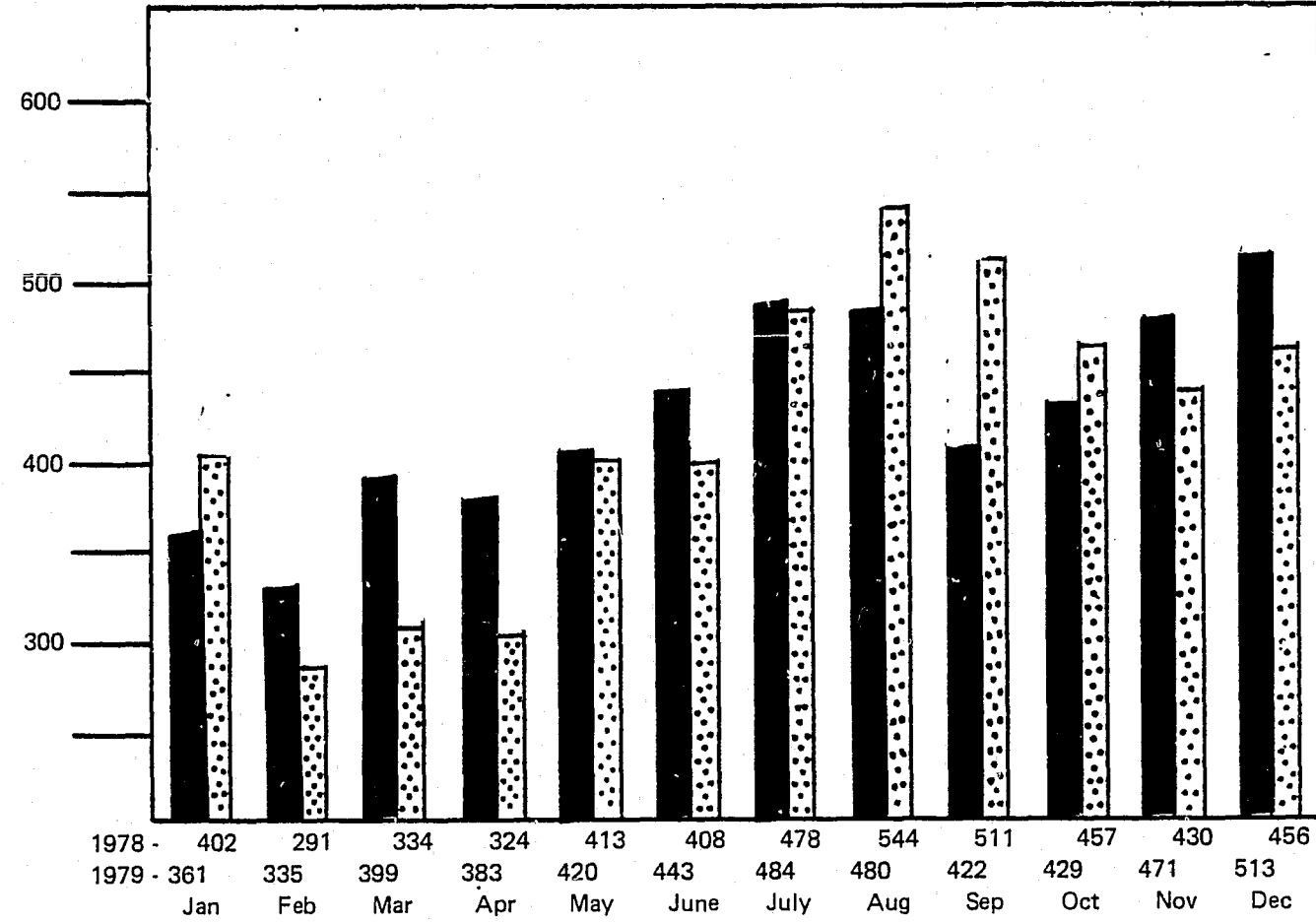
ASSAULT



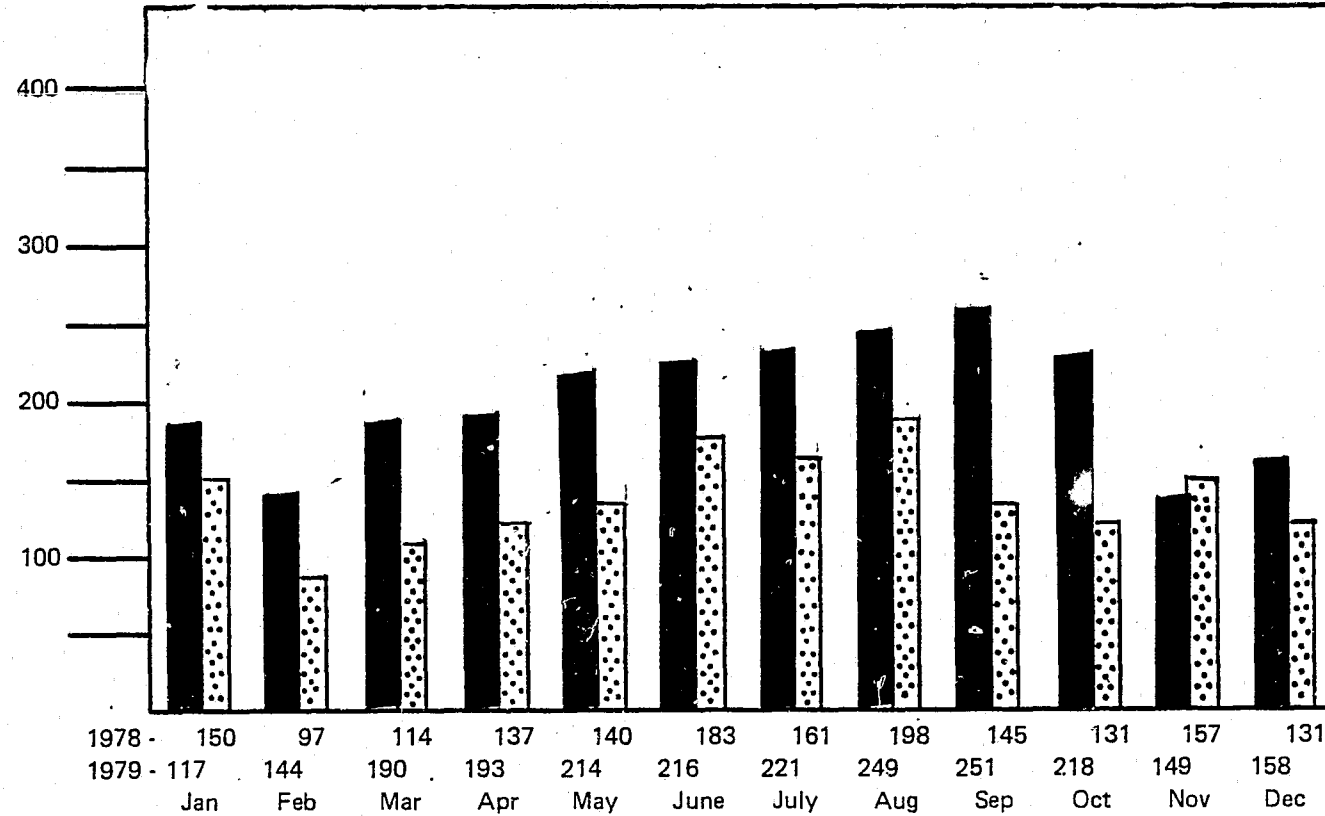
MONTHLY COMPARISON - PART ONE OFFENSES

1979 
 1978 

BURGLARY



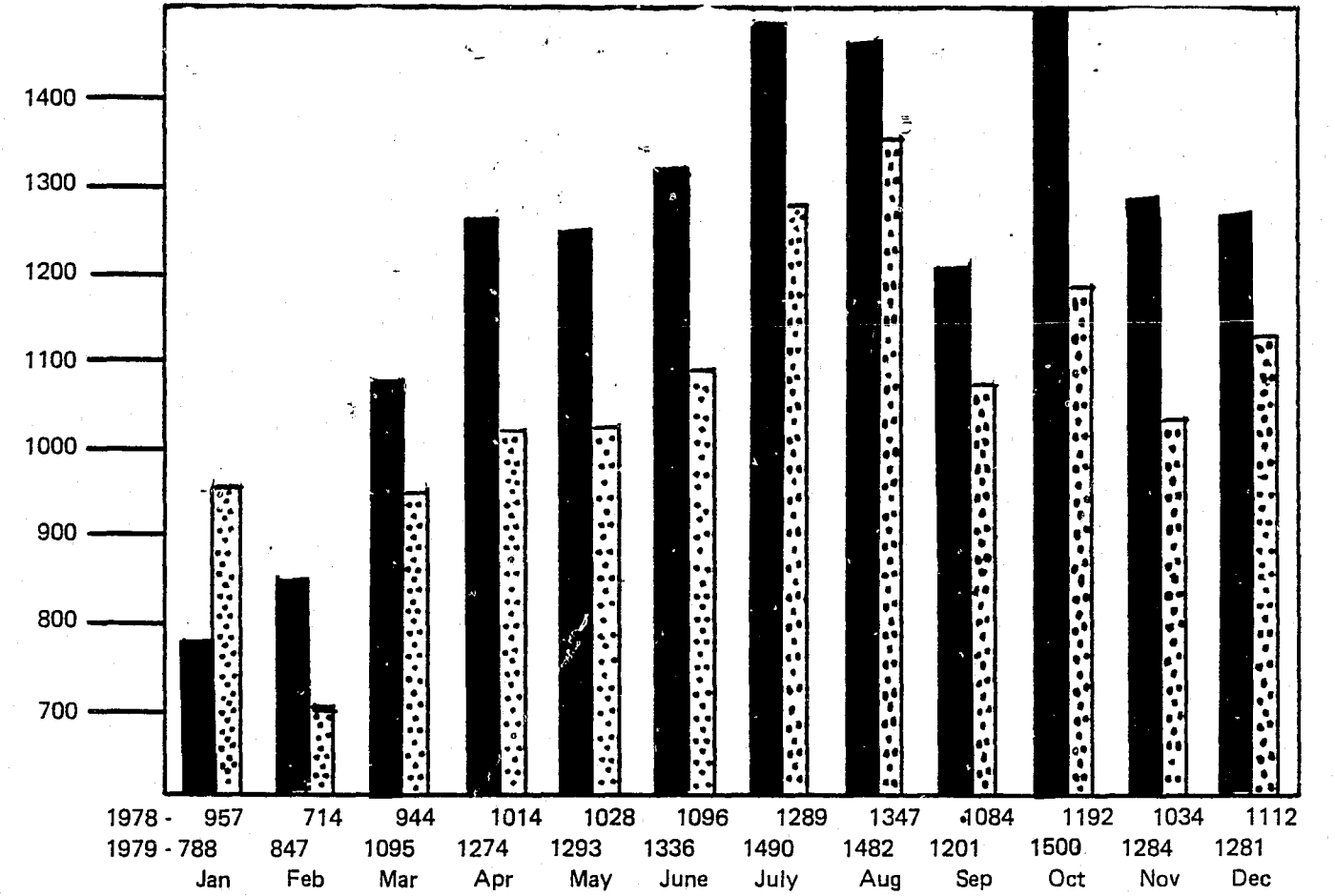
MOTOR VEHICLE THEFT



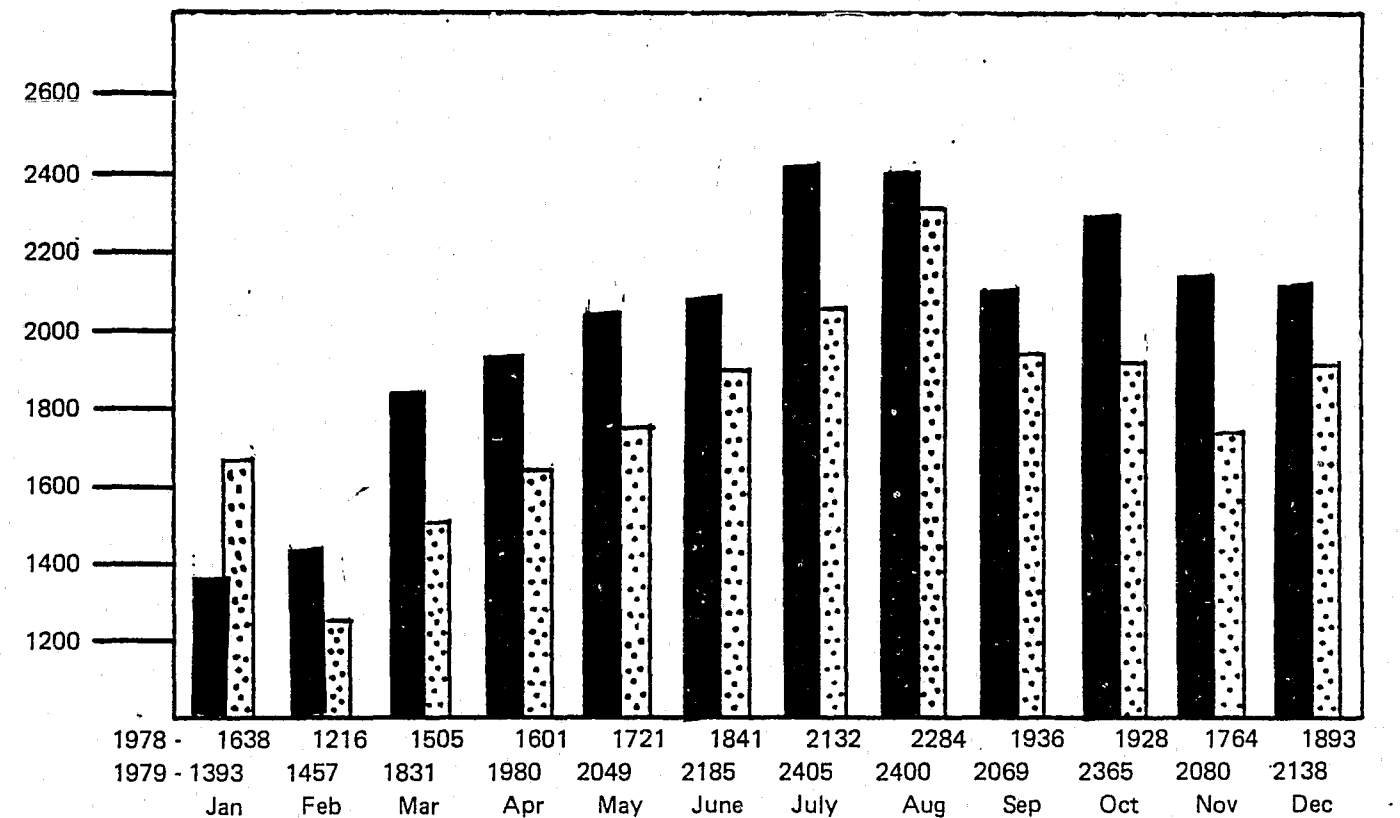
MONTHLY COMPARISON - PART ONE OFFENSES

1979 
 1978 

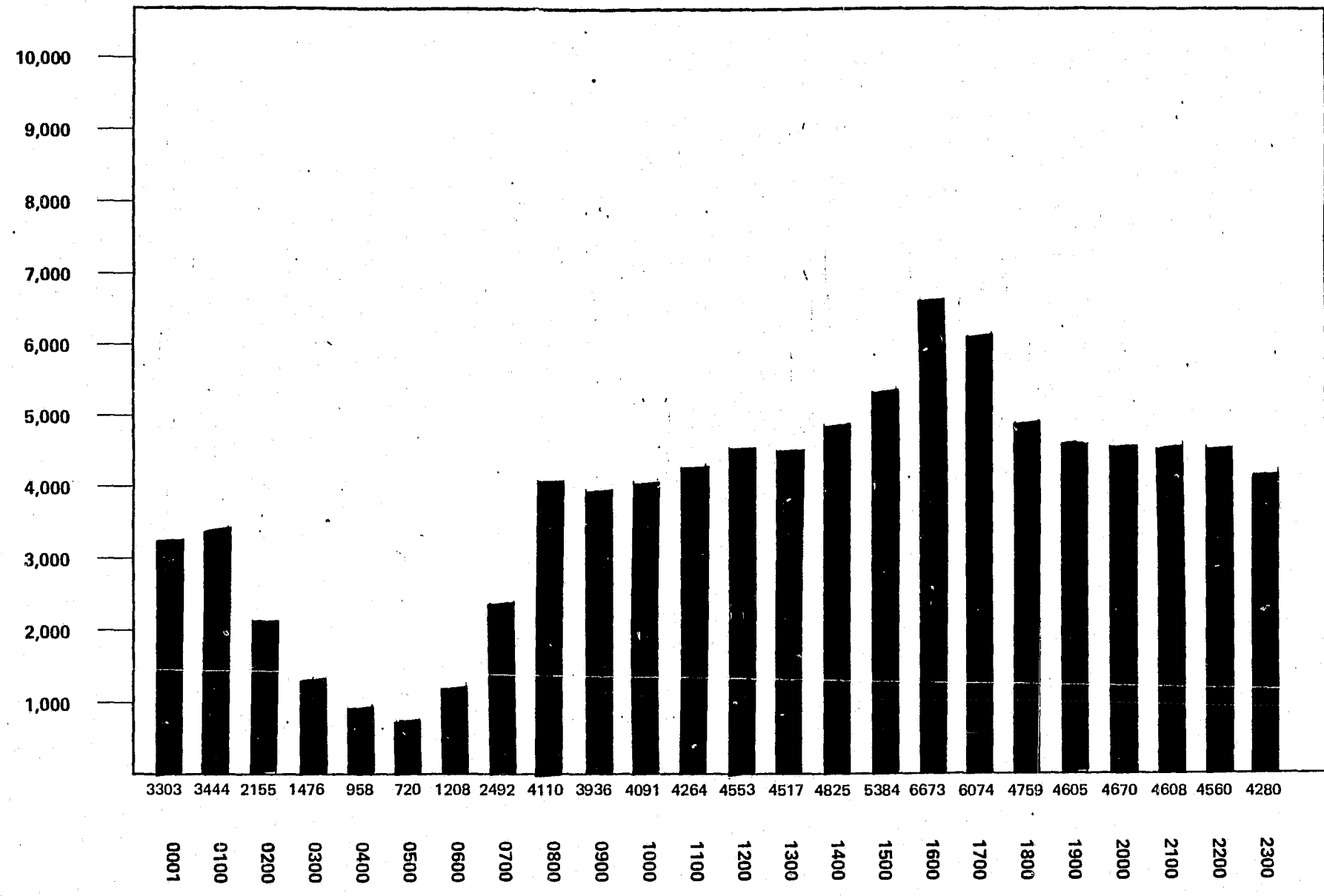
LARCENY - THEFT



TOTAL PART ONE CRIMES



TOTAL OF ALL CRIMES, INCIDENTS, ARRESTS AND ACCIDENTS AS THEY OCCUR IN RELATION TO TIME OF DAY



ADULT ARRESTS BY RACE

Offense	White	Negro	Indian	Chinese	Japanese	Other	Total
Murder & Manslaughter	15	13					28
Death by Negligence	5		1				6
Forcible Rape	29	36				1	66
Robbery	78	159	15				252
Felony Assault	84	145	10				239
Burglary	177	112	7			1	297
Larceny	1,084	587	58	1		9	1,739
Auto Theft	76	67	5				148
Misdemeanor Assaults	322	244	16			2	584
Arson	25	13	2				40
Forgery & Counterfeiting	46	53					99
Fraud	218	111	8				337
Embezzlement	22	12				1	35
Stolen Property	122	201	3				326
Vandalism (D.O.P.)	224	76	14				314
Weapons (Carrying, Possessing)	161	158	9				328
Prostitution & Vice	109	111	2				222
Other Sex Offenses	74	26	2			1	103
Narcotic Drug Laws-Sale, Poss:	335	153	7		1	1	497
Opium, Cocaine, Codeine, Morphine, Heroin	86	42					128
Marijuana	233	108	4		1	1	347
Syn/Mfg. Narcotics	9		1				10
Other Dang. Non-Narcotics	7	3					10
Gambling:	52	27	1	1			81
Bookmaking	18	16	1	1			36
Numbers & Lottery		1					1
All Other Gambling	34	10					44
Offenses Against Family/Child	51	29	3				83
Driving Under Influence	614	161	12				787
Liquor Laws	231	22	7				260
Drunkenness/Intoxication							
Disorderly Conduct	525	261	49				835
Loitering or Prowling	150	119	10			1	280
All Other Offenses (Except Traffic)	1,038	679	63			2	1,782
Totals	6,254	3,755	310	3	2	20	10,344

ADULT ARRESTS BY AGE AND SEX

Offense	18		19		20		21		22		23		24		25-29		30-34		35-39		40-44		45-49		50-54		55-59		60-64		Over 65		Total		Grand Total
	M	F	M	F	M	F	M	F	M	F	M	F	M	F	M	F	M	F	M	F	M	F	M	F	M	F	M	F	M	F	M	F	Total		
Murder & Manslaughter	2				3		1		3	1	1	1			4	1	3		2	1	1		2		1		1					24	4	28	
Death By Negligence	1								1						4																	6		6	
Forcible Rape	3		8		3		3		6		3		6		20		7		5		1		1									66		66	
Robbery	25	2	20	5	29	2	17	1	20	1	18		9	2	57	6	17	3	9		6		3									230	22	252	
Felony Assault	9	2	12	2	11	2	20	8	15	2	10	5	8	3	37	13	17	8	9	5	13	3	8		7	3	2	1	3	1		182	57	239	
Burglary	67	1	45	1	39	2	19		19		20	1	10		23	2	17		7		2		4	1	6		3		8		289	8	297		
Larceny	142	100	94	78	103	50	59	61	63	28	44	45	33	26	133	93	98	69	55	39	52	29	31	27	37	28	19	23	20	11	32	27	1,015	724	1,739
Auto Theft	17		26	4	25	3	10		8		16		7		7	1	7		6		6		2	1	1		1				139	9	148		
Misc. Assaults	36	7	30	8	25	6	34	5	39	4	34	5	29	5	108	16	51	14	42	9	27	2	17	2	18		4	2	4	1		499	85	584	
Arson	6		6		2		4	2	1	1	1		2		5	2	2		2		1	1	1		1						33	7	40		
Forgery & Counterfeiting	4	4	5	3	3	2	7	2	6	4	2	2	3	2	23	8	7		2		3	1	1	1	2			1	1	1	70	29	99		
Fraud	6	8	12	6	9	8	13	6	11	5	9	9	13	4	54	18	36	18	28	6	19	6	9	5	9	3	3		1	3	234	103	337		
Embezzlement			3		3	1			3				4	1	4		2	2	3	2			2	1			4				28	7	35		
Stolen Property	27	6	25	5	17	8	21	2	17	3	25	2	15		34	6	29	7	17	4	23	1	10		12		4		1	5		282	44	326	
Vandalism (D.O.P.)	63	5	26	1	23	2	18	1	12	1	8	2	8		41	9	28	6	17	1	15	4	7	1	7		5		1	2		281	33	314	
Weapons, Carrying, Possessing	14	3	18	3	26	3	20		21		13	6	14	1	53	10	44	4	19	4	19	3	10		13		4		1	2		291	37	328	
Prostitution & Vice	6	27	3	31	6	22	3	16	6	6	3	6	5	14	15	13	7	3	9		7		2		8		2		1	1	84	138	222		
Sex Offenses (Other)	3	1	5	1	5	2	2		7		5		4	2	20		8	1	15		10		8		3				1		96	7	103		
Narcotic Drugs	60	8	49	6	54	10	50	5	31	3	29	10	27	6	72	25	24	3	14	2	2	1	3		2		1				416	81	497		
Gambling					1		1		1		3	1	2		4	2	16	3	6		10	1	12		4	2	1	3		7	1	67	14	81	
Offenses Against Family			2		1		2	1	1	7		7	1	3	9	13	7	9	6	2	2	4	1	1	1		1		1	1		32	51	83	
Driving Under Influence	20	1	28	4	35	5	33	4	34	4	26	2	29	3	114	19	90	10	67	11	56	8	52	10	53	5	30	1	14	2	17	698	89	787	
Liquor Laws	91	15	48	3	24	2	10	3	1	1	6	2	4	2	9	2	10	3	6	1	5	2	4	1	2		2		1		223	37	260		
Drunkness																																			
Disorderly Conduct	58	14	47	26	46	15	42	11	46	9	49	9	32	6	133	21	73	11	47	9	42	8	23	9	22	2	13	3	2	2	4	1	679	156	835
Loitering or Prowling	20	27	26	27	17	21	12	34	10	11	9	1	6	5	22	6	4		7	5	3		4		2		1				143	137	280		
Offenses Other than Traffic	175	45	143	39	127	23	128	22	116	19	100	23	62	19	274	59	134	33	73	16	35	8	29	8	22	10	23	2	9	1	6	1	1,455	327	1,782
Totals	855	276	679	255	636	190	529	174	496	111	434	138	333	104	1279	345	738	207	473	117	360	82	245	69	230	55	124	35	60	18	91	29	7,562	2,206	9,768

20

JUVENILE ARRESTS BY RACE

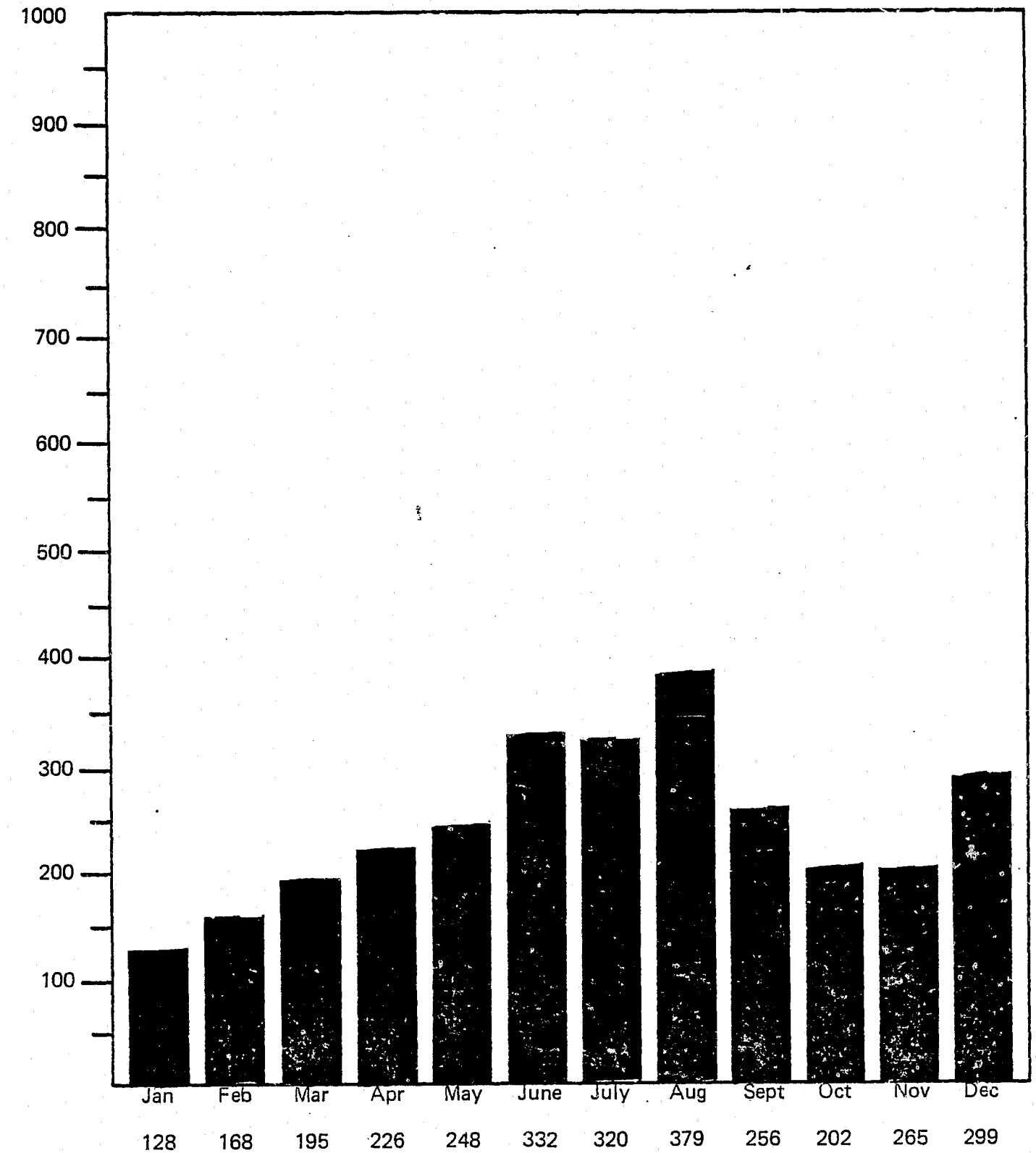
Offense	White	Negro	Indian	Chinese	Japanese	Other	Total
Murder & Manslaughter	5	3					8
Death by Negligence	1						1
Forcible Rape	8	13	1			1	23
Robbery	37	55	2				94
Felony Assault	18	9					27
Burglary	174	126	8				308
Larceny	1,059	621	22			2	1,704
Auto Theft	93	69	4				166
Misdemeanor Assaults	59	37	2				98
Arson	31	9	1				41
Forgery & Counterfeiting	24	7					31
Fraud	39	22					61
Embezzlement	6						6
Stolen Property	41	19	2				62
Vandalism (D.O.P.)	272	59	3				334
Weapons (Carrying Possessing)	25	10					35
Prostitution & Vice	5	11					16
Other Sex Offenses	16	3					19
Narcotic Drug Laws-Sale, Poss: Opium, Cocaine, Codeine, Morphine, Heroin	11						11
Marijuana	114	17	1				132
Syn/Mfg. Narcotics	5		3				8
Other Dang. Non-Narcotics	2						2
Gambling: Bookmaking							
Numbers & Lottery							
All Other Gambling							
Offenses Against Family/Child	2						2
Driving Under Influence	28	1					29
Liquor Laws	237	3					240
Drunkness/Intoxication							
Disorderly Conduct	71	29	5				105
Loitering or Curfew Violations	51	18	2				71
All Other Offenses (Except Traffic)	234	97	2				333
Runaways	3						3
Totals	2,671	1,238	58			3	3,970

**JUVENILE ARRESTS -
by Age & Sex**

Offense	0-10		11-12		13-14		15		16		17		Total		Grand Total
	M	F	M	F	M	F	M	F	M	F	M	F	M	F	
Murder & Manslaughter					1	2	1		3		1		6	2	8
Death by Negligence									1				1		1
Forcible Rape	1		1		5		7		5		4		23		23
Robbery	1		4		16	1	13		19	2	34	4	87	7	94
Felony Assault	1		1	1	5		5	1	5		7	1	24	3	27
Burglary	13	3	18	3	69	8	35	2	58	4	94	1	287	21	308
Larceny	96	24	150	72	284	166	172	115	200	120	199	106	1,101	603	1,704
Auto Theft			3		30	4	24		42	3	56	4	155	11	166
Misdemeanor Assaults	4		8	1	12	2	18	1	14	3	30	5	86	12	98
Arson	9	2	6		8	1	8		4		3		38	3	41
Forgery & Counterfeiting	1				4		3	4	8	3	5	3	21	10	31
Fraud	1		2	1	5	8	9	1	11	6	13	4	41	20	61
Embezzlement									2		3	1	5	1	6
Stolen Property	2		5		6		8	1	9	3	24	4	54	8	62
Vandalism (D.O.P.)	32	3	39	3	108	9	35	4	46	5	48	2	308	26	334
Weapons (Carrying, Poss)			2		1		2		10	2	15	3	30	5	35
Prostitution & Vice								1	1	4	1	9	2	14	16
Other Sex Offenses			1		7	1	5		2		2	1	17	2	19
Narcotic Drug Laws-Sale, Poss:															
Opium, Cocaine, Codeine, Morphine, Heroin					8		21	2	37	5	72	8	138	15	153
Marijuana							3		1		4		8		8
Syn./Mfg. Narcotics															
Other Dang. Non-Narcotics								1			1		1	1	2
Gambling:															
Bookmaking															
Numbers & Lottery															
All Other Gambling															
Offenses Against Family/Child										1		1		2	2
Driving Under Influence									7	1	20	1	27	2	29
Liquor Laws					6	5	13	12	66	18	96	24	181	59	240
Drunkness/Intoxication															
Disorderly Conduct	1	1	1	1	9	2	9	4	26	4	41	6	87	18	105
Loitering or Curfew Violations	1		1		10	3	9		14	2	27	4	62	9	71
All Other Offenses (Except Traffic)															
Runaways					2		1						3		3
Totals	163	33	242	82	596	212	401	149	591	186	800	192	2,793	854	3,647

REQUESTS FOR SPECIAL ATTENTION

1979

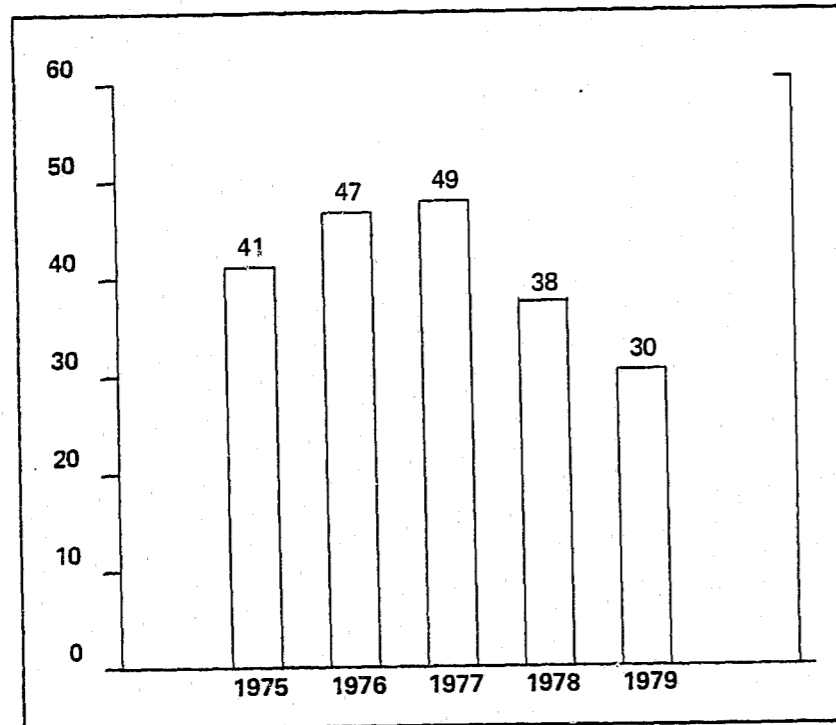


TRAFFIC SECTION STATISTICS — 1979

TRAFFIC ACCIDENTS
1978 - 1979

	1978	1979	Numerical Change	Percentage Change
Fatalities	38	30	- 8	-21.05
Injuries	7,452	6,698	-754	-10.12
Total Accidents	14,444	13,786	-658	- 4.56

TRAFFIC FATALITIES
FIVE YEAR PERIOD



STANDARD SUMMARY OF NEBRASKA
MOTOR VEHICLE TRAFFIC ACCIDENTS

FIRST HARMFUL EVENT		THIS YEAR								
		ACCIDENTS				PERSONS KILLED AND INJURED				
		Total	Fatal	Non Fatal Injury	Property Damage Only	Killed	Non-Fatal Injuries			
						Total	A*	B*	C*	
COLLISION INVOLVING	Pedestrian	314	6	308		6	317	49	177	91
	Motor Vehicle in Transport	10,192	16	3,340	6,836	17	5,152	309	2,341	2,502
	Parked Motor Vehicle	1,423		139	1,284		172	15	88	69
	Railway Train	10		4	6		4		2	2
	Pedalcyclist	97		96	1		99	13	63	23
	Animal	12		2	10		3	1	2	
	Fixed Object	1,386	6	525	855	6	693	80	425	188
	Other Object	128		59	69		70	4	49	17
	Non-collision: Overturned	147	1	110	36	1	131	14	83	34
	Other Non-collision	77		51	26		57	6	33	18
	TOTALS		13,786	29	4,634	9,123	30	6,698	491	3,263

*INJURY SEVERITY CODES A = Incapacitating injury B = Non-incapacitating evident injury
C = Non-evident or possible injury

ROADWAY		ACCIDENTS				PERSONS	
		Total	Fatal	Non-Fatal Injury	Property Damage Only	Killed	Injured
URBAN	Interstate	779	3	293	483	3	433
	Other State System Highways	3,590	12	1,328	2,250	13	2,068
	Local Roads and Streets	9,417	14	3,013	6,390	14	4,197
	URBAN SUBTOTAL	13,786	29	4,634	9,123	30	6,698
RURAL	Interstate						
	Other State System Highways						
	Local Roads and Streets						
	RURAL SUBTOTAL						
TOTALS		13,786	29	4,634	9,123	30	6,698

MILEAGE AND RATES	This Year	Last Year	Percentage Change
Vehicles Miles (Millions)			.0%
Fatal Accidents	29	36	-19.4%
Fatalities	30	38	-21.1%
Fatal Accident Rate (per 100 million vehicle miles)			.0%
Death Rate (per 100 million vehicle miles)			.0%

	TIME HOURS BEGINNING	TOTAL		MONDAY		TUESDAY		WEDNESDAY	
		ALL	FATAL	ALL	FATAL	ALL	FATAL	ALL	FATAL
BEFORE NOON	Midnight	515	2	33		46		54	
	1:00	550		42		36		30	
	2:00	269	2	20	1	15		31	
	3:00	142		13		10		11	
	4:00	66		5		4		6	
	5:00	46		4		3		4	
	6:00	209		38		47		31	
	7:00	702		133		138		142	
	8:00	667	1	120	1	130		123	
	9:00	424	1	87		76		58	
	10:00	458	1	81		70	1	73	
11:00	607		76		87		84		
AFTER NOON	Noon...	711	1	112	1	110		95	
	1:00	667	3	99		107	2	74	
	2:00	774	1	117		112		104	
	3:00	1,066	1	153		162		172	
	4:00	1,126	1	185		166		196	
	5:00	1,022	2	133		170	2	144	
	6:00	668	2	83	1	79		102	
	7:00	617	1	77		82		77	
	8:00	457		51		51		67	
	9:00	514	1	65		58	1	67	
	10:00	516	3	55	1	63		60	1
11:00	468	6	48	2	39		51		
Not stated	525		64		66		79		
TOTALS	13,786	29	1,894	7	1,927	6	1,935	1	

	TIME HOURS BEGINNING	THURSDAY		FRIDAY		SATURDAY		SUNDAY	
		ALL	FATAL	ALL	FATAL	ALL	FATAL	ALL	FATAL
BEFORE NOON	Midnight	47		56		157	2	122	
	1:00	51		69		165		157	
	2:00	27		16		76	1	84	
	3:00	6		9		47		46	
	4:00	8		4		21		18	
	5:00	10		5		5		15	
	6:00	42		25		15		11	
	7:00	140		111		24		14	
	8:00	105		117		53		19	
	9:00	52		62	1	62		27	
	10:00	56		68		75		35	
11:00	91		104		123		42		
AFTER NOON	Noon	77		104		140		73	
	1:00	91		100		117	1	79	
	2:00	113		131		122		75	1
	3:00	149		192	1	144		94	
	4:00	157		214	1	129		79	
	5:00	161		206		127		81	
	6:00	119		130		100	1	55	
	7:00	74		124	1	112		71	
	8:00	66		108		66		48	
	9:00	57		119		102		46	
	10:00	71	1	121		98		48	
11:00	43	1	149	1	105	1	33	1	
Not stated	68		89		99		60		
TOTALS	1,881	2	2,433	5	2,284	6	1,432	2	

		ALL Accidents	Fatal Accidents	Injury Accidents
SINGLE UNIT	Passenger car or station wagon	19,855	22	6,645
	Vans	629		192
	Light duty truck	2,458	12	712
	Heavy duty truck or truck tractor	245	2	55
	Commercial bus	106		44
	School bus	52		13
	Motorcycle	423	10	368
	Truck with camper	2		1
	Motorhome	7		3
	Other	21		9
	WITH TRAILER	Passenger car or station wagon	3	
Vans		1		
Light duty truck or truck with camper		3		
Heavy duty truck		28		
Truck tractor with semi-trailer		376	3	96
Other		13		5
Farm tractor or farm equipment		2		
Not stated		2,535		568
TOTALS		26,759	49	8,717

LIGHT CONDITION	ALL Accidents	Fatal Accidents	Injury Accidents
Daylight	8,171	10	2,774
Dawn or dusk	660	3	234
Darkness	1,022	2	287
Darkness - streetlights on	3,128	13	1,142
Darkness - streetlights off	60	1	21
Not stated	745		176
TOTALS	13,786	29	4,634

AGE OF DRIVER	ALL Accidents	Fatal Accidents	Injury Accidents
15 and younger	95		43
16	838	1	273
17	1,120	2	395
18	1,224	3	410
19	1,238	2	446
20 to 24	4,978	8	1,708
25 to 34	5,864	20	2,143
35 to 44	2,899	6	1,073
45 to 54	2,212	4	785
55 to 64	1,491	1	519
65 to 74	751	2	259
75 and older	327		101
Not stated	915		143
TOTALS	23,952	49	8,298

AGE AND SEX OF CASUALTIES	ALL PERSONS						PEDESTRIANS ONLY					
	KILLED			INJURED			KILLED			INJURED		
	Total	Male	Female	Total	Male	Female	Total	Male	Female	Total	Male	Female
0- 4 years	2	1	1	217	119	98	1		1	28	17	11
5- 9	1	1		256	141	115				73	46	27
10-14				216	103	113				43	20	23
15-19	5	4	1	1,281	679	602				43	24	19
20-24	2	1	1	1,199	638	561	1		1	22	13	9
25-34	10	9	1	1,444	747	697	1	1		24	16	8
35-44	3	2	1	659	329	330				12	10	2
45-54	1		1	526	249	277				16	10	6
55-64	2		2	340	170	170	1		1	10	7	3
65-74	3	1	2	180	81	99	1	1		14	6	8
75 and older	1		1	86	34	52	1		1	16	8	8
Age not stated				240	104	136				24	18	6
TOTALS	30	19	11	6,644	3,394	3,250	6	2	4	325	195	130

AGE AND SEX OF CASUALTIES	PEDALCYCLISTS ONLY					
	KILLED			INJURED		
	Total	Male	Female	Total	Male	Female
0- 4 years				2	1	1
5- 9				27	21	6
10-14				30	26	4
15-19				8	7	1
20-24				11	10	1
25-34				9	7	2
35-44				1	1	
45-54						
55-64						
65-74						
75 and older						
Age not stated				10	10	
TOTALS				98	83	15

37

SEX OF DRIVER	All Accidents	Fatal Accidents	Injury Accidents
Male	15,624	36	5,282
Female	7,868	13	2,948
Not stated	460		68
TOTALS	23,952	49	8,298

LOCATION	ACCIDENTS			
	Total	Fatal	Non-Fatal Injury	Property Damage Only
URBAN (by population)	Below 1000			
	1000-2499			
	2500-4999			
	5000-9999			
	10,000-24,999			
	25,000-49,999			
	Lincoln Omaha	13,786	29	4,634
SUBTOTAL URBAN	13,786	29	4,634	9,123
SUBTOTAL RURAL				
TOTALS	13,786	29	4,634	9,123

KIND OF LOCATION	All Accidents	Fatal Accidents	Injury Accidents
Open country	1,210	7	486
Residential	5,624	7	1,824
Shopping or business	5,486	15	1,903
Manufacturing or industrial	641		193
School or playground	196		60
Other	318		102
Not stated	311		66
TOTALS	13,786	29	4,634

ALL OTHER ACCIDENTS		All	Fatal	Non-Fatal Injury	Property Damage Only
COLLISION WITH FIXED OBJECT	on roadway	138			
	off roadway	1,359			
Collision with other object		17			
Collision with animal		12			
Collision with non-motor vehicle (train, bicycle, etc.)		107			
OVERTURNED	on roadway	90			
	off roadway	57			
Fell from moving vehicle		34			
All others		43			
TOTALS		1,857			

TWO MOTOR VEHICLE COLLISIONS			ACCIDENTS			
			Total	Fatal	Non-Fatal Injury	Property Damage Only
VEHICLE MOVEMENTS			Total	Fatal	Non-Fatal Injury	Property Damage Only
AT INTERSECTION	1.	Entering at angle	2,849	4	1,008	1,837
	2a.	From same direction - both straight	487		137	350
	b.	From same direction - one turning, one straight	503	1	120	382
	c.	From same direction - one stopped	471		176	295
	d.	From same direction - all others	59		12	47
	3a.	From opposite directions - both going straight	103	1	37	65
	b.	From opposite directions - left turn, one straight	912	3	369	540
	c.	From opposite directions - all others	28		9	19
	4.	Not stated	1			1
	TOTAL AT INTERSECTION			5,413	9	1,868
NOT AT INTERSECTION	1.	Going opposite directions - both moving	650	1	227	422
	2.	Going same direction - both moving	1,617	2	433	1,182
	3a.	One car parked	1,423		139	1,284
	b.	One car stopped in traffic	1,529	2	610	917
	4a.	One car entering parked position	6		1	5
	b.	One car leaving parked position	112		9	103
	5a.	One car entering alley or driveway	231	1	53	177
	b.	One car leaving alley or driveway	620	1	138	481
6.	All others	12		1	11	
7.	Not stated	2			2	
TOTAL NOT AT INTERSECTION			6,202	7	1,611	4,584
TOTAL AT INTERSECTION AND NOT AT INTERSECTION			11,615	16	3,479	8,120

TWO MOTOR VEHICLE COLLISIONS VEHICLE MOVEMENTS		ACCIDENTS BY TYPE OF IMPACT												
		HEAD-ON			ANGLE or SIDESWIPE			REAR-END			OTHER			
		All	Fatal	Injury	All	Fatal	Injury	All	Fatal	Injury	All	Fatal	Injury	
AT INTERSECTION	1. Entering at angle	5		3	2,746	4	986	3		1	95		18	
	2a. From same direction - both straight	1			186		26	288		109	12		2	
	b. From same direction - one turning, one straight	1			384	1	73	109		45	9		2	
	c. From same direction - one stopped	1			32		3	389		160	49		13	
	d. From same direction - all others				41		7	18		5				
	3a. From opposite directions - both going straight	12		5	80	1	29	1		1	10		2	
	b. From opposite directions - left turn, one straight	6		4	898	3	362	5		1	3		2	
	c. From opposite direction all others	1			26		8				1		1	
	4. Not stated				1									
	TOTAL AT INTERSECTION		27		12	4,394	9	1,494	813		322	179		40
NOT AT INTERSECTION	1. Going opposite directions - both moving	62		26	452	1	159	13		8	123		34	
	2. Going same direction - both moving	3			829	1	153	711		261	74	1	19	
	3a. One car parked	23		4	868		72	311		59	221		4	
	b. One car stopped in traffic	9		5	119	1	16	1,286	1	559	115		30	
	4a. One car entering parked position				3		1				3			
	b. One car leaving parked position				80		5	4		2	28		2	
	5a. One car entering alley or driveway				173	1	36	50		16	8		1	
	b. One car leaving alley or driveway	3		3	476	1	119	11		3	130		13	
	6. All others	2			6		1	4						
	7. Not stated				2									
TOTAL NOT AT INTERSECTION		102		38	3,008	5	562	2,390	1	908	702	1	103	
TOTAL AT INTERSECTION AND NOT AT INTERSECTION					7,402	14	2,056	3,203	1	1,230	881	1	143	

PEDESTRIAN ACTIONS BY AGE		Pedestrians Killed	AGES OF PEDESTRIANS KILLED AND INJURED									
			Total	0 to 4	5 to 9	10 to 14	15 to 19	20 to 24	25 to 44	45 to 64	65 & Older	Not Stated
1a.	Crossing roadway - at intersection	3	96	3	21	11	5	12	5	15	17	7
b.	Same - not at intersection	2	116	16	39	16	12	4	11	5	7	6
2a.	Walking in roadway - with traffic		8			3	3		2			
b.	Same - against traffic		8				3	1		1		3
3.	Standing in roadway		8			1		1	4			2
4.	Getting on or off other vehicle		9		1	2	3		1			2
5.	Working on vehicle on roadway		3				2		1			
6.	Other working in roadway		2							1		1
7.	Playing in roadway		8	2	1	2		1	1	1		
8.	Other in roadway	1	6	1			1		2			2
9.	Not in roadway		14		1	4	3	1	1	1	1	2
10.	Not stated		61	7	10	4	11	4	9	3	7	6
TOTALS		6	339	29	73	43	43	24	37	27	32	31

PEDESTRIAN ACCIDENTS	All Pedestrian Accidents	FATAL ACCIDENTS			NON-FATAL INJURY ACC'S			Property Damage Only
		Total	Inter- section	Non- Inter- section	Total	Inter- section	Non- Inter- section	
Car going straight	251	4	1	3	247	46	201	
Car turning right	21	1	1		20	14	6	
Car turning left	27	1	1		26	16	10	
Car backing	9				9		9	
All others	6				6	1	5	
Not Stated								
TOTALS	314	6	3	3	308	77	231	

ROAD SURFACE CONDITION	All Accidents	Fatal Accidents	Injury Accidents
Dry	8,427	24	3,048
Wet	2,303	1	794
Snowy or icy	2,710	4	703
Other	66		27
Not stated	280		62
TOTALS	13,786	29	4,634

RESIDENCE OF DRIVER	All Accidents	Fatal Accidents	Injury Accidents
Resides in city or town of accident	20,031	39	7,106
Within 25 miles of accident	1,373	2	477
Residing elsewhere in state	433	1	126
Non-resident	1,514	7	497
Not stated	601		92
TOTALS	23,952	49	8,298

COMPLETED DRIVERS EDUCATION COURSE	All Accidents	Fatal Accidents	Injury Accidents
Yes	12,393	20	4,318
No	9,685	17	3,444
Not stated	1,874	12	536
TOTALS	23,952	49	8,298

CONTRIBUTING CIRCUMSTANCES	All Accidents	Fatal Accidents	Injury Accidents
Speed too fast for conditions	907	3	358
Exceeding speed limit	234	3	114
Physical Impairment (fatigue or illness)	75		34
Alcohol or drugs	435	5	217
Failure to yield	2,620	7	882
Drove left of center	574	2	226
Improper overtaking	185	1	50
Ran stop sign	333		143
Disregarded traffic signal	658	3	311
Following too closely	2,165		909
Made improper turn	543		138
Improper or no turn signals	69		15
Construction area	113		43
Maintenance activity	48	1	14
Evasive action	583	2	207
Backing unsafely	224		22
Inattention or confusion	1,125	1	411
Other improper driving	1,954	5	583
Defective brakes	189		66
Defective lights (and signals)	90		20
Defective tires	62		28
Other vehicle defects	146	1	44
TOTALS	13,332	34	4,835

LOCATION OF FIRST HARMFUL EVENT	All Accidents	Fatal Accidents	Injury Accidents
On roadway	12,396	24	4,108
0 - 10 feet from edge of roadway	1,319	5	491
11 - 20 feet from edge of roadway	62		34
21 - 30 feet from edge of roadway	7		1
Over 30 feet from edge of roadway	2		
TOTALS	13,786	29	4,634

ALCOHOL INVOLVEMENT IN ACCIDENTS	NUMBER OF ACCIDENTS			
	Total	Fatal	Injury	Property Damage
Includes Drivers and/or Pedestrians				
Apparently alcohol involvement	627	12	311	304
Alcohol involvement not known	2,411	10	654	1,747
No alcohol involvement	10,748	7	3,669	7,072
TOTALS	13,786	29	4,634	9,123

RESTRAINT USAGE (Includes passenger cars, vans and light duty trucks)	NUMBER OF PERSONS																	
	NO INJURY						INJURED						KILLED					
	RESTRAINTS IN USE			No Restraints In Use	No Restraints Available	Restraint Information Unknown	RESTRAINTS IN USE			No Restraints In Use	No Restraints Available	Restraint Information Unknown	RESTRAINTS IN USE			No Restraints In Use	No Restraints Available	Restraint Information Unknown
	Lap	Lap and Shoulder	Other				Lap	Lap and Shoulder	Other				Lap	Lap and Shoulder	Other			
Driver	31	14		107	14	204	287	300	5	1,890	501	515		1		5	1	
Front Center	1			2	4	2	10	5	4	89	39	20						
Front Right	2	3	1	14	1	22	85	69	6	825	210	121				1		
Rear Left	1			1		7	6		1	52	17	9						
Rear Center	1			3		1	4	2	1	20	24	5					2	1
Rear Right				3		9	8	1	3	59	18	12						
Other				3			11	2	5	135	58	11				1	1	
Unknown				1	1	17,218	1			20	7	65						
TOTALS	36	17	1	134	20	17,463	412	379	25	3,090	874	758		1		7	4	1

42

DRIVERS' AND PEDESTRIANS' CONDITION		NUMBER OF DRIVERS			NUMBER OF PEDESTRIANS		
		All Accidents	Fatal Accidents	Injury Accidents	All Accidents	Fatal Accidents	Injury Accidents
ALCOHOL INVOLVEMENT	Apparently had been drinking - no test results	568	1	281	24		24
	Had been drinking - BAC less than .05	1	1				
	Had been drinking - BAC .05 to .09	4	1	1			
	Had been drinking - BAC .10 to .14	7	1	1	1	1	
	Had been drinking - BAC .15 to .19	18	5	4			
	Had been drinking - BAC .20 or greater	11	2		1	1	
	Apparently under influence of drugs						
	Apparently fatigued or asleep	115		55			
	Other impairment	116			11		11
	Apparently normal	20,108	30		254	1	253
Not stated	3,004	8		48	3	45	
TOTALS	23,952	49		339	6	333	

**COMMUNITY SERVICES BUREAU
LECTURES, TOURS, RIDE ALONGS,
MOBILE CRIME PREVENTION UNIT**

1979

<u>Month</u>	<u>Lectures</u>	<u>Tours</u>	<u>Ride Along</u>	<u>*MCPU</u>	<u>Total</u>	<u>Attendance</u>
January	67	0	2	---	69	2,266
February	63	0	17	---	80	3,038
March	49	12	18	---	79	7,720
April	43	8	20	---	71	2,466
May	32	9	9	---	50	11,272
June	29	22	3	---	54	1,901
July	9	3	0	---	12	271
August	13	1	0	---	14	644
September	159	3	1	---	163	13,334
October	57	7	5	2	71	2,711
November	59	9	4	4	76	2,243
December	24	4	2	1	31	2,180
	<u>604</u>	<u>78</u>	<u>81</u>	<u>7</u>	<u>770</u>	<u>50,046</u>

Lectures:	1973-660 1974-765 1975-673 1976-599 1977-620 1978-462 1979-604	Tours:	1973-244 1974-223 1975-227 1976-226 1977-242 1978-151 1979- 81	Ride Along:	1973-220 1974-204 1975-198 1976-140 1977-132 1978- 10 1979- 7	MCPU:	1973- 1974- 1975- 76 1976-125 1977- 95 1978-115 1979- 78
Total Programs:	1973-1,124 1974-1,192 1975-1,174 1976-1,090 1977-1,089 1978- 739 1979- 770	Total Attendance	1973-128,313 1974-145,050 1975-157,457 1976- 95,401 1977- 98,934 1978-145,485 1979- 50,046				

*Mobile Crime Prevention Unit



LAW ENFORCEMENT EXPLORER POST 591

Law Enforcement Explorer Post 591 has completed it's sixth successful and activity-filled year.

Under the supervision and guidance of the Adult Advisory Staff including Omaha Police Division Officer Garry Gernandt, Civilians Charles Gorr, Steve Kidder, Terry Krelle and Joyce Mulligan, these young adults between the ages of 14 to 18 are having a taste of the Law Enforcement life in a reality setting.

One former member has recently been accepted by the Lincoln, Nebraska Police Division as a recruit.

The regular Annual Academy Training has included 38 Cal. Hand Gun and 12 Gauge Shot Gun Qualification with the National Rifle Association, First Aid, Radio Procedures, Crime Scene experience, Ride-along excursions, Hostage and Self Defense Arrest procedures, along with many more true to life experiences encountered by an actual Law Enforcement Officer.

Many community projects and services have been rendered including Security at Rock Concerts, the Art Festival, Memorial Service at Central Police Headquarters, Security at Peony Park in conjunction with the Omaha Police Division "Safety Patrol Day", Halloween Patrol, etc. etc. etc.

Law Enforcement Post 591 is run as a "Junior" version of an actual Police Division, with the S.O.P. as a general guide. Each member retains the status of "recruit" until he/she has successfully fulfilled a three month probation period after which he/she is awarded their respective badge.

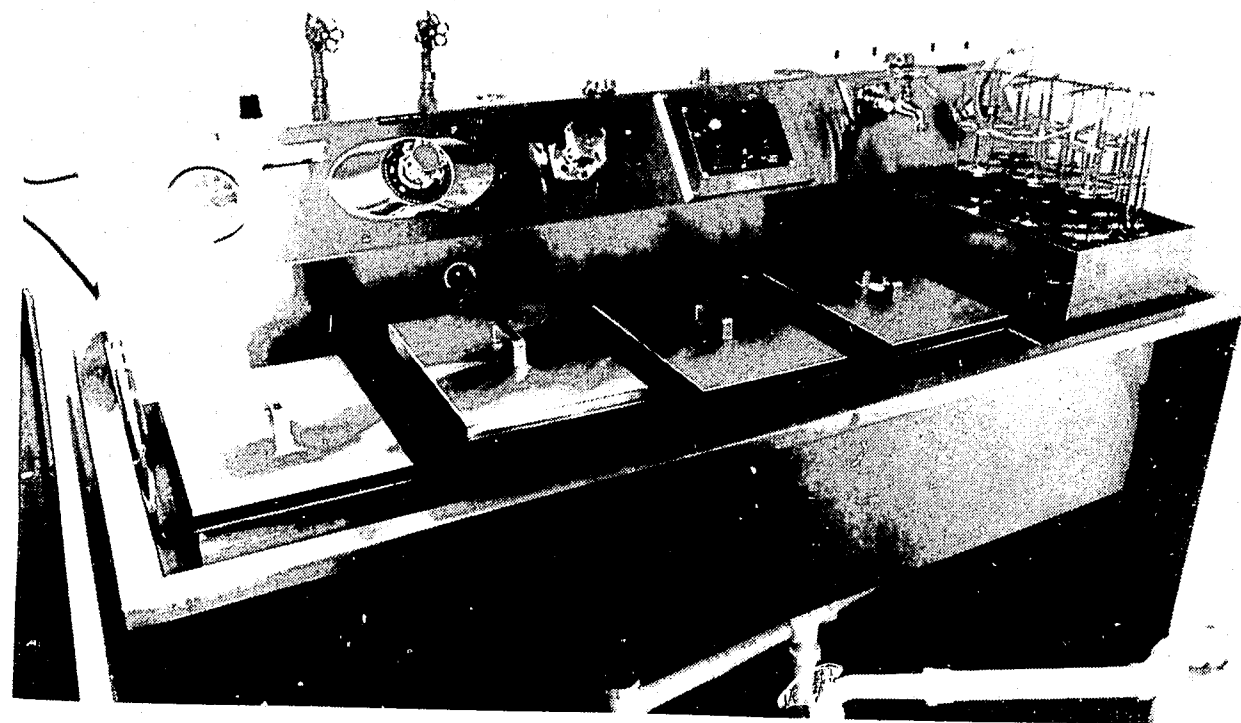
Presently there are 22 proud members.

**EDUCATIONAL ACHIEVEMENT
OF
THE OMAHA POLICE DIVISION**

<u>RANK</u>	<u>Master's Degree</u>	<u>College Degree</u>	<u>Associate Degree</u>
Chief of Police	1		
Coordinator of Police Community Relations		1	
Deputy Chief of Police		1	
Police Captain		2	1
Police Lieutenant	1	5	6
Police Sergeant	1	19	7
Police Officer	1	52	7

**OMAHA POLICE DIVISION
1979
CRIMINALISTICS SECTION SUMMARY**

Subjects fingerprinted, processed, photographed and assigned Bureau of Identification numbers (new offenders)	1,622
Repeat felons, fingerprinted, processed and photographed	1,269
Juveniles (15 and under) fingerprinted processed and photographed assigned Bureau of Identification numbers	127
Street assignments	3,254
In-house laboratory assignments	2,739
Photographs (mug shots not included)	12,655
Breath tests	682
Latent fingerprints identified from crime scene	342
Print for identification	494
Fingerprint comparison requests	2,378
Battley cards taken and filed (single print system)	3,780
Questionable document and handwriting comparisons	52
Firearms tested and examinations	132
Number restoration tests	27
Scene diagrams	127
Court diagrams	27



CRIMINALISTICS PHOTO LABORATORY

Several major changes were made in the police photo-lab in 1979. In late 1978, an application for a Federal Grant was initiated and later approved for the expansion of equipment and services in the Forensic Photography Field. Bids were solicited and equipment selected in February and construction started in March on the \$27,000.00 project.

A number of new and needed items were added to the photo-lab including:

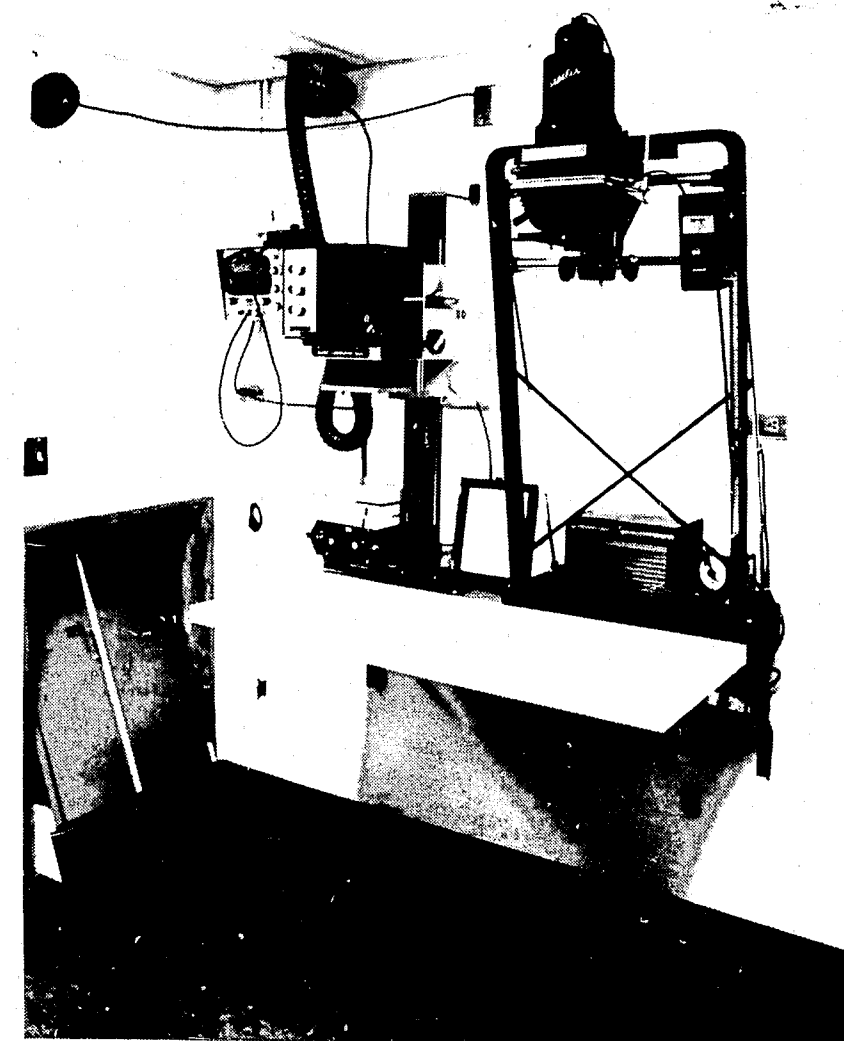
- (a) A machine for developing color negatives in-house. This enabled the photo-lab to provide photos in a turn-around time for rush work in less than 90 minutes. The past minimum was 24 hours.
- (b) A new machine for production printing of negatives. With this machine, the photo-lab is now able to print anything from 3½ x 5 to 8 x 10 inch prints with accurate color in about one-fourth of the time required before. The capacity also exists for rapid printing of 100 mug-shots in under 20 minutes.
- (c) A machine was obtained for color print processing that can handle four times the volume of the past machine in 20% less time. This item will enable faster and better quality color photographs in less time. This machine also enabled the photo-lab to handle more than one process at a time; this was unavailable in the past.

Several other items were added to the arsenal of equipment used by the photo-lab for forensic photography. New services were added toward the end of the year and many more expected in the 1980's. To list a few; In-house processing of bank robbery films and high quality black and white printing. In-house processing of color films and high quality color printing. Surveillance photography in color with accurate results, etc.

Another first in the photo-lab is in personnel. For the first time in the department's history, a civilian was placed into the lab and given control of its operation.

1979 Photo Laboratory Statistics

Total rolls of color film processed or equivalent	2,704
Total rolls of black and white films processed or equivalent	326
Total black and white photos printed in 1979	696
Total color photos printed in 1979	23,793



Remodeled facilities for black and white color hand printing.



1979 CRIMINALISTICS ACTIVITIES

During the past year Criminalistics personnel have attained additional expertise in several areas by attending various seminars for advanced training in the following areas: photography, crime scene investigation, advanced latent fingerprint study, mass homicide investigation and artist composite sketching.

They have branched out in their services to include the composite drawings of crime suspects sketched from the verbal description of victims and witnesses.

They have also implemented the use of a district file containing the fingerprints of burglars filed by district. When latent fingerprints are obtained by Criminalistic technicians, the latents are routinely checked with the prints on file in the district they obtained the latents from. The prints are also checked against the adjacent district file. This file has been instrumental in numerous identification matches. We are continuing to utilize and up-date our Battley identification system. The Battley system and the district file system tend to compliment each other as each method has distinct advantages and disadvantages over the other system.

In December of 1979 the Criminalistics section began using its newly purchased Mark IV Gas Chromatograph for breath testing suspected intoxicated drivers. The older Mark II model has been retired to a standby status and the Breathalyzer which was used for breath testing for many years has been phased out as the Gas Chromatograph has many advantages over the Breathalyzer.

CITY OF OMAHA, NEBRASKA PUBLIC SAFETY DEPARTMENT
COMMUNICATIONS DIVISION
ANNUAL REPORT 1979

REQUESTS FOR SERVICES VIA 911 RURAL DOUGLAS COUNTY

	FIRE	RESCUE	POLICE	TOTAL
BENNINGTON	6	2	2	10
ELKHORN	5	10	18	33
IRVINGTON	49	47	0	96
MILLARD (RURAL)	48	49	0	97
PONCA	8	9	0	17
RALSTON	28	31	104	163
VALLEY	12	11	35	58
WATERLOO	2	4	2	8
NEBRASKA STATE PATROL	0	0	134	134
DOUGLAS COUNTY SHERIFF	0	0	6,671	6,671
DOUGLAS COUNTY TOTAL	158	163	6,966	7,287

REQUESTS FOR SERVICE VIA 911 SARPY COUNTY

BELLEVUE	80	225	782	1,087
GRETNA	10	14	19	43
LAVISTA	20	58	195	273
PAPILLION	19	42	25	86
SPRINGFIELD	1	2	4	7
OFFUTT	3	1	3	7
SARPY COUNTY SHERIFF	0	0	2,029	2,029
SARPY COUNTY TOTAL	133	342	3,057	3,532
GRAND TOTAL	291	505	10,023	10,819

REQUESTS FOR SERVICES

"IN OMAHA"		"OUTSIDE JURISDICTION"	
FIRE:	5,900	FIRE:	291
RESCUE:	11,146	RESCUE:	505
POLICE:	209,155	POLICE:	10,023
TOTAL:	226,201	TOTAL:	10,819

INCOMING CALLS (ELECTRONICALLY COUNTED)

	CENTREX	NWB "0"	911	ALL
"A" SHIFT	25,978	2,810	90,340	119,128
"B" SHIFT	52,150	1,650	125,650	179,450
"C" SHIFT	57,561	3,750	180,960	242,271
TOTAL:	135,689	8,210	396,950	540,849

911 CALLS PER DAY: 1,088 - PER HOUR: 45
ALL CALLS PER DAY: 1,482 - PER HOUR: 62

COMMUNICATIONS DIVISION

ANNUAL REPORT 1979

REQUESTS FOR SERVICE/POLICE:	"A" SHIFT:	49,104
	"B" SHIFT:	63,418
	"C" SHIFT:	<u>96,633</u>

TOTAL: 209,155

POLICE TRANSMISSIONS:	"A" SHIFT	726,906
	"B" SHIFT	963,273
	"C" SHIFT	<u>1,003,063</u>

TOTAL: 2,693,242

REQUESTS FOR SERVICE/FIRE-RESCUE:

	<u>FIRE</u>	<u>RESCUE</u>
JANUARY	422	933
FEBRUARY	332	811
MARCH	467	896
APRIL	488	837
MAY	505	950
JUNE	529	989
JULY	526	1,118
AUGUST	552	1,007
SEPTEMBER	490	946
OCTOBER	574	937
NOVEMBER	456	794
DECEMBER	<u>559</u>	<u>928</u>
TOTAL	<u>5,900</u>	<u>11,146</u>

FIRE TRANSMISSIONS:	"A" SHIFT	59,275
	"B" SHIFT	93,077
	"C" SHIFT	<u>95,440</u>

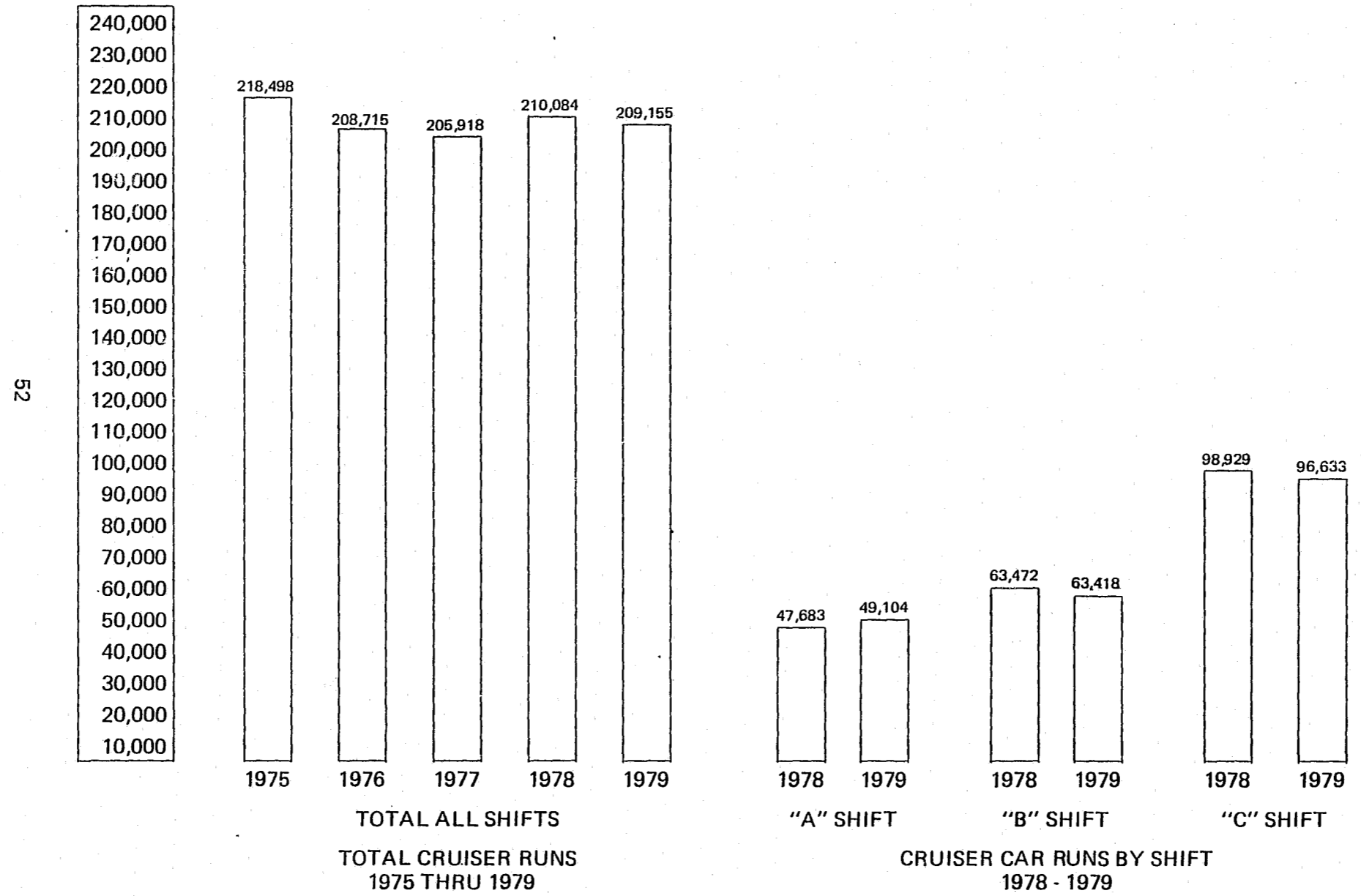
TOTAL: 247,792

SPECIAL DUTY NON-MEDICAL: 54

SPECIAL DUTY MEDICAL ASSISTS: 2,947

FIRE-RESCUE/POLICE RADIO TRANSMISSIONS: 2,941,034

COMMUNICATIONS
DIVISION
POLICE ACTIVITIES - 1979



52

1979 CRUISER TRANSMISSIONS

A - B - C SHIFT

SHIFT	TRAFFIC	CRUISER NORTH	CRUISER SOUTH
A	14,505	295,037	304,850
B	103,667	301,404	396,185
C	157,236	542,451	667,319
TOTAL	275,408	1,148,892	1,458,354
	CRUISER SOUTH	1,458,354	
	CRUISER NORTH AND TRAFFIC	1,384,290	
		74,064 DIFFERENCE	
		203 PER DAY	
		67.2 PER SHIFT	

1979 REQUESTS FOR SERVICE

A - B - C SHIFT

SHIFT	100	150	200	250	300	350	400	450	500	550
A	4,351	6,534	4,531	5,268	5,864	5,335	4,415	4,529	4,660	3,598
B	5,615	8,178	6,009	6,177	7,832	7,070	5,784	5,346	6,669	4,732
C	9,658	12,679	9,609	10,544	10,718	10,024	9,163	7,579	9,584	7,075
SubTotal	18,624	27,391	20,149	21,989	24,414	22,429	19,362	17,454	20,913	15,425
TOTAL	47,015	42,138	46,843	36,816	36,338					

CRUISER SOUTH	119,997
CRUISER NORTH	89,153
DIFFERENCE	30,844



EMERGENCY SIREN AND LIGHTING SYSTEMS

1979 saw the installation of a new Federal Director II Electronic Siren providing additional wattage resulting in an increase in volume that nearly doubled the old system. Another added feature of the system is the "Hi Lo" Pitch of the siren making an ear catching sound.

In addition to the new emergency siren system, a new "Yankee" emergency light system was installed on the uniform field cars. This system provided officers in the field with greater than before visibility due to doubling the light bulb wattage. This new system will provide an added safety to the operator.

1979 RETIREMENTS

DATE	RANK	NAME	YEARS SERVICE
3-16-51 – 5-31-79	Officer	NARAN, Alexander	28 years
6-23-42 – 5-26-79	Sergeant	REGNER, John	36 years
5-16-47 – 6-26-79	Sergeant	TEMIN, Abraham	32 years
11-02-53 – 7-05-79	Officer	PETERSEN, Robert	25 years
8-11-49 – 7-31-79	Officer	ELDER, James M.	30 years
5-16-47 – 8-31-79	Sergeant	WILSON, Roy J.	31 years
11-02-53 – 8-16-79	Officer	VACCARO, Carl A.	25 years
2-09-42 – 11-20-79	Lieutenant	BOZAK, John E.	37 years
3-13-50 – 12-28-79	Sergeant	KAUFHOLD, William	29 years

RESIGNATIONS

DATE	RANK	NAME	YEARS SERVICE
6-30-73 – 9-01-79	Officer	BYRNE, Barbara	6 years

IN MEMORIAM

1979 DECEASED OFFICERS

<u>NAME</u>	<u>RANK</u>	<u>AGE</u>	<u>YEARS SERVICE</u>	<u>DIVISION STATUS</u>	<u>DATE DECEASED</u>
Carl Schaffer	Police Officer	41	16	Active	06-12-79
Faye Hiykel	Sergeant	66	29	Retired	12-04-79
Lester Smith	Chief of Police	66	31	Retired	05-25-79
John Stanek	Police Officer	62	35	Retired	03-29-79

ROSTER OF OMAHA POLICE OFFICERS

DECEMBER 31, 1979

ABBOTT, Alan	BRIGANTI, Louis	COOK, Paul	FELINSKI, John
ABBOTT, James	BRISBY, Robert	COOPER, Walter	FERRETTI, William
AGNEW, William	BROCK, Darrell	CORTESE, Joseph	FERRO, Frank
AKEN, Joseph	BROCK, Michael	CORTEZ, Jesse	FIDONE, Raymond
ALBRECHT, Leroy	BROOKS, Fred	COSTELLO, David	FISICARO, Charles
ALEXANDER, James	BROWN, Eugene	COUFAL, Steve	FLEHARTY, Michael
ALLEN, Arthur	BRUNER, Mary K.	COURTWRIGHT, Wesley	FLEMING, Glen
ALLEN, David	BRUNER, Terry	COUSIN, Anderson	FLEMMER, Harold
ALLEN, George	BRUSCINO, James	COYAN, Ronald	FONFARA, Thomas
ALSAGER, Richard	BUNACH, Leonard	CRAMER, Carl	FOREHEAD, Stephen
ALTIC, Fred	BURCHARD, Foster	CRAWFORD, Carleton	FORSMAN, Ned
AMEND, Robert	BURGGRAFF, Terry	CRAWFORD, William	FOX, Robert
ANDERS, James	BUSCH, Phillip	CRESS, John	FOXALL, Pitmon
ANDERSEN, Richard	BYERS, Gary	CRINKLAW, Don	FRICKE, Max
ANNIN, Jack	CAHOW, Ronald	CRINKLAW, Gary	FRIEND, David
ARIZA, Alex	CAMPBELL, David	CRINKLAW, Joseph	FRIEND, John
ARMSTRONG, Charles	CAMPBELL, Debra	CROCKER, Michael	FRIEND, Joseph
AUSDEMORE, Eugene	CAMPBELL, Jack	CROWLEY, J. Martin	FRIEND, William
AYALA, Antonio	CAMPBELL, Terry	CUBRICH, Peter	FYFE, Ronald
BARBOUR, William	CANIGLIA, Jack	CYRONEK, Dave	GALETTI, Stephen
BARICKMAN, David	CAPPS, Gerald	DACUS, Robert	GALLAGHER, Robert
BARNEY, Stephen	CAR, John	DAILEY, Aaron	GALVAN, Alfred
BARONE, John	CARDENAS, George	DAVIES, Thomas	GAMMOND, William
BARRACLOUGH, Alvin	CARMEAN, Irl	DAVIS, Andrew	GARACZKOWSKI, Ed
BARRETT, Richard	CARMICHAEL, Forth	DAVITT, Joseph	GARAGIOLA, Harry
BARTEK, Larry	CARNEY, William	DEIGNAN, James	GENTLEMAN, Patricia
BATMAN, Floyd	CARUSO, Robert	DEMEULMEESTER, James	GENTZLER, Ronald
BEAM, Floyd	CASEY, Charles	DERRY, John	GEORGE, Edward
BECERRA, Gary	CASEY, Donald	DICKEY, Gerald	GERMER, William
BEERS, John	CATES, James	DIERKS, Calvin	GERNANDT, Garry
BEETHE, Carolyn	CAVANAUGH, Michael	DIMAURO, Sebastiano	GIBILISCO, Nick
BELL, William	CHAMBERLAIN, Robert	DIRGO, Raymond	GIBILISCO, Phillip
BENAK, Charles	CHASE, De Earl	DISTEFANO, Sam	GIBNEY, Robert
BERNEY, Melvin	CHELIN, Carol	DOANE, Royce	GLASSON, Frederick
BERRY, Glenn	CHRISTENSEN, Robert	DOLAN, Francis	GODBERSON, Harley
BLECHA, Jon	CICIULLA, Carl	DONAGHY, Thomas	GOLLA, Leo
BLOEMER, Harold	CIRCO, Charles	DRAGOUN, Richard	GOODMAN, Ronald
BOAN, Joseph	CIRCO, James	DUGAN, George	GOODRICH, Guy
BOBER, James	CIRCO, Richard	DUKE, Donald	GOODRICH, Ronald
BOBER, John	CISAR, James	DUNNING, Timothy	GORDEN, Michael
BOLDT, Gary	CLARK, Michael	DUTTON, Dennis	GORGEN, Thomas
BOLTER, Jack	CLOUSE, Stephen	DYLES, Morris	GRAF, William
BOOTH, Lynn	COFFELT, Thomas	EGGERS, Mary	GRECO, Francisco
BOSAK, Gordon	COGAN, Joseph	ELDER, James A.	GRIFFITH, Richard
BOSILEVAC, Joseph	COLE, Ronald	ELKINS, Gordon	GRIFFITH, Robert
BOVASSO, Kenneth	COLEMAN, Monroe	ERDEI, Richard	GRIGER, John
BRADSHAW, Nancy	COMSTOCK, Phillip	ERICKSON, Arthur	GRIGER, Leonard
BRADSHAW, Reginald	CONNELLY, William	ERNCE, George	GUILFOYLE, Michael
BRIDIE, Robert	CONRAD, Joseph	FALK, Bernard	GUILLEN, Susan
BRIESE, Paul	CONRAD, Phillip	FARMER, John	GUTCHEWSKY, Thomas

HADLEY, Anthony	JERNIGAN, Wallace	LYNCH, George	NOVOTNY, Steven
HAIAR, James	JOHN, Angelo	LYONS, William R. II	NUTSCH, Clyde
HALE, Edward	JOHN, Patrick	McADAMS, Benjamin	O'CONNOR, Frank
HALEY, Edward	JOHN, Sam	McCLAIN, Duane	O'DONNELL, Jack
HAMMANN, John	JOHNSON, Allen	McCLARTY, Marvin	O'KEEFE, Michael
HANSEN, William	JOHNSON, Bassie	McGOWEN, Michael	OLSON, Robert
HANSON, David	JOHNSON, Craig	McKILLIP, Katherine	O'NEILL, Edward
HANZEK, John	JOHNSON, Robert L.	McMANIGAL, Robert	ORR, James
HARBIN, Harvey	JOHNSON, Willard	McWILLIAMS, Richard	O'SHAUGHNESSY, Edward
HARDIN, Roger	KALUZA, John J.	MACHACEK, Robert	OSTERHAUS, Donald
HARRISON, Johnny	KALUZA, John J. III	MACKEVICIUS, Vytautas	OTTE, Gregory
HARTFORD, Bruce	KASUN, James	MAGNUSON, Wayne	OURADA, Robert
HASIAK, Raymond	KAVULAK, Paul	MAHONEY, Richard	PARKER, Charles
HAUGER, George	KEAVY, Thomas	MAILLE, Thomas	PARKER, Kevin
HAUGER, Vernard	KEEGAN, Michael	MAINELLI, Thomas	PARKER, Robert
HAUPTMAN, Barbara	KELLY, Marion	MALEY, John	PATRYLAK, Joseph
HEARTY, Thomas	KINGSTON, William	MALLY, Milo	PATTAVINA, Alfred
HEESE, David	KLECKNER, George	MANN, William	PATTERSON, James
HEIDELBERG, Daniel	KLEIN, Donald	MANZITTO, Phillip	PAUL, Gerald
HENDERSON, Stephen	KOCOUREK, Charles	MARANVILLE, John	PAWOL, Alfons
HERMANSKY, Emil	KOFOED, Richard	MARION, David	PAYNE, Charles
HERMSEN, Michael	KORALESKI, Thomas	MARKEY, John	PAYNE, James
HERZBERG, Charles	KOSTAL, Frank	MARTIN, James	PECHA, Michael
HILL, Don	KRAMER, Larry	MARTIN, Jean	PECK, Stephen
HILL, John	KREJCI, W.C.	MARTIN, Thomas	PEKULA, Dennis
HILLABRAND, Robert	KRIEGLER, Eugene	MARTINEZ, Alfred	PENSYL, Guy
HIYKEL, Emil	KRIST, Alvin	MARTINEZ, Charles	PEPIN, Alan
HIYKEL, Fay	KRUMLAND, William	MATULA, Floyd	PERALES, Peter
HOCH, Michael	KRZEMIEN, James	MEAD, Timothy	PERKINS, Glen
HOFFMAN, Gregory	KUHL, Daniel	MEEHAN, John	PERRY, James
HOGYA, Lawrence	KUHL, Patrick	MEISINGER, Terry	PETERSEN, Richard
HOLEWINSKI, Ray	LAMB, Louis	MELCHER, Wayne	PFEFFER, Fredrick
HOLLEY, James	LANG, Howard	MENOUSEK, Jerry	PFEFFER, John
HOLLINGSHEAD, Darrell	LANGAN, Mark	METZLER, Alfred	PFEFFER, Oscar
HOLMES, Lyle	LANT, Keith	MILKE, Bernard	PFEFFER, Robert
HORNE, Edward	LAPPE, Robert	MILLER, Kenneth A.	PHILLIPS, Thomas
HOWARD, Dennis	LAUSTEN, Charles	MILLER, Kenneth G.	PIERNICKY, Michael
HUBBARD, Donald	LAVERTY, John	MILLER, Paul	PIETRAMALE, Lee
HUG, Harold	LAWLER, Howard	MILLER, William	PIGNOTTI, Gary
HUGHES, Richard	LAWSON, Marilou	MITCHELL, John	PLOTT, Richard
HUNT, Ray	LEAVITT, Jamie	MOEN, Thomas	POINTS, Dave
HUNTER, Eugene	LEE, Samuel	MOHATT, Earl	PROKUPEK, Charles
HUSEBO, MARTHA	LEENERTS, Gayle	MOLLNER, Bernard	PUTNAM, Merrill
HUSTON, Phillip	LEHOYTAK, John	MOORE, Richard	QUIST, John
HYDOCK, Dennis	LENKER, Lanny	MORACZEWSKI, Mark	RADER, Charles
ILTZSCH, Robert	LEWIS, Charles	MORAN, Dennis	RANDOLPH, Donald
INFANTINO, Anthony	LEWIS, Russell	MORFORD, Robert	REED, Celia
IRVIN, Douglas	LIDDICK, Richard	MORRISON, Louis	REEDY, James
ISELIN, Terry	LINDBLOM, Ronald	MULDOON, William	REIBOLD, Robert
IVENER, Lance	LINDEMAN, Thomas	NARED, Willie	REUTING, James
JABLONSKI, Jerry	LINDSEY, William	NELSEN, Steven	RICHARDSON, Kirk
JACKSON, Isaiah	LONDON, Michael	NENEMAN, Dianne	RIEGER, David
JAMES, Richard	LONGSTRETH, Carl	NEPODAL, Joseph	ROBERTS, Jon
JANCA, John	LOWDER, Pete	NORMAN, William	ROBERTS, Larry
JEPSEN, James	LUTTON, Larry	NOVOTNY, Kathleen	ROCKWELL, Robert

ROHLFF, Virgil
ROSENER, Kenneth
ROTHLISBERGER, David
RUBERTI, Lewis
RUEBSAM, Ralph
RUNKLES, Robert
RUST, Paul
SALERNO, Sebastano
SANCHELLI, Stephen
SAUNDERS, F. Richard
SAUNDERS, Wayne
SCARPINO, Eugene
SCHAFER, Robert
SCHLOTMAN, David
SCHMADERER, Richard
SCHUEMANN, Richard
SCHULTE, Raymond
SCHWARTZ, Thomas
SEBRON, Frank
SEIDENGLANZ, Jack
SETTERLUND, Virgil
SGROI, Sam
SHAFFER, David
SHAFFER, Thomas
SHAW, Richard
SHOOK, Richard
SIEBKEN, Richard
SIEBORG, Robert
SIEH, Verlyn
SIMMONS, Darrell
SKALESKE, William
SKAR, Edward
SKINNER, David
SKINNER, James
SKLENAR, Robert
SKOGMAN, Loren
SLATTERY, James
SMITH, John
SMITH, Robyn
SOMMER, Lawrence
SORBELLO, Domenick
SORICH, Peter
SORYS, Raymond
SPICL, Dennis
SPRATLEN, Fred
STADT, William
STANZEL, Gregory
STANZEL, Kirk
STAUFFACHER, Don
STECKI, Dennis
STEIMER, Glenn
STEPANEK, Donald
STEPHENS, Donald
STOCK, Bernard
STOKES, Elwin

STOLP, Norris
STONE, Earl
STRAKA, Milton
STRICKLETT, Michael
SULLIVAN, William
SUTHERLIN, Gail
SWANSON, Jack D.
SWANSON, Richard
SWANSON, Warren
SWIERCEK, Raymond
SWIRCINSKI, Richard
SZALEWSKI, John
TATE, William
TAYLOR, Dennis
TEPLY, Michael
TERRY, Jack
TEUSCHER, Howard
THOMAS, Michael
THOMPSON, Gregory
THORSEN, Dean
THORSON, Robert
THROENER, Dana
THRUSH, John
TINSLEY, Thomas
TIPLER, Roy
TOMSCHECK, James
TOSTENSEN, Dennis
TOUREK, John
TRUAX, Glen
TWOREK, Kenneth
TYLER, Kenneth
URYASZ, Eugene
UTTER, Winton
VACCARO, Jack
VACCARO, Joseph
VACEK, Richard
VANCIL, Connie
VAUGHN, Harold
VENDITTE, Bernard
VENDITTE, Charles
VITTITOE, Michael
VOGEL, Charles
VOLCEK, Jerald
VOLKIR, Paul
VOLLMAR, Hanspeter
VRBANAC, Ronald
WADE, Paul
WALKER, Herbert
WALLER, Richard
WARD, Donald
WARREN, Kirby
WEBB, Jerry
WEEKLY, John
WEIKEL, James
WERNER, Steven

WEST, Robert
WESTERCAMP, Dwayne
WHITTED, Donald
WIESE, Robert
WILCOXSON, Burt
WILLIAMS, Roger
WILLS, Daniel
WILSON, David
WILSON, James
WILSON, John
WILSON, Robert
WILSON, Roy I.
WOLF, Richard
WOLF, Robert
WOODARD, Russell
YOST, William
ZADALIS, James
ZEGAR, John
ZIEG, Dudley
ZOLCK, Dennis
ZOUCHA, Thomas

END