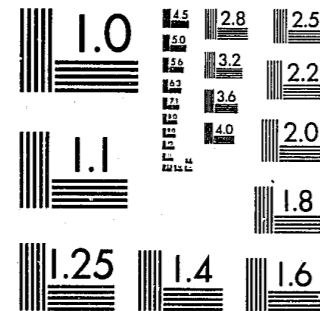


National Criminal Justice Reference Service

ncjrs

This microfiche was produced from documents received for inclusion in the NCJRS data base. Since NCJRS cannot exercise control over the physical condition of the documents submitted, the individual frame quality will vary. The resolution chart on this frame may be used to evaluate the document quality.



MICROCOPY RESOLUTION TEST CHART
NATIONAL BUREAU OF STANDARDS-1963-A

Microfilming procedures used to create this fiche comply with the standards set forth in 41CFR 101-11.504.

Points of view or opinions stated in this document are those of the author(s) and do not represent the official position or policies of the U. S. Department of Justice.

National Institute of Justice
United States Department of Justice
Washington, D. C. 20531

Date Filmed

2/16/81



-0941460-

U. S. DEPARTMENT OF JUSTICE
FEDERAL BUREAU OF INVESTIGATION

INVESTIGATION OF THE ACTS OF
TERRORISM AND CRIMINAL RECORDS DIVISION

REPORT OF THE DIVISION

CONCLUSION
RECOMMENDATIONS
ADDITIONAL INFORMATION
REFERENCES

NCJRS

SEP 18 1980

ACQUISITIONS

**TEXAS CRIME REPORT
1979**

**AN ANNUAL REPORT COMPILED BY THE
UNIFORM CRIME REPORTING BUREAU
IDENTIFICATION AND CRIMINAL RECORDS DIVISION**

**TEXAS DEPARTMENT OF PUBLIC SAFETY
5805 NORTH LAMAR BOULEVARD
AUSTIN, TEXAS 78765**

ACKNOWLEDGEMENTS

The Texas Uniform Crime Program has been made possible by a Grant Award from the Law Enforcement Assistance Administration through the Texas Criminal Justice Division of the Governor's Office.

This report on Crime in Texas during 1979 was compiled from data submitted to the UCR Bureau by 709 Texas Sheriffs and Chiefs of Police whose jurisdictions represented 99.3% of the State's population. Their excellent cooperation is gratefully acknowledged.

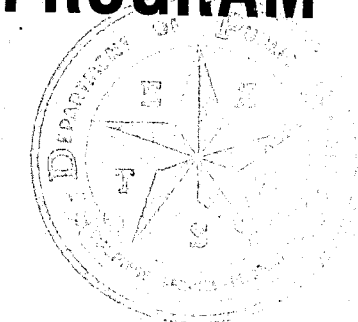
Special appreciation is extended to the Federal Bureau of Investigation Uniform Crime Reporting Section for the assistance provided to the Texas UCR Program.

TABLE OF CONTENTS

Acknowledgements	i
Summary of Uniform Crime Reporting Program	1
Crime Factors	3
History of Uniform Crime Reporting	3
Texas Uniform Crime Reporting Program	4
Introduction	4
Field Representation	4
Reporting Procedures	4
Verification Procedures	4
Field Rep Map	5
Offenses in Uniform Crime Reporting	6
Data Flow Chart	7
Texas Crime Analysis	9
Crime Index Offenses	11
Volume	11
Violent Crime	11
Property Crime	11
Clearances	11
Stolen Property Value	11
Stolen & Recovered Property (Table)	11
Value of Property Lost (Chart)	12
Percentage Property Value Recovered (Chart)	12
Clearance Rates (Chart)	13
Violent/Nonviolent Crime (Chart)	13
Index Crimes Breakdown (Chart)	14
Offenses and Clearances by Month	14
Summary of Index Crimes Data (Table)	15
Murder	16
Volume	16
Type of Weapon (Chart)	16
Persons Arrested (Table)	16
Victims by Age, Sex & Race (Table)	17
Circumstances (Table)	17
Relationship of Victim to Offender (Table)	17
Rape	18
Volume	18
Persons Arrested (Table)	18
Robbery	19
Volume	19
Value of Property Stolen (Table)	19
Persons Arrested (Table)	19
Type of Weapon (Chart)	20
Locations (Chart)	20
Aggravated Assault	21
Volume	21
Persons Arrested (Table)	21
Type of Weapon (Chart)	22
Burglary	23
Volume	23
Value of Property Stolen (Table)	23
Persons Arrested (Chart)	23
Methods (Chart)	24
Time & Location (Chart)	24

Larceny - Theft	25
Volume	25
Value of Property Stolen (Table)	25
Persons Arrested (Table)	25
Nature of Larcenies (Chart)	26
Motor Vehicle Theft	27
Volume	27
Persons Arrested (Table)	27
Arson	28
Total Crime Index by Population Group (Chart)	29
Summary of Crime Data (Table)	29
Crime Clocks	30
Texas Crime by Contributor	31
Contributing Agencies (Table)	33
Months on File	33
Index Crimes by County (Table)	34
Texas Arrest Data	53
Juvenile Male Arrests (Table)	55
Juvenile Female Arrests (Table)	56
Adult Male Arrests (Table)	57
Adult Female Arrests (Table)	59
Texas Law Enforcement Officers Killed or Assaulted	61
Law Enforcement Code of Ethics	63
Officers Killed 1971 - 1979 (Chart)	65
Locations of Officers Killed (Map)	66
Officers Assaulted	67
Assignment Information (Table)	67
Circumstances (Table)	67
Type of Weapon (Table)	67
Injury Information (Table)	67
Time (Table)	67
Law Enforcement Employees	67
Full-Time Sworn Law Enforcement Officers (Table)	67
Full-Time Civilian Employees (Table)	67
Employee Survey Forms	67
Appendix	69
Glossary of Terms	71

UNIFORM CRIME REPORTING PROGRAM



CRIME FACTORS

Statistics gathered under the Uniform Crime Reporting Program are submitted by the law enforcement agencies of Texas and project a statewide view of crime. Awareness of the presence of certain crime factors, which may influence the resulting volume and type of statistics presented, is necessary if fair and equitable conclusions are to be drawn. These crime influencing factors are present, to some degree, in every community and their presence affects, in varying degrees, the crime experience of that community. Attempts at comparison of crime figures between communities should not be made without first considering the individual factors present in each community.

Crime, as an outgrowth of society, remains a social problem of grave concern and the police are limited in their role to its suppression and detection. As stated by the President's Commission on Law Enforcement and Administration of Criminal Justice in their report "The Challenge of Crime in a Free Society" (1967 - Page 92):

"But the fact that the police deal daily with crime does not mean that they have unlimited power to prevent it, or reduce it, or deter it. The police did not create and cannot resolve the social conditions that stimulate crime. They did not start and cannot stop the convulsive social changes that are taking place in America. They do not enact the laws that they are required to enforce, nor do they dispose of the criminals they arrest. The police are only one part of the government; and the government is only one part of society. Insofar as crime is a social phenomenon, crime prevention is the responsibility of every part of society. The criminal process is limited to case by case operations, one criminal or one crime at a time."

Set forth below are some of the conditions which will, by type and volume, affect the crime that occurs from place to place:

Density and size of the community population and the metropolitan area of which it is a part.

Composition of the population with reference particularly to age, sex and race.

Economic status of the population.

Relative stability of population, including commuters, seasonal, and other transient types.

Climate, including seasonal weather conditions.

Educational, recreational, and religious characteristics.

Standards governing appointments to the police force.

Policies of the prosecuting officials and the courts.

Attitude of the public toward law enforcement problems.

The Administrative and Investigative efficiency of the local law enforcement agency, including the degree of adherence to crime reporting standards.

HISTORY OF UNIFORM CRIME REPORTING

The Uniform Crime Reporting Program of the Federal Bureau of Investigation provides a nationwide view of crime based on the submission of police statistics by city, county, and state law enforcement agencies throughout the country.

The Uniform Crime Reporting Program is the outgrowth of a need for a national and uniform compilation of law enforcement statistics. A voluntary national Program of collection of crime counts was initiated in 1930 by the Committee on Uniform Crime Records of the International Association of Chiefs of Police (IACP). In that same year, the Federal Bureau of Investigation (FBI) was authorized by the Congress of the United States to serve as the national clearinghouse for statistical information on crime.

Crime reports are obtained from law enforcement agencies throughout the Nation based on uniform classifications and procedures of reporting. In an effort to provide as complete a picture of crime in the United States as possible, the Committee on Uniform Crime Records of the IACP chose to obtain data on offenses that became known to police. A meaningful overview of crime was available through examination of seven offenses which were selected because of their seriousness, frequency of occurrence and likelihood of being reported to police. These offenses known as the Crime Index Offenses, are murder, forcible rape, robbery, aggravated assault, burglary, larceny-theft and motor vehicle theft.

To provide for uniformity nationwide in the reporting of these offenses, standardized definitions were adopted. This standardization was necessary to overcome the variations in definitions of criminal offenses in the states and localities. Reporting agencies are required to interpret local criminal acts and law violations in the context of these definitions prior to submission of their counts to the FBI. Because of the differences among the state codes, there is no possibility in a Program such as this to distinguish between crimes by designations such as "felony" or "misdemeanor".

The Committee on Uniform Crime Records, IACP, continues to serve in an advisory capacity to the FBI in the operation of this Program.

The National Sheriff's Association (NSA) in June, 1966, established a Committee on Uniform Crime Records to serve in an advisory capacity to the NSA membership and the national Uniform Crime Reporting Program. This Committee actively encourages sheriffs throughout the country to fully participate in this important Program.

Committees on Uniform Crime Reporting within state law enforcement associations are active in promoting interest in the Uniform Crime Reporting Program, fostering widespread and more intelligent use of uniform crime statistics, and lending assistance to contributors when the need exists.

In recent years, the FBI has actively assisted individual states in the development of statewide programs of police statistics compatible with the national system. These state statistical programs provide the advantage of increased coverage of law enforcement agencies due to state mandatory reporting requirements. The state systems also can provide direct and frequent service to law enforcement agencies in assuring completeness and quality of information provided by them.

The conditions under which these systems are developed provide for consistency and comparability in the data submitted to the national Program. They also permit regular and timely reporting of the national crime data. These conditions are:

(1) The State Program must conform to the national Uniform Crime Reports standards, definition, and information required. This, of course, does not prohibit the state from collecting other statistical data beyond the national collection. (2) The state criminal justice agency must have a proven, effective, mandatory, statewide Program and have instituted acceptable quality control procedures. (3) Coverage within the state by a state agency must be, at least, equal to that attained by national Uniform Crime Reports. (4) The state agency must have adequate field staff assigned to conduct audits and to assist contributing agencies in record practices and crime reporting procedures. (5) The state agency must furnish to the FBI all of the detailed data regularly collected by the FBI in the form of duplicate returns, computer printouts, and/or magnetic tape. (6) The state must have the proven capability (tested over a period of time) to supply all the statistical data required to the FBI in time to meet national Uniform Crime Reports publication deadlines. (7) The FBI will continue its internal procedures to editing and reviewing individual agency reports for both completeness and quality. (8) The FBI will continue to have direct contact with individual contributors within the state where necessary in connection with crime reporting matters, but will coordinate such contacts with the state agency. (9) Upon request, the FBI will continue its training programs within the state with respect to police records and crime reporting procedures. For mutual benefit these will be coordinated with the state agency.

Source: FBI Crime in the United States 1975

THE TEXAS UNIFORM CRIME REPORTING PROGRAM

Introduction

On January 1, 1976, Texas joined a growing number of states that have adopted the Uniform Crime Report as the official statewide crime report. The Department of Public Safety has accepted the responsibility to collect, validate and tabulate Uniform Crime Reports from all reporting jurisdictions in Texas. A Uniform Crime Reporting Bureau was established within the Identification and Criminal Records Division to coordinate the collection, processing and dissemination of data regarding the extent of major crime in Texas.

The fundamental objective of the Uniform Crime Reporting Program is to produce a reliable set of criminal statistics for use in law enforcement administration, operation, and management. This compiled data is also intended for the use and information of other professionals and scholars who have an interest in the crime problem. At the same time, this information is important as a reference source for the public as an indicator of the crime factor in our society.

The means utilized to attain these objectives are: (1) To measure the extent, fluctuation, distribution, and nature of crime in Texas through presentation of data on the seven Crime Index Offenses. (2) To measure the total volume of serious crime known to police. (3) To show the activity and coverage of law enforcement agencies through arrest counts and police employee strength data.

Field Representation

In compliance with national guidelines for field representation, the Texas Crime Reporting Program has assigned five persons to assist local agencies in crime reporting procedures.

Working out of Austin, each field representative is responsible for a specific area (see map on page 5) to assist local police agencies in the resolution of reporting problems, train new personnel and contact non-reporting agencies to enlist their participation in the Program.

Reporting Procedure

Each contributing agency is responsible for compiling its own crime reports and submitting them to the Uniform Crime Reporting Program. The Program, in an effort to maintain quality and uniformity in the data received, furnishes full-time field representatives who provide training in Uniform Crime Reporting procedures. All contributors also are furnished with the Uniform Crime Reporting Handbook which outlines in detail procedures for scoring and classifying offenses. The Handbook illustrates and discusses the monthly and annual reporting forms as well as the numerous tally sheets made available to facilitate the periodic tabulation of desired data.

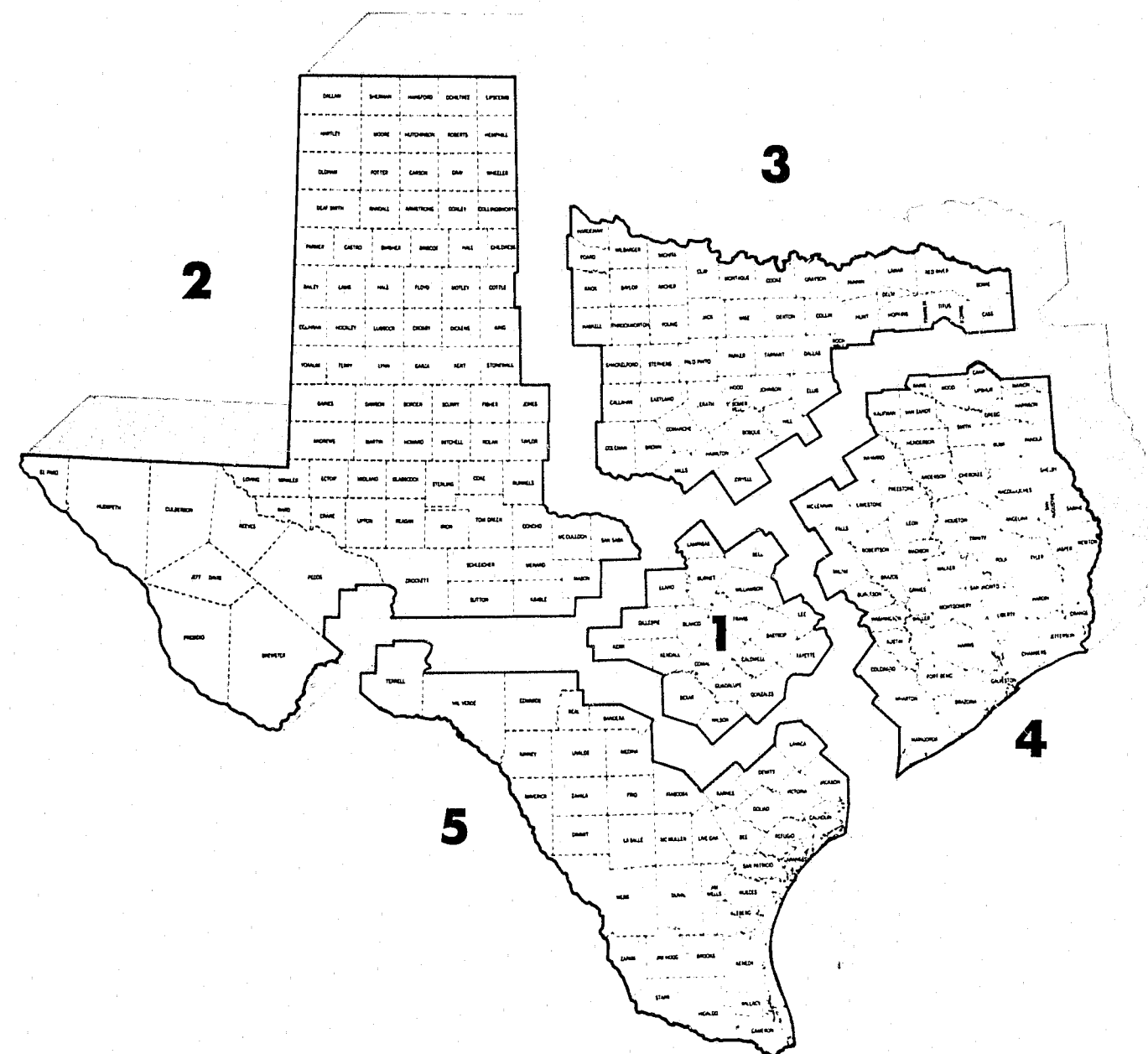
On a monthly basis, law enforcement agencies report the number of offenses known to them in the following crime categories: murder, forcible rape, robbery, assault, burglary, larceny-theft and motor vehicle theft. The count of offenses is taken from the records of complaints received by law enforcement agencies from victims, witnesses, or other sources, or discovered by agencies during their own operations. Complaints determined by subsequent investigations to be unfounded are eliminated from the count. The resulting number of "offenses known to law enforcement officials" in these crime categories is reported without regard to whether anyone is arrested, stolen property is recovered, local prosecutive policy, or any other consideration. Municipal and county agencies also report, on a monthly basis, supplemental offense information such as the value of property stolen and recovered, circumstances surrounding homicides and other pertinent data. Additionally, monthly reports of persons arrested are submitted. These reports provide information concerning the age, sex and race of all persons arrested by each individual law enforcement agency.

Verification Procedures

An obvious concern in the collection of crime statistics is the validity and uniformity of the data received. With the receipt of monthly reports covering over 700 jurisdictions, prepared on a voluntary basis, the problems of attaining uniformity are readily apparent. It is standard operating procedure to examine each incoming report not only for arithmetical accuracy but also, and possibly of even more importance, for reasonableness as a possible indication of errors.

Numerous checks and cross checks are used to insure the accuracy of the reports. Errors of a minor nature are corrected by the UCR report verifiers without contacting the contributor. Necessary arithmetical adjustments or unusual variations are noted by the UCR verifiers and brought to the attention of the submitting agency by direct contact through a UCR field representative. Upon resubmission of a corrected return from a field representative, the forms are re-verified. Upon completion of all individual form verification processes, summary statistics in various forms are derived.

TEXAS UNIFORM CRIME REPORTING FIELD REPRESENTATIVE AREAS



A great deal of the success of Texas' UCR Program to this point has been due to the full time field staff assigned to assist local agencies in crime reporting procedures. Personal contact is invaluable to the accuracy and uniformity of UCR data received.

OFFENSES IN UNIFORM CRIME REPORTING

Offenses in Uniform Crime Reporting are divided into two groupings designated as Part I and Part II offenses. Crime Index offenses are included among the Part I offenses. Offense and arrest information is reported for the Part I offenses on a monthly basis, whereas only arrest information is reported for Part II offenses.

The Part I offenses are as follows:

1. **Criminal homicide.**-(a) Murder and nonnegligent manslaughter: All willful felonious homicides as distinguished from deaths caused by negligence. Excludes attempts to kill, assaults to kill, suicides, accidental deaths, or justifiable homicides. Justifiable homicides are limited to: (1) The killing of a person by a law enforcement officer in line of duty; and (2) The killing of a person in the act of committing a felony by a private citizen. (b) Manslaughter by negligence: Any death which the police investigation established was primarily attributable to gross negligence of some individual other than the victim.

2. **Forcible rape.**-The carnal knowledge of a female, forcibly and against her will in the categories of rape by force, assault to rape, and attempted rape. Excludes statutory offenses (no force used—victim under age of consent).

3. **Robbery.**-Stealing or taking anything of value from the care, custody, or control of a person by force or by violence or by putting in fear, such as strong-arm robbery, stickups, armed robbery, assaults to rob, and attempts to rob.

4. **Aggravated assault.**-Assault with intent to kill or for the purpose of inflicting severe bodily injury by shooting, cutting, stabbing, maiming, poisoning, scalding, or by the use of acids, explosives, or other means. Excludes simple assaults.

5. **Burglary—breaking or entering.**-Burglary, house-breaking, safecracking, or any breaking or unlawful entry of a structure with the intent to commit a felony or a theft. Includes attempted forcible entry.

6. **Larceny-theft** (except motor vehicle theft).—The unlawful taking, carrying, leading, or riding away of property from the possession or constructive possession of another. Thefts of bicycles, automobile accessories, shoplifting, pocket-picking, or any stealing of property or article which is not taken by force and violence or by fraud. Excludes embezzlement, "con" games, forgery, worthless checks, etc.

7. **Motor vehicle theft.**-Unlawful taking or stealing or attempted theft of a motor vehicle. A motor vehicle is a self-propelled vehicle that travels on the surface but not on rails. Specifically excluded from this category are motor boats, construction equipment, airplanes, and farming equipment.

8. **Arson.**-Willful or malicious burning with or without intent to defraud. Includes attempts.

The Part II offenses are:

9. **Other assaults (simple).**-Assaults which are not of an aggravated nature.

10. **Forgery and counterfeiting.**-Making, altering, uttering or possessing, with intent to defraud, anything false which is made to appear true. Includes attempts.

11. **Fraud.**-Fraudulent conversion and obtaining money or property by false pretenses. Includes bad checks except forgeries and counterfeiting. Also includes larceny by bailee.

12. **Embezzlement.**-Misappropriation or misapplication of money or property entrusted to one's care, custody or control.

13. **Stolen property; buying, receiving, possessing.**-Buying, receiving, and possessing stolen property and attempts.

14. **Vandalism.**-Willful or malicious destruction, injury, disfigurement, or defacement of property without consent of the owner or person having custody or control.

15. **Weapons; carrying, possessing, etc.**-All violations of regulations or statutes controlling the carrying, using, possessing, furnishing, and manufacturing of deadly weapons or silencers. Includes attempts.

16. **Prostitution and commercialized vice.**-Sex offenses of a commercialized nature and attempts, such as prostitution, keeping a bawdy house, procuring, transporting women for immoral purposes, etc.

17. **Sex offenses (except forcible rape, prostitution, and commercialized vice).**-Statutory rape, offenses against chastity, common decency, morals, and the like. Includes attempts.

18. **Narcotic drug laws.**-Offenses relating to narcotic drugs, such as unlawful possession, sale, use, growing and manufacturing of narcotic drugs.

19. **Gambling.**-Promoting, permitting, or engaging in illegal gambling.

20. **Offenses against the family and children.**-Nonsupport neglect, desertion, or abuse of family and children.

21. **Driving under the influence.**-Driving or operating any motor vehicle or common carrier while drunk or under the influence of liquor or narcotics.

22. **Liquor laws.**-State or local liquor law violations, except "drunkenness" (class 23) and "driving under the influence" (class 21). Excludes Federal violations.

23. **Drunkenness.**-Drunkenness or intoxication.

24. **Disorderly conduct.**-Breach of the peace.

25. **Vagrancy.**-Vagabondage, begging, loitering, etc.

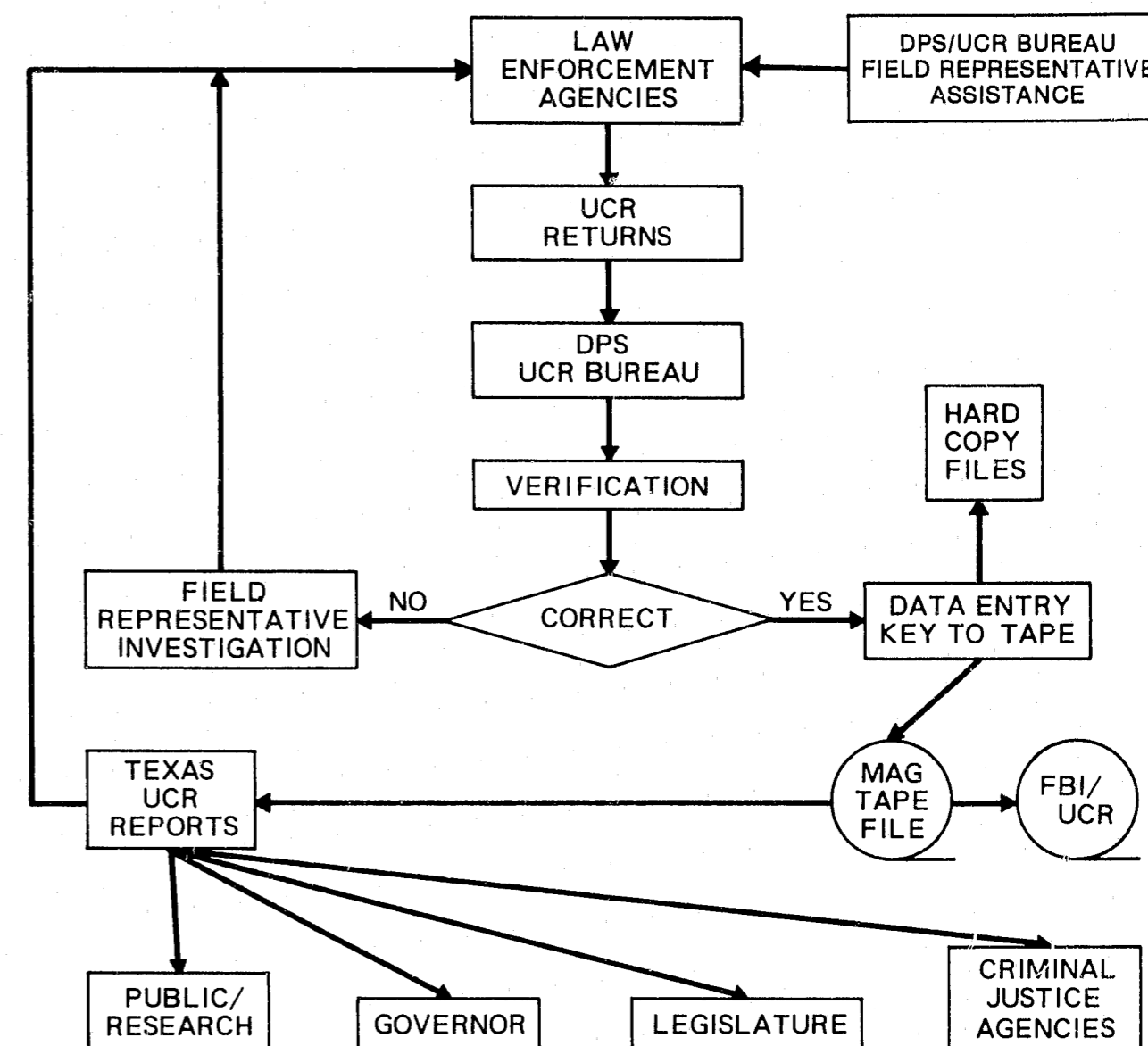
26. **All other offenses.**-All violations of state or local laws, except classes 1-25 and traffic.

27. **Suspicion.**-Arrests for no specific offense and released without formal charges being placed.

28. **Curfew and loitering laws (juveniles).**-Offenses relating to violation of local curfew or loitering ordinances where such laws exist.

29. **Runaway (juveniles).**-Limited to juveniles taken into protective custody under provisions of local statutes as runaways.

TEXAS UNIFORM CRIME REPORTING DATA FLOW CHART



TEXAS CRIME ANALYSIS

CRIME INDEX OFFENSES

Volume

During the calendar year of 1979, a total of 790,127 Index Offenses were reported by law enforcement agencies in Texas. The crimes in this group are all serious, either by their very nature or because of the frequency with which they occur, and present a common enforcement problem to all police. Crimes within this index can be further categorized as Violent Crimes, which include Murder, Forcible Rape, Robbery, and Aggravated Assault, or as Property Crimes, which consist of Burglary, Larceny-Theft, and Motor Vehicle Theft.

Violent Crimes

Violent Crimes involve the element of personal confrontation between the perpetrator and the victim. Because of their nature, Violent Crimes are considered more serious than Property Crimes. These Offenses for 1979 made up 8.7% of the Crime Index Total.

A total of 67,721 Violent Crimes were reported during 1979. This figure represents a 20% increase over the crimes reported in 1978. A review of the distribution of the Violent Crimes discloses that Murder accounted for .3%, Rape .8%, Robbery 3.3%, and Aggravated Assault 4.3% of the Total Index.

Property Crimes

The number of Property Crimes reported during 1979 was more than 10 times greater than the number of Violent Crimes reported. As a group, Property Crimes made up 91.3% of the Total Index.

Property Crimes increased 9% over 1978 UCR figures. Burglary accounted for 33% of all property offenses and 30.1% of the Total Crime Index. Larceny Theft accounted for 57% of all property offenses and 52% of the Total Crime Index. Motor Vehicle Theft made up 10% of all property offenses and 9.2% of the Crime Index Total.

Clearances

For Uniform Crime Reporting purposes, a Crime Index Offense is cleared when a law enforcement agency has identified the

offender, there is enough evidence to charge him and he is actually taken into custody. The arrest of one person can clear several crimes or several persons may be arrested in the process of clearing one offense. Clearances are also recorded in exceptional circumstances when some element beyond law enforcement control precludes formal charges against the offender.

Law enforcers in Texas cleared by arrest or exceptional clearance 21.5% of all Index Offenses reported to them in 1979. 52.5% of the Violent Crimes were cleared while 18.6% of all Non-Violent Crimes were cleared.

Reports submitted by the law enforcement agencies of the State during 1979 disclosed that, in the area of Violent Crime, they were successful in solving 73% of the Murder offenses, 52% of the Forcible Rapes, 34% of all Robberies, and 65% of all Aggravated Assaults. They showed clearances in Property Crimes of 15% in Burglary, 20% in Larceny-Theft, and 20% in Motor Vehicle Theft.

The relatively high clearance rate for Violent Crimes as compared to the Non-Violent Property Crimes is in part attributable to the volume difference between the two. The volume of Property Crime is much greater than that of Violent Crime and police investigation of Violent Crime is usually more intense. The element of confrontation between the victim and the perpetrator also contributes to the higher rate of solution.

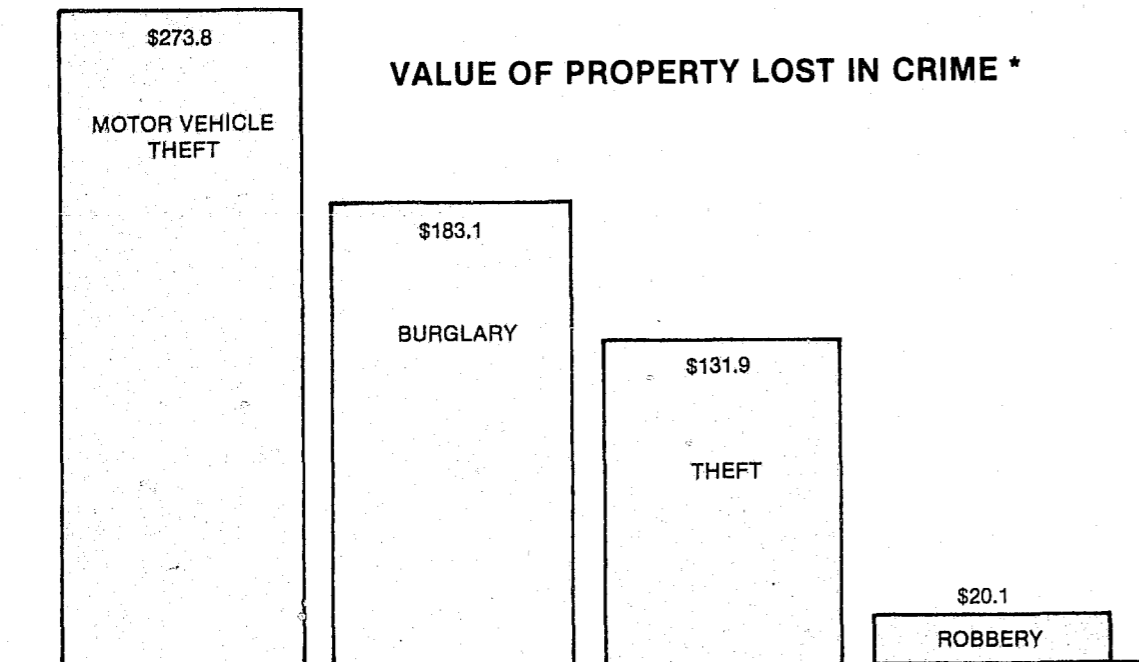
In 1979, persons under the age of 18 represented 19.5% of all cases solved. They accounted for 6.8% of all Violent Crime Clearances, while being responsible for 22.9% in the Non-Violent Crime categories. The involvement rate of persons under 18 years of age was 6% for Murder, 6.2% for Forcible Rape, 7.8% for Robbery, and 6.5% for Aggravated Assault. In the Non-Violent Crime categories, this age group accounted for 24% of the burglaries, 22.8% of the Larceny-Thefts, and 20% of the Motor Vehicle Thefts.

Stolen Property Value

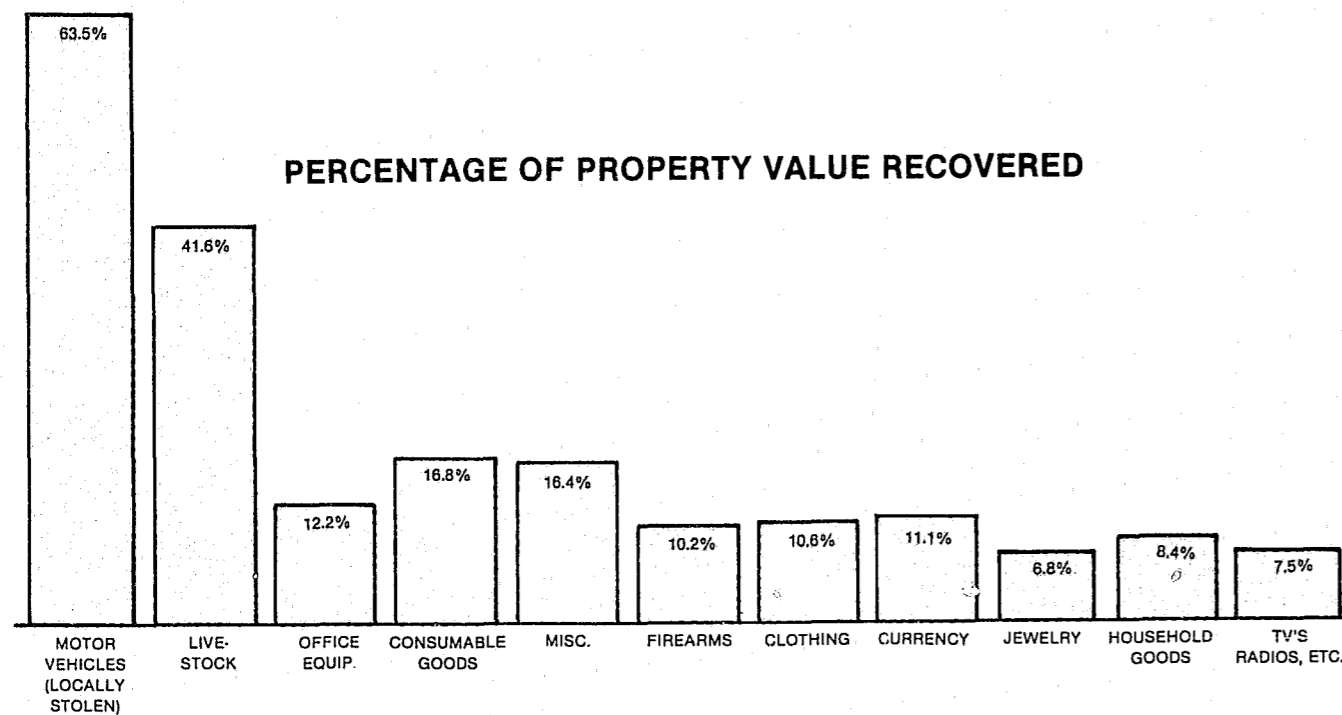
The Total Value of Property Stolen during 1979 in Texas was \$610,072,138. Although police recoveries reduced this loss by 35.4%, the remaining unrecovered portion represents a loss of \$394,018,262 to the victims.

PROPERTY BY TYPE AND VALUE

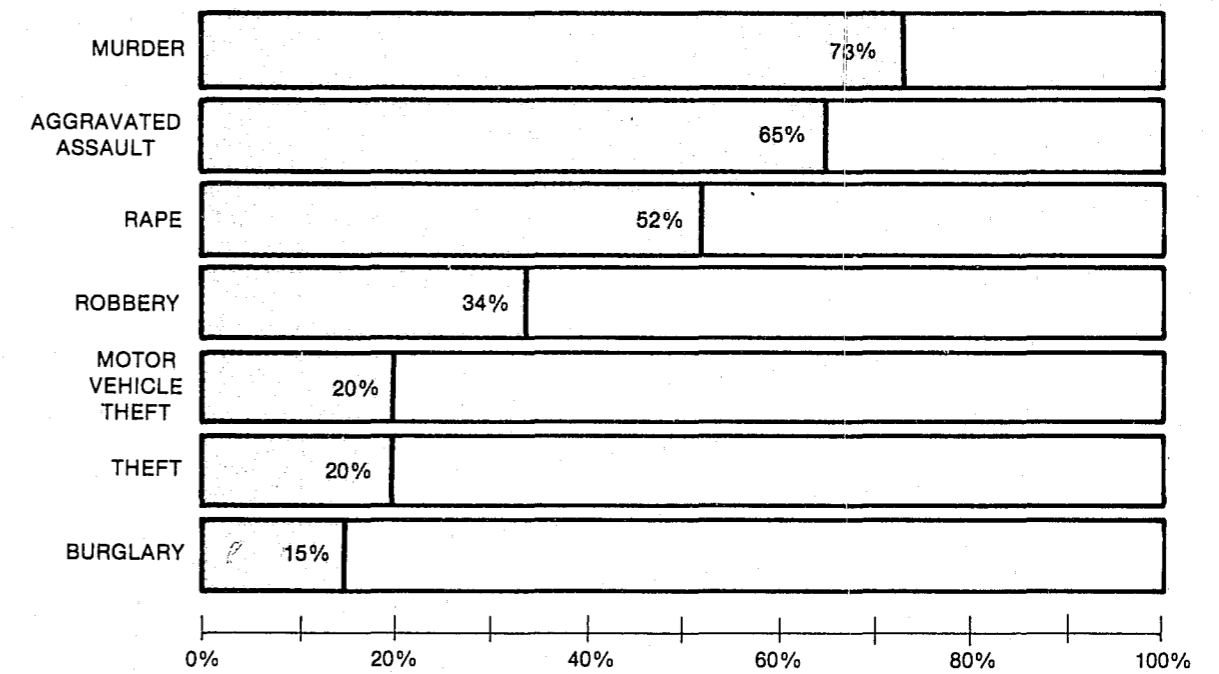
TYPE OF PROPERTY	STOLEN	RECOVERED
(A) CURRENCY, NOTES, ETC.	32,947,335	3,670,704
(B) JEWELRY AND PRECIOUS METALS	62,558,560	4,254,870
(C) CLOTHING AND FURS	12,554,253	1,336,645
(D) LOCALLY STOLEN MOTOR VEHICLES	278,165,935	176,670,577
(E) OFFICE EQUIPMENT	7,550,775	919,558
(F) TELEVISIONS, RADIOS, STEREOS, ETC.	55,206,314	4,151,086
(G) FIREARMS	11,612,252	1,181,883
(H) HOUSEHOLD GOODS	16,973,147	1,419,155
(I) CONSUMABLE GOODS	5,443,395	915,812
(J) LIVESTOCK	2,681,441	1,115,874
(K) MISCELLANEOUS	124,378,731	20,417,712
TOTALS	\$610,072,138	\$216,053,876



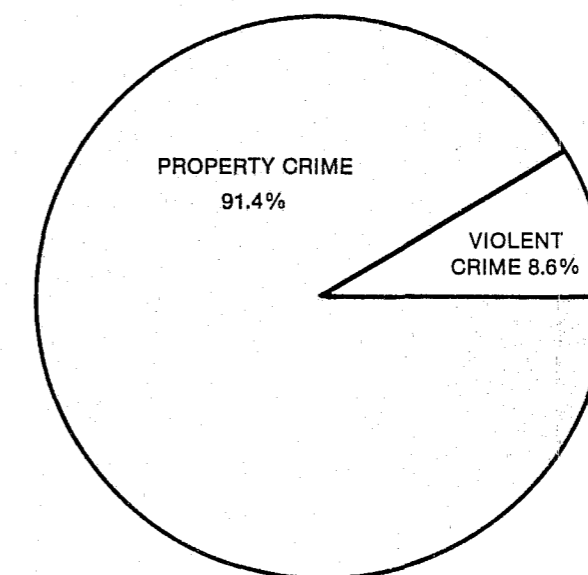
* IN MILLIONS OF DOLLARS



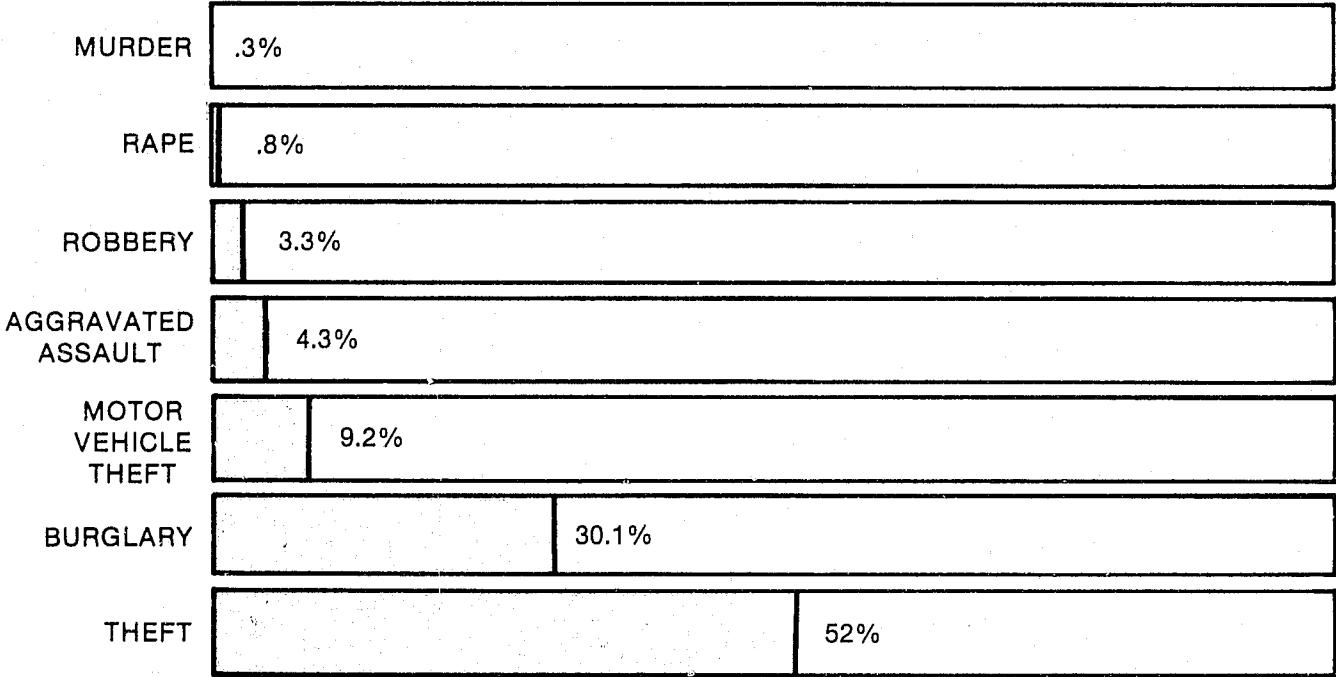
CLEARANCE RATES Percentage of Crime Cleared



CRIME IN TEXAS



CRIME BREAKDOWN



OFFENSES AND CLEARANCES BY MONTH FOR CALENDAR YEAR 1979

MONTH		MURDER	RAPE	ROBBERY	AGG. ASSAULT	BURGLARY	LARCENY	AUTO THEFT	TOTAL
JAN -	OFFENSES	181	412	2394	2056	19339	31084	5285	60751
	CLEARANCES	144	229	869	1474	3087	6344	1087	13234
FEB -	OFFENSES	168	362	2103	2173	18091	31399	5271	59567
	CLEARANCES	124	191	666	1482	2901	6194	1050	12608
MAR -	OFFENSES	151	467	2204	2796	19279	35510	5542	65949
	CLEARANCES	113	233	810	1762	3188	7581	1205	14892
APR -	OFFENSES	172	474	2021	2948	19230	34056	5786	64687
	CLEARANCES	129	279	739	1963	2717	7356	1058	14241
MAY -	OFFENSES	197	477	1868	2862	19173	34094	5610	64281
	CLEARANCES	139	272	605	1908	3359	7146	1296	14725
JUN -	OFFENSES	192	530	1906	2997	18663	34129	6130	64547
	CLEARANCES	138	262	661	1757	2767	6809	1210	13604
JUL -	OFFENSES	208	637	2207	3365	21580	36735	6898	71630
	CLEARANCES	141	321	668	2130	2986	6841	1233	14320
AUG -	OFFENSES	223	642	2188	3212	22300	38046	7128	73739
	CLEARANCES	165	309	1012	2091	3465	6935	1378	15355
SEP -	OFFENSES	188	558	2059	2994	20169	32739	6394	65101
	CLEARANCES	146	260	981	1849	2974	6670	1248	14128
OCT -	OFFENSES	168	560	2094	3082	21030	35889	6659	69482
	CLEARANCES	127	255	613	2057	3284	7158	1272	14766
NOV -	OFFENSES	183	454	2219	2527	19391	33149	5923	63846
	CLEARANCES	129	268	592	1729	2945	7184	1138	13985
DEC -	OFFENSES	192	452	2363	2833	20559	34136	6003	66538
	CLEARANCES	135	234	621	1754	2819	7445	1012	14020
TOT -	OFFENSES	2223	6025	25626	33847	238806	410970	72630	790127
	CLEARANCES	1630	3113	8837	21956	36492	83663	14187	169878

SUMMARY OF CRIME DATA STATE TOTALS			
BEGINNING DATE FOR DATA TOTALS: 01/79 ENDING DATE FOR DATA TOTALS: 12/79	ACTUAL OFFENSES	TOTAL OFFENSES CLEARED	CLEARANCES INVOLVING ONLY UNDER 18 YR. OLD
CLASSIFICATION OF OFFENSES			
1. CRIMINAL HOMICIDE			
A. Murder and Nonneg. Manslaughter	2,223	1,630	98
2. FORCIBLE RAPE (TOTAL)	6,025	3,113	193
A. Rape by Force	4,728	2,489	122
B. Attempts to Commit Forcible Rape	1,297	624	71
3. ROBBERY (TOTAL)	25,626	8,837	694
A. Firearm	14,725	4,881	250
B. Knife or Cutting Instrument	3,604	1,337	133
C. Other Dangerous Weapon	1,659	593	69
D. Strong-Arm (Hands, Fists, Feet Etc.)	5,638	2,026	242
4. ASSAULT (TOTAL)*	33,847	21,956	1,430
A. Firearm	8,645	5,689	284
B. Knife or Cutting Instrument	8,898	5,682	459
C. Other Dangerous Weapon	5,815	3,526	275
D. Hands, Fists, Feet, Etc.-Aggrav. Injury	10,489	6,059	412
5. BURGLARY (TOTAL)	238,806	36,492	8,810
A. Forcible Entry	174,776	27,947	6,570
B. Unlawful Entry - No Force	54,206	7,089	1,844
C. Attempted Forcible Entry	9,824	1,456	396
6. LARCENY-THEFT (EXCEPT MTR. VEH.)	410,970	83,663	19,040
7. MOTOR VEHICLE THEFT (TOTAL)	72,630	14,187	2,852
A. Autos	44,526	9,924	1,952
B. Trucks and Buses	19,919	2,775	462
C. Other Vehicles	8,185	1,488	438
GRAND TOTAL	790,127	169,878	33,117
* in addition to Aggravated Assaults there were 40,111 Simple Assaults reported.			

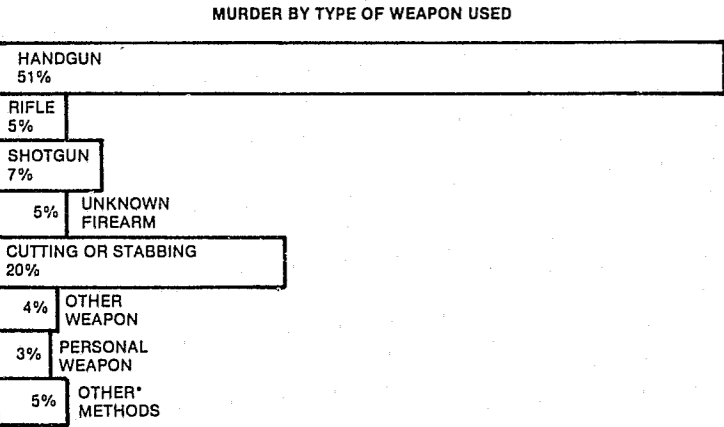
MURDER

Murder is defined as the unlawful killing of a human being. Any death due to a fight, argument, quarrel, assault or commission of a crime is included. Traffic deaths, caused by the negligence of someone other than the victim are not included here. Attempts to kill and assaults to kill are scored as aggravated assaults and not as murder. Suicides, accidental deaths, and justifiable homicides are also excluded.

The law enforcement agencies which participate in Uniform Crime Reporting cooperate in providing additional information regarding homicide so that a more in-depth analysis of this offense can be made. Through a supplemental reporting system, information is provided regarding the age, sex, and race of the victim and the offender; the weapon used in the murder; the relationship of the victim to the offender; and the circumstances surrounding the offense. All tables reflect actual offenses as well as the victims of justifiable homicides.

Volume

Cases of murder reported to law enforcement agencies in Texas in 1979 totaled 2223. Additionally, there were 82 killings classified as justifiable - the killing of a felon by a peace officer in the line of duty or the killing of a felon by a private citizen. Throughout the State, law enforcement agencies continue to be successful in clearing or solving by arrest a greater percentage of murders than any other Crime Index offense. In 1979, 73 percent of the murders were cleared. Property loss in the murder category was reported as \$160,191.



* Includes poison, fire, narcotics, drowning, strangulation, asphyxiation, etc.

AGE GROUPS

10 & Under

11-12

13-14

15

16

17

18

19

20

21

22

23

24

25-29

30-34

35-39

40-44

45-49

50-54

55-59

60-64

65 & Over

TOTAL

WHITE

BLACK

OTHERS

NUMBER ARRESTED

2

1

2

1

20

5

31

7

66

3

54

9

91

7

111

14

91

11

80

10

89

10

78

7

73

15

314

52

199

40

133

29

109

22

72

13

57

9

45

2

17

4

37

6

1771

277

1278

764

6

MURDER VICTIMS* BY AGE, SEX & RACE

AGE	NUMBER	SEX		WHITE	RACE	
		MALE	FEMALE		NEGRO	OTHERS
Under 1	13	8	5	10	3	0
1-4	27	14	13	19	7	1
5-9	10	6	4	9	1	0
10-14	24	17	7	13	11	0
15-16	42	32	10	23	19	0
17-19	178	150	28	126	52	0
20-24	390	307	83	237	148	5
25-29	368	317	51	220	144	4
30-34	277	236	41	165	108	4
35-39	203	173	30	98	101	4
40-44	163	135	28	94	67	2
45-49	109	87	22	74	35	0
50-54	132	109	23	87	43	2
55-59	86	77	9	57	28	1
60-64	45	38	7	25	20	0
65-69	43	28	15	24	18	1
70-74	35	25	10	20	14	1
75 & Over	37	18	19	26	11	0
Unknown	92	84	8	65	20	7
TOTAL	2274	1861	413	1392	850	32

Age, Sex, Race Data Unavailable on 31 Victims

MURDER CIRCUMSTANCES*

Felony Type - Felony murder is defined as a killing which occurs in conjunction with the commission of another crime such as robbery, sex motive, and other felonious activities.

Rape	32
Robbery	194
Burglary	20
Larceny	3
Motor Vehicle Theft	4
Arson	6
Prostitution & Commercialized Vice	0
Other Sex Offense	7
Abortion	0
Narcotic Drug Laws	24
Gambling	8
Other	2
Suspected Felony Type	24

Other Than Felony Type

Lover's Triangle	51
Child Killed by Babysitter	2
Brawl Due to Influence of Alcohol	260
Brawl Due to Influence of Narcotics	3
Argument Over Money or Property	76
Other Arguments	722
Gangland Killings	2
Juvenile Gang Killings	0
Institutional Killings	2
Sniper Attack	2
Other	658

Unable To Determine Circumstances

Unknown	121
---------	-----

Justifiable Homicide - The intentional killing of a person

without evil design and under such circumstance of necessity or duty as to render the act proper.

Felon Killed by Private Citizen	38
Felon Killed by Police	44

RELATIONSHIP OF VICTIM TO OFFENDER*

Husband	105
Wife	74
Common-Law Husband	39
Common-Law Wife	25
Mother	13
Father	19
Son	20
Daughter	10
Brother	20
Sister	4
In-Law	47
Stepfather	15
Stepmother	1
Stepson	2
Stepdaughter	0
Other Family	18
Neighbor	25
Acquaintance	726
Boyfriend	25
Girlfriend	20
Ex-Husband	9
Ex-Wife	10
Employee	5
Employer	1
Friend	49
Homosexual Relationship	1
Other - Known to Victim	12
Stranger	381
Unknown Relationship	629

* Justifiable Homicides Included

RAPE	AGE GROUPS	NUMBER ARRESTED
Forcible rape is the carnal knowledge of a female through the use of force or the threat of force. Assaults to commit forcible rape are also included; however, statutory rape (without force) is not counted in this category. Crime counts in this offense classification are broken down by actual forcible rapes and attempted forcible rapes.	10 & Under	M 2
		F 0
	11-12	M 7
		F 0
	13-14	M 28
		F 0
	15	M 44
		F 0
	16	M 75
		F 2
	17	M 88
		F 2
	18	M 128
		F 1
	19	M 123
		F 0
	20	M 125
		F 3
	21	M 127
		F 0
	22	M 130
		F 0
	23	M 119
		F 0
	24	M 112
		F 1
	25-29	M 368
		F 2
	30-34	M 205
		F 2
	35-39	M 115
		F 2
	40-44	M 57
		F 0
	45-49	M 38
		F 1
	50-54	M 35
		F 0
	55-59	M 13
		F 0
	60-64	M 7
		F 0
	65 & Over	M 6
		F 0
	TOTAL	M 1952
		F 16
	WHITE	1162
	BLACK	801
	OTHERS	5

Forcible rape differs from other violent crimes in that the victim, in many cases, is hesitant in reporting the offense to police. The rigors of court procedure, embarrassment and fear of any accompanying stigma have a deterrent effect on the victim's willingness to make the crime known to police. The presence of a prior relationship between victim and perpetrator makes the determination of the act of force difficult to establish, and the usual clandestine nature of the offense presents a problem in verification.

Volume

Cases of forcible rape reported to law enforcement agencies in Texas in 1979 totaled 6,025. In 1979, 4,728, or 78.5% of the incidents reported were actual rapes by force, while the remainder were attempts to assaults to commit forcible rape.

Property loss in the rape category was reported as \$487,701.

ROBBERY	AGE GROUPS	NUMBER ARRESTED
Robbery is a vicious type of crime which takes place in the presence of the victim to obtain property or a thing of value from a person by use of force or threat of force. Assault to commit robbery and attempts are included. This is a violent crime and frequently results in injury to the victim.	10 & Under	M 17
		F 3
	11-12	M 38
		F 6
	13-14	M 188
		F 17
	15	M 204
		F 21
	16	M 348
		F 18
	17	M 450
		F 27
	18	M 527
		F 36
	19	M 451
		F 35
	20	M 409
		F 41
	21	M 377
		F 43
	22	M 384
		F 37
	23	M 333
		F 31
	24	M 269
		F 40
	25-29	M 942
		F 93
	30-34	M 457
		F 47
	35-39	M 238
		F 31
	40-44	M 124
		F 15
	45-49	M 98
		F 11
	50-54	M 69
		F 6
	55-59	M 35
		F 0
	60-64	M 9
		F 0
	65 & Over	M 18
		F 1
	TOTAL	M 5985
		F 559
	WHITE	3553
	BLACK	2976
	OTHERS	15

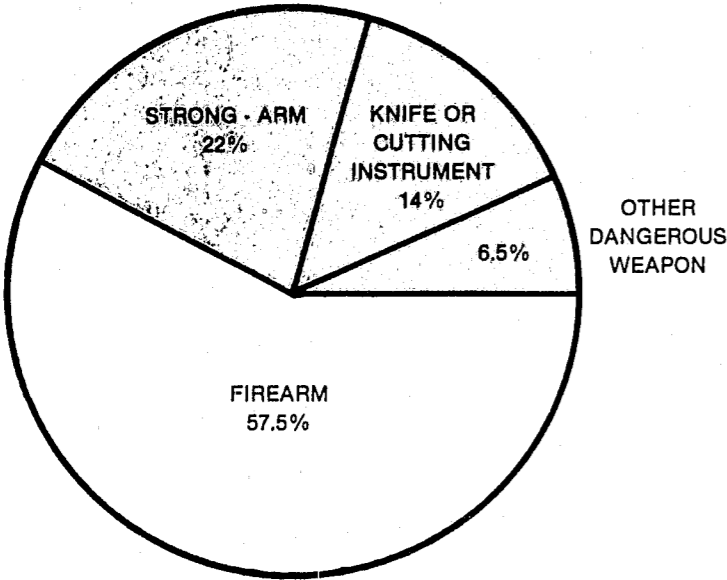
Volume

Cases of robbery reported to law enforcement agencies in Texas in 1979 totaled 25,626. In 1979, the average value loss in each robbery incident was \$803 for a total loss of \$20,567,633.

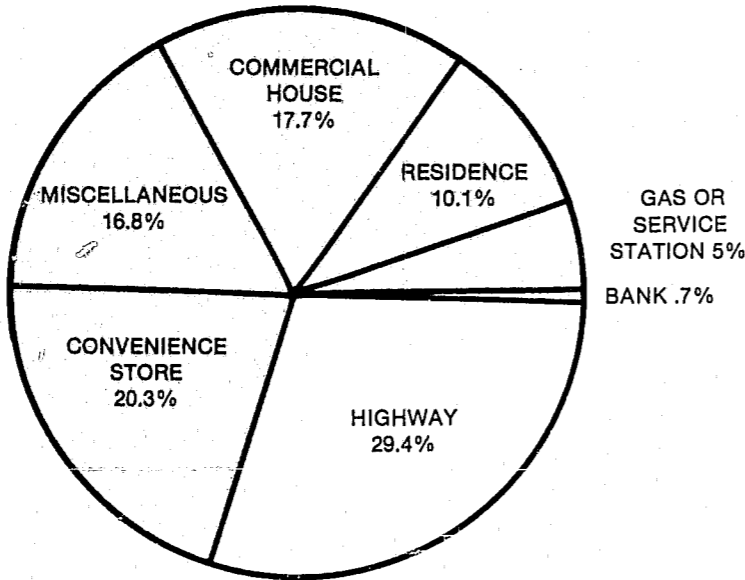
VALUE OF PROPERTY STOLEN ROBBERY

LOCATION	ACTUAL OFFENSES	VALUE OF PROPERTY
HIGHWAY	7,526	3,795,153
COMMERCIAL HOUSE	4,539	3,465,661
GAS OR SERVICE STATION	1,286	425,216
CONVENIENCE STORE	5,214	2,665,450
RESIDENCE	2,584	4,804,477
BANK	179	901,865
MISCELLANEOUS	4,298	4,509,811
TOTAL ROBBERY	25,626	20,567,633

ROBBERY WEAPON



ROBBERY LOCATIONS



AGGRAVATED ASSAULT

Aggravated assault is defined as an unlawful attack by one person upon another for the purpose of inflicting severe bodily injury usually accompanied by the use of a weapon or other means likely to produce death or serious bodily harm. Attempts are included since it is not necessary that an injury result when a gun, knife, or other weapon is used which could and probably would result in serious personal injury if the crime were successfully completed.

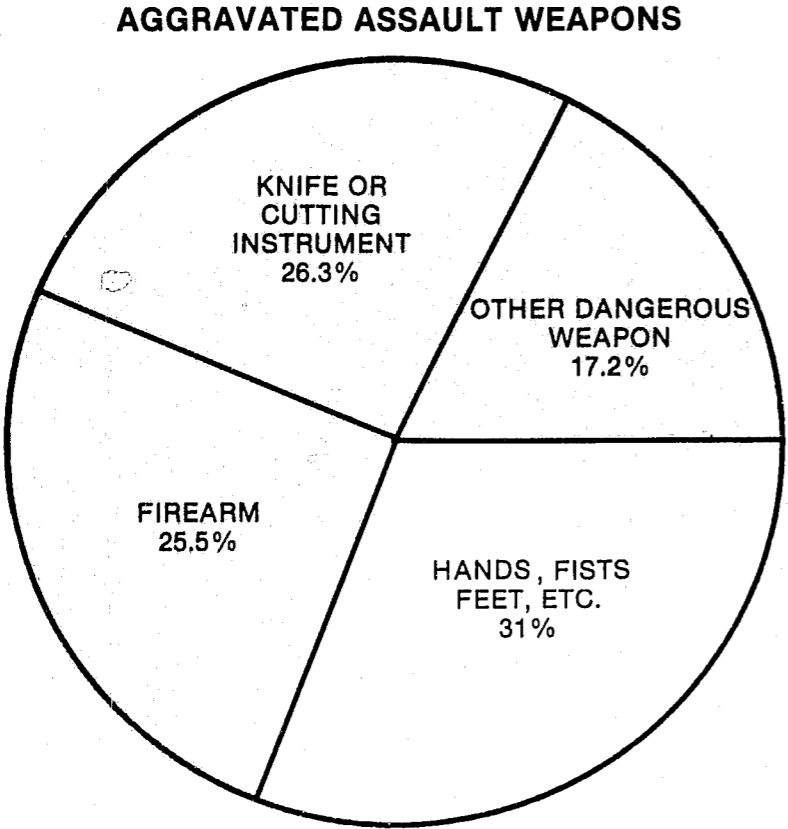
Volume

Cases of aggravated assault reported to law enforcement agencies in Texas in 1979 totaled 33,847. The use or attempted use of dangerous weapon in an assault or the serious injury inflicted by hands, fists, or feet separates this index offense from those assaults categorized as "simple" and not felonious in nature. There were 40,111 "simple" assaults reported in Texas in 1979.

AGE GROUPS

NUMBER ARRESTED

10 & Under	M	40
	F	1
11-12	M	62
	F	17
13-14	M	241
	F	70
15	M	270
	F	44
16	M	412
	F	56
17	M	450
	F	68
18	M	591
	F	72
19	M	553
	F	75
20	M	571
	F	63
21	M	651
	F	66
22	M	567
	F	67
23	M	538
	F	59
24	M	518
	F	69
25-29	M	1976
	F	224
30-34	M	1345
	F	151
35-39	M	852
	F	115
40-44	M	576
	F	69
45-49	M	456
	F	69
50-54	M	290
	F	50
55-59	M	195
	F	17
60-64	M	83
	F	7
65 & Over	M	103
	F	5
TOTAL	M	11340
	F	1434
WHITE		8869
BLACK		3863
OTHERS		42



BURGLARY

Burglary is defined as the unlawful entry or attempted forcible entry of any structure to commit a felony or theft.

As with other nonviolent crimes, the motive of personal gain coupled with the element of opportunity, results in the commission of this offense by both the amateur and the professional perpetrator. Only the absence of confrontation and the use of force separate this crime from robbery of the violent crime group. However, detection during commission many times results in a confrontation of the victim by the perpetrator demonstrating why this offense is considered the most serious of the nonviolent crime group.

The volume of this offense presents the police with a serious enforcement problem made more difficult in many areas by the lack of sufficient personnel to act as a deterrent and to provide successful solutions to these crimes.

Volume

Cases of burglary reported to law enforcement agencies in Texas in 1979 totaled 238,806. The average value loss in each burglary incident was \$767 for a total loss of \$183,086,957.

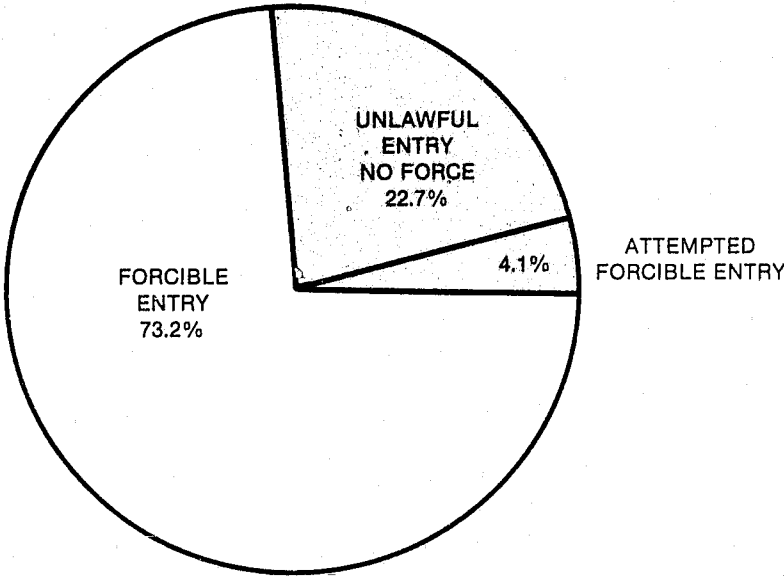
**VALUE OF PROPERTY STOLEN
BURGLARY**

LOCATION	ACTUAL OFFENSES	VALUE OF PROPERTY
RESIDENCE-NIGHT (6pm-6am)	47,523	30,872,504
RESIDENCE-DAY (6am-6pm)	62,535	53,768,829
RESIDENCE-UNKNOWN TIME	40,642	40,652,767
NON-RESIDENCE-NIGHT (6pm-6am)	50,897	27,726,969
NON-RESIDENCE-DAY (6am-6pm)	7,263	3,484,383
NON-RESIDENCE-UNKNOWN TIME	29,946	26,581,505
TOTAL BURGLARY	238,806	183,086,957

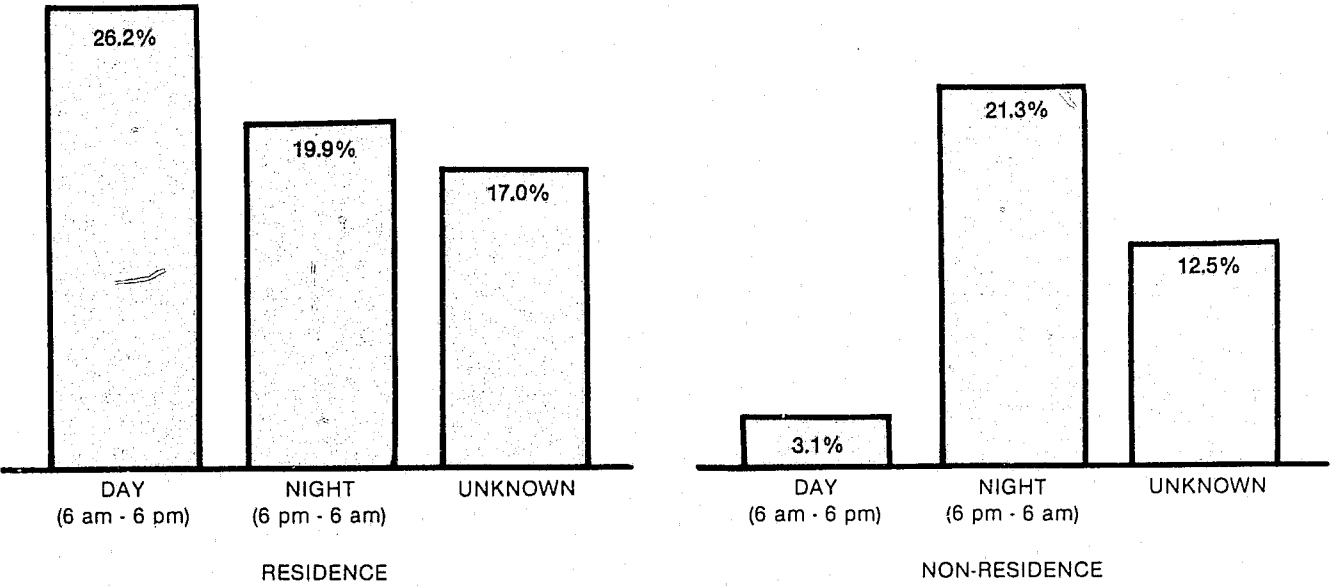
AGE GROUPS

AGE GROUPS		NUMBER ARRESTED
10 & Under	M	607
	F	73
11-12	M	1167
	F	97
13-14	M	3305
	F	247
15	M	2684
	F	172
16	M	2803
	F	164
17	M	2554
	F	134
18	M	2551
	F	135
19	M	1913
	F	89
20	M	1583
	F	87
21	M	1343
	F	98
22	M	1148
	F	66
23	M	977
	F	68
24	M	847
	F	87
25-29	M	2640
	F	155
30-34	M	1238
	F	85
35-39	M	581
	F	59
40-44	M	437
	F	27
45-49	M	287
	F	19
50-54	M	188
	F	21
55-59	M	99
	F	4
60-64	M	26
	F	2
65 & Over	M	54
	F	3
TOTAL	M	29032
	F	1892
WHITE		22751
BLACK		8095
OTHERS		78

BURGLARY METHODS



TIME OF BURGLARIES



LARCENY-THEFT

Larceny-theft is the unlawful taking or stealing of property or articles without the use of force, violence, or fraud. It includes crime such as shoplifting, pocket-picking, purse-snatching, thefts from motor vehicles, thefts of motor vehicle parts and accessories, bicycle thefts, etc. In the Uniform Crime Reporting Program this crime category does not include embezzlement, "con" games, forgery, and worthless checks. Motor vehicle theft, of course, is excluded from this category for crime reporting purposes inasmuch as it is a separate Crime Index offense.

Larceny offenses cleared by police arrest are dramatically affected by the nature of the crime. As with other nonviolent crimes, opportunity and stealth, working in favor of the perpetrator and against police detection, reduce solutions for this offense.

As with other offenses against property, larceny is primarily a crime of opportunity. Types of larcenies will differ in volume depending upon the opportunity for theft offered in a given area.

Volume

Cases of larceny reported to law enforcement agencies in Texas in 1979 totaled 410,970. When average value is applied to the reported crimes in this category, the dollar loss to victims was \$321 for a total loss of \$131,952,845. It is true that a portion of goods stolen was recovered and returned to the victims, but the relatively low percentage of crimes cleared by arrest and the lack of specific identification characteristics on such property indicate these recoveries will not materially reduce the overall loss. In addition, many offenses in this category, particularly where the value of goods stolen is small, never come to police attention.

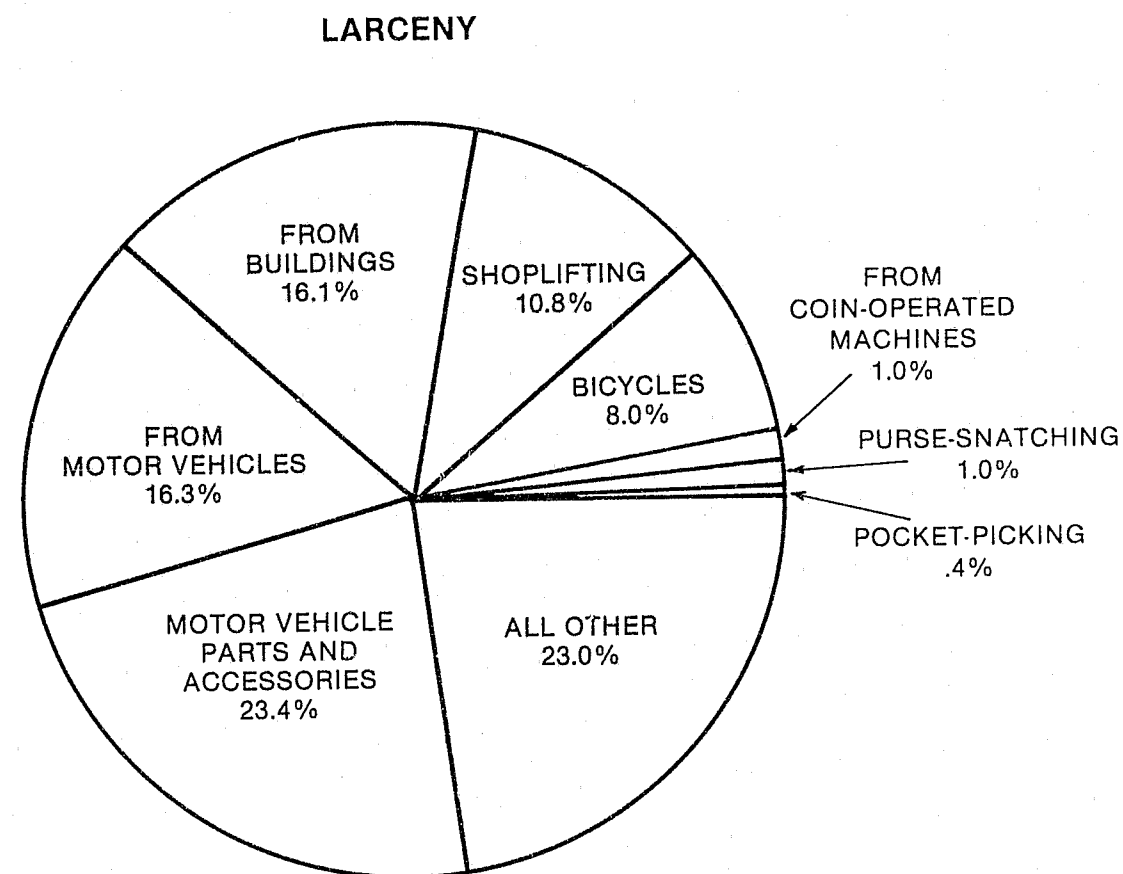
VALUE OF PROPERTY STOLEN
LARCENY-THEFT

TYPE OF THEFT	ACTUAL OFFENSES	VALUE OF PROPERTY
POCKET-PICKING	1,470	272,921
PURSE-SNATCHING	4,207	596,648
SHOPLIFTING	44,303	2,637,994
FROM MOTOR VEHICLES	66,899	21,916,402
MOTOR VEHICLE PARTS & ACCESSORIES	96,117	18,926,928
BICYCLES	33,016	3,185,507
FROM BUILDINGS	66,076	28,654,770
FROM ANY COIN-OPERATED MACHINES	4,425	473,489
ALL OTHER	94,457	55,288,186
TOTAL LARCENY-THEFT	410,970	131,952,845
\$200 & OVER	123,568	115,059,112
\$50 TO \$200	126,614	13,466,537
UNDER \$50	160,788	3,427,196

AGE GROUPS

NUMBER ARRESTED

AGE GROUPS	NUMBER ARRESTED
10 & Under	1125
11-12	283
13-14	2410
15	862
16	5027
17	2079
18	3428
19	1438
20	3985
21	1600
22	3735
23	1451
24	4279
25-29	1701
30-34	3290
35-39	1459
40-44	2783
45-49	1356
50-54	2450
55-59	1222
60-64	2261
65 & Over	1130
TOTAL	1961
WHITE	1144
BLACK	1821
OTHERS	1021



MOTOR VEHICLE THEFT

In Uniform Crime Reporting, motor vehicle theft is defined as the unlawful taking or stealing of a motor vehicle, including attempts. This definition excludes taking for temporary use by those persons having lawful access to the vehicle.

Volume

There were 72,630 motor vehicle thefts reported by law enforcement agencies in 1979. The average value of a motor vehicle at the time of theft was \$3,770 for a total loss of \$273,816,811.

AGE GROUPS		NUMBER ARRESTED
10 & Under	M	45
	F	2
11-12	M	178
	F	32
13-14	M	997
	F	163
15	M	983
	F	115
16	M	1137
	F	127
17	M	885
	F	93
18	M	808
	F	74
19	M	585
	F	56
20	M	471
	F	47
21	M	405
	F	55
22	M	403
	F	40
23	M	327
	F	41
24	M	265
	F	40
25-29	M	937
	F	121
30-34	M	501
	F	62
35-39	M	290
	F	38
40-44	M	233
	F	14
45-49	M	152
	F	15
50-54	M	97
	F	9
55-59	M	65
	F	5
60-64	M	17
	F	1
65 & Over	M	14
	F	7
TOTAL	M	9787
	F	1157
WHITE		8330
BLACK		2578
OTHERS		36

ARSON

The collection of arson data under the Uniform Crime Reporting Program began during 1979. The information below was compiled from arson reports submitted by agencies representing only 64% of the state population and is published as an indication of the extent of arson in Texas in 1979. Future arson data under UCR will be more complete.

PROPERTY CLASSIFICATION	ACTUAL OFFENSES	OFFENSES CLEARED	CLEARANCES INVOLVING UNDER 18	OFFENSES UNINHABITED STRUCTURES	EST. VALUE OF PROPERTY DAMAGE
A. Single Occupancy Residential: Houses, Townhouses, Duplexes, Etc.	1341	332	127	403	\$10,590,231
B. Other Residential: Apartments, Tenements, Flats, Hotels, Inns, Dormitories, Boarding Houses, Etc.	491	113	44	135	\$38,738,892
C. Storage: Barns, Garages, Warehouses, Etc.	299	98	58	36	\$ 6,209,206
D. Industrial/Manufacturing	35	14	0	6	\$ 1,013,245
E. Other Commercial: Stores, Restaurants, Offices, Etc.	546	85	9	22	\$ 7,752,267
F. Community/Public: Churches, Jails, Schools, Colleges, Hospitals, Etc.	238	84	55	12	\$ 9,494,300
G. All Other Structure: Out Buildings, Monuments, Buildings Under Construction, Etc.	168	20	15	30	\$ 2,239,350
TOTAL STRUCTURE	3118	746	318	644	\$76,037,491
H. Motor Vehicles: Automobiles, Trucks, Buses, Motorcycles, Etc.: UCR Definition	709	64	12		\$ 1,485,740
I. Other Mobile Property: Trailers, Recreational Vehicles, Airplanes, Boats, Etc.	119	14	3		\$ 651,775
TOTAL MOBIL	828	78	15		\$ 2,137,515
J. Total Other: Crops, Timber, Fences, Signs, Etc.	1401	153	119		\$ 114,681
GRAND TOTAL	5347	977	452	644	\$78,289,687

TOTAL CRIME INDEX BY POPULATION GROUP

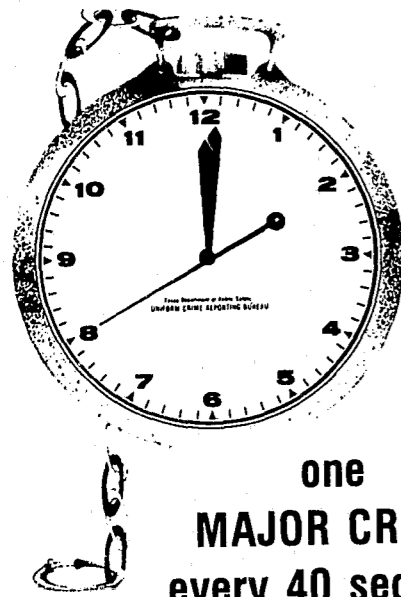
POPULATION GROUP	NUMBER OF OFFENSES	RATE PER 100,000
Cities Over 100,000	488,199	8238.4
50-100,000	68,155	6792.1
25-50,000	46,983	5612.7
10-25,000	63,239	4475.3
Under 10,000	39,048	3260.5
Counties Over 100,000	18,536	6117.2
25-100,000	20,205	2454.0
10-25,000	21,056	2079.5
Under 10,000	16,614	2022.7
College & University Campuses	6,912	
Dallas/Fort Worth Airport		1180

TOTAL CRIME INDEX OFFENSES* 790,127
* Does Not Include Arson or Simple Assault (4E in Chart Below)

SUMMARY OF CRIME DATA KNOWN TO POLICE
STATE TOTALS

STATE POPULATION REPRESENTED	94.5%	98.2%	98.7%	99.3%
	1976	1977	1978	1979
CLASSIFICATION OF OFFENSES	ACTUAL OFFENSES	ACTUAL OFFENSES	ACTUAL OFFENSES	ACTUAL OFFENSES
1. CRIMINAL HOMICIDE				
A. Murder and Nonneg. Manslaughter	1,464	1,686	1,839	2,223
2. FORCIBLE RAPE (TOTAL)	3,565	4,293	4,892	6,025
A. Rape by Force	2,751	3,309	3,791	4,728
B. Attempts to Commit Forcible Rape	814	984	1,101	1,297
3. ROBBERY (TOTAL)	17,166	19,453	21,320	25,626
A. Firearm	9,850	11,400	12,173	14,725
B. Knife or Cutting Instrument	2,120	2,507	2,695	3,604
C. Other Dangerous Weapon	1,001	1,151	1,367	1,659
D. Strong-Arm (Hands, Fists, Feet, Etc.)	4,195	4,395	5,085	5,638
4. ASSAULT (TOTAL)	49,799	59,259	64,648	73,958
A. Firearm	5,527	6,623	6,885	8,645
B. Knife or Cutting Instrument	5,119	6,612	7,018	8,898
C. Other Dangerous Weapon	3,729	4,581	5,115	5,815
D. Hands, Fists, Feet, etc.-Aggravated Injury	6,865	8,576	9,182	10,489
E. Other Assaults-Simple, not Aggravated	28,559	32,867	36,448	40,111
5. BURGLARY (TOTAL)	188,277	203,700	207,989	238,806
A. Forcible Entry	148,785	158,541	155,328	174,776
B. Unlawful Entry - No Force	34,416	43,654	43,654	54,206
C. Attempted Forcible Entry	8,076	8,966	9,007	9,824
6. LARCENY-THEFT (EXCEPT MTR. VEH.)	393,658	380,222	396,380	410,970
7. MOTOR VEHICLE THEFT (TOTAL)	43,140	50,595	57,462	72,630
A. Autos	29,546	33,048	35,531	44,526
B. Trucks and Buses	8,557	11,901	14,689	19,919
C. Other Vehicles	5,037	6,456	7,242	8,185
GRAND TOTAL	697,069	181,673	754,530	830,238

TEXAS CRIME CLOCK 1979



one
MAJOR CRIME
every 40 seconds

one
VIOLENT CRIME
every 7¾ minutes

one
PROPERTY CRIME
every 43½ seconds

one
MURDER
every 4 hours

one
FORCIBLE RAPE
every 1 hour 30 minutes

one
ROBBERY
every 20½ minutes

one
AGGRAVATED ASSAULT
every 15½ minutes

one
BURGLARY
every 2⅓ minutes

one
LARCENY-THEFT
every 1⅓ minutes

one
MOTOR VEHICLE THEFT
every 7½ minutes

TEXAS CRIME BY CONTRIBUTOR



The crime clock should be viewed with care. Being the most aggregate representation of UCR data. It is designed to convey the annual estimated crime experience by showing the relative frequency of occurrence of the Offenses. This mode of display should not be taken to imply a regularity in the commission of the Offenses; rather, it represents the annual ratio of crime to fixed time intervals.

CONTRIBUTING AGENCIES AND POPULATION

CONTRIBUTING AGENCIES		POPULATION COVERED
Sheriff's offices	248	Rural 98.1%
Police Departments	430	City 99.7%
Campuses & Universities	31	
TOTALS	709	State 99.3%

MONTHS ON FILE

Several agencies never previously participating in Uniform Crime Reporting began contributing data at various intervals during the year. Also some late reports were still in the process of being validated at the time this annual Crime Report was finalized.

Every effort has been made to ensure the validity and accuracy of the information from individual agencies published in this section. The data contained in this report should not be used for the purpose of evaluating or comparing the effectiveness of law enforcement agencies. It is presented as an unbiased effort to identify the extent of major crime in urban and rural Texas.

TEXAS INDEX CRIME OFFENSES BY CONTRIBUTOR

	Months On File	Murder	Rape	Robbery	Aggravated Assault	Burglary	Larceny	Motor Vehicle Theft	TOTAL CRIME INDEX
ANDERSON CO		2	2	17	66	250	611	47	995
Sheriff's Off.	12	0	0	1	6	63	68	4	142
Palestine	12	2	2	16	60	187	543	43	853
ANDREWS CO		0	0	1	19	73	188	13	294
Sheriff's Off.	12	0	0	0	10	37	139	8	194
Andrews	12	0	0	1	9	36	49	5	100
ANGELINA CO		4	11	33	71	657	1156	119	2051
Sheriff's Off.	12	1	3	1	13	90	84	10	202
Diboll	12	0	1	2	17	65	85	6	176
Lufkin	12	3	7	30	41	502	987	103	1673
ARANSAS CO		0	9	6	21	104	195	26	361
Sheriff's Off.	12	0	6	3	16	69	149	20	263
Rockport	12	0	3	3	5	35	46	6	98
ARCHER CO		0	0	0	3	30	41	7	81
Sheriff's Off.	12	0	0	0	3	30	41	7	81
Holliday	*								
ARMSTRONG CO		0	0	0	0	17	22	2	41
Sheriff's Off.	12	0	0	0	0	17	22	2	41
ATASCOSA CO		2	2	5	46	95	147	14	311
Sheriff's Off.	12	1	1	3	26	54	86	7	178
Pleasanton	12	1	1	2	20	41	61	7	133
Poteet	0								
AUSTIN CO		5	5	7	16	67	106	23	229
Sheriff's Off.	12	3	4	2	3	26	32	4	74
Bellville	12	0	0	0	0	5	16	3	24
Sealy	12	2	1	5	13	36	58	16	131
BAILEY CO		1	0	1	3	46	426	8	485
Sheriff's Off.	12	1	0	1	1	13	54	3	73
Muleshoe	12	0	0	0	2	33	372	5	412
BANDERA CO		0	3	1	9	81	43	10	147
Sheriff's Off.	12	0	3	1	9	81	43	10	147
BASTROP CO		5	1	6	27	177	211	26	453
Sheriff's Off.	12	3	1	1	9	91	70	6	181
Bastrop	0								
Elgin	12	1	0	2	10	39	69	9	130
Smithville	12	1	0	3	8	47	72	11	142
BAYLOR CO		0	0	0	4	41	94	6	145
Sheriff's Off.	12	0	0	0	4	41	94	6	145
Seymour	*								
BEE CO		5	1	3	18	173	220	49	469
Sheriff's Off.	12	0	0	0	1	41	35	8	85
Beeville	12	5	1	3	17	132	185	41	384
BELL CO		24	111	218	380	2601	4536	349	8219
Sheriff's Off.	12	4	8	19	76	318	326	38	789
Belton	12	2	8	10	17	188	319	17	561
Harker Heights	12	0	1	10	25	162	187	26	411
Killeen	12	15	79	135	209	1362	2145	167	4112
Morgans Point Resort	12	0	0	0	0	12	15	1	28
Nolanville	12	0	1	0	3	15	36	4	59
Temple	12	3	14	44	50	544	1508	96	2259
BEXAR CO		184	411	1801	2104	18333	33056	5011	60900
Sheriff's Off.	12	12	36	65	187	1279	1353	159	3091
Alamo Heights	12	1	0	3	4	51	189	11	259
Balcones Heights	12	0	1	8	4	58	383	39	493
Castle Hills	12	0	0	4	6	34	79	9	132

	Months On File	Murder	Rape	Robbery	Aggravated Assault	Burglary	Larceny	Motor Vehicle Theft	TOTAL CRIME INDEX
BEXAR CO continued									
Converse	12	0	0	0	1	31	55	7	94
Hollywood Park	12	0	0	1	2	10	20	4	37
Kirby	12	0	2	3	17	52	120	14	208
Leon Valley	12	0	0	10	4	73	296	32	415
Live Oak	12	0	2	2	1	54	90	15	164
Olmos Park	12	0	1	0	2	9	50	4	66
San Antonio	12	171	367	1689	1861	16502	29746	4645	54981
Selma	12	0	0	0	0	8	1	8	17
Terrell Hills	12	0	0	1	1	36	60	12	110
Universal City	12	0	2	5	9	108	297	36	457
UT Health Sci. Ctr.	12	0	0	0	1	0	78	3	82
UT San Antonio	12	0	0	0	0	0	116	1	117
Windcrest	12	0	0	10	4	28	123	12	177
BLANCO CO		0	0	2	2	29	19	3	55
Sheriff's Off.	12	0	0	2	1	24	17	3	47
Blanco	12	0	0	0	1	5	2	0	8
BORDEN CO		0	0	0	0	0	2	0	2
Sheriff's Off.	12	0	0	0	0	0	2	0	2
BOSQUE CO		1	1	0	6	72	50	9	139
Sheriff's Off.	12	0	0	0	0	60	31	4	95
Clifton	12	1	1	0	5	5	14	2	28
Valley Mills	12	0	0	0	1	7	5	3	16
BOWIE CO		9	29	58	186	661	2132	201	3276
Sheriff's Off.	12	3	2	8	3	166	241	36	459
De Kalb	12	0	0	1	2	11	22	2	38
Hooks	12	0	3	0	10	11	44	3	71
New Boston	12	0	0	0	0	12	30	0	42
Texarkana	12	6	22	47	168	443	1732	153	2571
Wake Village	12	0	2	2	3	18	63	7	95
BRAZORIA CO		16	41	59	291	1507	3219	441	5574
Sheriff's Off.	12	8	14	15	85	441	657	107	1327
Alvin	12	1	11	10	24	193	392	78	709
Angleton	12	1	3	3	29	84	234	26	380
Clute	12	0	2	2	17	117	336	40	514
Freeport	12	5	7	19	56	408	655	114	1264
Lake Jackson	12	0	2	2	7	110	499	35	655
Pearland	12	0	1	7	37	121	260	32	458
Richwood	12	0	0	1	9	7	25	3	45
Sweeny	12	1	0	0	3	11	96	3	114
West Columbia	12	0	1	0	24	15	65	3	108
BRAZOS CO		8	37	76	183	1491	3270	105	5170
Sheriff's Off.	12	2	1	2	36	125	104	10	280
Bryan	12	5	25	61	97	832	1525	22	2567
College Station	12	1	11	12	47	436	774	66	1347
Texas A&M Univ.	12	0	0	1	3	98	867	7	976
BRESTER CO		0	4	1	6	45	47	5	108
Sheriff's Off.	12	0	3	1	0	11	10	3	28
Alpine	12	0	1	0	4	14	19	2	40
Sul Ross Univ.	12	0	0	0	2	20	18	0	40
BRISCOE CO		0	0	0	0	13	10	2	25
Sheriff's Off.	12	0	0	0	0	13	10	2	25
BROOKS CO		3	1	1	7	99	70	6	187
Sheriff's Off.	12	0	1	1	7	25	10	2	46
Falfurrias	12	3	0	0	0	74	60	4	141
BROWN CO		2	8	15	47	284	720	79	1155
Sheriff's Off.	12	1	2	5	37	71	99	14	229
Bangs	12	0	0	1	0	1	3	1	6

	Months On File	Murder	Rape	Robbery	Aggravated Assault	Burglary	Larceny	Motor Vehicle Theft	TOTAL CRIME INDEX
BROWN CO continued									
Brownwood	12	1	6	9	10	212	618	64	920
BURLESON CO		0	2	0	15	80	82	11	190
Sheriff's Off.	12	0	2	0	10	69	60	8	149
Caldwell	12	0	0	0	5	11	22	3	41
BURNET CO		1	1	3	20	144	188	9	366
Sheriff's Off.	12	0	1	2	6	82	63	2	156
Bertram	12	0	0	0	1	7	12	0	20
Burnet	12	1	0	0	10	35	68	1	115
Marble Falls	12	0	0	1	3	20	45	6	75
CA DWELL CO		3	2	7	38	171	299	27	547
Sheriff's Off.	12	1	0	0	3	25	12	1	42
Lockhart	12	1	1	1	26	86	158	8	281
Luling	12	1	1	6	9	60	129	18	224
CALHOUN CO		3	2	7	30	161	338	29	570
Sheriff's Off.	12	2	0	2	3	60	113	10	190
Port Lavaca	12	1	2	5	27	101	225	19	380
CALLAHAN CO		0	3	2	8	73	68	10	164
Sheriff's Off.	12	0	3	2	8	73	68	10	164
CAMERON CO		12	49	139	607	3052	6067	1107	11033
Sheriff's Off.	12	0	10	8	114	415	318	85	950
Brownsville	12	7	30	109	301	1661	3452	779	6339
Harlingen	12	3	5	18	76	620	1756	189	2667
La Feria	12	1	0	1	6	30	21	1	60
Los Fresnos	12	0	1	0	0	21	6	5	33
Port Isabel	12	1	0	1	25	53	87	5	172
San Benito	12	0	0	2	73	201	351	29	656
South Padre Island	12	0	3	0	12	51	76	14	156
CAMP CO		4	6	6	19	104	79	12	230
Sheriff's Off.	12	2	4	4	14	57	38	5	124
Pittsburg	12	2	2	2	5	47	41	7	106
CARSON CO		1	1	2	2	16	31	8	61
Sheriff's Off.	12	1	1	2	2	16	31	8	61
CASS CO		0	2	9	26	217	128	28	410
Sheriff's Off.	12	0	1	6	9	143	64	12	235
Atlanta	12	0	1	3	17	74	64	16	175
CASTRO CO		1	1	7	23	77	161	7	277
Sheriff's Off.	12	1	0	2	3	38	64	3	111
Dimmitt	12	0	1	5	20	39	97	4	166
CHAMBERS CO		2	6	25	34	183	179	27	456
Sheriff's Off.	12	2	6	25	34	183	179	27	456
CHEROKEE CO		2	5	8	27	228	249	58	577
Sheriff's Off.	12	0	2	1	17	75	84	20	199
Jacksonville	12	2	0	7	9	130	162	35	345
Rusk	12	0	3	0	1	23	3	3	33
CHILDRESS CO		0	0	1	12	21	35	9	78
Sheriff's Off.	12	0	0	0	4	4	11	2	21
Childress	12	0	0	1	8	17	24	7	57
CLAY CO		0	2	5	8	76	174	11	276
Sheriff's Off.	12	0	2	5	8	76	174	11	276
Henrietta	*								
COCHRAN CO		1	1	0	19	36	78	8	143
Sheriff's Off.	12	0	0	0	2	19	40	3	64
Morton	12	1	1	0	17	17	38	5	79
COKE CO		0	0	0	0	29	20	2	51
Sheriff's Off.	12	0	0	0	0	29	20	2	51
COLEMAN CO		0	1	4	14	70	114	2	205
Sheriff's Off.	12	0	0	2	3	33	52	2	92

	Months On File	Murder	Rape	Robbery	Aggravated Assault	Burglary	Larceny	Motor Vehicle Theft	TOTAL CRIME INDEX
COLEMAN CO continued									
Coleman	12	0	1	2	11	37	62	0	113
COLLIN CO		3	18	34	133	1548	2629	193	4558
Sheriff's Off.	12	0	0	1	13	183	172	13	382
Allen	12	0	0	0	5	49	79	2	135
Farmersville	12	1	0	1	6	16	35	2	61
McKinney	12	2	7	8	45	381	604	52	1099
Plano	12	0	10	24	58	862	1667	118	2739
Princeton	12	0	1	0	2	11	13	1	28
Wylie	12	0	0	0	4	46	59	5	114
COLLINGSWORTH CO		0	2	0	1	23	29	4	59
Sheriff's Off.	12	0	2	0	1	23	29	4	50
Wellington	*								
COLORADO CO		2	2	3	19	56	38	8	128
Sheriff's Off.	12	2	2	3	19	56	38	8	128
Columbus	*								
Eagle Lake	0								
COMAL CO		4	9	27	53	357	748	49	1247
Sheriff's Off.	12	1	3	1	1	107	124	6	243
New Braunfels	12	3	6	26	52	250	624	43	1004
COMANCHE CO		1	4	0	20	79	92	13	209
Sheriff's Off.	12	1	3	0	18	58	61	10	151
Comanche	12	0	1	0	2	21	31	3	58
CONCHO CO		0	1	0	2	26	37	2	68
Sheriff's Off.	12	0	1	0	2	26	37	2	68
COOKE CO		0	3	9	34	296	468	52	762
Sheriff's Off.	12	0	1	6	5	94	145	5	256
Gainesville	12	0	2	3	29	202	323	47	606
CORYELL CO		1	6	8	40	265	619	38	977
Sheriff's Off.	12	0	0	0	1	33	50	2	86
Copperas Cove	12	1	6	8	14	188	455	30	702
Fort Gates	12	0	0	0	2	2	4	1	9
Gatesville	12	0	0	0	23	42	110	5	180
COTTLE CO		0	1	2	5	7	0	5	20
Sheriff's Off.	12	0	1	2	5	7	0	5	20
Paducah	12	0	0	0	0	0	0	0	0
CRANE CO									
Sheriff's Off.	0								
Crane	0								
CROCKETT CO		2	2	2	15	27	100	12	160
Sheriff's Off.	12	2	2	2	15	27	100	12	160
CROSBY CO		1	0	0	6	34	51	7	99
Sheriff's Off.	12	1	0	0	6	34	51	7	99
Crosbyton	*								
Lorenzo	*								
Ralls	*								
CULBERSON CO		0	0	0	3	18	20	6	47
Sheriff's Off.	12	0	0	0	2	17	16	6	41
Van Horn	06	0	0	0	1	1	4	0	6
DALLAM CO		0	1	0	17	67	104	19	208
Sheriff's Off.	12	0	0	0	0	14	32	5	51
Dalhart	12	0	1	0	17	53	72	14	157
DALLAS CO		359	1151	4951	6973	36760	71693	10467	132354
Sheriff's Off.	12	6	18	21	66	481	437	61	1090
Addison	12	0	3	6	11	121	332	52	525
Balch Springs	12	2	1	2	30	146	343	38	562
Carrollton	12	0	10	14	18	538	1121	124	1825
Cedar Hill	12	1	0	2	24	92	178	23	320

DALLAS CO continued	Months On File	Murder	Rape	Robbery	Aggravated Assault	Burglary	Larceny	Motor Vehicle Theft	TOTAL CRIME INDEX
Cockrell Hill	12	0	2	4	5	54	104	17	186
Coppell	12	0	0	1	4	29	53	1	88
Dallas	12	307	983	4456	5707	26442	48019	7847	93761
Desoto	12	1	2	4	8	158	272	33	478
Duncanville	12	6	5	7	33	353	871	68	1343
Eastfield College	12	0	0	0	0	11	100	0	111
Farmers Branch	12	2	1	17	18	464	871	108	1481
Garland	12	10	36	95	123	1997	3844	310	6415
Grand Prairie	12	7	31	81	259	1402	3035	485	5300
Highland Park	12	0	0	10	2	57	296	15	380
Hutchins	12	0	1	2	0	36	56	4	99
Irving	12	10	28	108	462	1898	5180	709	8395
Kleburg	*								
Lancaster	12	0	2	12	67	178	278	59	596
Mesquite	12	5	15	51	90	789	2573	284	3807
Richardson	12	0	9	50	20	1171	2605	174	4029
Rowlett	12	1	1	0	8	94	142	9	255
Seagoville	*								
Southern Meth. Univ.	12	0	1	1	10	24	314	3	353
University Park	12	1	2	7	8	199	535	42	794
UT Med School	12	0	0	0	0	7	88	1	96
UT Dallas	12	0	0	0	0	1	43	0	44
Wilmer	12	0	0	0	0	18	3	0	21
DAWSON CO		1	1	3	31	75	294	23	428
Sheriff's Off.	12	0	1	0	2	17	55	3	78
Lamesa	12	1	0	3	29	58	239	20	350
DEAF SMITH CO		3	3	6	114	244	365	24	759
Sheriff's Off.	12	0	1	2	9	54	160	17	243
Hereford	12	3	2	4	105	190	205	7	516
DELTA CO		1	2	0	4	23	4	3	37
Sheriff's Off.	12	1	2	0	4	23	4	3	37
DENTON CO		9	24	41	137	1138	2965	336	4650
Sheriff's Off.	12	4	6	10	31	266	259	38	614
Denton	12	5	9	19	40	338	1193	165	1769
Flower Mound	12	0	0	2	8	43	44	8	105
Lake Dallas	12	0	0	0	9	43	66	20	138
Lewisville	12	0	6	8	27	314	1014	91	1460
North Tex. St. Univ.	12	0	1	1	2	41	197	3	245
Pilot Point	12	0	2	0	4	3	11	0	20
Texas Woman's Univ.	02	0	0	0	0	0	11	0	11
The Colony	12	0	0	1	16	90	170	11	288
DEWITT CO		0	1	3	17	111	176	13	321
Sheriff's Off.	12	0	0	0	1	41	23	3	68
Cuero	12	0	1	3	13	66	150	7	240
Yorktown	12	0	0	0	3	4	3	3	13
DICKENS CO		4	0	0	5	13	11	5	38
Sheriff's Off.	12	2	0	0	2	1	5	1	11
Spur	12	2	0	0	3	12	6	4	27
DIMMIT CO		2	0	0	9	41	42	5	99
Sheriff's Off.	12	2	0	0	9	41	42	5	99
Carrizo Springs	*								
DONLEY CO		0	0	1	2	14	17	3	37
Sheriff's Off.	12	0	0	1	1	6	1	3	12
Clarendon	12	0	0	0	1	8	16	0	25
DUVAL CO		1	1	0	16	59	32	8	117
Sheriff's Off.	12	1	1	0	9	28	8	5	52
Benavidez	*								

DUVAL CO continued	Months On File	Murder	Rape	Robbery	Aggravated Assault	Burglary	Larceny	Motor Vehicle Theft	TOTAL CRIME INDEX
Freer	12	0	0	0	7	31	24	3	65
San Diego	*								
EASTLAND CO		2	3	6	17	181	196	24	429
Sheriff's Off.	12	1	2	3	7	56	76	13	158
Cisco	12	0	0	3	5	64	74	3	149
Eastland	12	0	1	0	1	10	17	4	33
Ranger	12	1	0	0	4	51	29	4	89
ECTOR CO		20	25	128	239	1895	4887	527	7721
Sheriff's Off.	12	6	6	16	27	313	632	89	1089
Odessa	12	14	19	112	211	1578	4241	438	6613
UT Permian Basin	12	0	0	0	1	4	14	0	19
EDWARDS CO		0	0	0	4	4	4	0	9
Sheriff's Off.	12	0	0	0	4	4	1	0	9
ELLIS CO		4	9	21	113	506	937	86	1676
Sheriff's Off.	12	3	6	14	59	225	193	18	518
Ennis	12	1	3	4	35	117	290	32	482
Midlothian	12	0	0	0	3	34	40	2	79
Red Oak	12	0	0	0	2	10	45	1	58
Waxahachie	12	0	0	3	14	120	369	33	539
EL PASO CO		37	187	824	1320	6412	16033	2667	27530
Sheriff's Off.	12	4	12	11	90	267	343	63	790
Anthony	12	0	0	0	3	23	63	11	100
El Paso	12	33	175	813	1224	6088	15521	2585	26439
UT El Paso	12	0	0	0	3	34	156	8	201
ERATH CO		0	0	3	9	151	315	21	499
Sheriff's Off.	12	0	0	1	0	45	60	5	111
Dublin	12	0	0	0	2	10	19	0	31
Stephenville	12	0	0	2	7	96	236	16	357
FALLS CO		1	2	10	29	87	84	4	217
Sheriff's Off.	12	1	1	2	17	41	48	4	114
Marlin	12	0	0	7	11	37	26	0	81
Rosebud	12	0	1	1	1	9	10	0	22
FANNIN CO		5	3	1	18	133	194	17	371
Sheriff's Off.	12	5	2	1	10	91	44	6	159
Bonham	12	0	1	0	8	42	150	11	212
FAYETTE CO		2	0	2	2	47	33	7	93
Sheriff's Off.	12	2	0	2	2	47	33	7	93
La Grange	*								
FISHER CO		2	1	2	8	25	28	4	70
Sheriff's Off.	12	0	1	1	3	8	18	2	33
Rotan	12	2	0	1	5	17	10	2	37
FLOYD CO		0	0	2	3	62	127	9	203
Sheriff's Off.	12	0	0	2	1	52	92	8	155
Floydada	*								
Lockney	12	0	0	0	2	10	35	1	48
FOARD CO		0	0	0	0	7	10	4	21
Sheriff's Off.	12	0	0	0	0	7	10	4	21
FORT BEND CO		18	31	69	210	1258	1713	212	3511
Sheriff's Off.	12	10	19	28	77	575	689	75	1473
Missouri City	12	0	0	6	29	252	247	30	564
Needville	12	0	0	1	2	11	17	1	32
Richmond	12	2	4	6	45	137	162	22	378
Rosenburg	12	6	5	22	43	167	438	52	733
Stafford	12	0	2	5	9	94	134	25	269
Sugarland	12	0	1	1	5	22	26	7	62
FRANKLIN CO		1	0	2	7	40	69	3	122
Sheriff's Off.	12	1	0	2	7	40	69	3	122

	Months On File	Murder	Rape	Robbery	Aggravated Assault	Burglary	Larceny	Motor Vehicle Theft	TOTAL CRIME INDEX
FREESTONE CO		0	4	3	61	149	156	27	400
Sheriff's Off.	12	0	4	3	61	149	156	27	400
Teague	*								
FRIO CO		2	0	1	38	80	94	11	226
Sheriff's Off.	12	2	0	1	15	53	81	9	161
Pearsall	12	0	0	0	23	27	13	2	65
GAINES CO		0	1	2	11	78	263	33	388
Sheriff's Off.	12	0	1	1	2	32	143	15	194
Seagraves	12	0	0	0	1	14	10	11	36
Seminole	12	0	0	1	8	32	110	7	158
GALVESTON CO		33	120	369	883	3943	6024	1195	12567
Sheriff's Off.	12	6	11	17	64	459	577	163	1297
Friendswood	12	0	0	3	17	121	193	22	356
Galveston	12	24	78	264	630	1817	2661	607	6081
Hitchcock	12	0	1	2	11	84	57	14	169
Jamaica Beach	12	0	0	0	2	12	7	0	21
La Marque	12	0	1	12	3	214	157	29	416
League City	12	0	3	13	16	251	559	61	903
Texas A&M Univ. Galveston	12	0	0	0	0	0	1	0	1
Texas City	12	3	25	58	135	985	1705	295	3206
UT Galveston	12	0	1	0	5	0	107	4	117
GARZA CO		2	1	6	10	27	20	5	71
Sheriff's Off.	12	2	1	6	10	27	20	5	71
Post	*								
GILLESPIE CO		0	0	1	6	46	101	7	161
Sheriff's Off.	12	0	0	1	1	21	41	4	68
Fredricksburg	12	0	0	0	5	25	60	3	93
GLASSCOCK CO		0	0	0	2	0	3	0	5
Sheriff's Off.	12	0	0	0	2	0	3	0	5
GOLIAD CO		0	0	1	11	55	42	4	113
Sheriff's Off.	12	0	0	1	11	55	42	4	113
GONZALES CO		2	4	4	17	119	252	1	399
Sheriff's Off.	12	0	1	3	1	51	84	0	140
Gonzales	12	2	3	1	16	68	168	1	259
GRAY CO		1	7	15	146	243	693	80	1185
Sheriff's Off.	12	0	0	0	0	22	45	9	76
Pampa	12	1	7	15	146	221	648	71	1109
GRAYSON CO		6	15	55	121	1280	2641	250	4368
Sheriff's Off.	12	1	4	5	32	295	357	38	732
Collinsville	*								
Denison	12	3	8	23	32	416	1095	73	1650
Pottsboro	*								
Sherman	12	2	3	27	56	560	1183	135	1966
Van Alstyne	*								
Whitesboro	12	0	0	0	1	9	6	4	20
GREGG CO		19	22	99	174	1482	2480	386	4662
Sheriff's Off.	12	1	4	10	73	234	226	68	616
Gladewater	12	0	1	7	10	114	304	42	478
Kilgore	12	7	0	4	10	260	443	40	764
Longview	12	11	17	78	81	851	1426	219	2683
White Oak	12	0	0	0	0	23	81	17	121
GRIMES CO		4	2	6	14	165	143	16	350
Sheriff's Off.	12	3	1	1	2	91	86	7	191
Navasota	12	1	1	5	12	74	57	9	159
GUADALUPE CO		3	12	24	131	414	968	53	1605
Sheriff's Off.	12	2	5	5	20	131	123	4	290

	Months On File	Murder	Rape	Robbery	Aggravated Assault	Burglary	Larceny	Motor Vehicle Theft	TOTAL CRIME INDEX
GUADALUPE CO continued									
Schertz	12	0	1	0	10	59	166	10	246
Seguin	12	1	6	19	101	224	679	39	1069
HALE CO		6	6	27	66	292	909	99	1405
Sheriff's Off.	12	2	1	4	12	69	100	16	204
Abernathy	*								
Plainview	12	4	5	23	54	223	809	83	1201
HALL CO		0	1	3	4	27	26	4	65
Sheriff's Off.	12	0	0	0	1	12	9	1	23
Memphis	12	0	1	3	3	15	17	3	42
HAMILTON CO		0	0	1	9	44	62	5	121
Sheriff's Off.	12	0	0	1	7	32	41	2	83
Hamilton	12	0	0	0	2	12	21	3	38
HANSFORD CO		0	1	0	3	32	57	5	98
Sheriff's Off.	12	0	0	0	1	22	26	4	53
Gruver	12	0	1	0	0	3	1	1	6
Spearman	12	0	0	0	2	7	30	0	39
HARDEMAN CO		0	0	1	6	15	13	4	39
Sheriff's Off.	12	0	0	0	1	2	2	0	5
Quanah	12	0	0	1	5	13	11	4	34
HARDIN CO		3	3	4	34	155	236	28	463
Sheriff's Off.	0								
Kountze	12	0	2	2	11	75	83	11	184
Silsbee	12	3	1	2	23	80	153	17	279
HARRIS CO		739	1727	10312	4069	60726	71756	29315	178644
Sheriff's Off.	12	61	129	570	523	6969	7670	2614	18536
Baytown	12	8	39	80	391	1048	2073	374	4013
Bellaire	12	0	0	22	12	190	352	59	635
Deer Park	12	0	1	12	4	123	87	52	279
Galena Park	12	0	1	9	2	92	138	32	274
Hedwig Village	12	0	1	14	3	42	205	32	297
Houston	12	654	1481	9311	2770	48952	54008	24572	141748
Humble	12	1	0	14	3	164	279	129	590
Jacinto City	12	0	0	20	9	100	308	55	492
Katy	12	0	0	1	8	59	132	9	209
La Porte	12	1	4	1	14	158	331	57	566
Nassau Bay	12	1	3	4	5	44	132	12	201
Pasadena	12	9	52	148	200	1816	3675	986	6886
Seabrook	12	0	1	2	6	100	260	15	384
Spring Valley	12	0	1	0	4	114	71	9	199
South Houston	12	3	6	47	27	301	335	162	881
Southside Place	12	0	0	10	2	12	69	5	98
Spring Valley	12	0	1	0	4	114	71	9	199
Tomball	12	0	2	3	36	76	204	27	348
Univ. of Houston	12	0	0	18	14	36	536	47	651
Univ. of Houston Clearlake	11	0	0	0	0	0	25	0	25
Univ. of Houston (Downtown)	12	0	0	0	1	12	54	0	67
UT Houston	12	0	0	2	2	1	259	7	271
Village	12	0	1	3	15	145	161	15	340
Webster	12	0	0	8	11	92	195	32	338
West Univ. Place	12	1	5	13	7	80	197	13	316
HARRISON CO		8	7	26	45	498	733	84	1401
Sheriff's Off.	12	6	3	8	21	224	151	31	444
Marshall	12	2	4	18	24	274	582	53	957
HARTLEY CO		0	0	0	0	7	19	4	30
Sheriff's Off.	12	0	0	0	0	7	19	4	30
HASKELL CO		1	0	0	4	33	12	6	56
Sheriff's Off.	12	0	0	0	1	25	12	5	43
Haskell	12	1	0	0	3	8	0	1	13

	Months On File	Murder	Rape	Robbery	Aggravated Assault	Burglary	Larceny	Motor Vehicle Theft	TOTAL CRIME INDEX
HAYS CO		3	14	37	84	743	1314	82	2277
Sheriff's Off.	12	0	3	7	21	193	127	14	365
San Marcos	12	3	9	30	58	430	970	64	1564
Southwest Tex. Univ.	12	0	2	0	5	120	217	4	348
HEMPHILL CO		2	2	0	2	34	121	22	183
Sheriff's Off.	12	2	2	0	2	34	121	22	183
Canadian	*								
HENDERSON CO		2	2	7	79	475	543	63	1171
Sheriff's Off.	12	1	0	3	33	197	78	13	325
Athens	12	0	2	3	34	242	410	42	733
Gun Barrel City	12	0	0	0	6	9	7	2	24
Malakoff	12	1	0	0	4	24	37	1	67
Seven Points	12	0	0	1	2	3	11	5	22
HIDALGO CO		6	21	67	347	3353	6318	615	10727
Sheriff's Off.	12	1	4	10	25	377	280	30	727
Alamo	12	0	0	0	13	49	76	5	143
Donna	12	0	1	1	3	138	72	15	230
Edcouch	12	0	1	0	9	26	24	6	66
Edinburg	12	0	4	4	70	263	638	50	1029
Elsa	12	0	0	0	1	51	32	2	86
Hidalgo	12	0	0	0	1	27	145	3	176
La Joya	12	0	0	0	0	6	0	0	6
La Villa	12	0	1	0	2	10	6	0	19
McAllen	12	2	2	27	86	1087	2576	327	4107
Mercedes	12	0	2	2	2	107	150	7	270
Mission	12	1	0	10	48	488	759	44	1350
Pan American Univ.	12	0	0	0	3	7	60	6	76
Pharr	12	0	3	4	43	302	748	64	1164
San Juan	12	0	0	2	11	142	195	11	361
Weslaco	12	2	3	7	30	273	557	45	917
HILL CO		1	5	3	15	177	273	25	499
Sheriff's Off.	12	1	1	0	6	80	119	8	215
Covington	*								
Hillsboro	12	0	4	3	9	97	154	17	284
HOCKLEY CO		0	3	3	54	261	429	43	793
Sheriff's Off.	12	0	1	3	5	76	86	18	189
Levelland	12	0	2	0	49	185	343	25	604
HOOD CO		2	1	2	17	162	267	38	489
Sheriff's Off.	12	2	1	2	7	132	138	25	307
Granbury	12	0	0	0	10	30	129	13	182
HOPKINS CO		1	4	16	114	266	621	53	1075
Sheriff's Off.	12	0	2	3	8	85	137	10	245
Sulphur Springs	12	1	2	13	106	181	484	43	830
HOUSTON CO		1	0	3	23	106	114	20	267
Sheriff's Off.	0								
Crockett	12	1	0	3	23	106	114	20	267
HOWARD CO		7	5	24	290	399	964	100	1789
Sheriff's Off.	12	2	0	2	4	13	26	10	57
Big Spring	12	5	5	22	286	386	938	90	1732
HUDSPETH CO		1	0	2	1	25	33	4	66
Sheriff's Off.	12	1	0	2	1	25	33	4	66
HUNT CO		6	14	23	330	730	1503	119	2725
Sheriff's Off.	12	1	7	4	24	191	151	29	407
Celeste	0								
Commerce	12	0	3	4	15	59	179	25	285
East Tex. St. Univ.	12	0	0	0	1	23	77	0	101
Greenville	12	5	4	15	290	457	1096	65	1932

	Months On File	Murder	Rape	Robbery	Aggravated Assault	Burglary	Larceny	Motor Vehicle Theft	TOTAL CRIME INDEX
HUTCHINSON CO		4	6	7	20	191	522	53	803
Sheriff's Off.	12	2	2	1	8	56	108	20	197
Borger	12	2	4	6	12	125	389	31	569
Stinnett	12	0	0	0	0	10	25	2	37
IRION CO		0	0	0	0	0	9	0	9
Sheriff's Off.	12	0	0	0	0	0	9	0	9
JACK CO		0	1	1	1	60	62	15	140
Sheriff's Off.	12	0	0	0	0	14	32	5	51
Jacksboro	12	0	1	1	1	46	30	10	89
JACKSON CO		1	1	2	12	37	108	11	172
Sheriff's Off.	12	0	1	1	4	16	54	3	79
Edna	12	1	0	1	8	21	54	8	93
JASPER CO		2	2	2	44	143	380	37	610
Sheriff's Off.	12	2	2	2	7	94	140	18	265
Jasper	12	0	0	0	37	45	239	19	340
Kirbyville	1	0	0	0	0	4	1	0	5
JEFF DAVIS CO		0	0	0	1	1	2	0	4
Sheriff's Off.	12	0	0	0	1	1	2	0	4
JEFFERSON CO		34	133	526	894	4827	8568	966	15948
Sheriff's Off.	12	3	5	12	51	199	364	49	683
Beaumont	12	17	92	327	685	3049	5255	625	10050
Groves	12	0	3	3	5	146	195	32	384
Lakeview	*								
Lamar Univ.	12	0	2	0	3	35	261	4	305
Nederland	12	1	4	12	14	256	378	38	703
Port Arthur	12	13	21	160	127	1019	1762	182	3284
Port Neches	12	0	6	12	9	123	353	36	539
JIM HOGG CO		0	0	0	0	1	0	0	1
Sheriff's Off.	12	0	0	0	0	1	0	0	1
JIM WELLS CO		1	6	19	222	421	757	79	1505
Sheriff's Off.	12	0	0	8	52	89	81	24	254
Alice	12	1	6	10	162	294	670	51	1194
Premont	12	0	0	1	8	38	6	4	57
JOHNSON CO		0	4	6	40	495	1360	160	2065
Sheriff's Off.	12	0	1	1	14	199	144	39	398
Alvarado	12	0	0	1	4	28	51	11	95
Burleson	12	0	2	3	3	97	459	39	603
Cleburne	12	0	1	1	18	140	623	53	836
Joshua	12	0	0	0	0	12	23	9	44
Keene	12	0	0	0	1	19	60	9	89
JONES CO		2	5	4	18	62	189	7	287
Sheriff's Off.	12	1	4	1	5	17	49	1	78
Anson	12	1	0	1	4	11	7	0	24
Hamlin	12	0	1	1	6	16	48	0	72
Stamford	12	0	0	1	3	18	85	6	113
KARNES CO		1	0	3	18	51	64	10	147
Sheriff's Off.	12	1	0	3	18	51	64	10	147
Karnes City	*								
Kenedy	*								
KAUFMAN CO		7	4	24	44	250	514	44	887
Sheriff's Off.	11	5	0	4	1	86	77	7	180
Kaufman	10	1	0	1	3	26	19	6	56
Kemp	12	0	0	0	3	10	4	1	18
Terrell	12	1	4	19	37	128	414	30	633
KENDALL CO		0	1	0	0	32	1	5	39
Sheriff's Off.	12	0	1	0	0	32	1	5	39

	Months On File	Murder	Rape	Robbery	Aggravated Assault	Burglary	Larceny	Motor Vehicle Theft	TOTAL CRIME INDEX
KENEDY CO		0	0	0	0	0	1	1	2
Sheriff's Off.	12	0	0	0	0	0	1	1	2
KENT CO		0	0	0	0	4	0	0	4
Sheriff's Off.	12	0	0	0	0	4	0	0	4
KERR CO		2	3	8	54	225	497	18	807
Sheriff's Off.	12	0	1	1	14	72	80	5	173
Kerrville	12	2	2	7	40	153	417	13	634
KIMBLE CO		1	0	1	2	21	9	7	41
Sheriff's Off.	12	1	0	1	2	21	9	7	41
KING CO		0	0	0	0	3	1	1	5
Sheriff's Off.	12	0	0	0	0	3	1	1	5
KINNEY CO		0							
Sheriff's Off.	0								
KLEBERG CO		5	7	35	55	491	950	48	1591
Sheriff's Off.	12	2	1	1	2	67	60	7	140
Kingsville	12	3	6	34	53	424	890	41	1451
KNOX CO		0	0	0	2	18	18	5	43
Sheriff's Off.	12	0	0	0	0	12	12	5	29
Knox City	*								
Munday	12	0	0	0	2	6	6	0	14
LAMAR CO		7	9	38	374	468	1295	107	2298
Sheriff's Off.	12	0	0	1	6	88	101	3	199
Paris	12	7	9	37	368	380	1194	104	2099
LAMB CO		1	0	1	15	241	257	17	532
Sheriff's Off.	12	1	0	1	2	47	67	4	122
Littlefield	12	0	0	0	10	183	169	9	371
Olton	12	0	0	0	3	11	21	4	39
LAMPASAS CO		1	5	1	20	75	155	14	271
Sheriff's Off.	12	1	4	1	15	50	33	7	111
Lampasas	12	0	1	0	5	25	122	7	160
LA SALLE CO		0	2	2	12	37	6	8	67
Sheriff's Off.	12	0	2	2	12	37	6	8	67
Cotulla	*								
LAVACA CO		1	2	4	7	116	142	3	275
Sheriff's Off.	12	0	1	2	1	28	17	0	49
Hallettsville	12	0	1	0	3	22	48	1	75
Yoakum	12	1	0	2	3	66	77	2	151
LEE CO		1	3	1	10	67	70	20	172
Sheriff's Off.	12	1	2	1	10	63	67	20	164
Giddings	0								
Lexington	10	0	1	0	0	4	3	0	8
LEON CO		2	0	0	2	75	27	7	113
Sheriff's Off.	12	2	0	0	2	75	27	7	113
LIBERTY CO		8	7	16	104	391	707	118	1351
Sheriff's Off.	12	5	2	4	22	169	246	31	479
Cleveland	12	2	0	5	19	92	156	42	316
Dayton	12	1	0	1	13	21	53	10	99
Liberty	12	0	5	6	50	109	252	35	457
LIMESTONE CO		4	2	5	52	205	299	29	596
Sheriff's Off.	12	1	2	2	8	81	69	14	177
Groesbeck	12	0	0	0	10	43	61	3	117
Mexia	12	3	0	3	34	81	169	12	302
LIPSCOMB CO		0	0	0	3	9	19	1	32
Sheriff's Off.	12	0	0	0	3	9	19	1	32
LIVE OAK CO		2	0	2	8	83	101	7	203
Sheriff's Off.	12	2	0	2	8	83	101	7	203

	Months On File	Murder	Rape	Robbery	Aggravated Assault	Burglary	Larceny	Motor Vehicle Theft	TOTAL CRIME INDEX
LLANO CO		1	0	1	0	47	47	5	101
Sheriff's Off.	12	1	0	1	0	47	47	5	101
Llano	*								
LOVING CO		0	0	0	0	0	6	0	6
Sheriff's Off.	12	0	0	0	0	0	6	0	6
LUBBOCK CO		45	140	239	789	4687	8354	887	15141
Sheriff's Off.	12	11	12	4	47	318	239	55	686
Idalou	12	0	0	0	1	5	16	2	24
Lubbock	12	31	127	232	711	4150	7294	787	13332
Shallowater	12	0	0	0	0	11	0	1	12
Slaton	12	3	0	1	19	88	210	35	356
Texas Tech Univ.	12	0	1	2	11	115	595	7	731
LYNN CO		0	0	0	5	29	13	2	49
Sheriff's Off.	12	0	0	0	5	29	13	2	49
Tahoka	*								
MCCULLOCH CO		3	0	0	6	72	112	14	207
Sheriff's Off.	12	3	0	0	2	27	46	8	86
Brady	12	0	0	0	4	45	66	6	121
MCLENNAN CO		8	48	198	563	2857	6202	547	10423
Sheriff's Off.	12	0	6	17	62	188	175	43	491
Baylor Univ.	12	0	0	0	3	27	159	5	194
Bellmead	12	0	1	4	17	105	251	26	404
Beverly Hills	12	0	0	0	2	24	18	13	57
Hewitt	12	0	0	0	2	11	47	2	62
Lacy-Lakeview	12	1	1	1	3	14	121	6	147
McGregor	12	0	0	0	0	23	8	3	34
Mart	12	0	1	0	7	11	19	3	41
Northcrest	12	0	0	0	8	17	40	2	67
Robinson	12	0	0	1	7	31	74	5	118
Tex. St. Tech. Inst.	11	0	1	1	3	29	133	7	174
Waco	12	7	38	171	444	2293	5001	421	8375
West	12	0	0	1	3	10	32	1	47
Woodway	12	0	0	2	2	74	124	10	212
MCMULLEN CO		0	0	0	0	0	0	0	0
Sheriff's Off.	12	0	0	0	0	0	0	0	0
MADISON CO		3	0	2	33	69	124	19	250
Sheriff's Off.	12	3	0	0	15	42	34	10	104
Madisonville	12	0	0	2	18	27	90	9	146
MARION CO		5	2	4	20	145	97	16	289
Sheriff's Off.	12	3	1	3	16	97	61	13	194
Jefferson	12	2	1	1	4	48	36	3	95
MARTIN CO		0	2	1	5	17	59	4	88
Sheriff's Off.	12	0	2	1	5	17	59	4	88
MASON CO		1	0	0	2	12	7	5	27
Sheriff's Off.	12	1	0	0	2	12	7	5	27
MATAGORDA CO		6	8	18	232	386	936	107	1693
Sheriff's Off.	12	1	1	0	30	129	196	23	380
Bay City	12	4	3	17	201	203	690	78	1196
Palacios	12	1	4	1	1	54	50	6	117
MAVERICK CO		0	1	1	32	108	674	31	847
Sheriff's Off.	0								
Eagle Pass	12	0	1	1	32	108	674	31	847
MEDINA CO		3	4	2	69	146	212	17	453
Sheriff's Off.	12	2	1	1	11	52	27	2	96
Devine	12	1	1	0	10	36	58	8	114
Hondo	12	0	2	1	48	58	127	7	243

	Months On File	Murder	Rape	Robbery	Aggravated Assault	Burglary	Larceny	Motor Vehicle Theft	TOTAL CRIME INDEX
MENARD CO		0	0	0	2	7	6	1	16
Sheriff's Off.	12	0	0	0	2	7	6	1	16
MIDLAND CO		9	20	37	260	1013	1370	375	3084
Sheriff's Off.	12	2	5	2	55	206	263	67	600
Midland	12	7	15	35	205	807	1107	308	2484
MILAM CO		7	2	6	38	150	290	20	513
Sheriff's Off.	12	4	2	3	3	51	50	6	119
Cameron	12	3	0	1	18	50	157	8	237
Rockdale	12	0	0	2	17	49	83	6	157
MILLS CO		0	0	0	2	23	11	4	40
Sheriff's Off.	12	0	0	0	2	23	11	4	40
MITCHELL CO		0	1	1	13	59	117	9	200
Sheriff's Off.	12	0	0	0	0	24	19	1	44
Colorado City	12	0	1	1	13	35	98	8	156
MONTAGUE CO		4	0	2	13	181	220	24	444
Sheriff's Off.	12	3	0	1	2	77	82	10	175
Bowle	12	1	0	1	11	69	101	14	197
Nocona	12	0	0	0	0	35	37	0	72
Saint Jo	*								
MONTGOMERY CO		16	14	63	126	1406	1688	442	3755
Sheriff's Off.	12	11	12	38	105	1185	1076	326	2753
Conroe	12	5	2	25	21	221	612	116	1002
MOORE CO		2	0	1	5	83	249	23	363
Sheriff's Off.	12	2	0	1	3	36	56	13	111
Dumas	12	0	0	0	2	47	193	10	252
MORRIS CO		3	2	5	27	112	152	9	310
Sheriff's Off.	12	3	1	3	15	59	69	0	150
Dalingerfield	12	0	0	1	11	42	71	9	134
Lone Star	12	0	0	1	0	9	12	0	22
Naples	12	0	1	0	1	2	0	0	4
MOTLEY CO		0	0	0	0	0	4	1	5
Sheriff's Off.	12	0	0	0	0	0	4	1	5
NACOGDOCHES CO		4	13	28	61	307	795	74	1282
Sheriff's Off.	12	0	1	5	16	97	129	12	260
Nacogdoches	12	4	10	22	39	185	491	60	811
Stephen F. Austin	12	0	2	1	6	25	175	2	211
NAVARRO CO		4	12	16	129	693	956	76	1886
Sheriff's Off.	12	1	5	5	25	120	140	11	307
Corsicana	12	3	7	11	104	573	816	65	1579
NEWTON CO		0	4	1	10	85	10	10	129
Sheriff's Off.	12	0	4	1	10	85	19	10	129
NOLAN CO		1	4	4	102	273	372	28	784
Sheriff's Off.	12	0	3	0	7	19	32	1	62
Roscoe	*								
Sweetwater	12	1	1	4	95	254	340	27	722
NUECES CO		32	174	513	1031	6062	9747	1504	19063
Sheriff's Off.	12	2	17	22	63	187	365	74	730
Bishop	12	0	0	0	0	15	18	3	36
Corpus Christi	12	28	155	476	930	5553	9028	1374	17544
Robstown	12	2	1	14	38	276	196	34	561
Port Aransas	12	0	1	1	0	31	140	19	192
OCHILTREE CO		1	3	0	3	96	167	25	295
Sheriff's Off.	12	0	2	0	0	15	33	4	54
Perryton	12	1	1	0	3	81	134	21	241
OLDHAM CO		0	0	2	1	14	20	3	40
Sheriff's Off.	12	0	0	2	1	14	20	3	40

	Months On File	Murder	Rape	Robbery	Aggravated Assault	Burglary	Larceny	Motor Vehicle Theft	TOTAL CRIME INDEX
ORANGE CO		6	27	66	259	1230	2110	256	3954
Sheriff's Off.	12	3	7	13	57	473	326	62	941
Bridge City	12	0	4	1	3	67	153	15	243
Orange	12	1	15	44	171	480	999	114	1824
Vidor	12	2	0	7	22	133	438	49	651
West Orange	12	0	1	1	6	77	194	16	295
PALO PINTO CO		3	2	9	34	319	630	25	1022
Sheriff's Off.	12	1	2	4	11	93	96	6	213
Mineral Wells	12	2	0	5	23	226	534	19	809
PANOLA CO		6	3	5	39	116	190	22	381
Sheriff's Off.	12	6	3	4	28	74	128	15	258
Carthage	12	0	0	1	11	42	62	7	123
PARKER CO		1	8	19	91	438	770	105	1432
Sheriff's Off.	12	1	4	7	57	290	276	50	685
Weatherford	12	0	4	12	34	148	494	55	747
PARMER CO		0	4	1	8	57	174	10	254
Sheriff's Off.	12	0	2	1	5	34	92	8	142
Friona	12	0	2	0	3	23	82	2	112
PECOS CO		2	4	7	33	157	234	31	468
Sheriff's Off.	12	2	3	2	12	36	46	11	112
Fort Stockton	12	0	1	5	21	121	188	20	356
POLK CO		1	0	7	29	200	72	39	348
Sheriff's Off.	12	0	0	2	10	111	34	16	173
Corrigan	12	0	0	0	14	17	23	2	56
Livingston	12	1	0	5	5	72	15	21	119
POTTER CO		17	45	144	488	2575	5606	454	9329
Sheriff's Off.	12	1	2	4	6	60	137	17	227
Amarillo	12	16	43	140	482	2515	5469	437	9102
PRESIDIO CO		1	0	3	7	23	10	3	47
Sheriff's Off.	12	1	0	3	4	16	7	3	34
Marfa	12	0	0	0	3	7	3	0	13
RAINS CO		2	0	1	9	52	39	0	103
Sheriff's Off.	12	2	0	1	9	52	39	0	103
RANDALL CO		2	0	5	15	131	243	33	429
Sheriff's Off.	12	2	0	2	14	96	138	28	280
Canyon	12	0	0	3	1	35	105	5	149
REAGAN CO		0	2	0	6	11	55	6	80
Sheriff's Off.	12	0	2	0	0	2	41	5	50
Big Lake	12	0	0	0	6	9	14	1	30
REAL CO		0	0	0	1	17	0	1	19
Sheriff's Off.	12	0	0	0	1	17	0	1	19
RED RIVER CO		0	0	1	10	102	95	15	223
Sheriff's Off.	12	0	0	1	1	55	95	8	160
Clarksville	12	0	0	0	9	47	0	7	63
REEVES CO		0	1	8	50	157	263	47	526
Sheriff's Off.	12	0	1	6	22	71	140	21	261
Pecos	12	0	0	2	28	86	123	26	265
REFUGIO CO		1	0	1	9	44	80	14	149
Sheriff's Off.	12	0	0	0	7	36	75	13	131
Refugio	12	1	0	1	2	8	5	1	18
ROBERTS CO		0	0	0	0	3	19	2	24
Sheriff's Off.	12	0	0	0	0	3	19	2	24
ROBERTSON CO		3	2	11	65	156	179	13	429
Sheriff's Off.	12	0	1	1	9	65	59	8	143
Calvert	*								
Hearne	12	3	1	10	56	91	120	5	286

	Months On File	Murder	Rape	Robbery	Aggravated Assault	Burglary	Larceny	Motor Vehicle Theft	TOTAL CRIME INDEX
ROCKWALL CO		0	2	3	6	111	146	27	295
Sheriff's Off.	12	0	2	0	2	39	29	8	80
Rockwall	12	0	0	2	2	57	112	15	188
Royse City	12	0	0	1	2	15	5	4	27
RUNNELS CO		0	2	2	5	41	62	5	117
Sheriff's Off.	12	0	2	2	5	24	37	3	73
Ballinger	12	0	0	0	0	9	24	1	34
Winters	12	0	0	0	0	8	1	1	10
RUSK CO		3	2	17	22	428	388	61	921
Sheriff's Off.	12	3	2	6	7	269	148	28	463
Henderson	12	0	0	11	10	122	207	28	378
Overton	12	0	0	0	1	20	25	3	49
Tatum	12	0	0	0	4	17	8	2	31
SABINE CO		1	0	0	0	12	1	1	15
Sheriff's Off.	11	1	0	0	0	12	1	1	15
SAN AUGUSTINE		1	1	1	26	71	61	12	173
Sheriff's Off.	12	1	1	1	26	68	60	12	169
San Augustine	11	0	0	0	0	3	1	0	4
SAN JACINTO CO		3	0	2	0	78	75	42	200
Sheriff's Off.	12	3	0	2	0	78	75	42	200
SAN PATRICIO CO		6	15	17	117	643	990	104	1892
Sheriff's Off.	12	3	5	3	28	170	216	21	446
Aransas Pass	12	0	4	6	14	153	182	34	393
Gregory	0								
Ingleside	12	0	2	2	5	67	80	16	172
Mathis	12	1	0	3	33	113	158	4	312
Portland	12	2	2	0	8	91	232	16	351
Sinton	12	0	2	3	23	44	105	13	190
Taft	12	0	0	0	6	5	17	0	28
SAN SABA CO		1	0	0	3	12	9	1	26
Sheriff's Off.	12	0	0	0	0	9	6	1	16
San Saba	12	1	0	0	3	3	3	0	10
SCHLEICHER CO		0	1	0	2	11	15	0	29
Sheriff's Off.	12	0	1	0	2	11	15	0	29
SCURRY CO		2	1	3	27	61	367	14	475
Sheriff's Off.	12	0	0	0	2	26	73	4	105
Snyder	12	2	1	3	25	35	294	10	370
SHACKLEFORD CO		0	0	0	4	4	15	5	28
Sheriff's Off.	12	0	0	0	4	4	15	5	28
Albany	*								
SHELBY CO		2	7	10	59	152	222	21	473
Sheriff's Off.	12	1	2	4	0	41	33	10	91
Center	12	1	5	6	59	111	189	11	382
SHERMAN CO		0	0	0	0	4	6	2	12
Sheriff's Off.	12	0	0	0	0	4	6	2	12
SMITH CO		18	52	147	222	1870	4722	516	7547
Sheriff's Off.	12	10	7	22	119	265	301	91	815
Troup	1	0	0	0	2	2	2	0	6
Tyler	12	8	45	124	98	1596	4390	423	6684
Whitehouse	12	0	0	1	3	7	29	2	42
SOMERVELL CO		0	0	1	1	20	25	7	54
Sheriff's Off.	12	0	0	1	1	20	25	7	54
STARR CO		5	0	1	1	96	77	21	201
Sheriff's Off.	12	5	0	1	1	96	77	21	201
STEPHENS CO		0	0	0	4	39	181	12	236
Sheriff's Off.	12	0	0	0	2	24	72	2	100
Breckenridge	12	0	0	0	2	15	109	10	136

	Months On File	Murder	Rape	Robbery	Aggravated Assault	Burglary	Larceny	Motor Vehicle Theft	TOTAL CRIME INDEX
STERLING CO									
Sheriff's Off.	0								
STONEWALL CO		0	0	2	4	2	3	0	11
Sheriff's Off.	12	0	0	2	4	2	3	0	11
SUTTON CO		0	0	3	7	21	62	5	98
Sheriff's Off.	12	0	0	2	3	5	18	3	31
Sonora	12	0	0	1	4	16	44	2	67
SWISHER CO		0	1	1	16	69	129	26	242
Sheriff's Off.	12	0	0	1	6	30	62	16	115
Tulla	12	0	1	0	10	39	67	10	127
TARRANT CO		123	460	2228	2303	21126	37462	4997	68697
Sheriff's Off.	12	4	8	24	53	482	589	98	1258
Arlington	12	11	52	190	373	2030	6570	753	9979
Azle	12	1	0	2	3	35	82	15	138
Bedford	12	0	2	12	27	176	519	32	768
Benbrook	12	0	0	6	5	156	266	35	468
Blue Mound	12	0	2	0	1	8	11	1	23
Colleyville	12	0	3	0	3	61	65	8	140
Crowley	12	1	2	3	0	42	115	5	168
D/FW Airport	12	0	2	9	10	33	992	134	1180
Eules	12	0	11	24	24	352	917	94	1422
Everman	12	1	0	2	2	41	180	4	230
Forest Hill	12	1	1	17	16	238	244	80	597
Fort Worth	12	99	345	1783	1572	15033	20727	3131	42690
Grapevine	12	1	5	11	31	147	519	48	762
Haltom City	12	1	11	49	9	576	1199	130	1975
Hurst	12	1	5	39	45	474	1504	105	2173
Keller	12	0	0	0	1	27	20	7	55
Kennedale	12	2	0	2	2	22	37	11	76
Lakeside	12	0	0	1	0	4	1	0	6
Lake Worth	12	0	0	6	10	46	178	19	259
Mansfield	12	0	2	0	33	76	174	18	303
North Richland Hills	12	0	4	24	24	385	877	143	1457
Pantego	12	0	0	0	0	38	56	10	104
Richland Hills	12	0	0	8	10	131	237	18	404
River Oaks	12	0	1	2	10	41	82	15	151
Saginaw	12	0	0	1	0	61	157	10	229
Sansom Park Village	12	0	0	5	13	63	56	7	144
Southlake	12	0	1	0	1	20	22	5	49
Tex. Christian Univ.	12	0	2	0	2	33	140	2	179
UT Arlington	12	0	0	0	10	33	173	3	219
Watauga	12	0	1	2	7	68	225	20	323
Westover Hills	12	0	0	0	0	7	5	0	12
Westworth	12	0	0	0	0	12	20	6	38
White Settlement	12	0	0	4	6	175	503	30	718
TAYLOR CO		9	34	71	140	1121	3450	252	5077
Sheriff's Off.	12	0	1	2	12	101	142	9	267
Ablene	12	9	33	69	128	1006	3308	241	4794
Merkel	12	0	0	0	0	14	0	2	16
TERRELL CO		0	0	0	1	12	17	1	31
Sheriff's Off.	12	0	0	0	1	12	17	1	31
TERRY CO		1	6	8	57	230	386	37	725
Sheriff's Off.	12	1	3	2	15	37	46	11	115
Brownfield	12	0	3	6	42	193	340	26	610
THROCKMORTON CO		0	0	0	0	7	13	1	21
Sheriff's Off.	12	0	0	0	0	7	13	1	21

	Months On File	Murder	Rape	Robbery	Aggravated Assault	Burglary	Larceny	Motor Vehicle Theft	TOTAL CRIME INDEX
TITUS CO		4	2	2	10	94	252	22	386
Sheriff's Off.	12	0	0	1	1	18	61	1	82
Mount Pleasant	12	4	2	1	9	76	191	21	304
TOM GREEN CO		2	26	51	155	1241	3183	308	4966
Sheriff's Off.	12	0	1	8	10	128	197	14	358
San Angelo	12	2	25	43	145	1111	2980	294	4600
San Angelo Univ.	01	0	0	0	0	2	6	0	8
TRAVIS CO		53	238	613	750	8853	18190	1761	30458
Sheriff's Off.	12	10	22	32	81	1021	939	161	2266
Austin	12	43	216	577	659	7766	16390	1586	27237
DPS	12	0	0	0	0	0	0	0	0
Lakeway Village	12	0	0	0	0	11	34	1	46
Rollingwood	12	0	0	0	0	0	0	0	0
UT Austin	12	0	0	4	9	36	809	13	871
West Lake Hills	12	0	0	0	1	19	18	0	38
TRINITY CO		1	3	5	18	69	59	8	163
Sheriff's Off.	12	1	3	5	18	69	59	8	163
TYLER CO		0	3	2	11	94	80	13	203
Sheriff's Off.	12	0	3	2	11	60	33	5	114
Woodville	12	0	0	0	0	34	47	8	89
UPSHUR CO		1	4	9	73	390	381	60	918
Sheriff's Off.	12	1	1	1	21	300	184	36	544
Big Sandy	11	0	2	0	29	22	50	4	107
Gilmer	12	0	1	8	23	68	146	19	265
Ore City	2	0	0	0	0	0	1	1	2
UPTON CO		0	1	1	9	36	47	3	97
Sheriff's Off.	12	0	1	1	9	36	47	3	97
McCamey	*								
UVALDE CO		3	6	3	43	89	329	32	505
Sheriff's Off.	12	2	2	1	10	51	78	10	154
Uvalde	12	1	4	2	33	38	251	22	351
VAL VERDE CO		1	3	9	213	315	938	57	1536
Sheriff's Off.	12	0	1	1	16	45	108	12	183
Del Rio	12	1	2	8	197	270	830	45	1353
VAN ZANDT CO		0	1	9	31	225	356	38	660
Sheriff's Off.	12	0	0	7	21	175	266	21	490
Canton	12	0	0	0	0	10	23	7	40
Grand Saline	12	0	0	0	5	13	20	3	41
Van	12	0	0	0	1	3	9	4	17
Wills Point	12	0	1	2	4	24	38	3	72
VICTORIA CO		3	18	52	206	1098	2150	176	3703
Sheriff's Off.	12	1	4	6	36	171	259	44	521
Victoria	12	2	14	46	170	927	1891	132	3182
WALKER CO		6	5	13	103	344	625	61	1157
Sheriff's Off.	12	5	1	0	19	102	119	27	273
Huntsville	12	1	4	13	84	242	506	34	884
WALLER CO		4	3	9	26	110	111	23	286
Sheriff's Off.	12	3	1	6	12	75	27	9	133
Brookshire	11	1	2	3	14	35	84	14	153
WARD CO		1	9	3	32	103	248	23	419
Sheriff's Off.	12	1	2	2	17	38	49	12	121
Monahans	12	0	7	1	15	65	199	11	298
WASHINGTON CO		1	2	8	9	110	142	13	285
Sheriff's Off.	12	0	0	1	1	40	5	8	55
Brenham	12	1	2	7	8	70	137	5	230
WEBB CO		5	7	49	225	1163	2485	301	4235
Sheriff's Off.	12	0	0	3	14	84	108	7	216

	Months On File	Murder	Rape	Robbery	Aggravated Assault	Burglary	Larceny	Motor Vehicle Theft	TOTAL CRIME INDEX
WEBB CO continued									
Laredo	12	5	7	46	211	1079	2377	294	4019
WHARTON CO		3	10	14	72	452	724	38	1313
Sheriff's Off.	12	1	4	4	15	159	165	14	362
El Campo	12	0	2	5	11	112	327	16	473
Wharton	12	2	4	5	46	181	232	8	478
WHEELER CO		2	0	0	3	37	63	2	107
Sheriff's Off.	12	2	0	0	3	31	53	1	90
Shamrock	12	0	0	0	0	6	10	1	17
WICHITA CO		6	65	241	569	1891	4029	501	7302
Sheriff's Off.	12	0	2	4	8	65	110	19	208
Burkburnett	12	0	0	1	6	90	297	6	400
Electra	12	0	0	0	1	18	46	2	67
Iowa Park	12	0	0	1	3	36	44	4	88
Midwestern Univ.	12	0	0	0	1	12	54	1	68
Wichita Falls	12	6	63	235	550	1670	3478	469	6471
WILBARGER CO		0	2	6	13	110	242	16	389
Sheriff's Off.	12	0	1	1	2	29	51	5	89
Vernon	12	0	1	5	11	81	191	11	300
WILLACY CO		1	3	1	23	139	282	21	470
Sheriff's Off.	12	0	1	1	9	44	62	14	131
Raymondville	12	1	2	0	14	95	220	7	339
WILLIAMSON CO		2	9	12	88	444	992	65	1612
Sheriff's Off.	12	1	5	3	27	134	209	22	401
Cedar Park	12	0	0	0	4	19	60	4	87
Georgetown	12	0	2	1	30	50	141	10	234
Round Rock	12	0	0	3	15	85	269	19	391
Taylor	12	1	2	5	12	156	313	10	499
WILSON CO		3	1	3	30	113	111	24	285
Sheriff's Off.	12	3	1	3	30	113	111	24	285
Floresville	*								
WINKLER CO		1	2	3	7	76	157	24	270
Sheriff's Off.	12	0	0	0	2	11	28	6	47
Kermit	12	1	2	3	5	65	129	18	223
WISE CO		1	1	2	11	188	249	40	492
Sheriff's Off.	12	1	1	1	6	130	121	26	286
Bridgeport	12	0	0	1	5	43	94	7	150
Decatur	12	0	0	0	0	15	34	7	56
WOOD CO		3	2	1	15	108	137	14	280
Sheriff's Off.	12	2	0	0	0	67	47	0	116
Mineola	12	1	0	0	3	13	37	4	58
Quitman	12	0	2	0	2	7	30	3	44
Winnsboro	12	0	0	1	10	21	23	7	62
YOAKUM CO		0	1	0	11	27	40	17	96
Sheriff's Off.	12	0	0	0	5	6	9	12	32
Denver City	12	0	1	0	6	21	31	5	64
YOUNG CO		0	1	0	3	139	237	20	400
Sheriff's Off.	12	0	1	0	1	14	44	0	60
Graham	12	0	0	0	1	80	162	11	254
Olney	12	0	0	0	1	45	31	9	86
ZAPATA CO		1	0	1	5	18	34	2	61
Sheriff's Off.	12	1	0	1	5	18	34	2	61
ZAVALA CO		2	0	6	19	64	59	10	160
Sheriff's Off.	12	2	0	5	16	13	12	6	54
Crystal City	12	0	0	1	3	51	47	4	106

* INDICATES AGENCY REPORTS COVERED BY SHERIFF'S OFFICE



JUVENILE MALE ARRESTS

CLASSIFICATION OF OFFENSES	10 & UNDER	11-12	13-14	15	16	UNDER 17 TOTAL
MURDER & NONNEGLIGENT MANSALUGHTER	2	2	20	31	66	121
MANSLAUGHTER BY NEGLIGENCE	0	0	2	2	8	12
FORCIBLE RAPE	2	7	28	44	75	156
ROBBERY	17	38	188	204	348	795
AGGRAVATED ASSAULT (Return A-4a-4d)	40	62	241	270	412	1,025
BURLGARY-BREAKING OR ENTERING	607	1,167	3,305	2,684	2,003	10,566
LARCENY-THEFT (Except Vehicle Theft)	1,125	2,410	5,027	3,428	3,985	15,975
MOTOR VEHICLE THEFT	45	170	997	983	1,137	3,332
OTHER ASSAULTS (Return A-4e)	72	130	454	381	570	1,607
ARSON	50	40	63	39	34	226
FORGERY & COUNTERFEITING	3	15	58	55	93	224
FRAUD	1	6	27	20	58	112
EMBEZZLEMENT	0	0	2	2	2	6
STOLEN PROPERTY, BUYING						
RECEIVING, POSSESSING	5	20	44	44	34	147
VANDALISM	550	590	1,024	700	764	3,628
WEAPONS: CARRYING, POSSESSING, ETC.	13	25	186	227	435	886
PROSTITUTION AND COMMERCIALIZED VICE	0	4	1	5	11	21
SEX OFFENSES (Except Forcible Rape and Prostitution)	18	34	125	67	74	318
DRUG ABUSE						
VIOLATIONS	18	65	730	1,052	1,874	3,739
(1) SALE/MANUFACTURING						
SUBTOTAL	2	3	48	64	122	239
OPIUM OR COCAINE	0	0	1	1	5	7
MARIJUANA	2	2	39	59	101	203
SYNTHETIC NARCOTICS	0	0	6	3	13	22
OTHER (Dangerous Non-Narcotic)	0	1	2	1	3	7
(2) POSSESSION	16	62	682	988	1,752	3,500
OPIUM OR COCAINE	0	0	6	9	19	34
MARIJUANA	14	46	528	861	1,543	2,992
SYNTHETIC NARCOTICS	0	4	30	23	30	87
OTHER (Dangerous Non-Narcotic)	2	12	118	95	160	387
GAMBLING	0	2	12	19	24	57
BOOKMAKING	0	1	1	1	1	4
NUMBERS AND LOTTERY	0	0	0	0	1	1
ALL OTHER GAMBLING	0	1	11	18	22	52
DRIVING UNDER THE INFLUENCE	19	3	19	54	335	430
LIQUOR LAWS	6	21	283	623	1,539	2,472
DRUNKENNESS	60	71	789	1,334	2,699	4,953
DISORDERLY CONDUCT	89	221	784	817	1,224	3,135
VAGRANCY	2	5	6	11	12	36
ALL OTHER OFFENSES (Except Traffic)	417	930	3,016	2,761	3,339	10,463
SUSPICION	50	88	327	297	337	1,099
CURFEW AND LOITERING LAW VIOLATIONS	14	66	287	306	397	1,070
RUN-AWAYS	310	583	1,913	1,663	1,531	6,000
TOTALS	3,811	6,825	20,020	18,159	24,259	72,611

JUVENILE FEMALE ARRESTS

CLASSIFICATION OF OFFENSES	10 & UNDER	11-12	13-14	15	16	UNDER 17 TOTAL
MURDER & NONNEGLIGENT MANSLAUGHTER	1	1	5	7	3	17
MANSLAUGHTER BY NEGLIGENCE	0	0	0	0	1	1
FORCIBLE RAPE	0	0	0	0	2	2
ROBBERY	3	6	17	21	18	65
AGGRAVATED ASSAULT (Return A-4a-4d)	1	17	70	44	56	188
BURGLARY-BREAKING OR ENTERING	73	97	247	172	164	753
LARCENY-THEFT (Except Vehicle Theft)	283	862	2,079	1,438	1,600	6,262
MOTOR VEHICLE THEFT	2	32	163	115	127	439
OTHER ASSAULTS (Return A-4e)	25	42	147	83	95	392
ARSON	6	3	5	3	3	20
FORGERY & COUNTERFEITING	1	4	31	34	37	107
FRAUD	0	0	6	8	11	25
EMBEZZLEMENT	0	0	0	0	0	0
STOLEN PROPERTY, BUYING	5	0	12	6	3	32
RECEIVING, POSSESSING VANDALISM	45	50	103	47	63	308
WEAPONS: CARRYING, POSSESSING, ETC.	0	0	14	15	23	52
PROSTITUTION AND COMMERCIALIZED VICE	0	3	16	9	27	55
SEX OFFENSES (Except Forcible Rape and Prostitution)	2	0	5	2	10	19
DRUG ABUSE VIOLATIONS	6	18	182	244	363	813
(1) SALE/MANUFACTURING						
SUBTOTAL	2	4	14	19	32	71
OPIUM OR COCAINE	0	1	1	3	2	7
MARIJUANA	1	1	8	14	24	48
SYNTHETIC NARCOTICS	1	1	3	2	4	11
OTHER (Dangerous Non-Narcotic)	0	1	2	0	2	5
(2) POSSESSION	4	14	168	225	331	742
SUBTOTAL	0	1	0	4	12	17
OPIUM OR COCAINE	3	13	124	184	264	588
MARIJUANA	0	0	10	4	13	27
SYNTHETIC NARCOTICS	1	0	34	33	42	110
OTHER (Dangerous Non-Narcotic)	0	0	2	1	1	4
GAMBLING	0	0	0	0	0	0
TOTAL	0	0	0	0	0	0
BOOKMAKING	0	0	0	0	0	0
NUMBERS AND LOTTERY	0	0	2	1	1	4
ALL OTHER GAMBLING	1	1	3	8	32	45
DRIVING UNDER THE INFLUENCE	0	5	93	180	260	538
LIQUOR LAWS	6	14	141	217	261	639
DRUNKENNESS	9	67	248	220	227	771
DISORDERLY CONDUCT	0	2	1	3	6	12
VAGRANCY	80	159	915	750	657	2,561
ALL OTHER OFFENSES (Except Traffic)	21	16	79	62	77	255
SUSPICION	1	22	107	91	75	296
CURFEW AND LOITERING LAW VIOLATIONS	137	512	3,268	2,740	2,021	8,678
RUN-AWAYS	894	1,968	8,023	6,558	6,264	23,349
TOTALS						

ADULT MALE ARREST

CLASSIFICATION OF OFFENSES	17	18	19	20	21	22	23	24	25-29
MURDER & NONNEGLIGENT MANSLAUGHTER	54	91	111	91	80	89	78	73	314
MANSLAUGHTER BY NEGLIGENCE	7	22	17	13	14	19	13	18	45
FORCIBLE RAPE	88	128	123	125	127	130	119	112	368
ROBBERY	450	527	451	409	377	384	333	269	942
AGGRAVATED ASSAULT (Return A-4a-4d)	450	591	553	571	651	567	538	518	1,976
BURGLARY-BREAKING OR ENTERING	2,554	2,551	1,913	1,583	1,343	1,148	977	847	2,640
LARCENY-THEFT (Except Vehicle Theft)	3,735	4,279	3,290	2,783	2,450	2,261	1,961	1,821	6,626
MOTOR VEHICLE THEFT	885	808	585	471	405	403	327	265	937
OTHER ASSAULTS (Return A-4e)	617	899	879	919	917	904	863	813	3,160
ARSON	25	48	23	23	21	21	25	20	63
FORGERY & COUNTERFEITING	159	189	217	200	216	189	193	189	673
FRAUD	82	189	236	321	337	357	321	318	1,180
EMBEZZLEMENT	2	1	10	1	6	3	5	7	12
STOLEN PROPERTY, BUYING									
RECEIVING, POSSESSING	29	65	50	42	38	30	31	27	135
VANDALISM	537	611	449	388	333	294	239	224	777
WEAPONS: CARRYING, POSSESSING, ETC.	540	787	795	805	733	748	685	621	2,467
PROSTITUTION AND COMMERCIALIZED VICE	37	56	67	65	89	99	89	70	296
SEX OFFENSES (Except Forcible Rape and Prostitution)	105	126	122	120	118	145	125	146	620
DRUG ABUSE VIOLATIONS	2,600	3,894	3,680	3,476	3,192	2,858	2,553	2,315	6,889
(1) SALE/MANUFACTURING									
SUBTOTAL	162	257	264	263	273	215	212	198	640
OPIUM OR COCAINE	6	9	12	20	23	22	32	19	84
MARIJUANA	124	200	191	179	193	137	126	127	372
SYNTHETIC NARCOTICS	19	35	28	39	37	46	38	33	141
OTHER (Dangerous Non-Narcotic)	13	13	33	25	20	10	16	19	43
(2) POSSESSION	2,438	3,637	3,416	3,213	2,919	2,643	2,341	2,117	6,249
SUBTOTAL	33	54	76	94	105	92	94	118	372
OPIUM OR COCAINE	2,149	3,229	2,970	2,783	2,419	2,179	1,855	1,649	4,712
MARIJUANA	66	97	126	108	124	137	143	109	346
SYNTHETIC NARCOTICS	190	257	244	228	271	235	249	241	819
OTHER (Dangerous Non-Narcotic)	63	69	68	68	82	67	98	100	440
GAMBLING	1	0	4	5	4	2	2	1	12
TOTAL	1	2	5	8	6	3	2	3	17
BOOKMAKING	61	61	59	55	72	62	94	96	411
NUMBERS AND LOTTERY	23	70	58	65	81	78	61	100	369
ALL OTHER GAMBLING	1,133	2,951	3,480	3,706	3,842	3,649	3,509	3,419	13,965
OFFENSES AGAINST FAMILY AND CHILDREN	1,597	878	588	457	375	304	243	211	723
DRIVING UNDER THE INFLUENCE	5,653	11,304	11,004	11,047	10,334	9,975	9,289	8,674	34,144
LIQUOR LAWS	1,781	3,019	2,647	2,496	2,285	2,094	1,832	1,628	5,578
DRUNKENNESS	36	21	28	32	27	27	24	22	109
DISORDERLY CONDUCT	3,462	5,314	5,101	5,122	4,674	4,450	4,074	3,564	12,878
VAGRANCY	338	435	360	330	312	293	261	258	913
ALL OTHER OFFENSES (Except Traffic)	142								
SUSPICION	69								
CURFEW AND LOITERING LAW VIOLATIONS									
RUN-AWAYS									
TOTALS	27,253	39,923	36,905	35,729	33,459	31,586	28,866	26,649	99,239

ADULT MALE ARREST									
CLASSIFICATION OF OFFENSES	30-34	35-39	40-44	45-49	50-54	55-59	60-64	OVER 65	ADULT TOTAL
MURDER & NONNEGLIGENT MANSLAUGHTER	199	133	109	72	57	45	17	37	1,650
MANSLAUGHTER BY NEGLIGENCE	23	22	6	6	7	3	3	11	249
FORCIBLE RAPE	205	115	57	38	35	13	7	6	1,796
ROBBERY	457	238	124	98	69	35	9	18	5,190
AGGRAVATED ASSAULT (Return A-4a-4d)	1,345	852	576	456	290	195	83	103	10,315
BURGLARY-BREAKING OR ENTERING	1,238	581	437	287	188	99	26	54	18,466
LARCENY-THEFT (Except Vehicle Theft)	3,890	2,445	1,598	1,210	1,007	597	373	510	40,836
MOTOR VEHICLE THEFT	501	290	233	152	97	65	17	14	6,455
OTHER ASSAULTS (Return A-4e)	1,868	1,233	779	511	365	205	117	118	15,167
ARSON	42	37	14	10	8	1	6	7	394
FORGERY & COUNTERFEITING	417	221	94	77	53	27	5	12	3,131
FRAUD	764	534	391	288	161	83	45	47	5,654
EMBEZZLEMENT	12	13	7	2	3	4	0	0	88
STOLEN PROPERTY, BUYING									
RECEIVING, POSSESSING	65	69	36	45	15	12	1	9	699
VANDALISM	373	244	136	95	75	41	17	26	4,859
WEAPONS: CARRYING, POSSESSING, ETC.	1,630	1,027	669	431	358	219	87	122	12,724
PROSTITUTION AND COMMERCIALIZED VICE	193	128	86	87	63	32	12	16	1,485
SEX OFFENSES (Except Forcible Rape and Prostitution)	453	364	226	167	128	81	40	47	3,133
DRUG ABUSE									
VIOLATIONS	3,052	1,377	674	424	258	124	44	52	37,462
(1) SALE/MANUFACTURING									
SUBTOTAL	265	132	101	49	33	10	8	7	3,089
OPIUM OR COCAINE	46	17	28	13	9	1	0	1	342
MARIJUANA	133	62	43	18	15	2	2	3	1,927
SYNTHETIC NARCOTICS	59	40	22	16	6	3	5	3	570
OTHER (Dangerous Non-Narcotic)	27	13	8	2	3	4	1	0	250
(2) POSSESSION	2,787	1,245	573	375	225	114	36	45	34,373
SUBTOTAL	242	106	61	32	11	13	4	1	1,508
OPIUM OR COCAINE	1,940	815	355	241	147	59	19	28	27,549
MARIJUANA	170	84	35	28	11	11	1	3	1,599
SYNTHETIC NARCOTICS	435	240	122	74	56	31	12	13	3,717
OTHER (Dangerous Non-Narcotic)	385	361	299	248	174	111	80	84	2,797
GAMBLING	19	13	9	7	6	5	4	2	102
BOOKMAKING	10	22	17	21	14	14	11	16	172
NUMBERS AND LOTTERY	356	326	273	220	154	92	65	66	2,523
ALL OTHER GAMBLING	315	197	144	77	44	22	15	18	1,737
OFFENSES AGAINST FAMILY AND CHILDREN	10,389	8,336	6,677	5,830	5,046	3,483	1,706	1,471	82,592
DRIVING UNDER THE INFLUENCE	416	337	291	224	214	137	62	108	7,165
LIQUOR LAWS	23,393	18,855	15,390	13,560	13,084	9,485	4,851	4,503	214,545
DRUNKENNESS	3,115	1,848	1,303	919	748	472	264	245	32,274
DISORDERLY CONDUCT	50	45	34	30	28	29	9	19	570
VAGRANCY	7,296	4,452	2,805	1,988	1,466	842	416	462	68,366
ALL OTHER OFFENSES (Except Traffic)	471	231	148	90	60	39	24	23	4,586
SUSPICION									142
CURFEW AND LOITERING LAW VIOLATIONS									69
RUN-AWAYS									
TOTALS	62,557	44,585	33,343	27,422	24,101	16,501	8,336	8,142	584,596

ADULT FEMALE ARREST									
CLASSIFICATION OF OFFENSES	17	18	19	20	21	22	23	24	25-29
MURDER & NONNEGLIGENT MANSLAUGHTER	9	7	14	11	10	10	7	15	52
MANSLAUGHTER BY NEGLIGENCE	1	1	4	3	0	1	1	1	3
FORCIBLE RAPE	2	1	0	3	0	0	0	1	2
ROBBERY	27	36	35	41	43	37	31	40	93
AGGRAVATED ASSAULT (Return A-4a-4d)	68	72	75	63	66	67	59	69	224
BURGLARY-BREAKING OR ENTERING	134	135	89	87	98	66	68	87	155
LARCENY-THEFT (Except Vehicle Theft)	1,451	1,701	1,459	1,356	1,222	1,130	1,144	1,021	3,830
MOTOR VEHICLE THEFT	93	74	56	47	55	40	41	40	121
OTHER ASSAULTS (Return A-4e)	108	133	130	123	137	117	107	114	389
ARSON	2	4	8	4	2	5	4	2	12
FORGERY & COUNTERFEITING	70	114	112	90	109	113	92	105	314
FRAUD	40	114	169	229	248	240	279	251	876
EMBEZZLEMENT	1	2	3	1	6	3	2	2	5
STOLEN PROPERTY, BUYING									
RECEIVING, POSSESSING	5	8	11	0	4	5	6	3	10
VANDALISM	40	44	32	43	34	22	42	23	91
WEAPONS: CARRYING, POSSESSING, ETC.	28	45	45	54	60	61	63	69	259
PROSTITUTION AND COMMERCIALIZED VICE	68	209	259	298	307	254	214	193	651
SEX OFFENSES (Except Forcible Rape and Prostitution)	9	13	18	27	19	14	9	17	39
DRUG ABUSE									
VIOLATIONS	388	596	552	523	563	439	419	351	1,062
(1) SALE/MANUFACTURING									
SUBTOTAL	34	55	52	55	62	47	38	40	108
OPIUM OR COCAINE	3	3	8	9	16	11	7	9	18
MARIJUANA	18	30	22	24	29	19	16	16	54
SYNTHETIC NARCOTICS	13	14	17	17	15	13	11	12	24
OTHER (Dangerous Non-Narcotic)	0	8	5	5	2	4	4	3	12
(2) POSSESSION	354	541	500	468	501	392	381	311	954
SUBTOTAL	12	22	39	42	40	29	32	27	109
OPIUM OR COCAINE	281	413	326	309	335	255	255	198	557
MARIJUANA	14	36	46	42	38	33	22	29	95
SYNTHETIC NARCOTICS	47	70	89	75	88	75	72	57	193
OTHER (Dangerous Non-Narcotic)	2	4	3	4	14	9	6	4	32
GAMBLING	0	0	0	1	2	0	1	0	1
BOOKMAKING	0	1	0	2	5	4	1	1	1
NUMBERS AND LOTTERY	2	3	3	1	7	5	4	3	30
ALL OTHER GAMBLING	3	9	5	9	12	4	9	13	25
OFFENSES AGAINST FAMILY AND CHILDREN	68	170	204	200	222	203	225	175	815
DRIVING UNDER THE INFLUENCE	170	101	62	64	63	47	40	44	139
LIQUOR LAWS	412	734	689	702	671	630	622	615	2,386
DRUNKENNESS	266	418	331	387	324	297	265	223	895
DISORDERLY CONDUCT	6	2	1	3	3	0	4	2	14
VAGRANCY	497	734	758	908	850	650	726	640	2,211
ALL OTHER OFFENSES (Except Traffic)	55	63	63	50	59	59	48	52	155
SUSPICION									
CURFEW AND LOITERING LAW VIOLATIONS	18								
RUN-AWAYS	77								
TOTALS	4,118	5,544	5,187	5,330	5,201	4,523	4,533	4,172	14,860

ADULT FEMALE ARREST

CLASSIFICATION OF OFFENSES	30-34	35-39	40-44	45-49	50-54	55-59	60-64	OVER 65	ADULT TOTAL
MURDER & NONNEGLIGENT MANSLAUGHTER	40	29	22	13	9	2	4	6	260
MANSLAUGHTER BY NEGLIGENCE	6	6	2	1	1	1	0	0	32
FORCIBLE RAPE	2	2	0	1	0	0	0	0	14
ROBBERY	47	31	15	11	6	0	0	1	494
AGGRAVATED ASSAULT (Return A-4a-4d)	151	115	69	69	50	17	7	5	1,246
BURGLARY-BREAKING OR ENTERING	85	59	27	19	21	4	2	3	1,139
LARCENY-THEFT (Except Vehicle Theft)	2,389	1,504	1,033	752	579	394	251	354	21,570
MOTOR VEHICLE THEFT	62	38	14	15	9	5	1	7	718
OTHER ASSAULTS (Return A-4e)	207	143	104	95	34	24	13	11	1,989
ARSON	12	5	3	2	3	0	0	1	69
FORGERY & COUNTERFEITING	165	95	54	21	14	9	0	1	1,478
FRAUD	652	444	239	141	84	36	10	19	4,071
EMBEZZLEMENT	1	2	3	0	1	0	0	0	32
STOLEN PROPERTY, BUYING									
RECEIVING, POSSESSING	7	6	5	2	5	1	0	2	80
VANDALISM	63	35	12	15	7	10	2	2	517
WEAPONS: CARRYING, POSSESSING, ETC.	181	113	75	58	41	13	5	10	1,180
PROSTITUTION AND COMMERCIALIZED VICE	263	132	74	54	41	20	9	9	3,055
SEX OFFENSES (Except Forcible Rape and Prostitution)	26	15	12	4	2	1	0	1	226
DRUG ABUSE									
VIOLATIONS									
GRAND TOTAL	491	216	117	71	44	21	3	9	5,865
(1) SALE/MANUFACTURING									
SUBTOTAL	45	16	10	17	6	1	0	4	590
OPIUM OR COCAINE	7	2	5	3	0	0	0	1	102
MARIJUANA	19	6	3	4	3	1	0	0	264
SYNTHETIC NARCOTICS	12	7	2	8	3	0	0	3	171
OTHER (Dangerous Non-Narcotic)	7	1	0	2	0	0	0	0	53
(2) POSSESSION									
SUBTOTAL	446	200	107	54	38	20	3	5	5,275
OPIUM OR COCAINE	51	18	4	4	0	2	0	0	431
MARIJUANA	260	112	60	30	23	6	0	2	3,422
SYNTHETIC NARCOTICS	31	21	5	6	3	1	0	1	423
OTHER (Dangerous Non-Narcotic)	104	49	38	14	12	11	3	2	999
GAMBLING									
TOTAL	20	23	20	20	17	17	11	8	214
BOOKMAKING	0	0	1	0	0	1	0	0	7
NUMBERS AND LOTTERY	1	2	6	8	6	11	8	6	66
ALL OTHER GAMBLING	16	21	13	12	11	5	3	2	141
OFFENSES AGAINST FAMILY AND CHILDREN	17	16	14	9	8	4	0	0	157
DRIVING UNDER THE INFLUENCE	650	644	635	498	436	246	107	79	5,577
LIQUOR LAWS	79	72	65	39	44	25	11	15	1,080
DRUNKENNESS	1,740	1,584	1,310	1,065	926	586	248	196	15,116
DISORDERLY CONDUCT	524	352	254	151	157	61	35	24	4,964
VAGRANCY	1	2	3	2	1	2	1	0	47
ALL OTHER OFFENSES (Except Traffic)	1,180	674	424	297	176	87	54	62	10,928
SUSPICION	73	37	15	23	11	2	4	3	772
CURFEW AND LOITERING LAW VIOLATIONS									18
RUN-AWAYS									77
TOTALS	9,134	6,394	4,620	3,448	2,727	1,588	778	828	82,985

TEXAS
LAW ENFORCEMENT OFFICERS
KILLED OR ASSAULTED
LAW ENFORCEMENT
EMPLOYEES DATA



Law Enforcement Code of Ethics

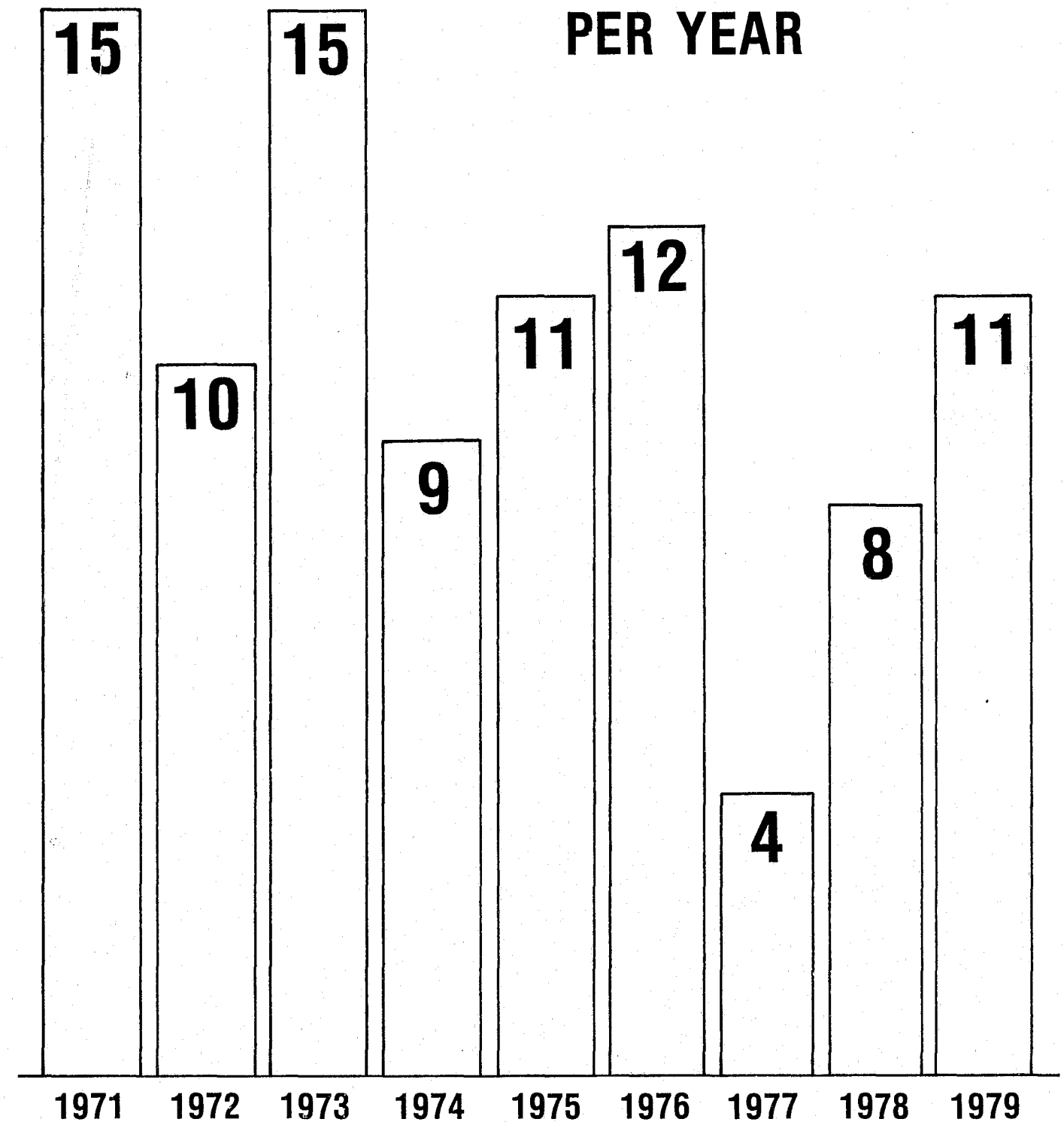
As a Law Enforcement Officer, my fundamental duty is to serve mankind; to safeguard lives and property; to protect the innocent against deception, the weak against oppression or intimidation, and the peaceful against violence or disorder; and to respect the Constitutional rights of all men to liberty, equality and justice.

I will keep my private life unsullied as an example to all; maintain courageous calm in the face of danger, scorn, or ridicule; develop self-restraint; and be constantly mindful of the welfare of others. Honest in thought and deed in both my personal and official life, I will be exemplary in obeying the laws of the land and the regulations of my department. Whatever I see or hear of a confidential nature or that is confided to me in my official capacity will be kept ever secret unless revelation is necessary in the performance of my duty.

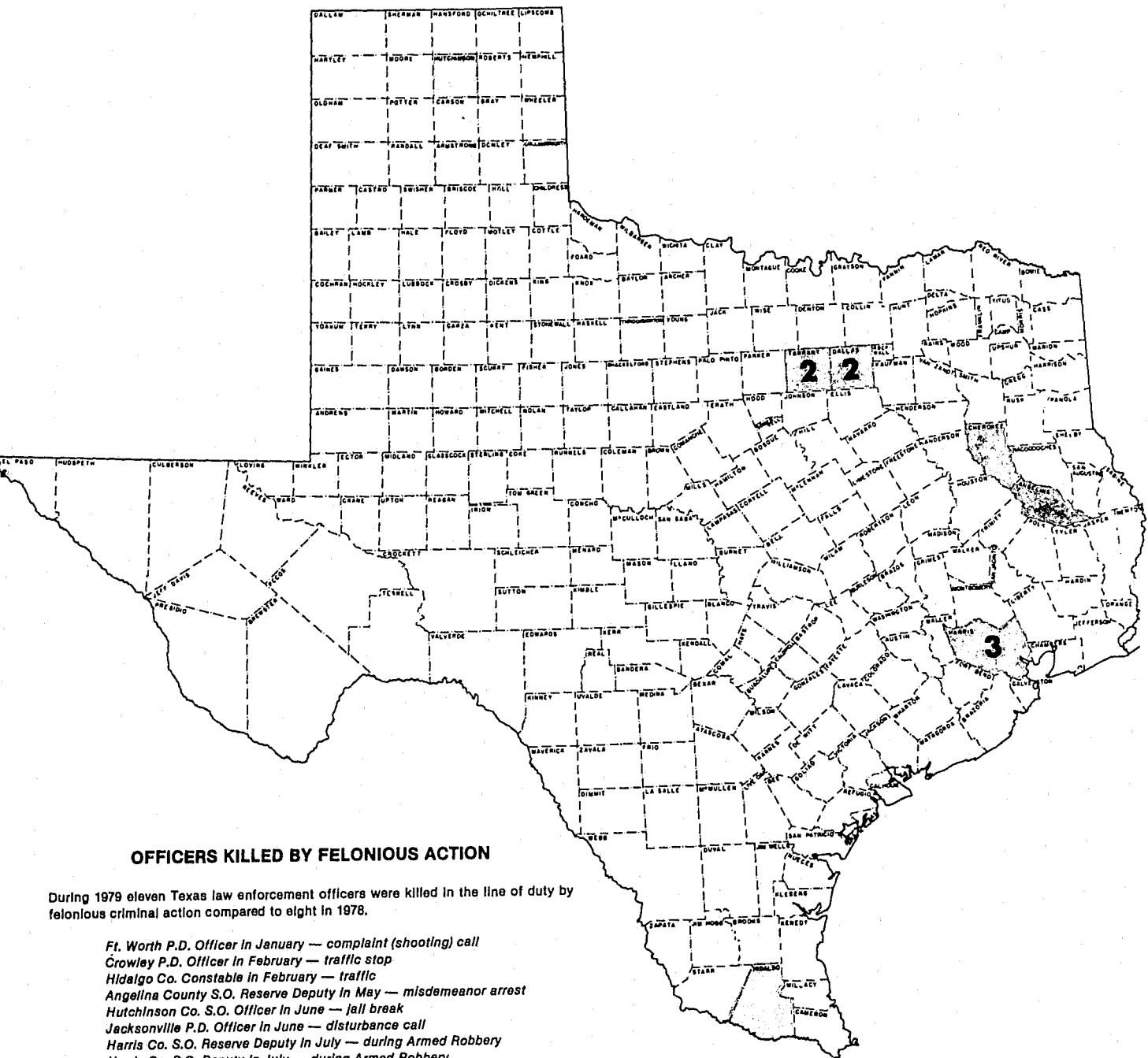
I will never act officiously or permit personal feelings, prejudices, animosities or friendships to influence my decisions. With no compromise for crime and with relentless prosecution of criminals, I will enforce the law courteously and appropriately without fear or favor, malice or ill will, never employing unnecessary force or violence and never accepting gratuities.

I recognize the badge of my office as a symbol of public faith, and I accept it as a public trust to be held so long as I am true to the ethics of the police service. I will constantly strive to achieve these objectives and ideals, dedicating myself before God to my chosen profession . . . law enforcement.

TEXAS LAW ENFORCEMENT OFFICERS KILLED PER YEAR



TEXAS LAW ENFORCEMENT OFFICERS KILLED IN THE LINE OF DUTY IN 1979



OFFICERS KILLED BY FELONIOUS ACTION

During 1979 eleven Texas law enforcement officers were killed in the line of duty by felonious criminal action compared to eight in 1978.

- Ft. Worth P.D. Officer in January — complaint (shooting) call
- Crowley P.D. Officer in February — traffic stop
- Hidalgo Co. Constable in February — traffic
- Angelina County S.O. Reserve Deputy in May — misdemeanor arrest
- Hutchinson Co. S.O. Officer in June — jail break
- Jacksonville P.D. Officer in June — disturbance call
- Harris Co. S.O. Reserve Deputy in July — during Armed Robbery
- Harris Co. S.O. Deputy in July — during Armed Robbery
- Houston City Marshal in August — arrests on traffic warrants
- Duncanville P.D. Officer (2) in December — traffic

Agencies also reported three other Officers were accidentally killed in the line of duty.

Additionally there were 3,256 Officers assaulted in the line of duty during 1979.

(See Details on Page 67)

TEXAS OFFICERS ASSAULTED IN THE LINE OF DUTY—1979

ASSIGNMENT INFORMATION			ASSAULTS BY WEAPON	
TYPE OF ASSIGNMENT		NUMBER ASSAULTED	WEAPON	NUMBER ASSAULTED
Two Man Vehicle		1,092	Firearm	313
			Knife; Cutting Instrument	107
One Man Vehicle	Alone	615	Other Dangerous Weapon	282
	Assisted	744	Hands, Fists, Feet, etc.	2,554
Detective	Alone	67	TOTAL	3,256
	Assisted	213		
Other	Alone	147	INJURY INFORMATION	
	Assisted	378		
TOTAL		3,256	INJURY	NUMBER ASSAULTED
			Without Injury	2,217
			With Injury	1,039
			TOTAL	3,256

ASSAULTS BY ACTIVITY		ASSAULTS BY TIME	
CIRCUMSTANCES	NUMBER ASSAULTED	TIME	NUMBER ASSAULTED
Disturbance Call	929	12 a.m. - 2 a.m.	665
Burglary in Progress	58	2 a.m. - 4 a.m.	399
Robbery in Progress	31	4 a.m. - 6 a.m.	105
Attempting Other Arrests	511	6 a.m. - 8 a.m.	50
Civil Disorder	32	8 a.m. - 10 a.m.	69
Handling, Transporting Prisoners	628	10 a.m. - 12 p.m.	102
Investigating Suspicious		12 p.m. - 2 p.m.	158
Persons or Circumstances	366	2 p.m. - 4 p.m.	178
Ambush - No Warning	24	4 p.m. - 6 p.m.	218
Mentally Deranged	40	6 p.m. - 8 p.m.	287
Traffic Pursuits and Stops	423	8 p.m. - 10 p.m.	439
All Other	214	10 p.m. - 12 a.m.	586
TOTAL	3,256	TOTAL	3,256

TOTALS OF FULL-TIME LAW ENFORCEMENT EMPLOYEES AS OF OCTOBER 31, 1979

Full-time sworn law enforcement officers	Male	Female	TOTAL
Police Departments	16,615	854	17,469
Sheriff's Departments	3,783	447	4,230
Texas DPS	2,423	17	2,440
TOTAL	22,821	1,318	24,139

Full-time civilian employees	Male	Female	TOTAL
Police Departments	1,627	3,521	5,148
Sheriff's Department	639	895	1,534
Texas DPS	644	1,232	1,876
TOTAL	2,910	5,648	8,558

NUMBER OF EMPLOYEE SURVEY FORMS RETURNED

Police Departments - 462	TOTAL - 714
Sheriff's Departments - 251	
Texas DPS - 1	



GLOSSARY OF TERMS

ADULT - In Texas an adult is defined as a person 17 years of age or over. In this publication we have followed this definition.

CLEARED BY ARREST OR EXCEPTIONAL MEANS - For Uniform Crime Reporting purposes, an offense is cleared by arrest or solved when at least one person is (1) arrested, (2) charged with the commission of an offense and (3) turned over to court for prosecution. In certain situations police are not able to follow these three steps. In many instances police have exhausted all leads and have done everything else possible to clear a case. If the following four conditions can be met, the offense can be cleared exceptionally: (1) the investigation has definitely established the identity of the offender, (2) there is enough information to support an arrest, charge, and turning over to the court for prosecution, (3) the exact location of the offender is known so that he could be taken into custody and (4) there is some reason outside the police control that prevents the arresting, charging, and prosecuting of the offender.

CRIME FACTORS - Conditions which affect the amount and type of crime that occurs in a geographical area.

CRIME INDEX - The sum total of seven major offenses used to measure the extent, fluctuation and distribution of crime in a given geographical area. Crime classifications used in the index are: (1) murder, (2) forcible rape, (3) robbery, (4) aggravated assault, (5) burglary, (6) larceny-theft and (7) motor vehicle theft. Each of these offenses is referred to as an "Index Offense."

CRIME RATE - The number of offenses per 100,000 inhabitants. This rate can be calculated regardless of the number of in-

habitants in your city or county. To compute rates, divide the population by 100,000 and divide the number of offenses in each class by that answer. The answer is the number of offenses in that class per 100,000 and is your crime rate for that offense. Example: (a) Population for your jurisdiction, 75,000. (b) Number of burglaries for your jurisdiction for a year, 215. Divide 75,000 by 100,000 - 0.75. Divide 215 by 0.75 - 286.7. Your burglary rate: 286.7 per 100,000 inhabitants. The number 0.75 can now be divided into your totals in any offense class to produce a crime rate for that offense.

JUVENILE - In Texas a juvenile is defined as a person 16 years of age or under. In this publication we have followed this definition.

NON-VIOLENT CRIME - Consists of the Index Offenses of Burglary, Larceny-Theft and Motor Vehicle Theft.

PART I OFFENSES - The first of two main categories of crime classes composing a universal crime classification system established for crime reporting purposes. Part I Offenses are by their nature more serious and/or occur most frequently. The monthly tabulation of Part I Offenses provides a count of "offenses known."

PART II OFFENSES - The second of two main categories of crime classes composing a universal crime classification system established for crime reporting purposes. Part II Offenses are generally less serious in nature and/or occur less frequently. Monthly tabulations of Part II Offenses are limited to arrest information only.

VIOLENT CRIME - Consists of the Index Offenses of Murder, Forcible Rape, Robbery and Aggravated Assault.

END