

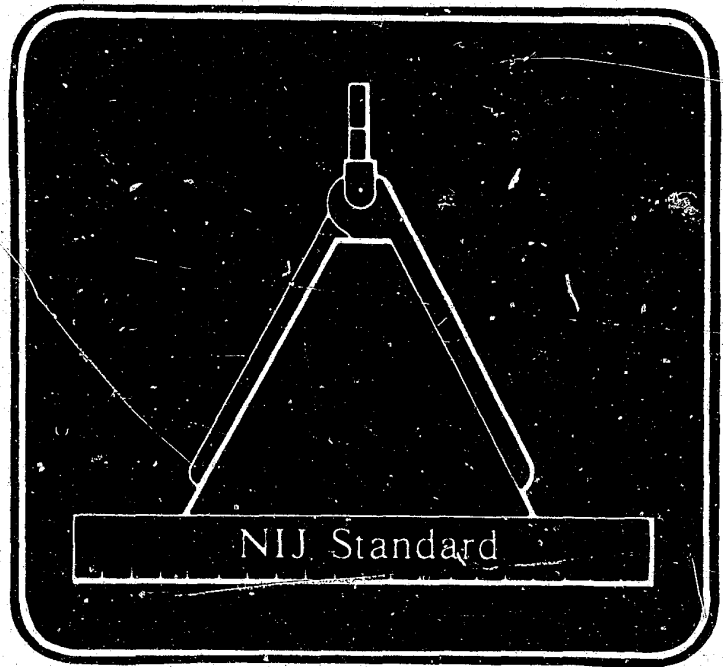


U.S. Department of Justice
National Institute of Justice

Technology Assessment Program

NIJ Standard-0104.01

Riot Helmets and Face Shields



A Program of the National Institute of Justice

71102

Technology Assessment Program

**NIJ Standard
for
Riot Helmets and Face Shields**

Supersedes NILECJ-STD-0104.00 dated October 1974

***A Voluntary National Standard Promulgated by the
National Institute of Justice.***

AUGUST 1980

**U.S. DEPARTMENT OF JUSTICE
National Institute of Justice**

**U.S. DEPARTMENT OF JUSTICE
National Institute of Justice**

Harry M. Bratt, Acting Director

ACKNOWLEDGMENTS

This standard was formulated by the Law Enforcement Standards Laboratory of the National Bureau of Standards under the direction of Ralph Gorden, Jr. and Ronald Dobbyn, Program Managers for Protective Equipment, and Jacob J. Diamond and Lawrence K. Eliason, successive Chiefs of LESL. The technical research was performed by Nicholas J. Calvano of the NBS Center for Consumer Product Technology. The standard has been reviewed and approved by the National Advisory Committee for Law Enforcement Equipment and Technology of the International Association of Chiefs of Police (IACP) and adopted by them as an IACP standard.

NIJ STANDARD FOR RIOT HELMETS AND FACE SHIELDS

CONTENTS

	Page
Foreword	v
1. Purpose	1
2. Scope and Classification	1
3. Definitions	1
4. Requirements	3
4.1 Riot Helmet Requirements	3
4.1.1 Sampling for Test	3
4.1.2 User Information	3
4.1.3 Test Sequence	3
4.1.4 Peripheral Vision	3
4.1.5 Impact Attenuation	3
4.1.6 Penetration Resistance	3
4.1.7 Retention System	3
4.1.8 Construction	3
4.1.9 Labeling	3
4.2 Face Shield Requirements	3
4.2.1 Sampling for Test	3
4.2.2 Light Transmission	4
4.2.3 Prismatic Power	4
4.2.4 Refractive Power	4
4.2.5 Resolving Power	4
4.2.6 Impact Protection	4
4.2.7 Fastening System	4
5. Test Methods	4
5.1 Riot Helmet Test Methods	4
5.1.1 Peripheral Vision Test	4
5.1.2 Impact Attenuation Test	4
5.1.3 Penetration Resistance Test	7
5.1.4 Retention System Test	9
5.2 Face Shield Test Methods	10
5.2.1 Light Transmission Test	10
5.2.2 Prismatic Power Test	10
5.2.3 Refractive Power and Resolving Power Test	11
5.2.4 Impact Protection and Fastening System Test	12
References	14

FOREWORD

Following a Congressional mandate* to develop new and improved techniques, systems, and equipment to strengthen law enforcement and criminal justice, the National Institute of Law Enforcement and Criminal Justice, now the National Institute of Justice (NIJ), established the Law Enforcement Standards Laboratory at the National Bureau of Standards. LESL's function is to conduct research that will assist law enforcement and criminal justice agencies in the selection and procurement of quality equipment.

In response to priorities established by NIJ, LESL is: (1) Subjecting existing equipment to laboratory testing and evaluation and (2) conducting research leading to the development of several series of documents including national voluntary equipment standards, user guides, and technical reports.

This document, NIJ-STD-0104.01, Riot Helmets and Face Shields, is a law enforcement equipment standard developed by LESL and approved and issued by NIJ. Additional standards as well as other documents are being issued under the LESL program in the areas of protective equipment, communications equipment, security systems, weapons, emergency equipment, investigative aids, vehicles and clothing.

This equipment standard is a technical document consisting of performance and other requirements together with a description of test methods. Equipment which can meet these requirements is of superior quality and is suited to the needs of law enforcement agencies. Purchasers can use the test methods described in this standard to determine firsthand whether a particular equipment item meets the requirements of the standard, or they may have the tests conducted on their behalf by a qualified testing laboratory. Law enforcement personnel may also reference this standard in purchase documents and require that any equipment offered for purchase meet its requirements and that this compliance be either guaranteed by the vendor or attested to by an independent testing laboratory.

The necessarily technical nature of this NIJ standard, and its special focus as a procurement aid, make it of limited use to those who seek general guidance concerning riot helmets and face shields. The User Guide Series is designed to fill that need. We plan to issue guides to various items of law enforcement equipment as soon as possible, within the constraints of available funding and the overall NIJ program.

The user guides being issued are highly readable and tutorial in nature in contrast to the standards, which are highly technical and intended for laboratory use by technical personnel. The guides provide, in non-technical language, information for purchasing agents and other interested persons concerning the capabilities of equipment currently available. They may then select equipment appropriate to the performance required by their agency.

NIJ standards are subjected to continuing review.** Technical comments and recommended revisions are invited from all interested parties. Suggestions should be addressed to the Program Manager for Standards, National Institute of Justice, U.S. Department of Justice, Washington, DC 20531.

Lester D. Shubin
Program Manager for Standards
National Institute of Justice

*Section 402(b) of the Omnibus Crime Control and Safe Streets Act of 1968, as amended.

**Prior to citing this standard, or any other NIJ equipment standard, in a contract document the user should verify that the most recent edition is used. Write to: Chief, Law Enforcement Standards Laboratory, National Bureau of Standards, Washington, D.C. 20234.

NIJ STANDARD FOR RIOT HELMETS AND FACE SHIELDS

1. PURPOSE

The purpose of this standard is to establish requirements and methods of test for helmets and face shields to be worn by law enforcement officers during civil disturbances, riots or other situations that pose a threat of injury from blows to the head. This standard is a revision of NILECJ-STD-0104.00, dated October 1974.

2. SCOPE AND CLASSIFICATION

Riot helmets and face shields covered by this standard are of one class. It should be noted that they are not designed to offer protection against gunfire. Ballistic helmets and crash helmets are covered by other NIJ standards [4,5].*

3. DEFINITIONS

3.1 Basic Plane

The plane through the centers of the external ear openings and the lower edges of the eye sockets (see fig. 1).

3.2 Coronal Plane

The plane, perpendicular to the basic and mid-sagittal planes, which passes through the centers of the external ear openings (see fig. 1).

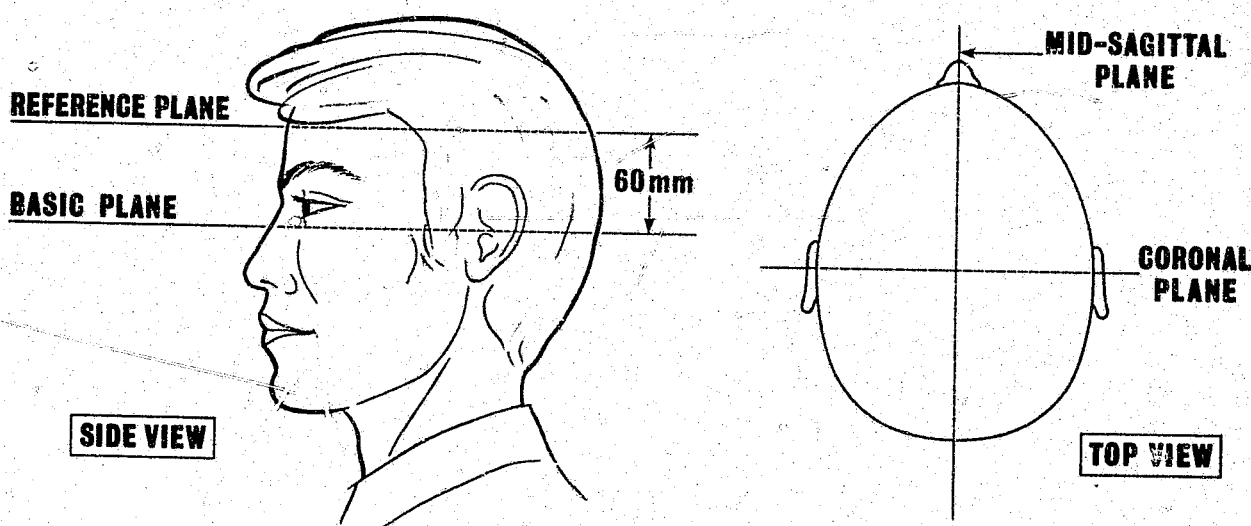


FIGURE 1. Head planes.

*The numbers in brackets refer to the references on page 14.

3.3 Edging

The edge, rim or rim trim around a helmet.

3.4 Headform

A test device which simulates the configuration of the human head.

3.5 Mid-Sagittal Plane

The plane, perpendicular to the basic and coronal planes, which symmetrically bisects the head (see fig. 1).

3.6 Primary Visual Area

The face shield area that is bounded at the top by a line 12 mm inside the top edge of the face shield, is 85 mm from top to bottom, and is bounded at the sides by the arcs of a circle of 90 mm radius with its center located at the intersection of the mid-sagittal plane, the front surface of the face shield, and the plane that is 15 mm above and parallel to the basic plane (see fig. 2).

3.7 Reference Plane

The plane 60 ± 1 mm above and parallel to the basic plane.

3.8 Retention System

The complete assembly by which the helmet is retained in position on the head.

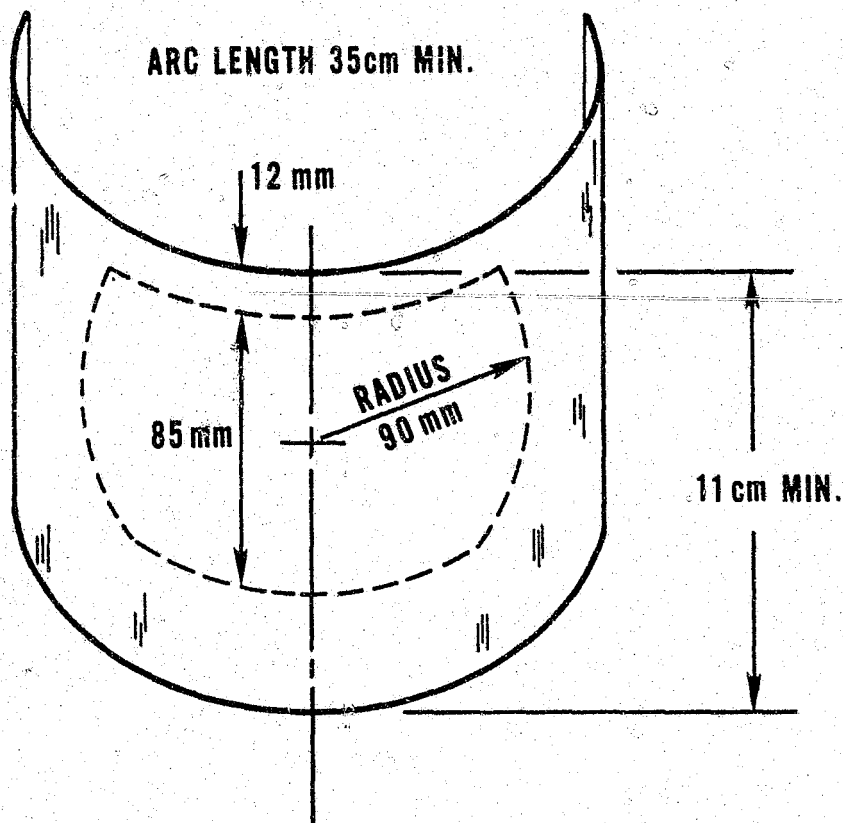


FIGURE 2. Face shield configuration. The primary visual area is outlined with dashed lines.

4. REQUIREMENTS

4.1 Riot Helmet Requirements

4.1.1 Sampling for Test

Four riot helmets, size 7 1/4 and selected at random, shall constitute a test sample.

4.1.2 User Information

The information supplied to the user with each helmet shall include the following: a) recommended cleaning agents, paints, adhesives, etc., which can be applied to the helmet without damaging the shell and impairing its function; b) a warning that a helmet which has been subjected to a severe blow may thereafter offer decreased protection to the wearer.

4.1.3 Test Sequence

The helmets shall be examined to determine compliance with the requirements of paragraphs 4.1.8 and 4.1.9, and shall then be tested for compliance with the requirements of paragraphs 4.1.4, 4.1.5, 4.1.6 and 4.1.7, in that sequence.

4.1.4 Peripheral Vision

The helmets shall provide peripheral visual clearance of at least 120° to each side of the mid-sagittal plane when measured in accordance with paragraph 5.1.1.

4.1.5 Impact Attenuation

Each helmet shall be tested for impact attenuation in accordance with paragraph 5.1.2. No measured peak acceleration shall exceed 400 times the standard acceleration of free fall (400 g_n^{*}), no acceleration in excess of 200 g_n shall exceed 3 ms in duration, and no acceleration in excess of 150 g_n shall exceed 5 ms in duration.

4.1.6 Penetration Resistance

Each helmet shall be tested for penetration resistance in accordance with paragraph 5.1.3 without any demonstrable electrical contact being made between the penetration test striker and the test headform.

4.1.7 Retention System

Each helmet shall be tested for retention system static strength in accordance with paragraph 5.1.4 without any break occurring and without any resulting slip or stretch of more than 25 mm.

4.1.8 Construction

The helmets shall be free from dents, blisters, cracks, crazing, chipped or sharp corners and other evidences of inferior workmanship. They shall have no slits, holes or other openings above the reference plane and shall have no incompressible projections that protrude more than 2.5 mm inside the shell or more than 5.0 mm outside the shell.

4.1.9 Labeling

Each helmet shall be permanently and legibly labeled in a manner such that the label can be easily read without removing padding or any other permanent part, and shall include the following information: a) name or designation of manufacturer; b) model designation; c) size; d) month and year of manufacture; e) lot number. Items (d) and (e) may be incorporated into a single number such as a serial number.

4.2 Face Shield Requirements

4.2.1 Sampling for Test

Three face shields, selected at random, shall constitute a test sample.

^{*}g_n=9.81 meters per second per second.

4.2.2 Light Transmission

Each face shield specimen shall be tested for light transmission in accordance with paragraph 5.2.1. The light transmission at every part of the primary visual area shall be no less than 75%.

4.2.3 Prismatic Power

Each face shield specimen shall be tested for prismatic power in accordance with paragraph 5.2.2. The center of the primary visual area shall be free of any distortion that would cause the intersection of the telescope crosshairs to fall outside the inner circle of the test target. The entire primary visual area shall be free of any distortion that would cause the crosshairs to fall outside the outer circle of the test target.

4.2.4 Refractive Power

Each face shield specimen shall be tested for refractive power in accordance with paragraph 5.2.3. The refractive power shall be between $-1/8$ and $+1/8$ diopter.

4.2.5 Resolving Power

Each face shield specimen shall be tested for resolving power in accordance with paragraph 5.2.3. The resolving power shall be such that the series of lines marked "34" on the NBS Resolution Test Chart [3] is clearly resolved.

4.2.6 Impact Protection

Each face shield shall be tested for impact protection in accordance with paragraph 5.2.4 without any demonstrable electrical contact being made between the face shield and either of the two test headform contact sensors.

4.2.7 Fastening System

Each face shield shall remain attached to the helmet by all of its fastening devices after subjection to the impact protection test described in paragraph 5.2.4.

5. TEST METHODS

5.1 Riot Helmet Test Methods

5.1.1 Peripheral Vision Test

5.1.1.1 Test Headform

The test headform shall be size 7 1/4 and shall have two symmetrical slots which define a 120° angle lying in the plane 15 mm above and parallel to the basic plane, with the apex at the point of intersection of the above-defined plane, the mid-sagittal plane and the front surface of the headform, as shown in figure 3.

5.1.1.2 Test Procedure

Place the helmet squarely on the headform so that the mid-sagittal plane of the helmet coincides with the mid-sagittal plane of the headform. Place a straightedge along the base of each of the slots. Alternately, it is acceptable to conduct this test with a template constructed so that two straightedges with an included angle of 120° extend beyond the sides of the helmet when the apex of that angle is in contact with the headform on the mid-sagittal plane and the template forms a plane parallel to and 15 mm above the basic plane. If the edging of the helmet protrudes forward of either of the extended lines as defined by the straightedge or template, the helmet fails this test.

5.1.2 Impact Attenuation Test

5.1.2.1 Test Equipment

5.1.2.1.1 Test Headform

The test headform shall be size 7 1/4 and shall exhibit no resonance frequencies below 3000 Hz; it may be made of any suitable magnesium alloy such as K-1A. Its dimensions are given in figure 4.

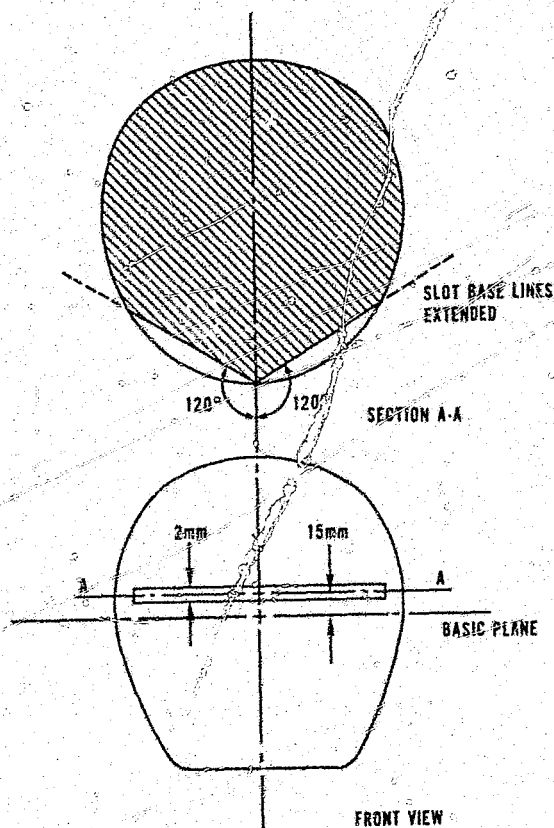


FIGURE 3. Peripheral vision test headform.

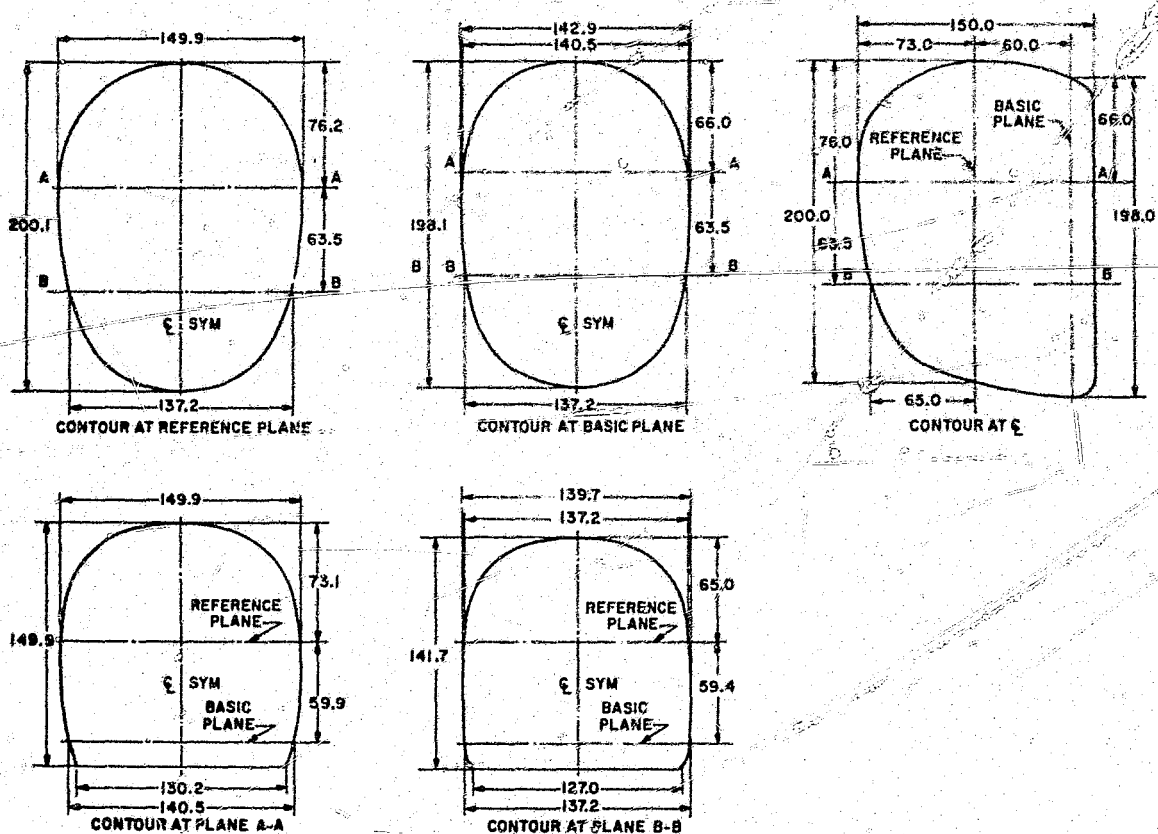


FIGURE 4. Size 7 1/4 test headform, dimensions in mm.

5.1.2.1.2 Drop Assembly

The drop assembly, consisting of the test headform, the accelerometer, and the supporting arm, shall have a total mass of 5.1 ± 0.1 kg. The center of mass of the assembly shall lie within a cone of 10° included angle about the vertical, with its apex at the point of impact.

5.1.2.1.3 Test Anvil

The test anvil shall be made of steel and have a hemispherical striking surface with a 48 mm radius of curvature. The anvil shall be firmly mounted on a steel plate $250 \times 250 \times 25$ mm minimum, backed with a solid mass of at least 140 kg.

5.1.2.1.4 Acceleration Measurement System

The accelerometer should be able to withstand shocks up to 2000 g. The acceleration data channel, including all instrumentation which may alter the frequency content of the test data and all recording and analysis procedures, shall comply with SAE Recommended Practice J211b requirements for channel class 1000 [6]. The time duration of acceleration shall be measurable within ± 0.1 ms.

5.1.2.1.5 Reference Anvil

When the bare drop assembly is dropped on the reference anvil from an appropriate height, it shall produce a peak acceleration of 400 ± 20 g, and accelerations above 200 g, of at least 1 ms duration. The reference anvil may be made of any material that will reproducibly yield these results with a precision of ± 0.1 ms. A reference anvil found to be suitable is a 1-in Open Blue Modular Elastomer Programmer, available from MTS Systems Corp., P.O. Box 24012, Minneapolis, Minn. 55424.

5.1.2.1.6 Environmental Chambers

The environmental chamber or chambers shall be capable of providing ambient temperatures of $-10 \pm 2^\circ\text{C}$ ($14 \pm 3^\circ\text{F}$) and $50 \pm 2^\circ\text{C}$ ($122 \pm 3^\circ\text{F}$), and of holding those temperatures for at least 24 h.

5.1.2.2 Conditioning for Testing

5.1.2.2.1 Room Temperature

Condition one helmet at a temperature of 20 to 28°C (67 to 82°F) for at least 4 h.

5.1.2.2.2 Low Temperature

Condition a second helmet by placing it in an environmental chamber at a temperature of $-10 \pm 2^\circ\text{C}$ ($14 \pm 3^\circ\text{F}$) for not less than 4 h nor more than 24 h.

5.1.2.2.3 High Temperature

Condition a third helmet by placing it in an environmental chamber at a temperature of $50 \pm 2^\circ\text{C}$ ($122 \pm 3^\circ\text{F}$) for not less than 4 h nor more than 24 h.

5.1.2.2.4 Water

Condition a fourth helmet by immersing it in water at a temperature of $25 \pm 5^\circ\text{C}$ ($77 \pm 9^\circ\text{F}$) for not less than 4 h nor more than 24 h.

5.1.2.3 Test Procedure

Set up the test equipment as shown in figure 5. Mount the accelerometer at the center of mass of the drop assembly with the sensitive axis aligned to within 5° of the vertical. Throughout the calibration and testing, maintain the ambient temperature at 20 to 28°C (68 to 82°F) and the relative humidity at 30 to 70%.

Prior to testing, allow all electronic equipment to warm up for 30 min or until stability is achieved, whichever time is greater. Check the instrumentation before and after each period of testing by dropping the bare instrumented drop assembly onto the reference anvil three times from the height which experience has shown will produce a peak acceleration of 400 ± 20 g and an acceleration above 200 g, of at least 1 ms duration. Should the average acceleration-time history obtained prior to testing differ from this, adjust the equipment as necessary. Should the post-test average differ from the pre-test average by more than 40 g, discard the entire test series.

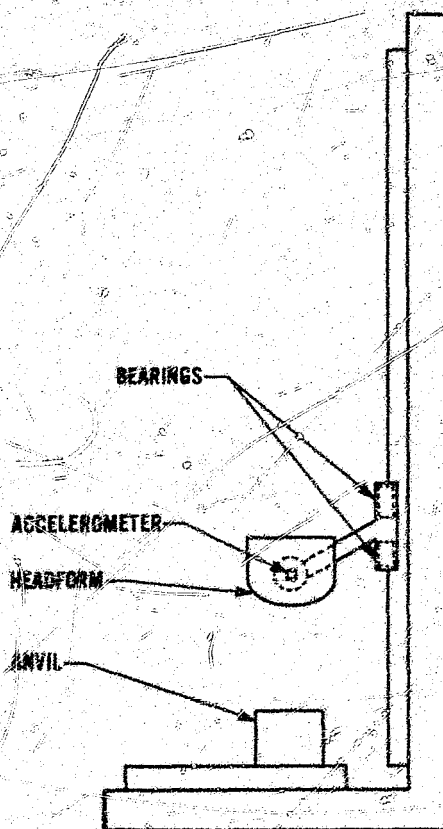


FIGURE 5. Impact attenuation test setup.

Precondition one each of the four helmets comprising the test sample to room temperature, low temperature, high temperature, and water, in accordance with paragraph 5.1.2.2. Begin testing immediately after a helmet is removed from the conditioning environment. After 5 min of testing return the helmet to the conditioning environment for at least 15 min, and continue this alternation until the testing is completed.

Position the helmet squarely on the test headform and secure it by its chin strap or other means that will not interfere with the test. Adjust the vertical drop height to provide an impact velocity of 6.6 ± 0.3 m/sec. Impact each helmet once at each of four sites: front, side, back and top, as follows.

Impact the front of each helmet in the area bounded by the reference plane, the plane parallel to and 50 mm above the reference plane, and the planes parallel to and 50 mm to either side of the mid-sagittal plane.

Impact the side of each helmet in the area bounded by the reference plane, the plane parallel to and 50 mm above the reference plane, and the planes parallel to and 50 mm to either side of the coronal plane.

Impact the back of each helmet in the area bounded by the reference plane, the plane parallel to and 50 mm above the reference plane, and the planes parallel to and 50 mm to either side of the mid-sagittal plane.

Impact the top of each helmet at a point within 50 mm of the intersection of the mid-sagittal plane, the coronal plane, and the outer surface of the helmet.

Record the acceleration-time history of each impact and continue this procedure until each of the four conditioned helmets has been tested.

5.1.3 Penetration Resistance Test

5.1.3.1 Test Equipment

5.1.3.1.1 Test Headform

The test headform shall be size 7 1/4 and, above the reference plane, shall have an electrically conductive surface which is electrically connected to the contact indicator (par. 5.1.3.1.3). While the material used for the electrically conductive surface is not critical, aluminum foil is not suitable for this purpose.

5.1.3.1.2 Penetration Striker

The penetration striker shall be electrically conductive and have a mass of $3000 \pm 45 - 0$ g. The point of the striker shall be a cone with an included angle of $60 \pm 0.5^\circ$, a height of 38 mm, and a tip radius of 0.5 ± 0.1 mm. The hardness of the striking tip shall be Rockwell scale C 60. The penetration striker shall be electrically connected to the contact indicator (par. 5.1.3.1.3).

5.1.3.1.3 Contact Indicator

The contact indicator shall indicate when electrical contact of 1 ms duration or longer has been made between the penetration striker and the conductive surface of the test headform.

5.1.3.2 Test Procedure

Set up the test equipment as shown in figure 6. Again condition each of the four helmets that had been subjected to the impact attenuation test in the same environment in which it had been conditioned for that test, as described in paragraph 5.1.2.2.

Place the conditioned helmet on the test headform and secure it by its chin strap or by other means that will not interfere with the test. Adjust the helmet in the same manner as a person would adjust it to his head. Drop the penetration striker in guided fall onto the outer surface of the helmet anywhere above the reference plane and at least 75 mm from the center of a previous impact site or penetration site. Drop the striker from a height of $3.00 \pm 0.01 - 0$ m, as measured from the striker point to the point of the impact on the outer surface of the helmet. Subject each of the four helmets to at least two penetration blows. Following each test, remove the helmet from the headform and touch the electrically conductive surface with the penetration striker at the point of impact to verify the continuity of contact indicator circuit.

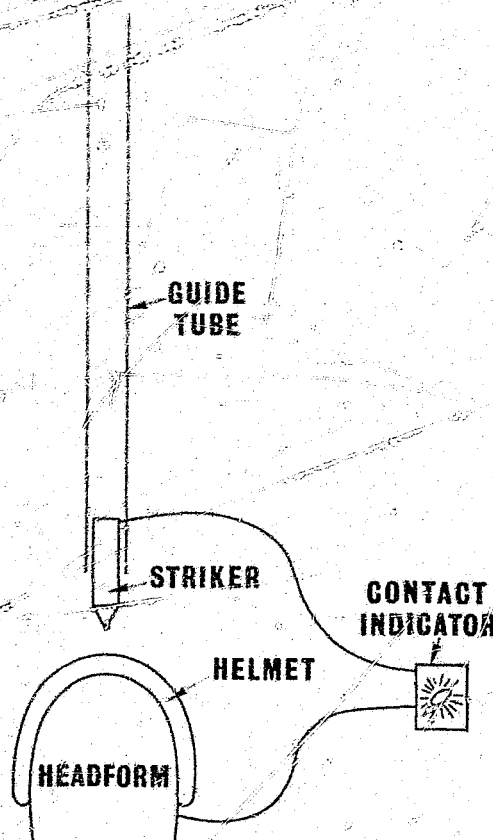


FIGURE 6. Penetration test setup.

5.1.4 Retention System Test

5.1.4.1 Test Headform

The test headform shall be size 7 1/4 and capable of supporting the helmet when a load of 1500 N (330 lbf) is applied to the retention system.

5.1.4.2 Test Procedure

Again condition each of the four helmets that had been subjected to the impact attenuation and penetration resistance tests in the same environment in which it had been conditioned for those tests, as described in paragraph 5.1.2.2.

Place the conditioned helmet on the rigidly mounted test headform in such a manner that it will not move during the application of the test loads and fasten the chin strap to the loading device, as shown in figure 7. Take care that the points of attachment of the chin strap to the helmet as well as the chin strap itself will be subjected to the test.

Apply the test loads perpendicular to the basic plane of the headform and symmetrically with respect to the helmet retention system.

Statically load the retention system with 225 N (50.6 lbf) for at least 30 s and then measure the maximum distance between the chin strap and the apex of the helmet. Do not remove the load.

Apply an additional 1230 N (276.5 lbf) to the retention system for at least 3 min and again measure the maximum distance between the chin strap and the apex of the helmet.

Record any break in the retention system. Record any slip or stretch as the difference between the two distance measurements. Continue this test until each of the four conditioned helmets has been tested.

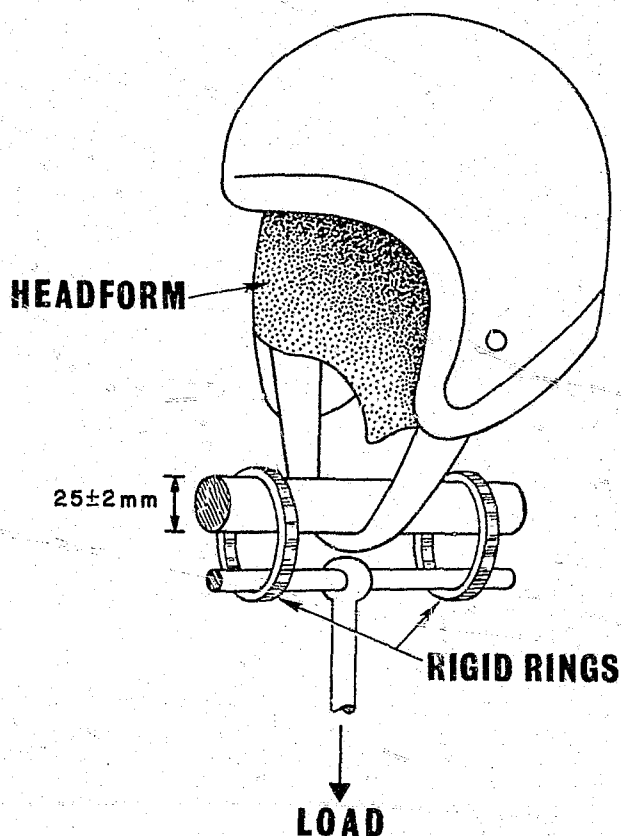


FIGURE 7. Retention system test setup.

5.2 Face Shield Test Methods

5.2.1 Light Transmission Test

5.2.1.1 Test Equipment

5.2.1.1.1 Light Source

The light source shall consist of a quartz-halogen lamp mounted inside a box with matte white inner surfaces for maximum diffusion. Centered on one face of the box shall be an 8x8 cm window fitted with a flashed opal glass diffuser mounted inside the box with its flashed side facing away from the lamp. The lamp shall be operated so that its color temperature is 2856 K as viewed through the diffuser.

5.2.1.1.2 Photometer

The photometer shall be equipped with a photodetector whose spectral response is corrected to approximate the CIE photopic curve [2]. The photometer's maximum sensitivity shall be at 550 ± 25 nm and it shall not respond to wavelengths below 425 ± 25 nm or above 700 ± 25 nm. Its field of view shall be between 2° and 8° .

5.2.1.2 Test Procedure

Set up the test equipment as shown in figure 8, with the photometer 30 cm from the light source diffuser. Aline the optic axis of the photometer with the light bulb and the center of the luminous area, perpendicular to the surface of the light source diffuser.

With no test specimen in the light path, adjust the photometer sensitivity so that the photometer reads close to full scale and record the photometer reading as I_0 .

Clean the face shield thoroughly and place it in the light path so that its convex face is perpendicular to and no more than 6 mm in front of the diffuser and its concave face is toward the photometer. Record the resulting photometer reading as I and calculate the light transmission as $100 I/I_0$.

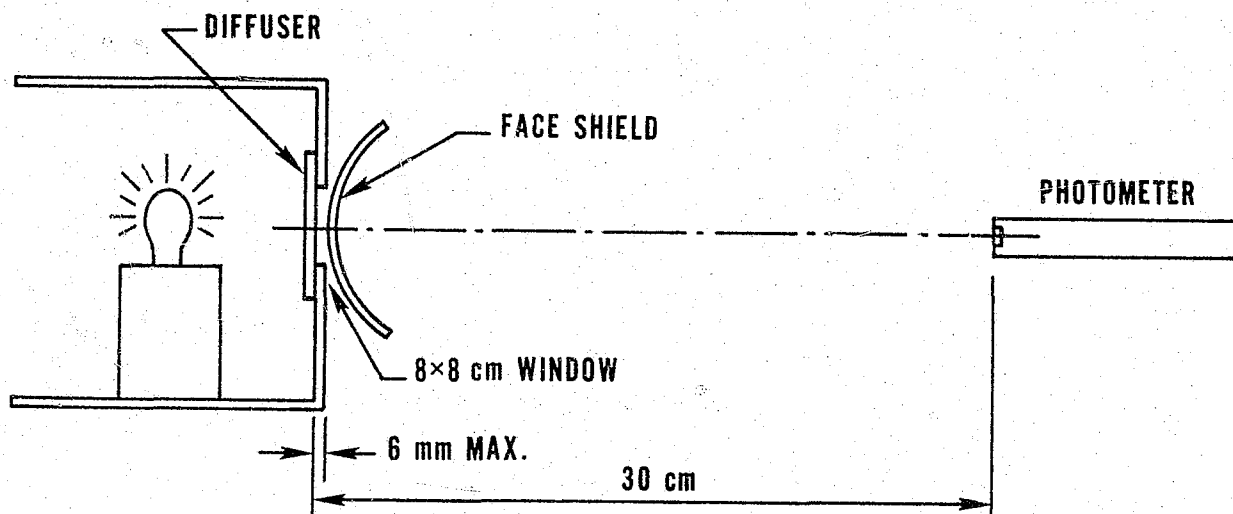


FIGURE 8. Light transmission test setup.

5.2.2 Prismatic Power Test

5.2.2.1 Test Equipment

5.2.2.1.1 Telescope

The telescope shall have a magnifying power of 8 to 10 diameters and shall be equipped with crosshairs. It shall have an effective aperture of 19 to 25 mm.

5.2.2.1.2 Test Target

The test target shall consist of two concentric circles having diameters of 10 mm and 25 mm, respectively, with their center marked with an "X." The target shall be drawn in black on a white background and illuminated so that it is clearly visible when viewed through the telescope from a distance of 6 m.

5.2.2.2 Test Procedure

Set up the test equipment as shown in figure 9, with the target located 6 m from the objective lens of the rigidly mounted telescope. With no test specimen in the line of sight, focus the telescope on the test target and adjust their positions so that the intersection of the telescope crosshairs is centered over the "X" at the center of the test target.

Then position the face shield so that its concave side faces the telescope and the center of its primary viewing area is 8 cm in front of the telescope and normal to the line of sight. Refocus the telescope on the test target and observe whether the intersection of the telescope crosshairs falls within the image of the inner circle of the test target.

Test the entire primary visual area of the face shield by moving it through the line of sight of the telescope, taking care to assure that the part of the face shield in the line of sight is perpendicular to the line of sight, and observe whether the intersection of the telescope crosshairs stays within the image of the outer circle of the test target.

5.2.3 Refractive Power and Resolving Power Test

Use the test setup shown in figure 9, but replace the prismatic power test target with an NBS Resolution Test Chart [3]. With no test specimen in the line of sight, place a standard $+1/8$ diopter lens immediately in front of the objective lens of the telescope, focus the telescope on the test chart and mark a line on the draw tube to indicate the position of best focus. Replace the $+1/8$ diopter lens with a $-1/8$ diopter lens and again focus the telescope and mark the position of best focus on the draw tube. The two lines on the draw tube mark the limits of acceptable refractive power ($-1/8$ to $+1/8$ diopter).

Remove the $-1/8$ diopter lens and position the face shield so that the center of its primary visual area is normal to the line of sight. Focus the telescope and observe whether the position of best focus falls between the two marks on the draw tube; if it does, the face shield passes the refractive power test. Also observe whether the series of lines marked "34" are resolved as separate lines; if they are, the face shield passes the resolving power test.

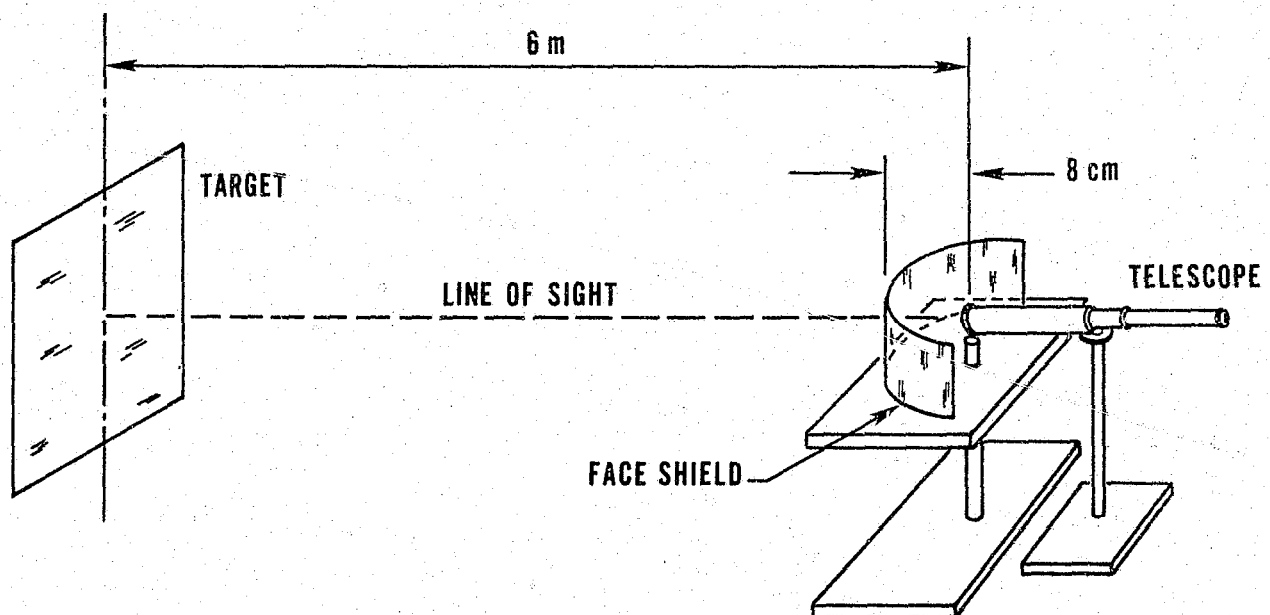


FIGURE 9. Setup for the prismatic power, refractive power and resolving power tests.

5.2.4 Impact Protection and Fastening System Test

5.2.4.1 Test Equipment

5.2.4.1.1 Test Headform

The test headform shall be size 7 1/4, made of a rigid material such as epoxy, have the dimensions shown in figure 10, and be fitted with two contact sensors as shown in details A and B.

5.2.4.1.2 Contact Indicator

The contact indicator shall indicate when electrical contact of 1 ms duration or longer has been made between the conductive surface of the face shield and either one of the test headform contact sensors.

5.2.4.1.3 Impactor

The impactor shall be a steel cylinder 45 mm in diameter with a hemispherical surface on one end. The mass of the impactor shall be 1000 ± 45 g.

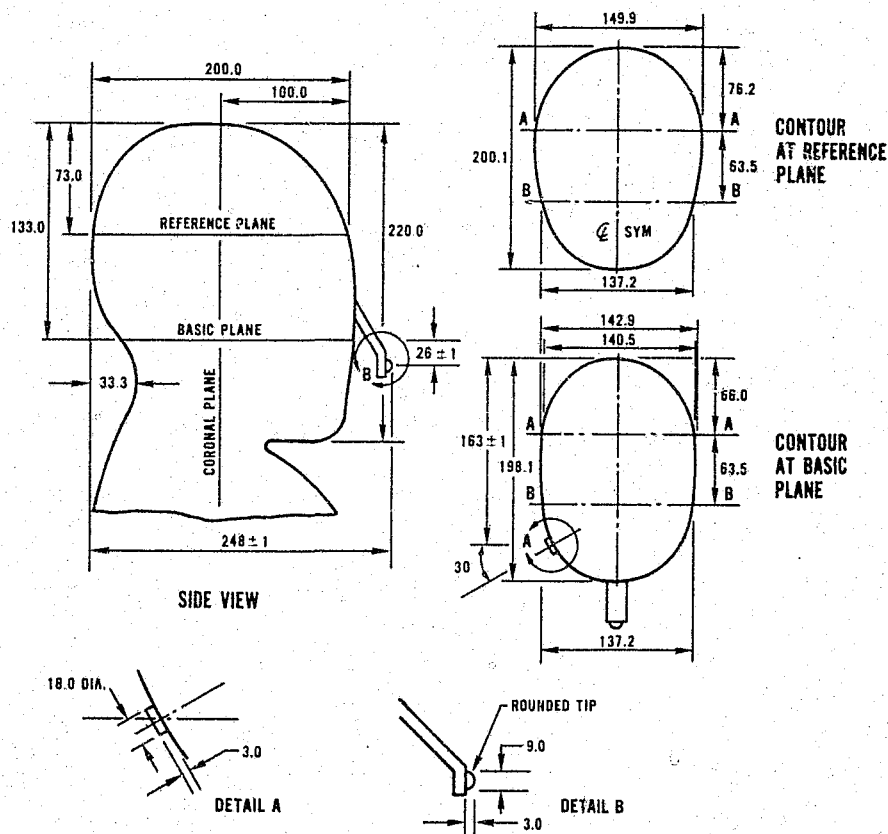


FIGURE 10. Impact protection and fastening system test headform, dimensions in mm.

5.2.4.2 Test Procedure

Set up the test equipment as shown in figure 11. Line the concave surface of each face shield with a conductive material such as heavy-duty aluminum foil, attach the face shield to a helmet in accordance with the manufacturer's instructions, and leave it attached throughout the preconditioning and testing.

Precondition one each of the three face shields comprising the test sample to room temperature, low temperature, and high temperature, respectively, in accordance with paragraph 5.1.2.2. Begin testing immediately after removing the face shield from the conditioning environment. After 5 min of testing return the face shield to the conditioning environment for at least 15 min, and continue this alternation until the testing is completed.

Position a helmet, with one of the three preconditioned face shields attached, squarely on the test headform, and fasten the chinstrap securely. Electrically connect the face shield liner, through the contact indicator, to each of the two test headform contact sensors. Position the helmeted test headform face up, with its coronal plane horizontal and its mid-sagittal plane vertical, and support it firmly. Suspend the impactor inside the vertical drop tube 30+1-0 cm above the face shield, with its hemispherical end facing down, directly above the contact sensor on the nose of the headform. Impact the face shield by releasing the impactor and allowing it to fall freely. Observe whether or not the contact indicator indicates that the face shield had made electrical contact with the headform contact sensor.

Reposition the face shield if necessary and impact it a second time in the same area. Repeat the above procedure for the remaining two face shield specimens.

Reposition the helmeted test headform side up and head tilted down, with its coronal plane vertical, its mid-sagittal plane at an angle of 30° with the horizontal and the side contact sensor directly under the impactor. Repeat the testing as described above.

Observe whether or not each face shield remained attached to the helmet by all of its fasteners after each of the impacts delivered during this test.

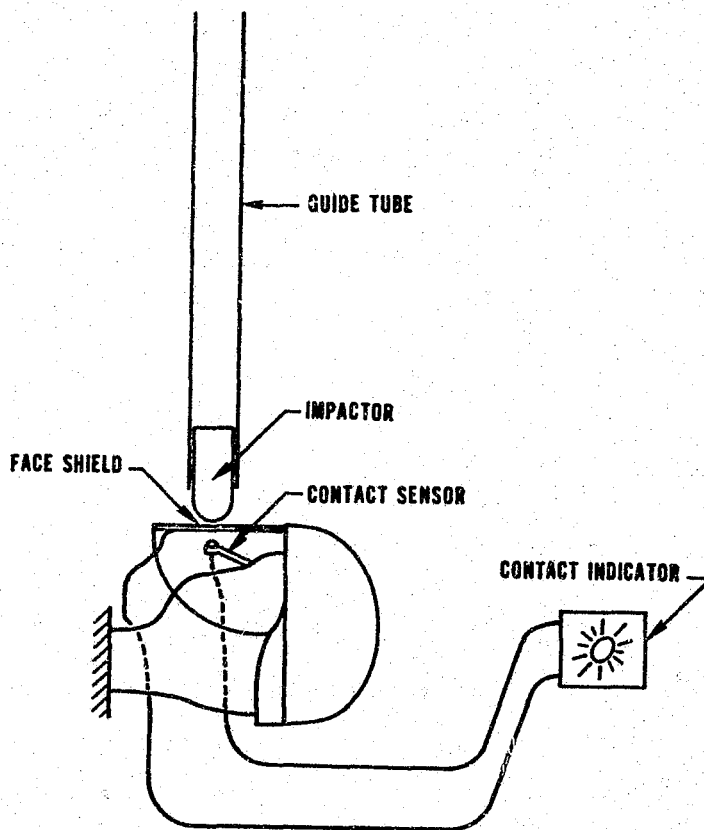


FIGURE 11. Impact protection and fastening system test setup.

REFERENCES

1. ANSI Z90.1-1971, "American National Standard Specifications for Protective Headgear for Vehicular Users," (American National Standards Institute, Inc., New York, N.Y., Aug. 1971).
2. CIE No. 18 (E-1.2), "Principles of Light Measurements" (Commission Internationale de L'Eclairage, 4, Ave. du Recteur Poincare, 75-Paris 16, France, 1970).
3. NBS Resolution Test Chart, presented in "Method for Determining the Resolving Power of Photographic Lenses," by F. E. Washer and I. C. Gardner, Nat. Bur. Stand. (U.S.), Spec. Publ. 374 (June 1973).
4. NILECJ-STD-0105.00, "NILECJ Standard for Crash Helmets," (National Institute of Justice, U.S. Department of Justice, Washington, D.C. 20531, June 1975).
5. NILECJ-STD-0106.00, "NILECJ Standard for Ballistic Helmets," (National Institute of Justice, U.S. Department of Justice, Washington, D.C. 20531, Sept. 1975).
6. SAE J211b, "SAE Recommended Practice for Instrumentation for Impact Tests," (Society of Automotive Engineers, Inc., New York, N.Y. 10001, Dec. 1974).

END