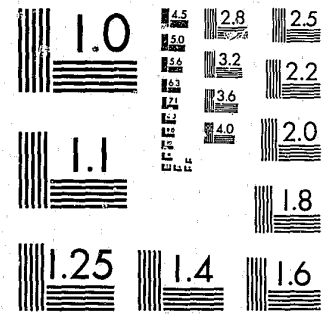


National Criminal Justice Reference Service



This microfiche was produced from documents received for inclusion in the NCJRS data base. Since NCJRS cannot exercise control over the physical condition of the documents submitted, the individual frame quality will vary. The resolution chart on this frame may be used to evaluate the document quality.



MICROCOPY RESOLUTION TEST CHART  
NATIONAL BUREAU OF STANDARDS-1963-A

Microfilming procedures used to create this fiche comply with the standards set forth in 41CFR 101-11.504.

Points of view or opinions stated in this document are those of the author(s) and do not represent the official position or policies of the U. S. Department of Justice.

National Institute of Justice  
United States Department of Justice  
Washington, D. C. 20531

DATE FILMED

7/27/81

U.S. Department of Justice  
National Institute of Justice

This document has been reproduced exactly as received from the person or organization originating it. Points of view or opinions stated in this document are those of the authors and do not necessarily represent the official position or policies of the National Institute of Justice.

Permission to reproduce this copyrighted material in microfiche only has been granted by  
Stephen M. Puckett/Wisconsin  
Division of Corrections  
to the National Criminal Justice Reference Service (NCJRS).

Further reproduction outside of the NCJRS system requires permission of the copyright owner.

OFFENDERS ADMITTED TO THE MUTUAL AGREEMENT PROGRAM  
CALENDAR YEAR 1977



DEPARTMENT OF HEALTH AND SOCIAL SERVICES  
DIVISION OF CORRECTIONS  
OFFICE OF SYSTEMS AND EVALUATION  
MADISON, WISCONSIN 53701  
JULY 1978

77297

STATE OF WISCONSIN

DEPARTMENT OF HEALTH AND SOCIAL SERVICES  
Donald E. Percy, Secretary  
Terry Willkom, Deputy Secretary

DIVISION OF CORRECTIONS  
Allyn R. Sielaff, Administrator  
Lee Roy Black, Ph.D., Deputy Administrator

BUREAU OF INSTITUTIONS  
Robert E. Ellsworth, Director  
Darrell A. Kolb, Deputy Director

MAP SUPERVISOR  
Russel L. Leik

OFFICE OF SYSTEMS AND EVALUATION  
Paul H. Kusuda, Director  
Perry C. Baker, Deputy Director, Statistics and Evaluation Section  
Theodore H. Johnson, Deputy Director, Records Development Section

Offenders Admitted to the Mutual Agreement Program  
Calendar Year 1977

This report describes adult offenders who negotiated agreements through the Mutual Agreement Program (MAP) for calendar year 1977. Information for this report was routinely collected from adult institutions record offices, social services, and MAP negotiating staff.

Institutions of negotiations were Wisconsin State Prison (WSP), Wisconsin State Reformatory (WSR), Wisconsin Correctional Institution (WCI), Kettle Moraine Correctional Institution (KMCI), Wisconsin Correctional Institution--Oakhill (WCI-O), Taycheedah Correctional Institution (TCI), and Wisconsin Correctional Camp System (WCCS). Each of these institutions have MAP teams consisting of a MAP Coordinator and Institution Representative (except TCI and KMCI where one MAP team serves both institutions).

The offender, represented by the MAP Coordinator, negotiates with the Institution Representative and Parole Board (this team representing, respectively, the institution, Division of Corrections, and the Department of Health and Social Services) for a definite release date in exchange for the resident agreeing to specific, individualized objectives relating to work assignments, education, treatment, transfers, and behavior.

Table A illustrates selected characteristics for residents receiving Mutual Agreement Program (MAP) contracts for 1977, as compared to 1975 and 1976. The average length of sentence rose by 13.9 months over 1975 and 9.9 months over 1976. Average length of contracts remained relatively low but increased 0.3 months over 1975 and 0.9 months over 1976.

NCJRS

APR 20 1981

ACQUISITIONS

Table A  
Selected Characteristics for Adult Residents  
Receiving Mutual Agreement Program Contracts  
Calendar Years 1975, 1976, and 1977 Compared

Characteristics	1975	1976	1977
Average (mean) length of sentence (in months)	50.0	54.0	63.9
Average (mean) length of contract (in months)	9.3	8.7	9.6
Percent with routine work assignments	63.5	57.4	72.3
Percent with school component	70.5	67.2	72.6
Percent with treatment component	68.0	71.2	71.2
Percent with transfer plan	71.5	72.0	80.4
Percent first admission	88.4	89.3	93.9
Average (mean) age (in years)	24.0	24.0	24.1

Over 70 percent of the written contracts contained elements of school, treatment or transfer considerations. Table B shows that approximately 89 percent of all contracts are program-oriented. This means that residents are receiving contracts specifying education or treatment, or both. Over half of all contracts contained both education and treatment, almost 3 percent higher than 1975 and 5 percent higher in 1976.

Table B  
Type of Contract  
Residents Receiving Mutual Agreement Program Contracts  
Calendar Years 1975, 1976, 1977 Compared

Type of Contract	1975		1976		1977	
<u>Total</u>	<u>797</u>	<u>100.0</u>	<u>823</u>	<u>100.0</u>	<u>953</u>	<u>100.0</u>
<u>Performance Contract</u>	<u>62</u>	<u>7.7</u>	<u>97</u>	<u>11.1</u>	<u>103</u>	<u>10.7</u>
No transfer plan	13	1.6	28	3.4	34	3.5
With transfer plan	49	6.1	63	7.7	69	7.2
<u>Program Contract</u>	<u>735</u>	<u>92.3</u>	<u>732</u>	<u>88.9</u>	<u>850</u>	<u>89.3</u>
Complete contract--all elements	413	51.8	408	49.6	517	54.2
Contract with no education	171	21.6	188	22.8	161	16.9
Contract with no treatment	151	18.9	136	16.5	172	18.2

Performance contracts are those where residents do not participate in education or treatment. These contracts have only a behavioral component where the resident agrees to avoid major behavior infractions. While nearly 11 percent of contracts written in 1977 are performance by nature, over two-thirds contained a transfer. This is slightly lower than that reported for 1976 but higher than reported for 1975.

Table A, referenced previously, identified the increased average length of sentence and relatively stable length of contract for the three reporting years. Table C compares the average length of contracts with the respective length of sentence reported at admission. Over 40 percent (see Table 10 also) of the contracted population have sentences within the ranges of 4 years, less than 5, and 8 years, less than 9. These ranges contain longer contracts for 1977 (averaging nearly a month longer) compared to 1975 and 1976. However, over 50 percent of the contracted population are within the range of 2 years, less than 3, and 4 years, less than 5.

Table C  
Average Length of Contracts by Length of Sentence  
Residents Receiving Mutual Agreement Program Contracts  
Calendar Years 1975, 1976, and 1977 Compared

Length of Sentence	Length of Contract in Months		
	1975	1976	1977
<u>Totals</u>	<u>9.3</u>	<u>8.7</u>	<u>9.6</u>
1 year, less than 2	5.2	5.1	5.6
2 years, less than 3	7.0	6.7	6.3
3 years, less than 4	9.1	9.2	8.8
4 years, less than 5	10.5	10.9	11.2
5 years, less than 6	10.8	6.3	11.9
6 years, less than 7	11.4	11.1	12.1
7 years, less than 8	10.6	12.1	14.0
8 years, less than 9	10.5	10.8	11.1
9 years, less than 10	11.4	10.2	12.2
10 years, less than 15	8.4	10.3	3.6
15 years, less than 20	9.4	9.4	16.7
20 years, less than 25	7.0	5.6	16.6
25 years, less than life	-	11.6	18.1

A set of 21 supplemental tables and a summary of highlights follow this discussion and aids in reviewing the Mutual Agreement Program process in 1977.

Prepared by: Stephen M. Puckett, Planning Analyst  
Office of Systems and Evaluation  
Division of Corrections  
P.O. Box 669  
Madison, WI 53701

Highlights from Tables 1 through 21

1. Over 70 percent of the contracts negotiated have "routine institution needs" reported as a work assignment. This implies that institutions may assign residents where needed when the resident is free from other contract obligations. Wisconsin State Prison and Wisconsin State Reformatory are the two major users of this assignment category.
2. As identified in Table A, over 70 percent of the contracts contained an education component. Approximately 10 percent of the contracts had academic programs, 46 percent vocational, and 14 percent High School Equivalency Diploma (HED) or Adult Basic Education (ABE) review. The welding program is the vocational program most frequently contracted for. In addition to Table 2, Table 3 identifies education programs for those contracts containing a second component. Over 31 percent of the contracts have a second component, with emphasis placed on HED or ABE programs.
3. Approximately 72 percent of all contracts have a treatment component. Most treatment is requested through Clinical Services where group therapy and the Alcohol Education and Treatment Program (AETP) are contracted for most often. Social Services provides treatment in over one-fourth of the contracts, with drug counseling, individual, and group therapy being most often contracted for. As with education, a second assignment is possible. Contracts with a second treatment assignment makes up approximately 15 percent of contracts written. Alcohol Education and Treatment Program (AETP) is the most frequently selected.
4. Transfer components are found in over 80 percent of the contracts in 1977. The Wisconsin State Prison and Wisconsin State Reformatory most often have contract transfers to medium security institutions, while the medium security institutions contract more often to Oakhill, Wisconsin Correctional Camp System (WCCS), or Bureau of Community Corrections Residential Centers. Nearly 30 percent of the contracts have a second transfer assignment. Almost 64 percent of these second requests are to WCCS or Bureau of Community Corrections. The other major receiving unit is TCI, where residents ask for AETP assignments.

5. Approximately 94 percent of residents contracting in 1977 were new admissions. This is 6 percentage points more than in 1975 and 5 percentage points more than in 1976. Over 57 percent of the new admissions reported in 1977 were residents with a new sentence only. Nearly 75 percent of the re-admission residents were parole or mandatory release violators with a new sentence.
6. Offense categories listed for residents receiving contracts in 1977 show that burglary (29 percent), robbery (24 percent), and theft (10 percent) are the largest offense groups. These groups account for nearly 63 percent of the contracting population. Robbery offenders are up 1 percent over 1976, while burglarly is down nearly 3 percent. Theft offenders are down nearly 3 percent, while drug offenders are up 2 percent over those reported for 1976.
7. As shown in Table A and Table 12, the age characteristics of offenders receiving MAP contracts changed very little. The mean age centers around 24 years from 1975 to 1977.
8. Males accounted for approximately 93 percent of contracts received in 1977 for first admissions (compared to about 94 percent in 1975 and 1976), with white males receiving 51.6 percent of the contracts. Black males received over 38 percent of contracts, an increase of 5 percentage points over 1976 and 11 percentage points over 1975. Female offenders made up only 7 percent of the contracts received in 1977. About half were Black, as was true also for 1976.
9. Nearly 54 percent of contracted residents had no previous felony convictions, while 30 percent had one reported prior conviction. This is unchanged from 1976.
10. Almost no change occurred in the proportions relating to previous penal experience. Fifty-three percent of the residents in 1977 and 1976 have none reported.

11. Juvenile institution experience finds 75 percent of 1977 contracting residents reported as having none. This is an increase of nearly five percent over 1976.
12. The largest proportion of the contracting residents are reported as having completed tenth grade or more (76 percent). Achievement test results show only 28.2 percent of the residents testing at this level.

Table 1  
Work Assignment  
Residents Receiving  
Mutual Agreement Program Contracts in 1977

Work Assignment	Total		WSP		WSR		WCI		KMCI		WCI-Oak.		TCI		WCCS	
	#	%	#	%	#	%	#	%	#	%	#	%	#	%	#	%
Total	953	100.0	142	100.0	75	100.0	310	100.0	238	100.0	41	100.0	83	100.0	64	100.0
Institution needs	689	72.3	141	99.3	74	98.7	168	54.2	185	77.7	27	65.9	39	47.0	55	85.9
General maintenance	12	1.3	-	-	1	1.3	1	0.3	4	1.7	5	12.2	1	1.2	-	-
Mechanical maintenance	9	0.9	-	-	-	-	6	1.9	2	0.8	1	2.4	-	-	-	-
Industries	12	1.3	-	-	-	-	7	2.3	5	2.1	-	-	-	-	-	-
Institution services	130	13.6	-	-	-	-	65	21.0	25	10.5	3	7.3	35	42.2	2	3.1
Food services	87	9.1	-	-	-	-	61	19.7	13	5.5	2	4.9	7	8.4	4	6.3
Ancillary services	13	1.4	1	0.7	-	-	2	0.6	3	1.3	3	7.3	1	1.2	3	4.7
Not reported or none	1	0.1	-	-	-	-	-	-	1	0.4	-	-	-	-	-	-

Table 2  
Education - First Assinment  
Residents Receiving  
Mutual Agreement Program Contracts in 1977

Contract Education- First Assignment	Total		WSP		WSR		WCI		KMCI		WCI-Oak.		TCI		WCCS	
	#	%	#	%	#	%	#	%	#	%	#	%	#	%	#	%
<u>Total</u>	<u>953</u>	<u>100.0</u>	<u>142</u>	<u>100.0</u>	<u>75</u>	<u>100.0</u>	<u>310</u>	<u>100.0</u>	<u>238</u>	<u>100.0</u>	<u>41</u>	<u>100.0</u>	<u>83</u>	<u>100.0</u>	<u>64</u>	<u>100.0</u>
Academic Program	98	10.2	1	0.7	13	17.3	18	5.8	25	10.5	7	17.0	19	22.8	15	23.4
High School	9	0.9	-	-	1	1.3	5	1.6	3	1.2	-	-	-	-	-	-
Full time	(5)	(0.5)	(-)	(-)	(1)	(1.3)	(2)	(0.6)	(2)	(0.8)	(-)	(-)	(-)	(-)	(-)	(-)
Part time	(4)	(0.4)	(-)	(-)	(-)	(-)	(3)	(1.0)	(1)	(0.4)	(-)	(-)	(-)	(-)	(-)	(-)
College	75	7.8	1	0.7	10	13.3	7	2.2	18	7.6	6	14.6	19	22.8	14	21.8
Full time on																
Study Release	(58)	(6.1)	(1)	(0.7)	(3)	(4.0)	(5)	(1.6)	(15)	(6.3)	(5)	(12.2)	(18)	(21.6)	(11)	(17.1)
Full time	(9)	(0.9)	(-)	(-)	(7)	(9.3)	(1)	(0.3)	(-)	(-)	(-)	(-)	(-)	(-)	(1)	(1.6)
Extension																
Courses	(5)	(0.5)	(-)	(-)	(-)	(-)	(-)	(-)	(3)	(1.3)	(1)	(2.4)	(1)	(1.2)	(-)	(-)
Correspondence																
Courses	(3)	(0.3)	(-)	(-)	(-)	(-)	(1)	(0.3)	(-)	(-)	(-)	(-)	(-)	(-)	(2)	(3.1)
Other	14	1.5	-	-	2	2.7	6	1.9	4	1.7	1	2.4	-	-	1	1.6
Vocational Programs	444	46.5	53	37.3	35	46.7	172	55.5	135	56.7	4	9.8	31	37.4	14	21.9
Appliance Serv.	5	0.5	-	-	-	-	5	1.6	-	-	-	-	-	-	-	-
Auto body	29	3.0	9	6.2	3	4.0	9	2.9	8	3.4	-	-	-	-	-	-
Auto mechanics	32	3.4	3	2.0	4	5.3	11	3.6	14	5.8	-	-	-	-	-	-
Barbering	2	0.2	-	-	2	2.7	-	-	-	-	-	-	-	-	-	-
Blueprint reading/ graphics	7	0.7	-	-	2	2.7	2	0.6	3	1.3	-	-	-	-	-	-
Butcher/meat cutting	1	0.1	1	0.6	-	-	-	-	-	-	-	-	-	-	-	-
Cabinet making	3	0.3	-	-	-	-	-	-	-	-	-	-	-	-	3	4.7
Carpentry/wood techniques	33	3.5	-	-	2	2.7	22	7.1	9	3.8	-	-	-	-	-	-
Cooks and bakers	12	1.3	3	2.0	1	1.3	4	1.3	-	-	-	-	1	1.2	3	4.7
Cosmetology	8	0.8	1	0.6	-	-	-	-	-	-	-	-	7	8.4	-	-
Custodial/ Janitorial serv.	38	4.0	1	0.6	1	1.3	33	10.6	3	1.3	-	-	-	-	-	-
Data processing/ computer serv.	6	0.6	-	-	3	4.0	1	0.3	-	-	-	-	2	2.4	-	-
Electronics	9	0.9	-	-	-	-	8	2.6	1	0.4	-	-	-	-	-	-
Foundry	4	0.4	1	0.6	1	1.3	-	-	2	0.8	-	-	-	-	-	-

Table 2 (Concluded)

Contract Education- First Assignment	Total # %	WSP # %	WSR # %	WCI # %	KMCI # %	WCI-Oak # %	TCI # %	WCCS # %
<u>Vocational Programs (Continued)</u>								
Machinist	35 3.7	4 2.7	3 4.0	12 3.9	16 6.7	- -	- -	- -
Masonry	14 1.5	2 1.3	- -	11 3.6	1 0.4	- -	- -	- -
Metal Fabrication	3 0.3	- -	- -	- -	3 1.3	- -	- -	- -
Painting	2 0.2	- -	2 2.7	- -	- -	- -	- -	- -
Printing	2 0.2	1 1.3	- -	- -	1 0.4	- -	- -	- -
Sewing	7 0.7	- -	- -	- -	1 0.4	- -	6 7.3	- -
Sheet metal	5 0.5	1 1.3	3 4.0	- -	1 0.4	- -	- -	- -
Welding	103 10.9	11 7.7	3 4.0	17 5.5	60 25.2	4 9.3	1 1.2	7 10.9
Woodworking	17 1.8	5 3.5	3 4.0	- -	8 3.4	- -	1 1.2	- -
Xerox (TAPP)	5 0.5	3 2.0	- -	2 0.6	- -	- -	- -	- -
All others	62 6.5	7 4.9	2 2.7	35 11.3	4 1.7	- -	13 15.7	1 1.6
<u>Apprenticeship Programs</u>	<u>14 1.4</u>	<u>7 4.9</u>	<u>2 2.7</u>	<u>- -</u>	<u>3 1.2</u>	<u>2 4.9</u>	<u>- -</u>	<u>- -</u>
Baking/food services	1 0.1	- -	- -	- -	1 0.4	- -	- -	- -
Barbering	2 0.2	- -	2 2.7	- -	- -	- -	- -	- -
Butcher	2 0.2	- -	- -	- -	2 0.8	- -	- -	- -
Metal fabrication	2 0.2	2 1.4	- -	- -	- -	- -	- -	- -
Industrial painter	3 0.3	3 2.1	- -	- -	- -	- -	- -	- -
Welding	4 0.4	2 1.4	- -	- -	- -	2 4.9	- -	- -
<u>Other Education Programs</u>	<u>137 14.5</u>	<u>18 12.7</u>	<u>11 14.7</u>	<u>47 15.2</u>	<u>32 13.5</u>	<u>6 14.7</u>	<u>11 13.3</u>	<u>12 18.8</u>
Adult basic education	54 5.7	8 5.6	3 4.0	21 6.8	9 3.8	4 9.8	1 1.2	8 12.5
Basic review courses	1 0.1	- -	- -	- -	- -	- -	1 1.2	- -
HED or GED	82 8.7	10 7.1	8 10.7	26 8.4	23 9.7	2 4.9	9 10.9	4 6.3
Full time	(38) (4.0)	(4) (2.8)	(6) (8.0)	(4) (1.3)	(15) (6.3)	(2) (4.9)	(6) (7.3)	(1) (1.6)
Part time	(44) (4.7)	(6) (4.2)	(2) (2.7)	(22) (7.1)	(8) (3.4)	(-) (-)	(3) (3.6)	(3) (4.7)
None Contracted For	260 27.4	63 44.4	14 18.6	73 23.5	43 18.1	22 53.6	22 26.5	23 35.9



Table 3  
Education - Second Assignment  
Residents Receiving  
Mutual Agreement Program Contracts in 1977

Education - Second Assignment	Total		WSP		WSR		WCI		KMCI		WCI-Oak.		TCI		WCCS	
	#	%	#	%	#	%	#	%	#	%	#	%	#	%	#	%
<u>Total</u>	<u>953</u>	<u>100.0</u>	<u>142</u>	<u>100.0</u>	<u>75</u>	<u>100.0</u>	<u>310</u>	<u>100.0</u>	<u>238</u>	<u>100.0</u>	<u>41</u>	<u>100.0</u>	<u>83</u>	<u>100.0</u>	<u>64</u>	<u>100.0</u>
Academic Program	42	4.3	1	0.7	12	15.8	15	4.3	9	3.7	1	2.4	2	2.4	2	3.1
High School	5	0.5	-	-	-	-	3	1.0	2	0.8	-	-	-	-	-	-
Full time	(1)	(0.1)	(-)	(-)	(-)	(-)	(-)	(-)	(1)	(0.4)	(-)	(-)	(-)	(-)	(-)	(-)
Part time	(4)	(0.4)	(-)	(-)	(-)	(-)	(3)	(1.0)	(1)	(0.4)	(-)	(-)	(-)	(-)	(-)	(-)
College	30	3.1	-	-	11	14.5	10	2.7	5	2.1	1	2.4	1	1.2	2	3.1
Full time																
Study Release	(22)	(2.3)	(-)	(-)	(10)	(13.2)	(7)	(1.8)	(3)	(1.3)	(-)	(-)	(-)	(-)	(2)	(3.1)
Full time	(4)	(0.4)	(-)	(-)	(-)	(-)	(1)	(0.3)	(1)	(0.4)	(1)	(2.4)	(1)	(1.2)	(-)	(-)
Part time	(1)	(0.1)	(-)	(-)	(1)	(1.3)	(-)	(-)	(-)	(-)	(-)	(-)	(-)	(-)	(-)	(-)
Ext. Courses	(2)	(0.2)	(-)	(-)	(-)	(-)	(1)	(0.3)	(1)	(0.4)	(-)	(-)	(-)	(-)	(-)	(-)
Corres. Courses	(1)	(0.1)	(-)	(-)	(-)	(-)	(1)	(0.3)	(-)	(-)	(-)	(-)	(-)	(-)	(-)	(-)
Other	7	0.7	1	0.7	1	1.3	2	0.6	2	0.8	-	-	1	1.2	-	-
Vocational Programs	69	7.1	7	4.9	7	9.3	27	8.5	20	8.2	2	4.8	4	4.8	2	3.2
Appliance Serv.	1	0.1	-	-	-	-	1	0.3	-	-	-	-	-	-	-	-
Auto body	3	0.3	-	-	-	-	2	0.6	1	0.4	-	-	-	-	-	-
Auto mechanics	5	0.5	3	2.1	-	-	2	0.6	-	-	-	-	-	-	-	-
Blueprint reading/ graphics	7	0.7	-	-	1	1.3	-	-	6	2.5	-	-	-	-	-	-
Carpentry/wood techniques	3	0.3	-	-	-	-	2	0.6	1	0.4	-	-	-	-	-	-
Cosmetology	2	0.2	-	-	-	-	-	-	1	0.4	-	-	1	1.2	-	-
Custodial/ Janitorial serv.	5	0.5	-	-	1	1.3	3	1.0	1	0.4	-	-	-	-	-	-
Foundry	2	0.2	1	0.7	1	1.3	-	-	-	-	-	-	-	-	-	-
Machinist	4	0.4	1	0.7	1	1.3	-	-	2	0.8	-	-	-	-	-	-
Masonry	11	1.2	-	-	-	-	10	3.2	1	0.4	-	-	-	-	-	-
Sewing	1	0.1	-	-	-	-	-	-	-	-	-	1	1.2	-	-	-
Sheet metal	1	0.1	-	-	1	1.3	-	-	-	-	-	-	-	-	-	-
Welding	6	0.6	-	-	-	-	2	0.6	2	0.8	1	2.4	-	-	1	1.6
Woodworking	3	0.3	-	-	1	1.3	-	-	1	0.4	1	2.4	-	-	-	-
Account clerk	1	0.1	-	-	-	-	-	-	1	0.4	-	-	-	-	-	-
Others	14	1.5	2	1.4	1	1.3	5	1.6	3	1.3	-	-	2	2.4	1	1.6

Table 3 (Concluded)

Education - Second Assignment	Total		WSP		WSR		WCI		KMCI		WCI-Oak.		TCI		WCCS	
	#	%	#	%	#	%	#	%	#	%	#	%	#	%	#	%
<u>Apprenticeship Program</u>	<u>1</u>	<u>0.1</u>	<u>1</u>	<u>0.7</u>	<u>-</u>	<u>-</u>	<u>-</u>	<u>-</u>	<u>-</u>	<u>-</u>	<u>-</u>	<u>-</u>	<u>-</u>	<u>-</u>	<u>-</u>	<u>-</u>
Welding	1	0.1	1	0.7	-	-	-	-	-	-	-	-	-	-	-	-
<u>Other Education</u>	<u>188</u>	<u>19.7</u>	<u>20</u>	<u>14.0</u>	<u>7</u>	<u>9.4</u>	<u>50</u>	<u>16.1</u>	<u>86</u>	<u>36.1</u>	<u>-</u>	<u>-</u>	<u>18</u>	<u>21.7</u>	<u>7</u>	<u>11.0</u>
Adult basic education	61	6.4	4	2.8	1	1.3	19	6.1	32	13.4	-	-	2	2.4	3	4.7
Basic review courses	4	0.4	3	2.1	-	-	1	0.3	-	-	-	-	-	-	-	-
HED or GED	123	12.9	13	9.1	6	8.1	30	9.7	54	22.7	-	-	16	19.3	4	6.3
Full time	(34)	(3.6)	(5)	(3.5)	(2)	(2.7)	(5)	(1.6)	(18)	(7.6)	(-)	(-)	(4)	(4.8)	(-)	(-)
Part time	(89)	(9.3)	(8)	(5.6)	(4)	(5.3)	(25)	(8.1)	(36)	(15.1)	(-)	(-)	(12)	(14.5)	(4)	(6.3)
<u>None</u>	<u>653</u>	<u>68.8</u>	<u>113</u>	<u>79.7</u>	<u>49</u>	<u>65.5</u>	<u>218</u>	<u>71.1</u>	<u>123</u>	<u>52.0</u>	<u>33</u>	<u>92.8</u>	<u>59</u>	<u>71.1</u>	<u>53</u>	<u>82.7</u>

Table 4  
Treatment - First Assignment  
Residents Receiving  
Mutual Agreement Program Contracts in 1977

Treatment - First Assignment	Total		WSP		WSR		WCI		KMCI		WCI-Oak.		TCI		WCCS	
	#	%	#	%	#	%	#	%	#	%	#	%	#	%	#	%
<u>Total</u>	<u>953</u>	<u>100.0</u>	<u>142</u>	<u>100.0</u>	<u>75</u>	<u>100.0</u>	<u>310</u>	<u>100.0</u>	<u>238</u>	<u>100.0</u>	<u>41</u>	<u>100.0</u>	<u>83</u>	<u>100.0</u>	<u>64</u>	<u>100.0</u>
<u>Clinical Services</u>	<u>377</u>	<u>39.5</u>	<u>68</u>	<u>47.9</u>	<u>41</u>	<u>54.7</u>	<u>105</u>	<u>33.9</u>	<u>108</u>	<u>45.4</u>	<u>18</u>	<u>43.9</u>	<u>29</u>	<u>34.9</u>	<u>8</u>	<u>12.6</u>
Individ. therapy	60	6.3	-	-	-	-	17	5.5	19	8.0	5	12.2	18	21.7	1	1.6
Group therapy	108	11.3	1	0.7	-	-	60	19.4	34	14.3	4	9.8	9	10.8	-	-
Drug group	41	4.3	-	-	6	8.0	5	1.6	30	12.6	-	-	-	-	-	-
Alcoholics Anon.	3	0.3	-	-	-	-	-	-	1	0.4	1	2.4	-	-	1	1.6
Indiv. counseling	41	4.3	17	12.0	20	26.7	1	0.3	-	-	2	4.9	1	1.2	-	-
Group counseling	30	3.1	28	19.7	1	1.3	1	0.3	-	-	-	-	-	-	-	-
Alcoholic Educa. and Treatment	94	9.9	22	15.5	14	18.7	21	6.8	24	10.1	6	14.6	1	1.2	6	9.4
<u>Social Services</u>	<u>271</u>	<u>28.5</u>	<u>36</u>	<u>25.4</u>	<u>9</u>	<u>12.0</u>	<u>107</u>	<u>34.5</u>	<u>72</u>	<u>30.3</u>	<u>8</u>	<u>19.5</u>	<u>24</u>	<u>28.9</u>	<u>15</u>	<u>23.4</u>
Individ. therapy	61	6.4	1	0.7	-	-	9	2.9	28	11.8	5	12.2	12	14.5	6	9.4
Group therapy	54	5.7	-	-	-	-	16	5.2	28	11.8	1	2.4	6	7.2	3	4.6
Drug group	90	9.4	-	-	1	1.3	81	26.1	5	2.1	-	-	2	2.4	1	1.6
Alcoholics Anon.	14	1.5	-	-	-	-	1	0.3	10	4.2	-	-	2	2.4	1	1.6
Family counseling	1	0.1	-	-	-	-	-	-	-	-	-	-	1	1.2	-	-
Indiv. counseling	33	3.5	18	12.7	8	10.7	-	-	1	0.4	2	4.9	1	1.2	3	4.6
Group counseling	17	1.8	17	12.0	-	-	-	-	-	-	-	-	-	-	-	-
Transactional Analysis	1	0.1	-	-	-	-	-	-	-	-	-	-	-	-	1	1.6
<u>Chaplains</u>	<u>6</u>	<u>0.6</u>	<u>-</u>	<u>-</u>	<u>-</u>	<u>-</u>	<u>3</u>	<u>1.0</u>	<u>3</u>	<u>1.3</u>	<u>-</u>	<u>-</u>	<u>-</u>	<u>-</u>	<u>-</u>	<u>-</u>
Individ. therapy	3	0.3	-	-	-	-	-	-	3	1.3	-	-	-	-	-	-
Group counseling	3	0.3	-	-	-	-	3	1.0	-	-	-	-	-	-	-	-
<u>Other Source</u>	<u>25</u>	<u>2.6</u>	<u>2</u>	<u>1.4</u>	<u>-</u>	<u>-</u>	<u>-</u>	<u>-</u>	<u>5</u>	<u>2.1</u>	<u>5</u>	<u>12.2</u>	<u>-</u>	<u>-</u>	<u>13</u>	<u>20.3</u>
Group therapy	1	0.1	-	-	-	-	-	-	1	0.4	-	-	-	-	-	-
Alcoholics Anon.	19	2.0	-	-	-	-	-	-	3	1.3	4	9.8	-	-	12	18.7
Group counseling	3	0.3	2	1.4	-	-	-	-	1	0.4	-	-	-	-	-	-
Transactional Analysis	2	0.2	-	-	-	-	-	-	-	-	1	2.4	-	-	1	1.6
<u>None</u>	<u>274</u>	<u>28.8</u>	<u>36</u>	<u>25.3</u>	<u>25</u>	<u>33.3</u>	<u>95</u>	<u>30.6</u>	<u>50</u>	<u>20.9</u>	<u>10</u>	<u>24.4</u>	<u>30</u>	<u>36.2</u>	<u>28</u>	<u>43.7</u>

Table 5  
Treatment - Second Assignment  
Residents Receiving  
Mutual Agreement Program Contracts in 1977

Treatment - Second Assignment	Total		WSP		WSR		WCI		KMCI		WCI-Oak.		TCI		WCCS	
	#	%	#	%	#	%	#	%	#	%	#	%	#	%	#	%
<u>Total</u>	<u>953</u>	<u>100.0</u>	<u>142</u>	<u>100.0</u>	<u>75</u>	<u>100.0</u>	<u>310</u>	<u>100.0</u>	<u>238</u>	<u>100.0</u>	<u>41</u>	<u>100.0</u>	<u>83</u>	<u>100.0</u>	<u>64</u>	<u>100.0</u>
<u>Clinical Services</u>	<u>111</u>	<u>11.7</u>	<u>16</u>	<u>11.3</u>	<u>8</u>	<u>10.6</u>	<u>46</u>	<u>14.7</u>	<u>32</u>	<u>13.5</u>	<u>2</u>	<u>4.8</u>	<u>3</u>	<u>3.6</u>	<u>4</u>	<u>6.3</u>
Individ. therapy	12	1.3	-	-	-	-	8	2.6	3	1.3	-	-	1	1.2	-	-
Group therapy	11	1.2	-	-	-	-	11	3.5	-	-	-	-	-	-	-	-
Drug counseling	1	0.1	-	-	-	-	1	0.3	-	-	-	-	-	-	-	-
Individ. counsel.	2	0.2	-	-	1	1.3	-	-	-	-	1	2.4	-	-	-	-
Group counseling	4	0.4	2	1.4	-	-	2	0.6	-	-	-	-	-	-	-	-
Alcohol, Educa. & Treatment (AETP)	81	8.5	14	9.9	7	9.3	24	7.7	29	12.2	1	2.4	2	2.4	4	6.3
<u>Social Services</u>	<u>29</u>	<u>3.4</u>	<u>5</u>	<u>3.5</u>	<u>1</u>	<u>1.3</u>	<u>19</u>	<u>6.1</u>	<u>1</u>	<u>0.4</u>	-	-	<u>2</u>	<u>2.4</u>	<u>1</u>	<u>1.6</u>
Individ. therapy	4	0.4	-	-	-	-	3	1.0	-	-	-	-	1	1.2	-	-
Group therapy	3	0.3	-	-	-	-	2	0.6	1	0.4	-	-	-	-	-	-
Drug counseling	15	1.6	-	-	-	-	14	4.5	-	-	-	-	1	1.2	-	-
Alcohol Anon.	1	0.3	-	-	-	-	-	-	-	-	-	-	-	1	1.6	-
Individ. counsel.	1	0.3	-	-	1	1.3	-	-	-	-	-	-	-	-	-	-
Group counseling	5	0.5	5	3.5	-	-	-	-	-	-	-	-	-	-	-	-
<u>Other Services</u>	<u>3</u>	<u>0.3</u>	<u>1</u>	<u>0.7</u>	-	-	-	-	-	-	-	-	<u>1</u>	<u>1.2</u>	<u>1</u>	<u>1.6</u>
Individ. therapy	1	0.1	-	-	-	-	-	-	-	-	-	-	1	1.2	-	-
Alcohol Anon.	1	0.1	-	-	-	-	-	-	-	-	-	-	-	1	1.6	-
Transactional Analysis	1	0.1	1	0.7	-	-	-	-	-	-	-	-	-	-	-	-
<u>None</u>	<u>810</u>	<u>84.6</u>	<u>120</u>	<u>84.5</u>	<u>66</u>	<u>88.1</u>	<u>245</u>	<u>79.2</u>	<u>205</u>	<u>86.1</u>	<u>39</u>	<u>95.2</u>	<u>77</u>	<u>92.8</u>	<u>58</u>	<u>90.5</u>

Table 6  
Transfer - First Assignment  
Resident Receiving  
Mutual Agreement Program Contracts in 1977

Transfer - First Assignment	Total		WSP		WSR		WCI		KMCI		WCI-Oak.		TCI		WCCS	
	#	%	#	%	#	%	#	%	#	%	#	%	#	%	#	%
<u>Total</u>	<u>953</u>	<u>100.0</u>	<u>142</u>	<u>100.0</u>	<u>75</u>	<u>100.0</u>	<u>310</u>	<u>100.0</u>	<u>238</u>	<u>100.0</u>	<u>41</u>	<u>100.0</u>	<u>83</u>	<u>100.0</u>	<u>64</u>	<u>100.0</u>
Wis. State Prison	12	1.3	10	7.0	-	-	2	0.6	-	-	-	-	-	-	-	-
WCI-Fox Lake	41	4.3	30	21.1	3	4.0	2	0.6	6	2.5	-	-	-	-	-	-
WCI-Kettle Moraine	88	9.2	45	31.7	13	17.3	4	1.3	25	10.5	-	-	1	1.2	-	-
WCI-Oakhill	107	11.2	3	2.1	4	5.3	60	19.4	33	13.9	4	9.8	3	3.6	-	-
WCI-Taycheedah	136	14.3	15	10.6	18	24.0	30	9.7	46	19.3	6	14.6	11	13.2	10	15.6
<u>Wis. Correctional Camp System</u>	<u>157</u>	<u>16.5</u>	<u>9</u>	<u>6.3</u>	<u>11</u>	<u>14.6</u>	<u>86</u>	<u>27.7</u>	<u>42</u>	<u>17.7</u>	<u>2</u>	<u>4.9</u>	<u>1</u>	<u>1.2</u>	<u>6</u>	<u>9.4</u>
Oregon	35	3.7	-	-	1	1.3	17	5.5	15	6.3	-	-	-	-	2	3.1
Thompson	38	4.0	2	1.4	1	1.3	22	7.1	11	4.6	-	-	1	1.2	1	1.6
Winnebago	45	4.7	4	2.8	4	5.3	25	8.1	7	2.9	2	4.9	-	-	3	4.7
Black River	8	0.8	-	-	-	-	5	1.6	3	1.3	-	-	-	-	-	-
Gordon	19	2.0	3	2.1	2	2.7	11	3.5	3	1.3	-	-	-	-	-	-
McNaughton	12	1.3	-	-	3	4.0	6	1.9	3	1.3	-	-	-	-	-	-
<u>Bureau of Community Corrections System</u>	<u>212</u>	<u>22.3</u>	<u>19</u>	<u>13.4</u>	<u>8</u>	<u>10.6</u>	<u>79</u>	<u>25.4</u>	<u>50</u>	<u>21.0</u>	<u>5</u>	<u>12.2</u>	<u>45</u>	<u>54.2</u>	<u>6</u>	<u>9.3</u>
Milwaukee Metro	140	14.7	14	9.9	7	9.3	41	13.2	30	12.6	3	7.3	44	53.0	1	1.5
Men's	(97)	(10.2)	(14)	(9.9)	(7)	(9.3)	(41)	(13.2)	(30)	(12.6)	(3)	(7.3)	(1)	(1.2)	(1)	(1.5)
Women's	(43)	(4.5)	(-)	(-)	(-)	(-)	(-)	(-)	(-)	(-)	(-)	(-)	(43)	(51.8)	(-)	(-)
Abode	52	5.5	2	1.4	1	1.3	28	9.0	14	5.9	2	4.9	1	1.2	4	6.3
Baker House	20	2.1	3	2.1	-	-	10	3.2	6	2.5	-	-	-	-	1	1.5
<u>Others</u>	<u>13</u>	<u>1.3</u>	<u>-</u>	<u>-</u>	<u>10</u>	<u>13.3</u>	<u>1</u>	<u>0.3</u>	<u>2</u>	<u>0.8</u>	<u>-</u>	<u>-</u>	<u>-</u>	<u>-</u>	<u>-</u>	<u>-</u>
Halfway House	4	0.4	-	-	1	1.3	1	0.3	2	0.8	-	-	-	-	-	-
Other	9	0.9	-	-	9	12.0	-	-	-	-	-	-	-	-	-	-
<u>None</u>	<u>187</u>	<u>19.6</u>	<u>11</u>	<u>7.8</u>	<u>8</u>	<u>10.9</u>	<u>46</u>	<u>15.0</u>	<u>34</u>	<u>14.3</u>	<u>24</u>	<u>58.5</u>	<u>22</u>	<u>26.5</u>	<u>42</u>	<u>65.7</u>

Table 7  
 Transfer - Second Assignment  
 Resident Receiving  
 Mutual Agreement Program Contracts in 1977

Transfer - Second Assignment	# Total %		# WSP %		# WSR %		# WCI %		# KMCI %		# WCI-Oak. %		# TCI %		# WCCS %	
	#	%	#	%	#	%	#	%	#	%	#	%	#	%	#	%
<u>Total</u>	<u>953</u>	<u>100.0</u>	<u>142</u>	<u>100.0</u>	<u>75</u>	<u>100.0</u>	<u>310</u>	<u>100.0</u>	<u>238</u>	<u>100.0</u>	<u>41</u>	<u>100.0</u>	<u>83</u>	<u>100.0</u>	<u>64</u>	<u>100.0</u>
Wis. State Prison	2	0.2	2	1.4	-	-	-	-	-	-	-	-	-	-	-	-
Wis. State Reform.	1	0.1	-	-	-	-	1	0.3	-	-	-	-	-	-	-	-
WCI-Fox Lake	-	-	-	-	-	-	-	-	-	-	-	-	-	-	-	-
WCI-Kettle Moraine	1	0.1	-	-	-	-	-	-	1	0.4	-	-	-	-	-	-
WCI-Oakhill	14	1.5	7	4.9	1	1.3	3	1.0	3	1.3	-	-	-	-	-	-
WCI-Taycheedah	51	5.4	18	12.7	5	6.7	16	5.2	11	4.6	-	-	1	1.2	-	-
<u>Wis. Correctional Camp System</u>	<u>28</u>	<u>2.9</u>	<u>18</u>	<u>12.7</u>	<u>-</u>	<u>-</u>	<u>6</u>	<u>1.9</u>	<u>4</u>	<u>1.6</u>	<u>-</u>	<u>-</u>	<u>-</u>	<u>-</u>	<u>-</u>	<u>-</u>
Oregon	1	0.1	1	0.7	-	-	-	-	-	-	-	-	-	-	-	-
Thompson	8	0.8	6	4.2	-	-	1	0.3	1	0.4	-	-	-	-	-	-
Winnebago	17	1.8	10	7.1	-	-	5	1.6	2	0.8	-	-	-	-	-	-
McNaughton	2	0.2	1	0.7	-	-	-	-	1	0.4	-	-	-	-	-	-
<u>Bureau of Community Corrections System</u>	<u>93</u>	<u>9.8</u>	<u>32</u>	<u>22.5</u>	<u>8</u>	<u>10.7</u>	<u>31</u>	<u>10.0</u>	<u>20</u>	<u>8.4</u>	<u>1</u>	<u>2.4</u>	<u>1</u>	<u>1.2</u>	<u>-</u>	<u>-</u>
Milwaukee Metros	51	5.4	19	13.4	4	5.3	13	4.2	14	5.9	-	-	1	1.2	-	-
Men's	(50)	(5.3)	(19)	(13.4)	(4)	(5.3)	(13)	(4.2)	(13)	(5.5)	(-)	(-)	(1)	(1.2)	(-)	(-)
Women's	(1)	(0.1)	(-)	(-)	(-)	(-)	(-)	(-)	(1)	(0.4)	(-)	(-)	(-)	(-)	(-)	(-)
Abode	29	3.0	9	6.3	2	2.7	13	4.2	4	1.7	1	2.4	-	-	-	-
Baker House	13	1.4	4	2.8	2	2.7	5	1.6	2	0.8	-	-	-	-	-	-
<u>Other</u>	<u>2</u>	<u>0.2</u>	<u>-</u>	<u>-</u>	<u>2</u>	<u>2.7</u>	<u>-</u>	<u>-</u>	<u>-</u>	<u>-</u>	<u>-</u>	<u>-</u>	<u>-</u>	<u>-</u>	<u>-</u>	<u>-</u>
<u>None</u>	<u>761</u>	<u>79.8</u>	<u>65</u>	<u>45.8</u>	<u>59</u>	<u>78.6</u>	<u>253</u>	<u>81.6</u>	<u>199</u>	<u>33.7</u>	<u>40</u>	<u>97.6</u>	<u>81</u>	<u>97.6</u>	<u>64</u>	<u>100.0</u>

Table 8  
Length of Contract  
Residents Receiving Mutual Agreement Program Contracts in 1977

Length of Contract	Total		WSP		WSR		WCI		KMCI		WCI-Oak.		TCI		WCCS	
	#	%	#	%	#	%	#	%	#	%	#	%	#	%	#	%
Total	953	100.0	142	100.0	75	100.0	310	100.0	238	100.0	41	100.0	83	100.0	64	100.0
3 months or less	135	14.2	21	14.8	9	12.0	30	9.7	22	9.2	17	41.5	12	14.5	24	37.5
4 mos. to 6 mos.	159	16.7	13	9.2	11	14.7	48	15.5	47	19.7	9	22.0	21	25.3	10	15.6
7 mos. to 9 mos.	214	22.5	22	15.5	21	28.1	90	29.0	45	18.9	7	17.1	14	16.9	15	23.4
10 mos. to 12 mos.	145	15.2	15	10.6	13	17.3	47	15.2	43	18.1	3	7.3	18	21.7	6	9.4
13 mos. to 18 mos.	211	22.1	37	26.1	13	17.3	73	23.5	66	27.7	4	9.8	10	12.0	8	12.5
19 mos. and over	79	8.3	33	23.1	7	9.3	21	6.8	12	5.1	-	-	6	7.2	-	-
Not calculated	10	1.0	1	0.7	1	1.3	1	0.3	3	1.3	1	2.3	2	2.4	1	1.6
Average (mean) length of con- tract(in months)	9.6		12.8		8.2		10.2		10.2		5.5		9.1		5.8	
Median (mean) length of con- tract(in months)	9.5		12.1		9.4		9.6		10.1		4.7		9.1		5.1	

Table 9  
Admission Status  
Residents First and Re-admitted Receiving  
Mutual Agreement Program Contracts in 1977

Admission Status	Total		WSP		WSR		WCI		KMCI		WCI-Oak.		TCI		WCCS	
	#	%	#	%	#	%	#	%	#	%	#	%	#	%	#	%
<u>New Sentence</u>	893	100.0	124	100.0	70	100.0	296	100.0	228	100.0	37	100.0	80	100.0	58	100.0
Non-violator	516	57.8	92	74.2	37	52.9	155	52.5	131	57.5	25	67.6	43	53.7	33	56.9
Probation violator	344	38.6	30	24.2	33	47.1	112	37.8	97	42.5	12	32.4	37	46.3	23	39.6
New Sentence	(319)	(35.7)	(24)	(19.4)	(32)	(45.7)	(104)	(35.1)	(94)	(41.2)	(8)	(21.6)	(35)	(43.8)	(22)	(37.9)
No New Sentence	(25)	(2.8)	(6)	(4.8)	(1)	(1.4)	(8)	(2.7)	(3)	(1.3)	(4)	(10.8)	(2)	(2.5)	(1)	(1.7)
Youthful Offender																
Violator	31	3.4	1	0.8	-	-	28	9.4	-	-	-	-	-	-	2	3.5
New Sentence	(28)	(3.1)	(1)	(0.8)	(-)	(-)	(25)	(8.4)	(-)	(-)	(-)	(-)	(-)	(-)	(2)	(3.5)
No New Sentence	(3)	(0.3)	(-)	(-)	(-)	(-)	(3)	(1.0)	(-)	(-)	(-)	(-)	(-)	(-)	(-)	(-)
Juvenile After-care Violator	2	0.2	1	0.8	-	-	1	0.3	-	-	-	-	-	-	-	-
<u>Readmissions</u>	58	100.0	18	100.0	5	100.0	14	100.0	10	100.0	4	100.0	1	100.0	6	100.0
New Sentence	43	74.1	12	66.7	2	40.0	12	85.8	7	70.0	4	100.0	1	100.0	5	83.4
Adult Parole Violator	(27)	(46.5)	(7)	(38.9)	(2)	(40.0)	(6)	(42.9)	(6)	(60.0)	(1)	(25.0)	(1)	(100.0)	(4)	(66.7)
Adult Mandatory Release Violator	(16)	(27.6)	(5)	(27.8)	(-)	(-)	(6)	(42.9)	(1)	(10.0)	(3)	(75.0)	(-)	(-)	(1)	(16.7)
Adult Parole Violator	11	19.0	4	22.2	2	40.0	2	14.2	2	20.0	-	-	-	-	1	16.6
Adult Mandatory Release Violator	4	6.9	2	11.1	1	20.0	-	-	1	10.0	-	-	-	-	-	-



Table 10  
Length of Sentence  
Residents Receiving Mutual Agreement Program Contracts in 1977

Length of Sentence	Total		# WSP		# WSR		# WCI		# KMCI		# WCI-Oak		# TCI		# WCCS	
	#	%	#	%	#	%	#	%	#	%	#	%	#	%	#	%
Total <sup>/1</sup>	947	100.0	142	100.0	75	100.0	309	100.0	237	100.0	40	100.0	81	100.0	63	100.0
1 yr., less than 2	51	5.4	2	1.4	3	4.0	13	4.2	14	5.9	4	10.0	10	12.3	5	7.9
2 yrs., less than 3	137	14.5	14	10.0	10	13.3	28	9.1	35	14.8	14	35.0	12	14.8	24	38.1
3 yrs., less than 4	227	24.0	16	11.3	22	29.3	76	24.6	62	26.2	12	30.0	23	28.4	16	25.4
4 yrs., less than 5	119	12.6	16	11.3	7	9.3	32	10.4	52	21.9	2	5.0	5	6.2	5	7.9
5 yrs., less than 6	157	16.6	24	16.9	11	14.7	66	21.3	35	14.8	4	10.0	14	17.3	3	4.8
6 yrs., less than 7	44	4.6	9	6.3	4	5.3	20	6.5	6	2.5	1	2.5	3	3.7	1	1.6
7 yrs., less than 8	51	5.4	11	7.7	6	8.0	21	6.8	8	3.4	-	-	3	3.7	2	3.2
8 yrs., less than 9	26	2.7	3	2.1	1	1.4	9	2.9	6	2.5	1	2.5	5	6.2	1	1.6
9 yrs., less than 10	10	1.1	2	1.4	1	1.4	6	1.9	1	0.4	-	-	-	-	-	-
10 yrs., less than 15	71	7.5	24	16.9	7	9.3	19	6.1	12	5.1	-	-	5	6.2	4	6.3
15 yrs., less than 20	28	3.0	10	7.0	3	4.0	11	3.6	2	0.8	-	-	1	1.2	1	1.6
20 yrs., less than 25	18	1.9	9	6.3	-	-	4	1.3	4	1.7	-	-	-	-	1	1.6
25 yrs., less than life	8	0.7	2	1.4	-	-	4	1.3	-	-	2	5.0	-	-	-	-
Mean Length of Sentence (in months)	63.9															

<sup>/1</sup> Six cases have missing data for length of sentence.



Table 11 (Concluded)

Offense	Total		WSP		WSR		WCI		KMCI		WCI-Oak.		TCI		MCCS	
	#	%	#	%	#	%	#	%	#	%	#	%	#	%	#	%
Rape (including attempt)	33	3.5	5	3.5	4	5.3	14	4.5	9	3.9	-	-	-	-	1	1.6
Indecent behavior with child	3	0.3	2	1.4	-	-	1	0.3	-	-	-	-	-	-	-	-
Prostitution, pandering	1	0.1	-	-	-	-	-	-	1	0.4	-	-	-	-	-	-
Sexual perversion	1	0.1	-	-	-	-	1	0.3	-	-	-	-	-	-	-	-
Uniformed Controlled Substance Act and other drug violations	83	8.7	20	14.1	3	3.9	20	6.6	21	8.9	7	17.1	7	8.6	5	7.8
Weapons	2	0.2	1	0.7	-	-	-	-	1	0.4	-	-	-	-	-	-
Escape	5	0.5	2	1.4	-	-	1	0.3	1	0.4	1	2.4	-	-	-	-
Attempt (except rape or murder)	18	1.9	4	2.8	4	5.3	3	1.0	3	1.3	1	2.4	-	-	3	4.7
Possession of burglarous tools	2	0.2	-	-	1	1.4	1	0.3	-	-	-	-	-	-	-	-
Arson	10	1.1	3	2.1	-	-	4	1.3	-	-	-	-	-	-	3	4.7
Extortion(threats)	3	0.3	1	0.7	-	-	2	0.6	-	-	-	-	-	-	-	-
Malicious destruction of property	1	0.1	-	-	-	-	-	-	-	-	1	2.4	-	-	-	-
Abandonment, non-support	1	0.1	-	-	-	-	1	0.3	-	-	-	-	-	-	-	-
Perjury	3	0.3	-	-	-	-	-	-	1	0.4	-	-	2	2.5	-	-
Contributing to delinquency of minor	1	0.1	1	0.7	-	-	-	-	-	-	-	-	-	-	-	-
All other offenses	10	1.1	-	-	1	1.4	2	0.6	2	0.8	1	2.4	4	5.0	-	-

/1 Two cases have missing data.

Table 12

Age

Residents Receiving Mutual Agreement Program Contracts in 1977

Age	Total		WSP		WSR		WCI		KMCI		WCI-Oak.		TCI		WCCS	
	#	%	#	%	#	%	#	%	#	%	#	%	#	%	#	%
<u>Total</u>	<u>953</u>	<u>100.0</u>	<u>142</u>	<u>100.0</u>	<u>75</u>	<u>100.0</u>	<u>310</u>	<u>100.0</u>	<u>238</u>	<u>100.0</u>	<u>41</u>	<u>100.0</u>	<u>83</u>	<u>100.0</u>	<u>64</u>	<u>100.0</u>
<u>Under 20 years</u>	<u>222</u>	<u>23.3</u>	<u>7</u>	<u>4.9</u>	<u>25</u>	<u>33.3</u>	<u>81</u>	<u>26.2</u>	<u>73</u>	<u>30.7</u>	<u>4</u>	<u>9.8</u>	<u>14</u>	<u>16.9</u>	<u>18</u>	<u>28.1</u>
16 years	7	0.1	7	0.7	-	-	-	-	-	-	-	-	-	-	-	-
17 years	12	1.3	-	-	-	-	9	2.9	1	0.4	-	-	-	-	2	3.1
18 years	91	9.5	-	-	14	18.7	29	9.4	34	14.3	1	2.4	5	6.0	8	12.5
19 years	118	12.4	6	4.2	11	14.6	43	13.9	38	16.0	3	7.4	9	10.9	8	12.5
<u>20 to 24 years</u>	<u>424</u>	<u>44.5</u>	<u>47</u>	<u>33.1</u>	<u>45</u>	<u>60.0</u>	<u>136</u>	<u>43.9</u>	<u>119</u>	<u>50.0</u>	<u>17</u>	<u>41.6</u>	<u>40</u>	<u>48.2</u>	<u>20</u>	<u>31.3</u>
20 years	120	12.6	7	4.9	15	20.0	41	13.2	37	15.5	2	4.9	10	12.0	8	12.5
21 years	92	9.7	7	4.9	12	16.0	29	9.4	25	10.5	3	7.4	12	14.5	4	6.3
22 years	76	8.0	9	6.3	10	13.3	26	8.4	21	8.8	4	9.8	4	4.9	2	3.1
23 years	78	8.2	14	9.9	6	8.0	23	7.4	20	8.4	6	14.6	7	8.4	2	3.1
24 years	58	6.0	10	7.1	2	2.7	17	5.5	16	6.8	2	4.9	7	8.4	4	6.3
<u>25 to 29 years</u>	<u>165</u>	<u>17.3</u>	<u>46</u>	<u>32.4</u>	<u>3</u>	<u>4.1</u>	<u>47</u>	<u>15.2</u>	<u>29</u>	<u>12.2</u>	<u>12</u>	<u>29.4</u>	<u>16</u>	<u>19.3</u>	<u>12</u>	<u>18.8</u>
25 years	42	4.4	10	7.1	2	2.8	16	5.2	8	3.4	-	-	3	3.6	3	4.7
26 years	31	3.3	7	4.9	-	-	11	3.5	7	2.9	3	7.4	1	1.2	2	3.1
27 years	36	3.8	10	7.1	-	-	8	2.6	6	2.5	6	14.6	5	6.0	1	1.6
28 years	30	3.1	11	7.7	1	1.3	5	1.6	4	1.7	3	7.4	3	3.6	3	4.7
29 years	26	2.7	8	5.6	-	-	7	2.3	4	1.7	-	-	4	4.9	3	4.7
<u>30 to 34 years</u>	<u>68</u>	<u>7.1</u>	<u>18</u>	<u>12.7</u>	<u>1</u>	<u>1.3</u>	<u>25</u>	<u>8.1</u>	<u>10</u>	<u>4.2</u>	<u>1</u>	<u>2.3</u>	<u>8</u>	<u>9.6</u>	<u>5</u>	<u>7.7</u>
<u>35 to 39 years</u>	<u>30</u>	<u>3.1</u>	<u>8</u>	<u>5.6</u>	<u>=</u>	<u>=</u>	<u>10</u>	<u>3.2</u>	<u>5</u>	<u>2.1</u>	<u>1</u>	<u>2.3</u>	<u>2</u>	<u>2.4</u>	<u>4</u>	<u>6.3</u>
<u>40 to 44 years</u>	<u>24</u>	<u>2.6</u>	<u>10</u>	<u>7.1</u>	<u>=</u>	<u>=</u>	<u>7</u>	<u>2.2</u>	<u>=</u>	<u>=</u>	<u>3</u>	<u>7.4</u>	<u>1</u>	<u>1.2</u>	<u>3</u>	<u>4.7</u>
<u>45 to 49 years</u>	<u>12</u>	<u>1.3</u>	<u>3</u>	<u>2.1</u>	<u>1</u>	<u>1.3</u>	<u>2</u>	<u>0.6</u>	<u>2</u>	<u>0.8</u>	<u>2</u>	<u>4.9</u>	<u>=</u>	<u>=</u>	<u>2</u>	<u>3.1</u>
<u>50 to 54 years</u>	<u>6</u>	<u>0.6</u>	<u>1</u>	<u>0.7</u>	<u>=</u>	<u>=</u>	<u>2</u>	<u>0.6</u>	<u>=</u>	<u>=</u>	<u>1</u>	<u>2.3</u>	<u>2</u>	<u>2.4</u>	<u>=</u>	<u>=</u>
<u>55 to 64 years</u>	<u>2</u>	<u>0.2</u>	<u>2</u>	<u>1.4</u>	<u>=</u>	<u>=</u>	<u>=</u>	<u>=</u>	<u>=</u>	<u>=</u>	<u>=</u>	<u>=</u>	<u>=</u>	<u>=</u>	<u>=</u>	<u>=</u>
Median age(in years)	24.1		28.2		21.0		23.7		22.3		27.3		24.5		25.2	







Table 16  
 Previous Felony Convictions  
 Residents First Admitted Receiving  
 Mutual Agreement Program Contracts in 1977

Previous Felony Convictions	Total		WSP		WSR		WCI		KMCI		WCI-Oak.		TCI		WCCS	
	#	%	#	%	#	%	#	%	#	%	#	%	#	%	#	%
<u>Total</u>	<u>892</u>	<u>100.0</u>	<u>123</u>	<u>100.0</u>	<u>70</u>	<u>100.0</u>	<u>296</u>	<u>100.0</u>	<u>228</u>	<u>100.0</u>	<u>37</u>	<u>100.0</u>	<u>80</u>	<u>100.0</u>	<u>58</u>	<u>100.0</u>
None Recorded	476	53.4	43	35.0	44	62.9	166	56.1	129	56.6	10	27.0	53	66.3	31	53.4
Previous Convictions	416	46.6	80	65.0	26	37.1	130	43.9	99	43.4	27	73.0	27	33.7	27	46.6
One	271	30.4	34	27.6	18	25.7	91	30.7	76	33.3	20	54.1	16	20.0	16	27.6
Two	101	11.3	30	24.4	8	11.4	26	8.8	20	8.8	6	16.2	5	6.3	6	10.4
Three or more	44	4.9	16	13.0	-	-	13	4.4	3	1.3	1	2.7	6	7.4	5	8.6



Table 17  
 Previous Penal Experience  
 Residents First Admitted Receiving  
 Mutual Agreement Program Contracts in 1977

Previous Penal Experience	#	Total %	#	WSP %	#	WSR %	#	WCI %	#	KMCI %	#	WCI-Oak. %	#	TCI %	#	WCCS %
<u>Total</u>	<u>892</u>	<u>100.0</u>	<u>123</u>	<u>100.0</u>	<u>70</u>	<u>100.0</u>	<u>296</u>	<u>100.0</u>	<u>228</u>	<u>100.0</u>	<u>37</u>	<u>100.0</u>	<u>80</u>	<u>100.0</u>	<u>58</u>	<u>100.0</u>
None Recorded	475	53.3	46	37.4	40	57.1	159	53.7	121	53.0	22	59.5	54	67.5	33	56.9
<u>Previous Correctional Institution Experience</u>	<u>417</u>	<u>46.7</u>	<u>77</u>	<u>62.6</u>	<u>30</u>	<u>42.9</u>	<u>137</u>	<u>46.3</u>	<u>107</u>	<u>47.0</u>	<u>15</u>	<u>40.5</u>	<u>26</u>	<u>32.5</u>	<u>25</u>	<u>43.1</u>
At Wisconsin Penal Institutions																
Prison or Taycheedah Reformatory	33	3.6	9	7.3	-	-	7	2.4	1	0.4	4	10.8	9	11.2	3	5.2
Prison or Reformatory	77	8.6	23	18.7	5	7.1	24	8.1	15	6.6	2	5.4	1	1.3	7	12.1
Prison or Reformatory	7	0.8	2	1.6	-	-	3	1.0	1	0.4	-	-	-	-	1	1.7
Not at a Wisconsin Institution but at other Prison or Reformatory	62	6.9	21	17.1	2	2.9	19	6.4	9	4.0	3	8.1	4	5.0	4	6.9
Not at any penal Institution but served a jail sentence	238	26.7	22	17.9	23	32.9	84	28.4	81	35.6	6	16.2	12	15.0	10	17.2

Table 18  
 Juvenile Institution Experience  
 Residents First Admitted Receiving  
 a Mutual Agreement Program Contract in 1977

Juvenile Institution Experience	Total		WSP		WSR		WCI		KMCI		WCI-Oak.		TCI		WCCS	
	#	%	#	%	#	%	#	%	#	%	#	%	#	%	#	%
<u>Total</u>	<u>892</u>	<u>100.0</u>	<u>123</u>	<u>100.0</u>	<u>70</u>	<u>100.0</u>	<u>296</u>	<u>100.0</u>	<u>228</u>	<u>100.0</u>	<u>37</u>	<u>100.0</u>	<u>80</u>	<u>100.0</u>	<u>58</u>	<u>100.0</u>
None Recorded	668	74.9	92	74.8	56	80.0	210	70.9	161	70.6	32	86.5	66	82.5	51	87.9
<u>At Wisconsin Institutions</u>	<u>198</u>	<u>22.2</u>	<u>28</u>	<u>22.8</u>	<u>14</u>	<u>20.0</u>	<u>77</u>	<u>25.9</u>	<u>56</u>	<u>24.6</u>	<u>4</u>	<u>10.8</u>	<u>12</u>	<u>15.0</u>	<u>7</u>	<u>12.1</u>
Wis. Juvenile Training Schools	196	22.0	28	22.8	14	20.0	75	25.3	56	24.6	4	10.8	12	15.0	7	12.1
Wis. Child Center	1	0.1	-	-	-	-	1	0.3	-	-	-	-	-	-	-	-
Wis. Juvenile Training Schools and Wis. Child Center	1	0.1	-	-	-	-	1	0.3	-	-	-	-	-	-	-	-
<u>Not at Wis. Public Institutions but at Other Children's Institution</u>	<u>26</u>	<u>2.9</u>	<u>3</u>	<u>2.4</u>	<u>-</u>	<u>-</u>	<u>9</u>	<u>3.2</u>	<u>11</u>	<u>4.8</u>	<u>1</u>	<u>2.7</u>	<u>2</u>	<u>2.5</u>	<u>-</u>	<u>-</u>

Table 19  
Grade Completed  
Residents First Admitted Receiving  
a Mutual Agreement Program Contract in 1977

Grade Completed	Total		WSP		WSR		WCI		KMCI		WCI-Oak.		TCI		WCCS	
	#	%	#	%	#	%	#	%	#	%	#	%	#	%	#	%
<u>Total</u>	<u>892</u>	<u>100.0</u>	<u>123</u>	<u>100.0</u>	<u>70</u>	<u>100.0</u>	<u>296</u>	<u>100.0</u>	<u>228</u>	<u>100.0</u>	<u>37</u>	<u>100.0</u>	<u>80</u>	<u>100.0</u>	<u>58</u>	<u>100.0</u>
Less than fourth	46	5.2	7	5.6	1	1.4	15	5.1	9	3.9	2	5.4	8	10.0	4	6.9
Fourth	2	0.2	-	-	-	-	1	0.3	-	-	-	-	1	1.3	-	-
Fifth	1	0.1	-	-	-	-	-	-	-	-	-	-	-	-	-	-
Sixth	6	0.7	1	0.8	-	-	1	0.3	3	1.3	-	-	-	-	1	1.7
Seventh	10	1.1	4	3.3	-	-	3	1.0	1	0.4	-	-	2	2.5	-	-
Eighth	47	5.3	20	16.3	2	2.9	7	2.4	11	4.8	2	5.4	2	2.5	3	5.2
Ninth	101	11.3	17	13.8	9	12.9	34	11.5	28	12.4	2	5.4	4	5.0	7	12.1
Tenth	174	19.5	25	20.3	11	15.7	62	20.9	50	21.9	3	8.1	16	20.0	7	12.1
Eleventh	209	23.4	14	11.4	26	37.1	75	25.3	60	26.4	8	21.6	17	21.3	9	15.5
Twelfth or more	296	33.2	35	28.5	21	30.0	98	33.2	66	28.9	19	51.4	30	37.4	27	46.5

Table 20  
 Achievement Test  
 Residents First Admitted Receiving  
 Mutual Agreement Program Contracts in 1977

Achievement Test	Total		WSP		WSR		WCI		KMCI		WCI-Oak.		TCI		WCCS	
	#	%	#	%	#	%	#	%	#	%	#	%	#	%	#	%
<u>Total</u>	<u>892</u>	<u>100.0</u>	<u>123</u>	<u>100.0</u>	<u>70</u>	<u>100.0</u>	<u>296</u>	<u>100.0</u>	<u>228</u>	<u>100.0</u>	<u>37</u>	<u>100.0</u>	<u>80</u>	<u>100.0</u>	<u>58</u>	<u>100.0</u>
Less Than Fourth Grade	170	19.1	23	18.7	6	8.6	64	21.6	41	18.0	7	18.9	17	21.3	12	20.7
Fourth Grade	45	5.0	5	4.1	2	2.9	13	4.4	21	9.2	1	2.7	2	2.5	1	1.7
Fifth Grade	43	4.8	10	8.1	1	1.4	16	5.4	13	5.7	-	-	1	1.3	2	3.4
Sixth Grade	87	9.8	18	14.6	7	10.0	29	9.8	18	7.9	3	8.1	9	11.3	3	5.2
Seventh Grade	94	10.5	13	10.6	7	10.0	34	11.5	25	11.0	3	8.1	8	10.0	4	6.9
Eighth Grade	88	9.9	12	9.8	4	5.7	26	8.8	20	8.8	6	16.2	12	14.9	8	13.8
Ninth Grade	113	12.7	18	14.6	10	14.3	40	13.5	25	11.0	3	8.1	12	14.9	5	8.6
Tenth Grade	94	10.5	9	7.3	11	15.7	26	8.8	26	11.4	4	10.9	10	12.5	8	13.8
Eleventh Grade	64	7.2	6	4.9	9	12.9	19	6.4	13	5.7	3	8.1	2	2.5	12	20.7
Twelfth Grade or More	94	10.5	9	7.3	13	18.5	29	9.8	26	11.3	7	18.9	7	8.8	3	5.2

Table 21  
 Intelligence Estimate  
 Residents First Admitted Receiving  
 Mutual Agreement Program Contracts in 1977

Intelligence Estimate	# Total %		# WSP %		# WSR %		# WCI %		# KMCI %		# WCI-Oak. %		# TCI %		# WCCS %	
	#	%	#	%	#	%	#	%	#	%	#	%	#	%	#	%
<u>Total</u>	<u>892</u>	<u>100.0</u>	<u>123</u>	<u>100.0</u>	<u>70</u>	<u>100.0</u>	<u>296</u>	<u>100.0</u>	<u>228</u>	<u>100.0</u>	<u>37</u>	<u>100.0</u>	<u>80</u>	<u>100.0</u>	<u>58</u>	<u>100.0</u>
Superior and Above	11	1.2	-	-	2	2.9	3	1.0	4	1.8	-	-	1	1.3	1	1.7
Bright Normal	70	7.8	3	2.4	12	17.1	24	8.1	18	7.9	4	10.8	4	5.0	5	8.6
Average or Normal	334	37.5	36	29.3	35	50.0	112	37.8	97	42.5	7	18.9	22	27.4	25	43.1
Dull Normal	160	18.0	30	24.4	11	15.7	56	18.9	49	21.5	3	8.1	8	10.0	3	5.2
Borderline	36	4.0	3	2.4	2	2.9	10	3.4	16	7.0	-	-	4	5.0	1	1.7
Defective	3	0.3	-	-	1	1.4	1	0.3	1	0.4	-	-	-	-	-	-
Not Tested	278	31.2	51	41.5	7	10.0	90	30.5	43	18.9	23	62.2	41	51.3	23	39.7

Appendix 1  
MAP Process for 1977

The MAP process involves a series of complicated tasks performed at each adult corrections institution by the MAP Coordinator, Institution Representative, Resident, and the Parole Board. Table I identifies some of the significant points of the MAP process for calendar year 1977. As shown, of 2,256 referrals made to the MAP Coordinator, almost 92 percent (or 2,069 cases) were considered for negotiations. Of these negotiations, about 51 percent were reported successful (meaning the resident received a MAP contract) and approximately 14 percent, unsuccessful.

Unsuccessful negotiations, a relatively small percentage, is attributed to an increase in refusals to negotiate by the Parole Board. The impact of this group of residents to the MAP process has produced several discussions relating to eligibility criteria for Mutual Agreement Programming. Table II illustrates the result of the refusals in terms of defers. (A defer meant that the resident was ineligible to reapply for MAP until the defer has lapsed.) Nearly 57 percent of the refusal cases were deferred from ten to twelve months.

Table III illustrates essential socio-demographic characteristics relevant to the deferred group as compared with residents reported as receiving a contract. While many of the characteristics differ between the two groups, length of sentence and type of offense show the greatest difference. Nearly 73 percent of the successful MAP cases and 39 percent of the referrals population had sentence lengths between one and five years. In addition, the refusal group showed more person and robbery offenses and fewer property offenses compared with the MAP population

Institution adjustment is also considered an influencing factor for negotiations. A random sample of MAP and refusal cases were screened by MAP staff for one year prior to the negotiations. Table IV presents the results of the screening for institution adjustment measured in terms of major and minor adjustment report dispositions. The refusal group is 11.3 percentage points higher than the MAP group in terms of having institution adjustments resulting in major dispositions. Fifty-eight percent of the MAP group with major dispositions had only one major adjustment disposition compared with 42 percent of the refusal group. Nearly 35 percent of the refusal group with major adjustment dispositions had three or more reported, almost 23 percentage points higher than for the same category for MAP.

Of the MAP group, adjustments resulting in minor dispositions totaled 75 percent as compared with 70 percent for refusals. Of the number of cases reported, however, the refusal group had percentages higher than MAP in terms of having three or more minor adjustment dispositions reported during the preceding twelve months.

In general, the refusal group consisted of persons with more serious person-oriented offenses, a sentence over five years, and more serious institutional mal-adjustment. However, even within the successful MAP negotiations, 32 percent of the cases had robbery or other person offenses reported and 27 percent had sentences over five years at admission.

Table I  
 Overview:  
 MAP Processing Activities by Month

Status Type	Total Year 1977	Month of Report											
		Jan.	Feb.	Mar.	Apr.	May	June	July	Aug.	Sept.	Oct.	Nov.	Dec.
<u>Referrals</u>	<u>2,256</u>	<u>215</u>	<u>379</u>	<u>296</u>	<u>211</u>	<u>162</u>	<u>141</u>	<u>123</u>	<u>186</u>	<u>149</u>	<u>133</u>	<u>145</u>	<u>116</u>
<u>Negotiations</u>	<u>2,069</u>	<u>125</u>	<u>153</u>	<u>206</u>	<u>197</u>	<u>187</u>	<u>203</u>	<u>151</u>	<u>164</u>	<u>160</u>	<u>196</u>	<u>189</u>	<u>138</u>
Successful	1,053	77	87	108	88	80	90	75	90	82	94	104	78
Unsuccessful	291	26	41	28	25	22	27	14	26	17	26	23	16
Continued	254	13	17	20	22	24	24	30	17	21	22	25	19
Refusals to negotiate	471	9	8	50	62	61	62	32	31	40	54	37	25
<u>Active Contracts</u> <sup>/1</sup>	$\bar{x}=658$ <sup>/2</sup>	<u>607</u>	<u>635</u>	<u>658</u>	<u>681</u>	<u>668</u>	<u>661</u>	<u>620</u>	<u>642</u>	<u>662</u>	<u>682</u>	<u>711</u>	<u>669</u>

<sup>/1</sup> Numbers of cases or active contract status as of last day of each month.

<sup>/2</sup> Average of end-of-month active contracts.

NOTE: All figures represent number of cases reported by category. Source of information taken from monthly MAP reporting form submitted by MAP teams.

Table II  
 Deferment Breakdown

	Number of Cases	Percent
<u>Total</u>	<u>443</u>	<u>100.0</u>
Deferred 3 months	91	20.6
Deferred 4 to 6 months	64	14.4
Deferred 7 to 9 months	29	6.5
Deferred 10 to 12 months	250	56.5
Deferred over 12 months	9	2.0



Table III  
Selected Characteristics for Deferment and  
MAP Populations for Calendar Year 1977

Characteristics	Deferred Population		MAP Population	
	Number	Percent of Total	Number	Percent of Total
Total Number of Cases	437 <sup>/1</sup>		953 <sup>/2</sup>	
Type of Commitment				
Adult felony	435	98.2	946	99.2
With 10 to 12 month defer	243	54.9	-	-
Juvenile Penal Experience (none reported)	338	76.3	729	76.4
Previous Penal Experience (none reported)	276	62.3	535	56.1
Previous Convictions (none reported)	260	58.7	537	56.3
Racial Breakdown				
White	222	50.1	525	55.0
Black	212	47.9	394	41.4
Other	9	2.0	35	3.6
With 10 to 12 month defers				
White	122	27.5	-	-
Black	123	27.8	-	-
Age				
20 and under	118	26.6	342	35.8
21 to 25	147	33.2	347	36.4
Over 25	178	40.2	265	27.8
Type of Admission				
New admission	226	51.7	517	54.3
New admission w/violator status	168	38.4	364	38.1
Violator only	43	9.9	42	4.4
Youthful offender	-	-	31	3.2
Offense Type at Admission				
Robbery	152	34.4	231	24.2
Other person offenses	77	17.4	74	7.8
Property	140	31.7	464	48.6
Other	73	16.5	183	19.2
Length of Sentence				
1 to 5 years at admission	173	39.0	694	72.7
6 to 10 years at admission	107	24.2	187	19.6
Over 10 years at admission	163	36.8	73	7.7

<sup>/1</sup> Only 437 of the 471 known cases of refusals to negotiate were reported. The number of cases and percentages reported are based on a Total N of 437.

<sup>/2</sup> Only 953 of the 1,053 cases of the successful MAP cases were reported. The number of cases and percentages shown are based on a Total N of 953.

Table IV  
Adjustment Reports Dispositions  
Number of Major and Minor Adjustment Dispositions  
Found in the Preceding Twelve-Month period on a  
Sample of MAP and Refused to Negotiate Persons

	MAP		Refused to Negotiate	
	Number	Percent	Number	Percent
<u>Total Cases</u>	<u>226</u>	<u>100.0</u>	<u>285</u>	<u>100.0</u>
<u>Total Receiving Major Adjustment Disposition</u> <sup>/1</sup>	<u>69</u>	<u>30.5</u>	<u>119</u>	<u>41.8</u>
Number of cases receiving				
One major adjustment	40	58.0	50	42.0
Two major adjustments	21	30.4	28	23.5
Three or more major adjustments	8	11.6	41	34.5
<u>Total Receiving Minor Adjustment Disposition</u> <sup>/1</sup>	<u>169</u>	<u>74.8</u>	<u>202</u>	<u>70.1</u>
Number of cases receiving				
One minor adjustment	44	26.0	47	23.3
Two minor adjustments	31	18.3	33	16.3
Three minor adjustments	17	10.1	27	13.4
Four or more minor adjustments	77	45.6	95	47.0

<sup>/1</sup> Some cases for the MAP and Refusal groups received both a major and minor adjustment disposition.

**END**