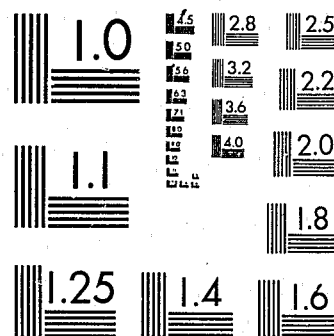


National Criminal Justice Reference Service

ncjrs

This microfiche was produced from documents received for inclusion in the NCJRS data base. Since NCJRS cannot exercise control over the physical condition of the documents submitted, the individual frame quality will vary. The resolution chart on this frame may be used to evaluate the document quality.



MICROCOPY RESOLUTION TEST CHART
NATIONAL BUREAU OF STANDARDS-1963-A

Microfilming procedures used to create this fiche comply with the standards set forth in 41CFR 101-11.504.

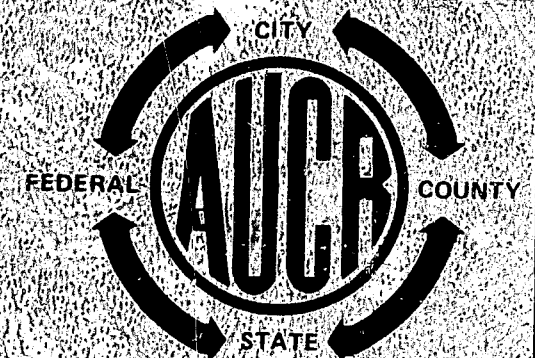
Points of view or opinions stated in this document are those of the author(s) and do not represent the official position or policies of the U. S. Department of Justice.

National Institute of Justice
United States Department of Justice
Washington, D. C. 20531

DATE FILMED

12/01/81

MF-1



CRIME IN ARIZONA 1978



78273

**CRIME IN ARIZONA
1978**

U.S. Department of Justice
National Institute of Justice

This document has been reproduced exactly as received from the person or organization originating it. Points of view or opinions stated in this document are those of the authors and do not necessarily represent the official position or policies of the National Institute of Justice.

Permission to reproduce this copyrighted material has been granted by
Ralph T. Milstead, Director
Ariz. Dept. of Public Safety

to the National Criminal Justice Reference Service (NCJRS).

Further reproduction outside of the NCJRS system requires permission of the copyright owner.

**An annual report compiled by the
Uniform Crime Reporting Unit**

Arizona Department of Public Safety
2310 North 20th Avenue
Phoenix, Arizona 85009

NCJRS

MAY 18 1981

ACQUISITIONS

**V. L. Hoy, Director
June 1979**

TABLE OF CONTENTS

Foreword	iii
Acknowledgment	v
The Arizona Uniform Crime Reporting System	1
History of Uniform Crime Reporting	2
Objectives of Arizona UCR	2
Considerations for Interpretation	2
Portrait and Profile of Arizona	4
Population Grouping	4
Uniform Crime Reporting Summary Data	7
State Crime Summary	8
Part I Index Crimes	11
Murder Summary Analysis	12
Rape Summary Analysis	16
Robbery Summary Analysis	18
Aggravated Assault Summary Analysis	21
Burglary Summary Analysis	23
Larceny-Theft Summary Analysis	26
Motor Vehicle Theft Summary Analysis	29
Part I and Part II Arrest Data	43
Persons Arrested Summary Analysis	44
Law Enforcement Employee Data	51
Assaults on Police	55
In Memoriam	56
Police Officers Assaulted Summary Analysis	57
Appendices	61
A. Map of Arizona Counties	62
B. Map of Arizona Justice Planning Regions	63
C. Glossary of Terms	64
D. Arizona Revised Statutes 41-1750	65
E. Arizona Uniform Crime Reporting Data Flow Chart	66

STATISTICAL CHARTS & GRAPHS

Time Clock of Index Crimes	9
Murder Comparison by Month	12
Murder Comparison	12
Murder Victim by Time of Day	13
Murder Victim by Day of Week	13
Murder Victim Distribution by Relationship	14
Murder Victim Distribution by Circumstance and Population Group	14
Murder Victim by Age, Sex and Race	15
Murder by Type of Weapon Used	15
Rape Comparison	16
Rape by Month	17
Rape by Population Group	17
Rapes per 1000 Population	17
Robbery Comparison	18
Robbery by Month and Weapon Used	19
Robbery by Location and Value	19
Robbery by Population Group	20
Robberies per 1000 Population	20
Assault by Weapon Used	21
Aggravated Assault Comparison	21
Assault by Population Group	22
Assaults per 1000 Population	22
Assault Trend by Month	22
Burglary Comparison	23
Burglary by Month and Means of Entry	24
Burglary by Location and Time	24
Burglary by Population Group	25
Burglaries per 1000 Population	25
Larceny-Theft Comparison	26
Larceny-Theft by Value by Month	27
Larceny-Theft by Population Group	27
Larceny-Thefts per 1000 Population	27
Larceny-Theft by Type by Month	28
Stolen Vehicles by Type	29
Motor Vehicle Theft Comparison	29
Motor Vehicle Theft Trend by Month	30
Motor Vehicle Recovery Information	30
Motor Vehicle Theft by Population Group	31
Motor Vehicle Thefts per 1000 Population	31
Part I Index Crime Comparison	32
Index Crimes by Month - State Totals	33
Value, in Dollars, of Property Stolen by Crime and Month - State Totals	34
Type and Value, in Dollars, of Property Stolen and Recovered by Month - State Totals	35
Index Crimes by County	36
Value, in Dollars, of Property Stolen by Crime by County	37
Type and Value, in Dollars, of Property Stolen and Recovered by County	38
Index Crimes by Justice Planning Region	39
Value, in Dollars, of Property Stolen by Crime by Justice Planning Region	40
Type and Value, in Dollars, of Property Stolen and Recovered by Justice Planning Region	41
Arrest by Age Group	44
Arrest by Offense and Race	45
Arrest Comparison by Sex	46
Arrest Comparison by Age Group	46
Juvenile Male Arrests	47
Adult Male Arrests	48
Juvenile Female Arrests	49
Adult Female Arrests	50
Number of Full Time Law Enforcement Employees by Agency	52
Officers Assaulted by Month	57
Officers Assaulted by Weapon	58
Time of Assault	58
Officers Assaulted by Activity	59

Foreword

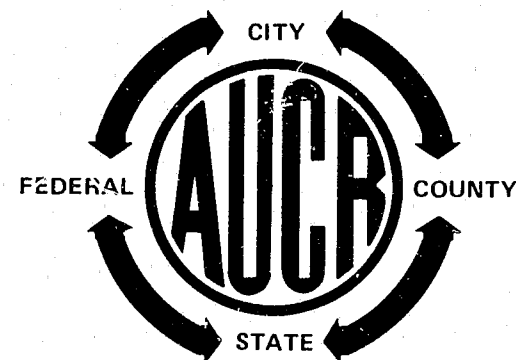
The purpose of this publication is to expose the nature and extent of crime in Arizona, to guide the criminal justice system in its efforts to combat crime and to prompt the citizen action that is necessary if we are to control crime in our society. Legislators need statewide information about crime in order to pass laws that will increase the stability of our society.

Arizona citizens are understandably concerned about the possibility of becoming victims of crime.

To provide an effective defense against crime it is vital that every citizen unites with law enforcement authorities. To flourish, crime needs the apathy of the community. If apathy is replaced with hostility to crime, that ability to flourish is greatly reduced.

We hope this publication will help arouse that hostility to crime in the Arizona community.

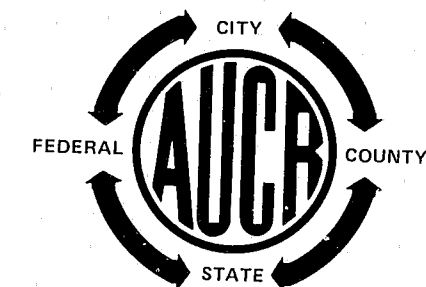
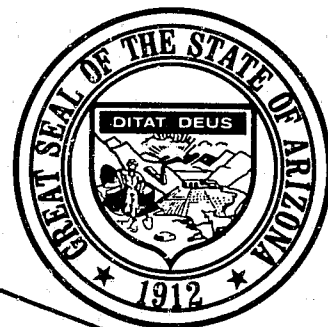
V. L. Hoy
Director



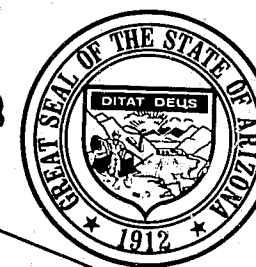
Acknowledgment

This fourth edition of "Crime in Arizona" is dedicated to the law enforcement agencies and their personnel who participate in the operation of the Arizona Uniform Crime Reporting Program. It is only through their continued cooperation and effort that this publication can be both possible and meaningful.

We would also like to acknowledge the Federal Bureau of Investigation for its advice and support.



The Arizona Uniform Crime Reporting System



HISTORY OF UNIFORM CRIME REPORTING

The Committee on Uniform Crime Records of the International Association of Chiefs of Police (IACP) was established in 1927 to initiate a national program for collecting crime information. This Committee's responsibility to provide management information to law enforcement agencies was eventually turned over to the Federal Bureau of Investigation (FBI) in 1930, when the FBI received a Congressional mandate to collect and disseminate national crime information. The IACP has continued to serve the Uniform Crime Reporting Program (UCR) in an advisory capacity, and has been joined in this responsibility by the Committee on Crime Records of the National Sheriff's Association (NSA) in 1966.

The Arizona Uniform Crime Reporting (AUCR) Unit first began receiving voluntary crime information from Arizona law enforcement agencies in January 1975. Prior to this date these agencies submitted their crime data directly to the FBI. At the close of calendar year 1978, all 90 eligible law enforcement agencies were contributing crime data to the AUCR unit.

OBJECTIVES OF ARIZONA UCR

Because increasing attention has been focused on the problem of crime in our communities in recent years, many segments of our population need more complete information for a variety of reasons.

Law enforcement professionals, managers and administrators who must focus on crime in their own jurisdictions, also need to know what is occurring in surrounding jurisdictions in order to deploy personnel and equipment most efficiently. Researchers and planners need to know what is actually happening to predict trends and recommend changes.

The goal of *Crime in Arizona* is to identify the nature and extent of criminal activity in this state and present the information needed by each of these groups. This information will not in itself prevent crime, but it may encourage all segments of society, by understanding the problem, to work together with law enforcement agencies to reduce crime through more effective enforcement.

The objectives of *Crime in Arizona* are (1) To identify the nature and extent of crime in our state; (2) To provide the management information needed by the law enforcement community to augment their ability to attack the crime problem; (3) To provide our citizens with the most complete information available; (4) To provide legislators with the information necessary to formulate laws which address the crime problems, and (5) To provide sufficient detailed data for researchers and planners.

CONSIDERATIONS FOR INTERPRETATION

Statistics are a tool used to summarize information so that patterns or trends become clearer. All statistics must be interpreted with an understanding of just what it is that they can say. Too often information of the type in this report is used incorrectly to draw conclusions that the statistics simply do not support. We ask that great care be taken in analysis and interpretation.

The following factors have a major influence on the statistics presented in this report:

1. Crime figures are police statistics as distinguished from the findings of a court, coroner, jury or decision of a prosecutor.
2. Density and size of community population.
3. Variations in composition of the population, particularly age structure.
4. Stability of population with respect to transient factors.
5. Economic conditions, including job availability.
6. Climate.
7. Effective strength of law enforcement agencies; some police jurisdictions overlap.
8. Attitudes of citizenry toward crime.
9. Crime reporting practices of citizenry.
10. Crime rates are based on census-fixed residential populations of police jurisdictions.
11. Crimes committed on Indian reservations are not counted in the AUCR program, although their population is included in the state's population figures.

To obtain accurate information from many different agencies, the national UCR program had to precisely define the methods for collecting such information as the number of offenses, arrests, clearances and value of stolen or recovered property. The methods of collecting and some resulting limitations are explained below.

Classification of Offenses

UCR divides offenses into two major classifications which are designated Part I and Part II offenses. This distinction is important to keep in mind because different information is collected for each.

Part I offenses include:

Violent Crimes

1. Criminal Homicide
2. Forcible Rape
3. Robbery
4. Aggravated Assault

Non-Violent Crimes

5. Burglary
6. Larceny-Theft
7. Motor Vehicle Theft

Note: These offenses are also referred to as the Index Crimes. These seven offenses are used to calculate the crime index and crime rates.

Part II offenses include:

8. Other Assaults - simple
9. Arson
10. Forgery and Counterfeiting
11. Fraud
12. Embezzlement
13. Stolen Property: Buying, Receiving, Possessing, Etc.
14. Vandalism
15. Weapons: Carrying, Possessing, Etc.
16. Prostitution
17. Sex Offenses (Except forcible rape and prostitution)
18. Narcotic Drug Laws
19. Gambling
20. Offenses Against Family and Children
21. Driving Under the Influence
22. Liquor Laws
23. Drunkenness (not reported in Arizona)
24. Disorderly Conduct
25. Vagrancy
26. All Other Offenses (except traffic)
27. Suspicion (not reported in Arizona)
28. Curfew and Loitering Law Violations (Juveniles)
29. Runaways (Juveniles)

Note: Only arrests are counted for Part II offenses.

All offenses are classified on the basis of law enforcement officer investigation in accordance with UCR offense definitions (which will not necessarily be identical to Criminal Code definitions). Because UCR identifies a police problem, offense classifications are not based on the findings of a court, coroner, jury or decision of a prosecutor.

Counting of Offenses

The number of offenses is counted only for Part I crimes and simple assault. The method of counting varies with the type of crime committed, and it is important to remember that the number of offenders does not determine the number of offenses.

For murder and non-negligent manslaughter, negligent manslaughter, rape, aggravated assault and simple assault, one offense is counted for each victim, regardless of the number of offenders involved.

For robbery and larceny-theft, one offense is counted for each distinct operation which is separate in time and place. The number of victims in any one operation does not determine the number of offenses.

For burglary, one offense is counted for each structure which is illegally entered. However, when the structure is an apartment house, business or office building in which units are leased for a period of time, one offense is counted for each unit burglarized.

For motor vehicle theft, one offense is counted for each vehicle stolen.

Note: Attempts to commit any of the above are also counted as offenses, except that attempts to kill and assaults to kill are counted as aggravated assaults.

For multiple offenses that occur in one crime incident, only the most serious offense is counted. Part I crimes are ranked according to seriousness and appear in order from most serious to least serious under "Classification of Offenses," above.

Clearances

An offense is considered cleared (solved) when at least one offender is arrested for a crime, even though several may have been involved.

Offenses may also be cleared by exceptional means when the offender: commits suicide; makes a dying declaration; confesses while in custody or serving time for another crime; is prosecuted in another jurisdiction for the same offense; is a juvenile who is handled by notifying the parents; when the victim refuses to prosecute or another jurisdiction refuses to extradite the offender.

Clearances are counted as "adult" and "juvenile." A "juvenile" clearance is counted only when juveniles are exclusively involved in the clearance of an offense. If the arrest of both adults and juveniles results in a clearance, it is counted as an "adult" clearance.

Property Stolen and Recovered

The figures for value of property stolen and recovered report the value at each point in time. Although property can increase in value over time, it is more likely that stolen property will be recovered in a damaged condition. Therefore, recovery value does not necessarily represent a "clearance rate" for stolen property, and one cannot use it to determine law enforcement effectiveness in recovering stolen goods. Because stolen and recovered property figures indicate thefts and recoveries in the current year, it is important to note that recovered property may have been stolen in a previous year. In addition, the type and value of stolen or recovered property is reported only for Part I offenses and does not include such Part II offenses as fraud, forgery or embezzlement.

Arrests

Arrest information is collected for all Part I and Part II offenses according to the age, sex and race of the offender. It is not possible, however, to correlate race with sex or specific ages because the information is collected independently, thus limiting analysis. Furthermore, arrest figures cannot be directly related to the number of crimes cleared because arrest totals count all offenders arrested for each offense, and clearance totals count only the offenses for which an arrest(s) or exceptional clearances have occurred.

Reporting Variations and Procedures

Arizona now receives Uniform Crime Reports from all eligible 90 law enforcement agencies. One must be aware that unintentional variations from UCR guidelines may occur that would affect the validity of the data presented in this report. Offense totals vary from the actual number of offenses that occur because UCR statistics are based on crimes that are reported to law enforcement agencies and many crimes are not reported.

Each contributing law enforcement agency is responsible for compiling its own monthly reports. To aid in this endeavor, the Arizona UCR guide manual and the FBI UCR handbook are supplied to all contributors. These manuals outline reporting procedures in detail and are complete with examples and illustrations. Additionally, our Field Representatives provide instruction and clarification as required. Each agency is supplied with twelve sets of monthly report forms which are used by the agencies to submit their reports.

PORTRAIT AND PROFILE OF ARIZONA

Arizona, with 113,909 square miles, is the sixth largest state in the United States. Much of this area is owned by the Federal Government in the form of Indian reservations, National Parks, and National Forests. Arizona is 69% federally owned; 27% of that federal ownership is in the form of Indian reservations. The state owns 13%, leaving 18% to private ownership.

Arizona has two principal metropolitan areas, Phoenix and Tucson (Maricopa and Pima counties). Phoenix, the capitol city, is the financial, commercial, retail, cultural and employment hub in the state, as well as the largest population center with an estimated 696,763 people. Tucson, the largest business, educational and cultural center in southern Arizona, has an estimated population of 309,200 people. More than 43 percent of the people who live in Arizona live in these two cities.

One of the unique characteristics of Arizona is its temperate climate. This factor, along with the economic opportunities and a desire to live in the West, has contributed to the state's dynamic population and economic growth.

The state's population density is 20 persons per square mile, with a total population of 2,354,000. This figure includes the Indians living on the reservations within the state.

Arizona experienced strong economic growth during 1978 with manufacturing, construction, tourism and travel, and agriculture producing the greatest majority of income for Arizonans.

POPULATION GROUPING

The crime statistics reported by an individual agency indicates what is happening in one particular area. AUCR groups jurisdictions on the basis of population size and reports crime rates among these groups. The cities, towns and counties within the state have been divided into seven groups according to population size. The seventh group (ungrouped) is provided for identification of volume and type of crime to account for total offenses. This population grouping factor has some influence on the volume and type of crime presented in this report. For use in interpreting this report, the UCR grouping is listed below:

- Group No.
- 1

Over 250,000 population. There are two (2) cities that fall within this group.
- 2

100,001 to 250,000 population. There are four (4) cities and counties that fall within this group.
- 3

50,001 to 100,000 population. There are two (2) cities that fall within this group.
- 4

25,001 to 50,000 population. There are nine (9) cities and counties that fall within this group.
- 5

10,001 to 25,000 population. There are ten (10) cities, towns, or counties that fall within this group.
- 6

10,000 or less population. There are fifty-five (55) cities, towns, or counties that fall within this group.
- 7

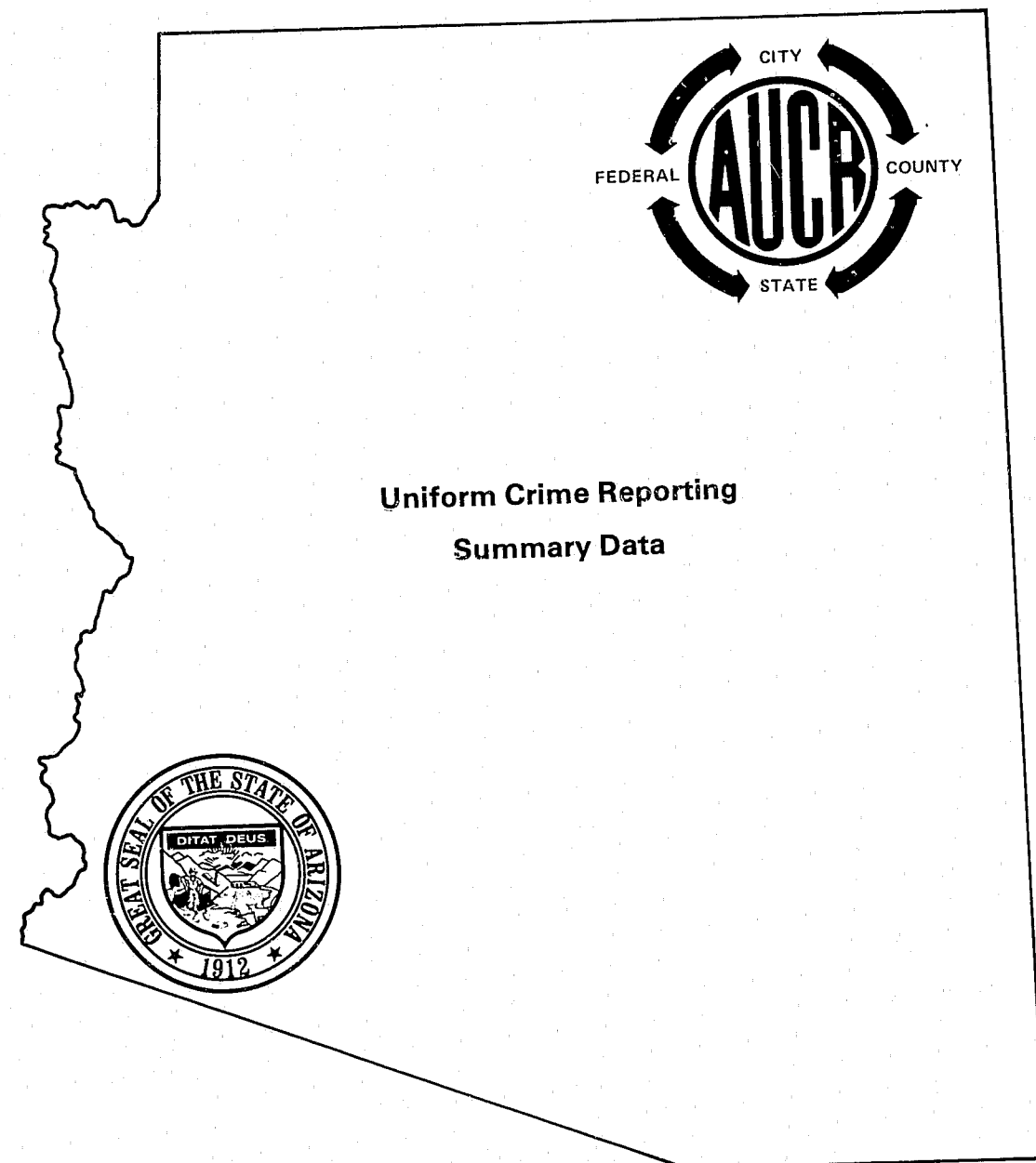
Ungrouped. There are eight (8) reporting agencies. These are Educational Institutions and the Department of Public Safety, that by definition do not have measurable population. For purposes of this report, they are combined for the crimes by population distribution.

The following is a listing by population group and Justice Planning Region of law enforcement agencies submitting crime data to the Uniform Crime Reporting Unit.

AGENCY	POPULATION GROUP NO.	ASJP REGION
Apache S.O.	4	3
Arizona DPS	7	1
ASU	7	1
AZ Western College	7	4
Avondale P.D.	6	1
Benson P.D.	6	6
Bisbee P.D.	6	6
Buckeye P.D.	6	1
Casa Grande P.D.	5	5
Central AZ College	7	5
Chandler P.D.	5	1
Clarkdale P.D.	6	3
Clifton P.D.	6	6
Cochise S.O.	5	6
Coconino S.O.	4	3
Coolidge P.D.	6	5
Cottonwood P.D.	6	3
Douglas P.D.	5	6
Duncan P.D.	6	6
Eagar P.D.	6	3
Eastern AZ College	7	6
El Mirage P.D.	6	1
Eloy P.D.	6	5
Flagstaff P.D.	4	3
Florence P.D.	6	5
Fredonia P.D.	6	3
Gila Bend P.D.	6	1
Gila S.O.	5	5
Gilbert P.D.	6	1
Glendale P.D.	3	1
Globe P.D.	6	5
Goodyear P.D.	6	1
Graham S.O.	6	6
Greenlee S.O.	6	6
Hayden P.D.	6	5
Holbrook P.D.	6	3
Huachuca City P.D.	6	6
Jerome P.D.	6	3
Kearny P.D.	6	5
Kingman P.D.	6	4
Mammoth P.D.	6	5
Marana P.D.	6	2
Maricopa S.O.	2	1

AGENCY	POPULATION GROUP NO.	ASJP REGION
Mesa P.D.	2	1
Miami P.D.	6	5
Mohave S.O.	4	4
Navajo S.O.	4	3
Nogales P.D.	5	6
Northern AZ Univ.	7	3
Oro Valley P.D.	6	2
Page P.D.	6	3
Paradise Valley P.D.	5	1
Parker P.D.	6	4
Patagonia P.D.	6	6
Payson P.D.	6	5
Peoria P.D.	5	1
Phoenix P.D.	1	1
Pima Comm. College	7	2
Pima P.D.	6	6
Pima S.O.	2	2
Pinal S.O.	4	5
Prescott P.D.	5	3
Safford P.D.	6	6
St. Johns P.D.	6	3
Santa Cruz S.O.	6	6
Scottsdale P.D.	3	1
Show Low P.D.	6	3
Sierra Vista P.D.	5	6
Snowflake P.D.	6	3
Somerton P.D.	6	4
South Tucson P.D.	6	2
Springerville P.D.	6	3
Superior P.D.	6	5
Surprise P.D.	6	1
Taylor P.D.	6	3
Tempe P.D.	2	1
Thatcher P.D.	6	6
Tolleson P.D.	6	1
Tombstone P.D.	6	6
Tucson P.D.	1	2
University of AZ	7	2
Wickenburg P.D.	6	1
Willcox P.D.	6	6
Williams P.D.	6	3
Winkelman P.D.	6	5
Winslow P.D.	6	3
Yavapai S.O.	4	3
Youngtown P.D.	6	1
Yuma P.D.	4	4
Yuma S.O.	4	4

Note: Population figures for these groups are furnished by the FBI.



**Uniform Crime Reporting
Summary Data**

Preceding page blank

STATE CRIME SUMMARY

OFFENSES

- There were 178,430 Crime Index Offenses reported. Of these offenses, 19 percent were cleared.
- The crime rate for the state of Arizona was established at 75.6 offenses for every 1,000 inhabitants.
- The value of property stolen amounted to \$74,536,997. The value of property recovered was \$23,574,422 for a recovery rate of 32 percent.
- In 1978, law enforcement agencies reported 220 murders, an increase of 3 percent over 1977.
- Handguns were used in 45 percent of all murder cases reported.
- The number of rapes increased 33 percent from 1977, the largest percentage increase of the seven index crimes.
- Bank robberies increased 73 percent over 1977 and had the largest dollar loss per robbery, \$2,440.31.
- Aggravated Assaults accounted for 7,869 Crime Index Offenses. Of these, 31 percent were committed by the use of hands, fists, feet, etc.
- Burglary accounted for a substantial value of property loss amounting to \$26,437,953. Residential burglaries accounted for 70 percent of all burglaries reported. Of these, 35 percent were committed during the day.
- Larceny-Theft represented the largest number of our Crime Index Offenses. The 105,594 offenses accounted for 59 percent of the State Crime Index.
- In 1978, 10,917 motor vehicles were stolen with a property value of \$27,659,223. There were 8,045 vehicles recovered with a reported value of \$18,758,513.

INDEX CRIME COMPARISON

INDEX CRIMES	OFFENSES			CLEARANCES		
	1977	1978	Change	1977	1978	Change
Murder	214	220	+ 2.8%	178	152	- 14.6%
Forcible rape	781	1,039	+33.0%	417	452	+ 8.4%
Robbery	3,155	3,835	+21.6%	1,047	1,135	+ 8.4%
Aggravated assault	7,081	7,869	+11.1%	4,437	4,685	+ 5.6%
Burglary	53,520	48,956	- 8.5%	6,581	6,052	- 8.0%
Larceny-theft	101,575	105,594	+ 4.0%	19,110	19,440	+ 1.7%
Motor vehicle theft	10,019	10,917	+ 9.0%	1,966	2,045	+ 4.0%
TOTALS	176,345	178,430	+ 1.2%	33,736	33,961	+ 0.7%

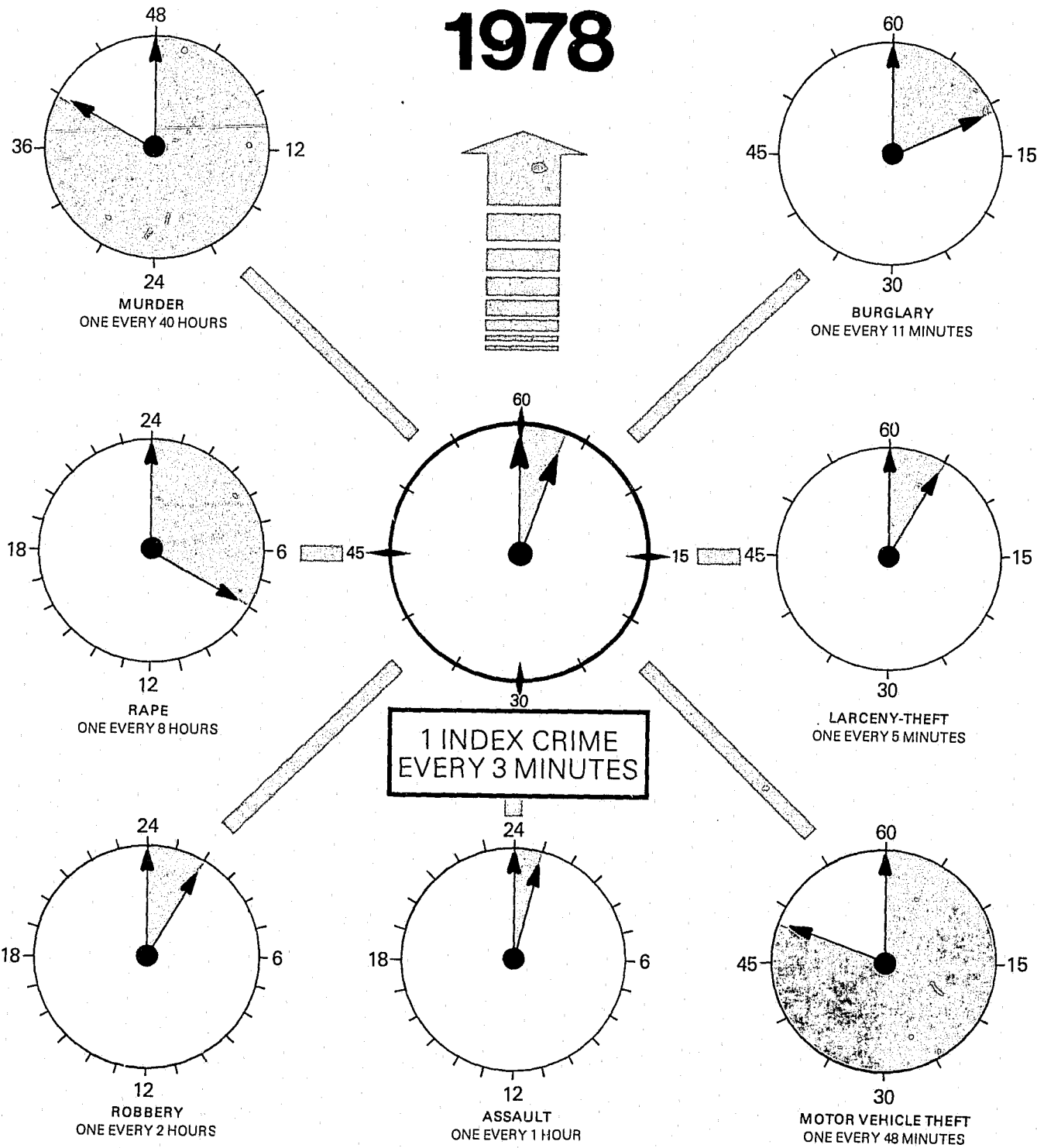
ARRESTS

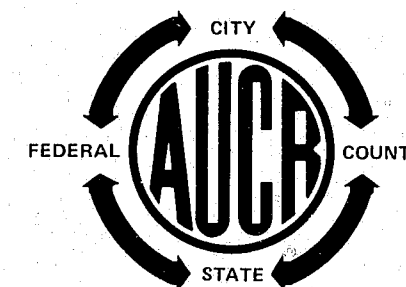
- During 1978, there were 116,339 persons arrested for all Criminal Acts.
- Adults accounted for 79 percent of all Violent Crime arrests.
- Juveniles accounted for 58 percent of all Property Crimes and 30 percent of all arrests made during 1978.

LAW ENFORCEMENT OFFICERS KILLED AND ASSAULTED

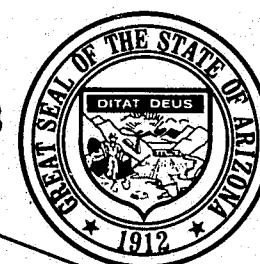
- Two Arizona law enforcement officers lost their lives in 1978.
- There were 1,277 Assaults on Police Officers reported and 97 percent were cleared.

TIME CLOCK OF INDEX CRIMES





Part I Index Crimes



Preceding page blank

MURDER AND NONNEGLIGENT MANSLAUGHTER

SUMMARY ANALYSIS

Murder in Arizona increased by 3 percent over the number reported in 1977. A total of 220 individuals were murdered in 1978, which represents 2 percent of all reported violent crimes. The largest number of murders reported in one month was 30 in August. The offense of murder represents .1 of one percent of the state crime index.

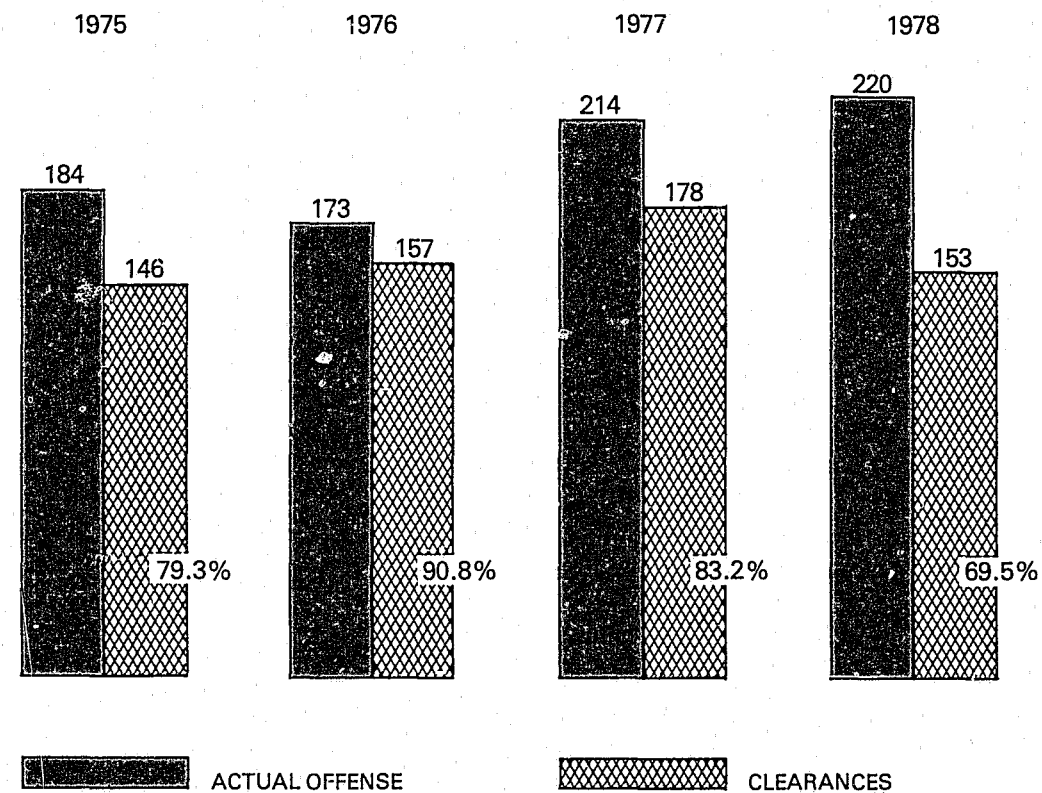
Because murder is such a serious crime, detailed information is collected concerning victims, offenders, weapons used, and the circumstances in which the offense took place. Handguns were used in the majority of killings, 45 percent of the time. The relationship between the victims and the offenders was undeterminable in 27 percent of the murders. Acquaintance was the next most frequent relationship, 25 percent; and stranger was third, 16 percent. Arguments led to 29 percent of the deaths, and in 28 percent of the cases, police were unable to determine the circumstances. The large number of cases where the circumstances were unknown and the victim/offender relationship was also undeterminable may have contributed to the 14 percent reduction in murder clearances from 1977. Despite this reduction, murder had the highest clearance rate, 70 percent, of the seven Index Crimes.

MURDER COMPARISON BY MONTH

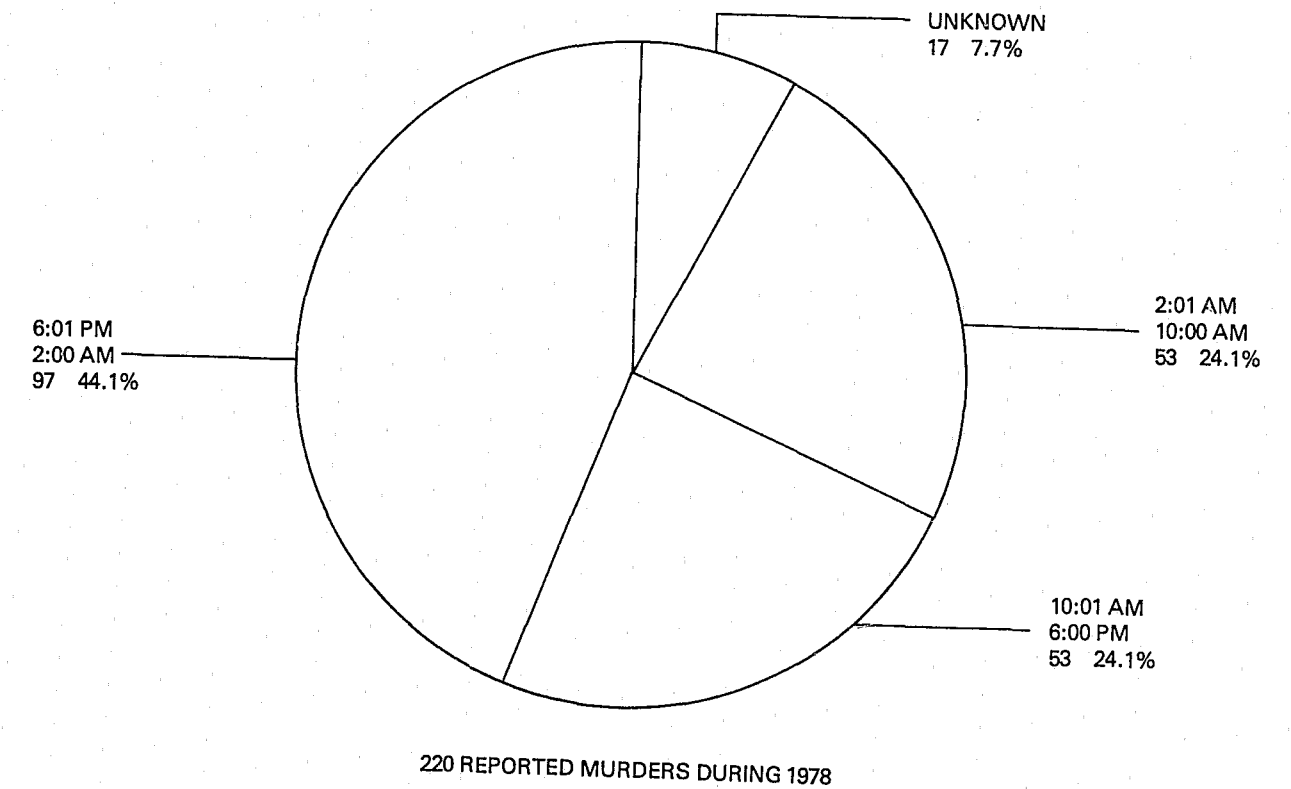
	1975	1976	1977	1978
JAN	17	18	29	11
FEB	17	15	18	13
MAR	15	11	14	17
APR	11	9	20	15
MAY	10	18	14	15
JUN	16	19	13	24
JUL	20	11	17	23
AUG	17	10	17	30
SEP	15	11	18	18
OCT	16	17	14	13
NOV	17	20	16	17
DEC	13	14	24	24
TOTAL	184	173	214	220

The age group of the most frequent offender was in the 15 to 19 year olds with 42, or 18 percent; 38, or 16 percent were in the 20 to 24 age group. Of the known offenders, 68 percent were males and 9 percent were females. Whites accounted for 144, or 61 percent; Negroes 29, or 12 percent and Indians 8, or 3 percent.

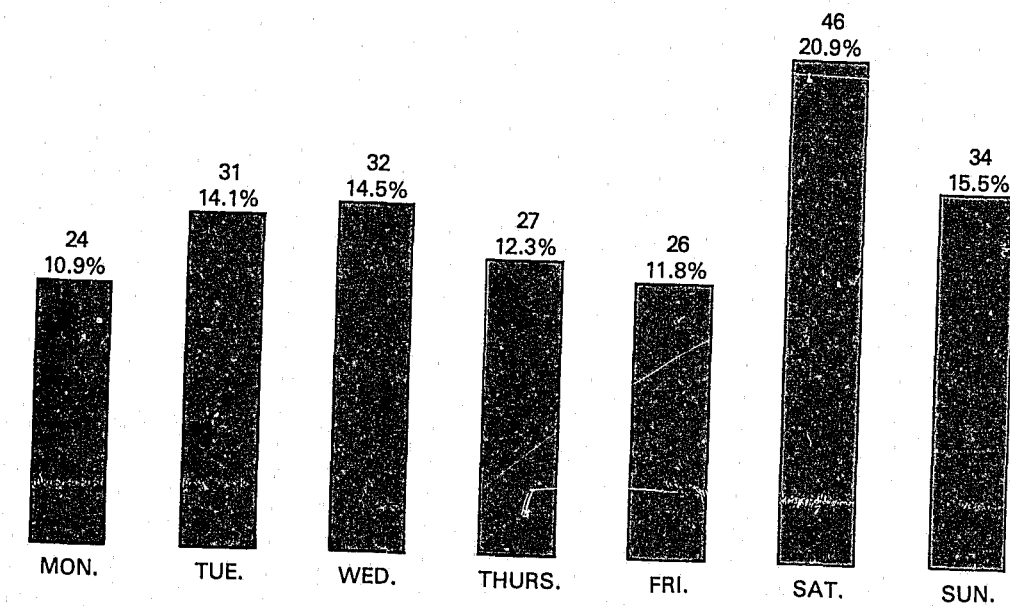
MURDER COMPARISON



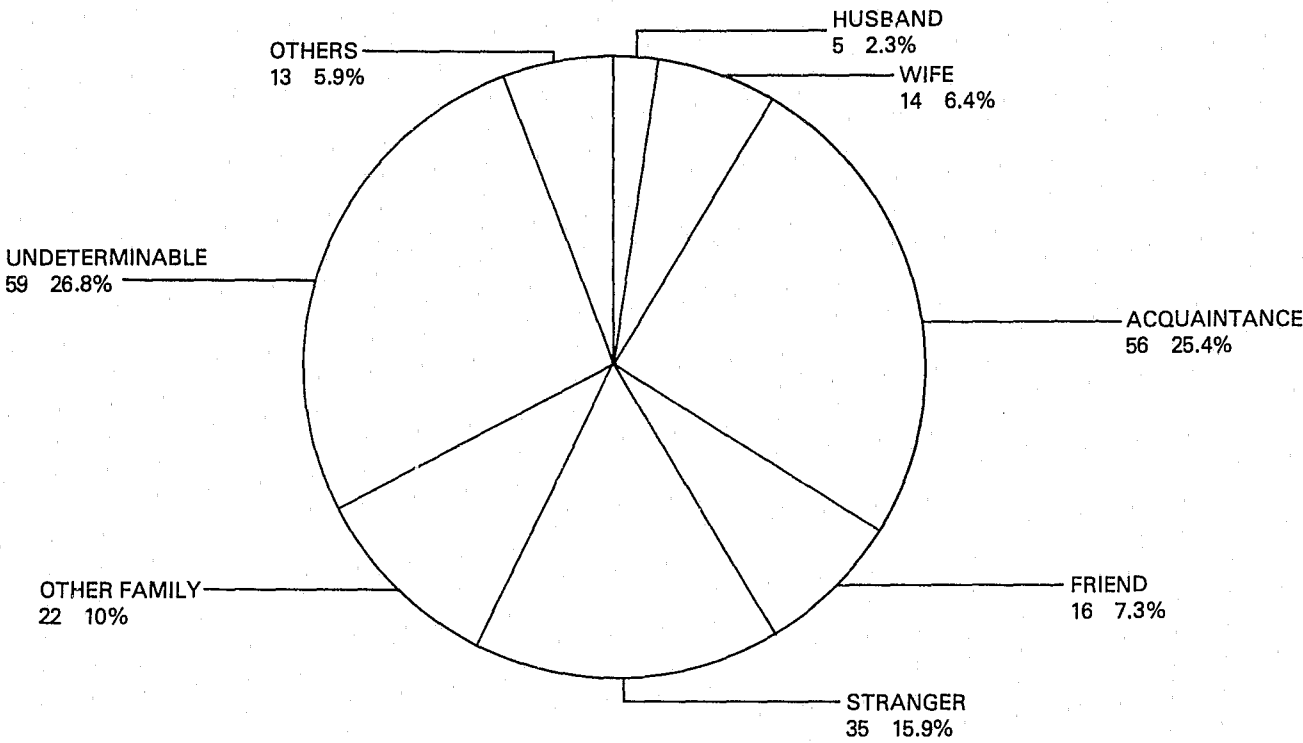
MURDER VICTIM BY TIME OF DAY



MURDER VICTIM BY DAY OF WEEK



MURDER VICTIM DISTRIBUTION BY RELATIONSHIP



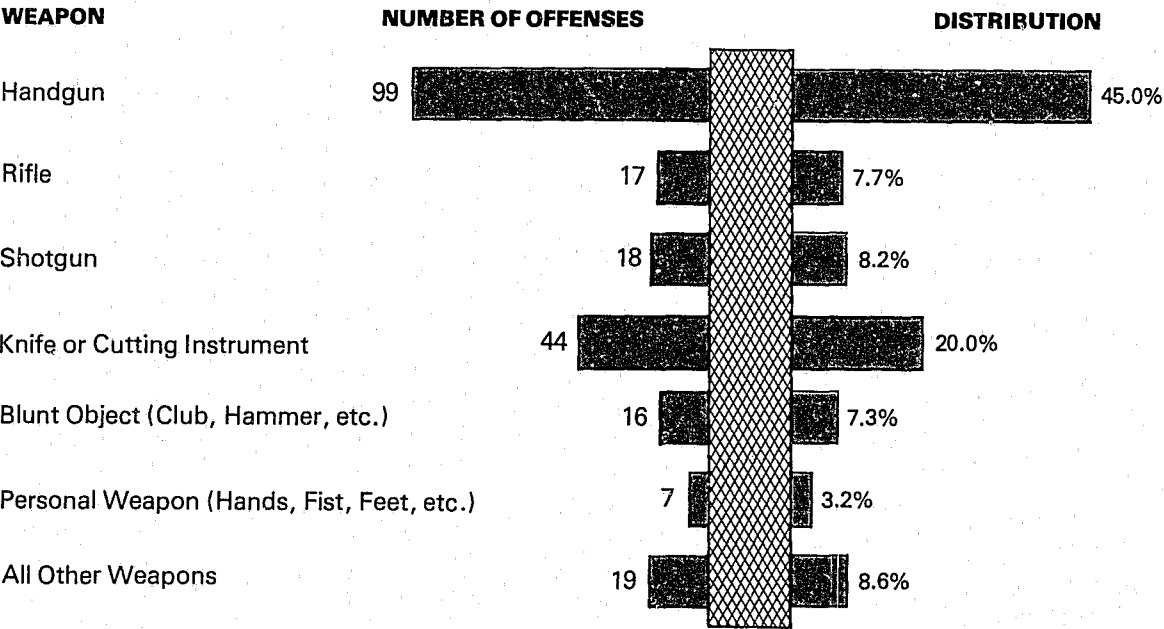
MURDER VICTIM DISTRIBUTION BY CIRCUMSTANCE & POPULATION GROUP

Circumstance	POPULATION GROUP							Totals	Dist.
	1 Over 250,000	2 100,001 To 250,000	3 50,001 To 100,000	4 25,001 To 50,000	5 10,001 To 25,000	6 10,000 Or Less	7 Un- grouped		
Lovers Triangle	5	1	1	1	1	1	-	10	4.6%
Brawl Due To Alcohol	13	5	-	4	2	4	-	28	12.7%
Felony Murder	19	1	1	10	1	4	-	36	16.4%
Argument (Property/Money) and Other Arguments	35	11	1	4	4	8	-	63	28.6%
Suspected Felony Murder	7	2	3	3	2	4	-	21	9.5%
Other Murders	35	13	1	10	3	-	-	62	28.2%
TOTALS	114	33	7	32	13	21	-	220	100%
Distribution	51.8%	15.0%	3.2%	14.5%	5.9%	9.6%	-	-	-

MURDER VICTIM BY AGE, SEX & RACE

Age	Number	Distribution	Sex		Race			
			Male	Female	White	Negro	Indian	All Other
Infant	2	.9%	2	-	2	-	-	-
1 - 4	5	2.3%	3	2	5	-	-	-
5 - 9	1	.4%	-	1	1	-	-	-
10 - 14	2	.9%	1	1	2	-	-	-
15 - 19	23	10.5%	17	6	19	1	3	-
20 - 24	38	17.3%	23	15	28	5	4	1
25 - 29	34	15.5%	29	5	29	4	1	-
30 - 34	24	10.9%	19	5	19	1	4	-
35 - 39	19	8.6%	18	1	15	1	3	-
40 - 44	20	9.1%	14	6	18	-	2	-
45 - 49	15	6.8%	13	2	12	3	-	-
50 - 54	16	7.3%	11	5	12	4	-	-
55 - 59	6	2.7%	5	1	6	-	-	-
60 - 64	4	1.8%	3	1	3	1	-	-
65 - 69	3	1.4%	2	1	3	-	-	-
70 - 74	-	-	-	-	-	-	-	-
75 and Over	4	1.8%	-	4	4	-	-	-
Unknown	4	1.8%	2	2	4	-	-	-
TOTALS	220	-	162	58	182	20	17	1
Distribution	-	100%	73.6%	26.4%	82.7%	9.1%	7.7%	.5%
ADULT	196	89.1%						
JUVENILE	20	9.1%						
UNKNOWN	4	1.8%						

MURDER BY TYPE OF WEAPON USED



RAPE

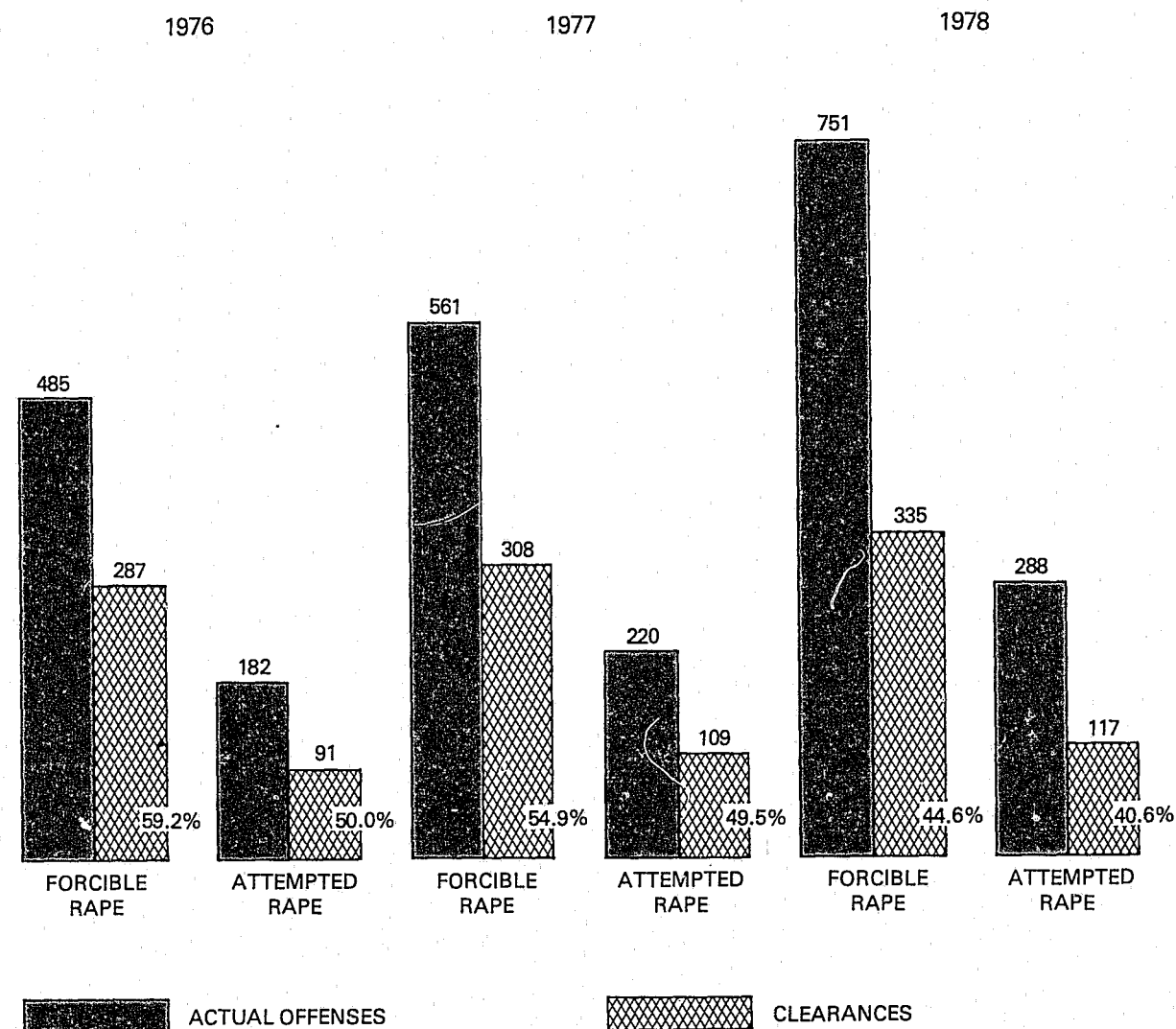
SUMMARY ANALYSIS

Rapes reported in Arizona increased 33 percent over the number reported in 1977, the largest increase of any of the seven index crimes. A total of 1,039 rapes were reported, which represents 8 percent of all reported violent crimes and .6 of one percent of the state crime index. Forcible rape accounted for 72 percent (751) of all rapes. The largest number of reported forcible rapes for one month was in June with 81, followed by July, 77

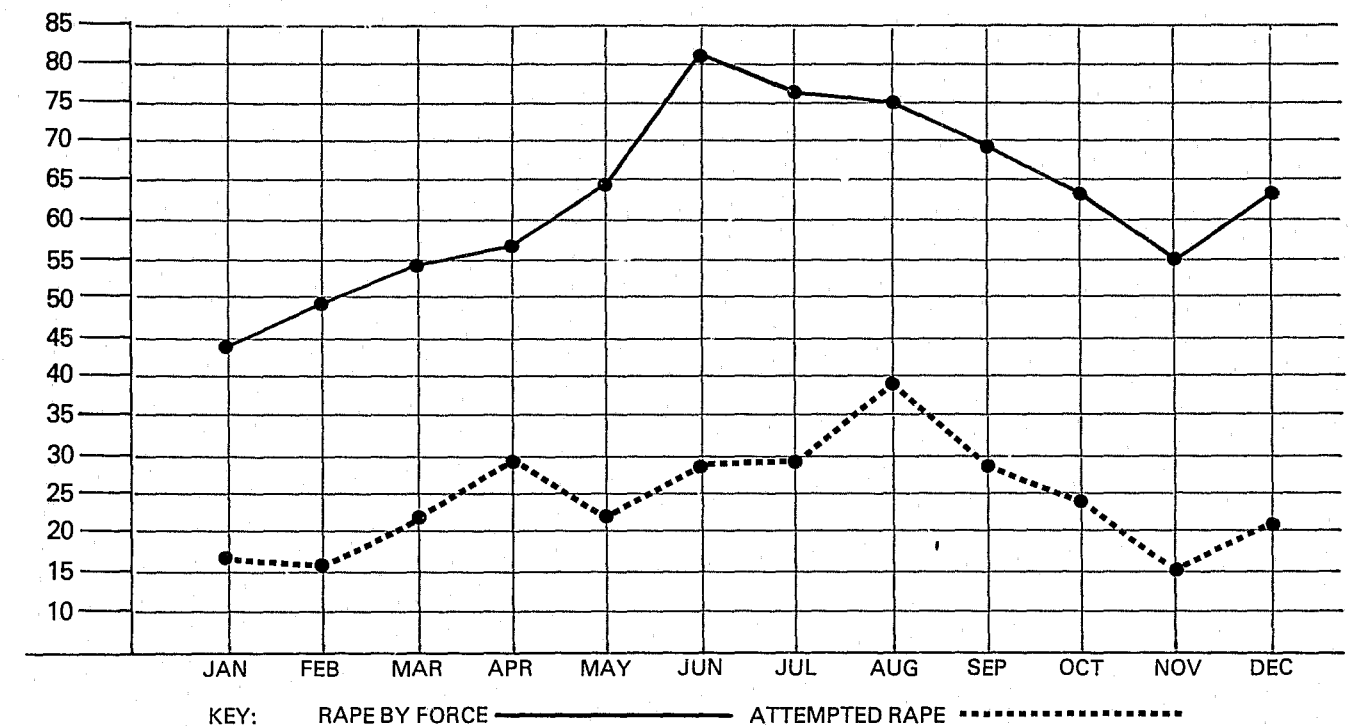
and August, 75. The month of August has the largest increase in rapes, 56, from 1977.

Rapes were cleared 44 percent of the time, down 8 percent from 1977. Adults accounted for 40 percent of the clearances and juveniles 4 percent. There were 36 more arrests in 1978 than in 1977. Adults made up 86 percent of the increase and juveniles 14 percent.

RAPE COMPARISON



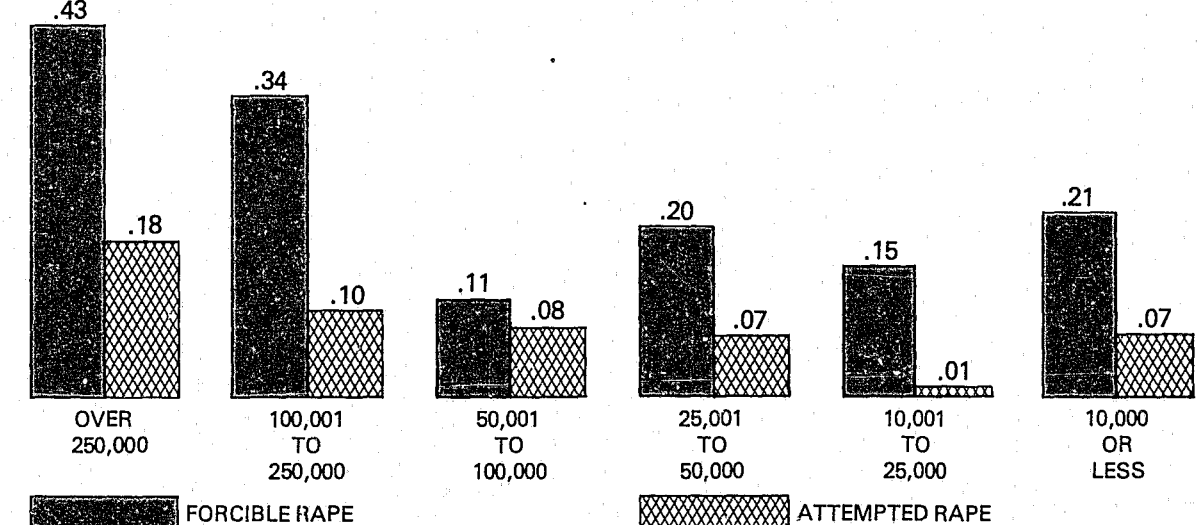
RAPE BY MONTH



RAPE BY POPULATION GROUP

Population Group	1 Over 250,000	2 100,001 To 250,000	3 50,001 To 100,000	4 25,001 To 50,000	5 10,001 To 25,000	6 10,000 Or Less	7 Ungrouped
Rape By Force Distribution	433 57.6%	167 22.2%	17 2.3%	65 8.7%	24 3.2%	43 5.7%	2 .3%
Attempted Rape Distribution	185 64.2%	51 17.7%	13 4.5%	23 8.0%	2 .7%	14 4.9%	—
Total Distribution	59.5%	21.0%	2.9%	8.4%	2.5%	5.5%	.2%

RAPES PER 1000 POPULATION



ROBBERY

SUMMARY ANALYSIS

During 1978, Arizonans reported 3,835 robberies, an increase of 22 percent (680) over the number of robberies reported during 1977. Robbery represents 30 percent of the violent crimes and 2 percent of the state crime index.

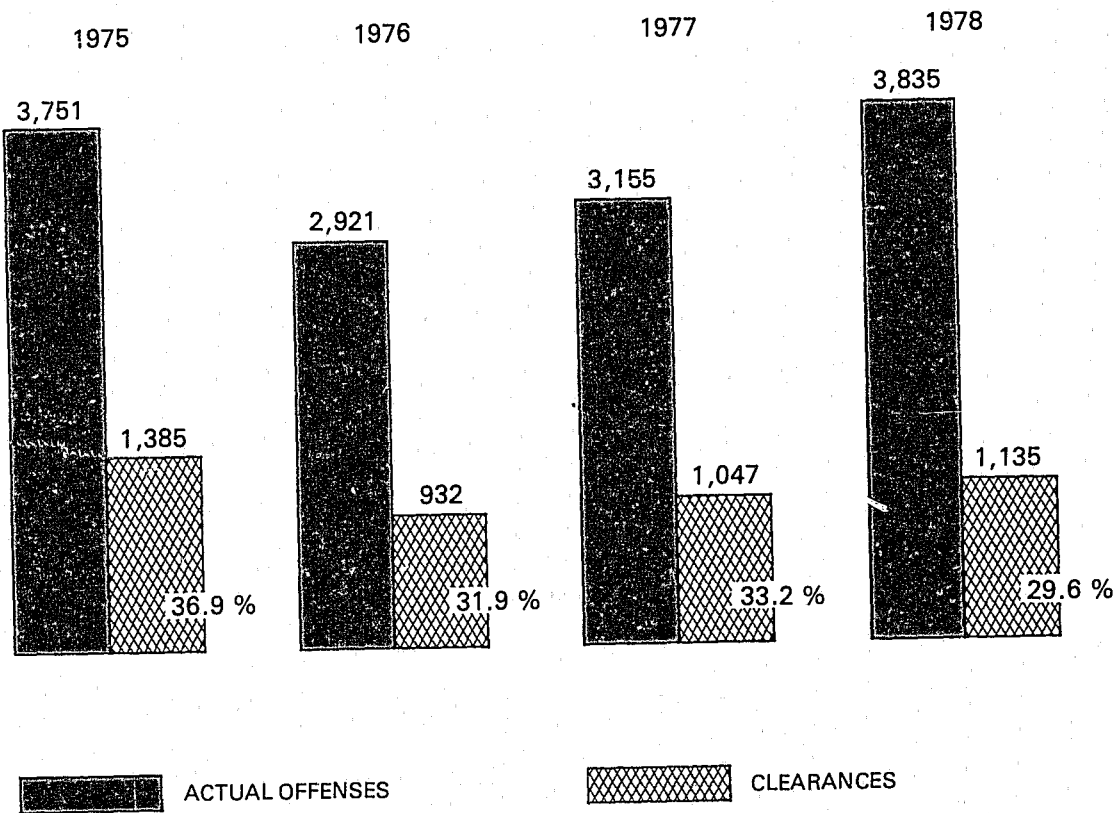
Robberies occurring on highways, that is streets, alleys and sidewalks, were the most frequent type of robbery reported, 1,448 or 38 percent of all robberies, whereas, commercial houses had the highest dollar loss, \$541,959. As in 1977, banks had the lowest number of reported robberies, but the largest loss per robbery, \$2,440. Bank robberies increased 73 percent over the 37 reported in 1977, the highest increase reported of the

different type of robbery locations. The reported value of \$1.6 million taken in robberies was up from \$1.1 million in 1977.

Strong-arm (hands, fists, feet, etc.) was used in 43 percent of the robberies and firearm was the weapon used 39 percent of the time.

Robberies were cleared in 30 percent of the cases, a decrease from 1977, when the clearance rate was 33 percent. Adult arrests accounted for 24 percent of the clearances and juveniles 6 percent. However, there were 160 more robbery arrests in 1978 than in 1977.

ROBBERY COMPARISON



ROBBERY BY MONTH & WEAPON USED

WEAPON	Total	Dist	Jan	Feb	Mar	Apr	May	Jun	Jul	Aug	Sep	Oct	Nov	Dec
Firearm	1,494	39.0%	148	148	122	116	114	78	113	134	129	114	127	151
Knife Or Cutting Instrument	434	11.3%	36	40	41	37	35	30	40	34	29	28	41	43
Other Dangerous Weapons	268	7.0%	23	16	29	16	22	22	25	24	25	20	21	25
Strong Arm	1,639	42.7%	136	105	133	129	133	114	142	122	124	177	169	155
TOTALS	3,835	—	343	309	325	298	304	244	320	314	307	339	358	374
Distribution	—	100%	8.9%	8.1%	8.5%	7.8%	7.9%	6.4%	8.3%	8.2%	8.0%	8.8%	9.3%	9.8%

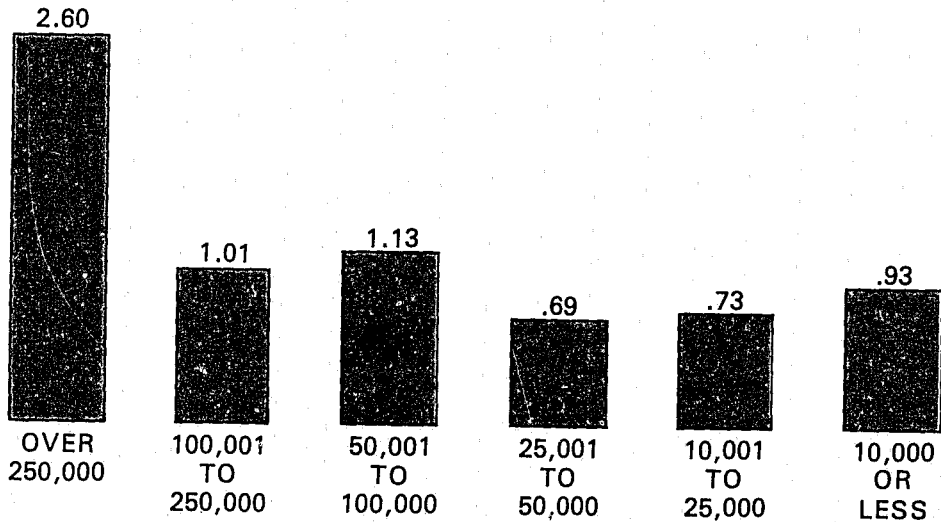
ROBBERY BY LOCATION & VALUE

LOCATION	Number Of Offenses	Distribution	Total Dollar Value Stolen	Average Dollar Value Stolen
Highway	1,448	37.7%	\$ 387,346	\$268.00
Commercial House	790	20.6%	541,959	686.00
Gas or Service Station	259	6.8%	74,857	289.00
Convenience Store	442	11.5%	55,504	126.00
Residence	428	11.2%	279,963	654.00
Bank	64	1.7%	156,180	2,440.00
Miscellaneous	404	10.5%	88,494	219.00
TOTALS	3,835	100%	\$1,584,303	\$413.00

ROBBERY BY POPULATION GROUP

Population Group	1	2	3	4	5	6	7
	Over 250,000	100,001 To 250,000	50,001 To 100,000	25,001 To 50,000	10,001 To 25,000	10,000 Or Less	Ungrouped
Robbery	2615	502	179	226	117	192	4
Distribution	68.2%	13.1%	4.7%	5.9%	3.0%	5.0%	.1%

ROBBERIES PER 1000 POPULATION



AGGRAVATED ASSAULT

SUMMARY ANALYSIS

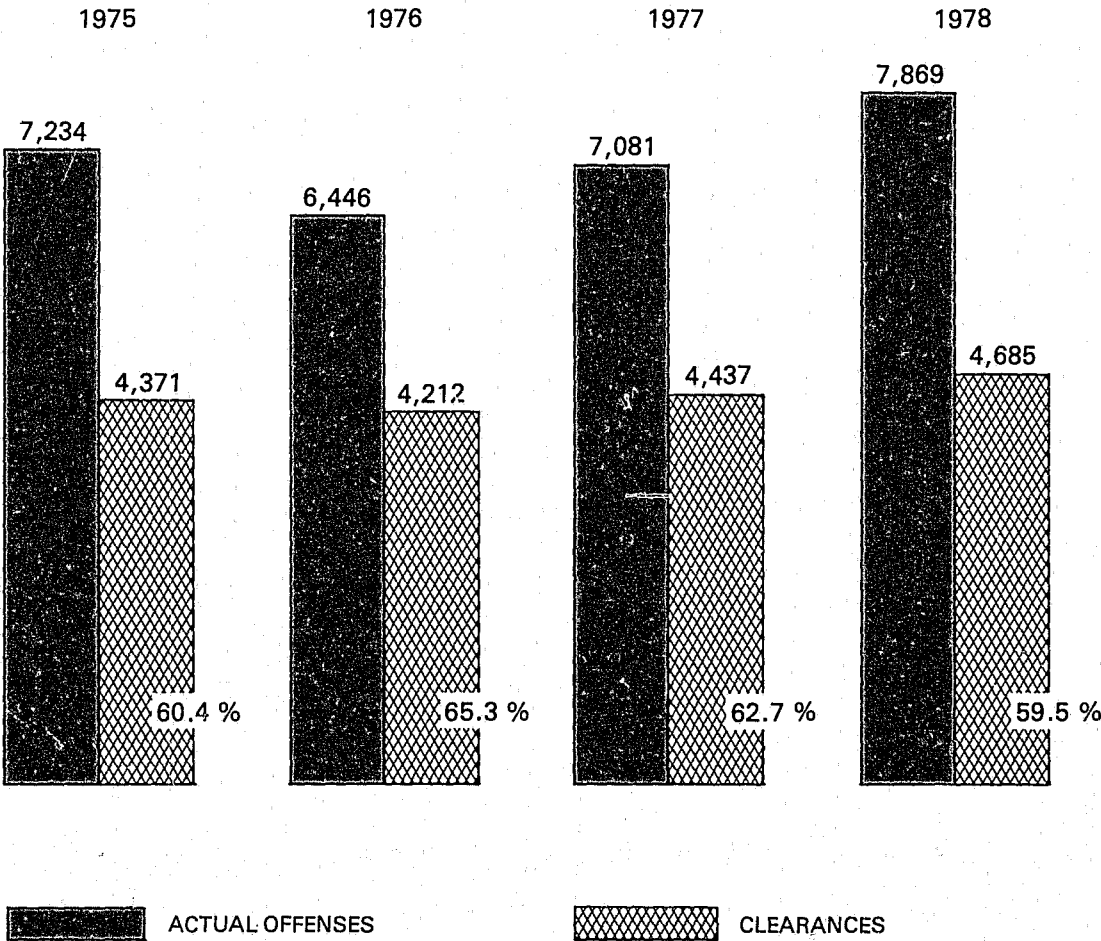
Law enforcement agencies reported 19,584 assaults, 11 percent more than in 1977. Of the total assaults, 7,869 (40%) were aggravated and 11,715 (60%) were simple. Simple assault is primarily differentiated from aggravated assault by the seriousness of the injury and the weapon used. Aggravated assault increased 11 percent from 1977 and simple assault increased 10 percent. Aggravated assault represents 61 percent of violent crimes and 4 percent of the state crime index.

The largest number of aggravated assaults for one month occurred during October, which also had the highest number of hands, fists, feet, etc., assaults for the year, 11 percent.

The clearance rate increased 6 percent over 1977. Adults accounted for 5 percent of the clearances and juveniles 1 percent. There were 150 more arrests for assaults during 1978 over 1977.

ASSAULT BY WEAPON USED		
Weapon	Number of Offenses	Distribution
Firearm	1,970	25.0%
Knife or Cutting Instrument	1,454	18.5%
Other Dangerous Weapon	1,985	25.2%
Hands, Fists, Feet, Etc.	2,460	31.3%
TOTALS	7,869	100.0%

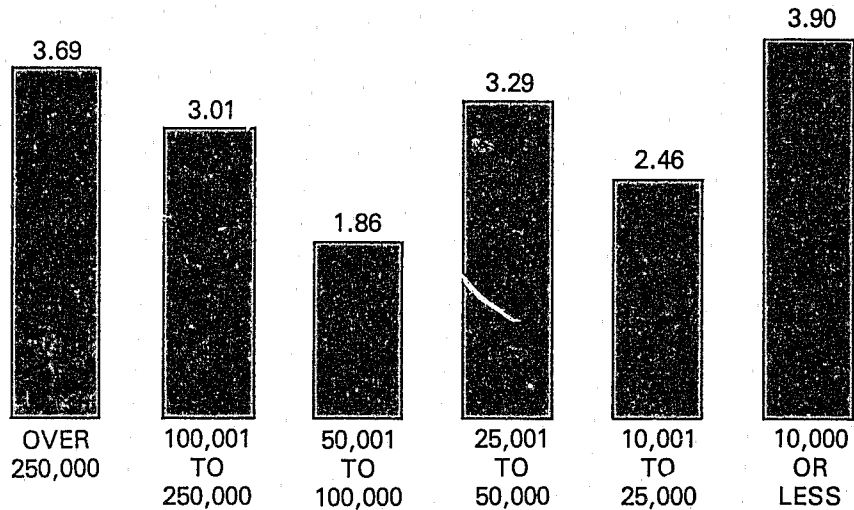
AGGRAVATED ASSAULT COMPARISON



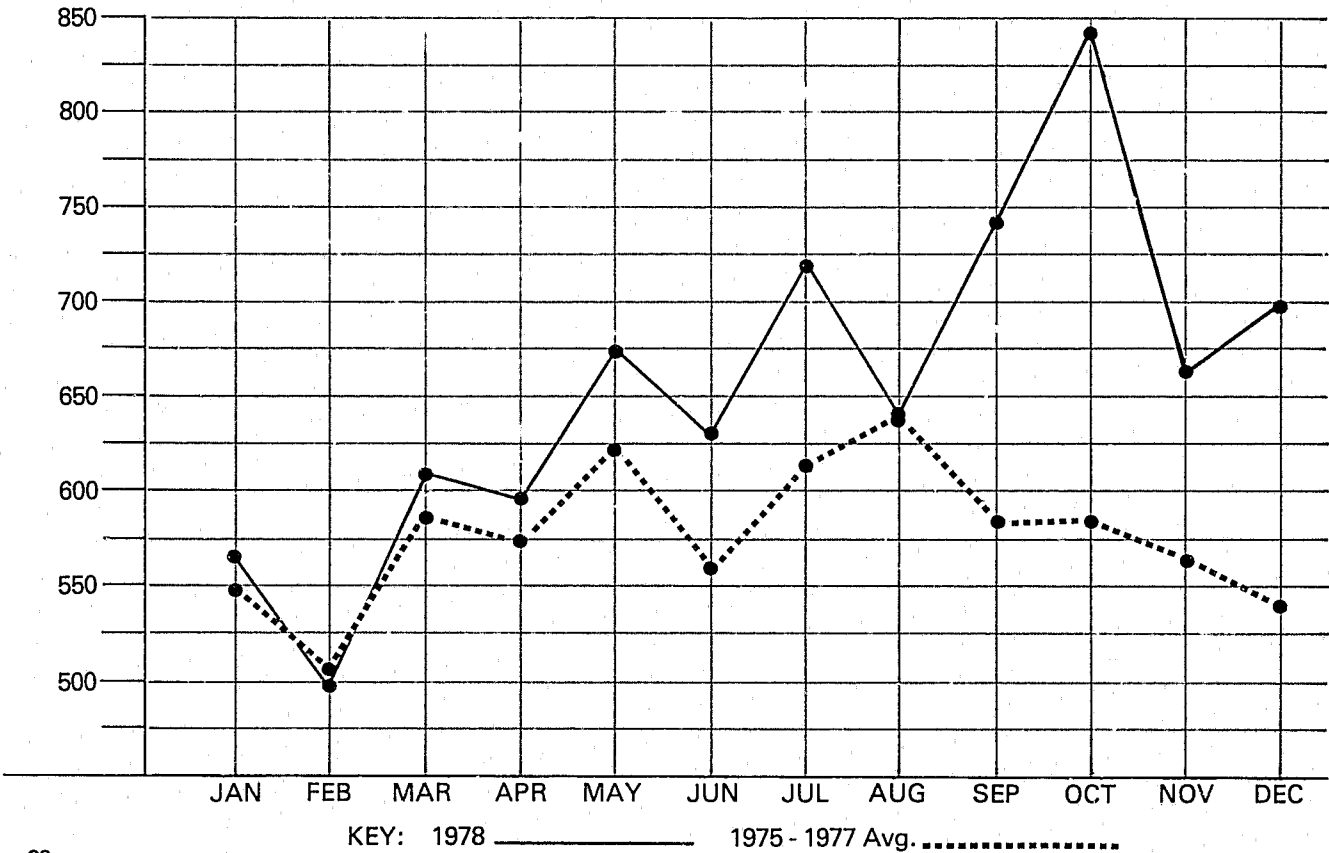
ASSAULT BY POPULATION GROUP

Population Group	1	2	3	4	5	6	7
	Over 250,000	100,001 To 250,000	50,001 To 100,000	25,001 To 50,000	10,001 To 25,000	10,000 Or Less	Ungrouped
Aggravated Assault	3,708	1,492	295	1,076	395	804	99
Distribution	47.1%	19.0%	3.7%	13.7%	5.0%	10.2%	1.3%

ASSAULTS PER 1000 POPULATION



ASSAULT TREND BY MONTH



BURGLARY

SUMMARY ANALYSIS

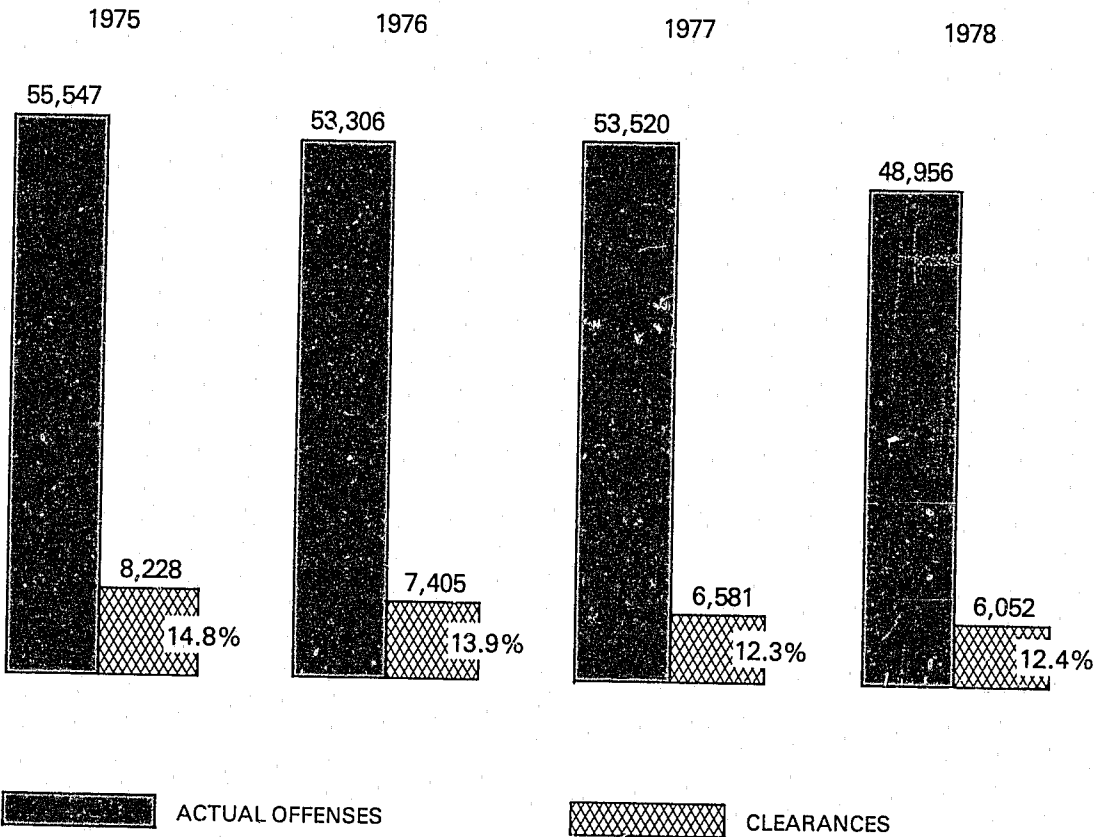
During 1978, there were 48,956 burglaries reported in Arizona, a decrease of 9 percent from 1977. Part of this decrease is attributable to a change in reporting procedure, at the beginning of the year, whereas, thefts from "appurtenance to a dwelling" (carports, patios, etc.) were no longer classified as burglaries. Thefts of this type are now classified in the larceny-theft category. Burglary represented 30 percent of the property crime and 27 percent of the state crime index.

The largest number of burglaries occurred during January, 4,547. The month of December had the largest number of burglaries in 1977, 4,710. Forcible entry was used in 69 percent of the burglaries. Residential burglaries accounted for 70 percent of all burglaries. Of

those residential burglaries, 35 percent occurred at night. Fifty-five percent of non-residential burglaries occurred at night. A reported value of \$26.4 million was lost to all burglaries during 1978, up from \$25.8 million in 1977. The majority (69%) of the dollar loss occurred during residential burglaries, \$18.3 million.

Burglaries were cleared in 12.4 percent of the cases, up slightly from the 12.3 percent clearance rate in 1977. Adults accounted for 7.3 percent of the clearances and juveniles 5.1 percent. There were 433 fewer persons arrested in 1978 than in 1977 for burglary and again in 1978, more juveniles than adults were arrested. The burglary clearance rate remains the lowest of the seven index crimes.

BURGLARY COMPARISON



BURGLARY BY MONTH & MEANS OF ENTRY

	Total	Dist	Jan	Feb	Mar	Apr	May	Jun	Jul	Aug	Sep	Oct	Nov	Dec
Forcible Entry	33,656	68.7%	3,223	2,612	2,865	2,515	2,811	2,590	2,837	2,933	2,700	2,883	2,760	2,927
Unlawful Entry - No Force	11,196	22.9%	999	908	1,085	938	1,037	926	930	985	807	858	864	859
Attempted Forcible Entry	4,104	8.4%	325	317	345	336	351	327	378	388	336	340	328	333
TOTALS	48,956	-	4,547	3,837	4,295	3,789	4,199	3,843	4,145	4,306	3,843	4,081	3,952	4,119

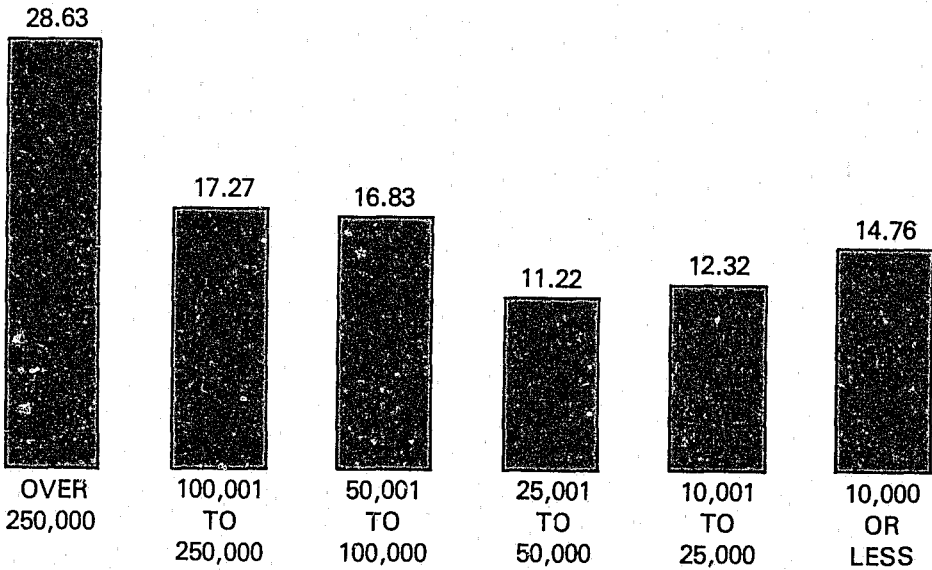
BURGLARY BY LOCATION & TIME

LOCATION	Number of Offenses	Distribution
Residence Total	34,201	69.9%
Night (6 PM - 6 AM)	11,803	34.5%
Day (6 AM - 6 PM)	12,034	35.2%
Unknown	10,364	30.3%
Non-Residence Total	14,755	30.1%
Night (6 PM - 6 AM)	8,179	55.4%
Day (6 AM - 6 PM)	1,409	9.6%
Unknown	5,167	35.0%
TOTAL	48,956	100.0%

BURGLARY BY POPULATION GROUP

	1	2	3	4	5	6	7
Population Group	Over 250,000	100,001 To 250,000	50,001 To 100,000	25,001 To 50,000	10,001 To 25,000	10,000 Or Less	Ungrouped
Burglary	28,800	8,561	2,670	3,667	1,982	3,040	236
Distribution	58.8%	17.5%	5.5%	7.5%	4.0%	6.2%	.5%

BURGLARIES PER 1000 POPULATION



LARCENY-THEFT

SUMMARY ANALYSIS

Larceny-theft, as in years past, is the largest component of the seven index crimes. Arizona law enforcement agencies reported 105,594 larcenies, an increase of 4 percent over 1977. Larceny-theft accounted for 64 percent of the property crimes and 59 percent of the state crime index.

As in 1977, the greatest number of larcenies occurred during March, 9,512. All months showed an increase over the corresponding month in 1977 with February showing the smallest gain, 13.

Despite the small increase, 4 percent, in the number of larcenies between 1977 vs 1978, the reported value loss increased 18 percent, \$3 million.

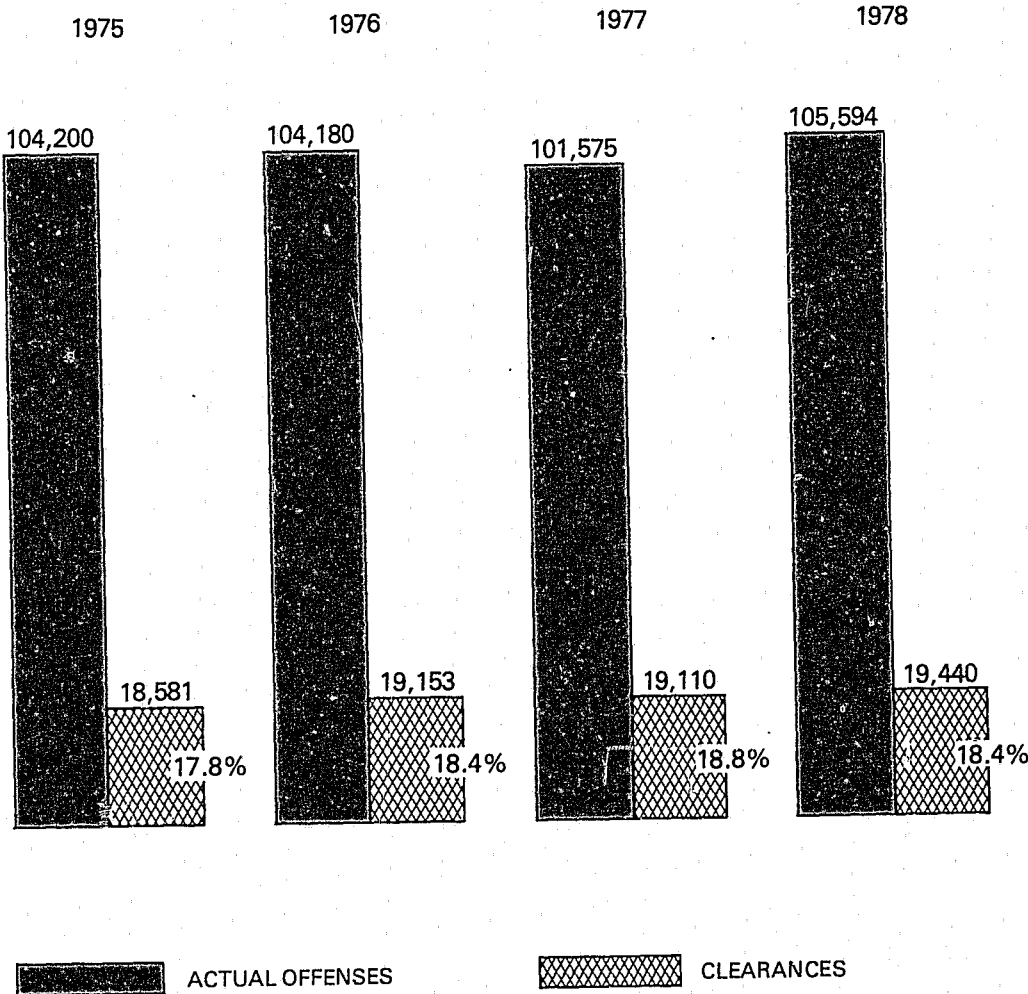
The value range of dollar loss with the largest number of

larcenies, was under \$50, as in 1977. The value range of \$200 and over had the largest reported dollar loss, \$15 million, 78 percent of all larceny loss.

In 1978 as in 1977, theft from motor vehicles and theft of motor vehicle parts and accessories accounted for over one-third, (35%) of all larcenies. Pocket-picking and purse snatching were the least reported type of larcenies.

Larceny-theft clearances dropped slightly from 18.8 percent to 18.4 percent in 1978. Adults accounted for 11.5% of the larceny clearances and juveniles 6.9%. There were 247 more larceny arrests in 1978 than in 1977.

LARCENY-THEFT COMPARISON



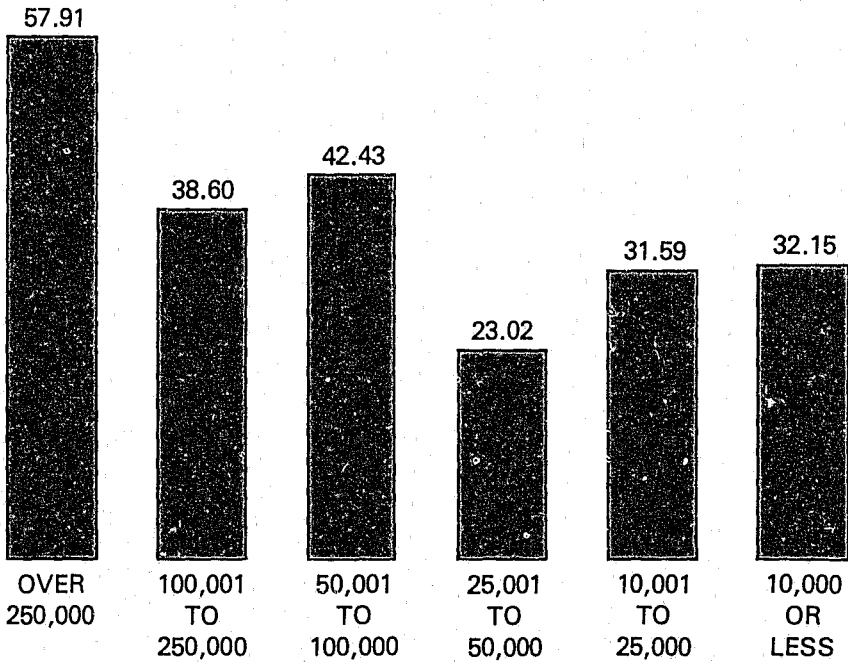
LARCENY-THEFT BY VALUE BY MONTH

VALUE	Total	Dist	Jan	Feb	Mar	Apr	May	Jun	Jul	Aug	Sep	Oct	Nov	Dec
Over \$200	18,726	17.7%	1,581	1,547	1,712	1,439	1,504	1,456	1,449	1,551	1,463	1,639	1,650	1,735
\$50 to \$200	33,956	32.2%	2,797	2,681	3,053	2,863	2,800	2,727	2,748	3,082	2,824	3,118	2,694	2,569
Under \$50	52,912	50.1%	4,449	4,351	4,747	4,324	4,271	4,163	4,257	4,374	4,251	4,684	4,351	4,690
Totals	105,594	100%	8,827	8,579	9,512	8,626	8,575	8,346	8,454	9,007	8,538	9,441	8,695	8,994

LARCENY-THEFT BY POPULATION GROUP

Population Group	1	2	3	4	5	6	7
	Over 250,000	100,001 To 250,000	50,001 To 100,000	25,001 To 50,000	10,001 To 25,000	10,000 Or Less	Ungrouped
Larceny-Theft	58,251	19,136	6,731	7,524	5,080	6,623	2,249
Distribution	55.2%	18.1%	6.4%	7.1%	4.8%	6.3%	2.1%

LARCENY-THEFTS PER 1000 POPULATION



LARCENY-THEFT BY TYPE BY MONTH

Classification	Total	Dist	Jan	Feb	Mar	Apr	May	Jun	Jul	Aug	Sep	Oct	Nov	Dec
Pocket Picking	418	.4%	31	40	27	21	19	23	32	38	33	65	39	50
Purse Snatching	626	.6%	65	54	63	59	52	41	44	45	48	72	38	45
Shoplifting	19,287	18.2%	1,624	1,597	1,827	1,601	1,533	1,421	1,381	1,551	1,411	1,637	1,632	2,072
From Motor Vehicle	14,914	14.1%	1,270	1,236	1,360	1,187	1,229	1,200	1,225	1,190	1,196	1,267	1,286	1,268
Motor Vehicle Parts/ Access.	22,061	20.9%	2,024	1,891	2,044	1,728	1,714	1,774	1,700	2,005	1,688	1,866	1,812	1,815
Bicycles	14,772	14.0%	1,004	1,004	1,160	1,270	1,209	1,345	1,313	1,495	1,375	1,579	1,132	886
From Buildings	13,008	12.3%	1,153	1,050	1,188	1,091	1,094	931	966	985	1,144	1,187	1,113	1,106
From Coin Oper. Machine	1,016	1.0%	81	77	63	84	63	84	88	110	81	108	104	73
All Other	19,492	18.5%	1,575	1,630	1,780	1,585	1,662	1,527	1,705	1,588	1,562	1,660	1,539	1,679
TOTALS	105,594	—	8,827	8,579	9,512	8,626	8,575	8,346	8,454	9,007	8,538	9,441	8,695	8,994

MOTOR VEHICLE THEFT

SUMMARY ANALYSIS

Arizona law enforcement agencies reported 10,917 motor vehicle thefts, a 9 percent increase over 1977. Motor vehicle theft accounted for 7 percent of property crime and 6 percent of the state crime index.

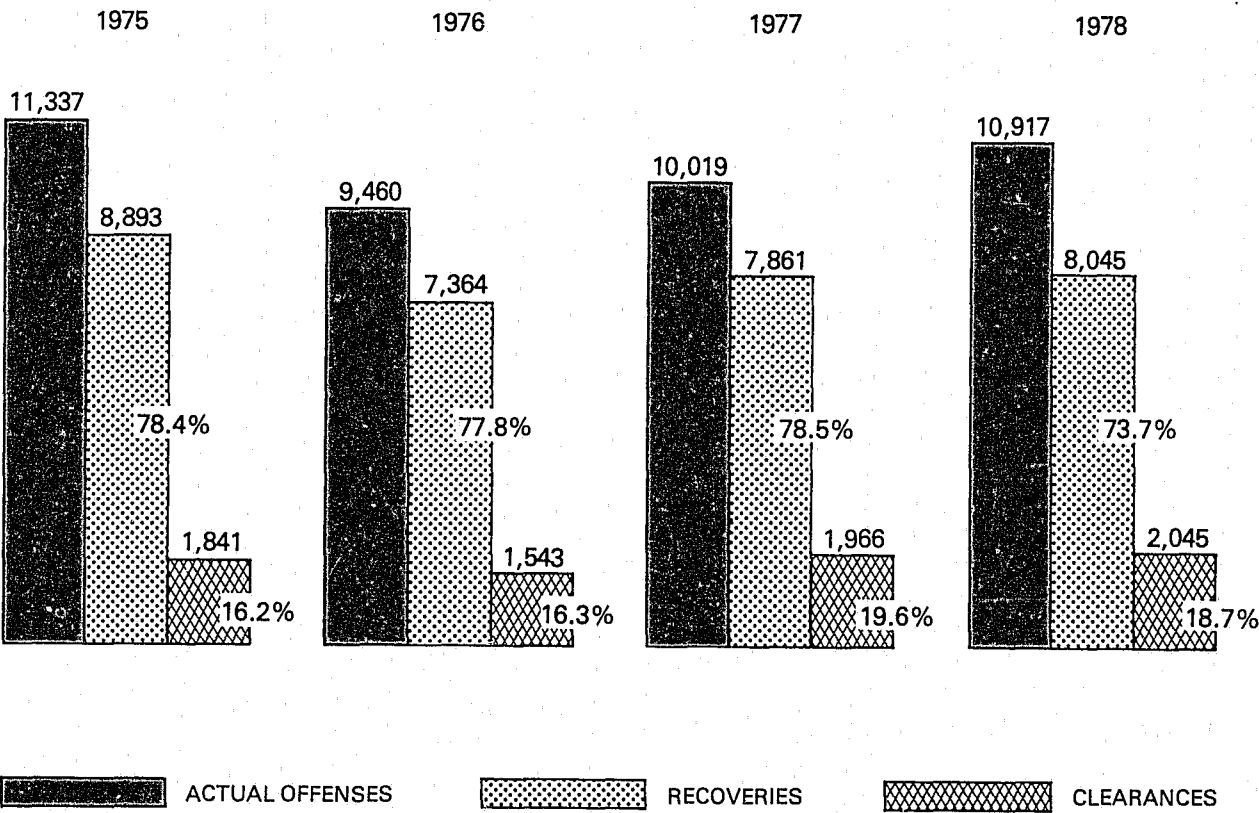
July had the largest total of reported vehicle thefts. April had the lowest number of thefts. Of the motor vehicles stolen, 74 percent (8,045) were recovered. This is a 4 percent decrease from the 78 percent recovery rate in 1977.

Motor vehicle thefts accounted for a reported dollar loss of \$27,659,223. Of that amount, \$18,758,513 was recovered. The recovered amount reflects the value of the vehicle when recovered and may be lower than the value when stolen because of parts missing or damaged.

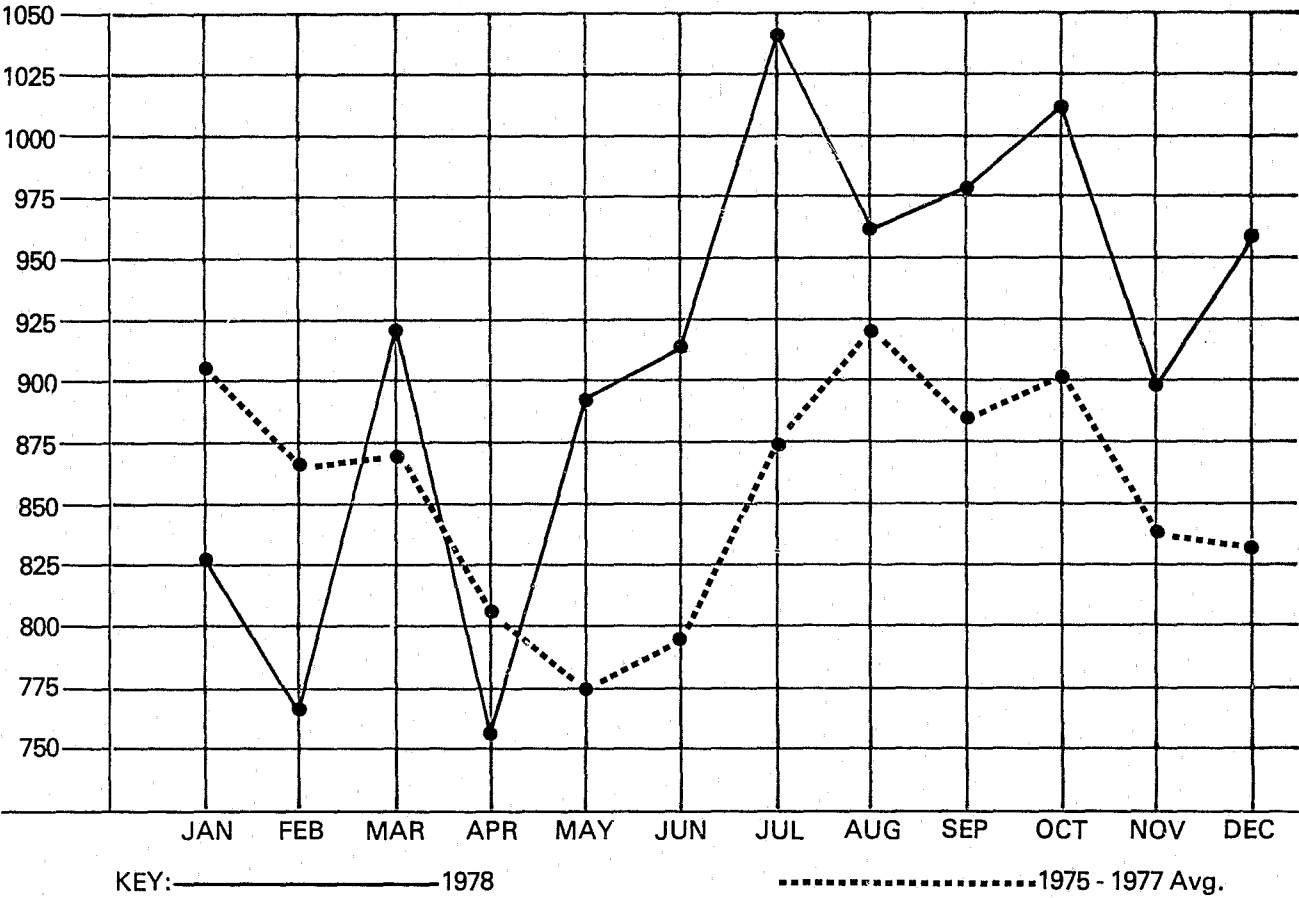
Motor vehicle theft clearances decreased 1 percent in 1978 from 1977. Of the 19 percent clearance rate, adults accounted for 12 percent and juveniles 7 percent. There were 40 fewer persons arrested for motor vehicle theft in 1978 than in 1977. Again in 1978, the number of juveniles arrested exceeded the adults.

STOLEN VEHICLES BY TYPE		
Type	Number Stolen	Distribution
Automobiles	5,805	53.2%
Truck & Busses	2,628	24.1%
Motorcycles	1,989	18.2%
Other Vehicles	495	4.5%
TOTALS	10,917	100.0%

MOTOR VEHICLE THEFT COMPARISON



MOTOR VEHICLE THEFT TREND BY MONTH



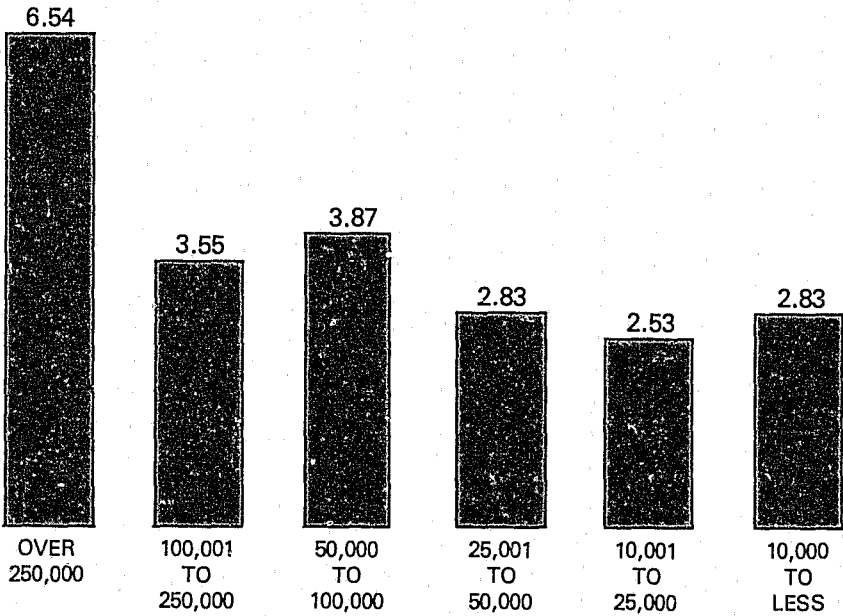
MOTOR VEHICLE RECOVERY INFORMATION

Situation	Total	Jan	Feb	Mar	Apr	May	Jun	Jul	Aug	Sep	Oct	Nov	Dec
Stolen Locally - Recovered Locally	5,821	437	416	484	413	461	474	573	524	510	519	491	519
Stolen Locally - Recovered by Other Agencies In State	1,824	138	149	147	114	139	114	176	179	182	188	127	171
Stolen Locally - Recovered by Other Agencies Out Of State	400	31	25	28	20	29	43	56	34	42	28	33	31
Total Locally Stolen	8,045	606	590	659	547	629	631	805	737	734	735	651	721
Stolen Out Of Town, Instate, Recovered Locally	1,429	111	113	133	102	127	102	125	169	123	124	113	87
Stolen Out Of State - Recovered Locally	762	50	47	78	61	65	72	53	58	70	84	68	56
Total Recovered/Stolen Out Of Town Or State	2,191	161	160	211	163	192	174	178	227	193	208	181	143
TOTALS	10,236	767	750	870	710	821	805	983	964	927	943	832	864

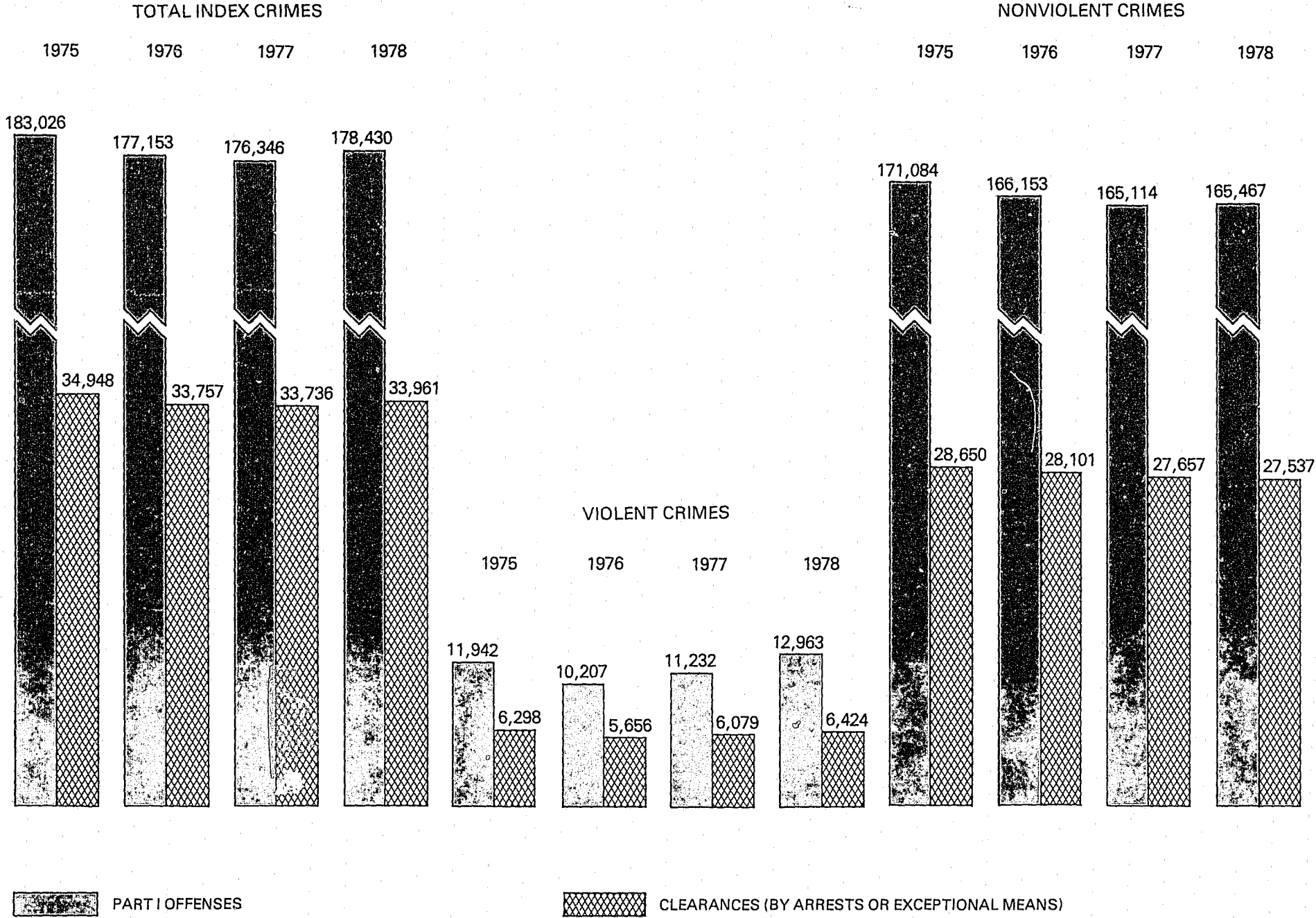
MOTOR VEHICLE THEFT BY POPULATION GROUP

Population Group	1	2	3	4	5	6	7
	Over 250,000	100,001 To 250,000	50,001 To 100,000	25,001 To 50,000	10,001 To 25,000	10,000 Or Less	Ungrouped
Motor Vehicle Theft	6,580	1,758	614	924	407	582	52
Distribution	60.3%	16.1%	5.6%	8.5%	3.7%	5.3%	.5%

MOTOR VEHICLE THEFTS PER 1000 POPULATION



PART I INDEX CRIME COMPARISON



INDEX CRIMES BY MONTH – STATE TOTALS

INDEX OFFENSES	TOTAL	JAN	FEB	MAR	APR	MAY	JUN	JUL	AUG	SEP	OCT	NOV	DEC
CRIMINAL HOMICIDE													
Murder/Nonneg. Manslaughter	220	11	13	17	15	15	24	23	30	18	13	17	24
FORCIBLE RAPE	1,039	61	65	76	85	86	109	106	113	97	87	70	84
Rape By Force	751	44	49	54	57	64	81	77	75	69	63	55	63
Attempts To Commit	288	17	16	22	28	22	28	29	38	28	24	15	21
ROBBERY	3,835	343	309	325	298	304	244	320	314	307	339	358	374
Firearm	1,494	148	148	122	116	114	78	113	134	129	114	127	151
Knife or Cutting Instrument	434	36	40	41	37	35	30	40	34	29	28	41	43
Other Dangerous Weapon	268	23	16	29	16	22	22	25	24	25	20	21	25
Strong-Arm (Hands, Fist, Feet, Etc.)	1,639	136	105	133	129	133	114	142	122	124	177	169	155
ASSAULT	7,869	565	496	608	598	673	629	721	638	743	839	662	697
Firearm	1,970	156	138	165	148	157	149	214	149	173	188	159	174
Knife or Cutting Instrument	1,454	92	86	105	118	116	118	132	131	128	174	131	123
Other Dangerous Weapon	1,985	132	132	153	150	200	170	164	163	188	202	157	174
Hands, Fist, Feet, Etc. - Aggravated	2,460	185	140	185	182	200	192	211	195	254	275	215	226
BURGLARY	48,956	4,547	3,837	4,295	3,789	4,199	3,843	4,145	4,306	3,843	4,081	3,952	4,119
Forcible Entry	33,656	3,223	2,612	2,865	2,515	2,811	2,590	2,837	2,933	2,700	2,883	2,760	2,927
Unlawful Entry - No Force	11,196	999	908	1,085	938	1,037	926	930	985	807	858	864	859
Attempted Forcible Entry	4,104	325	317	345	336	351	327	378	388	336	340	328	333
LARCENY-THEFT	105,594	8,827	8,579	9,512	8,625	8,575	8,346	8,454	9,007	8,538	9,441	8,695	8,994
MOTOR VEHICLE THEFT	10,917	827	767	922	756	883	912	1,040	961	978	1,012	899	960
Automobiles	5,805	445	401	492	407	481	483	584	538	513	526	474	461
Trucks And Buses	2,628	181	175	198	188	227	229	246	209	225	259	220	271
Motorcycles	1,989	155	158	205	130	141	141	165	172	186	182	161	193
Other Vehicles	495	46	33	27	31	34	59	45	42	54	45	44	35
TOTALS	178,430	15,181	14,066	15,755	14,167	14,735	14,107	14,899	15,369	14,524	15,812	14,653	15,252
MANSLAUGHTER BY NEGLIGENCE	9	1	0	0	0	0	1	2	1	3	0	1	0
OTHER ASSAULTS - SIMPLE	11,715	856	808	909	961	970	991	1,074	985	1,132	1,120	967	942

VALUE, IN DOLLARS, OF PROPERTY STOLEN BY CRIME AND MONTH — STATE TOTALS

INDEX OFFENSES	TOTAL	JAN	FEB	MAR	APR	MAY	JUN	JUL	AUG	SEP	OCT	NOV	DEC
HOMICIDE	15,870	0	0	500	0	0	1,640	580	11,900	200	1,050	0	0
FORCIBLE RAPE	31,121	2,820	114	38	316	491	8,183	896	683	1,291	1,400	1,583	13,306
ROBBERY	1,584,303	159,818	112,226	185,481	120,488	264,635	130,253	81,400	86,777	99,831	114,523	124,379	104,492
Highway	387,346	58,872	33,673	24,145	29,456	18,667	19,606	20,920	31,603	23,692	54,209	48,277	24,226
Commercial House	541,959	36,897	29,145	40,609	25,567	218,104	61,666	12,357	24,072	29,903	20,776	17,084	25,779
Gas Or Service Station	74,857	9,598	10,528	6,007	6,503	5,972	1,571	6,212	5,898	3,608	3,410	3,115	12,435
Convenience Store	55,504	8,354	5,628	2,238	2,292	2,092	3,875	4,433	3,126	4,349	2,614	6,792	9,711
Residence	279,963	19,775	15,194	85,560	12,151	14,426	33,701	26,105	5,760	17,050	10,402	25,698	14,141
Bank	155,180	21,533	7,030	21,604	34,726	3,088	620	3,190	13,831	16,907	19,615	4,660	9,376
Miscellaneous	88,494	4,789	11,028	5,318	9,793	2,286	9,214	8,183	2,487	4,322	3,497	18,753	8,824
BURGLARY	26,437,953	2,341,063	2,128,029	2,326,432	2,035,166	2,177,178	2,041,837	2,006,322	2,370,708	2,068,209	2,209,381	2,236,236	2,497,392
Residence	18,356,096	1,704,835	1,425,634	1,563,332	1,339,289	1,546,354	1,503,885	1,503,130	1,669,070	1,442,948	1,552,411	1,428,055	1,677,153
Night, 6 PM - 6 AM	6,217,411	629,080	565,882	518,436	450,631	543,278	483,998	519,651	607,439	435,892	447,138	444,415	571,571
Day, 6 AM - 6 PM	6,547,950	581,035	491,589	622,412	515,075	565,310	561,230	502,178	541,586	472,107	621,590	528,900	544,938
Unknown	5,590,735	494,720	368,163	422,484	373,583	437,766	458,657	481,301	520,045	534,949	483,683	454,740	560,644
Non-Residence	8,081,857	636,228	702,395	763,100	695,877	630,824	537,952	503,192	701,638	625,261	656,970	808,181	820,239
Night, 6 PM - 6 AM	4,425,976	347,126	380,369	446,287	398,832	285,010	336,246	243,876	381,893	312,552	333,366	472,791	487,628
Day, 6 AM - 6 PM	675,275	45,450	68,089	37,859	30,412	136,978	39,387	24,537	38,388	58,952	46,577	76,162	72,484
Unknown	2,980,606	243,652	253,937	278,954	266,633	208,836	162,319	234,779	281,357	253,757	277,027	259,228	260,127
LARCENY-THEFT	19,668,255	1,437,572	1,595,715	1,834,811	1,624,878	1,946,952	1,447,840	1,364,424	1,599,679	1,560,056	1,692,926	1,787,172	1,776,230
\$200 And Over	15,265,273	1,081,640	1,232,538	1,437,818	1,249,098	1,584,300	1,095,381	1,018,863	1,211,129	1,198,437	1,293,571	1,428,074	1,434,419
\$50 To \$200	3,570,780	287,583	294,122	322,255	307,612	298,181	282,282	282,941	321,997	293,127	321,887	290,292	268,501
Under \$50	832,202	68,349	69,055	74,738	68,168	64,471	70,177	62,615	66,553	68,492	77,468	68,806	73,310
Pocket-Picking	70,964	2,950	4,722	5,362	7,893	2,811	2,853	5,063	10,343	5,307	9,761	6,453	7,446
Purse Snatching	52,880	4,033	5,009	4,880	4,380	5,314	6,520	1,916	4,774	4,121	4,413	2,136	5,384
Shoplifting	395,934	32,017	27,898	32,225	27,753	35,236	23,966	22,058	31,693	37,014	28,696	44,720	52,658
From Motor Vehicle	4,066,228	329,524	358,737	329,674	307,034	299,878	357,855	296,878	322,908	302,817	354,944	385,474	420,505
Vehicle Parts and Access.	2,352,888	216,685	215,642	230,454	182,752	171,644	185,182	159,452	210,408	161,581	214,974	191,709	212,405
Bicycles	1,229,670	75,027	76,877	91,208	107,180	97,762	107,458	107,354	136,366	113,507	138,668	100,811	77,452
From Buildings	3,444,342	263,463	205,649	349,362	326,264	287,635	25,606	244,445	294,914	303,356	321,472	308,678	288,128
Coin-Operated Machines	51,462	2,403	2,933	2,287	4,010	1,489	4,801	3,970	6,962	3,598	4,235	12,327	2,447
All Other	8,003,887	511,470	698,248	789,359	657,612	1,045,183	508,229	523,288	581,311	628,755	615,763	734,864	709,805
MOTOR VEHICLE THEFT	26,799,495	2,222,202	1,835,307	2,043,912	1,731,165	2,107,297	2,273,532	2,617,642	2,251,711	2,345,619	2,652,195	2,206,830	2,652,083
TOTAL STOLEN	74,536,997	6,023,475	5,671,391	6,391,174	5,512,013	6,496,553	5,903,285	6,071,264	6,321,458	6,075,206	6,671,475	6,356,200	7,043,503

**TYPE AND VALUE, IN DOLLARS, OF PROPERTY STOLEN AND RECOVERED BY MONTH -
STATE TOTALS**

STOLEN	TOTAL	JAN	FEB	MAR	APR	MAY	JUN	JUL	AUG	SEP	OCT	NOV	DEC
Currency, Notes, Etc.	4,328,512	318,558	301,932	455,543	348,966	335,673	376,369	339,270	353,752	346,979	399,554	350,411	401,505
Jewelry/Precious Metals	8,307,578	737,017	627,732	867,538	589,596	812,715	756,190	618,339	656,305	569,435	788,758	601,268	682,685
Clothing And Furs	1,145,596	132,866	143,659	72,436	96,013	73,969	83,741	60,236	95,664	83,546	80,866	84,483	138,117
Locally Stolen Vehicles	27,659,223	2,127,206	1,913,692	1,976,356	1,794,689	2,104,606	2,342,922	2,696,841	2,383,645	2,431,568	2,825,883	2,345,087	2,716,728
Office Equipment	950,103	132,805	69,950	84,837	78,595	78,776	68,563	72,435	90,162	65,519	67,641	80,143	60,677
Stereos/TV's/Cameras	8,706,823	775,010	709,179	749,301	676,908	773,651	675,668	644,460	787,486	669,239	688,032	781,563	776,326
Firearms	1,563,517	143,549	114,459	143,423	127,745	149,798	107,145	120,479	133,723	126,406	129,237	102,514	165,039
Household Goods	1,965,137	147,617	175,823	125,630	131,602	173,814	123,135	160,248	191,734	185,324	123,214	220,248	206,748
Consumable Goods	562,507	72,493	48,095	66,766	46,085	37,580	34,306	41,970	45,752	28,656	40,587	38,555	61,662
Livestock	78,955	4,336	2,203	11,939	1,709	2,873	4,375	4,198	1,485	12,250	20,075	3,619	9,893
Miscellaneous	19,269,046	1,432,018	1,564,667	1,837,405	1,620,105	1,953,098	1,330,871	1,312,788	1,581,750	1,556,284	1,507,628	1,748,309	1,824,123
TOTAL STOLEN	74,538,997	6,023,475	5,671,391	6,391,174	5,512,013	6,496,553	5,903,285	6,071,284	6,321,458	6,075,206	6,671,475	6,356,200	7,043,503
RECOVERED													
Currency, Notes, Etc.	396,197	15,143	25,988	22,763	18,417	123,979	24,141	26,900	33,018	26,554	38,754	22,322	18,218
Jewelry/Precious Metals	657,568	48,137	31,267	46,683	29,400	59,953	59,788	78,330	60,259	64,199	82,921	52,032	44,549
Clothing And Furs	137,378	10,093	30,135	8,498	5,581	8,979	7,275	7,987	7,265	8,426	10,534	13,568	19,037
Locally Stolen Vehicles	18,758,513	1,322,840	1,351,524	1,424,400	1,151,102	1,318,974	1,452,413	2,126,028	1,545,816	1,765,785	1,945,814	1,545,629	1,808,188
Office Equipment	93,212	28,586	10,817	19,486	6,622	2,567	2,517	4,331	3,607	883	7,697	2,331	3,768
Stereos/TV's/Cameras	399,035	31,918	43,626	23,159	30,230	29,262	24,616	34,923	34,033	45,186	30,707	36,206	35,169
Firearms	125,980	13,707	6,245	8,799	15,340	17,315	8,056	12,295	5,759	11,709	6,269	3,952	16,534
Household Goods	84,802	5,375	2,411	10,395	5,586	9,555	9,710	5,755	5,827	8,252	4,591	7,645	9,700
Consumable Goods	54,758	3,421	3,959	4,508	3,491	4,512	4,534	5,373	3,422	3,871	10,388	3,538	3,741
Livestock	29,579	8,750	220	1,132	925	151	240	500	0	600	15,516	725	820
Miscellaneous	2,837,400	145,943	100,988	217,882	149,857	182,702	438,992	215,587	259,887	158,504	167,275	503,696	296,087
TOTAL RECOVERED	23,574,422	1,633,913	1,607,180	1,787,705	1,416,551	1,757,949	2,032,282	2,518,059	1,958,893	2,093,969	2,320,466	2,191,644	2,255,811

INDEX CRIMES BY COUNTY

INDEX OFFENSES	APACHE	COCHISE	COCONINO	GILA	GRAHAM	GREENLEE	MARICOPA	MOHAVE	NAVAJO	PIMA	PINAL	SANTA CRUZ	YAVAPAI	YUMA
CRIMINAL HOMICIDE Murder and Nonnegligent Manslaughter	—	6	2	1	1	—	130	9	1	37	9	6	6	12
FORCIBLE RAPE Rape By Force Attempts to Commit	— — —	7 6 1	29 18 11	— — —	3 3 —	3 2 1	685 490 195	11 9 2	19 10 9	208 152 56	33 28 5	— — —	12 12 —	29 21 8
ROBBERY Firearm Knife or Cutting Instrument Other Dangerous Weapon Strong-Arm (Hands, Fist, Feet, Etc.)	5 4 — — 1	26 12 3 3 8	71 22 6 4 39	11 4 — — 7	— — — — —	2 — — — 2	2,699 1,038 297 212 1,152	32 14 2 3 13	15 3 6 — 6	756 326 86 33 311	113 38 14 6 55	3 — 1 — 2	20 8 2 3 7	82 25 17 4 36
ASSAULT Firearm Knife or Cutting Instrument Other Dangerous Weapon Hands, Fist, Feet, Etc. - Aggravated	38 8 5 7 18	167 23 15 20 109	206 27 48 42 89	92 23 11 18 40	44 4 5 3 32	28 — 3 3 22	4,585 1,338 920 1,425 902	188 33 7 23 125	73 6 10 11 46	1,277 330 217 247 483	419 94 71 77 177	57 5 8 5 39	150 32 24 17 77	545 47 110 87 301
BURGLARY Forcible Entry Unlawful Entry - No Force Attempted Forcible Entry	114 68 36 10	725 468 211 46	996 522 363 111	345 199 123 23	127 72 47 8	62 41 18 3	30,723 20,091 8,270 2,362	745 612 104 29	471 336 98 37	10,921 8,870 911 1,140	1,376 914 394 68	396 311 42 43	586 350 190 46	1,369 802 389 178
LARCENY-THEFT	244	1,722	2,732	742	320	129	67,253	1,217	1,060	22,405	2,684	508	1,212	3,366
MOTOR VEHICLE THEFT Autos Trucks And Buses Motorcycles Other Vehicles	15 5 9 1 —	170 81 42 39 8	245 142 63 34 6	69 34 18 17 —	33 16 9 7 1	14 5 6 3 —	6,906 3,787 1,616 1,184 319	196 78 28 60 30	118 65 28 15 10	2,409 1,233 625 488 63	228 121 44 54 9	50 17 29 1 3	68 40 14 13 1	396 181 97 73 45
TOTALS	416	2,823	4,231	1,260	528	238	112,981	2,398	1,757	38,013	4,862	1,020	2,054	5,799
MANSLAUGHTER BY NEGLIGENCE	1	—	3	2	—	—	2	—	—	—	1	—	—	—
OTHER ASSAULTS - SIMPLE	26	228	569	127	33	14	5,805	44	63	3,710	439	53	183	421

VALUE, IN DOLLARS, OF PROPERTY STOLEN BY CRIME BY COUNTY

INDEX OFFENSES	APACHE	COCHISE	COCONINO	GILA	GRAHAM	GREENLEE	MARICOPA	MOHAVE	NAVAJO	PIMA	PINAL	SANTA CRUZ	YAVAPAI	YUMA
HOMICIDE	0	0	0	0	0	0	1,415	2,140	0	0	0	200	0	12,115
FORCIBLE RAPE	0	0	0	0	200	0	17,328	0	0	5,214	1,097	0	0	7,282
ROBBERY	20,114	13,767	22,062	5,246	0	114	1,151,970	9,146	31,421	223,322	19,518	1,650	17,394	68,579
Highway	19,064	2,582	16,199	41	0	0	212,853	5,303	3,029	113,486	7,949	0	1,893	4,947
Commercial House	0	8,936	1,574	4,000	0	6	459,053	809	27,772	34,440	4,136	0	0	1,283
Gas Or Service Station	0	1,021	952	68	0	0	57,275	1,364	200	11,377	1,333	0	517	750
Convenience Store	0	323	433	200	0	0	33,548	906	470	16,724	1,347	0	654	899
Residence	0	20	1,919	700	0	108	179,595	485	0	36,359	2,765	0	540	57,472
Bank	0	0	0	0	0	0	133,975	0	0	6,725	0	0	13,790	1,690
Miscellaneous	1,050	885	985	237	0	0	75,671	279	0	4,211	1,988	1,650	0	1,538
BURGLARY	39,140	393,043	369,735	156,002	42,964	22,321	16,742,027	463,425	248,449	6,415,721	571,580	211,622	241,792	520,132
Residence	21,301	220,418	183,440	103,245	20,759	4,034	11,563,921	330,745	167,538	4,737,872	331,264	157,037	139,368	375,154
Night, 6 PM - 6 AM	10,557	114,194	62,698	37,207	7,118	1,241	3,190,292	161,189	84,106	2,127,726	130,603	80,727	36,446	173,307
Day, 6 AM - 6 PM	5,678	47,235	32,409	21,907	2,540	691	4,155,331	27,478	10,015	2,049,895	60,441	36,873	20,116	77,341
Unknown	5,066	58,989	88,333	44,131	11,101	2,102	4,218,298	142,078	73,417	560,251	140,220	39,437	82,806	124,506
Non-Residence	17,839	172,625	186,295	52,757	22,205	18,287	5,178,106	132,680	80,911	1,677,849	240,316	54,585	102,424	144,978
Night, 6 PM - 6 AM	13,302	141,328	99,958	14,361	9,628	16,704	2,548,480	72,037	68,840	1,089,248	151,554	46,468	64,579	89,489
Day, 6 AM - 6 PM	2,164	4,302	28,377	1,932	1,774	130	297,329	11,154	3,353	287,543	14,727	3,849	6,781	11,860
Unknown	2,373	26,995	57,960	36,464	10,803	1,453	2,332,297	49,489	8,718	301,058	74,035	4,268	31,064	43,629
LARCENY-THEFT	74,446	371,472	482,840	130,766	50,233	13,791	12,559,482	385,999	236,828	3,629,810	668,161	81,561	278,585	704,281
\$200 And Over	63,003	297,039	366,608	99,312	34,216	6,474	9,900,596	337,732	192,164	2,571,365	551,624	62,534	229,163	553,443
\$50 To \$200	10,143	59,835	95,424	26,138	13,755	6,443	2,139,310	40,527	38,735	861,842	94,428	14,815	41,274	128,111
Under \$50	1,300	14,598	20,808	5,316	2,262	874	519,576	7,740	5,929	196,603	22,109	4,212	8,148	22,727
Pocket-Picking	570	68	128	0	628	0	41,399	1,121	2,452	16,354	3,325	110	937	3,872
Purse Snatching	266	562	3,720	69	125	140	31,629	729	2,711	11,052	600	0	471	806
Shoplifting	518	4,274	5,733	1,214	2,279	219	278,124	1,433	9,015	71,333	8,375	2,857	5,102	5,458
From Motor Vehicle	11,025	52,243	101,710	35,200	10,610	3,235	2,489,675	67,123	45,735	910,200	119,517	9,863	52,026	158,066
Motor Vehicle Parts														
And Access.	19,669	20,183	34,408	16,899	4,707	2,050	1,615,524	20,521	16,636	438,469	56,597	12,831	33,683	60,711
Bicycles	1,133	21,523	32,044	5,028	4,061	822	789,424	3,920	10,709	289,589	25,531	5,639	7,395	32,852
From Buildings	13,796	70,237	120,988	32,605	19,420	2,520	2,047,207	41,957	41,009	766,830	67,961	24,304	64,716	130,792
Coin-Operated Machines	341	880	3,014	240	72	50	29,765	1,246	2,289	9,773	1,346	25	1,521	900
All Other	27,128	201,502	181,095	39,511	8,331	4,755	5,236,735	247,949	106,272	1,116,210	384,909	25,932	112,734	310,824
MOTOR VEHICLE THEFT	33,380	485,329	738,202	150,531	71,770	8,900	17,323,024	691,675	333,179	5,170,830	510,076	236,220	163,642	882,737
TOTAL STOLEN	167,080	1,263,611	1,612,839	442,545	165,167	45,126	47,795,246	1,552,385	849,877	15,444,897	1,770,432	531,253	701,413	2,195,126

TYPE AND VALUE, IN DOLLARS, OF PROPERTY STOLEN AND RECOVERED BY COUNTY

STOLEN	APACHE	COCHISE	COCONINO	GILA	GRAHAM	GREENLEE	MARICOPA	MOHAVE	NAVAJO	PIMA	PINAL	SANTA CRUZ	YAVAPAI	YUMA
Currency, Notes, Etc.	14,944	74,507	148,950	41,462	10,771	1,747	2,480,896	170,939	72,006	935,775	116,400	39,295	66,962	153,858
Jewelry/Precious Metals	8,684	141,879	120,561	34,208	5,005	4,194	5,488,113	151,739	125,863	1,704,377	126,634	69,960	74,745	251,616
Clothing and Furs	1,240	18,953	42,029	6,780	3,897	376	740,061	21,011	5,730	234,889	20,053	14,621	9,575	26,381
Locally Stolen Vehicles	58,480	494,029	738,027	157,156	72,170	8,900	17,920,498	682,483	331,369	5,390,684	517,949	236,040	168,267	883,171
Office Equipment	1,210	8,460	31,687	6,277	525	40	649,425	1,748	10,423	207,770	10,735	7,958	5,378	8,467
Stereos/TV's/Cameras	8,904	81,742	170,760	32,341	11,064	10,681	5,667,935	84,170	52,696	2,180,199	153,060	48,353	47,057	157,861
Firearms	6,195	26,905	34,131	30,247	4,632	2,791	953,317	20,161	33,750	312,610	51,405	9,589	30,009	47,775
Household Goods	1,736	46,693	54,467	17,971	4,881	1,403	1,217,643	26,889	15,592	434,074	56,547	6,469	27,557	53,215
Consumable Goods	736	8,030	9,808	4,980	746	1,527	294,719	7,476	4,365	182,316	25,912	2,285	9,324	10,283
Livestock	17,231	2,379	2,317	350	50	550	38,683	3,000	432	6,215	4,782	511	765	1,690
Miscellaneous	47,720	360,034	260,102	110,773	51,426	12,917	12,343,956	382,769	197,651	3,855,988	686,955	96,172	261,774	600,809
TOTAL STOLEN	167,080	1,263,611	1,612,839	442,545	165,167	45,126	47,795,246	1,552,385	849,877	15,444,897	1,770,432	531,253	701,413	2,195,126
RECOVERED														
Currency, Notes, Etc.	1,680	21,533	85,383	1,423	2,078	78	82,590	19,462	13,567	133,504	13,503	1,177	2,952	17,267
Jewelry/Precious Metals	1,400	15,942	40,136	3,200	669	377	371,305	36,828	37,897	53,520	55,358	604	20,496	19,836
Clothing and Furs	255	2,944	8,410	829	2,077	19	61,344	26,758	2,173	20,790	2,317	4,566	2,305	2,591
Locally Stolen Vehicles	43,830	295,577	629,136	92,205	56,545	6,600	12,749,438	268,191	246,408	3,312,802	360,035	101,940	114,122	481,684
Office Equipment	800	525	18,308	0	300	0	41,545	0	6,067	4,968	3,408	474	13,557	3,260
Stereos/TV's/Cameras	731	9,601	31,014	3,427	1,146	5,975	237,651	12,070	4,759	49,867	17,067	4,199	3,676	17,852
Firearms	2,630	3,967	10,123	7,803	560	190	60,091	2,205	14,200	10,668	5,674	217	2,558	5,094
Household Goods	611	1,231	14,045	54	1,330	110	42,018	119	634	7,245	5,941	65	2,233	9,166
Consumable Goods	6	631	4,319	1,552	231	622	32,619	1,108	1,178	6,921	2,389	372	1,395	1,415
Livestock	15,001	60	840	100	0	0	1,771	300	1,257	600	1,300	0	75	8,275
Miscellaneous	8,495	124,535	60,001	16,409	8,608	2,613	1,984,907	21,620	21,247	153,227	276,163	8,132	34,247	117,196
TOTAL RECOVERED	75,439	476,546	901,715	127,002	73,544	16,584	15,665,279	388,661	349,387	3,754,112	743,155	121,746	197,616	683,636

INDEX CRIMES BY JUSTICE PLANNING REGION

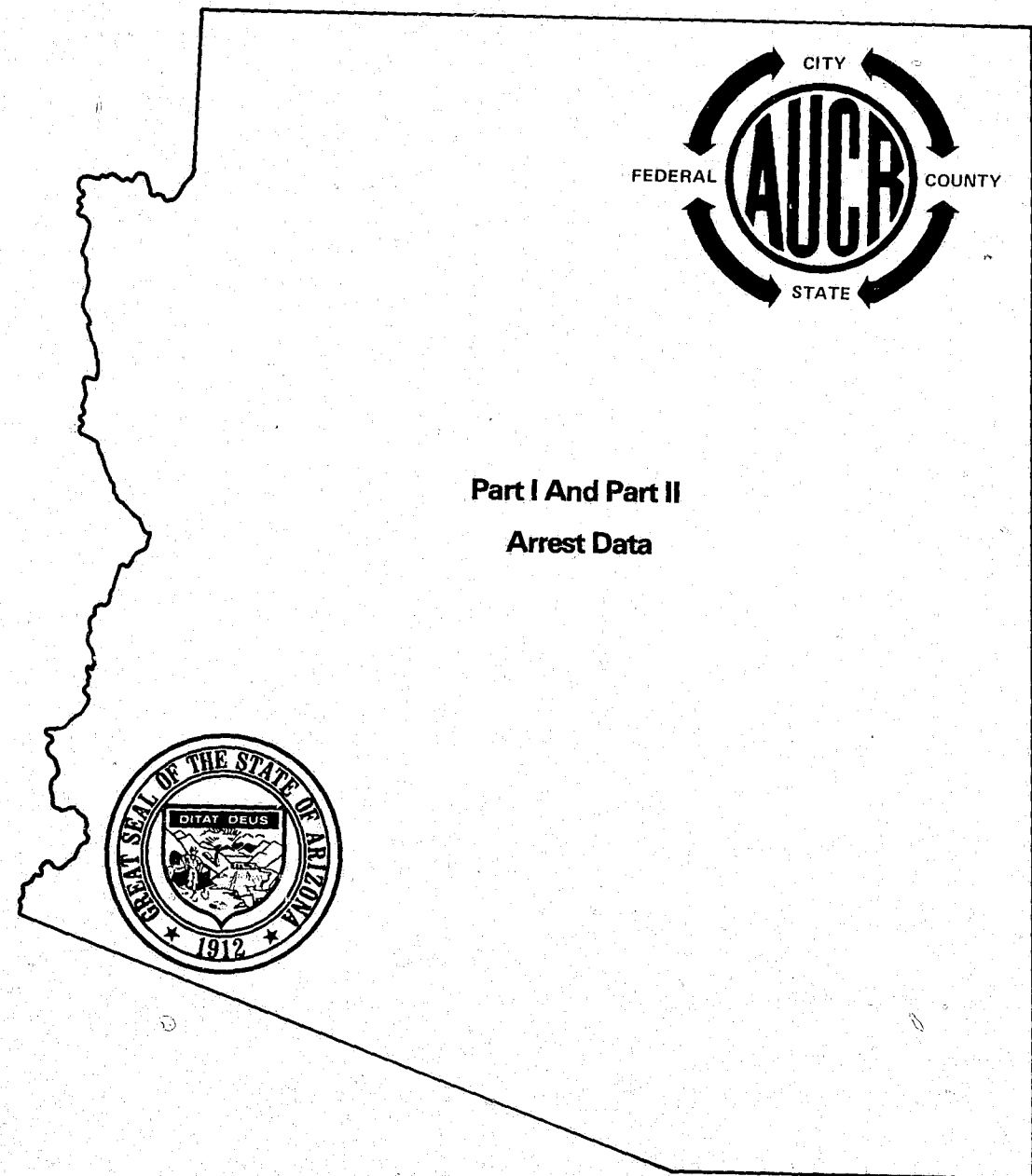
INDEX OFFENSES	REGION 1	REGION 2	REGION 3	REGION 4	REGION 5	REGION 6
CRIMINAL HOMICIDE Murder and Nonnegligent Manslaughter	130	37	9	21	10	13
FORCIBLE RAPE Rape By Force Attempt to Commit	685 490 195	208 152 56	60 40 20	40 30 10	33 28 5	13 11 2
ROBBERY Firearm Knife or Cutting Instrument Other Dangerous Weapon Strong-Arm (Hands, Fist, Feet, Etc.)	2,699 1,038 297 212 1,152	756 326 86 33 311	111 37 14 7 53	114 39 19 7 49	124 42 14 6 62	31 12 4 3 12
ASSAULT Firearm Knife or Cutting Instrument Other Dangerous Weapon Hands, Fist, Feet, Etc. - Aggravated	4,585 1,338 920 1,425 902	1,277 330 217 247 483	467 73 87 77 230	733 80 117 110 426	511 117 82 95 217	296 32 31 31 202
BURGLARY Forcible Entry Unlawful Entry - No Force Attempted Forcible Entry	30,723 20,091 8,270 2,362	10,921 8,870 911 1,140	2,167 1,267 687 204	2,114 1,414 493 207	1,721 1,113 517 91	1,310 892 318 100
LARCENY-THEFT	67,253	22,405	5,248	4,583	3,426	2,679
MOTOR VEHICLE THEFT Autos Trucks And Buses Motorcycles Other Vehicles	6,906 3,787 1,616 1,184 319	2,409 1,233 625 488 63	446 252 114 63 17	592 259 125 133 75	297 155 62 71 9	267 119 86 50 12
TOTALS	112,981	38,013	8,508	8,197	6,122	4,609
MANSLAUGHTER BY NEGLIGENCE	2	—	4	—	3	—
OTHER ASSAULTS - SIMPLE	5,805	301	841	465	566	328

VALUE, IN DOLLARS, OF PROPERTY STOLEN BY CRIME BY JUSTICE PLANNING REGION

INDEX OFFENSES	REGION 1	REGION 2	REGION 3	REGION 4	REGION 5	REGION 6
HOMICIDE	1,415	0	0	14,255	0	200
FORCIBLE RAPE	17,328	5,214	0	7,282	1,097	200
ROBBERY	1,151,970	223,322	90,991	77,725	24,764	15,531
Highway	212,853	113,486	40,185	10,250	7,990	2,582
Commercial House	459,053	34,440	29,296	2,092	8,136	8,942
Gas Or Service Station	57,275	11,377	1,669	2,114	1,401	1,021
Convenience Store	33,548	16,724	1,557	1,805	1,547	323
Residence	179,595	36,359	2,459	57,957	3,465	128
Bank	133,975	6,725	13,790	1,690	0	0
Miscellaneous	75,671	4,211	2,035	1,817	2,225	2,535
BURGLARY	16,742,027	6,415,721	899,116	983,557	727,582	669,950
Residence	11,563,921	4,737,872	511,647	705,899	434,509	402,248
Night, 6 PM - 6 AM	3,190,292	2,127,726	193,807	334,496	167,810	203,280
Day, 6 AM - 6 PM	4,155,331	2,049,895	68,218	104,819	82,348	87,333
Unknown	4,218,298	560,251	249,622	266,584	184,351	111,629
Non-Residence	5,178,106	1,677,849	387,469	277,658	293,073	267,702
Night, 6 PM - 6 AM	2,548,480	1,089,248	246,679	161,526	165,915	214,128
Day, 6 AM - 6 PM	297,329	287,543	40,675	23,014	16,659	10,055
Unknown	2,332,297	301,058	100,115	93,118	110,499	43,519
LARCENY-THEFT	12,559,482	3,629,810	1,072,699	1,090,280	798,927	517,057
\$200 And Over	9,900,596	2,571,365	850,938	891,175	650,936	400,263
\$50 To \$200	2,139,310	861,842	185,576	168,638	120,566	94,848
Under \$50	519,576	196,603	36,185	30,467	27,425	21,946
Pocket-Picking	41,399	16,354	4,087	4,993	3,325	806
Purse Snatching	31,629	11,052	7,168	1,535	669	827
Shoplifting	278,124	71,333	20,368	6,891	9,589	9,629
From Motor Vehicle	2,489,675	910,200	210,496	225,189	154,717	75,951
Motor Vehicle Parts and Access.	1,615,524	438,469	104,396	81,232	73,496	39,771
Bicycles	789,424	289,589	51,281	36,772	10,559	32,045
From Buildings	2,047,207	766,830	240,509	172,749	100,566	116,481
Coin-Operated Machines	29,765	9,773	7,165	2,146	1,586	1,027
All Other	5,236,735	1,116,210	427,229	558,773	424,420	240,520
MOTOR VEHICLE THEFT	17,323,024	5,170,830	1,268,403	1,574,412	660,607	802,219
TOTAL STOLEN	47,795,246	15,444,897	3,331,209	3,747,511	2,212,977	2,005,157

**TYPE AND VALUE, IN DOLLARS, OF PROPERTY STOLEN AND RECOVERED
BY JUSTICE PLANNING REGION**

STOLEN	REGION 1	REGION 2	REGION 3	REGION 4	REGION 5	REGION 6
Currency, Notes, Etc.	2,480,896	935,775	302,862	324,797	157,862	126,320
Jewelry/Precious Metals	5,488,113	1,704,377	329,853	403,355	160,842	221,038
Clothing and Furs	740,061	234,889	58,574	47,392	26,833	37,847
Locally Stolen Vehicles	17,920,498	5,390,684	1,296,143	1,565,654	675,105	811,139
Office Equipment	649,425	207,770	48,698	10,215	17,012	16,983
Stereos/TV's/Cameras	5,667,935	2,180,199	279,417	242,031	185,401	151,840
Firearms	953,317	312,610	104,085	67,936	81,652	43,917
Household Goods	1,217,643	434,074	99,352	80,104	74,518	59,446
Consumable Goods	294,719	182,316	24,233	17,759	30,892	12,588
Livestock	38,683	6,215	20,745	4,690	5,132	3,490
Miscellaneous	12,343,956	3,855,988	767,247	983,578	797,728	520,549
TOTAL STOLEN	47,795,246	15,444,897	3,331,209	3,747,511	2,212,977	2,005,157
RECOVERED						
Currency, Notes, Etc.	82,590	133,504	103,582	36,729	14,926	24,866
Jewelry/Precious Metals	371,305	53,520	99,929	56,664	58,558	17,592
Clothing and Furs	61,344	20,790	13,143	29,349	3,146	9,606
Locally Stolen Vehicles	12,749,438	3,312,802	1,033,496	749,875	452,240	460,662
Office Equipment	41,545	4,968	38,732	3,260	3,408	1,299
Stereos/TV's/Cameras	237,651	49,867	40,180	29,922	20,494	20,921
Firearms	60,091	10,668	29,511	7,299	13,477	4,934
Household Goods	42,018	7,245	17,523	9,285	5,995	2,736
Consumable Goods	32,619	6,921	6,898	2,523	3,941	1,856
Livestock	1,771	600	17,173	8,575	1,400	60
Miscellaneous	1,984,907	153,227	123,990	138,816	292,572	143,888
TOTAL RECOVERED	15,665,279	3,754,112	1,524,157	1,072,297	870,157	688,420



Part I And Part II
Arrest Data

Preceding page blank

PERSONS ARRESTED

SUMMARY ANALYSIS

The number of arrests are primarily a measure of police activity. The number of arrests also provides a useful indicator of criminal involvement of perpetrators by age, sex and race, particularly for those crimes which have a high-solution rate. The reporting procedures used in the UCR program require that an arrest be counted on each separate occasion a person is taken into custody, summoned or cited, except for traffic violators other than DWI.

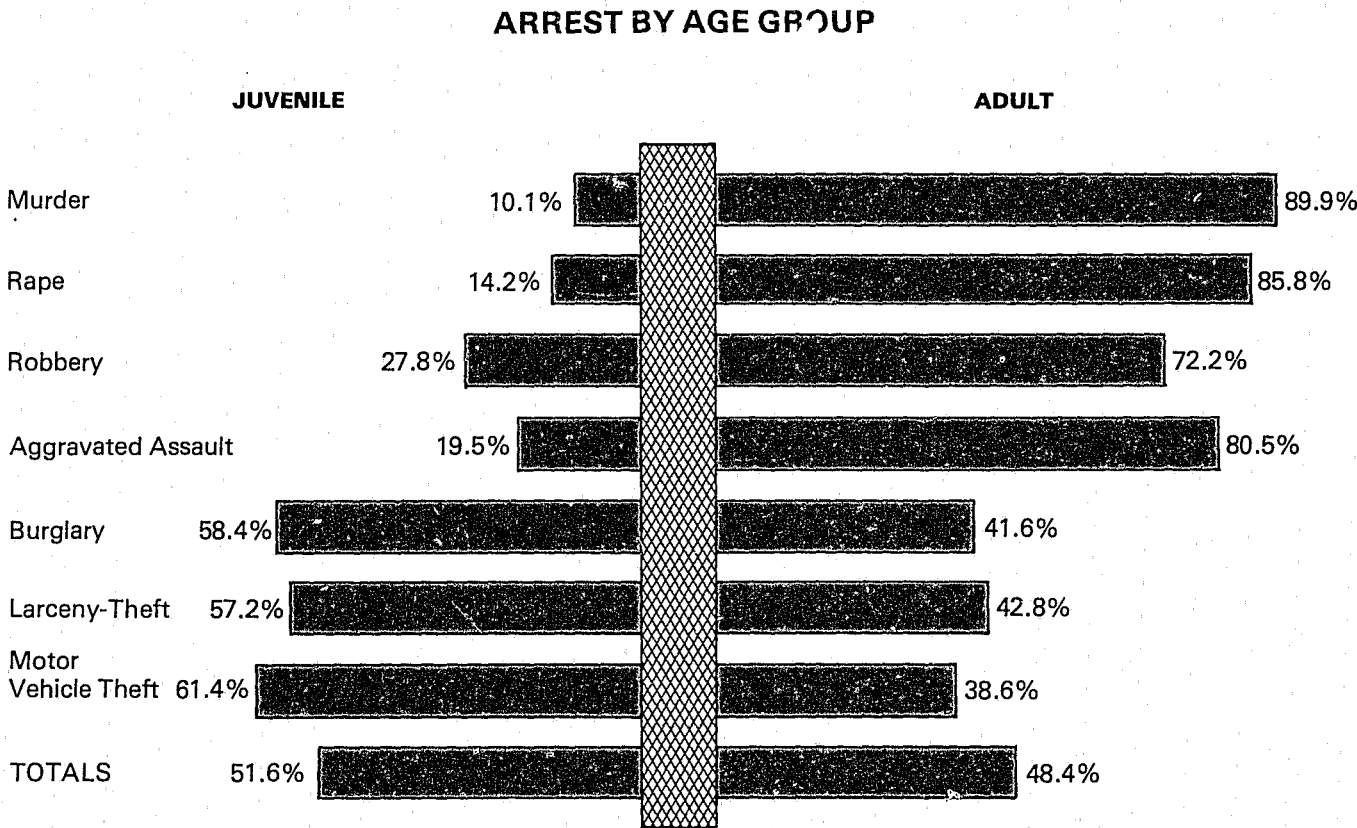
Arizona law enforcement officers arrested a total of 116,339 persons in 1978. This is 880 less or .8 of one percent from 1977. There were 29,111 persons arrested

for Part I offenses. This is an increase of .4 of one percent over the 28,988 persons arrested in 1977.

Adults accounted for 70 percent of the total arrests and Juveniles 30 percent. Male arrests accounted for 97,809 or 84 percent and females 18,530 or 16 percent.

Of the 35,137 Juveniles arrested in 1978, 19,450 or 55 percent were 15 years or younger, this is a 1 percent decrease over 1977.

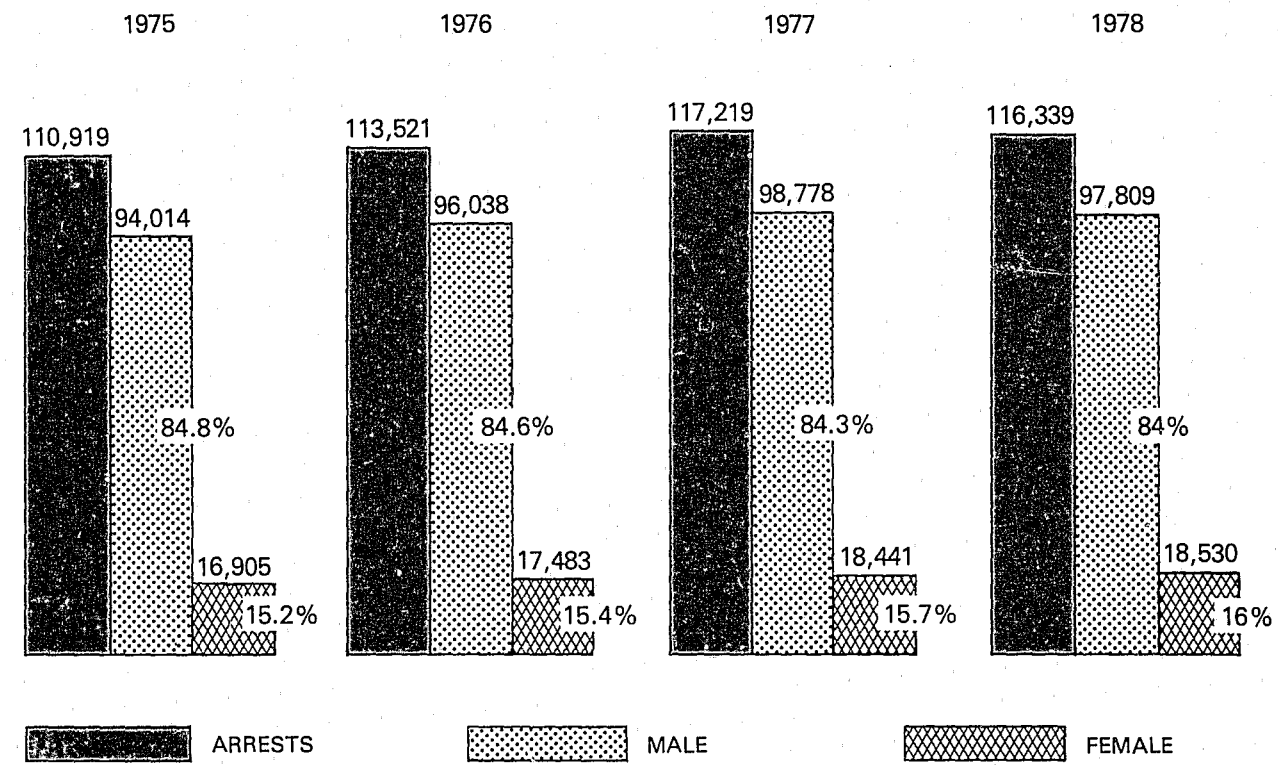
As to race, Whites accounted for 84 percent of the total arrests, Indians 9 percent and Negroes 7 percent.



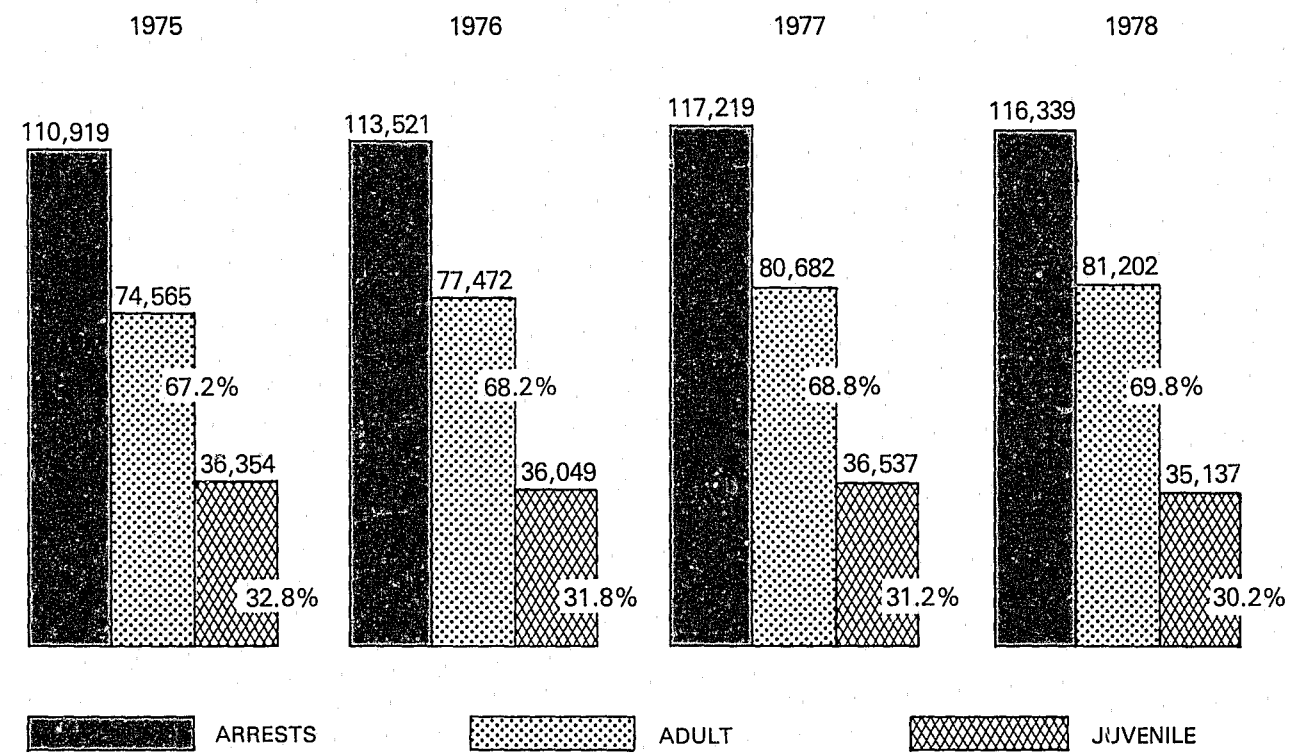
ARREST BY OFFENSE & RACE

OFFENSE	Number of Arrests	Distribution	Rate Per 1,000 Population	White	Negro	Indian	Chinese	Japanese	Other
Murder and non-negligent manslaughter	168	.14%	.07	137	24	6	1	—	—
Manslaughter by negligence	71	.06%	.03	66	1	3	—	—	1
Forcible rape	344	.30%	.15	264	60	20	—	—	—
Robbery	1,284	1.10%	.55	912	300	70	1	—	1
Aggravated assault	3,094	2.66%	1.31	2,455	417	209	3	—	10
Burglary	6,227	5.35%	2.65	5,336	644	233	11	1	2
Larceny-theft	16,262	13.98%	6.91	13,776	1,482	944	25	2	33
Motor vehicle theft	1,661	1.43%	.71	1,477	93	89	2	—	—
SUBTOTAL	29,111	25.02%	12.37	24,423	3,021	1,574	43	3	47
PART II									
Other assaults, simple	4,167	3.58%	1.77	3,444	414	303	—	—	6
Arson	280	.24%	.12	256	17	7	—	—	—
Forgery and counterfeiting	419	.36%	.18	351	59	7	1	—	1
Fraud	1,161	1.00%	.49	1,012	89	55	2	—	3
Embezzlement	200	.17%	.08	189	9	1	—	—	1
Stolen property; buying, receiving, possessing	1,080	.93%	.46	922	123	31	—	—	4
Vandalism	2,769	2.38%	1.18	2,507	141	104	13	1	3
Weapons: carrying, possessing, etc.	1,792	1.54%	.76	1,439	289	57	4	3	—
Prostitution and commercial vice	1,104	.95%	.47	767	295	30	3	—	9
Sex Offenses, (except forcible rape and prostitution)	1,312	1.13%	.56	1,078	120	111	—	—	3
Drug abuse violations	7,603	6.54%	3.23	6,885	502	192	4	—	20
Gambling	44	.04%	.02	37	7	—	—	—	—
Offenses against family and children	193	.16%	.08	157	6	29	—	—	1
Driving under the influence	26,769	23.00%	11.37	23,043	842	2,839	6	1	38
Liquor laws	6,069	5.22%	2.58	4,262	160	1,638	1	—	8
Disorderly conduct	10,362	8.91%	4.40	7,719	770	1,852	2	2	17
Vagrancy	515	.44%	.22	394	62	59	—	—	—
All other offenses (except traffic)	15,052	12.94%	6.39	12,361	1,143	1,510	16	1	21
Curfew and loitering laws (juveniles)	1,584	1.36%	.67	1,490	45	44	2	—	3
Runaways (juveniles)	4,753	4.09%	2.02	4,268	138	339	3	—	5
SUBTOTAL	87,228	74.98%	37.06	72,581	5,231	9,208	57	8	143
TOTALS	116,339	—	49.42	97,004	8,252	10,782	100	11	190
Race Distribution				83.38%	7.09%	9.27%	.09%	.01%	.16%

ARREST COMPARISON BY SEX



ARREST COMPARISON BY AGE GROUP



JUVENILE MALE ARRESTS

OFFENSE CLASSIFICATION	AGE						TOTAL JUVENILE
	10 AND UNDER	11 - 12	13 - 14	15	16	17	
PART I							
Murder and Nonneg. Manslaughter	—	—	—	4	9	3	16
Manslaughter By Negligence	1	—	—	1	2	4	8
Forcible Rape	—	—	7	11	16	15	49
Robbery	1	14	50	72	71	107	315
Aggravated Assault	15	17	83	91	145	192	543
Burglary	192	342	909	660	663	586	3,352
Larceny-Theft	509	863	1,857	1,075	1,172	1,089	6,565
Motor Vehicle Theft	9	52	228	207	236	191	923
PART I SUBTOTAL	727	1,288	3,134	2,121	2,314	2,187	11,771
PART II							
Other Assaults - Simple	53	88	210	191	258	291	1,091
Arson	57	38	34	20	19	14	182
Forgery And Counterfeiting	—	1	6	8	13	18	46
Fraud	2	3	13	9	21	38	86
Embezzlement	—	2	1	2	4	9	18
Stolen Property	9	26	90	65	84	108	382
Vandalism	260	241	404	198	241	231	1,575
Weapons - Carrying, Possessing	3	7	50	62	74	102	298
Prostitution And Comm. Vice	—	—	—	—	1	3	4
Sex Offenses	9	13	35	31	31	33	152
DRUGS, SALE OR MFG							
Opium, Cocaine, Derivatives	—	—	1	—	5	2	8
Marijuana	—	—	8	12	30	34	84
Synthetic Narcotics	—	—	—	—	—	4	4
Other Dangerous Nonnarcotics	—	—	1	—	—	2	3
DRUGS, POSSESSION							
Opium, Cocaine, Derivatives	—	—	2	4	3	5	14
Marijuana	8	32	201	256	419	528	1,444
Synthetic Narcotics	2	3	4	4	7	3	23
Other Dangerous Nonnarcotics	4	8	11	5	12	20	60
Bookmaking - Horse, Sport Book	—	—	—	—	—	—	—
Numbers and Lottery	—	—	—	—	—	—	—
All Other Gambling	—	—	—	—	1	1	2
Offenses Against Family And Children	—	—	4	2	5	—	11
Driving Under The Influence	1	2	10	25	141	343	522
Liquor Laws	3	12	163	312	637	833	1,960
Disorderly Conduct	26	39	153	183	274	313	988
Vagrancy	—	3	9	9	10	5	36
All Other, Except Traffic	123	206	538	498	554	658	2,577
Curfew And Loitering	9	38	255	295	353	332	1,282
Runaways	64	167	562	485	477	319	2,074
PART II SUBTOTAL	633	929	2,765	2,676	3,674	4,249	14,926
TOTALS	1,360	2,217	5,899	4,797	5,988	6,436	26,697

ADULT MALE ARRESTS

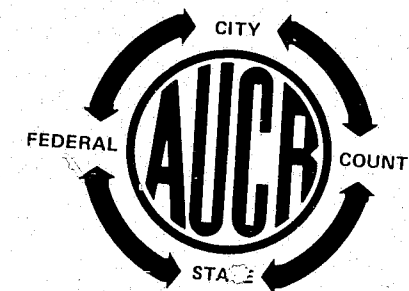
OFFENSE CLASSIFICATION	AGE																TOTAL ADULTS
	18	19	20	21	22	23	24	25-29	30-34	35-39	40-44	45-49	50-54	55-59	60-64	65-OVER	
PART I																	
Murder and Nonneg. Manslaughter	13	7	7	5	8	3	10	22	12	14	8	4	9	3	2	4	131
Manslaughter By Negligence	3	4	5	2	6	2	3	8	4	3	4	4	3	1	—	1	53
Forcible Rape	20	23	28	20	25	26	10	56	42	17	11	9	4	1	1	1	294
Robbery	128	80	90	77	53	61	46	162	82	39	25	10	3	4	2	—	862
Aggravated Assault	164	184	153	155	127	123	119	418	249	208	117	94	84	37	25	23	2,280
Burglary	452	340	280	194	145	118	116	350	179	90	45	22	22	21	5	4	2,383
Larceny-Theft	563	473	413	326	253	209	228	769	439	275	249	194	116	115	83	105	4,810
Motor Vehicle Theft	138	66	64	51	30	25	28	95	38	27	15	12	6	4	1	—	600
PART I SUBTOTAL	1,481	1,177	1,040	830	647	567	580	1,880	1,045	673	474	349	247	186	119	138	11,413
PART II																	
Other Assaults - Simple	183	191	141	167	140	121	139	492	344	212	132	94	62	40	23	24	2,505
Arson	3	6	1	8	3	8	—	8	13	7	8	3	7	6	—	2	83
Forgery And Counterfeiting	25	18	16	21	13	10	10	55	31	18	15	9	4	6	2	—	253
Fraud	34	32	56	54	43	41	40	170	129	70	48	41	31	25	15	7	836
Embezzlement	8	4	11	6	6	6	10	26	22	13	10	8	3	3	2	—	138
Stolen Property	84	76	56	53	52	30	25	80	43	37	24	13	12	6	2	1	594
Vandalism	130	106	79	69	50	43	48	160	109	49	34	28	17	12	7	4	945
Weapons - Carrying, Possessing	112	113	93	82	70	61	63	258	160	102	69	43	46	28	15	12	1,327
Prostitution And Comm. Vice	12	12	23	16	20	18	19	90	75	57	22	25	16	9	1	5	420
Sex Offenses	26	35	30	41	46	44	57	211	165	113	105	67	58	24	26	15	1,063
DRUGS, SALE OR MFG																	
Opium, Cocaine, Derivatives	5	5	12	16	20	15	16	64	29	26	10	13	6	1	—	—	238
Marijuana	43	43	59	56	41	30	31	100	39	20	5	6	—	2	1	—	476
Synthetic Narcotics	1	4	—	—	2	5	1	2	1	4	1	—	1	—	—	—	22
Other Dangerous Nonnarcotics	5	7	—	4	5	1	2	10	5	2	1	—	—	—	—	—	42
DRUGS, POSSESSION																	
Opium, Cocaine, Derivatives	14	20	18	14	12	16	13	53	27	16	8	2	3	2	1	—	219
Marijuana	503	508	453	338	305	262	237	619	232	116	40	17	6	1	2	1	3,640
Synthetic Narcotics	5	5	5	2	3	4	1	7	—	—	1	1	—	—	1	—	42
Other Dangerous Nonnarcotics	17	15	19	14	17	12	13	38	16	10	5	1	6	1	1	—	185
Bookmaking - Horse, Sport Book																	
Numbers And Lottery	—	—	—	—	—	—	—	1	—	1	1	—	—	—	—	—	3
All Other Gambling	2	—	3	—	2	1	—	3	6	4	3	3	2	1	1	1	32
Offenses Against Family And Children																	
Driving Under The Influence	884	1,159	1,337	1,266	1,229	1,053	1,013	4,206	3,100	2,228	1,848	1,576	1,303	798	488	423	23,911
Liquor Laws	680	154	124	110	81	97	86	321	308	310	251	240	204	193	98	81	3,338
Disorderly Conduct	501	584	574	493	422	403	402	1,486	911	624	497	369	304	199	136	121	8,026
Vagrancy	27	23	19	17	13	13	12	63	61	62	45	34	30	24	16	5	464
All Other, Except Traffic	758	964	853	857	738	617	562	2,009	1,082	757	551	386	265	177	89	98	10,763
PART II SUBTOTAL	4,073	4,098	3,995	3,714	3,340	2,914	2,806	10,553	6,933	4,867	3,745	2,983	2,389	1,560	928	801	59,699
TOTALS	5,554	5,275	5,035	4,544	3,987	3,481	3,366	12,433	7,978	5,540	4,219	3,332	2,636	1,746	1,047	939	71,112

JUVENILE FEMALE ARRESTS

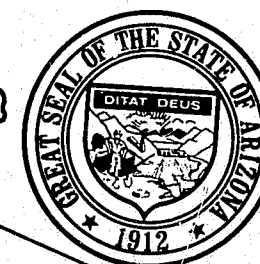
OFFENSE CLASSIFICATION	AGE						TOTAL JUVENILE
	10 AND UNDER	11-12	13-14	15	16	17	
PART I							
Murder and Nonneg. Manslaughter	—	—	—	—	1	—	1
Manslaughter By Negligence	—	—	—	—	—	—	—
Forcible Rape	—	—	—	—	—	—	—
Robbery	—	1	14	10	7	10	42
Aggravated Assault	1	1	18	12	14	15	61
Burglary	14	15	90	47	69	51	286
Larceny-Theft	117	336	846	498	484	449	2,730
Motor Vehicle Theft	1	6	37	26	14	13	97
PART I SUBTOTAL	133	359	1,005	593	589	538	3,217
PART II							
Other Assaults - Simple	5	21	85	49	57	50	267
Arson	1	1	2	—	1	1	6
Forgery And Counterfeiting	—	1	5	7	2	9	24
Fraud	—	2	5	5	2	5	19
Embezzlement	—	—	3	2	1	1	7
Stolen Property	—	1	5	13	11	9	39
Vandalism	21	25	51	23	15	21	156
Weapons - Carrying, Possessing	—	—	6	5	6	5	22
Prostitution and Comm. Vice	—	—	1	5	9	12	27
Sex Offenses	—	—	1	1	2	8	12
DRUGS, SALE OR MFG							
Opium, Cocaine, Derivatives	—	—	2	1	—	—	3
Marijuana	—	—	2	1	2	2	7
Synthetic Narcotics	—	—	—	—	—	—	—
Other Dangerous Nonnarcotics	—	—	—	—	—	1	1
DRUGS, POSSESSION							
Opium, Cocaine, Derivatives	—	—	—	1	—	3	4
Marijuana	1	4	53	67	74	100	299
Synthetic Narcotics	—	—	4	3	3	—	10
Other Dangerous Nonnarcotics	—	—	1	2	2	2	7
Bookmaking - Horse, Sport Book	—	—	—	—	—	—	—
Number And Lottery	—	—	—	—	—	—	—
All Other Gambling	—	—	—	—	—	—	—
Offenses Against Family And Children	—	—	2	1	2	2	7
Driving Under The Influence	1	—	1	4	19	28	53
Liquor Laws	2	5	82	101	131	138	459
Disorderly Conduct	3	9	40	40	53	49	194
Vagrancy	—	—	—	3	1	1	5
All Other, Except Traffic	16	27	172	135	135	129	614
Curfew And Loitering	2	12	89	85	66	48	302
Runaways	20	109	894	738	570	348	2,679
PART II SUBTOTAL	72	217	1,506	1,292	1,164	972	5,223
TOTALS	205	576	2,511	1,885	1,753	1,510	8,440

ADULT FEMALE ARRESTS

OFFENSE CLASSIFICATION	AGE																TOTAL ADULTS
	18	19	20	21	22	23	24	25-29	30-34	35-39	40-44	45-49	50-54	55-59	60-64	65-OVER	
PART I																	
Murder And Nonneg. Manslaughter	—	—	—	1	3	1	2	2	4	2	—	4	1	—	—	—	20
Manslaughter By Negligence	1	—	1	3	—	—	—	—	3	2	—	—	—	—	—	—	10
Forcible Rape	—	—	—	1	—	—	—	—	—	—	—	—	—	—	—	—	1
Robbery	12	11	6	5	4	4	1	11	5	4	1	—	—	1	—	—	65
Aggravated Assault	13	12	10	11	11	12	8	45	35	17	14	10	9	1	2	—	210
Burglary	26	20	22	16	13	10	20	38	16	7	13	2	—	2	1	—	206
Larceny-Theft	198	183	169	138	122	118	114	322	183	140	116	80	92	67	43	72	2,157
Motor Vehicle Theft	10	4	1	2	2	2	3	10	5	—	—	—	1	1	—	—	41
PART I SUBTOTAL	260	230	209	177	155	147	148	428	251	172	144	96	103	72	46	72	2,710
PART II																	
Other Assaults - Simple	25	16	25	15	20	17	11	54	39	24	24	15	12	4	1	2	304
Arson	—	—	—	—	2	1	1	2	—	2	—	—	—	1	—	—	9
Forgery And Counterfeiting	3	9	11	10	8	5	14	16	8	2	5	4	—	1	—	—	96
Fraud	13	7	12	6	13	11	19	44	37	21	10	12	5	6	2	2	220
Embezzlement	1	3	4	5	2	1	1	8	2	5	3	1	1	—	—	—	37
Stolen Property	5	7	4	7	5	3	3	11	7	8	2	1	—	2	—	—	65
Vandalism	7	8	10	4	6	4	2	18	15	5	5	6	1	1	1	—	93
Weapons - Carrying, Possessing	7	15	9	9	18	6	8	26	13	13	7	8	2	2	—	2	145
Prostitution And Comm. Vice	64	77	73	101	86	69	52	100	16	8	6	—	—	—	1	—	653
Sex Offenses	4	3	3	9	19	8	7	15	7	5	3	—	1	1	—	—	85
DRUGS, SALE OR MFG																	
Opium, Cocaine, Derivatives	4	—	9	5	2	5	5	13	7	3	3	2	1	—	—	—	59
Marijuana	8	8	11	12	4	7	11	14	11	3	—	1	—	—	—	—	90
Synthetic Narcotics	—	1	1	2	1	—	—	1	—	—	—	—	—	—	—	—	6
Other Dangerous Nonnarcotics	—	—	—	2	3	—	—	4	1	—	—	—	—	—	—	—	10
DRUGS, POSSESSION																	
Opium, Cocaine, Derivatives	5	4	2	7	8	4	9	7	8	—	—	1	—	—	—	—	55
Marijuana	73	50	64	54	51	35	27	90	30	11	8	5	—	3	—	—	501
Synthetic Narcotics	1	1	1	1	1	3	1	5	3	1	1	—	—	—	—	—	19
Other Dangerous Nonnarcotics	1	4	5	1	2	3	1	4	2	1	2	1	—	—	1	—	28
Bookmaking - Horse, Sport Book	—	—	—	—	—	—	—	—	—	—	—	—	—	—	—	—	—
Numbers And Lottery	—	—	—	—	—	—	—	—	—	—	—	—	—	—	—	—	—
All Other Gambling	1	—	—	—	—	—	1	1	1	—	—	1	—	—	—	—	5
Offenses Against Family And Children	3	3	4	2	2	1	3	11	3	5	5	—	1	—	—	—	43
Driving Under The Influence	68	115	116	100	105	86	105	346	318	254	216	194	136	68	29	27	2,283
Liquor Laws	89	16	13	14	15	10	10	40	28	27	17	14	5	9	3	2	312
Disorderly Conduct	56	58	78	85	77	69	58	228	137	105	73	50	32	20	18	10	1,154
Vagrancy	2	—	—	—	—	1	—	1	1	—	3	1	—	—	—	1	10
All Other, Except Traffic	75	73	96	91	72	62	74	203	114	81	55	44	28	14	9	7	1,098
PART II SUBTOTAL	515	478	551	542	522	411	423	1,262	806	584	448	361	225	132	65	53	7,380
TOTALS	775	708	760	719	677	558	571	1,690	1,059	756	592	457	328	204	111	125	10,090



Law Enforcement Employee Data



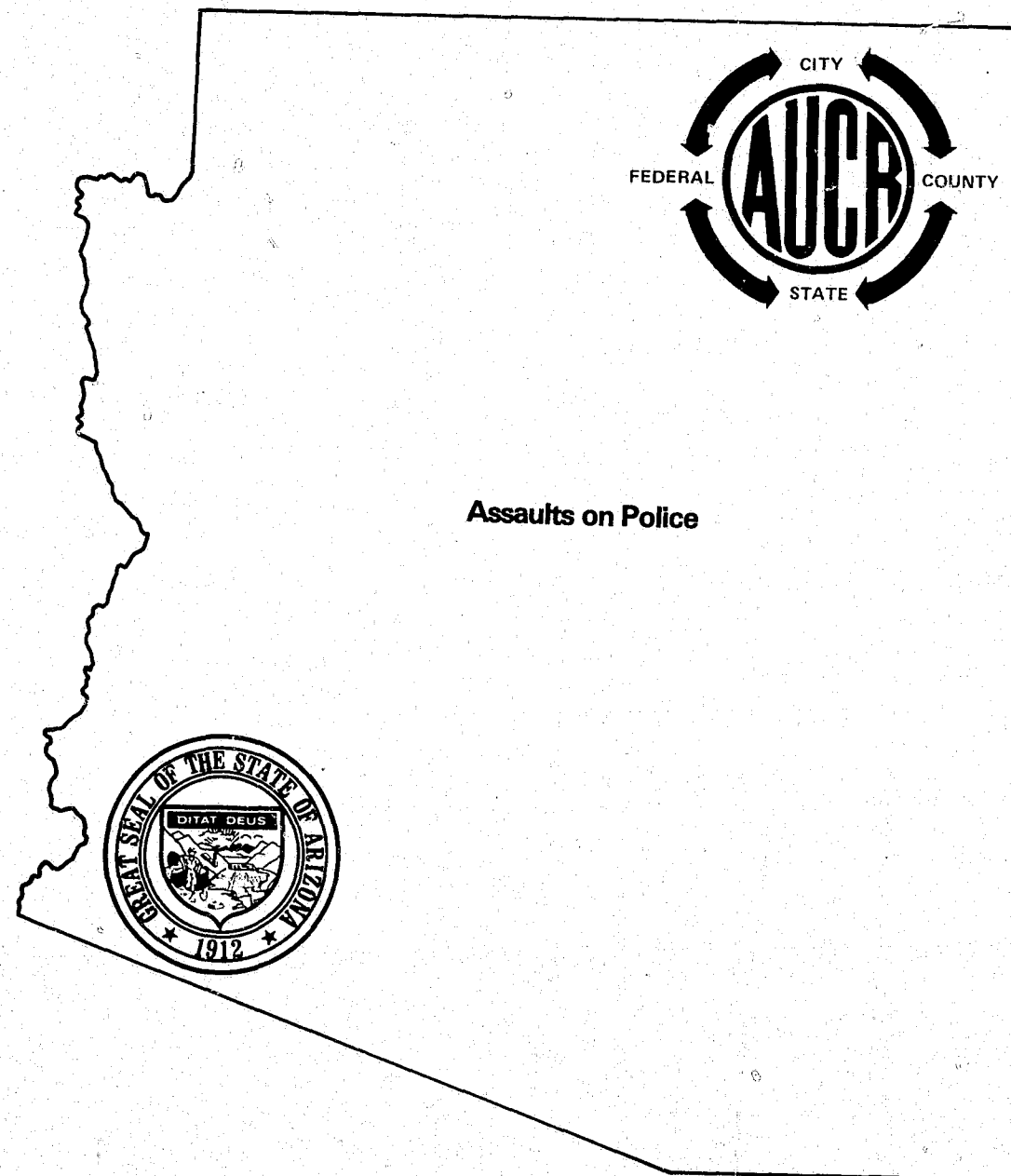
**NUMBER OF FULL TIME LAW ENFORCEMENT EMPLOYEES
BY AGENCY
AS OF OCTOBER 31, 1978**

DEPARTMENT	POPULATION	EMPLOYEES RATE PER 1000 POP.	TOTAL	SWORN		CIVILIAN	
				MALE	FEMALE	MALE	FEMALE
Apache County S.O.	39,403 *	.61	24	13	1	5	5
Avondale P.D.	6,852	2.48	17	14	0	3	0
Benson P.D.	4,036	3.96	16	8	0	3	5
Bisbee P.D.	9,615	3.12	30	21	2	1	6
Buckeye P.D.	2,787	3.58	10	6	0	2	2
Casa Grande P.D.	15,805	2.78	44	29	1	3	11
Chandler P.D.	23,065	2.38	55	31	1	9	14
Clarkdale P.D.	1,153	2.60	3	2	1	0	0
Clifton P.D.	5,395	1.66	9	6	1	0	2
Cochise County S.O.	18,656	5.03	94	59	2	10	23
Coconino County S.O.	29,264 *	3.07	90	57	8	0	25
Coolidge P.D.	6,996	3.43	24	17	0	1	6
Cottonwood P.D.	4,036	3.71	15	8	1	3	3
Douglas P.D.	12,508	3.19	40	31	1	2	6
Duncan P.D.	1,009	1.98	2	2	0	0	0
Eagar P.D.	2,210	1.80	4	3	0	0	1
El Mirage P.D.	3,652	4.38	16	8	2	1	5
Eloy P.D.	6,675	2.99	20	13	1	1	5
Flagstaff P.D.	32,195	2.20	71	50	0	5	16
Florence P.D.	3,071	3.25	10	9	1	0	0
Fredonia P.D.	817	2.44	2	2	0	0	0
Gila Bend P.D.	2,307	3.90	9	5	0	1	3
Gila County S.O.	14,165 *	3.60	51	35	14	0	2
Gilbert P.D.	4,084	2.69	11	10	0	0	1
Glendale P.D.	76,884	1.78	137	107	4	9	17
Globe P.D.	7,626	3.01	23	16	0	1	6
Goodyear P.D.	2,638	4.16	11	6	1	0	4
Graham County S.O.	8,760 *	1.25	11	7	0	3	1
Greenlee County S.O.	4,360	3.66	16	11	0	4	1
Hayden/Winkelman P.D.	2,552	2.35	6	6	0	0	0
Holbrook P.D.	5,286	4.35	23	17	4	0	2
Huachuca City P.D.	2,258	3.54	8	4	0	0	4
Jerome P.D.	601	8.31	5	5	0	0	0
Kearny P.D.	2,561	4.68	12	7	0	0	5
Kingman P.D.	8,116	3.94	32	18	3	0	11
Mammoth P.D.	2,148	1.39	3	2	1	0	0
Marana M.O.	1,754	5.13	9	3	1	0	5
Maricopa County S.O.	130,974 *	5.48	718	313	4	236	165
Mesa P.D.	124,937	1.63	204	144	5	28	27
Miami P.D.	3,763	3.45	13	9	0	2	2
Mohave County S.O.	36,285 *	3.25	118	84	5	7	22
Navajo County S.O.	41,478 *	1.25	52	30	2	6	14
Nogales P.D.	11,283	2.39	27	26	0	0	1
Oro Valley P.D.	1,442	3.46	5	5	0	0	0
Page P.D.	4,133	3.62	15	10	0	2	3

**NUMBER OF FULL TIME LAW ENFORCEMENT EMPLOYEES
BY AGENCY
AS OF OCTOBER 31, 1978**

DEPARTMENT	POPULATION	EMPLOYEES RATE PER 1000 POP.	TOTAL	SWORN		CIVILIAN	
				MALE	FEMALE	MALE	FEMALE
Paradise Valley P.D.	10,158	1.77	18	17	0	0	1
Parker P.D.	2,979	4.02	12	6	1	1	4
Patagonia P.D.	903	2.21	2	2	0	0	0
Payson P.D.	4,858	2.88	14	7	0	3	4
Peoria P.D.	12,494	2.72	34	22	4	3	5
Phoenix P.D.	696,763	2.94	2,051	1,486	42	193	330
Pima P.D.	1,624	.61	1	1	0	0	0
Pima County S.O.	137,208 *	3.49	479	251	8	132	88
Pinal County S.O.	43,761 *	2.76	121	88	3	12	18
Prescott P.D.	18,260	2.30	42	32	0	3	7
Safford P.D.	7,712	2.07	16	13	0	0	3
St. Johns P.D.	4,133	1.69	7	5	0	1	1
Santa Cruz County S.O.	5,882	5.95	35	18	0	14	3
Scottsdale P.D.	81,757	2.16	177	104	11	25	37
Show Low P.D.	3,652	3.55	13	8	1	0	4
Sierra Vista P.D.	24,435	1.55	38	22	0	5	11
Snowflake P.D.	2,739	1.82	5	3	0	0	2
Somerton P.D.	3,364	4.45	15	9	0	3	3
South Tucson P.D.	6,031	4.47	27	15	2	5	5
Springerville P.D.	1,442	2.08	3	3	0	0	0
Superior P.D.	5,382	2.78	15	10	1	0	4
Surprise P.D.	3,268	2.14	7	7	0	0	0
Taylor P.D.	1,624	.61	1	1	0	0	0
Tempe P.D.	102,607	1.96	202	136	3	25	38
Thatcher P.D.	3,239	1.23	4	4	0	0	0
Tolleson P.D.	3,738	3.47	13	8	0	2	3
Tombstone M.O.	1,725	5.79	10	7	0	2	1
Tucson P.D.	309,200	2.31	716	508	30	49	129
Wickenburg P.D.	3,167	2.84	9	8	0	1	0
Willcox P.D.	3,171	4.41	14	8	0	2	4
Williams P.D.	2,979	4.36	13	9	1	1	2
Winkelman P.D.	Law enforcement is provided by Hayden P.D.						
Winslow P.D.	7,785	3.46	27	20	6	0	1
Yavapai County S.O.	33,325 *	2.34	78	55	5	9	9
Youngtown P.D.	1,922	6.24	12	6	1	2	3
Yuma P.D.	38,154	2.28	87	65	0	6	16
Yuma County S.O.	32,964 *	2.57	85	74	1	1	9
TOTAL	2,354,000	2.76	6,518	4,307	187	848	1,176
Agencies with no measurable population:							
Arizona Department of Public Safety				1,342	838	7	267
Arizona State University				49	34	4	9
Arizona Western College				6	5	0	0
Central Arizona College				15	9	1	4
Eastern Arizona College				2	2	0	0
Northern Arizona University				27	16	0	7
Pima Community College				11	9	1	0
University of Arizona				88	41	1	32

* Includes Indians living within the county boundry. Most Indian tribes provide law enforcement for their reservation.



Assaults on Police

Preceding page blank



IN MEMORIAM

TO THOSE OFFICERS WHO LOST THEIR LIVES
IN THE PERFORMANCE OF THEIR DUTY

James L. Epp	Maricopa County Sheriff's Department	March 1, 1978
Noah M. Merrill	Department of Public Safety	December 11, 1978

POLICE OFFICERS ASSAULTED

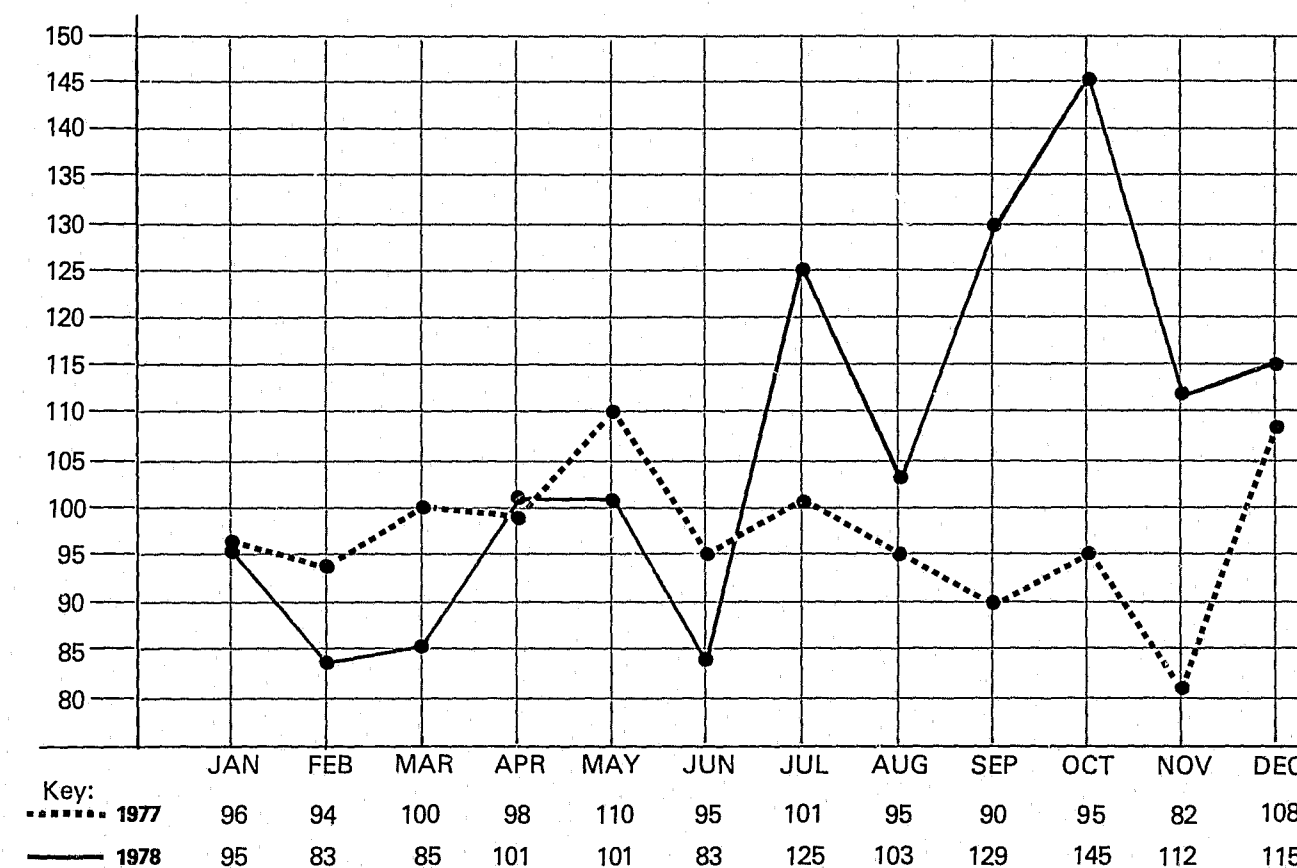
SUMMARY ANALYSIS

There were 1,277 reported assaults on Arizona law enforcement officers in 1978. This represents a 10% increase over the 1,164 assaults in 1977.

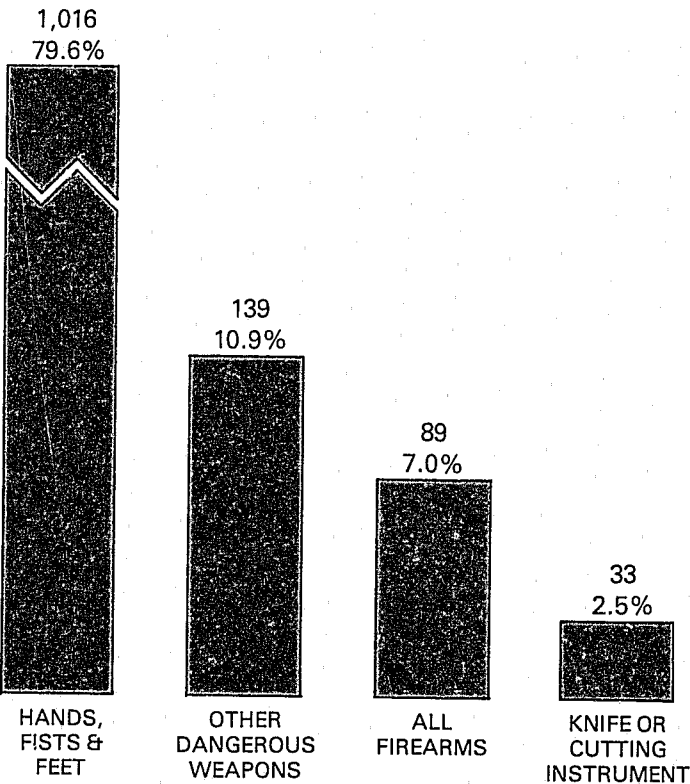
The weapon most often used in the commission of the assault was hands, fists, feet, etc. This represents 80%

of all law enforcement officers assaulted. The most dangerous activity was responding to disturbance calls (family quarrels, man with gun, etc.), with 400 or 31%. The highest incidents of assaults occurred between 2201 and 2400 hours with 273 or 21%.

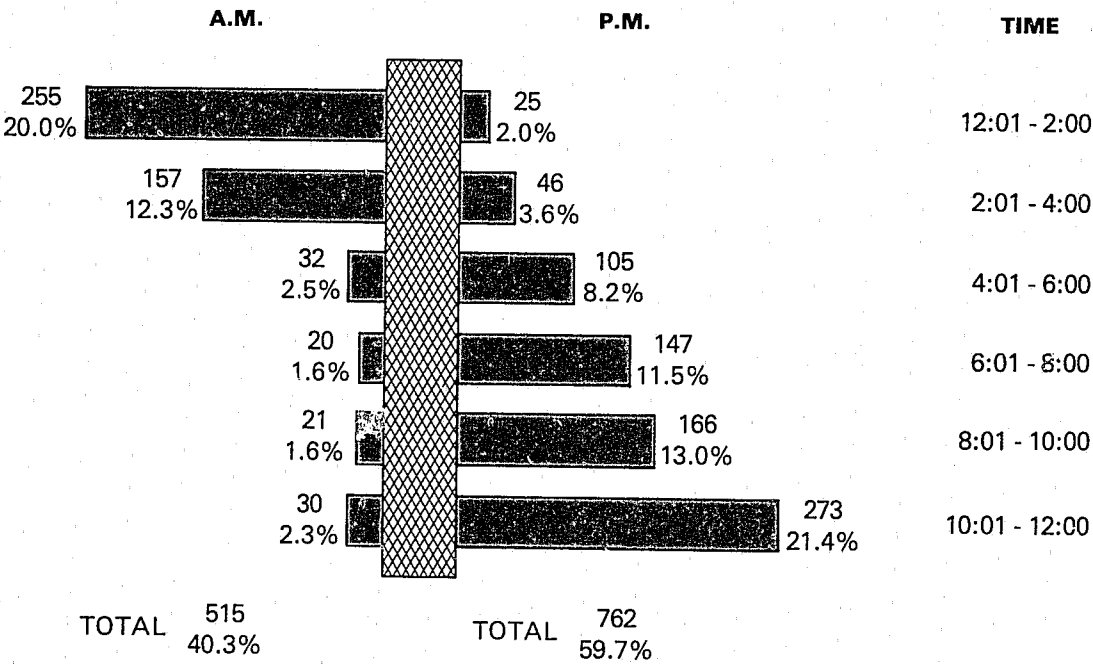
Officers Assaulted by Month
1978 vs. 1977



OFFICERS ASSAULTED BY WEAPON

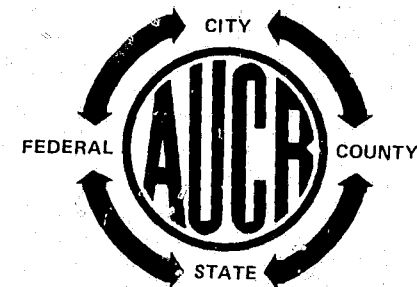


TIME OF ASSAULT

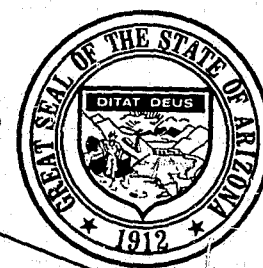


OFFICERS ASSAULTED BY ACTIVITY

ACTIVITY	Type of Weapon				Totals	Type of Assignment								Police Assaults Cleared
	Fire-arms	Knife/Cut. Inst.	Other Dang. Weapon	Hands, Fists, Feet		Two Man Vehicle	One Man Veh.		Det. Spec. Assign		Other			
							Alone	Assisted	Alone	Assisted	Alone	Assisted		
Responding to "disturbance" calls (Family quarrels, man with gun, etc.)	33	22	39	306	400	132	76	177	2	5	1	7	393	
Burglaries in progress or pursuing burglary suspects	2	—	3	8	11	2	2	5	—	—	1	1	10	
Robberies in progress or pursuing robbery suspects	4	—	1	8	13	1	6	4	—	2	—	—	13	
Attempting other arrests	2	2	17	159	180	33	47	85	3	4	1	7	176	
Civil disorder (Riot, mass disobedience)	—	1	1	22	24	7	1	7	—	4	1	4	23	
Handling, transporting, custody of prisoners	1	—	6	177	184	51	40	58	—	1	10	24	182	
Investigating suspicious persons or circumstances	7	2	17	106	132	23	35	65	1	2	3	3	127	
Ambush - No warning	11	—	—	1	12	6	1	3	—	—	2	—	9	
Mentally deranged	—	1	2	4	7	—	2	4	—	—	1	—	7	
Traffic pursuits and stops	9	2	33	170	214	45	72	87	1	2	4	3	205	
All other	20	3	20	57	100	16	27	29	5	9	8	6	97	
TOTALS	89	33	139	1,016	1,277	316	309	524	12	29	32	55	1,242	
Personal Injury	8	5	51	402	466									
No Personal Injury	81	28	88	614	811									

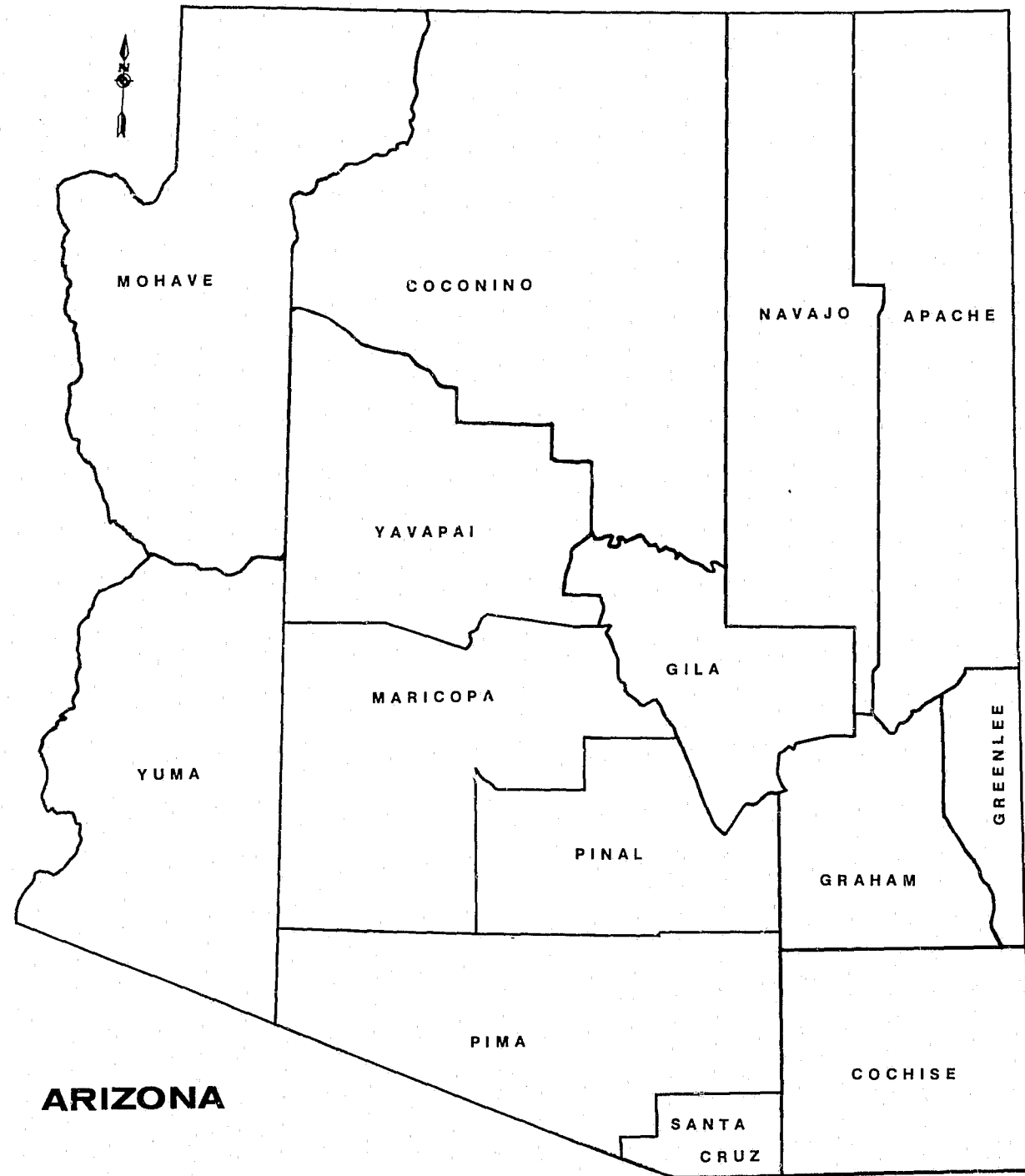


Appendices



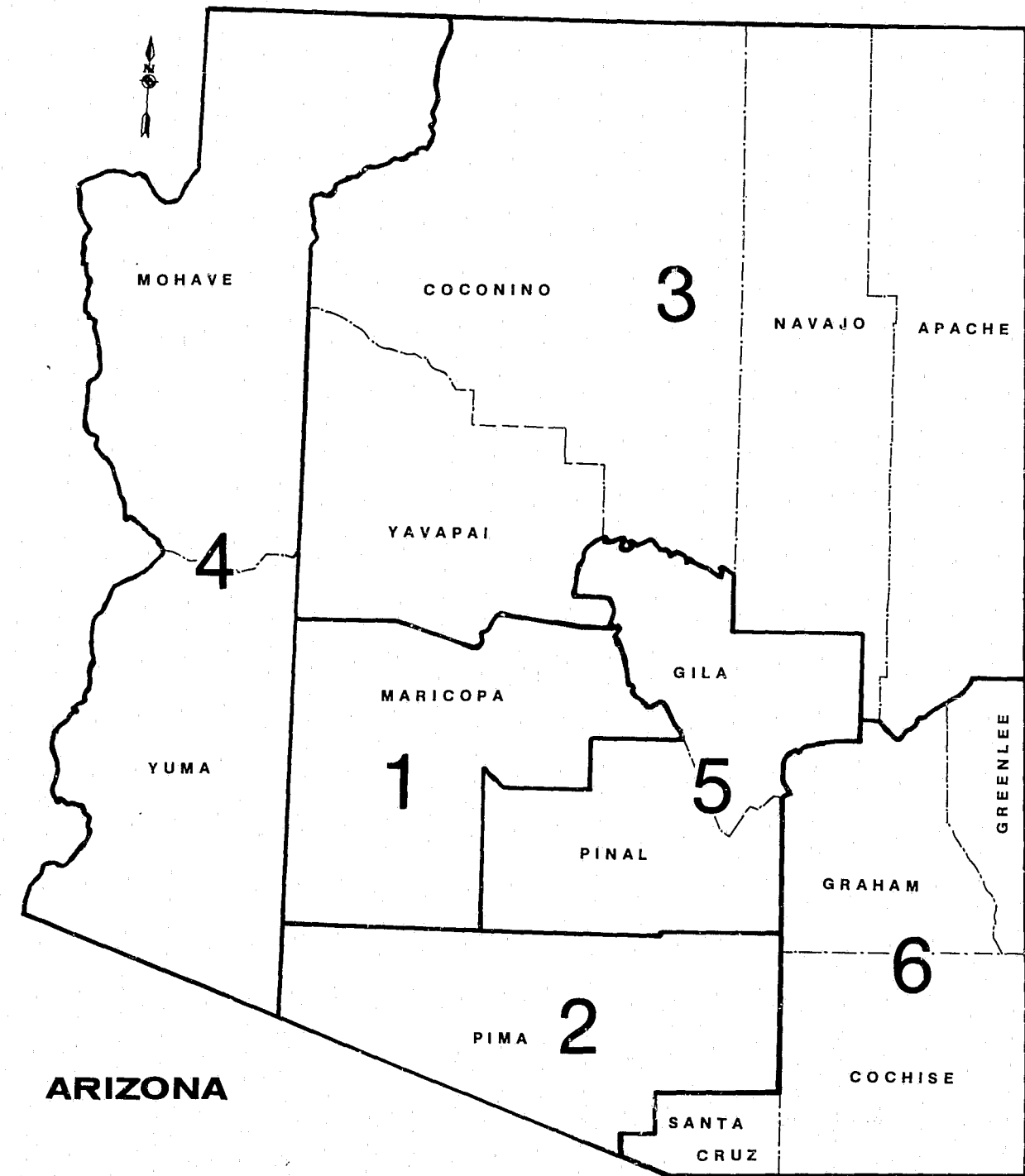
Preceding page blank

Arizona Counties



APPENDIX A

Arizona Justice Planning Regions



APPENDIX B

Glossary of Terms

CRIME ANALYSIS - Statements relating to type and nature of crimes and rates of occurrence and distribution in Arizona, but not comparisons of agencies or causes.

CRIME RATE - A figure which represents the number of crimes committed known to the police for each 1,000 population. A crime rate should be considered a victim risk rate in that it demonstrates the risk of becoming a victim of crime.

CRIME INDEX - The sum total of seven major offenses used to measure the extent, fluctuation and distribution of crime in a given geographical area. Crime classifications used in the index are: (1) murder, (2) forcible rape, (3) robbery, (4) aggravated assault, (5) burglary, (6) larceny-theft and (7) motor vehicle theft. Each of these offenses is referred to as an "Index Offense."

CLEARED BY ARREST OR EXCEPTIONAL MEANS - For Uniform Crime Reporting purposes, an offense is cleared by arrest or solved when at least one person is (1) arrested, (2) charged with the commission of an offense and (3) turned over to court for prosecution. In certain situations police are not able to follow these three steps. In many instances police have exhausted all leads and have done everything else possible to clear a

case. If the following four conditions can be met, the offense can be cleared exceptionally: (1) the investigation has definitely established the identity of the offender, (2) there is enough information to support an arrest, charge, and turning over to the court for prosecution, (3) the exact location of the offender is known so that he could be taken into custody and (4) there is some reason outside the police control that prevents the arresting, charging, and prosecuting of the offender.

PART I OFFENSES - The first of two main categories of crime classes composing a universal crime classification system established for crime reporting purposes. Part I Offenses are by their nature more serious and/or occur most frequently. The monthly tabulation of Part I Offenses provides a count of "actual offenses."

PART II OFFENSES - The second of two main categories of crime classes composing a universal crime classification system established for crime reporting purposes. Part II Offenses are generally less serious in nature and/or occur less frequently.

JUVENILE - A person under the age of 18 years.

ADULT - A person 18 years of age or older.

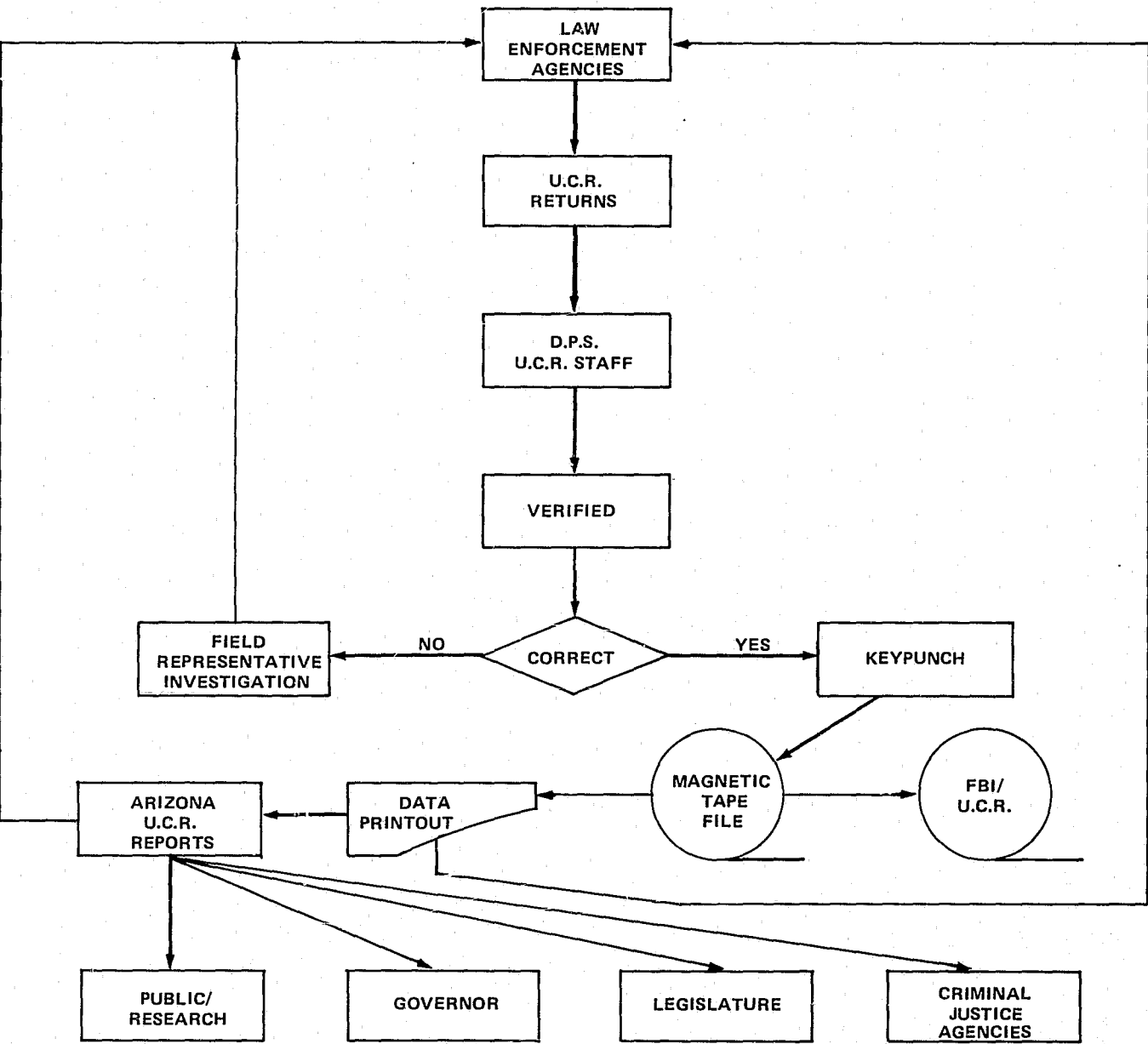
Arizona Revised Statutes
(41-1750 Criminal Identification Section; duties)

- A. There shall be a criminal identification section within the Department of Public Safety.
- *B. The criminal identification section shall:
 - 1. Procure and maintain records of photographs, descriptions, fingerprints, dispositions and such other information as may be pertinent to all persons who have been arrested for or convicted of a public offense within the state.
 - *2. Collect information concerning the number and nature of offenses known to have been committed in the state, of the legal steps taken in connection therewith, and such other information as shall be useful in the study of crime in the administration of justice.
 - 3. Cooperate with the criminal identification bureaus in other states and with the appropriate agency of the federal government in the exchange of information pertinent to violators of the law. In addition, the criminal identification section shall provide for the rapid exchange of information concerning the commission of crime and the detection of violators of the law, between the law enforcement agencies of this state and its political subdivisions and the law enforcement agencies of other states and of the federal government.
 - 4. Furnish assistance to peace officers throughout the state in crime scene investigations for the detection of latent fingerprints, and in the comparison thereof.
 - 5. Provide information from its records to law enforcement agencies of the state or its political subdivisions upon request by the chief officer of such agency or his authorized representative. Such information shall be used only for purposes of law enforcement.
 - 6. Provide information from its records to courts, prosecutors or correctional agencies of the state or its political subdivisions upon request by the chief officer of such agency or his authorized representative. Such information shall be used only for purposes of the criminal justice system.
 - 7. Provide information from its records relating to convictions for public offenses to non-law enforcement agencies of the state or its political subdivisions upon request by the chief officer of such agency or his authorized representative, for the purpose of evaluating the fitness of prospective employees of such agency. Such information shall be used only for the purpose of such evaluation.

- 8. Provide information from its records relating to convictions for public offenses to licensing and regulatory agencies of the state or its political subdivisions upon request by the chief officer of such agency or his authorized representative, for the purpose of evaluating the fitness of prospective licensees. Such information shall be used only for the purpose of such evaluation.
- 9. Provide information from its records relating to arrests or convictions for public offenses to the subject of such information, or to his attorney at the request of the subject, and when accompanied by proper identification.
- *C. The chief officers of law enforcement agencies of the state or its political subdivisions shall provide to the criminal identification section such information concerning crimes and persons arrested for or convicted of public offenses within the state as the chief of the criminal identification section, with the approval of the director, shall deem useful for the study or prevention of crime and for the administration of justice.
- D. Any person who releases or procures the release of information held by the criminal identification section other than as provided by this section, or who uses such information for a purpose other than as provided by this section, is guilty of a misdemeanor.
- E. The chief of the criminal identification section may, with the written approval of the director and in the manner prescribed by law, remove and destroy such records as he determines are no longer of value in the detection or prevention of crime.
- *F. The chief of the criminal identification section, subject to the approval of the director, shall make and issue rules and regulations relating to the procurement and dissemination of information, in the manner prescribed by law.
- G. All non-law enforcement agencies of the state or its political subdivisions may establish by rule, regulation or ordinance the need for fingerprint or background investigations for purposes of employment or licensing and may, thereafter, utilize the criminal identification section of the Department of Public Safety in accordance with subsection F. Added Laws 1968, Ch. 209, § 1, effective July 1, 1969, as amended Laws 1972, Ch. 39, § 1.

*Sections B.2., C., and F. apply directly to UCR.

ARIZONA UNIFORM CRIME REPORTING DATA FLOW CHART



END