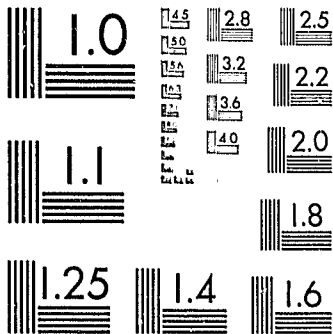


National Criminal Justice Reference Service



This microfiche was produced from documents received for inclusion in the NCJRS data base. Since NCJRS cannot exercise control over the physical condition of the documents submitted, the individual frame quality will vary. The resolution chart on this frame may be used to evaluate the document quality.



MICROCOPY RESOLUTION TEST CHART
NATIONAL BUREAU OF STANDARDS-1963-A

Microfilming procedures used to create this fiche comply with the standards set forth in 41CFR 101-11.504.

Points of view or opinions stated in this document are those of the author(s) and do not represent the official position or policies of the U. S. Department of Justice.

National Institute of Justice
United States Department of Justice
Washington, D. C. 20531

3/8/82

✓
COMPARISON OF PROGRAM PARTICIPANTS
MASSACHUSETTS HALFWAY HOUSES, INC.
1979 RELEASES

NCJRS

JUN 15 1981

Prepared By:

Lawrence T. Williams
Research Specialist

Assisted By:

John Harrington
Research Assistant

ACQUISITIONS

Massachusetts Department of Correction

Louis M. Berman
Commissioner

December, 1980

PUBLICATION : #12407 - 60 - 250 - 12/80 - CR
Approved by John J. Manton, State Purchasing Agent

79203

Abstract

This report examines those residents released from facilities operated by Massachusetts Halfway Houses, Inc., during the year 1979. A comparison of clients in each particular halfway house program was carried out to determine what characteristics or variables existed that distinguished individuals in the different programs.

The analysis resulted in the finding that the 699 House program, the Temporary Housing Project facility, and Brooke House differed significantly from each other and the other two programs operated by Massachusetts Halfway Houses, Inc. Those individuals who were serviced by Massachusetts Halfway Houses who constituted the most serious risks tended to concentrate in the 699 House program. The Temporary Housing Project tended to service youthful offenders who began their criminal (delinquent) involvement at a younger age than those of the other programs but who had not established extensive records as adults. The Brooke House population were individuals who were less serious offenders and better risks than those residents of the other MHHI programs.

U.S. Department of Justice 79203
National Institute of Justice

This document has been reproduced exactly as received from the person or organization originating it. Points of view or opinions stated in this document are those of the authors and do not necessarily represent the official position or policies of the National Institute of Justice.

Permission to reproduce this copyrighted material has been granted by

Massachusetts Department of
Corrections

to the National Criminal Justice Reference Service (NCJRS).

Further reproduction outside of the NCJRS system requires permission of the copyright owner.

-2-
TABLE OF CONTENTS

<u>TITLE</u>	<u>PAGE NUMBER</u>
I. Introduction	3
II. Samples	4
III. Table I - Type of Release By MHHI Facility	5
IV. Table II - Release Statistics by Sending Institution	6
V. Data Collection	7
VI. Results	7
VII. Summary	18
VIII. Appendix I - 1979 Releases by MHHI Facility	20
IX. Appendix II - Variables Found to Be Significant by MHHI Facility	50
X. Footnotes	59
XI. References	60

Introduction

Massachusetts Halfway Houses, Inc. (MHHI) is a private, non-profit corporation that contracts with the Massachusetts Department of Correction to provide services for individuals on a pre-release basis. At the present time, MHHI operates five programs for residents of the system. These programs are 577 House, 699 House, Temporary Housing Program, Brooke House, and Coolidge House.

The Research Division of the Department of Correction has carried out several evaluations of releases from the Massachusetts Halfway Houses.¹ The most recent recidivism evaluation of the MHHI population indicated significant differences in the population of individuals released from specific programs at MHHI.² This present study examines residents released from each of the MHHI facilities during the year 1979. A comparison will be made between program participants to determine if there are significant characteristics to distinguish individuals in each program.

The second component of the evaluation will look at those individuals who were program completers and those who were

unsuccessful completers to determine the significant variables that distinguish the two groups.

Samples

During the year 1979, there were 151 individuals released from facilities operated by the Massachusetts Halfway Houses, Inc. The breakdown of releases during 1979 by MHHI facility is as follows:

	1979 Releases	
	Number	Percent
577 House	36	(24)
699 House	37	(25)
Temporary Housing Program	25	(17)
Coolidge House	20	(12)
Brooke House	33	(22)
TOTAL	151	(100)

Table I contains the type of release by MHHI facility released from in 1979. Table II indicates the sending institution for all individuals released from MHHI during the year 1979.

Table I
Type of Release By Massachusetts Halfway House Facility

	577 House N (%)	699 House N (%)	Temporary Housing N (%)	Brooke House N (%)	Coolidge House N (%)	Total N (%)
Lateral Transfer	1 (3)	0 (0)	2 (8)	2 (6)	0 (0)	5 (3)
Discharged at Expiration of Sentence	5 (14)	0 (0)	0 (0)	1 (3)	0 (0)	6 (4)
Paroled	18 (50)	24 (65)	19 (76)	19 (58)	14 (70)	94 (62)
Returned to Higher Security	6 (17)	4 (11)	1 (4)	4 (12)	3 (15)	18 (12)
Escapes	6 (17)	9 (24)	3 (12)	7 (21)	3 (15)	28 (19)
TOTAL	36 (100)	37 (100)	25 (100)	33 (100)	20 (100)	151 (100)

Table 2
Release Statistics By Sending Institution

Received From:	577 House N (%)	699 House N (%)	Temporary Housing N (%)	Brooke House N (%)	Coolidge House N (%)	Total N (%)
Warwick	2 (6)	2 (5)	1 (4)	0 (0)	1 (5)	6 (4)
Walpole	4 (11)	7 (19)	3 (12)	2 (6)	3 (15)	19 (13)
Concord	5 (14)	6 (16)	10 (40)	2 (6)	6 (30)	29 (19)
Temporary Housing	0 (0)	0 (0)	0 (0)	2 (6)	0 (0)	2 (1)
Shirley	2 (6)	0 (0)	1 (4)	2 (6)	1 (5)	6 (4)
Boston State	0 (0)	0 (0)	1 (4)	1 (3)	1 (5)	3 (2)
Framingham	1 (3)	0 (0)	1 (4)	10 (30)	1 (5)	13 (9)
Park Drive	0 (0)	0 (0)	0 (0)	1 (3)	1 (5)	2 (1)
Western Avenue	1 (3)	0 (0)	0 (0)	0 (0)	0 (0)	1 (1)
Bay State	0 (0)	0 (0)	0 (0)	1 (3)	0 (0)	1 (1)
Norfolk	6 (17)	9 (24)	2 (8)	1 (3)	0 (0)	18 (12)
N.R.D.C.	6 (17)	0 (0)	4 (16)	3 (9)	1 (5)	14 (9)
N.E.C.C.	7 (19)	7 (19)	1 (4)	5 (15)	4 (20)	24 (16)
Norfolk Pre-Release	0 (0)	0 (0)	0 (0)	1 (3)	0 (0)	1 (1)
Medfield	0 (0)	0 (0)	0 (0)	1 (3)	0 (0)	1 (1)
Bridgewater	2 (6)	1 (3)	0 (0)	0 (0)	0 (0)	3 (2)
S.E.C.C.	0 (0)	5 (14)	1 (4)	1 (3)	1 (5)	8 (5)
TOTAL	36 (100)	37 (100)	25 (100)	33 (100)	20 (100)	151 (100)

Data Collection

The sample of individuals released from MHHI during 1979 was selected from the admission and release forms of each MHHI facility. Information concerning these individuals was obtained from the Massachusetts Department of Correction Central Office Files and from the computerized data base developed by the Correction and Parole Management Information System (CAPMIS) and was in turn produced on the Massachusetts State College Computer Network (MSCCN). Data consisted of commitment, social background and criminal history variables. Finally additional data collected consisted of institutional behavior and movement variables.

Contained in Appendix I is a complete statistical breakdown of each variable by the MHHI facility from which each individual was released.

Results

At this point, an analysis will be done comparing the population of residents released from individual MHHI facilities. The results of this analysis are presented below with a description of the variables that significantly distinguished each MHHI facility from the others.

A) 577 House

When comparing all variables for 577 House releases against all other MHHI releases during 1979, one variable was found to be significant.

1) Number of Furloughs

577 House releases had significantly more individuals who had six or more furloughs than the other MHHI Programs (64% versus 43%).

B) 699 House

A special focus was centered on this population to determine the ways that the individuals released from this program differed from the other MHHI programs. There were thirteen variables that proved to be significant.

1) Jail Credits

Significantly more of the individuals released from 699 House during 1979 had fifty days or more of jail credits at commitment (51% versus 28%) than the other MHHI facilities. This would indicate that these offenders were felt to be more serious offenders and as a result, were incarcerated pending trial for their commitment offense. Of course, it could just be a reflection of the fact that more of the 699 House sample were poor and unable to make bail

pending trial.

2) Race

As compared to the other MHHI programs, significantly more of the 699 House population for this sample were minorities (blacks or hispanics) (59% versus 32%).

3) Prior Address - Selected Cities and Towns

Consistent with the above finding, significantly more of the 699 House releases were from Boston (68% versus 44%).

4) Prior Address - County

Also consistent with the above findings, significantly more of the 699 House releases were from Suffolk County (68% versus 47%).

5) Known Drug Use

When this variable is compared for the 699 House releases only versus the remainder of the MHHI 1979 releases, the results indicate that the 699 House releases had significantly more individuals who indicate prior drug use than the other MHHI programs (75% versus 56%).

6) Total Number of Furloughs

Significantly more of the 699 House releases had five or fewer furloughs as compared to the other facilities (92% versus 39%).

7) Number of Successful Furlough Outcomes (Excluding Those Individuals Who Were Never Furloughed)

Most of the 699 House releases during 1979 had five or fewer successful furloughs (87%). This compares to a rate of 33% for the remainder of the population.

8) Number of Charges for Drug Offenses

Significantly more of the 699 House releases during 1979 had one or more charges for a drug offense as compared to the other MHHI programs (62% versus 35%).

9) Number of Charges for Escape Offenses

The results indicate that significantly more of the 699 House releases during 1979 had one or more charges for an escape offense than did the releases from the other MHHI programs (27% versus 11%).

10) Institution Received From

Significantly more of the individuals who were placed at 699 House had been housed in either Walpole or Norfolk immediately prior to their placement at 699 House (43% versus 18%).

11) Time Served in Prison Before MHHI Placement

A significant majority of the 699 House releases had spent seventeen months or longer in prison prior to their placement at 699 House (68%).

The majority of individuals placed in other MHHI programs had served sixteen months or less prior to placement.

12) Number of Major Disciplinary Reports

Significantly more of the 699 House releases during 1979 had one or more prior major disciplinary reports before placement at 699 House (78%) while those releases from the other MHHI programs tended not to have had any major disciplinary reports. (40%)

13) Total Number of Disciplinary Reports (Major and Minor)

Most of those individuals released from 699 House during 1979 had received two or more total disciplinary reports while incarcerated in walled institutions (76%). A smaller percentage of those at other MHHI facilities had received two or more disciplinary reports (54%).

C) Temporary Housing Project (THP)

An examination of the variables for this program yielded eight that significantly differentiated this population of releases from the remainder of the Massachusetts Halfway House releases during 1979.

1) Committing Institution

Significantly more of the THP releases during 1979 were Concord commitments than the other MHHI

facilities (40% versus 15%).

2) Prior Address - County

This program was drawing a significant number of individuals from Middlesex county when compared to the total MHHI releases during 1979 (28% versus 11%).

3) Number of Prior County Incarcerations

Significantly more of the Temporary Housing Project releases during 1979 were never incarcerated in a county facility than were the other MHHI program releases during 1979 (72% versus 50%).

4) Number of Prior Adult Incarcerations

A Majority of the releases from THP during 1979 had no prior adult incarcerations (68%). The majority of releases from other programs operated by MHHI had one or more prior adult incarcerations.

5) Age at First Arrest (Excluding Unknown)

Significantly more of the THP releases during 1979 were age fifteen or younger at their age at first arrest than were found at the other MHHI programs (75% versus 50%).

6) Number of Charges for Person Offenses

Significantly more of the Temporary Housing Project releases had four or fewer prior charges for person offenses than were found at the other

MHHI facilities (80% versus 57%).

7) Age at MHHI Placement

A significant difference was observed between the ages of THP releases at placement versus the age of individuals released from other MHHI programs. Significantly more of the THP releases were 21 years or younger at placement than were found at the other facilities. (40% versus 21%).

8) Time Served in Prison Before MHHI Placement

Significantly more of the Temporary Housing Project releases during 1979 had served eighteen months or less before being placed in the program than were found at Brooke House, 577 House, or any of the other MHHI facilities (76% versus 49%).

D) Coolidge House

An examination of all the variables for this program yielded four that significantly differentiated this population of releases from the remainder of the MHHI releases during 1979.

1) Occupation (Unknowns Excluded)

There were a significant number of individuals released from Coolidge House during 1979 who had a service occupation (bartender, taxi drivers, etc.) when compared to the number of individuals in other MHHI facilities with this same occupa-

tional category (58% versus 25%).

2) Time on Job of Longest Duration (Unknowns Excluded)

A significant majority of the individuals released from Coolidge House during 1979 had worked ten months or longer at their job of longest duration. Less than half of the other MHHI program participants had worked at least this period of time (70% versus 43%).

3) Time at Most Skilled Position (Unknowns Excluded)

Significantly more of the Coolidge House releases during 1979 had worked one year or longer at their most skilled position than the other MHHI releases (60% versus 34%).

4) Number of Charges for Escape Offenses

More of the Coolidge House releases during 1979 had one or more prior charges for escape than the remainder of the MHHI releases (30% versus 13%).

E) Brooke House

After analysis, there were four variables that significantly differentiated Brooke House releases during 1979 from the remainder of the MHHI programs.

1) Prior Address - County

Significantly more of the Brooke House releases

during 1979 were from a county other than Suffolk or Middlesex than the other MHHI programs (52% versus 30%).

2) Jail Credits

More of the Brooke House releases during 1979 had ten days or fewer of jail credits when committed to prison than the remainder of the MHHI program participants (64% versus 41%).

3) Number of Charges for Property Offenses

Significantly more of the Brooke House releases had never received any charges for property offenses than the rest of the Massachusetts Halfway House releases (18% versus 6%).

4) Last Grade Completed

Significantly more of the Brooke House releases either had some college or were college graduates than the remainder of the MHHI program releases (33% versus 16%).

VARIABLES FOUND TO BE SIGNIFICANT - 1979 MHHI RELEASES

VARIABLES	577. HOUSE	699. HOUSE	T H P	COOLIDGE HOUSE	BROOKE HOUSE
1. Number of Furloughs	X	X			
2. Number of Successful Furloughs		X			
3. Jail Credits		X			X
4. Committing Institution			X		
5. Race		X			
6. Last Grade Completed					X
7. Prior Address-Cities & Towns	X				
8. Prior Address - County	X	X			X
9. Known Drug Use	X				
10. Occupation				X	
11. Time on Job of Longest Duration				X	
12. Time at Most Skilled Position				X	
13. Number of Charges for Person Offenses		X			
14. Number of Charges for Property Offenses					X
15. No. of Charges for Drug Offenses		X			
16. No. of Charges for Escape Offenses		X		X	
17. No. of Prior County Incarcerations			X		
18. No. of Prior Adult Incarcerations			X		
19. Age at First Arrest			X		
20. Institution Received From		X			
21. No. Major Disciplinary Reports		X			
22. Total No. Disciplinary Reports		X			
23. Age at MHHI Placement			X		
24. Time Served Before MHHI Placement		X	X		
TOTAL	1	13	8	4	4

At Table IV shows, 699 House had more variables that distinguished its population from the other MHHI programs, based on an analysis of releases during 1979. Based on an analysis of the variables, the 699 House program during 1979 dealt with individuals who were from the city of Boston and Suffolk County, minorities who spent more days in jail awaiting trial than the individuals at the other programs. The 699 House population also experienced fewer furloughs and successful furloughs, had a history of drug use, and had prior charges for both drug and escape offenses. Finally, the 699 House population came directly from Walpole or Norfolk had served one year and a half or more in prison before placement, and had one or more major disciplinary reports and two or more total disciplinary reports. This gives validity to the assertion that the most serious risks that are dealt with by Massachusetts Halfway Houses, Inc. are housed and participate in the program at 699 House.

The population of releases from the Temporary Housing Project were also different from the remainder of the MHHI population. This program dealt with Concord commitments from Middlesex County who were twenty-one or younger when placed at the Temporary Housing Project and who had served less than a year and a half in prison before their placement. They also had four or fewer prior person offenses, no prior county or adult incarcerations, and were fifteen or younger at their first arrest. Temporary Housing Project can be said to have dealt primarily with youthful

offenders who began their criminal involvement at a younger age but who had not established an extensive record as an adult in the adult system.

Appendix II lists all variables found to be significant for each MHHI program with each corresponding chi square values.

Summary

This report has examined those individuals released from MHHI during the year 1979. The focus of this report was to determine the significant characteristics of each MHHI facility. This type of analysis is important in that it enables program administrators to determine the differences in their populations. It also is useful in analyzing results for the total MHHI population to remember that not all programs deal with the same kind of individual.

From the analysis in the report, we have concluded that there is validity to the assertion that the most serious risks dealt with by MHHI are housed in the program at 699 House. This could explain why this program exhibits yearly recidivism rates that are higher than the other MHHI facilities. The results also indicate that the Temporary Housing Project is different from the other MHHI facilities. A profile of this population is the following: youthful offenders who began their criminal involvement at a younger age than the other MHHI programs but who had not

established an extensive record as an adult.

Finally, the Brooke House population was also different from the remainder of the MHHI population. This program dealt with individuals who primarily were from counties other than Suffolk and Middlesex. They had very little days of jail credits at commitment and had never received any charges for property offenses. Lastly, they were more educated than those individuals at other MHHI programs. Based on these factors, it seems clear that the Brooke House population consisted of individuals who were less serious offenders and better risks than those residents of other MHHI programs.

Appendix I

	577 HOUSE		699 HOUSE		TEMPORARY HOUSING		BROOKE HOUSE		COOLIDGE HOUSE		TOTAL	
	N	%	N	%	N	%	N	%	N	%	N	%
1. Sex												
Male	36	(100)	37	(100)	25	(100)	24	(73)	20	(100)	142	(94)
Female	0	(0)	0	(0)	0	(0)	9	(27)	0	(0)	9	(6)
TOTAL	36	(100)	37	(100)	25	(100)	33	(100)	20	(100)	151	(100)
2. Jail Credits												
None	12	(33)	12	(32)	13	(52)	17	(52)	6	(30)	60	(40)
1 to 10	2	(6)	3	(8)	2	(8)	4	(12)	2	(10)	13	(9)
11 to 50	6	(17)	3	(8)	4	(16)	6	(18)	8	(40)	27	(18)
51 to 100	11	(31)	7	(19)	4	(16)	1	(3)	2	(10)	25	(17)
101 to 150	2	(6)	4	(11)	2	(8)	1	(3)	1	(5)	10	(7)
151 to 200	2	(6)	2	(5)	0	(0)	2	(6)	1	(5)	7	(5)
Over 200	1	(3)	6	(16)	0	(0)	2	(6)	0	(0)	9	(6)
TOTAL	36	(100)	37	(100)	25	(100)	33	(100)	20	(100)	151	(100)
3. Present Offense												
Person	26	(72)	22	(60)	15	(60)	19	(58)	14	(70)	96	(64)
Sex	2	(6)	4	(11)	3	(12)	2	(6)	0	(0)	11	(7)
Property	5	(14)	6	(16)	5	(20)	7	(21)	5	(25)	28	(19)
Drug	1	(2)	2	(5)	2	(8)	5	(15)	0	(0)	10	(6)
Other	2	(6)	3	(8)	0	(0)	0	(0)	1	(5)	6	(4)
TOTAL	36	(100)	37	(100)	25	(100)	33	(100)	20	(100)	151	(100)

	577 HOUSE N E	699 HOUSE N E	TEMPORARY HOUSING N E	BROOKE HOUSE N E	COOLIDGE HOUSE N E	TOTAL N E
4. <u>Drug Offenses</u>						
Not Applicable	35 (97)	35 (95)	23 (92)	28 (85)	20 (100)	141 (93)
Possession of Heroin	0 (9)	0 (0)	0 (0)	2 (6)	0 (0)	2 (1)
Controlled Substance-Unclassified	0 (0)	0 (0)	1 (4)	1 (3)	0 (0)	2 (1)
Controlled Substance-Class A	0 (0)	1 (3)	0 (0)	1 (3)	0 (0)	2 (1)
Controlled Substance-Class B	0 (0)	1 (3)	1 (4)	1 (3)	0 (0)	3 (2)
Controlled Substance-Class D	1 (3)	0 (0)	0 (0)	0 (0)	0 (0)	1 (1)
TOTAL	36 (100)	37 (100)	25 (100)	33 (100)	20 (100)	151 (100)
5. <u>Person Offenses</u>						
Not Applicable	10 (28)	15 (41)	10 (40)	14 (42)	6 (30)	55 (36)
Murder - 1	1 (3)	0 (0)	0 (0)	1 (3)	0 (0)	2 (1)
Murder - 2	2 (6)	0 (0)	0 (0)	2 (6)	1 (5)	5 (3)
Manslaughter	1 (3)	0 (0)	0 (0)	0 (0)	0 (0)	1 (1)
Assault-Intent	1 (3)	1 (3)	1 (4)	0 (0)	0 (0)	3 (2)
Armed Robbery	13 (36)	13 (35)	13 (52)	12 (36)	8 (40)	59 (39)
Unarmed Robbery	1 (3)	4 (11)	0 (0)	1 (3)	2 (10)	8 (5)
Armed Assault	5 (14)	3 (8)	1 (4)	2 (6)	2 (10)	13 (9)
Unarmed Assault	0 (0)	1 (3)	0 (0)	1 (3)	0 (0)	2 (1)
Conspiracy	2 (6)	0 (0)	0 (0)	0 (0)	1 (5)	3 (2)
TOTAL	36 (100)	37 (100)	25 (100)	33 (100)	20 (100)	151 (100)

	577 HOUSE N %	699 HOUSE N %	TEMPORARY HOUSING N %	BROOKE HOUSE N %	COOLIDGE HOUSE N %	TOTAL N %
6. <u>Sex Offenses</u>						
Not Applicable	34 (94)	33 (89)	22 (88)	31 (94)	20 (100)	140 (93)
Rape	2 (6)	3 (8)	1 (4)	2 (6)	0 (0)	8 (5)
Assault-Rape	0 (0)	1 (3)	1 (4)	0 (0)	0 (0)	2 (1)
Unnatural Acts	0 (0)	0 (0)	1 (4)	0 (0)	0 (0)	1 (1)
TOTAL	36 (100)	37 (100)	25 (100)	33 (100)	20 (100)	151 (100)
7. <u>Property Offenses</u>						
Not Applicable	31 (86)	31 (84)	20 (80)	26 (79)	15 (75)	123 (82)
Arson	0 (0)	0 (0)	1 (4)	0 (0)	0 (0)	1 (1)
Burglary-Armed	0 (0)	0 (0)	1 (4)	0 (0)	0 (0)	1 (1)
Burglary	3 (8)	3 (8)	3 (12)	1 (3)	4 (20)	14 (9)
Tools	0 (0)	1 (3)	0 (0)	0 (0)	0 (0)	1 (1)
Larceny-Person	1 (3)	1 (3)	0 (0)	3 (9)	0 (0)	5 (3)
Larceny	0 (0)	1 (3)	0 (0)	1 (3)	1 (5)	3 (2)
Vehicle Theft	1 (3)	0 (0)	0 (0)	0 (0)	0 (0)	1 (1)
Forgery-Uttering	0 (0)	0 (0)	0 (0)	1 (3)	0 (0)	1 (1)
Stolen Goods	0 (0)	0 (0)	0 (0)	1 (3)	0 (0)	1 (1)
TOTAL	36 (100)	37 (100)	25 (100)	33 (100)	20 (100)	151 (100)
8. <u>Other Offenses</u>						
Not Applicable	34 (94)	34 (92)	25 (100)	33 (100)	19 (95)	145 (96)
Escapes	0 (0)	1 (3)	0 (0)	0 (0)	0 (0)	1 (1)
Weapons Offenses	2 (6)	2 (5)	0 (0)	0 (0)	1 (5)	5 (3)
TOTAL	36 (100)	37 (100)	25 (100)	33 (100)	20 (100)	151 (100)

	577 HOUSE		699 HOUSE		TEMPORARY HOUSING		DROOKE HOUSE		COOLIDGE HOUSE		TOTAL	
	N	%	N	%	N	%	N	%	N	%	N	%
9. <u>Minimum Sentence in Years</u>												
Less than one Year	15	(42)	20	(54)	6	(24)	10	(30)	10	(50)	61	(40)
Life	3	(8)	0	(0)	0	(0)	3	(9)	1	(5)	7	(5)
Indeterminate	18	(50)	17	(46)	19	(76)	20	(61)	9	(45)	83	(55)
TOTAL	36	(100)	37	(100)	25	(100)	33	(100)	20	(100)	151	(100)
10. <u>Maximum Sentence in Years</u>												
Less than one year	0	(0)	0	(0)	0	(0)	2	(6)	0	(0)	2	(1)
2 Years	0	(0)	5	(14)	4	(16)	7	(21)	1	(5)	20	(13)
3 Years	0	(0)	1	(3)	0	(0)	0	(0)	0	(0)	1	(1)
5 Years	8	(22)	7	(19)	4	(16)	6	(18)	7	(35)	32	(21)
6 Years	6	(17)	3	(8)	0	(0)	1	(3)	2	(10)	12	(8)
7 Years	1	(3)	2	(5)	2	(8)	1	(3)	0	(0)	6	(4)
8 Years	0	(0)	0	(0)	1	(4)	1	(3)	2	(10)	4	(3)
10 Years	5	(14)	10	(27)	6	(24)	6	(18)	4	(20)	31	(21)
11 to 12 Years	5	(14)	1	(3)	2	(8)	1	(3)	1	(5)	10	(7)
13 to 15 Years	4	(11)	4	(11)	4	(16)	3	(9)	2	(10)	17	(11)
16 to 19 Years	0	(0)	1	(3)	2	(8)	1	(3)	0	(0)	4	(3)
20 to 24 Years	1	(3)	1	(3)	0	(0)	1	(3)	0	(0)	3	(2)
25 or more years	0	(0)	2	(5)	0	(0)	0	(0)	0	(0)	2	(1)
Life	3	(8)	0	(0)	0	(0)	3	(9)	1	(5)	7	(5)
TOTAL	36	(100)	37	(100)	25	(100)	33	(100)	20	(100)	151	(100)

	577 HOUSE	699 HOUSE	TEMPORARY HOUSING	BROOKE HOUSE	COOLIDGE HOUSE	TOTAL
	N	N	N	N	N	N
11. <u>Race</u>						
White	23 (64)	15 (41)	17 (60)	25 (76)	13 (65)	93 (62)
Black	13 (36)	22 (59)	8 (32)	7 (22)	6 (30)	56 (37)
Hispanic	0 (0)	0 (0)	0 (0)	1 (2)	1 (5)	2 (1)
TOTAL	36 (100)	37 (100)	25 (100)	33 (100)	20 (100)	151 (100)
12. <u>Military Discharge</u>						
No Service	26 (72)	27 (73)	19 (76)	24 (73)	12 (60)	108 (72)
Honorable	4 (11)	1 (3)	3 (12)	4 (12)	2 (10)	14 (9)
Dishonorable	0 (0)	0 (0)	0 (0)	0 (0)	1 (5)	1 (1)
Bad Conduct	1 (3)	1 (3)	2 (8)	2 (6)	2 (10)	8 (5)
Medical	0 (0)	1 (3)	0 (0)	0 (0)	0 (0)	1 (1)
Discharge Unknown	3 (8)	2 (5)	0 (0)	0 (0)	1 (5)	6 (4)
Unknown	2 (6)	5 (14)	1 (4)	3 (9)	2 (10)	13 (9)
TOTAL	36 (100)	37 (100)	25 (100)	33 (100)	20 (100)	151 (100)
13. <u>Marital Status</u>						
Married	5 (14)	6 (16)	3 (12)	4 (12)	6 (30)	24 (16)
Single	23 (64)	26 (70)	19 (76)	21 (64)	10 (50)	99 (66)
Divorced	6 (17)	3 (8)	1 (4)	3 (9)	3 (15)	16 (11)
Widowed	0 (0)	0 (0)	1 (4)	0 (0)	0 (0)	1 (1)
Separated	2 (6)	2 (5)	1 (4)	5 (15)	1 (5)	11 (7)
TOTAL	36 (100)	37 (100)	25 (100)	33 (100)	20 (100)	151 (100)

14. Address	577 HOUSE N	699 HOUSE N	TEMPORARY HOUSING N	BROOKE HOUSE N	COOLIDGE HOUSE N	TOTAL N
Boston	18 (50)	25 (60)	8 (32)	12 (36)	12 (60)	75 (50)
Brockton	0 (0)	0 (0)	1 (4)	1 (3)	0 (0)	2 (1)
Cambridge	1 (3)	1 (3)	0 (0)	1 (3)	0 (0)	3 (2)
Fall River	1 (3)	0 (0)	0 (0)	3 (9)	0 (0)	4 (3)
Holyoke	1 (3)	0 (0)	0 (0)	0 (0)	0 (0)	1 (1)
Lowell	1 (3)	1 (3)	0 (0)	0 (0)	0 (0)	2 (1)
Lynn	1 (3)	0 (0)	0 (0)	0 (0)	0 (0)	1 (1)
New Bedford	0 (0)	0 (0)	0 (0)	1 (3)	1 (5)	2 (1)
Quincy	2 (6)	0 (0)	0 (0)	0 (0)	0 (0)	2 (1)
Somerville	0 (0)	1 (3)	1 (4)	1 (3)	0 (0)	3 (2)
Springfield	0 (0)	0 (0)	1 (4)	0 (0)	1 (5)	2 (1)
Worcester	0 (0)	1 (3)	0 (0)	0 (0)	1 (5)	2 (1)
Other Massachusetts	10 (28)	7 (19)	13 (52)	13 (39)	4 (20)	47 (31)
Out of State	1 (3)	1 (3)	1 (4)	1 (3)	1 (5)	5 (3)
TOTAL	36 (100)	37 (100)	25 (100)	33 (100)	20 (100)	151 (100)

15. Prior Address-SMSA

	577 HOUSE N	699 HOUSE N	TEMPORARY HOUSING N	BROOKE HOUSE N	COOLIDGE HOUSE N	TOTAL N
Boston	29 (81)	29 (78)	19 (76)	22 (67)	14 (70)	113 (75)
Brockton	0 (0)	1 (3)	1 (4)	1 (3)	0 (0)	3 (2)
Fall River	1 (3)	1 (3)	0 (0)	3 (9)	0 (0)	5 (3)
Fitchburg-Leominster	0 (0)	0 (0)	0 (0)	0 (0)	1 (5)	1 (1)
Lawrence-Haverhill	0 (0)	0 (0)	0 (0)	2 (6)	0 (0)	2 (1)
Lowell	1 (3)	1 (3)	1 (4)	0 (0)	0 (0)	3 (2)
New Bedford	0 (0)	0 (0)	1 (4)	1 (3)	1 (5)	3 (2)
Providence-Warwick-Pawtucket	1 (3)	0 (0)	0 (0)	0 (0)	0 (0)	1 (1)
Springfield	1 (3)	0 (0)	2 (8)	0 (0)	1 (5)	4 (3)
Worcester	0 (0)	2 (5)	0 (0)	0 (0)	1 (5)	3 (2)
Other Massachusetts	2 (6)	2 (5)	0 (0)	3 (9)	1 (5)	8 (5)
Out of State	1 (3)	1 (3)	1 (4)	1 (3)	1 (5)	5 (3)
TOTAL	36 (100)	37 (100)	25 (100)	33 (100)	20 (100)	151 (100)

16. Prior Address-County

Worcester	1 (3)	2 (5)	0 (0)	1 (3)	1 (5)	5 (3)
Middlesex	4 (11)	4 (11)	7 (28)	4 (12)	2 (10)	21 (14)
Suffolk	19 (53)	25 (68)	9 (36)	12 (36)	13 (65)	78 (52)
Norfolk	4 (11)	0 (0)	1 (4)	3 (9)	0 (0)	8 (5)
Bristol	2 (6)	2 (5)	1 (4)	4 (12)	1 (5)	10 (7)
Plymouth	0 (0)	1 (3)	1 (4)	2 (6)	0 (0)	4 (3)
Essex	3 (8)	2 (5)	3 (12)	5 (15)	0 (0)	13 (9)

16. <u>Prior Address-County</u> (continued)	577 HOUSE		699 HOUSE		TEMPORARY HOUSING		BROOKE HOUSE		COOLIDGE HOUSE		TOTAL	
	N	%	N	%	N	%	N	%	N	%	N	%
Hampshire	0	(0)	0	(0)	1	(4)	0	(0)	0	(0)	1	(1)
Hampden	1	(3)	0	(0)	1	(4)	0	(0)	1	(5)	3	(2)
Barnstable	1	(3)	0	(0)	0	(0)	1	(3)	1	(5)	3	(2)
Out of State	1	(3)	1	(3)	1	(4)	1	(3)	1	(5)	5	(3)
TOTAL	36	(100)	37	(100)	25	(100)	33	(100)	20	(100)	151	(100)
17. <u>Age at Pre-Release Placement</u>												
Nineteen	3	(8)	2	(5)	5	(20)	0	(0)	1	(5)	11	(7)
Twenty	2	(6)	1	(3)	2	(8)	5	(15)	0	(0)	10	(7)
Twenty-one	2	(6)	5	(14)	3	(12)	6	(18)	0	(0)	16	(11)
Twenty-two	6	(17)	2	(5)	0	(0)	2	(6)	3	(15)	13	(9)
Twenty-three	2	(6)	2	(5)	2	(8)	1	(3)	2	(10)	9	(6)
Twenty-four	2	(6)	5	(14)	1	(4)	2	(6)	2	(10)	12	(8)
Twenty- five	3	(8)	5	(14)	3	(12)	2	(6)	1	(5)	14	(9)
26 to 29	3	(8)	6	(16)	3	(12)	4	(12)	4	(20)	20	(13)
30 to 39	9	(25)	7	(19)	4	(16)	7	(22)	7	(35)	34	(23)
40 and Older	4	(11)	2	(5)	2	(8)	4	(12)	0	(0)	12	(8)
TOTAL	36	(100)	37	(100)	25	(100)	33	(100)	20	(100)	151	(100)

	577 HOUSE	699 HOUSE	TEMPORARY HOUSING	BROOKE HOUSE	COOLIDGE HOUSE	TOTAL
	N %	N %	N %	N %	N %	N %
18. <u>Age at Incarceration</u>						
Sixteen	1 (3)	0 (0)	0 (0)	0 (0)	0 (0)	1 (1)
Eighteen	4 (11)	2 (5)	5 (20)	2 (6)	0 (0)	13 (9)
Nineteen	1 (3)	2 (5)	3 (12)	3 (9)	2 (10)	11 (7)
Twenty	3 (8)	6 (16)	2 (8)	7 (21)	0 (0)	18 (12)
Twenty-one	3 (8)	3 (8)	1 (4)	3 (9)	1 (5)	11 (7)
Twenty-two	4 (11)	4 (11)	2 (8)	0 (0)	4 (20)	14 (9)
Twenty-three	4 (11)	4 (11)	1 (4)	4 (12)	1 (5)	14 (9)
Twenty-four	2 (6)	3 (8)	4 (16)	2 (6)	3 (15)	14 (9)
Twenty-five	0 (0)	1 (3)	1 (4)	1 (3)	1 (5)	4 (3)
26 to 29	14 (39)	12 (32)	6 (24)	11 (33)	8 (40)	51 (34)
TOTAL	36 (100)	37 (100)	25 (100)	33 (100)	20 (100)	151 (100)
19. <u>Age at Release</u>						
Nineteen	3 (8)	2 (5)	5 (20)	0 (0)	1 (5)	10 (7)
Twenty	1 (3)	1 (3)	2 (8)	4 (12)	0 (0)	9 (6)
Twenty-one	3 (8)	5 (14)	3 (12)	6 (18)	2 (10)	17 (11)
Twenty-two	6 (17)	2 (5)	0 (0)	3 (9)	3 (15)	13 (9)
Twenty-three	2 (6)	0 (0)	2 (8)	1 (3)	2 (10)	8 (5)
Twenty-four	2 (6)	6 (16)	1 (4)	1 (3)	0 (0)	12 (8)
Twenty-five	3 (8)	6 (16)	3 (12)	1 (3)	1 (5)	14 (9)
26 to 29	3 (8)	6 (16)	3 (12)	6 (18)	4 (20)	22 (15)
30 to 39	9 (25)	7 (19)	4 (16)	6 (18)	7 (35)	33 (22)
40 and Older	4 (11)	2 (5)	2 (8)	5 (15)	0 (0)	13 (9)
TOTAL	36 (100)	37 (100)	25 (100)	33 (100)	20 (100)	151 (100)

20. <u>Total Number of Furloughs</u>	<u>577</u> <u>HOUSE</u>		<u>699</u> <u>HOUSE</u>		<u>TEMPORARY</u> <u>HOUSING</u>		<u>BROOKE</u> <u>HOUSE</u>		<u>COOLIDGE</u> <u>HOUSE</u>		<u>TOTAL</u>	
	<u>N</u>	<u>%</u>	<u>N</u>	<u>%</u>	<u>N</u>	<u>%</u>	<u>N</u>	<u>%</u>	<u>N</u>	<u>%</u>	<u>N</u>	<u>%</u>
None	5	(14)	14	(38)	3	(12)	1	(3)	3	(15)	26	(17)
One	4	(11)	2	(5)	1	(4)	7	(21)	2	(10)	16	(11)
2 to 5	4	(11)	18	(49)	8	(32)	5	(15)	2	(10)	37	(25)
6 to 10	11	(31)	3	(8)	4	(16)	10	(30)	5	(25)	33	(22)
11 to 15	9	(25)	0	(0)	8	(32)	7	(21)	5	(25)	29	(19)
16 to 20	2	(6)	0	(0)	0	(0)	2	(6)	1	(5)	5	(3)
21 to 30	1	(3)	0	(0)	1	(4)	1	(3)	2	(10)	5	(3)
TOTAL	36	(100)	37	(100)	25	(100)	33	(100)	20	(100)	151	(100)
21. <u>Number of Successful Furlough Outcomes</u>												
Never Furloughed												
None	5	(14)	14	(38)	3	(12)	1	(3)	3	(15)	26	(17)
One	1	(3)	0	(0)	0	(0)	0	(0)	0	(0)	1	(1)
2 to 5	4	(11)	2	(5)	1	(4)	7	(21)	2	(10)	16	(11)
6 to 10	4	(11)	18	(49)	8	(32)	5	(15)	2	(10)	37	(25)
11 to 15	10	(28)	3	(8)	4	(16)	10	(30)	5	(25)	32	(21)
16 to 20	9	(25)	0	(0)	8	(32)	7	(21)	5	(25)	29	(19)
21 to 30	2	(6)	0	(0)	0	(0)	2	(6)	1	(5)	5	(3)
TOTAL	1	(3)	0	(0)	1	(4)	1	(3)	2	(10)	5	(3)
	36	(100)	37	(100)	25	(100)	33	(100)	20	(100)	151	(100)

	577 HOUSE N	699 HOUSE N	TEMPORARY HOUSING N	BROOKE HOUSE N	COOLIDGE HOUSE N	TOTAL N
22. Number of Late Under Furlough Outcomes						
Never Furloughed	5 (14)	14 (30)	3 (12)	1 (3)	3 (15)	26 (17)
None	30 (83)	23 (62)	21 (84)	32 (97)	17 (85)	123 (82)
One	1 (3)	0 (0)	1 (4)	0 (0)	0 (0)	2 (1)
TOTAL	36 (100)	37 (100)	25 (100)	33 (100)	20 (100)	151 (100)
23. Number of Late Over Furlough Outcomes						
Never Furloughed	5 (14)	14 (30)	3 (12)	1 (3)	3 (15)	26 (17)
None	29 (81)	23 (62)	19 (76)	32 (97)	16 (80)	119 (79)
One	2 (5)	0 (0)	3 (12)	0 (0)	1 (5)	6 (4)
TOTAL	36 (100)	37 (100)	25 (100)	33 (100)	20 (100)	151 (100)
24. Number of Escape Furlough Outcomes						
Never Furloughed	5 (14)	14 (30)	3 (12)	1 (3)	3 (15)	26 (17)
None	31 (86)	23 (62)	22 (88)	32 (97)	17 (85)	125 (83)
TOTAL	36 (100)	37 (100)	25 (100)	33 (100)	20 (100)	151 (100)

25. <u>Occupation</u>	577 HOUSE		699 HOUSE		TEMPORARY HOUSING		BROOKE HOUSE		COOLIDGE HOUSE		TOTAL	
	N	%	N	%	N	%	N	%	N	%	N	%
Professional	0	(0)	1	(3)	0	(0)	1	(3)	0	(0)	2	(1)
Semi-professional	0	(0)	0	(0)	1	(4)	0	(0)	0	(0)	1	(1)
Business	0	(0)	0	(0)	0	(0)	2	(6)	1	(5)	3	(2)
Sales, Clerical	3	(8)	5	(14)	1	(4)	3	(9)	3	(15)	15	(10)
Manual	22	(61)	21	(57)	14	(56)	14	(42)	4	(20)	75	(50)
Services	7	(19)	9	(24)	5	(20)	10	(30)	11	(55)	42	(28)
Student	2	(6)	0	(0)	0	(0)	0	(0)	0	(0)	2	(1)
Unemployed	1	(3)	1	(3)	0	(0)	2	(6)	0	(0)	4	(3)
Unknown	1	(3)	0	(0)	4	(6)	1	(3)	1	(5)	7	(5)
TOTAL	36	(100)	37	(100)	25	(100)	33	(100)	20	(100)	151	(100)
26. <u>Time on Job of Longest Duration</u>												
Less than one month	2	(6)	3	(8)	0	(0)	5	(15)	1	(5)	11	(7)
1-2 Months	5	(14)	2	(5)	4	(16)	6	(18)	1	(5)	18	(12)
3-4 Months	4	(11)	5	(14)	2	(8)	1	(3)	2	(10)	14	(9)
5-6 Months	4	(11)	2	(5)	2	(8)	6	(18)	1	(5)	15	(10)
7-9 Months	5	(14)	4	(11)	3	(12)	1	(3)	1	(5)	14	(9)
10-12 Months	1	(3)	3	(8)	2	(8)	1	(3)	2	(10)	9	(6)
1-2 Years	4	(11)	9	(24)	3	(12)	4	(12)	6	(30)	26	(17)
2-5 Years	5	(14)	4	(11)	1	(4)	2	(6)	3	(15)	15	(10)
More than 5 years	1	(3)	2	(5)	3	(12)	5	(15)	3	(15)	14	(9)
Unknown	5	(14)	3	(8)	5	(20)	2	(6)	0	(0)	15	(10)
TOTAL	36	(100)	37	(100)	25	(100)	33	(100)	20	(100)	151	(100)

27. Time at Most Skilled Position	577 HOUSE		699 HOUSE		TEMPORARY HOUSING		BROOKE HOUSE		COOLIDGE HOUSE		TOTAL	
	N	%	N	%	N	%	N	%	N	%	N	%
Less than one month	2	(6)	2	(5)	1	(4)	5	(15)	1	(5)	11	(7)
1-2 Months	7	(19)	3	(8)	4	(16)	7	(21)	3	(15)	24	(16)
3-4 Months	5	(14)	5	(14)	1	(4)	1	(3)	1	(5)	13	(9)
5-6 Months	4	(11)	4	(11)	2	(8)	5	(15)	1	(5)	16	(11)
7-9 Months	4	(11)	4	(11)	3	(12)	1	(3)	1	(5)	13	(9)
10-12 Months	0	(0)	4	(11)	2	(8)	1	(3)	1	(5)	8	(5)
1-2 Years	4	(11)	6	(16)	3	(12)	4	(12)	6	(30)	23	(15)
2-5 Years	4	(11)	4	(11)	1	(4)	3	(9)	3	(15)	15	(10)
More than 5 years	1	(3)	2	(5)	3	(12)	4	(12)	3	(15)	13	(9)
Unknown	5	(14)	3	(8)	5	(20)	2	(6)	0	(0)	15	(10)
TOTAL	36	(100)	37	(100)	25	(100)	33	(100)	20	(100)	151	(100)
28. Last Grade Completed												
Third Grade or Less	0	(0)	1	(3)	2	(8)	0	(0)	0	(0)	3	(2)
Fifth	1	(3)	1	(3)	1	(4)	0	(0)	0	(0)	3	(2)
Sixth	2	(6)	0	(0)	1	(4)	3	(9)	2	(10)	8	(5)
Seventh	6	(17)	3	(8)	0	(0)	4	(12)	1	(5)	14	(9)
Eighth	6	(17)	3	(8)	2	(8)	4	(12)	3	(15)	18	(12)
Ninth	7	(19)	13	(35)	4	(16)	8	(24)	3	(15)	35	(23)
Tenth	4	(11)	5	(14)	2	(8)	1	(3)	1	(5)	13	(9)
Eleventh	2	(6)	11	(3)	5	(20)	1	(3)	3	(15)	12	(8)
High School Graduate	3	(8)	5	(14)	3	(12)	1	(3)	3	(15)	15	(10)

	577 HOUSE		699 HOUSE		TEMPORARY HOUSING		BROOKE HOUSE		COOLIDGE HOUSE		TOTAL	
	N	%	N	%	N	%	N	%	N	%	N	%
28. Last Grade Completed (continued).												
Some College	5	(14)	4	(11)	4	(16)	9	(27)	4	(20)	26	(17)
College Graduate	0	(0)	1	(3)	1	(4)	2	(6)	0	(0)	4	(3)
TOTAL	36	(100)	37	(100)	25	(100)	33	(100)	20	(100)	151	(100)
29. Known Drug Use												
None	14	(39)	9	(24)	10	(40)	16	(49)	10	(50)	59	(39)
Non-specific	3	(8)	2	(5)	1	(4)	2	(6)	2	(10)	10	(7)
Heroin	15	(42)	16	(43)	6	(24)	4	(12)	2	(10)	43	(29)
Marijuana	2	(6)	6	(16)	5	(20)	2	(6)	3	(15)	18	(12)
Other	2	(6)	3	(8)	3	(12)	9	(27)	3	(15)	20	(13)
Unknown	0	(0)	1	(3)	0	(0)	0	(0)	0	(0)	1	(1)
TOTAL	36	(100)	37	(100)	25	(100)	33	(100)	20	(100)	151	(100)
30. Total Number of Court Appearances												
First Offense	1	(3)	1	(3)	1	(4)	1	(3)	1	(5)	5	(3)
Two	1	(3)	1	(3)	0	(0)	3	(9)	0	(0)	5	(3)
Three	0	(0)	2	(5)	1	(4)	1	(3)	0	(0)	4	(3)
Four	1	(3)	1	(3)	3	(12)	1	(3)	1	(5)	7	(5)
Five	3	(8)	1	(3)	3	(12)	3	(9)	2	(10)	12	(8)
Six to Eight	6	(17)	6	(16)	0	(0)	1	(3)	2	(10)	15	(10)
Nine to Eleven	6	(17)	6	(16)	6	(24)	7	(21)	3	(15)	28	(19)
Twelve to Fifteen	8	(22)	5	(14)	4	(16)	8	(24)	1	(5)	26	(17)
Sixteen to Twenty	6	(17)	6	(16)	7	(28)	5	(15)	3	(15)	27	(18)
More than 20	4	(11)	8	(22)	0	(0)	3	(9)	7	(35)	22	(15)
TOTAL	36	(100)	37	(100)	25	(100)	33	(100)	20	(100)	151	(100)

31. Number of Charges for Person Offenses	577 HOUSE		699 HOUSE		TEMPORARY HOUSING		BROOKE HOUSE		COOLIDGE HOUSE		TOTAL	
	N	%	N	%	N	%	N	%	N	%	N	%
None	4	(11)	4	(11)	2	(8)	4	(12)	5	(25)	19	(13)
One	7	(19)	4	(11)	6	(24)	5	(15)	4	(20)	26	(17)
Two	4	(11)	6	(16)	3	(12)	5	(15)	0	(0)	18	(12)
Three	6	(17)	3	(8)	4	(16)	3	(9)	2	(10)	18	(12)
Four	1	(3)	1	(3)	5	(20)	4	(12)	0	(0)	11	(7)
Five	2	(6)	6	(16)	3	(12)	1	(3)	3	(15)	15	(10)
Six to Eight	7	(19)	3	(8)	2	(8)	9	(27)	3	(15)	24	(16)
Over Eight	5	(14)	10	(27)	0	(0)	2	(6)	3	(15)	20	(13)
TOTAL	36	(100)	37	(100)	25	(100)	33	(100)	20	(100)	151	(100)
32. Number of Charges for Property Offenses												
None	2	(6)	2	(5)	1	(4)	6	(18)	2	(10)	13	(9)
One	3	(8)	4	(11)	3	(12)	3	(9)	2	(10)	15	(10)
Two	2	(6)	1	(3)	3	(12)	3	(9)	0	(0)	9	(6)
Three	5	(14)	4	(11)	3	(12)	1	(3)	1	(5)	14	(9)
Four	4	(11)	2	(5)	3	(12)	2	(6)	1	(5)	12	(8)
Five	3	(8)	0	(0)	2	(8)	0	(0)	1	(5)	6	(4)
Six to Eight	3	(8)	7	(19)	3	(12)	3	(9)	4	(20)	20	(13)
Over Eight	14	(39)	17	(46)	7	(28)	15	(46)	9	(45)	62	(41)
TOTAL	36	(100)	37	(100)	25	(100)	33	(100)	20	(100)	151	(100)

	577 HOUSE N	699 HOUSE N	TEMPORARY HOUSING N	BROOKS HOUSE N	COOLIDGE HOUSE N	TOTAL N
33. Number of Charges for Sex Offenses						
None	32 (89)	30 (81)	20 (80)	29 (88)	18 (90)	129 (85)
One	3 (8)	3 (8)	2 (8)	2 (6)	2 (10)	12 (8)
Two	1 (3)	2 (5)	3 (12)	0 (0)	0 (0)	6 (4)
Three	0 (0)	2 (5)	0 (0)	1 (3)	0 (0)	3 (2)
Four	0 (0)	0 (0)	0 (0)	1 (3)	0 (0)	1 (1)
TOTAL	36 (100)	37 (100)	25 (100)	33 (100)	20 (100)	151 (100)
34. Number of Charges for Narcotics Offenses						
None	23 (64)	14 (38)	15 (60)	22 (67)	14 (70)	88 (58)
One	5 (14)	11 (30)	4 (16)	4 (12)	4 (20)	28 (19)
Two	4 (11)	3 (8)	1 (4)	1 (3)	0 (0)	9 (6)
Three	0 (0)	2 (5)	3 (12)	3 (9)	1 (5)	9 (6)
Four	1 (3)	2 (5)	1 (4)	0 (0)	0 (0)	4 (3)
Five	2 (6)	0 (0)	1 (4)	1 (3)	0 (0)	4 (3)
Six to Eight	0 (0)	1 (3)	0 (0)	2 (6)	0 (0)	3 (2)
Over 8	1 (3)	4 (11)	0 (0)	0 (0)	1 (5)	4 (6)
TOTAL	36 (100)	37 (100)	25 (100)	33 (100)	20 (100)	151 (100)

	577 HOUSE <u>N</u> <u>8</u>	699 HOUSE <u>N</u> <u>8</u>	TEMPORARY HOUSING <u>N</u> <u>8</u>	BROOKE HOUSE <u>N</u> <u>8</u>	COOLIDGE HOUSE <u>N</u> <u>8</u>	TOTAL <u>N</u> <u>8</u>
35. Number of Charges for Drunkenness Offenses						
None	23 (64)	24 (65)	19 (76)	23 (70)	11 (55)	100 (66)
One	4 (11)	5 (14)	1 (4)	6 (18)	4 (20)	20 (13)
Two	3 (8)	1 (3)	1 (4)	1 (3)	1 (5)	7 (5)
Three	2 (6)	2 (5)	1 (4)	1 (3)	1 (5)	7 (5)
Four	1 (3)	2 (5)	2 (8)	1 (3)	0 (0)	6 (4)
Five	1 (3)	1 (3)	0 (0)	0 (0)	0 (0)	2 (1)
Six to Eight	2 (6)	0 (0)	1 (4)	1 (3)	1 (5)	5 (3)
Over Eight	0 (0)	2 (5)	0 (0)	0 (0)	2 (10)	4 (3)
TOTAL	36 (100)	37 (100)	25 (100)	33 (100)	20 (100)	151 (100)
36. Number of Charges for Escape Offenses						
None	33 (92)	27 (73)	23 (92)	31 (94)	14 (70)	128 (85)
One	3 (8)	8 (22)	1 (4)	0 (0)	5 (25)	17 (11)
Two	0 (0)	1 (3)	1 (4)	1 (3)	1 (5)	4 (3)
Three	0 (0)	0 (0)	0 (0)	1 (3)	0 (0)	1 (1)
Over 8	0 (0)	1 (3)	0 (0)	0 (0)	0 (0)	1 (1)
TOTAL	36 (100)	37 (100)	25 (100)	33 (100)	20 (100)	151 (100)

Two	4 (11)	3 (8)	3 (12)	2 (6)	2 (10)	14 (9)
Three	3 (8)	1 (3)	1 (4)	2 (6)	0 (0)	7 (5)
Four	0 (0)	0 (0)	1 (4)	0 (0)	0 (0)	1 (1)
Five	2 (6)	2 (5)	0 (0)	1 (3)	1 (5)	6 (4)
Six or More	0 (0)	1 (3)	0 (0)	0 (0)	0 (0)	1 (1)
TOTAL	36 (100)	37 (100)	25 (100)	33 (100)	20 (100)	151 (100)
38. Number of Prior County Incarcerations						
None	20 (56)	16 (43)	18 (72)	17 (52)	10 (50)	81 (54)
One	10 (28)	10 (27)	3 (12)	10 (30)	3 (15)	36 (24)
Two	2 (6)	3 (8)	0 (0)	5 (15)	1 (5)	11 (7)
Three	2 (6)	5 (14)	3 (12)	1 (3)	5 (25)	16 (11)
Four	1 (3)	1 (3)	0 (0)	0 (0)	0 (0)	2 (1)
Five	0 (0)	0 (0)	0 (0)	0 (0)	1 (5)	1 (1)
Six or More	1 (3)	2 (5)	1 (4)	0 (0)	0 (0)	4 (3)
TOTAL	36 (100)	37 (100)	25 (100)	33 (100)	20 (100)	151 (100)

39. Number of Prior State or Federal Incarcerations	577 HOUSE		699 HOUSE		TEMPORARY HOUSING		BROOKE HOUSE		COOLIDGE HOUSE		TOTAL	
	N	%	N	%	N	%	N	%	N	%	N	%
None	25	(69)	25	(68)	22	(88)	28	(85)	19	(95)	119	(79)
One	3	(8)	5	(14)	1	(4)	1	(3)	0	(0)	10	(7)
Two	4	(11)	1	(3)	1	(4)	2	(6)	0	(0)	8	(5)
Three	2	(6)	2	(5)	0	(0)	2	(6)	0	(0)	6	(4)
Four	2	(6)	2	(5)	1	(4)	0	(0)	0	(0)	5	(3)
Five	0	(0)	0	(0)	0	(0)	0	(0)	1	(5)	1	(1)
Six or More	0	(0)	2	(5)	0	(0)	0	(0)	0	(0)	2	(1)
TOTAL	36	(100)	37	(100)	25	(100)	33	(100)	20	(100)	151	(100)
40. Total Number of Prior Adult Incarcerations												
None	15	(42)	13	(35)	17	(68)	13	(39)	10	(50)	68	(45)
One	9	(25)	9	(24)	2	(8)	11	(33)	3	(15)	34	(23)
Two	3	(8)	3	(8)	2	(8)	6	(18)	1	(5)	15	(10)
Three	3	(8)	4	(11)	3	(12)	2	(6)	4	(20)	16	(11)
Four	1	(3)	2	(5)	0	(0)	0	(0)	0	(0)	3	(2)
Five	3	(8)	2	(5)	0	(0)	1	(3)	1	(5)	7	(5)
Six or More	2	(6)	4	(11)	1	(4)	0	(0)	1	(5)	8	(5)
TOTAL	36	(100)	37	(100)	25	(100)	33	(100)	20	(100)	151	(100)

	577 HOUSE		699 HOUSE		TEMPORARY HOUSING		BROOKE HOUSE		COOLIDGE HOUSE		TOTAL	
	N	%	N	%	N	%	N	%	N	%	N	%
41. Total Number of Any Prior Incarcerations												
None	13	(36)	10	(27)	11	(44)	10	(30)	9	(45)	53	(35)
One	5	(14)	7	(19)	4	(16)	10	(30)	3	(15)	29	(19)
Two	4	(11)	4	(11)	3	(12)	5	(15)	0	(0)	16	(11)
Three	4	(11)	6	(6)	4	(16)	2	(6)	4	(20)	20	(13)
Four	2	(6)	3	(8)	1	(4)	3	(9)	1	(5)	10	(7)
Five	2	(6)	0	(0)	1	(4)	3	(9)	1	(5)	7	(5)
Six or More	6	(17)	7	(19)	1	(4)	0	(0)	2	(10)	16	(11)
TOTAL	36	(100)	37	(100)	25	(100)	33	(100)	20	(100)	151	(100)
42. Committing Institution												
Walpole	16	(44)	18	(49)	6	(24)	12	(36)	11	(55)	63	(42)
Concord	20	(56)	19	(51)	19	(76)	12	(36)	9	(45)	79	(52)
Framingham	0	(0)	0	(0)	0	(0)	9	(28)	0	(0)	9	(6)
TOTAL	36	(100)	37	(100)	25	(100)	33	(100)	20	(100)	151	(100)

43. Institution Received From	577 HOUSE		699 HOUSE		TEMPORARY HOUSING		BROOKE HOUSE		COOLIDGE HOUSE		TOTAL	
	N	%	N	%	N	%	N	%	N	%	N	%
Warwick	2	(6)	2	(5)	1	(4)	0	(0)	1	(5)	6	(4)
Walpole	4	(11)	7	(19)	3	(12)	2	(6)	3	(15)	19	(13)
Concord	5	(14)	6	(16)	10	(40)	2	(6)	6	(30)	29	(19)
Temporary Housing	0	(0)	0	(0)	0	(0)	2	(6)	0	(0)	2	(1)
Shirley	2	(6)	0	(0)	1	(4)	2	(6)	1	(5)	6	(4)
Boston State	0	(0)	0	(0)	1	(4)	1	(3)	1	(5)	3	(2)
Framingham	1	(3)	0	(0)	1	(4)	10	(30)	1	(5)	13	(9)
Park Drive	0	(0)	0	(0)	0	(0)	1	(3)	1	(5)	2	(1)
Western Avenue	1	(3)	0	(0)	0	(0)	0	(0)	0	(0)	1	(1)
Bay State	0	(0)	0	(0)	0	(0)	1	(3)	0	(0)	1	(1)
Norfolk	6	(17)	9	(24)	2	(8)	1	(3)	0	(0)	18	(12)
N.R.D.C.	6	(17)	0	(0)	4	(16)	3	(9)	1	(5)	14	(9)
N.E.C.C.	7	(19)	7	(19)	1	(4)	5	(15)	4	(20)	24	(16)
Norfolk Pre-Release	0	(0)	0	(0)	0	(0)	1	(3)	0	(0)	1	(1)
Medfield	0	(0)	0	(0)	0	(0)	1	(3)	0	(0)	1	(1)
Bridgewater	2	(6)	1	(3)	0	(0)	0	(0)	0	(0)	3	(2)
S.E.C.C.	0	(0)	5	(14)	1	(4)	1	(3)	1	(5)	8	(5)
TOTAL	36	(100)	37	(100)	25	(100)	33	(100)	20	(100)	151	(100)

44. Number of Juvenile Paroles	577 HOUSE	699 HOUSE	TEMPORARY HOUSING	BROOKE HOUSE	COOLIDGE HOUSE	TOTAL
	N	N	N	N	N	N
None	31 (86)	27 (73)	21 (84)	28 (85)	16 (80)	123 (82)
One	1 (3)	4 (11)	1 (4)	2 (6)	3 (15)	11 (7)
Two	2 (6)	3 (8)	2 (8)	3 (9)	0 (0)	10 (7)
Three	0 (0)	1 (3)	1 (4)	0 (0)	0 (0)	2 (1)
Four or More	2 (6)	2 (5)	0 (0)	0 (0)	1 (5)	5 (3)
TOTAL	36 (100)	37 (100)	25 (100)	33 (100)	20 (100)	151 (100)
45. Number of Juvenile Parole Violations						
Never Paroled						
None	31 (86)	27 (73)	21 (84)	28 (85)	16 (80)	123 (82)
One	3 (8)	3 (8)	1 (4)	3 (9)	2 (10)	12 (8)
Two	0 (0)	5 (14)	2 (8)	2 (6)	1 (5)	10 (7)
Four or More	0 (0)	1 (3)	1 (4)	0 (0)	0 (0)	2 (1)
TOTAL	2 (6)	1 (3)	0 (0)	0 (0)	1 (5)	4 (3)
46. Number of Adult Paroles	36 (100)	37 (100)	25 (100)	33 (100)	20 (100)	151 (100)
None	24 (67)	26 (70)	22 (88)	28 (85)	16 (80)	116 (77)
One	6 (17)	6 (16)	2 (8)	3 (9)	3 (15)	20 (13)
Two	5 (14)	1 (3)	1 (4)	1 (3)	0 (0)	8 (5)
Three	1 (3)	3 (8)	0 (0)	1 (3)	0 (0)	5 (3)
Four or More	0 (0)	1 (3)	0 (0)	0 (0)	1 (5)	2 (1)
TOTAL	36 (100)	37 (100)	25 (100)	33 (100)	20 (100)	151 (100)

	577 HOUSE	699 HOUSE	TEMPORARY HOUSING	BROOKE HOUSE	COOLIDGE HOUSE	TOTAL
	N	N	N	N	N	N
47. Number of Adult Parole Violations						
Never Paroled	24 (67)	26 (70)	22 (88)	28 (85)	16 (80)	116 (77)
None	2 (6)	3 (8)	1 (4)	3 (9)	2 (10)	8 (5)
Two	3 (8)	2 (5)	1 (4)	0 (0)	0 (0)	6 (5)
Three	0 (0)	2 (5)	0 (0)	0 (0)	0 (0)	2 (1)
Four or More	0 (0)	1 (3)	0 (0)	0 (0)	1 (5)	2 (1)
TOTAL	36 (100)	37 (100)	25 (100)	33 (100)	20 (100)	151 (100)
48. Number of Paroles						
None	22 (61)	20 (54)	19 (76)	24 (73)	14 (70)	99 (66)
One	4 (11)	8 (22)	1 (4)	4 (12)	3 (15)	20 (13)
Two	5 (14)	2 (5)	4 (16)	3 (9)	1 (5)	15 (10)
Three	2 (6)	5 (14)	1 (4)	2 (6)	0 (0)	10 (7)
Four or More	3 (8)	2 (5)	0 (0)	0 (0)	2 (10)	7 (5)
TOTAL	36 (100)	37 (100)	25 (100)	33 (100)	20 (100)	151 (100)
49. Number of Parole Violations						
Never Paroled	22 (61)	20 (54)	19 (76)	24 (73)	14 (70)	99 (66)
None	2 (6)	5 (14)	2 (8)	3 (9)	3 (15)	15 (10)
One	7 (19)	5 (14)	1 (4)	3 (9)	1 (5)	17 (11)
Two	3 (8)	3 (8)	3 (12)	3 (9)	0 (0)	12 (8)
Three	0 (0)	2 (5)	0 (0)	0 (0)	0 (0)	2 (1)
Four or More	2 (6)	2 (5)	0 (0)	0 (0)	2 (10)	6 (4)
TOTAL	36 (100)	37 (100)	25 (100)	33 (100)	20 (100)	151 (100)

50. Age at First Drug Arrest

Not Applicable

8 to 14

15 to 17

18 to 19

20 to 21

22 to 24

25 to 29

30 to 34

35 to 39

Unknown

TOTAL

51. Age at First Drunk Arrest

Not Applicable

8 to 14

15 to 17

18 to 19

20 to 21

22 to 24

25 to 29

35 to 39

40 and Older

Unknown

TOTAL

577 HOUSE	699 HOUSE	TEMPORARY HOUSING	BROOKE HOUSE	COOLIDGE HOUSE	TOTAL
N	N	N	N	N	N
22 (61)	15 (41)	15 (60)	22 (67)	14 (70)	88 (58)
1 (3)	1 (3)	0 (0)	0 (0)	0 (0)	2 (1)
3 (8)	7 (19)	3 (12)	5 (15)	2 (10)	20 (13)
3 (8)	5 (14)	3 (12)	0 (0)	0 (0)	11 (7)
4 (11)	3 (8)	1 (4)	1 (3)	2 (10)	11 (7)
1 (3)	3 (8)	0 (0)	2 (6)	2 (10)	8 (5)
0 (0)	2 (5)	1 (4)	1 (3)	0 (0)	4 (3)
1 (3)	0 (0)	1 (4)	0 (0)	0 (0)	2 (1)
0 (0)	0 (0)	0 (0)	2 (6)	0 (0)	2 (1)
1 (3)	1 (3)	1 (4)	0 (0)	0 (0)	3 (2)
36 (100)	37 (100)	25 (100)	33 (100)	20 (100)	151 (100)
25 (69)	24 (65)	19 (76)	24 (73)	11 (55)	103 (68)
0 (0)	0 (0)	0 (0)	1 (3)	0 (0)	1 (1)
3 (8)	6 (16)	3 (12)	3 (9)	5 (25)	20 (13)
2 (6)	3 (8)	1 (4)	4 (12)	3 (15)	13 (9)
5 (14)	0 (0)	0 (0)	1 (3)	0 (0)	6 (4)
0 (0)	1 (3)	0 (0)	0 (0)	0 (0)	1 (1)
0 (0)	0 (0)	1 (4)	0 (0)	1 (5)	2 (1)
1 (3)	1 (3)	0 (0)	0 (0)	0 (0)	2 (1)
0 (0)	1 (3)	0 (0)	0 (0)	0 (0)	1 (1)
0 (0)	1 (3)	1 (4)	0 (0)	0 (0)	2 (1)
36 (100)	37 (100)	25 (100)	33 (100)	20 (100)	151 (100)

52. Age at First Arrest	577 HOUSE	699 HOUSE	TEMPORARY HOUSING	BROOKE HOUSE	COOLIDGE HOUSE	TOTAL
	N %	N %	N %	N %	N %	N %
10 or Younger	3 (8)	1 (3)	3 (12)	1 (3)	2 (10)	10 (7)
Eleven	1 (3)	2 (5)	3 (12)	2 (6)	0 (0)	8 (5)
Twelve	1 (3)	3 (8)	1 (4)	5 (15)	0 (0)	10 (7)
Thirteen	5 (14)	8 (22)	0 (0)	2 (6)	2 (10)	17 (11)
Fourteen	3 (8)	3 (8)	4 (16)	3 (9)	1 (5)	14 (9)
Fifteen	4 (11)	6 (16)	7 (28)	2 (6)	3 (15)	22 (15)
Sixteen	2 (6)	1 (3)	1 (4)	4 (12)	2 (10)	10 (7)
Seventeen	5 (14)	2 (5)	2 (8)	6 (18)	5 (25)	20 (13)
Eighteen	4 (11)	2 (5)	0 (0)	0 (0)	3 (15)	9 (6)
Nineteen	1 (3)	1 (3)	1 (4)	0 (0)	0 (0)	3 (2)
Twenty	1 (3)	2 (5)	1 (4)	0 (0)	0 (0)	4 (3)
Twenty-one	0 (0)	1 (3)	0 (0)	0 (0)	1 (5)	2 (1)
Twenty-two	0 (0)	0 (0)	0 (0)	0 (0)	1 (5)	1 (1)
Twenty-three	0 (0)	2 (5)	0 (0)	0 (0)	0 (0)	2 (1)
Twenty-four	0 (0)	0 (0)	0 (0)	1 (3)	0 (0)	1 (1)
Twenty-five	1 (3)	0 (0)	1 (4)	2 (6)	0 (0)	4 (3)
26 to 29	0 (0)	0 (0)	0 (0)	2 (6)	0 (0)	2 (1)
30 to 39	1 (3)	0 (0)	0 (0)	2 (6)	0 (0)	3 (2)
40 and Older	0 (0)	1 (3)	0 (0)	0 (0)	0 (0)	1 (1)
Unknown	4 (11)	2 (5)	1 (4)	1 (3)	0 (0)	8 (5)
TOTAL	36 (100)	37 (100)	25 (100)	33 (100)	20 (100)	151 (100)

	577 HOUSE	699 HOUSE	TEMPORARY HOUSING	BROOKE HOUSE	COOLIDGE HOUSE	TOTAL
	N	N	N	N	N	N
53. Type of Release	18 (50)	24 (65)	19 (76)	19 (58)	14 (70)	94 (62)
Parole	5 (14)	0 (0)	0 (0)	1 (3)	0 (0)	6 (4)
Discharge	1 (3)	0 (0)	2 (8)	2 (6)	0 (0)	5 (3)
Lateral Transfer	6 (17)	9 (24)	3 (12)	7 (21)	3 (15)	28 (19)
Escape	6 (17)	4 (11)	1 (4)	4 (12)	3 (15)	18 (12)
Return to Higher Security	36 (100)	37 (100)	25 (100)	33 (100)	20 (100)	151 (100)
TOTAL						
54. Time Served Before Pre-Release Placement	6 (17)	0 (0)	10 (40)	5 (15)	2 (10)	23 (15)
1 to 3 Months	1 (3)	3 (8)	1 (4)	4 (12)	1 (5)	10 (7)
4 to 6 Months	6 (17)	4 (16)	0 (0)	1 (3)	2 (10)	13 (8)
7 to 9 Months	2 (6)	4 (11)	2 (8)	4 (12)	3 (15)	15 (10)
10 to 12 Months	5 (14)	6 (16)	6 (24)	3 (9)	2 (10)	22 (15)
13 to 18 Months	4 (11)	6 (16)	2 (8)	6 (18)	2 (10)	20 (13)
19 to 24 Months	2 (6)	6 (16)	2 (8)	3 (9)	3 (15)	16 (11)
2 to 3 Years	4 (11)	6 (16)	1 (4)	4 (12)	4 (20)	19 (13)
3 to 5 Years	4 (11)	2 (5)	0 (0)	0 (0)	0 (0)	6 (4)
5 to 10 Years	2 (6)	0 (0)	0 (0)	1 (3)	1 (5)	4 (3)
10 to 15 Years	0 (0)	0 (0)	1 (4)	2 (6)	0 (0)	3 (2)
Over 15 Years	36 (100)	37 (100)	25 (100)	33 (100)	20 (100)	151 (100)
TOTAL						

	577 HOUSE		699 HOUSE		TEMPORARY HOUSING		BROOKE HOUSE		COOLIDGE HOUSE		TOTAL	
	N	%	N	%	N	%	N	%	N	%	N	%
55. Number of Minor Disciplinary Reports												
None	23	(64)	21	(57)	15	(60)	19	(58)	13	(65)	91	(60)
One	9	(25)	9	(24)	4	(16)	7	(21)	3	(15)	32	(21)
Two	0	(0)	3	(8)	5	(20)	2	(6)	1	(5)	11	(7)
Three	1	(3)	2	(5)	0	(0)	1	(3)	1	(5)	5	(3)
Four	1	(3)	0	(0)	1	(4)	3	(9)	2	(10)	7	(5)
Five or More	2	(6)	2	(5)	0	(0)	1	(3)	0	(0)	5	(3)
TOTAL	36	(100)	37	(100)	25	(100)	33	(100)	20	(100)	151	(100)
56. Number of Major Disciplinary Reports												
None	15	(42)	8	(22)	12	(48)	13	(39)	6	(30)	54	(36)
One	4	(11)	6	(16)	1	(4)	4	(12)	4	(20)	19	(13)
Two	5	(14)	8	(22)	4	(16)	4	(12)	3	(15)	24	(16)
Three	4	(11)	4	(11)	4	(16)	5	(15)	2	(10)	19	(13)
Four	1	(3)	4	(11)	0	(0)	2	(6)	1	(5)	8	(5)
Five	2	(6)	2	(5)	3	(12)	2	(6)	2	(10)	11	(7)
6 to 10	2	(6)	5	(14)	1	(4)	2	(6)	2	(10)	12	(8)
Eleven or More	3	(8)	0	(0)	0	(0)	1	(3)	0	(0)	4	(3)
TOTAL	36	(100)	37	(100)	25	(100)	33	(100)	20	(100)	151	(100)

	577 HOUSE		699 HOUSE		TEMPORARY HOUSING		BROOKE HOUSE		COOLIDGE HOUSE		TOTAL	
	N	%	N	%	N	%	N	%	N	%	N	%
57. Total Number of Disciplinary Reports												
None	14	(39)	8	(22)	9	(36)	11	(33)	6	(30)	48	(32)
One	3	(8)	1	(3)	2	(8)	4	(12)	3	(15)	13	(9)
Two	3	(8)	8	(22)	4	(16)	5	(15)	2	(10)	22	(15)
Three	4	(11)	5	(14)	4	(16)	1	(3)	3	(15)	17	(11)
Four	3	(8)	6	(16)	1	(4)	1	(3)	1	(5)	12	(8)
Five	4	(11)	4	(11)	2	(8)	3	(9)	2	(10)	15	(10)
6 to 10	1	(3)	3	(8)	3	(12)	7	(21)	2	(10)	16	(11)
11 to 20	2	(6)	2	(5)	0	(0)	0	(0)	1	(5)	5	(3)
21 or More	2	(6)	0	(0)	0	(0)	1	(3)	0	(0)	3	(2)
TOTAL	36	(100)	37	(100)	25	(100)	33	(100)	20	(100)	151	(100)
58. Number of Escapes												
None	33	(92)	29	(78)	23	(92)	27	(82)	20	(100)	132	(87)
One	3	(9)	6	(16)	2	(8)	5	(15)	0	(0)	16	(11)
Two	0	(0)	2	(5)	0	(0)	1	(3)	0	(0)	3	(2)
TOTAL	36	(100)	37	(100)	25	(100)	33	(100)	20	(100)	151	(100)
59. Number of Prior Pre-Release Placements												
None	27	(75)	26	(70)	21	(84)	20	(61)	12	(60)	106	(70)
One	8	(22)	7	(19)	1	(4)	11	(33)	8	(40)	35	(23)
Two	1	(3)	4	(11)	3	(12)	2	(6)	0	(0)	10	(7)
TOTAL	36	(100)	37	(100)	25	(100)	33	(100)	20	(100)	151	(100)

	577 HOUSE <u>N</u> <u>%</u>	699 HOUSE <u>N</u> <u>%</u>	TEMPORARY HOUSING <u>N</u> <u>%</u>	BROOKE HOUSE <u>N</u> <u>%</u>	COOLIDGE HOUSE <u>N</u> <u>%</u>	TOTAL <u>N</u> <u>%</u>
60. Number of Prior Minimum Security Placements						
None	30 (83)	30 (81)	24 (96)	29 (88)	16 (80)	129 (85)
One	4 (11)	7 (19)	1 (4)	2 (6)	3 (15)	17 (11)
Two	2 (6)	0 (0)	0 (0)	1 (3)	1 (5)	4 (3)
Three	0 (0)	0 (0)	0 (0)	1 (3)	0 (0)	1 (1)
TOTAL	36 (100)	37 (100)	25 (100)	33 (100)	20 (100)	151 (100)

Appendix II

VARIABLE FOUND TO BE SIGNIFICANT - 1979
577 HOUSE RELEASES

	<u>M H H I</u>		<u>577 HOUSE</u>		<u>T O T A L</u>	
	<u>N</u>	<u>%</u>	<u>N</u>	<u>%</u>	<u>N</u>	<u>%</u>
1. Total Number of Furloughs						
5 or Fewer	66	(57)	13	(36)	79	(52)
6 or More	49	(43)	23	(64)	72	(48)
TOTAL	115	(100)	36	(100)	151	(100)

(χ^2 = 4.977, 1df, $p < .05$)

VARIABLES FOUND TO BE SIGNIFICANT - 1979
699 HOUSE RELEASES

	M H H I		699 HOUSE		T O T A L	
	<u>N</u>	<u>%</u>	<u>N</u>	<u>%</u>	<u>N</u>	<u>%</u>
1. Total Number of Furloughs						
5 or Fewer	45	(39)	34	(92)	79	(52)
6 or More	69	(61)	3	(8)	72	(48)
TOTAL	114	(100)	37	(100)	151	(100)
(X ² = 30.767, 1df, p < .001)						
2. Number of Successful Furlough Outcomes (Excluding Never Furloughed)						
5 or Fewer	34	(33)	20	(87)	54	(43)
6 or More	69	(67)	3	(13)	72	(57)
TOTAL	103	(100)	23	(100)	126	(100)
(X ² = 22.343, 1df, p < .001)						
3. Institution Received From						
Walpole or Norfolk	21	(18)	16	(43)	37	(25)
Other	93	(82)	21	(57)	114	(75)
TOTAL	114	(100)	37	(100)	151	(100)
(X ² = 9.304, 1df, p < .01)						
4. Race						
White	78	(68)	15	(41)	93	(62)
Minority	36	(32)	22	(59)	58	(38)
TOTAL	114	(100)	37	(100)	151	(100)
(X ² = 9.179, 1df, p < .01)						

VARIABLES FOUND TO BE SIGNIFICANT - 1979
699 HOUSE RELEASES

	M H H I		699 HOUSE		T O T A L	
	<u>N</u>	<u>%</u>	<u>N</u>	<u>%</u>	<u>N</u>	<u>%</u>
5. Number of Charges for Drug Offenses						
None	74	(65)	14	(38)	88	(58)
One or More	40	(35)	23	(62)	63	(42)
TOTAL	114	(100)	37	(100)	151	(100)
($\chi^2 = 8.421$, 1df, $p < .01$)						
6. Jail Credits						
50 Days or Less	82	(72)	18	(49)	100	(66)
51 Days or More	32	(28)	19	(51)	51	(34)
TOTAL	114	(100)	37	(100)	151	(100)
($\chi^2 = 6.769$, 1df, $p < .01$)						
7. Prior Address - Selected Cities and Towns						
Boston	50	(44)	25	(68)	75	(50)
Other	64	(56)	12	(32)	76	(50)
TOTAL	114	(100)	37	(100)	151	(100)
($\chi^2 = 6.281$, 1df, $p < .02$)						
8. Number of Charges for Escape Offenses						
None	101	(89)	27	(73)	128	(85)
One or More	13	(11)	10	(27)	23	(15)
TOTAL	114	(100)	37	(100)	151	(100)
($\chi^2 = 5.281$, 1df, $p < .05$)						

-50-

VARIABLES FOUND TO BE SIGNIFICANT - 1979
BROOKE HOUSE RELEASES

	M H H I		BROOKE HOUSE		T O T A L	
	<u>N</u>	<u>%</u>	<u>N</u>	<u>%</u>	<u>N</u>	<u>%</u>
1. Prior Address-County						
Suffolk, Middlesex	83	(70)	16	(48)	99	(66)
Other	35	(30)	17	(52)	52	(34)
TOTAL	118	(100)	33	(100)	151	(100)
$(X^2 = 5.455, 1df, p < .02)$						
2. Jail Credits						
10 Days or Less	52	(41)	21	(64)	73	(46)
11 Days or More	74	(59)	12	(36)	86	(54)
TOTAL	126	(100)	33	(100)	159	(100)
$(X^2 = 5.268, 1df, p < .05)$						
3. Number of Charges for Property Offenses						
None	7	(6)	6	(18)	13	(9)
One or More	111	(94)	27	(82)	138	(91)
TOTAL	118	(100)	33	(100)	151	(100)
$(X^2 = 4.918 1df, p < .05)$						
4. Last Grade Completed						
High School Grad or Less	99	(84)	22	(67)	121	(80)
Some College or College Grad	19	(16)	11	(33)	30	(20)
TOTAL	118	(100)	33	(100)	151	(100)
$(X^2 = 4.809, 1df, p < .05)$						

-59-

FOOTNOTES

- Williams, Lawrence T., Client Profile Massachusetts Halfway Houses, Inc.: 1977 and 1978 Releases, Massachusetts Department of Correction Publication Number 187, July, 1980.

Williams, Lawrence T., A Profile of Characteristics Distinguishing Between Program Completers and Program Non-Completers at Massachusetts Halfway Houses, Inc.: 1977 and 1978 Releases, Massachusetts Department of Correction Publication Number 188, March, 1980.
- Williams, Lawrence T., An Analysis of Recidivism Among Residents Released from the Massachusetts Halfway Houses, Inc.: 1977 and 1978 Releases, Massachusetts Department of Correction Publication Number 198, July, 1980.

References

1. Williams, Lawrence T., Client Profile - Massachusetts Halfway Houses, Inc.: 1977 and 1978 Releases, Massachusetts Department of Correction Publication Number 187, March, 1980.
2. Williams, Lawrence T., A Profile of Characteristics Distinguishing Between Program Completers and Program Non-Completers at Massachusetts Halfway Houses, Inc.: 1977 and 1978 Releases, Massachusetts Department of Correction Publication Number 188, March, 1980.
3. Williams, Lawrence T., An Analysis of Recidivism Among Residents Released From the Massachusetts Halfway Houses, Inc. 1977 and 1978 Releases, Massachusetts Department of Correction Publication Number 198, July, 1980.

END