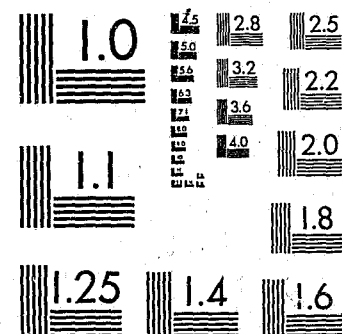


National Criminal Justice Reference Service

ncjrs

This microfiche was produced from documents received for inclusion in the NCJRS data base. Since NCJRS cannot exercise control over the physical condition of the documents submitted, the individual frame quality will vary. The resolution chart on this frame may be used to evaluate the document quality.



MICROCOPY RESOLUTION TEST CHART
NATIONAL BUREAU OF STANDARDS-1963-A

Microfilming procedures used to create this fiche comply with the standards set forth in 41CFR 101-11.504.

Points of view or opinions stated in this document are those of the author(s) and do not represent the official position or policies of the U. S. Department of Justice.

National Institute of Justice
United States Department of Justice
Washington, D. C. 20531

DATE FILMED
12/28/81

79514

213

MFI

DISCIPLINARY REPORT STATISTICS

July 1, 1979 to December 31, 1979

PREPARED BY
Charles Metzler
Manager of Data Processing

MASSACHUSETTS DEPARTMENT OF CORRECTION

Louis M. Berman, Commissioner

JANUARY, 1981

PUBLICATION #: 12284

APPROVED BY: John Manton,
State Purchasing Agent

TABLE OF CONTENTS

<u>TITLE</u>	<u>PAGE</u>
Introduction	1
Statistical Highlights	2
Statistical Tables	
Total Number of Disciplinary Reports and Individuals by Institution	4
Number of D-Reports for each Individual	5
Type of Report by Month of Report	6
Disciplinary Offense by Charge Number	7
Finding of D-Report	8
Appeal Outcomes for Guilty Dispositions	8
Sanction by Sanction Number	9
Sanction Action by Sanction Number	9
Good Time Lost by Isolation Days Imposed	10
Age by Race	11
Sentence by Committing Institution	12
Present Offense Catagory	13

U.S. Department of Justice
National Institute of Justice

This document has been reproduced exactly as received from the person or organization originating it. Points of view or opinions stated in this document are those of the authors and do not necessarily represent the official position or policies of the National Institute of Justice.

Permission to reproduce this copyrighted material has been granted by
Massachusetts Department of
Corrections

to the National Criminal Justice Reference Service (NCJRS).

Further reproduction outside of the NCJRS system requires permission of the copyright owner.

NCJRS

JUN 24 1981

ACQUIS

INTRODUCTION

Although the present disciplinary process has been in existence for a number of years, a systematic procedure for monitoring institutional disciplinary reports was initiated on July 1, 1979.* The purpose of this report is to document all disciplinary reports written in the Massachusetts Department of Correction from July 1, 1979 to December 31, 1979.*

Information from this report was collected from disciplinary reports and was produced on the Correction and Parole Management Information System (CAPMIS). This information includes the total number of individuals who received disciplinary reports, institution of report, month of report, type of report, disciplinary offense, finding, sanction, action of sanction, appeal outcome, good time lost, isolation days imposed, age, race, sentence and present offense. It is hoped that this information will be useful in assessing the disciplinary process and measuring levels of misconduct at the correctional facilities.

* Individuals in Framingham awaiting trial unit are not included in this report.

STATISTICAL HIGHLIGHTS

During the six month period from July 1, 1979 to December 31, 1979, a total of 3727 disciplinary reports were written to 2261 individuals. Therefore, out of a base population* of 3,549 individuals, 64% received at least one disciplinary report. For those who received a disciplinary report during this six month period, the average number of disciplinary reports written per person is 1.6 and the number of reports written per individual ranged from one to 18.

About one third (30%) of all reports were written at Walpole, the state's maximum security institution. Forty four percent were written at medium security institutions, only 7% were written at minimum security and about 20% were written at pre-release centers.

An average of 621 reports are written during the course of a month and ranged from a high of 855 in September to a low of 496 in November. D-Reports are classified according to seriousness. The majority of disciplinary reports (75%) are of the major type, 24% of the minor type and only 1% of the reports were referred to the district attorney.

Up to 5 offenses may be listed on a single disciplinary report. Nearly half (49%) of the reports contained two or fewer offenses. The average number of changes per report is 1.8. Only 57 reports (2%) had five offenses listed. The most common offenses were violating rules and for disobeying, lying or insolence. Out of a total of 6732 charges listed on the 3727 disciplinary reports, 2,371 (35%) were for these two types of offenses.

The majority of the disciplinary reports resulted in guilty findings (73%). Of the 2734 cases with guilty dispositions, 434 (16%) were appealed and in 128 cases (29% of those appealed), action favorable to the inmate was approved.

* The base population was obtained by adding the population on July 1, 1979 to the total number of new admissions from July, 1979 to December 31, 1979.

The majority of reports had only one sanction listed. Only 724 reports contained two sanctions, 15 reports contained three sanctions and no reports had four sanctions. The most common sanction was isolation time. Other common sanctions were loss of privileges, room restrictions, extra work duty and good time loss. Of the 3,515 sanctions, 71% were invoked, 26% were suspended and 3% were consolidated.

Of the 354 reports containing the loss of good time sanction, 25% were for less than one month, 10% were between 30 and 44 days, and 65% were for 45 days or more. Of the 1289 reports containing the isolation days sanction, the median number of isolation days given was seven.

The majority of reports (59%) were written on white (non hispanic) inmates, 38% were written on black (non hispanic) inmates, 3% were written on hispanic inmates (both white and black) and no reports were written on asians or native americans. The racial breakdown of inmates residing on January 1, 1980 was 62% white, 36% black and 3% hispanic. The median age at time of report is 24 years old.

Two thirds (67%) of the reports were written on Walpole commitments, 27% on Concord commitments, and 6% on Framingham commitments. Of the 2485 disciplinary reports written on Walpole commitments, 49% had minimum sentences of less than 12 years. Of the 1001 disciplinary reports written on Concord commitments, 69% had maximum sentences under 12 years. Of the 241 commitments to Framingham, 71% had indeterminate minimum sentences. A total of 401 (11%) of the reports were written on individuals with life sentences. On January 1, 1980, 17% of the inmate population were serving life sentences. Finally, the majority of reports (75%) were written on individuals currently serving an offense against the person.

TOTAL NUMBER OF DISCIPLINARY REPORTS AND INDIVIDUALS
BY INSTITUTION FROM JULY 1, 1979 TO DECEMBER 31, 1979

INSTITUTION	TOTAL NUMBER OF D-REPORTS		TOTAL NUMBER OF INDIVIDUALS	
	N	(%)	N	(%)
<u>MAXIMUM SECURITY</u>				
Walpole	1120	(30)	650	(29)
Reception Diag. Center	65	(2)	43	(2)
<u>MEDIUM SECURITY</u>				
Concord	602	(16)	391	(17)
Framingham	267	(7)	147	(7)
Norfolk	465	(12)	334	(15)
SECC	212	(6)	124	(5)
Lemuel Shattuck Hospital	4	(0.1)	2	(0.1)
<u>MINIMUM SECURITY</u>				
Bay State C.C.	13	(0.3)	10	(0.4)
Medfield	9	(0.2)	7	(0.3)
NECC	126	(3)	84	(4)
Plymouth	48	(1)	35	(2)
Warwick	68	(2)	48	(2)
Gardner	6	(0.2)	4	(0.2)
<u>PRE-RELEASE</u>				
Boston State	257	(7)	119	(5)
Lancaster	75	(2)	44	(2)
Shirley	195	(5)	117	(5)
Norfolk P.R.	26	(1)	15	(1)
S. Middlesex	100	(3)	48	(2)
Park Drive	69	(2)	39	(2)
TOTAL	3727	(100)	2261	(100)

NUMBER OF D-REPORTS FOR EACH INDIVIDUAL

<u>NUMBER OF DISCIPLINARY REPORTS</u>	<u>NUMBER OF INDIVIDUALS</u>	
	<u>N</u>	<u>%</u>
ONE	1502	(66)
TWO	429	(19)
THREE	181	(8)
FOUR	66	(3)
FIVE	37	(2)
SIX	17	(1)
SEVEN	6	(*)
EIGHT	10	(*)
NINE	2	(*)
TEN	3	(*)
ELEVEN	3	(*)
TWELVE	2	(*)
THIRTEEN	1	(*)
FOURTEEN	1	(*)
FIFTEEN	0	(0)
SIXTEEN	0	(0)
SEVENTEEN	0	(0)
EIGHTEEN	1	(*)
TOTAL	2261	(100)

* = Less than 0.5%

MONTH OF REPORT BY TYPE OF REPORT

<u>MONTH</u>	<u>MAJOR</u>		<u>MINOR</u>		<u>REFERRED TO</u>		<u>TOTAL</u>
	<u>N</u>	<u>(%)</u>	<u>N</u>	<u>(%)</u>	<u>DISTRICT ATTORNEY</u>	<u>N (%)</u>	
July	507	(18)	156	(18)	10	(20)	673
August	481	(17)	139	(16)	4	(8)	624
September	687	(25)	161	(18)	7	(14)	855
October	416	(15)	148	(17)	12	(24)	576
November	339	(12)	142	(16)	15	(29)	496
December	364	(13)	136	(15)	3	(6)	503
TOTAL	2794	(100)	882	(100)	51	(100)	3727

DISCIPLINARY OFFENSE BY CHARGE NUMBER

<u>OFFENSE</u>		<u>CHARGE NUMBER</u>					<u>TOTAL</u>
#	<u>DESCRIPTION</u>	<u>#1</u>	<u>#2</u>	<u>#3</u>	<u>#4</u>	<u>#5</u>	
1	Disobeying/lying or Insolence	1006	17	2	0	0	1025
2	Violating Rules	931	413	1	0	0	1346
3	Failure to Keep Quarters	15	14	7	0	0	36
4	Out of Place	257	232	254	0	0	743
5	Failure to Perform Assingment	181	89	38	9	0	317
6	Counterfeiting/Forgery	1	2	2	0	0	5
7	Tampering with Exit	13	32	9	0	0	54
8	Disrupting Order	362	309	93	28	0	792
9	Escape	73	11	5	1	0	90
10	Alcohol/Other Drug	333	120	38	4	2	497
11	Misuse Medication	10	3	0	2	0	15
12	Refusing Drug Test	10	12	3	1	1	27
13	Gambling	5	2	1	0	0	8
14	Rioting	6	20	5	196	0	227
15	Possession of Weapon	87	27	12	5	0	131
16	Killing	0	0	0	0	0	0
17	Self Mutilation	8	29	3	0	2	42
18	Fighting/Assaulting/Threatening	185	168	64	28	6	451
19	Abusive Language	74	127	108	32	18	359
20	Engaging in Sexual Acts	7	6	1	0	0	14
21	Setting a Fire	5	15	3	1	0	24
22	Destroying Property	37	37	26	5	3	108
23	Possession of Others Property	14	17	4	5	0	40
24	Possession of Unauthorized Items	78	38	24	7	1	148
25	Exchanging Money	0	2	2	2	3	9
26	Stealing	12	19	8	2	4	45
27	Bribing Staff	0	1	0	0	0	1
28	Bribing Staff with services	1	0	1	0	0	2
29	Extortion	2	3	5	0	0	10
30	Violating Mass. Laws	7	51	25	12	8	103
31	Attempting to commit infraction	7	10	21	16	9	63
TOTAL		3727	1826	765	357	57	6732

FINDING OF DISCIPLINARY REPORT

<u>FINDING</u>	<u>N</u>	<u>%</u>
Guilty	2734	(73)
Not Guilty	144	(4)
Filed	52	(1)
Dismissed	205	(6)
Warning	320	(9)
Referred to DA	18	(0.4)
Consolidated	44	(1)
Escape Status	24	(1)
Released Before Hearing	43	(1)
No Finding	143	(4)
TOTAL	3727	(100)

APPEAL OUTCOMES FOR GUILTY DISPOSITIONS

	<u>N</u>	<u>%</u>
No Appeal	2300	(84)
Denied	306	(11)
Approved-Finding Changed	47	(2)
Approved-Sanction Changed	81	(3)
TOTAL Number of Guilty Dispositions	2734	(100)

SANCTION BY SANCTION NUMBER

<u>SANCTION</u>	<u>#1</u>	<u>#2</u>	<u>#3</u>	<u>TOTAL</u>	
				<u>N</u>	<u>%</u>
Reprimand	119	8	0	127	(4)
Loss of Privileges	466	96	2	564	(16)
Room Restriction	480	12	0	492	(14)
Restitution	21	22	1	44	(1)
Extra Work Duty	336	97	1	434	(12)
Isolation Time	1263	6	1	1270	(36)
Good Time Lost	19	335	0	354	(10)
Recommended For Reclassification	29	125	10	164	(5)
Referred to DA	6	11	0	17	(*)
Time Already Served	42	12	0	54	(2)
Probation	1	0	0	1	(*)
TOTAL	2782	724	15	3521	(100)

* = Less than 0.5%

<u>ACTION</u>	<u>#1</u>	<u>#2</u>	<u>#3</u>	<u>TOTAL</u>	
				<u>N</u>	<u>%</u>
Invoked	2000	267	14	2481	(71)
Suspended	690	233	1	924	(26)
Consolidated	87	23	0	110	(3)
TOTAL	2777	723	15	3515	(100)

GOOD CONDUCT DAYS LOST BY ISOLATION DAYS IMPOSED

<u>ISOLATION DAYS</u>	<u>NOT APPLICABLE</u>	<u>GOOD TIME LOSS</u>			<u>TOTAL</u>
		<u>10-29 DAYS</u>	<u>30-44 DAYS</u>	<u>45 OR MORE DAYS</u>	
Not Applicable	2437	0	1	0	2438
4 Days or Less	125	0	0	1	126
5 Days	337	67	1	0	402
6 Thru 9 Days	124	11	3	0	138
10 Days	164	9	23	0	196
11-14 Days	12	1	1	0	14
15 Days	123	1	7	15	146
Over 15 Days	51	2	1	213	267
TOTAL	3373	88	37	229	3727

NUMBER OF DISCIPLINARY REPORTS
BROKEN DOWN BY
AGE AND RACE

<u>AGE</u>	<u>RACE</u>					<u>TOTAL</u>
	<u>BLACK HISPANIC</u>	<u>BLACK NON</u>	<u>WHITE HISPANIC</u>	<u>WHITE NON</u>	<u>HISPANIC RACE NOT SPECIFIED</u>	
16	0	5	0	0	0	5
17	0	1	0	6	2	9
18	5	69	0	52	0	126
19	0	100	0	135	7	242
20	5	108	0	183	5	301
21	4	74	1	225	6	310
22-24	17	389	3	552	3	946
25-29	26	446	4	575	1	1052
30-39	0	169	3	384	0	556
40-64	0	57	0	101	3	161
65&Older	0	0	0	1	0	1
TOTAL	57	1418	11	2214	27	3727

NUMBER OF DISCIPLINARY REPORTS
BROKEN DOWN BY
SENTENCE AND COMMITTING INSTITUTION

<u>COMMITTING INSTITUTION</u>				
<u>MINIMUM SENTENCE</u>	<u>WALPOLE</u>	<u>CONCORD</u>	<u>FRAMINGHAM</u>	<u>TOTAL</u>
Indeterminate	32	1001	172	1205
Less than 2½ yrs.	5	0	2	7
2½ - 6 yrs	899	0	24	923
6 - 12	893	0	25	918
12 - 18	193	0	8	201
18 or more	73	0	0	73
Life	390	0	10	400
TOTAL	2485	1001	241	3727

<u>MAXIMUM SENTENCE</u>					
Less than 2½ yrs	5*	14	97		116
2½ - 6	300	247	70		617
6 - 12	1053	426	41		1520
12 - 18	313	160	15		488
18 or More	423	154	8		585
Life	391	0	10		401
TOTAL	2485	1001	241		3727

* Includes house of correction and interstate transfers.

TOTAL NUMBER OF D-REPORTS AND INDIVIDUALS
CLASSIFIED BY PRESENT OFFENSE CATEGORY

OFFENSE	NUMBER OF D-REPORTS		NUMBER OF INDIVIDUALS		NUMBER OF INDIVIDUALS INCARCERATED ON 1/1/80	
	<u>N</u>	<u>(%)</u>	<u>N</u>	<u>(%)</u>	<u>N</u>	<u>%</u>
Person	2807	(75)	1728	(76)	1891	(69)
Sex	78	(2)	53	(2)	328	(12)
Property	585	(16)	343	(15)	351	(13)
Drug	126	(3)	67	(3)	112	(4)
Other	131	(4)	70	(3)	72	(3)
TOTAL	3727	(100)	2261	(100)	2754	(100)

END