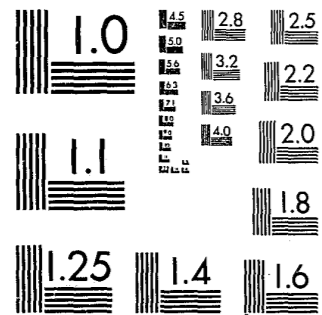


National Criminal Justice Reference Service



This microfiche was produced from documents received for inclusion in the NCJRS data base. Since NCJRS cannot exercise control over the physical condition of the documents submitted, the individual frame quality will vary. The resolution chart on this frame may be used to evaluate the document quality.



MICROCOPY RESOLUTION TEST CHART  
NATIONAL BUREAU OF STANDARDS-1963-A

Microfilming procedures used to create this fiche comply with the standards set forth in 41CFR 101-11.504.

Points of view or opinions stated in this document are those of the author(s) and do not represent the official position or policies of the U. S. Department of Justice.

National Institute of Justice  
United States Department of Justice  
Washington, D. C. 20531

185  
- MFI



A STATISTICAL DESCRIPTION OF COMMITMENTS TO  
MASSACHUSETTS HOUSES OF CORRECTION  
DURING 1979

PREPARED BY  
Charles Metzler  
Manager of Data Processing

MASSACHUSETTS DEPARTMENT OF CORRECTION

William T. Hogan  
Commissioner

MARCH, 1980

Publication #: 11,794-17-200-3-80

Approved By: Alfred C. Holland, State  
Purchasing Agent

82037

U.S. Department of Justice  
National Institute of Justice

This document has been reproduced exactly as received from the person or organization originating it. Points of view or opinions stated in this document are those of the authors and do not necessarily represent the official position or policies of the National Institute of Justice.

Permission to reproduce this copyrighted material has been granted by

Massachusetts Department of  
Corrections

to the National Criminal Justice Reference Service (NCJRS).

Further reproduction outside of the NCJRS system requires permission of the copyright owner.

TABLE OF CONTENTS

<u>TITLE</u>	<u>PAGE NUMBER</u>
Introduction.....	1
Operating Expenditures for Year Ending 6/30/79.....	2
Summary of Statistics.....	3
Statistical Tables	
Month Committed.....	5
Present Offense	
General Categories.....	6
Person Offenses.....	7
Sex Offenses.....	8
Property Offenses.....	9
Drug Offenses.....	10
Other Offenses.....	11
Sentence.....	12
Age At Commitment.....	13
Sex.....	14
Marital Status.....	14
Last Grade Completed.....	15

NCJRS

OCT 28 1981

ACQUISITIONS

INTRODUCTION

The following report is a brief description of court commitments to the Massachusetts county facilities (houses of correction) during 1979. Included is information concerning the operating expenditures as well as statistics regarding institution of commitment, month committed, present offense, sentence, age at commitment, sex, marital status and last school grade completed. The tables in this report were derived from data collected by the Data Processing Unit and were produced on the Massachusetts State College Computer Network.

Upon referring to the statistical tables in this report, the reader should take note of the following: (1) The total population is sub-divided by committing institution. (2) The top number in each cell represents the total number of individuals who fall into the corresponding category in the table. (3) The bottom number in each cell (the number contained in parenthesis) is the percentage of the number of individuals in the category to the total number of individuals from that institution (column percents). For example, upon referring to the first table on page 5, Month Committed is presented and the following types of information can be obtained:

- (1) The total number of individuals broken down by committing institution is labeled and presented horizontally.
- (2) The specific months are labeled and presented vertically.
- (3) Of the 4,612 individuals committed during 1979, 913 were committed to Billerica.
- (4) Of the 913 individuals committed to Billerica, 72 (8%) were committed in January.

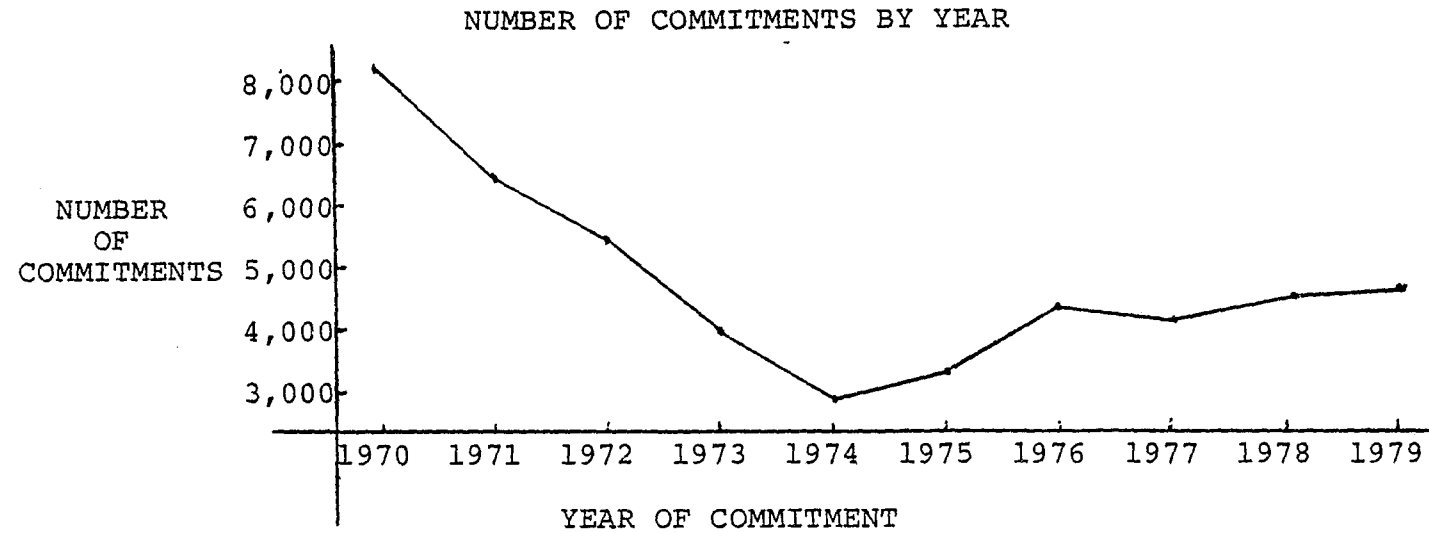
OPERATING EXPENSES  
FOR YEAR ENDING 6/30/79

<u>INSTITUTION</u>	<u>TOTAL EXPENDITURES</u>
Billerica Jail and House of Correction	\$ 4,446,653
Deer Island House of Correction (Boston)	\$ 3,279,147
Charles Street Jail (Boston)	
Edgartown Jail and House of Correction	
Worcester Jail and House of Correction	\$ 2,491,206
Springfield Jail and House of Correction	\$ 2,206,866
Salem Jail and House of Correction	
Lawrence Jail and House of Correction	
New Bedford Jail and House of Correction	\$ 1,122,354
Plymouth Jail and House of Correction	\$ 1,424,078
Pittsfield Jail and House of Correction	\$ 726,805
Dedham Jail and House of Correction	\$ 1,230,248
Greenfield Jail and House of Correction	
Northampton Jail and House of Correction	\$ 832,214
Barnstable Jail and House of Correction	\$ 1,029,680

\* Data Not Available

SUMMARY OF STATISTICS

During 1979, there were 4,612 individuals sentenced to the county facilities. This represents an increase of 9% over the number of commitments during 1978. The graph below illustrates the total number of commitments by year for the past ten years.



INSTITUTIONS

Each institution includes the county jail and house of correction except for Suffolk County. Deer Island is the Suffolk County House of Correction and Charles Street is the Suffolk County Jail. The vast majority of the 4,612 commitments were committed to the houses of correction. Excluding the thirty three commitments to Charles Street Jail, there were only 25 individuals committed to all other jails combined. The breakdown is as follows: Billerica, 2; Worcester, 3; Salem, 1; Lawrence, 10; Plymouth, 4; Pittsfield, 2; Northampton, 2; and Barnstable, 1.

A fire occurred in the north wing of Dedham House of Correction on November 24, 1978. Reconstruction was completed in January 1980 at a cost of \$450,000. Only five individuals were committed to Dedham House of Correction during 1979.

Over half (51%) of the commitments were sentenced to three institutions - Billerica (20%), Worcester (18%), and Deer Island (13%).

PRESENT OFFENSE

The majority of individuals were committed for non-person offenses (47% for offenses against property, 7% for drug offenses, and 28% for other offenses). The single offense for which individuals were most frequently sentenced was burglary (17%).

SENTENCE

Sentences to county facilities may not exceed 2 1/2 years. Nearly half (49%) were committed for sentences of three months or less which includes commitments in lieu of fines.

AGE AT COMMITMENT

The median age for commitments to houses of correction is 23 years old.

SEX

The vast majority of commitments were male (98%).

MARITAL STATUS

Most individuals were single (70%), whereas only 19% were married at the time of their incarceration.

LAST SCHOOL GRADE COMPLETED

The median last grade completed was eleventh grade. About one third of the commitments (35%) graduated from high school.

MONTH COMMITTED

	BILLERICA	DEER ISLAND	CHARLES STREET	EDGARTOWN	WORCESTER	SPRINGFIELD	SALEM	LAWRENCE	NEW BEDFORD	PLYMOUTH	PITTSFIELD	DEDHAM	GREENFIELD	NORTHAMPTON	BARNSTABLE	TOTAL
JANUARY	72 ( 8)	45 ( 7)	1 ( 3)	0 ( 0)	88 ( 11)	41 ( 8)	18 ( 9)	21 ( 8)	21 ( 6)	44 ( 12)	6 ( 4)	0 ( 0)	7 ( 9)	10 ( 6)	18 ( 11)	392 ( 8)
FEBRUARY	85 ( 9)	33 ( 5)	1 ( 3)	0 ( 0)	79 ( 9)	49 ( 9)	15 ( 7)	12 ( 5)	36 ( 11)	25 ( 7)	15 ( 10)	0 ( 0)	7 ( 9)	11 ( 7)	14 ( 9)	382 ( 8)
MARCH	97 ( 11)	61 ( 10)	1 ( 3)	0 ( 0)	73 ( 9)	38 ( 7)	18 ( 9)	22 ( 9)	44 ( 14)	19 ( 6)	28 ( 8)	9 ( 6)	0 ( 0)	3 ( 4)	12 ( 7)	442 ( 10)
APRIL	54 ( 6)	85 ( 14)	1 ( 3)	0 ( 0)	66 ( 8)	38 ( 7)	20 ( 10)	26 ( 8)	19 ( 6)	21 ( 6)	32 ( 9)	19 ( 13)	1 ( 20)	10 ( 13)	19 ( 11)	379 ( 8)
MAY	97 ( 11)	39 ( 6)	2 ( 6)	0 ( 0)	61 ( 7)	34 ( 6)	14 ( 6)	14 ( 7)	30 ( 12)	24 ( 7)	30 ( 8)	10 ( 7)	2 ( 40)	6 ( 8)	12 ( 7)	362 ( 8)
JUNE	77 ( 8)	45 ( 7)	5 ( 15)	0 ( 0)	51 ( 6)	47 ( 9)	14 ( 7)	14 ( 7)	20 ( 8)	27 ( 8)	27 ( 8)	6 ( 4)	0 ( 0)	4 ( 5)	12 ( 7)	307 ( 7)
JULY	43 ( 5)	41 ( 7)	4 ( 12)	0 ( 0)	83 ( 10)	34 ( 6)	17 ( 8)	17 ( 8)	21 ( 8)	35 ( 11)	28 ( 8)	6 ( 4)	0 ( 0)	12 ( 15)	20 ( 12)	388 ( 8)
AUGUST	89 ( 10)	43 ( 7)	3 ( 9)	0 ( 0)	58 ( 7)	51 ( 10)	20 ( 10)	20 ( 10)	21 ( 8)	26 ( 8)	41 ( 11)	12 ( 8)	0 ( 0)	5 ( 6)	24 ( 14)	455 ( 10)
SEPTEMBER	66 ( 7)	50 ( 8)	4 ( 12)	0 ( 0)	79 ( 9)	53 ( 10)	23 ( 11)	23 ( 11)	24 ( 10)	37 ( 11)	27 ( 8)	18 ( 12)	0 ( 0)	9 ( 11)	10 ( 6)	394 ( 9)
OCTOBER	87 ( 10)	54 ( 9)	6 ( 18)	0 ( 0)	64 ( 8)	44 ( 8)	17 ( 8)	17 ( 8)	17 ( 7)	20 ( 6)	34 ( 9)	20 ( 14)	0 ( 0)	7 ( 9)	12 ( 7)	311 ( 7)
NOVEMBER	87 ( 10)	60 ( 10)	3 ( 9)	0 ( 0)	52 ( 6)	48 ( 9)	16 ( 8)	16 ( 8)	16 ( 6)	14 ( 4)	14 ( 4)	13 ( 9)	0 ( 0)	7 ( 9)	12 ( 7)	162
DECEMBER	59 ( 6)	50 ( 8)	2 ( 6)	0 ( 0)	52 ( 6)	48 ( 9)	16 ( 8)	16 ( 8)	16 ( 6)	14 ( 4)	14 ( 4)	13 ( 9)	0 ( 0)	7 ( 9)	12 ( 7)	4612
TOTAL	913	606	33	0	834	526	209	209	250	324	358	146	5	80	166	162

PRESENT OFFENSE - GENERAL CATEGORIES	BILLERICA	DEER ISLAND	CHARLES STREET	EDGARTOWN	WORCESTER	SPRINGFIELD	SALEM	LAWRENCE	NEW BEDFORD	PLYMOUTH	PITTSFIELD	DEDHAM	GREENFIELD	NORTHAMPTON	BARNSTABLE	TOTAL
PERSON OFFENSES	154 ( 17)	24 ( 16)	5 ( 15)	0 ( 0)	147 ( 18)	79 ( 15)	40 ( 19)	34 ( 14)	53 ( 15)	57 ( 16)	35 ( 24)	1 ( 20)	13 ( 16)	73 ( 26)	23 ( 14)	777 ( 17)
PROPERTY OFFENSES	482 (-53)	312 (-54)	9 (-27)	0 ( 0)	305 (-37)	244 (-46)	80 (-34)	116 (-46)	156 (-48)	179 (-50)	65 (-45)	4 (-80)	50 (-53)	75 (-45)	91 (-56)	2168 (-47)
SEX OFFENSES	14 ( 2)	8 ( 1)	1 ( 3)	0 ( 0)	15 ( 2)	12 ( 2)	8 ( 4)	2 ( 1)	2 ( 1)	6 ( 2)	3 ( 2)	0 ( 0)	2 ( 3)	4 ( 2)	2 ( 1)	79 ( 2)
DRUG OFFENSES	29 ( 3)	83 ( 14)	1 ( 3)	0 ( 0)	39 ( 5)	50 ( 10)	14 ( 7)	13 ( 5)	17 ( 5)	24 ( 7)	11 ( 8)	0 ( 0)	2 ( 3)	11 ( 7)	10 ( 6)	304 ( 7)
OTHER OFFENSES	234 ( 26)	109 ( 18)	17 ( 52)	0 ( 0)	328 ( 39)	142 ( 27)	67 ( 32)	85 ( 34)	96 ( 30)	92 ( 26)	32 ( 22)	0 ( 0)	13 ( 16)	33 ( 20)	36 ( 22)	1284 ( 28)
TOTAL	913	606	33	0	834	526	209	250	324	358	146	5	80	166	162	4612

	BILLERICA	DEER ISLAND	CHARLES STREET	EDGARTOWN	WORCESTER	SPRINGFIELD	SALEM	LAWRENCE	NEW BEDFORD	PLYMOUTH	PITTSFIELD	DEDHAM	GREENFIELD	NORTHAMPTON	BARNSTABLE	TOTAL
<b>PRESENT OFFENSE-PERSON</b>	250	512	29	0	538	449	179	216	271	101	111	4	57	123	139	3037
NON-PERSON OFFENSES	( 83)	( 84)	( 85)	( 0)	( 82)	( 85)	( 81)	( 86)	( 84)	( 84)	( 76)	( 80)	( 84)	( 74)	( 86)	( 83)
MANSLAUGHTER *	21	5	0	0	9	1	1	3	2	3	2	0	1	1	5	54
	( -2)	( -1)	( -0)	( -0)	( -1)	( -0)	( -0)	( -1)	( -1)	( -1)	( -1)	( -0)	( -1)	( -1)	( -3)	( -1)
ASSAULT W/INTENT	2	7	0	0	0	1	2	1	0	0	0	0	0	0	0	6
	( 0)	( 0)	( 0)	( 0)	( 0)	( 0)	( 1)	( 0)	( 0)	( 0)	( 0)	( 0)	( 0)	( 0)	( 0)	( 0)
ARMED ROBBERY	2	1	0	0	2	7	1	0	1	1	2	0	1	1	0	19
	( -0)	( -0)	( -0)	( -0)	( -0)	( -1)	( -0)	( -0)	( -0)	( -0)	( -1)	( -0)	( -1)	( -1)	( -0)	( -0)
UNARMED ROBBERY	5	5	1	0	4	6	0	0	5	0	0	0	1	1	0	28
	( 1)	( 1)	( 3)	( 0)	( 0)	( 1)	( 0)	( 0)	( 2)	( 0)	( 0)	( 0)	( 1)	( 1)	( 0)	( 1)
ARMED ASSAULT	56	31	2	0	50	21	20	19	16	19	10	9	7	14	8	264
	( -6)	( -5)	( -6)	( -0)	( -6)	( -4)	( -10)	( -4)	( -5)	( -5)	( -7)	( -0)	( -9)	( -8)	( -5)	( -6)
UNARMED ASSAULT	60	41	2	0	73	37	13	19	22	24	21	1	3	23	6	345
	( 7)	( 7)	( 6)	( 0)	( 9)	( 7)	( 6)	( 8)	( 7)	( 7)	( 14)	( 20)	( 4)	( 14)	( 4)	( 7)
MAYHEM	0	0	0	0	0	0	1	0	0	3	0	0	0	0	0	4
	( -0)	( -0)	( -0)	( -0)	( -0)	( -0)	( -0)	( -0)	( -0)	( -1)	( -0)	( -0)	( -0)	( -0)	( -0)	( -0)
KIDNAPPING	2	2	0	0	2	2	0	0	5	3	0	0	0	1	2	23
	( 0)	( 0)	( 0)	( 0)	( 0)	( 0)	( 0)	( 0)	( 2)	( 1)	( 0)	( 0)	( 0)	( 1)	( 1)	( 0)
EXTORTION	5	7	0	0	3	2	1	1	1	3	0	0	0	0	0	23
	( -1)	( -1)	( -0)	( -0)	( -0)	( -0)	( -0)	( -0)	( -0)	( -1)	( -0)	( -0)	( -0)	( -0)	( -0)	( -0)
CONSPIRACY	1	2	0	0	3	1	0	0	0	1	0	0	0	2	2	12
	( 0)	( 0)	( 0)	( 0)	( 0)	( 0)	( 0)	( 0)	( 0)	( 0)	( 0)	( 0)	( 0)	( 1)	( 1)	( 0)
<b>TOTAL</b>	<b>913</b>	<b>606</b>	<b>33</b>	<b>0</b>	<b>834</b>	<b>526</b>	<b>209</b>	<b>250</b>	<b>324</b>	<b>358</b>	<b>146</b>	<b>5</b>	<b>80</b>	<b>166</b>	<b>162</b>	<b>4612</b>

\* Manslaughter includes vehicular homicide.

	BILLERICA	DEER ISLAND	CHARLES STREET	EDGARTOWN	WORCESTER	SPRINGFIELD	SALEM	LAWRENCE	NEW BEDFORD	PLYMOUTH	PITTSFIELD	DEDHAM	GREENFIELD	NORTHAMPTON	BARNSTABLE	TOTAL
PRESENT OFFENSE-SEX																
NOT APPLICABLE	899 ( 98)	594 ( 99)	12 ( 97)	0 ( 0)	119 ( 98)	514 ( 98)	281 ( 96)	244 ( 99)	322 ( 99)	352 ( 99)	143 ( 98)	5 (100)	78 ( 98)	162 ( 98)	160 ( 99)	4533 ( 98)
RAPE	0 ( 0)	0 ( 0)	0 ( 0)	0 ( 0)	0 ( 0)	0 ( 0)	0 ( 0)	0 ( 0)	0 ( 0)	0 ( 0)	1 ( 1)	0 ( 0)	0 ( 0)	1 ( 1)	0 ( 0)	2 ( 2)
ASSAULT W/INTENT RAPE	1 ( 0)	0 ( 0)	0 ( 0)	0 ( 0)	2 ( 0)	7 ( 1)	2 ( 1)	0 ( 0)	0 ( 0)	2 ( 1)	0 ( 0)	0 ( 0)	0 ( 0)	0 ( 0)	0 ( 0)	11 ( 1)
RAPE OF MINOR	0 ( 0)	5 ( 1)	0 ( 0)	0 ( 0)	5 ( 1)	2 ( 0)	0 ( 0)	0 ( 0)	2 ( 1)	1 ( 0)	1 ( 1)	0 ( 0)	1 ( 1)	1 ( 1)	0 ( 0)	19 ( 0)
ASSAULT W/INTENT RAPE MINOR	5 ( 1)	2 ( 0)	0 ( 0)	0 ( 0)	0 ( 0)	4 ( 1)	4 ( 2)	0 ( 0)	0 ( 0)	1 ( 0)	1 ( 1)	0 ( 0)	1 ( 1)	1 ( 1)	0 ( 0)	19 ( 0)
UNNATURAL & LACIVIOUS ACTS	3 ( 0)	0 ( 0)	0 ( 0)	0 ( 0)	2 ( 0)	1 ( 0)	1 ( 0)	0 ( 0)	0 ( 0)	1 ( 0)	0 ( 0)	0 ( 0)	0 ( 0)	0 ( 0)	1 ( 1)	9 ( 2)
OTHER *	5 ( 1)	1 ( 0)	1 ( 3)	0 ( 0)	5 ( 1)	2 ( 0)	1 ( 0)	2 ( 1)	0 ( 0)	1 ( 0)	0 ( 0)	0 ( 0)	0 ( 0)	1 ( 1)	1 ( 1)	21 ( 0)
TOTAL	913	606	33	0	834	526	209	250	324	358	146	5	80	166	162	4612

\* Other sex offenses includes fornication, indecent exposure, open and gross lewdness, and lewd and lacivious cohabitation.



	BILLERICA	DEER ISLAND	CHARLES STREET	EDGEMOUNT	WORCESTER	SPRINGFIELD	SALEM	LAWRENCE	NEW BEDFORD	PLYMOUTH	PITTSFIELD	DEDHAM	GREENFIELD	NORTHAMPTON	BARNSTABLE	TOTAL
<b>PRESENT OFFENSE-PROPERTY</b>	74	284	24	0	529	282	129	134	154	179	81	1	30	91	71	2444
NOT APPLICABLE	( 67)	( 49)	( 73)	( 0)	( 63)	( 54)	( 62)	( 54)	( 52)	( 50)	( 55)	( 20)	( 38)	( 55)	( 44)	( 53)
ARSON	12	3	0	0	11	5	3	1	3	1	2	2	0	2	1	48
	( 1)	( 0)	( 0)	( 0)	( 1)	( 1)	( 1)	( 1)	( 1)	( 0)	( 1)	( 4)	( 0)	( 1)	( 1)	( 1)
ARMED BURGLARY	1	0	0	0	1	0	0	0	0	1	0	0	0	0	1	4
	( 0)	( 0)	( 0)	( 0)	( 0)	( 0)	( 0)	( 0)	( 0)	( 0)	( 0)	( 0)	( 0)	( 0)	( 1)	( 0)
BURGLARY	157	95	1	0	119	91	36	54	77	68	25	1	18	22	36	800
	( 17)	( 15)	( 3)	( 0)	( 14)	( 17)	( 17)	( 22)	( 24)	( 19)	( 17)	( 20)	( 23)	( 13)	( 22)	( 17)
BURGLARY TOOLS	22	13	1	0	10	7	2	8	3	3	0	0	0	1	3	73
	( 2)	( 2)	( 3)	( 0)	( 1)	( 1)	( 1)	( 3)	( 1)	( 1)	( 0)	( 0)	( 0)	( 1)	( 2)	( 2)
LARCENY FROM THE PERSON	16	39	1	0	6	0	2	1	12	6	0	0	2	3	1	80
	( 2)	( 5)	( 3)	( 0)	( 1)	( 0)	( 1)	( 0)	( 4)	( 2)	( 0)	( 0)	( 3)	( 2)	( 1)	( 2)
LARCENY	121	59	3	0	75	73	15	20	35	47	15	0	12	21	20	517
	( 13)	( 10)	( 9)	( 0)	( 9)	( 14)	( 7)	( 8)	( 11)	( 13)	( 11)	( 0)	( 15)	( 13)	( 12)	( 11)
MOTOR VEHICLE THEFT *	74	57	2	0	20	16	3	5	12	15	5	1	6	3	9	228
	( 8)	( 9)	( 6)	( 0)	( 2)	( 2)	( 1)	( 2)	( 4)	( 4)	( 3)	( 20)	( 9)	( 2)	( 6)	( 5)
FORGERY & UTTERING	21	7	0	0	15	7	4	4	3	14	6	0	4	5	6	96
	( 2)	( 1)	( 0)	( 0)	( 2)	( 1)	( 2)	( 2)	( 1)	( 4)	( 4)	( 0)	( 5)	( 3)	( 4)	( 2)
FRAUD	0	0	0	0	0	1	0	0	0	0	0	0	1	1	1	4
	( 0)	( 0)	( 0)	( 0)	( 0)	( 0)	( 0)	( 0)	( 0)	( 0)	( 0)	( 0)	( 1)	( 1)	( 1)	( 0)
STOLEN GOODS	37	33	1	0	23	31	9	11	2	11	9	0	3	12	11	193
	( 4)	( 5)	( 3)	( 0)	( 3)	( 6)	( 4)	( 4)	( 1)	( 3)	( 6)	( 0)	( 4)	( 7)	( 7)	( 4)
PROPERTY INJURIES	21	15	0	0	25	13	6	10	9	13	2	0	4	5	2	125
	( 2)	( 2)	( 0)	( 0)	( 3)	( 2)	( 3)	( 4)	( 3)	( 4)	( 1)	( 0)	( 5)	( 3)	( 1)	( 3)
<b>TOTAL</b>	<b>913</b>	<b>606</b>	<b>33</b>	<b>0</b>	<b>834</b>	<b>526</b>	<b>209</b>	<b>250</b>	<b>324</b>	<b>358</b>	<b>146</b>	<b>5</b>	<b>80</b>	<b>166</b>	<b>162</b>	<b>4612</b>

\* Motor Vehicle Theft includes larceny of a motor vehicle and use without authority

PRESENT OFFENSE -- DRUG	BILLERICA	DEER ISLAND	CHARLES STREET	EDGARTOWN	MORCESTER	SPRINGFIELD	SALEM	LAWRENCE	NEW BEDFORD	PLYMOUTH	PITTSFIELD	DEDHAM	GREENFIELD	NORTHAMPTON	BARNSTABLE	TOTAL
NOT APPLICABLE	334 ( 97)	523 ( 86)	32 ( 07)	0 ( 0)	795 ( 95)	476 ( 93)	195 ( 33)	237 ( 95)	307 ( 35)	334 ( 93)	135 ( 92)	5 ( 00)	77 ( 98)	155 ( 93)	152 ( 94)	4308 ( 93)
POSSESSION OF HEROIN	1 ( 2)	0 ( 0)	0 ( 0)	0 ( 0)	0 ( 0)	0 ( 0)	0 ( 0)	1 ( 0)	0 ( 0)	0 ( 0)	0 ( 0)	0 ( 0)	0 ( 0)	0 ( 0)	0 ( 0)	2 ( 3)
POSSESSION OF NARCOTICS	0 ( 0)	0 ( 0)	0 ( 3)	0 ( 0)	0 ( 0)	1 ( 3)	0 ( 0)	0 ( 3)	0 ( 0)	0 ( 3)	0 ( 0)	0 ( 0)	0 ( 3)	0 ( 0)	0 ( 0)	1 ( 0)
STEALING DRUGS	0 ( 0)	0 ( 0)	0 ( 0)	0 ( 0)	0 ( 0)	0 ( 0)	0 ( 0)	0 ( 0)	0 ( 0)	0 ( 0)	0 ( 0)	0 ( 0)	0 ( 0)	0 ( 0)	1 ( 1)	1 ( 0)
PRESENCE	0 ( 0)	2 ( 0)	7 ( 0)	0 ( 0)	0 ( 0)	2 ( 0)	0 ( 0)	0 ( 0)	0 ( 0)	0 ( 0)	0 ( 0)	0 ( 0)	0 ( 0)	0 ( 0)	0 ( 0)	4 ( 0)
POSSESSION OF SYRINGE	2 ( 0)	3 ( 0)	0 ( 0)	0 ( 0)	0 ( 0)	0 ( 0)	1 ( 0)	1 ( 0)	0 ( 0)	1 ( 3)	0 ( 0)	0 ( 0)	0 ( 0)	0 ( 0)	0 ( 0)	8 ( 0)
SALE OF HEROIN	0 ( 0)	0 ( 0)	0 ( 0)	1 ( 0)	1 ( 0)	2 ( 0)	0 ( 0)	0 ( 0)	1 ( 0)	0 ( 0)	0 ( 0)	0 ( 0)	0 ( 0)	0 ( 0)	0 ( 0)	4 ( 0)
OP MV UNDER DRUGS	0 ( 0)	1 ( 0)	0 ( 0)	0 ( 0)	0 ( 0)	0 ( 0)	0 ( 0)	0 ( 0)	0 ( 0)	0 ( 0)	0 ( 0)	0 ( 0)	0 ( 0)	0 ( 0)	0 ( 0)	1 ( 0)
CONTROLLED SUBST-NO CLASS	20 ( 2)	15 ( 2)	1 ( 3)	0 ( 0)	37 ( 4)	32 ( 6)	12 ( 6)	10 ( 4)	12 ( 4)	16 ( 4)	3 ( 2)	0 ( 0)	1 ( 1)	0 ( 5)	7 ( 4)	174 ( 4)
CONTROLLED SUBST CLASS A	5 ( 1)	17 ( 3)	0 ( 0)	0 ( 0)	0 ( 0)	3 ( 1)	0 ( 0)	1 ( 0)	2 ( 1)	0 ( 0)	0 ( 0)	0 ( 3)	0 ( 0)	0 ( 0)	0 ( 0)	28 ( 1)
CONTROLLED SUBST CLASS B	0 ( 0)	12 ( 2)	0 ( 0)	0 ( 0)	0 ( 0)	0 ( 0)	0 ( 0)	0 ( 0)	0 ( 0)	4 ( 1)	4 ( 3)	0 ( 0)	1 ( 1)	0 ( 0)	1 ( 1)	22 ( 0)
CONTROLLED SUBST CLASS C	0 ( 0)	19 ( 3)	0 ( 0)	0 ( 0)	0 ( 0)	1 ( 0)	0 ( 0)	0 ( 0)	2 ( 1)	0 ( 0)	0 ( 0)	0 ( 0)	0 ( 0)	1 ( 1)	0 ( 0)	23 ( 0)
CONTROLLED SUBST CLASS D	0 ( 0)	12 ( 2)	0 ( 0)	0 ( 0)	1 ( 0)	9 ( 2)	1 ( 3)	0 ( 0)	0 ( 0)	3 ( 1)	6 ( 3)	0 ( 0)	0 ( 0)	1 ( 1)	1 ( 1)	32 ( 1)
CONTROLLED SUBST CLASS E	1 ( 0)	2 ( 0)	0 ( 0)	0 ( 0)	0 ( 0)	0 ( 0)	0 ( 0)	0 ( 0)	0 ( 0)	0 ( 0)	0 ( 0)	0 ( 0)	0 ( 0)	1 ( 1)	0 ( 0)	4 ( 3)
TOTAL	913	606	33	0	834	526	299	250	324	350	146	5	80	166	162	4612

Class A includes heroin and morphine. Class B includes cocaine, opium, amphetamines and barbituates. Class C includes hallucinogens  
Class D includes marijuana. Class E includes other prescription drugs.

	BILLERICA	DEER ISLAND	CHARLES STREET	EDGARTOWN	WORCESTER	SPRINGFIELD	SALEM	LAWRENCE	NEW BEDFORD	PLYMOUTH	PITTSFIELD	DEDHAM	GREENFIELD	NORTHAMPTON	BARNSTABLE	TOTAL
PRESENT OFFENSE - OTHER																
NOT APPLICABLE	679 ( 74)	497 ( 82)	15 ( 43)	0 ( 0)	506 ( 61)	386 ( 73)	142 ( 68)	155 ( 65)	220 ( 70)	265 ( 74)	114 ( 78)	5 (100)	57 ( 84)	133 ( 80)	126 ( 78)	3328 ( 72)
ESCAPE	4 ( 0)	2 ( 0)	0 ( 0)	0 ( 0)	2 ( 0)	3 ( 1)	1 ( 0)	2 ( 1)	2 ( 1)	3 ( 1)	0 ( 0)	0 ( 0)	1 ( 1)	0 ( 0)	1 ( 1)	21 ( 0)
WEAPONS OFFENSES *	28 ( 3)	29 ( 5)	0 ( 0)	0 ( 0)	19 ( 2)	12 ( 2)	8 ( 4)	10 ( 4)	12 ( 4)	21 ( 5)	4 ( 3)	0 ( 0)	0 ( 0)	1 ( 1)	3 ( 2)	147 ( 3)
NON-SUPPORT	9 ( 1)	3 ( 0)	0 ( 0)	0 ( 0)	27 ( 3)	5 ( 1)	2 ( 1)	9 ( 3)	2 ( 1)	0 ( 0)	3 ( 2)	0 ( 0)	0 ( 0)	0 ( 0)	0 ( 0)	59 ( 1)
COMMON NIGHT WALKER	0 ( 0)	0 ( 0)	0 ( 0)	0 ( 0)	1 ( 0)	6 ( 1)	0 ( 0)	0 ( 0)	0 ( 0)	1 ( 0)	0 ( 0)	0 ( 0)	0 ( 0)	0 ( 0)	0 ( 0)	8 ( 0)
PIMPING	0 ( 0)	2 ( 0)	0 ( 0)	0 ( 0)	1 ( 0)	1 ( 0)	0 ( 0)	0 ( 0)	0 ( 0)	0 ( 0)	0 ( 0)	0 ( 0)	0 ( 0)	0 ( 0)	0 ( 0)	4 ( 0)
DISTURBING THE PEACE	29 ( 3)	12 ( 2)	3 ( 9)	0 ( 0)	66 ( 8)	15 ( 3)	5 ( 2)	12 ( 5)	19 ( 5)	8 ( 2)	7 ( 5)	0 ( 0)	2 ( 3)	0 ( 0)	3 ( 2)	181 ( 4)
PROSTITUTION	0 ( 0)	1 ( 0)	0 ( 0)	0 ( 0)	3 ( 0)	9 ( 2)	0 ( 0)	0 ( 0)	0 ( 0)	3 ( 1)	0 ( 0)	0 ( 0)	0 ( 0)	0 ( 0)	0 ( 0)	16 ( 6)
ILLEGITIMACY	2 ( 0)	0 ( 0)	0 ( 0)	0 ( 0)	1 ( 0)	0 ( 0)	0 ( 0)	0 ( 0)	0 ( 0)	0 ( 0)	0 ( 0)	0 ( 0)	0 ( 0)	0 ( 0)	0 ( 0)	3 ( 0)
GAMING	5 ( 1)	0 ( 0)	0 ( 0)	0 ( 0)	0 ( 0)	0 ( 0)	0 ( 0)	0 ( 0)	0 ( 0)	0 ( 0)	0 ( 0)	0 ( 0)	0 ( 0)	1 ( 1)	0 ( 0)	6 ( 0)
MOTOR VEHICLE OFFENSE **	86 ( 9)	44 ( 7)	6 ( 18)	0 ( 0)	140 ( 17)	57 ( 13)	34 ( 16)	33 ( 13)	51 ( 16)	60 ( 11)	9 ( 6)	0 ( 0)	4 ( 5)	15 ( 9)	20 ( 12)	544 ( 12)
CONTEMPT-OF-COURT	30 ( 3)	3 ( 0)	6 ( 18)	0 ( 0)	8 ( 1)	9 ( 2)	5 ( 2)	14 ( 6)	0 ( 0)	4 ( 1)	5 ( 3)	0 ( 0)	1 ( 1)	8 ( 5)	2 ( 1)	95 ( 2)
BRIBERY	2 ( 0)	0 ( 0)	0 ( 0)	0 ( 0)	0 ( 0)	0 ( 0)	0 ( 0)	0 ( 0)	0 ( 0)	0 ( 0)	0 ( 0)	0 ( 0)	0 ( 0)	0 ( 0)	0 ( 0)	2 ( 0)
OTHER ***	41 ( 4)	16 ( 3)	2 ( 5)	0 ( 0)	60 ( 7)	15 ( 3)	12 ( 5)	6 ( 2)	10 ( 3)	12 ( 3)	4 ( 3)	0 ( 0)	5 ( 5)	8 ( 5)	7 ( 4)	198 ( 4)
TOTAL	913	606	31	0	834	526	207	250	324	350	146	5	80	166	162	4612

\* Weapons offenses includes the Bartley-Fox Gun Law.  
 \*\* Motor Vehicle Offense includes operating a MV under the influence of alcohol.  
 \*\*\* Other includes trespassing, begging, minor in possession of alcohol, unlawful possession of alcohol, false alarm of fire, cruelty to animals, pornography and loitering.

SENTENCE	BILLERICA	DEER ISLAND	CHARLES STREET	EDGARTOWN	WORCESTER	SPRINGFIELD	SALEM	LAWRENCE	NEW BEDFORD	PLYMOUTH	PITTSFIELD	DEDHAM	GREENFIELD	NORTHAMPTON	BARNSTABLE	TOTAL
FINED	44 ( 5)	2 ( 0)	16 ( 5)	0 ( 0)	207 ( 25)	34 ( 6)	16 ( 8)	16 ( 6)	49 ( 15)	19 ( 5)	3 ( 2)	0 ( 0)	1 ( 1)	5 ( 3)	17 ( 10)	429 ( 9)
LESS THAN 1 MONTH	137 ( 15)	23 ( 4)	10 ( 3)	0 ( 0)	91 ( 11)	61 ( 12)	23 ( 11)	56 ( 22)	28 ( 9)	24 ( 7)	14 ( 10)	2 ( 4)	11 ( 14)	19 ( 11)	21 ( 13)	520 ( 11)
1 MONTH	117 ( 13)	64 ( 11)	2 ( 6)	0 ( 0)	97 ( 12)	58 ( 11)	27 ( 13)	39 ( 16)	39 ( 12)	32 ( 9)	15 ( 10)	1 ( 2)	6 ( 8)	29 ( 17)	19 ( 12)	545 ( 12)
2 MONTHS	43 ( 5)	22 ( 6)	1 ( 3)	0 ( 0)	53 ( 6)	17 ( 3)	13 ( 6)	12 ( 5)	18 ( 6)	12 ( 3)	7 ( 5)	1 ( 2)	5 ( 6)	6 ( 4)	8 ( 5)	218 ( 5)
3 MONTHS	129 ( 14)	59 ( 10)	1 ( 3)	0 ( 0)	71 ( 9)	76 ( 14)	17 ( 8)	33 ( 13)	39 ( 12)	42 ( 12)	22 ( 15)	0 ( 0)	9 ( 11)	19 ( 11)	9 ( 6)	526 ( 11)
4 MONTHS	9 ( 1)	8 ( 1)	1 ( 3)	0 ( 0)	8 ( 1)	9 ( 2)	5 ( 2)	3 ( 1)	5 ( 2)	3 ( 1)	3 ( 2)	0 ( 0)	2 ( 3)	3 ( 2)	4 ( 2)	63 ( 1)
5 MONTHS	8 ( 1)	3 ( 0)	0 ( 0)	0 ( 0)	7 ( 1)	1 ( 0)	2 ( 1)	1 ( 0)	1 ( 0)	5 ( 1)	0 ( 0)	0 ( 0)	1 ( 1)	1 ( 1)	1 ( 1)	31 ( 1)
6 MONTHS	145 ( 16)	108 ( 18)	0 ( 0)	0 ( 0)	103 ( 12)	81 ( 15)	23 ( 11)	28 ( 11)	49 ( 15)	64 ( 18)	30 ( 21)	0 ( 0)	13 ( 16)	31 ( 19)	16 ( 10)	691 ( 15)
7 MONTHS	1 ( 0)	1 ( 0)	0 ( 0)	0 ( 0)	1 ( 0)	0 ( 0)	0 ( 0)	0 ( 0)	0 ( 0)	0 ( 0)	1 ( 1)	0 ( 0)	0 ( 0)	0 ( 0)	0 ( 0)	4 ( 0)
8 MONTHS	4 ( 0)	0 ( 0)	0 ( 0)	0 ( 0)	2 ( 0)	1 ( 0)	2 ( 1)	0 ( 0)	0 ( 0)	1 ( 0)	1 ( 1)	0 ( 0)	0 ( 0)	1 ( 1)	1 ( 1)	13 ( 0)
9-11 MONTHS	18 ( 2)	20 ( 3)	0 ( 0)	0 ( 0)	16 ( 2)	13 ( 2)	6 ( 3)	5 ( 2)	10 ( 3)	11 ( 3)	7 ( 5)	0 ( 0)	7 ( 9)	3 ( 2)	2 ( 1)	118 ( 3)
1 YEAR	161 ( 18)	148 ( 24)	0 ( 0)	0 ( 0)	86 ( 10)	72 ( 14)	37 ( 18)	31 ( 12)	40 ( 12)	77 ( 22)	16 ( 11)	1 ( 2)	11 ( 14)	22 ( 13)	28 ( 17)	730 ( 16)
13-17 MONTHS	2 ( 0)	6 ( 1)	0 ( 0)	0 ( 0)	5 ( 1)	6 ( 1)	3 ( 1)	0 ( 0)	2 ( 1)	0 ( 0)	1 ( 1)	0 ( 0)	1 ( 1)	0 ( 0)	4 ( 2)	30 ( 1)
1 1/2 YEARS	24 ( 3)	26 ( 4)	0 ( 0)	0 ( 0)	19 ( 2)	30 ( 6)	7 ( 3)	5 ( 2)	9 ( 3)	10 ( 3)	10 ( 7)	0 ( 0)	2 ( 3)	6 ( 4)	2 ( 1)	150 ( 3)
19-23 MONTHS	0 ( 0)	1 ( 0)	0 ( 0)	0 ( 0)	3 ( 0)	0 ( 0)	0 ( 0)	0 ( 0)	4 ( 1)	1 ( 0)	0 ( 0)	0 ( 0)	1 ( 1)	0 ( 0)	1 ( 1)	11 ( 0)
2 YEARS	42 ( 5)	83 ( 14)	1 ( 3)	0 ( 0)	44 ( 5)	29 ( 6)	14 ( 7)	11 ( 4)	19 ( 6)	42 ( 12)	10 ( 7)	0 ( 0)	2 ( 3)	9 ( 5)	14 ( 9)	320 ( 7)
OVER 2 YEARS	29 ( 3)	32 ( 5)	1 ( 3)	0 ( 0)	21 ( 3)	39 ( 7)	14 ( 7)	10 ( 4)	12 ( 4)	15 ( 4)	6 ( 4)	0 ( 0)	8 ( 10)	12 ( 7)	15 ( 9)	213 ( 5)
TOTAL	913	606	33	0	814	526	209	250	324	354	146	5	80	166	162	4612

	BILLERICA	DEER ISLAND	CHARLES STREET	EDGARTOWN	WORCESTER	SPRINGFIELD	SALEM	LAWRENCE	NEW BEDFORD	PLYMOUTH	PITTSFIELD	DEDHAM	GREENFIELD	NORTHAMPTON	BARNSTABLE	TOTAL
<u>AGE AT COMMITMENT</u>																
16	0 ( 0)	0 ( 0)	0 ( 0)	0 ( 0)	3 ( 0)	1 ( 0)	0 ( 0)	0 ( 0)	0 ( 0)	0 ( 0)	0 ( 0)	0 ( 0)	0 ( 0)	1 ( 1)	0 ( 0)	5 ( 0)
17	43 ( 5)	34 ( 6)	1 ( 3)	0 ( 0)	49 ( 6)	31 ( 6)	10 ( 5)	24 ( 10)	17 ( 5)	14 ( 4)	12 ( 8)	0 ( 0)	5 ( 6)	17 ( 10)	7 ( 4)	264 ( 6)
18	92 ( 10)	49 ( 8)	3 ( 9)	0 ( 0)	86 ( 10)	44 ( 8)	27 ( 13)	32 ( 13)	35 ( 11)	43 ( 12)	16 ( 11)	1 ( 20)	11 ( 14)	17 ( 10)	19 ( 12)	475 ( 10)
19	95 ( 10)	61 ( 10)	4 ( 12)	0 ( 0)	72 ( 9)	51 ( 10)	17 ( 8)	26 ( 10)	37 ( 11)	28 ( 8)	19 ( 13)	0 ( 0)	12 ( 15)	16 ( 10)	13 ( 8)	451 ( 10)
20	73 ( 8)	65 ( 11)	2 ( 6)	0 ( 0)	52 ( 6)	44 ( 8)	18 ( 9)	20 ( 8)	19 ( 6)	34 ( 9)	17 ( 12)	0 ( 0)	8 ( 10)	5 ( 3)	14 ( 9)	371 ( 8)
21	74 ( 8)	49 ( 8)	6 ( 18)	0 ( 0)	64 ( 8)	40 ( 8)	24 ( 11)	20 ( 8)	30 ( 9)	31 ( 9)	12 ( 8)	1 ( 20)	4 ( 5)	7 ( 4)	18 ( 11)	380 ( 8)
22	59 ( 6)	43 ( 7)	0 ( 0)	0 ( 0)	52 ( 5)	36 ( 7)	18 ( 9)	19 ( 8)	30 ( 9)	25 ( 7)	9 ( 6)	1 ( 20)	4 ( 5)	14 ( 8)	15 ( 9)	325 ( 7)
23	53 ( 6)	34 ( 6)	0 ( 0)	0 ( 0)	36 ( 4)	37 ( 7)	8 ( 4)	14 ( 6)	22 ( 7)	26 ( 7)	5 ( 3)	0 ( 0)	5 ( 6)	15 ( 9)	12 ( 7)	267 ( 6)
24	50 ( 5)	34 ( 6)	3 ( 9)	0 ( 0)	41 ( 5)	30 ( 6)	9 ( 4)	12 ( 5)	15 ( 5)	21 ( 6)	7 ( 5)	0 ( 0)	3 ( 4)	10 ( 6)	6 ( 4)	241 ( 5)
25	43 ( 5)	36 ( 6)	0 ( 0)	0 ( 0)	47 ( 6)	23 ( 4)	6 ( 3)	9 ( 4)	15 ( 5)	22 ( 6)	7 ( 5)	0 ( 0)	4 ( 5)	9 ( 5)	4 ( 2)	225 ( 5)
26-29	107 ( 12)	79 ( 13)	5 ( 15)	0 ( 0)	112 ( 13)	68 ( 13)	24 ( 11)	30 ( 12)	46 ( 14)	41 ( 11)	15 ( 10)	2 ( 40)	4 ( 5)	17 ( 10)	25 ( 15)	575 ( 12)
30-39	131 ( 14)	83 ( 14)	7 ( 21)	0 ( 0)	134 ( 16)	88 ( 17)	30 ( 14)	31 ( 12)	38 ( 12)	53 ( 15)	17 ( 12)	0 ( 0)	12 ( 15)	27 ( 16)	13 ( 8)	664 ( 14)
40-64	89 ( 10)	38 ( 6)	2 ( 6)	0 ( 0)	81 ( 10)	33 ( 6)	18 ( 9)	13 ( 5)	18 ( 6)	20 ( 6)	10 ( 7)	0 ( 0)	7 ( 9)	11 ( 7)	16 ( 10)	356 ( 8)
65 and older	4 ( 0)	1 ( 0)	0 ( 0)	0 ( 0)	5 ( 1)	0 ( 0)	0 ( 0)	0 ( 0)	2 ( 1)	0 ( 0)	0 ( 0)	0 ( 0)	1 ( 1)	0 ( 0)	0 ( 0)	13 ( 0)
TOTAL	913	606	33	0	834	526	209	250	324	358	146	5	80	166	162	4612

<u>SEX</u>	BILLERICA	DEER ISLAND	CHARLES STREET	EDGARTOWN	WORCESTER	SPRINGFIELD	SALEM	LAWRENCE	NEW BEDFORD	PLYMOUTH	PITTSFIELD	DEDHAM	GREENFIELD	NORTHAMPTON	BARNSTABLE	TOTAL
MALE	913 (100)	606 (100)	33 (100)	0 (0)	832 (100)	487 (93)	209 (100)	250 (100)	324 (100)	319 (89)	138 (95)	5 (100)	79 (99)	165 (99)	160 (99)	4520 (98)
FEMALE	0 (0)	0 (0)	0 (0)	0 (0)	2 (0)	39 (7)	0 (0)	0 (0)	0 (0)	39 (11)	8 (5)	0 (0)	1 (1)	1 (1)	2 (1)	92 (2)
TOTAL	913	606	33	0	834	526	209	250	324	358	146	5	80	166	162	4612

<u>MARITAL STATUS</u>	BILLERICA	DEER ISLAND	CHARLES STREET	EDGARTOWN	WORCESTER	SPRINGFIELD	SALEM	LAWRENCE	NEW BEDFORD	PLYMOUTH	PITTSFIELD	DEDHAM	GREENFIELD	NORTHAMPTON	BARNSTABLE	TOTAL
SINGLE	625 (68)	458 (76)	25 (76)	0 (0)	575 (69)	362 (69)	153 (73)	162 (65)	243 (75)	247 (69)	99 (68)	2 (40)	58 (73)	115 (69)	122 (75)	3246 (70)
MARRIED	176 (19)	94 (16)	6 (18)	0 (0)	136 (16)	110 (21)	39 (19)	64 (26)	54 (17)	76 (21)	31 (21)	0 (0)	10 (13)	38 (23)	30 (19)	864 (19)
DIVORCED	78 (9)	37 (6)	2 (6)	0 (0)	87 (10)	30 (6)	11 (5)	24 (10)	21 (6)	34 (9)	7 (5)	1 (20)	11 (14)	12 (7)	9 (6)	364 (8)
SEPARATED	29 (3)	14 (2)	0 (0)	0 (0)	32 (4)	21 (4)	6 (3)	0 (0)	6 (2)	0 (0)	7 (5)	2 (40)	0 (0)	0 (0)	0 (0)	117 (3)
WIDOWED	5 (1)	1 (0)	0 (0)	0 (0)	3 (0)	3 (1)	0 (0)	0 (0)	0 (0)	1 (0)	2 (1)	0 (0)	0 (0)	1 (1)	1 (1)	17 (0)
COMMON LAW	0 (0)	1 (0)	0 (0)	0 (0)	0 (0)	0 (0)	0 (0)	0 (0)	0 (0)	0 (0)	0 (0)	0 (0)	0 (0)	0 (0)	0 (0)	1 (0)
UNKNOWN	0 (0)	1 (0)	0 (0)	0 (0)	1 (0)	0 (0)	0 (0)	0 (0)	0 (0)	0 (0)	0 (0)	0 (0)	1 (1)	0 (0)	0 (0)	3 (0)
TOTAL	913	606	33	0	834	526	209	250	324	358	146	5	80	166	162	4612

	BILLERICA	DEER ISLAND	CHARLES STREET	EDGARTOWN	WORCESTER	SPRINGFIELD	SALEM	LAWRENCE	NEW BEDFORD	PLYMOUTH	PITTSFIELD	DEDHAM	GREENFIELD	NORTHAMPTON	BARNSTABLE	TOTAL
<u>LAST SCHOOL GRADE COMPLETED</u>																
1st GRADE (INCLUDES NO SCHOOL)	2 ( 0)	0 ( 0)	0 ( 0)	0 ( 0)	5 ( 1)	7 ( 1)	0 ( 0)	0 ( 0)	1 ( 0)	0 ( 0)	0 ( 0)	0 ( 0)	0 ( 0)	0 ( 0)	0 ( 0)	15 ( 0)
2nd GRADE	0 ( 0)	1 ( 0)	0 ( 0)	0 ( 0)	4 ( 0)	0 ( 0)	0 ( 0)	2 ( 1)	1 ( 0)	1 ( 0)	0 ( 0)	0 ( 0)	0 ( 0)	0 ( 0)	0 ( 0)	9 ( 0)
3rd GRADE	4 ( 0)	1 ( 0)	0 ( 0)	0 ( 0)	3 ( 0)	4 ( 1)	1 ( 0)	2 ( 1)	2 ( 1)	0 ( 0)	0 ( 0)	0 ( 0)	0 ( 0)	0 ( 0)	0 ( 0)	17 ( 0)
4th GRADE	6 ( 1)	4 ( 1)	0 ( 0)	0 ( 0)	5 ( 1)	8 ( 2)	0 ( 0)	0 ( 0)	2 ( 1)	1 ( 0)	0 ( 0)	0 ( 0)	0 ( 0)	0 ( 0)	0 ( 0)	26 ( 1)
5th GRADE	6 ( 1)	4 ( 1)	1 ( 3)	0 ( 0)	12 ( 1)	7 ( 1)	0 ( 0)	3 ( 1)	7 ( 2)	2 ( 1)	0 ( 0)	0 ( 0)	0 ( 0)	1 ( 1)	2 ( 1)	45 ( 1)
6th GRADE	9 ( 1)	11 ( 2)	0 ( 0)	0 ( 0)	11 ( 1)	9 ( 2)	4 ( 2)	6 ( 2)	3 ( 1)	1 ( 0)	0 ( 0)	0 ( 0)	1 ( 1)	4 ( 2)	5 ( 3)	64 ( 1)
7th GRADE	29 ( 3)	15 ( 2)	1 ( 3)	0 ( 0)	31 ( 4)	22 ( 4)	15 ( 7)	10 ( 4)	26 ( 8)	6 ( 2)	3 ( 2)	0 ( 0)	5 ( 6)	5 ( 3)	3 ( 2)	171 ( 4)
8th GRADE	55 ( 6)	37 ( 6)	5 ( 15)	0 ( 0)	36 ( 10)	44 ( 8)	14 ( 7)	22 ( 9)	59 ( 18)	26 ( 7)	12 ( 8)	0 ( 0)	3 ( 4)	13 ( 8)	7 ( 4)	383 ( 8)
9th GRADE	107 ( 12)	90 ( 15)	1 ( 3)	0 ( 0)	158 ( 19)	72 ( 14)	26 ( 12)	34 ( 14)	55 ( 17)	56 ( 16)	25 ( 17)	0 ( 0)	10 ( 13)	15 ( 9)	13 ( 8)	662 ( 14)
10th GRADE	166 ( 18)	102 ( 17)	5 ( 15)	0 ( 0)	170 ( 20)	108 ( 21)	38 ( 18)	61 ( 24)	69 ( 19)	72 ( 20)	27 ( 18)	0 ( 0)	16 ( 20)	36 ( 22)	27 ( 17)	888 ( 19)
11th GRADE	172 ( 14)	113 ( 19)	8 ( 24)	0 ( 0)	122 ( 15)	87 ( 17)	36 ( 17)	30 ( 12)	31 ( 10)	60 ( 17)	20 ( 14)	3 ( 6)	11 ( 14)	21 ( 13)	40 ( 25)	714 ( 15)
HIGH SCHOOL GRADUATE	313 ( 34)	169 ( 28)	8 ( 24)	0 ( 0)	174 ( 21)	125 ( 24)	57 ( 27)	72 ( 29)	65 ( 20)	109 ( 30)	44 ( 30)	0 ( 0)	26 ( 33)	47 ( 28)	63 ( 39)	1272 ( 28)
SOME COLLEGE	60 ( 7)	41 ( 7)	3 ( 9)	0 ( 0)	42 ( 5)	27 ( 5)	11 ( 5)	6 ( 2)	8 ( 2)	15 ( 4)	11 ( 8)	2 ( 4)	5 ( 6)	13 ( 8)	0 ( 0)	244 ( 5)
COLLEGE GRADUATE	13 ( 1)	3 ( 0)	1 ( 3)	0 ( 0)	5 ( 1)	2 ( 1)	5 ( 2)	1 ( 0)	2 ( 1)	3 ( 1)	2 ( 1)	0 ( 0)	0 ( 0)	7 ( 4)	0 ( 0)	45 ( 1)
GRADUATE SCHOOL	7 ( 1)	1 ( 0)	0 ( 0)	0 ( 0)	2 ( 0)	0 ( 0)	2 ( 1)	0 ( 0)	0 ( 0)	0 ( 0)	2 ( 1)	0 ( 0)	2 ( 3)	3 ( 2)	0 ( 0)	19 ( 0)
UNKNOWN	4 ( 0)	14 ( 2)	0 ( 0)	0 ( 0)	4 ( 0)	3 ( 1)	0 ( 0)	1 ( 0)	2 ( 1)	6 ( 2)	0 ( 0)	0 ( 0)	1 ( 1)	1 ( 1)	2 ( 1)	38 ( 1)
TOTAL	913	606	33	0	934	526	209	250	324	358	146	5	80	166	162	4612

**END**