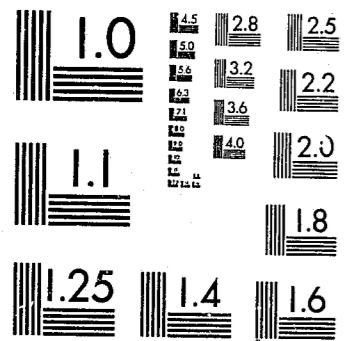


National Criminal Justice Reference Service



This microfiche was produced from documents received for inclusion in the NCJRS data base. Since NCJRS cannot exercise control over the physical condition of the documents submitted, the individual frame quality will vary. The resolution chart on this frame may be used to evaluate the document quality.



MICROCOPY RESOLUTION TEST CHART
NATIONAL BUREAU OF STANDARDS-1963-A

Microfilming procedures used to create this fiche comply with the standards set forth in 41CFR 101-11.504.

Points of view or opinions stated in this document are those of the author(s) and do not represent the official position or policies of the U. S. Department of Justice.

National Institute of Justice
United States Department of Justice
Washington, D. C. 20531

11/10/82

1980 Yearly Statistical Report
Of The Furlough Program

U.S. Department of Justice
National Institute of Justice

This document has been reproduced exactly as received from the person or organization originating it. Points of view or opinions stated in this document are those of the authors and do not necessarily represent the official position or policies of the National Institute of Justice.

Permission to reproduce this copyrighted material has been granted by

Massachusetts Department
of Corrections

to the National Criminal Justice Reference Service (NCJRS).

Further reproduction outside of the NCJRS system requires permission of the copyright owner.

Prepared By:

Lawrence T. Williams
Research Specialist

Massachusetts Department of Correction

Michael V. Fair
Commissioner

October, 1981

ATION #12594 - 40 - 250 - 10/81 - CR.
ed By: John J. Manton, State Purchasing Agent

82042

Abstract

The furlough program has been in operation by the Massachusetts Department of Correction since November 6, 1972. A total of 67,319 furloughs have been granted between the inception of the program and December 31, 1980. During that period, 539 of those furloughs resulted in escapes (a resident failing to return to his/her correctional facility within two hours of his/her designated time), thus yielding an overall escape rate of 0.8%. The present report contains a statistical description of the furlough program for the year 1980 as well as a trend analysis of the program since its inception in 1972.

From January 1, 1980 to December 31, 1980, a total of 8,654 furloughs were granted. The number of individuals furloughed in 1980 was 1,193. The escape rate by furloughs granted during 1980 was 0.3% and the escape rate by individual furloughed was 2.0%.

NCJRS

NOV 18 1981

ACQUISITIONS

Table of Contents

Title	Page Number
I. Abstract	1
II. Introduction	3
III. Section I - Statistical Fact Sheet 1980	4
A. Table I - Furlough Statistics for 1980 by Security Level	7
B. Table II - Number of Individuals Furloughed in Proportion to the Average Population	9
IV. Section II - Furlough Statistics Since Inception of Program	10
A. Table III - Summary Furlough Statistics For the Years 1972 - 1980	11
B. Table IV - Releases by Furlough Participation 1973 - 1980	12
C. Table V - Comparative Furlough Statistics by Institution for Years 1973 - 1976	14
D. Table VI - Comparative Furlough Statistics by Institution for Years 1977 - 1980	15
E. Table VII - Percentage of Average Monthly Population Furloughed by Security Level 1974 - 1980	16
V. Footnotes	18
VI. Appendix I	19

Introduction

This report is a statistical description of the Massachusetts Department of Correction Furlough Program for the year 1980. Included is some information on trends for the program from its inception in 1972 until the end of the year 1980.

The report is divided into two sections. The first section gives an overview of pertinent furlough statistics for the year 1980 only. Section II provides a brief overview of the Massachusetts Furlough Program. Comparisons of furlough characteristics over the past eight years are discussed. In addition, this section contains escape rates on background variables of an individual for each furlough granted during 1980. The background variables include personal background characteristics, present offense variables, criminal history variables, and furlough variables.

The data for the tables in this report were derived from the computerized data base data base developed by the Correction and Parole Management Information System (CAPMIS) and were produced on the Massachusetts State College Computer Network (MSCCN).

Section I

Statistical Fact Sheet on the Massachusetts Furlough Program, 1980

Statistical Fact Sheet on the Massachusetts Department
Correction Furlough Program-1980

1980 Statistics

From January 1, 1980 to December 31, 1980, a total of 8,654 furloughs were granted. The number of individuals furloughed in 1980 was 1,193. The average number of furloughs per resident was approximately 7.

Escape Rate by Furlough: 1980

During 1980, out of the 8,654 furloughs granted, 24 resulted in escapes for an escape rate (by furlough) of 0.3% for 1980.¹

Escape Rate by Individuals Furloughed in 1980

Of the 1,193 individuals furloughed in 1980, 24 were declared on escape status. The escape rate by individual furloughed is 2.0%.

Late Returns for 1980

For 1980, there were 249 cases which were late returns. These 249 cases involved 188 individuals. These 188 individuals all returned within two hours of their return time. Sixty-one individuals voluntarily returned within the two hour period more than once during 1980.

Furloughs By Security Level 1980

During 1980, 762 furloughs were from maximum or medium security institutions, representing 9% of the furloughs granted during 1980. There were 2,530 furloughs from minimum security (representing 27%) and 5,362 furloughs from pre-release (representing 62% of the furloughs granted during 1980). Table I presents information on furloughs by security level for 1980 along with the corresponding escape rates.

Proportion of Releases Participating in Furloughs, 1980

From January 1, 1980 to December 31, 1980, the Department of Correction released 1,015 residents to the community. Of that total, 403 had received one or more furloughs (40%). The remaining 60% of the individuals released had not participated in the furlough program during their incarceration.

Individuals Returning Voluntarily During 1980

There were seven individuals who were on escape status from their furlough and returned voluntarily within 24 hours from their return date.

Table 1

Furlough Statistics for the Year 1980 By Security Level

	Furloughs	Escape Rate
<u>I. Maximum and Medium</u>		
Walpole	44	0.0%
Concord	14	0.0%
Framingham	306	1.3%
Norfolk	230	0.4%
SECC	168	0.0%
TOTAL	762	0.7%
<u>II. Minimum</u>		
Plymouth	539	0.4%
Warwick	268	0.4%
Medfield	287	0.0%
Bay State	741	0.1%
NECC	695	0.1%
TOTAL	2530	0.2%
<u>III. Pre-Release</u>		
Boston State	1281	0.0%
Shirley	524	0.4%
Charlotte House	130	0.8%
Brooke House	316	0.3%
Coolidge House	311	0.3%
T.H.P.	148	0.0%
Norfolk P.R.	346	0.0%
577 House	257	0.0%
699 House	298	1.3%
Drug Rehab	27	0.0%
S. Middlesex	627	0.3%
Lancaster	407	0.0%
Park Drive	639	0.0%
Hillside	51	5.9%
TOTAL	5362	0.3%
GRAND TOTAL	8654	0.3%

Furloughs Monthly in Proportion to Average Population - 1980

Out of an average population of 3,024, an average of 425 individuals received a furlough during the course of a month in 1980. This results in an average proportion of 14.1% of the population being furloughed during the course of one month. The overwhelming majority (77%) of the population is housed in maximum or medium security institutions in a given month; 2% of this population received a furlough on an average in 1980. On the average, 44% of the minimum security population and 66% of the pre-release population received furloughs during a typical month in 1980. Table II presents information on the number of individuals furloughed in proportion to the average population for 1980.

Table 2

Number of Individuals Furloughed in Proportion
To The Average Population-1980

Institution	Average Population	Average Number of Individuals Furloughed Per Month	Proportion of Population Receiving Furloughs
<u>I. Maximum and Medium</u>			
Walpole	660	3	0.5%
Concord	402	1	0.3%
Framingham	134	18	13.4%
Norfolk	830	16	1.9%
SECC	235	9	3.8%
RDC*	58	0	0.0%
Lemuel Shattuck	13	0	0.0%
TOTAL	2332	47	2.0%
<u>II. Minimum</u>			
NCC	144	48	33.3%
Bay State C.C.	77	44	57.1%
Plymouth	64	30	46.9%
Warwick	46	16	34.8%
Medfield	24	17	70.8%
TOTAL	355	155	43.7%
<u>III. Pre-Release</u>			
Boston State	49	44	89.8%
Shirley	80	35	43.8%
Charlotte House	4	4	**
MHHI	44	42	95.5%
Norfolk P.R.	25	13	52.0%
Drug Rehab.	11	1	9.1%
S. Middlesex	38	29	76.3%
Lancaster	43	26	60.5%
Park Drive	36	26	72.2%
Hillside	7	3	42.9%
TOTAL	337	223	66.2%
GRAND TOTAL	3024	425	14.1%

* This figure represents averages for months in which the RDC was in operation.

** The greater number of individuals furloughed at these institutions reflects a substantial population turnover at these facilities.

Section II

Furlough Statistics Since Inception of Program

Overview

The furlough program for residents of Massachusetts correctional facilities has been operating since November 6, 1972. Between that time and December 31, 1980, a total of 67,319 furloughs have been granted. In 539 cases, individuals have failed to return to their respective correctional facility within two hours of their prescribed time of return. Thus, since the inception of the program there has been an overall escape rate of 0.8%.

Table 3 presents a summary of furlough statistics for the years 1972 to 1980. For each of these years information regarding the number of furloughs, the number of individuals furloughed, the number of escapes and corresponding escape rates is presented.

Table 3

Summary Furlough Statistics For the Years 1972 To 1980

Year	Number of Furloughs	Individuals Furloughed	Number Of Escapes	Escape Rate For Individual ²	Escape Rate By Furlough
1972 ³	1182	793	8	1.0	0.7
1973	7195	1868	134	7.2	1.9
1974	8322	1668	127	7.6	1.5
1975	8680	1482	88	5.9	1.0
1976	7985	1305	40	3.1	0.5
1977	8199	1355	42	3.1	0.5
1978	9062	1248	38	3.0	0.4
1979	8040	1232	38	3.1	0.5
1980	8654	1193	24	2.0	0.3
TOTAL	67319	6328 ⁴	539	8.5	0.8

As Table 3 shows, the escape rates by furlough have decreased from 1973 to 1980 and range from a high of 1.9% to a low of 0.3%. Similarly, the escape rates by individual have also decreased during this time frame from a high of 7.6% to a low of 2.0%.

Since the inception of the furlough program, the number of individuals furloughed per year has decreased significantly. From 1973 to 1980, the number of individuals furloughed decreased from 1,868 to 1,193 - a decline of 36%. The escape rate by individuals furloughed has also decreased within the same time span. In 1973, the escape rate by individual was 7.2%, and in 1980, the rate was 2.0%. At the same time, the percentage of individuals being released who had not participated in the furlough program has increased. Table IV presents the data for the percentage of releases who participated in the furlough program prior to their release.

Table 4

Releases By Furlough Participation 1973-1980⁵

Releasing Year	Number of Releases	Percentage Furloughed Before Release
1973	966	69%
1974	911	74%
1975	926	59%
1976	1029	51%
1977	1193	50%
1978	1133	49%
1979	1124	42%
1980	1015	40%

Tables 5 and 6 give furlough statistics by institution furloughed from the years 1973 to 1976 and 1977 to 1980 respectively. The number of furloughs and the corresponding escape rates for each correctional institution is given. Although minor fluctuations have occurred at some institutions, the overall escape rates have been decreasing.

Table 5
Comparative Furlough Statistics By Institution For Years 1973-1976

	1 9 7 3		1 9 7 4		1 9 7 5		1 9 7 6	
	Furloughs	Escape Rate	Furloughs	Escape Rate	Furloughs	Escape Rate	Furloughs	Escape Rate
I. Maximum and Medium								
Walpole	107	3.7%	310	2.3%	338	1.5%	398	1.5%
Concord	1254	3.5%	923	4.2%	812	3.3%	430	0.7%
Framingham	562	1.6%	741	0.9%	805	1.0%	642	0.5%
Norfolk	1811	2.2%	1466	2.2%	1200	1.2%	741	0.7%
SECC	244	5.3%	283	1.4%	196	3.1%	165	0.6%
RDC	0	0.0%	4	0.0%	2	0.0%	0	0.0%
TOTAL	3978	2.8%	3727	2.4%	3353	1.8%	2376	0.8%
II. Minimum								
Plymouth	451	1.1%	416	1.0%	500	1.6%	385	0.8%
Warwick	321	1.2%	209	2.9%	55	1.8%	0	0.0%
Monroe	342	0.6%	306	2.3%	274	1.8%	233	3.4%
Medfield	0	0.0%	0	0.0%	0	0.0%	157	0.0%
TOTAL	1114	1.0%	931	1.8%	829	1.7%	775	1.4%
III. Pre-Release								
Boston State	1333	0.6%	2061	0.3%	1804	0.3%	1241	0.1%
Shirley	709	0.8%	494	2.4%	715	1.3%	574	0.9%
Charlotte House	61	0.0%	86	2.3%	83	0.0%	126	0.8%
Roxbury Multi-Serv.	0	0.0%	130	0.0%	444	0.0%	80	0.0%
Brooke House	0	0.0%	422	0.2%	509	0.0%	578	0.0%
Coolidge House	0	0.0%	471	0.0%	583	0.0%	331	0.0%
T.H.P.	0	0.0%	0	0.0%	1	0.0%	150	0.0%
Norfolk P.R.	0	0.0%	0	0.0%	96	0.0%	334	0.0%
577 House	0	0.0%	0	0.0%	85	0.0%	619	0.0%
699 House	0	0.0%	0	0.0%	138	0.0%	136	0.7%
BOSP/METAC	0	0.0%	0	0.0%	40	0.0%	203	0.5%
Drug Rehab.	0	0.0%	0	0.0%	0	0.0%	14	0.0%
South Middlesex	0	0.0%	0	0.0%	0	0.0%	44	2.3%
Lancaster	0	0.0%	0	0.0%	0	0.0%	404	0.2%
TOTAL	2103	0.7%	3664	0.6%	4498	0.3%	4834	0.2%
GRAND TOTAL	7195	1.9%	8322	1.5%	8680	1.0%	7985	0.5%

Table 6

Comparative Furlough Statistics By Institution for the Years 1977-1980

	1977		1978		1979		1980	
	Furloughs	Escape Rate	Furloughs	Escape Rate	Furloughs	Escape Rate	Furloughs	Escape Rate
I. Maximum and Medium								
Walpole	166	0.0%	70	0.0%	51	0.0%	44	0.0%
Concord	352	1.4%	134	2.2%	20	0.0%	14	0.0%
Framingham	775	1.0%	788	0.3%	676	0.9%	306	1.3%
Norfolk	560	0.2%	238	0.0%	223	0.0%	230	0.4%
SECC	233	1.7%	210	1.4%	232	0.9%	168	0.0%
TOTAL	2086	0.9%	1440	0.6%	1202	0.7%	762	0.7%
II. Minimum								
Plymouth	413	0.2%	398	0.0%	400	0.2%	539	0.4%
Warwick	252	1.6%	234	2.6%	289	2.1%	268	0.4%
Monroe	223	2.7%	52	7.7%	0	0.0%	0	0.0%
Medfield	264	0.0%	257	0.0%	232	1.3%	287	0.0%
Bay State	168	1.2%	845	0.3%	732	0.1%	741	0.1%
NECC	0	0.0%	418	0.7%	646	0.6%	695	0.1%
TOTAL	1320	1.0%	2204	0.7%	2299	0.5%	2530	0.2%
III. Pre-Release								
Boston State	1073	0.2%	1602	0.3%	1279	0.3%	1281	0.0%
Shirley	295	1.0%	352	0.6%	421	0.7%	524	0.4%
Charlotte Hse.	103	0.0%	97	0.0%	108	0.0%	130	0.8%
Brooke House	272	0.0%	419	0.0%	283	0.0%	316	0.3%
Coolidge House	269	0.0%	230	0.0%	232	0.9%	311	0.3%
T.H.P.	154	0.0%	59	0.0%	193	1.0%	148	0.0%
Norfolk P.R.	309	0.3%	348	0.0%	269	0.0%	346	0.0%
577 House	786	0.2%	538	0.0%	277	0.7%	257	0.0%
699 House	144	0.0%	136	0.0%	93	0.0%	298	1.3%
BOSP/METAC	220	0.0%	148	0.0%	0	0.0%	0	0.0%
Drug Rehab.	55	0.0%	18	0.0%	1	0.0%	27	0.0%
S. Middlesex	379	0.3%	317	0.6%	367	0.0%	627	0.3%
Lancaster	513	0.4%	425	0.7%	290	0.7%	407	0.0%
Park Drive	221	0.0%	460	0.0%	588	0.0%	639	0.0%
Western Ave.	0	0.0%	169	0.2%	88	0.0%	0	0.0%
Gardner	0	0.0%	0	0.0%	50	0.0%	0	0.0%
Hillside	0	0.0%	0	0.0%	0	0.0%	51	5.9%
TOTAL	4793	0.2%	5418	0.2%	4539	0.4%	5362	0.3%
GRAND TOTAL	8199	0.5%	9062	0.4%	8040	0.5%	8654	0.3%

Finally, Table 7 looks at the average percentage of individuals furloughed by security levels and the total percentage of the population furloughed from 1974 to 1979.

Table 7

Percentage of Average Monthly Population Furloughed By Security Level 1974 - 1980⁶

Year	Maximum or Medium Security	Minimum Security	Pre-Release	Total
1974	15.2%	55.2%	79.9%	21.9%
1975	13.8%	59.6%	74.6%	20.8%
1976	7.6%	44.9%	55.9%	14.7%
1977	6.2%	60.2%	54.5%	15.5%
1978	4.5%	54.2%	64.6%	16.8%
1979	4.0%	47.1%	59.6%	15.5%
1980	2.0%	43.7%	66.2%	14.1%

As Table 7 indicates, the percentage of the population in maximum and medium security institutions who received furloughs decreased from 15.2% in 1974 to only 2% in 1980. The total percentages have decreased also.

At this juncture, the report looks at the escape rates of characteristics of individuals for each furlough granted for 1980. Information concerning an individual's present offense variables, personal background characteristics, criminal history variables, and furlough variables have been examined. In order to determine any significant relationships between the characteristics of the existing variables and their escape ratios, chi square statistics were computed. During 1979, there were ten variables that were found to be significant. They were: sex, known drug use, total number of court appearances, number of charges for person offenses, property offenses, drug offenses, and escape offenses, age at first court appearance, number of Department of Youth Service commitments, and total number of prior incarcerations.⁷

After examining the variables for 1980, the results indicate that the same characteristics were found to be significant. That is, women, offenders with prior known drug use, individuals with prior charges for drug offenses, and individuals with any prior incarcerations have higher escape rates.

The tables which follow in Appendix I contain frequencies and escape rates of characteristics of individuals for each furlough granted during 1980. It is important to note that the figures in these tables refer to the number of furloughs, not the number of individuals furloughed, therefore, some individuals who received more than one furlough are counted more than once in the tables in Appendix I.

Footnotes

1. The Department of Correction furlough statistics define an "escape from furlough" in accordance with Department Order 467.1 entitled, "Furloughs - Rules and Regulations", according to Section 10.4(c): "Failure of the resident to return to the correctional facility after the two hour period set forth in Section 10.4(b) shall be considered an escape regardless of prior notification to the facility by the resident that he would be late. The superintendent or his designee shall notify, forthwith, appropriate law enforcement officials of the escape.
2. These figures may differ from prior departmental reports due to multiple counting of individuals furloughed from different institutions.
3. The figures for 1972 represent totals for only two months of 1972. Therefore, the number of furloughs and individuals furloughed is much lower than subsequent years.
4. The figure for the total number of individuals furloughed since the inception of the program is not the sum of the individual years. Individuals are furloughed in different years and so by adding the yearly totals for individuals participating in the program, multiple counting occurs.
5. The figures in this table were taken from yearly Research Unit reports on A Statistical Description of Releases From the Massachusetts Department of Correction, Massachusetts Department of Correction Publication Numbers 89, 109, 117, 137, 163, 177, 204, and 234.
6. The figures in this table were taken from yearly furlough reports by the Research Unit entitled A Yearly Statistical Report of the Furlough Program, Massachusetts Department of Correction Publication Numbers 95, 115, 145, 162, 176, and 206.
7. Williams, Lawrence T., 1979 Statistical Report of the Furlough Program, Massachusetts Department of Correction Publication Number 206 (September, 1980).

Appendix I

Present Offense Variables	Number	Percent	Escape Rate
A. Institution Committed To			
Walpole	6566	(76)	0.2%
Concord	1741	(20)	0.5%
Framingham	346	(4)	1.4%
House of Correction	1	(0)	0.0%
Total	8654	(100)	0.3%
B. Jail Credits			
None	2878	(33)	0.2%
1 to 10 days	1276	(15)	0.2%
11 to 50 days	955	(11)	0.7%
51 to 100 days	810	(9)	0.4%
101 to 150 days	590	(7)	0.2%
151 to 200 days	843	(10)	0.4%
Over 200 days	1301	(15)	0.1%
Unknown	1	(0)	0.0%
Total	8654	(100)	0.3%
C. Present Offense- General Categories			
Person	5939	(69)	0.3%
Sex	823	(10)	0.0%
Property	1305	(15)	0.4%
Drug	386	(5)	0.8%
Other	200	(2)	0.5%
Unknown	1	(0)	0.0%
Total	8654	(100)	0.3%

Present Offense Variables	Number	Percent	Escape Rate
D. Present Offense - Person			
Not Applicable	2714	(31)	0.3%
Murder - 1	272	(3)	0.0%
Murder - 2	1173	(14)	0.0%
Manslaughter	862	(10)	0.1%
Assault w/Intent to Murder	217	(3)	0.0%
Armed Robbery	2182	(25)	0.4%
Unarmed Robbery	350	(4)	0.6%
Armed Assault	672	(8)	0.3%
Unarmed Assault	37	(0)	0.0%
Extortion	21	(0)	0.0%
Kidnapping	53	(1)	0.0%
Conspiracy	42	(1)	0.0%
Other Person Offenses	58	(1)	0.0%
Unknown	1	(0)	0.0%
TOTAL	8654	(100)	0.3%
E. Present Offense - Sex			
Not Applicable	7830	(91)	0.3%
Rape	498	(6)	0.0%
Assault - Rape	94	(1)	0.0%
Rape of Minor	167	(2)	0.0%
Assault and Rape of Minor	50	(1)	0.0%
Unnatural Acts	12	(0)	0.0%
Incest	2	(0)	0.0%
Unknown	1	(0)	0.0%
TOTAL	8654	(100)	0.3%

Present Offense Variables	Number	Percent	Escape Rate
F. Present Offense - Property			
Not Applicable	7348	(85)	0.3%
Arson	134	(2)	0.0%
Burglary - Armed	127	(2)	0.8%
Burglary	533	(6)	0.6%
Possession of Burglary Tools	10	(0)	0.0%
Larceny From Person	55	(1)	0.0%
Larceny	130	(2)	0.0%
Vehicle Theft	11	(0)	0.0%
Forgery And Uttering	171	(2)	0.0%
Fraud	17	(0)	0.0%
Stolen Goods	116	(1)	0.0%
Property Injuries	1	(0)	100.0%
Unknown	1	(0)	0.0%
TOTAL	8654	(100)	0.3%
G. Present Offense - Drug			
Not Applicable	8274	(96)	0.3%
Possession of Heroin	10	(0)	0.0%
Sale of Heroin	33	(0)	0.0%
Sale of Narcotics	3	(0)	0.0%
Intent to Sell	2	(0)	0.0%
Controlled Substance - Unclassified	35	(0)	0.0%
Class A	189	(2)	1.6%
Class B	79	(1)	0.0%
Class C	12	(0)	0.0%
Class D	9	(0)	0.0%
Class E	7	(0)	0.0%
Unknown	1	(0)	0.0%
TOTAL	8654	(100)	0.3%

Present Offense Variables	Number	Percent	Escape Rate
H. Present Offense - Other			
Not Applicable	8446	(98)	0.3%
Escapes	47	(1)	0.0%
Weapons Offenses	127	(2)	0.0%
Prostitution	11	(0)	9.1%
Vehicle Offense	3	(0)	0.0%
Child Pornography	7	(0)	0.0%
Loansharking	7	(0)	0.0%
Other	5	(0)	0.0%
Unknown	1	(0)	0.0%
TOTAL	8654	(100)	0.3%
I. Minimum Sentence			
Less Than 2 Years	4	(0)	0.0%
2-3 Years	136	(2)	0.0%
3-4 Years	537	(6)	0.6%
4-5 Years	376	(4)	0.0%
5-6 Years	674	(8)	0.3%
6-7 Years	615	(7)	0.2%
7-8 Years	490	(6)	0.6%
8-9 Years	459	(5)	0.0%
9-10 Years	359	(4)	0.0%
10-11 Years	462	(5)	0.0%
11-12 Years	407	(5)	0.2%
13-15 Years	268	(3)	0.4%
16-19 Years	182	(2)	0.5%
20-24 Years	116	(1)	0.0%
25 or More Years	100	(1)	0.0%
Life	1517	(18)	0.1%
Indeterminate	1951	(23)	0.5%
Unknown	1	(0)	0.0%
TOTAL	8654	(100)	0.3%

Present Offense Variables	Number	Percent	Escape Rate
J. Maximum Sentence			
Less Than 1 Year	39	(1)	2.6%
1-2 Years	50	(1)	2.0%
2-3 Years	234	(3)	0.4%
3-4 Years	59	(1)	0.0%
4-5 Years	40	(1)	0.0%
5-6 Years	656	(8)	0.5%
6-7 Years	207	(2)	0.5%
7-8 Years	427	(5)	0.2%
8-9 Years	201	(2)	1.0%
9-10 Years	203	(2)	0.0%
10-11 Years	1798	(21)	0.3%
11-12 Years	670	(8)	0.1%
13-15 Years	884	(10)	0.2%
16-19 Years	424	(5)	0.7%
20-24 Years	937	(11)	0.1%
25 or More Years	300	(4)	0.0%
Life	1524	(18)	0.1%
Unknown	1	(0)	0.0%
TOTAL	8654	(100)	0.3%
K. Age At Incarceration			
Fifteen	9	(0)	0.0%
Sixteen	21	(0)	0.0%
Seventeen	45	(1)	0.0%
Eighteen	372	(4)	0.0%
Nineteen	380	(4)	0.0%
Twenty	425	(5)	0.7%
Twenty-one	723	(8)	0.4%
Twenty-two	376	(4)	0.8%
Twenty-three	713	(8)	0.4%
Twenty-four	661	(8)	0.3%
Twenty-five	420	(5)	0.2%
26-29	1895	(22)	0.2%
30-39	1791	(21)	0.3%
40 And Older	822	(10)	0.0%
Unknown	1	(0)	0.0%
TOTAL	8654	(100)	0.3%

Personal Background Variables	Number	Percent	Escape Rate
A. Race			
White	5473	(63)	0.2%
Black	3038	(35)	0.3%
Native American	3	(0)	0.0%
Asiatic	2	(0)	0.0%
Hispanic	137	(2)	1.5%
Unknown	1	(0)	0.0%
Total	8654	(100)	0.3%
B. Marital Status			
Married	2765	(32)	0.1%
Single	4129	(48)	0.4%
Divorced	898	(10)	0.3%
Widowed	272	(3)	0.0%
Common Law	48	(1)	0.0%
Separated	541	(6)	0.2%
Unknown	1	(0)	0.0%
Total	8654	(100)	0.3%
C. Military Discharge			
No Service	5702	(66)	0.4%
Honorable	930	(11)	0.0%
Dishonorable	6	(0)	0.0%
Bad Conduct	316	(4)	0.0%
Medical	59	(1)	0.0%
Discharge Unknown	892	(10)	0.0%
Unknown	749	(9)	0.3%
Total	8654	(100)	0.3%

Personal Background Variables	Number	Percent	Escape Rate
D. Prior Address - Selected Towns			
Boston	3313	(38)	0.2%
Brockton	151	(2)	0.0%
Cambridge	146	(2)	0.0%
Fall River	107	(1)	0.0%
Framingham	60	(1)	0.0%
Holyoke	119	(1)	0.0%
Lawrence	77	(1)	1.3%
Lowell	145	(2)	0.7%
Lynn	88	(1)	0.0%
New Bedford	238	(3)	1.3%
Quincy	71	(1)	0.0%
Somerville	179	(2)	0.0%
Springfield	517	(6)	0.6%
Worcester	309	(4)	0.6%
Other Massachusetts	2684	(31)	0.1%
Out of State	449	(5)	1.1%
Unknown	1	(0)	0.0%
Total	8654	(100)	0.3%
E. Prior Address - County			
Worcester	609	(7)	0.3%
Franklin	54	(1)	0.0%
Middlesex	1235	(14)	0.2%
Suffolk	3492	(40)	0.2%
Norfolk	354	(4)	0.0%
Bristol	511	(6)	0.6%
Plymouth	443	(5)	0.2%
Essex	442	(5)	0.2%
Hampshire	17	(0)	0.0%
Hampden	866	(10)	0.3%
Berkshire	52	(1)	0.0%
Dukes	1	(0)	0.0%
Barnstable	115	(1)	0.0%
Out of State	462	(5)	1.1%
Unknown	1	(0)	0.0%
Total	8654	(100)	0.3%

Personal Background Variables	Number	Percent	Escape Rate
F. Prior Address - SMSA			
Boston	5168	(60)	0.2%
Brockton	201	(2)	0.0%
Fall River	129	(2)	0.0%
Fitchburg - Leominster	75	(1)	0.0%
Lawrence - Haverhill	167	(2)	0.6%
Lowell	209	(2)	0.5%
New Bedford	250	(3)	1.2%
Pittsfield	49	(1)	0.0%
Providence-Pawtucket-Warwick	45	(1)	0.0%
Springfield	880	(10)	0.3%
Worcester	430	(5)	0.5%
Other Massachusetts	601	(7)	0.2%
Out of State	449	(5)	1.1%
Unknown	1	(0)	0.0%
Total	8654	(100)	0.3%
G. Occupation			
Professional	229	(3)	0.0%
Semi-Professional	123	(1)	0.8%
Business	543	(6)	0.0%
Sales, Clerical	814	(9)	0.1%
Manual	4491	(52)	0.3%
Services	1929	(22)	0.4%
Agriculture	13	(0)	7.7%
Armed Services	38	(0)	0.0%
Housekeeper	1	(0)	0.0%
Student	109	(1)	0.0%
Unemployed	168	(2)	0.0%
Unknown	196	(2)	0.5%
Total	8654	(100)	0.3%

Personal Background Variables	Number	Percent	Escape Rate
H. Time At Most Skilled Position			
Less Than One Month	586	(7)	0.0%
1-2 Months	511	(6)	0.4%
3-4 Months	951	(11)	0.3%
5-6 Months	709	(8)	0.7%
7-9 Months	459	(5)	0.4%
10-12 Months	571	(7)	0.2%
1-2 Years	1298	(15)	0.2%
2-5 Years	1790	(21)	0.1%
More Than 5 Years	1156	(13)	0.2%
Unknown	623	(7)	0.6%
Total	8654	(100)	0.3%
I. Time on Job of Longest Duration			
Less Than One Month	482	(6)	0.0%
1-2 Months	361	(4)	0.3%
3-4 Months	880	(10)	0.5%
5-6 Months	681	(8)	0.6%
7-9 Months	465	(5)	0.4%
10-12 Months	648	(8)	0.2%
1-2 Years	1385	(16)	0.3%
2-5 Years	1881	(22)	0.1%
More Than 5 Years	1351	(16)	0.1%
Unknown	520	(6)	0.8%
Total	8654	(100)	0.3%

Personal Background Variables	Number	Percent	Escape Rate
J. Last Grade Completed			
Third Or Less	74	(1)	0.0%
Fourth	104	(1)	1.0%
Fifth	80	(1)	0.0%
Sixth	221	(3)	0.9%
Seventh	557	(6)	0.4%
Eighth	792	(9)	0.1%
Ninth	1298	(15)	0.4%
Tenth	978	(11)	0.3%
Eleventh	762	(9)	0.1%
High School Graduate	1581	(18)	0.2%
G.E.D.	1060	(12)	0.3%
Some College	280	(3)	0.0%
College Graduate	157	(2)	0.0%
Unknown	710	(8)	0.4%
Total	8654	(100)	0.3%
K. Known Drug Use			
None	4887	(57)	0.1%
Non-Specific	507	(6)	0.0%
Heroin	1829	(21)	0.4%
Marijuana	698	(8)	0.7%
Other	622	(7)	0.6%
Unknown	111	(1)	0.9%
Total	8654	(100)	0.3%

Criminal History Variables	Number	Percent	Escape Rate
A. Total Number of Court Appearances			
First Offense	537	(6)	0.4%
Two	495	(6)	0.4%
Three	464	(5)	0.2%
Four	332	(4)	0.3%
Five	586	(7)	0.2%
6 to 8	1205	(14)	0.2%
9 to 11	1151	(13)	0.3%
12 to 15	1205	(14)	0.2%
16 to 20	870	(10)	0.6%
More Than 20	1197	(14)	0.3%
Unknown	612	(7)	0.3%
Total	8654	(100)	0.3%
B. Number of Charges For Person Offenses			
None	664	(8)	0.5%
One	1232	(14)	0.2%
Two	1385	(16)	0.3%
Three	1223	(14)	0.4%
Four	788	(9)	0.3%
Five	617	(7)	0.2%
6 to 8	282	(15)	0.4%
More Than 8	804	(9)	0.0%
Unknown	659	(8)	0.3%
Total	8654	(100)	0.3%
C. Number of Charges for Property Offenses			
None	1873	(22)	0.3%
One	708	(8)	0.1%
Two	657	(8)	0.6%
Three	467	(5)	0.2%
Four	528	(6)	0.2%
Five	556	(6)	0.2%
6 to 8	1000	(12)	0.2%
More Than 8	2187	(25)	0.3%
Unknown	678	(8)	0.3%
Total	8654	(100)	0.3%

Criminal History Variables	Number	Percent	Escape Rate
D. Number of Charges for Sex Offenses			
None	6497	(75)	0.3%
One	786	(9)	0.1%
Two	372	(4)	0.3%
Three	149	(2)	0.7%
Four	104	(1)	0.0%
Five or More	89	(1)	0.0%
Unknown	657	(8)	0.3%
Total	8654	(100)	0.3%
E. Number of Charges For Drug Offenses			
None	5304	(61)	0.2%
One	938	(11)	0.4%
Two	466	(5)	0.0%
Three	321	(4)	0.6%
Four	190	(2)	0.0%
Five	167	(2)	0.0%
6-8	232	(3)	1.7%
More Than 8	360	(4)	0.8%
Unknown	676	(8)	0.3%
Total	8654	(100)	0.3%

Criminal History Variables	Number	Percent	Escape Rate
F. Number of Charges For Drunkenness Offenses			
None	5668	(66)	0.3%
One	1078	(13)	0.2%
Two	477	(6)	0.6%
Three	308	(4)	0.3%
Four	157	(2)	0.6%
Five or More	305	(4)	0.0%
Unknown	661	(8)	0.3%
Total	8654	(100)	0.3%
G. Number of Charges For Escape Offenses			
None	7476	(86)	0.3%
One	394	(5)	0.3%
Two	66	(1)	0.0%
Three	19	(0)	0.0%
Four or More	42	(0)	0.0%
Unknown	657	(8)	0.3%
Total	8654	(100)	0.3%
H. Department of Youth Service Commitments			
No	6530	(76)	0.3%
Yes	1476	(16)	0.2%
Unknown	648	(8)	0.3%
Total	8654	(100)	0.3%

Criminal History Variables	Number	Percent	Escape Rate
I. Number of Prior County Incarcerations			
None	5178	(60)	0.2%
One	1344	(16)	0.6%
Two	701	(8)	0.1%
Three	429	(5)	0.5%
Four	206	(2)	0.0%
Five	78	(1)	0.0%
6 or More	74	(1)	0.0%
Unknown	644	(7)	0.3%
Total	8654	(100)	0.3%
J. Number of Prior State or Federal Incarcerations			
None	5999	(69)	0.2%
One	1006	(12)	0.4%
Two	565	(7)	0.4%
Three	282	(3)	0.4%
Four	107	(1)	0.0%
Five	23	(0)	4.3%
Six or More	28	(0)	0.0%
Unknown	644	(7)	0.3%
Total	8654	(100)	0.3%
K. Total Number of Prior Adult Incarcerations			
None	4194	(49)	0.1%
One	1586	(18)	0.5%
Two	902	(10)	0.6%
Three	473	(6)	0.6%
Four	317	(4)	0.0%
Five	268	(3)	0.4%
Six or More	270	(3)	0.0%
Unknown	644	(7)	0.3%
Total	8654	(100)	0.3%

Criminal History Variables	Number	Percent	Escape Rate
L. Number of Juvenile Paroles			
None	6900	(80)	0.3%
One	612	(7)	0.2%
Two	188	(2)	0.0%
Three	178	(2)	0.0%
More Than Three	129	(2)	0.0%
Unknown	647	(8)	0.3%
Total	8654	(100)	0.3%
M. Number of Juvenile Parole Violations			
Never Paroled	6900	(80)	0.3%
None	660	(8)	0.2%
One	172	(2)	0.0%
Two	151	(2)	0.0%
Three	34	(0)	0.0%
More Than Three	90	(1)	0.0%
Unknown	647	(8)	0.3%
Total	8654	(100)	0.3%

Criminal History Variables	Number	Percent	Escape Rate
N. Number of Adult Paroles			
None	6015	(70)	0.2%
One	1253	(15)	0.5%
Two	459	(5)	0.2%
Three	184	(2)	0.5%
More Than Three	82	(1)	0.0%
Unknown	661	(8)	0.3%
Total	8654	(100)	0.3%
O. Number of Adult Parole Violations			
Never Paroled	6015	(70)	0.2%
None	878	(10)	0.2%
One	784	(9)	0.5%
Two	230	(3)	0.4%
Three	39	(1)	2.6%
More Than Three	47	(1)	0.0%
Unknown	661	(8)	0.3%
Total	8654	(100)	0.3%
P. Total Number of Paroles			
None	5422	(63)	0.3%
One	1296	(15)	0.4%
Two	523	(6)	0.4%
Three	393	(5)	0.3%
More Than Three	356	(4)	0.0%
Unknown	664	(8)	0.3%
Total	8654	(100)	0.3%

Criminal History Variables	Number	Percent	Escape Rate
Q. Total Number of Parole Violations			
Never Paroled	5422	(63)	0.3%
None	1170	(14)	0.2%
One	750	(9)	0.5%
Two	377	(4)	0.3%
Three	112	(1)	0.9%
More Than Three	159	(2)	0.0%
Unknown	664	(8)	0.3%
Total	8654	(100)	0.3%
R. Age at First Court Appearance			
10 or Younger	356	(4)	0.0%
Eleven	206	(2)	0.0%
Twelve	347	(4)	0.0%
Thirteen	460	(5)	0.0%
Fourteen	639	(7)	0.5%
Fifteen	593	(7)	0.5%
Sixteen	780	(9)	0.4%
Seventeen	1251	(15)	0.2%
Eighteen	754	(9)	0.7%
Nineteen	489	(6)	0.2%
Twenty	343	(4)	0.0%
Twenty-one	394	(5)	0.3%
Twenty-two	166	(2)	0.0%
Twenty-three	227	(3)	0.0%
Twenty-four	184	(2)	0.0%
Twenty-five	181	(2)	0.0%
26 to 30	265	(3)	0.0%
31 to 40	202	(2)	0.5%
Older Than 40	127	(2)	0.0%
Unknown	690	(8)	0.6%
Total	8654	(100)	0.3%

Criminal History Variables	Number	Percent	Escape Rate
S. Age at First Court Appearance for Drunkenness Offense			
Not Applicable	6258	(72)	0.3%
8 to 14	28	(0)	0.0%
15 to 17	420	(5)	0.7%
18 to 19	651	(8)	0.2%
20 to 21	445	(5)	0.0%
22 to 24	343	(4)	0.3%
25 to 29	304	(4)	0.0%
30 to 34	66	(1)	3.0%
35 to 39	32	(0)	0.0%
40 And Older	19	(0)	0.0%
Unknown	88	(1)	0.0%
Total	8654	(100)	0.3%
T. Age at First Court Appearance for Drug Offense			
Not Applicable	5841	(68)	0.2%
8 to 14	80	(1)	0.0%
15 to 17	523	(6)	0.8%
18 to 19	682	(8)	0.3%
20 to 21	529	(6)	0.4%
22 to 24	411	(5)	0.7%
25 to 29	311	(4)	0.0%
30 to 34	143	(2)	0.0%
35 to 39	36	(0)	2.8%
40 And Older	36	(0)	0.0%
Unknown	62	(1)	1.6%
Total	8654	(100)	0.3%

Furlough Variables	Number	Percent	Escape Rate
A. Type of Furlough			
Earned	8493	(98)	0.3%
Emergency	60	(1)	0.0%
Escorted	101	(1)	0.0%
Total	8654	(100)	0.3%
B. Month Furloughed			
January	483	(6)	0.0%
February	711	(8)	0.1%
March	745	(9)	0.1%
April	694	(8)	0.3%
May	803	(9)	0.6%
June	650	(8)	0.3%
July	700	(8)	0.4%
August	792	(9)	0.3%
September	594	(7)	0.3%
October	600	(7)	0.0%
November	817	(9)	0.4%
December	1065	(12)	0.3%
Total	8654	(100)	0.3%
C. Hours Furloughed			
6 or Less	914	(11)	0.0%
7 to 12	2671	(31)	0.1%
13 to 18	820	(10)	0.4%
19 to 24	1857	(22)	0.1%
25 to 30	394	(5)	0.3%
31 to 36	726	(8)	0.0%
37 to 42	127	(2)	0.0%
43 to 48	870	(10)	0.0%
More Than 48	261	(3)	0.8%
Escape	14	(0)	100.0%
Total	8654	(100)	0.3%

Furlough Variables	Number	Percent	Escape Rate
D. Institution Furloughed From			
Maximum and Medium Security			
Walpole	44	(1)	0.0 %
Concord	14	(0)	0.0 %
Framingham	306	(4)	1.3 %
Norfolk	230	(3)	0.4 %
SECC	168	(2)	0.0 %
Total	762	(9)	0.7 %
Minimum Security			
Plymouth	539	(6)	0.4 %
Warwick	268	(3)	0.4 %
Medfield	287	(3)	0.0 %
Bay State	741	(9)	0.1 %
NECC	695	(8)	0.1 %
Total	2530	(29)	0.2 %
Pre-Release			
577 House	257	(3)	0.0 %
699 House	298	(3)	1.3 %
THP	148	(2)	0.0 %
Shirley	524	(6)	0.4 %
Boston State	1281	(15)	0.0 %
Coolidge House	311	(4)	0.3 %
Brooke House	316	(4)	0.3 %
South Middlesex	627	(7)	0.3 %
Park Drive	639	(7)	0.0 %
Lancaster	407	(5)	0.0 %
Charlotte House	130	(2)	0.8 %
Hillside	51	(1)	5.9 %
Norfolk Pre-Release	346	(4)	0.0 %
Drug Houses	27	(0)	0.0 %
Total	5362	(62)	0.3 %
GRAND TOTAL	8654	(100)	0.3 %

END