

CR sent  
7-15-82



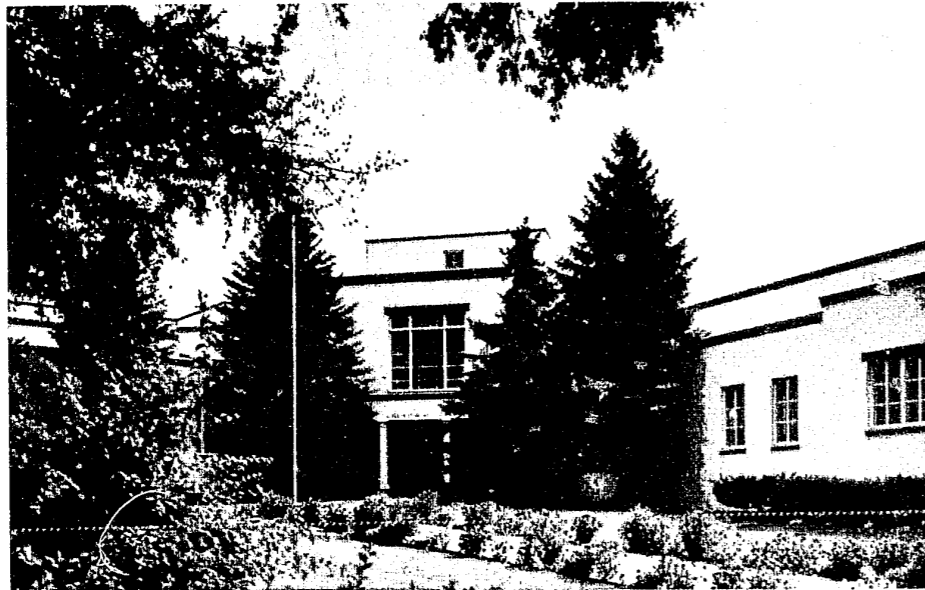
Edward J. Baca  
Director

**Supreme Court of New Mexico**  
Administrative Office of the Courts

Supreme Court Building  
Room 130  
Santa Fe, New Mexico 87503  
(505) 827-2771

January 1, 1982

# Judicial Department State of New Mexico



## Annual Report July 1, 1980-June 30, 1981

THE HONORABLE CHIEF JUSTICE  
AND JUSTICES OF THE SUPREME  
COURT OF NEW MEXICO

DISTINGUISHED MEMBERS OF THE  
NEW MEXICO STATE LEGISLATURE

The 1980-81 fiscal year Annual Report of the Judicial Department, published pursuant to Section 34-9-3, et seq., N.M.S.A. 1978 Annotated, is submitted herewith for your review.

Projects are in progress which address major areas of concern, caseload management and reducing trial delay, as well as all aspects of court management. The administrative office constantly strives to improve the quality of services provided to the courts. Ultimately, the people of the state will benefit via increased efficiency in case processing.

Harmonious relations among the three branches of state government have produced an atmosphere conducive to accomplishing our mutual goal: the best possible judicial system for the citizens of New Mexico.

Respectfully submitted,

A handwritten signature of Edward J. Baca in cursive script.

EDWARD J. BACA, DIRECTOR  
Administrative Office of the Courts

82466  
9488

U.S. Department of Justice 82466  
National Institute of Justice

This document has been reproduced exactly as received from the person or organization originating it. Points of view or opinions stated in this document are those of the authors and do not necessarily represent the official position or policies of the National Institute of Justice.

Permission to reproduce this copyrighted material has been granted by

State of New Mexico

Administrative Off. of the Court

to the National Criminal Justice Reference Service (NCJRS).

Further reproduction outside of the NCJRS system requires permission of the copyright owner.

## TABLE OF CONTENTS

Page	
1	<b><i>Administrative Office of the Courts</i></b>
7	<b><i>The Supreme Court</i></b>
11	<b><i>Court of Appeals</i></b>
19	<b><i>District Courts</i></b>
28	<b><i>Juvenile Probation Services</i></b>
31	<b><i>Magistrate Courts</i></b>
38	<b><i>Bernalillo County Metropolitan Court</i></b>
42	<b><i>Subsidiary Judicial Agencies</i></b>

## ADMINISTRATIVE OFFICE OF THE COURTS

The Administrative Office of the Courts was created by the New Mexico State Legislature in 1959. The office of the court administrator was placed under the supervision of the Supreme Court initially to inventory out-of-district designations in the district courts and survey the civil dockets of the state to determine the relative number of types of civil cases handled by district courts. Responsibilities of the Administrative Office of the Courts have expanded considerably in the last twenty-two years to keep pace with the state's rapid population growth and resultant rising caseloads at all levels of courts as well as meeting demands of an increasingly complex judicial system.

Section 34-9-3, NMSA 1978 Annotated, sets forth the statutory requirements of the Director of the Administrative Office of the Courts who shall, under the Supreme Court's direction and supervision:

supervise all matters relating to administration of the courts;

examine fiscal matters and the state of the dockets of the courts...

submit to the Supreme Court and to the Legislature by January 30 of each year a report of the activities of the administrative office and of the state of business of the courts, including the statistical data submitted to the Supreme Court...

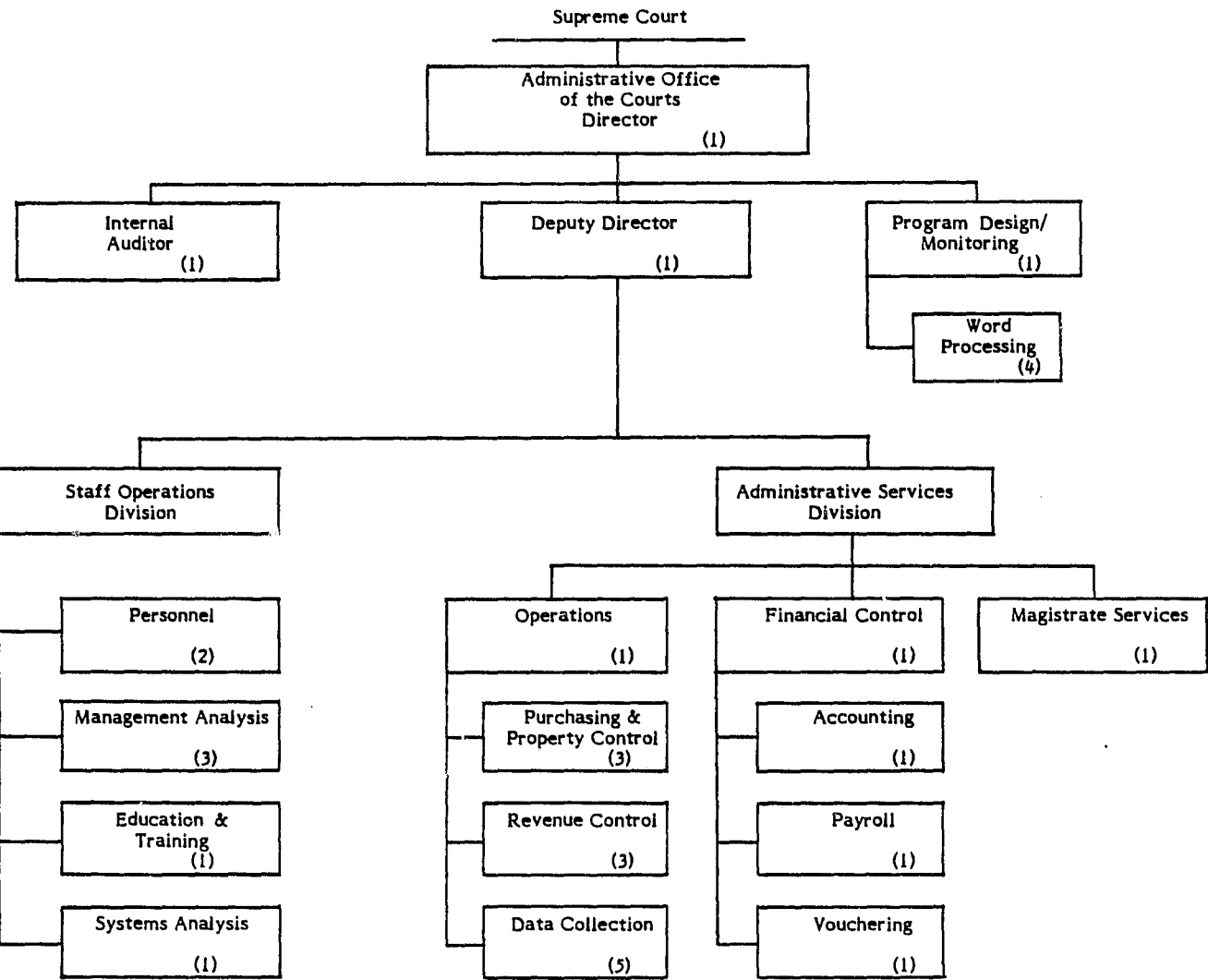
deal with the problems of finance of those courts supported by legislative appropriation and be concerned with adequate but economical financing of each of these courts and the equitable distribution of funds among them. For this purpose the Director shall receive, adjust and approve proposed budgets submitted by these courts...

perform other duties in aid of the administration of justice and the administration and dispatch of the business of the courts as directed by the Supreme Court. The courts shall comply with all requests of the director for information.

The Administrative Office of the Courts is budgeted funds by the Legislature each year to maintain the total operation of the magistrate courts, penalty assessment revenue collection system, district court jury and witness vouchering system, judge pro tempore program, and management staff. Other responsibilities include judicial personnel administration, court management analysis services, program design and monitoring, systems development, continued judicial education and training, administrative services management, and operations supervision of the Supreme Court Building Commission.

The staff of thirty-three full-time employees is organized into two divisions: Staff Operations and Administrative Services. Staff Operations performs studies of judicial organizational structures, systems and methods for the purpose of recommending changes to improve functioning of the appellate, district and magistrate courts. Management analysis and judicial education and training services are provided to appellate, district and magistrate courts, juvenile probation officers and court reporters. Program design and monitoring and internal audit of the state funded courts fall within the Director's purview.

The Administrative Services Division handles budget and accounting for the Supreme Court Building Commission in addition to the Administrative Office of the Courts and magistrate courts. Also included under administrative services are data collection, penalty assessment revenue collection, purchasing and property control, and magistrate services.



Penalty Assessment Program

The penalty assessment system, now in its eleventh year, disposes of minor traffic citations issued by the New Mexico State Police and eleven other enforcement and regulatory agencies.

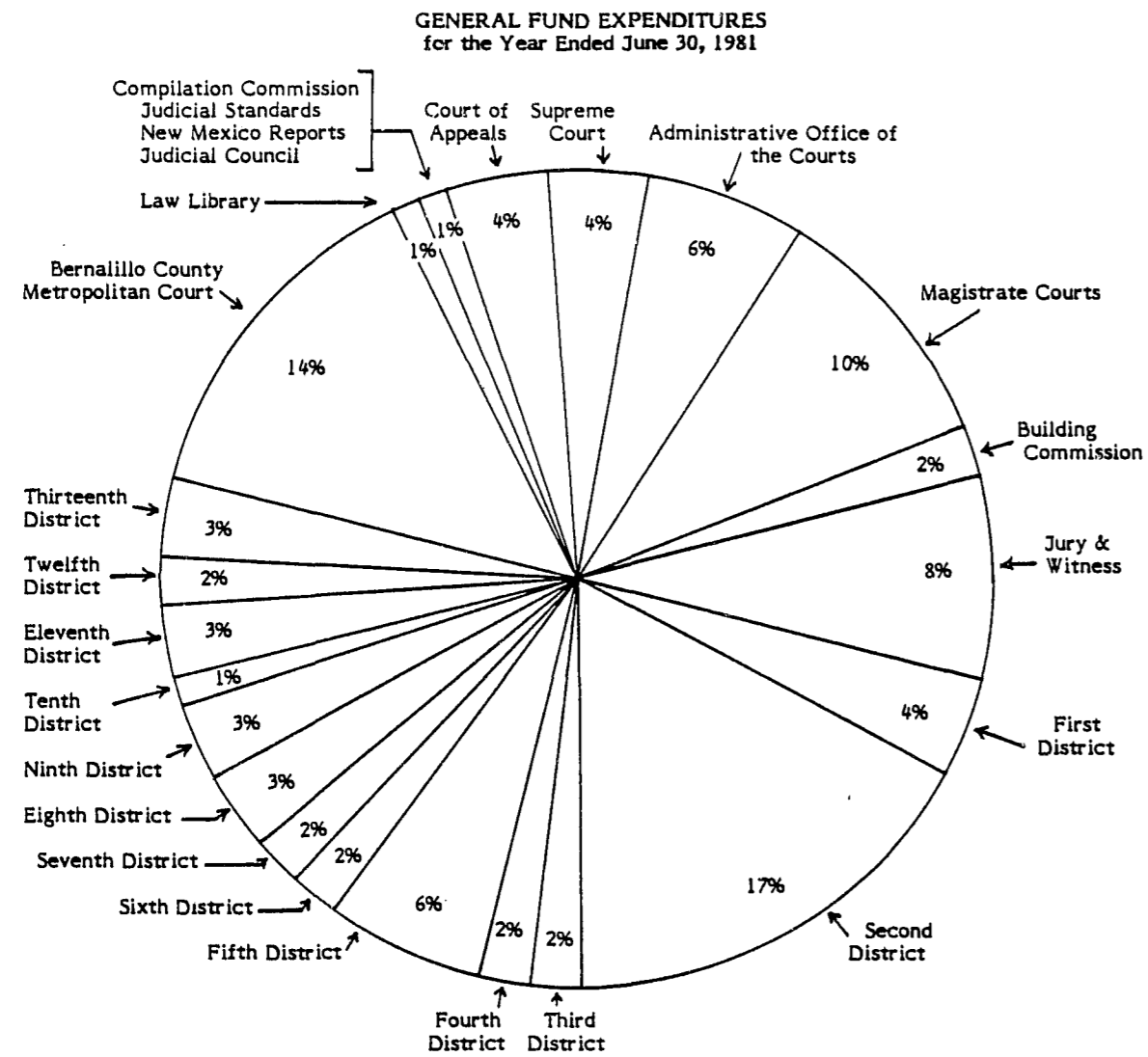
Legislation (House Bill 216, Chapter 360, Laws of 1981) passed in 1981 transfers the penalty assessment system from the Administrative Office of the Courts to the Transportation Department, Motor Vehicle Division, effective January 1, 1982. This move was designed to limit participation in the penalty assessment system to those agencies directly involved. Inconvenience to motorists for failure to pay penalty assessments, resulting in the inability to renew their driver's licenses, should be reduced by administrative handling of these cases by the Motor Vehicle Division.

PENALTY ASSESSMENTS PROCESSED FROM JULY, 1980 THROUGH JUNE, 1981

Month	Number of Documents	Amount	Resident Skip	Non-Resident Skip
JULY	13,443	\$ 223,229.95	1,442	2,271
AUGUST	13,106	214,341.01	934	1,597
SEPTEMBER	12,397	201,081.94	957	793
OCTOBER	9,373	153,545.75	958	1,505
NOVEMBER	7,635	125,299.20	950	1,431
DECEMBER	9,427	155,828.40	1,017	1,600
JANUARY	9,949	165,317.31	1,192	1,694
FEBRUARY	9,310	154,662.00	565	730
MARCH	10,115	167,424.50	990	1,407
APRIL	10,297	172,137.05	1,080	1,497
MAY	9,237	154,270.34	1,183	1,559
JUNE	11,366	189,058.28	1,020	1,392
	125,655	\$2,076,195.73	12,288	17,476

CITATIONS RECEIVED

Year	Residents	Non-Residents	Total	Revenue Collected
1970	34,028	20,245	54,273	\$ 667,629
1971	38,994	24,580	63,574	841,989
1972	43,929	26,728	70,657	1,009,963
1973	44,977	23,173	68,150	948,295
1974	38,798	34,289	73,087	1,148,812
1975	48,883	37,839	86,722	1,317,818
1976	63,003	48,875	111,878	1,792,922
1977	56,617	25,436	82,053	1,370,085
1978	64,324	39,015	103,339	1,763,009
1979	73,679	49,120	122,799	2,104,222
1979-1980	77,263	44,406	121,669	2,064,339
1980-1981	71,667	53,988	125,655	\$2,076,196



**GENERAL FUND EXPENDITURES**  
**DISTRICT COURT REGULAR AND JUVENILE PROBATION**  
69th Fiscal Year, 1980-81

	Court Regular	% Agency Total	Juvenile Probation	% Agency Total	Agency Total
Judicial District 1	\$ 673,440	73.5	\$ 242,260	26.5	\$ 915,700
Judicial District 2	2,627,344	76.6	802,156	23.4	3,429,500
Judicial District 3	323,953	67.1	159,147	32.9	483,100
Judicial District 4	290,691	76.4	89,609	23.6	380,300
Judicial District 5	968,452	81.2	224,348	18.8	1,192,800
Judicial District 6	358,041	74.9	119,659	25.0	477,700
Judicial District 7	363,358	79.8	92,242	20.2	455,600
Judicial District 8	331,889	65.6	174,111	34.4	506,000
Judicial District 9	447,563	78.5	122,537	21.5	570,100
Judicial District 10	181,343	78.2	50,457	21.8	231,800
Judicial District 11	499,347	75.8	159,453	24.2	658,800
Judicial District 12	297,987	75.1	99,013	24.9	397,000
Judicial District 13	<u>541,143</u>	<u>77.7</u>	<u>155,757</u>	<u>22.3</u>	<u>696,900</u>
	\$7,904,551	76.6	\$2,490,749	24.6	\$10,395,300

All amounts in thousands of dollars.

**GENERAL FUND EXPENDITURES BY REPORTING ENTITY**  
for the Year Ended June 30, 1981

Code	Activity	Amount Expended And Encumbered	% of Total	Code	Activity	Amount Expended And Encumbered	% of Total
205	Supreme Court Law Library	\$ 223,900	1	232	Second Judicial District	\$ 3,429,500	17
208	Compilation Commission	284,600	1	233	Third Judicial District	483,100	2
213	New Mexico Reports			234	Fourth Judicial District	380,300	2
215	Court of Appeals	801,100	4	235	Fifth Judicial District	1,192,800	6
216	Supreme Court	755,800	4	236	Sixth Judicial District	477,700	2
218.1	Administrative Office of the			237	Seventh Judicial District	455,600	2
	Courts	1,343,200	6	238	Eighth Judicial District	506,000	3
218.3	Magistrate Courts	2,073,800	10	239	Ninth Judicial District	570,100	3
219	Supreme Court Building			240	Tenth Judicial District	231,800	1
	Commission	309,100	25	241	Eleventh Judicial District	658,800	3
221	Jury & Witness Fees	1,723,100	8	242	Twelfth Judicial District	397,000	2
244	Bernalillo County Metropolitan			243	Thirteenth Judicial District	696,900	3
	Court	2,896,900	14				
231	First Judicial District	915,700	4				
				Total		\$20,806,800	100

THE SUPREME COURT

During the 69th Fiscal Year the Supreme Court was composed of:

Mack Easley, Chief Justice  
Dan Sosa, Jr., Senior Justice  
H. Vern Payne, Justice  
William R. Federici, Justice  
William F. Riordan, Justice

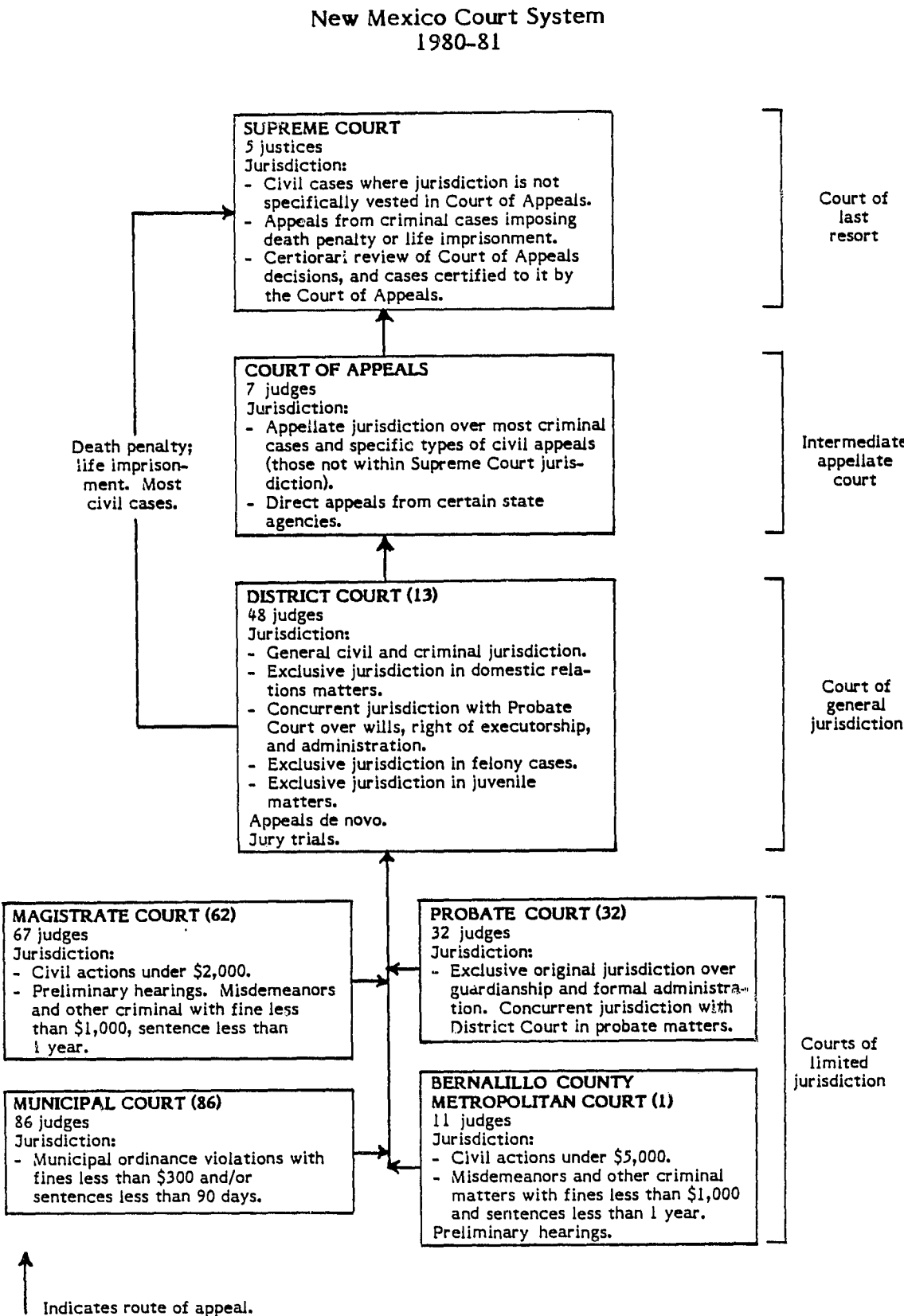
In 1976 Mack Easley was successful in his election bid for an unexpired term of six years and Dan Sosa, Jr. was successful in his race for an eight-year term. Both terms began on January 1, 1977. In 1978 William R. Federici was elected to an eight-year term, beginning on January 1, 1979. During the 69th fiscal year, H. Vern Payne was successful in his campaign for an eight-year term, beginning on January 1, 1981. William F. Riordan defeated Edwin L. Felter in the 1980 general election, and was elected to the unexpired term of Mr. Justice John B. McManus. This term will expire on December 31, 1987.

The Chief Justice of the Supreme Court is selected by the Court to serve for two years. Mr. Senior Justice Sosa was chosen by the Court to serve as Chief Justice for the 1979 and 1980 calendar years. Mr. Chief Justice Easley was selected by the Court to serve for the 1981 and 1982 calendar years. The Chief Justice presides at all sessions of court and is the Administrative Officer of the Court during his tenure as Chief Justice.

On a monthly basis, the new cases on the regular docket of the Supreme Court were filed as follows. (Figures for the 68th, 67th, 66th and 65th fiscal years are added for comparison.)

	69th	68th	67th	66th	65th
July	62	45	41	48	43
August	40	53	43	53	32
September	42	38	43	43	29
October	50	44	49	51	30
November	31	45	47	34	38
December	64	40	33	51	32
January	37	51	36	45	41
February	40	47	37	46	44
March	54	66	39	51	48
April	51	50	60	56	41
May	49	43	47	65	39
June	44	55	47	43	49
TOTALS	564	577	522	586	466

In addition to the cases above, there were 347 miscellaneous motions filed for a total of 911 filings.



New matters filed on the regular docket are in the following categories. Comparable figures are included, when available.

	69th	68th	1979	1978	1977
Civil	219	227	206	245	251
Criminal	18	32	28	28	22
Certiorari	204	208	182	174	167
Mandamus	27	21	27	27	18
Prohibition	62	60	59	56	51
Habeas Corpus	9	14	10	12	17
Superintending Control	9	5	7	7	6
Disciplinary	7	1	2	3	4
Quo Warranto				1	
Rule 32 Election Challenge				5	
Criminal Contempt			1	1	
Judicial Standards	2	1	2	1	
Suspension of Attorneys	2	3	2	2	
Removal from Corporation					
Commission	1		1		1
Other	<u>4</u>	<u>5</u>	<u>4</u>	<u>—</u>	<u>5</u>
TOTALS	564	577	531	562	542

There were 46 cases entered on the habeas corpus docket. There were petitions filed and hearings held on 263 Rule 37 Motions, 38 Rule 46 Motions and 10 Rule 60 Motions. These motions are entered on a separate docket and deal with the right to a speedy trial, a right to hearing, etc. One Justice hears all of the above petitions each month and this assignment is rotated between the Justices.

Original proceedings, motions, and petitions for prerogative writs are heard by a panel of three Justices each Wednesday, unless otherwise directed by the Court. The panels for the hearings are assigned by the Chief Justice each month on a rotating basis. The Court disposes of these matters either by order or by written opinion.

Petitions for writ of certiorari to the Court of Appeals are considered by the entire Court, and are either granted and assigned for disposition by opinion or denied by order.

The remainder of the cases filed in the Supreme Court are placed on the regular docket to be submitted to the Court when at issue. Cases are submitted to the Court either by oral argument or on the briefs in the file.

The Supreme Court scheduled 30 days of oral argument and heard a total of 154 cases during the 69th fiscal year. Thirty-seven cases were submitted to the Court on briefs only.

The Supreme Court handed down 229 opinions and/or decisions during the twelve month period, disposing of 236 cases. There were opinions handed down on 41 cases where writs of certiorari had been issued, reviewing decisions of the Court of Appeals.

The authors of the 229 opinions and/or decisions are:

Chief Justice Easley	40
Senior Justice Sosa	54
Justice Payne	42
Justice Federici	48
Justice Riordan	16
Justice Felter	18
District Judges Sitting by Designation:	
Love	1
Reese	1
Snead	1
Garcia	1
Doughty	2
Nieves	1
Caldwell	1
DePauli	1
Per Curiam	<u>2</u>

The results of the 229 opinions/decisions were as follows:

Affirmed	126
Reversed	67
Affirmed in Part and Reversed in Part	30
Dismissed	2
Quashed Writ	1
Remanded	4
Strike Petition	<u>1</u>

229

The average elapsed time (in days) for the cases closed by written opinion and/or decision was as follows:

	69th	68th	1979	1978	1977
From Notice of Appeal to Transcript*	91.9	92.0	93.6	85.8	75.8
From Transcript to Issue	77.3	82.4	82.5	73.5	63.4
From Issue to Submission	55.3	60.1	59.0	52.6	44.0
From Submission to Opinion/Decision	98.7	85.9	74.8	41.5	56.7
From Issue to Opinion/Decision	153.3	146.4	135.8	94.5	77.7
From Transcript to Mandate	247.9	269.5		182.0	155.1

\*As Counsel has only thirty days to file a skeleton transcript after the filing of notice of appeal, no table was prepared on the Notice of Appeal to Docketing.

RECAP OF CASES PENDING ON JULY 1, 1980:

At Issue - not set for oral argument	17
Not at Issue	71
Previously Submitted	77
	<u>165</u>

TOTAL CASES PENDING JULY 1, 1980 .....	165
NEW CASES FILED - REGULAR DOCKET .....	<u>564</u>
TOTAL CASES ON DOCKET AT END OF FISCAL YEAR	729
LESS TOTAL NUMBER OF CASES DISPOSED OF	<u>- 548</u>
TOTAL NUMBER OF PENDING CASES ON DOCKET	181

RECAP OF CASES PENDING ON JUNE 30, 1981:

At Issue - not set for oral argument	21
Not at Issue	70
Previously Submitted	90
	<u>181</u>

The Compilation Commission has continued to service the New Mexico Statutes Annotated's public subscribers. Approximately 990 full set holders are now participating in this service. There are, in addition, approximately 980 partial set holders. There were three distributions of statute materials made to the set holders during the 69th fiscal year. One billing for these materials was authorized. The 1981 supplements and the billing for those supplements were distributed in September, 1981.

The Compilation Commission has continued with its program of organization and publication of the New Mexico Attorney General Opinions. There are approximately 200 subscriptions to this service. The individual Attorney General Opinions, as well as a 30-year index, compliance guides and informational pamphlets are being offered in a quarterly subscription service.

As a service to the public, the Compilation Commission and this office are maintaining an inventory of statute pamphlets, judicial rules pamphlets and Attorney General Opinion materials for sale. Currently these supplies are running at approximately 150 of each pamphlet and supplement, with a supply of 300 of the Attorney General publications also in stock.

This office completed distribution of Volume 94 of the New Mexico Reports during the 69th fiscal year. Sales of New Mexico Reports are made to the general public and to interested state agencies. A complete inventory of Volumes 4 through 94 is available for sale.

NEW MEXICO COURT OF APPEALS  
July 1, 1980 through June 30, 1981

During the above period, the Court of Appeals was composed of:  
B. C. Hernandez, Chief Judge  
Joe W. Wood, Senior Judge  
William R. Hendley, Judge  
Lewis R. Sutin, Judge  
Ramon Lopez, Judge  
Mary C. Walters, Judge  
Leila Andrews, Judge\*

\* Deceased June 16, 1981.

I. NEW FILINGS

Volume	1980	1981
July	43+5*	
August	39	
September	44+2*	
October	46	
November	32	
December	46	
January		40
February		33
March		44
April		41
May		42
June		<u>48</u>

\* Reinstatements 498+7\*

Category

Civil:

Administrative appeals	10
Interlocutory appeals	24
Docket & affirm	11
All other	211
	<u>256</u>

Criminal:

Interlocutory appeals	23
Appeals by state	27
All other	192
	<u>242</u>

Free process in both criminal and civil cases: 498  
246

Action on Interlocutory Appeals

Grant	17
Deny	27
Transfer/Certify	3
	<u>47</u>

Docketing Statements Filed 202

<b>Calendar Assignments</b>		
Docketing Statements filed	202	
Pending from prior period	4	
		206
Limited	69	
Legal	13	
Summary affirm	73	
Summary reverse	31	
Summary dismiss	11	
Summary affirm/reverse	1	
No assignment (closed)	4	
Pending	4	

<b>Calendar Reassignments</b>		
Summary reverse to limited	16	
Summary reverse to summ/affirm	2	
Summary affirm to limited	9	
Summary affirm to summ/reverse	5	
Summary affirm to legal	1	
Summary affirm to summ/reverse	1	
Summary dismiss to limited	1	
Legal to limited	1	
Limited to summ/reverse	1	

II. CASE DISPOSITIONS

Volume	Opinion	Order	Transfer/ Certify	
July	52	11	2	
August	37	10	0	
September	36	11	3	
October	46	3	0	
November	39	5	1	
December	40	12	2	
January	37	10	0	
February	39	6	2	
March	21	9	5	
April	30	8	2	
May	29	3	1	
June	38	5	2	
	444	93	20	557
Formal Opinions				189
Memorandum Opinions				255
				444

Category of Opinions

<b>Civil:</b>			
Affirm	102		
Reverse	63		
Dismiss	26		
A/R	2		
Other	3		
		196	
<b>Criminal:</b>			
Affirm	149		
Reverse	73		
Dismiss	6		
A/R	9		
Other	11		
		248	444

Calendar Assignments of Criminal Appeals Reversed

<b>Reverse in favor of state:</b>			
Limited	7		
Legal	1		
Summary	2		
		10	
<b>Reverse in favor of defendant:</b>			
Limited	40		
Legal	3		
Summary	19		
No calendaring	1		
		63	73
Defendants ordered discharged		13	
Further trial proceedings ordered		60	

III. MOTIONS

<b>Motions Filed:</b>			
<b>Extensions of time:</b>			
Briefs		385	739
Transcripts	280		
Docketing Statements	54		
Skeleton Transcripts	23		
	28		
Docket and Affirm		13	
Dismiss/Affirm		61	
Rehearing		40	
Other		240	

**Disposition of Rehearings**

Grant	6
Deny	34

**IV. MISCELLANEOUS**

During this period, there were 33 days of oral argument involving 107 cases; 16 days of motion hearings involving 20 cases; and 11 days of show cause hearings involving 15 cases.

**V. CERTIORARI STATUS REPORT****Notices of Certiorari**

Notices pending prior to June 30, 1980:	11	
Notices filed during fiscal year:	<u>204</u>	215
Withdrawn:	2	
Granted:	71	
Denied:	134	
Pending:	8	

**Writs of Certiorari Issued**

Writs issued prior to 6/30/80 and pending:	31	
Writs issued during fiscal year:	<u>71</u>	102
Quashed:	32	
Opin Rev:	23	
Opin A/R:	6	
Opin Affirm:	4	
Other:	<u>4</u>	
	69	
Writs pending as of July 1, 1981:	33	

**VI. REPORT OF APPEALS BY COUNTY**

<u>County</u>	<u>Total</u>	<u>Free Process</u>	<u>Civil</u>	<u>Criminal</u>	<u>Inter-Locu.</u>	<u>D&amp;A</u>
Bernalillo	182	83	92	90	15	3
Catron	0	0	0	0	0	0
Chaves	24	14	2	22	4	0
Colfax	4	2	4	0	0	0
Curry	22	16	6	16	1	0
De Baca	4	3	1	3	0	0
Dona Ana	12	5	9	3	0	0
Eddy	32	19	11	21	5	1
Grant	11	8	5	6	0	1
Guadalupe	0	0	0	0	0	0
Harding	1	1	0	1	0	0
Hidalgo	0	0	0	0	0	0
Lea	28	20	8	20	1	0
Lincoln	2	1	1	1	0	0
Los Alamos	5	0	4	1	1	0
Luna	11	5	7	4	1	0
McKinley	7	7	4	3	0	0
Mora	3	0	3	0	0	0
Otero	13	5	6	7	0	0
Quay	2	2	0	2	0	0
Rio Arriba	7	5	3	4	1	0
Roosevelt	2	2	0	2	1	0
Sandoval	5	2	3	2	2	0
San Juan	17	3	15	2	0	3
San Miguel	7	4	3	4	0	0
Santa Fe	56	21	34	22	13	1
Sierra	0	0	0	0	0	0
Socorro	1	1	1	0	0	0
Taos	6	2	3	3	1	0
Torrance	1	0	1	0	0	0
Union	0	0	0	0	0	0
Valencia	23	10	20	3	1	0
Administrative Appeals	10	5	10			
<b>TOTAL</b>	<b>498</b>	<b>246</b>	<b>256</b>	<b>242</b>	<b>47</b>	<b>9</b>

# VII. CRIMINAL APPEALS BY CATEGORY OF CRIME

Auto burglary	1
Assault	2
Assault & battery	1
Aggravated assault	6
Aggravated battery	9
Aggravated burglary	2
Armed robbery	15
Battery of peace officer	1
Child abuse	1
Conspiracy	3
Contempt	5
Commercial burglary	3
Commercial robbery	1
Criminal sexual penetration	13
Disorderly conduct	2
Driving while intoxicated	5
Enter dwelling	1
Escape	5
Extortion	2
False imprisonment	1
Forgery	8
Fraud	1
Habitual offender	18
Kidnapping	6
Larceny	4
Murder, 2nd	14
Possession/distribution controlled substance	16
Probation revocation	12
Residential burglary	13
Robbery	3
Shoplifting	4
Speeding	1
Unlawful possession firearm in liquor establishment	1
Unlawful taking vehicle	2
Voluntary manslaughter	10

## STATISTICS OF AVERAGE TIME ON APPEAL (in Days) FROM NOTICE OF APPEAL THROUGH FINAL DECISION (Opinion)\* July 1, 1980 - June 30, 1981

Children's and Criminal Cases										
Calendar Assignment	No.Cases	NA-DS	DS-CA	CA-Memo	CA-BC	Memo-D	BC-AB	AB-D	CA-D**	NA-D
BERNALILLO COUNTY										
Summary Affirmance	24	11.2	12.1	15.3	NA	10.3	NA	NA	24.1	48.8
Summary Reversal	10	10.0	9.8	9.4	NA	16.1	NA	NA	None	45.3
Summary Dismissal	4	12.0	12.3	10.0	NA	28.0	NA	NA	18.0	47.3
Limited (Pure Trans.)	8	17.4	21.9	NA	73.9	NA	21.4	63.6	NA	198.2
Limited (Trans./Tapes)***	31	10.2	13.0	NA	84.2	NA	22.8	87.5	NA	217.7
Limited (Pure Tapes)	14	9.8	20.1	NA	57.9	NA	27.8	73.2	NA	188.8
Legal	5	11.0	11.4	NA	23.0	NA	18.2	53.4	NA	117.0
OTHER COUNTIES										
Summary Affirmance	38	10.3	9.6	11.7	NA	14.2	NA	NA	25.9	44.9
Summary Reversal	7	12.7	11.4	9.4	NA	17.0	NA	NA	19.0	49.7
Summary Dismissal	5	12.8	14.4	10.0	NA	4.0	NA	NA	30.8	54.6
Limited (Pure Trans.)	64	11.8	13.0	NA	92.9	NA	22.5	79.1	NA	219.3
Limited (Trans./Tapes)	1	12.0	19.0	NA	40.0	NA	28.0	64.0	NA	163.0
Limited (Pure Tapes)	0									
Legal	10	10.0	13.6	NA	30.1	NA	21.4	68.6	NA	134.7

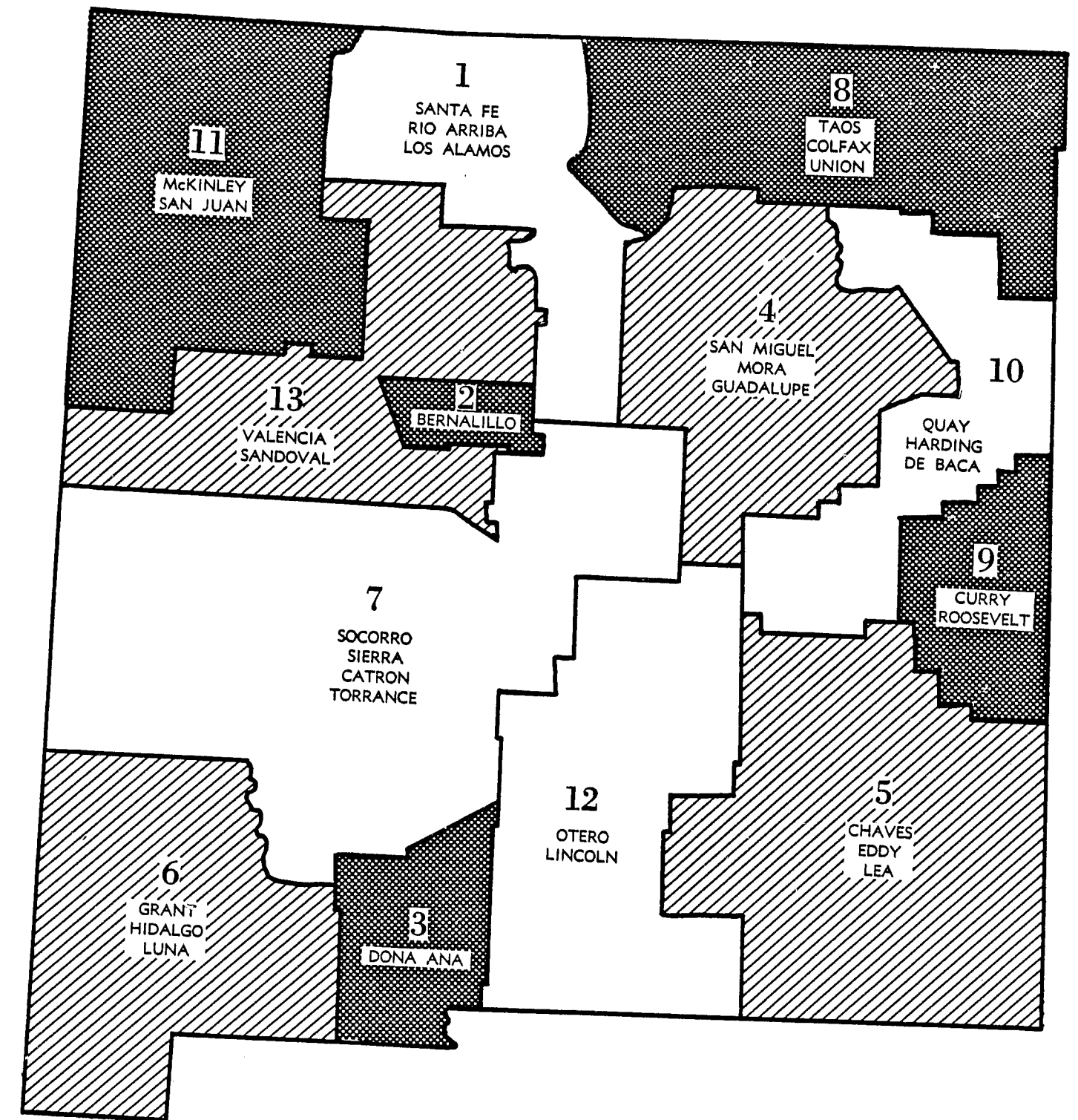
Civil Cases						
Nature of Case	No.Cases	NA-TR	TR-BC	BC-AB	AB-D	NA-D
BERNALILLO COUNTY						
Tort	36	104.2	38.0	37.9	122.8	302.9
Workmen's Compensation	15	99.8	39.0	38.2	85.8	262.8
Probate	3	81.7	34.0	39.7	131.3	286.7
Other	1	89.0	47.0	29.0	84.0	249.0
OTHER COUNTIES						
Tort	60	99.6	34.0	33.9	126.2	293.7
Workmen's Compensation	28	86.9	31.2	33.5	104.1	255.7
Probate	5	77.0	34.2	31.0	147.0	289.2
Other	4	98.3	34.7	41.5	113.3	287.8
Administrative Appeals	12	38.2	45.3	41.8	146.2	271.5
Interlocutory Appeals						
From Bernalillo	4	59.0	29.0	25.8	82.8	196.6
From Other Counties	8	16.3	28.1	20.4	84.9	149.7

NA--Notice of Appeal filed in the district court  
DS--Docketing Statement filed in Court of Appeals  
CA--Calendar Assignment  
TR--Transcript (or Tapes) filed in the Court of Appeals  
BC--Brief in Chief filed

MEMO--Memo in Opposition to proposed Summary Calendar  
AB--Answer Brief filed  
D--Decision filed

\* Less atypical cases.  
\*\* No memos in opposition filed  
\*\*\* From filing of tape to transcript, an average of 32.2 days delay.

# DISTRICT COURTS



Preceding page blank

DISTRICT COURTS

New Judgeships:

At fiscal year end, June 30, 1981, there were 48 district judges. The 45 judges in office June 30, 1980 were increased in numbers in the following manner: The 1981 Legislature created a new, temporary division in the First Judicial District from March 1, 1981 through July 1, 1983. The Honorable Edwin L. Felter was appointed by Governor Bruce King to fill the position, Division VI. The 1979 Legislature created a new judgeship in the Fifth Judicial District, Division VI, effective January 1, 1981. The Honorable William J. Schnedar was elected to office November 4, 1980. The 1980 Legislature created a new division in the Second Judicial District effective January 1, 1981. The Honorable Thomas J. Mescall was elected to Division XV on November 4, 1980. A new division was created in the Third Judicial District, Division III, by the 1981 Legislature. The Honorable James T. Martin was appointed by Governor Bruce King to take office July 1, 1981.

Other Changes:

The Honorable Tony Scarborough was elected November 4, 1980 to the position held by Judge Harl D. Byrd, a Governor King appointee, in the First Judicial District, Division II. In the Second Judicial District, The Honorable Frank H. Allen was appointed December 30, 1980 by Governor Bruce King to fill the vacancy in Division IV created by Judge William R. Riordan's election to the New Mexico Supreme Court. The Honorable Philip Ashby was appointed to Division VII May 1, 1981 by Governor King, filling the vacancy created by Judge James A. Maloney's resignation. In the Thirteenth Judicial District, the Honorable Mayo T. Boucher was appointed December 30, 1980 by Governor King to fill the vacancy in Division I created by the death of Presiding Judge Filo M. Sedillo.

DISTRICT	COUNTIES	NO. OF JUDGES 6/30/81
1	Santa Fe, Rio Arriba, Los Alamos...	05 + 1 new
2	Bernalillo.....	14 + 1 new
3	Dona Ana.....	2
4	San Miguel, Mora, Guadalupe.....	2
5	Eddy, Chaves, Lea.....	05 + 1 new
6	Grant, Hidalgo, Luna.....	2
7	Socorro, Sierra, Catron, Torrance...	2
8	Taos, Colfax, Union.....	2
9	Curry, Roosevelt.....	2
10	Quay, DeBaca, Harding.....	1
11	McKinley, San Juan.....	3
12	Otero, Lincoln.....	2
13	Valencia, Sandoval.....	3
TOTALS	32 Counties.....	45 + 3 new

District Court Judges  
1980-1981

DISTRICT/DIVISION	LOCATION	JUDGE
First	III Santa Fe	Lorenzo Garcia, Presiding Judge
I	" " "	Thomas A. Donnelly
II	" " "	Tony Scarborough <sup>1</sup>
IV	" " "	Bruce E. Kaufman
V	" " "	Michael Francke
VI	" " "	Edwin L. Felter <sup>2</sup>
Second	VIII Albuquerque	Gerald R. Cole, Presiding Judge
I	" " "	Harry E. Stowers, Jr.
II	" " "	Joseph F. Baca
III	" " "	Jack Love
IV	" " "	Frank H. Allen, Jr. <sup>3</sup>
V	" " "	Gerald D. Fowlie
VI	" " "	Gene Franchini
VII	" " "	Philip Ashby <sup>4</sup>
IX	" " "	Patricia A. Madrid
X	" " "	Rozier E. Sanchez
XI	" " "	Richard B. Traub
XII	" " "	Phil Baia Monte
XIII	" " "	John E. Brown
XIV	" " "	W. John Brennan
XV	" " "	Thomas J. Mescall <sup>5</sup>
		Tom Ruiz, District Court Administrator
Third	II Las Cruces	Joe H. Galvan, Presiding Judge
I	" " "	Garnett R. Burks, Jr.
Fourth	I Las Vegas	Joe Angel, Presiding Judge
II	" " "	Donaldo A. Martinez
Fifth	IV Hobbs	N. Randolph Reese, Presiding Judge
I	Carlsbad	Harvey W. Fort
II	Roswell	Paul Snead
III	Hobbs	C. Fincher Neal
V	Carlsbad	John B. Walker
VI	Roswell	William J. Schnedar <sup>6</sup>
Sixth	I Silver City	Norman Hodges, Presiding Judge
II	Deming	Ray Hughes
Seventh	I Socorro	Edmund H. Kase, Presiding Judge
II	" " "	Paul "Pablo" Marshall
Eighth	I Raton	John B. Wright, Presiding Judge
II	Taos	Joe Caldwell
Ninth	I Clovis	Reuben E. Nieves, Presiding Judge
II	" " "	Fred T. Hensley
Tenth	I Tucumcari	Stanley F. Frost
Eleventh	I Aztec	James W. Musgrove, Presiding Judge
II	Gallup	Louis E. De Pauli
III	Aztec	James L. Brown
Twelfth	I Alamogordo	George L. Zimmerman, Presiding Judge
II	" " "	Robert M. Doughty, III
Thirteenth	II Bernalillo	George Perez, Presiding Judge
I	Los Lunas	Mayo T. Boucher <sup>7</sup>
III	" " "	Tibo Chavez

1. The Honorable Tony Scarborough elected November 4, 1980 to position held by Judge Harl D. Byrd.  
2. The Honorable Edwin L. Felter appointed effective March 1, 1981 - July 1, 1983 by Governor Bruce King to fill temporary judgeship.  
3. The Honorable Frank H. Allen Jr. appointed December 30, 1980 by Governor Bruce King to fill vacancy created by the election of Judge William F. Riordan to the Supreme Court.  
4. The Honorable Philip Ashby appointed effective May 1, 1981 by Governor Bruce King to fill vacancy created by the resignation of Judge James A. Maloney.  
5. The Honorable Thomas J. Mescall elected to newly created Division XV effective January 1, 1981.  
6. The Honorable William J. Schnedar elected to newly created Division VI effective January 1, 1981.  
7. The Honorable Mayo T. Boucher appointed December 30, 1980 by Governor Bruce King to fill vacancy created by death of Judge Filo M. Sedillo.

DISTRICT COURT CASELOAD REPORT  
PRESENTED BY JUDICIAL DISTRICT, JULY 1, 1980 - JUNE 30, 1981

	CIVIL CASES				DOMESTIC CASES			
	Pending 7-1-80	Filed 69th FY	Closed 69th FY	Pending 6-30-81	Pending 7-1-80	Filed 69th FY	Closed 69th FY	Pending 6-30-81
1st Judicial District	2705	2204	2125	2784	887	1354	1271	970
2nd Judicial District	8588	11175	12271	7492	1825	6369	6440	1754
3rd Judicial District	744	1135	1044	835	398	1513	1445	466
4th Judicial District	615	538	690	463	145	399	394	150
5th Judicial District	2173	2609	2544	2258	978	3551	3472	1057
6th Judicial District	693	608	649	652	587	805	785	607
7th Judicial District	381	498	505	374	101	449	508	42
8th Judicial District	853	659	702	810	254	441	465	230
9th Judicial District	576	815	742	649	214	1032	1014	232
10th Judicial District	206	254	237	223	76	162	153	85
11th Judicial District	1370	1539	1535	1374	618	1374	1747	245
12th Judicial District	586	863	727	722	154	836	785	205
13th Judicial District	<u>1557</u>	<u>1752</u>	<u>1653</u>	<u>1656</u>	<u>376</u>	<u>964</u>	<u>948</u>	<u>392</u>
TOTALS	21047	24669	25424	20292	6613	19249	19427	6435

CRIMINAL DEFENDANTS				JUVENILE DEFENDANTS				TOTAL 69th FY CASELOAD			
Pending 7-1-80	Filed 69th FY	Closed 69th FY	Pending 6-30-81	Pending 7-1-80	Filed 69th FY	Closed 69th FY	Pending 6-30-81	Pending 7-1-80	Filed 69th FY	Closed 69th FY	Pending 6-30-81
388	932	514	806	258	449	529	178	4238	4939	4439	4738
941	1435	1238	1138	1450	1838	1692	1596	12804	20817	21641	11980
42	331	225	148	33	183	177	41	1217	3164	2891	1490
46	109	72	83	151	110	78	183	957	1156	1234	879
266	1023	870	419	98	512	435	175	3515	7715	7321	3909
65	195	186	74	78	271	278	71	1423	1879	1898	1404
54	161	151	64	15	110	109	16	551	1218	1273	496
161	135	171	125	18	49	48	19	1286	1284	1386	1184
140	529	515	154	39	180	166	53	969	2556	2437	1088
39	126	118	47	40	84	74	50	361	626	582	405
146	527	481	192	88	264	285	67	2222	3704	4048	1878
93	257	267	83	16	142	116	42	849	2098	1895	1052
<u>220</u>	<u>167</u>	<u>193</u>	<u>194</u>	<u>28</u>	<u>148</u>	<u>144</u>	<u>32</u>	<u>2181</u>	<u>3031</u>	<u>2938</u>	<u>2274</u>
2601	5927	5001	3527	2312	4342	4131	2523	32373	54187	53983	32777

DISTRICT COURT CASELOAD REPORT  
PRESENTED BY COUNTY, JULY 1, 1980 - JUNE 30, 1981

COURT	CIVIL CASES				DOMESTIC CASES			
	Pending 7-1-80	Filed 69th FY	Closed 69th FY	Pending 6-30-81	Pending 7-1-80	Filed 69th FY	Closed 69th FY	Pending 6-30-81
SANTA FE	2190	1589	1521	2258	623	931	892	662
RIO ARriba	364	425	412	377	210	295	241	264
LOS ALAMOS	151	190	192	149	54	128	138	44
BERNALILLO	8588	11175	12271	7492	1825	6369	6440	1754
DONA ANA	744	1135	1044	835	398	1513	1445	466
SAN MIGUEL	409	411	513	307	100	321	307	114
GUADALUPE	119	63	127	55	26	49	67	8
MORA	87	64	50	101	19	29	20	28
EDDY	616	678	693	601	287	1093	1032	348
CHAVES	987	889	814	1062	350	1069	1062	357
LEA	570	1062	1037	595	341	1389	1378	352
GRANT	335	299	347	287	340	515	509	346
LUNA	189	227	229	187	160	209	196	173
HIDALGO	169	82	73	178	87	81	80	88
SIERRA	125	183	175	133	6	136	127	15
TORRANCE	97	122	157	62	29	133	156	6
SOCORRO	128	156	138	146	60	152	199	13
CATRON	31	37	35	33	6	28	26	8
COLFAX	256	204	210	250	97	167	173	91
UNION	161	105	146	120	22	40	49	13
TAOS	436	350	346	440	135	234	243	126
CURRY	370	576	557	389	170	820	809	181
ROOSEVELT	206	239	185	260	44	212	205	51
QUAY	143	206	189	160	64	133	131	66
DE BACA	39	37	42	34	12	24	19	17
HARDING	24	11	6	29	0	5	3	2
MCKINLEY	373	451	484	340	140	380	408	112
SAN JUAN	997	1088	1051	1034	478	994	1339	133
OTERO	316	576	419	473	114	655	625	144
LINCOLN	270	287	308	249	80	181	160	61
VALENCIA	1183	1341	1259	1265	300	657	653	304
SANDOVAL	374	411	394	391	76	307	295	88
TOTALS	21047	24669	25424	20292	6613	19249	19427	6435

CRIMINAL DEFENDANTS				JUVENILE DEFENDANTS				TOTAL 69th FY CASELOAD			
Pending 7-1-80	Filed 69th FY	Closed 69th FY	Pending 6-30-81	Pending 7-1-80	Filed 69th FY	Closed 69th FY	Pending 6-30-81	Pending 7-1-80	Filed 69th FY	Closed 69th FY	Pending 6-30-81
276	445	379	342	191	306	394	103	3280	3271	3186	3365
77	136	103	110	57	115	120	52	708	971	876	803
35	351	32	354	10	28	15	23	250	697	377	570
941	1435	1238	1138	1450	1838	1692	1596	12804	20817	21641	11980
42	331	225	148	33	185	177	41	1217	3164	2891	1490
31	96	58	69	102	71	56	117	642	899	934	607
-0-	10	4	6	32	38	22	117	177	160	220	117
15	3	10	8	17	1	-0-	18	138	97	80	155
89	263	226	126	53	239	205	87	1045	2273	2156	1162
101	380	324	157	25	155	130	50	1463	2493	2330	1626
76	380	320	136	20	118	100	38	1007	2949	2835	1121
17	97	87	27	33	173	156	50	725	1084	1099	710
30	74	80	24	32	70	98	4	411	580	603	388
18	24	19	23	13	28	24	17	287	215	196	306
23	61	46	38	7	53	58	2	161	433	406	188
12	32	39	5	6	13	18	1	144	300	370	74
15	48	49	14	2	40	32	10	205	396	418	183
4	20	17	7	-0-	4	1	3	41	89	79	51
68	49	52	65	10	29	29	10	431	449	464	416
37	16	44	9	2	4	5	1	222	165	244	143
56	70	75	51	6	16	14	8	633	670	678	625
110	379	399	90	21	137	126	32	671	1912	1891	692
30	150	116	64	18	43	40	21	298	644	546	396
27	114	108	33	36	67	56	47	270	520	484	306
10	10	8	12	4	11	14	1	65	82	83	64
2	2	2	2	-0-	6	4	2	26	24	15	35
45	138	116	67	14	96	97	13	572	1065	1105	532
101	389	365	125	74	168	188	54	1650	2639	2943	1346
60	205	200	65	10	96	81	25	500	1532	1325	707
33	52	67	18	6	46	35	17	349	566	570	345
179	117	147	149	21	99	89	31	1683	2214	2148	1749
41	50	46	45	7	49	55	1	498	817	790	525
2601	5927	5001	3527	2312	4342	4131	2523	32573	54187	53983	32777

WITNESS AND JURY FUND  
69th Fiscal Year

Expenditures from July 1, 1980 through June 30, 1981 based on jury compensation of \$2.90 per hour plus 19 cents per mile, witness compensation of \$36.00 per day and 19 cents per mile:

DISTRICT	EXPENDITURES
FIRST	\$ 277,056.14
SECOND	444,592.43
THIRD	68,645.41
FOURTH	50,039.36
FIFTH	162,114.27
SIXTH	53,911.13
SEVENTH	17,638.34
EIGHTH	55,301.36
NINTH	53,720.11
TENTH	14,476.84
ELEVENTH	40,072.47
TWELFTH	32,352.55
THIRTEENTH	144,451.58
MAGISTRATE	101,553.44
TOTAL	\$1,515,925.43

DISQUALIFICATIONS, RECUSALS AND DESIGNATIONS  
July 1, 1980 - June 30, 1981

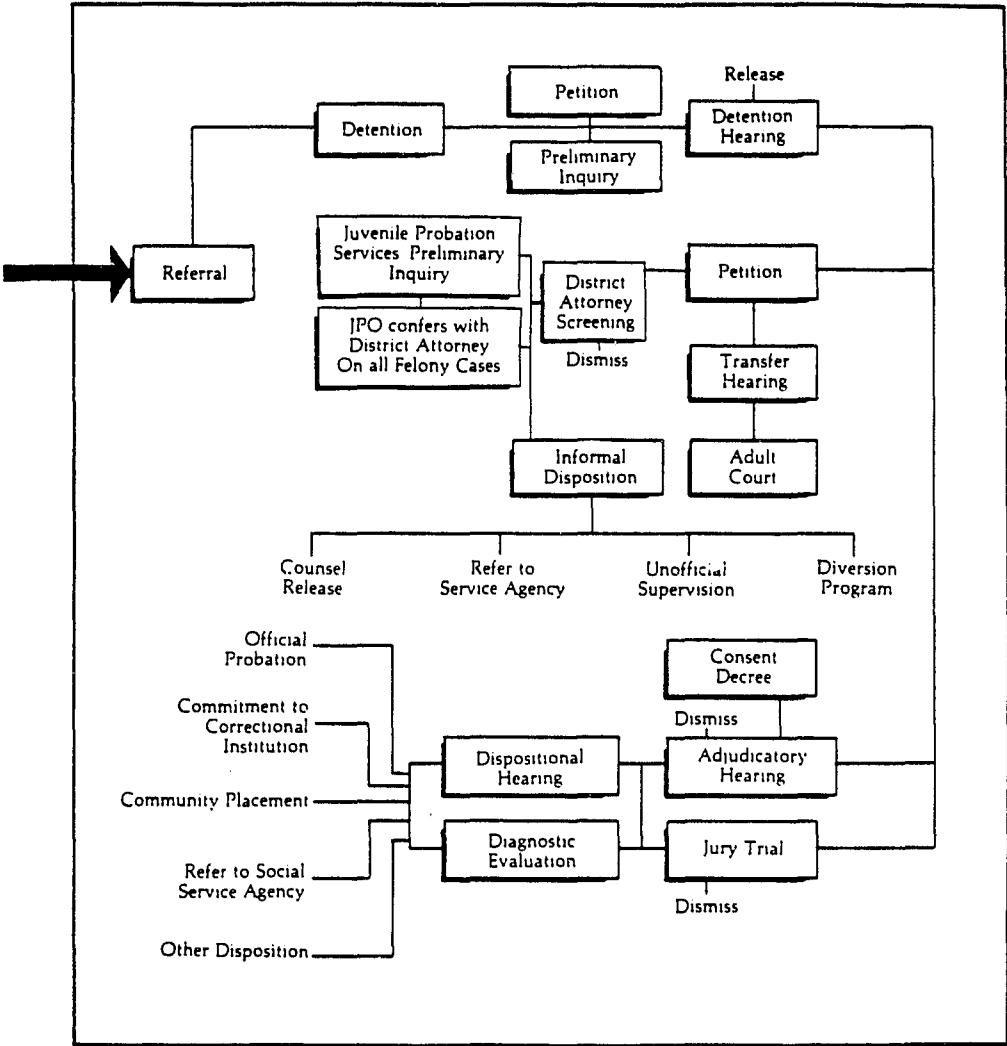
District/Division	Judge	Disqual.	Recusals	Out-of-District Designations
First	I Donnelly	1	2	0
	II Byrd	1	1	0
	III Scarborough	1	1	2
	IV Garcia	1	2	2
	V Kaufman	1	2	0
	VI Francke	1	2	1
Total		6	10	5
Second	I Stowers	81	29	0
	II Baca	65	6	1
	III Love	65	15	0
	IV Riordan/Allen	33	38	1
	V Fowlie	33	6	1
	VI Franchini	12	11	0
	VII Maloney/Ashby	61	20	2
	VIII Cole	36	12	2
	IX Madrid	98	20	0
	X Sanchez	100	15	0
	XI Traub	29	41	1
	XII Baiamonte	38	21	0
	XIII Brown	0	0	0
	XIV Brennan	8	0	1
	XV Mescal	31	12	1
	Special Commissioner	8	6	0
Total		698	255	9
Third	I Galvan	7	4	6
	II Burks	6	4	17
Total		13	8	23
Fourth	I Angel	22	2	5
	II Martinez	20	3	3
Total		42	5	8
Fifth	I Fort	25	13	1
	II Snead	5	4	0
	III Neal	114	3	2
	IV Reese	26	3	0
	V Walker	13	8	0
	VI Schnedar	5	4	1
Total		188	35	4
Sixth	I Hodges	8	2	0
	II Hughes	10	0	9
Total		18	2	9
Seventh	I Kase	8	9	7
	II Marshall	9	6	10
Total		17	15	17
Eighth	I Wright	11	3	0
	II Caldwell	4	10	9
Total		15	13	9
Ninth	I Nieves	2	7	4
	II Hensley	3	6	5
Total		5	13	9
Tenth	I Frost	11	0	14
Total		11	0	14
Eleventh	I Musgrove	2	0	5
	II DePauli	2	0	2
	III Brown	2	0	0
Total		6	0	7
Twelfth	I Zimmerman	11	2	4
	II Doughty	7	6	4
Total		18	8	8
Thirteenth	I Boucher	1	0	2
	II Perez	1	0	6
	III Chavez	1	0	5
Total		3	0	13
GRAND TOTAL		1,040	364	135
Judge Pro Tempore	Felter	0	1	1
	Montoya	0	0	0
	Oman	0	0	1
Total Judge Pro Tempore		0	1	2

JUVENILE PROBATION SERVICES

The information contained in the following two pages is separated into two categories: official and unofficial referrals. The official referrals are individuals who were the subject of a petition filed and who appeared in children's court. The unofficial referrals were informally handled and adjusted at the juvenile probation office. Statistics were collected manually from juvenile probation officers' reports submitted to the Administrative Office of the Courts.

Included in this report are dispositions, formal and informal, for the period July 1, 1980 through June 30, 1981.

CHILDREN'S COURT CASE  
FLOW CHART



JUVENILE CASES  
TOTAL FORMAL DISPOSITIONS  
JULY 1, 1980 - JUNE 30, 1981

Judicial District	County	Certified Probation							Total
		For Criminal	And Terms	Custody Transfer	Special Program	Consent Decree	Dismissed	Other	
1st	SANTA FE	0	41	32	42	71	37	7	230
	RIO ARriba	0	19	1	4	22	5	4	55
	LOS ALAMOS	1	9	2	13	13	2	2	42
2nd	BERNALILLO	0	200	41	141	207	137	34	760
3rd	DONA ANA	1	44	18	5	23	52	5	148
4th	SAN MIGUEL	1	3	0	5	12	3	5	29
	MORA	0	0	0	0	0	1	0	1
	GUADALUPE	0	29	1	0	5	3	1	39
5th	CHAVES	2	45	12	3	5	6	1	74
	LEA/LOVINGTON	0	8	2	0	1	4	5	20
	HOBBS	0	20	5	0	0	13	1	39
	EDDY/CARLSBAD	1	76	18	41	8	32	58	234
	ARTESIA	0	5	1	2	0	1	2	11
6th	GRANT	4	39	16	7	27	24	2	119
	HIDALGO	0	12	13	0	24	7	2	58
	LUNA	0	27	2	17	16	1	5	68
7th	CATRON	0	1	0	1	2	0	0	4
	SOCORRO	1	17	4	2	0	6	5	35
	SIERRA	0	18	3	1	0	6	1	29
	TORRANCE	0	0	1	2	0	5	0	8
8th	TAOS	0	3	2	0	0	1	0	6
	COLFAX	0	8	7	4	1	0	0	20
	UNION	0	1	0	0	0	1	0	2
9th	CURRY	59	2	12	0	31	18	0	122
	ROOSEVELT	0	13	3	0	0	0	0	16
10th	QUAY	0	18	4	0	3	4	10	39
	HARDING	2	4	4	0	4	1	1	16
	DE BACA	0	6	1	0	0	0	1	8
11th	MCKINLEY	0	25	21	40	26	5	8	125
	SAN JUAN	2	8	8	1	3	6	1	29
12th	LINCOLN/RUIDOSO	0	27	2	3	7	3	9	51
	CARRIZOZO	0	1	0	0	0	0	0	1
	OTERO	0	33	5	0	4	4	8	54
13th	SANDOVAL/BERNALILLO	0	12	2	2	10	7	0	33
	VALENCIA/GRANTS	0	2	0	0	1	4	0	7
	LOS LUNAS	1	5	0	0	5	9	0	20
TOTALS		75	781	243	336	531	408	178	2,552

**JUVENILE CASES  
TOTAL INFORMAL DISPOSITIONS  
July 1, 1980 - June 30, 1981**

Judicial District	County	Informal	Admin- istrative Probation	Dis- missed	Other Agency	Formal	Special Program	Other	Total
1st	SANTA FE	537	24	470	9	1	24	39	1104
	RIO ARRIBA	259	28	118	4	10	20	24	463
	LOS ALAMOS	178	23	49	14	7	61	70	402
2nd	BERNALILLO	1773	99	986	69	366	485	322	4100
3rd	DONA ANA	479	35	116	10	0	111	50	801
4th	SAN MIGUEL	367	42	25	6	19	32	190	681
	MORA	62	13	21	1	0	5	24	126
	GUADALUPE	143	4	4	4	0	0	29	184
5th	CHAVES	450	0	273	13	48	27	109	920
	LEA/LOVINGTON	46	4	5	0	0	1	3	59
	HOBBS	522	66	70	0	0	0	1	659
	EDDY/CARLSBAD	445	67	71	30	0	45	100	758
	ARTESIA	222	22	37	9	6	103	3	402
6th	GRANT	385	35	333	4	0	2	0	759
	HIDALGO	107	9	83	1	6	0	13	219
	LUNA	130	8	3	14	0	2	10	167
7th	CATRON	28	2	1	1	0	0	7	39
	SOCORRO	114	15	17	5	1	1	22	175
	SIERRA	109	6	80	7	0	4	15	221
	TORRANCE	45	4	1	18	1	0	2	71
8th	TAOS	258	32	23	3	1	43	73	433
	COLFAX	487	90	25	28	1	31	84	746
	UNION	96	20	6	9	0	19	3	153
9th	CURRY	487	27	82	8	2	79	3	688
	ROOSEVELT	58	3	15	0	0	3	1	80
10th	QUAY	218	3	2	7	0	11	13	254
	HARDING	17	0	0	1	0	0	6	24
	DE BACA	12	2	0	1	0	0	0	15
11th	MCKINLEY	359	81	255	2	1	16	13	727
	SAN JUAN	170	3	7	5	3	2	10	200
12th	LINCOLN/RUIDOSO	97	6	60	0	4	9	5	181
	CARRIZOZO	6	0	6	0	0	0	0	12
	OTERO	326	15	243	14	0	6	22	626
13th	SANDOVAL/BERNALILLO	117	21	18	2	1	7	2	168
	VALENCIA/GRANTS	400	97	18	2	0	4	13	534
	LOS LUNAS	306	18	31	13	0	37	3	408
TOTALS		9815	924	3554	314	478	1190	1284	17559

**MAGISTRATE COURTS**

New Mexico magistrates preside over courts of limited jurisdiction. Since they derive their powers by legislative enactment, the legislature can increase or reduce magistrate court jurisdiction, as well as create or abolish individual courts.

By current law, a magistrate's territorial jurisdiction is coextensive with the district or county in which he serves. However, a magistrate may exercise jurisdiction over certain vehicle and game department violations occurring in adjacent districts. They may also sit in any action arising in another district when designated by a district judge.

A magistrate's criminal jurisdiction extends to all misdemeanors. He may levy fines of not more than \$1,000.00 and may impose jail sentences of a definite term of less than one year. A magistrate may conduct preliminary hearings in felony cases, where authorized by law. Civil jurisdiction extends to debts or sums claimed up to \$2,000.00 exclusive of interest and court costs.

The New Mexico magistrate system entered its twelfth year of operation January 1, 1981. Seventy-eight magistrates, including eleven metropolitan judges, are presently serving the state. They are assigned primarily based on caseloads. Only the Bernalillo County Metropolitan Court judges of the state magistrates are required to be members of the New Mexico Bar in qualifying them for election or appointment. The magistrates of the remaining thirty-one counties must be high school graduates or the equivalent thereof. Several magistrates serve as municipal judges as well.

Annual training is provided all magistrates by the Administrative Office of the Courts, in compliance with statutory mandate. The magistrate benchbook and court clerk's manual provide judges and clerks with daily procedural guidance.

The Administrative Office of the Courts gathers and analyzes statistics to determine judgeship and clerk needs. Areas of concern within the magistrate court system are reviewed and improvements recommended on a continuing basis.

**Magistrate Court Judges  
1980-1981**

<u>COUNTY and DIVISION</u>	<u>LOCATION</u>	<u>JUDGE</u>
Catron I	Reserve	Ronald Gardner
Catron II	Quemado	Jim Trantham <sup>1</sup>
Chaves I	Roswell	L. O. "Tommy" Thompson, Presiding Judge
Chaves II	Roswell	John W. McLemore
Chaves III	Dexter	John R. Moore
Colfax I	Raton	Glada Sanderson
Colfax II	Springer	Les Russell
Colfax III	Cimarron	Florence B. Nowlin
Curry I	Clovis	Ernest C. Trapp, Presiding Judge
Curry II	Clovis	Emory W. Gaydon <sup>2</sup>
DeBaca I	Ft. Sumner	Willard Cook
Dona Ana I	Las Cruces	Robert Rodriguez, Presiding Judge
Dona Ana II	Las Cruces	Benjamin B. Rios
Dona Ana III	Anthony	Ruben J. Maynez
Dona Ana IV	Hatch	Mike Fajardo
Eddy I	Carlsbad	H. H. "Bud" Linneweh
Eddy II	Artesia	Donald W. Price
Grant I	Silver City	John H. Scholl
Grant II	Bayard	Y. B. Morales
Guadalupe I	Santa Rosa	Delbert A. Garcia
Guadalupe II	Vaughn	Robert E. Nolan
Harding I	Roy	Mae Nucci
Hidalgo I	Lordsburg	Rosa Lina Salinas
Lea I	Lovington	Drayton E. Wasson
Lea II	Hobbs	Donald D. Hallam
Lea III	Jal	Karen G. Kimble
Lea IV	Tatum	Virginia Pior
Lea V	Eunice	Millard "R. C." Hayes
Lincoln I	Carrizozo	S. M. Ortiz
Lincoln II	Capitan	Alfred Leroy Montez
Lincoln III	Ruidoso	James R. Wheeler
Los Alamos I	Los Alamos	Otis A. Farmer
Luna I	Deming	Manuel T. Holguin
McKinley I	Gallup	Lidio G. Rainaldi, Presiding Judge
McKinley II	Gallup	Paris C. Derizotis
McKinley III	Thoreau	John J. Carey <sup>3</sup>

1. Took office May 21, 1981 replacing Judge Mary E. Lee.

2. Took office January 1, 1981 replacing Judge John H. Spearman.

3. Took office January 1, 1981 replacing Judge Minnie Mahler.

**Magistrate Court Judges (cont'd)  
1980-1981**

<u>COUNTY and DIVISION</u>	<u>LOCATION</u>	<u>JUDGE</u>
Mora I	Mora	Levi Alcon
Otero I	Alamogordo	Robert H. Bradley
Otero II	Alamogordo	Henry M. Prelo
Otero III	Orogrande	Nelson L. Naylor
Quay I	Tucumcari	J. Bronson Moore
Quay II	San Jon	Marvin E. Terry
Rio Arriba I	Tierra Amarilla	Raltazar Archuleta
Rio Arriba II	Espanola	Cipriano Vigil
Roosevelt I	Portales	Jesse Porter
Sandoval I	Bernalillo	Bennie Lovato
Sandoval II	Cuba	Richard Velarde
San Juan I	Aztec	Ola Mae Hynson <sup>4</sup>
San Juan II	Farmington	Roy Marcum
San Miguel I	Las Vegas	Pat Romero
San Miguel II	Las Vegas	John Perea <sup>5</sup>
Santa Fe I	Santa Fe	Eugene F. Romero, Presiding Judge
Santa Fe II	Santa Fe	Isaac R. Archuleta
Santa Fe III	Espanola	Eugene P. Garcia
Sierra I	Truth or Consequences	Totsie Norton Williams
Socorro I	Socorro	Ignacio N. Garcia
Taos I	Ranchos de Taos	Juan F. Romero
Taos II	Questa	Mary Anne G. Romero
Taos III	Taos	Frank R. Trujillo <sup>6</sup>
Taos IV	Llano	Ambrose J. Mascarenas
Torrance II	Moriarty	Jean Williams
Torrance III	Mountainair	Edward J. Birmingham
Union I	Clayton	Berlin H. Crites
Valencia I	Los Lunas	Toribio L. Perea
Valencia II	Belen	Gillie Sanchez
Valencia III	Grants	John V. Horacek
Valencia IV	Milan	Rebecca Gomez

4. Took office May 20, 1981 replacing Judge J. Ellen Holloway.

5. Took office May 8, 1981 replacing Judge Louis E. Vigil.

6. Took office December 30, 1980 replacing Judge Phillip Archuleta.

**MAGISTRATE CASELOAD FILINGS  
JULY 1, 1980 - JUNE 30, 1981**

COURT	TRAFFIC	SPECIAL TRAFFIC FILINGS	DRIVING WHILE INTOXI- CATED	FELONY	MIS- DEMEANOR	FAILURE TO PAY PENALTY ASSESS.	CIVIL	TOTAL
CATRON								
I Reserve	219	6	11	17	265	1	0	519
II Quemado	247	8	8	9	419	13	1	705
CHAVES								
I Roswell	527	70	33	353	167	216	410	1,776
II Roswell	415	21	29	286	342	96	421	1,610
III Dexter	23	1	2	3	13	4	61	107
COLFAX								
I Raton	256	6	30	173	573	44	217	1,299
II Springer	142	4	5	6	39	51	3	250
III Cimarron	149	1	5	5	62	47	8	277
CURRY								
I Clovis	730	0	23	479	830	183	344	2,589
II Clovis	558	6	11	384	765	185	273	2,182
DE BACA								
I Ft. Sumner	122	0	15	54	93	27	7	318
DONA ANA								
I Las Cruces	2,020	4	125	383	1,399	751	508	5,190
II Las Cruces	2,144	20	92	248	792	842	324	4,462
III Anthony	605	0	21	8	1,920	42	68	2,664
IV Hatch	126	0	11	17	118	0	72	344
EDDY								
I Carlsbad	756	8	89	262	1,541	169	1,006	3,831
II Artesia	516	6	51	106	210	87	378	1,354
GRANT								
I Silver City	612	57	49	220	259	30	393	1,620
II Bayard	773	65	88	182	431	98	149	1,786
GUADALUPE								
I Santa Rosa	164	8	20	40	123	25	11	391
II Vaughn	67	0	2	0	237	28	0	334
HARDING								
I Roy	28	1	0	4	19	0	3	55
HIDALGO								
I Lordsburg	197	0	34	125	1,807	14	75	2,252
LEA								
I Lovington	497	7	41	749	238	103	288	1,923
II Hobbs	676	0	27	429	642	348	1,637	3,759
III Jal	48	3	7	7	21	5	180	271
IV Tatum	110	10	30	8	138	0	15	311
V Eunice	109	38	15	23	81	0	53	319
LINCOLN								
I Carrizozo	144	45	11	52	88	53	31	424
II Capitan	38	1	3	10	26	15	12	105
III Ruidoso	528	0	53	190	226	142	233	1,372
LOS ALAMOS								
I Los Alamos	269	0	13	86	209	0	245	822
LUNA								
I Deming	619	12	28	162	192	102	194	1,309

COURT	TRAFFIC	SPECIAL TRAFFIC FILINGS	DRIVING WHILE INTOXI- CATED	FELONY	MIS- DEMEANOR	FAILURE TO PAY PENALTY ASSESS.	CIVIL	TOTAL
McKINLEY								
I Gallup	2,013	1	198	246	1,039	554	218	4,269
II Gallup	2,377	9	224	234	1,049	462	217	4,572
III Thoreau	325	7	7	5	80	60	15	499
MORA								
I Mora	170	0	21	22	57	12	2	284
OTERO								
I Alamogordo	1,173	56	82	253	490	282	283	2,619
II Alamogordo	735	0	32	411	384	266	176	2,004
III Orogrande	174	88	3	11	73	50	53	452
QUAY								
I Tucumcari	593	2	45	396	652	93	131	1,912
II San Jon	72	0	0	7	757	6	0	842
RIO ARRIBA								
I Tierra								
II Amarilla	178	0	23	8	137	16	13	375
III Espanola	821	149	105	334	671	141	230	2,451
ROOSEVELT								
I Portales	714	130	37	321	620	89	433	2,344
SANDOVAL								
I Bernalillo	765	43	95	139	319	6	30	1,397
II Cuba	1,133	29	111	39	196	369	38	1,915
SAN JUAN								
I Aztec	2,582	403	308	369	1,032	133	208	5,035
II Farmington	1,010	283	155	597	825	122	1,469	4,461
SAN MIGUEL								
I Las Vegas	581	0	29	192	267	104	222	1,395
II Las Vegas	141	0	7	18	55	44	27	292
SANTA FE								
I Santa Fe	1,059	0	73	575	835	252	622	3,416
II Santa Fe	1,254	2	97	511	860	303	864	3,891
III Espanola	624	23	54	30	122	152	36	1,041
SIERRA								
I Truth or								
Consequences	679	0	81	126	527	204	186	1,803
SOCORRO								
I Socorro	919	2	42	269	441	474	70	2,217
TAOS								
I Ranchos de								
Taos	1,031	19	117	50	374	158	230	1,979
II Questa	38	0	3	0	20	0	0	61
III Taos	26	0	8	11	49	1	0	95
IV Llano	171	0	32	4	111	14	1	333
TORRANCE								
II Moriarty	862	0	58	69	318	306	0	1,613
III Mountainair	44	0	5	27	68	13	9	166
UNION								
I Clayton	98	0	19	31	218	10	60	436
VALENCIA								
I Los Lunas	377	118	88	307	498	2	164	1,554
II Belen	1,162	30	126	272	674	233	200	2,697
III Grants	1,097	8	91	37	435	187	174	2,029
IV Milan	949	188	56	59	162	339	116	1,869
GRAND TOTALS	40,381	1,998	3,414	11,060	28,700	9,178	14,117	108,848

**MAGISTRATE ANNUAL REVENUE REPORT**  
JULY 1 1980 - JUNE 30, 1981

COURTS	FINES	BOND FORFEITS	COSTS	LAB TESTS	OTHER	TOTAL
CATRON I Reserve II Quemado	\$ 22,097.00 23,635.50	\$ 1,810. 21,799.	\$ 3,040.00 3,119.00	-0- -0-	-0- 80.00	\$ 26,947.00 48,633.50
CHAVES I & II Roswell III Dexter	38,783.00 1,227.00	1,150. -0-	15,840.00 620.00	25. -0-	30.50 15.00	55,828.50 1,862.00
COLFAX I Raton II Springer III Cimarron	19,722.00 1,975.00 10,562.50	2,684. 130. -0-	6,180.00 635.00 2,942.00	-0- -0- -0-	25.00 -0- 64.00	28,611.00 2,740.00 13,568.50
CURRY I Clovis II Clovis	24,562.93 26,890.00	2,950. 1,372.	11,942.00 11,431.00	-0- -0-	40.00 110.08	39,494.93 39,803.08
DE BACA I Ft. Sumner	3,808.50	632.	1,230.00	-0-	-0-	5,670.50
DONA ANA I & II Las Cruces III Anthony IV Hatch	43,523.00 24,560.00 4,371.74	10,769. 111,040. 375.	32,480.00 6,620.00 1,950.00	-0- -0- -0-	386.26 .50 10.00	87,158.26 142,220.50 6,706.74
EDDY I Carlsbad II Artesia	96,655.00 22,990.00	4,925. 281.	28,520.00 7,120.00	-0- -0-	74.56 -0-	130,174.56 30,391.00
GRANT I Silver City II Bayard	13,660.00 14,690.00	505. 1,220.	8,290.00 7,530.00	-0- -0-	17.00 -0-	22,472.00 23,440.00
GUADALUPE I Santa Rosa II Vaughn	3,016.00 8,850.00	740. -0-	1,145.00 2,210.00	-0- -0-	-0- -0-	4,901.00 11,060.00
HARDING I Roy	960.00	-0-	400.00	-0-	-0-	1,360.00
HIDALGO I Lordsburg	9,595.00	92,785.	2,710.00	-0-	15.80	105,105.80
LEA I Lovington II Hobbs III Jal IV Tatum V Eunice	22,960.00 49,715.00 1,582.00 16,855.00 10,948.00	10,100. 720. 445. 60. 1,670.	7,560.00 27,155.00 2,080.00 1,830.00 2,620.00	-0- -0- -0- -0- -0-	15.00 153.50 -0- -0- -0-	40,635.00 77,743.50 4,107.00 18,745.00 15,238.00
LINCOLN I Carrizozo II Capitan III Ruidoso	8,941.00 1,895.00 8,740.00	-0- 255. 3,460.	2,310.00 360.00 6,060.00	-0- -0- -0-	10.00 500.00 15.00	11,261.00 3,010.00 18,275.00
LOS ALAMOS I Los Alamos	8,550.00	750.	4,730.00	-0-	45.00	14,075.00
LUNA I Deming	13,485.00	5,670.	5,150.00	-0-	-0-	24,305.00

COURTS	FINES	BOND FORFEITS	COSTS	LAB TESTS	OTHER	TOTAL
McKINLEY I Gallup II Gallup III Thoreau	22,920.00 29,371.10 2,715.00	39,654. 42,436. 270.	12,500.00 13,740.00 1,790.00	25. 25. -0-	100.00 140.00 -0-	75,199.00 85,712.10 4,775.00
MORA I Mora	\$ 1,952.00	\$ 100.	\$ 1,300.00	-0-	-0-	\$ 3,352.00
OTERO I Alamogordo II Alamogordo III Orogrande	47,905.00 57,079.00 5,465.00	2,445. 2,385. 365.	11,640.00 10,880.00 1,930.00	-0- -0- -0-	90.00 -0- 200.00	62,080.00 70,344.00 7,960.00
QUAY I Tucumcari II San Jon	17,876.00 10,703.00	28,040. 41,016.	4,850.00 2,580.00	-0- -0-	25.00 (100.00)	50,791.00 54,199.00
RIO ARriba I Tierra Amarilla II Espanola	6,040.00 19,629.00	110. 4,045.	2,260.00 9,170.00	-0- -0-	-0- 60.00	8,410.00 32,904.00
ROOSEVELT I Portales	26,190.50	2,020.	9,800.00	-0-	126.19	38,136.69
SANDOVAL I Bernalillo II Cuba	14,108.00 27,357.24	1,225. 660.	6,150.00 3,970.00	-0- -0-	45.00 -0-	21,528.00 31,987.24
SAN JUAN I Aztec II Farmington	90,985.50 51,217.50	4,640. 2,925.	17,010.00 27,555.50	-0- -0-	40.00 1,560.00	112,675.50 83,258.00
SAN MIGUEL I Las Vegas II Las Vegas	18,583.00 465.00	385. -0-	8,240.00 640.00	-0- -0-	14.00 95.00	27,222.00 1,200.00
SANTA FE I Santa Fe II Santa Fe III Espanola	23,752.44 24,352.50 8,535.00	8,495. 9,345. 1,900.	13,860.00 14,925.00 4,350.00	-0- -0- -0-	813.84 562.44 15.00	46,921.28 49,184.94 14,800.00
SIERRA I Truth or Consequences	27,547.00	7,106.	7,980.00	-0-	202.00	42,835.00
SOCORRO I Socorro	20,907.00	110.	8,060.00	-0-	102.50	29,179.50
TAOS I Ranchos de Taos II Questa III Taos IV Llano	20,775.00 4,945.00 1,440.00 6,475.00	2,030. -0- 150. 100.	9,340.00 940.00 710.00 1,610.00	-0- -0- -0- 25.	1,255.00 -0- -0- -0-	33,400.00 5,885.00 2,300.00 8,210.00
TORRANCE II Moriarty III Mountainair	22,640.00 560.00	9,576. -0-	7,040.00 630.00	-0- -0-	50.00 -0-	39,306.00 1,190.00
UNION I Clayton	12,517.00	5,600.	2,360.00	-0-	15.00	20,492.00
VALENCIA I Los Lunas II Belen III Grants IV Milan	3,425.00 23,779.00 14,835.00 6,075.00	1,440. 665. 2,853. 10,490.	4,370.00 11,840.00 8,070.00 3,360.00	-0- -0- -0- -0-	190.00 61.50 -0- 325.00	9,425.00 36,345.50 25,758.00 20,250.00
GRAND TOTALS	\$1,232,926.95	\$510,878.	\$461,259.50	\$100.	\$7,594.67	\$2,212,759.12

**BERNALILLO COUNTY METROPOLITAN COURT**

During the 69th Fiscal Year the Metropolitan Court was composed of:

William Short, Presiding Judge Division X (July-December 1980)	Michael E. Martinez, Presiding Judge Division VI (January-June 1981)
Frederick M. Mowrer Division I	C. Burton Cosgrove Division VII
H. Richard Blackhurst Division II	James M. O'Toole Division VIII
A. Joseph Alarid <sup>1</sup> Division III	Elizabeth Love Division IX
Charles Barnhart <sup>2</sup> Division IV	Thomas Davis Division XI
Samuel Mandel Division V	

Effective July 1, 1980, the Bernalillo County Metropolitan Court was established in Albuquerque. Created by the 1979 Legislature, the "metropolitan court" consolidated the Bernalillo County Magistrate Court, Small Claims Court, and the Albuquerque Municipal Court. Albuquerque's metropolitan court was so designated as it meets statutory requirements of being located within the boundaries of a class A county with a population of more than 200,000 persons.

The metropolitan court constitutes a state magistrate court. In addition to the jurisdiction provided by law for magistrate courts, it has jurisdiction coextensive with the county over all offenses and complaints under ordinances of the county and of any municipality located within Bernalillo County. Civil jurisdiction extends to debts and sums claimed not exceeding \$5,000 exclusive of interest and costs.

The Court Administrator of Bernalillo County Metropolitan Court, Dennis Becker, was appointed by judges of the three courts being combined prior to July 1, 1980. Six judges were added to the magistrate court system, i.e., one from the small claims court and five from municipal court.

1. Appointed to office effective September 8, 1980 replacing Ben J. Roybal, deceased August 8, 1980.
2. Elected to office November 4, 1980 replacing Robert L. Thompson, appointed to office October 1, 1980, who replaced Thomas J. Mescall, who resigned July 19, 1980.

The following is a statistical summary of activity in the Metropolitan Court July 1, 1980 - June 30, 1981.

<u>Arraignments</u>	
Misdemeanor arraignments	26,580
Felony arraignments	1,073
Bench warrants for failure to appear at arraignment	1,834
Total	29,487
<u>Citations processed through the court</u>	
Traffic	121,348
Parking	197,429
Misdemeanor criminal cases filed (There were more arraignments than new cases filed because of arrests made on old warrants)	22,595
Total	341,372
<u>Trial Activity: Cases set for trial</u>	
D.W.I.	4,467
Other Misdemeanors	6,264
Traffic	14,250
Parking	652
Bench warrants for failure to appear at trial	3,954
Total	29,587
<u>Civil</u>	
New case filings	8,290
Dispositions	6,364
Pending	1,926
<u>Probation</u>	
Pre-sentence reports completed	3,430
Average client caseload per Probation Officer	132
Defendants interviewed for indigency determination	5,544
Defendants interviewed by Pre-Trial Release Unit	8,109
Defendants released on their own recognizance by PTR Unit	5,737
D.W.I. School completions	3,582
Petty Larceny School completions	853
Driver Improvement School completions	1,649
Total	29,036

Community Service - 117,558 hours of Community Service completed by 2,383 clients.

**BERNALILLO COUNTY METROPOLITAN COURT  
REVENUE REPORT  
FOR THE YEAR ENDED June 30, 1981**

	<u>Total Deposit</u>		<u>Crime Lab Fund</u>	<u>Fines</u>
	<u>State</u>	<u>Trust</u>		
July	\$ 193,085.41	\$ 48,268.50		\$ 138,589.91
August	203,400.82	102,346.50		135,499.82
September	215,325.34	49,815.00		142,504.84
October	281,925.62	66,378.50		188,302.62
November	239,584.78	43,695.25		167,937.28
December	264,308.21	66,296.32		172,686.21
January	263,989.49	47,383.50		180,613.49
February	264,471.41	51,789.70		177,567.41
March	299,091.08	60,683.00		200,904.48
April	277,753.84	52,786.45		191,971.44
May	239,478.49	57,583.50		159,016.49
June	<u>258,256.47</u>	<u>58,997.00</u>	<u>125.00</u>	<u>178,790.97</u>
TOTAL	<u>\$3,000,670.96</u>	<u>\$706,023.22</u>	<u>\$ 125.00</u>	<u>\$2,034,384.96</u>

<u>Cash</u>	<u>Forfeitures</u>	<u>Partial Payments</u>	<u>School Fees</u>	<u>Court Costs</u>	<u>Other</u>
	<u>Surety</u>				
\$ 3,030.00	\$ 2,495.00	\$ 945.00	\$ 12,816.00	\$ 35,096.00	\$ 113.50
2,385.00	3,735.00	293.50	20,933.00	40,267.00	287.50
2,745.00	1,240.00	530.00	19,415.00	48,641.00	249.50
4,652.00	4,430.00	300.00	20,510.00	63,535.00	196.00
245.00	885.00	295.00	18,135.00	51,890.00	197.50
10,855.00	3,850.00	745.00	22,105.00	53,965.00	102.00
4,658.00	611.00	570.00	19,965.00	57,300.00	272.00
4,289.00	8,890.00	1,024.00	19,195.00	53,250.00	256.00
4,013.00	11,475.00	780.00	24,580.00	57,000.10	338.50
3,815.00	4,555.00	160.00	22,905.00	54,135.00	212.40
4,590.00	4,880.00	-0-	18,340.00	52,475.00	177.00
<u>4,659.50</u>	<u>7,680.00</u>	<u>70.00</u>	<u>19,875.00</u>	<u>46,960.00</u>	<u>221.00</u>
<u>\$49,936.50</u>	<u>\$54,726.00</u>	<u>\$5,712.50</u>	<u>\$238,774.00</u>	<u>\$614,514.10</u>	<u>\$2,622.90</u>

**Caseload Filings  
July 1, 1980 - June 30, 1981**

<u>Traffic</u>	<u>Driving While Intoxicated</u>	<u>Felony</u>	<u>Misdemeanor</u>	<u>Civil</u>	<u>Parking</u>
121,348	8,429	1,073	22,595	8,290	197,429

NOTE: Failure to Pay Penalty Assessment figures are not included in these statistics.

## SUBSIDIARY JUDICIAL AGENCIES

### Supreme Court Building Commission

The Supreme Court Building Commission was created by the 1967 session of the Legislature and is composed of three resident New Mexico members appointed by the Supreme Court. The commission has responsibility for the care, custody and control of the Supreme Court Building, its grounds and all furniture, fixtures and equipment used by Judicial agencies housed

therein. Under the supervision of the building superintendent, the present maintenance staff performs the continuous duties of building repair and maintenance. Although commission members meet regularly, they are not compensated for time spent in meetings discussing commission matters.

#### Members

A. K. Montgomery, Attorney at Law, Chairman

Samuel Z. Montoya, Justice Retired, Vice Chairman

Edward J. Baca, Director, AOC, Secretary

### STATEMENT OF REVENUES AND EXPENDITURES FROM JULY 1, 1980 THROUGH JUNE 30, 1981

Beginning Cash Balance .....	\$231,070.22
REVENUES:	
Interest on Investments .....	\$26,228.02
District Court Fees .....	-0-
Total Revenue .....	\$ 26,228.02
EXPENDITURES:	
Interest Payment on Bonds .....	\$ 5,812.50
Required Bond Redemption .....	30,000.00
Agent's Fees .....	11.63
Total Expenditures .....	\$ 35,824.13
Excess Revenue over Expenditures .....	(9,596.11)
Ending Cash Balance June 30, 1981 .....	\$221,474.11
Bond Balance Outstanding as of June 30, 1981 .....	\$120,000.00

## Supreme Court Law Library

Greatly improved control of library materials has been realized since inauguration of a new charging system. Issuance of library cards has revealed that we have 681 registered public borrowers plus 51 registered judges for a total of 732. Library users have been asked to shelve the books they used during the past year; and while it is felt that business has continued to increase at about the same rate as in recent years, an accurate circulation figure indicating volume of business done is not available.

The number of new books (2,165) acquired by the library in fiscal 1980-1981 is up about 500 over the average for the past several years. The acquisition count was 103,124 volumes at the end of June, 1981. Although only about half of this increase, somewhat over 200, are treatises, many of these titles relate to areas not covered before. This of course was made possible by increased legislative funding.

The use of copy machines is continuing to increase and is up about 10,000 over the 60,000 copies reported last year. It is felt that the availability of the second copy machine while increasing convenience to patrons has also reduced the need to take many volumes out of the library as it is in many instances easier to copy a page or two

than to charge the book out and carry it to one's office.

The cataloging program begun in 1979 completed the first and most important portion of the project: the current treatise collection. This involved the cataloging of approximately 695 titles (totaling 1700 volumes) and was completed in mid-October of 1980. The project has cataloged a total of approximately 1500 titles and has generated over 11,000 cards in our public catalog and 2000 in our internal shelf list catalog, a new tool in the library's operation. With the aid of the shelf list, the entire public catalog could be duplicated if some accident such as fire or vandalism were to result in its destruction. We are pleased with the progress of this program and are looking forward to the completion of the next stage. This will greatly increase the value of the older part of the treatise collection for patrons doing in-depth research.

We are making plans for expanding the library's capacity to serve a greater number of patrons at one time by creating a second, main reading room on the third floor. In this connection we have asked the next legislature for some funds to provide furniture to increase seating capacity.

**New Mexico Judicial Council**  
May 27, 1981

The Judicial Council was created by statute in 1969 to study the operations of the judicial system and make recommendations for improvements to the Legislature and the Supreme Court. The 19-member council is composed of judges, legislators, laymen and agency directors,

and meets monthly to initiate studies, receive reports, discuss ideas for judicial improvements, and decide which proposals should be recommended to the Supreme Court or Legislature. A report on the yearly activities may be found in the Judicial Council's annual report.

**Appointed by the Supreme Court**

Justice H. Vern Payne  
NM Supreme Court  
P. O. Box 848  
Santa Fe, NM 87501 - 827-2710

Magistrate Lidio Rainaldi  
P. O. Box 37  
Gallup, NM 87301 - 722-6636

**Appointed by the Court of Appeals**

B. C. Hernandez, Presiding Judge  
P. O. Box 2008  
Santa Fe, NM 87501 - 827-2214

**Appointed by the District Judges**

Judge Gene Franchini  
Second Judicial District  
P. O. Box 488  
Albuquerque, NM 87103 - 842-3269

Judge N. Randolph Reese  
Fifth Judicial District  
P. O. Box 1619  
Hobbs, NM 88240 - 393-6101

Judge James L. Brown  
Eleventh Judicial District  
San Juan County Courthouse  
Aztec, NM 87401 - 334-6151

**Appointed by the Legislature**

\*\* Senator Manny M. Aragon  
P. O. Drawer Z  
Albuquerque, NM 87403 - 842-1322

Senator Joseph H. Mercer  
3127 Carolina, NE  
Albuquerque, NM 87110 - 881-1010

Rep. Tandy L. Hunt  
909 North Kentucky  
Roswell, NM 88201 - 623-1776

Rep. Raymond G. Sanchez  
P. O. Box 1966  
Albuquerque, NM 87103 - 247-4321

**Appointed by the Board of Bar Commissioners**

\* Russell D. Mann, Esq.  
P. O. Drawer 700  
Roswell, NM 88201 - 662-6221

Marshall Martin, Esq.  
P. O. Box 1769  
Albuquerque, NM 87103 - 842-8155

**Appointed by the Governor**

Dr. James A. Beall  
P. O. Box 1444  
Ruidoso, NM 88345 - 257-2305

Ms. Mary Margaret Wilson  
4005 Van Buren, NE  
Albuquerque, NM 87110 - 881-2299

Mrs. Jo-Carol Ropp  
1040 Larry Drive  
Las Cruces, NM 88001 - 522-2088

Sammy L. Pacheco, District Attorney  
P. O. Drawer E  
Taos, NM 87571 - 758-8683

**Ex-Officio**

Attorney General Jeff Bingaman  
P. O. Drawer 1508  
Santa Fe, NM 87501 - 982-6000

Dean Robert Desiderio  
UNM School of Law  
1117 Stanford, NE  
Albuquerque, NM 87131 - 227-2146

Edward J. Baca, Director  
Administrative Office of the Courts  
Supreme Court Bldg., Room 130  
Santa Fe, NM 87503 - 827-2771

**Staff**

David R. Gardner, Executive Secretary  
P. O. Box 4007  
Albuquerque, NM 87196 - 842-3102, 867-5563

\* Chairman  
\*\* Vice-chairman

**Judicial Standards Commission**

The Judicial Standards Commission was created by amendment to the state constitution and began functioning in 1968. The Commission has authority to investigate complaints against any judge, justice or magistrate of the state. Complaints may originate from any source, but the Commission requests that the complaints be submitted in writing and that they be verified by the complainant. Grounds for Commission action are willful misconduct in office, persistent failure or inability to perform a judge's duties, habitual intemperance, or disability seriously interfering with the performance of a judge's duties which is, or is likely to become, of a permanent nature.

After investigation, the Commission may recommend to the Supreme Court that the judge, justice or magistrate be disciplined or removed from office, or, in the case of a disability, retire from office. Under the terms of current law, a judge who is removed from office upon recommendation of the Judicial Standards Commission forfeits his right to receive retirement pay under the judicial retirement act.

The Commission is composed of two district judges, two lawyers and five non-lawyers. One of the non-lawyers serves as chairman. During 1980 the Commission met nine times. Ten investigations were carried over from 1979, and 38 new complaints were received in 1980. At the end of the year 38 matters had been closed and ten remained open. Of the 48 complaints handled by the Commission, seventeen were against county magistrates, nine were against municipal judges and seventeen were against district judges. The other five were against judges or justices of the small claims court, court of appeals or Supreme Court. No complaints were received against probate judges.

In disposing of 38 matters the Commission found that seventeen were not within its jurisdiction. One was withdrawn by the complainant. Twelve were investigated and found to be insubstantial. Seven were found to require attention by administrative authority within the judicial system and were referred for counseling. One matter proceeded to a formal hearing before the Commission, and, upon recommendation by the Commission, the magistrate involved was removed from office.

**Members**

	<b><u>Term Expires</u></b>		<b><u>Term Expires</u></b>
** Judge Paul Snead P. O. Box 1776 Roswell, NM 88201 622-2212	June 30, 1984	* Susan S. Dixon 827 East Zia Santa Fe, NM 87501 982-2132	June 30, 1984
Judge Thomas A. Donnelly Supreme Court Building Santa Fe, NM 87501 827-2605	June 30, 1981	Lucy M. Salazar P. O. Box 2153 Albuquerque, NM 87103 766-3024	June 30, 1983
Charles D. Olmsted P. O. Box 669 Santa Fe, NM 87501 982-4611	June 30, 1982	Doris Wakeland Route 8, Box 149-3 Silver City, NM 88061 538-9015	June 30, 1982
James E. Sperling P. O. Box 2168 Albuquerque, NM 87103 243-4511	June 30, 1984	Dr. John W. Hernandez Box 3196 N.M. State University Las Cruces, NM 88003 646-3233	June 30, 1981
Eloy A. Duran P. O. Box 4059 Albuquerque, NM 87196 243-7304	June 30, 1985	* Chairman ** Vice-chairman	
		August 3, 1981	

Disciplinary Board Statistical Report  
Calendar Year 1981

(Note: Figures in parentheses are 1980 totals for comparison)

	<u>1980</u>	<u>1981</u>
Caseload carried over from preceding year (Dockets)	(120)	149
New Contacts	(314)	539
Staff Level Disposition (Dismissed)	(359)	480
Docketed for Investigation	(195)	95
Suspense, awaiting further information (not docket)	(11)	37
Caseload (carry-over + docketed + suspense)	(326)	281

	<u>1980</u>	<u>1981</u>
<u>Docketed cases disposed of:</u>		
By Dismissal	(35)	60
Tried and Acquitted	(2)	1
Public Censure	-	1
Reinstated	(1)	-
Formal Reprimand	(1)	1
Suspended (Probation)	(1)	1
Took Inactive Status	-	-
Disbarred	-	1
Informal Admonition	(6)	10
Reinstatement Denied	-	1
Totals	<u>(46)</u>	<u>76</u>

<u>Docketed cases not yet disposed of:</u>		
Under Investigation	(109)	89
With Reviewing Officer	(6)	11
With Chief Counsel	(6)	-
With Special Investigator	(1)	1
In Suspense	(27)	2
Before Hearing Committees	(-)	56
Before Disciplinary Board	(-)	-
Charges in Preparation	(-)	6
Totals	<u>(149)</u>	<u>165</u>

(19 individual respondents)

CASELOAD FOR THE YEAR 278

**END**