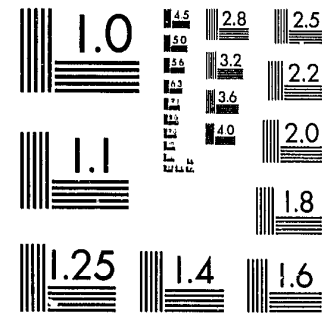


National Criminal Justice Reference Service

ncjrs

This microfiche was produced from documents received for inclusion in the NCJRS data base. Since NCJRS cannot exercise control over the physical condition of the documents submitted, the individual frame quality will vary. The resolution chart on this frame may be used to evaluate the document quality.



MICROCOPY RESOLUTION TEST CHART
NATIONAL BUREAU OF STANDARDS-1963-A

Microfilming procedures used to create this fiche comply with the standards set forth in 41CFR 101-11.504.

Points of view or opinions stated in this document are those of the author(s) and do not represent the official position or policies of the U. S. Department of Justice.

National Institute of Justice
United States Department of Justice
Washington, D. C. 20531



THOMAS A. COUGHLIN III
COMMISSIONER

STATE OF NEW YORK
DEPARTMENT OF CORRECTIONAL SERVICES
THE STATE OFFICE BUILDING CAMPUS
ALBANY, N.Y. 12226

DIVISION OF PROGRAM PLANNING, RESEARCH AND EVALUATION
Frank Tracy, Director

X
ESCAPES FROM DEPARTMENT OF CORRECTIONAL
SERVICES FACILITIES: 1976, 1977, 1978, 1979 and 1980

This report describes escapes from the Department of Correctional Services during calendar years 1976 through 1980. An escape profile is provided including: reason for original commitment, minimum and maximum controlling sentence, facility of escape, time served since last commitment, duration of escape, age at time of escape and prior adult criminal record.

February 1981

Prepared by:

Henry C. Donnelly
Director
Records and Statistical Analysis

Jeanne Bassett, Senior Research Analyst

82477

NCJRS
FEB 1981
ACQUISITION

ESCAPES FROM DEPARTMENT OF CORRECTIONAL
SERVICES FACILITIES: 1976 THROUGH 1980

Escapes from the Department of Correctional Services facilities rose over a period of several years reaching a high of 72 during calendar year 1977. The following graph shows a rise during the four year period 1974-1977. Then the level of escapes fell sharply to 47 in 1978 and to 23 in 1979, the lowest number in seven years. There were 40 escapes in 1980, the second lowest number during this seven year period. The data in this report compares escapes for the years 1976 through 1980.

H I G H L I G H T S

1. Total number of escapes fell from 72 in 1977 to a low of 23 in 1979, and rose to 40 in 1980, a drop of over 44 percent from the 1977 level.
2. In 1980, three-fourths of the inmates who escaped had been committed for robbery or burglary while percentages in the four earlier years ranged from only 50% to 66%.
3. 50% of the escapees in 1980 were from minimum security camp facilities and nearly 47% in 1978 while in the other three years the percentage was only 20 to 27%.
4. Escapes from female facilities have fallen rapidly during the five year period, from a high of 13 in 1976 to none in 1980.
5. In 1980, 72.5% of escapees were returned to custody within a one-week period, which was substantially higher than in the previous four years.
6. The smallest number of escapees were serving life terms in 1979 and in 1980 (four each year).
7. The median age of escapees in 1980 was 22.8 years, the lowest for the five year period.
8. At least 88% of escapees in all 5 years had prior adult criminal records.

U.S. Department of Justice
National Institute of Justice

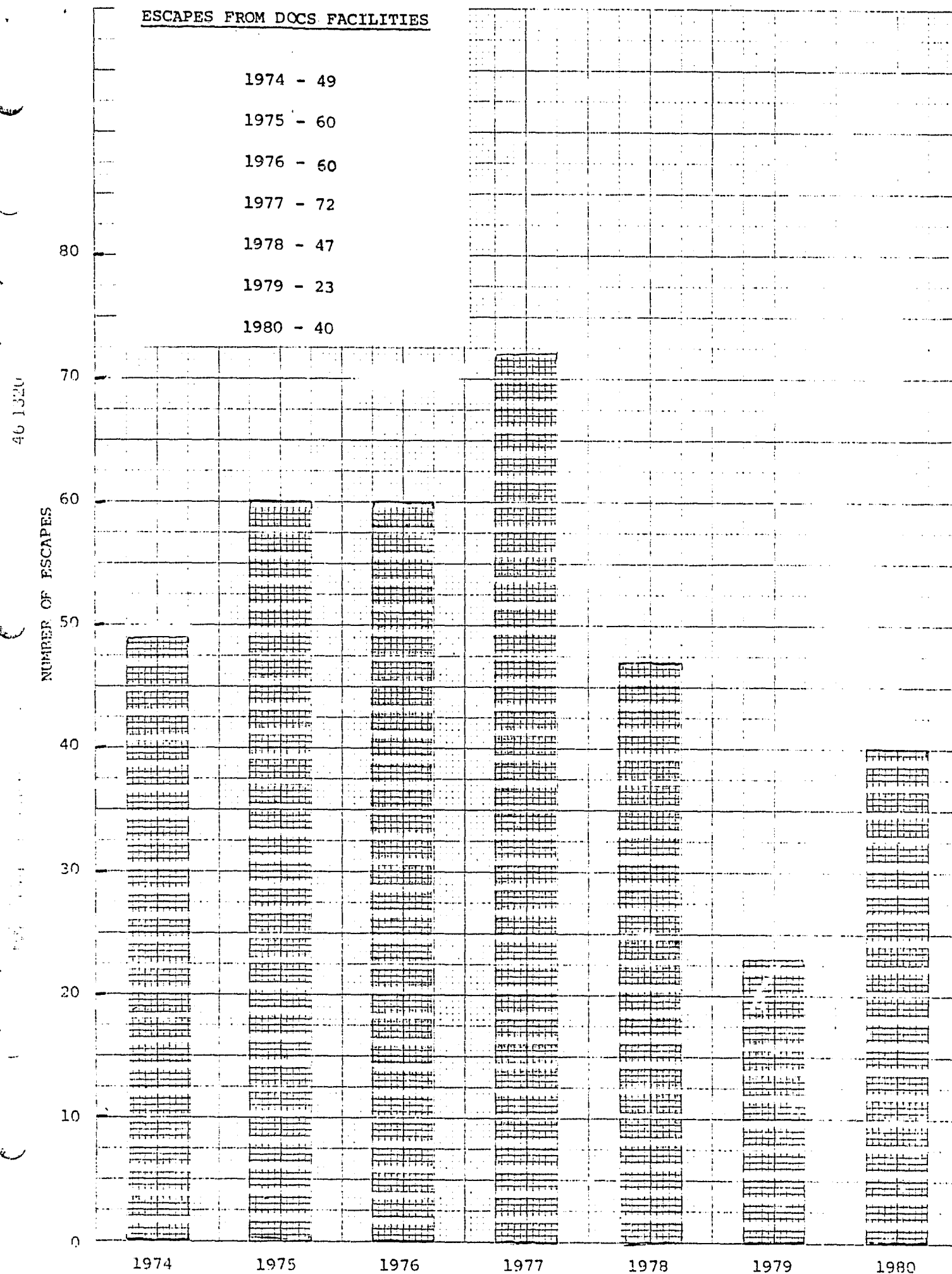
This document has been reproduced exactly as received from the person or organization originating it. Points of view or opinions stated in this document are those of the authors and do not necessarily represent the official position or policies of the National Institute of Justice.

Permission to reproduce this copyrighted material has been granted by

New York State Department
of Corrections

to the National Criminal Justice Reference Service (NCJRS).

Further reproduction outside of the NCJRS system requires permission of the copyright owner.



ESCAPES FROM DEPARTMENT OF CORRECTIONAL SERVICES FACILITIES
1976 THROUGH 1980 CALENDAR YEARS

Calendar Year	Number of Escapes	Rate Per Thousand Inmates
1976	60	3.38
1977	72	3.71
1978	47	2.33
1979	23	1.10
1980	40	1.85
Total Escapes	242	2.42

The total number of escapes have fallen from a high of 72 in 1977 to a low of 23 in 1979. Thus, the rate of escapes per thousand inmates under custody has declined from a high of 3.7 in 1977 to less than 2 per 1,000 in 1979 and 1980, with a low of 1.1 in 1979. The mean escape rate per thousand inmates was 2.4 for the five year period.

In 1977 there were a large number of multiple escapes including the escape of ten inmates from Matteawan State Hospital in May of that year. In all, there were 17 instances of multiple escapes in 1977 while in 1978 there were 11 multiple escapes but only pairs of inmates were involved. In 1979 there were only two multiple escapes and just two inmates were involved in each. In 1980 there were again 11 multiple escapes, one of which involved four inmates, three of which involved three inmates and the remaining seven with two inmates each. Thus, it appears that multiple escapes have increased in 1980, especially those involving more than two inmates.

ESCAPES FROM DEPARTMENT OF CORRECTIONAL SERVICES FACILITIES
BY REASON FOR COMMITMENT: 1976 THROUGH 1980

In 1980, the largest number of escapees had been committed for robbery (15 or 37.5%) and for burglary (also 15). Thus, three-fourths of the 1980 escapees had been convicted of either robbery or burglary. This was a higher proportion than in the four earlier years. Since male robbery commitments averaged nearly 34 percent in 1979 and burglary commitments only a little over 16 percent, it appears that a relatively high proportion of 1980 escapees had been convicted of burglary.

While about 9.5 percent of male commitments in 1979 had been convicted of murder and manslaughter, a comparable proportion of 1980 escapees had been committed for these crimes (10%). The highest proportion of escapees who had been convicted of murder or manslaughter occurred in 1979 (17.4%) and in 1977 (16.6%).

The proportion of 1980 escapees committed as Youthful Offenders was 10 percent, relatively high compared to Y.O. commitment rates of between 5 and 6 percent in recent years. No inmates convicted of dangerous drug offenses have escaped in the past two years while in 1976 there were six (10%).

ESCAPES FROM DEPARTMENT OF CORRECTIONAL SERVICES FACILITIES
BY REASON FOR COMMITMENT: 1976 THROUGH 1980

Reason for Commitment	Number					Percent				
	1976	1977	1978	1979	1980	1976	1977	1978	1979	1980
TOTAL	60	72	47	23	40	100.0	100.0	100.0	100.0	100.0
FELONIES	53	64	43	22	36	88.3	88.9	91.5	95.7	90.0
Murder	1	4	3	4	3	1.7	5.5	6.4	17.4	7.5
Manslaughter	4	8	2	--	1	6.6	11.1	4.3	--	2.5
Robbery	18	19	15	4	15	30.0	26.4	31.9	17.4	37.5
Burglary	15	17	16	9	15	25.0	23.6	34.0	39.2	37.5
Felonious Assault	1	3	6	--	--	1.7	4.2	12.8	--	--
Grand Larceny	3	2	--	1	1	5.0	2.8	--	4.3	2.5
Rape	--	2	--	2	--	--	2.8	--	8.7	--
Dangerous Drugs	6	4	1	--	--	10.0	5.5	2.1	--	--
Criminal Possession of Stolen Property	2	2	--	1	--	3.3	2.8	--	4.3	--
All Other Felonies	3	3	--	1	1	5.0	4.2	--	4.3	2.5
YOUTHFUL OFFENDERS	7	7	4	1	4	11.7	9.7	8.5	4.3	10.0
JUVENILE DELINQUENTS	--	1	--	--	--	--	1.4	--	--	--

ESCAPES FROM DEPARTMENT OF CORRECTIONAL SERVICES FACILITIES
BY TIME SERVED SINCE LAST COMMITMENT: 1976 THROUGH 1980

Over 80 percent of the inmates who escaped in 1980 had served less than three years before their escape (82.5%). Less than one-half of the 1980 escapees had served under one year (47.5%). In the prior four years between 50 and 53 percent of the escapees had served less than one year. In 1976 and again in 1977 nearly 92 percent of the escapees had served less than three years while in 1978 and in 1979, slightly over 85 percent and nearly 83 percent of the escapees, respectively, had served less than three years before their escape. Median time served of escapees was 12.0 months in 1976 and in 1977, 11.3 months in 1978, 11.6 months in 1979 and 12.9 months in 1980.

Thus, it appears that although the time served since last commitment for inmates escaping during these periods has risen slightly in 1980, an inmate is still most likely to escape in the first three years of his sentence.

ESCAPES FROM DEPARTMENT OF CORRECTIONAL SERVICES FACILITIES
BY TIME SERVED SINCE LAST COMMITMENT: 1976 THROUGH 1980

[illegible]

ESCAPES FROM DEPARTMENT OF CORRECTIONAL SERVICES FACILITIES
BY FACILITY OF ESCAPE: 1976 THROUGH 1980

The proportion of escapes from minimum security correctional camps was highest in 1980 (50%), slightly lower in 1978 (46.8%) while in the other years the proportion of camp escapees ranged between 20 and 27 percent. Conversely, the proportion of escapees from other minimum security facilities was lowest in 1980 (7.5%). In addition, escapes from female facilities have fallen rapidly during this period, from a high of 13 (21.7%) in 1976 to none in 1980. Escapes from medium security facilities were lowest in 1979 (8.7%) and 1980 (15.0%) while escapes from maximum security facilities were highest in 1980 - ten or 25 percent.

The distribution of escapes by individual facility appears to differ widely during this period. This perhaps attests to the somewhat random nature of these occurrences as well as to population shifts. For example, Camp Monterey and Camp Georgetown, which were the facilities with the largest number of escapes in 1980, at 9 and 8 escapees, respectively, had none in 1979. Although the lowest number of escapes occurred in 1979, this experience was not reflected in every facility.

ESCAPES FROM DEPARTMENT OF CORRECTIONAL SERVICES FACILITIES
BY FACILITY OF ESCAPE: 1976 THROUGH 1980

Facility	Year of Escape				
	1976	1977	1978	1979	1980
TOTAL ESCAPES	60	72	47	23	40
MAXIMUM SECURITY	7	9	7	5	10
Attica	--	--	2	1	2
Clinton	--	--	--	--	2
Clinton Annex	--	3	--	--	--
Coxsackie	--	5	--	--	--
Downstate	--	--	--	1	--
Eastern	5	--	--	--	--
Elmira	--	--	1	2	--
Great Meadow	--	1	--	--	3
Green Haven	2	--	3	1	3
Ossining Reception	--	--	1	--	--
MEDIUM SECURITY	13	17	11	2	6
Albion	4	12	3	--	--
Arthur Kill	4	--	--	--	3
Fishkill	2	1	5	--	1
Mid-Orange	--	1	1	1	--
Ossining	--	--	--	--	1
Otisville	--	2	--	1	--
Queensboro	2	1	1	--	1
Wallkill	1	--	1	--	--
MINIMUM SECURITY: OTHER	11	11	6	6	3
Bayview (M) <u>1/</u>	3	--	--	--	--
Edgecombe	4	3	1	--	--
Fulton	--	--	1	--	--
Hudson	--	2	3	5	3
Lincoln	--	1	--	--	--
Rochester	2	1	--	1	--
Taconic	2	4	1	--	--
MINIMUM SECURITY: CAMPS	16	15	22	6	20
Adirondack	1	--	2	--	2
Georgetown	7	4	3	--	8
Mt. McGregor	1	1	1	2	1
Monterey	2	4	6	--	9
Pharsalia	5	4	5	3	--
Summit	--	2	5	1	--
FEMALE FACILITIES	13	7	1	1	--
Albion	--	--	--	1	--
Bedford Hills	12	3	1	--	--
Fulton	--	3	--	--	--
Parkside	1	1	--	--	--
MATTEAWAN STATE HOSPITAL <u>2/</u>	--	11	--	--	--
OUTSIDE FACILITY CONFINES	--	2 <u>a/</u>	--	3 <u>b/</u>	1 <u>c/</u>

ESCAPES FROM DEPARTMENT OF CORRECTIONAL SERVICES FACILITIES
BY DURATION OF ESCAPES: 1976 THROUGH 1980

FOOTNOTES FOR PRECEDING TABLE

1/ Now houses females.

2/ Abolished 4/1/77.

a/ One Clinton inmate while in out-to-court status at Westchester County Jail and one Auburn inmate while in out-to-court status at Allegany County Jail.

b/ Three Attica inmates: one at a Rochester funeral home, one in out-to-court status at Rikers Island and one from Erie County Medical Center.

c/ One Attica inmate from Roswell Park Memorial Hospital.

The proportion of escapees returned in 1980 remains high (95.0%) in spite of the recent nature of the occurrences. The proportion of escapees returned over the five year period was lowest for 1978 (91.5%) and highest for 1977 (97.2%). In 1980 57.5 percent of the escapees were returned in one day or less, a higher proportion than in any of the other years where percentages ranged from 38.3% in 1976 to 48.6% in 1977. Within a week, 72.5 percent of the 1980 escapees were returned and 82.5 percent had been returned to custody within two weeks. In fact, 38 of the 40 escapees in 1980 had been returned within two months (95%). This record was substantially better than in the previous four years. For example, the proportion returned in one week ranged from nearly 57% in 1976 to about 65% in 1979, while the proportion returned within two weeks ranged from nearly 62% in 1976 to nearly 74% in 1979 and the proportion recaptured in two months went from almost 79% in 1978 to almost 83% in 1979.

The median duration of escapes in 1980 was one day out of custody - the shortest length of time for the five year period. The median length of time out of custody in the other years ranged from 2 days in 1977 to about 5 days in 1976.

ESCAPES FROM DEPARTMENT OF CORRECTIONAL SERVICES FACILITIES
BY DURATION OF ESCAPES: 1976 THROUGH 1980

Time Period	Number Returned					Cumulative Number Returned				
	1976	1977	1978	1979	1980	1976	1977	1978	1979	1980
Same Day	13	9	12	5	9	13	9	12	5	9
One Day	10	26	8	4	14	23	35	20	9	23
2-7 Days	11	10	9	6	6	34	45	29	15	29
8-14 Days	3	3	2	2	4	37	48	31	17	33
15-21 Days	3	4	2	1	--	40	52	33	18	33
22 Days - 1 Month	6	3	2	1	1	46	55	35	19	34
Over 1 Month - 2 Months	3	2	2	--	4	49	57	37	19	38
Over 2 Months - 3 Months	2	1	1	1	--	51	58	38	20	38
Over 3 Months - 4 Months	2	3	1	1	--	53	61	39	21	38
Over 4 Months - 6 Months	2	1	2	1	--	55	62	41	22	38
Over 6 Months - 8 Months	1	5	1	--	--	56	67	42	22	38
Over 8 Months - 12 Months	--	1	1	--	--	56	68	43	22	38
Over 12 Months - 24 Months	1	1	--	--	--	57	69	43	22	38
Over 24 Months	1	1	--	--	--	58	70	43	22	38
Still Out	2	2	4	1	2	xxx	xxx	xxx	xxx	xxx

ESCAPES FROM DEPARTMENT OF CORRECTIONAL SERVICES FACILITIES
MINIMUM AND MAXIMUM SENTENCE: 1976 THROUGH 1980

In 1980, the same number of escapees were serving life maximum terms as in the prior two years (four) while 5 escapees had life terms in 1976 and 7 in 1977. Three of the four escapees in 1978 and in 1980 with life terms had been committed for murder while all four in 1979 were murder commitments. The other life term escapee in 1978 had been committed under the old Rockefeller drug laws and the fourth in 1980 was a persistent felony offender with a Robbery 2 commitment. Four of the five escapees in 1976 were convicted under the old Rockefeller drug laws while the other had been committed for murder. Two of the 1977 escapees had been convicted of murder while three had been committed under the old Rockefeller drug laws and two were persistent felony offenders - one committed for manslaughter and the other for rape.

One-half of 1980 escapees had received maximum sentences of 5 years or less while only 43.5 percent of escapees in 1979 had received such terms. Conversely, higher percentages of escapees in the prior three years had received maximum sentences of 5 years or less, ranging from slightly over 53 percent in 1978 to 62.5 percent in 1977 and 70.0 percent in 1976. Exactly 40 percent of 1980 escapees had 3 year (20%) or 4 year (20%) maximums.

45 percent of the 1980 escapees had not received specified minimum sentences on commitment while only 39 percent of escapees in 1979 did not have specified minimum terms. Percentages of escapees in the prior three years, however, were over one-half, ranging from 51 to 58 percent. The percentage of total male new commitments in 1979 with unspecified minimum terms was slightly over 31 percent. 35 percent of 1980 escapees had minimum terms of 2 1/2 or more years while nearly 48 percent of the 1979 escape cohort had received such minimums. Conversely, smaller proportions of the escapees in the three prior years had received such severe minimum terms - ranging down from nearly 32 percent in 1978 to slightly over 25 percent in 1977 and nearly 17 percent in 1976.

Thus, although the 1980 escape cohort had relatively less severe minimum and maximum terms than the 1979 escapees, escapees in the prior three years had less severe terms.

MINIMUM AND MAXIMUM SENTENCE (CONTROLLING SENTENCE)
1976 ESCAPES

MAXIMUM SENTENCE											
Minimum Sentence	Total	Percent	3 Yrs.	37-47 Months	4 Yrs.	49-59 Months	5 Yrs.	Over 5-10 Yrs.	Over 10 to 20 Yrs.	20 or More Yrs.	Life
TOTAL	60	100.0	16	--	21	--	5	11	1	1	5
Percent	100.0	xxx	26.7	--	35.0	--	8.3	18.3	1.7	1.7	8.3
1 to Under 2 1/2 Years	17	28.3	6	--	8	--	--	--	--	--	3
2 1/2 Years	1	1.7	--	--	--	--	1	--	--	--	--
2 1/2 To Under 5 Years	6	10.0	--	--	--	--	--	5	--	--	1
5 Years to Under 10 Years	2	3.3	--	--	--	--	--	--	1	1	--
10 to Under 20 Years	1	1.7	--	--	--	--	--	--	--	--	1
20 or More Years	--	--	--	--	--	--	--	--	--	--	--
Life	--	--	--	--	--	--	--	--	--	--	--
Unspecified Minimum	33	55.0	10	--	13	--	4	6	--	--	--

Second Felony Offenders 18

MINIMUM AND MAXIMUM SENTENCE (CONTROLLING SENTENCE)
1977 ESCAPES

MAXIMUM SENTENCE											
Minimum Sentence	Total	Percent	3 Yrs.	37-47 Months	4 Yrs.	49-59 Months	5 Yrs.	Over 5-10 Yrs.	Over 10 to 20 Yrs.	20 or More Yrs.	Life
TOTAL	72	100.0	15	--	25	--	5	10	3	7	7
Percent	100.0	xxx	20.0	--	34.7	--	7.0	13.9	4.2	9.7	9
1 to Under 2 1/2 Years	12	16.6	4	--	4	--	--	1	--	--	3
2 1/2 Years	2	2.8	--	--	--	--	2	--	--	--	--
2 1/2 to Under 5 Years	2	2.8	--	--	--	--	--	2	--	--	--
5 Years to Under 10 Years	9	12.5	--	--	--	--	--	2	2	5	--
10 to Under 20 Years	2	2.8	--	--	--	--	--	--	--	1	1
20 or More Years	3	4.2	--	--	--	--	--	--	--	--	3
Life	--	--	--	--	--	--	--	--	--	--	--
Unspecified Minimum	42	58.3	11	--	21	--	3	5	1	1	--

Second Felony Offenders 13
Persistent Felony Offenders 2

MINIMUM AND MAXIMUM SENTENCE [CONTROLLING SENTENCE]
1978 ESCAPES

MAXIMUM SENTENCE

Minimum Sentence	Total	Percent	3 Yrs.	37-47 Months	4 Yrs.	49-59 Months	5 Yrs.	Over 5-10 Yrs.	Over 10 to 20 Yrs.	20 or More Yrs.	Life
TOTAL	47	100.0	10	--	12	--	3	12	5	1	4
Percent	100.0	xxx	21.3	0.0	25.5	0.0	6.4	25.5	10.6	2.1	8.6
1 to Under 2 1/2 Years	8	17.0	2	--	3	--	--	3	--	--	--
2 1/2 Years	1	2.1	--	--	--	--	1	--	--	--	--
2 1/2 to Under 5 Years	5	10.6	--	--	--	--	--	5	--	--	--
5 Years to Under 10	6	12.8	--	--	--	--	--	1	4	--	1
10 to Under 20 Years	--	--	--	--	--	--	--	--	--	--	--
20 or More Years	3	6.4	--	--	--	--	--	--	--	--	3
Life	--	--	--	--	--	--	--	--	--	--	--
Unspecified Minimum	24	51.1	8	--	9	--	2	3	1	1	--

Second Felony Offenders 11

MINIMUM AND MAXIMUM SENTENCE [CONTROLLING SENTENCE]
1979 ESCAPES

MAXIMUM SENTENCE

Minimum Sentence	Total	Percent	3 Yrs.	37-47 Months	4 Yrs.	49-59 Months	5 Yrs.	Over 5-10 Yrs.	Over 10 to 20 Yrs.	20 or More Yrs.	Life
TOTAL	23	100.0	3	--	6	--	1	6	1	2	4
Percent	100.0	xxx	13.1	--	26.1	--	4.3	26.1	4.3	8.7	17.4
1 to Under 2 1/2 Years	3	13.1	1	--	2	--	--	--	--	--	--
2 1/2 Years	--	--	--	--	--	--	--	--	--	--	--
2 1/2 to Under 5 Years	4	17.4	--	--	--	--	--	4	--	--	--
5 Years to Under 10	2	8.7	--	--	--	--	--	--	1	1	--
10 to Under 20 Years	2	8.7	--	--	--	--	--	--	--	1	1
20 or More Years	3	13.1	--	--	--	--	--	--	--	--	3
Life	--	--	--	--	--	--	--	--	--	--	--
Unspecified Minimum	9	39.0	2	--	4	--	1	2	--	--	--

Second Felony Offenders 8

ESCAPES FROM DEPARTMENT OF CORRECTIONAL SERVICES FACILITIES
BY AGE AT TIME OF ESCAPE: 1976 THROUGH 1980

In 1980, 80.0 percent of the inmates who escaped were under 30 years of age while three-eighths were less than 21 and 20 percent were from 16 to 18 years of age. These percentages did not differ substantially from the previous four years except in the proportion of 16 to 18 year olds which was at least 3 percent higher for 1980 escapes than for the earlier years.

The median age of escapees in 1980 was 22.8 years, the lowest for the five year period, while the median age of 1979 escapees was the highest at 26.3 years. Thus, the escape cohort in 1980 was the youngest during this period. Since the median age on commitment of males was 25.0 years in 1978 and in 1979, it appears that escapees tend to be from the younger age groups.

MINIMUM AND MAXIMUM SENTENCE [CONTROLLING SENTENCE]
1980 ESCAPES

MAXIMUM SENTENCE											
Minimum Sentence	Total	Percent	3 Yrs.	37-47 Months	4 Yrs.	49-59 Months	5 Yrs.	Over 5-10 Yrs.	Over 10 to Under 20	20 or More Yrs.	Life
TOTAL	40	100.0	8	--	8	3	1	10	4	2	4
Percent	100.0	xxx	20.0	--	20.0	7.5	2.5	25.0	10.0	5.0	10.0
1 to Under 2 1/2 Years	8	20.0	2	--	2	2	--	2	--	--	--
2 1/2 Years	1	2.5	--	--	--	--	--	1	--	--	--
2 1/2 to Under 5 Years	4	10.0	--	--	--	--	--	4	--	--	--
5 Years to Under 10	5	12.5	--	--	--	--	--	1	3	1	--
10 to Under 20 Years	1	2.5	--	--	--	--	--	--	--	--	1
20 or More	3	7.5	--	--	--	--	--	--	--	--	3
Life	--	--	--	--	--	--	--	--	--	--	--
Unspecified Minimum	18	45.0	6	--	6	1	1	2	1	1	--

Second Felony Offenders 10
Persistent Felony Offender 1

ESCAPES FROM DEPARTMENT OF CORRECTIONAL SERVICES FACILITIES
BY AGE AT TIME OF ESCAPE: 1976 THROUGH 1980

Age in Years	Number					Percent				
	1976	1977	1978	1979	1980	1976	1977	1978	1979	1980
TOTAL	60	72	47	23	40	100.0	100.0	100.0	100.0	100.0
16-18 Years	8	12	8	2	8	13.3	16.7	17.0	8.7	20.0
19-20 Years	13	17	10	5	7	21.7	23.6	21.3	21.8	17.5
21-24 Years	18	9	8	3	11	30.0	12.5	17.0	13.0	27.5
25-29 Years	11	17	11	6	6	18.3	23.6	23.4	26.1	15.0
30-34 Years	5	9	4	3	3	8.3	12.5	8.5	13.0	7.5
35-39 Years	3	6	2	3	--	5.0	8.3	4.3	13.0	--
40-44 Years	1	1	2	1	2	1.7	1.4	4.3	4.4	5.0
45-49 Years	1	--	1	--	1	1.7	--	2.1	--	2.5
50-64 Years	--	1	1	--	2	--	1.4	2.1	--	5.0
65 Years and Over	--	--	--	--	--	--	--	--	--	--

ESCAPES FROM DEPARTMENT OF CORRECTIONAL SERVICES FACILITIES
BY PRIOR ADULT CRIMINAL RECORD: 1976 THROUGH 1980

No more than seven of the escapees during any of these periods had no prior adult criminal record (no arrests) prior to commitment. In 1980, 38 of those who escaped or 95.0 percent, had a prior adult record. Fourteen of those with previous arrests had no prior institutional commitment (35.0%) and 14 had prior commitment(s) in local facilities only (35.0%). Ten of these 1980 escapees (25.0%) had one or more previous incarcerations in state correctional facilities.

In comparison with prior years, it appears that the previous criminal record of 1980 escapees was relatively less severe than the experience in 1978 and in 1979 because lower percentages of escapees in those two years had no prior institutional commitments (between 21 and 22%) and higher percentages had previous state commitments in 1978 and 1979 - 32 and 39%, respectively. Conversely, the prior adult criminal records of 1976 escapees were the least severe in that nearly 12 percent had no prior adult record and 40.0 percent had a prior adult record but no previous institutional commitment. In contrast, the prior adult criminal records of male commitments in 1979 were less severe than all but the 1976 escape cohort, in that nearly 11 percent of the commitments had no prior adult record.

ESCAPES FROM DEPARTMENT OF CORRECTIONAL SERVICES FACILITIES
BY PRIOR ADULT CRIMINAL RECORD: 1976 THROUGH 1980

Prior Adult Record	Number					Percent				
	1976	1977	1978	1979	1980	1976	1977	1978	1979	1980
TOTAL	60	72	47	23	40	100.0	100.0	100.0	100.0	100.0
NO PRIOR ADULT RECORD	7	7	2	1	2	11.7	9.7	4.3	4.3	5.0
PRIOR ADULT RECORD	53	65	45	22	38	88.3	90.3	95.7	95.7	95.0
No Prior Institutional Commitment	24	19	10	5	14	40.0	26.4	21.3	21.8	35.0
Local Commitment Only	13	21	20	8	14	21.7	29.2	42.5	34.8	35.0
State or Federal Commitment	16	25	15	9	10	26.6	34.7	31.9	39.1	25.0

END