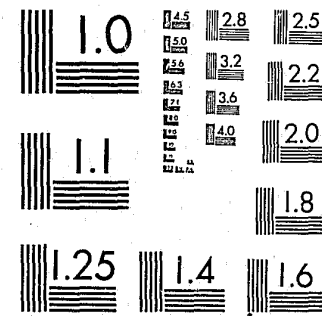


National Criminal Justice Reference Service

**ncjrs**

This microfiche was produced from documents received for inclusion in the NCJRS data base. Since NCJRS cannot exercise control over the physical condition of the documents submitted, the individual frame quality will vary. The resolution chart on this frame may be used to evaluate the document quality.



MICROCOPY RESOLUTION TEST CHART  
NATIONAL BUREAU OF STANDARDS-1963-A

Microfilming procedures used to create this fiche comply with the standards set forth in 41CFR 101-11.504.

Points of view or opinions stated in this document are those of the author(s) and do not represent the official position or policies of the U. S. Department of Justice.

National Institute of Justice  
United States Department of Justice  
Washington, D. C. 20531

3/9/83

82603

**CRIME  
IN  
MONTANA  
1980  
ANNUAL REPORT**





U.S. Department of Justice  
National Institute of Justice

This document has been reproduced exactly as received from the person or organization originating it. Points of view or opinions stated in this document are those of the authors and do not necessarily represent the official position or policies of the National Institute of Justice.

Permission to reproduce this copyrighted material has been granted by

Public Domain

LEAA/U.S. Dept. of Justice

to the National Criminal Justice Reference Service (NCJRS).

Further reproduction outside of the NCJRS system requires permission of the copyright owner.

# CRIME IN MONTANA

1980  
ANNUAL REPORT

Compiled by the  
CRIMINAL JUSTICE DATA CENTER  
OF THE MONTANA BOARD OF CRIME CONTROL

Dr. Gordon Browder, Chairman

JUNE, 1981

criminal  
justice  
data  
center





## MONTANA BOARD OF CRIME CONTROL

### FOREWORD

*Crime in Montana* is an annual report prepared by the Criminal Justice Data Center of the Montana Board of Crime Control. It presents an overview of the nature and extent of crime in our state, and also includes a summary of index crimes referenced by the reporting law enforcement agency.

With our crime reporting program ten years old, we have achieved a level of reliability which enhances the utility of the data.

This publication would not be possible without the continuing support of the Montana criminal justice community, which voluntarily provides the source data.

Special thanks go to Bill Erwin of the state Department of Justice Central Services Division for his assistance.

A handwritten signature in cursive script that reads 'Mike A. Lavin'.

Mike A. Lavin  
Administrator

**TABLE OF CONTENTS**

<b>INTRODUCTION .....</b>	<b>1</b>
Criminal Justice Data Center .....	1
Montana Uniform Crime Reporting Program .....	2
<b>CRIME IN MONTANA - 1980 .....</b>	<b>5</b>
Crime Factors .....	5
Statistical Method of Reporting .....	5
Crime Index .....	5
Crime Rate .....	6
Crime Incidence Comparison .....	7
Crime and Population .....	9
Crime Offense Profile .....	10
Crime Clocks .....	11
Clearances .....	12
Crime by County .....	13
Offense Summary .....	17
<b>CRIME PROJECTION .....</b>	<b>19</b>
Statistical Method .....	19
<b>MONTANA INDEX CRIMES BY CONTRIBUTOR .....</b>	<b>21</b>

## INTRODUCTION

This report by the Criminal Justice Data Center contains the most complete and accurate information currently available about crime in Montana. It contains an extensive collection of facts along with detailed analyses of the prevalence of different crimes, crime trends, arrests and crime by law enforcement agency; in short, the nature, extent and location of crime in the state.

While this report addresses not only the informational needs of law enforcement agencies, planners, local government officials and legislators, it should afford citizens an opportunity to assess the state's crime situation.

## CRIMINAL JUSTICE DATA CENTER

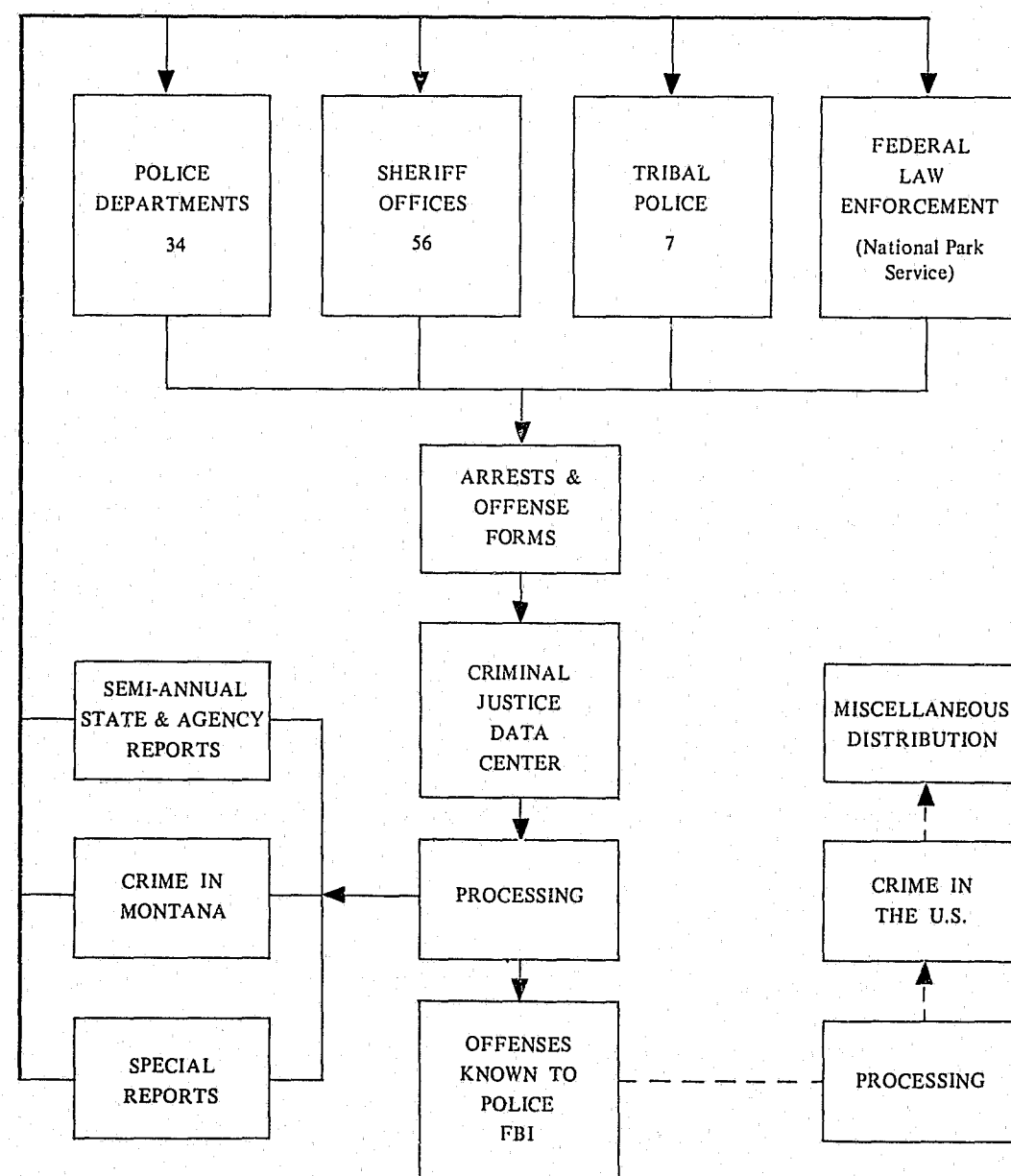
The major mission of the Montana Criminal Justice Data Center has been the development, implementation and maintenance of data collection systems to provide both essential information on crime as it occurs within the state and on the offenders who are apprehended and enter the criminal justice system, and a statistical analysis of criminal justice data. The Criminal Justice Data Center serves as a statewide clearinghouse for criminal justice information.

Criminal justice data is furnished to the Data Center by county law enforcement agencies, city police departments and government agencies such as the Bureau of Indian Affairs and the National Park Service. Although reporting is voluntary, nearly all law enforcement agencies participate, as shown on pages 21 through 29.

## MONTANA UNIFORM CRIME REPORTING PROGRAM

Montana became involved in the National Uniform Crime Reporting program in September, 1978, when the F.B.I. transferred the responsibility of data collection from its Uniform Crime Reporting Division to the Board of Crime Control's Data Center. This transfer has enhanced crime data collection by giving the state more control over the crime reporting and closer contact with local law enforcement.

Illustration 1.  
MONTANA CRIMINAL JUSTICE DATA CENTER  
ARRESTS AND OFFENSES STATISTICS SYSTEM



The development of Montana's Uniform Crime Reporting program has encouraged law enforcement participation in record keeping, data collection, data analysis and its use. The law enforcement agencies are wholly responsible for compiling and completing their own crime reports and submitting them to the Data Center. On a monthly basis, law enforcement agencies (as shown on the previous page) report the number of offenses that become known, property stolen by type, value and crime classification, age, sex and race of persons arrested, homicides, arsons and law enforcement officers killed or assaulted.

The Montana Uniform Crime Reporting program involves two distinct data systems: the Arrest Information System and the Offense Information System. The Arrest Information System compiles and summarizes felony and misdemeanor arrests by age, race and sex of the offender, time of day and the day, week and month on which the arrest occurred. The Offense Information System summarizes the type of crimes actually being committed and reported to law enforcement agencies.

Nearly all of the law enforcement agencies in the state participate by reporting the incidence of serious crimes and arrests on a monthly basis. A reporting summary and crime rate by contributor is included on pages 21 through 29. The reporting agencies include all 56 sheriff departments, seven tribal police departments, the National Park Service at Glacier Park, the Bureau of Indian Affairs and 34 local police departments. In addition, many small police departments and campus police units report to the sheriff departments in their counties and the data is forwarded to the Data Center. Several law enforcement agencies have combined during the year while others have elected to do their own jurisdictional crime reporting.

A particularly important service of the Montana Crime Reporting program is statistical feedback to contributors. Data is returned to them in the form of computerized summaries of offenses and arrests, showing crime by offense and arrest categories, clearances, volume of arrests and offenses — all of which is useful to departments in terms of resource distribution, identification of needs and problems, manpower deployment, budget allocations and public relations.

## CRIME IN MONTANA—1980

### CRIME FACTORS

The amount and type of crime reported in this section is based on offenses reported to the police and does not measure those offenses which the law enforcement community never becomes aware of. A considerable volume of crime is not reported to law enforcement agencies because the victims may consider the offenses against them of very little consequence, they believe there is very little the police can do about them, or they fear publicity of a police investigation or retaliation from offenders. Recent national victimization surveys indicate that the actual number of certain index offenses committed may be fully double the number that are made known to police.

A report on the number and types of crime alone doesn't tell the whole story of criminal activity within the state. Other factors which may influence the type and volume of crime are:

- density and size of community
- composition of the population with reference to age, race and sex
- economic status of the population
- stability of population such as seasonal workers and tourism
- educational, recreational and religious characteristics
- effective strength of the police force
- policies of the prosecuting officials and the courts
- attitude of the public toward law and law enforcement

### STATISTICAL METHOD OF REPORTING

Several statistical measurements are used to make the crime data more meaningful: *crime index and crime rate*. These are discussed below.

### CRIME INDEX

The crime index has been used nationwide for many years as a standard for comparing the amount and extent of serious crime.

The index includes seven crimes divided into two groups. The sub-classification allows comparison and contrast of the groups.

Violent Crimes .....	Homicide
	Rape
	Robbery
	Assault
Property Crimes .....	Burglary
	Larceny/Theft
	Motor Vehicle Theft

These seven crimes are recognized as the most serious crimes in our society and the most likely to be reported to law enforcement. The numerous other felony and serious misdemeanor offenses are not included in the crime index but are included and reported on page 8, Illustration 3.

The crime index is only an indication of the amount and type of crime occurring in a jurisdiction. It is not an absolute measure. If multiple crimes were committed during an incident and reported, only the most serious is recorded in the index.

#### CRIME RATE

One of the most commonly used statistical measurements is the crime rate, which calculates the number of incidents which occur for every 100,000 residents. The crime rate is useful in comparing the amount of crime in two areas with unequal populations.

The crime rate is calculated by dividing the total number of serious crimes (usually it is the seven major index crimes) by the population or estimated population and multiplying the answer by 100,000 as follows:

$$\frac{\text{Number of Crimes}}{\text{Population of Law Enforcement Jurisdiction}} \times 100,000 = \text{Rate per 100,000}$$

According to the F.B.I. and Bureau of the Census, Montana's 1980 population is 786,690. This is the figure on which the crime rates are based in the following illustration.

Illustration 2.  
1980 MONTANA INDEX OFFENSE CRIME RATES

Violent Crimes			Property Crimes		
Index Offenses	Number Of Offenses	Rate Per 100,000 Population	Index Offenses	Number Of Offenses	Rate Per 100,000 Population
Homicide .....	30	3.8	Burglary .....	7,027	893.5
Rape .....	166	21.1	Larceny/Theft ....	25,749	3,274.2
Robbery .....	257	32.7	Motor Vehicle Theft	2,319	294.9
Assault .....	1,243	158.1			
Total .....	1,696	215.7	Total .....	35,095	4,462.7
GRAND TOTAL .....				36,791	4,678.3

Comparison of the amount of crime and estimated population for the state shows a crime rate of 4,678. This means that 4,678 out of every 100,000 Montanans were victims of a major crime - or more simply:

4,678.0 crimes per 100,000 persons  
468.0 crimes per 10,000 persons  
47.0 crimes per 1,000 persons  
4.7 crimes per 100 persons

Out of every 100 Montanans, 4.7 were victims of an index crime. In 1979, the level of victimization was 4.4 per 100 persons.

#### CRIME INCIDENCE COMPARISON

A comparison of the number of crimes reported in 1980 to that reported in the previous year provides a measure of the fluctuation in criminal activity.

The number of index crimes increased again this year. The total of 36,791 index crimes reported in 1980 is 1,911 greater than the 34,880 reported in the previous year. A comparison by index crime for 1979 and 1980 is shown in the following illustration with the percent of change in the column at the right.



Illustration 3.  
CRIME INCIDENCE COMPARISON  
1979-1980

Offense	1979	1980	Percent Change
Homicide .....	41	30	-26.8
Rape .....	183	166	-41.3
Robbery .....	261	257	- 1.5
Aggravated Assault .....	1,361	1,243	- 8.7
Total Offenses Against Persons .....	1,846	1,696	- 8.1
Burglary .....	6,326	7,027	11.1
Larceny/Theft .....	24,304	25,749	6.0
Motor Vehicle Theft .....	2,404	2,319	- 3.5
Total Offenses Against Property .....	33,034	35,095	6.2
Total 7 Major Offenses .....	34,880	36,791	5.5
Negligent Manslaughter .....	5	8	60.0
Other Assaults .....	1,797	2,628	46.2
Arson .....	174	182	4.6
Forgery and Counterfeiting .....	595	572	- 3.9
Fraud .....	1,674	2,042	22.0
Embezzlement .....	9	12	33.3
Stolen Property .....	408	171	-58.1
Vandalism .....	11,332	11,973	5.7
Weapons .....	345	222	-35.7
Prostitution .....	22	29	31.8
Sex Offenses .....	308	406	31.8
Drugs .....	818	917	12.1
Gambling .....	45	28	-37.8
Offenses Against Family .....	525	640	21.9
Total Other Offenses .....	18,057	19,830	9.8
GRAND TOTAL .....	52,937	56,621	7.0

The major increase was in property crimes. Burglary and larceny/theft increased by 11.1 percent and 6.0 percent respectively. Overall, a 6.2 percent increase in property crime occurred in 1980.

While property crime increased 6.2 percent, reported violent crimes of rape and homicide decreased by 41.3 and 26.8 percent respectively. Aggravated assault recorded a 8.7 percent decrease, causing the whole volume of crimes against persons to decrease by 8.1%.

The volume increase in the larceny/theft and burglary crime categories accounted for the general crime trend increase in all the seven major index offenses.

In addition, high volume increases are noted in non-index offenses of fraud at 22 percent increase, other assaults at 46.2% increase, sex offenses at 31.8 percent increase and drugs at 12.1 percent increase.

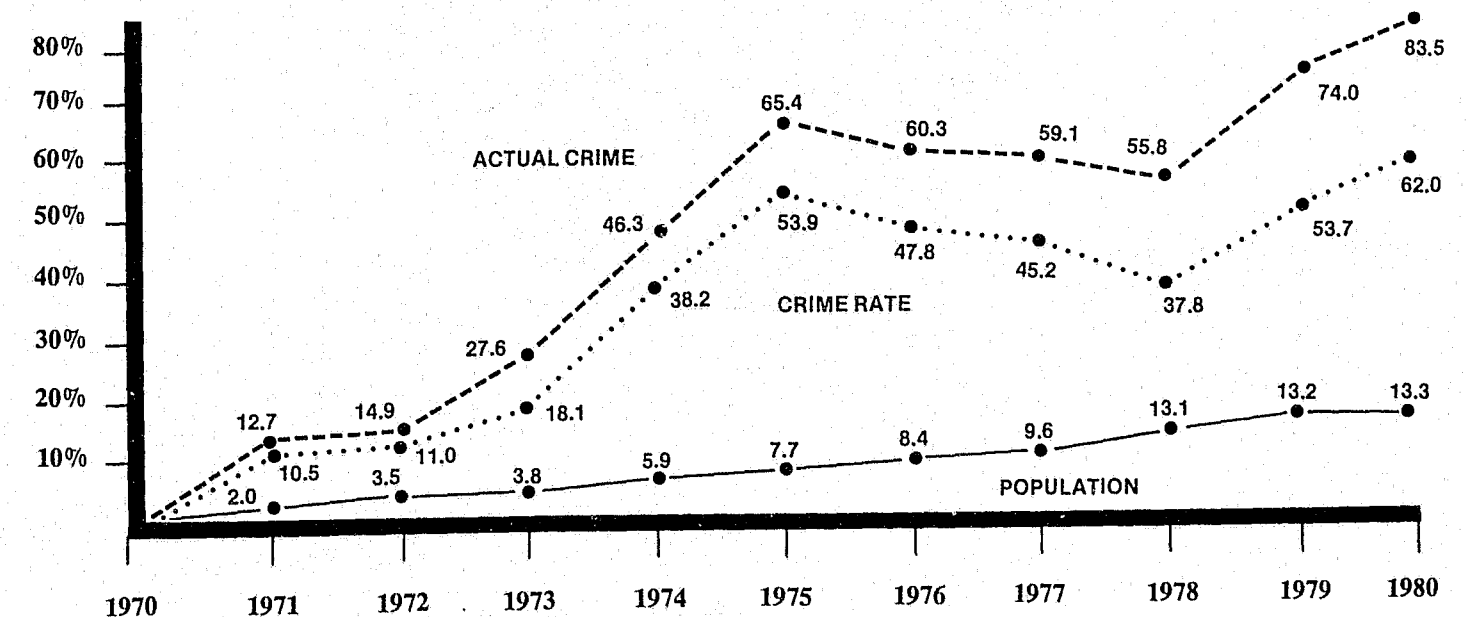
Illustration 3 on the previous page shows the specific changes in the seven major index crimes as well as the other felony and serious misdemeanor classifications.

### CRIME AND POPULATION

In order to demonstrate the crime trend and the population trend over a period of years, a percent change is calculated using 1970 as the base year. In 1970, Montana recorded 20,052 index crimes with a crime rate of 2,887.6 per 100,000 and a population of 694,409. The rapid increase in crime in the earlier years of this decade corresponds to very small increases in the state population. By 1980, the crime rate had increased 62.0 percent over 1970 while the state population had grown only 13.3 percent in that same period.

Illustration 4 indicates a leveling off and decrease in the overall crime picture from the 1975 peak through 1978; however, the 1979 and 1980 increases are reflected in percentage changes which surpass the 1975 peak. The population trend shows a steady increase to 786,690 in 1980.

Illustration 4.  
CRIME RATE AND POPULATION CHANGES — 1970-1980  
(By Percent Change From 1970)



### CRIME OFFENSE PROFILE

The circle graph below shows the proportion of each index crime to the total of all the index crimes reported in 1980.

Three property crimes — burglary, larceny/theft and motor vehicle theft — account for 95.4 percent of all major crimes reported in 1980. Violent crimes of homicide, rape, robbery and aggravated assault accounted for 4.6 percent of the index offenses.

Illustration 5.  
CRIME PROFILE - 1980

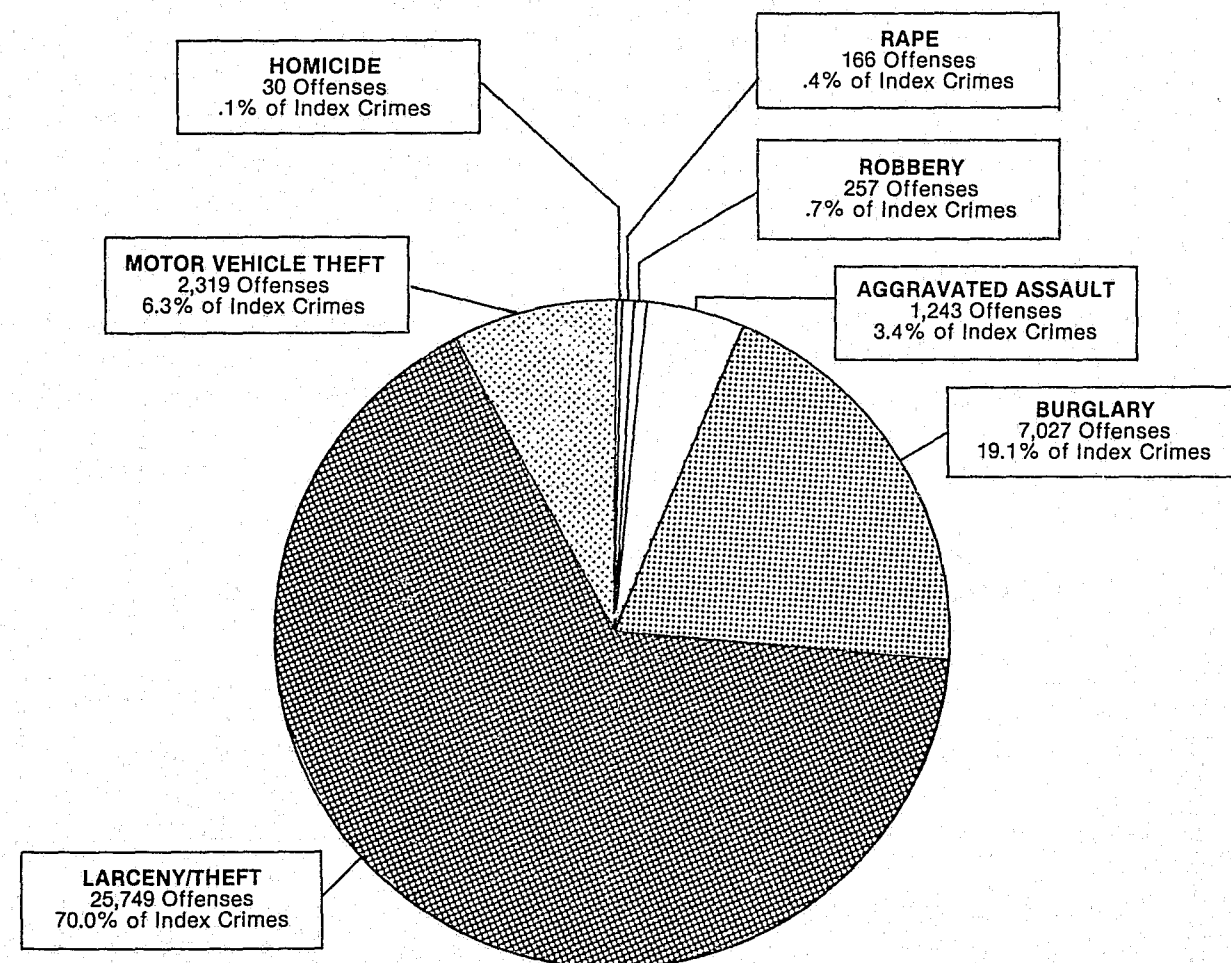
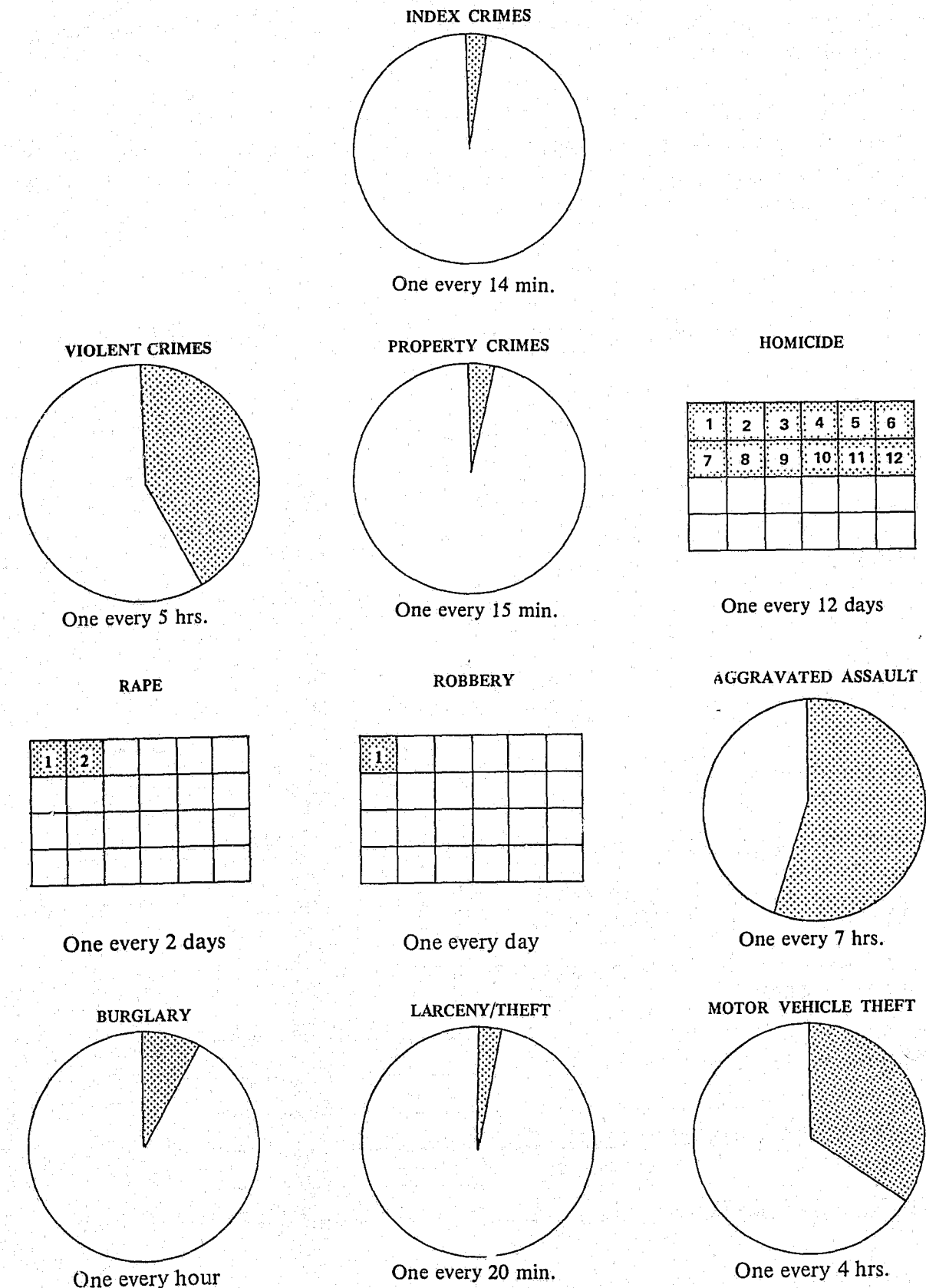


Illustration 6.  
CRIME CLOCKS - 1980

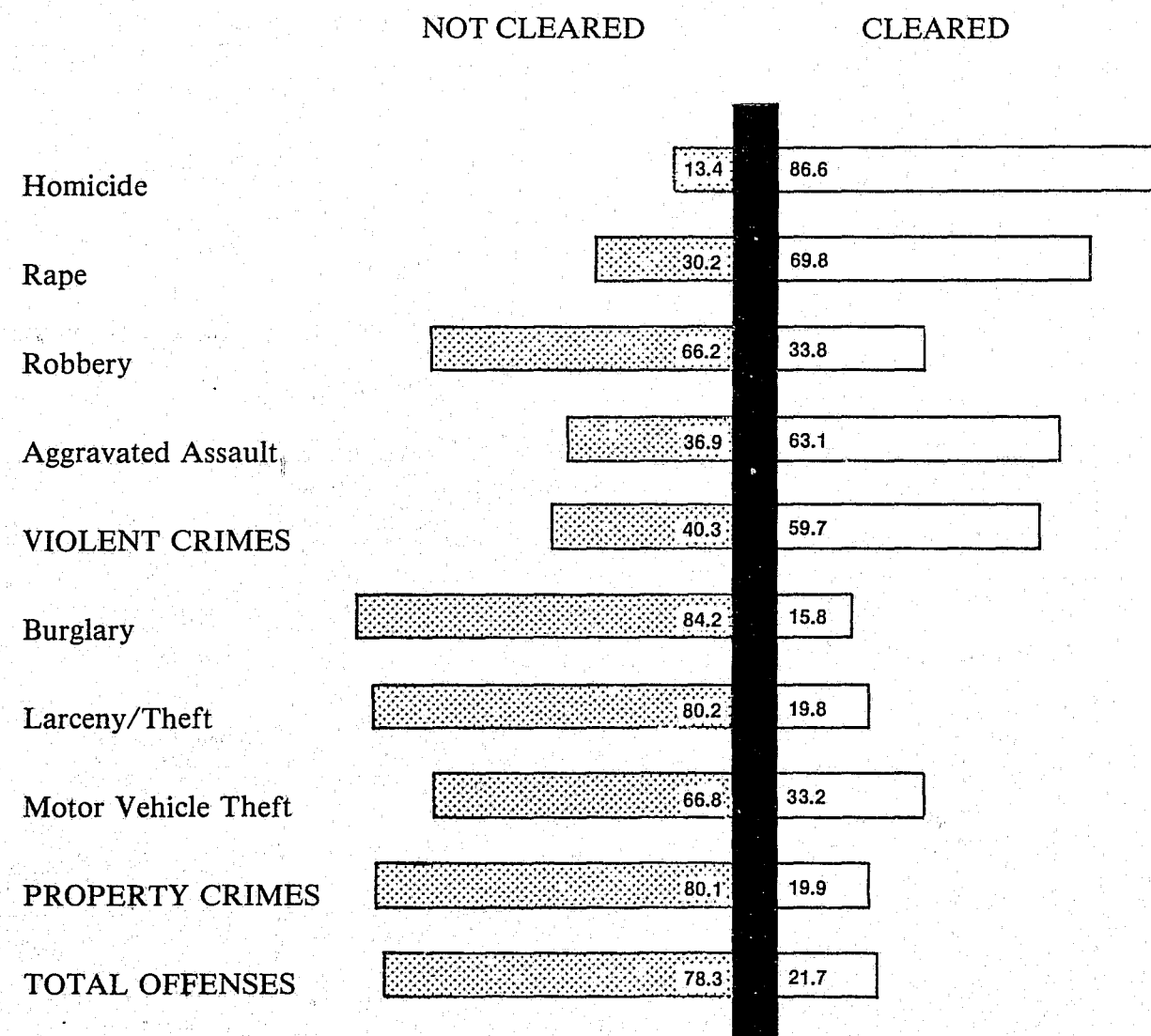


### CLEARANCES

An offense is considered cleared when a law enforcement agency has identified the offender and gathered sufficient evidence and filed a charge. The arrest of one person can clear several crimes or conversely, several persons may be arrested in the process of clearing one crime.

The following illustration shows the percent of offenses cleared by arrest. Note that property crimes — burglary, larceny/theft and motor vehicle theft — have the lowest percent of clearance, while violent crimes or crimes against persons have a higher percentage of clearance.

Illustration 7.  
PERCENT OF OFFENSES CLEARED BY ARREST  
1980



### CRIME BY COUNTY

The crime rate for each county in Montana is listed below. Five counties are above the statewide average of 4,678.3 crimes reported per 100,000. These five counties contain 45.7 percent of the total state population and were the scene of 67.4 percent of the reported index crimes.

The five counties are not a contiguous geographical high-crime area; rather, they correspond to high population areas of the state. Two of the top ten counties, Broadwater and Sweet Grass, have low populations. In such relatively low populated jurisdictions, any fluctuation in the number of crimes creates a major impact on the crime rate.

Illustration 8.  
CRIME RATE BY COUNTY  
1980 Ranking

1.	Lewis & Clark	8067.1	29.	Liberty	2018.0
2.	Cascade	8064.8	30.	Carbon	1963.2
3.	Missoula	6982.7	31.	Prairie	1960.8
4.	Yellowstone	6322.0	32.	Chouteau	1904.1
5.	Flathead	5170.7	33.	Pondera	1871.9
STATE TOTAL		4678.3	34.	Phillips	1788.7
6.	Broadwater	4622.0	35.	Musselshell	1738.9
7.	Sweet Grass	4570.9	36.	Park	1714.1
8.	Beaverhead	4471.0	37.	Toole	1619.0
9.	Roosevelt	4413.9	38.	Sanders	1406.3
10.	Custer	4391.0	39.	Fallon	1381.9
11.	Gallatin	4210.9	40.	Meagher	1299.9
12.	Lincoln	4202.3	41.	Blaine	1200.2
13.	Hill	3997.8	42.	Wheatland	1102.2
14.	Silver Bow	3856.4	43.	Teton	1001.4
15.	Granite	3740.7	44.	Daniels	987.7
16.	Powell	3650.5	45.	Powder River	952.4
17.	Valley	3648.8	46.	Madison	703.2
18.	Fergus	3617.3	47.	McCone	458.9
19.	Dawson	3481.6	48.	Judith Basin	75.6
20.	Ravalli	2898.7	49.	Sheridan	73.9
21.	Rosebud	2858.9	50.	Glacier	28.2
22.	Richland	2752.6	51.	Carter	0
23.	Mineral	2721.1	52.	Deer Lodge	0
24.	Lake	2518.9	53.	Garfield	0
25.	Jefferson	2418.6	54.	Golden Valley	0
26.	Wibaux	2235.8	55.	Petroleum	0
27.	Stillwater	2179.3	56.	Treasure	0
28.	Big Horn	2162.9			

Illustration 9a.  
CRIME INDEX REPORT

STATE SUMMARY FOR JANUARY 1, 1980 THROUGH DECEMBER 31, 1980

Population or Estimate: 786,415	Sq. Mi.: 146,869	Population Density: 5.4			
OFFENSE CLASSIFICATION	Number Of Actual Offenses	Crime Index Per 100,000 Population	Offense Occurs Every	Number Cleared By Arrest	Percent Cleared By Arrest
Murder and Non-Negligent Manslaughter .....	30	3.8	12 DA	26	86.6
Forcible Rape .....	166	21.1	2 DA	116	69.8
Robbery .....	257	32.7	1 DA	87	33.8
Aggravated Assault .....	1,243	158.1	7 HR	785	63.1
TOTAL OFFENSES AGAINST PERSONS .....	1,696 *	215.7 *	5 HR *	1,014 *	59.7 *
Burglary .....	7,027	893.5	1 HR	1,115	15.8
Larceny/Theft .....	25,749	3,274.2	20 MIN	5,102	19.8
Motor Vehicle Theft .....	2,319	294.9	4 HR	772	33.2
TOTAL OFFENSES AGAINST PROPERTY ...	35,095 *	4,462.7 *	15 MIN *	6,989 *	19.9 *
TOTAL SEVEN MAJOR OFFENSES .....	36,791 *	4,678.3 *	14 MIN *	8,003 *	21.7 *
Manslaughter by Negligence .....	8	1.0	2 MO	5	62.5
Other Assaults - Simple - Not Aggravated .....	2,628	334.2	3 HR	1,660	63.1
Arson .....	182	23.1	2 DA	43	23.6
Forgery and Counterfeiting .....	572	72.7	15 HR	230	40.2
Fraud .....	2,042	259.7	4 HR	845	41.3
Embezzlement .....	12	1.5	1 MO	4	33.3
Stolen Property: Buying, Receiving, Possessing .....	171	21.7	2 DA	121	70.7
Vandalism .....	11,973	1,522.5	44 MIN	1,839	15.3
Weapons: Carrying, Possessing, Etc. ....	222	28.2	2 DA	139	62.6
Prostitution and Commercialized Vice .....	29	3.7	13 DA	27	93.1
Sex Offenses .....	406	51.6	22 HR	153	37.6
Narcotic Drug Laws .....	917	116.6	10 HR	754	82.2
Gambling .....	28	3.6	13 DA	16	57.1
Offenses Against Family and Children .....	640	81.4	14 HR	371	57.9
TOTAL OTHER OFFENSES .....	19,830 *	2,521.6 *	26 MIN *	6,207 *	31.3 *
GRAND TOTAL .....	56,621 *	7,199.9 *	9 MIN *	14,210 *	25.0 *

\*Indicates sub-totals and totals.

Illustration 9b.  
OFFENSES KNOWN TO THE POLICE

STATE SUMMARY FOR JANUARY 1, 1980 THROUGH DECEMBER 31, 1980

CLASSIFICATION OF OFFENSES	Offenses Reported Or Known By Police	Unfounded Offenses	Actual Offenses	Number of Offenses Cleared By Arrest	Number of Offenses Cleared By Arrest Under 18
Criminal Homicide .....	41 *	3 *	38 *	31 *	2 *
Murder and Non-Negligent Manslaughter ..	33	3	30	26	2
† Manslaughter By Negligence .....	8	0	8	5	0
Forcible Rape .....	190 *	24 *	166 *	116 *	14 *
Rape By Force .....	150	22	128	91	8
Attempts To Commit Forcible Rape .....	40	2	38	25	6
Robbery .....	270 *	13 *	257 *	87 *	12 *
Firearm .....	106	4	102	42	4
Knife Or Cutting Instrument .....	29	3	26	11	3
Other Dangerous Weapon .....	22	1	21	6	1
Strong-Arm: Hands, Fists, Feet, Etc. ....	113	5	108	28	4
Assault .....	3,969 *	98 *	3,871 *	2,445 *	293 *
Firearm .....	271	11	260	167	12
Knife Or Cutting Instrument .....	187	7	180	119	21
Other Dangerous Weapon .....	194	7	187	102	13
Hands, Fists, Feet, Etc.-Aggravated Injury .	633	17	616	397	38
† Other Assaults - Simple - Not Aggravated ..	2,684	56	2,628	1,660	209
TOTAL OFFENSES AGAINST PERSONS .....	4,470 *	138 *	4,332 *	2,679 *	321 *
Burglary .....	7,319 *	292 *	7,027 *	1,115 *	507 *
Forcible Entry .....	4,610	175	4,435	807	384
Unlawful Entry - No Force .....	2,102	85	2,017	255	112
Attempted Forcible Entry .....	607	32	575	53	11
Larceny/Theft .....	26,274 *	525 *	25,749 *	5,102 *	1,794 *
Motor Vehicle Theft .....	2,682 *	363 *	2,319 *	772 *	193 *
Autos .....	1,570	253	1,317	466	127
Trucks and Buses .....	667	76	591	198	40
Other Vehicles .....	445	34	411	108	26
TOTAL OFFENSES AGAINST PROPERTY ...	36,275 *	1,180 *	35,095 *	6,989 *	2,494 *
TOTAL OFFENSES AGAINST PERSONS & PROPERTY .....	40,745 *	1,318 *	39,427 *	9,668 *	2,815 *

†Not Included in the UCR 7 major offenses.

\*Indicates sub-totals and totals.



Illustration 9b. (Con't.)  
**OFFENSES KNOWN TO THE POLICE**  
 STATE SUMMARY FOR JANUARY 1, 1980, THROUGH DECEMBER 31, 1980

CLASSIFICATION OF OFFENSES	Offenses Reported Or Known By Police	Unfounded Offenses	Actual Offenses	Number of Offenses Cleared By Arrest	Offenses Cleared By Arrest Under 18
Arson .....	186 *	4 *	182 *	43 *	21 *
Forgery and Counterfeiting .....	581 *	9 *	572 *	230 *	51 *
Fraud .....	2,075 *	33 *	2,042 *	845 *	32 *
Embezzlement .....	12 *	0 *	12 *	4 *	0 *
Stolen Property: Buying, Receiving, Possessing	175 *	4 *	171 *	121 *	33 *
Vandalism .....	12,061 *	88 *	11,973 *	1,839 *	766 *
Weapons: Carrying, Possessing, Etc. ....	226 *	4 *	222 *	139 *	15 *
Prostitution and Commercialized Vice .....	29 *	0 *	29 *	27 *	2 *
Sex Offenses .....	419 *	13 *	406 *	153 *	34 *
Narcotic Drug Laws .....	940 *	23 *	917 *	754 *	211 *
Opiates .....	35	1	34	31	3
Marijuana .....	757	11	746	620	195
Dangerous Drugs .....	84	2	82	64	7
Other .....	64	9	55	39	6
Gambling .....	30 *	2 *	28 *	16 *	3 *
Offenses Against Family and Children .....	663 *	23 *	640 *	371 *	82 *
TOTAL OTHER OFFENSES .....	17,397 *	203 *	17,194 *	4,542 *	1,250 *
GRAND TOTAL .....	58,142 *	1,521 *	56,621 *	14,210 *	4,065 *

\*Indicates sub-totals and totals.

## OFFENSE SUMMARY

- \* Crimes against property accounted for 95.4 percent of all reported offenses.
- \* Crimes against persons accounted for 4.6 percent of all reported offenses.
- \* An index crime occurs every 14 minutes with a property crime occurring every 15 minutes. Violent crime occurs every 5 hours.
- \* From 1970 through 1980, the number of crimes increased 83.5 percent while the estimated population increased only 13.3 percent.
- \* Crime rates relate the incidence of crime to population. The crime rate can be considered a victim risk rate because it demonstrates the risk of becoming a crime victim. Thus, of every 100 Montanans, 4.7 were victims of an index crime and 7.2 were victims of an index crime and serious crime combined.
- \* Of the 36,791 major offenses known, only 21.7 percent was cleared, either by arrest or exceptional means.

CRIME PROJECTION

STATISTICAL METHOD

The number of recorded index offenses in Montana has increased from 20,052 in 1970 to 36,791 in 1980. This change indicates a 83.5 percent increase. Much of this increase can be attributed to better and more sophisticated reporting methods by the law enforcement agencies. In addition, the increased population also has an influence on the number of crimes.

The illustration on the following page shows the trend increases and decreases in crime from 1970 as well as a projection to 1985 based on previous years.

Two methods are used in developing the crime projection. The first, a straight-line method, uses the average yearly increase of 6.5 percent for a ten-year period from 1970 to 1980. This increment, accumulated each year, indicates that crimes will reach 50,736 in 1985.

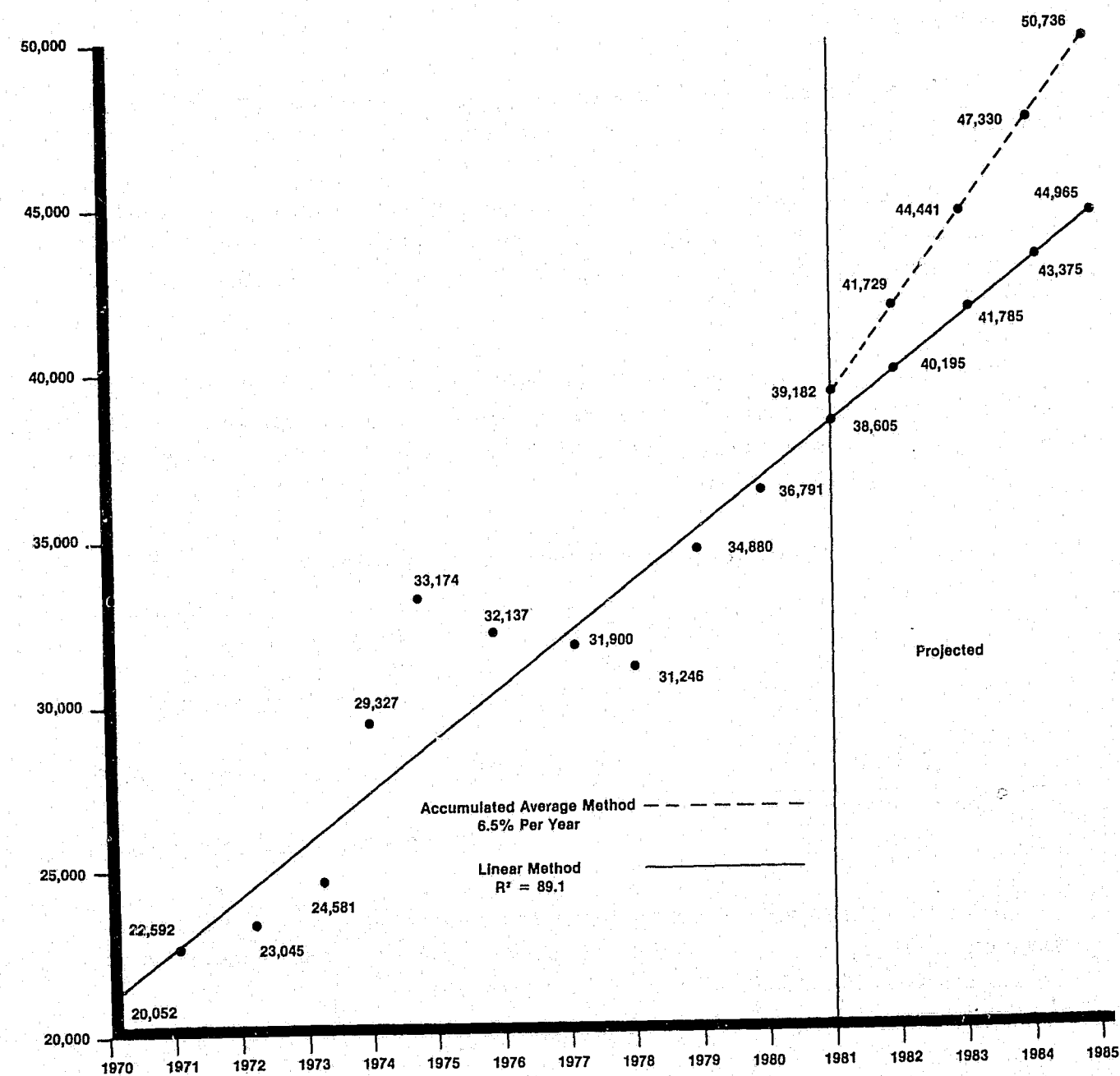
The second projection method, linear least squares regression, plots on the illustration the number of crimes for the nine-year period. Using the regression formula,  $y = a + bx$ , a line is then projected to 1985. By this method, the number of crimes is projected to be 44,965 in 1985.

A summary of the two projection methods is shown as follows:

	Actual Crimes	Projected Crimes				
	in 1980	1981	1982	1983	1984	1985
Accumulation Average Method	36,791	39,182	41,729	44,441	47,330	50,736
Linear Regression Method		38,605	40,195	41,785	43,375	44,965

It is important to note that the projections are not point estimations but rather trend estimates. Thus, it is predictable that Montana can anticipate crimes in 1985 to be between 44,965 and 50,736 if present trends continue.

Illustration 10.  
MONTANA PROJECTED CRIMES  
(Seven Major Index Crimes)  
1970-1985



### MONTANA INDEX CRIMES BY CONTRIBUTOR

This section is a summary of offenses reported to each law enforcement agency. Several crime rates may appear to be extreme for some jurisdictions; however, this is because in communities with low populations, any fluctuation in the number of crimes creates a major impact on the crime rate.

The population figures for each jurisdiction are provided by the Federal Bureau of Investigation through the Bureau of Census.

AGENCY	MONTHS CONTRIB- UTED	1980 POPULATION ESTIMATE	CRIME RATE PER 100,000	TOTAL OFFENSES	HOMICIDE	RAPE	ROBBERY	AGGRAVATED ASSAULT	BURGLARY	LARCENY/ THEFT	MOTOR VEHICLE THEFT
<b>BEAVERHEAD COUNTY</b>											
Sheriff	12	4,210	2,446.6	103				5	2	91	5
Dillon	12	3,976	6,614.7	263		2	1	4	48	199	9
<b>TOTAL</b>		<b>8,186</b>	<b>4,471.0</b>	<b>366</b>		<b>2</b>	<b>1</b>	<b>9</b>	<b>50</b>	<b>290</b>	<b>14</b>
<b>BIG HORN COUNTY</b>											
Sheriff	12	6,110	3,027.8	185	2	2	7	15	46	97	16
Crow Tribe	A	4,986	1,303.7	65			3	12	17	33	
<b>TOTAL</b>		<b>11,096</b>	<b>2,162.9</b>	<b>250</b>	<b>2</b>	<b>2</b>	<b>10</b>	<b>27</b>	<b>63</b>	<b>130</b>	<b>16</b>
<b>BLAINE COUNTY</b>											
Sheriff	12	4,157	1,299.0	54		1		3	19	25	6
Ft. Belknap	A	1,819	1,429.4	26	1	2		6	6	11	
Harrison	12	1,023	391.0	4		2			2		
<b>TOTAL</b>		<b>6,999</b>	<b>1,200.2</b>	<b>84</b>	<b>1</b>	<b>5</b>		<b>9</b>	<b>27</b>	<b>36</b>	<b>6</b>
<b>BROADWATER COUNTY</b>											
Sheriff	12	3,267	4,622.0	151		1		6	20	117	7
<b>TOTAL</b>		<b>3,267</b>	<b>4,622.0</b>	<b>151</b>		<b>1</b>		<b>6</b>	<b>20</b>	<b>117</b>	<b>7</b>
<b>CARBON COUNTY</b>											
Sheriff	11	6,203	1,692.7	105	1			2	29	65	8
Red Lodge	12	1,896	2,848.1	54				7	21	17	9
<b>TOTAL</b>		<b>8,099</b>	<b>1,963.2</b>	<b>159</b>	<b>1</b>			<b>9</b>	<b>50</b>	<b>82</b>	<b>17</b>
<b>CARTER COUNTY</b>											
Sheriff	0	1,799	0	0							
<b>TOTAL</b>		<b>1,799</b>	<b>0</b>	<b>0</b>							
<b>CASCADE COUNTY</b>											
Sheriff	12	23,198	1,379.4	320		1	6	12	91	187	23
Great Falls	12	56,725	10,854.1	6,157		10	56	94	1,463	4,177	357
Cascade City	12	773	4,010.3	31				4	2	24	1
<b>TOTAL</b>		<b>80,696</b>	<b>8,064.8</b>	<b>6,508</b>		<b>11</b>	<b>62</b>	<b>110</b>	<b>1,556</b>	<b>4,388</b>	<b>381</b>

A - Submitted Annually



AGENCY	MONTHS CONTRIB- UTED	1980 POPULATION ESTIMATE	CRIME RATE PER 100,000	TOTAL OFFENSES	HOMICIDE	RAPE	ROBBERY	AGGRAVATED ASSAULT	BURGLARY	LARCENY/ THEFT	MOTOR VEHICLE THEFT
<b>CHOTEAU COUNTY</b>											
Sheriff	12	4,399	1,909.5	84		1	1	6	14	56	6
Fort Benton	12	1,693	1,890.1	32					17	12	3
<b>TOTAL</b>		<b>6,092</b>	<b>1,904.1</b>	<b>116</b>		<b>1</b>	<b>1</b>	<b>6</b>	<b>31</b>	<b>68</b>	<b>9</b>
<b>CUSTER COUNTY</b>											
Sheriff	10	3,507	2,851.4	100	1		1	8	18	60	12
Miles City	10	9,602	4,926.1	473	1	1	4	12	103	293	59
<b>TOTAL</b>		<b>13,109</b>	<b>4,371.0</b>	<b>573</b>	<b>2</b>	<b>1</b>	<b>5</b>	<b>20</b>	<b>121</b>	<b>353</b>	<b>71</b>
<b>DANIELS COUNTY</b>											
Sheriff	12	2,835	987.7	28					6	19	3
<b>TOTAL</b>		<b>2,835</b>	<b>987.7</b>	<b>28</b>					<b>6</b>	<b>19</b>	<b>3</b>
<b>DAWSON COUNTY</b>											
Sheriff	12	5,827	1,973.6	115			1	3	12	96	3
Glendive	12	5,978	4,951.5	296	2	2	1	19	19	232	21
<b>TOTAL</b>		<b>11,805</b>	<b>3,481.6</b>	<b>411</b>	<b>2</b>	<b>2</b>	<b>2</b>	<b>22</b>	<b>31</b>	<b>328</b>	<b>24</b>
<b>DEER LODGE COUNTY</b>											
Sheriff	0	12,518	0	0							
<b>TOTAL</b>		<b>12,518</b>	<b>0</b>	<b>0</b>							
<b>FALLON COUNTY</b>											
Sheriff	12	1,409	1,632.4	23				3	3	15	2
Baker	12	2,354	1,231.9	29				1	8	17	3
<b>TOTAL</b>		<b>3,763</b>	<b>1,381.9</b>	<b>52</b>				<b>4</b>	<b>11</b>	<b>32</b>	<b>5</b>
<b>FERGUS COUNTY</b>											
Sheriff	12	5,972	1,925.7	115				7	19	85	4
Lewistown	12	7,104	5,025.3	357				34	81	224	18
<b>TOTAL</b>		<b>13,076</b>	<b>3,617.3</b>	<b>472</b>				<b>41</b>	<b>100</b>	<b>309</b>	<b>22</b>

AGENCY	MONTHS CONTRIB- UTED	1980 POPULATION ESTIMATE	CRIME RATE PER 100,000	TOTAL OFFENSES	HOMICIDE	RAPE	ROBBERY	AGGRAVATED ASSAULT	BURGLARY	LARCENY/ THEFT	MOTOR VEHICLE THEFT
<b>FLATHEAD COUNTY</b>											
Sheriff	12	34,503	3,904.0	1,347		12	2	129	344	766	94
Columbia Falls	12	3,112	4,595.1	143			1	4	8	122	8
Kalispell	12	10,648	8,874.9	945		1	7	37	98	750	52
Whitefish	12	3,703	6,805.3	252				10	42	181	19
<b>TOTAL</b>		<b>51,966</b>	<b>5,170.7</b>	<b>2,687</b>		<b>13</b>	<b>10</b>	<b>180</b>	<b>492</b>	<b>1,819</b>	<b>173</b>
<b>GALLATIN COUNTY</b>											
Sheriff	11	20,485	1,171.6	240		4		12	26	185	13
Bozeman	12	21,645	6,722.1	1,455		6	4	52	158	1,150	85
West Yellowstone	12	735	14,966.0	110				2	16	78	14
<b>TOTAL</b>		<b>42,865</b>	<b>4,210.9</b>	<b>1,805</b>		<b>10</b>	<b>4</b>	<b>66</b>	<b>200</b>	<b>1,413</b>	<b>112</b>
<b>GARFIELD COUNTY</b>											
Sheriff	0	1,656	0	0							
<b>TOTAL</b>		<b>1,656</b>	<b>0</b>	<b>0</b>							
<b>GLACIER COUNTY</b>											
Sheriff	0	2,058	0	0							
Blackfeet Tribe	A	4,882	61.5	3				2		1	
Cut Bank	0	3,688	0	0							
<b>TOTAL</b>		<b>10,628</b>	<b>28.2</b>	<b>3</b>				<b>2</b>		<b>1</b>	
<b>GOLDEN VALLEY COUNTY</b>											
Sheriff	0	1,026	0	0							
<b>TOTAL</b>		<b>1,026</b>	<b>0</b>	<b>0</b>							
<b>GRANITE COUNTY</b>											
Sheriff	12	2,700	3,740.7	101		3		8	26	53	11
<b>TOTAL</b>		<b>2,700</b>	<b>3,740.7</b>	<b>101</b>		<b>3</b>		<b>8</b>	<b>26</b>	<b>53</b>	<b>11</b>
<b>HILL COUNTY</b>											
Sheriff	7	5,190	2,061.7	107				6	40	58	3
Rocky Boy Tribe	A	1,904	1,470.6	28		3		4	6	15	
Havre	12	10,891	5,362.2	584			1	7	55	489	32
<b>TOTAL</b>		<b>17,985</b>	<b>3,997.8</b>	<b>719</b>		<b>3</b>	<b>1</b>	<b>17</b>	<b>101</b>	<b>562</b>	<b>35</b>

A - Submitted Annually

AGENCY	MONTHS CONTRIB- UTED	1980 POPULATION ESTIMATE	CRIME RATE PER 100,000	TOTAL OFFENSES	HOMICIDE	RAPE	ROBBERY	AGGRAVATED ASSAULT	BURGLARY	LARCENY/ THEFT	MOTOR VEHICLE THEFT
JEFFERSON COUNTY Sheriff TOTAL	12	7,029 7,029	2,418.6 2,418.6	170 170			1 1	13 13	33 33	107 107	16 16
JUDITH BASIN COUNTY Sheriff TOTAL	12	2,646 2,646	75.6 75.6	2 2					1 1		1 1
LAKE COUNTY Sheriff St. Ignatius Flathead Tribe Ronan TOTAL	12 6 A 12	13,324 877 3,325 1,530 19,056	2,334.1 456.1 1,744.4 6,993.5 2,518.9	311 4 58 107 480		2	3  1 4	11  3 2 16	141 1 2 17 161	139 3 53 79 274	15   8 23
LEWIS AND CLARK COUNTY Sheriff East Helena Helena TOTAL	12 12 12	17,454 1,647 23,938 43,039	3,300.1 2,732.2 11,909.9 8,067.1	576 45 2,851 3,472		2	3  16 19	21 2 31 54	116 6 538 660	388 36 2,138 2,562	46 1 120 167
LIBERTY COUNTY Sheriff TOTAL	12	2,329 2,329	2,018.0 2,018.0	47 47		1 1		3 3	8 8	35 35	
LINCOLN COUNTY Sheriff Libby TOTAL	12 12	15,004 2,748 17,752	3,439.1 8,369.7 4,202.3	516 230 746	1 1	3 1 4	2  2	34 5 39	113 33 146	319 186 505	44 5 49
MCCONE COUNTY Sheriff TOTAL	12	2,702 2,702	703.2 703.2	19 19					2 2	17 17	
MADISON Sheriff TOTAL	9	5,448 5,448	458.9 458.9	25 25		1 1	1 1	8 8	4 4	7 7	4 4

A - Submitted Annually

AGENCY	MONTHS CONTRIB- UTED	1980 POPULATION ESTIMATE	CRIME RATE PER 100,000	TOTAL OFFENSES	HOMICIDE	RAPE	ROBBERY	AGGRAVATED ASSAULT	BURGLARY	LARCENY/ THEFT	MOTOR VEHICLE THEFT
MEAGHER COUNTY Sheriff TOTAL	6  6	2,154 2,154	1,299.9 1,299.9	28 28			1 1		3 3	23 23	1 1
MINERAL COUNTY Sheriff TOTAL	12  12	3,675 3,675	2,721.1 2,721.1	100 100				10 10	23 23	57 57	10 10
MISSOULA COUNTY Sheriff Missoula TOTAL	12 12 12	42,628 33,388 76,016	2,915.9 12,175.0 6,982.7	1,243 4,065 5,308	2 3 5	13 17 30	5 28 33	49 80 129	259 378 637	811 3,361 4,172	104 198 302
MUSSELSHELL COUNTY Sheriff TOTAL	12  12	4,428 4,428	1,738.9 1,738.9	77 77		1 1		6 6	16 16	48 48	6 6
PARK COUNTY Sheriff Livingston TOTAL	3 12 12	5,666 6,994 12,660	370.6 2,802.4 1,714.1	21 196 217		1 1 1	1 1 1	3 1 4	2 43 45	14 136 150	2 14 16
PETROLEUM COUNTY Sheriff TOTAL	0  0	655 655	0 0	0 0							
PHILLIPS COUNTY Sheriff Malta TOTAL	12 12 12	3,000 2,367 5,367	3,000.0 253.5 1,788.7	90 6 96			1  1	2 1 3	11 1 12	58 4 62	18  18
PONDERA COUNTY Sheriff Conrad Valier TOTAL	12 12 0 0	3,017 3,074 640 6,731	2,552.2 1,594.0 0 1,871.9	77 49 0 126		1 1 2		2 1 3	7 2 9	53 45 98	14  14



AGENCY	MONTHS CONTRIB- UTED	1980 POPULATION ESTIMATE	CRIME RATE PER 100,000	TOTAL OFFENSES	HOMICIDE	RAPE	ROBBERY	AGGRAVATED ASSAULT	BURGLARY	LARCENY/ THEFT	MOTOR VEHICLE THEFT
POWDER RIVER COUNTY Sheriff TOTAL	12	2,520 2,520	952.4 952.4	24 24		1 1		4 4	3 3	15 15	1 1
POWELL COUNTY Deer Lodge-Powell County Combined TOTAL	12	6,958 6,958	3,650.5 3,650.5	254 254				11 11	32 32	201 201	10 10
PRAIRIE COUNTY Sheriff TOTAL	12	1,836 1,836	1,960.8 1,960.8	36 36					10 10	21 21	5 5
RAVALLI COUNTY Sheriff Stevensville Hamilton TOTAL	12 10 12	18,625 1,207 2,661 22,493	2,335.6 2,154.1 7,177.8 2,898.7	435 26 191 652		2  1 3	1   1	30 1 15 46	122 1 29 152	260 24 140 424	20  6 26
RICHLAND COUNTY Sheriff Sidney TOTAL	0 12	6,517 5,726 12,243	0 5,885.4 2,752.6	0 337 337			1 1	9 9	55 55	234 234	38 38
ROOSEVELT COUNTY Sheriff Fort Peck Tribe Poplar TOTAL	12 A 3	4,448 5,024 995 10,467	6,317.4 3,284.2 1,608.0 4,413.9	281 165 16 462		1 5  6		2 26  28	50 51 7 108	201 83 9 293	27   27
ROSEBUD COUNTY Sheriff Northern Cheyenne TOTAL	12 A	6,197 3,702 9,899	3,243.5 2,215.0 2,858.9	201 82 283	1  1			10 28 38	27 30 57	149 24 173	14  14
SANDERS COUNTY Sheriff TOTAL	12	8,675 8,675	1,406.3 1,406.3	122 122		2 2		16 16	30 30	70 70	4 4

A - Submitted Annually

AGENCY	MONTHS CONTRIB- UTED	1980 POPULATION ESTIMATE	CRIME RATE PER 100,000	TOTAL OFFENSES	HOMICIDE	RAPE	ROBBERY	AGGRAVATED ASSAULT	BURGLARY	LARCENY/ THEFT	MOTOR VEHICLE THEFT
SHERIDAN COUNTY Sheriff TOTAL	12	5,414 5,414	73.9 73.9	4 4		1 1			2 2		1 1
SILVER BOW COUNTY Butte-Silver Bow Combined TOTAL	12	38,092 38,092	3,856.5 3,856.5	1,469 1,469	5 5	10 10	9 9	121 121	264 264	925 925	135 135
STILLWATER COUNTY Sheriff TOTAL	12	5,598 5,598	2,179.3 2,179.3	122 122				3 3	17 17	89 89	13 13
SWEET GRASS COUNTY Sheriff TOTAL	12	3,216 3,216	4,570.9 4,570.9	147 147				2 2	28 28	114 114	3 3
TETON COUNTY Sheriff TOTAL	12	6,491 6,491	1,001.4 1,001.4	65 65	1 1	1 1		2 2	11 11	44 44	6 6
TOOLE COUNTY Sheriff TOTAL	12	5,559 5,559	1,619.0 1,619.0	90 90			1 1	2 2	25 25	49 49	13 13
TREASURE COUNTY Sheriff TOTAL	0	981 981	0 0	0 0							
VALLEY COUNTY Sheriff Glasgow TOTAL	12 12	5,795 4,455 10,250	1,967.2 5,836.1 3,648.8	114 260 374		2 2	1 1 2	1 23 24	22 14 36	83 206 289	5 16 21
WHEATLAND COUNTY Sheriff TOTAL	5	2,359 2,359	1,102.2 2.2	26 26					9 9	12 12	5 5

AGENCY	MONTHS CONTRIB- UTED	1980 POPULATION ESTIMATE	CRIME RATE PER 100,000	TOTAL OFFENSES	HOMICIDE	RAPE	ROBBERY	AGGRAVATED ASSAULT	BURGLARY	LARCENY/ THEFT	MOTOR VEHICLE THEFT
WIBAUX COUNTY											
Sheriff	12	1,476	2,235.8	33				2	8	20	3
TOTAL		1,476	2,235.8	33				2	8	20	3
YELLOWSTONE COUNTY											
Sheriff	12	35,756	3,646.9	1,304	3	7	12	53	233	887	109
Laurel	12	5,481	5,728.9	314		1	2	2	54	239	16
Billings	12	66,798	7,802.6	5,212	4	28	70	53	1,239	3,482	336
TOTAL		108,035	6,322.0	6,830	7	36	84	108	1,526	4,608	461
GLACIER NATIONAL PARK	A			63				3	9	51	
STATE TOTAL		786,415	4,678.3	36,791	30	166	257	1,243	7,027	25,749	2,319

A - Submitted Annually.

**END**