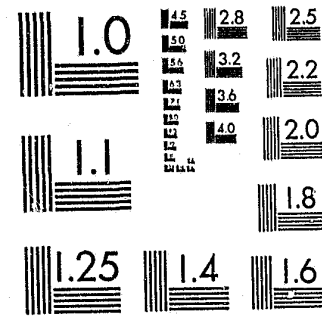


National Criminal Justice Reference Service

ncjrs

This microfiche was produced from documents received for inclusion in the NCJRS data base. Since NCJRS cannot exercise control over the physical condition of the documents submitted, the individual frame quality will vary. The resolution chart on this frame may be used to evaluate the document quality.



MICROCOPY RESOLUTION TEST CHART
NATIONAL BUREAU OF STANDARDS-1963-A

Microfilming procedures used to create this fiche comply with the standards set forth in 41CFR 101-11.504.

Points of view or opinions stated in this document are those of the author(s) and do not represent the official position or policies of the U. S. Department of Justice.

National Institute of Justice
United States Department of Justice
Washington, D.C. 20531

7/13/83

MONTANA UNIFORM
CRIME REPORTING MANUAL

Montana Board of Crime Control

U.S. Department of Justice
National Institute of Justice

83732

This document has been reproduced exactly as received from the person or organization originating it. Points of view or opinions stated in this document are those of the authors and do not necessarily represent the official position or policies of the National Institute of Justice.

Permission to reproduce this copyrighted material has been granted by
Montana Board of Crime Control

to the National Criminal Justice Reference Service (NCJRS).

Further reproduction outside of the NCJRS system requires permission of the copyright owner.

TABLE OF CONTENTS

<u>SECTION</u>	<u>PAGE</u>
1.0 MUCR - REPORTING	1
1.2 MUCR - GENERAL DESCRIPTION	1
1.3 CONCEPTS AND CAPABILITIES	2
1.4 REPORTING FORMS	2
1.4.1 OFFENSE AND ACTIVITY FORM	3
1.4.2 CUSTODY FORM	3
1.4.3 SUPPLEMENTARY HOMICIDE REPORTS	3
1.4.4 LAW ENFORCEMENT OFFICERS KILLED OR ASSAULTED . .	3
1.4.5 NUMBER OF FULL-TIME LAW ENFORCEMENT EMPLOYEES .	3
1.5 GENERAL REPORTING PROCEDURES	4
1.6 LEVELS OF PARTICIPATION	4
1.6.1 LEVEL 1 - BASIC "CRIMINAL" INFORMATION	4
1.6.2 LEVEL 2 - EXPANDED "CRIMINAL" INFORMATION . . .	5
1.6.3 LEVEL 3 - PART III NON-CRIMINAL ACTIVITY . . .	5
2.0 OFFENSE AND ACTIVITY REPORTING	7
2.1 OFFENSE/ACTIVITY FORM	7
2.2 GENERAL PROCEDURES FOR PREPARING OFFENSE/ACTIVITY FORM	9
2.3 OFFENSE/ACTIVITY FORM DESCRIPTION AND GUIDELINES . .	10
2.4 SAMPLE PROBLEMS	19
2.5 CODES	27
2.5.1 OFFENSE/ACTIVITY CODES	27
2.5.2 REPORTED AND OCCURRED DATE AND TIME CODES . . .	39

<u>SECTION</u>	<u>PAGE</u>
2.5.3 COUNTY CODES	40
2.5.4 PREMISE CODES	41
2.5.5 UCR ARTICLE CODES	43
2.5.6 LOSS VALUE	44
3.0 CUSTODY/ARREST REPORTING	45
3.1 CUSTODY FORM	46
3.2 GENERAL PROCEDURES FOR PREPARING CUSTODY FORMS . . .	47
3.3 CUSTODY FORM DESCRIPTION AND GUIDELINES	48
3.4 SAMPLE PROBLEMS	55
3.5 CODES	59
3.5.1 ARREST CODES	59
4.0 SUPPLEMENTARY HOMICIDE AND OFFICERS KILLED/ASSAULTED . .	67
4.1 INSTRUCTIONS FOR PREPARING HOMICIDE REPORT	69
4.2 LAW ENFORCEMENT OFFICERS ASSAULTED	82
4.3 FULL-TIME LAW ENFORCEMENT EMPLOYEES REPORT	87
5.0 MUCR DEFINITIONS	91
5.1 PART I OFFENSES	91
5.2 PART II OFFENSES	111
5.3 PART III ACTIVITY	118
6.0 INTERPRETATION AND USE OF THE MUCR AGENCY REPORTS	127
6.1 INTRODUCTION	127
6.2 GENERAL	127
6.3 MUCR REPORTING LEVELS	127
6.4 REPORT DETAIL	128
6.4.1 OFFENSE AND CUSTODY SUMMARY - MUCR 100	128
6.4.2 ACTIVITY SUMMARY BY TIME OF OCCURRENCE - MUCR 100A	128

<u>SECTION</u>	<u>PAGE</u>
6.4.3 LOCATION SUMMARY - MUCR 100B	128
6.4.4 OFFENSES BY OFFICER IDENTIFICATION - MUCR 100C	128
6.4.5 ARRESTS BY OFFICER IDENTIFICATION - MUCR 100D	129
6.4.6 OFFENSE/ACTIVITY SUMMARY BY DAY OF WEEK - MUCR 100E	129
6.4.7 STOLEN PROPERTY BY TYPE AND VALUE - MUCR 100F	129
6.4.8 LAW ENFORCEMENT OFFICER ASSAULTED SUPPLEMENTARY REPORT - MUCR 60	129
6.4.9 AGE, SEX AND RACE OF PERSONS ARRESTED 18 YEARS OF AGE AND OVER - MT/UCR 40	130
6.4.10 AGE, SEX AND RACE OF PERSONS ARRESTED UNDER 18 YEARS OF AGE - MT/UCR 50	130
6.5 SUPPLEMENTAL PERIOD REPORTS	130
6.6 MUCR 100 - OFFENSE AND CUSTODY SUMMARY	132
6.7 MUCR 100 - OFFENSE AND CUSTODY SUMMARY PART III . .	138
6.8 MUCR 100A - ACTIVITY SUMMARY BY TIME OF OCCURRENCE .	140
6.9 MUCR 100B - LOCATION SUMMARY	144
6.10 MUCR 100C - OFFENSES BY OFFICER IDENTIFICATION . . .	146
6.11 MUCR 100D - ARREST BY OFFICER IDENTIFICATION	148
6.12 MUCR 100E - OFFENSE/ACTIVITY BY DAY OF WEEK	150
6.13 MUCR 100F - STOLEN PROPERTY BY TYPE AND VALUE . . .	154
6.14 MUCR 60 - LAW ENFORCEMENT OFFICER ASSAULTED SUMMARY	156
6.15 MT/UCR 40 - AGE, SEX & RACE OF PERSONS OVER 18 . . .	158
6.16 MT/UCR 50 - AGE, SEX & RACE OF PERSONS UNDER 18 . .	162
7.0 INDEX	167

1.2 MUCR - GENERAL DESCRIPTION

Law Enforcement agencies keep records about the operations of their departments, which are necessary for the preparation of Uniform Crime Reports, other reports and administrative needs. Participation in the MUCR program can provide a means for meeting local reporting requirements and for reducing duplicate reporting.

The MUCR program is maintained by the Criminal Justice Data Center of the Montana Board of Crime Control (MBCC).

The two basic MUCR reporting forms work well and lend themselves to daily entry as the information becomes known.

The reporting forms are printed on both sides in pads of fifty and are mailed to each agency in sufficient quantity to last several months. If an agency's supply of reporting materials gets low, additional supplies may be requested from the MBCC by teletype, phone or mail.

Upon receiving the completed forms, the Data Center processes the incident information and returns monthly summary reports to each agency. Data required for the National FBI UCR program is extracted and sent to the FBI.

Sections 2 - 6 provide detailed information and instructions about program requirements, its operation and use.

1.3 CONCEPTS AND CAPABILITIES

Prior to 1980, UCR information collected from Montana agencies by the FBI was used primarily for developing national crime trends and was of minimal benefit to contributing agencies.

It is the objective of the Montana program to also provide a meaningful service to each contributing agency by:

- (1) Providing useful and timely statistical and management informational reports to each contributing agency.
- (2) Minimizing the amount of work required to report basic state and federal UCR data; and
- (3) Providing for additional reporting capabilities which, if used, can further reduce the amount of manual statistical compilation done in most departments.

The various levels of participation are described in paragraph 1.6. Each administrator may choose the level and options which best serve his department's needs, so long as minimum reporting requirements are met.

1.4 REPORTING FORMS

The MUCR system uses two basic forms, plus other supplemental forms (used only in special circumstances), to accomplish all reporting necessary to satisfy national and state UCR requirements.

1.4.1 Offense and Activity Form

This is an "incident" oriented form, supplied in pads of fifty, printed on both sides. It is used to report Part I and Part II criminal offenses, associated property loss and recovery, and clearances. It may be used to report non-criminal police "activity" (Part III) at the option of the department. A detailed description of the form and examples of its use are given in the Offense/Activity Section (Section 2) of the manual.

1.4.2 Custody Form

This is an "incident" oriented form, supplied in pads of fifty, printed on both sides. It is used to report information about persons (including juveniles) "arrested, cited or summoned" for criminal offenses by your department. It may be used to report information about other persons "handled"; such as bench warrants, detoxification, etc., at the option of the department. A detailed description of the form and procedures for its use are given in the Arrest/Custody section (Section 3) of the manual.

1.4.3 Supplementary Homicide Report

The seriousness of homicide requires more information about this crime than is available through the Offense and Activity form. A special supplementary form is required. Detailed procedures for this forms are given in section 4.

1.4.4 Law Enforcement Officers Killed or Assaulted Report

With the increasing number of assaults and killings of police officers, a special entry providing additional detailed information is required in these cases. Detailed instructions are given in section 4.

1.4.5 Number of Full-Time Law Enforcement Employees

Once a year in October, agencies are asked for a count of their criminal law enforcement staff in the categories of POST Certified Law Enforcement Officers and Civilian Employees by male and female. Guidelines for this form are given in section 4.

1.5 GENERAL REPORTING PROCEDURES

As indicated in section 1.4, the two basic reporting forms for the MUCR system are the OFFENSE AND ACTIVITY form and the CUSTODY form. These "incident" reporting forms do not require tallying, summarizing or arithmetic balancing. They can provide a way to distribute the workload over the reporting month.

For best results the following general procedure is recommended:

1. Process forms daily.
As source documents (crime reports, complaints, clearance reports, property reports, arrest reports, etc.) are reviewed each day, transcribe the required information from the source documents to the appropriate form(s).
2. Mail completed forms as soon as possible after the end of the month. The sooner the reports are received, the sooner monthly summary reports will be returned.
3. If you have questions on how to handle a particular incident, which is not clearly answered in the manual, contact the MBCC Data Center staff (449-3604). This will ensure the Data Center staff is made aware of any problems and will allow you to maintain your "momentum".

1.6 LEVELS OF PARTICIPATION

There are three (3) basic levels of participation which may be elected by the contributing agency. The decision as to which level should be made by the department administrator. The three basic levels are described as follows:

1.6.1 Level 1 - Basic "Criminal" Information

This is the minimum reporting level and includes reporting of:

- (1) Part I and Part II offenses, property, and clearances (using required data only) on the Offense and Activity form.
- (2) Part I and Part II arrests, (using required data only) on the Custody form.
- (3) Supplementary Homicide form(s) when applicable.
- (4) Annual Police Employee Report
- (5) Supplementary Law Enforcement Officers Killed or Assaulted

1.6.2 Level 2 - Expanded "Criminal" Information

This level includes reporting of all information in level 1 plus use of optional data such as "Premise Type", "Location Code", "Officer ID", "Arrests Made For Other Agencies", "Property Recovered For Other Agencies", etc.

1.6.3 Level 3 - Part III Non-Criminal "Activity"

Includes level 1 (level 2 optional) plus reporting of non-criminal "activity" (barking dogs, family beefs, etc.), on the Offense and Activity form, plus reporting of other persons handled (detoxification, protective custody) on the Custody form.

2.0 OFFENSE AND ACTIVITY REPORTING

2.1 OFFENSE/ACTIVITY FORM

The purpose of this form is to provide law enforcement with a record of total criminal offenses, associated property and values, offense clearances and other related police activity.

The requirements of this form are:

- (1) The reporting of both Part I and Part II offenses
- (2) The reporting of "multiple offenses" (several offenses occurring within a single criminal act/episode)
- (3) Associated property and value
- (4) Offense clearances

Also required in the MUCR program is the supplemental form for Murder, when this offense is being reported. See section 4 for description and procedures for preparing this form.

Optional capabilities allow for the entry of:

- (1) Recovery of property for other agencies
- (2) Police activity, complaints, requests for service, etc.
- (3) Date and time offenses and activities occurred
- (4) Type of premise/place where offenses and activities occurred
- (5) Location within reporting jurisdiction where offenses and activities happened
- (6) Identification number of the investigating/handling officer

2.2 GENERAL PROCEDURES FOR PREPARING OFFENSE & ACTIVITY FORMS

At the top left side of each form enter the last 6 numbers of your agency's National Identifier (ORI) in the "Agency Ident." box. Enter the month and year being reported.

At the top right side of the form enter your agency's name, name of person preparing the form(s), and the page number.

Although the form is printed on both sides, each single form is to be counted as one page.

The first form you fill out each month should be numbered "page 1", the next "page 2", etc., until the month has been completed. Then enter the last page number on page 1 on the line "Page ___ of ___ pages". This procedure will assist the Data Center in reviewing and processing your reports and in keeping them intact and complete.

At the end of the month, on the first page of the form, fill in the Officer Assault section at the bottom of the page.

Before mailing, place the forms in order by page number and place them in the envelope along with any supplementary forms that may be required.

Case numbers must be at least 3 digits and may not exceed 8 digits.

All dates entered must be 4 digits (month and day). (E.g., 0312 = March 12; 1109 = November 9).

All values are to the nearest dollar and entered without commas or periods. (E.g., 10 = \$10.00; 1500 = \$1,500.00; 20000 = \$20,000.00, etc.).

Do not use hyphens with entries. (E.g., 79205 = case number 79-205, etc.).

Part III "Activity" entries do not have to include any appropriate property or value. They do not have to be cleared and the entry may be considered complete at column 6. Use of additional options, Property-Value and Clearance is at the further discretion of the reporting agency. However, if these options are used and your entry goes beyond column 11, a case number is required.

If you believe that one of your entries is in question, include a note with page 1 that refers to the page and case number in question. Do not make marginal notes on the form.

2.3 OFFENSE/ACTIVITY FORM DESCRIPTION AND GUIDELINES

<u>Col.</u>	<u>Title</u>	<u>Definition</u>
1	<u>Message Key</u>	<p>Defines the type of entry being made.</p> <p>E = ENTER -New offense/activity entry.</p> <ul style="list-style-type: none">Enters a new offense with property, clearance and options as may be appropriate or known at time of entry.Enters multiple offenses if more than one offense is classified for that case. <p>M = MODIFY -Change or update to previous entry.</p> <ul style="list-style-type: none">Adds property to a previously reported case.Adds clearance to a previously reported case.Recovers property for a previously reported case. <p>X = DELETE -Deletion of previous entry <u>for current month only.</u></p>
2.	<u>Case Number</u>	<p>The offense or activity case number. Case numbers are required for reporting offenses and optional for reporting "activity". Case numbers must be at least 3 digits and may not exceed 8 digits. <u>DO NOT USE HYPHENS. USE LETTERS A-Z AND NUMBERS 0-9 ONLY.</u></p>
3	<u>Offense/Activity Code</u>	<p>The numeric code which describes the offense or activity you are reporting. See pages 27 through 37 for codes. This is the most important element to be entered onto the offense form. It is the code (from section 2.5.1) that defines the offense and must be in accordance with the uniform offense definitions on pages 91-126 in section 5.0. Any questions about classification of offenses in difficult cases should be referred to the Data Center for clarification.</p>
	<u>Offense/Activity Name</u>	<p>A short English language word or abbreviation of the offense or activity. Used for quality control in data review.</p>

<u>Col.</u>	<u>Title</u>	<u>Definition</u>
4	<u>Occurred Date</u>	<p>Used for the recording of the 4 digit (month and day) occurred date and the 2 digit occurred time of an offense or incident. Also allows for limited time span reporting when the exact hour is unknown. Time codes listed on page 39.</p>
5	<u>Occurred Time</u>	
6	<u>County Code</u>	<p>The 2 digit code of the county (01-56) in which the offense or activity occurred, e.g., 01 = Beaverhead County. See list of County Codes on page 40.</p>
7	<u>Location Code</u>	<p>Optional -- the geographic or organizational location where the offense or activity occurred. If your jurisdiction is divided into grids, sectors, beats or other geographic or organizational subdivisions you may use this local code to give your department a finer breakdown of the areas where offenses/activities are occurring.</p> <p>The code(s) used will be your own and will not be meaningful outside your department. Use of this field is optional, but if used must be used consistently.</p> <p>The makeup of this code is limited to nine characters. <u>DO NOT USE HYPHENS.</u></p>
8	<u>Officer Identification</u>	<p>Optional -- the "Identification" number of investigating or handling officer. This is optional, but if used it should be used consistently and should be a number that will not be reassigned after an officer leaves the department, e.g., POST or other unique number instead of badge number. Entry of Officer ID is limited to five digits. <u>DO NOT USE HYPHENS.</u></p>
9	<u>Premise Type Code</u>	<p>Optional -- numeric code indicating the type of premise, location or place where the offense or activity occurred. See pages 41-42 for premise type code.</p>

<u>Col.</u>	<u>Title</u>	<u>Definition</u>																
10	<u>Article Type Code</u>	<p>The numeric code of the property stolen, vandalized or recovered. Article type codes are found on page 43.</p> <p>Article Type Code and value are required for all offenses of:</p> <table><tr><td>03 Robbery</td><td>14 Vandalism</td></tr><tr><td>05 Burglary</td><td>26 All Other-Kidnap</td></tr><tr><td>06 Larceny</td><td>26 All Other-Blkml/Ext</td></tr><tr><td>07 MV Theft</td><td>53 Stln MV recrvd for another agency</td></tr><tr><td>09 Arson</td><td>54 Stln Prop recrvd for another agency</td></tr><tr><td>10 Forg/Cntf</td><td></td></tr><tr><td>11 Fraud</td><td></td></tr><tr><td>12 Embezlmt</td><td></td></tr></table> <p>Note that you may enter "Crime Damage" as a result of criminal acts (Other than Arson and Vandalism) by using article type code 98 (e.g., property damaged as the result of an extensive or crude burglary, poorly executed gas theft by damage to a vehicle, etc.).</p>	03 Robbery	14 Vandalism	05 Burglary	26 All Other-Kidnap	06 Larceny	26 All Other-Blkml/Ext	07 MV Theft	53 Stln MV recrvd for another agency	09 Arson	54 Stln Prop recrvd for another agency	10 Forg/Cntf		11 Fraud		12 Embezlmt	
03 Robbery	14 Vandalism																	
05 Burglary	26 All Other-Kidnap																	
06 Larceny	26 All Other-Blkml/Ext																	
07 MV Theft	53 Stln MV recrvd for another agency																	
09 Arson	54 Stln Prop recrvd for another agency																	
10 Forg/Cntf																		
11 Fraud																		
12 Embezlmt																		
11	<u>Loss Value</u>	<p>The nearest dollar value of stolen, vandalized or "Crime Damaged" property.</p> <p>Questions frequently arise as to the method most commonly used to value stolen property. The following procedures are suggested:</p> <ul style="list-style-type: none">. Use fair market value for articles which are subject to depreciation because of wear and tear, age, or other factors which cause the value to decrease with use.. Use cost to merchant (Wholesale) of goods stolen from retail establishments, warehouses, etc. In other words, use dollar value representing the actual cash loss to the victim without any markup of profit added.. Use the victim's cost or valuation of items such as jewelry, watches and other similar goods which decrease slightly or not at all with use or age.. Use replacement cost or actual cash value to victim for new clothes, auto accessories, bicycles, etc.																

Col.	Title	Definition
11	<u>Loss Value</u> (cont.)	<p>When victim obviously exaggerates the value of stolen property for insurance or other purposes, common sense and good judgment will dictate that police place a reasonable and fair market value on the stolen items. In most instances, the victim's valuation can be accepted. Non-negotiable instruments such as travelers checks, personal checks, money orders, stocks and bonds, etc., should be entered if stolen, but <u>zero</u> value entered. Negotiable instruments such as bonds payable to bearer, etc., are valued at current market value at time of loss.</p>
12	<u>Recovered Value</u>	<p>The nearest dollar value of the recovered property.</p> <p>Often, recovered property is in a different condition from what it was at the time of theft. The market value at time of recovery should be used even if it is less than at the time it was stolen.</p> <p>The Montana UCR system also has the additional capability of allowing the entry of stolen property recovered by your agency for other departments through use of the proper property status code in Column 16 of the Offense/Activity form. The value placed on property recovered for other agencies is <u>your department's reasonable valuation</u> of the property, and it does not have to agree with any entry of another agency.</p>
13	<u>Property Status Code</u>	<p>Recovered property Status Code may be one of three codes (I, O, F):</p> <p>I = Property was recovered by your department for one of your cases O = Property was recovered by some other agency for one of your cases F = Property was recovered by your department for some other agency</p> <p>Note that the word "Status" refers to jurisdiction, not physical condition of property.</p>

<u>Col.</u>	<u>Title</u>	<u>Definition</u>
14	<u>Case Status Code</u>	<p>Code which indicates that the case has been <u>cleared by arrest</u>, <u>cleared exceptionally</u>, <u>unfounded</u> or <u>investigation discontinued</u>.</p> <p>A = Cleared by Arrest E = Cleared Exceptionally U = Unfounded D = Investigation discontinued (Optional)</p> <p><u>Clearance by Arrest</u></p> <p>An offense is "cleared by arrest" or solved for crime reporting purposes when at least one person is:</p> <ol style="list-style-type: none"> 1. Arrested; 2. Charged with the commission of the offense; and 3. Turned over to the court for prosecution. <p>The prosecution can follow arrest, court summons, or police notice. A clearance by arrest can be claimed when the offender is a person under 18 years of age and is cited to appear in juvenile court or before other juvenile authorities. This clearance can be taken even though <u>no</u> physical arrest was made.</p> <p><u>Remember that the number of offenses cleared and not the number of persons arrested are counted in the clearances that you record.</u></p> <p>If several persons are involved in one crime and only one is arrested and charged, list the crime as cleared by arrest.</p> <p>When the other persons involved in the crime are arrested at a later date, no clearance entry will be made on the Offense form since the offense was cleared following the arrest of the first person. However, records of the arrests would be entered on the Custody form.</p>

<u>Col.</u>	<u>Title</u>	<u>Definition</u>
14	<u>Case Status Code (cont.)</u>	<p>Several crimes may be cleared by the arrest of one person; or, one crime may be cleared by the arrest of several persons.</p> <p><u>Examples:</u></p> <p>A man commits murder. He is arrested, charged, and turned over to the court. You enter one offense of murder and offense of murder, cleared.</p> <p>Five thieves break into a warehouse. You arrest and charge one of them. Enter one offense of burglary -- forcible entry, and one such offense cleared by arrest. Later, the other four thieves are arrested and charged. No entry is made on the Offense form; the one offense has already been listed as cleared by arrest.</p> <p>You identify a suspect with five forcible entry burglaries. You arrest him and charge him with the five offenses. These five offenses are cleared by the arrest of one person.</p> <p><u>Exceptional Clearances</u></p> <p>In certain situations police are not able to follow the three steps outlined under "Clearances by Arrest" to clear offenses known to them. In many instances police have exhausted all leads and have done everything possible in order to clear a case. If the following questions can <u>all</u> be answered "yes", the offense can then be cleared exceptionally:</p> <ol style="list-style-type: none"> 1. Has the investigation definitely established the identity of the offender? 2. Is there enough information to support an arrest, charge and turning over to the court for prosecution?

<u>Col.</u>	<u>Title</u>	<u>Definition</u>
14	<u>Case Status Code</u> (cont.)	<p>3. Do you know the exact location of the offender so that you could take or cause him to be taken into custody now?</p> <p>4. Is there some reason outside the police control that stops you from arresting, charging, and prosecuting the offender?</p> <p><u>Examples of Exceptional Clearance</u></p> <p>Suicide of the offender (the person responsible is dead)</p> <p>Double murder (two persons kill each other)</p> <p>Deathbed confession (the person responsible dies after making the confession)</p> <p>Offender killed by police or citizen</p> <p>Confession by offender already in your custody or serving sentence (this is actually a variation of a true clearance by arrest -- you would not "apprehend" the offender, but in most situations like this the offender would be prosecuted on a new charge)</p> <p>An offender held and prosecuted in another jurisdiction for a different offense by state or local authorities or prosecuted in another city or state by Federal Government for an offense which may be the same. (You attempt to return him for prosecution, but the other jurisdiction will not release the offender to you)</p> <p>Extradition is denied.</p> <p>The victim refuses to cooperate in the prosecution (this does not "unfound" the offense and the answer must still be "yes" to the first three questions above)</p>

<u>Col.</u>	<u>Title</u>	<u>Definition</u>
14	<u>Case Status Code</u> (cont.)	<p>For some reason outside your control an offender is prosecuted for a less serious charge than that for which you arrested him (such as a charge of reckless driving for a negligent manslaughter offense -- the offense remains the same).</p> <p>The handling of a juvenile offender either orally or by written notice to parents in instances involving minor offenses such as petty larceny. No referral is made to juvenile court.</p> <p>It is recognized that departmental policy in various police agencies permits the discontinuance of investigation and the closing administratively of cases in which all investigation has been completed. The administrative closing of a case or the "clearing" of it by departmental policy does not permit you to clear the offense by exceptional clearance unless the four questions mentioned above can all be answered "yes". <u>The recovery of property does not give you reason to clear the case for UCR purposes.</u> The clearance of a case for UCR purposes should have no effect on whether or not your department has internal policies as to "closing" a case or discontinuing active investigation of a case.</p> <p><u>Unfounded Complaints</u></p> <p>On occasion your department will receive a complaint of an offense which through investigation or later information proves to be false or baseless.</p> <p><u>Example:</u></p> <p>You receive a report of a burglary. Investigation shows that a man climbed through the window of his own home. He had locked himself out by mistake. A neighbor thought it was a burglary and called the police.</p>

<u>Col.</u>	<u>Title</u>	<u>Definition</u>
14	<u>Case Status Code</u> (cont.)	<p><u>Investigation Discontinued</u></p> <p>An optional use code that advises that this case has been investigated, re-viewed and is deemed administratively closed for lack of workable leads, evidence, etc.</p> <p>If at some later date a person is arrested or circumstances arise that permit Exceptional Clearance the entry should be modified to reflect the correct status.</p> <p>If the entry is a Part III, "ID" will assume the additional meaning that the complaint or request for service was completed.</p> <p>The use of this case status code does not imply that each entry should have a disposition.</p> <p><u>Part III Clearance</u></p> <p>If you wish to "clear" Part III Activities, A, E, U, and D are used as applicable. However, a case number is required if case status is reported.</p>
15	<u>Juvenile</u>	<p>Code which indicates whether the offense was cleared by the arrest or handling of juveniles.</p> <p>A = Case cleared by the arrest or handling of juveniles.</p> <p>B = Case cleared by the arrest of one or more adults and by the arrest or handling of one or more juveniles.</p>

Sample problems and entries showing minimum required information.

Case # 790310: At 1430 hours on 091579 a robber enters a Salem bank armed with a handgun and robs the bank of \$1500. During the commission of the robbery, the robber strikes a teller with the butt of his gun. The robber then runs from the bank and steals a \$4000 auto parked at the curbside.

Solution: You can recognize robbery, aggravated assault and auto theft as the three offenses involved in this incident.

12	13	21	27	31	33	35	44	49	51	54	60	66	67	68
1. MSG	2. CASE NUMBER	3. OFFENSE ACTV CD	4. OCCURRED DATE	5. TIME	6. CNTY	7. LOCATION CODE	8. OFFICER IDENTIFICATION	9. PREMISE TYPE	10. ARTICLE TYPE CODE	11. LOSS VALUE	12. RECOVERED VALUE	13. PROPERTY STATUS CODE	14. CASE STATUS CODE	15. JUVENILE
E	790310	0316 Robbery	0915	14	24	A3	04160	34	14	1500				
↓	↓	0411 A.A.-Gun	↓	↓	↓	↓	↓	↓						
↓	↓	0711 Auto Theft	↓	↓	↓	↓	↓	60	321	4000				

61

Case # 79311: During the evening of 091879, 2 men break into a new-car dealership after closing hours. They take \$425 from the office safe and a \$3500 auto and a \$3100 pickup from the garage. Police discover the crime at 2300 hours the same night.

Solution: This is an offense of forcible entry burglary and 2 offenses of auto theft.

12	13	21	27	31	33	35	44	49	51	54	60	66	67	68
1. MSG	2. CASE NUMBER	3. OFFENSE ACTV CD	4. OCCURRED DATE	5. TIME	6. CNTY	7. LOCATION CODE	8. OFFICER IDENTIFICATION	9. PREMISE TYPE	10. ARTICLE TYPE CODE	11. LOSS VALUE	12. RECOVERED VALUE	13. PROPERTY STATUS CODE	14. CASE STATUS CODE	15. JUVENILE
E	79311	05211 Burg	0918	NT	24	D4	04160	45	14	425				
↓	↓	0711 A/T-Car	↓	↓	↓	↓	↓	↓	321	3500				
↓	↓	0731 A/T-Truck	↓	↓	↓	↓	↓	↓	322	3100				

On occasion a number of offenses may be committed by an individual or group of individuals over a short period of time. If there is a separation of time and place between the commission of several crimes, each of the crimes will be handled as separate incidents receiving separate case numbers.

Case # 79325: At 1000 hours on 092179, a bandit enters a bank lobby and at gunpoint steals \$5000. He runs from the bank, jumps into a getaway car and flees the scene.
 &
 79326 At 1020 hours the same day, he and his partner steal a \$2500 car from a parking lot across town in their further effort to elude police.

Solution: In this situation you would not handle this as a "Multiple Offense" due to the separation of time and distance between the robbery and the theft of the auto. These two offenses would be entered with different case numbers.

12	13	21	27	31	33	35	44	49	51	54	60	66	67	68
1. MSG	2. CASE NUMBER	3. OFFENSE ACTV CD OFFENSE NAME	4. OCCURRED DATE	5. TIME	6. CNTY	7. LOCATION CODE	8. OFFICER IDENTIFICATION	9. PREMISE TYPE	10. ARTICLE TYPE CODE	11. LOSS VALUE	12. RECOVERED VALUE	13. PROPERTY STATUS CODE	14. CASE STATUS CODE	15. JUVENILE
E	79325	03/6 Robbery	0921	10	24	B14	04160	34	14	5000				
E	79326	07/1 A/T-Car	↓	↓	↓	C27	05780	64	321	2500				

Case # 79333: On 092779 at 0100 hours the police received a complaint of a house burglary which is estimated to have occurred between 2300 hours on 092679 and 0045 on 092779 while no one was home. Investigation determines that entry was probably gained via an unlocked basement door. Taken were two power drills valued at \$145, one \$200 chain saw, one \$90 target pistol, one \$150 hunting rifle and miscellaneous items valued at \$25.

12	13	21	27	31	33	35	44	49	51	54	60	66	67	68
1. MSG	2. CASE NUMBER	3. OFFENSE ACTV CD OFFENSE NAME	4. OCCURRED DATE	5. TIME	6. CNTY CODE	7. LOCATION CODE	8. OFFICER IDENTIFICATION	9. PREMISE TYPE	10. ARTICLE TYPE CODE	11. LOSS VALUE	12. RECOVERED VALUE	13. PROPERTY STATUS CODE	14. CASE STATUS CODE	15. JUVENILE
E	79333	05112 Burg	0926	NT	24	F6	04160	10	17	345				
↓	↓	↓							22	240				
↓	↓	↓							75	25				

Case # 79334: On 092779 at 0030 hours the local hotel desk clerk reported the forced entry of three separate guests' rooms. Police determine the burglary occurred sometime between noon on 092679 and the reported date and time. The thief took only clothing valued at \$300 from the rooms.

Solution: "Hotel Rule" (see page 102). One offense of forced entry residence burglary occurring at an unknown time.

12	13	21	27	31	33	35	44	49	51	54	60	66	67	68
1. MSG	2. CASE NUMBER	3. OFFENSE ACTV CD OFFENSE NAME	4. OCCURRED DATE	5. TIME	6. CNTY CODE	7. LOCATION CODE	8. OFFICER IDENTIFICATION	9. PREMISE TYPE	10. ARTICLE TYPE CODE	11. LOSS VALUE	12. RECOVERED VALUE	13. PROPERTY STATUS CODE	14. CASE STATUS CODE	15. JUVENILE
E	79334	05131 Burg	0927	XX	24	G7	04160	14	04	300				

Case # 79331: On 092679 at 1930 hours, police responding to a disturbance call find two persons shot to death in a local residence, no weapon is found and a third party was reported to have been seen leaving the scene in a fast car.

Solution: Two apparent willful murders occurring at the same place and time.

12	13	21	27	31	33	35	44	49	51	54	60	66	67	68
1. MSG	2. CASE NUMBER	3. OFFENSE ACTV CD OFFENSE NAME	4. OCCURRED DATE TIME	5. CNTY	6. CODE	7. LOCATION CODE	8. OFFICER IDENTIFICATION	9. PREMISE TYPE	10. ARTICLE TYPE CODE	11. LOSS VALUE	12. RECOVERED VALUE	13. PROPERTY STATUS CODE	14. CASE STATUS CODE	15. JUVENILE
E	79331	011	0926	19	24	A 16	04160	10						
↓	↓	Murder	↓	↓	↓	↓	↓	↓						

Case # 79332: On 092679 at 2230 hours in a lovers lane situation, the boyfriend is shot and killed and his girl friend raped.

Solution: One murder and one forcible rape occurring at the same time and place within a single criminal act.

12	13	21	27	31	33	35	44	49	51	54	60	66	67	68
1. MSG	2. CASE NUMBER	3. OFFENSE ACTV CD OFFENSE NAME	4. OCCURRED DATE TIME	5. CNTY	6. CODE	7. LOCATION CODE	8. OFFICER IDENTIFICATION	9. PREMISE TYPE	10. ARTICLE TYPE CODE	11. LOSS VALUE	12. RECOVERED VALUE	13. PROPERTY STATUS CODE	14. CASE STATUS CODE	15. JUVENILE
E	79332	011 Murder	0926	22	24	R 47	05136							
↓	↓	0211 Rape	↓	↓	↓	↓	↓							

Case # 790020: On 092779 the dept. writes a clearance report on a case of forgery which occurred last January. This case is now cleared by the arrest of an adult female.

Solution: Enter one previously reported offense of forgery as cleared by arrest.

12	13	21	27	31	33	35	44	49	51	54	60	66	67	68
1. MSG	2. CASE NUMBER	3. OFFENSE ACTV CD OFFENSE NAME	4. OCCURRED DATE	5. TIME	6. CNTY CODE	7. LOCATION CODE	8. OFFICER IDENTIFICATION	9. PREMISE TYPE	10. ARTICLE TYPE CODE	11. LOSS VALUE	12. RECOVERED VALUE	13. PROPERTY STATUS CODE	14. CASE STATUS CODE	15. JUVENILE
M	790020	1011 Forgery											A	

Case # 79201: On 092779 the dept. writes a clearance report on an April motorcycle theft case by the arrest of a 19-year-old adult and a juvenile.

Solution: Enter one previously reported offense of motor vehicle theft as cleared by the arrest of an adult and juvenile.

12	13	21	27	31	33	35	44	49	51	54	60	66	67	68
1. MSG	2. CASE NUMBER	3. OFFENSE ACTV CD OFFENSE NAME	4. OCCURRED DATE	5. TIME	6. CNTY CODE	7. LOCATION CODE	8. OFFICER IDENTIFICATION	9. PREMISE TYPE	10. ARTICLE TYPE CODE	11. LOSS VALUE	12. RECOVERED VALUE	13. PROPERTY STATUS CODE	14. CASE STATUS CODE	15. JUVENILE
M	79201	0721 M/c Theft											A B	

Case # 79245: On 092779 the dept. writes a clearance report on a May larceny case. The arrest was made by a police department in the next county and the subject still had a \$150 adding machine in his possession. The adding machine was one of the items stolen.

Solution: Enter one previously reported larceny offense as cleared by arrest and enter the recovery of stolen property showing that it was recovered for you by another agency.

12	13	21	27	31	33	35	44	49	51	54	60	66	67	68
1. MSG	2. CASE NUMBER	3. OFFENSE ACTV CD OFFENSE NAME	4. OCCURRED DATE	5. TIME	6. CNTY CODE	7. LOCATION CODE	8. OFFICER IDENTIFICATION	9. PREMISE TYPE	10. ARTICLE TYPE CODE	11. LOSS VALUE	12. RECOVERED VALUE	13. PROPERTY STATUS CODE	14. CASE STATUS CODE	15. JUVENILE
M	79245	06741 THEFT							13		150	D	A	

Case # 790247: On 092979 the Dept. writes a special or supplemental report advising that a subject wanted for a May arson case involving the firebombing of a vehicle has been arrested in a neighboring state for other serious charges and they will not release him.

Solution: Enter one previously reported offense of arson as cleared exceptionally.

12	13	21	27	31	33	35	44	49	51	54	60	66	67	68
1. MSG	2. CASE NUMBER	3. OFFENSE ACTV CD OFFENSE NAME	4. OCCURRED DATE	5. TIME	6. CNTY CCDE	7. LOCATION CODE	8. OFFICER IDENTIFICATION	9. PRIME TYPE	10. ARTICLE TYPE CODE	11. LOSS VALUE	12. RECOVERED VALUE	13. PROPERTY STATUS CODE	14. CASE STATUS CODE	15. JUVENILE
M	790247	0922 ARSON											E	

24 Case # 790289: On 092979 the Dept. writes a special or supplemental report advising that an August rape victim is now refusing to prosecute an identified subject due to fear of a public trial and publicity, etc. Your original investigation definitely established that the rape complaint was valid.

Solution: Enter one previously reported offense of forcible rape as cleared exceptionally.

12	13	21	27	31	33	35	44	49	51	54	60	66	67	68
1. MSG	2. CASE NUMBER	3. OFFENSE ACTV CD OFFENSE NAME	4. OCCURRED DATE	5. TIME	6. CNTY CCDE	7. LOCATION CODE	8. OFFICER IDENTIFICATION	9. PRIME TYPE	10. ARTICLE TYPE CODE	11. LOSS VALUE	12. RECOVERED VALUE	13. PROPERTY STATUS CODE	14. CASE STATUS CODE	15. JUVENILE
M	790289	0214 Rape											E	

Case # 790295: On 091579 the Dept. writes a special or supplementary report advising that a man wanted for an August offense of embezzlement of company funds was found dead of natural causes in a Florida motel and local police there recover \$20,000 in negotiable bonds.

Solution: Enter one previously reported offense of embezzlement as cleared exceptionally.

12	13	21	27	31	33	35	44	49	51	54	60	66	67	68
1. MSG	2. CASE NUMBER	3. OFFENSE ACTV CD OFFENSE NAME	4. OCCURRED DATE	5. TIME	6. CNTY CODE	7. LOCATION CODE	8. OFFICER IDENTIFICATION	9. PRIME TYPE	10. ARTICLE TYPE CODE	11. LOSS VALUE	12. RECOVERED VALUE	13. PROPERTY STATUS CODE	14. CASE STATUS CODE	15. JUVENILE
M	790295	121 EMBEZZ.							14		20000	0	E	

Case # 790335: On 092979 at 1500 hours the Dept. responds to a residence burglary complaint where the house was entered via an open window and food was eaten in the kitchen. Investigation determines that the son of the occupants had returned home from college unexpectedly, ate a quick meal and left to visit friends.

Solution: Enter one offense of daytime, unlawful entry, residence burglary as unfounded.

12	13	21	27	31	33	35	44	49	51	54	60	66	67	68
1. MSG	2. CASE NUMBER	3. OFFENSE ACTV CD OFFENSE NAME	4. OCCURRED DATE	5. TIME	6. CNTY CODE	7. LOCATION CODE	8. OFFICER IDENTIFICATION	9. PREMISE TYPE	10. ARTICLE TYPE CODE	11. LOSS VALUE	12. RECOVERED VALUE	13. PROPERTY STATUS CODE	14. CASE STATUS CODE	15. JUVENILE
E	790335	05122 Burg.	0929	15	24	A16	04160		0	0			U	

Case # 790336: On 092979 at 2100 hours the Dept. receives a complaint from a young woman that a male acquaintance had tried to rape her. Subsequent investigation determined that the woman has exaggerated and no actual attempted rape has taken place.

Solution: Enter one offense of attempted forcible rape as unfounded.

12	13	21	27	31	33	35	44	49	51	54	60	66	67	68
1. MSG	2. CASE NUMBER	3. OFFENSE ACTV CD OFFENSE NAME	4. OCCURRED DATE	5. TIME	6. CNTY CODE	7. LOCATION CODE	8. OFFICER IDENTIFICATION	9. PREMISE TYPE	10. ARTICLE TYPE CODE	11. LOSS VALUE	12. RECOVERED VALUE	13. PROPERTY STATUS CODE	14. CASE STATUS CODE	15. JUVENILE
E	790336	0224 Rape	0929	21	24	C8	04160						U	

Case # 790337: On 093079 at 0900 hours a man advises that the hub caps (\$75) are missing from his car. Later the same day he calls back to advise that his young son took them off to improve the appearance of the family automobile.

Solution: Enter one offense of Larceny (motor vehicle parts/accessories) as unfounded.

12	13	21	27	31	33	35	44	49	51	54	60	66	67	68
1. MSG	2. CASE NUMBER	3. OFFENSE ACTV CD OFFENSE NAME	4. OCCURRED DATE	5. TIME	6. CNTY CODE	7. LOCATION CODE	8. OFFICER IDENTIFICATION	9. PREMISE TYPE	10. ARTICLE TYPE CODE	11. LOSS VALUE	12. RECOVERED VALUE	13. PROPERTY STATUS CODE	14. CASE STATUS CODE	15. JUVENILE
E	790337	06531 Theft			24	D7	04160	60	20	75			U	

"Activity": On 100579 at 1000 hours the dept. receives an official communication advising that a subject wanted for escape is believed to be hiding out within the local jurisdiction. Subsequent investigation/search is underway. (IF the subject is located and arrested, he may be also entered on the Custody form as a fugitive arrest made for another agency).

12	13	21	27	31	33	35	44	49	51	54	60	66	67	68
1. VSG	2. CASE NUMBER	3. OFFENSE ACTV CD	4. OCCURRED DATE	5. TIME	6. CNTY	7. LOCATION CODE	8. OFFICER IDENTIFICATION	9. PREMISE TYPE	10. ARTICLE TYPE CODE	11. LOSS VALUE	12. RECOVERED VALUE	13. PROPERTY STATUS CODE	14. C'SE STATUS CODE	15. JUVENILE
E		552 FUGITIVE	1005	10	24									

26

[illegible]

entered on the Custody form using Protective/Civil custody codes).

[illegible]

2.5 CODES

2.5.1 OFFENSE/ACTIVITY CODES

OFFENSE CODES

01 CRIMINAL HOMICIDE

- 1 Murder and Non-negligent Manslaughter
- 2 Manslaughter by Negligence (Do not use this category for traffic accident death. See 40 TRAFFIC ACCIDENT-FATAL as defined on page 118.)

02 FORCIBLE RAPE

- | | |
|------------------------------------|-------------------------------|
| 1 Forcible | 1 Firearm |
| 2 Attempts to Commit Forcible Rape | 2 Knife or Cutting Instrument |
| | 3 Other Dangerous Weapon |
| | 4 Hands, Fist, Feet, etc. |

03 ROBBERY

- | | |
|-------------------------------|--|
| 1 Firearm | 1 Highway |
| 2 Knife or Cutting Instrument | 2 Commercial House |
| 3 Other Dangerous Weapon | 3 Service Station |
| 4 Hands, Fist, Feet, etc. | 4 Convenience Store (Circle K, 7-11, etc.) |
| | 5 Residence |
| | 6 Bank |
| | 9 Other |

04 ASSAULT (Reckless endangering/menacing are coded under the appropriate assault categories dependent upon the individual circumstances.)

- | | |
|---|-------------------------------|
| 1 Aggravated | 1 Firearm |
| | 2 Knife or Cutting Instrument |
| | 3 Other Dangerous Weapon |
| | 4 Hands, Fist, Feet, etc. |
| 2 Not Aggravated | 1 Resist Arrest |
| | 4 Coercion |
| | 5 Harrassment (Physical) |
| | 9 Other |
| 3 Attempted Murder
(This code is to be used only when police investigation establishes murder as the intent of the assailant.) | 1 Firearm |
| | 2 Knife or Cutting Instrument |
| | 3 Other Dangerous Weapon |
| | 4 Hands, Fist, Feet, etc. |

05 BURGLARY

- | | | |
|-----------------|-------------------|-------------------------------|
| 1 Residence | 1 Night (6pm-6am) | 1 Forcible Entry |
| | 2 Day (6am-6pm) | 2 Unlawful Entry-
no force |
| 2 Non-Residence | 3 Unknown | 3 Attempted Forcible Entry |

06 LARCENY

- | | | |
|---------------------------------------|------------------|-------------------|
| 1 Pickpocket | 2 Under \$5 | 1 Theft |
| 2 Pursesnatch | 2 \$5 to \$50 | 2 Attempted Theft |
| 3 Shoplift | 3 \$50 to \$100 | |
| 4 From Motor Vehicles | 4 \$100 to \$200 | |
| 5 Motor Vehicle Parts and Accessories | 5 \$200 plus | |
| 6 Bicycles | | |
| 7 From Buildings | | |
| 8 From Coin-op Machines | | |
| 9 All others | | |

07 MOTOR VEHICLE THEFT

- | | |
|---------------------|-------------------|
| 1 Automobiles | 1 Theft |
| 2 Motorcycles | 2 Attempted Theft |
| 3 Trucks/Buses/Vans | |
| 4 Snowmobiles | |
| 9 Other Vehicles | |

09 ARSON (It is important to refer to ARSON definition on page 110 for detailed definition of sub-categories).

- | | | |
|-------------------|-------------------------|-------------------------|
| 1 Residence | 1 Single Occupancy | 1 Normally Occupied |
| | 2 Other Residential | 2 Not Normally Occupied |
| 2 Other Buildings | 1 Storage | 1 Normally Used |
| | 2 Industrial/Mfg. | 2 Not Normally Used |
| | 3 Other Commercial | |
| | 4 Public/Community | |
| | 9 Other Structures | |
| 3 Vehicle | 1 Motor Vehicle | |
| | 2 Other Mobile Property | |
| 9 All Other | | |

10 FORGERY & COUNTERFEITING

- | | |
|------------------|----------------|
| 1 Forgery | 1 Check |
| 2 Counterfeiting | 2 Credit Cards |
| | 3 Currency |
| | 4 Securities |
| | 9 Other |

11 FRAUD

- | | |
|----------------|------------------|
| 1 Checks | 1 No Account |
| | 2 Account Closed |
| | 3 NSF |
| | 9 Other |
| 2 Credit Cards | |
| 3 By Deception | |
| 4 Of Services | |
| 9 Other | |

12 EMBEZZLEMENT

- | |
|------------|
| 1 Money |
| 2 Property |
| 9 Other |

13 STOLEN PROPERTY

- | |
|---------------------|
| 1 Receive & Conceal |
| 2 Possess |
| 3 Buy |
| 4 Sell |
| 9 Other |

14 VANDALISM

- | |
|---------------------|
| 1 Residence |
| 2 Non-Residence |
| 3 Vehicle |
| 4 Venerated Objects |
| 5 Police Cars |
| 9 Other |

15 WEAPONS

- | |
|---------------------|
| 1 Possess Illegally |
| 2 Carry Concealed |
| 9 Other |

16 PROSTITUTION

- | |
|-------------|
| 1 Engage In |
| 2 Promote |
| 3 Compel |
| 9 Other |

17 SEX OFFENSES

Victim

- | |
|-------------------|
| 1 Adult Male |
| 2 Adult Female |
| 3 Juvenile Male |
| 4 Juvenile Female |

- | |
|---|
| 1 Statutory Rape |
| 2 Contributing to the sexual delinquency of a minor |
| 3 Molest - Physical |
| 4 Molest - Obscene Phone Call |
| 5 Peeper |
| 6 Expose |
| 7 Sodomy - Forcible |
| 8 Sodomy - Statutory |
| 9 Other |

18 DRUG ABUSE (Entered as an offense if supported by arrest or investigation).

- | | | |
|--------------------|---------------------|-----------------|
| 1 Narcotics | 1 Sale | 1 Opium |
| | 2 Poss. or use | 2 Heroin |
| | 3 Manufacture | 3 Morphine |
| | 4 Obtain Unlawfully | 4 Cocaine |
| | 5 Tamper w/Records | 5 Codeine |
| | 6 Cultivate | |
| | 9 Other | |
| 2 Marijuana | 1 Sale | 1 Hashish |
| | 2 Poss. or use | 2 Marijuana |
| | 3 Manufacture | 9 Other |
| | 4 Obtain Unlawfully | |
| | 5 Tamper w/Records | |
| | 6 Cultivate | |
| | 9 Other | |
| 3 Synthetic Narco. | 1 Sale | 1 Methadone |
| | 2 Poss. or use | 2 Demerol |
| | 3 Manufacture | 9 Other |
| | 4 Obtain Unlawfully | |
| | 5 Tamper w/Records | |
| | 6 Cultivate | |
| | 9 Other | |
| 4 Dangerous Drugs | 1 Sale | 1 Barbiturates |
| | 2 Poss. or use | 2 Amphetamines |
| | 3 Manufacture | 3 Benzedrine |
| | 4 Obtain Unlawfully | 4 Hallucinogens |
| | 5 Tamper w/Records | 5 Tranquilizers |
| | 6 Cultivate | 9 Other |
| | 9 Other | |

19 GAMBLING

- | | |
|---------------------|-------------------|
| 1 Bookmaking | 1 Conduct |
| 2 Numbers & Lottery | 2 Possess Device |
| 9 Other | 3 Possess Records |
| | 9 Other |

20 OFFENSES AGAINST FAMILY

- 1 Child Abandonment
- 2 Child Neglect
- 3 Child Abuse (Code as assault if assault or physical injury).
- 4 Non-Support
- 9 Other

22 LIQUOR LAWS

- 1 Minor in Possession
- 2 Illegal Liquor - Make, Sell, Possess, etc.
- 3 Illegal Establishment - Operate
- 4 Drinking in Public
- 5 Furnishing
- 6 Importing
- 9 Other

24 DISORDERLY CONDUCT

- 1 Fight
- 3 Profane or Abusive Language
- 4 Refuse to Assist Police or Fire
- 9 Other

26 ALL OTHER (Except Traffic)

- 1 Kidnap (Includes Custodial Interference)
- 2 Trespass
 - 1 Public Property
 - 2 Private Property
- 3 Escape
- 4 Garbage/Littering
- 5 Obscene Materials or Display (Obscene Phone Calls are classified as 17 Other Sex Offenses).
- 6 Threat
 - 1 Bomb
 - 2 Phone
 - 9 Other
- 7 Harassment (Vocal/Nuisance)
- 8 Blackmail/Extortion
- 9 Other

29 RUNAWAY (Juveniles)

- | | | |
|----------|------------|----------------------------------|
| 1 Male | 1 Under 10 | 1 Foster Home |
| 2 Female | 2 10 | 2 Residential Treatment Facility |
| | 3 11 | 3 Home |
| | 4 12 | 4 Boys/Girls Ranch |
| | 5 13 | 9 Other |
| | 6 14 | |
| | 7 15 | |
| | 8 16 | |
| | 9 17 | |

PART III - ACTIVITY CODES

39 TRAFFIC CRIME (Except DUII)

- 1 Hit and Run
- 2 Reckless Driving
- 3 Eluding and Attempting to Elude
- 4 Driving While Suspended

40 TRAFFIC ACCIDENT - FATAL

- 1 Pedestrian
- 2 Train
- 3 Bicycle
- 4 Other Motor Vehicle
- 5 Animal
- 6 Ran off Road
- 7 Overturned in Road
- 8 Fixed Object
- 9 Other

41 TRAFFIC ACCIDENT - INJURY

- 1 Pedestrian
- 2 Train
- 3 Bicycle
- 4 Other Motor Vehicle
- 5 Animal
- 6 Ran off Road
- 7 Overturned in Road
- 8 Fixed Object
- 9 Other

42 TRAFFIC ACCIDENT - PROPERTY DAMAGE

- 1 Pedestrian
- 2 Train
- 3 Bicycle
- 4 Other Motor Vehicle
- 5 Animal
- 6 Ran off Road
- 7 Overturned in Road
- 8 Fixed Object
- 9 Other

50 ILLEGAL ALIEN

52 WARRANTS

- | | |
|---------------------|---------------|
| 1 Circuit | 1 Felony |
| 2 District | 2 Misdemeanor |
| 3 Justice/Municipal | 3 Violation |
| | 4 Traffic |

53 STOLEN MOTOR VEHICLE RECOVERED FOR ANOTHER AGENCY

54 STOLEN PROPERTY RECOVERED FOR ANOTHER AGENCY

55 FUGITIVE (Search and/or apprehension for outside agency)

- 1 Felony - (Optional - Include 2 digit offense code showing charge subject is wanted for).
- 2 Escape
- 3 Misdemeanor

56 MISSING PERSON

- 1 Person
- 2 Lost Hunter/Person
- 3 Lost Child (10 years or under)

57 SUDDEN DEATH/BODIES FOUND

- 1 Male Adult
 - 2 Female Adult
 - 3 Male Juvenile
 - 4 Female Juvenile
- (If a criminal offense is determined, appropriate Offense/Custody entry(s) are required).

58 SUICIDE

- 1 Suicide
- 2 Attempt Suicide

59 OTHER ACCIDENTS

- 1 Recreation/Sports
- 2 Home
- 3 Occupational
- 4 Firearms
- 5 Plane
- 6 Public Buildings
- 7 Private Buildings (Non-Residence)
- 9 Other

60 ANIMAL PROBLEMS

- 1 Cruelty/Neglect
- 2 Killing
- 3 Lost/Stray
- 4 Dog at Large
- 5 Dog Bite
- 6 Barking Dog
- 7 Road Killed
- 9 Other

61 PROPERTY

- 1 Lost
- 2 Found
- 3 Confiscated
- 9 Other

62 ABANDONED AUTO

64 LOCATE ONLY AUTO (Missing)

(If MV Theft is subsequently determined, must make Stolen MV Offense entry also.)

65 IMPOUND AUTO

- 1 In Evidence
- 2 Parking Violation
- 3 Abandoned
- 4 Prisoner Property
- 5 Repossessed

66 ASSISTANCE REQUIRED

- 1 Public
- 2 Law Enforcement Agencies
- 3 Other Government Agencies

67 DOMESTIC PROBLEMS

- 1 Family Disturbance
- 2 Home Health Hazards

69 INSECURE PREMISES/SECURITY

- 1 Found/Reported by Department
- 2 Found/Reported by Citizen

70 SUSPICIOUS PERSONS & CIRCUMSTANCES

- 1 Person(s)
 - 2 Premises
 - 3 Activity
- (If a criminal offense is determined, appropriate Offense/Custody entry(s) are required).

71 PUBLIC SAFETY

- 1 Open Wells-Ditch-Ponds-Pools
- 2 Shafts & Excavations
- 3 Unsafe Structures
- 4 Abandoned Refrigerators/Freezers
- 5 Down Power Lines
- 6 Floods & High Water
- 7 Dangerous Liquids & Gases
- 8 Fire/Smoke
- 9 Other

73 DISTURBANCE/NOISE

- 1 Party
- 2 Music
- 3 Vehicle
- 4 Equipment/Construction
- 5 Arguments/Verbal
- 9 Other

75 SICK CARED FOR

76 MARINE

77 TRAFFIC/ROADS (Do not use for traffic citations)

- 1 Moving
- 2 Signs/Signals
- 3 Railroads
- 4 Parking
- 5 Road Surface
- 6 Trees/Debris on Road
- 7 Visibility Obstructions
- 8 Blocked Driveway
- 9 Other

78 CIVIL COMPLAINTS

- 1 Boundary Disputes
- 2 Landlord/Tenant
- 3 Contracts/Agreements
- 4 Divorce
- 9 Other

79 VEHICLE DISPOSITION

- 1 Sale
- 2 Released to Owner
- 3 Other

81 ALARM

- | | | |
|--------------|------------|---------------------------|
| 1 Confirmed | 1 Fire | (If a criminal offense is |
| 2 False | 2 Burglary | determined, appropriate |
| 3 Accidental | 3 Robbery | Offense/Custody entry(s) |
| 4 Faulty | 9 Other | are required). |
| 9 Other | | |

82 SUBPOENAS (Clearance of these entries will indicate successful service).

90 OFFICER ASSAULT (Please refer to Officer Assault Section on Pages 82-85 when making this entry. Occurred date and time are required. This entry is to be cleared if an arrest or exceptional clearance is involved).

- 1 Assaulted, No Injury
- 2 Assaulted, With Injury
- 3 Killed, Felonious Act
- 4 Killed Accidental/Negligent Act

- 1 Firearm
- 2 Knife or Cutting Instrument
- 3 Other Dangerous Weapon
- 4 Hands, Fist, Feet, etc.

- 1 Two Man Vehicle
- 2 One Man Vehicle, Alone
- 3 One Man Vehicle, Assisted
- 4 Detective or Special Assignment, Alone
- 5 Detective or Special Assignment, Assisted
- 6 Other, Alone
- 7 Other, Assisted

- A Responding to "Disturbance" calls
- B Burglary in progress or pursuing burglary suspect
- C Robbery in progress or pursuing robbery suspects
- D Attempting other arrests
- E Civil Disorder
- F Handling, transporting, custody of prisoners
- G Investigating suspicious persons or circumstances
- H Ambush, No Warning
- I Mentally deranged
- J Traffic Pursuits and Stops
- K All Other

97 and 98

- 1 These 2 codes (97 and 98) are for local departmental needs for the
- 2 entering of other activities, etc., not covered in this section
- 3 that you may wish to collect.
- 4
- 5 Any entries here will be returned to you in numbers only, for
- 6 your agency will be the only one that knows their local definitions.
- 7
- 8
- 9

99 OTHER (Miscellaneous)

2.5.2 REPORTED AND OCCURRED DATE AND TIME CODES

OCCURRED DATE

Occurred date (optional) is entered in column 7 by use of 4 digit month and day. E.g., July 12 = 0712; November 4 = 1104; December 25 = 1225, etc.

If occurred date is unknown, leave blank.

OCCURRED TIME

Occurred time (optional) is entered in column 8 by use of coded time.

OCCURRED TIME may select the most appropriate code (00 thru 23, DY, NT and XX) that best describes the particular incident.

Occurred Time Code:

00 = Midnight to 0059 hours	12 = 1200 to 1259 hours
01 = 0100 to 0159 hours	13 = 1300 to 1359 hours
02 = 0200 to 0259 hours	14 = 1400 to 1459 hours
03 = 0300 to 0359 hours	15 = 1500 to 1559 hours
04 = 0400 to 0459 hours	16 = 1600 to 1659 hours
05 = 0500 to 0559 hours	17 = 1700 to 1759 hours
06 = 0600 to 0659 hours	18 = 1800 to 1859 hours
07 = 0700 to 0759 hours	19 = 1900 to 1959 hours
08 = 0800 to 0859 hours	20 = 2000 to 2059 hours
09 = 0900 to 0959 hours	21 = 2100 to 2159 hours
10 = 1000 to 1059 hours	22 = 2200 to 2259 hours
11 = 1100 to 1159 hours	23 = 2300 to 2359 hours

DY (Day) = Occurred time was greater than the specific 1 hour codes and was generally during the day; probably between 0600 and 1800 hours.

NT (Night) = Occurred time was greater than the specific 1 hour codes and was generally during the night; probably between 1800 and 0600 hours.

XX (Unknown) = Occurred time was generally during or between midnight and 2359 hours of the same day.

Use of XX as the occurred time will return a specific day of the week on MUCR/100E and an unknown time on MUCR/100A when the report is processed.

Leave Occurred Date and Time columns 4 and 5 blank when the occurred date and time are beyond the scope of these codes.

REMEMBER: DATE AND TIME ARE A "SET". A DATE REQUIRES A TIME. A TIME REQUIRES A DATE.

2.5.3 COUNTY CODES BY NUMBER (Column 6 - Offense Form)

BEAVERHEAD	01	MADISON	29
BIG HORN	02	MEAGHER	30
BLAINE	03	MINERAL	31
BROADWATER	04	MISSOULA	32
CARBON	05	MUSSELSHELL	33
CARTER	06	PARK	34
CASCADE	07	PETROLEUM	35
CHOUTEAU	08	PHILLIPS	36
CUSTER	09	PONDERA	37
DANIELS	10	POWDER RIVER	38
DAWSON	11	POWELL	39
DEER LODGE	12	PRAIRIE	40
FALLON	13	RAVALLI	41
FERGUS	14	RICHLAND	42
FLATHEAD	15	ROOSEVELT	43
GALLATIN	16	ROSEBUD	44
GARFIELD	17	SANDERS	45
GLACIER	18	SHERIDAN	46
GOLDEN VALLEY	19	SILVER BOW	47
GRANITE	20	STILLWATER	48
HILL	21	SWEET GRASS	49
JEFFERSON	22	TETON	50
JUDITH BASIN	23	TOOLE	51
LAKE	24	TREASURE	52
LEWIS & CLARK	25	VALLEY	53
LIBERTY	26	WHEATLAND	54
LINCOLN	27	WIBAUX	55
MCCONE	28	YELLOWSTONE	56

2.5.4 PREMISE CODES

DWELLING-LODGING

- 10 Single Family Residence (House, Mobile Home, House Boat, etc.)
- 11 Apartment/Plex/Condominium
- 12 Club/Dormitory (Fraternity, YM-YWCA, Rooming House, etc.)
- 13 Cabin
- 14 Hotel/Motel

PUBLIC BUILDINGS

- 20 Public Safety Facility (Police, Correctional, Fire, etc.)
- 21 Government Office/Service (City Hall, Court House, Post Office, etc.)
- 22 Public School/College
- 23 Auditorium (Coliseum, Stadium, Museum, etc.)
- 24 Airport/Depot
- 25 Church
- 26 Private School/College

BUSINESS

- 30 Restaurant (Cafe, Drive-In, etc.)
- 31 Theater
- 32 Bowling Alley/Skating Rinks
- 33 Night Club/Tavern
- 34 Financial (Bank, Stocks, Finance, Insurance, etc.)
- 35 Services (Gas, Grooming, Cleaning, Rental, Repair, etc.)
- 36 Medical/Dental (Dr. Office, Hospital, etc.)
- 37 Pharmacy/Drug Store
- 38 Grocery
- 39 Convenience Store (7-11, Circle K, etc.)
- 40 Department/Variety Store
- 41 Apparel (Clothing, Shoes, Furs, etc.)

BUSINESS (cont.)

- 42 Jewelry/Camera
- 43 Furniture/Appliance (TV, Radio, Stereo, Office Equipment, etc.)
- 44 Hardware/Sporting Goods
- 45 Motor Vehicle Sales - Service - Parts, etc.
- 46 Marine (Marinas, Boat Sales, Service, Parts, etc.)
- 47 Construction (Building, Electrical, Plumbing, Lumber Supplies, etc.)
- 49 Other Business (None of the above)

OTHER STRUCTURES

- 50 Factory/Warehouse
- 51 Other Residence Buildings (Unattached Garage, Pump House, etc.)
- 52 Other Farm Buildings (Barn, Shed, Chicken House, etc.)
- 53 Dock/Pier/Wharf
- 59 Other Buildings

THOROUGH-FARE

- 60 Street/Alley/Sidewalk
- 61 Freeway
- 62 Other Road
- 63 Bridge/Viaduct/Tunnel
- 64 Parking Lot/Driveway

AREA

- 70 Golf Course
- 71 Park/Campground/Beach
- 72 Water/Shoreline (Ocean, Lake, River)
- 73 Cemetery
- 74 Yards/Related area
- 75 Developed Farm Land/Pasture
- 76 Logging Site
- 77 Woods/Forest/Mountains
- 79 Other Area

- | | |
|--|--|
| 01 Bicycle/Tricycles | 26 Livestock |
| 02 Boats | 1 Horse(s) |
| 03 Cameras/Related Equipment | 2 Cattle |
| 04 Clothing, Furs, Purses, Wallets, Luggage | 3 Pigs |
| 05 Farm/Garden | 5 Sheep |
| 1 Farm Tractor(under 50 engine hp) | 9 Other mammals commonly raised as farm stock |
| 2 Farm Tractor(over 50 engine hp) | 27 Heavy Construction/Machinery |
| 3 Farm Tillage Impl.(plow, disc) | 32 Motor Vehicles |
| 4 Farm Irrigation Equipment | 1 Autos |
| 5 Farm Spraying Equipment | 2 Trucks/Bus/Vans |
| 6 Farm Harvest Impl.(Picker, baler) | 3 Motorcycles |
| 7 Farm, all other | 4 Snowmobiles |
| 8 Garden/Lawn Mach.(tiller, mower) | 5 Go-Carts |
| 9 Garden, all other | 9 Other |
| 06 Furniture | 33 Miscellaneous Vehicles
(not applicable for Auto Theft) |
| 08 Household & Appliances | 34 Aircraft |
| 09 Jewelry/Precious Metals/Watches
(Gold, Silver, Platinum, etc.) | 1 Aircraft |
| 12 Musical Instruments | 2 Parts/Accessories |
| 13 Office Equipment | 35 Metals (Brass, Copper, etc.) |
| 14 Securities, Money, Notes, Stamps, etc. | 36 Consumable Goods |
| 15 Sound Equipment | 1 Beverages/Liquor |
| 1 Radio | 2 Food/Meat |
| 2 Stereo/Phonograph | 3 Personal Hygiene Items |
| 3 Tape Recorder/Player | 4 Gas/Fuel |
| 4 Television | 5 Hay/Feed |
| 5 Accessories | 6 Cigarettes/Tobacco |
| 6 P.A./Paging Devices | 7 Drugs |
| 7 Sound Metering Devices | 9 Other |
| 8 Citizens Band Radio | 50 Logging Equipment: Choker cables, chain binders, blocks, etc.
(Does not include saws, tools or other heavy machinery.) |
| 9 Other | 51 Timber/Raw Wood Products |
| 16 Sports Equipment | 52 Building Materials(Lumber, Bricks, etc.) |
| 17 Tools | 60 Saddles and tack |
| 20 Vehicle Parts/Accessories | 61 Marine Equipment |
| 21 Viewing Equipment | 70 Building/Structures(use only for |
| 22 Firearms | 1 Residence offenses of Van- |
| 23 Knives | 2 Non-Residence dalism and Arson.) |
| 24 Explosives/Related | 75 Miscellaneous |
| 25 Trailers/Campers/Canopies | 98 Crime Damage (Damage to property as the result of a criminal act <u>other than</u> Vandalism or Arson.) |

2.5.6 LOSS VALUE Column 11

1. The entry of a loss value is required for all property offenses when using the E message key.
2. Loss Value property offenses are :

03 Robbery	11 Fraud
05 Burglary	12 Embezzlement
06 Larceny	14 Vandalism
07 Motor Vehicle Theft	26 All Other-Kidnapping
09 Arson	for Ransom
10 Forgery/Counterfeiting	26 All Other-Blackmail/ Extortion
3. Values are entered to the nearest dollar.

Do not use commas (,), decimal points (.), or dollar signs (\$).
4. Do not use this column if you are only entering the recovery of property in column 12.
5. Enter one zero (0) in this column if there is no known loss value for any of the above listed offenses.

Sample entry: Amount stolen in the robbery was \$235.35.
This value would be entered as 235.

3.0 CUSTODY/ARREST REPORTING

3.1 CUSTODY FORM (Age, sex, and race information, etc. about persons arrested/handled by your department).

The purpose of this form is to provide law enforcement with a record of total arrests for criminal acts in all of the Part I, Part II offenses and to furnish basic data concerning personal characteristics of persons arrested or handled by police.

The requirements of the Custody section are:

- . The entering of all arrests and charges for each person arrested or handled by your department each month.
- . Sex, race and DOB profiles of those subjects.
- . Police disposition of juveniles.

Optional capabilities of this form permit the Part III entry of:

- . Fugitive arrests made for other agencies.
- . Warrants.
- . Civil/protective custody (includes detoxification).
- . Adult court dispositions.

3.2 GENERAL PROCEDURES FOR PREPARING CUSTODY FORMS

At the top left side of each form enter the last 6 numbers of your agency's National Identifier (ORI) in the "Agency Ident." box. Enter the month and year being reported.

At the top right side of the form enter your agency's name, name of person preparing the form(s), and the page number.

Although the form is printed on both sides, each single form is to be counted as one page.

The first form you fill out each month should be numbered "page 1", the next "page 2", etc., until the month has been completed. Then enter the last page number on page 1 on the "Page of pages". This procedure will assist the Data Center in reviewing and processing your reports and keeping them intact and complete.

Before mailing, place the forms in order by page numbers and place them in the envelope along with the Offense and supplementary forms that may be required.

Case, arrest or citation numbers must be at least 3 digits and may not exceed 8 digits. DO NOT USE HYPHENS.

All dates entered must be 4 digit (month and day).
(E.g., 0312 = March 12 -- 1109 = November 9).

All times entered must be 2 digit 24 hour clock time.
(E.g., 02 = 0200 thru 0259 hours -- 19 = 1900 thru 1959 hours).

Do not use hyphens with entries.
(E.g., 79205 = case number 79-205, etc.).

If you believe that one of your entries is in question, include a note with page 1 that refers to the page and case number in question. Do not make marginal notes on the form.

3.3 CUSTODY FORM - DESCRIPTION AND GUIDELINES

Col.	Title	Definition
1	Message Key	<p>Defines the type of entry being made:</p> <p>E = ENTER -New custody entry. . Enters a new arrest and options. . Enters multiple arrest charges.</p> <p>M = MODIFY -Change or update to previous entry. . Adds court disposition for a previously reported arrest (Optional).</p> <p>X = DELETE -Deletion of previous entry <u>for current month only.</u></p>
2	Case, Arrest, Misdemeanor or Traffic Citation (DUII Only)	<p>The number your department assigned to the arrest or handling of a subject. This number must be at least 3 digits and may not exceed 8 digits. DO NOT USE HYPHENS.</p> <p>No number is required for a Civil/Protective Custody entry.</p>
3	Arrest Code	<p>The numeric code which describes the arrest offense(s) or custody you are reporting.</p> <p>Enter arrest(s) for each person on each separate occasion he is arrested.</p> <p>If two or more persons are arrested committing an offense(s), each person is entered as a separate arrest.</p> <p>If a person is arrested for committing a crime or multiple crimes, or while in custody it is determined that he committed other crimes, enter additional arrests (if he is charged) for those crimes.</p> <p>If a person who was arrested for an offense is released on bond and it is then discovered he has committed other offense(s), and he is again arrested, a <u>new entry</u> is made using appropriate "arrest" code(s).</p> <p>Persons arrested as aiders, abettors, conspirators, solicitors and accessories should be entered using the offense classification of the offense in which they were involved.</p>

Col.	Title	Definition
3	Arrest Code (cont.)	<p>Juveniles arrested are entered in the offense classification in which their offense belongs.</p> <p>See section 5, pages 91-126 for offense definitions.</p>
	Arrest Name	<p>A short English language word or abbreviation of the charge. Used for quality control in data review.</p>
4	Arrest Date	<p>The 4 digit date (month and day) when the arrest/custody/handling took place (e.g., 0412 = April 12).</p>
5	Arrest Time	<p>The 2 digit 24 hour time designation for when the arrest/custody/handling took place (e.g., 14 = 14 through 1459 hours. An arrest made at 1445 hours would be entered as 14 arrest time.).</p>
6	County Code	<p>The 2 digit code of the County in <u>your jurisdiction</u> in which <u>your department</u> made the arrest (e.g., 01 = Beaverhead County). See page 40 for list of County codes.</p>
7	Location Code	<p>Optional - the geographic or organizational location where the arrest, custody or handling took place. If your jurisdiction is divided into grids, sectors, beats or other geographic or organizational subdivisions, you may use this local code to give your department a finer breakdown of the areas where arrests are occurring. The codes used will be your own and will not be meaningful outside your department. Use of this field is optional, but if used it must be used consistently.</p> <p>The makeup of this code is limited to nine characters. <u>DO NOT USE HYPHENS.</u></p>
8	Officer ID (ID number of arresting/handling officer; limited to 5 digits)	<p>Optional - the "identification" number of arresting or handling officer. This is optional, but if used it should be used consistently and should be a number that will not be reassigned after an officer leaves the department, e.g., POST or other unique number instead of badge number. Entry of officer ID is limited to five (5) digits. DO NOT USE HYPHENS.</p>

Col.	Title	Definition
9	<u>Sex Code</u>	The sex code identifies the sex of the person arrested/handled: M = Male F = Female
10	<u>Race Code</u>	The race code identifies the race of the person arrested/handled: W = White M = Mexican American/ N = Negro Mexican National I = Indian V = Vietnamese/Cambodian/ C = Chinese Laotian/Thai J = Japanese A = Other Asian/Pacific Islander Persons arrested/handled are divided into the eight general race categories of White, Negro, Indian, Chinese, Japanese, Mexican American/Mexican National, Vietnamese/Cambodian/Laotian/Thai, and Other Asian/Pacific Islander. The six-digit date (month, day and year) of birth of the subject arrested/handled. If DOB cannot be established due to a language barrier and/or lack of personal identification papers, determine the approximate age, such as 30 years, and enter as 000050. (A protective/civil custody entry is complete at this column.)
11	<u>Date of Birth</u>	
12	<u>Arrest Type Code</u>	The arrest type code is a very important and critical factor of the MUCR program. It describes the type of arrest as Arrested, Cited, Summoned, or Notified. The arrest type codes are: A = Arrested by your department for your case(s) or arrested for your department by another agency (Use "M" for additional charges).

Col.	Title	Definition
12	<u>Arrest Type Code (cont.)</u>	F = Arrested by your department for another agency C = Cited S = Summoned N = Notified M = Additional charges at time of arrest or while in custody When entering multiple arrest charges, code A may be used only one time for each subject each time he is taken into custody. It would logically be the most serious charge, and any other charges of equal or lesser value would receive M coding. Code all "Fugitive" arrests (arrest/custody code 550) made for other agencies as "F". Only arrest/handling code A, C, S, and N will be sent to the FBI National UCR program to become part of the nation-wide UCR persons arrested/handled statistics. The remaining will become part of the MUCR program, <u>and proper coding will not exaggerate the actual number of persons arrested</u> and will properly reflect arrest activity.
13	<u>Juvenile Disposition Code</u>	This column is for the purpose of collecting data that will be meaningful in the police disposition of juveniles who are taken into custody or arrested. When an adult is arrested, he is usually held for prosecution on some charge or is released for future handling in court.

<u>Col.</u>	<u>Title</u>	<u>Definition</u>
13	<u>Juvenile Disposition Code (cont.)</u>	<p>This is not necessarily the case with juveniles. Depending on the seriousness of the offense and the juvenile's prior record, many are warned by police and released to parents, relatives, to the juvenile court, or probation department. In other instances juveniles are referred to welfare agencies, other police agencies, or, in some serious cases, the subject may be remanded to adult court.</p> <p>The word "arrest" as it applies to juveniles is intended to mean the police handling of all juveniles who have committed a crime and are taken into custody under such circumstances that, were the juvenile an adult, an arrest would be made. Police "contacts" with juveniles where no offense has been committed should not be counted as arrests. Instances in which a juvenile is taken into custody for matters such as dependency should not be entered as "arrests" and are not included in the tabulation of arrest data.</p> <p>Specific guidelines about Column 13 entries of juvenile disposition on the custody form follow.</p> <p>The juvenile disposition codes are:</p> <p>P = Handled within department and released to parents</p> <p>J = Referred to juvenile court/probation department</p> <p>W = Referred to welfare agency</p> <p>O = Referred to other police agency</p> <p>R = Referred to criminal or adult court (Remand)</p>

<u>Col.</u>	<u>Title</u>	<u>Definition</u>
13	<u>Juvenile Disposition Code (cont.)</u>	<p>P - <u>Handled within the department and released to parents, etc.</u></p> <p>As mentioned before, many juveniles will be taken into custody or arrested for committing a violation, but no referral will be made to juvenile court and no formal charges will be preferred. Rather, the juvenile is warned by police and released to parents, relatives, etc., such dispositions would be coded "P".</p> <p>J - <u>Referred to juvenile court or probation department.</u></p> <p>Enter "J" in the juvenile disposition field if the juvenile arrested/handled is referred to juvenile court or an agency working within the jurisdiction of the juvenile court. If a juvenile is arrested/handled more than once during the month, enter each referral as a new arrest.</p> <p>W - <u>Referred to welfare agency.</u></p> <p>The same rules apply here as with "J" above, except the referral is to a welfare agency either public or private, rather than to juvenile court or probation department.</p> <p>O - <u>Referred to other police agency.</u></p> <p>Entries using this juvenile disposition code will in most instances be juveniles who commit crimes in your jurisdiction, but reside in another jurisdiction and are turned over to that jurisdiction and handling, or are committing crimes in their home jurisdiction and are turned over to the latter for handling.</p> <p>R - <u>Referred to criminal or adult court.</u></p> <p>Enter "R" for juveniles remanded to adult court.</p>

<u>Col.</u>	<u>Title</u>	<u>Definition</u>
13	<u>Juvenile Disposition Code (cont.)</u>	The entering of juveniles is complete at this column unless referred to criminal or adult court, in which case there would be court disposition available at some later date.
		COURT DISPOSITION REPORTING IS OPTIONAL. HOWEVER, BOTH OF THE COURT DISPOSITION COLUMNS (14 AND 15) ARE REQUIRED AS A SET IF A COURT DISPOSITION IS ENTERED.
14	<u>Court Charge</u>	Using the Arrest Code to describe the charge on which the subject actually stood trial. This could be different from the charge at time of arrest. See Arrest Codes on pages 59 through 65.
15	<u>Court Disposition Code</u>	The alpha code describing the basic outcome of the trial: A = Acquitted D = Case Dismissed C = Convicted L = Convicted of Lesser Charge P = Plead Guilty F = Bail Forfeiture X = Deferred Prosecution

3.4 Case, Arrest, Misdemeanor or Traffic Citation number (DUII only) may be used as the entry identifier. Protective/Civil custody code entries do not require any case or arrest number.

Arrest # 45123: On 092779 at 1000 hours the Woodburn police arrested a white female with date of birth (DOB) of 032044 for misdemeanor forgery. The arrest occurred in town.

12	13	21	27	31	33	35	44	49	50	51	57	58	59	65
1.	2.	3.	4.	5.	6.	7.	8.	9.	10.	11.	12.	13.	14.	15.
MSG	CASE, ARREST OR	ARREST CODE	ARREST				OFFICER	S	R	DATE OF	ARST	JUV	COURT	
KEY	CITATION NUMBER	ARREST NAME	DATE	TIME	CNTY	LOCATION CODE	IDENTIFICATION	E	A	BIRTH	TYPE	DISP	CHARGE	COUNT
					CODE			X	C		CODE	CODE		DISPO CODE
E	45123	1002 Forg (M)	0927	10	24	D7	04160	F	W	032044	A			

Misd. Cit. # L31234: On 100179 at 1700 hours, the dept. cited a white male with date of birth (DOB) of 072053 for shoplifting a small pocket transistor radio from the local Pay-More Store.

12	13	21	27	31	33	35	44	49	50	51	57	58	59	65
1.	2.	3.	4.	5.	6.	7.	8.	9.	10.	11.	12.	13.	14.	15.
MSG	CASE, ARREST OR	ARREST CODE	ARREST				OFFICER	S	R	DATE OF	ARST	JUV	COURT	
KEY	CITATION NUMBER	ARREST NAME	DATE	TIME	CNTY	LOCATION CODE	IDENTIFICATION	E	A	BIRTH	TYPE	DISP	CHARGE	COUNT
					CODE			X	C		CODE	CODE		DISPO CODE
E	L31234	0602 Theft (M)	1001	17	24	F10	04160	M	W	072053	C			

Case # 790400: On 100379 at 1100 hours, the dept. takes a white male juvenile with date of birth (DOB) of 081663 into custody for Theft; taking several band instruments from his school over a period of several weeks. The subject is referred to the juvenile department.

12	13	21	27	31	33	35	44	49	50	51	57	58	59	65
1.	2.	3.	4.	5.	6.	7.	8.	9.	10.	11.	12.	13.	14.	15.
MSG	CASE, ARREST OR	ARREST CODE	ARREST				OFFICER	S	R	DATE OF	ARST	JUV	COURT	
KEY	CITATION NUMBER	ARREST NAME	DATE	TIME	CNTY	LOCATION CODE	IDENTIFICATION	E	A	BIRTH	TYPE	DISP	CHARGE	COUNT
					CODE			X	C		CODE	CODE		DISPO CODE
E	790400	0601 Theft (F)	1003	11	24	A14	04160	M	W	081663	A	J		

Arrest # 45124: On 100479 at 1300 hours, the department arrests a Chinese male subject for disorderly conduct. The subject can't or won't speak English and has no papers to establish his DOB or identification etc. The subject appears to be about 30 years old and a "No DOB" would be entered as follows.

12	13	21	27	31	33	35	44	49	50	51	57	58	59	65
1.	2.	3.	4.	5.	6.	7.	8.	9.	10.	11.	12.	13.	14.	15.
MSG	CASE, ARREST OR	ARREST CODE	ARREST				OFFICER	S	R	DATE OF	ARST	JUV	COURT	
KEY	CITATION NUMBER	ARREST NAME	DATE	TIME	CNTY	LOCATION CODE	IDENTIFICATION	E	A	BIRTH	TYPE	DISP	CHARGE	COURT
					CODE			X	C		CODE	CODE		DISP CODE
E	45124	2402 Dis. Ord.	1004	13	24	B4	04160	M	C	000049	A			

"Custody": On 100479 at 1500 hours the department picks up an intoxicated Japanese male subject with a DOB of 112130. The subject is delivered to the local Detoxification Center.

12	13	21	27	31	33	35	44	49	50	51	57	58	59	65
1.	2.	3.	4.	5.	6.	7.	8.	9.	10.	11.	12.	13.	14.	15.
MSG	CASE, ARREST OR	ARREST CODE	ARREST				OFFICER	S	R	DATE OF	ARST	JUV	COURT	
KEY	CITATION NUMBER	ARREST NAME	DATE	TIME	CNTY	LOCATION CODE	IDENTIFICATION	E	A	BIRTH	TYPE	DISP	CHARGE	COURT
					CODE			X	C		CODE	CODE		DISP CODE
E		51021 Detox.	1004	15	24	C7	04160	M	J	112130				

Case # 790401: On 100679 at 2330 hours the department arrests a white male subject with DOB of 052550 for Burglary and Arson.

12	13	21	27	31	33	35	44	49	50	51	57	58	59	65
1.	2.	3.	4.	5.	6.	7.	8.	9.	10.	11.	12.	13.	14.	15.
MSG	CASE, ARREST OR	ARREST CODE	ARREST				OFFICER	S	R	DATE OF	ARST	JUV	COURT	
KEY	CITATION NUMBER	ARREST NAME	DATE	TIME	CNTY	LOCATION CODE	IDENTIFICATION	E	A	BIRTH	TYPE	DISP	CHARGE	COURT
					CODE			X	C		CODE	CODE		DISP CODE
E	790401	0502 Burg.	1006	23	24	E1	04160	M	W	052550	A			
↓	↓	0901 Arson	↓	↓	↓	↓	↓	↓	↓	↓	M			

Arrest # 45125: On 100679 at 0700 hours the department arrests a male negro subject with a
 DOB of 052048 on a neighboring county warrant charging criminal activity in drugs.

12	3	21	27	31	33	35	44	49	50	51	57	58	59	65
1.	2.	3.	4.	5.	6.	7.	8.	9.	10.	11.	12.	13.	14.	15.
MSG	CASE, ARREST OR	ARREST CODE	ARREST		CNTY	LOCATION CODE	OFFICER	S	R	DATE OF	ARST	JUV	COURT	
KEY	CITATION NUMBER	ARREST NAME	DATE	TIME	CODE		IDENTIFICATION	X	A	BIRTH	TYPE	DISP	CHARGE	COURT
								E	N		CODE	CODE		DISPO
E	45125	550180 Fugitive	1006	07	24	G3	04160	M	N	052048	F			

Case # 790289: The department receives judicial disposition which advises of final court
 action occurring on 100179. The arrested subject originally arrested in August for
 burglary was formally charged/stood trial on burglary and was convicted.

12	3	21	27	31	33	35	44	49	50	51	57	58	59	65
1.	2.	3.	4.	5.	6.	7.	8.	9.	10.	11.	12.	13.	14.	15.
MSG	CASE, ARREST OR	ARREST CODE	ARREST		CNTY	LOCATION CODE	OFFICER	S	R	DATE OF	ARST	JUV	COURT	
KEY	CITATION NUMBER	ARREST NAME	DATE	TIME	CODE		IDENTIFICATION	X	A	BIRTH	TYPE	DISP	CHARGE	COURT
								E	N		CODE	CODE		DISPO
M	790289	0502 Burg.			24								0502	C

57

Citation # 12345: On 100779 at 1800 hours the patrol division arrested a white female subject
 with DOB of 031740 for driving under the influence of intoxicating liquor with BA of .12,
 (DUII). (DO NOT enter an offense of DUII on the Offense/Activity form).

12	3	21	27	31	33	35	44	49	50	51	57	58	59	65
1.	2.	3.	4.	5.	6.	7.	8.	9.	10.	11.	12.	13.	14.	15.
MSG	CASE, ARREST OR	ARREST CODE	ARREST		CNTY	LOCATION CODE	OFFICER	S	R	DATE OF	ARST	JUV	COURT	
KEY	CITATION NUMBER	ARREST NAME	DATE	TIME	CODE		IDENTIFICATION	X	A	BIRTH	TYPE	DISP	CHARGE	COURT
								E	N		CODE	CODE		DISPO
E	12345	21012 DUII	1007	18	24	A6	04160	F	W	031740	A			

3.5 CODES

3.5.1 ARREST/CUSTODY CODES

010 CRIMINAL HOMICIDE

- 1 Willful
 - 1 Deliberate
 - 2 Mitigated deliberate
- 2 Negligent
 - 1 Criminally Negligent - Auto
(Optional Offense for this particular
sub category is 40 Traffic Accident - Fatal,
page 33).
 - 2 Criminally Negligent - Other

020 FORCIBLE RAPE

- 1 Sexual Intercourse W/O Consent. (Includes arrests for attempts.)

030 ROBBERY

040 AGGRAVATED ASSAULT

050 BURGLARY

- 1 Aggravated Burglary
- 2 Burglary

060 LARCENY (Except Motor Vehicle Theft)

- 1 Felony Theft
- 2 Misdemeanor Theft
- 3 Theft of Mislaid Property

070 MOTOR VEHICLE THEFT

- 1 Motor Vehicle Theft
- 2 Unauthorized Use of Motor Vehicles

080 OTHER ASSAULTS

- 4 Resist Arrest
- 5 Simple, Not Aggravated
- 6 Intimidation
- 9 Other

090 ARSON

- 1 Arson
- 2 Negligent Arson
- 3 Reckless Burning

100 FORGERY & COUNTERFEITING

- 1 Forgery, A Felony (over \$150)
- 2 Forgery, A Misdemeanor (under \$150)
- 3 Illegal Branding
- 9 Other

110 FRAUD

- 1 Deceptive Business Practices
- 2 Fraud Use of Credit Cards
- 3 Chain Distributor Schemes
- 4 Negotiating a Bad Check
- 5 Deceptive Practices
- 6 Theft of Labor or Services
- 9 Other

120 EMBEZZLEMENT

130 STOLEN PROPERTY - BUYING, RECEIVING, POSSESSING

140 VANDALISM

- 1 Criminal Mischief - Loss more than \$150
- 2 Criminal Mischief - Loss less than \$150
- 5 Local Ordinance

150 WEAPONS - CARRYING, POSSESSING, ETC.

- 1 Possess Illegally
- 2 Carry Concealed
- 9 Other

160 PROSTITUTION & COMMERCIALIZED VICE

- 1 Prostitution
- 2 Promote Prostitution
- 3 Aggravated Promotion of Prostitution
- 4 Local Ordinance

170 SEX OFFENSES

- 1 Deviate Sexual Conduct
- 2 Sexual Assault
- 3 Incest
- 4 Bigamy
- 5 Indecent Exposure
- 9 Other

180 DRUG ABUSE

- | | | |
|-----------------------|---|------------------------------|
| 1 Narcotics | 1 Criminal Sale of Dangerous Drugs | 1 Opium |
| | 2 Crim. Possession with Intent to Sell | 2 Heroin |
| | 3 Crim. Possession of Dangerous Drugs | 3 Morphine |
| | 4 Altering Labels on Dangerous Drugs | 4 Cocaine |
| | 5 Crim. Possession of Precursors to Dangerous Drugs | 5 Codeine |
| | 6 Other | |
| | 7 Fraudulently Obtaining Dangerous Drugs | |
| 2 Marijuana | 1 Criminal Sale of Dangerous Drugs | 1 Hashish |
| | 2 Crim. Possession with Intent to Sell | 2 Marijuana over 1 Kilogram |
| | 3 Crim. Possession of Dangerous Drugs | 3 Marijuana under 1 Kilogram |
| | 4 Altering Labels on Dangerous Drugs | |
| | 5 Crim. Possession of Precursors to Dangerous Drugs | |
| | 6 Other | |
| | 7 Fraudulently Obtaining Dangerous Drugs | |
| 3 Synthetic Narcotics | 1 Criminal Sale of Dangerous Drugs | 1 Methadone |
| | 2 Crim. Possession with Intent to Sell | 2 Demerol |
| | 3 Crim. Possession of Dangerous Drugs | 9 Other |
| | 4 Altering Labels on Dangerous Drugs | |
| | 5 Crim. Possession of Precursors to Dangerous Drugs | |
| | 6 Other | |
| | 7 Fraudulently Obtaining Dangerous Drugs | |
| 4 Dangerous Drugs | 1 Criminal Sale of Dangerous Drugs | 1 Barbiturates |
| | 2 Crim. Possession with Intent to Sell | 2 Amphetamines |
| | 3 Crim. Possession of Dangerous Drugs | 3 Benzedrine |
| | 4 Altering Labels on Dangerous Drugs | 4 Hallucinogens |
| | 5 Crim. Possession of Precursors to Dangerous Drugs | 5 Tranquilizers |
| | 6 Other | 9 Other |
| | 7 Fraudulently Obtaining Dangerous Drugs | |

190 GAMBLING

- | | |
|------------------------|-------------------|
| 1 Bookmaking | 1 Promote |
| 2 Numbers | 2 Possess Record |
| 3 Slot Machines | 3 Possess Device |
| 4 Prohibited Lotteries | 4 Local Ordinance |
| 5 Card Games | |
| 6 Sports Pool | |
| 9 Other | |

200 OFFENSES AGAINST FAMILY

- 1 Sexual Abuse of Children
- 2 Unlawful Transactions with Children
- 3 Endangering the Welfare of Children
- 4 Non-Support
- 9 Other

210 DRIVING UNDER THE INFLUENCE OF INTOXICANTS (DUII)

(The entry of this arrest will automatically create the Part II Offense of Driving Under the Influence. If your department uses Location Code, Officer ID Code, and Occurred Date and Time, be certain to include Location and Officer ID with this entry. Date and Time of arrest will be converted to Occurred Date and Time).

- | | |
|----------------|-----------------|
| 1 Of Alcohol | 1 Under .10 |
| 2 Of Drugs | 2 .10 to .15 |
| 3 Undetermined | 3 .15 to .20 |
| | 4 .20 and above |
| | 5 BA refused |
| | 6 BA not given |
| | 7 Undetermined |

(DO NOT ENTER "OFFENSES" OF DUII ON THE OFFENSE AND ACTIVITY FORM)

220 LIQUOR LAWS

- 1 Minor in Possession
- 2 Illegal Liquor - Make, Possess, Sell, etc.
- 3 Illegal Establishment - Operate
- 4 Drinking in Public
- 5 Furnishing
- 6 Importing
- 9 Other

240 DISORDERLY CONDUCT

- 1 Unlawful Assembly
- 2 Disorderly Conduct
- 3 Harassment
- 4 Obstructing a Peace Officer
- 5 Obstructing Another Public Servant
- 6 Failure to Aid a Peace Officer
- 9 Other

260 OTHER (Except Traffic)

- 1 Kidnap
 - 1 Aggravated Kidnapping
 - 2 Kidnapping
 - 3 Custodial Interference
 - 4 Unlawful Restraint
- 2 Trespass
 - 1 Criminal Trespass to Property
 - 2 Criminal Trespass to Vehicles
 - 3 Local Ordinances
- 3 Animal Ordinances
- 4 Endangering Welfare of Minor
- 5 Escape
- 6 Extortion/Blackmail
- 7 Offensive Littering
- 8 Obscene Materials or Displays
- 9 Other

280 CURFEW/LOITERING (Juveniles)

- 1 Curfew
 - 2 Loiter
- (The entry of this arrest will automatically create the Part II Offense of Curfew/Loitering.)

(DO NOT ENTER "Offenses" of Curfew on the Offense and Activity form.)

290 RUNAWAY (Juveniles)

390 TRAFFIC CRIME (Except DUII)

- 1 Misdemeanor
 - 2 Felony
- 1 Hit and Run
 - 2 Reckless Driving
 - 3 Eluding
 - 4 Driving While Suspended

500 ILLEGAL ALIEN

510 CUSTODY

- 1 Protective
- 2 Civil
 - 1 Detox
 - 2 Mental
- 3 Material Witness
- 9 Other

520 WARRANTS

(Indictments (Includes re-arrest), Bench Warrants, and Traffic Warrants.)

550 FUGITIVES

(Optional - Include 3 digit arrest code to show criminal offense.)

(Arrests for other agencies (Except Traffic) include Parole/Probation, AWOL, etc.)

3.5.2 ARREST DATE AND TIME CODES

ARREST AND/OR COURT DISPOSITION DATE

Dates are entered in columns 4 or 14 by use of 4 digit month and day.
E.g., July 12 = 0712; November 4 = 1104; December 25 = 1225, etc.

ARREST TIME

Arrest times are entered in column 5 by use of coded time.

Arrest time entries must use the specific 1 hour time codes of 00 thru 23.

Arrest time code:

00 = Midnight to 0059 hours	12 = 1200 to 1259 hours
01 = 0100 to 0159 hours	13 = 1300 to 1359 hours
02 = 0200 to 0259 hours	14 = 1400 to 1459 hours
03 = 0300 to 0359 hours	15 = 1500 to 1559 hours
04 = 0400 to 0459 hours	16 = 1600 to 1659 hours
05 = 0500 to 0559 hours	17 = 1700 to 1759 hours
06 = 0600 to 0659 hours	18 = 1800 to 1859 hours
07 = 0700 to 0759 hours	19 = 1900 to 1959 hours
08 = 0800 to 0859 hours	20 = 2000 to 2059 hours
09 = 0900 to 0959 hours	21 = 2100 to 2159 hours
10 = 1000 to 1059 hours	22 = 2200 to 2259 hours
11 = 1100 to 1159 hours	23 = 2300 to 2359 hours

CONTINUED

1 OF 3

4.0 SUPPLEMENTARY HOMICIDE FORM AND OFFICERS
KILLED/ASSAULTED INFORMATION

The supplementary form for willful homicide/negligent homicide is necessary to provide additional information on these specific offenses.

This form is required when these offenses or circumstances are being reported on the Offense/Activity form.

4-220 (6-22-78)
Form Approved
Budget Bureau No. 43-R0002

Ia. Murder and Nonnegligent Manslaughter

[illegible]

Month and Year	Agency Identifier	Prepared By	Title
Agency	State	Chief, Sheriff, Commissioner, Superintendent	EBK/DO

Do Not Write Here	
Recorded	Initials
Edited	
Punched	
Verified	
Adjusted	

INSTRUCTIONS FOR PREPARING THE SUPPLEMENTARY HOMICIDE REPORT

The supplementary form (FBI/DOJ) is used only when your agency has a criminal homicide to report and is in addition to the related entries on the offense/activity form and custody forms.

MURDER AND NON-NEGLIGENT MANSLAUGHTER -- defined as the willful (non-negligent) killing of one human being by another.

MANSLAUGHTER BY NEGLIGENCE -- defined as the killing of another person through gross negligence.
(does not include "traffic death")

Code the appropriate side of the supplementary homicide report form which indicates the type of homicide being reported.

SITUATION CODE (Use only one of the following)

A = Single Victim/Single Offender
B = Single Victim/Unknown Offender or Offenders
C = Single Victim/Multiple Offenders
D = Multiple Victims/Single Offender
E = Multiple Victims/Multiple Offenders
F = Multiple Victims/Unknown Offender or Offenders

VICTIM (Make complete entry for each victim)

AGE Use 2 digit age of victim (e.g., 05 = 5 years;
31 = 31 years; etc.)
99 - if victim is 99 years of age or older
NB - if victim is 1 week or less in age
BB - if victim is more than 1 week old and less than
12 months
00 - if age is totally unknown and no reasonable
estimate is practical

SEX M - if victim is male
F - if victim is female
U - if sex of victim is unknown

VICTIM (cont.)

<u>RACE</u>	W - White	M - Mexican American/Mexican National
	N - Negro	J - Japanese
	I - Indian	V - Vietnamese/Cambodian/Laotian/Thai
	C - Chinese	A - Other Asian/Pacific Islander
		U - Unknown

OFFENDER

Enter any AGE, SEX and RACE information that is known using the same guidelines as for VICTIM. Leave any offender columns blank when the information is unknown.

WEAPON/CAUSE (Use one of the following)

Handgun
Rifle
Shotgun
Firearm (Type unknown)
Other gun
Knife or cutting instrument (ice pick, screwdriver, axe, etc.)
Blunt object
Personal weapons (hand, fists, feet, teeth, etc.)
Poison (not including gas)
Pushed or thrown
Explosives
Fire
Narcotics and drugs (includes sleeping pills)
Drowning
Strangulation - hanging
Asphyxiation (includes death by gas)
Other (type of weapon is none of the above or is unknown)

RELATIONSHIP OF VICTIM TO OFFENDER (Use one of the following)

Husband	Neighbor
Wife	Acquaintance
Common-law husband	Boy friend
Common-law wife	Girl friend
Mother	Ex-husband
Father	Ex-wife
Son	Employee
Daughter	Employer
Brother	Friend
Sister	Homosexual relationship
In-law	Other-known to victim
Step-father	Stranger
Step-mother	Unknown relationship
Step-son	
Step-daughter	
Other family	

CIRCUMSTANCES

In this portion, furnish a brief statement as to the circumstances surrounding the victims death. In those felony killings which occur in conjunction with the commission of another crime such as robbery, rape, or other felonious activity, identify the specific offense involved. In other criminal homicides, provide as much information as is possible in order that murders resulting from lovers quarrels, drunkenness, arguments of money, revenge, narcotics, gangland killings, etc., may be identified. Please do not merely put down the words "altercation," "fight," "quarrel," etc. Descriptions of this type do not provide sufficient information for purposes of analysis. Remember that you are basing your statement of circumstances on information known to police following police investigation. Do not be concerned as to what a grand jury, coroner's inquest, or other agency outside law enforcement might finally decide regarding the circumstances of a murder. Use as much space as necessary to describe circumstances.

MANSLAUGHTER BY NEGLIGENCE

On the Supplementary Homicide Report you will find the page entitled "1.b. Manslaughter by Negligence."

Instructions with regard to situation codes; age, sex and race of both the victim and offender; weapon used; and relationship of victim to offender are identical to that provided for the murder and nonnegligent manslaughter section. The circumstances for the manslaughter by negligence portion of this form vary only in that for obvious reasons certain circumstances employed in the murder and nonnegligent manslaughter section would not be applicable. Circumstances commonly utilized in manslaughter by negligence offenses, to name a few, will be victim shot in hunting accident, gun cleaning, children playing with gun, etc.

Please bear in mind you are not to include traffic fatalities, accidental deaths or deaths due to the negligence of the victim. Information is to be provided regarding all other negligent manslaughter regardless of prosecutive action taken.

Example:

Death resulting from the discharge of a firearm by a person other than the victim in a grossly negligent manner would be a situation which you would describe on page 2 of the SHR.

SAMPLE PROBLEMS:

Sample homicide problems in Sometown, Montana as reported by the Sometown PD of Our County. Corresponding entries on the opposite pages illustrate the supplementary entries.

Case Number 790069

On January 10, 1979 at about 10:30 a.m., the body of a man (white, male, age 35) was found at the bottom of an elevator shaft of the 12 story apartment house where he resided on the 10th floor with his wife (white, female, age 34). Investigation determined that he arrived home about 3:30 a.m., engaged in a brief heated argument with his wife regarding suspected infidelity, whereupon she knocked him unconscious with a rolling pin and pushed his body down an empty elevator shaft. The sudden stop after falling 10 floors (plus basement) was the actual cause of death.

4-220 (6-22-78)
Form Approved
Budget Bureau No. 43-R0002

1a. Murder and Nonnegligent Manslaughter

List below specific information for all offenses shown in item 1a of the monthly Return A. In addition, list all justifiable killings of felons by a citizen or by a peace officer in the line of duty.

[illegible]

* - See reverse side for explanation

0179
Month and Year

Agency Identifier

Prepared By

Title

Agency

State

Chief, Sheriff, Commissioner, Superintendent

FBI/DOJ

Do Not Write Here	
Recorded	Initials
Edited	
Punched	
Verified	
Adjusted	

Case Number 790096

On January 12, 1979 at 12:45 a.m., a man and wife were asleep in the upstairs of their residence when the wife was awakened by the sound of breaking glass downstairs. She aroused her husband (white, male, age 51) who took his shotgun and went to investigate. He subsequently shot and killed a burglar/intruder (negro, male, age 23) who attacked him when he tried to hold him for the police.

4-220 (6-22-78)
Form Approved
Budget Bureau No. 43-R0002

1a. Murder and Nonnegligent Manslaughter

[illegible]

* - See reverse side for explanation
 **

0179 MTD350500
Month and Year Agency Identifier

Sometown P.D. M.T.
Agency State

Prepared By

Title

Chief, Sheriff, Commissioner, Superintendent

FBI/DOJ

Do Not Write Here	
Recorded	Initials
Edited	
Punched	
Verified	
Adjusted	

Case Number 790131

On January 19, 1979 at approximately 11:00 p.m., the owner (white, female, age 50) of the local all night convenience store was shot and killed with a rifle during an armed robbery of her business. Witnesses advised that 2 masked white men fled the scene in a fast car.

SUPPLEMENTARY HOMICIDE REPORT

4-220 (6-22-78)
Form Approved
Budget Bureau No. 43-R0002

In view of the importance of the homicide classification in crime reporting, it is requested that the following supplementary report be filled in and transmitted with monthly Return A to: Uniform Crime Reports, Federal Bureau of Investigation, U. S. Department of Justice, Washington, D. C. 20535.

1a. Murder and Nonnegligent Manslaughter

List below specific information for all offenses shown in item 1a of the monthly Return A. In addition, list all justifiable killings of felons by a citizen or by a peace officer in the line of duty.

Data	Situation *	Victim **			Offender **			Data Code Do Not Write In These Spaces	Weapon Used (Handgun, Rifle, Shotgun, Club, Poison, etc.)	Relationship of Victim to Offender (Husband, Wife, Son, Father, Acquaintance, Neighbor, Stranger, etc.)	Circumstances (Victim shot by robber, robbery victim shot robber, killed by patron during barroom brawl, etc.)
		Age	Sex	Race	Age	Sex	Race				
77		C	50	F	W	00	M	W	Rifle	UNKNOWN	Victim shot during
									"	"	ROBBERY.

* - See reverse side for explanation
**

0179			
Month and Year	Agency Identifier	Prepared By	Title
Agency	State	Chief, Sheriff, Commissioner, Superintendent	FBI/DOJ

Do Not Write Here	
Recorded	Initials
Edited	
Punched	
Verified	
Adjusted	

Case Number 790211

On January 29, 1979, at 1:00 p.m., two young men were hunting jack rabbits in a large undeveloped sagebrush area at the edge of town. One of the men (white, male, age 21) was climbing over a fence in a careless manner and his shotgun discharged killing his friend and companion (Indian, male, age 19).

SUPPLEMENTARY HOMICIDE REPORT (Continued)

1b. Manslaughter by Negligence

Do not list traffic fatalities, accidental deaths, or death due to the negligence of the victim. List below all other negligent manslaughters, regardless of prosecutive action taken.

[illegible]

*** - Situations A - Single Victim/Single Offender**

B - Single Victim/Unknown Offender or Offenders

C - Single Victim/Multiple Offenders

D - Multiple Victims/Single Offender

E - Multiple Victims/Multiple Offenders

F - Multiple Victims/Unknown Offender or Offenders

Use only one victim/offender situation code per set of information. The utilization of a new code will signify the beginning of a new murder situation.

** Age - 01 to 99. If 100 or older use 99. New born up to one week old use NB. If over one week, but less than one year old use BB. Use two characters only in age columns.

Sex - M for Male and F for Female. Use one character only.

Race - White - **W**, Negro - **N**, American Indian - **I**, Chinese - **C**, Japanese - **J**, Other - **O**, Unknown - **U**. Use only these as race designations.

LAW ENFORCEMENT OFFICERS ASSAULTED

Entry Instructions and Examples

Officer assault can be best described as an assault or aggressive attack upon the person of an officer while the officer was acting in an official capacity. Whether this was during a time of on or off duty has no bearing.

The seriousness of injury is not the determining factor in the decision to report an Officer Assault. There may be no injury or very slight injury to the officer, but the circumstances of the assault may have had grave potential if carried out.

An Officer Assault (Activity Code 90) entry should be made for each officer assaulted. This entry is in addition to any other offense entry relating to the incidents surrounding the officer assault and to the answering of the three officer assault questions at the bottom of your monthly page 1 Offense/Activity form.

Example: During the course of mediating a family disturbance the officer was struck by one of the participants.

Solution: One 04 assault offense entry and a 90 officer assault entry.

Explanation: The Data Center will include the 04 assault in the Part I offenses and will create the special Officer Assault Supplementary Report based on the completed (six character) code 90 entry.

90 OFFICER ASSAULT

- 1 Assaulted, No Injury
- 2 Assaulted, With Injury
- 3 Killed, Felonious Act
- 4 Killed, Accidental/Negligent Act

- 1 Firearm
- 2 Knife or Cutting Instrument
- 3 Other Dangerous Weapon
- 4 Hands, Fists, Feet, Etc.

- 1 Two man Vehicle
- 2 One Man Vehicle, Alone
- 3 One Man Vehicle, Assisted
- 4 Detective or Special Assignment, Alone
- 5 Detective or Special Assignment, Assisted
- 6 Other, Alone
- 7 Other, Assisted

- A Responding to "Disturbance" Calls
- B Burglary in Progress or Pursuing Burglary Suspect
- C Robbery in Progress or Pursuing Robbery Suspects
- D Attempting Other Arrests
- E Civil Disorder
- F Handling, Transporting, Custody of Prisoners
- G Investigating Suspicious Persons or Circumstances
- H Ambush - No Warning
- I Mentally Deranged
- J Traffic Pursuits and Stops
- K All Other

Occurred date and time (columns 7 and 8 of the Offense/Activity form) are required for this entry.

It is very important to clear this entry if an arrest or clearance by exceptional means is involved.

Sample Officer Assault problems at the Sometown Police Department in Our County: Corresponding entries on the following page illustrate the required information.

Case Number 791234

On January 3, 1979 at 10:45 p.m., a foot patrolman was in hot pursuit of a suspect wanted in connection with an attempted burglary of a jewelry store. The suspect turned and fired a shot at the pursuing officer which missed and harmlessly struck a wall several feet away. Subsequently the suspect was apprehended and disarmed.

Case Number 794123

On January 16, 1979 at 12:30 a.m., a traffic officer in a one-man car stopped a woman motorist for speeding on Montana 207 at the edge of town. During the interview, the driver became irate and struck the officer several times about the head with her heavy, sharp-edged purse which caused lacerations and bleeding. The driver was subdued and arrested.

5.0 MUCR DEFINITIONS

The MUCR program collects criminal offense and related information from state and local law enforcement agencies. From this data statistical, administrative and analytical reports are produced. The establishment of standard definitions is essential to ensure uniformity and consistency of this information.

The reporting of offense data requires the classification of each offense to the appropriate MUCR category. This classification depends solely on the circumstances of the offense. Titles contained in state or local statutes and ordinances have no effect on the MUCR classification.

Unusual situations may arise in the process of classifying offenses which are not covered in this manual due to the infrequency of their occurrence. In classifying an unusual situation consider the circumstances of the crime and use the guidelines provided by the following definitions in arriving at a classification.

If assistance is needed in classifying any situation, contact the Data Center by phone, teletype or letter.

5.1 PART I OFFENSES

PART I OFFENSES ARE AS FOLLOWS:

- 01 Criminal Homicide
 - Murder
 - Manslaughter
- 02 Forcible Rape
 - Rape by Force
 - Attempts to commit forcible rape
- 03 Robbery
 - Firearm
 - Knife or cutting instrument
 - Other dangerous weapon
 - Strongarm - hands, fists, feet, etc.
- 04 Aggravated Assault
 - Firearm
 - Knife or cutting instrument
 - Other dangerous weapon
 - Hands, fists, feet, etc. (aggravated injury)
- 05 Burglary
 - Forcible entry
 - Unlawful entry - no force
 - Attempted forcible entry

PART I OFFENSE (cont.)

06 Larceny-Theft (Except motor vehicle theft)

07 Motor Vehicle Theft

Autos
Motorcycles
Trucks/buses/vans
Snowmobiles
Other motor vehicles

CRIME INDEX

The "Crime Index" refers to specific crimes on which national crime trends are calculated and reported. Crime index offenses include all Part I offenses except manslaughter.

MUCR DEFINITIONS, EXAMPLES

01 CRIMINAL HOMICIDE

Murder-Willful Homicide

Definition -- the willful killing of one human being by another

As a general rule, any death due to a fight, argument, quarrel or assault is classified as a murder. Make one entry for each person willfully killed by another.

Suicides, accidental deaths, assaults to murder, and attempted murders are not counted as murder. Suicides (or attempts) are entered as police activity (see page 33). Some accidental deaths are counted as manslaughter and are discussed on page 94. Attempted murders are counted as aggravated assaults and are discussed on pages 98-99.

Certain willful killings are classified as justifiable or excusable. In MUCR, justifiable homicide is defined and limited to:

- 1 The killing of a felon by a peace officer in the line of duty, or
- 2 The killing of a felon by a private citizen.

Do not count as justifiable or excusable on the basis of self-defense, action of a coroner, prosecutor, grand jury or court. You are classifying and entering police statistics based on police investigation and program guidelines.

To enter justifiable homicide, make one entry for each victim and unfound in column 18. See examples on the following page.

Murder Examples

A berserk gunman shoots and kills three pedestrians. He is subdued and placed under arrest. (Enter three offenses of murder, cleared by arrest).

Joe and Jim, while playing cards, get into an argument. Joe comes at Jim with a broken bottle, and Jim pulls a gun and kills Joe. (Enter one offense of murder, cleared by arrest, and one offense of aggravated assault, cleared exceptionally).

A neighbor discovers an infant who has been beaten. The neighbor rushes the infant to the hospital. Later, the infant dies as a direct result of the injuries. Investigation reveals that the boyfriend of the mother is responsible. He and the mother are not considered mentally competent, and the district attorney does not wish to prosecute. (Enter one offense of murder, cleared exceptionally).

A husband and wife have an argument. The wife shoots the husband and severely wounds him. He grabs the gun and kills her. The husband lives and is subsequently arrested. (Enter one offense of murder, cleared by arrest, and one offense of aggravated assault, cleared exceptionally).

A man is shot and killed in an argument with a neighbor over the location of their property line. The neighbor is arrested and charged. (Enter one offense of murder, cleared by arrest).

Subsequent to a bank robbery, a private citizen chases the robber from the bank. The robber fires at the pursuer, misses, and kills a woman walking on the street. (Enter one offense of robbery, one offense of aggravated assault, and one offense of murder, no clearances).

A man is in a fight on the second floor of a building. He is knocked through a window and is killed. No arrests have been made. (Enter one offense of murder, not cleared).

A police officer answers a bank holdup alarm and surprises the robber coming out of the bank. The robber fires at the police officer who shoots and kills him in the line of duty. (Enter one offense of murder, unfounded, one offense of robbery and one offense of aggravated assault, both cleared exceptionally). (Be certain to enter a Code 90-Officer Assault).

Manslaughter by Negligence

Definition -- The killing of another person through gross negligence.

One offense is entered for each person killed. The death of a person caused by his own negligence is unfounded. Enter as unfounded the death of a person who was determined by your investigation to be negligent in causing his own death. The findings of a court, coroner's inquest, etc., do not affect the classifying or entering; these are police statistics.

NOTE

ARRESTS for Negligent Homicide due to traffic accident death are entered in this classification.

OFFENSES of Negligent Homicide due to traffic accident death are entered as code 40 TRAFFIC ACCIDENT-FATAL as defined on page 118.

Manslaughter Examples

A target shooter was practicing in a wooded area near a housing project. One shot missed the target and killed a resident of the project. The police arrested the shooter. (Enter one offense of manslaughter, cleared by arrest).

While two juvenile boys are playing with a gun, one "playfully" points the gun at the other. One boy fires the gun, and the other boy is killed. At the time of arrest the boy claimed he didn't know the gun was loaded. (Enter one offense of manslaughter, cleared by arrest).

02 FORCIBLE RAPE

Definition -- The carnal knowledge of a female forcibly and against her will.

Enter one offense for each person raped or upon whom an assault to rape or attempt to rape has been made.

Rape or attempts to accomplish by force or threat of force are classified as forcible rape regardless of the age of the victim.

In cases where several men attack one female, enter one forcible rape. Do not count the number of offenders.

Do not count statutory rape offenses. Statutory rape is defined as the carnal knowledge or the attempted carnal knowledge of a female with no force used and in which the female victim is under the legal age of consent. Do not include other sex offenses under this category. Statutory rape, sex attack upon a male, and other sex offenses are listed as "Sex Offenses" on page 113.

Forcible Rape Examples

A complaint is received from a woman who states that on leaving work late one night she was attacked in the company parking lot by an unknown male and forcibly raped. (Enter one offense of rape, not cleared).

Two men lure a girl into their hotel room with the promise of a job. They threaten her with a knife and both forcibly rape her. On complaint of the girl both men are arrested. (Enter one offense of rape, cleared by arrest).

Investigation determines that a forcible rape has occurred. Police arrest the offender, but the victim refuses to prosecute due to fear of possible publicity and embarrassment. Even though the victim refuses to cooperate, the offense actually took place and must be counted. (Enter one offense of rape, cleared exceptionally).

Three girls are attacked, assaulted and raped by four boys. Each of the boys raped each of the girls. No arrests have been made. (Enter three offenses of rape, no clearances).

A woman is attacked on the street by a man who attempts to have sexual relations with her. The attacker is frightened away by a pedestrian before the intended offense can be completed. (Enter one offense of attempted forcible rape, not cleared).

03 ROBBERY

Definition -- The taking or attempting to take anything of value from the care, custody, or control of a person or persons by force or threat of force or violence and/or by putting the victim in fear.

Robbery is a vicious type of theft in that it takes place in the presence of the victim. The victim, who usually is the owner or person having custody of the property, is directly confronted by the perpetrator and is threatened with force or fear that force will be used. Robbery involves a theft or larceny, but aggravated by the element of force or threat of force. If no force or threat of force is used such as in pocketpicking or pursesnatching, the offense must be counted as larceny rather than robbery.

If force is used in the commission of a theft such as in overcoming the active resistance of the victim in a purse-snatching, then the offense is to be classified as strongarm robbery.

In the effort to analyze robbery, the natural breakdown related to the degree of threatened or applied force is used. Robbery is divided into the following subheadings:

- . Firearm
- . Knife or cutting instrument
- . Other dangerous weapon
- . Strongarm - hands, fists, feet, etc.

Examples of armed robbery are incidents commonly referred to as "stickups", "hijackings", "holdups", and "heists". Robberies in which no weapons are used may be referred to as "strongarms", "muggings", "Yokes", and "muscle jobs".

In any instance of robbery, enter one offense for each distinct operations. Do not count the number of persons robbed or those present at the robbery. Also, remember that the number of persons committing the crime has nothing to do with the number of offenses.

In cases involving pretended weapons or those in which the weapon is not seen by the victim, but the robber claims to have it in his possession, enter as armed robbery under the appropriate category. If an immediate "on view" arrest proves that there is no weapon, you may enter the matter as strongarm robbery. In all of the categories of robbery enter attempts the same as completed offenses.

Firearm

Enter one offense for each "distinct operation" in which any firearm is used as a weapon or employed as a means of force to threaten the victim or put him in fear.

Knife or Cutting Instrument

Enter one offense for each "distinct operation" in which a knife, broken bottle, razor, or other cutting instrument is employed as a weapon or as a means of force to threaten or put the victim in fear.

Other Dangerous Weapon

Enter one offense for each "distinct operation" in which a club, acid, explosive, brass knuckles, or other dangerous weapon is used.

Strongarm - Hands, Fists, Feet, Etc.

This category includes muggings, yokings, and similar offenses where no weapon is used, but strongarm tactics are employed to deprive the victim of his property. This is limited to personal weapons such as hands, arms, feet, fists, teeth, etc.

Robbery Examples

A man comes to a victim's door and asks to use the phone. After being admitted to the residence, he pulls a gun and demands money. He takes the victim's money and flees. (Enter one offense of robbery, no clearance).

A lone male with a gun appeared in a tavern and ordered ten patrons and the owner to hand over their cash and jewelry. After obtaining the loot, the subject left. (Enter one offense of robbery, no clearance).

A group of four men planned to rob a local supermarket. One of the men informed the police. On the appointed day, the four walked in the front door armed with handguns. They were all arrested. The source of information was later released for cooperating. (Enter one offense of robbery, one clearance).

A person enters a rural grocery with a shotgun and orders the clerk to hand over the cash. The clerk complies. The suspect runs out of the store to a waiting auto. The police are notified, and spot the suspect's vehicle. A 17-year-old suspect is apprehended. (Enter one offense of robbery, cleared by arrest of person under 18).

A man was walking down the street when an assailant grabbed him and held a broken bottle to his throat. While the assailant was attempting to remove the victim's wallet from his pocket, the police arrived. The assailant was arrested. (Enter one offense of robbery, cleared by arrest).

Two men accosted a third in an alley near a bar. They beat him severely with a club and took his wallet containing several hundred dollars. No arrest was made. (Enter one offense of robbery, no clearance).

A woman robbed a jewelry store by threatening to detonate a bomb. The bomb was composed of wire and highway flares and black powder. She was apprehended by two employees of the store. (Enter one offense of robbery, cleared by arrest).

During a purse snatching on a street corner the victim is shoved to the ground and her purse taken. The thief escapes. (Enter one offense of strongarm robbery, no clearance).

04 ASSAULT

For the purpose of Uniform Crime Reporting, assault information is collected on the offenses that are aggravated in nature and on those that are not aggravated in nature.

Assault, as used in Part I of the UCR, may be defined as an unlawful attack by one person upon another. Aggravated assault is defined as an unlawful attack by one person upon another for the purpose of inflicting severe bodily injury usually accompanied by the use of a weapon or other means likely to produce death or great bodily harm. Attempts should be included since it is not necessary that any injury result from an aggravated assault when a gun, knife, or any other weapon is used which could and probably would result in serious personal injury if the crime were successfully completed.

Aggravated Assault (041 and 043)

Definition -- an unlawful attack by one person upon another for the purpose of inflicting severe or aggravated bodily injury. This type of assault usually is accompanied by the use of a weapon or by means likely to produce death or great bodily harm.

The categories of aggravated assault include the commonly entitled offenses of assault with intent to kill or murder; poisoning; assault with a dangerous or deadly weapon; maiming, mayhem, and assault with intent to maim or commit mayhem; assault with explosives; and all attempts to commit the foregoing offenses. Attempt to murder or assault to murder are reported as aggravated assault. All offenses coming to the attention of police involving an assault by one person upon another with the intent to kill, maim, or inflict severe bodily injury with the use of any dangerous weapon are classified under one of the aggravated assault categories.

On occasion it is the practice of local jurisdictions to charge assailants in assault cases with assault and battery or simple assault. This practice may be followed even though a knife, gun, or other weapon was used in the assault. For Uniform Crime Reporting purposes this type of assault is to be entered as aggravated.

Firearm

Enter here all assaults in which a firearm of any type is used or its use is threatened. Include assaults with revolvers, automatic pistols, shotguns, zip guns, rifles, etc.

Knife or Cutting Instrument

Include the number of assaults or attempted assaults in which a weapon such as a knife, razor, hatchet, ax, cleaver, scissors, glass, broken bottle, ice pick, etc., is used as a cutting or stabbing object.

Other Dangerous Weapon

Include assaults resulting from the use of any object or thing as a weapon which does or could result in serious injury. The weapons in this category would include but not be limited to a club, brick, jack handle, tire iron, bottle, or other blunt instrument used to club or beat the victim. Also include in this category attacks by explosives, acid, lye, poison, scalding water, burning, etc.

Hands, Fists, Feet, Etc. - Aggravated Injury

Show in this category only the attacks by personal weapons such as hands, fists, feet, etc., which result in serious or aggravated injury. The seriousness of the injury is the primary factor to consider in establishing whether the assault is aggravated or simple. The assault will be aggravated if the personal injury is serious such as broken bones, internal injuries, or where stitches are required. On the other hand, it is a simple assault if the injuries are not serious, like abrasions, minor lacerations, or contusions, and require no more than usual first-aid treatment. These simple assaults are to be entered as Other Assaults.

A severe beating, kicking, etc., of a woman or child by an adult will usually be an aggravated assault.

Other Assaults -- Simple, Not Aggravated. (042)

Any assault which does not involve the use of a firearm, cutting instrument or other dangerous weapon and no serious or aggravated injury to the victim.

Enter all offenses of simple assault, assault and battery, injury caused by culpable negligence, intimidation, coercion, and all attempts to commit these offenses.

An Aid in Classifying Assaults

Careful consideration of the following factors should assist you in classifying aggravated assaults.

- . The type of weapon used or the use made of an object as a weapon
- . The seriousness of the injury
- . The intent of the assailant to cause serious injury

It should be necessary in only a very limited number of instances to go so far as to examine the intent of the assailant. Usually the weapons used or the extent of the injury sustained will be the deciding factors.

Prosecutive policy in your jurisdiction should not control your classification. You are reporting police offense data. It is necessary that you examine assaults in your jurisdiction, whether felonious or not by local definition, and classify according to the standard Uniform Crime Reporting definitions. In an aggravated assault situation where the victim later dies, enter one offense of murder for the month in which death occurred, and delete aggravated assault count previously recorded.

Assault Examples

Joe and Bill had an argument. Joe later returned with a gun and shot Bill, attempting to kill him. Bill recovered and Joe was prosecuted for attempted murder. (Enter one offense of aggravated assault-attempted murder, cleared).

While attempting to enter a warehouse at 2 a.m., an individual is discovered by the police. The subject turns and fires on the officer, wounding him. The subject is caught and arrested. (Enter one offense of aggravated assault, cleared, one offense of burglary, cleared and one officer assault).

During a dice game, Mack stabs Phil. Phil recovers and refuses to prosecute Mack. (Enter one offense of aggravated assault, cleared by exceptional means).

During an argument Sam cut Leo with a razor. Sam has not been arrested. (Enter one offense of aggravated assault, not cleared).

Police, in answer to a disturbance call, find a juvenile gang fight in progress. The participants escape, except for seven who suffer injuries. None will cooperate, and it is not determined who started the fight. Three were cut severely

with knives. The remaining four suffered broken bones from beatings by clubs. All seven are arrested on felonious assault charges. (Enter seven offenses of assault, all cleared by arrest of persons under 18).

At the scene of a riot, three policemen were attacked by twenty rioters who were armed with clubs and rocks. The policemen sustained injuries which caused their hospitalization. A total of 45 rioters, including 18 of those participating in the assault were arrested for disturbance. (Enter three assault offenses cleared by arrest, also enter three Code 90 Officer Assaults, cleared by arrest).

During a neighborhood altercation a resident, John, hits neighbor Don and Don's wife with a tire iron. Don suffers a minor bruise, but his wife has a concussion from a blow to the head. John is arrested on charges of disturbing the peace. (Enter two offenses of assault, both cleared).

Jack comes in drunk and during an argument with his wife breaks her jaw. She refuses to sign a complaint. (Enter one offense of assault, cleared exceptionally).

05 BURGLARY -- BREAKING OR ENTERING

Definition -- The unlawful entry of a structure to commit a felony or a theft.

Offenses locally known as burglary (any degree), unlawful entry with intent to commit a larceny or felony, breaking and entering with intent to commit a larceny, housebreaking, safecracking, and all attempts at these offenses should be counted in UCR as burglary.

In the UCR standard definition of burglary, a structure is considered to include but not be limited to the following:

Apartment	Mill
Barn	Office
Cabin	Outbuildings
Church	Public buildings
Dwelling house	Railroad car
Factory	Room
Garage	Schoolhouse
Houseboat (Used as a permanent dwelling)	Ship
Housetrailer (Used as a permanent dwelling)	Shop
	Stable
	Storehouse
	Tenement
	Vessel
	Warehouse
	Other building

Whenever a question arises as to whether a type of structure comes within the purview of this definition, the law enforcement

officer, in looking to the nature of the crime should be guided by the examples set out, and thereafter if there is still a question, contact the MBCC Data Center.

The illegal entry of a tent, tent trailer, motor home, house-trailer, or other mobile unit that is being used for recreational purposes, followed by a theft, felony, or attempt to commit a felony or theft, should not be counted as a burglary. The house-trailer or mobile unit that is permanently fixed as an office, residence, or storehouse should be considered a structure. These will be discussed in the section on Larceny.

Hotel Rule

The burglaries of hotels, motels, lodging houses, and places where lodgings of transients is the main purpose, are entered under provisions of the "Hotel Rule". This principle of entering states that if a number of dwelling units or commercial spaces under a single manager are burglarized and the offenses are most likely to be reported to the police by the manager rather than the individual tenants, the burglary should be counted as one offense. Examples of situations for application of the Hotel Rule are burglary of a number of rental hotel rooms, rooms in "flop" houses, rooms in a youth hostel, and units in a motel. If the individual living areas or commercial spaces in a building are rented or leased to the occupants for a period of time which would preclude the tenancy from being classified as transient, then the burglaries would most likely be reported by the occupants. These should be counted as separate offenses. Examples of this latter type of multiple burglary would be the burglary of a number of apartments in an apartment house, or the offices of a number of commercial firms in a business building, or the offices of separate professionals within one building.

Note

It is important for you to remember that when classifying for Uniform Crime Reporting, you should classify offenses according to UCR definitions and not according to state or local statutes.

Forcible Entry

Enter all offenses where force of any kind is used to unlawfully enter a structure for the purpose of committing a theft or any felony. This act includes entry by use of tools; breaking windows; forcing windows, doors, transoms, or ventilators; cutting screens, walls, or roofs and where known, the use of master keys, picks, unauthorized keys, celluloid or other devices which leave no outward mark but are used to force a lock. Burglary by concealment inside a building followed by an exiting of the structure is included in this category.

Unlawful Entry -- No Force

The entry in these situations involves no force and is achieved by use of an unlocked door or window. Entry is made for the purpose of committing a theft or other felony. The element of trespass to the structure is essential in this classification. This category includes thefts from open garages, open warehouses, open or unlocked dwellings, and open or unlocked common basement areas in apartment houses where entry is committed other than by the tenant who had lawful access. If the area entered were one of open access, thefts from the area would not involve an unlawful trespass and would be scored as larceny.

Attempted Forcible Entry

Enter in this classification those situations where a forcible entry burglary is attempted. If an entry is actually made, enter as in forcible entry above. Police experience is the determining factor in deciding whether force was used or not in gaining entry.

A forcible entry or unlawful entry where no theft or felony occurs but where acts of vandalism, malicious mischief, etc., are committed, is not entered as a burglary provided your investigation clearly establishes that the unlawful entry was for a purpose other than to commit a felony or theft.

Burglary Examples

The ABC liquor Store is broken into on a holiday. Alcoholic beverages and money are missing. (Enter one offense, forcible entry, no clearance).

A burglar uses a key to enter four apartments in a condominium at night. He steals something from each apartment. Each apartment is considered a residence. (Enter four offenses, forcible entry, no clearances).

During the day a thief enters a hotel, forcibly enters seven rooms, and steals articles from all seven rooms. The rooms are occupied by guests. The investigation eliminates hotel employees and others who had lawful access to the rooms. (Enter one offense, forcible entry, no clearance).

A man hides in a theater. After it closes he steals money from the cashbox and leaves the premises during the night. (Enter one offense, forcible entry, no clearance).

After closing hours at night a thief enters an unlocked door of a warehouse. The warehouse has a number of offices of individual shipping companies within it. The subject breaks into eight of the company offices and rifles the office desks.

Some items are stolen from each office. This is similar to counting and entering for apartments. (Enter eight offenses, forcible entry, not cleared).

While a housewife was in the backyard hanging clothes, a 14 year old boy went in the unlocked front door and took her purse. The boy was located and charged with "Juvenile delinquency". (Enter one offense, unlawful entry, cleared by arrest of person under 18).

During the day a thief, posing as a floor cleaner, enters an unlocked office and steals a wallet from a cabinet. (Enter one offense, unlawful entry, no clearance).

06 LARCENY -- THEFT

Definition -- The unlawful taking, carrying, leading, or riding away of property from the possession or constructive possession of another.

Larceny and theft mean the same thing in Uniform Crime Reporting. Motor vehicle theft is not included and is counted separately because of the great volume of thefts in that particular theft category.

All thefts which are not part of a robbery, burglary, or motor vehicle theft should be classified in this category regardless of the value of the article stolen. All thefts and attempted thefts are counted.

Embezzlement, fraudulent conversion of entrusted property, conversion of goods lawfully possessed by bailees, lodgers, or finders of lost property, obtaining money by false pretenses, larceny by check, larceny by bailee, and check fraud are all to be classified as Part II offenses. The definitions of Part II offenses are found on pages 111-117 of this manual.

Enter all attempted larcenies.

Enter one offense of larceny for each distinct operation.

Local offense classifications such as "grand theft", "petty larceny", "felony larceny", or "misdemeanor larceny" have no bearing on the fact that each distinct operation of larceny is counted as an offense for UCR reporting purposes.

Pocketpicking

Definition -- The theft of articles from a person by stealth where the victim usually does not become immediately aware of the theft.

The theft includes removal of such items as wallets from women's purses or handbags and men's pockets, and usually occurs in a crowd, public conveyance, or other similar situation to disguise the activity. Theft from a person in a conscious or unconscious state, including drunks, is included. However, if the victim is manhandled to force beyond simple jostling is used to overcome the resistance of the victim, the offense becomes a strongarm robbery and should be so entered.

Purse Snatching

Definition -- The grabbing or snatching of a purse, handbag, etc., from the custody of an individual.

If more force is used than is actually necessary to snatch the purse from the grasp of the person, then a strongarm robbery has occurred.

Shoplifting

Definition -- The theft by a person other than an employee of goods or merchandise exposed for sale.

This violation assumes that the offender had legal access to the premises and thus no trespass or unlawful entry was involved. This category includes thefts of merchandise displayed outside a building as part of the stock in trade such as in department stores, hardware stores, supermarkets, fruit stands, gas stations, etc.

Thefts from Motor Vehicles (Except Theft of Motor Vehicle Parts and Accessories)

Definition -- The theft of articles from a motor vehicle, whether locked or unlocked.

This type of larceny includes thefts from automobiles, trucks, truck trailers, buses, or motorcycles. It also includes thefts from any area in the automobile or other vehicle including the trunk, glove compartment, or other enclosure. Some of the items included in this category of theft are cameras, suitcases, wearing apparel, packages, tapes, etc. Do not include items that are automobile accessories as they should be in the category Theft of Automobile Parts and Accessories.

Certain state statutes might interpret Thefts from Motor Vehicles as burglaries. For Uniform Crime Reporting these must be entered as larceny.

Theft of Motor Vehicle Parts and Accessories

Definition -- The theft of any part or accessory attached to the interior or exterior of a motor vehicle in a manner which would make the part an attachment to the vehicle or necessary for the operation of the vehicle.

This category would include theft of motors, transmissions, radios, heaters, hubcaps and wheel covers, manufacturers' emblems, license plates, radio antennas, sideview mirrors, gasoline, tape decks, etc. Theft of items being transported in the vehicle should be classified as Thefts from Motor Vehicles.

Theft of Bicycles

Definition -- The unlawful taking of any bicycle, tandem bicycle, unicycle, etc.

Include all bicycle thefts reported to law enforcement agencies.

Theft from Buildings

Definition -- The theft from within a building which is open to the general public and where the offender has legal access.

Do not include shoplifting and thefts from coin-operated devices or machines because these offenses should be counted in their separate categories of larceny. The category theft from buildings includes thefts from such places as churches, restaurants, schools, libraries, public buildings and other public and professional offices during the hours when such facilities are open to the public.

Theft from coin-operated machines or pay telephone boxes within open buildings should be counted as thefts from coin-operated devices or machines.

A theft from a structure accompanied by a breaking or unlawful entry (trespass) without breaking should be counted as burglary and not as a larceny-theft.

Theft from Coin-Operated Device or Machine

Definition -- A theft from a device or machine which is operated or activated by the use of a coin.

Some examples of such machines are candy, cigarette, and food vending machines; telephone coin-boxes; parking meters; laundry machines; pinball machines; washers and dryers located in laundromats where no breaking or illegal entry of the building is involved.

If a building were broken into or illegally entered and a coin-operated machine in the building were rifled for money and/or merchandise, the matter should be classified as burglary.

All Other Larceny -- Theft Not Specifically Classified

Definition -- All thefts which do not fit the definition of the specific categories of larceny listed above.

This category includes theft from fenced enclosures, boats, and airplanes. Thefts of animals, lawnmowers, lawn furniture, hand tools, farm and construction equipment are also included, where no breaking or entering of a structure is involved.

The illegal entry of a tent, tent trailer, or travel trailer used for recreational purposes followed by a theft, felony, or attempt to commit a felony should be counted as larceny. The illegal entry of a motor home or other recreational vehicle followed by a theft, felony, or attempt to commit a felony should be counted as larceny. This type of theft would be classified as a theft from motor vehicle type larceny.

Larceny Examples

While standing in a crowd watching a parade, a man is jostled by a pickpocket who steals his billfold containing over \$200. (Enter one offense of larceny, no clearance).

Two men enter a hardware store together. While one promotes a discussion with the clerk in the back of the store, the other man steals a power saw valued at \$125. (Enter one offense of larceny, no clearance).

The B & O Railroad reported the theft of one of its \$75,000 engines. Investigation resulted in the arrest of six juveniles. The engine was recovered. (Enter one offense of larceny, cleared by arrest of persons under 18).

A local airport reported the theft of a \$2,000 single-engine airplane by a mechanic who did not have permission to take the plane. The subject is apprehended. (Enter one offense of larceny, cleared by arrest).

Two 17-year-old boys board a rowboat at dockside and steal a \$25 fishing pole and reel. They are both apprehended by police, but no charges are formally filed. (Enter one offense of larceny, cleared by arrest of persons under 18).

A tractor trailer, parked in the company parking lot, is broken into, and 20 cases of canned foods valued at \$160 are taken. (Enter one offense of larceny, no clearance).

A thief broke into a locked car and was attempting to remove an expensive \$80 tape deck when he was surprised by the owner of the car. Police arrested the subject. (Enter one offense of larceny, cleared by arrest).

07 MOTOR VEHICLE THEFT

Definition -- The theft or attempted theft of a motor vehicle.

Count in this classification the theft or attempted theft of a motor vehicle which is defined for this program as a self-propelled vehicle that runs on the surface and not on rails. Examples of motor vehicles are automobiles, trucks, buses, motorcycles, motor scooters, snowmobiles, etc.

THEFTS OF BOATS, AIRPLANES, TRAINS, ROAD GRADERS, TRACTORS AND CONSTRUCTION EQUIPMENT ARE NOT THEFTS OF MOTOR VEHICLES WITHIN THE DEFINITIONS OF THIS CLASSIFICATION AND SHOULD BE ENTERED AS LARCENY-THEFT.

The taking for temporary use when prior authority has been granted or can be assumed, such as in family situations, or unauthorized use by chauffeurs and others having lawful access to the vehicle are not counted as motor vehicle thefts.

Count as motor vehicle theft all cases where automobiles are taken by persons not having lawful access thereto and are later abandoned. One offense is counted for each vehicle stolen or where an attempt is made to steal a motor vehicle. If a vehicle is stolen in conjunction with another offense, classification is handled through consideration of the procedures for classifying and entering multiple-offenses (pages 19-26).

For the purpose of obtaining a more specific definition of the types of motor vehicles stolen, three breakdown categories have been established.

Autos

Include in this category the thefts of all sedans, station wagons, coupes, convertibles, and other similar motor vehicles which serve the sole purpose of transporting people from one place to another.

Motorcycles

Trucks, Buses and Vans

This category includes those vehicles specifically designed to transport people on a commercial basis and to transport cargo. It is conceivable that certain vehicles could qualify as automobiles, but based upon their designed use, become trucks, buses or vans. Licensing should not be a determining factor. In some states a station wagon can be registered as a truck. This vehicle, for UCR purposes, is an auto. The self-propelled motor home is a truck.

Snowmobiles

Other Vehicles

This category includes all other motor vehicles limited by the UCR definition. Obviously, unique situations will arise. The classifier must base the decisions on the results of police investigation and the standards of Uniform Crime Reporting.

NOTE: THEFTS OF BOATS, AIRPLANES, TRAINS, ROAD GRADERS, TRACTORS AND CONSTRUCTION EQUIPMENT ARE NOT THEFTS OF MOTOR VEHICLES WITHIN THE DEFINITION OF THIS CLASSIFICATION AND SHOULD BE ENTERED AS LARCENY-THEFT.

Motor Vehicle Theft Examples

A juvenile takes an auto from in front of the owner's residence. Approximately three hours later it is found on the other side of town, abandoned, and out of gas. (Enter one offense of motor vehicle theft, no clearance).

The owner of an auto awakens to find the vehicle several parking spaces north of where he had parked it the previous night. There is no damage. The vehicle has not been hotwired. The gas tank is now empty. (Enter one offense of motor vehicle theft, no clearance).

A lady stops at a mailbox and leaves her auto running while she mails a letter. A 14-year-old boy jumps into the auto and drives away. The auto was recovered an hour and a half later, wrecked against a tree. The boy was arrested. (Enter one offense of motor vehicle theft, cleared by arrest/handling of a person under 18 years of age).

09 ARSON

Definition -- The offense of Arson is defined to include any willful or malicious burning or attempting to burn, with or without intent to defraud, a dwelling, public buildings, other buildings or structures, motor vehicles, aircraft, personal property of another, etc. Included are all offenses or violations of state laws or municipal ordinances relating to Arson and Attempted Arson.

For the purposes of MUCR classification and entry the sub-categories of Arson are defined as follows:

Residence:

Single Occupancy Residential -- Houses, townhouses, duplexes, etc.

Other Residential -- Apartments, dormitories, hotels, motels, etc.

Other Buildings:

Storage -- Barns, garages, warehouses, etc.

Industrial/Manufacturing -- Factories, foundries, mills, etc.

Other Commercial -- Stores, restaurants, offices, etc.

Public/Community -- Schools, hospitals, jails, churches, etc.

All Other Structures -- Outbuildings, monuments, buildings under construction, etc.

Vehicles:

Motor Vehicle -- UCR definition of a motor vehicle as described in preceding motor vehicle theft definition on pages 108 and 109 of this manual. Autos, trucks, buses, vans, motorcycles, etc.

Other Mobile Property -- Trailers, airplanes, boats, tractors, etc.

All Other:

Includes timber, crops, fences, signs, etc.

An Arson fire that burns more than one of the above categories should be entered to the category where the fire was set or started. (e.g., an arson fire to a residence that also burns a vehicle in the yard would be entered as a residence arson).

If personal injury or death results from arson, the situation would be classified as the multiple offenses of Aggravated Assault and Arson or of Murder and Arson.

5.2 PART II OFFENSES

The part II offenses encompass all other crime classifications outside those defined as Part I offenses. In November 1932, the UCR program adopted a Standard Classification of Offenses for the compilation of criminal statistics. This classification was devised and adopted in order that police, judicial, and penal statistics might be uniformly compiled in terms of a single classification of offenses. The definitions of the Part II offenses that follow include some of the offense titles described in local or state law. The inclusion of these titles is intended to serve as a descriptive aid in determining what offenses would be included or excluded in each classification.

08 OTHER ASSAULTS (Use for Arrest only)

Assaults and attempted assaults which do not result in serious or aggravated injury to the victim are included as Other Assaults.

Examples of local jurisdiction offense titles which would be included in "Other Assaults" are:

- . Simple Assault
- . Minor Assault
- . Assault and battery
- . Injury by culpable negligence
- . Resisting or obstructing an officer
- . Intimidation
- . Hazing
- . Attempts to commit above

10 FORGERY AND COUNTERFEITING

In the majority of states forgery and counterfeiting are treated as allied offenses. In this class are placed all offenses dealing with the mailing, altering, uttering or possessing, with intent to defraud, anything false in the semblance of that which is true.

Include:

- . Altering or forging public and other records
- . Making, altering, forging, or counterfeiting bills, notes, drafts, tickets, checks, credit cards, etc.
- . Forging wills, deeds, notes, bonds, seals, trademarks, etc.
- . Counterfeiting coins, plases, bank notes, checks, etc.
- . Possessing or uttering forged or counterfeited instruments
- . Erasures
- . Signing the name of another of fictitious person with intent to defraud
- . Using forged labels
- . Possession, manufacture, etc., of counterfeiting apparatus
- . Selling goods with altered, forged, or counterfeited trademarks
- . All attempts to commit the above

11 FRAUD

Fraudulent conversion and obtaining money or property by false pretenses. Includes bad checks, confidence games, etc., except forgeries and counterfeiting.

12 EMBEZZLEMENT

Misappropriation or misapplication of money or property entrusted to one's care, custody, or control as an employee.

13 STOLEN PROPERTY -- Buying, Receiving, Possessing

Include in this class all offenses of buying, receiving, and possessing stolen property, as well as all attempts to commit any of these offenses.

14 VANDALISM

Vandalism consists of the willful or malicious destruction, injury, disfigurement, or defacement of any public or private property, real or personal, without consent of the owner or person having custody or control, by cutting, tearing, breaking, marking, painting, drawing, covering with filth, or any other such means as may be specified by local law. This offense covers a wide range of malicious behavior directed at property such as: Cutting, smashing windows, destroying school records, tipping over gravestones, defacing library books, etc. Enter all offenses for the above including attempts.

15 WEAPONS -- CARRYING, POSSESSING, ETC.

This class deals with weapon offenses, regulatory in nature, such as:

- . Manufacture, sale or possession of deadly weapons
- . Carrying deadly weapons, concealed or openly
- . Using, manufacturing, etc., silencers
- . Furnishing deadly weapons to minors
- . Aliens possessing deadly weapons
- . All attempts to commit any of the above

16 PROSTITUTION AND COMMERCIALIZED VICE

Include in this class the sex offenses of a commercialized nature such as:

- . Prostitution
- . Keeping a bawdy house, disorderly house, or house of ill fame
- . Pandering, procuring, transporting, or detaining women for immoral purposes, etc.
- . All attempts to commit any of the above

17 SEX OFFENSES

(Except forcible rape and prostitution and commercialized vice). Includes offenses against chastity, common decency, morals, and the like, such as:

- . Obscene Phone Calls
- . Buggery
- . Indecent Exposure
- . Seduction
- . Intercourse with an insane, epileptic or venereally diseased person
- . Indecent Liberties
- . Sodomy or crime against nature
- . All attempts to commit any of the above
- . Adultery and fornication
- . Incest
- . Statutory rape (no force)

18 DRUG ABUSE

Narcotic drug law offenses are classified on the basis of the narcotics used. Make the following subdivisions of narcotic drug law arrests.

Include all arrests for violations of state and local laws, specifically those relating to the unlawful possession, sale, use, growing, manufacturing, and making of narcotic drugs:

- . Opium or cocaine and their derivatives (mophine, heroin, codeine)
- . Marijuana-hashish
- . Synthetic narcotics - manufactured narcotics which can cause true drug addiction (demerol, methadones)
- . Dangerous nonnarcotic drugs (barbiturates, benzedrine)

19 GAMBLING

All offenses which relate to promoting, permitting, or engaging in gambling are included in this category. To provide a more refined collection of gambling offenses, the following breakdown is used:

- . Bookmaking (horse and sport book)
- . Numbers and lottery
- . All others

20 OFFENSES AGAINST THE FAMILY AND CHILDREN

Include here all offenses of nonsupport and neglect or abuse of family and children, such as:

- . Desertion, abandonment, or nonsupport of wife or child
- . Neglect or abuse of child (If assaulted enter as 04 Assault)
- . Nonpayment of alimony
- . All attempts to commit any of the above

21 DRIVING UNDER THE INFLUENCE

This class is limited to the driving or operating of any vehicle or common carrier while drunk or under the influence of liquor or narcotics.

Include:

- . Operating a motor vehicle while intoxicated
- . Operating an engine, train, streetcar, boat, etc., while intoxicated

22 LIQUOR LAWS

With the exception of "Driving Under the Influence" (offense 21), liquor law violations, state or local, are placed in this class.

Include:

- . Manufacture, sale transporting, furnishing, possession, etc., intoxicating liquor
- . Maintaining unlawful drinking places
- . Advertising and soliciting orders for intoxicating liquor
- . Bootlegging
- . Operating still
- . Furnishing liquor to a minor or intemperate person
- . Using a vehicle for illegal transportation of liquor
- . Drinking on train or public conveyance
- . All attempts to commit any of the above

24 DISORDERLY CONDUCT

In this class are placed all offenses of committing a breach of the peace.

Include:

- . Affray
- . Unlawful assembly
- . Disturbing the peace
- . Disturbing meetings
- . Disorderly conduct in state institutions, at court, at fairs, on trains or public conveyances, etc.
- . Prize fights
- . Blasphemy, profanity, and obscene language
- . Desecrating flag
- . Refusing to assist an officer
- . All attempts to commit any of the above

26 ALL OTHER CRIMINAL OFFENSES -- Except Traffic

Include in this class every other state or local offense not included in offense numbers 1 through 24, such as:

- . Admitting minors to improper places
- . Abduction and compelling to marry
- . Bigamy and polygamy
- . Blackmail and extortion
- . Combination in restraint of trade, trusts, monopolies
- . Contempt of court
- . Criminal anarchism
- . Criminal syndicalism
- . Discrimination; Unfair competition
- . Kidnaping

Offenses contributing to juvenile delinquency (except as provided for in offenses 1 through 24 inclusive) such as employment of children in immoral vocations or practices, admitting minors to improper places, etc.:

- . Perjury and subornation of perjury
- . Possession, repair, manufacture, etc., of burglar's tools
- . Possession or sale of obscene literature, pictures, etc.
- . Public nuisances
- . Riot and rout
- . Trespass
- . Unlawfully bringing weapons into prisons or hospitals

- . Unlawfully bringing drugs or liquor into state prisons, hospitals, etc.; furnishing to convicts
- . Unlawful disinterment of the dead and violation of sepulture
- . Unlawful use, possession, etc., of explosives
- . Violations of state regulatory laws and municipal ordinances (this does not include those offenses or regulations which belong in the above classes)
- . Violation of quarantine
- . All criminal offenses not otherwise classified
- . All attempts to commit any of the above

28 CURFEW AND LOITERING LAWS -- (JUVENILES)

Count all arrests made by your department for violation of local curfew or loitering ordinances where such laws exist.

29 RUNAWAY -- (JUVENILES)

Enter offenses of runaway juveniles.

5.3 PART III -- ACTIVITY CODE DEFINITIONS

Part III is defined in Montana as Police Activity, Non Criminal Complaints and requests for service, etc., from 39 Traffic Crime through 99 Other, including Custody activity 500 through 550.

The definitions presented in this section vary from exact and specific to standardized guidelines for code usage.

A number of these codes frequently border on criminal offense circumstances. When subsequent information or investigation uncovers criminal situations, the appropriate offense/custody entry(s) are required.

39 TRAFFIC CRIME (Except DUII)

Traffic Crime Examples

Officers from your department are investigating an injury accident where one of the participating vehicles fled the scene.

Officers from your department pursue a vehicle for reckless driving.

QUESTION: Is Hit and Run an accident or Traffic Crime?

ANSWER: MUCR says this is a multiple offense and recommends that both be entered. Traffic Crime (Hit and Run) is the offense of fleeing driver responsibility after the collision.

40 TRAFFIC ACCIDENT -- Fatal

Traffic accidents that result in the death of at least one of those persons involved.

41 TRAFFIC ACCIDENT -- Injury

Non-fatal traffic accidents that result in the injury of at least one of those persons involved.

42 TRAFFIC ACCIDENT -- Property damage

Traffic accidents that result in property damage without personal injury.

50 ILLEGAL ALIEN

Police activity in circumstances relating to illegal aliens.

Illegal Alien Examples

Officers from your department assist Immigration authorities with a search for illegal aliens.

An officer from your department arrests an illegal alien.

52 WARRANTS

Receiving warrants and related papers for service where the charge is ordinarily beyond the scope of Criminal Offenses of 01 through 29. e.g. Traffic, re-arrest, etc.

NOTE: Served warrants are entered on the yellow custody form.

53 STOLEN MOTOR VEHICLES RECOVERED FOR ANOTHER AGENCY

The recovery of a stolen "Motor Vehicle" when the original theft report and case is not from your department.

Example

Officers from your department recover a motor vehicle reported stolen by another law enforcement agency.

54 STOLEN PROPERTY RECOVERED FOR ANOTHER AGENCY

The recovery of stolen property (Other than motor vehicle) when the original theft report and case is not from your department.

Example

Your department recovers stolen property for another law enforcement agency.

55 FUGITIVE

The search for and/or the apprehension of a subject wanted for any offense of 01 through 29 (including Parole or Probation Violations, AWOL, etc.) when the original offense or case is not from your department.

NOTE: If an arrest is made, an appropriate entry (Fugitive 550) should also be made on the yellow custody form.

Fugitive Example

Your department receives information from another law enforcement agency to the effect that a wanted subject is believed hiding out in your jurisdiction, your department is investigating.

56 MISSING PERSON

The receiving of information or complaint of a missing person.

57 SUDDEN DEATH/BODIES FOUND

The finding of a deceased person when the cause of death is of natural, suspicious or unknown circumstances.

If it is later determined that Homicide is involved an additional entry for that particular offense is required.

58 SUICIDE

The attempt of or the actual taking of one's own life by purposely self inflicted means or circumstances.

59 OTHER ACCIDENTS

Other forms of accidents that are not traffic related.

60 ANIMAL PROBLEMS

Circumstances of complaints relating to the care of or actions of animals.

61 PROPERTY

The circumstances relating to lost, found or confiscated property. Does not include recovery of property associated with a reported offense by your department or outside agency or jurisdiction.

Property Examples

Your department receives information that a citizen lost his wallet on the street in the downtown business district.

A citizen reports that a man's wallet and contents were found on the sidewalk by the Pay-More store.

62 ABANDONED AUTO

The circumstance or complaint/investigation of an abandoned auto.

64 LOCATE ONLY AUTO

Complaint of a missing auto where current circumstances or information do not necessarily indicate theft.

NOTE: If a stolen motor vehicle report is subsequently taken, a criminal offense entry will also be required.

Locate Only Auto Examples

An intoxicated and confused subject reports his car is "stolen". Your department does not wish to take a stolen report until the victim is more rational. In the meanwhile officers are checking here and there for the auto.

An elderly lady shopper advises that she can't remember where she parked her car.

65 IMPOUND AUTO

Recording the activity of legally removing a motor vehicle from its location.

Impound Auto Examples

Your detective division impounds a vehicle involved in a narcotics case.

A lending institution advises that they have repossessed a local resident's auto.

66 ASSISTANCE RENDERED

An act or actions taken rendering assistance or service to the public, other law enforcement or governmental agencies that is not specifically covered by other codes.

Assistance Rendered Examples

Your department dispatches a patrol unit to assist a neighboring jurisdiction with an injury traffic accident.

Your department delivers an emergency message to a local address.

67 DOMESTIC PROBLEMS

Complaints or problems of the home and/or family relationships, family beefs, etc.

NOTE: If any criminal offense is determined an additional offense entry is required.

69 INSECURE PREMISES/SECURITY

Citizens reporting and/or officers finding and investigating unlocked or open doors, window, insecure buildings, etc.

NOTE: If any criminal offense is determined and if any arrest is made, appropriate offense and custody entries are required.

70 SUSPICIOUS PERSONS & CIRCUMSTANCES

Complaints and observations, resulting from apparent suspicious actions.

71 PUBLIC SAFETY

Situations that relate to problems created by man or acts of nature that present possible danger or potential hazard, etc.

Public Safety Example

Children are reported to be playing in a vacant dilapidated building.

73 DISTURBANCE/NOISE

Complaints relating to disturbances involving noise.

75 SICK CARED FOR

Assistance rendered to ill or injured persons.

Sick Cared For Examples

An officer from your department responds to a "man down" call and provides heart massage to an apparent heart attack victim.

An officer from your department responds to a "man down" call and upon arrival finds that another citizen is applying proper treatment to an apparent victim of some form of seizure. The officer summons an ambulance, provides additional assistance and crowd control, etc.

Officers on routine patrol come across a local person known to have a mental problem who is wandering far from home, proper care, and attention.

76 MARINE

Complaints relating to boating and water ways.

Marine Example

The department receives a complaint that power boats are frequently speeding through a beach area clearly marked and designed for swimming only.

77 TRAFFIC/ROADS

Reports relating to moving traffic, parking, obstructed throughfares, etc.

NOTE: This code should not be used for the recording of traffic citations.

Traffic/Roads Examples

A local resident phones to advise that a parked car is blocking his driveway.

The department receives information that a traffic signal is stuck and is not changing colors - traffic is starting to back up.

78 CIVIL COMPLAINTS

Complaints relating to civil matters that may or may not involve the department's presence in an effort to mediate minor disputes or to keep the peace, etc.

Civil Complaint Examples

Your department receives a complaint from a local resident that 2 other neighbors are involved in a heated argument over possession of apples from a tree growing on their property line.

A lady requests that an officer accompany her to a former husband's residence because she wished to pick up some property awarded to her as the result of a divorce.

The manager of a local apartment house requests that an officer remove a guest of one of his tenants for violating building rules.

79 VEHICLE DISPOSITION

The release or discharge of vehicles within the custody of or held by the authority of the department.

81 ALARM

Complaints or observations of fire, burglary, robbery and similar alarms.

NOTE: If it is subsequently determined that a criminal offense is involved an additional entry for the particular offense is required.

82 SUBPOENAS

Receiving subpoenas for service (Clearance of these entries would indicate successful service).

90 OFFICER ASSAULT

The assault or aggressive attack upon the person of a law enforcement officer, whether or not the officer suffers an injury or brings assault charges.

This entry is required in addition to any criminal offense entry such as "Assault" or other offense surrounding the incident.

See pages 82 through 85 for further assistance.

97 and 98 LOCAL OPTION CODES

Reserved for individual agency use for recording specialized matters of local interest that are not covered by coding.

99 OTHER

Miscellaneous complaints, actions, service, etc., not covered by preceding codes.

CUSTODY SECTION -- Arrest activity definitions (Yellow Custody form)

390 TRAFFIC CRIME (Except DUII)

Citations/Arrests for serious traffic offenses.

500 ILLEGAL ALIEN

Illegal Alien arrests made by officers from your department.

510 CUSTODY

The custody or handling of persons for detoxification, mental, material witness, etc.

This category also allows for the entry of those persons lodged in your department's jail facility by other agencies.

Custody Examples

Your department handles an intoxicated subject and provides transportation to the local detoxification center.

The U.S. Marshal lodges a subject in your jail for the night.

520 WARRANTS

The service of warrants (including traffic) and related papers for matters ordinarily beyond the scope of criminal offenses of 01 through 29 for your department and other agencies' cases. See 550 below.

This category also includes re-arrests for criminal offenses for your department and other agencies' cases.

Warrant Examples

Your department serves a Traffic Warrant for a neighboring county.

The sheriff's department serves a warrant on a subject for burglary. The "arrested" subject had been apprehended at the scene earlier in the week by city police officers and the second arrest is based on the same set of facts.

550 FUGITIVE

Specifically covers arrests made for other agencies for criminal offenses 01 through 29 when the original case is not from your department. Subjects arrested by your department for Parole/ Probation violation, AWOL, etc., should be included in this category.

Fugitive Examples

Officers from your department apprehend a subject wanted for arson by another law enforcement agency.

Officers on routine patrol locate a runaway juvenile from another jurisdiction.

Your detective division picks up a subject wanted for parole violation.

Re-arrest made by departments subsequent to matters such as Grand Jury indictments should be entered as 520 Warrants.

6.0 INTERPRETATION AND USE OF MUCR AGENCY REPORTS

6.1 INTRODUCTION

The reports provided to police agencies monthly are compiled from information supplied by each agency to the Montana Uniform Crime Reporting program. The reports were designed with the assistance of police administrators and personnel to provide information for planning and enforcement functions to agency administrators.

The collection of statistical data should not be the total product of the crime reporting program. Each agency is encouraged to analyze and use the information presented in these reports to the maximum extent possible in planning enforcement and crime prevention programs. This requires that the information be made available to personnel responsible for those functions on a regular and timely basis. The potential of the MUCR incident reporting system can only be realized if agencies apply the information developed from it to crime prevention and enforcement programs.

6.2 GENERAL

The reports discussed here are intended to present a general overview of police problems in a specific jurisdiction. They provide the numbers and types of offenses, reported and cleared, the numbers and profiles of persons arrested, the location where offenses are occurring, the time offenses are occurring and other data relating to property lost and recovered. Each report is discussed in detail in the following paragraphs.

6.3 MUCR REPORTING LEVELS

The MUCR program requires as a minimum, reporting of required data relating to Part I and Part II crimes. The program also has options which allow for the reporting of additional data for offenses and the reporting of police activities not related to "criminal offenses". The level of participation beyond the minimum requirements directly determines which reports are returned to an agency. Agencies desiring reports reflecting additional factors must exercise the options described in the detailed discussion of that specific report. In addition to the regular reports the Data Center may produce on request reports relating to factors of specific offenses that exceed general reporting. For further information regarding special reports contact the Data Center.

6.4 REPORT DETAIL

6.4.1 OFFENSE AND CUSTODY SUMMARY MUCR 100

A four page summary of all reported Part I and Part II offenses and Part III (police activity) reflecting the total numbers of each specific offense of activity reported, the number of offenses cleared by arrest or exception, the numbers and profiles of persons arrested for each specific offense and the value of property stolen and recovered by offense category. This report also provides the number of previously reported offenses which have since been determined to be unfounded.
See Pages 132 - 139

6.4.2 ACTIVITY SUMMARY BY TIME OF OCCURRENCE MUCR-100A

A two page monthly summary of offenses and activities reported by the time of day spans in which they were reported to have occurred. This report is only produced for those agencies that report occurred date and time in columns 4 and 5 of the offense form.
See Pages 140 - 143

6.4.3 LOCATION SUMMARY MUCR-100B

A report reflecting the occurrence of selected offenses and activities by the geographic regions in which they are known to have occurred. The offenses and activities reported on this summary are those offenses that have been identified as being most affected by patrol deployment. The geographic regions are reported by the agency's designation and the report is furnished only to those departments who report Location Code in column 7 of the offense form.
See Pages 144 - 145

6.4.4 OFFENSES BY OFFICER IDENTIFICATION MUCR-100C

This report depicts the number(s) of specific offenses or activities handled by an individual officer. The report is keyed from the department's officer identification number. The report is provided for those agencies who report this information in column 8 of the offense reporting form.
See Pages 146 - 147

6.4.5 ARRESTS BY OFFICER IDENTIFICATION MUCR-100D

This report returns the number of arrests reported by offense classification and officer identification. The report is keyed from departments' officer identification numbers. The report is provided for those agencies who report this information in column 8 of the custody reporting form.
See Pages 148 - 149

6.4.6 OFFENSE/ACTIVITY SUMMARY BY DAY OF WEEK MUCR-100E

A two page monthly summary of offenses reported by the day of week in which they occurred. This report is only produced for those agencies that report occurred date and time in columns 4 and 5 of the offense form.
See Pages 150 - 153

6.4.7 STOLEN PROPERTY BY TYPE AND VALUE MUCR-100F

A monthly summary of stolen property by MUCR Article type and loss and recovered values.
See pages 154 - 155

6.4.8 LAW ENFORCEMENT OFFICERS ASSAULTED SUPPLEMENTARY REPORT MUCR-60

The reporting of assaults against police officers is a requirement of the Montana program. This report is produced and forwarded to any department reporting an officer assault during the reporting period.

The report reflects (1) the type of assault, (2) type of weapon, (3) category of assignment when assaulted, (4) activity at the time of assault, (5) the time of the assault and the clearance of police officer assaults.
See Pages 156 - 157

6.4.9 AGE, SEX AND RACE OF PERSONS ARRESTED
18 YEARS OF AGE AND OVER
MT/UCR 40

A six month and yearly detailed arrest report of those "Adult" persons arrested for the reporting period.
See Pages 158 - 161

Age and sex groupings are those used by the National FBI UCR Program and are based on U.S. Census Standards.

With the exception of Mexican (MEX), racial groupings are those used by the National FBI UCR Program and are based on U.S. Census standards.

6.4.10 AGE, SEX AND RACE OF PERSONS ARRESTED
UNDER 18 YEARS OF AGE
MT/UCR 50

A six month and yearly detailed arrest report of those "Juvenile" persons arrested or handled for the reporting period.
See Pages 162 - 165

The age and racial groupings used are based on the same principles and standards used in paragraph 6.4.9.

6.5 SUPPLEMENTAL PERIOD REPORTS

Each agency receiving all or part of the regular monthly reports is provided with an identical report set reflecting the totals of monthly reports submitted at the end of each six month period and a set of annual reports at the close of each year.

Preceding page blank

132

COLUMN 1 - CLASSIFICATION OF OFFENSES:

Part I and II Offense classifications of
01 Homicide through 29 Other.

COLUMN 2 - OFFENSES REPORTED OR KNOWN:

The number of Offenses and Activities
reported to or known by the department for
the reporting period stated in the upper
right hand corner of the page. (Source-
Column 3 of the Offense and Activity form).

COLUMN 3 - UNFOUNDED, FALSE OR BASELESS:

This month's reported offenses or activities
from the Reported or Known column that were
determined to be unfounded, false or base-
less as the result of subsequent information,
action or investigation. (Source-Columns 3
and 18 Offense and Activity form).

COLUMN 4 - ACTUAL OFFENSES:

Verified offenses and activities. (Source-
Adjustment between Reported/Known and
Unfounded columns).

COLUMN 5 - OFFENSES CLEARED EXCEP

Those classifications cleared by means
other than by arrest as defined on pages
15 thru 17. (Source-Column 3 and 18 Offense
and Activity form).

COLUMN 6 - OFFENSES CLEARED ADULT ARREST

Those classifications cleared by the
arrest of one or more adults. (Source-
Columns 3 and 18 Offense and Activity form).

COLUMN 7 - OFFENSES CLEARED JUV ARREST

Those classifications cleared only by the
"arrest or handling" of juveniles. (See
paragraph 2 of page 52 for further defi-
nitions of Juvenile arrest). (Source-
Columns 3, 14 & 15 Offense and Activity form).

COLUMNS 8 & 9 - PERSONS ARRESTED, ADULT, JUV

The actual number of adult and juvenile
arrests by offense classification. (Source-
Columns 3 & 11 Custody form).

COLUMNS 10 & 11 - PERSONS ARRESTED, MALE, FEMALE

The actual number of male and female arrests
by offense classification. (Source-Columns
3 and 9 Custody form).

COLUMN 12 - PROPERTY LOSS

The actual dollar value loss reported by
offense classification. (Source-Columns
3 and 11 Offense and Activity form).

COLUMN 13 - PROPERTY RECOVERED

The actual dollar value recovered by
offense or activity classification.
(Source-Columns 3 and 12 Offense and
Activity form).

COLUMN 14 - PRIOR PERIOD UNFOUNDED

Those offenses and activities unfounded on
this month's reports that are for a prior
reporting period. (Source-Column 3 and
14 entries dated for prior report's monthly
reporting period).

ORI NO- AGENCY MONTH OF- 11/80 11
MUCR-100 (1) (2) (3) OFFENSE AND CUSTODY SUMMARY (4) (5) (6) (7) (8) (9) (10) (11) (12) PAGE NUMBER 10
(1) (2) (3) (4) (5) (6) (7) (8) (9) (10) (11) (12) (13) (14)
CLASSIFICATION OF OFFENSES OFFENSES REPORTED OR KNOWN UNFOUNDED FALSE OR BASELESS ACTUAL OFFENSES EXCEP ADULT JUV ADULT JUVEN MALE FEMALE LOSS RECOVERED PRIOR PERIOD UNFND

PART 1 - INDEX OFFENSES (CONT.)

09. ARSON														
1.RESIDENCE														
2.OTHER BUILDINGS														
3.VEHICLE														
9.ALL OTHER														
TOTAL														
INDEX TOTAL	112		112	11	14	7	19	8	16	11	37,311	13,899		
(*NEGLIGENT HOMICIDE IS NOT AN INDEX OFFENSE)														
PART 1 OFFENSE TOTAL	112		112	11	14	7	19	8	16	11	37,311	13,899		

PART 2 OFFENSES

042-080 OTHER ASSAULTS	10		10	4	1	1	1	1	2					
10. FORGERY/COUNTERFEIT														
1.CHECK														
2.CREDIT CARD														
3.CURRENCY														
4.SECURITIES														
9.OTHER	1		1											
TOTAL	1		1											
11. FRAUD														
1.CHECKS	1		1								1,400			
2.CREDIT CARDS														
3.BY DECEPTION														
4.OF SERVICES	2		2	1							55			
9.OTHER														
TOTAL	3		3	1							1,455			
12. EMBEZZLEMENT														
13. STOLEN PROPERTY														
14. VANDALISM														
1.RESIDENCE	3		3								15			
2.NON-RESIDENCE	10		10		1						930			
3.VEHICLE	10		10	1							1,390			
4.VENERATED OBJECTS														
5.POLICE CARS	1		1		1									
9.OTHER														
TOTAL	24		24	1	2		1		1		2,335			
15. WEAPONS														
16. PROSTITUTION														
17. SEX OFFENSES														
1.STATUTORY RAPE														
2.CONTRIB DELNQ MINOR														
3.MOLEST PHYSICAL	1		1			1								
4.MOLEST/OBSCENE PHONE														
5.PEEPER														
6.EXPOSE														
7.SODOMY - FORCIBLE														
8.SODOMY - STATUTORY														
9.OTHER	1		1											
TOTAL	2		2			1								

Page 135

Preceding page blank

ORI NO- MUCR-100 (1)	AGENCY	OFFENSE AND CUSTODY SUMMARY										- MONTH OF- 11/80	12 PAGE NUMBER	11 PAGE NUMBER
CLASSIFICATION OF OFFENSES	(2) OFFENSES REPORTED OR KNOWN	(3) UNFOUNDED FALSE OR BASELESS	(4) ACTUAL OFFENSES	(5) EXCEP	(6) ARRST	(7) ARRST	(8) ADULT	(9) ADULT	(10) JUVEN	(11) MALE	(12) FEMALE	(13) PROPERTY LOSS	(14) PROPERTY RECOVERED	(15) PRIOR PERIOD UNFND
PART 2 OFFENSES (CONT.)														
18. DRUG ABUSE														
1. NARCOTICS														
2. MARIJUANA														
3. SYNTHETIC NARCO														
4. DANGEROUS DRUGS														
TOTAL														
19. GAMBLING														
20. OFF AGAINST FAMILY														
1. CHILD ABANDONMENT														
2. CHILD NEGLECT														
3. CHILD ABUSE	1	1												
4. NON-SUPPORT														
9. OTHER														
TOTAL	1	1												
21. DRIVING UNDER INFLNC														
1. UNDER .10														
2. .10 TO .15														
3. .15 TO .20														
4. .20 AND ABOVE														
5. BA REFUSED														
6. BA NOT GIVEN														
7. UNDETERMINED														
TOTAL														
22. LIQUOR LAWS	7		7				7							
24. DISORDERLY CONDUCT	8		8				4		3			6		
26. ALL OTHER							12					11		
1. KIDNAP/CUST INTER														
2. TRESPASS	3		3			1	2							
3. ESCAPE (INCL AWOL)														
4. GARBAGE/LITTERING														
5. OBSCENE MATRL/DISPLY														
6. THREAT														
7. HARASSMENT/NUISANCE	1		1											
8. BLACKMAIL/EXTORTION														
9. OTHER	1		1											
TOTAL	5		5			1	2	2	2	4				
28. CURFEW/LOITER (JUV)														
29. RUNAWAY (JUV)	9		9	4	3	2			3		3			
PART 2 TOTAL	70	1	69	10	22	6	27	9	29	7		3,790		
TOTAL (PART 1 & PART 2)	182	1	181	21	36	13	46	17	45	18		41,101	13,899	

Page 137

Preceding page blank

6.7

MUCR 100-OFFENSE AND CUSTODY SUMMARY (PART III)

COLUMN 1 - CLASSIFICATION OF OFFENSES

Part III offense classifications of
39 Traffic Crime thru 99 Other.

COLUMN 2 - OFFENSES REPORTED

The number of Part III offenses reported to
or known by the department for the reporting
period stated in the upper right hand corner
of the page. (Source-Column 3 of the Offense
and Activity form).

COLUMN 3 - OFFENSES CLEARED

The number of offenses reported as
cleared by exception, arrest and/or
investigation discontinued. Source-
Columns 3 and 14 of the Offense and
Activity form).

COLUMN 4 - PERSON ARRESTED

The actual number of arrests by classification.
This column applies only to the specific
classifications of 50 Illegal Alien, 51 Custody,
52 Warrants and 55 Fugitive. (Source-Columns
3 and 11 of Custody form).

COLUMN 5 - PROPERTY LOSS

The reported loss value by classification.
This column applies only to classification
61 Property. (Source-Columns 3 and 11 of
the Offense and Activity form).

COLUMN 6 - PROPERTY RECOVERED

The reported recovered values by
classification. This column only applies
to classifications 53 Stolen Motor Vehicles
Recovered For Other Jurisdictions, 54 Stolen
Property Recovered For Other Jurisdictions
and 61 Lost, Found and Confiscated Property.
(Source-Columns 3 and 12 of the Offense
and Activity form).

NO. MUCR-100 (1)	AGENCY	(2)	(3)	(4)	OFFENSE AND CUSTODY SUMMARY (5) (6) PROPERTY ***** LOSS RECOVERED	CLASSIFICATION OF OFFENSES	MONTH OF- 11/80 (2) (3) (4)	PAGE NUMBER 13 (5) (6) PROPERTY *****
PART 3 ACTIVITY								
39. TRAFFIC CRIME						57. SUDDEN DEATH/BODY		
1. HIT AND RUN		30	4	2		58. SUICIDE OR ATTEMPT		
2. RECKLESS DRIVING		2	2			1. SUICIDE		
3. ELUDING		2	2			2. ATTEMPT SUICIDE		
4. DRIVING WHILE SUSP.		34	8	2		TOTAL		
40. TRAF ACCIDENT FTL						59. OTHER ACCIDENTS	1	1
1. PEDESTRIAN						60. ANIMAL PROBLEMS		
2. TRAIN						1. CRUELTY/NEGLECT		
3. BICYCLE						2. KILLING		
4. OTHER MV		1	1			3. LOST/STRAY		
5. ANIMAL						4. DOG AT LARGE	1	1
6. RAN OFF ROAD						5. DOG BITE	6	6
7. OVERTURN IN ROAD						6. BARKING DOG		
8. FIXED OBJECT						7. ROAD KILLED		
9. OTHER						9. OTHER	1	1
TOTAL		1	1			TOTAL	8	8
41. TRAFFIC ACC.-INJURY						61. PROPERTY		
1. PEDESTRIAN		1	1			62. ABANDONED AUTO	4	4
2. TRAIN						64. LOCATE ONLY AUTO		
3. BICYCLE		1	1			65. IMPOUND AUTO	1	1
4. OTHER MV		3	3			66. ASSISTANCE RENDERED		
5. ANIMAL		1	1			1. PUBLIC		
6. RAN OFF ROAD						2. LAW ENFORCE AGENCY		
7. OVERTURN IN ROAD						3. OTHER GOVERN AGENCY		
8. FIXED OBJECT		1	1			TOTAL		
9. OTHER						67. DOMESTIC PROBLEMS	4	4
TOTAL		7	7			69. INSECURE PREMISES		
42. TRAF ACCIDENT-PROP						70. SUSPICIOUS PER/CIRC	5	
1. PEDESTRIAN		1	1			71. PUBLIC SAFETY	1	1
2. TRAIN						73. DISTURBANCE/NOISE	2	2
3. BICYCLE						75. SICK CARED FOR	1	1
4. OTHER MV		60	58			76. MARINE		
5. ANIMAL						77. TRAFFIC/ROADS	18	18
6. RAN OFF ROAD		1	1			78. CIVIL COMPLAINTS		
7. OVERTURN IN ROAD						79. VEHICLE DISPOSITION		
8. FIXED OBJECT		2	2			81. ALARM		
9. OTHER						1. CONFIRMED		
TOTAL		64	62			2. FALSE		
50. ILLEGAL ALIEN						3. ACCIDENTAL		
51. CUSTODY						4. FAULTY		
52. WARRANTS		9	9	9		9. OTHER		
53. MV RECOVERED-OTHER						TOTAL		
54. PROP RECVRD-OTHER						82. SUBPOENAS		
55. FUGITIVES				1		90. OFFICER ASSAULT		
56. MISSING PERSON						97. OPTION COUNTER		
1. PERSON		4	4			98. OPTION COUNTER		
2. LOST HUNTER/PERSON		1	1			99. OTHER		
3. LOST CHILD								
TOTAL		5	5					
PART 3 ACTIVITY TOTAL						165	132	12

6.8

MUCR 100A - ACTIVITY SUMMARY BY TIME OF OCCURENCE

CLASSIFICATION OF ACTIVITY

Part I, II and III offense classification
of 01 Homicide thru 99 Other.

ACTIVITY COUNT

The number of offenses reported (Source-
Column 3 Offense and Activity form).

MID to 2 AM thru 10 PM to 12 MID

The two hour time breakdowns that reflect
the number of offenses that fall within
these specific time segments. (Source-
Columns 3 and 5 Offense and Activity form).

DAY

The number of offenses which occurred
between 6 AM and 6 PM. This column
includes those offenses reported as
occurred DY (Day 6 AM-6PM) and the
counts from Columns 6 AM to 8 AM thru
4 PM to 6 PM. (Source-Columns 3 and
5 Offense and Activity form).

NIGHT

The number of offenses which occurred
between 6 PM and 6 AM. This column
includes those offenses reported as
occurred NT (Night 6 PM-6 AM) and the
counts from columns MID to 2 AM thru
4 AM to 6 AM and 6 PM to 8 PM thru
10 PM to 12 MID. (Source Columns 3
and 5 Offense and Activity form).

UNKNOWN

The number of offenses which were
reported as XX (Unknown time for a
specific occurred date) and where
occurred time was not entered or was
not possible to enter due to the
actual time span of a particular
incident. (Source-Columns 3 and 5.
Offense and Activity form).

ORI NO-
MUCR-100A

AGENCY

OFFENSE/ACTIVITY SUMMARY BY TIME OF OCCURRENCE - MONTH OF- 11/80

14
PAGE NUMBER 13

CLASSIFICATION OF ACTIVITY		OFFENSE COUNT	MID TO 2 AM	2 AM TO 4 AM	4 AM TO 6 AM	6 AM TO 8 AM	8 AM TO 10AM	10 AM TO 12 N	12 N TO 2 PM	2 PM TO 4 PM	4 PM TO 6 PM	6 PM TO 8 PM	8 PM TO 10PM	10 PM TO 12MID	DAY	NIGHT	UNKNOWN
PART 1 & PART 2																	
01. CRIMINAL HOMICIDE																	
02. FORCIBLE RAPE																	
03. ROBBERY																	
04. AGGRAVATED ASSAULT		12	1	3		1			1			2	1	1	2	9	1
05. BURGLARY		7															
1. RESIDENCE		6															
2. NON-RESIDENCE		1	1													3	4
TOTAL		13	1									1	1			5	5
06. LARCENY																	
1. PICKPOCKET																	
2. PURSES/NATCH																	
3. SHOPLIFT		14		2													
4. FROM MOTOR VEHICLES		22	2				2	1		1	3	1	2	2	7	7	
5. MOTOR VEH. PART/ACC.		6	1								1		1		1	11	10
6. BICYCLES		13								1						3	
7. FROM BUILDINGS		21	1									1			1	3	2
8. FROM COIN-OP MACHINE									1							3	10
9. ALL OTHERS		14		2	1										1	7	13
TOTAL		90	4	4	1		2	1	2	5	2	3	2	2	2	8	4
07. MOTOR VEHICLE THEFT		7	1				1										
09. ARSON							1										
10. FORGERY/COUNTERFEIT		1															
11. FRAUD		3			1			1								5	39
12. EMBEZZLEMENT																	1
13. STOLEN PROPERTY															1	1	1
14. VANDALISM																	
15. WEAPONS		24	1	4		1		2	1		1				5	13	6
16. PROSTITUTION																	
17. SEX OFFENSES		2															
18. DRUG ABUSE									1								
19. GAMBLING															1	1	
20. OFF AGAINST FAMILY		1															
21. DRIVING UNDER INFLNC												1					
22. LIQUOR LAWS		7	2													1	
24. DISORDERLY CONDUCT		8	1	1			1						2				
26. ALL OTHER		5	2				3			1	1		1	3	3	7	
28. CURFEW/LOITER (JUV)																5	
29. RUNAWAY (JUV)		9				1										2	
TOTAL (PART 1 & PART 2)		182	13	12	2	3	7	4	5	3	7	6	10	10	29	2	6
PART 3																	
39. TRAFFIC CRIME		34	2	1			2	2	1	1	2		1	7	8	18	8
40. TRAF ACCIDENT FATAL		1															
41. TRAFFIC ACC.-INJURY		7	1	1		1							1			1	
42. TRAF ACCIDENT-PROP		64	5			1	2	10	11	6	18	6	1	3	48	15	1
50. ILLEGAL ALIEN																	
52. WARRANTS		9	1	1				2	1	1	1	2			5	4	

ORI NO-
MUCR-100A

AGENCY

OFFENSE/ACTIVITY SUMMARY BY TIME OF OCCURRENCE - MONTH OF- 11/80

PAGE NUMBER 15
14

CLASSIFICATION OF ACTIVITY	OFFENSE COUNT	MID TO 2 AM	2 AM TO 4 AM	4 AM TO 6 AM	6 AM TO 8 AM	8 AM TO 10 AM	10 AM TO 12 N	12 N TO 2 PM	2 PM TO 4 PM	4 PM TO 6 PM	6 PM TO 8 PM	8 PM TO 10 PM	10 PM TO 12 MID	DAY	NIGHT	UNKNOWN
PART 3 (CONT.)																
53. MV RECOVERED-OTHER																
54. PROP RECVRD-OTHER																
55. FUGITIVES																
56. MISSING PERSON	5						1							1		4
57. SUDDEN DEATH/BODY																
58. SUICIDE OR ATTEMPT																
59. OTHER ACCIDENTS	1					1								1		
60. ANIMAL PROBLEMS	8					1	2	1	2	2				8		
61. PROPERTY																
62. ABANDONED AUTO	4	1				1			1	1				3	1	
64. LOCATE ONLY AUTO																
65. IMPOUND AUTO	1					1								1		
66. ASSISTANCE RENDERED																
67. DOMESTIC PROBLEMS	4	1	1	1				1						1	3	
69. INSECURE PREMISES																
70. SUSPICIOUS PER/CIRC	5		1	1				1		1				2	2	1
71. PUBLIC SAFETY	1									1				1		
73. DISTURBANCE/NOISE	2	1							1					1	1	
75. SICK CARED FOR	1								1					1		
76. MARINE																
77. TRAFFIC/ROADS	18		1			1	3	3	7	1	1	1		15	3	
78. CIVIL COMPLAINTS																
79. VEHICLE DISPOSITION																
81. ALARM																
82. SUBPOENAS																
90. OFFICER ASSAULT																
97. OPTION COUNTER																
1.																
2.																
3.																
4.																
5.																
6.																
7.																
8.																
9.																
98. OPTION COUNTER																
1.																
2.																
3.																
4.																
5.																
6.																
7.																
8.																
9.																
99. OTHER																
TOTAL (PART 3)	165	12	6	2	2	8	21	20	20	28	10	4	11	99	52	14
GRAND TOTAL (PART 1,2,3)	347	25	18	4	5	15	25	25	23	35	16	14	21	128	145	74

Page 143

Preceding page blank

6.9

MUCR 100B-LOCATION SUMMARY

LOCATION CODE

Individual Agency location codes
for their own jurisdiction. (Source-Optional
use column 7 Offense/Activity form).

- 01 HOM & NEG HOM (Homicide and Negligent Homicide)
Willful Homicide and Negligent Homicide
count by location code. (Source-Column 3 and
optional use column 7 Offense/Activity form).

All remaining categories listed for this form
(MUCR 100B) are derived from the same "source"
as shown for 01 Hom & Neg Hom.

- 02 RAPE & SEX OFF (Rape and Sex Offense)
Forcible, Attempt Forcible Rape and Other
Sex Offenses county by location codes

- 03 ROBB (Robbery)
Robbery count by location code

- 04 ASLT (Assault)
Assault (Attempted Murder, Aggravated and
Simple Assault) by location code

- 05 BURG (Burglary)
Burglary count by location code

- 06 LARC (Larceny)
Larceny-Theft count by location code

- 07 MTR VEH THEFT (Motor Vehicle Theft)
Motor Vehicle Theft by location code

- 14 VANDALISM
Vandalism offenses by location

- 18 NARC (Narcotic Offenses)
Narcotic offenses by location code

- 21 DUII
Driving Under the Influence of
Intoxicants by location code

- 22 - 24 LIQ LAWS (Liquor Law Violations)
Liquor Law Violations and Disorderly
Conduct offense counts by location

- 40 - 41 - 42 TRAFF ACC (Traffic Accidents)
Fatal, Injury and Property Damage
accidents by location

- 60 ANML PROBL (Animal Problems)
Animal Problems by location

- 67 DOM PROBL (Domestic Problems)
Domestic Problems, Family Beefs, etc.,
by location

- 69 PREM SEC (Premise Security)
Premise Security, open doors, windows
by location

- 73 DIST PEAC NOISE (Disturbing Peace)
Noise related disturbances by location

- 97 OPT (Optional)
Optional agency counters by location

- 98 OPT (Optional)
Optional agency counters by location

OTHER NOT SHOWN

All Other Part I, II Offenses and Part III
Activities grouped together by location

TOTAL ACTIV (Total Activity)

Total Offense/Activity county by location
for all columns (01 Homicide through
OTHER NOT SHOWN).

ORI NO- MUCR-100B	AGENCY	LOCATION SUMMARY																	- MONTH OF- 11/80		PAGE NUMBER 35 14	
LOCATION CODE	01 HOM& NEG. HOM	02-17 RAPE &SEX OFF	03 ROBB	04 ASLT	05 BURG	06 LARC	07 MTR VEH THEFT	14 VAND- ALISM	18 NARC	21 DUII	22-24 LIQ- DOC	40-41 -42 TRAFF ACC	60 ANML PROBL	67 DOM PROBL	69 PREM SEC	73 DIST PEAC NOISE	97 OPT	98 OPT	OTHER NOT SHOWN	TOTAL ACTIV		
UNKNOWN																			1	1		
CP				2	2	2	1	8			10	6		1	6	11			27	76		
CR				2							2								2	6		
CSI																1		1	2			
DP																			1			
15				7	5	2	2	6	1		7	41	18	1		10			97	197		
15 E							1												1			
35																			1			
4												2							1			
7												1							1			
TOTAL				11	7	4	4	14	1		19	50	19	2	6	22			130	289		

CONTINUED

2 OF 3

6.10

MUCR 100C-OFFENSES BY OFFICER IDENTIFICATION

OFFICER CODE

Individual agency officer ID codes
(Source-Optional use column 8 Offense/Activity form).

All other categories are identical to MUCR 100B as described on page 144.

The source for the data is column 3 and optional use column 8 Offense/Activity form.

ORI NO-
MUCR-100C

AGENCY

OFFENSES BY OFFICER IDENTIFICATION

- MONTH OF- 11/80

PAGE NUMBER 16 15

OFFICER ID CODE	01 HOM& NEG. HOM	02-17 RAPE &SEX OFF	03 ROBB	04 ASLT	05 BURG	06 LARC	07 MTR VEH THEFT	14 VAND- ALISM	18 NARC	21 DUII	22-24 LIQ- DOC	40-41 -42 TRAFF ACC	60 ANML PROBL	67 DOM PROBL	69 PREM SEC	73 DIST PEAC NOISE	97 OPT	98 OPT	OTHER NOT SHOWN	TOTAL ACTIV
UNKNOWN				1	3	16	2	6				11							20	89
0078				1				1				2	2						7	11
1451						2						2							3	7
1514						1						7		1					12	24
1817		1			1						1	4							5	13
1942				1				1				4							1	11
2189						3	1	2											1	2
3196						1													1	1
3867						3		1											1	2
4232				1		6		1				2							4	10
4813				1	1	2						13							4	25
4920		1				2					4	4				1			8	21
5202						1		1			1	1							2	5
5607																			1	5
5698				2	1	3							4						1	4
5770					1	1	2					4							2	7
5771							1												2	10
6822						1								2					1	1
7339					1	1		4				6				1			5	4
7382				2		1						4							2	18
7444					1	5		2			2	3		1					2	7
7858				1	1	2	1	2			1	5							2	18
8357					1														10	22
8795				2	1	7		3			2	3	1						2	4
9547													1						1	3
TOTAL		2		12	13	90	7	24			15	71	8	4		2			99	347

Page 147

6.11

MUCR 100D-ARREST BY OFFICER IDENTIFICATION

OFFICER CODE

Individual agency Officer ID code
(Source - optional use column 8-Custody form).

01 HOM & NEG HOM (Homicide and Negligent Homicide)
Willful Homicide and Negligent Homicide arrest
counts by Officer Identification. (Source -
Column 3 and optional use column 8-Custody
form).

All remaining categories listed for this form
(MUCR 100D) are derived from the same "source"
as shown for 01 Hom & Neg Hom.

02-17 RAPE & SEX OFF (Rape and Sex Offenses)
Forcible, attempt forcible and other sex
offense arrest counts by officer ID.

03 ROBB (Robbery)
Robbery arrest counts by officer ID

04 ASLT (Assault)
Assault arrest counts by officer ID

05 BURG (Burglary)
Burglary arrest counts by officer ID

06 LARC (Larceny)
Larceny-theft arrest counts by officer ID

07 MTR VEH THEFT (Motor Vehicle Theft)
Motor vehicle theft arrest counts by officer ID

10-11 FORG, CNTF-FRAUD (Forgery, Counterfeiting
and Fraud)
Forgery-Counterfeiting and fraud arrest counts
by officer ID

13 STL PROP (Stolen Property)
Stolen Property (buy, sell, receive) arrest
counts by officer ID

14 VAND-ALISM (Vandalism)
Vandalism arrest counts by officer ID

15 WEA-PONS (Weapons)
Weapons arrest counts by officer ID

18 DRUG ABUSE
Drug abuse arrest counts by officer ID

20 OFF AGNST FAMLY (Offenses Against Family)
Offense against family arrest counts by
officer ID

21 DUUI
Driving under influence of intoxicants
arrest counts by officer ID

22-24 LIQ-DOC (Liquor Law-Disorderly Conduct)
Liquor law violations and disorderly
conduct arrest counts by officer ID

51 CUS-TODY (Custody)
Custody (Detox, mental, protective)
"Arrest" counts by officer ID

52 WARR-ANTS (Warrants)
Warrant service/arrest counts by officer
ID where the charge on the warrant is
beyond the scope of offense codes 01-29

55 FUGI-TIVES (Fugitives)
Fugitive arrest counts by officer ID
where the offense is between 01 and 29
and the arrest is for another agency/
jurisdiction.

OTHER NOT SHOW (Other Not Shown)
All other part I, II and III arrest
counts by officer ID

TOTAL ACTIV (Total Activity)
Total activity - arrests counts by officer
ID

ORI NO-
MUCR-100D

AGENCY

ARREST BY OFFICER IDENTIFICATION

- MONTH OF- 11/80

PAGE NUMBER 17 16

OFFICER ID CODE	01 HOME NEG. HOM	02-17 RAPE &SEX OFF	03 ROBB	04-08 ASLT	05 BURG	06 LARC	07 MTA VEH THEFT	10-11 FORG CNTF- FRAUD	13 STOL PROP	14 VAND- ALISM	15 WEA- PONS	18 DRUG ABUSE	20 OFF AGNST FAMLY	21 DUII	22-24 LIQ- DOC	51 CUS- TODY	52 WARR- ANTS	55 FUGI- TIVES	OTHER NOT SHOWN	TOTAL ACTIV
UNKNOWN																				
1451																				
1817																				
1942																				
2189																				
3196																				
3867																				
4232																				
4813																				
5202																				
5698																				
5770																				
7339																				
7382																				
7444																				
7858																				
8357																				
9547																				
TOTAL																				

6.12

MUCR 100E-OFFENSE/ACTIVITY SUMMARY BY DAY OF WEEK

Classification of activity.

Part I, II and III offense classifications of 01 Homicide through 99 Other.

Activity Count

The number of offenses reported by classification
(Source - Column 3 offense and activity form).

Sunday thru Saturday

The number of offenses reported by classification as occurring during
one of these specific days

Unknown

The number of offenses by classification where the time of occurrence
was beyond a specific day (unreported for this option) or where no entry
was attempted.

150

ORI NO-
MUCR-100E

AGENCY

OFFENSE/ACTIVITY SUMMARY BY DAY OF WEEK

- MONTH OF- 11/80

19
PAGE NUMBER 18

CLASSIFICATION OF ACTIVITY	OFFENSE COUNT	SUNDAY	MONDAY	TUESDAY	WEDNESDAY	THURSDAY	FRIDAY	SATURDAY	UNKNOWN
PART 3 (CONT.)									
53. MV RECOVERED-OTHER									
54. PROP RECVRD-OTHER									
55. FUGITIVES									
56. MISSING PERSON	5			2			1	2	
57. SUDDEN DEATH/BODY									
58. SUICIDE OR ATTEMPT									
59. OTHER ACCIDENTS	1		1						
60. ANIMAL PROBLEMS	8	2		1	2	1	2		
61. PROPERTY									
62. ABANDONED AUTO	4			1	1	1	1		
64. LOCATE ONLY AUTO									
65. IMPOUND AUTO	1				1				
66. ASSISTANCE RENDERED									
67. DOMESTIC PROBLEMS	4		1			2		1	
69. INSECURE PREMISES									
70. SUSPICIOUS PER/CIRC	5	2	1	1			1		
71. PUBLIC SAFETY	1	1							
73. DISTURBANCE/NOISE	2	1						1	
75. SICK CARED FOR	1				1				
76. MARINE									
77. TRAFFIC/ROADS	18		4	1	5	3	3	2	
78. CIVIL COMPLAINTS									
79. VEHICLE DISPOSITION									
81. ALARM									
82. SUBPOENAS									
90. OFFICER ASSAULT									
97. OPTION COUNTER									
1.									
2.									
3.									
4.									
5.									
6.									
7.									
8.									
9.									
98. OPTION COUNTER									
1.									
2.									
3.									
4.									
5.									
6.									
7.									
8.									
9.									
99. OTHER									
TOTAL (PART 3)	165	22	18	24	28	12	36	25	
GRAND TOTAL (PART 1,2,3)	347	46	42	39	47	21	70	66	16

Page 153

Preceding page blank

6.13

MUCR 100F -- STOLEN PROPERTY BY TYPE AND VALUE

COLUMN 1 - Type of property

MUCR Property-Article type of 01 Bicycles through 75 Miscellaneous and 98 Crime Damage.

COLUMN 2 - Number of Offenses for Loss Value

The number of Part I and II offenses where each type of property resulted in victim loss. (Source-Column 10 Offense/Activity form).

COLUMN 3 - Loss Value

The loss value reported by Property-Article type. (Source-Columns 10 and 11 Offense/Activity form).

COLUMN 4 - Recovered Value

The recovered value reported by Property-Article type. (Source-Columns 10 and 12 Offense/Activity form).

ORI NO-
MUCR-100F

AGENCY

STOLEN AND RECOVERED PROPERTY BY TYPE AND VALUE

MONTH OF- 11/80

PAGE NUMBER 20 19

(1)	(2) NO. OF OFFENSES FOR LOSS VALUE	(3) LOSS VALUE	(4) RECOVERED VALUE
01. BICYCLE/TRICYCLE	13	1,543	200
02. BOATS			
03. CAMERAS/RELATED EQUIP			
04. CLOTHING	6	913	67
05. FARM/GARDEN			
1. TRACTOR (UNDER 50 HP)			
2. TRACTOR (OVER 50 HP)			
3. TILLAGE IMPLEMENTS			
4. IRRIGATION EQUIPMENT			
5. SPRAYING EQUIPMENT			
6. HARVESTERS			
7. ALL OTHER FARM			
8. GARDEN/LAWN MACHINES			
9. ALL OTHER GARDEN			
TOTAL			
06. FURNITURE			
08. HOUSEHOLD & APPLIAN	1	113	
09. JEWELRY/PRECIOUS MET	2	6,400	
12. MUSICAL INSTRUMENT			
13. OFFICE EQUIPMENT	1	200	
14. SECURITIES-CUR, ETC.	16	2,998	4
15. SOUND EQUIPMENT			
1. RADIO	1	80	
2. STEREO/PHONOGRAPH	1	608	
3. TABLE RECORDER/PLAYR	1	80	
4. TELEVISION			
5. ACCESSORIES	2	174	
6. P.A./PAGING DEV.			
7. SOUND METER DEV.			
8. CB RADIOS	1	185	
9. OTHER	3	926	
TOTAL	9	2,053	
16. SPORTS EQUIP			
17. TOOLS	2	225	
20. VEHICLE PART/ACC	11	1,645	
21. VIEWING EQUIP			
22. FIREARMS	6	2,323	
23. KNIVES			
24. EXPLOSIVES/RELAT			
25. TRAILER/CAMPER			

Page 155

(1)	(2) NO. OF OFFENSES FOR LOSS VALUE	(3) LOSS VALUE	(4) RECOVERED VALUE
26. LIVESTOCK			
1. HORSES			
2. CATTLE			
3. PIGS			
5. SHEEP			
9. OTHER MAMMALS			
TOTAL			
27. HEAVY CONST/MACHINES			
32. MOTOR VEHICLES			
1. AUTOMOBILES	101	9,600	9,400
2. TRUCKS/BUSES	2	3,000	3,000
3. MOTORCYCLES	1	1,000	
4. SNOWMOBILES			
5. GO-CARTS			
9. OTHER	2		
TOTAL	106	13,600	12,400
33. MISC. VEHICLES			
34. AIRCRAFT			
1. AIRCRAFT			
2. PARTS/ACCESSORIES			
TOTAL			
35. METALS (BRASS, COPR.)			
36. CONSUMABLE GOODS			
1. BEVERAGES/LIQUOR	4	261	34
2. FOOD/MEAT	5	3,255	4
3. PERSONAL HYG. ITEMS			
4. GAS/FUEL	3	53	14
5. HAY/FEED			
6. CIGARETTES/TOBACCO			
7. DRUGS	1	5	5
9. OTHER	1	2	2
TOTAL	14	3,576	59
50. LOGGING EQUIPMENT			
51. TIMBER / RAW WOOD			
52. BUILDING MATERIALS	2	215	
60. SADDLES AND TACK			
61. MARINE EQUIPMENT			
70. BUILDINGS			
1. RESIDENCE	1	15	
2. NON-RESIDENCE	3	730	
TOTAL	4	745	
75. MISCELLANEOUS	25	4,251	1,169
PROPERTY TOTAL		41,101	13,899

*98. CRIME DAMAGE

* PROPERTY DAMAGE FROM CRIMINAL ACTS OTHER THAN ARSON/VANDALISM

6.13

MUCR 60-LAW ENFORCEMENT OFFICER ASSAULTED SUPPLEMENTARY REPORT

TYPE OF ACTIVITY

The eleven nationally established and standardized police activities (1 thru 11) in which assaults on law enforcement officers occur.

TOTAL ASSLTs WEAPON (A)

The total number of officer assaults by police activity categories. (Source-Total(s) from "force element" Columns B thru E).

FIREARM (B), KNIFE OTHR INSTR (CUTTING INSTRUMENT) (C), OTHER DANGER WEAPON (D), HANDS FIST FEET (E)

The number of officer assaults by force element corresponding with type of activity. (Source-Column 3, Part III Code 90 record entries on the Offense/Activity form).

TWO MAN VEH (F), ONE MAN VEHICLE, ALONE (G), ASSISTED (H), DETECTIVE OR SPEC ASSIGN, ALONE (I), ASST (J), OTHER, ALONE (K), AST (L)

The number of officer assaults by type of assignment corresponding to force elements and type of activity. (Source-Column 3, Part III Code 90 record entries on the Offense/Activity form).

POLICE ASSAULTS CLEARED (M)

The number of officer assaults cleared by arrest or exceptional means corresponding to type of assignment, force elements and type of activity. (Source-Column 3, Part III code 90 and Column 14 record entries on Offense/Activity form).

NUMBER WITH PERSONAL INJURY (13)

NUMBER WITHOUT PERSONAL INJURY (14)

The number of officer assaults with (13) and without (14) personal injury by total and corresponding force elements.

TIME OF ASSAULTS (15)

The time of officer assaults in two hour segments. (Source-Columns 4 and 5 occurred date and time record entries on the Offense/Activity form).

NUMBER OF LAW ENFORCEMENT OFFICERS KILLED IN THE LINE OF DUTY.

BY FELONIOUS ACT, BY ACCIDENT OR NEGLIGENCE (Source-Column 3, Part III Code 90 record entries on Offense/Activity form).

ORI NO-
/UCR 60

AGENCY

LAW ENFORCEMENT OFFICERS ASSAULTED SUPPLEMENTARY REPORT

- MONTH OF- 07/79

PAGE NUMBER 9

TYPE OF ACTIVITY	TOTAL ASSLT WEAPON (A)	FIREARM (B)	KNIFE OTHER INSTR (C)	OTHER DANGR WEAPON (D)	HANDS FIST FEET (E)	TWO MAN VEH (F)	ONE MAN VEHICLE ALONE (G)	ASST. (H)	DETECT OR SPEC ASSIGN ALONE (I)	ASST. (J)	OTHER ALONE (K)	AST. (L)	POLICE ASSAULTS CLEARED (M)
1.RESPONDING TO DISTURBANCE CALLS	1				1			1					1
2.BURGLARIES IN PROGRESS/PURSuing													
3.ROBBERIES IN PROGRESS/PURSuing													
4.ATTEMPTING OTHER ARRESTS													
5.CIVIL DISORDER (RIOT,MASS DISOB)													
6.HANDLING, TRANSPORTING PRISONERS	1				1			1					1
7.INVESTIGATING SUSPICIOUS PER/CIR													
8.AMBUSH - NO WARNING													
9.MENTALLY DERANGED													
10.TRAFFIC PURSUITS AND STOPS													
11.ALL OTHER													
12. TOTAL 1-11	2				2			2					2
13.NUMBER WITH PERSONAL INJURY	2				2								
14.NUMBER WITHOUT PERSONAL INJURY													
15.TIME OF ASSAULTS	1												1

1	NUMBER OF LAW ENFORCEMENT OFFICERS	1	BY FELONIOUS ACT	0	1
1	KILLED IN THE LINE OF DUTY.	1	BY ACCIDENT OR NEGLIGENCE	0	1

MT/UCR 40-AGE, SEX & RACE OF PERSONS ARRESTED
18 YEARS OF AGE AND OVER

CLASSIFICATION OF OFFENSES

Part I and Part II offenses of 01A Homicide through 26 All Other.

SEX

M and F (Male and Female). (Source-Columns 3 and 9 Custody form).

AGE

18 through 65 OV
Male and female arrest counts by offense classification and age or age groupings. (Source-Columns 3, 9 and 11 Custody form).

TOT (Total)

Total male and total female arrests by offense classification. (Source-Addition of all male arrests and all female arrests on that particular offense classification line).

RACE

WHT (White) through OTH ASN (Other Asian)
The number of persons arrested (minor and adult) by race and offense classification. (Source-Columns 3 and 10 Custody form).

ORI NO-
MT/UCR 40

AGENCY

AGE, SEX AND RACE OF PERSON ARRESTED

- MONTH OF- 11/80

PAGE NUMBER 6
5

OFFENSE CLASS.	SEX	18 YEARS OF AGE AND OVER														TOT	WHT	NEG	* * RACE * *				C/J	OTH ASIAN
		18	19	20	21	22	23	24	25 29	30 34	35 39	40 44	45 49	50 54	55 59	60 64	65 OV							
MURDER 01A	M																							
MANSLAUGHT. 01B	F																							
RAPE 02	M																							
ROBBERY 03	F																							
AGG. ASSAULT 04	M				1				2									3	3					
BURGLARY 05	F								1									1	1					
LARCENY 06	M	2	1	3	1				1		1	0						9	14	1				
MV. THEFT 07	F	1		2					3									6						
OTH ASSLT. 08	M										1							1	1					
ARSON 09	F																							
FORGERY 10	M																							
FRAUD 11	F																							
EMBEZZLMNT. 12	M																							
STLN. PROP. 13	F																							
VANDALISM 14	M											1						1	1					
WEAPONS 15	F																							
PROSTITUT. 16	M																							
SEX OFFNS. 17	F																							
DRUG/TOTAL 18	M																							
SALE TOTAL	F																							
NARCOTICS A	M																							
MARIJUANA B	F																							
SYNTHETIC C	M																							
DANGEROUS D	F																							
POSSESS. TOT	M																							
NARCOTICS E	F																							

ORI NO-
MT/UCR 40

AGENCY

AGE, SEX AND RACE OF PERSON ARRESTED

- MONTH OF- 11/80

PAGE NUMBER 7 6

OFFENSE CLASS.	SEX	18 YEARS OF AGE AND OVER																	* * RACE * *					OTH ASIAN
		18	19	20	21	22	23	24	25 29	30 34	35 39	40 44	45 49	50 54	55 59	60 64	65 OV	TOT	WHT	NEG	IND	MEX	C/J	
MARIJUANA	F																							
	M																							
SYNTHETIC	G																							
	M																							
DANGEROUS	H																							
	M																							
GAMBL TOT. 19	F																							
	M																							
BOOKMAKING	A																							
	M																							
NUMBERS	B																							
	M																							
OTH GAMBL.	C																							
	M																							
FAMILY/CHLD20	F																							
	M																							
DRIV. INFLC.21	F			1	2					1			1	1				6	6			1		
	M		1															1						
LIQUOR 22	F	4																4	4					
	M																							
DISORDERLY 24	F		4	1	1	2	1		1	1								11	12					
	M				1													1						
ALL OTHER 26	F			1		1												2	2					
	M																							
TOTAL		7	6	8	6	3	1		8	2	2	1	1	1				46	44	1	1			

Page 161

Preceding page blank

6.15

MT/UCR 50-AGE, SEX & RACE OF PERSONS ARRESTED
UNDER 18 YEARS OF AGE

CLASSIFICATION OF OFFENSES

Part I and Part II offenses of 01A Homicide
through 29 Runaway.

SEX

M and F (Male and Female). (Source-Columns
3 and 9 Custody form).

AGE

10/UND through 17

Male and female arrest counts by offense
classification and age or age groupings
from ages 10 and under through 17 years.
(Source-Columns 3, 9 and 11 Custody form).

TOTAL UNDER 18

Total male and total female arrest by
offense classification. (Source-
Addition of all male and all female
arrests on that particular offense line).

RACE

WHITE through OTHER ASIAN

The number of persons (Juveniles)
arrested by race designation and
offense classification. (Source-
Columns 3 and 10 Custody form).

ORI NO-
MT/UCR 50

AGENCY

AGE, SEX AND RACE OF PERSONS ARRESTED

- MONTH OF- 11/80

PAGE NUMBER 8
7

OFFENSE CLASS.	SEX	UND TO	* * AGE * *	UNDER 18 YEARS OF AGE					TOTAL UND 18	WHITE	* * RACE * *				CH/JAP	OTHER ASIAN
			10 12	13 14	15	16	17			NEGRO	INDIAN	MEX.				
MURDER 01A	M															
MANSLAUGHT.01B	F															
RAPE 02	F															
ROBBERY 03	F															
AGG. ASSAULT 04	F															
BURGLARY 05	F															
LARCENY 06	F	1	1		1			1	3	7						
MV. THEFT 07	F			1	1	2		4								
OTH ASSLT. 08	F				1			1	1							
ARSON 09	F															
FORGERY 10	F															
FRAUD 11	F															
EMBEZZLMNT. 12	F															
STLN. PROP. 13	F															
VANDALISM 14	F															
WEAPONS 15	F															
PROSTITUT. 16	F															
SEX OFFNS. 17	F															
DRUG/TOTAL 18	F															
SALE TOTAL	F															
NARCOTICS A	F															
MARIJUANA B	F															
SYNTHETIC C	F															
DANGEROUS D	F															
POSSESS. TOT	F															
NARCOTICS E	F															

ORI NO-
MT/UCR 50

AGENCY

AGE, SEX AND RACE OF PERSONS ARRESTED

- MONTH OF- 11/80

PAGE NUMBER 8

OFFENSE CLASS.	SEX	UNDER 18 YEARS OF AGE						TOTAL UND 18	WHITE	** RACE **					CH/JAP	OTHER ASIAN
		UND 10	** AGE ** 10 12	13 14	15	16	17			NEGRO	INDIAN	MEX.				
MARIJUANA	F															
SYNTHETIC	G															
DANGEROUS	H															
GAMBL TGT. 19																
BOOKMAKING	A															
NUMBERS	B															
OTH GAMBL.	C															
FAMILY/CHLD20																
DR IV. INFLC. 21																
LIQUOR 22							1	1	1	3						
DISORDERLY 24									2							
ALL OTHER 26				1	1			2	2							
CURFEW 28																
RUNAWAY 29							2	1	3	3						
TOTAL		1	1	2	4	6	3	17	17							

POLICE DISPOSITION OF JUVENILES

1. HANDLED WITHIN DEPT AND RELEASED	0
2. REFERRED TO JUV. COURT/PROB DEPT.	17
3. REFERRED TO WELFARE AGENCY	0
4. REFERRED TO OTHER POLICE AGENCY	0
5. REFERRED TO CRIMINAL OR ADULT CRT	0

Page 165

Preceding page blank

END