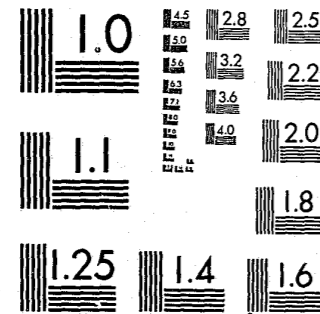


National Criminal Justice Reference Service

ncjrs

This microfiche was produced from documents received for inclusion in the NCJRS data base. Since NCJRS cannot exercise control over the physical condition of the documents submitted, the individual frame quality will vary. The resolution chart on this frame may be used to evaluate the document quality.



MICROCOPY RESOLUTION TEST CHART
NATIONAL BUREAU OF STANDARDS-1963-A

Microfilming procedures used to create this fiche comply with the standards set forth in 41CFR 101-11.504.

Points of view or opinions stated in this document are those of the author(s) and do not represent the official position or policies of the U. S. Department of Justice.

National Institute of Justice
United States Department of Justice
Washington, D. C. 20531

12/27/82

U.S. Department of Justice
National Institute of Justice

This document has been reproduced exactly as received from the person or organization originating it. Points of view or opinions stated in this document are those of the authors and do not necessarily represent the official position or policies of the National Institute of Justice.

Permission to reproduce this copyrighted material has been granted by
Wyoming Board of Parole

to the National Criminal Justice Reference Service (NCJRS).

Further reproduction outside of the NCJRS system requires permission of the copyright owner.

PROBATION & PAROLE IN WYOMING

REPORT FOR THE

1979/80 BIENNIAL

85775

NCJRS

OCT 4 1982

PROBATION AND PAROLE IN WYOMING

ACQUISITIONS

The Department of Probation and Parole operates under the direction of the Governor of the State of Wyoming and the Board of Parole. (See Figure 1) Agents supervise the conduct of persons granted a parole by the Board of Parole as well as those granted a conditional release from the State's several correctional institutions (Wyoming State Penitentiary, Wyoming Industrial Institute, Wyoming Girl's School, Wyoming Women's Center). Under direction of the district courts of the State, agents supervise those individuals granted probation by the district and juvenile courts. In addition, they are responsible for investigating and preparing written reports or social summaries in pre-release, pre-sentence and Interstate Compact Matters. (See Figure 2)

The overall objectives of the Department of Probation and Parole are as follows:

- a) To provide adequate, imaginative and practicable supervisory services for the rehabilitation and reintegration of juvenile and adult offenders so that they may become and remain law-abiding, productive citizens;
- b) To support the evolution and implementation of innovative and realistic methods of treating individuals subject to the juvenile or criminal justice systems, so that noncriminal behavior is possible;
- c) To take such actions as may be necessary and feasible to prevent, consistent with the protection of the public interest and safety, children and adults from becoming delinquent or criminal;

d) To collect and evaluate information and data relating to the nature, extent and causes of crime and delinquency;

e) To cooperate with and assist, within the scope of its functions and duties as provided by law, other public and voluntary agencies and organizations in the development and coordination of programs beneficial to offenders;

f) To supplement its rehabilitative and reintegrative services to offenders by referring them to appropriate social services and activities to citizens generally;

g) To encourage that any supervisory condition imposed on an individual be reasonably related to the correctional liberty and compatible with his needs, subject always to the interest and safety of others and of the public generally;

h) To conduct supervision on the basis of factors relating to the individual offender rather than to the offense committed;

i) To provide for maximum involvement of the individual offender in determining the nature and direction of his own goals, and the mechanisms for attaining the same; and

j) To be guided by the criteria that no offender should receive more surveillance or help than he requires, and no offender should be supervised or scrutinized more than his potential risk demands.

Board of Parole

Jurisdiction: The Board has the power to:

- a) Grant parole to any person who has been convicted of a felony by a District Court and who is confined in any state institution.

- b) Fix the terms and conditions of parole.
- c) Provide rules and regulations for the granting of good time and special good time allowance.
- d) Adopt rules and regulations for the conduct of proceedings, hearings and meetings.
- e) Promulgate rules and regulations under which parole can be granted and revoked.
- f) Grant parole to felons under the age of nineteen (19) years sentenced to the Wyoming Industrial Institute by a District Court of this State.
- g) Transfer from Wyoming State Penitentiary to the Wyoming Industrial Institute any convict under the age of nineteen (19) years if the public interest and welfare of such convict is subserved.
- h) Require clerks of the District Courts of this State to submit information relative to persons sentenced to the Wyoming State Penitentiary.
- i) Perform such other duties and powers as may be delegated to it by law and by the provisions of its rules and regulations.

Membership: The Board is comprised of three (3) members appointed by the Governor with consent of the Senate; no more than two (2) members shall be of the same political party. In the initial appointments, the Governor shall appoint one (1) member to a two (2) year term, one (1) member to a four (4) year term, and one (1) member to a six (6) year term. The members shall elect from their number, a chairman and vice-chairman.

Meetings: The Board meets quarterly at the Wyoming State Penitentiary in Rawlins, and at other places and times as deemed necessary. Administrative meetings can be held at a time and place at the discretion of the Board. The quarterly meetings are held on the first Thursday of January, April, July and October, unless a change of the meeting date becomes necessary due to a holiday, inclement weather conditions, lack of a quorum or the like. In the event of a change in the meeting date, the hearing will be rescheduled to take place within ten (10) days.

Specific Powers: The Board has the power to:

- a) Award or grant to an inmate special good time for unusual and extremely beneficial and exemplary services and actions on recommendations of the Chief Administrative Officer of the institution (Warden). It shall also be granted or awarded in an amount not to exceed sixty (60) days when acceleration of his release date is desired for administrative purposes and when it is recommended by the Chief Administrative Officer (Warden) of the institution.
- b) Review and recommend to the Governor commutations of sentences.
- c) Restore good time lost by disciplinary action of the Wyoming State Penitentiary.
- d) Automatically review the case of an inmate at the first meeting three months prior to the inmate's eligibility for parole or within the three months prior to the completion of his minimum sentence.
- e) Automatically review long-term and life sentence cases at such time as the inmate has served a minimum of five (5) years in confinement and thereafter on a yearly basis.

Listed below are the definitional terms used to classify offenses in a more categorized format. This was done for easier statistical manipulations and better representation of the material in graph or table format.

VIOLENT

- Murder (1st Degree)
- Murder (2nd Degree)
- Manslaughter
- Kidnapping/child stealing
- Rape (1st and 2nd Degree)
- Rape (3rd Degree)
- Robbery (General)
- Robbery (Armed)
- Assault and Battery
- Sex Crimes (Except Rape)

PROPERTY

- Arson (All Degrees)
- Breaking and Entering
- Burglary
- Theft (Larceny)
- Auto Theft
- Grand Larceny
- Larceny by Bailee

FRAUD

- Embezzlement
- Disposing Mortgaged Property
- Obtaining Merchandise/Property by Fraud
- Misappropriating Public Funds
- Checks (No-account)
- Checks (Insufficient Funds)
- Forgery

DRUGS

- Drugs/Narcotic Laws

JUVENILE ONLY

- Offenses (Juvenile vs Family)
- Offenses (Juvenile vs Property)
- Incorrigible (Juvenile)
- Runaway (Juvenile)
- Juvenile (Other Violations)

OTHER

- Accessory (Before/After Fact)
- Receiving Stolen Goods
- Criminal Conspiracy
- Telephone Calls (Illegal)
- Gambling Laws
- Prostitution/Adultery
- Abortion (Criminal)
- Obscenity-Pornography
- Alcohol Laws
- Motor Vehicle Laws
- Weapon Laws
- Rustling (Cattle, Horses, Sheep)
- Escape (Prison/Jail)
- Riots (Inciting, Etc.)
- Other

7/79-6/80

ORGANIZATIONAL CHART STATE DEPARTMENT OF PROBATION & PAROLE

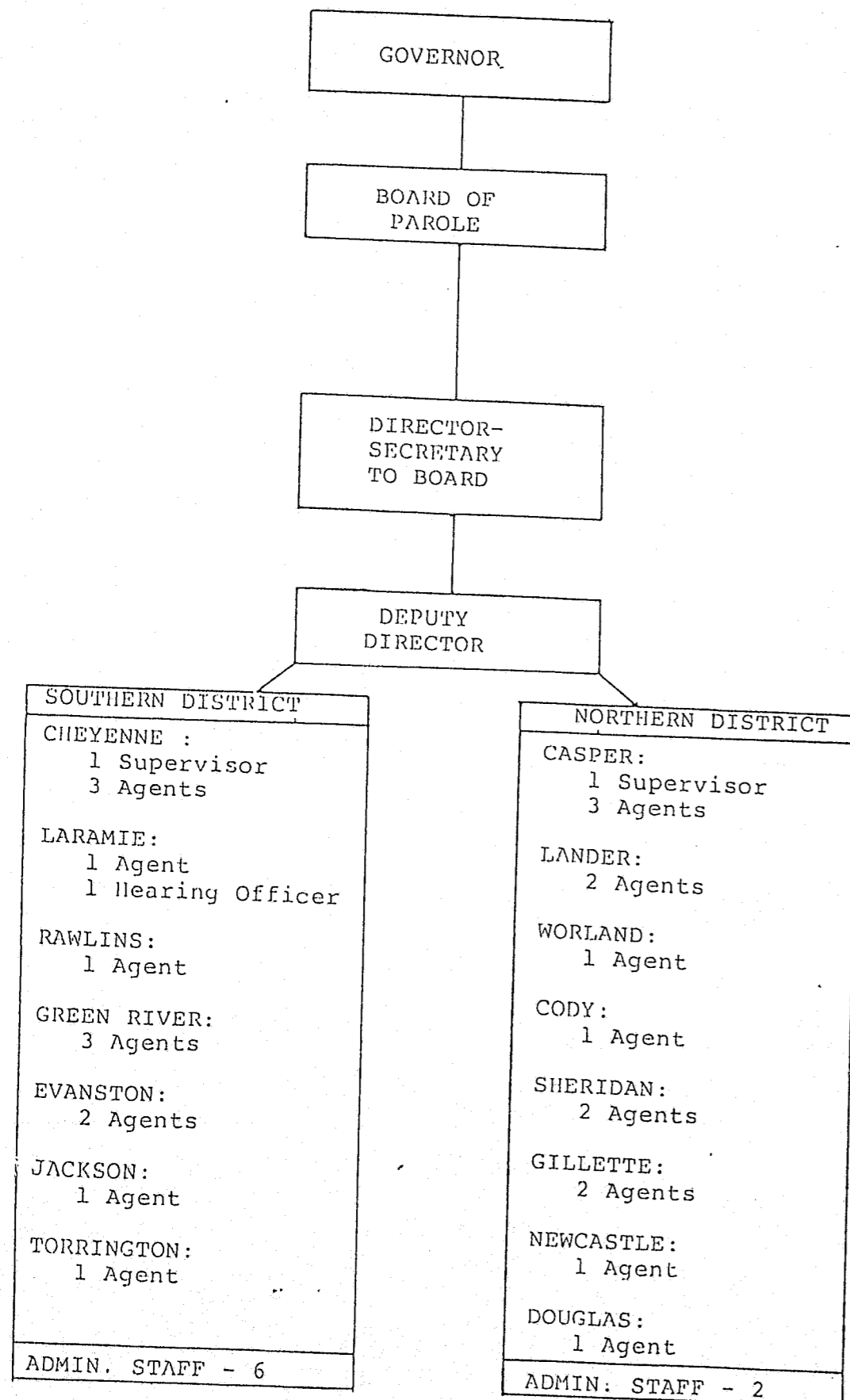


Figure 1

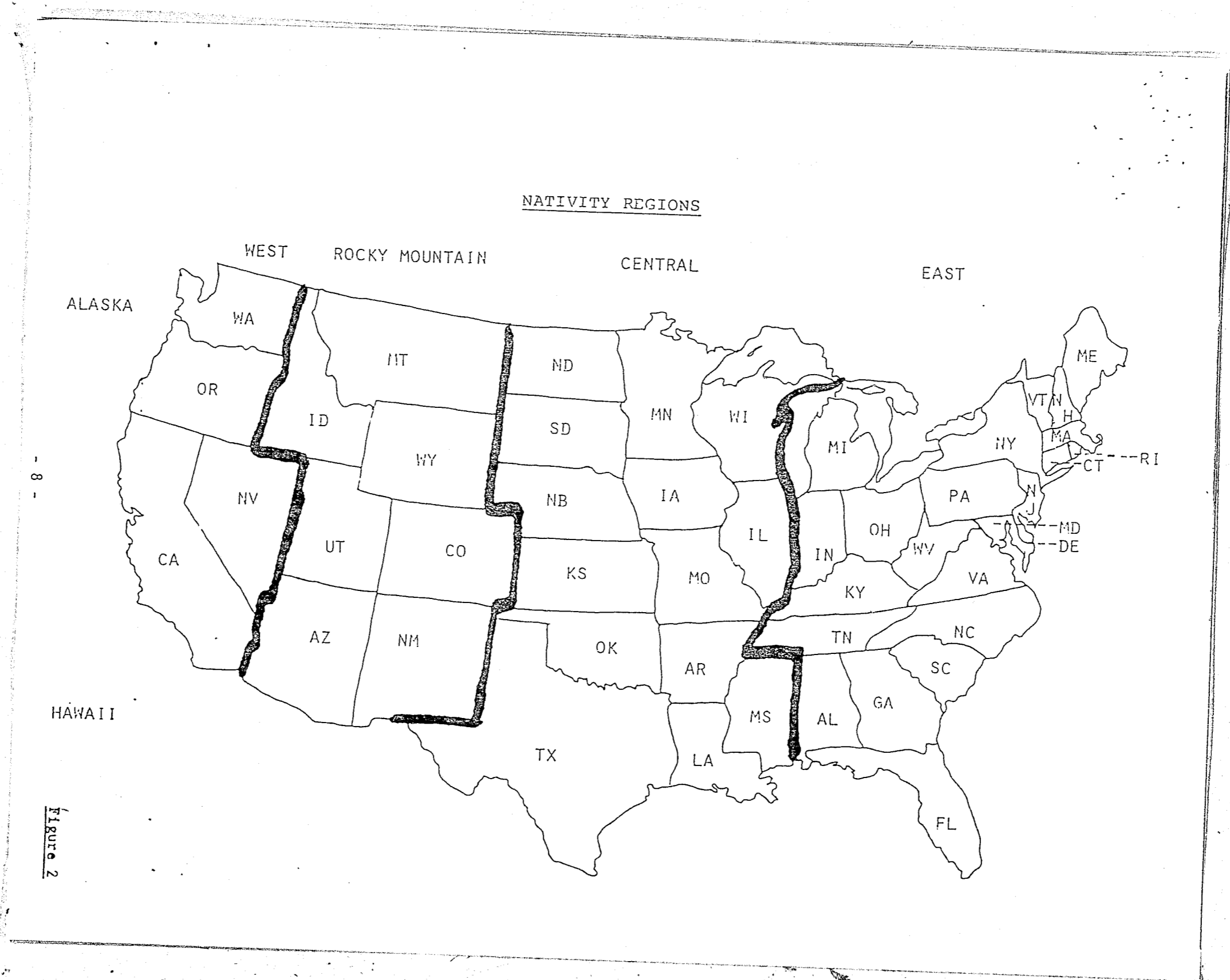


Figure 2

BOARD OF PAROLE ACTIVITIES

The activities of the Board of Parole can be seen during the period covering July 1, 1979 to June 30, 1980.

<u>BOARD DATE</u>	<u>INMATES HEARD</u>	<u>PAROLES GRANTED</u>	<u>PAROLES REVOKED</u>
October 1979	86	26	2
January 1980	103	30	4
March 1980	56	19	2
April 1980	61	14	-
June 1980	66	27	1

PERSONS UNDER SUPERVISION

BY AGE, SEX & RACE

CHARACTERISTICS

AGE

	Adult Probation Number	Percent	Adult Parole Number	Percent	Juvenile Probation Number	Percent	Juvenile Parole Number	Percent
LE 18 Yrs.	67	10.1	5	3.5	196	98.0	197	97.0
19-25 Yrs.	382	57.4	73	51.4	4	2.0	6	3.0
26-35 Yrs.	154	23.2	36	25.4	0	---	0	---
GE 36 Yrs.	62	9.3	28	19.7	0	---	0	---
TOTAL	665	100.0	142	100.0	200	100.0	203	100.0

SEX

	Adult Probation Number	Percent	Adult Parole Number	Percent	Juvenile Probation Number	Percent	Juvenile Parole Number	Percent
Male	573	86.2	134	94.4	170	85.0	103	50.7
Female	92	13.8	8	5.6	30	15.0	100	49.3
TOTAL	665	100.0	142	100.0	200	100.0	203	100.0

RACE

	Adult Probation Number	Percent	Adult Parole Number	Percent	Juvenile Probation Number	Percent	Juvenile Parole Number	Percent
Caucasian	625	94.0	127	89.4	196	98.0	188	92.6
Negro	13	2.0	6	4.2	0	---	2	1.0
American Indian	14	2.1	5	3.5	1	.5	4	2.0
Mexican-American	12	1.8	3	2.1	3	1.5	9	4.4
Other	1	.2	1	.7	0	---	0	---
TOTAL	665	100.0	142	100.0	200	100.0	203	100.0

PERSONS UNDER SUPERVISION
BY RELIGION, EDUCATION & EMPLOYMENT

CHARACTERISTICS	Adult Probation		Adult Parole		Juvenile Probation		Juvenile Parole	
	Number	Percent	Number	Percent	Number	Percent	Number	Percent
<u>RELIGION</u>								
Protestant	146	22.0	45	31.7	55	27.5	84	41.4
Catholic	97	14.6	28	19.7	19	9.5	38	18.7
Hebrew	1	.2	1	.7	0	---	0	---
Indian Faith	0	---	1	.7	0	---	1	.5
Latter Day Saints	36	5.4	4	2.8	20	10.0	18	8.9
Other	57	8.6	12	8.5	5	2.5	12	5.9
None	73	11.0	23	16.2	22	11.0	31	15.3
Unknown	255	38.4	28	19.7	79	39.5	19	9.4
TOTAL	655	100.0	142	100.0	200	100.0	203	100.0
<u>EDUCATION</u>								
Less Than HS	266	40.0	64	45.1	157	78.5	170	83.7
High School	306	46.0	58	40.9	25	12.5	26	12.8
College	73	11.0	19	13.4	2	1.0	1	.5
Unknown	20	3.0	1	.7	16	8.0	6	3.0
TOTAL	655	100.0	142	100.0	200	100.0	203	100.0
<u>EMPLOYMENT</u>								
Professional	4	.6	0	---	0	---	0	---
White Collar	12	1.8	1	.7	0	---	0	---
Blue Collar	95	14.3	20	14.1	9	4.5	3	1.5
Laborer	415	62.4	89	62.9	78	39.0	41	20.2
Unemployed	132	19.9	26	18.3	76	38.0	118	58.1
In-School Training	7	1.1	3	2.1	31	15.5	37	18.2
In-School W/part-time training	0	---	3	2.1	6	3.0	4	2.0
TOTAL	655	100.0	142	100.0	200	100.0	203	100.0

PERSONS UNDER SUPERVISION
BY NATIVITY & MILITARY SERVICE

CHARACTERISTICS	Adult Probation		Adult Parole		Juvenile Probation		Juvenile Parole	
	Number	Percent	Number	Percent	Number	Percent	Number	Percent
<u>NATIVITY</u>								
Wyoming	155	23.3	24	16.9	61	30.5	75	37.0
Rocky Mountains	152	22.9	29	20.4	48	24.0	43	21.2
East USA	91	13.7	26	18.3	17	8.5	24	11.8
Central	174	26.2	49	34.5	40	20.0	39	19.2
West USA	72	10.8	12	8.5	12	6.0	19	9.4
Foreign Country	8	1.2	0	---	3	1.5	1	.5
Unknown	13	2.0	2	1.4	19	9.5	2	1.0
TOTAL	665	100.0	142	100.0	200	100.0	203	100.0
<u>MILITARY SERVICE</u>								
US Army	95	14.3	31	21.8	1	.5	1	.5
US Navy	24	3.6	5	3.5	0	---	0	---
US Air Force	34	5.1	8	5.6	0	---	0	---
US Marine Corps	21	3.2	7	4.9	1	.5	0	---
Coast Guard/ National Guard/ Reserves	12	1.8	3	2.1	1	.5	0	---
None	479	72.0	88	62.0	197	98.5	202	99.5
TOTAL	665	100.0	142	100.0	200	100.0	203	100.0

PERSONS UNDER SUPERVISION

BY MONTHLY INCOME, MARITAL STATUS & DEPENDENTS

CHARACTERISTICS	Adult Probation		Adult Parole		Juvenile Probation		Juvenile Parole	
	Number	Percent	Number	Percent	Number	Percent	Number	Percent
<u>MONTHLY INCOME</u>								
None/Unknown	544	81.8	128	90.1	191	95.5	200	98.5
\$1 - \$500	29	4.4	1	.7	3	1.5	1	.5
\$501-\$800	26	3.9	4	2.8	2	1.0	1	.5
\$801-\$998	14	2.1	1	.7	1	.5	0	---
More than \$999	52	7.8	8	5.6	3	1.5	1	.5
TOTAL	665	100.0	142	100.0	200	100.0	203	100.0
<u>MARITAL STATUS</u>								
Never Married	345	51.9	63	44.4	194	97.0	199	98.0
Married	156	23.5	30	21.1	6	3.0	0	---
Divorced	103	15.5	38	26.8	0	---	2	1.0
Widowed	3	.5	1	.7	0	---	1	.5
Seperated	26	3.9	5	3.5	0	---	1	.5
Re-Married	17	2.6	2	1.4	0	---	0	---
Common-Law	15	2.3	3	2.1	0	---	0	---
TOTAL	665	100.0	142	100.0	200	100.0	203	100.0
<u>DEPENDENTS</u>								
Yes	245	36.8	53	37.3	4	2.0	4	2.0
No	420	63.2	89	62.7	196	98.0	199	98.0
TOTAL	665	100.0	142	100.0	200	100.0	203	100.0

PERSONS UNDER SUPERVISION
BY MILITARY DISCHARGE, DRUG USE & ALCOHOL USE

CHARACTERISTICS	Adult Probation		Adult Parole		Juvenile Probation		Juvenile Parole	
	Number	Percent	Number	Percent	Number	Percent	Number	Percent
<u>MILITARY DISCHARGE</u>								
None	494	74.3	89	62.7	199	99.5	203	100.0
Honorable	141	21.2	39	27.5	0	---	0	---
Administrative	22	3.3	3	2.1	1	.5	0	---
Bad Conduct	2	.3	2	1.4	0	---	0	---
Dishonorable	6	.9	9	6.3	0	---	0	---
TOTAL	665	100.0	142	100.0	200	100.0	203	100.0
<u>DRUG USAGE</u>								
Experimental Use	98	14.7	20	14.1	50	25.0	45	22.2
Regular Use	67	10.1	30	21.1	16	8.0	29	14.3
Addicted	3	.5	2	1.4	0	---	0	---
None	104	15.6	23	16.2	17	8.5	12	5.9
Unknown	393	59.1	67	47.2	117	58.5	117	57.6
TOTAL	665	100.0	142	100.0	200	100.0	203	100.0
<u>ALCOHOL USE</u>								
Some Use	212	31.9	44	31.0	65	32.5	65	32.0
Excessive Use	70	10.5	47	33.1	1	.5	7	3.4
None	29	4.4	4	2.8	12	6.0	13	6.4
Unknown	354	53.2	47	33.1	122	61.0	118	58.1
TOTAL	665	100.0	142	100.0	200	100.0	203	100.0

PERSONS UNDER SUPERVISION

BY PAYMENT OF RESITUTION, PRIOR JUVENILE OFFENSES & PRIOR ADULT OFFENSES

CHARACTERISTICS	Adult Probation		Adult Parole		Juvenile Probation		Juvenile Parole	
	Number	Percent	Number	Percent	Number	Percent	Number	Percent
<u>PAYMENT OF RESTITUTION</u>								
Exceptional	8	1.2	1	.7	0	---	0	---
Marginal	1	.2	0	---	0	---	0	---
Legitimate Job Diff.	2	.3	0	---	0	---	0	---
Uncooperative Attitude	0	---	0	---	0	---	1	.5
None	193	29.0	54	38.0	56	28.0	51	25.1
Unknown	461	69.3	87	61.3	144	72.0	151	74.4
TOTAL	665	100.0	142	100.0	200	100.0	203	100.0
<u>PRIOR JUVENILE OFFENSES</u>								
None	498	74.9	104	73.2	126	63.0	122	60.1
One	65	9.8	11	7.8	34	17.0	34	16.8
Two	37	5.6	13	9.2	11	5.5	17	8.4
Three	19	2.9	5	3.5	14	7.0	12	5.9
Four	9	1.4	2	1.4	5	2.5	5	2.5
Five or More	37	5.6	7	4.9	10	5.0	13	6.4
TOTAL	665	100.0	142	100.0	200	100.0	203	100.0
<u>PRIOR ADULT OFFENSES</u>								
None	390	58.7	50	35.2	198	99.0	203	100.0
One	93	14.0	20	14.1	1	.5	0	---
Two	51	7.7	8	5.6	0	---	0	---
Three	42	6.3	14	9.9	0	---	0	---
Four	24	3.6	9	6.3	0	---	0	---
Five or More	65	9.8	41	28.9	1	.5	0	---
TOTAL	665	100.0	142	100.0	200	100.0	203	100.0

PERSONS UNDER SUPERVISION
PRIOR INSTITUTIONALIZATION, PRIOR PENAL COMMITMENTS &
PRIOR MENTAL COMMITMENTS

CHARACTERISTICS	Adult Probation		Adult Parole		Juvenile Probation		Juvenile Parole	
	Number	Percent	Number	Percent	Number	Percent	Number	Percent
<u>PRIOR INSTITUTIONALIZATION</u>								
None	632	95.0	121	85.2	187	93.5	152	74.9
One	26	3.9	14	9.9	9	4.5	40	19.7
Two	5	.8	4	2.8	2	1.0	7	3.5
Three	1	.2	1	.7	2	1.0	1	.5
Four or More	1	.2	2	1.4	0	---	3	1.5
TOTAL	665	100.0	142	100.0	200	100.0	203	100.0
<u>PRIOR PENAL COMMITMENTS</u>								
None	627	94.3	101	71.1	200	100.0	202	99.5
One	27	4.1	24	16.9	0	---	1	.5
Two	6	.9	7	4.9	0	---	0	---
Three	2	.3	5	3.5	0	---	0	---
Four or More	3	.5	5	3.5	0	---	0	---
TOTAL	665	100.0	142	100.0	200	100.0	203	100.0
<u>PRIOR MENTAL COMMITMENTS</u>								
None	632	95.0	134	94.4	195	97.5	197	97.0
One	27	4.1	4	2.8	4	2.0	5	2.5
Two	4	.6	1	.7	0	---	0	---
Three	1	.2	2	1.4	1	.5	0	---
Four or More	1	.2	1	.7	0	---	1	.5
TOTAL	665	100.0	142	100.0	200	100.0	203	100.0

PERSONS UNDER SUPERVISION
BY FAMILY STATUS, RISK FACTOR &
BACKGROUND INFORMATION

CHARACTERISTICS	Adult Probation		Adult Parole		Juvenile Probation		Juvenile Parole	
	Number	Percent	Number	Percent	Number	Percent	Number	Percent
<u>FAMILY STATUS</u>								
Family Intact	284	42.7	47	33.1	108	54.0	97	47.8
Family Dissolved	208	31.3	51	35.9	21	10.5	21	10.3
Father Absent	121	18.2	27	19.0	60	30.0	71	35.0
Mother Absent	44	6.6	12	8.5	8	4.0	14	6.9
Unknown	8	1.2	5	3.5	3	1.5	0	---
TOTAL	665	100.0	142	100.0	200	100.0	203	100.0
<u>RISK FACTOR</u>								
Good	94	14.1	11	7.8	29	14.5	10	4.9
Average	501	75.3	108	76.1	145	72.5	180	88.7
Poor	21	3.2	7	4.9	2	1.0	3	1.5
None/Unknown	49	7.4	16	11.3	24	12.0	10	4.9
TOTAL	665	100.0	142	100.0	200	100.0	203	100.0
<u>BACKGROUND INFORMATION</u>								
Pre-Sentence	563	84.7	109	76.8	32	16.0	15	7.4
Pre-Release	11	1.7	12	8.5	1	.5	10	4.9
Social-Summary	36	5.4	4	2.8	149	74.5	161	79.3
None	55	8.3	17	12.0	18	9.0	17	8.4
TOTAL	665	100.0	142	100.0	200	100.0	203	100.0

PERSONS UNDER SUPERVISION
BY MONTHS UNDER SUPERVISION

CHARACTERISTICS	Adult Probation		Adult Parole		Juvenile Probation		Juvenile Parole	
	Number	Percent	Number	Percent	Number	Percent	Number	Percent
MONTHS UNDER SUPERVISION								
0 - 6 Months	137	20.6	50	35.2	70	35.0	140	69.0
7 - 12 Months	217	32.6	43	30.3	76	38.0	50	24.6
13 - 18 Months	144	21.7	23	16.2	40	20.0	10	4.9
19 - 24 Months	79	11.9	11	7.8	9	4.5	2	1.0
25 - 30 Months	44	6.6	7	4.9	0	---	1	.5
31 - 36 Months	18	2.7	2	1.4	3	1.5	0	---
37 - 48 Months	17	2.6	2	1.4	2	1.0	0	---
More than 48 Months	<u>9</u>	<u>1.4</u>	<u>4</u>	<u>2.8</u>	<u>0</u>	<u>---</u>	<u>0</u>	<u>---</u>
TOTAL	665	100.0	142	100.0	200	100.0	203	100.0

PERFORMANCE WHILE UNDER SUPERVISION

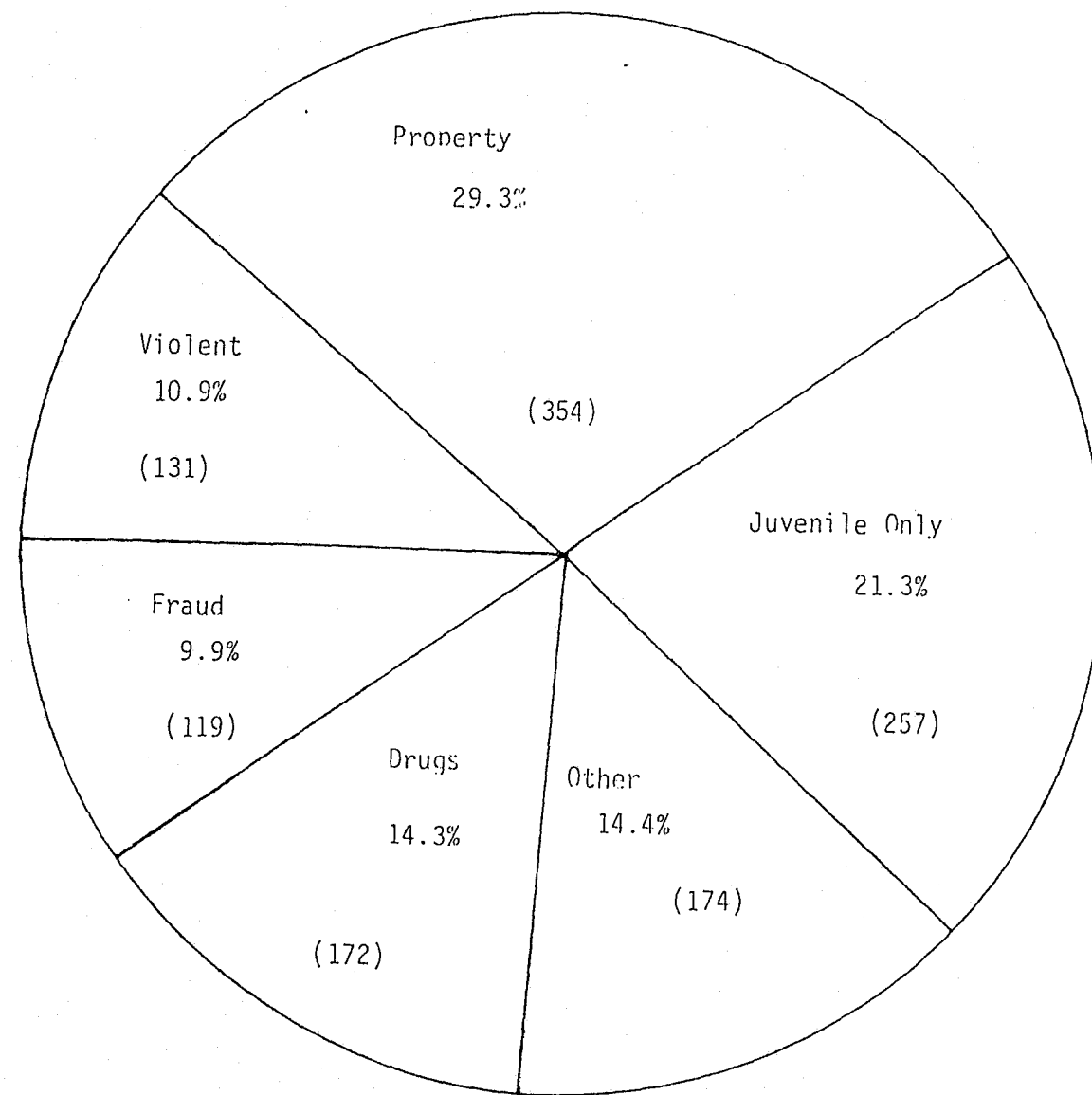
	Adult Probation- And Parole		Juvenile Probation And Parole	
	Number	Percent	Number	Percent
Satisfactory	558	69.1	256	63.5
Discharged-New Offense	8	1.0	10	2.5
Discharged-Other (Death)	9	1.1	8	2.0
Revoked-New Offense/ Revoked-Technical	47	5.8	69	17.1
Absconded/ BW-No Follow Up BW-Committment BW-Reinstated	35	4.3	3	.7
Transferred	124	15.4	23	5.7
Returned to Institution	1	.1	24	6.0
Other (Death- Closed case)	<u>25</u>	<u>3.1</u>	<u>10</u>	<u>2.5</u>
TOTAL	807	100.0	403	100.0

COUNTY BREAKDOWNS BY
TYPE OF CLASSIFICATION

	ADULT PROBATION		ADULT PAROLE		JUVENILE PROBATION		JUVENILE PAROLE	
	N	%	N	%	N	%	N	%
ALBANY	27	5.7	7	9.1	0	---	12	6.2
BIG HORN	2	.4	1	1.3	0	---	2	1.0
CAMPBELL	30	6.3	5	6.5	4	2.3	8	4.1
CARBON	39	8.2	4	6.2	1	.6	5	2.6
CONVERSE	21	4.4	3	3.9	19	10.9	11	5.6
CROOK	3	.6	0	---	1	.6	1	.5
FREMONT	36	7.6	11	14.3	1	.6	22	11.3
GOSHEN	9	1.9	2	2.6	18	10.3	11	5.6
HOT SPRINGS	16	3.4	1	1.3	1	.6	2	1.0
JOHNSON	4	.8	0	---	0	---	1	.5
LARAMIE	51	10.8	5	6.5	26	14.9	21	10.8
LINCOLN	13	2.7	2	2.6	21	12.0	7	3.6
NATRONA	74	15.6	18	23.4	3	1.7	31	15.9
NIOBRARA	0	---	1	1.3	5	2.9	0	---
PARK	11	2.3	4	5.2	1	.6	4	2.1
PLATTE	12	2.5	1	1.3	2	1.1	3	1.5
SHERIDAN	44	9.3	7	9.1	2	1.1	7	3.6
SUBLETTE	5	1.1	0	---	5	2.9	0	---
SWEETWATER	21	4.4	2	2.6	31	17.7	30	15.4
TETON	18	3.8	0	---	6	3.4	5	2.6
UINTA	24	5.1	1	1.3	17	9.7	5	2.6
WASHAKIE	11	2.3	1	1.3	4	2.3	3	1.5
WESTON	<u>3</u>	<u>.6</u>	<u>1</u>	<u>1.3</u>	<u>7</u>	<u>4.0</u>	<u>4</u>	<u>2.1</u>
TOTAL	*474	100.0	* 77	100.0	175	100.0	*195	100.0

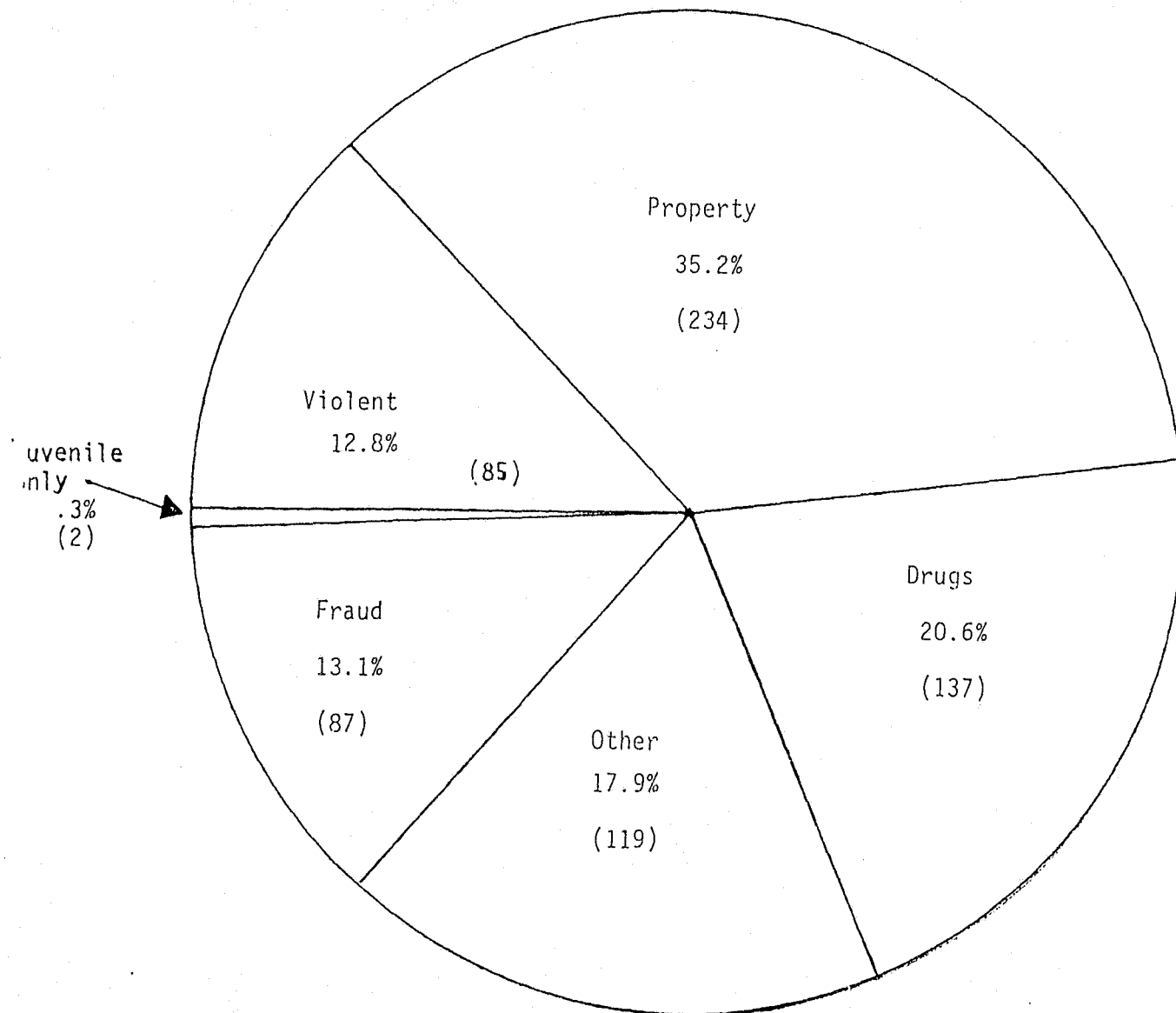
*3 cases were unknown for Adult Probation, 2 cases were unknown for Adult Parole,
and 1 case was unknown for Juvenile Parole.

PERSONS UNDER SUPERVISION BY
TYPE OF OFFENSE

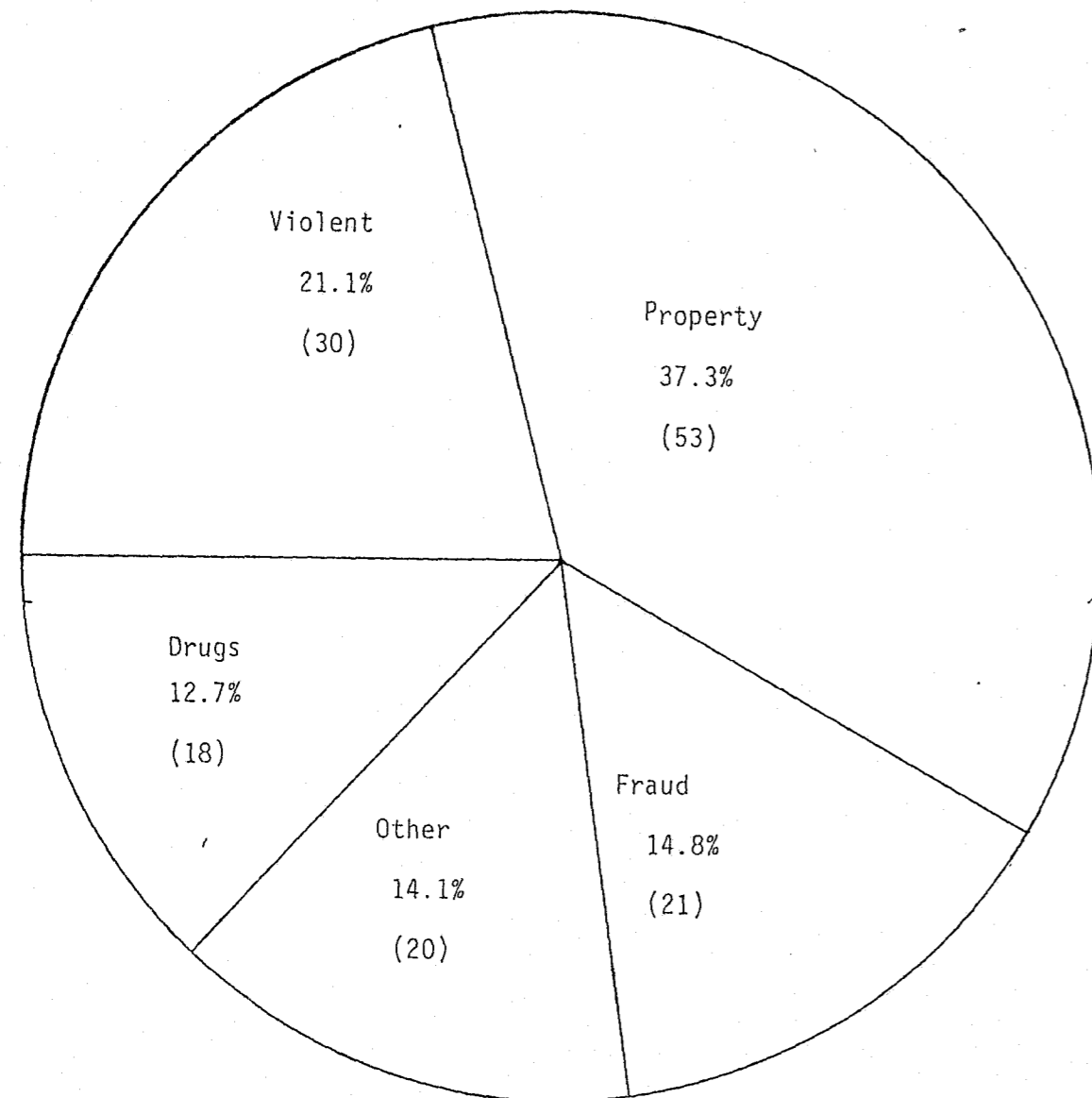


* Three cases were unknown.

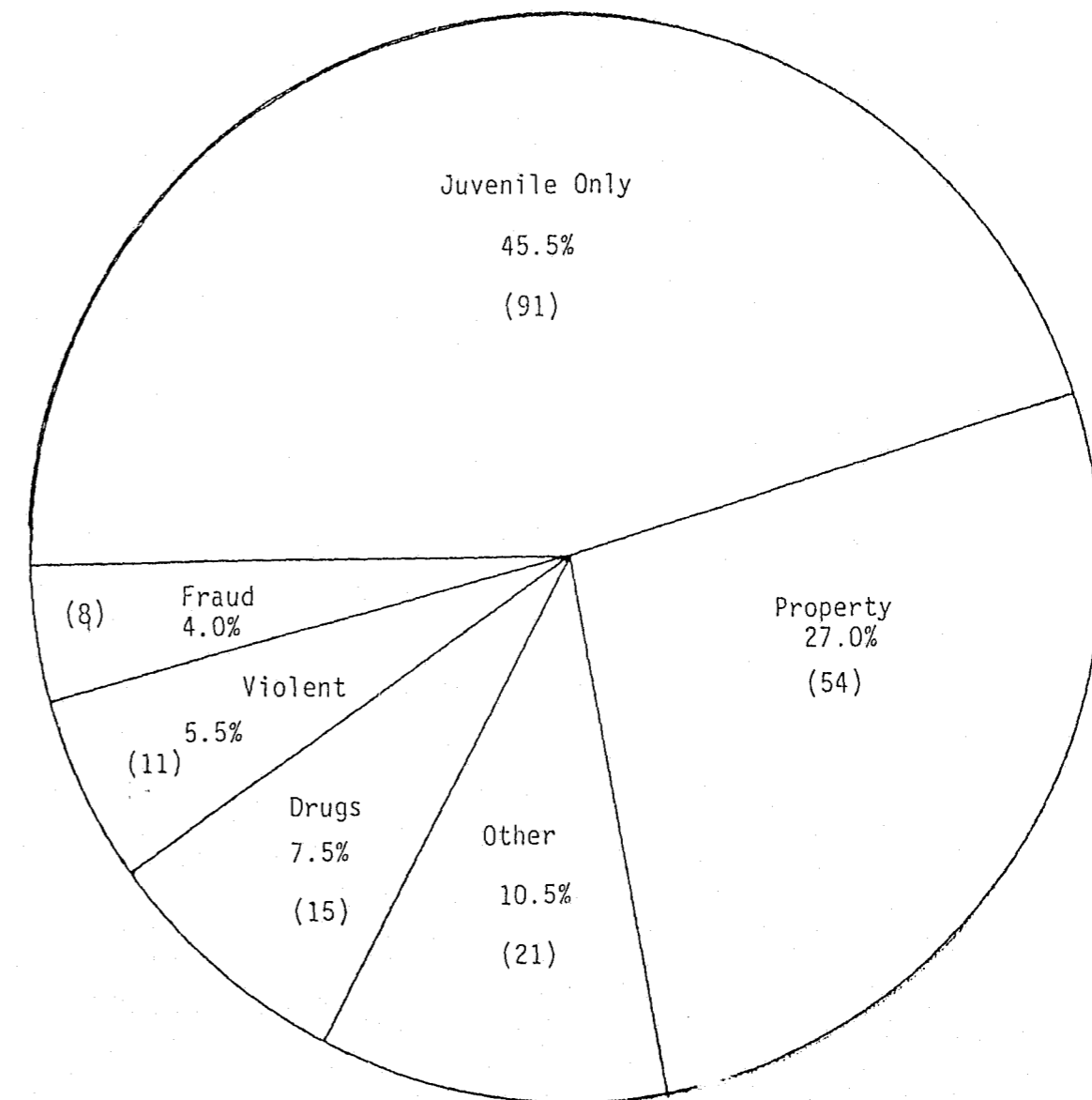
ADULT PROBATIONERS
BY TYPE OF OFFENSE



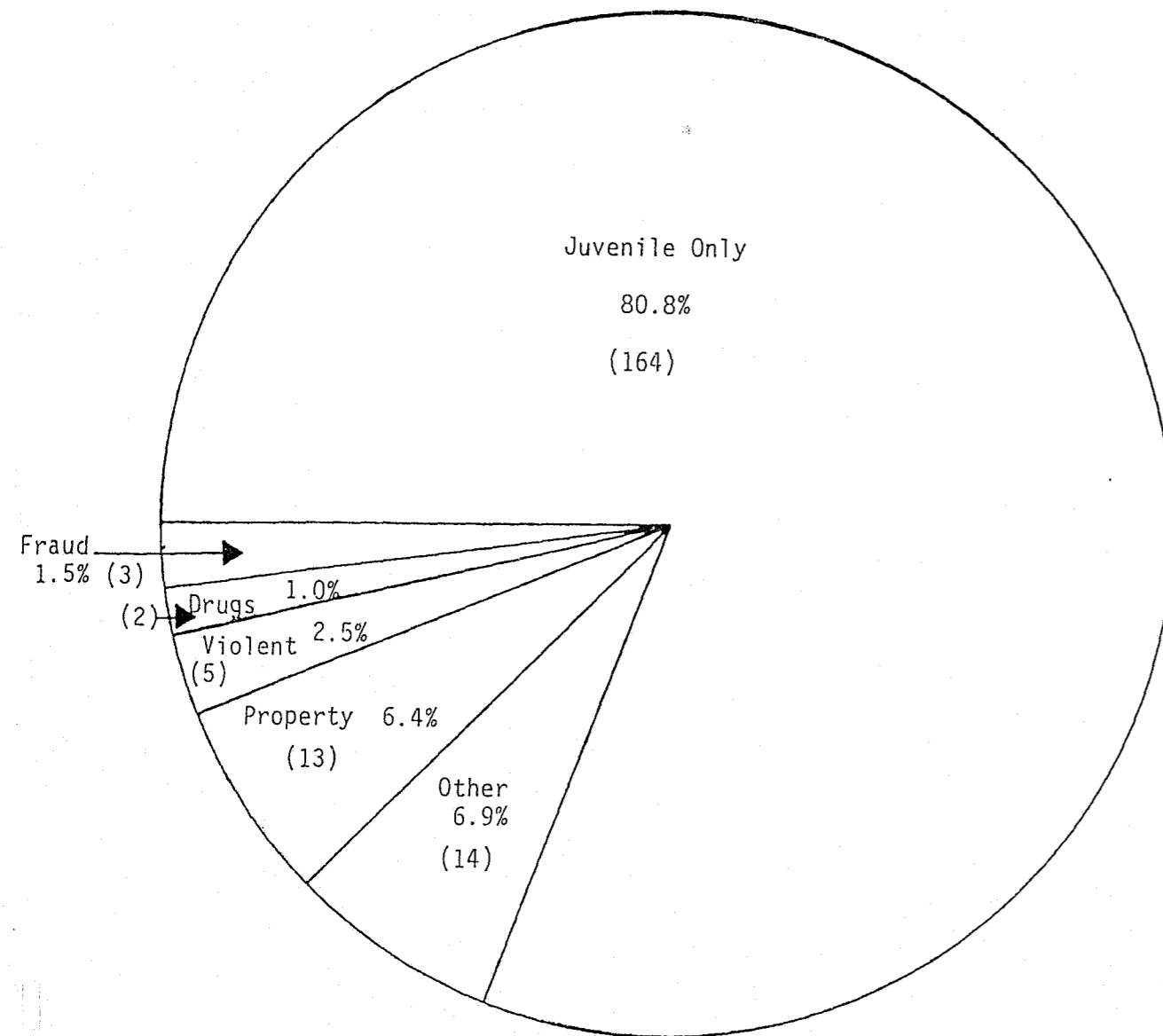
ADULT PAROLEES
BY TYPE OF OFFENSE



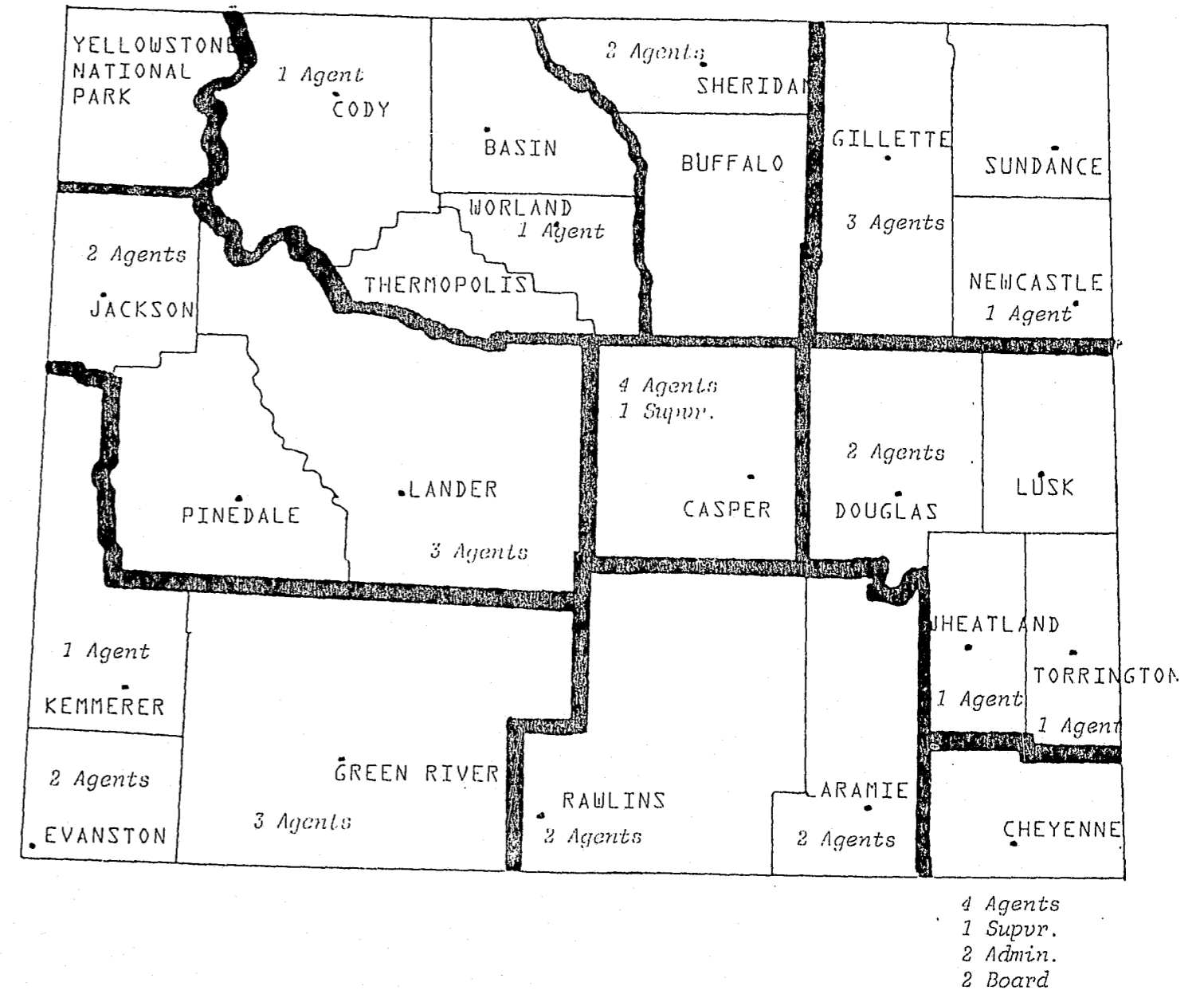
JUVENILE PROBATIONERS
BY TYPE OF OFFENSE



JUVENILE PAROLEES
BY TYPE OF OFFENSE



GEOGRAPHIC DISTRIBUTION OF THE
DEPARTMENT OF PROBATION AND PAROLE
(These figures are projected
for Fiscal year 1980)



END