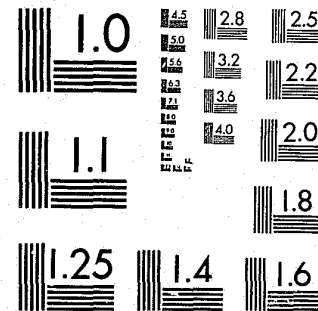


National Criminal Justice Reference Service

**ncjrs**

This microfiche was produced from documents received for inclusion in the NCJRS data base. Since NCJRS cannot exercise control over the physical condition of the documents submitted, the individual frame quality will vary. The resolution chart on this frame may be used to evaluate the document quality.



MICROCOPY RESOLUTION TEST CHART  
NATIONAL BUREAU OF STANDARDS-1963-A

Microfilming procedures used to create this fiche comply with the standards set forth in 41CFR 101-11.504.

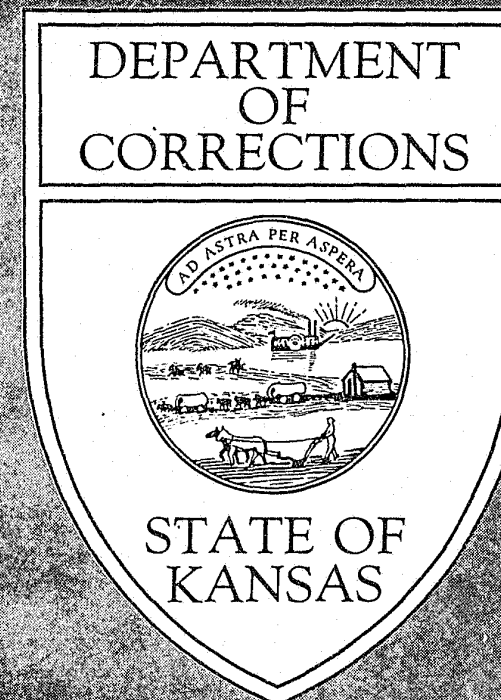
Points of view or opinions stated in this document are those of the author(s) and do not represent the official position or policies of the U. S. Department of Justice.

National Institute of Justice  
United States Department of Justice  
Washington, D. C. 20531

1/04/83

85874

# 1980 ANNUAL



## JAIL INSPECTION REPORT

Patrick D. McManus  
Secretary of Corrections



U.S. Department of Justice  
National Institute of Justice

This document has been reproduced exactly as received from the person or organization originating it. Points of view or opinions stated in this document are those of the authors and do not necessarily represent the official position or policies of the National Institute of Justice.

Permission to reproduce this copyrighted material has been granted by  
Kansas Department of Corrections

to the National Criminal Justice Reference Service (NCJRS).

Further reproduction outside of the NCJRS system requires permission of the copyright owner.

State of Kansas  
John Carlin  
Governor

Kansas Department of Corrections  
Patrick D. McManus  
Secretary

## 1980 Annual Jail Inspection Report

Deputy Secretary of Community Services  
Joseph A. Ruskowitz

NCJRS

SEP 30 1982

ACQUISITIONS

Community Facilities and Services Administrator  
Harold D. Samuels

### Correctional Facilities Specialists

Eastern Region  
Max R. Gilmore

Western Region  
Larry H. Dixon

TABLE OF CONTENTS

	<u>PAGE NO.</u>
DEFINITION OF TERMS-----	1
A GENERAL OVERVIEW OF THE STATUS OF LOCAL CONFINEMENT FACILITIES-	2
Distribution of Facilities by Age Group-----	4
FACILITIES IN THE PLANNING PROCESS, FACILITIES UNDERGOING MAJOR RENOVATION, FACILITIES UNDERGOING NEW CONSTRUCTION AND JAILS NO LONGER IN USE-----	6
MEETINGS RECOMMENDED BY THE SECRETARY OF CORRECTIONS, PURSUANT TO K.S.A. 75-5228-----	8
FACILITIES THAT MEET THE KANSAS ADVISORY JAIL STANDARDS AND PROCEDURES BY JUDICIAL DISTRICTS-----	10
FIRST JUDICIAL DISTRICT-----	10
Atchison City Holding-----	10
SECOND JUDICIAL DISTRICT-----	10
Holton City Lockup-----	10
FOURTH JUDICIAL DISTRICT-----	10
Allen County Jail-----	10
Franklin County Jail-----	10
Woodson County Jail-----	10
Anderson County Holding-----	10
Coffey County Holding-----	10
Osage County Holding-----	10
Osage City Holding-----	10
FIFTH JUDICIAL DISTRICT-----	10
Lyon County Jail-----	10
SIXTH JUDICIAL DISTRICT-----	10
Bourbon County Jail-----	10
Linn County Jail-----	10
SEVENTH JUDICIAL DISTRICT-----	10
Douglas County Jail-----	10
EIGHTH JUDICIAL DISTRICT-----	11
Dickinson County Jail-----	11
Junction City Lockup-----	11
TENTH JUDICIAL DISTRICT-----	11
Johnson County Jail-----	11
Leawood City Holding-----	11
Northeast Facility Holding-----	11
Overland Park Holding-----	11
Prairie Village Holding-----	11
Shawnee City Holding-----	11

PAGE NO.

FACILITIES THAT MEET THE KANSAS ADVISORY JAIL STANDARDS AND  
PROCEDURES BY JUDICIAL DISTRICTS (Continued)

ELEVENTH JUDICIAL DISTRICT-----	11
Galena City Lockup-----	11
Parsons City Lockup-----	11
Pittsburg City Lockup-----	11
TWELFTH JUDICIAL DISTRICT-----	11
Cloud County Jail-----	11
Mitchell County Jail-----	11
THIRTEENTH JUDICIAL DISTRICT-----	11
Butler County Jail-----	11
Douglas City Holding-----	11
FOURTEENTH JUDICIAL DISTRICT-----	12
Coffeyville City Lockup-----	12
SEVENTEENTH JUDICIAL DISTRICT-----	12
Smith County Jail-----	12
EIGHTEENTH JUDICIAL DISTRICT-----	12
Haysville City Holding-----	12
Mulvane City Holding-----	12
NINETEENTH JUDICIAL DISTRICT-----	12
Arkansas City Lockup-----	12
Winfield City Lockup-----	12
TWENTIETH JUDICIAL DISTRICT-----	12
Ellsworth County Jail-----	12
Hoisington City Holding-----	12
Stafford County Holding-----	12
Wilson City Holding-----	12
TWENTY-FIRST JUDICIAL DISTRICT-----	12
Riley County Jail-----	12
TWENTY-SECOND JUDICIAL DISTRICT-----	12
Marshall County Jail-----	12
Nemaha County Jail-----	12
TWENTY-THIRD JUDICIAL DISTRICT-----	13
Ellis County Jail-----	13
Trego County Jail-----	13
Wallace County Lockup-----	13
TWENTY-FIFTH JUDICIAL DISTRICT-----	13
Garden City Lockup-----	13
Greeley County Lockup-----	13

PAGE NO.

FACILITIES THAT MEET THE KANSAS ADVISORY JAIL STANDARDS AND  
PROCEDURES BY JUDICIAL DISTRICTS (Continued)

TWENTIETH-SIXTH JUDICIAL DISTRICT-----	13
Stanton County Jail-----	13
TWENTY-NINTH JUDICIAL DISTRICT-----	13
Kansas City, Kansas City Jail-----	13
Bonner Springs City Holding-----	13
OPERATIONAL CONFINEMENT FACILITIES WITH DEFICIENCIES BY JUDICIAL DISTRICTS*-----	15
FIRST JUDICIAL DISTRICT-----	15
Atchison County Jail-----	15
Leavenworth County Jail-----	15
SECOND JUDICIAL DISTRICT-----	16
Jackson County Jail-----	16
Jefferson County Jail-----	16
Pottawatomie County Jail-----	16
Wabaunsee County Jail-----	17
THIRD JUDICIAL DISTRICT-----	18
Shawnee County Jail-----	18
SIXTH JUDICIAL DISTRICT-----	19
Miami County Jail-----	19
EIGHTH JUDICIAL DISTRICT-----	20
Geary County Jail-----	20
Morris County Jail-----	20
Herington City Lockup-----	21
NINTH JUDICIAL DISTRICT-----	22
Harvey County Jail-----	22
McPherson County Jail-----	22
ELEVENTH JUDICIAL DISTRICT-----	23
Cherokee County Jail-----	23
Crawford County Jail-----	23
Labette County Jail-----	24
Neosho County Jail-----	25
Wilson County Jail-----	25
Baxter Springs Lockup-----	25
Chanute City Lockup-----	26

PAGE NO.

OPERATIONAL CONFINEMENT FACILITIES WITH DEFICIENCIES BY JUDICIAL DISTRICTS (Continued)

TWELFTH JUDICIAL DISTRICT-----	27
Lincoln County Jail-----	27
Republic County Jail-----	27
Washington County Jail-----	28
THIRTEENTH JUDICIAL DISTRICT-----	29
Elk County Jail-----	29
Greenwood County Jail-----	29
Augusta City Holding-----	29
Eureka City Lockup-----	29
FOURTEENTH JUDICIAL DISTRICT-----	30
Montgomery County Jail-----	30
FIFTEENTH JUDICIAL DISTRICT-----	31
Graham County Jail-----	31
Rooks County Jail-----	31
Sherman County Jail-----	31
Thomas County Jail-----	32
SIXTEENTH JUDICIAL DISTRICT-----	33
Clark County Jail-----	33
Ford County Jail-----	33
Kiowa County Jail-----	34
Meade County Jail-----	34
SEVENTEENTH JUDICIAL DISTRICT-----	35
Norton County Jail-----	35
Osborne County Jail-----	35
Rawlins County Jail-----	36
Cheyenne County Lockup-----	36
EIGHTEENTH JUDICIAL DISTRICT-----	37
Sedgwick County Jail-----	37
NINETEENTH JUDICIAL DISTRICT-----	38
Barber County Jail-----	38
Cowley County Jail-----	38
Harper County Jail-----	38
Pratt County Jail-----	38
Sumner County Jail-----	39
Kingman County Holding-----	39

PAGE NO.

FACILITIES THAT MEET THE KANSAS ADVISORY JAIL STANDARDS AND PROCEDURES-----

10

JAILS

Allen County-----	10
Bourbon County-----	10
Butler County-----	11
Cloud County-----	11
Dickinson County-----	11
Douglas County-----	10
Ellis County-----	13
Ellsworth County-----	12
Franklin County-----	10
Johnson County-----	11
Kansas City, Kansas Facility-----	13
Linn County-----	10
Lyon County-----	10
Marshall County-----	12
Mitchell County-----	11
Nemaha County-----	12
Riley County-----	12
Smith County-----	12
Stanton County-----	13
Trego County-----	13
Woodson County-----	10

LOCKUPS

Anderson County-----	10
Arkansas City City-----	12
Coffeyville City-----	12
Galena City-----	11
Garden City City-----	13
Holton City-----	10
Junction City-----	11
Parsons City-----	11
Pittsburg City-----	11
Greeley County-----	13
Wallace County-----	13
Winfield City-----	12

HOLDING

Atchison City-----	10
Bonner Springs City-----	13
Coffey County-----	10
Douglas City-----	11
Haysville City-----	12
Hoisington City-----	12
Leawood City-----	11
Mulvane City-----	12
Northeast Facility-----	11
Osage City-----	10
Osage County-----	10
Overland Park-----	11
Prairie Village-----	11
Shawnee City-----	11
Stafford County-----	12
Wilson City-----	12

PAGE NO.

OPERATIONAL CONFINEMENT FACILITIES WITH DEFICIENCIES BY JUDICIAL DISTRICTS (Continued)

TWENTIETH JUDICIAL DISTRICT-----	40
Barton County Jail-----	40
Rice County Jail-----	40
Russell County Jail-----	41
Russell City Holding-----	41
TWENTY-FIRST JUDICIAL DISTRICT-----	42
Clay County Jail-----	42
TWENTY-SECOND JUDICIAL DISTRICT-----	43
Brown County Jail-----	43
Doniphan County Jail-----	43
Horton City Holding-----	43
TWENTY-THIRD JUDICIAL DISTRICT-----	44
Oakley City Lockup-----	44
TWENTY-FOURTH JUDICIAL DISTRICT-----	45
Edwards County Jail-----	45
Hodgeman County Jail-----	45
Lane County Jail-----	46
Ness County Jail-----	46
Pawnee County Jail-----	46
TWENTY-FIFTH JUDICIAL DISTRICT-----	47
Finney County Jail-----	47
Kearny County Jail-----	47
Scott County Jail-----	48
Wichita County Lockup-----	48
TWENTY-SIXTH JUDICIAL DISTRICT-----	49
Grant County Jail-----	49
Morton County Jail-----	49
Seward County Jail-----	50
Stevens County Jail-----	50
Haskell County Lockup-----	50
TWENTY-SEVENTH JUDICIAL DISTRICT-----	51
Reno County Jail-----	51
TWENTY-EIGHTH JUDICIAL DISTRICT-----	52
Ottawa County Jail-----	52
Saline County Jail-----	52
TWENTY-NINTH JUDICIAL DISTRICT-----	53
Wyandotte County Jail-----	53
MOST COMMON DEFICIENCIES ENCOUNTERED-----	54

\*For location of Operational Detention Facilities, consult alphabetized County index immediately following Table of Contents.

PAGE NO.

OPERATIONAL CONFINEMENT FACILITIES WITH DEFICIENCIES BY JUDICIAL DISTRICTS (Continued)

TWENTIETH JUDICIAL DISTRICT-----	40
Barton County Jail-----	40
Rice County Jail-----	40
Russell County Jail-----	41
Russell City Holding-----	41
TWENTY-FIRST JUDICIAL DISTRICT-----	42
Clay County Jail-----	42
TWENTY-SECOND JUDICIAL DISTRICT-----	43
Brown County Jail-----	43
Doniphan County Jail-----	43
Horton City Holding-----	43
TWENTY-THIRD JUDICIAL DISTRICT-----	44
Oakley City Lockup-----	44
TWENTY-FOURTH JUDICIAL DISTRICT-----	45
Edwards County Jail-----	45
Hodgeman County Jail-----	45
Lane County Jail-----	46
Ness County Jail-----	46
Pawnee County Jail-----	46
TWENTY-FIFTH JUDICIAL DISTRICT-----	47
Finney County Jail-----	47
Kearny County Jail-----	47
Scott County Jail-----	48
Wichita County Lockup-----	48
TWENTY-SIXTH JUDICIAL DISTRICT-----	49
Grant County Jail-----	49
Morton County Jail-----	49
Seward County Jail-----	50
Stevens County Jail-----	50
Haskell County Lockup-----	50
TWENTY-SEVENTH JUDICIAL DISTRICT-----	51
Reno County Jail-----	51
TWENTY-EIGHTH JUDICIAL DISTRICT-----	52
Ottawa County Jail-----	52
Saline County Jail-----	52
TWENTY-NINTH JUDICIAL DISTRICT-----	53
Wyandotte County Jail-----	53
MOST COMMON DEFICIENCIES ENCOUNTERED-----	54

\*For location of Operational Detention Facilities, consult alphabetized County index immediately following Table of Contents.



FACILITIES THAT MEET THE KANSAS ADVISORY JAIL STANDARDS AND  
PROCEDURES-----

10

## JAILS

Allen County-----	10
Bourbon County-----	10
Butler County-----	11
Cloud County-----	11
Dickinson County-----	11
Douglas County-----	10
Ellis County-----	13
Ellsworth County-----	12
Franklin County-----	10
Johnson County-----	11
Kansas City, Kansas Facility-----	13
Linn County-----	10
Lyon County-----	10
Marshall County-----	12
Mitchell County-----	11
Nemaha County-----	12
Riley County-----	12
Smith County-----	12
Stanton County-----	13
Trego County-----	13
Woodson County-----	10

## LOCKUPS

Anderson County-----	10
Arkansas City City-----	12
Coffeyville City-----	12
Galena City-----	11
Garden City City-----	13
Holton City-----	10
Junction City-----	11
Parsons City-----	11
Pittsburg City-----	11
Greeley County-----	13
Wallace County-----	13
Winfield City-----	12

## HOLDING

Atchison City-----	10
Bonner Springs City-----	13
Coffey County-----	10
Douglas City-----	11
Haysville City-----	12
Hoisington City-----	12
Leawood City-----	11
Mulvane City-----	12
Northeast Facility-----	11
Osage City-----	10
Osage County-----	10
Overland Park-----	11
Prairie Village-----	11
Shawnee City-----	11
Stafford County-----	12
Wilson City-----	12

## OPERATIONAL CONFINEMENT FACILITIES WITH DEFICIENCIES----- 15

## JAILS

Atchison County-----	15
Barber County-----	38
Barton County-----	40
Brown County-----	43
Cherokee County-----	23
Cheyenne County-----	36
Clark County-----	33
Clay County-----	42
Cowley County-----	38
Crawford County-----	23
Doniphan County-----	43
Edwards County-----	45
Elk County-----	29
Finney County-----	47
Ford County-----	33
Geary County-----	20
Graham County-----	31
Grant County-----	49
Greenwood County-----	29
Harper County-----	38
Harvey County-----	22
Hodgeman County-----	45
Jackson County-----	16
Jefferson County-----	16
Kearny County-----	47
Kiowa County-----	34
Labette County-----	24
Lane County-----	46
Leavenworth County-----	15
Lincoln County-----	27
Meade County-----	34
Miami County-----	19
Montgomery County-----	30
Morris County-----	20
Morton County-----	49
McPherson County-----	22
Neosho County-----	25
Ness County-----	46
Norton County-----	35
Osborne County-----	35
Ottawa County-----	52
Pawnee County-----	46
Pottawatomie County-----	16
Pratt County-----	38

PAGE NO.

OPERATIONAL CONFINEMENT FACILITIES WITH DEFICIENCIES (Continued)-- 15

Rawlins County-----	36
Reno County-----	51
Republic County-----	27
Rice County-----	40
Rooks County-----	31
Russell County-----	41
Saline County-----	52
Scott County-----	48
Sedgwick County-----	37
Seward County-----	49
Shawnee County-----	18
Sherman County-----	31
Stevens County-----	50
Sumner County-----	39
Thomas County-----	32
Wabaunsee County-----	17
Washington County-----	28
Wilson County-----	25
Wyandotte County-----	53

LOCKUPS

Baxter Springs City-----	25
Chanute City-----	26
Cheyenne County-----	36
Eureka City-----	29
Haskell County-----	50
Herington City-----	21
Oakley City-----	44
Wichita County-----	48

HOLDING

Augusta City-----	29
Horton City-----	43
Kingman County-----	39
Russell City-----	41

DEFINITION OF TERMS

JAIL-----	A facility operated by a unit of local government for the physical detention or confinement, for a period of one year or less, of persons charged with, or convicted of, criminal offenses.
LOCKUP-----	A facility operated by a unit of local government for the physical detention or confinement, for a period of seventy-two hours or less, of persons charged with, or convicted of, criminal offenses.
HOLDING FACILITY-----	A facility operated by a unit of local government for the temporary physical detention of persons awaiting processing, booking, appearance before a court of competent jurisdiction, or discharge.
CAPACITY-----	The bed space for which the facility was originally designed to accommodate.
RECOMMENDED CAPACITY--	The bed space that should be available using a formula of fifty-two square feet of cell space per bed for existing facilities.
URGENT-----	A situation or hazard which presents an immediate threat to the health and safety of inmates or employees, or the potential for escape.
NECESSARY-----	A situation or hazard which presents a potential threat to the health and safety of inmates or employees if they are continually exposed over a prolonged period.
DESIRABLE-----	A condition which does not present an immediate or potential threat to the health and safety of inmates or employees; but which, if changed, would improve the habitability of the facility or the staff's management abilities.



A GENERAL OVERVIEW OF THE STATUS OF LOCAL CONFINEMENT FACILITIES

As enumerated in K.S.A. 1976 Supp. 75-5228, the Secretary of Corrections is given three major responsibilities in performing the jail inspection function.

1. The promulgation of advisory standards relating to the safety and sanitation of state correctional and local detention facilities;
2. The periodic inspection of correctional detention facilities;
3. The presentation of evidence to local officials and judicial personnel that a particular facility, within their jurisdiction, needs major improvement or should be closed.

The program responsibility entails on-site inspection of jails, including such basic areas as sanitation, safety, administration, facility construction, personnel, housekeeping, food service and medical care, emergency procedures, programs, counseling and recreation. The program staff also investigates complaints concerning the operation of jails and/or treatment of prisoners.

During 1980 the Jail Inspection Staff responded to requests from the National Institute of Corrections, Washburn University and various counties in the state as participating consultants for management and jail staff training.

During calendar year 1980 the Jail Inspection Staff requested and coordinated 63 joint inspections with the State Fire Marshal's office and 12 with the Department of Health and Environment. These joint inspections were requested because of serious problems in the jail/detention facilities that pertained to these agencies' field of expertise.

The Jail Inspection Staff investigated 25 letters of complaint from individual inmates and/or their friends. The majority of these complaints were forwarded from the offices of the Governor and the Attorney General. There were a total of 61 allegations derived from 25 complaints, 19 of these allegations or 31% were found to be valid. Because of the nature of the complaints, on-site investigations of each letter of complaint was conducted.

Throughout 1980 the Jail Inspection Staff made 61 on-site contacts to provide technical assistance with respect to the custody, care and treatment of inmates. These contacts included review and comment on plans for the construction or major modification of local jail/detention facilities.

Inspections were made during 1980 of a total of 123 operational jail/detention facilities. Of these 123 jail/detention facilities there were 83 jails, 20 lockups, and 20 holding facilities operating within the 105 counties. There were also 12 additional jail/detention facilities identified as no longer in use, undergoing major renovation, or under new construction.

Distribution of Facilities by Age Group

Age of Facility	Jails	Lockups	Holding Facilities	TOTAL
1 year or less	3	0	0	3
2 - 10 years	23	6	8	35
11 - 20 years	9	4	4	17
21 - 30 years	21	0	0	21
31 - 40 years	3	1	4	8
41 - 50 years	15	1	1	17
51 - 60 years	0	5	4	18
61 - 70 years	2	1	1	4
71 - 80 years	2	0	0	2

At the close of the calendar year 1980, there were 83 jails, 20 lockups, and 20 holding facilities operating within the 105 counties. Combined, these facilities confined an average of 11 individuals on any given day in 1980. The facilities range in age from 1 year to 80 years, with a mean age of 27.7 years as derived from group data.

FACILITIES IN THE PLANNING PROCESS,  
FACILITIES UNDERGOING MAJOR RENOVATION,  
FACILITIES UNDERGOING NEW CONSTRUCTION,

AND

JAILS NO LONGER IN USE



Listed below are the jail/detention facilities that were identified in 1980 as no longer in use:

JAILS

1. Chautauqua County
2. Chase County
3. Commanche County
4. Decatur County
5. Gove County
6. Gray County
7. Hamilton County
8. Jewell County
9. Marion County
10. Phillips County
11. Rush County
12. Sheridan County

LOCKUPS

1. Columbus
2. Stockton

Listed below are facilities that are in the planning stage, undergoing major renovation or under construction:

PLANNING NEW  
FACILITIES

1. Brown
2. Montgomery

PLANNING MAJOR  
RENOVATION

1. Geary
2. Phillips
3. Shawnee

UNDER MAJOR RENOVATION

1. Atchison
2. Commanche
3. Decatur
4. Norton
5. Rooks
6. Saline
7. Sedgwick
8. Seward
9. Wyandotte

UNDER CONSTRUCTION

1. Clay
2. Finney
3. Marion
4. Kingman

MEETINGS RECOMMENDED BY THE SECRETARY  
OF CORRECTIONS, PURSUANT TO K.S.A. 75-5228  
REGARDING FACILITIES WITH SERIOUS DEFICIENCIES  
CONSIDERED TO BE A DETRIMENT TO HUMAN LIFE

During 1980 the Jail Inspection Staff identified 34 facilities that contained serious deficiencies that could be a detriment to human life. The Secretary of Corrections disseminated letters to the officials of these 34 facilities recommending meetings be held pursuant to K.S.A. 75-5228.

During 1980 10 counties held meetings with the Secretary of Corrections and all agreed to correct the deficiencies rated as urgent and necessary. An asterisk indicates the remaining counties that did not meet with the Secretary pursuant to K.S.A. 75-5227; however, action was taken to correct the deficiencies rated as urgent.

Counties Responding to Recommended Meetings with the  
Secretary of Corrections

- |                    |                        |
|--------------------|------------------------|
| 1. Clay County     | 6. Meade County        |
| 2. Doniphan County | 7. Oakley City Lockup  |
| 3. Geary County    | 8. Pottawatomie County |
| 4. Graham County   | 9. Reno County         |
| 5. Labette County  | 10. Thomas County      |

Counties not Responding to Recommended Meetings with the  
Secretary of Corrections

- |                          |                        |
|--------------------------|------------------------|
| 1. Augusta City Holding  | 13. Miami County *     |
| 2. Cherokee County       | 14. McPherson County   |
| 3. Cheyenne County       | 15. Montgomery County  |
| 4. Clark County          | 16. Morton County      |
| 5. Elk County            | 17. Neosho County      |
| 6. Ford County           | 18. Pratt County *     |
| 7. Greenwood County *    | 19. Republic County    |
| 8. Harvey County         | 20. Rice County *      |
| 9. Herington City Lockup | 21. Russell County     |
| 10. Hodgeman County      | 22. Sumner County      |
| 11. Jackson County       | 23. Wilson County *    |
| 12. Kearny County        | 24. Wyandotte County * |

FACILITIES THAT MEET THE  
KANSAS ADVISORY JAIL STANDARDS AND PROCEDURES



LISTED BY JUDICIAL DISTRICT  
ARE THE FACILITIES THAT  
MEET THE KANSAS JAIL STANDARDS AND PROCEDURES

	<u>Date of Construction</u>	<u>Average Daily Population</u>
<u>First Judicial District</u>		
Atchison City Holding	1939	less than one
<u>Second Judicial District</u>		
Holton City Lockup	1977	less than one
<u>Fourth Judicial District</u>		
Allen County Jail	1958	8
Franklin County Jail	1972	8
Woodson County Jail	1969	less than one
Anderson County Lockup	1926	less than one
Coffey County Holding	1923	less than one
Osage County Holding	1923	less than one
Osage City Holding	unknown	less than one
<u>Fifth Judicial District</u>		
Lyon County Jail	1977	18
<u>Sixth Judicial District</u>		
Bourbon County Jail	1977	20
Linn County Jail	1979	2
<u>Seventh Judicial District</u>		
Douglas County Jail	1976	29

	<u>Date of Construction</u>	<u>Average Daily Population</u>
<u>Eighth Judicial District</u>		
Dickinson County Jail	1956	11
Junction City Lockup	1977	3
<u>Tenth Judicial District</u>		
Johnson County Jail	Renovated 1974	55
Leawood City Holding	1972	less than one
Northeast Facility Holding	1973	2
Overland Park Holding	1975	2
Prairie Village Holding	1970	less than one
Shawnee City Holding	1979	less than one
<u>Eleventh Judicial District</u>		
Galena City Lockup	1978	less than one
Parsons City Lockup	1937	less than one
Pittsburg City Lockup	1969	less than one
<u>Twelfth Judicial District</u>		
Cloud County Jail	Renovated 1978	8
Mitchell County Jail	1959	5
<u>Thirteenth Judicial District</u>		
Butler County Jail	1971	15
Douglas City Holding	1966	less than one

	<u>Date of Construction</u>	<u>Average Daily Population</u>
<u>Fourteenth Judicial District</u>		
Coffeyville City Lockup	1964	3
<u>Seventeenth Judicial District</u>		
Smith County Jail	1976	4
<u>Eighteenth Judicial District</u>		
Haysville City Holding	1979	less than one
Mulvane City Holding	1967	less than one
<u>Nineteenth Judicial District</u>		
Arkansas City Lockup	Renovated 1977	less than one
Winfield City Lockup	1963	less than one
<u>Twentieth Judicial District</u>		
Ellsworth County Jail	1980	1
Hoisington City Holding	1939	less than one
Stafford County Holding	1977	1
Wilson City Holding	1964	less than one
<u>Twenty-First Judicial District</u>		
Riley County Jail	Renovated 1976	18
<u>Twenty-Second Judicial District</u>		
Marshall County Jail	1979	4
Nemaha County Jail	1978	4



	<u>Date of Construction</u>	<u>Average Daily Population</u>
<u>Twenty-Third Judicial District</u>		
Ellis County Jail	1975	9
Trego County Jail	1980	2
Wallace County Lockup	Renovated 1977	less than one
<u>Twenty-Fifth Judicial District</u>		
Garden City Lockup	1920	2
Greeley County Lockup	1975	less than one
<u>Twenty-Sixth Judicial District</u>		
Stanton County Jail	1978	2
<u>Twenty-Ninth Judicial District</u>		
Kansas City, Kansas City Jail	1969	18
Bonner Springs City Holding	Renovated 1977	less than one

At the close of the 1980 jail/detention facility evaluations, there were 21 jails, 12 lockups and 16 holding facilities that met the Kansas Advisory Jail Standards and Procedures.

JAILS-LOCKUPS-HOLDING FACILITIES  
WITH DEFICIENCIES  
BY JUDICIAL DISTRICT

NAME OF FACILITY	DATE CONSTRUCTED	CAPACITY	RECOMMENDED CAPACITY	AVERAGE DAILY POPULATION	<div>FIRST JUDICIAL DISTRICT</div> <div>DEFICIENCIES</div>	PRIORITY OF CORRECTIVE ACTION		
						URGENT	NECESSARY	DESIRABLE
ATCHISON COUNTY JAIL*	1941	24	12	5	(01) Hazardous materials and/or equipment in cell areas. (02) Electrical cords and/or fixtures are accessible to inmates.** (03) Inadequate administrative space.** (04) Inadequate ventilation.** (05) Cell areas do not maintain fifty-two (52) square feet per inmate.** (06) No emergency power.** (07) Does not maintain adequate separation of inmates.** (08) Inadequate and/or improper plumbing fixtures.** (09) No standard inmate clothing issued.** (10) No exercise area.** (11) Painted surfaces need repainting.** (12) Overall sanitation needs to be improved.**	X X	X X X  X X X	X X X X
LEAVENWORTH COUNTY JAIL*	1939	65	65	40	(01) Does not maintain adequate separation of inmates. (02) Inadequate interior lighting.** (03) Inadequate and/or improper plumbing fixtures. (04) No exercise area.** (05) No floor drains in cell block areas. (06) Painted surfaces need repainting.		X X X	X X X
* Reports from either the State Fire Marshal's Office or the State Department of Health and Environment are available. ** This deficiency existed in previous inspection reports but no corrective action has been taken.								



NAME OF FACILITY	DATE CONSTRUCTED	CAPACITY	RECOMENDED CAPACITY	AVERAGE DAILY POPULATION	<div>SECOND JUDICIAL DISTRICT</div> <div>DEFICIENCIES</div>	PRIORITY OF CORRECTIVE ACTION		
						URGENT	NECESSARY	DESIRABLE
JACKSON COUNTY JAIL*	1929	10	10	4	(01) Does not comply with State Fire Marshal's regulations.** (02) Inadequate ventilation.** (03) Cell areas do not maintain fifty-two (52) square feet per inmate.** (04) Inadequate interior lighting.** (05) Inadequate and/or improper plumbing fixtures. (06) No standard inmate clothing issued.** (07) No floor drains in cell block areas.** (08) Painted surfaces need repainting.**	X	X X	X X X
JEFFERSON COUNTY JAIL*	1932	14	14	5	(01) Inadequate administrative space. (02) Inadequate ventilation.** (03) Inadequate consultation and visitation area. (04) No standard inmate clothing issued.** (05) No exercise area.**		X X X	X X
POTTAWATOMIE COUNTY JAIL*	1970	18	18	5	(01) Does not comply with State Fire Marshal's regulations.** (02) Inadequate administrative space. (03) Does not maintain adequate separation of inmates.** (04) Inadequate consultation and visitation area.	X	X X X	
* Reports from either the State Fire Marshal's Office or the State Department of Health and Environment are available. ** This deficiency existed in previous inspection reports but no corrective action has been taken.								

NAME OF FACILITY	DATE CONSTRUCTED	CAPACITY	RECOMMENDED CAPACITY	AVERAGE DAILY POPULATION	<div> <div>SECOND JUDICIAL DISTRICT</div> <div>DEFICIENCIES</div> </div>	PRIORITY OF CORRECTIVE ACTION		
						URGENT	NECESSARY	DESIRABLE
WABAUNSEE COUNTY JAIL*	1900	18	18	2	(01) Inadequate administrative space.** (02) Inadequate ventilation.** (03) No emergency power.** (04) Does not maintain adequate separation of inmates.** (05) Inadequate interior lighting.** (06) Inadequate and/or improper plumbing fixtures.** (07) No security and/or insect screens on windows.** (08) No cells for holding chemically or mentally impaired persons.** (09) Inadequately equipped processing area.** (10) No exercise area.** (11) No floor drains in cell block areas.** (12) Painted surfaces need repainting.** (13) No thirty (30) day menu provided.**		X X X X X X X X	X X X X

\* Reports from either the State Fire Marshal's Office or the State Department of Health and Environment are available.  
 \*\* This deficiency existed in previous inspection reports but no corrective action has been taken.





NAME OF FACILITY	DATE CONSTRUCTED	CAPACITY	RECOMMENDED CAPACITY	AVERAGE DAILY POPULATION	<u>SIXTH JUDICIAL DISTRICT</u>  DEFICIENCIES	PRIORITY OF CORRECTIVE ACTION		
						URGENT	NECESSARY	DESIRABLE
MIAMI COUNTY JAIL*	1967	22	22	12	(01) Hazardous materials and/or equipment in cell areas.** (02) Does not provide three (3) meals daily.** (03) No smoke detectors. (04) Inadequate visitation and consultation area. (05) No exercise area.**	X	X X X	X

\* Reports from either the State Fire Marshal's Office or the State Department of Health and Environment are available.  
\*\* This deficiency existed in previous inspection reports but no corrective action has been taken.

NAME OF FACILITY	DATE CONSTRUCTED	CAPACITY	RECOMMENDED CAPACITY	AVERAGE DAILY POPULATION	<div>EIGHTH JUDICIAL DISTRICT</div> <div>DEFICIENCIES</div>	PRIORITY OF CORRECTIVE ACTION		
						URGENT	NECESSARY	DESIRED
GEARY COUNTY JAIL*	1951	45	22	30	(01) Insufficient emergency exits provided.** (02) Inadequate supervision of inmates. (03) Cell areas do not maintain fifty-two (52) square feet per inmate.** (04) No emergency power.** (05) Does not maintain adequate separation of inmates.** (06) Inadequate interior lighting.** (07) Inadequate and/or improper plumbing fixtures.** (08) Inadequately equipped processing area. (09) Inadequate visitor control and visitation area. (10) Inadequate weapon storage. (11) No cells for holding chemically or mentally impaired persons. (12) No standard inmate clothing issued. (13) No exercise area.**	X X	X X X X X X X X	X X
MORRIS COUNTY JAIL*	1969	4	4	1	(01) Inadequate administrative space.** (02) Does not maintain adequate separation of inmates.** (03) Inadequate interior lighting.** (04) No smoke detectors. (05) No standard inmate clothing issued.** (06) No exercise area.** (07) Painted surfaces need repainting.**		X X X X	X X
* Reports from either the State Fire Marshal's Office or the State Department of Health and Environment are available. ** This deficiency existed in previous inspection reports but no corrective action has been taken.								

NAME OF FACILITY	DATE CONSTRUCTED	CAPACITY	RECOMMENDED CAPACITY	AVERAGE DAILY POPULATION	<div>EIGHTH JUDICIAL DISTRICT</div> <div>DEFICIENCIES</div>	PRIORITY OF CORRECTIVE ACTION		
						URGENT	NECESSARY	DESIRABLE
HERINGTON CITY LOCKUP (Dickinson County)	1974	8	8	less than one	(01) Hazardous materials and/or equipment in cell areas. (02) Security equipment in need of repair or replacement.** (03) Does not maintain adequate separation of inmates.	X X	X	
* Reports from either the State Fire Marshal's Office or the State Department of Health and Environment are available. ** This deficiency existed in previous inspection reports but no corrective action has been taken.								



NAME OF FACILITY	DATE CONSTRUCTED	CAPACITY	RECOMMENDED CAPACITY	AVERAGE DAILY POPULATION	<div>NINTH JUDICIAL DISTRICT</div> <div>DEFICIENCIES</div>	PRIORITY OF CORRECTIVE ACTION		
						URGENT	NECESSARY	DESIRABLE
HARVEY COUNTY JAIL*	1965	46	28	15	(01) Inadequate supervision of inmates. (02) Does not comply with State Fire Marshal's regulations.** (03) Electrical cords and/or fixtures are accessible to inmates.** (04) Cell areas do not maintain fifty-two (52) square feet per inmate.** (05) No intercom system between jail office and cell block areas.** (06) Inadequate interior lighting.** (07) No exercise area.** (08) Painted surfaces need repainting.	X X  X	   X X X	     X X
McPHERSON COUNTY JAIL*	1958	27	27	15	(01) Inadequate supervision of inmates. (02) Hazardous materials and/or equipment in cell areas. (03) Does not provide three (3) meals daily. (04) No exercise area.** (05) Painted surfaces need repainting.	X X	  X	  X X
* Reports from either the State Fire Marshal's Office or the State Department of Health and Environment are available. ** This deficiency existed in previous inspection reports but no corrective action has been taken.								

NAME OF FACILITY	DATE CONSTRUCTED	CAPACITY	RECOMMENDED CAPACITY	AVERAGE DAILY POPULATION	<div>ELEVENTH JUDICIAL DISTRICT</div> <div>DEFICIENCIES</div>	PRIORITY OF CORRECTIVE ACTION		
						URGENT	NECESSARY	DESIRABLE
CHEROKEE COUNTY JAIL*	1950	14	14	5	(01) Inadequate supervision of inmates.** (02) Inadequate administrative space.** (03) Inadequate ventilation.** (04) No emergency power.** (05) No security and/or insect screens on windows.** (06) Inadequate consultation and visitation area. (07) No cells for holding chemically or mentally impaired persons.** (08) No standard inmate clothing issued.** (09) No exercise area.**	X	X X X X X	X X
CRAWFORD COUNTY JAIL*	1925	19	19	16	(01) Inadequate administrative space.** (02) Inadequate consultation and visitation area. (03) Painted surfaces need repainting. (04) Inadequate or improper cell furnishings. (05) Shower stalls need to be repainted.**		X X	X X X
* Reports from either the State Fire Marshal's Office or the State Department of Health and Environment are available. ** This deficiency existed in previous inspection reports but no corrective action has been taken.								

NAME OF FACILITY	DATE CONSTRUCTED	CAPACITY	RECOMMENDED CAPACITY	AVERAGE DAILY POPULATION	<u>ELEVENTH JUDICIAL DISTRICT</u>  DEFICIENCIES	PRIORITY OF CORRECTIVE ACTION		
						URGENT	NECESSARY	DESIRABLE
LABETTE COUNTY JAIL*	1954	24	12	9	(01) Does not comply with State Fire Marshal's regulations.** (02) Hazardous materials and/or equipment in cell areas.** (03) Security equipment in need of repair or replacement.** (04) Electrical cords and/or fixtures are accessible to inmates.** (05) No isolation cells for suspected contagious disease carriers.** (06) No smoke detectors. (07) Inadequate ventilation.** (08) Cell areas do not maintain fifty-two (52) square feet per inmate.** (09) Does not maintain adequate separation of inmates.** (10) Inadequate interior lighting.** (11) Inadequate and/or improper plumbing fixtures.** (12) No security and/or insect screens on windows.** (13) Dormitories house more than eight (8) inmates.** (14) Inadequate consultation and visitation area.** (15) No holding cell for inmates awaiting processing.** (16) No exercise area.** (17) No floor drains in cell block areas.** (18) Painted surfaces need repainting.**	X X X X	    X  X X X X X X X	             X X X X

\* Reports from either the State Fire Marshal's Office or the State Department of Health and Environment are available.  
\*\* This deficiency existed in previous inspection reports but no corrective action has been taken.

- 24 -



NAME OF FACILITY	DATE CONSTRUCTED	CAPACITY	RECOMMENDED CAPACITY	AVERAGE DAILY POPULATION	<u>ELEVENTH JUDICIAL DISTRICT</u>  DEFICIENCIES	PRIORITY OF CORRECTIVE ACTION		
						URGENT	NECESSARY	DESIRABLE
NEOSHO COUNTY JAIL*	1948	10	10	10	(01) Inadequate supervision of inmates. (02) Inadequate ventilation. (03) Inadequate interior lighting. (04) Inadequate and/or improper plumbing fixtures. (05) Does not provide three (3) meals daily.** (06) Painted surfaces need repainting.**	X	X X X X	X
WILSON COUNTY JAIL*	1976	14	14	2	(01) Inadequate supervision of inmates.** (02) No standard inmate clothing issued.**	X		X
BAXTER SPRINGS LOCKUP FACILITY (Cherokee County)	1926	4	4	less than one	(01) Hazardous materials and/or equipment in cell areas** (02) Inadequate ventilation.** (03) Inadequate interior lighting.** (04) Inadequate and/or improper plumbing fixtures.** (05) No intercom system between jail office and cell block areas.** (06) No security and/or insect screens on windows.** (07) No smoke detectors.	X	X X X X  X X	
* Reports from either the State Fire Marshal's Office or the State Department of Health and Environment are available. ** This deficiency existed in previous inspection reports but no corrective action has been taken.								

NAME OF FACILITY	DATE CONSTRUCTED	CAPACITY	RECOMMENDED CAPACITY	AVERAGE DAILY POPULATION	<u>ELEVENTH JUDICIAL DISTRICT</u>  DEFICIENCIES	PRIORITY OF CORRECTIVE ACTION		
						URGENT	NECESSARY	DESIRABLE
CHANUTE CITY LOCKUP FACILITY* (Neosho County)	1925	6	6	1	(01) Inadequate and/or improper plumbing fixtures.** (02) No floor drains in cell block areas.**		X	X

\* Reports from either the State Fire Marshal's Office or the State Department of Health and Environment are available.  
\*\* This deficiency existed in previous inspection reports but no corrective action has been taken.

NAME OF FACILITY	DATE CONSTRUCTED	CAPACITY	RECOMMENDED CAPACITY	AVERAGE DAILY POPULATION	<div>TWELFTH JUDICIAL DISTRICT</div> <div>DEFICIENCIES</div>	PRIORITY OF CORRECTIVE ACTION		
						URGENT	NECESSARY	DESIRABLE
LINCOLN COUNTY JAIL*	1930	6	6	1.5	(01) Does not comply with State Fire Marshal's regulations.**	X		
REPUBLIC COUNTY JAIL*	1939	13	7	less than one	(01) Inadequate supervision of inmates. (02) Hazardous materials and/or equipment in cell areas.** (03) Security equipment in need of repair or replacement.** (04) Electrical cords and/or fixtures are accessible to inmates. (05) Inadequate administrative space.** (06) Inadequate ventilation.** (07) Does not maintain adequate separation of inmates.** (08) Inadequate and/or improper plumbing fixtures.** (09) No security and/or insect screens on windows.** (10) No cells for holding chemically or mentally impaired persons. (11) No holding cell for inmates awaiting processing. (12) No standard inmate clothing issued. (13) Painted surfaces need repainting.**	X X X  X	    X X X X X  X	          X X
* Reports from either the State Fire Marshal's Office or the State Department of Health and Environment are available. ** This deficiency existed in previous inspection reports but no corrective action has been taken.								

NAME OF FACILITY	DATE CONSTRUCTED	CAPACITY	RECOMMENDED CAPACITY	AVERAGE DAILY POPULATION	<u>TWELFTH JUDICIAL DISTRICT</u>  DEFICIENCIES	PRIORITY OF CORRECTIVE ACTION		
						URGENT	NECESSARY	DESIRABLE
WASHINGTON COUNTY JAIL*	1899	4	4	less than one	(01) Inadequate administrative space.** (02) No emergency power.** (03) No intercom system between jail office and cell block areas.** (04) Does not maintain adequate separation of inmates.** (05) Inadequate and/or improper plumbing fixtures.** (06) No cells for holding chemically or mentally impaired persons. (07) No holding cell for inmates awaiting processing. (08) No maximum security cell.		X X X  X X  X X	

\* Reports from either the State Fire Marshal's Office or the State Department of Health and Environment are available.  
\*\* This deficiency existed in previous inspection reports but no corrective action has been taken.



NAME OF FACILITY	DATE CONSTRUCTED	CAPACITY	RECOMMENDED CAPACITY	AVERAGE DAILY POPULATION	<div>THIRTEENTH JUDICIAL DISTRICT</div> <div>DEFICIENCIES</div>	PRIORITY OF CORRECTIVE ACTION		
						URGENT	NECESSARY	DESIRABLE
ELK COUNTY JAIL*	1960	10	10	2	(01) Inadequate supervision of inmates.**	X		
GREENWOOD COUNTY JAIL*	1955	16	16	4	(01) Does not comply with State Fire Marshal's regulations.** (02) No exercise area.**	X		X
AUGUSTA CITY HOLDING FACILITY*	1920	8	3	less than one	(01) Hazardous materials and/or equipment in cell areas. (02) Inadequate administrative space.** (03) Inadequate ventilation.** (04) Cell areas do not maintain fifty-two (52) square feet per inmate.** (05) No intercom system between jail office and cell block areas.** (06) Inadequate interior lighting.** (07) Inadequate and/or improper plumbing fixtures.**	X	X X X  X  X X	
EUREKA CITY LOCKUP (Greenwood County)	1966	4	4	less than one	(01) Hazardous materials and/or equipment in cell areas. (02) Inadequate interior lighting. (03) Overall sanitation needs to be improved.	X	X	X
* Reports from either the State Fire Marshal's Office or the State Department of Health and Environment are available. ** This deficiency existed in previous inspection reports but no corrective action has been taken.								

NAME OF FACILITY	DATE CONSTRUCTED	CAPACITY	RECOMMENDED CAPACITY	AVERAGE DAILY POPULATION	<div>FOURTEENTH JUDICIAL DISTRICT</div> <div>DEFICIENCIES</div>	PRIORITY OF CORRECTIVE ACTION		
						URGENT	NECESSARY	DESIRABLE
MONTGOMERY COUNTY JAIL*	1931	54	26	21	(01) Security equipment in need of repair or replacement.** (02) Inadequate administrative space.** (03) Inadequate ventilation. (04) Cell areas do not maintain fifty-two (52) square feet per inmate.** (05) Does not maintain adequate separation of inmates.** (06) Inadequate interior lighting.** (07) Inadequate and/or improper plumbing fixtures. (08) No exercise area.** (09) Painted surfaces need repainting.** (10) Overall sanitation needs to be improved.** (11) Inadequate food service personnel.**	X	X X X  X X X	X X X X

\* Reports from either the State Fire Marshal's Office or the State Department of Health and Environment are available.  
 \*\* This deficiency existed in previous inspection reports but no corrective action has been taken.

NAME OF FACILITY	DATE CONSTRUCTED	CAPACITY	RECOMMENDED CAPACITY	AVERAGE DAILY POPULATION	<u>FIFTEENTH JUDICIAL DISTRICT</u>  DEFICIENCIES	PRIORITY OF CORRECTIVE ACTION		
						URGENT	NECESSARY	DESIRABLE
GRAHAM COUNTY JAIL*	1958	15	8	2	(01) Hazardous materials and/or equipment in cell areas.** (02) Inadequate ventilation.** (03) Cell areas do not maintain fifty-two (52) square feet per inmate.** (04) Does not provide three (3) meals daily. (05) Does not maintain adequate separation of inmates.** (06) No exercise area.** (07) Insufficient shower facilities.** (08) Unsanitary bathing facility.**	X	X X  X X	X X X
ROOKS COUNTY JAIL*	1930	8	8	1	(01) Hazardous materials and/or equipment in cell areas. (02) Inadequate administrative space.** (03) Does not maintain adequate separation of inmates.** (04) Painted surfaces need repainting.	X	X X	X
SHERMAN COUNTY JAIL*	1972	12	12	6	(01) No written safety, security and emergency procedures.** (02) No emergency power.**	X	X	
* Reports from either the State Fire Marshal's Office or the State Department of Health and Environment are available. ** This deficiency existed in previous inspection reports but no corrective action has been taken.								

NAME OF FACILITY	DATE CONSTRUCTED	CAPACITY	RECOMMENDED CAPACITY	AVERAGE DAILY POPULATION	<div style="text-align: center;"> <u>FIFTEENTH JUDICIAL DISTRICT</u>   DEFICIENCIES </div>	PRIORITY OF CORRECTIVE ACTION		
						URGENT	NECESSARY	DESIRABLE
THOMAS COUNTY JAIL*	1976	9	9	8.13	(01) Inadequate supervision of inmates.**	X		

\* Reports from either the State Fire Marshal's Office or the State Department of Health and Environment are available.  
\*\* This deficiency existed in previous inspection reports but no corrective action has been taken.

NAME OF FACILITY	DATE CONSTRUCTED	CAPACITY	RECOMMENDED CAPACITY	AVERAGE DAILY POPULATION	<div>SIXTEENTH JUDICIAL DISTRICT</div> <div>DEFICIENCIES</div>	PRIORITY OF CORRECTIVE ACTION		
						URGENT	NECESSARY	DESIRABLE
CLARK COUNTY JAIL*	1950	5	3	1	(01) Inadequate supervision of inmates.** (02) Hazardous materials and/or equipment in cell areas. (03) Inadequate administrative space.** (04) Cell areas do not maintain fifty-two (52) square feet per inmate.** (05) Does not maintain adequate separation of inmates.** (06) Inadequate jail staff training. (07) No exercise area**	X X	X X X X	X
FORD COUNTY JAIL*	1931	38	12	7	(01) No written safety, security and emergency procedures. (02) Inadequate administrative space.** (03) Inadequate ventilation.** (04) Cell areas do not maintain fifty-two (52) square feet per inmate.** (05) No intercom system between jail office and cell block areas.** (06) Does not maintain adequate separation of inmates** (07) Inadequate interior lighting.** (08) Inadequate and/or improper plumbing fixtures. (09) No secure weapons storage area. (10) Inadequate jail staff training. (11) No standard inmate clothing issued.** (12) No exercise area.** (13) Painted surfaces need repainting.**	X	X X X X X X X X	X X X

\* Reports from either the State Fire Marshal's Office or the State Department of Health and Environment are available.  
 \*\* This deficiency existed in previous inspection reports but no corrective action has been taken.



NAME OF FACILITY	DATE CONSTRUCTED	CAPACITY	RECOMMENDED CAPACITY	AVERAGE DAILY POPULATION	<div style="text-align: center;"> <u>SIXTEENTH JUDICIAL DISTRICT</u>   DEFICIENCIES </div>	PRIORITY OF CORRECTIVE ACTION		
						URGENT	NECESSARY	DESIRABLE
KIOWA COUNTY JAIL*	1973	9	9	2.33	(01) Inadequate jail staff training. (02) Overall sanitation needs to be improved.**		X	X
MEADE COUNTY JAIL*	1933	6	6	2.25	(01) Inadequate supervision of inmates.** (02) Hazardous materials and/or equipment in cell areas.** (03) No written safety, security and emergency procedures.** (04) Insufficient exits. (05) Inadequate administrative space.** (06) Inadequate ventilation.** (07) Does not maintain adequate separation of inmates. (08) Inadequate jail staff training. (09) No standard inmate clothing issued.** (10) No exercise area.**	X X X  X	   X X X X	      X X

\* Reports from either the State Fire Marshal's Office or the State Department of Health and Environment are available.  
\*\* This deficiency existed in previous inspection reports but no corrective action has been taken.

NAME OF FACILITY	DATE CONSTRUCTED	CAPACITY	RECOMMENDED CAPACITY	AVERAGE DAILY POPULATION	<u>SEVENTEENTH JUDICIAL DISTRICT</u>  DEFICIENCIES	PRIORITY OF CORRECTIVE ACTION		
						URGENT	NECESSARY	DESIRABLE
NORTON COUNTY JAIL*	1929	7	4	1	(01) Does not comply with State Fire Marshal's regulations.** (02) Electrical cords and/or fixtures are accessible to inmates.** (03) No written safety, security and emergency procedures.** (04) Inadequate control and storage of cleaning equipment. (05) Cell areas do not maintain fifty-two (52) square feet per inmate.** (06) Inadequate administrative space.** (07) Does not maintain adequate separation of inmates.** (08) Inadequate interior lighting.** (09) Inadequate and/or improper plumbing fixtures.** (10) No security and/or insect screens on windows.** (11) Inadequate kitchen facility.** (12) No jail officer for each floor of detention. (13) No exercise area.** (14) Overall sanitation needs to be improved.** (15) Stairway will not accommodate an ambulance cot.**	X		
OSBORNE COUNTY JAIL*	1956	7	7	1	(01) Inadequate administrative space.** (02) Inadequate interior lighting. (03) Floor drains need periodic flushing.		X	

\* Reports from either the State Fire Marshal's Office or the State Department of Health and Environment are available.  
\*\* This deficiency existed in previous inspection reports but no corrective action has been taken.

- 35 -

NAME OF FACILITY	DATE CONSTRUCTED	CAPACITY	RECOMMENDED CAPACITY	AVERAGE DAILY POPULATION	<div>SEVENTEENTH JUDICIAL DISTRICT</div> <div>DEFICIENCIES</div>	PRIORITY OF CORRECTIVE ACTION		
						URGENT	NECESSARY	DESIRABLE
RAWLINS COUNTY JAIL*	1921	10	10	4	(01) No written safety, security and emergency procedures. (02) Overall sanitation needs to be improved.	X		X
CHEYENNE COUNTY LOCKUP*	1924	6	6	less than one	(01) Does not comply with State Fire Marshal's regulations.** (02) Hazardous materials and/or equipment in cell areas. (03) No written safety, security and emergency procedures.** (04) Inadequate administrative space.** (05) No emergency power.** (06) No intercom system between jail office and cell block areas.** (07) No security and/or insect screens on windows.** (08) No jail officer for each floor of detention. (09) No standard inmate clothing issued.**	X X X	X X X X X	X

\* Reports from either the State Fire Marshal's Office or the State Department of Health and Environment are available.  
 \*\* This deficiency existed in previous inspection reports but no corrective action has been taken.

NAME OF FACILITY	DATE CONSTRUCTED	CAPACITY	RECOMMENDED CAPACITY	AVERAGE DAILY POPULATION	<u>EIGHTEENTH JUDICIAL DISTRICT</u>  DEFICIENCIES	PRIORITY OF CORRECTIVE ACTION		
						URGENT	NECESSARY	DESIRABLE
SEDGWICK COUNTY JAIL*	1958	212	135	185	(01) Cell areas do not maintain fifty-two (52) square feet per inmate.** (02) No emergency power. (03) Does not maintain adequate separation of inmates.** (04) Inadequate interior lighting.** (05) No exercise area. (06) Painted surfaces need repainting. (07) Inadequate food service.		X  X X X	    X X X

\* Reports from either the State Fire Marshal's Office or the State Department of Health and Environment are available.  
\*\* This deficiency existed in previous inspection reports but no corrective action has been taken.

NAME OF FACILITY	DATE CONSTRUCTED	CAPACITY	RECOMMENDED CAPACITY	AVERAGE DAILY POPULATION	NINETEENTH JUDICIAL DISTRICT  DEFICIENCIES	PRIORITY OF CORRECTIVE ACTION		
						URGENT	NECESSARY	DESIRABLE
BARBER COUNTY JAIL*	1956	6	6	1	(01) Inadequate supervision of inmates. (02) Inadequate administrative space.** (03) No emergency power. (04) No exercise area.**	X	X X	X
COWLEY COUNTY JAIL*	1963	64	40	22	(01) Cell areas do not maintain fifty-two (52) square feet per inmate.** (02) No standard inmate clothing issued.** (03) No exercise area. (04) Painted surfaces need repainting.		X	X X X
HARPER COUNTY JAIL*	1976	16	16	3	(01) Hazardous materials and/or equipment in cell areas.** (02) No written safety, security and emergency procedures. (03) No intercom system between jail office and cell block areas.**	X X	X	
PRATT COUNTY JAIL*	1976	30	30	9	(01) Hazardous materials and/or equipment in cell areas.**	X		

\* Reports from either the State Fire Marshal's Office or the State Department of Health and Environment are available.

\*\* This deficiency existed in previous inspection reports but no corrective action has been taken.



NAME OF FACILITY	DATE CONSTRUCTED	CAPACITY	RECOMMENDED CAPACITY	AVERAGE DAILY POPULATION	<div>NINETEENTH JUDICIAL DISTRICT</div> <div>DEFICIENCIES</div>	PRIORITY OF CORRECTIVE ACTION		
						URGENT	NECESSARY	DESIRABLE
SUMNER COUNTY JAIL*	1951	31	18	18	(01) Does not comply with State Fire Marshal's regulations.** (02) Hazardous materials and/or equipment in cell areas** (03) Cell areas do not maintain fifty-two (52) square feet per inmate.** (04) No emergency power.** (05) No security and/or insect screens on windows.** (06) No cells for holding chemically or mentally impaired persons. (07) No exercise area.** (08) No floor drains in cell block areas. **	X  X X	   X X X	     X X
KINGMAN COUNTY HOLDING FACILITY* (Kingman County)	1959	16	8	less than one	(01) Hazardous materials and/or equipment in cell areas.	X		
* Reports from either the State Fire Marshal's Office or the State Department of Health and Environment are available. ** This deficiency existed in previous inspection reports but no corrective action has been taken.								

NAME OF FACILITY	DATE CONSTRUCTED	CAPACITY	RECOMMENDED CAPACITY	AVERAGE DAILY POPULATION	<div> <div>TWENTIETH JUDICIAL DISTRICT</div> <div>DEFICIENCIES</div> </div>	PRIORITY OF CORRECTIVE ACTION		
						URGENT	NECESSARY	DESTRABLE
BARTON COUNTY JAIL*	1954	30	30	20	(01) No written safety, security and emergency procedures.** (02) Inadequate visitation and consultation area. (03) Inadequate food service. (04) Slippery floor surfaces around showers. (05) Does not maintain adequate separation of inmates.** (06) Inadequate and/or improper plumbing fixtures. (07) No exercise area.** (08) Painted surfaces need repainting.** (09) Overall sanitation needs to be improved.	X	X X X X X	X X X
RICE COUNTY JAIL*	1929	26	14	5.1	(01) Inadequate supervision of inmates.** (02) Does not comply with State Fire Marshal's regulations.** (03) Inadequate administrative space.** (04) Cell areas do not maintain fifty-two (52) square feet per inmate.** (05) No intercom system between jail office and cell block areas.** (06) Does not maintain adequate separation of inmates.** (07) Inadequate and/or improper plumbing fixtures.** (08) Inadequate jail staff training. (09) No written policies and procedures.** (10) No standard inmate clothing issued.** (11) No exercise area.** (12) No floor drains in cell block areas.**	X X	X X  X X X X X	X X X
* Reports from either the State Fire Marshal's Office or the State Department of Health and Environment are available. ** This deficiency existed in previous inspection reports but no corrective action has been taken.								

NAME OF FACILITY	DATE CONSTRUCTED	CAPACITY	RECOMMENDED CAPACITY	AVERAGE DAILY POPULATION	<u>TWENTIETH JUDICIAL DISTRICT</u>  DEFICIENCIES	PRIORITY OF CORRECTIVE ACTION		
						URGENT	NECESSARY	DESIRABLE
RUSSELL COUNTY JAIL*	1957	22	14	1.7	(01) Inadequate supervision of inmates.** (02) Hazardous materials and/or equipment in cell areas.** (03) Security equipment in need of repair or replacement. (04) No written safety, security and emergency procedures.** (05) Inadequate ventilation.** (06) Cell areas do not maintain fifty-two (52) square feet per inmate.** (07) No emergency power.** (08) Inadequate and/or improper plumbing fixtures.** (09) No security and/or insect screens on windows. (10) Inadequate heating devices.** (11) Food service utensils not properly cleaned. (12) No thirty (30) day menu available. (13) No exercise area.** (14) Overall sanitation needs to be improved.	X X X  X	     X X  X X X	         X X X
RUSSELL CITY HOLDING FACILITY* (Russell County)	1969	2	2	less than one	(01) Bedding not issued in sanitary condition.			X

\* Reports from either the State Fire Marshal's Office or the State Department of Health and Environment are available.  
\*\* This deficiency existed in previous inspection reports but no corrective action has been taken.

NAME OF FACILITY	DATE CONSTRUCTED	CAPACITY	RECOMMENDED CAPACITY	AVERAGE DAILY POPULATION	<div> <div>TWENTY-FIRST JUDICIAL DISTRICT</div> <div>DEFICIENCIES</div> </div>	PRIORITY OF CORRECTIVE ACTION		
						URGENT	NECESSARY	DESIRABLE
CLAY COUNTY JAIL*	1909	7	5	3.6	(01) Inadequate supervision of inmates. (02) Hazardous materials and/or equipment in cell areas. (03) Insufficient emergency exits. (04) Inadequate administrative space.** (05) Inadequate ventilation.** (06) Cell areas do not maintain fifty-two (52) square feet per inmate.** (07) Does not maintain adequate separation of inmates. (08) Inadequate interior lighting. (09) Inadequate and/or improper plumbing fixtures.** (10) No holding cell for inmates awaiting processing** (11) Inadequate processing area. (12) No weapons arsenal. (13) No exercise area.** (14) No floor drains in cell block areas.**	X X X	X X X X X X X X	X X

\* Reports from either the State Fire Marshal's Office or the State Department of Health and Environment are available.  
 \*\* This deficiency existed in previous inspection reports but no corrective action has been taken.

NAME OF FACILITY	DATE CONSTRUCTED	CAPACITY	RECOMMENDED CAPACITY	AVERAGE DAILY POPULATION	<p>TWENTY-SECOND JUDICIAL DISTRICT</p> <p>DEFICIENCIES</p>	PRIORITY OF CORRECTIVE ACTION		
						URGENT	NECESSARY	DESIRABLE
BROWN COUNTY JAIL*	1924	16	8	12	(01) Does not comply with State Fire Marshal's regulations.** (02) Inadequate ventilation.** (03) Cell areas do not maintain fifty-two (52) square feet per inmate.** (04) Does not maintain adequate separation of inmates.** (05) Inadequate interior lighting.** (06) No exercise area.**	X	X X X X	X
DONIPHAN COUNTY JAIL*	1957	14	7	4	(01) Does not comply with State Fire Marshal's Regulations.** (02) Inadequate administrative space. (03) No intercom system between jail office and cell block areas.** (04) Inadequate and/or improper plumbing fixtures.** (05) No standard inmate clothing issued.** (06) No exercise area.**	X	X X X	X X
HORTON CITY HOLDING FACILITY* (Brown County)	1914	3	3	less than one	(01) Does not comply with State Fire Marshal's regulations. ** (02) No intercom system between jail office and cell block areas. ** (03) No security and/or insect screens on windows.**	X	X X	
* Reports from either the State Fire Marshal's Office or the State Department of Health and Environment are available. ** This deficiency existed in previous inspection reports but no corrective action has been taken.								



NAME OF FACILITY	DATE CONSTRUCTED	CAPACITY	RECOMMENDED CAPACITY	AVERAGE DAILY POPULATION	<div>TWENTY-THIRD JUDICIAL DISTRICT</div> <div>DEFICIENCIES</div>	PRIORITY OF CORRECTIVE ACTION		
						URGENT	NECESSARY	DESIRABLE
OAKLEY CITY LOCKUP FACILITY* (Logan County)	1948	3	3	3	(01) Inadequate administrative space.** (02) Inadequate ventilation.** (03) Cell areas do not maintain fifty-two (52) square feet per inmate.** (04) No emergency power.** (05) Does not maintain adequate separation of inmates.** (06) Inadequate interior lighting.** (07) Inadequate and/or improper plumbing fixtures. (08) Inadequate processing area. (09) Security area unsecure from public access. (10) No exercise area.** (11) No floor drains in cell block areas.** (12) Overall sanitation needs to be improved.** (13) Inadequate kitchen facilities.		X X X X X X X X	X X X X

\* Reports from either the State Fire Marshal's Office or the State Department of Health and Environment are available.  
 \*\* This deficiency existed in previous inspection reports but no corrective action has been taken.

NAME OF FACILITY	DATE CONSTRUCTED	CAPACITY	RECOMMENDED CAPACITY	AVERAGE DAILY POPULATION	<p>TWENTY-FOURTH JUDICIAL DISTRICT</p> <p>DEFICIENCIES</p>	PRIORITY OF CORRECTIVE ACTION		
						URGENT	NECESSARY	DESIRABLE
EDWARDS COUNTY JAIL*	1928	11	11	1	(01) Inadequate supervision of inmates. (02) Hazardous materials and/or equipment in cell areas.** (03) Does not maintain adequate separation of inmates.** (04) Inadequate jail staff training. (05) No exercise area.** (06) Painted surfaces need repainting.** (07) Overall sanitation needs to be improved.	X X	X X	X X X
HODGEMAN COUNTY JAIL*	1927	8	6	less than one	(01) Insufficient emergency exits. (02) Hazardous materials and/or equipment in cell areas. (03) No written safety, security and emergency procedures.** (04) Inadequate administrative space.** (05) Inadequate ventilation.** (06) No emergency power. (07) Does not maintain adequate separation of inmates.** (08) Inadequate interior lighting.** (09) No security and/or insect screens on windows.** (10) Inadequate jail staff training. (11) Inadequate bedding issue.** (12) Inadequate insect and rodent control. (13) No exercise area.** (14) No floor drains in cell block areas.** (15) Painted surfaces need repainting. (16) No thirty (30) day menu available.	X X X	X X X X X X X X	X X X X
* Reports from either the State Fire Marshal's Office or the State Department of Health and Environment are available. ** This deficiency existed in previous inspection reports but no corrective action has been taken.								

NAME OF FACILITY	DATE CONSTRUCTED	CAPACITY	RECOMMENDED CAPACITY	AVERAGE DAILY POPULATION	<div> <div>TWENTY-FOURTH JUDICIAL DISTRICT</div> <div>DEFICIENCIES</div> </div>	PRIORITY OF CORRECTIVE ACTION		
						URGENT	NECESSARY	DESIRABLE
LANE COUNTY JAIL*	1935	8	8	1	(01) No written safety, security and emergency procedures. (02) Inadequate and/or improper plumbing fixtures.** (03) Inadequate jail staff training. (04) No thirty (30) day menu available.	X	X X	X
NESS COUNTY JAIL*	1955	6	6	less than one	(01) Hazardous materials and/or equipment in cell areas. (02) Inadequate jail staff training. (03) No exercise area.** (04) Overall sanitation needs to be improved.	X	X	X X
PAWNEE COUNTY JAIL*	1952	15	15	4	(01) No written safety, security and emergency procedures. (02) No intercom system between jail office and cell block areas. (03) Does not maintain adequate separation of inmates.** (04) Inadequate jail staff training. (05) No exercise area.**	X	X X X	X

\* Reports from either the State Fire Marshal's Office or the State Department of Health and Environment are available.  
 \*\* This deficiency existed in previous inspection reports but no corrective action has been taken.

NAME OF FACILITY	DATE CONSTRUCTED	CAPACITY	RECOMMENDED CAPACITY	AVERAGE DAILY POPULATION	<p>TWENTY-FIFTH JUDICIAL DISTRICT</p> <p>DEFICIENCIES</p>	PRIORITY OF CORRECTIVE ACTION		
						URGENT	NECESSARY	DESIRABLE
FINNEY COUNTY JAIL*	1920	34	15	7	(01) Inadequate supervision of inmates.** (02) Does not comply with State Fire Marshal's regulations.** (03) Hazardous materials and/or equipment in cell areas.** (04) Inadequate administrative space.** (05) Cell areas do not maintain fifty-two (52) square feet per inmate.** (06) No emergency power.** (07) No intercom system between jail office and cell block areas.** (08) Does not maintain adequate separation of inmates** (09) Inadequate interior lighting.** (10) Does not provide three (3) meals daily.** (11) No holding cell for inmates awaiting processing.** (12) No exercise area. ** (13) No floor drains in cell block areas.**	X X  X	   X X  X X X X	          X X
KEARNY COUNTY JAIL*	1965	21	15	2	(01) Hazardous materials and/or equipment in cell areas. (02) No written safety, security and emergency procedures. (03) Inadequate administrative space.** (04) No security and/or insect screens on windows. (05) Inadequate jail staff training. (06) No exercise area.** (07) Overall sanitation needs to be improved.	X X	   X X X	     X X
* Reports from either the State Fire Marshal's Office or the State Department of Health and Environment are available. ** This deficiency existed in previous inspection reports but no corrective action has been taken.								

**CONTINUED**

**1 OF 2**



NAME OF FACILITY	DATE CONSTRUCTED	CAPACITY	RECOMMENDED CAPACITY	AVERAGE DAILY POPULATION	<u>TWENTY-FIFTH JUDICIAL DISTRICT</u>  DEFICIENCIES	PRIORITY OF CORRECTIVE ACTION		
						URGENT	NECESSARY	DESIRABLE
SCOTT COUNTY JAIL*	1948	12	6	1	(01) Inadequate administrative space. (02) Cell areas do not maintain fifty-two (52) square feet per inmate.** (03) Does not maintain adequate separation of inmates** (04) Inadequate interior lighting. (05) Inadequate and/or improper plumbing fixtures.** (06) No security and/or insect screens on windows.** (07) No holding cell for inmates awaiting processing.** (08) No cells for holding chemically or mentally impaired persons.** (09) No exercise area. ** (10) Painted surfaces need repainting. (11) Overall sanitation needs to be improved.		X X  X X X X X	        X X X
WICHITA COUNTY LOCKUP FACILITY* (Wichita County)	1920	4	4	less than one	(01) Inadequate ventilation.** (02) No emergency power.**		X X	

\* Reports from either the State Fire Marshal's Office or the State Department of Health and Environment are available.  
\*\* This deficiency existed in previous inspection reports but no corrective action has been taken.

NAME OF FACILITY	DATE CONSTRUCTED	CAPACITY	RECOMMENDED CAPACITY	AVERAGE DAILY POPULATION	<p>TWENTY-SIXTH JUDICIAL DISTRICT</p> <p>DEFICIENCIES</p>	PRIORITY OF CORRECTIVE ACTION		
						URGENT	NECESSARY	DESIRABLE
GRANT COUNTY JAIL*	1972	22	22	1	(01) No emergency power.** (02) Inadequate interior lighting.** (03) Painted surfaces need repainting.**		X X	X
MORTON COUNTY JAIL*	1964	13	9	1	(01) Inadequate supervision of inmates.** (02) Inadequate administrative space.** (03) Cell areas do not maintain fifty-two (52) square feet per inmate.** (04) No emergency power.** (05) No intercom system between jail office and cell block areas.** (06) No security and/or insect screens on windows. (07) Inadequate jail staff training. (08) No exercise area.**	X	X X X X	X
SEWARD COUNTY JAIL*	1957	42	24	12	(01) Electrical cords and/or fixtures are accessible to inmates.** (02) No written safety, security and emergency procedures.** (03) Inadequate ventilation.** (04) Cell areas do not maintain fifty-two (52) square feet per inmate.** (05) No emergency electrical power.**	X X	X X X	
<p>* Reports from either the State Fire Marshal's Office or the State Department of Health and Environment are available.  ** This deficiency existed in previous inspection reports but no corrective action has been taken.</p>								

NAME OF FACILITY	DATE CONSTRUCTED	CAPACITY	RECOMMENDED CAPACITY	AVERAGE DAILY POPULATION	<div> <div>TWENTY-SIXTH JUDICIAL DISTRICT</div> <div>DEFICIENCIES</div> </div>	PRIORITY OF CORRECTIVE ACTION		
						URGENT	NECESSARY	DESIRABLE
SEWARD COUNTY JAIL*					(06) Does not maintain adequate separation of inmates.** (07) Does not comply with the regulations of the Department of Health and Environment** (08) No standard inmate clothing issued.** (09) No exercise area.**		X X X	X X
STEVENS COUNTY JAIL*	1978	4	4	less than one	(01) No emergency power.** (02) Inadequate jail staff training. (03) No standard inmate clothing issued.** (04) No exercise area.** (05) No thirty (30) day menu available.		X X	X X X
HASKELL COUNTY LOCKUP FACILITY* (Sublette County)	1978	4	4	less than one	(01) Inadequate supervision of inmates.**	X		

\* Reports from either the State Fire Marshal's Office or the State Department of Health and Environment are available.  
 \*\* This deficiency existed in previous inspection reports but no corrective action has been taken.

NAME OF FACILITY	DATE CONSTRUCTED	CAPACITY	RECOMMENDED CAPACITY	AVERAGE DAILY POPULATION	<u>TWENTY-SEVENTH JUDICIAL DISTRICT</u>  DEFICIENCIES	PRIORITY OF CORRECTIVE ACTION		
						URGENT	NECESSARY	DESIRABLE
RENO COUNTY JAIL*	1971	65	65	40	(01) Inadequate supervision of inmates.** (02) Inadequate ventilation. (03) Inadequate interior lighting. (04) Inadequate and/or improper plumbing fixtures. (05) No exercise area.**	X	X X X	X

\* Reports from either the State Fire Marshal's Office or the State Department of Health and Environment are available.  
\*\* This deficiency existed in previous inspection reports but no corrective action has been taken.

NAME OF FACILITY	DATE CONSTRUCTED	CAPACITY	RECOMMENDED CAPACITY	AVERAGE DAILY POPULATION	<p>TWENTY-EIGHTH JUDICIAL DISTRICT</p> <p>DEFICIENCIES</p>	PRIORITY OF CORRECTIVE ACTION		
						URGENT	NECESSARY	DESTRABLE
OTTAWA COUNTY JAIL*	1915	7	4	2	(01) No written safety, security and emergency procedures.** (02) Inadequate administrative space.** (03) Cell areas do not maintain fifty-two (52) square feet per inmate.** (04) No emergency power. (05) Inadequate interior lighting.** (06) No security and/or insect screens on windows. (07) No secure storage space for weapons. (08) No exercise area.**	X	X X  X X X X	X
SALINE COUNTY JAIL*	1962	66	66	33	(01) Does not maintain adequate separation of inmates.** (02) No exercise area.**		X	X

\* Reports from either the State Fire Marshal's Office or the State Department of Health and Environment are available.  
 \*\* This deficiency existed in previous inspection reports but no corrective action has been taken.

NAME OF FACILITY	DATE CONSTRUCTED	CAPACITY	RECOMMENDED CAPACITY	AVERAGE DAILY POPULATION	<p style="text-align: center;">TWENTY-NINTH JUDICIAL DISTRICT</p> <p style="text-align: center;">DEFICIENCIES</p>	PRIORITY OF CORRECTIVE ACTION		
						URGENT	NECESSARY	DESIRABLE
WYANDOTIE COUNTY JAIL*	1929	125	55	65	(01) Does not comply with State Fire Marshal's regulations.** (02) Security equipment in need of repair or replacement. (03) Inadequate administrative space. (04) Inadequate ventilation.** (05) Inadequate interior lighting.** (06) No cells for holding chemically or mentally impaired persons.** (07) Emergency lighting fixtures need repair.** (08) Does not comply with Kansas Department of Health and Environment regulations.** (09) No security and/or insect screens on windows.** (10) No exercise area.** (11) Painted surfaces need repainting.** (12) Overall sanitation needs to be improved.**	X  X	   X X X X  X X  X	         X X X

\* Reports from either the State Fire Marshal's Office or the State Department of Health and Environment are available.  
 \*\* This deficiency existed in previous inspection reports but no corrective action has been taken.



MOST COMMON DEFICIENCIES ENCOUNTERED

		Priority of Corrective Action		
		Urgent	Necessary	Desirable
DEFICIENCIES				
1	Inadequate supervision of inmates.	20		
2	Does not comply with State Fire Marshal's regulations.	15		
3	Hazardous materials and/or equipment in cell areas.	26		
4	Security equipment in need of repair or replacement.	7		
5	Electrical cords and/or fixtures are accessible to inmates.	5		
6	No written safety, security and emergency procedures.	14		
7	Inadequate administrative space.		29	
8	Inadequate ventilation.		24	
9	Cell areas do not maintain fifty-two (52) square feet per inmate.		25	
10	No emergency power.		20	
11	No intercom system between jail office and cell block areas.		13	
12	Does not maintain adequate separation of inmates.		30	
13	Inadequate interior lighting.		28	
14	Inadequate and/or improper plumbing fixtures.		24	
15	No security and/or insect screens on windows.		16	
16	Inadequate jail staff training.		15	
17	No standard inmate clothing issued.			16
18	No exercise area.			45
19	No floor drains in cell block areas.			12
20	Painted surfaces need repainting.			23
21	Overall sanitation needs to be improved.			15
22	All other deficiencies.	3	57	16
TOTAL For each level of Corrective Action		90	281	127
TOTAL Deficiencies			498	

**END**