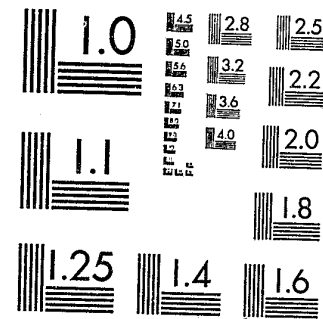


National Criminal Justice Reference Service

ncjrs

This microfiche was produced from documents received for inclusion in the NCJRS data base. Since NCJRS cannot exercise control over the physical condition of the documents submitted, the individual frame quality will vary. The resolution chart on this frame may be used to evaluate the document quality.



MICROCOPY RESOLUTION TEST CHART
NATIONAL BUREAU OF STANDARDS-1963-A

Microfilming procedures used to create this fiche comply with the standards set forth in 41CFR 101-11.504.

Points of view or opinions stated in this document are those of the author(s) and do not represent the official position or policies of the U. S. Department of Justice.

National Institute of Justice
United States Department of Justice
Washington, D. C. 20531

2/24/83

86293

ANNUAL REPORT OF PAROLEE EARNINGS

State of New Jersey
Department of Corrections
Division of Policy and Planning

BUREAU OF PAROLE
Trenton, N. J.

Calendar Year 1980

U.S. Department of Justice
National Institute of Justice

This document has been reproduced exactly as received from the person or organization originating it. Points of view or opinions stated in this document are those of the authors and do not necessarily represent the official position or policies of the National Institute of Justice.

Permission to reproduce this copyrighted material has been granted by
New Jersey Bureau of Parole

to the National Criminal Justice Reference Service (NCJRS).

Further reproduction outside of the NCJRS system requires permission of the copyright owner.

Fred B. Holley, Chief
Bureau of Parole

Victor R. D'Ilio,
Assistant Chief

Donald L. Ide,
Senior Parole Officer

NEW JERSEY BUREAU OF PAROLE

ANNUAL REPORT OF
PAROLEE EARNINGS
1980

NCJRS

OCT 4 1982

ACQUISITIONS

The earnings of parolees for the calendar year 1980 are compiled, classified and capsulated from data submitted by the nine district parole offices in the Bureau of Parole. (See attached table)

There were 11,521 parolees under supervision in New Jersey in 1980 (an increase of 1,273 from 1979) and they earned, as qualified herewith \$29,321,239.

In comparison to 1979 this was an increase of \$3,562,988.

Fifty-two per cent (5,978) of those under supervision during the year were classified as employed (worked all or part of the period under supervision, which period of supervision could be from one week to the full year) and twenty-six per cent (2,981) were unemployed throughout their entire period of supervision, although employable. The other twenty-two per cent (2,555) were classified as unemployable by reason of being missing or in custody for the entire period of supervision during the year, or attending school, being engaged in homemaking, or being incapacitated.

The rates for District Offices follow:

DISTRICT OFFICE	PER CENT											
	UNEMPLOYABLE				UNEMPLOYED				EMPLOYED			
	1977	1978	1979	1980	1977	1978	1979	1980	1977	1978	1979	1980
No. 1 — Morris, Passaic, Sussex, Warren and Bergen (portion)	21%	23%	26%	20%	22%	16%	13%	22%	57%	61%	61%	58%
No. 2 — Essex (portion)	29%	29%	29%	27%	31%	27%	26%	25%	40%	44%	45%	48%
No. 3 — Middlesex, Monmouth and Ocean	23%	24%	26%	23%	23%	18%	19%	25%	54%	58%	55%	52%
No. 4 — Hudson and Bergen (portion)	26%	21%	21%	29%	26%	26%	27%	25%	48%	53%	52%	46%
No. 5 — Somerset and Union	19%	14%	16%	26%	22%	29%	26%	25%	59%	57%	58%	49%
No. 6 — Burlington, Hunterdon and Mercer	20%	21%	22%	30%	25%	22%	25%	19%	55%	57%	53%	51%
No. 7 — Camden, Gloucester and Salem	20%	12%	11%	30%	36%	32%	38%	20%	44%	56%	51%	50%
No. 8 — Atlantic, Cape May, Cumberland	25%	20%	22%	21%	26%	24%	15%	18%	49%	56%	63%	61%
No. 9 — Essex (portion)	16%	18%	16%	30%	35%	30%	29%	18%	49%	52%	55%	52%

The over-all rates for the past five years follow:

	1976	1977	1978	1979	1980
Employed	46%	51%	55%	55%	52%
Unemployed	31%	27%	24%	23%	26%
Unemployable	23%	22%	21%	22%	22%

July 1, 1981

Forty-seven per cent of the 11,521 parolees supervised were under supervision for a period of 10 months to the full year in 1980; 15% from 7 months to 9 months; 20% from 4 months to 6 months; and 18% from 1 day to 3 months. Caution should be used in drawing inferences from the foregoing data and accordingly the average earnings of employed parolees is presented below for comparative purposes only.

Institution Average:

	<u>1976</u>	<u>1977</u>	<u>1978</u>	<u>1979</u>	<u>1980</u>
Training School for Girls	\$ 1,988	\$ 600	\$ 749	\$ 1,526	\$ 1,772
Correctional Institution for Women	\$ 2,472	\$ 2,378	\$ 2,839	\$ 3,369	\$ 3,537
Out-of-State Females	\$ 2,185	\$ 3,977	\$ 3,894	\$ 4,435	\$ 6,638
Training School for Boys, Jamesburg	\$ 1,796	\$ 2,107	\$ 1,582	\$ 1,667	\$ 2,139
Youth Correctional Institution, Annandale	\$ 2,711	\$ 2,900	\$ 3,157	\$ 3,456	\$ 3,574
Youth Correctional Institution, Bordentown	\$ 3,228	\$ 3,669	\$ 4,211	\$ 4,277	\$ 4,487
Yardville Reception and Correction Center	\$ 2,984	\$ 3,746	\$ 3,899	\$ 3,894	\$ 4,065
State Prison	\$ 5,040	\$ 5,100	\$ 4,951	\$ 5,384	\$ 5,554
Out-of-State Males	\$ 5,143	\$ 5,620	\$ 7,703	\$ 6,393	\$ 6,715
Adult Diagnostic and Treatment Center	\$ 8,385	\$ 6,804	\$ 4,923	\$ 7,917	\$ 6,965
County Corrections	—	—	—	—	\$ 6,955

Parole District Office Average:

	<u>1977</u>	<u>1978</u>	<u>1979</u>	<u>1980</u>
District Office No. 1	\$ 3,490	\$ 3,805	\$ 3,774	\$ 4,660
District Office No. 2	\$ 4,017	\$ 4,128	\$ 4,711	\$ 4,750
District Office No. 3	\$ 3,664	\$ 5,092	\$ 4,609	\$ 4,298
District Office No. 4	\$ 5,198	\$ 4,621	\$ 5,065	\$ 5,642
District Office No. 5	\$ 3,405	\$ 3,979	\$ 3,971	\$ 4,149
District Office No. 6	\$ 3,710	\$ 4,453	\$ 4,753	\$ 4,520
District Office No. 7	\$ 5,233	\$ 4,599	\$ 6,565	\$ 5,873
District Office No. 8	\$ 4,060	\$ 4,151	\$ 4,076	\$ 5,433
District Office No. 9	\$ 3,719	\$ 4,432	\$ 4,480	\$ 5,582

Over-all Average:

1976 — \$ 3,757 1977 — \$ 4,030 1978 — \$ 4,369 1979 — \$ 4,578 1980 — \$ 4,905

July 1, 1981

In contrast to the foregoing, employed parolees under supervision for the entire calendar year (12 full months) earned on the average the following:

	<u>1977</u>	<u>1978</u>	<u>1979</u>	<u>1980</u>
Training School for Girls	\$ 900	\$ 237	\$ 509	\$ 660
Correctional Institution for Women	\$ 4,183	\$ 3,224	\$ 3,216	\$ 4,410
Out-of-State Females	\$ 5,994	\$ 2,939	\$ 2,036	\$ 3,544
Training School for Boys, Jamesburg	\$ 2,775	\$ 1,851	\$ 1,939	\$ 3,349
Youth Correctional Institution, Annandale	\$ 2,860	\$ 4,121	\$ 3,545	\$ 4,295
Youth Correctional Institution, Bordentown	\$ 4,418	\$ 4,734	\$ 4,238	\$ 5,310
Youth Reception and Correction Center	\$ 4,353	\$ 4,943	\$ 4,090	\$ 4,838
State Prison	\$ 7,075	\$ 7,533	\$ 6,163	\$ 7,171
Out-of-State Males	\$ 8,283	\$ 9,143	\$ 7,915	\$ 7,959
Adult Diagnostic and Treatment Center	\$ 9,223	\$ 3,328	\$ 6,737	\$ 9,024
County Corrections	—	—	—	\$ 3,825

Fred B. Holley, Chief
Bureau of Parole

[Signature]

By

Victor R. D'Illio,
Assistant Chief

and

Donald L. Ide,
Senior Parole Officer

July 1, 1981

STATE OF NEW JERSEY

BUREAU OF PAROLE

REPORT ON EARNINGS OF PAROLEES

Calendar Year 1980

INSTITUTION*	UNEMPLOYED	UNEMPLOYABLE	EMPLOYED	ESTIMATED EARNINGS	VERIFIED EARNINGS	PERIOD SUPERVISED				INSTITUTIONAL TOTAL
						1 DAY TO 3 MOS.	4 MOS. TO 6 MOS.	7 MOS. TO 9 MOS.	10 MOS. TO 12 MOS.	
T.S.G.	17	7	5	\$ 700	\$ 8,162	6	6	3	14	29
C.I.W.	159	139	138	132,528	355,633	60	92	72	212	436
CTY.	1	—	—	—	—	1	—	—	—	1
O./S. F.	5	3	22	84,620	61,405	7	2	6	15	30
TOTAL FEMALE	182	149	165	217,848	425,200	74	100	81	241	496
T.S.B.	149	87	118	93,028	159,398	83	93	61	117	354
Y.C.I.A.	537	381	860	1,268,647	1,804,971	302	345	267	864	1,778
Y.C.I.B.	473	502	858	1,751,334	2,098,342	265	301	282	985	1,833
Y.R.C.C.	479	410	908	1,717,227	1,973,644	294	341	310	859	1,804
S.P.	989	929	2,428	4,454,900	9,029,851	782	994	597	1,973	4,346
O./S. M.	126	66	549	1,311,271	2,375,198	123	128	131	354	741
A.D.T.C.	9	16	53	123,364	245,789	7	11	12	48	78
CTY.	37	15	39	24,970	246,257	61	24	6	—	91
TOTAL MALE	2,799	2,406	5,813	10,744,741	17,933,450	1,922	2,237	1,666	5,200	11,025
TOTALS	2,981	2,555	5,978	10,962,589	18,358,650	1,996	2,337	1,747	5,441	11,521

GRAND TOTAL EARNINGS

\$ 29,321,239

*Legend

T.S.G. — TRAINING SCHOOL FOR GIRLS	Y.C.I.B. — YOUTH CORRECTIONAL INSTITUTION, BORDENTOWN
C.I.W. — CORRECTIONAL INSTITUTION FOR WOMEN	Y.R.C.C. — YARDVILLE RECEPTION & CORRECTION CENTER
O./S. F. — OUT-OF-STATE FEMALES	S.P. — STATE PRISON
T.S.B. — TRAINING SCHOOL FOR BOYS, JAMESBURG	O./S. M. — OUT-OF-STATE MALES
Y.C.I.A. — YOUTH CORRECTIONAL INSTITUTION, ANNANDALE	A.D.T.C. — ADULT DIAGNOSTIC & TREATMENT CENTER
CTY. — COUNTY CORRECTIONAL INSTITUTION	

END